

## **Historic, Archive Document**

Do not assume content reflects current scientific knowledge, policies, or practices.



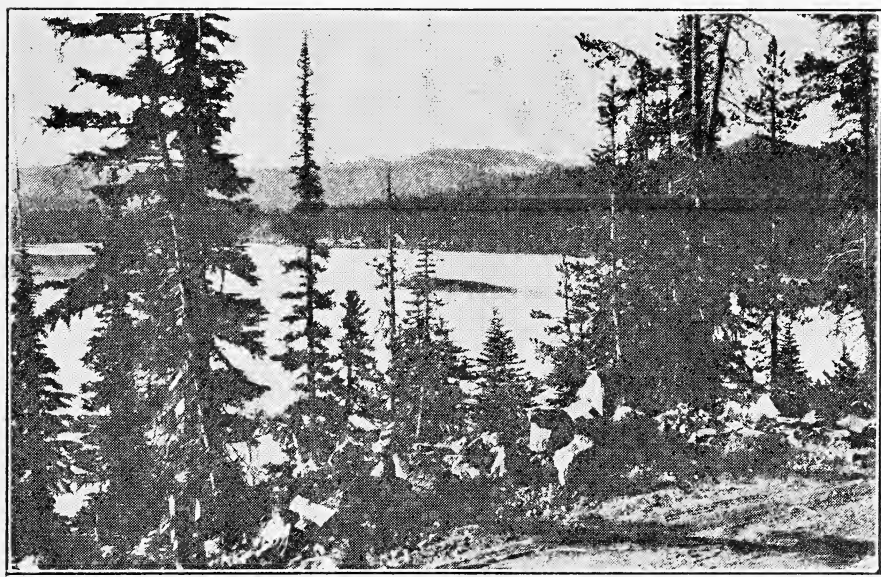
6271

Price list of

# Tulips

8 lines

## 1930



**Arthur C. Perrin**

766 Alberta Street

❖ ❖

Portland, Oregon

# PRICE LIST

	Per 100		Per Qt.
	1¼-up \$.....	1-1¼ \$5.00	½-1 \$.....
<b>Adonis</b> (M), Vivid rosy red .....			
<b>Allard Pierson</b> (D), Rich crimson maroon, fine long shaped flower. One of the earliest Darwins .....	3.50	2.40	.70
<b>Andre Doria</b> (D), Velvety dark chestnut .....	3.00	2.00	.60
<b>Arentine</b> (D), Strong growing, pink. Excellent variety.....	3.00	2.00	.60
<b>Barrone de la Tonnaye</b> (D), Rose, shaded blush. Very fine flower .....	3.50	2.40	.....
<b>Bleu Amiable</b> (D), Soft bluish lilac. Large flower. Good for late forcing. Small stock produces bloom .....	3.00	2.00	.60
<b>Bronze Queen</b> (B), Buff tinged apricot. Increases rapidly....	2.50	1.65	.50
<b>Cardinal Manning</b> (B), Blending of mauve and rose. Mature flowers have orange petal edge .....	3.75	2.50	.....
<b>City of Haarlem</b> (D), Large vermilion scarlet. Blue black base edged white .....	8.00	.....	.....
<b>Clara Butt</b> (D), Beautiful pink, forces well. good for bedding. A standard pink variety .....	2.50	1.40	.50
<b>Eclipse</b> (M), Orange, splashed red. Tall plant. Favorite cut flower .....	2.50	1.65	.50
<b>Edmee</b> (D), Deep cherry rose, silvery pink edges. Very beautiful flower and foliage .....	3.50	2.40	.....
<b>Ellen Willmott</b> (M), Creamy yellow, strong fragrance .....	3.50	.....	.....
<b>Gesneriana Major</b> (spathulata) (M), Very brilliant crimson scarlet with blue black base. Excellent cut flower .....	2.75	1.80	.75
<b>Grenadier</b> (M), Brilliant scarlet orange .....	3.00	2.40	.....
<b>Golden Crown</b> (S. E.), Yellow with red edges on petals.....	2.75	1.80	.60
<b>Herodiade</b> (D), Lilac rose color .....	4.00	2.65	.....
<b>Inglescombe Yellow</b> (M), Globular flowers of glossy canary yellow. Fine for borders and cutting .....	3.00	2.00	.80
<b>Isabella</b> (M), Buds creamy white changing to brilliant car- mine rose. One of the largest flowered tulips. Height 18 inches .....	2.25	1.50	.50
<b>Jubilee</b> (B), Deep rich blue purple. Flower egg shaped. Ex- tra fine and strong grower .....	3.00	2.00	.80
<b>King Harold</b> (D), Large crimson maroon. Good cut flower....	3.00	2.00	.....
<b>La tulipe noire</b> (D), Large flowered, black tulip .....	3.00	2.40	.....
<b>Louis XIV</b> (B), Large purple flowers, petal edges of golden bronze. One of the best breeders .....	4.50	3.00	1.40
Mixed, Various colors and types .....	2.25	1.50	.50
<b>Moonlight</b> (M), Large light yellow .....	3.50	2.40	.....
<b>Nectar</b> (M), Brilliant carmine red, very fragrant .....	4.00	2.65	.....
<b>Osmode</b> (D), Fine red .....	2.50	1.80	.75
<b>Ouida</b> (D), Fiery scarlet red with pale blue base .....	3.00	2.00	.60
<b>Panorama (Fairy)</b> (B), Terra cotta changing to bronze. Large flower about 24 inches in height .....	3.50	2.40	.....
<b>Paris</b> (D), Extra brilliant deep red.....	3.00	2.00	.60
<b>Pride of Haarlem</b> (D), An excellent red. Large flower and useful for cutting, forcing or borders .....	3.50	.....	.....
<b>Prince Albert</b> (B), Glowing mahogany. Brown, large .....	5.00	.....	.....
<b>Prof. Rauwenhoff</b> (D), Bright cherry red. Blue and white base Excellent for cutting or late forcing .....	3.00	2.00	.60
<b>Psyche</b> (D), Soft rose, inside silvery rose. Base tinted blue. Very large flower on a long stem. (See illustration) .....	2.25	1.50	.50
<b>Remembrance</b> (D), Silvery violet, dark base .....	3.00	2.00	.60
<b>Rev. Ewbank</b> (D), Heliotrope lilac with lighter edge.....	3.00	2.00	.60
<b>Sieraad van Flora</b> (D), Fine rose, good for forcing or cutting. One of the earliest Darwins .....	3.00	2.00	.60
<b>Sir Harry</b> (M), Beautiful lavender pink. Very large flowers on medium height plant .....	3.00	2.00	.60
<b>Sultan</b> (D), Very dark, almost black. Very lasting flower and deliciously fragrant. Good multiplier .....	2.00	1.35	.50
<b>W. T. Ware</b> (M), Unrivalled yellow. Outside golden yellow, inside rich buttercup yellow. Large flower and fine for cutting. This tulip produces medium size bulbs.....	.....	3.00	.....
<b>Wm. Copeland</b> (D), Excellent lavender. Early and good for forcing and cutting .....	.....	2.40	.75
Average weight of Tulips per 100 .....	6 lb.	3½ lb.	1½ lb.
This does not include boxes and wrapping.			

Abbreviations for type of Tulip—(S.E.) Single Early; (B) Breeder; (D) Darwin;  
(M) May flowering.

# Planting Stock by Peck or Bushel

Increase in duty on tulip bulbs from \$2.00 to \$6.00 per M should stimulate tulip growing in U. S. I have surplus planting stock 1/2" to 1" in the following varieties. Priced per peck of 8 quarts or 11 1/2 pounds. Not less than one peck one variety at these prices.

Allard Pierson .....	\$5.00
Eclipse .....	3.50
Paris .....	4.00
Bleu Amiable .....	4.00
Inglescombe Yellow .....	5.00
Prof. Rauwenhoff .....	4.00
Clara Butt .....	2.50
Isabella .....	3.50
Sultan .....	2.50

Five bushels, one variety, or assorted, 10% less.

---



---

## LILIES

All Lilies available in late September.

	Per	
<b>REGAL LILIES (Lilium Regale)</b>	100	1,000
Seedlings, less than 3/4 diameter or 2 inches circumference.....	8.75	\$6.00
3/4 to 1 diameter or 2 to 3 inches circumference .....	3.50	30.00
1 to 1 1/4 diameter or 3 to 4 inches circumference .....	8.00	70.00
Regal Lily Seed. Immediate Shipment		
1/4 oz. 15 cts.: 1 oz. 50 cts.: Lb. \$6.00.		

### MT. HOOD LILIES (Lilium Washingtonianum)

An early lily. Blooms open white with wine dots. Entire flower changes to purple at maturity. 3 to 7 feet in height. Very beautiful when established. ....

Seedlings, less than 3/4 diameter or 2 inches circumference.....	1.50	13.00
--	------	-------

### TIGER LILY, SINGLE (Lilium tigrinum)

Less than 3/4 diameter or 2 inches circumference .....	1.00	9.00
3/4 to 1 diameter or 2 to 3 inches circumference .....	2.00	18.00
1 to 1 1/4 diameter or 3 to 4 inches circumference .....	3.00	27.00

### TIGER LILY, DOUBLE (Tigrinum flore pleno)

1 to 1 1/4 diameter or 3 to 4 inches circumference .....	4.00	35.00
--	------	-------

U. S. Department of Agriculture circular "A Score of Easily Propagated Lilies" costs 15 cents. Order from Government Printing office and ask for Department of Agriculture circular No. 23.

W. E. Marshall & Co., Inc., 150 West 23rd Street, New York, publish a book "Consider the Lilies". This shows 70 varieties in color with description and cultural instructions. A very fine value at \$1.00. Order direct from Marshall & Company.

All lily stock is sold f. o. b., Portland, Oregon, except seed which will be prepaid.

(Over)

## **DO YOU GROW TULIPS?**

If not you are missing one of the finest bulb grown flowers. Tulips are of easy culture and give an abundance of bloom at a season when other flowers are scarce.

It is natural for large tulip bulbs to break up into several divisions and it is unusual to harvest as many of the large size, from a planting of large bulbs, as were planted. Many people have concluded from this that tulips lost vigor in their soil when the tulips were only increasing in a natural way. Purchase second size and planting stock by the quart if you wish to test your locality for tulip growing.

---

### **TERMS AND SHIPMENT**

These prices are f. o. b., Portland, Oregon. Express is the best method of shipment for all except local and small parcels. Tulips carry safely by freight if the weight is enough to make it profitable. Minimum order is \$1.00.

---

### **REFERENCE**

Bradstreets or R. G. Dunn & Company Mercantile Agencies or American National Bank, Portland, Oregon.

---

### **CULTURAL DIRECTIONS**

A booklet from the Government Printing Office, Washington, D. C., gives very complete instructions on the culture and storage of tulips. This costs 25 cents and should be ordered from the printing office. Ask for U. S. Department of Agriculture Bulletin No. 1082.

---

### **DISCOUNT**

For 1000 rate multiply 100 price by 9.

Twenty-five bulbs sold at 100 rate, and 250 or more at 1000 rate.

For less than 25 bulbs add 10% to 100 rate.

No item less than 20 cents.

Tulips are sold f. o. b. Portland, Oregon, and all offers are subject to prior sale.

The count of tulip bulbs in quart of small stock will vary somewhat with the variety but runs close to 130 bulbs.

Sizes are given in inches for the convenience of my customers.

If you wish to compare with sizes given in centimeters of circumference, multiply size given by 8, thus 1¼" Up is 10 to 12 cm., and 1-1¼ is 8 to 10 cm.

For weight of your shipment see estimates given below varieties.

Bulbs take second class express rate.