

Historic, Archive Document

Do not assume content reflects current scientific knowledge, policies, or practices.

INDEXED



A book of
TREES *and*
PLANTS

PORTLAND SEED COMPANY

321 East Alder Street

Portland, Oregon

Instructions for Ordering, Etc.

Pre-Pay Stations

On orders to go by freight or express, be sure to add money enough for transportation charges if your station is a pre-pay point, which is always the case when there is no regular agent.

How to Remit

Send money by Postoffice or Express Money Order, Bank Draft or Registered Letter. Postage stamps accepted for small amounts, two-cent stamps preferred. Money sent in mail is at sender's risk. Send plenty of money for purchase and transportation charges if to pre-pay point, which will save delay, and we will promptly return all over-payments to you.

In common with all other responsible seed houses, we sell our goods subject to the disclaimer adopted by the American Seed Trade Association, as follows:

DISCLAIMER NOTICE

We give no warranty, express or implied, as to description, quality, productiveness, or any other matter of any seeds, bulbs, nursery stock, roots or plants we sell, and will not be in any way responsible for the crop.—Portland Seed Co.

Parcel Post Shipments

We send all shipments in quantities of 10 pounds or less by mail. An additional remittance of 5c will insure any mailed package. We do not guarantee replacement of the goods sent by mail unless insured.

Complaints

Should there be any error in your order or if you are not pleased with some article, advise us promptly, giving order number, and we will make every effort to please you. Do not return any goods until you hear from us.

ORNAMENTAL VINES

CINNAMON VINES

The easiest grown climbers in the world; from China—the land of wonders. Their abundant blossoms perfume the air for a long distance with a delicate fragrance. Perfectly hardy—thriving in all soils, in sun or shade, wet or dry. No insects, blight or disease ever troubles them, no winter harms. Once planted, they will grow a lifetime. Each **25c**; five for **\$1.00**; postpaid.

AMPELOPSIS (IVY)

VEITCHI, "BOSTON IVY"—Leaves glossy green, coloring bronze in fall; flowers small; berries deep blue; clings firmly to smooth walls. Strong 2-year roots **50c**; postage extra.

QUINQUEFOLIA, "VIRGINIA CREEPER"—Common Ivy. Strong 2-year roots **50c**; postage extra.

ENGELMANNI—Similar to Quinquefolia, but leaves are slightly smaller; will cling to walls without any support. Very hardy. Strong 2-year roots **50c**; postage extra.

CLEMATIS

Beautiful and useful climbers. Their magnificent flowers, borne in great profusion in beautiful shades of soft lavenders, purples and white, make them especially attractive. Plant in light sandy soil, using slacked lime to keep slugs out of the roots. Manure should not touch the roots.

PANICULATA—A rapid and vigorous grower; it produces sheets of medium sized, pure white flowers of the most pleasing fragrance; is well adapted for covering trellises or fences. Choice plants, each **50c**; postage extra.

HENRYI—Fine, large, creamy white flowers; a strong grower and very hardy. Each **\$1.00**; postage extra.

JACKMANII—Intense violet purple with a rich velvety appearance; distinctly veined. Large plants, each **\$1.00**; postage extra.

RAMONA—Beautiful lavender. Each **\$1.00**; postage extra.

DUTCHMAN'S PIPE

ARISTOLOCHIA SIPHO—Bright green, luxuriant, having large foliage and brownish flowers. A strong rapid grower. Strong plants, each **75c**; postage extra.

ENGLISH IVY

Large, thick, shining, leathery leaves; evergreen. Plant in sheltered position. Ea. **25c**; postage extra.

HONEYSUCKLE

HALL'S JAPANESE—Almost evergreen, very popular; white turning to yellow. Each **50c**; postage extra.

JASMINE

NUDIFLORUM—Drooping branches, enveloped with bright yellow flowers before leaves appear. Each **\$1.00**; postage extra.

KUDZU

PUERERIA THUNBERGIANA—Large foliage and dense shade, growing 50 feet in one season. Flowers plentiful in August, rosy-purple, pea shaped; racemes. Each **50c**; postage extra.

TRUMPET VINE

BIGNONIA RADICANS—Strong climber; deciduous; flowers orange scarlet. Blooms in mid-summer. Ea. **50c**; postage extra.

WISTARIA

W. SINENSIS (Chinese Wistaria)—Grows 15 to 20 feet in a season; has long, pendulous clusters of pale blue or pink flowers in May and June and autumn. Choice 1-year plants **75c** to **\$1.50**. Grafted plants, pink, blue or white, each **\$1.50**; postage extra.

POLYGONUM

AUBERTI

SILVER LACE VINE—One of the most desirable flowering climbers, of strong, vigorous growth, attaining a height of 25 feet or more, producing thru the summer and fall great foamy sprays of white flowers. A well established plant during its long flowering period is a mass of bloom. It adapts itself to the most varied climatic conditions. Each **85c**; postage extra.



SILVER LACE VINE





FORSYTHIA HONEYSUCKLE LILAC SNOWBALL SPIRAEA MOCK ORANGE

Deciduous Shrubs

Deliveries made from November until May; orders are accepted at any time for delivery in season.

We use every precaution to deliver healthy, vigorous stock, but the measure of your success will depend upon the planting and care given. Avoid unnecessary exposure of roots to the air. In the case of evergreens that are "balled," do not remove the burlap. Plant as received, only cut the string around the top, then loosen burlap after tree is set. If you cannot plant immediately on receipt, always "heel" in so roots may be in contact with good soil.

If the soil is good and properly prepared, only a hole large enough to easily take the roots need be dug, but better results can always be obtained by digging out a large space and filling in with good top soil. In setting trees, do not put deeper than they stood in the nursery, excepting some dwarfs, which go a little deeper. Be sure to Pack Earth Solidly Around Roots. Neglect of this causes many failures.

ALL PRICES ON SHRUBS F. O. B. PORTLAND

ALMOND (PRUNUS)

PINK FLOWERING (P. Japonica)—Well known early dwarf shrub. Double clear pink little roses festoon the gracefully bending branches. Height at maturity 4 feet. Shipping size 24-36 inches. Each **\$1.25**.

ALTHAEA (ROSE OF SHARON)

Late summer blooming, continues into fall, bearing flowers that closely resemble Hollyhocks in color and size. Colors pink, white or red. Maturity height 10 feet. Shipping size 36 inches. Each **75c**.

AZALEA

A. MOLLIS—Tall growing; in early spring is covered with gorgeous flowers before the leaves appear. Excellent planted under trees or in groups. Cannot guarantee colors, mostly orange, yellow and salmon-pink. Maturity height 6 feet. Shipping size 12-18 inches. Each **\$2.50**.

BERBERRY

B. THUNBERG (Japanese)—Low growing with clusters of white flowers in May. Foliage changes to a red in autumn. Maturity height 4 feet. Shipping size 18-24 inches. Each **75c**.

BOX LEAF ELDER

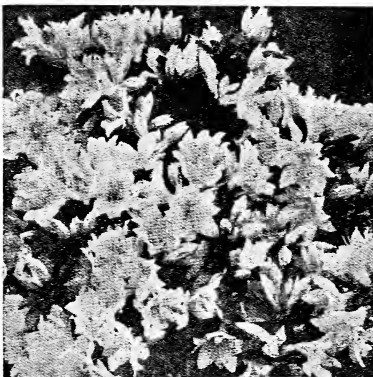
VARIEGATED—The finest variegated tree of the hardy kinds, leaves almost pure white. Nothing finer for specimen planting 4 to 6 feet. Also in silver and gold coloring. Maturity height 10 feet. Shipping size 5 feet. Each **\$3.00**.

BROOM (GENISTA)

SCARAPIUS (Scotch)—Rapid growing, bearing clusters of bright yellow flowers in spring. Maturity height 10 ft. Shipping size 3 ft. Each **75c**.



DEUTZIA—PRIDE OF ROCHESTER



AZALEA—A. MOLLIS



WRITE FOR YOUR

FREE ROSE BOOK

Deciduous Shrubs—Continued

PRICES ON SHRUBS ARE F. O. B. PORTLAND

BUDDLEYA (MAGNIFICA LILAC)

Produces long straight slender branches that terminate in long spikes of lilac-like flowers of a beautiful shade of lavender blue. Commences to bloom in June and continues until frost. Fine subject for lawn or tall hedge. Maturity height 6 ft. Shipping size 24-30 in. 2-year plants, ea. **75c.**

CALYCANTHUS

FLORIDUS (Sweet Scented Shrub)—Double, dark crimson flowers, very fragrant and blooms all season. Maturity height 5 ft. Shipping size 24-30 in. Each **75c.**

CRAB

BECHTEL'S FLOWERING—Bears masses of double rose-like flowers of delicate pink color and delightful fragrance; tree shape. Maturity height 10 ft. Ship. size 3 ft. **\$1.50.**

DEUTZIA

Especially suited for shady positions

GRACILIS—One of our daintiest and most graceful flowering shrubs; low growing, slender branches, covered with a profusion of flowers, white with a blush of pink in the bud. Shipping size 18-24 inches. Each **\$1.00.**

LEMOINE'S (D. Lemoinei)—One of the hardiest and most popular varieties, flowers in large clusters of pure white. Grows to 6 ft. high. Shipping size 24-30 in. Each **75c.**

PRIDE OF ROCHESTER (Deutzia Crenata)—Pure white, tinged with blush. Flowers very double, blooming May and June. Maturity height 6 ft. Shipping size 24-30 in. **75c.**

WATERI (D. Crenata Flora Rosa Plena)—Beautiful dainty double pink flowers. A fine lawn subject. Very showy. Grows to 6 ft. Shipping size 24-30 in. Each **\$1.00.**

ELAEGNUS (JAPAN, CHINA)

Ornamental shrub of spreading habit. Branchlet ruddy brown, leaves silvery. Flowers small but numerous, yellowish white and fragrant, followed by scarlet fruit in large clusters. Maturity height 4 ft. Note—this fruit is edible and makes delicious jelly or juice. Shipping size 1½ to 2 ft., each **\$1.00**; 2½ to 3 ft., each **\$2.50.**

FORSYTHIA (GOLDEN BELL)

F. FORTUNEI—Blossoms in dense masses of golden yellow flowers in early spring. Beautiful as a lawn specimen. Shipping size 3 ft. Each **75c.**

INTERMEDIA—One of the finest shrubs for early spring blooming. Yellow flowers appear before leaves. Height at maturity 4 ft. Shipping size 3 ft. Each **\$1.00.**

HONEYSUCKLE (BUSH)

WHITE TARTARIAN—Bushy upright growth, flowers freely. Red and orange berries stay on until fall. Maturity height 8 ft. Shipping size 18-24 in. Each **75c.**

HYDRANGEA

JAPANESE OTAKSA—One of the most popular lawn plants. The flowers run in shades of pink, blue and white, the minerals in soil often changing them to two or three shades in one. For shady places. Maturity height 4 ft. Shipping size 12 to 30 in. Each **75c** to **\$1.50.**

PANICULATA GRANDIFLORA (Tree Hydrangea)—Grows to six feet high. Flowers are in cone shape on ends of branches, pure white, afterwards changing to pink, remaining on tree until frost. Shipping size 3 ft. Each **\$1.00.**

KERRIA

A very graceful shrub that bears bright yellow rose-shaped flowers in early spring, vivid green branches, showy in winter. Maturity height 4 ft. Shipping size 24-30 in. **75c.**

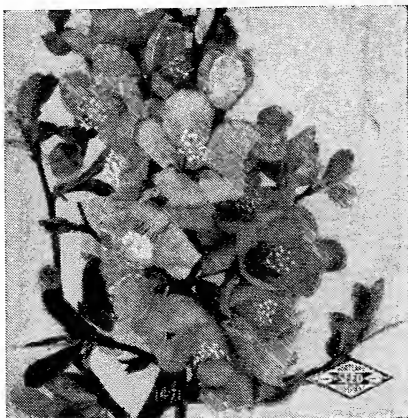
LILAC (SYRINGA VULGARIS)

COMMON VARIETIES, NOT GRAFTED—Single, white or purple. Maturity height 15 ft. Shipping size 30 to 36 in. Each **75c.**

GRAFTED VARIETIES—We can furnish the grafted varieties in double or single blooms and in white or purple colors. Maturity height 15 ft. Shipping size 3 ft. Each **\$1.25.**



BECHTEL'S FLOWERING CRAB



JAPANESE FLOWERING QUINCE

MOCK ORANGES (SYRINGA)

Large hardy shrub with a profusion of white creamy flowers, very fragrant. Maturity height 12 ft. Shipping size 3 ft. Each **75c.**

Are You Planning a Lily Pool?

Write us for our new booklet of instructions for building and planting lily pools, with lily pictures in colors.



Deciduous Shrubs Continued

All Prices on Shrubs Are f.o.b.
Portland

PRUNUS (Flowering Prune)

P. BLIVANS—Same as Pissardi in growth but flowers double pink. Most beautiful of all and very rare. Maturity height 20 ft. Shipping size 3 ft. Each **\$2.00**.

P. PISSARDI—Foliage and fruit red, covered in spring with clouds of white flowers. Maturity height 20 ft. Shipping size 3-4 ft. Each **\$1.00**.

P. VESUVIUS—Foliage comes out light green, gradually getting darker until fall, when it is blood red. Very showy fruit. Maturity height 20 ft. Shipping size 3-4 ft. Each **\$1.50**.

QUINCE

JAPANESE FLOWERING — Covered with bright scarlet flowers very early in spring before leaves appear. Maturity height 4 ft. Shipping size 18-24 inches. Each **\$1.00**.

RUSSIAN OLIVE

Large shrub with long narrow silvery foliage. Flowers yellow, appearing in May, followed by yellow berries. Maturity height 10 ft. Shipping size 24-30 inches. Each **\$1.00**.

SPIRAEA

BILLARDI'S (S. Billardi) — Flowers red in dense spikes, blooms most of summer. Maturity height 4 ft. Shipping size 24-30 inches. Each **60c**.

BLUE SPIRAEA — Beautiful autumn blooming shrub. Flowers bright blue the entire length of stems. Maturity height 4 ft. Shipping size 18-24 in. Each **60c**.

CRIMSON (Anthony Waterei) (S. Bumalda)—A desirable variety, deep red flowers, blooming all summer; fine for foreground planting. Maturity height 4 ft. Shipping size 24-30 in. Ea. **60c**.

JAPANESE (S. Callosa)—Purplish foliage while young, flowers rosy pink in July. Maturity height 4 ft. Shipping size 18-24 inches. Each **60c**.

THUNBERGII—Charming spiraea with graceful form and abundant blooms. Maturity height 4 ft. Shipping size 24-30 inches. Each **60c**.

VAN HOUETTI'S BRIDAL WREATH (S. Vanhouetti)—Very graceful; flowers white in clusters. May. Maturity height 6 ft. Ship. size 24-30 in. **60c**.

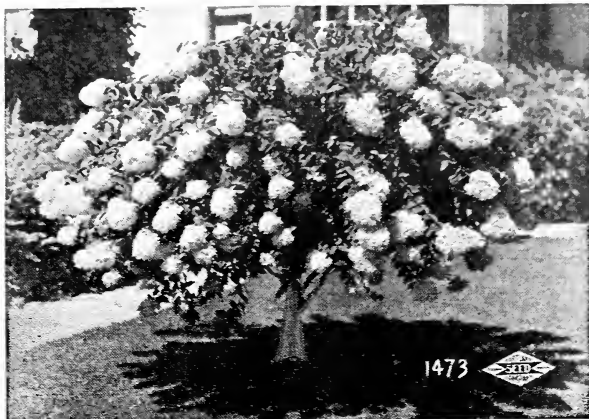
SNOWBALL

COMMON—Flowers globular, pure white, in May. Maturity height 12 ft. Shipping size 24-30 in. Each **75c**.

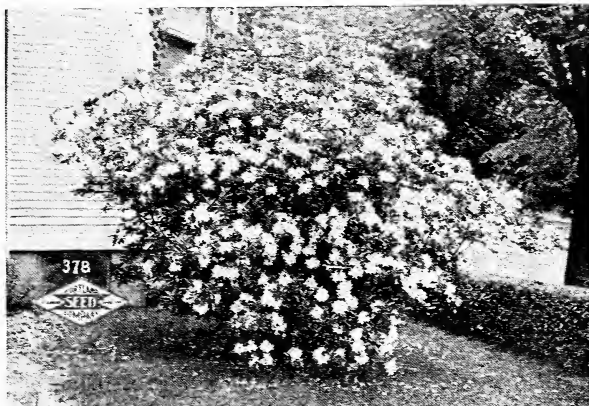
SNOWBERRY (Symphoricarpos)

S. OCCIDENTALIS — Western snowberry. A native shrub of spreading habit, bearing small pink flowers in summer and clusters of large clear white berries in winter. Maturity hgt. 5 ft. Ship. size 24-30 in. Each **50c**.

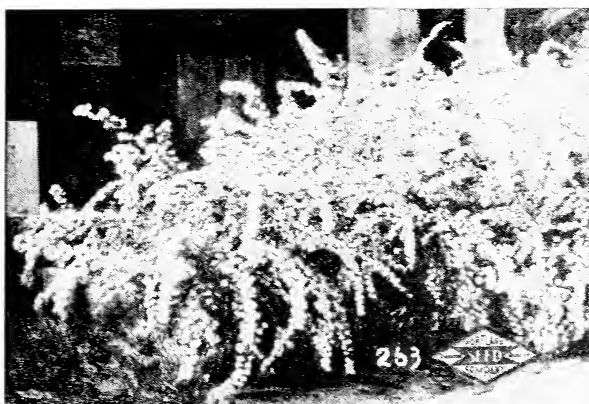
S. VULGARIS, Indian Currant—Red fruited snowberry, habits similar to white, but loaded with dark red berries fall and winter. Maturity height 4 ft. Shipping size 24-30 in. Each **50c**.



TREE HYDRANGEA—PANICULATA GRANDIFLORA



WEIGELIA



SPIRAEA—VAN HOUETTI

TAMARIX

JUNIPERANA (Africana)—Ornamental tree with soft, juniper-like leaves, pink flowers. Maturity height 14 ft. Shipping size 24 in. **\$1.00**.

WEIGELIA

A most desirable free flowering shrub covered in the late spring with a mass of trumpet-shaped flowers, showing a profusion of bloom that is unequalled. Maturity height 12 ft. Shipping size 24-30 in. Each **75c**.

CANDIDA—Flowers white, bush tall.
ROSEA—Flowers pink, shrub compact.
EVA RATHKE—Flowers red, very fine.
VARIEGATED—Silvery leaves.



BE SURE TO USE THE

RIGHT FERTILIZER



Evergreen Shrubs

Deliveries are made from November until May; orders are accepted at any time for delivery in season. We use every precaution to deliver healthy, vigorous stock, but the measure of your success will depend upon the planting and care given. Avoid unnecessary exposure of roots to the air. In the case of evergreens that are "balled," do not remove the burlap. Plant as received, only cut the string around the top, then loosen burlap after tree is set. If you cannot plant immediately on receipt, always "heel" in so roots may be in contact with good soil. If the soil is good and properly prepared, only a hole large enough to easily take the roots need be dug, but better results can always be obtained by digging out a large space and filling in with good top soil. In setting the trees, do not put deeper than they stood in the nursery, excepting some dwarfs, which go a little deeper. Be sure to Pack Earth Solidly Around Roots. Neglect of this is responsible for many failures.

ALL PRICES ON SHRUBS ARE F. O. B. PORTLAND

ABELIA

GRANDIFLORA—Graceful evergreen shrub with small glossy leaves and tubular shaped flowers of a bluish pink color. Large ruddy sepals remain long after the flowers fall, having the appearance of blooms themselves. Does not like to be crowded as it is of a drooping nature and effect is spoiled if planted too close to buildings or other shrubs. Maturity height 5 ft. Shipping size 18-30 in. Each **\$1.50**.

AUCUBA (Japanese Laurel)

Gold Dust Laurel, moderate size, very beautiful and covered with wonderful large red berries. It is necessary to have at least one green foliage plant to every three variegated if berries are desired as there are both male and female plants of this variety and planted alone they will often be barren. Do not expose to extreme hot sun as leaves are apt to burn. Maturity height 5 feet.

JAPONICA VARIEGATED—Yellow spotted leaves.
JAPONICA GREEN—Dark glossy green leaves. Shipping size 15-18 in., each **\$1.50**; 18-30 in., each **\$2.00**.

AZALEA (Asahi)

CRIMSON (A. Hinodegri)—Evergreen from Japan, bright minute, waxy foliage that turns gamete in winter. Loaded in early spring with masses of scarlet flowers which almost cover the plant. Thrive best in cool, moist situation; do not plant in full sunlight. Excellent for massing or in front of other shrubs. Maturity height 3 ft. Choice plants, shipping size 10-12 in., each **\$2.00**.

BARBERRY

B. DARWINI (Chile)—Shrub with slender branches, drooping toward tips. Leaves shaped like holly, flowers golden yellow, berries blue; foliage turns red in winter; slow growth. Maturity height 4 ft. Shipping size 6-8 in., each **75c**; 12-13 in., each **\$1.25**.

B. VERICULOSIS—Resembles Darwini, but is low growing dwarf for rockeries and terrace work; more brilliant foliage. Maturity height 2 ft. Shipping size 12-15 in. Each **\$1.25**.

B. WILSONI (China)—One of the most attractive winter shrubs, being covered with clusters of cone-shaped red berries that completely cover it all winter. Do not plant too close to other shrubs, as it becomes bushy. Grows to 5 ft., long spikes. Shipping size 12-15 in., each **\$1.00**; 18-24 in., each **\$1.50**.

BOXWOOD (Buxus)

One of the longest lived shrubs known, small leaved, of dense compact growth; can be used in tubs or for low hedge work and trimmed into any form. Pyramid form, trimmed 2-2½ ft., each **\$4.00**; 2½-3½ ft., each **\$5.00**. Globe form, 12 to 15 in. spread, 15 to 18 in. high, each **\$2.00** to **\$4.00**.

For hedges, write for prices on quantity desired.

CAMELLIA (China and Japan)

Small trees with shining waxy leaves and waxy flowers, resembling small roses. Thrive best in partial shade. Grow very slowly, but begin blooming when extremely young. Should have protection in cold regions, as buds set in late fall and blooms come very early in spring. Maturity height 10 ft. In assorted colors only, mostly red and pink. Shipping size 1 to 1½ ft. high, each **\$2.50**.

COTONEASTER

C. FRANCHETTI (China)—Growth upright, distinguished by its very arching branches, which give it a most graceful habit. Pink flowers followed by red berries in the fall. Maturity height 6-8 ft. Shipping size 2-3 ft. Each **\$1.50**.

C. HORIZONTALIS (Trailing)—Nearly deciduous; leaves very small and turn red during winter; berries of the brightest red that stay on all winter. Low growing with horizontal branches, excellent for terrace or embankment work. Very hardy. Maturity height 2 ft. Ship. spread 18 in., ea. **\$1.00** to **\$1.50**.

C. MICROPHYLLA (Himalayas)—Very much like C. Horizontalis, but differs in that it is entirely evergreen; berries are larger and of purplish red, almost prostrate growth. Shipping spread 18 to 24 in. Each **75c** to **\$1.50**.

C. MICROPHYLLA THYMIFOLIA—Like above, but foliage is very dense; tiny leaves and berries; very dainty. Maturity height 1 ft. Each **75c** to **\$1.50**.

C. SIMONSII—Growth very straight and upright; excellent to fill in background between shrubs when height is desired. Leaves do not remain all winter, but branches are covered with bright red berries the size of a cranberry. Of quick growth. Maturity height 10 to 12 feet. Shipping size 18 to 24 in., each **75c**; 2 to 3 ft., each **\$1.50**.



6 WRITE FOR YOUR FREE

FERTILIZER BOOK

EVERGREEN SHRUBS—Continued from page 6

All prices are f.o.b.
Portland

DAPHNE

(China and Japan)

D. ODORA MARGINATA (Pink Daphne)
A grand shrub, greatly admired everywhere; the flowers are intensely fragrant, massed in dense clusters of pink at ends of branches; leaves are edged white; blooms very early in spring. Of slow substantial growth. Maturity hgt. 4 ft. Shipping size 24-30 in., each **\$2.50** to **\$3.50**.



DWARF JUNIPER

A low growing shrub of widespread habit, beautiful green coloring. Plants as delivered spread 12 to 18 inches and increase to many feet; beautiful for parking strip, along walls, etc. See photograph above. Each **\$2.50**.

ESCALLONIA (South America)

Dwarf growing evergreen with dark green foliage; spreading branches covered throughout summer with tubular shaped pink flowers of much beauty. Very handsome species; not very hardy in cold climate. Maturity height 3 ft. Shipping size 1½ ft. Each **\$1.50**.

EUONYMOUS (Japan)

GREEN—A fine specimen evergreen plant with leathery green leaves, one of the hardiest broad leaved evergreens. Very fine for foundation planting. Maturity height 8 ft. Shipping size 12-18 in., each **\$1.00**; 18-30 in., each **\$1.50**.

HOLLY (Ilex)

ENGLISH (Aquifolia)—Prickly dark green foliage; grows moderately fast; covered during the winter months with bright red berries. We endeavor to furnish nothing but assured berry bearing stock which has produced berries before being sent out. However, very often in transplanting they drop these berries and do not reset them until roots become established again. Holly trees, while they never should be allowed to remain dry too long, are often ruined by too much spraying with hose during summer months, causing flowers to drop and no berries. Maturity hgt. 40 feet. Price **\$3.00** and up, at rate of \$1.50 per ft. of height. Write for prices on holly for hedges, stating length of hedge.



HOLLY

DWARF JUNIPER

LAUREL

ENGLISH LAUREL (Cerasus)—One of the best known laurels; growth shrub-like with broad dark green leaves of leathery texture, greatly used in landscape work. Attains a height of 12 feet if not topped. Being used a great deal now for evergreen hedge planting at a distance of 2 feet apart for dense hedge. Shipping size 18-24 in., **75c** to **\$2.50**. Larger plants up to 5 feet priced on request. Hedge plants unballled from **\$15.00** to **\$40.00** per 100, height 8 to 15 inches.

PORTUGAL LAUREL—A very beautiful slow growing laurel, dark green glossy leaves, small but very compact; can be trimmed to globe or pyramid shapes. Maturity height 8 ft. Shipping size 12-15 in., each **\$1.50**; 2 ft., each **\$2.25**; 2½ ft., each **\$3.00**.

LAURUSTINUS (Mediterranean Region)

A well known evergreen shrub with dark green foliage. Bears a profusion of small white flowers in the open and pink in the bud, very early in the spring. Attains considerable size and used a great deal in specimen planting or to fill a large corner or space. Fine for massing or hedge work. Very hardy. Maturity height 10 ft. Shipping size 10-18 in., each **75c**; 18-24 in., each **\$1.25**; 24-30 in., each **\$2.00**.

LONICERA

NITIDA EVERGREEN BUSH HONEY-SUCKLE (China)—A fine variety for base or foundation planting, as well as for massing in large beds. Bright glossy foliage. Can be trimmed much the same as boxwoods for tub or porch decoration. Maturity height 5 ft. Shipping size, 1 ft., each **50c**; 1½ ft., **75c**; 2½ ft., **\$1.25**. Write for prices on hedge size.

OREGON GRAPE

MAHONIA AQUIFOLIA—The holly-leaved berry of Oregon, a native of this state, but our plants are nursery grown and especially fine. Dark evergreen foliage in summer, changing to purplish and variegated reds in the fall. The official flower for the state of Oregon. Shipping size 14 in., each **\$1.00**; 18 in. **\$1.25**; 24 in. **\$1.75**.

PERNETTYA

P. ROSEA—A new evergreen novelty, of dense compact habit; does well in any location, but prefers a rich soil. The leaves are small, dark, glossy green, with white flowers in the spring and a profusion of attractive pink berries in the fall and winter. Can be trimmed. Shipping size 1½ ft., each **\$2.50**; 2½ ft., each **\$3.50**.



IT'S NOT A HOME

UNTIL IT'S PLANTED

EVERGREEN SHRUBS—Continued from page 6

Privet

PRIVET (*Ligustrum*)

CALIFORNIA PRIVET (*L. Ovalifolium*)—Our best plant for hedges. Plant in double row 2 feet apart, 6 inches between plants. Maturity height 10 feet.

18-24 in., 10 plants \$1.00; 100 \$7.50.

24-30 in., 10 plants \$1.25; 100 \$10.00.

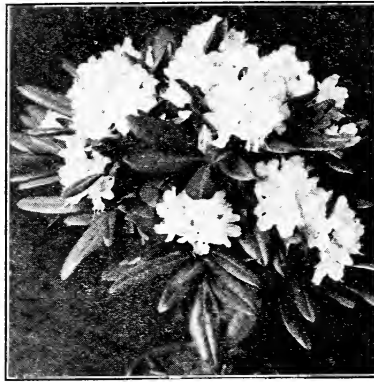
ENGLISH PRIVET (*L. Vulgare*)—A little hardier, for colder climate, leaves smaller. Maturity height 10 ft.

18-24 in., 10 plants \$1.00; 100 \$7.50.

24-30 in., 10 plants \$1.25; 100 \$10.00.

GOLDEN PRIVET (*L. Lucidum Variegatum*)—A beautiful variegated shrub used to plant in among evergreens, giving a wonderful effect.

Maturity height 10 to 12 ft. Shipping size 2 ft., each \$1.00; 3 ft., each \$1.50.



Pyracantha

CRATAEGUS

A tall growing shrub with long narrow green leaves, small white flowers, followed by berries that stay on all winter; especially fine for background. Maturity height 15 feet.

P. LALANDI (From Europe)—Orange berries. Shipping size 12-18 inches, each \$1.25; 18-24 inches, each \$1.50.

P. CREMULATA (China)—Red berries. Shipping size 18 to 24 in., each \$1.50.

Grafted Rhododendron

PINK PEARL—Wonderful pearly pink flowers; 12-18 in., each \$5.00; 18-24 in., each \$7.00.

SHADES OF RED—Pink or purple, grafted named varieties labeled true to name; order by color; 12-18 in., each \$5.00.

SEEDLINGS—No color guaranteed; 18-24 in., each \$3.00.

All prices on shrubs are f.o.b. Portland

Beautiful Evergreen Trees for the Lawn



ARBOR VITAE (*T. Occidentalis*)

ARBOR VITAE (*Thuja*)

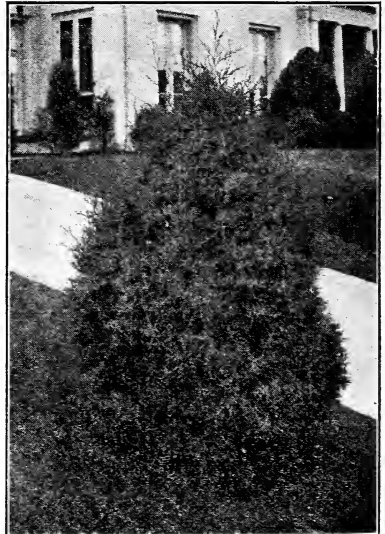
AMERICAN (*T. Occidentalis*)—Native, known as cedar. Foliage bright green; yellow-green underneath; bronze in winter. Shipping size 24 to 30 inches, each \$2.00 to \$3.00.

PYRAMID ARBORVITAE (*Thuja Lobbii*)—Bright green leaves above and dark glossy green leaves beneath. An excellent tree for pyramid forms. Shipping size 12-18 in., each \$1.50 to \$2.00.

It's Not
a
Home
Until It's
Planted



Write for
FREE
BOOKLET
on conducting
Amateur
Garden
Contests



JUNIPERUS VIRGINIA (Red Cedar)

CEDAR

DEODAR or INDIAN CEDAR (*Cedrus Deodara*)—Very handsome; branches drooping; foliage silvery green. Very popular. Shipping size 18 to 24 inches, each \$2.50.

RED CEDAR (*Juniperus Virginiana*)—Native with striking form and color. See illustration above. Shipping size 18 to 24 inches, each \$2.50.



8 WRITE FOR YOUR

FREE BULB BOOK

Coniferous Evergreen Trees



COLORADO BLUE SPRUCE

In handling and planting evergreens never allow the roots to become dry for an instant. Their juices are resinous, and when once dry, water has no power to restore them; dip the roots in "grout" or very thin mud, and plant quickly; cover the roots with fresh soil and with a heavy piece of wood beat the earth solid over them. Fill up and pound again, and finish by bringing fresh loose earth about the tree with a hoe. No wind can now bend the tree about so as to break the tender rootlets as fast as formed.

Sizes given are the approximate sizes when sold. Prices f. o. b. Portland. Sizes up to 3 feet can be mailed. Postage extra.

SPRUCE (*Picea*)

NORWAY (*P. Excelsa*)—A lofty, rapid grower; branches drooping. Fine for hedge or windbreak. 2 to 3 feet, each **\$3.00** to **\$3.50**.

COLORADO BLUE SPRUCE—One of the hardiest evergreens of beautiful color and outline. Shipping size 2 ft., each **\$4.50**.

JUNIPER (*Juniperus*)

IRISH (*J. Communis Hibernica*)—Pyramidal in form; foliage silvery gray. Shipping size 2-3 ft., each **\$3.00**.

COMMON (*J. Communis*)—Branches spreading. Shipping size 2½ to 3 ft., each **\$3.00**.

JUNIPER CHINENSIS—Very compact growth, light green. Shipping size 1½ ft., each **\$2.00**; 2 ft., each **\$4.00**.

It's
Not
a
Home
Until
It's
Planted



LAWSON CYPRESS

CRYPTOMERIA

ELEGANS (Japanese Cedar)—A very beautiful evergreen. Delicate green foliage and graceful habit. Color changing to reddish brown. Shipping size 18 to 24 in., each **\$2.00** to **\$3.00**.

CRYPTOMERIA JAPONICA—The open branched tree type of Cryptomeria, resembling somewhat the Sequoia Gigantea, but of slower growth. Shipping size 18 to 24 in., each **\$2.50**.

CYPRESS (*Cupressus*)

ALUMII—Handsome pyramid shaped conifer. Foliage greenish-blue. Shipping size 1½ to 2 ft., **\$3.00**; 3 to 3½ ft., **\$5.00**; 4 ft., **\$7.00**.

LAWSON'S (*Chamaecyparis Lawsoniana*)—Graceful and conspicuous; branches horizontal, slightly pendulous, foliage dark green. Shipping size 1 to 3 feet, each **\$1.50** to **\$5.00**.

LAWSON (*Erecta Veridis*)—Pyramid, green. Shipping size 12 to 18 in., **\$2.00** to **\$2.50**; 2 to 3 ft., **\$5.00**; 4 ft., **\$6.00**.

ITALIAN—Bright green. Very compact in growth; nothing finer in the upright type. Shipping size 2 to 3 ft., each **\$2.50**; 3 to 4 ft., each **\$3.00**.

RETINOSPORA

PLUMOSA AUREA—Golden. 12 to 18 in., **\$2.25**; 18 to 24 in., **\$3.00**.

SQUARROSA—Dense, compact, foliage with feathery branches. Light bluish green. 12 to 18 in., **\$2.00**; 2 ft., **\$2.50**.

See Page 26
for
Grass Seed
and
Fertilizers



TRY A FALL PLANTING

OF SWEET PEAS

PEONIES

Peonies make a gorgeous display whether in landscape, flower bed, border or garden, and for those who have only limited time for the care of flowers, nothing will give so much joy and satisfaction and endure so long as these wonderful flowers. Color schemes are not necessary for beautiful effects, any combination is delightful. They are nearly always free from disease, few insects bother them and they succeed in almost any soil or climate. They improve quickly season after season and each year flower and plant become increasingly beautiful.

CULTURE. Fall is the best time to plant, because blooms will usually follow the next spring, although planting may be done in early spring. Peonies need a deep soil, not too much gravel, a good clay loam is best, and work soil to a good depth. Give a good dressing of bone meal at planting time and repeat every second year. Sheep guano is also good to work in the bed. Cover the crown not over 2 inches deep. When cutting Peonies allow at least two leaves to remain on each stem; the roots need these for full growth. Do not remove foliage until it is thoroughly dead. Plant immediately upon arrival. If roots are dry when received, soak over night before planting. Prepare soil long enough in advance to allow it to settle before planting.

PRICES F.O.B. PORTLAND

New and Rare Varieties

Grandiflora Nivea Plena (Le-moine, 1824)—Rose. Early. Med. Guards milk-white, the collar cream white. Center petals have delicate salmon and sulphur tints. Each **\$1.50**.

Kelway's Media—A deep, clear pink of exceptional beauty of form. Highly recommended. **\$2**.

Octavie Demay—Pink and white; large flat crown, guards delicate flesh pink, narrow collar of white petals, center of deeper pink. Habit of plant low. Fragrant and very early. Ea. **\$1.00**.

Mons. Martin Cahuzac—Dark purple garnet with black reflex; mid-season; very large. Ea. **\$3**.

Reine Hortense—Hydrangea pink with flecks of crimson, semi-rose type, large, compact, tall growing. Each **\$2.50**.

Sarah Bernhardt—Flat compact semi-rose type; uniform mauve color; penetrating fragrance. Each **\$2.50**.

Therese—Very soft pink, lilac white center; with reflex; mid-season; strong stems, enormous flowers. Each **\$5.00**.

White Varieties

James Kelway (Kelway)—Exquisite white; very fragrant; fine variety. Mid-season. Each **\$3.00**.

Avalanche—A large milk-white flower of perfect form; the base is of soft yellow and a few petals are flecked with carmine. A strong grower, blooming profusely and fragrant. Ea. **\$1.00**.

Baroness Schroeder—Plum shaped flower with irregular and fringed petals; opens a blush, changing to milk white; delicate odor; very free bloomer; one of the best grower. Each **\$1.50**.

Duchesse De Nemours (Calot)—White tinged sulphur and sometimes pale green. Mid-season. Each **75c**.

Festiva Maxima—Large rose type, white with crimson markings in the center; one of the best. Fragrant. Each **75c**.

LaTendresse—Early, rose type, with very full spreading flowers of immense size in clusters. Petals thick and wax-like. Color milk white, guards slightly splashed and center flecked with crimson. Each **\$1.00**.

Madame De Verneville—Very large anemone shaped flower, pure white with slight carmine touches, of pleasing fragrance; long strong stems; an ideal cut flower. Each **\$1.00**.

Pink Varieties

Asa Gray (Crousse, 1886)—Semi-rose. Mid. Guard petals salmon-flesh. Center of bloom full and perfect, delicate lilac sprinkled with minute dots of deeper lilac. Large imbricated bloom. Each **\$1.50**.

Charlemagne—Salmon pink, very double and full. **60c**.

Duchess d'Orleans—A deep pink, salmon center. Early cut flower. Each **50c**.

Edulis Superba—Crown type, bright clear pink, very fragrant, extra large early Decoration Day peony. Each **50c**.

Elegantissima—Light cherry pink; mid-season; an excellent cut flower. Each **60c**.

General Dodds—Uniform dark Tyrian rose, center touched with a few white dots; very desirable; late. Each **75c**.

Lady Bramwell—Beautiful pink of the finest form. Each **75c**.

Livingstone—Rose type, a pretty pink flecked with carmine; blooms in clusters; late. **\$1.00**.

Madame Breon—A light pink, of full compact form, very attractive large flowers. **\$1.00**.

Madame Lemonier—Rose type, soft lilac pink, changing to lilac overcast with white. A large compact flower, mid-season, fragrant, vigorous grower. **\$1.00**.

Special

"Name Lost" PEONIES

Peonies on which the names have become misplaced. Some are of the highest priced varieties. We offer these at the especially low price of:

Each 35c
Three for \$1.00
Separate Colors, Red,
White or Pink
Each 50c
Three for \$1.40
Postage Extra

Single Varieties

Albiflora—Large single paper white, long yellow stamens, blooming in clusters; tall, early and fragrant. Each **\$1.50**.

Apple Blossom—Delicate pink, shaded darker, resembling huge apple blossom. Each **\$3.00**.

Florestine—A beautiful dark red single type, large size, very special for this climate. **\$2.00**.

Some Ganoko—Very dark red, with satiny reflex petals, yellow center; the very finest. **\$5.00**.

Red Varieties

Adolph Rousseau—Semi-double type; purple garnet; tall plant; free bloomer; dark foliage veined red; one of the best for landscape effect; early. **\$1.00**.

Charles McKellip (Brand)—A rich, bright red; large flowers. Each **\$3.50**.

Felix Crousse—Bomb type; brilliant red, good odor, vigorous grower with spreading habit, blooms freely in clusters. One of the most enjoyable peonies and one of the best reds. Ea. **\$1.00**.

Karl Rosenfield—Semi-rose; velvety crimson, mid-season, no odor; strong and healthy, free bloomer in clusters; large and fine for cut flowers as well as landscapes. Each **\$1.50**.

Louis VanHoutte—Semi-rose; dark crimson tipped with silver, with fiery reflex, medium height. Fragrant. Each **\$1.00**.

Officialis Rubra—Earliest of good reds, a large round bloom of vivid crimson, generally in bloom on Memorial Day. Each **75c**.

Richard Carvel (Brand)—Highly recommended by the introducer as the best early red, and it was included by the late Bertrand H. Farr in his list of the twelve best peonies. The red has a ruby shade and somewhat resembles Felix Crousse, but the color is brighter. Each **\$3.00**.

Rubra Superba—Rose type; a brilliant dark crimson; large full double; without stamens; fragrant. Each **75c**.





Our Diamond 1929 Collection PEONIES

This collection is especially selected for those who are beginning their peony gardens, giving a most charming invitation to join the ranks of peony lovers. For complete descriptions see page 91.

Collection of 6 **\$4.50**
Value \$5.25 for.....

Here is the list, all the finest quality

- | | |
|------------------------------------------------------------------|--------|
| 1. Festiva Maxima, fragrant..... | \$.75 |
| 2. Asa Gray, mid-season..... | 1.50 |
| 3. Duchess d'Orleans, for early cutting..... | .50 |
| 4. Madame Breon, large, compact..... | 1.00 |
| 5. Felix Crousse, blooms in clusters..... | 1.00 |
| 6. Edulis Superba, the Decoration Day
peony, extra large..... | .50 |

All for **\$4.50**; value.....**\$5.25**
Not prepaid. Add postage for mail shipments.

Hardy Iris Collection

One each (6 in all) for..... 85c
Three each (18 in all) for..... \$2.25
Six each (36 in all) for..... \$4.25
Twelve each (72 in all) for..... \$7.75

F.O.B. Portland, postage extra

7. Ma-Mie, pure white, penciled border.
8. Queen-of-May, soft pinkish lilac.
9. Walthalla, lavender and wine red.
10. Monsignor, very rich coloring.
11. Perfection, truly named.
12. Her Majesty, beautiful.

See full descriptions on page 12



JAPANESE IRIS

(KAEMPFERI)

All the colors of the rainbow are gathered into their wonderful, vivid, yet harmonious shadings and silky texture. They average about 4 feet in height with flowers 5 to 7 inches across, although in the hands of experts they reach the great size of 12 inches. They are surely worth a choice place in every garden. Each year the clumps increase in size and the flowers become more beautiful.

CULTURE—They are very unlike Hardy Iris in culture. Japanese Iris requires plenty of water and good soil to get the best blooms; they do especially well on the borders of streams or ponds. A good dressing of bone meal is a big help when planting. Plant about 3 inches deep and 12 inches apart, divide the clumps every other year. They bloom after the Hardy Iris. Doubles have six petals, singles have three petals.

Named Varieties

Each 40c; Dozen \$3.75

Not prepaid. Add postage for mail shipments

The finest varieties to be had in the Northwest and priced exceptionally low for high quality



DATE-DOGU—Single; rich claret red with orange blotches; very charming.

GOLD BOUND—Double; pure white, one of the best and most beautiful.

KUMO-NO-OBI—Double, dark lavender blue, especially fine. Six petals.

KURO-KOMO—Double; purple overlaid with dark blue; yellow blotches, stigmas dark blue bordered with purple.

MOUNT HOOD—Double; light blue, shaded slightly darker, with a bright orange center (just the colors reflected on the grand old mountain as the sun rises).

PYRAMID—Double; violet-purple, veined white in the center of each petal.

ROSE-ANNA—Double; ivory white, heavy ruby red veins, yellow blotch, stigmas dark plum.

SENJO-NO-HARA—Double, vinous purple speckled and splashed gray, primrose blotches radiating out into sky blue, petaloid stigmas purple stained gray.

TAIHERAKU (PEACE)—Double; rich purple with yellow blotches, tipped blue, purple veins radiating out; petaloid stigmas gray and lavender; gorgeous. Six petals.

JAPANESE IRIS MIXTURE—Double and single, no named varieties; all colors and shades. Special prices, each 20c; doz. \$2.00; 100 \$15.00; f.o.b. Portland.

HARDY IRIS

Also known as German Iris, Liberty Iris, Bearded Iris, Fleur de Lis or Flag Lilies

The growing of the Iris is greatly increasing each year on account of their rare beauty as well as ease of growing. They are hardy, drouth resisting; they come at a time when the garden needs their color, they bloom the first season after planting and soon form big clumps which are easily divided and transplanted.

Cultivation is easy; sunny situation needed; soil dry and well drained (hardy iris cannot stand water around the roots). Plant with bulb just below the surface, spread the roots out and pack the soil. No fertilizer should touch rhizomes. Water about once in two weeks until well established. Bone meal and ground limestone are good fertilizers.

Named Varieties, Strong Roots, Each 15c; Dozen \$1.50

MIXED VARIETIES, DOZ. \$1.00; prices are f.o.b. Portland, postage extra

(S indicates Standard or part of flower remaining upright; F is the Falls or drooping part of flower)

CAPRICE—S. soft rosy red; F. deep rosy red;

HER MAJESTY—S. rose pink; F. bright crimson tinged darker shade.

JUNIATA—S. and F. clear deep blue, tallest of bearded iris; fragrant.

HALFDAN—All yellow, wonderfully rich.

LOHENGRIN—S. and F. uniform shade of Cattlevea rose. Large.

LADY JANE—S. coppery; F. red and white.

MA MIE—S. and F. pure white, with blue penciled border.

Special Mixture of Hardy Iris

These are our regular grade iris as shown in list, but some get mixed. They will make a beautiful showing at a wonderfully low price. Order early as stock is limited.

100 for \$5.00



Perennial Alpine & Border Plants and Seeds

IMPORTANT NOTICE. In our catalog this season we have separated the Annual and Perennial Seeds and Plants and in the following pages show a more complete list of Perennials than ever before. Many are NEW and RARE; the original plants having been secured from

Dozen Price Applies to a dozen of One Variety Only

One Dozen Plants at the Price of Ten

NEW INTERESTING ALPINES

The popularity of rockeries, rock gardens, lily ponds, etc., has increased so greatly we have selected and include in our compilation an exceptionally large and fine list of alpenes especially suited for these purposes and have endeavored to make the descriptions as clear and concise as possible. We hope that you will enjoy reading through the entire list as much as we have enjoyed preparing it and that you will find many new and pleasing selections for your rockeries. With the exception of a few of the newest and most rare varieties, our plants are field grown, are given constant care and cultivation and when sent out are strong and well developed; much larger and worth a great deal more money than pot-grown plants. While we endeavor to secure the best possible seeds from the most reliable sources, we cannot guarantee, as to form and color, plants propagated from seed, especially hybrids. Please do not specify straight colors on hybrids that are listed "in mixture of colors only."

An interesting chart showing the varieties that bloom each month will be sent free on request

ALPINE OR ROCKERY PLANTS MARKED WITH A STAR (*); BORDER PLANTS WITH A DAGGER (†)

ACONITUM (Monkshood)

Bushy clumps for planting under trees and in shady places or in the sun. Bold spikes of hood-shaped flowers.

†ANTHORA. A pale yellow flowering trees and in the following pages show a more complete list of Perennials than ever before. Many are NEW and RARE; the original plants having been secured from

Europe; and all plants propagated from cuttings or root divisions are guaranteed true to name and color. We offer well-rooted specimens that can be safely packed and promptly delivered in perfect condition. If you contemplate large plantings or special effects, let us know your plans and requirements. We can supply in any quantity for every requirement at lowest prices.

Europe; and all plants propagated from cuttings or root divisions are guaranteed true to name and color. We offer well-rooted specimens that can be safely packed and promptly delivered in perfect condition. If you contemplate large plantings or special effects, let us know your plans and requirements. We can supply in any quantity for every requirement at lowest prices.

Europe; and all plants propagated from cuttings or root divisions are guaranteed true to name and color. We offer well-rooted specimens that can be safely packed and promptly delivered in perfect condition. If you contemplate large plantings or special effects, let us know your plans and requirements. We can supply in any quantity for every requirement at lowest prices.

AETHIONEMA (Persian Candytuft)

Plant in light, sandy soil on dry, sunny slopes, and will last for many years without replanting or renewing. They dislike moist soil and shady places.

*CORIDIFOLIUM. Rosy-lilac flowers in dense short racemes, numerous branches, 4-6 in. May-July. Plants, each 50c; 3 for \$1.35.

*GRANDIFLORUM. Strong twiggy branches resembling Iberis in growth with clusters of rosy pink flowers in May and June. 12 in. Plants, each 50c; 3 for \$1.35.

*OVALIFOLIUM. Compact bushlet about 8 in. tall; light pink flowers. Plants, each 40c; 3 for \$1.10. Seeds, 25c pkt.

*PERSICUM. Rosy pink flowers of deep tone, dense, 4 to 6 in. high. May to July. Very fine. Plants, each 50c; 3 for \$1.35.

*PERSICUM. Rosy pink flowers of deep tone, dense, 4 to 6 in. high. May to July. Very fine. Plants, each 50c; 3 for \$1.35.

*PERSICUM. Rosy pink flowers of deep tone, dense, 4 to 6 in. high. May to July. Very fine. Plants, each 50c; 3 for \$1.35.

*PERSICUM. Rosy pink flowers of deep tone, dense, 4 to 6 in. high. May to July. Very fine. Plants, each 50c; 3 for \$1.35.

*PERSICUM. Rosy pink flowers of deep tone, dense, 4 to 6 in. high. May to July. Very fine. Plants, each 50c; 3 for \$1.35.

*PERSICUM. Rosy pink flowers of deep tone, dense, 4 to 6 in. high. May to July. Very fine. Plants, each 50c; 3 for \$1.35.

*PERSICUM. Rosy pink flowers of deep tone, dense, 4 to 6 in. high. May to July. Very fine. Plants, each 50c; 3 for \$1.35.

*PERSICUM. Rosy pink flowers of deep tone, dense, 4 to 6 in. high. May to July. Very fine. Plants, each 50c; 3 for \$1.35.

*PERSICUM. Rosy pink flowers of deep tone, dense, 4 to 6 in. high. May to July. Very fine. Plants, each 50c; 3 for \$1.35.

AJUGA (Bugleweed)

*REPTANS-BROCKBANKII. Forms a close carpet 2 to 4 inches high of richly bronzed purple leaves with blue flowers like mint blooms, for shaded or moist positions. Plants, each 25c; 3 for 65c.

ALSTROEMERIA-AURANTIACA

†PERUVIAN LILY. Handsome plants, especially when grown in groups, yellow flowers, streaked with red, in umbels on stems 2 to 4 ft. high. Require a well drained, partly shaded position, and roots must have an abundance of water during growth. July to Sept. Seeds, pkt. 25c. Plants, each 30c; 3 for 80c.

ALYSSUM (Rock Madwort)

*ARGENTEUM. Dwarf dense growth, foliage silvery beneath, large panicles of bright yellow flowers, blooming all summer. 12 in. high. Seeds, pkt. 25c. Plants, each 25c; 3 for 65c.

*MOELLENDORFIANUM. Makes a dense cushion about 18 in. across; fine for carpeting, growing about 4 in. high; silvery foliage, yellow flowers. June to August. Plants, each 30c; 3 for 80c.

*SAXATILE COMPACTUM. The old favorite gold dust, large heads of golden yellow flowers, excellent for rockery or in front of borders. 3 to 10 inches. May to June. Plants, each 20c; 3 for 55c.

*SAXATILE CITRINUM. Dwarf, compact habit. Especially good for rockeries or edging work. Masses of pale yellow flowers. 10 in. high. May to June. Plants, each 30c; 3 for 80c.

*MONTANUM. Silvery leaves and fragrant, yellow flowers; 4 inches. Plants, each 35c; 3 for 95c.

ALYSSUM (Continued)

*SPINOSUM. Sub-shrubby. Dense, spiny, silvery foliage and very small numerous white flowers. Is choice and rare; 4 to 6 inches May and June. Plants, each 40c; 3 for \$1.10.

*WULFENIANUM. Resembles A. Montanum leaves being less silvery and flowers pale yellow. Plants, each 35c; 3 for 95c.

ANEMONE (Windflower)

*HUPEHENSIS. A pretty species from central China, closely resembling anemone Japonica in a miniature way; pleasing mauve-rose flowers about 1½ in. across. 12 to 18 in. high. From August till late fall. Plants, each 25c; 3 for 65c.

*PULSATILLA (Pasque Flower). A delightful plant for rockery or border, large flowers, colors from lilac to purple, 3 to 12 in. high. April to May. Seeds, pkt. 25c. Plants, each 35c; 3 for 95c.

*ST. BAVO. A new race of starry windflowers, closely allied to A. Fulgens. Colors range from scarlet, rose salmon and brick red to dark carmine, lilac and blue, all with a silvery white center. Can supply in mixture only. 8 to 10 inches high. March to May. Seed, pkt. 50c.

Plants, each 35c; 3 for 95c.

*ST. BRIGID (Irish Anemone). Their fine cut foliage and pretty blue, pink and white flowers make them one of the most popular spring flowers. 12 to 18 in. high. March to May. Mixture only. Seeds, pkt. 25c.

Plants, each 25c; 3 for 65c.

*MAGELLANICA. Has white or very pale yellow flowers; 12 in. May and June. Plants, each 40c; 3 for \$1.10.

*MONTANUM. Of the Pulsatilla type, but with nodding flowers of blue. Plants, each 35c; 3 for 95c.

*RIVULARIS. A North Indian species, suitable for rockery or woodland planting. White flowers on 18-inch stems. Plants, each 40c; 3 for \$1.10.



TRY SOME NEW

PERENNIALS

Perennial ALPINE & BORDER PLANTS & SEEDS—Alphabetically Listed
 ALPINE OR ROCKERY PLANTS MARKED WITH A STAR (*); BORDER PLANTS WITH A DAGGER (†)

ANEMONE (Continued)

- *PRATENSIS. Large, dark purple flowers on stems 6 inches long. Plants, each 40c; 3 for \$1.10.
- *SYLVESTRIS. Fine for a cool corner. Large white blossoms on 12-inch stems. Very free blooming. May and June. Plants, each 35c; 3 for 95c.

ANEMONE JAPONICA

Among the most important fall flowering hardy perennials that thrive in the shade. Valuable for massing or single specimens. They grow rapidly and are profuse in bloom, increasing in beauty and strength each year and furnishing abundant cut flowers. August to November. Stems 2 to 4 ft. high.

- †LOUISE UHINK. Large double pure white flowers, 3 to 4 feet. Plants, each 35c; 3 for 95c.
- †MAX VOGEL. Large pink, semi-double flowers, 2 to 3 feet high. Plants, each 35c; 3 for 95c.
- †QUEEN CHARLOTTE. Very large semi-double, LaFrance pink, 3-4 ft. Plants, each 25c; 3 for 65c.
- †RICHARD AHRENS. Large single shell pink flowers, lilac tinge. Plants, each 35c; 3 for 95c.
- †RUBRUM. Rosy red, semi-double, 2 feet high. Plants, each 20c; 3 for 55c.
- †WHIRLWIND. Fine double white, 2 to 3 feet high. Plants, each 20c; 3 for 55c.

AQUILEGIA (Columbine)

In all of our gardens there is no daintier, more airy a flower than the long spurred Columbines, with their handsome foliage and long sturdy stems. While a light shade and loose loamy soil are best, they will do well in the full sun and in any soil from light loam to adobe. Colors of every sort, blooming for a long season. In this list we also include some very charming dwarf types for rockeries.

- *ALPINA. A beautiful short spurred form, blue and white flowers, 12 inch stems. May to August. Plants, each 30c; 3 for 80c.
- †CHRYSANTHA. Long spurred waxy yellow flowers, free blooming, 2 feet high. Plants, each 25c; 3 for 65c.
- *HELENAE (Hybrid). Dwarf, 12 to 15 in., with large glaucous green leaves and flowers of pure blue, with snow white centers, the color of the famous Aquilegia Glandulosa Jocunda, or Siberian Columbine, but with smaller flowers and shorter spurs. Plants, each 35c; 3 for 95c.
- †LONG SPURRED HYBRIDS. Extra large long spurred flowers, sweet scented, in blue, pink, white, yellow and lavender color combinations, mixture only. Seeds, pkt. 25c; 1/16 oz. 50c. Plants, each 25c; 3 for 65c.
- *PYRANEICA. The most dwarf of all the aquilegias. A very rare and beautiful plant, compact clumps of dark green foliage with clear blue flowers on stems 6 to 8 in. high. June to July. Seeds, pkt. 50c. Plants, each 35c; 3 for 95c.
- †SINGLE MIXED. A desirable mixture of all colors. Seeds, pkt. 15c; 1/4 oz. 50c.
- †DOUBLE MIXED. All colors. Seeds, pkt. 15c; 1/4 oz. 50c.

ARABIS (Rock Cress)

One of the earliest and prettiest spring flowers for rockeries or edging. Sow seeds in permanent location and thin to 6 in. Gray green foliage, sheets of fragrant flowers. Will stand drouth, 6 to 8 inches high. April and May.

- *ALPINA. Pure white flowers. Seeds, pkt. 10c; 1/4 oz. 30c. Plants, each 25c; 3 for 65c.
- *ALPINA FLORE PLENO. Double white flowers with pinkish tinge. Plants, each 25c; 3 for 65c.
- *ROSEA. Dainty sprays of rose colored flowers. Seeds, pkt. 25c. Plants, each 30c; 3 for 80c.
- *ARABIS KELLERI. New dwarf Rock Cress, 1 inch high, with flower stems not over 3 inches high. Very choice. Plants, each 35c; 3 for 95c.

ARMERIA (Sea Pink or Thrift)

Very attractive dwarf plants, forming evergreen tufts of bright green foliage with many flowers in dense heads on stiff wiry stems, flowering from spring until fall, foliage being attractive the year round. Will succeed in any soil.

- *VULGARIS. A native of the Coos Bay country, rose pink flowers, 6-inch stems. Seeds, pkt. 15c. Plants, each 25c; 3 for 65c.

ASCLEPIAS (Butterfly Weed)

†TUBEROSA. Very showy native plant, thriving in the full sun and not particular as to soil. Flowers are first salmon pink, changing to light orange, then brilliant orange scarlet, putting three colors on each flower stem. 2 ft. June-Aug. Plants, each 25c; 3 for 65c.

ASTERS-PERENNIAL ALPINES

The list of perennial asters is divided into two classes, the spring and summer flowering and dwarf types especially suited for rockeries and edgings and the late flowering taller types for borders.

- *ALPINUS GOLIATH. Large beautiful flowers of lilac shade with yellow center. 12-15 in. May-June. Seeds, pkt. 15c. Plants, each 25c; 3 for 65c.
- *AMELLUS KING GEORGE. The amellus type is a large flowering early blooming Michaelmas daisy, the individual flowers measuring 2 to 3 in. Erect bushy habit, with trusses of bluish violet flowers. 2 ft. high. May to August. Plants, each 50c; 3 for \$1.35.
- *AMELLUS RUDOLPH GOETHE. Very free flowering with large trusses of lavender blue flowers. Especially fine. 2 ft. June-Aug. Plants, each 40c; 3 for \$1.10.
- *FARRERI-BIG BEAR. Narrow rays of richest violet hanging loosely from a flat center disc of vermilion orange. Suggested for a dry spot in the rockery. 12 to 18 in. high. May to July. Plants, each 50c; 3 for \$1.35.
- *SUBCOERULEUS - A P O L L O. Large soft lavender blue flowers with orange center disc. Stems 12 to 18 in. May to July. Seeds, pkt. 25c. Plants, each 25c; 3 for 65c.

ASTERS (Continued)

*MAUVE CUSHION. A new hardy Japanese perennial of distinct species forming a circular cushion-like plant 2 to 3 ft. in diameter and 6 to 8 in. high, with delicate mauve colored flowers in such profusion as to completely cover the plant from September to November when they are at their best. Plants, each 25c; 3 for 65c.

ASTERS-PERENNIAL Fall-Flowering Hardy Michaelmas Daisies

Among the very best of our hardy plants, having the merit of making soft masses of any desired height from 2 to 7 feet. The foliage is a soft pleasing shade of green and makes an excellent contrast in other groups. They succeed well in any garden soil with moderate watering, either in full sun or light shade.

- †ABENDROTHE (Evening Glow). Rosy red flowers, height 3 ft. Plants, each 30c; 3 for 80c.
- †BARR'S PINK. A new variety, large open bright rose pink, semi-double flowers, with showy gold bronze center. 4 ft. Sept.-Oct. Plants, each 50c; 3 for \$1.35.
- †CLIMAX. Spikes of large light blue-lavender with golden yellow disc, very free, one of the showiest. 4 to 5 ft. Plants, each 20c; 3 for 55c.
- †LITTLE BOY BLUE. The finest rich blue aster yet introduced, of neat habit, about 2 ft. high. Aug. to Oct. Plants, each 40c; 3 for \$1.10.
- †LOUVAIN. Soft pink, free flowering. 3 to 4 ft. high. Plants, each 30c; 3 for 80c.
- †MAGGIE PERRY. Very large flowers about 2 1/2 inches across in large trusses, lovely shade of mauve. 3 to 5 ft. high. Plants, each 20c; 3 for 55c.
- †MESA GRANDE SPECIOSA. Grandiflora, very late flowering species covered in October and November with immense purple flowers. 3 ft. high. Plants, each 30c; 3 for 80c.
- †MME. MICHAUD. A semi-dwarf French aster, soft lavender pink. 1 ft. high. Plants, each 40c; 3 for \$1.10.
- †PERRY'S WHITE. Pure white, very large, with a golden center which turns to crimson when fully developed, perfect in habit and the best white aster yet introduced. Very free flowering, stout well branched stems. 4 ft. high. Plants, each 20c; 3 for 55c.
- †RYECROFT'S PINK. Rosy pink flowers, free branching. 5 ft. Plants, each 20c; 3 for 55c.
- †RYECROFT'S PURPLE. Large rich purple flowers. 5 ft. high. Plants, each 25c; 3 for 65c.
- †ST. EGWIN. Free flowering, soft rosy pink flowers. 3 ft. high. Plants, each 25c; 3 for 65c.
- †TARTARICUS. A bluish violet color. One of the tallest and latest flowering varieties. 7 ft. high. Plants, each 25c; 3 for 65c.

CALAMINTHA

*ALPINA. A graceful little rock plant with spreading tufts of pretty foliage, spangled with lavender blue flowers. 6-8 in. June-Aug. Seeds, pkt. 25c. Plants, each 25c; 3 for 65c.



Perennial ALPINE & BORDER PLANTS & SEEDS—Alphabetically Listed

ALPINE OR ROCKERY PLANTS MARKED WITH A STAR (*); BORDER PLANTS WITH A DAGGER (†)

AUBRIETIA (Wall Cress)

- *HYBRIDS. Neat tufts of foliage, smothered during spring and early summer, with gorgeous colored pink to purple flowers. Fine for planting in rock crevices or on walls, 4 to 6 in. Seeds, pkt. 15c.
- *AUBRIETIA "MOEHRHEIMII". Pretty greyish foliage, very compact growing. Pale rose flowers. Plants, each 50c; 3 for \$1.35.

AURICULA (Alpine Primrose)

- *Handsome smooth-leaf foliage, covered with fine powder. Flowers in clusters, fragrant at times and many attractive yellow to garnet color combinations. 6 to 8 inches. April to May. Seeds, pkt. 25c. Plants, each 25c; 3 for 65c.

CAMPANULA

(Hardy Bellflower)

- One of the most popular families of hardy garden flowers, ranging from tall, imposing border varieties to dainty dwarf types for the rockery or edgings. A good rich soil is preferred and if partly shaded the blooms last longer.
- *CAMPANULA ALLIONII. Large lilac-colored blossoms studding the ground on inch-high stems. Flowers are the largest for the size of the plant of any Campanula. For a cool crevice. Plants, each 75c, 3 for \$2.00.
 - *CARPATICA (Carpathian Harlequin Bells). Compact tufts not over 8 inches high with clear blue flowers on erect wiry stems. For rockery or edging. June to Oct. Seeds, pkt. 25c. Plants, each 25c; 3 for 65c.
 - *CARPATICA ALBA. A pure white form of the preceding. Plants, each 25c; 3 for 65c.
 - *GARGANTICA. The jewel of the rock garden. The plants form rosettes of small leaves, covered from June to September with light blue star-shaped flowers with white eyes. Trailing, 3 to 4 in. Plants, each 40c; 3 for \$1.10.
 - *GLOMERATA ACAULIS. An almost stemless variety, flowers coming in clusters 4 to 6 in. long and 3 to 4 in. in diameter. Rich violet. May and June. Seeds, pkt. 25c. Plants, each 40c; 3 for \$1.10.
 - *ISOPHYLLA ALBA. Trailing, with pure white flowers, about 1 inch across. For rock walls and basket planting. Plants, each 40c; 3 for \$1.10.
 - *MAYII. The blue flowering form of preceding. Plants, each 40c; 3 for \$1.10.
 - *PIPERII. Easily America's finest Campanula, and for rock garden purposes it surpasses all of the well known forms of Campanula. Its habit of growth and flowers resembles that of C. rotundifolia, but the flower is nearly double the size of the former and is much more compact growing. Large blue flowers on wiry stems 6 to 10 inches high. Very drought resistant and will bloom from June to October. Seeds, pkt. 50c. Plants, each 50c; 3 for \$1.35.
 - *RADDEANA. Forms a compact bush, about 12 inches high, and is covered with large purple or violet purple flowers from May to July. Plants, each 40c; 3 for \$1.10.

CAMPANULA (Continued)

- *SAXIFRAGA. One of the rarest of Campanula. Deep blue flowers on trailing stems from May to June. Plants, each 75c; 3 for \$2.00.
- †LACTIFLORA. Large trusses of open bell-shaped flowers of blue or lavender on stiff stems, excellent for cutting. Graceful, height 3 ft. May to July. Seeds, pkt. 25c. Plants, each 25c; 3 for 65c.
- *LAURIF. A new species from the Greek Islands, flowers a beautiful shade of lavender, about 1 inch across. When in bloom the plants are a mass of color with scarcely a leaf visible. The flowers, instead of drooping, turn upward. 10 in. high. May to July. Plants, each 40c; 3 for \$1.10.
- *MURALIS (Portenschlagiana). Dense tufts of dark green foliage, smothered with large light blue flowers for months. Very dwarf, 3 to 6 inches. June to September. Plants, each 30c; 3 for 80c.
- †PERSICIFOLIA (Peach Bells). Blue or white separate colors, excellent for cutting. 2 ft. high. May to July. Seeds, pkt. 15c. Plants, each 20c; 3 for 55c.
- †PERSICIFOLIA FLORE PLENO. The double flowered Peach Bell, bright blue flowers. Plants, each 30c; 3 for 80c.
- *PUSILLA. Very dense spreading clump of fine foliage with many nodding blue flowers on slender stems 4 to 6 in. high. June-Oct. Seeds, pkt. 25c. Plants, each 30c; 3 for 80c.
- *PUSILLA ALBA—The white flowering form of above. Plants, each 40c; 3 for \$1.10.
- †PYRAMIDALIS (Chimney Bell-Flower). The most conspicuous of all Campanulas, forming a perfect pyramid crowned with large porcelain blue flowers. A stately plant for garden or pot culture. 4 to 5 ft. high. June to September. Seeds, blue or white, pkt. 10c; Plants, each 30c; 3 for 80c.
- *ROTUNDIFOLIA (Blue Bells of Scotland or Harebells). Slender branching stems covered with dainty pale blue flowers. Especially fine for rockery crevices or steep slopes. 10-15 in. May-Sept. Seeds, pkt. 25c. Plants, each 25c; 3 for 65c.
- *ROTUNDIFOLIA MISS C. M. HARK. Our new introduction, flowers larger and bloom 2 to 4 weeks longer than the preceding. Plants, each 35c; 3 for 95c.
- *TURBINATA. A beautiful variety forming close mats of foliage with large saucer cups of blue, close to the plant and smothering it. June to July. Seeds, pkt. 25c. Plants, each 25c; 3 for 65c.

CHELONE (Shellflower)

- †BARBATA HYBRIDS. Slender, tubular flowers on tall erect stems in red and pink shades. 3 to 4 ft. high. June to August. Plants, each 25c; 3 for 65c.
- †PRAECOX HYBRIDA. Very early spring flowering species. Many new colors. May to August. Plants, each 30c; 3 for 80c.

CAMPANULA-MEDIA

Canterbury Bells

- Hardy biennials about 2½ ft. high with large nodding bell-shaped flowers of many exquisite shades. Sow seeds in May, keep well watered and transplant to permanent location in July or August. Give rich soil and plenty of room.
- †CALYCANTHEMA (Cup and Saucer). White, blue, pink or mixed. Seeds, pkt. 15c; ¼ oz. 60c.
- †MEDIUM SINGLE. Blue, rose, white or mixed. Seeds, pkt. 10c; ¼ oz. 25c. Plants, each 20c; 3 for 55c.

CALTHA "UNIFLORA"

- (Marsh Marigold)
Native. Big round, shiny leaves, white Buttercup flowers on 10 to 12-inch stems. Plants, each 35c; 3 for 95c.

CHEIRANTHUS

(Siberian Wallflower)

- *ALLIONI. Dazzling fiery orange flowers on ft.-high stems. Beautiful rock plant, good winter bloomer. Seeds, pkt. 25c. Plants, each 25c; 3 for 65c.
- *LINIFOLIUS. Beautiful new species with lilac mauve flowers, very free flowering. For dry rockeries and borders. 8 in. June-July. Plants, each 25c; 3 for 65c.

COREOPSIS (Tick Seed)

- Fine for cutting or for garden decoration. Sow seeds indoors very early, transplanting to open when soil is warm. One of the best hardy plants.
- †GOLDEN STAR. Dazzling orange flowers. 2 ft. high. June to Oct. Seeds, pkt. 25c. Plants, each 20c; 3 for 55c.
- †LANCEOLATA. Bright yellow flowers. 2 ft. high. June to Oct. Seeds, pkt. 10c; oz. 65c.
- *GRANDIFLORUM. "New, Semi-Double." Flowers rich golden yellow, prettily fluted. Plants, each 25c; 3 for 65c.

CONVULVULUS MAURITANICUS

- *CONVULVULUS MAURITANICUS. One of the best summer blooming plants for the rockery or border. Needs a well-drained, sunny spot. Beautiful clear blue flowers on 6-inch stems. Plants, each 35c; 3 for 95c.

CYPRIPEDIUM

(Lady's Slipper)

- Hardy orchids with very interesting and odd shaped flowers, the colors and markings being quite unusual.
- †ACAULE. Rosy-purple flowers on one-foot stems. Plant in well drained soil with some leaf mold or peat moss. May. Plants, each 50c; 3 for \$1.35.
- †PUBESCENS. The yellow lady's slipper. 18 in. May to June. Plants, each 50c; 3 for \$1.35.
- †SPECTABILE. The finest of all our native orchids. Large rose-purple or white flowers on 2-ft. stems. Plant in moist, partly shaded bed of peat moss or leaf mold. May to June. Plants, each 60c; 3 for \$1.60.



Perennial ALPINE & BORDER PLANTS & SEEDS—Alphabetically Listed
 ALPINE OR ROCKERY PLANTS MARKED WITH A STAR (*); BORDER PLANTS WITH A DAGGER (†)

DELPHINIUM
 (Hardy Larkspur)

"The new popular flower of the day." Within the past few years the culture of Delphinium has advanced greatly in the Pacific Northwest, the climatic conditions here being so favorable to perfect development. Profuse in their blooming with tall spikes of many colors and special characteristics of bee they offer the greatest interest and possibilities in their culture.

†**BELLADONNA.** The freest, most continuous bloomer of all Delphinium, making also the best cut flowers and giving 7 crops a season. Clear azure blue, white bee. Seeds, pkt. **25c**; ¼ oz. **\$1.35**. Plants, each **20c**; 3 for **55c**.

†**BELLAMOSUM.** Habit and growth the same as Belladonna, but a deep blue with white bee. Seeds, pkt. **15c**; ¼ oz. **\$1.25**. Plants, each **20c**; 3 for **55c**.

†**CARDINALE.** Bright scarlet, 3 to 5 ft. high. Seeds, pkt. **15c**; ¼ oz. **\$1.00**.

***CHINENSIS.** A very pretty species with fine feathery foliage and intense gentian blue flowers. 18 in. high. May to July. Seeds, pkt. **10c**; ¼ oz. **60c**. Plants, each **20c**; 3 for **55c**.

***CHINENSIS ALBUM.** A pure white of the preceding. Seeds, pkt. **10c**; ¼ oz. **50c**. Plants, each **20c**; 3 for **55c**.

†**CLIVEDEN BEAUTY.** An improved Belladonna, with larger flowers on taller stems. Cambridge blue. Seeds, pkt. **15c**. Plants, each **30c**; 3 for **80c**.

†**EXCELSIOR STRAIN HYBRIDS.** From the best named varieties in one of the largest perennial gardens in England. Plants, each **30c**; 3 for **80c**.

†**FORMOSUM.** Improved form of the dark blue larkspur, white bee. Plants, each **30c**; 3 for **80c**.

***NUDICAULE.** A free flowering dwarf 15 to 20 in. high, brilliant scarlet flowers. June to Sept. Plants, each **25c**; 3 for **65c**.

***WREXHAM STRAIN HYBRIDS.** The original strains from the north of Wales, carefully developed and the rarest and best varieties selected for this climate and soil. With proper care and cultivation they produce stalks as tall as 7 feet, filled with flowers 2 to 3 inches in diameter. The range of colors runs the most delicate combinations of mauve and light blue, Crater Lake blue, heliotrope, pinkish lavender, creamy white, deep blues, purples, with the most interesting bees in each flower. Seed produces best results when planted in the fall and requires more careful attention than other varieties, but the extra care is more than rewarded. Seeds, mixed, pkt. of 30 for **25c**. Plants, first quality, each **\$1.00**.

***DELPHINIUM LAMARTINE.** Is very distinct, coming true from seed. Flowers violet or almost a Centian blue with a small white bee. Excellent cut flower. Seeds, pkt. **25c**. Plants, each **35c**; 3 for **95c**.

DAPHNE (Garland Flower)

***NEORUM.** Long trailing branches, leaves small dark green, evergreen. Perhaps the most beautiful dwarf shrub in cultivation. Heads of rose-pink very fragrant flowers. Excellent for front row in shrubberies. 6-10 in. May-July. Plants, each **75c** and **\$1.00**.

DIANTHUS (Alpine Species)

This genus contains some of the most charming of our alpine gems. They are of the easiest culture and thrive best in any well drained gritty soil. Charming for dry rockeries, dry walls or sunny spots.

***ALPINUS.** Very dwarf, the flower stems rarely being more than ¾ in. high. Dark shining foliage, flowers deep rose or purplish and crimson spotted with darker ring around the eye, about 1 in. across. May to July. Plants, each **35c**; 3 for **95c**.

***DIANTHUS ANATOLICUS.** Pale pink, sometimes white, flowers on 10-inch stems. Seeds, pkt. **25c**. Plants, each **30c**; 3 for **80c**.

***DIANTHUS ARVENENSIS.** Wide-spreading mats of grey-green, completely covered with sweet rose-pink flowers during May and June. Plants, each **40c**; 3 for **\$1.10**.

***DIANTHUS GLACIALIS.** Requires gritty sand and peat. Rose colored flowers on short stems. Are very choice and rare. Stock limited. Plants, each **50c**; 3 for **\$1.35**.

***DIANTHUS KNAPPIL.** On account of its loose, straggling growth, should be planted high in the rockery or wall where the stems may fall over without soiling the flowers. The only clear yellow-pink known. Plants, each **50c**; 3 for **\$1.35**.

***DIANTHUS SYLVESTRIS (Inodorus).** Dense grassy tufts from which spray arching stems carrying big, clear pink flowers. Plants, each **40c**; 3 for **\$1.10**.

***DELTOIDES (Maiden Pink).** A delightful little plant, trailing, with narrow leaves and a profusion of small deep rose flowers. 4 to 6 in. high. May to July. Seeds, pkt. **15c**. Plants, each **25c**; 3 for **65c**.

***GRANITICUS.** Branching habit, bright red flowers with sometimes a purple or vivid rose among them. 6 to 8 in. high. July to Sept. Plants, each **25c**; 3 for **65c**.

***NEGLECTUS.** Perhaps the most beautiful of all alpine pinks. Very dwarf tufts 3 to 4 in. high with flowers of salmon rose, reverse of petals tawny yellow. June-Aug. Plants, each **40c**; 3 for **\$1.10**.

***SEMPERFLORENS PERFECTION.** A splendid strain, producing an infinite variety of shades of crimson, carmine, pink, rose, salmon, cinnabar, etc., with eyes of deeper hue. 10 to 12 in. stems. May to July. Mixture only. Seeds, pkt. **25c**. Plants, each **30c**; 3 for **80c**.

***SYLVESTRIS.** Tufted plant, salmon pink flowers, especially fine. 12 in. high. July to Sept. Plants, each **30c**; 3 for **80c**.

DIANTHUS (Continued)

***SUPERBUS.** Has grassy foliage with quantities of the palest lilac (or sometimes white) flowers, very fragrant and splendid for cutting. 12 in. high. July to Sept. Plants, each **25c**; 3 for **65c**.

DIANTHUS
 (Hardy Garden Pinks)
 Perpetual Flowering

†**ALLWOODI.** Improved type of the old hardy pink, blooming continuously from early summer to late fall. Larger flowers, larger stronger stems, with a delicious fragrance, propagated from cuttings. SNOW, early white.

WHITE RESERVE. late white. **ETOILE De LYON.** Brilliant crimson. Double.

GLADYS CRANFIELD. Rich pink with deep carmine eye. **GERTRUDE.** Deep rose. Double. **HOMER.** Rosy red with dark center. Double.

LITTLE DORRIT. White with a touch of bright crimson in center. Plants, each **30c**; 3 for **80c**.

One each 7 varieties above, **\$1.90**. **PLUMARIS FL. PL.** (Double Scotch pinks). This strain produces about 90% doubles, ranging from white to crimson.

Plants, each **30c**; 3 for **80c**. **SEMPERFLORENS.** "Perfection." A true everblooming pink. Mixture of colors only.

Plants, each **25c**; 3 for **65c**.

DIANTHUS BARBATUS
 (Sweet William)

Remarkably free flowering plants of brilliant flowers ranging from snow white to darkest crimson and purple, with a delicate refreshing fragrance. Heights 12 to 18 in.

†**COPPERY RED.** Single. Seeds, pkt. **10c**; ¼ oz. **75c**.

†**DUNNETT.** Single dark crimson. Seeds, pkt. **10c**; ¼ oz. **75c**.

†**LATIFOLIUS ATROCICINEUS** (Everblooming Sweet William). A beautiful summer bedding variety producing masses of brilliant colored double flowers all season. 12". Plants, each **20c**; 3 for **55c**.

†**NEWPORT PINK.** Watermelon. Plants, each **20c**; 3 for **55c**. Seeds, pkt. **15c**.

†**PINK BEAUTY.** Single, soft pink. Seeds, pkt. **10c**; ¼ oz. **75c**. Plants, each **20c**; 3 for **55c**.

†**PUNICEUS.** Pink, overlaid with scarlet. Plants, each **20c**; 3 for **55c**.

†**PURE WHITE.** Double. Seeds, pkt. **10c**; ¼ oz. **75c**.

†**SCARLET BEAUTY.** A rich deep scarlet, bright green foliage. Plants, each **20c**; 3 for **55c**. Seeds, pkt. **15c**.

†**DOUBLE MIXED.** Seeds, pkt. **10c**; ¼ oz. **75c**.

†**SINGLE MIXED.** Seeds, pkt. **10c**; ¼ oz. **60c**.

DODOCATEON

(Bird's Bill or Shooting Stars) **CONJUGENS.** Small white to pink flowers, 8 to 12 inches. Plants, each **30c**; 3 for **80c**.

JEFFERYI. Flowers white and pink. Very robust; 10 to 14 in. Plants, each **30c**; 3 for **80c**.

HENDERSONI. Dwarf and showy. Rose to bright crimson. Plants, each **25c**; 3 for **65c**.



DICTAMUS

(Gas Plant or Burning Bush)
One of the most satisfactory as well as unusual hardy plants in cultivation. The foliage is rich and durable. During early summer it produces flowers of pink or white, and from the flower heads and seed capsules exudes a volatile inflammable oil in hot weather. If lighted early on a warm summer evening the whole flower heads will be enveloped in a bluish flame and a very pungent odor emitted.

- †FRAXINELLA ALBA. White. Seeds, pkt. 25c. Plants, each 50c; 3 for \$1.35.
- †FRAXINELLA RUBRA. Pink. Seeds, pkt. 50c. Plants, 2-year-old, each 50c; 3-year-old 75c.

DIELYTRA or DICENTRA
Bleeding Heart

One of the prettiest and most popular hardy perennials, with heart-shaped flowers in long drooping racemes.

- †EXIMIA (Plumy Bleeding Heart). Dwarf growing variety with beautiful finely cut foliage and showy racemes of rose-pink flowers thru-out a long blooming period. Equally at home in full sun or shade and will grow in any climate under any conditions. 12 to 15 in. April to July. Seeds, pkt. 25c. Plants, each 30c; 3 for 80c.
- †SPECTABILIS. This variety splendid for forcing, and prefers shady nooks in the borders. Especially valuable for planting in clumps. Rose crimson flowers in long racemes. April to June. Plants, each 75c.

DRYAS

- *SUNDERMANII. Evergreen, dwarf tufted, somewhat shrubby plants, with large creamy white anemone-like flowers from May to July. Prefer well drained soil in a sunny but not dry situation in the rocky. 4 to 6 in. high. Seeds, pkt. 50c. Plants, each 50c; 3 for \$1.35.

ERYTHRAEA DIFFUSA
MASONII

- *DIFFUSA MASONII. Belongs to the Gentian family and often called the Pink Gentian. Form low mats, studded with small pink flowers. Prefer partial shade. Plants, each 50c; 3 for \$1.35.

FUNKIA (Plantain Lily)

Very handsome and distinctive, whether or not they are in flower, due to their broad massive foliage. They prefer a partial shade and moist soil but do well in almost any location.

- †SUBCORDATA GRANDIFLORA. Very large pure white flowers. Lily-like in shape and fragrant. Prefer shade. August and Sept. Plants, each 60c; 3 for \$1.60.
- †UNDULATA VARIEGATA. The leaves are widely edged and striped with white. Light blue flowers are on 16 to 20 in. stems. A beautiful edging plant. June to Aug. Plants, each 30c; 3 for 80c.

GAILLARDIA

(Blanket Flower)

One of the showiest and most desirable hardy plants in cultivation, responding to very simple care and treatment and giving a profusion of blossoms continuously from June to November, even with the driest weather and least amount of water.

- †GRANDIFLORA. Many color combinations of reds, yellows and orange. 15 to 24 in. high. June to November. Mixture of colors only. Seeds, pkt. 10c; ¼ oz. 40c. Plants, each 20c; 3 for 55c.
- †PORTOLA. Strong vigorous upright growth, heavy glaucous foliage 2 to 3 ft. high. Flowers are 3 to 4 in. in diameter on long strong straight stems. Petals are broad, overlapping and spread out flat, forming a very symmetrical flower of coppery scarlet, margined with golden yellow. Our plants are grown from root divisions. Seeds, pkt. 25c. Plants, each 30c; 3 for 80c.
- †THE KING. The best gaillardia introduced to date; the flowers measure up to 6 to 7 inches across on stout stems 18 to 24 inches long. Vivid crimson center with wide yellow margin. Plants are propagated by our grower from root divisions imported from Holland and guaranteed true to name. Seeds, pkt. 25c. Plants, each 40c; 3 for \$1.10.

GENTIANA (Blue Gentian)

- *ANDREWSII. The closed bottle Gentian. One of the most fascinating native hardy plants. The flowers, which are tightly closed, are borne at the top of 8 to 12 inch stems. An intense blue. July-Aug. Plants, each 25c; 3 for 65c.
- *CRUCIATA. Small deep blue flowers in clusters. July and August; 10 inches. Seed, pkt. 25c. Plants, each 50c; 3 for \$1.35.
- FARRERI. A new variety from China. Vigorous growth, semi-prostrate habit. Sky blue flowers with white throats on 4 to 6-inch stems from August to October. Require partial shade. Plants, \$1.00 to \$2.00 each.
- *SEPTEMFIDA. Heads of brilliant blue blossoms, which are somewhat variable as to size and shade of blue, with white interior. Not difficult, thriving in a good loam, little shade. July to Sept.; 12 in. Seed, pkt. 25c. Plants, each 75c; 3 for \$2.00.
- WALUJEWI. A strong grower with large leaves and clustered heads of pale blue and white flowers from July to Sept. Shade. Plants, each 75c; 3 for \$2.00.

GEUM (Avens)

- An invaluable group of plants for rockeries and borders, of easy cultivation, flowering for a long period thru the spring and summer.
- *BULGARICUM. Large orange yellow flowers, dark green leaves. Rare. Plants, each 40c; 3 for \$1.10.

GEUM (Continued)

- *BORISII. The finest of this showy family. Neat tufts of evergreen foliage in an abundance of branching stems, covered with large well formed flowers of a vivid tangerine or orange scarlet. (Propagated from root divisions, not seedlings.) Dwarf, 8 to 10 in. May to Nov. Plants, each 50c; 3 for \$1.40.
- *HELDREICHII. Resembles Borisii in habit but is a dwarf species from Greece with deep orange red flowers and light green foliage. 8 in. high. May to September. Plants, each 35c; 3 for 95c.
- *MONTANUM. Dwarf alpine species with large golden strawberry flowers. Plants, each 40c; 3 for \$1.10.
- †LADY STRATHEDEN. Rich golden yellow flowers, very double. Seeds, pkt. 25c. Plants, each 25c; 3 for 65c.
- *MRS. BRADSHAW (Chilense). Hardy free blooming, with large double flowers of a fiery red. Blooms all summer. 8 to 12 in. Seeds, pkt. 25c; ¼ oz. 75c. Plants, each 25c; 3 for 65c.
- *SIBERICUM. Alpine species. Has large coppery-scarlet flowers, 9 to 12-inch stems. Plants, each 50c; 3 for \$1.35.

HELENIUM (Sneezewort)

- This species is allied to the Sunflower, being tall growing and bearing in the summer and early fall great masses of large daisy-like flowers.
- †AUTUMNALE RUBRUM. Oxblood red, changing to terra cotta. 5 to 6 ft. high. September. Plants, each 20c; 3 for 55c.
- †GARTENSONNE. Flowers of a brilliant golden yellow with velvety brown center. Aug. to Oct. Plants, each 30c; 3 for 80c.
- †HOOPESII. Low growing early flowering plants, excellent for positions where they will receive a little sunshine. The earliest of all Heleniums and the only variety with pure orange colored flowers which are 3 to 4 in. across on 18 to 24 in. stems. May to June. Plants, each 25c; 3 for 65c.
- †RIVERTON BEAUTY. Lemon yellow with large cone of purplish black. August to September. Seeds, pkt. 25c. Plants, each 20c; 3 for 55c.
- †RIVERTON GEM. Old gold, suffused with terra cotta, changing to wallflower red. July to Oct. Seeds, pkt. 25c. Plants, each 20c; 3 for 55c.

HELLEBORUS
(Christmas Rose)

- *HYBRIDUS. Hardy herbaceous perennials, admired for their very early flowers and very attractive leaves. Erect growing, with large palmately divided leaves. Large pink, white or maroon flowers 4 to 6 in. across; a few mild days in December will bring out the buds and flowers. A moist well drained partly shaded situation is preferable. Do not disturb after they have become established. 12 to 18 in. high. December to January. 2-year plants, each 50c; 3 for \$1.40. 3-year plants, ea. \$1.00.



HELIANTHEMUM
(Rock or Sun Rose)

- *APRICOT. Large apricot colored flowers, glossy foliage. Plants, each 50c; 3 for \$1.35.
- BURNT ORANGE. Glossy foliage, prostrate habit. Plants, each 50c; 3 for \$1.35.
- *BOULE DEFEU. A low growing evergreen shrub. During the flowering season covered with a mass of brilliant red double flowers. They form broad clumps suited to borders, edgings, rockery or dry sunny banks. 10-12 in. May-July. Plants, each 30c; 3 for 80c.
- *MUTABLE. Single flowers in white and various shades of red and pink, in mixture only. 10 to 12 in. high. May to August. Seeds, pkt. 25c. Plants, each 25c; 3 for 65c.
- RODANTHE CARNEUM. Large pink flowers, silvery foliage. Plants, each 50c; 3 for \$1.35.
- TUBERARIA. Glossy, corrugated tuber, from which rise 6 to 10 in. spikes of golden yellow flowers. Plants, each 40c; 3 for \$1.10.

HELIANTHUS
(Hardy Sunflower)

- Very effective perennials for planting in masses among shrubs or in clumps on the lawn where they can have plenty of room.
- †RIGIDUS JAPONICUS. Golden yellow with dark center. 5 to 6 ft. high. July to Sept. Plants, each 20c; 3 for 55c.
 - †SPARSIFOLIUS. Golden yellow flowers, the best of the summer blooming varieties. Very free blooming, flowers about 3 inches across. Spreads rapidly. 4-5 ft. Plants, each 20c; 3 for 55c.

HEPATICA (Wood Anemone)

- A charming group of early spring flowering plants, remarkable for the way in which they flower. They prefer a north or east slope where there is partial shade, but do fairly well in open positions in moist rich soil. Clumps of several crowns.
- *ACUTILOBA. White, pink or purple flowers, mixture only. Plants, each 25c; 3 for 65c.
 - *TRILOBA ALBA. White flowers. Plants, each 25c; 3 for 65c.
 - *TRILOBA COERULEA. Blue. Plants, each 30c; 3 for 80c.

HIBISCUS (Mallow)

- †MOSCHEOTUS HYBRIDS (Giant Flowered Mallows). The mammoth hollyhock-shaped flowers range in color from white to intense crimson, with a soft delicacy that harmonizes with any color scheme. The flowers are 6 to 10 in. across on stems 5 to 7 ft. high. Suitable for any soil or condition, dry or wet. One of the most beautiful of all herbaceous plants, and very striking in large groups and mixed borders. 2-yr.-old plants furnished. Plants, each 30c; 3 for 80c.

HOLLYHOCKS (China)

- †Natives of China, being one of the very oldest cultivated flowers. Prefer a full sunny position. Mixed colors from scarlets and pinks to white. Double or single flowering. Plants, each 20c; 3 for 55c.

IBERIS (Hardy Candytuft)

- *GIBRALTARICA. Neat bushes of dark evergreen foliage smothered with close heads of flowers, ranging from white to lavender in the spring. 10 in. high. Seeds, pkt. 15c. Plants, each 20c; 3 for 55c.
- *PRUITII. Early blooming, pure white flowers, very dwarf. Each 40c; 3 for \$1.10.
- IBERIS SEMPERVIRENS. Spreading evergreen clumps. Pure white flowers in profusion, April-June. Plants, each 30c; 3 for 80c.
- *TENORENNA. Dwarf 6-in. shrub with white flowers changing to pale purple. May to July. Seeds, pkt. 15c. Plants, each 25c; 3 for 65c.

INULA (Fleabane)

- *ENSIFOLIA. Compact bushes smothered with golden yellow flowers. Prefer full sun and one of the finest plants for the rockery during July and August when yellow is scarce in the rockery. Rather poor soil. 18 in. June-Sept. Seeds, pkt. 15c. Plants, each 25c; 3 for 65c.
- *ROYLEANA. A new Himalayan species with rich orange colored flowers 4 to 6 in. across, very conspicuous black buds. 12 to 18 in. July to Sept. Seeds, pkt. 25c. Plants, each 40c; 3 for \$1.10.

IRIS

- BRACTEATA. One of Oregon's finest native Iris. Slender, dark green foliage. Flowers deep yellow, veined with bluish-purple; 8 to 12 inches. Plants, each 50c; 3 for \$1.35.
- CHRYSOPHYLLA. Glossy foliage with white flowers tinted and veined yellow and lavender; 6 to 10 inches. Plants, each 30c; 3 for 80c.
- ORMANII. A rare species, dwarf. Slender foliage and soft yellow flowers. Has the longer flowering period of any of the Iris. May to July. Plants, each 50c; 3 for \$1.35.
- *IRIS CRISTATA. Dwarf Iris, with very fine blue flowers; 8 to 10 inches. Plants, each 35c; 3 for 95c.
- *IRIS PUMILA. Dwarf, violet flowers. Plants, each 35c; 3 for 95c.
- IRIS PRISMATICA. Grassy foliage, purple flowers on 12-in. stems. Plants, each 35c; 3 for 95c.
- *IRIS TENUIS. Rare native. White flowers marked with yellow and purple; 10 inches. Plants, each 50c; 3 for \$1.35.
- *IRIS VERNA. Dwarf, with clear blue flowers; 4 to 6 inches. Plants, each 35c; 3 for 95c.

LIATRIS

- (Blazing Star or Gay Feather)
- †PYCNOSTACHYA. One of the most attractive perennials in cultivation. Long narrow spikes of rich purple flowers which last a long time. It has a great attraction for butterflies. 3 ft. high. July to September. Seeds, pkt. 15c. Plants, each 20c; 3 for 55c.

LEONTIPODIUM (Edelweiss)

- Prefers an elevated position in the rockery, in rather light soil, with full exposure to the sun.
- *ALPINUM. Pretty white leaves and small yellow flowers which are surrounded by star-like heads of leaves, clothed with a dense white woolly substance. 4 to 6 in. May to August. Seeds, pkt. 25c. Plants, each 40c; 3 for \$1.10.
- *SIBERICUM. Resembles the above with larger flower heads. Seeds, pkt. 25c. Plants, each 40c; 3 for \$1.10.

LEWISIA

- The Lewisia are amongst Oregon's finest natives. Perfect drainage and plenty of sunshine is all that is required. Do best when wedged in between two rocks.
- COLUMBIANUM. Evergreen rosettes of flat leaves. Small pink and white flowers on 8 to 10-inch stems. May and June. Plants, each 35c; 3 for 95c.
- COTYLEDON. Leaves of rosettes narrow, few, giving a scattered, starry effect. Flowers white with pink lines. Plants, each 35c; 3 for 95c.
- FINCHII. The prettiest of the species. Broad, bright green leaves making a close rosette. Flowers pink, with deeper stripe and apricot suffusion while opening; 10 to 20 flowers on each stem; 8 to 12 inches. May and June. Plants, each 50c; 3 for \$1.35.
- HOWELLII. Narrow evergreen leaves, more or less crinkled on sides. White or apricot flowers, streaked with wide center band of rose, on 10 to 12-inch stems. May and June. Plants, each 35c; 3 for 95c.
- OPPOSITIFOLIA. Long narrow leaves, 12-inch stems bearing one to five pure white Aster-like flowers. Plants, each 30c 3 for 80c.
- REDIVIVA. Waxy white or pink Water Lily-like flowers, 2 inches across, on 2 to 3-inch stems. One of the most alluring of Oregon natives. Plants, each 30c; 3 for 80c.

LUPINUS (Lupines)

- *LUPINUS ARBOREUS. "Yellow Boy." The tree Lupin. Unexcelled for cutting. Seed, pkt. 25c. Plants, each 30c; 3 for 80c.
- †HARKNESS' HYBRIDS. Wonderful mixture containing many beautiful art shades. Mixture of colors. Plants, each 30c; 3 for 80c.
- †HARKNESS' REGAL HYBRIDS. This new race of herbaceous Lupines is quite distinct from any other race of Lupins and embraces colors never before seen or ever dreamed of. These plants, being seedlings of Hybrids, are not guaranteed to be 100% true to color, about 50% being the average. It is impossible by description to convey an adequate idea of the beauty of these colors, some so startlingly bright, others more subdued, yet not less charming. Seeds, pkt. 15c; ¼ oz. 60c. Plants, each 50c; 3 for \$1.40.
- †POLYPHYLLUS MOERHEIMII. A new named hybrid, rose pink. Plants, each 30c; 3 for 80c.
- †MIXED LUPINUS. Colors white and pink, occasionally blue. Seeds, pkt. 10c; oz. 50c.



Perennial ALPINE & BORDER PLANTS & SEEDS—Alphabetically Listed
ALPINE OR ROCKERY PLANTS MARKED WITH A STAR (*); BORDER PLANTS WITH A DAGGER (†)

LYTHRUM

- †**SALICARIA**. A strong growing plant thriving in any soil or position, producing large spikes of rose colored flowers from July to Sept. 4 to 6 ft. high. Seeds, pkt. **15c**.
Plants, each **20c**; 3 for **55c**.
***MAZUS RUGOSUS**. Creeper. Light green foliage, white and purple Lobelia-like flowers close among the foliage during May and June. Plants, each **35c**; 3 for **95c**.

LOBELIA (Indian Paintbrush)

- †**QUEEN VICTORIA**. This variety has crimson foliage which with the scarlet flowers is very effective. Plants, each **40c**; 3 for **\$1.10**.

MERTENSIA (Blue Bells)

- LAEVIGATA**. Wonderful blue flowers May and June, 2 to 3 feet high. Unlike *M. Virginica*, it does not dry up and lose its foliage as soon as blooming period is past. Plants, each **50c**; 3 for **\$1.35**.
PULCHELLA. One of the finest of blue flowers; 6 to 8-inch stems bearing a drooping cluster of deep flowers, sometimes tinted pink. Plants, each **50c**; 3 for **\$1.35**.
VIRGINICA (Virginian Bluebells). Bluish-grey foliage. Long arching racemes of rich, sky-blue flowers, 2 to 3 feet. April to June. Plants, each **30c**; 3 for **80c**.
***VIRGINICA (Virginian Cowslip)**. Bluish gray foliage, long arching racemes of flowers. Demand moist shady spot. 12-18 in. April-June. Plants, each **30c**; 3 for **80c**.

NEPETA

(Ground Ivy; Catnip; Catmint)

- ***GLECHOMA**. A most useful and dainty mint. The leaves are crenate and pretty, the stems run on the ground and root, making solid carpets. No better cover for shaded beds or steep banks. Plants, each **20c**; 3 for **55c**.
***MUSSINI**. One of the most desirable perennials. Neat bushes of lavender-like foliage covered with terminal spikes of lavender blue flowers, both flower and foliage being aromatic. 12 to 15 in. high. June to September. Plants, each **25c**; 3 for **65c**.
***NUDA**. Beautiful gray foliage and lavender blue flowers, continuous bloomer from May to Sept. Plants, each **25c**; 3 for **65c**.
NEPETA UKRANICA. Purplish blue flowers on 18-inch stems. Plants, each **30c**; 3 for **80c**.

PAPAVER (Poppies)

- ***ALPINUS**. A diminutive species for the rock garden. Neat tufts of foliage and dainty flowers in shades of white, rose, yellow, buff, etc. Can supply in mixture of color only. 6 in. high. Seeds, pkt. **25c**.
1-yr. plants, each **25c**; 3 for **65c**.
2-yr. plants, each **35c**; 3 for **95c**.
†**BRACTEATUM**. Red flowers. Seeds, pkt. **10c**; ½ oz. **40c**.
†**MAHONY**. Maroon shaded crimson, the darkest Papaver yet introduced. True to name and color. Seeds, pkt. **25c**.
Plants, each **30c**; 3 for **80c**.
†**MRS. BAKER**. A rich wine red. Plants, each **20c**; 3 for **55c**.
†**MRS. FISHER (New)**. Large dark crimson flowers borne on stout stems, 2 to 3 ft. high. Plants, each **30c**; 3 for **80c**.

PAPAVER (Continued)

- *†**NUDICAULE (Iceland Poppy)** (Improved Sunbeam). This strain includes many new tints, such as maize, creams and various tones of rose. The flowers, which are much larger than the old strain, are borne on long thick stems; very fine for cutting. 18 in. Early spring to late summer. Seeds, pkt. **10c**; ½ oz. **65c**.
Plants, each **20c**; 3 for **55c**.
NUDICAULE, "Coonara Pink". This strain produces many flowers of pink shades, although there are orange, yellows and whites in the mixture. Sold in mixture only. Plants, each **30c**; 3 for **80c**.
ORIENTALIS. Fall is the proper time to transplant the Oriental Poppy. All of varieties listed below are from root cuttings or divisions, and are guaranteed true to name.
MRS. BAKER. Wine red. Plants each **30c**; 3 for **80c**.
PRINCESS VICTORIA LOUISE. Delicate shade of salmon pink. Plants, each **30c**; 3 for **80c**.
REHBRANDT. Orange scarlet. Plants, each **30c**; 3 for **80c**.
SALMON QUEEN. A deep salmon pink, very large flowers. Plants, each **30c**; 3 for **80c**.
†**ORIENTALIS FL. PL. OLYMPIA**. The double flowering Oriental Poppy. Rich flame scarlet overlaid with iridescent glistening golden salmon. Plants, each **50c**; 3 for **\$1.40**.
ORIENTALIS LACHS KOENIGIN. Large salmon pink flowers. Seeds, pkt. **10c**; ½ oz. **60c**.
Plants, each **20c**; 3 for **55c**.
†**PERRY'S WHITE**. Fine satiny white with crimson blotch at base of petal. Guaranteed true to name. Plants, each **30c**; 3 for **80c**.
†**PRINCESS VICTORIA LOUISE**. A delicate shade of salmon pink. Plants, each **20c**; 3 for **55c**.
†**REHBRANDT**. Magnificent orange scarlet; the most gorgeous of all the Papaver. Plants, each **30c**; 3 for **80c**.
RUPIFRAGUM ATLANTICUM. Large flowers of orange-red or scarlet on 12-18-inch stems. Likes hot, dry situation and if not allowed to seed will bloom from early June to August. Mixture only. Plants, each **35c**; 3 for **95c**.

PENTSTEMON

(Beard Tongue)

- †**BARBATUS TORREYI**. Spikes of bright scarlet flowers on stems 2 to 3 ft. high. June to Sept. Plants, each **25c**; 3 for **65c**.
***CARDWELLII**. Native evergreen, covered several times each season with short spikes of bright purple flowers on 8 to 12 in. stems. Plants, each **50c**; 3 for **\$1.40**.
***MENZIESII (Davidsonii)**. An alpine dwarf having its tough and almost herbaceous stems underground except the very short and erect flowering branches, which are 2 to 3 in. high, the flowers usually exceeding in size all the remainder of the plants above ground. Flowers 1 in. long, lilac purple. June to August. Plants, each **50c**; 3 for **\$1.40**.

PENTSTEMON (Continued)

- ***HETEROPHYLLUS**. Make compact bushes 12 to 18 in. high. Flowers about 1 in. long, pink or rose purple, slender at base but full or inflated above, lips well marked. May to July, second cutting in September. Plants, each **30c**; 3 for **80c**.
***NEWBERRY**. An alpine dwarf 6 to 8 in. high, with pink or rose purple flowers. Drought resistant. June to September. Plants, each **50c**; 3 for **\$1.40**.
***PROCERUS**. Mats of bright green leaves with heads of deep blue flowers. May and June. 8 to 12 in. Plants, each **35c**; 3 for **95c**.
***PUBESCENS PYGMAEUS**. Very dwarf; blue flowers with white lip, 6 in. high. June to Aug. Plants, each **30c**; 3 for **80c**.
†**SENSATION**. As a bedding plant this takes rank with the *Petunia*. About 2 ft. Every branch a spike of flowers in a wide range of bright colors. Treated as *Petunias*. Seeds, pkt. **15c**; ½ oz. **90c**.
Plants, each **25c**; 3 for **65c**.
†**MIXED**. Brilliant bell shaped flowers borne on long spikes abundantly all summer. Colors range thru red, rose, cherry, carmine, pink and purple. Should be sown indoors. Cover lightly and press down firmly. Transplant to open. Mixed. Seeds, pkt. **10c**; ½ oz. **50c**.

PHLOX (Alpine Varieties)

- ***ADURGENS**. The finest of Oregon's native flowers. Dense mats of bright green evergreen foliage, from which ascend stems 6 to 10 in. long with large clusters of rose or pink colored flowers during June and July. Prefer a woodland soil of light shady position. Plants, each **50c**; 3 for **\$1.40**.
***AMOENA**. This is one of the best varieties for the rockery or for carpeting the ground. Grows but 4 in. high and in the spring is a sheet of rich bright pink flowers. Plants, each **50c**; 3 for **\$1.40**.
***CANADENSIS DIVARICATA**. One of the prettiest hardy plants in cultivation. Neat tufted habit, slender stems terminating with corymbose heads of lovely fragrant lavender blue flowers. 10 to 12 in. high. April to June. Plants, each **20c**; 3 for **55c**.
***SUBULATA (Moss or Mountain Pink)**. It is impossible to accurately describe the singular beauty of this charming group. Close tufts of moss-like foliage covered during spring and early summer with brilliant colored flowers and blooming again in Sept. and Oct. Invaluable for carpeting the ground in rockeries or in cemetery plots as well as for beds or borders. Separate colors, white, lavender or rose pink. 4 to 6 in. Plants, each **20c**; 3 for **55c**.

PHLOX DECUSSATA

(Hardy Phlox)

- Perennial Phlox succeed in almost any kind of soil enriched with manure in spring and allowed an occasional soaking of water during hot weather.
†**BARON VON DEDEM**. Brilliant scarlet suffused with orange. 30 in. Plants, each **25c**; 3 for **65c**.



Perennial ALPINE & BORDER PLANTS & SEEDS—Alphabetically Listed
ALPINE OR ROCKERY PLANTS MARKED WITH A STAR (*); BORDER PLANTS WITH A DAGGER (†)

PHLOX (Continued)

- †**BARON VON HEECKERN.** One of the finest salmon pink, large flowering varieties. 24 in. high. Plants, each **35c**; 3 for **95c**.
BEACON. Brilliant cherry red; 36 inches. Plants, each **25c**; 3 for **65c**.
 †**DEUTSCHLAND.** Oriental red with orange suffusion and crimson eye. 24 in. high. Plants, each **35c**; 3 for **95c**.
ECLAIREUR. Carmine violet red. 36 inches. Plants, each **25c**; 3 for **65c**.
 †**ELIZABETH CAMPBELL.** Salmon pink with lighter shadings and dark red eye; one of the most attractive of all Phlox. 24 in. Plants, each **25c**; 3 for **65c**.
 †**EUGENE DANZANVILLIERS.** Rosy lilac with large white eye. 30 in. high. Plants, each **35c**; 3 for **95c**.
ETHEL PRICHARD. Large flowers of French Mauve. A strong grower. Plants, each **40c**; 3 for **\$1.10**.
 †**EUROPA.** White with large crimson eye, large flowers; very effective for massing. Plants, each **20c**; 3 for **55c**.
 †**FEUERBRANDT.** A new European introduction in a color heretofore unknown in Phlox. The bright vermilion scarlet with deeper center places it at the head of all Phlox. Plants, each **40c**; 3 for **\$1.10**.
 †**FRAU ANTON BUCHNER.** A beautiful pure white and very early 30 in. high. Plants, each **25c**; 3 for **65c**.
JULES SANDEAU. Dwarf. Large rose-pink flowers. Plants, each **35c**; 3 for **95c**.
GOLIATH. Bright Cerise, deeper eye. Fine for shade. 36 inches. Plants, each **25c**; 3 for **65c**.
HINDENBURG (Commander). Crimson red with darker eye. NEW. Plants, each **40c**; 3 for **\$1.10**.
 †**LAVENDER QUEEN.** Large spikes of purplish lavender flowers; will not sunburn. 30 in. Plants, each **20c**; 3 for **55c**.
 †**MISS LINGARD (Suffruticosa).** A shrubby variety, the earliest flowering of the Phloxes, having immense heads of exquisite white flowers in June and again in September, October. Bright glossy green foliage. 30 in. high. Plants, each **25c**; 3 for **65c**.
MRS. ELIZABETH FEY. One of the best pinks introduced. Delicate pink with deeper eye. Plants, each **40c**; 3 for **\$1.10**.
 †**MRS. JENKINS.** Immense panicles of white flowers, free bloomer. Plants, each **20c**; 3 for **55c**.
 †**MRS. MILLY VON HOBOKEN.** Extra large rich salmon rose. Plants, each **35c**; 3 for **95c**.
 †**PROF. SCHLIEMANN.** Bright lilac rose; one of the best for late flowering. 36 in. high. Plants, each **25c**; 3 for **65c**.
 †**PROF. VERSCHOUW.** Bright carmine overlaid with rose and scarlet. 30 in. high. Plants, each **25c**; 3 for **65c**.
 †**RHEINLANDER.** Salmon pink with carmine, cherry red eye, immense flower trusses. 24 in. high. Plants, each **25c**; 3 for **65c**.
 †**RJNSTROEM.** Bright rose pink, large trusses of flowers. 24 in. Plants, each **25c**; 3 for **65c**.

PHLOX (Continued)

- †**R. P. STRUTHERS.** Lovely rose carmine with claret eye. 30 in. Plants, each **20c**; 3 for **55c**.
SBLMA. Tender soft pink with large ruby center. Plants, each **25c**; 3 for **65c**.
 †**THOR.** Salmon pink suffused with orange scarlet. A light halo surrounds the aniline red eye. Plants, each **25c**; 3 for **65c**.
 †**VALD JENSEN.** One of the newest varieties, a salmon red with small white eye; does not bleach in the sun. Very fine. Plants, each **35c**; 3 for **95c**.
WM. ROBINSON. Pale rosy salmon with small purplish eye. 42 inches. Plants, each **25c**; 3 for **65c**.
 †**MIXED SEED.** Our seed mixture of Hardy Phlox contains a wide range of colors, producing the finest quality flowers from midsummer to fall and will usually bloom the first season. Sow seeds early in boxes and transplant once before placing in permanent location. Seeds, mxd., pkt. **10c**; ½ oz. **60c**.

PHYSALIS

(Chinese Lantern Plant)

- †**FRANCHETTI.** An ornamental variety of the Winter Cherry. Forms dense bushes about 2 feet high, producing freely its bright orange scarlet lantern-like fruits. When cut, will last all winter. Seeds, pkt. **25c**. Plants, each **30c**; 3 for **80c**.

PLATYCODON

(Balloon Flower)

- ***GRANDIFLORA (Chinese Balloon Flower).** Large deep blue or white flowers, stems 18 to 24 in. long. June to October. Plants, each **20c**; 3 for **55c**. Seeds, pkt. **25c**.
 ***JAPONICUM FLORE PLENA.** Is of stronger and bushier growth and freer flowering. The flowers average 2½ in. across, the inner and outer lobes alternate with one another, giving the flower the appearance of a ten-pointed star. Habits same as preceding. Plants, each **40c**; 3 for **\$1.10**.

PLUMBAGO (Leadwort)

- ***LARPENTAE.** Dwarf, spreading habit, 6 to 8 in. high, covered with deep cobalt blue flowers, late summer and fall. One of the most desirable for rockeries. Plants, each **25c**; 3 for **65c**.

POLEMONIUM

(St. Jacob's Ladder)

- †**COERULEUM.** Useful border plants, succeeding best in partial shade. Deep green, finely cut foliage, spikes of showy blue flowers in May and June. 2 to 3 ft. high. Plants, each **20c**; 3 for **55c**.
 ***REPTANS.** Dwarf bushy plant with showy blue flowers, the best of the genus for rock gardens and a fine border plant. 8 to 12 in. high. May to July. Seeds, pkt. **25c**. Plants, each **30c**; 3 for **80c**.
 ***NEPALENSIS WILLMOTTAE.** Strawberry-like foliage with bright cerise flowers on stems 6 to 10 in. high, blooming all summer. A valuable acquisition to the rockery. Plants, each **30c**; 3 for **80c**.

PRIMULA (Hardy Primrose)

- One of the most interesting and pleasing hardy plants we have and as varied as they are beautiful.
 ***BEEISIANA.** Whorls of rich velvety purple flowers with a distinct yellow eye, on 2 ft. spikes. Plants, each **50c**; 3 for **\$1.35**.
 ***BULLEYANA.** Striking Chinese species bearing several whorls of rich orange colored flowers. Fond of a damp spot. Plants, each **50c**; 3 for **\$1.35**.
CAPITATA. Neat, compact tufts, leaves whitish beneath, heads of rich purple flowers on 12-inch stems. May to July. Plants, each **50c**; 3 for **\$1.35**.
 ***CASHMERIANA.** Large globular heads of purplish blue flowers. Prefers a moist, shaded situation. 12 in. high. March to May. Plants, each **50c**; 3 for **\$1.35**.
 ***CORTUSOIDES.** Soft, wrinkled, heart-shaped leaves. Flowers of deep rose on 8 to 12-inch stems from April to June. Plants, each **50c**; 3 for **\$1.35**.
 ***JAPONICA PURPUREA.** A bog primula with crimson purple flowers on 18 in. stems. June to July. Plants, each **50c**; 3 for **\$1.35**.
 ***VERIS TRIUMPH.** The finest strain of P. Veris in cultivation. Many new colors, flowers extra large, long stems. Mixture only. Seeds, pkt. **15c**. Plants, each **30c**; 3 for **80c**.
 ***VERIS "GOLDSTERN".** Deep yellow with deep eye. A worthy companion for the wonderful blue "Queen of Heaven". Stock limited. Plants **60c**, 3 for **\$1.60**.
 ***VERIS LORD BEACONSFIELD.** A polyanthus type with clusters of soft yellow flowers. Plants, each **40c**; 3 for **\$1.10**.
 ***VERIS QUEEN OF HEAVEN.** Flowers of a beautiful shade of blue, very rare and well worthy of a place in any garden. Plants, each **60c**; 3 for **\$1.65**.
 ***VEITCHII.** A hardy free-flowering species from Central China. Flowers violet or rosy-purple with yellow anthers. 12 inches. Plants, each **50c**; 3 for **\$1.35**.
 ***REPTANS.** Excellent for ground cover. Bright yellow flowers on stems 2 to 3 inches high. Plants, each **35c**; 3 for **95c**.

PYRETHRUM

(Painted or Persian Daisy)

- †**HYBRIDUM.** Perfectly hardy and invaluable as a cut flower, lasting longer in water than most any other flower, and with their long stems they are ideal for decorative uses. Nothing can surpass the Pyrethrum profusion of flowers throughout the entire summer, from May to August. While we sow only from the best double flowering varieties, only a small percentage will bloom double the first year, but will average 70% to 80% double the second season. Mixture of colors only. Seed Roseum, pkt. **25c**. Plants, each **30c**; 3 for **80c**.

ROSMARINUS (Rosemary)

- ***OFFICINALIS.** Dainty evergreen bushes with spikes of leafy grey and green aromatic foliage and clusters of pretty lilac flowers. 12 to 18 in. high. April and May. Plants, each **30c**; 3 for **80c**.



Perennial ALPINE & BORDER PLANTS & SEEDS—Alphabetically Listed

ALPINE OR ROCKERY PLANTS MARKED WITH A STAR (*); BORDER PLANTS WITH A DAGGER (†)

SAGINA (Pearlwort)

***STIBULATA**. Mossy green cushions, studded with tiny white flowers during May and June. Excellent for stepping stones. Plants, each **20c**; 3 for **55c**.

SANGUINARIA

CANADENSIS (Bloodroot)

Pure white flowers an inch across, on 6-inch stems during April and May. Large leathery leaves appear laatear. Prefer rich soil in shady location. Plants, each **30c**; 3 for **80c**.

SAXIFRAGA

It is impossible to over-value this extensive genus of rock plants. They can be successfully grown in any sunny position and sandy soil with the exception of some varieties that require shade or moist soil as noted in description.

***AIZOON**. A very valuable alpine plant, much tufted and forming dense small rosettes. White flowers on stems 6 to 10 in. high. May and June. Seeds, pkt. **25c**.

Plants, each **30c**; 3 for **80c**.

***AIZOON FLAVESCENS**. A free growing and decorative Saxifraga with clear lemon yellow flowers produced in good spikes. 6 to 8 in. high. May and June. Seeds, pkt. **25c**.

Plants, each **40c**; 3 for **\$1.10**.

***AIZOON ROSEA**. A bright pink flowering form of the preceding. Plants, each **30c**; 3 for **80c**.

***APICULATA ALBA**. White flowering variety of preceding, the combination making a pleasing effect. Plants **50c**; 3 for **\$1.35**.

***BATHONIENSIS**. A rapid grower, 10 to 12 inches high, with stout branching stems, bearing large pink white flowers. April-May. Plants, each **30c**; 3 for **80c**.

***COCHLEARIS**. A dainty earnest variety, making mats of platinum grey, reddening stemmed sprays of large white flowers. Choice and rare. Plants **75c**; 3 for **\$2.00**.

***DECIPIENS ROSEA**. Neat tufts with bright pink flowers. A recent introduction. 4 to 6 in. high. Seeds, pkt. **25c**.

Plants, each **30c**; 3 for **80c**.

***FERDINAND COBURGI**. A very choice Kabschia, close grey green foliage with small bright yellow flowers, April and May. Plants, each **60c**; 3 for **\$1.60**.

***GUILDFORD'S SEEDLING**. A mossy Saxifraga with bright crimson flowers; very beautiful. 10 to 12 in. high. April and May. Plants, each **40c**; 3 for **\$1.10**.

***H. S. STOKES**. One of the most satisfactory of the mossy Saxifraga. Very compact tufts of evergreen foliage with bright carmine flowers. 6 in. high. April-May. Plants, each **40c**; 3 for **\$1.10**.

***LAGEVANA**. A miniature plant with tiny silvery rosettes and ruddy stems, 6 to 8 in. high, bearing 4 to 6 creamy white flowers to each stem. May and June. Plants, each **40c**; 3 for **\$1.10**.

***MacNABIANA**. Seldom more than a foot high, more or less branched above. Flowers white, numerous, heavily speckled with pink to purple dots, dots being large. June and July. Plants, each **30c**; 3 for **80c**.

SAXIFRAGA (Continued)

***MEGASEA CORDIFOLIA**. Broad deep green foliage which alone renders them useful, while the pretty rose pink flowers, which appear early in spring, make them doubly effective. 10 to 15 in. high. March and April. Plants, each **25c**; 3 for **65c**.

***PRIMULOIDES**. A tiny compact "London Pride" with pretty rose colored flowers on stems 4 to 6 in. high. Shady position preferred. June to August. Plants, each **35c**; 3 for **95c**.

***PYRAMIDALIS**. Very robust, 2 to 4 ft. high when in flower. The rosettes are large and glaucous and the flowers very numerous in a large panicle, white speckled with crimson. June and July. Plants, each **25c**; 3 for **65c**.

***UMBROSA (London Pride)**. The leaves form a dense rosette, 8 to 12 inches across. Flowers white, speckled carmine, on stems 12 to 18 in. high. Requires a shady, moist position. May and June. Plants, each **25c**; 3 for **65c**.

SCABIOSA

(Pin-cushion Flower)

†**CAUCASICA (Blue Bonnet)**. Soft charming shade of lavender, commencing to bloom in June, on stems 18 to 24 in. long, and continuing until frost cuts them down. Seeds, pkt. **25c**.

Plants, each **30c**; 3 for **80c**.

†**JAPONICA**. A variety from Japan, forming bushy plants 2 feet high, bearing on long wiry stems the most beautiful and artistic lavender blue flowers. Will thrive in any kind of soil and demand very little water during the summer. Plants, each **25c**; 3 for **65c**.

SCUTELLARIA (Skull Cap)

***ALPINA**. Hardy spreading plant, about 10 in. high, with blue flowers in dense terminal racemes. May to September. Plants, each **20c**; 3 for **55c**.

***ORIENTALIS**. A low growing species, never more than a foot high, with clear yellow flowers. May to September. Plants, each **25c**; 3 for **65c**.

SEDUM (Stoncrop)

A very interesting group of plants, easily grown, the larger proportion forming tufts, clasping the ground. For carpeting there is nothing to equal the Sedums. Sunny positions in the rockery are preferred for the more dwarf varieties, while the taller varieties are suitable for both borders and rock gardens. A rather poor soil is preferred and they form the principal genus for commencing the rockery.

***ACRE (Golden Moss)**. Stems creeping, branched, flower stems 2 to 3 in. high. Foliage green, flowers yellow. Thrives best in poor soil. June and July. Plants, each **20c**; 3 for **55c**.

***DASYPHYLLUM**. One of the finest of all Sedums. Compact mats of pale blue pearly beads strung tightly together. White flowers. Plants, each **35c**; 3 for **95c**.

SEDUM (Continued)

***EWERSII**. Rose colored flowers and very pretty foliage. A sub-trailing plant, excellent for walls and dry rock work. Plants, each **25c**; 3 for **65c**.

***GLAUCUM**. Forms rather mossy mats of beautiful blue green foliage with white flowers. Plants, each **25c**; 3 for **65c**.

***KAMTSCHATICUM GRANDIFLORUM**. Trailing variety. Branches 6 to 10 in. long. Yellow flowers on stems 6 to 8 in. June-July. Plants, each **30c**; 3 for **80c**.

***MURALIS**. Dark green leaves, turning red as they grow older. Flowers white with pink center or a clear red. One of the best. 4 to 6 in. high. June to August. Plants, each **30c**; 3 for **80c**.

***SIEBOLDII**. Red edged green leaves, pink flowers in large umbellated cymes. Unexcelled for rock walls, hanging baskets, etc. Plants, each **35c**; 3 for **95c**.

***SPATHULIFOLIUM**. A very pretty native plant, clusters of soft grey rosettes, bearing great heads of yellow flowers on red stems. A real rock plant in every sense of the word. 2 to 4 in. high. Plants, each **25c**; 3 for **65c**.

***SPURIMUM ROSEUM**. Creeping branches with bright pink flowers on reddish stems. 6 in. July-Sept. Plants, each **20c**; 3 for **55c**.

***SPECTABILIS**. One of the prettiest erect growing Sedums, 12 to 18 in. high, with broad light green foliage and immense flat heads of showy rose colored flowers. Aug. to Sept. Plants, each **30c**; 3 for **80c**.

SEMPERVIVUM

(House Leek)

Also called **Hen and Chickens**. Curious and interesting plants, forming rosettes of succulent leaves of varying colors. For carpeting, rockeries, dry banks or walls.

***ARACHNOIDEUM (Cob-web House Leek)**. Called so on account of nearly all of the tips of leaves being connected with long soft white hairs. Salmon pink colored flowers on stems 4 to 6 in. June to Sept. Plants, each **20c**; 3 for **55c**.

***BROWNII**. Very distinct with dark green foliage, tipped brown. Flowers red. Plants, each **20c**; 3 for **55c**.

***GLAUCUM**. Rose colored flowers about 1 in. in diameter on stems 6 to 8 in. high, in a short compact panicle 2 to 3 in. across. Plants, each **20c**; 3 for **55c**.

***LARGERII**. Leaves grey green, flowers rose. One of the best. June to September. Plants, each **20c**; 3 for **55c**.

***MONTANUM**. Flowers mauve red on stems 4 to 8 in. high in very dense panicles about 2 in. in diameter. June to September. Plants, each **20c**; 3 for **55c**.

***PALLIDIUM**. Light rose colored flowers on stems 10 to 12 in. high. Plants, each **20c**; 3 for **55c**.

***PYRANEICUM**. Very dwarf, stems 3 to 4 in. high with light rose flowers. Plants, each **20c**; 3 for **55c**.

***TRISTE**. Brown foliage, white flowers on 8 to 10 in. stems. Very novel. Seeds, pkt. **25c**.

Plants, each **20c**; 3 for **55c**.



Hardy Flower Seeds and Plants for your Perennial Borders

SEEDS

Collection of Ten
pkts., one each of
list below

\$1.00 value,
postpaid, **75¢**
for.....

PLANTS

Collection of Ten
Plants, one each

\$2.15 value,
f.o.b. Portland, **\$1.75**
for.....

	SEEDS		PLANTS	
	pkt.	each	each	doz.
Alyssum Saxatile	10c	20c	\$2.00	
Arabis, Rock Cress, Alpina.....	10c	20c	\$2.00	
Delphinium, Bellamosum	10c	20c	\$2.00	
Digitalis (Fox Glove)	10c	20c	\$2.00	
Gaillardia, Grandiflora	10c	20c	\$2.00	
Geum, Mrs. Bradshaw	10c	25c	\$2.50	
Gypsophila, Paniculata	10c	20c	\$2.00	
Hollyhock, Perennial	10c	20c	\$2.00	
Pyrethrum, Persian Daisy.....	10c	30c	\$3.00	
Sweet William, mixed.....	10c	20c	\$2.00	

\$1.00 \$2.15

Seeds are postpaid
Plants are f.o.b. Portland

Perennial ALPINE & BORDER PLANTS & SEEDS—Alphabetically Listed
ALPINE OR ROCKERY PLANTS MARKED WITH A STAR (*); BORDER PLANTS WITH A DAGGER (†)

SENECIO (Groundsel)

***TYROLENSIS.** Finely cut foliage and dainty bright orange flowers, June and July, 8 to 10 in. high. Plants, each **25c**; 3 for **65c**.

†**SHASTA DAISY—ALASKA**
SIEGER. The largest flowering daisy yet introduced; immense fluffy white flowers with yellow centers, measuring 4-6 in. across. Seeds, pkt. **15c**. Plants, each **25c**; 3 for **65c**.

†**SIDALCEA (Greek Mallow)**
ROSE QUEEN. Erect growing, more or less branching plants, producing their rose pink flowers during June to August, succeeding in any ordinary garden soil, 2-4 ft. Seeds, pkt. **15c**. Plants, each **30c**; 3 for **80c**.

SILENE (Catchfly)

This delightful group of plants are very desirable for the rock garden. They are allied to the pinks, blooming nearly all summer and giving great pleasure.

***AACULIS.** Dense tufts of spiny foliage covered with tiny pink flowers, 1 to 2 in. high. May to July. Very choice. Plants, each **40c**; 3 for **\$1.10**.

***MARITIMA.** Glaucous blue foliage of a pleasing tint, makes a very compact mass, covered with white flowers June to August. Very fine for hot dry spots, stems should hang over edge of rock wall to keep foliage and flowers clean. Seeds, pkt. **25c**. Plants, each **30c**; 3 for **80c**.

***SAXIFRAGA.** Somewhat shrubby, bright green foliage, small white flowers in very great profusion. A choice alpine, 4 to 8 in. high. May to July. Plants, each **25c**; 3 for **65c**.

***SCHAFFIA.** A beautiful alpine species with large bright rose pink or carmine flowers. Probably the best known of all the Silenes. Trailing, 3 to 6 in. July to Sept. Plants, each **30c**; 3 for **80c**.

STATICE (Sea Lavender)

***LATIFOLIA.** A valuable plant for the border or rockery, tufts of leathery leaves and immense candleabra-like heads of purplish blue flowers. These, if cut and dried, will last for months. Flower heads 2 to 3 in. across, 12 to 18 in. high. June to August. Sow in flats and transplant when large enough to permanent position 12 to 18 in. apart. Seeds, pkt. **10c**; ¼ oz. **35c**. Plants, each **20c**; 3 for **55c**.

STOKESIA (Cornflower Aster)
***CYANEA.** A native plant, bearing freely from early June to late fall; handsome bright lavender blue or white flowers on 12 to 18 in. stems. Plants, each **20c**; 3 for **55c**.

***LILACINA.** A recent introduction from Europe. Flowers 3 to 4 in. across, on stems 15 to 18 in. long, 4 to 8 flowers on one stem. A pleasing lavender. June-Sept. Plants, each **30c**; 3 for **80c**.

THALICTRUM (Meadow Rue)

†**ADIANTFOLIUM.** A beautiful variety with foliage like a Maiden Hair Fern and minute yellow flowers. May to July. Plants, each **30c**; 3 for **80c**.

THALICTRUM (Continued)

†**AQUILEGIFOLIUM.** Graceful foliage like Columbine and rosy purple or white flowers from May to July, 2 to 3 ft. Can supply in mixture only. Plants, each **30c**; 3 for **80c**.

†**DIPTEROCARPUM.** Chinese species of great merit, from 4 to 7 ft. high, fern-like foliage, loose panicles of flowers of lilac mauve, brightened by lemon yellow stamens, July to Sept. Plants, each **30c**; 3 for **80c**.

†**GLAUCUM.** Soft yellow flowers and greyish foliage. 6 ft. high. July and August. Plants, each **20c**; 3 for **55c**.

THYME (Thyme)

These dwarf mountain thymes make the closest most perfect mats or carpeting and are especially valuable on hot sunny banks where it is hard to grow grass. Also very attractive for a carpet in the spring flowering bulb beds and for walk edgings. Their fragrance and the sheets of blossoms in summer are additional inducements.

***CITRIODORUS AUREA.** A golden yellow form of the well known Lemon Scented Thyme. 6 in. Plants, each **20c**; 3 for **55c**.

***SERPILLUM (Creeping Thyme).** Forms dense mats of dark green foliage and clouds of lilac flowers. Trailing. June and July. Plants, each **20c**; 3 for **55c**.

***SERPILLUM ALBUS.** The white flowering form of creeping thyme, excellent for ground cover. Plants, each **25c**; 3 for **65c**.

***SERPILLUM CARNEUS.** Pink flowering form of Creeping Thyme. Plants, each **25c**; 3 for **65c**.

***SERPILLUM COCCINEUM.** A bright red flowering form of the preceding but has a longer season. June to September. Plants, each **25c**; 3 for **65c**.

***SERPILLUM LANUGINOSA.** Foliage woolly, gray; flowers pink. The best Thyme for the rockery, one plant often covering a rock 2 to 3 feet in diameter. Plants, each **25c**; 3 for **65c**.

TRITOMA (Red Hot Poker)

Also called Flame Flower or Torch Lily

†**BORSCH'S HYBRIDS.** Early, perpetual flowering hybrids, colors ranging from pale yellow to scarlet. Supply in mixture only. Seeds, pkt. **25c**.

Plants, each **30c**; 3 for **80c**.

†**MIRABILIS.** Everblooming hybrids that bloom from early May until cut down by frost. Orange scarlet to canary yellow. Plants, each **25c**; 3 for **65c**.

†**PFITZERII.** Everblooming Flame Flower. The free and everblooming qualities of this variety have made it one of the greatest bedding perennials. From June to October, spikes 3 to 4 ft. high, heads of a rich orange scarlet, producing a grand effect planted singly or in masses. Seeds, pkt. **25c**. Plants, each **30c**; 3 for **80c**.

TRITOMA (Continued)

†**UVARIA.** Dazzling orange red, large spikes 2 to 4 ft. high. Will bloom the first season from seeds sown indoors very early and planted out as soon as soil is warm. Seeds, pkt. **15c**.

TROLLIUS (Globe Flower)

Grown for the beauty of their globular flowers and show of dark green leaves. They are suited to wet sunken gardens, wild borders and edges of water gardens, altho doing well in a good garden soil, not lacking moisture.

***ASIATICUS.** Small bronze green leaves, flowers rich orange yellow, 18 to 24 in. Will do best if partially exposed to sun. May to July. Plants, each **50c**; 3 for **\$1.35**.

***GOLD QUELLS.** Golden yellow. Very showy. 2 ft. May to July. Hybrid Seeds, pkt. **25c**. Plants, each **50c**; 3 for **\$1.35**.

***PUMILUS.** Very dwarf species, 6 to 8 inches high. Very rare. Plants, each **75c**; 3 for **\$2.00**.

***TEUCRUM CHAMAEDRYS.** Its beautiful glossy green foliage and red-purple or bright rose flowers with red and white spots, during July and August, makes this a valuable addition to the rock garden or border; 12 to 15 inches. Plants, each **50c**; 3 for **\$1.35**.

***WULFENIA CARINTHACA.** A neat evergreen Alpine with blue flowers on 6 to 10-inch spikes during May and June. Plants, each **35c**; 3 for **95c**.

VALERIANA

(Garden Heliotrope)

†**COCCINEUM.** Heads of old rose or pink, flowers sweet scented; fine for borders or against walls. 2 to 3 ft. June to October. (Sow seeds early in boxes and transplant as soon as large enough to handle.) Seeds, pkt. **10c**; ¼ oz. **35c**. Plants, each **20c**; 3 for **55c**.

†**COCCINEUM ALBA.** White flowering form of the preceding. Seeds, pkt. **25c**. Plants, each **20c**; 3 for **55c**.

†**OFFICINILIS.** Showy heads of rose tinted white flowers with a strong heliotrope odor. 4 to 5 ft. high. June and July. Plants, each **20c**; 3 for **55c**.

VERBENA (Hardy)

***AUBLETIA** or **CANADENSIS.** Masses of pink or rosy purple flowers on stems 6 to 12 in. high, a native of this country but grown more extensively in English rock gardens. It has been a delightful acquisition to our rock gardens. July to October. Seeds, pkt. **25c**. Plants, each **30c**; 3 for **80c**.

***VENOSA.** A showy species from Brazil and Argentine, tuberous rooted, flowers lavender blue and sky blue in great profusion. 8 to 10 in. Spreads by root growth. Seeds, pkt. **25c**. Plants, each **25c**; 3 for **65c**.

VERBASCUM

(Mullein or Aaron's Club)

†**GIGANTEUM.** Silvery white foliage with yellow flowers. Attains a height of 5 to 6 ft., with a brilliant showing. Plants, each **20c**; 3 for **55c**.



Perennial ALPINE & BORDER PLANTS & SEEDS—Alphabetically Listed

ALPINE OR ROCKERY PLANTS MARKED WITH A STAR (*); BORDER PLANTS WITH A DAGGER (†)

VERONICA (Speedwell)

Some of the most charming forms for the rockery or hardy borders are found in this family. They thrive wonderfully and richly reward the grower.

- ***AMETHYSTINA.** A slender species with short stems of amethyst blue flowers. 6 to 10 in. May-June. Seeds, pkt. 15c.
Plants, each 25c; 3 for 65c.
- †**LONGIFOLIA.** One of the handsomest blue flowering plants. Hardy and increases in strength and beauty each year. Spikes 2 to 3 feet high, completely studded with beautiful blue flowers from July to September. Excellent for cutting. Seeds, pkt. 25c.
Plants, each 20c; 3 for 55c
- ***PROSTRATA.** Carpets of olive green foliage smothered with dainty spikes of rich blue flowers. 4 to 5 in. high. May and June. Plants, each 25c; 3 for 65c.
- ***REPENS.** Prostrate, growing in dense masses, preferring moist corners but will thrive on a moderately dry soil and is excellent for covering ground where grass will not grow. Small white flowers in June and July. 1 to 2 in. Plants, each 25c; 3 for 65c.
- ***SAXATILIS.** One of the finest of all Veronicas for the rockery. Subshrubby 2 to 3 in. high with bright blue flowers. Wonderfully fine for carpeting. Plants, each 40c; 3 for \$1.10.
- †**SPICATA.** Dense tufts from which arise erect spikes of clear blue flowers on 12 to 18 in. stems. June and July. Plants, each 25c; 3 for 65c.

VIOLA ODORATA (Sweet Violets)

No flower is a greater favorite. The violets we offer are hardy, and while they will do well in almost any position, they will do best in partial shade. Seeds, pkt. 10c.

- *†**GOV. HERRICK.** Rich deep purple flowers in early spring, sweet scented. Plants, each 20c; 3 for 55c
- *†**PRINCESS OF WALES.** Rich violet flowers. Seeds, pkt. 25c.
Plants, each 20c; 3 for 55c

VIOLA (Sweet Violet, Heart's-ease or Tufted Pansies)

The Violas succeed best in partially shaded positions where the soil is kept moist and cultivated. When cared for they reward with flowers from May to October. They should be sheared several times during the season so they cannot go to seed.

- ***ALPINA.** Rather large flowers, violet or purplish violet in color, on stems 4 to 6 in. long. A good alpine. Plants, each 30c; 3 for 80c.
- ***APRICOT.** A real gem for the rockery where it gets partial shade. It flowers for a long period with flowers like Pansies of the richest apricot color. A compact grower. Spring to late summer. Seeds, pkt. 25c.
Plants, each 25c; 3 for 65c.

VIOLA (Continued)

BOSNIACA. A fine new European everblooming introduction. Neat clumps covered with reddish violet flowers throught the summer. A distinct species. Seeds, pkt. 25c.
Plants, each 30c; 3 for 80c.

***FLOREARIENSIS.** The nearest to a winter flowering Viola that can be found. Bloomed practically all winter in the gardens. Small blossoms of a pleasing blue. Is the product of the well known M. Henri Corveon. Plants, each 30c; 3 for 80c.

***GRACILIS "LORD NELSON."** A lovely species from Greece of trailing habit, with rich, glowing violet purple flowers. May to August. 4 to 6 inches. Plants, each 40c; 3 for \$1.10.

***G. WERMIG.** A Cornuta, variety of tufted pansy, forming clumps with small dark violet flowers on long stems, a veritable sheet of bloom the whole season. Plants, each 25c; 3 for 65c.

***HALLI.** The best of our native violas. Cut leaves, large flowers with upper petals dark violet and lower ones yellow, or sometimes white. Wonderfully sweet scented. Plants, each 40c; 3 for \$1.10.

***JERSEY GEM.** Possesses the dwarf habit and continuity of blooming of the Horned Violet (*Viola Cornuta*) and the vigorous, bushy growth and roundish foliage of the finest English bedding varieties. Color is a pure violet and flowers are slightly perfumed. 8 to 10 in. Will bloom 9 months of the year. Seeds, pkt. 25c.
Plants, each 25c; 3 for 65c.

***LUTEA SPLENDENS.** Bright yellow flowers on long stems. Flowers all summer. Seeds, pkt. 25c.
Plants, each 25c; 3 for 65c.

***PORTLAND GEM.** As persistent in blooming as *Viola Jersey Gem*, but of a pretty shade of blue with a small yellow eye. Flowers somewhat larger than *Jersey Gem*, but without the least trace of that unpopular "pansy" look. Plants put out in the nursery beds last September commenced to bloom during November and bloomed incessantly for 8 months, when they were cut back to allow them to produce new growth for propagation. Stock is limited. Plants, each 50c; 3 for \$1.35.

***RIVINIANA.** An excellent plant for the rockery, standing the sun and drought better than any other *Viola*. Blooms the entire summer if given a little water. Flowers a light blue, on stems 3 to 4 in. high. A true alpine *Viola*. Plants, each 25c; 3 for 65c.

SYLVESTRIS ROSEA. Distinct, dwarf, close-growing little species with fine rose-pink flowers. Excellent for rockery, border or naturalizing. Plants, each 30c; 3 for 80c.

***WHITE WERMIG.** White flowering form of this popular variety. Plants, each 35c; 3 for 95c.

WAHLENBERGIA

(*Edrianthus*)

***DALMATICA.** Belongs to the Campanula family. A beautiful dwarf alpine, wonderfully fine for the rockery. Blue flowers in a terminal 6 to 10 flowered heads on stems 4 to 8 in. high. May-Aug. Seeds, pkt. 50c.
Plants, each 50c; 3 for \$1.35.

WALLFLOWERS

(*Cheiranthus*)

(See other varieties under heading of *Cheiranthus*)

We have the old favorite sweet scented Wallflowers. Although the greatest care is used it is not always possible to guarantee the color, the average running about 75% to 90%. Seeds should be sown in open and transplanted to permanent position in late summer and will bloom the second season.

- †**BLOOD RED.** Very fragrant. Seeds, pkt. 15c.
Plants, each 20c; 3 for 55c
- †**CRIMSON KING.** Purplish crimson, fragrant. Plants, each 20c; 3 for 55c
- †**EARLY GIANT.** Brown and yellow, early flowering. Plants, each 20c; 3 for 55c
- †**GOLDEN KING.** Golden yellow, fragrant. Plants, each 20c; 3 for 55c
- †**GOLDEN MONARCH.** Dwarf golden yellow. Seeds, pkt. 15c.
Plants, each 20c; 3 for 55c
- ORANGE BEDDER.** Rich orange, shading to apricot. Plants, each 30c; 3 for 80c.
- †**QUEEN OF SHEBA.** New. Velvety dark ruby red, dwarf type. Plants, each 25c; 3 for 65c.
- †**VULCAN.** Large flowers of ruby crimson, dwarf variety. Seeds, pkt. 25c.
Plants, each 20c; 3 for 55c
- SINGLE MIXED.** Large flowering. Seeds, pkt. 10c; ¼ oz. 25c.
- TALL DOUBLE MIXED, FINEST.** Branching habit. Seeds, pkt. 15c; ½ oz. 75c.

YUCCA (Adam's Needle)
Also called Spanish Bayonet or Bear Grass

†**FILAMENTOSA.** Among hardy plants there is nothing more effective and striking for isolated positions on the lawn or on dry banks where few other plants thrive. It is also indispensable for the rockery. Its broad sword-like evergreen foliage and immense branching spikes of drooping, creamy white flowers, rising to a height of 6 ft., render it a bold and handsome subject wherever placed. Should be planted in the spring. 3 year old plants. Plants, each 35c; 3 for 95c.

ZAUSCHNERIA

(*California Fuchsia*)

Also called Humming Bird's Trumpet

***CALIFORNICA.** A low growing plant with scarlet or vermilion trumpet-shaped flowers, about 2 in. long. A flaming sheet during the month of August and September. It is remarkably resistant to drought, excellent for rock walls where they receive the full sun and where the foliage may hang over rocks or edge of wall. Plants, each 40c; 3 for \$1.10.





Special
Collection
One pkt. of
each variety
listed, all for
75c postpaid.

Early Flowering Spencer Sweet Peas FOR FALL PLANTING

EARLY GIANT ROSE—Awarded silver medal at the New York show. A vigorous grower, with blooms brighter and half as large again as Zvelanek's Rose. The vines are free flowering, flowers large and the bunches are larger than bunches made up with an equal number of stems of other varieties. The stems average 20 inches long, 5 blossoms on many stems and flowers with great standards 2 3/4 in. across. Pkt. **20c**; oz. **\$2.00**; postpaid.

SUPERIOR PINK—Awarded silver medal at International Flower Show at New York City and certificate of merit by the Chicago Florist Club. Beautiful rose pink, very slightly shaded salmon, strong growth and under good growing conditions the stems measure 18 inches and carry four flowers. Pkt. **15c**; oz. **75c**; postpaid.

VULCAN—The brightest of all scarlets. Never burns or scalds. The hotter the sun, the brighter and more intense is the color. Pkt. **15c**; oz. **75c**; postpaid.

WHITE HARMONY—Growers have been looking for a black seeded white, of pure white color. White Harmony, being black seeded, germinates readily and the plants are vigorous from the start. Stems are long, flowers are large, pure paper white and of grand substance. Does not show the green edge on the flowers which other black seeded whites have shown. Pkt. **15c**; oz. **\$1.00**; postpaid.

HARMONY LAVENDER—A splendid variety, rich true deep lavender throughout. Flowers of large size, beautifully waved. Considered the best in the lavender class. Pkt. **15c**; oz. **65c**; postpaid.

GLITTERS—The standard is a bright fiery orange, with wings of deep orange; strong vigorous grower, blooms profusely and continuously for long period. Pkt. **15c**; oz. **60c**; postpaid.

EARLY BLUE BOY—A fine large clear blue. A vigorous grower and a good cut flower variety. Pkt. **15c**; oz. **60c**; postpaid.

DIAMOND QUALITY TESTED GRASS SEEDS

The choicest new crop seeds, RECLEANED IN OUR SPECIAL CLEANING MACHINES IN OUR OWN WAREHOUSE AND TESTED FOR PURITY AND GERMINATION IN OUR OWN LABORATORY, the only exclusive commercial seed laboratory in Oregon. No one, unless he has visited our laboratory, can realize the painstaking study and tests, given grass seeds especially, by our Seed Analyst, co-operating closely with our recleaning department in order to give the very purest seed.

Our SPECIAL MIXTURES have been carefully worked out by the tests and observations of our practical experts familiar with the requirements and conditions to be met, and will give the best results possible to obtain for the uses recommended.

Note: Prices on Grass Seeds are subject to change without notice.

DIAMOND FANCY LAWN GRASS MIXTURE—Prepared from the choicest recleaned grass seeds carefully selected for their fineness, their deep rooting, close growing habits and seasonal qualities; producing an ideal, dense, velvety turf of lasting quality that remains green throughout the year. Sow one pound to 200 square feet. 1 lb. **60c**, 10 lbs. **\$5.50**, postpaid.

DIAMOND FANCY LAWN GRASS MIXTURE WITH WHITE CLOVER—This is our regular Diamond Mixture with the addition of white clover. 1 lb. **55c**, 10 lbs. **\$5.00**, postpaid.

DIAMOND FANCY LAWN GRASS MIXTURE WITH CREEPING BENT—This mixture has sufficient creeping bent to eventually dominate the lawn and crowd out the weeds, at the same time giving a fine, velvety turf. Sow one pound to 200 square feet. 1 lb. **85c**, 10 lbs. **\$7.50**, postpaid.

DIAMOND SHADY LAWN MIXTURE—Especially selected for producing a fine velvety lawn under firs and shade trees where most grasses do not thrive. 1 lb. **\$1.00**, 10 lbs. **\$9.00**, postpaid.

FINE MIXED LAWN GRASS—A good clean mixture for general use. Makes a quick lawn and if kept cut will be lasting. 1 lb. **50c**, 10 lbs. **\$4.00**.

In addition to the grass seeds above, we carry all other varieties for lawns, pastures and hay, also clover and alfalfa. We make a specialty of blending seeds for golf courses, etc. We invite correspondence.

PACIFIC CREEPING BENT GRASS (Agrostis Maritima)—Grown on this coast, acclimated to this country and especially recommended for golf courses. It makes an exceptionally fine turf that smothers out weeds. 1 lb. **\$1.75**, 10 lbs. **\$15.00**, postpaid.

IMPORTED CREEPING BENT GRASS—1 lb. **\$1.25**, 10 lbs. **\$10.00**, postpaid.

RED TOP GRASS—Especially recommended for use with other grass seeds as a nurse crop. Comes up very quickly and protects the other more tender grasses. 1 lb. **40c**, 10 lbs. **\$3.50**, postpaid.

CHEWING FESQUE—A low growing grass, forming a very close turf, good for all kinds of soils, even the driest. 1 lb. **50c**, 10 lbs. **\$4.00**, postpaid.

ENGLISH RYE GRASS—Short seeded; sow thickly for fine lawns and parks. 1 lb. **25c**, 10 lbs. **\$1.80**, postpaid.

KENTUCKY BLUE GRASS—A very hardy grass for lawns, of fine appearance. 1 lb. **55c**, 10 lbs. **\$5.00**, postpaid.

WHITE DUTCH CLOVER—Diamond Fancy, especially selected for lawns, the very finest grade. 1 lb. **65c**, 10 lbs. **\$6.00**, postpaid.



TRY OUR SWEET PEA

COLLECTION SPECIAL 25

Fertilizers

Use "Diamond Quality" for Better Crops

Diamond Quality Fertilizers are complete fertilizers of the highest grade and concentration. No inferior ingredients or cheap fillers are used in their preparation, Bone Meal and Tankage forming the base, to which is added the necessary Potash, Nitrogen and Phosphoric Acid. Each package is marked plainly, showing the percentages of available plant foods so you can know exactly what you are getting.

For over thirty years the Portland Seed Company has been working in cooperation with the farmers of the Pacific Northwest in studying, experimenting and demonstrating by every manner of test the value of each fertilizing ingredient. In our own laboratory, scientific tests are being made continuously to prove the results of practical experiments and investigations under regular farming conditions.

Based on these tests, our Diamond Quality Mixed Fertilizers have been developed and have consistently been perfected. Full descriptions of each fertilizer are given below. The first figure in the formula is the per cent of nitrogen, the second figure the per cent of phosphorous and the third figure the per cent of potash.

Sheep Guano

The best natural manure, dried and ground to a fine powder. Soluble, quick in action and practically free from weed seed. Especially fine for lawns, as there is no trash to bother mowers or tools. A complete odorless fertilizer, containing nitrogen, phosphorous and potash; combined in nature's own way, and recommended for vegetables, flowers, roses, shrubs, plants, florists' use, etc.

100 lb. sack **\$1.35**; f.o.b. Portland (On larger quantities write for price)

"DIAMOND A" General Vegetable Fertilizer 2-10-2

This is our all-purpose fertilizer, which can be used on any crop. It is especially adapted for grain and general farm crops. The base of this fertilizer is bone meal and tankage to which the necessary chemical elements are added to make the 2-10-2 formula. In the most modern machinery it is thoroughly mixed and ground to a fineness that makes it readily available to the plant roots.

10 lbs. **50¢**; 100 lbs. **\$2.60**; ton **\$50.00**; f.o.b. Portland

"DIAMOND B" Heavy Cropper Fertilizer 3-7-10

This fertilizer is mixed to give the best possible ratio of nitrogen, phosphorous and potash for heavy root crops and general garden truck. Especially fine for onions. A big favorite among the market gardeners.

10 lbs. **60¢**; 100 lbs. **\$3.00**; ton **\$58.00**; f.o.b. Portland

DIAMOND Fruit and Berry Fertilizer 4-6-8

By practical experience this has been found the best formula for all-around use with fruit trees and berries of all kinds. It is especially preferred by many strawberry growers, on account of its high nitrogen content, in the spring of the bearing year. It should be used to assure plenty of plant food quickly available for the new plants in the row.

10 lbs. **60¢**; 100 lbs. **\$3.10**; ton **\$60.00**; f.o.b. Portland

DIAMOND Lawn and Garden Grower 4-7-3

Promotes a vigorous, healthy growth of the lawn, giving the dark rich green appearance so greatly desired. It can be used at the time the seed is planted and later as a top dressing; 100 pounds is sufficient for the ordinary city lot. It is far more effective and far less objectionable than stable manure. It contains no weed seeds to cause trouble as is the case with manure. Especially recommended for roses, shrubs, flowers and the home garden.

10 lbs. **55¢**; 100 lbs. **\$2.85**; ton **\$55.00**; f.o.b. Portland

DIAMOND Bulb Fertilizer 2-10-10

For the use of commercial bulb growers as well as the home gardeners. Contains ample potash and phosphorous to produce healthy bulbs and beautiful flowers.

10 lbs. **60¢**

100 lbs. **\$3.00**

ton, **\$58.00**

f.o.b. Portland



Deciduous Trees Shade and Ornamental

When you are planning to purchase deciduous shade and ornamental trees, we strongly recommend that you write us, telling us the location of tree and height desired, as we can advise as to the best to plant and give you a better description of the trees as to habit, etc. All of the trees below can be furnished in much larger sizes than listed and we will be pleased to tell you what we can furnish and quote prices. (The sizes given below are the approximate heights when shipped.)

ALL PRICES ON TREES F. O. B. PORTLAND
(Up to 4-foot sizes can be mailed; add postage)

ASH

AMERICAN WHITE—Broad, round head and dense foliage. Very fine. 5 to 6 ft. Each **\$1.50**.

BIRCH (Betula)

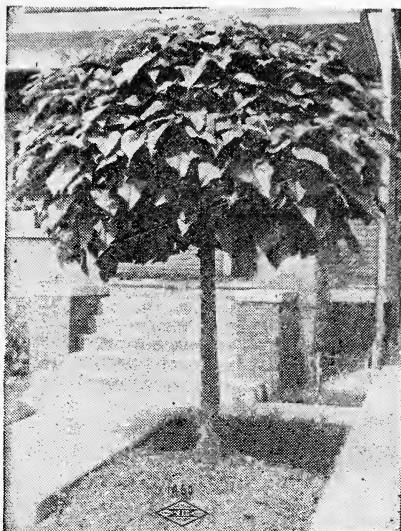
CUT LEAF (B. Alba)—Silvery white bark, slender drooping branches. 5 to 6 ft. Each **\$2.25**.

CATALPA

Splendid trees, white flowers, bright foliage.

CATALPA WESTERN (Speciosa)—Very rapid grower; a quick shade. 7 to 8 ft. Each **\$1.50**.

CATALPA BUNGEI—Dwarf dense round headed variety, much in outline like the popular Bay trees, but is hardy and better adapted for the garden. 6 to 8 ft. Each **\$3.00**.



CATALPA BUNGEI

DOGWOOD (Cornus Florida)

WHITE FLOWERING—Flowers white, 3 inches in diameter, blooming before leaves come in spring. 4 to 5 feet. Each **\$1.50**.

BOX LEAF ELDER

Variegated, hardy, leaves almost pure white. Nothing finer for specimen planting. 4 to 6 ft. **\$3.00**.

ELM

AMERICAN WHITE—A magnificent tree with drooping branches. 6 to 8 feet, each **\$1.50**.

ENGLISH—A rapid grower, erect and compact, dark green. 6 to 8 feet, each **\$1.50**.

HAWTHORNE

PAUL'S DOUBLE SCARLET (C. Monogyna Pauli)—A tree of fine habit; flowers bright scarlet, large, full and very double in heavy clusters on long sprays. 4 to 6 ft. **\$2.00**; 6 to 8 ft., **\$2.50**.

DOUBLE WHITE (C. Monogyna Alba Plena)—Flowers small. Leaves lustrous green. 6 ft. Ea. **\$2.00**.

HORSE CHESTNUT (Aesculus)

WHITE FLOWERING (Hippocastanum)—Foliage showy, flowers stand in upright panicles. 6 feet. Each **\$2.00**.

LABURNUM (Golden Chain)

L. VULGARIS—A beautiful small growing tree, with long, drooping racemes of fragrant yellow flowers. 6 to 8 feet. Each **\$1.75**.

LINDEN (Tilia)

AMERICAN (T. Americana)—Shapely and handsome, foliage large. 6 feet. Each **\$1.50**.

EUROPEAN (T. Europea)—Similar to American; leaf smaller. 6 feet. Each **\$1.50**.

LOCUST (Robinia)

BLACK (R. Pseudocacia)—Rapid grower; fine for street planting. 6-8 feet. Each **\$1.50**.

HONEY LOCUST (Gledistria Triacanthus)—6 to 8 feet. Each **\$1.50**.

MAPLE (Acer)

OREGON SOFT (A. Macrophyllum)—A rapid grower, fine for avenues. 6 to 8 feet. Each **\$1.25**.

NORWAY (A. Platanoides)—Large, growth compact; foliage deep green; very handsome. 6-8 ft., **\$1.50**.

MAPLE (A. Platanoides Schwedleri)—Purple Leaf Maple. Variety Norway Maple. Young leaves are deep purple. As summer advances changes to green. 6 to 8 feet. Each **\$2.00**.

MOUNTAIN ASH (Sorbus)

EUROPEAN (S. Aucuparia)—White flowers, then beautiful red berries. 5-6 feet. Each **\$2.00**.

OAK (Quercus)

ENGLISH (Q. Robur)—Dark green leaves, very dense. 6 to 8 feet. Each **\$2.50**.

RED OAK (Q. Rubra)—Ideal for lawn or street. Dark red, shapely cut foliage. 6-8 ft. Each **\$2.50**.

POPLAR (Populus)

BOLLE'S SILVER (P. Alba Bolleana)—A compact upright grower, foliage glossy. 6 to 8 ft., **\$1.50**; 8 to 10 ft., **\$2.00**.

LOMBARDY (P. Nigra Fastigiata)—An erect rapid grower. 6 to 8 ft., **\$1.50**; 8 to 10 ft., **\$2.00**.

SYCAMORE or PLANE (Platanus)

Erect growing tree with mottled trunk. Foliage bright green. 6 to 8 ft., each **\$2.25**.

WEeping WILLOW (Salix)

WISCONSIN (S. Babylonica Dolorosa)—Large glossy leaves, pendulous habit. 5 to 6 feet, each **\$1.50**.

AMERICAN (S. Babylonica)—The well known common weeping willow. 5 to 6 feet, each **\$1.50**.

Nut trees make excellent
shade trees.



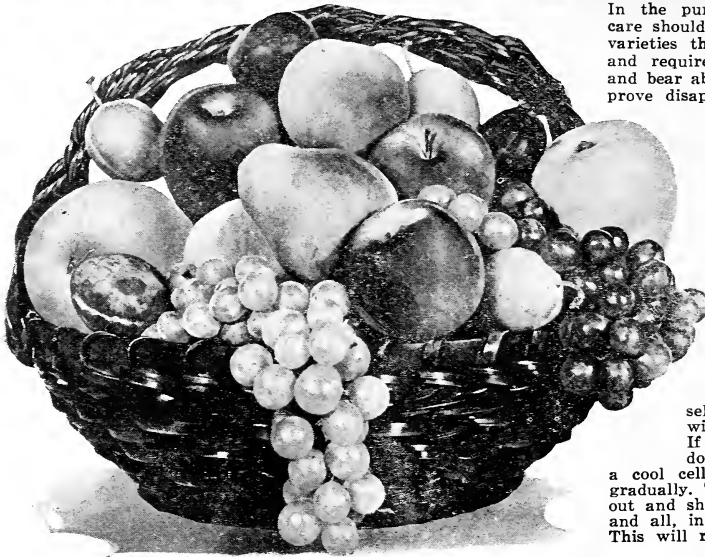
PLANT A BIRTHDAY TREE

Protect your trees by spraying with
the proper fungicides and
insecticides.

FOR THE CHILDREN

27

FRUIT TREES



In the purchase of fruit stocks great care should be given to the selection of varieties that will meet your conditions and requirements, as many that thrive and bear abundantly in one section often prove disappointing under variable conditions.

Also many splendid sorts for home use are totally unsuited for profitable marketing. For this reason we offer a large assortment of improved varieties carefully tested and selected for their special merits and their adaptability to varying conditions, and if you will state whether you intend growing for distant or local market or for home use, giving location and general conditions, we can recommend or assist in the

selection of those varieties that will give you the best results. If trees are frozen in transit, do not unpack, but set away in

a cool cellar and allow them to thaw gradually. Trees or roses that are dried out and shriveled should be buried, tops and all, in moist earth for a few days. This will restore them.

Deliveries made from November until May; orders are accepted at any time for delivery in season

Apples

First Grade	Each	Per 10	Per 100
2 year75c	\$6.00	\$50.00
1 year, 4 to 5 ft.....	.60c	\$5.00	\$40.00
1 year, 3 to 4 ft.....	.50c	\$4.50	\$35.00

F.O.B. Portland; if mailed, postage extra

AUTUMN AND WINTER VARIETIES

BALDWIN—Large, rounded; deep bright red; very productive; crisp, fine flavor; one of the best and most popular winter apples. Nov. to Feb.

DELICIOUS—Fruit equals name in every respect. Fine for market and home, especially adapted to Eastern Oregon and Washington. Keeps till April.

GRIMES GOLDEN—Very popular; rich golden yellow; flesh tender, juicy and rich. Tree hardy and vigorous, bearing young. November to December.

JONATHAN—Tree vigorous, long lived and an early bearer. Fruit beautiful red and oblong; fine quality. Valuable as a pollener with Spitzenberg and Newtown. October to January.

MULTNOMAH (New)—A hybrid between the American Pippin and Rome Beauty. Red striped yellow; flesh white and fine; sub-acid extra long keeper in its prime from February to June.

NORTHERN SPY—Large, round, greenish yellow, stripes of purplish-red; flesh white, juicy, brisk sub-acid; valuable for "top work." Requires good soil. December.

ORTLEY or WHITE BELLFLOWER—White fleshed, fine grained conical fruit of superior flavor. December to April.

SPITZENBERG—Large, oblong; yellowish with broken stripes of bright red; flesh yellowish, juicy. November to March.

WEALTHY—Medium, whitish yellow, shaded with deep red; flesh white, tender and juicy. October.

WINTER BANANA—Fancy market fruit; pale yellow with pink blush. November.

YELLOW BELLFLOWER—Large, oblong, yellow; flesh firm, crisp, juicy, sub-acid. October to January.

YELLOW NEWTOWN PIPPIN—Large; skin smooth, golden yellow; firm, juicy. December to May.

SUMMER VARIETIES OF APPLES

Prices the same for all apples

EARLY HARVEST—Medium size; bright straw color; tender and fine; for table and cooking. July.

GRAVENSTEIN—Large, beautifully dashed with deep red and orange, aromatic flavor; tree very vigorous. August.

RED ASTRACHAN—Large, deep crimson, flesh white, moderately juicy, agreeable rich acid flavor; very productive. August.

YELLOW TRANSPARENT—Medium size, roundish, slightly conical; skin pale yellow; flesh tender, juicy, sub-acid; good; bears at an early age. July.

CRABAPPLE VARIETIES

FLORENCE—Red striped; early, juicy and crisp; fine for home gardens. September 1.

RED SIBERIAN—Yellow with scarlet cheek. Bears young and abundantly. September.

TRANSCENDENT—Very large, good for cider; yellow striped red. Adapted to Montana. September.

Apricots

	Each	Per 10	Per 100
2 year, 4 to 6 ft.....	.85c	\$7.00	\$50.00
1 year, 3 to 4 ft.....	.75c	\$6.00	\$40.00

F.O.B. Portland; if mailed, postage extra

BLENHEIM—Deep orange, sometimes blushed, tender, rich and juicy. Tree vigorous. Good for Pacific Coast. Last of June.

MOOREPARK—Large, yellowish, green, flesh bright orange; for canning and drying; freestone. July to August.

ROYAL—Above medium size; sweet, rich, juicy; good dryer and canner. July.

THE LEWIS—Best flavored, perfectly hardy. Grown extensively in the Goodnoe Hills. July to August.

TILTON—Large; rich color, high flavor; very productive; similar to Royal but later. July.



FRUIT TREE LIST CONTINUED ON NEXT PAGE

Cherries

	Each	Per 10	Per 100
2 year, 4 to 6 ft.....	\$1.25	\$10.00	\$75.00
1 year, 4 to 6 ft.....	\$1.00	\$ 8.50	\$65.00
1 year, 3 to 4 ft.....	\$0.75	\$ 6.50	\$55.00

F.O.B. Portland; if mailed, postage extra

BING—Large, dark brown or black; very fine; late; good shipping. July.

BLACK REPUBLICAN (Lewelling)—Large, black, sweet, purplish flesh; good shipper. June.

***KENTISH** (Early Richmond)—Dark, red, juicy; sour, for cooking purposes. Mid-May.

LAMBERT—Largest size; deep rich red; flesh firm; fine flavor. July.

***LATE DUKE**—Large, light red, excellent, sub-acid. Late July.

***MAY DUKE**—Large, rich, dark red; sub-acid. May.

ROYAL ANN (Napoleon Bigarreau)—A magnificent cherry of the largest size; pale yellow, with a bright red cheek; flesh firm, juicy, sweet; tree a rapid grower and immense bearer. July 1.

Those marked (*) are Pie Cherries.

Pears

	Each	Per 10	Per 100
2 year, 4 to 6 ft.....	\$1.00	\$8.50	\$60.00
1 year, 4 to 6 ft.....	\$0.85	\$7.50	\$45.00
1 year, 3 to 4 ft.....	\$0.65	\$5.50	\$35.00

F.O.B. Portland; if mailed, postage extra

AUTUMN VARIETIES

BARTLETT—Large; skin thin, clear, lemon yellow with soft blush; flesh white, buttery, juicy and highly flavored; best summer pear in existence. August to September.

BEURRE BOSC—Large, beautiful, russety; highly flavored; fine for shipping. September.

BEURRE D'ANJOU—Large, fine flavor; keeps till Christmas. September.

COMICE—A splendid commercial variety; ships well. October.

FALL BUTTER—Yellow, sweet and juicy. September.

FLEMISH BEAUTY—Large, rich and sweet; pale yellow with slight russet. Adapted to Montana and the Northwest.

SECKEL—Rich, highly flavored; skin brownish green, russet brown cheek. September to October.

WINTER VARIETIES

P. BARRY—Fine keeper. Large, yellow. Dec.-Mar.

WINTER BARTLETT—Undoubtedly one of the few pears of recent introduction of real merit.

WINTER NELLIS—Medium; skin yellowish green; flesh yellowish white; fine grained. December.

Nectarines

	Each	Per 10	Per 100
1 year, 4 ft.....	\$1.00	\$9.00	\$75.00

F.O.B. Portland; if mailed, postage extra

BOSTON—Large, deep yellow, bright blush; flesh yellow. Best for Oregon. August 1.

EARLY VIOLET—Medium; skin pale, shaded violet; flesh white; good. July.

Peaches

	Each	Per 10	Per 100
First Grade			
4 to 6 ft.....	85c	\$7.00	\$50.00

F.O.B. Portland; if mailed, postage extra

EARLY ALEXANDER—One of the largest early varieties. Almost freestone. July.

EARLY CRAWFORD—Large, yellow, red cheek; freestone. August.

ELBERTA—Large bright yellow, red cheek; juicy, sweet; freestone. Late July.

HALE'S EARLY—Early, freestone; extra quality.

LATE CRAWFORD—Large, yellow, dark red, juicy; freestone; canning, drying. September.

MAYFLOWER—Red all over; extremely early; freestone. Late June.

MUIR—Large, pale yellow; firm and sweet; best for drying; freestone. August.

SALWAY—Creamy yellow, red cheek; freestone. Late September.

TUSCAN CLING—Very large; yellow, blushed red. July to August.

Prunes

	Each	Per 10	Per 100
First Grade			
2 year, 4 to 6 ft.....	90c	\$8.00	\$60.00
1 year, 6 to 8 ft.....	75c	\$5.00	\$35.00
1 year, 4 to 6 ft.....	50c	\$4.00	\$30.00
1 year, 3 to 4 ft.....	40c	\$3.00	\$20.00

F.O.B. Portland; if mailed, postage extra

GIANT—Largest prune known, averaging 1½ to 2 oz. each.

HUNGARIAN—Very large; dark red, juicy, sweet; good shipper. August.

ITALIAN (Fellenberg)—Large, oval, tapering at both ends; dark purple, flesh greenish yellow; separates freely from stone; best for drying. August.

NEW STANDARD (Burbank Production)—Trees large; enormous yield; sweet, fine grained and delicious; perfect freestone; skin purple.

PACIFIC—Large, sweet; same color as Italian. Good canner or to eat raw. Early August.

PETITE (French)—Medium, egg shaped; violet purple; sweet, rich, sugary; very productive; standard for drying. August.

Quince

	Each	Per 10
First Grade		
2 years	\$1.25	\$9.50

F.O.B. Portland; if mailed, postage extra

APPLE OR ORANGE—Well known standard variety; early; large, golden yellow; good for preserving or flavoring. September.

CHAMPION—Large, yellow; cooks very tender; delicious. October.

PINEAPPLE—Flavor is suggestive of pineapple; resembles the orange quince; making superior jelly; can be eaten raw and has a most exquisite and delicious flavor. September.



IT'S NOT A HOME

UNTIL IT'S PLANTED

Family Fruit and Berry Collection

This particularly attractive and inviting collection is made up to meet a very considerable demand from our customers and is based on the greatest preferences. It makes an ideal assortment for the average family fruit and berry supply and is offered at a special discount. Here is the list—

10	Cuthbert Raspberries, the favorite redcap.....	\$0.75
3	Worden Grapes, the improved Concord.....	\$0.60
1	Bing Cherry, best two-year tree.....	\$1.25
1	Delicious Apple, best two-year tree.....	\$0.75
1	Bartlett Pear, best two-year tree.....	\$1.00
3	Cory Thornless Blackberries, mammoth berries, 1-year transplanted plants.....	\$0.75
100	New Oregon Strawberries, the finest.....	\$1.00

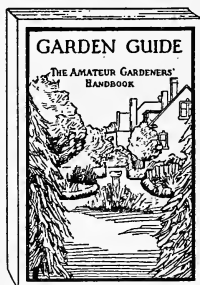
Total value.....**\$6.10**

**Special
Price Offer**

\$ 4.75

See Back Cover

Garden Guide



The Amateur Gardener's Hand Book

380 pages of the best information available, with planting charts, profusely illustrated, 5x7 1/4 inches, paper covers

Postpaid

\$1.00

Currants

(Due to quarantine can be shipped only when dormant, usually from Nov. 1st to April 1st.)

Each **20c**; 10 **\$1.75**; 100 **\$12.50**; f.o.b. Portland.

CHERRY—Very large, deep red; fine for preserving; valuable market variety.

PERFECTION—Largest, most prolific; bright red, rich flavor, mild sub-acid.

FAY'S PROLIFIC—Bright red, very sweet, fruit hangs on better than most kinds.

Gooseberries

OREGON CHAMPION—Very large, pale green, sweet, fine; bush strong, prolific. Each **20c**; 10 **\$1.75**; 100 **\$12.50**, f.o.b. Portland, postage extra.

NUT TREES

ALMOND (Nut Bearing)

Almonds can be grown successfully in many sections of Oregon and Washington. We can supply most of the leading varieties at price listed. Special prices on large orders.

3 to 5 ft., ea. **\$1.00**; 10, **\$9.00**; 100, **\$65.00**

L. X. L.—A vigorous grower and sure cropper, producing nuts of large size and handsome appearance; shell thin; most popular commercial sort.

NONPAREIL—Tree slightly weeping; nut sweet and shell very thin. Best for the home.

BUTTERNUT

A beautifully formed tree bearing a rough coated nut of most attractive flavor, well known to the Middle West. Succeeds fairly well in the Pacific states. 2 to 3 ft., each **\$1.50**; 10, **\$12.50**.

FILBERTS

3 to 4 ft., ea. **\$1.25**; 10, **\$8.50**; 100, **\$55.00**

BARCELONA—Magnificent large nut from Spain, first quality; can be grown as low standard tree or bush.

DU CHILLY—The largest Filbert on Pacific Coast. Nuts are broad, 1 inch by 3/4 inch; full fleshed and sweet; best grown as low standard. Special prices on large orders. Du Chilly is a good pollinizer for Barcelona.

WHITE AVELINE—This used with the Du Chilly considered best varieties for planting with Barcelona for pollinizer.

GRAFTED WALNUTS

FRANQUETTES, Soft Shelled—We offer a splendid strain grafted on four-year California Black Walnuts. Sturdy, thrifty trees with big fibrous roots. The best to plant. Comes to bearing much younger than seedling walnut. 3-4 ft., each **\$1.50**; 4-5 ft., each **\$2.00**; 5-6 ft., each **\$2.50**; large tree, 1 1/2 inch diameter, each **\$3.50**; can be shipped by express or truck.

PAYNES—It is one of the best bearers of all the different varieties. The description is similar to the Franquette. This variety must be kept heavily pruned or it will overbear and the tree will become stunted. 6 ft., each **\$2.50**.

SEEDLING WALNUTS

FRANQUETTE and **MAYETTE**—Second generation, soft shell, selected stock. Trees hardy and prolific bearers. Nuts are rich and meaty. Each **\$1.00**; f.o.b. Portland.

CALIFORNIA BLACK—A rapid grower and very desirable; nut medium size, with hard, smooth shell. Adapts itself easily to different climates. 4-6 ft., each **\$1.00**; 6-7 ft., each **\$1.25**; 7-8 ft., each **\$1.50**.





Diamond Quality Strawberry Plants

FOR
IMMEDIATE
DELIVERY

DIAMOND QUALITY Strawberry Plants are large, vigorous, healthy; heavily rooted; have large, full crowns; carefully grown and are free from disease and pests.

We dig as ordered and pack for shipment in ventilated crates of 1000 plants

each. Grown from our select strains and always true to name; no substitution is ever allowed without instructions from the purchaser.

All our plants are officially inspected in the field by the State Horticultural officers and by our own inspectors.

NEW OREGON

NEW OREGON. Best, most uniform and heaviest yielding main crop strawberry. Large, firm, of fine form, average 15 to the quart box; brilliant deep rich red, with glossy varnished appearance. Color extends through to very center and they are never hollow. Flavor is suggestive of the wild berry. Will remain on the vine for three days without injury, keep perfectly for many days after picking, stand long shipments and will hold color, shape and flavor when canned. An early bearer, being ready for marketing the first half of May in the Willamette Valley and holds up in size and quality throughout the season.

GOLD DOLLAR (Extra Early). Large size, dark red all through, fine flavor. Foliage heavy, large and spreading, which protects blooms from early frosts. Standard early berry in the big markets of the Northwest.

MARSHALL. One of the best all-round strawberries; very large; dark crimson throughout; fine flavor; a fine market and table berry. Our stock of Marshalls is absolutely true and a vigorous and prolific strain.

MAGOON. Originated near Portland; berry large, fine and of excellent sub-acid flavor; bears heavily throughout the season; especially adapted to Western Oregon and Washington.

PRICES—All varieties listed above: Prepaid, 12, **30c**; 25, **50c**; 100, **\$1.50**. Not prepaid, 25, **40c**; 100, **\$1.00**; 1000, **\$8.00**.

Lots of 5000 or more, **\$6.00** per 1000. Not less than 500 of a kind at 1000 rate.

EVERBEARING

PROGRESSIVE EVERBEARING. Fall bearing Strawberries. Require special care and attention, as the late fruit will be small and yield less if blossoms are not removed and plants are allowed to fruit early and continuously. When properly grown they are of splendid quality and yield heavily until frost. Rich, red color, firm and of delicious flavor. Good keepers and shippers. Postpaid, 12, **60c**; 25, **75c**; 100, **\$2.00**. Not prepaid, 12, **35c**; 25, **55c**; 100, **\$1.75**; 1000 plants, **\$15.00**; f.o.b. Portland.

MASTODON EVERBEARING
(See description at top of page)

MASTODON STRAWBERRIES

The largest everbearing berry grown. Mastodon is the most prolific, the firmest, the most beautiful berry with the real Strawberry flavor. Bears early and late. Can be picked all Spring and Summer. Many of the berries grow as large as a silver dollar, and are just as perfect. Mastodon is the real marvel in Strawberries; nothing like it has ever been known.

Big yields of big berries under all conditions—does not require special soil, petting or care.

Just plant them out this Spring in ordinary soil that will produce good garden or farm crops, give them only ordinary care, keep the blossoms cut off until July 1—that's all there is to it. In about three weeks you'll have berries—big, red, delicious berries—lots of them and you will continue having them until Winter.

Prepaid, 12 **80c**; 25 **\$1.25**; 100 **\$3.00**.

Not prepaid, 12 **60c**; 25 **90c**; 100 **\$2.50**; 1000 **\$20.00**

Grapes

PRICES F. O. B. PORTLAND

2-year plants.....each **20c**, 10 **\$1.75**, 100 **\$15.00**

1-year plants.....each **15c**, 10 **\$1.25**, 100 **\$10.00**

CAMPBELL'S EARLY. Nearly round, black, with light purple bloom; flesh rather firm but tender; quality rich, sweet, slightly vinous; a strong, vigorous grower. August.

CONCORD. Large, black grape; bunches compact; berries round, sweet, pleasant. August.

DELAWARE. One of the finest grapes; grows freely; perfectly hardy; ripens early; berries small, bright red. August.

LUCILE. Good medium large red grape, hardy.

MOORE'S EARLY. Berry large, resembling Concord, but more pulp and earlier.

NIAGARA. Bunch medium; berry large roundish, uniform; skin thin but rough; pale yellow flesh tender and sweet; vine vigorous and productive; one of the best white. September.

WORDEN. Bunch large and compact; berry large, black; improved Concord. Late August.

Raspberries

PRICES F. O. B. PORTLAND

BLACK CAPS

2-year.....each **25c**, 10 **\$2.25**, 100 **\$20.00**

1-year.....each **20c**, 10 **\$1.75**, 100 **\$15.00**

GREGG. Good size, productive and hardy.

PLUM FARMER. Large, black, hardy and very productive.

RED CAPS

1-year.....each **10c**, 10 **75c**, 100 **\$3.00**

CUTHBERT. Deep rich, red, large and firm; one of the best; ripens medium to late.

MARLBORO. Bright crimson. Ripens early; large, firm, good commercial variety.

ST. REGIS EVERBEARING RED CAPS. Each **20c**, 10 **\$1.75**, 100 **\$15.00**.

Blackberries

PRICES F. O. B. PORTLAND

1-year.....each **15c**, 10 **\$1.25**, 100 **\$10.00**

ELDORADO. Large, jet black, melting, sweet and rich; hardy, productive; fine for Oregon.

HIMALAYA GIANT (Evergreen). Strong rampant grower; everbearing, enormous yielder; berries large, juicy, coreless, sweet and firm, aromatic flavor. Its deep-rooting qualities enable it to produce a large, firm berry even in a very dry season.

LAWTON. Fruit large; very productive; well known; Oregon's most popular kind.

THORNLESS MAMMOTH BLACKBERRY (Cory)

Strong, vigorous grower; bears prolific; canes grow thick and stout until 5 or 6 feet, when they take trailing habit; should be trellised. Delicious flavor of its own, resembling the wild berry. Self-fertilizing—never been known to fail to bear. Almost seedless. F.o.b. Portland.

Tips—Spring delivery only.....each **20c**, 100 **\$12.00**

1-year transplanted.....each **25c**, 100 **\$20.00**

Loganberries

2-year plants.....each **20c**, 10 **\$1.75**, 100 **\$15.00**

1-year plants.....each **15c**, 10 **\$1.25**, 100 **\$10.00**

Dark red, immense clusters, June—

F. O. B. PORTLAND; POSTAGE EXTRA



WRITE FOR YOUR

FREE SPRAY CHART

31



- | | |
|----------------------|-------------------------|
| 1 Cuthbert Raspberry | 5 Bartlett Pears |
| 2 Worden Grape | 6 Cory Thornless |
| 3 Bing Cherry | Blackberry |
| 4 Delicious Apple | 7 New Oregon Strawberry |

DORTLAND
SEED CO.
DORTLAND
SEED
CORPORATION