

Historic, Archive Document

Do not assume content reflects current scientific knowledge, policies, or practices.

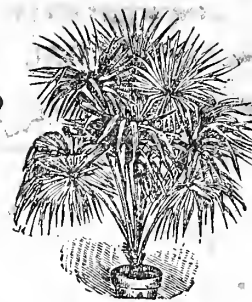


Royal Palm Nurseries'

RARE PLANT LIST

Covering Subjects Not Listed in Their Catalog

ISSUED QUARTERLY



Vol. 4

Oneco, Florida -- November 1, 1930

No. 2

FANCY LEAVED CALADIUMS

We are more than pleased with the progress which we have made this last season with our collection of Fancy Leaf Caladiums. Additional importations have been made during the last year from Brazil, England and France, as well as from two prominent American growers. The Federal Horticultural Board has begun to release us on some of our earliest importations, as those interested will note from the several new varieties of Brazilian origin added to our list this season. Still further additions, particularly from the French and English collections may be expected next year. About fifteen additional varieties have been transferred to our list of discarded varieties because of their poor coloring, but nearly fifty new sorts have been added, so there is a substantial increase in the number of varieties listed.

Feeling even more strongly, as we indicated last year, that the American producer was not receiving a fair value for his bulbs compared with the French and English markets where even common varieties retail from 60¢ up, and good sorts will run as high as \$3.00 each, we have added an additional group classification this year in which novelties, new introductions and scarce varieties will be carried at higher prices than heretofore. On the other hand, quite a number of the well established sorts have been reduced in price in our effort to make the lower grades even more desirable.

We call particular attention to the four new varieties which we are introducing this season, and which will be found fully described under Group 6. These are among the finest varieties of Caladiums that we have ever seen, and some of them, at least, are bound to become very popular in the years to come. While orders for these four new varieties will be booked at once, delivery cannot be made until the formalities of registration in accordance with the new Plant Patent Act have been complied with. Notice is given herewith of our intention to Patent these varieties and propagation for sale purposes expressly forbidden without our authority.

We have had much pleasure in the last season from the many visitors who have called to inspect our collection of Caladium varieties, and we hope for an even greater number in the coming season. Specialists are cordially invited to correspond with us on any phase of the Caladium industry. We are especially interested in the question of nomenclature and will welcome any and all suggestions in this line.



GROUP NUMBER ONE

Caladiums to be sold at 25¢ each, \$2.00 per ten, \$15.00 per hundred.

- ACARY -- Silver green, light red center, red blotches.
- ANGUSTURA (?) -- Transparent rose blotches on large green leaf.
- BEROSE -- Light green with deep rose center and veins, surrounded by gray-green zone.
- BILONTRA -- Moss-green, light blueish-violet centers. Peculiar shade.
- BLANCIE WISE -- Gray-green center and veins, strong red blotches. Vigorous grower.
- COIMBRA -- Green, heart-shaped leaf, clouded gray-green center and ribs, profusely spotted white. A good vigorous grower.
- CRUMARIN -- Marbled green and silver, pinkish-violet blotches.
- FASCINATION -- Deep green border, shading thru gray-green to old rose center and veins.
- HEDWIG ELSE NEHRLING (Nehrling) -- Lance-leaved, dark green with red spots, white midrib.
- ITAQUI (Magna Charta) -- Deep crimson midrib and veins bordered lighter red. Whole leaf thickly covered with pink and white freckles on deep green ground.
- JERICO -- Large leaved variety profusely splashed transparent delicate pink on dark green background. Sometimes entirely pale pink. Prominent dark green veins.
- JUPITER (?) -- Red center and veins on gray-green ground, green border and covered with white spots thruout. Different from the French sort of the same name.
- L'AUTOMNE -- Creamy-white, with rosy lilac spots.
- LUDERMANNI -- Deep and broad crimson ribs, apple green leaf densely spotted white.
- MADAM ALFRED BLEU (Bleu) -- Green and white background, tender rose veins, sometimes flushing strongly pink.
- MARANGUAPE -- Light green ground, numerous pink spots.
- MARIA COROLLA -- Green, profusely spotted red and white, green ribs.
- MERUDA -- Creamy green with a few large red spots.
- MRS. JENNY PERKINS -- Dark green, splashed dark crimson, clouded lighter red in center. Red veins.
- MRS. T. L. MEAD (Nehrling) -- Large dark green leaf, densely spotted maroon, and dusted with gold.
- OURO FINO -- White ground, crimson ribs; the young leaves look as though trimmed in golden gauze.
- PROSERPINE -- Dark green leaf with pale pinkish-gray center, large red spots, the whole overcast with dark shades to give a most peculiar effect. Choice.
- PUTO MAYO -- Constantly varying from deep red to transparent pink. Entire leaf heavily covered with thousands of small and larger blood-red spots, ribs narrow green.
- SAPOPEMBA -- Mottled light and dark green and white; occasional pink flush, extra large grower.
- TRAHIRAS -- Pure white, green veined, occasionally more green. Black stems.



GROUP NUMBER TWO

Caladiums to be sold at 35¢ each, \$3.00 per ten. \$25.00 per hundred.

AMOENUM (Bleu) -- Dark green leaf shading to deep rose center.

Strong rose veins. Choice.

BERNARD WAGNER (?) (No. 10) -- Mottled green and white background, strongly flushed pink toward the center. Prominent red veins.

CANDIDUM -- Pure white ground with delicate green veins and tracery. Elegant.

C. E. DAHLE -- Creamy leaf, soft pink and green, large red spots.

CHAS. T. SIMPSON (Nehrling) -- Large leaf, silvery green, prominent red blotches.

CUYABA -- Large, transparent pink leaves darkening with age; green veins.

D. M. COOK -- Crinkled leaf, plum red center, heavily spotted deep red, green border.

ELOISE ROBINSON (Nehrling) -- Transparent white, changing to pink.

FACEIRO -- Greenish yellow leaf with large irregular transparent pinkish-white blotches. Shaded darker green. Variable.

GARTEN DIRECTOR GIREAUD -- Greenish-yellow, clouded moss-green; spotted red.

HILDEGARDE NEHRLING -- Creamy leaf with pink ribs, later suffused deep pink.

LORD DERBY -- Beautiful deep pink crumpled leaf, with main veins and even the smallest side veins deep green.

MACAHYBA (Also spelled Macaby) -- Dark green leaf with heavy red ribs, and large pink blotches.

MARIE MOER -- Large white leaf, delicate green veins and occasional red blotches.

MATAGALEA -- Dark green leaf with large gray-green center flushing light pink and light pink veins. Very elegant.

MRS. F. SANDER -- Greenish-yellow and dark green leaf, heavily blotched large lavender-pink spots. Ribs insignificant.

NANDAYA -- Rose center, carmine nerves, margined green with small white spots.

PAVAUNA (?) -- Shading from dark green to very light center, light rose veins and tracery. The whole overlaid with bronze.

PETROLIS -- Mostly red and pink shaded; difficult to describe.

PIO TEDORO (Mead) (?) -- Vigorous, large leaves, dark green shading to dark carmine in center, darker ribs. Sparsely blotched white.

SIR FRANK CRISP -- Light green leaf, veined and centered ivory white; few large, transparent rose spots.

SOROCABA -- White, flushed pink, green veins.

TOCATINS -- Deep transparent rose, narrow green ribs and border.

TRIOMPHÉ DE EXPOSITION -- Glowing crimson center, red ribs, green border. One of the best of the older sorts.

WHITE FLAG -- Large ivory leaf, transparent white spots.



GROUP NUMBER THREE

Caladiums to be sold at 50¢ each, \$4.00 per ten, \$35.00 per hundred.

- ARASSUAHY (Nehrling) -- Large leaf, beautiful transparent pink, green ribs and veins, margined with narrow white edging.
- AYMORE -- Ivory center, ribs tinged lavender, flushing red with age.
- CABO FRIO -- Very thin leaf, creamy white interspersed light and dark green. Strongly flushed pink early in the season.
- CALCOSANIATCHEE (Nehrling) -- Lance-leaved, white center changing to pink with age. Deep green border.
- DAYBREAK -- White background strongly traced green, prominent rose veins.
- DR. H. NEHRING -- Large green border, pink and white blotched center.
- DR. WILHELM MILLER -- Strong grower, large red leaf showing but little green. Becomes more intense with age.
- DR. VILHENA -- Large leaf, center mingled transparent claret and white, two-toned green edge.
- DUESTA FEINOSTA -- Large leaf, suffused white and pink. Shows very little green.
- EDITH LOUISA HUBBARD (Nehrling) -- Purplish center, profusely spotted dark red. Resembles D. M. Cook, but more dwarf and brighter colored.
- ELSA -- Deep green, changing to intense pink, densely flecked crimson.
- FAUST -- Resembles D. M. Cook but lighter in color. Large leaf, tall grower.
- FLUMINENSE -- Creamy yellow leaf profusely spotted small red spots.
- JACQUITHONHA -- Transparent rose and white, veined dark green. Dwarf.
- JOHN PERD -- Dark red with transparent center, narrow green border.
- MANAOS -- Beautiful pink, spotted crimson and white.
- MARY QUEEN OF SCOTS -- Strong growing, cream white and green ground with red blotches. Odd, but charming coloration.
- MRS. W. B. HALDEMAN (Nehrling) -- Strong grower, lovely pink center, white spots, bordered with green.
- PORTO NOVO -- Center deep blood red on creamy white ground profusely spotted blackish red.
- PORTO RICO -- Dwarf, small leaved variety, but very showy. Transparent dark red center bordered with deep glossy green. Shows good color even on a small bulb.
- ROSSINII -- Center and ribs rich crimson, deep green ground, bright blood-red blotches.
- RUTH FOSTER (Gerbing) -- Large round leaf, dark green, strongly mottled white, flushed pink at times, broad pink veins.
- TRIOMPHE DE COMPIE -- Handsome leaves of rich fiery crimson.
- TRUCE (Nehrling) -- Heavy creamy-white leaf sometimes flushing light pink.
- ZOE MUNSON (Nehrling) -- Transparent white changing to pink, resembles Eloise Robinson.

GROUP NUMBER FOUR

Caladiums to be sold at 75¢ each, \$6.50 per ten, \$60.00 per hundred.

AGUAPE -- Large leaf, mottled pink and white in center, with dark green border; heavy scarlet ribs. With age becomes solid transparent pale pink.

DAISY -- Small-leaved tall growing seedling from D. M. Cook, but leaves even more curled and crinkled. Deep purplish red center and veins, edged old gold. Lighter red spots.

DR. GEO. TYRRELL -- Deep rose center and scarlet ribs, zoned bluish rose. Profusely spotted with small transparent pink spots. Light bronzy-green border.

EDITH E. MEAD (Mead) -- Ivory center, veined rose, narrow green border. Elegant.

FANNY REBA -- Large leaf veined deep red, center red, profusely spotted white and pink.

FRED BAUSE -- Deep transparent rose center, often overlaid with purplish tints.

GARDEN DIRECTOR BETZ -- Large bronze-red leaf, darker veins; very vigorous.

HORTULANIA (Lietze) -- Fine, transparent pink, shading to white toward edge, narrow green border.

ITAPOCU -- Deep and very brilliant red. Leaf large and vigorous.

JESSIE M. THAYER -- Leaf flushed pink and white, prominent red veins.

MADAM JULES PICOT (?) -- White, with green veins, flushed pink; very variable.

MADAM TRUAULT -- Dark red leaf suffused and veined carmine; very fine.

MITRIDATE -- Fine, deep red, very large cup-shaped leaf.

MRS. ARNO NEHRLING (Nehrling) -- Suffused pink and white, changing to red; veins red.

MRS. SOPHIE NEHRLING (Nehrling) -- A clear pure white, sometimes transparent, occasionally flushed pink and later lavender. Narrow green border and veins.

MRS. SUSAN B. WIGHT (Nehrling) -- Very large transparent pink leaf, with red veins. Very handsome.

NORTHERN LIGHT -- Very dark green leaf, veined and spotted deep red.

PAULA GERBLING -- Very dark bronze-green cup-shaped leaf, brilliant dark red center and prominent red veins.

PIRACICABA -- Green and rose leaf, veined darker.

RIO BONITO -- Transparent ivory white, suffused and flushed a delicate pink.

SCARLET PIMPERNEL -- Creamy-yellow ground, deep red center and veins.

STARS & STRIPES -- Large purplish red and green leaf, spotted light red. Resembles Rising Sun but somewhat darker, and duller color.

STUART H. ANDERSON (Nehrling) -- Dwarf, deep pink center, transparent blotches, green border.

TECUMSEH -- Brilliant deep red, large leaf.

WALTER SCOTT (Blou) -- Light red ground, darker veins. (Not the English Sir Walter Scot, but the same as the French Walter Scot.)



GROUP NUMBER FIVE

Caladiums to be sold at \$1.00 each, \$9.00 per ten, \$80.00 a hundred.

BAMBINO (Lietze) -- One of the new lance-leaved varieties from Brazil. Green and white, flushing pink; quite vigorous.

CARO NOME -- Large, ivory leaf with unusually broad rose-colored veins. Leaf becomes suffused with rose color in center as it ages. A very bold, striking grower.

CRESCENT CITY -- Very showy leaves with partly transparent deep rose center, slightly mottled green and white inter-spaces; attractive bronze-green border, heavy scarlet ribs.

DON DIOGO DE MENEZES (Lietze) -- Heavy greenish-cream leaf, prominently marked with contrasting deep rose center. The rose coloration appearing but faintly on young leaves on the edges of the main ribs, gives them a characteristic star-like appearance.

GUSTAV G. GERBING (Gerbing) -- Light rose leaf with carmine red ribs, center intermingled whitish-green blotches, changes to deeper rose with age. Narrow green border. Variable.

IRENE DAHLBERG -- Transparent clear white, veined & bordered light green.

JURACY -(Lietze) -- A very unusual Caladium. Leaves pale pea-green at first with colorless transparent blotches. On strong bulbs becoming as completely transparent as the thinnest tissue and flushing delicate pink with age. Does not show real value until late in the season, but very beautiful then.

LEWIS WALLER -- Dwarf growing, brilliant red, resembling Poecille Anglais but lighter color and overcast with blueish shimmer.

LUCY Y. CALKINS (Gerbing) -- Red ribs, lighter red center; pink blotches on large leaf; bronzy-green border. Strong grower.

MACAPA (Lietze) -- Cream with dark rose spots; dark green blotches; red veins.

NAVAJO (Gerbing) -- Creamy-green leaf, center marked rose and white; heavy dark red ribs.

PAQUETA (Lietze) -- Dark, purplish-red. The leaf is very slow in unrolling (10 days or more), hence the name, which is Spanish for "Bundle".

PIRATININGA (Lietze) -- One of the finest of our new importations, but requires strong bulbs and some age to show its full character. At first, mottled dark green and cream with few transparent rose blotches, becomes almost entirely cream and transparent pink.

POECILLE ANGLAIS -- Very darkest red, almost an Ox-blood color, with small green border. Very distinctive and striking. Dwarf grower. Leaves somewhat cup-shaped.

"PURE WHITE" -- A very dwarf grower, a delicate snow-white, occasionally flushed pink. (Formerly listed as Tabatinga but different from the Brazilian variety of that name, which see.)

RIO DE JANEIRO -- Transparent pink ground with a Mother-of-Pearl shimmer. The narrow green edge is dotted with pink, white-edged spots.

RISING SUN -- Brilliant red and green, pink spots; makes very large leaves on strong bulbs, but grows very slowly.

SALOME (Lietze) -- Vigorous lance-leaved sort from Brazil; green and white leaves more or less flushed pink.



GROUP NUMBER FIVE (Continued)

SEÑORITA ODETE DELGADO DE CARVALHO (Lietze) -- Mottled pink and white center, dark green border; suggesting Mrs. Haldeman in younger plants but lighter color. On strong bulbs whole leaf becomes transparent pale pink with white veins.

SENATOR CALKINS (Gerbing) -- Round leaf, cream with fine green nerves. Strong pink veins flushing pale pink thruout. Type of "Caro Nome" but more delicate coloring.

TABATINGA (Lietze) -- Opaque, greenish-white leaf, flushing pink with age. Not so clear a white as the variety formerly carried under this name, but now listed as "Pure White".

THEOLINDA AMARAL (Lietze) -- Large-leaved variety with bright red center, dark green ribs and border, sometimes becoming almost entirely brilliant red.

THOMAS TOMLINSON -- Brilliant scarlet center, sometimes transparent, sometimes showing some white; variable green edge. A very brilliant, showy and distinct sort.

VOTIVERAVA -- Pale green leaf, mottled with transparent pink and white spots. On strong bulbs the leaves are entirely transparent pale pink.

VENTANA (Formerly Seedling No. 1078) (Gerbing) -- While we introduced this variety last season, we were not at the moment able to find an appropriate name which would do justice to the marvelous transparency of this variety, the thinnest and most entirely transparent at all times of any Caladium we know. Inspired by the comments of several of our visitors that the leaves "could be used for window glass", we have named the variety "Ventana", the Spanish word for window. Large, crumpled, very transparent, greenish-white leaf, veined and bordered with dark green, the whole leaf flushing pale pink with age.

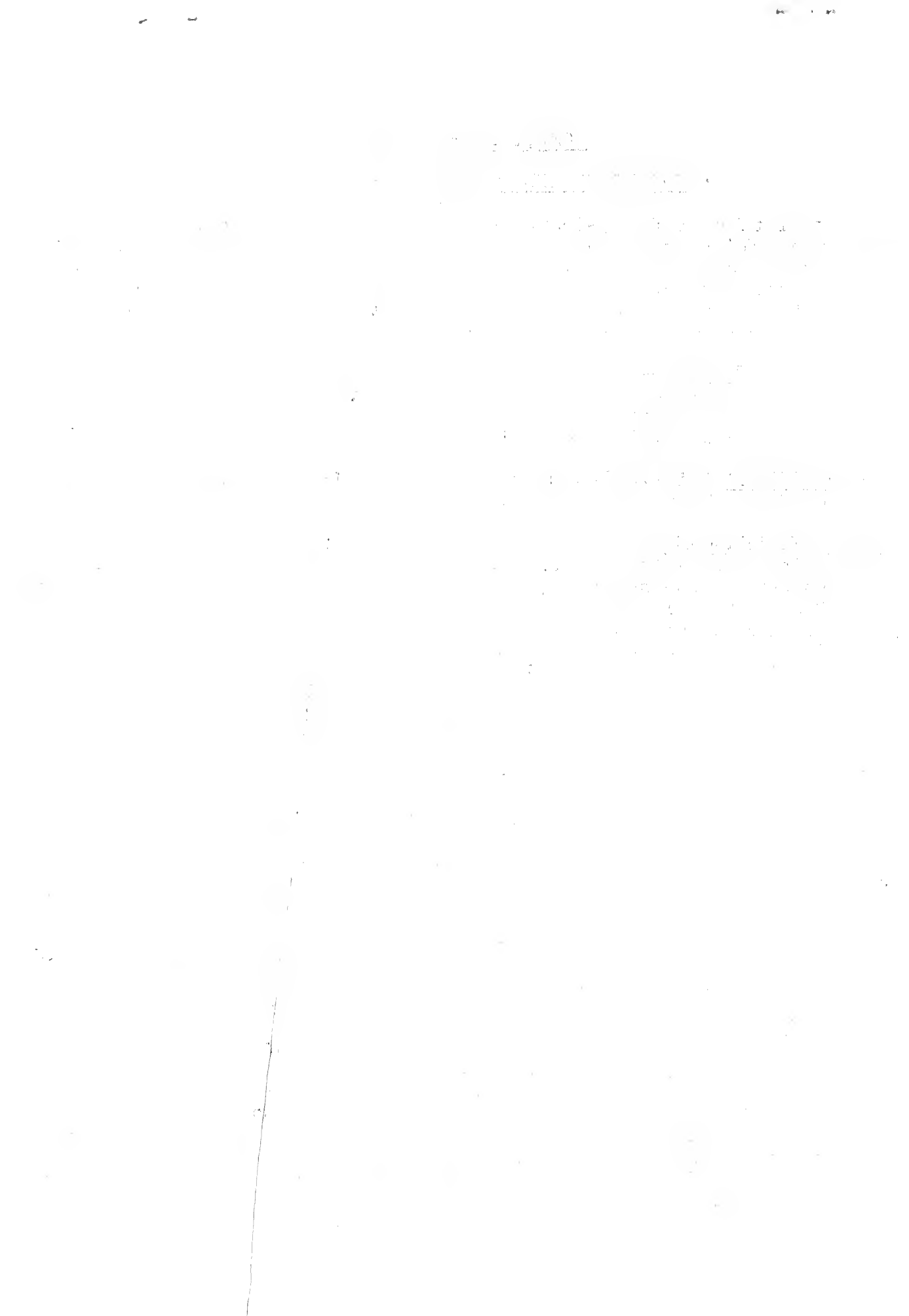


GROUP NUMBER SIX

NOVELTIES AND SCARCE VARIETIES

Some varieties of Fancy-leaved Caladiums propagate so poorly that it is impossible to grow them for the same price as other sorts. Then, too, there are these novelties and new creations of interest to the specialist, but not yet in sufficient supply to list at regular prices. It is, therefore, to this class of material that this section is particularly devoted. Prices as noted under each variety.

- BETTY P. NEHRLING -- Dwarf grower with beautiful transparent rose magenta foliage lightly bordered green, becoming a darker, wonderful dark magenta with age. (Mrs. Fanny Munson is so similar we see no need of listing both.) \$1.50
- DIOGO BOTELLO (Lietze) -- Dark, blood-red cinnibar-colored ribs; border a beautiful yellow. \$1.50
- EGBERT N. REASONER (Gerbing) -- Formerly Seedling 1112. In naming this variety for our Father, the proprietor of the Royal Palm Nurseries for so many years, we believe we have selected a variety that will bring his name to remembrance among Caladium growers as long as they shall be grown, for this variety, like "John Peed", "Thos. Tomlinson", "Mrs. Marian McAdow", etc., is so distinct and striking that it will live on forever. A transparent rose leaf, shading darker with age. White veins. Younger leaves shading to mottled green and white toward the edges. The leaf is peculiarly distinct from all other Caladiums because of its deep, cup-shaped form. Exquisite. \$5.00
- GALEAO (Lietze) -- Dark, purplish-red, with "Paqueta", a new shade in our collection. \$1.50
- IRIS -- (Lietze) One of the most beautiful of our new importations. A deep, transparent claret color, more or less mottled with green and white. The deepest colored transparent sort we know. \$2.50
- JAFY (Lietze) -- Lovely, all-rose transparent leaves with green border and veins on the order of Irene Dahlberg but flushed a delicate flesh color; a novel color. \$1.50
- MINNA HOFFMAN (Nehrling) -- Transparent rose on creamy ground, narrow, yellowish ribs and veins, darkening to brilliant red effect with age. Difficult to propagate. \$1.50
- MRS. MARIAN McADOW (Nehrling) -- Deep, glowing red, very narrow green border, comparatively short stem with quite large leaf. Almost as charming as the lady for whom it is named. \$1.50
- MRS. THOMAS A. EDISON (Gerbing) -- Formerly Seedling 1111. This variety, as charming as it is, can only faintly suggest the delightful elegance of our patron, the wife of the distinguished inventor, with whom we have spent such happy hours in working out the beautification of her winter home in Fort Myers. A white leaf bordered with dark green shading to rose in the center. White veins; black stems. \$5.00



GROUP NUMBER SIX (Continued)

- MRS. WILLIAM FIELDER (Gerbing) -- Formerly Seedling 1139. A beautiful Caladium can have no more worthy excuse for existence than to honor the name of one distinguished for her accomplishments in the realm of beautification. We are happy, therefore, to name this variety in honor of Mrs. William Fielder, pioneer leader in the Garden Club movement in Tampa, to whom much of the present beauty of that city is due. Exceedingly transparent; as much so as any Caladium we know. Leaves slow to unroll and remaining more or less crumpled. Tender, flesh pink, marked with prominent red veins. The leaf margined with a narrow band of green. \$3.50
- PAMPA (Lietze) -- Transparent pale rose with narrow green border. Leaves somewhat crinkled. Even small bulbs show good color. \$2.50
- PAULO LIETZE -- (Lietze) Rose and white lance-leaved variety with green veins and border. Very good. \$1.50
- PEDRO MARIA BINOT (Lietze) -- Creamy-yellow leaf with dark, transparent claret center and spots. Magnificent. \$1.50
- SADIE A. REASONER (Gerbing) -- Formerly Seedling 654. Only those who were privileged to know her will understand our reasons for naming this lovely variety after our Mother. A truly beautiful variety, it could not be more fair than she whose memory it honors and to whom in the closing months of her life the love of these Fancy-leaved Caladiums came to solace her grief in the loss of her husband who had gone on before. The entire leaf evenly colored a semi-transparent rose, the veins and nerves ivory white. Only occasional touches of pale pea-green. \$5.00
- SENIORA MARIA LUIZA MOREIRA (Lietze) -- Peculiar mottling of light and dark green and white, the whole overlaid with tender rose. Ribs brownish. \$1.50
- VALENTINE (Gerbing) -- Roundish heart-shaped leaf with brilliant red center and veins, and a yellowish-green border. The whole leaf marked with large white spots. A most unusual combination \$3.50

