

Historic, Archive Document

Do not assume content reflects current scientific knowledge, policies, or practices.

From the

PECAN AND CITRUS STOCK NURSERIES

of
E. E. STOKES & SON, Campville, Fla.



For

1939-1930

STAMP

LIBRARY
RECEIVED
★ FEB 26 1929 ★
U. S. Department of Agriculture.

BUREAU OF PLANT INDUSTRY
Horticulture
M. R. N.

GOVERNMENT PRINTING OFFICE 132437

U. S. DEPARTMENT OF AGRICULTURE
WASHINGTON, D. C.



PECAN AND CITRUS STOCK NURSERIES

of
E. E. STOKES & SON, Campville, Fla.

MONEY IN PECANS

The Pecan has now become thoroughly established as one of the highest grade nuts of commerce and there is a ready sale for it everywhere. The trees are very hardy and long lived and, with good care, bear great quantities of large nuts, rich meated and thin shelled.

The pecan nut has many fine qualities, such as imperishability (the nuts do not have to be sold at once when gathered, no matter how low the price, but can be kept for many months, if necessary), richness in fats and oils (the meat of the pecan is so rich in fats and oils that it will burn like a candle when set afire), thin, easily cracked shell (in many varieties the meat can be taken out whole with ease), and large size (forty and fifty of the nuts of some varieties will weigh a pound). The trees bear well over the South and many of the Middle States and, wherever they have once become established more and more orchards are being set out all the time as the demand for the nuts far exceeds the supply.

The trees we have for sale are fine, vigorous, stocky, and well rooted and are grown from large, improved nuts of varieties most immune from scab and budded with budding wood from the finest and most prolific bearing trees in our orchards. We see to this personally, as indeed we do to all other phases of the work. Stock grown from large nuts grows faster and has many advantages over that grown from small pecans. Every orchardman should know this.

By many experiments during our twenty-nine years of experience as nurserymen, we have found that the trees budded with buds from prolific trees, well into bearing will bear quicker after setting out and also be much more prolific than those budded from buds from light bearers, or trees that have not yet come into bearing. Therefore, all our stock is budded only with buds from specially selected orchard trees. No one wishing to set out a pecan orchard can make a mistake if he uses these fine trees and gives them the proper care, as they are very hardy.

Our pecans have won eleven first prizes and two second prizes in thirteen entries in Alachua County Fair.

Our trees are all first class stock, well rooted, sturdy and straight, that have always had the best of care and are fine looking and vigorous and will make orchards that you will always be proud of; fast growing and heavy bearing; will please you in appearance as well as in results.

If you live in the Pecan Belt, we can give you references as to our reliability, quality of our trees, etc. in your own state—probably in your own home county.

Mr. E. E. Stokes,
 Campville, Fla.

Lake Butler, Florida.

Dear Sir:

The trees bought from you three years ago produced \$2.50 worth of nuts to each tree.

Yours very truly,
 J. W. TOWNSEND

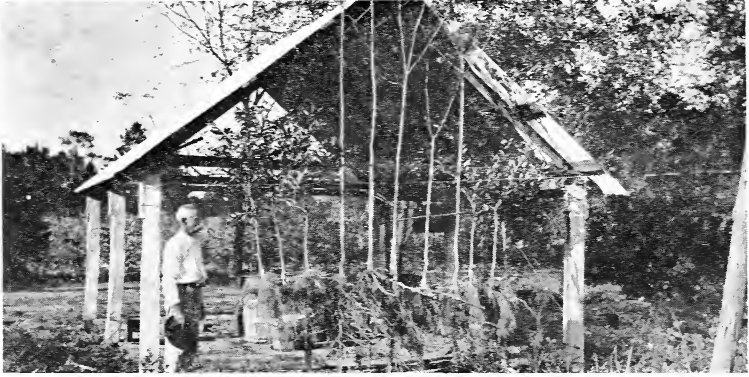
VARIETIES OF PECANS

CURTIS. Originated by Dr. J. B. Curtis, Orange Heights, Fla., in 1886. This pecan has proven to be one of the most popular nuts grown. It is a great favorite on account of its prolific bearing, fast growing and fine quality. It is medium in size, very thin shelled, fine flavor and the shell is always FULL of meat. The Curtis is a regular bearer and is one of the best commercial varieties on the market; in fact we sell more Curtis trees than all the other varieties combined that we grow.

MONEY MAKER. Very free from disease, one of the most prolific varieties we have; easy to crack out of shell whole, a very attractive and profitable nut and one that grows in favor annually.

PRESIDENT. The most prolific large nut we know of. Nut large sized oblong, texture fine, fills well. Is widely known through pecan belt. Heavy bearer.

SUCCESS. Tree a good grower, heavy and regular bearer, nut large, oblong, tapering to apex, thin shell, large plump kernel, sweet flavor, a high class variety and heavy bearer.



NOTE HEAVY ROOT SYSTEM

SCHLEY. Size above medium, oblong, oval, flattened; color, light reddish brown, marked with small specks about the base and small splashes of brown about the apex; base rounded, abruptly short; apex abrupt, flatter on two sides. This pecan is proving to be one of the most widely planted and popular nuts grown and we predict for it a great future. It is a large, fine nut, fairly prolific, fills well, a uniform bearer and one of the most profitable and best selling varieties to plant.

STUART. Large to very large, about $1\frac{1}{8}$ by 1 inch; grayish brown, dotted with purplish black; base rounded; blunt both ends; shell medium thickness, cracking quality very good; kernel large, full, plump, solid, fine grained; flavor rich, sweet; quality, good; a strong grower and a heavy bearer. Has proven adapted to a very wide range of country. One of the best.

RANDALL. Medium to large, easily cracked, very prolific, fine quality.

MOORE. Medium size, vigorous grower, bears at early age, very prolific, first to mature; nuts medium size, quality good.

BIG "Z" Nuts run 38 to 40 to the pound, beautiful, fine quality, prolific.

PRICES ON BUDDED AND GRAFTED PECAN TREES

	Each	10	50	100
3 to 4.....	\$.65	\$ 6.00	\$26.50	\$ 45.00
4 to 5.....	.75	7.00	32.50	55.00
5 to 7.....	.95	9.00	42.50	75.00
7 to 9.....	1.15	10.50	50.00	95.00
7-9 2 yr.....	2.00	19.00	87.50	150.00
8-10 3 yr.....	2.25	20.00		160.00

Larger on request.

Prices on large quantities furnished on application.

Plant pecan trees 50 ft. each way, 17 trees to the acre. Use Square system.

You may buy cheaper trees, but you can't buy better ones.

Write us for information as to planting, varieties, soil, etc. All inquiries promptly and cheerfully answered.



E. E. STOKES IN HIS BUDDED PECAN NURSERY

Note the height and sturdy character of the stock.

We have been in this business thirty years and our best customers are orchardmen who have been buying and setting out our trees for years and know the kind we send out. We would rather give them to you than for you to buy them and be dissatisfied with them.

Lake Geneva,
Clay Co., Fla.

Mr. E. E. Stokes' Pecan Nursery
Campville, Florida
Dear Mr. Stokes:

It has occurred to me that I might be of benefit to you, and to those contemplating the purchase of budded paper shell pecan stock as well in stating briefly my experience with your trees.

I purchased sufficient stock from you to plant fifteen acres of surface here for Mr. H. Edwards, his land being situated in about the center of our development a short distance out from Lake Geneva. The formation is similar to the balance of our tract—high pine land underlaid with red clay.

These trees arrived in splendid condition and were all planted immediately. Every tree lived and put out a fine growth the following spring.

Five acres have been added since and this twenty acre young grove is a sight good to look upon.

I have since purchased from you enough trees to plant twenty-five acres more, twenty acres being for Mr. R. T. Weir and five for myself. They are just like the first, perfect in every way and exceptionally fine.

We planted them carefully, and this spring every one of them lived and made a splendid growth this season.

I cannot recommend your stock too highly, having had experience also with other nurseries, and would advice all planters of budded paper shell pecans to use your trees exclusively if it were possible to obtain them.

Very truly yours,

R. C. JENKINS
Associated Pecan Growers
Lake Geneva, Fla.

Dunnellon, Florida
October 27, 1928

Messrs. E. E. Stokes and Son
Campville, Fla.

Gentlemen:

As I have been purchasing Satsuma buds on Trifoliata Stock from you for the past two years and previous to this I had bought from other nurseries and I like your trees better than those I bought from other places, as your trees seem to get right off to growing and shape up a nice tree and also the pecans that I bought of you have made a wonderful growth and nice trees and will be in the market again this winter for some more of your satsuma stock.

Very Respt.
J.G. Baskin

Keystone Heights, Fla.
Dec. 14, 1925

Mr. C. M. Stokes,
Green Cove Springs, Fla.
Dear Mr. Stokes:

I understand you will plant a number of pecan trees this winter and wish to say after several years planting and four hundred acres set out with trees from different nurseries, that I had the smallest loss and the best growth from the nurseries of E. E. Stokes & Sons of Campville, Florida, and in the past three years I have planted nothing but trees from the Stokes Nurseries.

I had a loss of many thousand dollars on pecan trees which would have been avoided had I bought all my trees from Mr. Stokes.

I know his trees to be superior in many ways to those from many nurseries. I am interested in the pecan industry and that is the reason I write you.

Yours truly,
J. J. LAWRENCE

ORANGES

CHINESE HONEY. Brought here by a missionary from China. A Kid glove orange of high quality; the sweetest we have ever eaten. It makes good growth. Will stand almost as much cold as the Satsuma.

PRICES OF CHINESE HONEY ORANGE TREES

	Each	10	50	100
2 to 3 ft.-----	\$ 2.00	\$18.50	\$ 75.00	\$165.00
3 to 4 ft.-----	2.25	20.00	87.50	175.00
4 to 7 ft.-----	2.50	25.00	100.00	190.00

Prices for large quantities furnished on application.

PARSON BROWN. Fruit is medium to large size, quality good, ready for market in November or earlier. Fine market variety.

PINEAPPLE. Fruit of good size, of a deep rich red and fully developed. Quality unsurpassed, with a flavor resembling the pineapple in taste and odor. Trees bear well and fruit ripens in January and February.

DANCY TANGERINE. Is best known of "Kid Glove" varieties. Trees are heavy bearers and good money makers.

SATSUMA. Very hardy, can be grown over Lower South without danger from cold. Skin, "Kid Glove" type, easily removed with fingers; ripens in October and early November; quality excellent. We grow the popular Owari strain.

PRICES OF ORANGES, GRAPE FRUIT AND TANGERINES

OWARI SATSUMAS (on citrus trifoliata stock)—first class, straight, stocky, well branched, the kind that pay—

Caliper—	Each	Per 100
$\frac{3}{8}$ to $\frac{1}{2}$ inch-----	\$.40	\$30.00
$\frac{1}{2}$ to $\frac{5}{8}$ inch-----	.50	40.00
$\frac{5}{8}$ to $\frac{3}{4}$ inch-----	.60	50.00
$\frac{3}{4}$ to 1 inch, 2 year-----	.70	60.00
1 to $1\frac{1}{4}$ inch, 3 year-----	1.00	90.00

Prices on large quantities on application.

TANGERINES, ORANGES AND GRAPEFRUIT ON SOUR STOCK

One Year—	Each	Two Year—	Each
$\frac{3}{8}$ to $\frac{1}{2}$ inch-----	40c	$\frac{5}{8}$ to $\frac{3}{4}$ inch-----	65c
$\frac{1}{2}$ to $\frac{3}{4}$ inch-----	55c	$\frac{3}{4}$ to 1 inch-----	75c
Three year, extra large-----			90c to \$1.00



TWO YEAR OLD SATSUMAS

These Satsuma trees are as fine as we have ever seen; they are stocky vigorous, well branched at right height, have fine root systems, foliage green and pretty as can be, the branches of the two year olds are interlocking in four and one-half foot rows in many places. These trees will please you in every respect if given a chance.

PRICES OF ORANGE TREES ON LARGE SOUR STOCK

	Each	10	100
2 to 3 ft. -----	\$.65	\$ 6.00	\$ 55.00
3 to 4 ft. -----	.90	8.00	75.00
Large heavy tops -----	1.75	16.50	150.00
3 year old buds -----	2.00	17.50	160.00

Plant round oranges 30 ft. each way.

Compare our prices with those of other reputable nurseries.

We also carry a complete stock of peach trees, Japanese persimmons, pears, kumquats, roses and all kinds of fruit adapted to Florida. Our long experience in growing fruit trees and roses in this state enables us to select for our customers such as will give them the best service.



THIS SATSUMA TREE PRODUCED A BOX OF
ORANGES FOUR YEARS FROM PLANTING

TERMS OF BUSINESS

Shipping season from November to March first.

We substitute when not otherwise instructed.

Terms Cash.

If an error should occur and same be reported to us promptly, we will correct same or refund purchase price.

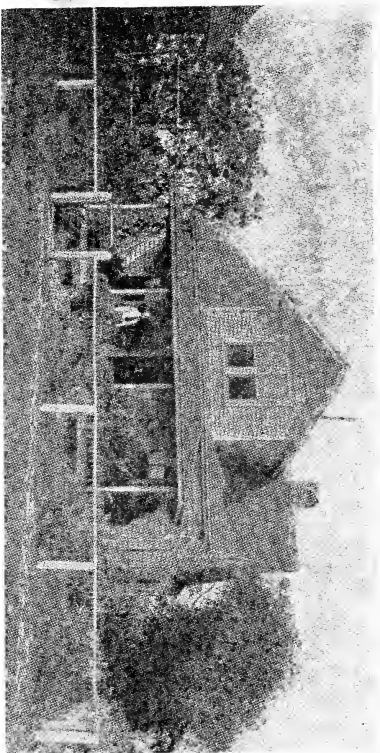
When trees are delivered to transportation company in good order, our responsibility ceases.

Trees baled or boxed carefully.

Come and see our nurseries and grove, while nuts are on trees, showing what can be done when good trees are planted.

In planting trees dig hole large and roomy. Do not set trees below earthen collar mark. If soil is wet and heavy, plant 1 to 2 inches above collar mark; keep roots straightened out naturally, put in top soil. When tree is two thirds planted, put in one to two buckets of water. Pack soil firm, mulch.

Write us about your soils. Our advice based on long experience is yours for the asking.



RESIDENCE OF E. E. STOKES, CAMPVILLE, FLORIDA

For thirty years E. E. Stokes has devoted his time to the propagation of nursery stock, specializing in pecans. The result of this ripe experience is yours when you buy Stokes Pecan Trees.