

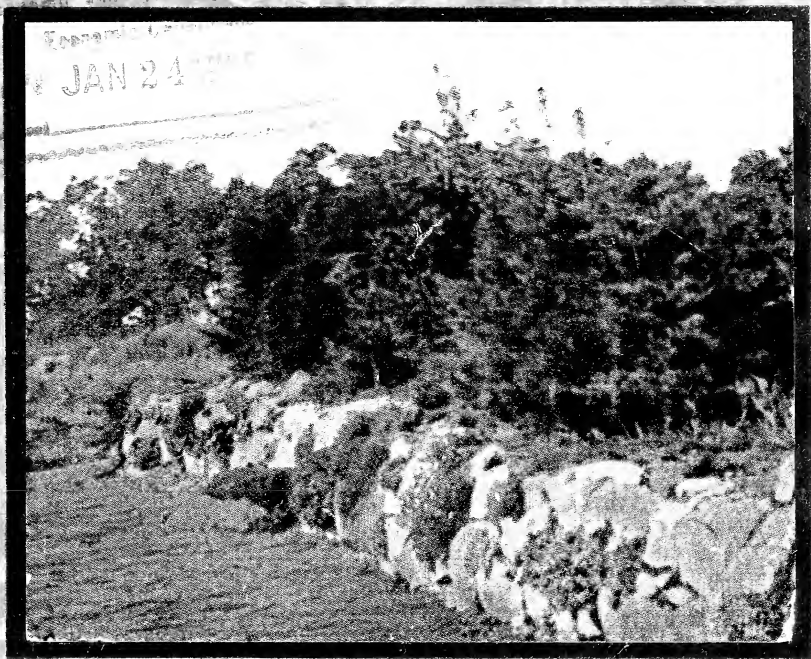
Historic, Archive Document

Do not assume content reflects current scientific knowledge, policies, or practices.

Public and State History

Economic Geology

JAN 24 1911



Wolcotts
Ltd.

THE S. D. ROW
LONDON

Eleventh Edition

WOLCOTTS, LTD.

*Landscape Architects and
Builders of Fine Gardens*

JACKSON, MICH.



Nurseries located at "Primrose Wood"
Five miles north on M-50

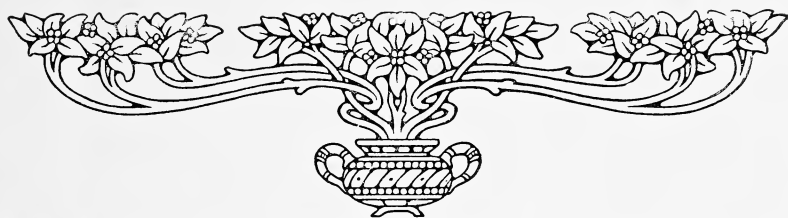
Members

Women's National Farm and Garden Association—
and The Royal Horticultural Society
Great Britain

Attention

To encourage the use of plants in larger quantities and to *discourage* the planting of one plant of a variety, we have raised the price of a single plant, but have also offered *three plants* of a variety at the dozen rate, instead of *six*, as formerly.

We trust our customers will agree with us, that the practice of planting one plant of a variety is most undesirable from every standpoint.



WE WISH to again express our appreciation of the interest shown by garden lovers in the pioneer work we are doing in this country. It is a good deal of an undertaking to bring to the public a collection of choice varieties which are little known by the majority of gardeners. But the interest is great and the desire to learn very sincere, which encourages us to forge ahead and give the people in our own America the opportunity to add to their gardens the choicest of the European gems. As they become better known, the only wonder will be that we have deprived ourselves of the pleasure of growing them for so long a time.

We specialize on the desirable new and rare varieties of Hardy Plants and Alpines, as they make their appearance abroad or in this country.

We have listed many extremely rare plants in this edition, and still have many more under observation which will be offered to the garden lovers as soon as they become acclimatized to American conditions and prove themselves worthy subjects.

We hope you will appreciate our efforts to give garden lovers the best obtainable; often secured from private sources, where years of patient toil and care have rewarded the grower.

Our plants are strong, vigorous stock and, grown in our trying climate, we can assure their hardiness anywhere.

We are always glad to give all the assistance possible to our patrons, by giving them any information desired as to the especial requirements of any plant.

Our stock is all field grown, insuring the strongest, healthiest constitution possible. This is the forerunner of certain success when transplanted to your garden. We do not advocate pot grown plants for anything but the greenhouse.

We use the utmost care in shipping stock. Plants and Shrubs are not dug and then left around to dry out; but each order is dug separately, put into receptacles filled with wet, sphagnum moss, and brought immediately to the shipping room. Each plant is then wrapped in wet moss and oiled paper, that they may keep fresh from the start to the finish of their journey.

All of this is expensive; but it insures to the customer plants that are in good condition when received.

We would like to call attention to the fact that ALL plants require a thorough preparation of the soil if they are to thrive and make a vigorous growth.

Keep the *surface* of the soil *loose* by frequent stirring. If watering is done, water at least an hour in one place (using a fine spray) and then do not sprinkle there again for a week. Frequent watering is worse than none at all, as it induces the roots to come to the surface, instead of striking down deep, as they should.

WE MAKE ALL SHIPMENTS BY EXPRESS, CUSTOMERS TO PAY CHARGES, UNLESS OTHERWISE REQUESTED. If desiring shipment by PARCEL POST, add 10% extra for points west of the Mississippi.

TERMS—Cash with order, unless it is desired to open an account with us. In that case, please send financial references.

No account opened for less than an initial order of \$10.00.

Not less than *three plants* of the same variety supplied at the dozen rate.

Alpine Gardens

TO MANY, the idea of a Rock Garden seems to be an exposition of stone. The real object of a Rock Garden is to enable one to grow in their own gardens the natives of the high mountains, where snows are deep and summers very short. To be sure, all plants grown in the rockery are not natives of the Alpine regions; but the great majority are, and while the beginner is apt to feel that this is a most difficult branch of gardening, it is only necessary to begin with the many easy subjects to find it not only comparatively simple but immensely fascinating as well, and a branch that opens up entirely new delights in gardening.

An Alpine garden should be an artistic expression of rock formation, conveying the idea of a drift or out-cropping of strata rock. Not uniform or regular but rather bold and so placed as to form a harmonious picture from all approaches.

The framing of this picture, or the background, should express the note of irregularity by varying heights, groupings and staging of trees and shrubs so they will co-ordinate with the feeling conveyed by the middle-ground.

The fore-ground, or detail, expressed in the vivid colors and association of dwarf conifers and shrubs, should be carefully considered. Harmony is attained when colors nearly related lead on from one to another, or are grouped together. But even contrasts become harmonious when they are perfectly true.

It is obvious, therefore, that the designer must know his subjects thoroughly; their time of bloom, color, type of foliage and form. Form and light should be the governing thought throughout the entire garden.

It is the popular belief that the building of an Alpine Garden is the easiest form of Landscape work; whereas, it is decidedly the most difficult.

It may be of assistance if we give a few suggestions as to the construction of a Rock Garden. First of all, the drainage must be perfect, for no Alpine Plant will survive a stagnant condition of the soil. If underground moisture can be supplied by

means of minutely perforated pipe, so much the better. This is to supply, in a small way, the melting snows, to which all Alpines are accustomed, and should be so arranged that the water can be turned off and on at will.

Contrary to common impression, Alpines require something besides ashes and tin cans upon which to grow. While they **do** require a very **stony** soil, they need **good soil** mixed with the stones; more or less, according to the subjects being planted.

We have found that a soil mixture consisting of one-half peat, one-fourth leaf mould and one-fourth clay loam is well adapted to the successful growth of nearly all Alpines.

All Alpines are deep rooting. This fact should never be forgotten and when building rockery, wall or bank, ample depth should be provided. It is a **deep, cool root run**, under the stones, that is required for success.

Next in importance, is a thorough ramming of the soil, to preclude the possibility of any air spaces. This one mistake is the cause of more failures in planting, **IN ANY KIND OF A GARDEN**, than any other one thing. **THE SOIL CANNOT BE PACKED TOO TIGHT AROUND THE ROOTS**. But in addition, **THE SOIL MUST BE LOOSE ON TOP**, that the rain may easily penetrate it, that the roots may breathe, and that there may be a mulch to keep the roots cool and moist.

Alpine plants need to be planted in masses of one kind to obtain good color effects. This applies to all garden planting; but to Alpines most of all, as they are so small.

A list of plants for special places will be found in the back of the catalog.



Landscape Department

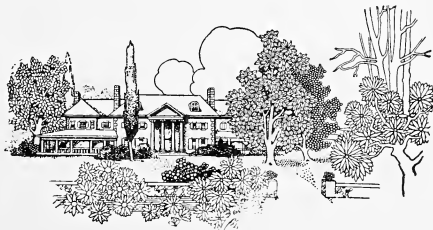
We are prepared to design and execute Alpine Gardens, Herbaceous Borders, naturalistic rock work and the complete development of both large and small estates.

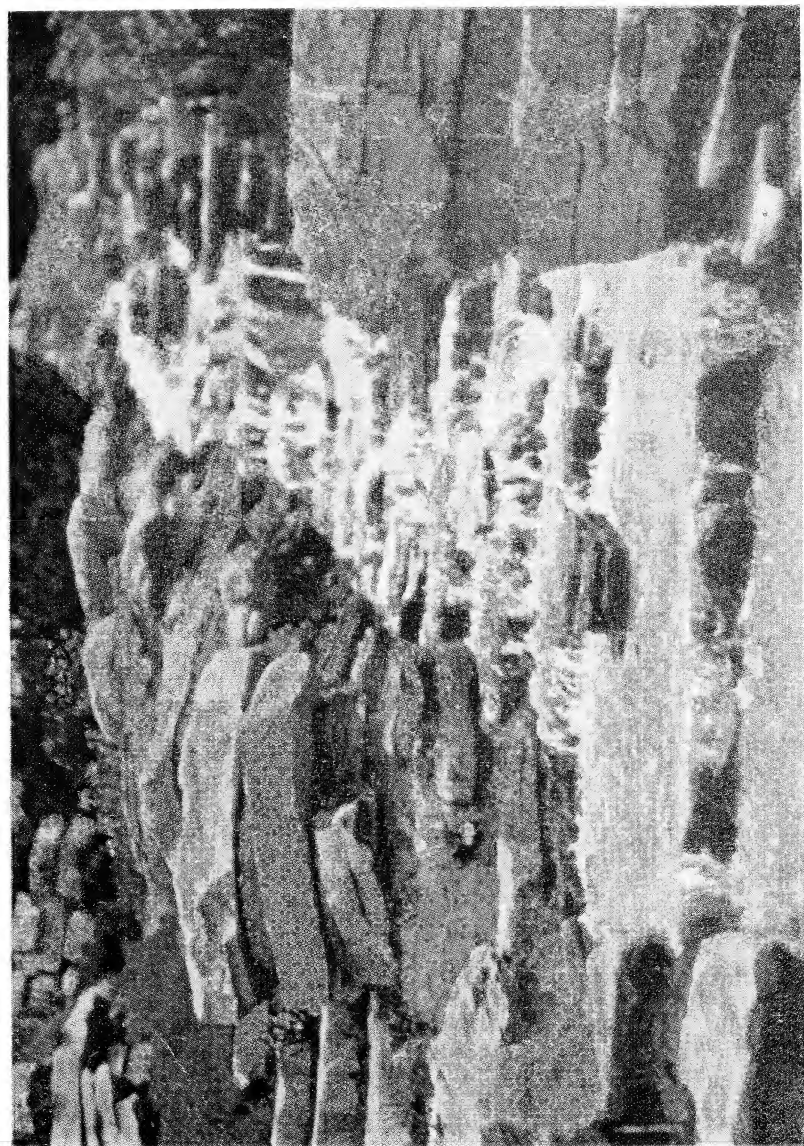
Being growers, we have the advantage of knowing the exact requirements of the different plants. This knowledge is absolutely essential to the attainment of best results in landscape composition.

Good staging of deciduous trees and evergreens, as well as Alpines and border plants, requires knowledge gained only through constant association with them during their growth and blooming periods. Opportunity is also afforded to study beautiful combinations not generally known.

Our men are skilled in planting, our prices are moderate, and we guarantee our work to give excellent results.

A perusal of our catalog will give an idea of some of our designs as executed. Our Mr. H. W. or H. C. Wolcott are ready at all times to advise prospective clients, for which service we make a nominal charge to cover traveling expenses and actual time consumed.





MYOSOTIS—ALPINE BLUE
MYOSOTIS—BLUE KING

LITHOSPERMUM INTERMEDIUM
ERINUS ALPINUS ROSEUS

ARABIS AUBRIETOIDES
GENTIANA LAGODECHIANA

ACÆNA—New Zealand Bur

Hardy Perennial

Alpine plants belonging to the Rose family. Inconspicuous blossoms but having beautiful foliage. All the varieties are most useful for carpeting and thrive in almost any situation.

A. glauca —Beautiful carpeting plants with rose-like foliage of soft grey-blue.....	\$0.50	\$ 3.50
A. Microphylla —Charming foliage from rosy-bronze to grey-blue. Studded with little round balls of bloom, like a crimson hedge-hog.....	.50	3.50
A. sanguisorba —Less silky than the other varieties. Heads of bloom smaller, reddish purple.....	.50	3.50

ACHILLEA—Milfoil or Yarrow

Hardy Perennial

Well known border plants, suitable for dry and sunny places.

A. abrotanifolia —Grey foliage, almost downy. Large white flowers on stems of 6 inches. May-June	\$0.50	\$ 3.50
A. ageratifolia —Tufted growth with silvery leaves and white flowers. Blooms in May and June. Fine for rockery. 3 inches.....	.75	5.00
A. aizoon —A beautiful Alpine, forming silvery rosettes of finely cut foliage covered with white daisies on 5-inch stems. May.....	.75	5.00
A. Clavennea —Compact tufts of silver foliage with a profusion of white flowers from July to September. Rockery75	5.00
A. ptarmica "Boule de Neige"—An improved variety of this useful plant, having very double flowers of a purer white than the type.....	.35	2.50

ACONITUM—Monkshood

Hardy Perennial

Aconitums are very stately and beautiful plants for the hardy border. Exceedingly valuable on account of their late bloom as well as for planting in

	Each	Per Doz.
shade, as they will flourish even under trees. Thrive best in very rich soil and prefer not to be disturbed when once established.		
A. Fischeri —Semi-dwarf variety with large, pale blue flowers. Commences to bloom in Sept.....	\$0.50	\$ 3.50
A. Sparks' Variety —Very dark blue. Blooms early50	3.50
A. Wilsoni —Very handsome variety, introduced from China by Mr. Wilson. Large, violet-blue flowers from September until frost.....	.75	5.00

ÆTHIONEMA—Lebanon Candytuft

Hardy Perennial

Near relatives of the Candytuft, these hardy little rock plants are of the most fascinating character. The foliage of most of them is a beautiful, glaucous blue; stems woody, and when covered with their heads of pink or white blossoms, make a picture not to be forgotten.

They are almost shrubby in habit and are improved by a slight cutting back after blooming. Stony, sandy loam is suitable for them and a warm, sunny position. Given these conditions, they will grow more beautiful every year.

A. amocnum —Very attractive, with blue-grey foliage and large heads of light pink blossoms. May	\$0.75	\$ 5.00
A. armenum —A gem of only three or four inches high, blue grey leaves and charming pink blossoms in close heads.....	.75	5.00
A. armenum var. Warleyensis —(New)—A fine hybrid with brilliant rose colored flowers and glaucous blue foliage75	5.00
A. coridifolium —Dwarf, bushy plant with bluish green foliage and dense heads of pink flowers. May75	5.00
A. diatrophis —Beautiful and very choice variety. Close, tufted growth and unusually large, deep pink blossoms. May.....	.75	5.00
A. grandiflorum —The giant of the race, reaching a height of 12 inches, with large and beautiful heads of rose colored bloom.....	.50	3.50

	Each	Per Doz.
A. Kotschyannum —A new variety of great beauty. Very rare	\$0.75	\$ 5.00
A. pulchellum —Another beauty with very glaucous leaves and heads of rosy pink flowers. About six inches high. One of the best.....	.75	5.00
A. schistosum —Forms a compact little plant with beautiful large pink blossoms50	3.50
A. stylosum —A treasure from Lebanon, only 2 or 3 inches high. Foliage blue and large, rounded heads of clear pink blossoms.....	.75	5.00

ALLIUM—Onion

Hardy Perennial

Bulbous plants, with very attractive blossoms, useful for the rock garden. If disturbed, the roots have a very unpleasant odor.

A. cyaneum —A very pretty little bulbous plant for the rock garden in sun and light soil. Erect, slender stems about 8 inches high with nodding heads of bright blue bells. June.....	\$0.50	\$ 3.50
A. pedemontanum (narcissiflorum) —A gem for the rock garden. Large, pendant bells of rosy purple on stems 8 inches to 10 inches high. Will thrive in poor soil.....	.75	5.00

ALSINE—Alsine

Hardy Perennial

Small, tufted plants, very close to *Arenaria*, with small flowers in great profusion. Very desirable for clothing the rocks.

A. Bauhinorum —A most beautiful dwarf Alpine, forming mats of fine green foliage, bearing an abundance of pure white flowers on slender 8-inch stems in July and August.....	\$0.50	\$ 3.50
A. juniperiana —Lovely tufts of fine, grey green foliage and small white flowers in June.....	.35	2.50
A. verna —Forms mats of deep green, mossy foliage covered with white stars on 3-inch stems. June-September35	2.50

ALYSSUM—Mad Wort

Hardy Perennial

Beautiful, showy plants for rock work, bedding, etc. They like a sunny position and well drained soil.

A. alpestre (rostratum) —Prostrate, almost shrubby variety, hoary grey all over. Flowers pale yellow, in unbranched heads. Very early.....	\$0.50	\$ 3.50
A. argenteum —Dense growth. Leaves silvery beneath, flowers yellow in clustered heads, all summer. About 15 inches.....	.75	5.00
A. creticum —Silvery foliage and golden blossoms covering the plant in early summer. Attains a height of about a foot and is somewhat shrubby in growth. June.....	.75	5.00
A. Mœllendorffianum —A most attractive variety from Bosnia. Very silvery foliage and heads of bright yellow flowers at the ends of the branches. June-August75	5.00
A. saxatile citrinum —Very attractive variety with paler yellow flowers than the type.....	.35	2.50
A. "Silver Queen" —A very beautiful variety from England. Masses of pale yellow blooms.....	.50	3.50
A. serpyllifolium —Very dwarf, 4 inches to 5 inches high, with racemes of pale yellow flowers and rough, hoary leaves. Charming for the rock garden. Very rare75	5.00
A. spinosum —A woody stemmed plant with silvery leaves and numerous small, yellow blossoms. About 6 in. high and very branching habit. A gem for the rock garden.....	.75	5.00
A. spinosum roseum —A very choice rose colored form of the above. Very scarce.....	.75	7.50
A. Wulfenianum —Lovely variety with silvery foliage and large blossoms of pale yellow in loose, showy head75	5.00

Each Per Doz.

ANCHUSA—Alkanet*Hardy Perennial*

Anchusas grow readily in ordinary soil in sunny situations but quickly respond to good feeding. Their large hairy leaves and tall spikes of beautiful blue flowers make a fine background in borders. Physostegia is very effective planted in front of them, as the latter takes their place when through flowering.

- A. *italica*—"Dropmore Variety"—A beautiful variety of the Italian Alkanet with numerous flowers of deepest gentian blue. In good soil will reach a height of six to seven feet with numerous side branches, making a most imposing plant. Requires staking\$0.50 \$ 3.50
- A. *italica*—"Opal"—A charming light blue variety. Identical with above except color..... .75 5.00

ANDROSACE—Rock Jasmine*Hardy Perennial*

Typical Alpines, most fascinating because of their great beauty. Some of them are reputed difficult to grow, their worst enemy being early spring rains. They require very gritty soil, the stones furnishing the cool moisture their roots enjoy. In sticky clay or hot, loose sand, they will soon dwindle and die. We have had great success in growing these, with no special care or preparation of soil.

- A. *arachnoidea*—Neat, dwarf variety with silvery foliage. Large heads of pearl white flowers on stems 2 or 3 inches high. Very choice. May-June.\$0.75 \$ 7.50
- A. *brigiatica*—A variety of *A. carnea*. Foliage smooth and deep green. Flowers pink, in ample heads on stems 2 or 3 inches high. April..... .75 7.50
- A. *chamæjasme*—Silver rosettes with blossoms opening pure white and fading to pale pink. Rare75 7.50
- A. *chumbyi*—Densely silky with glowing pink blossoms. Blooms profusely. Very choice..... .75 7.50

	Each	Per Doz.
A. <i>glacialis</i> —One of the loveliest plants for the rock garden. Forms masses of rosettes, each covered with beautiful pink blossoms in spring. Very rare	\$0.75	\$ 7.50
A. <i>Halleri</i> —An improved form of <i>A. carnea</i> , with smooth foliage and bright rose flowers. April....	.75	7.50
A. <i>helvetica</i> —One of the best. Compact, silky rosettes of grey-green, covered in early spring with milk-white, stemless flowers with golden eye. Very choice. May.....	.75	5.00
A. <i>Laggeri</i> —Beautiful variety from the Pyrenees. Dark green foliage and brilliant pink blossoms in early spring75	7.50
A. <i>lactea</i> —Glossy green foliage and loose heads of lovely white flowers with golden eye. Very hardy and vigorous75	7.50
A. <i>Ianuginosa</i> —One of the most beautiful. Trailing growth and soft, silvery foliage. The blossoms are soft lilac-rose, lasting nearly all the summer75	5.00
A. <i>primuloides</i> —Rosettes of very silky foliage and heads of rosy lilac blossoms on stems 4 inches high. May75	5.00
A. <i>sarmentosa</i> —One of the easiest and best. Rosettes of silky foliage and heads of verbena-like blossoms of pink on stems about six inches high. From the Himalayas. June-July75	5.00
A. <i>sempervivoides</i> —Lovely relative of <i>A. sarmentosa</i> , with smooth foliage and deep pink flowers on 2-inch stems. June-July.....	.75	7.50
A. <i>villosa</i> —Tiny rosettes of silky wool producing pearly white blossoms with yellow eye75	7.50
A. <i>Vitaliana</i> —Unlike most other <i>Androsaces</i> . Forms a prostrate mass of dark green foliage, with flowers of clear gold. Very choice and very beautiful75	7.50
A. <i>Wulfeniana</i> —Very rare species from the Alps. Forms mats of bright green rosettes. Unusually large rose-colored blossoms on half-inch stems. Very choice and easily grown. April.....	.75	7.50

ANEMONE—Wind Flower

Hardy Perennial

Lovely, graceful Alpines, in most cases delighting in deep rich soil in full sun.

A. angulosa —A variety of Hepatica, larger in all its parts, with beautiful blossoms of clear blue. Delights in woodland conditions.....	\$0.75	\$ 5.00
A. baldensis —A true Alpine Anemone. Prefers stony soil and perfect drainage. Large, single white blossoms, with golden center, on stems of 5 or 6 inches75	7.50
A. borealis (parviflora) —Lovely variety, native of Alaska and Siberia, with white blossoms, slightly tinged with blue at base.....	.75	5.00
A. globosa —Resembling A. sylvestris but with rosy red blossoms50	3.50
A. Halleri —Lovely rich violet blossoms, all silky outside. Very choice75	5.00
A. patens —Allied to the Pulsatillas. Large blossoms in varying shades of violet50	3.50
A. pennsylvanica —A native variety with single, pure white flowers, on stems 12 to 18 inches high. Moist soil in full sun.....	.35	2.50
A. pulsatilla —(Pasque-flower)—A fine plant for either rockery or border. Lovely violet cups filled with golden stamens. Well drained position in full sun. April-May.....	.35	2.50
A. pulsatilla rubra —A variety with blossoms of deep, violet red35	3.00
A. rivularis —A gem for a cool, moist position. Lovely white blossoms, with blue reverse, in summer. Very choice75	7.50
A. rupicola —Lovely white blossoms, silky outside, on stems 10 to 12 inches high.....	.50	3.50
A. sylvestris —Fine for cool, moist corner of rock garden or border. Large white blossoms on nodding stems of about 12 inches. Very free blooming. May-June35	3.00

Each Per Doz.

- A. **vernalis**—(Lady of the Snow)—A rare and exquisite Alpine. Large, open flowers of pure white, flushed violet outside. Blooms very early. Easily grown in rich vegetable soil in full sun. Very choice\$0.75 \$ 7.50

ANTENNARIA—Cat's Ears

Hardy Perennial

- A. **dioica**—Masses of silvery grey rosettes with heads of white blossoms on stems of 2 or 3 inches. May\$0.50 \$ 3.50
- A. **dioica rosea**—Very choice with heads of pink blossoms. May75 5.00

ANTHYLLIS—Vetch

Hardy Perennial

- A. **montana**—Somewhat shrubby plant about one foot high with silky foliage and dense heads of pink blossoms. Very easy culture and much prized for the rock garden.....\$0.75 \$ 5.00

ANTIRRHINUM—Snapdragon

Hardy Perennial

The ordinary snapdragons are of too coarse growth to be admitted to the rock garden, but there are two or three species that are very charming for the rockery. A dry, sunny spot and well drained soil are essential to success.

- A. **Asarina**—A trailing plant from the south of France with very attractive foliage and creamy white flowers. June\$0.50 \$ 3.50
- A. **glutinosum**—A charming variety of prostrate habit of small, grey-green foliage. Abundance of yellow and white flowers..... .50 3.50
- A. **semperirens**—A beautiful trailing plant for the rock garden. Flowers white with purple blotch. June-July50 3.50



AETHIONEMA—IN VARIETY

DIANTHUS—IN VARIETY

Each Per Doz.

AQUILEGIA—Columbine

Hardy Perennial

The Aquilegias need no praise; they appeal to everyone by their grace and the beauty of their flowers, the colors of the new hybrids being particularly handsome. All the Columbines may be used on the rockery, but it is better to leave the larger species and their varieties to the border, although some of them are very attractive, when perched on some high spot.

They thrive in shade or sun but prefer a rich, well-drained soil in partially shaded position. If not allowed to go to seed and not covered too heavily in winter, they will flourish for years and will not change their colors. Coal ashes put around the crown in the fall will help to prevent their decay.

A. <i>alpina</i> —A charming species from Switzerland and best suited to the rockery. Beautiful blue and white flowers. True variety very rare.....	\$0.75	\$ 5.00
A. <i>cærulea</i> —True—Lovely white and blue flowers..	.35	2.50
A. <i>cærulea</i> —"Mrs. Nicholls"—A fine novelty. The flowers are long spurred and immense size. Beautiful rich blue with white cup and golden anthers. 1 ft.75	5.00
A. <i>canadensis</i> —The native bright red and yellow columbine35	2.50
A. <i>canadensis nana</i> —Very dwarf form of our native Columbine. May35	2.50
A. <i>chrysantha</i> —Bright yellow, long spurred flowers35	2.50
A. <i>flabellata nana</i> —Very dwarf white variety. The first to bloom in spring. Fine for rockery or edging35	2.50
A. <i>formosa</i> —A form of <i>A. canadensis</i> but more slender growth and much more brilliant coloring. June50	3.50
A. <i>jucunda</i> —A beautiful variety (syn. <i>glandulosa</i>) with stems 2 feet high carrying large flowers of rich blue with white cup. Prefers rich soil. May50	3.50

	Each	Per Doz.
A. <i>oxysepala</i> —Dwarf and early flowering. Very attractive with flowers of blue and white with yellow centers. Very new	\$0.75	\$ 5.00
A. <i>pyrenaica</i> —A miniature <i>A. alpina</i> . Very handsome, about 1 foot high. May.....	.75	5.00
A. <i>pyrenaica Bertoloni</i> —Large blossoms of rich blue, downy outside. Rare. May.....	.75	5.00
A. <i>Reuteri</i> —Very rare and a lovely species from the Maritime Alps. Soft, clear blue flowers on stems a foot high. Succeeds in poor soil. June75	5.00
A. "Rose Queen"—Large flowers of rose pink. Short spurs of the same color; 2 ft. June.....	.50	3.50
A. "Silver Queen"—New. A very beautiful variety raised in England. Large, elegant flowers with long spurs, white faintly tinged rosy sapphire; 2 ft.75	5.00
A. "White Lady"—A beautiful variety of <i>cærulea</i> with white flowers and graceful foliage; 2 ft.....	.75	5.00
A. Long spurred Hybrids —Selected from the finest long-spurred varieties obtainable in Europe; strains that have received the highest awards at the Royal Horticultural Shows in London. They range in color from cream white to delicate lavender, blue, delicate pink, rose, deep purple and pure yellow; 2 ft.....	.35	2.50

ARABIS—Rock Cress

Hardy Perennial

One of the most common of rock plants. Ordinary soil is suitable but they must have a sunny position. We offer the best of the many varieties.

A. <i>albida</i> —A very vigorous rock-cress with grey leaves and countless spikes of white flowers nearly the whole summer	\$0.35	\$ 2.50
A. <i>alpina fl. pl.</i> —Double, pure white flowers in long spikes.....	.50	3.50
A. <i>alpina superba</i> —Large, pure white flowers. Fine for edging and for rockery.....	.35	2.50

	Each	Per Doz.
A. arenosa —An attractive variety with white flowers in heads borne on slender stems of 8 to 10 inches	\$0.35	\$ 2.50
A. aubrietiooides —A beautiful variety of rock- cress, bearing a profusion of delicate pink flowers	.75	5.00
A. Ferd. Coburgi —Very dwarf, compact variety with greyish foliage and white flowers on stems of two inches50	5.00
A. procurrens —A dwarf spreader for cool rocks. Flowers white on long stems.....	.50	3.50
A. rosea —Very dwarf species with an abundance of rose colored flowers.....	.50	3.50
A. Sturii —A gem for the sunny rock garden. Forms cushions of glossy, dark green foliage. Large heads of white blossoms on stems 2 or 3 inches high75	5.00

ARENARIA—Sand Wort

Hardy Perennial

As their name implies, the majority of these plants do best in sand and full sun. Beautiful and of easy culture, they are most at home in the rock garden.

A. Balearica —Creeping plant with dark green foliage and white blossoms. A gem for cool, shady places in the rockery, especially for clothing bare rocks	\$0.30	\$ 2.50
A. cæspitosa —A close tufted plant of mossy growth, studded with white flowers all summer. Charming for the rock garden.....	.35	2.50
A. gracilis —Very new. Prostrate growth with deep green foliage and white blossoms. Fine for rock garden35	2.50
A. grandiflora —Large, pure white flowers in spring. Trailing growth35	3.00
A. juniperiana —Fine, greyish foliage forming tufts, covered with slender stems of small white flowers50	3.50
A. laricifolia —Dainty white blossoms, freely produced on four-inch stems. Trailing growth.....	.35	3.50

	Each	Per Doz.
A. <i>Ledebouriana</i> —Tiny Alpine, forming clumps of rosettes of blue-grey. White blossoms on branching sprays. Very choice and rare.....	\$0.75	\$ 5.00
A. <i>montana</i> —Creeping variety, forming mounds of green which in early summer are covered with large white blossoms. Indispensable for the rockery35	2.50
A. <i>pinifolia</i> —Dense tufts of close rosettes. Small white flowers on loose stems of 5 inches.....	.50	3.50
A. <i>purpurascens</i> —A gem for cool, moist portions of the rock garden. Dark green, tufted plants with blossoms of lilac-rose in July and August....	.75	5.00
A. <i>saxifraga</i> —Lovely white blossoms, resembling Cerastium. Very showy. Scarce.....	.75	5.00

ARMERIA—Sea Pink or Thrift

Hardy Perennial

Small perennials, with leaves in rosettes close to the ground. Very easy culture, preferring a sunny position in light soil.

A. <i>alpina</i> —From the Pyrenees, making a low growing clump and covered for many weeks in early summer with soft pink heads of bloom.....	\$0.75	\$ 5.00
A. <i>cæspitosa vera</i> —Very rare. Spiny leaves, forming very compact rosettes. Pink flowers. Rockery. Sold out until next year.....	.75	7.50
A. <i>cephalotes</i> —Long, narrow foliage with heads of bloom of light rose color on long stems. Very attractive35	2.50
A. <i>cephalotes rubra</i> —Flowers a deeper pink.....	.35	2.50

ARNICA—Arnica

Hardy Perennial

A. <i>montana</i> —Large, solitary, golden flowers. A composite of much beauty75	5.00
--	-----	------

Each Per Doz.

ARTEMISIA—Wormwood*Hardy Perennial*

- A. **lactiflora**—Foliage very graceful, resembling an Astilbe. Flower stems from three to four feet high, bearing panicles of very fragrant, creamy white blossoms in July and September. A very useful border plant\$0.35 \$ 2.50
- A. **glacialis**—Choice high Alpine with silvery white foliage and golden yellow flowers on stems of 4 or 5 inches. Tufted growth. June-July..... .75 5.00
- A. **mutellina**—One of the choicest Alpines. Very beautiful silvery foliage with attractive yellow flowers on stems 6 or 8 inches high. Prefers granite. June-July75 5.00

ASTER—Starwort*Hardy Perennial*

- A. **alpinus**—Very effective plants for the rock garden or edge of hardy border. Bear large, showy purple flowers in May and June.....\$0.35 \$ 2.50
- A. **alpinus albus**—A white form of the Alpine Aster35 2.50
- A. **baldensis**—A form of the Alpine Aster, having branching stems carrying several blossoms of a more rosy hue than the type. Very choice..... .50 3.50
- A. **alpinus Garibaldi**—An improved variety of A. alpinus with large lilac blossoms in June..... .75 5.00
- A. **alpinus himalaicus**—More dwarf than the type and bearing a profusion of lilac blue flowers. Very choice75 5.00
- A. **alpinus Magnificus**—Handsome variety with pure white flowers75 5.00
- A. **subcærulea**—A very handsome dwarf aster. Tufted foliage, slightly hairy, with large, solitary flowers of pale blue with golden centers, making a most beautiful combination..... .35 2.50

ASTILBE—Meadow Sweet

Hardy Perennial

Invaluable plants for rich effects in the herbaceous border, rock garden and water garden. Extremely graceful foliage and very showy blossoms in July and August. Perfectly hardy, increasing each year, and only need to be assured plenty of moisture during the summer months.

A. Ceres —Early flowering. Rosy lilac. 2½ to 3 ft.	\$0.75	\$ 5.00
A. Crepuscle —Blush pink75	5.00
A. Davidii —One of the best of the large Astilbes and particularly fine in boggy places, producing graceful plumes of rich crimson purple with violet anthers. 4-5 ft.....	.50	3.50
A. Etna —Beautiful rose pink blossoms.....	.75	5.00
A. Feerie —Flesh white in large panicles. 2 ft.....	.75	5.00
A. Gerbe d'Argent —White flushed pink.....	.75	5.00
A. Gloria —Brilliant, deep pink blossoms. Exceptionally fine	1.00	7.50
A. Grandis —A fine species, growing five to six feet tall and bearing immense panicles of white flowers75	5.00
A. Rubens —A recent introduction of great beauty, producing large panicles of the deepest rose color75	5.00
A. Mt. Blanc —Blossoms of pure white.....	.75	5.00
A. Plumet Neigeux —Fine white variety.....	.75	5.00
A. Queen Alexandria —Dwarf variety with light pink flowers75	5.00
A. Salland —Very vigorous variety with bronzy red stems and distinct red blossoms75	5.00
A. Solferino —Very fine variety. Showy blossoms of deep red	1.00	7.50
A. Tourbillon —White flushed with pink. Lovely75	5.00
A. Vesta —Lovely salmon pink75	5.00

Each Per Doz.

ASTILBE SIMPLICIFOLIA—Beautiful dwarf variety from Japan. Panicles of white blossoms and attractive foliage. A gem for the Alpine garden.
9 inches1.00

AUBRETIA—Wall Cress

Hardy Perennial

The rock garden could ill afford to do without its wonderful masses of Aubretia that give such a rare color during April and May and which are among the most easily grown and the most showy of all rock plants. They form spreading tufts and are never seen at their best on the flat, but should be so placed that they may droop over some mound of soil or cover the face of a rock, or fall from the top of a rockery wall. A light loamy soil meets their requirements and after the flowers are over the plants should be cut back well, that the tufts may not become bare in the center. We offer the best of the new-named varieties.

A. Bridesmaid —Pale rosy blush	\$0.50	\$ 5.00
A. Cilicica —One of the best—Flowers large and freely produced. Lavender with white eye.....	.50	5.00
A. Fire King —Glowing Crimson—Very fine.....	.50	5.00
A. H. Marshall —Rich deep mauve colored flowers; late50	5.00
A. Leichtlini —Bright rose colored flowers.....	.50	5.00
A. Pritchard's A-1 —New—Violet flowers; compact habit; one of the finest.....	.50	5.00
A. Selected Hybrids —From fine large flowered varieties, ranging in color from rose to carmine and from pale lavender to deep purple.....	.35	3.50

BELLIS—Daisy

Hardy Perennial

Nearly everyone is familiar with the common hardy daisy, but the improved form of these delightful plants is a surprise to those who see them for the first time. The size of bloom has been increased until the choicer varieties are as large as small asters. Fine for edgings.

	Each	Per Doz.
B. Monstrosum —A monster variety of the hardy English Daisy. Pure white; 6 inches.....	\$0.25	\$ 2.00
B. Pink Beauty —Deep pink, very handsome; 6 inches25	2.00
B. alpinus —Alpine Daisy—A graceful, spreading plant, growing about six inches high and covered with dainty pink and white single flowers throughout the summer and autumn.....	.25	2.00
B. cærulescens —An exceptionally dainty little plant, flowers white, tinted lilac. Requires a warm site. Fine for the rockery; 3 inches.....	.25	2.00
Bellium Bellidicoides —A dainty little miniature of the <i>Bellis perennis</i> , except that it throws out numerous runners and so forms a wide mat, covered in summer with small white daisies. Fine for rockery50	3.50

BOCCONIA—Plume Poppy

Hardy Perennial

B. cordata —A very handsome plant, both in foliage and flower, and fine for planting in the border or in groups in almost any position. Flowers of a creamy white, in large panicles, during July and August; 6 feet	\$0.35	\$ 2.50
---	--------	---------

BOYKINIA

Hardy Perennial

B. rotundifolia —Very useful for cool, damp and shady places: Fine for waterside. The foliage is handsome and the flower stems are about two feet high, carrying heads of small creamy white flowers	\$0.75	\$ 5.00
---	--------	---------

CAMPANULAS—Bellflowers

Hardy Perennials and Biennials

The Bellflowers are for the most part of a very elegant habit and beautiful appearance. The perennial varieties are all of great beauty, the taller ones being suitable for the border and very valuable as cut flowers, while the dwarfer sorts are well



COTONEASTER HORIZONTALIS

CAMPANULA GARGANICA

VERONICA INCANA

Each Per Doz.

adapted for the front of borders and for rockeries. The most of the varieties are easily grown and unless otherwise specified, prefer a well-drained, rather rich sandy loam. Those adapted to rockery culture are among the choicest of perennial plants.

C. abietina —Very dwarf, tufted growth. Saucer shaped, purple flowers on long stems. Very choice. Rockery	\$0.75	\$ 7.50
C. alliarifolia —Showy and choice bell-flower of pyramidal habit. The flowers are white, long tubed and hang in scores from one side of arching stems35	2.50
C. aucheri —Lovely, tufted Bellflower with large violet bells, downy on the outside, on slender stalks in May and June. Rare and very beautiful75	7.50
C. ardonensis —Beautiful tufted plant with smooth, grass-like foliage. Large bells of intense violet blue. Very dwarf and one of the choicest75	7.50
C. barbata —So called because of the hairs inside the blooms. It requires a well-drained soil, containing plenty of stones, and more sun than most of bell-flowers. The handsome pale blue flowers are produced from May to July, on stems about 6 inches high75	7.50
C. barbata alba —A lovely white form of above75	7.50
C. bellidifolia —Another beauty for the Alpine garden. Rosettes of spoon-shaped leaves, covered with violet bells on stems of two or three inches75	7.50
C. carpathica —The well known Carpathian bell-flower, blooming profusely nearly all summer. Fine for border or rockery35	2.50
C. carpathica nana —A dwarf and compact variety of the above50	3.50
C. carpathica —“Isabel”—Very handsome variety of the Carpathian bell-flower, with large flat saucers of a beautiful deep blue; 1 ft.50	3.50
C. carpathica —“Riverslea”—A dwarf tufted plant, bearing large, flat, saucer-shaped flowers of a pale blue, on slender stems, about 1 ft. high.....	.50	3.50

	Each	Per Doz.
C. <i>carpathica</i> —"White Star"—An extra large and selected variety of the Carpathian Harebell. Pure white flowers, freely produced.....	\$0.50	\$ 3.50
C. <i>collina</i> —A glorious campanula from the highest ranges of the Caucasian Mountains. Tufted growth with graceful, purple blossoms on stems about 1 ft. high, in June. Very choice.....	.75	7.50
C. <i>elatinoides</i> —Spreading habit with pale blue flowers and woolly foliage.....	.75	5.00
C. <i>excisa</i> —Exceedingly rare Alpine with grassy foliage and masses of violet blue bells of varying shades, on slender stems of three or four inches. Each lobe of the flower has a curious punched-out hole, which gives it its name. Very choice.....	.75	7.50
C. <i>fenestrellata</i> —A rare form of <i>C. garganica</i> , with pale blue flowers. From the Croatian Mountains75	5.00
C. <i>garganica</i> —A gem for the rock garden. Forms a low, spreading tuft which in June is covered with starry, light blue flowers having a white eye. Exquisite hanging over a rock.....	.75	5.00
C. <i>garganica</i> —"W. H. Paine"—Improved form of this charming Italian bellflower. Large, bright violet flowers with white center. More upright in habit than type. A striking plant.....	.75	7.50
C. <i>glomerata Dahurica</i> —Large heads of purple flowers. Fine for the border; 2 ft.....	.50	3.50
C. <i>grandis</i> —A handsome plant with tall spikes of blue flowers; 3 feet.....	.50	3.50
C. <i>istriaca</i> —A prostrate bellflower with hairy leaves and beautiful, wide open blossoms of blue.....	.75	7.50
C. <i>Kolentiana</i> —A lovely species from the Caucasian Mountains. Erect stems of nodding violet-blue bells, about 2 ft. high. Biennial, but seeds freely and should be in every garden.....	.75	5.00
C. <i>lactiflora alba</i> "Magnifica"—A beautiful variety from the Imperial gardens of Petrograd, producing spikes 6 ft. high, bearing large, snowy-white flowers. New and choice. The true variety.....	.75	5.00
C. <i>lactiflora</i> —"E. Molyneux"—A giant form of <i>C. lactiflora</i> , bearing immense panicles of light blue flowers. Very effective for the hardy garden.....	.75	5.00

	Each	Per Doz.
C. <i>latifolia</i> —A strong growing variety, 3 to 5 ft. high. Flowers in July, blue.....	\$0.35	\$ 2.50
C. <i>latifolia</i> —"Brantwood"—A dwarf variety, only reaching a height of 2 ft. Very large, dark blue bells on sturdy stems.....	.50	3.50
C. <i>latifolia eriocarpa</i> —Not so tall as the type. Better habit and a fine variety, producing large flowers of a brilliant violet purple in June and July; 3 ft.75	5.00
C. <i>latifolia macrantha</i> —Tall and handsome species with royal purple flowers, 2 inches long, trumpet-shaped. Suitable for the border or wild garden....	.35	2.50
C. <i>Laurii</i> —A new species from the Greek Islands. Resembles <i>rotundifolia</i> in growth, blooming much more profusely and with the lovely lavender bells turning up instead of drooping.....	.75	5.00
C. <i>longistyla</i> —A most beautiful Campanula, with large, violet bells having a protruding style, and carried on spikes of a foot or eighteen inches.....	.75	5.00
C. <i>mirabilis</i> —A very beautiful variety of Campanula for the rock garden, forming a flat rosette of glossy, saw-toothed leaves and bearing a fountain of light blue bells about half the size of those of Canterbury Bells.....	.75	5.00
C. <i>muralis</i> —(<i>Portenschlagiana</i>)—Very dwarf plant covered with blue-purple flowers in June. Fine for wall or rock garden.....	.75	5.00
C. <i>muralis bavarica</i> —An improved form of <i>C. muralis</i> with larger flowers on longer, more upright stems. Easily grown and fine for wall or rockery75	7.50
C. <i>Palassi</i> —Fine new variety with blue flowers on stems about two and one-half feet high. Blooms in July and August. Fine for hardy garden.....	.75	5.00
C. <i>persicaefolia</i> —(<i>Peach Bells</i>)—One of the finest border varieties, bearing large, blue, saucer-shaped flowers on long spikes, 3 ft. high. June and July35	2.50
C. <i>persicaefolia alba grandiflora</i> —A fine variety of the above, with extra large blossoms. White.....	.35	2.50

	Each	Per Doz.
C. <i>persicifolia</i> Mørheimi —A very fine variety of the Peach Bell, with spikes of double, pure white flowers	\$0.75	\$ 5.00
C. <i>persicifolia</i> —"Telham Beauty"—A grand variety, producing immense bell-shaped flowers of delicate china blue, in June and July; 3 ft.75	5.00
C. <i>pulla</i> —Dwarf Campanula of great beauty for the Alpine garden. Shining bells of deepest purple-blue on graceful, solitary stems, 3 inches high. June and July.....	.75	7.50
C. <i>pusilla</i> —One of the very choice rock bellflowers. Strong grower with a profusion of blue flowers during July and August. About 3 inches high75	5.00
C. <i>pusilla alba</i> —Charming white form of the above75	5.00
C. <i>pusilla</i> —"Miss Willmott"—A lovely variety with soft, pale blue flowers. New and very choice75	7.50
C. <i>pyramidalis</i> — Chimney Bellflower —Lovely variety for the border but not reliably hardy north of Philadelphia35	2.50
C. <i>pyramidalis alba</i> —A beautiful white form of the above50	3.50
C. <i>Raddeana</i> —A very handsome perennial, forming a compact bush some 12 inches high, with dark, wiry stems and large purple flowers. Very beautiful if planted near a low shrub in the rockery, to act as a light support for the beautiful blossoms75	5.00
C. <i>Raineri</i> —One of the choicest and rarest of the dwarf Campanulas. Large, erect blue cups on two-inch stems	1.00	10.00
C. <i>rhomboidalis</i> —A beautiful bellflower from the Alpine meadows. Deep blue bells on stems 18 inches to 2 ft. high, in greatest profusion. Very rare75	7.50
C. <i>Robsoni</i> —A new hybrid of <i>Scheuchzeri</i> and <i>turbinata</i> with large, deep blue bells on spikes....	.50	3.50
C. <i>rotundifolia alba</i> —Pure white form of this charming harebell50	3.50

	Each	Per Doz.
C. <i>rotundifolia</i> <i>Hostii</i> —A large form of above with rich blue flowers. Very free.....	\$0.50	\$ 3.50
C. <i>rotundifolia</i> <i>Scheuchzeri</i> —A wonderful variety with magnificent bells of richest violet.....	.75	5.00
C. <i>Saxifraga</i> —Tufted, narrow foliage. Lovely violet blossoms on two-inch stems, abundantly produced. Very rare75	7.50
C. <i>speciosa</i> —Enormous rosettes of greyish foliage with spikes of bloom like an enormous Canterbury Bell. Needs full sun and stony soil.....	.75	5.00
C. <i>Stansfieldii</i> —An easily grown and beautiful variety of bellflower. It forms a dwarf carpet of leaves and bears unusually large blue, somewhat drooping flowers. Charming in the rockery.....	.75	5.00
C. <i>Stevenii</i> —Mats of deep green foliage, resembling <i>C. abietina</i> , with slender stems of six inches carrying shallow bells of pale lilac.....	.75	7.50
C. <i>tridentata</i> —Another lovely variety of tufted habit with large, violet blue flowers borne singly on stems of three inches in early summer. A gem75	7.50
C. <i>Tommasiniana</i> —A lovely Italian Alpine with narrow blue flowers on slender stems. It forms a dense tuft and flourishes in light soil on rock work; 9 in.75	7.50
C. <i>turbinata</i> —A beautiful variety, forming close mats of foliage and bearing large saucer cups of blue, sitting close to the plant and fairly smothering it. June and July.....	.50	3.50
C. <i>Waldsteiniana</i> —A Hungarian rock plant of exquisite beauty. It has upright and star-shaped blue flowers on short stems. It does well in a cool part of the rock garden in gritty loam. Scarce and very choice.....	.75	7.50

CAMPANULA MEDIUM—Canterbury Bells

An unusually fine strain of these popular, old-fashioned flowers, obtained in England. The blossoms are much larger and the plants much more vigorous than the ordinary strain and the colors are clearer and better.

	Each	Doz.	100
Cup and Saucer, Pink.....	\$0.35	\$2.50	\$15.00
Cup and Saucer, White.....	.35	2.50	15.00
Cup and Saucer, Blue.....	.35	2.50	15.00
Single, Pink35	2.50	15.00
Single, White35	2.50	15.00
Single, Blue35	2.50	15.00
Double, Pink35	2.50	15.00
Double, White35	2.50	15.00
Double, Blue35	2.50	15.00

CARLINA—Charlemagne's Thistle

Hardy Perennial

	Each	Per Doz.
C. acaulis —An Alpine thistle with an immense stemless flower head which, when dried, is silvery brown. Leaves are intensely spiny and very silvery, making a handsome subject for the rockery. Rare	\$0.75	\$ 5.00
C. acanthifolia —The huge, stemless Thistle of the Alps. Glittering, spiny leaves, in the center of which sits a large, white thistle blossom. Sun and sandy soil. July-August.....	.75	5.00

CENTRANTHUS—Valerian

Hardy Perennial

C. ruber —Excellent showy plant for borders, walls, etc. Blooms all summer and is fine for cutting	\$0.35	\$ 2.50
---	--------	---------

CERASTIUM—Chickweed

Hardy Perennial

C. tomentosum —(Snow in Summer)—Grey foliage and white flowers. Invaluable for rockeries..	\$0.35	\$ 2.50
---	--------	---------

CHEIRANTHUS—Wallflower

Hardy Perennial

C. Allionii —A beautiful rock plant. Dazzling fiery orange flowers, on stems about a foot high. Best used as a biennial, as it frequently blooms itself to death	\$0.35	\$ 2.50
---	--------	---------

CHRYSANTHEMUM LEUCANTHEMUM

Shasta Daisy

Hardy Perennial

A handsome, strong growing plant for the hardy border and valuable for cutting.

C. Alaska —Handsome plant, with large, glistening white blossoms	\$0.35	\$ 2.50
C. Kenneth —Very New—Pure white, elegantly lacinated. Very lasting50	3.50
C. King Edward VII. —Huge cup-shaped flowers. Very attractive; 2½ ft.....	.35	3.50
C. Mayfield Giant —Grand new variety, with very large flowers, on strong stems. Continuous bloomer. Excellent for cut flowers.....	.50	3.50
C. Mrs. C. Lowthian Bell —Very large, perfectly formed flowers. Continuous bloomer. One of the largest35	2.50
C. Vomerense —Very New—Pure white. The largest and most refined. Undoubtedly the finest of the group. Its flowers frequently measure 6 in. across; 3½ ft.75	5.00
C. arcticum (Arctic Daisy) —A very hardy and most attractive plant. Forms a rosette of deep green foliage and in the fall is a mass of white daisies sometimes tinged lilac50	3.50

CLEMATIS—Virgin's Bower

Hardy Perennial

C. recta grandiflora —One of the best hardy perennials. A strong, erect growing plant with heads of creamy white flowers. Is best moved when young	\$0.75	\$ 5.00
---	--------	---------

COREOPSIS—Tick Seed

Hardy Perennial

C. grandiflora —A splendid, showy plant for the border or shrubbery. Flowers bright yellow, two or three inches across, all summer. One of the best; 3 ft.	\$0.35	\$ 2.50
--	--------	---------

Each Per Doz.

CORTUSA Matthiola —A rare Alpine, belonging to the Primrose family. Soft, crinkled foliage. Tall stems bearing showers of pendant, deep red bells in April and May. Shade; 6 inches.....	\$0.75	\$ 5.00
---	--------	---------

CORYDALIS—Fumitory

Hardy Perennial

Ornamental, early flowering plants, especially useful for half shady positions but requiring good drainage. All have beautiful foliage, usually blue green.

C. cheilanthifolia —Handsome variety with fern-like foliage and long spikes of yellow blossoms, 10 to 12 inches in height. Prefers rich, well drained, stony soil. Very rare and perfectly hardy	\$0.75	\$ 7.50
C. lutea —An everblooming, dwarf variety with golden flowers. Lovely in the rock garden.....	.75	7.50
C. pallida —Beautiful foliage and sulphur flowers75	7.50
C. rupestris —A semi-prostrate variety of much beauty75	7.50
C. thalictrifolia —One of the best recent introductions from China. Handsome foliage and bright, clear yellow flowers in long racemes.....	.75	7.50

CYCLAMEN—Cyclamen

Hardy Perennial

Beautiful, hardy plants for shady, well-drained situations. Especially desirable for planting on slopes under trees and in semi-shady places in the rock garden. We are pleased to be able to offer a limited quantity.

C. coum —Small foliage, un-marbled, and producing a profusion of pink and white blossoms in the fall75	7.50
C. europæum —A Swiss variety of great beauty. Small, dark green leaves, slightly marbled with white. Numerous blossoms of carmine from July until fall75	7.50
C. hederæfolium —A spring blooming variety with brilliant carmine blossoms and showy leaves, beautifully marbled with white.....	.75	7.50



HERBACEOUS BORDERS

Each Per Doz.

- C. **neapolitanum**—Lovely variety with blossoms of varying shades of pink to white, very freely produced in autumn\$0.75 \$ 7.50

CYNOGLOSSUM—Hound's Tongue

Hardy Perennial

- C. **amabile**—Lovely plant for sunny places in the herbaceous garden. Glaucous foliage of bluish-green and producing a mass of bright blue blossoms during the summer. China; 2 ft.....\$0.75 \$ 7.50
- C. **Wallichii**—Lovely species from Himalaya with silver-grey foliage and erect, branching stems of about eight inches, bearing pure, deep blue blossoms75 7.50

DELPHINIUMS—Larkspur

Hardy Perennial

The Delphinium of today is one of the most beautiful of all flowers. It is most rich in coloring and very stately of habit. The foliage is very attractive and the spikes of bloom freely borne. A border of Delphiniums is one of the most glorious things in the garden and will often remain in bloom for two months.

The culture of Delphiniums is exceedingly simple, as they thrive in almost any position. A rich, friable loam will suit them finely. Dig deeply, add plenty of well-rotted manure and plant about 2 ft. apart, being very careful that no manure comes in contact with the roots.

Planted in lines or groups as a background for other plants, the effect is exceedingly fine. Copious watering in summer will greatly increase the size of spike and flower and top dressing is strongly recommended that the soil may not dry out and bake. Coal ashes strewn over the crowns will protect the plant from slugs and worms through the winter and spring.

We are also pleased to advise our customers that we have obtained a small stock of the wonderful "Wrexham" strain of Delphiniums, which have carried all honors of the Horticultural Shows in Great Britain. The blooms are of immense size and the spikes are very massive, many carrying five feet of bloom and measuring nine inches across at the base of the stalk.

Each Per Doz.

Our stock of named varieties is still too small to offer but we can furnish fine plants, our selection, at \$2.00 each, which are fully equal to the named sorts.

For several years past we have offered Gibson Delphiniums and we still feel they are a very superior type of Delphinium, embracing all of the essentials necessary to make a perfect type. Strong stalks of good form; well arranged blooms of large size, averaging better than two inches in diameter and colors that more than appeal to the most exacting Delphinium critic.....	\$1.00	\$ 7.50
D. Belladonna grandiflora —A much improved form of the Belladonna type bearing large flowers of a beautiful sky blue. Extra fine.....	.50	3.50
D. English Hybrids —From the finest named varieties to be found abroad75	5.00

DESMODIUM—Tick Trefoil

Hardy Perennial

D. penduliflorum —Very graceful shrub-like plant with rich, purplish red flowers in September. Should be cut back to ground each spring. Very beautiful	\$0.75	\$ 5.00
--	--------	---------

DIANTHUS—Pinks

Hardy Perennial

Almost all pinks are of the easiest culture in any well-drained soil and sunny position. Some of the choicest subjects for the Alpine garden are to be found among them, and we feel that we have a collection of which to be proud.

D. alpestris —Beautiful Alpine pink with glaucous, blue foliage. Blossoms of deep rose, intensely sweet and very much fringed. Very choice for sunny rockery	\$0.75	\$ 5.00
D. alpinus (Alpine Pink) —This is one of the loveliest of all rockery Pinks, with glossy leaves and large flowers of brilliant rose, produced during June and July. It thrives best in loam with some lime added and perhaps a little shade during the hottest part of the summer. A gem for the rock garden; 6 in.75	5.00

	Each	Per Doz.
D. alp. albus —A very lovely white form of the Alpine Pink	\$0.75	\$ 5.00
D. arenarius (Sand-loving pink) —As its name indicates, this Pink delights in a sandy soil and sun. Flowers white with a carmine ring, deeply fringed and fragrant. Excellent for dry, hot places; 6 inches35	3.00
D. brevicaulis —A very dwarf species from the high Alps, forming a tight mat of toothed leaves and bearing rosy mauve flowers on solitary stems close to the plant. A gem for the rockery.....	.75	7.50
D. cæsius grandiflorus —This is the "Cheddar Pink" and one of the best known of the family. It is very compact in growth and makes a cushion of glaucous leaves from which, in May, spring the sweet-smelling, rose-colored flowers, each on its own stem. It varies as much as from four inches to ten inches in height. It is easily grown and very fine for the wall or rock garden; 6 inches. True50	3.50
D. cæsius Arvernensis —A delightful miniature form of <i>D. cæsius</i> , with the same lovely blossoms on stems of only two or three inches in height75	5.00
D. cruentus —Dense heads of flowers on long stems. Deep red. Fine border plant.....	.35	2.50
D. deltoides (Maiden Pink) —A beautiful little plant with narrow leaves and bearing a profusion of small crimson flowers during June and July. Easily grown on rockery.....	.35	2.50
D. deltoides albus —A charming white form of the above variety35	2.50
D. deltoides "Brilliant" —A very choice variety of the above, bearing bright rose colored flowers.....	.50	3.50
D. fragrans —An easy rockery pink, needing sandy loam and grit. It produces white fringed flowers. Fragrant35	2.50
D. Freynei —Exquisite rockery pink, forming tight rosettes of bluish foliage, covered with stemless blossoms of rose.....	.75	7.50
D. fimbriatus —Very showy with large, pink blossoms on stems ten to twelve inches high.....	.35	2.50

	Each	Per Doz.
D. <i>furcatus</i> —Cushions of dark green leaves with branching stems carrying a profusion of pale rose-colored flowers; 9 inches. June	\$0.50	\$ 3.50
D. <i>gallicus</i> —Flowers purplish crimson, highly scented, on stems about one foot high.....	.35	2.50
D. <i>glacialis</i> —Although this is listed by some as one of the difficult pinks, it has been of the easiest culture with us in gritty sand and peat. It has exquisite rose colored blossoms on short stems and is a real treasure for the rockery. Very rare75	7.50
D. <i>glacialis gelidus</i> —An especially rare and beautiful form of the above.....	.75	7.50
D. <i>graniticus</i> (Granite Pink)—A glorified form of the Maiden Pink, rather taller and with large rose-colored flowers from June onward. Prefers a sunny place and a gritty soil. Especially fine for the rock garden.....	.35	2.50
D. <i>Integer</i> (syn. strictus)—Dark green foliage with erect stems of 6 inches, carrying pure white blossoms in June50	3.50
D. <i>kamtschaticus</i> —Distinct rock plant and one of the best introductions of recent years. It is of trailing growth with large, deep pink flowers.....	.50	3.50
D. <i>Knappi</i> —Loose, straggling growth but worth growing for its clear yellow blossoms. When planting, place high in the rockery where the stems may fall over without soiling the flowers. The only yellow pink known.....	.75	5.00
D. <i>neglectus</i> —One of the most beautiful wild pinks in cultivation. The stems are about 6 inches high with deep rose-colored flowers, frequently borne two on a stem. No flower garden should be without this lovely pink.....	.75	5.00
D. <i>microlepsis</i> —Lovely carmine heads of bloom on straggly stems of a foot or so. Makes good background planting in the rockery.....	.50	3.50
D. <i>petraeus</i> —Tufted growth, about a foot in height, bearing a profusion of fringed, rose-colored blossoms. Very fragrant.....	.35	2.50
D. <i>plum</i> —“ Crimson Bedder ”—A new hybrid pink with handsome, deep crimson blossoms.....	.35	2.50

	Each	Per Doz.
D. plumarius "Maurice Pritchard" —Perhaps the finest single Pink. Robust constitution. Exceptionally large pink flowers. Excellent for cutting..	\$.35	\$ 2.50
D. plumarius "Mrs. Sinkins" —Large double white flowers. Very fragrant50	3.50
D. pyridicola —A very charming small rock pink. Compact growth, large bright pink blossoms on stems of three inches.....	.75	7.50
D. seguieri —A late flowering species with rose crimson blooms on stems about a foot high.....	.35	2.50
D. speciosus —A beautiful high Alpine pink with glaucous, blue foliage and erect stems bearing one or two deep rose, fringy blossoms—True variety75	7.50
D. Sternbergi —A very desirable variety, both on account of its color and fragrance. Lovely rose colored blossoms on stems of about six inches, intensely fragrant75	5.00
D. suavis —A form of <i>D. caesius</i> but more dwarf and with much more jagged petals75	5.00
D. subcaulis —Very dwarf, tufted variety with one lovely rose colored blossom on each short stem75	7.50
D. superbus grandiflorus (Fringed Pink) —Very fragrant and bears deeply fringed flowers, ranging from white to pink or rose35	2.50
D. superbus Holtzeri —A very beautiful variety of the above. Blooms early35	2.50
D. sylvestris (Wood Pink) —Bluish foliage and salmon pink flowers on stems about a foot high. Likes an open, sunny place in stony loam and a slight covering of stone chips upon the surrounding soil is beneficial35	2.50
D. zonatus —Lovely dwarf pink with glaucous foliage and large rosy flowers, bearded at the throat and a purple zone at center75	7.50
Hardy Carnations —The genuine hardy border carnation is a great addition to the garden. During the last few years great progress has been made in the culture of these plants and we take great pleasure in offering a strain from one of the best		

	Each	Per Doz.
known growers in Scotland. They are perfectly hardy and bear in profusion blooms that are quite as large and just as handsome as the greenhouse variety. We guarantee these to be the true variety	\$0.75	\$ 5.00

SWEET WILLIAM

Hardy Perennial

D. barbatus "Diadem"—Most effective. Rich crimson with large white eye	\$0.35	\$ 2.50
D. barbatus "Harlequin"—Each head of flowers includes many shades of color, curiously marked. Exceedingly bright35	2.50
D. barbatus "Holborn Glory"—A very fine auricula-eyed variety; white with a well marked and distinct eye35	2.50
D. barbatus "Pink Beauty"—A beautiful salmon pink variety, which should be grown in every garden35	2.50
D. barbatus "Scarlet Beauty"—An intensely rich deep scarlet. Very new and very fine35	2.50
D. barbatus "Giant White"—A very fine large flowered pure white variety35	2.50
D. Deep Crimson —Very handsome, deep red35	2.50

DIGITALIS—Foxglove

Hardy Perennial

The Foxglove has been a favorite in gardens since our grandmother's time and adds beauty and dignity to any planting. The newer varieties show exceedingly choice colorings as well as increased size in spike and bloom and in combination with Larkspur and Canterbury Bells, create a most charming spot in any garden.

Their cultivation is very easy if given a rich, friable soil and not treated too kindly by covering the crowns for the winter. Cornstalks, so placed that they do not mat down, make an ideal covering, as they must have air during the winter. It is also well to remove some of the largest leaves.

	Each	Per Doz.
D. "Ayrshire White"—A very fine variety, producing large spikes of pure white flowers.....	\$0.50	\$ 3.50
D. "Giant Primrose"—A beautiful Foxglove with large flowers of cream or buff color.....	.50	3.50
D. "Giant Spotted"—Beautiful spotted flowers in many different colors. Very large35	2.50
D. "Giant Shirley"—Magnificent strain with much larger spikes of bloom, ranging in color from white to deep rose35	2.50
D. <i>lanata</i> —Very distinct, producing spikes nearly four feet high of deep cream-colored flowers with brown spots. Rarely seen in gardens. Very effective planted with <i>Rudbeckia purpurea</i>35	2.50
D. "Lutz Hybrid"—A new and attractive hybrid. Flowers of a light salmon color50	3.50

DODECATHEON—Shooting Star

Hardy Perennial

Lovely plants for the rockery in deep, moist soil. The blossoms somewhat resemble a Cyclamen and are very charming.

D. <i>Meadia</i> —Erect and strong, sometimes growing to two feet. Blossoms rose colored with yellow base	\$0.50	\$ 3.50
---	--------	---------

DORONICUM (Leopard's Bane)

Hardy Perennial

Doronicums are splendid subjects for moist or heavy situations in the garden. Especially valuable because of their early blooming.

D. <i>caucasicum</i> Magnificum — Very handsome, large yellow blossoms on stems of two feet. Exceedingly showy where planted in masses. Fine for cutting. May-June	\$0.75	\$ 5.00
---	--------	---------

DRABA—Whitlow-Grass

Hardy Perennial

One of the important spring flowering plants for the rockery. Very dwarf and compact with numerous small flowers in early spring. They require an open soil and sunny position.

D. aizoides —Forms beautiful little rosettes of hairy leaves, covered in spring with bright yellow flowers about 2 inches high.....	\$0.75	\$ 5.00
D. aizoon —A very silky little rosette with flowers of pale yellow on stems of three inches.....	.75	7.50
D. armata —Minute rosette with fine blossoms of golden yellow. Rare75	7.50
D. Athoa —Very handsome species from the mountain tops of Greece. Spiny foliage, forming close mats which are covered in early spring with yellow blossoms on stems three inches high. Rare75	5.00
D. borealis —Forms a rosette of slightly caespitose leaves and in spring bears white flowers on stems from two to twelve inches high. Rockery.....	.50	3.50
D. bruniaefolia —Dwarf, compact mat with bright yellow flowers in early spring75	5.00
D. cuspidata —Forms dense rosettes of downy foliage. Wide flower heads of deep yellow on short stems75	5.00
D. Dedeana —From northern Spain. Forms a dense tuft covered with small white blossoms in early spring. Fine for rockery75	7.50
D. diversifolia —Compact rosettes with yellow flowers on two inch stems75	5.00
D. hirta —A very hardy species from the Arctic regions. Produces a profusion of white flowers from March to May. Fine for rocks75	5.00
D. hispanica —Forms a mass of rosettes of bright green foliage with heads of golden yellow blossoms on two inch stems75	5.00

	Each	Per Doz.
D. lasiocarpa —Very attractive rosettes of densely hairy leaves bearing umbels of deep yellow flowers in early spring	\$0.75	\$ 5.00
D. pyrenaica — (Petrocallis) — Delightful, mat-forming species with pale lilac blossoms which are almost stemless. Very rare75	7.50
D. repens —A graceful plant of trailing growth with numerous bright yellow flowers in early spring. Rockery50	3.50

DRACOCEPHALUM—Dragon's Head

Hardy Perennial

A very valuable class of plants for moist, shady positions. They do not bloom well where it is dry and sunny.

D. argunense —Fine variety, about ten inches high, with a profusion of blue blossoms in June and July	\$0.50	\$ 3.50
D. austriacum —A dwarf variety of great beauty with small, narrow foliage and large blossoms of blue on stems of about twelve inches. Especially fine for rockery75	5.00
D. botryoides —Dwarf species, suitable for rock garden. Pink blossoms on four inch stems. Very choice75	7.50
D. bullatum —Large, loose heads of bright blue blossoms. 6 inch75	5.00
D. Forresti —Very new. Lovely deep blue blossoms on stems twelve to sixteen inches high75	5.00
D. nutans alpinum —Beautiful plant for the rockery. Half trailing growth with an abundance of purple blue flowers50	3.50
D. Ruprechtii —Vigorous plant about 1½ feet high. Flowers purplish blue35	2.50
D. Ruyschianum —Spikes of dark, violet blue flowers. 12 inches35	2.50
D. thymifolium —A beautiful rock plant about ten inches in height, having heads of violet blue blossoms50	5.00

DRYAS—Mountain Avens*Hardy Perennial*

Shrubby plants for the rock garden, having oak-like leaves and branching stems. They can be grown in any good, stony soil, in full sun, and should be left undisturbed as long as possible.

D. Drummondii —Similar to <i>D. octopetala</i> but with yellow blossoms. Rare	\$0.75	\$ 7.50
D. lanata —More dwarf in habit than <i>D. octopetala</i> and the foliage is covered with grey down. Very rare75	7.50
D. octopetala —Very choice sub-shrub for the Alpine garden. Forms flat carpets of deep green foliage and when well established, bears immense anemone-like blossoms of white. Very choice75	7.50
D. octo. minor —Very dwarf form of the above. Exceedingly choice75	7.50
D. Sundermanni —Yellow buds, opening white. Very rare variety of these lovely plants75	7.50

ECHINOPS—Globe Thistle*Hardy Perennial*

E. ritro —Showy, thistle-like plants with large heads of steel blue flowers in July. Very attractive to bees and exceedingly effective when planted near rose-pink phlox	\$0.35	\$ 2.50
E. ruthenicus —Handsome heads of glistening steel blue. 3 ft.50	3.50
E. sphaerocephalus —Fine silvery foliage and heads of whitish flowers35	2.50

EPILOBIUM—Willow Herb*Hardy Perennial*

E. hirsutum —A very showy plant for the water-side or wild garden. Grows about four feet high with pale pink blossoms	\$0.50	\$ 3.50
--	--------	---------

Each Per Doz

ERIGERON—Fleabane*Hardy Perennial*

Showy plants with daisy-like blooms springing from tufts of more or less hairy leaves. Very effective used in masses in the border or rock garden.

E. alpinus —A dwarf aster with delicate pink blossoms. Especially good for rockery	\$0.35	\$ 2.50
E. caucasicus —Fine dwarf plant with large heads of violet blossoms35	2.50
E. Coulteri —Large white or mauve daisies on stems about a foot high. Likes a moist, open position35	2.50
E. elator —Striking plant with silvery-lavender flowers in clusters on stems about a foot high....	.35	2.50
E. glabellus —Dwarf, violet flowers35	2.50
E. mucronatus —Dainty little pink and white daisy, covered with blossoms from June until frost. Fine for rockery or edging35	2.50
E. multiradius roseus —Dainty rockery plant of dwarf habit with a profusion of pink blossoms. New75	5.00
E. speciosus grandiflorus —Large violet purple blossoms on 2 ft. stems. Very fine35	2.50

ERINUS—Wall Erinus*Hardy Perennial*

Very attractive spring flowering plants for the rock garden or dry wall. Thrives best in steep parts of the rockery where water cannot lodge. Requires a little shade from the mid-day sun.

E. alpinus —Purple flowers in racemes about 2 in. long	\$0.35	\$ 2.50
E. alpinus albus —A white variety of the above....	.35	2.50
E. alpinus roseus —Sprays of bright pink flowers. Very attractive in clumps35	2.50

ERODIUM—Heron's Bill

Hardy Perennial

Very choice and valuable race of plants, belonging to the Geranium family. The exquisite veining and blotching of the blossoms gives them an unusual beauty and the foliage in nearly every variety is very lovely. Require a sunny position in well drained, gritty soil. Very hardy.

- | | | |
|---|--------|---------|
| E. absinthoides —Silvery foliage, slashed into a lace-like appearance. Flowers large, on short stems, and ranging from pink to white | \$0.75 | \$ 7.50 |
| E. absin. amanum —Delicate and lovely variety; very dwarf habit. Flowers pure white on stems of six inches | .75 | 7.50 |
| E. absin. Sibthorpiatum —(Olympicum) — Leaves nearly smooth but cut into feathers. Rosy blossoms, blotched purple, on six-inch stems..... | .75 | 7.50 |
| E. cheilanthifolium —Foliage clothed in velvety grey down. Blossoms blush with dark blotch, on stems of six inches | .75 | 7.50 |
| E. chrysanthum —Very beautiful and distinct. Foliage very finely feathered and silvery. Stems branching, with heads of large blossoms of delicate sulphur yellow. Exceedingly choice | .75 | 7.50 |
| E. corsicum —Forms mats of downy, crumpled leaves. Lovely rose pink blossoms, delicately veined with a deeper shade | .75 | 7.50 |
| E. daucoides —Small, rose colored flowers in profusion. Foliage like a finely cut fern. 4 inches.. | .75 | 7.50 |
| E. Kolbianum —Beautiful hybrid with grey leaves and blossoms ranging from shell pink to white.... | .75 | 7.50 |
| E. macradenum —Smooth, green foliage, so finely cut it has a lacy appearance. Small pink blossoms streaked with black | .75 | 7.50 |
| E. romanum —Silvery foliage with leaves simply cut. The flower stems are about six inches high, carrying a head of about six bright pink blossoms | .75 | 7.50 |

	Each	Per Doz.
E. supracanum —One of the loveliest with silver foliage, forming a flat rosette and flowers of soft pink	\$0.75	\$ 7.50
E. tricomanefolium —Handsome, deep green foliage, finely cut and slightly downy. Flowers in heads of from three to seven on stems about 8 inches high, of rosy pink with darker veining....	.75	7.50
E. Wilksonianum —Blush white blossoms with dark blotch on stems of six inches. Lovely hybrid75	7.50

EUPHORBIA—Spurge

Hardy Perennials

E. myrsinites —A choice variety for hot, dry places in the rock garden or border. The growth is trailing, with stems of about six inches in length clothed with glaucous blue foliage and bearing heads of clear yellow blossoms.....	\$0.35	\$ 2.50
--	--------	---------

ERYNGIUM—Sea Holly

Hardy Perennial

Handsome ornamental plants for the hardy border and especially useful for striking effects in landscape work.

E. amethystinum —Distinct, glistening blue blossoms. Finely cut foliage; 2 ft. Splendid variety..	\$0.50	\$ 3.50
E. Bourgati —Bright, steel blue flowers and stems. Foliage deeply cut; 2½ ft.50	3.50
E. cæruleum —Good, clear blue flowers and stems. About 2 ft. Very valuable50	3.50
E. giganteum —Robust species for the hardy border, with large heads of thistle-like blooms on stems 3 feet high.....	.35	2.50
E. planum —Branching heads of steel blue flowers, stems and bracts of a glistening metallic sheen35	2.50
E. Spinalba —A rare and lovely variety with spiny foliage and stems and frill of pale blue fading to white. 18 inches75	5.00

ERYSIMUM—Hedge Mustard

Hardy Perennial

Very valuable race of plants for the rockery or border. Full sun and well drained soil suits them perfectly. The following varieties have all proven hardy here.

E. helveticum —Tufts of grey-green foliage and heads of large, clear yellow blossoms.....	\$0.75	\$ 5.00
E. Kotschyanum —Narrow, pale green foliage and large heads of orange yellow flowers. Very dwarf75	5.00
E. ochroleucum —Very useful variety, blooming nearly all summer. Pale yellow blossoms, on 15-inch stems50	3.50
E. pulchellum —Brilliant orange blossoms on stems from six inches to a foot high.....	.35	2.50
E. pumilum —One of the loveliest. Tufts of foliage literally covered with bright, pale yellow blossoms on stems of two or three inches. Very scarce75	5.00
E. purpureum —Dwarf, half shrubby variety with flowers of lovely purple on stems three to six inches high. Very choice.....	.75	5.00

ERYTHRÆA—Centaury

Hardy Perennial

Lovely plants belonging to the Gentian family. Form tiny tufts, covered with brilliant pink, stemless blossoms. Should be given a choice place in the rockery and planted in masses.

E. chloodes —Lovely pink blossoms, almost stemless	\$0.75	\$ 7.50
E. diffusa —Especially brilliant and free flowering75	7.50

Each Per Doz.

GAILLARDIA—Blanket Flower*Hardy Perennial*

During the summer and autumn months Gaillardias are among the gayest and most showy flowers in the garden and when grown in masses are literally a sheet of brilliant color. The flowers last a long time either on the plants or in a cut state. We have a fine strain of mixed varieties, only, this season.....

\$0.35 \$ 2.50

GALEGA—Goat's Rue*Hardy Perennial*

Showy plants of the easiest culture and very useful in the hardy border. They form very bushy plants with attractive foliage and pea-shaped flowers. Fine for cutting.

G. **Duchess of Bedford**—Lilac and white flowers.

Very free flowering.....\$0.35 \$ 2.50

G. **officinalis**—Dense clusters of lilac flowers..... .35 2.50

G. **persica**—Pure white..... .35 2.50

GENTIANA—Gentian*Hardy Perennial*

The Gentians furnish the rock garden with some of its most glorious subjects. While many are extremely difficult, others are comparatively easy and all will repay any effort made to give them conditions to their liking.

Nearly all Gentians enjoy peat mixed with light loam and fine stones. They grow readily here and are perfectly hardy.

Top dress in spring with coarse sand or very small stones, partially covering the tufts, that it may work down between the shoots.

G. **acaulis**—Very large flowers covering a dwarf green carpet. Very choice.....\$1.00 \$ 7.50

G. **angulosa**—One of the easiest of the Alpine Gentians and one of the most beautiful. Brilliant blue cups covering the tufts of foliage nearly all summer..... 1.00 7.50

	Each	Per Doz.
G. <i>asclepiadea</i> —Willow Gentian. Long, arching sprays of beautiful rich blue trumpets. 2 ft.....	\$1.00	\$ 7.50
G. <i>cruciata</i> —An easy and vigorous Gentian for deep soil in a sunny garden. Clustered heads of bright blue blossoms, on stems 12 inches high, in August and September75	7.50
G. <i>depressa</i> —Dense tufts of small leaves covered with beautiful erect cups of blue.....	1.00	7.50
G. <i>excisa</i> —A choice variety of G. <i>acaulis</i> with darker foliage and larger cups of rich sapphire blue	1.00	7.50
G. <i>Farreri</i> —A new variety from China of great beauty. Vigorous habit, semi-prostrate growth with sky blue flowers and white throat. Blossoms continuously from August to frost.....	1.00	10.00
G. <i>Purdomii</i> —Large, intense sapphire blue flowers, speckled white in the throat.....	1.00	7.50
G. <i>septemfida</i> —One of the best and of easiest culture. Heads of brilliant blue blossoms in August; 6 to 12 inches high.....	.75	7.50
G. <i>s. Lagodechiana</i> —A more dwarf variety of G. <i>septemfida</i> with large flowers of beautiful pale blue. Especially choice.....	.75	7.50

GERANIUM—Crane's Bill

Hardy Perennial

An easily grown, long flowering group of plants, very valuable for both rock garden and border.

G. <i>argenteum</i> —One of the loveliest of rock plants with silvery foliage and glowing rose colored blossoms. 6 inches.....	.75	7.50
G. <i>cinereum</i> —Silvery foliage and rosy blossoms on six inch stems. Choice.....	.75	7.50
G. <i>Endressi</i> —Dwarf variety suitable for the hardy border or rock garden. Rose colored flowers on stems about a foot high, lasting for many weeks75	5.00
G. <i>Fremonti</i> —Large, showy flowers of a rosy purple. Blooms all summer. About two feet high and a very desirable plant for the hardy border35	2.50



ANDROSACE LANUGINOSA

SEDUM SEMPERVIVUM



	Each	Per Doz.
G. grandiflorum —A fine plant for the border with striking, deep violet flowers two inches across	\$0.35	\$ 2.50
G. ibericum —Handsome, violet flowers, about one inch across, in showy panicles. Tufted foliage. One of the best.....	.35	2.50
G. pratense —Large blue flowers in pairs on stems 2½ ft. high. Very handsome plant for border....	.35	2.50
G. pratense album —Very handsome white variety of the Meadow Crane's Bill.....	.35	2.50
G. sanguineum — Attractive foliage and bright crimson flowers; 18 inches.....	.35	2.50
G. sang. lancastriense — Lovely cushions of fine green foliage with beautiful open flowers of soft pink75	7.50
G. Traversii —A beautiful dwarf, silver leaved Geranium. Large rose colored blossoms over an inch across and borne on stems about four inches high. A treasure for the rock garden, although not reliably hardy in the open, north of Washington75	7.50
G. Wallichianum —Charming plant of spreading habit and flowers of a beautiful shade of pale blue75	7.50

GEUM—Avens

Hardy Perennial

Excellent border or rock plants, liking plenty of sun above and moisture at the roots. They produce very showy, bright colored flowers from June to August.

G. Bulgaricum —Enormous, orange yellow flowers; a magnificent variety. Very scarce and far in advance of any other Geum.....	\$0.75	\$ 5.00
G. Eweni —Semi-double, orange yellow; 1 ft.35	2.50
G. Heldreichii —Dwarf species with large flowers of deep orange on stems about a foot in height. July50	3.50

	Each	Per Doz.
G. "Lady Stratheden"—A new introduction of great merit. Rich golden yellow blossoms, counterpart of G. "Mrs. Bradshaw." Fine for hardy garden	\$0.50	\$ 3.50
G. "Mrs. Bradshaw"—Large double scarlet flowers, blooming nearly all summer. Very attractive35	2.50
G. <i>montanum</i> —One of the most valuable of Alpines. Golden yellow blossoms on stems 3 to 6 inches high. Very lovely planted with Anemones. May75	5.00
G. <i>pyrenaicum</i> —Similar to above but somewhat larger75.	5.00
G. <i>reptans</i> —One of the choicest of rock plants, native of the highest Alps. Plump, feathered foliage, bearing enormous, golden blossoms on slender stems, about 9 inches high. Does best in very poor, stony and ashy soil.....	1.00	7.50
G. <i>rhaeticum</i> —Rarely beautiful variety, forming mats of foliage covered with golden yellow blossoms in June.....	.75	7.50

GILLENIA—Bowman's Root

Hardy Perennial

G. <i>trifoliata</i> —Handsome plant for the rockery or hardy border with deeply cut foliage and numerous pinkish white flowers.....	\$0.35	\$ 2.50
--	--------	---------

GLOBULARIA—Globe Daisy

Hardy Perennial

Shrubby plants for the hardy garden or rockery, producing fluffy balls of blue flowers during the summer. They all require light soil in a warm, sunny position.

G. <i>alyssum</i> —A beautiful sub-shrub with heads of pale blue in August and September. Very rare..	\$1.00	\$ 7.50
G. <i>cordifolia</i> —A smaller variety forming flat, dark green rosettes, covered in June with heads of blue fluff75	5.00

	Each	Per Doz.
G. nana —Very dwarf, about one inch high. Forms compact mats, covered in June with balls of lilac blue. For choice place in rockery.....	\$0.75	\$ 7.50
G. nudicaulis —Dwarf plants for well drained but not too hot places on the rockery. Heads of steel blue, fluffy blossoms on stems of six inches.....	.75	5.00

GYPSOPHILA—Chalk Plant

Hardy Perennial

Exceedingly useful plants for the garden, adding both grace and beauty to any planting. They will thrive in any open and sunny position and blossom over a long period.

G. acutifolia —Similar in habit to <i>G. paniculata</i> but with pale pink flowers. Very useful and decorative	\$0.35	\$ 2.50
G. alpigena —A dwarf variety from the Alps, only attaining a height of about four inches, with delicate blossoms of rose and white.....	.50	3.50
G. cerastoides —Excellent plant for the rockery or very sandy soils, bearing a profusion of large white flowers, veined pink.....	.35	2.50
G. paniculata —Clouds of foam-like, white blossoms during July and August; 3 ft.....	.35	2.50
G. paniculata fl. pl. —Beautiful, double flowering form. Flowers pure white and a valuable plant for the hardy border.....	.60	5.00
G. panic fl. pl. —“Snow White”—A fine hybrid, recently introduced in Great Britain. The blossoms are double and of a snowy whiteness not to be found in the ordinary strain.....	.75	5.00
G. repens —Very attractive trailing plant for rockery or dry wall. Covered with small white flowers35	2.50
G. repens rosea —Delicate rose colored variety of the above35	2.50
G. Sundermanni —A hybrid between <i>G. repens</i> and <i>G. cerastoides</i> . Low in growth with beautiful, large white blossoms in greatest profusion. Very choice75	5.00

NEW DOUBLE FLOWERING GYPSOPHILA—"Bristol Fairy"

A wonderful new introduction, offered for the first time, and a great improvement over even the fine "Snow White." "Bristol Fairy" produces much larger panicles of flowers, in which the individual blossom is larger, and of much purer white. It also flowers almost continually throughout the summer.

Strong plants\$1.50 \$15.00

HABERLEA—Haberlea

Hardy Perennial

A near relative of *Ramondia* and requiring the same treatment.

H. **Ferdinandi-Coburgi**—An especially fine form of *H. rhodopensis*, delighting in a moist, shady position. The blooms resemble a small *Gloxinia*, lilac in color and with a wide open throat speckled with gold.....\$1.25 \$10.00

H. **rhodopensis**—Rosettes of flannel-like leaves of dusky green which in June are covered with sprays of small lilac-lavender flowers. Very choice\$1.00 \$10.00

HELENIUM—Sneezewort

Hardy Perennial

Gorgeous plants for fall bloom, coming into flower in August and continuing until frost. There is quite a range in height and they are especially effective when planted with fall *Asters*.

H. **autumnale rubrum**—Deep, rich crimson-purple. Fine; 5 ft.\$0.35 \$ 3.00

H. a. **superbum**—Very fine, large flowered variety. Pale yellow with darker center; 5 ft..... .35 3.00

H. **Bigelowi**—New species. Deep yellow, black disc and long stems. Prefers damp ground in full sun; 2 ft..... .35 3.00

	Each	Per Doz.
H. Hoopsei —Very large, orange yellow blossoms from June through the summer. A very fine border plant; 3 ft.....	\$0.35	\$ 3.00
H. Riverton Beauty —Rich lemon yellow with large purplish center; 6 ft.....	.35	3.00
H. Riverton Gem —Old gold, changing to wall flower red. Very handsome; 6 ft.....	.35	3.00

HELIANTHEMUMS—Rock or Sun Rose

Hardy Perennial

Exceedingly useful as well as beautiful low growing plants for either the hardy garden or rockery. They are literally covered all summer with their delicate, crinkled blossoms, in almost every color of the rainbow. They demand sun and sandy soil and are especially valuable for places too poor to grow other plants. We have proven them perfectly hardy here, in spite of their reputation to the contrary. Should be trimmed back to prevent becoming straggly.....

	\$0.50	\$ 3.50
--	--------	---------

HEMEROCALLIS—Yellow Day Lily

Hardy Perennial

Well known and popular plants, suitable for almost any situation but preferring a moderately moist and partially shady position. Make very showy clumps for the hardy garden.

H. Apricot —Rich apricot color.....	\$0.35	\$ 2.50
H. Aurantiaca —Bright orange. Very fragrant....	.35	2.50
H. flava —Lemon lily. Blooms in June.....	.35	2.50
H. Gold Dust —Bright yellow. Reverse of petals bronzy35	2.50
H. Kwanso fl. pl. —Beautiful double blossoms of a bronzy-orange. Very lasting.....	.35	2.50
H. Middendorffii —Rich orange yellow. Very free	.35	2.50
HERNIARIA glabra —Dwarf carpeter with beautiful deep green foliage. Turns bronzy-red in winter50	3.50

HEUCHERA—Alum Root

Hardy Perennial

One of the most desirable perennials for a hardy garden or for the rockery. Compact growth with handsome dark green, mottled foliage, from which spring slender stems about a foot high bearing panicles of bright scarlet bells. Very light and airy in effect in the garden and fine for cutting.

H. <i>gracillima rosea</i> —Carminc rose—Lovely color	\$0.35	\$ 2.50
H. "Pluie de Feu"—Brilliant scarlet.....	.50	5.00
H. <i>sanguinea maxima</i> —Bright blossoms of scarlet in July. Bells larger than type.....	.35	2.50

HIBISCUS—Mallow

Hardy Perennial

H. <i>Mallows</i> —A beautiful border plant, suitable for moist soil conditions, colors ranging from white to deep red. Mixed seedlings	\$0.50	\$ 3.50
Extra strong plants75	7.50

HOLLYHOCK—Althæa Rosea

Hardy Perennial

No hardy garden is complete without the stately and majestic Hollyhock. They lend beauty to the hardy border or shrubbery which cannot be secured with any other plant.

The Hollyhock requires a deeply dug, well enriched soil and should be well supplied with water during the summer months. They will live and thrive for years if protected around the collar with sand or coal ashes during winter, and if the stem is left a foot or so high instead of being cut to the ground it will prevent the crown from rotting.

So far as we know, there is no absolute cure or prevention of the Hollyhock disease, but we are pleased to give our patrons the benefit of a remedy found most effective by the specialists in England.

"Slack one peck of lime and when cool add one peck of soot, 1 pound of flowers of sulphur and

Each Per Doz.

half an ounce of sulphate of copper (finely powdered). Pass the mixture through a fine sieve and dust the plants well over with it three or four times during the growing season, preferably early in the day while the dew is still on the plants."

We are pleased to again offer the Chater strain of choicest named varieties. These are the true, original strain, direct from the growers and we feel are a great acquisition to the garden lovers of this country. They are a revelation in Hollyhocks and only need to be grown beside the ordinary strains to be fully appreciated.

H. Adonis —Rosy cerise. Large flowers, well displayed	\$0.75	\$ 7.50
H. Alfred Chater —Lovely rose color. New75	7.50
H. Amaranth —Large flowers of deep amaranth pink. A very distinct variety75	5.00
H. Britannia —A fine scarlet. Very bright color and large, compact spike. Certificate of Merit R. H. S.75	7.50
H. Black Knight —Handsome variety with very dark blossoms. The nearest black of any variety grown and very effective. Certificate of Merit R. H. S.75	5.00
H. Constance —Beautiful rosy salmon flesh. A gem75	7.50
H. Crimson Queen —Intense, deep crimson. One of the finest crimson Hollyhocks ever offered. Certificate of Merit R. H. S.75	7.50
H. Decora —Beautiful buff, suffused with rosy cerise. A strong grower and makes a fine display late into the autumn75	5.00
H. Delicata —Soft, delicate creamy white. Very lovely75	5.00
H. Felicity —Pale flesh pink. Fine flower and spike75	5.00
H. Fire King —Bright red; very large and of exceptional beauty. Very striking. Certificate of Merit R. H. S.75	7.50

	Each	Per Doz.
H. Hugh Mitchell —A new and unusual color in Hollyhocks. The flowers are lilac mauve, with edges of a lighter shade.....	\$0.75	\$ 7.50
H. Lady Bailey —A beautiful shade of delicate flesh pink. One of the best. Award of Merit R. H. S.75	7.50
H. Lord Kitchener —Deep crimson. Fine flower and strong spike. Splendid75	5.00
H. Minerva —Beautiful shrimp pink. Magnificent variety75	7.50
H. Mulberry Superb —Rich, glowing mulberry. Fine75	5.00
H. Olivier Chater —Soft, delicate flesh, edged white. Very distinct75	5.00
H. Ovid —Clear rose throughout. Blooms are large and fine75	7.50
H. Primrose Queen —Very effective, especially when massed. Beautiful soft primrose, deepening toward the center to a clear yellow75	7.50
H. Queen of the Yellows —A beautiful yellow Hollyhock. Very strong grower and immense blooms. Award of Merit R. H. S.75	5.00
H. Royal Sovereign —Bright clear yellow. Very fine flower and strong spike. One of the best....	.75	7.50
H. Ruby King —A beautiful rich deep crimson variety. Gorgeous spikes of brilliant blossoms....	.75	7.50
H. Salmon Queen —Fine rich salmon in color. Especially effective in carrying out color schemes in the garden75	5.00
H. Victor —Large, bold flowers of crimson-scarlet, tinged buff75	5.00
H. Wm. Archer —A fine crimson Hollyhock, strong growing and with unusually fine blooms..	.75	5.00
HUTCHINSIA alpina —Lovely Alpine for cool banks. Mats of deep green foliage covered with dainty, pure white flowers from May to July75	5.00

Each Per Doz.

HYPERICUM—St. John's Wort*Hardy Perennial*

Very ornamental plants, especially valuable in the garden. Their foliage is attractive, habit good, and their late flowering makes them very desirable. They prefer a rich, sandy loam and if given partial shade, the blossoms last longer.

H. calycinum —A shrubby species, reaching two feet in height and producing a profusion of large yellow blossoms. Fine for banks, rockeries, etc.	\$0.75	\$ 5.00
H. Coris —One of the jewels of the race, forming spreading tufts of blue foliage covered with cups of clear gold on thread-like stems of 6 or 8 inches, the numerous stamens giving them a sky-rocket effect. Especially fine for the rocky	1.00	7.50
H. fragile —A trailing variety with stems about five inches in length, ending in flowers of pure gold75	5.00
H. olympicum —Upright growth, about a foot high. Leaves grayish green; flowers large, golden yellow. Very handsome.....	.50	3.50
H. polyphyllum —Rare. Glauous foliage. Flowers yellow in dense terminal cymes. In bloom all summer75	5.00
H. reptans —Beautiful, absolutely prostrate variety, forming a perfect sheet over the rocks, covered with enormous roses of gold, the outside petals being varnished with mahogany, the center having the characteristic shower of stamens. A gem every rock garden should possess.....	.75	7.50

HYPOCHOERIS—Composite*Hardy Perennial*

H. uniflora —From Alpine meadows and very useful in rock garden. Blossoms pale yellow, two or three to a stem, eight to ten inches high. Full sun in well drained soil.....	\$0.75	\$ 5.00
--	---------------	----------------

IBERIS—Candytuft

Hardy Perennial

The evergreen Candytufts rank high among the rock garden flowers. They are of half-shrubby growth and in April and May become smothered with bloom. Ordinary well-drained soil suits them and they never look better than when planted above some rock ledge so that the growth may hang over its face.

- | | | |
|--|--------|---------|
| I. gibraltarica hybrids —Very handsome variety of Candytuft with flowers shading from deep lavender to white. Blooms nearly all summer. Very strong grower. Young plants transplant best..... | \$0.50 | \$ 3.50 |
| I. Jordani —An exceedingly choice variety for rockery. Stems trailing, about six inches long, the tips bearing heads of pure white blossoms of large size | .50 | 3.50 |
| I. petrae Tenoreana —Splendid variety for sunny bank or rockery, forming dense mats a foot across, covered in spring with heads of white blossoms, often tinged purple as they fade | .50 | 3.50 |
| I. Pruitii —Half shrubby variety with procumbent stems of white blossoms. Very rare..... | .50 | 3.50 |
| I. Sempervirens "Snowflake" —A splendid new variety with large white flowers and evergreen habit | .50 | 3.50 |

IRIS—Iris

Iris thrive in any sunny position. The majority of bearded Irises, however, are too large for the Rock Garden, only the dwarfer sorts being suitable.

- | | | |
|--|--------|---------|
| Alcazar —Deep red-violet and lavender on tall stalks. 42 inches | \$0.35 | \$ 2.50 |
| Anna Farr —White, delicately frilled violet. 3 feet | 1.00 | 9.50 |
| Anne Leslie —S. white, flushed rose; F. carmine. 2½ feet | 1.00 | 10.00 |
| Ambassadeur —Strong growing with very large flowers. S. reddish violet; F. velvety brown. 3½ feet | 2.00 | |

	Each	Per Doz.
Asia —A grand Iris with unusually large flowers and fine foliage. S. pale, silvery lavender; F. pale reddish purple, lighter at margin. Rich golden beard. 4 feet.....		\$4.00
Azure —Beautiful coloring. S. lavender blue; F. rich violet-blue. 2½ feet.....	.50	4.00
Ballerine —Tall, branching habit. S. light blue-violet; F. deeper shade. Large flowers and a beautiful variety. 3½ feet.....		2.00
Benbow —S. & F. deep violet blue. 3 feet.....	2.00	
Bluet —S. & F. lovely shade of blue. 2 feet.....	1.00	
Camelot —Cream white, edged pale violet. Fine branching habit. Very attractive. 3 feet.....		1.00
Chausseur —Very fine large flowers of deep yellow. One of the finest yellow Irises. 3 feet.....		5.00
Clematis —Shape of flower like a six petaled Clematis. Color clear violet with veining at base. 2½ feet		1.50
Col. Candelot —S. bronze, overlaid with lavender; F. rich crimson. Very striking. 3 feet.....	.50	3.50
Corrida —Light blue-violet self. Highly recommended. 3 feet75	6.00
Crusader —Loveliest clear blue. Large, broad petaled flowers of great beauty. 3½ feet.....	.75	6.00
Darius —S. Rich yellow; F. reticulated purple on white, margined primrose. 18 inches.....	.30	2.50
Dalila —Very choice. S. flesh white; F. rich red-purple. One of the most distinct. 2 feet.....		1.00
Delicatissima —Lovely variety of exquisite coloring. S. blue, clouded rose; F. violet, shading to lilac. 3 feet		1.50
Demure —Beautiful blending of rose and copper. 2½ feet50	5.00
Dora Longden —S. pale lavender, suffused yellow. F. rich reddish-lilac, edged yellow. Very fine.....		2.50
Drake —Pale blue, very free flowering. 3 feet.....	.75	6.00

	Each	Per Doz.
Dream —S. & F. soft, clear pink. Large flowers of perfect form. 3 feet.....	\$1.50	
Edouard Michel —A grand Iris. S. deep rosy violet; F. a shade deeper. 3 feet.....	1.00	
E. H. Jenkins —Fine plant; branching stems and very free flowering. S. bluish purple; F. deep blue-violet. 3½ feet.....	3.00	
Ensign —Lovely violet throughout. 4 feet.....	4.00	
Fairy —S. & F. white, delicately bordered and suffused soft blue. 2 feet.....	.35	2.50
Flavescens —Delicate shade of soft yellow. Large flowers, sweet scented. 2½ feet.....	.35	2.50
Georgia —Very distinct reddish-lilac throughout with bright orange beard.....	1.00	
Gold Imperial —Chrome yellow throughout, with orange beard. The finest yellow Iris. 3 feet.....	12.00	
Iris King —S. clear lemon-yellow; F. rich maroon, bordered yellow. Very striking. 2 feet.....	.35	2.50
Hermione —Late flowering purple self. S. bright blue-purple; F. rich reddish-purple with orange beard. Fine foliage. 3½ feet.....	5.00	
Isoline —Grand, distinct Iris. Large flowers and bold foliage. S. lilac pink; F. purplish old rose. 2½ feet50	3.50
Jean Chevreau —Beautiful new Iris. S. yellow, shaded amber; F. milk white, spotted violet brown at throat and edges. 3 feet.....	7.50	
Juanita —Very tall with fine foliage. S. & F clear blue. 3½ feet.....	.50	4.75
Kharput —S. violet; F. deep purple-violet, white beard. 2½ feet.....	.30	2.50
Kochii —Dark violet. Very handsome. 15 inches	.35	2.50
Lent Williamson —S. soft lavender-violet; F. velvety royal purple. One of the finest. 40 inches	1.00	
Lohengrin —Soft shade of rose throughout. Very large. 3 feet.....	.50	3.50

	Each	Per Doz.
Lord of June —Exceedingly handsome. S. lavender-blue; F. rich violet-blue. Vigorous habit. 3½ feet		\$1.25
Ma Mic —White frilled blue. One of the best. 2½ feet50	3.50
Mad. Cheric —Very fine. S. wine purple, shot with yellow; F. ageratum-violet washed with pink. Tall and strong. 4 feet.....	1.00	8.50
Mad. Chereau —S. white edged blue; F. white, frilled blue. 2½ feet.....	.35	2.50
Mad. Chobaut —S. white shot pale yellow and shading to wine red; F. white edged lilac. Very pleasing. 3 feet.....	2.00	
Mady Carriere —S. pale blue; F. ageratum blue. 2½ feet75	6.00
Magnifica —Enormous flowers, borne on stiff, branching stems. S. light violet blue; F. long, deep, rich violet. 3 feet.....	2.00	
Mary Williamson —White with violet center, flaring falls. Beautifully ruffled. 33 inches.....	1.00	
Medrano —Remarkably fine flowers. S. rose purple; F. dark crimson purple. 2½ feet.....	1.50	
Mlle. Schwartz —Palest mauve, much lighter than Dalmatica. Very tall with branching spikes, bearing exceptionally large flowers. 4 feet.....	1.50	
Mother of Pearl —Pale bluish lavender of great beauty. 4 feet	4.00	
Mrs. Cowley —S. coppery buff; F. deep, rich rosy-purple. 27 inches.....	1.00	
Mrs. Tinley —S. & F. intense violet-blue. Early. Very fine. 3 feet.....	.75	6.00
Mrs. H. Darwin —S. waxy white; F. white with violet veins. Blooms profusely. 2 feet.....	.25	2.00
Nine Wells —S. light blue; F. deep purple-violet, white ground at throat. Large flowers. 4 feet....	.75	6.00
Ochracea-coerulea —S. long and narrow, yellowish buff; F. same tone, flushed with blue. 2 feet....	2.00	

	Each	Per Doz.
Opera —Very distinct. S. reddish-lilac; F. purple-violet. Dark and velvety	\$1.00	\$ 6.00
Oriflamme —One of the best. S. bright blue; F. dark purple. 2 ½ feet.....	.50	5.00
Phyllis Bliss —S. & F. pale rosy-lavender. Very strong and erect grower.....	1.50	
Queen Caterina —Pale lavender-violet; white haft, veined bronze. 3 feet.....	1.25	
Roseway —Deep, reddish-pink flowers on strong, branching stems. 3 feet.....	.75	6.00
Seminole —Brilliant, velvety, royal purple. 30 inches	1.00	
Shekinah —Pale lemon-yellow, deepening at center. 3 feet	1.00	10.00
Soledad —Clear yellow, deep in tone. Early flowering and very fine. 2 feet.....	2.00	
Souv. de Mad. Gaudichau —S. & F. rich, deep purple. Very beautiful and striking. 3 feet.....	2.50	
Susan Bliss —Lovely rose pink with light orange beard. 3 ½ feet.....	5.00	
Sweet Lavender —Very distinct. Strong spikes, branching from the bottom with as many as twelve flowers on one inflorescence. S. pale lavender; F. deep rose-lavender. 40 inches.....	2.00	
Tamar —Red-lilac, color deepening below the beard. Wonderful grower. 4 feet.....	.75	6.00
R. Tom Tit —Flowers small, three to four on a stem, of deep, self violet-blue. A desirable variety for the Rock Garden. 18 inches	2.00	
Wyomissing —S. creamy white, suffused delicate rose; F. deep rose, shading to flesh. 2 feet.....	.50	3.50
R. Iris pumila cœrulea —Very dwarf. Dark violet-blue flowers. 6 inches35	3.00
R. Iris pumila Schneekuppe —Snow white variety of above. 6 inches35	3.00

Each Per Doz.

MISCELLANEOUS SPECIES AND VARIETIES

	Iris Sibirica orientalis "Emperor" —A noble form of Japanese origin. Falls large and circular and the whole flower deep violet-blue. For waterside and damp places. 4 feet.....	\$1.00	
I.	Sib "Monspur" —Flowers large, of good substance and very free flowering. Blue and yellow. Wet situations. 4 feet.....	1.00	
I.	Sib. "Snow Queen" —Lovely snow white form with rich golden blotch. Should be in every collection. 3 feet.....	.50	3.50
I.	Sib. "Perry's Blue" —New, tall variety with broad falls of wonderful sky blue. 4 feet.....	1.00	
R. I.	Bulleyana —A new, grassy leaved species from China. Allied to Sibirica but much dwarfer. The flowers are a lovely shade of blue. 1 foot....	.75	
I.	Chrysographes —From China. Flowers deep, velvety, violet-purple. 2½ feet.....	2.00	
R.	cristata —Very dwarf with beautiful, deep blue flowers spotted orange. Very free.....	.35	3.50
R.	ensata —From China. Pale lilac flowers, beautifully veined. 10 inches	1.00	
R. I.	Forresti —A striking Iris from China. Grassly foliage and habit of Sibirica. Flowers yellow with slight netting at throat. 18 inches.....	1.00	
R. I.	graminea —Close growing tufts of foliage with flowers of violet-blue. Very dainty and deliciously scented50	
I.	imbricata —A very rare species from the Caucasus. Crowded inflorescence. S. greenish-yellow; F. same color, but veined with brown-purple at haft. The white hairs of the beard are tipped bright orange. 20 inches.....	1.50	
R. I.	setosa —Very distinct species with broad falls of deep lilac. 1 foot	1.00	
R. I.	stylosa —Lavender-blue blossoms and a very beautiful species. 1 foot	1.00	
R. I.	tricuspis —Large, rich violet flowers. Very rare	1.50	

All varieties marked with "R" are suitable for the Rockery.

INULA—Inula*Hardy Perennial*

- I. **Roylei**—A superb species for bold places in the rockery or for the hardy garden. Very large golden blossoms on stems two feet high.
 Rare\$0.75 \$ 5.00

IPOMŒA—Morning Glory*Tender Annuals*

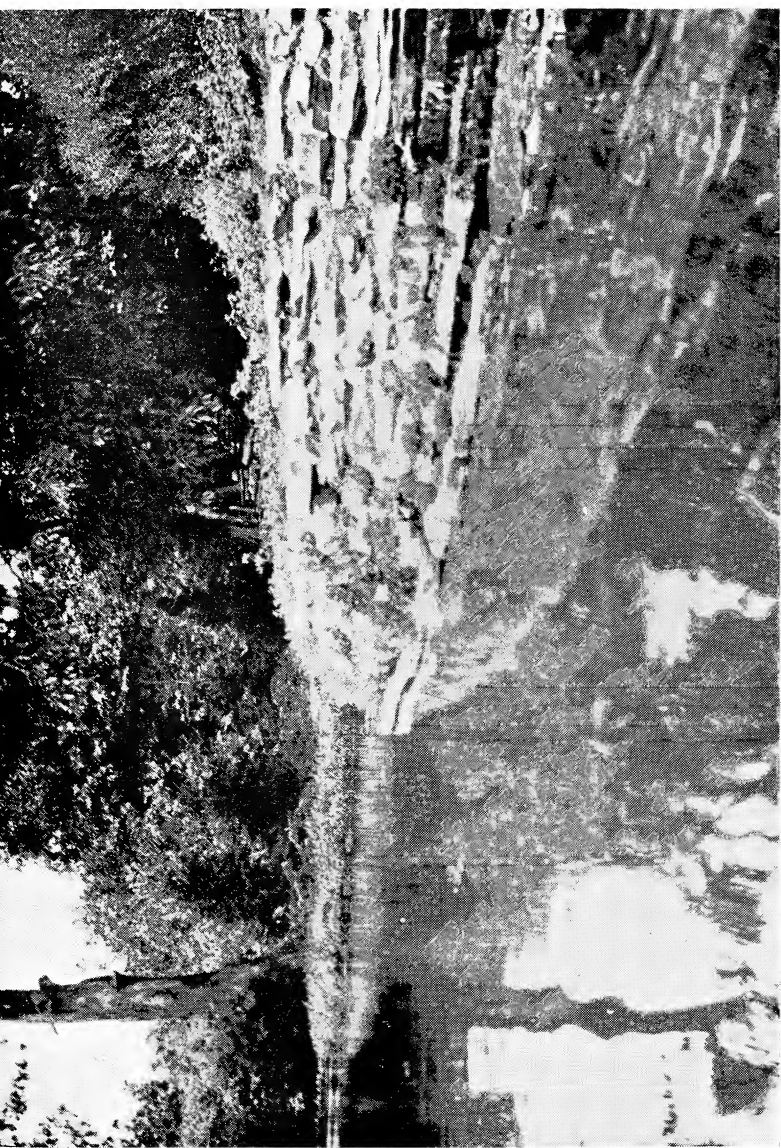
- Large, beautiful blue variety of Morning Glory. We have fine plants in paper pots, ready to send out about May 15th.....\$0.50 \$ 5.00

JASIONE—Sheep's Scabious*Hardy Perennial*

- J. **humilis**—Very dainty, like a dwarf Scabious, with fluffy heads of azure blue on 4-inch stems in June and July.....\$.50 \$ 3.50
- J. **perennis**—Similar to above, only larger and taller50 3.50

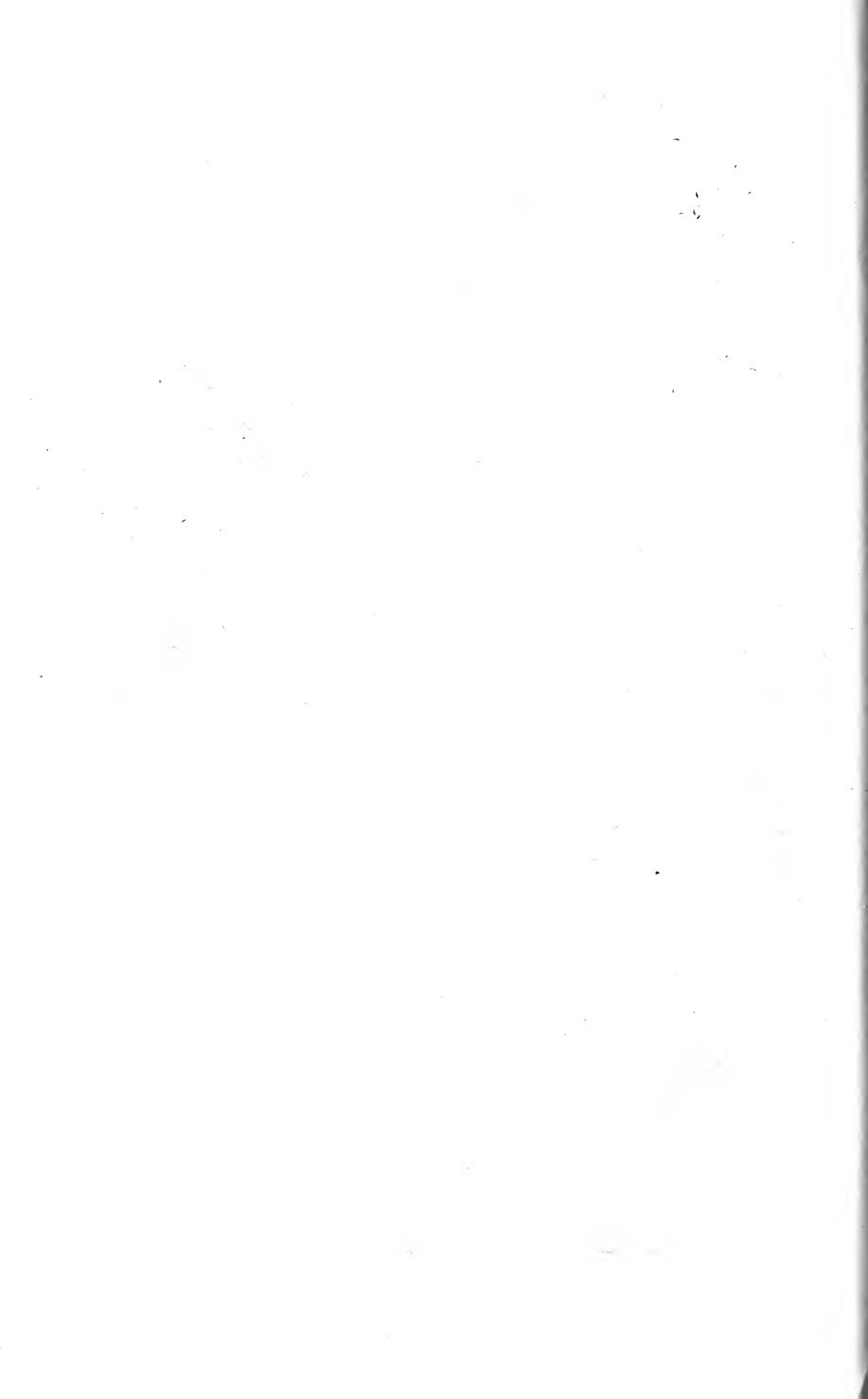
LATHYRUS—Everlasting Pea*Hardy Perennial*

- L. **latifolius** "Pink Beauty"—A very desirable hardy climber, bearing a profusion of delicate pink blossoms\$0.50 \$ 3.50
- L. **latifolius** "White Pearl"—A very lovely pure white variety of the Everlasting Pea and a great improvement on the common L. albus50 3.50
- L. **rotundifolius**—A fine variety with clusters of scarlet blossoms75 5.00



MYOSOTIS PALUSTRIS SEMPERFLORENS

DWF. CAMPANULAS IN VAR.



Each Per Doz.

LAVANDULA—Lavender*Hardy Perennial*

- L. vera**—The true Lavender of our Grandmothers' gardens, prized for its fragrant leaves as well as for its attractive blue flowers. Fine for edging beds\$0.35 \$ 2.50

LEONTOPODIUM—Edelweiss*Hardy Perennial*

- Contrary to the popular supposition that, because the natural habitat of Edelweiss is on high mountains, it is difficult to grow, it is really easy if firmly planted in well-drained, stony loam in a sunny place among the rocks. The woolly flower heads on stalks about six inches high, rise from a loose tuft of rather narrow gray leaves, in June. It requires lime in the soil.....\$0.50 \$ 3.50

LINARIA—Toad Flax*Hardy Perennial*

- L. alpina**—A charming rock garden plant of trailing growth, bearing a profusion of violet flowers with orange throat, like a miniature Snapdragon. Loves a sunny spot in well drained soil\$0.50 \$ 3.50
- L. alpina rosea**—Handsome variety of the above with pale pink blooms50 3.50
- L. dalmatica**—Fine for borders or perennial garden. Glauous blue foliage and spikes of golden yellow blossoms on stems of three feet35 2.50
- L. organifolia**—Dwarf habit, with purple blossoms and paler throat. Six inches50 3.50

LINUM—Flax*Hardy Perennial*

Charming border plants of easiest culture and profuse bloom. Prefer sandy loam in full sun.

- L. alpinum**—A rare species from the Dauphine, of prostrate growth with showers of pale blue blossoms throughout the summer\$0.75 \$ 5.00

	Each	Per Doz.
L. austriacum —A much improved variety of L. perenne, having more upright habit with blossoms of rich gentian blue.....	\$0.75	\$ 5.00
L. flavum —Fine variety with transparent, yellow blossoms. Very attractive35	2.50
L. hirsutum —Downy foliage and erect growth. Flowers large purplish blue with white eye, on stems about one foot high. Fine for border or rockery. Rare75	5.00
L. Narbonnense —Forms a spreading clump of attractive foliage with a profusion of azure blue flowers with white eye. Very handsome for the rockery75	5.00
L. salsoloides —Forms mats of dwarf foliage, covered with beautiful blossoms of pale lavender on stems of six inches. Very rare75	7.50
L. sibiricum —Much improved variety of the common Flax35	2.50
L. tenuifolium —Dwarf variety of great beauty with prostrate foliage and rosy-lilac blossoms. Lovely for a bank or rockery. Very choice.....	.75	5.00
L. viscosum —Rather shrubby in growth with broad leaves and large blossoms of soft, lilac-rose. 12 inches to 18 inches75	5.00

LITHOSPERMUM—Gromwell

Hardy Perennial

L. petraeum —A woody plant, in appearance much like <i>lavendula vera</i> . Heads of beautiful pale blue and purple flowers. Should have a choice place in the rock garden in full sun and rich soil	\$0.75	\$ 7.50
L. graminifolium —Very choice variety with clusters of azure blue flowers on stems six inches high75	7.50
L. intermedium —Erect growing plant, about nine inches high. Small spikes of beautiful Forget-me-not blue flowers75	7.50
L. prostratum —Lovely trailing plant with deep green leaves and lovely bright blue blossoms, rivaling the Gentian75	7.50

Each Per Doz.

LOBELLA cardinalis—Our native Cardinal Flower. Rich cardinal blossoms in August and September. Prefers a moist situation\$0.35 \$ 2.50

LUPINUS—Lupine

Hardy Perennial

The Lupins are well known garden plants, bearing long spikes of pea-like blossoms of various colors. In many gardens Lupins are killed with kindness, as they strongly object to a rich soil. Planted in sandy loam, full sun, and having perfect drainage, they will continue to be a joy for many years and one of the very showy subjects of the garden.

We are fortunate in being able to offer hybrids from one of the most famous Lupin growers in Europe. The choice colors and large blooms will more than please our customers. Young plants....\$0.50 \$ 3.50

LYCHNIS—Campion

Hardy Perennial

A family of very showy and useful plants both for the border and rock garden. Very easy culture, thriving in almost any soil, but requiring full sun.

- L. **alpina**—A very attractive little plant for the rockery, of tufted growth and bearing heads of pink blossoms in May and June\$0.50 \$ 3.50
- L. **Arkwrightii**—A new and very desirable border plant, being a cross between L. *chalcedonica* and L. *Haageana*. Makes a long and lasting display in many new and lovely colors50 3.50
- L. **chalcedonica**—Brilliant scarlet; very showy..... .35 2.50
- L. **Lagascae**—An exquisite little plant for the rockery. Forms small clumps about 4 inches high, covered with showy blossoms of carmine rose75 5.00
- L. **Lagascae rosea**—A rose colored form of this lovely species75 5.00
- L. **pyrenaica**—Glaucous foliage, with exquisite blossoms of pink or white. One of the choicest .75 7.50

LYSIMACHIA—Loosestrife

Hardy Perennial

- | | | |
|--|--------|---------|
| L. <i>atropurpurea</i> —Fine plant for moist places with spikes of crimson flowers, 2 feet high. July..... | \$0.50 | \$ 3.50 |
| L. <i>clethroides</i> — Excellent border plant with spikes of white blossoms, 2 to 3 feet high. Fine for cutting. July-September | .35 | 2.50 |

LYTHRUM—Purple Loosestrife

Hardy Perennial

Splendid plants for the wild garden or for banks of streams, ponds, etc.

- | | | |
|---|--------|---------|
| L. <i>salicaria</i> —A much improved variety of the common Loose-strife. Spikes of purple flowers 2 to 3 feet high. July-September..... | \$0.35 | \$ 2.50 |
| L. <i>virgatum</i> —Purple Loose-strife, native of Siberia. Spikes of clear pink blossoms, four feet high. Fine for bog garden | .35 | 2.50 |

MERTENSIA—Blue Bells

Hardy Perennial

One of the most attractive early blooming plants, especially useful as it thrives best in shade. Should be given a very rich soil and be left undisturbed for years.

- | | | |
|--|--------|---------|
| M. <i>echioides</i> —Exquisite, dwarf variety with croziers of rich, sapphire blue flowers on stems of eight or nine inches. Rich soil and shady situation | \$0.75 | \$ 7.50 |
| M. <i>virginica</i> —(Virginian Cowslip)—Long, nodding clusters of pale blue flowers with pink buds, making a most charming combination. Prefers moist, peaty ground. Foliage disappears during summer | .35 | 2.50 |

MIMULUS—Monkey Flower*Hardy Perennial*

- M. luteus**—Handsome plant for moist, shady places. Grows about 10 to 12 inches high, covered nearly all summer with showy yellow blossoms\$0.50 \$ 3.50
- M. ringens**—A rare and very lovely variety with violet purple blossoms75 5.00

MONARDA—Oswego Tea*Hardy Perennial*

One of the most brilliant flowers for the border. Will grow in almost any position and spreads rapidly.

- M. didyma—Cambridge Scarlet**—A very brilliant variety and especially effective with a dark background\$0.35 \$ 2.50

MORINA—Whorl Flower*Hardy Perennial*

- M. longifolia**—A very handsome plant with spiny thistle-like foliage and tall spikes of white and rose tubular flowers in whorls. They thrive in rich, sandy loam, and require a little shade and shelter; 2 ft.\$0.50 \$ 3.50

MYOSOTIS—Forget-me-not*Hardy Perennial*

Nearly everyone is familiar with the Forget-me-not which makes such beautiful pictures in the garden in early spring. They are alike charming in the border, rock garden, or by the water side. They all require shade and a fair amount of moisture.

- M. Alpine Blue**—One of the most intense blues of all the Forget-me-nots and makes a very compact growth; 9 inches\$0.25 \$ 2.50

	Each	Per Doz.
M. Blue King —One of the richest and deepest colored blues of all the Alpine Forget-me-nots; 10 inches	\$0.35	\$ 3.50
M. alpestris —(Alpine Forget-me-not) — Bright blue; a lovely rock garden plant25	2.50
M. alpestris “Queen Victoria”—Improved dwarf variety with large flowers in clusters25	2.50
M. caespitosa —Very dwarf alpine variety of azure blue; blossoms in June. Rare75	5.00
M. lithospermifolia —Very rare variety with large, deep blue flowers75	5.00
M. palustris semperflorens —Large rich blue flowers with yellow eye. A charming plant for damp places and a more profuse bloomer than the type25	2.00
M. “ Rosy Gem ”—Dwarf and compact, with beautiful pink blossoms in great profusion35	3.50
M. rupicola —The gem of all the Alpine Forget-me-nots. Forms rosettes of beautiful foliage, covered with heads of large flowers of the most exquisite blue. Thrives especially well in moraine75	5.00
M. “ Ruth Fisher ”—A fine new hybrid of compact habit, with dark green, glossy foliage, and large, bright blue flowers50	3.50
M. “ Spring Beauty ”—A beautiful early flowering variety of compact habit and charming light blue flowers; 10 inches35	3.50
M. “ Royal Blue ”—An exquisite variety of Forget-me-not, literally covered with flowers of beautiful indigo blue in long sprays. A mass of this makes a sight not to be forgotten. Fine for cutting; 12 inches25	2.50
M. “ White Lady ”—A beautiful variety, covered with clusters of white flowers, having a small, striking, yellow eye; 10 inches25	2.50

Each Per Doz.

MYRRHIS—Myrrh*Hardy Perennial*

- M. odorata**—The Sweet Cicely of English gardens. A very attractive plant having finely cut foliage resembling a large fern, and bearing panicles of lace-like white bloom in early spring. Very valuable as a background for spring blooming bulbs\$0.75 \$ 5.00

NEPETA—Catmint*Hardy Perennial*

- N. Mussini**, "Dark Var."—A new variety with deep blue flowers. Very handsome\$0.50 \$ 3.50
- N. nuda**—A novelty received from Switzerland. Rather dwarf and compact grower50 3.50

ŒNOTHERA—Evening Primrose*Hardy Perennial*

The Evening Primroses are excellent subjects for planting in sunny, exposed parts of the garden, and are especially fond of a sandy soil.

- O. acaulis**—Fine for rockery or edging in full sun and well drained position. Yellow blossoms on 6-inch stems\$0.50 \$ 3.50
- O. "Afterglow"**—Fine new variety, suitable either for border or rock garden. Clear yellow blossoms with red calyx and remaining fully open in brightest sunshine; 2 ft.50 3.50
- O. Fraseri**—Handsome yellow blossoms, freely borne for a long season. Equally useful for border or rockery; 1 ft.50 3.50
- O. fruticosa**—Large, golden yellow blossoms; 2 ft. .35 2.50
- O. Lamarckiana**—Large yellow blossoms on long spikes. Fine for border; 4 ft.35 2.50
- O. macrocarpa**—An especially fine variety for the rock garden, its lax stems being very attractive falling over the face of the rocks. Large, rich cups of yellow all summer50 3.50

	Each	Per Doz.
O. pumila —Forms neat rosettes flat on the ground, covered all summer with bright yellow blossoms. Wants both sun and sand. 4 inches.....	\$0.35	\$ 2.50
O. serrulata —Another dwarf variety with large yellow blossoms on stems six inches high35	2.50
O. speciosa —Large, pure white flowers, about 3 inches across35	2.50
O. taraxacifolia —Forms a spreading tuft of leaves close to the ground, from which spring twisted stems bearing very large white blooms, turning to pink with age. Very attractive75	5.00

PAPAVER—Poppy

Hardy Perennial

P. alpinum —Like a small and more delicate Iceland Poppy having flowers of white, pink, orange or yellow and often delicately fringed. Transplants best when quite small. True stock, from Switzerland	\$0.50	\$ 3.50
P. nudicale —Iceland Poppy—A native of the Arctic regions and mostly yellow flowered. Very showy and excellent for cut flowers.....	.35	2.50
P. pilosum —Very attractive Alpine with showy orange flowers35	2.50
P. orientale —Gorgeous subjects for the hardy border and very easily grown. The new shades of pink are exquisite and harmonize with other plants in the garden which the older orange scarlet shades do not always do.		
P. Finest mixed seedlings, from named varieties..	.35	2.50
P. bracteatum —Rich blood red50	3.50
P. "Mahoney"—Deep mahogany color. Very handsome50	3.50
P. "Mrs. Perry"—Orange apricot shade50	3.50
P. "Princess Victoria Louise"—Lovely shade of silvery pink50	3.50

Each Per Doz.

PARONYCHIA—Whitlow-Wort*Hardy Perennial*

Creeping plants, related to the Pinks and requiring poor soil and hot sun. Fine for carpeting.

P. argentea —Lovely carpeting plants for hot, dry places in sandy soil. Inconspicuous blossoms.....	\$0.50	\$ 3.50
P. Kapela —Greyish foliage. Fine for carpeting. Silver-headed blossoms in little clusters. Very choice75	5.00
P. serpyllifolia —Perfectly prostrate; tiny foliage and flowers with glistening bracts of white. Rare75	5.00

PENTSTEMON—Beard Tongue*Hardy Perennial*

Few border plants are more useful than the Pentstemons. Graceful in habit, free flowering and easily grown, they add much to the beauty of any garden. The dwarf varieties are especially fine for the rock garden. Given rich, light soil and plenty of sun, they will all flourish amazingly.

P. cyananthus Brandegei —A dwarf and very beautiful variety, especially suited to the rock garden. Deep blue blossoms on stems about 9 inches in height	\$0.50	\$ 3.50
P. barbatus Torreyi —A fine variety for hardy garden with long spikes of brilliant scarlet blooms; 3 to 4 feet35	2.50
P. glaber —Glaucous foliage and flowers of lovely clear blue on spikes about 18 inches high.....	.35	2.50
P. g. roseus —A variety of the Western species with rosy pink blossoms50	3.50
P. Gordoni splendens —A superb variety of <i>P. glaber</i> . Erect spikes of brilliant deep blue flowers; 3 ft.75	5.00
P. gracilis —Dwarf variety with lovely lilac bugles. Prefers moist situation. 1 foot. August	.50	3.50

	Each	Per Doz.
P. heterophyllus —One of the best. Spikes of exquisite sky blue blossoms, shaded amethyst; 1 ft. True variety	\$0.75	\$ 5.00
P. pygmaeus —Very dwarf, only 6 inches high. Flowers of clear blue from July to September....	.75	5.00
P. secundiflorus —Spikes of bloom about 2 feet tall, of a beautiful, glaucous blue50	3.50
P. speciosus —An improved variety of <i>P. glaber</i> ; more erect and looser spire of bloom. Choice. 2 ft.50	3.50

HARDY PHLOX

Hardy Perennial

These beautiful hardy border plants are among the most effective things in the garden during the late summer and fall months. The varieties have been much improved during the past few years, both as to color and size of pip. To be at their best, they require soil which has been deeply enriched and plenty of water during the blooming period. It is also well to remember that they should never be allowed to go to seed and should be divided every three years, or they will become small and in not a few cases, change their color.

We have tried to confine our list to the very best of the numerous varieties offered and can safely say there is not a poor variety in the lot.

Athis —Deep, clear salmon. Very fine.....	\$0.35	\$ 2.50
Antonin Mercie —Clear lilac with white eye. Extra large and very handsome.....	.35	2.50
B. Comte —Deep, rich red.....	.35	2.50
Caran d'Ache —Bright carmine rose with deeper eye. Large flower.....	.35	2.50
Eclaircur —Carmine suffused with salmon. Enormous truss and flower. Extra fine.....	.35	2.50
Elizabeth Campbell — One of the finest. Large flower and spike. Bright salmon pink with dark red eye50	4.00
Eugene Danzanvillier —Lilac, shading to white at the edges35	2.50

	Each	Per Doz.
Europa —A new variety, white with large crimson-carmine eye. Very large flower and truss.....	\$0.35	\$ 2.50
Frau Anton Buckner —The finest white phlox. Strong habit and flowers of an enormous size.....	.35	2.50
Gefion —Peach blossom pink with rose eye. Very large and fine.....	.35	2.50
Gen. Von Heutz —Bright salmon red, white eye....	.35	2.50
Independence —Large, early flowering white. Tall	.35	2.50
Jeanne d'Arc —Good late flowering pure white. Very free bloomer.....	.35	2.50
Le Cygne —Pure white, large trusses and flower. Very late35	2.50
LeMahdi —Dark purple violet. Late.....	.35	2.50
Lord Raleigh —Dark, purplish mauve. Fine variety35	2.50
Louise Abbema —Very large, pure white dwarf.....	.35	2.50
Mme Pape Carpentier —Brilliant cherry.....	.35	2.50
Mme. Paul Dutrie —Very soft, delicate pink. Flowers very large, immense panicle.....	.35	2.50
Miss Lingard —An early flowering variety, beginning in June and continuing all summer. White, with faint lilac eye and handsome, deep green foliage. It is a most popular variety for planting in masses.....	.35	2.50
Mrs. Chas. Dorr —Rich lavender.....	.35	2.50
Mrs. Jenkins —Pure white, enormous truss. Free bloomer and one of the best white varieties.....	.35	2.50
Rheinlander —Beautiful salmon pink. Large flowers and trusses.....	.35	2.50
Rosenberg —Bright reddish-violet with blood-red eye. A most striking variety.....	.35	2.50
R. P. Struthers —Bright rosy-carmine with claret-red eye. Very brilliant.....	.35	2.50
Rynstrom —Beautiful rose pink. Extra fine.....	.35	2.50
Selma —Light rose with crimson eye. Very large bloom and truss.....	.35	2.50

	Each	Per Doz.
Tapis Blanc —Very dwarf white with large flowers and trusses. Finest dwarf white variety.....	\$0.50	\$ 3.50
Thor —Deep salmon pink. Very large blooms.....	.50	4.00
Von Lassburg —Pure white; very large individual flowers35	2.50
Wanadis —Violet, rayed white, purple eye. Very large and fine.....	.35	2.50
W. C. Egan —A most beautiful variety of soft pink with bright red eye. Immense flower and truss. Very fine35	2.50
Widar —Purple violet with very large white center	.35	2.50
PHLOX amœna —Large, deep rose flowers in May and June. Very showy; 4 inches.....	.35	2.50

PHLOX SUBULATA—Moss Pink

Hardy Perennial

The creeping Phloxes are easily grown in full sun and make a very valuable addition to either the hardy garden or rockery because of their sheets of color in early spring.

They form creeping masses of moss-like foliage, smothered with large, brilliant flowers. We list a few of the best.

P. Daisy Hill —Large, deep rose blossoms.....	\$0.35	\$ 2.50
P. G. F. Wilson —Delicate blossoms of pale lilac....	.35	2.50
P. The Bride —Purest white.....	.35	2.50

PHYSOSTEGIA—False Dragon-Head

Hardy Perennial

P. virginica grandiflora —A plant much valued for hardy borders, blooming as it does in August when flowers are scarce. In good deep soil, will attain a height of over seven feet; bears long spikes of bright but soft pink flowers.....	\$0.35	\$ 2.50
P. virginica grandiflora alba —Pure white, very attractive35	2.50

Each Per Doz.

PHYTEUMA—Horned Rampion

Hardy Perennial

A small race of Alpine plants from the Mountains of Europe and Western Asia. Very frail in appearance, with balls of bloom quite unlike any others. They are all very rare but thrive well in sandy peat and loam, with perfect drainage.

P. hemispræricum —Grass-like foliage, forming small tufts. Flowers like tiny clear-blue, soda-water bottles with protruding, forked stigma. Very unusual in effect and very choice.....	\$0.75	\$ 7.50
P. Michelli —Spikes of pale blue flowers on six inch stems. Very dwarf.....	.75	7.50
P. Scheuchzeri —One of the choicest Alpines, forming close masses of deep green foliage and bearing graceful balls of deep blue on foot high stems in July. Very rare.....	1.00	7.50
P. s. Charmelii —A rare variety of P. Scheuchzeri, smaller in all its parts.....	1.00	7.50

PLATYCODON—Chinese Bellflower

Hardy Perennial

These are closely allied to the bellflower family and derive the name of "Balloon Flower" from the shape of the buds. They enjoy a very rich, loamy soil and are most attractive plants for the border, bearing blue blossoms for about a month or six weeks, beginning about the middle of July. They are best planted when quite young, as they do not bear disturbing after once established. Start into growth very late in the spring.

P. Maresii —A splendid variety of dwarf habit with very large flowers of a purplish blue color....	\$0.35	\$ 2.50
P. Grandiflorum —Very handsome variety, about 2 feet high, blooming in July and August. Flowers a deep blue two or three inches across.....	.35	2.50

POLEMONIUM—Jacob's Ladder

Hardy Perennial

Excellent border plants with striking handsome and effective blossoms. The foliage is also very handsome, closely resembling some of the ferns. They flourish in rich, deep, well-drained loam and prefer partial shade.

P. Berniac —A much improved variety of <i>P. cæruleum</i>	\$0.50	\$ 3.50
P. cæruleum grandiflorum —A very large form of <i>P. Cæruleum</i> having long spikes of large blue blossoms35	2.50
P. cæruleum grandiflorum album —A fine white form of the above.....	.35	2.50
P. carneum —Fern-like foliage with masses of flesh-colored bells in midsummer; 1 to 2 ft.50	3.50
P. confertum —A treasure from the highest Alps of the Rockies. Very dwarf, the flower stems of about 8 or 10 inches high bearing dense heads of beautiful saucer-like bells of clear, rich blue. A gem for the rockery.....	.75	7.50
P. humile —Very pretty with pale blue blossoms, white in the throat, on stems of six inches.....	.75	5.00
P. reptans —Lovely bells of pale blue on slender stems. Trailing growth. Very choice and very rare75	7.50
P. Richardsoni —Masses of beautiful, sky-blue blossoms; 18 inches.....	.35	2.50

POTENTILLA—Strawberry Flower

Hardy Perennial

Very effective plants for the hardy garden with strawberry-like leaves and showy blossoms which continue for a long period. Easily cultivated, doing well in an open position. Fine for cutting.

P. alpestris —Erect growing with large, pale yellow blossoms. Fine for sunny positions.....	\$0.50	\$ 3.50
--	--------	---------

	Each	Per Doz.
P. crinita —Very handsome, silky white foliage. Large yellow blossoms on stems about fifteen inches high	\$0.75	\$ 5.00
P. Friedrichseni —Lovely tiny bushes about ten inches high. Small, attractive foliage and graceful weeping habit. A profusion of yellow blossoms from May to September. Especially suited to the rock garden.....	.75	5.00
P. nepalensis —Beautiful rose color.....	.35	2.50
P. pygmeaa —Very beautiful variety for a choice place in the rock garden. Forms a rosette of handsome foliage from which bursts a perfect fountain of white blossoms on slender stems all through the summer.....	.50	3.50
P. pyrenaica —A choice variety from the Pyrenees with lovely golden blossoms, one or two to the stem and suitable for the rockery or perennial garden35	2.50
P. rupestris —A very beautiful variety with stems about one foot high bearing beautiful, clear white blossoms. Very choice.....	.50	3.50
P. Saxifraga —Dark green foliage and dainty white blossoms on two inch stems. Both rare and beautiful75	7.50
P. Thurberi —A luxuriant species with prostrate leaves and blood red blossoms. Very showy in a sunny, well-drained spot, either in rockery or perennial garden35	2.50

POLYANTHUS—Bunch Primrose

Hardy Perennial

The Polyanthus is an indispensable spring flower and should be used largely in flower beds and borders, also wild gardens and rockeries. It likes an open, half-shady position in rich soil and under such conditions will bear flower stems a foot high.

P. Exhibition Blue —A very beautiful strain, having flowers from deep to light blue.....	\$0.75	\$ 5.00
P. Gold Laced —Wide range of colors, all beautifully laced with gold.....	.50	3.50

	Each	Per Doz.
P. Exhibition White —A very fine, large-flowered pure white, with striking yellow eye.....	\$0.50	\$ 3.50
P. "Mrs. Berkeley" —A new strain of bunch Primrose, with remarkably large blossoms and clear colors75	5.00
P. Munstead Strain —In shades of yellow, from cream to dark orange, selected and perfected by Miss Jekyll of England.....	.50	3.50
P. Pink and Red Shades —Very handsome, ranging from light to dark red, with yellow eye.....	.50	3.50

PRIMULA—Primrose

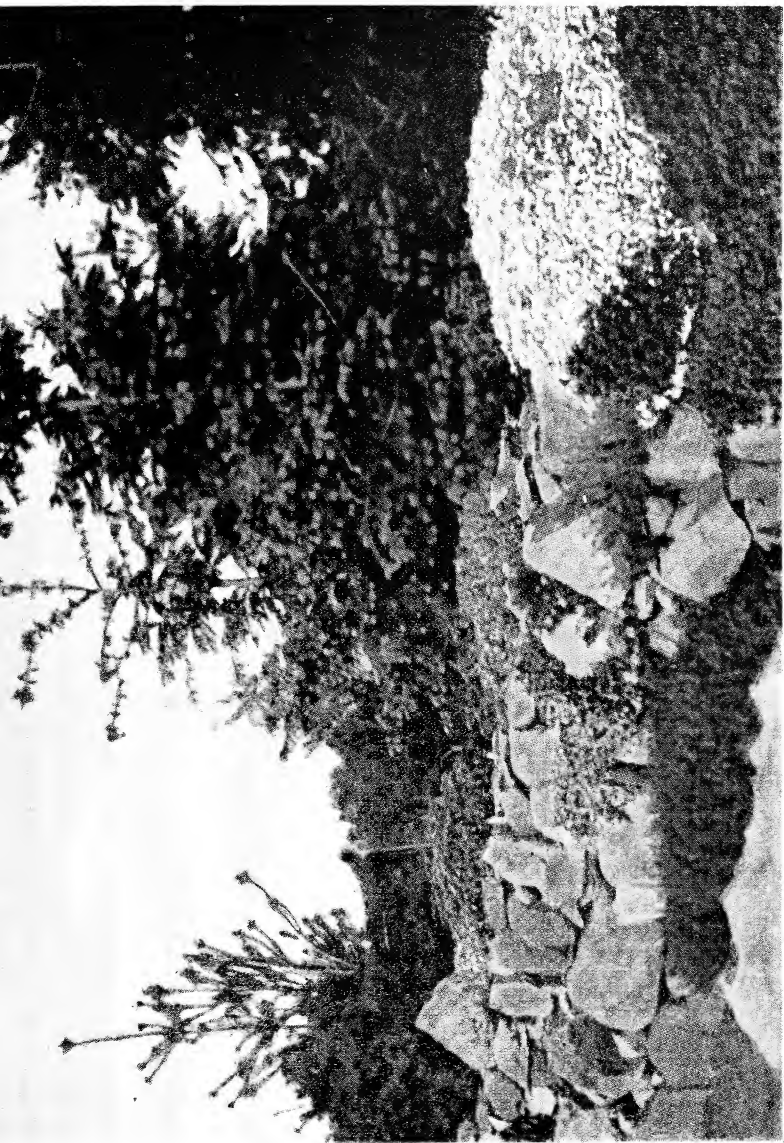
Hardy Perennial

A race of plants little known in America, but forming one of the most attractive features of the spring garden. They are perfectly hardy in our Michigan climate and once established are as sturdy as our oaks. The different varieties range in size from one inch to three feet, and in time of blooming, from early April until late summer.

Do not try to compel Primroses to grow in hot, sandy places for you will only meet with failure. They need at least partial shade and while they enjoy moisture at the roots, they must have good drainage or they will rot at the crown. Also be particular when planting that no dirt is left on the crown, as it seems to smother them.

We have found hard coal cinders excellent for drainage. In fact, the majority of rock plants seem to like a few cinders mixed with the soil.

- | | | |
|---|--------|---------|
| P. acaulis —The much beloved English Cowslip. Loves cool, shady situations. Mixed colors..... | \$0.50 | \$ 3.50 |
| P. acaulis carnea —A fine red variety of the Cowslip | .50 | 3.50 |
| P. auricula alpina —One of the treasures of the rock garden. The growth is very attractive, forming rosettes of thick leaves, sometimes farinose or mealy. From these rosettes the flower stalks rise to a height of six or eight inches, bearing heads of bloom of various colors and exceedingly fragrant. | | |



CAMPANULA-GARGANICA—W. H. PAINE
SEDUM ANGLICUM

SEDUM DASYPHYLLUM
SEDUM LAGGERI
JUNIPERUS-JAPONICA

GYTSOPHILIA REPENS
GYTSOPHILIA REPENS, RGSEA



Each Per Doz.

Their native home is in the rocks, where they are constantly supplied with moisture at their roots. Give them a mixture of peat, leaf mould, and sandy loam, with plenty of stones mixed.

Our strain is from the great *Primula* specialist in Scotland and comprises a wide range of colors

\$0.75 \$ 5.00

- P. auricula Mrs. S. Robinson**—A very handsome variety with large heads of deep yellow flowers.... **.75 5.00**
- P. auricula Palinura**—Very rare species of the *Auricula*. Light green rosettes, powderless, with flower stems eight to twelve inches high carrying a bunch of deep yellow blossoms. Very fragrant **.75 7.50**
- P. "Asthor"**—Coppery old rose flowers, tinged with heliotrope and shading deeper to the yellow eye **.75 7.50**
- P. Beesiana**—Distinct type of *Bulleyana* and *pulverulenta* but later than either, with flowers of various shades of purple with yellow eye; 3 ft. **.75 5.00**
- P. Bulleyana**—A beautiful species from Yunnan. Flowers rich golden yellow, shaded orange buff, borne in whorls on stiff stems. 2 ft. **.75 5.00**
- P. Bullesiana Hybrids**—A new strain of Hardy Primulas with the constitution of *P. Japonica*, resulting from the crossing of *P. Bulleyana* and *P. Beesiana*. Colors range from cream to many shades of yellow, orange, purple, lilac, pink and crimson. They are very hardy and prefer a half shaded position that is fairly moist..... **.75 5.00**
- P. capitata**—Producing dainty heads of handsome violet blue flowers, dusted with a white mealy powder. Likes a partially shaded, moist position; late. 1 ft. **.75 5.00**
- P. capitata Mooreana**—A much stronger growing form with stalwart stems and ample heads of Tyrian violet flowers..... **.75 7.50**
- P. calycina**—Pointed glossy leaves and large heads of showy rose-purple flowers. 4 inches..... **.75 7.50**
- P. cashmiriana**—Flowers much the same as *denticula* but of a deep purple **.75 5.00**

	Each	Per Doz.
P. <i>chionantha</i> —A new species from China. Tall, white powdered stems, bearing fragrant white flowers with blackish center	\$1.00	\$10.00
P. <i>Cockburniana</i> —A lovely species recently introduced from Western China, bearing scarlet flowers in whorls; very striking. Makes a wonderful combination of color planted with <i>Bulle-yana</i> . 1 ft.75	5.00
P. <i>cortusoides</i> —A distinct Siberian species, with soft, wrinkled heart-shaped leaves. Flowers in early summer, deep rose. Prefers light, rich, well-drained soil, in a sunny position, in border or rockery; 10 inches75	5.00
P. <i>crispil</i> —Rosettes of deep, olive green with large heads of vivid crimson blossoms. Very new	1.00	7.50
P. <i>denticulata</i> —Very handsome, large flower heads, in various shades of lilac. One of the first to bloom. Prefers a moist, shady position; 2 ft.75	5.00
P. <i>denticulata alba</i> —A beautiful white form of the above; 2 feet75	5.00
P. <i>elatior</i> —(True Oxlip) — Bardfield Yellow — Rich deep yellow50	3.50
P. <i>farinosa</i> —Silvery foliage and rosy purple flowers; 1 foot75	5.00
P. <i>Forresti</i> —A beautiful variety recently introduced from China. Flowers on slender stems, deep orange, and very fragrant. Prefers well drained, half shady position in rock garden.....	.75	7.50
P. <i>frondosa</i> —Similar to <i>farinosa</i> , with rosy lilac blooms75	5.00
P. <i>glycosma</i> —Fine species for damp or boggy situations. Deep purple flowers on strong stems of 18 inches75	7.50
P. <i>Helodoxa</i> —A superb variety from China, belonging to the Japonica class. Soft, rich, yellow flowers in whorls, on tall stems. Prefers moist situation. Very choice75	7.50
P. <i>involucrata</i> —Lovely in a damp, shady place; umbels of white, drooping flowers. 1 ft.....	.75	7.50

	Each	Per Doz.
P. Japonica Hybrids —A fine strain of this beautiful Primrose in shades of crimson. Extra fine strain	\$0.50	\$ 3.50
P. “Lissadell Hybrid” —A cross between pulverulenta and Cockburniana. Very vigorous with flowers of a beautiful soft vermillion; 2 ft.....	.75	7.50
P. “Ailin Aroon” —Another cross between pulverulenta and Cockburniana; flowers light scarlet....	.75	7.50
P. “Red Hugh” —Intense fiery red. Very new and exceedingly choice	1.00	7.50
P. Littoniana —One of the most striking. Flowers lilac, in spikes, with vividly contrasting buds of red	1.00	7.50
P. luteola —Heads of pale yellow blossoms about 6 inches high. Robust plant and very attractive	.75	5.00
P. minima —The smallest member of the Primrose family. Cut leaves and rose colored flowers. Very choice and rare. 1 inch.....	1.00	10.00
P. nivalis —Clusters of pure white flowers on 4-inch stems. Dark, thick leaves, forming a rosette. Very rare	1.00	10.00
P. Poissoni —Very handsome Primrose from Northern China. Light foliage and flowers of a deep purple with a bright yellow center, in whorls. June and July; 2 ft.75	5.00
P. pulverulenta —Rich crimson in color, in whorls, on stems 3 ft. high. One of the finest varieties75	5.00
P. pulverulenta, “Mrs. Berkeley” —A very beautiful form of pulverulenta, having pale, blush flowers with a saffron eye. Very choice; 3 ft....	.75	7.50
P. rosea —A handsome species, native of Kashmir. Leaves bright pale green and flowers in early spring of a bright rosy carmine, with yellow center. Prefers moist, loamy soil in rockery or on banks of streams; 6 in.75	7.50
P. Sieboldi —A lovely species from Japan, with soft, crinkled foliage and heads of lovely flowers in a wide range of colors75	5.00
P. sikkimensis —One of the loveliest of the Primroses. Umbels of drooping, soft yellow bells in June. Prefers boggy soil and shade; 1 ft.75	7.50

PYRETHRUM—Persian Daisy*Hardy Perennial*

A charming, old-fashioned flower which has been much improved during recent years by Kelway of England. They are invaluable both for cutting and for color effects in the hardy border. They are exceedingly easy of culture, asking only for well-drained soil and plenty of sun. However, they amply repay generous feeding. We are pleased to be able to offer Kelway's strain of these lovely plants\$0.50 \$ 3.50

RAMONDIA—Rosette Mullein*Hardy Perennial*

We take much pleasure in offering our patrons this very choice and interesting gem of the rock garden. The densely hairy leaves form a flat rosette, throwing scapes of exquisite violet blossoms with yellow centers.

They should be planted in a cleft of the rocks, so water cannot lodge in the crown, in a mixture of coarse sandy peat.

- R. **pyrenaica**—Densely hairy leaves, forming a flat rosette and throwing scapes of exquisite violet blossoms\$1.00 \$10.00
- R. **Nathaliae**—The Carpathian form. Brilliant, deep lilac flowers. Very scarce 1.25

ROSCŒA*Hardy Perennial*

- R. **cautlioides** — New introduction from China. Lovely flowers of soft yellow, not unlike an orchid. Foliage resembles that of an Iris. Thrives in rich woodland soil in full sun\$1.00 \$ 7.50

ROMANZOFFIA*Hardy Perennial*

- R. **sitchensis**—Kidney shaped, scalloped leaves, with small white flowers on branching stems, resembling a Saxifrage. Fine for damp spots in Rock Garden, in partial shade75 7.50

Each Per Doz.

RUDBECKIA—Cone-Flower*Hardy Perennial*

Fine plants for the hardy border and very easily grown.

R. Newmannii —Orange yellow flowers with black center, on stout, wiry stems; 2 ft.....	\$0.35	\$ 2.50
R. Purpurea (Giant Purple Cone-Flower) —Rosy purple flowers on stiff stems, 3 to 4 feet high. Very effective35	2.50
R. subtomentosa —A densely branched plant about 2 ft. high, completely covered with a mass of brilliant yellow flowers with dark centers.....	.35	2.50

RUTA—Rue*Hardy Perennial*

R. graveolens —Fine aromatic foliage of bluish green. Excellent for dry, sunny places in the garden; 3 ft.	\$0.50	\$ 3.50
--	--------	---------

SAGINA—Pearlwort*Hardy Perennial*

S. procumbens —Very valuable carpeting plant, making sheets of minute moss50	3.50
---	-----	------

SALVIA—Meadow Sage*Hardy Perennial*

S. azurea grandiflora —A most attractive plant for the border bearing exquisite pale blue spikes of flowers on stems 3 to 4 ft. tall. It prefers a rich, sandy loam in a sunny position	\$0.35	\$ 2.50
S. glutinosum —A fine perennial, growing to a height of 3 feet, with erect stems and pale yellow flowers75	5.00
S. Scleara —Strong plant with branching spikes of pale mauve flowers with reddish bracts; 4 ft. The old-fashioned "Clary" of which Miss Jekyll speaks so often. Biennial35	2.50

	Each	Per Doz.
S. <i>sylvestris alba</i> —An acquisition to the perennial garden, with its stems of 3 feet terminating in whorls of pure white bloom.....	\$0.75	\$ 5.00
S. <i>pratensis Tenorei</i> —Fine plant for border with deep blue flowers on stems of 2 feet50	3.50

SAPONARIA—Soapwort

Hardy Perennial

S. <i>caespitosa</i> —A beautiful variety from the Pyrenees. Dense rosettes with velvety buds of red, opening pink. 6 inches	\$0.75	\$ 5.00
S. <i>ocymoides "Splendens"</i> —A much improved variety of the common Soapwort. Trailing growth and a profusion of deep pink blossoms in June. Fine for sandy places in full sun35	2.50

SATUREIA—Savory

Hardy Perennial

S. <i>Montana</i> —Very choice, bushy little plants for sunny places in the rock garden. Delicate foliage with thyme-like blossoms of mauve in late summer. Eight inches	\$0.50	\$ 3.50
--	--------	---------

SAXIFRAGA—Dactyloides—Mossy Saxifrage

Hardy Perennial

The Mossy Saxifrages are ideal plants for amateurs. They form perfect little carpets of evergreen that quickly spread over the ground or cover the stones with beautiful, close-tufted verdure, which, in spring and early summer, become jeweled with sprays of blossoms in pink, white or red. Most of them are easy to grow and ordinary, well-drained, loamy ground, with which pieces of grit or stone have been mixed, suits them admirably. They prefer half shade.

S. Apple Blossom —Soft pink and white blossoms. Dwarf	\$0.50	\$ 5.00
S. <i>aquatica</i> —Handsome mossy saxifrage with very finely cut foliage and tall, branching stems bearing sprays of brilliant white flowers75	5.00

	Each	Per Doz.
S. Bathoniensis —Grows nearly a foot high, with much branched stems, and large brilliant red flowers	\$0.75	\$ 5.00
S. Blutentippich —Scarlet flowers; 6 in.....	.75	5.00
S. Guildford Seedling —Small red flowers, compact grower75	5.00
S. Magnifica —Largest flowering of all. Flowers clear crimson75	5.00
S. Rhei superba —Deep rose colored flowers; 4 inches75	5.00
S. Tapis Rouge —Rose colored flowers; 4 inches....	.75	5.00
S. tenella —Forms a dense carpet of mossy green. Cream white flowers on stems of 3 inches.....	.75	5.00
S. trifurcata —An especially handsome mossy, with deep green foliage and branching sprays of large, pure white flowers75	5.00

SAXIFRAGA—Euízoonia—SILVERY ROCKFOIL

Hardy Perennial

A class of very beautiful plants, natives of the European Alps and Arctic regions. Nearly all have lime encrustations on the foliage, making them glorious subject for the Rock Garden. They thrive in light, well drained stony loam, with a little lime added, but must be planted **flat** against the rocks in such a manner as to prevent water lodging in the crowns.

S. aezoeides —A rare variety for cool, moist soil in full sun. Masses of bright green foliage, clear yellow flowers, spotted red, on 4 inch stems	\$0.75	\$ 7.50
S. aezoon —A treasure for the Alpine garden, forming rosettes of silver beaded leaves and bearing plumes of creamy white blossoms, 8 to 10 inches high, in early summer75	7.50
S. aezoon rosea —Beautiful variety of above with rose pink blossoms on stems about 12 inches high. A real gem	1.00	7.50

	Each	Per Doz.
A. Andrewsii —Hybrid between aeizoon and umbrosa. Narrow foliage, sharply toothed, and stars of pink blossoms freckled with purple. 6 inches	\$0.75	\$ 7.50
S. apiculata —Pale green rosettes and large primrose-yellow flowers in early spring. Very beautiful and very rare	1.00	10.00
S. Bertoloni —Spiny leaved rosettes with daintily arching stems and purplish-crimson blossoms....	1.00	10.00
S. Borisii —Large, yellow flowers on stiff, erect stems of 3 inches. A gem	1.00	10.00
S. burseriana grand. — Grey-green leaves and large white flowers, almost stemless. Very choice	1.00	10.00
S. cochlearis —Dainty spikes of slightly spotted white flowers on red stems. Very silvery rosette. 6 inches75	7.50
S. Cotyledon —Large rosettes of broad, encrusted leaves and large pyramids of white flowers. The flowering rosette dies after blooming but carries on by the surrounding rosettes75	7.50
S. granulata —“Fair Maids of France”—Showers of large, white blossoms on graceful stems of 10 inches75	7.50
S. Griesbachii —Handsome, broad rosettes of silver-grey. Small flowers in crimson bracts. Very rare	1.50	
S. Gusmusii —Similar to S. Bertolonii but with paler red blossoms. Rare	1.00	10.00
S. Haussmannii —Orange copper flowers, green foliage75	7.50
S. Kolentiana —Distinct, pointed, incurved rosettes. Lovely pink flowers in dark-red calyx. 9 inches	1.00	10.00
S. lantoscana —Arching sprays of creamy white flowers. Very fine. 12 inches75	7.50

	Each	Per Doz.
S. longifolia —Called the "Queen of Saxifrages." Beautiful encrusted rosettes, lovely enough in themselves; but the crowning glory is the immense panicle of white bloom, 1 to 2 feet long. Should be planted flat against the rock. Our stock is direct from the Pyrenees Mountains.....	\$0.75	\$ 7.50
Extra large specimens	1.25	
S. Macnabiana —Another very choice encrusted, requiring same treatment as all the Euaeizoons. Panicles of white blossoms, spotted red.....	.75	7.50
S. marginata —Bunches of white flowers and frosted leaves. One of the finest	1.00	10.00
S. porophylla —Small grey rosettes and arched, crimson flower heads. Very rare	1.00	10.00
S. Stribnryi —Handsome, large silvered rosettes. Hairy spikes of purple flowers with red bracts and stems. Very choice	2.00	
S. Schotti —One of the finest. Branching spikes of pale, reddish purple; hairy bracts and stems.	2.00	
Splendens —(longifolia x Cotyledon)—One of the very choice hybrids of the encrusted section. It has more of the longifolia rosette and the looser inflorescence of the Cotyledon parent. A most attractive plant for the rock garden, the silvery edging of the leaves being most interesting. Plant in loamy soil, with plenty of grit; limestone, if possible. Top dress with coarse gravel..	1.00	7.50
S. Stuarti —Bells of clear yellow on branching, hairy spines. Small grey rosettes	1.50	
S. thessalica —Foliage similar to <i>S. burseriana</i> . Pink flowers and conspicuous red bracts. Very choice75	7.50
S. umbrosa —"London Pride"—Spikes of white flowers, spotted pink, and dark green foliage. Very fine75	7.50

SAXIFRAGA—Megasea

Hardy Perennial

A most effective class of plants having broad, deep green foliage which takes on most beautiful

Each Per Doz.

tints in the fall. They are perfectly hardy, their only demand being stones around the roots, which makes them very desirable for the rock garden. The flowers are borne on stout stems well above the foliage and are very handsome, ranging in color from palest pink to rose and purple. We are able to offer Smith's hybrids, which are the finest grown\$0.50 \$ 3.50

SCABIOSA—Blue Bonnet

Hardy Perennial

- S. *caucasica*—Beautiful soft blue blossoms on long stems from June to August. Fine for cutting\$0.50 \$ 3.00
- S. c. "*Magnifica*"—New. Very beautiful variety of perfect form and substance. Exquisite shade of sparkling blue, the stamens tipped with pink 1.00 10.00
- S. c. "*Rosamond*"—Almost identical with "*Magnifica*" except in color, being a true silver blue.. 1.00 10.00
- S. *graminifolia*—Dwarf habit, flowers pale violet; 18 inches75 5.00
- S. *gigantea*—Very large sulphur yellow blossoms on sturdy stems five feet high50 3.50
- S. *ochroca*—Sulphur flowers and finely cut foliage. Blooms in August and September; 6 ft..... .75 5.00
- S. *vestita*—Very dwarf variety with lovely lavender blossoms. Very rare75 5.00

SCUTELLARIA—Helmet Flower

Hardy Perennial

- S. *alpina*—Handsome lip-worts with whorled sprays of violet blossoms. Light soil in full sun; 12 to 18 inches.....\$0.50 \$ 3.50
- S. *japonica*—Greyish foliage with large trumpets of deep purple..... .50 3.50

Each Per Doz.

SEDUM—Stonecrop*Hardy Perennial*

The dwarf varieties are charming plants for sunny positions in the rockery, etc., and the taller kinds make effective color groups in the border. They thrive in almost any soil. They are especially fond of sand and full sun.

S. album —Foliage green. Small white flowers. Three inches	\$0.25	\$ 2.00
S. anglicum —A very choice variety of Sedum with delicate pink, feathery blossoms. It is reputed hard to grow but has been most rampant with us in a sandy soil and full sun. A gem for the rockery50	3.50
S. corsicum —A form of <i>S. dasyphyllum</i> with spraying branches of slightly hairy foliage. Very choice75	5.00
S. dasyphyllum —A rare variety from Southern Europe, having fat, glaucous blue leaves set tight on their 3-inch stems. Slightly resembles <i>S. anglicum</i> but bluer. Flower pink and very profuse50	5.00
S. Ewersi —Grey foliage and attractive growth. Rosy lilac flowers. Choice50	3.50
S. kantschaticum —Foliage deep green, coarsely toothed, numerous yellow flowers in flat heads; 6 inches35	2.50
S. Laggeri —Attractive new species, with orange flowers. 1 ft.35	2.50
S. lydium —Pink blossoms; bronzy green tufts. Four inches35	2.50
S. glaucum —Same growth, except that the foliage is a glaucous green.....	.50	3.50
S. maximum —Tall, robust species, foliage purplish, flowers whitish. 2 ft.35	2.50
S. monstrosum —Yellow blossoms; 1 ft.35	2.50
S. oppositifolium —Similar to <i>S. spurium</i> but the pinkish white blossoms are broader. 1 ft.35	2.50

	Each	Per Doz.
S. pilosum —The gem of the species. Densely downy rosettes with heads of brilliant rose-colored blossoms on two inch stems.....	\$0.75	\$ 7.50
S. pulchellum —One of the prettiest of the family, with trailing stems and bright red flowers, like a starfish; 5 inches. The true variety75	5.00
S. purpurascens — Purplish foliage and pinkish-purple flowers. 15 inches.....	.35	2.50
S. reflexum —A variety with green leaves and yellow blossoms. 8 to 10 inches high.....	.35	2.50
S. rupestre —Prostrate grower with reddish stems and heads of brilliant golden flowers. 6 to 10 inches50	3.50
S. Selskianum —Heads of yellow blossoms in July. 18 inches35	2.50
S. Sieboldii —Handsome glaucous foliage and bright pink flowers in September. 6 inches.....	.50	3.50
S. spathulatum —Bright yellow flowers; gray rosettes. 6 inches.....	.35	2.50
S. spurium —Prostrate habit with heads of pinkish white flowers. 6 inches.....	.35	2.50
S. spurium splendens —Creeping habit with umbles of rosy pink flowers.....	.35	2.50
S. stoloniferum — Long, rooting stems, blunt leaves, scalloped at their edges, ending in heads of pink flowers.....	.35	2.50

SEMPERVIVUM—Houseleek

Hardy Perennial

Interesting plants for hot, dry situations, especially for the rock garden. Extremely attractive foliage.

S. arachnoideum —Small rosettes, covered with fine, cobweb-like down	\$0.35	\$ 2.50
S. Calcareum Large rosettes of glaucous green leaves with red points.....	.50	4.00
S. Funckii —Small rosettes of brilliant emerald green and spikes of red flowers.....	.35	2.50

	Each	Per Doz.
S. glaucum —Pale glaucous green leaves. Large rosettes	\$0.50	\$ 3.50
S. globiferum —Bright green leaves, tipped red-brown. Small rosettes.....	.35	2.50
S. Pittonii —Tongue shaped leaves, tipped purple. Extremely rare75	5.00
S. rubicundum —Large rosettes of dull red leaves, tipped green75	5.00
S. Schotti —Ruby tinted species. Very fine.....	.50	3.50
S. tectorum —Common Houseleek—Large green leaves, pale red flowers.....	.35	2.50

SENECIO—Groundsel

Hardy Perennial

Excellent plants for low, moist places in the hardy garden and for edges of ponds, etc.

S. Clivorum —Grand wild garden or water-side plant from China. Bold foliage and large heads of deep, golden-yellow flowers.....	\$0.50	\$ 3.50
S. Doronicum —A fine species from the higher Alps. Stiff leaves with large flowers of rich, deep orange75	5.00
S. macrophyllum —A vigorous plant, reaching 4 feet in height. Large panicles of deep yellow blossoms. Beautiful glaucous foliage.....	.50	3.50
S. Tyrolensis —Very choice variety for the Rock Garden. Very dwarf and compact, with splendid heads of brilliant orange.....	.75	7.50

SILENE—Catchfly

Hardy Perennial

A charming class of plants for the rock garden. They are closely allied to the Pink family and require much the same treatment. They bloom nearly all summer and are very desirable additions to the rockery.

S. acaulis —Close cushions of foliage, spangled with tiny pink, stemless flowers in June. Very choice	\$0.75	\$ 5.00
--	--------	---------

	Each	Per Doz.
S. alpestris —A charming Alpine plant with pure white blossoms on wiry stems from three to four inches high	\$0.50	\$ 3.50
A. alpestris fl. pl. —Neat, double white flowers and compact, deep green tufts.....	.75	5.00
S. Lerchenfeldianum —Blue-grey foliage, trailing habit, with delicate stems of clear pink stars. Lovely75	5.00
S. menachorum —Very dwarf variety for cool rocks. White blossoms on two-inch stems all through the summer. Rare.....	.75	5.00
S. pumilio —Lovely little plant with bright rose-colored flowers and shining foliage. 2 inches....	.75	7.50
S. quadrifida —Fine for damp and partially shady spots in Rock Garden. Branching, airy stems of four or five inches with a shower of pure white blossoms75	5.00
S. saxifraga —A choice Alpine of mossy growth. Flowers white, in great profusion.....	.50	3.50
S. Schafta —Very showy variety of tufted growth and covered with rosy purple flowers in July and August35	2.50

SOLDANELLA—Moonwort

Hardy Perennial

Charming subjects for the Alpine garden. Natives of Switzerland, they are perfectly hardy and thrive well in moist, cool soils.

S. alpina —One of the gems of the rock garden. Round, leathery leaves, forming large mats from which spring many stems bearing wide fringed blossoms of violet in early spring. Very beautiful and very choice	\$1.00	\$10.00
S. pusilla —Long, slender little bells, toothed at edge, of dainty lavender on two inch stems. Extremely rare	1.00	

SPIREA—Meadow Sweet

Hardy Perennial

Lovely border plants with attractive foliage and feathery plumes of flowers. Especially fine for damp situations.

S. aruncus —Long, feathery panicles of white flowers in June. 4 feet.....	\$0.50	\$ 3.50
S. palmata elegans —Plumes of light pink blossoms. 3 feet.....	.50	3.50
S. ulmaria fl. pl. —Double white flowers in June and July. 3 feet.....	.50	3.50

STACHYS—Woundwort

Hardy Perennial

S. lantana —Handsome silvery white foliage with stalks of bloom about a foot high, purple, borne in the axils of the leaves. Very valuable for color contrast in the border and especially handsome planted with pink Canterbury Bells.....	\$0.35	\$ 2.50
--	--------	---------

STATICE—Sea Pink

Hardy Perennial

S. Gmelini —Fine glaucous blue leaves and large panicles of dark purple blossoms. Dwarf habit. Rare	\$0.75	\$ 5.00
S. latifolia —Great Sea Lavender—Fine for border. Branching sprays of bloom of a purple blue color. Fine for winter bouquets.....	.35	2.50
S. limonium —Large leathery leaves with sprays of bluish purple flowers. Very handsome.....	.50	3.50
S. "Silver Cloud" —Lovely plant for the hardy border. Branching stems with myriads of pearl white flowers. Very useful for winter bouquets50	3.50

STOKESIA—Stokes' Aster

Hardy Perennial

A handsome, vigorous plant, with heads of flowers about 1½ inches across, from July to September. Fine for cutting.

- | | | |
|---|--------|---------|
| S. cyanea —Very handsome lavender blue flowers.
Prefers full sun..... | \$0.35 | \$ 2.50 |
| S. cyanea alba —Pure white variety of the above | .35 | 2.50 |

SYMPHYANDRA

Hardy Perennial

Excellent plants, for cool, moist situations in the Rockery, belonging to the Bellflower family.

- | | | |
|---|--------|---------|
| S. pendula —A treasure for the rock garden, forming large mounds of bright green foliage and in August producing multitudes of bells of cream white of a wonderful translucent quality. Very hardy and of vigorous growth..... | \$0.75 | \$ 5.00 |
|---|--------|---------|

THALICTRUM—Meadow-Rue

Hardy Perennial

The Meadow Rues are among the most beautiful plants in the garden. Their foliage is finely cut and closely resembles the Maidenhair Fern, while the blossoms lend a light and feathery grace to their surroundings. They are fine for cutting and the foliage is most useful mixed in bouquets. They prefer a rich loam and rather moist position.

- | | | |
|--|--------|---------|
| T. adiantifolium —Very beautiful with miniature white flowers through July..... | \$0.35 | \$ 2.50 |
| T. alpinum —The tiniest of the family, with delicate leaves and tiny stems of four or five inches. Flowers very inconspicuous, of a greenish white. Very rare | .75 | 7.50 |
| T. aquilegifolium —Feathered Columbine. Handsome foliage; sepals white, stamens purple. 3 ft. | .35 | 2.50 |
| T. aquilegifolium atropurpureum —Graceful foliage and masses of rosy purple flowers. 3 ft..... | .35 | 2.50 |

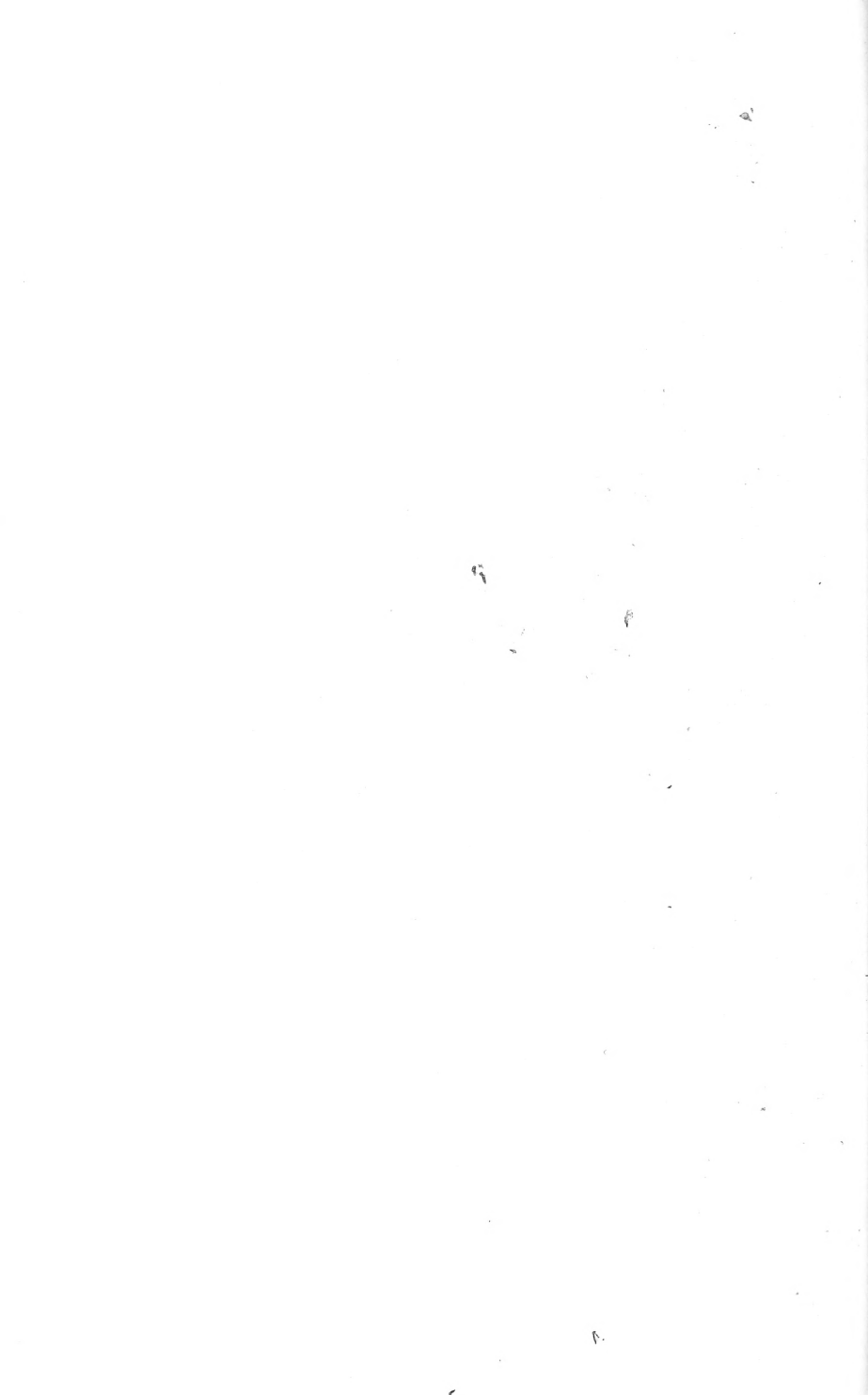


AURICULA ALPINA

SEDUM CORSICUM

WAHLENBERGIA DALMATICA

CAMPANULA TOMMASINIANA



Each Per Doz.

T. Delavayi —Bluish green foliage and lilac flowers with sulphur stamens	\$0.50	\$ 4.00
T. diptercarpum —A very distinct species, with flowers of a beautiful rosy lilac and long, lemon yellow stamens and anthers. The plant grows four to five feet high and is one of the gems of the garden50	3.50
T. glaucum —Finely cut foliage and pale yellow flowers in July and August.....	.35	2.50
T. minus — Very dwarf with fern-like foliage. True50	3.50

THERMOPSIS—False Lupin

Hardy Perennial

T. caroliana —A showy plant for the hardy border, bearing long spikes of yellow, pea-like blooms in June. Very effective planted with Delphiniums	\$0.35	\$ 2.50
--	--------	---------

THYMUS—Thyme

Hardy Perennial

T. nitidus —A most distinctive variety. Covers itself with a cloud of rosy lilac flowers in June. Very choice. 10 inches.....	\$0.75	\$ 5.00
T. lanuginosus —Woolly foliage and bright pink flowers35	2.50
T. odoratus —Lemon scented Thyme.....	.35	2.50
T. Serpyllum —Very desirable creeping plant for the rockery. Foliage dense of a handsome dark green; clouds of delicate purple flowers.....	.35	2.50

TUNICA—Coat Flower

Hardy Perennial

T. saxifraga — Beautiful little prostrate rockery plant with rose colored flowers.....	\$0.35	\$ 2.50
T. sax. compacta —Very dwarf form, especially desirable for the small rock garden. Very new75	5.00

TROLLIUS—Globe Flower

Hardy Perennial

Beautiful spring blooming plants, for damp, shady places.

T. aurantiacus —Bright orange yellow.....	\$0.75	\$ 5.00
T. europæus —Deep bronze foliage and pale yellow flowers. 2 feet.....	.75	5.00
T. Golden Globe —Lovely bright yellow blossoms75	5.00
T. Orange Globe — Globular flowers of rich orange. Fine75	5.00
T. Orange Prince —New variety of great beauty....	.75	5.00
T. Spring Beauty - -Another fine new variety of a lovely yellow ..	.75	5.00
T. Yunnanensis —Large, clear yellow blossoms. Fine. 1 foot.....	.75	5.00

VALERIANA—Valerian

Hardy Perennial

One of the most popular of the old-fashioned garden flowers and of the easiest culture.

V. officinalis (Garden Heliotrope) —Very fragrant, pinky-lavender flowers in June.....	\$0.35	\$ 2.50
---	--------	---------

VERBASCUM—Mullein

Hardy Perennial

Verbascums, commonly known as Mulleins, have been greatly improved in recent years. We know of no plants more noble or picturesque than these newer varieties. Their pyramidal spikes, towering up among other border plants are just the flowers to give the whole border a light, graceful and most natural appearance.

Roots should be given a good, deep soil, but well drained and very sandy. When the stems are cut down in the fall cover the crowns well with ashes or sand. The crown may sometimes appear

	Each	Per Doz.
to be dead, but the roots are still alive and should not be disturbed.		
V. chaixii —A fine border plant with long spikes of yellow flowers.....	\$0.35	\$ 2.50
V. chaixii album —A beautiful white flowered counterpart of the above.....	.50	3.50
V. giganteum —A noble species with handsome silvery foliage and spikes of golden flowers. 10 ft.35	2.50
V. Harkness' New Hybrid —A handsome new mullein with woolly grey foliage and stout stems covered in late summer with very large yellow flowers35	2.50
V. "Miss Willmott" —Huge spikes of creamy white flowers and golden stamens. Beautiful. 10 ft.50	3.50
V. nigrum —Fine spikes of yellow flower, with purple eye. Very handsome, and most effective planted with Larkspur.....	.50	3.50
V. olympicum —Silvery leaves and much branched flower spikes, studded with yellow blossoms.....	.35	2.50
V. phœniceum —Very attractive border plant, of various shades, including white, pink, and violet, in graceful spikes. 2 ft.35	2.50

VERONICA—Speedwell

Hardy Perennial

A family containing some of the most beautiful subjects for the hardy garden and rockery. Given a rich, well drained soil in an open situation in full sun, they will all thrive in an amazing manner.

V. cæspitosa —A gem for the rock garden. Makes a dense cushion of grey, woolly shoots, covered with stars of pink blossoms in May and June....	\$0.75	\$ 7.50
V. crassifolia —Fine for the perennial garden. Spikes of blue two to three feet high in late summer50	3.50
V. gentianœides —Beautiful variety with spikes of large flowers, palest blue, edged deep blue, in June and July; 1 ft.50	3.50

	Each	Per Doz.
V. <i>incana</i> —Silvery foliage with spikes of pale blue flowers. Valuable for both rock garden and border	\$0.35	\$ 2.50
V. <i>longifolia subsessilis</i> —One of the handsomest border plants we know. Grows about two feet tall and from July until frost is covered with long spikes of deep blue flowers.....	.35	2.50
V. <i>multifida</i> —Dwarf variety, especially fine for the rock garden. Foliage deeply cut, with flowers of pale blue on stems of five or six inches....	.75	5.00
V. <i>orchidea</i> —Very handsome variety from the Balkans. Grows four or five feet in height and produces a profusion of clear, blue flowers.....	.35	2.50
V. <i>pectinata rosea</i> —Velvety mats of rooting shoots with flowers of rose-pink in May and June50	3.50
V. <i>peduncularis</i> —A lovely variety from the Caucasus, growing about four inches high and producing pearly-white blossoms, lined with pink....	.75	5.00
V. <i>repens</i> —A very attractive variety for any warm place in good soil; sun or shade. Forms sheets of soft green, smothered the summer through with very pale blue heads of bloom.....	.35	2.50
V. <i>rupestris</i> —A most charming rock plant forming thick masses of deep green foliage which is smothered in June with bright blue flowers. A gem for the rock garden, dry wall or for edging the border, if raised a little above the path, as its growth is absolutely prostrate. True variety	.50	3.50
V. <i>rupestris rosea</i> —Lovely rose-colored variety of above50	3.50
V. <i>saxatilis</i> —One of the choicest for rock garden. Splendid foliage of deep, shining green with intense azure blue flowers.....	.75	7.50
V. <i>spicata</i> —A fine border plant, growing about two feet tall and in June producing long spikes of bright blue flowers.....	.35	2.50
V. <i>teucrium "Royal Blue"</i> —Very desirable variety for the rock garden as it is of trailing growth and covered with deep blue flowers in June.....	.50	3.50

	Each	Per Doz.
V. "True Blue" —Very handsome with brilliant blue flowers late in summer. 1 ft.....	\$0.50	\$ 3.50
V. Lyallii — Dwarf, sub-shrubby species, eight inches high, covered in May with spikes of white flowers, veined pink. Very choice.....	1.00	
V. Hulkeana —A very beautiful shrubby variety, with long, branching spikes of pale blue flowers. Requires winter protection.....	1.00	
V. Traversii —A very hardy variety of the beautiful shrubby Veronicas from New Zealand. Forms compact bushes of dark green foliage, bearing a profusion of pale mauve blossoms in late summer	1.00	

VIOLA—Tufted Pansy

Hardy Perennial

The Viola is not as well known in America as it should be, for it is perfectly hardy in well-drained soil and a most profuse bloomer from early spring until fall. It needs deep, well-enriched soil and considerable sun, with plenty of water. Ideal for carpeting rose beds. The colors are varied, as in Pansies, but much more refined and only need to be appreciated.

Do not allow to seed, as it will stop the bloom. Early in September cut back all straggling growth when the plant will make new tufts.

V. Ariel —Mauve, beautifully shaded with white	\$0.50	\$ 5.00
V. Apricot —A gem, having the growth of the bedding Viola and producing profusely, all summer through, large blossoms of true, apricot yellow....	.50	5.00
V. Blanche —Creamy white; very large.....	.50	5.00
V. Blue Gown —Blue, tinted mauve.....	.50	5.00
V. Councillor Waters —Crimson purple.....	.50	5.00
V. Gen. Baden Powell —Orange, very large.....	.50	5.00
V. James Pilling —Pure white with lavender margin50	5.00
V. John Forbes —Violet, shading to rich rose.....	.50	5.00
V. Kitty Bell —Lavender. Very refined.....	.50	5.00

	Each	Per Doz.
V. Maggie Mott —Soft mauve, free flowering. Fine..	\$0.50	\$ 5.00
V. Moseley Perfection —Deep yellow; large and grand50	5.00
V. Snowflake —Snowy white; very large.....	.50	5.00
V. Wm. Neil —Rose. Very pleasing.....	.50	5.00
V. William Robb —Lavender. Very free.....	.50	5.00

VIOLA CORNUTA—Horned Violet

Hardy Perennial

One of the parents of the tufted pansy and much grown as an edging for beds and borders. It is a Pyrenean species and of dwarf, tufted habit.

V. Jersey Gem —A new and very desirable variety. Large violet blossoms on 6 inch stems.....	\$.50	\$ 3.50
V. lutea splendens —Rich golden yellow.....	.25	2.00
V. Mauve Queen —Reddish violet. Very fine.....	.25	2.00
V. Papilio —Violet, dark eye25	2.00
V. Pink Pearl —Lovely rose-pink flowers, freely produced50	3.50
V. Blue Perfection —Very deep blue.....	.25	2.00
V. White Perfection —Lovely pure white.....	.25	2.00

VIOLA GRACILIS—Olympian Violet

Hardy Perennial

A lovely Grecian species on the order of the Violetta. Planted in masses in an open position on the rockery, they will rapidly cover the ground with dark green foliage that is covered throughout the spring and summer with their dainty blossoms.

V. "Alannah" —Very new. Cross between <i>bosniaca</i> and <i>cornuta</i> . Flowers pink.....	\$0.50	\$ 3.50
V. bosniaca —A perfect gem from Bosnia, with quantities of rose colored flowers. Resembles <i>gracilis</i> in habit. True variety.....	.75	5.00

	Each	Per Doz.
V. calcarata —The most popular Alpine Viola. Makes a riot of color in June. Blue flowers with yellow eye	\$0.50	\$ 5.00
V. cenesia —Lovely purple Viola, pencilled black Very choice high Alpine.....	.75	5.00
V. gracilis —Intense violet flowers. A fine rock plant35	2.50
V. gracilis "Purple Robe"—Blooms from April to September. Very choice75	5.00
V. gracilis "Lord Nelson"—New. The most perpetual Viola in cultivation. Flowers of a glowing violet purple, erect, on long stems. Very desirable rock plant75	5.00
V. hederacea (Erpction Reniforme)—Fine creeping plant forming tufts of leaves close to the ground. Small violet and white blossoms, like a baby Viola. A gem for the rockery50	3.50
V. pinnata —A rare treasure for the rock garden, growing easily in any well drained situation. Rosy lavender blossoms on stems of 2 to 3 inches. The only Viola with divided foliage.....	.50	3.50

WAHLENBERGIA—Tufted Harebell

Hardy Perennial

Beautiful, free flowering plants, especially suited to the rock garden. They are closely allied to the Bellflowers and need about the same treatment.

W. dalmatica —Beautiful dwarf Alpine, flowers deep violet. Rare	\$0.75	\$ 5.00
W. graminifolia —Long grassy foliage and pale blue flowers. Prefers ledge of rocks75	5.00
W. Kitaibeli —Tufted foliage and bright blue flowers75	5.00
W. tasmanica —Beautiful variety with bright blue flowers. Very new75	5.00



... Evergreens ...



Choice Dwarf Evergreens

Suitable for the Alpine Garden

In the planting of Alpine Gardens, the fact should always be kept in mind that Evergreens are a most important part of the garden scheme.

The very name of Alpine Garden suggests the high altitudes of the snowy Alps with the deep gorges and ravines clothed in the warm, fragrant, ever beautiful Pines.

It is, of course, impossible to use the same varieties of large Evergreens in the man-made garden of infinitely smaller proportions. However, the dwarf types of conifers readily lend themselves to the smaller scale of their surroundings and are at home among the rocks, where they are vitally essential in producing the effect of distance and depth, so necessary in making a naturalistic picture.

Another very important part of their use is in the softening of the garden color. They form a connecting note with the higher tones, producing an effect of perfect color harmony.

5 Plants of one variety at the 10 price.

JUNIPERUS COMMUNIS DEPRESSA

(*J. Canadensis*)

Prostrate Juniper

Each Per 10

Excellent ground cover. Rarely exceeds two feet in height and delights in sandy or gravelly hillsides, fully exposed to the sun. Foliage grey-green and very dense. Trims well.

1 to 1½ feet—xx*

B.&B.

\$3.50 \$30.00

* Each x indicates one transplanting.
B.&B. signifies Balled and Burlapped.

Each Per 10

JUNIPERUS SABINA HORIZONTALIS— Creeping Juniper

An especially fine type produced from seed obtained from Russia and of absolute hardness. Very desirable for hillside planting.

1 to 1½ feet—*	B.&B.	\$4.50	\$40.00
----------------	-------	--------	---------

JUNIPERUS SABINA TAMARISCIFOLIA Tamarix-leaved Juniper

A very beautiful creeper. Foliage fine in texture of a bluish green color, which never changes. Grows very dense.

1 to 1½ feet—xx*	B.&B.	\$4.50	\$40.00
1½ to 2 feet—xxx*	B.&B.	7.00	67.50

JUNIPERUS HORIZONTALIS DOUG- LASSI—Waukegan Juniper

Trailing variety with steel-blue foliage, turning purple in autumn. Never grows over 6 to 8 inches in height but will spread 10 to 12 feet.

10 to 12 inches—xx*	B.&B.	\$3.50	\$30.00
1 to 1½ feet—xx*	B.&B.	4.50	40.00
1½ to 2 feet—xxx*	B.&B.	6.00	50.00

JUNIPERUS PFITZERIANA— Pfitzer's Juniper

One of the handsomest of the Juniper family. It forms a low, broad shrub with beautiful blue-green foliage. Branches grow horizontally from the stem, forming a flat, spreading top.

1½ to 2 feet—xxx*	B.&B.	\$6.50	\$ 60.00
2 to 2½ feet—xxx*	B.&B.	9.00	80.00
2½ to 3 feet—xxx*	B.&B.	11.00	100.00

* Each x indicates one transplanting.
B.&B. signifies Balled and Burlapped.

JUNIPERUS SABINA— Savin Juniper

A beautiful dwarf tree, reaching 6 to 8 feet, with irregular spreading branches, forming a vase-shaped shrub. Deep green foliage. Prefers dry, rocky soil in sunny situations. Fine for foundation planting, low borders and in combination with other low growing evergreens.

1 to 1½ feet—xx*	B.&B.	\$4.00	\$35.00
------------------	-------	--------	---------

PINUS MUGHO COMPACTA— Dwarf Mountain Pine

An invaluable evergreen, lending itself to landscape work, foundation groups, low borders and rockery planting.

We offer the genuine dwarf Mountain Pine with close, compact growth and many branches in contrast with the loose, straggling type so often sent out. These only reach a height of 4 to 5 feet, but spread to 6 or 8 feet when full grown.

By annual shearing of the new growth it can be kept as small as desired.

8 to 10 inches—xx*	B.&B.	\$2.00	\$17.50
1 to 1½ feet—xxx*	B.&B.	3.50	30.00
1½ to 2 feet—xxx*	B.&B.	4.50	40.00

TAXUS CANADENSIS— American Yew

Very dwarf, seldom growing more than two or three feet above ground. Has handsome, deep green foliage, very dense growth. Beautiful in the autumn when covered with their scarlet fruit. Foliage assumes a reddish tint in winter. Thrives well in shade, very hardy and can be trimmed to any shape.

1 to 1½ feet—xxx*	B.&B.	\$4.50	\$40.00
-------------------	-------	--------	---------

* Each x indicates one transplanting.
B.&B. signifies Balled and Burlapped.

Each Per 10

TAXUS CUSPIDATA— Japanese Yew

A valuable Yew, growing 40 to 50 feet high, in its native state. Somewhat smaller under cultivation. It is very hardy, withstanding extremes of both heat and cold. Foliage dark green, growth upright, close and compact. Bright scarlet fruit in winter.

Can be kept any size by close shearing.

1 to 1½ feet—xxx*	B.&B.	\$4.75	45.00
-------------------	-------	--------	-------

TAXUS CUSPIDATA BREVIFOLIA— Dwarf Japanese Yew

A very dwarf and compact variety of Japanese Yew. Foliage very dark green, almost black. Irregular, picturesque outline, attaining a height of about six feet and as much wide. Retains its deep green color in winter. Extremely hardy.

10 to 12 inches—xx*	B.&B.	\$4.50	\$40.00
---------------------	-------	--------	---------

1 to 1½ feet—xxx*	B.&B.	6.50	60.00
-------------------	-------	------	-------

THUYA OCCIDENTALIS GLOBOSA— Globe Arbor Vitae

A dwarf form of Arbor Vitae, which has been clipped or sheared into perfect round balls. Fine for formal gardens, tubbing and entrances.

12 by 12 inch—xxx*	B.&B.	\$4.00	37.50
--------------------	-------	--------	-------

Five of same variety and size at 10 rate.

* Each x indicates one transplanting.
B.&B. signifies Balled and Burlapped.



Hints for the Planting and Care of Shrubs

Planting and Preparing Soil for Shrubs

If the ground is not ready or the weather is unfavorable when shrubs are received, great care should be taken not to allow the roots to become exposed to the air. A half hour's exposure to the sun or wind will quite often be enough to badly stunt or kill a choice shrub. If it is not possible to heel the shrubs in the ground until ready to plant, they should be placed in a dark, cool place with moist burlap or straw placed over the roots.

In planting, square holes should be dug for each shrub about twice the size of the roots and if the soil is poor the holes should be made extra deep and rich soil placed in the bottom.

When the shrub is placed in position, at a depth about the same as previously planted, a small amount of soil is thrown over the roots; a thorough packing of this soil is then necessary to preclude the possibility of any air spaces. When thoroughly packed in, the rest of the soil may be firmed about the shrub, care being taken to leave the surface loose and flat so that the rain may penetrate to the roots.

Trimming and Shearing of Shrubs

Shrubs that are planted in masses should be pruned only by taking the larger stalks off at the ground, thus checking a too rampant growth. Individual or specimen shrubs should always be allowed to take their natural, graceful outline.

Beware the "handy man" who comes along with claims of vast knowledge of all things pertaining to gardening. He will often endeavor to shear a beautiful shrub as a barber would a man's head.

Early flowering shrubs bloom on last season's wood and should be trimmed after blooming, while later flowering shrubs make their bloom on the same season's growth and should be pruned very early in the spring.

Each Per 10

AMELANCHIER CANADENSIS— (Service Berry)

A large shrub sometimes growing into a tree 30 feet high or more. White blossoms early in August. Fine for background.

2 to 3 feet	\$0.75	\$ 6.25
3 to 4 feet	1.00	8.50

AMORPHA—(False Indigo)

A. *fruticosa*—A low growing shrub of slender branches and feathery leaves. Has long spikes of dark violet flowers. Well adapted for large Alpine gardens. Very beautiful in June.

2 to 3 feet	\$1.50	\$12.50
3 to 4 feet	2.00	17.00

AMYGDALUS—(Flowering Almonds)

A. *communis*—Flowers white in early spring; 2

to 3 feet	\$1.50	\$12.50
-----------------	--------	---------

A. *rosea*—Pink flowers; 2 to 3 feet..... 1.50 12.50

ARALIA—Angelica Tree

A. *pentaphylla*—A pretty Japanese shrub of medium size. Spiny branches, leaves pale green.

2 to 3 feet	\$0.75	\$ 6.25
3 to 4 feet	1.00	8.50

BERBERIS—Barberry

B. *Thunbergii*—Japanese Barberry—Dwarf habit, small foliage, changing to beautiful tints in the autumn. Very attractive scarlet fruit all winter. Fine for hedges. Not the variety of Barberry forbidden in wheat growing states.

1 to 1½ feet	\$.50	
2 to 3 feet75	
Extra heavy—3 to 3½ feet.....	1.00	

BUDDLEIA—Butterfly Bush

Splendid shrubs for the front of borders or as specimens. Often kills back to the ground during winter but will come up from the roots and be as large as ever by fall.

- | | | |
|---|--------|---------|
| B. Magnifica —Very handsome, immense spikes of deep purple | \$0.75 | \$ 6.25 |
| B. Veitchiana —Very robust. Branches erect at first, later arching. Bright mauve colored flowers, orange eye | .50 | 4.25 |

CALYCANTHUS—Carolina Allspice

- | | | |
|--|--------|---------|
| C. floridus —Sweet-Scented Shrub—Foliage downy beneath. Flowers in May of a deep brown-red, and very fragrant; 2 to 3 feet..... | \$.75 | \$ 6.25 |
|--|--------|---------|

CALICARPA PURPUREA

Small shrub bearing pink flowers in June, followed by clusters of beautiful lilac-colored berries in autumn.

- | | | |
|-------------------|--------|---------|
| 2 to 3 feet | \$0.90 | \$ 7.50 |
| 3 to 4 feet | 1.25 | 10.50 |

CARAGANA ARBORESCENS—(Pea Tree)

A fine shrub for high hedges. Long sprays of yellow, pea-shaped flowers in May.

- | | | |
|-------------------|--------|---------|
| 2 to 3 feet | \$0.75 | \$ 6.25 |
| 3 to 4 feet | 1.00 | 8.50 |

CLETHRA—White Alder

- | | | |
|--|--------|---------|
| C. alnifolia —(Sweet Pepper Bush)—One of our best flowering shrubs. Spikes of pure white flowers in July and August. Very fragrant. Prefers shade; 2 to 3 feet..... | \$0.75 | \$ 6.25 |
|--|--------|---------|

Each Per 10

CORNUS—Dogwood

C. alba — Red-Branched Dogwood — Handsome, bright red bark in winter; creamy white flowers in early spring, followed by white fruit; 2 to 3 feet	\$0.60	\$ 5.00
C. alba elegantissima —A very handsome variegated variety, leaves broadly margined white; bark bright red in spring; 2 to 3 ft.....	1.00	8.50
C. florida—Flowering Dogwood —A beautiful tree, 20 to 30 feet high, with white flowers in April and May; 3 to 4 feet.....	4.50	40.00
C. paniculata —Panicked Dogwood—Gray branches, flowers white. Very handsome in the fall with its white fruit on red peduncles.....	.60	5.00
C. saguinea —Large shrub of 12 feet or more, with black fruit in autumn; 2 to 3 feet.....	.60	5.00
C. sericea —Purple branches and blue fruit in late summer; 2 to 3 feet.....	.75	6.25
C. stoloniferna — Red Osier — Dark, blood red branches, with white fruit. Reaches a height of 8 feet; 2 to 3 feet.....	.60	5.00
C. stolonifera lutea —A shrub of spreading habit. Branches quite yellowish; 2 to 3 feet.....	.75	6.25

COTONEASTER—Cotoneaster

Very choice and beautiful shrubs, nearly all recent introductions from China, suitable both to rockery and shrubby planting. They are handsome at all times but particularly so in the autumn when covered with their beautiful berries.

C. **adpressa**—Very dwarf habit and invaluable for the rock garden. The small leaves turn orange in the autumn; pink flowers and scarlet berries.

3 to 4 inches	B.&B.	\$1.50
5 to 6 inches	B.&B.	2.00

		Each	Per 10
C. <i>applanata</i> —A beautiful shrub, attaining a height of six feet. Slender, arching branches with shining leaves, tomentose beneath. Flowers small, followed by large bright red berries.			
15 to 18 inches	B.&B.		\$2.00
2 to 3 feet	B.&B.		4.00
3 to 4 feet	B.&B.		6.00
4 to 5 feet	B.&B.		8.00
C. <i>buxifolia</i> —Bushy growth and shining leaves, very downy beneath. Large red fruit. Very handsome.			
1½ to 2 feet	B.&B.		2.00
2 to 3 feet	B.&B.		4.00
3 to 4 feet	B.&B.		6.00
C. <i>congesta</i> —A lovely, dense slow-growing little shrub. Foliage bright, glossy green. Small pink flowers, fruit bright red.			
4 to 6 inches	B.&B.		2.00
C. <i>Franchetti</i> —Strong growing shrub with wiry, arching branches. The leaves are glossy above and downy beneath. Fruit orange-red. 6 ft.			
1½ to 2 feet	B.&B.		3.00
2 to 3 feet	B.&B.		5.00
C. <i>horizontalis</i> —Beautiful prostrate shrub with distinct, fan-like branches. Small, glossy foliage and red berries. The leaves turn brilliant red in fall.			
6 to 10 inches	B.&B.		1.50
C. <i>humifusa</i> —A trailing variety, never growing more than a few inches high. Beautiful on a steep bank or overhanging a rock. Scarlet berries in fall.			
3 to 4 inches	B.&B.		1.50
5 to 6 inches	B.&B.		2.00



ARABIS ROSEA	CAMPANULA PUSILLA	CORYDALIS IN VARIETY	ERODIUM IN VARIETY
AUBRETTIA IN VARIETY	CAMPANULA PUSILLA "MISS WILLMOTT"	DIANTHUS ALPESTRIS	GENTIANA IN VARIETY
ACHILLEA CLAVENNEA	CAMPANULA MIRABILIS	DIANTHUS ALPINUS	PRIMULA IN VARIETY
ASTER ALPINUS HIMALAICUS	CAMPANULA GARGANICA—W. H. PAINE	DIANTHUS BREVICAULIS	RAMONDIA—IN VARIETY
CAMPANULA PULLA	CAMPANULA CARPATICA—RIVERSLEA	DIANTHUS CAESIUS—ARVERNENSIS	SAXIFRAGA MOSSY—IN VAR.
SAXIFRAGA ENCRUSTED—IN VAR.	SEDUM IN VARIETY	DWARF COTONEASTER	DWARF EVERGREENS

	Each	Per 10
C. microphylla —Lovely, prostrate shrub for rock garden, bank or wall. The branching is dense and the scarlet berries are large and showy.		
3 to 4 inches	B.&B.	\$1.00
6 to 8 inches	B.&B.	2.00
8 to 10 inches	B.&B.	3.50
10 to 15 inches	B.&B.	5.00
C. Simonsii —Upright branches and glossy foliage. Clusters of small white blossoms followed by large, bright red berries. 5 feet.		
2 to 3 feet	B.&B.	1.00
3 to 4 feet	B.&B.	1.50
4 to 5 feet	B.&B.	4.00

CYDONIA JAPONICA—(Japanese Quince)

Very showy shrub, covered in **early spring** with dazzling scarlet flowers. Should be used only with a dark background; 2 to 3 feet.....**\$0.75 \$ 6.25**

CYTISUS—Broom

Very handsome, free flowering shrubs and much used for showy effects, especially in the rock garden. They flourish in a dry, sandy place and transplant best when young.

The varieties we offer are all perfectly hardy, going through our severe winters in the open field with no protection.

C. albus — (White Broom) — Fine species with white flowers borne in long racemes during spring	\$0.50	\$ 4.25
C. albus " White Gem "—A much improved variety of the White Broom75	6.25
C. austriacus —A twiggy shrub, two to four feet high, with numerous yellow blossoms in June.....	.75	6.25

	Each	Per 10
C. capitatus —Low growing shrub, about three feet, with hairy leaves and branches and blooming profusely in July and August. Yellow.....	\$0.75	\$ 6.25
C. laburnum—Golden Chain —A tall growing variety, almost tree like, with long racemes of yellow flowers in June50	4.25
C. nigricans —A downy shrub, growing from three to six feet high, with long, erect spikes of yellow flowers in June50	4.25
C. præcox —One of the finest varieties and one of the first to blossom. A charming shrub, forming a solid mass of creamy yellow blossoms.....	.75	6.25
C. scoparius Magnificus — Scotch Broom — Very hardy variety, growing to a height of 10 feet and covered in May and June with its bright yellow blossoms75	6.25
C. sessilifolius —Exceptionally fine. Flowers later than the other varieties and is fairly smothered with the golden yellow blossoms it carries.....	.75	6.25

DEUTZIA—Deutzia

Very beautiful shrubs, grown for their showy blossoms in spring and summer.

They thrive in any well-drained soil, thoroughly enriched. The tall growing varieties are suitable for shrubberies and back grounds, while the dwarf kinds make beautiful foreground plantings in borders, etc.

D. crenata fl. pl.—Double-Flowered Deutzia —Flowers double white, tinged rose. Very handsome.....	\$0.75	\$ 6.25
D. crenata Magnifica —Flowers of very double, pure white in great abundance;		
2 to 3 feet75	6.25
3 to 4 feet	1.00	8.50
D. crenata — Pride of Rochester — Very double white blooms edged with pink. A sturdy grower;		
2 to 3 feet60	5.00
3 to 4 feet75	6.25

	Each	Per 10
D. gracilis — Slender-Branched Deutzia —A charming dwarf shrub with pure white flowers. Grows well in partial shade.....	\$0.75	\$ 6.25
D. gracilis campanulata —A dwarf variety of D. gracilis with a great profusion of campanula like blooms	1.00	9.00
D. Lemoinei —One of the best. Flowers pure white, upright growth. Dwarf.....	.75	6.25

DIERVILLA—Weigela

Shrubs of spreading habit, with arching branches and very showy blossoms in early summer.

Handsome foliage of deep green, seldom attacked by insects. They will thrive in any open, sunny position and good garden soil.

D. Abel Carrier —Flowers rose-carmine with yellow spot in throat; 2 to 3 feet.....	\$0.75	\$ 6.25
D. amabilis —Shrub to six feet. Rose-colored blossoms; 2 to 3 feet.....	.75	6.25
D. Eva Rathke —Flowers deep carmine-red. Very free flowering	1.00	8.75
D. Mme. Lemoine —Flowers delicate blush, changing to pink. Very handsome	1.00	8.75
D. rosea —Light rose-colored blossoms in June. Very hardy75	6.25

ELÆAGNUS—Oleaster

E. angustifolia —Russian Olive—A rapid growing, tree-like shrub with willow-like leaves, grayish green above and silvery white beneath. Flowers in summer, yellow, followed by silver-gray fruits. Fine for poor, sandy soil; 2 to 3 feet.....	\$0.75	\$ 6.25
E. atropurpureus —Shrub or small tree with small purple blossoms, fruit scarlet and very showy; 2 to 3 feet75	6.25
E. europæ —Forms a tree, sometimes 30 feet high. Small, greenish-white flowers in May, followed by bright pink fruits which open when ripe and reveal the orange-colored aril.....	.75	6.25

Each Per 10

EXOCHORDA—Pearl Bush

- E. *grandiflora*—A fine shrub with large white flowers in May. One of the best of its season; 2 to 3 feet\$1.25 \$10.00

FORSYTHIA—Golden Bell

- M. *Fortunei*—Flowers bright golden. One of the earliest shrubs to bloom.....\$0.75 \$ 6.25
- F. *intermedia*—Slender, arching branches. Flowers bright golden in early spring before the leaves appear. Very handsome75 6.25

HIBISCUS SYRIACUS—Rose of Sharon or Althea

These large growing, tree-like shrubs, are very beautiful in late August and September when they are covered with large hollyhock-like blossoms.

They are valuable for hedges, backgrounds, and as specimen trees.

- H. *anemonaeflorus* — Large, semi-double white blossoms with dark center; 2 to 3 feet.....\$0.75 \$ 6.25
- H. *Boule de Feu*—Double, very deep pink; 2 to 3 feet75 6.25
- H. *Jeanne de Arc*—Large double white; 2 to 3 feet .75 6.25
- H. *Paeoniflorus*—White, with deep red center..... .75 6.25
- H. *Totus albus*—Large, single pure white..... .75 6.25

HYDRANGEA

- H. *arborescens grandiflora*—Hills of Snow—One of the most valuable shrubs, both on account of its attractive foliage and its beautiful flowers, which form large heads of snow-white bloom. Begins to bloom in June and lasts into August. Will also do well in partial shade; 2 to 3 feet....\$1.00 \$ 8.75
- H. *paniculata grandiflora*—A fine shrub, growing from six to eight feet high, with large panicles of white flowers turning pink with age; strong plants 1.50 12.50

Each Per 10

HYPERICUM—St. John's Wort

H. aureum —A dwarf variety of 3 feet. Numerous bright yellow blossoms in July and August. Fine subject for Alpine garden; 12 to 18 inches.....	\$0.50	\$ 4.25
H. densiflorum —A shrub reaching a height of 6 feet. Handsome foliage and numerous bright yellow blossoms about half an inch across, in July and August; 2 to 3 feet.....	.75	6.25
H. patulum Henryi —Very showy shrub, growing from two to four feet high and producing masses of clear yellow blossoms in July and August.....	.75	6.25
H. prolificum —Rapid growing shrub reaching a height of five feet or more and bearing a profusion of golden yellow blossoms; 2 to 3 feet.....	.75	6.25

KERRIA—Corchorus

H. japonica —Globe Flower—A slender branched shrub with globular, yellow flowers from June to August. Very handsome.....	\$0.75	\$ 6.25
---	--------	---------

LIGUSTRUM—Privet

L. amurense —Amur Privet—A much hardier variety than the California Privet. Fine for hedges; 2 to 3 feet.....	\$0.60	\$ 4.00
L. Ibota —Choice hedge plant. Flowers white, large and very fragrant.....	.50	3.50
L. Regelianum —Regel's Privet—A handsome flowering shrub;		
2 to 3 feet75	6.25
3 to 4 feet	1.25	10.00

We do not list *L. ovalifolium* (California Privet), as it is not hardy in this climate. The above varieties are perfectly hardy here and make just as desirable hedge plants.

Special prices on hedges.

Each Per 10

LONICERA—Upright Honeysuckle

L. bella albida —White flowers, showy red fruit in abundance;		
2 to 3 feet	\$0.50	\$ 4.25
3 to 4 feet75	6.25
L. fragrantissima —Handsome, half evergreen foliage. Blooms very early and is very fragrant; 2 to 3 feet.....	.60	5.00
L. Morrowi —A handsome Japanese Honeysuckle, covered during summer with showy red berries;		
2 to 3 feet75	6.25
3 to 4 feet	1.00	8.50
L. tartarica rosea —Rose-colored flowers in June, followed by red berries;		
2 to 3 feet75	6.25
3 to 4 feet	1.00	8.50

MALUS IOENSIS VAR. BETCHELI— (Betchel's Crab)

This is a beautiful tree for specimen planting. The masses of delicate pink, double flowers fill the air with a delightful fragrance in early spring;

2 to 3 feet	\$1.50	\$12.50
3 to 4 feet	2.50	20.00

PHILADELPHUS—(Syringa)

This shrub of ancient origin was named for the Egyptian king, Pholomy Philadelphus, who reigned from 285 to 247 B. C.

These handsome flowering shrubs deserve a good place in the shrubbery border, for without plenty of sun and air and a well enriched soil they will make but a poor growth. When given these requirements the blooms of pure white often attain an individual size of two and one-half to three inches across.

Trim after blooming as flowers are borne on last year's wood.

	Each	Per 10
P. coronarius grandiflorus — Garland Syringa —		
Pure white, highly-scented flowers in early spring. Flowers larger than type.		
3 to 4 feet	\$0.75	\$ 6.25
4 to 5 feet	1.00	8.50
P. Lemoinei— A beautiful hybrid with large white flowers in June. Very fragrant:		
2 to 3 feet75	6.25
3 to 4 feet	1.00	8.50
P. Lemoinei—"Boquet Blanc"— Flowers in bouquet-like masses. Not very fragrant; 2 to 3 ft.....		
	1.00	8.50
P. L. "Mt. Blanc"— One of the most profusely flowering varieties and exceedingly fragrant; 2 to 3 feet		
	.75	6.25
P. "Virginal"— Large double flowers averaging 2½ inches in diameter, very fragrant. Choice and very scarce; 2 to 3 feet.....		
	2.00	

POTENTILLA (Cinquefoil)

P. fruticosa— A fine, low growing shrub for Alpine gardens; does well in either dry or moist positions. Profuse blooms of clear yellow; 2 to 3 feet		
	\$0.75	\$ 6.25
P. fruticosa Friedrichsenii— Very beautiful variety with brilliant yellow flowers in summer and autumn; 2 to 3 feet.....		
	1.25	

PRUNUS—Plum

P. triloba—Double-Flowered Plum— Very handsome double flowers of a delicate pink, thickly set on long, slender branches, in May; 2 to 3 ft.....		
	\$1.25	\$11.00
P. Pissardi— Purple leaved variety—fine; 3 to 4 ft.		
	1.00	8.50

PTELEA—Hop Tree

P. trifoliata— Shrub or small tree with glossy light green foliage, adorned in fall with clusters of very ornamental light green fruits. Plant in moist, well drained soil (porous) and partially shady position		
	\$1.00	\$ 8.50

Each Per 10

RHODOTYPOS—White Kerria

- K. **kerrioides**—A fine Japanese shrub with handsome foliage and large, single white flowers the latter part of May, followed by black fruit; 2 to 3 feet\$0.75 \$ 6.25

RHUS—Sumach

- R. **aromatica**—An aromatic shrub with small greenish-white flowers. Foliage assumes beautiful tints in the fall; 2 to 3 feet.....\$0.90 \$ 7.50
- R. **copallina**—Winged, dark green, glossy foliage. Flowers in dense panicles in July and August. Does well in dry soil; 2 to 3 feet..... .50 4.00
- R. **glabra laciniata**—Cut-Leaf Sumach—Very elegant, beautifully cut foliage, resembling fern leaves and turning to rich red in autumn..... 1.25 11.00
- R. **typhina**—Stag-Horn Sumach—A large shrub or tree, brilliant foliage and scarlet fruit in autumn; 3 to 4 feet..... .60 5.00

ROBINIA—Locust

- R. **hispida**—(Rose Acacia)—Handsome shrub with rose-colored flowers in short racemes. Good subject for sandy soils; 2 to 3 feet.....\$1.50 \$12.50

SAMBUCUS—Elder

- S. **nigra aurea**—Golden Elder—A handsome, golden-leaved shrub. Very valuable.....\$0.60 \$ 5.00
- S. **nigra laciniata**—Handsome, cut-leaved variety.. .75 6.25
- S. **racemosa**, syn. **pubens**—Shrub to 20 feet with very showy scarlet berries in June and July;
- 2 to 3 feet75 6.25
- 3 to 4 feet 1.00 8.50

Each Per 10

SPIRAEA—Meadowsweet

The *Spiræas* are fine shrubs for use in massing, their profusion of bloom making great banks of color when used in this manner.

They are of easy culture, distinct habit, and graceful form. No shrubbery planting is complete without the use of some of these choice shrubs.

S. Anthony Waterer —Brilliant carmine flowers borne in dense clusters; continuous bloom throughout the summer; 18 to 24 inches.....	\$1.00	\$ 8.50
S. Billiardii —Rose-colored flowers, blooming all summer; 2 to 3 feet.....	1.00	8.50
S. Douglassi —Growth similar to <i>Billiardii</i> . Produces long spikes of delicate pink blooms in July and August; 2 to 3 feet.....	1.00	8.50
S. Frœbeli —A variety of <i>A. Waterer</i> , growing to a greater height, and having bright pink blossoms;		
1½ to 2 feet	1.00	8.50
3 feet	2.00	17.50
S. opulifolia —(Physocarpos)—A fine shrub, about five feet high, with white flowers in June; 3 to 4 feet75	6.25
S. prunifolia —A more erect shrub than <i>S. Van Houttei</i> . Has beautiful glossy leaves and bears double, pure white flowers. Blooms later than <i>Van Houttei</i> ; 2 to 3 feet.....	.75	6.25
S. Reevesiana —Spreading growth; profusion of white flowers in May;		
2 to 3 feet75	6.25
3 to 4 feet	1.00	8.50
S. Thunbergii —Dwarf habit and slender, drooping branches. Flowers small, white and appearing very early in the spring; 2 feet.....	1.00	7.50
S. Van Houttei —One of the finest of the <i>Spiræas</i> . In May and June the plant is a mass of white flowers, presenting a beautiful appearance;		
2 to 3 feet50	
3 to 4 feet75	
4 feet, extra heavy.....	1.00	

SYRINGA—Lilac

- S. **Casimir Perier**—Double white. Dwarf; 2 feet...**\$2.75**
- S. **Charles Joly**—Double flowers of very dark reddish purple; superb; 2 to 3 feet..... **2.75**
- S. **Ludwig Spaeth**—Flowers large, dark purplish red. Single. Very distinct; 2 to 3 feet..... **2.75**
- S. **Mme. Lemoine**—A beautiful, double white; 1½ to 2 feet **2.75**
- S. **Marie Legraye**—Large panicles of single white flowers. One of the best; 2 feet..... **2.50**
- S. **Michael Buckner**—Pure lilac. Double. Beautiful; 2 feet **3.00**
- S. **Josikea—Hungarian Lilac**—A distinct species with dark, shining leaves and purple flowers in June, after the other varieties have done flowering;
- 2 to 3 feet **1.50**
- 3 to 4 feet **2.50**
- S. **Persica** — Persian Lilac—Small foliage and bright purple flowers; 2 to 3 feet..... **1.50**

SYMPHORICARPUS—St. Peter's Wort

- S. **racemosa**—Snowberry—A well known shrub having small, pink flowers at the ends of the branches and followed by large, white berries that hang on the plant during the winter. Will grow under trees**\$0.75** \$ **6.25**
- S. **vulgaris** — **Indian Currant** — A shrub of good habit, with inconspicuous flowers and deep purple-red berries, which hang all winter. Excellent for growing in shade or under trees; 2 to 3 feet **.60** **5.00**

TAMARIX—Tamarisk

- T. **Africana**—Slender, spreading branches. Flowers pink, along last year's branches. Blooms in May**\$0.75** \$ **6.25**
- T. **hispida æstivalis**—Small, blue-green leaves and rosy-carmine flowers in fall..... **1.00** **8.50**

VIBURNUM—(Arrow Root)

These handsome, vigorous shrubs of northern regions are noted for their beauty of fruit as well as flower.

They are easily grown in any good soil which will retain the moisture. A number of the varieties furnish a striking note of color for the autumn landscape.

V. acerifolium —Low growing shrub with flat heads of white flowers in May. Black, glossy berries in autumn; 2 to 3 feet.....	\$0.75	\$ 6.25
V. dentatum —A tall shrub bearing greenish white flowers in June, followed by clusters of deep blue fruit. Fine for massing; 2 to 3 feet.....	.75	6.25
V. Lantana — Wayfaring Tree — A large, robust shrub with thick, heavy leaves and large clusters of white flowers in May. Fruit red, turning black. Very handsome;		
2 to 3 feet75	6.25
3 to 4 feet	1.00	8.50
V. Lentago —Very fragrant flowers of creamy white. Foliage a light glossy green; 2 to 3 feet....	.75	6.25
V. molle —A robust growing shrub, with cymes of white flowers appearing later than those of the other Viburnums;		
2 to 3 feet75	6.25
3 to 4 feet	1.00	8.50
V. Opulus — Bush Cranberry — Very ornamental, bearing red berries, resembling cranberries, until destroyed by frost;		
2 to 3 feet	1.00	8.50
3 to 4 feet	1.50	12.50
V. var. plicatum—Japan Snowball —From China. Handsome plicated leaves, globular heads of pure white, neutral flowers early in June. Much finer than the common Snowball in every way;		
2 to 3 feet	1.50	15.00
V. tomentosum — The single form of the Japan Snowball. Flowers pure white, in flat cymes, early in June. One of the handsomest shrubs grown	1.00	8.50

Vines

Each Per 10

AMPELOPSIS

- A. **Englemanni**—Small dense foliage. Type somewhat similar to *A. quinquefolia*.....\$0.75 \$ 6.50
- A. **Veitchii**—Boston Ivy — Leaves small, overlapping one another, forming a dense sheet of green. It grows rapidly and clings closely to wall or trellis. The foliage assumes beautiful tints in the fall. Protect until well established. Strong two-year-old plants75 6.50
- A. **quinquefolia** — **Virginia Creeper** — Beautiful leaves that become a rich crimson in autumn. A fine vine for covering walls, verandas or trunks of trees. Very hardy75 6.00

ARISTOLOCHIA—Birthwort

- A. **Sipho**—**Dutchman's Pipe**—A native of climbing habit and rapid growth. Magnificent, light green foliage and curious pipe-shaped, yellowish brown flowers\$1.25
- A. **tomentosa**—Much like the last but leaves very tomentose. Flowers yellow, much reflexed..... 1.00

CELASTRUS—(Bittersweet)

- C. **articulata**—(**Japanese Bittersweet**)—Fruit borne in clusters of greater profusion than the American variety\$0.75 \$ 6.25
- C. **scandens**—A fine vine of rapid growth suitable for covering banks or walls. Showy clusters of orange fruits in the fall..... .75 6.25

Each Per 10

CLEMATIS—*Virgin's Bower*

- | | | |
|---|--------|---------|
| C. <i>graveolens</i> —A rapid growing climber, with large yellow blossoms in great profusion. Perfectly hardy and one of the most beautiful vines imaginable | \$0.75 | \$ 6.25 |
| C. <i>Jackmanni</i> —Large, violet purple blossoms. Free grower and an abundant bloomer..... | 1.00 | 8.50 |
| C. <i>paniculata</i> —A most desirable and beautiful vine; grows luxuriantly, blooms profusely and is very graceful. Flowers pure white, very fragrant and produced in late summer, followed by ornamental seed pods..... | .75 | |
| Extra large field grown, 4 years old..... | 1.25 | |
| C. <i>tanguitica</i> —Climbing vine to ten feet. Handsome flowers of bright yellow, nearly three inches across, in June. Large heads of feathery fruits in late summer. A gem..... | 1.00 | 8.50 |
| C. <i>vitalba</i> —The “Traveler’s Joy” of English gardens. Strong climber with a profusion of white flowers, having a faint odor of almonds. July toto September | .75 | 6.50 |
| C. <i>flammula</i> —Slender climber to 15 feet. Numerous small white blossoms in August and September, followed by plummy seeds. Very lovely..... | .75 | 6.50 |
| C. <i>montana</i> —Vigorous climber to 20 feet. Lovely anemone-like blossoms of white with conspicuous yellow stamens. Turns pink with age..... | 1.50 | |
| C. <i>montana rubens</i> —Foliage reddish when unfolding. Beautiful blossoms of pink in June. Very choice | 2.00 | |
| C. <i>viticella</i> —Climber to 12 feet. Flowers 2 inches in diameter, of a beautiful deep blue with gold stamens | 2.00 | |
| C. <i>Koreana</i> —(<i>Atragene</i>)—Shrubby growth. Large, nodding yellow blossoms, 2 inches across. Very handsome | 1.50 | |

Each Per 10

EVONYMUS

E. **radicans**—An evergreen vine that clings to walls after the manner of ivy;

1 year	\$0.50	\$ 4.00
2 years75	6.25

E. **radicans vegetus**—In late fall and winter produces an abundance of showy red and yellow fruits. A fine vine for walls or buildings;

1 year50	4.00
2 years75	6.25

E. **radicans variegata**—A variegated variety of the above. Much used as edgings for beds and borders, by keeping closely cut;

1 year50	4.00
2 years75	6.25

LONICERA—Honeysuckle

L. **Halleana**—Hall's Honeysuckle—A vigorous variety, with pure white flowers, changing to yellow. Very fragrant

\$0.50 \$ 4.00

LYCIUM—Box Thorn

L. **vulgare**—Matrimony Vine—A very ornamental climber, of strong growth and bearing small, purplish flowers in summer, followed by scarlet berries

\$0.75 \$ 6.25

ROSA—Rose

R. **nitida**—Low upright shrub with very shining leaves. Fine for Alpine garden.....

\$0.75 \$ 6.25

R. **rubiginosa**—(Sweet Briar)—Pale pink single blooms of a spicy fragrance.....

.75 6.25

R. **Wichuriana**—Single, wax-like flowers in great profusion. Fine for covering banks or drooping over walls

.75 6.25

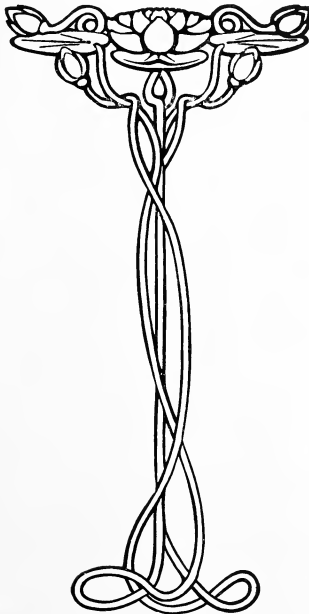
Each Per 10

TECOMA—Trumpet Vine

- T. **radicans**—A hardy, climbing plant with trumpet-shaped, scarlet flowers in August.....\$0.75 \$ 6.25

WISTERIA

- W. **Magnifica**—A type of *frutescens*. Beautiful racemes of 10 inches or more; individual flowers one inch across, lilac with yellow eye. Requires moist soil\$1.75



Rock Plants for Sunny Places

Achillea ageratifolia	Cerastium tomentosum
" Clavennae	Cheiranthus Allionii
Aethionemas	Dianthus
Alyssums	Draba
Antirrhinum Asarina	Dryas lanata
Anthyllis montana	" octopetala
Aquilegias	Erigeron
Arabis	Erinus
Arenaria gracilis	Erodium
" montana	Erysimum
Armeria	Euphorbia
Aster alpinus	Geum
" subcaerulea	Gypsophila
Astilbe	Helianthemum
Aubrietia	Heuchera
Bellium Bellidiceides	Hypericum Coris
Bellis perennis	" olympicum
Campanula abietina	Iberis
" barbata	Lavandula
" carpathica	Leontopodium
" collina	Linaria
" fenestrellata	Linum
" garganica	Lychnis
" istriaca	Oenothera
" muralis	Papaver, dwarf
" pusilla	Sedum
" Raddeana	Silene
" Stansfieldi	Statice
" turbinata	Viola
Carlina acaulis	

Rock Plants for Shady Places

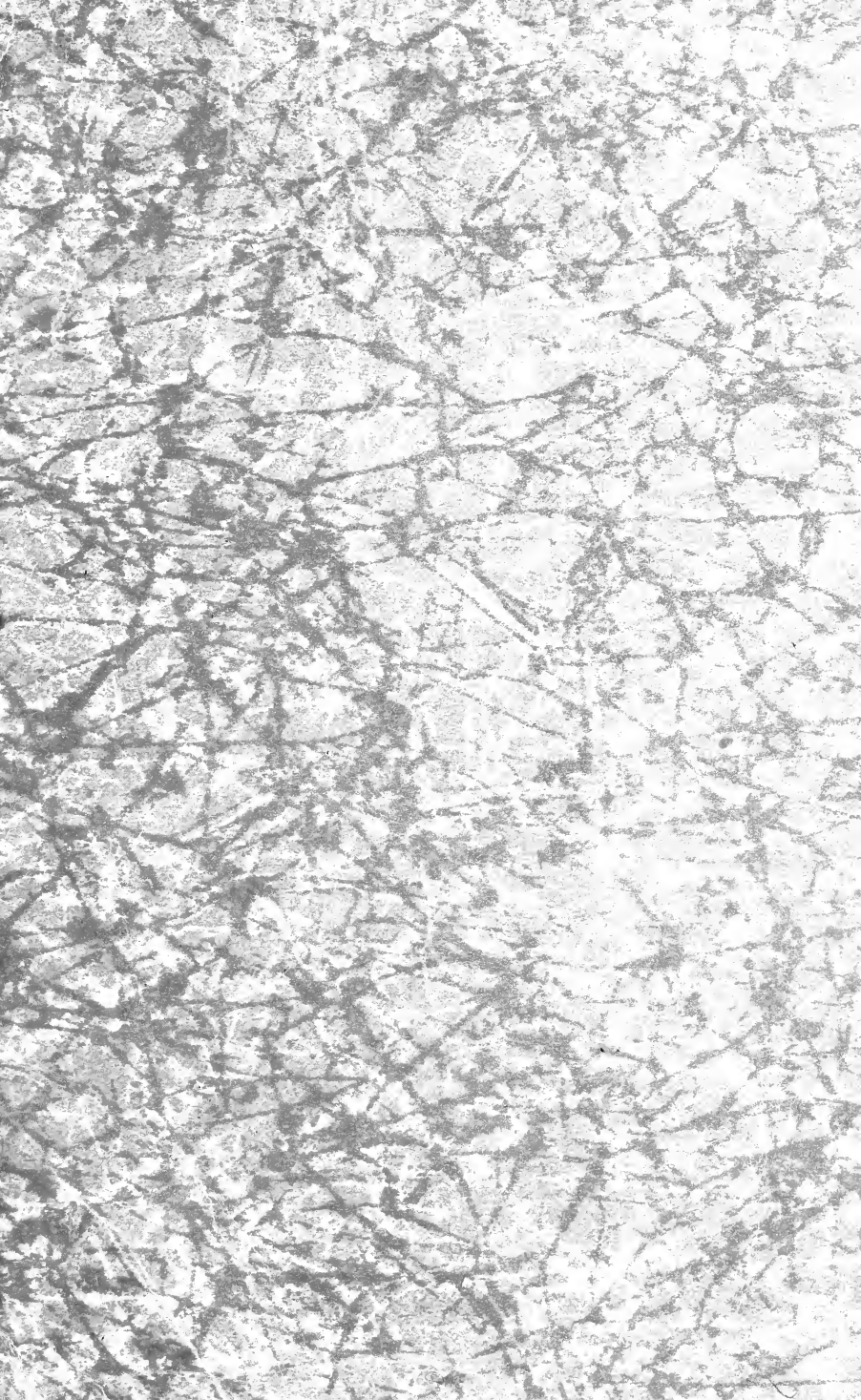
- Androsaces—Partial
Anemones— “
Aquilegia alpina— Partial
“ Mrs. Nicholls “
“ coerulea
Arenaria balearica
“ caespitosa
Campanula pulla
“ rotundifolia
“ Robsoni
“ Tommasiniana
“ Waldsteiniana
Corydalis
Dracocephalum
Erpetion reniforme
Haberlea
Mertensia
Myrrhis odorata
Myosotis
Phyteuma
Polyanthus
Primulas
Ramondia pyrenaica
Saxifraga, mossy
Wahlenbergia—Partial

Rock Plants of Drooping Growth

Aethionema	Helianthemum
Alyssum argenteum	Hypericum Coris
" saxatile	" polyphyllum
" serpyllifolium	" repens
" spinosum	" reptans
Androsace lanuginosum	Iberis Jordani
Antirrhinum Asarina	" Snowflake
Arabis albida	Leontopodium
" arenosa	Linaria alpina
" aubrietoides	Linum alpinum
Arenaria balearica	Lithospermum
" montana	Lychnis Lagascae
" gracilis	Saponaria
Campanula carpathica	Saxifraga—Mossy
" garganica	Sedum album
" muralis	" anglicum
" pusilla	" lydium
" rotundifolia	" pulchellum
Dianthus caesius Arvernensis	" rupestre
" deltoides	" stoloniferum
Draba Dedeana	Silene alpestris
" repens	" saxifraga
Dracocephalum nutans alpinum	Thymus serpyllum
Dryas octopetala	Tunica saxifraga
Euphorbia Myrsinites	Veronica repens
Erinus	" rupestris
Erpetion reniforme (Viola)	Viola gracilis (all)
Gypsophila repens	Wahlenbergia

Memorandum

Memorandum



Economic and Systematic Botany
Economic Collections

Rec'd JAN 24 1930 ★

Received