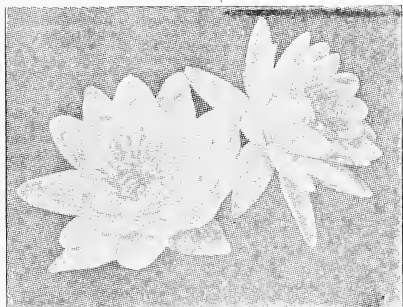
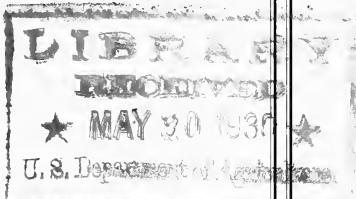


Historic, Archive Document

Do not assume content reflects current scientific knowledge, policies, or practices.

62.09 -1932
Woodford

Water
Gardens



6158 Fulton Ave.
Van Nuys, California

Phone Van Nuys 630 M

WATER gardening has increased in popularity in recent years more than any other kind of gardening for pleasure. As a woman caller at our gardens stated to the writer, "I got tired of the hard work in my garden, and put in pools instead, and now I neither pull weeds nor water the plants." When one considers that in the pool, once planted, one has a succession of blooms the whole summer through without effort, it places it in the front rank for returns on the investment of cost and labor.

Added to the plants and blooms, there are the gold fish, quite necessary to keep the water free from mosquito larve, and much pleasure may be derived from raising the finny pets. No experience is necessary, just plant lilies and aquatics in the pool; they do the rest.

The writer will say this: Buy of reliable growers whose catalogs describe the plants so that the buyer can make selection to suit his fancy and purse.

Our growing business is, we believe, proof that we are one of the reliable ones.

We never ship out a plant we would not want to receive were we on the buyer's end.

F. D. WOODFORD, *Proprietor.*

POOLS

We build pools. Designs will be submitted and prices given upon application.

Advice freely given to those building their own pool.



*Built by us for H. Phelps Gates
15230 Ventura Boulevard, Van Nuys, California*

Where overgrown with vines this pergola makes a delightful resting place. The pool surrounding it is planted to one pink and one yellow water lily. Water Poppies, Floating Heart, Water Snowflake, Hyacinth Azurea, and three other water plants. We put in five gold fish, and our charge for the job is \$75.00. When built outside of Los Angeles County we add for expenses according to distance from our gardens.

Water Lilies

PLANTING AND CARE. Water lilies are in two general divisions, hardy and tender or tropical. Hardys have roots or rhizomes, and can be taken up and replanted any time of the year when it is not freezing. Tropicals have bulbs which send out roots. The foliage and the roots die at the approach of winter and the bulb may be dug and kept in moist sand until freezing weather is over, then planted in the pool. This applies also to the care of hardys in cold parts of the country. In the South and in California lilies need no attention except to refertilize the pool once in two years. At this time the increase of tropical bulbs may be taken off, and hardy roots may be cut up as crowns have increased. In planting spread 3 inches of cow fertilizer on floor of pool or in bottom of box and spread 8 to 10 inches of soil on top of this. Fill pool up to top of soil and press root or bulb down into the mud. Then fill pool. Hardys should be allowed 2 ft. by 2 ft. space and tenders twice that amount of room.

Hardy Water Lilies

PINK

MARLIACEA CARNEA. Beautiful flesh pink flowers of good form. Blossoms are large, the plant strong, and exceptionally free blooming. A lily that deserves a place in every pool, \$1.00.

SOMPTUOSA. One of the largest and best of the pinks. The broad open flowers are deep pink near the center, growing lighter outward. The plant is a strong grower. A recent introduction\$3.50

ROSE AREY. This lily was awarded a silver medal by the New York Horticultural Society. The flowers are a deep cerise pink, petals pointed with a noticeable curl, giving the effect of darker shading near the edges. One of the best of the Odorata group. A very popular lily\$3.00

MARLIACEA ROSEA. The deep pink fragrant flowers are cup shaped, of good size and

form, and freely borne. The first to open in the morning. A vigorous grower.....\$2.00

MASANIELLO. A fine free flowering variety. The plant is a strong grower producing flowers of an exquisite shade of pink. A very desirable lily\$2.50

TUBEROSA ROSEA. Flowers of wax texture and delicate shade of pink. Wonderfully scented. Cannot be classed with the free bloomers, but the flowers it produces make amends for being fewer in number than the more prolific sorts\$1.50

WHITE

MARLIACEA ALBIDA. Large, dazzling white flowers with yellow stamens, making a startling contrast. Large pads of bright green, with a pink shading on the under side.....\$1.50

GLADSTONE. Very large cup-shaped flowers that open early in the morning as well as early in the season. Vigorous grower and should have plenty of room.....\$1.50

RED

ROBINSONII. Flowers of good size and freely borne, petals red streaked with yellow, the general effect being orange red. Leaves mottled and prettily ruffled on the sinus.....\$2.50

MARLIAC RED. Bright red flowers freely produced. An old variety and a good companion to the other Marliac lilies.....\$2.50

ESCARBOUCLE. The most brilliant flowered red among the water lilies. Bright intense red deepening to crimson; the garnet stamens an effective foil. The plant is a strong grower, producing its strikingly beautiful flowers in profusion. This is one of the best of all hardy lilies\$6.00

CONQUEROR. The flower, under proper plant treatment, will attain a size of 8 inches in diameter. Color carmine red, the petals flecked with white with lighter sepals. A combination in color that has caused this lily to be called the handsomest of the hardys. The plant has every good point desired. Strong growing and exceptionally free blooming.....\$5.00

GLORIOSA. The hybridist who brought this lily to flower said it would be impossible to picture a more glorious sort, so named it Gloriosa. Brilliant red double flowers of exquisite cup shape, most freely borne. A very popular variety\$5.00

JAMES BRYDON. An old American variety that is yet in good demand because of its great merit. The flower is rosy crimson, large and broadly cup shaped, making a most attractive blossom. The leaves tinged with bronzy red, and very ornamental.....\$3.00

YELLOW

CHROMATELLA. (Marliac Yellow). Of the Marliac family and a good plant, producing in profusion well formed blossoms. A strong grower\$1.50

ODORATA SULPHUREA GRANDIFLORA. Our lily is the true type. Enormous plant, with huge green leaves, and produces beautiful sulphur yellow flowers that attain a size of 10 inches in diameter, from early spring till late in the fall\$5.00

SUNRISE. This lily has deservedly received unlimited praise. One that causes an exclamation of astonishment from the observer when introduced to it. Throughout the summer it produces enormous flowers of brightest yellow, with long lanceolate petals. A flower that is hard to describe, but which has a grace and beauty all its own. One caller at our gardens, after drinking in its beauty, said: "Oh, it is magnificent." We leave it at that. It surely is\$7.50

MEXICANA. Wild lily of Mexico. Flowers fragrant, bright yellow, standing well above the water. Desirable for small pools.....\$1.00

SUNSET COLORS

COMANCHE. The best of all the copper or apricot colored sorts. A large flower, with long pointed petals of amber red overlaid with yellow. Strong growing plant, having a long blooming season. This lily deserves the praise it gets from every one who sees it.....\$3.50

PENNSYLVANIA

An old, but very fine variety bearing profusely large deep blue flowers, having a delightful fragrance

AURORA. This lily derives its name from the changing colors of the blossoms. It opens yellow warmed with amber, and deepens daily to dark red. Gives the grower a range of color all on one root. Semi-dwarf in growth. Free flowering. Desirable for tub culture.....\$1.50

LUCIDA. Flower light red with warm yellow flush. Petals long and pointed. The plant is a free bloomer until late in the fall. A desirable lily\$2.50

PAUL HARIOT. A copper pink flower of good size and fine form that deepens its color with age. An exceptionally good sort with a long blooming season.....\$2.50

TROPICAL WATER LILIES

Tropical or tenders may be planted in Eastern States June 1st and after. Southern States and California May 15th and after.

ZANZIBAR BLUE. Large star shaped flowers, borne on tall stems a foot above the water. Bud opens purple fading to blue as it develops. Fragrant\$2.50

WM. STONE. Star shaped purple flowers freely borne on tall stems. The margins of the leaves are scalloped. The flowers last well when cut\$2.50

CALIFORNIA. The deep blue flowers are large and fragrant, leaves large with scalloped edges and blotched with mahogany spots. A splendid bloomer. Needs lots of room.....\$5.00

MRS. C. W. WARD. Flowers deep rose pink, star shaped, and produced in profusion. Leaves prettily scalloped. The best of the tropicals for cut flowers\$2.50

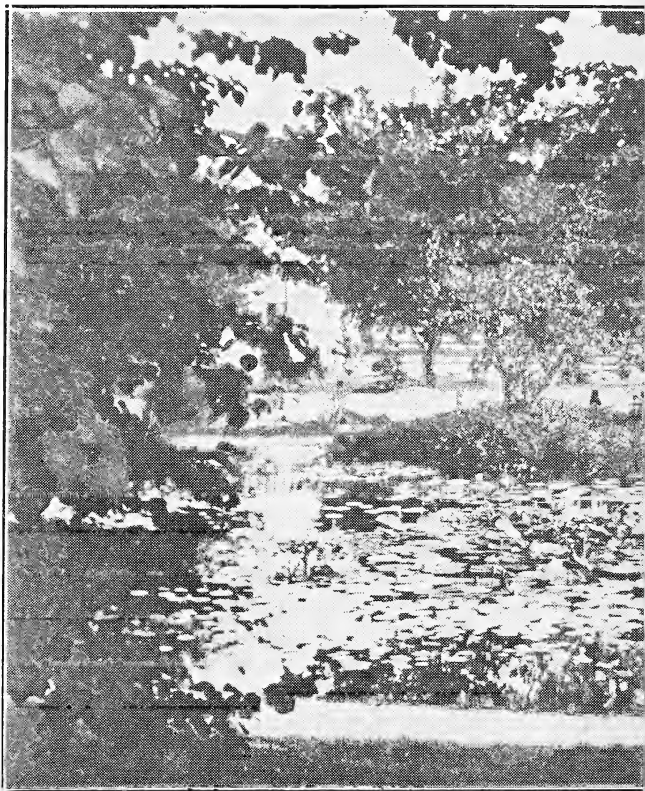
AUGUST KOCH. Large deep blue flowers. The plant very persistent, flowering soon after planting. It is of the viviparous group, producing new plants at base of leaf.....\$2.00

STELLA GURNEY. A free flowering lily producing fragrant blossoms of bright pink with long pointed petals. The large green pads are ruffled at the margin.....\$2.50

PANAMA PACIFIC. A viviparous plant, and free flowering. The buds as they rise out of the water are bronzy green, spotted with reddish

brown; open a rich rosy red with yellow stamens. Young plants spring from the base of the leaf\$3.50

MRS. GEO. H. PRING. Ours is the true Pring, the stock, which we were fortunate in obtaining, coming from the Missouri Botanical Gardens, where this lily originated. Immense snow-white flowers, profusely borne through the entire summer. Blossoms open in early morn-



A Scene in

ing remaining open till evening. The only really good white tropical. A splendid contrast to the colored varieties\$5.00

NIGHT BLOOMERS

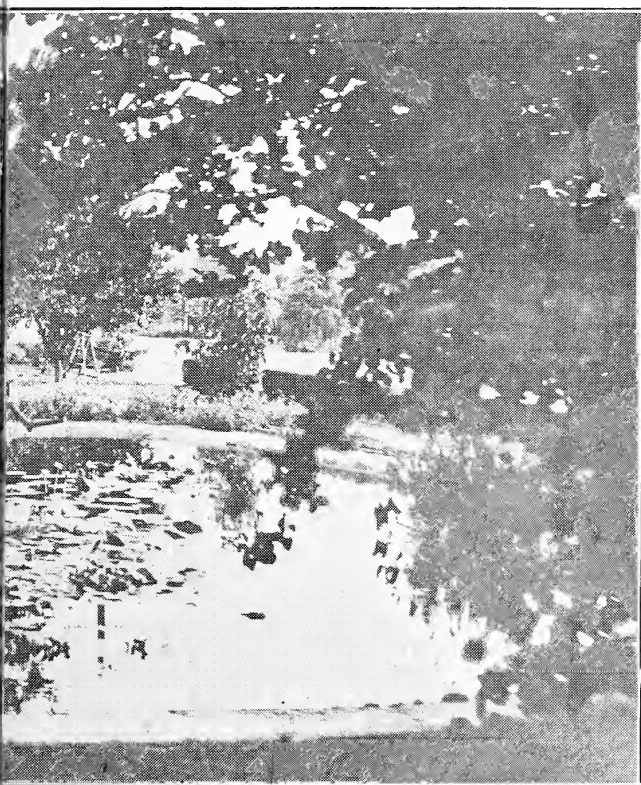
The night bloomers have been called the business man's lilies, since they open in early evening, remaining open till about 9 o'clock the next day.

DEVON. A very free blooming lily with bright rosy red flowers of large size and long pointed petals. Flowers borne on tall stems. Leaves dark maroon with toothed edges...\$2.00

DENTATA. Large flowers, pure white in color and are produced very freely. Leaves bright apple green\$2.00

LOTUS (Nelumbium)

This plant brings to mind the ancient lore of



ar Gardens

a civilization that flourished thousands of years ago along the banks of the Nile. The flower is the same today, as evidenced by blossoms found in recently opened tombs.

Tubers sold only in March and April. After that in tubs.

ALBA GRANDIFLORA. Flowers pure white, large and very fragrant. Dormant tubers \$2.50, in tubs\$5.00

SPECIOSUM. Exquisite flowers of rose pink. Free flowering. Dormant tubers \$2.50. In tubs\$5.00

WATER PLANTS

Except where otherwise indicated water plants should be planted in shallow water near the edge of the pool.

WATER HAWTHORNE. An interesting plant producing snow-white flowers with the fragrance of the English Hawthorne. The leaves are oblong and float on the water. The flower spike is forked and each floret speckled with tiny black antlers. In the South and in California it blooms through the entire winter. Plant in one foot of water among the lilies...50c

WATER POPPY. Sulphur yellow flowers borne all through the summer. Plant increases by runners. Hardy.....3 for 25c

WATER SNOWFLAKE. A pretty little plant with floating leaf. The blossom bears five frosty petals with yellow center. Flowers spring from the base of the leaf and roots form on the lower side making a new plant. Tender and should be brought into the greenhouse in winter25c

FLOATING HEART. This plant has leaves like a miniature water lily. Bears profusely bright yellow flowers. Hardy.....25c

WATER BUTTERCUP. Long trailing stems with waxy leaf and bearing small yellow flowers. When planted in shallow water near the edge of the pool the runners will climb out of the water and trail along the border.....25c

DUCK WEED. The smallest floating water plant. Fish eat it. A good oxygenator. Per bunch15c

EEL GRASS. (*Vallisneria Spiralis*). Long ribbon like leaves that will come to the surface through 1 to 2 feet of water. Blossom consists of a long thread like spiral. Pretty in aquaria15c

GIANT ANACHARIS. The most used for aquarium. Graceful stems with whorls of deep green leaves. Good also for the pool.....15c

BABY ANACHARIS. Same as anacharis but of dwarf growth. Good for aquarium. Do not plant in pool as it becomes a nuisance.....15c

CRINUM AMERICANUM. An easily grown and beautiful bulbous plant related to *Amaryllis*. The large, white, lily-like blossoms are borne in spikes of 6 to 8. Grows in any kind of soil, preferring wet situations, thriving in the pool if only the roots reach the water.....50c

MYROPHYLLUM. A pretty aquatic with fine hair-like leaves. Good for the pool, where the fish prefer it to other plants for a spawning place. The plants is clean and does not harbor enemies of small fish.....25c

WATER FERN. Bronzy fern-like leaves. Good for aquarium, but do not plant in pool, 15c

SPEAR HEAD. (*Saggitaria Nataus*). Lance-like leaves and spike of white blossoms with yellow eye15c

JAPANESE ARROWHEAD. Arrow-like leaves 1 foot high. Blossoms have three petals and yellow center25c

GIANT DOUBLE ARROWHEAD. Plant has large arrowhead leaves, and bears a flower spike bearing ten or more balls of white bloom. Grows to height of 2 to 3 feet. Goes dormant in winter and bulbs may be dug and kept in wet sand until spring. Very pretty plant..... 50c

WATER CANNA. (*Thalia Dealbata*). Has canna-like leaves with maroon spot at base, growing on stalks 5 to 6 ft. high. An attractive purple blossom covered with a lavender dust. Hardy, a strong grower, and desirable as a centerpiece in the pool, or to place in a recessed corner.50c

PICKEREL PLANT. Grows to height of 1 to 2 feet, has heart shaped leaves, and bears spikes of purple flowers throughout the summer25c

AZURE PICKEREL PLANT. Attains a height of 4 to 5 ft. Each leaf bearing a spike of sky blue flowers25c

PARROT FEATHER. May be planted in a water tight hanging basket, or near the edge of

the pool where it will creep over the border and out among the lilies. The bright green whorls of feathery leaves make it an attractive plant15c

ZEBRA GRASS. Tall quill-like reeds banded alternately green and white, grows to a height of 5 ft. Will show better color if planted where the earth rises above the water.....25c

WATER HYACINTH (*Eichornia Azurea*). A very satisfactory variety of hyacinth. Flowers a rich blue with a purple throat and a yellow eye. A rank grower, the creeping runners covering several square feet of water surface in a single season. Plant in 6 to 10 inches of water among the lilies.....50c

WATER HYACINTH (*Eichornia Crassipes*). Flowers delicate lilac in trusses like a hyacinth. Does best in partial shade, as the sun burns the air filled petioles, or bind the plants together in a close bunch with a hoop or wire. The roots may be anchored to the earth with a stone until they become rooted. Per plant 15c, four for 50c

JAPANESE HYACINTH. Grows in clumps in shallow water, bearing small purple flowers all through the summer. Per plant 15c, four for50c

POOLSIDE PLANTS

The following plants do well and are seen to best advantage placed outside at the border of the pool, but must be kept damp.

ELEPHANT EAR. Leaves are immense and shaped like ear of the elephant. Very showy, 50c

PALM GRASS. A graceful palm-like grass that grows to height of 3 to 4 ft. and forms a large clump. Leaves are broad and pleated, arching gracefully. Very ornamental.....25c

DWARF UMBRELLA PALM. The plant has slender stems 2 to 3 ft. high, bearing a feathery crown of leaves.....25c

TRITOMA. (Torch Lily). Tall spikes of orange and red flowers grow from a grassy clump25c

CRINUM AMERICANUM. Large white lily-like blossoms are borne in spikes of 6 to 8.

Plant in pool where earth is raised above the surface. A worth while plant.....50c

FOUNTAIN GRASS. Narrow stiff blades grow in clumps to height of 2 ft. Surmounted by feathery plumes25c

HEMEROCALLIS. (Day lily). Will grow as well in New England as in California. Easy of culture and valuable because they will, each year, make larger clumps bearing large bell-shaped yellow and orange fragrant blossoms. Every garden should have this lily.....25c

PAPYRUS. (Egyptian paper plant). This may be grown either inside the pool where soil is raised to the surface of the water, or outside the pool if kept damp. Its plummy heads are borne on stout reeds which grow to a height of 6 to 8 ft.....50c

WATER IRIS

Iris should be planted in very shallow water or in a wet place.

IRIS PSEUDACORUS. (Gigantea). A splendid plant attaining a height of 6 ft. bearing golden yellow flowers. The longer the clumps grow undisturbed the better it blooms.....25c

PURPLE WATER IRIS. Grows to a height of 2 to 3 ft. and produces a pretty spike of purple flowers25c

IRIS KAEMPFERI (Japanese Iris)

Japanese iris when planted in wet soil at the border of the pool affords the water gardener an opportunity of producing flowers that for beauty are unexcelled by any other plant at the pool side, and call forth words of praise from those who view them. Visitors at our gardens have expressed astonishment at the large and beautiful blossoms produced by the different varieties of Japanese iris growing there. We have selected five varieties for propagating that, we think, represent the best in this kind of iris.

GOLD BOUND. A fine, double pure, white with creamy glow and gold banded center.....35c

PURPLE AND GOLD. Double, rich violet, purple with white petaloids tipped violet. Golden throat35c

UCHEU. This word in Japanese means uni-

verse. It is their way of saying this flower is matchless. Double caerulean blue with golden center and white.....35c

KURO-KUMO. Purple overlaid with dark blue, yellow and white blotches.....35c

GEKKA-NO-NAMI. Pure white, yellow blotches35c

JEANETTE PARRY. Large single. Orchid color flecked with purple, golden throat. Beautiful35c

One of each of the above 5 iris for.....\$1.50

ROCK GARDEN PLANTS

Very often small rock gardens are built in connection with the pool. We have a few good plants to be used in such a place.

TRAILING LANTANA. Runners arching over and trailing on the ground, covered throughout the summer with fragrant lavender blossoms25c

ICE PLANT. (*Misembryanthemum Crystallinum*). Dark green frosty leaves with an abundance of little red blossoms. No plant will so quickly cover a bare spot in the garden, as it grows marvelously fast15c

MYRTLE. (Variegated). Its runners, with green and white leaves growing in pairs, trail over the ground in a quick growth. Flowers blue15c

RIBBON GRASS. Grows in clumps 1 ft. high, its ribbon-like leaves streaked green and white, 15c.



