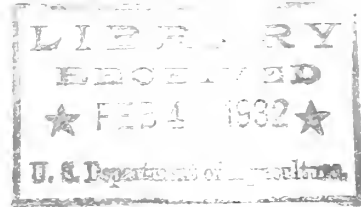


Historic, Archive Document

Do not assume content reflects current scientific knowledge, policies, or practices.

231



Catalog

BAGATELLE NURSERY



HALF HOLLOW HILLS
Long Island

HUNTINGTON STATION, N.Y.
Phone: Farmingdale 850

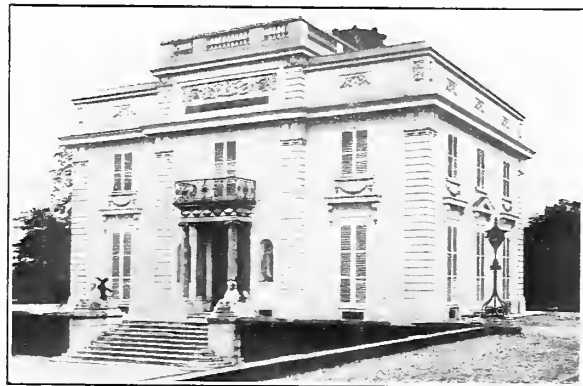
COPYRIGHT, 1931—BAGATELLE NURSERY
ALL RIGHTS RESERVED

"BAGATELLE"

*How the Famous Parisian
Garden Received Its Name*



"Mais, non. C'est une bagatelle."



Chateau de Bagatelle

An Eighteenth Century Wager

On a wager with Marie Antoinette, in 1780, the Comte d'Artois (later Charles X, the second king of the Restoration) built an entrancing little chateau with its charming gardens in the incredibly brief time of 64 days. The outlay was three million francs.

"C'est magnifique!" cried Marie Antoinette, on catching her first glimpse of the beauty spot which became an enduring reminder of her wager.

"Mais, non. C'est une bagatelle," answered the gallant Comte d'Artois. So in this romantic manner the name "Bagatelle" originated.

BAGATELLE NURSERY is so named because it also is a beauty spot, with its specimen Evergreens, Ornamental and Flowering Trees, Rhododendrons and Shrubbery. It is well worth a visit. A cordial welcome awaits you.

Greeting

To every lover of trees and flowers; to every home owner who enjoys the friendliness of Evergreens and Shrubs and realizes their value when planted on his grounds—Bagatelle sends greetings. Although this is our first catalog—Bagatelle is not “new.”

It has been in existence several years. Its 150 acres under the efficient management of Hugo P. Streckfus, a name widely known in horticultural circles, have produced as complete an assortment of the finer and rarer varieties of Evergreens as can be found anywhere.

We are specially proud of our Lawson Blue Cypress and Hybrid Rhododendrons. Our endeavor is to produce worth-while planting material which shall give lasting satisfaction to the purchaser.

Photographs. The photographs reproduced in the following pages represent about a half of the growing acreage in use.

Foundation plantings—Interspersed with the views of plant material, we have reproduced illustrations of actual plantings, with key plans and lists. These will help in your selections for your own planting.

Up to the Spring of 1931 no selling plan was inaugurated because the owner and manager preferred to wait until the sizes were marketable. Now we are ready.

AN INVITATION

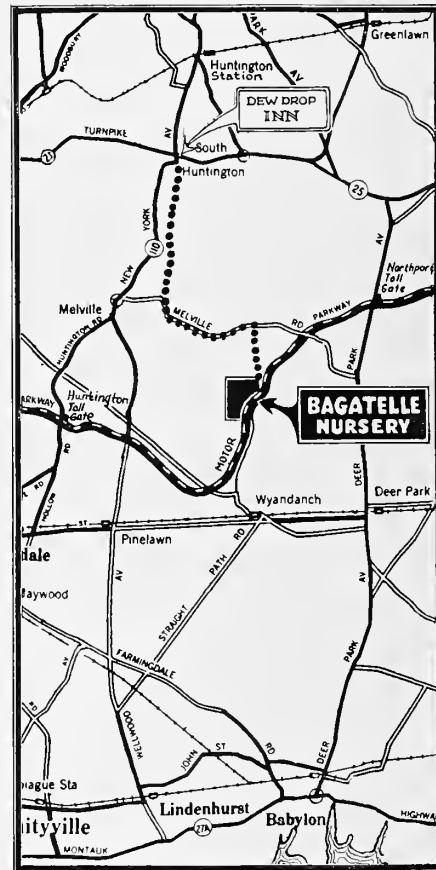
With almost every family owning a motor it is now possible to select your planting material at the nursery. Come and see—select just what appeals to you. The *Map* will help you, no matter from which direction you come.

EASY WAYS TO REACH US

- (1) Public Road—go east via Jericho Turnpike about 34 miles from New York. At the “Dew Drop Inn”—turn right, and as every corner is plainly posted “Bagatelle Nursery” you’ll have no trouble in finding us.
- (2) Motor Parkway via Long Island Motor Parkway beginning at Nassau Boulevard—just outside of Flushing, Long Island. Drive about 30 miles to Huntington Toll Gate. Continue on Parkway $4\frac{1}{2}$ miles to first cross road, where you turn left, at a sign—“Bagatelle Nursery.”

You’ll always find a genuine welcome.

THE BAGATELLE NURSERY



Location of “Bagatelle”



View looking Northeast—Koster Blue Spruce in center

NURSERY VIEW

This is a small section of our plantings at Bagatelle. Thousands of beautiful Evergreens are in view—every one grown with great care. Many are ready for shipping—ready to decorate home and estate. Clean, sturdy, disease free, with strong roots. Bagatelle stock meets every demand for good reliable material for landscape plans. The great majority of this material has been reproduced by grafting.

LIST OF EVERGREENS AND FLOWERING TREES IN THIS GROUP— IN FOREGROUND

1. GOLDEN ORIENTAL ARBORVITAE (*Thuja Orientalis Aurea Nana*)
2. BEVERLEY GOLDEN ARBORVITAE (*Thuja Orientalis Aurea Beverleyensis*)
3. LAWSON BLUE CYPRESS (*Chamaecyparis Lawsoniana Alami*)
4. ORIENTAL PYRAMIDAL ARBORVITAE (*Thuja Orientalis Pyramidalis*)
5. COLUMNAR JUNIPER (*Juniperus Chinensis Columnaris*)
6. DWARF ALBERTA SPRUCE (*Picea Glauca Conica*)
7. KOSTER BLUE SPRUCE (*Picea Pungens Glauca Kosteriana*)
8. WEEPING JAPANESE CHERRY (*Prunus Rosea Pendula*)
9. JAPANESE FLOWERING CHERRY (*Fugenzo*) double, pink (*Prunus Serrulata Sachaliensis*)
10. JAPANESE FLOWERING CHERRY (*Paul Wollert*) deep pink (*Prunus Serrulata Sachaliensis*)



GOLDEN ARBORVITAE (Berckman's)

(Thuja Orientalis Aurea Nana)

SPECIMEN

This dignified specimen is a fair representation of our large collection, hundreds of which are shown on Page 5. During the Summer it carries its bright golden green foliage straight through the season. In Winter it turns to bronze. Being dwarf, compact and symmetrical, it lends itself nicely to formal types of foundation plantings. It is compact in habit, very attractive and popular everywhere. North of New York it needs some protection in the cold season, but it's worth the slight effort.

PRICES

3 to 3½ ft. perfect specimens, \$15.00-\$18.00 each

OTHER ARBORVITAE

GOLDEN-TIPPED ARBORVITAE (*Thuja occidentalis elegantissima*)

The golden-edged bronze foliage in Winter is remarkably beautiful.

	Each	10	
2 to 2½ feet	\$3.50		\$30.00
2½ to 3 feet	5.00		45.00

RIVER'S ARBORVITAE (*Thuja occidentalis riversi*)

Bright green variety, forming a very shapely broad pyramid.

	Each	10	
2½ to 3 feet	\$5.00		\$45.00
3 to 3½ feet	6.50		60.00

COLUMNAR ARBORVITAE (*Thuja orientalis*)

Dense, pyramidal little tree, with fresh green foliage, turning to a rich brown in Autumn.

	Each	10	
2 to 2½ feet	\$3.00		\$25.00
2½ to 3 feet	4.00		35.00
3 to 4 feet	6.00		55.00



Specimens as perfect as these are comparatively scarce

**GOLDEN ARBORVITAE
(Berckman's)**

(Thuja Orientalis Aurea Nana)

On Page 4 we have shown a single specimen of this golden beauty. Because of the comparative scarcity of perfect specimens we are demonstrating in this plate that we have a good quantity of these for sale and other thousands approaching marketable sizes. The soil at Bagatelle is admirably adapted to the propagation of this golden gem. Our great care and conservatism in shipping only specimens of the right age to endure transplanting successfully, assure our customers of satisfaction, when planted according to our directions.

These golden Evergreens should be seen and examined at close quarters. If you intend to purchase several it would be worth your while to call. Visitors always welcome.

Remember please—specimens like these at Bagatelle are comparatively scarce.

PRICES

*3-3½ ft. Specimens perfect) \$15.00—\$18.00 each

**GOLD SPIRE
ARBORVITAE**

(Thuja Orientalis Aurea Conspicua)

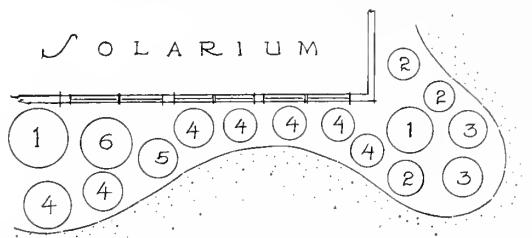
This Arborvitae is an interesting and peculiar novelty—slender pyramid-shaped with showy, yellow foliage in Spring and Summer changing to a pleasant bronze in Winter. Rather scarce.

*3-3½ ft.	Each \$7.50
*3½-4 ft.	\$9.00

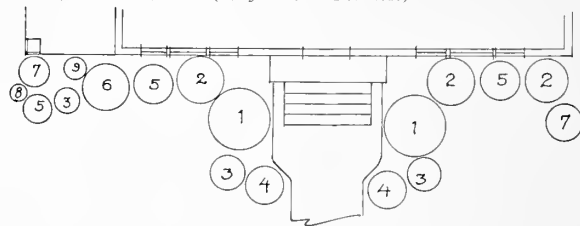
FOUNDATION PLANTINGS



1. Upright Japanese Yew (*Taxus cuspidata capitata*)
2. Dwarf Hinoki Cypress (*Retinospora obtusa nana*)
3. Pfitzer Juniper (*Juniperus chinensis pfitzeriana*)
4. Dwarf Japanese Yew (*Taxus cuspidata brevifolia*)
5. Japanese Andromeda (*Pieris japonica*)



1. Green or Plume Retinospora (*Retinospora plumosa*)
2. American Arborvitae (*Thuja occidentalis*)
3. Sulphurplume Retinospora (*Retinospora plumosa flavescens*)
4. Mugho Pine (*Pinus mughus*)
5. Moss Retinospora (*Retinospora pisifera var. squarrosa*)
6. Koster Blue Spruce (*Picea pungens kosteriana*)
7. Goldenplume Retinospora (*Retinospora plumosa aurea*)
8. Savin Juniper (*Juniperus sabina*)
9. Reid Arborvitae (*Thuja occidentalis reidi*)



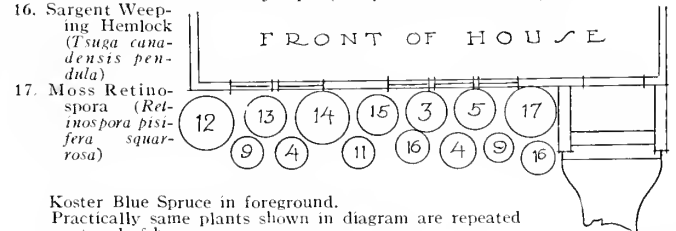
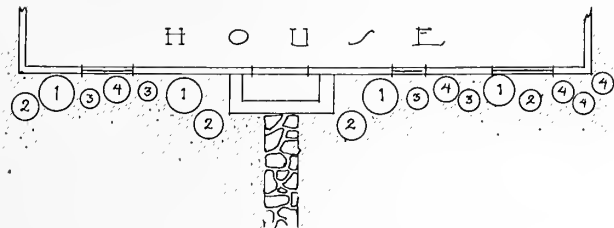
FOUNDATION PLANTINGS



1. American Arborvitae (*Thuja occidentalis*)
2. Pfitzer Juniper (*Juniperus chinensis pfitzeriana*)
3. Spiny Greek Juniper (*Juniperus excelsa stricta*)
4. Rosebay Rhododendron (*Rhododendron maximum*)



3. Slender Hinoki Cypress (*Retinospora obtusa gracilis*)
4. Moss Retinospora (*Retinospora pisifera squarrosa*)
5. Siebold Hemlock (*Tsuga sieboldii*)
9. Sulphur Retinospora (*Retinospora plumosa sulphurea*)
11. Spiny Greek Juniper (*Juniperus excelsa stricta*)
12. Lobb Cryptomeria (*Cryptomeria lobbii*)
13. Golden Sawara Retinospora (*Retinospora pisifera aurea*)
14. Upright Japanese Yew (*Taxus cuspidata capitata*)
15. Golden Chinese Juniper (*Juniperus chinensis aurea*)



Koster Blue Spruce in foreground.
Practically same plants shown in diagram are repeated at end of house.



Be sure to include these Bagatelle Arborvitae in your planting plans

AMERICAN ARBORVITAE
(*Thuja Occidentalis*)

Of all the Evergreens the "Tree of Life" (Arborvitae) is the most frequently planted. Its beauty—its beautiful green colors—its attractive form and its willingness to live to a great age, make its name quite suitable. Its lacy foliage, overlapping in graceful frond-like sprays, makes it popular everywhere. Its symmetry is typical of the species. It can be kept in form—always presentable—by shearing, either formal or informal. It thrives most anywhere. It is suitable for lawn specimens, for backgrounds, for hedges, for tall accents about foundation or in garden; splendid for screens about stables, garages, etc. We have thousands of these from 3 to 7 feet. Bushy, compact specimens, several times transplanted. Any planting you propose to do this Spring should include the American Arborvitae.

If you can use an evergreen hedge, don't overlook this block of Arborvitae.

PRICES			
	Each	10	100
3 to 4 ft.	\$4.00	\$35.00	\$340.00
4 to 5 ft.	7.00	60.00	590.00
5 to 6 ft.	9.00	75.00	725.00
6 to 7 ft.	12.00	100.00

Five More
BAGATELLE ARBORVITAE



You should see this display in person

RIVER'S ARBORVITAE (*Thuja occidentalis riversi*)

Bright green variety, forming a very shapely broad pyramid.

	Each	10
2½ to 3 feet.....	\$5.00	\$45.00
3 to 3½ feet.....	6.50	60.00
3½ to 4 feet.....	7.50	70.00

ROSENTHAL ARBORVITAE (*Rosenthalii*)

Dark green, dense foliage; the growths terminate with a little whitish ball; compact grower.

	Each	10
2 to 2½ feet.....	\$5.00	\$45.00
2½ to 3 feet.....	6.00	55.00
3 to 3½ feet.....	7.50	70.00

SPIRAL ARBORVITAE (*Douglas pyramidalis*)

This is a very distinct variety, rich in appearance and color. Habit is erect and formal. The foliage is peculiarly twisted.

	Each	10
3 to 3½ feet.....	\$6.00	\$55.00
3½ to 4 feet.....	7.50	68.00
4 to 4½ feet.....	9.00	80.00
*4½ to 5 feet.....	12.50

VERVAENE ARBORVITAE (*Vervaeana*)

A choice variety of dense, pyramidal habit, with light green foliage, retaining its color throughout Winter.

	Each	10
3 to 3½ feet.....	\$6.50	\$58.00
3½ to 4 feet.....	7.50	65.00
4 to 4½ feet.....	9.00	80.00

SIBERIAN ARBORVITAE (*Wareana*)

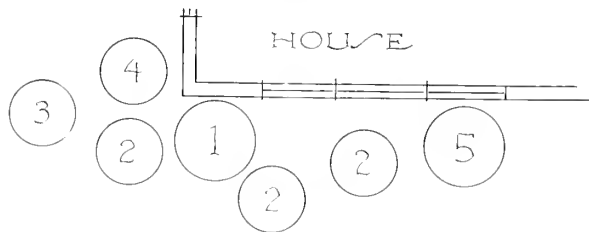
Large, glaucous green foliage; broad pyramid. Much used in foundation plantings.

	Each	10
2 to 2½ feet.....	\$4.00	\$35.00
2½ to 3 feet.....	5.50	50.00
3 to 3½ feet.....	6.50	60.00

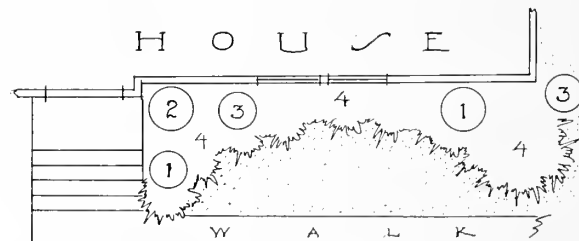
FOUNDATION PLANTINGS



1. Pyramidal Arborvitae (*Thuja occidentalis pyramidalis*)
2. Douglas Golden Juniper (*Juniperus canadensis aurea*)
3. Bush-Honeysuckle (*Diervilla sessilifolia*)
4. Mockorange (*Philadelphus virginale*)
5. Canada Hemlock (*Tsuga canadensis*)



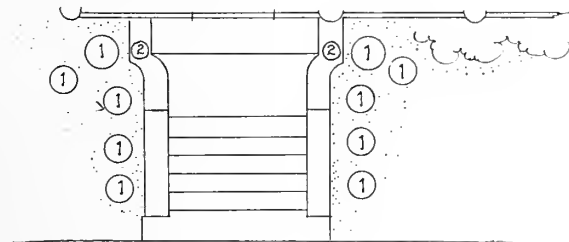
1. American Arborvitae (*Thuja occidentalis*)
2. Goldenplume Retinospora (*Retinospora plumosa aurea*)
3. Siberian Arborvitae (*Thuja sibirica*)
4. Creeping Juniper (*Juniperus horizontalis*)



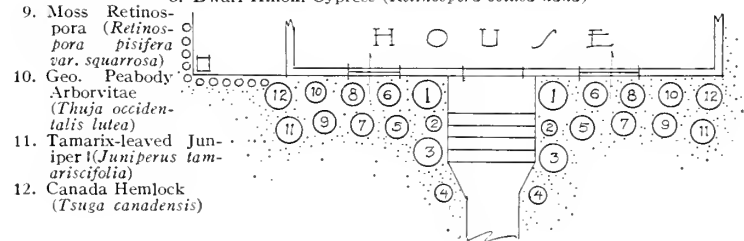
FOUNDATION PLANTINGS



1. Pfitzer Juniper (*Juniperus chinensis pfitzeriana*)
2. Dracena (*Dracaena indivisa*)



1. American Arborvitae (*Thuja occidentalis*)
2. Berckmans Golden Arborvitae (*Thuja orientalis aurea nana*)
3. Pfitzer Juniper (*Juniperus chinensis pfitzeriana*)
4. Mugho Pine (*Pinus mughus*)
5. Spiny Greek Juniper (*Juniperus excelsa stricta*)
6. Oriental Arborvitae (*Thuja orientalis*)
7. Golden Oriental Arborvitae (*Thuja orientalis aurea*)
8. Dwarf Hinoki Cypress (*Retinospora obtusa nana*)



9. Moss Retinospora (*Retinospora pisifera* var. *squarrosa*)
10. Geo. Peabody Arborvitae (*Thuja occidentalis lutea*)
11. Tamarix-leaved Juniper (*Juniperus tamariscifolia*)
12. Canada Hemlock (*Tsuga canadensis*)

TWO CEDARS AND AN ARBORVITAE

Rows *A*, *B* and *C* show three favorites much used for foundation planting.

(A) SILVER RED CEDAR

(*Juniperus Virginiana Glauca*)

Stands at the head of the Cedars; foliage more conspicuous than in the common Red Cedar; a favorite for specimen work; fine sturdy grower; cone-shaped and having a characteristic whitish color. Does well in dry soil. There is a scarcity of the larger size (4½ to 5 feet). Each 10

3½ to 4 feet	\$7.50	\$65.00
4 to 4½ feet	9.00	80.00
*4½ to 5 feet	12.00	

(B) LOBB'S ARBORVITAE

(*Thuja Occidentalis Atrovirens*)

It is never tall, has slightly pendulous branches; carries its fleshy, lustrous green leaves all through the whole twelve months. Each 10

3 to 4 feet	\$6.00	\$55.00
4 to 5 feet	9.00	80.00

(C) BURK'S CEDAR

(*Juniperus Virginiana Burki*)

A very symmetrical grower, gradually narrowing toward the top; has steel-blue foliage. This is a scarce variety and several specimens are quite an acquisition. Each 10

*3½ to 4 feet	\$7.50	
*4 to 4½ feet	10.00	



-A-

-C-

{ 12 } -B- These Silver Red Cedars are scarce in the larger sizes



Note how regular in form these are

GLOBE ARBORVITAE

(Thuja Occidentalis Globosa)

This is the globe-like variety of the American Arborvitae. Grows in compact form, well rounded out, and demands very little trimming to keep it symmetrical.

It seldom grows higher than 3 to 4 feet. Mostly used in front rows of foundation plantings—semi-formal and balanced plantings. Popular also for potting. Its dense foliage is a clear green.

We have a good supply of these plants in splendid condition, ready to decorate your home and property; 15 to 24 inches high. Every one (with a generous ball of earth protecting the roots) ready to be planted and *grow*.

PRICES

	Each	10	100
15 to 18 in.	\$2.50	\$22.50	\$215.00
18 to 21 in.	3.50	31.00	300.00
21 to 24 in.	4.50	41.00	400.00



DEODAR CEDAR
(*Cedrus Deodar Argentina*)
SPECIMEN

"Timber of the Gods"—that's the literal meaning of this Hindustani word "Deodar." Highly valued in the East Indies for its size, beauty and valuable timber; it is also prized in Europe and America as an exceptionally attractive Ornamental Evergreen.

Can you recollect the number of times you have seen it? It's extremely scarce.

Its stately dignified habit and its silvery white foliage create a pyramid of beauty distinctly individual. There is no other Cedar so unique in growth. Note its graceful pendulous branchlets—how strong they are, despite their length! No photograph can adequately depict this splendid Evergreen. If you purchase one or more, your visitors and friends will never tire of telling you of its beauty. It is hardy and grows in any soil.

	Each	10
3 to 4 feet	\$6.00	\$50.00
4 to 5 feet	10.00	85.00
*5 to 6 feet	15.00	120.00



A Cedar not often planted the—Deodar

DEODAR CEDAR

(Cedrus Deodara Argentina)

On Page 14 we show a specimen plant of this decorative Evergreen.

Here is seen part of a block ready for market. Although this tree grows to a height of 100 to 150 feet on the sides of the Himalaya Mountains, it seldom grows taller than 30 feet in America, being bred for ornamental purposes only.

Like many other Bagatelle offerings, this Deodar Cedar is unique—highly prized as a scarce ornamental Evergreen.

Its silver green foliage is carried on pendulous branchlets radiating from a strong center upright. The growth is sharply pyramidal. The leaves and branchlets have a dainty elegance that is highly pleasing. At a distance the tree appears rather frail, but examination discloses the whole tree to be very strong, tough and sturdy.

The quality of these exceptional acquisitions is limited even at Bagatelle. They're a sight worth driving 150 miles to see.

PRICES

	Each	10
3 to 4 ft.	\$6.00	\$50.00
4 to 5 ft.	10.00	85.00
*5 to 6 ft.	15.00	120.00



A suggestion for Roadway Curve

DECORATIVE GROUPING

Here's a suggestion for a driveway planting. There are about 44 plants set 24 inches from edge of drive. It is a 90 degree curve.

LIST OF PLANTS AS DISPLAYED

1. GOLDEN ORIENTAL ARBORVITAE (*Thuja orientalis aurea nana*)
2. BEVERLEY GOLDEN ARBORVITAE (*Thuja orientalis aurea beverleyensis*)
3. LAWSON BLUE CYPRESS (*Chamaecyparis lawsoni alumi*)
4. ORIENTAL PYRAMIDAL ARBORVITAE (*Thuja orientalis pyramidalis*)
5. COLUMNAR JUNIPER (*Juniperus chinensis columnaris*)
6. DWARF ALBERTA SPRUCE (*Picea glauca conica*)
7. VERVAENE'S ARBORVITAE (*Thuja occidentalis vervaeneana*)
8. WEEPING JAPANESE CHERRY (*Prunus rosea pendula*)
9. JAPANESE FLOWERING CHERRY (Paul Wohlert), deep pink (*Prunus serrulata sachaliensis*)
10. TAMARIX SAVIN JUNIPER (*Juniperus sabina tamariscifolia*)



Why not grow a Specimen Group like this? See Text

A GROUP PLANTING

This is a suggestion for tree lovers who delight to grow specimens in small groups.

Here are:

LAWSON BLUE CYPRESS
 COLUMNAR JUNIPER
 SWISS STONE PINE
 UMBRELLA PINE
 BROOM YEW
 JAPANESE YEW
 HICK'S YEW
 DOVASTON YEW

some of which we are growing for stock and for experimental purposes only. But we can supply others equally attractive. Every man with a little ground and a growing family would enjoy (through a period of fifteen to twenty years) seeing, ten, fifteen or more varieties of Evergreens and Shrubs grow, mature and flourish while his boys and girls keep them company. It's a commendable idea—worth considering.

Decorative.—These group plantings are suitable for driveways, corners and curves; for recesses where lawns meet fences, lattice work or walls. Locate one near a rock garden. Evergreens are always friendly—Summer and Winter.

CRYPTOMERIA (Lobb)

(Cryptomeria Japonica Compacta)

The beauty of this very scarce Evergreen cannot be judged from any photograph. It must be seen at close quarters.

We have quite a stock of this handsome and picturesque Japanese Cedar. You may be certain that your neighbors will congratulate you on the possession of one or more of these specimens, as they're not often seen.

It grows tall, somewhat narrow, tending toward a pyramidal form. Has deep green foliage, changing during the cold season to a rich russet or bronze tint. The leaves assume a rather stiff angle, seeming to grow straight out from the branches.

PRICES

Height	Each	10
*5 to 6 feet	\$17.50	\$170.00

BAGATELLE LANDSCAPE SERVICE

Is your home rather bare and uninviting? Does it need the decorative setting that will increase its value and make it a thing of beauty? Ornamental Trees and Evergreens, Shade and Flowering Trees, Rhododendrons, etc., will make a magic transformation which your neighbors will notice and try to copy.

WE HELP YOU WITH YOUR PLANS

You need not buy all the planting material which a well worked out plan would require. You *should* buy a generous share to plant at once and then next Fall or Spring purchase the balance.

Your correspondence is invited



SAWARA CYPRESS

(*Chamaecyparis Pisifera Retinospora*)

The Cypress is a noble family of ornamental Evergreens, everywhere popular because of their lacy, feathery foliage so characteristic of the genus—in many cases fern-like. These leaf forms give a delicacy and fineness of texture to the tree, quite different from other conifers.

This specimen is a good example; tall pyramid-like form; broad, flat foliage a deep glossy green, making a handsome formal specimen when sheared. It grows to 20 feet. Because of its willingness to send out a wealth of new branches and shoots in all directions, it will bear trimming twice a year to keep it dense and shapely. The Sawara Cypress is suitable as an accent note in foundation planting, also as single specimen when 5 to 6 feet high.

PRICES

	Each	10	100
3 to 4 feet.....	\$6.00	\$50.00	\$475.00
4 to 5 feet.....	10.00	90.00	875.00
5 to 6 feet.....	15.00	140.00	1375.00

GOLDEN SAWARA CYPRESS (*Chamaecyparis pisifera aurea*)

Beautiful golden yellow color, a shapely specimen and one of the most exquisite.

	Each	10	100
3 to 4 feet.....	\$6.00	\$50.00	\$475.00
4 to 5 feet.....	10.00	90.00	875.00
*5 to 6 feet.....	15.00	140.00

ARIZONA CYPRESS (*Cupressus arizonica*)

Glaucous pyramidal tree, dense foliage for arid regions.

	Each	10
2 to 3 feet.....	\$3.50	\$30.00
3 to 4 feet.....	5.00	45.00



A conifer with an individuality. Note its lacy feathery foliage { 19 }



Lawson Blue Cypress—the Aristocrat—a “special” at Bagatelle

LAWSON CYPRESS

(Chamaecyparis Lawsoniana Alumi)

This aristocrat among the Evergreens has its distinct individuality and because of its dignified beauty is in demand wherever well designed plants are required. Lawson “Blue” Cypress is one of our “specials” upon which we have lavished thousands of dollars to propagate a vast collection of specimens worthy of the approval of experts in the art of landscaping. We are justly proud of the results. No photo can adequately picture this wonderful spread shown here. One should view them in person to get a proper idea of their beauty.

It is an upright, slender pyramidal tree; foliage has a deep blue tint holding this color well in the Winter. It is rather scarce—not often seen because the average nurseryman does not propagate and grow it to an age where it can be safely shipped to home owners. It is hardy in New York and South. In Massachusetts needs Winter protection or planting in sheltered positions. If you have some of “the Handsome Bagatelle Lawsons” you may be justly proud. They will be the “talk of the neighborhood.”

PRICES

	Each	10	100
3-3½ ft.	\$5.50	\$50.00	\$480.00
3½-4 ft.	8.00	75.00	725.00
*5-6 ft.	25.00	240.00
*6½-7 ft.	30.00	290.00
*7-7½ ft.	35.00	340.00

FIVE DESIRABLE CYPRESSES

DWARF GOLDEN-PLUME CYPRESS (*Chamaecyparis pisifera plumosa aurea*)
It is one of the most popular Evergreens, particularly liked for its rich golden foliage, which shows up well among the more somber Evergreens.

	Each	10	100
2½ to 3 feet.....	\$5.00	\$45.00	\$435.00
3 to 4 feet.....	7.00	65.00	635.00
*4 to 5 feet.....	\$10.00 to 15.00		
*5 to 6 feet.....	18.00		

PLUME CYPRESS (*Chamaecyparis pisifera plumosa*)
Main stems are erect, but side shoots assume a plume-like arrangement, with the leaf points prominent. The branches are slender and pliable, imparting a feathery appearance of graceful habit, with delicate glaucous foliage; valuable for foundation plantings.

	Each	10	100
2½ to 3 feet, very heavy.....	\$4.00	\$32.50	\$300.00
3 to 4 feet, very heavy.....	6.00	55.00	535.00
4 to 5 feet, very heavy.....	9.00	80.00	775.00
5 to 6 feet, very heavy.....	15.00	145.00	

THREAD CYPRESS (*Chamaecyparis filifera*)
The long thread-like branches are very pendulous, with the lateral shoots distinct, of a consistent bright green. Worthy of its popularity.

	Each	10	100
2½ to 3 feet.....	\$6.00	\$54.00	
3 to 3½ feet.....	8.00	75.00	
*3½ to 4 feet.....	10.00		
*4 to 5 feet.....	14.00		

GOLDEN THREAD CYPRESS (*Chamaecyparis filifera aurea*)
Most attractive bright golden form of similar habit to its parent.

	Each	10	100
1½ to 2 feet.....	\$5.00	\$45.00	
*2 to 2½ feet.....	6.00	55.00	

HINOKI CYPRESS (*Chamaecyparis obtusa compacta*)
A graceful Evergreen. The foliage is a vivid dark green. Compact growth. A splendid type for foundation plantings.

	Each	10	100
2½ to 3 feet.....	\$8.00	\$75.00	\$725.00
3 to 3½ feet.....	9.50	90.00	880.00
*4 to 5 feet.....	12.00	115.00	



Dwarf Golden Plume Cypress—Include in your planting scheme

PINE, SPRUCE, YEW AND HEMLOCK

AUSTRIAN PINE (*Pinus nigra austriaca*)

A robust, stately Pine of rapid growth and very hardy. Stiff, long, dark green leaves in pairs. The Winter buds are whitish and long

	Each	10	100
2½ to 3 feet.....	\$5.00	\$47.50	\$465.00
3 to 4 feet.....	8.00	77.50	740.00



{ 22 } Norway Spruce—If you plant one of these on your lawn you'll own a living "Christmas Tree"

NORWAY SPRUCE (*Picea excelsa*)

Known as the "Christmas Tree." Very hardy and adaptable to hedge or other purposes; leaves dark green; very handsome. Tree of pyramidal lofty appearance.

	Each	10	100
2½ to 3 feet.....	\$3.50	\$32.50	\$310.00
3 to 4 feet.....	4.75	42.50	410.00

ENGLISH YEW (*Taxus baccata dovastoni*)

Wide-spreading branches, pendulous toward end; short, dull green leaves.

Spread	Each	10
1½ to 2 feet.....	\$5.00	\$45.00
2 to 3 feet.....	7.50	65.00

JAPANESE YEW (*Taxus cuspidata*)

In growth it is of a loose spreading habit, with dark green foliage and brilliant scarlet fruits. It does very well in shady places.

Spread	Each	10
1½ to 2 feet.....	\$5.00	\$45.00
2 to 3 feet.....	7.50	65.00

UPRIGHT JAPANESE YEW (*Taxus cuspidata capitata*)

The pyramidal shape of this variety makes it very useful where accent is needed. A choice evergreen.

	Each	10
1½ to 2 feet.....	\$5.50	\$50.00
2 to 2½ feet.....	7.50	65.00

HICKS YEW (*Taxus media hicksi*)

A hardy substitute for the Irish Yew, of compact habit with dark green foliage. Useful for formal effects.

	Each	10
15 to 18 inches.....	\$6.50	\$60.00
18 to 24 inches.....	7.50	70.00

AMERICAN HEMLOCK (*Tsuga canadensis*)

Leaves about half an inch long, dull green and slightly grooved above, striped beneath. Branches slender and softly pendulous.

	Each	10
2 to 2½ feet.....	\$4.00	\$35.00
2½ to 3 feet.....	5.50	50.00

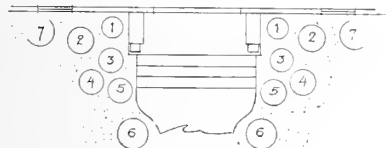


- A -

DOORWAY
PLANTINGS

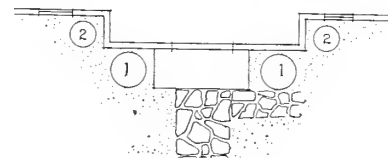


- (A)
1. Oriental Arborvitae (*Thuja orientalis*)
 2. Norway Spruce (*Picea excelsa*)
 3. Savin Juniper (*Juniperus sabina*)
 4. Dwarf Golden Oriental Arborvitae (*Thuja orientalis aurea nana*)
 5. Reid Arborvitae (*Thuja occidentalis reidi*)
 6. Thread-branched Golden Retinospora (*Retinospora filifera aurea*)
 7. Plume Retinospora (*Retinospora plumosa*)



- B -

- (B)
1. American Arborvitae (*Thuja occidentalis*)
 2. Plume Retinospora (*Retinospora plumosa*)



COLUMNAR CHINESE JUNIPER

(*Juniperus Chinensis Columnaris*)



This beautiful Evergreen, like all the Chinese Junipers, is remarkably decorative and a very valuable acquisition.

Being extremely scarce in the 5-6 ft. size, the possession of one or more is a source of genuine satisfaction.

It is a formal grower, distinctly conical in silhouette, narrowing gradually toward the apex—graceful and dignified. Its foliage is a metallic blue-green, holding this color well into the cold season. The needle-like leaves are displayed in star-like form on delicate branchlets.

Our stock of these much desired trees is exceptional. You'll travel quite a distance—and make many a call before you find equals of these at Bagatelle. Although these trees are scarce and not for sale generally, they enjoy the valuable quality of being robust, steady growers of extreme hardiness—they live!

PRICES

	Each	10	100
3 to 4 feet	\$7.50	\$70.00	\$680.00
4 to 5 feet	10.00	90.00
*5 to 6 feet	12.50	120.00

TAMARIX SAVIN JUNIPER (*Juniperus sabina tamariscifolia*)

A distinct trailing variety of *sabina*. The needle-shaped leaves have a deceptive but pleasing shade of gray-green. Fine for edging.

Spread	Each	10
1 to 1½ feet	\$2.50	\$22.00
1½ to 2 feet	3.00	27.50
2 to 2½ feet	4.00	35.00

PFITZER JUNIPER

(*Juniperus Chinensis Pfitzeriana*)

The Junipers are a most valuable group of Evergreens for ornamental landscaping. The habit of the tall varieties to grow in such compact forms—like silent sentries “at attention”—particularly fits them for formal use. Balanced in matched pairs, they accent the garden, or emphasize an entrance or drive. Shearing insures a dense uniform growth.

This Pfitzer is a low growing spreading variety suitable for foundation planting, for edging drives; at steps and entrances and for ground cover on banks and slopes.

Its foliage is soft to the touch, has a rich green-blue color—highly attractive. Grows anywhere. Planted in front of taller specimens, it completes the planting scheme nicely.

PRICES

Spread	Each	10	100
1½ to 2 feet	\$4.00	\$35.00	\$325.00
2 to 2½ feet	5.00	45.00	425.00
2½ to 3 feet	7.00	67.50	650.00
3 to 3½ feet	10.00	87.50	850.00
3½ to 4 feet, very heavy	12.00	100.00

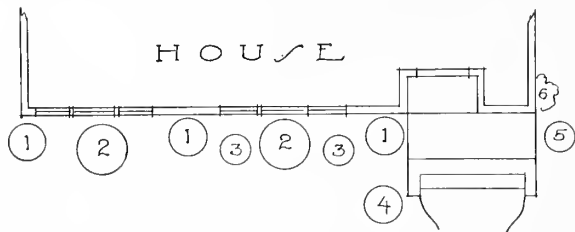


Popular everywhere—the “Pfitzer”

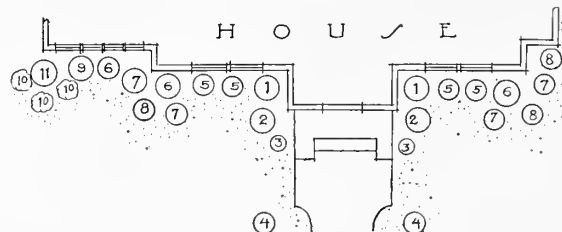
FOUNDATION PLANTINGS



1. Oriental Arborvitae (*Thuja orientalis*)
2. Pfitzer Juniper (*Juniperus chinensis pfitzeriana*)
3. Globe Arborvitae (*Thuja globosa*)
4. Koster Blue Spruce (*Picea pungens kosteri*)
5. Spiny Greek Juniper (*Juniperus excelsa stricta*)
6. Pauls Scarlet Climber Rose



1. Swiss Stone Pine (*Pinus cembra*)
2. Pfitzer Juniper (*Juniperus chinensis pfitzeriana*)
3. Japanese Azalea (*Azalea hinodagiri*)
4. Norway Spruce (*Picea excelsa*)
5. Japanese Yew (*Taxus cuspidata*)
6. George Peabody Arborvitae (*Thuja occidentalis lutea*)
7. Spiny Greek Juniper (*Juniperus excelsa stricta*)
8. Inkberry (*Ilex glabra*)
9. Cripps Retinospora (*Retinospora obtusa crispis*)
10. Japanese Barberry (*Berberis thunbergii*)
11. American Arborvitae (*Thuja occidentalis*)





Note the silver tips. A scarce variety. It's difficult to find such good specimens

WHITE LEAVED CHINESE JUNIPER

(Juniperus Chinensis Albo Variegata)

This variety of Juniper is much prized for several reasons. (1) Because of the scarcity of good specimens; (2) Because of its beautiful contour—usually pyramidal; (3) Because its needles are a silver green—the foliage being a light glaucous tint with creamy branches. This is in contrast with its dark green masses makes it extremely attractive; (4) Because it is hardy. The specimens at Bagatelle are “extra.” We doubt if you’ll find such fine ones easily. Owners of this white-leaved variety are usually (and rightly so) very proud of them.

It is a formal erect grower—attains great age and becomes a fixed part of the landscape. An additional good feature is it retains its dense habit—seldom sprawls or becomes spindled.

PRICES

*3 to 3½ ft. \$6.00 each



NURSERY SCENE
RHODODENDRON HYBRIDS

These are new and very rare varieties imported from Europe under bond. None of these plants will be old enough to sell before Spring of 1932. The illustration is presented to demonstrate how we protect our Rhododendron "babies" during the cold season. Notice the screen wire fence interwoven with oat straw on the Northwest boundry of this bed. The bed is mulched with a layer of peat moss on the soil surface and on top of that coarse litter is strewn.

Bagatelle Nursery stock is scientifically propagated and carefully grown, never shipped until it will withstand the shock of transplanting and is guaranteed healthy, disease-free and absolutely true to name and color.

*Are you planning to plant Evergreens, Shade Trees and Shrubs?
Let us advise you*



Bagatelle Hybrid Rhododendrons another "special". Come and see them in Blossom

HYBRID RHODODENDRON SEEDLINGS

The handsomest of all the Broad-leaved Evergreens—the Rhododendron. It's name translated means "Rose Tree." When the tall growing varieties reach their maturity and are overspread with a wealth of gorgeous blossoms, they appear like a glorified Rose bush—what an enchanting sight!

These Bagatelle Hybrids are one of our specialties. The beds grown in this picture represent a small fortune and years of concentrated attention. A finer, healthier lot cannot be found. A personal examination would be worth while to anyone who intends to purchase 100 or more. They are sold in assorted colors only—red, pink, lavender, purple, and white. The blooms are very large and you do not have to wait long for them, as these hybrids set buds when $1\frac{1}{2}$ to 2 feet high.

	Each	10	100
$1\frac{1}{2}$ to 2 ft.	\$6.00	\$55.00	\$450.00
2 to 3 ft.	7.00	65.00	550.00
3 to 4 ft.	9.00	85.00	800.00

Sent by Express

Write for Special Prices in Quantities

CHINESE OR SIBERIAN ELM
(Ulmus Pumila)

This shade tree is surprising its most ardent admirers—literally taken the country by storm. It was introduced by the Department of Agriculture in 1911 and since has undergone the most rigorous experiments in practically every section of the United States.

Fast Grower. Elms as a rule are slow, but this variety is a genuine surprise. It grows nearly as fast as the undesirable Poplar, but with none of the latter's objectionable features. It is hardy—similar to the American Elm in appearance—full of grace, symmetry and regal beauty.

Its adaptability to every soil and condition is truly marvelous. It develops into a splendid shade tree, tall and protective, with proportionate spread. It will succeed anywhere. We do not hesitate to recommend it.

PRICES

	Each	10
10 to 12 ft., 1¾ to 2 in. cal.	\$5.00	\$45.00
12 to 14 ft., 2 to 2½ in. cal.	6.00	55.00
12 to 14 ft., 2½ to 3 in. cal.	8.00	75.00
*14 to 16 ft., 3 to 3½ in. cal.	10.00



430 } *The fast growing Siberian Elm—now so much in demand for shade trees*



Weeping Mulberry—You should see how the birds devour the sweet berries grown on these trees

WEeping MULBERRY

(Morus Alba Pendula)

This small tree is very popular for lawn decoration, having pendulous branches and producing a wealth of foliage. *Morus Alba* has been cultured from the earliest historical times and is known all over the world chiefly for feeding the silk worm. The variety *Pendula* differs from the parent tree in having slender, drooping branches. It is quite an acquisition on the lawn and requires very little attention, being very thrifty and hardy. Often it produces berries which are very sweet. These are sometimes an inch long but oftener only half. The color is usually black. The fruit, however, cannot be depended upon, as cultivation for ornamental purposes sometimes eliminates the tendency of the tree to produce fruit.

Our block fruited heavily last year. You would be pleased to see how the Red Birds enjoyed the berries. The umbrella-like habit of the branches make the tree very attractive—rather odd.

Each 10
5 to 6 ft., 4 yr. head. \$7.50 \$70.00

ORNAMENTAL AND FLOWERING TREES



Shade, Ornamental and Flowering Trees should be included in every well planned landscape. On the estate or the small lot, trees increase the price of property and stabilize its value. Evergreens, Flowering Shrubs and small growing plants are also a necessary asset.

We will be glad to give helpful suggestions as to the planting of trees on your grounds if you'll give us an idea as to the size of space which can be given to them.

NORWAY MAPLE (<i>Acer platanoides</i>)—Illustrated		Each	10	100
8-10 ft.	1½-1¾ in. cal.	\$6.00	\$55.00	\$525.00
10-12 ft.	1¾-2 in. cal.	7.00	65.00	625.00
12-14 ft.	2½-3 in. cal.	9.00	80.00
EUROPEAN PLANE-TREE (<i>Platanus orientalis</i>)		Each	10	100
8-10 ft.	1¾-2 in. cal.	\$6.00	\$55.00	\$525.00
10-12 ft.	2 -2½ in. cal.	7.50	65.50	625.00
10-12 ft.	2½-3 in. cal.	9.00	80.00

JAPANESE FLOWERING CHERRIES

YAMA CHERRY (*Prunus serrulata sachaliensis*—Fugezo)

One of the best varieties. The large double pink flowers with reddish green calyx. make a strong contrast with the foliage.

HITOYE CHERRY (*Prunus lannesiana Shirotae*—Mount Fuji)

One of the very best white varieties.

YAMA CHERRY (*Prunus serrulata sachaliensis*—Naden-Zakura)

Pink, late flowering, double, very popular, vigorous grower, showy and attractive.

YAMA CHERRY (*Prunus serrulata sachaliensis*—Paul Wohlert)

Semi-double, early, deep pink or red, fragrant flowers in great profusion.

WEeping JAPANESE CHERRY (*Prunus rosea pendula*)

This, no doubt, is one of the most beloved Japanese cherries. As a lawn tree, it can hardly be excelled. The weeping slender branches are covered with a multitude of deep pink flowers.

WOHLERT'S DOUBLE FLOWERING WEeping, New (*Prunus serrulata sachaliensis*)

Habit of growth fairly regular, and the shape of the tree as it resembles a sticking and open umbrella. The double, rose-pink flowers are large.

As it is difficult to list sizes and prices for the reason that in a short time some varieties and sizes may be exhausted, we quote prices on application.

ORNAMENTAL FLOWERING CRABS

ARNOLD CRAB (*Malus arnoldiana*)

One of the most beautiful varieties, originating at the Arnold Arboretum. Very large rose-colored flowers, turning to white, followed by ornamental fruit.

CARMINE CRAB (*Malus atrosanguinea*)

Makes a good head, covered with deep carmine flowers, not fading white.

ELEY FLOWERING CRAB (*Malus purpurea eleyi*)

Purple to red foliage and bloom. New, best red leaf sort. In sunlight the foliage is quite brilliant and stays so until Fall, rivaling Japanese Red-leaf Maple.

JAPANESE FLOWERING CRAB (*Malus floribunda*)

Single, pink, early, spreading. Yellow fruit, slightly tinted red. An old well known sort and for that reason one of the best sellers.

PARKMAN CRAB (*Malus helliana parkmani*)

Bright rose-red, double flowers hang on long slender stems. A favorite in Japanese gardens.

BECHTEL CRAB (*Malus ioensis plena*)

An exceptionally fine variety. Very hardy. Forms a shapely, compact specimen and blooms freely. The fragrant flowers are very double, soft pink resembling a small rose in formation.

SARGENT CRAB (*Malus sargentii*)

Very dwarf spreading Japanese variety. Pure white flowers with bright yellow anthers. Scarlet fruit hanging until Spring.



Flowering Crab (Malus Floribunda)

SCHEIDECKER CRAB (*Malus scheideckeri*)

Double, pink, free flowering; fruit excellent for jelly. One of the most conspicuous pink flowering trees in early Spring; very hardy.

TEA CRAB (*Malus theifera*)

A handsome and very scarce variety with fragrant flowers and beautiful waxy fruit with crimson cheeks. Considered at the Arnold Arboretum as one of the very choicest.

PRICES OF FLOWERING CRABS

	Each	10
3 to 4 feet. Strong bushy stock	\$1.50	\$13.50
4 to 5 feet. Strong bushy stock	2.50	22.50
5 to 6 feet. Strong bushy stock	3.50	32.50
6 to 7 feet. Strong bushy stock	5.00	45.00
7 to 8 feet. Strong bushy stock	7.50	70.00

EXPERIENCE THE PLEASURE OF GROWING A GRAFTED EVERGREEN GARDEN



BAGATELLE Grafted Evergreens are not to be confused with the ordinary seedling stock offered so freely at low prices. Ours have been grafted over two years ago and field grown for two years, and twice transplanted. They average 14 to 18 inches in height and about the same in spread.

They are sturdy, well developed plants and are characteristic specimens of good varieties. If you invest \$25.00 in this collection and plant them in your garden according to the following simple directions, we are sure that within a few years the value of this material will be greatly enhanced and you will be proud of your "Grafted Evergreen Garden." On receipt of your order

we will ship you twelve beautiful Grafted Evergreens.

Diagram A.—As soon as you receive them, lay out a small part of your vegetable or flower garden according to Diagram A. If this shape is not agreeable, follow your own fancy. It makes no difference how they are arranged; only they should be set out at least 24 inches apart.

Stake and Spade.—The area determined on should be staked out and the ground inside thoroughly spaded not less than 12 inches deep.

Size of Holes.—Dig twelve holes each about twice as large as

the ball about the roots of the plants, broader at the bottom than top. Pile loose soil at side of hole.

Note Red Mark.
—Now examine your plant carefully and observe that the point of union or graft is marked with red paint on the stem. This mark is to assist you in planting it correctly.

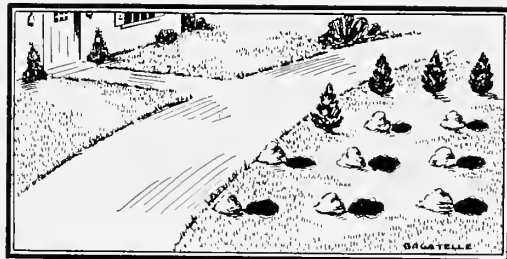


Diagram A.—A suggestion for laying out your "Grafted Evergreen Garden." Four have been planted—the black spots are eight other holes. See text.

Set the plant in the hole so that the red mark is three inches below the original level of the ground. You can ascertain this level correctly by laying a small stick across the hole.

Another way is to see that the top of the ball of earth is 1 to 2 inches below the ground level. Carefully untie burlap and spread out in hole or cut away.

It is not necessary to take off burlap, as it disturbs the roots and loosens the soil about them. It will soon decay and mix with the soil.



HOW TO PLANT YOUR GRAFTED EVERGREEN GARDEN

Fill in spaces around ball with rich, loamy top soil, firming it well with the foot or a flat ended stick. Don't

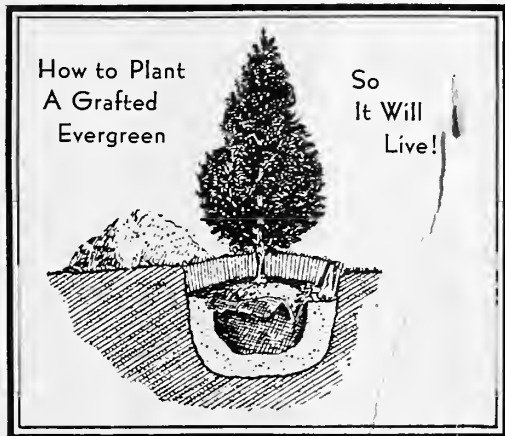


Diagram B.—This is a cross section of the hole, depth to plant, handling of burlap, etc. See text.

disturb the burlap and its ball of earth and roots any more than you can help. When within two inches of top, pour in water till the hole will hold no more. Complete filling in with soil, but not quite to original level, so as to have a reservoir for water for future watering which will prevent your valuable Evergreen from drying out. Mulch thoroughly with well rotted manure, peat moss or other litter.

The Pleasure now begins.—From now on, you will experience a sort of pleasureable fascination watching these

twelve splendid Evergreens grow into beautiful specimens. After two years you may transplant—say half of them—into permanent positions on your grounds, leaving the balance to grow on another two years. Of course, if you so choose—you may plant them at once in permanent positions. But the little group of plants has its own unique attraction which you are bound to enjoy.

HOW YOU GET THEM
These twelve Grafted Evergreens are dug to your order, balled and burlapped at once, packed securely in a special wood box and shipped to you by Express. Each Evergreen is marked on the stem with a red line to aid you in planting. Each plant is distinctly labeled with the correct botanical name as well as the common English name. If you send your order today we assure you that no regrets will follow.



YOUR CHOICE OF ANY SIX

Two of each as listed below

Lawson Blue Cypress	Goldenplume Cypress	Spiral Arborvitae
Triomphe de Boskoop Cypress	Columnar Juniper	Globe Arborvitae
Golden Sawara Cypress	Pfitzer Juniper	Rivers Arborvitae
Plume Cypress	Spiny Greek Juniper	Vervaeae Arborvitae

The Price is \$25.00 for the 12 Plants. Sent Express Collect



TERMS AND INFORMATION

Starred Items. Some items are scarce or rare. These we have indicated with an asterisk (*). Be sure to order these early as the supply is limited.

Planting Seasons. Evergreens can be transplanted safely most any time of year except in July and August. But the two most popular seasons are Spring and Fall.

In Spring the season starts about April 1st and continues till June 15th in this latitude. The time may vary according to the weather conditions.

The Fall transplanting period begins about September 1st and ends December 1st.

Balling and Burlapping. The prices quoted on Evergreens include balling and burlapping and all are

Three Times Transplanted.

Shipments by Express, Freight or Truck. All our prices are F.O.B. Huntington Station, Long Island Railroad and subject to change without notice. We deliver by truck within a 50 mile radius of the nursery. A nominal charge is made for this service.

Rates. Five of the same variety and size sold at the 10 rate, 50 at the 100 rate.

Responsibility. We take great care to supply genuine stock of highest quality, strictly true to name—exactly as represented, and so hold ourselves responsible. If we err we cannot be held for a greater amount than the original price of the goods.

Adjustments. Errors or omissions in shipment will be satisfactorily adjusted, if we are notified immediately upon receipt of order.

Cash with Order. Remit by personal check, postal or express money order. In order to be certain of receiving exactly what you plan for—send your order promptly after receiving catalog. We start shipments about April 1st and continue till middle of June.

Our Guarantee. We guarantee that our material will reach you safely, in good condition and found true to name. It must prove entirely satisfactory to our customers, otherwise we cheerfully refund money paid; however, we must be promptly informed of any dissatisfaction.



BAGATELLE NURSERY

P. O. Box 207X,

Huntington Station,

Half Hollow Hills

Long Island, New York

Phone: Farmingdale 850

