

Historic, Archive Document

Do not assume content reflects current scientific knowledge, policies, or practices.

Del-Mar-Va Nurseries

(INCORPORATED)

Milford, Delaware



There's No Place Like Home, and
It's Not A Home Until It's Planted.

Our Latest Catalog
with Reduced Prices

"Direct from Growers to You"

Instructions to Purchasers

TERMS—Cash with order. We allow a cash discount of 5 per cent on all orders large or small, when cash accompanies order in full and when order is received by us before March 15th. After this date no discount is allowed.

APPLICATION OF PRICES—The prices in this catalog apply as follows: 1 to 4 trees or plants of one kind are sold at the each rate; 5 to 30 of one kind are sold at the ten rate; 30 to 250 of one kind at the 100 rate; 250 or more of one kind at the thousand rate, except where otherwise noted.

NURSERY INSPECTION—A certificate of inspection by the state Entomologist accompanies each shipment.

WHEN YOU RECEIVE TWO CATALOGS—Please hand one to your neighbor or friend.

WARRANTY—Any stock received from us that isn't true to name, we agree to replace on proper proof, such stock free of charge or refund purchase price, and upon doing either, we are not to be held further responsible.

REFERENCES—We refer you to Dun's Commercial Agency, First National Bank, Milford, Delaware or any business house in Milford.

CLAIMS—If any should be made in five days after stock is received.

WE CANNOT GUARANTEE STOCK TO LIVE—We guarantee all stock we sell to be strictly first class and true to name, dug and packed properly for shipment; our prices compete with other reliable nurserymen, we do not charge a price for a tree, that should it die, we could replace it and then still make a profit. Too much depends on the weather conditions, the way it is planted and cared for, which makes it impracticable for a nurseryman to guarantee trees and plants to live.

TELEPHONE US AT MILFORD, DELAWARE.

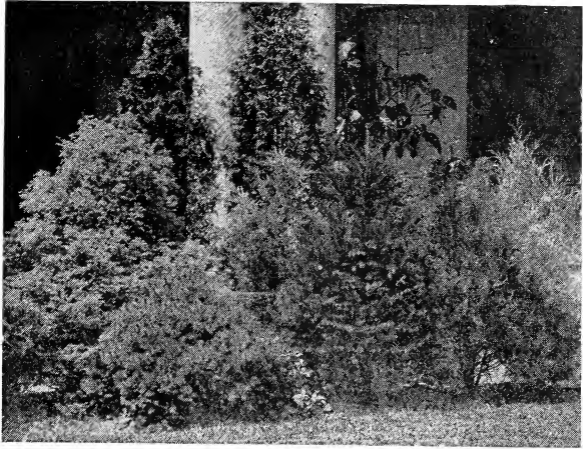
TELEGRAPH US AT LINCOLN, DELAWARE

ORDERS—All orders should be sent in just as soon as possible after receiving catalog. By placing orders early you are more certain of getting the varieties wanted, as late in the season, we are sometimes sold out on some varieties. If ordered early, we can reserve the stock until you want it shipped. We acknowledge receipt of all orders promptly and notice of shipment will be sent you when order is shipped.

LOCATION—Our Nurseries are four miles south of Milford, and the Worlds Famous Du Pont Boulevard crosses the center of our nursery. We are 68 miles South of Wilmington, 94 miles South of Philadelphia and 78 miles East of Baltimore. Our nursery consists of 150 acres where we are growing the stock described in this catalog. We invite you to visit with us.

PRICES—Are F. O. B. Lincoln City, Del. and Cash with order unless otherwise agreed upon.

EVERGREENS



Evergreen Group

We cannot recommend evergreens too strongly. No home-grounds are complete without them. They are beautiful both in winter and in summer; in winter they supply the only living green in the landscape, and in summer their rich, dark foliage contrasts beautifully with the brighter tones of deciduous trees and shrubs. They make an ideal back-ground for any house, giving a gracious and dignified appearance which cannot be produced in any other manner.

AMERICAN ARBORVITAE. *Thuja Occidentalis*—One of the best very handsome with dark green foliage. Grows rapidly and easily and in almost any soil.

| | | |
|------------------|-------|--------|
| 1 to 1½ feet, at | ----- | \$1.00 |
| 2 to 2½ feet, at | ----- | 2.50 |
| 2½ to 3 feet, at | ----- | 3.00 |

CHINESE ARBORVITAE. *Biota Orientalis*—Smaller growing than the American, more compact and regular, and pyramidal in outline, with fine, feathery deep green foliage.

| | | |
|------------------|-------|--------|
| 1 to 1½ feet, at | ----- | \$1.00 |
| 1½ to 2 feet, at | ----- | 1.50 |
| 2 to 2½ feet, at | ----- | 2.50 |
| 2½ to 3 feet, at | ----- | 3.00 |

The Del-Mar-Va. Nurseries, Milford, Del.

PYRAMIDAL ARBORVITAE *Thuja Occidentalis* *Pyramidalis*. Of straight, erect growth and slenderly columnar in form, densely branched with foliage of a rich dark glossy green.

| | |
|------------------------|--------|
| 2 to 2½ feet, at ----- | \$3.50 |
| 2½ to 3 feet, at ----- | 4.25 |
| 3 to 3½ feet, at ----- | 5.00 |

GLOBE ARBORVITAE. *Thuja Globosa*—A perfect globe when well grown, the spread usually equalling the height. Foliage of light green.

| | |
|---------------------------|--------|
| 10 to 12 inches, at ----- | \$2.00 |
| 12 to 15 inches, at ----- | 2.50 |

GEORGE PEABODY ARBORVITAE. *Thuja Occidentalis* *Lutea*—The most golden form of American *Arborvitae*.

| | |
|------------------------|--------|
| 1 to 1½ feet, at ----- | \$2.50 |
| 1½ to 2 feet, at ----- | 3.00 |

BIOTA AUREA NANA—Berckman's Golden *Arborvitae*—A gem for dwarf planting; compact, roundish shape; warm golden yellow foliage.

| | |
|---------------------------|--------|
| 8 to 10 inches, at ----- | \$2.00 |
| 10 to 12 inches, at ----- | 2.50 |
| 12 to 15 inches, at ----- | 3.00 |

IRISH JUNIPER. *Juniperus Hibernica*—A distinct and beautiful variety of erect, dense conical shape, forming a column of green; leaves bluish-green.

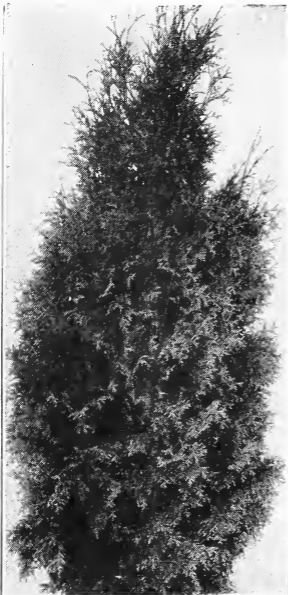
| | |
|------------------------|--------|
| 2 to 2½ feet, at ----- | \$2.50 |
| 2½ to 3 feet, at ----- | 3.00 |



The Del-Mar-Va. Nurseries, Milford, Del.

RED CEDAR. *Juniperus Virginiana*—Of medium, compact growth; varies considerable in habit and color and shape of foliage. Produces a striking effect when planted to center groups or in pairs at entrances framing doorways or windows to break the height of tall houses.

| | | |
|------------------|-------|--------|
| 1 to 1½ feet, at | ----- | \$1.25 |
| 1½ to 2 feet, at | ----- | 1.75 |
| 2 to 3 feet, at | ----- | 2.25 |
| 3 to 4 feet, at | ----- | 2.75 |
| 4 to 5 feet, at | ----- | 3.25 |
| 5 to 6 feet, at | ----- | 4.00 |



American Arborvitae

PFITZER JUNIPER.

Juniperus Pfitzeriana — Broad, bushy habit. Gray-green foliage, giving feathery appearance.

| | | |
|-----------------------|-------|--------|
| 15 to 18 inch spread | | |
| at | ----- | \$2.50 |
| 18 to 24 inch spread, | | |
| at | ----- | 3.00 |

SPINY GREEK JUNIPER.

Juniperus Excelsa Stricta — Compact. Well-shaped pyramid. Foliage gray-green.

| | | |
|---------------------|-----|--------|
| 10 to 12 inches, at | --- | \$2.00 |
| 12 to 15 inches, at | --- | 3.00 |

SAVIN JUNIPER.

Juniperus Sabina—Dense dark green foliage. Spreading branches forming irregular vase-shaped bush.

| | | |
|------------------|------|--------|
| 1½ to 2 feet, at | ---- | \$3.00 |
|------------------|------|--------|

DOUGLAS FIR.

Pseudotsuga Douglasi—Very hardy dark bluish-green coloring. Prefers well drained situation.

| | | |
|------------------|------|--------|
| 1½ to 2 feet, at | ---- | \$3.00 |
| 2 to 2½ feet, at | ---- | 4.00 |

NORWAY SPRUCE. *Picea Excelsa*—This familiar spruce is more generally used than any of the others. It grows rapidly, does well in most soils and withstands the bleak, cold winds of winter.

| | | |
|------------------|-------|--------|
| 1 to 1½ feet, at | ----- | \$1.00 |
| 1½ to 2 feet, at | ----- | 1.50 |
| 2 to 2½ feet, at | ----- | 2.25 |
| 2½ to 3 feet, at | ----- | 3.00 |

RETINOSPORA PISIFERA.

Sawara Cypress—Foliage bright green, somewhat pendulous. 15 to 18 in. at \$2.50; 2 to 2½ ft., at \$3.25.

RETINOSPORA PISIFERA AUREA.

Sawara Cypress Golden—A bright golden evergreen that holds its color; foliage light airy. 15 to 18 ins., at \$3.00; 2 to 2½ ft., at \$3.75.

RETINOSPORA PLUMOSA.

Plume-like Cypress—A rapid growing variety, with exquisite dark green foliage, the ends of the limbs drooping.

12 to 15 ins., \$1.50
15 to 18 ins., 2.00
18 to 24 ins., 2.50
2 to 2½ ft., 3.00

RETINOSPORA PLUMOSA AUREA.

Golden plume Cypress—This is one of the best, hardiest and most desirable. Vigorous grower. Retains its color constantly.

12 to 15 inches, at ----- \$2.00
15 to 18 inches, at ----- 2.50
18 to 24 inches, at ----- 3.00
2 to 2½ feet, at ----- 3.50

RETINOSPORA SQUARROSA VEITCHII—Foliage

blue-gray, feathery and dense, giving soft wooly appearance. Broad pyramidal outline when young.

12 to 15 inches, at ----- \$2.00
15 to 18 inches, at ----- 2.50
2 to 2½ feet, at ----- 3.50

CANADIAN HEMLOCK. *Tsuga Canadensis*—Makes a tall, spreading, graceful tree with drooping branches; blends so well that it enhances every group of which it is a part.

2 to 2½ feet, at ----- \$5.00
2½ to 3 feet, at ----- 6.00



Retinospora

DON'T FORGET—Our Special Selections are money savers, and offer you good assortments.

BROAD—LEAVED EVERGREENS

ABELIA GRANDIFLORA. Bush Arbutus—The graceful, drooping stems and branches are covered with dark, glossy leaves which in winter assume a metallic green. From the middle of May until frost tubular-shaped white pinkish flowers, about an inch long, are borne in clusters. 1 to 2 feet, at ----- \$1.00 each

AZALEA HINODEGIRI—A bright scarlet form of the well known and charming Azalea Amoena, but far surpassing it in brilliancy and general beauty. Strong plants, at ----- \$2.50

AZALEA AMOENA—Flowers are a bright rosy purple and are produced in a solid mass in May. Strong plants, at ----- \$2.50

RHODODENDRON CATAWBIENSE—Bushy with large roundish leaves; blossoms of rose-lavender. Free flowering; early June. Strong plants at ----- \$3.50



Rhododendrons

RHODODENDRON MAXIMUM—Largest of all native Rhododendrons, with very large heavy foliage. Waxy white flowers, blooms in July. Strong plants, at ----- \$3.50

PIERUS FLORIBUNDA. Mountain Andromedia—A beautiful compact evergreen shrub which bears clusters of small white flowers in early spring. Strong plants, at ----- \$2.50

BOXWOOD SEMPERVIRENS—The variety with small dark green leaves; fresh and glossy. A compact grower, thrives in any soil and does well in shaded places. 15 to 18 inches, at ----- \$2.00

The Del-Mar-Va. Nurseries, Milford, Del.

BOXWOOD SUFFRUTICOSA—Dwarf Boxwood. This is a most attractive variety, having small, dense foliage growing slowly and remaining dwarf and compact.

| | | |
|---------------------|-------|--------|
| 6 to 8 inches, at | ----- | \$0.75 |
| 8 to 10 inches, at | ----- | 1.00 |
| 10 to 12 inches, at | ----- | 1.50 |

EUONYMOUS JAPONICA—Lustrous, deep green leaves; upright bushy habit; very desirable for specimen plants, can be trimmed to any desired shape.

| | | |
|---------------------|-------|--------|
| 6 to 12 inches, at | ----- | \$0.50 |
| 12 to 18 inches, at | ----- | 1.00 |
| 18 to 24 inches, at | ----- | 1.50 |

EUONYMOUS RADICAN VARIEGATA—Climbing habit or can be grown in bush form, leaves are tipped with white coloring.

| | | |
|-------------------|-------|--------|
| 2 year plants, at | ----- | \$0.75 |
|-------------------|-------|--------|

ILEX OPACA. American Holly—A slow-growing native tree, having short branches with large shining, thorny leaves and bright red berries in winter.

| | | |
|-----------------|-------|--------|
| 2 to 3 feet, at | ----- | \$2.00 |
| 3 to 4 feet, at | ----- | 2.50 |
| 4 to 5 feet, at | ----- | 3.00 |

Ask for prices on large specimen Hollies.

MAGNOLIA GRANDIFLORA—Nothing more conspicuous can be seen among evergreens when its large white flowers are expanded.

| | | |
|------------------|-------|--------|
| 1½ to 2 feet, at | ----- | \$2.50 |
|------------------|-------|--------|

KALMIA LATIFOLIA. American Laurel—A beautiful broad leaved evergreen shrub. Its thick waxy leaves, retained the year round gives a most striking effect. Pinkish-white, geometrically shaped flowers in July.

| | | |
|-------------------|-------|--------|
| Strong clumps, at | ----- | \$2.50 |
|-------------------|-------|--------|

SCOTCH BROOME—The broom like foliage is green in color the year round. In June, the foliage is entirely covered with small yellow flowers which resembles a bank of gold.

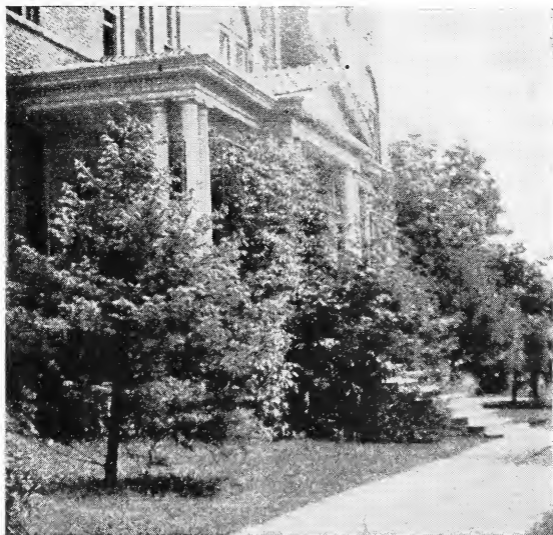
| | | |
|------------------|-------|--------|
| Strong plants at | ----- | \$1.50 |
|------------------|-------|--------|

YUCCA FILAMENTOSA. Adams Needle—A stately evergreen shrub having long sharp-pointed leaves and producing spikes of tall ivory-white flowers on tall stems.

| | | |
|-------------------|-------|--------|
| Strong clumps, at | ----- | \$0.75 |
|-------------------|-------|--------|

DON'T FORGET—5 per cent discount allowed on all orders received by us before March 15th.

Ornamental and Shade Trees



Ornamental shade trees play an important part in the arrangement of all lawns and parks. They are often invaluable as windbreaks, supply shade, and help retain the moisture—conditions that are essential to the growth of many of the choicest shrubs and perennials.

SILVER LEAF MAPLE. *Acer Dasycarpum*—A very rapid-growing tree of graceful spreading habit. Will grow on poor or dry soil.

| | | | |
|-------------------|-------|--------------|---------------|
| 6 to 8 feet, at | ----- | \$1.00 each, | \$8.00 per 10 |
| 8 to 10 feet, at | ----- | 1.50 each, | 14.00 per 10 |
| 10 to 12 feet, at | ----- | 2.00 each, | 18.00 per 10 |

RED, OR SCARLET MAPLE. *Acer Rubrum*—Of compact growth with fine round head. The leaves color up gorgeously in the fall. Thrives in low damp places.

| | | | |
|-------------------|-------|--------------|----------------|
| 8 to 10 feet, at | ----- | \$3.50 each; | \$30.00 per 10 |
| 10 to 12 feet, at | ----- | 4.00 each; | 35.00 per 10 |

SUGAR MAPLE. *Acer Saccharum*—Good for the large lawn, but ideal for street planting.

| | | | |
|------------------|-------|--------------|----------------|
| 8 to 10 feet, at | ----- | \$3.50 each; | \$30.00 per 10 |
|------------------|-------|--------------|----------------|

The Del-Mar-Va. Nurseries, Milford, Del.

NORWAY MAPLE. *Acer Platanoides*—One of the best shade trees for all purposes, whether in the lawn or roadside. Grows to large size and is of neat, compact habit with a rounded head.

8 to 10 feet, at ----- \$4.00 each; \$35.00 per 10
10 to 12 feet, at ----- 4.50 each; 40.00 per 10

Larger sizes quoted on application.

JAPANESE BLOOD LEAF MAPLE. *Acer Palmatum Autropurpureum*—Leaves extremely bright blood color. Grows in shrub form and is not for shade.

1 to 1½ feet, at ----- \$5.00 each; \$45.00 per 10

JAPANESE MAPLE. *Acer Palmatum*—Same as the Blood leaf except not grafted. They usually do not run as true to color as do the grafted types.

1½ to 2 feet at ----- \$3.50 each; \$32.50 per 10

AMERICAN BEECH. *Fagus Americana*—Silvery bark; fine spreading growth and symmetrical, rounded head.

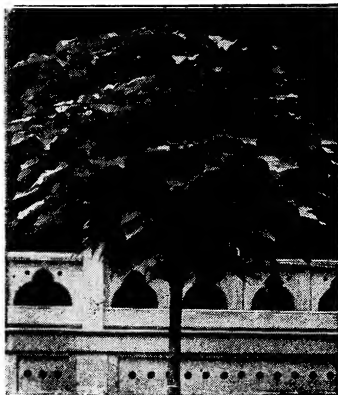
8 to 10 feet, at ----- \$3.00 each; \$27.50 per 10

CUT LEAF WEEPING BIRCH—The bark is very attractive in the winter as well as the drooping cut leaves in the summer months.

5 to 6 feet at ----- \$2.75 each; \$25.00 per 10

CATALPA SPECIOSA—A large handsome tree with immense tropical looking leaves and big clusters of white flowers with purple centers.

6 to 8 feet, at ----- \$0.75; \$6.00 per 10



Catalpa Bungeii

CATALPA BUNGEII.

Umbrella Tree—Round compact balls on a straight stem. Very formal in effect, but useful only when right-fully placed as along straight walks, 5 to 6 feet stems, 2 yr. heads, at \$2.00 ea.; \$17.50 per 10.

AMERICAN PERSIMMON.

Diospyros Virginiana—The tree reaches a height of about thirty feet. The fruit is one half to one inch in diameter, and must become fully ripe to become edible; best after a hard frost.

6 to 8 feet at --\$2.00 each; \$17.50 per 10.

The Del-Mar-Va. Nurseries, Milford, Del.

AMERICAN ELM. *Ulmus Americana*—A tall and stately tree with spreading top, combining great strength with peculiar grace.

8 to 10 feet, at ----- \$2.00 each; \$16.00 per 10

JUDAS, OR RED BUD TREE. *Cercis Canadensis*—A small tree branching irregularly from the ground, spreading in habit, with smooth heart-shaped leaves and branches covered their whole length with small pink flowers before the leaves appear.

4 to 5 feet, at ----- \$1.00 each; \$9.00 per 10

BLACK LOCUST—Familiar tree of quick growth, thriving in almost any soil or location. Has fragrant flowers in early spring.

8 to 10 feet, at ----- \$2.00 each; \$17.50 per 10
10 to 12 feet, at ----- 2.50 each; 22.50 per 10

RUSSIAN MULBERRY—Very hardy, fairly low-growing. Bears quantities of small sweet edible berries. Fine for the chicken yard.

5 to 6 feet, at ----- \$1.00 each; \$9.00 per 10



American Elm

TEA S WEEPING MULBERRY

—A weeping top on a straight stem, branching outward and downward, soon reaches the ground. As a lawn ornament, the best of the weeping trees.

5 to 6 ft. stems, 2 yr. heads, \$3.25 each; \$30.00 per 10.

ORIENTAL PLANE.

Platanus Occidentalis. Wide spreading, with large green above and grayish below. The bark peels annually and the new bark is silvery white.

8 to 10 feet, at --\$2.75 each; \$25.00 per 10.

LOMBARDY P O P L A R.

Populus nigra—A tall shaft-like column of a tree that grows quickly, like all poplars and often reaches 80 to 100 feet in height. Makes a fine effect when planted a l o n g

The Del-Mar-Va. Nurseries, Milford, Del.

driveways; or when the trees are planted together they make a very good screen, branched almost from the ground up.

7 to 8 feet, at -----\$0.75 each; \$6.50 per 10
8 to 10 feet, at ----- 1.00 each; 9.00 per 10
10 to 12 feet, at ----- 1.25 each; 11.50 per 10

SWEET GUM. Liquidamber styracifus—A native tree of rare beauty, erect and symmetrical, with curious cork like bark and leaves that take on brilliant autumnal colors of orange and scarlet.

6 to 8 feet, at -----\$1.50 each; \$14.00 per 10
8 to 10 feet, at ----- 2.00 each; 17.50 per 10

TULIP TREE. Liriodendron tulipifera. Tulip Poplar—Quick growing, making a compact, pyramidal head. It has greenish-yellow flowers shaped like a tulip.

5 to 6 feet, at ----- \$1.50 each; \$12.50 per 10

WEeping WILLOW. Salix Babylonica—Tall spreading with long drooping branches and narrow, dark-green leaves.

6 to 8 feet, at ----- \$1.00; \$9.00 per 10
8 to 10 feet, at ----- 1.25; 11.50 per 10

GOLDEN WEeping WILLOW—Bark and branches are of a yellowish hue, makes a striking contrast when planted with green leaved types.

6 to 8 feet, at -----\$1.00 each; \$9.00 per 10
8 to 10 feet, at -----\$1.25 each; 11.50 per 10

PUSSY WILLOW. Salix caprea—A small, shrubby tree, with numerous upright branches. Large catkins. Highly prized for cutting and furnishing the garden's first spring beauty to the house.

2 to 3 feet, at ----- \$0.50; \$4.50 per 10
3 to 4 feet, at ----- .75; 6.50 per 10

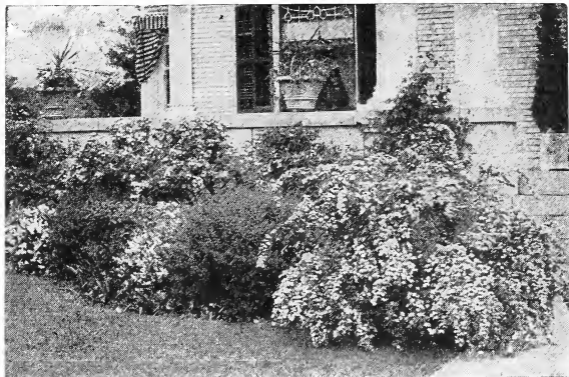
SCARLET OAK—A grand tree, with bright green, deeply cut leaves, that color to sparkling red in the fall.

6 to 8 feet, at ----- \$3.00 each; \$27.50 per 10
8 to 10 feet, at ----- 3.50 each; 32.50 per 10

LANDSCAPE SERVICE

Every home, whether of simple or elaborate architectural conception, requires a planned landscape setting to complete the picture. Yet how often do we see the beauty of a well designed structure sadly depreciated by lack of adequate shrubbery or by a planting attempt that lacks unity and harmony with the style of architecture it is supposed to enhance. WHY NOT CONSULT OUR EXPERT LANDSCAPE SERVICE IN HANDLING YOUR PROBLEMS?

ORNAMENTAL SHRUBS



The planting of ornamental shrubs is very largely on the increase, and this is as it should be, for with a good selection, the lawn can always be beautiful. They are mostly of medium size, enabling one to plant a great variety in a small space, and offer a wonderful assortment of foliage from the darkest green and purple to light orange and silver tints. These, in addition to the great variety in the blossoms, all unite to keep up never-failing interest. The following list will be found to contain all of the well known standard varieties as well as the best of the newer introductions.

ABELIA GRANDIFLORA—See under Broad Leaved Evergreens.

ALMOND—Double-flowering non-fruiting. Small shrubs, whose upright branches are literally covered their entire length in earliest spring before the leaves appear. Color white.

80c each; \$7.50 per 10.

ALTHEA—Rose of Sharon. Double flowering red, white and blue. The Altheas are ideal flowering shrubs, because during the hot dry season and always from the middle of July till September, they are filled with blooms. They flower, when flowers are scarce.

50c each; \$4.00 per 10.

BUTTERFLY BUSH—One of the most desirable shrubs for summer flowering. A very bushy plant, covered from July until frost with delicate lilac-like flowers of dainty beauty and great fragrance.

2 to 3 feet at ----- 50c each; \$4.00 per 10

The Del-Mar-Va. Nurseries, Milford, Del.

CREPE MYRTLE—The flowers are daintily fringed and borne in immense panicles; they appear in May and continue all through the summer. Color crimson and pink. Not hardy north of Delaware.

2 to 3 feet at ----- \$1.00 each; \$8.00 per 10

CYDONIA JAPONICA. Japan Quince—Scarlet color blooms which appear before the leaves appear. Dainty single blooms covering the branches with dazzling red. Valuable for early blooming and bright color.

No. 1 plants ----- 75c each; \$6.50 per 10

CORNUS FLORIDA. White flowering Dogwood—Large white flowers produced in spring before the leaves appear, foliage greyish green.

2 to 3 feet, at ----- 75c each; \$6.50 per 10

CORNUS SIBERICA—The branches are bright red, very attractive in the winter with white flowers in summer.

2 to 3 feet at ----- 75c each; \$6.50 per 10

CORNUS FLORIDA RUBRA. Red Flowering Dogwood—A variety of the well-known flowering dogwood, with rosy-pink flowers. Blooms during May and early June.

2 to 3 feet at ----- \$5.00 each; \$45.00 per 10

DEUTZIA PRIDE OF ROCHESTER

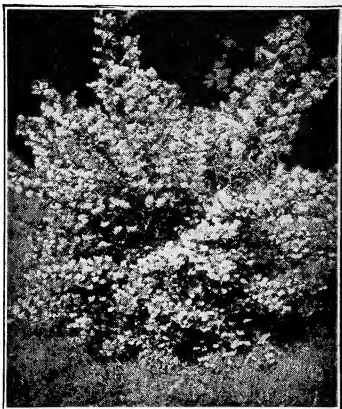
One of the very best. Strong, upright-growing with double white flowers, the outer petals tinged with pink, flowering in mid-June. 2 to 3 ft., at 50c each; \$4.00 per 10.

DEUTZIA LEMOINE

— Flowers pure white, borne in profusion on stout branches which are of upright growth. Habit dwarf. 18 to 24 ins., 50c each; \$4.00 per 10.

FORSYTHIA FORTUNEI.

Golden Bell—Growth upright; foliage deep green; flowers bright yellow appearing before the leaves. 2 to 3 feet at ----- 50c each; \$4.00 per 10



Pride of Rochester

FORSYTHIA INTERMEDIA—Slender erect, arching branches, narrow leaves. Flowers bright yellow, appearing before leaves.

2 to 3 feet at ----- 50c each; \$4.00 per 10

HONEYSUCKLE. Pink Tartarian—The best of all bush honeysuckles. The flowers are borne freely in May and June, are of bright pink followed by showy red berries.

2 to 3 feet at ----- 50c each; \$4.00 per 10

HYDRANGEA PANICULATA GRANDIFLORA—

Among the medium sized shrubs this is one of the most showy. The large white flowers are produced in August and September and as Autumn approaches, they assume a bronzy pink color.

2 to 3 feet at ----- 75c each; \$6.50 per 10



Tree Hydrangea

HYDRANGEA P. G. TREE FORM—

Same variety as above, but trained into tree form in the nursery. 3 to 4 ft., at \$2.00 each; \$17.50 per 10.

HYDRANGEA OTAKSA HORTENSIA—

Flowers generally blue, with a few exceptions they are delicate pink, depending on the type of soil in which they are planted, but termed blue by most nurserymen. (Soft wood) 2 yr. No. 1 at \$1.00 each; \$9.00 per 10.

HYDRANGEA MAURICE HAMAR—

A pleasing shade of delicate flesh pink. (Soft wood). 2 yr. No. 1 at \$1.00 each; \$9.00 per 10.

HYDRANGEA MME. E. MOUILLERE—

The most popular white. Very free blooming, and of large, size and fine form. (Soft wood).

2 yr. No. 1 at ----- \$1.00 each; \$9.00 per 10

The Del-Mar-Va. Nurseries, Milford, Del.

LILAC, CHAS X.—An old and well known favorite. Deep purple.
No. 1 bushy plants ----- 80c each, \$7.00 per 10

PUSSY WILLOW—See under Shade Trees.

PEACH, DOUBLE FLOWERING—Very desirable. The branches are covered with large double flowers before the leaves appear in the spring. Red and White.
2 to 3 feet at ----- 50c each; \$4.00 per 10

PHILADELPHUS CORONARIUS. Sweet Mock orange—Flowers white, in dense clusters resembling the orange blossoms.
2 to 3 feet at ----- 50c each; \$4.00 per 10

RED BUD—See under Shade trees.

RED LEAF BARBERRY—See under Hedging.

SCOTCH BROOME—See under evergreens.

SNOWBERRY—Small rose colored flowers in June and July, followed by large clustered milk-white fruits, which remain far into the winter.
2 to 3 feet, at ----- 80c; \$6.50 per 10

SPIREA ANTHONY WATERER — A dwarf compact growing shrub. Blossoms in broad flat heads of beautiful deep red color. Flowers from July to frost. Fine for edging the larger growing shrubs. No. 1 plants at 50c each; \$4.00 per 10.

SPIREA BILLARDI — Blooms nearly all summer; rose colored; fine, showy. July to Sept.
2 to 3 feet, at 50c each; \$4.00 per 10.

SPIREA BILLARDI ALBA—Same as Spirea Billardi, except the flowers are white instead of pink.
2 to 3 feet at 50c each; \$4.00 per 10.

SPIREA THUNBERGIA—A dwarf plant with numerous slender branches, somewhat drooping forming



Anthony Waterer

a feathery bush. Small white flowers early May.
2 to 3 feet at ----- 60c each; \$5.00 per 10

“THERE’S NO PLACE LIKE HOME” AND “IT’S NOT A HOME UNTIL ITS PLANTED”

SPIREA VAN HOUTTE

—The finest of all Spireas. Resembles a fountain with white flowers in May and June. Fine for mass plantings or for hedges. 2 to 3 ft. at 50c each; \$4.00 per 10.

SNOWBALL, JAPAN—

A new variety from Japan. It surpasses the old varieties, in several respects. \$8.50 per 10.

SNOWBALL, Viburnum

Moole—An old fashioned sort, blooms globular clusters of pure white flowers. 2 to 3 ft., at 80c each; \$7.00 per 10.



Snowball

TAMARIX, AFRICANA

—An upright shrub with fine feathery foliage, light green, a fine plant for the sea shore. Spiky pink flowers in April. 2 to 3 feet, at ----- 50c each; \$4.00 per 10

TAMARIX, ODESSANA—A dwarf variety with upright slender branches covered in late fall with pink flowers.

Foliage a sea-green color. 2 to 3 feet, at 50c each; \$4.00 per 10.

WEIGELA ROSEA—A tall growing vigorous variety with deep pink blossoms borne in wonderful profusion.

Makes a great show in June when covered with its pink beauty. 2 to 3 feet, at ----- 50c each; \$4.00 per 10

VIRBURNUM OPULUS, European Cranberry—Large white flowers in great profusion at the end of May, followed by clusters of showy scarlet berries.

2 to 3 feet, at ----- \$1.00; \$8.50 per 10

PLANTING THE HOME—is not an expense, but a profitable investment. It pays dividends of satisfaction.

Five per cent of the building cost of a "Home" invested in Shrubbery, Vines, Ornamental Trees and other Ornamental Stock for exterior yard and lawn decorations, it is conceded increases the property value at least 20 per cent.

"It will save you money to order our Special Collections on pages 39 and 40."

CLIMBING VINES

CLEMATIS PANICULATA—This is one of the most attractive and effective of the hardy flowering climbing vines. Fine for covering trellises, fences, walls and pillars. 2 year vines at ----- 60c each; \$5.00 per 10

DUTCHMANS PIPE, ARISTOLOCHIA—Magnificent light green heart-shaped leaves, ten to twelve inches in diameter with curious pipe shaped yellowish brown flowers. 2 year vines, at ----- 75c; \$7.00 per 10

HALLS JAPAN HONEYSUCKLE—Vigorous, almost evergreen climber with white flowers, changing to yellow. 2 year vines at ----- 50c; \$4.00 per 10

BIGNONIA RADICANS. Trumpet vine—A very rapid strong growing vine. Bears orange trumpet-shaped flowers in summer. A good ground cover, or for buildings and etc. 2 year plants at 50c; \$4.00 per 10.



Wistaria

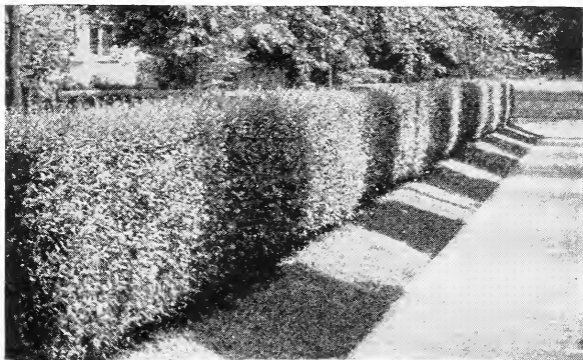
ENGLISH IVY—Used extensively for covering brick or stone walls. A decided evergreen and does not shed its leaves in winter. 2 year plants at 80c each; \$7.00 per 10.

WISTARIA, PURPLE—A beautiful climber of very rapid growth. Produces long, pendulous clusters of pale blue flowers in June and in Fall. 2 yr. plants 60c; \$5.00 per 10.

HEDGING

CALIFORNIA PRIVET—The leading hedge plant without question. Foliage of richest dark green, almost making it an evergreen. Does not shed its foliage until late winter. Plants should be set six inches apart.

| | 10 | 100 | 1000 |
|-----------------------|--------|--------|---------|
| 6 to 12 inches ----- | \$0.50 | \$3.00 | \$20.00 |
| 12 to 18 inches ----- | .60 | 4.00 | 30.00 |
| 18 to 24 inches ----- | .75 | 5.00 | 40.00 |
| 2 to 3 feet ----- | 1.00 | 6.00 | 50.00 |



Privet Hedge

GLOBE SHAPED PRIVET—Properly sheared into perfect balls. Are appropriate for planting with evergreens. It's glossy green foliage makes a wonderful contrast when planted with groups of evergreens. Shipped with ball of earth the same as evergreens.

Size 12 by 12 inches, at -----\$0.75; \$6.00 per 10
 Size 18 by 18 inches, at ----- 1.00; 8.00 per 10
 Size 22 by 22 inches, at ----- 1.50; 12.50 per 10

PYRAMIDAL SHAPED PRIVET—Same as ball privet, except, they have been properly sheared into pyramidal shape.

Size 12 to 18 inches, at -----\$1.00; \$8.00 per 10
 Size 18 to 24 inches, at ----- 1.50; 12.50 per 10
 Size 24 to 30 inches, at ----- 2.00; 17.50 per 10

BARBERRY THUNBERGII AUTROPUREUM. Red Leaf Barberry—Similar to the green leaf Barberry except the foliage of this new variety is of a rich bronzy red, similar to the richest of Red Japanese Maples. It is important that this be set in a position where it will get full exposure to the sun.

1 year strong plants, at ----- 60c; \$5.50 per 10

BARBERRY THUNBERGII—For a nice hedge that does not require much trimming, this stands to the head of the list. It may be sheared just as the owner prefers to have it. Should be planted 9 inches apart. Fine for edging, turning out cats, dogs or other animals. Red berries in winter.

| | Each | 10 | 100 | 1000 |
|------------------------|------------|--------|--------|---------|
| 2 year 6 to 12 inches | ----\$0.15 | \$1.00 | \$8.00 | \$60.00 |
| 2 year 12 to 18 inches | ---- .20 | 1.50 | 12.00 | 100.00 |
| 2 year 18 to 24 inches | ---- .30 | 2.00 | 15.00 | 125.00 |

ROSES

Every home should have Roses. No other flower combines such exquisite form, refinement of texture and delicate fragrance. The range in color is wide enough to please all tastes. A bed of roses, blooming throughout the summer, is a constant source of pleasure. They are something easy to have, for roses take up little room and only require good soil, well fertilized, and some pruning.

HYBRID TEAS MONTHLY BLOOMING ROSES

Price 80c each; \$8.40 per dozen

KILLARNEY PINK—Long pointed buds, opening to flat, bright sparkling pink blooms with enormous petals.

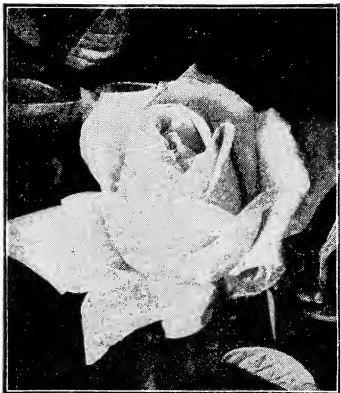
KILLARNEY WHITE—A pure white sport of the original Killarney, identical in shape of bud and petalage.

LOS ANGELES—Very lovely buds and exquisite flowers of salmon-pink, with yellow shading, and very sweetly perfumed.

MME. BUTTERFLY—Fine, light pink buds and flowers, tinted with gold near base of petals, of exquisite shape and richly perfumed.

SUNBURST — Fine yellow flowers, strongly suffused with orange at the center, fragrant and well shaped.

KAISERINE AUGUSTA VICTORIA—Well-formed, creamy buds which develop slowly to blooms absolutely perfect in form, snowy white with a slight tint of lemon at center; fragrant.



White Killarney

LA FRANCE—Bright pink flowers with curled petals showing silvery tints; intensely fragrant.

MRS. AARON WARD—Delightful little buds of golden buff, opening to fully double, attractive shaped flowers of tawny golden pink, with an agreeable fragrance.

“It will save you money to order our Special Collections on pages 39 and 40.”

The Del-Mar-Va. Nurseries, Milford, Del.

RADIANCE—Brilliant rose-pink buds, opening to well formed shining flowers with lighter tints on the reverse of the petals; globular in shape and very fragrant.

RED RADIANCE—An even better rose than its parent Radiance, bearing deep globular flowers of deep rose-red on strong, individual canes which are freely produced all summer until frost.

HYBRID PERPETUAL ROSES

Price 80c each; \$8.40 per dozen.

FRAU KARL DRUSCHKI—Pinkish buds and magnificent, snow-white blooms with deep, firm petals, forming a flower of unimpeachable shape, but without fragrance.

PAUL NEYRON—Dark lilac-rose, blooms of immense size, fair form, very double and remarkably fragrant.

GENERAL JACQUEMINOT—Scarlet-crimson, buds and clear red flowers of moderate size and excellent shape; deeply fragrant.

MARGARET DICKSON—White with pale-rosy center, well shaped, and faintly fragrant.

AMERICAN BEAUTY—Dark pink, shaded with smoky carmine, full, globular form and most deliciously fragrant.

HARDY CLIMBING ROSES

Price, 80c each; \$8.40 per dozen.

CLIMBING AMERICAN BEAUTY—Not quite the same as its namesake, but descended from it and a far finer rose; bright pink, nearly red, large and double, and one of the few hardy climbing roses with bloom equal to those of the bush rose.

DR. W. VAN FLEET—Pale pink buds and flowers equal in form and size to the finest Hybrid Teas, borne on long individual stems.

DOROTHY PERKINS—Beautiful miniature flowers of brilliant shell-pink in splendid pendulous sprays.

DOROTHY PERKINS WHITE—Identical with the Pink Dorothy Perkins, but pure white.

PAULS SCARLET CLIMBER—Intense scarlet flowers of excellent shape and moderate size, borne in small trusses.

GOLDFINCH—Slender, deep yellow buds, opening to clusters fairly large creamy flowers. Disease resistant and a strong climber.

We have used an unusual amount of care and thought in compiling this catalog and as a result we do not hesitate to recommend every item listed to our customers as being the best of its class. If you should not be in the market for nursery stock, pass it on to a neighbor or friend, you will be doing him as well as us a favor.

FRUIT TREES

APPLES

Our list of varieties is confined to the best ones only.

| | Each | 10 | 100 | 1000 |
|-------------------|--------|--------|---------|----------|
| 2 to 3 feet ----- | \$0.35 | \$3.00 | \$20.00 | \$150.00 |
| 3 to 4 feet ----- | .40 | 3.50 | 25.00 | 200.00 |
| 4 to 5 feet ----- | .50 | 4.00 | 30.00 | 250.00 |
| 5 to 6 feet ----- | .60 | 5.00 | 40.00 | 300.00 |

DELICIOUS—Fruit large, nearly covered with brilliant dark red, flesh fine grained, crisp and melting. Juicy with a delightful aroma. Winter.

GRIMES GOLDEN—Very large, skin golden yellow; flesh tender and crisp. A very good fall apple.

JONATHAN—Perfectly hardy and is productive in all soils. Fruit medium size, very regularly formed, skin thin and smooth; yellow ground, almost covered with lively red stripes deepening to dark red in sun. Winter.

KING DAVID—A fine apple, of largest size and best quality; red, showy. Winter.

LIVELAND RASPBERRY—Ripens with Transparent.

Skin same color with stripes of pinkish red. Early.

McINTOSH—Large, dark red. A handsome apple of fine quality. Autumn.

ROME BEAUTY—Large, yellow, bright red, handsome, first quality, moderate grower, early bearer. Winter.

STAYMENS WINESAP—Comes into bearing young, and is an annual cropper; fruit medium to large in size, yellow, nearly covered with red. Winter.

WINESAP—Medium to large size. Red color. Flesh yellow, firm, crisp, with rich flavor. Quality very good. Winter.



Jonathan

“It will save you money to order our Special Collections on pages 39 and 40.”

YELLOW TRANSPARENT—Fruit medium to large, with a brilliant waxy skin; flesh is tender, crisp and juicy, color yellow. Summer.

YORK IMPERIAL—Medium to large in size, oval, angular, skin greenish yellow, nearly covered with bright red; flesh crisp, tender and juicy, aromatic; winter.

YELLOW SIBERIAN CRAB—Almost an inch in diameter, grows in clusters. Yellow with lively scarlet cheek. Fine for jellies.

PEARS

5 to 6 feet, at \$1.00 each; \$9.00 per 10

BARTLETT—It is the most popular pear, both for home use and market. Is a buttery and melting sort, with a rich flavor. September.



Bartlett Pear

CLAPPS FAVORITE—A superb, large, yellow pear. Richly blushed with russet-red next to the sun; juicy and delightful. August.

DUCHESS—Strong grower, productive, not subject to blight. Fruit large, light green patched with russet. Melting, juicy, sweet and good. October.

KIEFFER—It is an abundant and regular bearer. Fruit large, color yellow with red cheek. October.

SECKEL—Medium size, skin rich, yellowish brown, with deep brownish red cheek when fully ripe; flesh very fine grained, sweet, juicy, melting. One of the best, flavored pears known. Summer.

PLUMS

5 to 6 feet, at \$1.00; \$8.00 per 10

ABUNDANCE—This is one of the best in quality, a liberal bearer of good sized fruit. The flesh is yellow and juicy; the skin a dark red where exposed to sun.

BURBANK—Ripens a little later than Abundance, is a stronger grower and sets enormous leads of fruit, which usually need to be severely thinned. Flesh is yellow and a trifle firmer than Abundance.

RED JUNE—This variety usually ripens a week before Abundance. Fruit of good size; flesh is yellow and firm, skin a mottled garnet.

SHROPSHIRE DAMSON—Medium size fruit, produced in thick clusters or groups. Color dark purple. October.

CHERRIES

5 to 6 feet at \$1.00; \$9.00 per 10

SWEET CHERRIES

BLACK TARTARIAN—Very large, bright, purplish black; half tender, juicy, very rich. Last of June or first of July.

GOVERNOR WOOD—Very large, rich light yellow, with red cheeks, juicy, sweet. Late June.

NAPOLEON BIGGAREAU—Very large, pale yellow or red, very firm, juicy and sweet. One of the best, early July.

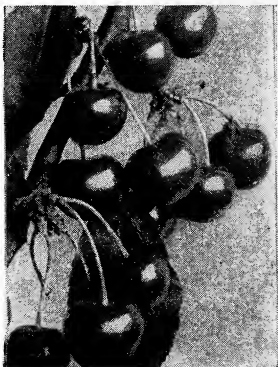
SOUR CHERRIES

EARLY RICHMOND—This is a hardy cherry fruiting on young trees soon after planting. Dark red fruit. Unsurpassed for canning. June.

ENGLISH MORELLO — Medium to large, blackish red rich acid, juicy, good. Late.

MONTMORENCY — The most popular of all hardy cherries. Large size; light red; stem rather short. Late.

YELLOW SPANISH — Large pale yellow, with red cheek when exposed to the sun; flesh firm, juicy and delicious. June.



Early Richmond

PEACHES

We can grow here in our soil and climate, extra fine peach trees, having strong fibrous roots; the tops have nice clean yellowish brown bark with bright red twigs, indicating sturdy vigorous constitution.

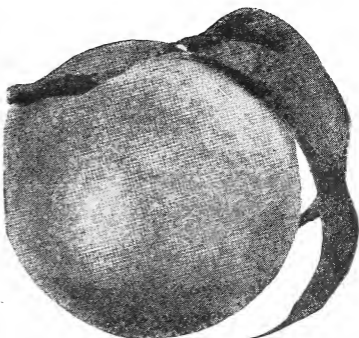
| | Each | 10 | 100 | 1000 |
|-----------|-------------|--------|---------|----------|
| 1½-2 feet | -----\$0.25 | \$2.00 | \$15.00 | \$100.00 |
| 2 -3 feet | ----- .30 | 2.50 | 17.50 | 125.00 |
| 3 -4 feet | ----- .35 | 3.00 | 20.00 | 175.00 |
| 4 -5 feet | ----- .40 | 3.50 | 25.00 | 225.00 |
| 5 -6 feet | ----- .50 | 4.00 | 30.00 | 250.00 |

BELLE OF GEORGIA—Ripens here the first to fifteenth of August. Fruit large, white with red cheek; flesh white, firm, of excellent flavor. One of the best market sorts. Freestone.

“It will save you money to order our Special Collections on pages 39 and 40.”

CARMAN—A very hardy peach, ripening here about the middle of July, skin pale yellow, with blush on sunny side. Flesh white, tender, sweet and melting.

CHAMPION — Large size, good quality. Skin is of a rich, creamy white with red cheek; flesh creamy-white, sweet and delicious. July 20th. Freestone.



Champion

CHAIRS CHOICE

—Fruit matures in late midseason. Color, pale green dotted with reddish-green, is very attractive and is considered a select fruit and quite large. Freestone.

EARLY ELBERTA—Exactly the same as the old reliable Elberta, only it ripens a week before.

ELBERTA—A valuable large peach, of good quality; fruit large, yellow with red cheek; juicy and extremely high flavored; Flesh yellow; freestone. The leading market variety.

FOX SEEDLING—Freestone. Ripens about Sept. 15th. Fruit is very large and of good quality and flavor.



Elberta

GREENSBORO— Ripens here from June 25th to July 10th. Large in size, white in color with a red cheek. Flesh rich and melting; very juicy.

HILEY—Ripens about a week before the Belle of Georgia, also a seedling of the Belle. A large creamy white peach with rich blush on sunny side. Freestone.

IRON MOUNTAIN—Ripens Sept. 1st. Freestone. Fruit is large size, color white.

“Buy from Del-Mar-Va and spend the difference.”

The Del-Mar-Va. Nurseries, Milford, Del.

J. H. HALE—One of the best. Fruit is very large, round, quality excellent. Skin yellow finely colored, flesh yellow, sweet and melting. Ripens just before the Elberta.

LATE ELBERTA—Exactly the same as the old reliable Elberta only ripens about two weeks afterwards.

L'THORNE MILLER—Freestone. Fruit is quite large, fine flavor. Ripens in October. One of the latest and best peaches.

RAY—Midseason, large, white, freestone, excellent flavor, highly red colored.

APRICOT TREES

2 year 4 to 5 feet, at \$1.00 each; \$9.00 per 10

ALEXANDER—Large size, orange skin and flesh. The best Apricot. July.

QUINCE TREES

2 year 4 to 5 feet, at \$1.00 each; \$9.00 per 10.

CHAMPION—Fruit very large, fair and showy. Flavor delicate imparting and exquisite taste and odor to any fruit with which it is cooked. Later than Orange.

ORANGE—Large, roundish, bright golden yellow, cooks tender, quality excellent.

GRAPES

No home is complete without grapes. No part of the fruit garden yields a richer harvest than does the vineyard.

Price of Grape Vines except Caco.

| | Each | 10 | 100 | 1000 |
|---------------------------|--------|--------|---------|---------|
| 2 year No. 1 plants ----- | \$0.30 | \$2.50 | \$10.00 | \$75.00 |
| 1 year No. 1 plants ----- | .20 | 1.50 | 8.00 | 50.00 |

AGAWAM—Deep red, large berries aromatic flavor. Ripens soon after Concord.

BRIGHTON—One of the best red varieties; bunch variable in size; flesh tender and juicy.

CACO—A new variety considered one of the best. Wine-red, with large berries, medium size bunches of good form. Ripens almost with Concord.

1 year No. 1 plants 50c each; \$45.00 per 100

CATAWBA—Ripens late and can be kept in good condition a long time. The bunch and berry are medium in size and red in color.

“It will save you money to order our Special Collections on pages 39 and 40.”

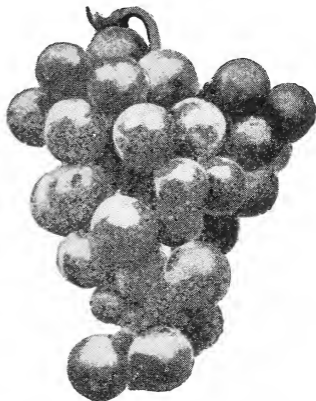
CONCORD—The most popular black grape. The bunch is large, shouldered and compact; skin is tender, flesh juicy and sweet. Extremely productive.

DIAMOND—Compact, slightly shouldered bunches of delicate greenish-white with rich yellow tinge. Early.

DELAWARE—Small, light red, thick skinned, very juicy, sweet and sprightly. Ripens after Concord.

NIAGARA—The best of the standard, light colored grapes. The berries are greenish white, changing to pale yellow when fully ripe. Ripens with Concord.

SALEM—Red. Bunch large, berry large, round; flesh tender, juicy with a rich aromatic flavor.



GOOSEBERRIES AND CURRANTS

Owing to restrictions the Government will not permit shipment of Gooseberries and Currants into many states, and for this reason, we are not listing them. Should you be interested, ask if we can ship into your section, state the number and variety you are interested in, and we will be glad to quote you by letter.

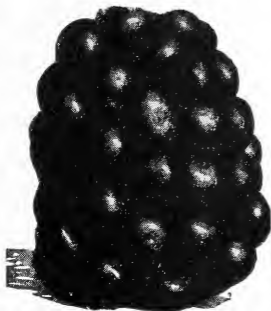
BLACKBERRIES

2 year plants, at 20c each; \$7.00 per 100.

ELDORADO—Jet black. Berries are large and of the finest quality.

EARLY HARVEST—More compact in growth than most other varieties and therefore more suitable for small gardens.

LUCRETIA DEWBERRY—The best of the blackberry family. Fruit as large as the largest blackberries; ripens two weeks earlier. Extremely productive. Ask for special prices on lots of 500 or more.



Eldorado

RASPBERRIES

2 year at 15c each; \$6.00 per 100.

PLUM FARMER—Black. Largest of all black Raspberries. Quality of fruit unsurpassed. Good for both home and market.

CUTHBERT—Red. The best red raspberry. Heavy yielder of large solid fruit. Fine for market or table use.

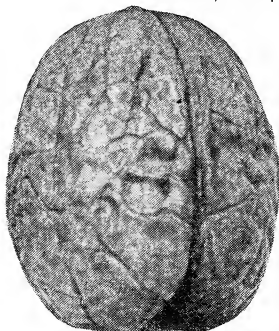
ST. REGIS—Everbearing. Red. Ripens with the earliest and continues on young canes until autumn. Flesh firm and meaty.

NUT TREES

Nut trees are valuable, useful and ornamental. No home should be without them. They are valuable for shade and ornamental trees as well as the nuts they produce.

BUTTERNUT—A walnut, producing oily, nutritious kernels for which it is much prized.

5 to 6 feet, at \$1.50; \$14.00 per 10



English Walnut

BLACK WALNUT—Does well on any well-drained soil. Trees grow to immense size and bear heavy crops regularly.

2 to 3 feet, at \$1.00 each; \$9.00 per 10.

ENGLISH WALNUT — The trees that we offer are all grown from large French nuts and are thin shelled; of excellent quality.

2 to 3 feet, at \$1.75 each; \$16.50 per 10.

JAPAN WALNUT—Bears nuts of medium size in clusters. Very rich flavor. 5 to 6 feet, at \$2.00 each; \$19.00 per 10.

PECANS—Well known. Richest flavored of all nuts.

5 to 6 feet, at \$2.00 each; \$19.00 per 10.

ASPARAGUS

Asparagus usually sells at a good price and being ready for market in May and June, the income derived from it is especially appreciated at that time. It is usually planted on light soil to have it early, though it can be easily grown on all good garden soils. The roots will give food crops from fifteen to twenty years. Plant Asparagus by the acre.

| | | | | |
|--------------|-------------|--------|---------|---------|
| | 25 | 100 | 1000 | 10,000 |
| 2 year No. 1 | -----\$0.80 | \$2.00 | \$10.00 | \$80.00 |
| 1 year No. 1 | ----- | .60 | 1.25 | 6.00 |
| | | | | 50.00 |

The Del-Mar-Va. Nurseries, Milford, Del.

MARY WASHINGTON—Very Early and prolific. Rust resistant. A new variety claimed by many to be the best of them all.

PALMETTO—Of Southern origin. Very large and productive. Most extensively used of them all.

GIANT ARGENTEUIL—Stalks of immense size, very bright and attractive, sweet and tender. Comes into cutting condition much earlier than others.

BARRS MAMMOTH—Very large, tender stalks, light color and very early.

RHUBARB OR PIE PLANT

2 year No. 1, 10c each; \$6.00 per 100

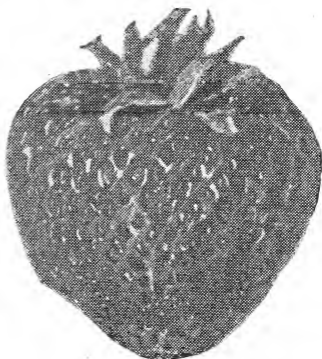
MYATT'S LINNEAUS—Early, large, tender and of good quality.

STRAWBERRY PLANTS

We are located in the "Heart of the Del-Mar-Va. Peninsula" which is the center of the strawberry market of the world. Growing strawberry plants is one of our specialties, and we know how to pack and ship that they will reach you in first class condition.

It is not an unusual thing for an acre set to strawberries to pay back a net income of \$500.00 per acre. They, are the main fruit crop here on the Peninsula.

The land should be plowed deep as possible, as this gives the water a chance to go down quick when it is wet and cause it to rise when dry. Lay off the rows after you have thoroughly pulverized or made smooth by some kind of machinery, either 3½ or 4 feet apart, set the plants one to one and a half feet apart in the row. Spring is the proper time to set strawberry plants, they can be set with reasonable success in the fall. When setting plants see that the roots are not allowed to become dry.



Gandy

"It will save you money to order our Special Collections on pages 39 and 40."

The Del-Mar-Va. Nurseries, Milford. Del.

Prices of Less Than 500 of a Variety

| | \$5 per M | \$6 per M | \$8 per M |
|------------------|--------------|--------------|--------------|
| 25 plants ----- | \$0.30 | \$0.40 | \$0.50 |
| 50 plants ----- | .50 | .60 | .80 |
| 75 plants ----- | .70 | .80 | 1.20 |
| 100 plants ----- | .90 | 1.10 | 1.50 |
| 150 plants ----- | 1.25 | 1.35 | 1.75 |
| 200 plants ----- | 1.40 | 1.50 | 2.00 |
| 250 plants ----- | 1.60 | 1.75 | 2.35 |
| 300 plants ----- | 1.80 | 2.00 | 2.70 |
| 350 plants ----- | 2.00 | 2.25 | 3.05 |
| 400 plants ----- | 2.20 | 2.50 | 3.40 |
| 450 plants ----- | 2.35 | 2.75 | 3.70 |

PROGRESSIVE—A genuine fall bearing. This is, without a doubt, the best one; plants of good size, deep rooted. To obtain best results keep blooms off until August 1st, then when they begin to ripen you will have something to be proud of. (Everbearing).

\$8.00 per thousand.

KELLOGS PREMIER—Noted for its long fruiting season. Ripens with the early varieties and continues until the late varieties come on. Fruit is large to very large and holds size well through ripening season. (Early).

\$5.00 per thousand.

MISSIONARY—A reliable market berry and succeeds in all parts of the country. It comes in among the earliest to ripen and is very productive. (Early).

\$5.00 per thousand

LUPTON LATE—In many respects it is like Gandy, but far more prolific and comes into bearing a few days ahead. (Late).

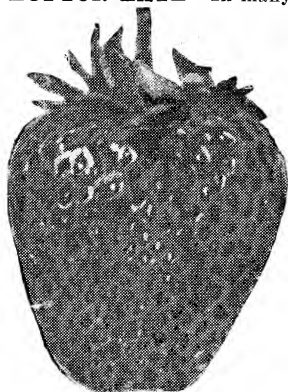
\$6.00 per thousand.

CHESAPEAKE— Ripens a little earlier than Gandy. Has a beautiful appearance, extra large, even in shape and uniform in color. (Late).

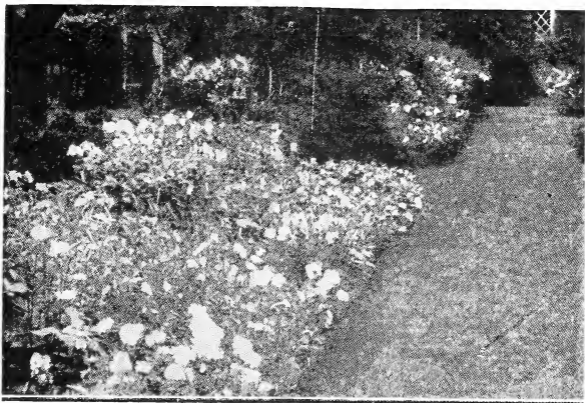
\$6.00 per thousand.

GANDY— This variety is grown here by thousands of acres, which always produce more money on the average than does any other variety. Does best in springy land with some clay in its make-up.

\$5.00 per thousand.



Premier



HARDY PERENNIALS

The dictionary says "Perennial" means "Perpetual" and that is what these are. When you plant them, they are there permanently. They die down to the ground at the approach of winter, but come up again each spring, always better and larger than before. Some plants in this class brighten every month from early spring until hard frost, with brilliant color. They require no trimming nor attention. Give them fair soil, keep them reasonably free of weeds, and they return their thanks with yearly smiles. They cost little; they last indefinitely; and their bright and showy colors add a lot of beauty to the garden and especially during those months when few other plants are in bloom.

Price 25c each; \$2.00 per 10, unless otherwise noted.

CHRYSANTHEMUMS—These are the hardy kinds and not the Greenhouse types. They fill a place of their own because the blooming season is from October until hard frosts. Assorted colors only.

ACHILLEA. (The Pearl)—2 ft. White. Blooms all summer.

ANCHUSA ITALICA—3 to 5 feet. Brilliant blue. May and June.

AQUILEGIA (Columbine)—2 to 3 ft. Mixed colors. June and July.

"It will save you money to order our Special Collections on pages 39 and 40."

BOCCONIA, PLUME POPPY—Cream white. 6 ft. July and Aug.

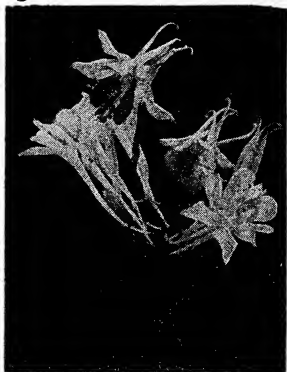
CARNATIONS—Mixed colors. 18 inches.

CERASTIUM TOMONTOSUM (Snow in Summer)—Bright silvery foliage with white flowers. Suitable for rockery or planting in dry sunny places. Fine for edging. 6 inches. May and June.

CAMPANULA, BELL FLOWER—These combine a large range of habit and color, and are perfectly hardy. One of the best border plants. 12 inches.

COREOPSIS, Lanceolata Grandiflora—Large, showy bright yellow flowers produced in great abundance from June until frost.

DELPHINIUM, Larkspur—Dark blue. 3-4 ft. June and July.



Aquilegia

DIGITALIS. Foxglove—3 to 4 ft. Assorted colors only. One of the finest Perennials.

GAILLARDIA, BLANKET FLOWER—2 ft. Crimson and yellow edging. June until frost.

GYP S O P H I L A, BABY'S BREATH, 2 to 3 ft. White. July and Aug.

HARDY PINKS. Dianthus—Assorted colors. 18 in. Mid-summer until frost. A very good one for cut-flowers.

HIBISCUS M a r v e l Mallows—Mixed colors. 4 to 5 ft., July and Sept.

HOLLYHOCKS. Double flowering—6 to 8 ft. White, pink, yellow, red and black.

HEMEROCALLIS, Day Lily—Deep orange.



Gaillardia

large and lovely flowers; free blooming. 3 ft. July and August.

The Del-Mar-Va. Nurseries, Milford, Del.

LILY OF THE VALLEY—Small white bell-shaped flowers on drooping stems. May and June. 8 inches.

15c each; \$1.00 per 10

LOBELIA, Cardinal Flower—2 to 3 ft. Red. Early Aug. to Sept.

LYCHNIS, Chalcedonica—2-3 ft. Scarlet. June and July

LUPINE—3 ft. Blue, May and June.

PHYSOTEGIA VIRGINIANA. False Dragonhead—Strong spikes of delicate pink flowers. 2-3 ft. June and July.



Hardy Phlox

PHLOX—Assorted colors. 2 to 3 ft. July and Aug. A very popular one for gardens or formal plantings.

RUDBECKIA. Golden Glow—A stately border plant, with masses of double, golden yellow flowers. 6-8 ft. Aug. to Sept.

STOKESIA. Cyanea Blue—Flowers 3 to 4 inches across, of fine sky blue. 2 ft. July to Oct.

SWEET WILLIAM—Variegated. 18 inches. June.

TRITOMA, Red Hot Poker—Orange-scarlet, shading to salmon-rose at edge. 2-3 ft. Aug. and Sept.

VIOLA. Tufted Pansies—Color variegated. Will grow in any good soil. 6 inches. May until frost.

VERONICA, Blue Bird Flower—2 ft. Blue. July to Sept.

IRIS, Germanica—Rainbow hues. In beauty they rival the orchids.

YUCCA FILIMENTOSA—See under evergreens.

We specialize on the Landscaping of the highest class of homes and extensive grounds, but no order is too small to receive our most careful attention.

“It will save you money to order our Special Collections on pages 39 and 40.”

PEONIES

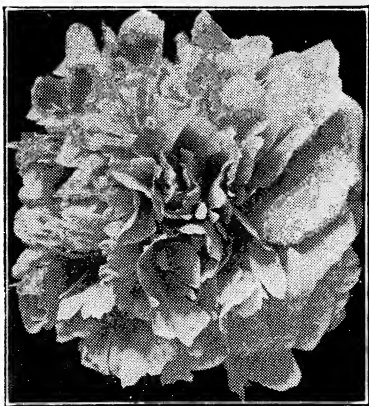
The Prince of the Flower Garden. Rivals the rose in beauty of form and color. Decoration Day usually finds the early varieties in their prime of bloom. Peonies are free from all diseases and insects. For cut flowers, they are seldom equaled. We only grow the select varieties.

ARMADINE MECHIN—Midseason. Large, compact blooms of violet-crimson, showing stamens; strong, spreading habit; free bloomer. 50c each.

ALFRED de MUSSET—Late. Compact, very large, milk-white flowers, blush center crimson flecks. \$1.00 each.

BARONES S SCHROEDER—Midseason. Flesh-white, fading to milk-white; very large; globular; fragrant; \$1.25 each.

COURONNE d'OR—Late. Lovely pure white, with a ring of yellow stamens around a tuft of center petals, tipped carmine; large flat. 75c ea.



Baroness Schroeder

FRAGRANS—Early. Bomb type, dark pink, strong, vigorous, free bloomer. Good keeper, very fragrant. 40c each.

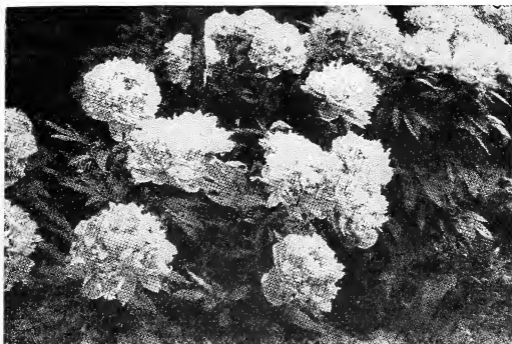
FESTIVA MAXIMA—Early. Large; double; creamy-white with crimson spots in center; fragrant. 40c each.

FLORAL TREASURE—Midseason. Very large; showy, pale lilac-rose; free bloomer; fragrant. 40c each.

L'ECLANTANTE—Midseason. Tyrian-rose of very large, compact bomb type, strong and of medium height. 50c each.

MME. LEMOINE—Late, midseason. Pale lilac-rose, fading to lilac-white, center flecked crimson; large, fragrant. \$1.25 each.

MARGUERITE GERARD—Late. An exquisite pale hydrangea-pink, fading to nearly white, central petals minutely flecked dark carmine; large compact. \$1.00 each.



MME. de GALHAU—Late. Rose-white, center pale lilac-rose; medium large, compact, globular; fragrant. 50c each.

ZOE CALOT—Midseason. Violet-rose, blooms of medium size and compact, flat bomb type; fragrant. 75c each.

UNNAMED VARIETIES—Colors, Red, White and Pink. 40c each.

TUBEROSE

Beautiful, long compact spikes of fragrant white flowers in August. 10c each; \$6.00 per 100.

GLADIOLUS

These, without a doubt, are the most satisfactory bulbs you can plant in your garden, so easy to cultivate, and when planted in rotation of about two weeks apart, until the end of June, you have a succession of cut flowers for your home all summer. We offer a beautiful assortment of colors in rainbow hues.

Price 10c each; \$6.00 per 100.

CANNAS

Good strong divisions; 15c each; \$8.00 per 100.

RICHARD WALLACE—Light yellow. A very strong grower, the best yellow flowered canna. Green foliage.

KING HUMBERT—The best canna introduced. Large heart-shaped leaves, brown over bronze. Flower velvety orange-scarlet, flecked carmine, rose tinted at margin of base.

KATE GREY—Dwarf. Flowers immense size of orange color.

DAHLIAS

Dahlias are among the finest late blooming plants in the garden. They show a wide range of color in various forms and a mixed bed will display a wealth of beauty in the late summer and early fall. We offer the cream of varieties.

A. D. LIVONI—Ball. Clear cerise pink, quilled petals, a free bloomer. 20c each.

BELLE OF SPRINGFIELD—Pom. Soft rosy red, on stems above foliage. 15c each.

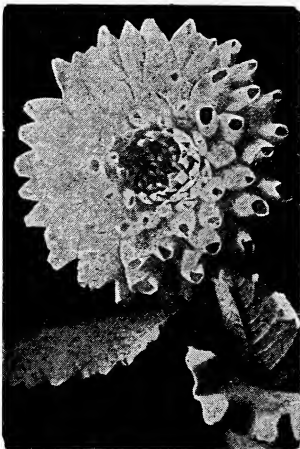
CHAS. TURNER—Cactus. A large yellow and vigorous grower. 15c each.

CROWN OF GOLD—Decorative. Orange scarlet, edged gold; very effective. 15c each.

COUNTESS OF LONSDALE—Cactus. Yellow, suffused salmon red overlaid lavender. A very fine one. 20c each.

DREER'S WHITE—Ball. Large, pure white, quilled petals. A good bloomer. 20c each.

DREER'S YELLOW—Ball. Same as Dreer's White except yellow. 20c each.



Dreer's White

EVANGELINE—Cactus. Pure white, vigorous bloomer. 25c each.

FLAMINGO—Decorative. Large deep red. 40c each.

LEO NIESSEN—Decorative. Brilliant cardinal red with a glistening sheen. An excellent bloomer on long stiff stems. The best of all Decorative Reds. \$1.00 each.

LAVENDER QUEEN—Ball. Lavender fading to white at base of petals. 25c each.

MRS. J. G. CASSETT—Decorative. Bright cerise pink, large flowers on long stiff stems. 15c each.

“BUY DIRECT FROM GROWER AT A SINGLE PROFIT”

The Del-Mar-Va. Nurseries. Milford, Del.

MME. HENRI CAYEUX—Cactus. Clear pink, tinting to white at tips. Long slender petals. 35c each.

PAUL BOUYON—Dec. Salmon color with pale center. Free bloomer. 50c each.

QUEEN MARY—Decorative. Clear, silvery cerise pink. The best deep pink for all purposes. 20c each.

SNOW CLAD—Pom. The best pure white pompon. 20c each.

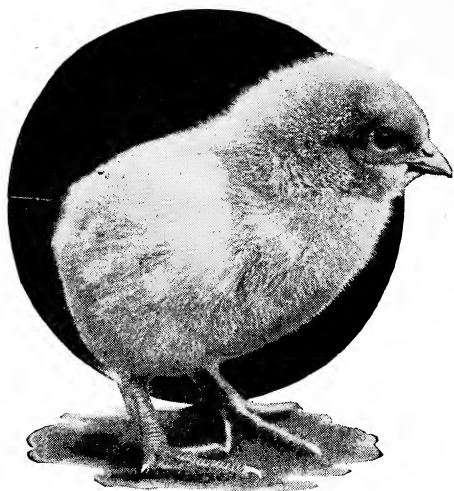
WHITE SWAN—Ball. Pure white. A strong grower and free bloomer. 25c each.



White Swan Dahlia

“It will save you money to order our Special Collections on pages 39 and 40.”

BABY CHICKS



of Superior Quality

Direct from Lincoln Hatcheries. Our eggs are personally selected from choice flocks of Sussex County, Delaware, which ranks fifth in poultry production of the United States.

PRICES

| | |
|----------------------------------|----------|
| S. C. White Leghorns | |
| Tom Barron Strain at..... | 18c each |
| Other well known strains at..... | 15c each |
| Barred Plymouth Rocks at..... | 14c each |

Above prices are delivered to your address.

We guarantee prompt service; 100 per-cent live chicks and entire satisfaction.

SPECIAL SELECTIONS

We are offering at special prices a few well balanced assortments suitable for planting around the home. These selections are made of leading varieties and not of slow sellers. This is done for the benefit of those who want to add beauty and value to their grounds and are not familiar with the names of shrubs, evergreens, etc. or who do not have time to go through the catalog and make up a larger order.

Items in these selections are of good planting size and are fully 25 per cent under the catalog prices. There is no discount allowed on special selections. When ordering, just give the Selection Number.

SELECTION NO. 1

- | | |
|------------------------|-------------------------|
| 2 Spirea Van Houtte | 2 Weigela Rosea |
| 1 Juniperus Virginiana | 2 Butterfly Bush |
| 2 Chinese Arborvitae | 2 Forsythia Golden Bell |
| 2 Philadelphus | 1 Althea Red |
| 2 Ball Privet | 1 Althea White |
| 2 Spirea Billardi Alba | |

19 plants for only \$9.00

SELECTION NO. 2

- | | |
|---------------------|-------------------------|
| 1 Spirea Van Houtte | 1 Forsythia Golden Bell |
| 1 Weigela Rosea | 1 Philadelphus |
| 1 Pussy Willow | 2 Juniperus Virginiana |

Special Price of Only \$3.25

SELECTION NO. 3

A complete home planting

- | | |
|-------------------------|-----------------------------------|
| 2 Lombardy Poplars | 2 Weeping Willows |
| 2 Tulip Trees | 6 Deutzia Pride of Roches- ter |
| 10 Assorted Spireas | 2 Philadelphus |
| 2 Hydrangea P. G. | 2 Abelia Grandiflora |
| 4 Weigela Rosea | 4 Assorted Althea's |
| 2 Ball Privet | 2 Chinese Arborvitae |
| 2 Forsythia Golden Bell | 12 Assorted Cannas |
| 12 Assorted Gladiolus | 6 Butterfly Bush |
| 12 Assorted Dahlias | 2 Pussy Willows |
| 2 Japan Quince | 4 Climbing Roses assorted |
| 4 Barberry Thunbergii | |
| 2 Silver Maples | |

All of above for only \$25.00

One half of this selection for \$13.50

The Del-Mar-Va. Nurseries, Milford, Del.

SELECTION NO. 4

Fruit collection of largest size trees

- | | |
|---------------------------------|--------------------------|
| 2 Staymens Winesap apples | 2 Burbank Plums |
| 2 King David apples | 2 Elberta Peach |
| 2 Grimes Golden apples | 2 Belle of Georgia Peach |
| 2 Liveland and Raspberry apples | 2 J. H. Hale Peach |
| 2 Rome Beauty apples | 2 L'Thorne Miller Peach |
| 2 Yellow Siberian (Crab) apples | 2 Late Elberta peach |
| | 2 Carman peach |
| | 2 Red June Plums |

All for only \$13.00

One half of this selection for \$7.00

SELECTION NO. 5

A complete home planting

- | | |
|-----------------------|------------------------------|
| 2 Silver Maples | 2 Forsythia Golden Bell |
| 2 Lombardy Poplars | 2 Deutzia Pride of Rochester |
| 2 Butterfly Bush | 2 Weigelia Rosea |
| 2 Spirea Van Houtte | 4 Mallow Marvels (Hibiscus) |
| 1 English Ivy | 2 Dianthus |
| 2 Lychnis Chalcedonia | 2 Physotegia |
| 2 Hollyhocks | 2 Gallardia |
| 2 Violas | 6 Assorted peonies |
| 2 Bocconia | 2 Ball Privet |
| 2 Pyramidal Privet | 2 Juniperus Virginiana |
| 2 Chinese Arborvitae | |
| 2 Norway Spruce | |
| 1 Weeping Willow | |

Our Bargain Price is only \$20.00

SELECTION NO. 6

Evergreen Collections

All plants from 2 to 6 years of age

- | | |
|------------------------|------------------------------|
| 2 Euonymous Japonica | 2 Abelia Grandiflora |
| 2 Pyramidal Privet | 2 Pieris Floribunda |
| 2 Rhododendrons | 2 Chinese Arborvitae |
| 2 Kalmia Latifolia | 2 Retinospora Plumosa Aurea |
| 2 Juniperus Virginiana | 2 Retinospora Plumosa |
| 2 Pyramidal Arborvitae | 2 American Holly |
| 2 Globe Arborvitae | 2 Retinospora Pisifera Aurea |
| 2 Retinospora Pisifera | |
| 2 Ball Privet | |

32 Choice Evergreens at our Bargain price of only \$30.00

One half of above assortment for \$17.00