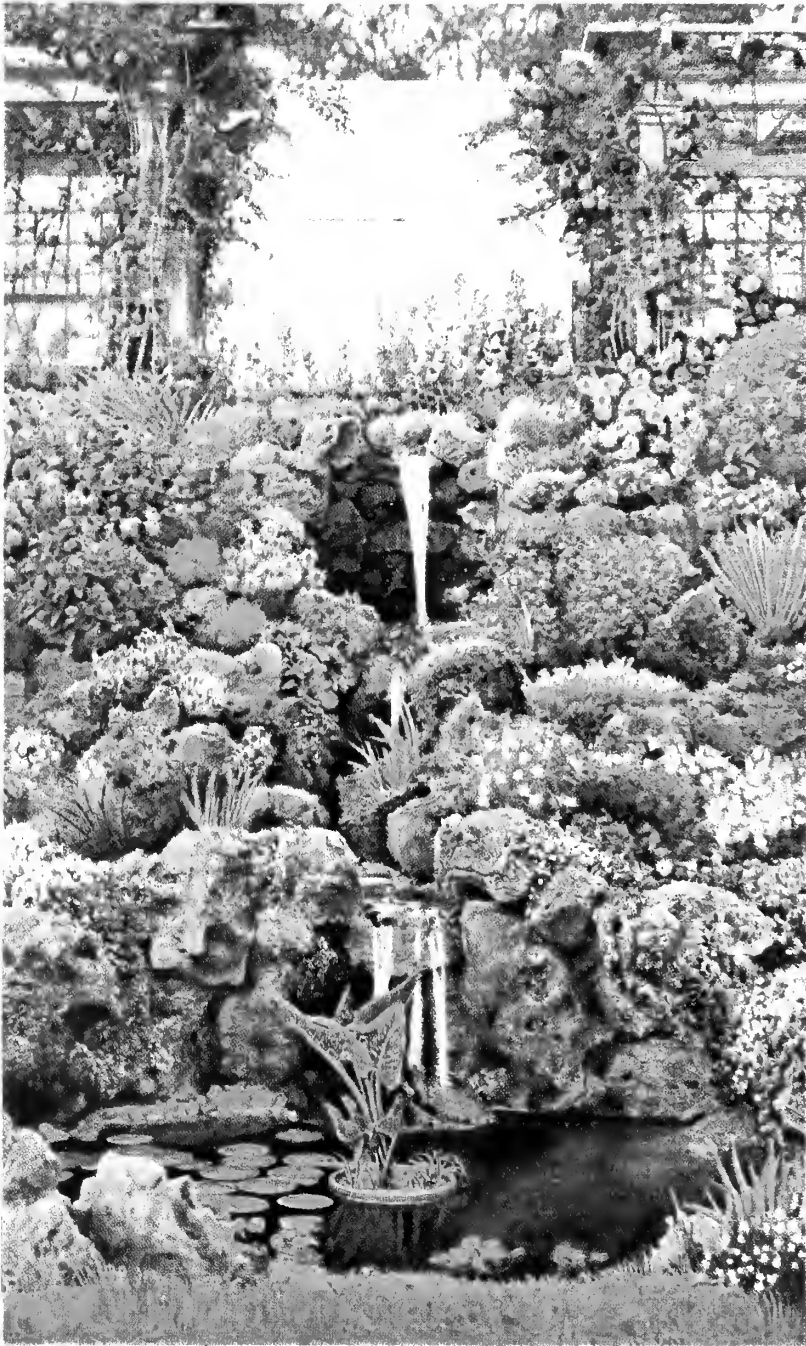


Historic, Archive Document

Do not assume content reflects current scientific knowledge, policies, or practices.

1931

U.S. DEPARTMENT OF AGRICULTURE
FEB 3 1931 ★
Department of Agriculture



GREEN'S

"Approved"

FRUITS and FLOWERS

Vegetable Seed Trials

Green's Catalog for 1931

QUALITY — SATISFACTION — SERVICE
FOR OVER HALF A CENTURY

It Pays to Buy Direct from Green's

CHARLES A. GREEN was the first nurseryman to sell direct to the planter on the cash with order basis. This method makes it possible for the HOME OWNER or ORCHARDIST to purchase direct from Green's the highest quality nursery stock at the lowest possible cost. It eliminates agents' commissions of thirty to forty per cent, the cost of carrying open accounts, making collections, and other unnecessary expenses that the purchaser has to pay in the end.



CHARLES A. GREEN
Founder

Green-Grown Products have made the old farm pay, established profitable orchards, have beautified and increased the value of large estates, city and rural homes. Green's method of selling direct to the planter has saved hundreds of thousands of people millions of dollars.

When you purchase from Green's you get hardy, northern grown stock, with fine tops and strong root systems, that please the most particular customers. Our success for 56 years, assures our reliability.

The Value of Planting Green's "Approved" Fruits and Flowers

EACH year hundreds of new varieties of growing things are introduced and bought by garden lovers of America. Some are good, hardy, and worthy of introduction, while others are not, and thousands of dollars are wasted annually by people who have no way of telling which ones to buy.

With over half a century of experience with growing things, it is possible for us to determine which of the new introductions are worthy of planting. Before a new variety is "Approved by Green's," it is thoroughly tested, must prove perfectly hardy, and have outstanding characteristics in flower, taste, quality, habit of growth, and be superior to other varieties in its class, to prove worthy of our endorsement.

For over fifty years hundreds of thousands of people have bought with confidence, varieties offered in Green's catalog, because of our steadfast policy of growing only the best varieties of the highest quality. We have kept faith with our customers by rigidly maintaining our policy of "What is not good for our customers is not good for us."

Sixty per cent of our new business comes to us unsolicited each year. This huge volume of good will business is sent to us by our customers who have recommended Green's Nursery Company to their friends and neighbors.

We take great pleasure in presenting to our old customers and new friends "Green's Approved Fruits and Flowers" for the Spring and Fall seasons of 1931.

Important Information . . . Read Carefully

Green's Money Saving Terms

Your remittance must be sent with order. An express money order, postal money order, or bank draft is the best form of remittance. You can send your personal check if you desire. It is not safe to send silver or bills, except in a registered letter. Green's low prices are F. O. B. shipping point, except where otherwise specified.

C. O. D. Shipments

To new customers, we extend the privilege of C. O. D. shipments, provided one-fourth cash is sent with order—balance to be paid to expressman, mailman or freight agent, when delivery is made.

Save 10%—Order Early

Send your order just as soon as you receive this catalog. It is decidedly to your advantage. It will enable us to reserve for you the varieties you want, and avoids the possibility of our being sold out. Then, too, you can save money by taking advantage of our cash discounts for early orders.

Shipments Sent at Best Time for Planting

We keep careful records, and receive daily reports, of weather conditions throughout the country and ship each order so as to reach our customers at the very best time for planting in their localities. If it is necessary that your order arrive on a certain date, please note it on your order sheet and we will ship to arrive as near that date as possible.

Cash Discounts for Early Orders

10% Discount or an equal value in additional stock Free on CASH ORDERS amounting to \$5.00 or more received on or before March 20, 1931. If your order amounts to \$10.00 or more and is received by March 1, we will send you Free 1 Climbing Rose Bush of our selection.

5% Discount or an equal value in additional stock Free on CASH ORDERS amounting to \$5.00 or more received between March 21 and April 15, 1931.

Why We Can Make These Liberal Offers

If we can induce our customers to send their orders early, it enables us to handle the thousands of orders received with a much smaller office force. It also enables us to plan our spring work efficiently and more economically. This results in a considerable saving in our expenses, and we pass this saving on to you in the form of the above Cash Discounts.

Complete Planting Instructions are Sent With Each Shipment

Our interest in you does not end when we receive your order. We want every customer to have complete success with growing things purchased from us. Our How to Plant booklet will be sent with your order. Should you desire these planting instructions before shipment, let us know, and we will send them.

Green's Guarantee of Satisfaction

WE guarantee every Tree, Plant, or Vine sold by us to be strong, vigorous and healthy, and to deliver them to you in good condition. If for any reason you are not absolutely satisfied with your stock when it is received, advise us at once, and we will gladly replace the items or refund your money.

Replacements—Our success depends on the success of our customers, therefore we do everything in our power to furnish them with vigorous, healthy stock that will grow and give complete satisfaction. It is just as impossible for us to guarantee the life of our growing things as it is for a doctor to guarantee the life of a new born child.

In the interest of our customers, however, we will, upon proper proof, replace at one-half price all stock

that fails to grow, providing we are notified within ninety days after the planting of the stock. We reserve the right to have the stock returned which is to be replaced under this agreement.

Green's trees are True-to-Name—No human caution could be more exacting than ours. If any trees prove untrue to name, upon proper proof we will replace or refund the purchase price. Obviously, we cannot assume further responsibility than this.

Green's "Approved" Shrubs

All Blooming Size Ready for Immediate Effects

TRULY, "It's not a home until it's planted," and shrubs play the most important part in landscaping the home grounds. The gardens of old England and Italy were stiff and formal, using brick walls and trimmed hedges to afford seclusion. Americans have broken these traditions and our gardens have been created with natural beauty and loveliness by the use of graceful and colorful flowering shrubs. Green's shrubs have been very carefully selected and include the most beautiful and hardy varieties of new introductions and the lovely old ones we just can't do without. (*Shrubs not over 2½ to 5 ft. high can be sent by parcel post, postpaid, for 5c per shrub extra.*)

ALMONDS (*Prunus glandulosa*)

- Pink Flowering Almond** (*Prunus glandulosa sinensis*). Beautiful double pink, rose-like flowers, early in spring before leaves appear. Grows 6 to 8 feet.
2½ to 5 feet.....75c each
- White Flowering Almond** (*Prunus glandulosa albiplena*). Same as Pink Flowering Almond except flowers are double white.
2½ to 5 feet.....75c each



Althea—Rose of Sharon

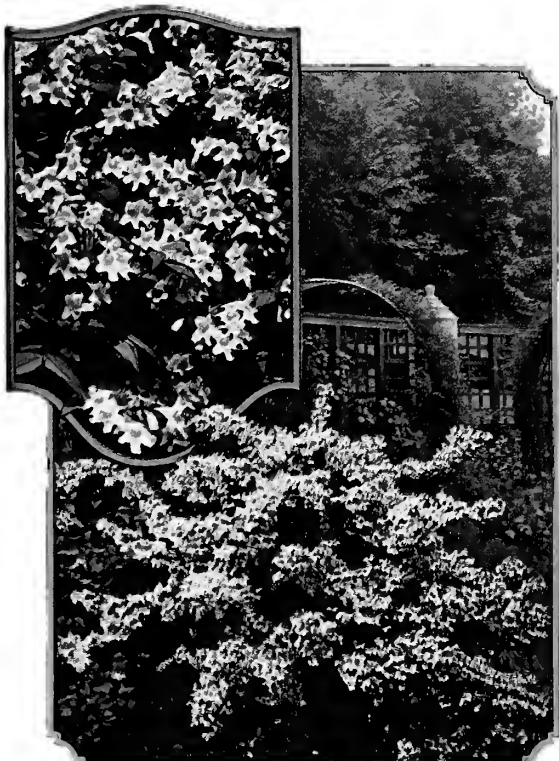
Althea (*Rose of Sharon*) (*Hibiscus syriacus*). Beautiful bell-shaped flowers from August until frost. Hardy, erect, compact. Grows 8 to 10 feet high. We offer only double-flowered sorts in Pink, Purple, Red, White, Rose with darker center. Order by color.
2½ to 5 feet.....50c each

Japanese Dwarf Barberry (*Berberis thunbergi*). See page 50 for description.

Red-Leaved Japanese Dwarf Barberry (*Berberis thunbergi atropurpurea*). See illustrations and prices on back cover.

Beauty Bush (*Kolkwitzia amabilis*). One of the most hardy and beautiful shrubs China has ever given to the gardens of America. It is one of the choicest introductions of Dr. E. H. Wilson and the Arnold Arboretum. A shrub of year-round beauty, with graceful, spreading branches, covered with an amazing profusion of delicate pink flowers in early June, transforming the bush into a veritable fountain of pink loveliness. Grows to a height of 6 to 8 feet and its spreading branches extend 5 feet in width at maturity. It does not always flower the first year planted, but its beauty when in flower is outstanding.
1½ to 2 feet.....\$1.25 each
2½ to 3 feet.....\$1.75 each

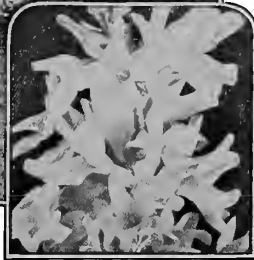
Butterfly Bush (*Buddleia*). A very attractive and unusual shrub. Its lavender flowers are very sweet-scented 6 to 10 inches long, resembling lilacs. Blooms from July until frost. The tops die back after blooming but grow annually to a height of 4 to 5 feet.
Strong 2 year plants.....50c each



The New Beauty Bush—Kolkwitzia Amabilis



Border Forsythia



GOLDEN BELLS (*Forsythia*)

Border Forsythia (*Forsythia intermedia*). This beautiful old favorite is loved by all. One of the first shrubs to bloom in the spring, with bright yellow, bell-shaped flowers in April before the leaves appear. Grows erect 8 to 10 feet.

2½ to 3 feet.....50c each
3½ to 4 feet.....60c each

Weeping Forsythia (*Forsythia suspensa*). A magnificent drooping type, with long graceful branches bending to the ground. Flowers same as Border Forsythia. Grows 6 feet.

2½ to 3 feet.....75c each

Golden Elder (*Sambucus canadensis aurea*). Golden yellow leaves and white flowers in May and June.

2½ to 3 feet.....50c each

HONEYSUCKLES (*Lonicera*)

Morrow's Honeysuckle (*Lonicera Morrowi*). A graceful, spreading type of honeysuckle, with fine, dark green leaves and creamy-white flowers. The blood-red berries which follow make it one of the most striking summer-fruiting shrubs. Grows 6 to 8 feet.

2½ to 3 feet.....50c each

Red Honeysuckle (*Lonicera tartarica rubra*). The favorite, old-fashioned shrub, covered with pink flowers in spring, immediately followed by scarlet berries that last through the fall. Grows more rapidly than any other shrub. Fine for screening out undesirable views, reaching an ultimate height of 8 to 10 feet very rapidly.

2½ to 3 feet.....50c each; \$4.50 per 10

3½ to 4 feet.....65c each; \$6.00 per 10

White Honeysuckle (*Lonicera tatarica alba*). Same as Pink Honeysuckle except its flowers are white. Combine both in your planting.

2½ to 3 feet.....50c each; \$4.50 per 10

3½ to 4 feet.....65c each; \$6.00 per 10

Cutleaf Stephanandra (*Lacubush*) (*Stephanandra flexouosa*) A beautiful shrub which you should have. Feathery, fern-like foliage, green in summer, bronze red in autumn. Cream-colored flowers in June. Grows 4 to 5 feet high.

2½ to 3 feet.....60c each

DEUTZIAS

Double Rose Deutzia (*Deutzia crenata plena*). Full, double white, bell-shaped blossoms, tinged with rose in June. Grows 6 to 8 feet high.

2½ to 3 feet.....50c each

3½ to 4 feet.....60c each

Lemoine's Deutzia. Rather low growing, 3 to 5 feet high. Medium size, bell-shaped flowers of pure white.

2½ to 3 feet.....60c each

Pride of Rochester Deutzia. An early variety that blooms in May. Double bell-shaped flowers of pinkish white. Grows 6 to 8 feet high.

2½ to 3 feet.....50c each

3½ to 4 feet.....60c each

Slender Deutzia (*Deutzia gracilis*). A dwarf, dense-growing shrub, with single, white, bell-shaped flowers in May. Excellent for shrub borders in front of taller kinds. Grows 3 to 4 feet high.

1½ to 2 feet.....60c each

DOGWOODS (*Cornus*)

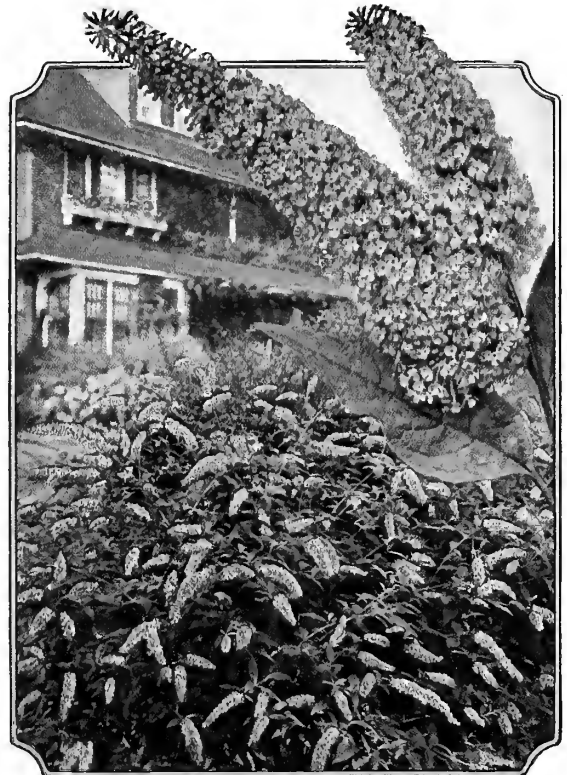
Coral Dogwood (*Cornus sibirica alba*). Striking, bright coral red branches, very ornamental, especially for winter effects. Yellowish white flowers in spring, white berries in winter. Grows 6 to 10 feet high.

2½ to 3 feet.....50c each

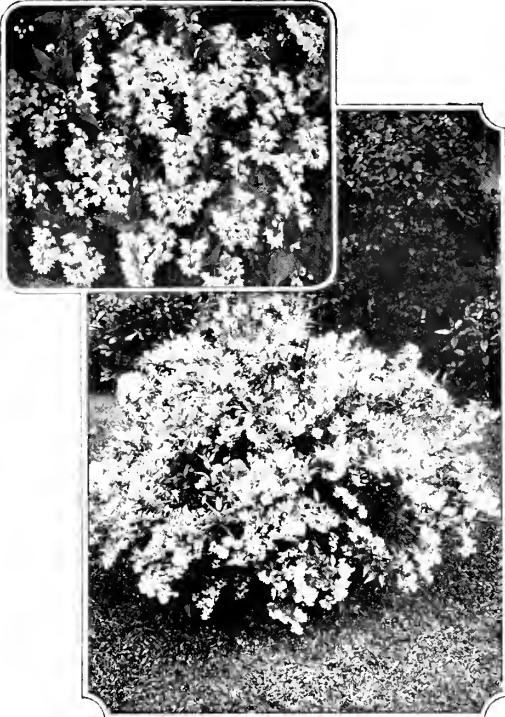
Goldtwig Dogwood (*Cornus stolonifera lutea*). A broad bush about 4 feet high, with strikingly conspicuous yellow bark. Very attractive.

2½ to 3 feet.....50c each

Dogwood (tree form) described on page 14.



Butterfly Bush—Buddleia



Slender Deutzia—Deutzia-Gracilis
(See description on page 5)



Hydrangea Arborescens—Hills of Snow

HYDRANGEAS

Hydrangea Arborescens (Grandiflora) (Hills of Snow). Magnificent clusters of snow-white flowers from July through September. Grows naturally into a round, compact bush 4 to 5 feet high. Makes a fine hedge and grows well in shady places.

2½ to 3 feet.....50c each

Hydrangea Paniculata Grandiflora (bush form). In our opinion, no other shrub gives quite the "value received" as this hardy hydrangea. Immense clusters of greenish-white flowers changing to white and later to delicate pink. Blooms in August and September, and if the flowers are allowed to dry on the bush, they turn to a bronzy green and are valuable for winter decoration in the home. Makes a beautiful flowering hedge. Grows 6 to 7 feet high.

1½ to 2 feet.....40c each; \$3.50 per 10

2½ to 3 feet.....50c each; \$4.50 per 10

Hydrangea Paniculata Grandiflora (tree form). We train the bush hydrangea to single stems which form small, compact, miniature trees, much like the tree rose in appearance. Same characteristics as the bush form except shape.

2½ to 3 feet.....\$1.00 each

3½ to 4 feet.....\$1.50 each

Indian Currant (Coral Berry) (Symphoricarpos vulgaris). A desirable shrub for shady places. Grows 3 to 5 feet tall, producing small, rose-colored flowers in June and July. Its dull red, coral-like berries cling in great profusion along the under side of the branches. Fine as a hedge. Desirable for planting on banks to prevent soil washing away.

2½ to 3 feet.....50c each

3½ to 4 feet.....60c each

Japan Quince (Cydonia japonica). Another old favorite. Fine for specimen or border planting. Completely covered with dazzling scarlet flowers in May. The fruits which follow are quince-shaped and quite fragrant. Armed with fine thorns, it makes not only a desirable flowering hedge, but a defensive one as well. Grows naturally 6 to 8 feet high, but can stand any amount of shearing.

2½ to 3 feet.....75c each

Double Kerria (Kerria japonica). Produces an abundance of double flowers, rich yellow resembling half-opened rose buds. Its branches are of beautiful pea-green color. Grows 6 to 8 feet high.

2½ to 3 feet.....\$1.00 each

MOCK ORANGE OR SYRINGAS

(*Philadelphus*)

Golden Mock Orange (Philadelphus aureus). Shown on page 8. A compact, dwarf-growing shrub, with very brilliant yellow foliage and white flowers in May and June. Retains its color all season. Fine for planting under windows or low porches. Beautiful effects are obtained by grouping with Anthony Waterer Spiraea, with its purple flowers and fine green foliage. If double rows are desired, plant the Mock Orange in the background as it grows a little taller than the Spiraea. Grows 3 to 4 feet high.

1½ to 2 feet.....75c each

Fragrant Mock Orange (Philadelphus Coronarius). A well-known shrub, with clusters of pure white, very fragrant flowers in June. A very attractive and graceful shrub. Grows 8 to 10 feet high.

2½ to 3 feet.....50c each

Virginal Mock Orange (Philadelphus virginialis). We consider this the most beautiful white flowering shrub introduced in the last quarter century. Exceeds all other Mock Orange in beauty and form; unusually large, double white flowers, often 1½ inches across, in clusters of five to seven in a group. Aside from its beauty of flower, its rich perfume, rivaled only by that of orange blossoms, makes it worthy of a place on your grounds. Blooms in June and continues over a long period. Grows compact to a height of 6 to 8 feet.

2½ to 3 feet.....75c each

Pearl Bush (*Exochorda grandiflora*). Buds, like pearls strung on slender threads, opening up to fragrant clusters of pure white, starry flowers. Grows 6 to 10 feet high.

2½ to 3 feet.....75c each

Snowberry (*Symphoricarpos racemosus*). See illustration on page 11. A slender, medium-growing shrub, which does well in any soil and will flourish under trees and in dense shaded places where little else will grow. Leaves are dark green and slender, small rose-colored flowers in June and July. Clusters of attractive, milk-white berries which last until late in winter. Very attractive as a hedge. Grows 3 to 5 feet high.

2½ to 3 feet.....50c each

3½ to 4 feet.....60c each

SPIRAEAS

Anthony Waterer Spiraea. A dwarf variety, growing 2 to 3 feet high, branches of which terminate with beautiful, deep rose flowers that are fine for bouquets. If first blooms are cut, it will continue to bloom all summer. Very desirable for grouping with Golden Mock Orange beneath window or in front of taller growing shrubs. Pretty green foliage.

1½ to 2 feet.....50c each

Billard's Spiraea (*S. Billardi*). An erect growing shrub with dense spikes of rose-pink flowers 4 to 6 inches long in July and August, and again in the fall. Does well in moist places. Grows 4 to 6 feet high.

2½ to 3 feet.....50c each

3½ to 4 feet.....60c each

Bridal Wreath Spiraea (*S. prunifolia*). Flowers white and double like little roses, borne in great profusion the whole length of the branches; foliage, scarlet in autumn. Blooms early in the spring. Grows six feet high.

2½ to 3 feet.....50c each

Froebel's Spiraea (*S. Froebeli*). A new variety, called by some the Improved Anthony Waterer. Its flowers and foliage are identical, but it grows taller—4 to 5 feet. Groups well with Golden Mock Orange and Slender Deutzia, but when planted with these it should be placed in the background.

2½ to 3 feet.....50c each

Golden Spiraea (*S. opulifolius aureus*) (*Ninebark*). A rapid-growing variety, with masses of snowy white flowers in June. Young foliage bright yellow, changing to golden brown in autumn. Very desirable for group plantings. Grows 8 to 10 feet high.

2½ to 3 feet.....50c each

3½ to 4 feet.....60c each

Korean Spiraea (*S. trichocarpa*). See illustration and prices on back cover page.

Thunberg's Spiraea (*S. thunbergi*). A graceful bush, whose thread-like branches bear innumerable small white flowers and tiny leaves. Foliage changes in autumn to bright red and orange. Grows 3 to 5 feet high.

2½ to 3 feet.....65c each

VanHoutte Spiraea—Better known and more largely planted than any other shrub. An extremely graceful shrub, with long, drooping branches completely covered with flat clusters of white flowers in May and June. When in blossom, a hedge of Spiraea Vanhoutte is a sight long to be remembered. Cannot be too highly recommended. We consider it the best for general purposes. Grows 6 to 8 feet high.

2½ to 3 feet.....50c each

3½ to 4 feet.....65c each

Sweet Shrub (*Allspice*) (*Calycanthus floridus*). An unusual upright-growing shrub, with reddish brown shoots and spicy, fragrant, chocolate-colored flowers in June. Grows 5 to 6 feet high.

2½ to 3 feet.....75c each



Virginal Mock Orange
See description on page 6



Hydrangea P.G.
See description on page 6

Miss
StepmanPresident
Grey

Charles Joly

THREE CHOICE HYBRID LILACS

Green's Policy

for over a half a century

QUALITY

To furnish our customers with hardy, northern grown stock of highest quality at the lowest possible prices.



SATISFACTION

To offer our customers only varieties of proven merit, that have been thoroughly tested and have outstanding characteristics in flower, taste, quality, habit of growth, and be superior to others in their respective classes.



SERVICE

To assist our customers in every way possible in obtaining the greatest pleasure and profit from growing things.

LILACS (*Syringa*)

Common Purple (*Syringa vulgaris*). Far from common in beauty, very popular. The well known, old fashioned lilac. Fragrant, lilac-colored flowers in May. Grows 8 to 12 feet high.

2½ to 3 feet.....50c each

Common White (*Syringa alba*). The popular white variety. Splendid panicles of pure white, single flowers in May. Fragrant. Grows 6 to 8 feet high.

2½ to 3 feet.....75c each

Rouen Lilac (*Syringa Rothomagensis Var. rubra*). A distinct variety, with reddish flowers; panicles of great size and very abundant. The only variety that does well in shady locations. Fine for a hedge or border planting.

2½ to 3 feet.....75c each; \$7.00 per 10

HYBRID FRENCH LILACS

*Selected from the World Famous
Highland Park Collection*

RIGHT here in sight of our office is the largest single collection of Lilacs in the world. From nearly three hundred varieties we have selected ten of the choicest to offer our customers. Every one is worthy of a place on your grounds. Hybrid Lilacs are far superior to the common varieties; their flower clusters are larger and more fragrant. These extremely fine and unusual varieties, generally sell from \$1.50 to \$2.00 each.

Green's Special Price, 2½ to 3 ft., \$1.10 each.

Note: D indicates double flowers—S single flowers.

Belle de Nancy (D). Beautiful, large, satiny rose flowers, with white centers. Grows 6 to 8 feet high.

Charles Joly (D). Large, dense flower heads of very dark reddish purple. Grows 5 to 6 feet high.

Charles X (S). Large trusses of light lavender flowers with bluish tinge. Rapid grower. Grows 6 to 8 feet.



Golden Mock Orange
(See description on page 6)

HYBRID FRENCH LILACS (Continued)

- Dr. Charles Jacob (S).** One of the unusual red flowered varieties. Grows 6 to 8 feet high.
- Jacques Calot (S).** Very large panicles of delicate rosy pink flowers. Grows 6 to 8 feet high.
- Madam Casimer Perier (D).** Medium sized clusters of deep white flowers. Grows 5 to 6 feet high.
- Miss Stepman (S).** Enormous trusses of large, perfectly shaped, pure white flowers with reflex lobes.
- President Grevy (D).** Immense clusters of double wisteria-violet flowers, the faces of which are a pretty contrasting shade of light blue. Grows 6 to 8 feet high.
- Rene Jarry Desloges (D).** Very large panicles of exquisite and unusual shade of blue flowers. Grows 6 to 8 feet high.
- Souvenir de Ludwig Spaeth (S).** Extremely long panicles of large, rich purple flowers. Grows 6 to 8 feet high.

**Green's
Special Lilac Offer**

*To make popular these wonderful Hybrid
French Varieties*

- Your choice of any *three* French Lilacs . . \$3.00
- Your choice of any *five* French Lilacs . . . 4.50
- Your choice of any *ten* French Lilacs . . . 8.50



Honey-suckle—Lonicera Tatarica Rubra
(See description on page 5)

VIBURNUMS

CONSIST of a family of shrubs which give year around beauty. Growing in popularity fast and recently called double purpose shrubs. Aside from beauty of flowers, their foliage colors gorgeously in the fall and many have colored berries that remain all winter. Be sure to include them in your plantings.

- Arrow-Wood (*V. dentatum*).** White flowers in May ripen into black berries of which the birds are fond. Foliage turns deep purple and red in autumn. Does well in moist places. Grows 10 to 12 feet high.
2½ to 3 feet 75c each
- Fragrant Viburnum (*V. carlesii*).** A very distinct, new and rare variety. A low-spreading, hardy shrub, with extremely fragrant white flowers tinged with pink, resembling apple blossoms, appearing in May and June. Flowers open slowly, giving long blooming period. Unquestionably one of the most valuable new shrubs. Grows 4 to 5 feet high.
1½ to 2 feet \$2.25 each
- High Bush Cranberry (*V. opulus*).** An upright and spreading shrub; smooth, light grey branches; broad leaves that turn a beautiful scarlet in fall. Flat heads of white flowers in May and June, followed by scarlet berries which remain and keep their bright color until the following spring. Grows 8 to 10 feet high.
2½ to 3 feet 85c each
- Japanese Snowball (*V. tomentosum plicatum*).** An erect, compact shrub, 6 to 8 feet tall, with purple-tinged foliage. Ball-shaped clusters of white flowers in June.
2½ to 3 feet \$1.00 each
- Old Fashioned Snowball (Common Snowball) (*V. opulus sterile*).** A well-known, favorite shrub, with globular clusters of white flowers the latter part of May. Grows 8 to 10 feet high.
2½ to 3 feet 75c each



Spiraea Anthony Waterer
(See description on page 7)

Viburnum (Continued)

Witherod (*V. cassinoides*). Creamy white flowers from June to July, followed by clusters of pink berries that change to blue. Autumn foliage vinous red. Does well in moist places. Grows 6 to 8 feet high.
 2½ to 3 feet.....\$1.00 each

WEIGELAS (Diervilla)

Eva Rathke Weigela. A fine dark red variety of dwarf habit. Blooms profusely in June and intermittently all summer. Grows 3 to 5 feet high.

2½ to 3 feet.....60c each

Pink Weigela (*Weigela Rosea*). Deep pink flowers in great profusion in June. Grows 6 to 8 feet high.

2½ to 3 feet.....50c each

Winged Burning Bush (*Euonymus alatus*). Spreading in growth, with peculiar corky bark. Has ornamental scarlet berries. Foliage turns a beautiful crimson in autumn. Ultimate height 6 feet.

2½ to 3 feet.....\$1.25 each

Green's Flowering Shrub Collection No. 5

10 Popular Shrubs that will give bloom from early spring until late fall. All 2 to 3 foot shrubs that will bloom this year.

- | | |
|------------------------------|-------------------|
| 1 Forsythia Intermedia | 1 Mock Orange |
| 1 Double Rose Deutzia | 1 Snowberry |
| 1 Pride of Rochester Deutzia | 1 Spirea Billardi |
| 1 Honeysuckle (White) | 1 Spirea (Golden) |
| 1 Lilac (Purple) | 1 Weigela (Pink) |

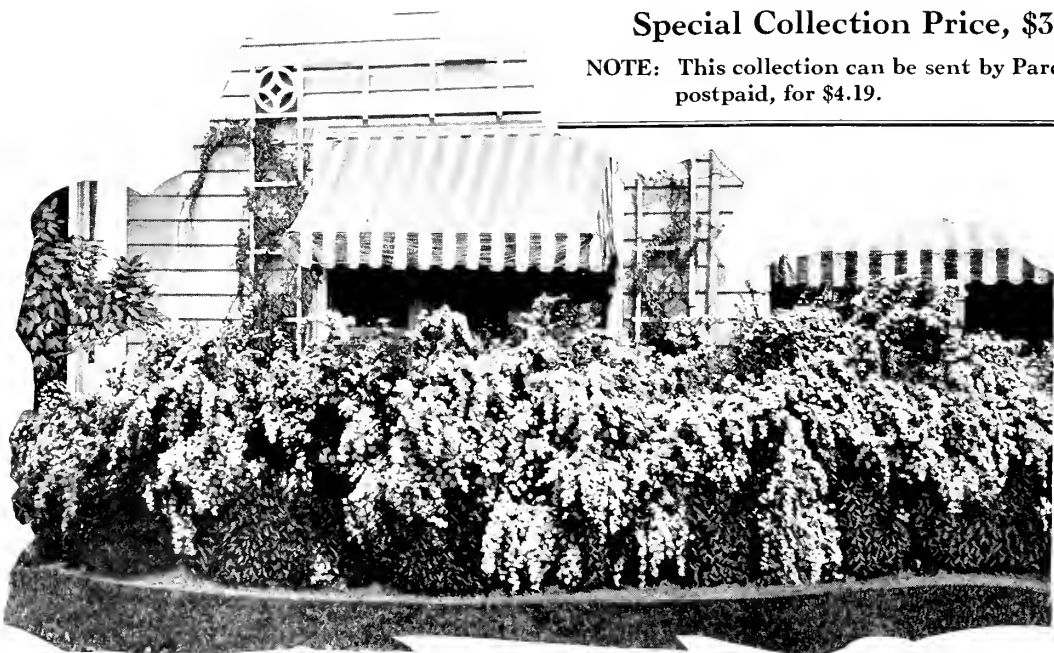
Regular Price, \$5.00

Special Collection Price, \$3.98

NOTE: This collection can be sent by Parcel Post, postpaid, for \$4.19.



Common Snowball—Viburnum opulus sterile
 (See description on page 9)



A Foundation Planting of the Popular Spiraea Van Houtte



Morrow's Honeysuckle
(Description on page 5)

Snowberry
(Description on page 7)

Weigela Rosea
(Description on page 10)

How to Plant and Care for Shrubs

Planting Flowering Shrubs

WHEN planting out shrubs, dig your holes large enough to allow the entire root system to be placed in the hole without bending the roots. Square holes are better than round holes.

Be sure to pack the earth tightly about the roots and when the hole is half filled with earth, fill the remainder with water and allow it to settle before filling the remainder of the hole with earth. This will also help to settle the earth about the roots, which is vitally important to the success in transplanting all growing things. The proper spacing of the shrubs naturally depends on its ultimate growth. The following table will guide you:

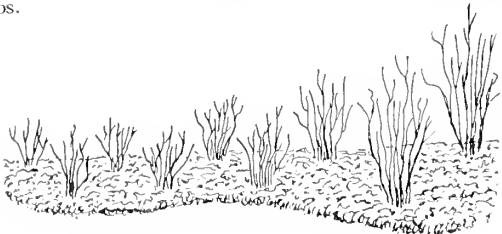
Plant varieties growing:

- 3 to 4 feet in height 2½ to 3 feet apart
- 4 to 6 feet in height 3 to 3½ feet apart
- 6 to 8 feet in height 3½ to 4 feet apart
- 8 to 10 feet in height 4 to 4½ feet apart

You will find the ultimate height of each variety given in the description of the shrub.

Pruning Flowering Shrubs

WHILE shrubs do not need severe pruning, too many people neglect their shrubs in this respect and therefore do not get their full beauty. Annual pruning will make your shrubs flower better and become more bushy. Each year the tops should be cut back at least 6 to 12 inches. Never cut the tops straight across. Cut back the tops to give a semi-circle appearance. This means that the outer top branches should be cut back farther than the center ones. Annual pruning forces out new growth and more flowers. To keep shrubs at any desired height, prune back farther. It will not harm your shrubs.



The above illustration shows the proper arrangement for shrubs set in a double row. The shrubs should be staggered as indicated.

Proper Time to Prune

WE believe that this important knowledge is responsible for people neglecting their shrubs because if pruning is not done at the proper time the shrubs will not bloom. With rare exceptions shrubs that bloom before July 1st the flowers come on the last season's growth. Shrubs that bloom after July 1st the flowers come on the new growth made early in the same season. Therefore, prune as follows:

Shrubs flowering before July 1st prune immediately after flowering.

Shrubs flowering after July 1st prune in late fall or early spring.

Most shrubs having berries in the fall flower after July 1st. If berry-laden shrubs flower before this date they should be pruned in late fall or early spring.

Note: Lilacs do not require pruning other than cutting off the seeds left after flowers have gone. This is particularly true with French varieties. Common varieties will stand additional pruning if desired to curtail growth.

You will not harm the bushes by cutting the flowers when in bloom. Never break the stems of the flowers, cut them with knife or shears.



Fig. A



Fig. B

Illustration A shows shrubs as received. Illustration B shows the shrubs properly pruned, ready for planting.

Green's "Approved" Vines

Vines Add a Certain Charm not Obtainable from any other Source

THE home planting is not complete without them. They keep the house cool in summer and furnish protection and shade for the porch, arbor or pergola. Many beautiful flowering vines will be found in our complete assortment. Include them in your plantings.

American Ivy (*Virginia Creeper*) (*Woodbine Ampelopsis quinquefolia*). The well-known native ivy, with five-parted leaves that change to scarlet in fall. Blue-black berries. Hardy and quick-growing. Requires artificial support on walls.

2 year vines.....50c each; \$4.50 per 10

Bittersweet (*Celastrus scandens*). This vine produces the colorful clusters of orange and crimson berries so popular and attractive for winter home decoration. Why tramp miles or pay high prices for them when two vines will give supply for yourself and friends. Practical for any place a climbing vine is desired. For pollination, we recommend two vines.

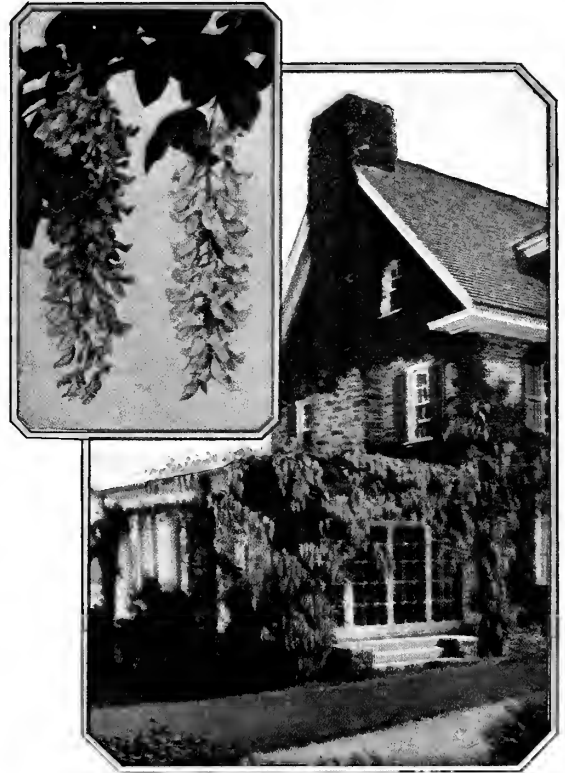
2 year vines.....60c each, 2 for \$1.00; 10 for \$4.50

Boston Ivy (*Japan Ivy*) (*Ampelopsis veitchii*). It is a rapid grower and clings to brick or stone walls without artificial fastening. The foliage is handsome, dark-green in summer, changing to crimson and yellow in autumn.

2 year vines.....65c each; \$6.00 per 10



Bittersweet



Purple Wisteria

Clematis Jackmani. A large-flowering variety, the flowers often 2 to 3 inches in diameter. Intense, violet-purple, rich velvety appearance. It blooms from July until frost.

2 year vines.....\$1.00 each; \$9.00 per 10

Clematis Paniculata. A rapid-growing vine, with handsome, clear, glossy foliage and medium sized, star-shaped, fragrant, white flowers in September when few other vines are in blossom. Very attractive.

2 year vines.....50c each; \$4.50 per 10

Dutchman's Pipe (*Aristolochia siphon*). A very rapid-growing vine, large, heart-shaped leaves, desirable when dense shade is required. Its peculiar brownish flowers resemble pipes.

2 year vines.....\$1.00 each; \$9.00 per 10

Hall's Japan Honeysuckle (*Lonicera japonica hallicana*) One of the most popular of climbing vines, valuable for covering banks, bare spaces, etc., where grass will not grow. Flowers white, changing to yellow, fragrant and blooms whole season.

2 year vines.....50c each; \$4.50 per 10

Trumpet Vine (*Bignonia radicans*). A grand old favorite. Showy, orange-scarlet flowers and evergreen leaves. A strong grower, often over 30 feet tall. Fine for training on walls, trellises, trunks of trees and arbors.

2 year vines.....50c each; \$4.50 per 10

Wisteria (*Purple*). Desirable for heavy trellises and pergolas. Attractive if trained to old trees. Pea-shaped, purple flowers in dense, pendant clusters, often a foot long. Blooms in May. Wisterias grown from seed often will not bloom. We sell only grafted vines which assure early flowering.

2 year vines.....\$1.00 each

“Approved” Ornamental Trees

Will Add Value and Beauty to Your Property

WHAT a barren place this world would be without our beautiful shade trees. You owe the future generation a debt which the past generation has created and you have enjoyed, that of our full-grown trees. The most attractive homes are those with a few well placed ornamental trees around them. There is a growing appreciation of trees. More people are learning to know and love them. Shade trees around the farm or city home will not only add to its beauty and comfort, but will greatly increase its value.

Ash, American Mountain (*Sorbus Americana*). A handsome, little lawn tree, growing 20 to 30 feet high, with long, dark green foliage and clusters of bright red berries.
 5 to 6 feet.....\$1.25 each
 6 to 8 feet.....\$1.75 each

BIRCH (*Betula*)

European (*Betula Alba*). Attractive, smooth white bark and handsome foliage. Very hardy. Grows 50 to 60 feet high.
 6 to 8 feet.....\$2.25 each

Cut-Leaved Weeping, White (*B. laciniata pendula*). A tall, graceful, weeping tree, with silvery-white bark and delicately cut foliage. Excellent for lawn and cemetery planting. Reaches 60 feet at maturity.
 6 to 8 feet.....\$5.00 each



Japanese Flowering Cherry
 (For description see page 14)



Bechtel's Crab



CATALPA

Bungei (*Umbrella Catalpa*). A beautiful, umbrella-shaped tree, with large, heart-shaped leaves forming an even, compact, dome-shaped head; hardy, very useful in formal plantings. Grows about 8 feet tall. This is a grafted variety of catalpa, and while the top of the tree becomes larger and more compact each year, the trees do not grow any taller.
 5 to 6 feet.....\$1.75 each
 6 to 8 feet.....\$2.25 each

Western (*Catalpa speciosa*). One of the most showy flowering trees, noted for its fast and vigorous growth. Large, heart-shaped leaves, white flowers tinged with violet and dotted with purple and yellow. Grows to a height of 60 feet. Very hardy.
 5 to 6 feet.....\$1.00 each
 6 to 8 feet.....\$1.25 each

Crab, Bechtel's (*Pyrus ioensis bechteli*). A handsome bush or little tree, seldom over 20 feet in height. One of the finest for lawn decoration. Produces in profusion double, delicate pink flowers resembling at a distance dainty little roses. Is very fragrant.
 2½ to 3 feet.....\$1.00 each
 3½ to 4 feet.....\$1.25 each

Cash Discounts for Early Orders

SEE DETAILS ON PAGE THREE

DOGWOODS (*Cornus*)

Red Flowering (*C. florida rubra*). A dwarf tree, with beautiful, large light red flowers appearing early in the spring before the grayish-green leaves, and followed by attractive red berries. Leaves turn to deep red in autumn. Grows 10 to 20 feet high.
 2½ to 3 feet.....\$3.25 each

White Flowering (*C. florida alba*) Same as Red Flowering Dogwood except that the flowers are pure white. Both varieties are exceptionally beautiful.
 2½ to 3 feet.....\$1.25 each

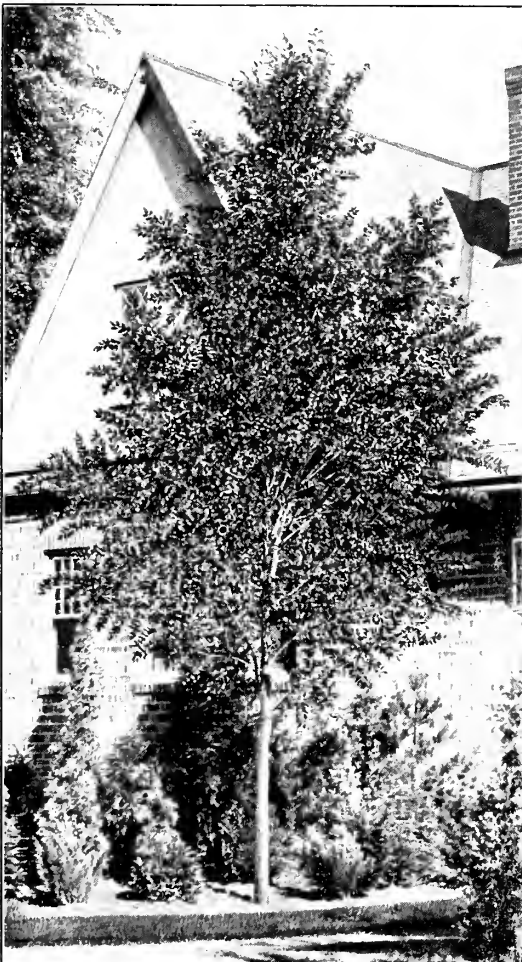
Dogwood (*Shrub Form*) see page 6.

ELMS (*Ulmus*)

American (*U. Americana*). In our opinion, the most handsome and dignified of all the native trees. A tall-growing, stately tree, reaching 60 feet, with a wide, arching top and vase-like form. Extensively used for street planting, where its wide-sweeping branches form perfect Gothic arches over the streets.

6 to 8 feet.....\$1.50 each
 8 to 10 feet.....\$2.00 each

Chinese (*U. pumila*). A new introduction from China. This variety is a very rapid grower. Known to have reached a height of 20 feet six years after planting an 8 to 10 foot



Chinese Elm

tree. Resembles the popular Norway Maple in shape. Good foliage, more dense than other elms. Exceptionally adapted for street and shade planting where quick results are desired. Grows 75 feet high.

6 to 8 feet.....\$2.25 each
 8 to 10 feet.....\$3.50 each

Moline (*U. Moline*). Another new elm, compact but a fast grower. Leaves of distinct dark blue-green color. Grows 60 feet high.

6 to 8 feet.....\$2.00 each
 8 to 10 feet.....\$2.50 each

Horse Chestnut, White (*Aesculus hippocastanum*). A large tree of regular outline, 60 to 80 feet tall, completely covered in May with great, upright spikes of white flowers. Desirable where dense shade is required.

5 to 6 feet.....\$1.50 each
 6 to 8 feet.....\$2.00 each

FLOWERING CHERRY

Japanese Flowering (*Cerasus Fugervo*). Sometimes called James H. Veitch. This is the finest of all the upright Japanese Flowering Cherries. A mass of large double pink flowers, clinging closely to the branches. The tree appears to be buried beneath a wealth of exquisite color and fragrance. Grows 20 feet.

4 to 5 feet.....\$3.00 each

Japanese Weeping (*Cerasus Pendula*). One of the most beautiful of our flowering trees. Delicate pink flowers studded on graceful drooping branches, early in the spring. Famous at Washington. Grows 8 to 10 feet.

5 to 6 feet.....\$4.50 each

LINDEN (*Tilia*)

American (*Basswood*) (*Tilia Americana*). A tall-growing, stately tree, growing 60 feet tall, with large, shining, green leaves and light yellow, fragrant flowers in July.

6 to 8 feet.....\$2.25 each

European (*Basswood*) (*Tilia Platyphyllos*). A handsome round headed tree with red bark and deep green leaves smaller than the preceding. Showy and sweet scented flowers. Grows 40 feet.

6 to 8 feet.....\$2.25 each

MAPLES (*Acer*)

Ash-Leaved (*Box Elder*) (*A. negundo*). A very hardy, fast-growing tree about 60 feet high. Easily distinguished by its greenish-yellow bark. Bright green leaves which turn to yellow in autumn.

8 to 10 feet.....\$1.50 each

Norway (*A. platanoides*). Without a doubt one of the most desirable shade trees for street and lawn planting. Of fairly rapid growth, reaching a height of 60 feet at maturity. Sturdy, compact and vigorous, forming a rounded head of stout branches and broad, deep green leaves.

6 to 8 feet.....\$2.25 each
 8 to 10 feet.....3.00 each
 10 to 12 feet.....5.00 each

Silver (*Soft Maple*) (*A. dasycarpum*). The fastest growing of the maples, very valuable where immediate shade is required. Grows to a height of 60 feet, forming a large, spreading head, with bright green leaves, silvery white on the under side. Does equally well in well-drained or low, swampy locations.

6 to 8 feet.....\$1.25 each
 8 to 10 feet.....1.75 each
 10 to 12 feet.....2.50 each



Weeping Willow

Sugar (*Hard or Rock Maple*) (*A. saccharum*). A tree of magnificent proportions, often 80 feet in height, straight, spreading and symmetrical in shape. Long-lived. Dark green leaves, turning to scarlet and gold in autumn.
 6 to 8 feet.....\$2.00 each
 8 to 10 feet..... 3.00 each

MULBERRIES

New American. For description see page 47.
Russian (*Morus alba tartarica*). Very hardy. 20 to 30 feet high, with beautifully cut foliage and fruit which attracts the birds.
 5 to 6 feet.....\$1.00 each
Tea's Weeping. Forms a perfect umbrella-shaped head with long slender, willowy branches drooping to the ground. It is very hardy and easy to transplant.
 5 to 6 feet.....\$3.00 each

Oak, English (*Quercus robur*). The Royal Oak of England. A spreading, long-lived tree, 40 feet or more at maturity, with dark green leaves, smaller than our native species.
 5 to 6 feet.....\$2.25 each
Plane, Oriental (*European Sycamore*) (*Platanus orientalis*). A hardy, rapid-growing shade tree that does well in smoky cities, near the seashore, or in other unfavorable situations. Excellent for street planting. Beautiful foliage. Grows 60 feet and upwards.
 8 to 10 feet.....\$2.25 each

POPLARS (*Populus*)

Carolina (*Southern Cottonwood*). A very rapid-growing tree, giving shade in a very short time. Very easy to transplant. Desirable for planting for the protection of the banks. Attains a height of 60 feet at maturity.
 6 to 8 feet.....75c each; 10 for \$5.00
 8 to 10 feet.....\$1.00 each; 10 for \$7.00
Lombardy. A tall, narrow, tapering tree, 60 feet high at maturity, a striking feature in any landscape. Fine for planting in groups, along driveways, or to make boundary lines. Good for tall screen hedges.
 6 to 8 feet.....85c each; 10 for \$7.50
 8 to 10 feet.....\$1.25 each; 10 for \$10.00

PLUMS (*Flowering*)

Double Flowered (*Prunus triloba*). The most beautiful of all flowering plums. A gorgeous mass of very double, pink blossoms early in the spring before the leaves appear. A fine, small tree for lawn planting. Grows 10 to 12 feet.
 2 to 3 feet.....\$1.25 each
 3 to 4 feet..... 1.50 each
Purple-Leaved (*Prunus pissardi*). A handsome, showy little tree, 20 feet in height, with striking, pinkish-purple leaves in the spring that deepen in color as the season advances. Small, white, single flowers. Very striking and ornamental for lawn planting.
 3 to 4 feet.....\$1.00 each
 4 to 5 feet..... 1.25 each

THORNS (*Hawthorn*)

Double White (*Crataegus oxyacantha*). The famous May Thorn of England. Low, dense, little tree about 20 feet in height. A mass of clustered, double white flowers in May, followed by a display of showy, scarlet fruits which remain a long time. Makes a beautiful hedge or specimen.
 3 to 4 feet.....\$2.25 each
Paul's Scarlet (*Crataegus Pauli*). Similar to White Flowering Thorn except that the flowers are a deep crimson scarlet. Grows 10 to 12 feet high.
 3 to 4 feet.....\$2.25 each

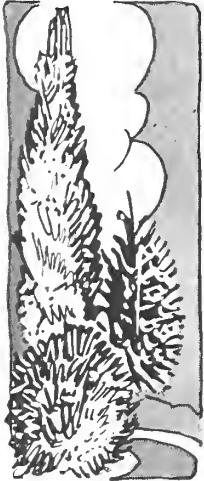
WILLOWS (*Salix*)

Babylon, Weeping. Our well-known weeping willow. A large, graceful tree, especially effective when planted near water. Grows 30 to 60 feet high.
 6 to 8 feet.....\$1.25 each
Golden (*Tree Form*). A very showy, yellow-barked tree, reaching a height of 60 feet at maturity. A handsome tree at all seasons, but particularly conspicuous in winter and early spring before the leaves appear.
 6 to 8 feet.....75c each



Tea's Weeping Mulberry

Green's "Approved" Evergreens



Will Add Dignity and Coziness to Your Grounds in Winter or in Summer

TRULY the aristocrats of freedom, lending year around beauty to your home surroundings. Their varied shades of green, blue and silver make possible the most attractive combination of colors. Planted about the foundation of a home they give dignity, coziness and warmth not attained by any other class of trees or shrubs. Their attractiveness is unsurpassed during any season of the year. Styles change in landscaping as in other things. Solid foundation plantings are not used. Our Landscape Department will gladly furnish complete and individual plans for their planting. This service is described on page 19.



Liberal Cash Discounts for Early Orders

(See details on page 3)

ARBORVITAE (*Thuja*)

American (*T. Occidentalis*). A beautiful pyramidal-shaped tree, with deep green, feathery and spray-like foliage. Used extensively for foundation plantings. It should be planted at the corners of the home in groups of two or three, or at the entrance as single specimens. We also recommend it very highly for hedges or windbreaks. Can be kept to any desired height if annually trimmed in late August. We advise trimming, as this thickens its foliage. Allow 3 foot spread.

- 2 to 2½ feet.....\$2.25 each
- 3 to 3½ feet..... 3.00 each
- 4 to 4½ feet..... 4.50 each

George Peabody (*T. Occidentalis Lutea*). A broad, pyramidal type, with golden foliage. Affords beautiful contrast when grouped with dark green varieties. Allow 3 foot spread.

- 1½ to 2 feet.....\$3.00 each

Globe (*T. Globosa*). The foliage is identical with that of the American Arborvitae, but radically different in its habit of

growth. This is a truly dwarf-growing type, rarely over 2 to 3 feet high, forming an almost perfect ball shape. Fine for planting in front of taller growing evergreens, also under windows. Unexcelled for tubs. Allow 2 to 3 foot spread.

- 1 to 1½ foot spread.....\$2.00 each
- 1½ to 2 foot spread.....\$3.00 each

Hovey's Golden (*T. Occidentalis Aurea Hoveyi*). Light golden green foliage. Semi-dwarf, growing 3 to 4 feet. In a dense conical shape, affords fine contrast when grouped with dark green varieties. Allow 3 foot spread.

- 18 to 24 inches.....\$3.00 each

Siberian (*C.T. Siberica aurea*). A semi-dwarf evergreen, broad, globe-shaped base, abruptly tapering to a blunt point. The foliage is dark green, heavy and deeply crested. A slow grower, ultimately reaching a height of 5 to 6 feet. Good for foundation planting, centering in front of the pyramidal type on corners. Allow 3 to 3½ foot spread.

- 2 to 3 feet.....\$3.25 each

Pyramidal (*T. Pyramidalis*). An extremely compact, pyramidal-shaped variety, very similar in character to the



Evergreens Add Dignity to the Home Grounds

A Planting of Evergreens in Winter or Summer is Always Pleasing, Adding A Cosy Cheerfulness to the Home.

American Arborvitae. Its foliage, however, is much thicker and of a darker green color. We recommend it for foundation planting in preference to American Arborvitae, particularly when used about the entrance, due to its narrow and compact manner of growth. It retains its fine dark color throughout the winter months and can also be kept to any desired height by trimming. Allow 2½ foot spread.
 1 to 1½ feet.....\$2.50 each
 2 to 2½ feet..... 3.00 each
 2½ to 3 feet..... 3.50 each
 3 to 3½ feet..... 4.50 each

JUNIPERS (*Juniperus*)

Creeping Juniper (*J. horizontalis glauca*). A trailing variety, with fine blue foliage. One of the best evergreens for ground covering. Allow 3 foot spread.
 1½ to 2 foot spread.....\$3.50 each
Pfitzer's (*J. Chinensis pfitzeriana*). A low-spreading type, with lacy foliage of blue-green color. The branches grow horizontally from the stem, forming a flat, spreading top. Very hardy and should be included in every foundation planting in front of taller varieties and under windows. Allow 3 foot spread.
 12 to 15 inch spread.....\$3.00 each
 18 to 24 inch spread..... 4.00 each
Red Cedar (*J. virginiana*). A very hardy, pyramidal-shaped variety, with light green foliage, which becomes darker as the season advances, tips having pinkish tinge during winter. A rapid grower and used extensively for foundation planting. Allow 3 foot spread.
 2 to 3 feet.....\$3.50 each

PINES (*Pinus*)

Austrian (*P. nigra*). Another fine evergreen of the Christmas tree type, spreading at the base when fully grown to 12 feet or more, and tapers to a rounded point. Its branches are made up of many smaller ones 4 or 5 inches long, and covered with long needles of fine, dark green color. Excellent for single or group plantings about your grounds.
 2 to 3 feet.....\$3.50 each
Mugho (*P. montana mughus*). A dwarf, globe-shaped evergreen, with dark green foliage. Each spring when the new growth starts it is covered with little shoots resembling hundreds of little candles. Its growth is dense and low, making it one of the best varieties for planting under windows, also in front of taller types, never growing over 4 to 5 feet, and can be kept lower by trimming. Highly advised. Allow 3 to 4 foot spread.
 1 to 1½ foot spread.....\$3.50 each
 1½ to 2 foot spread..... 4.25 each
 2 to 2½ foot spread..... 5.00 each

SPRUCE (*Picea*)

Colorado Blue (*P. pungens glauca*). Unquestionably the most beautiful of all evergreens, beyond words of description. Its foliage of rich, glistening blue, its stately and symmetrical growth are admired by all. You will be justly

proud of having one or more of these beautiful trees on your grounds. Unexcelled for specimen plantings, which will add distinction to your home.

1 to 1½ feet.....\$5.00 each
 1½ to 2 feet..... 7.00 each
 2½ to 3 feet.....\$10.00 each
 3 to 3½ feet..... 15.00 each

Colorado Green (*P. pungens glauca*). Having the same fine characteristics of the Blue Spruce except color. When seeds of the Colorado Blue are planted in the nursery, only 25 per cent become blue, the balance are green, with only a slight bluish cast and cannot be classed as true blues.
 1½ to 2 feet.....\$3.50 each

Norway (*P. excelsa*). The time-honored Christmas tree, universally used for this purpose. Its foliage varies from fine shades of rich, dark green color to very light green. Planted more extensively than any other evergreen. Its popularity for planting in tubs for decorating public and private entrances is fast growing. Also used for window boxes and group plantings. Used for windbreaks and hedges more extensively than any evergreen because it is a fast grower, very hardy and gives the most complete protection.
 1½ to 2 feet.....\$1.50 each; 10 for \$15.50
 2 to 2½ feet..... 2.00 each; 10 for 20.00
 2½ to 3 feet..... 3.00 each; 10 for 25.00
 3 to 3½ feet..... 3.50 each; 10 for 30.00

Prices on larger lots quoted on request.

YEW (*Taxus*)

English (*T. repandens*). The most hardy of all prostrate varieties, lustrous, slender green leaves that curve slightly upward. Excellent for low plantings. Allow 2½ foot spread.

1 to 1½ feet.....\$4.00 each

Dwarf Japanese (*T. cuspidata nana Brevifolia*). An excellent dwarf type, with beautiful spreading branches and short rich green leaves. Highly recommended. Allow 2½ foot spread.

12 to 15 inches.....\$4.00 each

Japanese (*T. cuspidata*). A beautiful bushy variety, with spreading habit, reaching a height of 4 to 5 feet. Foliage stays a rich deep green all winter. Allow 3 foot spread.

1 to 1½ feet.....\$4.00 each

How to Plant Evergreens

All of our evergreens come with the roots balled in earth. First, place the evergreens in the locations they are to be planted, then dig the holes a foot larger and slightly deeper than the ball of earth surrounding the root systems. Place some good top soil in the hole, then place the tree in the hole. Do not remove burlap as it disturbs the soil about the roots. It is only necessary to roll it back or cut it away from the top as the remainder will soon rot away. Fill the hole two-thirds full of earth and stamp down firmly. Then fill the remainder of the hole with water and allow this to settle, after which fill up the hole with soil and pack firmly. Water frequently during the first week or ten days but do not allow water to get on the tops.

RHODODENDRONS (Broad-Leaved Evergreens)

RHODODENDRONS should be planted in shady locations where they are protected from the sun and strong winds. Although most effective when planted in masses, smaller groups add greatly

Hybrid Varieties

We offer a selected group of Hybrid varieties in the following colors. WHITE, PINK, PURPLE, RED. Please order by color.

All Hybrid varieties, 1 to 1½ feet.....\$5.00 each

to the beauty of one's grounds tucked in corners about the house or lawn. All Rhododendrons are balled and burlapped. We offer both Hybrid and Native varieties.

The Two Most Popular Native Varieties

Catawbiense. Lavender and purple flowers. Blooms in June. Very hardy.

Maximum (*Great Laurel*). White shaded to shell pink flowers. Blooms in July. Very hardy.

1½ to 2 feet.....\$4.00 each

Green's "Approved" Hedge Plants

HEDGES fulfill a universal demand for artistic borders for the home grounds. They afford better protection than unsightly fences. A border formed by hedge plants will grow more beautiful each year, while common fences deteriorate. There are varieties to meet your particular fancy. For a formal or defensive hedge, particularly where a

definite outline is desired, we recommend California Regel's, Ibolium Privets, American Arborvitae and Japanese Dwarf Barberry. Flowering shrubs also make beautiful hedges or borders, particularly VanHoutte Spiraea, Hydrangea, Snowberry, Altheas and Bush Honeysuckles and Rosa Hugonis, the Golden Rose of China.

PRIVETS (*Ligustrum*)

California (*L. ovalifolium*). An almost evergreen shrub of dense, shapely habit, with shining, dark green foliage and a few minute flowers in June. Universally popular as a hedge plant because it stands trimming well and can be kept at any height or in any shape desired. The most desirable shrub for a hedge 3 to 5 feet high. Usually planted in single rows 10 inches apart, but where a broad hedge is desired, can be set in double rows, the rows 1 foot apart with the bushes 1 foot apart in each row, but alternated or staggered so as to come 6 inches apart in the hedge. Untrimmed, California Privet grows upright 8 to 12 feet and makes a very fine windbreak for the vegetable garden. Excellent for planting alone as single specimens. Not hardy in extreme Northern states, for these we recommend Ibolium Privets.

2 to 3 feet.....10 for \$1.75; 100 for \$9.00; 300 for \$20.00
 1½ to 2 feet.....10 for \$1.25; 100 for \$7.00; 300 for \$18.00
 Parcel Post Size—18 to 24 inches.....\$1.50 per 10, postpaid

Ibolium (*L. ibolium*). A remarkably sturdy and cold-resistant variety of privet, very similar in foliage and appearance to the well-known California Privet. We recommend this variety very highly for climates too cold for the California variety. Plant same as California.

2 to 3 feet.....10 for \$2.00; 100 for \$15.00
 1½ to 2 feet.....10 for \$1.60; 100 for \$12.00
 Parcel Post Size—18 to 24 inches.....\$1.75 per 10, postpaid

Regel's (*L. regelianum*). A low-spreading bush, with graceful, drooping branches. White flowers, followed by blue-black berries that last all winter. Autumn foliage, rich red. Grows 6 to 8 feet high.

2 to 3 feet.....50c each; \$4.00 per 10

BARBERRY (*Berberis*)

Japanese Dwarf Barberry (*Berberis Thunbergi*). A very attractive dwarf shrub, barely 3 feet high under the best conditions. Dense in growth, yet graceful on account of its drooping branches. Its yellow flowers are borne on

long stems followed by scarlet berries in great profusion, clinging through most of the winter. The leaves color to scarlet and gold in the autumn. Very desirable for planting as single specimens and used extensively in foundation plantings, or in borders planted in front of taller-growing shrubs. Very desirable for planting in corners where sidewalks meet. For a hedge not over 2 to 3 feet high, this makes a very desirable shrub. Very hardy. As a hedge, set bushes 2 feet apart.

1½ to 2 feet.....40c each; 10 for \$3.00; 100 for \$20.00
 1 to 1½ feet.....30c each; 10 for \$2.00; 100 for \$15.00
 Parcel Post Size—12 to 18 inches, 35c each; \$2.25 per 10, postpaid.

Rates—On all Hedge Plants. Ten to fifty at ten rates. Fifty or more at hundred rates.

Windbreaks

For protection against strong winds, nature has given trees for this use. The most effective varieties are listed below according to their popularity, giving proper spacing for each.

- Norway Spruce.....5 to 10 feet apart
- American Arborvitae.....3 to 5 feet apart
- Lombardy Poplar.....5 to 10 feet apart
- California Privet.....1 to 3 feet apart

For quick results we advise the closest distances.

An Attractive Hedge Is Useful as Well as Ornamental

Cash Discounts for Early Orders

10% Discount on an equal value in additional stock Free on CASH ORDERS amounting to \$5.00 or more received on or before March 20, 1931. See Free Climbing Rose Offer, page 3.

5% Discount on an equal value in additional stock Free on CASH ORDERS amounting to \$5.00 or more received between March 21 and April 15, 1931.



California Privet

Green's Landscape Department

Our Landscape Architects Will Furnish Individual Planting Plans For Beautifying Your Home Grounds

THEY are experts with thorough knowledge of plant life and landscape design, and hundreds of homes in America owe their attractiveness to them. Entrust your planting problems to us and you, too, can have beautiful home surroundings. Our architects will faithfully design them and carefully select varieties best adapted to your particular needs, arranged in pleasing harmony that will give year around beauty. Grounds beautified by plans are more beautiful grounds!

Green's Method Makes It Easy

By experience gained in solving the planting problems of our customers for many years, we have prepared special Sketch Blanks with complete instructions, making it very easy for you to prepare the rough layout of your house and grounds. All we need is the size of your lot, the location of your house, walks, drives, etc., with the proper measurements. This is the information that we would obtain if we were right on your grounds. Our architects carefully study these layouts in our office before preparing the planting plan and are able to clearly visualize your grounds, therefore you get the same service that you would if you lived right here in Rochester.

Detached planting plans furnished.

Our planting plans are complete in every detail, showing you just where to place the trees, plants and shrubs recommended, with an itemized list of varieties, with numbers corresponding with those on the plan. You receive a blueprint of the plan; we keep the original drawing on file in our office for reference. We want every customer completely satisfied and are always glad to make changes in the original plan if desired.

Not necessary to complete entire planting in one year. The actual planting can be done gradually from year to year if you so desire regardless of the size. It is best, however, to plan the entire layout at one time so you may know just how your grounds will look when finished.

A Planting Plan Will Save You Money

You actually save money by having a detailed planting plan prepared. The common fault that most people make when doing their own landscaping is that they overplant to their disappointment. This not only spoils the effect of their planting but eventually has to be taken out. It is best, therefore, to have your home planting designed by experts. Send for our special sketch blank and be assured of beautiful home surroundings.

This Complete Landscape Service Is Free If You Order From Us

This is just a part of Green's policy of giving their customers quality, satisfaction and service. We make no charge for planting plans, providing the order for the plant material is placed with us. It takes hours to conscientiously prepare and draw these plans and therefore in order to do justice to them, we require a deposit sufficient to cover the actual cost without profit. This deposit, however, is credited on your order when received. The deposit required is based on the size of your property as outlined below.

Deposits Required and Credit Allowed

Lot Size	Deposit Required	Credit Allowed On
Lot 50 feet in width.....	\$ 5.00	\$ 50.00 order
Lot 60 feet in width.....	10.00	100.00 order
Lot 75 feet in width.....	15.00	150.00 order
Lot 80 feet in width.....	20.00	200.00 order
Lot 100 feet in width.....	25.00	250.00 order
Lot 150 feet in width.....	30.00	300.00 order

For larger properties—Prices on request.

Special Consultation Service For Large Estates, Etc.

Consultation and personal supervision by our Landscape Architects may be arranged for large Estates, Parks, Schools, Cemeteries, Public Buildings, and Subdivisions, anywhere. Write for complete details covering this service.

The Garden Scene On Front Cover Designed By Our Architect

This is an actual photograph of a rock garden laid out by our landscape architect, which shows the beauty of a well-planned garden. The three illustrations below were also designed and planted by our Mr. Boone.



"Approved" Rock Garden Plants

THE interest and individuality of the rock garden is seldom found in any other type of planting. Ten years ago there were very few of these fascinating gardens but today they are springing up all over the country, not only on large estates but in the yards of small city and suburban homes as well. Every home landscape should and can have a rock garden, because whether large or small it is a spot of beauty from early spring to late fall. A rock garden is the most interesting of all gardens.

Prices of all Rock Plants except Daphne 35c each; 3 for 90c; \$3.00 per dozen, postpaid

- Achillea Tomentosom** (*Milfoil*). Bright yellow flowers. Blooms July to September. Grows 6 to 8 inches.
- Ajuga Reptans** (*Bugleweed*). Deep purplish blue flowers in May and June. Grows 6 inches high.
- Alyssum saxatile** (*Golden Tuft*). Numerous golden yellow flowers in little compact clusters, fragrant and showy, in early spring. Foliage velvety gray, making a spreading mat. Grows 8 to 12 inches.
- Armeria Lauchean** (*Thrift*). Bright rosy red flowers in May and June. Grows 3 to 6 inches.
- Daphne Cneorum** (*Rose Daphne*). A delightfully fragrant flowering evergreen shrub, keeping its leaves during the winter. Fragrant pink flowers almost completely cover the plant early in April and again during the fall. This makes an ideal plant for rockeries or to plant among perennials. Ultimate height 9 to 12 inches.
6 to 8 inch plants \$1.50 each; 3 for \$4.00
- Globularia Trichosantha** (*Globe Daisy*). A very dwarf tufted little plant with beautiful lavender flower heads. Blooms May and June. Height 6 inches.
- Gypsophila Repens**. A beautiful trailing plant, with clouds of small white and pink flowers in July and August. Grows 6 inches.
- Heuchera Sanguinea** (*Coralbells*). Bright coral, bell-shaped flowers on stems 12 to 18 inches high. Blooms June to September.
- Lychnis Alpina** (*Campion*). A fine dwarf variety with rose-pink flowers during April. Height 6 inches.
- Myosotis** (*Forget-Me-Not*). A flower everyone knows. Flowers all summer. We offer both pink and blue. Order by color. Height 6 to 8 inches.
- Phlox Subulata** (*Moss or Mountain Pinks*). Pretty moss-like evergreen foliage hidden under mass of flowers in April and May. We offer white, pink, lavender. Order by color. Height 3 to 6 inches.
- Plumbago Larpentae** (*Leadwort*). Of dwarf spreading habit, growing 6 to 8 inches high, covered with deep blue flowers during the summer and late fall. Also a fine border plant.
- Primula Veris** (*Hardy Primrose*). A hybrid strain with a wide range including lilac, purple, violet, buff, salmon and rich reds. Offered in mixed colors only. Blooms April and May. Height 6 to 9 inches.

SEDUM (*Stonecrop*)

- Acre** (*Golden Moss*). A trailing type, green foliage. Flowers bright yellow in May to July. Height 2 to 3 inches.
- Dasyphyllum**. One of the smallest of all Sedums, bluish-gray headbeads set tightly on slender stems, covered in summer with blushing stars. Blooms May to July. Height 2 to 3 inches.

- Glaucum**. Dwarf growing, green foliage, pink flowers.
- Lydiium**. Dwarf growing, bronze-green foliage, pink flowers in June. Height 1 to 3 inches.
- Sarmentosum**. Strong, spreading habit, with yellow flowers in May to July. Grows 6 inches high.

SEMPERVIVUM (*Hens and Chickens*)

- Fimbriatum**. Dense rosettes with hairy tufts, outer leaves turning red. Bright red flowers in September and October. Height $\frac{1}{2}$ to 1 foot.
- Globiferum**. Flattened rosettes 2 to 3 inches in diameter, gray-green, lightly tipped brown. Yellow flowers in September and October. Height 1 foot.
- Tectorum**. Very large, flat, plate green rosettes, with distinct brown-red tips. Pink flowers in September and October. Height 1 foot.

- Veronica Incana**. A white, woolly plant, numerous blue flowers in July and August. Good appearance both in and out of bloom. Height 1 foot.

- Viola**—*Jersey Gem*, *Sutton's Apricot*, *White Perfection*, see description under perennial page 25.

How to Build Your Rock Garden

While Rock Gardens look charming on banks they can be made equally attractive on level ground, provided a suitable background of shrubs is afforded. If your garden must be in the open it should be raised in the center. Oval, kidney and crescent outlines or inverted curves give the most pleasing effects.

After selecting the location, dig out the earth to a depth of 12 inches, fill the excavation half full of gravel, small stones or cinders to insure proper drainage, cover this with good soil to the desired height.

The next step is to place your rocks. Porous limestone rocks are best but if unobtainable others may be used. In placing the rocks remember it's the flowers that bring out the beauty of your garden, therefore use rock sparingly, leaving ample ground spaces for plants. Best effects are obtained by grouping the plants in threes.

Special Book Tells About Rock Gardens

A very interesting and complete book telling all about rock gardens has been written by F. F. Rockwell. It tells you in simple words how to build, locate, plants to use, etc. This book will be sent postpaid for \$1.00 and is worth many times its cost to those interested in rock gardens.

Special Collection Offers

OFFER No. 1 — 25 Rock Plants

1 each of those offered — \$7.68 postpaid

OFFER No. 2 — 50 Rock Plants

2 each of those offered — 14.98 postpaid

Green's Special Economy Offers for 1931

Amazing Values on "Approved Fruits and Flowers"

These Offers Expire April 1, 1931. Order Now!

THIS is not a clean-up sale of left-over stock. Every item offered here is positively guaranteed to be of first quality, taken from our regular stock of "Approved Fruits and Flowers."

Green's Collections are famous the country over for quality and value. Never before have we offered

such amazing values. Here's a real opportunity to add beauty and value to your property.

Don't delay! Order now! Save an additional 10%. See details of Green's money-saving discount offers on page three.

Please Order by Offer Number.

Ornamental Shrubs

ECONOMY OFFER NO. 1

Three of the most popular shrubs of today. This group will produce flowers from June until October.

- 1 Spiraea VanHoutte, 2½ to 3 ft.
 - 1 Althea (Pink), 2½ to 3 ft.
 - 1 Butterfly Bush, 2½ to 3 ft.
- Regular \$1.50 Value*

Special Economy Price \$1.29

ECONOMY OFFER NO. 2

These three shrubs are especially valued, the Forsythia for its early flowers, the Mock Orange for its fragrance, the Spiraea for its fairy like pink flowers.

- 1 Forsythia (Golden Bell), 2½ to 3 ft.
 - 1 Fragrant Mock Orange, 2½ to 3 ft.
 - 1 Spiraea Billiardi, 2½ to 3 ft.
- Regular \$1.50 Value*

Special Economy Price \$1.29

ECONOMY OFFER NO. 3

Two of the newest introductions to the shrub family. Take advantage of this special offering and enjoy them in your own yard.

- 1 Beauty Bush, 1½ to 2 ft.
 - 1 Red-Leaved Barberry, 1 to 1½ ft.
- Regular \$2.00 Value*

Special Economy Price \$1.79

ECONOMY OFFER NO. 4

This group of shrubs solves the perplexing problem of what to plant under windows or in front of taller growing varieties. Very artistic when planted in groups.

- 1 Hydrangea Arborescens, 2½ to 3 ft.
 - 1 Spiraea Anthony Waterer, 1½ to 2 ft.
 - 1 Golden Syringa, 1½ to 2 ft.
- Regular \$1.75 Value*

Special Economy Price \$1.49

ECONOMY OFFER NO. 5

Three outstanding shrubs of special merit, which should be included in every modern planting.

- 1 Pink Almond, 2½ to 3 ft.
 - 1 Spiraea Thunbergi, 2½ to 3 ft.
 - 1 Hydrangea P. G., 2½ to 3 ft.
- Regular \$1.90 Value*

Special Economy Price \$1.59

ECONOMY OFFER NO. 6

This very unusual offering makes it possible for you to make your own selection from this fine list of shrubs at greatly reduced prices. A real opportunity to screen out that unsightly view with a border of beautiful flowering shrubs. This offer not limited as to quantity. All 2½ to 3 ft. shrubs that will bloom this year.

- | | |
|----------------------------|-----------------------|
| Althea | Fragrant Mock Orange |
| Butterfly Bush | Purple Lilac (Common) |
| White Honeysuckle | Snowberry |
| Red Honeysuckle | Spiraea VanHoutte |
| Forsythia (Golden Bell) | Spiraea Billiardi |
| Deutzia Pride of Rochester | Spiraea Froebeli |
| Hydrangea Arborescens | Weigela Pink |
| Hydrangea P. G. | |

Your choice of any three shrubs listed above.

Regular \$1.50 Value

Special Economy Price 3 for \$1.29

Evergreen Specials

ECONOMY OFFER NO. 7

Just the right Evergreen for planting on either side of your doorway. Plant offer No. 14 and 15 in front of these.

- 2 Pyramidal Arborvitae, 1 to 1½ ft.

Regular \$5.00 Value

Special Economy Price \$4.49

ECONOMY OFFER NO. 8

Unquestionably the most popular ball shaped evergreen.

- 2 Globe Arborvitae, 1 to 1½ ft.

Regular \$4.00 Value

Special Economy Price \$3.59

ECONOMY OFFER NO. 9

One of the most outstanding of the true dwarf varieties.

- 2 Mugho Pine, 1 to 1½ ft.

Regular \$7.00 Value

Special Economy Price \$6.19

ECONOMY OFFER NO. 10

The time honored Christmas Tree, fine for lawn planting.

- 2 Norway Spruce, 1 to 1½ ft.

Regular \$2.50 Value

Special Economy Price \$2.19

Green's Special Economy Offers for 1931

Ornamental Vines

ECONOMY OFFER NO. 11

The Wisteria is unquestionably the most beautiful of all flowering vines. Fine for porches, arbors and pergolas.

2 Wisteria Purple Vines, 2 year
Regular \$2.00 Value

Special Economy Price \$1.79

ECONOMY OFFER NO. 12

A very attractive offer on the two most popular varieties of Clematis. Excellent for the end of your porch.

1 Clematis Jackmani Vines, 2 year
1 Clematis Paniculata Vines, 2 year
Regular \$1.50 Value

Special Economy Price \$1.29

Ornamental Trees

ECONOMY OFFER NO. 13

The Silver Maple is noted for its beautiful bark which has a silvery cast. Plant in front of your home this year.

2 Silver Maple, 6 to 8 ft.
Regular \$2.50 Value

Special Economy Price \$2.19

ECONOMY OFFER NO. 14

Why wait years for shade. Plant the new Chinese Elm, the fastest growing shade tree known. An exceptional value.

2 Chinese Elm, 6 to 8 ft.
Regular \$4.50 Value

Special Economy Price \$3.98

ECONOMY OFFER NO. 15

Two of the outstanding flowering trees for specimen lawn planting. They are unexcelled for their beauty.

1 Bechtel's Crab, 3 to 4 ft. 1 Prunus Pissardi, 3 to 4 ft.
Regular \$2.25 Value

Special Economy Price \$1.98

ECONOMY OFFER NO. 16

The very popular Catalpas, fine for lining drives or planting on either side of your walk.

2 Catalpa Bungei (Umbrella Tree), 5 to 6 ft.
Regular \$3.50 Value

Special Economy Price \$2.98

Fruits for Your Home

ECONOMY OFFER NO. 17

This complete planting can be made on any average size city lot, giving fresh fruits in season.

1 Dwarf Bartlett Pear, 2½ to 3 ft.
1 Dwarf Cortland Apple, 2½ to 3 ft.
1 Rochester Peach, 3 to 4 ft.
1 Bradshaw Plum, 3 to 4 ft.
3 Grapes (1 Concord, 1 Niagara, 1 Caco)
20 Latham Raspberries, 1 yr.
Regular \$5.55 Value

Special Economy Price \$4.89

Selected Perennials

ECONOMY OFFER NO. 18

Twelve Choice Strong 2 yr. Field Grown Plants

2 W. & S. Delphiniums 2 Iris (Purple)
2 Viola (Jersey Gem) 2 Shasta Daisy
2 Foxglove 2 Painted Daisy

Regular \$3.15 Value

Special Economy Price \$2.89, postpaid.

ECONOMY OFFER NO. 19

Twelve Choice Strong 2 Yr. Field Grown Plants

2 Achillea (Perry's White) 2 Canterbury Bell (Pink)
2 Blazing Star 2 Chinese Lantern
2 Blanket Flower 2 Columbine

Regular \$3.00 Value

Special Economy Price \$2.69, postpaid.

Everblooming Roses

ECONOMY OFFER NO. 20

6 Strong 2 Yr. No. 1 Hybrid Tea Roses

1 Columbia
1 Duchess of Wellington
1 Gruss an Teplitz
1 Kaiserin Augusta Victoria
1 Mme. Butterfly
1 Ophelia

Regular \$5.10 Value

Special Economy Price \$4.49

ECONOMY OFFER NO. 21

6 Strong 2 Yr. No. 1 Hybrid Tea Roses

1 Mme. Edouard Herriot
1 Mrs. Aaron Ward
1 Kaiserin Augusta Victoria
1 Radiance (Pink)
1 Radiance (Red)
1 Souvenir de Claudius Pernet

Regular \$5.10 Value

Special Economy Price \$4.49

ECONOMY OFFER NO. 22

6 Strong 2 Yr. No. 1 Hybrid Tea Roses

1 Betty Uprichard 1 Etoile de Hollande
1 Mrs. Charles Bell 1 Rev. F. Page Roberts
1 Lady Margaret Stewart 1 Talisman

Regular \$7.50 Value

Special Economy Price \$6.69

ECONOMY OFFER NO. 23

6 Strong 2 Yr. No. 1 Hybrid Tea Roses

1 Briarcliff
1 Mrs. Henry Morse
1 Souvenir de Georges Pernet
1 Ville de Paris
1 Mme. Jules Bouche
1 President Hoover

Regular \$7.50 Value

Special Economy Price \$6.69

See Green's Two Famous Rose Collections of 12 Roses each on pages 30 to 31.

Many Other Money-Saving Collections Throughout Catalog

Green's "Approved" Perennials

Planted This Spring Will Provide
Glorious Flowers in Your Garden
This Summer

BY a careful selection of varieties, you can have a constant supply of flowers for table and house decoration. They can be planted almost anywhere, in beds and borders by themselves, as a foreground for your shrubbery plantings, in your rockery, and of course are indispensable in the formal garden. To be most effective, several plants of one variety or color should be massed together, never plant less than three of a variety or color in a clump; to plant them singly is indeed a mistake.

All perennials sold by us are strong, selected, field-grown plants. We guarantee arrival in perfect condition. To insure safe delivery, all perennials will be shipped separately by parcel post. Prices quoted include postage.

Prices of all Perennials, unless otherwise noted,
35c Each; 3 for 90c; \$3.00 per doz., postpaid.



Anemone—(Japanese Windflower) *A. Japonica* Var.



Blanket Flower—(*Gaillardia Grandiflora*)

ACHILLEA (*Milfoil*)

Millefolium Roseum. Rosy-pink flowers in dense heads, on stems 18 inches high. Blooms July to October.

Perry's White. One of the very best hardy white perennials, covered with pure white, double flowers from spring to fall. Fine for cutting. Height 2 feet.

Aconitum Fischeri (*Monkshood*). Beautiful, large, deep flowers resembling Monk's hoods; blooms in September. Grows 18 inches high. Tuberous roots.

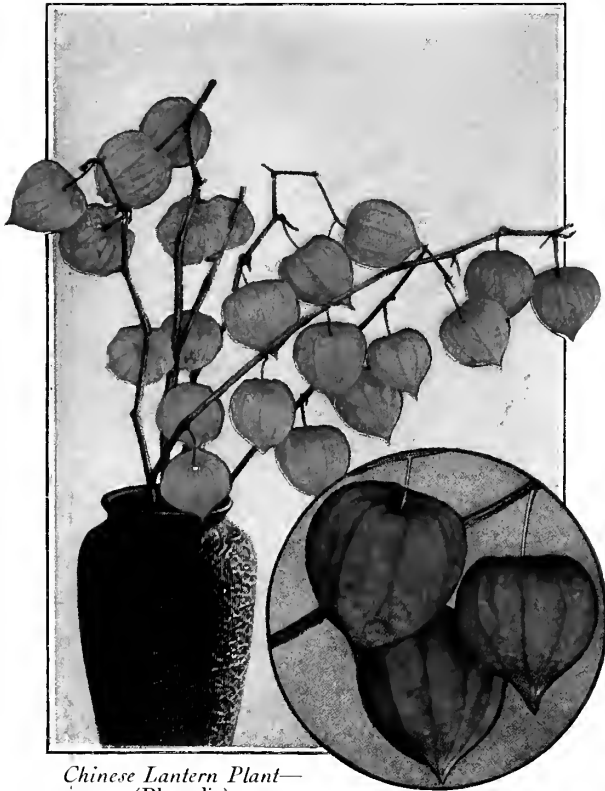
Anemone (*Japanese Windflower*). These beautiful flowers are among the most important hardy plants. While they begin blooming in August they are more especially valuable on account of their continuing in full beauty till cut down by hard frost. The plants grow 2 to 5 feet high. We offer strong potted plants, two colors, **Pink** and **White**. Order by color.

Blanket Flower (*Gaillardia*). One of the showiest perennials. Grows about 2 feet high, blooming from late June until November. Our strain is particularly vivid in color and of unusual size.

Blazing Star or Gay Feather (*Liatrix*). Showy and attractive both in garden and bouquets. Produces large spikes of rosy-purple flowers. Blooming period July and August. (Illustration on page 22.)

Bleeding Heart (*Dicentra Spectabilis*). Old-fashioned favorite, heart-shaped pink flowers in long, drooping racemes. Especially valuable for planting in shade, blooming from April until June. (See illustration page 25.)

Price.....75c each; 3 for \$2.10 postpaid



Chinese Lantern Plant—
(Physalis)

Canterbury Bell (*Campanula Medium*). Bell-shaped flowers grow from 2 to 3 feet high. Likes good soil and lasts longer if planted in a half shady place. We offer three colors: **White, Rose and Blue**. Order by color.

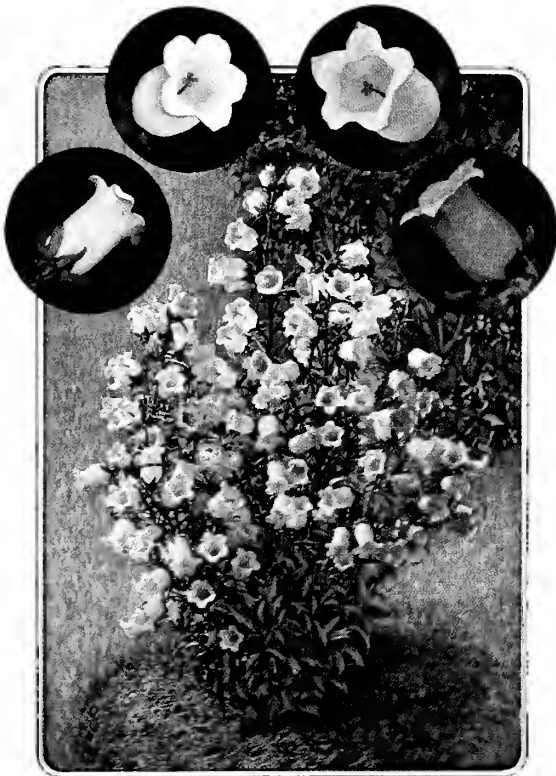
Carnations (*Hardy Double*). We offer a selected strain in mixed colors. Bloom during June and July. Grows 1 foot high.

Chinese Lantern Plant (*Physalis*). An ornamental variety of the Winter Cherry, forming dense bushes, about 2 feet high, producing freely its bright orange-scarlet lantern-like fruits, which can be cut and dried, in which shape they are used extensively for floral decoration during winter.

Chrysanthemums (*Hardy Garden*). Fall flowering perennials, form attractive clumps of foliage and flowers when other outdoor flowers are gone. Four colors: **Pink, Red, White and Yellow**. Order by color.

Columbine (*Aquilegia*) **Mrs. Scott Elliotts Long Spurred Hybrids**. No other flower has such grace as the Columbine. Generous in bloom, ideal for cutting purposes. Columbine play the most important part of the hardy garden and should be grown in quantity. This strain is considered the best in the world. A mixture of beautiful new shades in **Blue, White, Yellow, Pink and Rose**. Grows 2 feet or more in height. (See illustration on page 25.)

Coreopsis (*Tickseed*). Flowers of rich golden color, graceful in form, ideal for cutting. Blooms entire summer and fall. Grows 2 feet high. (See illustration on page 25.)



Canterbury Bells—(Campanula)
See description above



Blazing Star or Gay Feather—(Liatris)
See description on page 21

DAY LILIES (*Hemerocallis*)

Orange. Gorgeous orange color lily. Thrives best in moist soil and shady places. Grows 3 feet high.

Yellow. Large, amber-yellow, lily-like flowers in June and July. Fragrant. Thrives best in moist soil and shady places. Grows 3 feet high.

DELPHINIUMS (*Larkspur*)

Watkins and Simpson's Covent Garden Hybrid. This wonderful new English strain was received direct from the originators—Watkins and Simpson, Covent Garden, London, England. It is the best and finest strain to be secured anywhere. Its range of colors vary from the palest shades of blue to the deepest indigo blue and royal purple, with many intermediate tones of mauve, pink and lavender. Among these new hybrids are flowers of huge size, running mostly to double and semi-double flowers. See illustration. Grows 4 to 5 feet high. We cannot keep the colors separate. *Strong field-grown plants... 50c each; 5 for \$1.35; \$4.50 per doz., postpaid*

Belladonna. Magnificent, large spikes of the most delicate turquoise-blue. Excellent for cutting, as they combine well with other flowers. Produce as many as three crops during a season, June to October. Grows 4 to 5 feet high.

Bellamosum. A very dark blue variety, excellent for planting in contrast with the lighter blue shade of the Belladonna. June to October. Grows 4 to 5 feet high.

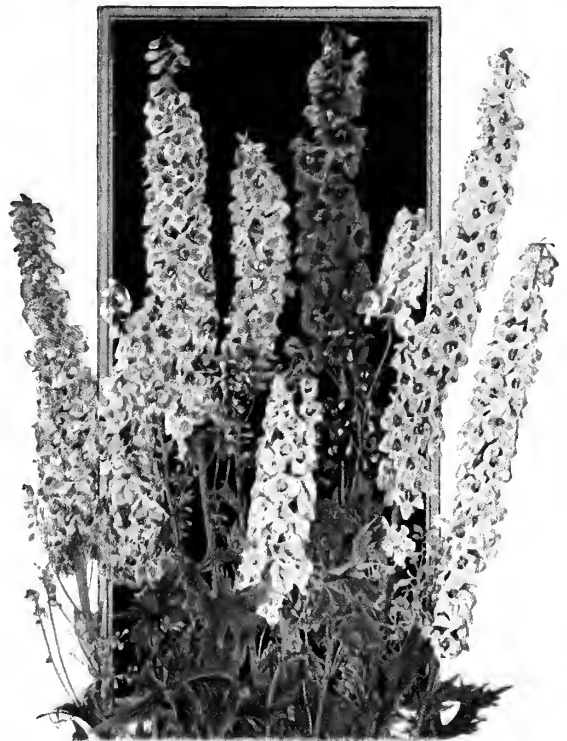
A generous planting of perennials will furnish cut flowers for your home from early spring until late fall. Our perennials are all 2-year plants that will bloom this year.



Bleeding Heart—(*Dicentra spectabilis*)
See description on page 21



Columbine Aquilegia
See description on page 22



Watkins and Simpson Delphinium
See description above



Foxglove—(Digitalis purpurea)

Important Notice

TO ATTEMPT sending perennials with other nursery stock is indeed a mistake. It's just like putting eggs in a load of coal—only a miracle would deliver them to the purchaser in good condition. That is why we pack our perennials individually and send them in separate shipments, postpaid.

Unlike other growing things, it is very important that some top growth starts before perennials are dug and shipped. The proper time to ship them, therefore, depends entirely upon weather conditions. Under normal conditions perennials are usually shipped between April 15th and May 10th during the spring planting season and between September 10th and October 15th in the fall.

It will greatly assist us and be of direct benefit to you if you will place your order early so that we may ship your plants at the most ideal time for planting.

Erigeron Speciosus (Fleabane). Large, handsome, blue flowers, violet tinted with yellow centers. Fine for cutting. Blooms in June and July. Height 18 inches.

Foxglove (Digitalis). The new **Giant Shirley** strain which we offer is considered the finest of all. Dignified and stately, the flower stalks rising from rich and luxuriant masses of leaves give an appearance of strength and make a beautiful background to a perennial garden when mixed with flowering shrubs. Grows 4 to 5 feet tall. A mixture of colors ranging from white and shell pink to deepest rose, many attractively dotted with crimson or chocolate.

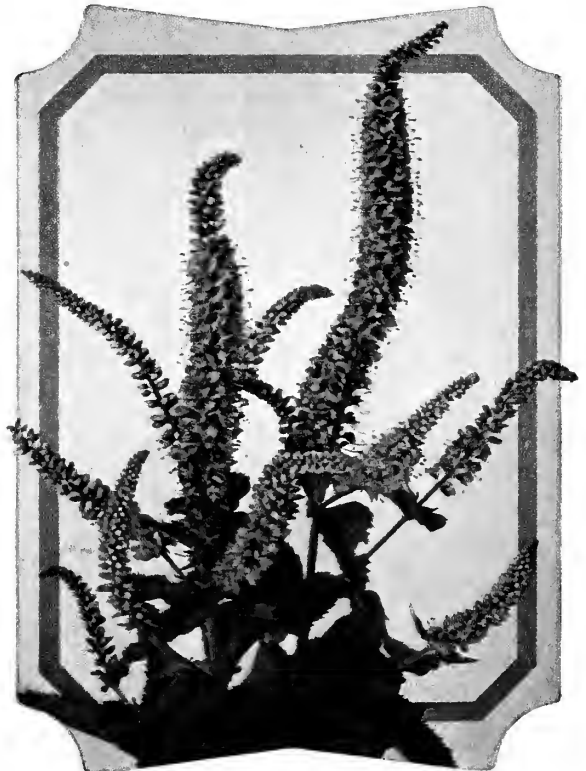
German Iris (Flags). Orchid-like, delicate flowers in many shades on spikes 2 to 3 feet high in May and June. Should be in every perennial garden and rockery. For best effects, plant in groups, a half dozen of each color to a group. We offer the following colors: Lavender-Rose, Light Blue, Purple, Orchid Color, Rose-Pink, White, White with Blue Edge, Yellow, Mahogany-Bronze. Order by color.

Prices. 25c each; 3 for 60c; \$2.00 per doz.
Gypsophila Paniculata (Baby's Breath). When in bloom during July and August, it forms a mist of delicate, minute, white flowers. When cut it is exquisite in combination with roses and other flowers. Grows 2 to 3 feet high and as wide.

Hollyhocks (Althea Rosea). Stately, majestic spikes, 6 to 8 feet high, of peony-like flowers in July and August. Planted in groups as a background to the perennial garden or interspersed with shrubbery on the lawn, the bold, striking colors of the blooms produce an effect not obtainable with any other plant or shrub. We offer the following colors, all double type: Rose, Red, White, Salmon, Newport-Pink, and Yellow. Order by color.

A Bargain in Mixed Hollyhocks

For group planting where individual colors are not required, we offer a special mixture comprising all the above colors. *Special Price, Strong, Field-grown Plants, \$2.00 per 10; \$4.00 per 25, postpaid.*



Veronica Longifolia
 See description on page 25

Lupines. Very effective. Large spikes of flowers, blooming in May and June. Plant in a semi-shady location. Grows 3 feet high. We offer a mixture of colors including clear blue, white, and rose. We cannot keep the colors separate.

Lychnis Viscaria Splendens (*Lamp Flower*). Forms a dense tuft of evergreen foliage, and in June and July sends up spikes of handsome, deep red, fragrant, double flowers. Height 12 inches.

Monarda (*Beebalm*). Cambridge scarlet. Stout, leafy stems, 3 feet high, with heads of brilliant scarlet flowers from June to August.

Oriental Poppy (*Papaver Orientale*). Tremendous, cup-shaped blooms of brightest crimson-scarlet, with large, purplish-black blotches at base of petals, from May to July. Grows 2 to 3 feet high. Strong potted plants.

Painted Daisy (*Pyrethrum*) Hybrid Single. A profusion of chrysanthemum-shaped flowers from June through September. A mixture of colors of various shades, including white, pink, rose and darkest crimson. Their long stems and lasting qualities make them exceedingly valuable for cut flowers. Grows 2 to 3 feet high.

Red Hot Poker (*Tritoma Pflzeri*). Unique-shaped flower heads of orange-scarlet on spikes 3 to 4 feet high from August to October. A free and continuous bloomer. Should be given winter protection.

Rudebeckia Purpurea (*Giant Purple Coneflower*). Large, peculiar, reddish purple flowers with big cone-shaped, brown centers, forms bushy plants 3 feet high and blooms from July to October.

Scabiosa Caucasica (*Blue Bonnet*). A soft and charming shade of lavender flowers on stems 18 to 24 inches long. Blooms from June to September. Wonderful for cutting.



Coreopsis—(Tickseed)
See description on page 22

Shasta Daisy (*Chrysanthemum Maximum*). The Alaska variety which we offer is a vast improvement over the well-known, old-fashioned Shasta Daisy. Its handsome, large, glistening white blossoms appear in early June and last through July. Grows 2 feet high.

Sweet William (*Dianthus Barbatus*). Great masses of extremely rich-colored flowers in May and June. Grows 2 feet high. We offer a mixture of Red, White and Rose.

Veronica Longifolia (*Japanese Speedwell*). One of the best blue flowering plants. Long spikes completely studded with beautiful blue flowers; fine for cutting. Blooms July to September. Grows 2 to 3 feet. (Illustration page 24.)

VIOLAS (*Tufted Pansies*)

These beautiful little plants are wonderful for edging the perennial border or for planting in your rock garden. Flowers are borne on dainty stems about 6 inches high, making splendid subjects for cutting, and will bloom from May until October if they are sheared back about once a month so that the flowers do not go to seed.

- Jersey Gem.** Rich deep purple flowers.
 - Sutton's Apricot.** Gorgeous apricot-gold flowers.
 - White Perfection.** Attractive snow-white flowers.
- (Illustration on page 26.)

Yucca Filamentosa (*Adam's Needle*). Of tropical appearance. Its broad, sword-like, evergreen foliage, and immense, branching spikes of drooping, creamy-white flowers rising to a height of 5 feet.

Yucca, Variegated Leaved. Same as ordinary Yucca except that its bayonet-shaped leaves have a dark bronze green center stripe, with an outer edge of yellow on each side.
Strong, 2 Year Plants.....75c each



Painted Daisy—(Pyrethrum)
See description above

PERENNIAL PHLOX

NO garden is complete without an assortment of perennial Phlox. Without them it would be difficult to maintain the brilliant display of color during the late summer. This favorite plant needs no petting—it will grow well in any average soil and bloom the first summer after being set out.

Green's Selection of Phlox

Prices of Extra Strong Field-Grown Plants, 35c each; 3 for 90c; \$3.00 per doz., postpaid.

General Von Huetz. Bright salmon-red, white center.

Jules Sandeau. Pure pink. Very large heads.

Mrs. Jenkins. Pure white. Very early.

Mrs. Millie Van Hoboken. Soft pink. A new variety.

Purity. White.

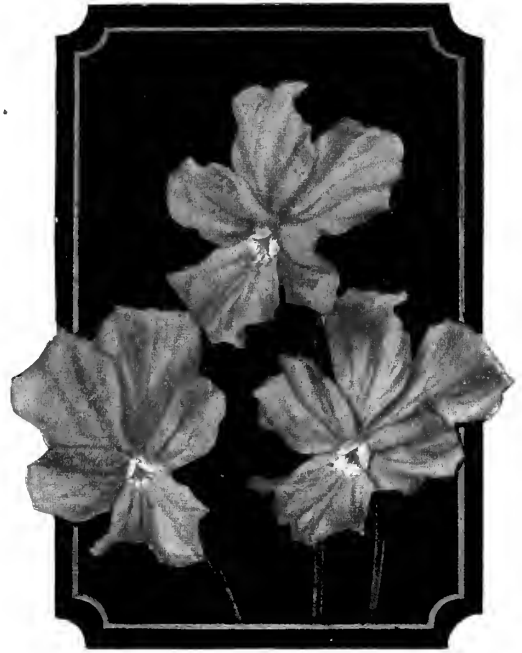
Richard Wallace. White, with carmine eye.

Rynstrom. Lively rose-pink. Large.

R. P. Struthers. Cherry-red, suffused salmon.

Thor. Rich salmon-pink, with deep crimson eye.

Von Hochberg. Brilliant red.



The New Viola Jersey Gem

See description on page 25

Green's Quality Products Make Satisfied Customers



R. P. Struthers

GLADIOLUS BULBS

Strong Bulbs, 15c each; 90c per 10; \$6.00 per 100, postpaid

America. Flesh pink, faintly tinged with lavender.

Lucette. Ivory white, with lines of faint pink.

1910 Rose. Rose-pink, shading to rose-red.

Cracker Jack. Dark red, throat spotted with yellow and maroon.

Mrs. Francis King. Pure light scarlet.

Mrs. Frank Pendleton, Jr. Delicate salmon-pink with blood-red throat.

Schwaban. Pure canary yellow, sulphur throat blotched with carmine.

Green's Rainbow Collection of Gladiolus

Twenty Extra Size Bulbs—A Wonderful Mixture of Colors

ALL FOR SPECIAL PRICE OF

\$1.10, postpaid

**Beautiful Climbing Rose Bush
Free With Every \$10.00 Order
Received by March 1, 1931.**

PEONIES

Truly Justify Their Popularity

PROBABLY no other perennial is more universally loved and admired. They are hardy, are not bothered by a multitude of ailments, are not particular about soils or fertilizers, do not require continual coddling or anxiety from the gardener. For the little that they need they pay back with increasing generosity. They are particularly valuable for planting in groups throughout the shrub and perennial borders. Blooming period extends from middle of May through June. Most varieties grow 2 to 3 feet high.

**Prices of Extra Strong Roots, 75c each;
\$7.50 per doz., postpaid
(Except where otherwise noted)**

Duchess De Nemours. Early. A lovely, pure white variety, with sulphur-white collar; medium size; fragrant.

Edulis Superba. Early, large, loose, flat crown. Bright mauve-pink; collar mixed with narrow lilac. Strong, upright; free bloomer. One of the best commercial pinks for Decoration Day.

Felix Crousse. Midseason. Brilliant red; good fragrance. *\$1.00 each; \$10.00 per dozen*

Festiva Maxima. Early. Very large, double, creamy white, with crimson spots in center. Outer petals are sometimes tinted faint lilac, white on opening. Fragrant. The most popular white for cut flowers.

Jeanne D'Arc. Midseason. Large, globular, bomb, developing a crown. Guards and center pale lilac-rose, collar cream-white, shaded with sulphur color. Strong, medium height, free bloomer.

Karl Rosenfield. Midseason. Very large, globular, compact, semi-rose type. Dark crimson. Very strong, tall, compact grower and free bloomer. A brilliant and striking variety. *\$1.50 each; \$15.00 per dozen*

Madame Calot. Early. Very large, rose type. Pale hydrangea-pink, center shaded darker; collar tinted silver. Tall, strong grower, free bloomer.



Peonies

Green's Peony Collection

FIVE OF THE CHOICEST All for \$3.50 Postpaid

- | | |
|----------------------|------------------|
| 1 DUCHESS DE NEMOURS | 1 FELIX CROUSSE |
| 1 JEANNE D'ARC | 1 FESTIVA MAXIMA |
| 1 EDULIS SUPERBA | |

SPECIAL, 2 each of the above — \$6.50 postpaid

How to Plant and Care for Perennials

Planting Perennials

QUITE contrary to other growing things, the root systems of perennials should not be spread out. Before setting the plants the ground should be spaded thoroughly and all hard lumps of earth well broken up. Use a garden trowel or pointed round broom handle for making holes. These should be made to look like the inside of an ice cream cone. Each hole should be made just deep and wide enough to take the roots of the particular variety you are planting so that the head or crown will come about one inch below the ground surface to form a water pocket. Dip the roots of the plants in a pail of water (never let the crown or head become wet). As you lift the plant the roots will mat together and taper to a point, all ready to fit the cone-shaped hole already prepared. Place the plant in the hole just as it is taken from the water. Then press the earth tightly about the roots, pressing down and in towards the roots at the same time. Soak each plant thoroughly with water after planted. This will help pack the earth tightly about the roots, which is very important. Later, after the earth dries out again, press the earth about the plants. Never water or plant perennials during the sunny part of the day, any time after 4:00 P.M. is all right. Water your perennials

frequently during dry spells. Never put any kind of fertilizer in the hole when planting any growing things. This should be applied sparingly on the ground surface only.

Pruning Perennials

Perennials require no pruning. Cut your flowers freely during blooming and enjoy their beauty in your home as well as in your garden. Cutting the flowers develops your plants and brings more blooms. If the flowers go to seed during blooming periods, cut them off and more flowers will follow.

Winter Protection for Perennials

It is advisable to protect your plants during winter. This requires very little work and your plants will reward you with more flowers the next season. After the ground has become permanently frozen cover your plants with leaves, straw or other handy litter. Lay light pieces of wood or tree limbs over the covering to keep same from blowing away. This covering should not be removed until all danger of freezing or frost is past in the spring.

GREEN'S "APPROVED" ROSES

*A Choice Selection of the Most Beautiful and Hardy Varieties
Including the Old Favorites, and the New Introductions of Proven Merit*

GREEN'S roses are famous for their wonderful development. They have been carefully selected from thousands of varieties and represent the best roses grown today. They have been thoroughly tested—all are strong, two year No. 1, field grown bushes. It pays well to plant Green's big, healthy, well rooted roses that will bloom profusely in your garden this year.



Betty Uprichard



Etoile de Hollande

"APPROVED" HYBRID TEA (EVERBLOOMING) ROSES

THE Rose is rightfully called "Queen of the Garden," and of all roses the Hybrid Tea varieties are the most beautiful and will bloom from early

June until late fall. This outstanding list of everblooming roses represents the choice of experts and rose lovers throughout the country.

Roses can be sent by parcel post for 5c per bush extra



Columbia

Betty Uprichard. A worthy rose of unusual color, buds copper-red, flower semi-double, brilliant copper-pink on back of petals, light flesh-pink inside. Strong, vigorous grower, which holds its fine color under all conditions. \$1.00 each

Briarcliff. This fine rose is generally conceded to be a greatly improved Columbia. Large, double pointed buds, blooms of brilliant rose-pink, paling toward the edges; vigorous, producing fine stems for cutting. \$1.00 each

Columbia. Large, double, rose-pink flowers, deepening in color as they expand, held erect on long, sturdy stems. Very vigorous, excellent keeper and intensely fragrant. 85c each

Duchess of Wellington. Long, large, tapering, semi-double, saffron-yellow buds, slowly opening to fragrant yellow flowers,

splashed with golden orange at the base. Very vigorous and a continual bloomer. 85c each

Etoile de Hollande. Considered the finest red hybrid tea rose grown—a generous and continuous bloomer, producing splendid, large buds of rich crimson. Very vigorous and extremely fragrant. \$1.25 each

Gruss an Teplitz. Medium-sized double blooms of brilliant crimson with velvety shadings and intense fragrance. A fine bush, continually in bloom. Bushes reach a height of four feet, therefore it should be placed in the background. 85c each

Kaiserin Augusta Victoria. Well-formed, creamy buds which develop into perfectly formed, ivory-white blooms. Hardy and a free bloomer. 85c each

Lady Margaret Stewart. A gorgeous double rose of unusual color; large, beautifully formed buds and blooms of red-orange and coppery yellow. Very sweetly scented. A strong-growing and free-blooming rose. \$1.25 each

Los Angeles. Considered one of the best roses in California. Luminous pale pink and coral, shaded gold, beautifully shaped and fragrant. A fine rose, but due to its tendency to winter kill in the North, we recommend the Willowmere. 85c each

Luxembourg. Large, well-shaped, rich yellow buds on stiff stems, opening up to attractive, deep yellow, fragrant blooms. Considered the best yellow rose in the South and found perfectly hardy in the North, a rose that merits

more extensive planting. 85c each

Mme. Butterfly. Fine, light pink buds, flowers tinted with gold near the base of the petals, of exquisite shape and highly perfumed. Strong grower. 85c each

Mme. Edouard Herriot. Sparkling buds of coral-red and orange, opening to medium size, semi-double flowers of brilliant orange-red and salmon. A free bloomer and one of the most showy of garden roses. 85c each

Mme. Jules Bouche. Without question the best everblooming white rose introduced. The flowers are large, quite double, splendid both in the bud and when fully open. Has a slight blush tint at times. A fine vigorous grower, fragrant and very free bloomer. \$1.00 each



Mme. Butterfly



Duchess of Wellington



Gruss an Teplitz



Kaiserin Augusta Victoria



Lady Margaret Stewart



Los Angeles



Mme. Edouard Herriot



The New Ville de Paris

Mrs. Aaron Ward. A splendid rose for garden display. Very delightful little buds of golden orange, opening to fully double, attractively-shaped flowers of gold-pink. Rather dwarf in growth but a free bloomer. . . . *85c each*

Mrs. A. R. Barraclough. A new rose that has already been acclaimed one of the very finest garden roses. Large, pointed, beautifully-shaped, pure pink flowers, shaded with clear yellow at the base of petals. The stems are long and slender, the plant unusually vigorous and blooms very freely. . . . *\$1.25 each.*

Mrs. Charles Bell. Similar in habit to Radiance, of which it is a sport. Its color is entirely different, being a lovely shell-pink with salmon shadings. Splendid buds and fine, globular blooms. . . . *\$1.00 each*

Mrs. Henry Morse. The most beautiful two-tone pink rose ever introduced. It has well-formed, fine pink buds, with a lighter shade inside, and as the flowers open into blooms of great size, the beautiful two-tone pink effect results. Very fragrant, healthy and hardy. Highly recommended. . . . *\$1.00 each*

Green's Famous Rose Collection No. 10

- 1 Betty Uprichard
- 1 Briarcliff
- 1 Etoile de Hollande
- 1 Lady Margaret Stewart
- 1 Mme. Jules Bouche
- 1 Mrs. A. R. Barraclough

- 1 Mrs. Charles Bell
- 1 Mrs. Henry Morse
- 1 Rev. F. Page Roberts
- 1 Souvenir de Georges Pernet
- 1 Talisman
- 1 Ville de Paris

Regular Catalog Price, \$14.00

Special Collection Price \$11.75

NOTE: *By Parcel Post, Postpaid, \$12.00*



Rev. F. Page Roberts



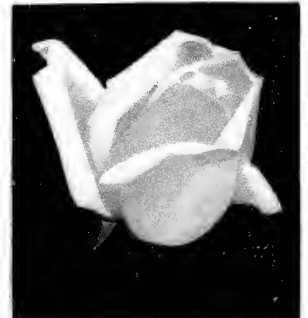
Mme. Jules Bouche



Mrs. Charles Bell



Mrs. Aaron Ward



Mrs. Henry Morse

Ophelia. One of the world's best. A creamy white and pale pink bloom with a glint of golden yellow in the folds of its petals. Very fragrant. A liberal bloomer, and of very strong habit.
.....85c each

President Hoover. A new rose with large flowers of a very charming combination of cerise-pink, flame, scarlet, and yellow, with broad, thick petals retaining this characteristic for days after the flowers have fully opened; very fragrant. Clean, handsome foliage.
.....\$2.25 each

Radiance (Pink). This rose stands high among amateur growers because of its vigorous growth, hardiness and continuous production of lovely, light silver-pink, double flowers, with a deeper pink on the reverse side of the petal.
.....85c each

Red Radiance. As good as its parent, Radiance, in habit of blossom and growth. Lovely, deep red, with an intense fragrance.....85c each



Briarcliff

Green's Famous Rose Collection No. 15

- | | |
|-----------------------------|-------------------------------|
| 1 Columbia | 1 Mrs. Aaron Ward |
| 1 Duchess of Wellington | 1 Ophelia |
| 1 Gruss au Teplitz | 1 Radiance (Pink) |
| 1 Kaiserin Augusta Victoria | 1 Red Radiance |
| 1 Mme. Butterfly | 1 Souvenir de Claudius Pernet |
| 1 Mme. Edouard Herriot | 1 Willowmere |

Regular Catalog Price, \$10.20

Special Collection Price \$8.50

NOTE: By Parcel Post, Postpaid, \$8.75



Ophelia



Radiance (Pink)



Red Radiance



Souvenir De Claudius Pernet



Souvenir De Georges Pernet



Willowmere

Rev. F. Page Roberts. One of the most beautiful of all roses. Beautifully formed, tawny yellow, coppery red buds of great length, opening to golden yellow blooms stained outside with red. Large, fragrant, fully double. \$1.25 each

Souvenir de Claudius Pernet. Fine buds of fadeless yellow, paling somewhat at the extreme edge as the buds open to large, full blooms. Bushes vigorous and erect. Glossy, deep green foliage. 85c each

Souvenir de Georges Pernet. Truly a beautiful rose. Brick-red buds, opening to orange-pink blooms of immense size, very double, and deliciously fragrant. Free blooming and hardy. \$1.00 each

Talisman. One of the most vividly colored roses ever introduced. Brilliant red and gold buds, opening to well-shaped, double bloom of scarlet-orange and rich yellow. It created a sensation when first introduced and its popularity is growing by leaps and bounds. It is a very interesting rose, bringing many surprises with its variation of blooms from early spring to late fall. It has fine green foliage and is a free bloomer. Be sure to include this gorgeous new rose in your planting. \$1.75 each

Ville de Paris. One of the outstanding yellow roses of the Radiance type, producing splendid buds of clear yellow which open to big, globular flowers of the same hue. An exceptionally fine yellow garden rose. Strong, wiry growth. \$1.25 each



The New Talisman

Willowmere. A handsome, large rose of excellent form, superb buds and blooms of richest pink, shining with a yellow glow which seems to come from the heart of the flower. A very strong grower and persistent bloomer. Has replaced Los Angeles in the North. 85c each

A Warning to Rose Lovers

YOU take more risk in purchasing roses than any other class of growing things. Don't be misguided by the ridiculously low prices at which roses are frequently offered.

There are three distinct grades of two year roses: No. 1, No. 1½ and No. 2. If you purchase other than the No. 1 grade, you are getting weak, inferior bushes that will produce poor roses at best, if they grow at all.

Don't buy southern grown roses under any circumstances. They can be sold at even lower prices than the weak grades of northern grown roses but cannot be expected to withstand the winters in the North.

For your own protection insist upon receiving nothing but northern grown, strong, two year, No. 1 grade of roses. They are far superior and less costly in the end.



The New President Hoover

*Route 3, Alexandria, Virginia.
November 18, 1930.*

I want to thank you for the extraordinary value in roses I received from you in my fall order. I certainly have never seen handsomer plants anywhere, and the way in which they were packed and received was beyond criticism. Thanks again for your very kind attention to my needs and your courtesy.

JOHN A. GRAHAM

Green's "Approved" Hybrid Perpetual Roses

THE flowers of Hybrid Perpetual roses are larger, fuller and generally more fragrant than the everblooming rose. They are wonderfully productive of blooms in June and again sparingly in the Fall. Due to the fact that Perpetual roses are very

strong growers, often attaining a height of 4 to 6 feet, they should not be planted in beds with Hybrid Tea roses unless they can be placed in the background. We offer a selected and "Approved" list of the best varieties.

Prices of Strong, Two Year No. 1 Bushes, 80c each.

Frau Karl Druschki (*Snow Queen*). The best pure white rose in the world. Magnificent pure snow-white, perfectly formed buds and flowers.

General Jacqueminot. An old favorite and one of the best known of all roses. Scarlet-crimson buds and flowers which are very fragrant.

Magna Charta. An excellent rose, exceptionally large, bright

pink flowers suffused with carmine. Noted for its fragrance and hardiness.

Mrs. John Laing. Large, cup-shaped flowers of beautiful clear pink. One of the loveliest Hybrid Perpetual roses and an excellent bloomer.

Paul Neyron. Probably the largest rose in existence, fragrant, cream-pink flowers on long stems. A free and consistent bloomer. Very highly recommended.

Green's Perpetual Rose Collection No. 20

5 Strong, 2 Year, Blooming Age Roses
 1 Frau Karl Druschki 1 Magna Charta
 1 Gen. Jacqueminot 1 Paul Neyron
 1 Mrs. John Laing

Regular Catalog Price, \$4.00

Special Collection Price, \$3.69

Note: By parcel post, postpaid, \$3.85



Frau Karl Druschki



Magna Charta



General Jacqueminot



Mrs. John Laing



Paul Neyron



The New Pink Grootendorst

ROSA HUGONIS

The Golden Rose from China

This beautiful rose is unlike any other. It is of shrub-like habit in growth, reaching 6 feet in height and width. Its bright, single yellow flowers are produced on its long, graceful branches, lining both sides from base to tip. The flowers appear early in April and May. Makes a gorgeous specimen or border shrub and the most beautiful hedge that you can imagine. \$1.00 each; 12 for \$10.00

How to Plant and Care For Your Roses

Planting Roses

Roses should be planted 2 to 2½ feet apart so that each bush is afforded plenty of nourishment and cultivation made easy. They should be planted fairly deep in the ground so that the earth level is at least 2 inches above where the branches first start out from the main trunk of the root system.

Cultivation of Roses

The ground surface about your roses should be kept loosened and never allowed to crust over. By hoeing your roses following each rain, after the ground is workable, should be sufficient. While roses require moisture they should never be planted in low areas on your grounds where water is apt to settle and remain for some time. If any prolonged droughts are experienced during the summer, water your roses thoroughly twice a week and keep the surface soil loosened.

Pruning Roses

Green's roses come to you properly pruned for transplanting and no further pruning is necessary the first year. For best results your roses should be pruned annually. Proper pruning of roses is very simple. Red

"APPROVED" POLYANTHA ROSES

THESE roses are the most truly everblooming roses grown, with blooms from June until November. They are dwarf growing seldom over 18 inches high. Every garden should include them.

Price of Dwarf Polyantha Roses: 2 year old bushes, 85c each; \$7.50 per 10.

Cecil Brunner. The popular sweetheart rose used so exclusively for bouquets at Easter time. Bushes are covered with perfectly formed tiny pink and white buds.

Crimson Baby Rambler. A dwarf, shapely little bush, 15 to 18 inches high, entirely covered with clusters of crimson flowers resembling those of the climbing Crimson Rambler. They do equally well indoors and can be dug up and potted in the fall and kept in bloom all winter.

Orange Perfection. Huge clusters of gorgeous bright orange salmon flowers. Growth is vigorous and bushy. A new rose of exceptional beauty.

"APPROVED" RUGOSA ROSES

THESE lovely roses are absolutely hardy and attain a height of 4 to 6 feet and form sturdy bushes. They should not be planted in beds with other roses. Used extensively for mixing in hardy shrub borders, in foundation plantings or as specimens. They also make exquisite hedges. The foliage is very attractive and the flowers are followed by clusters of reddish-yellow seeds. Blooms from June until frost.

F. J. Grootendorst. A fine new hybrid variety covered with clusters of crimson-red flowers. . . . \$1.00 each; 12 for \$10.00

Pink Grootendorst. Another exceptionally fine variety with beautiful pink flowers. . . . \$1.00 each; 12 for \$10.00

Rugosa Alba. Large, single white flowers in clusters on strong stems. 85c each; 12 for \$8.50

Rugosa Rubra. Large, beautiful, single flowers of bright crimson color. 85c each; 12 for \$8.50

and pink roses require more severe pruning than the yellow and white varieties because they make more wood growth. Cut back your roses early each spring after all danger of freezing is past. A bush properly pruned should have four or five good healthy branches, each branch having five or six leaf buds. Pruned in this manner your bushes will be about 8 to 10 inches from the ground level. Yellow and white varieties should have six to eight leaf buds and be 12 to 14 inches high.

Winter Protection of Roses

While Green's roses are of the most hardy varieties suitable for northern winters, we recommend that they be protected each winter. It is not the zero weather that causes roses to winter kill but rather the freezing and thawing experienced in the early spring. By hilling the earth up on each bush to a height of six or eight inches in late November each fall should afford ample protection. A further protection is that of covering your rose beds with leaves, strawy manure or other handy litter, after hilling up as outlined above. **IMPORTANT**—This covering should never be applied until after the ground has become thoroughly frozen and crusted over. It should not be removed until all danger of freezing is past in the spring.

Green's Roses are All Two Year, No. 1, Field Grown Bushes

"APPROVED" CLIMBING ROSES

Price of Climbing Roses: 2 year No. 1 bushes,
60c each; \$6.00 per doz.

American Pillar. A single flowering variety, with lovely pink blooms 3 to 4 inches across, with white center and yellow stamens. Very beautiful.

Climbing American Beauty. One of the best climbing roses. Healthy, vigorous growth, making 10-foot shoots. A lovely, deep, rich, rose-pink bloom of splendid form on a long stem. Fine for cutting. Extremely hardy.

Crimson Rambler. Unusually vigorous. Produces a great profusion of medium size, double red blossoms.

Dorothy Perkins. Full, double, shell-pink flowers in large clusters, very attractive.

Dr. Van Fleet. Lightest shell pink to silver flesh blooms on stems 12 to 18 inches long. Excellent for cutting. This exquisite variety is worthy of its great popularity. Hardy and vigorous.

Paul's Scarlet Climber. The brilliant, vivid scarlet which this rose maintains until the petals fall puts it in a class by itself. Good-sized flowers, freely produced in clusters of from 3 to 20, literally cover the plant with bloom. Strong and perfectly hardy.



Paul's Scarlet Climber



Climbing American Beauty is all the r... implies

Silver Moon. A beautiful, semi-double, pure white rose, four inches in diameter, with a cluster of prominent yellow stamens in the center which greatly adds to its attractiveness.

Tausendschon (Thousand Beauties). Varies in color. A beautiful combination of colors, including several shades of pink. Semi-double.

White Dorothy. A duplicate of Dorothy Perkins except in color.

Yellow Rambler. Yellow buds, which fade to creamy white as the flower opens. Strong and hardy.

Green's Climbing Rose Collection No. 25

1 Climbing American Beauty
1 Dr. Van Fleet
1 Paul's Scarlet
1 White Dorothy Perkins

Regular Catalog Price \$2.40

Special Collection Price \$1.98

NOTE: *By Parcel Post, Postpaid, \$2.20*

Plant "Green-Grown" Cortland Apple Trees

The Scientifically Improved McIntosh

MR. GREEN'S prediction of the success of the Cortland Apple, when first introduced, is now a reality. We were the first nurserymen to start propagating Cortland, the buds coming direct from trees that were grown at the New York State

Agricultural Experiment Station, Geneva, New York. It is outselling McIntosh three to one. We, and other authorities, firmly believe that it will become the leading commercial variety in the entire eastern and northern sections of the country.

Cortland Cannot Be Surpassed

Professor U. P. Hedrick, of the New York State Agricultural Station, has this to say about Cortland: "The Cortland cannot be surpassed by apples grown anywhere in the world, and apple growers in New York and New England have opportunity to specialize in a distinctive fruit that will bring renown and profit to the industry of the region."

Description of Cortland

The fruit of Cortland is as large or larger than that of McIntosh, round to somewhat conical in shape. In color it is a bright red, blushed with darker red, splashed and striped with carmine and more or less overlaid with a deep purplish bloom. The flesh is white, firm, fine grained, crisp, tender, very juicy, aromatic, perfumed, sprightly sub-acid and very good to best for dessert. The trees are large, vigorous, upright-spreading, very hardy, productive and healthy. Flowers bloom in mid-season. Fruits about two weeks later than McIntosh. Bears very young and full crop every year.

Cortland has been given the highest honors obtainable in the horticultural world. The American Pomological Society awarded to Cortland the Wilder silver medal for new fruits. To qualify for a Wilder medal, a new fruit must exhibit superiority to all existing varieties with which it will compete.

Nine Reasons Why You Should Plant Cortland Apple Trees Now

1. Cortland apples are of the highest quality and flavor—equal to McIntosh. Just what the apple eating public demands.
2. Cortland bears quickly—the third and fourth year after planting—a money crop the sixth year. No long wait for returns on your investment.
3. Cortland apples hang on the tree unusually well—do not drop or blow off. No losses from unmarketable fruit. Has an exceedingly long picking season.
4. Cortland apples are very easy to handle and pack—do not bruise easily. Reach the consumer in perfect condition.
5. Cortland apples are large and uniform in size and shape. A large percentage will grade number one.
6. Cortland should be picked later and will keep longer than McIntosh.
7. Cortland is an annual bearer—sets an abundance of fruit buds. No off season.
8. Cortland apple trees are very thrifty and fast growers. The trees develop an abundant framework to carry big crops.
9. Cortland apples have the bright red color that appeals so strongly to the apple eating public. Their beautiful and attractive appearance sells them on the open market at \$5.00 per bushel.

Special Offer **FIFTY CORTLAND**

Standard Apple Trees

2 year, 5 to 4 feet, well branched

\$11.00

NOTE: Order early, as we reserve the right to withdraw this Special Offer when our present supply becomes exhausted.



The Famous Cortland Apple

Green's Fruit Department

"Fruit Tree and Small Fruit Specialists for Over 50 Years"

Green-Grown Fruit Trees and Plants are true to name

FOR over half a century we have been recognized as fruit specialists. Mr. Charles A. Green, founder of our business, became a nationally known authority on fruits through his careful study of every phase in propagating and marketing fruits. His predictions regarding the success and value of our now leading fruits, when first introduced, have materialized. With these years devoted to the growing of better fruit trees and plants, you may be assured of getting the best stock that can be

grown anywhere. The soil on which our stock is grown is carefully selected, fertilized, cultivated, and the trees and plants sprayed thoroughly, making them free from disease. This careful attention results in strong trees and plants, with fine root systems and top growth, which are carefully graded in a way that pleases the most particular customers. All inferior or crooked trees are discarded. Green-Grown Varieties can be purchased with confidence.

Green's "Approved" Standard Apples

Varieties of Proven Value for Commercial Orchards and Home Plantings

WE and other authorities strongly recommend that commercial planters standardize on varieties of proven market value. Varieties offered by us have been selected after careful study of market and growing conditions, and the coopera-

tion of the various state departments of agriculture. You will find Green's trees exceptionally well rooted, with fine developed tops and evenly graded. Plant standard apples 35 feet apart each way.

PRICES OF STANDARD APPLE TREES

Size	Height	Each	10	100
Largest	5 ft. and up	\$0.75	\$6.50	\$50.00
Medium	4 to 5 ft.	.65	5.50	40.00
Smaller	3 to 4 ft.	.55	4.50	30.00

By Parcel Post, 2½ to 3½ ft. 50c each, \$4.50 per 10, postpaid.

Rates: Less than 10 at the each rate. Ten to fifty at the ten rate. Fifty or more at hundred rates.

SUMMER APPLES

Sweet Bough. A large, pale, greenish-yellow, sweet apple of excellent quality. Should be in every home orchard. Ripens in July.

Red Astrachan. The best mid-summer cooking and eating apple for home and market. Yellow, splashed with deep crimson. Brisk sub-acid in flavor. Very good in quality. The tree is medium in size, a reliable cropper, very hardy. Ripens in July.

Yellow Transparent. One of the best of the extra early apples; waxy-yellowish white, mild acid, juicy and pleasant. Bears annually, usually starting the fourth year. Extremely hardy in the North. A good filler tree. Ripens late in July.

AUTUMN APPLES

Gravenstein. A variety of excellent quality. For culinary purposes unexcelled by any of its season. The skin is slightly rough and of an orange-yellow color, overlaid with broken stripes of light and dark red. Sprightly sub-acid in flavor. The trees grow rather large, come into bearing early, are productive and reliable croppers. The fruit ripens about the middle of September.

Oldenburg. Often called Duchess of Oldenburg, or just Duchess. Has excellent culinary qualities; pleasant to eat out of hand when fully ripe. Skin is yellow, with splashes and stripes of red. A good filler tree, as it is dwarf in habit. Ripens late August or early September.

Twenty Ounce. Large, attractive, greenish-yellow, with broad stripes and splashes of red. Bears young, annually, and is a good cropper. Ripens in September.

WINTER APPLES

Baldwin. Due to its dependability, desirable season, good size, attractive color and good quality, Baldwin is a leading commercial variety for New York, New England, Ohio and Michigan as well as being popular in many other states. Large, strong, vigorous trees, producing an abundance of large apples of a bright red color, with yellowish, crisp, tender, very juicy flesh. Agreeably sub-acid in flavor. Very good in quality. Rather slow to come in bearing, but rapidly makes up for lost time when it begins bearing. Long lived. Ripens in November and lasts until April in common storage and to May or later in cold storage.

Cortland. See illustration and complete description on page 36.

Pumpkin Sweet. One of the best sweet apples of its season for baking, and for canning. Fruit very large, yellow in color. Ripens in early October.

Rhode Island Greening. Commonly called by the simple name of Greening. As a cooking apple it is unsurpassed, and as a dessert fruit of its season, has few equals. It is a good variety to grow with Baldwin in commercial orchards, because, being a little earlier in season, it can be picked and marketed before it is necessary to pick Baldwin. The fruit is large, yellowish-green, often with a dull blush. It is long lived, productive and a reliable cropper. Ripens in October.

Rome Beauty. A medium to large apple, yellowish, more or less mottled with bright red. It is thick skinned, stands handling well and is a good keeper. It has an established reputation in market and sells at a good price. Ripens in November and keeps until April or May.

Roxbury Russet. The most popular russet apple. An excellent keeper, of good size, with a russet-brown skin and a bronze blush in highly colored specimens. Flesh is tinged with yellow or greenish, firm, somewhat coarse, moderately tender and crisp. Sprightly, sub-acid in flavor. Good to very good in quality. In season from December to July.

Stayman's Winesap. Fruit medium to large in size, yellowish, striped and splashed with dull red in color, and with a firm, crisp, yellow flesh, mildly sub-acid in flavor. Good quality. A reliable annual cropper. Ripens late November.

Tompkins King. More often known as King or King of Tompkins County. Large, attractive, beautiful red fruit, a regular bearer. Ripens in October.

Tolman Sweet. A medium size, whitish-yellow, sweet apple. Very hardy. Ripens in November.

Transcendent Crab. This for many years has been one of the most popular of the crab apples. The fruit is medium to rather large, skin clear bright yellow, with red cheek overspread with bloom. Flesh-yellow, crisp, juicy, somewhat astringent and sub-acid in flavor. Very good for culinary uses. A good grower, hardy, and usually very productive. In season from late August to middle of September or later.

Wagener. The fruit is medium to large, bright red in color, having a fine texture, high flavor, and excellent quality. Good for cooking, but especially prized for dessert. A steady bearer. Ripens in October.

Wealthy. Particularly valuable in cold climates where a hardy tree is needed. A thrifty grower when young, but forming a medium sized tree. Planted in commercial orchards as a filler between rows of stronger growing varieties. Fruit is very attractive red and yellow color, and of good quality. Ripens in October.

Winter Banana. An exceedingly attractive yellow apple, usually with a bright red cheek. Has distinct banana flavor and good dessert quality. Good keeper and bears well. Ripens in mid-November.

Green's "Approved" Dwarf Apples

Require Little Space—Bear Young—Have Large Fruit

DWARF Apple trees are ideal for the home garden. They are very low growing, and the fruit may easily be picked from the ground without the use of ladders. Dwarf Apple trees come into bearing sooner and produce larger size fruit, equal

in color and quality to standard trees. Especially recommended in small garden spaces and as fillers in newly planted orchards of standard trees. Plant 10 feet apart each way.

Prices of Green's Dwarf Apple Trees

Two Year Old Well Branched Trees

Size	Height	Each	10	100
Large	3½ and up	\$0.80	\$7.00	\$55.00
Medium	2½ and up	.70	6.00	45.00

By Parcel Post—2 to 2½ ft., 65c each; \$5.50 per 10, postpaid.

Rates—Less than ten dwarf apple trees at each rates. Ten to fifty at ten rates. Fifty or more at hundred rates.

Green's Dwarf Apple Trees

BALDWIN	RED ASTRACHAN
CORTLAND	WEALTHY
DELICIOUS	WINTER BANANA
McINTOSH	YELLOW
OLDENBURG	TRANSPARENT

For description of varieties see standard apple listings.

Green's Dwarf Apple Collection

No. 35

5 Dwarf Apple Trees, 3½ ft. and up

1 Cortland	1 McIntosh
1 Baldwin	1 Yellow Transparent
	1 Delicious

Regular Catalog Price, \$4.00

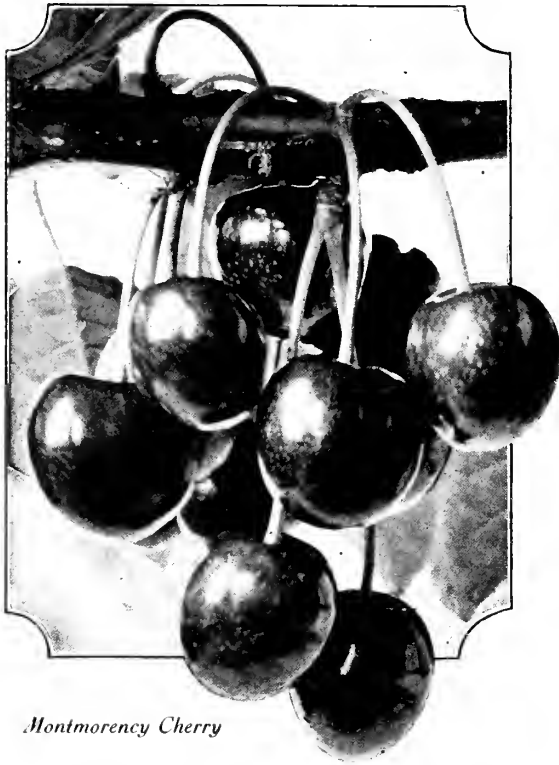
Special Collection Price \$3.59

We can send this collection in 2 to 2½ foot sizes by parcel post for \$2.79, postpaid.

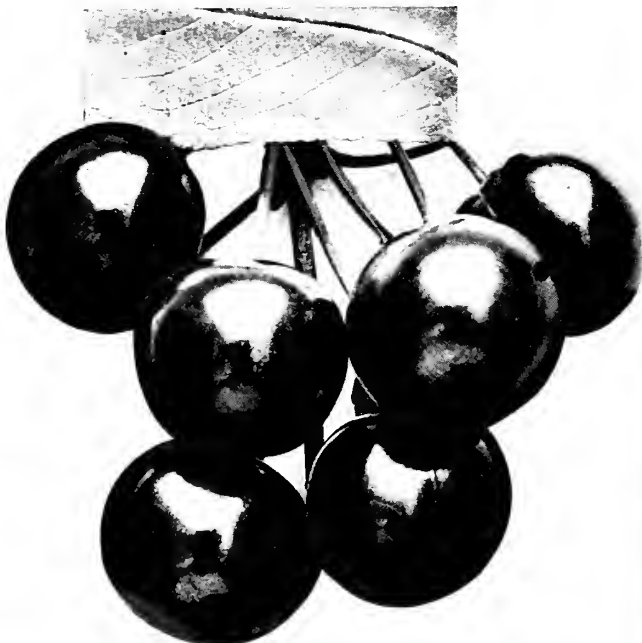
Cash Discounts for Early Orders

See details on Page Three

Green's "Approved" Cherries



Montmorency Cherry



Black Tartarian Sweet Cherry

WE offer a selection of choice varieties—the result of over fifty years' experience as fruit growers. Due to a rapidly increasing demand for fruit juices, cherries are becoming more profitable every year. Every orchard and home garden should have a few of Green's thrifty, vigorous, well rooted cherry trees. Plant sour cherries 15 feet and sweets 20 feet apart each way.

SOUR CHERRIES

Prices of 2 Year Sour Cherry Trees

Size	Height	Each	10	100
Largest	5 ft. and up	\$0.85	\$7.50	\$60.00
Medium	4 to 5 ft.	.75	6.50	50.00

Early Richmond. The best of the early sour varieties. Medium size, light red, changing to dark red, tender, juicy and of good quality. Vigorous, healthy and fruitful. Ripens in June.

Montmorency. For any and all purposes Montmorency may be recognized as the best. The fruit is about average in size, rather dark red, tender, juicy and of very good quality. Hardy and very productive. Ripens last of June. The leading commercial variety.

SWEET CHERRIES

Prices of 2 Year Sweet Cherry Trees

Size	Height	Each	10
Largest	5 ft. and up	\$1.00	\$9.00
Medium	4 to 6 ft.	.90	8.00

We do not offer Sweet Cherries in parcel post sizes.

Black Tartarian (Black). The favorite home garden sweet cherry. Produces immense crops of heart-shaped cherries, bright, glossy, purplish black. Flesh tender, juicy, rich, and of best quality. Ripens middle of June.

Governor Wood (Yellow). Large, beautiful, yellowish white, tinted with shades of crimson, with conspicuous russet dots. The flesh is tender, juicy, the best in quality. Ripens in June.

Napoleon (Light Red). Sometimes called Royal Ann. Color bright red on a yellowish background. The flavor is rich and sweet, which, with the abundant juice and firm, crackling flesh, makes it a most delicious and refreshing cherry for dessert and home uses. Ripens in July.

Windsor (Dark Red). The leading late sweet cherry. Large, very dark red, with firm, tender, juicy flesh. Prolific and of excellent quality. Ripens in July.

Important

We properly prune all sweet cherries before shipping which must be done to assure success in transplanting. The tops of sweet cherries develop very rapidly, but the root systems are very small in comparison. This fact makes it vital that the tops be cut back and that unusual precautions are taken when setting to plant them deeply and pack the earth tightly about the root and water frequently for the first 2 or 3 weeks. Our 5 to 7 ft. trees properly cut back are 4 feet in height, the 4 to 6 ft. size about 3½ feet.

“Approved” Standard Pears

A Pear Orchard is a Profitable Investment

FRUIT growers and nurserymen from all parts of the country state that we grow the finest pear trees in the world. We appreciate the compliment, but can only say that soil conditions at our nurseries are unusually adapted to pear trees, and they develop wonderfully. The varieties we offer are unquestionably the best and most profitable varieties. Plant standard pear trees 20 feet apart each way.

Prices of All Varieties Except Bosc

Size	Height	Each	10	100
Largest 2 yr.	5 ft. and up	\$0.85	\$7.50	\$60.00
Medium 2 yr.	4 to 5 ft.	.75	6.50	50.00

*We do not offer parcel post size in standard pears.
Rates: Less than 10 at the each rate. Ten to fifty at ten rates.
Fifty or more at hundred rates.*

SUMMER PEARS

Bartlett. The most popular pear both for home and market, a leader among canning pears, commands top prices. Should be in every garden and orchard. Large, golden yellow with reddish blush on the sunny side. Flesh tender, melting and juicy, with a delicious, musky flavor. Tree vigorous, an erect grower, bears abundantly. Ripens in Sept.

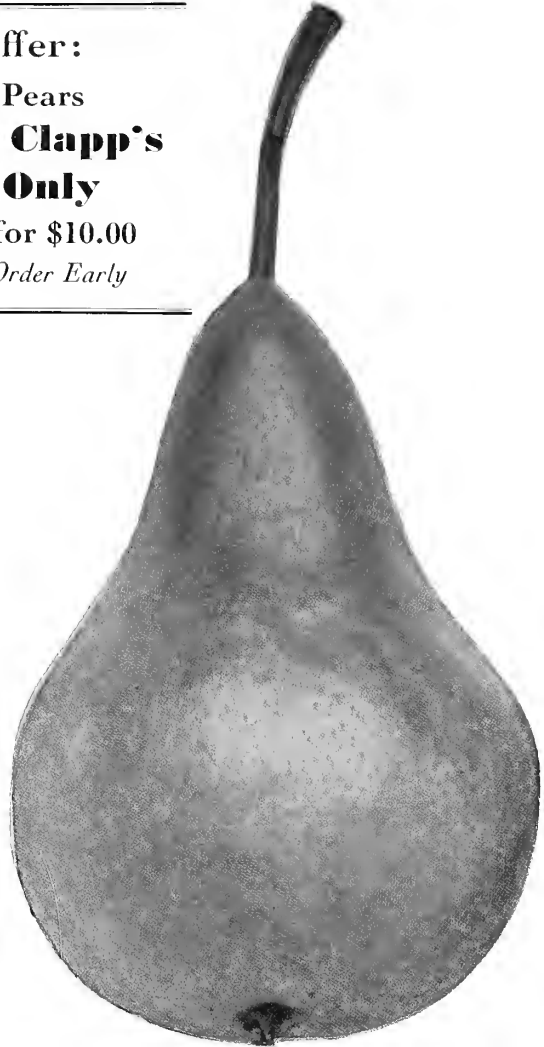
Clapp's Favorite. The most productive pear in cultivation. Very good for the home garden and a desirable commercial variety. Large, long, pale lemon color, richly flushed with russet red on the exposed side. Flesh fine grained, juicy, melting and buttery. A good grower and hardy. Ripens in August, about ten days ahead of Bartlett.

Wilder Early. One of the very earliest pears, it always finds a ready sale in the market, and is largely grown by commercial orchardists. Of medium size, pale yellow shaded with russet red, flesh melting and delightful, with a small core. The trees are good bearers. Ripens in early August.

Special Offer:
Three Year Pears
Bartlett and Clapp's
Favorite Only

\$1.15 each; 10 for \$10.00

Supply Limited—Order Early



Bartlett—Most Popular for Preserving

Bosc—Beats Them All

AUTUMN PEARS

Bosc (*Buerre Bosc*). Without a doubt the highest quality and best flavored pear of all. Should be in every home garden. Very large, having a distinct gourd shape—roundish at the blossom end, with a long, thin, tapering neck. Beautiful golden russet color. Flesh fine-grained, juicy and melting, very delicious and highly flavored. In great demand at fancy fruit stores, often selling as high as 10 cents apiece. We grow it as a standard tree only, as it does not do well as a dwarf. The tree is a moderate grower, fairly erect and productive. Ripens here in late September or early October.

Prices of Bosc Standard Pears

Size	Height	Each	10	100
Largest 2 yr.	5 ft. and up	\$1.00	\$9.00	\$75.00
Medium 2 yr.	4 to 5 ft.	.90	8.00	65.00

We do not offer parcel post size in Bosc.

Duchess (*Duchess d'Angouleme*). We offer this good variety in dwarf type only. See price of dwarf trees on page 45. This variety does exceptionally well when grown as a dwarf on quince roots. As a dwarf it is an all around, profitable, market variety, very prolific and a dependable cropper, an early bearer, often fruiting the season after planting. The

fruit is very large. The color, when fully ripe, is bright golden yellow, with a blush on one side, and sometimes slightly russeted. Flesh white, juicy, and of good quality. An excellent keeper. On dwarf roots it is an excellent commercial variety. Ripens here in October.

Seckel. The small size and peculiar, rich, juicy flavor of this variety makes it a most desirable variety for pickling and preserving. It is generally conceded to be the sweetest of all pears and is greatly prized as a dessert fruit to eat fresh out of the hand. Although small in size, it is very attractive in appearance, being of a russet-yellow color, with a bright red cheek. It is very prolific. Every home orchard should have a tree or two of this excellent variety. Ripens in September and October.

Sheldon. A pear of unusually good quality and high flavor. Large, round, greenish-yellow in color, covered with light russet. It is very juicy, melting and has a tasty flavor. The tree is a fine grower and a good bearer. It is not recommended as a commercial variety but an excellent home garden pear. Ripens in late October.

Worden Seckel. An improved Seckel. Equal in quality to its famous parent, which it much resembles in flavor. It is fully as luscious, more juicy, and with an aroma equally as rich and inviting. The fruits are beautifully smooth and regular, golden yellow, with a russet-red cheek. Ripens in October.

WINTER PEARS

Kieffer. A very profitable market variety on account of its great productiveness and its excellent keeping and shipping qualities. While only fair in quality, it is an excellent canner and is in great demand for this purpose. The fruit is large, golden yellow, sometimes tinted with red on the exposed cheek. The trees are strong, vigorous growers. Ripens in October and November.

Lawrence. A long keeping winter pear that should be planted more extensively. The fruit is medium to large, golden yellow, melting and aromatic. The trees are moderate growers but abundant bearers. A profitable market variety. Ripens in November.



Clapp's Favorite Pear Trees

Green's Standard Pear Collection No. 40

5 Standard Pear Trees, 4 to 5 feet

1 BOSC	1 CLAPP'S FAVORITE
2 BARTLETT	1 SECKEL

Regular Catalog Price, \$3.90

Special Collection Price, \$3.49

NOTE: This collection cannot be sent by parcel post.

**Green's Quality Products Make
Satisfied Customers**

Green's "Approved" Dwarf Pears

A Green Specialty

WE were pioneers in the propagation and sale of dwarf fruit trees which are now so popular for fillers in large commercial orchards and for home plantings. Dwarf trees bear at 5 years of age, and the fruits is larger in size and better in flavor, color and size than that of standard varieties. The only feature that is dwarf is their growing habit, seldom attaining a height of over 18 feet, as against 40 feet in standard trees. Plant 10 feet apart each way.

Green's Selected Varieties of Dwarf Pear Trees

Anjou	Duchess	Wilder Early
Bartlett	Lawrence	Worden Seckel
Clapp's Favorite	Seckel	

Prices, Regular 2-Year Size

Size	Height	Each	10	100
Largest	5 ft. and up	75c	\$6.50	\$50.00
Medium	2½ to 3 ft.	65c	5.50	40.00
Small	2 to 2½ ft.	55c	4.50	50.00

By Parcel Post—2 to 2½ feet, 60c each; \$5.00 per 10, postpaid.

Rates: Less than 10 at the each rate. Ten to fifty at ten rates. Fifty or more at hundred rates.

Dwarf Pear Trees planted 5 feet apart make a fine hedge. Mr. C. A. Green personally introduced the now popular idea, after originating same in his own garden. A pear hedge is a beautiful sight when in flower, besides the value of the fruit.



Duchess Pears as Grown on Dwarf Trees



Clapp's Favorite Dwarf Pear Tree

Special For Spring 1931 Only

Three Year Old Dwarf Pear Trees Ready to Bear

Bartlett	Duchess	Wilder Early
Clapp's Favorite	Seckel	Worden Seckel

The finest lot of trees we have ever seen—straight, stocky trunks and wonderfully developed heads.

Size	Height	Each	10	100
Extra Large 3 Year	4 ft. and up	\$0.90	\$8.00	\$65.00
Extra Medium 3 Year	3 to 4 ft.	.80	7.00	55.00

Green's Dwarf Pear Collection No. 45

Four Extra Size 3 Year Trees, 4 ft. and up

1 BARTLETT	1 DUCHESS
1 CLAPP'S FAVORITE	1 SECKEL

Regular Price \$5.60

Special Collection Price

\$3.29

NOTE: We can send this collection in 2-year trees (2 to 2½ feet) by parcel post \$2.00, postpaid.

Green's "Approved" Peaches

A Selected List of Proven Varieties

THE cream of hundreds—all thoroughly tried and tested and found to possess the essential characteristics of good peaches. Our peach trees are all hardy, Northern grown with wonderfully

developed tops and root systems. Peaches prefer a good, sandy loam, but will do well on almost any soil except a heavy clay. Plant 16 feet apart each way.

Prices of Green's Peach Trees

One Year Old

Size	Height	Each	10	100
Largest	4 ft. and up	\$0.70	\$6.00	\$45.00
Medium	3 to 4 ft.	.60	5.00	35.00
Smaller	2 to 3 ft.	.50	4.00	25.00

By Parcel Post—2 to 3 feet, 55c each; \$4.50 per 10 postpaid.

Rates—Less than ten at each rates. Ten to fifty at ten rates. Fifty or more at hundred rates.

Carman (*White, Freestone*). The color is a brilliant red, splashed with darker red on a creamy-white background. Very good in quality. Ripens here about the middle of August.

Champion (*White, Freestone*). This is considered the highest in quality of all the white-fleshed peaches. The skin is creamy-white, with splashes of carmine and darker red. Ripens in late August or early September.

Elberta (*Yellow, Freestone*). Deservedly Elberta is the pear of all commercial peaches. The two characteristics that enable Elberta to hold first place undisputed are its ability to do well in almost any soil or climate and its fruitfulness. A beautiful, large, golden-yellow peach, with a brilliant red cheek, firm, juicy, rich and sweet. Ripens here early in September.

Early Crawford (*Yellow, Freestone*). Unapproached in quality by any other variety except Rochester, its offspring. Fruit very large, golden-yellow, blushed with dark red. Ripens here in late August or early September.

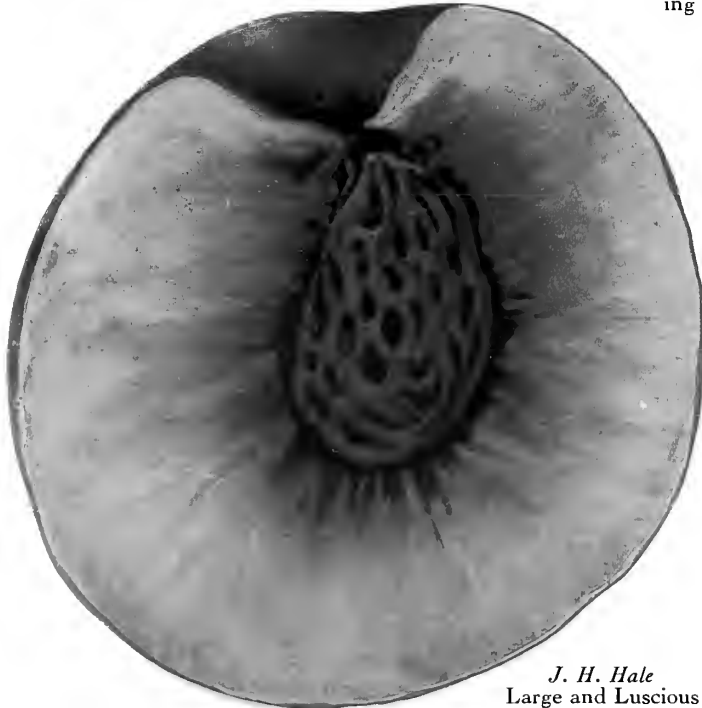
Greensboro (*White, Freestone*). One of the leading white-fleshed peaches, principally because of its great productiveness and early bearing. Skin is creamy-white, blushed and striped with dark red. Ripens here in July.

J. H. Hale (*Yellow, Freestone*). A notable variety of recent introduction, unusually large in size of fruit and very handsome. Largely advertised as a rival to Elberta for commercial honors, but reported in many sections as not prolific enough to compete with that grand old variety. Of a deep golden-yellow color, overlaid with bright carmine. Ripens here in late August or early September.

Late Crawford (*Yellow, Freestone*). Fruit large and very handsome, deep yellow, blushed and splashed with dark red. Ripens here the last of September.

Rochester (*Yellow, Freestone*). A remarkable new, early peach which seems to combine the high quality of the Early Crawford with the productiveness of the Elberta. Not only an ideal home orchard variety, but an excellent commercial peach as well. The fruit is large, yellow mottled with red in color, with thick, firm, juicy flesh, rich and sweet in flavor. Ripens here the middle of August.

South Haven (*Yellow, Freestone*). Fruit large, roundish and uniform in size. Color deep yellow with red cheek. Prolific bearer. Ripens two weeks earlier than Elberta. A promising new variety extremely hardy.



J. H. Hale
Large and Luscious

Green's Peach Collection No. 50

4 Trees, 4 ft. and up

1 Early Crawford	1 Rochester
1 Elberta	1 J. H. Hale

Regular Price, \$2.80

Special Collection Price

\$2.49

Note: We can send this collection in 2 to 3 ft. trees by parcel post for \$1.98 postpaid.



Rochester Peach

Buy from a Reliable Nursery

UNDER the best possible growing conditions, only about sixty per cent of the nursery stock grown by nurserymen develops into perfect salable stock.

What happens to the other forty per cent? Reliable nurserymen destroy them. Unfortunately, however, millions of these inferior plants are sold annually to the American public at prices that look like bargains.

There are hundreds of reliable nursery firms who have been supplying their customers with the best Trees, Plants and Vines that can be grown—they have succeeded over a long period of years by satisfying their customers. Make your purchases from a reliable nursery.

Special Offering of Quinces

All Four Year Trees, Bearing Size

Quinces Pay Good Profits—Take advantage of Green's exceptionally low prices and plant an orchard this spring.

THEY are especially prized for jellies and preserves. They are easy to grow and find a good sale in all local markets.

Orange. We offer only this variety of quince as we consider it by far the best. There are several strains of this old-fashioned Orange Quince and we are propagating from the most desirable strain. The fruit is large, roundish, bright golden yellow, cooks tender and is of excellent flavor. An excellent variety for baking and preserving. The trees are vigorous and productive. Each year more and more are planted for commercial purposes. They are also being extensively planted on the home grounds. Their beautiful and fragrant blossoms are equaled only by the gorgeous and sweet-scented orange blossoms in California. Ripens in late September or early October.



Orange Quince

Prices of Green's Orange Quince Trees, Four Years Old

Size	Height	Each	10	100
Largest	5 ft. and up	\$0.75	\$6.50	\$50.00
Medium	4 to 5 ft.	.65	5.50	40.00

Special Quotations to Commercial Planters on large lots of Fruits of all kinds. Send list for special prices.

Green's "Approved" Nut Trees

Butternut. Valued for its tropical appearance and beautiful wood. Produces large crops of oblong, nutritious nuts. Bears early.
 5 to 6 feet.....\$1.50 each

English Filbert (Hazelnut). A low-growing, bushy tree, producing abundant crops of roundish, tender nuts of fine flavor. Will grow in almost any location. Nuts larger and of better quality than the native American Filbert.
 2 to 3 feet.....65c each
 3 to 4 feet.....85c each
Special prices on quantity lots.

WALNUTS

Black Walnut. A large tree of majestic form and beautiful foliage. Its wood is exceedingly valuable and in great demand by furniture makers and gunsmiths. Bears large, round nuts of excellent quality.
 5 to 6 feet.....\$1.50 each
 6 to 8 feet.....\$2.00 each

English Walnut. A fine, lofty-growing tree, with handsome, spreading head. Produces large crops of nuts, which are apt to vary in size and quality. We offer a seedling strain grown from nuts secured from a successful grove a few miles from Rochester.
 2 to 3 feet.....\$1.00 each; \$ 9.00 per 10
 3 to 4 feet..... 1.25 each; 11.50 per 10

Japan Walnut (Sieboldi). This is a very hardy, handsome, rapid-growing tree with large leaves. Bears young and abundantly. Nuts resemble butternuts, but smaller, smooth and thinner shell.
 4 to 5 feet.....\$1.75 each



English Walnut

MULBERRIES

New American Mulberry. We consider this the best variety of edible mulberry. A vigorous grower and very productive. Very hardy—the best large fruiting variety for Northern sections. Fruit very large, black, sweet, rich and delicious, ripening from June to September.
Strong Trees, 5 to 6 feet high.....\$1.25 each

Russian and Tea's Weeping Mulberry (See page 15).

APRICOTS

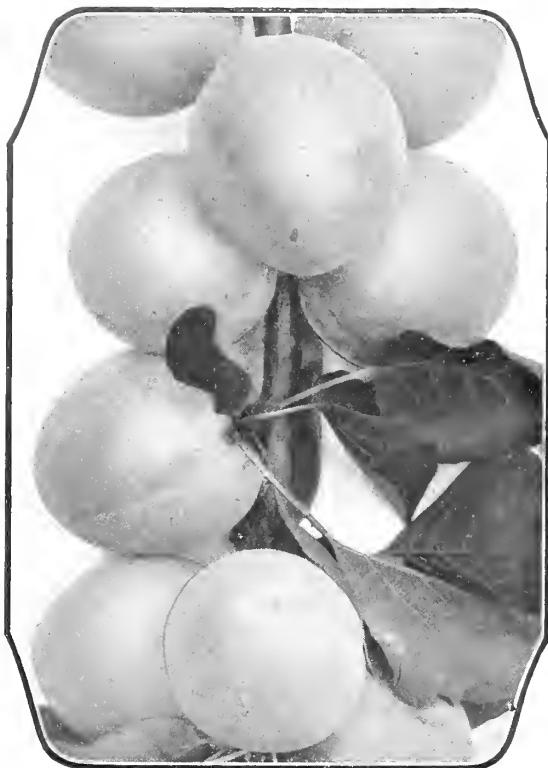
The apricot is a cross between the peach and the plum. In shape and color it resembles the peach, but in texture and smoothness of skin it is more like the plum. Plant 15 feet apart each way.

Price of All Apricots: Large 2-yr., 4 to 5 ft., \$1.00 Each, \$9.00 per 10.

Superb. Considered by many the best flavored, most productive, hardy apricot yet produced. Fruit medium size, light salmon color.

Royal. A large yellow variety, very delicious.

Early Golden. Small fruit but very sweet and juicy.



Superb Apricots

See Details on Page Three for
 Cash Discount on Early Orders and
 Green's Guarantee of Satisfaction

Green's "Approved" Raspberries



Cumberland—The Best Black Raspberry

How to Plant Raspberries

PLANT raspberries 4 feet apart in rows which are 6 feet apart. The old wood should be cut out as soon as it has fruited, and with the red varieties, thin out the suckers each spring to 5 or 6 on each hill. Black and purple varieties should be pinched early when the canes are about 2 feet high. Nitrate of Soda will hurry up the growth of the plants, but rich barnyard manure applied annually or semi-annually will keep the plants in vigor.

First in Commercial Importance of the Bush Fruits

CHARLES A. GREEN was possibly the first raspberry enthusiast to advise the value of raspberries for home and commercial growing. The planting of this fruit has brought undeniable pleasure to the home owner and surprising profits to the commercial grower. They are luscious when fresh picked for table use and bring 20 to 30 cents per quart on the market.

IMPORTANT NOTICE: We have selected and "approved" the three best varieties of raspberries for our customers and recommend that you plant these varieties, which in our opinion supersede all others in quality, flavor and productiveness. We will be glad, however, to furnish any of the leading varieties of raspberries at the same prices quoted below in 1 and 2 year old plants. Green's extra strong 1 year bushes are the same as those generally offered by nurserymen as No. 1 plants. Green's selected 2 year transplanted bushes are in a class by themselves.

Prices of Selected Two Year Transplanted Bushes, \$1.50 per 10; \$9.00 per 100; \$75 per 1000.

Prices of Extra Strong One Year Bushes, \$1.00 per 10; \$6.50 per 100; \$45.00 per 1000.

Rates: Less than fifty at ten rates. Fifty to 300 at hundred rates. Three hundred or more at thousand rates.

Raspberries can be sent by Parcel Post for 2c per bushel extra.

Columbian (Purple). At our nurseries we have found this to be by far the best purple raspberry. Very large, dark reddish purple, juicy and delicious. An excellent shipper and in great demand for canning. A strong grower and very productive.

Cumberland (Black). In our opinion the best of all black raspberries. Very productive, exceedingly large, shiny black berries of the finest quality, not exceeded by any other variety. The most profitable blackcap grown.

Green's Raspberry Collection No. 60

40 Selected Strong 2-year transplanted bushes

10 Columbian 20 Latham 10 Cumberland

Regular Catalog Price \$6.00

**SPECIAL
COLLECTION PRICE \$4.98**

This collection can be sent by parcel post, postpaid, for \$5.20.

Green's Raspberry Collection No. 65

40 Extra Strong 1-year old plants

10 Columbian 20 Latham 10 Cumberland

Regular Catalog Price \$5.00

**SPECIAL
COLLECTION PRICE \$3.98**

This collection can be sent by parcel post, postpaid, for \$4.20.

LATHAM (Red)

*(Sometimes called Redpath or Minnesota No. 4)
The Mosaic free variety*

A new variety that supersedes all other red raspberries in size of berry, color, hardness, growth and productiveness. Large, luscious, thick-meated, firm, sweet and juicy—characteristics that make it the outstanding raspberry of all times. The most profitable commercial raspberry and also the best for home planting. We have been completely sold out of this variety every year. Order early to avoid disappointment. If we could have but one raspberry we would choose Latham.



The New Latham

**Green's Quality Products
Make Satisfied Customers**



The New Caco

Green's "Approved" Grapes

Every home should have grape vines

Commercial Vineyards bring big profits

Prices of Green's Extra Size Two Year Old Vines—All Varieties except Caco, Ontario and Concord, 25c each; \$2.25 per 10; \$15.00 per 100.

By Parcel Post Postpaid—30c each; \$2.50 per ten.

Rates—Less than ten at each rates. Ten to fifty at ten rates. Fifty or more at hundred rates.

Agawam (Red). An excellent keeper. Large in both bunches and berries, dull purplish red, rich, sweet and of a decidedly foxy flavor. Ripens here last of September.

Brighton (Red). A very handsome dark red grape of high quality that should be in every home garden. Not generally recommended as a commercial variety, as it will not ship to distant markets. Vigorous, productive and easy to grow. Ripens here about the middle of September.

Caco (Red). This new red grape has the most delicious flavor and is of the highest quality of any grape that we have ever tested. It is one of the earliest grapes in ripening. It has a peculiar characteristic not common to other grapes in that, on account of its being so rich in sugar and excellent in flavor, it can be eaten with enjoyment fully two weeks in advance of its being fully ripe. In appearance, it is the most beautiful of hardy grapes, wine red in color with abundant bloom. The berries are unusually large, bunches of good size, compact and of good form. The vines are very strong, vigorous growers, hardy, healthy and prolific. This variety is a cross of the two well-known grapes, Catawba and Concord, and is said by expert grape-growers to have all the good qualities of both of these varieties without the defects of either. Ripens here early in September.

Extra size, two year old Caco Grape Vines. 60c each; \$5.00 per 10; \$40.00 per 100.

By Parcel Post, postpaid.....65c each; \$5.25 per 10.

Green's "Approved" Blackberries

Will Make Poor Land Pay Big Profits

Prices of Green's Strong 2-Year Transplanted Bushes

10	100	1000
\$1.25	\$8.50	\$75.00

By parcel post, postpaid, for 2c per bush extra.

Eldorado. We consider this the best variety for home and market use. An early to medium season berry of great merit. The bushes are hardy and very productive. The berries are large, jet black, borne in large clusters and ripen well together. They are sweet and melting, have no hard core and keep for 8 to 10 days after picking without quality impaired.

Snyder. A very popular early variety, possibly the hardest of all, and very productive. The berries are of medium size, sweet, melting and delicious.

Green's "Approved" Gooseberries

Will Pay You Well

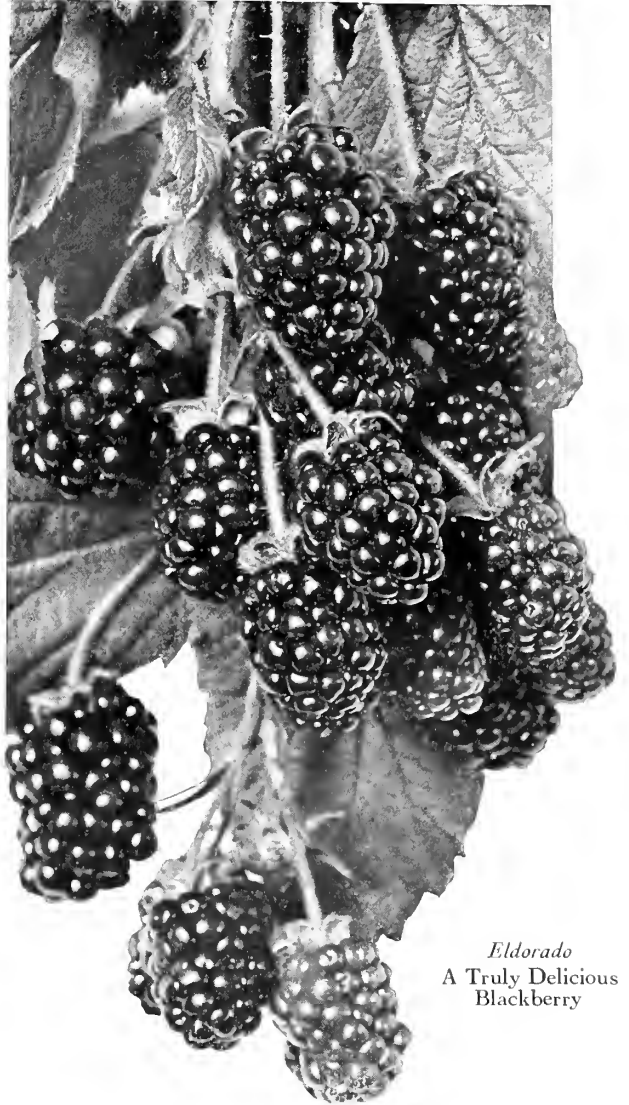
AN exceedingly profitable fruit when properly handled. The market is rarely over supplied, as gooseberries can be gathered and marketed through a very long season. Every home garden should have a dozen or two bushes, as gooseberries are very easy to grow, and the fruit is extremely desirable for cooking and other culinary uses. Plant gooseberries 4 feet apart each way.



Downing Gooseberry

Chautauqua. An excellent variety for the home garden. Large, greenish yellow, of excellent quality, sweet and high flavored. Vigorous, upright bushes, hardy and productive. *Extra Size, Two Year Bushes, 40c each; \$3.50 per 10*

Downing. The most profitable commercial variety on account of its great productiveness and remarkable shipping qualities. The fruit is pale green, of excellent quality. The bushes are vigorous, upright growers, keeping the fruit free from the ground. Mildew proof. *Extra Size, Two Year Bushes, 25c each; \$2.00 per 10; \$15.00 per 100.*



Eldorado
A Truly Delicious Blackberry

Red Jacket (Josselyn). The best red gooseberry, of high quality, can be planted with entire confidence. Vigorous, upright, hardy and very prolific. *Extra Size, Two Year Bushes, 35c each; \$3.00 per 10; \$25.00 per 100.*

Gooseberry bushes can be sent by parcel post, postpaid, for 2c per bush extra.

Cash Discounts on Early Orders
Green's Guarantee of Satisfaction

SEE DETAILS ON PAGE THREE

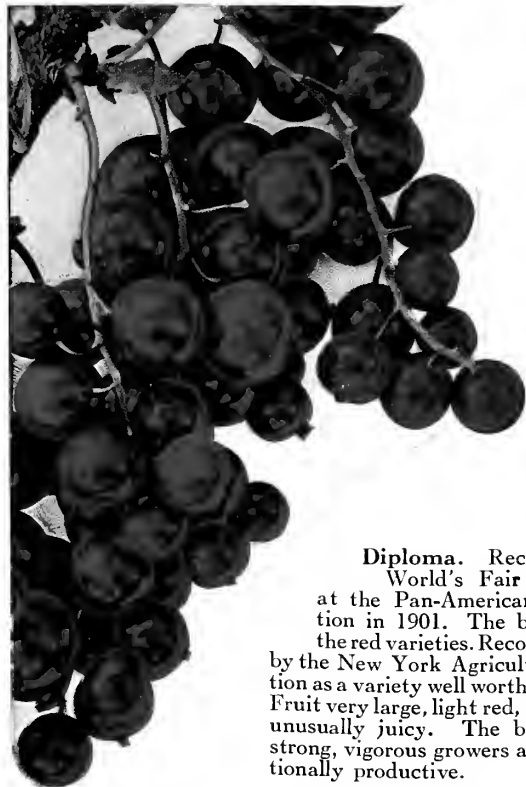
Green's "Approved" Currants

Another Green Specialty

UNQUESTIONABLY we raise more currant bushes than any other nursery company. We grow them for fruit extensively in our nurseries and have found that they are one of the most profitable small fruits. Currants are always in demand on the market for making jellies, jams, preserves, tarts, etc. Every home garden should contain a dozen or two bushes. Plant 4 feet apart each way.

By Parcel Post, postpaid add 2c per bush extra.

Rates—Less than ten at each rate. Ten to fifty at ten rate. Fifty or more at hundred rate.



Diploma
The Largest and Most Productive Currant

Diploma. Received the World's Fair Diploma at the Pan-American Exposition in 1901. The best of all the red varieties. Recommended by the New York Agricultural Station as a variety well worth planting. Fruit very large, light red, sweet and unusually juicy. The bushes are strong, vigorous growers and exceptionally productive.

Strong 2 Yr. Bushes, 40c each; \$3.50 per 10; \$30.00 per 100.

Perfection. In color it is a beautiful bright red, the berries averaging larger than most varieties, the

clusters averaging longer, and the size of the berries is maintained to the end of the bunch. It has a rich, mild, sub-acid flavor, with plenty of pulp and few seeds.

Strong, 2 Yr. Bushes, 35c each; \$3.00 per 10; \$25.00 per 100.

Red Cross. A strong growing and exceedingly productive red currant. The clusters are long, with berries of medium size and of bright red color. This variety is unusually sweet for a currant, requiring less sugar in canning than other varieties. Highly recommended for commercial planting.

Strong 2 Yr. Bushes, 25c each; \$2.00 per 10; \$15.00 per 100.

White Grape. This is the best of all white currants. It is an excellent dessert variety because of its mildly acid flavor and large, handsome clusters of golden green or white berries. It is very prolific.

Strong 2 Yr. Bushes, 25c each; \$2.00 per 10; \$15.00 per 100.

Green's "Approved" Strawberries

For the Home Garden or for Commercial Planting

STRAWBERRIES come first among small fruits. If planted for home use, a very small bed will yield a large amount of berries. Commercially, they pay big profits, \$400.00 to \$500.00 per acre being not uncommon. As a matter of fact, a patron wrote us not long ago that his strawberry plants were making for him \$1000.00 per acre. Planted between the rows of trees in a young orchard, they

will often pay all expenses of bringing the orchard into profitable fruiting and net a handsome profit besides. All the varieties that we offer are perfect flowering and do not need another variety planted nearby for cross-pollination. Plants should be planted immediately upon arrival. Our plants are taken from young beds, fresh dug before shipment; plants are well rooted.

Green's Special Home Garden Strawberry Collection

75 Strong No. 1 Plants

25 CORSICAN 25 KELLOGG'S PREMIER

25 MASTODON

Regular Catalog Price, \$5.75

Collection Price \$3.29

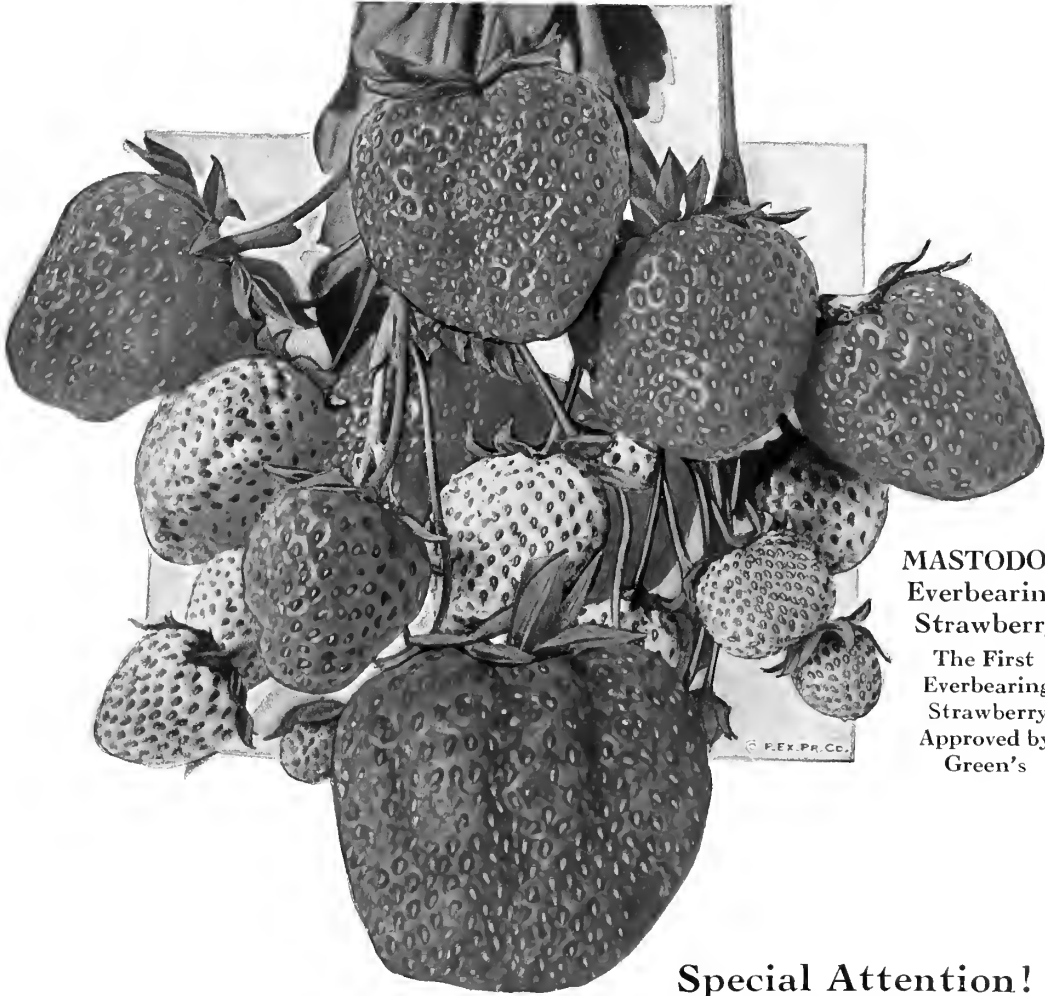
By Parcel Post, Postpaid

JUNE BEARING VARIETIES

Corsican

The largest and best variety known

We consider this the finest June bearing home garden berry. The berries are unusually large, bright red, firm, juicy and of exceedingly high quality and flavor. The plants are exceedingly vigorous and healthy, resisting disease, drought, weeds and even neglect of cultivation. Very productive. Mid-season. Perfect flowering.
Strong Plants \$1.25 per 25; \$3.00 per 100, postpaid



MASTODON
Everbearing
Strawberry
 The First
 Everbearing
 Strawberry
 Approved by
 Green's

Special Attention!

Pot-Grown Strawberries for Mid-Summer and Early Fall Planting

By planting pot-grown strawberry plants during the late summer months you are assured of a bountiful crop of delicious strawberries the following season. We offer the following varieties in pot-grown plants for delivery after August 1, 1931.

- Corsican.** \$1.50 per dozen; \$2.50 per 25; \$8.00 per 100.
- Kellogg's Premier.** \$1.00 per dozen; \$1.75 per 25; \$7.00 per 100.
- Mastodon.** \$2.50 per dozen; \$4.50 per 25; \$15.00 per 100.

JUNE BEARING VARIETIES (Continued)

Kellogg's Premier (*Perfect Flowering*). Early. Unquestionably the best extra early variety known. In all soils and climates it will be found producing enormous crops of uniformly large, deep red berries, which have made this variety famous.

Strong Plants \$1.00 per 25; \$2.50 per 100, postpaid

EVERBEARING VARIETY

EVERBEARING strawberries yield fruit continuously from June until frost. To obtain the largest fruit in the fall keep blossoms picked off until about the first of August.

Mastodon Everbearing

The Best Everbearing Strawberry Ever Introduced

The introduction of this wonderful variety has caused much interest amongst strawberry growers—and no wonder—the Mastodon outranks all everbearing varieties in plant growth, fruit production and size of berry. One well known grower says, "The berries are of immense size and crop almost incredible." On our grounds the Mastodon has proven five hundred per cent better than any other everbearing variety. Last season we picked and marketed fruit of the Mastodon from June until November.

Strong plants \$1.50 per 25; \$4.50 per 100, postpaid

Green's Special Pot-Grown Strawberry Collection

75 Strong Pot-Grown Plants
 25 CORSICAN 25 KELLOGG'S PREMIER
 25 MASTODON

Regular Catalog Price, \$8.75

Collection Price \$7.00

Green's "Approved" Garden Roots

RHUBARB

Myatt's Linnaeus. The best variety for general use. Stems large, tender and of refined flavor. Yields abundantly. We offer heavy three-year roots ready to produce stalks for use the first of season. If planted in rows, place roots three feet apart with rows four feet apart.

Extra Strong, 3-Year Roots..... 35c each; \$2.50 per 10
By Parcel Post, postpaid, for 3c per root extra.

HORSE RADISH

English or Common. The variety in general use. Very, very hardy and will persist in soil year after year. Does best in deep, rich, cool soil. As high as ten tons have been taken from one acre. Plant in rows three feet apart and one foot apart in each row.

Strong Sets..... 10 for 75c; 25 for \$1.50; 100 for \$4.50

SAGE

Holt's Mammoth. Forms a dense mass of light green leaves, used extensively for seasoning dressings and sauces. Set plants three feet apart each way.

Strong, Transplanted Roots..... 50c each; \$4.50 per 10

ASPARAGUS (*The Vegetable Aristocrat*)

A SPARAGUS is the first of the earliest green vegetables—the most delicious delicacy in vegetables—the most health-giving vegetable of all. We offer the two most profitable and popular varieties of proven merit.



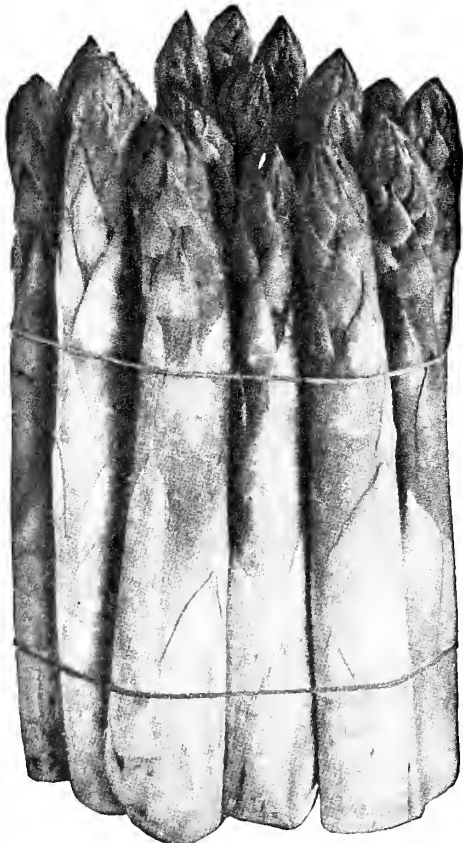
Myatt's Linnaeus Rhubarb

Prices of Asparagus

Extra Strong 2 year plants, \$1.25 per 25; \$2.50 per 100; \$18.00 per 1000

Palmetto. Extensively planted both for commercial use and the home garden. A very early, hardy variety, producing large stalks of even, regular size and of excellent quality.

Washington. The most popular new variety ever introduced. Stalks are large, dark green, with heavy purple overtone. Tips are tight and firm and do not open until well out of the ground. Rust-resistant.



Washington Asparagus

Handy Helps for Garden and Orchard



BLOOMAID

For Flowers, Shrubs, Vegetables

If you want your flowers to bloom earlier and longer, your shrubs and hedges to be greener, thriftier, we recommend that you use Bloomaid. Fifteen times as rich as manure; does not bring in weed seed or the spores of plant diseases. *5-lb. container, \$.75 postpaid; 25-lb. Bag, \$1.75; 100-lb. Bag, \$5.00, F.O.B. Rochester.*

TREE PROTECTORS

The most practical tree protection against mice, rabbits, and other pests is the "Wood Veneer Protector," size, 10 by 20 inches, placed about the trunks of young trees. *In lots of 50, \$1.35; \$2.00 per hundred; \$8.50 per 500.*

THE LEVIN PRUNER

One of the easiest cutting pruning shears. *Postpaid, \$1.25.*

GREEN'S GRAFTING TOOL

A complete tool for grafting, made in one piece of forged steel. *Price postpaid, \$1.50.*

GREEN'S GRAFTING WAX

Price, pound package, postpaid, \$.75. Price, 5 lbs., postpaid, \$3.00.

BERRY CANE HOOK

A useful tool for thinning berry bushes and shrubbery. Length, 30 inches; *postpaid, \$1.50.*

Index

Acer.....	14, 15	Coreopsis.....	22	Indian Currant.....	6	Pyrethrum Daisy.....	25
Achillia.....	20, 21	Cornus, Bush Form.....	5	Iris.....	24	Pyrus ionensis bechteli.....	13
Aconitum.....	21	Cornus, Tree Form.....	14	Ivy.....	12	Quercus robur.....	15
Adams Needle.....	25	Cralaeus.....	15	Japan Honeysuckle.....	12	Quinces.....	45
Aesculus hippocastanum.....	14	Currants.....	52	Japan Ivy.....	12	Raspberries.....	48, 49
Allspice.....	7	Cut-leaf Stephanandra.....	5	Japanese Wind-flower.....	21	Red-Hot Poker.....	25
Almonds (Flowering).....	4	Cydonia japonica.....	6	Japanese Dwarf Barberry.....	18	Red-Leaved Barberry.....	56
Althea.....	4	Daphne Cneorum.....	20	Japanese Snowball.....	9	Regel's Privet.....	18
Alpine Plants.....	20	Day Lily.....	23	Junipers.....	17	Rhododendrons.....	17
Alyssum Saxatile.....	20	Delphiniums.....	23	Kolkwitzia amabilis.....	4	Rhubarb.....	54
American Ivy.....	12	Deutzias.....	5	Korean Spiraea.....	56	Rock Garden Plants.....	20
American Linden.....	14	Dianthus Barbatus.....	25	Lace Bush.....	5	Rose of Sharon.....	20
Ampelopsis veitchi.....	12	Dicentra Spectabilis.....	21	Larkspur.....	23	Rose Daphne.....	20
Anemone.....	21	Diervilla.....	10	Liatris.....	21	Rosa Hugonis.....	54
Apple Trees, Standard.....	36, 39	Digitalis.....	24	Lilacs.....	8, 9	Rose of Sharon.....	4
Apple Trees, Dwarf.....	39	Dogwoods, Bush.....	5	Lindens.....	14	Roses.....	28-35
Apricots.....	47	Dogwoods, Tree.....	14	Lonicera.....	5	Rudbeckia Purpurea.....	25
Aquilegia.....	22	Double Kerria.....	6	Lonicera japonica hallicana.....	12	Rugosa Roses.....	54
Arborvitae.....	16, 17	Dutchman's Pipe.....	12	Lupins.....	20, 25	Sage.....	54
Aristolochia siphio.....	12	Dwarf Barberry.....	18	Lychnis.....	20, 25	Salix.....	15
Arrow-Wood.....	9	Elms.....	14	Maples.....	14, 15	Sambucus canadensis aurea.....	5
Ash, American.....	13	Euonymus alatus.....	15	Mock Orange.....	6	Scabiosa.....	25
Asparagus.....	54	European Sycamore.....	15	Milfoil.....	20, 21	Sedum.....	20
Baby's Breath.....	24	Erigone, speciosus.....	24	Monarda.....	25	Sempervivum.....	20
Barberry.....	18, 56	Evergreens.....	16, 17	Monarda.....	25	Shasta Daisy.....	25
Basswood.....	14	Exochorda grandiflora.....	7	Monarda.....	25	Snowball.....	9
Beauty Bush.....	4	Flags.....	24	Monkshood.....	21	Snowberry.....	7
Bechtels Crab.....	13	Flecbane.....	24	Moss Pink.....	20	Sorbus Americana.....	13
Beebalm.....	25	Flowering Cherries.....	14	Mulberries.....	15, 47	Spiraeas.....	7, 56
Berberis.....	18, 56	Flowering Plum.....	15	New American Mulberry.....	47	Spruce.....	17
Betula.....	13	Forsythia.....	5	Nut Trees.....	47	Stephanandra flexoua.....	5
Bignonia radicans.....	12	Foxglove.....	24	Oak, English.....	15	Strawberries.....	52, 53
Birches.....	13	Fragrant Viburnum.....	9	Old Fashioned Snowball.....	9	Sweet Shrub.....	7
Bittersweet.....	12	Gaillardia.....	21	Oriental Plane.....	15	Sweet William.....	25
Blackberries.....	51	Garden Roots.....	54	Oriental Poppy.....	25	Syringas.....	6
Blanket Flower.....	21	Gladioli.....	26	Paeonies.....	27	Taxus.....	17
Blazing Star.....	21	Golden Bell.....	5	Painted Daisy.....	25	Thorn Trees.....	15
Bleeding Heart.....	21	Golden Elder.....	5	Papaver Oriental.....	25	Thuja.....	16, 17
Blue Bohnet.....	25	Gooseberries.....	51	Peaches.....	44	Tickseed.....	22
Boston Ivy.....	12	Grapes.....	49, 50	Pear Bush.....	7	Tillia.....	14
Broad-Leaved Evergreens.....	17	Green's Landscape Department.....	19	Pear Trees, Standard.....	41, 42	Tritoma Pfitzeri.....	25
Buddleia.....	4	Gypsophila.....	20, 24	Perennials.....	20-27	Trumpet Vine.....	12
Bush Honeysuckle.....	5	Hardy Primrose.....	20	Philadelphia.....	6	Ulmus.....	14
Butterfly Bush.....	4	Hawthorns.....	15	Phlox, Hardy.....	26	Umbrella Tree.....	13
California Privet.....	18	Hedges.....	18	Phlox subblata.....	20	Veronica.....	20, 25
Calycanthus floridus.....	7	Hemerocallis.....	23	Physalis.....	22	Vines.....	12
Canterbury Bell.....	22	High Bush Cranberry.....	9	Pines.....	9, 10	Violas.....	20, 25
Carnations, Hardy.....	22	Hollyhocks.....	24	Platanus orientalis.....	15	Viburnums.....	9, 10
Catalpa.....	13	Honeysuckle, Bush.....	5	Plums, Flowering.....	15	Virginia Creeper.....	12
Celastrus scandens.....	12	Horse Chestnut, White.....	14	Plums, Fruit.....	46	Weigela.....	10
Cerasus.....	14	Horse Radish.....	54	Polyantha Roses.....	54	Western Catalpa.....	13
Cherries, Flowering.....	14	How to Plant Perennials.....	27	Poplars.....	15	Winged Burning Bush.....	10
Cherries, Sour, Sweet.....	40	How to Build Rock Gardens.....	20	Primula.....	25	Witherod.....	10
Chinese Elm.....	14	How to Plant Roses.....	34	Privets.....	18	Willows.....	15
Chinese Lantern Plant.....	22	How to Plant Shrubs.....	11	Prunus glandulosa.....	4	Wisteria.....	12
Chrysanthemums.....	22	Hybrid Perpetual Roses.....	33	Prunus pissardi.....	15	Woodbine.....	12
Clematis.....	12	Hybrid Tea Roses.....	28-32	Prunus triloba.....	15	Yew.....	17
Climbing Roses.....	35	Hydrangeas.....	6	Purple-Leaved Plum.....	15	Yucca.....	25
Columbine.....	22	Ibodium Privet.....	18				
Coral Berry.....	6						
Coralbells.....	20						

Planting Calendar for Spring and Fall Seasons

THROUGH extensive study and research during the past fifty years, we have found the following dates best adapted to the successful transplanting of growing things.

SPRING PLANTING SEASON

March 10th to June 1st

Ornamental Trees, Shrubs and Vines, Grapes and Fruit Trees

March 10th to May 15th

Roses, Blackberries, Raspberries, Currants and Gooseberries

April 15th to May 15th

Perennials and Strawberries, which are always sent in separate shipments postpaid.

April 15th to June 1st

Evergreens

All varieties contained in this catalog can be successfully transplanted in either spring or fall except peaches, which are offered for spring planting only.

FALL PLANTING SEASON

August 15th to October 1st

Potted Strawberry Plants, Paeonies and Iris

September 1st to October 15th

Perennials and Evergreens

October 15th to December 1st

Ornamental Trees, Shrubs and Vines, Raspberries, Currants, Gooseberries, Grapes and Fruit Trees

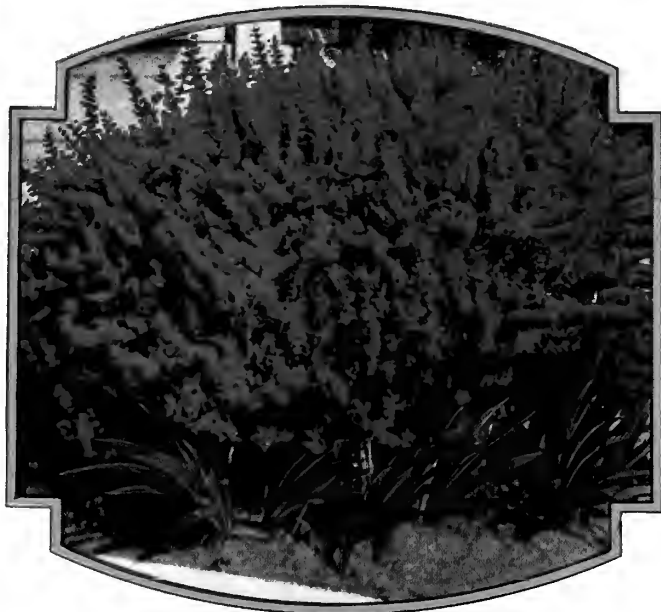
November 1st to December 1st

Roses

SPECIAL NOTICE

The above varies slightly with weather conditions. We will be guided by this when making shipments.

Two New Shrubs of Merit



New Red-Leaved Barberry

RED-LEAVED BARBERRY

(*Berberis Thunbergi atropurpurea.*) A new form of Japanese Barberry with rich bronze-red foliage of very striking appearance. Full exposure to the sun is necessary to intensify the brilliant red of its foliage. Its popularity is increasing every year because of its usefulness in creating unusual and artistic effects when planted with other shrubs. Our new low prices bring it within the reach of all.

1 to 1½ feet...75c each; \$6.50 per 10
1½ to 2 feet...90c each; \$8.50 per 10

Special Offer No. 75

1 Red-Leaved Barberry 1 to 1½ ft.
1 Korean Spiraea.....1 to 1½ ft.

Regular Catalog Price \$1.75

**Special Collection
Price \$1.49**

KOREAN SPIRAEA

(*Spiraea Trichocarpa.*) Another new shrub from China, introduced by Dr. E. H. Wilson and the Arnold Arboretum. It is considered the most beautiful of all the Spiraea family. Long, arching branches covered with large rounded clusters of snowy white flowers in June. The bush retains its glossy green foliage throughout the summer. An excellent and graceful variety, growing 4 to 6 feet in height. A really beautiful shrub which we are proud to add to our list of "approved" shrubs.

1 to 1½ feet.....\$1.00 each
2½ to 3 feet.....\$1.50 each



New Korean Spiraea

**Catalog for Spring and
Fall Seasons of
1931**

**GREEN'S NURSERY
COMPANY
ROCHESTER, N. Y.**