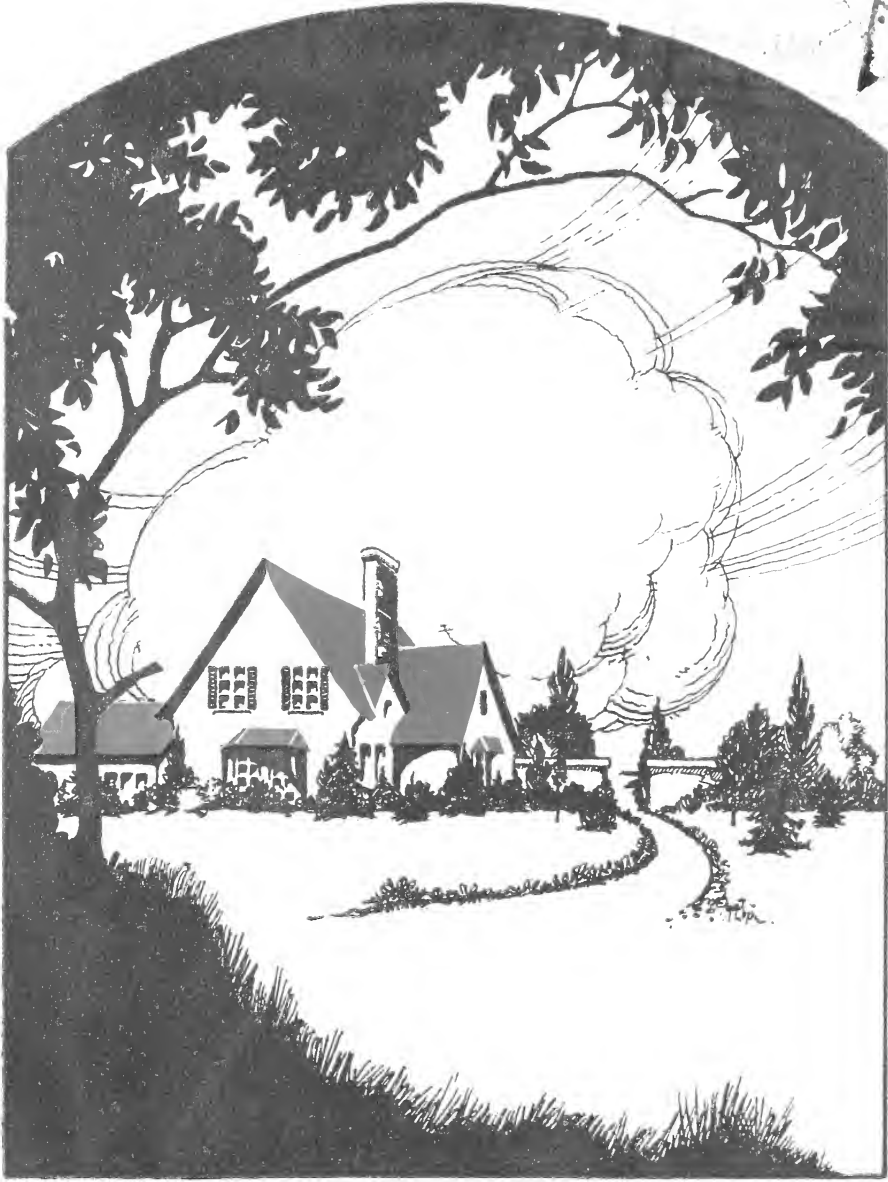


Historic, Archive Document

Do not assume content reflects current scientific knowledge, policies, or practices.

1931



HOGANSVILLE NURSERIES

JOHN WILKINSON, PROP.
HOGANSVILLE **GEORGIA**

DESCRIPTIVE CATALOG

and

PLANTING GUIDE

Economic and Social Policy
Economic Conditions
Rec'd JAN 10 1931 ☆



HOGANSVILLE NURSERIES

JOHN WILKINSON, *Prop.*

HOGANSVILLE, GEORGIA

CONTENTS

	PAGE
CONIFEROUS EVERGREENS	3
BROAD-LEAVED EVERGREENS	10
HARDY ORNAMENTAL FLOWERING SHRUBS.....	17
ORNAMENTAL DECIDUOUS TREES.....	27
CLIMBING VINES	33
MISCELLANEOUS	34
PLANTING INFORMATION	35
GRASS SEED	37
INDEX	38

TERMS—Cash with order, except to persons who satisfy us as to their responsibility. Remittances may be made by bank draft, Postal or Express Money Order or certified check.

SUBSTITUTION—The varieties you select are always sent unless you grant permission to substitute. If you wish a particular color, rather than a particular variety, many times it is to your advantage to mention the fact, as we may oftentimes improve upon your selection. Therefore, if a substitute is acceptable, be sure to advise us, as otherwise everything is shipped absolutely as ordered.

ORDER EARLY—Orders are filled in rotation. Ordering early will insure the reservation of varieties that later may be sold out, and save you any disappointment.

TIME OF SHIPMENT—Unless you give a specific shipping date, your order will be shipped to arrive at the proper time to plant in your locality. If you wish your order shipped at any special time please advise us.

PACKING—All plants are carefully packed to prevent drying or freezing while in transit. All packing charges are included in catalog list price except for specimen stock of unusual size, which will be at cost.

HOW WE SHIP—We prefer shipping by express, customer to pay the charges. If you prefer sending by parcel post, add 10 per cent to your order. This applies to evergreens and shrubs.

ACCURACY OF DESCRIPTION—All descriptions and other matter in this catalog will be found to be as nearly in accordance with actual facts as it is possible to write them, great care having been taken to avoid exaggeration in descriptions of varieties.

IN ORDERING, please give plainly the name, postoffice address and state. Always tell us how you want goods to come, and name your express or freight station. Make out orders on separate sheet from your letter.

GUARANTEE—We guarantee all nursery stock furnished by us to be first-class and true to name. We exercise the greatest of care to have all our trees and plants true to name, well grown, packed in the very best possible manner and hold ourselves in readiness on proper proof to replace all trees and plants that may accidentally prove untrue to label, free of charge or refund the amount paid.

We do not guarantee stock to grow, or results in any way. No complaints will be entertained that are not made immediately on receipt of stock.



MEMBERS OF

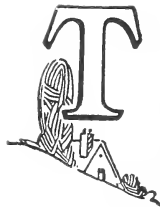
American Association of Nurserymen
Southern Nurserymen's Association

MEMBERS OF

Alabama Nurserymen's Association
Tennessee Nurserymen's Association



CONIFEROUS EVERGREENS



THE CONIFEROUS EVERGREENS (*cone bearing evergreens*) — Are essential in almost every plan for beautifying the home and surrounding grounds. They can be set in groups, with shrubbery or along the foundation of the house or used singly as specimens. In the winter time, when most other plants are dormant, the absence of other colors helps to bring

out their beauty of form in a very striking manner. We ship all coniferous evergreens with a ball of earth surrounding the roots, securely burlapped. This assures you of receiving plants with practically the entire root system intact and when planted in your ground they should live and continue their growth. Do not remove the burlap from the roots—just loosen the string at the top. Evergreens once planted and established shift for themselves and require but little pruning in the spring.

CEDARS (*Cedrus*)

DEODAR CEDAR (*Cedrus deodara*)—A true cedar which makes a beautiful tree of from 50 to 75 feet. Foliage is feathery, and of a pleasing blue green color; its lower branches gracefully sweep the ground giving the tree a stately appearance.

12 to 18 inches-----\$1.25	2 to 3 feet-----\$3.00
18 to 24 inches----- 2.00	3 to 4 feet----- 5.00
4 to 5 feet-----\$7.00	

CEDAR OF LEBANON (*C. libani*)—One of the most prominent species, so often mentioned in Sacred History. It is one of the most beautiful evergreen trees for lawn decoration. Reaches a height of thirty feet or more and the trunk will measure five feet or more in circumference.

12 to 18 inches-----\$1.50	2 to 3 feet-----\$3.50
18 to 24 inches----- 2 00	3 to 4 feet----- 5.00
4 to 5 feet-----\$7.00	

ATLAS CEDAR (*C. atlantica*)—A large tall evergreen, with horizontal branches. One of the most beautiful of all the conifers. So picturesque do the trees become with age that a large reservation of them in Algeria is visited by hosts of tourists each year. Ultimate height 120 feet.

12 to 18 inches-----\$1.50	30 to 36 inches-----\$ 5.00
18 to 24 inches----- 2.00	3 to 4 feet----- 7.00
24 to 30 inches----- 3.00	4 to 5 feet----- 10.00



Cedrus Deodara

RETINOSPORAS (*Chamaecyparis*)

A very interesting and important group of conifers for park, lawn, mass plantings and in the smaller sizes, for porch boxes and tubs. They grow best in moist, well drained soil; and in partly shaded situations. They are rather pyramidal in habit and are among the most attractive and easiest handled coniferous evergreens we have. Can be kept small by spring pruning.

PLUME RETINOSPORAS (*Chamaecyparis pisifera plumosa*)—Some times called Plumed Cypress. The foliage of this is a greyish green, very fine cut with a feathery appearance. Similar to a fine cut fern frond. Will make a wonderful specimen if kept sheared.

GOLDEN PLUME RETINOSPORAS (*C. pisifera plumosa aurea*)—Like the green form above; of a golden yellow color. Useful for contrast planting in foundation work or lawn groups.

	Each
12 to 15 inches, compact.....	\$1.00
15 to 18 inches, very compact.....	1.50
18 to 24 inches, very compact.....	2.00
2 to 3 feet, very compact.....	2.50
3 to 4 feet, very compact.....	4.00
4 to 5 feet, very compact.....	6.00

(The above prices apply to both varieties)



Sawara Retinospora

SILVERTIP RETINOSPORAS (*C. pisifera plumosa*)

—A dwarf variety of compact, globular growth. Foliage very graceful, similar to the Plume variety; edges silver tipped. Good for border of formal beds, small urns, etc.

	Each
10 to 12 inches.....	\$1.25
12 to 15 inches.....	1.50
15 to 18 inches.....	2.00
18 to 24 inches.....	3.00

RETINOSPORA OBTUSA NANA (*C. obtusa nana*)—

Dwarf Hinoki Cypress. A variety of very slow growth and irregular, picturesque form. Its short fronds of dark green foliage are beautifully curled.

	Each		Each
12 to 18 inches.....	\$2.50	18 to 24 inches.....	\$3.50

SAWARA RETINOSPORAS (*C. pisifera*)—A hardy, rapid growing tree, the foliage of which resembles the Arbor Vitae. Open and tall in growth, with erect branches pendulous at tips. When sheared, the foliage develops its true color especially well. The bright green foliage is very lacy in appearance with a silvery color underneath. Makes a very attractive specimen on the lawn.

GOLDEN SAWARA RETINOSPORAS (*C. pisifera aurea*)—

A bright golden form similar to the green form described above. An ideal type for corners in foundation planting, especially against a dark brick. Especially desirable for city planting.

MOSS RETINOSPORAS (*C. pisifera squarrosa*)—

The soft beautiful silvery blue foliage is very fine cut and very lacy in appearance. Growth dense; shears well and shows to best advantage close against dark greens. If left to grow naturally it is unusually attractive. Do not plant in sooty or dusty locations.

	Each		Each
15 to 18 inches.....	\$1.50	2 to 3 feet.....	\$3.00
18 to 24 inches.....	2.00	3 to 4 feet.....	5.00

(These prices apply to the above three varieties)

THREAD RETINOSPORAS (*C. pisifera filifera*)—

An unusual evergreen, broad and bushy, with long stringy foliage and tasseled ends. Pyramidal in outline and bright green in color. Makes an especially fine variety for specimen planting.

	Each		Each
15 to 18 inches.....	\$1.00	2 to 3 feet.....	\$2.50
18 to 24 inches.....	1.50	3 to 4 feet.....	3.50

HINOKI CYPRESS (*C. obtusa*)—

A slender rapid growing plant, rather open in habit, with cupped foliage of a dark green color; usually of medium height. Prefers a rather fertile soil.

LAWSON CYPRESS (*C. lawsoniana*)—

A very graceful plant of medium height. An erect grower, broad at base, tapering to a point at the tip, with drooping branches, under surface of foliage silvery, upper surface dark green. Make an ideal lawn specimen. Grows best in a dry, well-drained situation.

	Each		Each
12 to 15 inches.....	\$1.00	18 to 24 inches.....	\$2.50
15 to 18 inches.....	1.50	2 to 3 feet.....	3.50
		3 to 4 feet.....	\$5.00

(These prices apply to the above two varieties)

DWARF LAWSON CYPRESS (*C. lawsoniana nana*)—

Similar to the Lawson cypress but of smaller growth. Excellent as specimen when planted in a tub or urn.

	Each		Each
12 to 15 inches.....	\$1.50	18 to 24 inches.....	\$3.50
15 to 18 inches.....	2.50	2 to 3 feet.....	4.50

CRYPTOMERIA

COMMON CRYPTOMERIA (*C. japonica*)—A splendid evergreen tree, from sixty to one hundred feet high, which comes from the north of Japan. Requires a rich deep soil, with plenty of moisture and protection from cutting winds to fully develop its beauty. Of rapid growth and regular pyramidal habit; foliage resembles that of the Norfolk Island Pine.

	Each	Doz.
18 to 24 inches	\$1.00	\$10.00
24 to 30 inches	1.50	15.00
2 to 3 feet	2.00	20.00
3 to 4 feet	3.00	30.00
4 to 5 feet	5.00	50.00

CHINESE FIR (*Cunninghamia Lanceolat*)—Very decorative evergreen tree with horizontally spreading branches. Hardy north to Pennsylvania.

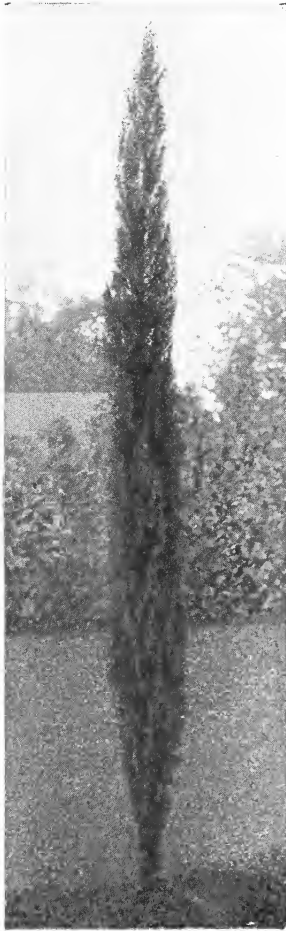
	Each	Each
12-15 inches	\$1.25	24-30 inches \$2.25
15-18 inches	1.50	2-3 feet 2.75
18-24 inches	1.75	3-4 feet 3.50

CYPRESS (*Cupressus*)

ARIZONA CYPRESS (*C. arizonica*)—A variety of rather moderate growth and of slender, pyramidal habit; foliage is similar to Cedar in texture, but has a silvery blue sheen; assumes a brown tint in the winter.

	Each	Each
18 to 24 inches	\$1.00	2 to 3 feet \$2.00
24 to 30 inches	1.50	3 to 4 feet 3.00

ITALIAN CYPRESS (*C. sempervirens*)—Of compact and shafillike habit, sometimes attaining a height of 50 feet or more. Foliage is dark green with slight silvery cast. It is most desirable where a formal effect is desired.



Italian Cypress

	Each
18 to 24 inches	\$1.00
24 to 30 inches	1.50
2 to 3 feet	2.00
3 to 4 feet	2.50
4 to 5 feet	4.50
5 to 6 feet	6.50

COLUMNAR ITALIAN CYPRESS (*C. pyramidalis*)

Similar to the above, but grows slightly taller.

	Each
18 to 24 inches	\$1.00
2 to 3 feet	1.50
3 to 4 feet	2.50
4 to 5 feet	4.00

PROSTRATE JUNIPER (*J. com. depressa*)—One of the most attractive small Junipers; especially adapted for planting among rocks and on hillsides. Branches are prostrate, foliage a silvery light green. Reaches a height of 2 or 3 feet and spreads about 6 or 8 feet.

	Each	Each
12 to 15 inches	\$1.50	15 to 18 inches \$2.00
18 to 24 inches		\$3.00

GOLDEN PROSTRATE JUNIPER (*J. com. depressa aurea*)—Similar in form to the Prostrate Juniper, foliage in spring is a light golden yellow, later turning to bronzy green.

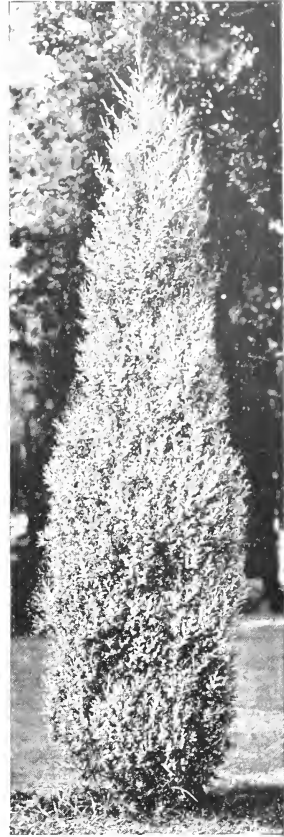
	Each	Each
12 to 15 inches	\$1.50	15 to 18 inches \$2.00
18 to 24 inches		\$3.00

ENGLISH JUNIPER (*J. communis*)—Also known as Common Juniper. Makes a dense pyramidal specimen of variable habit. Its feathery foliage is silvery blue in color and lends itself admirably as a specimen, or in groups, or for foundation planting. Very hardy. Height 15 to 20 feet.

	Each	Each
12 to 18 inches	\$.75	3 to 4 feet \$3.00
18 to 24 inches	1.00	4 to 5 feet 4.00
24 to 30 inches	1.50	5 to 6 feet 5.00
2 to 3 feet	2.00	6 to 8 feet 8.00

JUNIPERS (*Juniperus*)

ASHFORD JUNIPER (*Juniperus communis ashfordi*)—This type of Juniper, with short needles of a silvery greyish green deepening into purple shades during the winter, is superior to most other types as it does not die out or turn brown in the center and is of a more graceful form than common or Irish Juniper. Of rather compact growth, but spreads outward at the tips as the age of the plant increases. Reaches a height of 6 to 8 feet.



English Juniper

	Each
18 to 24 inches	\$1.00
24 to 30 inches	1.50
2 to 3 feet	2.50
3 to 4 feet	3.50

IRISH JUNIPER (*J. com. hibernica*)—This is a decided columnar form and immediately attracts attention. Erect, slender and formal in habit. Foliage is sage green, and very compact. Used in contrast with other plants for formal effects.

SWEDISH JUNIPER (*J. com. succica*)—Tall growing, of formal, columnar habit. The foliage is dense, fairly broad, with drooping tips; in color glaucous green somewhat lighter and bluer than the Irish Juniper.

	Each	Each
12 to 18 inches	\$.75	2 to 3 feet \$2.00
18 to 24 inches	1.00	3 to 4 feet 3.00
24 to 30 inches	1.50	4 to 5 feet 4.00

(These prices apply to the above two varieties)

JUNIPER (Continued)

PFITZER JUNIPER (*Juniperus chinensis pfitzeriana*)—the most popular of all the spreading types. Foliage is grey green both summer and winter; bushy with spreading, plume-like branches. It lays close to the ground and is especially valuable in landscape planting. Will withstand the soot and dust of cities and lends itself to severe pruning in case it outgrows its location.

	Each		Each
15 to 18 inches.....	\$1.50	2 to 3 feet.....	\$4.50
18 to 24 inches.....	2.00	3 to 4 feet.....	6.00
24 to 30 inches.....	3.00	4 to 5 feet.....	7.50

CREeping JUNIPER (*J. horizontalis*)—A handsome, serviceable ground-covering type of closely radiating habit. The foliage is thread-like and distended, yet it is dense and prostrate; the color is a healthy light green.

	Each		Each
12 to 15 inches.....	\$1.00	2 to 3 feet.....	\$2.50
15 to 18 inches.....	1.50	3 to 4 feet.....	3.00
18 to 24 inches.....	2.00	4 to 5 feet.....	4.50

SAVIN JUNIPER (*J. sabina*)—A fine dwarf ground cover or filler in Evergreen groups. Foliage a handsome moss green; its main branches protrude from the crown at a 45 degree angle. A good plant for use in cities.

	Each		Each
12 to 15 inch spread.....	\$1.00	18 to 24 inch spread.....	\$2.00
15 to 18 inch spread.....	1.50	2 to 3 feet spread.....	3.00
3 to 4 feet spread.....	\$4.50		

TAMARIX SAVIN JUNIPER (*J. sabina tamariscifolia*)—A beautiful trailing form of Savin, with bluish green foliage. The construction is dense and very fine. One of the best.

	Each		Each
12 to 15 inch spread... ..	\$1.25	18 to 24 inch spread... ..	\$2.00
15 to 18 inch spread... ..	1.50	2 to 3 feet spread... ..	3.00
3 to 4 feet spread.....	\$5.00		

WAUEGAN JUNIPER (*J. horizontalis douglasi*)—Ground-covering, closely compact. The beautiful silvery blue color assumes a rich purple autumn hue.

	Each		Each
12 to 15 inches.....	\$1.50	18 to 24 inches.....	\$3.00
15 to 18 inches.....	2.00	2 to 3 feet.....	4.50
3 to 4 feet.....	\$6.00		

SPINY GREEK JUNIPER (*J. excelsa stricta*)—An unusually attractive dwarf pyramidal form with very compact bluish green foliage. Vigorous in growth, and not particular as to soil. Its good characteristics are rather difficult to describe, but it is very pleasing wherever used.

	Each		Each
12 to 15 inches.....	\$1.00	18 to 24 inches.....	\$2.00
15 to 18 inches.....	1.50	2 to 3 feet.....	3.50
3 to 4 feet.....	\$5.00		



Retinospora Squarrosa Veitchii

VARIEGATED GREEK JUNIPER (*J. excelsa variegata*)—A form of the Greek Juniper, with an extremely slender outline. Foliage is variegated and very compact.

	Each		Each
12 to 15 inches.....	\$1.50	18 to 24 inches.....	\$3.00
15 to 18 inches.....	2.00	2 to 3 feet.....	3.50



RED CEDAR (*J. virginiana*)—A well-known native cedar; sturdy, thrifty and a strong grower. Easily trained into formal shapes. Foliage is compact and a light green in color. Adapted for shade or ornamental purposes.

	Each		Each
18 to 24 inches.....	\$1.00	3 to 4 feet.....	\$3.00
24 to 30 inches.....	1.50	4 to 5 feet.....	4.00
2 to 3 feet.....	2.00	5 to 6 feet.....	5.00

SILVER RED CEDAR (*J. Virginiana Glauca*)—An extremely attractive variety of the Red Cedar. It is more compact than the green form, and can be trimmed to narrow, column-like effect. Has the most decided blue color of all the blue-green trees. Holds its color both summer and winter, and succeeds so well that it is always to be desired.

18 to 24 inches.....	\$2.00	Each
24 to 30 inches.....	2.50	Each
30 to 36 inches.....	4.00	Each
3 to 4 feet.....	6.00	Each
4 to 5 feet.....	7.50	Each

LIBOCEDRUS

INCENSE CEDAR (*Libocedrus Decurrens*)—A tall, stately tree of compact, upright growth. Grows 75 to 100 feet. Native of the Northwest Mountains. Beautiful and distinct American evergreen.

Prices	Each
2-3 feet.....	\$3.00
18-24 inches.....	2.50



SPRUCE (*Picea*)

NORWAY SPRUCE (*P. excelsa*)—The most popular of the Spruce family, easy to transplant, hardy and grows rapidly. Pyramidal in shape and makes an excellent specimen; also very desirable as a screen, windbreak or hedge. The needles are dark green in color.

	Each		Each
12 to 18 inches.....	\$1.00	2 to 3 feet.....	\$2.50
18 to 24 inches.....	1.50	3 to 4 feet.....	4.00
		4 to 5 feet.....	\$5.00

YEW

JAPANESE YEW (*Taxus cuspidata*)—A distinctly valuable Yew, growing forty to fifty feet high. Grows close, upright and compact. Foliage dark green, fruit bright scarlet.

	Each		Each		Each
12-15 inches.....	\$1.25	15-18 inches.....	\$1.75	18-24 inches.....	\$2.50



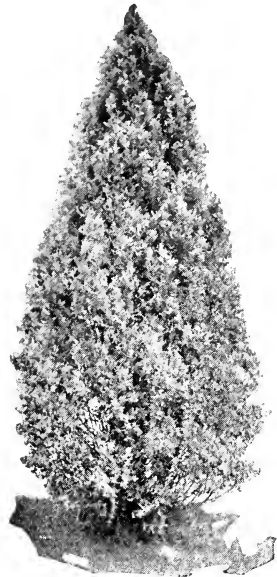
Landscape Suggestions



Any problems you have in planning or planting we want you to bring to us. All that we ask is that you let us hear from you before the rush season, which is in the fall.

We invite your inquiries about plants or sizes which are not listed in this catalog as we always had a large variety which we have too small a number of each to list.

The Arborvitae (Thuja)



Oriental Arborvitae
(*T. orientalis*)

This well-known group of evergreens includes some of the most beautiful and useful evergreen shrubs we have in cultivation, not only for single plants for the lawn, but for hedges, either high or low, for which they are admirably adapted.

The American or Occidental types are of open growth, short and horizontal with flat pressed branches. The foliage has a delightful fragrance and is of various shades of green and gold.

The Oriental type is of a more compact growth and is peculiar for its flattened branches, which are upright. Foliage varies from a light green to a golden green.

TOM THUMB ARBORVITAE (*T. occidentalis ellwangeriana*)—A low, broad pyramid with slender branches clothed with two kinds of foliage.

	Each		Each
12 to 15 inches.....	\$1.00	15 to 18 inches.....	\$1.25
		18 to 24 inches.....	\$2.50

ORIENTAL ARBORVITAE (*T. orientalis*)—A comparatively low, broadly pyramidal variety. Grows very rapidly and can be used where mass effect is wanted, as a specimen or in a hedge. Shears especially well and it is often necessary to prune it to make it real compact. Holds its bright green color throughout the winter.

	Each		Each
18 to 24 inches.....	\$1.50	3 to 4 feet.....	\$3.00
24 to 30 inches.....	2.00	4 to 5 feet.....	4.00
2 to 3 feet.....	2.50	5 to 6 feet.....	5.00

BERCKMAN'S GOLDEN ARBORVITAE (*T. orientalis aurea nana*)—One of the most showy of all the Arborvitae family. The color is an unusually attractive bright golden green which makes it still more attractive.

BONITA ARBORVITAE (*orientalis bonita*)—A beautiful broad, cone-shaped Arborvitae of unequalled richness, in color and perfection of form. The most attractive and useful of all varieties. Slow growth makes it desirable where other shrubs would over-grow.

	Each		Each
10 to 12 inches.....	\$1.00	2 to 3 feet.....	\$ 4.00
12 to 15 inches.....	1.25	3 to 4 feet.....	6.00
15 to 18 inches.....	2.00	4 to 5 feet.....	10.00
18 to 24 inches.....	2.50	5 to 6 feet.....	12.50

These prices apply to above two figure varieties.

AMERICAN ARBORVITAE (*T. occidentalis*)—One of the most popular types. It is inclined to be conical in habit of growth, fairly compact and of a light green color. Can be trimmed at will or even closely sheared when sufficiently developed.

	Each
18 to 24 inches.....	\$1.50
24 to 30 inches.....	2.00
2 to 3 feet.....	2.50
3 to 4 feet.....	3.00

AMERICAN PYRAMIDAL ARBORVITAE (*T. occidentalis pyramidalis*)—The most compact and erect of the entire species, being perfectly pyramidal in shape, spreading very little at its base and retaining the shape without shearing. It is almost a counterpart of the Irish Juniper. The color is a deep green and is retained throughout the year. Useful for general planting either as specimens or in groups.

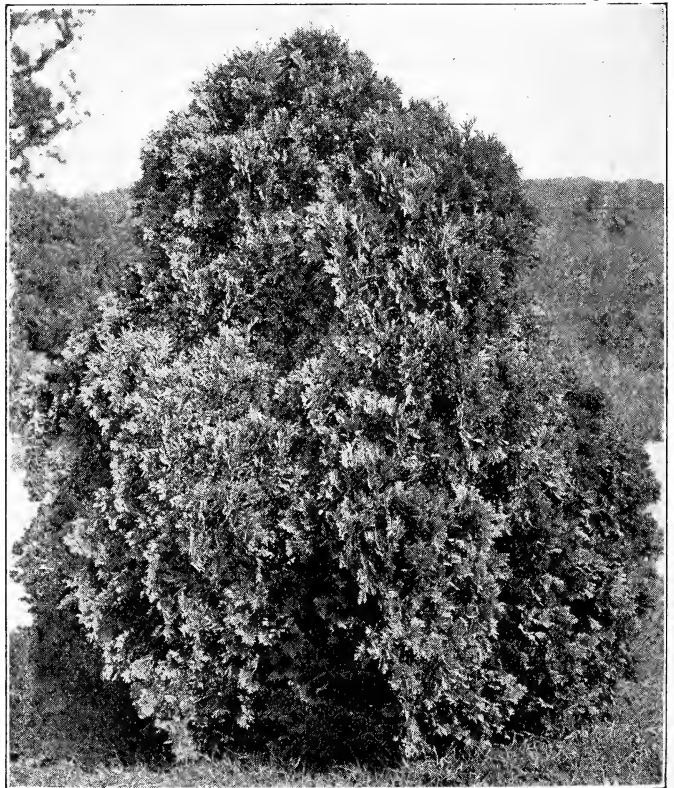
	Each
15 to 18 inches.....	\$1.25
18 to 24 inches.....	1.50
24 to 30 inches.....	2.50
2 to 3 feet.....	3.00
3 to 4 feet.....	4.00

AMERICAN GLOBE ARBORVITAE (*T. occidentalis globosa*)—This variety most usually forms a dense, low globe; the spread equaling the height. The foliage retains its light green color throughout the winter and is very attractive. Most generally used as specimens in urns or vases and for front line planting.

	Each
12 to 15 inches.....	\$1.25
15 to 18 inches.....	1.50
18 to 24 inches.....	2.50

HOVEY ARBORVITAE (*T. occidentalis hoveyi*)—A small, hardy tree, very compact and broadly pyramidal. Foliage a light green with a golden tinge; very distinct and desirable variety.

	Each
12 to 15 inches.....	\$1.25
15 to 18 inches.....	1.50
18 to 24 inches.....	2.50
2 to 3 feet.....	3.00



Hovey Arborvitae
(*T. occidentalis Hoveyi*)



Berckman's Golden Arborvitae

SIEBOLD ARBORVITAE (*T. orientalis compacta*)—A broad compact type with oright green foliage; very attractive and does well in most any soil.

	Each		Each
15 to 18 inches	-----\$1.25	2 to 3 feet	-----\$3.00
18 to 24 inches	-----2.00	3 to 4 feet	-----4.00
	4 to 5 feet	-----	\$.50

ORIENTAL PYRAMIDAL ARBORVITAE (*T. orientalis pyramidalis*)—Very attractive, being perfectly pyramidal in shape, spreading very little at its base and retaining its shape without shearing. Foliage is a deep rich green. Very popular for corners, in front of pillars, center or background of group plantings.

	Each		Each
15 to 18 inches\$1.50	2 to 3 feet\$3.00
18 to 24 inches2.00	3 to 4 feet4.00

TEXAS BLUE ARBORVITAE (*T. orientalis texana glauca*)—The foliage of this plant is a fine bluish green turning to a pleasing purple in winter. Similar to the Oriental Pyramidal in the soft texture of its foliage but does not burn out. Fills out to a broad pyramid as they age.

	Each		Each
18 to 24 inches	-----\$1.50	3 to 4 feet	-----\$3.00
2 to 3 feet	-----2.50	4 to 5 feet	-----5.00

T. ROSEDALE HYBRID—A neat, compact little shrub of rounded outline, and bright, soft bluish-green foliage.

	Each		Each
12-15 inches	-----\$.75	18-24 inches	-----\$1.50
15-18 inches	-----1.00	24-30 inches	-----2.00

BAKER'S COMPACT ARBORVITAE (*T. orientalis bakeri*)—A fine pyramidal type which is unexcelled for its tall, columnar growth; soft light green foliage. The plant does not take on character until about four feet high, when it fills out to form an almost perfect pyramid, broad at the base, tapering to a blunt point at top. One of the best of the compact forms, vigorous in growth, intense coloring, and a distinctive appearance.

	Each		Each
15 to 18 inches	-----\$1.50	2 to 3 feet	-----\$2.50
18 to 24 inches	-----2.00	3 to 4 feet	-----3.50
	4 to 5 feet	-----	\$5.00

GOLDSPIRE ARBORVITAE (*T. orientalis aurea conspicua*)—The most beautiful and artistic of all pyramidal Arborvitae. A compact symmetrical tree, branching close to the ground and tapering gradually to the tip. Its foliage is probably the most golden of all. Excellent in groups or as single specimens.

	Each		Each
18 to 24 inches\$2.00	4 to 5 feet\$5.00
2 to 3 feet2.50	5 to 6 feet7.50
3 to 4 feet4.00	6 to 8 feet10.00
	8 to 10 feet	-----	\$15.00

BEVERLYENSIS ARBORVITAE (*T. orientalis meldensis*)—A compact symmetrical tree; foliage a bright green which does not turn brown in winter.

	Each		Each
12 to 15 inches	-----\$1.50	18 to 24 inches	-----\$3.50
15 to 18 inches	-----2.50	2 to 3 feet	-----4.00

ROSEDALE ARBORVITAE (*Biota Rosedale*)—Bluish gray foliage; making a very striking plant; unlike any other arborvitae. Perfect compact, pyramidal shape. Widely used for urns.

	Each		Each
12-15 inches	-----\$.75	18-24 inches	-----\$1.50
15-18 inches	-----1.00	24-30 inches	-----2.00



Goldspire Arborvitae

BROAD-LEAVED EVERGREEN SHRUBS

Southern Grown for Southern Homes



THE complete development of a home calls for the correct treatment of the out-of-door units as well as for the furnishing of the rooms inside. There is no group of plants that will add more beauty to the out-of-door unit than the Broad-leaved Evergreen group. Many of the varieties lend beauty both with bloom and their lovely green-colored foliage, especially in the winter time when so many of the Deciduous Flowering shrubs are bare. Our collection is very large and all of our plants have been transplanted frequently which insures you of receiving plants with a thick growth of small feeding roots. The Broad-leaved Evergreens will thrive in almost any well-drained soil, and a few of them will grow in shady places. They require but little pruning except where used as strictly formal plants or hedges.

All of our Broad-leaved Evergreens are shipped to you with a ball of earth and an abundance of roots, carefully burlapped. The prices quoted are for small quantities; if large lots of a hundred or more are required, we can make you an attractive discount.

ABELIA

GLOSSY ABELIA (*Abelia grandiflora*)—One of the most attractive of the newer plants due to the fact that it combines a blooming shrub and evergreen foliage. Its graceful arching branches are covered with clusters of white flowers, tubular shaped flushed with pink, from May to November. The leaves are a glossy green which turns to a purplish bronze in the winter. The Abelia is useful for foundation, border or as a specimen. Grows in dense shade but does best in a sunny sheltered position. During the growing season it is advisable to pinch off the ends of the long shoots. This will make the plant dense and compact.

12 to 18 inches.....	Each	2 to 3 feet.....	Each
18 to 24 inches.....	\$.50	3 to 4 feet.....	\$1.00
	.75		1.25

AUCUBA

GOLDDUST AUCUBA (*Aucuba japonica variegata*)—An ornamental shrub of medium height (about 10 feet) which withstands dust, smoke and shade. Has large dark leaves which are spotted and flaked with yellow. Used for urns and window boxes, also in mass planting.

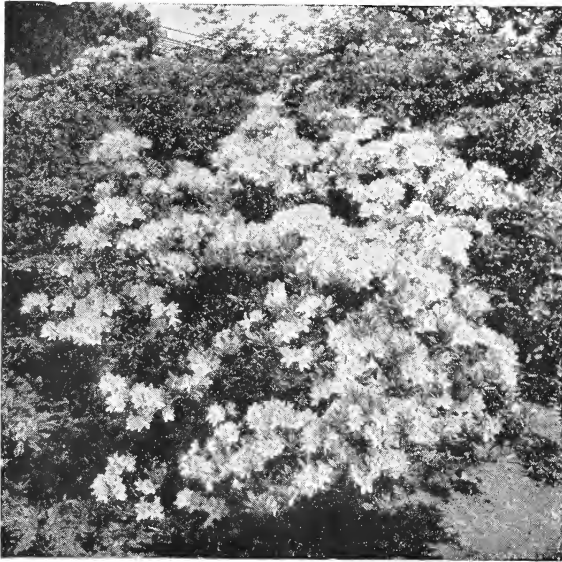
HIMALAYAN AUCUBA (*Aucuba himalaica*)—Similar to the Golddust Shrub except it has green, broad-pointed leaves without the spotted effect. Produces quantities of oblong fruit about a half inch long, bright crimson in color turning to a purple shade, making a fine contrast with the rich green foliage.

12 to 18 inches.....	Each	18 to 24 inches.....	Each
24 to 30 inches.....	\$1.00		\$1.50
	-----		\$2.00

(These prices apply to both varieties)



Glossy Abelia



Azaleas

AZALEAS

The most attractive flowering shrubs in the South. They thrive in the common soil of the garden, but in general, they require leaf mold or well-rotted muck and manure to be dug in with the natural soil. A good mulch of leaves or pine straw should be used as the Azaleas are surface feeders. Clay, lime and an excess of potash should be avoided.

HINODEGIRI AZALEA (*A. hinodegiri*)—A dwarf compact Japanese Azalea with bright carmine flowers. The blooms are produced in profusion in the early spring and almost hide the foliage which assumes a reddish appearance in the fall and winter months.

	Each		Each
6 to 8 inches	\$1.50	8 to 10 inches	\$1.75
10 to 12 inches	\$2.25		

AMOENA AZALEA (*A. amoena*)—Of somewhat stronger growth than the Hinodegiri, but of the same compact, bushy habit. Produces small claret colored blooms. Foliage assumes an autumn bronze tint in fall and winter.

	Each		Each
6 to 8 inches	\$1.00	8 to 10 inches	\$1.50
10 to 12 inches	\$2.00		

INDICA AZALEA (*Azalea indica*)—A beautiful evergreen shrub which is a mass of gorgeous flowers in the early spring and are perfectly hardy in this latitude. We offer the red, pink and white shades, in single flowers. Prefer a well-drained soil in which quantities of leaf mold have been mixed and protection from the hot afternoon sun.

	Each		Each
6 to 8 inches	\$1.00	8 to 12 inches	\$1.25
12 to 15 inches	\$1.75		

BARBERRY

BERBERIS ATROCARPA (*B. Sargentiana*)—A very handsome, new, hardy Barberry. This attractive evergreen grows to a height of about six feet, with corresponding breadth; thick dark evergreen leaves, yellow flowers and black fruit.

	Each		Each
12-15 inches	\$1.50	15-18 inches	\$2.00

BOX (*Buxus*)

TRUEDWARF BOX (*B. sempervirens suffruticosa*)—Quite extensively used for low hedges, as it is a dwarf, compact shrub. The foliage is a pleasing, bright lustrous green. Of slow growth, and its ultimate height is from four to six feet. Our stock is home-grown and bushy.

	Each		Each
3 to 4 inches	\$.10	8 to 10 inches	\$.75
4 to 6 inches	.15	10 to 12 inches	1.00
6 to 8 inches	.50	12 to 15 inches	1.50

COMMON BOX (*B. sempervirens*)—This is the boxwood most commonly seen in old-fashioned hedges. Of upright habit with small dark green leaves; dense and compact growth. A more rapid grower than the Truedwarf.

	Each		Each
4 to 6 inches	\$.10	12 to 15 inches	\$1.00
6 to 8 inches	.15	15 to 18 inches	1.25
8 to 10 inches	.35	18 to 24 inches	2.50
10 to 12 inches	.75	2 to 3 feet	3.50

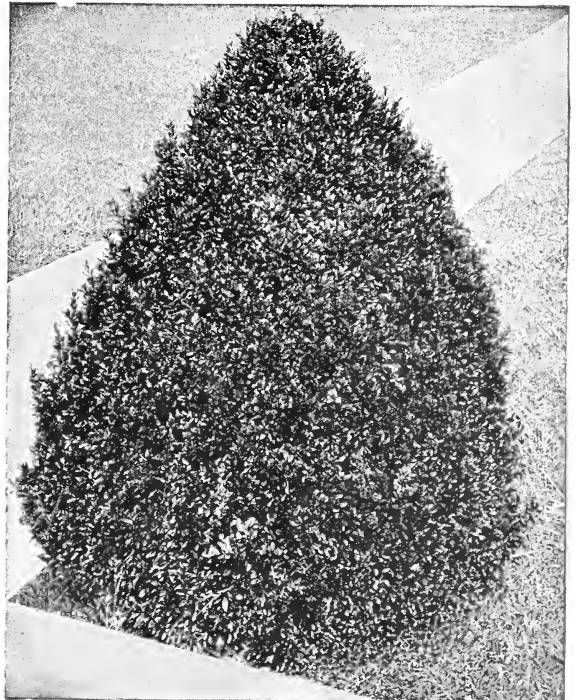
TRUETREE BOX (*B. sempervirens arborescens*)—Leaves are small, glossy, bright green. Grows in dense roundish form; valuable for formal planting. Succeeds in most well-drained soils, requires protection, however, against extremes of both heat and cold. Some shade is nearly always desirable. Reaches a height of 10 to 20 feet.

	Each		Each
8 to 10 inches	\$.10	15 to 18 inches	\$.50
10 to 12 inches	.25	18 to 24 inches	.75
12 to 15 inches	.35	2 to 3 feet	1.00
3 to 4 feet	\$2.50		

CAMELLIA

COMMON CAMELLIA (*Camellia japonica*)—The Japonica of the South. A well-known shrub, with glossy green foliage and beautiful flowers. Dense and symmetrical in its growth. Winter blooming. The colors are white, pink, red, and variegated.

	Each		Each
12 to 18 inches	\$1.50	18 to 24 inches	\$2.50



Boxwood

ELAEAGNUS

BRONZE ELAEAGNUS (*E. pungens reflexa*)—Also known as the Bronze Oleaster. A vigorous climbing plant, which if given support will make a very desirable vine. It can be pruned and kept as a shrub. The leaves are large, green above and silvery beneath, overspread with a bronze cast; the younger twigs are of a brownish hue.

ELAEAGNUS-FRUITLANDI—Similar to *pungens reflexa* but has broader leaves and is used chiefly for their handsome foliage.

	Each		Each
12 to 18 inches	-----\$1.25	24 to 30 inches	-----\$2.00
18 to 24 inches	----- 1.50	30 to 36 inches	----- 2.50

(These prices apply to both varieties)

EUONYMUS

EVERGREEN BURNINGBUSH (*Euonymus japonicus*)—A handsome, compact, upright shrub with glossy dark green foliage which holds its color all winter. Can be trimmed to most any form or height.

	Each		Each
12 to 18 inches	-----\$1.00	24 to 30 inches	-----\$1.50
18 to 24 inches	----- 1.25	30 to 36 inches	----- 1.75
	3 to 4 feet		-----\$2.00



American Holly

CAPE JASMINE (*Gardenia*)

CAPE JASMINE (*Gardenia florida*)—A popular evergreen shrub of medium height, with large glossy foliage and white wax-like flowers. Very fragrant and in bloom almost constantly from May until fall.

	Each		Each
12 to 18 inches	-----\$1.00	18 to 24 inches	-----\$1.50
	2 to 3 feet		-----\$2.50

DWARF CAPE JASMINE (*G. radicans*)—A dwarf trailing variety with small glossy foliage and fragrant white flowers. Desirable where a low effect is wanted.

	Each		Each
6 to 8 inches	-----\$.75	10 to 12 inches	-----\$1.50
8 to 10 inches	----- 1.00	12 to 18 inches	----- 2.00

HOLLY (*Ilex*)

AMERICAN HOLLY (*I. opaca*)—A handsome evergreen, known as the "Christmas Holly" and used for decorations. The leaves are glossy green, rather thick and thorny along the edges. Berries are bright red; quite hardy and adapts itself to varied soil conditions.

	Each		Each
18 to 24 inches	-----\$1.00	3 to 4 feet	-----\$2.00
2 to 3 feet	----- 1.50	4 to 5 feet	----- 4.00

ENGLISH HOLLY (*I. aquifolium*)—The most beautiful of all holly. This plant requires protection during the hot dry summers in the South and during winter months in the North. The leaves are glossy green and berries are scarlet.

	Each		Each
12 to 18 inches	-----\$1.50	18 to 24 inches	-----\$2.00
	24 to 30 inches		-----\$2.50

YAUPON HOLLY (*I. vomitoria*)—A small leaf shrub with spreading branches and small, yellowish white flowers which are borne in the spring. In the winter it is covered with scarlet berries. Very effective when planted in groups, or in borders with other shrubs.

	Each		Each
12 to 18 inches	-----\$1.00	2 to 3 feet	-----\$2.00
18 to 24 inches	----- 1.50	3 to 4 feet	----- 2.50

ILICIAM

JAPANESE ANISETREE (*Illicium anisatum*)—A handsome evergreen with broad, light-green leaves, which, when bruised, emit an anise fragrance. Attains a height of 10 to 20 feet.

	Each		Each
18 to 24 inches	-----\$1.00	3 to 4 feet	-----\$2.00
2 to 3 feet	----- 1.50	4 to 5 feet	----- 2.50

LAUREL (*Kalmia*)

MOUNTAIN LAUREL (*Kalmia latifolia*)—One of the most beautiful and attractive of the broad-leaved evergreen shrubs. Its dark green waxy leaves and masses of pink or rose-colored flowers, which appear in lavish profusion in late spring and early summer. They make a very handsome effect when planted in a mass.

	Each
12 to 18 inch, strong clumps	-----\$1.00
18 to 24 inch, strong clumps	----- 2.00

LOQUAT

LOQUAT ERIBOTRYA (*Eriobotrya japonica*)— This plant is practically hardy in the Piedmont zone, but is at its best in the Coastal zone. Trees of medium height, with long glossy evergreen leaves; fruit bright yellow, round or oblong, about the size of a Wild Goose Plum; borne in clusters from the end of February until May.

	Each
Five-year specimens-----	\$3.00
Four-year specimens-----	2.00
Three-year specimens-----	1.50
Two-year specimens-----	1.00



Carolina Cherry-Laurel

CHERRY-LAUREL (*Laurocerasus*)

CAROLINA CHERRY-LAUREL (*L. caroliniana*)— A hardy evergreen with dark green, glossy foliage; naturally compact and symmetrical in form, it submits to shearing and can be kept in any form at any height. Blooms are yellowish-white and appear in the spring. Useful as a specimen plant or in groups, masses, borders or screens. Very hardy, but prefers the full sun with good drainage.

	Each		Each
12 to 18 inches-----	\$.75	2 to 3 feet-----	\$1.50
18 to 24 inches-----	1.00	3 to 4 feet-----	2.50

ENGLISH CHERRY-LAUREL (*Laurocerasus officinalis*)—A valuable shrub of great vigor, with beautiful broad, shining, rich green foliage. Extremely useful for foundation plantings, as they form a dense evergreen background. Attain a height of 8 to 10 feet and thrive in most soils and situations.

	Each		Each
12 to 18 inches-----	\$1.25	2 to 3 feet-----	\$2.50
18 to 24 inches, bushy--	1.75	3 to 4 feet-----	3.00

GRECIAN LAUREL (*Laurus nobilis*)—Also known as the Sweet Bay Tree and Victor's Laurel. It is a beautiful evergreen shrub or tree which grows to the height of 50 or 60 feet but always retaining its shrub-like character. The leaves have an agreeable aromatic, slightly bitter taste; they are long, narrow and glossy green. Its flowers are yellowish and inconspicuous. Because of the agreeable flavor of the leaves, they are used in cooking and confections.

	Each		Each
12 to 18 inches-----	\$1.00	2 to 3 feet-----	\$2.00
18 to 24 inches-----	1.50	3 to 4 feet-----	2.50

MAHONIA

JAPANESE BARBERRY (*M. berberis japonica*)— Has broad holly-like leaves of a yellowish green tint and terminal clusters yellow bell-shaped flowers, produced in January, followed by clusters of purple berries. This plant is so different from everything else, it should be found in every collection of choice shrubs. Prefers shady locations and well drained soil.

	Each		Each
12 to 15 inches.....	\$1.00	18 to 24 inches.....	\$2.50
15 to 18 inches.....	1.50	24 to 30 inches.....	3.00





Mahonia or Hollygrape

MAHONIA

BARBERRY (*potanina*)—A very beautiful low growing barberry with margin of leaves crinkled. In the winter months the leaves have a beautiful purple tint.

15 to 18 inches-----	Each \$1.50	18 to 24 inches-----	Each \$2.00
----------------------	----------------	----------------------	----------------

OREGON HOLLYGRAPE (*M. aquifolium*)—Similar to the Leatherleaf variety except that the leaves turn to various shades of bronze and orange in the winter and the berries are a dark blue. A really handsome shrub rarely exceeding three feet in height; prefers shady locations and thrives in most any soil.

12 to 15 inches-----	Each \$1.00	18 to 24 inches-----	Each \$2.50
15 to 18 inches-----	1.50	2 to 3 feet-----	4.00

NANDINA

NANDINA (*Nandina domestica*)—A very showy shrub of medium height with large clusters of small red berries in the autumn. Its dark green foliage assumes a gorgeous orange-red or crimson color in winter. Thrives well in any well-drained, loamy soil, and is very hardy. One of the plants which is used in all of the better class of landscape work.



2 to 12 inches-----	Each \$.75	15 to 18 inches-----	Each \$1.50
12 to 15 inches-----	1.25	18 to 24 inches-----	2.00
2 to 3 feet-----	-----	-----	\$3.00

TEA OLIVE (*Osmanthus*)

FORTUNE TEA OLIVE (*O. fortunei*)—A beautiful shrub of compact symmetrical form. Leaves are dark green, glossy color, resembling the American Holly. Covered with a fragrant white flower in the spring and fall. Gives best results when planted in rich soil and partial shade and will reach a height of 20 feet.

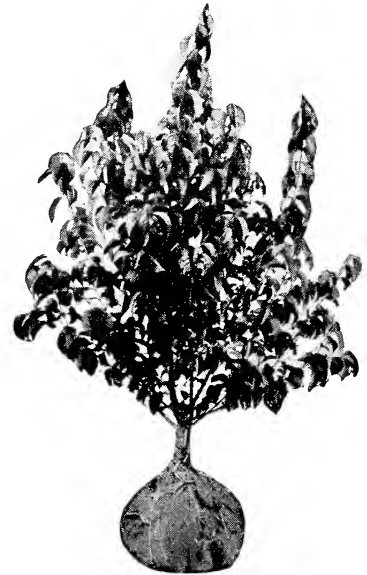
SWEET TEA OLIVE (*O. fragrans*)—A handsome shrub with serrated leathery leaves, and yellowish or almost white flowers which produce a delightful fragrance in the fall and early spring. Prefers deep, well-drained soil and some protection.

8 to 10 inches-----	Each \$1.00	12 to 15 inches-----	Each \$1.50
10 to 12 inches-----	1.25	15 to 18 inches-----	1.75
18 to 24 inches-----	-----	-----	\$2.00

(These prices apply to both varieties)

THE PRIVETS (*Ligustrum*)

JAPANESE PRIVET (*L. japonicum*)—A quick growing, upright shrub which makes up into striking tall clumps, or informal screening hedges, with wide spreading curving branches; foliage bright glossy green; showy, fragrant white flower plumes in the spring, followed by clusters of blue black berries. Stands trimming; very vigorous and hardy in most soil and situations.



Japanese Privet

12 to 18 inches-----	Each \$.35	2 to 4 feet, heavy-----	Each \$1.25
18 to 24 inches-----	.50	4 to 5 feet, heavy-----	1.50
2 to 3 feet, branches--	.75	5 to 6 feet, heavy-----	2.00

SILVERLEAF PRIVET (*L. jap. excelsum superbum*)—Similar in type to the Japanese Privet, but with foliage edged and veined with light silvery white. Reaches a height of 8 to 10 feet.

12 to 18 inches-----	Each \$1.00	2 to 3 feet-----	Each \$2.00
18 to 24 inches-----	\$1.50	3 to 4 feet-----	2.50
4 to 5 feet-----	-----	-----	\$3.00

NEPAL PRIVET (*L. nepalense*)—A medium size shrub essential to landscape planting in masses, banking or groups. Compact and symmetrical with dark green, glossy foliage, and white flowers early in spring.

12 to 15 inches-----	Each \$.75	18 to 24 inches-----	Each \$1.50
15 to 18 inches-----	1.00	2 to 3 feet-----	2.00
3 to 4 feet-----	-----	-----	\$3.00

THE PRIVETS (Continued)

CHINESE PRIVET (Amur River Privet)—There have been two plants sold as *Ligustrum amurense*. The true *Ligustrum amurense* is deciduous, and little used in the South. The plant so much used here is really *Ligustrum sinense*, which is perfectly evergreen when trimmed. When not trimmed it is a handsome shrub or tree with white flowers followed by dark blue berries that stay on all winter. The branches that bear the berries drop most of their leaves and the plant is, therefore, not entirely evergreen if allowed to bear fruit. It grows rapidly and is not very particular about soil or shade. The best plant for quickly and cheaply screening things from view.

18 to 24 inches	-----	\$3.50	(1,000)	\$30.00
2 to 3 feet	-----	5.00		45.00
3 to 4 feet	-----	7.50		70.00
2 to 3 feet specimen	-----	.40		
3 to 4 feet specimen	-----	.50		

Prices on Amur River Privet

GLOBES—Matched Pairs—

15 to 18 inches high, 15 to 18 inches broad, per pair	-----	\$3.00
18 to 24 inches high, 18 to 20 inches broad, per pair	-----	4.00
24 to 30 inches high, 20 to 24 inches broad, per pair	-----	6.00
30 to 36 inches high, 24 to 30 inches broad, per pair	-----	8.00

PYRAMIDS—Matched Pairs—

18 to 24 inches high, per pair	-----	\$3.00
24 to 30 inches high, per pair	-----	4.00
30 to 36 inches high, per pair	-----	6.00
3 to 3½ feet high, per pair	-----	7.00

GOLD LEAF PRIVET (L. marginatum aureum)—

A vigorous growing variety with large leaves beautifully margined with yellow. Stands the sun well. In winter the large bunches of purple berries together with golden foliage make quite a striking effect. Grows 18 to 20 feet. Very desirable.

12 to 18 inches	-----	Each \$1.00	2 to 3 feet	-----	Each \$2.00
18 to 24 inches	-----	1.50	3 to 4 feet	-----	3.00
4 to 5 feet	-----	\$4.00			

GLOSSY PRIVET (L. lucidum)—Makes one of the handsomest hedges in the South. Large, strong, dark glossy green leaves, and produces dense clusters of white flowers. Useful for securing massed effects in a border as well as individual specimens. Perfectly hardy and highly recommended.

LARGE LEAVED GLOSSY PRIVET (L. lucidum macrophyllum)—A very striking plant on account of its large sized leaves and intense dark, glossy green. Similar in habit to the Glossy Privet, but makes a very distinct specimen. Attains a height of 8 to 10 feet.

12 to 15 inches	-----	Each \$1.00	18 to 24 inches	-----	Each \$2.00
15 to 18 inches	-----	1.50	2 to 3 feet	-----	3.00

(These prices apply to both varieties)

PHOTINIA

PHOTINIA GLABRA—Beautiful ornamental evergreen growing to 20 feet in height with immense white flowers in spring, followed late in autumn by bright red foliage. Can be trimmed any shape desirable.

12-15 inches	-----	Each \$.75	18-24 inches	-----	Each \$1.25
15-18 inches	-----	1.00	24-30 inches	-----	1.50

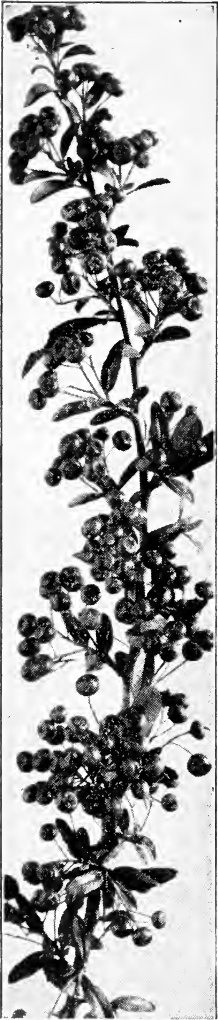
LOW PHOTINIA (P. serrulata)—A beautiful, hardy evergreen, with large shiny foliage which becomes very conspicuous in the fall as the older leaves take on a brilliant color. In spring the new growth comes out with tinted brown leaves and red stems. White flowers are produced in large flat-topped clusters in early April. Reaches a height of 5 to 12 feet and prefers well drained, fertile soil and partial shade. Our stock is well branched and strong from open ground.

12 to 18 inches	-----	Each \$1.00	24 to 30 inches	-----	Each \$2.00
18 to 24 inches	-----	1.50	30 to 36 inches	-----	2.50

A proper planting of the shrubs, trees and plants is just as essential to the home as a beautiful stage setting is to a successful play.



FIRETHORNS (*Pyracantha*)



Firethorn

LALAND FIRETHORN (*P. coccinea lalandi*)—A tall, growing shrub or tree with small box-like evergreen foliage; more hardy and vigorous than the Scarlet Firethorn. Particularly attractive in winter when it is covered with orange-red berries. Panicles of white flowers are produced in spring; very ornamental when used as a specimen plant.

	Each
12 to 15 inches.....	\$1.00
15 to 18 inches.....	1.25
18 to 24 inches.....	1.50
2 to 3 feet.....	2.00
3 to 4 feet.....	2.50

FIRETHORN (*P. crenulata yunnanensis*)—Well suited for hedge—more tender than the above, with handsomer, glossier foliage. Numerous flowers followed by bright coral red berries.

	Each
10 to 12 inches.....	\$1.25
12 to 15 inches.....	1.50
15 to 18 inches.....	1.75
18 to 24 inches.....	2.00
2 to 3 feet.....	2.50

A proper planting of the shrubs, trees and plants is just as essential to the home as a beautiful stage setting is to a successful play.

PITTOSPORUM

TOBIRA (*P. tobira*)—A shrub that is very popular and extensively used in the South. Of compact growth and rounded form with dark green leaves clustered at the ends of the branches. Yellowish white flowers are very fragrant and appear in the early spring. May be used in foundation planting, massing, trimmed as a specimen or as a dense hedge. Prefers well-drained soil and partial shade.

10 to 12 inches, branched.....	\$1.00
12 to 15 inches, branched.....	1.25
15 to 18 inches, well branched.....	1.50
18 to 24 inches, heavy.....	2.00



English Cherry-Laurel
Page Sixteen

ALL Coniferous and Broad-Leaved Evergreens are dug with a ball of earth and securely burlapped for shipping. Practically the entire root system is dug with every plant. They reach you in good condition and when transplanted to your ground they should live, thrive and continue their growth.

TEA PLANT (*Thea*)

BOKEA TEA PLANT (*T. sinensis bokea*)—Best known as the Tea Plant of commerce. A valuable hardy shrub of medium size and compact, bushy growth; dark green foliage, white flowers with yellow anthers are produced during the fall and winter. Does best in well-drained loamy soil and will stand some shade.

	Each		Each
10 to 12 inches.....	\$1.00	15 to 18 inches.....	\$1.50
12 to 15 inches.....	1.25	18 to 24 inches.....	2.00
2 to 3 feet.....	2.50		

VIBURNUM

LAURUSTINUS (*V. tinus*)—An evergreen bush or low shrub, upright, compact, and of rapid growth; foliage dark green; flowers creamy white, rose-colored in the bud. Produced in great profusion in early February and lasting for a long time. Very fragrant. Desirable as a house plant.

	Each		Each
12 to 18 inches.....	\$1.50	18 to 24 inches.....	\$2.00
24 to 30 inches.....	\$2.50		

SUGGESTIONS FOR CARE OF SHRUBS

In planting shrubs, first prepare the soil by ploughing or spading. Dig a hole large enough to allow the roots to spread out naturally. Plant the shrub a trifle deeper than it stood in the nursery, covering the roots a little at a time and firmly packing the soil about the roots with the feet. After planting, keep the ground free from weeds and grass by cultivating. This is important.

PRUNING—Do not fail to properly prune your shrubs as soon as planted. The success of your plants depends upon proper pruning. All deciduous shrubs should be pruned annually. The tops and branches should be cut back one-third or one-half if necessary; all dead branches and weak growth should be removed, and care must be exercised not to cut off the blooming wood. All shrubs that flower on the previous year's growth should not be pruned until June or July, after the blooming period has passed. To this class belong the Althaea, Cydonias, Deutzias, Forsythias, Philadelphus, Spirea, etc. Do not fail to fertilize your shrubs at least once a year.



HARDY ORNAMENTAL FLOWERING SHRUBS

Are enchanting with varieties of foliage, flowers and fruit

There are numerous ways in which the hardy ornamental flowering shrubs can be used to make the grounds around the home more beautiful. While they do not retain their foliage throughout the winter, they fill an important place and present a wide field for the selection of colors, season of bloom and growth. The Spirea, Hydrangea, Barberry, and others of like character are effective for grouping or mass planting against fences or walls. The tall, quick growing shrubs like the Dogwood, Hibiscus, and Mock orange may be used to screen buildings, planted to form a hedge or as specimens. All of the varieties described on the following pages thrive in the South and are of good stock, well branched.



Barberry

BARBERRY (*Berberis*)

HOLLY BARBERRY (*B. ilicifolia*)—One of the best varieties of the Barberry family. Leaves are of a rounded oval shape, with deeply serrated thorny edges. Strong suckers are thrown out forming a thick clump. The Holly-like leaves take on a purple color in the fall. Does best in shady situations.

Each	Each
18 to 24 inches.....\$.50	24 to 30 inches.....\$.75

PURPLE BARBERRY (*B. vulgaris atro purpurea*)—A variety with purple leaves. A very effective hedge plant.

Each	Each
12 to 18 inches.....\$.40	18 to 24 inches.....\$.50
2 to 3 feet.....\$.75	

EUROPEAN BARBERRY (*berberis vulgaris*)—A beautiful shrub with clusters of yellow flowers in the spring and coral red berries in the fall. Grows best in partial shade.

Each	Each
12 to 18 inches.....\$.40	18 to 24 inches.....\$.50
2 to 3 feet.....\$.75	

JAPANESE BARBERRY (*B. thunbergi*)—Probably the most widely planted shrub in existence. It is dwarf growing, uniformly bushy and rounded form. Stands pruning well. The thorny twigs are densely covered with small, numerous leaves; yellow flowers in the spring are followed in the autumn by quantities of small scarlet red berries. The general formation of the plant makes it very useful as a filler and for edging shrubbery groups; as a foundation screen in front of porches and as a compact, impassable, hardy, low hedge for lawns or dividing lines.

Each	Each
12 to 18 inches.....\$.35	18 to 24 inches.....\$.45
2 to 3 feet.....\$.60	

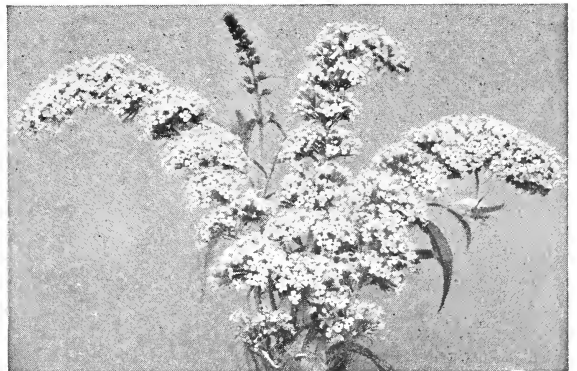
BUTTERFLY BUSH (*Buddleia*)

VEITCH BUTTERFLY BUSH (*B. davidi veitchiana*)—Also known as Summer Lilac. Of quick bushy growth; the flowers which are similar to the lilac in fragrance and color, bloom profusely all summer. Excellent for cut flowers. Should be cut back each spring.

Each	Each
18 to 24 inches.....\$.40	3 to 4 feet.....\$.60
2 to 3 feet......50	4 to 5 feet......75

LINDLEY BUTTERFLY BUSH (*B. lindleyana*)—Similar to the Veitch Butterfly Bush but smaller foliage and blooms, which are of a deeper purplish hue.

Each	Each
18 to 24 inches.....\$.40	2 to 3 feet.....\$.50
3 to 4 feet.....\$.75	



Butterfly Bush



COTONEASTER

COTONEASTER FRANCHETTI—A spreading, fast-growing variety with upright arching branches, medium-sized leaves. Many orange-red berries scattered over the branches in winter.

ROCK COTONEASTER (*Cotoneaster horizontalis*)—A low, almost prostrate open shrub with small dark green leaves; generally evergreen, but not always. Has small pink flowers during summer and bright red berries in the winter.

SIMONS COTONEASTER (*C. simonsi*)—A shapely shrub; leaves oval; white flowers with pinkish cast; bright red berries.

	Each		Each
16 to 18 inches	\$1.25	18 to 24 inches	\$1.50
24 to 30 inches	\$2.00		

BEAUTYBERRY (*Callicarpa*)

AMERICAN BEAUTYBERRY (*C. americana*)—A native plant with feathery blue flowers which grow in clusters about August, followed by bunches of bright purple berries along the stem.

	Each		Each
12 to 18 inches	\$.35	18 to 24 inches	\$.45
2 to 3 feet	\$.50		

SWEETSHRUB (*Calycanthus*)

COMMON SWEETSHRUB (*Calycanthus floridus*)—Also known as the Strawberry Bush, a unique shrub with dark green aromatic foliage, which turns yellow in autumn. Has odd shaped chocolate-colored flowers that are spicily fragrant. Thrives in shady situations; especially suited for planting near trees.

	Each		Each
18 to 24 inches	\$.40	3 to 4 feet	\$.75
2 to 3 feet	.50	4 to 5 feet	1.00

BLUEBEARD (*Caryopteris*)

BLUEBEARD (*C. incana*)—Blue Spirea; a low shrub, the stems of which are covered with pretty lavender-blue flowers about September. Not entirely hardy in colder sections.

	Each		Each
15 to 18 inches	\$.40	18 to 24 inches	\$.50
2 to 3 feet	.75		

CASSIA (*Cassia Corymbosa*)—A free-flowering plant, perfectly hardy here. Large, orange-yellow, pea-shaped flowers, produced in great profusion from July until frost. Attains a height of 6 to 8 feet. A most effective lawn plant.

	Each
3-4 feet	\$.75
2-3 feet	.60
18-24 inches	.40

REDBUD (*Cercis*)

CHINESE REDBUD (*C. chinensis*)—A shrub similar to our native redbud or Judas tree. Branches are covered in the spring with magenta-pink flowers.

	Each		Each
2 to 3 feet	\$.75	3 to 4 feet	\$1.00
4 to 5 feet	\$1.25		

SALIX WILLOW

PUSSY WILLOW (*Salix caprea*)—This is the willow whose blossoms, resembling at first silvery-gray fur, are the first sign of spring. An attractive, rapid-growing shrub for the lawn or garden. Wet soil is not necessary.

	Each		Each
2 to 3 feet	\$.75	3 to 4 feet	\$1.00
4 to 5 feet	\$1.50		

WHITE FRINGETREE

WHITE FRINGETREE (*Chionanthus virginica*)—A very ornamental native shrub, commonly known as Grandsire Greybeard. In April the plant is covered with white, fringe-like flowers.

	Each		Each		Each
18-24 inches	\$.75	24-30 inches	\$1.00	30-36 inches	\$1.25

SUMMERSWEET (*Clethra*)

SUMMERSWEET (*C. alnifolia*)—Remarkable for its sweet scented white flowers in July and August. The foliage is a compact mass of rich green in the summer and clear yellow in autumn. Succeeds well in a shrubby border, even though dry.

	Each		Each
18 to 24 inches	\$.50	2 to 3 feet	\$.60
3 to 4 feet	.75		

QUINCE (*Cydonia*)

FLOWERING QUINCE (*C. japonica*)—A shrub of great beauty. Very early in the spring it is completely covered with vivid red or scarlet flowers, followed by small fragrant quince-shaped fruit. The foliage is small, dark green and glossy. Does well in most soils and situations.

18 to 24 inches.....	Each	24 to 36 inches.....	Each
3 to 4 feet.....	\$.50	3 to 4 feet.....	\$.75
			\$1.00

BROOM (*Cytisus*)

SCOTCH BROOM (*C. scoparius*)—A beautiful yellow flowering shrub, whose slender and graceful branches are covered with golden yellow pea-shaped flowers. The numerous long twigs, resembling broom straws, remain green all year. Does best in well-drained, sandy soil.

12 to 18 inches.....	Each	2 to 3 feet.....	Each
18 to 24 inches.....	\$.40	3 to 4 feet.....	\$.75
	.50		1.00

SCOTCH BROOM (*C. albus*)—Similar to scoparius with yellowish white or pale flowers. These plants are recommended by landscape gardeners for covering raw and unbroken places. Their yellow flowers and bare stems make a unique combination in the American landscape.

12 to 18 inches.....	Each	2 to 3 feet.....	Each
18 to 24 inches.....	\$.40	3 to 4 feet.....	\$.75
	.50		1.00

DEUTZIA

One of the most desirable shrubs, though varying in height and habit, bloom alike in dainty bell or tassel-shaped flower. They will thrive in almost any situation; are extremely ornamental and make possible many striking effects in garden or border planting.

DOUBLE WHITE DEUTZIA (*D. crenata flora plena alba*)—A tall growing variety producing an abundance of double white flowers in April.

SLENDER DEUTZIA (*D. gracilis*)—A dwarf growing, dense, bushy; its drooping branches are wreathed with pure white flowers in the late spring. Will grow well in shade.

LEMOINE DEUTZIA (*D. lemoinei*)—A dwarf growing but the stems are borne erect. Has medium large flowers of pure white produced in cone-shaped heads. Reaches a height of 3 to 4 feet.

PRIDE OF ROCHESTER (*D. scabra*)—A tall, upright shrub, reaching a height of 6 to 8 feet; blooms appear before any of the other varieties. They are large and double with the outer petal tinged with pink.

12 to 18 inches.....	Each	2 to 3 feet.....	Each
18 to 24 inches.....	\$.35	3 to 4 feet.....	\$.50
4 to 5 feet.....	.45		.75
			\$1.00

(These prices apply to four varieties above)

EUONYMUS

EUONYMUS (*E. americanus*)—A native shrub that grows very erect and is attractive at all seasons. Forms a peculiar rose-colored fruit, which opens in the fall and turns a scarlet color. Very decorative.

18 to 24 inches.....	Each	3 to 4 feet.....	Each
2 to 3 feet.....	\$.50	4 to 5 feet.....	\$1.50
	.75		2.00

PEARLBUSH (*Exochorda*)

PEARLBUSH (*E. grandiflora*)—An upright shrub that prefers a moist fertile soil and grows 6 to 10 feet high. It takes its name from the early buds which resemble pearls strung on slender threads. The buds later open up into long gleaming sprays of pure white. Exceptionally showy and different.

18 to 24 inches.....	Each	3 to 4 feet.....	Each
2 to 3 feet.....	\$.40	4 to 5 feet.....	\$.60
	.50	5 to 6 feet.....	.75
			\$1.00

FORSYTHIA (*Golden Bell*)

Splendid old shrubs with bright yellow bell-shaped flowers, which appear very early in the spring before the leaves come out. Sometimes they are confused with the winter jasmine. The upright forms make excellent tall hedges, and also good fillers for massed shrubs.

FORTUNE FORSYTHIA (*F. suspensa fortunei*)—This is the most used variety on account of it being the most upright in growth. Useful in the back row of groups. Very vigorous grower and prolific bloomer.

GREENSTEM FORSYTHIA (*F. viridissima*)—The stems and foliage are a bright green and it stands the heat and drought best of all varieties; not entirely hardy in northern latitudes.

12 to 18 inches.....	Each	3 to 4 feet.....	Each
18 to 24 inches.....	\$.35	4 to 5 feet.....	\$.60
2 to 3 feet.....	.45	5 to 6 feet.....	.75
	.50		.85

(These prices apply to all of the above varieties)



Forsythia

WEeping FORSYTHIA (*F. suspensa*)—A graceful shrub with slender, limply drooping branches covered with bright rosettes of yellow flowers. Very attractive when trained up over a trellis or garden wall.

12 to 18 inches.....	Each	3 to 4 feet.....	Each
18 to 24 inches.....	\$.35	4 to 5 feet.....	\$.60
2 to 3 feet.....	.45	5 to 6 feet.....	.75
	.50		.85



Borders of PeeGee Hydrangeas

HYDRANGEAS

Our stock of Hydrangeas is unsurpassed in quality and our prices will be found much lower than those made by most nurserymen. As a rule, Hydrangeas are much more effective when planted in masses and our low prices permit them to be used freely in this way.



Hydrangeas

OAKLEAF HYDRANGEA (*H. quercifolia*)—A medium shrub, the foliage, similar in form to an oak leaf, is a rich deep green in summer and a claret color in the fall. Large showy panicles of pure white flowers are produced in mid-summer. Attains a height of 3 to 4 feet and grows well in sun or shade.

	Each
12 to 18 inches-----	\$.50
18 to 24 inches-----	.75
24 to 36 inches-----	1.00
3 to 4 feet-----	1.25

PEEGEE HYDRANGEA (*H. paniculata grandiflora*)—The old garden favorite. Has the largest cluster of flowers of all the shrubs. In July the plant is enveloped with a mass of pure white blooms and generally last for a long time. Large beds when kept at a uniform development are extremely showy. If planted in rich soil and pruned back every spring before the leaf buds open, they will grow to dense, dwarf clumps of compact form and produce larger clusters.

	Each		Each
12 to 18 inches-----	\$.50	2 to 3 feet-----	\$1.00
18 to 24 inches-----	.75	3 to 4 feet-----	1.25
		4 to 5 feet-----	\$1.50

SMOOTH HYDRANGEA (*H. arborescens*)—An attractive, upright shrub with bright green foliage and large creamy white flowers. A native plant and ideal for garden use or large plantings.

	Each		Each
12 to 18 inches-----	\$.50	2 to 3 feet-----	\$1.00
18 to 24 inches-----	.75	3 to 4 feet-----	1.50

SNOWHILL HYDRANGEA (*H. arborescens grandiflora*)—A compact, round-headed shrub of medium height; foliage is large and of a bright green color. The flowers, similar to the familiar "snowball" in appearance, are white and bloom from early June to late September. Excellent for solid low borders or in foundation plantings which will allow for about four feet.

	Each		Each
12 to 18 inches-----	\$.50	2 to 3 feet-----	\$1.00
18 to 24 inches-----	.75	3 to 4 feet-----	1.50

ALTHEA (*Hibiscus*)

SHRUB-ALTHEA (*Hibiscus syriacus*) — A l s o



called "Rose of Sharon," an old garden favorite of upright growth and makes one of the best shrubs for a tall hedge or screen. Blooms all summer in a variety of colors both double and single and pure white to dark purple flowers.

PRICES OF SHRUB-ALTHEA

18 to 24 inches.....	Each	\$.25
2 to 3 feet.....		.40
4 to 5 feet.....		.60

ST. JOHNSWORT (*Hypericum*)

GOLDFLOWER (*H. moserianum*)—A beautiful dwarf shrub that seldom gets more than two feet high. Of compact habit and attractive foliage. The flowers are similar to single yellow roses and are produced in great profusion in June. Excellent for massing or planting among perennials.

12 to 18 inches.....	Each	\$.40	2 to 3 feet.....	Each	\$.60
18 to 24 inches.....		.50	3 to 4 feet.....		.75



Shrub-Althea Rose of Sharon

JAPANESE HYPERICUM (*H. patulum*)—Similar to the Goldflower but slightly taller. Produces a great profusion of yellow flowers with a fringe of petals, like yellow roses, with anthers in the center. Nearly evergreen in the South.

12 to 18 inches.....	Each	\$.40	2 to 3 feet.....	Each	\$.60
18 to 24 inches.....		.50	3 to 4 feet.....		.75

JASMINE (*Jasminum*)

WHITE JASMINE (*J. officinale*)—Generally considered as a vine. Its small, dark glossy green leaves, and fragrant star-shaped flowers make a pleasing effect when planted on banks.

ITALIAN JASMINE (*J. humile*)—A shrub with bright green arching branches and bright yellow flowers in summer. Nearly evergreen and thrives best on moist, loamy soil and sunshine.

WINTER JASMINE (*J. nudiflorum*)—The Jasmine that blooms in the late winter, bearing a profusion of bright, yellow tubular flowers before the small green leaves appear. Nearly Evergreen and grows to a height of about three feet.

12 to 18 inches.....	Each	\$.40	2 to 3 feet.....	Each	\$.60
18 to 24 inches.....		.50	3 to 4 feet.....		.75

(These prices apply to above varieties)

KERRIA

KERRIA (*K. japonica*) — Sometimes called Globe Flower, is another old garden favorite that becomes a mass of golden yellow, globe-shaped flowers in the spring. The branches remain green in the winter.



Kerria Japonica

12 to 18 ins.....	Each	\$.35
18 to 24 ins.....		.40
2 to 3 feet.....		.50
3 to 4 feet.....		.75

DOUBLE KERRIA (*K. japonica flore plena*)—Similar to the single flowered variety except with double yellow blooms.

12 to 18 inches.....	Each	\$.40	2 to 3 feet.....	Each	\$.75
18 to 24 inches.....		.50	3 to 4 feet.....		1.00

Broad-Leaved Evergreens are among the very best plants for the South. You will make no mistake in planting them.



Crapemyrtle

CRAPEMYRTLE (*Lagerstroemia*)

CRAPEMYRTLE (*L. indica*)—The most popular and most characteristic of Southern shrubs. Of upright, open habit with small, dark green foliage and large clumps of the beautiful flowers borne throughout the summer. We are offering the following colors: Pink, white, crimson and purple.

	Each		Each
18 to 24 inches.....	\$.50	3 to 4 feet.....	\$1.00
2 to 3 feet.....	.75	4 to 5 feet.....	1.25
		5 to 6 feet.....	\$1.50

BUSHCLOVER (*Lespedeza*)

SHRUB-BUSHCLOVER (*L. bicolor*)—A beautiful little shrub with drooping branches. Produces rosy-purple flowers in late summer. Attains a height of three to five feet and will grow in poor soil.

	Each		Each
18 to 24 inches.....	\$.40	3 to 4 feet.....	\$.75
2 to 3 feet.....	.50	4 to 5 feet.....	1.00

BUSH HONEYSUCKLE (*Lonicera*)

LONICERA (*Pink*)—A Japanese variety of medium growth producing very frilly beautiful pink flowers in early April.

MORROW HONEYSUCKLE (*L. morrowi*)—A vigorous spreading shrub with dark green leaves; the many small white flowers appearing early in the spring are followed by bright red berries which make it very attractive.

TARTARIAN HONEYSUCKLE (*Lonicera tartarica*)—A large growing variety with dark green foliage and pink colored flowers and crimson berries. Will not stand a drouth.

WINTER HONEYSUCKLE (*L. fragrantissima*)—A very dependable sort, round headed; foliage remains nearly all winter and from mid-winter it is covered with fragrant, creamy white flowers.

	Each	Doz.
2 to 3 feet.....	\$.50	\$5.00
3 to 4 feet.....	.75	7.50
4 to 5 feet.....	1.00	10.00

(These prices apply to all four varieties)

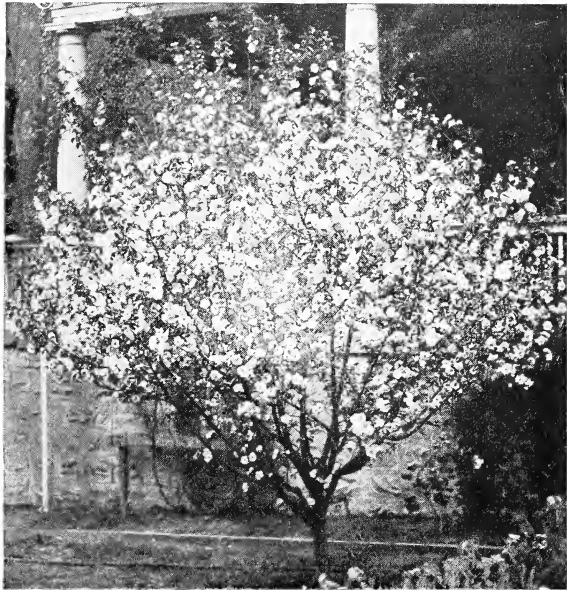
We are constantly adding to our list of ornamentals that grow best in the South.



THE CRABS (*Malus*)

BECHTEL CRAB (*Malus ioensis plena*)—A symmetrical round-headed tree, covered with a profusion of double flowers in late spring. They are of the most delicate shade of pink and resemble semi-double roses. One of the finest flowering trees for the lawn.

	Each		Each
18 to 24 inches	\$.75	24 to 36 inches	\$1.00
3 to 4 feet			\$1.25



Japanese Flowering Crab

JAPANESE FLOWERING CRAB (*M. floribunda*)—The best of the Asiatic Crabs. Bears large quantities of rose-colored flowers in the spring and in the fall have a highly ornamental red fruit.

	Each		Each
18 to 24 inches	\$.75	3 to 4 feet	\$1.50
2 to 3 feet	1.00	4 to 5 feet	2.50

WILD SWEET CRAB (*M. coronaria*)—This is the tree, the fruit of which makes good jelly. It is round, rather open headed and produces a profusion of pinkish white, fragrant flowers in early spring.

	Each		Each
18 to 24 inches	\$.75	3 to 4 feet	\$1.50
2 to 3 feet	1.00	4 to 5 feet	2.50

OLEANDER (*Nerium*)

OLEANDER (*Nerium*)—Oleander. Very satisfactory, free-blooming evergreen shrub, practically hardy in this latitude. They commence to bloom the last part of April and bloom throughout the summer. The Oleander is a most desirable plant for growing in tubs in conservatories.

Shell-Pink. A very fine variety of Oleander with beautiful shell-pink flowers.

Single Pink. A very showy, single pink variety of strong growth.

Single White. A very free-flowering form with large masses of flowers. Very hardy.

OLEANDER (*Continued*)

Double Pink. A fine variety, with large, double pink flowers. Very hardy.
Madonna Grandiflora. A strong-growing variety, with white, semi-double flowers.

	Each		Each
Bare-rooted.		Spade-balled.	
2 to 3 feet	\$.50	2 to 3 feet	\$.75
3 to 4 feet	.75	3 to 4 feet	1.25
4 to 5 feet	1.00	4 to 5 feet	2.00
		5 to 7 feet	3.50

MOCKORANGE (*Philadelphus*)

An ornamental shrub, the flowers of which smell like those of the orange, and the leaves taste like cucumbers. One of the common names of this plant is "Syringa" which is also the botanical name of the lilac, to which they have not the slightest affinity. They are all quite hardy.

MOCKORANGE (*Philadelphus virginial*)—Large double fragrant flowers, very beautiful, sometimes two and one-half inches across, a new variety and very desirable.

	Each		Each
18 to 24 inches	\$.75	2 to 3 feet	\$1.00
3 to 4 feet			\$1.25

BIG SCENTLESS MOCKORANGE (*P. grandiflorus*)
 A fine old variety with very large white flowers, which bloom early in the spring.

	Each		Each
2 to 3 feet	\$.40	3 to 4 feet	\$.50
4 to 5 feet	.75		

SWEET MOCKORANGE (*P. coronarius*)—A tall, upright shrub with fragrant, pure white flowers.

	Each		Each
18 to 24 inches	\$.40	3 to 4 feet	\$.75
2 to 3 feet	.50	4 to 5 feet	1.00

AVALANCHE MOCKORANGE (*hort. variety of P. lemoinei*)—A very desirable dwarf plant with single white flowers.

MONT BLANC MOCKORANGE (*hort. variety of P. lemoinei*)—One of the best of the dwarf varieties.

	Each		Each
2 to 3 feet	\$.75	3 to 4 feet	\$1.00

FLOWERING ALMOND (*Prunus*)

FLOWERING ALMOND (*Prunus glandulosa*)—A showy small shrub with double flowers and attractive foliage. We can supply either the pink or white variety.

	Each		Each
18 to 24 inches	\$.50	3 to 4 feet	\$1.00
2 to 3 feet	.75	4 to 5 feet	1.25



FLOWERING CHERRY (*Prunus*)

These are the trees which make the cherry blossom time of Japan so famous the world over. The fruiting cherries of Europe do not seem to like this southern climate, but many of their charming cousins from Japan appear to thrive here.

YUMA CHERRY (*Prunus serrulata sachalinensis*)—(Sargent Cherry.) Flowers rose-pink. Single.

FUGENZO CHERRY—(Kofugen, James H. Veitch.) Flowers very double. Deep pink.

SIEBOLD CHERRY (*Prunus sieboldi*)—(Naden-Zabura.) Flowers very double. Blush-pink.

3 to 4 feet.....	Each	4 to 5 feet.....	Each
	\$2.50		\$3.50

POMEGRANATE (*Punica*)

(*P. granatum rubra*)—A very valuable, summer flowering, tall-growing shrub. Perfectly hardy in the South, producing mass of beautiful red flowers from early May until last of summer. Bright foliage, lustrous green. Very conspicuous and desirable. No fruit.

10 to 12 inches.....	Each	15 to 18 inches.....	Each
12 to 15 inches.....	.40	18 to 24 inches.....	.60
	.50		.75

BUCKTHORN (*Rhamnus*)

CAROLINA BUCKTHORN (*R. caroliniana*)—A small shrub or tree with large dark green shiny leaves, brightly colored in the fall with red berries which turn blackish-purple; generally remain on the stems until after frost.

3 to 4 feet.....	Each	4 to 5 feet.....	Each
6 to 8 feet.....	.50		\$.75
			\$1.50

JETBEAD (*Rhodotypos*)

JETBEAD (*Rhodotypos kerrioides*)—Of medium height, very graceful with small light green foliage and white flowers, followed by small bunches of glistening black berries which stay on the bunches all summer and winter.

18 to 24 inches.....	Each	3 to 4 feet.....	Each
2 to 3 feet.....	.35	4 to 5 feet.....	.75
5 to 6 feet.....	.50		1.00
			\$1.50



Anthony Waterer Spirea



Spirea Prunifolia

SUMAC (*Rhus*)

COMMON SMOKETREE (*R. cotinus*)—Remarkable for its feathery inflorescence, purplish in color suggesting smoke. Useful in mass planting.

FRAGRANT SUMAC (*R. canadensis*)—Generally a low spreading shrub in its wild state. Foliage turns a deep red in autumn. Bears yellow flowers in the spring and scarlet berries in early summer. Fine for rock gardens.

18 to 24 inches.....	Each	3 to 4 feet.....	Each
2 to 3 feet.....	.40	4 to 5 feet.....	.75
	.50		1.00

LOCUST (*Robinia*)

ROSE-ACACIA (*R. hispida*)—A shrub of medium height resembling the locust tree. Flowers are a beautiful rose color, shaped like a sweet pea, during early spring. Branches are covered with hair-like thorns over their entire surface. Very conspicuous plant and thrives in the shade.

12 to 18 inches.....	Each	2 to 3 feet.....	Each
	.35	3 to 4 feet.....	.75
			\$.50

SPIREA (*Spiraea*)

The spireas are deciduous hardy shrubs, or herbaceous perennials of over fifty varieties. All of them prefer the sun and are well adapted to the South. They make beautiful plants for the lawn and grow in almost any situation, and continue in bloom a long time.

ANTHONY WATERER SPIREA—A dwarf, bushy type; flowers in flat clusters, bright rosy crimson. Blooms almost continuously and is one of the few good showy red flowered shrubs sufficiently dwarf to be used in foundation plantings or in the low front row of shrub groups. It is the most popular of the summer spires.

18 to 24 inches.....	Each	2 to 3 feet.....	Each
3 to 4 feet.....	.50		.75
			\$1.00

SPIREA (Continued)

BRIDALWREATH SPIREA (*Spiraea prunifolia*)—Of medium height with graceful arching branches. In spring, branches are covered with small, button-like double white flowers.

12 to 18 inches.....	Each	\$.35	2 to 3 feet.....	Each	\$.50
18 to 24 inches.....		.40	3 to 4 feet.....		.75
4 to 5 feet.....					\$1.00

REEVES SPIREA (*Spiraea reevesiana*)—A beautiful form that hugs the ground closely forming a rounded mass. Foliage is a pale green and bears double white flowers late in spring.

VAN HOUTTE SPIREA (*Spiraea vanhouttei*)—Probably the most popular variety today, graceful in habit, thrives in any soil or situation. Its gracefully arching form is very effective when the branches are covered with the round, white clustered flowers.

BILLIARD SPIREA (*Spiraea billiardi*)—A hardy shrub of upright growth. Purplish-red flowers are produced almost continuously during the summer. Useful as a cut flower.

12 to 18 inches.....	Each	\$.35	2 to 3 feet.....	Each	\$.50
18 to 24 inches.....		.40	3 to 4 feet.....		.75

(These prices apply to the above three varieties)

THUNBERG SPIREA (*S. thunbergi*)—Forms a dense fluffy bush, the feathery foliage, which is a peculiar but pleasing shade of yellowish green, changing to red and orange in the autumn.

12 to 18 inches.....	Each	\$.40	18 to 24 inches.....	Each	\$.50
2 to 3 feet.....					.75

SNOWBELL (*Styrax*)

JAPANESE SNOWBELL (*S. japonica*)—A most graceful shrub, with spreading branches and numerous drooping racemes of white, fragrant, bell-shaped flowers. A favorite for specimen planting, for in addition to the showy blooms the branches are covered with a pleasing bright green foliage. Makes a tall growth, either in sun or shade.

18 to 24 inches.....	Each	\$.50	2 to 3 feet.....	Each	\$.75
3 to 4 feet.....					\$1.00

LILAC (*Syringa*)

COMMON LILAC (*Syringa vulgaris*)—The favorite of old-fashioned gardens. It needs good soil to be vigorous. There are many named varieties in white and various shades of lilac, and we have the best and most distinctive of these; but for general effect none are better than the old white and purple.

LILAC (Continued)

PERSIAN LILAC (*Syringa persica*)—Can best be described as like the common lilac, but more delicate and feminine. The leaves are smaller and the bush more open. When in bloom, under good conditions, the flowers more completely cover the plant.

1½ to 2 feet.....	Each	\$.50	3 to 4 feet.....	Each	\$.75
2 to 3 feet.....		.60	4 to 5 feet.....		1.00

SNOWBERRY (*Symphoricarpos*)

SNOWBERRY (*S. racemosus*)—Handsome dark green foliage and a profusion of large white berries in the fall make it conspicuous in any border planting.

12 to 18 inches.....	Each	\$.40	18 to 24 inches.....	Each	\$.50
2 to 3 feet.....					.75

CORALBERRY (*Symphoricarpus vulgaris*)—Although this plant produces greenish red flowers in summer, its chief beauty is found in the wealth of red or purplish berries which follow the blooms and cling to the branches during the winter. Very useful for planting on banks to keep from washing out.

18 to 24 inches.....	Each	\$.35	3 to 4 feet.....	Each	\$.50
2 to 3 feet.....		.40	4 to 5 feet.....		.75

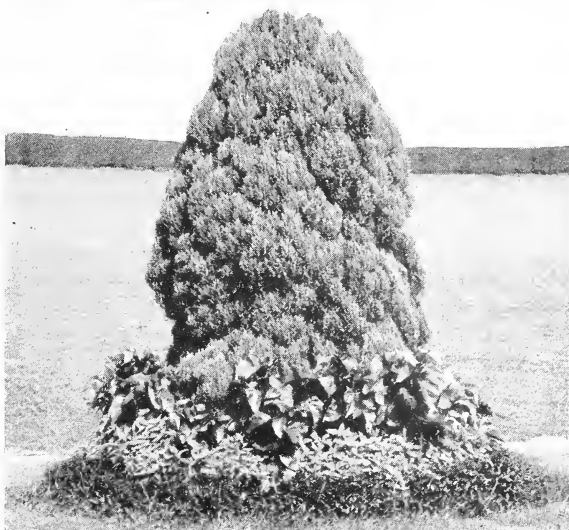
(These prices apply to both varieties)



Landscape Suggestions

Any problems you have in planning or planting we want you to bring to us. All that we ask is that you let us hear from you before the rush season, which is in the fall.

We invite your inquiries about plants or sizes which are not listed in this catalog as we always had a large variety which we have too small a number of each to list.



A setting of beautiful flowering shrubs around the home makes a home out of a house.



Tamarix

TAMARIX

AFRICAN TAMARIX (*T. africana*)—Slender, light green foliage and small pink flowers. The branches droop very gracefully and attain a height of 8 to 10 feet.

2 to 3 feet	Each \$.40	3 to 4 feet	Each \$.50
4 to 5 feet			\$.75

FIVESTAMEN TAMARIX (*T. pentandra*)—Bright green feathery foliage and deep pink flowers appearing in May and lasting all summer. Height 6 to 8 feet.

2 to 3 feet	Each \$.40	3 to 4 feet	Each \$.50
4 to 5 feet			\$.75

JUNIPER TAMARIX (*T. juniperina*)—Foliage is a bright green and flowers a pink color. Tall growing and very ornamental.

2 to 3 feet	Each \$.50	3 to 4 feet	Each \$.75
4 to 5 feet			\$1.00

VIBURNUM

COMMON SNOWBALL (*Viburnum opulus sterile*)—A shrub that is familiar to every one. Becomes covered in the early spring with perfect balls of snowy white flowers.

Reference List of Shrubs for General Planting

Low-growing Deciduous Shrubs for Foundation Planting

- | | |
|----------------------------------|-------------------------|
| Berberis thunbergi | Spiraea froebeli |
| Hydrangea paniculata grandiflora | Spiraea anthony waterer |
| Spiraea thunbergi | Spiraea thunbergi |
| Hypericum moserianum | Symphoricarpus vulgari |

Medium and Tall-Growing Varieties for Massing in Corners and Backgrounds

- | | |
|------------|-----------------|
| Buddleia | Lonicera |
| Callicarpa | Philadelphus |
| Deutzia | Spiraea |
| Exochorda | Syringa (Lilac) |
| Forsythia | Viburnum |
| Hibiscus | Weigela |

Varieties especially valuable for Fruit and Flower

- | | |
|------------------|--------------------|
| Callicarpa | Euonymus bungeanus |
| Calycanthus | Lonicera |
| Chionanthus | Symphoricarpus |
| Cydonia japonica | |

EUROPEAN CRANBERRY BUSH (*Viburnum opulus*)—Handsome, dense, brilliant green foliage; large bunches of crimson berries which persist on winter bare branches.

18 to 24 inches	Each \$.50	2 to 3 feet	Each \$.60
3 to 4 feet			\$.75

JAPANESE SNOWBALL (*Viburnum tomentosum plicatum*)—A beautiful variety of compact growth with brownish green leaves and snowball-like blooms of pure white in June.

18 to 24 inches	Each \$.75	2 to 3 feet	Each \$1.00
3 to 4 feet			\$1.50

CHASTE-TREE (*Vitex*)

LILAC CHASTE-TREE (*Vitex agnus-castus*)—A tall growing shrub with showy dark green leaves, deeply cut to a star shape. The flowers are a delicate blue, borne in clusters on long spikes from terminal shoots in mid-summer. They have a spicy fragrance and coming as they do in mid-summer add wonderfully to any planting.

18 to 24 inches	Each \$.40	3 to 4 feet	Each \$.60
2 to 3 feet	.50	4 to 5 feet	.75

WEIGELA

One of the best all-round shrubs for the lawn; of medium height with great masses of flowers in late spring. Prefer moist loamy soil with full sun or partial shade.

PINK WEIGELA (*Weigela rosea*)—Flowers open a pale pink and turn to a deep pink. Very popular and a vigorous grower.

SNOW WEIGELA (*Weigela candida*)—Flowers pure white.

18 to 24 inches	Each \$.50	3 to 4 feet	Each \$.75
2 to 3 feet	.60	4 to 5 feet	1.00

EVA RATHKE—A smaller, less vigorous variety with crimson flowers that bloom all summer.

18 to 24 inches	Each \$.50	2 to 3 feet	Each \$.75
3 to 4 feet			\$1.00



Weigela

ORNAMENTAL DECIDUOUS TREES



Red Maple
(*A. Rubrum*)

THE MAPLES (*Acer*)

NORWAY MAPLE (*Acer platanoides*)—A large handsome tree with spreading branches and a compact, round head. Splendid for edging avenues as the trees make a uniform growth. The leaves are a bright green and assume a bright yellow-hue before they drop. The leaves are preceded by an abundance of yellow-green blossoms.

	Each		Each
6 to 8 feet.....	\$1.25	8 to 10 feet.....	\$2.00
10 to 12 feet.....	-----		\$3.00

SILVER MAPLE (*Acer dasycarpum*)—Also called white Maple, is a quick growing tree which forms a large round head with an open top. Its foliage, pale green above and almost white beneath, makes a very delightful shade. Grows in almost any soil. Blooms very early in the spring; leaves appear promptly and remain until late fall.

	Each		Each
6 to 8 feet.....	\$.75	8 to 10 feet.....	\$1.00
10 to 12 feet.....	-----		\$1.50

JAPANESE DWARF SILVERLEAF MAPLE (*A. palmatum argenta*)—A low growing dwarf tree similar to the Bloodleaf Maple in habit. Its silvery colored foliage, the tips of which are tinged with pink, make it a very striking specimen. Reaches a height of 10 to 12 feet.

	Each		Each
2 to 3 feet.....	\$1.50	3 to 4 feet.....	\$2.50
4 to 5 feet.....	-----		\$3.50

A house never looks so well as when it is glimpsed between the arching branches of a nearby tree, or when it is nestled under the sheltering arm of a large tree.

Trees are a protection from the rigors of winter, and by transpiration they materially freshen the atmosphere during the summer. A tree should be chosen for its form, color, texture and general habit of growth—in other words, for its contribution to the picture. The ultimate effect to be produced must be visualized and a decision made as to where a round, pointed or triangular outline is wanted; where a light feathery texture or a dense mass is desirable, and where the colors must blend or contrast to strike an emphatic note.

Trees selected for street and avenue planting should be symmetrical in character; long lived and should not be readily susceptible to injury from insects and smoke. For narrow streets the American elm is one of the best trees on account of its high-headed characteristic growth. Its tall vase-like form enables it to reach above houses that may not be set far back. The low, compact-headed types, such as the sugar maple, pin oak and red oak ought to be planted only on wide streets.

There are two kinds of specimen plants; those which are used as single specimens, with full space allowed for their normal development, like the Japanese maples, dogwood, birch, magnolia, silktree, and those which are used as ascent trees, as the Lombardy, Pyramidal Tuliptree on account of their columnar or pyramidal habit of growth. All of our trees are hardy, field grown stock and when digging them great care is taken to keep the root system intact. With reasonable care they will thrive and become a real part of your home.



Silver Maple

RED MAPLE (*A. rubrum*)—Also called scarlet or swamp maple is one of the most widely distributed of American trees. Its leaves are the smallest of any of the native maples, but its growth is large and of rather upright outlines. It is one of the few trees succeeding well near the ocean. Has bright red blossoms before the leaves appear, and the young leaves and fruits are also red. The mature leaves begin to color early, some branches assuming brilliant reds and yellows.

5 to 6 feet.....	Each	8 to 10 feet.....	Each
6 to 8 feet.....	\$.50	10 to 12 feet.....	\$1.00
	.75		1.50

BLOODLEAF JAPANESE MAPLE (*A. palmatum atropurpureum*)—Extremely handsome shrub of dense though graceful habit. Has elegant foliage which is beautiful, especially in spring with delicate shades of green and red, and again in the autumn, when the leaves assume the most striking tints.

12 to 18 inches.....	Each	2 to 3 feet.....	Each
18 to 24 inches.....	\$3.00	3 to 4 feet.....	\$5.00
	4.00		7.00

SUGAR MAPLE (*A. saccharum*)—Often called Hard Maple, is especially adapted to gravelly soils. It is oval-headed, large and handsome, having red blossoms which individually are inconspicuous but in mass are showy early in the spring before the leaves appear. The leaves come early, but in late summer they begin to turn brilliant yellow and red and drop before most other leaves.

6 to 8 feet.....	Each	8 to 10 feet.....	Each
10 to 12 feet.....	\$1.50		\$2.00
			\$3.00

ALBIZZIA

SILKTREE or MIMOSA (*A. julibrissin*)—A small tree of great grace and beauty; low spreading top; foliage finely pinnate and a wealth of pink flowers in summer.

4 to 5 feet.....	Each	5 to 6 feet.....	Each
6 to 8 feet.....	\$.75		\$1.00
			\$1.50



Mimosa Tree



Umbrella Catalpa

CATALPA

UMBRELLA CATALPA (*C. bignonioides nana*)—Very popular because of its straight stem and symmetrical roundish head which resembles an umbrella. The tops are dwarf and while they do not grow very rapidly their wide leaves give them the appearance of much larger trees. Foliage is very pleasing and the effect obtained when planted in pairs along walks, drives or entrances is greatly admired. Need rather rich, moist soil. H. 6 to 8 feet.

2 Year heads.....	Each	3 Year heads.....	Each
	\$1.50		\$3.00

BIRCH (*Betula*)

WHITE BIRCH (*B. alba*)—An extremely graceful tree of moderately quick growth; bark almost white and branches slightly drooping with small glossy green leaves. When grouped before evergreens they are particularly attractive in the winter. A native of moist places but will do well on dry ground.

6 to 8 feet.....	Each	8 to 10 feet.....	Each
10 to 12 feet.....	\$1.00		\$1.50
			\$2.00

HACKBERRY (*Celtis*)

SUGARBERRY (*Celtis Mississipiensis*)—A medium-sized, open oblong-headed tree similar to the elm but smoother. Sweet purple-orange or almost black berries that are borne in the early fall. Thrives on most any soil and reaches a height of 50 feet.

4 to 5 feet.....	Each	8 to 10 feet.....	Each
6 to 8 feet.....	\$.50	10 to 12 feet.....	\$1.25
	.75		1.75

*We Root, Prune, and Transplant
Our Evergreens*



Hackberry

REDBUD (*Cercis*)

AMERICAN REDBUD (*C. canadensis*)—A small native tree with heart-shaped foliage. Has a conspicuous, bright purplish-red, pea-shaped flower which appears in numerous clusters along the small branches before the leaves in the early spring. Can be used in heavy mass planting of shrubs, with Dogwood or against evergreens or White Birch for a pleasant contrast.

	Each		Each
3 to 4 feet	\$.50	5 to 6 feet	\$1.00
4 to 5 feet	.75	6 to 8 feet	1.25
8 to 10 feet	\$1.50		

DOGWOOD (*Cornus*)

WHITE DOGWOOD (*C. florida*)—A native tree well known to every one. Its white blossoms are conspicuous, coming in early spring. The foliage is attractive all summer; in the fall, colors beautifully with brilliant scarlet berries that hang on most of the winter. Can be used as a specimen or in groups.

	Each		Each
2 to 3 feet	\$.50	4 to 5 feet	\$1.00
3 to 4 feet	.75	5 to 6 feet	1.50
6 to 8 feet	\$2.00		

PINK DOGWOOD (*C. florida rubra*)—Similar to the white except that its flowers are a beautiful pink. The two varieties planted together make a charming combination.

	Each		Each
18 to 24 inches	\$3.00	3 to 4 feet	\$4.50
2 to 3 feet	3.50	4 to 5 feet	6.00

MAIDENHAIR TREE (*Gingko*)

GINGKO (*Biloba*)—This comes from China, and is related to the conifers, not to the broad-leaved flowering trees. When small is upright like the Lombardy Poplar, but later grows irregular and finally spreading.

	Each		Each
6 to 8 feet	\$1.00	8 to 10 feet	\$1.50
10 to 12 feet	\$2.00		

TULIPTREE (*Liriodendron*)

TULIPTREE (*L. tulipifera*)—One of the finest of native trees, reaching a height of 60 to 100 feet. It has a narrow pyramidal head which in older age becomes more spreading. The leaves are simple; dark green in summer, turning to a clear yellow in the fall. The greenish-yellow tulip-shaped flowers appear in April. Useful for street and lawn planting, also valuable for timber.

	Each		Each
6 to 8 feet	\$.75	8 to 10 feet	\$1.00
10 to 12 feet	\$1.50		

FLOWERING PEACH (*Amygdalus persica*)—In early spring this double flowering peach is covered with a mass of beautifully formed blossoms and cannot be too highly recommended for early spring blooming. It is perfectly hardy and will do well in any soil in which other peaches will grow. Comes in red, pink and white.

	Each		Each
18 to 24 inches	\$.50	3 to 4 feet	\$1.00
2 to 3 feet	.75	4 to 5 feet	1.25
5 to 7 feet	\$1.50		

MAGNOLIA

SOUTHERN MAGNOLIA (*M. grandiflora*)—Called the evergreen magnolia, one of the handsomest trees in the South. It grows to be a large oval-headed tree and bears beautiful large white blossoms in late spring or early summer. Thrives best in not too dry a soil and where the temperature seldom falls to zero.

	Each		Each
18 to 24 inches	\$.75	3 to 4 feet	\$1.50
2 to 3 feet	1.00	4 to 5 feet	2.00
5 to 6 feet	\$2.50		



Southern Magnolia

POPLAR (*Populus*)

LOMBARDY POPLAR (*P. nigraitalica*)—A true Italian poplar; particularly suited for planting in poor soil where most trees would fail. It is a tall columnar tree adapted for formal effects or on narrow lanes.

	Each		Each
6 to 8 feet	\$.50	10 to 12 feet	\$1.00
8 to 10 feet	.75	12 to 14 feet	1.50

CAROLINA POPLAR (*Populus engenei*)—A rapid growing native tree of upright growth. When the tree has attained a height of 15 or 20 feet, it is advisable to cut the leader. This tree resembles the Cottonwood, but is quite distinct.

	Each		Each
6 to 8 feet	\$.50	10 to 12 feet	\$1.00
8 to 10 feet	.75	12 to 14 feet	1.50

PLANETREE (*Platanus*)

AMERICAN PLANETREE (*P. occidentalis*)—Known also as the sycamore and buttonwood tree, is a large, open, spreading, quick-growing tree. It frequently attains a height of 140 to 170 feet. The bark is a characteristic feature, scaling off in huge patches and exposing the white new bark. It will stand more pruning and shaping than most trees, which, with its high head, open habit of growth, and light green foliage, giving an impression of airiness with the shade. Valuable as a street tree on account of its ability to withstand the effects of dust and smoke.

	Each		Each
6 to 8 feet	\$1.00	10 to 12 feet	\$2.00
8 to 10 feet	1.50	12 to 14 feet	2.25



MAGNOLIA (*Continued*)

SAUCER MAGNOLIA (*Magnolia Soulangiana nigra*)

—A deciduous, early-flowering Magnolia. The flowers are tulip-shaped, purple on the outside, lighter colored within, produced with or before the leaves.

	Each		Each
2 to 3 feet	\$3.00	3 to 4 feet	\$5.00

BANANA-SHRUB (*Michelia fuscata*)—A medium height shrub of compact growth; perfectly hardy in the middle and lower South. The foliage resembles that of a magnolia, broad dark glossy green and the flowers are a brownish yellow, edged with light carmine, and have a banana-like fragrance. Makes a splendid sheared hedge or specimen.

	Each		Each
12 to 15 inches	\$1.50	18 to 24 inches	\$2.50
15 to 18 inches	2.00	2 to 3 feet	3.00

CHINABERRY (*Melia*)

TEXAS UMBRELLA TREE (*M. a. umbraculiformis*)

—Has a dense, spreading, umbrella-like head which is very formal and symmetrical. Very useful for formal effects.

	Each		Each
2 to 3 feet	\$.50	4 to 5 feet	\$1.00
3 to 4 feet	.75	5 to 6 feet	1.50
6 to 7 feet	\$2.00		

A proper planting of the shrubs, trees and plants is just as essential to the home as a beautiful stage setting is to a successful play.



Lombardy Poplar

THE OAKS (*Quercus*)

Of the trees available for roadside planting, the oaks are the most desirable. Although some of the handsomest species, such as the white oak and the live oak, are slow growers, others, like the red oak, are rapid growing. In the drier parts of the country, oaks are of slower growth than in the more humid sections and never attain the size of the same species under more favorable conditions, but they are worthy of planting because ultimately they make fine trees. They are hardy, most of them are long lived, and for the most part there are comparatively few diseases and insects that seriously attack them.

LIVE OAK (*Q. virginiana*)—Probably the noblest and most majestic of the oaks of the Southern States. Being an evergreen of slow growth, it is sufficiently open headed to make a good roadside tree, generally 40 to 50 feet in height and sometimes reaching a spread of 100 feet.

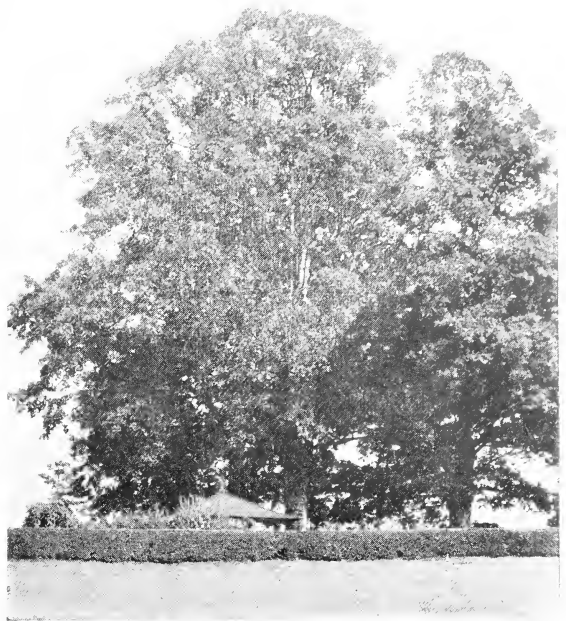
	Each		Each
3 to 4 feet-----	\$1.00	5 to 6 feet-----	\$1.50
4 to 5 feet-----	1.25	6 to 8 feet-----	2.00

PIN OAK (*Q. palustris*)—Sometimes called the "swamp oak," is a tall tree, conical when young, oval at maturity, with a drooping habit of the lower branches. The leaves are quite finely divided and are a bright glossy green. Comes into leaf late in the spring and holds its foliage late in the fall. Very rapid in growth and can be used for shade, street, lawn or specimen.

	Each		Each
5 to 6 feet-----	\$1.50	8 to 10 feet-----	\$2.50
6 to 8 feet-----	2.00	10 to 12 feet-----	3.00

SCARLET OAK (*Q. coccinea*)—A large open round-headed tree with leaves more deeply divided than those of the red oak. The leaves turn a brilliant scarlet in autumn, being even more gorgeous than the red oak. Very useful for lawn planting.

	Each		Each
4 to 6 feet-----	\$.75	8 to 10 feet-----	\$1.50
6 to 8 feet-----	1.00	10 to 12 feet-----	2.00



Water Oak

WATER OAK (*Q. nigra*)—Frequently confused with the willow oak and the laurel oak. Widely planted in the South along streets and in parks as a shade tree. Has roundish head and slender willow-like leaves of a dull bluish green color. When fully grown reaches a height of about 80 feet.

	Each		Each
5 to 6 feet-----	\$1.00	8 to 10 feet-----	\$2.00
6 to 8 feet-----	1.50	10 to 12 feet-----	3.00
		12 to 14 feet-----	\$4.00



WHITE OAK (*Q. alba*)—One of the finest, if not the finest of American trees, with broadly spreading branches that make a round top of more than 80 feet; medium-sized dark green leaves having a lighter undersurface and almost white flaky bark. It is one of the slow-growing trees, but is worthy of extended planting. Thrives on both uplands and bottom lands where it is not too wet; reaches a height of 80 feet.

5 to 6 feet	Each	8 to 10 feet	Each
6 to 8 feet	1.50	10 to 12 feet	3.00
			\$2.00

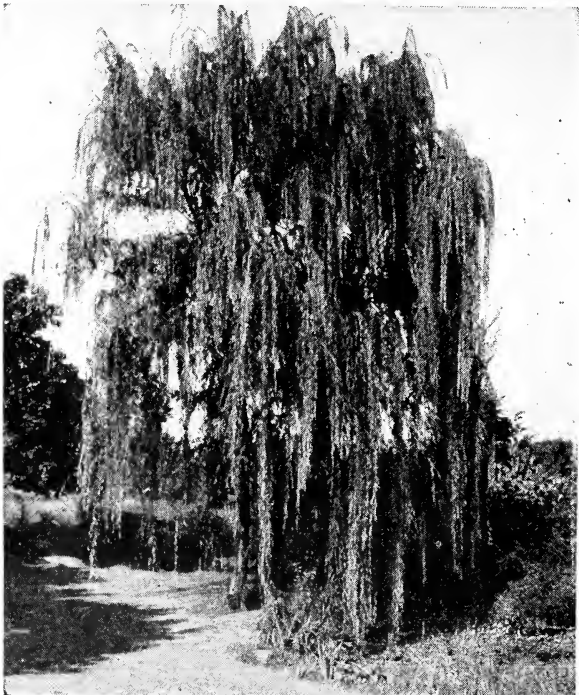
WILLOW OAK (*Q. phellos*)—Sometimes erroneously called water oak. One of the best of the quick-growing trees for use in the South. Frequently used with the water oak for street planting. Has slender willow-like leaves, light green and shiny above but dull and smooth beneath. It is nearly half evergreen in the extreme South, but its foliage does not assume the bright colors of the trees of the red-oak class.

5 to 6 feet	Each	8 to 10 feet	Each
6 to 8 feet	\$1.50	10 to 12 feet	\$2.50
	2.00	12 to 14 feet	3.00
			\$4.00

WILLOW (*Salix*)

WEeping WILLOW (*S. babylonica*)—Too well known to need a lengthy description. One of the best varieties we know of; will give a finish to the lawn which cannot be obtained with any other tree. Quick to take hold when transplanted and thrives with unusual vigor whether planted on moist or dry ground.

4 to 5 feet	Each	6 to 8 feet	Each
5 to 6 feet	\$.75	8 to 10 feet	\$1.25
	1.00		1.50



Weeping Willow

ELM (*Ulmus*)

AMERICAN ELM (*U. americana*)—Sometimes called the white elm and water elm, is one of the handsomest American trees. It is tall and spreading and when planted as near together as is customary on country roads, the effect of the mature trees is that of an arch formed by the growing together of their spreading tops. Is of rapid growth and long lived.

6 to 8 feet	Each	8 to 10 feet	Each
10 to 12 feet	\$.75	10 to 12 feet	\$1.25
			\$1.75



Texas Umbrella Tree

A Few Suggestions

Plants should be removed from the box or package as soon as possible after arriving. Sometimes it is not always possible to plant them at once, in which case see that the roots are wet and then place them in a cool, shady place; keeping the roots moist. Plants that are "balled and burlapped" should be set deep enough to entirely cover the wrapping. Do not remove the wrapping material, but plant the entire ball as received. If the plants are from pots, set them considerably deeper than they were in the pot. Do not try to straighten out the root system of potted plants. It is best to shade the trunks of large trees with straw or loosely wound burlap until growth is well advanced. All plants are better for shade the first few days, especially during the heat of the day.

One of the most important things to do after setting a plant or tree is to thoroughly soak the ground down to the subsoil and leave the surface dished so that the rainfall or future watering will be held. The mulching should be spread over this area and even beyond it, to conserve moisture and keep the ground as cool as possible. Do not allow the mulching to touch the plant. Watering must be kept up from a few days apart to weekly intervals until the plants are well established or even longer if the weather is unduly dry.

A setting of beautiful flowering shrubs around the home makes a home out of a house.

CLIMBING VINES

Climbing and Trailing Varieties

No group of plants is quite so adaptable and capable of a wide range of use as the vines and creepers because of their permanence, ease of culture, and freedom from insects and diseases. Vines are grown on masonry walls for the beauty of their foliage, and also to soften and add color and shadows to an otherwise blank expanse. They are grown on garden walks as a background for flowering plants, where the delicate tracery of the leaves against the wall, together with interesting flowers on some and fruit on others, contributes a gardenesque quality which is delightful. One of the foremost uses of vines is to provide shade under arbors, pergolas and porches. For this purpose, lateral growing vines with decorative qualities are recommended. The wisteria and grapes are excellent. Vines like the honeysuckle may be grown on wire fences or supports to form an impenetrable barrier where the space is too limited for a screen of trees or a hedge. In placing a trellis or other support against wooden structures it is usually better to secure them with a hinge at the bottom to 4 x 4-inch posts set firmly in the ground and fasten at their tops with hooks. Then the whole mass of foliage and vine can be unhooked and folded outward onto the ground when it is necessary to paint or remove the vine for any purpose. In planting vines see that they receive sufficient moisture until they become well established. Most vines thrive in places that would be too damp and shady for shrubs and they also make excellent ground covers to hide barren spots and washouts.

AMPELOPSIS

JAPANESE CREEPER (*Ampelopsis tricuspidata*)—Also known as Boston Ivy; one of the finest hardy climbers we have for covering walls; clings firmly to the smoothest surface. The broad foliage overlaps giving the appearance of shingles. Foliage is glossy green in summer changing to the brightest shades of crimson and yellow in the autumn.

Each	Each
Two years old.....\$.50	Three years old.....\$.75



Trumpet creeper

TRUMPET CREEPER

(*Bignonia*)
CHINESE TRUMPET CREEPER

(*B. grandiflora*) A vigorous woody vine that clings tightly with small roots along its stems. Produces clusters of large, deep orange, trumpet shaped flowers all summer. Will climb to great heights on trees and makes one of the best vines for all purposes.

EUONYMUS

WINTERCREEPER (*Euonymus radicans*)—One of the finest evergreen vines with small, rich green foliage and pink fruits. It is a moderately rapid grower and perfectly hardy. Excellent for covering brick walls, tree trunks, rocky banks as well as vases, baskets and borders of beds.

VARIEGATED WINTERCREEPER (*E. radicans variegata*)—Similar to above but has leaves of green and white which take on a pinkish tinge in the winter.

Each	Each
One year old plants...\$.25	Two year old plants...\$.40

(The above prices apply to both varieties)

CLEMATIS

A handsome twining shrub, quite hardy. They delight in a strong, rich soil and for climbing up stumps of old trees, training to trellises, covering arbors or planting to droop over rock work, no plants are more suitable or will make a more gorgeous display.

SWEET AUTUMN CLEMATIS (*C. paniculata*)—A rapid grower with light green shining foliage. The flowers are of medium size, fragrant, pure white and cover the plant with a mass of bloom in mid-summer and fall.

Each	Each
2-year plants.....\$.50	3-year plants.....\$.75

HONEYSUCKLE (*Lonicera*)

TRUMPET HONEYSUCKLE (*L. sempervirens*)—A handsome climbing plant with light green foliage and showy scarlet trumpet shaped flowers.

YELLOW NET JAPANESE HONEYSUCKLE (*L. japonica aureoreticulata*)—Prized for the beauty of its variegated foliage. Flowers are yellow and fragrant.

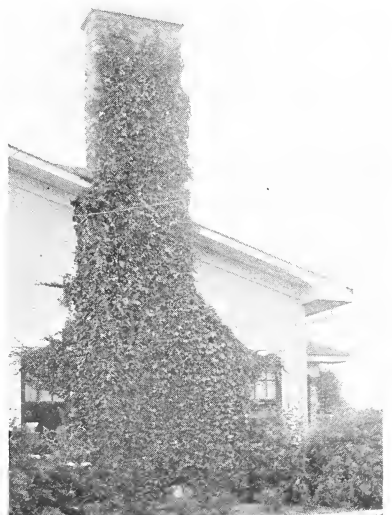
Each	Each
Two years old.....\$.35	Three years old.....\$.50

IVY (*Hedera*)

ENGLISH IVY (*H. helix*)

Very attractive effects are possible with this well-known vine. For planting under shrubs and as a ground cover where grass cannot be grown it is invaluable. The large glossy green leaves remain summer and winter.

2-year vines, 35c each; \$3.50 per doz.
3-year vines, 50c each; \$5.00 per doz.



Ivy-Covered Chimney

CLIMBING VINES (Continued)

CAROLINA JESSAMINE (*G. sempervirens*)—A small climbing shrub, with shiny evergreen foliage. Produces clusters of bright yellow, extremely fragrant flowers which are borne in great profusion in the spring.

Two years old.....\$.50 Three years old.....\$.75



Chinese Wisteria

WISTERIA

A small hardy, deciduous plant, unquestionably the most ornamental, hardy, flowering climber we have. Their lovely panicles of dark purple, light purple and pure white flowers, single and double, are produced in the most wonderful profusion under almost any circumstances. They are altogether without a rival. Useful on pergolas, porches and trellises.

AMERICAN WISTERIA (*W. frutescens*)—A native variety with bluish-purple flowers that bloom later than the Chinese.

CHINESE WISTERIA (*W. sinensis*)—The well-known, rapid growing climber; single, pea-shaped purple flowers borne early in the spring.

LONGCLUSTER WISTERIA (*W. multijuga*)—A very distinct and showy variety. Flowers are borne in loose racemes, sometimes three feet long and are light purple in color. Seldom blooms until about three years old.

WHITE CHINESE WISTERIA (*W. Sinensis alba*)—White flowering, a beautiful graceful climber.

(All the Wisteria Vines are two-year-old vines.)
\$.50 Each.....Three years old \$.75

A proper planting of the shrubs, trees and plants is just as essential to the home as a beautiful stage setting is to a successful play.

JESSAMINE (*Gelsemium*)

JASMINUM PRIMULINUM (*Primrose Jasmine*)—This variety, introduced from China, is a desirable acquisition to our list of hardy evergreen climbers. Light yellow flowers are produced in early March, and the plant continues to bloom for three months or more. In general appearance the flowers resemble those of *Jasminum nudiflorum*, but are considerably larger, sometimes being two inches in diameter. The foliage is rich, dark-green. In this locality the vine is an evergreen. It is not hardy north of Washington without protection. This plant should have a place in every garden. It does best when pruned and fertilized.

Each
18 to 24 inches, strong \$.50 2 to 3 feet, strong----\$.75

MISCELLANEOUS

JAPANESE SPURGE (*Pachysandra Terminalis*)—A spreading herbaceous plant about six inches high. A good dark green the year round. It is greatly used as an edging and as a ground cover in shady places where grass will not grow.

4 to 6 inches.....\$15.00 per 100

GRASSES

BAMBOO (*Bambusa verticillata*)—The yellow canes of this upright growing clump Bamboo are striped with green. Grows to a height of about 30 feet.

Each
Small clumps.....\$.50 Strong clumps.....\$.75
Extra strong.....\$1.00

GRASSES

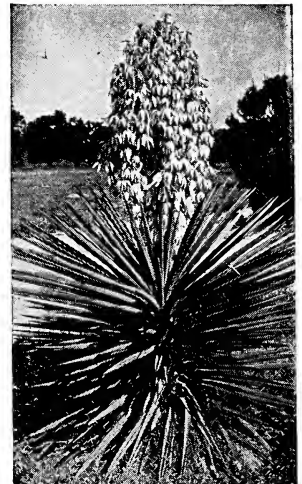
PAMPAS GRASS (*Cortaderia argentea*)—A large, strong-growing grass, producing splendid clumps 6 to 8 feet high, with white, plume-like flowers. Not a lawn grass but very ornamental for screens or individual specimens.

Each
Small clumps.....\$.50 Strong clumps.....\$.75
Extra strong.....\$1.00

YUCCA

COMMON YUCCA (*Yucca filamentosa*)—A conspicuous plant with stiff evergreen foliage. The large clusters of creamy white flowers make a fine effect in summer. Excellent for massing.

PRICES: Each
Five years.....\$1.00
Four years......75
Three years......50



Yucca

LET US LANDSCAPE YOUR GARDEN

Simply make a deposit of \$10.00 as an evidence of good faith and we will give you a credit coupon good for the full \$10.00 on an order amounting to \$50.00 or more. This offer applies to small home grounds.

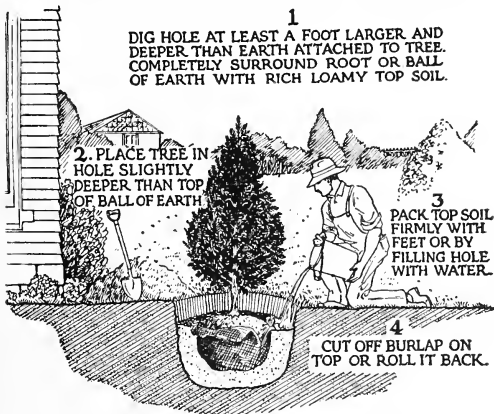


HOMES, large or small will profit through intelligent landscape planning. We maintain a landscape plan department to enable our customers to receive a valuable service in planning and developing their grounds. To home owners with small grounds, this service is free. Where a landscape project is of such size as to warrant a visit of our experts to the ground, a nominal charge for time and expense is made, but in the end this service is practically without cost to those who use it.

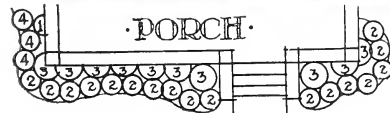
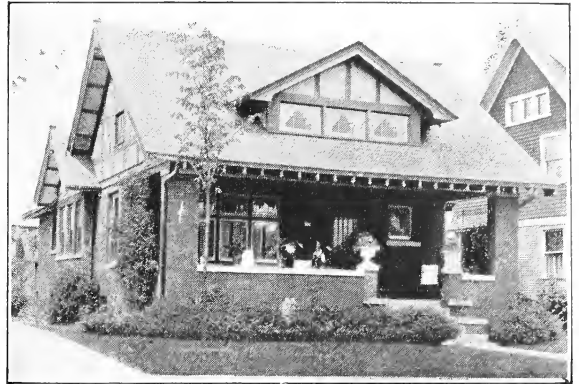
PLANTING EVERGREENS

NEARLY all plants taken from the open ground are lifted with a ball of earth around the roots. This is wrapped in moss, excelsior, or burlap. Plants with burlap around the ball may be planted with the burlap left on. Before filling the hole, cut the string to loosen the burlap and release it from the ball. It need not be removed from under the plant. When moss or excelsior wrapping is about the earth ball, this wrapping must be carefully removed. In no case should the earth about the roots be disturbed. If the ball of earth falls away from the roots the plant must be defoliated and cut back. It is advisable to prune severely and defoliate such plants as Camphor, Elaeagnus, Ilex, Laurocerasus, Ligustrums, Neriums, Photinia and Quercus. Preparing the soil properly will give the best results. Dig holes of ample size. Place a layer of rich top soil mixed with compost in the bottom of the hole, set plant at proper depth and fill hole half full with earth. At this point pour in water freely, but do not wash soil from roots. Allow water to settle, put in more soil and firm it about the roots, then fill up the hole. Place a mulch of well rotted leaves in a depth of from four to six inches about the plants for protection in winter and summer.

How to Properly Plant Evergreens



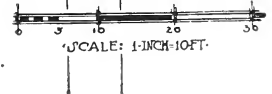
5. ADD LOOSE SOIL UNTIL THE HOLE IS FILLED AND PACK FIRMLY AND LEAVE LIBERAL SUPPLY OF LOOSE EARTH ON TOP.



Elm Tree

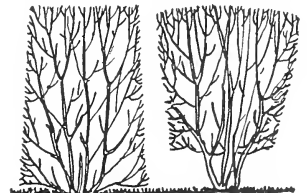
PLAN NO. 1

1. Clematis.
2. Japanese Barberry.
3. Spirea Vanhouttei.
4. Spirea-Anthony Waterer.



PLANTING PRIVET HEDGES

Prepare the ground by plowing or spading to the proper width and depth. Open the trench 12 inches wide by 15 deep. Apply to this a liberal amount of well-rotted stable manure, and if this is not available, bone meal or some high-grade fertilizer. Mix the manure or fertilizer thoroughly with soil. Set the plants in a straight line in the trench one foot apart, about one inch deeper than they originally stood in the nursery row. Firm the earth well about the roots, level off, and then cut the plants back to within four inches of the ground. In the spring, after the plants have made a growth of six or eight inches, cut off one-half this growth, both sides and top, and proceed in a like manner with each succeeding growth until your hedge has reached the desired height and width. Cultivate well. Prune hedges often; especially in early summer when the growth is prolific. The secret of a beautiful hedge is regularity in form and outline and density of foliage. By pruning carefully and to a line, one can secure the desired regularity. By pruning often, the growth is continually forced along the sides of the branches left untrimmed; voids will fill up and a smooth dense mass of foliage will result. Hedges must be trimmed on sides as well as on the top. Otherwise the hedge will get broader at the top than below. The lower branches will be shaded and the hedge will be unattractive. The ideal hedge is slightly A-shaped, being broader at the base. This permits the sunlight to reach all sides of the hedge.



HOW TO SECURE THIS FREE SERVICE

Simply write us your problems, sending all measurements and information needed to draw up a plan, and send a check for \$10.00 as evidence of good faith. This amount will be credited to you in your order of \$50.00 or more of nursery stock. The plan will then be made for you, plants listed and everything done to make it easy for you.

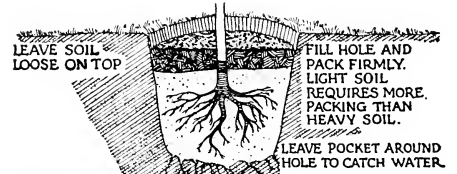
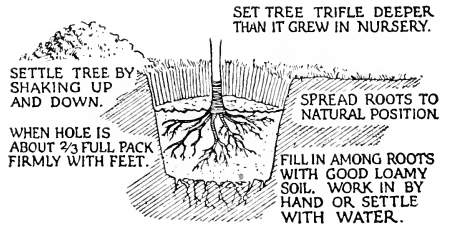
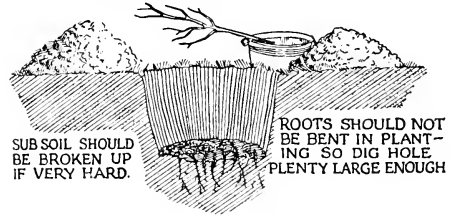
Any problems you have in planning or planting we want you to bring to us. All that we ask is that you let us hear from you as soon as possible. In the rush season it is difficult for us to do what we like to do for you. We invite your inquiries about our landscape service, as we are here to serve you in getting better plants and better plantings.

WE ARE FAMILIAR WITH PLANTING CONDITIONS IN THE SOUTH

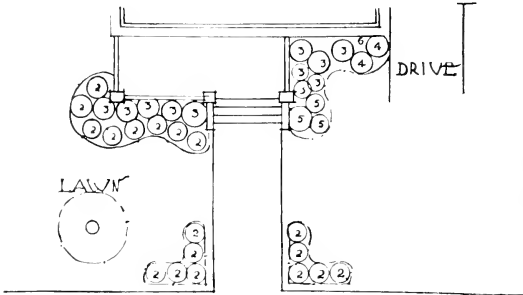
Southern homes have great possibilities for hearty development. There is a wide range of material adaptable to our demands and the pleasing and harmonious effects possible through the proper choice and arrangement of this material are practically unlimited to those who are familiar with the materials and who have been trained in the art of landscape planting. In our Landscape Department you can secure just the type of service you need to get the most out of your investment.

How to Plant a Tree

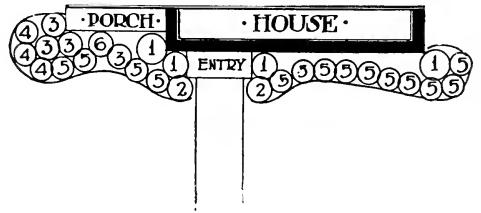
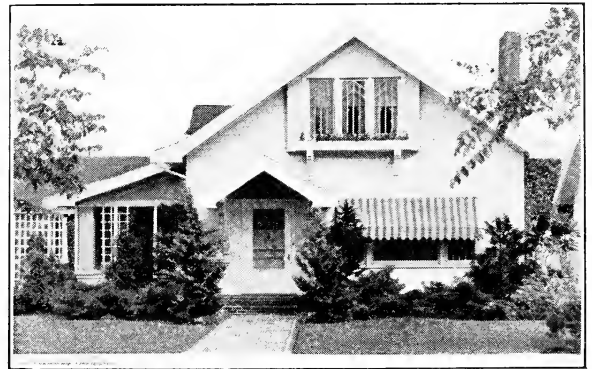
SET TREE IN TUB OF WATER WHILE DIGGING HOLE.



IMPORTANT: WE DO NOT ENCOURAGE THE USE OF MANURE. IF WELL DECAYED AND MIXED WITH SOIL IT SHOULD BE USED ONLY ON THE TOP.



- PLAN NO. 3**
2. Japanese Barberry.
 3. Spirea Vanhouttei.
 4. Spirea Anthony Waterer.
 5. Hydrangea Pan Gran.
 6. Ampetopsis Veitchi.
 7. Acer Rubrum.



- PLAN NO. 2**
1. Red Cedar.
 2. Blue Cedar.
 3. Arbor Vitae Pyram.
 4. Bioto Aurea Nana.
 5. Dwarf Junipers.





WILKINSON'S SPECIAL LAWN SEED MAKES GOOD LAWNS

Southern Evergreen, Wilkinson's Special



FOR a number of years we have tested many grasses to determine which one would stand best in the South. We have finally succeeded in obtaining one, our Wilkinson's Mixture, which has given most satisfactory

results, and we have not yet seen a better lawn grass for this section than our mixture produces. It is composed only of such grasses as have exhibited the greatest heat and drought-resisting qualities. These grasses are most carefully blended, resulting in a mixture that stands our hot weather better than any evergreen lawn grass that we have been able to obtain. Of course, during periods of intense heat and drought, the Wilkinson's Mixture, as well as all other evergreen lawn mixtures, will burn out more or less. During the hot, dry periods use a lawn sprinkler or hose and nozzle after sunset.

Lawns are frequently injured by using the hose and putting on the water with too great force, especially when the sun is shining. All of our seed has been re-cleaned, is strictly free from weeds and of high germination. During prolonged droughts it pays to water daily instead of only periodically. Grass, when artificially watered, requires that this be repeated regularly.

HOW TO MAKE A LAWN—The ground must be first thoroughly prepared by being plowed as deep as possible, and then subsoiled: harrowed, and all stones removed. If the area cannot be plowed, then spade it up carefully and thoroughly. Apply a liberal amount of thoroughly rotted stable manure,

turn this under and harrow. If this is not available then use sterilized sheep-manure at the rate of 1,000 pounds to the acre, or 500 to 800 pounds of bone-meal; rake in well and level off the ground. When the surface has been raked perfectly smooth, the seed should be sown broadcast at the rate of 60 to 75 pounds to the acre (a space 210 x 210 feet.) Rake lightly, thoroughly covering the seed, then roll. If the space is too small for rolling, or if you do not possess or cannot procure a roller, firm the soil with a plank. When the weather is very hot and dry do not mow the lawn as frequently or as closely as when weather conditions are more favorable. A light re-seeding on established lawns each autumn will take care of the bare spots and will insure a good, substantial turf. By following these directions, no trouble should be experienced in obtaining and keeping a perfect lawn.

NOTE—The best period for making a lawn is from September to December. The earlier in the fall the better. Never attempt to make a lawn during very dry or very windy weather.

WILKINSON'S MIXTURE

5 pounds	-----	\$ 2.50
10 pounds	-----	4.75
15 pounds	-----	6.75
50 pounds	-----	20.00
100 pounds	-----	35.00

ITALIAN RYE

5 pounds	-----	\$ 1.00
10 pounds	-----	1.50
25 pounds	-----	3.25
50 pounds	-----	6.25
100 pounds	-----	11.00

Postage extra if by Parcel Post

INDEX

<p>A</p> <p>Abelia ----- 10 Acer ----- 27 Albizzia ----- 28 Althea ----- 21 Ampelopsis ----- 33 Anise Tree ----- 12 Arborvitae ----- 8-9 Aucuba ----- 10 Azalea ----- 11</p> <p>B</p> <p>Bamboo ----- 34 Banana Shrub ----- 30 Barberry ----- 11 13, 14, 17 Beautyberry ----- 18 Berberis ----- 17 Betula ----- 28 Bignonia ----- 33 Birch ----- 28 Bluebeard ----- 18 Boxwood ----- 11 Broom ----- 19 Buckthorn ----- 24 Buddleia ----- 17 Burningbush ----- 12 Bushclover ----- 22 Butterflybush ----- 17 Buxus ----- 11</p> <p>C</p> <p>Callicarpa ----- 18 Calycanthus ----- 18 Camellia Japonica ----- 11 Cape Jasmine ----- 12 Caryopteris ----- 18 Cassia ----- 18 Catalpa ----- 28 Cedar ----- 3, 7 Cedrus ----- 3 Celtis ----- 28 Cercis ----- 18-29 Chamaecyparis ----- 4 Chaste Tree ----- 26 Cherry Laurel ----- 13 Chinaberry ----- 30 Chinese Fir ----- 5 Clematis ----- 33 Clethra ----- 18 Coniferous Evergreens ----- 3 Coralberry ----- 25 Cornus ----- 29 Cortaderia ----- 34 Cotoneaster ----- 18 Crabapple ----- 23 Crape Myrtle ----- 22 Creeper ----- 33 Cryptomeria ----- 5 Cupressus ----- 5 Cydonia ----- 19 Cypress ----- 4-5 Cytisus ----- 19</p> <p>D</p> <p>Deciduous Shrubs ----- 17 Deciduous Trees ----- 27 Deutzia ----- 19 Dogwood ----- 29</p> <p>E</p> <p>Eleagnus ----- 12 Elm ----- 32 Eriobotrya ----- 13 Euonymus ----- 12-19-33 Exochorda ----- 19</p> <p>F</p> <p>Firethorn ----- 16 Flowering Almond ----- 23 Flowering Cherry ----- 23 Flowering Crab ----- 23 Flowering Peach ----- 29 Flowering Quince ----- 18 Flowering Shrubs ----- 17 Forsythia ----- 19 Fringetree ----- 18</p>	<p>G</p> <p>Gardenia ----- 12 Gelsemium ----- 34 Gingko ----- 29 Globes ----- 15 Goldust Tree ----- 10 Golden Bell ----- 19 Goldflower ----- 21 Grasses ----- 34 Grecian Laurel ----- 13</p> <p>H</p> <p>Hackberry ----- 28 Hedera ----- 33 Hedge Plants ----- 15-35 Hibiscus ----- 21 Holly ----- 12 Hollygrape ----- 14 Honeysuckle ----- 22-33 Hydrangea ----- 20 Hypericum ----- 21</p> <p>I</p> <p>Ilex ----- 12 Illicium ----- 12 Ivy ----- 33</p> <p>J</p> <p>Japanese Creeper ----- 33 Japanese Spurge ----- 34 Japonica ----- 13 Jasmine ----- 21 Jasminum ----- 21 Jessamine ----- 34 Jetbead ----- 24 Junipers ----- 5-6 Juniperus ----- 5-6</p> <p>K</p> <p>Kalmia ----- 12 Kerria ----- 21</p> <p>L</p> <p>Lagerstroemia ----- 22 Laurel ----- 12 Laurocerasus ----- 13 Laurus ----- 13 Laurustinus ----- 16 Lawn Grass Seed ----- 37 Lespedeza ----- 22 Libocedrus ----- 7 Ligustrum ----- 14-15 Lilac ----- 25 Liriodendron ----- 29 Locust ----- 24 Lombardy Poplar ----- 30 Lonicera ----- 22 Loquat ----- 13</p> <p>M</p> <p>Magnolia ----- 29-30 Mahonia ----- 13-14 Maidenhair Tree ----- 29 Malus ----- 23 Maple ----- 27-28 Melia ----- 30 Mimosa ----- 28 Miscellaneous ----- 34 Mockorange ----- 23</p> <p>N</p> <p>Nandina ----- 14 Nerium ----- 23 Norway Maple ----- 27 Norway Spruce ----- 7</p>	<p>O</p> <p>Oak ----- 31-32 Oleander ----- 23 Osmanthus ----- 14</p> <p>P</p> <p>Pachysandra Terminalis ----- 34 Pampas Grass ----- 34 Pearlbush ----- 19 Philadelphus ----- 23 Photinia ----- 15 Picea ----- 7 Pittosporum ----- 16 Planetree ----- 30 Platanus ----- 30 Pomegranate ----- 24 Poplar ----- 30 Populus ----- 30 Privet ----- 14-15 Prunus ----- 23 Punica ----- 24 Pussy Willow ----- 18 Pyracantha ----- 16</p> <p>Q</p> <p>Quercus ----- 31, 32 Quince (Flowering) ----- 19</p> <p>R</p> <p>Redbud ----- 18-29 Red Cedar ----- 7 Retinospora ----- 4 Rhamnus ----- 24 Rhodotypos ----- 24 Rhus ----- 24 Robinia ----- 24 Rose-Acacia ----- 24 Rose of Sharon ----- 21</p> <p>S</p> <p>Salix ----- 18-32 Scotch Broom ----- 19 Shrub-Althea ----- 21 Silktree ----- 28 Smoketree ----- 24 Snowball ----- 26 Snowbell ----- 25 Snowberry ----- 25 Spiraea ----- 24-25 Spruce ----- 7 St. Johnswort ----- 21 Styax ----- 25 Sugarberry ----- 28 Sumac ----- 24 Summersweet ----- 18 Sweetshrub ----- 18 Syringa ----- 25</p> <p>T</p> <p>Tamarix ----- 26 Taxus ----- 7 Tea Olive ----- 14 Tea Plant ----- 16 Texas Umbrella ----- 20 Thea Bohea ----- 16 Thuja ----- 8-9 Trumpet Creeper ----- 33 Tuliptree ----- 29 Tobira ----- 16</p> <p>U</p> <p>Ulmus ----- 32 Umbrella Catalpa ----- 30</p> <p>V</p> <p>Viburnum ----- 16-26 Vines ----- 33 Vitex ----- 26</p> <p>W</p> <p>Weeping Willow ----- 32 Weigela ----- 26 Willow Oak ----- 32 Wintercreeper ----- 33 Wisteria ----- 34</p> <p>Y</p> <p>Yew ----- 7 Yucca ----- 34</p>
--	--	---



RECEIVED
WORLD
JAN 10 1933