

## **Historic, Archive Document**

Do not assume content reflects current scientific knowledge, policies, or practices.



6243



# HOME LANDSCAPES

1 9 3 1

U.S. DEPARTMENT OF AGRICULTURE  
 MAR 18 1931 ★  
 U.S. DEPARTMENT OF AGRICULTURE

**THE PARK NURSERIES**  
**HOLM & OLSON INC.**  
**SAINT PAUL MINNESOTA**

# CATALOGUE INDEX

This index shows all items listed in this catalogue. Both the botanical and common names are given.

Page	Page	Page	Page
<b>A</b>	<b>D</b>	<b>J</b>	<b>R</b>
Abies.....15	Current, Flowering..7	Jerusalem Cross...26	Raspberries.....33
Acer.....19	Current, Moun- tain.....7, 28	Juglans.....17, 19	Regal Lily.....26
Achillea.....22	Currants, Fruiting..33	Juneberry.....8	Rhamnus.....7, 28
Aconitum.....22		Juniper.....15	Rhubarb.....33
Adam's Needle.....27			Rhus.....12
Aesculus.....18	<b>Daisy, Alaska.....24</b>	<b>L</b>	Ribes.....7
Alaska Daisy.....24	Daisy, Giant.....27	Lantern Plant, Chi- nese (Physalis)...26	Robinia.....9
Almond, Flowering..6	Daisy, Persian.....27	Larkspur.....24	Rock Gardens...5, 21
Althaea.....25	Day Lily.....25	Lavender, Sea....27	Rosa Rugosa...11, 28
Alyssum.....22	Delphinium.....24	Lawn Grass Seed..36	Rose, Red Leaved...11, 32
Amelanchier.....8	Dianthus.....24	Lilac.....9	Roses.....30, 31, 32
Ampelopsis.....20	Dictamnus.....24	Lilium.....27	Rudbeckia.....11
Anchusa.....22	Dicentra.....24	Lily.....26	Russian Olive...11
Anthemis.....22	Digitalis.....24	Lily-of-the-Valley.26	
Apples.....33	Dogwood.....7	Linden.....18	<b>S</b>
Aquilegia.....22, 23	Dragonhead, False..26	Linum.....26	Salix.....19
Arabis.....23	Dutchman's Pipe...20	Locust, Flowering..9	Salvia.....27
Aralia.....6		Lonicer.....8, 20	Sambucus.....7
Arborvitae.....14	<b>E</b>	Loosestrife.....26	Sedum.....27
Aristolochia.....20	Echinops.....24	Lupinus.....26	Sempervivum...27
Armeria.....23	Elaeagnus.....11	Lychnis.....26	Shasta Daisy...24
Arrowwood.....13	Elder.....7	Lycium.....20	Shrubs.....6
Artemisia.....23	Elm.....18	Lythrum.....26	Siberian Pea Tree.11
Ash.....17	Engelman's Ivy...20		Snowball.....13
Asparagus.....33	Euonymus.....8	<b>M</b>	Snowberry.....11
Asters.....23	Evergreens.....14	Mallow.....25	Sorbus.....18
Astilbe.....23		Maple.....19	Spearmint.....26
	<b>F</b>	Marguerite, Hardy.22	Speedwell.....27
<b>B</b>	Ferns.....24	Matrimony Vine...20	Spiraea...11, 12, 28
Baby's Breath....24	Fertilizers.....36	Meadowsweet...24, 26	Spruce.....16
Barberry.....7, 28	Filipendula.....24	Mentha.....26	Statice.....27
Basswood.....18	Fir.....15	Milfoil.....22	Stoncrop.....33
Beard Tongue....26	Flax.....26	Mock Orange.....10	Strawberries...27
Betula.....17	Forget-me-not....24	Monarda.....26	Strawberry Bush.8
Birch.....17	Forsythia.....8	Monkshood.....22	Sumac.....12
Bittersweet.....20	Foxglove.....24	Mountain Ash....18	Sweet William...24
Blanket Flower...24	Fraxinus.....17	Myosotis.....24	Symphoricarpos.7, 11
Bleeding Heart..23, 24	Funkia.....24		Syringa.....9
Bocconia.....23		<b>O</b>	
Boltonia.....23	<b>G</b>	Oenothera.....26	<b>T</b>
Boston Ivy.....20	Gaillardia.....24	Olive, Russian....11	Tamarix.....12
Bridal Wreath..12, 28	Gas Plant.....24	Oswego Tea.....26	Taxus.....16
Buckthorn.....7, 28	Globe Flower.....27		Thorn Apple....13
Butternut.....17	Globe Thistle....24	<b>P</b>	Thuja.....14
	Golden Bell.....8	Pachysandra.....26	Tilia.....18
<b>C</b>	Golden Glow.....27	Papaver.....26	Trees.....17
Campanula.....23	Golden Moss.....27	Pea Tree, Siberian.11	Trollius.....27
Canterbury Bell...23	Golden Tuft.....22	Penstemon.....26	
Caragana.....11	Gooseberries.....33	Peonies.....35	<b>U</b>
Catalpa.....17	Grapes.....20, 33	Perennials, Hardy.21	Ulmus.....18
Cedar, Red.....15	Gypsophila.....24	Persian Daisies...27	
Celastrus.....20		Philadelphus.....10	<b>V</b>
Celtis.....18	<b>H</b>	Phlox.....29	Valeriana.....27
Centaurea.....23	Hackberry.....18	Physalis.....26	Veronica.....27
Cherries.....33	Harebell.....23	Physostegia.....26	Viburnum.....13
Cherry, Black....17	Hawthorn.....13	Picea.....16	Vines and Creepers.20
Cinquefoil.....11	Hedges.....28	Pie Plant.....33	Viola.....27
Clematis.....20, 24	Helenium.....24	Pine.....15	Virginia Creeper...20
Columbine.....22	Heliopsis.....24	Pinks.....24	
Coneflower, Purple.27	Heliotrope, Garden.27	Plantain Lily....24	<b>W</b>
Coral Bell.....25	Hemerocallis.....25	Platycodon.....26	Walnut, Black....19
Coralberry.....7	Hercules Club....6	Plum, Flowering..10	Wayfaring Tree...13
Coreopsis.....24	Heuchera.....25	Plum, Purple....10, 18	Weigela.....13
Cornflower.....23	Hibiscus.....25	Plums.....33	Willow.....19
Cornus.....7	Hollyhocks.....25	Poplar.....19	
Cotoneaster.....7, 28	Honeysuckle...8, 20, 28	Poppy.....26, 27	<b>Y</b>
Crab, Flowering...17	Horsechestnut....18	Populus.....19	Yew.....16
Cranberry, High- bush.....13	Hydrangea.....9	Potentilla.....11	Yucca.....27
Crataegus.....13		Pyrethrum.....27	
Cup-and-Saucer...23	<b>I</b>		
	Iris.....34		
	Ivy.....20		

1931  
"Home Landscapes"

DEDICATED TO HOME OWNERS AND GARDEN LOVERS OF THE NORTH CENTRAL STATES

*A PRACTICAL BOOK of Landscaping and Planting  
Suggestions and a Complete Catalogue of Hardy Nur-  
sery Stock Adapted to this Section of the Country*



**THE PARK NURSERIES**  
**Holm & Olson, Inc.**

LANDSCAPE ARCHITECTS · NURSERYMEN

20-22-24 W. 5th St., Saint Paul

ST. PAUL PHONE CEDAR 6083

MINNEAPOLIS PHONE DREXEL 7245

*Extension Landscape Office and Nursery at Rochester, Minnesota*

# Your Landscaping Made Easy

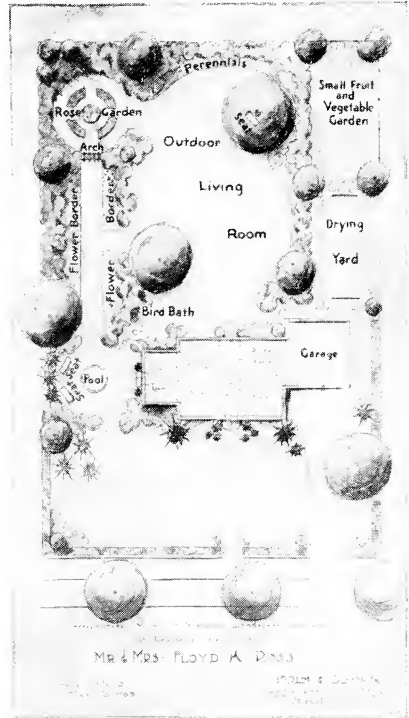
There is a real pride and satisfaction in having your home grounds attractive and pleasing. It is an established fact, too, that suitable improvements add many times their moderate cost to the value of the property so that these landscape plantings are made at no actual expense whatever. No one questions the evident desirability of landscaping his yard and now through our helpful landscape service we solve for you the problem of how to carry out these improvements most successfully and economically.

## We Help You with a Plan

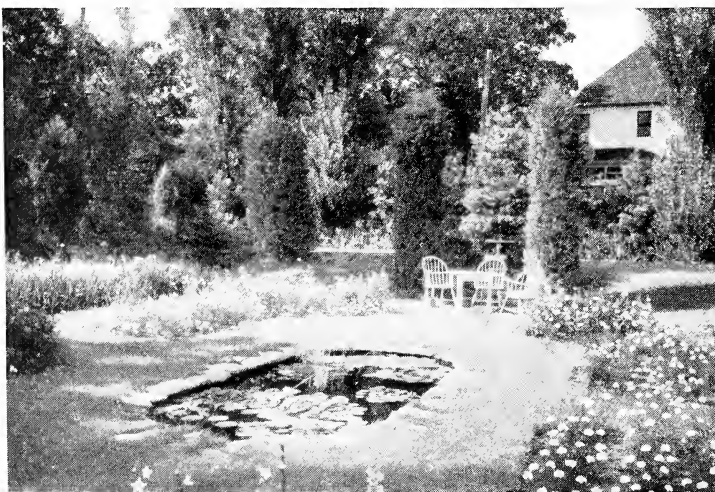
Haphazard, hit-or-miss landscaping is never justified since it is expensive and unproductive. Every planting whether it be modest or elaborate is worthy of careful study and a definite plan to show clearly just where and how the plantings are to be made. This plan can be carried out partially from season to season if you prefer. Our experts are ready to advise you and to help develop a landscape plan suited to your particular requirements and wishes.

## Consult Us—We Plan With You

Calls for landscape consultation will be made without charge to any Twin City address. Telephone Cedar 6083 (St. Paul) or Drexel 7245 (Minneapolis) and let our landscape architect know when such a visit would be convenient. Our designer will study your problem, plan with you and give careful cost estimates of all materials and labor required. Through their practical experience and technical training our staff can help you get the desired results in an economical way.



*A landscape plan will show you just what and where to plant*

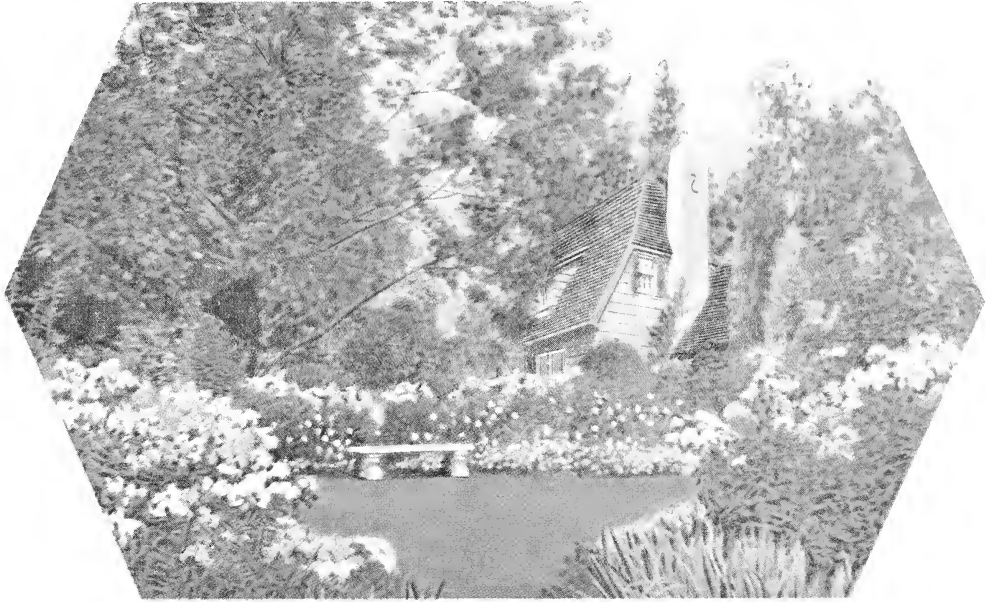


*The lily pool brings an added attraction to this carefully planned home-yard*

## A Special Plan-by-Mail Service

Out-of-town customers can enjoy the advantages of our skilled designer's suggestions through a special "plan-by-mail service." Send us a sketch plan of your property showing the position of the house, the walks, trees and other features with measurements indicated. We will suggest ways of improving and beautifying your grounds so that you will get just the results that you would like.

# How to Make An "Outdoor Living Room"



*The modern yard becomes the Outdoor Living Room*

Over one-half of the average house lot is in the area usually called the "back yard" and most likely is a seldom used, neglected piece of ground. The prevailing fashion is to so develop this otherwise wasted area that it will add to the pleasures and enjoyments of the household. The modern idea is to make over the "back yard" into the useful and beautiful "outdoor living room."

## Plantings Bring Privacy

To encourage intimate use of this outdoor area there must be some seclusion and privacy from the public. This requirement is met by building up "living walls" through plantings made along the boundaries of the yard. In these boundary plantings are placed choice flowering shrubs, evergreens and sometimes small trees or should the space be limited this boundary can be a well trimmed hedge.

## Create Both Beauty and Comfort

The boundary plantings while shielding and protecting the yard provide a splendid background for an inner border of flowering plants—perennials, annuals and bulbs. These plants, selected from personal preference, can be so arranged that there are always some in blossom. The view into this flower-bordered lawn from the house windows is a vision of cheerfulness and color.

## The Family Play Ground

Here, on the tree-shaded and enclosed lawn the children can play safe from the dangers of the street. Suitable lawn furniture such as tables, benches, garden houses, etc., can be placed so that guests and the older members of the family can find comfort and recreation in the healthful surroundings of the outdoor living room.



## Send Us a Sketch of Your Yard

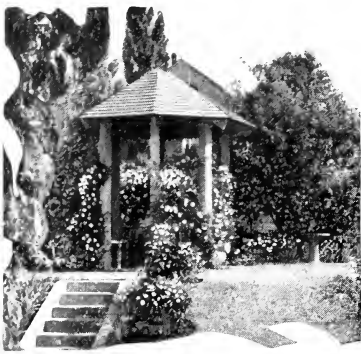
### WE WILL HELP YOU PLAN

Make a rough sketch of your back yard giving dimensions and showing present plantings and send this to our Landscape Department. We will suggest a way to create your Outdoor Living Room. You will be surprised to find how much you can do at very small expense.

### WRITE FOR FREE BOOK

"How to make an Outdoor Living Room," 31 pages of helpful information written by experts. Fully illustrated with line drawings and actual photographs.

# You Can Get Results Without Waiting



## Use Our Complete Landscape Service First—Practical Plans and Careful Estimates

Successful and satisfying landscape results are achieved at a minimum expense of time and money through using properly prepared plans. For your assistance we offer the services of experienced designers who will prepare plans after a careful study of the character of the property and with full consideration of your personal needs and wishes. All the details of construction and planting work are determined in advance so that you know the cost of the improvement before you begin.

## Second—Planting and Construction by Experts

Efficient and skilled workmen, many of whom have worked with us for years, are available to help you in planting and in lawn and garden construction. You are assured of satisfaction when your work is carried out by trained men who know just what to do.

## Third—Specimen Plants of Hardy Varieties

You will find an unequalled collection of the better varieties of trees, shrubs, evergreens and flowering perennials at the Park Nurseries, 1200 St. Clair Street. The varieties are those that are hardy and suited to our northern soil and climatic conditions. Stock is delivered promptly direct from our nurseries and reaches you fresh and in best condition to continue growth.

## Fourth—Maintenance and Upkeep Service

You are invited to make inquiries as to the care and culture of your lawn, garden trees and shrubs. As the seasons pass your plantings will need some attention and the help of our skilled gardeners is always available.

Twin City residents will find the services of our experienced workmen to be very economical. Estimates for lawn and gardening upkeep service will be cheerfully given.

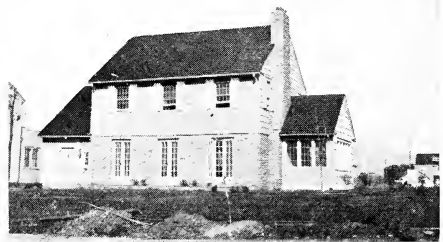
### *Modernize Your Yard*

A little remodeling, often made at small expense, will add tremendously to the beauty and usefulness of the older lawns and gardens. Let us help you arrange some new garden pleasure, such as a pool, rockery, rose plot or perennial border.

**CONSULT US — ASK FOR SUGGESTIONS**



*Home of Mr. Leopold Pistner, Saint Paul*



*The property before planting*

These photographs show the pleasing landscape beauty that developed just 2 years after planting. You can do likewise.

**CONSULT WITH OUR EXPERTS**



# Rock Gardens

## *A New Adventure in Gardening*

While a rock garden will fit most naturally into a slope or terrace, yet even a flat piece of ground will prove suitable if a proper background is provided such as a group of evergreens or shrubs or even a vine-covered fence. A pleasing position can be found in a corner of the rear yard, possibly near the garage or in any area somewhat removed from the central open lawn. Building the rock garden under large trees is not advisable as sunshine is needed to bring the plants and flowers to full development.



*A rockery and pool will bring new interest and pleasure*

## Simple Construction is Desirable

If it is always kept in mind that the purpose of the rockery is to provide a setting in which to grow plants and is not erected merely to display stones then the common error of using too many rocks will be avoided. Height is not essential as a low arrangement of horizontally placed stones with plenty of space between for the plants will be found most advantageous. Ledge rock or water-marked river rocks are very appropriate yet even boulders can be used effectively. Placing the rocks into irregular tiers or drifts that are partially buried in the ground creates a pleasing result.

## Plants for the Rockery

Those plants of dwarf habit that have their foliage mass close to the ground and those whose general direction of growth is horizontal and creeping are well adapted to the rock garden. A few evergreens can be used very effectively also, particularly the Mugho Pines, Savin's and Prostrate Juniper.

For the bulk of the planting the perennials are most desirable and a list of appropriate varieties is given below.



*A slope gives an ideal opportunity for a rock garden*

## Perennials for the Rock Garden

These are all described and priced in this catalogue. (See page 21 for special collection of rock plants.)

- |                                  |                                 |
|----------------------------------|---------------------------------|
| Adam's Needle (Yucca).           | Hen-and-Chickens (Sempervivum). |
| Armeria (Sea Pink).              | Iceland Poppy.                  |
| Bleeding Heart, dwarf plumy var. | Iris (Pumila dwarf).            |
| Blue Flax (Linum).               | Japanese Spurge (Pachysandra).  |
| Coral Bells (Heuchera).          | Phlox (dwarf Subulata).         |
| Clove Pink (Dianthus).           | Plantain Lily (Funkia).         |
| Ferns (Hardy vars.).             | Rock Cress (Arabis).            |
| Forget-me-not (Myosotis).        | Sea Lavender (Statice).         |
| Golden Tuft (Alyssum).           | Sedum, in variety.              |
| Grasses, ornamental vars.        | Speedwell (Veronica).           |
| Harebell (Campanula).            | Viola (Jersey Gem).             |

~o~

## ROCK GARDEN BOOKLET FREE

Send for our new booklet that gives practical instructions on "Building and Planting a Rock Garden." Make use of our complete Landscape Service if you wish to have our skilled workmen build your rockery for you. We can supply all necessary materials and specially selected rocks. Estimates given.



## Flowering Shrubs

### Hardy Varieties for Northern Gardens

MUCH of the beauty in the landscape planting of any home is supplied by shrubs. Their uses are legion and their cost is nominal. It is the softening grace of such shrubs as Spiraea (in variety), Snowberry, Hydrangea, Barberry and others of like nature used about the angles and corners of the house, which makes the transformation from bareness to beauty. Tall shrubs, such as Lilacs, Honeysuckles, Mockorange, etc., find their proper place in the border along the boundary or in plantings which serve to screen out unattractive views. In fact there is a place where most every type of shrub can be effectively used. By choosing carefully it is possible to have practically continuous bloom in the shrub border. A few of the colored twig sorts will liven up the planting in winter.

#### Flowering Almond

**ALMOND, Pink Flowering** (*Amygdalus communis rosea*). Rose-like, pink flowers in early spring. Should be planted deeply to prevent sprouting of the plum root on which, for hardiness, this variety must be grown.

2 to 3 ft. ....	Each \$1.00
3 to 4 ft. ....	1.50

**Almond, White Flowering** (*Amygdalus communis alba*). White flowering variety of the above. 4 to 5 ft.

2 to 3 ft. ....	\$1.25
-----------------	--------

**ARALIA chinensis, HERCULES CLUB**. Tropical appearing bush with long, compound leaves. Needs protected situation. Branches are thorny. General appearance is upright and club-like.

8 to 10 ft. ....	
3 to 4 ft. ....	\$1.25

#### Barberry

**BARBERRY, Japanese or Thunberg's** (*Berberis thunbergii*). The best and most popular hardy, dwarf shrub. Red berries and brilliant foliage in the fall. Grows most anywhere—in partial shade, sunny, moist or dry places. This variety of Barberry does not carry wheat rust. 2½ ft.

12 to 18 in. ....	\$0.35
18 to 24 in. ....	.50
24 to 30 in. ....	.70

**BRIDAL WREATH.** See *Spiraea Vanhouttei*



Double Flowering Almond

Flowering Shrubs—Continued

**Red-Leaved Barberry**

A splendid addition to our hardy shrubs. Similar to the popular Japanese Barberry but has rich bronze-red leaves that hold their color all summer. The fruit is a scarlet berry. Plant these in with other shrubs for a bright contrast.

15 to 18 in.....	\$1.25
18 to 24 in.....	1.50

**BUCKTHORN, Common** (*Rhamnus cathartica*). Very hardy. Lustrous leaves and black berries. Desirable in groups or for hedges. 8 to 10 ft. (See page 28 for hedge.) **Each**  
 2 to 3 ft.....\$0.40  
 3 to 4 ft......50  
 4 to 5 ft......75

**CARAGANA.** See Siberian Pea Tree.

**Coralberry**

**CORALBERRY** (*Symphoricarpus vulgaris*). Stands sun or shade and poor soil. Red to purple berries in late summer. A native shrub that is hardy and easy to grow where other plants fail. Grows 3 to 4 ft. in height.  
 2 to 3 ft.....\$0.50  
 3 to 4 ft......70

**Cotoneaster**

**COTONEASTER acutifolia.** **PEKING COTONEASTER.** Dense growing with ornamental, dark, glossy green leaves. Stands shade. Very desirable for foundation plantings where a neat, dignified effect is wanted. 6 ft.  
 18 to 24 in.....\$0.35  
 2 to 3 ft......50  
 3 to 4 ft......70

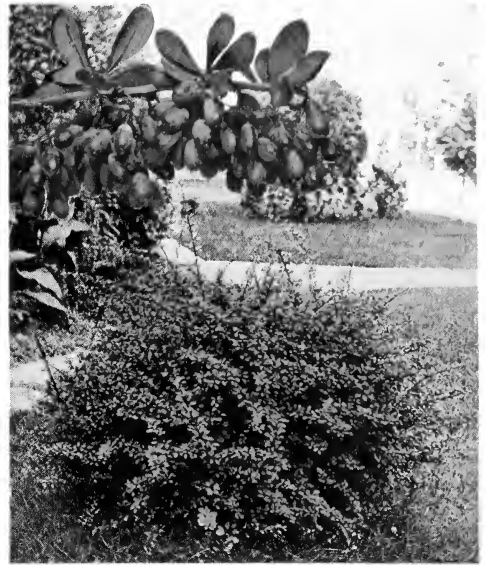
**Currants—Ornamental**

**CURRENT, Mountain** (*Ribes alpinum*). Dwarf shrub. Dense growth. Stands shade. One of the best low to medium height shrubs for planting under most all conditions. 4 ft.  
 18 to 24 in.....\$0.60  
 24 to 30 in..... 1.00

**Current, Yellow Flowering** (*Ribes aureum*). Large, yellow, fragrant flowers early in spring. Black, edible berries. Stands shade. 6 ft.  
 2 to 3 ft.....\$0.60  
 3 to 4 ft......90



*Snowhill Hydrangea (arborescens)* (See page 9)



*The new Red-Leaved Barberry*

**Dogwood**

**DOGWOOD, Goldentwig** (*Cornus siberica aurea*). Valued for its bright yellow branches in fall and winter. White flowers. 6 ft. **Each**  
 2 to 3 ft.....\$0.50  
 3 to 4 ft......75  
 4 to 5 ft..... 1.25

**Dogwood, Red-Twigged** (*Cornus siberica alba*). White flowers in June. The red stems are highly attractive during the winter. Old wood should be kept out and new growth encouraged to get best color. 6 to 8 ft.  
 2 to 3 ft.....\$0.50  
 3 to 4 ft......75  
 4 to 5 ft..... 1.25

**Dogwood, Silver** (*Cornus elegantissima*). Highly decorative because of its white-striped green leaves and red bark. 6 ft.  
 18 to 24 in.....\$1.00  
 2 to 3 ft..... 1.25  
 3 to 4 ft..... 1.50

**Elderberry**

**ELDER, Black-Fruited** (*Sambucus canadensis*). Heavy, broad, clusters of fragrant, white flowers in July. Edible, black fruit. A very rapidly growing hardy shrub. Stands partial shade. 6 ft.  
 2 to 3 ft.....\$0.50  
 3 to 4 ft......75

**Elder, Cut-Leaved** (*Sambucus nigra laciniata*). Divided, fern-like leaves. Stands shade. The delicate foliage makes a pleasing contrast when planted with other shrubs. 5 to 6 ft.  
 2 to 3 ft.....\$0.50  
 3 to 4 ft......75

**Elder, Golden** (*Sambucus aurea*). The golden leaves hold their color well all season through; white flowers. 7 ft.  
 2 to 3 ft.....\$0.60  
 3 to 4 ft......85

**Elder, Red-Berried** (*Sambucus racemosa*). Bright red berries in July. Stands shade. 8 ft.  
 2 to 3 ft.....\$0.60  
 3 to 4 ft......85

**ELAEAGNUS.** See Russian Olive.

Flowering Shrubs—Continued

- EUONYMUS americanus. STRAWBERRY BUSH.** Erect growing to 8 ft. Slender, green branches. Ornamental pink fruits in the fall. An unusual and desirable tall shrub. **Each**  
 2 to 3 ft. .... \$0.75  
 3 to 4 ft. .... 1.00
- FORSYTHIA. suspensa. GOLDEN BELL.** Pendulous in habit. Lustrous, dark foliage. Golden flowers in April. Needs protection. 5 ft.  
 2 to 3 ft. .... \$0.60
- Forsythia viridissima. GREEN-STEM GOLDEN BELL.** Erect, green branches carrying many yellow bell-shaped flowers in early spring. Needs protection. 7 ft.  
 2 to 3 ft. .... \$0.60
- HIGH BUSH CRANBERRY.** See Viburnum.

Honeysuckle

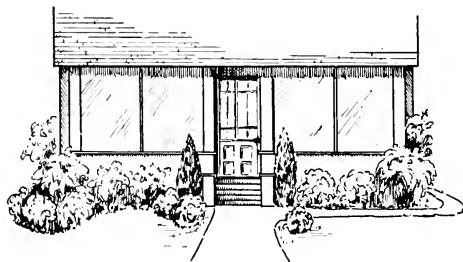
- HONEYSUCKLE, Morrow's (Lonicera morrowi).** Hardy shrub with wide-spreading branches. Yellowish white flowers. Brilliant red berries in July. One of the best all around shrubs for the home yard. Thrives in sun or shade, wet or dry places. 6 ft.  
 2 to 3 ft. .... \$0.50  
 3 to 4 ft. .... .75  
 4 to 5 ft. .... 1.25
- Honeysuckle, Pink (Lonicera tatarica rosea).** Quantities of pink to red flowers in spring. The fruit is a red berry that colors the bush in July and August. A long lived and very popular shrub that is always ornamental. Easy to grow. 8 ft.  
 2 to 3 ft. .... \$0.50  
 3 to 4 ft. .... .75  
 4 to 5 ft. .... 1.25  
 Specimen shrubs. .... \$1.50 to 3.00
- Honeysuckle, White (Lonicera tatarica alba).** Desirable white-flowering, bush honeysuckle. 8 ft.  
 2 to 3 ft. .... \$0.50  
 3 to 4 ft. .... .75  
 4 to 5 ft. .... 1.25  
 5 to 6 ft. .... 2.00



Bush Honeysuckle

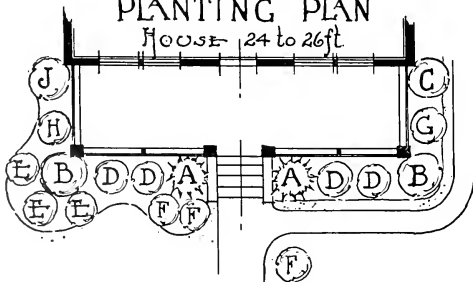
- JUNEBERRY (Amelanchier alnifolia).** White flowers in May. Black berries. 5 to 8 ft. **Each**  
 2 to 3 ft. .... \$0.60

**A Special House Foundation Planting**  
*Designed for the house with a central entrance*



PLANTING PLAN

HOUSE 24 to 26 ft.



Anyone can do the planting with the full instructions sent with every order

	No. of Key Plants	Variety	Size	Price
<b>EVERGREENS</b>				
A	2	American Arborvitae.....	3 ft. B & B	\$6.50
<b>HARDY SHRUBS</b>				
B	2	Bridal Wreath.....	3 to 4 ft.	1.50
C	1	Pink Honeysuckle.....	3 to 4 ft.	.75
D	4	Snowberry.....	2 to 3 ft.	2.00
E	3	Anthony Waterer—Spiraea (crimson).....	12 to 18 in.	1.50
F	3	Japanese Barberry.....	18 to 24 in.	1.50
G	1	Lemoines, Syringa—Philadelphus.....	2 to 3 ft.	.50
H	1	Rugosa Rose.....	2 yr.	.60
J	1	Persian Lilac.....	3 to 4 ft.	1.25

Value..... \$16.10

Total—2 Choice Evergreens and 16 Shrubs  
 All plants are bushy and of substantial size

**Our Special Group Price \$13.75**

Flowering Shrubs—Continued



*Evergreens and Shrubs are pleasingly combined in the plantings about the residence of Dr. A. P. Gruenhagen, St. Paul*

**Hydrangea**

**HYDRANGEA, Large-Flowered** (*H. paniculata grandiflora*). Conical, flower heads of white which later change to pink in August and September. Always wanted in home yard plantings because of the large flowers when other shrubs are out of bloom. 4 ft.

	<b>Each</b>
18 to 24 in.....	\$0.60
2 to 3 ft.....	.75
3 to 4 ft.....	1.00

**Hydrangea, Snowhill** (*H. arborescens grandiflora*). Heavy, snowball like flowers of white from late June to frost. Makes a pleasing compact bush with large leaves. Should have plenty of water. Stands partial shade. 3 to 4 ft.

18 to 24 in.....	\$0.60
2 to 3 ft.....	.75
3 to 4 ft.....	1.00

**Hydrangea, Tree.** A tree form of the large-flowered fall Hydrangea.

3 to 4 ft.....	\$2.00
----------------	--------

**French Lilacs**

**LILAC, French Hybrid Varieties.** Improved sorts that have heavier flowers than the common purple and white, and in a wider range of colors. 6 to 8 ft. The French lilacs are particularly desirable for garden planting where their beautiful trusses contrast splendidly with spring flowers planted beneath. All the varieties listed below are hardy, free flowering sorts, which will prove highly satisfactory.

2 to 3 ft.....	\$1.50
3 to 4 ft.....	1.75
4 to 5 ft.....	2.50

- Alphonse Lavalle.** Blue, shaded violet.
- Belle de Nancy.** Satiny pink.
- Charles X.** Reddish purple; large clusters.
- Chas. Joly.** Deep reddish purple. Very popular.
- Ludwig Spaeth.** Dark purplish-red.
- Marie Legraye.** One of the finest white Lilacs.
- Michel Buchner.** Clear lilac flowers. Double.
- Madame Lemoine.** Pure white.
- President Grevy.** A beautiful light blue.

**Lilac, Hungarian** (*Syringa josikaea*). Light, violet colored flowers in June, after the common lilacs have finished blooming. 8 to 10 ft.

	<b>Each</b>		<b>Each</b>
2 to 3 ft.....	\$1.25	3 to 4 ft.....	\$1.50

**Lilac, Japanese Tree** (*Syringa japonica*). Small tree in habit of growth. Flowers come in loose clusters of creamy white, in June. 15 ft.

2 to 3 ft.....	\$1.25	3 to 4 ft.....	\$1.50
----------------	--------	----------------	--------

**Lilac, Late Flowering** (*Syringa villosa*). Bushy, upright growth. Rich dark foliage with pinkish lilac flowers in June. A desirable, hardy shrub, ornamental both in and out of flower. 8 ft.

2 to 3 ft.....	\$0.80	3 to 4 ft.....	\$1.00
4 to 5 ft.....			1.25
Heavy specimen bushes.....			\$2.00 to 3.00

**Lilac, Persian** (*Syringa persica*). Slender growth; smaller leaves than the Common Lilac. Pale purple flowers in May. 7 ft.

2 to 3 ft.....	\$1.00	3 to 4 ft.....	\$1.25
4 to 5 ft.....			1.50
Specimen shrubs.....			\$2.00 to 3.00

**Lilac, Purple** (*Syringa vulgaris*). The well-known, old-fashioned Lilac. Fragrant flowers in May. 9 to 12 ft.

2 to 3 ft.....	\$0.60	3 to 4 ft.....	\$0.90
4 to 5 ft.....			1.35

**Lilac Rothomagensis** (Rouen Lilac). Late blooming, reddish purple flowers. Delicately formed leaves.

2 to 3 ft.....	\$1.00	3 to 4 ft.....	\$1.25
4 to 5 ft.....			1.50

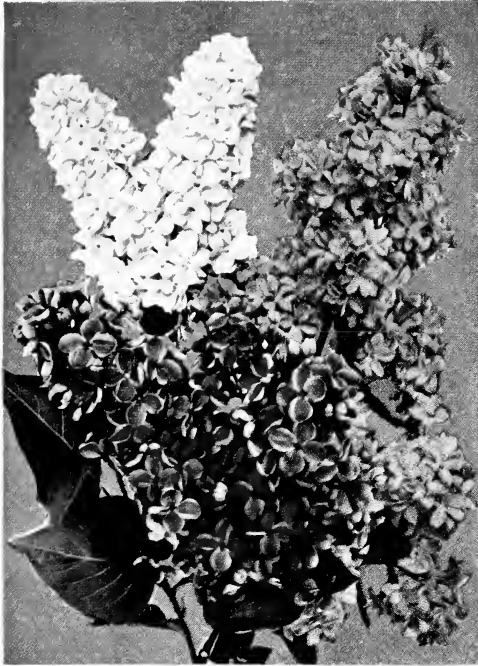
**Lilac, White** (*Syringa vulgaris alba*). The old-fashioned white flowering lilac. 9 to 12 ft.

2 to 3 ft.....	\$0.60	3 to 4 ft.....	\$0.90
4 to 5 ft.....			1.50

**LOCUST, Pink Flowering** (*Robinia hispida*). Showy rose-colored flowers in June. 5 ft.

2 to 3 ft.....	\$1.00
3 to 4 ft.....	1.25

Flowering Shrubs—Continued



The New French Hybrid Lilacs  
(Ludwig Spaeth, red; Marie Legraye, white;  
Michel Buchner, lilac) (See page 9)

Mockorange—(Syringa)

**PHILADELPHUS aureus. GOLDEN MOCKORANGE.** A dwarf compact shrub with bright, golden yellow foliage. 3 ft.

	Each
12 to 18 in.....	\$1.00
18 to 24 in.....	1.25

**Philadelphus coronarius. SWEET MOCKORANGE.** Flowers are pure white and very fragrant in May and June. Good foliage. Quite a large and hardy old-fashioned shrub that is well placed as a lawn specimen or as a screen planting. 7 ft.

2 to 3 ft.....	\$0.50
3 to 4 ft.....	.75
4 to 5 ft.....	1.25
Specimen shrubs.....	\$1.50 to 3.00

**Philadelphus lemoinei. LEMOINE'S MOCKORANGE.** Medium height, very useful for foundation plantings. Fragrant white flowers. 5 ft.

18 to 24 in.....	\$0.40
2 to 3 ft.....	.50
3 to 4 ft.....	.75
Specimen shrubs.....	\$1.50 to 3.00



*Spiraea* Anthony Waterer  
(See page 11)

A New Double-Flowering Mockorange

**Philadelphus virginial.** A choice, fragrant variety, with large creamy white double flowers. Has a prolonged blooming season. 4 to 5 ft.

	Each
2 to 3 ft.....	\$1.00
3 to 4 ft.....	1.50



*Hydrangea P. G.*  
Large Flowered Hydrangea (See page 9)

Flowering Plums

**PLUM, Double Flowering.** Large, double pink, rose-like flowers in early spring. Brilliant and remarkable in bloom. Hardier than the flowering almond. 5 ft.

	Each
2 to 3 ft.....	\$1.00
3 to 4 ft.....	1.25
4 to 5 ft.....	1.50
Specimen shrubs.....	\$3.00 to 7.50

**Plum, Purpleleaf. NEWPORT.** Dark purple leaves. Holds purple color all summer and makes a bright contrast with other foliage. 10 ft.

2 to 3 ft.....	\$0.75
3 to 4 ft.....	1.00
4 to 5 ft.....	1.50

Flowering Shrubs—Continued

**POTENTILLA fruticosa.** CINQUEFOIL. Low shrub; yellow flowers all summer. 2 ft. **Each**  
 12 to 18 in. .... \$0.50

**BUSH ROSES** (also see page 32)

**ROSE, RED LEAVED.** (*Rosa rubrifolia*.) A hardy rose with red leaves all summer. Makes a beautiful contrast in the shrub groups.  
 2 yr. plants ..... \$1.00

**ROSE RUGOSA** (*Rosa Rugosa*). A very hardy bush rose that needs no winter covering. Dark green crinkled foliage and bright pink flowers make it exceedingly ornamental. Bright scarlet fruits appear during late summer and fall.  
 2 yr. plants ..... \$0.60  
 3 yr. plants ..... .80



The hardy *Rugosa* Rose, F. J. Grootendorst  
 See page 32 for description



Fragrant Double Flowering Mockorange  
 (*Philadelphus virginial*) (See page 10)

**RUSSIAN OLIVE** (*Elaeagnus angustifolia*). Silvery, willow-like leaves. Fragrant yellow flowers followed by yellow fruits. Used in plantings for its silvery foliage and good size. Very hardy. 12 ft.  
 2 to 3 ft. .... \$0.60  
 3 to 4 ft. .... .80

**SIBERIAN PEA-TREE** (*Caragana arborescens*). Bright green, pea-like leaves. Clusters of yellow flowers in May followed by long slender seed pods. Very hardy and will stand dry locations and poor soils. 3 ft.  
 2 to 3 ft. .... \$0.50  
 3 to 4 ft. .... .75  
 4 to 5 ft. .... 1.25  
 Specimen shrubs ..... \$2.00 to 5.00

Snowberry

**SNOWBERRY, White** (*Symphoricarpos racemosus*). Medium height shrub. Stands shade. Large, waxy berries in September that persist well into the winter. A graceful and pleasing bush. 4 ft.  
 2 to 3 ft. .... \$0.50  
 3 to 4 ft. .... .70  
 Specimen shrubs ..... \$1.00 to 2.50

Spiraeas

**SPIRAEA, Anthony Waterer.** CRIMSON SPIRAEA. A very free flowering dwarf shrub of compact form. Crimson flowers all summer. Always blooms the first season. Makes a fine color combination planted with *Hydrangea Snowball*. 2 ft. **Each**  
 12 to 18 in. .... \$0.50  
 18 to 24 in. .... .75  
 24 to 30 in. .... 1.25

**Spiraea arguta.** GARLAND SPIRAEA. Many small, white flowers in May. 4 ft.  
 2 to 3 ft. .... \$0.60  
 3 to 4 ft. .... .80

**Spiraea billardi.** PINK SUMMER SPIRAEA. Pink flowers in terminal spikes during July and August. 5 ft.  
 2 to 3 ft. .... \$0.60  
 3 to 4 ft. .... .80

**Spiraea japonica** (*Callosa alba*). White flowers in clusters all summer. A dwarf shrub of compact symmetrical form. Refined foliage. 3 ft.  
 12 to 18 in. .... \$0.50  
 18 to 24 in. .... .75



Bridal Wreath (*Spiraea Vanhoutte*)

Flowering Shrubs—Continued



Children are happy and are safe from the dangers of the street in the Outdoor Living Room. A garden spot on the grounds of Mr. Paul G. Bass

**EXCELLENT MEDIUM HEIGHT SHRUB**

**Spiraea callosa rosea.** Rose colored flowers in flat topped clusters. Well suited to house foundation plantings. July and August. 3½ ft. **Each**

- 18 to 24 in. . . . . \$0.60
- 24 to 30 in. . . . . .80

**Spiraea opulifolia.** NINEBARK. Tall, vigorous shrub with heavy foliage and many small clusters of white flowers. Well suited for planting as a screen or background. 8 ft. **Each**

- 2 to 3 ft. . . . . \$0.50
- 3 to 4 ft. . . . . .75
- 4 to 5 ft. . . . . 1.25
- Specimen shrubs. . . . . \$2.00 to 4.00

**Spiraea opulifolia aurea.** GOLDEN SPIRAEA. An ornamental, golden leaved shrub. 6 ft. Has peculiar shredded bark. The profuse clusters of white flowers are followed by seeds which are brilliant orange-red in summer. Useful for screens and as a filler in masses and borders.

- 2 to 3 ft. . . . . \$0.50
- 3 to 4 ft. . . . . .75
- 4 to 5 ft. . . . . 1.25
- Specimen shrubs. . . . . \$2.00 to 3.50

**Spiraea sorbifolia.** PLUME SPIRAEA. Foliage resembling a Mountain Ash. Long spikes of white flowers in July. Begins growth very early. Stands either full sun or partial shade. 5 ft.

- 2 to 3 ft. . . . . \$0.60
- 3 to 4 ft. . . . . .75

**Spiraea thunbergi.** SNOW GARLAND. Graceful slender branches. Light feathery foliage. Abundant white flowers in May. One of the earliest shrubs to bloom in the spring. 3 ft.

- 18 to 24 in. . . . . \$0.50
- 2 to 3 ft. . . . . .75
- Large heavy bushes. . . . . 1.25

**Spiraea Vanhouttei.** BRIDAL WREATH.

The most admired of all shrubs. A round, graceful bush with arching branches. White flowers in masses in late May. The most popular and most planted of all shrubs. Will grow in almost any location. Very hardy. 5 to 6 ft.

- Each**
- 18 to 24 in. . . . . \$0.40
- 2 to 3 ft. . . . . .50
- 3 to 4 ft. . . . . .75
- 4 to 5 ft. . . . . 1.25
- Specimen shrubs. . . . . \$1.50 to 3.50

**Sumac**

**SUMAC, Fern Leaved** (*Rhus glabra laciniata*). Very desirable small shrub with deeply cut leaves. 3 to 4 ft.

- 18 to 24 in. . . . . \$1.25
- 2 to 3 ft. . . . . 1.50

**Sumac, Tall Cut Leaved** (*Rhus typhina laciniata*). Delicate, deeply cut leaves that show crimson in the fall. Splendid to add variety to heavier shrub masses. 8 to 10 ft.

- 2 to 3 ft. . . . . \$0.60
- 3 to 4 ft. . . . . .80

**Tamarix**

**TAMARIX Pentandra.** SUMMER TAMARIX.

Feathery, bluish gray foliage; with carmine pink flowers in long, loose terminal clusters. June and July. The delicate foliage is often used in flower bouquets. The appearance is so unlike other shrubs as to always attract attention. Does best in a protected spot. 6 ft.

- 2 to 3 ft. . . . . \$1.00
- 3 to 4 ft. . . . . 1.25



Weigela Blossoms



**Visit "The Park Nurseries"**

You are invited to visit our nursery and display grounds at 1200 St. Clair St.—just beyond the corner of Lexington and St. Clair. Make personal selections from our stock of specimen plants. Your plants will be carefully packed so that you can take them home with you in your car if you wish.



Flowering Shrubs—Continued

**THORN APPLE.** (Crataegus.) A hardy Hawthorn. White flowers. Red fruits. 10 to 12 ft.

	<b>Each</b>
2 to 3 ft.....	\$0.80
3 to 4 ft.....	1.00

**Viburnum**

**VIBURNUM, Arrowwood** (V. dentatum). Glossy green leaves; white flowers in June. Crimson berries, turning to blue. Stands partial shade.

2 to 3 ft.....	\$0.75
3 to 4 ft.....	.90
4 to 5 ft.....	1.25

**Viburnum, Highbush Cranberry** (V. opulus). White flowers in spring followed by brilliant red edible berries. Very hardy. A large growing shrub always ornamental but especially so during the fall because of its bright berry clusters and autumn foliage coloration. 8 ft.

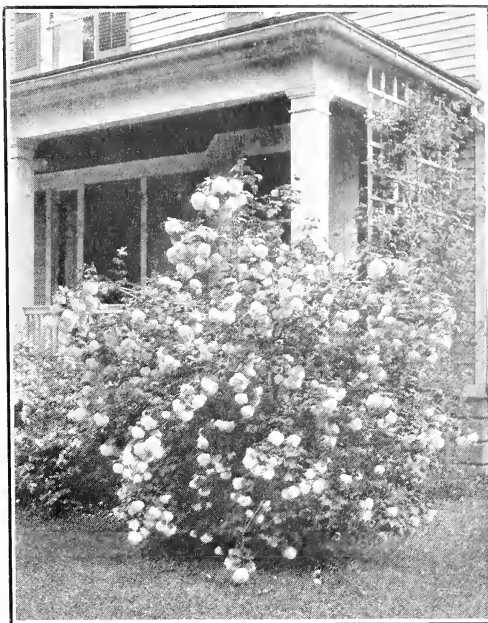
2 to 3 ft.....	\$1.00
3 to 4 ft.....	1.25

**Viburnum, Snowball** (V. opulus sterile). The hardy, old-fashioned Snowball bush. Globular white flowers. 7 ft.

2 to 3 ft.....	\$1.00
3 to 4 ft.....	1.25

**Viburnum, Wayfaring-tree** (V. lantana). Large, white flower clusters in May. Red berries later turning black. Splendid foliage. 10 ft.

2 to 3 ft.....	\$1.00
3 to 4 ft.....	1.25



The Snowball Viburnum

**Weigela**

**WEIGELA, Eva Rathke.** Large, crimson, trumpet shaped flowers. Free blooming. Needs protection. 4 ft.

	<b>Each</b>
18 to 24 in.....	\$0.75
2 to 3 ft.....	1.00

**Weigela rosea.** Pink, bell-shaped flowers in profusion. Good foliage. Needs protection. 5 ft.

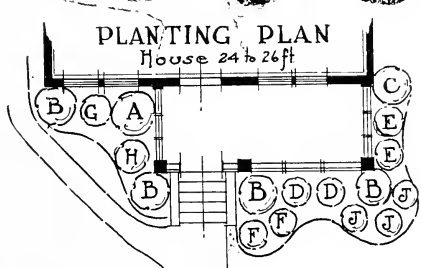
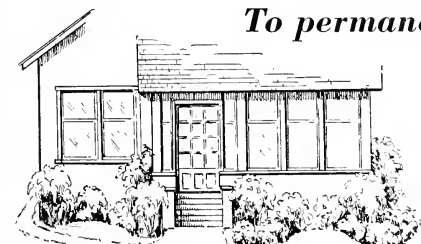
18 to 24 in.....	\$0.50
2 to 3 ft.....	.75

**Shrubs to Grow in Shade**

- |                          |                           |
|--------------------------|---------------------------|
| Honeysuckle, in variety  | Dogwood, in variety       |
| Hydrangea, Snowball      | Currant, Yellow flowering |
| Elder, in variety        | Currant, Alpine           |
| Philadelphus, in variety | Coralberry                |
| Viburnum, in variety     | Snowberry                 |
|                          | Barberry                  |

**A Choice Shrub Planting**

To permanently beautify the house front



The drawing shows a very attractive arrangement of hardy shrubs as a foundation planting. Full instructions will be sent so that you can easily do the planting work.

Key	No. of Shrubs	Variety	Size	Price
A	1	Persian Lilac.....	3 to 4 ft.	\$1.25
B	4	Bridal Wreath.....	3 to 4 ft.	3.00
C	1	Pink Honeysuckle.....	3 to 4 ft.	.75
D	2	Hydrangea Snowhill.....	2 to 3 ft.	1.50
E	2	Snowberry.....	2 to 3 ft.	1.00
F	2	Japanese Barberry.....	18 to 24 in.	1.00
G	1	Japanese Rose.....	2 yr.	.60
H	1	Lemoine's Syringa.....	2 to 3 ft.	.50
J	3	Spiraea Anthony Waterer.....	18 to 24 in.	2.25

Value..... \$11.85

**Total—17 Choice Flowering Shrubs**

All plants are of well developed and substantial size

**Special Group Price \$10.00**

Reverse plan if your entrance is on the right hand side

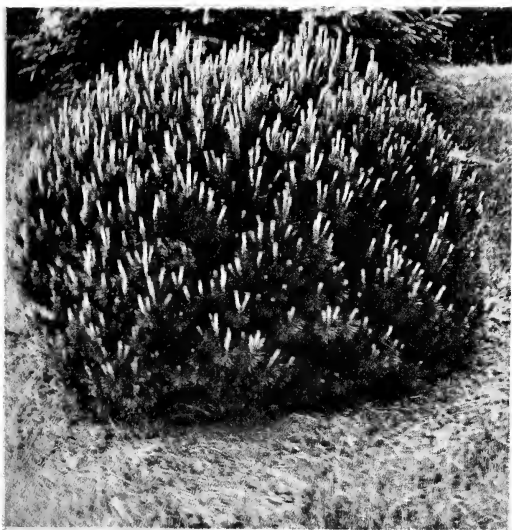


A cheerful and colorful group of hardy Evergreens. Austrian Pine, Blue Spruce  
Siberian arborvitae and Mugho Pine

## Evergreens

### For All Year Around Beauty

THE splendid form and color of the evergreens will add distinction and charm to your plantings. Their beauty can be enjoyed every day in the year since they retain their form and green foliage through all the seasons. Our stock of specimen evergreens is not excelled by any collection in the Northwest.



The Dwarf Mugho Pine

#### REMODEL WITH EVERGREENS

Add new color and interest to your older plantings by placing a few choice evergreens about the lawn or garden. Ask our Landscape Designers to give suggestions and estimates.

### Arborvitae—Thuja

**ARBORVITAE, American** (*Thuja occidentalis*). A native tree with fan-shaped leaves. Foliage is soft and flexible, usually bushy at bottom and tapering toward the top. Used very generally in planting singly or with other evergreen. Stands trimming well to any size. 20 ft.

Each		Each	
18 to 24 in.....	\$2.25	2 to 3 ft.....	\$ 3.25
3 to 4 ft.....	5.00	4 to 5 ft.....	7.25
5 to 6 ft.....	11.00	6 to 7 ft.....	14.00
7 to 8 ft.....	20.00		

Larger specimen trees priced on request.

**Arborvitae, Globe** (*Thuja occidentalis globosa*). A dwarf, bushy evergreen that grows naturally into a rounded, ball-like form. Keeps its rounded shape without trimming. Fine for low borders, foundation groups, tubs and urns. 4 ft.

12 to 18 in. spread.....	\$3.50
18 to 24 in. spread.....	5.00
24 to 30 in. spread.....	6.00
30 to 36 in. spread.....	8.00

Larger specimen trees priced on request.

**Arborvitae, Pyramidal** (*Thuja occidentalis pyramidalis*). An attractive, solid pyramid of green that retains its shape without shearing. Seldom measures over 30 inches in diameter at the base even when mature. 18 ft.

18 to 24 in.....	\$3.75
2 to 2½ ft.....	4.50
2½ to 3 ft.....	6.00
3 to 3½ ft.....	7.50
3½ to 4 ft.....	9.00
4 to 5 ft.....	12.00
5 to 6 ft.....	15.00
6 to 7 ft.....	20.00



*Pfitzer's Juniper*

**Arborvitae, Siberian** (*Thuja waccana siberica*). A compact, dense, bushy evergreen, conical in outline; foliage rich dark green. The hardiest of the Arborvitae. 8 ft. **Each**  
 18 to 24 in. .... \$4.50  
 2 to 2½ ft. .... 6.25  
 2½ to 3 ft. .... 7.50  
 3 to 3½ ft. .... 10.00

**CEDAR.** See **Juniper.**

**Fir—Abies**

**FIR, Douglas** (*Pseudotsuga douglasi*). Quick growing tree of open, broad, sharp pointed pyramidal shape. Large bluish-green needles. A splendid ornamental evergreen where a large tree is wanted. 40 ft.  
 4 to 5 ft. .... \$10.00  
 5 to 6 ft. .... 15.00  
 6 to 7 ft. .... 20.00

**Juniper—Juniperus**

**JUNIPER, Pfitzer's** (*Juniperus pfitzeriana*). Branches horizontally spreading and slightly drooping. A graceful, bushy form suited to foreground plantings. 8 ft.  
 18 to 24 in. .... \$ 5.50  
 2 to 3 ft. .... 7.50  
 3 to 4 ft. .... 12.00  
 4 to 5 ft. .... 20.00  
 5 to 6 ft. .... 25.00

**Juniper, Redcedar** (*Juniperus virginiana*). Pyramidal shape with rich green foliage. Probably the most useful of all ornamental evergreens because of its beauty, adaptability and hardness. Stands trimming. 30 ft.  
 2 to 3 ft. .... \$ 5.00  
 3 to 4 ft. .... 7.00  
 4 to 5 ft. .... 10.00  
 5 to 6 ft. .... 14.00  
 6 to 7 ft. .... 18.00  
 7 to 8 ft. .... 25.00  
 8 to 9 ft. .... 30.00  
 9 to 10 ft. .... 35.00

Larger specimen trees priced on request.

**Juniper, Savin's** (*Juniperus sabina*). Thickly branched, low spreading tree. Can be trimmed. Excellent for use as a low bush to foreground plantings. 5 ft.  
 12 to 18 in. spread .... \$3.50  
 18 to 24 in. spread .... 5.00  
 24 to 30 in. spread .... 6.50  
 30 to 36 in. spread .... 9.00

Larger specimen trees priced on request.

**Juniper, Silver** (*Juniperus virginiana glauca*). Rich, silvery-gray foliage all seasons. Valued for its contrasting color when planted with other evergreens. 15 ft.  
 3 to 4 ft. .... \$10.00 4 to 5 ft. .... \$11.00  
 5 to 6 ft. .... 17.50  
 6 to 7 ft. .... 20.00

**Juniper, Prostrate** (*Juniperus canadensis*). A dwarf many-stemmed evergreen shrub that grows closely to the ground. Suited to foreground plantings or for rock gardens.  
 12 to 18 in. spread. .... \$3.50 18 to 24 in. spread. .... \$4.00  
 24 to 30 in. spread. .... 6.00  
 30 to 36 in. spread. .... 7.00

**Pine—Pinus**

**PINE, Austrian** (*Pinus nigra*). Long, dark green needles; vigorous growing, very decorative, large-growing evergreen. 60 ft.  
 2 to 3 ft. .... \$5.00 3 to 4 ft. .... \$6.50  
 4 to 5 ft. .... 9.00  
 5 to 6 ft. .... 12.50

**Pine, Dwarf Mugho** (*Pinus montana mughus*). Desirable dwarf evergreen; bushy and globe shaped. Foliage deep green. Very hardy. 4 ft. Our best dwarf evergreen.  
 12 to 18 in. spread. .... \$ 4.50  
 18 to 24 in. spread. .... 6.00  
 24 to 30 in. spread. .... 8.50  
 30 to 36 in. spread. .... 12.50  
 Larger specimens priced on request.

**Pine, Mountain** (*Pinus montana*). A compact conical-shaped pine with the sort leaves thickly crowded along the ascending branches. Desirable as a lawn specimen or grouped with other evergreens.  
 30 to 36 in. spread .... \$ 8.00  
 36 to 40 in. spread .... 11.00

**PINE, Scotch** (*Pinus sylvestris*). A very hardy and rapidly growing pine suited to background and windbreaks. 60 ft.  
 2 to 3 ft. .... \$4.50 3 to 4 ft. .... \$6.00



*Colorado Blue Spruce*

Evergreens—Continued

**PLANTING PLAN**  
House 24 to 26 ft

The plan can be reversed  
if your entrance is on  
the right hand side.

Suggestive  
Spruce

### An Unusual All-Evergreen Foundation Planting

Fresh and green in all-year-around beauty  
Hardy evergreens are becoming very popular for house  
foundation plantings. This group has been especially selected  
for permanence and smart appearance.

Key	No. of Plants	Variety	Size	Price
A	2	Red Cedar	30 to 36 in.	\$11.00
B	2	Siberian Arborvitae	18 to 24 in.	9.00
C	1	Pfitzer's Juniper	18 to 24 in.	5.50
D	1	American Arborvitae	3 to 4 ft.	5.00
E	2	Mugho Pine	12 to 18 in.	9.00
F	2	Savin's Juniper	12 to 18 in.	7.00
Value				\$46.50
Total—10 choice Evergreens—all hardy varieties and all dug with solid root balls.				
Full planting directions furnished.				
<b>SPECIAL GROUP PRICE</b>				<b>\$39.75</b>

Spruce—Picea

**Spruce, Blue Colorado** (*Picea pungens glauca*). A hardy American Spruce with rich silvery-blue foliage. A tree of special value as a lawn specimen because of good color and symmetrical growth. 35 ft.

	Each
2 to 2½ ft.	\$11.00
2½ to 3 ft.	14.00
3 to 3½ ft.	17.00
3½ to 4 ft.	20.00
4 to 5 ft.	23.00
5 to 6 ft.	25.00
6 to 7 ft.	30.00
7 to 8 ft.	35.00

Larger trees priced on request.

**Spruce, Black Hills** (*Picea canadensis albertiana*). A valuable ornamental tree of close, dense growth. Stands dry soils and severe climatic conditions. Foliage varies from green to bluish color. 30 ft.

2 to 2½ ft.	\$ 4.00
2½ to 3 ft.	5.00
3 to 4 ft.	7.00
4 to 5 ft.	10.00
5 to 6 ft.	14.00
6 to 7 ft.	18.00

Larger specimen trees priced on request.

**SPRUCE, Colorado** (*Picea pungens*). Very attractive in appearance with even, symmetrical growth and bluish-green foliage. Very hardy. Thrives almost anywhere, and is always a good lawn specimen. 35 ft.

2 to 3 ft.	\$7.50
3 to 4 ft.	10.00
4 to 5 ft.	14.00
5 to 6 ft.	20.00
6 to 7 ft.	25.00

Larger trees priced on request.

**Spruce, Douglas.** See **Fir, Douglas.**

**Spruce, Norway** (*Picea excelsa*). A rapidly growing evergreen of graceful outline. Pyramidal growth. Dark green foliage. The older branches are wide spread and drooping in outline. 50 ft.

3 to 4 ft.	\$ 5.00
4 to 5 ft.	7.00
5 to 6 ft.	10.00

**Spruce, White** (*Picea canadensis*). A hardy, native tree of compact, upright growth. Leaves have silvery green appearance. 50 ft.

	Each
2 to 3 ft.	\$ 4.50
3 to 4 ft.	6.00
4 to 5 ft.	10.00
5 to 6 ft.	13.00
6 to 7 ft.	18.00
7 to 8 ft.	22.00

Specimen trees, large sizes, priced on request.

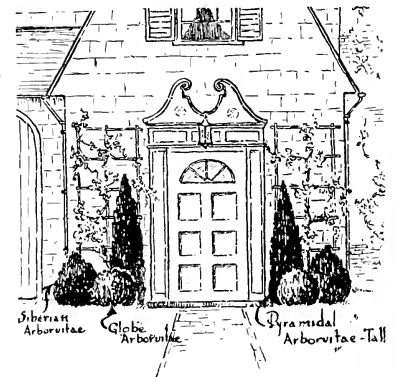
**YEW, Canada** (*Taxus canadensis*). A shrub-like evergreen with spreading slender branches. Dark green leaves. 3 ft. 18 to 24 in.

18 to 24 in.	\$ 7.00
24 to 30 in.	12.00

**Yew, Japanese** (*Taxus cuspidata*). A small growing evergreen for foreground planting. Longer leaves than the Canadian Yew. 3 ft.

18 to 24 in.	\$ 8.50
24 to 30 in.	12.00

*A Beautiful  
Entrance  
Planting  
of Hardy  
Evergreens*



2 Globe Arborvitae, 12 to 18 in.	\$ 7.00
2 Siberian Arborvitae, 18 to 24 in.	9.00
2 Pyramidal Arborvitae, 2 to 2½ ft.	9.00

Value.....\$25.00

**Our Special Group Price** **\$21.50**

with full planting directions  
(Freight or express extra)



*Fine old trees bring shade, shelter and beauty to the residence grounds of Mr. W. E. Schulke, Saint Paul*

## Ornamental Trees

*Bring Comfort and Beauty to the Home Grounds*

**Y**OUR home will offer the greatest comfort and charm when shade trees contribute their delightful shade and beauty. Our northern grown trees with their well developed root systems will help you get the best results quickly.

**Large Trees.** You need not wait for results if you plant one or more of our large, mature shade trees. Write or phone for prices and full information.

### Ash

**ASH, American White** (*Fraxinus americana*). A native shade and forest tree. Straight, clean growth. Few insect troubles. A splendid shade tree for the lawn or boulevard.

70 ft.	Each	\$1.25
6 to 8 ft.		2.00
8 to 10 ft.		3.50
10 to 12 ft. (1½-2 in.)		5.00
2 to 2½ in. diameter		

### Birch

**BIRCH, Cutleaf Weeping.** White bark; graceful branches; much used as a specimen tree on lawns. 35 ft.

6 to 8 ft.	\$3.50
8 to 10 ft.	5.00
10 to 12 ft.	6.50
10 to 12 ft., 2 to 2½ in. diam.	10.00

Large sizes priced on request.

**Birch, European White** (*Betula alba*). White Bark; erect growth. 50 ft.

6 to 8 ft.	\$2.00
8 to 10 ft.	3.00

**BUTTERNUT** (*Juglans cinerea*). A hardy, nut producing tree. 70 ft.

Each	Each
6 to 8 ft.	\$2.00

**CATALPA, Western** (*Catalpa speciosa*). The hardiest of the Catalpas. White flowers. 50 ft.

6 to 8 ft.	\$1.50	8 to 10 ft.	\$2.00
------------	--------	-------------	--------

**CHERRY, Black** (*Prunus serotina*). A native tree. White, fragrant flowers. Glossy leaves. Hardy. The fruit attracts birds. 50 ft.

6 to 8 ft.	\$2.00	8 to 10 ft.	\$2.50
------------	--------	-------------	--------

### Flowering Crab

**CRAB, Bechtel's Double Flowering.** Desirable lawn specimen. Covered in spring with rose like pink flowers. A splendid symmetrical, small lawn tree. 15 ft.

3 to 4 ft.	\$1.50	4 to 5 ft.	\$2.00
------------	--------	------------	--------

**DOLGA CRAB.** A splendid lawn tree of symmetrical shape. The long, conical fruits are an intense bright red and cover the tree.

5 to 6 ft.	\$2.00
------------	--------

## Safe Guard Your Trees

Your old shade trees are almost priceless. Keep them healthy and insure their growth and beauty by giving them reasonable attention as to trimming, fertilizing, and the repair of disease and insect damage.

Our tree expert will call at any Twin City address and make a free inspection of your trees. Careful cost estimates of any repair or upkeep work needed will be given.

**OUT OF TOWN CUSTOMERS** are invited to correspond with us about the care and maintenance of their shade trees.

Ornamental Trees—Continued



The bright, colorful fruit of the Mountain Ash

**HORSECHESTNUT (Buckeye).** (*Aesculus hippocastanum*.) Five-fingered leaves. White flowers in spikes. 40 ft. **Each**  
 5 to 6 ft.....\$2.50  
 6 to 8 ft..... 3.75

Linden—Basswood

**LINDEN, American** (Basswood). (*Tilia americana*.) Broad, heart-shaped leaves; fragrant white flowers. Quite hardy, native, fine for lawn planting.  
 6 to 8 ft.....\$2.00 8 to 10 ft.....\$3.00  
 10 to 12 ft., 1½ to 2 in. diameter..... 5.00  
 2 to 2½ in. diameter..... 7.00  
 2½ to 3 in. diameter..... 9.50  
 Larger trees priced on request.

Mountain Ash

**MOUNTAIN ASH** (*Sorbus aucuparia*). White flowers in May followed by bright, orange-red berries, which hang on for months. Very ornamental. Used as a specimen on the lawn or as an accent in the border. 30 ft.  
 6 to 8 ft.....\$1.50  
 8 to 10 ft..... 2.25  
 10 to 12 ft..... 4.00  
 2 to 2½ in. diameter..... 6.00  
 2½ to 3 in. diameter..... 7.50

**Plum, Purpleleaf.** Dark purple leaves all summer. Attractive lawn specimen, or to give color to shrub groups. 10 ft.  
 3 to 4 ft.....\$1.00  
 4 to 5 ft..... 1.50

**NEW FLOWERING CRAB**

**Hopa.** A good ornamental tree with abundant rose-colored flowers that cover the branches in May. Strikingly ornamental red fruits. 20 ft.  
 5 to 6 ft.....\$2.00 6 to 8 ft.....\$2.50

American Elm

**ELM, American** (*Ulmus americana*). Unquestionably the most popular tree in America for shade, street and lawn planting. It is tough grained and fast growing which places it at the head of the "permanent" class of ornamental trees. Very hardy. 60 ft.

**Each**  
 6 to 8 ft.....\$1.50  
 8 to 10 ft..... 2.25  
 10 to 12 ft., 1½ to 2 in. diameter..... 4.25  
 2 to 2½ in. diameter..... 6.50  
 2½ to 3 in. diameter..... 8.00

Larger trees priced on request.

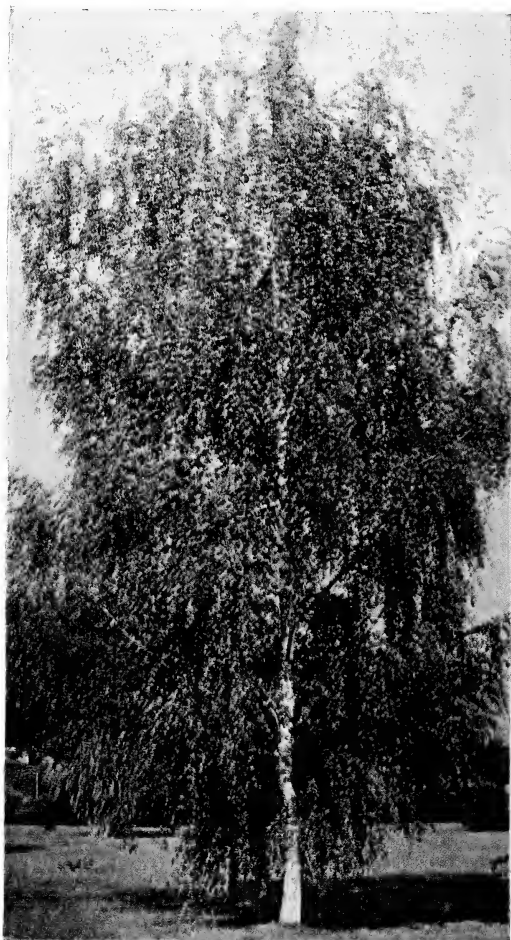
**Elm, Chinese** (*Ulmus parvifolia*). A new and beautiful lawn tree from Asia. Small, refined leaves. Quick growing. Very hardy.

6 to 8 ft.....\$2.25  
 8 to 10 ft..... 3.50  
 10 to 12 ft..... 5.00  
 2 to 2½ in. diameter..... 9.00

Hackberry

**HACKBERRY** (*Celtis occidentalis*). The foliage somewhat resembles the Elm. Wide spreading tops giving good shade. Very hardy. 50 ft.

6 to 8 ft.....\$2.00  
 8 to 10 ft..... 2.50  
 10 to 12 ft..... 4.00



Culleaved Weeping Birch  
 Unmatched in grace as a lawn tree (See page 17)

### Maples

**MAPLE, Norway** (*Acer platanoides*). Handsome tree; rounded head; broad, dark green leaves. The leaves stay green late in the fall turning yellow at last. A splendid lawn tree.

Each		Each
6 to 8 ft.	\$ 2.75	8 to 10 ft. \$4.00
10 to 12 ft., 1½ in. diameter		6.00
2 to 2½ in. diameter		9.00
2½ to 3 in. diameter		12.00
3½ to 4 in. diameter		16.00

Larger trees priced on request.

**Maple, Purple Leaf** (*Acer platanoides* Schwedler). Leaves are bright reddish-purple in spring toning to a deep purplish-green later. Highly prized for lawn planting.

6 to 8 ft. (slightly branched)	\$4.00
8 to 10 ft.	6.50
1½ to 2 in. diameter	12.00
10 to 12 ft., 2 to 2½ in. diameter	15.00

Larger trees priced on request.

**Maple, Silver** (*Acer dasycarpum*). Foliage light green, silvery beneath. Rapid growing. Succeeds anywhere. 50 ft.

6 to 8 ft.	\$1.25	8 to 10 ft. \$1.75
10 to 12 ft., 1½ to 2 in. diameter		3.00
10 to 12 ft., 2 to 2½ in. diameter		4.50

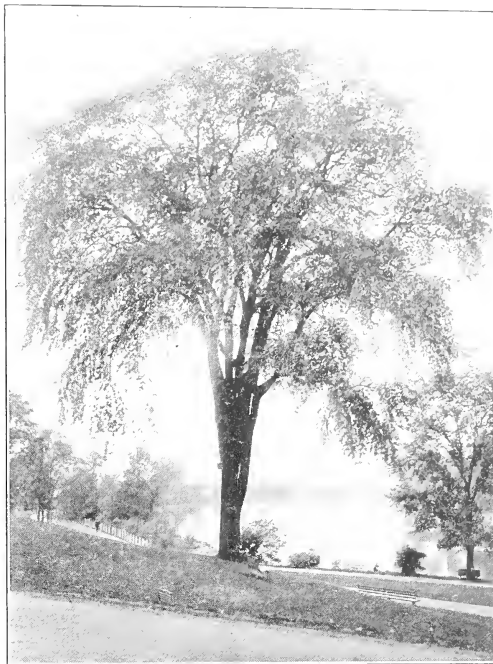
Larger trees priced on request.

**Maple, Sugar** (*Acer saccharum*). A symmetrical tree of great beauty. Hardy native. Deeply lobed, dark green leaves. Brilliant fall colors. Fine for streets, lawns and parks. 50 ft.

6 to 8 ft.	\$2.50	8 to 10 ft. \$4.00
10 to 12 ft., 1½ in. diameter		5.50
10 to 12 ft., 2 to 2½ in. diameter		8.00
2½ to 3 in. diameter		12.00

**Maple, Tatarian** (*Acer tataricum* Ginnala). A splendid lawn ornamental. Beautiful red fall color. 18 ft.

2 to 3 ft.	\$0.90	3 to 4 ft. \$1.25
------------	--------	-------------------



A majestic and dependable shade tree—  
the American Elm (See page 18)

### Poplars

**POPLAR, Bolleana** (*Populus bolleana*). Upright, columnar growth. Glossy, green leaves with downy white undersides. Makes a strong vertical accent, striking in appearance. 30 ft.

Each		Each
6 to 8 ft.	\$1.50	8 to 10 ft. \$2.50
10 to 12 ft.		3.50
12 to 14 ft., 2 to 2½ in. diameter		4.50
12 to 14 ft., 2½ to 3 in. diameter		6.00

**Poplar, Carolina** (*Populus eugenei*). Quick growth. Dense foliage. Grows anywhere. 50 ft.

6 to 8 ft.	\$1.00	8 to 10 ft. \$1.25
10 to 12 ft.		2.00

**Poplar, Lombardy** (*Populus fastigiata*). Erect and pyramidal in form. Planted for landscape effect, as an accent or for screening purposes. Grows quickly. 40 ft.

6 to 8 ft.	\$1.00	8 to 10 ft. \$1.50
10 to 12 ft.		2.50

Larger trees priced on request.

**WALNUT, Black** (*Juglans nigra*). A native nut bearing tree.

6 to 8 ft.	\$2.00	8 to 10 ft. \$3.00
------------	--------	--------------------

### Willows

**WILLOW, Golden** (*Salix vitellina aurea*). Rapidly growing with branches of rich golden yellow. Very hardy. 35 ft.

6 to 8 ft.	\$1.00	8 to 10 ft. \$1.50
------------	--------	--------------------

**Willow, Laurelleaf** (*Salix pentandra*). Glossy green leaves. Grows rapidly. 30 ft.

6 to 8 ft.	\$1.00	8 to 10 ft. \$1.50
------------	--------	--------------------

**Willow, Niobe Weeping**. Goldenbark; pendulous branches. 30 ft.

6 to 8 ft.	\$1.50	8 to 10 ft. \$2.25
------------	--------	--------------------

**Willow, Wisconsin Weeping**. The hardiest of the weeping willows. Very desirable for a quick growing, ornamental lawn specimen. 30 ft.

6 to 8 ft.	\$1.50	8 to 10 ft. \$2.25
------------	--------	--------------------



Use the Bolleana and Lombardy Poplars  
for this skyline effect

# Climbing Vines

## For Shade and Beauty

CLIMBING vines fill an important place in the planting of every home. Without them there frequently is ugliness and bareness. They will quickly drape themselves over suitable support or sprawl pleasingly over a wall or slope.

**BITTERSWEET** (*Celastrus scandens*). A hardy, native climber with glossy leaves. Red berries. Useful for trailing effects or banks, or for trellises, arbors, pergolas, fences, etc.

	<b>Each</b>
2 yrs.....	\$0.60
3 yrs.....	.80

**BOSTON IVY** (*Ampelopsis veitchii*). Small glossy leaves that cling closely to walls but is not altogether hardy in Minnesota.

2 yrs.....	\$1.00
------------	--------

**CLEMATIS Coccinea** (Scarlet Clematis). Vase shaped flowers of bright scarlet.

2 yrs.; strong, potted plants.....	\$1.25
------------------------------------	--------

**Clematis Henryi**. Large creamy-white flowers.

2 yrs.; strong, potted plants.....	\$1.50
------------------------------------	--------

**Clematis Jackmani**. Broad flowers of violet purple. The most popular and the hardiest of the large flowering Clematis.

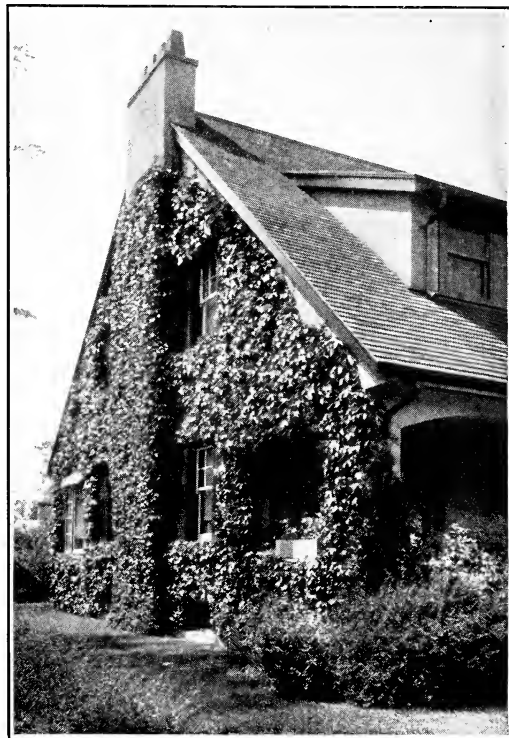
2 yrs.; strong, potted plants.....	\$1.50
------------------------------------	--------

**Clematis, Mme. Edouard Andre**. Large crimson flowers with long blooming season.

2 yrs.; strong, potted plants.....	\$1.50
------------------------------------	--------

**Clematis Paniculata** (Sweet Autumn Clematis). Rapid growth. Of graceful twining habit, with light green foliage; and in late summer is a mass of fragrant starry white flowers.

2 yrs.; strong, potted plants.....	\$1.00
------------------------------------	--------



*The Engelman's Ivy clings to walls*

**DUTCHMAN'S PIPE** (*Aristolochia siphon*). An excellent vine for porches as the large heart shaped leaves create a cooling shade. The purple flowers have an interesting pipe-like form.

	<b>Each</b>
2 yrs., strong .....	\$1.00
3 yrs., strong.....	1.25
Extra strong plants.....	2.00

**ENGELMAN'S IVY** (*Ampelopsis engelmanni*). This is the only Ivy that is perfectly hardy in Minnesota, and that will cling to brick, stone or plaster. It has innumerable uses.

2 yrs.....	\$0.50
3 yrs.....	.75

**GRAPE, Beta**. Desirable for fruit or foliage. Useful on pergolas, arbors, fences, etc. Hardy, rapid in growth and has large attractive leaves which quickly cover its support.

2 yrs., strong .....	\$0.50
3 yrs., strong.....	.75
Extra strong plants.....	1.00

**HONEYSUCKLE, Hall's Japan** (*Lonicera halliana*). Fragrant, buff-colored flowers from midsummer to frost. Plant in a protected place.

2 yrs., strong.....	\$0.75
---------------------	--------

**Honeysuckle, Scarlet Trumpet** (*Lonicera sempervirens*). An interesting twiner with smooth, grayish leaves which surround the stem of the vine. Flowers clear scarlet, with yellow throat.

2 yrs., strong .....	\$0.60
3 yrs., strong.....	.80

**MATRIMONY-VINE** (*Lycium chinense*). Excellent as a trailer for banks and slopes and often used on house lattices. Bright, star-shaped purple flowers followed by brilliant red berries.

2 yrs.....	\$0.50
3 yrs.....	.75

**VIRGINIA CREEPER** (*Ampelopsis quinquefolia*). A well-known native vine of the twining type, for fence, posts, arbors, pergolas and the like.

2 yrs.....	\$0.50
3 yrs.....	.75
Extra strong plants.....	1.00



*Clematis Jackmani*

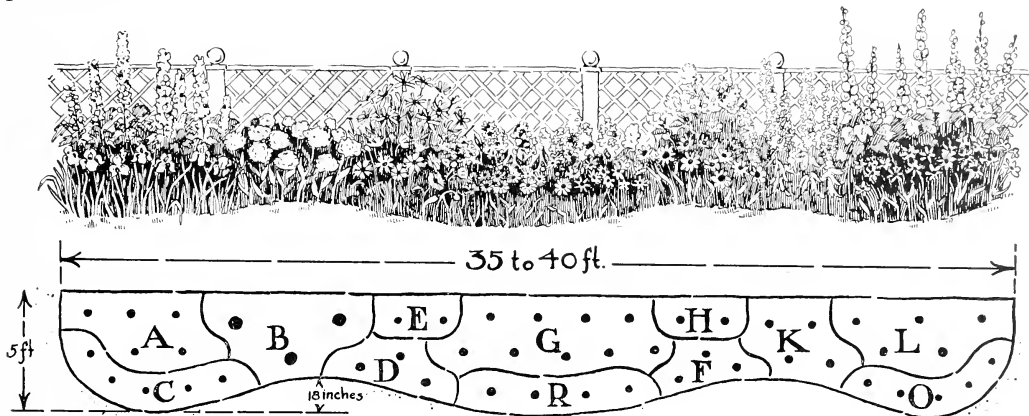


# Our Famous Perennial Collections

THE adaptability of these selected groups to any home yard and the moderate prices at which they are sold make these collections exceedingly popular. Full planting instructions will be sent with your order.

## H. and O's Complete Back Yard Perennial Border

Plant this border of hardy perennials along the property line and enjoy flowers from May to October. Enough plants here for a bed 35 to 40 feet long of the old garden favorites. Use the plan to arrange the plants.



Key	No.	Variety	
A	5	Hybrid Larkspur	\$1.75
B	3	Peonies—Red, White, Pink	2.25
C	5	Iris—Assorted colors	1.75
D	3	Coreopsis	.90
E	2	Tall Fall Daisy (Pyrethrum)	.70
H	2	Yellow Star (Helenium)	.70
G	9	Hardy Phlox—Assorted colors	3.15
R	4	Shasta Daisy	1.20
F	3	Gaillardia (Blanket Flower)	.90
K	4	Sky Blue Larkspur	1.40
L	5	Hollyhocks—Double Flowering	1.50
O	5	Persian Daisy	1.50
50 Catalogue Value			\$17.70

## This Complete Garden—50 Hardy Perennials

in strong, field-grown stock—selected for a long season of bloom and harmonious colorings—Catalogue value, \$17.70.

**SPECIAL COMBINATION PRICE** **\$14.50**  
with full planting instructions.....

(F. O. B. St. Paul—No packing charge.)

## ROCK GARDEN COLLECTION

A rock garden, simple to make and easy to care for will prove an interesting addition to your yard.

Use This Special Rockery Collection  
18 Choice Perennials

- |                              |                          |
|------------------------------|--------------------------|
| 2 Columbine (aquilegia)      | 2 Stonecrop (Sedum)      |
| 2 Pinks (Dianthus)           | 2 Rockcress (Arabis)     |
| 2 Dwarf Iris (Pumila)        | 2 Plantain Lily (Funkia) |
| 2 Harebell (Campanula)       | 2 Viola (Jersey Gem)     |
| 2 Meadow Sweet (Filipendula) |                          |

18 Choice Rockery Plants  
Value \$5.40

**SPECIAL GROUP PRICE**

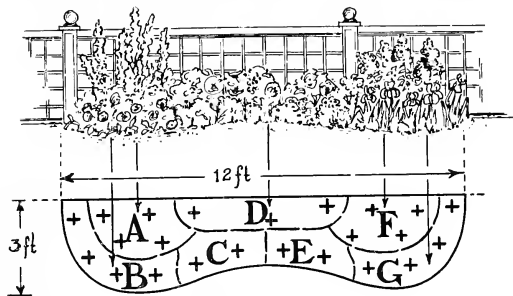
**\$4.50**

**ROCK GARDEN BOOKLET** of helpful information Sent Free with all orders for this collection



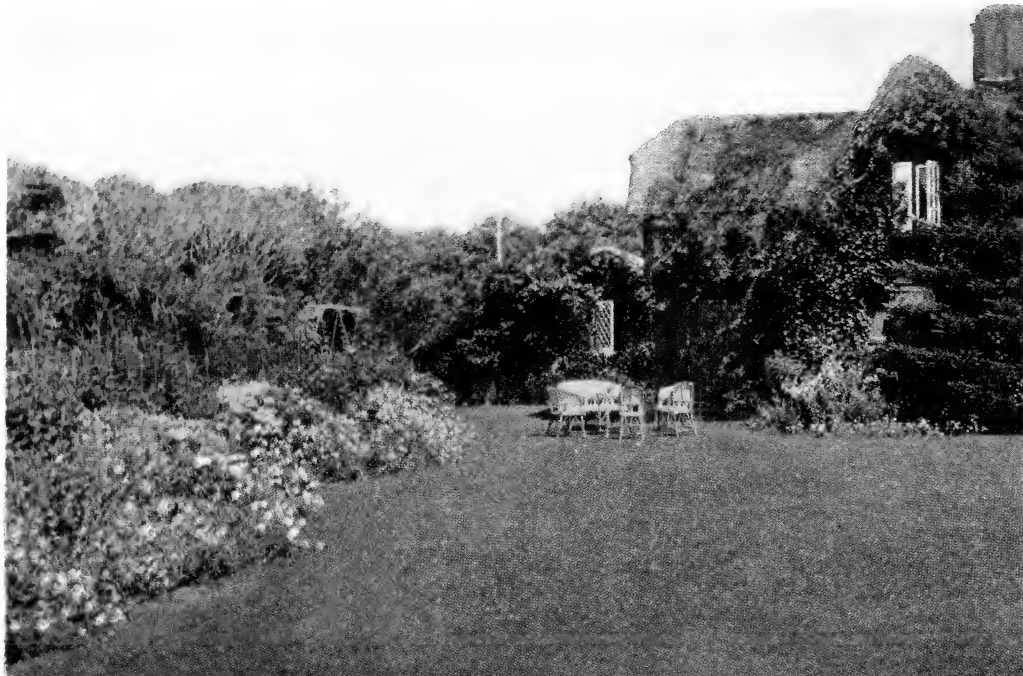
## A SPECIAL 12 ft. PERENNIAL BED

An Inexpensive Planting of Popular Varieties



Key	No.	Variety	
A	4	Larkspur	\$1.40
B	4	Gaillardia	1.20
C	2	Achillea	.70
D	3	Peonies—Red, White, Pink	2.25
E	2	Iceland Poppy	.70
F	4	Phlox, Pink	1.40
G	4	Alaska Daisy	1.20
Catalogue Value			\$8.85

23 Flowering Perennials,  
Special Group Price **\$7.25**



*A border of old-fashioned perennial flowers is an ideal arrangement for the home yard. Our experts will help you plan a border for your grounds*

## Flowering Perennials

**T**HE Perennials persist over winter and renew their growth with increased vigor in the spring. Their first cost is **small**, so that one can enjoy a good assortment at a modest outlay.

**Soil and Planting.** Perennials are best arranged in beds or borders with varieties selected so that there will be some in bloom at all times. The time of blooming is given in the descriptions. The soil should be well worked up and fertilized if necessary. Surface cultivation of the ground between the plants should be practiced. A location free of tree roots and dense shade is desirable.



*Shasta Daisy*

### PRICES

**Quantity Rate.** Ten or more plants of a single variety will be supplied at 5c less per plant. Example: Plants priced at 35c each are \$3.00 for ten.

**ACHILLEA millefolium roseum.** ROSY MILFOIL. Pink flowers in compact heads. Feathery foliage. 2 ft. June to September. 35 cts.; 2 yr., 50 cts.

**Achillea, Perry's White.** Pure white flowers like a small pompon chrysanthemum. Blooms June to September. 1½ ft. Fine cut flowers. 35 cts.; 2 yr., 50 cts.

**ACONITUM fischeri.** LATE MONKSHOOD. Strong spikes of dark blue, helmet-shaped flowers. 3 ft. September and October. 40 cts.; 2 yr., 60 cts.

**Aconitum autumnale.** MONKSHOOD. Loose spikes of blue flowers from September until frost. 4 ft. 40 cts.; 2 yr., 60 cts.

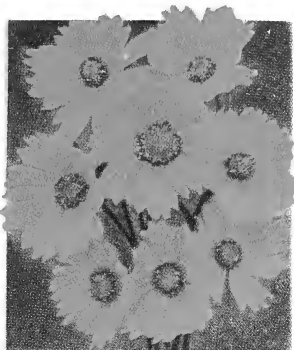
**ALASKA DAISY.** 30 cts.; 2 yr. 50 cts.

**ALYSSUM saxatile compactum.** GOLDEN TUFT. Masses of yellow flowers in early spring. For rockery or border. 12 in., 35 cts.; 2 yr., 50 cts.

**ANCHUSA italica, Dropmore.** ALKANET. Turquoise blue flowers in June and July. 4 to 5 ft. Large heavy leaves. 40 cts.; 2 yr., 60 cts.

**ANTHEMIS tinctoria kelwayi.** HARDY MARGUERITE. Daisy like flowers of golden yellow. 1½ ft. June to October. Finely cut foliage. 35 cts.; 2 yr., 50 cts.

**AQUILEGIA canadensis.** NATIVE CANADA COLUMBINE. Flowers red and yellow. Medium short spurs. 2 ft. June to August. 35 cts.; 2 yr., 50 cts.

*Aquilegia**Coreopsis**Astilbe*

**Aquilegia chrysantha.** GOLDEN COLUMBINE. Yellow flowers with long spurs. 2 ft. June to August. 35 cts.; 2 yr., 50 cts.

**Aquilegia helenae.** BLUE COLUMBINE. 1½ ft. June to August. 35 cts.; 2 yr., 50 cts.

**Aquilegia Hybrids.** Long-spurred flowers in a variety of beautiful colors. 35 cts.; 2 yr., 50 cts.

**ARABIS alpina.** ROCKCRESS. An early blooming dwarf border plant completely covered with white flowers in April and May. 35 cts.; 2 yr., 50 cts.

**ARMERIA Formosa.** SEA PINK. Dwarf border or rocky plant. Pink flowers on wiry stems. 9 in. All season bloom. 35 cts.; 2 yr., 50 cts.

**ARTEMISIA lactiflora.** MOUNTAIN FRINGE. Large branching plumes of sweetly scented creamy white flowers. 4 ft. August to September. 40 cts.; 2 yr., 60 cts.

**Artemisia, Silver King.** A hardy perennial with silver-gray foliage. Brilliant for garden display and delightful in a winter bouquet. 30 in. Price, 35 cts.; 2 yr., 50 cts.

**ASTER novae-angliae.** NEW ENGLAND ASTER (Michaelmas Daisy). Hardy purple Aster. 4 to 5 ft. September and October. 35 cts.; 2 yr., 50 cts.

**Aster, Lil Fardell.** Showy flowers are rich, mauve pink. 4 to 5 ft. September and October. 35 cts.; 2 yr., 50 cts.

**Aster, White Climax.** Pure White Aster. 4 to 5 ft. September and October. 35 cts.; 2 yr., 50 cts.

**ASTILBE, Hybrids.** Showy garden plant of easy culture. Airy plumes of pink flowers. June and July. 3½ ft. 50 cts.; 2 yr., 75 cts.

**Astilbe japonica.** (Spirea Japonica.) Heavy spikes of white, feathery flowers in June and July. Showy in the garden. Good for cutting. 2½ ft., 50 cts.; 2 yr., 75 cts.

**BABYSBREATH.** See *Gypsophila*, page 24.

**BLEEDING HEART** (*Dicentra spectabilis*). Rose-crimson heart shaped flowers in drooping racemes. The old garden favorite. 18 in. April and May. Partial shade. 60 cts.; 2 yr., \$1.00.

**BOCCONIA cordata.** PLUME POPPY. Tall growing perennial fine for background. 6 ft. Creamy white plummy flowers in August. 35 cts.; 2 yr., 50 cts.

**BOLTONIA asteroides.** FALSE STARWORT. Pure white, Aster-like flowers in profusion. Excellent cut flowers. 4 to 5 ft. August and September. 35 cts.; 2 yr., 50 cts.

**Boltonia latisquama.** Bears quantities of daisy like pinkish lavender flowers. 35 cts.; 2 yr., 50 cts.

**CAMPANULA carpatica.** CARPATHIAN HAREBELL. Dwarf habit and compact growth. Bell shaped, light blue flowers in July and August. 8 to 10 inches, 35 cts.; 2 yr., 50 cts.

**Campanula calycanthera.** CUP-AND-SAUCER BELL-FLOWER. A biennial. Blooms July and August. 3 ft. Colors mixed in blue, rose and white. 35 cts.; 2 yr., 50 cts.

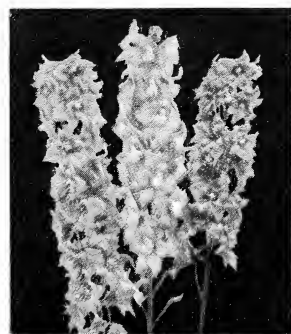
**Campanula glomerata.** CLUSTERED BELLFLOWER. Dense tuft of dark green foliage with globular dark blue flowers topping each stem. 13 in. June and July. 40 cts.; 2 yr., 60 cts.

**Campanula medium.** CANTERBURY BELLS. A biennial. Large bell flowers of rose, blue and white. July. 3 ft., 35 cts.; 2 yr., 50 cts.

**CENTAUREA montana.** PERENNIAL CORNFLOWER. Violet blue, resembling cornflowers. 1½ ft. July to September. 35 cts.; 2 yr., 50 cts.

## SPECIAL—"A Select Perennial Group"—As Illustrated

12 sturdy plants—2 each of the six choice varieties illustrated on this page.  
Catalogue value \$3.80. GROUP PRICE \$3.25 (Postpaid)

*Hybrid Larkspur**Gaillardia**Persian Daisy*

## Hardy Perennials—Continued

**CLEMATIS davidiana.** A bush form Clematis with pale blue flowers in small clusters. Fragrant. 3 to 4 ft. August and September. 60 cts.; 2 yr., \$1.00.

**Clematis recta.** A shrubby Clematis. 3 ft. Flowers are white in showy clusters on long stems. June and July. 60 cts.; 2 yr., \$1.00.

**COLUMBINE.** See *Aquilegia*, page 22.

**COREOPSIS lanceolata grandiflora.** TICKSEED. Golden yellow flowers on long graceful stems from June until frost. Fine for cutting. Narrow light green leaves. 2 ft., 30 cts.; 2 yr., 50 cts.

**DAY LILY.** See *Hemerocallis*.

**DAISY, Alaska.** An improved Daisy that blooms in middle to late summer. White flowers with yellow center. Height, 12 to 15 in. 30 cts.; 2 yr., 50 cts.

**Daisy, Hartje & Elder.** (New.) A pure white Decoration Day Daisy. Large flowers and strong stems make it fine for cutting. 35 cts.; 2 yr., 50 cts.

**Daisy, Shasta.** The popular June flowering white daisy. 3 ft. June. 30 cts.; 2 yr., 50 cts.

**DELPHINIUM chinense.** SLENDER LARKSPUR. Heads of bright blue flowers in open sprays from June until frost. Finely cut, fern-like foliage. 3 ft. 35c cts.; 2 yr., 50 cts.

**Delphinium chinense alba.** White flowering form of the Slender Larkspur. 35 cts.; 2 yr., 50 cts.

**Delphinium Belladonna.** Clear, turquoise blue flowers with long blooming habit. 3 to 4 ft. 35 cts.; 2 yr., 50 cts.

**Delphinium Bellamosa.** A dark blue Larkspur of free-blooming habit. 3 to 4 ft. 35 cts.; 2 yr., 50 cts.

## LARGE FLOWERING LARKSPUR

**Delphinium Hybrids.** Large spikes of beautiful flowers of varied shades of blue. Some double and some are single in form. 35 cts.; 2 yr., 50 cts.

**DIANTHUS barbatus.** SWEET WILLIAM. Flowers in variations of red, white and rose colors. May to July. 18 ins. 30 cts.; 2 yr., 50 cts.

**Dianthus plumarius.** CLOVE PINK. The fragrant white to scarlet flowers bloom in early summer. Grass-like leaves. 9 ins. 30 cts.; 2 yr., 50 cts.

**DICTAMNUS fraxinella.** GAS PLANT. Bushy growth. Terminal clusters of white and rose pink flowers in June and July. 2½ ft. 60 cts.; 2 yr., \$1.00.

**DICENTRA eximia.** PLUMY BLEEDINGHEART. Rosy pink heart-shaped flower in bloom from May through August. Delicate, finely cut foliage. 9 to 12 in. 40 cts.; 2 yr., 60 cts.

**Dicentra spectabilis.** BLEEDINGHEART. The favorite old-fashioned flower. 2½ ft. April and May. 60 cts.; 2 yr., \$1.00.



*Funkia or Plantain Lily*



*Trollius ledebouri (Globe Flower)*

**DIGITALIS. GIANT SHIRLEY FOXGLOVE.** Long flower heads of bell shaped blossoms. Colors, rose, shell pink and blue. 4 ft. July. 35 cts.; extra strong, 50 cts.

**ECHINOPS ritro.** GLOBE THISTLE. Ball shaped metallic blue flowers; thistle-like foliage. 3 ft. July to September. 40 cts.; 2 yr., 60 cts.

**FERNS, Hardy.** Strong growing native varieties suitable for yard planting. 40 cts.; 2 yr., 60 cts.

**Filipendula ulmaria (Spiraea).** MEADOWSWEET. Tufted, fern-leaved plant. Masses of white flowers on 18 in. stems in June and July. 35 cts.; 2 yr., 50 cts.

## A SHOWY GARDEN FLOWER

**FILIPENDULA palmata (Spiraea).** CRIMSON MEADOWSWEET. Deep pink to carmine flowers in loose clusters. Purplish, leafy stems to 3 ft. June and July. 25 cts.; 2 yr., 40 cts.

**FORGET-ME-NOT (Myosotis scorpioides).** Dainty blue flowers from May to September. Fine dwarf border plant. 10 ins. 30 cts.; 2 yr., 50 cts.

**FUNKIA (Hosta) caerulea.** BLUE PLANTAIN LILY. Drooping flowers of blue in July and August. 15 ins. Excellent border plant. Dark green, glossy foliage. Stands shade. 25 cts.; 2 yr., 40 cts.

**FUNKIA subcordata (White Plantainlily).** Fragrant, white, lily-like flowers in August and September. Bright glossy foliage. 18 in., 50 cts.; 2 yr., 75 cts.

**Funkia Undulata Variegata.** Broad, waxy foliage, beautifully variegated with white. Very attractive border plant. Blue flowers in July. 15 inches. Stands shade. 30 cts.; 2 yr., 40 cts.

**GALLARDIA grandiflora.** BLANKET FLOWER. Rich red and crimson petals with broad border of yellow. A brilliant garden flower unsurpassed for cutting. June to October. 2 ft., 30 cts.; 2 yr., 50 cts.

**GOLDEN GLOW.** See *Rudbeckia laciniata*. 30 cts.; 2 yr., 40 cts.

**GYPSOPHILA paniculata.** BABYBREATHER. Cut flower. Tiny white blossoms cover the plant through July and August. 2 to 3 ft., 30 cts.; 2 yr., 50 cts.

## DOUBLE BABYBREATHER

**Gypsophila. BRISTOL FAIRY.** A new and improved variety. Full, double flowers of snow white borne in large sprays. Blooms from June until frost. Grafted plants, \$1.00 each.

**HELENIUM autumnale superbum.** YELLOW STAR. Golden yellow flowers in August and September. 4 to 5 ft. 35 cts.; 2 yr., 50 cts.

**Helenium Riverton Gem.** (New.) Old gold shaded with terra cotta and red. For cutting or garden show. 3 ft. August to frost. 35 cts.; 2 yr., 50 cts.

**HELIOPSIS pitcheriana.** ORANGE SUNFLOWER. Single, thick textured flowers of deep golden yellow. June to September. 3 ft., 35 cts.; 2 yr., 50 cts.

**Heliopsis scabra zinniaeflora.** Grows into a compact head of double zinnia like flowers of golden yellow. July and August. 24 ins. 40 cts.; 2 yr., 60 cts.

## A Chart of The Hardy Perennials

This chart makes it easy to plan your flower plantings. The height of growth, general color and the season of bloom of the more popular perennials is shown.

SEASON					VARIETY NAME	HEIGHT (IN FEET)	COLOR												
MAY	JUNE	JULY	AUGUST	SEPT.			OCT.	1.	2.	3.	4.	5.	WHITE	PINK	YELLOW	ORANGE	RED	BLUE	PURPLE
██						ACHILLEA - BALL OF SNOW													
██	██					ACONITUM - MONKSHOOD													
██	██	██				ANCHUSA - ALKANET													
██	██	██	██			ANTHEMIS - HARDY MARGUERITE													
██						AQUILEGIA - IN VARS - COLUMBINE													
██	██	██	██			ASCLEPIAS - BUTTERFLY WLEAD													
██	██	██	██	██		ASTER - NEW ENGLAND													
		██				ASTILBE - HYBRID VARIETIES													
		██				BOCCONIA - PLUME POPPY													
		██				BOLTONIA ASTROIDES													
		██				CAMPANULA - HARE BELL													
		██				CHRYSANTHEMUM - ALASKA DAISY													
		██				COREOPSIS - TICKSLED													
		██				DELPHINIUM - IN VARS - LARKSPUR													
		██				DIELYTRA - BLEEDING HEART													
		██				DIANTHUS - SWEET WILLIAM													
		██				DIANTHUS - SCOTCH PINK													
		██				FUNKIA - WHITE PLANTAIN LILY													
		██				FUNKIA - BLUE PLANTAIN LILY													
		██				GAILLARDIA - BLANKET FLOWER													
		██				GYPSOPHILA - BABY'S BREATH													
		██				HELIOPSIS - ORANGE SUNFLOWER													
		██				HEUCHERA - CORAL BELLS													
		██				HEMEROCALLIS - LEMON DAY LILY													
		██				HOLLYHOCKS - IN VARS.													
		██				IRIS - GERMANICA - IN VARS													
		██				LILIUM - TIGER LILY													
		██				LILY - OF-THE-VALLEY													
		██				LYCHNIS - JERUSALEM CROSS													
		██				LYTHRUM - LOOSESTRIFE													
		██				MONARDA - OSWIGO TIA													
		██				MYOSOTIS - TORGET-ME-NOT													
		██				PEONIES - IN VAR.													
		██				PAPAVER - ORIENTAL POPPY													
		██				PHLOX - IN VARS.													
		██				PLATYCODON - BELLFLOWER													
		██				PYRETHRUM - PERSIAN DAISY													
		██				PYRETHRUM - OX-EYE DAISY													
		██				RUBBECKIA - GOLDEN GLOW													
		██				SEDUM - STONE CROP													
		██				STATICE - SEA-LAVENDER													
		██				TROLLIUS - GLOBE FLOWER													
		██				YUCCA - ADAM'S NEEDLE													

**HEMEROCALLIS flava. LEMON DAYLILY.** Sweetly scented lemon yellow flowers in June and July. 2½ ft. 35 cts.; 2 yr., 50 cts.

**Hemerocallis fulva. TAWNY DAYLILY.** Very hardy, vigorous perennial with orange colored lilies. 3 ft. July. 30 cts.; 2 yr., 40 cts.

**HEUCHERA Pleu-de-Feu. ALUMROOT.** Crimson flowers are borne in graceful sprays from middle to late summer. About the size of Lily-of-the-Valley bells. 18 ins. Evergreen leaves. 50 cts.; 2 yr., 75 cts.

**Heuchera sanguinea. CORALBELLS.** Bright coral crimson bells are held pendant from lender flower stems. 18 ins. July to September. Evergreen, geranium-like leaves. 40 cts.; 2 yr., 60 cts.

**HIBISCUS, Crimson-Eye. ROSEMALLOW.** Large pure white flowers with deep crimson center. August and September. 4 ft. 40 cts.; 2 yr., 60 cts.

**Hibiscus Mallow Marvels.** Giant flowering varieties in crimson, pink and white. 4 to 5 ft. 40 cts.; 2 yr., 60 cts.

**HOLLYHOCK, Althaea. ALLEGHENY MAMMOTH.** Single flowers of delicately fringed petals. Mixed colors. 5 to 7 ft. July and August. 30 cts.; extra strong, 50 cts.

**Hollyhock. DOUBLE FLOWERING.** Yellow, white, pink and red colors. July and August. 5 to 7 ft. 30 cts.; extra strong, 50 cts.

**IRIS. Fleur-de-Lis.** See list page 34.

**LARKSPUR.** See Delphinium.

## Hardy Perennials—Continued

**Lilium elegans.** ORANGE LILY. Very hardy variety producing orange-red flowers in great numbers. 18 ins. July. 35 cts.; 2 yr., 50 cts.

**Lilium speciosum album.** JAPANESE LILY. White flowers with recurved petals. 2 ft. August and September. Started, potted plants, \$1.00.

**Lilium speciosum rubrum.** A fragrant lily, under color white, shaded and spotted with crimson. 2 ft. August and September. Started, potted plants, 75 cts.

## THE REGALE LILY

**Lilium regale.** The acknowledged peer of all lilies for Northern gardens. Recently introduced from N. W. China, and proving hardy in Minnesota. The flowers are white with pink tinge on the outer side, with canary yellow shadings within the cup. Deliciously fragrant. 3 to 4 ft. July. Large dormant bulbs, 50 cts. each; started, potted plants, 75 cts. each.

**LILIAM auratum.** GOLDBANDED LILY. Fragrant white flowers spotted crimson with central yellow band. Red anthers. 3 ft. July and August. Started and potted plants, 75 cts.

**Lilium tigrinum, fl. pl.** DOUBLE TIGER LILY. A double flowering form of this well-known, hardy Lily. Orange-red spotted with black. Late July and August. 4 ft. Bulbs, 35 cts.; extra size, 50 cts.

**LILY-OF-THE-VALLEY.** Pure white, dainty bell shaped flowers in May and June. Fragrant. 3 to 10 ins. Field clumps, 25 cts.; extra heavy, 40 cts.

**LINUM perenne.** BLUE FLAX. Graceful foliage with delicate flowers of pearly blue. May to August. 18 ins. 35 cts.; 2 yr., 50 cts.

**LUPINUS Polyphyllus.** Azure blue, pea shaped flowers in long spikes. Late May and June. 3 to 4 ft. 40 cts.; 2 yr., 60 cts.



The Regale Lily

**LYCHNIS chalcedonica.** JERUSALEM CROSS. Flowers of vermilion scarlet in immense heads. 2½ ft. June to mid-July. 35 cts.; 2 yr., 50 cts.

**LYTHRUM roseum.** ROSE LOOSESTRIFE. Tall spikes of rose-colored flowers July to September. 3 to 4 ft., 35 cts.; 2 yr., 50 cts.

**MEADOW SWEET (Filipendula).** Pink to crimson flowers in feathery heads. June and July. Mixed colors. 50 cts.; 2 yr., 70 cts.

**MENTHA spicata.** SPEARMINT. Hardy garden mint. 30 cts.; 2 yr., 40 cts.

**MONARDA didyma.** OSWEGO TEA. Compact heads of bright red flowers. Aromatic foliage. June to September. 3 ft. 35 cts.; 2 yr., 50 cts.

**MYOSOTIS.** See Forget-Me-Not.

**OENOTHERA missouriensis.** EVENING PRIMROSE. Large golden yellow poppy like flowers from June to August. 12 inches. 35 cts.; 2 yr., 50 cts.

**PACHYSANDRA terminalis.** A valuable dwarf Evergreen perennial for ground cover planting. 6 to 9 ins. 30 cts.; 2 yr., 50 cts.

**PENTSTEMON barbatus torreyi.** BEARD TONGUE. Tall spikes of brilliant scarlet flowers. Very showy. 3½ ft. July. 35 cts.; 2 yr., 50 cts.

**PEONIES.** See list, page 35.

**PERSIAN DAISY.** See Pyrethrum Hybridum.

**PHLOX.** See list, page 29.

**PHYSALIS francheti.** CHINESE LANTERN PLANT. Brilliant orange colored seed pods or "lanterns" in September. 2 ft., 30 cts.; 2 yr., 50 cts.

**PHYSOSTEGIA virginica.** FALSE DRAGONHEAD. Strong spikes of delicate pink flowers. July and August. 2 to 3 ft., 35 cts.; 2 yr., 50 cts.

**PLATYCODON grandiflorum.** BALLOON FLOWER. Star shaped blue flowers at the tip of each branch. Compact, bushy growth to 18 ins. June to September. 35 cts.; 2 yr., 50 cts.

**Platycodon grandiflorum album.** A white flowered variety of the above. 35 cts.; 2 yr., 50 cts.

**POPPY, Oriental (Papaver orientale).** Massive cup shaped flowers of deep scarlet. May and June. 2½ ft., 35 cts.; 2 yr., 50 cts.

**Poppy, Oriental. New Named Varieties—50 cts. each.**  
**BEAUTY OF LIVERMORE,** crimson with dark shadings.  
**MRS. J. HARKNESS,** bright salmon pink.  
**MRS. PERRY,** orange apricot.



Delphinium or Larkspur

## Hardy Perennials—Continued

**Poppy, Iceland** (*Papaver nudicaule*). Cup shaped flowers of clear colors, white, yellow and orange scarlet. Blooms all summer. June to September. 12 ins. 35 cts.; 2 yr., 50 cts.

**PYRETHRUM Hybridum**. PERSIAN DAISY. Daisy shaped flowers in white to shades of pink, rose and red. Splendid for cutting. 2½ ft. May and June. 30 cts.; 2 yr., 50 cts.

**PYRETHRUM Uliginosum**. GIANT DAISY. Large white flowers in August and September. Splendid for cutting. 4 to 5 ft. 35 cts.; 2 yr., 50 cts.

**REGALE LILY**. The best garden Lily. See *Lilium Regale*. Large bulbs. 50 cts.; started plants, 75 cts.

**RUDBECKIA laciniata**. GOLDEN GLOW. The popular, double yellow blossoms of August and September. 5 to 6 ft., 30 cts.; 2 yr., 40 cts.

**Rudbeckia purpurea**. PURPLE CONE FLOWER. Rose-purple flowers with tall, brown center. 3 to 4 ft. August to October. 35 cts.; 2 yr., 50 cts.

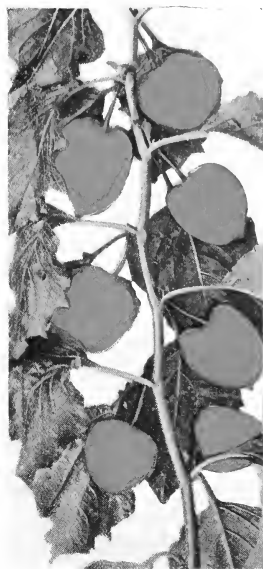
**SALVIA pitcheri**. MEADOW SAGE. Every stem tipped with spikes of pretty sky blue flowers. August and September. 3 to 4 ft., 35 cts.; 2 yr., 50 cts.

**SEDUM acre**. GOLDEN MOSS. Bright yellow flowers cover the dwarf plant in June and July. Useful for rockery or borders. 30 cts.; 2 yr., 50 cts.

**Sedum spectabile**. BRILLIANT STONECROP. Pink to rosy red flowers in heavy flat clusters. 18 ins. August and September. 30 cts.; 2 yr., 50 cts.

**SEMPERVIVUM**, "Hardy Hen and Chickens." Produces small rosettes of succulent leaves. A splendid rock garden plant. 35 cts.; 2 yr., 50 cts.

**SHASTA DAISY**. See Daisy.



Chinese Lantern Plant  
(*Physalis*)

**Trollius ledebouri**. Strong growing hardy perennial with handsome foliage and large orange flowers. 2½ ft., 40 cts.; 2 yr., 60 cts.

**VALERIANA officinalis**. HARDY GARDEN HELIOTROPE. Sweetly fragrant, gray-pink flowers in June and July. Deeply cut foliage. 3 ft., 35 cts.; 2 yr., 50 cts.

**VERONICA longifolia**. JAPANESE SPEEDWELL. Long spikes of attractive blue-violet flowers. 2 ft. August and September. 35 cts.; 2 yr., 50 cts.

**Veronica spicata**. SPEEDWELL. Spikes of blue flowers in June. 1½ ft. 35 cts.; 2 yr., 50 cts.

**VIOLA**. JERSEY GEM. Rich green foliage with blue flowers like small Pansies. 8 ins. May to September. Splendid border plant. 30 cts.; 2 yr., 50 cts.

**YUCCA filamentosa**. ADAM'S NEEDLE. Stiff, sword-shaped leaves with tall spikes of white, drooping flowers in July. 4 ft. 50 cts. each; 2 yr., 75 cts.



*Hemerocallis (Daylily)*

**SPIRAEA**. See *Astilbe* and *Filipendula*.

**STATICE latifolia**. SEA LAVENDER. Delicate, small blue flowers cover the branching tops in August and September. 2 ft., 35 cts.; 2 yr., 50 cts.

**TROLLIUS, Europaeus**. GLOBE FLOWER. A glorified Buttercup. Handsome dark green foliage with yellow cup-like flowers in May and June. 2 ft., 40 cts.; 2 yr., 60 cts.



*Viola, Jersey Gem*



*Japanese Barberry, neatly clipped, makes a splendid low hedge*

## Hardy Hedges — for ornament and protection

A HEDGE planting will bring privacy and seclusion to your grounds. It makes an ornamental wall-of-green along the lot boundaries to protect your property, yet has none of the objectionable features of a fence. Year by year a hedge grows into greater beauty and usefulness.

**BARBERRY, Thunberg's** (*Berberis thunbergii*). Very satisfactory for a low hedge of close growth. Can be trimmed or allowed to grow naturally. Bears attractive red berries in the fall.

	Per 10	Per 100
12 to 18 in.....	\$3.00	\$25.00
18 to 24 in.....	4.50	35.00

**BUCKTHORN** (*Rhamnus cathartica*). An ornamental plant of great hardiness that makes a dense hedge. Can be kept trimmed to any desired height or outline. Always satisfactory.

2 to 3 ft.....	\$3.00	\$22.50
3 to 4 ft.....	3.50	27.50

**COTONEASTER acutifolia** (Quinceberry). A dense growing shrub with dark green, glossy, oval leaves. A splendid hedge plant for the Northwest. Perfectly hardy.

2 to 3 ft.....	\$4.00	\$30.00
3 to 4 ft.....	5.00	45.00

**CURRANT, Alpine** (*Ribes Alpinum*). A dense, low-growing plant with attractive green leaves. Makes a desirable low hedge.

12 to 18 in.....	\$4.50	\$10.00
18 to 24 in.....	6.00	55.00

**HONEYSUCKLE** (*Lonicera tatarica*). In addition to great hardiness the Honeysuckles have attractive flowers and berries. Suitable where a tall untrimmed hedge is wanted.

	Per 10	Per 100
2 to 3 ft.....	\$5.00	\$40.00
3 to 4 ft.....	7.00	60.00

**ROSA RUGOSA** (Japanese Rose). Desirable for an open, untrimmed division hedge. Foliage and bright flowers are highly ornamental.

Strong, 2 yr. plants.....\$6.00 \$50.00

**SPIRAEA Vanhouttei** (Bridal Wreath). The most satisfactory of hardy shrubs for use as a flowering hedge. Plant only where close trimming is not required.

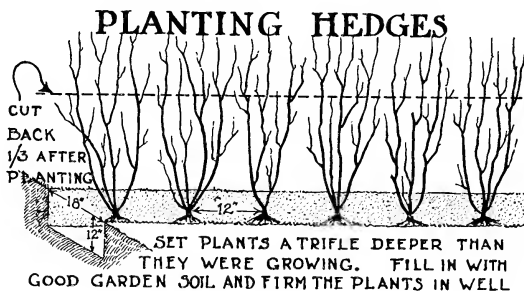
2 to 3 ft.....	\$5.00	\$40.00
3 to 4 ft.....	6.00	50.00

### How to Trim Your Hedge

To keep your hedge neat in appearance and close in growth it should be trimmed every spring before new growth begins. Trim the hedge in late March, remove dead wood and cut it back to the size and outline desired. Lighter trimmings can be given at any time during the summer.

### How to Plant Hedges

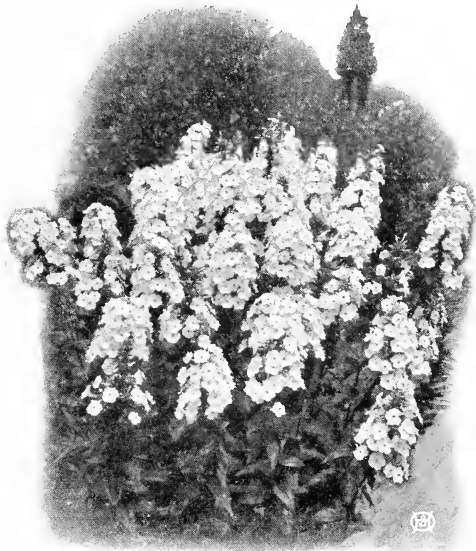
A trench should be dug where the planting is to be done, excavated to a depth of a foot, and 18 inches wide. Such a trench gives an even line to guide the planter. Discard any soil of pure quality and use surface loam. Varieties such as Japanese Barberry, Buckthorn and Cotoneaster, or those that are to be kept closely cut, should be spaced a foot apart in the row. In using Bridal Wreath or other open-growing varieties which are not to be kept sheared, a spacing of 2 to 2½ ft. is proper. After planting, cut off at least one-third of the top of the plants to insure good lateral growth. Water thoroughly.





# Bright Phlox

## For Midsummer Flowers



*Plant the Phlox for brilliant Midsummer flowers*

**PHLOXES** are very hardy floriferous perennials that give bold, brilliant color effects from July to frost. They can be had in pure white, pink, lavender and crimson and in varying combinations of these colors.

**Where to Plant**—They are exceedingly attractive when planted in masses of a single kind in a bed or border. Their midsummer bloom makes them a most valuable addition to beds where such spring blooming plants as Iris, Peonies, Poppies, etc., are located. Fertilize your Phlox plants generously and give them an abundance of water through the hot summer days.

**Quantity Rate**—5 or more of a single variety will be supplied at 5 cts. less per plant, viz., plants priced at 35 cts. each are 5 for \$1.50.

## Red Phlox

- B. Comte.** Bright purplish-crimson with satiny sheen. Medium height. One of last to flower. 40 cts.; 2 yr., 60 cts.
- Beacon.** A bright cherry red. Large flower heads carried on tall stems. 35 cts.; 2 yr., 50 cts.
- Coquelicot.** A bright orange-scarlet of outstanding color. 35 cts.; 2 yr., 50 cts.
- Dr. Königshofer.** Brilliant orange-scarlet, with dark blood red eye. Medium height, midseason. 35 cts.; 2 yr., 50 cts.
- Feurbran** (Fireglow). A brilliant orange-scarlet, sometimes almost vermilion. Flowers freely and is outstanding in its bright color. 40 cts.; 2 yr., 60 cts.
- Gen. Van Heutz.** Brilliant salmon red, with light center changing later to deep red eye. 35 cts.; 2 yr., 50 cts.
- Mme. Bezanson.** Rich crimson, medium height. 40 cts.; 2 yr., 60 cts.
- R. P. Struthers.** Rosy carmine with claret red eye. Very bright; tall. 35 cts.; 2 yr., 50 cts.

## White Phlox

- Frau Anton Buchner.** Undoubtedly the finest white Phlox which has as yet been raised. Large flowers of perfect form. 35 cts.; 2 yr., 50 cts.
- F. G. Von Lassburg.** Purest white; individual flowers very large. Tall, midseason. 35 cts.; 2 yr., 50 cts.
- Miss Lingard.** The most popular white. Immense heads of white flowers in late June and again in September. 35 cts.; 2 yr., 50 cts.
- Mrs. Jenkins.** Immense trusses of pure white flowers. Early. 35 cts.; 2 yr., 50 cts.
- Mia Ruys.** The finest of the dwarf white Phlox. Snow white flowers of large size. Height, 8 to 9 inches. 35 cts.; 2 yr., 50 cts.

## Lavender and Purple Phlox

- Eugene Danzanviller.** Soft lavender shading lighter to center. 35 cts.; 2 yr., 50 cts.
- Champs Elysees.** Large trusses of dark crimson-purple, medium height. 35 cts.; 2 yr., 50 cts.
- Mrs. Chas. Dorr.** A beautiful shade of lavender. Very large conical heads. 35 cts.; 2 yr., 50 cts.

## Dwarf Phlox for Borders

- Phlox Subulata.** An early spring flowering type which during the flowering season is a mass of bloom. An excellent plant for the rockery and border, and invaluable for carpeting the ground or covering graves.
- Rosea. Pink.** 25 cts.; 2 yr., 40 cts.
- Alba. White.** 25 cts.; 2 yr., 40 cts.

## Pink Phlox

- Elizabeth Campbell.** Very large heads, with flowers of quite a new color—light salmon changing to pink in the center. 50 cts.; 2 yr., 75 cts.
- Mme. Paul Dutrie.** Opens a soft lilac-rose which gets lighter as it ages. 35 cts.; 2 yr., 50 cts.
- Pantheon.** Deep salmon rose; light center. Very large flower. Tall. 35 cts.; 2 yr., 50 cts.
- Rheinlander.** A most beautiful salmon pink with deeper center. Immense size. 35 cts.; 2 yr., 50 cts.
- Rijnstroom.** A lovely rose pink, much like Paul Neyron rose. Very large flower heads. 35 cts.; 2 yr., 50 cts.
- Thor.** A rich salmon pink with crimson eye. 35 cts.; 2 yr., 50 cts.
- W. C. Egan.** Soft shade of lilac with dark pink eye. General effect is a soft rose color. 35 cts.; 2 yr., 50 cts.

## A New Early Pink

- Miss Verboom.** Blooms in June with Miss Lingard. Long heads of rose pink with bright glossy green foliage that is free from rust. 50 cts.

## White with Pink Eye

- Bridesmaid.** Tall, with flowers of pure white, with large crimson carmine eye. 35 cts.; 2 yr., 50 cts.

**SPECIAL**  
**HOME YARD PHLOX COLLECTION**

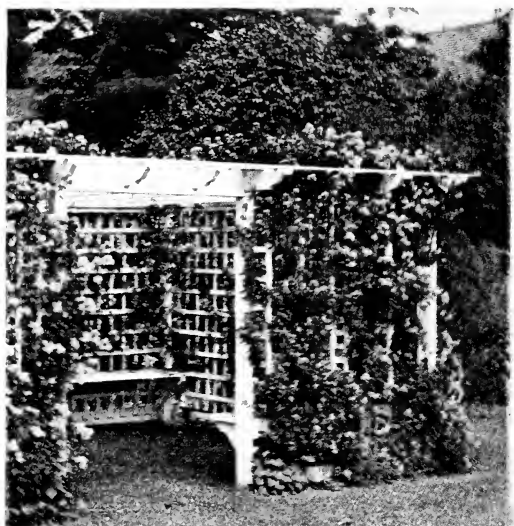
12 field-grown roots, 2 each of six standard varieties, selected for variation in colors.

**Value \$4.20**

**Special Combination Price (12 plants)**

**\$3.50**

Parcel Post Prepaid



The Dorothy Perkins Climbing Rose

## Climbing Roses

For House Wall and Garden Trellis

Plant Climbing Roses near the porch or on the house walls to have their fragrance and color close at hand. Use them in the garden also to decorate lattices, arbors or pergolas and as festoons over walls.

**PRICES**—Strong 2-year plants growing in pots, \$1.25 each.  
(except as noted)

- Climbing American Beauty.** Double, beautifully shaped flowers of rich carmine.
- Dorothy Perkins.** Drooping sprays of clear shell pink. Dainty foliage. \$1.00 each.
- Dr. W. Van Fleet.** Large flowers of light pink, shading deeper at center. Very fragrant. Splendid to cut.
- Excelsa.** Double crimson flowers in clusters. The improved Crimson Rambler. \$1.00 each.
- Mary Wallace.** (New.) Perfect double flowers of vivid pink shaded salmon at the base. Splendid foliage and moderately fragrant.
- Paul's Scarlet Climber.** Full double flowers of bright scarlet. Very free blooming.

## Hybrid Perpetual Roses

Make June "The Month of Roses"

These are the hardiest of the large flowering garden Roses. They grow into sturdy bushes with their heaviest blooming season during June and July.

**PRICE**—Strong 2-year plants, started and growing in pots, \$1.25 each

### Red H. P. Roses

- Anna de Diesbach.** A very double brilliant crimson. A fine Rose for the North.
- Capt. Hayward.** A fragrant, crimson carmine flower of large perfect form. Blooms almost constantly.
- General Jacqueminot.** A brilliant crimson. The standard of perfection in color and fragrance.
- J. B. Clark.** An intense scarlet flower on a tall thrifty bush.
- Prince Camille de Rohan.** A dark velvety crimson, the darkest of all the Roses. Sweetly fragrant.
- Ulrich Brunner.** A brilliant cherry crimson flower of cupped form. Very fragrant.

### Pink H. P. Roses

- George Arends.** A large, delicately scented, rose pink. A most beautiful pure pink rose.
- Magna Charta.** A brilliant pink shaded with carmine. Noted for its fragrance and hardiness.
- Paul Neyron.** A fully double, large flower of beautiful, deep rose. A constant bloomer.



Frau Karl Druschki

### White H. P. Rose

**Frau Karl Druschki.** A large silvery white that is considered the best white of any of the Roses.

### SPECIAL—A Yellow H. P. Rose

**Mme. Albert Barbier.** Full flowers of fawn-yellow with white and pink shadings. A new variety of unusual color. Growth vigorous and foliage a rich green. **Price.** Potted plants.....\$2.00 each



The J. B. Clark Rose

### Home Yard Rose Garden

A Special Collection  
12 H. & O. Potted Roses

Use this plan and have a beautiful rose garden this summer

A semi-circular rose bed

**SPECIAL**—"HOME YARD ROSE GARDEN"—12 choice Rose Plants. In assorted colors. Potted, growing stock. **Special Price**.....\$13.50



*Etoile de Hollande*



*Golden Emblem*



*Betty Uprichard*



*Radiance*

## Monthly Everblooming Roses

*These Hybrid Tea Roses Will Bloom for You All Summer*

PRICES for "H. & O. Quality" growing, potted Hybrid Tea Roses  
 Strong 2-year-old plants, growing in 6 inch pots—\$1.50 each (except as noted)  
 Price per dozen, \$15.00. They are sure to bloom.

### Pink and Rose Shades

- Columbia.** A lively bright pink. Sweetly scented. Exceptionally free blooming.
- Dame Edith Helen.** A large rose of brilliant but soft pink color.
- Los Angeles.** Luminous flame pink, touched with coral, shaded with gold at the base of the petals. Splendid grower and very fragrant.
- Ophelia.** Salmon-flesh color, tinted with rose. One of the best.
- Radiance.** Brilliant pink. Strong grower. Profusion and continuity of bloom. Very fragrant.
- Rose Marie.** A clean rose pink. Large flowers borne freely.
- Willowmere.** Rich salmon pink, shaded yellow. Persistent in bloom.

### Scarlet, Carmine and Crimson Shades

- Betty Uprichard.** A new and choice variety. Brilliant orange-carmine with salmon reflex. Spicy fragrance.
- Etoile de Hollande.** (New.) Large flowers of a brilliant crimson. Very fragrant. Called the "best red rose grown today." Price, \$1.75 each.
- Gruss an Teplitz.** Double blooms of brilliant crimson. The best of all for garden decoration.
- Hoosier Beauty.** An intense, rich crimson scarlet. Fragrant.
- Margaret McGredy.** (New.) Long lasting flowers of rich Oriental red shading to carmine. Spicy fragrance.
- Red Radiance.** Large, globular flowers of deep red. Erect sturdy stems; blooms freely until frost.

### White Hybrid Tea Roses

- Kaiserin Augusta Victoria.** Creamy white; sweetly fragrant; very full and large flowers. Strong growth.
- Killarney, White.** A continuous blooming white variety. Very attractive in both bud and flower.

### Yellow, Salmon and Copper Shades

- Golden Emblem.** A rich deep golden yellow.
- Mme. Edouard Herriot.** Coral red, shaded yellow and scarlet. A brilliant color. Considered the best of its class.
- Miss Lolita Armour.** Deep coral red with gold and coppery red suffusion.
- Mrs. Aaron Ward.** Distinct Indian yellow, shading light toward edges. Always in bloom. Healthy holly-like foliage.
- Soleil d'Or.** Gold and orange yellow of unrivalled color.
- Souvenir de Claudius Pernet.** A pure sunflower yellow. Strong growth and splendid foliage.
- Talisman.** (New.) A remarkable shading of gold, apricot, yellow and deep pink. Very free flowering on a strong, vigorous bush. Price, \$1.75 each.
- Wm. Kordes.** (New.) A warm salmon with red veinings and a coppery suffusion. Very fragrant.

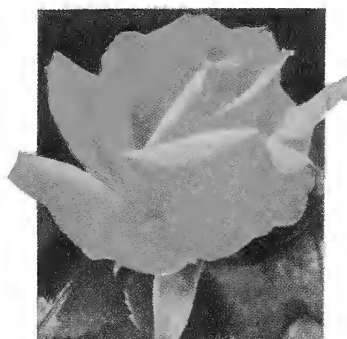
SPECIAL COLLECTION OF "MONTHLY ROSES"  
 4 choice Hybrid Tea Roses—in Red, White,  
 Pink and Yellow  
 4 potted, growing plants—value \$6.00.  
**GROUP PRICE \$5.00**



*Mme. Edouard Herriot*



*Ophelia*



*Souvenir de Claudius Pernet*



*Willowmere*

## Hardy Rugosa Roses

### Dependable and hardy all through the North

Their extreme hardiness, vigorous growth and dark ornamental foliage makes the Rugosas highly valued for northern plantings. They do not need winter protection.

Plant the Rugosas in the shrub borders, in foundation groups or wherever hardy shrubs are wanted. Their color and fragrance will delight you.

PRICES (except where noted) \$1.00 each—  
strong 2-year dormant bushes

**Belle Poitvine.** Clusters of large, double, magenta pink flowers that are produced continuously on vigorous plants.

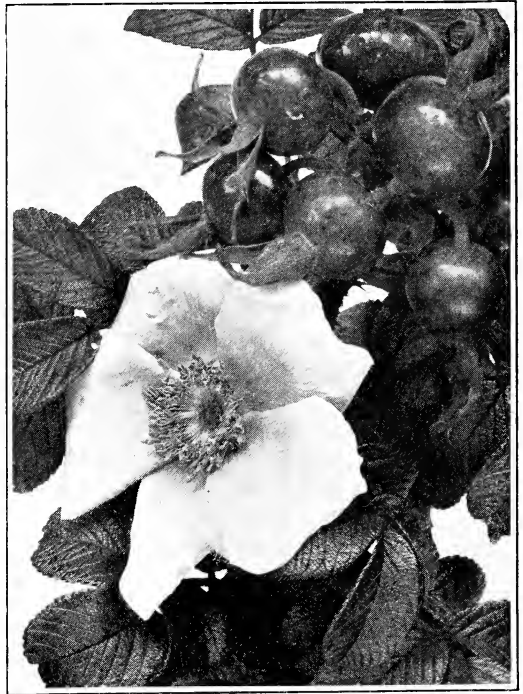
**Blanc de Coubert.** Fragrant, double white. Crinkled foliage. A tall grower that blooms throughout summer and fall.

**F. J. Grootendorst.** A combination of the Baby Ramblers with the hardy Rugosa Rose. Large clusters of double, bright red flowers that are produced from spring until frost.

**Hansa.** A large double deep red rose. Dependable and always blooms. Very hardy. Fragrance is very pleasing.

**Rugosa rubra.** The original type from Japan. Handsome crinkled foliage on strong plants. Absolutely hardy. Flowers are large five-petaled, fragrant with golden center. Color runs from dark pink to carmine. Ornamental red fruit in the fall. Price, 2-yr., 60 cents each; 3-yr. plants 80 cents.

**Sarah Van Fleet.** (New.) Soft rose pink and fragrant flowers on a vigorous and sturdy bush. Continuous in flowering. Price, \$1.25 each.



*Rugosa Rubra—The Japanese Rose*



### Polyantha (Baby Rambler) Roses

Heavy clusters of roses that bloom continuously through the summer. The bushes are compact in growth and moderate in size and so particularly suited to borders and home yard plantings.

PRICES—Strong 2 year growing potted plants \$1.25 each. They are sure to bloom.

**Red Baby Rambler** (Miss Edith Cavell). Large, open clusters of crimson scarlet.

**Pink Baby Rambler** (Ellen Poulsen.) Clusters of a deep, brilliant pink. Quite fragrant. Flowers abundantly.

### Hardy Bush Roses

A hardy class of roses used as flowering shrubs in borders, on banks and in naturalistic plantings.

**Blanda.** Soft pink flowers followed by red fruit. Thornless canes 3 to 4 ft. high. 60 cts. each.

**Rubrifolia.** Intensely pink flowers. Reddish purple leaves all summer. Its bright foliage makes a colorful contrast to other shrubs and plants. \$1.00.

**Harrison's Yellow.** Clear golden yellow semi-double flowers. Perfect foliage. \$1.00 each.

**Crested Moss.** A much loved, old-fashioned Rose with delicate mossy covering on the buds. Pink flowers. Very fragrant. \$1.00 each.

### Sweet Briar Roses

**Sweet Briar. Rubiginosa.** The well-known Sweet Briar with aromatic foliage and sweetly fragrant pink flowers. \$1.00 each.

## Suggestions for Rose Culture

**TIME TO PLANT**—Spring planting is the safest in our section. Our potted plants can be planted as soon as danger of heavy frost is past, about May 15, and from then on throughout the entire summer. Dormant stock should be planted in early spring.

**LOCATION**—Roses require a good warm location where they will get plenty of sunlight; near large trees they suffer from shade and from the roots and never do well. They will grow in any rich soil.

**PRUNING**—In the spring, cut out all short and spindly growth and remove winter-killed wood. Cut back the main shoots until they stand about 4 to 6 inches long. Watch carefully during the summer for any shoots appearing to grow from below the graft and cut these away. These are sprouts from the wild root which, because of greater vigor, would starve out the grafted top.

**WINTER PROTECTION**—In late fall heap the ground up around the base of the plants 9 to 12 inches high. After freezing weather bind the tops with hay or straw and over this tie a covering of tar paper.





# Delicious Fruit

## For the Home Garden

*Fruits are easy to grow. Know the delight of eating fresh fruit from your own garden*

### Hardy Apples

Prices—Strong Trees, 5 to 6 feet, \$1.00 each.

**Duchess.** Yellow with red stripes.

**Haralson.** Deep red winter apple.

**Northwestern Greening.** Large fruit of pale green.

**Wealthy.** Big red fruits in abundance.

**Yellow Transparent.** An early table fruit.

### Hardy Crab Apples

Price—Strong Trees, 5 to 6 feet, \$1.00 each.

**Early Strawberry.** An early, red-striped fruit.

**Whitney.** An early, large, red fruit.

**Dolga.** Good flavored, highly ornamental bright red fruits.

Makes excellent jelly. 5 to 6 ft. \$2.00.

### Hardy Plums

The best from the Minnesota State Fruit-breeding farm.

Price—Strong Trees, 5 feet and up, \$1.00 each.

**LaCrescent.** Our best quality yellow plum.

**Monitor.** Large, dark red clingstone. Late.

**Tonka.** Semi-freestone; red fruit. Midseason.

**Underwood.** Early ripening freestone. Red.

### Cherry-Plums

Price—Strong Trees, 4 to 5 feet, \$1.00 each.

**Nicollet.** Very close to a true sour cherry.

**Zumbra.** Large dark red fruit with small pit.

### Cherries

Price—Strong Trees, 4 to 5 feet, \$1.25 each.

**Wragg.** Heavy bearer of dark red, meaty fruit.

### Grapes

Prices—Strong Plants, 50 cts.; 3 yr. roots, 75 cts.

**Beta.** Very hardy black grape, sprightly flavor.

**Brighton.** Fine flavored red grape ripening early.

**Concord.** The large, popular, black grape.

**Pocklington.** An early, sweet, white grape.

### Raspberries

Prices—\$1.50 for ten; \$10 per 100.

**Latham.** Large red berries in abundance.

**Older.** A juicy and sweet black raspberry.

**St. Regis.** A continuous-fruiting red raspberry.

### Currants

Prices—Strong 2 year Plants, 30 cts.; \$2.50 per 10.

**Cherry.** Large bright red, rather acid berries.

**Perfection.** Heavy clusters of very large, red fruit.

**White Grape.** A white, sweet currant of good size.

### Gooseberries

Prices—Strong 2 year Plants, 30 cts.; \$2.50 per 10.

**Downing.** A large, oval, pale green berry.

**Carrie.** Bright red fruit of good size.



### Strawberries

#### June-Bearing Variety

**Senator Dunlap.** Large crops of big, deep red berries.

Price—Strong Plants, 40 cts. dozen; \$2.50 per 100.

#### Everbearing Variety

**Progressive.** Fruits from late June until frost.

Price—Strong Plants, 50 cts. dozen; \$3.75 per 100.

**Mastodon (New).** Largest berries of any variety.

Price—Strong Plants, 65 cts. dozen; \$5.00 per 100.

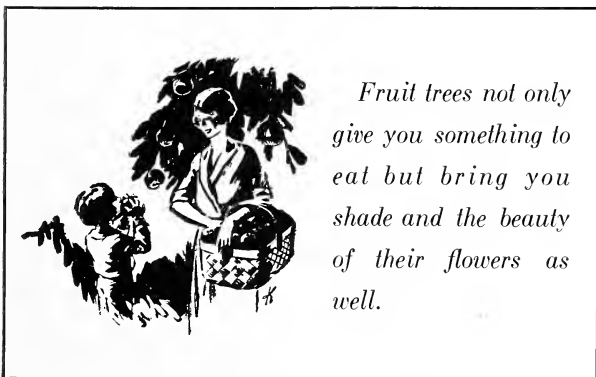
### Asparagus

**Washington Rust Proof.** An excellent green asparagus.

Price—Strong Roots, 50 cts. dozen; \$4.00 per 100.

### Rhubarb or Pie Plant

Price—Strong Roots, 25 cts. each; \$2.00 per dozen.



*Fruit trees not only give you something to eat but bring you shade and the beauty of their flowers as well.*

# Colorful Iris

*Brilliant in the Garden—Splendid for Cutting*



*Perfection and Iris King Varieties*

**PLANTING.** Set the roots only deep enough to have them covered with soil and avoid any fresh manure as a fertilizer. Iris will thrive in any good soil and prefers a sunny location.

**Quantity Rate**—5 or more of a single variety will be supplied at 5 cts. less per plant, viz.: plants priced at 35 cts. each are \$1.50 for 5.

*NOTE.* In the description "S" or "Standards" refer to the three upright petals. The letter "F" or "Falls" refers to the three drooping or lower petals.

<b>Ann Page</b> (Lavender). Lovely pale lavender blue. Large quite fragrant flowers on stout stems. . . . .	\$1.00
<b>Ambassadeur</b> (Smoky Bronze). S., red-violet; F., velvety purple maroon. Outstanding variety. . . . .	.50
<b>Asia</b> (Lavender and Gold). Unusually large flower with silvery lavender standards and violet falls. . . . .	1.00
<b>Aurea</b> (Yellow). Excellent garden variety of yellow color	.25
<b>Caprice</b> (Red Tones). S., reddish purple; F., deeper claret. Grape fragrance. . . . .	.25
<b>Dream</b> (Pink). Lovely rose pink with orange beard. . . .	.50
<b>Eldorado</b> (Bronze-Yellow). A blend of rich, yellowish bronze shaded heliotrope. . . . .	.25
<b>Fairy</b> (Blue White). Soft white with blue glow in depth of flowers. A favorite white. . . . .	.30
<b>Iris King</b> (Yellow and Red). S., buff yellow; F., maroon with gold border. . . . .	.25
<b>Juniata</b> (Mauve Violet). Tall, clear blue violet. . . . .	.30
<b>Kochi</b> (Claret Purple). Medium height good purple. . .	.25
<b>Lent. A. Williamson</b> (Lavender and Purple). An outstanding Iris with large flowers. S., soft violet; F., royal purple. . . . .	.35
<b>Lohengrin</b> . Effect, a silvery pink mauve. . . . .	.25
<b>Lord of June</b> . An immense flower of clear lavender blue. Very popular. . . . .	.75
<b>Madame Chereau</b> . White with falls frilled violet. . . . .	.25

<b>Majestic</b> (New) (Purple). S., light lavender with bronze at base; F., velvety raisin purple. An enormous flower. \$1.75	.75
<b>Medrano</b> . Reddish maroon in effect. . . . .	.50
<b>Monsignor</b> (Deep Blue Effect). S., bluish violet; F., purple with white veinings. . . . .	.25
<b>Morning Splendor</b> (New) (Red Purple). S., petunia violet; F., raisin purple. Yellow beard. Judged to be the finest American Iris. . . . .	1.50
<b>Mother-of-Pearl</b> . A light, soft lavender with pearly sheen. Very aptly named. . . . .	.40
<b>Opéra</b> (Reddish Effect). A bright, violet purple. . . . .	.40
<b>Pallida Dalmatica</b> . Clear lavender-blue flowers on tall strong stems. . . . .	.25
<b>Parc de Neuilly</b> (Violet Effect). S., arched and ruffled; F., drooping. A reliable purple. . . . .	.25
<b>Perfection</b> (Blue Purple Effect). S., light blue; F., rich dark velvety violet. . . . .	.25
<b>Prairie Gold</b> (New). A deep rich yellow. Large flowers and sturdy growth. The finest dark yellow. . . . .	1.75
<b>Princess Beatrice</b> (Silvery Lavender). S., cupped light lavender; F., flaring. Bright, clear color. . . . .	.35
<b>Prospero</b> . S., deep lavender; F., rich violet purple. Large flowers. . . . .	.50
<b>Quaker Lady</b> (Smoky-Lavender). S., aegeratum violet; F., violet overlaid olive buff. An unusual pastel shade	.25
<b>Rhein Nixie</b> (Purple and White). S., white; F., pansy violet edged white. . . . .	.25
<b>Salonique</b> . Creamy white standards with rich, red-purple falls. Large flower. Rapid grower. . . . .	.50
<b>Seminole</b> (Wine Red Effect). S., frilled petals of reddish tone; F., a deeper raisin purple. Brilliant in color. . . . .	.40
<b>Sherwin Wright</b> . Intense yellow effect. . . . .	.25
<b>Souvenir de Mme. Gaudichau</b> (Rich Purple). A large and richly-colored dark, velvety purple flower. . . . .	.75
<b>Taj Mahal</b> (New). A white Iris of pure color and tall growth. . . . .	.75
<b>Tenebrae</b> (New). (Rich Purple Effect). S., violet purple tinged deeper; F., velvety blackish purple. . . . .	1.25
<b>White Knight</b> . S., white of domed shape; F., rounded white petals. . . . .	.40

## Dwarf Growing Iris

These early flowering, dwarf Iris are particularly suited for rock gardens and for edging beds and borders.

<b>Dwarf Iris</b> (Pumila). Yellow or purple flowering. . . . .	\$0.25
---	--------

## Siberian Iris

Very attractive for garden display and particularly for cutting. Flowers on graceful stems; foliage grass-like.

<b>Siberian Blue</b> . A good violet blue. . . . .	\$0.25
<b>Snow Queen</b> . A delicate ivory white. . . . .	.25

## Japanese Iris

A large flowering Iris that blooms in July. Not as hardy as the Germanica type. We offer choic plants in WHITE, LIGHT BLUE, VIOLET BLUE, REDDISH CRIMSON.

**Strong roots, 40 cents each.**

## Home Yard Iris Collection

A special group of free flowering varieties in a very attractive assortment. 12 strong roots—2 each of 6 different kinds. A \$3.00 value.

**Special Group Price . . . . . \$2.25**

Postage Prepaid

# Exquisite Peonies

*“The Flower of the Great Northwest”*

The Peony has the largest and most gorgeous flowers of all perennials. Here, under our northern conditions, it grows so easily and blooms so profusely that everyone can enjoy these beautiful plants in his home yard.

**PLANTING**—The roots should be set with the “eyes” 2 to 3 inches below the surface and the soil tightly packed about them. Allow a spacing of about 3 feet between the plants.

The soil should be of good substance and the location free of tree roots and dense shade. Bone meal is preferred as a fertilizer.

**QUALITY**—The “roots” are substantial plants with 3 to 5 strong eyes.

## White Peonies

	Roots Each
<b>Avalanche.</b> Ivory white, of perfect form. Very fragrant. Late midseason.....	\$1.00
<b>Baroness Schroeder.</b> Light pink tint, opening to pure white. Full globular flowers of great fragrance.....	1.25
<b>Couronne d'Or.</b> Snow white with circle of golden stamens. Large blooms. Late. Excellent cut-flower.....	.75
<b>Festiva Maxima.</b> Early and very large. Center flaked crimson. Splendid in every way.....	.75
<b>Marie Lemoine.</b> Latest blooming creamy white. Gigantic flowers.....	.75

## Pink Peonies

<b>Claire Dubois.</b> Clear violet-rose, tipped silvery white. Large flower. Late.....	\$1.00
<b>Edulis Superba.</b> Bright mauve pink. Early. Large rose type.....	.75
<b>Livingstone.</b> Large, full. Soft rose pink with silvery tipped petals. Late.....	1.00
<b>Mme. Emile Galle.</b> Delicate shell pink. Sweetly fragrant. Blooms late.....	1.00
<b>Mons. Jules Elie.</b> Lilac-rose with silver sheen. Very large. Fragrant. Early. Has the appearance of a giant chrysanthemum.....	1.00
<b>Reine Hortense.</b> Delicate pink with center flecked crimson. Perfect flowers on tall, stiff stems. Mid-season.....	1.50
<b>Sarah Bernhardt.</b> Bright apple-blossom pink with petals silver-tipped. Agreeable fragrance.....	1.50
<b>Souv. de Louis Bigot.</b> An extra fine and large flower of rich salmon pink.....	3.00
<b>Therese.</b> Unexcelled light pink. Large, exquisitely lovely flowers of true rose type. Delightful fragrance	3.00
<b>Walter Faxon.</b> Brilliant salmon pink, outstanding color. Midseason.....	3.50



*Sarah Bernhardt Peony*

## Red Peonies

<b>Felix Crousse.</b> Bright rose red. Large globular flower. Fragrant.....	\$0.75
<b>Grover Cleveland.</b> Dark crimson. Large flowers of rose type. Vigorous grower. Late.....	1.25
<b>Karl Rosefield.</b> Rich, glowing crimson. Immense, solid flower. Superb variety with abundance of blooms. Midseason.....	1.00
<b>Longfellow.</b> Crimson with cherry tones. One of the best bright reds. Color never fades.....	2.50
<b>Mary Brand.</b> Deep red. Midseason. Large flowers in profusion. A Minnesota origination.....	1.75
<b>Mons. Martin Cahuzac.</b> Darkest maroon red peony. A large, full flower.....	2.50
<b>Officinalis Rubra.</b> The earliest red. An old favorite. Always blooms.....	1.00
<b>Tenuifolia fl. pl.</b> Early crimson. Very finely cut, fern-like foliage. Unusual.....	2.50

## Jap and Single Peonies

Popular taste is rapidly awakening to the beauty and charm of these striking flowers. Their simplicity and delicate structure leads many to prefer them to the heavy, double type. You will like the single and Japanese Peonies.

<b>Albiflora (The Bride).</b> Large flower with silky white petals and long, yellow stamens.....	\$1.50
<b>Etienne Dessert.</b> Large, cup-shaped china-pink flower with golden stamens.....	3.50
<b>Exquisite (Jap)</b> —A beautiful white from Japan with yellow center.....	3.50
<b>L'Étincelante.</b> Large petals of clear carmine with silvery margins.....	2.50
<b>Marie Jacquin</b> —Delicate flesh-white, commonly called “the water lily”.....	1.00
<b>Mikado (Jap).</b> Dark crimson. Like a giant red poppy. Gold center. Blooms freely.....	2.00
<b>Pride of Langport</b> —Soft peach-pink with golden stamens. Exquisite. The finest light single.....	4.00



**A SPECIAL COLLECTION**

**Choice Double Flowering Peonies**

Six good roots, all different. Each assortment will have early and late blooming varieties in white, pink and red colors. Value.....\$4.50

**SPECIAL COMBINATION PRICE**

(6 plants) (Postage Prepaid)..... **\$3.50**

# Enjoy a Beautiful Lawn

## H. & O.'s High Test Grass Seed

Good lawns are the logical result of sowing good grass seed on fertile, prepared soil and bestowing a reasonable amount of after-care.

**DEPENDABLE SEED.** There is no timothy seed or any cheap annual grass in our seed mixtures, yet our high quality seed costs only a few cents more per pound than unreliable, untested mixtures. Use the best seed obtainable and get the best results from your work and planting.

Sow one pound to every 200 square feet of area. Sow evenly, rake lightly and water thoroughly.

### HOW TO MAKE A LAWN

Our booklet—"The Principles of Lawn Making," will be mailed without charge to our customers who request it.



(Postage. Add 8 cts. per pound to prices listed on all grass seed wanted by Parcel Post.)

### Velvet-Sod Seed

A very high grade mixture of those hardy grasses that will combine to make a beautiful and lasting lawn. Especially prepared to withstand our Northern climatic conditions. Its weight, over 20 pounds per bushel, clearly indicates its purity and freedom from chaff and adulteration. We use this mixture on all our landscape contracts and recommend it highly.

Lb., 65 cts.; 5 lbs., \$3.15; 10 lbs., \$6.00; 20 lbs., \$11.00

### Shady-Side Seed

By using this seed it is possible to get a growth of lawn under trees and in shady places where the ordinary grasses will not grow. Has always proven satisfactory for such positions.

Lb., 65 cts.; 5 lbs., \$3.15; 10 lbs., \$6.00; 20 lbs., \$11.00

### Terrace Seed

A special mixture of spreading, deep rooting grasses that will thrive and hold the soil on terraces and slopes. It is very resistant to drought and poor soils and gives results where the ordinary grasses fail.

Lb., 60 cts.; 5 lbs., \$2.85; 10 lbs., \$5.55; 20 lbs., \$10.00

### White Clover

The best Clover for lawn uses because of its small leaves and dense, close growth. It is often sown on new lawns for its protection to the tender grasses the first year. Admired by many for its fragrant dainty flowers.

1/2 lb., 40 cts.; 1 lb., 75 cts.; 5 lbs., \$3.50; 10 lbs., \$6.75

### Red Top Grass

A fine-leaved grass that is becoming popular when mixed with Blue Grass as a lawn seed. Develops very quickly.

Lb., 50 cts.; 5 lbs., \$2.40; 10 lbs., \$4.50; 20 lbs., \$8.00

### Kentucky Blue Grass

A beautiful grass that should be the main constituent of every good lawn here in the North. Sometimes used alone, but becomes better established if sown in mixtures. Our seed is choice grade carefully re-cleaned of the high average weight of 21 lbs. per bushel.

Lb., 70 cts.; 5 lbs., \$3.40; 10 lbs., \$6.50; 20 lbs., \$12.00

We offer special service to parks and golf clubs. Let our lawn experts help you.

## Fertilizers

### For Lawn and Garden

Keep your lawn fresh and green by giving it plant food each season. Healthy lawns have very few weeds.

**THOROUGHLY WATER THE LAWN IMMEDIATELY AFTER SPREADING THE FERTILIZER.**

### "Loma"

#### THE PERFECT PLANT FOOD

#### Beautifies Lawns and Gardens

Loma is a concentrated plant food. It gives all vegetation a maximum of balanced nourishment that creates a luxuriant growth. Loma is clean to handle, has no odor and is entirely free of weed seeds.

**For the Lawn.** Apply 40 lbs. to each 1000 sq. ft. of area. Scatter evenly and wet down.

**For the Garden.** Apply along the rows or around plants according to directions on package.

#### Prices of LOMA

10 lbs., 85 cts.    25 lbs., \$1.75    50 lbs., \$3.25  
100 lbs., \$6.00

**BONE MEAL.** A splendid fertilizer for Roses, Peonies, flower or shrub beds. High phosphate content. Frequently used on the lawn (30 pounds to 1000 sq. ft.).

10 lbs., 75 cts.    50 lbs., \$2.50    100 lbs., \$4.25

**SHEEP MANURE (Pulverized).** A quick acting plant food for use about the lawn, or garden. For lawns use 30 pounds per 1000 sq. ft. and wet down.

10 lbs., 75 cts.    50 lbs., \$1.75    100 lbs., \$3.00

**SULPHATE OF AMMONIA.** A nitrogen fertilizer that will quickly stimulate grass or plant growth. For the lawn use one cupful in a large sprinkling can of water for an area of 100 sq. ft. Wet the sod with water immediately after applying.

10 lbs., \$1.00    50 lbs., \$3.75    100 lbs., \$7.00

#### NUTRIA PEAT MOSS

#### A humus to improve poor soils

A wonderful top dressing as a ground cover for lawns and a splendid mulch to work around trees, evergreens, roses, shrubs and perennials.

**BAG, about 3 bu., wt. about 90 lbs., \$1.00 each**  
(Will cover area of about 50 sq. ft. to depth of 1 inch)



FROM

---

---

FIRST CLASS  
Permit No. 250  
Sec. 384½ P. L. & R.  
St. Paul, Minn.

**BUSINESS REPLY ENVELOPE**

NO POSTAGE STAMP NECESSARY IF MAILED IN THE UNITED STATES

3c—POSTAGE WILL BE PAID BY—3c

**THE PARK NURSERIES**

(HOLM & OLSON, Inc.)


20-24 W. Fifth Street

*Landscape Architects*

**ST. PAUL, MINN.**

---

FOLD ON THIS LINE

**Before Sealing Be Sure**   
**Your Name and Address are Written**  
**plainly on the other side of this Blank**

**IMPORTANT**

**You Will Benefit**  
by ordering early. Orders are filled in rotation as received, and are marked for shipment at the best time for your use.

**Order Early**  
and be assured of a choice selection and a timely planting.

**Planting Instructions**  
are sent with our acknowledgement of your order.

**Parcel Post**  
Allow for postage if you want shipment by mail.

**ORDER SHEET AND ENVELOPE**  
**THE PARK NURSERIES**

**HOLM & OLSON, INC.**  
Growers of Hardy Plants for Northern Gardens  
20-24 W. 5th St.      St. Paul, Minn.

Date Ordered \_\_\_\_\_

Ship to \_\_\_\_\_

Street \_\_\_\_\_

City \_\_\_\_\_

County \_\_\_\_\_ State \_\_\_\_\_

Ship By: Exp.  Freight  Name of R. R. \_\_\_\_\_

Charge to \_\_\_\_\_  
(If Different)

Address \_\_\_\_\_

CATALOGUE PRICES ARE NET, F. O. B. SAINT PAUL

QUANTITY	NAME OF VARIETY	SIZE	PRICE EACH	TOTAL

May we substitute an equally good variety if any of kinds ordered are exhausted? No.....Yes.....

The following parties may be interested in your catalog and landscape suggestions:  
\_\_\_\_\_  
\_\_\_\_\_  
\_\_\_\_\_

**NEW ACCOUNTS:** Please furnish us with the usual credit and business references.

THIS FLAP IS GUMMED, READY TO SEAL  
**NO ENVELOPE NECESSARY**  
 JUST FOLD, SEAL AND MAIL

# How to Order

## *Read Our Liberal Terms and Policies*

**When to Order.** Make up your order and send it in as soon as this catalogue reaches you. Early orders enable us to reserve for you the plants wanted and to give you the first selections. *Your order will be shipped just when the weather is most favorable* and at just the right time for planting.

**How to Order.** Send in your orders by whatever means you prefer and we assure you of prompt, careful attention. For your convenience a special addressed order blank is placed in this catalogue ready for your use. This can be mailed without an envelope and postage is prepaid by us.

**Give Shipping Instructions.** Tell us how you want shipments made; whether by Freight, Parcel Post (suitable only for small packages) or Express, and indicate any special routing. We recommend Express as most advantageous and desirable excepting on heavy, bulky shipments. When not instructed we will use our best judgment.

**No Packing Charge.** Catalogue prices are all based on stock F.O.B. St. Paul and no charge is made for packing. Deliveries are made free of charge to any St. Paul or Minneapolis address.

**Terms.** Cash with order is expected and money should be sent by check, post office order or bank draft. If credit is to be arranged please advise us in ample time and furnish the usual business references. All accounts are due by the 10th of the month following date of purchase.

**Our Guarantee.** You are assured that all plants will be most carefully packed and stock will leave our nurseries in first class condition. Should any plant prove untrue to variety ordered we will replace it without charge or refund the purchase price but in no case are we to be liable for more than the original amount paid. Please report any error or complaints immediately for prompt adjustment.

**Liberal Replacement Offer.** We have full confidence in the vitality of our hardy, northern grown plants and know that they will thrive well on the customer's grounds if planting and growing conditions are made favorable. Should any plant fail to grow we will share with you in the cost of new stock—viz.:

“We agree to re-supply F.O.B. our nurseries at one-half of the purchase price any nursery stock bought at catalogue rates that may fail to make growth the first season after planting from causes other than abuse or neglect. This agreement applies only to accounts that are paid promptly when due and any labor involved in planting such replacements is to be charged for as used.”

**Free Planting Instructions** are sent with the acknowledgment of every order. Consult us freely for any further information you may need. We want the opportunity to help you and no expense will be spared to make every order we send you give entire satisfaction.

## *Your Correspondence Is Always Welcome*

# THE PARK NURSERIES

HOLM & OLSON, Inc.

*Landscape Architects*

Saint Paul

