

Historic, Archive Document

Do not assume content reflects current scientific knowledge, policies, or practices.

62,83

LIBRARY
RECEIVED
★ FEB 2 1931 ★
U. S. Department of Agriculture



Jackson's **QUALITY BRAND SEEDS**

Season of
1931

O. P. JACKSON SEED CO., Inc.
305 Travis St., near Congress Ave.
Opposite City Hall
Houston, Texas

Vegetable Seed Trials

Jackson's Giant Mammoth Zinnias

In presenting this new type of Zinnias, we offer a very rare collection of the most striking and desirable colors. The objectionable features of the Giant Zinnias have been overcome. This New Mammoth Type Zinnia has much smaller centers and more loosely placed petals. The flowers, from the time they begin to bud until in full bloom, present a very graceful appearance.

LEMON QUEEN. The petals of this immense Zinnia are a light canary on the upper and cerise on the lower side, the two shades blending as the flower develops, making a variety of lemon tint.

ROSE QUEEN. This shade is undoubtedly the most pleasing of this brand new type of Zinnia; the flower opens first as a bright rose with a deep rose-red center and gradually develops into a warm deep rose when in full bloom.

CERISE QUEEN. This is a very stately and distinctive cerise colored Zinnia.

ORANGE KING. This is a very striking shade of orange-yellow and should be in every collection.

PURITY. This is a pure clean white Zinnia, having lost the greenish tint that has made so many white Zinnias unpopular in the past.

FINEST MIXED. Contains all the above colors and many others.

Prices of Giant Mammoth Type Zinnias. All colors, Pkt., 15c; 4 pkts., 50c; ½ oz., \$1.00, postpaid.

Giant Zinnias

This is an improved Giant Double Zinnia, that often measures six inches across the surface; we have them in the following shades:

LIGHT FLESH or BLUSH PINK **PURPLE** **SCARLET** **CRIMSON**
DEEP SALMON-ROSE **LIGHT YELLOW** **GOLDEN YELLOW** **WHITE**
SPECIAL MIXTURE. This mixture contains all of the above colors and shades and many others.

Price of Giant Zinnias: Pkt., 10c; 6 pkts., 50c; ½ oz., 80c; oz., \$1.50, postpa'd.

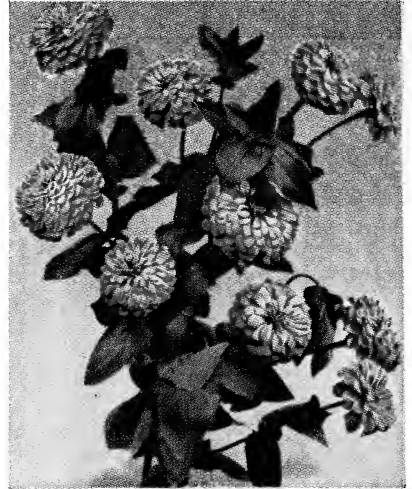
Picotee Zinnias

A distinct novelty in the Zinnia line, not quite as large as the Double Giants, but extremely beautiful and graceful in appearance, as the edges of the petals are all well marked with a different color than the body of the flower. The seed does not all produce a true Picotee flower, not more than 60 per cent, but those that do not come true are exquisite. All colors mixed, including a new shade. Pkt., 25c; 5 pkts. for \$1.00.

Price of Picotee Zinnias: Pkt., 10c; 6 pkts., 50c; ½ oz., 80c; oz., \$1.50, postpa'd.

Plant Zinnias

Plant as late as September and they will bloom until frost. We have specialized in Zinnias for the past four years and our selected strains of Giant Zinnias, Dahlia-Flowered and Picotee Zinnias have met with such success, that we know what we offer in the Zinnia line is the best that money can buy. Nothing that you can plant will beautify and brighten up your garden more than Zinnias; they are easy to grow, but one thing must be borne in mind, that is not to plant them until the ground is warm, as Zinnias checked in their growth while young never amount to very much. Try a box of STIM-U-PLANT fertilizer on your Zinnias. See page 6.



Jackson's Lilliput Dwarf Zinnia, Rose.
3 pkts., 25c, postpaid.

Quilled Zinnias

This is simply a beautiful type and stands out all alone. Each petal of this beautiful Zinnia is peculiarly quilled and twisted. The various shades of rose and lilac, when the petals twist, reflect very pleasing colors. Pkt., 25c.

Lilliput Zinnias or Dwarf Double

The Lilliput Double Zinnias are a new introduction and have justly gained in popularity until now they are being used in solid masses in esplanades on boulevards. The River Oaks addition here at Houston planted their esplanades throughout the addition with our Lilliput Zinnias last year and created a sensation. The flowers, as the name would indicate, are small and very double, growing on a dwarf bush and can be used to a good advantage as borders or in solid beds. They are new, beautiful and something different in Zinnias. They are to be obtained in the following shades:

CANARY-YELLOW **GOLDEN GEM** **WHITE GEM**
SCARLET GEM **SALMON-ROSE** **CRIMSON GEM**
PURPLE

SPECIAL MIXTURE. Containing all of the above shades.
 Price of Lilliput Zinnias: Pkt., 10c; 6 pkts., 50c; ½ oz., 80c; oz., \$1.50, postpaid.

Dahlia-Flowered Zinnias

In 1924 The Royal Horticultural Society of England granted an "AWARD OF MERIT" for the strain, and a "GOLD MEDAL" for the group of DAHLIA-FLOWERED ZINNIAS exhibited in London, by the grower of the strains of Zinnias that we handle. The Dahlia-Flowered Zinnia is the latest thing in the Zinnia line and is undoubtedly the most handsome one that has been propagated so far by any grower. They are exceptionally large and the many shades and colors which they come in make them simply indescribable.

EXQUISITE. By far the most pleasing of our collection. Truly dahlia-flowered as regards form and size; color a beautiful light rose with a deep rose center.

GOLDEN STATE. A very rich orange, yellow in the bud turning to an attractive orange when in full bloom.

SCARLET FLAME. A large, beautiful bright scarlet with a delightful blending of orange throughout the petals.

LEMON BEAUTY. A beautiful new shade, a somewhat golden yellow on brown; should be in every collection.

DREAM. A fine, deep lavender, turning to a purple (mellow purple), a new and very desirable shade in the Zinnia line.

PURPLE PRINCE. A fine deep purple, large and well formed; this is a new one and very pretty.

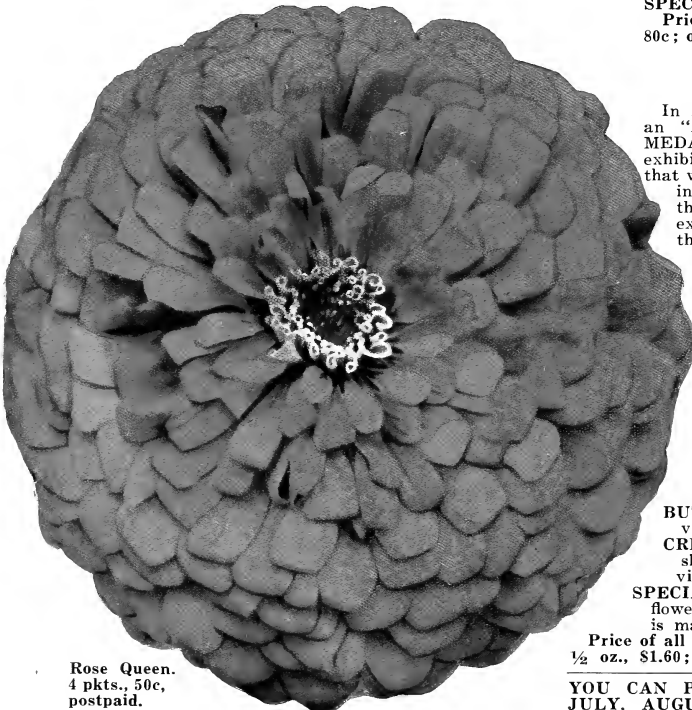
POLAR BEAR. A very large, pure white, true dahlia form and the best white in a Zinnia.

BUTTERCUP. An immense deep creamy yellow, which is very beautiful and should be in every collection.

CRIMSON MONARCH. By far the largest and best of the red shades. Flowers often 8 inches in diameter. Plant very vigorous.

SPECIAL MIXTURE. Contains all of the above named Dahlia-flowered Zinnias and others that we do not list; this mixture is made especially for us by our grower.

Price of all above Dahlia-Flowered Zinnias: Pkt., 25c; 5 pkts., \$1.00; ½ oz., \$1.60; oz., \$3.00, postpaid.



Rose Queen.
4 pkts., 50c,
postpaid.

YOU CAN PLANT ZINNIAS IN MARCH, APRIL, MAY, JUNE, JULY, AUGUST, SEPTEMBER AND SOMETIMES IN OCTOBER.

Beautify Your Home With Choice Flowers

We specialize in flower seeds and list only varieties which have been tried and proven successful in our section of the country. A home can hardly be called a home without some bright colored flowers blooming in the yard, and adding cheer to the surroundings. Flowers, when care is exercised and common sense is used, are not hard to grow, and every home, every farm and every park should abound in them, and the school yards should be a source of pride and beauty.

Plant shrubs, but don't plant all shrubs and no flowers as so many do, as you need bright flowers for a contrast in color.

One thing should be borne in mind, flower seeds should never be planted in a cold, wet ground, as they are delicate and will not readily germinate in adverse weather conditions. They should never be planted deep and the ground should be thoroughly prepared. A little care and attention will work wonders in a flower garden.

Sweet Alyssum

A fragrant, hardy annual, bearing spikes of beautiful, small, white flowers in great profusion throughout the Winter, Spring and Summer; without a doubt the best border plant in our section. Beautiful when planted in solid beds; blooms very quickly.

YELLOW SWEET ALYSSUM (Saxatile). A good golden yellow, excellent for rock gardens. Pkt., 10c; ½ oz., 50c, postpaid.

CARPET OF SNOW (Compactum procumbens). A very compact variety, growing about 3 inches high, one plant often having a diameter of 15 inches. Pkt., 10c; ½ oz., 50c.

LITTLE GEM (Maritimum compactum). The plants of this sort grow about 6 inches high, producing hundreds of flowers, forming a compact mass of blooms, usually 15 or 16 inches in diameter. Pkt., 10c; ½ oz., 50c.

LILAC QUEEN. A dwarf type which is of a beautiful, delicate lilac shade. Pkt., 10c; ½ oz., 50c.

Aquilegia

(COLUMBINE)

A hardy perennial of graceful habit, growing about 2 feet high; the flowers are very attractive, fine for cut flowers. If sown in the Spring they will often flower the same season.

MIXED COLORS. Pkt., 10c.



Ageratum.

Ageratum (FLOSS FLOWER)

An annual which is very hardy and of easy culture; fine for bedding, as it is literally covered with blossoms all Summer. Sow in boxes early in the Spring or out in the open when danger of frost is past.

BLUE PERFECTION. A deep blue; about 1 foot high. Pkt., 10c.

MIXED COLORS. Pkt., 10c.



Sweet Alyssum, Little Gem.

Amaranthus

An odd plant with many colors, being useful for tall borders and grouped with other foliage. Leaves and stems different shades of red, blended with green, usually growing from 2 to 3 feet high. Sow seed early in spring.

JACKSON'S MOLTEN FIRE. The best type of Amaranthus. Top leaves are fiery crimson in color, the lower ones being maroon. Pkt., 10c.

TRICOLOR (Joseph's Coat). Grows about 2½ feet tall; the inner foliage is the blackest bronze, tipped with green, while the outer foliage is bright scarlet and gold. Pkt., 10c, postpaid.

CAUDATUS (Love-Lies-Bleeding). Grows about 3 feet tall with drooping red spikes. Pkt., 10c, postpaid.

CRUENTUS (Prince's Feather). A variety growing about 3 feet tall, having dark red spikes. Pkt., 10c, postpaid.

Antirrhinum Majus - Snapdragon

The Snapdragon is now one of the most popular flowers. It is easily grown from seed and does exceptionally well in our section; they may be had in a great variety of separate colors or you can plant them mixed for a brilliant array of colors. By all means include a packet or two in your order.

HARMONY. A terra cotta-orange, shaded rose. Pkt., 10c.

CRIMSON KING. A beautiful dark red. Pkt., 10c.

BRILLIANT. Velvety crimson, yellow throat. Pkt., 10c.

TALL MIXED. Including all the new shades. Pkt., 10c.

DWARF MIXED. Pkt., 10c.

GOLDEN KING. A wonderful giant yellow. Pkt., 10c.

QUEEN VICTORIA. The purest of whites. Pkt., 10c.

ROSE QUEEN. A beautiful soft pink. Pkt., 10c.

PURPLE KING. A beautiful deep garnet shade. Pkt., 20c; 2 for 35c.

Asparagus Fern

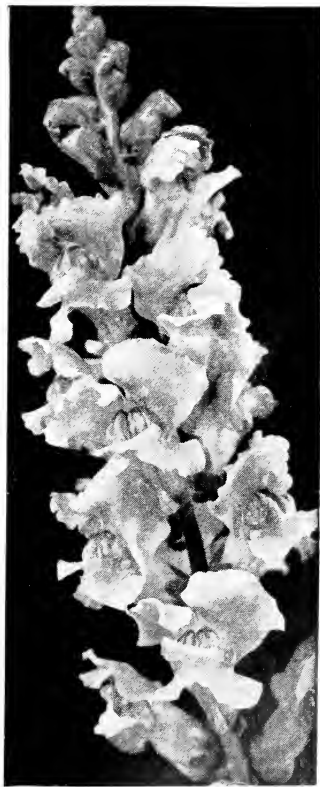
Seed does not germinate readily and should be soaked in lukewarm water before planting.

PLUMOSUS NANUS. A dwarf variety, preferred because of its beautiful, dense sprays of feathery green. Pkt., 10c.

SPRENGERI (Emerald Feather). An early, easily grown feathery-leaf variety with drooping branches. The best variety for hanging baskets. Pkt., 10c.



Amaranthus Caudatus.



Antirrhinum—Snapdragon.

Texas Blue Bells

(USTOMA—GENTIAN FAMILY)

One of Texas' most beautiful wild flowers—blooms usually in midsummer. The plant is of medium height, silvery green foliage, large clusters of magnificent bell-shaped purplish blue blossoms. Planted in front of a bed of Jackson's Rose Queen Zinnias make a dazzling display. The seed are rather difficult to germinate and should be soaked at least two days before planting, then planted very shallow, placing damp gunny sack over them until they germinate. Pkt., 30c; 4 pkts. for \$1.00, postpaid.

Texas Bluebonnet

(LUPINUS TEXENSIS)

This is the Texas State Flower. Grows wild all over the prairies of Central and South Texas. There is nothing more beautiful than to see the fields when the beautiful flowers are in bloom in the early Spring. Plants grow to 12 inches high and are covered with beautiful dark blue flowers tinged with white. They will grow on poor as well as rich soil. Sow the seed very early in the Spring, or in August, September, October or November, covering about one-half inch deep. As the seeds are very hard, file them before sowing to admit moisture. If the weather is dry, give them plenty of water. They bloom in Texas in March, April and May. After maturing seed, the plant dies and the seed comes up again the next Spring. If you want a bed of beautiful blue flowers in the early Spring, be sure and plant some of the Texas Blue Bonnet. Pkt., 15c; oz., 50c, postpaid.

Bellis Perennis

(ENGLISH DAISY)

This dwarf, double form of true Daisy is a charming little plant for edging and low borders. The bright little pompon or flower buttons are a delight in the Spring and early Summer. Plant early.

DOUBLE WHITE. The flowers are pure white. Pkt., 10c.

DOUBLE ROSE. The best of all pinks. Pkt., 10c.

DOUBLE MIXED. All colors. Pkt., 10c.

Begonia

A tender perennial, usually grown in a greenhouse. Some varieties are especially attractive on account of their foliage, but most varieties for their exquisite wax-like flowers, both single and double. The seed is very small and rather difficult to germinate and must be planted in boxes or pots indoors. If you like Begonias, be sure to include a packet in your order. Pkt., 25c.

Balsam or Lady Slipper

A very tender annual with brittle stems and foliage, flowering both single and double, being very bright and of various colors, growing close to the stem. Can be planted in the spring, summer and fall.

DOUBLE WHITE. Very pretty. Pkt., 10c; ½ oz., 50c.

DOUBLE SCARLET. A bright color. Pkt., 10c; ½ oz., 50c.

DOUBLE ROSE. A pleasing shade. Pkt., 10c; ½ oz., 50c.

TALL MIXED COLORS. A variety of colors. Pkt., 10c; ½ oz., 50c.

DWARF MIXED COLORS. Low-growing plants; all colors. Pkt., 10c; ½ oz., 50c.

Calendula

An old-fashioned popular flower that has been greatly improved in recent years, being very easy to grow, succeeding well in most any soil and blooming profusely from early Spring until late Fall. Excellent for cut flowers and very attractive when planted in solid beds or can be used as borders. Plant in the Fall or early Spring.

ORANGE KING. A new one that bears giant flowers sometimes three inches in diameter. In color it is a beautiful orange. Pkt., 10c; ½ oz., 45c.

LEMON QUEEN. A large type, bearing a beautiful lemon shaded flower. Pkt., 10c; ½ oz., 45c.

DOUBLE MIXED. A fine mixture containing many different shades of yellow and orange, some clear colors and some shaded. Pkt., 10c; ½ oz., 45c.

CAMPFIRE. This new forcing Calendula which was introduced last year has created a great sensation. It is a distinct new type originating from a mutation of Orange King. It is of vigorous growth, flowers are borne on stout stems. The blooms are flat and much larger than any type previously introduced. Color of petals is a brilliant orange with scarlet sheen, full yellow center. Pkt., 25c; 5 pkts., \$1.00.

The "Ball" Calendula

This new introduction is a very double flower of a beautiful orange, shading to a light center. This type of Calendula has only been offered to florists and we were fortunate in getting a small amount from the grower this year for our trade; so if you want something beautiful and something new in the Calendula line, order a packet or two before our limited supply is exhausted. Pkt., 25c.

California Giant Asters

This type of Asters is of the largest and most beautiful variety, often measuring 4 to 5 inches across the top of the flower. Their immense size and beauty as well as their long and sturdy stems make them very attractive as cut flowers. This is something new in the Aster family, and no garden will be complete without them. You cannot appreciate the beauty of them until you have grown them.

PEACH BLOSSOM. An exquisite flower with a wonderful bloom; in color similar to a peach blossom. Pkt., 25c.

LIGHT BLUE. The flowers are light bright blue, something out of the ordinary. Pkt., 25c.

DEEP ROSE. Nothing more beautiful. The flowers are giants, of a deep purplish rose color. Pkt., 25c.

DARK PURPLE. A beautiful artistic dark purple of the very largest size. Pkt., 25c.



Peach Blossom Asters.

Queen of the Market Asters

This type of Asters has proven very popular in this section, being a very early-flowering type. Plants are of the branching habit, bearing from 10 to 15 flowers of medium size, being very pretty.

BLUSH PINK. A pleasing shade. Pkt., 10c.

CRIMSON. An attractive red. Pkt., 10c.

DARK BLUE. A very beautiful color. Pkt., 10c.

LAVENDER. Very desirable. Pkt., 10c.

ROSE. A pleasing bright rose. Pkt., 10c.

WHITE. A beauty. Pkt., 10c.

FINEST MIXED. All shades mixed. Pkt., 10c.

Single Asters

The Pinks, Lavenders and Whites in which the single asters are obtained and the improvement that has been made in the last few years in the single asters make them much more sought after than the double types. They do exceptionally well in this section. Mixed colors, 15c per pkt.

Arctotis

Sometimes called "White African Daisy." A free-flowering annual, having large, daisy-like flowers which are white with a steel-blue reverse imparting a pearly hue of great charm. Plant in the spring and fall in open ground. Pkt., 15c; 2 for 25c.

Blue Lace Flower

(DIDISCUS COERULEUS)
A constant bloomer of long-stemmed blue flowers that resemble the blossoms of Queen's Lace Handkerchief. The seed is somewhat slow in germinating. Pkt., 10c.

Brachycome

(SWAN RIVER DAISY)

A dwarf growing annual suitable for edging, bearing a profusion of pretty daisy-like pink, blue and white flowers. Mixed colors. Pkt., 15c, postpaid.



Orange King Calendula.



Bellis Perennis.

Calliopsis or Coreopsis

An annual that will grow luxuriantly in our section, affording a constant supply of richly marked flowers for cutting.

MIXED COLORS. Pkt., 10c.

Candytuft - Iberis

This wonderful, showy, delicate looking plant thrives and does well in our section; in fact, one would almost think it was a native. Solid beds as well as borders planted in Candytuft have no equal. Their wide range of colors make them very desirable in every flower garden.

CARMINE. Just imagine a bed of this shade. Pkt., 10c.

EMPERESS WHITE. A solid bed of this is as white as snow. Pkt., 10c; ½ oz., 60c.

ROSE CARDINAL. A deep shade of rose. Pkt., 10c.

CHOICE MIXED. All colors in this mixture. Pkt., 10c; ½ oz., 50c.



Calliopsis.

Cosmos

This is an old-time annual, one of the most showy and beautiful of all flowers. There are two distinct types of Cosmos, the Early-Blooming type and Late-Blooming type. The Early-Blooming type may be planted from early Spring until Fall, and the Late-Blooming type should be planted in the late Spring for Fall blooming. Plant out in the open where the flowers are intended to bloom.



Giant White Hyacinth-Flowered Candytuft.

KLONDYKE. The late-blooming type, which should be planted in the Spring and will bloom in the Fall. In color a beautiful yellow. Pkt., 10c; ½ oz., 50c.

EARLY GIANT FLOWERING PINK. A beautiful pink for either Spring or Fall planting. Pkt., 10c; ½ oz., 50c.

EARLY GIANT FLOWERING WHITE. A pure white for Spring or Fall planting. Pkt., 10c; ½ oz., 50c.

EARLY GIANT FLOWERING CRIMSON. A wonderful red for Spring or Fall planting. Pkt., 10c; ½ oz., 50c.

EARLY GIANT FLOWERING MIXED. All colors for either Spring or Fall planting. Makes a wonderful bed as a background in mixed colors. Pkt., 10c; ½ oz., 50c.

Cockscomb - Celosia Cristata

An old and picturesque class of plants having colored foliage gracefully arranged like plumes and sometimes more dense, like a cock's comb. They are very easily grown and should be planted outdoors when the ground is warm; they make an extreme contrast to shrubby planted here and there among them.



Dwarf Giant Empress Cockscomb.

DWARF GIANT EMPRESS. This beautiful dwarf plant has bronze leaves and forms very large, crimson combs; height usually about one foot. Pkt., 10c.

TALL COCKSCOMB. Choice mixed of many types. Pkt., 10c.

DWARF MIXED. A mixture of the best growing dwarf sorts. Pkt., 10c.

Chinese Woolflower

(CELOSIA)

A new annual of great merit, the flowers resemble huge balls of wool. Height about 15 inches.

DEEP CRIMSON. Pkt., 10c.

CHILDSI IMPROVED MIXED. Pkt., 10c.

GROZ-IT Sheep Manure for your flower beds and lawns. Free from weed seed. \$2.75 per 100 lbs. F.O.B. HOUSTON.

A Few Don'ts

Don't plant flower seed too deep.
Don't plant flower seed in the cold ground.
Don't forget to fertilize your beds.

Carnation

(MARGUERITE)

This is decidedly the best type of Carnation for our section, being an extra vigorous race and especially adapted to outdoor culture. The plants are trim in habit, and flower abundantly in about five months from sowing of seed. Sow late in the Fall and early Spring in boxes and transplant later.

DOUBLE PINK. Nothing prettier. Pkt., 10c.

DOUBLE DARK RED. A wonderful shade. Pkt., 10c.

Giant White Hyacinth-Flowered Candytuft

This is a beautiful new variety of the Candytuft family. The grower has been working on it since 1916, and has finally perfected it. The blooms are giant in size, bearing immense snow-white spikes, which often measure 10 inches or more; so if you want a treat, give this one a trial. Pkt., 15c; ½ oz., 60c.

DOUBLE WHITE. Pure as snow. Pkt., 10c.

DOUBLE YELLOW. An odd shade. Pkt., 10c.

CHOICE DOUBLE MIXED. A variety of colors. Pkt., 10c.

Centaurea Cyanus

Sometimes called Cornflower or Bachelor's Button. This is an old-fashioned, hardy annual and still a great favorite for cutting purposes. Are very easily cultivated; the seed should be sown in the Spring where they are to remain and thin them to 3 or 4 inches.

DOUBLE WHITE. This is a new variety, it is absolutely pure white and very double; splendid as a cut flower. Pkt., 10c.

DOUBLE BLUE. A pleasing shade of blue, much prettier than the single kinds. Height 2 to 3 feet. Pkt., 10c.

DOUBLE PINK. A beautiful shade of bright pink. Pkt., 10c.

DOUBLE MIXED. All colors. Pkt., 10c.



Cosmos.

Clarkia

A popular summer annual growing about two feet high, grows well in the ordinary soil. Special mixture — 10c packet, postpaid.

Cynoglossum

(Chinese Forget-me-not)

A brilliant deep metallic blue plant growing from 18 to 24 inches tall with flowers of a true Forget-me-not blue. 20c pkt., postpaid.

Suggestions for a Rock Garden

Ageratum
Alyssum
Candytuft
Texas Blue Bonnet
Dwarf Balsam
English Daisy
Variegated Leaf
Caladiums
Gallardias

Ice Plant
Verbena
Lobelia
Mignonette
Pansy
Dwarf Petunia
Phlox
Portulaca
Torenia



Double-Flowered
Early Cosmos.

Cyclamen

Sometimes known as the Alpine Violet. A beautiful house plant with fine foliage, having rich colored, fragrant flowers. Sow in the Fall or early Spring. Pkt., 20c.

Shasta Daisy

A splendid hardy variety with flowers rarely less than four inches across, of the purest glistening white with yellow center, broad, overlapping petals and borne on long stems. A beautiful cut flower, remaining in a good condition a week or more.

ALASKA. The finest type. Pkt., 15c; 2 for 25c.

Annual Delphiniums

TALL DOUBLE STOCK-FLOWERED LARKSPUR

This is the finest strain for our section and will produce a wonderful show in any flower garden. The double-flowering varieties, with their long spikes, are excellent for cut flowers. They should be planted in beds, or as a background for other small plants; with their great varieties of colors one may carry out most any color scheme desired and the bright shades will add a touch of beauty to the garden that will be a pleasure. They are easy to grow and we know of no flower that will produce a greater show. By all means include an assortment of our Larkspur in your garden for early Spring blooming.

DARK BLUE. A rich deep blue. Pkt., 10c; ½ oz., 75c.

WHITE. A pure white. Pkt., 10c; ½ oz., 75c.

LUSTROUS CARMINE. A new type; beautiful glowing color. Pkt., 10c; ½ oz., 75c.

TALL STOCK-FLOWERED MIXED. This contains a fine mixture of all shades. Pkt., 10c; ½ oz., 75c.

ROSE. A soft rose-pink. Pkt., 10c; ½ oz., 75c.

PINK. A beautiful soft pink. Pkt., 10c; ½ oz., 75c.

IMPROVED EXQUISITE. A recent introduction by one of the California growers. In offering this new, beautiful, double stock-flowered Larkspur we are really offering something worth while. The color is a beautiful soft pink, and it is well named because it is one of the most exquisite Larkspurs. Pkt., 25c; 5 pkts., \$1.00.

La France Larkspur

This pleasing shade of salmon-pink larkspur was introduced and offered the first time last year. The fine qualities of the La France are that the flowers are extremely well formed, very double, and well placed on long stems. It is vigorous growing and is more resistant to mildew than any of the stock-flowered varieties of Larkspur. Pkt., 25c; 5 for \$1.00.

LAVENDER. A beautiful shade of delicate lavender. This shade planted with pink has no equal. Pkt., 15c, postpaid.

Perennial Delphiniums

Perennial Delphiniums or Larkspur are really a joy forever if once started; they thrive in almost any location, but a good, deep, rich soil will repay in more beautiful flowers.

BELLAMOSUM. No garden is complete without this dark blue type of perennial Delphinium. Our stock of this seed is the best money can buy. Pkt., 30c; 2 pkts., 55c, postpaid.

BELLADONNA. A beautiful light blue shade. Pkt., 30c; 2 for 55c, postpaid.

SPECIAL MIXTURE. This mixture contains the double and single types, with a wonderful array of blooms. Pkt., 25c.

Early Double-Flowered Cosmos

This is something new but being a hybrid, only about forty per cent of the flowers are double, the balance being large, single flowers, which are very attractive. Early double Cosmos flowers, aside from their novelty and beauty, are of lasting substance, both as cut flowers and on the plant. By all means send for a packet of this remarkable new Cosmos.

DOUBLE WHITE. A very handsome white. Pkt., 25c.

DOUBLE CRIMSON. An exquisite red. Pkt., 25c.

DOUBLE PINK. A beautiful shade of pink. Pkt., 25c.

EARLY DOUBLE MIXED. All colors mixed. Pkt., 25c.

Annual Chrysanthemums

(PAINTED DAISY—CARINATUM)

These are the florist's shaggy or double flowers that you see in the florist's window in the Fall of the year, but are handsome plants 1 to 2 feet high, covered with bright colored single flowers, sometimes called "Painted Daisy." These daisy-like flowers are red, yellow and white with rings around the center of contrasting color. Very attractive flowers and especially valuable for cutting. MIXED COLORS. Pkt., 10c.



Annual Chrysanthemums.

Giant Flowering Dahlias

Although not generally known, Dahlias are easily grown from seed. If planted early in a hotbed and transplanted when danger of frost is past, they will bloom the first season and make large bulbs the next Fall. We have secured seed of the Giant type Dahlia, which are the very largest grown; the flowers are very symmetrical in shape, with a wide range of colors, hardly any two alike. If you are looking for a treat, be sure and order a packet of this wonderful Dahlia.

GIANT DOUBLE MIXED. Pkt., 50c.

GIANT CACTUS MIXED. Pkt., 50c.

PETER PAN MIXED. Pkt., 50c.

Dahlia - Smaller Type

The medium size or smaller single flowers. Pkt., 10c.

The medium size or smaller double flowers. Pkt., 10c.

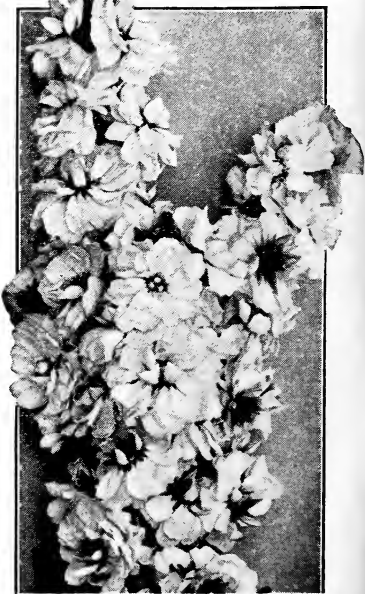
Coleus

The handsomest foliage plant obtained from seed. The leaves often measure 10 inches in length and 8 inches in width. Heart-shaped and handsomely crimped, toothed and frilled. Their color combination is remarkably rich; a plant that thrives and grows luxuriantly in our climate. Plant in hotbeds and transplant later.

RAINBOW MIXED. Pkt., 25c.



Dahlias.



Annual Larkspur.



Dianthus—Pinks.

Dianthus or Pinks

The family of Pinks is unrivalled for brilliancy and rich variety of color. The plants are bushy, of symmetrical form, blooming profusely until Fall, rendering them very satisfactory for summer gardens.

CHINESE'S DOUBLE MIXED. This is a double annual sort of beautiful colors. Pkt., 10c.

HEDDEWIGI DOUBLE MIXED. This is another type that is beautiful. Pkt., 10c.

SINGLE GRASS PINKS MIXED. This is a perennial type, but very pretty. Pkt., 10c.

LUCIFER. A gorgeous double red variety. Pkt., 15c; 2 for 25c, postpaid.

Gaillardia

A beautiful, showy plant, remarkable for the profusion, size and brilliancy of its flowers, continuing in bloom from early summer until late fall. Excellent for beds, borders or for cutting. Height about 18 inches.

JACKSON'S INDIAN CHIEF. A new bronze red annual Gaillardia that will thrive and do exceptionally well in this section of the country. Try a packet of the Indian Chief and have blooms the entire summer. Pkt., 15c; 2 for 25c.

SINGLE MIXED. Pkt., 10c.

DOUBLE MIXED. Pkt., 10c.

Geranium

A half-hardy perennial, flowering the first year from seed if sown very early. A gorgeous flower of numerous shades and colors. Bearing continuously renders this one of the most popular plants grown.

MIXED LARGE FLOWERS. This choice mixture includes many of the newest and finest sorts. Pkt., 25c.

Dimorphotheca (AFRICAN DAISY)

A very showy annual from South Africa, which has become a great favorite on account of its easy culture and beautiful flowers. The colors include all shades of yellow, orange, cream and white, and when massed in beds or wide borders they have a very brilliant effect. They may be planted during the Fall, Spring or Summer.

HYBRIDS, MIXED COLORS. Pkt., 10c.

Dusty Miller

A beautiful, finely cut, silvery gray foliage plant with graceful drooping habit in growth. For early planting start in hotbeds and transplant or plant in open when all danger of frost is past. Pkt., 10c.

Four o'Clock

(MARVEL OF PERU)

A well known favorite plant bearing free'y, funnel-shaped, red, white and striped flowers.

MIXED COLORS. Pkt., 10c.

Godetia

A very attractive hardy annual, producing fine gladiolus-like flowers in long trusses. Excellent for cutting. They do best in rather a poor soil. Mixed colors.

Pkt., 15c, postpaid.

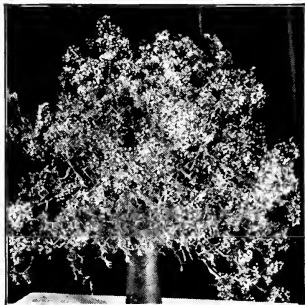
Gilia

Often called "Queen Ann's Thimble." Plants grow about 2 feet high, bearing feathery foliage covered all Summer with rich lavender-blue flowers. Makes excellent cut flowers.

CAPITATA. Lavender-blue. Pkt., 10c, postpaid.



Helichrysum—Strawflower.



Gypsophila.

Gypsophila

A delicate, free-flowering plant covered with star-shaped flowers; valuable for mistlike effects and as trimming in bouquets.

ELEGANS WHITE. A pure white variety. Pkt., 10c.

ELEGANS ROSEA. A beautiful soft pink. Pkt., 10c.

ELEGANS MIXED. Pkt., 10c.

Gomphrena

(BACHELOR'S BUTTON)

Entirely different in appearance from any of the everlasting flowers, being very attractive, having globe-shaped flowers resembling a clover blossom, which, when cut and dried, hold their shape and color well.

RUBRA. A beautiful red. Pkt., 10c.

MIXED COLORS. Pkt., 10c.

Hollyhocks

A beautiful flower that was popular in grandmother's days, and more popular today. For a background or a flower bed it has no equal. The perennial types are double and should be planted in the Fall of the year. The single types can be planted early in the Spring and will flower the first year. Be sure to order a packet of both kinds and have this old-time favorite in your garden.

"ALAMEDA PINK SHADES." The best in the double pink Hollyhocks. Pkt., 25c, postpaid.

DOUBLE ROSE. Pkt., 10c.

DOUBLE DARK RED. Pkt., 10c.

DOUBLE YELLOW. Pkt., 10c.

DOUBLE EVERBLOOMING MIXED. Pkt., 10c.

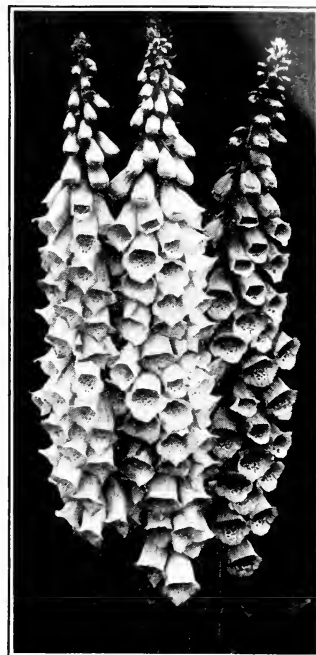
SINGLE EVERBLOOMING MIXED. Pkt., 10c.

Helichrysum

(STRAWFLOWER)

A free-flowering, hardy annual growing from 1½ to 2 feet tall, having an abundance of flowers that are round, flat but thick. Very full of short, stiff, incurved petals, surrounding a depressed center.

CHOICE MIXED. This mixture contains the latest types. Pkt., 10c.



Foxgloves.

Foxglove - Digitalis

A hardy perennial, old-fashioned border plant, forming dense spikes of brilliantly colored, thimble-like or bell-shaped flowers, three to five feet high.

FINEST MIXED. Pkt., 10c.

Heliotrope

Highly valued for the fragrance of their flowers and duration of bloom. Tender perennials; one foot high. Easily grown from seed; blooming first Summer if sown early.

FINEST MIXED. A mixture of the best type in shades of white and purple. Pkt., 10c.

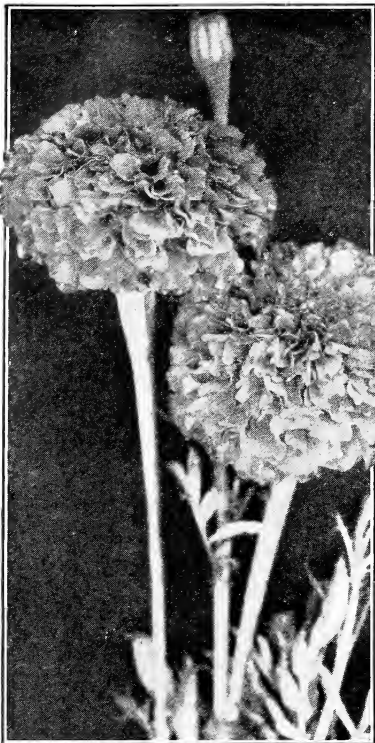
Hibiscus

A beautiful ornamental plant growing from 2 to 4 feet high, having beautiful bell-shaped flowers, ranging in color from a white and rose to a deep scarlet. Sow in open ground after all danger of frost is over.

MIXED COLORS. We offer the latest varieties. Pkt., 10c.



Double Hollyhocks.



Double Tall African Marigold.

Marigold

Marigolds are hardy annuals, in dwarf and tall varieties, growing from 6 inches to 3 feet high. The flowers are of various shades of yellow and brown. The tall varieties are excellent for tall bedding or background work, while the dwarf varieties are fine for borders. Marigolds do so well in our section you can almost call them native flowers. Easy to grow and every flower garden should have some.

Double Tall African Marigolds

AFRICAN TALL DOUBLE ORANGE. A beautiful flower of gigantic size; a very bright orange color, plant usually growing about 2 to 3 feet high. A very popular sort. Pkt., 10c; ½ oz., 75c.

AFRICAN TALL DOUBLE LEMON. A lemon shade that is beautiful. Pkt., 10c; ½ oz., 75c.

AFRICAN TALL DOUBLE MIXED. Containing all shades. Pkt., 10c; ½ oz., 75c.

STIM-U-PLANT

PLANT STIMULANT TABLET

Glorious Gardens - Perfect House Plants

STIM-U-PLANT is the only complete plant food in tablet form. Guaranteed analysis 41 per cent Nitrogen, 12 per cent Phosphoric Acid, 15 per cent Potash—all of which elements are water-soluble and immediately available to the feeding root-hairs of the plant.

TABLET FORM OF GREAT VALUE

1. They give an EXACT FEEDING UNIT.
2. No MESSY MIXING.
3. No UNPLEASANT ODOR.
4. MAXIMUM EFFICIENCY because no food-value lost in scattering, leaching, or run-off of soil surface-water.
5. Makes REPOTTING of plant UNNECESSARY, as it replaces the food withdrawn by the growing plant.

EASY TO USE

Simply insert tablets in soil about 3 inches from stem of plant or dissolve in water at the rate of four tablets to the gallon and apply as liquid manure. Complete directions with every package.

Order STIM-U-PLANT tablets with your seed and plant order. Price, 30 tablets, 25c; 100 tablets, 75c.

Ice Plant

A pretty little creeping flower for baskets or boxes; grows about 6 inches high, having flowers of white and pink; the leaves are covered with crystal-like drops, shining brightly in the sun. The foliage is remarkable. Pkt., 10c.

Lantana

A very popular, free-blooming, rapid-growing plant, with flower heads of various colors, which are continually changing. Plants are completely loaded with blossoms succeeded by berries, which, when ripe, turn deep blue. Used largely for bedding out in Summer and also fine for Winter blooming plants. Start seed in hotbeds.

HYBRIDS, MIXED. Pkt., 10c.

Lobelia

This charming little hardy annual grows from 4 to 6 inches high and is of very compact growth, being literally covered with small, bright flowers.

CRYSTAL PALACE. Undoubtedly the finest dwarf blue for bedding. Pkt., 10c.

OUR CHOICE MIXED COLORS. Pkt., 10c.

Lavender

(LAVANDULA VERA)

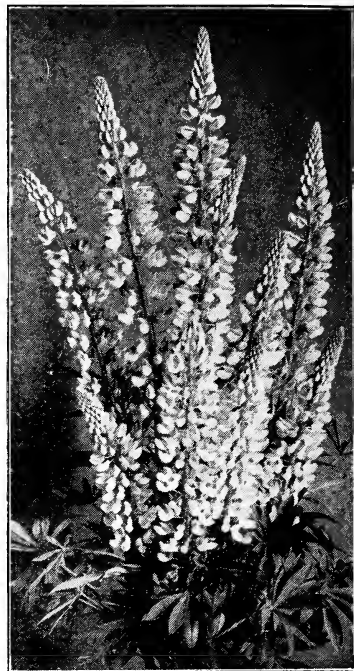
A much prized, highly perfumed border plant. Makes an excellent dried plant. Pkt., 10c.

Larkspur

See Annual Delphinium, page 4.



Mexican Fire Bush.



Lupines.

Dwarf French Marigolds

The French types are much smaller flowering than the African, but greatly prized for borders or bedding.

DWARF FRENCH GOLDEN BALL. A double golden yellow of very compact growth, blooming very profusely. Height about 1 foot. Pkt., 10c.

DWARF FRENCH DOUBLE MIXED. A fine mixture, having a wonderful lot of colors in it. Pkt., 10c.

DWARF FRENCH GOLD STRIPED. A wonderful type of Marigolds, used for a border, the color being a velvety maroon striped with gold. Pkt., 10c.

Mexican Fire Bush

(KOCHIA)

This beautiful plant forms regular pyramids from 2 to 3 feet in height, having a cypress-like appearance. It makes an excellent background or is fine for planting along the edge of the walk. Stays green all during the Summer and in the Fall or Winter turns fiery red.

CHILDSI IMPROVED. This is the latest type of Kochia. Pkt., 10c.

Linum

RUBRUM (Scarlet Flax). A beautiful brilliant colored Summer annual, grows about two feet high. Pkt., 10c, postpaid.

PERENNE. A beautiful blue Linum. Pkt., 10c, postpaid.

Lupines or Lupinus

Annual sorts. Free-flowering, easily grown, having graceful spikes of rich and various colored, pea-shaped flowers; valuable for mixed borders.

TALL MIXED. Pkt., 10c.

DARK BLUE. Pkt., 10c.

Matricaria

(FEVERFEW)

Small, double, white and yellow flowers. Well adapted for bedding and cut flowers. Pkt., 15c.

Mignonette

No garden is complete without the Mignonette. It is a hardy annual, growing 6 to 12 inches high, being very easy to grow. The flowers are pyramid-shaped spikes, which are very fragrant.

MIXED COLORS. Pkt., 10c.

USE VIGORO FERTILIZER FOR YOUR LAWN AND GARDEN. \$5.00 per 100-lb. bag.

Nasturtiums

For cut flowers they are unequalled; for a border along flower beds nothing is better. We have in our mixture this year the finest shades that have ever been offered, our mixture having been grown for us by one of the very best growers, he making the mixture from only the very best named varieties, and in offering you this mixture, we know that we are offering you something that is "classy" in the Nasturtium line.

GIANT FLOWERING BUSH OR DWARF NASTURTIUMS MIXED. Pkt., 10c; oz., 20c; ¼ lb., 70c; lb., \$2.00, postpaid.

TALL OR TRAILING NASTURTIUMS MIXED. Pkt., 10c; oz., 20c; ¼ lb., 75c.

KING OF TOM THUMBS. This is a dwarf, dark-leaved Nasturtium, having beautiful deep scarlet flowers. Pkt., 10c; oz., 25c, postpaid.

Ornamental Grasses

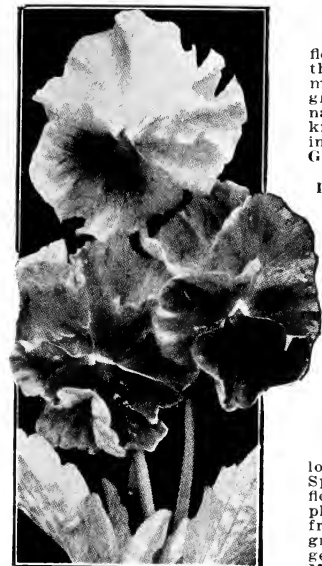
When planted among annuals or as a background, or in flower beds, they make a very attractive effect. We have selected only the best grasses that do well in our section.

MIXED. Pkt., 10c.

How to Grow Giant Pansies

Pansies thrive best in a moist, sunny location, in rich, loamy soil. The seed should be sown in the Fall for early Spring blooms, or can be sown early in the year for good flowers later in the Spring. The plants must be transplanted twice in order to get the largest flowers; once from the seed box to a chosen bed and again to the open ground where they are to bloom; this is very necessary to get the large sized blooms. Use manure very liberally.

MASTERPIECE. A beautiful frilled Pansy, each petal being curled or waved. The range of color is very extensive, the rich dark velvety shade predominates. Pkt. (about 300 seeds), 25c.



Steele's Pansies.

STEELE'S GREENHOUSE MIXTURE. This is the very largest type of Pansy grown; the many shades and colors and the enormous size of the blooms make it the most sought after Pansy in America today. The seed is grown in the Puget Sound country, where the climatic conditions are ideal for it to reach the zenith of perfection. By all means include a packet of these wonderful Pansies in your order this season. Pkt., 50c; ½ oz., \$5.50; oz., \$9.00.

JACKSON'S SWISS GIANT PANSY. A new strain of Pansy of enormous size. Three inches and over in diameter. Borne on strong stalks. The wonderful colors and color combinations are very rare and entirely new, something never seen in a Pansy before, such as salmon-pinks and reds. All flowers are three or five blotched. Undoubtedly the prettiest and largest Pansy ever introduced. Packet containing approximately 350 seeds, \$1.00 postpaid.

KING OF THE BLACKS. A very large black Pansy, that has a velvety appearance. Pkt., 10c.

AZURE BLUE. A soft shaded Pansy that is very pretty. Pkt., 10c.

KING OF THE WHITES. A very large, nice white Pansy. Pkt., 10c.

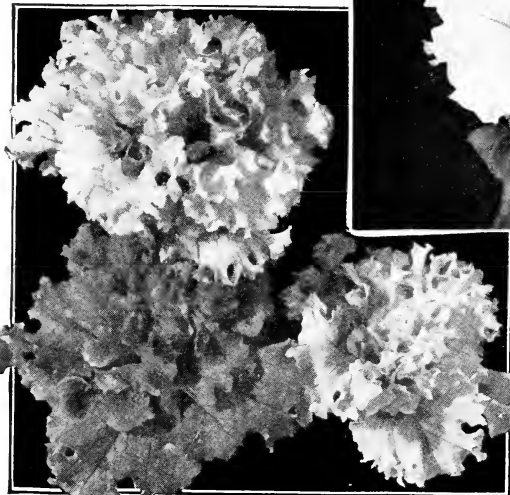
TRIMARDEAU MIXED. This is the best all around Pansy that we know of; the blooms reach a very nice size and the colors are excellent. Pkt., 10c; ½ oz., \$2.50; oz., \$4.00.

YELLOW with a dark center. An exceedingly pretty Pansy. Yellow with a dark eye, which is very attractive. Pkt., 10c.

BRONZE. A beauty. Pkt., 10c.



Large-Flowered Hybrid Petunias.



Giant Fluffy Ruffles Petunias.



Nasturtiums.

Petunias

Petunias are one of our specialties and we pride ourselves on having the best types procurable; types that are adapted to our section of the country. Unsurpassed for massing in beds, they are also used along the walks and driveways, and can be used very extensively in window boxes. Sow seed early in the Spring.

PURE WHITE. This is of the Hybrid type, being of excellent size and pure white. Pkt., 10c.

ROSE OF HEAVEN. A beautiful dwarf pink Petunia and when used in masses it has no equal. Pkt., 20c; 2 for 35c.

ROSY MORN. A most pleasing shade of a clear pink with a broad white throat; an excellent sort for window boxes or for beds. Pkt., 20c; 2 for 35c.

GENERAL DODD. A rich blood-red. The flowers are large and erect; a free bloomer. Pkt., 10c.

LARGE FLOWERING HYBRID MIXED. This is one of the best mixtures on the market today. Pkt., 10c.

HOWARD'S STAR IMPROVED. A beautiful velvety purple Petunia, with a white star; makes a very striking bed or border. Pkt., 15c; 2 for 25c.

LORD COURTNEY. A fine brilliant rose colored Petunia, with a yellow throat; flowers are very large and showy. One of the best varieties we offer. Pkt., 15c.

PURPLE PRINCE. A large, gorgeous velvety Petunia, something new and beautiful; when massed in beds nothing more exquisite; fine for window boxes and borders. Try a packet or two and be convinced. Pkt., 15c; 2 for 25c.

SILVER BLUE. A beautiful light blue shade of Petunias introduced for the first time this year. Something entirely new and a true blue. When planted with a bed of Rosy Morn Pink Petunia, just imagine the beauty of this. Pkt., 40c; 2 for 75c.

JACKSON'S ROMANY LASS. A clear bright velvety red new Petunia having a purple throat which is striped in black. Pkt., 50c.

JACKSON'S PINK GLORY. A large variety producing flowers that are slightly ruffled and in color a beautiful pure flame-rose-pink. Pkt., 50c.

JACKSON'S TRIUMPH PINK. A new large variety of beautiful ruffled flowers of a clear bright pink which would be the pride of any one's flower garden. Pkt., 50c.

GIANT FLUFFY RUFFLES MIXED. The most wonderful Petunia that you have ever seen; their rich colors and gigantic size make them the most beautiful of all Petunias. The edges are ruffled and the flowers are of the largest size. Pkt., 50c.

Balcony Petunias

BALCONY BLUE. The flowers open as a purplish blue, turning to a violet-blue color when in full bloom. Pkt., 25c.

BALCONY ROSE. A lovely bright rose flower with a white throat. Pkt., 25c.

Phlox, Drummondii Grandiflora

No flower does better in our section than the Phlox, it is undoubtedly the showiest and easiest of all annuals to raise. Seed can be sown in the open ground as soon as all danger of frost is past and in a few weeks your beds will be a blaze of glory. We offer the Grandiflora type of Phlox; the blooms from this strain are much larger than the ordinary kind.

PINK. A solid bed of pink Phlox. Pkt., 10c; ½ oz., \$1.00, postpaid.
JACKSON'S DELICATE PINK. Just picture a bed of delicate pink Phlox in connection with Jackson's Isabelliana, a yellow one. Pkt., 15c; 2 for 25c.
ISABELLIANA. A beautiful yellow. Pkt., 10c; ½ oz., \$1.00, postpaid.
COERULEA STRIATA. A very pretty blue striped sort. Pkt., 10c; ½ oz., \$1.00, postpaid.
ALBA. The purest of whites. Pkt., 10c; ½ oz., \$1.00, postpaid.
SPLENDENS. A large bright red. Pkt., 10c; ½ oz., \$1.00, postpaid.
BRILLIANT SCARLET. A much desired red type. Pkt., 10c; ½ oz., \$1.00, postpaid.

STARRED AND FRINGED. Oftentimes, called the Texas Star. A pretty star-shaped flower with a fringed edge. Pkt., 10c; ½ oz., \$1.00, postpaid.

CHOICE MIXED. This mixture is composed of all the above and many other sorts and shades not found ordinarily in mixed Phlox. Pkt., 10c; ½ oz., \$1.00, postpaid.

PERENNIAL HARDY. Grows much taller than the annual varieties. Pkt., 20c; 2 for 35c.

JACKSON'S TRUE BLUE. A new violet-blue Phlox that received the Blue Ribbon in the Houston Flower Show. Pkt., 30c; 2 pkts., 55c, postpaid.

Poppies

The different varieties of Poppies are always favorites for outdoor display, and the cultivation of them being so extremely simple, entitles them to a place in every garden. They should be planted in the late Fall or very early in the Spring, as in our section they burn out as Summer comes on.

SHIRLEY MIXED. This is a beautiful type of satiny flowers with a wide range of colors. Pkt., 10c.

SPLENDENS. A beautiful single rose colored Poppy. Pkt., 10c.

MIKADO. A beautiful Japanese double Poppy, with brilliant scarlet and white, curled petals; very similar to the Japanese Chrysanthemum. Pkt., 10c.

CARNATION-FLOWERED. Large size; flowers very double; of many colors. Pkt., 10c.

CALIFORNIA POPPY or ESCHSCHOLTZIA. A very beautiful annual with finely cut, feathery foliage, having a velvet, cup-shaped flower. When planted in late Fall or early Spring they do fairly well in our section, producing an abundance of pretty flowers. All colors mixed. Pkt., 10c.

AMERICAN LEGION. This is a new single Shirley Poppy; is of a dazzling orange-scarlet in color and of enormous size; flowers are borne on long, stout stems. The plants are of very erect, robust growth. Pkt., 15c.

KING EDWARD. A beautiful deep scarlet. Pkt., 10c.

BRILLIANT MIXED CALIFORNIA POPPY. Containing the shades of rose, red, scarlets, etc. Something new. Pkt., 15c; 2 pkts., 25c, postpaid.

BUTTERCUP YELLOW. A gorgeous fringed petal, buttercup-yellow Poppy. Something new. Pkt., 15c; 2 pkts., 25c, postpaid.

Physalis

(Chinese Lantern Plant)

A beautiful plant growing about 2 feet high, producing orange-scarlet, lantern fruits. Pkt., 25c, postpaid.



Phlox Drummondii.

Portulaca

(MOSS FLOWER)

One of the best low-growing annuals for hot and sunny places; will grow and bloom profusely in the Summer time when other flowers are dead. Sow after all danger of frost is over.

SINGLE MIXED. Many beautiful colors. Pkt., 10c.

DOUBLE MIXED. All shades and colors of double flowers. Pkt., 10c.

Jackson's Giant Portulaca, Parana

This wonderful strain produces flowers that are twice as large as other Portulacas. A very dazzling purple-scarlet; flowers produced in the greatest profusion. Be sure and try this beautiful Portulaca. Pkt., 15c; 2 for 25c.

Pyrethrum

An excellent plant for edging, growing about 6 inches high, producing a beautiful yellow foliage. Pkt., 10c.

Ricinus

(CASTOR BEAN)

This magnificent foliage plant is picturesque, showy and imposing in its very ornamental foliage. Pkt., 10c.



Double Portulacas.



American Legion Poppies.

Salvia - Scarlet Sage

Beautiful annual, having bright flowers from early spring until killed by frost in the late autumn. Easy to grow and its many uses make it a very valuable and popular flower. **SPLENDENS.** A beautiful bright scarlet. Pkt., 10c.

FIREBALL. Very compact; covered with scarlet spikes. Pkt., 10c.

BLUE SALVIA. A handsome and much admired variety of a deep azure-blue color. Pkt., 10c.

Solanum

JERUSALEM CHERRY. A very popular pot plant for winter decoration, being dwarf and bearing in the greatest profusion, bright scarlet berries. Pkt., 15c; 2 for 25c.

Stocks

IMPERIAL GIANT DOUBLE EARLY STOCKS. An improved Bismarck type growing from 24 to 30 inches tall; of branching habit, very early blooming and can be planted in the fall and spring.

BLOOD-RED.

APPLE BLOSSOM. A beautiful blush pink.

GOLDEN BALL. A canary-yellow.

LAVENDER.

ROSE. A beautiful deep rose-pink.

All of the above, pkt., 20c; 2 pkts., 35c, postpaid.

ELK'S PRIDE. A new royal purple introduced this year; nothing can be more beautiful than a bed of Elk's Pride planted in connection with the Canary Yellow or Golden Ball. Pkt., 25c; 5 pkts., \$1.00, postpaid.

MIXED. Ten Weeks Stocks. Pkt., 10c; 3 pkts., 25c, postpaid.



Double Ten Weeks Stocks.

Spencer Sweet Peas California Grown

We list only the standard Giant type of Spencer Sweet Peas. This strain of Sweet Peas produces the largest blooms and the longest spikes of any type in our section. We have inoculation to improve your Sweet Peas; in 25c bottles, be sure and order one.

"OUR GOLD MEDAL MIXTURE." This mixture is composed of the very best colors of the named type of Spencer Sweet Peas. Pkt., 10c; oz., 30c; ¼ lb., \$1.00, postpaid.

KING EDWARD. A beautiful carmine-scarlet. Pkt., 10c; oz., 35c, postpaid.

KING WHITE. The purest white Sweet Pea in the Spencer family. Pkt., 10c; oz., 35c, postpaid.

PICTURE. A giant cream-pink. Pkt., 10c; oz., 35c, postpaid.

ROYAL SCOT. A beautiful scarlet Sweet Pea of exceptional brilliancy. Pkt., 10c; oz., 35c, postpaid.

AUSTIN FREDERICK. A beautiful clear lavender shade. Pkt., 10c; oz., 35c, postpaid.

TANGERINE IMPROVED. A beautiful glowing orange. Pkt., 10c; oz., 35c, postpaid.

KING MAUVE. The largest waved lavender variety. Pkt., 10c; oz., 35c, postpaid.

HEAVENLY BLUE. The most pleasing shade of blue. Pkt., 10c; oz., 35c, postpaid.

Any Six packets of above Sweet Peas, postpaid for 50c.

New Spencer Sweet Pea Novelties

MARY PICKFORD. This is a beautiful light and dainty cream-pink with the faintest suffusion of salmon. Flowers are on long, stout stems. Pkt., 20c, postpaid.

MISS CALIFORNIA. The flowers of this new type are large, beautifully waved and borne in fours on long stems, the color being a beautiful salmon-cream-pink, a distinctly new shade. Pkt., 20c, postpaid.

DOREEN. This is a huge bright carmine Sweet Pea, being much larger and brighter than all other carmine varieties. Pkt., 20c, postpaid.

CAMPFIRE. This is one of the brightest scarlet sun-proof Sweet Peas. Pkt., 20c, postpaid.

EVERLASTING SWEET PEAS
See Lathyrus, page 10.



Spencer Sweet Peas.

red and purple. Should be planted very early in the Spring.
ALL COLORS MIXED. Pkt., 10c.

Sweet Sultan

A very hardy annual. Plants are of a spreading habit and one plant will produce enough cut flowers to keep an average home supplied the whole Summer.
CHOICE MIXED. Pkt., 10c.

Jackson's Early Flowering Spencer Sweet Peas

This type of Spencer Sweet Pea will bloom 30 days earlier than the standard Spencers. In a good many sections they are known as the Christmas Flowering Sweet Peas and when planted early in the fall or late summer they produce an abundance of blooms at Christmas. The varieties we list below are of the best early Spencer type.

GLITTERS. A beautiful cerise. **COLUMBIA.** Salmon-rose standard, white wing.

AVIATOR. A dazzling crimson-scarlet.

ROSE QUEEN. Rose-pink. **FAIR MAID.** Blush pink, suffused salmon.

SNOW STORM. Pure white. **LAVENDER KING.** Lavender.

NEW BLUE. A beautiful deep blue type.

CHRISTMAS FLOWERING SPECIAL MIXTURE. All of the above shades and others.

Prices of Christmas Flowering Sweet Peas: Pkt., 25c; oz., 75c; any 5 pkts., postpaid, \$1.00.

Salpiglossis

This beautiful popular annual is sometimes called the "Painted Tongue," and it well deserves its name, as it produces an abundance of trumpet-shaped flowers on long stems. Shades of white, pink,



Salpiglossis.

Sunflower (HELIANTHUS)

A stately, hardy annual of easy culture. Useful as a background or for a fence. The new types produce very showy flowers and nothing is prettier or brighter than to have a few of these ornamental varieties blooming around the home.

CHRYSANTHEMUM SUNFLOWER. A wonderful Sunflower; you have to see them to appreciate them. Pkt., 10c.

THE NEW RED SUNFLOWER. This is a new type; the plant is of a free-branching habit with well shaped, dark centered flowers of bright chestnut red, merging to a yellow at tips of the petals. Height about 6 feet. Pkt., 10c.

Torenia

FOURNIERI. A richly colored Snapdragon-like flower of a delightful sky-blue. Excellent for beds, pots or hanging baskets. Pkt., 15c; 2 for 25c.

WHITE WINGS. A white variety with a rose throat. Pkt., 15c; 2 for 25c.

MIXED. Pkt., 15c; 2 for 25c.

Viola - Tufted Pansies

The Tufted Pansies do not produce as large flowers as the regular types, yet they bloom more profusely and for a much longer period.
MIXED. Pkt., 10c.

Verbena

An old time bedding and border plant, having brilliant colored flowers blooming from early Spring until late Fall. We are offering this year a new type of Verbenas, with the same characteristics as the old type except each floweret in the cluster is much larger. The old type having flowerets of about the size of a ten-cent piece, while the new type is of the size of a twenty-five-cent piece. By all means order a few packets of this new strain of Verbenas.

MAMMOTH PINK SHADES. Pkt., 10c.

MAMMOTH WHITE SHADES. Pkt., 10c.

MAMMOTH PURPLE SHADES. Pkt., 10c.

MAMMOTH BLUE SHADES. Pkt., 10c.

MAMMOTH STRIPED. Pkt., 10c.

MAMMOTH SCARLET WITH WHITE EYE. Pkt., 10c.

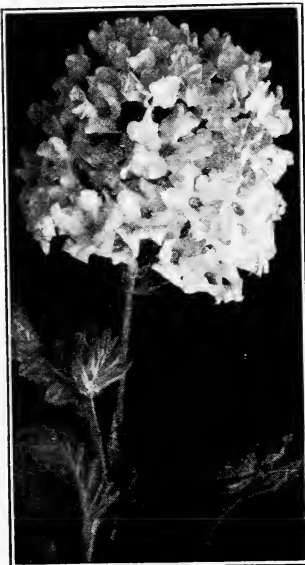
MAMMOTH MIXED. All shades. Pkt., 10c.

Verbena Hybrid, Lucifer

This is a new type of the most brilliant scarlet that has yet been seen in a Verbena. The strain is new on the market, being minus the little white eye in most scarlet Verbenas, and having flowerets of a very large size. We have been able to secure only a limited amount of seed, so if you want something in the brilliant scarlet type that is a pure red, be sure and order some of it immediately. Pkt., 15c; 2 for 25c.

Verbena, Royal Blue

(Hybrida Grandiflora Royale)
This is undoubtedly the most gorgeous blue Verbena that has been propagated. It is of an enormous size and the individual flowerets measure over an inch and a quarter in diameter. The color is a deep rich royal blue with a large, creamy yellow eye. Pkt., 20c; 2 for 35c, postpaid.



Verbena.

Vinca - Periwinkle

These are very attractive, bushy plants with glossy green foliage, producing an abundance of handsome round or salver-shaped, single flowers. Can be planted from early Spring till late Fall; thrives and does extra well in the Summer time. Excellent for borders.

WHITE. Pure white with a pink eye. Pkt., 10c; ½ oz., \$1.00.
PURE WHITE. Pkt., 10c; ½ oz., \$1.00.
PINK. Pkt., 10c; ½ oz., \$1.00.
ROSEA. Rose with a crimson eye. Pkt., 10c; ½ oz., \$1.00.
MIXED COLORS. Pkt., 10c; ½ oz., \$1.00.

Wildflowers

We have made up an assortment of Wildflowers that is well adapted to our section. Fine for beautifying vacant lots, etc.

MIXED COLORS. Pkt., 10c.

Wallflowers

Wallflowers should be in every garden, their adaptability to pot culture and outdoor bedding and the peculiar sweet fragrance of their flowers wins favor. The Oriental coloring of the flowers in their rich reds and yellows is very effective. Very easily grown and very useful as cut flowers.

SINGLE MIXED. Pkt., 10c, postpaid.
DOUBLE MIXED. Pkt., 10c, postpaid.

Climbing Vines

We have listed below the best climbers for porches and trellises for our section.

Ampelopsis Veitchi - Boston Ivy

This is one of the finest climbers for covering walls, as it clings firmly to the smoothest surface, covering it closely with overlapping foliage, giving it the appearance of being shingled with green leaves. Pkt., 10c.

Balloon Vine

A rapid and graceful climber, bearing small, white flowers; excellent for porches and trellises. Pkt., 10c.

Balsam Apple

A climbing annual growing about 10 feet high, having very graceful and ornamental foliage. Pkt., 10c.

Balsam Pear

This is another good climbing annual; excellent for porches or fences. Thrives well in hot sections. Pkt., 10c.

Canary Bird Vine

A beautiful climber, with charming little canary colored blossoms. Pkt., 10c.

Japanese Hop Vine or Humulus

A rapid Summer climber, attaining a height of 20 to 30 feet in about 4 weeks, making a dense covering. Pkt., 10c.

Japanese Kudzu Vine

The fastest growing hardy climbing plant. The foliage is large and covers well, bearing a small rosy purple, pea-shaped blossom; a wonderful variety for covering porches and trellises; a type we highly recommend. Pkt., 10c.

Lathyrus

(PERENNIAL SWEET PEA)

These showy Peas produce their flowers in large clusters on long, stiff stems. Pkt., 20c; 2 for 35c.

Mexican Coral Vine

(ANTIGONON)

This popular vine is sometimes called Queen's Crown and has its origin in Mexico and does exceptionally well in our section. The seeds should be started from January to March in boxes and transplanted out into the open as the weather warms up. The frost usually kills the older vines but they will grow up again next Spring. Pkt., 15c; ½ oz., 60c.

Moonflower

WHITE MOONFLOWER (Ipomoea). This is a greatly improved variety of the popular Moonflower vine, producing much larger flowers in a greater profusion, with immense saucer-shaped flowers from 7 to 8 inches across. Pkt., 10c.

BLUE MOON VINE (Bona Nox). Sometimes called an Evening Glory. A beautiful, large, violet flower. Pkt., 10c.

Morning Glory

One of the easiest of the vines to grow, being very hardy and a very rapid climber. Highly recommended for fences, trellises and porches.

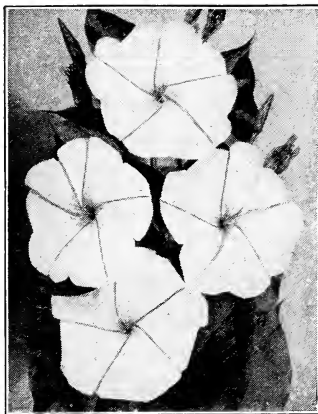
BLOOD RED. A beautiful red. Pkt., 10c.

BRAZILIAN BLUE. A large, beautiful blue type. Pkt., 10c.

DWARF WHITE. Very suitable as a border or can be grown in masses in beds, producing an unusual brilliant effect. Pkt., 10c; 3 for 25c.

JAPANESE MIXED. The best Morning Glory for strong growth and varying colors. Pkt., 10c.

OUR CHOICE MIXED. Lots of shade. Pkt., 10c.



White Moonflower.

Japanese Mammoth Flowering Morning Glory

This is the first year this new type of beautiful large-flowering Morning Glory has been offered. The flowers are much larger than the regular giant type of Morning Glories, and the many brilliant and interesting colors in the mixture will make your porch a rival of Joseph's Coat. Pkt., 15c.

Passion Flower

Often called "Southern Beauty." A wonderful vine for porches or windows. Few effects are more charming than the blue Passion Flower covering a wall with its rich foliage and sky-blue flowers. Pkt., 10c.

Blue Mexican Morning Glory

We were fortunate this year in securing some of the seed of the beautiful sky-blue Mexican Morning Glory that comes from Mexico and is often seen around San Antonio. Pkt., 20c, 2 for 35c.

Cardinal Climber

A most brilliant annual climber, being a strong and rapid grower, attaining a height of 30 feet or more, with beautiful, deeply lacinated foliage and literally covered with a blaze of circular cardinal-red flowers until frost. The flowers are about 1½ inches in diameter and are borne in clusters of 7 to 11 blooms each. If you are in need of an excellent climber, be sure and include a packet of this in your order. Pkt., 15c.

Cobaea Scandens

A beautiful vine producing large bell shaped purple flowers. Pkt., 15c, postpaid.

Dutchman's Pipe

(ARISTOLOCHIA)

A very attractive and ornamental climber. Pkt., 25c, postpaid.

Mina Lobata

Sometimes called the "Flag of Spain". A beautiful climber producing flowers of a brilliant red changing to a pale yellow. Pkt., 15c, postpaid.

Cypress Vine

A most beautiful rapid climber with delicate, dark green leaves and many bright, star-shaped flowers.

SCARLET. Pkt., 10c.

WHITE. Pkt., 10c.

MIXED COLORS. Pkt., 10c; 3 for 25c.

Clematis

An old, well known climber that is much admired for its graceful and attractive flowers; splendid for porches. Seed germinates very slowly.

CHOICE LARGE FLOWERING MIXED. Pkt., 10c.

Gourds

So many people desire Gourds where vines are desired quickly and we have made a mixture containing all sorts and types.

DISH RAG GOURD. Pkt., 10c; 3 for 25c.
ORNAMENTAL MIXED. Pkt., 10c.

Hyacinth or Jack Bean

A rapid growing annual climber, flowers freely, followed by ornamental seed pods.

PRINCESS HELEN. A beautiful snow-white variety. Pkt., 10c.

COCCINEA. A brilliant red. Pkt., 10c.

MIXED COLORS. Pkt., 10c.

Scarlet Runner Bean

A rapid growing annual climber, bearing sprays of brilliant scarlet, pea-shaped blossoms. The seed may be planted outdoors when all danger of frost is past. Vines grow from 10 to 12 feet high. Pkt., 10c.

Thunbergia

A rapid growing, trailing plant, used extensively for hanging baskets, window boxes and for covering porches. Flowers buff-white and orange, with a black eye. Pkt., 10c.

Wild Cucumber

This is the quickest climber on our list, having fragrant, white flowers. Pkt., 10c.

Wisteria

A very popular hardy climber. Long clusters of purple flowers. Pkt., 10c.

WHAT TO PLANT AND WHEN TO PLANT IN HOUSTON AND SOUTH TEXAS

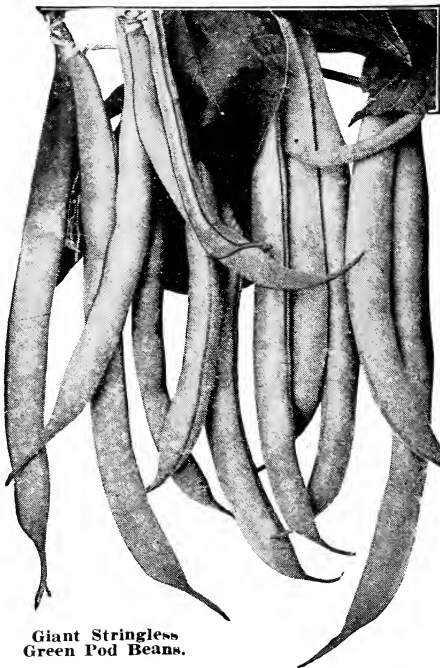
This table is compiled by our seed expert and is as accurate as we can possibly make it, but owing to the various soils and climatic conditions it may be possible that at times it cannot be followed to the minute.

GARDEN SEEDS

January	February	March	April	May	June	July	August	September	October	November	December	
In Hothed Beets Cabbage Cauliflower Cucumber Celery Eggplant Lettuce Melons Onions Pepper Squash Tomatoes	Transplant Beets Cabbage Cauliflower Cucumber Celery Eggplant Lettuce Melons Onions Pepper Squash Tomatoes	Artichoke Asparagus Beets Cabbage Cauliflower Collards Corn Salad Cucumber Eggplant Endive Herbs Kale Kohlrabi Leek Lettuce Melons Mustard Okra Onions Parsley Pumpkin Radish	Artichoke Asparagus Beets Cabbage Cauliflower Collards Corn Salad Cucumber Eggplant Endive Herbs Kale Kohlrabi Leek Lettuce Melons Mustard Okra Onions Parsley Pumpkin Radish	Artichoke Asparagus Beets Cabbage Cauliflower Collards Corn Salad Cucumber Eggplant Endive Herbs Kale Kohlrabi Leek Lettuce Melons Mustard Okra Onions Parsley Pumpkin Radish	Artichoke Asparagus Beets Cabbage Cauliflower Collards Corn Salad Cucumber Eggplant Endive Herbs Kale Kohlrabi Leek Lettuce Melons Mustard Okra Onions Parsley Pumpkin Radish	Beans Beets Carrots Cucumber Sweet Corn Endive Mustard Peas Pumpkin Radish Squash Turnips	Beans Beets Carrots Collards Sweet Corn Corn Salad Cucumber Chicory Endive Leek Mustard Parsley Parsnip Peas Potatoes Radish Squash Turnips	In Open Beets Cabbage Cauliflower Collards Chervil Corn Salad Carrots Endive Kale Kohlrabi Leek Mustard Onion Parsley Parsnip Peas Potatoes Radish Squash Turnips	Beets Cabbage Cauliflower Carrot Collards Corn Salad Cucumber Endive Kale Kohlrabi Leek Lettuce Mustard Onion Parsley Parsnip Peas Potatoes Radish Squash Turnips	Beets Cabbage Carrots Celery Collards Endive Kale Kohlrabi Leek Lettuce Mustard Onion Parsley Parsnip Peas Potatoes Radish Squash Turnips	Beets Cabbage Carrots Celery Collards Endive Kale Kohlrabi Leek Lettuce Mustard Onion Parsley Parsnip Peas Potatoes Radish Squash Turnips	
In Hothed Beets Carrots Collards Kale Kohlrabi Mustard Parsley Parsnip Peas Potatoes Radish Spinach Turnips Onion Sets Onions Peas Pumpkin Rhubarb Squash Strawberry Plants	In Open Artichoke Asparagus Beans Carrot Collards Endive Kale Kohlrabi Leek Lettuce Melons Mustard Onion Parsley Parsnip Peas Potatoes Radish Spinach Turnips Onion Sets Onions Peas Pumpkin Rhubarb Squash Strawberry Plants	Artichoke Asparagus Beets Cabbage Cauliflower Collards Corn Salad Cucumber Eggplant Endive Herbs Kale Kohlrabi Leek Lettuce Melons Mustard Okra Onions Parsley Pumpkin Radish	Artichoke Asparagus Beets Cabbage Cauliflower Collards Corn Salad Cucumber Eggplant Endive Herbs Kale Kohlrabi Leek Lettuce Melons Mustard Okra Onions Parsley Pumpkin Radish	Artichoke Asparagus Beets Cabbage Cauliflower Collards Corn Salad Cucumber Eggplant Endive Herbs Kale Kohlrabi Leek Lettuce Melons Mustard Okra Onions Parsley Pumpkin Radish	Artichoke Asparagus Beets Cabbage Cauliflower Collards Corn Salad Cucumber Eggplant Endive Herbs Kale Kohlrabi Leek Lettuce Melons Mustard Okra Onions Parsley Pumpkin Radish	Beans Beets Carrots Cucumber Sweet Corn Endive Mustard Peas Pumpkin Radish Squash Turnips	Beans Beets Carrots Collards Sweet Corn Corn Salad Cucumber Chicory Endive Leek Mustard Parsley Parsnip Peas Potatoes Radish Squash Turnips	In Cold Frame or Shaded Bed Cabbage Cauliflower Celery Eggplant Kale Kohlrabi Leek Mustard Onion Parsley Parsnip Peas Potatoes Radish Squash Turnips	Beets Cabbage Cauliflower Carrot Collards Corn Salad Cucumber Endive Kale Kohlrabi Leek Lettuce Mustard Onion Parsley Parsnip Peas Potatoes Radish Squash Turnips	Beets Cabbage Carrots Celery Collards Endive Kale Kohlrabi Leek Lettuce Mustard Onion Parsley Parsnip Peas Potatoes Radish Squash Turnips	Beets Cabbage Carrots Celery Collards Endive Kale Kohlrabi Leek Lettuce Mustard Onion Parsley Parsnip Peas Potatoes Radish Squash Turnips	Beets Cabbage Carrots Celery Collards Endive Kale Kohlrabi Leek Lettuce Mustard Onion Parsley Parsnip Peas Potatoes Radish Squash Turnips

FLOWER SEEDS AND BULBS

Hardy	Whole Line	All Flower	All Annual	Popular Varieties of Flowers	All Winter and Spring Flowering Bulbs and Perennials	Flowering Bulbs and Perennials	Flower Seeds
Annuals Perennials Gladiolus Dahlia Bulbs Nasturtium Salvia Coleus Shasta Pinks Phlox Petunias Marigolds Calendula Verbena Alyssum Popples Candytuft Larkspur Snappdragons Asters Tuberose Bulbs	Flower Seeds Summer Bulbs Lawn Grass Gladiolus Bulbs Dahlia Tuberose Nasturtium Cosmos Popples Phlox Verbena Larkspur Canna Bulbs Amaryllis Bulbs	Seeds Summer Bulbs Lawn Grass Flower Plants Dahlia Seed Cosmos Set Out Bedding Plants Vinca Balsam All Kinds of Vines Pinks Portulaca phlox Verbena	Flowers Summer Bulbs Lawn Grass Zinnias Cosmos Set Out Bedding Plants All Kinds of Vines Cockscomb Marigold Phlox	Cockscomb Galliardia Gomphrena Hibiscus Zinnias Cosmos Sunflower Cypress Vine Moon Vine Morning Glory Vinca Balsam Marigolds Salvia Portulaca	Marigold Petunias Phlox Winter Grass Seed Verbena Alyssum Carnation Hollyhocks Sweet Peas Hyacinth Tulips Narcissus Calla Lilies Shasta Pinks Daisy Salvia Alyssum Carnation Phlox Petunias Snappdragon Stocks Daisies Candytuft	Marigold Petunias Phlox Winter Grass Seed Verbena Alyssum Carnation Hollyhocks Sweet Peas Hyacinth Tulips Narcissus Calla Lilies Shasta Pinks Daisy Salvia Alyssum Carnation Phlox Petunias Snappdragon Stocks Daisies Candytuft	Perennial Flower Seed Sweet Peas Winter Grass Seed Bulbs Hyacinth Narcissus Easter Lilies Calla Lilies Shasta Pinks Daisy Coeus Salvia Alyssum Carnation Phlox Petunias Snappdragon Stocks Candytuft



Giant Stringless Green Pod Beans.

Bush or Bunch Green Pod Beans

CULTURE. Sow in rows 2 to 3 feet apart, plants about 8 inches apart in rows, cover about 2 inches. One pound of seed will sow a 100-foot row; one bushel (60 lbs.) to the acre.

BURPEE'S STRINGLESS GREEN POD. The plants grow from 12 to 15 inches, very erect and productive; pods round, about 5 inches long, strictly stringless and real tender. Pkt., 10c; ½ lb., 25c; lb., 45c; 2 lbs., 80c; 5 lbs., \$1.75, postpaid. Not prepaid, pk. (15 lbs.), \$3.25; bu. (60 lbs.), \$12.00.

JACKSON'S EARLY RED VALENTINE. Earliness is the feature of this variety; round, little stringy, but of extra good quality, especially when picked young. Dried seed pink, marbled with red. Pkt., 10c; ½ lb., 25c; lb., 45c; 2 lbs., 80c; 5 lbs., \$1.75, postpaid. Not prepaid, pk. (15 lbs.), \$3.25; bu. (60 lbs.), \$12.00.

GIANT STRINGLESS GREEN POD. From its first cultivation it has been a favorite. Pods round, about five inches long, dark green in color, very brittle and absolutely stringless. Dried seeds are of a yellowish brown color. Pkt., 10c; ½ lb., 25c; lb., 45c; 2 lbs., 80c; 5 lbs., \$1.75, postpaid. Not prepaid, pk. (15 lbs.), \$3.25; bu. (60 lbs.), \$12.00.

LONGFELLOW. Unsurpassed for home and market use. Pods are long, round, straight and very solid. In production very prolific. The plants grow from 14 to 16 inches high, bearing edible pods in 35 to 40 days. Pkt., 10c; ½ lb., 25c; lb., 45c; 2 lbs., 80c; 5 lbs., \$1.75, postpaid. Not prepaid, pk. (15 lbs.), \$3.25; bu. (60 lbs.), \$12.00.



Field of Jackson's Early Red Valentine Beans.

Bush Wax or Yellow Pod Beans

CULTURE. Sow in rows 2 to 3 feet apart, plants about 8 inches apart in rows, cover about 2 inches. One pound of seed will sow a 100 foot row; one bushel (60 lbs.) to the acre.

PENCIL POD BLACK WAX. This is a handsome black wax sort and is medium early. A good Bean for market gardeners, whose trade is near by and desire a Bean of high quality. Pods are round, fleshy and bright yellow; about 6 inches in length. Pkt., 10c; ½ lb., 25c; lb., 45c; 2 lbs., 80c; 5 lbs., \$1.75, postpaid. Not prepaid, pk. (15 lbs.), \$3.00; bu. (60 lbs.), \$11.50.

Asparagus

CULTURE. Asparagus roots may be purchased in the Spring or may be grown from seed sown in March, in good soil, in drills 12 to 14 inches apart. The permanent bed should be very rich with well-rotted manure, and thoroughly worked over to a depth of two feet. One ounce will sow 50 feet of drill.

WASHINGTON ASPARAGUS. This is a rust-free type. The shoots are thick and heavy; long and straight, with closely folded tips. Color a rich, dark green, tinted darker at the tips. Pkt., 10c; oz., 25c.

Asparagus Roots

You can save at least a year and a half by getting two-year-old roots. Sixty roots will plant 100 feet of row. 45c per doz.; \$2.50 per 100, postpaid.

Artichokes

CULTURE. Seed may be sown indoors and set out in the garden on the approach of warm weather, or the seed can be sown in hills outside and thinned to one plant to hill. Plants should be set in rows 3 feet apart and 2 to 3 feet apart in the rows. Use ½ ounces to 100 feet of row.

GREEN GLOBE. The best variety for the Southwest. Pkt., 15c; oz., 75c, postpaid.

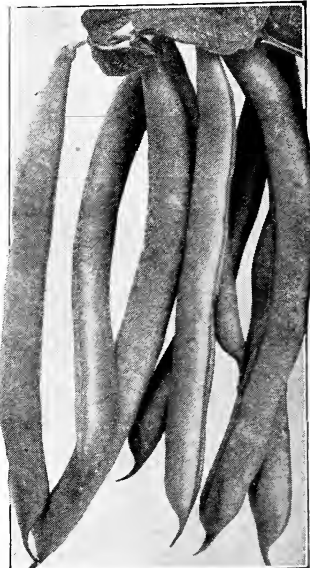
GIANT STRINGLESS YELLOW POD. The pods of this wonderful new Bean measure from 5 to 6 inches, they are entirely stringless, round, light yellow in color, very brittle, and attractive in appearance and of the finest quality. It is one of the earliest Wax Beans grown, being very productive, usually in about 40 days. Be sure and include some of this new type of Bean in your order. Pkt., 10c; ½ lb., 25c; lb., 50c; 2 lbs., 95c; 5 lbs., \$2.00, postpaid.

IMPROVED GOLDEN WAX. An old time favorite; pods are of a medium length and of golden color; bears in 45 to 50 days. Pkt., 10c; ½ lb., 25c; lb., 45c; 2 lbs., 80c; 5 lbs., \$1.75, postpaid. Not prepaid, pk. (15 lbs.), \$3.00; bu. (60 lbs.), \$11.50.

WARDWELL'S KIDNEY WAX. A very early variety of Wax Beans, which needs no recommendation; matures in 5 to 6 weeks. Pkt., 10c; ½ lb., 25c; lb., 45c; 2 lbs., 80c; 5 lbs., \$1.75, postpaid. Not prepaid, pk. (15 lbs.), \$3.25; bu. (60 lbs.), \$12.00.

ROUND POD KIDNEY WAX. A very early, round-podded Bean for market gardeners as well as home gardeners; the fleshy round pods hang thickly on the plants, and are of a fine flavor, stringless and free from rust; the pods are of a beautiful lemon-yellow, larger than those of Wardwell's which mature at the same time. Pkt., 10c; ½ lb., 25c; lb., 45c; 2 lbs., 80c; 5 lbs., \$1.75, postpaid. Not prepaid, pk. (15 lbs.), \$3.00; bu. (60 lbs.), \$11.50.

CUTWORMS—Acme Bait-M kills Cut Worms.
Lb. 35c; 3 lbs. 75c, not prepaid.



Giant Stringless Yellow Pod Beans.

Pole or Climbing Beans

Pole Beans require more care and labor than Bush Beans, but bear usually for a longer period than the dwarf sorts and are generally more productive; they are more sensitive to cold and wet than the dwarf varieties. Plant in hills 2 to 3 feet apart, 3 or 4 beans to every hill. One-half pound to 100 feet of row; 30 pounds to the acre.

STRIPED CREASEBACK. This is the best green podded cornfield Bean ever produced, being very hardy and very productive; the vines are very sturdy and of good climbing habit, with small, medium dark green leaves. The pods are long, usually about 6 inches, round and very tender. Pkt., 10c; ½ lb., 25c; lb., 45c; 2 lbs., 80c; 5 lbs., \$1.75, postpaid. Not prepaid, pk. (15 lbs.), \$3.00.

KENTUCKY WONDER WAX POLE BEAN. The pods of this variety are very long, thick, meaty, deeply saddle-backed, entirely stringless and of a bright yellow color. Pkt., 10c; ½ lb., 25c; lb., 45c; 2 lbs., 80c; 5 lbs., \$1.75, postpaid.

KENTUCKY WONDER or OLD HOMESTEAD. This is the best known Bean on the market today; the vines are vigorous, climbing well and very productive, bearing pods in large clusters, the pods being medium in size, light green in color, often measuring 9 to 10 inches in length, curved and somewhat twisted but nearly round and very crisp when young. Pkt., 10c; ½ lb., 25c; lb., 45c; 2 lbs., 75c; 5 lbs., \$1.75, postpaid. Not prepaid, pk. (15 lbs.), \$3.00.

IDEAL MARKET POLE SNAP BEAN. For the past five years this Bean has made a wonderful hit with the truckers and market gardeners around New Orleans. It is claimed to be the best Pole Bean in existence. It is very thrifty and very prolific, yielding better than all other varieties of Pole Beans. It is fully ten days to two weeks earlier than any other variety of green podded Pole Beans. Pkt., 10c; ¼ lb., 25c; lb., 50c; 2 lbs., 85c; 5 lbs., \$1.85, postpaid. Not prepaid, pk. (15 lbs.), \$3.75.

WHITE CREASEBACK. An early green-podded variety. Pods five to six inches in length, deeply creased and saddle-backed, and borne in clusters. Pkt., 10c; ½ lb., 25c; lb., 45c; 2 lbs., 80c; 5 lbs., \$1.75, postpaid. Not prepaid, pk. (15 lbs.), \$3.00.



Kentucky Wonder Wax Pole Beans.



Henderson's Bush Lima Beans.

Bush Butter or Lima Beans

CULTURE: Lima Beans for the home garden should be a continuous Summer crop and sowings may be made from March to September. Plant one inch deep and two feet apart. Have drills 1½ to 2½ feet apart. One pound to 100 feet of drill; 60 pounds to the acre.

HENDERSON'S BUSH LIMA. This popular variety is two weeks earlier than any of the climbing sorts, being very hardy and productive; they will produce an abundant crop under a wider range of climate and soil conditions than any other Lima, and we urge that every garden have some of them planted. Pkt., 10c; ½ lb., 25c; lb., 45c; 2 lbs., 80c; 5 lbs., \$1.75, postpaid. Not prepaid, pk. (15 lbs.), \$3.25; bu. (60 lbs.), \$12.00.

JACKSON'S WONDER BUSH LIMA. This flat, speckled butter bean is also known as Texas Speckled Bush Lima, being very prolific and one of the best speckled beans you can plant. Pkt., 10c; ½ lb., 25c; lb., 45c; 2 lbs., 80c; 5 lbs., \$1.75, postpaid. Not prepaid, pk. (15 lbs.), \$3.25.

BURPEE'S IMPROVED BUSH LIMA. A bush form of very large, white Limas, which grow about 20 inches high. The Beans are large and of an excellent quality, and if you like a large Lima Bean this variety is the one you should plant. Pkt., 10c; ½ lb., 25c; lb., 45c; 2 lbs., 80c; 5 lbs., \$1.75, postpaid. Not prepaid, pk. (15 lbs.), \$3.25.

Pole Lima or Butter Beans

CULTURE: Pole Limas are usually later in maturing but much more productive than the bush type, easy to grow and every fence in the garden should be used to produce Beans for the table. Plant in hills 12 to 18 inches apart, plant 3 to 4 Beans to every hill.

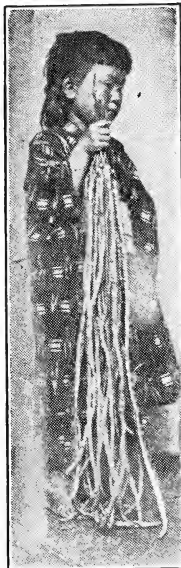
CAROLINA or SIEVA. The old type of small Pole Lima or Butter Bean; a sure cropper of small, dark green pods about 3 inches long, somewhat curved and flat, having small, white seed with a light tinge of yellow. The dried Beans are excellent for cooking. Pkt., 10c; ½ lb., 25c; lb., 45c; 2 lbs., 80c; 5 lbs., \$1.75, postpaid. Not prepaid, pk. (15 lbs.), \$3.25.

FLORIDA BUTTER BEAN. This resembles the old type of colored Butter Beans that your mother planted when you were a child. The seed of this wonderful variety has for the past year or so been scarce and hard to get, and our supply for this season is very limited. We would suggest that you order early, some of these true Pole Butter Beans. Pkt., 10c; ½ lb., 25c; lb., 45c; 2 lbs., 80c; 5 lbs., \$1.75, postpaid. Not prepaid, pk. (15 lbs.), \$3.25.

LARGE WHITE LIMA. A rather late but excellent variety; can be used either green or dry. Pkt., 10c; ½ lb., 25c; lb., 45c; 2 lbs., 80c; 5 lbs., \$1.75, postpaid.



Burpee's Improved Bush Lima Beans.



Yard Long Beans.

Celestial or Yard Long Beans

A good table Bean as well as a curiosity. It is very prolific and a rank grower. Should have ample arbor to climb upon. It should be grown more extensively in the home garden. It is of Chinese origin and one of the best vegetables emanating from that source. It is also absolutely rust-proof. Pkt., 15c; oz., 30c, postpaid.

EVERGREEN

Kills both chewing and sucking types of greenhouse insects. It cannot burn or damage the most tender foliage. It is fool-proof, operators do not become poisoned from using Evergreen. 1-oz. bottle, 35c; 6-oz. bottle, \$1.00; 16-oz. bottle, \$2.00, not prepaid. Can be sent by mail, so add postage.

Jackson's Superior Beet Seed

CULTURE. Beets should be planted in a deep, rich, sandy loam, sowing in rows 18 inches apart, covering about 1/2 inch deep, pressing the soil firmly over the seed. When plants are well established, thin to 4 to 6 inches in the row. About 60 days in maturing, according to variety. **One ounce to 50 feet of row; 6 to 8 pounds per acre.**

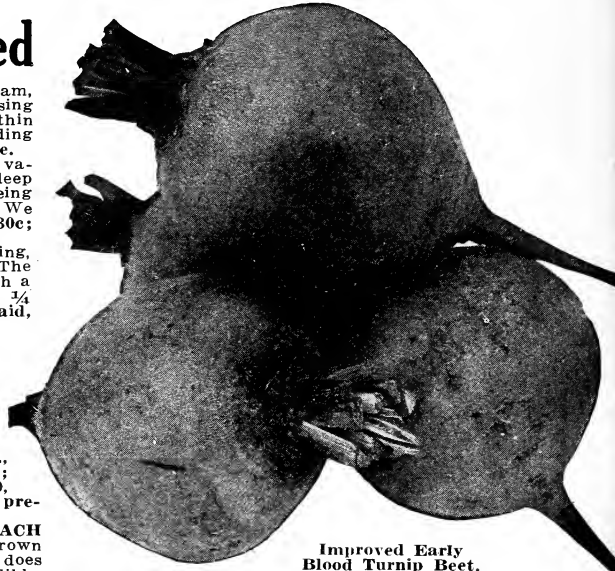
IMPROVED EARLY BLOOD TURNIP BEET. The most popular variety for home use and near-by market, the color being a deep blood-red, a fine even form, and very uniform in growth, being very tender and productive, free from strings and very sweet. We highly recommend this variety. **Pkt., 10c; oz., 15c; 1/4 lb., 30c; lb., \$1.00; 5 lbs., \$4.00, postpaid; 10 lbs., not prepaid, \$7.00.**

DETROIT DARK RED. This fine dark red Beet is good for canning, fine for home use and a great favorite with the truckers. The tops are small, dark green and red, the roots globular, the flesh a deep red, shading with blackish red zone. **Pkt., 10c; oz., 15c; 1/4 lb., 30c; lb., \$1.00; 5 lbs., \$4.00, postpaid; 10 lbs., not prepaid, \$7.00.**

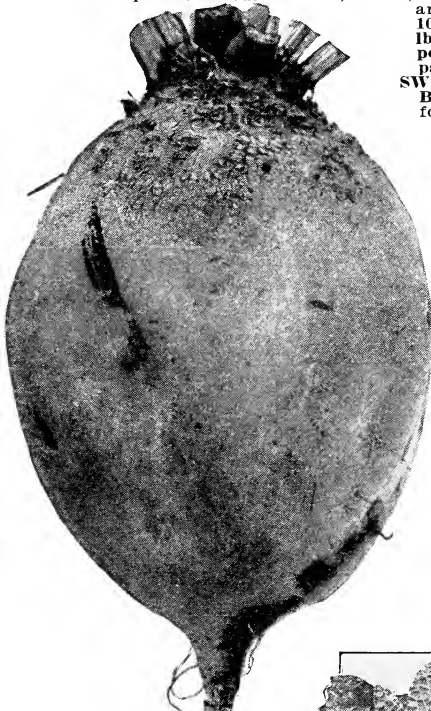
CROSBY'S EGYPTIAN. An old time variety that is still very popular, being very early; the shape is nearly round, very smooth, a rich red, fine grained and of extra quality. The tops being small, enables the trucker to make fine bunches. **Pkt., 10c; oz., 15c; 1/4 lb., 30c; lb., \$1.00; 5 lbs., \$4.00, postpaid; 10 lbs., not prepaid, \$7.00.**

ECLIPSE. This is another good all around Beet, very popular. Small tops with medium sized, round, bright red roots; sweet and very tender. **Pkt., 10c; oz., 15c; 1/4 lb., 30c; lb., \$1.00; 5 lbs., \$4.00, postpaid; 10 lbs., not prepaid, \$7.00.**

SWISS CHARD or SPINACH BEET. This variety is grown for its leaves only, as it does not make an edible root like other varieties; the leaves grow upright and very large, and as the outer leaves are cut more are produced from the center. The leaf part can be cooked like spinach or turnip greens, and the almost white mid-rib or center stem can be cooked and served like asparagus. This wonderful vegetable is gaining in popularity each year, being easy to grow, and we highly recommend every one trying at least a packet of same. **Pkt., 10c; oz., 15c; 1/4 lb., 35c; lb., \$1.10, postpaid.**



Improved Early Blood Turnip Beet.

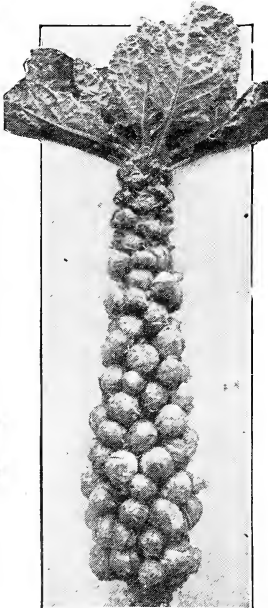


Golden Tankard Beets.

Brussels Sprouts

A member of the Cabbage family; fine for Spring and Fall planting. The sprouts are nothing more than miniature cabbages growing very closely on the stalks of the plant. The plants are very hardy and grow from 2 to 3 feet high, and should be cultivated the same as cabbage. 1/4 ounce to 100 feet of row.

IMPROVED LONG ISLAND. **Pkt., 10c; oz., 40c, postpaid.**



Brussels Sprouts.

Mangels or Stock Beets

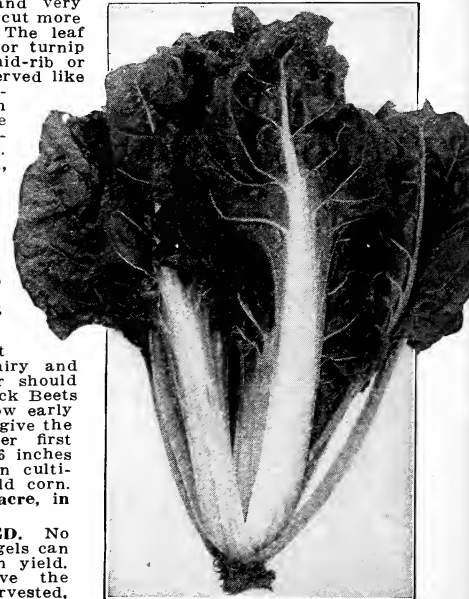
FARMERS AND STOCK RAISERS ATTENTION.

Too much cannot be said about this wonderful feed and every dairy and every farm and every stock raiser should have at least an acre or two of Stock Beets—the returns will be surprising. Sow early in the Spring and again in the Fall, give the ground thorough cultivation. After first cultivation, thin out, so as to stand 6 inches apart in the row, then cultivate same as you would corn. Sow 5 pounds to the acre, in rows 2 1/2 feet apart.

MAMMOTH LONG RED. No other variety of Mangels can compare with this in yield. It grows well above the ground, the deep red roots are straight, well formed and solid. Especially well adapted for deep soil. On good soil they will sometimes grow 18 inches long; leaves are dark, the flesh white, being veined with rings of rose-pink. An excellent keeper and a wonderful milk producer when fed to dairy cows. **Oz., 10c; 1/4 lb., 25c; lb., 80c; 5 lbs., \$3.00, postpaid. Not prepaid, 10 lbs., \$5.00.**

GOLDEN TANKARD. The best known and grown yellow Mangel and we especially recommend this variety to dairymen on account of its milk producing properties. The flesh is firm and solid, and a rich golden yellow in color. Grows well above the ground and is easily pulled. Yields particularly well on light soil. **Oz., 10c; 1/4 lb., 25c; lb., 80c; 5 lbs., \$3.00, postpaid. Not prepaid, 10 lbs., \$5.00.**

GIANT HALF SUGAR. This is by many considered the greatest Beet for feeding stock; it is richer in sugar than the Mangels and not so rich as the Sugar Beet. It grows about one-half out of the ground and is an excellent feed. **Oz., 10c; 1/4 lb., 25c; lb., 80c; 5 lbs., \$3.00, postpaid. Not prepaid, 10 lbs., \$5.00.**



Swiss Chard or Spinach Beet.

Broccoli

This is a vegetable that is very closely related to the cauliflower, but very much hardier; it grows larger and withstands more extremes of temperature than the cauliflower. Cultivate same as you would cauliflower. **One ounce to 2000 plants.**

CAPE BROCCOLI. The heads of this variety are white, compact, hard and of an excellent quality, being the best quality for our section. **Pkt., 15c; oz., 75c, postpaid.**

**Order
Your Seed
Early**

Jackson's Tested Cabbage Seed for the South

CULTURE: Sow seed early in January in hotbeds and transplant out in the open the last of February and March, or later varieties can be sown in the open in March and April, then again Cabbage can be sown in cold frames usually beginning in July. Cabbage plants should be set in rows 18 to 24 inches apart according to the size of the varieties. If Cabbage worms infest your crop, try Slug Shot or Garden Guard. One ounce of seed will produce 1000 plants or one pound of seed to the acre.

EARLY DWARF FLAT DUTCH. This is the most popular variety in our great Southwest; it belongs to the second early sorts, maturing in about 110 days, grows compact and upright, the leaves are few and short, solid heads, which are somewhat flat, very large for the size of the plant. For home use or a shipper, this variety has no equal. Pkt., 10c; oz., 25c; ¼ lb., 75c; lb., \$2.50; 5 lbs., \$11.25; 10 lbs., \$20.00, postpaid.

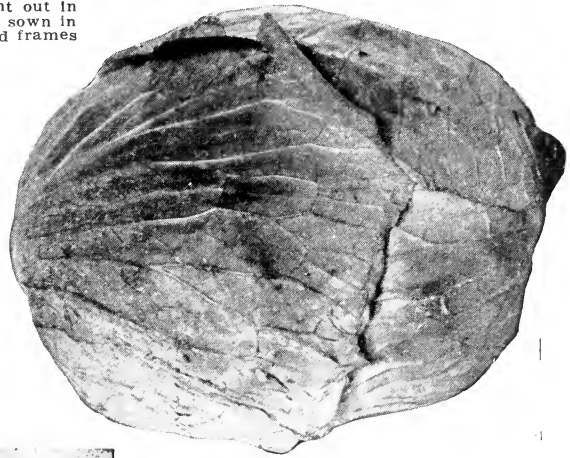
SUREHEAD. This type is a favorite with the truckers and large planters of Cabbage; it produces a large, round, flat head. Pkt., 10c; oz., 25c; ¼ lb., 75c; lb., \$2.50; 5 lbs., \$11.25; 10 lbs., \$20.00, postpaid.

COPENHAGEN MARKET. The heads are very solid, flat, with a small core, and of fine quality. It matures as early as the Charleston Wakefield and will give a much heavier yield than that popular variety; the plant is short-stemmed, leaves are light green and very tightly folded. Pkt., 10c; oz., 35c; ¼ lb., \$1.00; lb., \$3.50; 5 lbs., \$15.00, postpaid.

ALLHEAD EARLY. Heads are deep, flat and very solid; very uniform in color and size. A fine variety for kraut. Pkt., 10c; oz., 25c; ¼ lb., 75c; lb., \$2.50; 5 lbs., \$11.25; 10 lbs., \$20.00, postpaid.

EARLY DRUMHEAD. An old-time favorite of the early, flat type of Cabbage; very solid heads and an excellent keeper. Pkt., 10c; oz., 25c; ¼ lb., 75c; lb., \$2.50; 5 lbs., \$11.25; 10 lbs., \$20.00, postpaid.

CHARLESTON WAKEFIELD. Not quite as early as the Early Jersey Wakefield, but is of just as good quality, the heads being somewhat larger and a little more flat. Pkt., 10c; oz., 25c; ¼ lb., 75c; lb., \$2.50; 5 lbs., \$11.25; 10 lbs., \$20.00, postpaid.



Early Dwarf Flat Dutch Cabbage.



Copenhagen Market Cabbage.

AUTUMN KING. Decidedly the best late type of Cabbage you can grow either for home or market garden. Pkt., 10c; oz., 25c; ¼ lb., 80c; lb., \$2.75, postpaid.

EARLY JERSEY WAKEFIELD. The head of this variety is very solid, comparatively small and running to a small point at the top. Has very few outer leaves and is one of the earliest sorts. We highly recommend this type for home use and market garden. Pkt., 10c; oz., 25c; ¼ lb., 75c; lb., \$2.50; 5 lbs., \$11.25; 10 lbs., \$20.00, postpaid.



Early Jersey Wakefield Cabbage.

Evergreen

Effective against aphids, thrips, leaf-tier, white fly, most rose insects, leaf hopper and red spider. Oz., 35c; 6 ozs., \$1.00, not pre-paid.

Wong Bok or Chinese Cabbage

This wonderful variety produces a beautiful, crisp, celery-like head that bleaches easily. As a salad it rivals the finest lettuce grown; when cooked like spinach or cabbage makes excellent "greens." Sow seed in any good soil, making the rows 24 to 38 inches apart and thinning to 12 inches apart in the rows. It will not stand frost, so sow early in the Fall and again in the Spring. Be sure and try some of this wonderful variety, as it is easy to grow. Pkt., 10c; oz., 40c, postpaid.

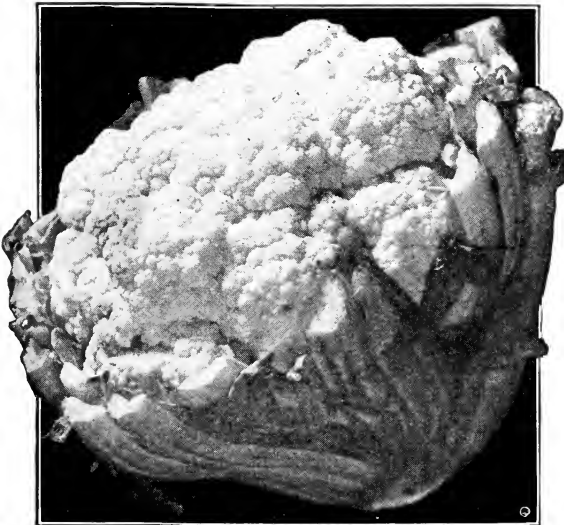


Chinese Cabbage.

Cauliflower

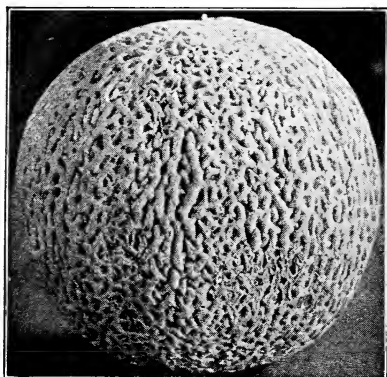
Cauliflower can be planted in the open in the Fall months or in hotbeds in the early Spring months; transplant when 4 or 5 inches high and water frequently, especially in dry weather. ¼ ounce to 100 feet of row; 4 ounces to the acre.

WIBOLTT'S EXPRESS SNOWBALL. This wonderful variety of fast growing, perfect heads of Cauliflower is produced in Denmark, and we would like you to read what the grower has to say: "I have at last succeeded in obtaining this grand stock; it is the result of a series of experiments which have gradually improved the seed to the highest grade of perfection. My Express Snowball is the earliest of all the Snowballs, the most dwarf, the most compact in habit of growth, the surest header; it gives the largest, most snow-white, cleanest heads and is a good keeper in dry weather." Pkt., 20c; ¼ oz., 65c; ½ oz., \$1.15; oz., \$2.00; ¼ lb., \$7.50; lb., \$28.00, postpaid.



Wiboltt's Express Snowball Cauliflower.

Jackson's Money-Making Cantaloupe Seed



Pollock 10-25 Cantaloupe.

BANANA CANTALOUPE. A Cantaloupe that tastes like a banana; grows from 18 to 30 inches in length and 4 to 6 inches in diameter. Pkt., 10c; oz., 20c; ¼ lb., 50c; lb., \$1.50, postpaid.

UP-TO-DATE ROCKY FORD. A very handsome Cantaloupe in appearance, being slightly ribbed and laced and interlaced with thick netting outside; the flesh is thick, green, very delicious. Pkt., 10c; oz., 15c; ¼ lb., 40c; lb., \$1.25; 5 lbs., \$5.50, postpaid. Not prepaid, 10 lbs., \$9.50.

HEARTS OF GOLD CANTALOUPE. Grows for home and for the market will be delighted to know that we are this year offering our new and wonderful Cantaloupe "HEARTS OF GOLD." This is undoubtedly one of the sweetest pink-meat Cantaloupes ever introduced; it is very uniform in size, having a thick netting with very pronounced ribs. The meat is fine grained and very delicious in flavor. A good shipper, weighing about two pounds, and ready for the market in about 92 days from planting. Pkt., 10c; oz., 20c; ¼ lb., 50c; lb., \$1.50; 5 lbs., \$7.00, postpaid. Not prepaid, 10 lbs., \$12.50.

EDEN GEM. A variety that gives perfect satisfaction to the home gardener and trucker, having green flesh of a fine flavor, and thick netting outside, which enables it to resist the rust. Pkt., 10c; oz., 15c; ¼ lb., 50c; lb., \$1.50, postpaid.

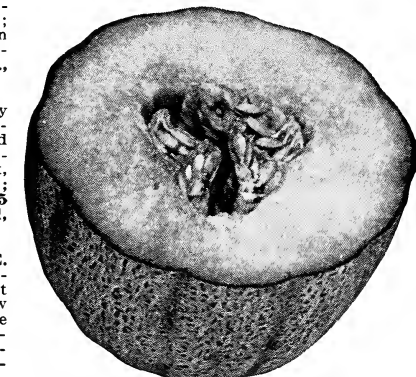
Honey Dew Casaba

This new Melon has created a sensation throughout the entire country. The flesh is an emerald-green, very thick and fine grained, can be eaten to the rind. It is of medium size, weighing 5 to 6 pounds. One of the best keepers, which makes it of special value to large growers, as they can be kept until Winter months for marketing, when prices are high.

Honey Dew is the result of crossing the Rocky Ford Cantaloupe with a South African Melon resembling the Casaba. Resembles the Casaba but surpasses it in quality. Pkt., 10c, oz., 20c; ¼ lb., 50c; lb., \$1.50; 5 lbs., \$7.00, postpaid.



Golden Self-Blanching Celery.



Hearts of Gold Cantaloupe.

Celery

CULTURE. Celery is slow to germinate and ample time must be given. Sow thinly, cover lightly and keep constantly moist. When seedling plants are three inches high, clip for stocky growth or else transplant. ¼ ounce to 100 feet of row; 4 ounces to the acre.

GOLDEN SELF-BLANCHING. The plants are compact and stocky, with a yellowish green foliage; stalks are perfectly solid, of fine flavor, and it attains a good size and is very handsome. Pkt., 15c; oz., \$1.00; ¼ lb., \$3.25, postpaid.

WHITE PLUME. Naturally white or light foliage, requires very little banking-up to bleach. Pkt., 10c; oz., 30c; ¼ lb., 85c, postpaid.

CULTURE. Cantaloupes thrive best in a light, rich soil; they should be planted as soon as the ground is warm, in hills 4 to 6 feet apart. In each hill apply well-rotted manure or a handful of commercial fertilizer, well mixed with the soil; plant about 14 seeds to each hill, covering about one inch deep. When plants are pretty well developed, thin out to about three plants to the hill. Cultivate frequently. One ounce to 60 hills; 2 to 3 pounds to the acre.

POLLOCK 10-25 (Salmon Fleshed). This is the most popular Melon used by the growers of Rocky Ford for home use and shipping to distant markets. It is very uniform in size and shape, and does not develop soft spots like some other varieties; the flesh is sweet and very delicious, being very deep and fine grained and more salmon colored than the Pollock 25. The seed cavity even from stem to blossom.

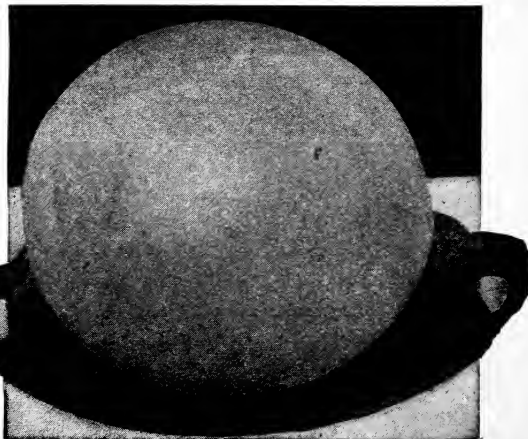
Germaco Hotkaps

Make money by planting Cantaloupes early, using Hotkaps as miniature hot-houses. Prices: 1000 lots, \$11.50; 5000 lots, \$11.00 per 1000; 10,000 lots, \$10.75 per 1000. 250 trial package, including garden type water proof setter, \$4.00. Germaco steel Hotkap Setter, \$2.50. If you need Hotkaps for your back yard garden, note these prices: 50 with Garden Setter, \$1.50; 100, with Garden Setter, \$2.25. Garden Setter alone, 50c, f. o. b. Houston.

Matures early and is a rust resister. Cuts with a golden center, generally shading to a light green near the rind, and by all odds the best Cantaloupe introduced. The Pollock 10-25 brought a premium on the Houston market last year and to truckers as well as home gardeners we highly recommend this new wonderful type of Cantaloupe. Pkt., 10c; oz., 15c; ¼ lb., 50c; lb., \$1.50; 5 lbs., \$6.50, postpaid. Not prepaid, 10 lbs., \$10.00.

EXTRA EARLY HACKENSACK. This type is the earliest of the Muskmelon family, being very large, the melons sometimes weighing from 5 to 6 pounds, the ribs being very prominent, the flesh being of a pale green and of an excellent quality. Pkt., 10c; oz., 15c; ¼ lb., 40c; lb., \$1.25, postpaid.

HONEY BALL CANTALOUPE. This new Cantaloupe is a little larger in size than the Rocky Ford, being very round and slightly netted, having a very thick wall of delicious green meat clear to the rind; the rind is tough, which enables the Melon to be shipped to distant markets. The color of the rind is greenish white until fully ripe, then they turn to a light yellow. Pkt., 10c; oz., 20c; ¼ lb., 60c; lb., \$2.00, postpaid.



Honey Dew Casaba.

NITRATE OF SODA

1000 pounds of Nitrate of Soda will furnish more nitrogen to the plants early in the Spring than the gardener can get from 100 tons of well-rotted stable manure. The stable manure may help furnish nitrate for his later crop, but for his early crops the gardener who fails to use Nitrate of Soda is blind to his own interest. Nitrate of Soda is usually applied at the rate of 100 to 200 pounds per acre of land previously dressed with barnyard manure. To secure an even distribution the Nitrate should be well mixed with from three to five parts of loam or sand. We will be glad to furnish you free books on the use of Nitrate of Soda. Price per 100 lbs., \$4.50, f. o. b. Houston.

Jackson's Improved Cucumber Seed



Early Fortune Cucumber.

CULTURE. Form low flat hills, six feet apart each way, scatter on each hill 15 or 20 seeds, or one every inch along the row, cover about 1/4 inch deep, pressing the soil firmly. Two ounces for 100 feet of drill; two pounds for one acre.

KLONDYKE. A medium early Cucumber of handsome intensely dark green color and of excellent quality for slicing; the vines are very hardy and prolific, the matured fruit is often 8 inches long and 2 1/2 inches in diameter. Very uniform in size and shape. Fruit will mature in about 70 days. This is the best market Cucumber we know of and we highly recommend it as a shipper for the northern markets. Pkt., 10c; oz., 15c; 1/4 lb., 40c; lb., \$1.25; 5 lbs., \$5.25, postpaid. Not prepaid, 10 lbs., \$9.50.

DAVIS PERFECT. The fruits of this type are very deep green in color, rather long, averaging about 10 inches or more in length and quite slender. Flesh is crisp, tender and of fine quality. Ready for market in about 70 days. Pkt., 10c; oz., 15c; 1/4 lb., 40c; lb., \$1.50; 5 lbs., \$6.75, postpaid.

EARLY FORTUNE. An excellent shipper and very popular in the Corpus Christi section. Fruits are very early, dark green and about 7 to 8 inches in length; flesh very thick and firm, with very small seed. Pkt., 10c; oz., 15c; 1/4 lb., 40c; lb., \$1.25; 5 lbs., \$5.50, postpaid. Not prepaid, 10 lbs., \$9.75.

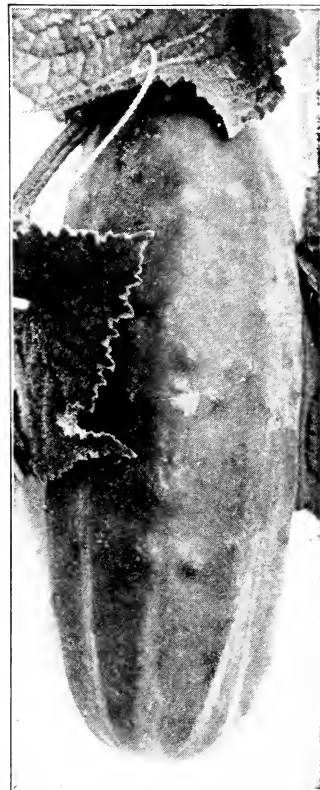
CHICAGO PICKLING. A very early pickling strain that is the standard everywhere; retains its freshness for a long period, tender and of excellent flavor; matures in about 50 days. Pkt., 10c; oz., 15c; 1/4 lb., 50c; lb., \$1.50, postpaid.

IMPROVED LONG GREEN. The fruits of this popular Cucumber are very long, often measuring 12 to 15 inches when mature, very uniform, slender, and of a beautiful green color. This variety furnishes some fruits very early but matures the bulk of its crop rather late; fine for slicing and excellent for pickles. Very popular as a market gardener's Cucumber and for home garden. Pkt., 10c; oz., 15c; 1/4 lb., 50c; lb., \$1.50; 5 lbs., \$7.00, postpaid. Not prepaid, 10 lbs., \$12.50.

JAPANESE CLIMBING. The fruits of this excellent variety are usually about 12 inches, the fruit being grown on a trellis. Ready in about 70 days. Pkt., 10c; oz., 20c; 1/4 lb., 65c, postpaid.

GHERKINS. Not a Cucumber proper, but a little rough, prickly fruit that grows on a pretty vine with leaves somewhat like a watermelon vine; excellent for pickling. Pkt., 10c; oz., 20c; 1/4 lb., 75c, postpaid.

LONGFELLOW. A new cucumber, very uniform, slender and a beautiful green color, just what the market gardeners have been looking for. Last year on the Houston market truckers sold Longfellow at 30c per doz. more than other varieties. Pkt., 10c; oz., 25c; 1/4 lb., 85c; lb., \$2.50, postpaid.



Davis Perfect Cucumber.

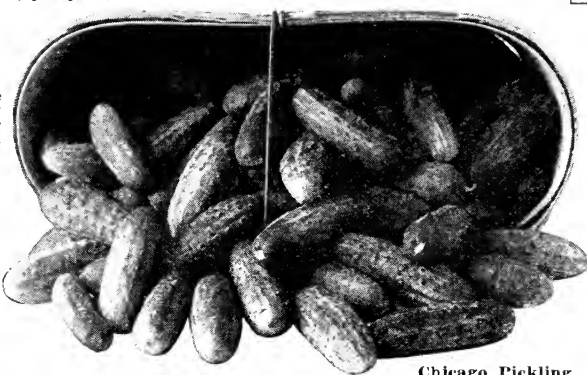
Collards

CULTURE. As old as the hills but still an old standby in the Southwest. For Winter greens it has no equal; not in its best condition until touched by frost. Sow early in January in hotbeds or a little later in the open, and if planted in August, sow in cold frames. When plants are 6 inches high, transplant, setting them 2 feet apart in rows; cultivate same as cabbage. 1/4 ounce to 100 feet of row; 1 pound to the acre.

SOUTHERN or CREOLE. A variety adapted to all parts of the South; will make a good crop where the soil is too poor to grow cabbage; hardy, standing Winters without serious injury in the southern states. Pkt., 10c; oz., 15c; 1/4 lb., 25c; lb., 75c; 5 lbs., \$3.00, postpaid.



Collards.



Chicago Pickling.

Nice Tender Carrots AND HOW TO GROW THEM

CULTURE. Carrots do best in a rather sandy loam, should be planted in drills 2 feet apart and thinned to 2 inches. In our section they can be planted in both the fall and spring. Our Carrot seed is the best that money can buy. One ounce will sow 100 feet of row; 4 pounds of seed are required for an acre.

JACKSON'S SELECTED DANVERS. This is a splendid strain which produces a fine, broad-shouldered Carrot about 6 inches long, very uniform in shape, the color being a beautiful orange-red. The skin is smooth. In quality it has no superior. The flesh is close grained, sweet and of good flavor. Pkt., 10c; oz., 15c; 1/4 lb., 30c; lb., \$1.00; 5 lbs., \$4.50. Not prepaid, 10 lbs., \$8.00.

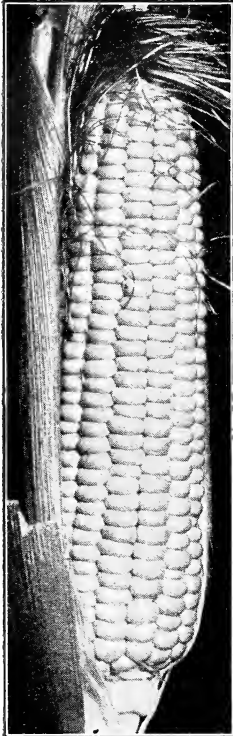
OXHEART or GUERANDE. Tops very small for the size of the roots, which are comparatively heavy, usually about four inches long, but very thick and heavy, terminating very abruptly in a small tap root; the flesh is bright orange, fine grained and sweet. Pkt., 10c; oz., 15c; 1/4 lb., 30c; lb., \$1.00; 5 lbs., \$4.50. Not prepaid, 10 lbs., \$8.00.

CHANTENAY. A medium early sort; very popular with the market gardeners and truckers. The tops are medium size with small neck. The mature roots are thick, 5 1/2 to 6 inches in length. Uniformly half long or stump-rooted but tapering slightly; smooth and a deep orange-red in color. Pkt., 10c; oz., 15c; 1/4 lb., 30c; lb., \$1.00; 5 lbs., \$4.50. Not prepaid, 10 lbs., \$8.00.



Danvers Carrot.

Sweet or Garden Corn



Golden Bantam Sweet Corn.

CULTURE: Plant in hills 18 inches apart with rows 3 feet apart. Three or four seeds may be planted in each hill but not more than two plants allowed to stand. As suckers or excess shoots appear they should be removed, as they take strength from the mother plant. One pound to 100 hills; 15 pounds to the acre.

GOLDEN BANTAM. This is a dwarf-growing early variety, with rich, golden kernels of the most delicious flavor. A plant attains a height of 3 to 4 feet, bearing 2 or more ears, about 5 inches long. Pkt., 10c; lb., 40c; 2 lbs., 70c; 5 lbs., \$1.50, postpaid. Not prepaid, 10 lbs., \$2.25; 20 lbs., \$4.00.

COUNTRY GENTLEMAN. An old time favorite; very rich in flavor, with plump, pearly white kernels of a great depth. Pkt., 10c; lb., 40c; 2 lbs., 70c; 5 lbs., \$1.50, postpaid. Not prepaid, 10 lbs., \$2.25; 20 lbs., \$4.00.

STOWELL'S EVERGREEN. Distinguished by its large ears and long, deep kernels. In flavor it is very sugary and rich. Pkt., 10c; lb., 40c; 2 lbs., 70c; 5 lbs., \$1.50, postpaid. Not prepaid, 10 lbs., \$2.25; 20 lbs., \$4.00.

ADAMS' EARLY. This type is very popular with market gardeners, being a very rapid maturing Corn. The ears are of medium size and very handsome. Pkt., 10c; lb., 30c; 2 lbs., 50c; 5 lbs., \$1.10, postpaid. Not prepaid, pk. (14 lbs.), \$1.50; bu. (56 lbs.), \$5.50.

IMPROVED SILVERMINE ROASTING EAR CORN. This wonderful new improved Silvermine Corn has been bred up for growing of quick roasting ears. Hundreds of market gardeners are now using this variety and their corn is bringing a premium. Qt., 30c, postpaid. Not prepaid, pk. \$1.00; bu. \$3.50.



Black Beauty Eggplant.

Seed Pop Corn

CULTURE. Plant at the rate of 12 pounds to the acre, in drills 3 feet apart, dropping seed 1 1/2 feet apart in the rows, or plant in hills, using 6 to 8 pounds to the acre. Cultivate same as field corn.

JAPANESE HULLLESS. Dwarf-growing; a heavy yielder of attractive ears, peculiar in form, nearly as thick as long. It has no equal as a popping corn. Pkt., 10c; lb., 35c; 5 lbs., \$1.25, postpaid.



Stowell's Evergreen Sweet Corn.

Tested Eggplant Seed

CULTURE. A very delicious vegetable that gives decided change in diet. Sow seed in hotbeds early in the Spring and transplant to the open after all danger of frost is over. Transplant 2 feet apart each way and cultivate frequently. One ounce of seed for 2000 plants; 8 ounces of seed for an acre.

BLACK BEAUTY. This is a very early, large Eggplant, usually maturing in about 120 days. The fruit is jet black, the average weight being about 2 to 3 pounds; very dwarf in growing habit, bearing its fruit close to the main stem; excellent for truckers. Pkt., 10c; oz., 40c; 1/4 lb., \$1.50; lb., \$3.50, postpaid.

NEW YORK IMPROVED SPINELESS. This type is very early and entirely spineless, bearing extra large fruits of a deep purple color; very smooth with white, delicious flesh. Pkt., 10c; oz., 40c; 1/4 lb., \$1.50; lb., \$5.50, postpaid.

Kale or Borecole

CULTURE. Kale is used for greens; a large producer. Sow in the Spring and when sown for Fall crop, usually beginning in September. Plant in drills 2 feet apart, thin out to 8 inches in the row and cultivate same as cabbage. One ounce to 100 feet; 1 pound per acre.

DWARF GREEN. The leaves of this variety are as curly as parsley, tender and of a fine flavor. Deep green in color, growing about 30 inches high; stands cold, which improves it. Pkt., 10c; oz., 15c; 1/4 lb., 30c; lb., \$1.00; 5 lbs., \$4.50, postpaid.



kohl-rabi.



Endive

Similar to lettuce. Endive has all the good points of lettuce yet is more attractive, certainly more highly flavored and when served with salad dressing it cannot be surpassed. Cultivate the same as lettuce. One ounce will sow 100 feet of row; 2 pounds to the acre.

GREEN CURLED. This is the hardest and most vigorous type, very quick to mature and more upright than the other sorts; very crisp and tender. Pkt., 10c; oz., 20c; 1/4 lb., 55c, postpaid.

BROAD-LEAVED BATAVIAN. The leaves of this variety are very broad and extremely large. The heads are well rounded and often measure 14 inches. Pkt., 10c; oz., 20c; 1/4 lb., 55c, postpaid.

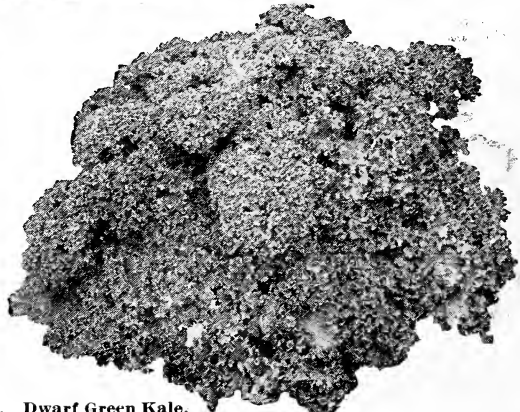
Leek

GIANT MUSSELBERG. A very hardy variety. Quite popular with our market gardeners. Pkt., 10c; oz., 25c; 1/4 lb., 75c, postpaid.

Kohl-rabi

CULTURE. A peculiar vegetable belonging to the cabbage family and forming a turnip-shaped bulb above the ground, which is used in the same manner as turnips. Cultivate the same as Cabbage; should be used when young and tender. One packet to 400 feet of row; 4 pounds per acre.

EARLY WHITE VIENNA. The flesh of this variety is white and very tender; a standard sort for both home use and market gardener. Fine for forcing, having short tops and forms a bulb quickly. Pkt., 10c; oz., 25c; 1/4 lb., 60c; lb., \$1.75, postpaid.



Dwarf Green Kale.

Jackson's Lettuce Seed for the Southwest

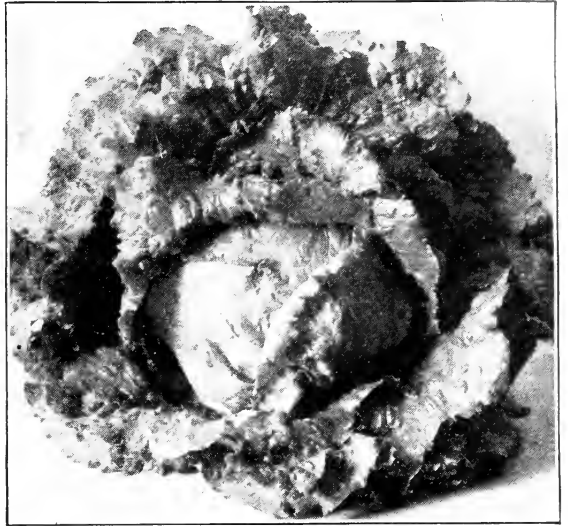
CULTURE. In our immediate section when sown in the Spring of the year the heading varieties have to be transplanted in order to form heads, and when sown in the Fall of the year, especially if the weather is warm, the seed does not always germinate readily, and if you experience trouble in getting it to germinate, dampen a cloth and spread the seed on same, placing it in the ice box for several days until the seeds germinate, then plant the sprouted seed in the open ground, sprinkling a little soil over them lightly, in drills 18 inches apart and thin the young plants to 4 inches apart in the row. $\frac{1}{2}$ ounce to 100 feet of row; 2 pounds to the acre.

BIG BOSTON. (Heading Variety). This is the most popular sort in Texas. It is a light green cabbage variety, slightly tinged with brown in the head, making a beautiful golden, buttery head. Pkt., 10c; oz., 20c; $\frac{1}{4}$ lb., 50c; lb., \$1.50; 5 lbs., \$7.00, postpaid. Not prepaid, 10 lbs., \$12.00.

EARLY CURLED SIMPSON. (Loose Bunching Variety). This is a very hardy type, easy to grow, forms no definite head, having light green, curled leaves. Pkt., 10c; oz., 20c; $\frac{1}{4}$ lb., 65c; lb., \$1.75, postpaid.

JACKSON'S ICEBERG. (Heading Variety). This type is light green in color, the red tinged leaves are somewhat curled, forming heads that are very large but not solid, being very tender and crisp and of excellent flavor. Pkt., 10c; oz., 20c; $\frac{1}{4}$ lb., 65c; lb., \$1.75, postpaid.

CALIFORNIA CREAM BUTTER. (Heading Variety). An extremely solid heading variety, highly prized for table use, leaves are thick and of a buttery, sweet flavor. Pkt., 10c; oz., 20c; $\frac{1}{4}$ lb., 65c; lb., \$1.75, postpaid.

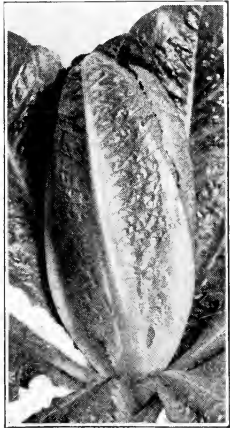


New York or Wonderful Lettuce.

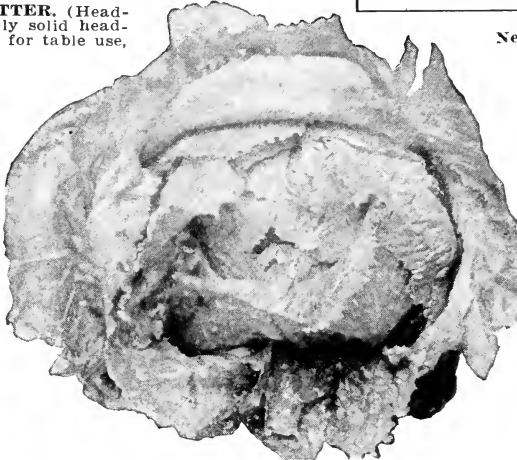
PARIS WHITE COS—ROMAINE. (Loose Bunching Variety). Easy to grow and a different type from all other sorts; has long, narrow, spoon-shaped leaves, forming a loose, conical head; very crisp and tender. Pkt., 10c; oz., 20c; $\frac{1}{4}$ lb., 65c; lb., \$1.75, postpaid.

NEW YORK or WONDERFUL (Heading Variety). This Lettuce is sometimes called the "Los Angeles Market." It is the largest and most solid variety on the market, often weighing 2 $\frac{1}{2}$ pounds a head. This is the most popular variety of Lettuce on today's market with the truckers; also an excellent Lettuce for home use. Being a poor seeder, the price is usually higher than other sorts. Our supply of this variety is very limited and we suggest ordering early. Pkt., 10c; oz., 25c; $\frac{1}{4}$ lb., 70c; lb., \$2.25; 5 lbs., \$10.00, postpaid. Not prepaid, 10 lbs. at \$1.75 per lb.

MAY KING. (Heading Variety). A very early sort, forming fine heads which are very hard. Fine for late Spring planting. Pkt., 10c; oz., 20c; $\frac{1}{4}$ lb., 65c; lb., \$1.75, postpaid.



Paris White Cos Lettuce.



Jackson's Iceberg Lettuce.

ALL OF OUR SEEDS ARE SECURED FROM THE MOST RELIABLE SOURCES OF SUPPLY, AND ARE CAREFULLY TESTED FOR GERMINATION.

Dwarf Essex Rape

Rape makes a very acceptable dish of "greens," and can be grown as a good substitute for "turnip greens," belonging to the same family as turnips and cabbage. The plants grow to a height of about 1 $\frac{1}{2}$ to 4 feet, depending a great deal on climatic and soil conditions. The leaves grow very rank and no crop is better for hogs or chickens than Rape. Can be planted in rows like turnips, four pounds to the acre, or broadcasted, using ten pounds to the acre. Large pkt., 10c; lb., 30c; 2 lbs., 50c; 5 lbs., \$1.00; 10 lbs., \$1.70, postpaid. Not prepaid, 25 lbs. at 14c per lb.; 50 lbs. at 13c per lb.; 100 lbs. at 12c per lb.

Herbs

Used for seasoning. Should be cut on a dry day just before they come into full blossom. Tie in bunches and keep where they will dry quickly.

Anise	Horehound
Balm	Lavender
Basil	Marjoram, Sweet
Borage	Rosemary
Catnip	Tue
Coriander	Sage
Dandelion	Tansy
Dill	Thyme
Fennel	Wormwood

Pkt., 10c; oz., 40c, postpaid.

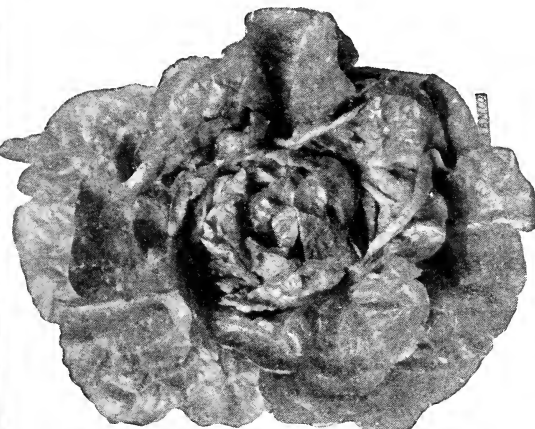
Fences Won't Stop Bugs

Acme All Round Spray will.

3 in 1 shot.

A triple service Insecticide and Fungicide all in one.

$\frac{1}{4}$ lb. carton, each, 50c; 1 lb. carton, each, \$1.00. Not Postpaid.

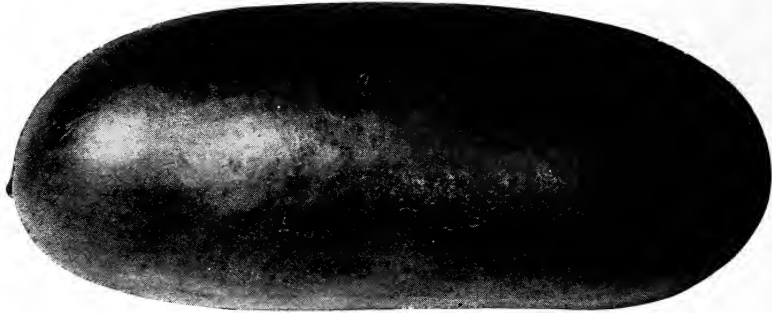


Big Boston Lettuce.

Southern Grown Watermelon Seed

CULTURE. Our Watermelon seed is all southern grown and is far superior to northern grown seed. A light, sandy soil, with good exposure to the sun is the best for Watermelons. It should be prepared deep, but receive shallow cultivation; hoe often. Plant in hills 8 to 10 feet apart each way; plant about 10 seeds to the hill, usually thinning out to three strong plants to the hill. One-half ounce to 100 feet of row; 2 pounds to the acre.

NEW WONDER WATERMELON. This new variety of Melons is about 5 or 6 years old, and is gaining in popularity each year. It is a large and long Melon, somewhat resembling the Watson; the rind is a dark, solid green, being thin but very tough. The flesh is a beautiful red, having a solid heart which does not show a hollow. An exceptionally fine eating Melon, good for use and fine for market. The seed is white with but few in the Melons, being very prolific. We highly recommend it to our customers and know they will be well pleased with it. It is not susceptible to the white heart and is undoubtedly the most handsome and delicious Melon on today's market. Being a poor seeder, naturally price is higher than other varieties. Stocks are very limited and should be ordered early. Pkt., 10c; oz., 15c; ¼ lb., 40c; lb., \$1.25; 5 lbs., \$5.50, postpaid. Not prepaid, 10 lbs., \$9.75.



Irish Grey Watermelon.

ALABAMA SWEET. An old time popular Melon; the dark, green, thin rind makes it a favorite with the shippers, and the dark red flesh, free of strings, makes it a ready seller with the trade. Pkt., 10c; oz., 15c; ¼ lb., 30c; lb., \$1.00; 5 lbs., \$4.50, postpaid. Not prepaid, 10 lbs., \$7.00.

GEORGIA RATTLESNAKE. This is a large, oblong Melon; bright green in color, mottled and striped with a lighter shade, having a thin rind with dark red flesh of a very delicious flavor. Pkt., 10c; oz., 15c; ¼ lb., 30c; lb., \$1.00; 5 lbs., \$4.50, postpaid. Not prepaid, 10 lbs., \$7.00.

IMPROVED IRISH GREY. This "brand new" Melon is very large and the vines are free from runts or small ones. In color the Melon is of a yellowish grey and the rind is as tough as a citron, making an ideal Melon to ship to distant markets, or for home use. The fruit is of a sparkling red color, being very sweet and free from strings. The outside appearance is not as attractive as some other Melons, but when once eaten you will be convinced that it is one of the sweetest Melons you have ever tasted. Pkt., 10c; oz., 15c; ¼ lb., 40c; lb., \$1.25; 5 lbs., \$5.00, postpaid. Not prepaid, 10 lbs., \$8.50.

HALBERT'S HONEY. This is unquestionably the sweetest long, dark, glossy Melon we know of. The flesh is crimson, very sweet and of a delicious flavor. Vigorous in growth and a heavy fruiter. Pkt., 10c; oz., 15c; ¼ lb., 40c; lb., \$1.25; 5 lbs., \$5.00, postpaid. Not prepaid, 10 lbs., \$8.50.

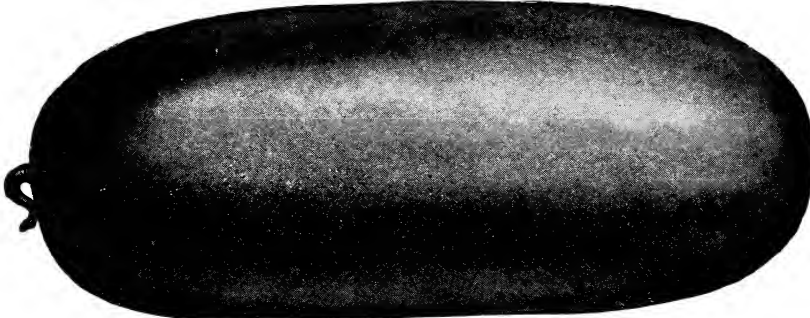
KLECKLEY SWEETS. An excellent variety which is unsurpassed for home use or nearby market; the fruits are medium to large, oblong, tapering slightly toward the stem end; dark green. The flesh is very bright, rich red and exceedingly sweet. Pkt., 10c; oz., 15c; ¼ lb., 30c; lb., \$1.00; 5 lbs., \$4.50, postpaid. Not prepaid, 10 lbs., \$7.00.

CUT RED TOM WATSON. The grower of Cut Red Tom Watson claims to have perfected a strain of Watson that cuts red and sweet, and grows dark, glossy green Melons of a large size. Pkt., 10c; ¼ lb., 25c; lb., \$1.00; 3 lbs., \$2.70; 5 lbs., \$4.00; 10 lbs., \$7.00, postpaid.

THURMOND GREY. This is a long, thick Melon; the rind is a rich greenish grey in color which does not sun burn easily. The Melons are very uniform in size. Pkt., 10c; oz., 20c; ¼ lb., 60c; lb., \$1.75, postpaid.

STONE MOUNTAIN. A beautiful large round Melon. Its deep dark green color and rich scarlet flesh make it a ready seller. It weighs from 50 to 80 pounds. Pkt., 10c; oz., 20c; ¼ lb., 60c; lb., \$1.75.

FOR SUCKING INSECTS USE BLACK LEAF "40."
See page 27.
USE NITRATE OF SODA FOR FINE WATERMELONS.
See page 16.



New Wonder Watermelon.

Mustard

CULTURE. Sow as early in the Spring as the ground will permit, and again in the Fall, in drills 18 inches apart, covering ½ inch deep, using ½ ounce to 100 feet of row, or 2 pounds to the acre.

CHINESE BROAD LEAF MUSTARD. A very hardy, broad-leaf variety. The leaves are thick, broad, white mid-rib; remains in fine condition for use; rapid in growth and very tender. Pkt., 10c; oz., 15c; ¼ lb., 25c; lb., 75c; 5 lbs., \$3.00, postpaid. Not prepaid, 10 lbs., \$5.00.

SOUTHERN GIANT CURLED. A large variety, forming a giant mass of beautiful leaves, which are ruffled and finely curled on the edges; very hardy and vigorous. Pkt., 10c; oz., 15c; ¼ lb., 25c; lb., 75c; 5 lbs., \$3.00, postpaid. Not prepaid, 10 lbs., \$5.00.

WHITE or YELLOW MUSTARD. Seed is used extensively for spicing, pickling and other culinary purposes. Pkt., 10c; oz., 15c; ¼ lb., 30c, postpaid.

FLORIDA BROAD LEAF MUSTARD. Quite distinct from the Chinese Broad Leaf, plants are larger and taller and remain in good condition much longer. Leaves large, comparatively smooth with a distinct broad rib. It produces considerably more leaf growth than other sorts and, when cooked, is of excellent quality. Pkt., 10c; oz., 15c; ¼ lb., 25c; lb., 75c; 5 lbs., \$3.00, postpaid.

Jackson's Mustard Spinach

A new vegetable which is a very mild Mustard with a creamy Spinach flavor. It may be harvested when the plant is four to five inches high. Hot weather does not injure the crop and the leaves are ready for cutting in three to four weeks after planting. By all means try some in your garden this year. Pkt., 10c; oz., 20c; ¼ lb., 50c; lb., \$1.50, postpaid.



Chinese Broad-Leaf Mustard.

Did You Plant Your Garden for the Bugs?

Use Acme All Round Spray. Contains the most popular remedies used in combating three classifications; chewing insects, sucking insects, blight and fungous diseases. ¼-lb. carton, each, 50c; 1-lb. carton, each, \$1.00, not postpaid.



Germaco Hotkaps

New Method of Plant Protection

A money maker — matures crops earlier, and shields the plants from frost, wind and rain — protects from insects. A miniature hothouse.

Prices: 1000 lots, \$11.50; 5000 lots, \$11.00 per 1000; 10,000 lots, \$10.75 per 1000. 250 trial package, including Garden Type Water-Proof Setter, \$4.00. Germaco Hotkap Setter, \$2.50. If you need Hotkaps for your back yard garden, note these prices: 50 with Garden Setter, \$1.50; 100 with Garden Setter, \$2.25. Garden Setter alone, 50c, f. o. b. Houston.



Crystal White Wax Bermuda Onion.

High Grade Onion Seed For Texas

CULTURE: Onions thrive best in a deep, rich, fertile soil. Plant seed in the early Spring and early Fall in rows about 12 to 18 inches apart, thinning plants out to about 1 inch apart in the rows. The ground should be thoroughly worked, well fertilized and well pulverized. Onions from seed will mature in about 140 days. One ounce of seed to 100 feet of row; 4 pounds of seed to the acre.

CRYSTAL WHITE WAX BERMUDA. This is the genuine pure white type of the Bermuda Onion family. Our seed of this variety comes directly from Teneriffe. This Onion is very mild in flavor, having a clear white skin; being deliciously tender, a heavy yielder, consequently a profitable crop to grow. Pkt., 10c; oz., 45c; ¼ lb., \$1.40; lb., \$5.00, postpaid.

IMPORTED WHITE or YELLOW BERMUDA. A very popular type of Bermuda Onion; it is a standard variety with large commercial growers in Southwest Texas, being a light straw colored Onion, ripening early and very prolific. Pkt., 10c; oz., 35c; ¼ lb., \$1.00; lb., \$3.50.

JACKSON'S GENUINE RED CREOLE ONION SEED. This wonderful Onion had its origin in Louisiana and is a very solid, semi-globe shaped Onion of a reddish color. Pkt., 10c; oz., 35c; ¼ lb., \$1.00; lb., \$3.50.

Onion Sets

While it is cheaper to raise Onions from seed, many prefer Onion Sets. They will produce early Spring Onions quick. In the Spring of the year we have what is called the Western Sets. No Bermudas offered in the Spring. One quart to 100 feet of row; 8 bushels to the acre.

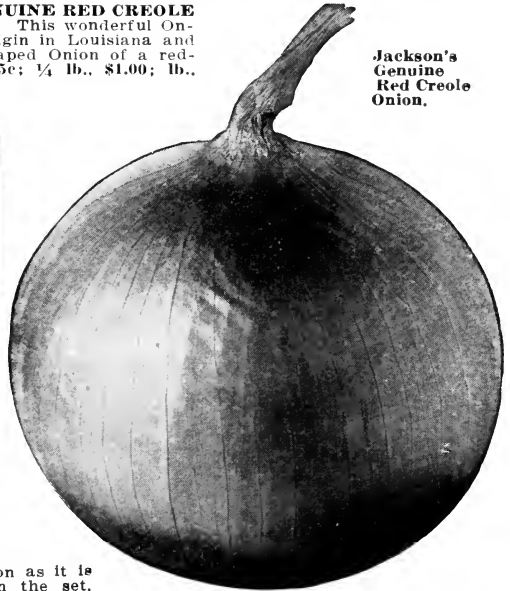
YELLOW and RED SETS. 35c per qt.; 3 qts., \$1.00, postpaid.

WHITE SETS. 35c per qt.; 3 qts., \$1.00, postpaid.

We can only supply Bermuda Onion Sets in the Fall of the year, not in the Spring.



Onion Sets.



Jackson's Genuine Red Creole Onion.

Bermuda Onion Plants

The usual manner of growing green Onions has, in the past, been by planting sets, but various tests have proven that the Onion plant is preferable. The set has to be absorbed by the new growth before it begins to form the new Onion, whereas the plant begins to grow as soon as it is planted and makes more headway than the set, producing delicious young Onions for table use during the Winter and Spring. Onions grown from plants are larger and do not run to seed in the Spring like sets. Onions like rich soil, so the ground should be liberally fertilized. Plant in rows about 15 inches apart and 3 or 4 inches apart in the row 100 for 30c; 200 for 50c; 500 for \$1.00; 1000 for \$1.75; crate of 6000 for \$6.00, all postpaid to you.

Can furnish Onion Plants from December to June only. Packed 100 to the bunch. We do not break bunches of 100 plants.

Okra

CULTURE: Very easy to grow; a plant that insects and pests do not bother much. Okra is a very profitable market crop, always being in good demand. Plant in rows 3 feet apart, dropping the seed in the rows about one foot apart. One ounce of seed will sow 50 feet; 6 to 8 pounds to the acre.

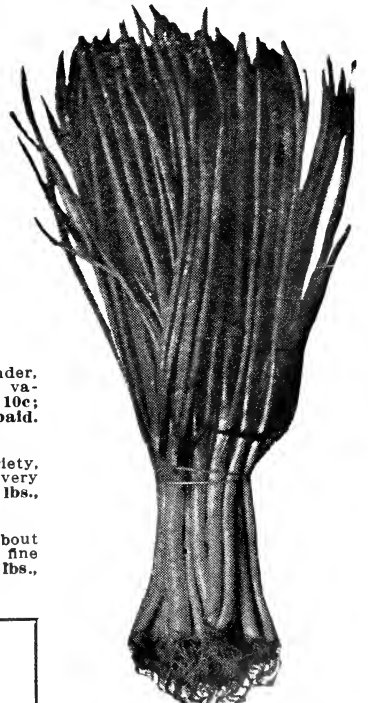
WHITE VELVET. Pods are greenish white, very tender, never prickly and it is a heavy yielder. The best variety for home use and for market gardeners. Pkt., 10c; oz., 15c; ¼ lb., 25c; lb., 75c; 5 lbs., \$3.00, postpaid. Not prepaid, 10 lbs., \$5.00; 20 lbs., \$8.00.

PERKINS' LONG POD. This is a very prolific variety, bearing pods of unusual length; very slim and very tender. Pkt., 10c; oz., 15c; ¼ lb., 25c; lb., 75c; 5 lbs., \$3.00, postpaid.

DWARF GREEN. This is a dwarf type, growing about 20 inches in height, bearing thick, green pods of fine flavor. Pkt., 10c; oz., 15c; ¼ lb., 25c; lb., 75c; 5 lbs., \$3.00, postpaid.



White Velvet Okra.



Onion Plants.

Write For Our Field Seed Price List

Garden or English Peas

CULTURE: The smooth sorts, such as Alaska and First and Best, can be planted very early, as it takes a hard freeze to kill them. The wrinkled types are more sensitive and should be planted later. Plant in double rows, 6 to 8 inches apart and 2 to 3 feet between the double rows, covering seed about one inch. All varieties growing more than 1½ feet high do better if staked up. 1½ pounds of seed to 100 feet of row; 1 to 1½ bushels to the acre.

EARLY ALASKA. This smooth blue Pea is one of the most popular sorts with market gardeners, the vines are of medium height, about 2½ to 3 feet, bearing pods of a good size, about 2½ to 3 inches long. This type matures its crop all at once. Pkt., 10c; ½ lb., 25c; lb., 45c; 2 lbs., 80c; 5 lbs., \$1.65, postpaid. Not prepaid, pk. (15 lbs.), \$2.50; bu. (60 lbs.), \$9.00.



Large White Marrowfat Peas.

FIRST AND BEST. Vines vigorous, hardy, of medium height, standing 30 to 36 inches high. Pods straight, of good size, containing 5 to 7 medium size, smooth peas of good quality. Pkt., 10c; ½ lb., 25c; lb., 45c; 2 lbs., 80c; 5 lbs., \$1.65, postpaid. Not prepaid, pk. (15 lbs.), \$2.50; bu. (60 lbs.), \$9.00.

TELEPHONE. A favorite old-time wrinkled Pea. Vines are large and coarse, 40 to 50 inches high; pods 4½ inches long, containing 6 to 7 large, sweet peas. Seeds large, green, wrinkled. Pkt., 10c; ½ lb., 25c; lb., 45c; 2 lbs., 80c; 5 lbs., \$1.65, postpaid. Not prepaid, 15 lbs., \$3.00.

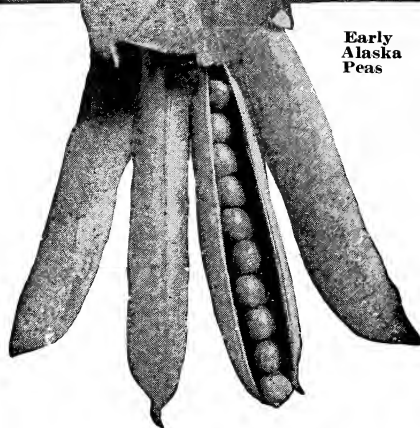
LARGE PODED ALASKA or AMEER. A new Pea that is very popular with the market gardeners. Pods are larger than the old type of Alaska and much more prolific. Pkt., 10c; ½ lb., 25c; lb., 45c; 2 lbs., 80c; 5 lbs., \$1.65, postpaid. Not prepaid, pk. (15 lbs.), \$2.50; bu. (60 lbs.), \$9.00.

SUTTON'S EXCELSIOR. The plants are dwarf, about 14 inches high, very stout. Exceedingly productive; fine quality. Pods quite large for so dwarf a variety and well filled. Pkt., 10c; ½ lb., 25c; lb., 45c; 2 lbs., 80c; 5 lbs., \$1.65, postpaid. Not prepaid, 15 lbs., \$3.00.

LARGE WHITE MARROWFAT. Vines are about 5 feet high, and of strong growth. Pods large, rough and light colored and well filled. Ready for pickling in about 85 days. Pkt., 10c; ½ lb., 25c; lb., 45c; 2 lbs., 80c; 5 lbs., \$1.65, postpaid.



Early Alaska Peas



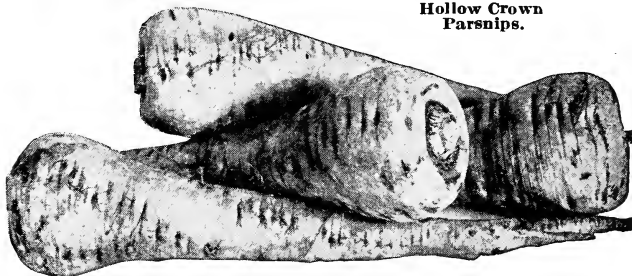
Field Peas

LARGE BLACKEYES. Lb., 25c; 2 lbs., 45c, postpaid. Not prepaid, 10 lbs., \$1.50. Write for prices in larger quantities.

CREAM PEAS. Lb., 25c; 2 lbs., 45c, postpaid. Not prepaid, 10 lbs., \$1.50. Write for prices in larger quantities.

BROWN CROWDERS. Lb., 35c; 2 lbs., 60c, postpaid. Not prepaid, 10 lbs., \$2.25. Write for prices in larger quantities.

Hollow Crown Parsnips.



Parsnips

CULTURE: Sow early in the Spring in rows 18 inches apart and in the Gulf Coast country, again in September, using 1 ounce of seed to 100 feet of row; 5 pounds to the acre.

HOLLOW CROWN. This is the favorite sort to grow, it frequently grows a foot long, is very tender and has a particularly good flavor. Pkt., 10c; oz., 15c; ¼ lb., 30c; lb., \$1.00, postpaid.

Seed Sweet Potatoes

We are prepared to furnish the very best Sweet Potatoes that can be had for seed purposes, being especially selected for seed. We handle the Porto Rican Yams and the Nancy Halls and other varieties; when ready to buy, write us for prices.

Sweet Potato Slips

We handle thousands of the very best slips procurable and when ready to buy drop us a card and we will gladly quote you our prices. 75 slips to 100-foot row; 10,000 per acre.

Seed Irish Potatoes

In season we handle the Red Bliss Triumph, the Irish Cobbler and Early Rose. As the market changes so much it is impossible to name prices. Write us, 5 pounds to 100-foot row; 8 to 10 bushels per acre.

ACME

ALL ROUND SPRAY Keeps the Bugs Away

Kills chewing and sucking insects. Controls blight and fungous diseases. Triple service in one operation.

¼-lb. carton, each 50c.

1-lb. carton, each \$1.

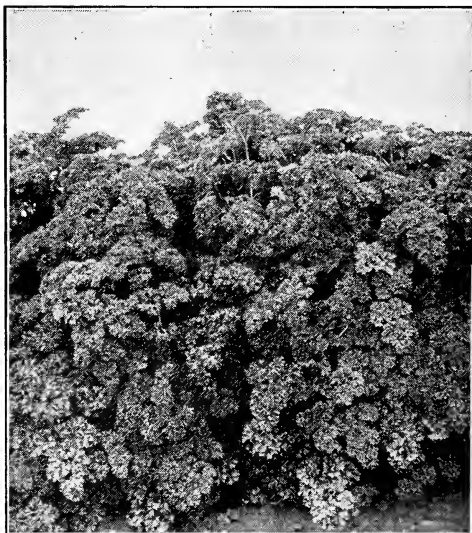
Not postpaid.

Parsley

CULTURE: Parsley is used as a garnishment for meat and salads, also adds a pleasing flavor to soup. If seeds are soaked in warm water several hours before planting, it facilitates them to germinate readily. Plant in rows 8 inches each way covering about one-eighth inch deep. One ounce of seed to 100 feet of row; 3 pounds per acre.

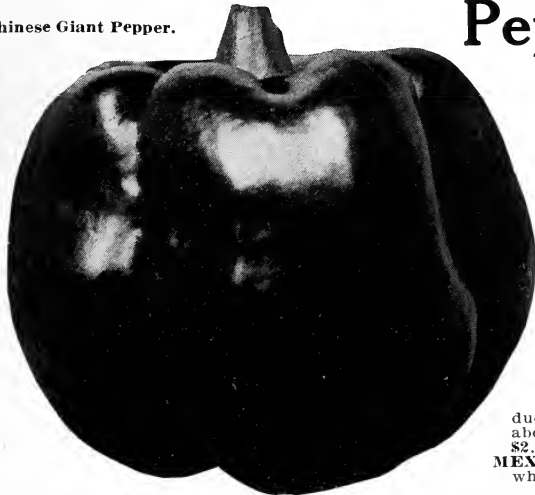
DOUBLE CURLED. The old-time standard variety, a favorite with the market gardeners; the plants are dwarf, of compact habit, leaves heavily curled and crimped and of dark green. Pkt., 10c; oz., 15c; ¼ lb., 30c; lb., 90c; 5 lbs., \$4.00, postpaid.

PLAIN OR SINGLE. Leaves of this variety are deeply cut, not curled, dark green in color. Pkt., 10c; oz., 15c; ¼ lb., 30c; lb., 90c; 5 lbs., \$4.00, postpaid.



Double Curled Parsley.

Chinese Giant Pepper.



Peppers - Hot Ones and Sweet Ones

CULTURE: Plant seed one-half inch deep in hotbeds in early Spring or in boxes in the house; when all danger of frost is over, transplant out in the open 1½ feet apart in rows 2 to 3 feet wide. One packet to 100 feet of row; ½ pound to the acre.

BURPEE'S CHINESE GIANT. We have been very fortunate in securing our stock of Chinese Giant Peppers from the famous grower "BURPEE." Thousands of market gardeners plant yearly this beautiful Pepper, which sells at sight. It is the largest Sweet Pepper grown. The flesh is very tender, thick, and has no equal. It undoubtedly is the best Pepper for home use, as it slices fine, and on account of its mild flavor, can be eaten like tomatoes. Pkt., 10c; oz., 60c; ¼ lb., \$2.00; lb., \$7.50, postpaid.

BELL or BULL NOSE. This variety is excellent for home use but should not be confused with the Chinese Giant; it is very similar in shape but scarcely more than half as large. Pkt., 10c; oz., 35c; ¼ lb., \$1.75.

MIXED PEPPERS. On account of the demand from home gardeners, we are offering a mixture of Peppers, containing both the sweet and the hot varieties. This gives you an excellent assortment and you can certainly use all varieties for cooking, pepper sauce, etc. Pkt., 10c; oz., 50c, postpaid.

TABASCO PEPPER. This is the variety which the famous Tabasco sauce is made from. The tall, bushlike growth produces a great number of small, slender, very hot and fiery fruits, about 1 inch long, bright scarlet in color. Pkt., 10c; oz., 60c; ¼ lb., \$2.00, postpaid.

MEXICAN CHILI. A very hot, medium size, pear-shaped Pepper, which matures bluish black when dried. Pkt., 10c; oz., 45c, postpaid.

WORLD BEATER. A large and very mild Pepper, being a cross between the Chinese Giant and Ruby King. The shape resembles the Ruby King except it is broader at the pointed end and nearly as large as the Chinese Giant. Pkt., 10c; oz., 40c; ¼ lb., \$1.25; lb., \$4.50, postpaid.

LONG RED CAYENNE. A well known hot, medium early variety. Very prolific, bearing fruits from 4 to 5 inches long; in color deep green turning to a red when ripe. Pkt., 10c; oz., 40c; ¼ lb., \$1.25, postpaid.

Pumpkins - THE GOOD ONES FOR PIES

CULTURE: Pumpkins are cultivated the same as melons or cucumbers; they are raised between hills of corn, but may be planted with success in fields by themselves. ½ ounce to 100 feet of row; 3 pounds to the acre.

MAMMOTH TOURS or BIG TOM. This is the largest Pumpkin that grows, a good keeper and an excellent feed for live stock. Pkt., 10c; oz., 20c; ¼ lb., 35c; lb., \$1.25, postpaid.

SMALL SUGAR. Fruits are of small size, averaging about 10 inches in diameter, of excellent keeping qualities; flattened and slightly ribbed. Skin deep orange-yellow, flesh very sweet, fine grained and one of the best varieties for pies. Pkt., 10c; oz., 15c; ¼ lb., 40c; lb., \$1.25; 5 lbs., \$5.25, postpaid. Not prepaid, 10 lbs., \$9.50.

LARGE CHEESE or KENTUCKY FIELD. This is undoubtedly the best field Pumpkin grown; the ripe fruits are flat and of a rich creamy yellow, measuring about 2 feet in diameter. The flesh is tender and of excellent quality. Fine for stock feed. Pkt., 10c; oz., 15c; ¼ lb., 25c; lb., 75c; 5 lbs., \$3.50, postpaid. Not prepaid, 10 lbs., \$6.00.

GREEN STRIPED CUSHAW. Nothing in the Pumpkin family can compare with this sweet, delicious vegetable; the fruit is long, with green and white stripes, ready to eat in about 90 days after planting. Very easy to grow, and to those who have unsightly spaces that need covering, we recommend the Cushaw. A packet or two of seed will be sufficient. Pkt., 10c; oz., 15c; ¼ lb., 50c; lb., \$1.50; 5 lbs., \$6.75, postpaid. Not prepaid, 10 lbs., \$10.00.

TENNESSEE SWEET POTATO. A bell-shaped Pumpkin of delicious flavor, excellent for pies. Pkt., 10c; oz., 15c; ¼ lb., 40c; lb., \$1.25; 5 lbs., \$5.25, postpaid. Not prepaid, 10 lbs., \$9.50.



Small Sugar Pumpkin.

Radishes - Crisp and Tender Sorts

CULTURE: To have crisp and tender Radishes they must be grown quickly; plant in very rich soil and give plenty of water. Sow early in the Spring at intervals of about a week or ten days apart, and again in the Fall, usually starting in August. Plant in drills 12 to 18 inches apart and thin out plants to prevent crowding. 1½ ounces to 100 feet of row; 8 pounds to the acre.

EARLY SCARLET TURNIP WHITE TIP. (21 days). Roots slightly flattened on under side; color very deep scarlet; distinct white tips; flesh white and of best quality. Pkt., 10c; oz., 15c; ¼ lb., 30c; lb., 90c; 5 lbs., \$3.25, postpaid.

EARLY LONG SCARLET SHORT TOP. (35 days). This is the standard long sort of Radish for either home or market gardeners, tops are short and comparatively small. Roots slender, uniform in shape and



Early Scarlet Turnip White Tip Radishes.

a very attractive bright red in color. Pkt., 10c; oz., 15c; ¼ lb., 30c; lb., 90c; 5 lbs., \$3.25, postpaid.

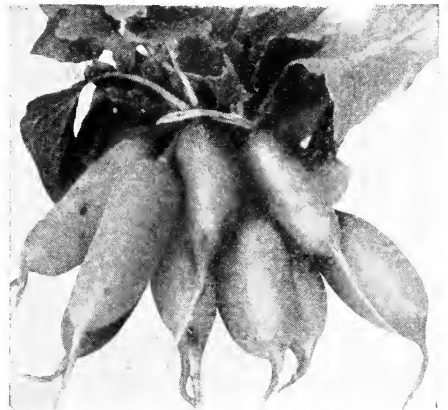
EARLY SCARLET TURNIP. A round, red, turnip-shaped Radish, with small tops; color almost crimson; flesh white, crisp and very tender. A rapid grower. Pkt., 10c; oz., 15c; ¼ lb., 30c; lb., 90c; 5 lbs., \$3.25, postpaid.

FRENCH BREAKFAST. (25 days). A quick-growing, small, olive-shaped Radish, about 1½ inches long by ¾ inch in diameter. Beautiful scarlet, except near the tip, where it is pure white. Pkt., 10c; oz., 15c; ¼ lb., 30c; lb., 90c; 5 lbs., \$3.25, postpaid.

CHINA ROSE. (50 days). A very large, bright rose Radish for Winter use. Pkt., 10c; oz., 15c; ¼ lb., 30c; lb., 90c; 5 lbs., \$3.25, postpaid.

ICICLE. (25 days). This Radish grows about 4 to 5 inches long, is of transparent whiteness with short leaves, making its growth very quickly; of excellent flavor; fine for home use as well as market. Pkt., 10c; oz., 15c; ¼ lb., 30c; lb., 90c; 5 lbs., \$3.25, postpaid.

JACKSON'S MIXED RADISH. For those who desire a patch of mixed Radishes, we have made a mixture containing all sorts of the best varieties. Pkt., 10c; oz., 15c; ¼ lb., 30c; lb., 90c; 5 lbs., \$3.25, postpaid.



French Breakfast Radishes.

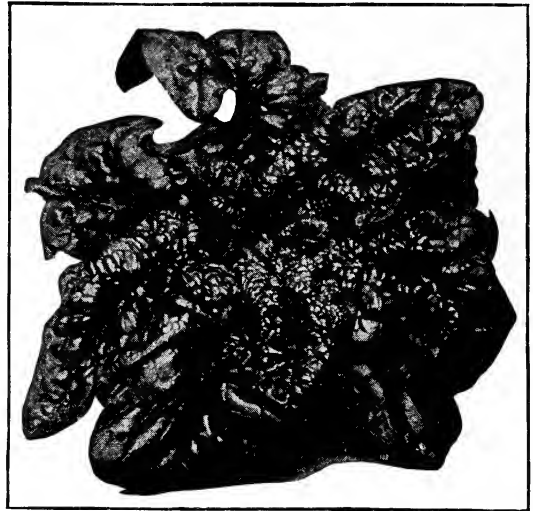
Spinach For Winter and Summer

CULTURE: Should be planted in very rich ground; for early Spring use sow early in the Fall and for later use, sow early in the Spring, sowing in drills 1 foot apart and begin thinning out the plants when the leaves are an inch wide. One ounce of seed to 50 feet of drill; 10 to 12 pounds per acre.

BLOOMSDALE. (45 days). A very early productive variety, with large, glossy, dark green leaves which are crumpled or blistered like savoy cabbage. Rather prone to run quickly to seed. The best variety for Fall, Winter or extremely early Spring. Thousands of acres of this variety are planted each year in Texas for northern market. Oz., 10c; ¼ lb., 25c; lb., 40c; 5 lbs., \$1.50, postpaid. Not prepaid, 10 lbs., \$2.25; 20 lbs., \$4.00; 50 lbs., \$9.00.

NEW ZEALAND. This is strictly a Summer variety, popular with the truckers and home gardeners, the stems and leaves are soft, thick and fleshy. This wonderful variety of Spinach is available in the Summer months when the other varieties fail. Pkt., 10c; oz., 15c; ¼ lb., 30c; lb., \$1.00; 5 lbs., \$4.50, postpaid. Not prepaid, 10 lbs., \$8.00.

VIROFLAY. A rapid growing variety, forming upright crumpled, thick leaves. Oz., 10c; ¼ lb., 25c; lb., 40c; 5 lbs., \$1.50, postpaid. Not prepaid, 10 lbs., \$2.25; 20 lbs., \$4.00; 50 lbs., \$9.00.



Bloomsdale Spinach.



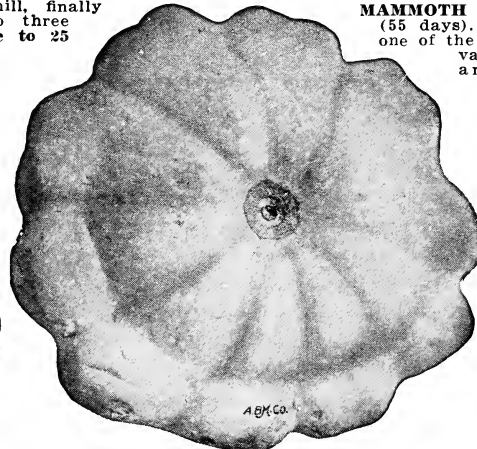
Italian Squash, Zucchini.

Squash - The Varieties You Like

CULTURE: Squash should not be planted until all danger of frost is past; plant in hills 5 feet apart for bush varieties and 6 or 8 feet apart for running varieties, putting 6 to 8 seeds in the hill, finally thinning out to three plants. 1 ounce to 25 hills; 4 lbs. to the acre.

MAMMOTH WHITE BUSH SCALLOP. (55 days). An excellent large strain; one of the handsomest of the Summer varieties, somewhat flattened and scalloped. Uniformly warty and of a beautiful, clear, waxy color. Pkt., 10c; oz., 15c; ¼ lb., 40c; lb., \$1.25; 5 lbs., \$5.50, postpaid. Not prepaid, 10 lbs., \$9.50.

EARLY WHITE BUSH or PATTY PAN. Very productive; skin and flesh a light cream color; an exceedingly popular variety with all market gardeners on account of its keeping qualities, which enables them to ship to distant markets. Pkt., 10c; oz., 15c; ¼ lb., 40c; lb., \$1.25; 5 lbs., \$5.50, postpaid. Not prepaid, 10 lbs., \$9.50.



Early White Bush Squash.

YELLOW SUMMER CROOKNECK. Very popular. A good shipper, fruits being small and of a light yellow color. Pkt., 10c; oz., 15c; ¼ lb., 40c; lb., \$1.25; 5 lbs., \$5.50, postpaid. Not prepaid, 10 lbs., \$9.50.

Italian Squash "Zucchini"

This is the true Italian Squash, originated in Italy and first grown in this country in California with great success.

It should be eaten when quite young, four to six inches long. One of the very best Summer varieties, being very prolific, a few hills planted in this fine Squash will keep a family supplied the whole Summer. Pkt., 15c; oz., 25c; ¼ lb., 60c, postpaid.



Yellow Summer Crookneck Squash.

JACKSON'S NEW WHITE BUSH SQUASH. This is truly a new white bush type desired by market gardeners. The fruit is smaller than the ordinary white bush squash—pale green in color and stays tender much longer. It sells at sight. Pkt., 10c; oz., 25c; ¼ lb., 75c; lb., \$2.25, postpaid.

IMPROVED HUBBARD. This variety matures in about 65 days from planting, and is the most popular of the Winter varieties. Pkt., 10c; oz., 15c; ¼ lb., 40c; lb., \$1.25; 5 lbs., \$5.50, postpaid.



Salsify.

Salsify - Oyster Plant

CULTURE: Sow the seed in the Spring in drills one foot apart and one inch deep, thinning out plants to four inches. It succeeds best in light, enriched soil. One ounce of seed to 50 feet of drill.

MAMMOTH SANDWICH ISLAND. (95 days). The roots of this variety are large, strong growing, smooth, white and tapering. Of excellent quality and delicate in flavor. Pkt., 10c; oz., 25c; ¼ lb., 80c, postpaid.

Tobacco

HAVANA IMPORTED. The best type for making cigars. Pkt., 15c; oz., 50c, postpaid.

WHITE BURLEY. Excellent for wrappers. Pkt., 15c; oz., 50c, postpaid.



Tobacco as it Grows in the Field.

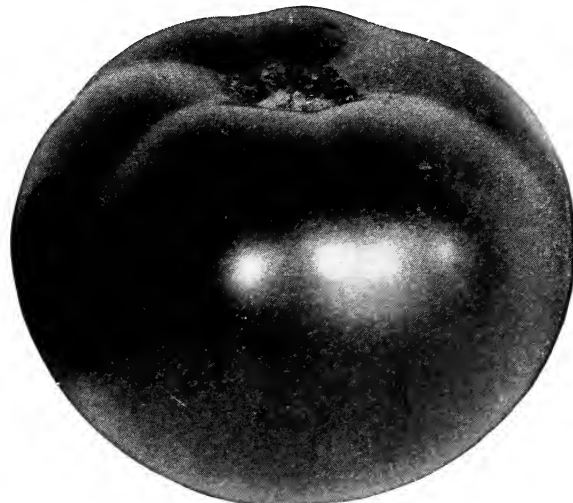
Tomatoes - THE BIG RED ONES

CULTURE: Sow seed in early Spring in hotbeds and transplant when 2 or 3 inches high into pots; when about 6 inches high, and the ground has become warm, transplant to the open, setting them from 3 to 4 feet apart each way, according to the variety. It is best to transplant on a rainy or cloudy day and water freely at time of transplanting. One packet of seed to 100 feet of row; ½ pound to the acre.

REDFIELD BEAUTY. Early, hardy and a great yielder. The fruit is large, always smooth, perfect in shape and of excellent quality; in color the fruit is a glossy crimson-purple, growing in clusters of 4 to 6 large fruits, which are very firm, having somewhat tough skin; it seldom rots or cracks, like some of the tender-skinned sorts. Pkt., 10c; oz., 40c; ¼ lb., \$1.25; lb., \$4.00; 2 lbs., \$7.50, postpaid.

ACME. This is a purple sort of Tomato, maturing in about 95 days, being one of the earliest purple fruited Tomatoes on the market; the fruits are produced in clusters of four and five, free from crack; the flesh is remarkably solid and stands long distance shipping well. Pkt., 10c; oz., 40c; ¼ lb., \$1.25; lb., \$4.00; 2 lbs., \$7.50, postpaid.

PONDEROSA. Purple. The largest variety of practical value, ripening its solid, almost seedless fruit early. The fruit is very meaty, fine grained and free from acid. Pkt., 10c; oz., 60c; ¼ lb., \$2.00, postpaid.



Redfield Beauty Tomato.

DWARF CHAMPION (100 days).

Purple.

This popular dwarf Tomato

combines more good qualities than any other upright variety. It is dwarf

in habit, making compact, stiff, upright plants which carry the fruit well above

the ground. The fruit is medium large, somewhat of a purplish pink in color,

being always round and smooth. A type well adapted for home use as well as

for market gardeners. Pkt., 10c; oz., 45c; ¼ lb., \$1.50; lb., \$4.50, postpaid.

YELLOW PEAR. A small Tomato used for preserving. Pkt., 10c; oz., 50c, postpaid.

JUNE PINK. A pink type of Tomato that ripens as early as Sparks' Earliana. An enormous bearer, having clusters of 6 to 8 fruits, being borne both at the crown and at the forks of the branches. Fruit is medium in size very uniform, smooth, and of attractive shape. Pkt., 10c; oz., 40c; ¼ lb., \$1.25; lb., \$4.00; 2 lbs., \$7.50.

McGEE. This wonderful Tomato originated in Texas and has stood the test in many ways and been found to be satisfactory. Very productive, of average size, bearing bright crimson colored, solid fruits of an excellent flavor. Pkt., 10c; oz., 40c; ¼ lb., \$1.25; lb., \$4.50, postpaid.

NEW STONE. This variety is increasing in popularity with market gardeners and home growers everywhere. A very desirable red Tomato, being perfectly smooth. Pkt., 10c; oz., 40c; ¼ lb., \$1.25; lb., \$3.75, postpaid.

DWARF STONE. The best large fruited dwarf Tomato, producing exceedingly bright red Tomatoes; rather late in maturing, but desirable for home use as well as for truckers. Pkt., 10c; oz., 45c; ¼ lb., \$1.50; lb., \$4.50, postpaid.

SPARKS' EARLIANA. (90 days). Bright red. The earliest smooth, bright red Tomato of good size. The Tomatoes are uniform, fleshy, solid and excellent for shipping purposes. Sparks' Earliana is nearly seedless, containing one-fourth less seeds than other varieties. Pkt., 10c; oz., 40c; ¼ lb., \$1.25; lb., \$3.50, postpaid.

MARGLOBE. A globe-shaped variety, being pure scarlet in color and extremely early. Pkt., 10c; oz., 50c; ¼ lb., \$1.75; lb., \$6.00, postpaid.

GULF STATE MARKET. The fruits of this variety are extremely large, round, or globe-shaped, showing but little depressions about stem, and are smooth and free from cracks. The color is a deep purplish pink, ripening well about the stems. Pkt., 10c; oz., 45c; ¼ lb., \$1.50; lb., \$4.50, postpaid.



Dwarf Champion Tomatoes.

Turnips - Everyone Should Grow Them

CULTURE. Turnips can be planted with great success in the Spring, but the main crop should be planted in the early Fall. The Spring sown seeds germinate rapidly and Turnips are ready for use very early, and, being sown under more favorable conditions, they are sweeter and more tender than those grown in the Fall. For Spring use, plant thinly in drills from January to March, and for Fall or Winter use from August on. One ounce of seed to 100 feet of drill; 3 pounds to the acre.

PURPLE TOP GLOBE. This is the best variety for both home and market use in Texas. It is a large, globe-shaped variety, being purple above the ground, very handsome and of excellent quality. A type of Turnip we highly recommend. Pkt., 10c; oz., 15c; ¼ lb., 25c; lb., 75c; 5 lbs., \$3.00, postpaid. Not prepaid, 10 lbs. at 50c per lb.; 20 lbs. at 40c per lb.

EARLY WHITE FLAT DUTCH. An old standby of the Strap Leaf family. Of medium size and a quick grower; flesh and skin white, fine grained and very sweet. Pkt., 10c; oz., 15c; ¼ lb., 25c; lb., 70c; 5 lbs., \$3.00, postpaid. Not prepaid, 10 lbs. at 50c per lb.; 20 lbs. at 40c per lb.

YELLOW OR AMBER GLOBE. The best yellow Turnip, producing a globe-shaped root with smooth skin and light yellow flesh, which is very firm and sweet. Pkt., 10c; oz., 15c; ¼ lb., 25c; lb., 75c; 5 lbs., \$3.00, postpaid. Not prepaid, 10 lbs. at 50c per lb.; 20 lbs. at 40c per lb.

PURPLE TOP STRAP LEAF. This is a round, flat Turnip, white on the bottom and a reddish purple above the ground; a quick grower and an excellent table sort. Pkt., 10c; oz., 15c; ¼ lb., 25c; lb., 75c; 5 lbs., \$3.00, postpaid. Not prepaid, 10 lbs. at 50c per lb.; 20 lbs. at 40c per lb.

WHITE GLOBE. The color is pure white, shape being round, large and very solid; extremely quick in growth. Pkt., 10c; oz., 15c; ¼ lb., 25c; lb., 25c; 5 lbs., \$3.00, postpaid. Not prepaid, 10 lbs. at 50c per lb.; 20 lbs. at 40c per lb.

SEVEN TOP. The tops are used as spinach, the root is of no value; the greens are excellent. Pkt., 10c; oz., 15c; ¼ lb., 35c, postpaid.

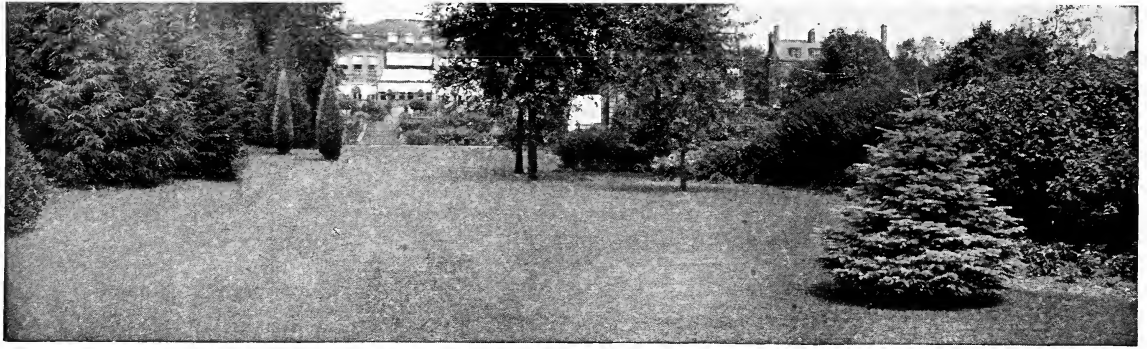
JAPANESE TURNIP (Shogoin). A splendid white globe Turnip which grows well in hot and dry weather. Pkt., 10c; oz., 15c; ¼ lb., 50c; lb., \$1.50.

MIXED TURNIPS. So many people desire mixed Turnips and we have made a mixture containing all of the above. Pkt., 10c; oz., 15c; 4 ozs., 25c, postpaid.

AMERICAN PURPLE TOP RUTABAGA. This strain is of American origin, bred to a smaller top and a shorter neck; the bulbs are of a large size; the flesh is yellow with a purple crown. A very desirable sort. Pkt., 10c; oz., 15c; ¼ lb., 25c; lb., 75c; 5 lbs., \$3.00, postpaid. Not prepaid, 10 lbs. at 50c per lb.; 20 lbs. at 40c per lb.



Purple Top Globe Turnip.



Hints for Making and Caring for Lawns

Houston is noted for its beautiful lawns, and so few people appreciate that a Winter lawn can be made to look as attractive as a Summer lawn, and be green the entire Winter. So do not let another Winter go by with that old, dead grass on your lawn. English Rye and Italian Rye are good Winter grasses and stay green all through the Winter.

JACKSON'S WINTER GRASS (Domestic Rye). This is the foremost winter grass and the foundation of all winter lawn mixtures, and we know of no better grass for winter lawn. Should not be planted until the weather is cool, as it will not germinate in the hot months. Plant seed using one pound to a space 10 by 15 feet. It is easy to grow and makes one of the most wonderful lawns with that beautiful green, velvety cast, such a contrast to other vegetation that is dead for the winter, which surrounds most lawns. The seed should be broadcast, following same with thin coating of dirt, then wetting it down, and in a few days the seed will begin to germinate. Just for your own satisfaction, seed your lawn down this winter in Winter Grass. Lb., 35c; 3 lbs., \$1.00; 10 lbs., \$3.00; 25 lbs., \$5.00, postpaid. Not prepaid, \$17.00 per 100 lbs.

RED TOP. This variety of Winter Grass has been used in the North for years, and until recently it was never planted in Texas, but is now a very popular Winter grass. It is used extensively in mixtures and on most all golf links. A fine variety for shady places. A mixture of English Rye and Red Top makes the best Winter lawn mixture you can buy. Use at the rate of one pound to a space 10 by 25 feet. Lb., 85c; 5 lbs., \$3.75; 10 lbs., \$6.75, postpaid. Write for prices in larger quantities.

WHITE CLOVER. Also called "White Dutch Clover." This is the small, low-growing Clover that is so much desired for lawns; nothing is more beautiful than a little White Clover dotting a beautiful green lawn here and there. Used extensively in lawn mixtures. Lb., \$1.00; 5 lbs., \$4.75, postpaid.

JACKSON'S LAWN GRASS MIXTURE. This special mixture produces a beautiful and permanent lawn. It is made from our own formula and composed of grasses which are adapted to the purpose of producing a turf which retains its rich green color and velvety appearance throughout a long season. Lb., 75c; 5 lbs., \$3.25, postpaid.

CARPET GRASS. Sometimes called Australian Bermuda. Excellent for lawns as it is a perennial, spreading by creeping stems with root at every joint, thus forming a close, compact turf. Seed very scarce on account of crop being short. Lb., 90c; 5 lbs., \$4.25; 10 lbs., \$7.50, postpaid.

KENTUCKY BLUE GRASS. Suitable in some places in Texas and very desirable for sowing under trees. Lb., \$1.00; 5 lbs., 85c lb.; 10 lbs., 75c lb., postpaid.

BERMUDA GRASS. This variety is strictly a hot weather grass and is the only kind that will withstand the hot sun in the Summer time. Often people are under the impression that Bermuda Grass seed is mixed with weed seed, as they have gotten weeds, nut grass, etc., in their lawn after sowing the Bermuda seed, but such is not the case. Bermuda seed is tested for purity and is usually free from weed seed, and the weeds, etc., that come up in the lawn are from fillings or applying new dirt to the lawn, and by gradually working the weeds and foreign matter out, and allowing the Bermuda to grow, they will in time be choked out and you will get a permanent Bermuda lawn. Sow in the Spring of the year, when the ground becomes warm, or any time in the Summer, using one pound of seed to a space 10 by 50 feet. A beautiful green lawn can be obtained from the seed much cheaper than by sodding. Landscape men and those who have charge of golf links, appreciate this and have almost entirely ceased using sod, as a more even turf can be obtained from the seed than by sodding. The seed will germinate very readily when the weather is warm by sprinkling every day, as plenty of water is necessary. Lb., \$1.00; 5 lbs., 85c lb.; 10 lbs., 75c lb.; 20 lbs., 60c lb. Write for prices in larger quantities.

NITRATE OF SODA. A little Nitrate of Soda lightly sprinkled over the lawns, adds new life to them, and all lawns are like everything else, they occasionally need renovating, and when your lawn needs new life, or you have dead spots in it, use Nitrate of Soda. Lb., 15c; 2 lbs., 25c; 50 lbs., \$2.75; 100 lbs., \$4.50, not prepaid. By express or freight only; cannot be sent through the mail.

BONE MEAL. Ground bone or Bone Meal is very necessary to all lawns; it should be the foundation of lawns. It takes about six months to decay, but when it does, it adds the required life that all lawns need. Lb., 10c; 10 lbs., 60c; 50 lbs., \$2.00; 100 lbs., \$3.50, not prepaid.

VIGORO. To have a velvety green lawn use Vigoro Fertilizer. The balanced fertilizer for your lawn which is clean, odorless, and can be sown by hand. Try a sack and be convinced. 50-lb. sack, \$3.00; 100-lb. sack, \$5.00, f. o. b. Houston.

GRANULATED PEAT MOSS. Very desirable for lawns and flower beds. Per bale, \$3.50, F. O. B. Houston.

GERMINATION TABLE

This gives the number of days that some of the most common Annuals and Perennials come up after being planted.

Plant Name	Days	Plant Name	Days	Plant Name	Days
Ageratum	5	Foxglove	20	Morning Glory	5
Alyssum	5	Gaillardia	20	Nasturtium	8
Anchusa	20	Geraniums	20	Nicotiana	20
Antirrhinum	20	Godetia	15	Nigella	10
Aquilegia	15	Gourd	15	Oenothera	5
Arctotis	20	Grass Seed	20	Pansies	10
Asters, Hardy	20	Gypsophila	15	Sweet Peas	15
Baby's Breath	10	Helianthus	15	Perennial Peas	25
Begonias	5	Helichrysum	5	Petunias	20
Bellis	10	Heliotrope	15	Phlox	20
Browallia	20	Heuchera	20	Pinks	5
Calendula	10	Hibiscus	15	Platycodon	30
California Poppy	8	Hollyhocks	5	Poppies	20
Campanulas	8	Hops	15	Portulaca	20
Candytuft	5	Hunneemannia	8	Primroses	1 year
Canna	15	Heavenly Blue Ipomoea. Plant in February in heat.		Romneya Coulteri	1
Canterbury Bells	15	Ipomoea	5	Rose	days
Centaurea	5	Impatiens	15	Saibiglossis	5
Chrysanthemums	5	Iris	15	Salvia	15
Cineraria	20	Jeusalem Cherry	15	Scabiosa	20
Cleome	15	Kenilworth Ivy	5	Scarlet Runner	10
Cobaea Scandens	15	Kochia	15	Scarlet Sage	15
Cockscomb	20	Larkspur, Annual	15	Schizanthus	20
Coreopsis	20	Lathyrus	25	Shasta Daisy	20
Cosmos	5	Lavender	20	Snapdragon	20
Cypress Vine	5	Lemon Verbena	8	Stocks	5
Dahlias	5	Linaria	10	Stokesia	5
Daisies	20	Lobelia	10	Sunflowers	15
Datura	15	Love-in-a-Mist	10	Sweet Peas	15
Delphinium (when fresh)	15	Lychnis	20	Sweet Sultan	5
Dianthus	5	Maurandia	25	Sweet William	10
Digitals	20	Mallow Marvels	15	Verbena	8
Eschscholtzia	5	Marigolds	5	Violets	1 year
Evening Primrose	20	Mesembryanthemum	5	Wallflowers	5
Feverfew	20	Mignonette	5	Zinnias	5
Forget-me-not	15	Moon Vine	20		
Four o'Clock	5				

INSECTICIDES AND FUNGICIDES



ACME SPRAYING GUIDE			
Compliance of Acme White Lead and Color Works Detroit, Michigan		WHEN AND WHAT TO SPRAY	Compliance of Acme White Lead and Color Works Detroit, Michigan
CROP	INSECT OR DISEASE	SPRAY WITH	SPRAYING TIME
ALMOND	Red Scale	Acme Garden Guard	From the first appearance of Red Scale until the end of the season. Do not spray after the first of August.
	Black Scale	Acme Garden Guard	From the first appearance of Black Scale until the end of the season. Do not spray after the first of August.
	Leaf Curler	Acme Garden Guard	From the first appearance of Leaf Curler until the end of the season. Do not spray after the first of August.
	Leaf Miner	Acme Garden Guard	From the first appearance of Leaf Miner until the end of the season. Do not spray after the first of August.
APPLES	Apple Maggot	Acme Garden Guard	From the first appearance of Apple Maggot until the end of the season. Do not spray after the first of August.
	Apple Worm	Acme Garden Guard	From the first appearance of Apple Worm until the end of the season. Do not spray after the first of August.
	Leaf Curler	Acme Garden Guard	From the first appearance of Leaf Curler until the end of the season. Do not spray after the first of August.
	Leaf Miner	Acme Garden Guard	From the first appearance of Leaf Miner until the end of the season. Do not spray after the first of August.



WRITE FOR THIS FINE GUIDE—FREE

All poisonous insecticides are shipped by express only, as it is against the Postal Laws to forward Poison by Parcel Post.



Acme Garden Guard

A garden insecticide and fungicide for use as a dust. No water, no mixing, no muss. For use on cabbage, cauliflower, tomato plants, melon vines, currants and gooseberries and other vegetables, flowers and shrubs of many kinds.

Price, 1-lb. sifter-carton, 25c; 5 lbs., 85c, f.o.b. Houston.



Acme Paris Green

A rich, emerald color and of fine, fluffy physical character. Containing 55% arsenious oxide, it will give quickest control where extreme measures are necessary.

For use on potatoes, cotton, tobacco, also to mix with Arsenate of Lead for fruit tree spraying where quick results are necessary.

Price, 1/2 lb., 25c; lb., 50c; 5 lbs., \$2.00; f.o.b. Houston.



Acme Two-Way Spray

A balanced insecticide and fungicide containing 14% Arsenate of Lead and 83% Bordeaux Mixture. Two results with one application.

Price, 1/2 lb., 30c; lb., 50c, not prepaid.



Acme All Round Spray

Acme All Round Spray was made principally for people unfamiliar with insect problems. This spray will give complete protection for shrubs, flowers, vegetable gardens and roses. It contains nicotine sulphate 40% for controlling sucking insects; Arsenate of Lead to destroy chewing insects, and Bordeaux Mixture to prevent blight and fungous diseases.

1/4-lb. carton, 50c; 1-lb. carton, \$1.00, not prepaid.

"BLACK LEAF 40". CANNOT BE SENT THROUGH THE MAILS, being a POISON. Please do not include with your mail orders. This is the insecticide that is so highly recommended by Experiment Stations for destroying all sucking insects, as lice, aphids, thrips, etc. Most efficient on Melon and Squash enemies, green lice on Roses, etc., without injuring foliage. Oz., 35c; (makes 6 gals. spray). 1/2 lb., \$1.25; (makes 40 to 120 gals. spray). 2 lbs., \$3.25; (makes 160 to 500 gals. spray). 10 lbs., \$11.85; (makes 800 to 2500 gals. spray). Prices f. o. b. Houston.

SLUG SHOT. A light composite, finely powdered, easily distributed either by duster or bellows. Thoroughly reliable in killing potato bugs, cabbage worms, slugs, sow bugs, etc. 1-lb. pkg., 25c; 5 lbs., 85c. Cannot be mailed.

FOMO GREEN. A dust for controlling black spots, mildew and chewing insects on roses and other plants. Lb. can, 50c; 5-lb. can, \$2.00, not prepaid.

19th CENTURY INSECTICIDE. A good general spray for shrubbery and trees. 1/4 gal., 50c; 1/2 gal., 75c; gal., \$1.35, f. o. b. Houston.

HAMMOND'S GRAPE DUST. Kills mildew and blight on flowers and fruit. For use on roses and flowers in general, and vegetables of all kinds. Grape Dust is a reliable, diffusable, light weight powder fungicide. 1-lb. pkg., 50c, prepaid.

DRY LIME-SULPHUR SOLUTION. A perfect scale and fungus destroyer; special for plum and peach trees, which need Fall and Spring treatment. Lb., 50c; 5 lbs., \$1.50, not prepaid.

SEMESAN. The universal seed disinfectant and plant stimulant. Important for control of damping off of seedling Gladiolus and disinfection of seed bed soil. Prices, 2 ozs., 50c; 1 lb., \$2.75. Write for leaflets, stating for what purpose desired. Write for leaflets on Semesan, Semesan Jr. and Semesan Bel.

Acme London Purple

A favored insecticide for 50 years. Now stronger and better than ever. London Purple is one of the lightest and fluffiest powdered insecticides on the market, assuring complete coverage and greatest adhesion to foliage.

For use on potatoes, cotton, tobacco, sugar beets, and many other shrubs and vegetables affected by leaf chewing insects.

Price, 1/4 lb., 25c; lb., 50c, not prepaid.



Acme Bait-M

An effective insecticide bait which will throw a ring of protection around shrubs, flowers and plants in garden and lawn.

For use against snails, cutworms, sowbugs, grasshoppers, and many other insects which migrate along the ground.

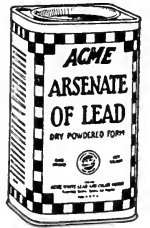
Price, lb., 40c; 3 lbs., 75c, not prepaid.



Acme Arsenate of Lead

The most favored arsenical insecticide found on the American market. It is safest to use on tender foliage and sticks well on the leaves. Recommended for fruit trees, vegetables, bushes and tobacco. Can be used as dust or spray.

Price, 1/2 lb., 30c; lb., 50c; 4 lbs., \$1.25; 100 lbs., \$16.50, f. o. b. Houston.



Acme Bordeaux Mixture

Prevents large losses caused by blight, rot, mildew, scab, anthracnose and certain other fungous diseases. It stimulates plant growth and greatly increases the harvest. Almost every kind of vegetable, fruit and shrub can be greatly improved by the early use of Bordeaux Mixture.

Price, lb., 50c; 4 lbs., \$1.25; 100 lbs., \$15.00, f. o. b. Houston.

Ever Green Will Protect Your Garden

GUARD ITS BEAUTY FROM INSECTS

Evergreen kills chewing and sucking types of insects including the Japanese beetle. Non-poisonous and pleasant to use, won't burn delicate blooms.

1 oz. bottles... \$.035 32 oz. cans... \$ 3.50
6 oz. bottles... 1.00 1 gal. cans... 13.00
16 oz. bottles... 2.00 5 gal. cans... 50.00



SNAROL. An insecticide bait to combat snails, cutworms, sow bugs and grasshoppers. Price, 1 lb., 45c; 3 lbs., 95c.

BORDEAUX MIXTURE (Paste). Prevents blight, rot, mildew, specks and spots. Increases crop yield 15 to 25 per cent. By adding water it is ready for use. One gallon will make one barrel of liquid 1-qt. can, 85c, not prepaid.

FISH OIL SOAP. Destroys lice on house plants, mealy bugs, scale on palms and San Jose scale. Lb., 40c; 5 lbs., \$1.50, not prepaid.

TOBACCO DUST. If dusted on the foliage it destroys rose lice, cabbage and turnip fleas. Lb., 20c; 2 lbs., 35c; 10 lbs., \$1.25; 50 lbs., \$5.00, not prepaid.

DOG AND CAT REMEDIES



FREE DOG BOOK

Polk Miller's famous Dog Book on Diseases of Dogs with symptom chart and instructions on care, feeding and breeding; also Senator Vest's celebrated "Tribute to a Dog." Write for a copy.

AILMENT	MEDICINES	PRICE
DISTEMPER CHOREA	Sergeant's Special Medicine.....	\$1.20
	Sergeant's Condition Pills.....	.60
	Sergeant's Compound Arsenic and Iron Pills.....	
WORMS (Round, Pin, Whip and Hook)	Sergeant's Sure Shot Capsules.....	.60
	Sergeant's Sure Shot Liquid.....	.60
	Sergeant's Puppy Capsules.....	.60
TAPE WORM	Sergeant's Tape Worm Medi- cine.....	.60
WEAKNESS AND GEN'L DEBILITY	Sergeant's Arsenic & Iron Pills Comp.....	.60
	Sergeant's Condition Pills.....	.60
MANGE AND ECZEMA	Sergeant's Mange Medicine.....	.65
	Sergeant's Arsenic & Iron Pills Comp.....	.60
	Sergeant's Skip-Flea Soap.....	.25
EAR CANKER	Sergeant's Canker Wash.....	.60
	Sergeant's Arsenic & Iron Pills Comp.....	.60
BLACK TONGUE SORE MOUTH	Sergeant's Mouth Wash.....	.60
	Sergeant's Pepsin Tablets (Comp'd.).....	.60
EYE TROUBLES	Sergeant's Eye Wash.....	.60
COLDS AND COUGHS	Sergeant's Expectorant Medicine.....	.60
	Sergeant's Condition Pills.....	.60
	Sergeant's Laxative Capsule.....	.60
RHEUMATISM LUMBAGO	Sergeant's Diuretic Pills.....	.60
	Sergeant's Liniment.....	.60
INDIGESTION	Sergeant's Pepsin Tablets (Comp'd.).....	.60
DIARRHOEA	Sergeant's Intestinal Astringent Pills.....	.60
	Sergeant's Pepsin Tablets (Comp'd.).....	.60
	Sergeant's Sure Shot Capsules.....	.60
FITS	Sergeant's Sure Shot Capsules.....	.60
	Sergeant's Condition Pills.....	.60
RUNNING FITS	Sergeant's Sedative Medicine.....	2.00
CONSTIPATION	Sergeant's Laxative Capsule.....	.60
	Sergeant's Condition Pills.....	.60
FLEAS, LICE, TICKS AND HARVEST BUGS	Sergeant's Skip-Flea Soap.....	.25
	Sergeant's Skip-Flea Powder.....	.25
	Sergeant's Disinfectant.....	.25

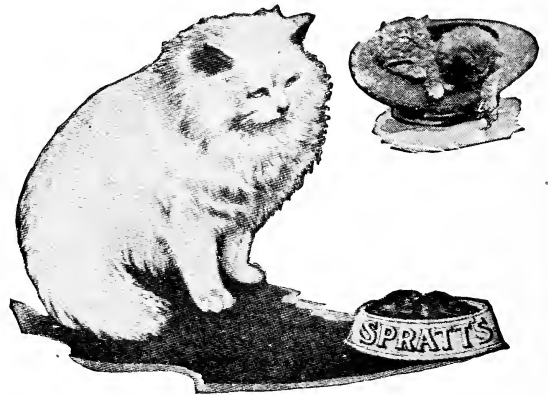
Dog Foods

AUSTIN'S DOG BREAD is in cake form and is obtained in bulk, being the best balanced dog biscuits to be obtained. 3 lbs., postpaid, 65c. Not prepaid, 25 lb. lots, 12c lb; 100 lb. lots, 11½c lb.

PERFECTION DOG FOOD. This is a ground food that can be served alone moistened with water or milk, which makes a well-balanced meal itself. Perfection Food is used and fed to all champions throughout the country. Not prepaid, 5 lbs., 75c; 10 lbs., \$1.25; 25 lbs., \$2.25; 50 lbs., \$4.00; 100 lbs., \$7.50.

CALO DOG FOOD. A health food for all dogs, consisting of meats, oils and vegetables. A cooked food ready to use. Calo Dog Food for most health and vigor in your dog. It is really the wonder dog food of the age. Much cheaper than meat and then, too, ready to serve right out of the can. 1 lb. can, 15c; 7 cans for \$1.00 or a case consisting of 48 one-pound cans for \$6.00, not prepaid.

CALO CAT FOOD. A wonderfully balanced ration. Ready to serve, containing ingredients so very essential for the growth and development for the cat or kittens, specially prepared cooked meat food. 10c per can of 8 ounces, or 48 cans to the case for \$4.50, not prepaid.



Spratt's Cat Medicines

SPRATT'S SPECIAL TABLETS. Price, \$1.00, postpaid.

SPRATT'S CAPSULES FOR ASCARIDS or LARGE ROUND WORMS. Price, 60c, postpaid.

SPRATT'S CAPSULES FOR ASCARIDS or LARGE ROUND WORMS IN KITTENS. For Kittens not less than nine weeks old. Price, 60c, postpaid.

SPRATT'S TONIC AND CONDITION TABLETS. Price, 60c, postpaid.

SPRATT'S PURGATIVE TABLETS. Perfectly safe and thoroughly effective. Price, 60c, postpaid.

SPRATT'S TABLETS FOR CONSTIPATION. A gentle and effective laxative. Price, 60c, postpaid.

SPRATT'S COUGH TABLETS. Should be given after or during recovery from Cough or when the animal is in a generally run-down condition. Price, 60c, postpaid.

CATNIP MICE. A cloth mouse filled with Catnip. A beneficial toy for pet cats and kittens. Provides them with plenty of Catnip. 15c, postpaid.

Bird Supplies

JUSTRITE HONEY ROLL WITH CHARM BELL



Trims bill, affords exercise, affords amusement. A food, a tonic, a real treat. Price, 15c each.

JUSTRITE HONEY ROLL—IT'S TOASTED

A Food Tonic for Canaries

Same as above without bell and of larger size. Price, 15c; 2 for 25c.



Does not contain vegetable glue or glucose which cause most of the intestinal disorders. A combination of selected and wholesome ingredients, including pure honey, relished by all Canaries. Will not fall apart or become sticky in hot or damp weather. Wholesomeness made possible with our toasting process. Furnished with string or metal holder for fastening in cage.

Every Canary owner should treat his pet to a Justrite Honey Roll as Canary will show its appreciation by singing for another.

JUSTRITE VITAMINE HEALTH FOOD

A health preserving food, containing Cod Liver Oil, for healthy cage birds, especially canaries. It is highly recommended to breeding birds, weak and young birds. Promotes vitality, egg producing, fertility and hatchability. Justrite Vitamine Health Food supplies vitamin "B" for their nervous system and vitamins "A" and "D" for building bone, body, muscle, feathers and overcoming leg weakness. 25c each, postpaid.



JUSTRITE COLOR AND PEPPER FOOD

In Can with Metal Pouring Spout

Invaluable during moulting and breeding period. Brings out that deep yellow color so much desired by bird fanciers. 25c each.

JUSTRITE SONG RESTORER

In Can with Metal Pouring Spout

A combination of select and finest quality ingredients that positively will aid canary in regaining lost song, due to excessive moulting, cold, hoarseness or asthma. 25c each.

JUSTRITE MOULTING FOOD

In Can with Metal Pouring Spout

GUARANTEED to aid bird in getting over moult, either in or out of season, quickly and normally, restoring fine beautiful feathers without injuring health or song. Justrite Color and Pepper Food should be fed with Justrite Moulting Food. 25c each, postpaid.



We recommend and offer to our customers Justrite—"The Quality Line" of bird foods and medicines. Each product is a tried and proven formula, scientifically prepared and packed in convenient container.



JUSTRITE EGG AND NESTLING FOOD

A very wholesome and highly nourishing food that will keep birds in perfect health, plumage and song. Invaluable to mother and young birds during breeding period. Packed in sealed cartons. Fed either plain or mixed with hard boiled egg. 20c postpaid.

JUSTRITE BIRD NESTING

A real bird nesting, cleaned by a patented process. No possible chance of your birds contracting any diseases. Ideal for breeding. Exceptionally soft. Birds prefer it. Packed in folding cartons. Price, 15c; 2 for 25c, postpaid.



JUSTRITE FLAKE BIRD CHARCOAL

Bird Charcoal aids digestion. Three times a week either put a little over gravel on bottom of cage or mix a little with Bird Seed. Packed in can with shaker top. Price, 15c postpaid.

JUSTRITE CRUSHED OYSTER SHELLS

Hens will lay hard shelled eggs when supplied with Justrite Crushed Oyster Shells. Keep breeding cage or breeding room supplied with Justrite Crushed Oyster Shells by sprinkling Justrite Bird Gravel on floor of cage and then sprinkling sufficient Justrite Oyster Shells on top of bird gravel. Packed in can with shaker top. Price, 15c postpaid.



JUSTRITE SILVER BIRD GRAVEL

(White) Washed and Screened

Containing Calcium Carbonate and Bird Charcoal (also known as Bird Grit).

Silver Bird Gravel is to birds what teeth are to people. Keep your birds healthy by feeding Justrite Silver Bird Gravel, containing calcium carbonate and bird charcoal, a scientific mixture to prepare food for digestion. Birds will not contract any disease from Justrite Silver Bird Gravel as it is washed, screened, sharp and clean. Enables bird to perfectly grind its food. Will not cake on bird's feet. Net weight 30 ounces. Price, 25c per box, postpaid.

JUSTRITE TRI-ONE GRAVEL PAPER



Sold in round, square and oblong shapes. 1 doz. sheets in an envelope. For the busy housewife, convenient—economical—sanitary—protects bottom of cage. Price, 35c postpaid for 12 sheets. When ordering, give size of cage.

JUSTRITE WILD GRASS SEED

Offers the necessary change of diet consisting of the wild seeds of the fields and forests, relished by all canaries, finches, linnets, parakeets and caged birds. Price, 30c postpaid.



JUSTRITE BALM FOR BALDNESS



Restores feathers to bald heads when all other remedies fail. Also invaluable for sore feet. Box contains two bottles of medicine to be applied very lightly and alternately only to bald heads. Price, 35c per box, postpaid.

JUSTRITE BIRD SALVE

A real bird salve with healing qualities. Gives immediate relief to sore feet, sore legs and scaly legs. First bathe and dry legs and feet. Then apply salve and gently massage. Packed in 1/4-oz. tin boxes. Price, 25c postpaid.



JUSTRITE FEATHER PULLING REMEDY



Guaranteed to stop all feather pulling in Parrots and Canaries. Comes in tin box with metal fastener for attaching inside of cage. Price, 25c postpaid.

Free!

Every Pet Owner should have a copy of the 64-page JUSTRITE CANARY and PET OWNER'S GUIDE BOOK, covering care, feeding and breeding of Canaries, Love Birds, Parrots, Dogs, Goldfish, and Tropical Fish. Send for your copy today.

Birds and Bird Supplies



BIRDS. We carry in stock at all times excellent singers, either solid yellow or yellow and green. \$7.50 each.
Female Canary. Strong, healthy birds. \$1.50 each.

BIRD MANNA. A stimulant and a medicine especially valuable during the breeding season as the old birds feed it to their nestlings and the wonderful increase in the growth of young birds will at once be noted. 2 cakes, 30c, postpaid.



SPRATT'S CLO FOOD. A specially prepared cod liver oil nestling food which is a substitute for egg food, containing all of the elements of an invigorating health diet for canaries and most of the smaller varieties of cage birds. An efficient substitute for egg food, being far less expensive and more easily prepared. 2 boxes, 30c, prepaid.

MEXICAN SALVE. An excellent salve for bare places on head, and sore feet. 25c, postpaid.

BIRD DUSTERS. For using Mite Powder. 25c postpaid.

MOCKING BIRD FOOD. A scientifically prepared food for mocking birds and other soft-billed birds. Large bottle, 60c, postpaid.



SHUR SONG RESTORER FOOD. Nature's most marvelous bird food. A mixture of eight kinds of imported seed combined with a secret formula makes this bird food the most practical one for your feathered pet. It keeps them in good health and song; also acts as a tonic. 30c, postpaid.

Bird Seed

We furnish and supply hundreds of bird fanciers with our **QUALITY BRAND BIRD SEED.** Our seed is bulk and re-cleaned and mixed fresh every day. The ingredients are mixed in such proportions as to form an ideal diet for birds. The ingredients of our mixed bulk bird seed are the best money can buy and cannot be compared with cheaper grades. It costs more but is good to the last grain.



CANARY BIRD SEED MIXED. Lb., 25c; 2 lbs., 45c; 5 lbs., \$1.00; 10 lbs., \$1.70; 50 lbs., \$8.00; 100 lbs., \$15.00, prepaid.

HEMP SEED. Large, plump, re-cleaned seed. Lb., 25c; 2 lbs., 45c; 5 lbs., \$1.00, prepaid.

RED MILLET. Thoroughly re-cleaned, excellent for Parakeets. Lb., 25c; 2 lbs., 45c; 5 lbs., \$1.00, prepaid.

LARGE YELLOW MILLET. Thoroughly re-cleaned. Lb., 25c; 2 lbs., 45c; 5 lbs., \$1.00, postpaid.

FLAX SEED. Excellent for plumage. Lb., 35c, prepaid.

WHITE LETTUCE SEED. Lb., 50c, postpaid.

BLACK THISTLE SEED. Lb., 50c, postpaid.

LARGE BIRD RAPE. Thoroughly re-cleaned. Lb., 25c; 2 lbs., 45c; 5 lbs., \$1.00, prepaid.

LARGE MOROCCAN SICILY. This is the best grade of plain canary. Lb., 25c; 2 lbs., 45c; 5 lbs., \$1.00; 10 lbs., \$1.70; 50 lbs., \$8.00; 100 lbs., \$15.00, prepaid.

MIXED PARROT FOOD. Composed of the very best and nourishing ingredients for a parrot. Lb., 25c; 2 lbs., 45c; 5 lbs., \$1.00; 10 lbs., \$1.70, prepaid.

SUNFLOWER SEED. Large, imported Russian sunflower seed, thoroughly re-cleaned. For parrots. Lb., 20c; 2 lbs., 35c; 6 lbs., \$1.00, prepaid.

MAW or POPPY SEED. An excellent builder or tonic. Lb., 40c, prepaid.

DRIED CHILI PEPPER. 4 for 10c, prepaid.

CUTTLE BONE. With holder. 10c, prepaid.

CUTTLE BONE. Without holder. 4 pieces, 10c; 1b., \$1.00, prepaid.

Bird Books

CANARY BREEDING AND TRAINING. Revised edition. By Chas. N. Page. A wonderful book on breeding, rearing, training and care of canary birds. 50c, postpaid.

AMERICAN CANARY BIRD CULTURE. By Amelia Mayberry. Written and designed for the American Canary Breeder and Nature Lover. 40c, postpaid.

PARROTS. This book is by the well known author, Chas. N. Page, telling about the care and treatment of parrots and other talking birds. 50c, postpaid.

MY BIRD HAS LICE—WHAT SHALL I DO?

JUSTRITE LICE DESTROYER KIT

Guaranteed to rid and keep your Bird and Cage Free of Lice and Mites.

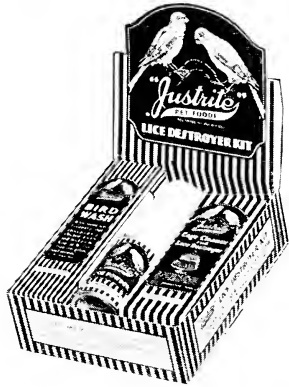
Contains

Justrite Lice Powder...\$0.25
 Justrite Bird Wash... .25
 Justrite Cage Cleaner... .30
 2 Pieces of Cloth for Cleaning Cage.....

Total\$0.80

This Kit Will Last for Months

Items also sold individually at respective prices listed.



JUSTRITE BIRD BITTERS

For Canaries, Love Birds, Parrots and caged birds.

An excellent remedy for colds, coughing, difficult breathing, discharge from nose and puffing out of feathers. Used in place of drinking water or feeding internally. 25c each.

JUSTRITE BIRD TONIC

A proven remedy for Canaries, Parrots, and small cage birds. Gives immediate relief to birds suffering from chronic asthma, catarrh, hoarseness, bleeding bowels, egg bound, and loss of appetite. Packed in bottle with medicine dropper. Used by feeding internally or mixing with food. 25c each.

JUSTRITE PARROT TONIC

Keeps parrots in good condition when fed once a week as a tonic. Gives immediate relief to parrots suffering from asthma, catarrh, hoarseness, colds, loss of appetite and bleeding bowels. Packed in bottle with medicine dropper. Price, 50c each, postpaid.



JUSTRITE IRON TONIC

A wonderful tonic for Canaries, Parrots, and small cage birds suffering from weakness, wasting and loss of appetite. Used by adding to drinking water or feeding internally. 25c each.

JUSTRITE BIRD JELLY

Gives instant relief to birds suffering from asthma, cold, catarrh or hard breathing. Applied by carefully anointing the bird's nostrils as well as rubbing it on the bill of the bird. 25c postpaid.

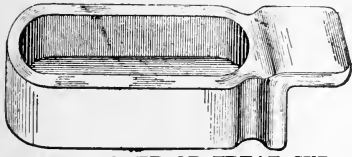


Jackson's Day Old Chicks

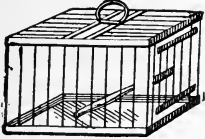
\$15.00 per 100, delivered to you.

We guarantee 100 percent live chicks. Terms cash with order. We can furnish most all breeds. Place your order today.

Bird Supplies



FOOD HOLDER OR TREAT CUP
Fits any wire cage. Ideal for feeding color food, etc. **3 for 30c, postpaid.**



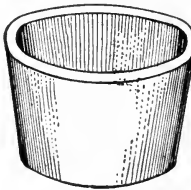
CANARY TRAVELING CAGE
Japanned tin, white only, 8 1/2 x 6 1/4 x 4 1/2 inches high, **\$1.45.**
If by mail, add 25c postage.



CANARY BATHS—OPAL.
We have them in two sizes. Large, 35c; small, 30c, postpaid.

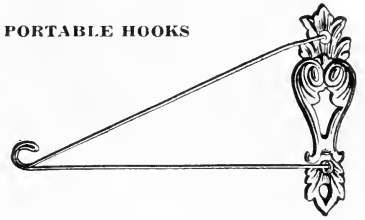


No. 1 Feed or Water Cups
We have them in either glass or opal. **Postpaid, 20c; 2 for 35c.**



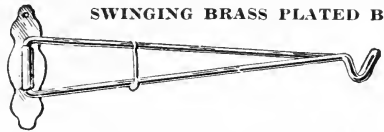
Round Canary Cups
Two inches diameter. Opal. **15c, postpaid.**

PORTABLE HOOKS



Brass Plated, 12 inches long. **60c, postpaid.**

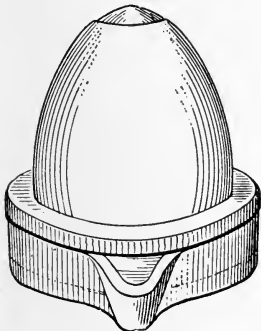
SWINGING BRASS PLATED BRACKET



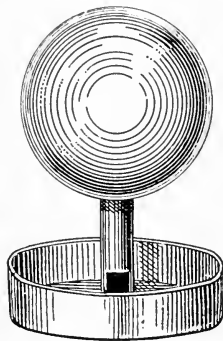
10 inches long \$0.35, postpaid
12 inches long45, postpaid



Extra Heavy Brass Cage Spring
Postpaid, 30c.



INSIDE FOUNTAIN
Total height, 2 3/4 inches. Crystal glass. **60c, postpaid.**
Fill with water, place saucer on opening, then turn over. It will hold enough water to last a bird five days.

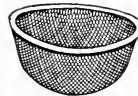


GLOBE FOUNTAIN
With a Japanned metal base for seed or water. **Postpaid, \$1.00.**



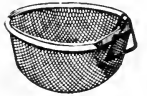
SCREW BRACKETS

For Parrot Cages and Hanging Flower Baskets. Japanned in brown. No. 5, 12 inches, **50c, postpaid.**



WIRE NESTS

These vermin - proof nests fit very nicely into Breeding Cages having Nest Boards. **Plain, 20c, postpaid; Swivel, 30c.**



HOW TO MAKE YOUR BIRD SING

When your Canary has gone through a moult he naturally stops singing. Shur Song Restorer Food is a mixture of eight kinds of imported seed combined with a secret formula which keeps your bird in good health and song, it also acts as a tonic. A box of this, postpaid to you, for 30c. In connection with Shur Song, be sure and feed Jackson's Re-cleaned Bird Seed, composed of the best ingredients money can buy. 5 lbs. of this seed, postpaid to you, for \$1.00.

Goldfish Supplies

Justrite Aquarium Cement—Price, 50c.

Justrite Natural Fish Food—An ideal goldfish food containing the necessary ingredients to keep goldfish in a healthy condition. **2 oz. tin, 15c, postpaid.**

Justrite Tropical Fish Food—A balanced tropical fish and goldfish food. **2 oz. tin, 25c, postpaid.**

Justrite Fish Tonic—Helps to keep water and fish free from disease when added to the aquarium once a month. **Pkt., 25c, postpaid.**

Justrite White Fungus Remedy—A necessary disinfectant and effective remedy for sluggishness, and tail and fin rot. **35c, postpaid.**

Imported Wafer Fish Food—Pkt., 10c, postpaid.

Colored Pearl Chips—20c lb., postpaid.

Colored Sea Shells—15c pkg., postpaid.

Fish Castles—25c to 50c, postpaid.

Turtle Food—20c, postpaid.

Aquarium Plants—20c per bunch, postpaid.

GOLDFISH AND AQUARIUM. By D. F. Banks. A practical treatise for the guidance of amateur aquarists. **Price, 40c, postpaid.**

Jackson's Seeds Grow Better

IMPORTANT TO CUSTOMERS

NON-WARRANTY

O. P. Jackson Seed Co., Inc., give no warranty, express or implied, as to description, type, purity, productiveness, or any other matter of any seeds, plants, trees or bulbs we send out, and we will not be in any way responsible for the crops grown therefrom. If the purchaser does not accept the goods on these terms, they are at once to be returned and the money that has been paid for the same will be refunded.

HOW TO SEND MONEY

Money can be sent safely either by Post Office Order, Bank Draft, Express Draft, Express Order or Registered Letter. If your order amounts to \$1.00 or more it is best to send by one of the above methods. Postage stamps taken in amounts less than one dollar. Never send coin in the mail unless in Registered Letter.

We do not send goods C. O. D. Cash must accompany your order.

ORDER EARLY

It is important to order as soon after you get the catalog as convenient, then you will have your seeds on hand for planting when you want them.

GIVE YOUR FULL ADDRESS

We frequently receive orders without the name of the sender or with insufficient address. Customers should be particular to give full name, post office, county and state, number of street, P. O. box, and the nearest express office.

PRICES

All prices named in this catalog are subject to change without notice, and all sales made are payable in Houston, Texas.

DO YOU WANT THIS CATALOG?

Be sure and send us an order for seeds if you want this catalog next year. If you do not send us an order your name is taken from our mailing list, believing you have changed your address, or you may have come to the store, where you get a catalog at the counter. We prefer to have you on our list as an annual customer; then you will always get our catalog as soon as it comes from the press.

WHEN YOU CHANGE YOUR ADDRESS NOTIFY US IF YOU WANT THIS CATALOG.

INDEX

African Daisy	5	Corn, Sweet and Pop	18	Japanese Hop	10	Radishes	23
Ageratum	1	Cosmos	3, 4	Kale	18	Rape	19
Alyssum	1	Cucumber	17	Kohl-rabi	18	Ricinus	8
Amaranthus	1	Cyclamen	4	Kudzu Vine	10	Salpiglossis	9
Ampelopsis	10	Cyress Vine	10	Lantana	6	Salsify	24
Antirrhinum	1	Dahlia	4	Larkspur	4	Salvia	8
Aquilegia	1	Delphinium	4	Lavender	5	Scabiosa	8
Arctotis	2	Dimorphothea	5	Leek	18	Scarlet Runner Bean	10
Artichoke	12	Dog Remedies	28	Lettuce	19	Semesan	27
Asparagus	12	Dog Foods	28	Linum	6	Shasta Daisy	4
Asparagus Fern	1	Dusty Miller	5	Lobelia	6	Solanum	8
Asters	2	Eggplant	18	Lupines	2, 6	Spinach	24
Balloon Vine	10	Endive	18	Mangels	14	Squash	24
Balsam	2	Everlasting Sweet Peas	10	Marigold	6	Stim-U-Plant	6
Balsam Apple	10	Flower Seeds	1-10	Mexican Fire Bush	6	Stocks	8
Balsam Pear	10	Four O'clock	5	Mignonette	6	Strawflowers	5
Beans	12, 13	Foxglove	5	Moonflower	6	Sunflower	9
Beets	14	Fungicides	27	Morning Glory	10	Sweet Peas	9
Begonia	2	Gaillardia	5	Mourning Bride	10	Sweet Sultan	9
Bellis	2	Geranium	5	Mustard	20	Sweet William	9
Bird Supplies	29, 30, 31	Germination Table	26	Nasturtiums	7	Texas Blue Bells	2
Blue Lace Flower	2	Gilia	5	Okra	5	Texas Blue Bonnet	2
Broccoli	14	Goldfish Supplies	31	Onions	21	Thunbergia	10
Brussels Sprouts	14	Gomphrena	5	Pansies	7	Tobacco	24
Cabbage	15	Gourds	10	Parsnips	22	Tomatoes	25
Calendula	2	Grafting Wax	10	Parsley	22	Torenia	9
Calliopsis	3	Grass, Lawn	26	Passion Flower	9	Tufted Pansies	9
Cat Remedies	28	Grasses, Ornamental	26	Peas	23	Turnips	25
Canary Bird Vine	10	Gypsophila	5	Peppers	23	Vegetable Seeds	12-25
Candytuft	3	Helichrysum	5	Petunias	7	Verbena	9
Cantaloupe	16	Heliotrope	5	Phlox	8	Vinca	10
Cardinal Climber	10	Herbs	19	Physalis	8	Vines	10
Carnation	3	Hibiscus	5	Planting Table	8	Viola	9
Carrots	17	Hollyhocks	5	Poppies	11	Wallflower	10
Castor Bean	8	Hotkaps	5	Portulaca	8	Watermelon	20
Cauliflower	15	Hyacinth Bean	10	Potatoes	22	Wild Cucumber	10
Celery	16	Ice Plant	6	Pumpkins	23	Wildflowers	10
Centaurea	3	Insecticides	27	Pyrethrum	31	Wisteria	10
Chinese Cabbage	15					Zinnias	Inside Front Cover
Chinese Woolflower	3						
Chrysanthemums	4						
Clematis	10						
Cockscomb	3						
Coleus	4						
Collards	17						

WEIGHT OF SEED AND QUANTITY USUALLY SOWN PER ACRE

Lbs. per bu	Sow per acre	Lbs. per bu	Sow per acre	Lbs. per bu	Sow per acre	
Alfalfa Seed	60	20-25 lbs.	Clover, Bur. Seed in bur	40 lbs.	Peanuts, Spanish	30
Barley Seed, Broadcast	48	2-3 lbs.	Clover, Sweet	60	Peas, Field or Stock	30-40 lbs.
Bean Seed, Dwarf, In drills	60	1 1/2 bu.	Cucumber, In hills	2 lbs.	Broadcast	60
Beans, Pole, In drills	60	15-20 lbs.	Feterita, In drills	50	Peas, Field or Stock, In drills	15-25 lbs.
Beans, Soja, Field, Broadcast	60	75-90 lbs.	Grass, Sudan, In drills	50	Peas, Garden, In drills	70 lbs.
In drills	60	25 lbs.	Grass, Sudan, Broadcast	50	Potatoes, Cut Tubers	60
Beans, Velvet, Field, In drills, 3 to 5 ft. rows	60	20-25 lbs.	Grass, Rhodes, In drills	5	Potatoes, Sweet	5 bu.
Beet, Mangel-Wurzel	32	6 lbs.	Grass, Rhodes, B'dcast	14	Potatoes, Sweet, Slips	7,000 slips
Broom Corn Seed, In drills	46	6 lbs.	Grass, Rescue	14	Pumpkins, In hills	3 lbs.
Cabbage, Transplant in beds		10-20 lbs.	Grass, Bermuda	25	Radish, In drills	8-10 lbs.
Cantaloupe, In hills		1/4 - 1/2 lb.	Grass, Johnson	15	Rape, Dwarf Essex	6-8 lbs.
Carrots, In drills		2-3 lbs.	Grass, Lawn	50	Sorghum, Broadcast	56
Cane or Sorghum, Broadcast	50	3-4 lbs.	Kaffir Corn, In drills	50	Sorghum or Sugar Cane, Broadcast	50
In drills	50	50-150 lbs.	Kaffir Corn, Broadcast	50	Sorghum, In drills	50
Cane or Sorghum, In drills		8-10 lbs.	Melon, Musk, In hills	2-3 lbs.	Sprach, In drills	50
Cotton	32	1/2 - 1 bu.	Melon, Water, In hills	4-5 lbs.	Squash, Bush Varieties, In hills	4 lbs.
Corn, In hills	56	8-10 lbs.	Millet, German, B'dcast	50	Squash, Running Varieties, In hills	3 lbs.
Clover, Lucerne or Alfalfa	60	20-25 lbs.	Milo Maize, In drills	50	Tomato, To transplant	1/4 lb.
Clover, Bur. Hulled seed	60	15-20 lbs.	Oats, Broadcast	32	Turnip, Broadcast	2-3 lbs.
			Onion Seed, In drills	3	Turnip, In drills, 1 oz. to 250 ft.	1 1/2 lbs.
			Onion Sets, In drills	32	Vetch, Broadcast	30-40 lbs.
			Onion Seed, Drill for sets	50 lbs.	Wheat, Broadcast	60
			Onion Plants, Rows 15 in. apart, 5 in. apart in rows	6-12 bu.		
			Peanuts, Virginia	22		
				75,000 pnts		
				1-1 1/2 bu.		

We handle a complete line of high grade field seeds, and carry in stock Alfalfa, Clovers, all kinds of Seed Corn, Cow Peas, Velvet Beans, Soy Beans, Cotton Seed, all kinds of Grass Seed, Cane Seed, Peanuts, Maize, Kaffir Corn, etc. Write for our Special Field Seed Price List.

Jackson's Beautiful Gladioli

This class of spring and summer flowering bulbs makes one of the most imposing and most gorgeous of displays. Grow best in rich, light soil, exposed to plenty of sunlight. Easy to grow; cheap in comparison to the blooms you get.

Novelties in Gladioli

MRS. LEON DOUGLAS. Rose, striped with flame and brilliant scarlet. Lip is pale lemon slightly speckled with ruby. 20c each; \$2.00 per doz., postpaid.

LOS ANGELES. A shrimp-pink with an orange lip; carmine throat. 20c each; \$2.00 per doz., postpaid.

LE MARECHAL FOCH. Flesh-pink. 20c each; \$2.00 per doz., postpaid.

BUTTER EOY. 20c each; \$2.00 per doz., postpaid.

PANAMA. A new one which is a great improvement over the America, producing the largest and most beautiful spikes of all pink sorts. First size bulbs, \$1.00 per doz., postpaid. Not prepaid, \$3.00 per 50; \$5.50 per 100.

AMERICA. An old-time favorite; a soft lavender-pink. Bulbs of extra size, \$1.00 per doz., postpaid. Not prepaid, \$3.00 per 50; \$5.50 per 100.

MRS. FRANCIS KING. A beautiful brilliant vermilion-scarlet. First size bulbs, \$1.00 per doz., postpaid. Not prepaid, \$3.00 per 50; \$5.50 per 100.

CHICAGO WHITE. A beautiful white Gladiolus, with a lavender marking in the throat. First size bulbs, \$1.00 per doz., postpaid. Not prepaid, \$3.00 per 50; \$5.50 per 100.

MRS. FRANK PENDLETON. A wonderful bloomer of a delicate flush salmon-pink. First size bulbs, \$1.00 per doz., postpaid. Not prepaid, \$3.00 per 50; \$5.50 per 100.

PRIMULINUS HYBRIDS. A wide range of colors is found in this type, from a light yellow to the deepest orange and from the softest salmon-pink to a rich crimson. First size bulbs, \$1.00 per doz., postpaid. Not prepaid, \$3.00 per 50; \$5.50 per 100.

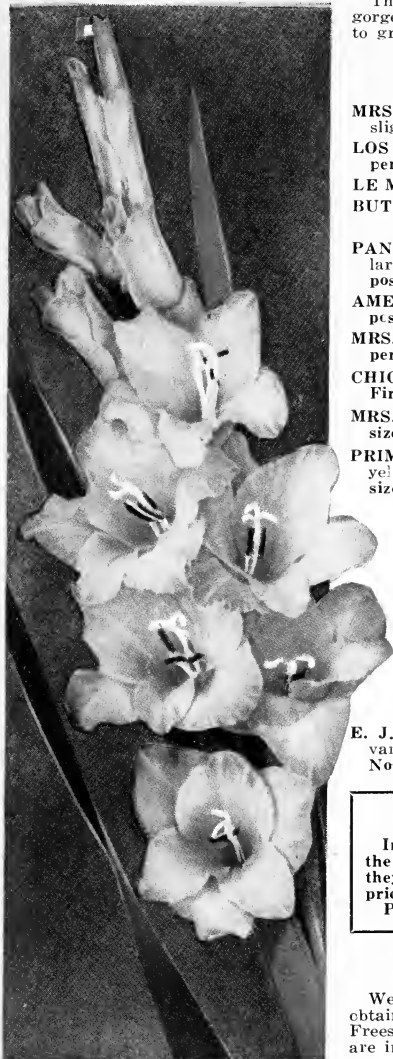
BARON J. HULOT. A beautiful dark velvety purple. First size bulbs, \$1.00 per doz., postpaid. Not prepaid, \$3.00 per 50; \$5.50 per 100.

SCHWABEN. The largest flowering Gladiolus of yellow color, a clear citron-yellow with an aster-purple tongue on lower petals. First size bulbs, \$1.00 per doz., postpaid. Not prepaid, \$3.00 per 50; \$5.50 per 100.

HYBRIDS MIXED. A wonderful range of colors, from the lightest of yellows to the deepest of orange and from the softest shade of salmon-pink to the richest crimson. First size bulbs, \$1.00 per doz., postpaid. Not prepaid, \$3.00 per 50; \$5.50 per 100.

HALLEY. A beautiful delicate salmon-pink with a slight roseate tinge. The lower petals have a creamy blotch and a bright red stripe run through the center. First size bulbs, \$1.00 per doz., postpaid. Not prepaid, \$3.00 per 50; \$5.50 per 100.

E. J. SHAYLOR. A superb rose-pink Gladiolus. Every garden should have some of this variety. Never before offered this cheap. First size bulbs, \$1.00 per doz., postpaid. Not prepaid, \$3.00 per 50; \$5.50 per 100.



Our Rainbow Mixture

In our Rainbow Mixture you will find named varieties as well as an assortment of the most beautiful Gladioli grown. The size of the bulbs is very large and consequently they produce blooms that are remarkable both in size and color. Don't compare our prices with small bulbs, as our bulbs are larger and sure bloomers. Price, \$1.00 per doz., postpaid. Not prepaid, \$3.00 per 50; \$5.50 per 100.

Winter Blooming Bulbs

We carry in the fall of the year the finest assortment of winter and early spring bulbs obtainable, such as Hyacinths, Narcissi, Tulips, Crocus, Easter Lily Bulbs, Calla Lily Bulbs, Freesias, Roman Hyacinths, Chinese Sacred Lilies, Ranunculus, Anemones. These bulbs are in stock, usually from August to December. Write for prices at that time.

Cannas

The New Improved Type.

HUNGARIA. Pink.
KING HUMBERT. Scarlet.
YELLOW KING HUMBERT.
THE PRESIDENT. Glowing scarlet.
30c per root; 4 for \$1.00, postpaid.

Other Bulbs

GERMAN IRIS. 25c per root; 5 for \$1.00.

MONTBRETIAS. A highly valued cut flower. 15c each; 3 for 40c; \$1.50 per doz.

ZEPHYRANTHES (Fairy Lily). A beautiful clear rose lily. 15c each; 3 for 40c; \$1.50 per doz.

AMARYLLIS, Giant-Flowered. This selection of giant bloomers in wonderfully varied and brilliant colorings has been made from thousands of seedlings produced from hand hybridized flowers by an expert grower. 75c each; 2 for \$1.25, postpaid.

AMARYLLIS, Johnsoni. Sometimes called the St. Joseph's Lily. A beautiful crimson-scarlet with a broad white stripe down the center of each petal. 40c each; ½ doz., \$2.25; doz., \$4.00, postpaid.

THE GUERNSEY LILY (or Red Spider Lily). A Lily of unusual beauty; the flower petals are long, narrow and do not close together. The color is a deep lovely coral-pink. Bulbs, 30c each; 2 for 55c; 4 for \$1.00, postpaid.

DAHLIA ROOTS. Grown in Colorado by a famous Dahlia grower, and the roots are all from named varieties. We can supply them in white, pink shades, yellow shades, lavender shades and red shades. 25c each; 2 for 45c; \$2.25 per doz., postpaid.

TUBEROSE, Mexican Everblooming. Single-flowering and very fragrant. Extremely popular and easy to grow. 60c per doz., postpaid. Not prepaid, \$2.00 per 50; \$3.50 per 100.

FANCY-LEAVED CALADIUMS. We offer a very rare mixture made up from the choicest varieties. 25c each; \$1.35 per 6; \$2.50 per doz., postpaid.

CINNAMON VINE ROOTS. A well known hardy climber, quick grower, vines will sometimes run 25 to 40 feet in one season. 2 for 25c; \$1.00 per doz., postpaid.



Jackson's Dahlia.



Jackson's Spencer Sweet Peas California Grown

We list only the standard giant type of named Spencer Sweet Peas. These named varieties have proven they are the best for our section, producing the largest blooms and longest spikes. Be sure and inoculate your seed with NITRAGIN, you increase the vigor and vitality of the plant and produce a much better flower. Price, 25c.

"OUR GOLD MEDAL MIXTURE." This mixture is composed of the very best colors of the named type of Spencer Sweet Peas. Pkt., 10c; oz., 30c; 1/4 lb., \$1.00, postpaid.

KING EDWARD. A beautiful carmine-scarlet. Pkt., 10c; oz., 35c, postpaid.

KING WHITE. The purest white Sweet Pea in the Spencer family. Pkt., 10c; oz., 35c, postpaid.

PICTURE. A giant cream-pink. Pkt., 10c; oz., 35c, postpaid.

ROYAL SCOT. A beautiful scarlet Sweet Pea of exceptional brilliancy. Pkt., 10c; oz., 35c, postpaid.

AUSTIN FREDERICK. A beautiful clear lavender shade. Pkt., 10c; oz., 35c, postpaid.

TANGERINE IMPROVED. A beautiful glowing orange. Pkt., 10c; oz., 35c, postpaid.

KING MAUVE. The largest waved lavender variety. Pkt., 10c; oz., 35c, postpaid.

HEAVENLY BLUE. The most pleasing shade of blue. Pkt., 10c; oz., 35c, postpaid.

Any six packets of above Sweet Peas, postpaid for 50c.