

Historic, Archive Document

Do not assume content reflects current scientific knowledge, policies, or practices.

6277

The Preferred Stock

FOR THE TRADE

FALL 1930 • SPRING 1931



PRESIDENT HERBERT HOOVER ROSE HT.

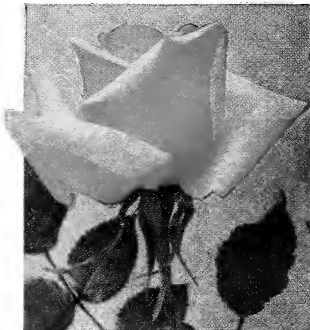
The largest and most beautifully formed Rose of the new color blends.
Buds are long and deep; flowers 5 to 6 inches across.

Jackson & Perkins Company

Wholesale Only
Newark, New York.



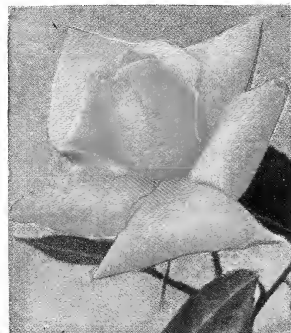
Etoile de France



Betty Uprichard



Mme. Jules Bouche



Mme. Edouard Herriot



Red Radiance



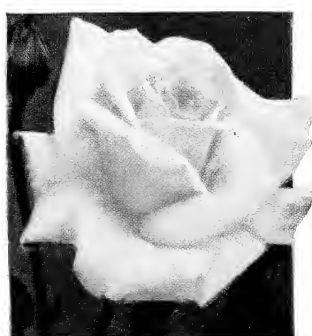
Souv. de Claudius Pernet



Mrs. Aaron Ward



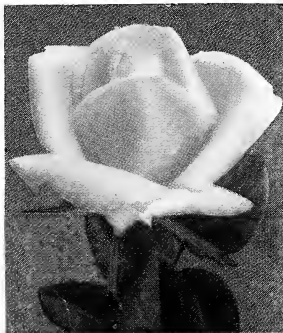
Margaret McGredy



Mme. Butterfly



Radiance



Duchess of Wellington



Francis Scott Key

THE "J. & P. PREFERRED" DOZEN

A GROUP of Hybrid Tea Roses selected for range of color, thriftiness, beauty, and adaptability to all parts of the country. They have been carefully chosen from a large collection of varieties as best worthy of maintaining the high standard set by the "J. & P. Preferred" Dozens of former years. Ready in autumn 1930 and spring 1931.

Copies of the color pictures of above dozen are available to our customers for sales promotion. Prices on application



Hybrid Tea Roses on Multiflora Japonica stock at Shiloh—a part of our 1930 block

Roses

GRADES. For early fall delivery we offer No. 1 grade only. For late fall and spring delivery we can supply No. 1½ (Medium) grade at 30% off and No. 2 grade at 50% off these prices. The following prices apply on 2-yr. No. 1 grade:

Ramblers and Climbers

(o) On own roots

(b) Budded

	Per 10	Per 100
b Albertine. Loose clusters of coppery chamois-yellow flowers, changing to coppery rose.	\$4 00	\$35 00
b Alida Lovett. A splendid, large-flowered, light shell-pink climber, lighter than Mary Wallace and a rapid, vigorous grower, although blooming later.	3 00	25 00
o American Pillar. Tremendous growth and glossy, permanent foliage. Flowers single, brilliant pink with a white eye, borne in clusters as large as your head. The most popular single-flowered climber.	2 20	18 00
ob Aviateur Blériot. Buds orange, pink, and apricot; flowers double, medium size, pale yellow to white. Foliage of the handsomest. Growth moderate. One of the most highly regarded yellow climbers.	3 00	25 00
o Baltimore Belle. An old sort, still admired by many. The flowers are light pink and cream. Growth tall and rapid.	2 50	20 00
ob Bess Lovett. Large, well-shaped blooms of bright, light crimson. Much more vigorous and generally more satisfactory than Climbing American Beauty.	3 00	25 00
b BONFIRE. Rambler of Dorothy Perkins type, literally covered with large trusses of crimson flowers. Blooms about two weeks ahead of Dorothy Perkins. A splendid forcer for pot trade.	4 50	40 00

b **CHAPLIN'S PINK CLIMBER.** A pink replica of Paul's Scarlet Climber of which it is a seedling. Blooms in clusters of 8 to 12 fairly large flowers. It is clear pink with a tuft of yellow stamens. \$7 for 10; \$60 per 100.

ob Christine Wright. A moderate-growing variety of Mary Wallace type, but is the first climber to bloom. It sometimes bears flowers in summer and autumn. A favorite sort with many growers.	3 00	25 00
ob Climbing American Beauty. Extremely beautiful large buds and flowers of bright purplish crimson. Best grown as a pillar Rose.	3 00	25 00
b Climbing General MacArthur. A climbing sport of the Hybrid Tea of the same name. Bright red blooms, borne freely in June and occasionally thereafter. Moderate vigor.	3 50	30 00
ob Climbing Gruss an Teplitz. Vigorous, branching grower, bearing continually bright crimson flowers like the bush Rose of the same name.	3 50	30 00
b Climbing Hoosier Beauty. Large, velvety crimson blooms.	3 50	30 00
b Climbing Lady Ashtown. A splendid, hardy, climbing Hybrid Tea Rose with exquisite, pointed blooms of vivid pink. This is the best climber of its type.	3 50	30 00

RAMBLER AND CLIMBING ROSES, continued

	Per 10	Per 100
b Climbing Lady Hillingdon. Beautiful, large flowers of apricot and saffron-yellow. The plant is very vigorous where the winters are not too severe. It blooms all the time.	\$3 50	\$30 00
b Climbing Los Angeles. The same beautiful salmon and gold flowers as the dwarf, but of strong, healthy growth.	3 50	30 00
b Climbing Mme. Caroline Testout. Climbing form of the well-known Hybrid Tea. Probably the hardiest of the type and very free-blooming.	3 50	30 00
b Climbing Mrs. Aaron Ward. An extremely vigorous climber with flowers larger than the bush variety.	3 50	30 00
b Climbing Souv. de Claudius Pernet. Yellow like the bush Rose.	4 00	35 00
b Climbing Sunburst. Like the bush Rose of the same name, but a vigorous climber. Flowers fine, sunny yellow.	3 50	30 00
b Climbing Sunstar. Fragrant, orange and vermilion flowers.	4 00	35 00
ob Crimson Rambler. The old favorite, with large heads of very gay, small, scarlet-crimson flowers. Recommended for large specimen bushes and hedge-rows.	2 20	18 00
o Dorothy Perkins. Graceful, twining growth of great vigor. Flowers soft shell-pink, small, crinkly, in great clusters.	2 20	18 00
o Dr. W. Van Fleet. Large flowers of exquisite pale pink on fine, long stems. Extremely vigorous, and has marvelously fine foliage. One of our most popular of all climbers.	3 00	25 00
b Emily Gray. The most beautiful yellow climber, with large golden buds and blooms which do not fade. The foliage is glossy, pointed, and holly-like. Growth very vigorous.	3 50	30 00
ob Eugène Jacquet. Vigorous, upright grower bearing large clusters of bright cherry-red, double flowers which last a long time. A splendid forcer.	3 00	25 00
cb Excelsa. Bright crimson flowers in large clusters. Very vigorous and hardy. Preferred by many to Crimson Rambler, and generally called "Red Dorothy Perkins".	2 20	18 00
ob Flower of Fairfield. Much like Crimson Rambler, but bears occasional flowers in summer and autumn. Frequently called Everblooming Crimson Rambler.	3 00	25 00
b Gardenia. One of the strongest growers, with beautiful glossy foliage. Buds rich creamy yellow and open flowers yellow at first. Very popular among the yellow climbers.	3 00	25 00
o Goldfinch. Small, semi-double, yellow flowers, slightly fragrant, borne in clusters.	2 20	18 00
b Hiawatha. Long, slender canes; fine for arches. Single flowers of American Pillar type, but smaller and redder, with a copper suffusion when nearly open.	2 20	18 00
o Lady Gay. Very much like Dorothy Perkins, but occasionally blooms in summer and fall.	2 20	18 00
b LE REVE. The long-wanted, absolutely hardy, unfading yellow climber. Flowers very large, semi-double, vivid golden yellow both in bud and open. Foliage dark and glossy; growth very vigorous. Superior in color to Gardenia, Goldfinch, and others of that type, and much harder than Emily Gray. A more reliable bloomer than Star of Persia.	4 00	35 00
b Maréchal Niel. Lovely lemon- and golden yellow flowers on a strong climbing plant. Suitable for mild climates only.	4 00	35 00
b Marie Gouchault. Early-flowering, of Dorothy Perkins type. A fine forcing Rose, with flowers of brilliant light red and salmon-pink.	4 00	35 00
b Mary Lovett. Large, Hybrid Perpetual-like flowers of pure snowy white. A very vigorous grower and one of the finest of its color.	3 00	25 00
ob Mary Wallace. The outstanding large-flowered pink climber. Very brilliant and invariably satisfactory. Growth is enormous and rapid, and the long-stemmed blooms make good cut-flowers.	3 00	25 00
b Mme. Grégoire Staechelin. See Staechelin.		
ob Paul's Scarlet Climber. The most popular red-flowered climber of the day. Flowers large, well-shaped, vivid scarlet-red, fading but little. Has a tendency to bloom again in the fall.	3 00	25 00
b PRIMROSE. New hardy yellow climber with double, canary-yellow flowers in great profusion. Lighter than Le Reve and more double. Much harder than Emily Gray. We believe it is the most satisfactory yellow climbing Rose for the North. It is very new and everyone who has it is enthusiastic over its merits. \$6 for 10; \$50 per 100.		
ob Roserie. Exactly like Tausendschön, except that it is several shades darker pink.	3 00	25 00
b SCORCHER. An Australian introduction that has created a world sensation. Very vigorous and hardy with handsome vermilion flowers covering the plant in great profusion. There is nothing else like it.	12 50	100 00
o Silver Moon. The favorite white climber. Flowers semi-double, very large, with brilliant yellow stamens. Growth even more vigorous than American Pillar. Foliage perfect.	3 00	25 00
ob Source d'Or. Double yellow flowers much like Aviateur Blériot, but considered somewhat harder.	3 00	25 00
b STAECHELIN. This most unique climber was discovered in Spain in 1925 by Mr. Nicholas, now head of our Research Department, and has just been awarded the John Cook Medal for the most outstanding climber. Hardy, vigorous grower. Crimson buds opening to large, perfumed, pale pink flowers.	10 00	75 00
ob Tausendschön. Vigorous, thornless plant bearing large clusters of medium-sized flowers varying from creamy white to soft pink. One of the most charming and most popular climbers. Sometimes called "Thousand Beauties".	2 20	18 00

The wholesale prices in our lists apply on wholesale quantities. Orders should call for 10 of a kind and size, and beyond that for multiples of 10



The best block of Baby Roses we have produced in many years. Photographed August, 1930

RAMBLER AND CLIMBING ROSES, continued

	Per 10	Per 100
o Trier. Moderate grower with large clusters of small, creamy white flowers. Frequently blooms in autumn.....	\$2 20	\$18 00
o Veilchenblau. Rosy purple buds and flowers turning grayish blue. Extraordinarily vigorous and decidedly unusual in color. Usually called the "Blue Rambler".....	3 00	25 00
o White Dorothy. Like Dorothy Perkins, except that the flowers are white. The best double, small-flowered white rambler.....	2 20	18 00
o Wichuraiana. The wild Rose from Korea which is the ancestor of most climbers. A fine ground-cover with glossy leaves and clusters of starry white flowers in midsummer and a profusion of red fruits late in the season.....	2 50	20 00
o Yellow Rambler. Yellow flowers in large clusters.....	2 50	20 00

Moss Roses

(b) Budded

	Per 10	Per 100
b Blanche Moreau. The charming old white Moss Rose with a pale pink heart.....	\$3 00	\$25 00
b Crested Moss. Beautiful pink buds and blooms with a feathery, hooded calyx.....	3 00	25 00
b Henri Martin. The best red Moss Rose.....	3 00	25 00
b White Moss. The fine pure white Moss of old-time gardens.....	3 00	25 00

Dwarf Polyantha or "Baby" Roses

(o) On own roots

(b) Budded

	Per 10	Per 100
ob Baby Rambler. The original, light crimson sort with fine heads of small flowers.....	\$3 00	\$25 00
b Baby Tausendschön. A dwarf, everblooming form of Tausendschön. Very pretty and prolific.....	3 00	25 00
b Brilliant Echo. Improved Echo; like Roserie in color but more uniform in color.....	4 50	40 00
b Cécile Brunner. Small, perfectly formed, pink and gold buds and flowers like tiny Tea Roses. Very popular and always in demand.....	3 00	25 00
b Chatillon Rose. Vivid light salmon-pink, semi-double flowers in enormous heads. Lasts a long time and is extremely prolific. Undoubtedly one of the finest.....	3 00	25 00
b Clotilde Soupert. An old-time Polyantha with large, globular flowers of rosy white tinted with pink in the center.....	3 50	30 00
o Echo. A soft pink, dwarf sport of Tausendschön, with the same lovely, frilly flowers. Very free-flowering.....	3 00	25 00

We cannot undertake to supply long and much assorted lists of stock calling for only small bundles of each kind, as our business is exclusively wholesale and we do not have the facilities to handle retail orders

DWARF POLYANTHA OR "BABY" ROSES, continued

	Per 10	Per 100
ob Ellen Poulsen. Very popular, small-flowered type of soft rose-pink. Vigorous, healthy, and very free-flowering.	\$3 00	\$25 00
b Erna Teschendorff. A very popular bright red sort, much brighter than the original Baby Rambler.	3 00	25 00
b Eva Teschendorff. Dwarf grower with large, frilled, snow-white flowers tinted green. Very dainty.	3 00	25 00
o George Elger. A delicately beautiful variety shaped like Cécile Brunner, but soft golden yellow in bud and paler in open flower.	3 00	25 00
b GOLDEN SALMON. <i>New.</i> Large clusters of striking reddish orange buds and blooms of most amazing color. The compact bushes bloom continually and make a fine mass effect. Attracts unlimited attention and admiration.	3 50	30 00
b Greta Kluis. A bright crimson sport of Baby Tausendschön of the same type in flower and habit.	3 00	25 00
b Gross an Aachen. Large flowers like Hybrid Teas, orange-pink in bud, paling to soft salmon-pink and white on opening. This is one of the most remarkable Roses in the world and is unrivaled for mass bedding or edging purposes. It is continually in flower and suffers from no diseases.	3 00	25 00
ob Ideal. Really the finest dark red—darker, more even color than Miss Edith Cavell. Flowers small and in gigantic clusters.	3 00	25 00
o Jeanne d'Arc. Pure white flowers in large clusters; delightfully perfumed.	3 00	25 00
o Katharina Zeimet. Much the same, but flowers are smaller and more freely produced. A fine edging variety.	3 00	25 00
b Lady Reading. A bright, light red sport of Ellen Poulsen with all the good traits of that popular variety.	3 00	25 00
ob Miss Edith Cavell. Brilliant crimson, with white center. Flowers small, in very large bunches. Free grower and bloomer.	3 00	25 00
b Mme. Anth. Kluis. A brilliant crimson-scarlet form of Orleans, with a distinct orange undertone. Very showy and satisfactory in every respect.	3 00	25 00
b Mrs. W. H. Cutbush. Soft pink flowers in clusters, like a dwarf, everblooming Dorothy Perkins.	3 00	25 00
b ORANGE PERFECTION. Orange-red. Probably the best of the type for general purposes and a good forcer for pot trade.	4 00	35 00
b Orléans. The most popular light red sort for many years. Fine, bushy plants crowded with clusters of small flowers all season.	3 00	25 00
b RUDOLPH KLUIS. Vermilion buds; flowers tinted cerise; of rather large type. Very free-flowering and compact bush.	3 00	25 00
b SUPERBA. The deepest maroon Polyantha. Vigorous bush, throwing large flowering heads in quick profusion.	3 00	25 00
b Suzanne Miller. Another Orléans sport with bright, fadeless cherry-red blooms. Withstands both hot and rainy weather without damage.	3 00	25 00
ob Triomphe Orléanais. One of the earlier improvements on Orléans with more profuse and brighter bloom. Finest of the crimson Polyanthas.	3 00	25 00
ob Yvonne Rabier. Fine, bushy plants with abundant foliage and great quantities of medium-sized, very double white blooms. A fine edging variety.	3 00	25 00

Tea, Hybrid Tea and Everblooming Roses

(a) On own roots (b) Budded

(Varieties on own roots 5 cts. less, and available for spring delivery only.)

	Per 10	Per 100
o Alexander Hill Gray. White, tinted lemon and gold. A superb Tea Rose for mild climates.	\$3 50	\$30 00
o American Legion. A popular bright red variety with long stems.	3 50	32 00
b Angèle Pernet. The most brilliantly colored mandarin and yellow Rose in existence.	4 00	35 00
b Angelus. Large, creamy white blooms of exquisite shape, very freely produced.	3 50	30 00
ob Antoine Rivoire. Very double, flat flower of creamy white with lilac shading at the center. A very dependable and popular variety.	3 50	30 00
b Aspirant Marcel Rouyer. A stiff, wiry grower with long-pointed buds and exquisitely shaped blooms of orange and pale yellow. Very free-flowering and vigorous.	4 00	35 00
o Augustine Guinoisseau. A popular old Rose of the La France type but pure silvery white.	3 50	30 00
ob Betty. A very popular, vigorous Rose with large, handsome foliage and very long, coppery buds which open to soft pinkish yellow, semi-double flowers of great size. Splendid for massing in large beds.	3 50	30 00
b Betty Uprichard. One of the finest new Roses, with brilliant copper-red buds and semi-double, salmon-pink flowers stained with copper-pink on the outside. It is a profuse bloomer and one of the outstanding varieties in commerce.	4 00	35 00
b Briarcliff. The most recent and the best sport of Columbia. Fine, handsome flowers of the even shade of silvery rose-pink.	3 50	30 00
b CALEDONIA. Large, long-pointed, cone-shaped buds; flowers large, full, double, high-centered, borne singly on long, strong stems. When first open, they are slightly lemon tinted, changing to pure white as they develop. A fine garden Rose.	10 00	75 00

The wholesale prices in our lists apply on wholesale quantities. Orders should call for 10 of a kind and size and beyond that for multiples of 10

TEA, HYBRID TEA AND EVERBLOOMING ROSES, continued

	Per 10	Per 100
b Charles K. Douglas. A very fine bright red bedding Rose which is becoming very popular as its merits are known. The flowers are large, semi-double, brilliant light crimson with a scarlet undertone, and are produced in great numbers throughout the season.	\$3 50	\$30 00
b CHARLES P. KILHAM. The finest variety on the market of the Mme. Edouard Herriot color. The very double flowers are blazing scarlet-orange at first and open bright orange-pink with fiery centers. Good grower, free-flowering, and excellent both for bedding and cutting.	7 00	60 00
b Château de Clos Vougeot. The ever-popular, almost black Rose which everybody likes so tremendously. The plants are low and spreading, every shoot tipped with a glowing blackish scarlet bloom of marvelous fragrance.	4 00	35 00
b Cheerful. Glowing pink, with orange and yellow suffusion; slightly fragrant.	4 00	35 00
ob Clara Watson. Fine, pointed blooms of pearly white, tinted with peach-color in the center.	3 50	30 00
ob Columbia. Popular greenhouse variety which does well outdoors, producing long-stemmed, pointed flowers of vivid pink throughout the entire season; very perfumed.	3 50	30 00
b Constance. Splendid golden yellow buds stained with crimson outside, opening to large, full, rich sunflower-yellow which does not fade.	4 00	35 00
b COURTNEY PAGE. Beautifully shaped blooms of bright scarlet-crimson, overlaid with a fine velvety sheen. Intensely fragrant.	4 50	40 00
o Crimson Queen. Showy, cupped flower of bright crimson on long, strong stems.	3 50	30 00
b Crusader. Fine crimson flowers, borne on stiff stems.	3 50	30 00
b Cuba. Tall plants with excellent foliage, producing enormous, semi-double blooms of blazing red-orange. Preferred to Padre by many.	4 00	35 00
b DAME EDITH HELEN. One of the largest and most perfectly shaped pink Roses known. Blooms abundantly, with long, strong stems, and the flowers resemble a perfectly shaped, bright pink Francis Scott Key. It has attracted abundant praise and unstinted admiration everywhere. The most perfumed of all pink Roses.	4 00	35 00
b Dean Hole. Well-shaped flowers of light rose-pink, with old-gold tints at the base of the petals.	3 50	30 00
b Diadem. Copper-pink flowers, held erect on stiff stems.	3 50	30 00
b DORIS TRAYLER. Tall, vigorous growth and long-pointed, orange-yellow buds and blooms. A splendid new yellow Rose of the Feu Joseph Looymans type.	4 00	35 00
b Dorothy Page-Roberts. Large, copper-pink buds and flowers suffused with apricot-yellow.	3 50	30 00
b Double White Killarney. A splendid pure white form of the always popular Killarney, with a few more petals than the type.	3 50	30 00
ob Duchess of Wellington. A low-spreading but vigorous grower with long, saffron-yellow buds opening to very large, light yellow flowers. Always popular and in great demand.	3 50	30 00
b DUCHESS OF YORK. Flowers large, very full, of fine form, deep golden yellow, tangerine center.	6 00	50 00
o Ecarlate. A fine bedding or low hedge Rose of great vigor, with splendid foliage and innumerable brilliant vermilion, semi-double flowers from spring until frost.	3 50	30 00
b Edel. Splendidly shaped, large, very double white flowers of exquisite texture. Plants vigorous and healthy.	3 50	30 00
b EDITH NELLIE PERKINS. A handsome new variety with long-pointed buds of rich orange-pink, opening to fine salmon-pink blooms with a golden underglow. Very fragrant.	6 00	50 00
b Edward Mawley. The popular old variety with bright crimson, cupped flowers.	3 50	30 00
b E. G. HILL. <i>New.</i> Great massive blooms of deep maroon, velvety on inside and glistening outside; very perfumed.	7 00	60 00
b Eldorado. Splendid, vigorous plants with large, solid, golden yellow buds, opening to very double, handsome, bright yellow blooms. One of our finest yellow Roses and becoming increasingly popular as its merits are known. The most perfumed of yellow Roses.	3 50	30 00
b Elsie Beckwith. Beautiful pointed buds with flowers of rich, deep rosy pink. A very vigorous grower.	3 50	30 00
b Emile Charles. A vigorous, bushy plant of the Mme. Edouard Herriot type, with brilliant fiery red buds shaded with golden yellow, opening to reddish coral flowers tinted with flame color.	4 00	35 00
b Ethel Somerset. Beautifully shaped buds and flowers of bright shrimp-pink.	4 00	35 00
b Etoile de Feu. The handsomest bright orange-pink of its type. Much better than Louise Catherine Breslau, Gorgeous, and Arthur R. Goodwin. The plants are very vigorous, low and branching, with healthy foliage, and steadily produce large, blazing blooms of amazing intensity of color.	4 00	35 00
ob Etoile de France. Bushy plants with large, dark crimson blooms. Has long been popular and in great demand.	3 50	30 00
b Etoile de Hollande. The finest dark red Rose for general purposes, having great vigor and floriferousness. Its gigantic flowers are velvety crimson and are produced with great freedom throughout the season. This is unquestionably the best and most popular red Hybrid Tea Rose in the world.	6 00	50 00

The wholesale prices in our lists apply on wholesale quantities. Orders should call for 10 of a kind and size and beyond that for multiples of 10



A part of our Newark Rose block—Anna de Diesbach and Frau Karl Druschki. Photographed August, 1930

TEA, HYBRID TEA AND EVERBLOOMING ROSES, continued

	Per 10	Per 100
b FEU JOSEPH LOOYMANS. Stiff, erect plants with splendid, glossy foliage and extremely long-pointed buds of glowing apricot and old-gold, opening to large, richly tinted yellow blooms of splendid form and fragrance. One of the finest new Roses.	\$4 00	\$35 00
o Florence Forrester. Clear snow-white with lemon tinge; the blooms are even larger than Paul Neyron; very sweetly perfumed.	3 50	30 00
b Florex. A very bright, glowing pink Rose of the Columbia type.	3 50	30 00
b Francis Scott Key. Giant, wonderfully shaped, extremely double flowers of brilliant crimson. Especially fine in dry seasons and late in the autumn; very fragrant.	3 50	30 00
b Frank Reader. Bright yellow buds and creamy yellow flowers of the Ophelia type, with a fine, free-growing and free-blooming habit.	3 50	30 00
b Frau Karl Druschki. Very vigorous growth, with gigantic white buds and blooms. A Hybrid Perpetual, but the most popular white Rose in existence.	3 00	25 00
ob General MacArthur. Erect, free-growing plants, with good foliage and an abundance of velvety crimson-scarlet bloom.	3 50	30 00
ob General-Superior Arnold Janssen. Tall, long-stemmed plants, with double, deep glowing pink or light red blooms of splendid substance and lasting quality.	3 50	30 00
b Georg Arends. A sturdy, wiry-stemmed Hybrid Perpetual, with very large, soft pink flowers of the Frau Karl Druschki type. Generally conceded to be the most beautiful pink Rose in the world.	3 00	25 00
b George C. Waud. Bushy, floriferous plants, with large, very double, bright red blooms, slightly shaded with vermilion. A splendid bedding variety.	3 50	30 00
b GLADYS BENSKIN. Large, long-pointed buds; flower beautifully formed, full, double, high-centered, richly fragrant, rose-cerise, shaded orange, deeper orange at base; reverse salmon-cerise over golden yellow; deep yellow veining. Hardy.	10 00	75 00
b Golden Emblem. The most beautifully shaped, rich, unfading yellow Rose, with large, dark, polished foliage.	4 00	35 00
b Golden Ophelia. Golden yellow, paling slightly on outer petals.	3 50	30 00
b Golden Pernet. See Julien Potin.		
b Gorgeous. Low, bushy plants; bright orange-pink flowers.	3 50	30 00
b Grange Colombe. Very bushy, vigorous plants with excellent foliage and large, well-shaped, creamy white blooms tinted with fawn. A superb old variety unsurpassed by many later introductions.	3 50	30 00
b Gruss an Aachen. See Baby Roses.		
ob Gruss an Teplitz. Erect, bushy plants 3 to 4 feet high, covered throughout the season with an abundance of small blackish maroon blooms in clusters. One of the most popular and valuable Roses known, especially for large beds, borders, or hedge purposes.	3 50	30 00
b Hadley. Straight-stemmed plants with well-shaped, velvety crimson blooms.	3 50	30 00
o Hermosa. Strong, bushy plants reaching a height of 3 to 4 feet, covered with an abundance of perfectly shaped, fragrant flowers of an exquisite shade of soft rose-pink. An old variety which is unexcelled for bordering or low hedge purposes. Always in bloom.	3 50	30 00

The wholesale prices in our lists apply on wholesale quantities. Orders should call for 10 of a kind and size and beyond that for multiples of 10

TEA, HYBRID TEA AND EVERBLOOMING ROSES, continued

	Per 10	Per 100
b Hoosier Beauty. Vigorous plants with large, velvety crimson bloom throughout the season.....	\$3 50	\$30 00
b H. V. Machin. Robust, stiff-stemmed plants with large, globular, bright crimson flowers. Extremely hardy; fine for cold sections.....	3 50	32 00
b Imperial Potentate. One of the finest new brilliant pink Roses. Very vigorous grower of free-flowering habit.....	4 00	35 00
b Independence Day. Spreading, bushy plants. Brownish orange buds, opening to large, semi-double, vivid apricot-yellow flowers. A bed of it always makes a glorious display of color.....	3 50	30 00
b Irish Charm. A new introduction from Ireland, with beautifully shaped blush-pink blooms, richly shaded with apricot and gold.....	4 00	35 00
ob Irish Elegance. Bronzy pink buds and flowers suffused with shades of apricot and yellow. Continually in bloom.....	3 50	30 00
b Irish Fireflame. Five-petaled flowers of brilliant orange-pink, somewhat on the Los Angeles shade.....	3 50	30 00
b IRISH HOPE. A new variety with maroon-crimson buds opening to large, crimson-scarlet, fragrant flowers of fine lasting qualities. We believe it is one of the finest new red Roses.....	4 00	35 00
b Ivy May. A new Rose from England which has shown up remarkably well in our trials and under field-culture. The long-pointed buds open to double, rose-pink blooms, shaded with amber at the base of the petals and suffused with golden yellow at the back and on the edges. We think it is a very fine thing.....	3 50	30 00
b JOANNA HILL. <i>New.</i> A glorified Mrs. Aaron Ward. Heavy lemon buds, evolving into a semi-double bloom with Indian yellow center surrounded by bold cream petals. Heavy foliage.....	7 00	60 00
b John Cook. A dwarf, bushy grower and very floriferous. Very useful as a bedder. The flowers are much like La France—bright rose and silvery pink. Very fine.....	4 00	35 00
b JOHN RUSSELL. A vigorous grower of almost Hybrid Perpetual habit, with large flowers borne singly on the top of strong stems. It is rich crimson-scarlet, shaded with black, and at all stages of the bloom is one of the most perfectly formed flowers we have ever seen. It blooms with us continuously from June until frost.....	4 50	40 00
ob Jonkheer J. L. Mock. A gorgeous, very double, brilliant pink variety shaded darker on the outside of the petals. One of the handsomest Roses grown and attracts admiration wherever seen.....	3 50	30 00
b J. Otto Thilow. One of the finest new Roses of recent years. Dark pink, well-formed, semi-double flowers shaded with gold and amber.....	3 50	30 00
b JULIEN POTIN. This is the Rose which was introduced to the greenhouse trade several years ago as Golden Pernet. It is a fine grower, slightly richer in color than the original Pernet, with more and better-placed petals, and never shows the black center which disfigured the older Rose.....	4 50	40 00
b Juliet. A strong-growing Hybrid Perpetual type, with large, pointed blooms of old-gold and bright carmine-pink.....	3 50	30 00
b K. of K. Strong, bushy plants with semi-single, scarlet, star-shaped flowers in great profusion. An excellent bedder.....	3 50	30 00
ob Kaiserin Auguste Viktoria. The standard, double, pure white bedding Rose which has been popular and in great demand for many years.....	3 50	30 00
o Killarney. An old favorite with splendid, bright pink buds and large, unfading blooms.....	3 50	30 00
b Killarney Brilliant. Much like Killarney but so bright a pink that it is almost red.....	3 50	30 00
ob Killarney Queen. Has more petals than Killarney and the color lies between Killarney and Killarney Brilliant.....	3 50	30 00
b La France. The oldest Hybrid Tea, with lovely, double, pale pink blooms, more deliciously scented than any other. It is still desired by many who remember its unsurpassed fragrance.....	3 50	30 00
o La Tosca. Strong, thornless bushes with large, cup-shaped, silvery pink blooms. A fine Rose which merits general popularity.....	3 50	30 00
b Lady Alice Stanley. Sturdy, active bushes with distinctive, healthy foliage and large, erect, very double flowers of light silvery pink, darker on the outside of the petals. This is one of the best Roses in the list and has been popular since the day of its introduction. Its unusual hardiness recommends it for cold climates.....	3 50	30 00
ob Lady Ashtown. Brilliant, glossy pink flowers of exquisite pointed shape. One of the old stand-bys which is always in great demand.....	3 50	30 00
b Lady Florence Stronge. A new Rose with pinkish yellow buds opening flesh-pink, shaded with rose and old-gold.....	4 00	35 00
b LADY FORTEVIOT. <i>New.</i> Large buds, opening to very large, double, bright golden yellow flowers, flushed with cardinal-red, borne in clusters on long, strong stems. Hardy, continuous bloomer.....	10 00	75 00
b Lady Hillingdon. The always-popular, beautiful apricot-yellow Tea Rose with lovely buds and exquisitely formed open blooms produced continuously. Probably the hardiest of all Tea Roses and undoubtedly the best yellow bedding Rose.....	3 50	30 00

We cannot undertake to supply long and much assorted lists of stock calling for only small bundles of each kind as our business is exclusively wholesale and we do not have the facilities to handle retail orders

TEA, HYBRID TEA AND EVERBLOOMING ROSES, continued

	Per 10	Per 100
b LADY INCHIQUIN. Large, full, perfectly shaped, orange-cerise flowers. Very decorative.	\$4 50	\$40 00
b LADY MARGARET STEWART. Stout, erect plants with immense, copper-orange buds, opening to bright golden yellow flowers of wonderful shape and luscious color. It is a severe rival of Rev. F. Page-Roberts and it would not surprise us to see it become even more popular.	5 50	45 00
b LADY MARY ELIZABETH. Large, long-pointed buds; flowers large, double, high-centered, lasting, fragrant, brilliant carmine-pink.	4 50	40 00
b Lady Pirrie. Tall, very healthy bushes, continuously producing bright copper-pink buds of lovely shape, which open to large, pale bronzy yellow flowers passing to nearly white. Similar in general appearance to Mrs. A. R. Waddell, but a much stronger plant and more beautiful flower. Lady Pirrie is so good that it deserves much wider planting.	3 50	30 00
ob Lady Ursula. Another old stand-by of the highest quality. The bush is very strong and continuously produces its well-shaped, pale pink blooms. Unsurpassed for bedding where a mass of flowers is desired all the time.	3 50	30 00
b Laurent Carle. A dwarf, sturdy bush with rich purple-crimson buds and velvety pointed blooms. One of the handsomest Roses in existence.	3 50	30 00
b Lieutenant Chauré. Dwarf, bushy plants with bright red, semi-double blooms produced unceasingly.	3 50	30 00
b Lord Calvert. One of John Cook's Roses, with brilliant velvety red flowers.	3 50	30 00
b LORD CHARLEMONT. Glowing scarlet-red flowers of wonderful shape and substance.	6 00	50 00
b Los Angeles. Beautifully shaped, fragrant flowers of pale salmon-pink, richly shaded with deep rose and gold. Extremely popular with everyone for its beauty and fragrance.	3 50	30 00
b Louise Catherine Breslau. Low-spreading plants with brilliant orange-pink, double flowers.	3 50	30 00
b LUCIE MARIE. <i>New.</i> Long-pointed buds of deep yellow, splashed with red. As the outer petals unfold, the inner face is yellow with coppery veination, tips of petals lightly tipped pink; slightly fragrant. Most distinct bedding variety.	10 00	75 00
ob MARGARET McGREDY. The first time in three generations of the house of McGredy that a Rose was thought good enough to be named for a member of that Rose aristocratic family. Much was expected of Margaret, but she won everywhere with flying colors. Brilliant red petals on hinges of deep gold. Buds upright. Seldom out of bloom.	4 00	35 00
b MARY PICKFORD. Bud large, long-pointed, orange-yellow; flower large, double, pale yellow, deeper at center, very fragrant.	6 00	50 00
b Maud Cuming. A bushy plant of exceptional vigor, with tapered buds and large, globular flowers of salmon-pink, shaded with coral and yellow.	4 00	35 00
b MAY WETTERN. <i>New.</i> Very deep pink-salmon bloom; fine pointed buds. Fine, strong bush, free from disease.	4 50	40 00
b MEVROUW G. A. VAN ROSSEM. A startling novelty with vivid orange and apricot buds, opening to brownish yellow flowers, strongly shaded with copper-pink. This new variety has created a decided stir wherever it has been seen, and we believe it will be widely popular in this country.	10 00	75 00
b Miss Cynthia Forde. One of the old stand-bys, with erect stems, good foliage, and brilliant, double pink flowers unceasingly produced.	3 50	30 00
b Miss Lolita Armour. Double, globular blooms of orange-pink toning to coppery yellow at the base; extremely fragrant.	3 50	30 00
b MISS ROWENA THOM. A striking novelty of last year with gigantic blooms of brilliant satiny pink, shaded with orange-flame at the center. It has the enthusiastic approval of all who have seen it and we predict great popularity for it.	6 00	50 00
b Miss Willmott. Large, globular flowers with pointed centers. Pure white when opening, but gradually develops peachy pink tints in the middle. We consider it one of the finest white Roses because of its fine blooming qualities in hot weather.	3 50	30 00
b Mme. Alexandre Dreux. Dwarf, free-flowering bushes with small, ripe mandarin flowers which always attract attention. A constant bloomer in the nursery.	3 50	30 00
ob Mme. Butterfly. The finest Rose of the Ophelia type, bright light pink, shaded with gold. Very popular and always in demand.	3 50	30 00
b Mme. Caroline Testout. A popular pink variety which everybody knows and wants.	3 50	30 00
b Mme. Colette Martinet. Dainty, little, pointed flowers of pale yellow. Attractive for buttonhole use.	3 50	30 00
ob Mme. Edouard Herriot. The original of all the bright orange-pink varieties and still one of the best. Deserves its wide popularity.	4 00	35 00
b Mme. Jules Bouché. Bushy, erect plants with medium-sized, well-shaped, white flowers, lightly tinted with pink at the center, produced abundantly throughout the season. This is the most dependable white Rose for bedding purposes.	3 50	30 00
o Mme. Jules Grolez. Brilliant, pointed flowers of satiny rose-pink and exquisite shape.	3 50	30 00
ob Mme. Léon Pain. Stocky, spreading plants with beautiful foliage and large, ruffled, light pink flowers of beautiful form and fragrance. A fine thing for bedding and has been popular for many years; almost immune from black-spot.	3 50	30 00

The wholesale prices in our lists apply on wholesale quantities. Orders should call for 10 of a kind and size and beyond that for multiples of 10

TEA, HYBRID TEA AND EVERBLOOMING ROSES, continued

	Per 10	Per 100
b Mme. Poincaré. Handsome new Rose shaped like Antoine Rivoire but of rich, peachy color which is most attractive.....	\$4 00	\$35 00
b Mme. Ravary. A fine, old-time, cupped golden fawn variety which is still in demand.....	4 00	35 00
ob Mme. Segond Weber. Blooms very double, bright rose-pink shaded salmon.....	3 50	30 00
b Mrs. Aaron Ward. Low, bushy plants with pointed, holly-like foliage and fine fawn-colored buds and open blooms. Has been popular for many years and is still in great demand....	3 50	30 00
b Mrs. Ambrose Ricardo. Enormous, incurved flowers of fine peach-yellow, shaded with pink. One of the finest Roses for cutting.....	3 50	30 00
b MRS. A. R. BARRACLOUGH. A new variety of giant growth with long, tapering buds and high-pointed blooms of light, glowing pink, tinted with salmon. Although very new, it has made a name for itself, and we think it will be very popular.....	4 00	35 00
ob Mrs. A. R. Waddell. A stiff, branching grower with flowers much like Lady Pirrie, but darker salmon-pink and sometimes scarlet in the bud. Very free-flowering.....	3 50	30 00
b MRS. BEATTY. Flowers of perfect shape, Maréchal-Niel-yellow; fragrant.....	5 50	45 00
ob Mrs. Charles Bell (Salmon Radiance). The most beautiful of the Radiance family, with all the good qualities of Radiance and Red Radiance, but flowers of a clear shade of salmon, turning to pearly pink.....	3 50	30 00
b Mrs. Charles Lamplough. Flower very large, pale lemon-yellow; fragrant. Vigorous....	4 00	35 00
b Mrs. C. W. Edwards. A very showy bright red Rose which seems worthy of being included in almost any garden.....	4 00	35 00
b MRS. ERSKINE PEMBROKE THOM. Generally conceded to be immensely superior for garden planting to Souv. de Claudius Pernet and others of that type. The fine long buds open into perfectly shaped, open flowers of rich lemon-yellow. Very vigorous and continuously in bloom.....	4 00	35 00
b MRS. HENRY BOWLES. Magnificent flowers of dark, lustrous pink, very freely produced by healthy, vigorous plants. There is no question that this is the finest of the modern pink introductions and is destined to become one of the most popular Roses in America. The rows of it in our fields have been in splendid condition all summer, standing far above older varieties of similar color.....	4 50	40 00
b MRS. HENRY MORSE. The flowers are bright pink with silvery shadings and are incessantly produced by low, branching bushes. It has a larger and more artistic bud than Radiance, on which it is an improvement, and the plant has equal blooming qualities, vigor, and health. This is a modern Rose, much superior to the old-time pinks, and is rapidly becoming very popular.....	4 00	35 00
b MRS. LOVELL SWISHER. A new variety with immense, heavy flowers of pale flesh-pink, excellent growth, and strong, erect stems. It is an improvement on Antoine Rivoire, Prince de Bulgarie, and Pharisæer, which it is fast displacing.....	4 00	35 00
o Mrs. MacKellar. Lovely long cream-white buds and very large flowers.....	3 50	30 00
b Mrs. S. K. Rindge. Well-shaped buds and semi-double, open blooms of soft yellow, quickly turning to soft pink.....	3 50	30 00
b MRS. S. W. BURGESS. Bushy plants with charming, fragrant, cream-white flowers shaded with orange and apricot.....	4 50	40 00
b Mrs. Wakefield Christie-Miller. Sturdy, erect plants of distinct habit, with splendid foliage and large, peony-shaped blooms of brilliant light pink. This is one of the most dependable bedding Roses on the market and is becoming more popular and more widely planted every year as it grows in favor with everybody.....	3 50	30 00
b Mrs. W. C. Egan. Very strong, branching plants with long-pointed buds and large, star-shaped flowers of very light pearl-pink with golden yellow at the base of the petals..	3 50	30 00
b Mrs. W. E. Nickerson. Semi-double, soft silvery pink flowers, shaded with old-gold and salmon.....	3 50	30 00
b NIGHT. <i>New.</i> The darkest crimson Rose so far raised. The English National Rose Society's Annual describes it as black, shaded maroon. Flowers are medium size, full, of perfect form, sweet scented. Blooms freely.....	15 00	125 00
b NORMAN LAMBERT. Stout bushes which freely produce large, blazing orange-yellow buds which open to cup-shaped, canary-yellow blooms brightly edged and flushed with pink and scarlet. A very distinct and worthy variety which attracts unbounded admiration.....	5 50	45 00
ob Old Gold. Wiry bushes of moderate vigor, bearing innumerable reddish orange, single flowers.....	3 50	30 00
b Ophelia. One of the most popular of all Roses because of the lovely shape of its pearly white blooms and the freedom with which they are produced.....	3 50	30 00
b Padre. Slender, erect plants bearing large, almost single blooms of a more vivid shade of copper-orange than Mme. Edouard Herriot. Makes a stunning picture when planted close together in a large bed.....	3 50	30 00
b PINK BEAUTY. Very vigorous, bushy plants with wonderful foliage and large, cupped blooms of the Radiance type, but several shades lighter pink. It makes a splendid bed because of its compact habit and is always in flower.....	4 00	35 00
b PINK PEARL. Of the Columbia type, with larger and darker more brilliant pink blooms. We consider it the finest of the Roses of this class and recommend it unreservedly.....	4 00	35 00
b Premier. Beautiful, fragrant, dark rose-pink blooms on erect stems.....	3 50	30 00
b Premier Supreme. Similar to Premier, but brighter color—almost red.....	3 50	30 00

TEA, HYBRID TEA AND EVERBLOOMING ROSES, continued

b PRESIDENT HERBERT HOOVER. An outstanding novelty of a really new color combination: Maroon, orange, and gold, rioting in the most contrasting fashion. Long-pointed buds, rigid stems, and a continuous cropper make it one of the most popular florist's Roses. Equally as good in the garden. \$12.50 for 10; \$100 per 100; \$750 per 1000.			
ob	Radiance. Plants of wonderful foliage and vigor, constantly producing large, brilliant rose-pink blooms of excellent globular shape and intense fragrance. There are probably more Radiance Roses grown and planted than any dozen other varieties put together.	Per 10 \$3 50	Per 100 \$30 00
b	Rapture. Sport of Butterfly with all its good qualities but more double and more highly colored.	3 50	30 00
ob	Red-Letter Day. Tall, bushy, persistently blooming plants, with nearly single, starry, brilliant vermilion-scarlet blooms. Very showy.	3 50	30 00
ob	Red Radiance. A bright rosy red form of Radiance with the same good habit and blooming qualities.	3 50	30 00
b	REV. F. PAGE-ROBERTS. Marvelously colored flowers of golden yellow stained with copper, and reddish buff on the outside. One of the most popular in the world and planted in great quantities every year.	6 00	50 00
b	ROBERT HUEY. Bushy plants of exceptional vigor, with bright rose-red flowers produced particularly well during the hot weather.	4 50	40 00
b	Rose Hill. Very similar to Columbia, with larger blooms and slightly darker color.	6 00	50 00
ob	Rose Marie. Large, dark satiny pink blooms of excellent form and fragrance.	3 50	30 00
b	Roselandia. A dark saffron-yellow bloom of the Ophelia type. Generally considered an improved Golden Ophelia.	3 50	30 00
b	RUTH. Vigorous, bushy, and free-blooming plants with orange flowers flushed with crimson	4 50	40 00
b	SCHWABENLAND. Large cerise-pink blooms borne singly on long stems. Continuous bloomer. Hardy.	15 00	125 00
b	Sensation. Handsome buds; large blooms of very deep blackish maroon; highly perfumed. Almost thornless. Healthy foliage. Undoubtedly the finest of the dark Roses.	4 00	35 00
b	Shot Silk. Medium coppery pink flowers, suffused with apricot and yellow; richly perfumed.	4 00	35 00
b	SIR DAVID DAVIS. One of the new red Roses in which we have great confidence. Flowers are brilliant scarlet-crimson and are borne in great profusion throughout the season. The plants are taller and produce more blooms than Etoile de Hollande, but they are lighter and smaller. A very handsome bedding Rose.	4 00	35 00
b	Souv. de Claudius Pernet. The old standby for a real yellow Rose.	3 50	30 00
b	Souv. de George Beckwith. Very large, salmon-pink flowers of wonderful shape. Vigorous and floriferous bushes.	3 50	30 00
b	Souv. de Georges Pernet. Stout, branching plants with large, brick-red buds opening to pink flowers of gigantic size. A splendid bedding Rose.	3 50	30 00
b	Souv. de H. A. Verschuren. Light yellow flowers of the Frank Reader and Golden Ophelia type.	3 50	30 00
ob	Sunburst. Rich yellow, cupped flowers shaded with orange.	3 50	30 00
b	TALISMAN. The most astounding novelty in Roses produced in many a year. Its brilliant orange-red buds open to a large, fragrant, high-pointed bloom of glowing golden yellow, stained with copper-red and orange-rose on the inside of the petal. It is the most magnificently colored flower we have ever seen and arouses astonishment and admiration everywhere. The plants have proved vigorous and healthy outdoors and have withstood severe winters unprotected. It is especially good in spring and late autumn.	7 00	60 00
b	Templar. Very full, fragrant, crimson flowers.	3 50	30 00
b	The Queen Alexandra Rose. Large, velvety scarlet blooms lightened with yellow on the outside and deep gold at the base. Very striking. Nothing else like it.	3 50	30 00
b	Una Wallace. Large, bright cherry-pink flowers of excellent shape; a vigorous upright grower.	3 50	30 00
b	VATERLAND. Flower large, blood-red with coppery reflexes—an unusual color, fading but little; fragrant. Vigorous, healthy grower with leathery foliage. Nothing like it in Rose colors.	15 00	125 00
b	VICTOR WADDILOVE. Pointed carmine-pink flowers suffused with yellow; slightly fragrant.	5 50	45 00
b	Ville de Paris. Vigorous plants of strong, wiry growth, producing splendid buds of bright yellow which open into fadeless, double blooms of the Radiance shape. It has proved a fine addition to our yellow Roses, and we believe it will become steadily more popular.	5 50	45 00
o	Viscountess Folkestone. Vigorous plants with large, creamy pink flowers shaded with salmon.	3 50	30 00
o	Wellesley. An old favorite Tea Rose with bright silvery pink flowers of pointed form.	3 50	30 00
b	Wm. F. Dreer. A bright yellow flower of the Los Angeles type, shaded with coppery pink.	3 50	30 00

The wholesale prices in our lists apply on wholesale quantities. Orders should call for 10 of a kind and size and beyond that for multiples of 10



Another part of our Hybrid Tea Roses at Shiloh, showing Ophelia and Mme. Butterfly in the foreground

TEA, HYBRID TEA AND EVERBLOOMING ROSES, continued

b	Wilhelm Kordes. Strong, branching growth with large, very double, star-shaped flowers of vivid salmon-pink shaded with orange and yellow. One of the most striking modern Roses and steadily increasing in popularity.	Per 10	Per 100
		\$3 50	\$30 00
o	William R. Smith. A very vigorous, branching Tea Rose with long-pointed, creamy white buds, stained with pink and crimson. The flowers are very double, beautifully shaped, and are produced constantly throughout the season. This is one of the finest old bedding Roses in commerce.	3 50	30 00
b	Willowmere. This is the Rose to plant where Los Angeles does not succeed. It has wonderful long-pointed buds and magnificent brilliant pink flowers suffused with a golden light. The plants are erect, very vigorous, and constantly throw up splendid sprays of bloom.	3 50	30 00
o	Winnie Davis. Flesh-pink.	3 50	30 00

Hybrid Perpetual and Miscellaneous Roses

(o) On own roots

(b) Budded

Per 10 Per 100

b	American Beauty. A very popular purplish crimson variety.	\$3 50	\$30 00
b	Anna de Diesbach. Splendid, flattish flowers of light pink shaded with rose.	3 00	25 00
b	Baroness Rothschild. Delicate pink, cup-shaped flowers.	3 00	25 00
b	Captain Hayward. Lovely, long-pointed scarlet buds opening to beautifully shaped, deep petaled crimson blooms.	3 00	25 00
b	Clio. Very stout, thorny plants with clusters of immense, globular, flesh-pink and white, fragrant flowers.	3 00	25 00
o	Dr. E. M. Mills. A twiggly bush for shrubbery planting, covered in early spring with small, semi-double, yellow flowers tinted with pink.	3 00	25 00
b	Earl of Dufferin. Dark purple-crimson.	3 00	25 00
b	Eugène Fürst. Bright purple-red flowers of excellent shape.	3 00	25 00
b	EVEREST. A new, very vigorous variety with enormous flowers of clear ivory-white, intensely fragrant, and remarkable because of their gigantic size. Resembles the Hybrid Perpetuals in habit and may be grown as a pillar.	5 50	50 00
b	Fisher Holmes. Beautifully shaped scarlet flowers shaded with blackish velvet.	3 00	25 00
b	Frau Karl Druschki. The most popular white Rose in the world.	3 00	25 00
b	Général Jacqueminot. The old favorite bright red garden Rose.	3 00	25 00
b	George Arends. One of the finest pink Roses, with flowers like Frau Karl Druschki.	3 00	25 00
b	George Dickson. Very vigorous plants with magnificent blackish scarlet blooms.	3 00	25 00
b	Gloire de Chédane-Guinoisseau. Easily the finest of the bright red Hybrid Perpetuals now in commerce.	3 00	25 00
b	Harison's Yellow. The bright yellow shrub Rose which blooms in early spring	3 50	30 00
b	Hugh Dickson. A fine bright crimson, beautifully formed flower.	3 00	25 00
ob	Hugonis. An early blooming shrub Rose covered with small, single, pale yellow flowers.	3 50	30 00
b	J. B. Clark. A very husky grower, with bright light red flowers.	3 00	25 00

HYBRID PERPETUAL AND MISCELLANEOUS ROSES, continued

	Per 10	Per 100
b MME. ALBERT BARBIER. Splendid new variety with large, camellia-shaped blooms of cream and pinkish yellow. It blooms without ceasing from spring to autumn and is bound to become exceedingly popular.	\$3 50	\$30 00
ob Mme. Plantier. A strong-growing shrub with double white flowers.	3 00	25 00
b Magna Charta. A strong variety with large pink flowers.	3 00	25 00
b Margaret Dickson. Broad, double, beautifully shaped white flowers with a pink center.	3 00	25 00
b Marshall P. Wilder. Extra-large, crimson, well-shaped blooms.	3 00	25 00
b Mrs. John Laing. Erect, healthy plant producing exquisite cup-shaped, soft pink, fragrant flowers throughout the entire season. One of the finest of the class.	3 00	25 00
b Mrs. R. G. Sharman-Crawford. A vigorous, healthy plant with crisp, rosy pink, fragrant blooms produced on and off throughout the season. A little-known variety which is one of the best.	3 00	25 00
b Paul Neyron. Dwarf bushes with gigantic purplish pink, fragrant flowers.	3 00	25 00
b Persian Yellow. A shrub Rose with small, double, dark yellow blooms in early spring.	3 50	30 00
b Prince Camille de Rohan. One of the darkest Roses, with deep maroon-red flowers.	3 00	25 00
b Soleil d'Or. Erect, stiff plants with large, gorgeously colored orange and gold-red flowers. Deliciously scented.	4 00	35 00
b Sweet Seventeen. Medium-size, semi-double, rich pink flowers; fragrant.	7 00	60 00
b Ulrich Brunner. Vigorous plants with large, cup-shaped, purple-crimson blooms.	3 00	25 00

Rugosa and Hybrid Rugosa Roses

(o) On own roots (b) Budded

	Per 10	Per 100
b Amélie Gravereaux. Very vigorous and productive plants, blooming throughout the season. Flowers bright purple-red and very fragrant. Almost a climber and makes wonderful pillar.	\$3 00	\$25 00
b Belle Poitevine. Brilliant magenta-purple flowers, produced unceasingly on vigorous plants. A splendid variety for landscape use.	3 00	25 00
b Blanc Double de Coubert. A free-growing and extra-fine white variety.	3 50	30 00
b BERGER'S ERFOLG. Large, single, blood-red blooms. Foliage typically like Hybrid Perpetuals. A good hardy shrub continuously in bloom.	6 00	50 00
b Conrad Ferdinand Meyer. Plants of extreme vigor, with well-shaped pale pink flowers.	3 00	25 00
ob F. J. Grootendorst. A cross of the red Rugosa Rubra by the Crimson Baby Rambler, with Rugosa growth and foliage and small, bright crimson flowers of the Baby Rambler type, produced in clusters throughout the season. Particularly suitable for hedges and massed planting.	3 00	25 00
ob Hansa. A very hardy variety with dark purple-red flowers.	3 00	25 00
b New Century. Stout, free-flowering variety with flesh-pink blooms.	3 00	25 00
b Nova Zembla. White form of Conrad F. Meyer.	3 00	25 00
b PINK GROOTENDORST. Very charming pink variety of the popular F. J. Grootendorst.	4 00	35 00
b Rose à Parfum de l'Hay. Bright red, very fragrant, double flowers.	3 00	25 00
b Roseraie de l'Hay. Dark violet-red, double blooms.	3 00	25 00
o Rugosa Alba. Splendid growth and foliage, with large, single, pure white blooms.	3 50	30 00
o Rugosa Rubra. The original species of splendid habit, with large, purple-red, single flowers.	2 50	20 00
b RUSKIN. Large, cup-shaped, fragrant, deep crimson flowers. Hardy.	3 50	30 00
b SARAH VAN FLEET. Large buds opening to semi-double, cup-shaped, wild-rose-pink flowers; intensely fragrant.	4 00	35 00
b Sir Thomas Lipton. Very vigorous plants with large, double, white blooms, produced all season.	3 00	25 00
b Türkes Rugosa Sämling. The vigorous variety of the Conrad F. Meyer type, with peach-pink flowers slightly shaded yellow.	4 00	35 00

Hybrid Sweetbriar Roses

(o) On own roots (b) Budded

	Per 10	Per 100
b Anne of Geierstein. Tall, thorny plants, with fragrant foliage and dark crimson, single flowers.	\$3 50	\$30 00
b Flora McIvor. Small, single, white flowers tinted pink.	3 50	30 00
b Lady Penzance. A handsome shrub, covered with single coppery flowers in early spring. Foliage very fragrant.	3 50	30 00
b Meg Merrilies. Rosy carmine flowers; highly perfumed.	3 50	30 00

The wholesale prices in our lists apply on wholesale quantities. Orders should call for 10 of a kind and size and beyond that for multiples of 10

Standard or Tree Roses

Budded on strong Rugosa stems. Offered only in assortment with more plentiful stock. Direct shipment from our New Jersey Branch

3-ft. stems, \$17.50 for 10, \$150 per 100

Hybrid Teas

Betty. Coppery rose, overspread yellow.
Betty Uprichard. Coppery red buds; salmon-pink flowers.
Columbia. Glowing pink.
Double White Killarney. White.
Frau Karl Druschki. The best white Rose.
Grange Colombe. Creamy white, tinted with fawn.
Gross an Teplitz. Blackish crimson.
Hadley. Velvety crimson.
John Cook. Bright rose and silvery pink.
J. Otto Thilow. Dark pink, shaded with gold and amber like La France.
Julien Potin. Rich yellow.
Kaiserin Auguste Viktoria. White; fine form.
Killarney Queen. Cerise-pink; vigorous grower.
Lady Ashtown. Shining pink, shaded to yellow.

Lady Hillingdon. Deep apricot-yellow.
Mme. Butterfly. Bright pink, apricot and gold.
Mme. Caroline Testout. Rich pink.
Mrs. Aaron Ward. Yellow, sometimes shaded salmon and rose.
Mrs. A. R. Waddell. Scarlet buds, opening to deep reddish saffron.
Mrs. W. C. Egan. Light pearl-pink star-shaped flowers with golden yellow at base of petals.
Ophelia. Pearly white.
Pink Pearl. Brilliant pink. Larger and darker than Columbia.
Radiance. Carmine-pink, yellow at base of petals.
Red Radiance. Dazzling crimson.
Souvenir de Claudius Pernet. Sunflower-yellow.
White Ensign. White.

Hybrid Perpetual Roses

Captain Hayward. Long-pointed buds opening to beautiful deep-petaled crimson blooms.

George Dickson. Blackish scarlet blooms.
Hugh Dickson. Bright crimson.

Half-Standard Roses

Budded on 15-in. stems, \$8.50 for 10, \$75 per 100

Miss Edith Cavell. Brilliant crimson, white eye.
Orléans. Clusters of small red flowers.

Triomphe Orléanais. Red.



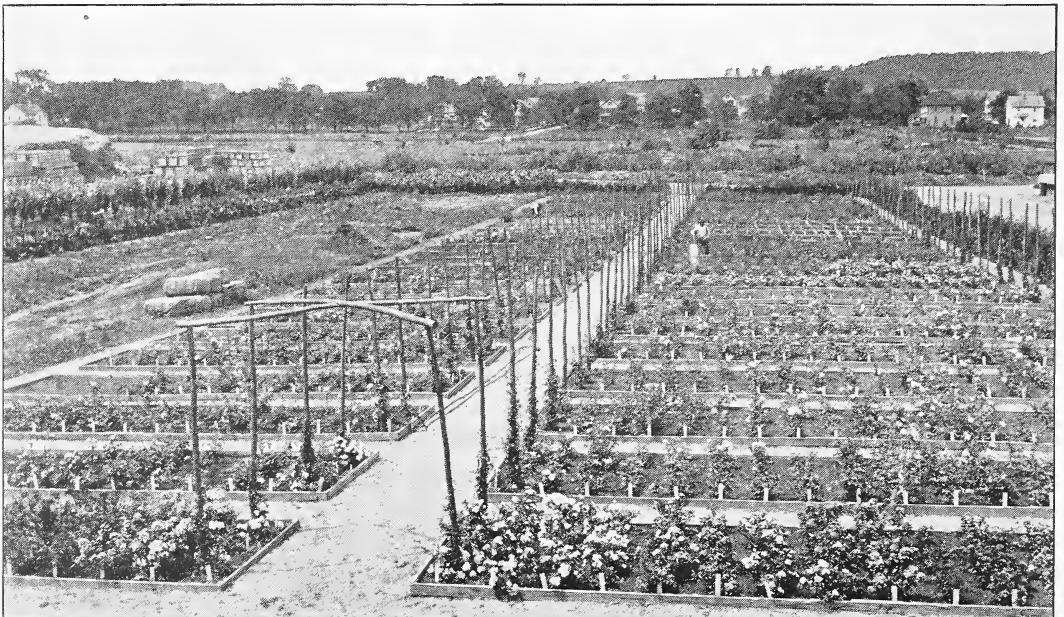
Standard or Tree Roses at Shiloh having strong, sturdy stems and well-developed heads

We cannot undertake to supply long and much assorted lists of stock calling for only small bundles of each kind as our business is exclusively wholesale and we do not have the facilities to handle retail orders

Climbing Vines

Strong field-grown plants; heavy tops; good roots

	Per 10	Per 100		Per 10	Per 100
ACTINIDIA.			ARISTOLOCHIA.		
Arguta. Bower Actinidia (Silver Vine). Flowers white, with purple center. 2 years, No. 1.	\$3 50	\$30 00	Sipho. Dutchman's Pipe.		
2 years, Medium.	3 00	25 00	3 years, 5-6 ft.	\$600 per 1000	\$65 00
			3 years, 4-5 ft.	\$500 per 1000	6 00 55 00
			3 years, 3-4 ft.	\$400 per 1000	5 00 45 00
			2 years, 2-3 ft.	\$300 per 1000	4 00 35 00
			2 yrs., 1½-2 ft.	\$225 per 1000	3 50 30 00
			2 years, 1-1½ ft.	1 75	15 00
AKEBIA.			BIGNONIA.		
Quinata. Fiveleaf Akebia. Purple flowers and ornamental fruit. Foliage almost evergreen.			Radicans. Trumpet Creeper (Trumpet Vine). Trumpet-shaped, scarlet flowers in August. Deep green foliage.		
2 years, 2-3 ft.	3 00	25 00	2 years, No. 1.	2 00	18 00
2 years, 1½-2 ft.	2 50	20 00			
AMPELOPSIS.			CELASTRUS.		
Quinquefolia. Virginia Creeper (American Ivy). Fine for covering trellises, verandas, etc.			Scandens. American Bittersweet. Yellow flowers; orange fruit in autumn.		
2 years, No. 1.	1 50	12 00	2 years, 3-4 ft.	2 50	20 00
Quinquefolia engelmanni. Engelmann Creeper. Clings to walls without aid of artificial support.			2 years, 2-3 ft.	1 60	14 00
2 years, No. 1.	1 60	14 00	2 years, 1½-2 ft.	1 25	10 00
Tricuspidata (veitchi). Japanese Creeper (Boston Ivy). Foliage handsome in summer, changing to crimson-scarlet in autumn. Clings to walls and fences; fine for brick and stone.			CLEMATIS, Large-flowering.		
3 years, XXX, 3-4 ft. tops.	3 50	30 00	Duchess of Edinburgh. Double; white. 2 years, No. 1.	4 50	40 00
2 years, No. 1, 2-3-ft. tops.			Henryi. White. 2 years, No. 1.	4 50	40 00
	\$200 per 1000	3 00 25 00	Jackmani. Purple. 2 years, No. 1.	4 50	40 00
2 years, Medium, 18-24-in. tops			Mme. Edouard Andre. Red.		
	\$150 per 1000	2 00 18 00	2 years, No. 1.	4 50	40 00
2 years, No. 2, 12-18-in. tops.			Ramona. Light blue. 2 years, No. 1	4 50	40 00
	\$100 per 1000	1 50 12 00	Ville de Lyon. Red. 2 years, No. 1.	4 50	40 00



The J. & P. Rose Test-Garden, planted spring, 1930, photographed in August. In another year this should be a glorious sight, but the photograph, as shown here, indicates the thorough testing we give to all new varieties, growing them under regular garden conditions.

We cannot undertake to supply long and much assorted lists of stock calling for only small bundles of each kind, as our business is exclusively wholesale and we do not have the facilities to handle retail orders



Dutchman's Pipe at Newark. Real he plants. True Aristolochia siphon

CLIMBING VINES, continued

CLEMATIS, Small-flowering.	Per 10	Per 100	IVY.	Per 10	Per 100
<i>Crispa.</i> Curly Clematis. Blue.			<i>English.</i> <i>Hedera helix.</i> Foliage		
2 years, No. 1.....	\$3 00	\$25 00	thick, dark glossy green.		
Paniculata. Sweet Autumn Clematis. White flowers.			Evergreen. 2 years, No. 1....	\$1 75	\$15 00
3 years, XXX.....	2 50	20 00	LYCIUM (Matrimony Vine).		
2 years, No. 1...\$125 per 1000...	1 75	15 00	Chinese. Chinese Matrimony		
2 years, Medium.....	1 50	12 00	Vine. Ornamental, shrubby		
2 years, No. 2.....	1 00	8 00	climber. Small purplish flowers		
Texensis (coccinea). Scarlet Clematis. 2 years, No. 1.....	3 00	25 00	in summer, followed by scarlet		
EUONYMUS.			berries until late in winter.		
Radicans. Wintercreeper. An evergreen vine. Clings to walls.			2 years, No. 1.....	1 75	15 00
12-15 in.....	2 50	20 00	POLYGONUM.		
Radicans coloratus. Bronze Wintercreeper. New variety; rich bronze foliage during the winter months. Rapid grower.....	2 50	20 00	Auberti. China Fleecevine. One of the most desirable flowering		
Radicans variegatus. Variegated Wintercreeper. Leaves are variegated.			climbers. The plant is of strong,		
12-15 in.....	2 50	20 00	vigorous growth, attaining a		
Radicans vegetus. Bigleaf Wintercreeper. Large leaves. Trailing. Valuable for ground-covering. Evergreen. 15-18 in.....	4 00	35 00	height of 25 feet or more, producing		
12-15 in.....	3 50	30 00	through the summer and fall great		
9-12 in.....	3 00	25 00	foamy sprays of creamy white flowers.		
HONEYSUCKLE.			2 years, No. 1.....	3 50	30 00
Hall's Japanese. <i>Lonicera japonica</i>			WISTERIA.		
<i>haliiana.</i> Pure white flowers, changing to yellow; sweet-scented. Almost evergreen.			Chinese Purple. <i>Wisteria sinensis.</i>		
2 years, No. 1...\$125 per 1000...	1 75	15 00	Long, pendulous clusters of		
2 years, Medium.\$80 per 1000...	1 25	10 00	pale blue flowers.		
Monthly Fragrant. Very fragrant white flowers.			2 years, No. 1 (From seed)....	2 50	20 00
2 years, No. 1.....	2 00	18 00	2 years, Medium (From seed)...	1 75	15 00
Trumpet (Scarlet Trumpet). <i>L. sempervirens.</i> Scarlet flowers. Rapid grower.			2 years, No. 1 (Grafts).....	4 00	35 00
2 years, No. 1.....	2 00	16 00	2 years, Medium (Grafts).....	3 00	25 00
2 years, Medium.....	1 50	12 00	Chinese White. <i>W. sinensis alba.</i>		
			2 years, No. 1 (From seed)....	3 00	25 00
			2 years, Medium (From seed)...	2 50	20 00
			2 years, No. 1 (Grafts).....	4 50	40 00
			Multijuga. Soft purple.		
			2 years, No. 1.....	5 00	45 00
			Yellow-eye Wisteria. <i>W. frutescens</i>		
			<i>magnifica.</i> Lilac with yellow spot.		
			2 years, No. 1.....	2 50	20 00



Hardy Perennial Plants at Newark. We are offering an excellent assortment of strong transplanted stock

Hardy Perennial Plants

Strong transplanted stock from the open field. One season older than much of the stock frequently offered.

Varieties marked with an asterisk (*) are best suited for rockeries

	Per 10	Per 100		Per 10	Per 100
*ABRONIA (Yarrow).					
<i>Umbellata.</i> Pink Sand Verbena.					
Lilac-rose flowers.....	\$1 50	\$12 00			
ACHILLEA	1 00	8 00			
<i>Ageratum.</i> Yellow flowers; sweet-scented.					
<i>Ptarmica, The Pearl.</i> One of the best hardy perennials. Blossoms from spring on.					
AGROSTEMMA (Rose Campion).					
<i>Coronaria.</i> Mullein Pink. Mixed colors. Stout, erect-growing plants with silvery foliage. Showy flowers are produced during June and July.....	1 00	8 00			
*ALYSSUM (Rock Madwort).					
<i>Saxatile compactum.</i> Masses of bright yellow flowers in early spring. Excellent plant for the rockery or borders.....	1 00	8 00			
ANCHUSA	1 00	8 00			
<i>Capensis angustifolia.</i> Narrow-leaved. Sky-blue flowers.					
<i>Italica, Dropmore.</i> Spikes of beautiful blue flowers produced all summer.					
ANEMONE (Windflower).					
(Except as noted.).....	2 00	15 00			
<i>Hupehensis.</i> Early Anemone. Grows from 12 to 14 inches high, and from early in August until late in autumn produces an abundance of mauve-rose flowers about 1½ inches in diameter. Hardier than the Japanese varieties.					
<i>Anemone japonica alba.</i> Whirlwind Anemone. Single, pure white, yellow center. Grows 2 to 3 feet high.					
<i>Japonica, Alice.</i> Large rose-pink flowers, lilac center. Best pink.					
<i>Japonica, Prince Heinrich.</i> Double red; dwarf; early.					
<i>Japonica rubra.</i> Rosy red, bright yellow stamens.					
<i>Pulsatilla.</i> Early, Light blue.....	\$1 50	\$12 00			
ANTHEMIS.					
<i>Frutescens.</i> Marguerite or Paris Daisy. White.....	1 50	12 00			
<i>Tinctoria.</i> Golden Marguerite. Handsome, finely cut foliage and large golden yellow flowers produced all summer. Succeeds in the poorest soil. Excellent for cut-flowers.....	1 25	10 00			
*AQUILEGIA (Columbine).					
<i>Sibirica flore-pleno.</i> Violet and white flowers.....	1 25	10 00			
<i>Breeze Hill.</i> <i>New.</i>	1 50	12 00			
<i>Cærulea.</i> Colorado Columbine; Rocky Mountain Columbine. Bright blue.....	1 00	8 00			
<i>Cærulea alba flore-pleno.</i> Double; white.....	1 00	8 00			
<i>Cærulea rosea flore-pleno.</i> Double; pink.....	1 00	8 00			
<i>Cærulea Hybrids.</i> Mixed colors..	1 00	8 00			
<i>California Hybrids.</i> Sepals and petals yellowish or tinged with orange, while the long, slender spurs are orange-red.....	1 25	10 00			

HARDY PERENNIAL PLANTS, continued

	Per 10	Per 100
<i>Aquilegia Haylodgensis</i> . <i>New Hybrid</i> . Upright, strong grower. Color from fine pink to deep purplish violet. Finest <i>Aquilegia</i> on the market.	\$1 25	\$10 00
Kelway's Selected Long-spurred Hybrids.	1 25	10 00
Mrs. Scott Elliott's Hybrids. Very fine strain.	1 25	10 00
*ARABIS (Rock Cross).		
<i>Alpina flore-pleno</i> . Double, white; fragrant flowers produced early in the spring. One of the best rock plants.	1 00	8 00
ARMERIA. (Thrift; Sea Pink).		
* <i>Maritima alba</i> . Rosettes of narrow evergreen leaves on the ground, studded with white flowers.	1 00	8 00
* <i>Purpurea</i> . Similar to the above but with red flowers.	1 00	8 00
ARTEMISIA.		
<i>Vulgaris lactiflora</i> . White Mugwort. Heads of small white flowers in August and September; very fragrant.	1 50	12 00
ASTER (Michaelmas Daisy)	1 25	10 00
* <i>Alpinus, Goliath</i> . Large; lilac-blue.		
* <i>Alpinus superbus</i> . Light blue.		
<i>Amellus</i> . Pink.		
<i>Amellus Hybrids</i> . Mixed colors.		
ASTILBE (Spiræa)	2 00	15 00
<i>Gladstone</i> . White.		
<i>Gloria</i> . Pink.		
<i>Gloria Atropurpurea</i> . Deep red.		
<i>Peach Blossom</i> . Pink.		
<i>Queen Alexandra</i> . Pink.		
*AUBRIETIA (False Wall Cross).		
Hybrid Mixed.	1 25	10 00
BOCCONIA (Plume Poppy)		
<i>Cordata (Japonica)</i> . Light yellow flowers.	1 25	10 00
<i>Microcarpa</i> . Creamy white.		
BUDDLEIA (Butterfly Bush).		
<i>Davidi magnifica (magnifica)</i> . Ox-eye Butterfly Bush. Violet-rose. \$120 per 1000.	2 00	15 00
<i>Davidi Veitchi (Veitchi)</i> . Violet-mauve. \$120 per 1000.	2 00	15 00
<i>Farquhari</i> . Delicate lavender-pink with intense orange center; very fragrant. \$150 per 1000.	2 00	16 00
BUPHTHALMUM (Ox-eye).		
<i>Grandiflora</i> . Yellow flowers.	1 25	10 00
CALANDRINIA (Rock Purslane).		
<i>Umbellata</i> . Peruvian Rock Purslane. Bright reddish purple flowers.	1 00	8 00
CAMPANULA		
* <i>Carpatica alba</i> . White Carpathian Bellflower. White flowers on erect stems.	1 00	8 00
* <i>Carpatica, Blue</i> . Blue Carpathian Bellflower. Blue flowers.		
<i>Grandiflora, Blue</i> . Large blue flowers.		
<i>Latifolia macrantha</i> . Deep purple flowers.		
<i>Medium alba</i> . Single white flowers.		
<i>Medium albo-plena</i> . Double; white.		

	Per 10	Per 100
Campanula, continued		
<i>Medium cærulea</i> . Single; blue.		
<i>Medium cærulea plena</i> . Double; blue.		
<i>Medium calycanthemum</i> . Cup-and-Saucer Canterbury Bell. Blue.		
<i>Medium calycanthemum alba</i> . Same as the above, but white flowers.		
<i>Medium, Double Reddish Scarlet</i> . Double.		
<i>Medium, Purple</i> . Double; purple.		
<i>Medium, Rose</i> . Single rosy pink flowers.		
<i>Persicifolia Moerheimi</i> . Large; double; white.		
<i>Pyramidalis</i> . Chimney Bellflower. Forms a pyramid composed of numerous stems, covered with large, beautiful blue flowers.		
<i>Pyramidalis alba</i> . Similar to the above, but with white flowers.		
CENTAUREA \$1 00 \$8 00		
<i>Babylonica</i> . Dark yellow flowers.		
<i>Montana</i> . Mountain Bluet; Perennial Cornflower. Large, violet-blue flowers.		
CHELONE. See Pentstemon.		
CHRYSANTHEMUMS. Named varieties \$80 per 1000.		
S., Single; D., Double; P., Pompon.	1 25	10 00
<i>Adironda</i> . D. Small aster-flowered variety of medium height. Bronze. Early.		
<i>Autumn Glow</i> . D. Rosy crimson; large.		
<i>Big Bronze</i> . D. Large; bronze.		
<i>Captain Cook</i> . P. Clear dark rose flowers; tall grower.		
<i>Carrie</i> . D. Clean, clear pale yellow flowers. Excellent variety. Early.		
<i>Glory of Seven Oaks</i> . D. Deep golden yellow. Earliest outdoor Mum.		
<i>Golden Queen</i> . D. Bright golden yellow.		
<i>Harvest Home</i> . D. Large golden yellow flowers, 3 inches across. Midseason.		
<i>Indian</i> . D. Flowers are shaggy and of a pleasing coppery red. Fine. Late.		
<i>Marie Antoinette</i> . D. Deep pink. A sure-blooming sort. Late.		
<i>Mitzi</i> . P. Small; brilliant clear yellow; free-flowering. Late.		
<i>Mrs. F. H. Bergen</i> . D. Large; bright pink with deeper pink center. Midseason.		
<i>Mrs. H. Harrison</i> . P. Full, double, pink flowers with cream-pink center.		
<i>Nellie Kleris</i> . D. Large; splendid clear pink; petals are decidedly incurved.		
<i>October Gold</i> . D. Large, loose, golden yellow flowers with pink sheen near the base.		
<i>Rose Trevenna</i> . D. Large; deep rose-pink. A good hardy variety.		
<i>Tints of Gold</i> . D. Large, rich golden yellow flowers suffused with yellow near base of petals. Early.		

HARDY PERENNIAL PLANTS, continued

Chrysanthemums, continued	Per 10	Per 100
Victory. D. Large; pure white.		
White Pompon. P. White.		
Zelia. D. Large, old-fashioned orange flowers. Splendid outdoor variety. Midseason.		
CHRYSANTHEMUM maximum.		
See Shasta Daisy.		
COREOPSIS.		
Lanceolata grandiflora flore-pleno.		
Large, yellow flowers, fine for cutting.....	\$1 00	\$8 00
DELPHINIUM (Larkspur).....		
(Except as noted). \$80 per 1000..	1 25	10 00
Belladonna. Clear turquoise-blue.		

Belladonna, Pfitzer's Improved. Clearsky-blue; stems heavier and flowers heavier and much fuller than old Belladonna. Also has greater keeping qualities. \$1.50 for 10; \$12 per 100.

Belladonna, Improved (Blue Cave). *New.* One of the earliest blooming Delphiniums, flowering about two weeks before the common Belladonna. The beautiful spikes of dark indigo-blue flowers are fine for cutting. Also this variety is a good forcer, because of its fine color, compact spikes, and early blooming habits. \$2 for 10; \$15 per 100.

- Bellamosa.** Deep blue.
- Formosum.** Rich blue flowers, tinged purple; white eye.
- Gold Medal Hybrids.** Mixed. Very large spikes.
- Grandiflorum.** Siberian Larkspur. Azure-blue.
- Grandiflorum chinense (chinense).** Slender Larkspur (Blue Butterfly). Fine feathery foliage. Large, gentian-blue flowers.
- Grandiflorum chinense album (chinense album).** Similar to *D. grandiflorum chinense*, but white flowers.

Hollyhock. *New.* The flower-spikes are of enormous size and quite tall. The blooms resemble Hollyhocks, which is how the variety got its name. Mixed colors. \$2.50 for 10; \$20 per 100; \$150 per 1000.

Hybrid giganteum plenum. *New.* Extra-strong grower with dark green foliage. The individual flowers are double and as large as 2 inches in diameter and are of the finest shades of blue. This is undoubtedly one of the finest Delphiniums on the market. \$2 for 10; \$15 per 100.

Vanderbilt Hybrids, Mixed. *New.* Similar to Prize Medal Hybrids, but from a better strain. \$2.50 for 10; \$20 per 100; \$150 per 1000.

DIANTHUS barbatus (Sweet William).....	\$1 00	\$8 00
Crimson.	Salmon-Rose.	
Newport Pink.	Scarlet Queen.	
Nigricans. Dark red.	White.	
Red.	Mixed.	
DIANTHUS caryophyllus (Hardy Carnations).....	1 25	10 00
White	Rose-Pink	
Dark Red	Yellow	
	Mixed	
DIANTHUS.		
Deltoides splendens. Maiden Pink.		
Dark carmine-pink. Fine for rockeries.....	1 25	10 00
Plumarius flore-pleno. Double Grass Pink; Hardy Garden Pink.		
Mixed.....	1 10	9 00
Speciosus. Lilac-pink.....	1 00	8 00
DIELYTRA spectabilis. Bleeding-Heart.....	2 50	20 00
DIGITALIS. Foxglove. Dignified and stately; blooms on strong stalks.....	\$80 per 1000..	1 25 10 00
Pink	White	
Purple	Yellow	
ECHINACEA. See Rudbeckia.		
ERIGERON.		
Glabellus. Beautiful blue flowers.	1 50	12 00
ERYNGIUM.		
Planum. Sea Holly. Many small blue flowers.....	1 00	8 00
*FUNKIA (Hosta).		
Subcordata alba. Old-fashioned white flowers; broad leaves....	1 50	12 00
Undulata media-picta variegata. Variegated leaves.....	1 25	10 00
GAILLARDIA.		
Aristata compacta (grandiflora compacta). Common Perennial Gaillardia; Blanket Flower. Mixed colors in rich shades of yellow and brown.....	1 25	10 00
*GENTIANA (Gentian).		
Asclepiadea alba. White flowers..	1 25	10 00
*GEUM (Avens).		
Coccineum, Mrs. Bradshaw. Splendid variety with large, double, fiery red flowers all summer....	1 25	10 00
GYPSOPHILA.		
Paniculata. Baby's Breath. Pure white; single.....	1 00	8 00
*Repens. Creeping Gypsophila. Beautiful trailing plant for rockeries, with clouds of small pink and white flowers in July and August.....	1 25	10 00

Bristol Fairy Gypsophila (New, large, double Baby's Breath)

Grafted plants

<p>FOR FALL OR SPRING</p> <p>Field-grown, \$4.50 for 10, \$35 per 100</p>	<p>FOR SPRING ONLY</p> <p>From 3-in. pots, \$4 for 10, \$30 per 100</p>
--	--

(25 at 100 rate)

HARDY PERENNIAL PLANTS, continued

	Per 10	Per 100
*HELIANTHEMUM. Fine for rockeries.		
Chamæcistus roseum (roseum). Light pink.....	\$2 00	\$15 00
HELIOPSIS.		
Scabra major. Hercules Heliopsis; Hardy Zinnia. Golden yellow; valuable for cutting.....	1 25	10 00
HELLEBORUS.		
Niger. Christmas Rose. Very large white flowers flushed with purple. Leaves evergreen. Natural blooming period February and March.....	10 00	75 00
HESPERIS.		
Matronalis. Dame's Rocket. Fragrant flower-spikes.....	1 00	8 00
HIBISCUS (Mallow). \$30 per 1000..	1 25	10 00
Crimson Eye. White, with large spot of velvety crimson in center.		
Manihot. Sunset Hibiscus. Yellow with purple eye.		
Moscheutos (palustris). White, with purple eye.		
Moscheutos roseus. Pink.		
New Giant Pink. The giant kinds are of enormous size.		
New Giant Red and New Giant White.		
HOLLYHOCKS, Single.		
\$60 per 1000..	1 00	8 00
Allegheny. Mixed colors. Pink.		
HOLLYHOCKS, Double (Chater's Strain).	\$60 per 1000..	1 00 8 00
Chater's Double Varieties.		
Chamois-Rose	Newport Pink	
Cherry-Red	Purple-Violet	
Dark Red	Red	
Dark Yellow	Rose-Pink	
Light Pink	Salmon	
Maroon	Scarlet	
Nanking Yellow	White	
*HOSTA. See Funkia.		
*IBERIS (Hardy Candytuft).		
Sempervirens. Very dwarf; white flowers. Particularly fine for rockeries.....	1 25	10 00
IRIS, German (Iris germanica).		
Named sorts.....	1 00	8 00
S, Standards; F, Falls		
Charles Dickens. S, light violet; F, indigo with white at base.		
Dalmatica. S, clear lavender-blue; F, deep lavender; very large.		
Darius. S, canary-yellow; F, lilac, margined white; rich orange beard.		
Delicata. S, purplish lavender; F, tinged lavender.		
Donna Maria. F, white, tinged lilac.		
Florentina Alba. Creamy white, flushed lavender; fragrant.		
Herant. S, bluish lilac; F, violet.		
Honorabile. S, golden yellow; F, rich deep brown.		

	Per 10	Per 100
German Iris, continued		
La Beaute. S and F, large pale blue.		
Lohengrin. S and F, deep violet- mauve.		
Mary Garden. S, pale yellow, flushed lilac; F, long, drooping, white.		
Midnight. S and F of deepest purple.		
Mirage. S, lavender-white; F, lilac.		
Monsignor. S, violet; F, velvety purplish crimson.		
Nibelungen. S, olive; F, deep pur- plish violet.		
Nine Wells. S, light violet-blue; F, deep purplish violet.		
Pauline. S, lavender; F, slightly darker.		
Powhatan. S, light violet; F, deep purple with crimson shades.		
Princess Victoria Louise. S, light sulphur-yellow; F, rich violet- red, edged creamy white.		
Queen of May. Soft rose-lilac.		
Queen Victoria (Montauk). S, lemon, slightly smoked; F, white and yellow. Thickly veined with russet and reddish plum at tip.		
Rebecca. S, golden yellow; F, brown.		
Sir Robert Peel. S, light blue; F, dark blue.		
Tendresse. S, porcelain-blue; F, light blue.		
Violacea Grandiflora. S, rich blue; F, violet-blue.		
Walhalla. S, clear blue; F, violet- purple.		
Mixed.....	\$0 80	\$6 00
IRIS, Japanese (Iris kaempferi).		
Named sorts.....	1 50	12 00
A. L. Sherwood. Light purple, veined white; three petals.		
Blue Flag. Indigo-blue, white veins; yellow base; six petals.		
Geisho-Ui. Red.		
Gold Bound. Large; pure white, yellow center; six petals.		
Hannibal. Porcelain, veined rose- purple and rose-purple center; three petals.		
Kumo-no-obi. Blue.		
Mount Hood. Double; light blue, shaded darker, bright orange center.		
Ondine. Pure white, shaded blue toward center; very large; three petals.		
Oni-ga-shima. Large; deep blue petals, streaked white; six petals.		
Patrocle. Single; dark reddish violet.		
Shadow. Single. Reddish purple; three petals.		
Sofu-no-koi. Light rosy purple; six petals.		
Uchin. Blue with white center.		
Yomo-no-umi. Lavender.		
Mixed.....	1 00	8 00

HARDY PERENNIAL PLANTS, continued

	Per 10	Per 100		Per 10	Per 100
TRITOMA (Red-Hot Poker)	\$1 25	\$10 00	Veronica spicata. Spike Speedwell.		
Elegans Multicolor Hybrids.			Long spikes of bright blue		
Perpetual Gracilis. Orange-red.			flowers. Used as border plant.		
Uvaria Pfizeriana. Rich orange-			*VIOLA cornuta. Tufted Pansy.....	\$1 00	\$8 00
scarlet.			Admiration. Dark blue. The best		
*TROLLIUS (Globe Flower).			edging plant for the hardy border		
Europæus. Large, lemon-colored,			or garden. Blooms continu-		
buttercup-like flowers.....	1 50	12 00	ously from May until October.		
*VALERIANA (Garden Heliotrope) ..	1 25	10 00	Alba. White flowers.		
Dark Red. Fragrant flowers, vary-			Dark Violet. White eye.		
ing from dark crimson to light			Grandiflora lutea. Yellow flowers.		
red.			YUCCA (Adam's Needle)	80	6 00
White. White form of the above.			Filamentosa. Common Yucca ;		
VERONICA (Speedwell)	1 00	8 00	Adam's Needle. Creamy white.		
Amethystina. Spikes of rich blue			Flaccida. Weak-leaf Yucca. Tall		
flowers during May and June.			panicles of cream-white flowers.		

Daphne cneorum (Garland Flower)

	Per 10	Per 100
12-15 in.....	\$12 50	\$100 00
10-12 in.....	8 50	80 00
8-10 in.....	6 50	60 00
6-8 in.....	4 50	40 00

Peonies

Strong divisions with 3 to 5 eyes, and plenty of roots. They are of more generous size than we have usually been able to procure from other growers.

	Per 10	Per 100		Per 10	Per 100
Achille. Shell-pink. Early mid-			Felix Crousse. Brilliant flaming red.		
season.....	\$3 50	\$30 00	The best red. Midseason.....	\$3 50	\$30 00
Albert Crousse. Rose-white, flecked			Festiva Alba. Ivory-white, with oc-		
crimson. Midseason.....	4 50	40 00	casional crimson spots on center		
Boule de Neige. Very large, medium			petals. Ships well and stands cold		
rose-type. Milk-white guards and			storage excellently. Midseason...	3 00	25 00
center flecked crimson. Early			Festiva Maxima. The ideal white.		
midseason.....	3 50	30 00	Early.....	2 00	18 00
Carnea Striata. Pale flesh, shading			Floral Treasure. Rich, soft pink.		
to almost pure white. Midseason..	2 00	18 00	Midseason.....	2 00	18 00
Charlemagne. Flesh-white, center			Fragrans. Solferino-red, with slight		
tinted lilac. Late.....	3 00	25 00	silvery reflex. Compact, full flow-		
Clarissa. Rosy pink, inner petals			ers. Strong, vigorous grower. Ex-		
sulphur. Midseason.....	2 00	18 00	tensively grown for cut-flowers.		
Comte de Jussier. Outer petals pink,			Late.....	2 00	18 00
inner sulphur. Midseason.....	2 00	18 00	Francois Ortegat. Semi-double, pur-		
Couronne d'Or. Immense, very full,			plish crimson blooms, with brilliant		
imbricated, ball-shaped; snowy			golden yellow anthers; very strik-		
white, with crimson blotches in			ing. Early.....	3 00	25 00
center. Very late.....	3 00	25 00	Fulgida. Dark red.....	3 00	25 00
Delachei. Deep crimson-purple. One			General Cavaignac. Large, globular,		
of the best dark Peonies. Mid-			semi-rose type. Light violet-rose,		
season.....	3 00	25 00	edged lighter. Late.....	2 00	18 00
Dorchester. See Richardson's Dor-			Gloire de Douai. Purplish scarlet-		
chester.			crimson with black reflex. Late....	2 50	22 00
Duc de Cazes. Dark pink, silvery			Golden Harvest. Guards pale rose,		
collar.....	2 50	20 00	center creamy white. Dwarf.		
Duc de Wellington. Sulphur-white;			Similar to Jeanne d'Arc. Mid-		
large and well-formed. Late.....	3 50	30 00	season.....	3 00	25 00
Duchesse d'Orleans. Pink. Mid-			Grandiflora. See Richardson's Gran-		
season.....	2 50	20 00	diflora.		
Duchesse de Nemours. Cup-shaped,			Grandiflora Rosea. Light rose; outer		
sulphur-white blooms. Late.....	2 50	22 00	petals very large, inner smaller and		
Edulis Superba. Soft pink. Early...	2 00	18 00	bunched. Vigorous grower. Late..	2 00	18 00
Faust. Hydrangea-pink, fading to			Karl Rosefeld. Dark crimson. A		
lilac-white. Midseason.....	2 00	18 00	very striking variety. Midseason..	5 00	45 00

We cannot undertake to supply long and much assorted lists of stocks calling for only small bundles of each kind as our business is exclusively wholesale and we do not have the facilities to handle retail orders

PEONIES, continued

	Per 10	Per 100
La Sublime. Crimson; fine; full, fragrant. Late.....	\$2 50	\$20 00
La Tulipe. Very large, full, shell-formed blooms, borne on long, erect stems. Delicate rose fading to creamy white. Late.....	2 50	20 00
Lady Bramwell. Silvery pink. Late midseason.....	2 50	20 00
Laius. Outer petals white; inner sulphur, changing to white; medium size. Late.....	2 00	13 00
Livingstone. (True Crousse variety.) Soft rosy pink, silvery reflex. Strong, long stems. Best late pink. Late.....	4 00	35 00
Louis Van Houtte. Fine dark crimson; very double. Late.....	3 00	25 00
Meissonier. Reddish purple, crimson center. Midseason.....	2 50	22 00
Mlle. Renee Dessert. In clusters. Soft lilac, with silvery violet reflex. Midseason.....	2 50	20 00
Mme. Crousse. One of the best whites. Midseason.....	3 00	25 00
Mons. Jules Elie. Pale lilac-rose. Early.....	4 50	40 00
Nigricans. Brilliant purplish crimson. Very late.....	3 00	25 00
Nobilissima. Bright, deep pink. Good stems. Lasts long. Late midseason.....	2 50	20 00
Octavie Demay. Guards and center pale hydrangea-pink; collar almost white. Very dwarf. Early.....	3 50	30 00

	Per 10	Per 100
Prince Imperial. Brilliant purplish scarlet. Free bloomer. Fine for massing in landscape work. Late midseason.....	\$2 50	\$22 00
Prolifera Tricolor. Soft flesh with center of golden yellow. Late.....	2 00	13 00
Queen Victoria (Whitley). White. Standard for market or storage. Midseason.....	2 00	15 00
Reine des Francais. White, pink, and yellow combined. Very early..	3 50	30 00
Richardson's Dorchester. Salmon-pink. One of the best late sorts...	4 00	35 00
Richardson's Grandiflora. Flesh-pink. Late.....	3 50	30 00
Rosea Plena Superba. Delicate pink and salmon; very full flower.....	2 50	22 00
Rosea Superba. Brilliant, deep cerise-pink; blooms compact and perfect. Healthy growth. Long stems. Keeps well. Midseason.....	4 00	35 00
Rubra Triumphans. Dark crimson. Early. Midseason.....	2 50	20 00
Umbellata Rosea. Guards violet-rose; amber-white center.....	3 00	25 00

Unnamed—By Color

Pink.....	1 50	12 00
Red.....	2 00	15 00
White.....	1 50	12 00

Perennial Phlox

Strong, 2-year field-grown stock

Our 2-year-old field-grown Phlox should not be compared in value with the small plants from 2-inch pots which are grown in the field only one season.

	Per 10	Per 100
*Ægir. Scarlet.....	\$1 25	\$10 00
*Africa. Carmine-purple; blood-red eye.....	1 50	12 00
Albion. White; faint red eye.....	1 00	8 00
*Alpha. New French variety. Brilliant rosy pink; Miss Lingard type	1 25	10 00
Antonin Mercis. Delicate lilac-blue.	1 00	8 00
Athis. Salmon-pink.....	1 00	8 00
*Australia. Carmine-violet.....	1 25	10 00
*B. Comte. Purple.....	1 25	10 00
*Beacon. Brilliant cherry-red.....	1 00	9 00
Bouquet Fleuri. White; carmine eye.	1 00	8 00
Bridesmaid. White, with large crimson center.....	1 00	8 00
Caran d'Ache. Salmon-pink.....	1 00	8 00
*Commander. Brilliant deep crimson-red; darker eye.....	1 80	15 00
*Coquelicot. Orange-scarlet.....	1 50	12 00
Eclairer. Bright rose-carmine.....	1 00	8 00
*Elizabeth Campbell. Soft pink; large.....	1 80	15 00
*Enchantress. Bright salmon-pink, with a dark red eye, resembling Elizabeth Campbell, but much more vigorous in growth, with rich green, glossy foliage.....	1 50	12 00
*Ethel Pritchard. French mauve, which on a cloudy day looks to be a pale blue. Very fine.....	1 25	10 00

	Per 10	Per 100
*Europa. Snowy white; carmine center.....	\$1 25	\$10 00
*Fernand Cortez. Deep crimson.....	1 00	9 00
Fraulein G. von Lassburg. Pure white; immense panicle.....	1 00	8 00
Hodur. Soft pink; white eye.....	1 00	8 00
*Iris. Light purple.....	1 25	10 00
Isabey. Salmon-pink.....	1 00	8 00
La Vague. Lavender-pink.....	1 00	8 00
*Le Mahdi. Deep velvety purple; large spikes.....	1 50	12 00
Le Soleil. Brilliant china-rose; rose center.....	1 00	8 00
Lothair. Bright crimson.....	1 00	8 00
Louise Abbema. White. Dwarf.....	1 00	8 00
Lumineux. Pink.....	1 00	8 00
*Maid Marian. <i>New</i> . Soft lavender. Large flower.....	1 25	10 00
Mauve Queen. Mauve.....	1 00	8 00
Michael Buchner. Lavender.....	1 00	8 00
Miss Lingard. Earliest white; pale pink eye. Long, graceful panicles	1 00	8 00
Mme. Pape Carpentier. White. Dwarf.....	1 00	8 00
*Mme. Prosper Laugier. Fine dark red.....	1 25	10 00
Mrs. Charles Dorr. A beautiful shade of lavender.....	1 00	8 00

PERENNIAL PHLOX, continued

	Per 10	Per 100		Per 10	Per 100
Mrs. Jenkins. Flowers large, pure white. Early. Free bloomer.	\$1 00	\$8 00	Riverton Jewel. Beautiful shade of mauve-rose; brilliant carmine-red eye.	\$1 00	\$8 00
*Mrs. Scholten. Dark salmon-pink flowers in enormous pyramidal spikes. Midseason.	1 80	15 00	R. P. Struthers. Cherry-red, suffused salmon.	1 00	8 00
Pacha. Pink.	1 00	8 00	Sir Edwin Landseer. Bright crimson.	1 00	8 00
Pantheon. Rose-pink.	1 00	8 00	Sunset. Dark rosy pink.	1 00	8 00
Pecheur d'Island. Lavender-cerise.	1 00	8 00	Sunshine. Pink.	1 00	8 00
*Pluto. Deep fuchsia-red.	1 80	15 00	Terre Neuve. Lavender, light center.	1 00	8 00
*Professor Virchow. Brilliant carmine overlaid with orange-scarlet.	1 25	10 00	Thebaide. Rosy pink.	1 00	8 00
*Rheinlander. Salmon-pink.	1 00	9 00	*Thor. Deep salmon-pink; aniline-red eye.	1 00	9 00
Richard Wallace. White; large carmine eye.	1 00	8 00	*Von Hochberg. Brilliant red.	1 50	12 00
Rijnstroom. A lively shade of rose-pink; very large.	1 00	8 00	*W. C. Egan. Soft pink.	1 25	10 00
			*Widar. Violet-blue; white eye.	1 25	10 00

Thousand rates (\$70 per 1,000) applied on lots of 500 or more and not less than 250 of a variety, except kinds marked (*), which are offered in assortment at straight hundred rates.

Shrubs

Items marked (*) are also available for fall shipment from Shiloh, New Jersey

	Per 10	Per 100	Althæa, continued	Per 10	Per 100
*ABELIA grandiflora. Glossy Abelia. White, heather-like flowers, tinted lilac, completely cover the plant.			Amplissima. Double; red.		
2-3 ft. Trans. B&B.	\$8 00	\$75 00	3-4 ft.	\$2 50	\$20 00
18-24 in. Trans. B&B.	6 50	60 00	2-3 ft.	2 00	15 00
15-18 in. Trans. B&B.	5 50	50 00	18-24 in.	1 50	10 00
2-3 ft. Not B&B.	5 50	50 00	Ardens. Double; purple.		
18-24 in. Not B&B.	4 50	40 00	3-4 ft.	2 50	20 00
ACANTHOPANAX (Aralia) pentaphyllum. Leaves bright green and shining; flowers greenish, borne in long-stalked clusters.			2-3 ft.	2 00	15 00
3-4 ft.	3 00	25 00	18-24 in.	1 50	10 00
2-3 ft.	2 50	20 00	Boule de Feu. Semi-double; violet-red.		
18-24 in.	2 00	15 00	3-4 ft.	2 50	20 00
ALMOND (Amygdalus). Double blossoms like small roses.			2-3 ft.	2 00	15 00
Double Red.			18-24 in.	1 50	10 00
3-4 ft.	5 00	45 00	Jeanne d'Arc. Double; white.		
2-3 ft.	4 00	35 00	3-4 ft.	2 50	20 00
18-24 in.	3 00	25 00	2-3 ft.	2 00	15 00
Double White.			18-24 in.	1 50	10 00
3-4 ft.	5 00	45 00	Lady Stanley. Double; blush-white, with pink eye.		
2-3 ft.	4 00	35 00	3-4 ft.	2 50	20 00
18-24 in.	3 00	25 00	2-3 ft.	2 00	15 00
ALTHÆA (Hibiscus syriacus).			Snowstorm (Totus albus). Single white.		
Double Pink.			3-4 ft.	2 50	20 00
3-4 ft.	2 50	20 00	2-3 ft.	2 00	15 00
2-3 ft.	2 00	15 00	Spotleaf (Variegatus). Variegated leaf.		
18-24 in.	1 50	10 00	3-4 ft.	5 00	45 00
Double Purple.			2½-3 ft.	4 00	35 00
3-4 ft.	2 50	20 00	2-2½ ft.	3 00	25 00
2-3 ft.	2 00	15 00	ALTHÆA, Tree-Form.		
18-24 in.	1 50	10 00	Double Pink.		
Double Red.			4-5 ft.	4 50	40 00
3-4 ft.	2 50	20 00	3-4 ft.	3 50	30 00
2-3 ft.	2 00	15 00	Double Purple.		
18-24 in.	1 50	10 00	4-5 ft.	4 50	40 00
Double White.			3-4 ft.	3 50	30 00
3-4 ft.	2 50	20 00	Double Red.		
2-3 ft.	2 00	15 00	4-5 ft.	4 50	40 00
18-24 in.	1 50	10 00	3-4 ft.	3 50	30 00
			Double White.		
			4-5 ft.	4 50	40 00
			3-4 ft.	3 50	30 00

We cannot undertake to supply long and much assorted lists of stock calling for only small bundles of each kind, as our business is exclusively wholesale and we do not have the facilities to handle retail orders

SHRUBS, continued

	Per 10	Per 100		Per 10	Per 100
ARALIA pentaphylla. See <i>Acanthopanax</i> .					
BARBERRY (Berberis).					
Box. <i>Berberis thunbergi minor</i> . A dwarf form of Japanese Barberry (<i>B. thunbergi</i>).					
15-18 in.	\$3 50	\$30 00			
12-15 in.	\$220 per 1,000..	3 00 25 00			
8-12 in.	\$180 per 1,000..	2 50 20 00			
6-8 in.	1 50	12 00			
Japanese (Thunberg's). <i>B. thunbergi</i> .					
2-2½ ft.	\$150 per 1,000..	2 00 18 00			
18-24 in.	\$90 per 1,000..	1 50 12 00			
12-18 in.	\$60 per 1,000..	1 00 8 00			
Japanese, New Red-leaved. <i>B. thunbergi atropurpurea</i> .					
15-18 in.	3 50	30 00			
12-15 in.	\$220 per 1,000..	3 00 25 00			
9-12 in.	\$180 per 1,000..	2 50 20 00			
BUDDLEIA.					
<i>Davidi magnifica (magnifica)</i> . Ox-eye Butterfly Bush. Violet- rose.	\$120 per 1,000..	1 75 15 00			
<i>Davidi Veitchi (Veitchi)</i> . Veitch Butterfly Bush. Violet-mauve. \$120 per 1,000..	1 75	15 00			
<i>Farquhari</i> . Delicate lavender- pink, with intense orange center; very fragrant.	\$120 per 1,000..	1 75 16 00			
CALYCANTHUS.					
<i>Floridus</i> . Common Sweet Shrub.					
3-4 ft.	3 50	30 00			
2-3 ft.	3 00	25 00			
18-24 in.	2 50	20 00			
CARAGANA (Pea-Tree).					
<i>Arborescens</i> .					
2-3 ft.	2 00	18 00			
18-24 in.	1 50	12 00			
CLETHRA.					
<i>Alnifolia</i> . Summersweet; Sweet Pepper Bush. Spikes of fra- grant white flowers.					
18-24 in.	3 50	30 00			
12-18 in.	2 50	20 00			
CORYLUS (Filbert).					
<i>Avellana</i> .					
3-4 ft.	5 00	40 00			
2-3 ft.	3 50	30 00			
18-24 in.	2 50	22 00			
*COTONEASTER.					
<i>Horizontalis</i> . Rock Cotoneaster. Late fall or spring delivery.					
2-3 ft. B&B.	15 00	110 00			
18-24 in. B&B.	10 00	90 00			
15-18 in. B&B.	7 50	70 00			
12-15 in. B&B.	6 50	60 00			
DEUTZIA.					
<i>Gracilis</i> . Slender Deutzia. White flowers.					
18-24 in.	2 00	16 00			
15-18 in.	1 50	12 00			
12-15 in.	1 25	10 00			
<i>Gracilis rosea</i> . Rose Panicle Deutzia. Pink flowers.					
18-24 in.	2 50	22 00			
12-18 in.	2 00	16 00			
<i>Deutzia Lemoinei</i> . Lemoine Deutzia. Pure white flowers.					
24-30 in.	\$2 50	\$20 00			
18-24 in.	2 00	15 00			
12-18 in.	1 50	12 00			
<i>Magnifica</i> . Pure white flowers produced in profusion.					
3-4 ft.	2 50	20 00			
2-3 ft.	2 00	15 00			
18-24 in.	1 50	12 00			
<i>*Scabra, Pride of Rochester</i> . Large, double white flowers.					
3-4 ft.	2 50	20 00			
2-3 ft.	2 00	15 00			
18-24 in.	1 50	12 00			
<i>Scabra crenata rosea flore-pleno</i> . Double, rose-colored flowers.					
3-4 ft.	2 50	20 00			
2-3 ft.	2 00	15 00			
18-24 in.	1 50	12 00			
DOGWOOD (Cornus).					
<i>Alba sibirica</i> . Coral Dogwood. Flowers white. Blood-red branches.					
3-4 ft.	2 50	20 00			
2-3 ft.	2 00	15 00			
<i>Mas elegantissima (elegantissima variegata)</i> . Variegated Cor- nelian Cherry. White and green foliage.					
3-4 ft.	4 50	40 00			
2-3 ft.	3 50	30 00			
18-24 in.	2 50	20 00			
<i>Paniculata</i> . Gray Dogwood.					
12-18 in.	2 00	15 00			
ELDER (Sambucus).					
<i>Golden European. S. nigra aurea</i> .					
3-4 ft.	3 00	25 00			
2-3 ft.	2 50	20 00			
<i>Cut-leaf European. S. nigra lacini- ata</i> .					
4-5 ft.	2 50	20 00			
3-4 ft.	2 00	15 00			
2-3 ft.	1 50	12 00			
EUONYMUS.					
<i>Alatus</i> . Winged Euonymus. Spreading shrub; wood very corky.					
2-3 ft.	4 50	40 00			
18-24 in.	3 50	30 00			
EXOCHORDA.					
<i>Grandiflora</i> . Common Pearl Bush. Large white flowers.					
3-4 ft.	3 50	30 00			
2-3 ft.	2 50	20 00			
FORSYTHIA.					
<i>Intermedia</i> . Border Forsythia; Golden Bell. Bright golden yellow flowers.					
3-4 ft.	2 50	20 00			
2-3 ft.	2 00	16 00			
<i>Int. spectabilis</i> . Showy Border Forsythia.					
3-4 ft.	2 50	22 00			
2-3 ft.	2 00	18 00			
18-24 in.	1 50	12 00			

SHRUBS, continued

	Per 10	Per 100
Forsythia, continued		
Suspensa. Weeping Forsythia. Growth drooping. Flowers yellow.		
3-4 ft.....	\$3 50	\$30 00
2-3 ft.....	3 00	25 00
*Sus. Fortunei. Fortune Forsythia. Flowers bright yellow.		
3-4 ft.....	2 50	22 00
2-3 ft.....	2 00	18 00
18-24 in.....	1 50	12 00
Sus. Sieboldi. Siebold Forsythia. Somewhat drooping. Flowers yellow.		
3-4 ft.....	2 50	22 00
2-3 ft.....	2 00	18 00
Viridissima. Green-stem Forsythia. Deep yellow flowers.		
Very early. 3-4 ft.....	2 50	22 00
2-3 ft.....	2 00	16 00
FRINGE TREE, Purple. See Smoke Tree.		
HALESIA (Silver-bell).		
Tetraptera.		
2-3 ft.....	4 50	40 00
HONEYSUCKLE (Lonicera).		
Chrysantha. Coralline Honeysuckle. Yellow flowers; red fruit.		
2-3 ft.....	2 00	16 00
18-24 in.....	1 50	12 00
*Fragrantissima. Winter Honeysuckle. Flowers creamy white or light yellow; very fragrant.		
3-4 ft.....	3 50	30 00
2-3 ft.....	2 50	20 00
18-24 in.....	1 75	15 00
Morrowi. Morrow Honeysuckle. Handsome red fruit; true drooping form.		
3-4 ft.....	2 50	20 00
2-3 ft.....	2 00	16 00
Nitida. (See Shiloh).		
Tatarica alba. White Tatarian Honeysuckle. White flowers.		
3-4 ft.....	2 50	20 00
2-3 ft.....	2 00	16 00
Tatarica rosea (grandiflora rosea). Rosy Tatarian Honeysuckle. Bright pink flowers.		
3-4 ft.....	2 50	22 00
2-3 ft.....	2 00	16 00
18-24 in.....	1 50	10 00
Tatarica sibirica (Tatarica rubra). Red Tatarian Honeysuckle. Light red flowers.		
3-4 ft.....	3 00	25 00
2-3 ft.....	2 25	18 00
18-24 in.....	1 50	12 00
HYDRANGEA.		
Arborescens grandiflora. Snowhill (Snowball) Hydrangea.		
3-4 ft.....	3 50	30 00
2-3 ft.....	\$175 per 1,000..	2 50 20 00
18-24 in.....	\$125 per 1,000..	2 00 15 00
12-18 in.....	\$85 per 1,000..	1 50 10 00

	Per 10	Per 100
Hydrangea, continued		
*Paniculata grandiflora, Bush-Form.		
3-4 ft.....	\$250 per 1,000..	\$3 50 \$30 00
2-3 ft.....	\$175 per 1,000..	2 50 20 00
18-24 in.....	\$125 per 1,000..	2 00 15 00
12-18 in.....	\$85 per 1,000..	1 50 10 00
Paniculata grandiflora, Tree-Form.		
4-5 ft.....	8 00	70 00
3-4 ft.....	6 50	60 00
2½-3 ft.....	4 50	40 00
KERRIA (Corchorus) japonica.		
Single yellow flowers.		
2-3 ft.....	5 50	50 00
18-24 in.....	4 00	35 00
Japonica flore-pleno. Double Kerria. Yellow flowers.		
2-3 ft.....	5 50	50 00
18-24 in.....	4 00	35 00
12-18 in.....	3 00	25 00
PHILADELPHUS (Mock Orange).		
Albatre. Medium-size, semi-double white flowers.		
2-3 ft.....	4 00	35 00
Aureus. Golden Mock Orange. Yellow foliage.		
18-24 in.....	4 00	35 00
15-18 in.....	3 00	25 00
12-15 in.....	2 50	20 00
Avalanche. White flowers; very fragrant.		
3-4 ft.....	3 00	25 00
2-3 ft.....	2 00	16 00
18-24 in.....	1 50	12 00
Banniere. Double, slightly fragrant flowers; compact growth.		
2-3 ft.....	3 50	30 00
Coronarius. Sweet Mock Orange; Garland Syringa. Flowers pure white; highly scented.		
3-4 ft.....	2 50	20 00
2-3 ft.....	2 00	15 00
18-24 in.....	1 50	10 00
*Grandiflorus. Big Scentless Mock Orange. Very large white flowers.		
3-4 ft.....	2 50	20 00
2-3 ft.....	2 00	15 00
Lemoinei. Lemoine Mock Orange. Small white flowers.		
3-4 ft.....	3 00	25 00
2-3 ft.....	2 00	16 00
18-24 in.....	1 50	12 00
Manteau d'Hermine. Flowers double or semi-double, creamy white. Dwarf.		
2-3 ft.....	3 00	25 00
18-24 in.....	2 00	16 00
12-18 in.....	1 50	12 00

Beauty Bush (*Kolkwitzia amabilis*)

	Per 10	Per 100	Per 1,000
2-year, 3-4 ft.....	\$12 50	\$100 00	\$900 00
2-year, 2-3 ft.....	7 50	75 00	600 00
2-year, 18-24 in.....	5 00	50 00	450 00
2-year, 12-18 in.....	4 50	40 00	350 00

Ask for our special folder with complete description



Hydrangea Peegee, well rooted and bushy. A J. & P. Specialty

SHRUBS, continued

	Per 10	Per 100		Per 10	Per 100
Philadelphus, continued					
*Mont Blanc. Large white flowers.			PRIVET (<i>Ligustrum</i>). (All 2-year.)		
3-4 ft.....	\$3 50	\$30 00	Amur. <i>L. amurense</i> . True hardy		
2-3 ft.....	2 50	22 00	northern variety.		
Norma. Large, fragrant flowers, sometimes double.			3-4 ft.....	\$100 per 1,000..	\$1 50 \$12 00
2-3 ft.....	4 00	35 00	2-3 ft.....	\$65 per 1,000..	1 00 8 00
Snowbank. <i>P. nivalis</i> . Free-flow- ering. White. Largest bloom of all the single Philadelphus.			18-24 in.....	\$45 per 1,000..	75 6 00
3-4 ft.....	2 50	20 00	12-18 in.....	\$35 per 1,000..	50 4 00
2-3 ft.....	2 00	16 00	*California. <i>L. ovalifolium</i> .		
18-24 in.....	1 50	12 00	3-4 ft.....	\$50 per 1,000..	80 7 50
Virginal. Very large, double white flowers. 3-4 ft.....	4 00	35 00	2-3 ft.....	\$40 per 1,000..	60 5 00
2-3 ft.....	3 00	25 00	18-24 in.....	\$25 per 1,000..	40 3 00
18-24 in.....	2 00	16 00	12-18 in.....	\$15 per 1,000..	30 2 00
PHYSOCARPUS <i>opulifolius</i> (<i>Spir- aea opulifolia</i>). Common Nine- bark. White flowers.			Ibodium. <i>L. ibodium</i> .		
3-4 ft.....	2 50	20 00	3-4 ft.....	\$80 per 1,000..	1 00 9 00
PLUM (<i>Prunus</i>).			2-3 ft.....	\$60 per 1,000..	75 7 00
Double-flowered. <i>P. triloba plena</i> .			18-24 in.....	\$45 per 1,000..	55 5 00
4-5 ft.....	6 00	55 00	Ibota. <i>L. ibota</i> . Large white flow- ers; very fragrant.		
3-4 ft.....	5 00	45 00	3-4 ft.....	\$120 per 1,000..	1 75 15 00
2-3 ft.....	4 00	35 00	2-3 ft.....	\$65 per 1,000..	1 00 8 00
18-24 in.....	3 00	25 00	18-24 in.....	\$50 per 1,000..	75 6 00
Newport. Purple-leaf Plum.			Ibota <i>regelianum</i> (Regel's). Spreading branches. Racemes of white flowers. Propagated from cuttings to avoid rever- sion to Ibota type as is common in plants grown from seed.		
4-5 ft.....	4 50	40 00	2-3 ft.....		2 00 16 00
3-4 ft.....	3 50	30 00	18-24 in.....		1 50 12 00
Purple-leaved. <i>P. cerasifera pis- sardi</i> (<i>P. pissardi</i>).			QUINCE (<i>Cydonia</i>).		
5-6 ft.....	5 50	50 00	Flowering. <i>C. japonica</i> . Scarlet- crimson flowers.		
4-5 ft.....	4 50	40 00	3-4 ft.....	4 00	35 00
3-4 ft.....	3 50	30 00	2-3 ft.....	2 50	22 00
2-3 ft.....	2 50	20 00	18-24 in.....	2 00	16 00
*Tomentosa.			12-18 in.....	1 50	12 00
2-3 ft.....	3 50	30 00	RHAMNUS (<i>Buckthorn</i>).		
18-24 in.....	2 50	20 00	Cathartica. Common Buckthorn.		
			3-4 ft.....	2 50	20 00
			2-3 ft.....	2 00	15 00
			18-24 in.....	1 50	10 00

SHRUBS, continued

RHODOTYPOS.

	Per 10	Per 100
Kerrioides. Jetbead; White Kerria. White flowers. Handsome foliage.		
3-4 ft.	\$3 50	\$30 00
2-3 ft.	2 50	20 00
18-24 in.	2 00	15 00

SMOKE TREE (Rhus).

Common (<i>Rhus cotinus</i>). Purple Fringe. Purple, hair-like flowers. 2-3 ft.	5 50	50 00
18-24 in.	4 50	40 00

SPIRÆA.

Anthony Waterer. Dwarf. Dark crimson flowers.		
24-30 in. \$200 per 1,000.	3 00	25 00
18-24 in. \$160 per 1,000.	2 50	20 00
15-18 in. \$120 per 1,000.	2 00	15 00
12-15 in. \$80 per 1,000.	1 25	10 00

Aurea. Golden Spirea.

3-4 ft.	2 50	20 00
2-3 ft.	2 00	15 00

Billiardi. Billiard Spirea. Rose-colored flowers.

3-4 ft.	2 50	20 00
2-3 ft.	2 00	15 00
18-24 in.	1 50	12 00

Bumalda. Dwarf; bright carmine.

18-24 in.	2 50	20 00
----------------	------	-------

Froebeli. *S. froebeli*. Bright crimson flowers. Similar to Anthony Waterer, but taller.

2-3 ft.	2 50	20 00
18-24 in.	2 00	16 00
12-18 in.	1 50	12 00

Japonica alba (*callosa alba*). White Japanese Spirea. White flowers; dwarf.

18-24 in.	2 50	20 00
15-18 in.	2 00	15 00
12-15 in.	1 50	10 00

Opulifolia. See *Physocarpus*.

Prunifolia. Bridal Wreath. Pure white flowers; very double.

3-4 ft.	3 50	30 00
2-3 ft.	2 50	20 00
18-24 in.	2 00	15 00
12-18 in.	1 50	12 00

Thunbergi. Thunberg Spirea. Small white flowers. Fine fringe-like foliage.

24-30 in.	2 50	20 00
18-24 in.	2 00	15 00
12-18 in.	1 50	10 00

Spiræa vanhouttei. Van Houtte Per 10 Per 100

Spirea. White flowers. Best of all Spireas.		
3-4 ft. \$150 per 1,000.	\$2 50	\$20 00
2-3 ft. \$100 per 1,000.	2 00	15 00
18-24 in. \$60 per 1,000.	1 35	8 00
12-18 in. \$50 per 1,000.	1 00	6 00

STEPHANANDRA.

Flexuosa. Cut-leaf Stephanandra. Erect-growing shrub with elegant, fern-like, yellowish green foliage.		
3-4 ft.	4 00	35 00
2-3 ft.	3 00	25 00

SUMAC (Rhus).

Fragrant. <i>R. aromatica</i> .		
2-3 ft.	4 00	35 00
18-24 in.	3 00	25 00

Cut-leaf. *R. glabra laciniata*. Deeply cut leaves, resembling fern leaves.

3-4 ft.	6 50	60 00
2-3 ft.	5 50	50 00
18-24 in.	4 50	40 00

Shredded. *R. typhina laciniata*.

3-4 ft.	4 00	35 00
2-3 ft.	3 00	25 00

SYMPLICARPOS.

Chenaulti. Handsome hybrid. Grows 4 to 5 feet tall, with graceful, arching branches; flowers pink, inconspicuous; fruit red and white spotted.		
3-4 ft.	3 00	25 00
2-3 ft.	2 50	20 00

Racemosus. Common Snowberry. Pink flowers; white berries.

3-4 ft.	2 50	20 00
2-3 ft.	2 00	16 00

Vulgaris. Coral Berry; Indian Currant. Purple berries.

3-4 ft.	2 50	20 00
2-3 ft.	2 00	15 00

TAMARIX.

Africana. African Tamarisk. Spikes of pink flowers.		
3-4 ft.	2 50	20 00
2-3 ft.	2 00	15 00

Gallica. French Tamarisk. Tall. Flowers pink.

3-4 ft.	2 50	20 00
2-3 ft.	2 00	16 00

Pentandra. Five-stamen Tamarisk. Bright carmine flowers.

3-4 ft.	3 00	25 00
2-3 ft.	2 00	18 00

VIBURNUM.

Carlesi. Fragrant Viburnum. Flowers pinkish white, fragrant. Very desirable. (B&B at 15 cts. extra.)		
2-2½ ft.	20 00	175 00
18-24 in.	15 00	125 00
15-18 in.	12 50	100 00
12-15 in.	10 00	75 00

Dentatum. Arrow-wood. Dentate leaves. Flowers greenish white.

2-3 ft.	2 50	20 00
18-24 in.	2 00	15 00
12-18 in.	1 50	12 00

Korean Spirea

Spiræa trichocarpa

	Per 10	Per 100	Per 1,000
2 year, 3-4 ft.	\$7 50	\$65 00	\$600 00
2 year, 2-3 ft.	6 00	50 00	450 00
2 year, 18-24 in.	4 50	35 00	300 00
2 year, 12-18 in.	3 50	25 00	200 00

Ask for our special folder with complete description

SHRUBS, continued

	Per 10	Per 100
Viburnum, continued		
Lantana. Wayfaring Tree. Thick dark green foliage, downy on one side. White flowers; red fruit.		
3-4 ft.....	\$4 00	\$35 00
2-3 ft.....	3 00	25 00
18-24 in.....	2 50	20 00
Molle.		
2-3 ft.....	2 50	20 00
18-24 in.....	2 00	15 00
12-18 in.....	1 50	10 00
Opulus. European Cranberry Bush; High-bush Cranberry. Red berries.		
3-4 ft.....	3 50	30 00
2-3 ft.....	2 50	20 00
18-24 in.....	2 00	15 00
*Opulus sterile. Common Snowball. White flowers.		
3-4 ft.....	3 50	30 00
2-3 ft.....	2 50	20 00
18-24 in.....	2 00	15 00
12-18 in.....	1 50	12 00
Tomentosum. Double-file Viburnum; Single Japanese Snowball. White flowers.		
3-4 ft.....	4 00	35 00
2-3 ft.....	3 50	30 00
18-24 in.....	2 50	20 00
*Tomentosum plicatum. Japanese Snowball; Double Japanese Snowball. White flowers.		
3-4 ft.....	5 50	50 00
2-3 ft.....	4 50	40 00
18-24 in.....	3 50	30 00

	Per 10	Per 100
WEIGELA (Diervilla).		
Amabilis. Rose Weigela. Flowers rose-colored.		
3-4 ft.....	\$2 50	\$22 00
2-3 ft.....	2 00	18 00
*Candida. White.		
3-4 ft.....	3 00	25 00
2-3 ft.....	2 50	20 00
*Eva Rathke. Brilliant crimson.		
3-4 ft.....	\$250 per 1,000..	4 00 35 00
2-3 ft.....	\$200 per 1,000..	3 00 25 00
18-24 in.....	\$120 per 1,000..	2 00 18 00
12-18 in.....	\$90 per 1,000..	1 50 10 00
*Floribunda. Crimson Weigela. Bright crimson flowers.		
3-4 ft.....	3 50	30 00
2-3 ft.....	2 50	22 00
18-24 in.....	2 00	15 00
*Rosea. Pink Weigela. Rose-colored flowers.		
3-4 ft.....	\$180 per 1,000..	2 50 22 00
2-3 ft.....	\$120 per 1,000..	2 00 18 00
18-24 in.....	1 50	12 00
Rosea foliis purpureis. Purple-leaf Weigela. Light pink flowers. Rich bronzy purple foliage.		
2-3 ft.....	3 00	25 00
18-24 in.....	2 50	20 00
12-18 in.....	2 00	16 00
*Rosea nana variegata. Dwarf Variegated Weigela. Pink flowers, variegated leaves.		
2-3 ft.....	2 50	20 00
18-24 in.....	2 00	15 00
12-18 in.....	1 50	12 00

Lilacs

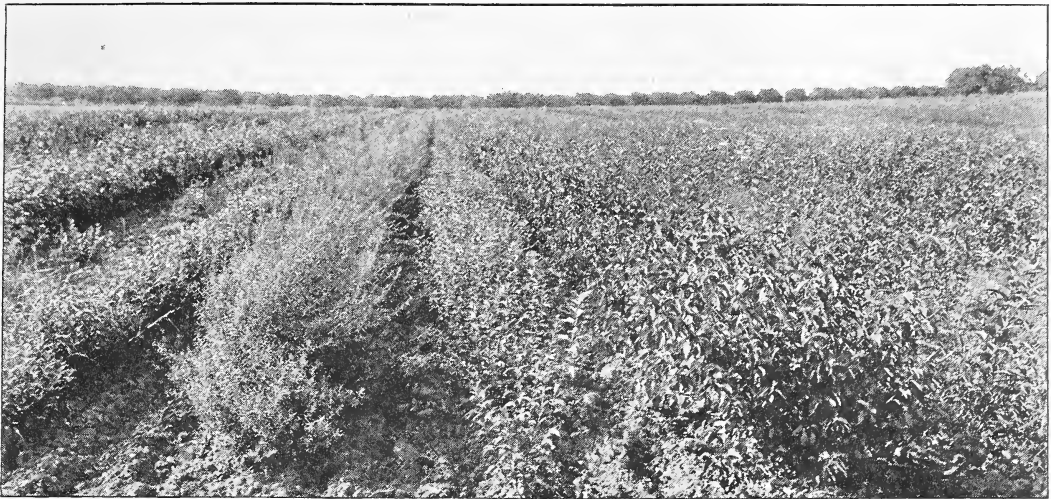
Common and Persian

	Per 10	Per 100
COMMON PURPLE.		
Bush-Form.		
3-4 ft.....	\$2 50	\$22 00
2-3 ft.....	2 00	16 00
18-24 in.....	1 50	12 00
12-18 in.....	1 25	10 00
COMMON WHITE.		
Bush-Form.		
3-4 ft.....	5 00	45 00
2-3 ft.....	4 00	35 00
18-24 in.....	3 00	25 00
12-18 in.....	2 00	16 00
*PERSIAN PURPLE.		
Tree-Form.		
3-4 ft.....	5 50	50 00
2-3 ft.....	4 50	40 00
*Bush-Form.		
2-3 ft.....	2 50	22 00
18-24 in.....	2 00	16 00
12-18 in.....	1 50	12 00
PERSIAN WHITE.		
Bush-Form.		
2-3 ft.....	4 50	40 00
18-24 in.....	3 50	30 00
CHINESE LILAC (rothomagensis).		
Chinese Lilac.		
Bush-Form.		
2-3 ft.....	3 00	25 00
18-24 in.....	2 50	20 00
12-18 in.....	2 00	15 00

Named French Varieties

	Per 10	Per 100
Tree-Form.		
3-4 ft.....	\$5 50	\$50 00
2-3 ft.....	4 50	40 00
Bush-Form.		
3-4 ft.....	6 00	55 00
2-3 ft.....	4 50	40 00
18-24 in.....	3 00	25 00
12-18 in.....	2 00	18 00
Abbreviations: S., Single; D., Double		
Those marked (*) are also available for fall shipment from Shiloh, N. J.		
*Adelaide Dunbar. D. Lilac.		
*Aline Mocqueris. D. Dark purplish red. Dwarf, compact bush.		
*Belle de Nancy. D. Large; satiny rose, white toward center.		
*Charles X. S. Purplish red. Strong rapid grower.		
*Condorcet. D. Pale blue.		
*Congo. S. Wine-red.		
Dr. Charles Jacob. S. Red.		
Dr. Lindley. S. Lilac.		
*Dr. Masters. D. Clear lilac.		
*Dr. Troyanowsky. D. Spikes of bluish mauve, hyacinth-like flowers.		
*Edouard Andre. D. Clear rose.		
*General Pershing. Semi-double. Buds deep lilac.		
*Hugo Koster. S. Soft lilac.		

The wholesale prices in our lists apply on wholesale quantities. Orders should call for 10 of a kind and size and beyond that for multiples of 10



One of our 2-year shrub blocks at Newark. Photographed August, 1930

NAMED FRENCH LILACS, continued

- ***Jacques Calot.** S. Very large panicle of delicate rosy pink flowers. The individual flowers are unusually large.
- ***L'Oncle Tom.** S. Large spikes of very dark purple flowers.
- ***Marie Legraye.** S. Pure white; fragrant. Fine for forcing.
- ***Michel Buchner.** D. Dwarf. Very double pale lilac blooms.
- ***Miss Stepman.** S. White.
- ***Mme. C. Perriere.** D. Creamy white.
- ***Mme. Felix.** S. White.
- ***Mme. Lemoine.** D. Pure white. Very fine.
- ***Othello.** S. Flowers purplish red; panicles large. Fine.
- ***Philemon.** S. The darkest shade in Lilacs. One of the best.
- ***President Grevy.** D. A beautiful shade of blue. Individual flowers large.
- ***President Viger.** D. Bluish lilac. Extra fine.
- ***Princess Alexandra.** S. White; large panicles. Fine.
- ***Reine Elizabeth.** S. White. Fine.
- ***Rene Jarry-Desloges.** D. Panicles very large. Perfectly formed flowers of a rarely beautiful shade of blue. One of the best.
- ***Stadtgartner Rothpletz.** S. Dark purple.
- ***Souvenir de Ludwig Spaeth.** S. Panicles long; individual flowers large, dark purplish red.
- ***William C. Barry.** S. Buds reddish lilac, opening silvery lavender or pearly lavender. Flowers somewhat cup-shaped.

Ornamental and Shade Trees

Items marked (*) are also available for fall delivery from our Shiloh (New Jersey) branch

ASH (Fraxinus).			
White (American White). <i>F. americana.</i>			
1 1/2-2 in. (10-12 ft.).....	Per 10	Per 100	
1 1/4-1 1/2 in.	\$17 50	\$150 00	
8-10 ft.	15 00	125 00	
6-8 ft.	12 50	100 00	
	8 00	75 00	
BIRCH (Betula).			
Alba. European White Birch; Common Birch.			
8-10 ft.	12 50	100 00	
6-8 ft.	9 00	75 00	
5-6 ft.	6 50	60 00	
4-5 ft.	5 50	50 00	
Pendula gracilis (alba laciniata pendula). Cut-leaf Weeping Birch.			
1 1/4-1 1/2 in.	22 50	200 00	
8-10 ft.	20 00	175 00	
6-8 ft.	15 00	125 00	
5-6 ft.	12 50	100 00	
4-5 ft.	8 00	75 00	
3-4 ft.	6 50	60 00	

CATALPA.			
Bungei. Manchurian Catalpa.			
2-year heads, 5-6 ft. stems. . . .	\$10 00	\$75 00	
1-year heads, 5-6 ft. stems. . . .	7 50	50 00	
CHERRY (Prunus).			
Fruticosa pendula (japonica pendula). Weeping Bush Cherry. Single pink flowers.			
2-year heads.	30 00	250 00	
1-year heads.	25 00	200 00	
CHERRY, JAPANESE FLOWER-ING (Cerasus).			
Amanogawa. Beautiful form and very distinct in its habit of growth. Flowers fragrant, semi-double, pale pink.			
4-5 ft.	12 50	100 00	
3-4 ft.	10 00	85 00	
Beni-Higan. Small flowers. Very light pink; single.			
5-6 ft.	15 00	125 00	
4-5 ft.	12 50	100 00	
3-4 ft.	10 00	85 00	

We cannot undertake to supply long and much assorted lists of stock calling for only small bundles of each kind as our business is exclusively wholesale and we do not have the facilities to handle retail orders



Cut-leaved Weeping Birch, another J. & P. Specialty given plenty of room in the nursery rows to develop properly

ORNAMENTAL AND SHADE TREES, continued

	Per 10	Per 100		Per 10	Per 100
Japanese Flowering Cherry, continued			Japanese Flowering Cherry, continued		
Double-flowering. Double, white flowers.			Sumizone. Large, fragrant, single or nearly single white flowers, flushed pink.		
3-4 ft.....	\$10 00	\$85 00	2-3 ft.....	\$9 00	\$75 00
2-3 ft.....	9 00	75 00	Yama. <i>P. serrulata sachalinensis</i> . Single, rosy pink flowers. Very showy. Leaves become yellow and crimson in the autumn.		
Fudan zakura. Single, white flowers.			2-3 ft.....	10 00	90 00
2-3 ft.....	9 00	75 00	Yoshino. <i>P. yedoensis</i> . Single, pink flowers, fading to white. A very fast-growing tree of spreading habit.		
Fugenzo (J. H. Veitch). Double; pink. Late.			5-6 ft.....	17 50	150 00
4-5 ft.....	12 50	100 00	4-5 ft.....	15 00	125 00
3-4 ft.....	10 00	85 00	3-4 ft.....	12 50	100 00
Kwanzan (K a n z a n -Sekiuama). Double; dark pink. Late.			CRAB (Malus).		
5-6 ft.....	17 50	150 00	Angustifolia flore-pleno (angustifolia roseo-pleno). Double Southern Crab. Large, double, light pink flowers.		
4-5 ft.....	12 25	100 00	3-4 ft.....	5 50	50 00
3-4 ft.....	10 00	85 00	2-3 ft.....	4 50	40 00
Ojochin. One of the best. Very large, semi-double, pale pink flowers.			Floribunda. Japanese Flowering Crab. Bright pink flower-buds; flowers white; small yellowish fruit.		
4-5 ft.....	12 50	100 00	3-4 ft.....	6 50	60 00
3-4 ft.....	10 00	85 00	2-3 ft.....	5 50	50 00
Shirofugen. <i>P. serrulata sachalinensis albo-rosea</i> . Flowers pink in bud, changing to white, bearing two leafy green carpels in center. Handsome. Single or nearly single.			Floribunda purpurea. Single crimson flowers.		
3-4 ft.....	12 50	100 00	4-5 ft.....	8 00	75 00
Shirotae (Mt. Fuji). Double; white. Fine late sort.			3-4 ft.....	6 50	60 00
3-4 ft.....	12 50	100 00	2-3 ft.....	5 50	50 00
Shogetsu. Large; double; pink; late.			Ioensis bechteli. Bechtel's Crab. Large, double, rosy pink flowers.		
4-5 ft.....	15 00	125 00	5-6 ft.....	10 00	90 00
3-4 ft.....	12 50	100 00	4-5 ft.....	7 50	70 00
Siebold. <i>P. sieboldi</i> (<i>P. sieboldi wateri</i>). Semi-double, pinkish white flowers.			3-4 ft.....	5 00	45 00
4-5 ft.....	15 00	125 00	2-3 ft.....	3 50	30 00
3-4 ft.....	12 50	100 00	18-24 in.....	2 50	20 00
2-3 ft.....	10 00	90 00			

The wholesale prices in our lists apply on wholesale quantities. Orders should call for 10 of a kind and size and beyond that for multiples of 10

ORNAMENTAL AND SHADE TREES, continued

Crab, continued	Per 10	Per 100	Dogwood, continued	Per 10	Per 100
Niedzwetzkyana. Red-vein Crab. Remarkable for the red color of flowers, branches, leaves, and fruit.			Red-flowering. <i>C. florida rubra.</i> Red flowers appearing before leaves.		
4-5 ft.....	\$6 50	\$60 00	4-5 ft. (B&B., 25 cts. extra)....	\$45 00	\$400 00
3-4 ft.....	5 50	50 00	3-4 ft. (B&B., 25 cts. extra)....	30 00	250 00
2-3 ft.....	4 50	40 00	2-3 ft. (B&B., 15 cts. extra)....	20 00	150 00
Sargenti. Sargent's Crab. Very dwarf spreading variety. Pale straw-color flowers with bright yellow anthers; scarlet fruit hanging until spring.			ELM (Ulmus).		
3-4 ft.....	8 00	75 00	American. <i>U. americana.</i>		
2-3 ft.....	6 50	60 00	2-2½ in.....	32 50	300 00
Scheideckeri. Scheidecker's Crab. Double; red in bud, changing to pink.			1¾-2 in.....	22 50	200 00
4-5 ft.....	8 00	75 00	1½-1¾ in. (10 to 12 ft.)....	16 50	140 00
3-4 ft.....	6 50	60 00	1¼-1½ in.....	15 00	100 00
2-3 ft.....	5 50	50 00	8-10 ft., 1-1¼ in.....	10 00	75 00
Sieboldi. Toringo Crab. Large, pink and white flowers; brilliant scarlet fruit.			6-8 ft.....	7 50	50 00
4-5 ft.....	8 00	75 00	Moline.		
3-4 ft.....	6 50	60 00	1½-1¾ in. (10-12 ft.)....	22 50	175 00
2-3 ft.....	5 50	50 00	1¼-1½ in.....	15 00	125 00
Spectabilis riversi rosea plena (<i>spectabilis rosea flore-pleno</i>). Double Pink Chinese Crab. Large pink flowers; yellow fruit.			8-10 ft.....	12 50	100 00
4-5 ft.....	6 50	60 00	6-8 ft.....	10 00	75 00
3-4 ft.....	5 50	50 00	*FAGUS (Beech).		
2-3 ft.....	4 50	40 00	Sylvatica. European Beech.		
DOGWOOD (Cornus).			4-5 ft.....	25 00	225 00
Flowering. <i>C. florida.</i> White flowers, appearing before leaves.			3-4 ft.....	17 50	150 00
5-6 ft.....	17 50	150 00	2-3 ft.....	12 50	100 00
4-5 ft.....	12 50	100 00	HORSE-CHESTNUT. <i>Aesculus hippocastanum.</i>		
3-4 ft.....	6 50	60 00	6-8 ft.....	12 50	100 00
2-3 ft.....	4 50	40 00	5-6 ft.....	10 00	75 00
			4-5 ft.....	8 00	60 00
			LINDEN (Tilia).		
			American. <i>T. americana.</i>		
			1½-1¾ in. (10-12 ft.)....	30 00	250 00
			1¼-1½ in.....	25 00	200 00
			8-10 ft.....	20 00	175 00
			6-8 ft.....	15 00	125 00
			Big-leaf European. <i>T. platyphyllos.</i>		
			8-10 ft.....	27 50	225 00
			6-8 ft.....	20 00	150 00
			5-6 ft.....	15 00	125 00



Our block of *Catalpa bungei*, 2-year heads. Photographed August, 1930



American Elms. This photograph, taken August, 1930, shows a part of one of our young blocks

ORNAMENTAL AND SHADE TREES, continued

MAPLE (Acer).	Per 10	Per 100	MOUNTAIN-ASH (Sorbus).	Per 10	Per 100
Bloodleaf Japanese. (Seedlings.)			European. <i>S. aucuparia</i> .		
<i>A. palmatum atropurpureum</i> .			1 1/4-1 1/2 in.	\$15 00	\$125 00
18-24 in.	\$22 50	\$175 00	8-10 ft.	8 50	80 00
15-18 in.	15 00	125 00	6-8 ft.	6 50	60 00
NOTE.—For grafts, see Shiloh			5-6 ft.	5 00	45 00
Box-Elder. <i>A. negundo</i>.			MULBERRY (Morus).		
10-12 ft.	10 00	75 00	Tea's Weeping.		
8-10 ft.	6 50	50 00	2-year heads, 5-6 ft. stems....	20 00	150 00
6-8 ft.	4 00	30 00	1-year heads, 5-6 ft. stems....	12 50	100 00
Norway. <i>A. platanoides</i>.			OAK (Quercus).		
1 1/4-1 1/2 in.	25 00	225 00	Pin. <i>Q. palustris</i> .		
8-10 ft.	20 00	150 00	1 1/2-1 3/4 in. (10-12 ft.)....	40 00	350 00
6-8 ft.	12 50	100 00	1 1/4-1 1/2 in.	35 00	300 00
Schwedleri. <i>A. platanoides</i>			8-10 ft.	30 00	250 00
<i>schwedleri</i> .			6-8 ft.	25 00	200 00
8-10 ft.	30 00	250 00	PLANE (Platanus).		
6-8 ft.	22 50	175 00	Oriental. <i>P. orientalis</i> .		
Silver. <i>A. dasycarpum</i>.			1 1/2-1 3/4 in. (10-12 ft.)....	20 00	175 00
2 1/2-3 in.	27 50	225 00	1 1/4-1 1/2 in.	15 00	125 00
2-2 1/2 in.	22 50	175 00	8-10 ft.	12 50	100 00
1 3/4-2 in.	17 50	140 00	6-8 ft.	8 00	75 00
1 1/2-1 3/4 in. (10-12 ft.)....	12 50	100 00	5-6 ft.	6 50	60 00
1 1/4-1 1/2 in.	8 50	75 00	POPLAR (Populus).		
8-10 ft.	6 00	50 00	Bolleana. <i>P. bolleana</i> .		
6-8 ft.	4 00	30 00	1 1/2-2 in. (10-12 ft.)....	12 50	100 00
Wier's (Wier's Cut-leaf). <i>A.</i>			1 1/4-1 1/2 in.	8 00	75 00
<i>saccharum wieri</i> .			8-10 ft.	6 50	60 00
1 1/2-1 3/4 in. (10-12 ft.)....	17 50	150 00	6-8 ft.	5 50	50 00
1 1/4-1 1/2 in.	12 50	100 00	Carolina. <i>P. eugenei</i> .		
8-10 ft.	8 50	75 00	1 1/4-1 1/2 in.	4 50	40 00
6-8 ft.	5 50	50 00	8-10 ft.	3 50	30 00
5-6 ft.	4 50	40 00	6-8 ft.	2 50	20 00

The wholesale prices in our lists apply on wholesale quantities. Orders should call for 10 of a kind and size and beyond that for multiples of 10

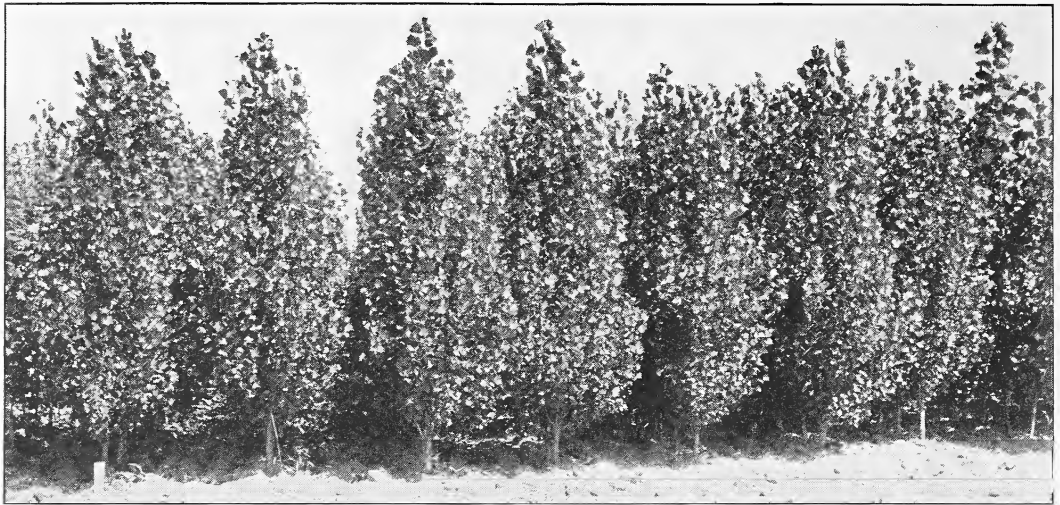


PYRAMIDAL MAPLE

Rapid-growing, and one of the most effective trees for screens and street-planting, taking the place of the objectionable Lombardy and other Poplars once used for this purpose but now so much in disfavor. The upper picture shows their use as a screen, acting as a rapid-growing boundary marker. The lower picture shows a 3-year-old block of these handsome trees in our Nursery.

	Per 10	Per 100
1 1/4-1 1/2 in.	\$12 50	\$100 00
8-10 ft.	10 00	85 00
6-8 ft.	7 50	50 00





Lombardy Poplars at Newark, properly grown, branched to the ground. Photographed August, 1930

ORNAMENTAL AND SHADE TREES, continued

Poplar, continued	Per 10	Per 100	TULIP TREE (<i>Liriodendron</i>).	Per 10	Per 100
Lombardy. <i>P. nigra italica</i>.			Tulip Tree. <i>L. tulipifera</i>.		
1½-2 in. (10-12 ft.).....	\$8 00	\$75 00	2-2½ in.	\$22 50	\$200 00
1¼-1½ in.	6 00	50 00	1½-2 in. (10-12 ft.).....	17 50	150 00
8-10 ft.	4 00	35 00	1¼-1½ in.	15 00	125 00
6-8 ft.	3 00	25 00	8-10 ft.	12 50	100 00
REDBUD (<i>Cercis</i>).			6-8 ft.	10 00	75 00
American. <i>C. canadensis</i>. Heart-shaped foliage and pink blossoms. Valuable for specimen or in the shrubby border.			5-6 ft.	7 50	60 00
5-6 ft.	10 00	80 00	WILLOW (<i>Salix</i>).		
4-5 ft.	7 50	60 00	Babylonica. Babylon Weeping Willow.		
THORN (<i>Crataegus</i>).			1¼-1½ in.	15 00	125 00
Double, White. <i>C. oxyacantha</i>.			8-10 ft.	9 00	80 00
4-5 ft.	12 50	100 00	6-8 ft.	7 00	60 00
3-4 ft.	10 00	75 00	Dolorosa. Wisconsin Weeping Willow.		
Paul's Double Scarlet. <i>C. oxyacantha splendens</i>.			8-10 ft.	9 00	80 00
6-8 ft. Transplanted.	15 00	125 00	6-8 ft.	7 50	60 00
5-6 ft. Transplanted.	12 50	100 00	Niobe Weeping.		
4-5 ft. Transplanted.	10 00	75 00	1½-2 in. (10-12 ft.).....	15 00	125 00
3-4 ft.	7 00	60 00	1¼-1½ in.	12 50	100 00
2-3 ft.	5 50	50 00	8-10 ft.	9 00	80 00
			6-8 ft.	7 00	60 00
			Pentandra. Laurel Leaf Willow.		
			6-8 ft.	5 00	40 00
			5-6 ft.	3 50	25 00

Evergreens

The following prices include B&B

Abbreviations: S, sheared; T, once transplanted; TT, twice transplanted; TTT, three times transplanted; TTTT, four times transplanted

CHAMÆCYPARIS (<i>Retinospora</i>). Per 10 Per 100	Chamaecyparis pisifera aurea, continued Per 10 Per 100		
Pisifera. Sawara Retinospora;	3-4 ft., TTS.	\$35 00	\$ 00 00
Sawara Cypress.	2-2½ ft., TTS.	12 50	100 00
2½-3 ft., TTTT.	1½-2 ft., TTS.	10 00	75 00
2-2½ ft., TTT.	15-18 in., TTS.	7 50	60 00
1½-2 ft., TTTT.	12-15 in., TTS.	6 00	50 00
15-18 in., TTS.	P. filifera. Thread Retinospora.		
12-15 in., TTS.	3-4 ft., TTS.	40 00	350 00
P. aurea. Golden Sawara Retinospora; Golden Sawara Cypress.	2-2½ ft., TTS.	22 50	200 00
	15-18 in., TTS.	11 00	90 00
	12-15 in., TTS.	7 50	60 00

EVERGREENS, continued

	Per 10	Per 100		Per 10	Per 100
Chamaecyparis pisifera plumosa.			Juniperus c. depressa plumosa, continued		
Plume Retinospora; Plume Cypress.			istic is the unusual reddish purple color during the fall and winter months. Ideal for ground-cover.		
2-2½ ft., TTS.....	\$15 00	\$125 00	1½-2 ft., TTTS.....	\$17 50	\$150 00
1½-2 ft., TTS.....	12 50	100 00	15-18 in., TTTS.....	12 50	100 00
15-18 in., TTS.....	10 00	75 00	12-15 in., TTTS.....	10 00	75 00
12-15 in., TTS.....	6 00	50 00	C. hibernica. Irish Juniper.		
P. plumosa aurea. Golden Plume Retinospora; Golden Plume Cypress.			2-2½ ft., TTTS.....	15 00	125 00
2-2½ ft., TTS.....	15 00	125 00	1½-2 ft., TTTS.....	11 00	90 00
1½-2 ft., TTS.....	10 00	75 00	Excelsa stricta.		
15-18 in., TTS.....	7 50	60 00	15-18 in.....	15 00	125 00
12-15 in., TTS.....	6 00	50 00	12-15 in.....	10 00	75 00
P. squarrosa sulphurea. Golden Moss Retinospora.			Virginiana. Red Cedar.		
12-15 in., TTS.....	10 00	75 00	3-4 ft.....	22 50	200 00
P. squarrosa veitchi.			2½-3 ft., TTTS.....	17 50	150 00
4-5 ft.....	55 00	450 00	2-2½ ft., TTTS.....	12 50	100 00
3-4 ft.....	35 00	300 00	1½-2 ft., TTTS.....	10 00	75 00
2½-3 ft.....	22 50	200 00	PICEA (Spruce).		
2-2½ ft.....	20 00	175 00	Canadensis (alba). White Spruce.		
1½-2 ft.....	12 50	100 00	2½-3 ft.....	20 00	175 00
JUNIPERUS (Juniper).			2-2½ ft.....	15 00	125 00
Chinensis pfitzeriana. Pfitzer's Juniper.			1½-2 ft.....	10 00	75 00
2-2½ ft., TTS.....	25 00	225 00	15-18 in.....	7 50	60 00
1½-2 ft., TTS.....	20 00	175 00	Excelsa. Norway Spruce.		
15-18 in., TTS.....	15 00	125 00	2½-3 ft., TTTS.....	15 00	125 00
12-15 in., TTS.....	12 50	100 00	2-2½ ft., TTTS.....	11 00	90 00
Communis canadensis. Prostrate Juniper; Canada Juniper.			1½-2 ft., TTTS.....	8 00	65 00
2-2½ ft., TTTS.....	15 00	125 00	15-18 in., TTS.....	6 00	50 00
1½-2 ft., TTTS.....	12 50	100 00	12-15 in., TTS.....	4 00	35 00
15-18 in., TTTS.....	10 00	75 00	Pungens glauca. Blue Colorado Spruce.		
12-15 in., TTTS.....	7 50	60 00	15-18 in., TTTS.....	40 00	300 00
C. depressa plumosa. Similar to <i>J. canadensis</i> , but has finer foliage. The chief character-			12-15 in., TTTS.....	17 50	150 00
			P. kosteriana. Koster's Blue Spruce.		
			21-24 in., TTTS....	\$8 each..	
			18-21 in., TTTS....	\$6.50 each..	
			15-18 in., TTTS....	\$5 each..	
			12-15 in., TTS.....	\$4 each..	



Block of Mugho Pines. A very dwarf strain grown from seeds from the high Alps. Photographed August, 1930

EVERGREENS, continued

PINUS (Pine).	Per 10	Per 100
Montana mughus, Dwarf. Mugho Pine.		
15-18 in.	\$17 50	\$150 00
12-15 in., TTT.	12 50	100 00
9-12 in., TTT.	10 00	75 00
Nigra. Austrian Pine.		
15-18 in., TT.	10 00	85 00
12-15 in., TT.	8 00	65 00
Sylvestris. Scotch Pine.		
3-4 ft., TTT.	17 50	150 00
2½-3 ft., TTT. \$900 per 1,000	12 50	100 00
2-2½ ft., TTT. \$750 per 1,000	10 00	85 00
1½-2 ft., TTT. \$500 per 1,000	7 50	60 00
15-18 in., TTT. \$350 per 1,000	4 50	40 00
12-15 in., TT. \$250 per 1,000	3 50	30 00
PSEUDOTSUGA.		
Douglasi. Douglas Fir.		
2½-3 ft., TTTS.		
\$1750 per 1,000	22 50	200 00
2-2½ ft., TTTS.		
\$1250 per 1,000	17 50	150 00
1½-2 ft., TTS. \$900 per 1,000	12 50	100 00
15-18 in., TTS. \$650 per 1,000	10 00	80 00
12-15 in., TTS. \$500 per 1,000	7 50	60 00
RETINOSPORA. See Chamæcyparis.		
THUJA (Thuya) Arborvitæ.		
Occidentalis. American Arborvitæ.		
3-4 ft., TTTTS.	20 00	175 00
2½-3 ft., TTTTS.	15 00	125 00
2-2½ ft., TTTTS.	10 00	75 00
1½-2 ft., TTS.	7 50	60 00
15-18 in., TTS.	5 50	45 00
12-15 in., TTS.	4 00	35 00
Occ. compacta. Parsons' Arborvitæ. 15-18 in., TTS.	10 00	75 00
12-15 in., TTS.	6 00	50 00
Occ. conica densa.		
15-18 in., TTTTS.	8 00	70 00
12-15 in., TTS.	6 00	50 00
Occ. douglasi spiralis.		
3-4 ft., TTS.	35 00	300 00
2-3 ft., TTS.	22 50	200 00
Occ. ellwangeriana. Tom Thumb Arborvitæ.		
1½-2 ft., TTS.	12 50	100 00
15-18 in., TTS.	10 00	75 00
12-15 in., TTS.	6 00	50 00
Occ. globosa. Globe Arborvitæ.		
15-18 in., TTTTS.	10 00	75 00
12-15 in., TTS.	6 00	50 00
Occ. hoveyi. Hovey Arborvitæ.		
15-18 in., TTS.	10 00	75 00
12-15 in., TTS.	6 00	50 00

Thuja occidentalis lutea. George Peabody Golden Arborvitæ.	Per 10	Per 100
1½-2 ft., TTS.	\$12 50	\$100 00
15-18 in., TTS.	10 00	85 00
12-15 in., TTS.	8 50	75 00
Occ. pyramidalis. American Pyramidal Arborvitæ.		
3-3½ ft., TTTTS.	25 00	225 00
2½-3 ft., TTTTS.		
\$1250 per 1,000	17 50	150 00
2-2½ ft., TTTS.		
\$1000 per 1,000	15 00	125 00
1½-2 ft., TTS. \$650 per 1,000	10 00	75 00
15-18 in., TTS. \$500 per 1,000	7 50	60 00
12-15 in., TTS. \$400 per 1,000	5 50	45 00
Occ. vervæneana. Vervæne's Arborvitæ.		
1½-2 ft., TTTS.	10 00	75 00
15-18 in., TTS.	7 50	60 00
12-15 in., TTS.	5 50	45 00
Occ. vervæneana aurea. Vervæne's Golden Arborvitæ.		
3-4 ft., TTS.	22 50	200 00
2-3 ft., TTS.	15 00	125 00
15-18 in., TTS.	7 50	60 00
12-15 in., TTS.	5 50	45 00
Occ. wareana (sibirica). Ware's Arborvitæ; Siberian Arborvitæ.		
2-2½ ft.	15 00	125 00
1½-2 ft., TTTTS.	10 00	75 00
15-18 in., TTS.	7 50	60 00
12-15 in., TTS.	6 00	50 00
Occ. wareana aurea (sibirica aurea). Ware's Golden Arborvitæ.		
1½-2 ft., TTTTS.	7 50	60 00
15-18 in., TTTTS.	6 00	50 00
12-15 in., TTS.	4 00	35 00
Plicata (gigantea plicata). Giant Arborvitæ.		
2-2½ ft., TTS.	17 50	150 00
1½-2 ft., TTS.	12 50	100 00
15-18 in., TTS.	10 00	75 00
P. elegantissima (gigantea elegantissima).		
2-2½ ft., TTS.	15 00	125 00
1½-2 ft., TTS.	12 50	100 00
15-18 in., TTS.	10 00	75 00
12-15 in., TTS.	6 00	50 00
TSUGA (Hemlock).		
Canadensis. Canada Hemlock.		
2-2½ ft., TTTTS.	17 50	150 00
1½-2 ft., TTTTS.	12 50	100 00
15-18 in., TTTTS.	10 00	75 00
12-15 in., TTTTS.	6 00	50 00

Young Evergreens from Pots (For nursery planting)

Ready for shipment April 1 to June 1. Well-established plants out of 2¼-inch pots except as noted
 Varieties marked (*) are also available for fall delivery.

BIOTA. See Thuja.		
CEDRUS.	Per 100	Per 1,000
Deodara. Deodar (Cedar)	\$25 00	\$200 00
CHAMÆCYPARIS (Retinospora).		
Obtusa gracilis. Slender Hinoki Cypress.	20 00	
*Pisifera. (Grafted.)		
3-in. pots.	20 00	
*P. aurea. Golden Sawara Retinospora. (Grafted.)		
3-in. pots.	20 00	

Chamæcyparis pisifera filifera (filifera). Thread Retinospora. (Grafted.)	Per 100	Per 1,000
3-in. pots.	\$20 00	
P. filifera aurea (filifera aurea). (Grafted.)		
3-in. pots.	25 00	
P. plumosa (plumosa). Plume Retinospora.	8 00	\$75 00
*P. plumosa aurea (plumosa aurea)	8 00	75 00

YOUNG EVERGREENS FROM POTS, continued

	Per 100	Per 1,000		Per 100	Per 1,000
<i>Chamaecyparis pisifera</i> , continued			TAXUS.		
* <i>P. squarrosa sulphurea</i> (squamata sulphurea)	\$8 00	\$75 00	* <i>Brevifolia</i> . Pacific Yew	\$22 00	
<i>P. squarrosa veitchii</i> (squamata veitchii)	10 00	90 00	* <i>Cuspidata</i> . Japanese Yew	22 00	
JUNIPERUS (Juniper).			* <i>Cus. capitata</i>	22 00	
<i>Chinensis</i> . Chinese Juniper. (Grafted.)			THUJA (Arborvitae).		
3-in. pots	50 00		<i>Occidentalis</i> . American Arborvitae	7 00	\$65 00
* <i>Chin. albo-variegata</i> . Whiteleaf Chinese Juniper	20 00	180 00	* <i>Occ. compacta</i> . Parsons' Arborvitae	8 00	75 00
<i>Chin. Pfitzeriana</i> . Pfitzer Juniper	16 00	150 00	* <i>Occ. conica densa</i>	10 00	90 00
<i>Communis aurea</i> . Golden Juniper	12 00	110 00	<i>Occ. douglasi spiralis</i>	16 00	
* <i>Com. depressa</i> (communis horizontalis). Prostrate Juniper	14 00	130 00	* <i>Occ. elegantissima</i>	12 00	110 00
<i>Com. hibernica</i> . Irish Juniper	7 00	60 00	* <i>Occ. ellwangeriana</i> . Tom Thumb Arborvitae	8 00	75 00
* <i>Com. suecica</i> . Swedish Juniper	9 00	85 00	* <i>Occ. globosa</i> . Globe Arborvitae	8 00	75 00
<i>Excelsa stricta</i> . Spiny Greek Juniper	16 00	150 00	* <i>Occ. hoveyi</i> . Hovey Arborvitae	8 00	75 00
* <i>Plumosa depressa</i>	15 00	120 00	* <i>Occ. lutea</i> . George Peabody Golden Arborvitae	13 00	120 00
<i>Sabina</i> . Savin	16 00	150 00	<i>Occ. plicata</i> . (Grafted.)	25 00	
* <i>Sab. tamariscifolia</i> . Tamarix Savin	16 00	150 00	* <i>Occ. plicata</i>	16 00	
* <i>Virginiana</i> . Red Cedar	12 00	110 00	* <i>Occ. pyramidalis</i> . American Pyramidal Arborvitae	8 00	75 00
<i>Vir. cannarti</i> . Cannart's Red Cedar. (Grafted.)			* <i>Occ. rosenthali</i> . Rosenthal's Arborvitae	16 00	
3-in. pots	50 00		<i>Occ. sibirica</i>	10 00	90 00
<i>Vir. glauca</i> . Silver Red Cedar. (Grafted.)			* <i>Occ. sibirica aurea</i>	10 00	90 00
3-in. pots	50 00		* <i>Occ. umbraculifera</i>	10 00	90 00
RETINOSPORA. See <i>Chamaecyparis</i> .			<i>Occ. vervæneana</i> . Vervæne's Arborvitae	10 00	90 00
			* <i>Occ. vervæneana aurea</i> . Vervæne's Golden Arborvitae	10 00	90 00
			<i>Orientalis</i> (<i>Biota orientalis</i>)	8 00	70 00
			* <i>Or. aurea nana</i> . Berckman's Golden Arborvitae	20 00	180 00

Evergreens for Lining Out

Evergreens of all important varieties! Young, thrifty stock grown with experienced skill and backed by the resources of one of the largest nurseries in the world.

These are really specimen trees in miniature, with full, bushy tops, and abundant, vigorous roots.

For best results, we recommend fall planting. T, indicates once transplanted; TT, twice transplanted; S, seedlings.

	Per 100	Per 1,000
ABIES (Fir) balsamea. Balsam Fir. 4 year, TT, 6-8 in.	\$10 00	\$85 00
4 year, TT, 4-6 in.	9 00	65 00
Concolor. White Fir. 3 year, T, 4-6 in.	10 00	80 00
2 year, 2-4 in.	4 00	35 00
Pectinata. Silver Fir. 4 year, TT, 6-8 in.	12 00	100 00
3 year, T, 4-6 in.	8 00	65 00
2 year, S, 2-4 in.	4 00	35 00
BIOTA. See Thuja.		
CHAMÆCYPARIS (Cypress).		
<i>Lawsoniana glauca</i> . Lawson Blue Cypress. 3 year, T, 6-8 in., grafting stock (Fall only).	8 00	65 00
PICEA (Spruce) canadensis (alba). 4 year, TT, 6-8 in.	10 00	80 00
3 year, T, 4-6 in.	7 00	60 00
2 year, S, 2-4 in.	6 00	50 00
Engelmanni. Engelmann's Spruce. 3 year, T, 6-8 in.	12 00	100 00
2 year, S, 2-4 in.	5 00	40 00
Excelsa. Norway Spruce. 4 year, TT, 10-12 in.	9 00	75 00
4 year, TT, 8-10 in.	7 00	60 00
3 year, T, 6-8 in., selected grafting stock	7 00	60 00
3 year, T, 6-8 in.	6 00	50 00
2 year, T, 2-4 in.	2 00	15 00
Mariana albertiana, Black Hills (canadensis). Black Hills Spruce. 3 year, T, 4-6 in.	7 50	65 00
2 year, S, 2-4 in.	5 00	40 00
Pungens glauca. Colorado Blue Spruce. 4 year, TT, 6-8 in.	15 00	125 00
3 year, T, 6-8 in.	11 00	90 00
3 year, T, 4-6 in.	10 00	80 00
2 year, S, 4-6 in.	6 00	50 00

The wholesale prices in our lists apply on wholesale quantities. Orders should call for 10 of a kind and size and beyond that for multiples of 10

EVERGREENS FOR LINING OUT, continued

	Per 100	Per 1,000
PINUS (Pine).		
Banksiana. Jack Pine. 4 year, TT, 8-10 in.....	\$11 00	\$90 00
3 year, T, 6-8 in.....	7 00	60 00
2 year, S, 4-6 in.....	3 00	25 00
Cembra. Swiss Stone Pine. 2 year, S, 2 in.....	12 00	100 00
Densiflora. Japanese Red Pine. 4 year, TT, 8-10 in.....	9 50	70 00
2 year, S, 4-6 in.....	3 00	25 00
Montana. Swiss Mountain Pine. 3 year, T, 4-6 in.....	6 00	50 00
Montana mughus. Mugho Pine. Dwarf. 5 year, TTT, 6-8 in.....	12 00	100 00
4 year, TT, 4-6 in.....	7 00	60 00
3 year, T, 2-4 in.....	5 00	40 00
2 year, S, 2 in.....	3 00	20 00
Nigra. Austrian Pine. 5 year, TTT, 10-12 in.....	20 00	150 00
4 year, TT, 8-10 in.....	10 00	85 00
4 year, TT, 6-8 in.....	8 00	65 00
3 year, T, 6-8 in.....	6 00	50 00
3 year, T, 4-6 in.....	5 00	40 00
2 year, S, 4-6 in.....	3 00	25 00
Ponderosa. Western Yellow Pine. 3 year, T, 4-6 in.....	6 00	50 00
2 year, S, 2-4 in.....	4 00	30 00
Strobus. White Pine. 4 year, TT, 8-10 in.....	10 00	80 00
3 year, T, 6-8 in.....	7 00	60 00
2 year, S, 2-4 in.....	3 00	25 00
Sylvestris. Scotch Pine. 4 year, TT, 10-12 in.....	10 00	85 00
4 year, TT, 8-10 in.....	8 00	65 00
3 year, T, 6-8 in.....	4 00	30 00
2 year, S, 4-6 in.....	2 00	15 00
Thunbergi. Japanese Black Pine. 3 year, T, 4-6 in.....	6 00	50 00
2 year, S, 2-4 in.....	4 00	30 00
PSEUDOTSUGA douglasi glauca. Blue Douglas Fir. 3 year, T, 6-8 in.....	7 00	60 00
2 year, S, 2-4 in.....	4 00	30 00
THUJA (Arborvitæ).		
Occidentalis. American Arborvitæ. 4 year, TT, 10-12 in.....	12 00	100 00
4 year, TT, 8-10 in.....	10 00	80 00
3 year, T, 6-8 in.....	7 00	60 00
Orientalis. Oriental Arborvitæ. 3 year, T, 8-10 in.....	10 00	80 00
2 year, T, 6-8 in.....	4 00	35 00
TSUGA (Hemlock) canadensis. Canada Hemlock; Hemlock Spruce. 5 year, TT, 10-12 in. 50 00 400 00	50 00	400 00
5 year, TT, 8-10 in.....	40 00	300 00
4 year, TT, 6-8 in. special.....	18 00	150 00

*NOTE.—We can ship Five-leaved Pines into the New England States, New Jersey, Pennsylvania, Michigan, Minnesota, and Wisconsin.

Fruit Department

These trees were especially grown for specimens—planted far apart in the rows and root-pruned last year. They were produced to take care of an increasing demand for **EARLY-TO-BEAR FRUIT TREES.**

Special 4-year specimens, 1 in. and up

Standard Apples

\$7.50 for 10, \$60 per 100

Baldwin	Northern Spy
Delicious	Red Astrachan
Fameuse	R. I. Greening
Gravenstein	Stayman's Winesap
Grimes Golden	Sweet Bough
McIntosh Red	Yellow Transparent

Standard Pears

\$9 for 10, \$75 per 100

Bartlett	Seckel
Clapp's Favorite	Sheldon

Dwarf Pears

\$9 for 10, \$75 per 100

Bartlett	Flemish Beauty
Clapp's Favorite	Seckel
Duchesse d'Angouleme	Sheldon

Apples

Statement of Inspection for Trueness to Name, 1930

Amherst, Mass., July 12, 1930

To Whom It May Concern:

I have examined for trueness to name all salable Apple stock now growing in the nurseries of Jackson & Perkins Company, Newark, New York, and I now declare that to the best of my knowledge and belief these trees are true to variety name as they stand in the nursery rows.

(Signed) A. P. French.

Budded trees, two years old

Per 10 Per 100 Per 1,000

No. 1 Grade, 11-16 in. and up.....	\$3 00	\$25 00	\$200 00
Medium Grade, 9-16 to 11-16 in.....	2 50	20 00	160 00
No. 2 Grade, 7-16 to 9-16 in.....	2 00	15 00	120 00

Abbreviations: A., Autumn; W., Winter

Baldwin. W. Red.	Fameuse. A. Red.
Bellflower. W. Yellow.	Gano. W. Red.
Ben Davis. W. Red.	Golden Russet. W. Yellow.
Cortland. W. Red.	low.
Delicious. W. Red.	Gravenstein. A. Red.
Duchess of Oldenburg. A. Red.	Grimes Golden. W. Yellow.
low.	Hubbardston's Non-such. W. Red.
Early Harvest. A. Yellow.	
Fall Pippin. A. Yellow.	



A block of 2-year budded Apples at Newark. Left to right, Baldwin, Cortland, Delicious, McIntosh

APPLES, continued

- | | |
|-------------------------------------|----------------------------------|
| Hyslop. A. Deep crimson. | Seek - No - Further. W. Red. |
| Jonathan. W. Red. | Spitzenburg. W. Red. |
| King. W. Red. | Stark. W. Red. |
| Loba. W. Red. | Stayman's Winesap. W. Red. |
| Maiden Blush. A. Yellow. | Sweet Bough. A. Yellow. |
| McIntosh Red. W. Red. | Tallman Sweet. W. Red. |
| Melba. W. Red. | Transcendent. A. Red and yellow. |
| Northern Spy. W. Yellow. | Twenty-Ounce. A. Red. |
| N. W. Greening. W. Yellow. | Wagoner. W. Red. |
| Opalescent. A. Red. | Wealthy. A. Red. |
| Rambo. W. Red. | Winesap. W. Red. |
| Red Astrachan. A. Red. | Winter Banana. W. Yellow. |
| Red Northern Spy. W. Red. | Wolf River. A. Red. |
| R. I. Greening. W. Yellowish green. | Yellow Transparent. A. Yellow. |
| Rome Beauty. W. Red. | York Imperial. W. Red. |
| Roxbury Russet. W. Dull green. | |

Apples, Dwarf

Budded trees, two years old

	Per 10	Per 100	Per 1,000
No. 1 Grade, 5-8 in. and up.	\$3 50	\$30 00	\$250 00

For description see standard varieties

- | | |
|----------------------|-------------------|
| Baldwin | McIntosh Red |
| Cortland | Red Astrachan |
| Delicious | R. I. Greening |
| Duchess of Oldenburg | Stayman's Winesap |
| Fameuse | Wealthy |
| Grimes Golden | Wolf River |

Cherries on Mahaleb Stock

Budded trees, two years old

Varieties marked with an (*) are also available budded on Mazzard at 10 cents per tree extra.

	Sweet and Sour		
	Per 10	Per 100	Per 1,000
No. 1 Grade, 11-16 in. and up.	\$4 50	\$40 00	\$350 00
Medium Grade, 9-16 to 11-16 in.	3 50	30 00	250 00
No. 2 Grade, 7-16 to 9-16 in.	2 50	22 00	180 00

Abbreviations: S., Sweet; R., Sour

- Bing. S. Dark red. Late.
- *Black Tartarian. S. Black. Early.
- Early Richmond. R. Light red. Early.
- *English Morello. R. Very dark red. Very late.
- *Governor Wood. S. Yellow. Early.
- Lambert. S. Purplish red. Early.
- May Duke. S. Light red. Early.
- *Montmorency. R. Red. Midseason.
- Napoleon Bigarreau. S. Bright red. Early.
- Rockport. S. Yellow. Early.
- Schmidt's Bigarreau. S. Purplish red. Early.
- *Windsor. S. Dark red. Late.
- Yellow Spanish. S. Yellow blushed. Early.

Peaches

One-year buds

	Per 10	Per 100	Per 1,000
No. 1 Grade, 9-16 in. and up.	\$2 50	\$20 00	\$175 00
Medium Grade, 7-16 to 9-16 in.	2 00	15 00	125 00
No. 2 Grade, 5-16 to 7-16 in.	1 50	10 00	80 00

- Beer's Smock. Yellow. Late.
- Belle of Georgia. White. Early.
- Carman. White. Early.
- Chair's Choice. Yellow. Late.
- Champion. White. Early.
- Crosby. Yellow. Late.
- Early Crawford. Yellow. Early.
- Early Elberta. Yellow. Early.
- Elberta. Yellow. Early.
- Fitzgerald. Yellow. Early.
- Gold Drop. Yellow. Late.
- Greensboro. White. Late.
- Hiley. White. Early.
- J. H. Hale. Yellow. Early.
- Kalamazoo. Yellow. Late.
- Late Crawford. Yellow. Late.
- Mountain Rose. White. Early.
- Oldmixon Free. White. Late.
- Rochester. Yellow. Early.
- Salway. Yellow. Late.
- Stump the World. White. Late.
- Yellow St. John. Yellow. Early.

Pears, Standard

Budded trees, two years old

	Per 10	Per 100	Per 1,000
No. 1 Grade, 11-16 in. and up.	\$4 00	\$35 00	\$300 00
Medium Grade, 9-16 to 11-16 in.	3 00	25 00	220 00
No. 2 Grade, 7-16 to 9-16 in.	2 00	18 00	150 00

(Except as noted)

Bartlett	Kieffer at 5 cts. less for
Beurre d'Anjou	No. 1
Clapp's Favorite	Seckel
Duchesse d'Angouleme	Sheldon
Flemish Beauty	Worden Seckel

Pears, Dwarf

Budded trees, two years old

	Per 10	Per 100	Per 1,000
No. 1 Grade, 5-8 in. and up.	\$3 00	\$25 00	\$200 00
Medium Grade, 1-2 to 5-8 in.	2 50	20 00	150 00
No. 2 Grade, 3-8 to 1-2 in.	2 00	15 00	100 00

Bartlett	Flemish Beauty
Clapp's Favorite	Seckel
Duchesse d'Angouleme	Sheldon

Plums

Budded trees, two years old, on Plum Stocks

	Per 10	Per 100
No. 1 Grade, 11-16 in. and up.	\$3 00	\$25 00
Medium Grade, 9-16 to 11-16 in.	2 50	20 00
No. 2 Grade, 7-16 to 9-16 in.	2 00	15 00

Abbreviations: J., Japan; E., European

Abundance. J. Cherry-red. Early.
Beauty of Naples. E. Light red. Midseason.
Bradshaw. E. Dark reddish purple. Early.
Burbank. J. Dark red. Early.
Fellenberg. E. Purplish black. Late.
German Prune. E. Purplish black. Late.
Grand Duke. E. Purple. Late.
Imperial Gage. E. Yellow. Early.
Lombard. E. Purplish red. Early.
Monarch. E. Dark purplish red. Late.
Moore's Arctic. E. Purplish black. Late.
Reine Claude. E. Yellow. Early.
Shipper's Pride. E. Purple. Early.
Shropshire Damson. E. Black. Late.
Tenant Prune. E. Purple. Late.
Yellow Egg. E. Yellow. Late.

Quinces

Budded trees, two years old

	Per 10	Per 100
No. 1 Grade, 5-8 in. and up.	\$3 50	\$30 00
Medium Grade, 1-2 to 5-8 in.	2 50	20 00

Bourgeat. Early.	Orange. Early.
Champion. Late.	Rea's Mammoth. Late.
Meech's Prolific. Early.	

Small Fruits

We can ship Currants and Gooseberries into any State in the Union.

Currants

	Per 10	Per 100	Per 1,000
No. 1 Grade.	\$1 00	\$7 00	\$60 00
Medium Grade.	75	5 00	45 00
No. 2 Grade.	60	4 00	30 00

(Except as noted)

Cherry. Red.
Fay's Prolific. Red.
Perfection at 10 cts., 7 cts., 5 cts. Red.
Pomona. Red.
President Wilder. Red.
Red Cross. Red.
White Grape. White.

Gooseberries

Two-year, No. 1 grade

	Per 10	Per 100	Per 1,000
Downing. Whitish green.	\$1 50	\$11 00	\$100 00
Houghton. Red.	1 25	10 00	80 00
Red Jacket. Reddish green.	1 75	15 00	135 00

Grapes

Two-year, No. 1 grade

	Per 10	Per 100	Per 1,000
Brighton. Red. Early.	\$1 00	\$8 00	\$60 00
Catawba. Red. Late.	1 00	8 00	60 00
Concord. Black. Early.	80	6 00	50 00
Delaware. Light red. Early	1 00	8 00	60 00
Moore's Early. Black. Early	1 00	8 00	60 00
Niagara. Green. Early.	1 00	8 00	60 00
Worden. Black. Early.	1 00	8 00	60 00



Our block of Ball-shaped Boxwood at Shiloh. Photographed this summer



Azalea Hinodegiri at Shiloh, properly spaced to develop well-rounded plants

From Our Branch at Shiloh, N. J.

(Near Bridgeton, N. J., on the Salem Pike)

Broad-leaved Evergreens and Deciduous Shrubs

All prices on Shiloh stock include B&B

The following stock is grown at Shiloh, N. J., and is offered for shipment from that point. When required to make up carload lots, we will have the stock forwarded to Newark, N. Y., if sufficient notice is given us in advance.

ABELIA.		
Grandiflora. Glossy Abelia. White, heather-like flowers, tinted lilac, completely cover the plant. Balled and bur- lapped.		
2-3 ft. Trans. B&B.....	\$8 00	\$75 00
18-24 in. Trans. B&B.....	6 50	60 00
15-18 in. Trans. B&B.....	5 50	50 00
2-3 ft. (not B&B).....	5 50	50 00
18-24 in. (not B&B).....	4 50	40 00
15-18 in. (not B&B).....	3 50	30 00
AZALEA.		
Amœna. Amœna Azalea. Pur- plish red. Double.		
12-15 in., balled.....	15 00	125 00
10-12 in., balled.....	12 50	100 00
8-10 in., balled.....	10 00	75 00
Amœna, Marvel.		
12-15 in., balled.....	15 00	125 00
10-12 in., balled.....	12 50	100 00
Hinamoyo. Best pink.		
10-12 in., balled.....	15 00	125 00

Azaleas, continued		
Hinodegiri. Bright red.		
12-15 in., balled.....	\$20 00	\$175 00
10-12 in., balled.....	17 50	150 00
8-10 in., balled.....	15 00	125 00
Kurume. Flame Azalea. Bright orange flowers.		
10-12 in.....	17 50	150 00
8-10 in.....	15 00	125 00
Mollis. Chinese Azalea. Mixed colors, yellow to red. Very bushy plants.		
15-18 in., balled. (Seedlings)...	17 50	150 00
12-15 in., balled. (Seedlings)...	15 00	125 00
Mollis, J. C. Van Tol. Mixed colors, yellow to red.		
15-18 in., balled. (Seedlings)...	17 50	150 00
12-15 in., balled. (Seedlings)...	15 00	125 00
BERBERIS.		
Buxifolia (dulcis). Evergreen. Red stems. Golden yellow flowers.		
12-15-in. spread.....	5 50	50 00
10-12-in. spread.....	4 00	35 00

BROAD-LEAVED EVERGREENS AND SHRUBS, continued

	Per 10	Per 100		Per 10	Per 100
Berberis, continued			Maple, continued		
Buxifolia nana (<i>dulcis nana</i>). Very dwarf. Yellow flowers.			Fern-leaf. <i>A. japonicum parsoni</i> (<i>A. japonica filicifolium</i>).		
8-10-in. spread.....	\$5 50	\$50 00	24-30 in.....	\$45 00	\$400 00
6-8-in. spread.....	4 00	35 00	Golden Moon. <i>A. japonicum aureum</i> (<i>A. japonica aurea</i>). Bright golden color; dwarf grower. Suitable for rock-gardens.		
CERRY-LAUREL (<i>Laurocerasus</i>). Rich, glossy evergreen foliage. Hardy wherever abelia is hardy.			18-21 in.....	40 00	350 00
Rotundifolia. Shortleaf Cherry-Laurel.			15-18-in. spread. (Grafts)....	40 00	350 00
18-24 in., balled.....	8 50	80 00	12-15-in. spread. (Grafts)....	35 00	300 00
15-18 in., balled.....	7 00	65 00	Green Cut-leaf. <i>A. palmatum dissectum virides</i> (<i>A. dissectum virides</i>).		
12-15 in., balled.....	5 50	50 00	21-24-in. spread. (Grafts)....	45 00	400 00
HONEYSUCKLE (<i>Lonicera</i>). Miniature P r i v e t -leaved. <i>L. nitida</i> . Dwarf. Almost evergreen. Can be sheared for formal specimens. Fall delivery only.			18-21-in. spread. (Grafts)....	40 00	350 00
18-24 in. (5 cts. extra for B&B).	10 00	75 00	15-18-in. spread. (Grafts)....	35 00	300 00
15-18 in. (5 cts. extra for B&B).	7 00	60 00	Spider-leaf. <i>A. palmatum ornatum</i> (<i>A. dissectum atropurpureum</i>). Fine for rock-gardens.		
12-15 in. (5 cts. extra for B&B).	6 00	50 00	24-30 in. (Grafts).....	55 00	450 00
HYPERICUM (<i>St. John's Wort</i>). Henryi. Golden yellow flowers.			21-24 in. (Grafts).....	45 00	400 00
24-30 in.....	10 00	75 00	18-21 in. (Grafts).....	40 00	350 00
18-24 in.....	5 50	50 00	15-18 in. (Grafts).....	35 00	300 00
JASMINUM. Nudiflorum. Winter Jasmine. Yellow.			PHILLYREA. Decora. <i>P. vilmoriniana</i> . Lance-leaf Phillyrea. Ornamental, woody shrub with spreading branches; grows 10 feet high. Leaves oblong, dark green, and shining above, yellowish green beneath. Fruit oblong, purplish black.		
3-4 ft. (10 cts. extra for B&B).	6 00	50 00	24-30 in., bushy.....	12 50	100 00
2-3 ft. (10 cts. extra for B&B).	4 00	35 00	18-24 in., 2-year.....	8 00	75 00
MAGNOLIA. Acuminata. Cucumber Tree. Large tree growing to 100 feet. Greenish yellow flowers.			PIERIS (<i>Andromeda</i>). Floribunda. Mountain Andromeda. Low, compact plants with shiny dark green foliage. The dense, pyramidal-spiked white blooms appear in April.		
7-8 ft.....	22 50	200 00	18-21 in., balled.....	35 00	300 00
6-7 ft.....	17 50	150 00	15-18 in., balled.....	30 00	250 00
5-6 ft.....	15 00	125 00	12-15 in., balled.....	25 00	200 00
4-5 ft.....	12 50	100 00	PRIVET (<i>Ligustrum</i>). California. <i>L. ovalifolium</i> .		
3-4 ft.....	10 00	75 00	Ball-shaped.		
Glauca. Sweetbay. Glossy green foliage; fragrant glossy white flowers, 3 inches across, in June.			24-30 in.....	20 00	150 00
4-5 ft.....	42 50	400 00	21-24 in.....	12 50	100 00
3-4 ft.....	32 50	300 00	18-21 in.....	8 50	75 00
30-36 in.....	22 50	200 00	15-18 in.....	7 00	60 00
24-30 in.....	17 50	150 00	Block-shaped. These are used at corners of walks and at ends of new hedges.		
18-24 in.....	12 50	100 00	18 x 18 x 30 in.....	15 00	125 00
Kobus. Kobus Magnolia. Very hardy, tall tree; white flowers 4 to 5 inches across, six petals.			15 x 15 x 20 in.....	12 50	100 00
5-6 ft.....	32 50	300 00	Pyramids. Fine compact specimens for tubs, etc.		
4-5 ft.....	22 50	200 00	4-4½ ft.....	35 00	300 00
3-4 ft.....	17 50	150 00	3½-4 ft.....	25 00	200 00
2-3 ft.....	12 50	100 00	Glossy. <i>L. lucidum</i> . Large, leathery, glossy leaves. Handsome sort suited for the upper South, but not dependably hardy north of Philadelphia.		
MAPLE (<i>Acer</i>). Blood-leaf Japanese (Purple-leaved). <i>Acer palmatum atropurpureum</i> (<i>Acer polymorphum atropurpureum</i>). Grafts.			30-36 in., bushy.....	25 00	200 00
21-24 in., bushy.....	40 00	350 00	24-30 in., bushy.....	20 00	150 00
18-21 in., bushy.....	35 00	300 00	18-24 in., bushy.....	15 00	100 00
15-18 in.....	30 00	250 00	15-18 in.....	9 00	65 00
12-15 in.....	22 50	175 00			
Blood-leaf Japanese (Seedlings).					
24-30 in.....	30 00	275 00			
21-24 in.....	25 00	225 00			
18-21 in.....	22 50	175 00			
15-18 in.....	17 50	125 00			

Privet, continued	Per 10	Per 100
Golden. <i>L. ovalifolium variegatum.</i>		
2-3 ft.....	\$4 50	\$40 00
18-24 in.....	3 50	30 00
Lodense, Standards. Lodense budded on <i>L. ovalifolium</i> standards. Very fine compact heads and absolutely healthy.		
24-30-in. stems.....	20 00	150 00

RHODODENDRON.	Per 10	Per 100
Pink Pearl.		
18-21 in., 6-8 buds.....	\$50 00	\$450 00
15-18 in., 5 buds.....	35 00	300 00
12-15 in., 4 buds.....	30 00	250 00
Assorted. Hardy named varieties, our selection. Pink, White, and Purple. Write for sizes and prices.		

Boxwood

Sempervirens. True Tree Box.	Per 10	Per 100
Bush-Form.		
24-30 in., extra heavy, B&B...	\$25 00	\$200 00
21-24 in., extra heavy, B&B...	20 00	160 00
18-21 in., B&B.....	15 00	125 00
15-18 in., extra heavy, B&B...	12 00	100 00
12-15 in., extra heavy, B&B...	8 50	75 00
10-12 in. (5 cts. extra for B&B)...	6 00	50 00
Balls.		
18-21 in.....	30 00	275 00
15-18 in.....	22 50	200 00
12-15 in.....	17 50	150 00
10-12 in.....	12 50	100 00
Pyramids.		
24-30 in.....	30 00	250 00
21-24 in.....	25 00	225 00

Pyramids, continued	Per 10	Per 100
18-21 in.....	\$22 50	\$200 00
15-18 in.....	20 00	175 00
Standards.		
30-in. stem (12-in. head).....		\$5 per pair
24-in. stem (12-in. head).....		\$5 per pair
18-in. stem (12-in. head).....		\$5 per pair
Suffruticosa. True Dwarf Box.		
8-10 in., extra heavy.....	6 50	60 00
6-8 in. (For edging).....		\$200 per 1,000..
	3 00	25 00
4-6 in. (For edging).....		\$125 per 1,000..
	1 75	15 00

Evergreens

Abbreviations: S., Sheared; T., Once transplanted; TT., Twice transplanted; TTT., Three times transplanted. Prices include B & B

ABIES (Fir).		
Concolor. White Fir.	Per 10	Per 100
18-21 in.....	\$25 00	\$225 00
15-18 in.....	20 00	175 00

CEDRUS (Cedar).		
Atlantica. Atlas Cedar.	Per 10	Per 100
3½-4 ft., TTT.....	\$35 00	\$300 00
3-3½ ft., TTT.....	30 00	250 00
2½-3 ft.....	22 50	200 00



Pyramidal Boxwood, 15 to 18 and 18 to 21 inches high. Photographed at Shiloh, August, 1930

EVERGREENS, continued

Cedrus, continued	Per 10	Per 100
Deodara. Deodar (Cedar).		
4-5 ft., TTS.	\$35 00	\$300 00
2-2½ ft., TTS.	17 50	150 00
1½-2 ft., TTS.	12 50	100 00
CHAMAECYPARIS (Retinospora).		
Lawsoniana. Lawson Cypress.		
4-5 ft., TS. (Seedlings)	30 00	250 00
3-4 ft., TS. (Seedlings)	17 50	150 00
2-3 ft., TS. (Seedlings)	12 50	100 00
1½-2 ft., TS. (Seedlings)	10 00	75 00
Law. Alumi.		
2-2½ ft.	20 00	175 00
1½-2 ft.	15 00	125 00
Law., Triomphe de Boskoop.		
3-4 ft. (Grafts) Sheared.	30 00	250 00
2½-3 ft. (Grafts) Sheared.	22 50	200 00
2-2½ ft. (Grafts) Sheared.	17 50	150 00
1½-2 ft. (Grafts) Sheared.	12 50	100 00
2½-3 ft. (Seedlings)	15 00	125 00
2-2½ ft. (Seedlings)	12 50	100 00
1½-2 ft. (Seedlings)	10 00	75 00
Obtusa crippei. Cripp's Golden Cypress.		
1½-2 ft., TS.	25 00	225 00
15-18 in.	20 00	175 00
Ob. gracilis. Slender Hinoki Cypress.		
2½-3 ft.	37 50	325 00
2-2½ ft., TS.	32 50	275 00
1½-2 ft., TS.	22 50	200 00
15-18 in., TS.	20 00	175 00
Ob. magnifica. A very vigorous form, having deep green foliage with many shadows.		
2½-3 ft.	30 00	275 00
2-2½ ft.	25 00	225 00
Ob. nana aurea. Dwarf Golden Hinoki Cypress. For rock-gardens.		
12 in., TS.	17 50	150 00
Ob. nana compacta. Fine for rockeries.		
8-10-in. spread.	17 50	150 00
6-8-in. spread.	12 50	100 00
Pisifera.		
2½-3 ft., TTS.	17 50	150 00
1½-2 ft., TS.	10 00	75 00
P. aurea. Golden Sawara Retinospora.		
4-5 ft., specimen plants.	45 00	400 00
3-4 ft., TS.	35 00	300 00
2½-3 ft., TTS.	25 00	225 00
2-2½ ft., TS.	12 50	100 00
1½-2 ft., TS.	10 00	75 00
P. filifera (filifera). Thread Retinospora.		
2½-3 ft., TS.	30 00	250 00
2-2½ ft., TS.	22 50	200 00
1½-2 ft., TS.	17 50	150 00
P. plumosa (plumosa). Plume Retinospora.		
Spread-shaped.		
1½-2-ft. spread.	15 00	125 00
15-18-in. spread.	12 50	100 00
12-15-in. spread.	10 00	75 00
Pyramidal-shaped.		
3½-4 ft., TTS.	32 50	275 00
3-3½ ft., TTS.	25 00	225 00
2½-3 ft., TTS.	20 00	175 00
2-2½ ft., TS.	15 00	125 00
1½-2 ft., TS.	12 50	100 00
15-18 in., TS.	10 00	75 00

Chamaecyparis (Retinospora), continued	Per 10	Per 100
Pisifera plumosa aurea (plumosa aurea). Golden Plume Retinospora. 2½-3 ft., TS.	\$22 50	\$200 00
P. plumosa lutescens (plumosa lutescens). For rock-gardens.		
15-18 in., TTS.	17 50	150 00
12-15 in., TTS.	15 00	125 00
10-12 in., TTS.	12 50	100 00
P. squarrosa sulphurea (squarrosa sulphurea). (Broad.)		
2-2½ ft., TS.	20 00	175 00
1½-2 ft., TS.	17 50	150 00
15-18 in., TS.	12 50	100 00
12-15 in., TS.	10 00	75 00
P. squarrosa veitchi (squarrosa veitchi). (Broad.)		
2½-3 ft., TTS.	22 50	200 00
2-2½ ft., TTS.	20 00	175 00
1½-2 ft., TS.	12 50	100 00
15-18 in., TS.	10 00	75 00

CRYPTOMERIA.

Japonica lobbi (lobbi). Lobb's Cryptomeria; Japan Cedar. Leaves change to beautiful bronze at the approach of cold weather.		
3½-4 ft., TTS.	50 00	400 00
3-3½ ft., TTS.	40 00	350 00
2½-3 ft., TTS.	35 00	300 00
2-2½ ft., TTS.	25 00	225 00
1½-2 ft.	22 50	200 00
15-18 in., TS.	20 00	175 00
Dracidoides.		
1½-2 ft.	35 00	300 00
15-18 in.	30 00	250 00

JUNIPERUS (Juniper).

Chinensis. Chinese Juniper.		
3½-4 ft.	50 00	400 00
3-3½ ft.	40 00	350 00
2½-3 ft., TTTS.	35 00	300 00
2-2½ ft., TTTS.	25 00	225 00
1½-2 ft., TTTS.	17 50	150 00
Chin. albo-variegata. White-leaf Chinese Juniper.		
2½-3 ft., TTS.	30 00	250 00
2-2½ ft., TTS.	20 00	175 00
1½-2 ft., TS.	17 50	150 00
15-18 in., TS.	12 50	100 00
Chin. columnaris.		
4-4½ ft., TTS.	70 00	600 00
3½-4 ft.	60 00	500 00
3-3½ ft., TTS.	50 00	400 00
2½-3 ft., TTS.	40 00	350 00
2-2½ ft., TTS.	30 00	250 00
1½-2 ft.	20 00	175 00
Chin. columnaris glauca.		
3½-4 ft., TTS.	70 00	600 00
3-3½ ft., TTS.	60 00	500 00
2½-3 ft., TTS.	50 00	400 00
Chin. pfitzeriana. Pfitzer Juniper.		
3½-4 ft.	60 00	500 00
3-3½ ft., TS.	50 00	400 00
2½-3 ft., TS.	35 00	300 00
Communis canadensis. Prostrate Juniper.		
3-4-ft. spread, TS.	35 00	300 00
2½-3-ft. spread, TS.	22 50	200 00



Our block of Pfitzer's Junipers, photographed at Shiloh, August, 1930. Note the care used in spacing and trimming in order to develop well-rounded plants.

EVERGREENS, continued

Juniperus, continued		Per 10	Per 100	Juniperus Virg. glauca, continued		Per 10	Per 100
Com. hibernica. Irish Juniper.				2-2½ ft.	\$30 00	\$275 00	
2½-3 ft., TS.	\$20 00	\$175 00	1½-2 ft.	22 50	200 00		
2-2½ ft., TS.	15 00	125 00	Virg. schottii. Schott Red Cedar.				
1½-2 ft., TS.	11 00	90 00	2½-3 ft., TTS.	37 50	325 00		
15-18 ft., TS.	10 00	75 00	2-2½ ft., TTS.	25 00	225 00		
Com. plumosa depressa.				MAHONIA (Hollygrape).			
1½-2 ft., TS.	17 50	150 00	Aquifolium. Oregon Hollygrape.				
15-18 in., TS.	12 50	100 00	1½-2 ft.	12 50	100 00		
Com. suecica. Swedish Juniper.				15-18 in.	10 00	75 00	
2½-3 ft., TTS.	25 00	225 00	PICEA (Spruce).				
2-2½ ft., TTS.	20 00	175 00	Canadensis (alba).				
1½-2 ft., TTS.	15 00	125 00	2-2½ ft., TTS.	15 00	125 00		
15-18 in., TTS.	11 00	90 00	1½-2 ft., TS.	11 00	75 00		
Excelsa stricta. Spiny Greek Juniper.				15-18 in., TS.	7 50	60 00	
18-21 in., TTS.	20 00	175 00	Excelsa. Norway Spruce.				
15-18 in., TTS.	15 00	125 00	2½-3 ft., TTS.	15 00	125 00		
Sabina. Savin; Savin Juniper.				2-2½ ft., TTS.	11 00	90 00	
2½-3 ft., TS.	37 50	325 00	1½-2 ft., TTS.	8 00	65 00		
2-2½ ft., TS.	30 00	250 00	15-18 in., TS.	6 00	50 00		
Tripartita. Fountain Red Cedar.				Pungens. Colorado Spruce; Colorado Green Spruce.			
Grayish prickly foliage; forms a wide irregular bush.				2-2½ ft., TTS.	20 00	175 00	
2½-3-ft. spread.	30 00	275 00	1½-2 ft., TS.	15 00	125 00		
2-2½-ft. spread.	25 00	225 00	15-18 in., TS.	12 50	100 00		
1½-2-ft. spread.	20 00	175 00	P. glauca. Colorado Blue Spruce.				
15-18-in. spread.	17 50	150 00	2-2½ ft., TTS.	\$6 each. . .			
Virginiana. Red Cedar.				21-24 in.	\$5 each. . .		
2½-3 ft., TS.	17 50	150 00	18-21 in.	\$4 each. . .			
2-2½ ft., TS.	12 50	100 00	15-18 in.	\$3 each. . .			
Virg. cannarti. Cannart Red Cedar.				P. kosteriana (pungens kosteri).			
2½-3 ft., TTS.	40 00	350 00	Koster's Blue Spruce.				
2-2½ ft., TTS.	30 00	250 00	2½-3 ft., TTS.	\$12.50 each. . .			
1½-2 ft., TTS.	20 00	150 00	2-2½ ft., TTS.	\$10 each. . .			
Virg. glauca. Silver Red Cedar.				21-24 in., TTS.	\$8 each. . .		
3½-4 ft., TTS.	60 00	500 00	18-21 in., TTS.	\$6.50 each. . .			
3-3½ ft., TTS.	50 00	400 00					

EVERGREENS, continued

PINUS (Pine).

Montana mughus. Mugho Pine.	Per 10	Per 100
Dwarf.		
1½-2 ft., T.....	\$30 00	\$250 00
15-18 in., T.....	17 50	150 00
12-15 in., T.....	12 50	100 00
9-12 in., T.....	10 00	75 00
Nigra. Austrian Pine.		
3-3½ ft., TTS.....	40 00	350 00
2½-3 ft., TTS.....	30 00	250 00
2-2½ ft., TTS.....	17 50	150 00
1½-2 ft., TTS.....	12 50	100 00
Sylvestris. Scotch Pine.		
5-6 ft.....	35 00	300 00
4-5 ft.....	30 00	250 00

RETINOSPORA. See Chamæcyparis.

TAXUS (Yew).

Brevifolia (cuspidata brevifolia).		
Pacific Yew. Shrubby form with spreading branches.		
15-18 in., TTS.....	35 00	300 00
12-15 in., TTS.....	22 50	200 00
Cuspidata. Japanese Yew.		
1½-2 ft., TS. (Heavy).....	35 00	300 00
15-18 in., TS. (Heavy).....	22 50	200 00
12-15 in., TS.....	17 50	150 00
Cus. capitata (capitata). Bark bright red; branches upright.		
2-2½ ft., TTS.....	35 00	300 00
1½-2 ft., TTS.....	30 00	250 00
15-18 in., TTS.....	22 50	200 00

THUJA (Arborvitæ).

Occidentalis. American Arborvitæ.		
3-4 ft., TTTS.....	20 00	175 00
2½-3 ft., TTTS.....	15 00	125 00
2-2½ ft., TTS.....	10 00	75 00
1½-2 ft., TTS.....	7 50	60 00
Occ. compacta. Parson's Arborvitæ.		
18-21 in., TS.....	12 50	100 00
15-18 in., TS.....	10 00	75 00
12-15 in., TS.....	6 00	50 00
Occ. ellwangeriana. Tom Thumb Arborvitæ.		
2-2½ ft., TS.....	17 50	150 00
1½-2 ft., TS.....	12 50	100 00
15-18 in., TS.....	10 00	75 00
12-15 in., TS.....	6 00	50 00
Occ. globosa. Globe Arborvitæ.		
21-24 in., TS.....	15 00	125 00
18-21 in., TS.....	12 50	100 00
15-18 in., TS.....	10 00	75 00
12-15 in., TS.....	6 00	50 00
10-12 in., TS.....	4 50	40 00
Occ. lutea. George Peabody Arborvitæ.		
2-2½ ft., TTS.....	17 50	150 00
1½-2 ft., TTS.....	12 50	100 00
Occ. plicata spiralis.		
2-2½ ft., TS.....	22 50	200 00
1½-2 ft., TS.....	17 50	150 00
Occ. pyramidalis. American Pyramidal Arborvitæ.		
4-5 ft., TTS.....	50 00	400 00
3½-4 ft., TTS.....	35 00	300 00
3-3½ ft., TTS.....	25 00	225 00
2½-3 ft., TTS.....	17 50	150 00
2-2½ ft., TTS.....	15 00	125 00
1½-2 ft., TTS.....	10 00	75 00
15-18 in., TS.....	7 50	60 00

Thuja Occidentalis umbraculifera. Per 10 Per 100

A very dwarf, compact Arborvitæ of low, mushroom shape, and rich green foliage.		
8-10-in. spread.....	\$10 00	\$75 00
6-8-in. spread.....	6 00	50 00
Occ. vervæneana. Vervæne's Arborvitæ.		
3-3½ ft., TS.....	25 00	225 00
2½-3 ft., TS.....	20 00	175 00
2-2½ ft., TS.....	15 00	125 00
Occ. vervæneana aurea. Vervæne's Golden Arborvitæ.		
2-3 ft., TS.....	15 00	125 00
1½-2 ft., TS.....	12 50	100 00
15-18 in., TS.....	7 50	60 00
Occ. wareana (sibirica). Ware's Arborvitæ.		
2-2½ ft., TS.....	15 00	125 00
1½-2 ft., TS.....	10 00	75 00
Occ. wareana aurea (sibirica aurea).		
15-18 in., TS.....	6 00	50 00
Orientalis. Oriental Arborvitæ; Chinese Arborvitæ.		
4-5 ft., TTS. Extra heavy....	35 00	300 00
3-4 ft., TTS. Extra heavy....	25 00	225 00
2½-3 ft., TS.....	17 50	150 00
2-2½ ft., TS.....	12 50	100 00
1½-2 ft., TS.....	10 00	75 00
Or. aurea conspicua. Gold-spire Arborvitæ. Very bright yellow pyramidal form.		
3-3½ ft., TTS. Extra heavy..	40 00	350 00
2½-3 ft., TTS.....	30 00	250 00
2-2½ ft., TTS.....	22 50	200 00
1½-2 ft., TS.....	17 50	150 00
Or. aurea nana. Berckman's Golden Arborvitæ.		
2-2½-ft. spread, T.....	35 00	300 00
21-24-in. spread, T.....	22 50	200 00
18-21 in., T.....	17 50	150 00
15-18 in., T.....	15 00	125 00
12-15 in., T.....	12 50	100 00
12 in., T.....	10 00	75 00
Or. beverleyensis. Golden pyramidal form.		
2-2½ ft., TS.....	17 50	150 00
Or. compacta. Type with broad, cone-shaped growth; has a good dark green color.		
2½-3 ft.....	25 00	225 00
2-2½ ft., TS. (Seedlings)....	20 00	175 00
1½-2 ft., TS. (Seedlings)....	15 00	125 00
Or. elegantissima. Yellow Column Arborvitæ.		
3½-4 ft., TTS.....	35 00	300 00
3-3½ ft., TTS.....	30 00	250 00
2½-3 ft., TTS.....	22 50	200 00
2-2½ ft., TS.....	17 50	150 00
1½-2 ft., TS.....	12 50	100 00
Or. pyramidalis. Oriental Pyramidal Arborvitæ.		
2-2½ ft., TS. (Seedlings)....	17 50	150 00
Plicata elegantissima (gigantea elegantissima). Giant Arborvitæ. Handsome, rich green foliage; growing tips yellow. Very hardy.		
3-3½ ft.....	30 00	250 00
2½-3 ft., TS.....	20 00	175 00
2-2½ ft., TS.....	15 00	125 00
1½-2 ft., TS.....	12 50	100 00

Terms and Conditions of Sale

This list cancels all previous quotations. All agreements and contracts are made subject to crop losses through unavoidable causes.

THE PRICES in this list are based upon present market conditions and are subject to change without notice. We invite correspondence with prospective buyers, and shall be pleased to quote special prices on want-lists for larger quantities than are named herein. On the other hand, these are **wholesale prices** and apply only to **wholesale quantities**; in no case will we fill retail orders, even from nurserymen. All orders should be made up for 10's or multiples of 10.

TERMS. The usual terms are offered to those of established credit or whose responsibility is known to us. Cash, security, or satisfactory references are required from unknown parties. All bills are due in sixty days unless other arrangements are made at the time of sale. **All prices are net and not subject to any discount** unless specially agreed upon. Interest charged after maturity.

SHIPPING. Customers are requested to give definite instructions for shipping. In the absence of special instructions we will use our own judgment, but with the distinct understanding that it is without responsibility on our part. All shipments travel at the risk and cost of the purchaser. We have the New York Central, the West Shore, the Pennsylvania Railroads, also the Rochester and Syracuse interurban trolley line, enabling us to ship in any direction over trunk lines. Express is handled over three of these routes.

BOXES will be charged for at the rates noted below. These prices are somewhat reduced because we are now able to buy lumber somewhat more reasonably. However, these rates do not really cover present actual cost to us.

10 ft. 30 in. x 30 in.....\$4 50	10 ft. 24 in. x 24 in.....\$3 50	10 ft. 18 in. x 18 in.....\$3 00
10 ft. 28 in. x 28 in..... 4 20	10 ft. 22 in. x 22 in..... 3 25	10 ft. 14 in. x 16 in..... 2 50
10 ft. 26 in. x 26 in..... 4 00	10 ft. 20 in. x 20 in..... 3 15	10 ft. 12 in. x 14 in..... 2 30

Add 50 cents on all sizes of 12-foot boxes; decrease in same proportion for shorter boxes.

BALES will be charged at actual cost of the material. We make no charge for packing or for delivery to the railroad station.

CLAIMS for any cause must be made promptly on receipt of goods. Any stock that is not exactly as represented must be reported promptly and on authority should be returned to us immediately. We will cheerfully and without question credit back the unsatisfactory plants, or send others; **but we will not entertain claims made after goods have been once accepted**, or when report is not made within ten days after arrival of the stock.

LIMITED LIABILITY AND NON-WARRANTY. In the event the nursery stock, or any part of it, sold by Jackson & Perkins Company, Newark, New York, should prove to be untrue to the name under which it is sold, or prove not to be of the kind or quality of nursery stock it was sold for, or ordered for, a replacement of the stock as originally ordered, or intended to be sold, without charge therefor, or a refund of the purchase price shall be a complete and entire satisfaction for any and all liability therefor of the seller, and such replacement or a refund of the purchase price it is agreed shall be the liquidated damages and all the damages to which the purchaser shall be entitled by reason of the premises. Except for such limited liability as herein set out, the seller, Jackson & Perkins Company, gives no undertaking or warranty, expressed or implied, as to the description, quality, growth, productiveness, or any other attribute of the nursery stock sold by Jackson & Perkins Company.

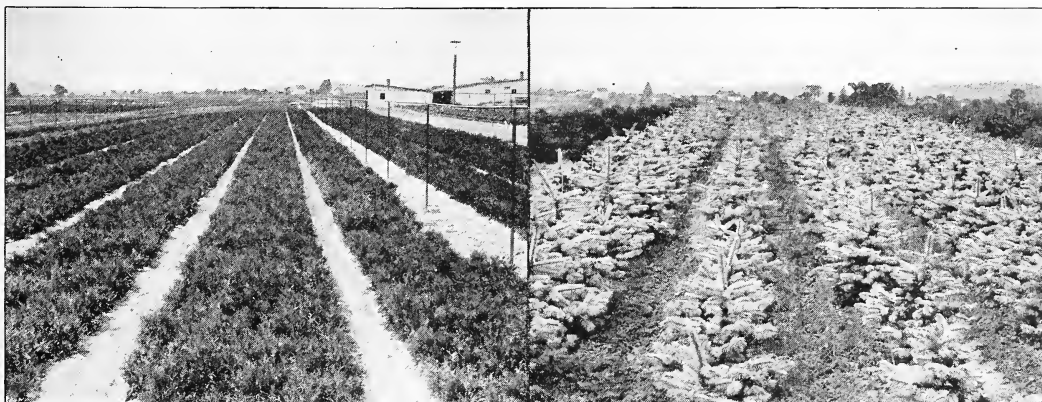
INSPECTION AND FUMIGATION. Certificate of Inspection will be furnished with every shipment and, when required, stock will be fumigated.

SPECIAL NOTICE. Correspondents are requested to use their printed business letterheads. We do not quote prices to retail buyers nor sell to planters; we have **no retail trade** of our own, and sell **to the trade only**; in justice to our **only** customers, the nurserymen, florists, and dealers, we use every effort to limit the distribution of trade prices to those whom we know to be entitled to receive them. **Use printed stationery, or enclose business card.**

LOCATION. We are located 30 miles east of Rochester, N. Y., and cordially invite a visit and inspection of our establishment.

Newark, New York, September 1, 1930

JACKSON & PERKINS COMPANY



Left. Bedded Evergreens at Newark, showing American Arborvitæ. 3-yr. T.
Right. Block of Koster's Blue Spruce at Newark.

INDEX OF STOCK SUPPLIED FROM NEWARK

Page	Page	Page	Page
Abelia 23	Chrysanthemums . . . 17, 18	Hollyhocks 19	Primula 20
Abies 37	Cinquefoil 20	Honeysuckle 15, 25	Privet 26
Abronia 16	Clematis 14, 15	Horse-Chestnut 31	Prunus 26, 29
Acanthopanax 23	Clethra 24	Hosta 18	Pseudotsuga 36, 38
Acer 32	Columbine 16, 17	Hydrangea 25	Quercus 32
Achillea 16	Coneflower 20	Iberis 19	Quince, Flowering 26
Actinidia 14	Coral Berry 27	Indian Currant 27	Quinces 40
Adam's Needle 21	Corchorus 25	Iris 19	Redbud 34
Æsculus 31	Coreopsis 18	Ivy 14, 15, 20	Red-hot Poker 21
Agrostemma 16	Cornflower 17	Jetbead 27	Retinospora 34-37
Akebia 14	Cornus 24, 31	Juniper 35, 37	Rhamnus 26
Almond 23	Corylus 24	Kerria 25	Rhodotypos 27
Althaea 23	Cotoneaster 24	Kniphofia 21	Rhus 27
Alyssum 16	Crab 30, 31	Kolkwitzia 25	Roses I-13
Ampelopsis 14	Cranberry Bush 28	Lantern Plant, Chinese 20	Rudbeckia 20
Amygdalus 23	Crataegus 34	Larkspur 18	Salix 34
Anchusa 16	Cress 17	Lathyrus 20	Sambucus 24
Anemone 16	Currants 40	Lavender, Great Sea 20	Scabiosa 20
Anthemis 16	Cydonia 26	Ligustrum 26	Shrubs 23-28
Apple 38, 39	Cypress 34-37	Lilacs 28, 29	Sidalcea 20
Aquilegia 16, 17	Daisy 17, 20	Limonium 20	Silene 20
Arabis 17	Dame's Rocket 19	Linaria 20	Silver Bell 25
Aralia 23	Daphne 21	Linden 31	Silver Vine 14
Arborvitæ 36-38	Delphinium 18	Liriodendron 34	Small Fruits 40
Aristolochia 14	Deutzia 24	Lonicera 15, 25	Smoke Tree 27
Armeria 17	Dianthus 18	Lupine 20	Snowball 25, 28
Arrow-wood 27	Dielytra 18	Lupinus 20	Snowberry 27
Artemisia 17	Diervilla 28	Lychnis 20	Sorbus 32
Ash 29	Digitalis 18	Lycium 15	Speedwell 21
Aster 17	Dogwood 24, 31	Madwort, Rock 16	Spiræa 17, 26, 27
Astilbe 17	Dutchman's Pipe 14	Mallow 19, 20	Spruce 35, 37, 38
Aubrietia 17	Echinacea 20	Malus 30, 31	Stachys 20
Avens 18	Elder 24	Maple 32, 33	Statice 20
Baby's Breath 18	Elm 31	Marguerite 16	Stephanandra 27
Barberry 24	Erigeron 18	Matrimony Vine 15	Stokesia 20
Beauty Bush 25	Eryngium 18	Mock Orange 25, 26	Sumac 27
Beech 31	Euonymus 15, 24	Morus 32	Summersweet 24
Bellflower 17	Evergreens 34-38	Mountain-Ash 32	Sweet Pepper Bush 24
Berberis 24	Exochorda 24	Mountain Bluet 17	Sweet Shrub 24
Betony, Woolly 20	Fagus 31	Mugwort 17	Sweet William 18
Betula 29	Filbert 24	Mulberry 32	Symphoricarpos 27
Bignonia 14	Fire 36-38	Myosotis 20	Tamarisk 27
Birch 29	Fleecevine, Chinese 15	Ninebark 26	Taxus 37
Bittersweet 14	Forget-me-not 20	Oak 32	Thalictrum 20
Blanket Flower 18	Forsythia 24, 25	Shade Trees 29-34	Thorn 34
Bleeding-Heart 18	Foxglove 18	Pachysandra 20	Thrift 17
Blue Bonnet 20	Fraxinus 29	Pansy, Tufted 21	Thuja 36-38
Bocconia 17	Fringe, Purple 27	Papaver 20	Tilia 31
Bridal Wreath 27	Fruit Department 38-40	Peaches 39	Tritoma 21
Buckthorn 26	Funkia 18	Pearl Bush 24	Trollius 21
Buddleia 17, 24	Gaillardia 18	Pears 38, 40	Trumpet Creeper 14
Bupththalmum 17	Garland Flower 21	Pea Tree 24	Tsuga 36, 38
Butterfly Bush 17	Gentian 18	Pentstemon 20	Tulip Tree 34
Calandrinia 17	Gentiana 18	Peonies 21, 22	Turtlehead 20
Calycanthus 24	Geum 18	Perennial Pea 20	Ulmus 31
Campanula 17	Globe Flower 21	Philadelphus 25, 26	Valeriana 21
Campion, Rose 16	Golden Bell 24, 25	Phlox, Perennial 22, 23	Verbena, Sand 16
Candytuft 19	Golden Glow 20	Physalis 20	Veronica 21
Canterbury Bells 17	Gooseberries 40	Physocarpus 26	Viburnum 27, 28
Caragana 24	Grapes 40	Picea 35, 37	Vines, Climbing I4, I5
Carnations 18	Gypsophila 18	Pine 36, 38	Viola 21
Catalpa 29	Halesia 25	Pink 16-18	Virginia Creeper 14
Catchfly 20	Hardy Perennials 16-21	Pinus 36, 38	Wayfaring Tree 28
Cedar 35, 36	Hedera 15	Plane 32	Weigela 28
Celastrus 14	Helianthemum 19	Platanus 32	Willow 34
Centaurea 17	Heliopsis 19	Plums 26, 40	Windflower 16
Cerasus 29	Heliotrope, Garden 21	Polygonum 15	Wintercreeper 14
Cercis 34	Helleborus 19	Poplar 32, 34	Wisteria 15
Chamæcyparis 34-37	Hemlock 36, 38	Poppy 17, 20	Yarrow 16
Chelone 20	Hesperis 19	Populus 32, 34	Yew 37
Cherries 39	Hibiscus 19, 23	Potentilla 20	Yucca 21
Cherry, Flowering 29, 30	Holly, Sea 18	Primrose 20	Zinnia 19
Christmas Rose 19			

STOCK SUPPLIED FROM SHILOH

Page	Page	Page	Page
Abelia 41	Chamæcyparis 44	Juniper 44, 45	Pine 46
Abies 43	Cherry-Laurel 42	Juniperus 44, 45	Pinus 46
Acer 42	Cryptomeria 44	Laurocerasus 42	Privet 42, 43
Althæa 23	Cucumber Tree 42	Ligustrum 42, 43	Retinospora 44
Andromeda 42	Cypress 44	Lonicera 42	Rhododendron 43
Arborvitæ 46	Evergreens 43-46	Magnolia 42	Spruce 45
Azalea 41	Fire 43	Mahonia 45	St. John's Wort 42
Berberis 41, 42	Hollygrape 45	Maple 42	Sweetbay 42
Boxwood 43	Honeysuckle 42	Phillyrea 42	Taxus 46
Cedar 43-45	Hypericum 42	Picea 45	Thuja 46
Cedrus 43, 44	Jasminum 42	Pieris 42	Yew 46

**NEW
YELLOW
CLIMBING
ROSE**

Primrose

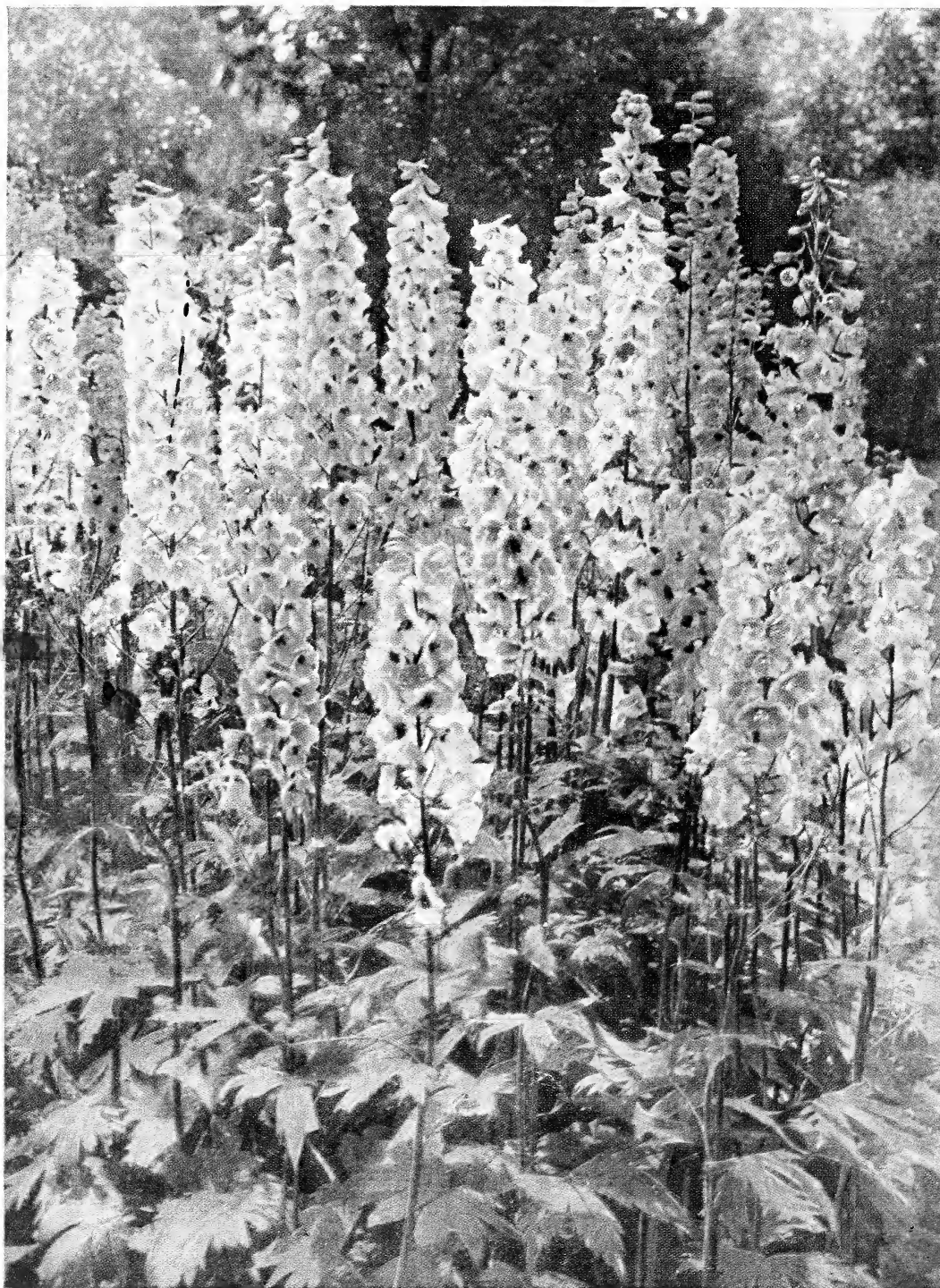


CLEAR, light yellow flowers, bringing for the first time the unfading tones of Souvenir de Claudius Pernet into the Climbing Roses. The plants are hardier than other yellow Climbers, grow vigorously, and bloom profusely. The best hardy yellow Climbing Rose to date.

For prices see Roses (Ramblers and Climbers), and note also the very complete assortment of other varieties.



COPYRIGHT 1930, JACKSON & PERKINS COMPANY



COPYRIGHT 1930, JACKSON & PERKINS COMPANY

DELPHINIUM, VANDERBILT HYBRIDS

An American strain embracing the large flowers, bold spikes, tall-growing characteristics, and delicate colors so much in favor, together with plants of healthy, robust habit

Jackson & Perkins Company
Wholesale Only
Newark, New York.

Copies of the color picture of above are available to our customers for sales promotion. Prices on application