

## **Historic, Archive Document**

Do not assume content reflects current scientific knowledge, policies, or practices.



62,63

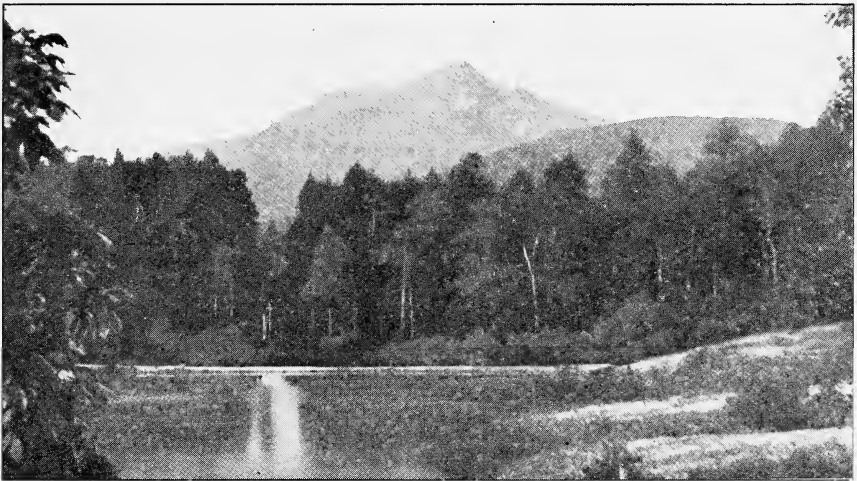
WHOLESALE LIST

Fall of 1930 and Spring of 1931

# Azaleas, Kalmias Rhododendrons



## Hemlocks, and other Hardy Plants



Grandfather Mountain. Elevation, 5,997 feet  
Included in the area owned by the Linville Improvement Company

## LINVILLE NURSERIES

Located at an elevation of 4,500 feet above sea-level  
"Crest of the Blue Ridge Mountains"

### LINVILLE, NORTH CAROLINA

Member American Association of Nurserymen

---


Owned and operated by  
Linville Improvement Co.  
Linville, N. C.

L. A. BERCKMANS, Augusta, Ga.  
P. J. A. BERCKMANS, Augusta, Ga.  
Associates and Sales Representatives.

---

Branch Offices: Wilmington, North Carolina, and Augusta, Georgia

## Introductory

 THE Linville Nurseries, at Linville, N. C. (on the Black Bear Trail from Canada to Florida), are ideally located on the slope of Grandfather Mountain at an elevation of 4,500 feet above sea-level; and upon the 16,000-acre tract owned by the Linville Improvement Company.

The Nursery was established in the fall of 1929 and a considerable area has been planted in Rhododendrons, Azaleas, Kalmias, Hemlock, etc., but none of this stock will be offered for sale until 1931.

We will, for the time being, specialize in **collected native plants** as are described in this folder. The locations from which these plants will be collected, being amid the peaks of the Blue Ridge, one of the oldest mountain ranges of the world, give us the opportunity to offer plants of unusual vigor and hardiness.

Louis A. Berckmans and P. J. A. Berckmans, who for many years were members of the firm of the P. J. Berckmans Company Nurseries (established in 1856) at Augusta, Ga., are associated with us in the management of the Nursery and will give their personal attention to its affairs; furthermore, we have experienced and capable assistants; therefore we are in a position to give our clients most efficient and satisfactory service.

---

---

### TERMS AND CONDITIONS

**SHIPPING SEASONS** Spring shipments commence when frost is out of the ground, usually about March 1, and continue until latter part of May.

Fall shipments commence about September 1 and continue until the ground freezes, usually about December 1.

**TERMS.** All invoices due and payable to Linville Nurseries 60 days from date of shipment. Where purchaser's credit is unknown to us, cash is required before shipment, or satisfactory trade or bank reference.

**QUOTATIONS.** All prices on this list are for **COLLECTED STOCK ONLY**—40 of the same variety and size will be billed at the 100 rate; 400 of the same variety and size at the 1,000 rate.

**PACKING.** When packed in bulk in carload lots, no charge will be made for packing, but when boxed, the boxes will be invoiced at actual cost.

**SHIPPING INSTRUCTIONS.** In all cases, state how shipments are to be made, whether by freight or express, also give routing.

**LIABILITY AND CLAIMS:** All shipments travel at purchaser's risk. We do not guarantee safe delivery. Our responsibility ceases when delivery is made to the transportation company and shipping receipt is signed by railroad or express agent. All claims for damages must be made promptly to the transportation agents at place of delivery.

No liability to attach to us where frost, drought, fire, or other casualties beyond our control prevent delivery of stock that may be contracted for.

**DELIVERY BY AUTO TRUCK.** We are equipped with trucks and can make deliveries to places not over 250 miles from Linville. Charges for such deliveries are assessed according to size of truck and the distance.

**SHIPPING FACILITIES.** Carload lots will be made from Ashford, McDowell County, North Carolina.

Express shipments from Linville and Ashford, N. C.

ALL ORDERS are accepted according to the above terms and conditions.

Address all communications to

**L. A. and P. J. A. BERCKMANS**  
AUGUSTA, GEORGIA

NOTE: Neither L. A. BERCKMANS nor P. J. A. BERCKMANS are connected with any other nursery.

All prices quoted are for COLLECTED STOCK, which will be carefully selected, BALLED and BURLAPPED.

**AZALEA CALENDULACEA.**

**Flame Azalea. Many shades of red, orange, yellow and buff.**

	WHOLESALE LIST		
	Per 10	Per 100	Per 1000
18 to 24 inches, strong clumps .....	\$7.00	\$65.00	\$550.00
2 to 3 feet, strong clumps .....	8.00	75.00	675.00
3 to 4 feet, strong clumps, 8 to 12 stems.....	12.00	110.00	950.00
4 to 5 feet, extra heavy clumps, 12 to 16 stems .....	22.50	175.00	1,500.00

**AZALEA NUDIFLORA. Pinxter Flower.**

**Flowers pink. Fragrant.**

2 to 3 feet, strong clumps .....	10.00	95.00
3 to 4 feet, strong clumps .....	15.00	125.00



*Kalmia latifolia*, two to three feet burnt over clump.

**KALMIA LATIFOLIA. Mountain Laurel, Calico Bush. Gives a fine effect, when inter-planted with Rhododendrons. Does well in either sun or shade.**

**NATURAL GROWTH**

18 to 24 inches, bushy .....	7.00	60.00
2 to 3 feet, bushy.....	10.00	80.00
3 to 4 feet, very bushy .....	15.00	135.00

**BURNT OVER CLUMPS, EXTRA FINE**

18 to 24 inches, with about equal spread, 15 to 25 stems.....	20.00	125.00	1,000.00
2 to 3 feet, with about equal spread, 25 to 40 stems .....	25.00	175.00	1,500.00
3 to 4 feet, with about equal spread, 40 stems and over .....	40.00	300.00	2,750.00
4 to 5 feet, beautiful specimens, with about equal spread, many stems	50.00	400.00	3,500.00
5 to 6 feet, beautiful specimens, with about equal spread, many stems	75.00	600.00	

**LEIOPHYLLUM PROSTRATUM.**

**Sand Myrtle.**

**WHOLESALE LIST**

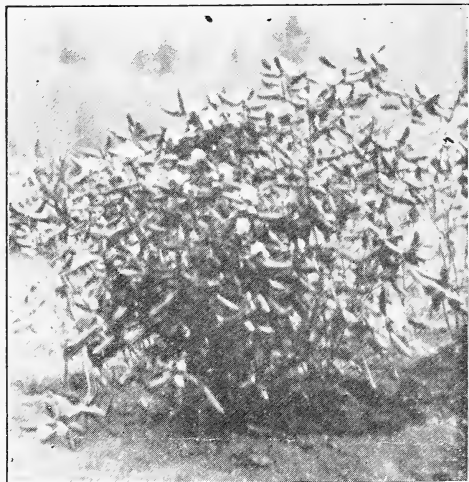
Per 10 Per 100 Per 1000

4 to 6 inch spread, fine clumps .....	\$4.50	\$40.00	\$325.00
6 to 10 inch spread, fine clumps .....	5.50	50.00	450.00
12 to 15 inch spread, fine specimens .....	20.00	150.00	

**LEUCOTHOE CATESBAEI.**

**Drooping Leucothoe. Grows well in sun or shade, but does best in a heavy, well-drained acid soil.**

Strong cut back clumps, Not B. and B.....	4.50	40.00	350.00
2 to 3 feet, extra strong clumps, many stems	15.00	100.00	800.00



*Rhododendron carolinianum*, three to four feet clump.

**RHODODENDRON CAROLINIANUM.**

**Carolina Rhododendron. Flowers vary from light to deep pink. Blooms produced from four to five weeks before R. Catawbiense. Does well in full sunlight.**

12 to 18 inch heavy clumps, extra quality .....	20.00	175.00
2 to 3 feet, heavy clumps, extra quality .....	25.00	200.00
3 to 4 feet, heavy clumps, extra quality .....	40.00	300.00



Rhododendron Catawbiense, burnt over clump, three to four feet.

**RHODODENDRON CATAWBIENSE.**

**Catawba Rhododendron. Exceedingly hardy. Does well in full sunlight. Colors vary from lilac, purple to almost red.**

Per 10 Per 100 Per 1000

**BURNT OVER CLUMPS.**

**EXCEPTIONALLY FINE**

1 to 2 feet clumps, several stems .....	\$20.00	\$150.00	\$1,250.00
2 to 3 feet clumps, 10 to 15 stems .....	30 00	250.00	2,250.00
3 to 4 feet clumps, 15 to 20 stems .....	40 00	350.00	3,250.00
4 to 5 feet clumps, 20 to 20 stems .....	50 00	450.00	4,250.00
5 to 6 feet clumps, 30 stems and over .....	90 00	800.00	
6 to 7 feet specimen clumps, many stems .....	125.00	1,000.00	

**RHODODENDRON MAXIMUM.**

**Great Laurel. Rosebay Rhododendron. Flowers white and light shades of pink. Does best in a shady location, although we have thousands of fine plants which are growing luxuriantly in full sun.**

**NATURAL GROWTH**

18 to 24 inches, branched .....	8.00	75.00	600.00
2 to 3 feet, well branched .....	10.00	90.00	800.00
3 to 4 feet, well branched .....	17.50	160.00	1,500.00
4 to 5 feet, well branched, heavy .....	30 00	275.00	2,500.00
5 to 6 feet, well branched, very heavy .....	45.00	400.00	
6 to 7 feet, well branched, extra heavy .....	75.00	650.00	



Rhododendron Maximum Natural Growth, two to three feet.

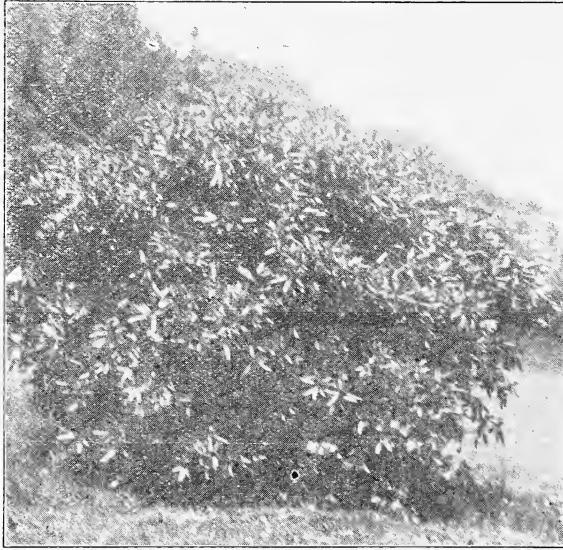
**BURNT OVER CLUMPS. EXTRA FINE**

Per 10 Per 100 Per 1000

18 to 24 inches, clumps, several stems .....	\$20.00	\$150.00	\$1,250.00
2 to 3 feet, clumps, 10 to 15 stems .....	25.00	200 00	1,750.00
3 to 4 feet, clumps, 15 to 20 stems .....	35.00	250.00	2,250.00
4 to 5 feet, clumps, 20 or more stems .....	40 00	375.00	3,500.00
5 to 6 feet, clumps, 30 stems and over .....	60.00	550 00	
6 to 7 feet, specimen clumps, with many stems, extra fine .....	100 00	800.00	



Rhododendron Maximum, burnt over clump, three to four feet.



Photograph of a specimen plant of a cut-back or burnt over Rhododendron Maximum 10 feet high, with a spread of 10 feet, at Linville, N. C. We can supply these specimens of various sizes in carload lots from \$12.50 to \$150.00 each. Ask for specifications.

**PLANTING AND CARE OF RHODODENDRONS**

To get satisfactory results, keep Rhododendrons mulched with leaves, peat moss, straw or old hardwood sawdust; and protect from winds by planting hardy evergreens on the north and west exposures; but the most important of all is an acid well drained soil, composed of loam, leaf mold and peat. Give plants an abundance of water, as they are not deeply rooted, and they should never be allowed to suffer for moisture. Never use a hoe, pull out the grass and weeds. When the blooming period has passed, break out the bunches of seed pods. This process will enable the plants to put on bloom buds for the ensuing year and there will be no "off year."

Treat your plants according to these simple directions and they will afford you pleasure and blooms a plenty.

**TSUGA CANADENSIS. Canadian or Common Hemlock. A very handsome ornamental tree for the lawn, also makes an excellent hedge, extensively used for wind brakes.**

	Per 10	Per 100	Per 1000
2 to 3 feet, well branched.....	\$17.50	\$150.00	
3 to 4 feet, well branched.....	25.00	225.00	
4 to 5 feet, well branched.....	35.00	325.00	
5 to 6 feet, well branched.....	45.00	435.00	

**TSUGA CAROLINIANA. Carolina Hemlock. Conceded to be the hardiest and handsomest of all Hemlocks. It has very dark foliage, compact growth, branches pendulous, a rapid grower.**

2 to 3 feet, well branched.....	\$25.00	\$225.00
3 to 4 feet, well branched.....	35.00	300.00
4 to 5 feet, well branched.....	45.00	435.00
5 to 6 feet, well branched.....	50.00	500.00



One of our four to five feet Rhododendron Maximum, burnt over clump, one year after being transplanted at Augusta, Georgia.

# LINVILLE NURSERIES

LINVILLE, NORTH CAROLINA