

## **Historic, Archive Document**

Do not assume content reflects current scientific knowledge, policies, or practices.



Co. 41

# BULBS

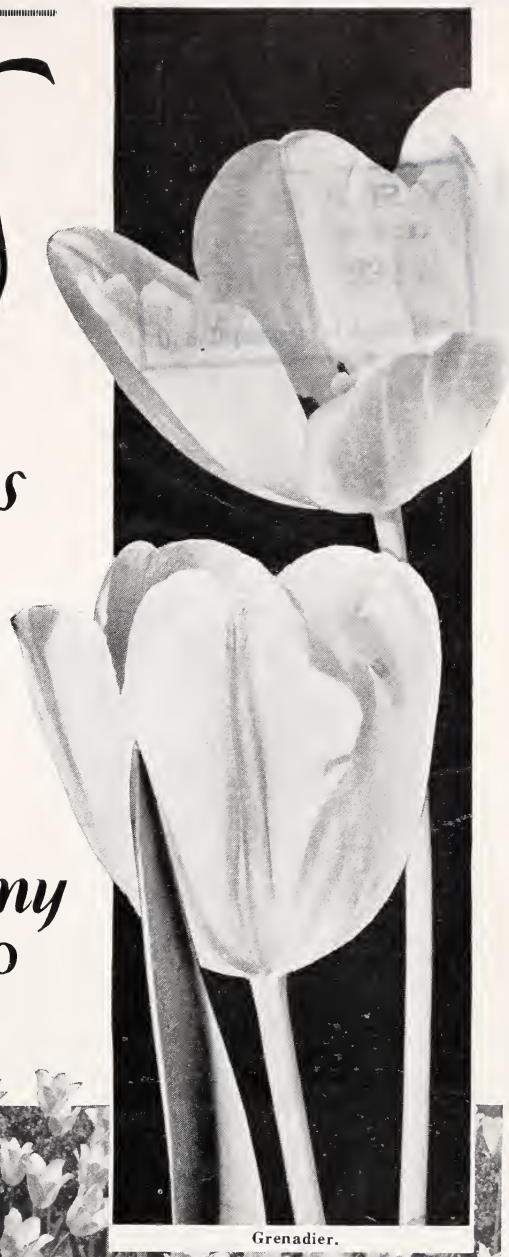
*For Spring Flowers*

FALL 1931

*Lohrman Seed Company*

Macomb at Brush...Rand. 1270

DETROIT, MICHIGAN



Grenadier.



Cottage Tulip, Mrs. Moon, in Garden Planting.

# Hardy Garden Lilies

## Lilium Candidum

THE MADONNA LILY

One of the oldest plants cultivated in gardens. The plants make healthy evergreen rosettes of leaves in the autumn, from which stout stems, clothed with short leaves, arise in spring bearing spire-like clusters of pure white, starry Lilies beautifully illumined by brilliant yellow anthers. They, too, are deliciously sweet, but are not so overpoweringly fragrant as some others, and may be cut and brought into the house with comfort. It blooms in June, immediately before the Regale Lily, at the same time as Delphinium Belladonna, with which it is frequently combined. Can be planted only in the fall. Large size, 35c each; \$3.50 per doz. Mammoth size, 50c each; \$5.00 per doz.

## Lilium Harrisii

The chaste snow-white flowers supply a long-felt want for purpose of decoration. The exquisitely perfumed flowers are produced in clusters on a stem varying from 2 to 4 feet in height. Invaluable for early flowering from Christmas onward.

	Each	12	100
9-11 in. ....	\$0.60	\$6.00	\$45.00
10-12 in. ....	.85	8.50	67.50

## Regal Lilies

A very hardy, easily grown variety from the mountains of western China, and one of the most glorious of all. The flowers are gigantic, of true Lily shape, with long, waxen petals recurved at the tips, and lightly frilled along the edges. In effect it is pure white, but the center of the flower is richly suffused with golden yellow and the brilliant orange-yellow anthers are large and showy. The outside of the buds and the three outer petals are stained with purple-brown, which often gives a faint pinkish value to the flowers seen in quantity. Unequaled for magnificent effect.

MEDIUM SIZE. 40c each; \$4.00 per doz.

MAMMOTH SIZE. 50c each; \$5.00 per doz.



Lilium Candidum, Madonna Lily.

**SUPERBUM (Turk's Cap Lily).** One of our native species.

Grown in good, rich soil, it will produce upwards of 20 beautiful orange, tipped red spotted flowers in a pyramidal cluster. 3 to 5 feet high. Blooms in July. 35c each; \$3.50 per doz.

**ELEGANS.** Very handsome, producing in July, large blood-red colored flowers with small, black spots; a strong, robust grower; very decorative in pots or borders. 15 to 18 inches. 35c each; \$3.50 per doz.

**TENUIFOLIUM.** A lovely orange-red Lily. Its brilliant color, easy culture and absolute hardiness have made it a great garden favorite. All it asks is a sunny place in the border where the soil is well drained. 2 feet. 40c each; \$4.00 per doz.



Lily-of-the-Valley.



Paper-White Narcissus.

## Indoor Bulbs

**GIANT-FLOWERED AMARYLLIS.** Bulbs, 85c each; \$8.50 per doz.

**YELLOW CALLA LILY.** Bulbs, 50c each; \$5.00 per doz.

**WHITE CALLA LILY.** Bulbs, 40c each; \$4.00 per doz.

**LILY-OF-THE-VALLEY.** Pips, \$1.00 per doz.; \$7.00 per 100; \$65.00 per 1000.

## Freessias

This is one of the most beautiful of all Cape bulbs, possessing a peculiar grace of form, and its fragrance is most delightful, one pot of five to six bulbs being sufficient to perfume a whole house. As cut flowers, they are extremely valuable.

**PURITY.** White. 85c per doz.; \$6.00 per 100.

**GEN. PERSHING.** Pink. 85c per doz.; \$6.00 per 100.

**CALIFORNIA.** Yellow. \$1.00 per doz.; \$8.00 per 100.

**MARC PETERS.** Lavender. 85c per doz.; \$6.00 per 100.

## Paper-White Narcissi

For the past few years we have made tests with bulbs from different locations and are now able to offer you a quality that blooms as well as the bulbs formerly imported from France.

Start them after December 1st. Planted in pebbles and water and grown fairly cool in full light, they will flower three weeks after planting.

We offer the largest size bulbs, which is the only grade from which you can expect splendid flowers.

	12	100	1000
FIRST-SIZE BULBS .....	\$0.75	\$6.00	\$50.00
JUMBO BULBS .....	1.00	7.00	60.00

Fertilize With Bone Meal

# Darwin Tulips

## Giant Flowers—Gorgeous Colors

The glory of the spring garden with their lovely cups nodding a merry "Good morning" to you every day for weeks. Tall and stately with huge flowers towering erect on strong stems. Plant either in clumps or groups of twenty-five or more, or in beds.

**CULTURE.** Plant bulbs 4 to 5 inches deep and 4 to 5 inches apart, during October and November and until the ground freezes up. Bone meal is the best fertilizer for Tulips.

## New Darwin Tulips

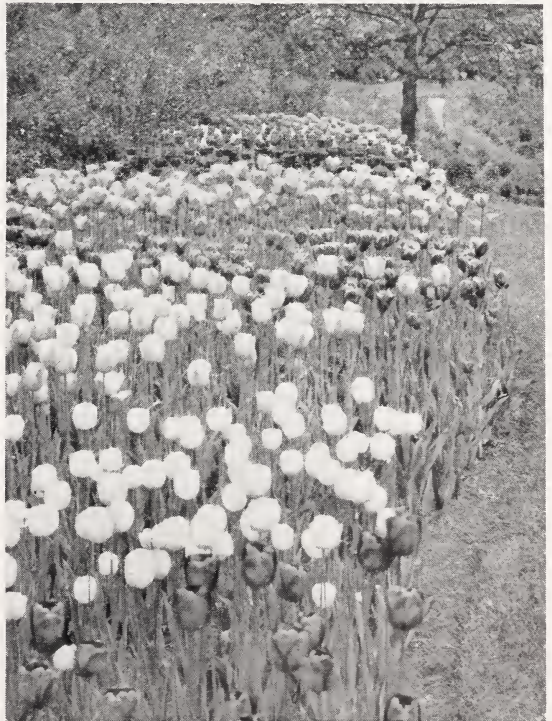
	Each	12	100
<b>CITY OF HAARLEM.</b> 24 in. Glittering scarlet, black center, edged white. Enormous flowers .....	\$0.10	\$1.00	\$ 7.50
<b>GOLDEN FLEECE.</b> 25 in. Golden yellow, with bronzy tips on the outside of petals. This Tulip is intensely deep yellow and of very large size .....	.15	1.50	11.00
<b>KING GEORGE V.</b> 30 in. Bright rosy red, shaded cerise, with white center. Large flowers of perfect shape .....	.15	1.50	11.00
<b>PRINCE OF WALES.</b> 28 in. Very bright crimson with scarlet flush. Bright blue base. Large .....	.10	1.00	7.50
<b>THE BISHOP.</b> 29 in. Finest deep violet, blue base, white halo .....	.30	2.75	20.00
<b>WHITE GIANT.</b> 24 in. Pure white; a very beautiful Tulip. Large flower on tall and strong stem. Anthers are black .....	.75	7.50	
<b>YELLOW GIANT.</b> 28 in. A pure yellow Tulip of great beauty and substance; large flower with black anthers. Tall and strong stem. The only yellow Darwin Tulip in existence to date .....	.60	6.00	
<b>ZWANENBURG.</b> 28 in. Pure white Darwin .....	.15	1.25	9.00

NOTE—6 bulbs at dozen rate; 25 bulbs at 100 rate.



Darwin Tulips, Afterglow and La Tulipe Noire.

<b>AFTERGLOW.</b> Deep rosy orange, salmon-tinted edges .....	12	100	1000
<b>BARONNE DE LA TONNAYE.</b> Rose-pink, paler shadings. Height 26 in. ..	\$0.65	\$4.50	\$40.00
<b>BARTIGON.</b> Clear crim-on-red; the best red forcing variety. 28 in. ....	.55	3.75	32.50
<b>CENTENAIRE.</b> Splendid violet-rose with blue center. Good forcer. 27 in. ....	.60	4.25	37.50
<b>CLARA BUTT.</b> Clear pink and salmon-rose. 21 in. ....	.60	4.00	35.00
<b>DREAM.</b> Clear lavender. 27 in. ....	.50	3.50	30.00
<b>DREAM.</b> Clear lavender. 27 in. ....	.65	4.50	40.00
<b>FAUST.</b> Deep wine-purple. 30 in. ....	.90	7.00	65.00
<b>FARNCOMBE SANDERS.</b> Bright rosy scarlet, white base. A good forcer. 25 in. ....	.60	4.00	35.00
<b>GIANT.</b> Deep reddish purple, shaded violet, white base and blue star. Height 29 in. ....	1.60	12.00	
<b>LA TULIPE NOIRE.</b> Blackish maroon. 25 in. ....	.70	5.00	45.00
<b>PRIDE OF HAARLEM.</b> Cerise-scarlet; excellent bedder and fine forcer. 25 in. ....	.50	3.50	30.00
<b>PRESIDENT TAFT.</b> Deep crimson-red. 20 in. ....	.75	5.50	50.00
<b>PRINCESS ELIZABETH.</b> Large, clear pink; good forcer. 23 in. ....	.60	4.00	35.00
<b>VIKING.</b> Plum purplish violet, with steel glow. 27 in. ....	.90	7.00	65.00
<b>WILLIAM COPELAND.</b> Lilac-rose. Good forcer. Height 25 in. ....	.60	4.00	35.00
<b>LOHRMAN'S SUPERB MIXTURE OF DARWIN TULIPS.</b> Includes only the best and most improved varieties of this lovely type. A really first-class mixture of all first-size bulbs .....	.50	3.50	32.50



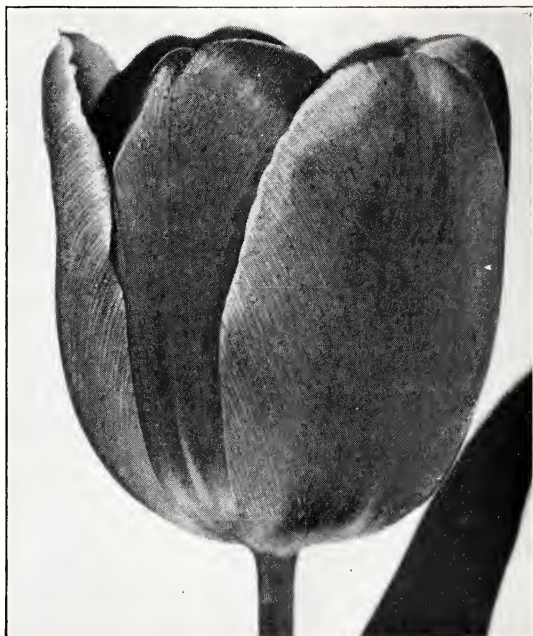
A border planting of Darwin, Breeder and Cottage Tulips.

## Breeder Tulips

The Old Dutch Breeder Tulips appeal to all tulip lovers on account of their sturdiness, large size, and beautiful "art colors." In size they even out rival the popular Darwins. Under favorable conditions many sorts will grow over 2½ feet high and bear enormous flowers of ideal form and great substance.

The colors of these tulips are most fascinating; including solid art colors (such as bronze, brown, buff, terra cotta) as well as many combinations of colors that are unsurpassably beautiful.

	12	100	1000
<b>BACCHUS.</b> Intense deep violet. 30 in. . . . .	\$1.00	\$7.00	\$65.00
<b>BRONZE QUEEN.</b> A pleasing shade of bronzy buff, inside golden bronze. The best forcer. 26 in. . . . .	.85	6.00	55.00
<b>CARDINAL MANNING.</b> Rosy violet tinted salmon and bronze to the edge. 28 in. . . . .	.70	4.75	42.50
<b>DOM PEDRO.</b> A unique shade of dull brown, shaded maroon, inside rich mahogany. 28 in. . . . .	.75	5.50	50.00
<b>FEU ARDENT.</b> Mahogany-red. 21 in. . . . .	1.00	7.00	65.00
<b>INDIAN CHIEF.</b> Reddish mahogany flushed purple . . . . . Each, 49c. . . . .	4.00	30.00	
<b>LOUIS XIV.</b> Rich, deep purplish violet, golden bronze margin. 30 in. . . . .	.65	4.50	40.00
<b>LUCIFER.</b> Bright orange, tinted rose. Very bright. 26 in. . . . .	1.10	8.00	75.00
<b>MRS. BEECHER STOWE.</b> A fine deep purple, of good form and splendid stem; very deep in color and uniform. 30 in. . . . . Each, 25c. . . . .	2.50	17.50	
<b>PANORAMA.</b> Orange-scarlet, olive-green base, violet anthers. 27 in. . . . .	.75	5.00	45.00
<b>PINK PEARL.</b> Violet-rose, suffused white at base of petals. 27 in. . . . .	1.15	8.50	



Breeder Tulip, Bronze Queen.

## Cottage Tulips

Cottage Tulips are so-called because found growing in the old cottage gardens of England, Scotland, Ireland and France where they had been established for 50 years or more. All are very beautiful, presenting a great variety in form and coloring, and having none of the stiffness of other tulips. For cutting they are greatly prized on account of their long stems and graceful habit.

	12	100	1000
<b>ARGO.</b> Golden bronze, stippled orange at edge of petals. . . . .	\$1.10	\$8.25	\$80.00
<b>DIDO.</b> Deep, rich pink with yellow stripes. Fragrant. 30 in. . . . .	1.60	12.00	
<b>GESNERIANA SPATHULATA MAJOR.</b> Brilliant crimson-scarlet with blue base. 24 in. . . . .	.70	5.00	45.00
<b>GRENADIER.</b> Dashy orange-scarlet, very large. 21 in. . . . .	.70	5.00	45.00
<b>INGLESCOMBE YELLOW.</b> "The Yellow Darwin." Bright canary-yellow; globular flower. 24 in. . . . .	.50	3.50	30.00
<b>INGLESCOMBE PINK.</b> Soft rosy pink, slightly flushed salmon. 24 in. . . . .	.60	4.00	35.00
<b>JOHN RUSKIN.</b> Salmon, with mauve-rose-apricot. 16 in. . . . .	.70	5.00	45.00
<b>MOONLIGHT.</b> Soft canary-yellow, oblong bloom. 20 in. . . . .	.70	5.25	47.50
<b>MES. MOON.</b> Deep golden yellow, slightly reflexed petals. 30 in. . . . .	.80	6.00	55.00
<b>PICOTEE.</b> White edged with rosy pink, reflexing petals. 20 in. . . . .	.60	4.25	37.50
<b>SIRENE.</b> Soft lilac-rose, slightly paler at edges. 16 in. . . . .	.70	5.00	45.00



Cottage Tulip, John Ruskin.

*Granulated Peat Moss  
is Better Than Manure*



Double Tulips, Couronne d'Or.

## Double Tulips

Double Tulips usually flower about 10 days later than the Single Early Tulips. They are very popular for bedding and forcing and on account of their low habit of growth, they are especially adapted for cemetery planting and rock gardens.

	12	100	1000
<b>COURONNE D'OR.</b> Golden yellow, shaded orange, 10 in. ....	\$0.80	\$6.00	\$55.00
<b>LAC VAN HAARLEM.</b> Rosy violet, 12 in. ....	1.00	7.50	70.00
<b>PEACH BLOSSOM.</b> Very double, bright pink flowers, flushed white .....	.70	5.25	47.50
<b>RUBRA MAXIMA.</b> Deep red, Height 10 in. ....	.70	5.25	47.50
<b>SCHOONOORD.</b> Pure white, 12 in. ....	.70	5.25	47.50
<b>TEA ROSE.</b> Primrose-yellow, flushed rose, 10 in. ....	.70	5.25	47.50

## Single Early Tulips

While especially recommended for forcing, planted outdoors they will bloom in April and during the first part of May.

	12	100	1000
<b>ARTUS.</b> Bright red, dwarf; fine bedder, 12 in. ....	\$0.80	\$5.75	\$52.50
<b>COTTAGE MAID.</b> Beautiful rosy pink, outside white, 12 in. ....	.70	5.00	45.00
<b>DE WET.</b> Golden yellow, flushed and spotted fiery orange-scarlet .....	1.15	8.50	80.00
<b>KEIZERSKROON.</b> Scarlet, bordered deep yellow, 16 in. ....	.90	7.00	65.00
<b>PRESIDENT LINCOLN.</b> Purplish mauve, 12 in. ....	.80	6.00	55.00
<b>PRINCE OF AUSTRIA.</b> Orange shaded scarlet; fragrant, 14 in. ....	.65	4.50	40.00
<b>RISING SUN.</b> Deep golden yellow .....	.75	5.50	50.00
<b>WHITE HAWK.</b> Pure white crinkled petals, 13 in. ....	.80	6.00	55.00
<b>YELLOW PRINCE.</b> Pure yellow; sweet scented, 12 in. ....	1.00	7.25	67.50

## Tulip Clusiana

The Little Lady Tulip. A beautiful dwarf variety suitable for perennial borders and rockeries. Outer petals bright cherry-red, inner petals creamy white with violet base. Plant 8 inches deep, 8 inches high. 85c per doz.; \$6.50 per 100.

## Parrot Tulips

The petals of these have feathered edges, and in addition to other colors, combined shades of green—a peculiarity confined to this class. These Tulips are very showy and worthy of general planting in beds and borders. Very late in flowering. 15 in.

**ASSORTED COLORS.** 70c per doz.; \$5.00 per 100.

**FANTASY.** (Novelty). This recent product of the Tulip breeder's art originated as a sport from Clara Butt, the well known Darwin Tulip. Clara Butt is esteemed for its beautiful salmon pink color; and this sport Fantasy has inherited the same glorious color, except that the inside of the flower is more intense in color; and borne on stiffer stems. The height is 20 inches. 30c each; \$3.50 per doz.

**SUNDEW.** This Tulip is called the Bartigon Parrot. Color a brilliant fiery crimson. The edge of the petals are finely fringed, like tiny icicles. Very attractive and out of the ordinary. \$1.15 per doz.; \$8.75 per 100.

## Rembrandt Tulips

In general habit of growth these resemble the popular Darwin Tulips. All are striped or splashed with a rich shade on lighter ground, 25 in. Stock carried in four colors. 95c per doz.; \$7.00 per 100.

# Hyacinths

Every year our growers prepare to select the finest grade of Hyacinths. These bulbs are called Exhibition and Bedding size, fully aged for these purposes. The Exhibition size are most adapted for indoor culture and should be planted singly in 5-inch pots or four bulbs to an 8-inch bulb pan. Keep cool and in a dark place, six to eight weeks, then bring to the light, forcing them by heat.

Bedding size bulbs are not as large but prove satisfactory for garden planting. Plant six inches apart and six inches deep, and fertilize with Bone Meal.

## Price List of Hyacinths

	Each	12	100
<b>Exhibition Size.</b> 20 cm. and over ...	\$0.18	\$1.65	\$11.50
<b>Bedding Size.</b> 16 cm. and over .....	.12	1.25	8.50

**CITY OR HAARLEM.** Deep yellow; magnificent spike.

**GRAND MAITRE.** Dark porcelain-blue.

**KING OF THE BLUES.** Deep blue. Extra fine.

**L'INNOCENCE.** Purest white.

**LA VICTOIRE.** Brilliant carmine-rose.

**LADY DERBY.** Pale pink. Fine.

**QUEEN OF THE PINKS.** Fine rose-pink; large flowers.

**GARIBALDI.** Brilliant vermilion-red.

## Miscellaneous Bulbs

**SCILLAS (Squills).** (Hardy).

**Sibitica Blue.** Drooping, bell-like flowers. 4 inches in height. Suitable for rock gardens. 65c per doz.; \$4.50 per 100.

**MUSCARI (Grape Hyacinth).** Little flowers for planting in masses either in shade or sun.

**Heavenly Blue.** The best blue. 50c per doz.; \$3.50 per 100. White. 75c per doz.; \$5.00 per 100.

**IXIAS.**

**Mixed Colors.** Star-shaped flowers in clusters 1 foot high, brilliant colors. 40c per doz.; \$3.00 per 100.

**CHIONODOXA (Glory of the Snow).** (Hardy).

**Luciliae.** Deep blue, with a white center. 50c per doz.; \$3.00 per 100.

**SNOWDROPS.** (Hardy). First to open in the spring, and are very lovely.

**Single Flowered.** 50c per doz.; \$3.50 per 100.

**Double Flowered.** 75c per doz.; \$5.00 per 100.

**ERANTHIS HYEMALIS (Winter Aconite).** (Hardy—give slight protection). Bright yellow flowers, produced in early spring on 6-inch stems. 40c per doz.; \$3.00 per 100.

## Spring Flowering Crocus

These early-flowering favorites make a most effective showing when planted in good-sized groups or when massed. Plant closely but not over an inch deep, or the bulbs will fail to bloom.

	12	100	1000
<b>KING OF THE WHITES.</b> Extra large...	\$0.50	\$3.50	\$32.50
<b>BARON VON BRUNOW.</b> Purplish blue.	.50	3.50	32.50
<b>SIR WALTER SCOTT.</b> Violet striped...	.50	3.50	32.50
<b>CLOTH OF GOLD.</b> Yellow striped brown	.50	3.50	32.50
<b>CLOTH OF SILVER.</b> White, striped purple .....	.50	3.50	32.50
<b>MAMMOTH YELLOW.</b> Extra large ...	.60	3.75	40.00
<b>MIXED CROCUS IN SEPARATE COLORS.</b> Blue, white, striped and yellow.	.40	2.50	21.00

# Narcissi or Daffodils

## Loved By Everyone

Daffodils are an indispensable factor in the pageant of spring floral beauty, and whether grown as specimens in the garden borders or planted "au naturel" in woodland or glade, each blossom seems a concentrated gleam of golden sunshine. Absolutely hardy, they increase in beauty and size, year after year. Our list has been carefully compiled and contains all that is best in these splendid bulbs.

Varieties marked with a (\*) are adapted for naturalizing.

### Large Trumpet

	12	100
*EMPEROR. Primrose-yellow perianth, large golden yellow trumpet; long, graceful stems; fine for cutting; excellent for garden and forcing in the greenhouse. 20 in. ....	\$1.85	\$13.50
KING ALFRED. Golden yellow perianth and trumpet of immense size, a veritable giant; stands unrivaled in size and beauty. 20 in. . .	2.50	18.50
VAN WAVEREN'S GIANT. The giant of the race, with large, bright yellow trumpet and primrose perianth. A splendid forcer. Exceptionally fine flowers. 17 in. ....	4.10	32.50
GLORY OF SASSENHEIM. Creamy white perianth with overlapping petals; long trumpet of deep golden yellow; large. Height 15 inches. 2.00	2.00	15.00
SPRING GLORY. Pure white perianth, deep golden yellow trumpet; enormous flower on long stem. 16 in. ....	1.90	14.00

**CULTURE.** The bulbs should be planted as early as convenient in the autumn to make root growth before winter sets in. The bulbs may be left undisturbed for several years on good loamy soils. The depth to plant varies according to the size of the bulbs—a covering of 2 to 3 inches of soil is about the average. The distance apart should be 3 to 6 inches, according to the size of the variety.

	12	100
VAN SION. The popular "Double Yellow Daffodil." Very early. Great favorite for garden planting. 13 in. ....	\$2.15	\$16.00
DUBLOOM. Deep lemon-yellow, suffused golden yellow, center orange; finely pointed petals, tall, graceful stem; good keeper. 13 in. ....	2.15	16.00

### Mixed Narcissi and Daffodils

For Naturalizing in Borders, Wild Gardens, Etc.

These are a special mixture of all varieties. They are very suitable for growing in masses for garden decoration, and are particularly adapted for mixed borders, "naturalizing" in shrubbery by woodland walks, in woods by streams and lakes and semi-wild, outlying grounds. They are perfectly hardy and will flourish and increase for many years. Price, \$1.00 per doz.; \$7.50 per 100; \$70.00 per 1000.

### Poetaz Hybrid Daffodils

This class produces its flowers in clusters. They have a very short trumpet or eye, giving each flower a striking appearance. They are very satisfactory for forcing.

	12	100
IRENE. Perianth silky sulphur-white, changing into light yellow; orange eye; large, broad clusters, bearing 5 to 8 flowers. 21 in. ....	\$2.50	\$15.00
LAURENS KOSTER. White with light yellow eye; large flower of remarkably good substance. The tallest, and an excellent cut flower. 9 in. ....	1.35	9.50

### Medium Sized Trumpets

The flowers of this class have a cup or trumpet measuring from one-third to nearly the length of the perianth segments.

	12	100
*AUTOCRAT. Primrose perianth, golden yellow cup; refined and stately; a real beauty. 20 in. ....	\$1.90	\$14.00
*SIR WATKIN. Primrose-yellow perianth, deep yellow cup. The tallest and largest of this type. 21 in. ....	1.85	13.00

### Narcissi Leedsii

A class with short trumpets, long, graceful stems, usually quite fragrant and well adapted for cutting.

	12	100
*MRS. LANGTRY. White perianth; cup pale primrose passing into white, with a narrow margin of lemon-yellow; a very free-flowering variety. Height 16 inches ....	\$1.30	\$9.00
QUEEN OF THE NORTH. Large, glistening snow-white perianth, primrose-yellow cup, edged creamy white, stands alone in its imposing, immaculate white luster. 18 in. ....	1.40	10.00
WHITE LADY. Large, broad, but dainty flower. Pure white perianth; soft yellow cup. 20 in. .	1.25	8.50

### Narcissus Poeticus (Poet's Narcissus)

These have a white perianth with a small, flattened yellow cup or eye. Perfectly hardy and easy to naturalize. Very fragrant.

	12	100
HORACE. Pure white perianth with overlapping, round petals; large cup with rim of scarlet-red; one of the early varieties in this section. Height 16 in. ....	\$1.65	\$12.00
*ORNATUS. Pure white petals, small, yellow cup with orange edge. A splendid cut flower. 14 in. ....	1.25	8.50

### Small Cupped or Star Narcissi

	12	100
*BARRI CONSPICUUS. Light yellow perianth; short yellow cup edged orange-scarlet. 21 in. ....	\$1.25	\$8.50



Narcissus, Emperor.



## Peonies

**PLANTING.** Peonies can be successfully planted from the first of September until the ground freezes. If you plant before October 15th the plants, as a rule, will have time to get established to some extent before winter sets in, and will give some blossoms the first year.

Our divisions are all one-year-old. This is the most desirable size clump to plant, therefore we discourage the purchase of smaller clumps.

	1-yr.-old Clumps Each
<b>BARONESS SCHROEDER.</b> Rose type; flesh pink, tinting to white; large, globular flower; fragrant. Mid-season .....	\$1.10
<b>COURONNE D'OR.</b> Semi-rose type; pure white, reflecting golden stamens. Late .....	.60
<b>FELIX CROUSSE.</b> Rose type; brilliant ruby-red. Mid-season .....	.90
<b>FESTIVA MAXIMA.</b> Rose type; pure white. Early ..	.50
<b>KARL ROSENFELD.</b> Semi-rose type, brilliant deep crimson; large. Early .....	1.00
<b>L'ECLATANTE.</b> Bomb type; velvety crimson. Mid-season .....	.75
<b>MADAME EMILE GALLE.</b> Rose type; delicate shell-pink with touches of heliotrope and lavender. Mid-season .....	.75
<b>MADAME GEISSLER.</b> Rose type; glossy pink, shading to bright rose. Midseason .....	.90
<b>MARECHAL VAILLANT.</b> Rose type; light crimson; probably the largest red Peony grown. Midseason ...	.65
<b>MONSIEUR JULES ELIE.</b> Glossy pink, deeper rose at the base. Early .....	1.00
<b>PIERRE DUCHARTRE.</b> Rose type; even shade of lilac-pink; large. Late .....	.75
<b>PRESIDENT TAFT.</b> Rose type; soft flesh-pink, with crimson splashes. Midseason .....	1.10
<b>SARAH BERNHARDT.</b> Semi-rose type; apple blossom-pink, silver tipped. Midseason .....	1.15
<b>THERESE.</b> Rose type; satiny pink, changing to lilac-white in the center. Midseason .....	2.50



A clump of Peony Festiva Maxima.

## Plant Roses This Fall

(Everblooming or Hybrid Tea)

This class of Rose is most satisfactory, since they continue to flower throughout the entire season, early summer until frost. They are hardy, but it is advisable to give winter protection. The following list contains the choicest varieties only.

PRICE OF ALL ROSES, 75 CENTS EACH; \$7.50 PER DOZ.

- BETTY.** Coppery rose with gold.
- COLUMBIA.** Bright pink.
- DUCHESS OF WELLINGTON.** Intense saffron-yellow, changing to deep coppery yellow as they expand.
- ETOILE DE FRANCE.** Crimson-red.
- GRUSS AN TEPLITZ.** Richest scarlet, shading to a velvety crimson.
- HOOSIER BEAUTY.** Glowing crimson with darker shadings.
- J. J. L. MOCK.** Carmine-pink.
- LOS ANGELES.** Flame-pink toned coral, shaded gold at base of petals.
- MME. JULES BOUCHE.** White.
- MME. BUTTERFLY.** Blending of bright pink, apricot and gold.
- MME. CAROLINE TESTOUT.** Bright satiny rose, with darker center, and edges of petals bordered with soft carmine-pink.
- MISS LOLITA ARMOUR.** Copper, orange tinge.
- PINK KILLARNEY.** Beautiful flesh color.
- PINK RADIANCE.** Rose-pink.
- PREMIER.** Rich dark pink.
- RED RADIANCE.** Deep rose.
- SOUV. DE CLAUDIUS PERNET.** Yellow toned.
- SOUV. DE GEORGES PERNET.** Terra cotta-pink.
- SOLIEL D'OR.** Orange-pink.
- WHITE KILLARNEY.** Pure white.

## Hardy Perennial Plants

PRICE: 25c each; \$2.50 per dozen, except where noted.

Achillea, Perry's White	Lathyrus (Pefennial Sweet Peas)
Aconitum Fischeri	Lupins
Anchusa italica	Lychnis
Aquilegia, Mrs. Scott Elliott	Mertensia
Agrostemma coronaria	Monarda
Campanula, medium	Pentstemon
Campanula calycanthema, Cup and Saucer	Physalis (Chinese Lantern)
Centaurea montana	Phlox—Thor, Rijnstroom, Commander, Von Lassburg, Beacon.
Coreopsis grandiflora	Pyrethrum
Delphinium Belladonna	Poppies, Mrs. Perry
Delphinium Bellamosa	Poppies, orientale
Delphinium Hybrids	Rudbeckia purpurea
Dianthus (Hardy Pinks)	Salvia azurea
Digitalis (Spring only)	Scabiosa
Geum, Mrs. Bradshaw	Shasta Daisy
Gypsophila paniculata	Statice
Hollyhocks, Chater's Double, Pink, Yellow, White, Maroon, Red	Sweet William
Hemerocallis (Lemon Lily)	Veronica
Heuchera (Coralbells)	Viola

Varieties below: 50c each; \$5.00 per doz.

Dictamnus rubra	Heuchera, Pluiz de Feu
Doronicum (Leopardbane)	Heuchera, Cascade
Gypsophila, Bristol Fairy (Double)	Trollius, Orange Globe

## Hardy Climbing Roses

- AMERICAN BEAUTY.** Brilliant carmine.
- DOROTHY PERKINS.** Clear cherry-pink.
- EMILY GRAY.** Golden yellow.
- EXCELSA.** Blood-red clusters.
- PAUL'S SCARLET CLIMBER.** Scarlet, shaded crimson.

# Lohrman's Evergreen Lawn Mixture

This above mixture is made from our own formula, and composed of grasses specially adapted for the purposes of producing turf which retains its rich green color and velvety appearance throughout the entire summer and fall. In making up this high grade mixture we are careful to use only the very finest quality of all the most desirable dwarf evergreen, re-cleaned grasses, free from chaff and

weeds, which thrive well on any soil, thus ensuring a beautiful and permanent lawn. This mixture you cannot buy elsewhere. Sow at the rate of 1 lb. to each 300 sq. ft. or 100 lbs. to an acre.

Price, lb., 50c; 3 lbs., \$1.35; 5 lbs., \$2.00; 10 lbs., \$3.75; 20 lbs. (1 bu.), \$7.00; \$32.50 per 100 lbs.

## Lohrman's Fairway Mixture

This special mixture produces beautiful and permanent lawns. It is made from our own formula, and composed of grasses which are adapted for the purpose of producing turf which retains its rich green color and velvety appearance throughout the entire summer and fall. This mixture does not contain any clover. In making up this brand we are careful to use only seed that has been thoroughly re-cleaned. Lb., 60c; 3 lbs., \$1.65; 5 lbs., \$2.50; 10 lbs., \$4.50; 20 lbs., \$8.00; 100 lbs., \$37.50.

## Bent Grass, Certified Seaside

(Sometimes called Coocos Bent)

Average purity, 98 per cent. Very highest quality, grown in Coos County, Oregon, and certified. True, creeping variety of Bent, spreading rapidly by means of stolons or runners; makes an ideal, perfect putting green turf. Seaside Bent will spread more quickly than the non-creeping sorts but requires more water and frequent cutting. Sow at the rate of 1 lb. for a space 10x10 or 100 square feet. Lb., \$1.90; 3 lbs., \$5.60; 5 lbs., \$9.25; 10 lbs., \$17.50; 20 lbs., \$34.00; 100 lbs., \$165.00.

## Lohrman's Superior Bent Grass Mixture

For those who desire a lawn similar to a putting green we are now prepared to offer our Superior Bent Grass Mixture. This mixture is composed chiefly of Bent Grass combined with other rapid growing grasses that act as a nurse or shelter crop for the slower growing Bent until it becomes established. Water often during dry weather and keep grass cut short. We recommend sowing this formula at the rate of one pound to a space 15 to 20 feet or 300 square feet. Lb., \$1.00; 3 lbs., \$2.90; 5 lbs., \$4.80; 10 lbs., \$9.50; 20 lbs., \$18.00; 100 lbs., \$87.50.

## Shady Lawn Grass Seed

On nearly all lawns there are unsightly spots caused by the fact that ordinary varieties of grasses used for lawns do not do well in the shade; consequently we have prepared a mixture of grasses which naturally grow in shady spots. Before sowing in such places it is well to rake off the surface thoroughly and then apply Evergreen Lawn Lime. One pound seed for every 300 sq. ft. of lawn. Lb., 65c; 3 lbs., \$1.85; 5 lbs., \$3.00; 10 lbs., \$5.50; 20 lbs., \$10.00; 100 lbs., \$45.00.

## Kentucky Blue Grass

(June Grass)

We recommend this hardy sort as the best grass for lawn purposes. It is slightly creeping in habit and grows most extensively in the early summer. It forms a good turf, is permanent and makes an ideal lawn. Well adapted to all soils. Lb., 45c; 3 lbs., \$1.30; 5 lbs., \$2.00; 10 lbs., \$3.75; 20 lbs., \$7.00; 100 lbs., \$32.50.

## Red Top—Fancy

A variety well adapted to growing where extensive care cannot be expended on the lawn. The leaf-blades are narrow, becoming very thin with turf cultivation. Succeeds in all soils. Lb., 40c; 3 lbs., \$1.15; 5 lbs., \$1.85; 10 lbs., \$3.50; 20 lbs., \$6.75; 100 lbs., \$32.50.

## Rough Stalked Meadow

(Poa Trivialis)

An ideal shade grass, and is a perennial closely related to Kentucky Blue Grass, but somewhat finer and softer. It has a splendid apple-green color and is a creeper. Sow in fall or spring at rate of one pound to every 300 square feet. Lb., 55c; 3 lbs., \$1.60; 5 lbs., \$2.50; 10 lbs., \$4.75; 20 lbs., \$9.00; 100 lbs., \$42.50.

# FERTILIZERS FOR FALL USE

## Bonemeal

Best for use in top dressing lawns, for Rose beds, trees and shrubbery, and all flowering bulbs. 5 lbs., 45c; 10 lbs., 85c; 25 lbs., \$1.25; 50 lbs., \$2.25; 100 lbs., \$4.00.

5 lbs., 50c; 10 lbs., 85c; 25 lbs., \$1.75; 50 lbs., \$3.00; 100 lbs., \$5.00.



*Makes things Grow!*



## Limestone (Pulverized)

YOUR GARDEN PROBABLY NEEDS LIME

Not only grass but every useful plant needs lime. It helps build part of their fiber structure. If a soil is "sour" the plants cannot develop properly. So look to the sweetness of your soil if your garden is not doing as well as it should. 50 pounds to each 500 sq. ft. 80 lbs., \$1.25; 480 lbs., \$6.50; 960 lbs., \$12.00; ton, \$20.00.

10 lbs., 95c; 25 lbs., \$2.00; 50 lbs., \$3.75; 100 lbs., \$6.50.

## Weed Killer

Fall is the proper time to destroy weeds in the lawn. This spray will kill dandelions, chick-weed and all wide-leaved weeds without injury to the grass. Dilute 1½ lbs. to 1 gal. of water for every 500 sq. ft. to be used twice at intervals of three days. Lb., 25c; 5 lbs., \$1.00; 10 lbs., \$1.80; 100 lbs., \$15.00.

5 lbs., 50c; 10 lbs., 85c; 25 lbs., \$1.75; 50 lbs., \$3.00; 100 lbs., \$5.00.

# VIGORO

*Specially prepared plant food*

## Sheep Manure

Pure pulverized. A nutritious fertilizer. Immediate and lasting in effect. 5 lbs., 35c; 10 lbs., 60c; 25 lbs., 95c; 50 lbs., \$1.49; 100 lbs., \$2.75.

## Adco

25-lb. bags, \$2.50. (Enough for 12 wheelbarrow loads of garden waste, making one-half ton of manure). 150-lb. bags, \$11.50. (Enough for a heap 10 ft. x 10 ft. x 6 ft., making about 3 tons of manure).

## Peat Moss

Mulch all fall planted bulbs with "GPM" Peat Moss 4 to 6 inches deep.

Established lawns should be covered ½ inch deep with GPM in the late fall. It will almost disappear by spring. 2-bu. bale, \$1.75; ½ bale, \$2.90; bale (22 bus.), \$4.75.

Macomb at Brush St.  
Phone: Rand. 1270

# Lohrman Seed Co., Detroit, Mich.