

Historic, Archive Document

Do not assume content reflects current scientific knowledge, policies, or practices.

219313

Planting

MEMO

LIBRARY

RECEIVED

FEB 10 1932

U. S. Department of Agriculture.

The Living Tree Guild is an
unique organization that backs
you up with a promise to re-
place, within one year, any Guild
tree, shrub or flower, that dies
... without cost to you

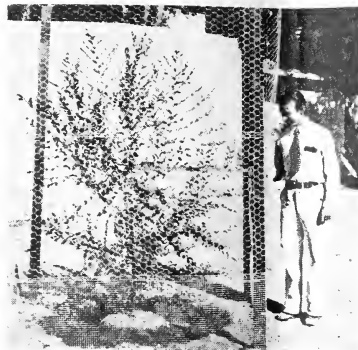
THE LIVING TREE GUILD

*National headquarters
for guaranteed living trees*

**468 Fourth Avenue, at 31st Street
NEW YORK**



MAY 17, 1929



SEPTEMBER 17, 1929

The above snapshots were received by the Living Tree Guild from the Carnegie Institution, Mt. Wilson Observatory, with the following letter: "I am enclosing two prints showing the wonderful growth of one of your Siberian Elms planted at Mt. Wilson May 17th of this year. In four months this tree doubled its height, and will no doubt put on another foot before the season is over. It responded with amazing rapidity, though it was out of the ground about a month, and was set out during one of our warmest months. It grew fourteen inches in the month of July. The enclosing cage was constructed to protect the tree from deer, which looked longingly at its fresh, tender foliage!"

for low cost



LEFT—A Siberian Elm in front of a government building in Washington, D. C. Planted in 1920 as a small whip, it is now 12 inches in caliper. Very favorable reports have been received from practically every section of the country regarding this variety of tree. It is destined to become, not only the most adaptable but the most popular shade tree for street, roadside and lawn planting.

What shall I plant for a shade tree? This is a difficult question for the average home owner. Most of the favorite trees grow slowly. It took decades for the American Elms to arch their beautiful branches across the streets of New England towns. And oaks are hard to transplant. And other trees won't do well where the weather is very hot, or dry, or cold—they are fussy. But unless the question is answered correctly, not only money but also valuable years may be lost.

It is a remarkable fact that the Siberian Elm can be planted at almost every home with assurance of success. Here's a rule: *When not sure which variety of shade tree to plant—plant Siberian Elms.*

This dependable home shade tree has clean-cut foliage—its delicate, brilliant green leaf is one of Nature's works of art. The tree develops the full shape of the Norway maple—but grows almost twice as fast as the maples and American Elm. In fact, you

will have no end of satisfaction and pleasure watching whips turn into trees even the first year. And after that, 4 to 6 feet a year is the customary growing schedule of this newly discovered shade tree. No wonder home owners and persons who want to beautify communities and bare lots are planting so many Siberian Elms today.

The Siberian Elm is hardy . . . is not attacked by the usual shade tree insects. It will grow in poor or rich soil . . . will stand intense cold and heat.

● PRICES

5 Foot Trees		6-8 Foot Trees	
One tree.....	\$ 2.50	One tree.....	\$ 4.00
Three trees.....	7.00	Three trees.....	10.00
Ten trees.....	20.00	Ten trees.....	30.00

Also Siberian Elm transplants for "growing your own trees" are available, 18-30 inches high. \$4.50 per dozen. \$32.00 per hundred. This is a rare bargain.

America's fastest growing, SHADE TREE

rare beauty~quick results

Siberian Elms

(ULMUS PUMILA-Hardy Northern Strain)

**Most Valuable Tree Ever
Introduced by
U. S. Department of Seeds**

If you want LOVELY SHADE TREES about your home—if you want to increase the value of bare lots by surrounding them with fine shade trees—the Siberian Elm offers a new way. With this remarkable tree you can have luxurious shade in a surprisingly short time.

There are a number of varieties. But there is only one best. That is the Northern Strain. This is the tree which The Living Tree Guild is offering to you.

**U. S. Department of
Agriculture Says:**

“It is hardy and has proved valuable under a greater variety of climate and soil conditions than any tree yet introduced.”



This photograph shows a Siberian Elm only five years after planting as a whip. This beautiful shade tree grows virtually twice as fast as the Maples and the American Elm.

hardy

SHADE TREES

Which are Old Friends

{
}
THERE is a shortage of vigorous shade trees in America. The demand for the best varieties is greater than the supply. The Guild offers the varieties listed below as meeting the highest standards of quality.

NORWAY MAPLE—One of the most popular of all shade trees, and one that can be depended upon to give good results under almost all soil conditions. A symmetrical grower with a beautiful spread. Resists drought and smoke. 4 to 5 feet high when delivered.

WHITE - FLOWERING DOGWOOD—Semi-dwarf in growth. Flourishes in shady locations. In the spring when in bloom it is a sheet of white—throughout the summer months, a mass of deep green, clean looking foliage—in the fall, one of the most gorgeously colored of all our deciduous trees—in winter, attractive with its scarlet berries. Height, 4 to 5 feet when delivered.

WEEPING WILLOW—This celebrated, graceful tree is a very quick grower. Also it is easy to grow—its roots taking hold readily. Its natural location is beside a pond or river. Its capacity for drinking up water and converting it into wood tissue is so great that this tree is often useful in landscaping to help dry up a boggy depression. Height when delivered, 5 to 6 feet.

LOMBARDY POPLAR—Of pyramidal growth. Exceedingly graceful and one of the most rapid growing of all deciduous trees. Famous in French landscapes. Height 4 to 5 feet when delivered.

AMERICAN WHITE ASH—Distinguished for height, contour, and clean graceful foliage! With plenty of sunlight this tree is a rapid grower. Somewhat like the American Elm in majesty, but shapely when young as well as when mature. Height when delivered, 5 to 6 feet.

SUGAR MAPLE—Similar in growth to Norway Maple, but taller. In every way a desirable variety, extra hardy and a rapid grower; foliage in the fall turns brilliant lemon yellow. 4 to 5 feet when delivered.

*You can select all of one kind,
or any desired combination.*

Six of the above trees.....\$ 7.50
 Per dozen 12.00
 For less than six, per tree..... 1.40

The Best HEDGES Easy to Grow

JAPANESE ROSE (Rosa Rugosa)—A hardy variety with an abundance of large green leaves. Flowers all summer with large single rose colored blooms. Also recommended for seashore locations. 9 to 12 inches. *Per dozen, \$1.50; Per hundred, \$11.50.*

JAPANESE BARBERRY—One dozen Barberry plants will make ten feet of hedge. Height, 6 to 12 inches when delivered—will grow quickly. Thorny protection against animals. *Per dozen, \$1.50; Per hundred, \$11.50.*

CALIFORNIA PRIVET—Decidedly popular but will sometimes suffer from winter injury when planted in latitudes north of New York City. Should be planted 6 inches apart in a row. Two dozen Privet plants will make twelve feet of hedge, 9 to 12

inches when delivered; multiple stems. *Per dozen, \$1.00; Per hundred, \$8.00.*

IBOLIUM PRIVET—Hardier than California Privet and better for northern climates. In milder climate it is almost evergreen retaining foliage until after Christmas. Same size and treatment as California Privet. *Per dozen, \$2.00; Per hundred, \$15.50.*

ALTHEA (Rose of Sharon)—Plant 15 inches apart in a row. Makes a glorious flowering hedge. 12 to 18 inches when delivered, will grow rapidly. *Per dozen, \$2.00; Per hundred, \$15.50.*

GENUINE BOXWOOD—This is the genuine dwarf boxwood, propagated from hedges over a hundred years old. An extremely slow grower, but lasts a life time with beautiful, compact, fragrant foliage. 4 to 6 inches when delivered. *Per dozen, \$7.50; Per hundred, \$60.00.*

SPECIAL

A Complete Home Nursery For Profit or a Hobby

ONE HUNDRED of the most beautiful and valuable evergreen trees. For a private nursery or tree garden. For estates large or small. For homes with yards. Every tree guaranteed to live.

Let the earth grow money for you!

This is one of the greatest bargains ever offered in this country. It presents you with a wonderful way to make money.

There is a great scarcity of fine decorative evergreens in America—and THEY BRING BIG PRICES. That is because trees increase the value of real estate.

See what Joseph P. Day says (who is America's best known real estate expert. He has made millions' out of real estate.)—"To sum up my feelings about trees from the viewpoint of one with a good many years of real estate experience . . . do not be afraid to spend money to plant trees . . . and if you wish to sell, the trees are going to make it easier to find a purchaser."

The Bumper Trees that will be sent to you from this special offer are THE HARDIEST STOCK IN AMERICA.

They are just right for increasing in value. They are sent at the exact time when their greatest growth and value is about to take place. They are bursting with life! You can sell them to friends, to nurserymen, store keepers—or you can enjoy

owning valuable trees about your own home.

In size, maturity, and transplanting, Bumper Trees are the equal of individual specimen trees which sell for much higher prices. The difference is the method of upbringing which saves enormously in labor costs.

These trees are all northern Maine stock—the foliage is glistening, moist, green—exceptionally fragrant. Every tree is luxuriantly healthy.

No dead needles. *They represent the finest tree value in America.*

● PRICES

This valuable home nursery includes 100 trees, as follows:

13 Scotch Pine	18-24 inches
13 Red Pine	12-18 inches
13 Austrian Pine	10-16 inches
12 Mugho Pine	6-10 inches
13 Norway Spruce	12-18 inches
12 American Arbor Vitae	6-10 inches
12 White Spruce	10-16 inches
12 Engelmann Blue Spruce	9-12 inches

Only
\$35
Delivered

Total 100 Trees, and full instructions in each shipment.

If you can use more, get more units at the following prices:

2 complete Nurseries (200 trees) . . .	\$65.00 delivered
3 complete Nurseries (300 trees) . . .	100.00 delivered
4 complete Nurseries (400 trees) . . .	130.00 delivered
5 complete Nurseries (500 trees) . . .	155.00 delivered
10 complete Nurseries (1000 trees) . . .	250.00 delivered

SEE BLUEPRINT NEXT PAGE

To be successful with Guild Trees, you don't have to be an expert . . . Instructions for planting come with every shipment. And they are all guaranteed to live.

KEY



Austrian Pine



Red Pine



Norway Spruce



Scotch Pine



*American
Arbor Vitae*



Mugho Pine



*Engelmann
Blue Spruce*



White Spruce

HOME NURSERY for PROFIT

Plan by

THE LIVING TREE GUILD

468 Fourth Ave., New York City

COMPLETE WITH 100 TREES -
1 EXTRA TREE NOT SHOWN IN DIAGRAM





18 ft.

Plant trees 2 ft. apart

22 ft.

Plant trees 2 ft. apart

Bumper Evergreens

In Separate Lots

For our friends who have not enough ground to take advantage of the special home nursery plan, BUMPER EVERGREENS are made available in lots of ten. You need

only a few square feet of ground to plant ten of these trees. Your order will receive the same careful attention as one calling for a complete home nursery.

THERE ARE NINE VARIETIES

Make your own choice but be sure the total comes to 10 trees, 25 trees, or 100 trees—any combination

Engelmann Blue Spruce (5 yrs).....	9-12 inches
Scotch Pine (5 yrs).....	18-24 inches
White Spruce (6 yrs).....	10-16 inches
Norway Spruce (6 yrs).....	12-18 inches
Mugho Pine (6 yrs).....	6-10 inches
Austrian Pine (5 yrs).....	10-16 inches
American Arbor Vitae (5 yrs).....	6-10 inches
Red Pine (6 yrs).....	12-18 inches

● PRICES

10 trees—Only	\$ 3.95 delivered
25 trees—Only	9.50 delivered
100 trees—Only	35.00 delivered

TEN *Genuine* **\$3⁹⁵** *Blue Spruce* **FOR ALL!**

A real treat while this supply lasts

While they last, we will have for planting this year genuine Colorado Blue Spruce, (*Picea Pungens Glauca*) 9-12 inches in height, twice transplanted specimens. Many requests have come to us for Colorado Blue Spruce. Because of their scarcity and the former high cost of production, we have never before been able to make such an offer on Blue Spruce. It has taken five years to bring these Blue Spruces to the point where we can offer them to you. Now they are ready for our special friends to enjoy.

The Blue Spruce is a marvelous investment. The bluest varieties are like a silvery cloud on the lawn. It is especially beautiful when young, and will retain its beauty for as long as thirty years.

Every tree lover wants Blue Spruces about his home. Here is your chance to obtain ten beautiful specimens at about half the usual cost. If you can use more than ten we will send you 25 for \$9.50, or 100 for \$35.00. **These prices include delivery!**

Selected Evergreens

for garden backgrounds and foundation planting

AMERICAN ARBOR VITAE—12 to 18 inches when delivered. Will make a tall dense pyramid of deep green, lacy foliage. Endures shearing well and is excellent as a screen or hedge plant.

GLOBE ARBOR VITAE—12 to 15 inches when delivered. A lovely, compact natural globe which will not exceed four feet in height.

CANADIAN HEMLOCK—12 to 18 inches when delivered. Especially hardy for northern climates. Recommended for locations in partial shade. Feathery fresh green foliage—that makes a graceful individual tree, or can be trained for a fine hedge.

DOUGLAS FIR—12 to 18 inches when delivered. One of the most valuable of the lofty trees. Dark green foliage, reminiscent of the deep forest. Excellent for a large lawn tree.

IRISH JUNIPER—12 to 18 inches when delivered. Upstanding, aristocratic and symmetrical. Pyramidal in shape, coming to a sharp point at tip. Here is a popular evergreen which does not require shearing to maintain its lovely shape. Deep green foliage.

PFITZER'S JUNIPER—12 to 18 inches when delivered will make a gorgeous decoration like an explosion of green. Very hardy. While it will grow to 6 or 8 feet it can easily be trimmed and kept within any limits.

GOLDEN RETINOSPORA—The tips of its foliage are a bright golden hue. 12 to 18 inches when delivered. The Retinosporas are among the most colorful and exquisite of the dwarf evergreens. Vigorous—but should not be planted in extremely severe climates.

GREEN RETINOSPORA—A decorative evergreen for foundation planting. 12 to 18 inches when delivered—will grow vigorously and is easily trimmed.

BLUE RETINOSPORA—Distinct and arresting with dense silver-blue foliage, of a feathery, billowy appearance. 12 to 18 inches when delivered.

*You can select all of one kind,
or any desired combination.*

Six of the above trees.....\$11.00
 Ten of the above trees..... 18.00
 For less than six, per tree..... 2.00

RHODODENDRONS!

Special Hybrid Strain

An unusually fine strain of hybrid rhododendrons for our friends. Rhododendrons are gaining in popularity because they are green the year round and produce large multi-colored flowers during June and July.

These hybrid rhododendrons are descended from selected stock. If pedigrees were in fashion the ancestors of these beautiful plants would be on the blue list.

These rhododendrons should be planted in acid soil, free of lime. Need plenty of water and protection from winter sun. Leaf mould mulching is especially good. Colors of flowers cannot be determined in advance. The pedigree of this family, however, assures you of a magnificent assortment of colors. 9 to 15 inches when delivered.

Each plant\$ 2.00
 Ten plants 18.00

HARDY SHRUBS

for filling bare corners with masses of flowers

BUTTERFLY SHRUB (Buddleia Magnifica)—This beautiful shrub begins to flower early in August, and continues in profuse bloom until frost. The long panicles of flowers resemble lilacs in color and shape. In rugged climate this lovely bush should be protected by a mulch in winter. It takes its name from the fact that butterflies are almost always hovering about this shrub. 1½ to 2 feet when delivered. Will grow to 5 to 6 feet.

HARDY HYDRANGEA (Hydrangea Paniculata Grandiflora)—Showy blooms, pure white, turning pink. 12 to 18 inches when delivered.

***PURPLE LILAC (tall)**—The shrub our grandmothers gloried in. 18 to 24 inches when delivered.

RED WEIGELA (Weigela Eva Rathke)—Deep garnet—red flowers in great abundance throughout the summer and fall. 18 to 24 inches when delivered.

DOUBLE PINK DEUTZIA—Tall, strong, and symmetrical. Freely flowers with double blossoms in June. 18 to 24 inches when delivered.

***RED TWIG DOGWOOD (Cornus Siberica)**—Especially desirable for winter effect, the brilliant red bark showing up in splendid contrast with drab surroundings. 18 to 24 inches when delivered.

MOCK ORANGE (Philadelphus)—The old-fashioned Syringa of our grandmother's garden. Attains great height with age. 18 to 24 inches when delivered.

Choose your own
combination

Any 12
Plants

\$6.00

Less than 12 plants

75c per plant

**The Shrubs that are starred are best for adverse city conditions. Every city home can have a touch of nature—even though there is congestion and dusty atmosphere.*

***BUSH HONEYSUCKLE**—If you want birds around your home grounds plant this wonderful shrub. Its early winter red fruit is a magnet to the songsters. 18 to 24 inches when delivered.

CRIMSON SPIREA (Spirea Froebell)—A dwarf shrub with bright crimson flowers. Lovely for a spot of rich color in the garden. 15 to 18 inches when delivered.

SUMMER BLOOMING LILACS (Syringa Villosa)—Large panicles that turn from light rosy purple in bud to creamy white when open. Very fragrant. It blooms about two weeks later than other lilacs. 18 to 24 inches when delivered.

BRIDAL WREATH (Spirea Van Houttei)—Absolutely hardy and the joy of every novice in gardening. Thousands of pure white blossoms completely cover every bush. 18 to 24 in. when delivered.

***GOLDEN BELL (Forsythia)**—The first herald of spring flowers. Branches gloriously burdened with yellow flowers before the foliage comes out. These branches can readily be cut and the golden sunshine that they radiate brought into the house. Moreover, Golden Bell is extremely hardy and flourishes under almost any condition. 18 to 24 inches when delivered. It will grow into a ten-foot shrub. Cuttings of Golden Bell will bloom indoors in mid-winter.

HYBRID LILACS!

for a Remarkable Adventure

These varieties will fascinate the person who wants to grow something unusual. With these Hybrid Lilacs you can have in bloom, a few weeks after planting, clusters of gorgeous varied colored flowers. Will surely bloom the first year, and note the colors.

CHAS. JOLY—Double dark crimson flowers. Gorgeous in color.

MME. LEMOINE—Double white flowers in large clusters.

HUGO KOSTER—Single reddish flowers.

MARIE LeGRAYE—Pure white flowers, medium size. Very beautiful.

SOUV. de LUDWIG SPAETH—Rich purplish red flowers, single, with very large and pointed clusters.

RUBRA de MARLEY—Lilac colored flowers, touched with blue. Single, with large, full clusters.

CHARLES X—Large purple flowers. A vigorous grower.

ALPHONSE LAVALLE—Gorgeous double blue flowers.

MICHEL BUCHNER—Large, double clear lilac, shaded pink on inner petals.

MME. CASSIMER PERRIER—Very large, creamy white, double flowers.

All the above plants 2-3 ft. in height.

Each	\$ 1.50
Three	4.00
Six	7.50
Ten	12.00

Choose any assortment you wish.

NEW PRICE LIST ON SIBERIAN PLMS

	<u>2 - 3 Ft.</u>	<u>5 - Ft.</u>	<u>6 - 8 Ft.</u>	<u>10-12 Ft.</u>
One	\$1.00	\$1.80	\$2.70	\$5.25
Two	\$1.85	-	-	-
Three	\$2.65	\$5.00	\$7.95	15.00
Ten	-	15.00	24.00	47.50
Dozen	\$9.45	-	-	-

THE LIVING TREE GUILD

1 1

MAIL THIS ORDER FORM!

To THE LIVING TREE GUILD

National Headquarters for Guaranteed Living Trees

468 Fourth Avenue (at 31st Street), New York, N. Y.

On the dotted line beside the variety write the number of plants or trees of that variety that you wish. Shipments will be made at the proper time for planting.

SIBERIAN ELMS

-Siberian Elm 5 ft. high (one tree \$2.50; three trees \$7.00; ten trees \$20.00)
Siberian Elm 6-8 ft. (one tree \$4.00; three trees \$10.00; ten trees \$30.00)
Siberian Elm (transplants) 18 to 30 in. (doz. trees \$4.50; hundred trees \$32.00)

HARDY SHRUBS

- | | | |
|--------------------------|--|-----------------------------|
|Butterfly Shrub | } Any combination
\$6.00
per dozen
Less than
12 plants,
per plant 75c |Mock Orange |
|Hardy Hydrangea | |Bush Honeysuckle |
|Purple Lilac | |Crimson Spirea |
|Red Weigela | |Summer Blooming Lilacs |
|Double Pink Deutzia | |Bridal Wreath |
|Red Twig Dogwood | |Golden Bell |

HYBRID LILACS

- | | | |
|-----------------------------|---|----------------------------|
|Chas. Joly | } Any combination
Three plants \$4.00
Six plants \$7.50
Ten plants \$12.00
Less than three \$1.50 per plant |Rubra de Marley |
|Mme. Lemoine | |Charles X |
|Hugo Koster | |Alphonse Lavalley |
|Marie LeGravey | |Michel Buchner |
|Souv. de Ludwig Spaeth | |Mme. Cassimer Perrier |

SHADE TREES

- | | | |
|------------------------------|--|-------------------------|
|Norway Maple | } Any combination
6 trees \$7.50
12 trees \$12.00
Less than 6,
per tree \$1.40 |Lombardy Poplar |
|White-Flowering Dogwood | |American White Ash |
|Weeping Willow | |Sugar Maple |

HEDGES

- | | | |
|----------------------------------|------------------------|--------------------------|
|Japanese Rose |per dozen \$1.50; |per hundred \$11.50 |
|Japanese Barberry |per dozen 1.50; |per hundred 11.50 |
|California Privet |per dozen 1.00; |per hundred 8.00 |
|Ibodium Privet |per dozen 2.00; |per hundred 15.50 |
|Althea |per dozen 2.00; |per hundred 15.50 |
|Genuine Boxwood |per dozen 7.50; |per hundred 60.00 |

COMPLETE HOME NURSERY

-One complete Nursery (100 trees) \$35.00 delivered
Two complete Nurseries (200 trees) 68.00 delivered
Three complete Nurseries (300 trees) 100.00 delivered
Four complete Nurseries (400 trees) 130.00 delivered
Five complete Nurseries (500 trees) 155.00 delivered
Ten complete Nurseries (1000 trees) 250.00 delivered

(OVER)

CHOICE VARIETIES

- Japanese Weeping Pink Flowered Cherry (one tree \$6.00; three \$17.50; dozen \$65.00)
- Prunus Newport (one tree \$2.50; three \$7.00; dozen \$24.00)
- Eli Flowering Crabapple (one tree \$2.50; three \$7.00; dozen \$24.00)
- Double Red Flowering Peach (one tree \$2.50; three \$7.00; dozen \$24.00)
- Pink Flowering Dogwood (one tree \$4.95; three \$14.00; dozen \$48.00)

BUMPER EVERGREENS (In Separate Lots)

- | | | |
|--|---|--|
| <p>..... Englemann Blue Spruce</p> <p>..... Scotch Pine</p> <p>..... White Spruce</p> <p>..... Norway Spruce</p> | <p><i>Any combination</i></p> <p>10 trees</p> <p>\$3.95 (delivered)</p> <p>25 trees</p> <p>\$9.50 (delivered)</p> <p>100 trees</p> <p>\$35.00 (delivered)</p> | <p>..... Mugho Pine</p> <p>..... Austrian Pine</p> <p>..... American Arbor Vitae</p> <p>..... Red Pine</p> |
|--|---|--|

GENUINE BLUE SPRUCE

(Picea Pungens Glauca or Colorado Blue Spruce)

- Ten for \$3.95; Twenty-five for \$9.50; One hundred for \$35.00
- (The prices for Colorado Blue Spruce include Delivery)

SELECTED EVERGREENS

- | | | |
|--|--|---|
| <p>..... American Arbor Vitae</p> <p>..... Globe Arbor Vitae</p> <p>..... Canadian Hemlock</p> <p>..... Douglas Fir</p> <p>..... Irish Juniper</p> | <p><i>Any combination</i></p> <p>Six trees</p> <p>\$11.00</p> <p>Ten trees</p> <p>\$18.00</p> <p>Less than 6,</p> <p>per tree \$2.00</p> | <p>..... Pfitzer's Juniper</p> <p>..... Golden Retinospora</p> <p>..... Green Retinospora</p> <p>..... Blue Retinospora</p> |
|--|--|---|

RHODODENDRONS

- One Plant \$2.00 Ten Plants \$18.00

HARDY PERENNIALS

- | | | |
|--|---|---|
| <p>..... Imperial Japanese Iris</p> <p>..... Gaillardia</p> <p>..... Korean Chrysanthemum</p> <p>..... Hardy Phlox</p> <p>..... Double Hollyhocks</p> <p>..... Hardy Chrysanthemums</p> <p>..... Columbines</p> <p>..... Larkspur</p> <p>..... Hardy Sweet Scented Lupines</p> | <p><i>Check One:</i></p> <p><input type="checkbox"/> Box A \$3.50</p> <p>51 plants—3 of ea.</p> <p><input type="checkbox"/> Box B 15.00</p> <p>102 plants—6 of ea.</p> <p><input type="checkbox"/> Box C 25.00</p> <p>204 plants—12 of ea.</p> <p>Less than 51 plants,</p> <p>per plant 30c</p> | <p>..... Baby's Breath</p> <p>..... Oriental Poppy</p> <p>..... Shasta Daisy</p> <p>..... Clove Scented Pinks</p> <p>..... Canterbury Bells</p> <p>..... Coreopsis</p> <p>..... Hibiscus</p> <p>..... Painted Daisies</p> |
|--|---|---|

IMPERIAL DELPHINIUM

- one \$1.00 dozen \$10.00 fifty \$33.00

PLEASE CHECK ONE

- Fully Prepaid Shipment.** If you prefer a fully prepaid shipment, send with this order exact amount on price list and add 10% to cover delivery. Additional 10% is not required on orders for Home Nurseries, Bumper Evergreens and Colorado Blue Spruce.
- Express Collect.** Send with this order exact amount on price list, and transportation charges will be collected upon delivery.
- C. O. D.** If you do not remit with this order shipment will be made C.O.D.

Mail to Living Tree Guild

468 Fourth Avenue, New York City

(PLEASE PRINT DISTINCTLY)

FA31S

Name

Street

City..... State.....

(OVER)

Hardy Perennials

IMPERIAL JAPANESE IRIS—Looks like the best of the orchids. No better Japanese Iris anywhere.

GAILLARDIA (Blanket Flower)—Flowers with red centers, with rings of crimson, maroon, orange or vermilion. Also topped with orange or lemon.

KOREAN CHRYSANTHEMUM—Two years ago we sold this exceptional variety for \$1.00 per plant. Brilliant claret pink colored flowers until late Fall. Very hardy. Don't miss having these in your garden.

HARDY PHLOX—The great panicles of bloom make the Hardy Phlox one of the most showy of all objects on the lawn during the summer months.

DOUBLE HOLLYHOCKS—Extra fine flower stalks, often grow to over five feet in height. A glory for the back fence line.

HARDY CHRYSANTHEMUMS—When other flowers are entering on their winter's rest, these Hardy Chrysanthemums are in their prime.

COLUMBINES—Can be used in full sunlight or partial shade. Graceful airy flowers.

LARKSPUR—Flower stalks produce blooms of various shades of blue, the stalks sometimes over five feet in height.

HARDY SWEET SCENTED LUPINES—Various colors of flowers—blue, mauve and pink, reaching majestically upward from long stems.

BABY'S BREATH—One of the most popular old-fashioned perennials.

ORIENTAL POPPY—Flowers from five to seven inches across on tall stems. A gorgeous variety.

SHASTA DAISY—One of the finest of Luther Burbank's productions. Pure white flowers, frequently 2½ or 3 inches in diameter.

CLOVE SCENTED PINKS—Delightfully sweet scented flowers (like carnations). Early summer flowering in great abundance, more sparingly in mid and late summer. Shades of pink predominate in great range of colors.

CANTERBURY BELLS—Profusion of bell-shaped blue and pink flowers through July and August.

COREOPSIS—The best of the hardy yellow flowers for mass effect. Blooms constantly from June to frost.

HIBISCUS (or Marshmallow)—Enormous blossoms sometimes 8 to 10 inches in diameter, white and pink; produced from early August to frost.

PAINTED DAISIES (or Pyrethrum)—These might be called "Aristocrats" of the flower garden because of their refined beauty. Most attractive foliage helps accentuate their refinement.

EXCEPTIONAL! Imperial Delphinium

HYBRID

Let any flower lover plant fifty of these Imperial Delphiniums in a mass—and they will set the whole town talking!

This is the Living Tree Guild's own strain. There is no finer delphinium available at any price. Heavy, field-grown plants raised from seed selected from only the strongest growing plants, thus producing the largest flowers. All shades of blue from very light to very dark, and many carrying gorgeous metallic lustre. These will bloom continuously until frost. If you could have only one fine perennial in your garden—this should be it.

PRICES

For Imperial Delphinium

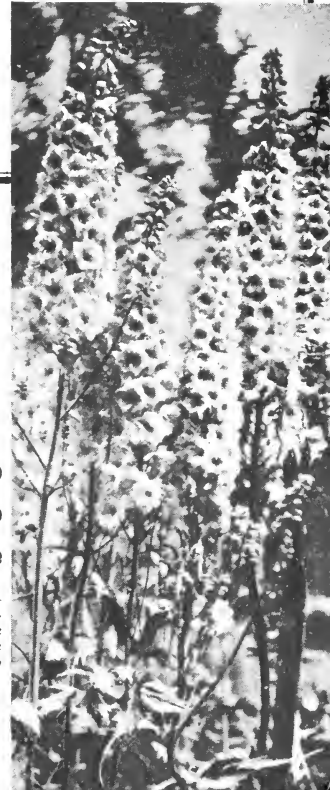
One	\$1.00
Dozen	10.00
Fifty	33.00

Prices of Hardy Perennials

Box A.....	51 plants	\$8.50
	(3 of each of the above)	
Box B.....	102 plants	15.00
	(6 of each of the above)	
Box C.....	204 plants	25.00
	(12 of each of the above)	

If you want a special selection—more of one variety and less of another—indicate your choice on the order form. But be sure that the total number of plants amounts to 51 or 102 or 204 plants.

(Less than 51 plants, per plant 30c)



Choice Variety of Trees

Seldom Seen and of Rare Beauty

JAPANESE WEEPING PINK FLOWERED CHERRY

—A brilliant importation from the Orient. This is the tree selected by the landscape architects of the beautiful Lincoln Memorial at Washington, D. C., and now helps to make that spot one of the most charming shrines of America. Long slender branches appear like a waterfall of pink flowers.

(With five-foot stems and one-year heads when delivered)

Each	\$ 6.00
Three	17.50
Per dozen	65.00

PRUNUS NEWPORT—An exceptionally fine, improved strain of Purple-leaved Plum. Retains its rich purple foliage throughout summer and fall. In the spring its color symphony is enhanced by small bluish-colored flowers, followed by dark wine-red fruit.

(Size when delivered, 3-4 ft.)

Each	\$ 2.50
Three	7.00
Per dozen	24.00

ELI FLOWERING CRABAPPLE—While this tree was under investigation, a member of the Guild Board of Advisors received the following report, dated September 4, 1929: "A very beautiful crab, large red flowers, the tree is loaded with cherry-colored fruit at this time of

year, and as beautiful as any tree can be. The foliage is a very beautiful pink, and is prettier than any other flowering crab I have ever seen."

(Size when delivered, 3-4 ft.)

Each	\$ 2.50
Three	7.00
Per dozen	24.00

DOUBLE RED FLOWERING PEACH—A tree which blooms very early in the Spring, affording a most welcome sight after a long winter. Very gorgeous blossoms about one inch in diameter appearing in large clusters. Double red flowers like big roses. Semi-dwarf in growth.

(Size when delivered, 3-4 ft.)

Each	\$ 2.50
Three	7.00
Per dozen	24.00

PINK FLOWERING DOGWOOD (Flor. Rubra)—A beautiful variety of Flowering Dogwood. Heretofore rather scarce in quantity and even now not too plentiful. Bears bright rosy pink flowers. Shapely. Recommended for a beautiful lawn tree.

(Size when delivered, 2-3 ft.)

Each	\$ 4.95
Three	14.00
Per dozen	48.00



THE LIVING TREE GUILD

Board of Advisors



PAUL H. DAVEY,
Vice Pres., Davey Tree Expert Co.

LESTER C. LOVETT,
Past Pres., Eastern Nurseryman's Assn.

DR. ROBERT T. MORRIS,
New York Surgeon, Author, Dean
Northern Nut Growers' Assn.

EVERETT G. GRIGGS, 2ND
St. Paul and Tacoma Lumber Co.,
Tacoma, Wash.

ERNEST THOMPSON SETON,
Former Chief Scout, Boy Scouts of
America and Chief of The Wood-
craft League of America

PERCIVAL S. RIDSDALE,
Managing Editor, Nature Magazine

F. W. LUENING,
The Milwaukee Journal

ELLEN EDDY SHAW,
Brooklyn Botanic Garden

Mail Enclosed Order Form to

THE LIVING TREE GUILD

National Headquarters for Guaranteed Living Trees

468 Fourth Avenue (at 31st Street) Phone: BOGardus 4-6570, 4-6571, 4-6572 New York, N. Y.