

Historic, Archive Document

Do not assume content reflects current scientific knowledge, policies, or practices.

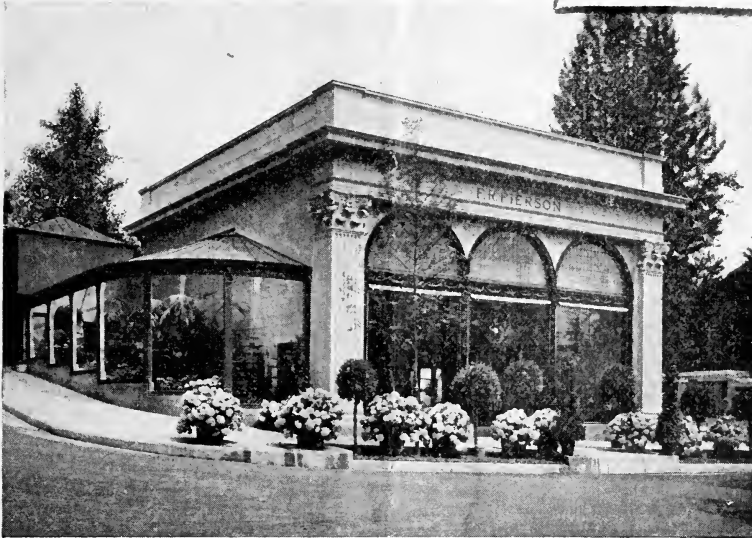
12.61

ROSES FOR THE GREENHOUSE AND GARDEN

BEDDING, DECORATIVE AND FLOWERING PLANTS

FERNS, ETC.

APR 25 1931 ★
U. S. Department of Agriculture



View of our Office Building and Flower Shop, Tarrytown, N. Y.

SPRING, 1931

ESTABLISHED 1877

F. R. PIERSON

TARRYTOWN

: : : : :

NEW YORK

ROSES FOR THE GREENHOUSE AND GARDEN

We can supply grafted greenhouse grown roses, out of 3½-in. pots, of the following varieties for winter flowering. These are the best varieties for winter flowering, and are grown especially for that purpose. These varieties can also be planted out in the garden in May and June and will bloom this summer and will make large flowering plants for another year.

Briarcliff. This variety is an improved Columbia, deeper in color, a pure pink. Bud is beautifully formed, long and pointed, every flower opening perfectly. Splendid grower, throwing long flowering stems.

Joanna Hill. A splendid yellow rose. The flowers are saffron yellow, deepening to orange yellow at the center. The flowers are produced on strong stems without pinching and it is very productive.

Killarney, Double White. Flowers pure white and similar to the White Killarney but with more petals.

Mrs. Calvin Coolidge. This variety is similar in habit to Ophelia and Mme. Butterfly, but the flowers are deep golden yellow which deepens into a rich orange as the flower develops.

Mrs. F. R. Pierson. This is a wonderful red rose. A cardinal red or a very bright crimson. Buds long and pointed, of ideal shape and form. Exceedingly fragrant. Foliage dark green, with strong stems.

Mrs. Paul M. Pierson. This new rose is a sport from Premier. It is a lovely shade of light silvery pink about the color of the well-known La France Rose or Laddie Carnation. For those who can grow the Premier roses, this offers a new and distinct color. Flowers are large and full. Was awarded Gold Medals last Spring by the American Rose Society and the International Flower Show at New York. **3½-in. pots (ready in May), \$1.00 each, \$10.00 per dozen, \$75.00 per 100.**

Premier Supreme. This variety is a sport from Premier. The color is better than Premier and the flower is more perfect in form.

President Herbert Hoover. It is remarkable for its vigorous growth, healthy foliage, strong stems, long pointed buds, productiveness and keeping qualities. The color of the flower is a charming combination of cerise-pink, flame, scarlet and yellow. Exquisitely fragrant.

Rapture (Improved Butterfly). Flowers salmon pink, very much brighter and deeper in color than Mme. Butterfly.

Souvenir de Claudius Pernet. Flowers large, very deep lemon yellow. **This variety we can only supply in strong budded plants (budded on odorata), 4-in. pots (ready in May), \$1.00 each, \$10.00 per dozen, \$75.00 per 100.**

Talisman. The flowers of this new variety are cup-shaped and very highly colored. The base of the petal is yellow with shadings of scarlet and crimson toward the center and end of the petals. The flower gradually becomes an old rose pink with darker veinings as the flower develops. It is a very strong, vigorous grower and producer, with long, strong stems.

Templar. A very fine red variety. A good grower and producer.

Above varieties, strong grafted plants, out of 3½-in. pots (ready in May), 75c. each, \$7.50 per dozen, \$50.00 per 100, except where noted.

BABY RAMBLER ROSES

Cecile Brunner (Mignon or Sweetheart). This dainty rose is particularly well adapted for corsage bouquets, also for table decorations. Flowers small, flesh-pink, produced in abundance. Fine for outdoor planting. **Own Root plants, 3½-in. pots (ready in May), 60c. each, \$6.00 per dozen, \$40.00 per 100.**

Gloria Mundi. A wonderful new Baby Rambler. The flowers are a brilliant orange-scarlet with exceptionally large flower heads which form a mass of color when the plant is in bloom. It is a compact, strong grower and is a very attractive variety for forcing or outdoor planting. **3½-in. pots (ready in May), \$1.00 each, \$10.00 per dozen.**

BEDDING, DECORATIVE AND FLOWERING PLANTS, ETC.

| | Size of Pot | Dozen | 100 |
|---|-------------|--------|---------|
| ABUTILON | | | |
| Eclipse , yellow and green; Savitzii , variegated..... | 3½ in. | \$3.00 | |
| AGERATUM | | | |
| Fraseri , bright blue, semi-dwarf, fine..... | 2¼ " | 1.50 | \$10.00 |
| Fraseri , bright blue, semi-dwarf, fine..... | 3½ " | 3.00 | 20.00 |
| ALYSSUM | | | |
| Tom Thumb and Double White | 2¼ " | 1.25 | 8.00 |
| ANTHERICUM | | | |
| Mandaeantum , foliage narrow, leaves green on the edges with creamy white center | 4 " | 6.00 | |
| ANTIRRHINUM | | | |
| Majus , separate colors | 2¼ " | 1.25 | 8.00 |
| ARECA | | | |
| Lutescens , fine plants, 8-in. pots, \$10.00 to \$15.00 each. | | | |
| ASPARAGUS | | | |
| Plumosus nanus ; Sprengeri | 3½ " | 5.00 | 35.00 |
| 5-in. pots, \$1.50 each. | | | |
| ASTERS | | | |
| Branching , separate colors, white, pink, purple, etc. | 2¼ " | 1.25 | 8.00 |
| BEGONIA, Flowering | | | |
| Luminosa , dark scarlet, bronze foliage..... | 2¼ " | 1.50 | 10.00 |
| | 3½ " | 3.00 | 20.00 |
| BELOPERONE | | | |
| Guttata . A very pretty plant that thrives well in a living room or conservatory. It flowers in long, drooping, heart-shaped Autumn shade and yellow panicles, flowers white with purple dots. | 3½ " | 5.00 | 35.00 |
| 5-in. pots, \$1.00 and \$1.50 each; 6-in. pots, \$2.00 each. | | | |
| CALENDULA | | | |
| Ball's Gold , dark golden yellow; Ball's Orange , bright golden orange; Campfire , or Sensation , dark orange with scarlet sheen; Orange King , deep orange | 3½ " | 2.50 | 15.00 |
| CANNAS | | | |
| Beaute de Poitevine , crimson, tall; Buttercup , yellow, dwarf; Florence Vaughan , yellow, tall; Hungaria , rose-pink, foliage green; King Humbert , scarlet, foliage bronze; Tarrytown , an extra fine carmine-crimson; The President , bright, glistening scarlet, green foliage; Venus , rose-pink; Wyoming , foliage bronze purple, immense spikes, flowers orange; Yellow Humbert , yellow, red throat | 3½ " | 3.00 | 20.00 |
| CARNATIONS | | | |
| Laddie , flowers large salmon-pink; Maine Sunshine , fine yellow; Surprise , very fine light pink..... | 2¼ " | 3.50 | 25.00 |
| Aviator , red; Benora , white streaked red; Betty Lou , dark pink; Matchless , white; Spectrum , a rich deep scarlet | 2¼ " | 2.50 | 15.00 |
| CASTOR OIL BEAN | 3 " | 2.50 | |
| CHRYSANTHEMUMS, large-flowered varieties | | | |
| Celebration , yellow, late; Charles Razer , white, medium; Dr. Enguehard , rose-pink, late; Early Frost , white; Edwin Seidewitz , incurved, pink, late; Gladys Pearson , apricot-orange, late; Gold Lode , yellow, early; Major Bonnaffon , incurved, yellow, late; Mistletoe , blush white, late; Oconto , white, early; Pacific Supreme , pink, early; Tints of Gold , bronze, early | 2¼ " | 2.50 | 15.00 |

| CHRYSANTHEMUMS, hardy pompon varieties | Size of Pot | Dozen | 100 |
|--|-------------|--------|---------|
| November Bronze. A wonderful new variety. The individual flower is large, 2½ inches or more in diameter. The color is a rich combination of bronze and orange-bronze. Very attractive, fairly glowing under artificial light. It is a vigorous grower and producer | 2¼ in. | \$5.00 | \$35.00 |
| Autumn, Glintz, yellow, center of flower bronze, reverse of petals yellow and bronze; Bucena, light bronze, very free flowering, late, fine for Thanksgiving; Buhl, yellow, early, flower medium in size; Christmas Gold, flowers small, yellow, late; Diana, pure white; El Reno, bronze, button type; Golden Climax, reddish yellow; Golden Feather, flowers large, bronze changing to yellow as the flower develops, deeper than Source d'Or; Irene, white, early; Marianna, white, large, early; Morena, deep yellow, medium size, rounded flower; Mrs. Frank Wilcox (Mrs. Frank Beu), yellow and reddish bronze, medium size flower; New York, yellow tipped bronze; Pauline Wilcox, flowers red, tips of petals yellow; Rowenna, bronze yellow, button type; Source d'Or, deep yellow; Souvenir d'Or, yellowish bronze..... | 2¼ " | 2.50 | 15.00 |
| CHRYSANTHEMUMS, single varieties | | | |
| Charter Oak, yellow, late; Elizabeth McDowell, bronze, midseason; Margaret Waite, a deep pink, sport of Mrs. E. D. Godfrey; Mensa, white, late; Mrs. Isabelle, bronze with silvery reverse of the petals; Mrs. E. D. Godfrey, light pink; Mrs. W. F. Buckingham, early, pink; Orient Pink, anemone-flowered, pink; Sunshine, anemone-flowered, bright yellow; Yellow Garza, anemone-flowered | 2¼ " | 2.50 | 15.00 |
| CLERODENDRON | | | |
| Balfouri. A beautiful greenhouse climber, and well suited for house culture; flowers bright scarlet enveloped in a creamy-white calax. 5-in. pots, \$1.00 to \$2.00 each. | | | |
| COBEA | | | |
| Scandens, blue, white | 3½ " | 2.50 | |
| COLEUS | | | |
| Firebrand, red; Golden Bedder, yellow; Trailing Queen, variegated; Verschaffelti, maroon | 2¼ " | 1.50 | 10.00 |
| | 3½ " | 3.00 | 20.00 |
| COSMOS | | | |
| Lady Lenox, white, pink | 2¼ " | 1.25 | 8.00 |
| Large Early-flowering, white, pink..... | 2¼ " | 1.25 | 8.00 |
| CRASSULA | | | |
| Arborescens, very ornamental. leaves thick and fleshy | 3 " | 5.00 | |
| CROTONS | | | |
| Assorted, fine plants, for bedding..... | 5 " | 18.00 | |
| DAHLIAS —See pages 7 and 8. | | | |
| DAISIES | | | |
| English, pink, white; strong plants from ground.... | | 1.00 | 6.00 |
| Paris, or Marguerites | 4 " | 3.00 | 20.00 |
| DIDISCUS (Blue Lace Flower). | | | |
| Coeruleus, Umbel-shaped pale bluish lavender lace-like flowers | 2¼ " | 1.25 | 8.00 |

| EUONYMUS | Size of Pot | Dozen | 100 |
|--|-------------|--------|-----|
| Japonica , green leaves, 5-in. pots, \$1.00 each. | | | |
| Japonica Aurea Marginata , yellow and green leaves. | 4 in. | \$7.50 | |

FERNS—See page 8.

FICUS

| | | | |
|--|-----|------|--|
| Elastica (Rubber Plant), 5-in. pots, \$2.00 to \$3.00 each; large plants, 10 to 12-in. tubs, \$20.00 to \$35.00 each. | | | |
| Retusa (F. Nitida). A very attractive plant for the house or conservatory. The leaves are bright green 3 to 4 inches long. It is a hardy indoor plant and easily cared for, which makes it a very desirable house plant. | 3 " | 6.00 | |

FUSCHIAS

| | | | |
|--|------|------|---------|
| Black Prince , fine plants | 3½ " | 5.00 | \$30.00 |
| " " large, 5-in. pots, \$1.50 to \$3.00 each. | | | |
| " " larger, 6-in. pots, \$3.50 to \$5.00 each. | | | |

GERANIUMS

| | | | |
|--|------|------|-------|
| Alphonse Ricard , scarlet; Beaute de Poitevine , salmon pink; Radio Red , fine dark red; Red Madame Barney , fine deep red, very free bloomer; Richard Gloed , fine rose-pink; Jean Viaud , double pink..... | | | |
| | 3½ " | 4.00 | 30.00 |
| Mme. Salleroi , variegated leaf; Rose , etc..... | 3½ " | 3.00 | 20.00 |

GLADIOLI

| | | | |
|--|-----|------|--|
| Extra Choice Mixture | .75 | 4.00 | |
| Primulinus Hybrids , mixed..... | .75 | 4.00 | |

HELIOTROPE

| | | | |
|--|------|------|-------|
| Light Blue | 3½ " | 3.00 | 20.00 |
| Royal Fragrance , deep blue, large truss..... | 3½ " | 4.00 | 30.00 |
| Royal Fragrance, Standards , with good heads, 2½ to 3 ft. stems (ready in June), \$3.50 each. | | | |

HYDRANGEAS

Otaksa. The standard pink variety. For June and July flowering. Extra fine plants in 14-in. common butter tubs, \$7.50 to \$10.00 each. If plants are wanted in new cedar tubs, painted green, with handles, \$3.00 each additional.

IVY

| | | | |
|----------------------|------|------|-------|
| English | 3½ " | 5.00 | 30.00 |
| German | 2¼ " | 1.50 | 10.00 |

LANTANAS

| | | | |
|--|-----|------|-------|
| Assorted , pink, bronze, yellow and trailing..... | 4 " | 3.00 | 20.00 |
|--|-----|------|-------|

LEMON VERBENA

| | | | |
|------|------|--|--|
| 3½ " | 4.00 | | |
|------|------|--|--|

LOBELIA

| | | | |
|---|------|------|------|
| Crystal Palace Compacta , dwarf, blue..... | 2¼ " | 1.25 | 8.00 |
|---|------|------|------|

MARANTA

Roseo-Lineata. Rich deep green leaves, beautifully variegated with narrow lines of soft salmon-rose, running out from the midrib, 3½-in. pots, \$1.00 each; 5-in. pots, \$2.00 each.

MARIGOLDS

| | | | |
|---|------|------|------|
| Dwarf French , mixed; Tall African , mixed..... | 2¼ " | 1.25 | 8.00 |
|---|------|------|------|

| | Size of Pot | Dozen | 100 |
|---|--------------------|--------------|---------------|
| MESEMBRYANTHEMUM Flowers bright pink | 3 in. | \$3.00 | |
| MYRTUS (Myrtle) Communis. The classic myrtle. Evergreen, leaves small, strongly scented | 2 " | 3.00 | |
| PACHYSANDRA Terminalis. A trailing plant, growing 6 to 8 in. high, forming a mass of glossy green foliage. Invaluable as a cover plant, rock gardens, etc., succeeding well either in full sun or partial shade... Per 1000, \$125.00. | 2 1/4 " | 2.50 | \$15.00 |
| PANAX Victoriae. A finely divided graceful variegated-leaved grass | 2 " 3 " | 2.00 5.00 | |
| PANDANUS Veitchii, green and white, 5-in. pots, \$2.00 to \$3.00 each. | | | |
| PANSIES Assorted, a choice strain, strong plants from ground | | 1.00 | 6.00 |
| PEPEROMIA Sandersii. Leaves roundish thick and fleshy, greenish-white with dark green heavy lines running out from the base of the leaf..... | 2 1/4 " 3 " | 3.00 5.00 | |
| PHILODENDRON Cordatum. A fine indoor vine. Better than English Ivy for indoor decoration, requiring very little care. Leaves dark green, elongated and pointed. 3-in. pots, 50c. each; 3 1/2-in. pots, 75c. each; 4-in. pots, \$1.00 each. | | | |
| PETUNIAS Balcony, separate colors; Single Fringed, mixed; Rosy Morn, bright rosy pink; Rose of Heaven, brilliant pink | 2 1/4 " 3 1/2 " | 1.25 2.50 | 8.00 16.00 |
| SALVIA Bonfire, semi-dwarf, scarlet; Splendens, scarlet... 3 1/2 " | 2 1/4 " 3 1/2 " | 1.25 2.50 | 8.00 16.00 |
| SANSEVIERIA Laurenti, variegated leaved, single plants, 5 to 6-in. pots, \$2.00 to \$6.00 each; made-up plants, 8-in. pots, \$7.50 to \$12.50 each; 10-in. pots, \$15.00 to \$20.00 each. | | | |
| SAXIFRAGA Sarmentosa. Roundish small dark green leaves, with whitish veins running out through the leaf from the base of the petals, serrated edge, reverse of petals deep pink | 2 " | 3.00 | |
| SUCCULENT PLANTS Assorted. For fancy dish work..... Made up in different containers for the window garden or conservatory, \$5.00 to \$15.00 each. | 2 " | 3.00 | |
| TOURENIA Fourneri, sky blue, with three large blue spots and yellow throat | 2 1/4 " | 1.25 | 8.00 |

| TRADESCANTIA, for baskets, etc. | Size of Pot | Dozen | 100 |
|---|-------------|--------|--------|
| Multicolor | 3½ in. | \$3.00 | |
| VERBENAS | | | |
| Assorted colors | 2¼ " | 1.25 | \$8.00 |
| VINCAS, for bedding | | | |
| Alba Pura, pure white | 2¼ " | 1.25 | 8.00 |
| Rosea, bright rose, dark eye..... | 2¼ " | 1.25 | 8.00 |
| Rosea Alba, white, rose center..... | 2¼ " | 1.25 | 8.00 |
| VINCAS, trailing, for baskets, etc. | | | |
| Variegated, strong plants | 3½ " | 3.50 | 25.00 |
| ZINNIA | | | |
| Mammoth-flowered, white, yellow, rose, etc..... | 2¼ " | 1.25 | 8.00 |

DAHLIAS

CACTUS AND HYBRID CACTUS

- Aurora.** Cream center, shading to amber and through tints of pink to white tips. **50c. each.**
- Garden Glow** (Hybrid Cactus). Flowers orange-red and yellow. **\$1.00 each.**
- Harpagon.** Flowers clear yellow; always covered with bloom. **75c. each.**
- Jonkheer, J. B. Von Tetz.** A very fine free-flowering white variety. **50c. each.**
- Kalif.** An enormous flower of perfect form. Flowers pure scarlet. **50c. each.**
- Nagels Roem** (Hybrid Cactus.) Salmon pink suffused chamois. Long, stiff stems; excellent keeper. **\$1.50 each.**

DECORATIVE

- Champagne.** The flowers of this variety are very large, of good form and of distinct color, "Golden Champagne" with chamois shadings. **\$1.00 each.**
- Couronne D'Or (Golden Crown).** Rich golden apricot; reverse of petals rosy carmine. **\$1.00 each.**
- Emma Marie.** Flowers a lovely combination of bright pink and white; stems strong; very free flowering. **75c. each.**
- Firebrand.** Flowers orange-carmine, well formed, large. **\$1.50 each.**
- Florenz Finger.** Flowers lavender-pink. **75c. each.**
- Fordhook Victory.** Flowers very large, well formed and carried on strong stems; a rich shade of Tyrian Pink. **\$1.50 each.**
- Jersey Beauty.** The finest pink dahlia. Flowers rose-pink, of the largest size, borne on long, stiff stems—a really wonderful variety. **50c. each.**
- King of Autumn.** Buff yellow suffused with terra-cotta, with good stem and foliage. **50c. each.**
- Lillian Baldwin.** A very beautiful variety. Flowers rose pink; splendid keeper; good stem and habit. **\$1.00 each.**
- Lucero.** Flowers bronze buff with a carmine tint and a deeper-tinted center. It has long stems and is fine for cutting. **50c. each.**
- Masterpiece.** Flowers, large, salmon-pink, borne on long stems. **50c. each.**
- Millionaire.** The flowers immense in size; lavender shading to white. **75c. each.**
- Mrs. Carl Salbach.** A clean, vigorous grower; flowers very large, solferino pink with white suffusion. **50c. each.**

DECORATIVE—Continued

- Mrs. I. De Ver Warner.** One of the finest decorative varieties. Color deep mauve-pink or orchid pink. Flowers large, of perfect form. **50c. each.**
- Patrick O'Mara.** Choice yellow; a good cut flower variety. **50c. each.**
- Pride of California.** Bright scarlet flowers of good size. **50c. each.**
- Purity.** Flowers pure white, large. **50c. each.**
- Robert Treat.** American Beauty rose color; plants are strong, healthy growers, producing flowers of the largest size on strong stems. **75c. each.**
- Roman Eagle.** Golden-bronze, a real autumn shade; flowers large. **\$1.00 each.**
- Sagamore.** Bright amber-yellow, shaded salmon-rose. **\$1.00 each.**
- Watchung Sunrise.** Rich golden yellow suffused with amaranth pink. **\$2.50 each.**

LARGE-FLOWERING OR SHOW

- A. D. Livoni.** Clear, beautiful pink of medium size, beautifully quilled. **35c. each.**
- W. W. Rawson.** A very fine dahlia. Color white, shaded with lilac. **35c. each.**

FERNS

NEPHROLEPIS

Elegantissima (The Tarrytown Fern). A superb variety with long, graceful fronds. **3½-in. pots, 75c. and \$1.00 each; 6-in. pots, \$2.00 each; 8-in. pots, \$4.00 to \$6.00 each; 10 to 12-in. pots, \$7.50 to \$15.00 each.**

Elegantissima Compacta. A short compact form of *Elegantissima*. **3½-in. pots, 75c. and \$1.00 each; 6-in. pots, \$2.00 each; 8-in. pots, \$4.00 to \$6.00 each; 10 to 12-in. pots, \$7.50 to \$15.00 each.**

Dwarf Boston. A dwarf form of the well-known Boston. **6-in. pots, \$2.00 each; 8-in. pots, \$4.00 to \$6.00 each.**

Verona. This variety is very similar to *Smithii*. (The Lace Fern). The fronds are very fine and finely divided. **3½-in. pots, \$1.00 each; 6-in. pots, \$2.00 each.**

ADIANTUM

Croweanum. (Maiden Hair Fern). Fine plants. **5-in. pots, \$1.50 each; 6-in. pots, \$2.00 each; 8-in. pots, \$4.00 to \$6.00 each; 10-in. pots, \$7.50 to \$10.00 each.**

CYRTOMIUM

Falcatum. (The Holly Fern). A very desirable variety. Fine plants. **3½-in. pots, 50c. each; 6-in. pots, \$2.00 each.**

SMALL FERNS FOR FERN PANS

Assorted. For filling fern dishes, etc. **2¼-in. pots, 20c. each, \$2.00 per dozen, \$12.00 per 100; 3½-in. pots, 50c. each.**

Telephone
Tarrytown 47 and 48

F. R. PIERSON
TARRYTOWN, NEW YORK

Catalogue of Hardy
Shrubs, etc., on
Application