

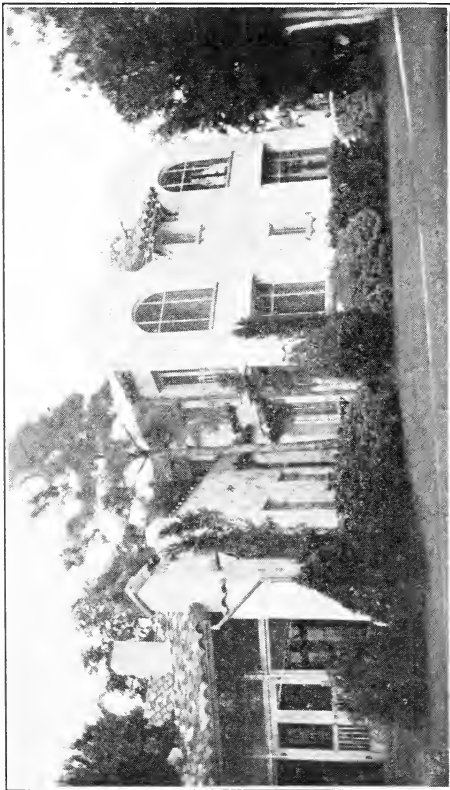
Historic, Archive Document

Do not assume content reflects current scientific knowledge, policies, or practices.

62.45

1930/31

Mississippi's Largest Nursery of Trees and Shrubs



"This is Your Country—BEAUTIFY IT" (The National Wayside Slogan)

PIGFORD NURSERIES

Lumberton, Mississippi

Mack...

SEC. 435 1/2 P.L.&R.
 U. S. POSTAGE
Paid
 LUMBERTON, MISS.
 PERMIT 4

U. S. DEPARTMENT OF AGRICULTURE,
 WASHINGTON, D. C.

M. R. N.
 BUREAU OF PLANT INDUSTRY
 Horticultural Crops and Diseases
 8-3591

LIBRARY
 RECEIVED
 ★ SEP 22 1931 ★
 U. S. Department of Agriculture

Our best recommendation and advertisement is that hundreds of customers who purchased trees and shrubs from us years ago continue to buy their trees and plants from us. Not only buy their stock from us but order for their relatives and friends.



A snap-shot of our truck delivering choice palms and evergreens.

OUR STOCK—

The Pigford Nurseries has for years prided itself with growing the highest quality trees and plants for the Southern Homes. We carefully select those best suited to the various soils and climatic conditions of the South. As a result, thousands of our customers are pleased with trees and plants purchased from us and come back for more.

OUR BUSINESS IS RUN ON A CASH BASIS—

It has always been the policy of the Pigford Nurseries to buy and sell for CASH ONLY. We pay cash for everything we use as well as for labor, therefore, we do not owe anyone a penny. By doing this we are able to sell the highest quality trees and plants at very reasonable cash prices, which means quite a saving to our customers.

REFERENCES—

As to our financial standing, business qualifications and reputation, we refer you to the First National Bank of this city and to the First National Bank of Hattiesburg, with whom we do most of our banking. As to the high quality of our trees and plants and freedom from disease and insect pests, we refer you to the Mississippi State Plant Board, A. and M. College, Miss., whose inspectors inspect our nurseries two or more times per year.

FIRST NATIONAL BANK

LUMBERTON, MISS.

TO WHOM IT MAY CONCERN:

We take pleasure in giving testimony to the thorough reliability and financial standing of the Pigford Nurseries here.

We have acted with interest the promotion and growth of this very worthy industry, which has been accomplished through careful attention to details and faithful and honest service rendered their customers.

Any business entrusted to them will receive satisfactory treatment and we have no hesitancy in recommending them as being thoroughly able to carry out their contracts, and entirely trustworthy.

Yours very truly,

H. M. BISHOP, Cashier





A STUDY

Beautifying and Improving the Home Grounds

THE restfulness of green surroundings, the joy that comes from blooming plants; the happiness of a beautiful and comfortable home and the pleasures shared with others is human's greatest inheritance.

The HOME GROUNDS planted to fruit, nuts and ornamental trees and shrubs enhances the value by producing fruit and nuts that are valuable and essential foods for human consumption and by producing beauty which is just as essential to the satisfaction and contentment of the Home owner.

The modest building with necessary comforts and surrounded by trees and plants is far more beautiful and satisfying than the more expensive house without NATURE'S blessings. It is said at least one fifth of the amount invested in a home should be spent on the grounds. Certainly it is wiser to spend less on the building rather than stint on the ground.

Civic pride is a wonderful asset to a community by beautifying the home, school, church, cemetery, play grounds, streets, parks and highways.

Everyone is realizing more and more each year that money spent on beautifying and improving the HOME ground and orchard bring in fruit and beauty far in excess of amount spent for the trees and plants.

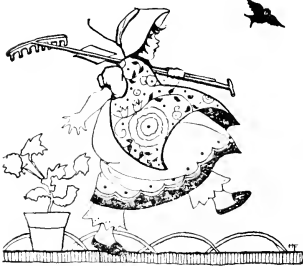
With well directed effort and intelligent care there is no small investment that will return so great a dividend as a HOME ORCHARD of fruits and nuts.

By "B. & B." we mean all specimen evergreen plants listed will be dug with ball of dirt adhering to roots and a piece of burlap pinned around same to prevent soil from falling away from roots. Our land being clay foundation, plants ball remarkably well.



Attractive planting of Arbor Vitae, Ligustrums and Primrose Jasmine

Broad Leaf Evergreens



ABELIA GRANDIFLORA—From May until frost the graceful arching branches are covered with clusters of tubular shaped white flowers faintly tinged with pink. The leaves are small lance shaped and glossy green turning to a purplish bronze with metallic sheen in winter. This plant is useful as specimens, for hedges, or in groupings for mass planting around foundations, etc. By pinching off the long tender shoots during the growing season the plant will grow very dense and thick. Price, 2 to 3 ft., 50c; large, 3 to 4 ft., heavy 75c. Very choice.

AZALEA INDICA—A densely growing evergreen shrub which in spring is covered with large bell shaped flowers. We have red, pink and lavender-pink, orchid. Price, 15 to 18 ins., \$1.50, heavier, \$2.00, B.&B.

BOTTLE BRUSH—A beautiful evergreen shrub, leaves narrow, flowers bright red in brushlike spikes, opening in April and continuing in bloom several weeks. Price, 1½ to 2½ ft., branched, B. & B., \$1.75.

JAPANESE BOXWOOD—The South has longed for a good hardy, dwarf, compact boxwood that does not scald by the hot sun. This variety seems to be the plant we are looking for. It is fine for borders, formal plantings, boxes, etc. Can be kept sheared any desired shape or size. Price, 15 to 18 in., \$1.00 ea. B.&B.

CAMELIA JAPONICA—Well known evergreen shrub; large dark glossy green leaves; bush grows to height of 10 to 15 feet, and covered about February with large double blooms. We have red, pink, white and variegated. Price, 10 to 15 inches, \$1.00 each; 15 to 18 inches, branched, \$1.50 each, B. & B.; 18 to 24 inches, branched, \$2.00 each, B. & B.

CAMELIA SASANQUA is a faster growing evergreen shrub with leaves smaller and not so waxy but covered in late fall with magnificent wide open single blooms with yellow center. Colors white and pink. Price, 15 to 18 ins., \$1.00; 18 to 30 ins., branched, \$1.50 each, B. & B.

CAMPHOR TREE may be pruned in bush form or allowed to make tree. Foliage two-toned green with new growth red. Because they live better, plants will be defoliated and pruned severely therefore can be shipped with roots puddled. Price, 2½ to 3 ft., \$1.00; 3 to 4 ft., \$1.50.

COTONEASTER PANNOSA—A beautiful slender, hardy evergreen shrub in the South. Leaves small, silvery white beneath, green above. White flowers in spring followed by red berries in winter. Price 2¼ to 3¼ ft., well branched, B. & B., \$1.00.

COTONEASTER FRANCHETTI—Same as above except there is not the silvery sheen to leaves and the plant droops more gracefully. Price, 2¼ to 3¼ ft., well branched, \$1.00.



A choice hedge of *Gardenia Floridus* along driveway. Can you imagine the exquisite beauty and fragrance when in bloom?

GARDENIA FLORIDUS—This is an improved strain of Cape Jasmine. The foliage is very rich, glossy, dark green, glistening in the sunlight. Our plants are extremely thrifty and beautiful. Blooms of velvety white are large, waxy, and extremely fragrant. Blooms are highly valuable, especially in northern markets. We have about 1000 extra choice plants. These are in heavy bloom in May and now (in August). No one ever sees them but that remarks they must get some plants this winter. We think every Southern home should have one or more of this choice native evergreen. They make wonderful hedges. Price, 1½ to 2 ft. bare roots, 75c each; 2½ to 3 ft., branched, \$1.00; extra large and choice, \$1.50, B.&B.

GARDENIA RADICANS OR DWARF GARDENIA is a small, dainty dwarf plant same as *Gardenia Floridus* except for the size and tendency of plant to spread or trail. The blooms are used extensively for dainty table decorations, weddings, etc. A customer in New Orleans reports a single plant purchased from us had as many as 1500 blooms on it at one time. Price, Junior size, 6 to 8 ins., 50c each; 1 to 1½ ft. spread, \$1.00 each.

GUAVA or FEIJOA SELLOWIANA—A hardy, compact evergreen shrub, dark green foliage, grayish beneath; purplish flowers; edible fruit. Price, 2½ to 3 ft., branched, B. & B., \$1.50.

AMERICAN HOLLY—A native evergreen tree used for Christmas decorations on account of the red berries and rich green leaves. Price, 2½ to 3 ft., B. & B., \$2.00. Same size puddled roots and defoliated, \$1.00 each.

CHINESE HOLLY—This is one of the richest evergreen plants grown. Foliage is dark, glossy green all year. Our stock is the genuine berry bearing and most of them have already borne berries which are bright red and larger than American Holly. It grows to tree size unless pruned to shrub size. Price, 2 to 2½ ft., \$1.50 each, B. & B.

ENGLISH IVY is one of the best ground or stone covers. It is hardy, grows rather fast, clings; has rich dark green leaves. Price, well rooted plants, 50c each.

PRIMROSE JASMINE—This is an evergreen trailing plant that may be kept pruned in bush form, making a gorgeous mass or allow to trail on ground or trellis. Has yellow jasmine-like blossoms in early spring; very hardy, thrifty and beautiful. Price, 2 to 3 ft. 50c.

HUMILE JASMINE—A very fine, small leaved evergreen trailing shrub, loaded practically all spring and summer with small yellow flowers. A choice shrub. Price, 1½ to 2 ft. 50c each.

EUONYMUS JAPONICUM is very hardy, upright growing; dark waxy green leaves. Makes fine specimen plants or hedges; grows rather slowly and can be kept sheared to suit ones planting. Price 15 to 18 inches, 75c each.

"Your plants came this morning in splendid condition—they were even better than you represented. In view of this fact, I'm hastening this order."—Miss., February, 1931.



Children as well as grown people select a setting of trees and shrubs in which to build their homes.

EUONYMUS RADICANS—A low, spreading plant rarely higher than one foot. Leaves rich green with white veins. Excellent in front of taller plants for ground cover. Price 1½ to 2½ ft. spread, bare roots 75c each.

ELEAGNUS PUNGENS—Has broad, bronzy green leaves with underside white. The addition of one or more of these plants to a planting blends with the other shades of green, giving a pleasing contrast. Price 2½ to 3 ft. plants \$1.00 each, B. & B.

CHERRY LAUREL—One of the most beautiful, hardy and useful evergreens which can be kept pruned to bush form or allowed to grow tree size. Foliage rich green, glistening in light; loaded with white plumelike flowers in spring followed by blue berries. We have a choice lot of bushy, well formed plants. No recommendation is too high for these plants which are especially useful for backgrounds about the place and for public plantings. Because plants live better we shall ship them pruned and defoliated with roots puddled so that express should be little. Price, 3 to 4 ft., 75c each; 4 to 5 ft., very choice, \$1.00 each. If wanted B. & B., add 25c. extra.



LAVENDER TRUE—This is a dwarf plant with light grayish blue foliage that is choice to use with the other shades of green. They do not grow higher than one foot and about 2 ft. spread, and are used mostly for borders or specimen plants about entrances, steps, etc. Plant hardy, purple blooms in spring. Price, about 1½ to 2 ft., bushy, \$1.00 each.

LEUCOPHYLLUM—A choice, hardy, evergreen plant for the South. The growth is bushy; leaves are rather small of a light shade of gray blue all the year, which makes it most attractive. It blooms freely all the summer until frost of small orchid flowers which makes the plant one of the showiest and one of the prettiest. Price, 2½ to 3 ft., well branched, \$1.25 each, B. & B.

LOQUAT (Japanese Plum)—Small tree-like bush; leaves large, light shade of green; flowers borne in panicles during winter and spring. Fruit edible. Price, 3 to 4 ft., branched, \$1.50, B. & B. Puddled roots and defoliated, \$1.00 each.



This picture shows some of our Waxleaf Ligustrums

LIGUSTRUMS are probably more extensively used and are far more valuable in landscape work than any other evergreen due to the rapid growth, large rich foliage, resistance to disease and their general suitability to all soils and locations. The effect is immediate and lasting. There are many varieties of Ligustrums differing in habit of growth, size, shape and color. Uprights are used for corner plantings or locations where height is desired. The lower growing a more spreading type are used for specimens, grouping and foundation work. Combined with Abelias and Conifers, such as Arbor Vitaes, Junipers and with Flowering plants and an occasional Palm, clump Bamboo or Grass, the unattractive grounds are converted into a haven of life and beauty, with little effort and expense.

LIGUSTRUM LUCIDUM—(Waxleaf) is perfectly hardy, vigorous and beautiful the year round. The branches have a tendency to spread, making a compact beautiful shaped shrub, not too dense, and by trimming out a branch here and there, it can be kept to the desired size. The leaves are thick, glossy, waxlike dark green on top with lighter shade underneath. Blooms freely in spring, clusters of white flowers which are followed by wonderful blue-black berries in the winter. We have several thousands of the finest plants of this variety. Price, 2 to 2½ ft., branched, 50c; 2½ to 3½ ft., heavier, 75c; very fine specimen \$1.00 each; if B. & B. \$1.25 each.

LIGUSTRUM NEPAL—This variety is more spreading than above and leaves are not as waxy. It is fine for filling large spaces. Price same as Lucidum.

LIGUSTRUM GRACILIS—Leaves dark green, pointed, borne thickly on upright curving branches. Price, 2½ to 3 ft. 75c; 3½ to 4 ft. \$1.00

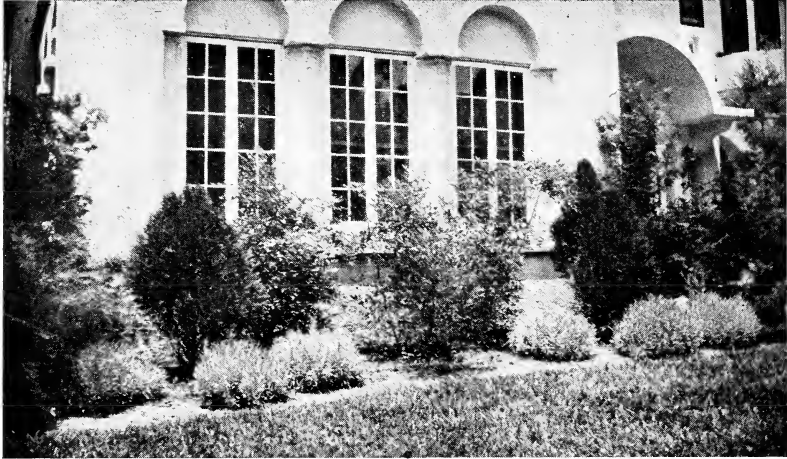
LIGUSTRUM PYRAMIDALIS—Same as above except growth more upright, leaves smaller.

LIGUSTRUM JAPONICUM—Most rapid tall growing variety, usually growing several feet in one season; effective in almost any planting scheme where height is desired. The leaves are light to dark green, large and broad. Price, 2½ to 3 ft., 50c each; 3½ to 4 ft., well branched, 75c each; 5 to 6 ft. very heavy, well branched, \$1.25 B.&B.

BIG LEAF LIGUSTRUM JAPONICUM—The leaves are very large and waxy. Plants are grafted. Price, 2½ to 3½ ft., 75c; 4 to 5 ft., heavy, \$1.00; if B. & B. \$1.25.



"You may be sure I was pleased with my plants received a few days ago by sending you another order so soon. How I wish I could order more this time; however I hope to send you another soon." March, 1931, Ala.



Planting of Nandinas and Arbor Vitae in background with Silvery Blue Lavender True in foreground.



MAGNOLIA FUSCATA is an old time favorite evergreen bush. Leaves thick, waxy, green. Price, 1½ to 2 ft., \$1.50, B. & B.

MAGNOLIA GRANDIFLORA is well known large thick, evergreen leaves, large white blooms in spring. Price, 1½ to 2 ft., \$1.00; 2½ to 3 ft. \$1.75; 4 to 5 ft. branched, very fine, \$2.00 each, B. & B.

NANDINA DOMESTICA—One of the choicest broad leaved evergreens. The foliage is different shades of green during summer, turning to rich red during winter. Plant loaded with red berries during winter. This plant is called "heavenly bamboo". As it gets older, many shoots are sent up from the ground making a mass of young plants. Very choice to mix with other shrubs. We have several hundred extra

choice plants. Price, 1½ to 2 ft., \$1.00 each B. & B.; 2 to 3 ft., \$1.50 each B.&B.; 3 to 3½ ft., 3 or more stems, heavy, \$2.00 each, B. & B.

PHOTINIA SERRULATA—One of the best hardy evergreen plants. Growth bushy with large holly-like leaves which are red when young, turning to dark green when mature; in spring, clusters of white blooms. The red foliage gives a lively color to plantings, which makes this plant one of the choicest new plants. Price, 1½ to 2 ft., branched, \$1.00; 2 to 3 ft., heavy choice, \$1.50 each, B. & B.

PHOTINIA GLABRA—This is another new evergreen plant that is very choice and seldom seen in ordinary plantings. We have two in the plantings about our house that give a live, gay look by the young foliage which is a bright red shading into green. This plant is bushy and can be kept trimmed to suit the planting. Now (middle of August) they look, from a distance, like a mass of red blooms. Price, 1 to 1½ ft., branched, \$1.00 each, B. & B.

PITOSPORUM TOBIA is a rich, waxy green leaved evergreen grown so extensively in lower south. The leaves grow in clusters at end of branch, making a round broad plant. Has white fragrant blooms in spring, very rich and pretty. Price, 1½ to 2 ft., \$1.50 each; 2½ to 3 ft., B. & B., \$2.00 each.

PITOSPORUM VARIEGATED—Leaves striped with yellow and green. Price same as above.



A planting of *Pittosporum Tobia* with Dwarf Gardenia in foreground.

PYRACANTHA LALANDII (Evergreen Hawthorn)—A tall growing evergreen shrub; leaves long and narrow, loaded from August 1st throughout the winter with clusters of rich, orange red berries. Hundreds of plants in our nursery now 4 or 5 ft. covered with berries, are the show of the place. They are hardy and give color to plantings, resembles the native Yaupon. Price. 3 to 4 ft., \$1.00; 4 to 5 ft., well branched, \$1.50 each, B. & B.

PYRACANTHA FORMOSA—A new low growing *Pyracantha*, berries similar to *Lalandii* except they are a bright crimson red and hang in immense clusters. Very beautiful. Price, 2½ to 3½ ft., \$1.25 each, B. & B.

ROSEMARY—The old time garden herb which is an evergreen making a dense dark green mat about 1½ ft. high and several feet broad. Price, 1½ ft. spread, 75c; larger, \$1.00 each.

RAPHIOLEPSIS INDICA—A very fine dwarf evergreen shrub. Leaves roundish, thick, dark green. Flowers pinkish white in flat bunches, resembles *Rhododendron*. Growth similar to *Pittosporum Tobia*. Price, 1½ to 2½ ft., B.&B. \$1.50.

VIBURNUM TINUS (Laurestinus)—A very hardy, thrifty evergreen shrub. The leaves are smaller than other viburnums; blooms in January and February in clusters of pinkish white, very fragrant. Choice. Price, 2½ to 3 ft., well branched, \$1.50 each, B. & B.

SWEET OLIVE—An old time garden favorite evergreen shrub. Leaves dark green, medium size, spiny—Small white blooms, extremely fragrant. Price, 15 to 18 inches, puddled roots, 75c each.

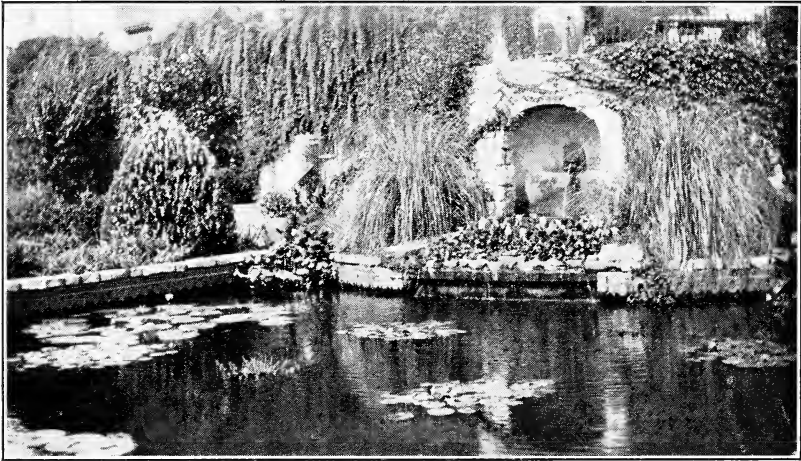
VIBURNUM MACROPHYLLUM—The leaves are large thick, leathery, waxy green. Blooms in spring are in masses of pink. Very fragrant. Makes a good bush plant for foundation or specimen. Price, 2½ to 3 ft., heavy, \$1.50 each, B. & B.

YAUPON—A native evergreen holly small foliage, compact, bushy; red berries during winter, produced in great profusion. One of the best native shrubs. Price, 1½ to 2 ft., B. & B. \$1.25 each; 2½ to 3 ft., B. & B. \$1.75.

JAPANESE YEW—Very desirable evergreen bush, especially for shady locations. Has narrow, dark green leaves. Price, 2½ to 3 ft, branched, B.&B. \$1.25.



"I received the trees and plants yesterday and I surely want to thank you so very much for your kindness and courtesy and your promptness in sending them. We put them out today and my husband said you surely were nice folks to deal with all right. I told the ladies at our Club yesterday how fine your stock is and they wanted your catalog so I am sending a good many names." Mississippi.



A glimpse of the lily pool in the Japanese sunken garden on the HOME GROUNDS of Mr. and Mrs. Hugh L. White, Columbia, Miss., showing Ivy covered walls, Primrose Jasmines, Pampas grass, etc.

BAMBOO—We have 3 kinds, viz: the small leaved, the large green leaves and the striped cane variety. All are good hardy sorts and make fine specimens. Price, small clumps, 50c; large clump, 75c.

BANANAS—A clump of bananas set on the grounds makes one think of the tropics and are an attraction, with the beautiful large, green leaves swaying back and forth with the winds. Price, \$1.00 each per bulb.

CENTURY PLANTS—Beautiful thick blue green fronds, some variegated; blooms once in a century. Very choice and attractive. Price 8 to 12 ins., 50c each.

SABOL PALM is one of the hardiest, as well as the most stately palms. It stands temperature around zero. It has large, fan shaped leaves, body of tree is well protected with fuzz. Trees, after becoming established, grow from 1 to 2 ft., per year. Price, 1 to 1½ ft., \$1.25; 2½ to 3 ft., \$2.00. B.&B.; 3 to 4 ft., \$3.00 each, B.&B.; 4 to 5 ft., very choice, heavy, \$4.00 each, B.&B.

PAMPAS GRASS—This variety grass makes attractive specimen plants on the lawn. It is a rapid grower, foliage rich blue green; big plumelike white blooms. Price, medium clumps 75c each, large, \$1.00

YUCCA FILMENTOSA is being used so much about the new homes of Spanish architecture; long fronds of gray green; clusters of white flowers. Price, 50c each.

YUCCA—SPANISH DAGGER—Upright, long narrow dark green leaved Yucca; ultimate height about 15 feet. Has large clusters of white blooms in early spring. One of the best hardy Yuccas which gives a tropical touch to the planting. Price, 1½ to 2½, 75c each. Larger, \$1.00 each.



SABOL PALM

Many customers who buy plants in large quantities from us every year state they get better results from our plants than any they have been able to get from any other source.



A neat planting of Pfitzer Juniper, Leucophyllum, Arbor Vitae, Photinia Serulata and Abelia against a rock wall on the attractive home grounds of Mr. and Mrs. R. Batson, Hillisdale, Miss.

CONIFEROUS EVERGREENS

EVERY yard needs one or several Junipers, Arbor Vitae, Cedrus, etc., mostly for specimen plants to give that stately, dignified air of refinement to the Home. The blending of many rich shades of blue, gold, and green of different varieties is very attractive and pleasing, especially during winter months, acting as blooming plants by giving color to the landscape.

BAKER'S COMPACT PYRAMIDALIS ARBOR VITAE—This is the best **TALL DARK GREEN**, compact arbor vitae. It is perfectly hardy. Foliage stays rich green all year, grows rather rapidly if fertilized heavily. Where a tall dark green conifer is wanted, this is the variety to set. We have several hundred extra choice plants. Price 2½ to 3 ft., \$1.50 each; 3 to 4 ft., \$2.00; 4 to 5 ft., \$3.00; 5 to 6 ft., \$4.00. B. & B.

BERCKMAN'S GOLDEN ARBOR VITAE is the best dwarf growing golden Arbor Vitae. It is exceedingly desirable to give life and color to a dark green planting. It is very compact, slow growth, conical shape. Foliage golden green. Very hardy and choice. Price, 1½ to 2 ft., \$1.50 each, 2 to 2½ ft., \$2.00; 2½ to 3½ ft., \$3.00 each; 4 ft., extra heavy, \$4.00. B. & B.

BONITA ARBOR VITAE—This is the best slow, dwarf growing, compact dark green arbor vitae. Foliage rich, dark green all the year; very hardy and good. Fine for urns and small specimen plants. Price, 1½ to 2 ft., \$1.50; 2 to 2½ ft., heavy. \$2.00. B. & B.

BEVERLYENSIS ARBOR VITAE is the best tall growing golden arbor vitae and works in fine with planting. It is hardy, fairly rapid grower. Price, 3 to 4 ft., \$1.75; 4 to 5 ft., \$2.00. B. & B.

COMPACTA ARBOR VITAE—Globe shaped. We have very choice stock of this beautiful variety. The foliage is soft green all year; growth hardy, compact, in time will attain several feet in breadth, and height. Price, 2 to 2½ ft., \$1.50; 2½ to 3 ft., \$2.00 each.

TALL COMPACTA ARBOR VITAE—Same as above except grows tall. Price, 2½ to 3 ft., \$1.75 each. B. & B.

ROSEDALE ARBOR VITAE—Compact, blue-green feathery foliage. Price, 1½ to 2½ ft., \$1.50 B. & B.

ORIENTAL ARBOR VITAE—Rapid growing, hardy, dark green foliage. Splendid for back grounds or where height and a quick growing conifer is wanted. Price, 3 to 4 ft., \$1.00; 4 to 5 ft., \$1.50; 5 to 6 ft., \$1.75. B. & B.

"I have been so pleased with the plants you have sent me in the past that I am giving you this order, rather than order from Nurseries nearer home."
Tenn., 1936.



Cedrus Deodara

Christmas cheer, joy and gladness to the entire community. Price, 2½ to 3 ft., \$1.50 each; 3 to 4 ft., \$2.00; 4 to 5 ft., \$3.00; 5 to 6 ft., \$4.00, B. & B. Write for prices on larger trees.

ROYAL ITALIAN CYPRESS—This is the much sought for tall, narrow, upright growing conifer. We have several hundred choice plants growing in our nursery now that are beautiful. The foliage is a rich green all year. The addition of one or more to your planting would give wonderful results. Price, 3 to 4 ft., \$1.75; 4 to 5 ft., \$2.00, B. & B.

CHINESE FIR—A fast growing fir shaped tree doing well in the lower South. The foliage is spiny, glossy green. Plant grows rather fast to a height of about 18 to 20 ft. Used mostly for specimen plants. Price, 2 to 2½ ft., \$1.75 each.

CANADENSIS JUNIPER—This variety juniper is not as well known as the Pfitzer, but is very useful. The foliage is blue green, spiny. Height seldom exceeds 2½ to 3 feet; spread may be several feet. We have a choice plant 13 years old in planting about the house that is the admiration of everyone who sees it. Price, 1½ to 2 ft. spread, \$1.50 each, B. & B., 2½ to 3 ft. spread, \$2.00 each.

JUNIPER CHINENSIS PYRAMIDALIS—This is one of the best tall, compact growing Junipers. It is hardy, thrifty, fairly rapid grower and fills many useful spots about the planting where a tall conifer is desired. The foliage is a beautiful green with a blue sheen. Price, 2½ to 3 ft., B. & B. \$1.25 each; 3 to 4 ft. \$2.00.

JUNIPER CONFERTA—A true creeper, spreading but seldom reaches a height more than 1 to 1½ ft. It is especially used for rock gardens, terraces, etc. It is hardy, sturdy and a most beautiful bluish green color. Price, 1½ to 2 ft. spread, \$1.25 each; 2½ to 3 ft., \$1.75, B. & B.

PFITZER JUNIPER is the best known low, spreading type juniper. The foliage is rich blue green all year. The plant is very hardy, fairly rapid grower and very useful for planting in front of other shrubs, as well as for terraces and corners. Price, 2 to 2½ ft. spread, \$1.50 each; 2½ to 3 ft. spread, \$2.00 each, B. & B.

"The evergreens I bought from you this season are the healthiest, thriest plants I ever saw, in fact, they are by far the best looking plants in town although they cost less than others bought elsewhere."—La.



A corner planting about our office of Juniper Canadensis, Va. Glauca Juniper, Photinia Glabra, with Baker's Arbor Vitaes, Ligustrums and Cherry Laurel for background. The color combination is most pleasing and beautiful.

SAVIN JUNIPER—Slow growing, semi-erect, many branched shrub, usually growing not over 2 to 3 feet high with several feet spread. Very similar to the Pfitzer Juniper except foliage is one color rich green whereas Pfitzer has two colors. It is very hardy and fine to use in low plantings. You would be pleased with it. Price, 1½ to 2 ft. spread, \$1.25; 2½ to 3 ft., \$1.75, B. & B.

SPINY GREEK JUNIPER—This beautiful variety forms a tall dense, conical head, tapering gradually from the ground to a sharp terminal point, and is of a fine bluish green color. The growth is slow so that the tree is well adapted for foundation planting, rock gardens, etc., where dwarf trees are required. Price, 1½ to 2½ ft., \$1.50 each; 2½ to 3 ft., \$2.00 B & B.

JUNIPER SYLVESTRIS—Rather tall, rapid growing hardy, upright, spreading juniper that is valuable for the South. Foliage is rich, glossy green, showing both dark and light green color, very desirable. Price, 2½ to 3 ft., \$1.50; 3½ to 4½ ft., \$2.00 each, B. & B.

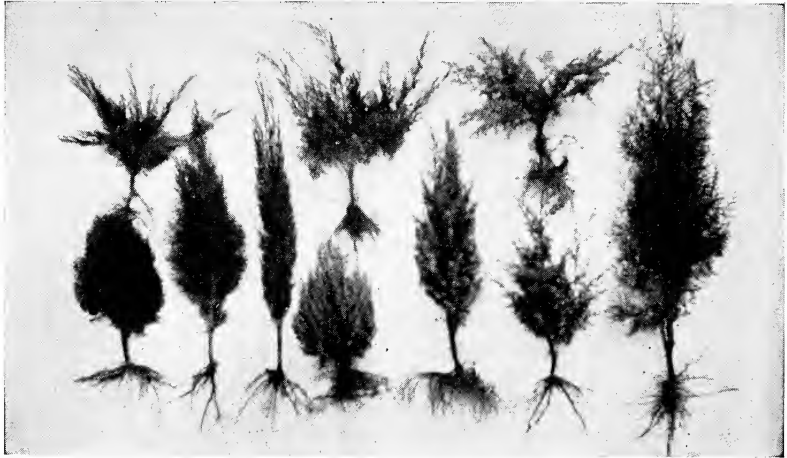
JUNIPER VIRGINIANA GLAUCA is one of the best conifers in landscape work where a TALL REAL BLUE-GREEN plant is desired for the color scheme. They may be trimmed columnar shape or branches may be allowed to spread gracefully. Price, 3 to 4 ft., \$2.50 each, B. & B.

RETINASPORA ERICODES—This is one of the most beautiful rich dark blue green conifers of soft, feathery compact foliage. Rather rapid upright grower. Price, 2½ to 3 ft., \$1.50 each; B. & B.; 3 to 4 ft., \$2.00 each.

RETINASPORA SQUARROSA—Same as above except foliage is a silvery blue color. Price, 2 to 3 feet, \$1.25 each.



Junior Specimen Plants



TOP ROW—Savin Juniper, Pfitzer Juniper, Canadensis Juniper.
 BOTTOM ROW—Berckman's Arbor Vitae, Baker's Arbor Vitae, Italian Cypress, Greek Juniper, Chinese Juniper, Sylvestris Juniper and Oriental Arbor Vitae.

IN ORDER to stimulate and encourage the beautification of our Southern homes we are offering this small size or Junior plants at very reasonable prices, quality considered.

There are thousands of homes in cities, towns and rural districts that need more plantings of hardy EVERGREENS. A great many more of these would be planted if smaller, and cheaper plants could be purchased.

It is wise to buy the best varieties and be willing to wait one or two years for ultimate results rather than buy undesirable plants or delay setting out evergreens. The pleasure of watching, training plants in growth in their rightful places is worth a great deal.

These plants are NOT the cheap inferior quality stock that you see advertised and sold so often in the different chain stores, especially. Most such stock is spindly seedlings from beds and worthless, generally. Sometimes one finds a good plant usually it is otherwise.

Our plants are stocky, well rooted, field grown and are identical with the larger sized specimens listed elsewhere in this catalog, the only difference being in size, age and method of digging and packing.

The Junior Sizes can be safely transplanted barerooted which saves a great deal of cost in handling, transportation and setting out. By buying this size one is enabled to get the very choicest varieties at very reasonable prices.

Juniors are easily set out and can be used the first year in pots, or in beds or in low plantings and next year set out in permanent location, if desired.

DIGGING AND SETTING OUT JUNIOR PLANTS—

Plants will be dug fresh from nursery row, roots immediately puddled, packed in damp moss and water proof paper to prevent drying out. When received they should be unpacked, set in water a few minutes to wash off excess puddle and set out promptly. By this method, this size plant transplants remarkably well and by fertilizing and cultivating they soon make large size plants at little expense.

Juniors can be shipped by PARCEL POST.



Junior Specimen Plants—[Continued]



TOP ROW—Ligustrum Lucidum, Nandina, Cotoneaster, Cedrus Deodara and Japanese Boxwood.
 BOTTOM ROW—Laurestinus, Lavender True, Abelia, Ligustrum Japonicum, Photina Serrulata, Retinaspora Ericodes and Pyracantha Laandii.

CONIFEROUS EVERGREENS

	Inches	Each		Inches	Each
Baker's Arbor Vitae	15-18	.75	Variogated Pfitzer Juniper	12-15	.90
Baker's Arbor Vitae	18-24	.90	Variogated Greek Juniper	12-15	.90
Berckman's Golden Arbor Vitae	12-15	.75	Greek Juniper	12-15	.75
Berckman's Golden Arbor Vitae	15-18	.90	Chinensis Juniper	12-15	.75
Beverlynsis Arbor Vitae	18-24	.75	Chinensis Juniper	15-18	.90
Compacta Arbor Vitae	12-15	.75	Sylvestris Juniper	15-18	.75
Rosedale Arbor Vitae	12-15	.75	Conferta Juniper (low spreading)	12-15	.75
Cedrus Deodara	15-18	.75	Conferta Juniper	15-18	.90
Cedrus Deodara	18-24	\$1.00	Italian Cypress	18-24	.75
Pfitzer Juniper	12-15	.75	Italian Cypress	24-30	.90
Pfitzer Juniper	15-18	.90	Sabot Palm, 3-yrs. old, about 1 ft		.50
Savin Juniper	15-18	.90	Cocos Australis, 3-yrs. old, about 1 ft.		.50
Canadensis Juniper	15-18	.90			

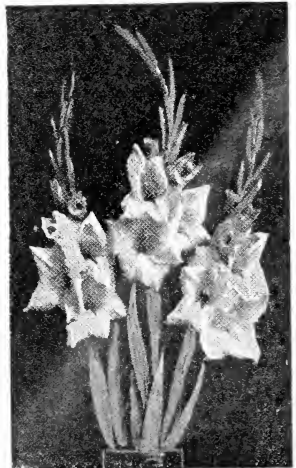
BROAD LEAVED EVERGREENS

	Ins.	Each		Ins.	Each
Abelia Grandiflora	15-20	.35	Camelia Sasanqua	8-10	.50
Cherry Laurel	18-24	.50	Nandina Domestica	10-12	.50
Cotoneaster Pannosa	15-20	.60	Nandina Domestica	12-15	.75
Japanese Boxwood	10-12	.50	Photinia Glabra	12-17	.60
Feijoa Guava	18-20	.60	Photinia Serrulata	12-15	.60
Primrose Jasmine	15-18	.35	Pittosporum Tobia	10-12	.50
Humile Jasmine	12-15	.35	Pittosporum Tobia	15-18	.75
Lavender True, medium		.50	Pyracantha Lalandii	18-24	.60
Laurestinus	12-15	.60	Pyracantha Formosa	15-18	.75
Ligustrum Lucidum	18-24	.35	Rapheolepsis	10-12	.60
Ligustrum Nepalense	18-24	.35	Gardenia Floridus	15-18	.50
Ligustrum Japonicum	18-24	.35	Gardenia Radicans	6-8	.50
Camelia Japonica	8-10	.75	Euonymus Japonicum	10-12	.35
			Centuy Plant	8-12	.50

“Glads”

VARIETIES—ALBANIA, Pure White; ALICE TIP-LADY, orange saffron; SHAYLOR, deep rose pink, ruffled; HALLEY, very early salmon pink; WILBRINK, pale rose pink.

Price, extra large blooming size, 60c per doz. Small bulblets 75c per 1000. Not less than 1 dozen bulbs or 1000 bulblets sold.



ROSES



ROSE culture is one of the MOST fascinating occupations. There being so many different varieties with the many different colors and color combinations together with the many characteristics of growth and habit that there is no end to the delightful game. Many varieties that do well in the North are worthless in the South. We try out many new varieties each year and retain only those that prove satisfactory.

OUR ROSES—

All our varieties listed below are monthly bloomers, 2 year field grown, either budded or grafted on hardy root stock which makes them free of any root disease like Nematode which destroys thousands of plants in the South that are grown on own roots. Plants grown on own roots are used in the colder sections where Nematode does not thrive but in the South plants on own roots will die out within a few years, therefore are not satisfactory.

The varieties listed here are the VERY BEST and will give most satisfaction if properly set and cared for and will gladden the growers' heart with choice long-stem roses within a few

weeks after they are set out and continue throughout the spring, summer and fall.

Red Varieties

PRESIDENT HERBERT HOOVER—We have been trying this variety out in the open fields this season and find it one of the best strong, long stem roses of the South, with foliage which stands the hot sun and our climate splendidly. The buds are long, full, pointed with ruffled edges that open out in a large full bloom that looks like a peony. The color is flame red tinged with yellow—some blooms having more yellow or more red than others. Either is extremely pleasing and we are delighted with this variety. Price for No. 1 two year field grown plants, \$1.00 each.

RED RADIANCE—In our opinion the VERY BEST ALL PURPOSE rose in existence for the average grower. Buds are a clear carmine red, large, full, and opening well; growth robust and vigorous, carrying the large well formed blooms on long heavy stems; fine for cut flowers; blooms all summer.

FRANCIS SCOTT KEY—Blooms rich red shading to lighter red, full double; fragrant; strong stems; very vigorous.

HADLEY—A rich dark red velvety rose, which with its vigorous growth, mildew proof foliage, full blooms and rich fragrance makes it one of the very best garden roses.

Pink Varieties

PINK RADIANCE—One of the most satisfactory pink varieties. Buds are large pointed, opening full, beautiful rosy carmine color when opening, changing to a light carmine pink on outside of petals, and a light, silvery pink on the inside, making a striking two-tone color combination. Together with the Red Radiance, they are the two BEST roses.

COLUMBIA—One of the choicest pink ever-blooming roses. Plant thrifty, good foliage. Buds on heavy stem, open out full and double of a clear, rich pink. One of our favorite varieties.

FRANK W. DUNLOP—Of rich, glowing pink, good buds borne on long stems opening into large well-formed blooms. Very fragrant, and desirable. You would be pleased with it.

Price of all varieties number 1, strong, field grown plants, 50c each; 10 for \$4.50 except where marked otherwise.

"If you will send me as good plants as the roses I bought from you last fall, I will certainly thank you for they were the finest plants I ever saw and just went right off to growing as soon as I set them out."—Miss., Feb. 1931.

JONKER J. L. MOCK—A fine velvety two tone pink, the under side of petals being a darker shade of pink with light silvery pink on inside. Large strong buds borne on strong stiff, smooth stems. Hardy and fine.

BRIARCLIFF is another of the newer roses and is very satisfactory. It is a free bloomer of a beautiful clear pink; very double; strong long stems; splendid rich green foliage. You would be pleased with this variety.



Pigford's ROSES are the BEST

PREMIER—This is the rose that is used so much by the Florist for cut flowers. It is a beautiful rich shade of pink. Good buds; full blooms; medium stems.

LOS ANGELES—A popular pink rose the top of petals being soft blending of pink and yellow while under side of petals are deeper shade of salmon pink; buds pointing and opening out full.

BETTY UPRICHARD—This variety is similar to Los Angeles except the pink is a deeper color, therefore makes a rich combination.

WILLOWMERE—Shrimp pink color, showing a suffusion of yellow in center; long pointed buds; foliage and growth heavy.

PINK MAMON COCHET is a light clear pink, with outer petals of deeper pink shade. Old time garden rose.

PAUL NEYRON—Flowers are pure pink in color, exceptionally large and full; growth upright, strong and vigorous.

White Varieties

KAISERIN AUGUSTA VICTORIA—Flowers creamy white, large full and fine form; growth vigorous, free flowering; very desirable white rose.

DOUBLE WHITE KILLARNEY—Buds long, pointed, with a slight pink tinge opening out full; free bloomer; growth splendid.

WHITE AMERICAN BEAUTY is a fine white rose. Blooms very large, on stiff stems with splendid foliage.

Price of all varieties number 1, strong, field grown plants, 50c each; 10 for \$4.50 except where marked otherwise.

"The roses I got from you last year are ideal—the best I have ever been able to obtain." Jackson, Miss., 1931.



Yellow Varieties

LUXEMBURG— Flowers rich deep yellow tinged with red, large full, pointed buds borne on long stems, opening up well; growth vigorous, upright, healthy and free flowering. Very fragrant.

JOHANNA HILL—One of the newest roses and after trial we find it very satisfactory. The blooms are a rich lemon yellow; long pointed buds opening out in full heavy blooms; strong stiff stems; hardy thrifty bush with rich green foliage. You'd be pleased with it. Price 75c each.

MRS. AARON WARD— Blooms coppery shade of yellow; buds similar to Luxemburg except into full double blooms borne on medium stems.

SUNBURST — Flowers and buds similar to Luxemburg except clear orange color; very pretty.

GOLDEN OPHELIA—A small tea rose of light yellow tinged with pink.

TALISMAN is one of the new popular varieties that is being advertised now. The buds are borne on good stems, have ruffled edges and open out in full double blooms of a saffron yellow tinged and striped with red. Foliage is a light green color. Plant vigorous. Price, No. 1 field grown, 75c each.

REV. ROBERT PAGE is a soft blending of a deep creamy yellow on top side of petals and a beautiful coral pink on under side of petals. The buds are borne on medium size stems which open into full double blooms; very fragrant; good foliage. A splendid rose.

SWEETHEART (Polyantha)—This dainty miniature rose of soft pink is exquisite for corages, small table decorations, weddings etc. The blooms when open is about size of quarter of dollar. Plant is hardy and vigorous. Be sure your garden includes one or more.

CHATILLON—This is another Polyantha variety. bush seldom taller than 1½ feet and is loaded from early spring to late fall with great clusters of different tones small pink roses. It is fine for bedding and for border use. We are sure you would be delighted with this variety.



Climbing Varieties

CLIMBING PINK RADIANCE is identical with the bush except is a thrifty climber.

CLIMBING RED RADIANCE is also same as the bush with the exception of being a healthy climber. We are sure you can not get better varieties than the Radiance.

CLIMBING LOS ANGELES is same as the bush variety except is a splendid climber.

CLIMBING KAISERIN AUGUSTA VICTORIA—Same as bush except is a monthly blooming climber.

CLIMBING SUNBURST—We like this variety best for a yellow climber Flowers and habit same as the bush form.

Price of all varieties number 1, strong, field grown plants, 50c each; 10 for \$4.50 except where marked otherwise.

Decidious Shade Trees

GINKHO (MAIDEN HAIR TREE)—A beautiful shade tree with thick dark green leaves shaped like maiden hair fern. In the fall the leaves turn a rich golden yellow, giving a picture that only an artist can paint. Price, 2½ to 4 feet, 75c each.

GOLDEN RAIN TREE (SHOWER)—This tree is grown extensively in California. It makes a well shaped tree covered with lacy fern-like leaves that turn yellow in fall; together with the yellow blooms the name is derived. Price, 3 to 4 ft., trees, 75c each.

TEA'S WEEPING MULBERRY—A hardy mulberry tree, limbs and foliage droop gracefully to the ground, and makes an unusually attractive tree, especially on large lawns or grounds where they have space. Price, 4 to 5 feet, \$1.50 each.

RED LEAF MAPLE—This variety makes a good shade tree the leaves of which turn a brilliant red in the fall and last some time. Has clusters of red blooms first thing in spring. Price, 3 to 4 feet, 60c each.

JAPANESE BLOOD LEAF MAPLE—This is a new introduction and is a slow or dwarf growing tree, the leaves being red all the time but especially so in the fall and winter. Price, 1½ to 2½ feet, \$1.50 each. These usually sell for \$6.00 ea.

WHITE FLOWERING DOGWOOD is a native of this section and thrives on most all soils. Tree covered in spring with large white flowers followed by red berries. Foliage pretty. Price, 4 to 5 feet, 60c each.

PINK FLOWERING DOGWOOD is identical with the white dogwood except the blooms are a beautiful shade of pink. Price, 2½ to 3 feet, 75c each.

MIMOSA makes one of the prettiest low trees. The leaves are dark velvety green; shaped like fern. Pink blooms. Very vigorous. Price, 3 to 4 ft., 60c each.



LOMBARDY POPLAR is one of the finest trees for sky line and therefore used so much in the best planned home grounds. Its foliage is a rich, beautiful green. Extremely rapid grower, tall, stately, holding its branches close and upright. We offer only the choicest trees with heavy root system. Large, well branched, 6 to 8 feet, 75c each; 10 for \$6.00. 1 year, 4 to 5 feet, 60c each; 10 for \$4.50. Larger, \$1.00 each.

SILVER LEAVED POPLAR grows rapidly, makes a fine spreading shade. The top of leaves is a deep rich green and underside is a shade of silver. 2 year branched, 4 to 5 feet, 60c each.

NEW CHINESE ELM is one of the best elm trees for shade along side walks etc. Makes a thick shade; foliage small leaved. Price, 3 to 5 feet, 75c each.

RED FLOWERING PEACH—Another very desirable flowering tree. In early spring the tree is a beautiful sight, loaded with double red blooms. Price, 3 to 4 feet, well branched, 75c each.

RED LEAVED PLUM is being used extensively for color in plantings. The shade of red is different from most any other, being a rich wine. Price, 3 to 4 feet, well branched, grafted trees, 75c each.

AMERICAN RED BUD OR JUDAS TREE—A small tree with large heart shaped leaves, purplish red flowers borne close along the stems in early spring before leaves appear. Price, 3 to 4 ft. 60c ea.

JAPANESE RED BUD is identical with American except it is a dwarf growing tree, ultimate height about 15 ft., and it blooms more freely. Price, 2½ to 3 ft., 60c each.

JAPANESE FLOWERING CRAB is one of the prettiest flowering trees which is loaded in early spring with great clusters of pink blooms. Price, 4 to 5 feet, 60c each.

PUSSY WILLOW is a tall, slender tree, if left untrimmed, that is one of the first to put out in the spring of fuzzy little cat tail blooms all along stem which remain on for some time. Extensively used for interior decorations. Price, 3 to 4 feet, 60c each.

TEXAS UMBRELLA CHINA makes the quickest and densest shade of any tree known. 3 to 4 ft., 50c each; 4 to 6 ft., 75c each.

WEEPING WILLOW makes a large graceful tree. Foliage is bright green. 3 to 4 ft., 60c ea.

PARSLEY HAW is a native small tree covered in spring with dainty white flowers followed by red berries in winter. Price, 60c each.



ALTHEA

DECIDIOUS SHRUBS

PINK FLOWERING ALMOND—Double flowers borne all along the stem. 18 to 24 inches, each 50c.

ALTHEA—ROSE OF SHARON—There is not a more useful and beautiful deciduous ornamental shrub than the Althea. It blooms constantly from early summer until late fall. Demands very little attention and endures the dry hot summer fine. Colors, double white; single white; single purple; double red; white with red throat. Price, 2 to 3 ft., 35c each.

BEAUTY BUSH—Another new introduction in the last few years. It is hardy with good foliage and covered in May with clusters of pink blooms. Price 2 to 3 feet, 50c each.

BUTTERFLY BUSH (BUDDLEIA)—A rapid growing, graceful shrub, with light green foliage. It is covered from midsummer to frost with long spikes of lilac-like blossoms. Excellent for cutting. 18 to 24 inches, each 35c; 24 to 30 inches, heavy, 50c.

WHITE BUDDLEIA—Same as Butterfly Bush except the blooms are white. 2 to 3 feet, 50c each.

CALYCANTHUS (SWEET SHRUB)—Has dark green foliage and chocolate colored flowers. Price, 18 to 24 inches, 35c each; larger, 50c each.

CORALBERRY—Is an old-time shrub producing a wealth of purplish red berries which remain on branches all winter. Price, 2½ to 3 feet, 35c each.

CYDONIA (FLOWERING QUINCE)—Low growing shrub, branches covered with red flowers early in spring before leaves put out. Price, 18 ins. to 2 ft., 35c each.

DEUTZIA—A tall shrub, panicles of double white blossoms with back of petals pink. 2 to 3 feet, 35c ca.

GOLDEN BELL (FORSYTHIA)—Long before the leaves appear, the branches become studded with the bright yellow blossoms. Price 2 to 3 ft. 35c each.

HONEYSUCKLE BUSH—Pink flowers early in spring. Price 18 to 24 inches, 35c each.

HYPERICUM—A pretty shrub with dark green leaves; blooms freely all summer of big yellow single flowers. Price, 1½ to 2 feet, 50c each.

HYDRANGEA OTASKA—A splendid variety with bright green foliage and large trusses of blue flowers. Price, 18 to 24 inches, bushy, 75c each.

HYDRANGEA—HILL OF SNOW—A compact headed shrub of medium height. A mass of white flowers in round panicles from July to September. Price, 18 to 24 inches, branched, 50c each.

HYDRANGEA PANICULATI—From midsummer to late fall the entire top is covered with a mass of white blooms borne in panicles. 18 to 24 inches, 50c each.

PEARL BUSH—Is a hardy bush that is covered in May with pure white blooms with yellow centers. Very much like mock oranges except blooms are in great clusters. Price, 2 to 3 ft., 50c each.

PERSIAN LILAC—It is generally thought that Lilacs would not bloom here in the lower South until they are several years old. This is true of rooted plants, but our grafted plants bloom the first year one or more times. Plants being literally loaded with heavy trusses of blooms. We have the lilac and white colors. Price, 3 to 3½ feet, 75c each.

MOCK ORANGE—A vigorous, hardy bush which bears in April, profuse sprays of white flowers. Price, 2 to 3 feet, 35c each

OLEANDER—Hardy pink. Price, 2 to 3 feet, 75c each.

AMOR RIVER PRIVETT SOUTH is by far the best privett for our Southern climate and soils, where it is practically an evergreen. Can be trimmed to any desired shape. Price, 2 to 3½ feet, branched, 10 for \$1.00; 100 for \$7.00.

CALIFORNIA PRIVETT is a rapid, upright growing hedge plant. Very desirable where a tall hedge is wanted. Leaves are large, green, some of which shed in the winter. Price, 2 to 3 ft., \$1.00 per 10.

FLOWERING POMEGRANATE—A very ornamental shrub with glossy green foliage; scarlet flowers in spring in great profusion. Price, 18 to 24 inches, 35c each.

LAMARCA (SALT CEDAR)—Fine feathery foliage of blue green with clusters of pink flowers in the spring. Price, 2½ to 3 feet, 35c; heavier, 50c each.



CREPE MYRTLE

CREPE MYRTLE—While familiar to everyone who lives in the South, yet there are many homes that do not have this fine old shrub. It is loaded from early summer to late fall with large panicles of beautiful flowers. We have the pink, lavender, white and crimson, 2½ to 3 ft., fine, 50c; larger size, very choice, 75c.

SPIREA VANHOUTTEI—All the Spireas are very hardy, easily grown and bloom extravagantly. This is one of the most popular Spireas, graceful in habit and producing a profusion of white flowers in March and April. Price 2 to 3 feet, 35c each.

SPIREA ANTHONY WATERER is a low, broad type Spirea with large corymbs of crimson flowers all the summer, if old blooms kept pinched off. Price. 15 to 20 inches, 35c each.

SPIREA THUNBERGII—Medium size bush, small fine foliage, loaded early in spring with small daisy-like white blooms. Price 2 to 3 feet, 35c each.

SPIREA BILLARDI is a medium size plant with large leaves; blooms in spikes of orchid pink; beautiful. Price 35c each.

SPIREA FROBELIA—Bloom same as Anthony Waterer; large growing plant. Price, 35c each.

SPIREA LUTEA or Yellow Spirea is a new introduction and has yellow blooms as well as the foliage is partly yellow. Price 2 to 3 feet, 35c each.

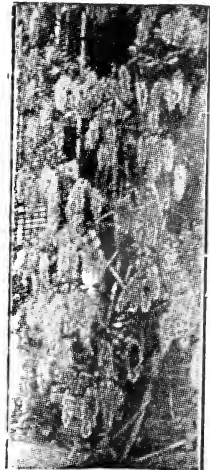
VITEX or **CHASTE TREE**—This bush resembles the butterfly bush or Buddleia. The blooms are also similar, except are smaller it is hardy and blooms all summer. Price, 2 to 3 feet. 50c each.

WEIGELA—In the spring, when in bloom, only the Azalea can compare with it. Grows several feet high and wide. Branches covered from top to bottom with masses of bell-like blooms which last about two weeks. Price, pink (Rosea): Red, (Eva Ratke) and yellow, 50c each.

WISTERIA—Strong, vigorous vine, loaded in early spring with long panicles of blooms. Very valuable for the pergola, trellis, etc., purplish blue. 2 years, 2 to 3 feet, 50c.

SCARLET TRUMPET HONEYSUCKLE—A very rapid growing VINE, rich green foliage; bright red trumpet shaped flowers borne in clusters; blooms freely. Price, 18 to 24 inch plants, 35c each.

HALL'S HONEYSUCKLE VINE is almost evergreen in this section. Blooms from early spring throughout summer of yellow and white very fragrant blooms; hardy and thrifty. Price, 35c each.



WISTERIA

Set out your orchard THIS season—NOW—so you will have nuts soon.



We have many thousands strong, thrifty, clean, healthy budded and grafted PAPERSHELL PECAN TREES growing in our nurseries. Better trees can not be found anywhere

PAPERSHELL PECANS

GROWING PAPERSHELL PECANS has become, in the last few years, one of the largest and most profitable enterprises in the South. The various soils and climatic conditions seems to be especially suited to their culture and growth. In no other section are such delicious nuts grown

A pecan orchard should be properly planned and managed as all other successful ventures. First the trees should be grown in the South by a reliable nurseryman and be of the best budded and grafted varieties; they should be strong, thrifty, peppy trees that have never been stunted; they should be properly set out on the best, well drained, fertile soil; and last they should be fertilized, cultivated and cared for as well as any other crop with the pleasant results of a fine, profitable orchard.

A few PAPERSHELL PECAN trees of best varieties are needed in most every yard for shade, sky line and last, but not least, from which to gather the large delicious nuts.

Farms should have several acres near the house set to orchard. The best plan is to set the tract out in PAPERSHELL PECANS about 70 feet apart. In between these set the various fruits of peaches, apples, pears, plums, grapes, scuppernongs, figs, blueberries, etc., sufficient for home consumption and some to sell. By having the different varieties of fruits ripening in succession there should be a supply of fresh fruits at least eight months of the year for home use and to sell the surplus. Several HOME ORCHARDS are bringing in more cash this season than the entire farm crop.

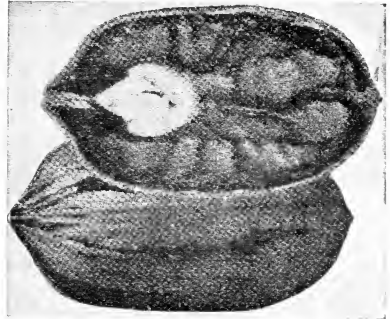
There are hundreds of instances where only a few trees about the home yard are paying the taxes on the entire homestead.

There is a feeling of pride as well as genuine pleasure to have a generous supply of extra fine pecans from ones own trees to exhibit and give friends.

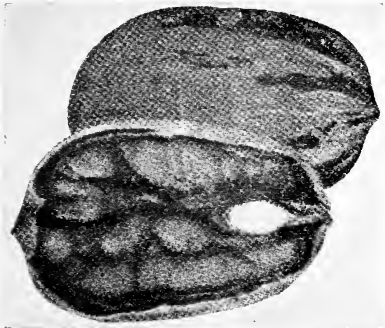
Papershell pecan trees, being so long lived and becoming more valuable every year as they grow larger and bear heavier, they not only draw interest, but compound it.

“Of the 2000 pecan and fruit trees purchased from you 2 years ago several of my pecan trees have as many as 12 nuts on them this season. I have the finest orchard I have ever seen and want you to come see them. Hope to set out more trees next season.”—Miss.

STUART—The very best variety of Papershell Pecan for all purposes and for all locations. The tree is hardy, grows off promptly, is practically immune to attacks of insects or disease. It bears early regularly, holds its nuts under different weather conditions, and responds to good treatment. The nut is large, averaging 40 to 50 per pound; kernel plump, bright, delicious flavor, rich, oily. Shell thin, easily cracked in hand. Very rine. Were it necessary to have only one variety we should certainly choose this one.



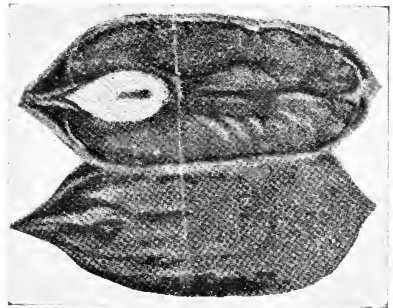
STURAT



SUCCESS

SUCCESS—This is the next best variety. It comes into bearing early and bears heavy crops. The nut is very large, ovate shape. The kernel is plump, heavy, rich, and a delicious walnut flavor all its own—to us the best flavored nut. The shell is thin and cracks easily. Be sure to set a few, at least, of this variety.

SCHLEY—This is another good and popular variety and is our third choice. The nut is a long thin shell; medium size; kernel very rich of a nutty flavor.



SCHLEY

OUR PAPERSHELL PECAN TREES are either budded or grafted. We carefully select our wood from our own early **HEAVY BEARING** trees in our orchard. This wood is either grafted or budded onto the best root system of strong, thrifty seedlings. Our land being rich and with proper care, thousands of our nursery trees have made several feet growth this season with caliper in comparison.

BE WILLING TO PAY A REASONABLE PRICE for trees of true varieties. We have thousands of choice trees in our pecan nursery to select your trees from that are full of pep and rearing-to-go. We are sure you can not find any better trees anywhere, at any price.

BE SURE TO BUY YOUR TREES FROM A RELIABLE NURSERYMAN if you expect them to be satisfactory.

It requires 12 trees to set an acre, if set 60x60 feet. 6-7 feet is a splendid size to set. It would cost **ONLY \$16.80**. This modest outlay of money with a small amount of energy expended, coupled with enthusiasm and pleasurable anticipation will soon have the trees planted and before you know it they will be bearing the much prized nuts

PRICE LIST OF BEST EARLY BEARING PAPERSHELL PECAN TREES

	Size	Each	Ten	100	Size	Each	Ten	100
3-4 feet	-----	\$.90	\$ 7.50	\$ 65.00	7-8 feet	-----	1.50	14.00
4-5 feet	-----	1.00	9.00	80.00	Large	-----	2.00	18.00
5-6 feet	-----	1.10	10.00	90.00	Extra large, 3 in. caliper			
6-7 feet	-----	1.35	12.50	115.00	fine for home planting	3.50	30.00	250.00

'Last year I purchased some of your large size peach trees and gathered about half a peck of fine fruit per tree from them this spring. I am so pleased with them that I must set out more this fall. Kindly send me your catalog at once'—Ark.



Set out trees this season so you and your family may enjoy choice fruit next season. Sooner you get them out the sooner you will have fruit to eat.

PEACHES



EVERY garden, lot or farm should have a few peach trees for family use, as well as commercial. Several varieties ripening in succession should be set, in this way, have fresh peaches from May 15th to September 15th. Only those who have experienced it know the joy and profits of having peaches direct from the trees for home use and to give friends, as well as to sell or to can.

OUR TREES are grown by us in our nurseries. By using rich, fertile, new land, best foundation stock; by proper care, fertilization and cultivation we have very choice stock.

MAYFLOWER is the earliest peach to ripen. It is a cling, large, with red blush. Being first on market is a ready seller.

UNEEDA is one of the earliest varieties. Hardy, heavy bearer of large juicy, cream colored with red blush fruit. Semi-cling.

EARLY ROSE—One of the best early varieties. Blooms late, therefore misses the late frosts. Fine, large, juicy, very heavy bearer, firm. Has fine red blush; cling. Ripens in early June.

RED BIRD CLING—Very fine, ripening early in June. Flesh firm, red to seed. Cling.

CARMEN—Ripens after Early rose. Large, round, flesh white, skin cream with red blush, fine. Semi-cling. Ripens in June.

HILEY BELLE—Begins to ripen before the Carmen is gone. Very red blush. Flesh firm, excellent, when ripe creamy white. Freestone.

"From my orchard of 2000 June Bud peach trees purchased from you 2 years ago I expect to net around \$1000.00—more than the whole farm crop would bring this season."—La.

BELLE OF GEORGIA—Large, skin and flesh light, creamy; excellent flavor.

EARLY ELBERTA—Same as Elberta except ripens couple weeks earlier.

J. H. HALE—Large, deep yellow flesh, red blush, fine and sweet Freestone. Middle of July.

ELBERTA—Large, yellow, red cheek, firm, fine for canning, also for preserving. Freestone, July and August.

INDIAN—Old fashioned. A very fine, sweet, juicy, cling. August.

HEATH CLING—Large, white meat, very sweet, juicy, delicious. Cling. August.



	Each	10	100
June Buds 1½ to 2 feet -----	\$.20	\$1.80	\$12.50
1-Year, 3 to 4 feet -----	.30	2.50	15.00
Branched 2-year 4 to 6 feet -----	.50	4.50	35.00

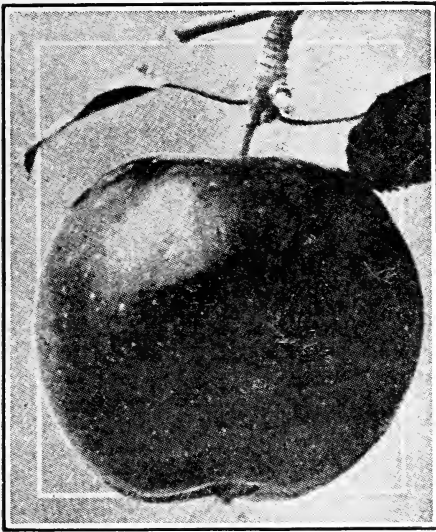
Wire for prices on "June Buds and 1-year in 1000 lots.

EARLY GOLDEN APRICOTS—Medium size, early, sweet, juicy, flesh firm, parting from stone, skin yellow with red cheek. Ripens in July. Price, 3 to 5 ft., 60c.

MULBERRIES—HICKS EVEREERING bears from three to four months a year. Tree is a rapid grower and bears early. Fruit large, good quality; 3 to 4 feet, 50c each 10 for \$4.50.

QUINCE—An orchard is not quite complete without one or more quince trees to make the much prized quince preserves. Price, 3 to 4 feet, 60c each.

SWEET POMEGRANATE—Large, very sweet and delicious. Price, 2 to 3 ft., 60c each.



Apples

From early June when the Early Harvest begins to ripen throughout the summer months to late fall one can have delicious apples for home use and many to give away as well as a good many bushels to sell on local market, at a good price.

EARLY HARVEST is one of the earliest varieties, ripening in June. It is round, yellow, flesh white, tender, juicy, with a rich sub-acid flavor. Tree very prolific and hardy.

RED JUNE—This is the other early Apple best for home. It is a rich, red, round, fine flavor. Ripens here early in July. A beautiful sight when loaded with red apples.

CLARK—This is a variety that is native to Central and South Mississippi, being very hardy, prolific bearing, large,

round cream colored with red stripes. Very juicy, crisp and good.

DELICIOUS—A very popular variety for fall and early winter use. Fruit large, brilliant dark red, flesh fine grained, crisp, melting, juicy, with delightful aroma. Very high quality. Fine keeper and shipper.

STAYMAN'S WINESAP—Large, bright red, fine juicy, extremely productive. Tree vigorous grower, adapting itself to different soils. Ripens in Fall. One of the best varieties.

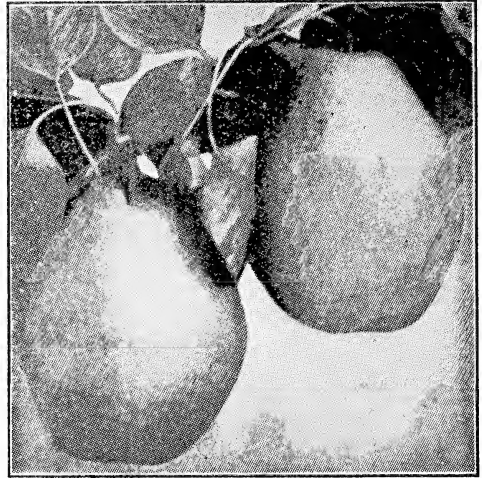
HORSE APPLE—An old time favorite. Big yellow apple that mellows so well. Ripens in October.

	Each	10	100
3 to 4 feet -----	\$0.40	\$3.50	\$32.50
4 to 6 feet -----	.50	4.50	40.00
2-year, branched, large, each -----	.75	Extra large \$1.00 ea.	

Pears

THE PINEAPPLE or **BLIGHTLESS PEAR** is large, smooth, firm, cream colored, fine flavored when mellow. It makes the most delicious preserves, marmalades, etc. It is a fine shipper and will keep for months when properly stored. Any fruit tree that bears from 50 to 75 bushels of fine fruit per year is worthy of most serious consideration. Not only bears heavily one year, but rarely misses a crop. The fruit sells readily. Ripens from August to September.

This pear comes into bearing the third to fourth year after setting out. The tree is extremely thrifty, vigorous, and a rapid grower on all types of soil. Our wood is gotten directly from old parent trees and is therefore the **GENUINE BLIGHTLESS STOCK**. They make beautiful shade trees for yard, and one or more should be in every Home Orchard.



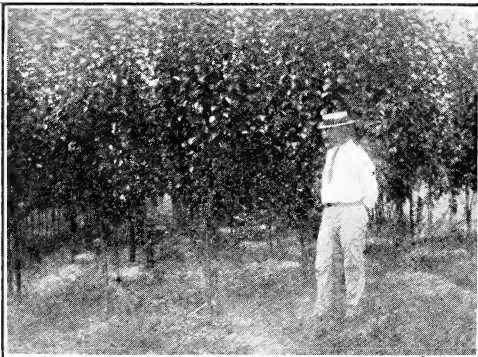
We think so much of this variety Pear that we have something like 800 trees in the orchard. The beauty of a Pineapple pear orchard in bloom is comparable to the Japanese Cherry blossoms in Washington.

	Each	10	100
3 to 4 feet -----	\$0.40	\$3.50	\$30.00
4 to 5 feet -----	.50	4.50	40.00
5 to 6 feet -----	.60	5.50	50.00
6 to 8 feet -----	.70	6.50	60.00

LARGE SPECIMEN TREES—For quick results buy our large 2 and 3 year Specimen trees with heavy fibrous root system, beautiful headed tops and smooth trunk. The extra gain in fruit one year will several times pay the small difference in cost.

2-year, properly headed, each\$1.00; Ten \$ 9.50
 3-year, extra fine, properly headed, each 1.50; Ten 14.00

BARTLETT PEARS—One of the best eating varieties. It is medium size; yellow, with red blush on sunny side; exceedingly sweet, juicy, aromatic, buttery. 3 to 5 feet, each, 60c; 10, \$5.50.

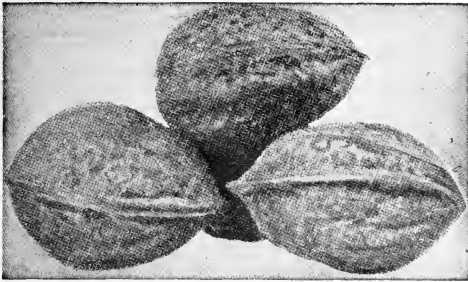


LeCONTE—A well known eating variety. A splendid bearer of medium size fruit, very juicy sweet and delicious. Cream colored when ripe with red blush. Early bearer. Price, 4 to 5 feet, 75c each.

Japanese Persimmon

TANE-NASHI is the very best all purpose variety. Fruit large pointed, skin very smooth, bright yellow, changing to almost red when fully ripe, flesh yellow. Practically seedless, very fine flavor. 3 to 4 ft., each 60c; 10 for \$5.50; 6 ft. 75c each.

"My trees did wonderfully well this year. I had them pruned by our County Agent and he said they were the finest trees he had ever seen. My neighbor wants me to order some for him JUST like mine."—La.



Japanese Walnuts

Japanese Walnuts

A broad spreading tree, ultimate height about 30 feet; rapid grower; very thrifty. It begins to bear second or third year and often produces in one season 1 to 1½ bushels per tree. Nuts borne in long clusters, very rich, delicious, shell medium hard; cracks easily. Very fine. Price, 2 ft., 50c each; 3 to 4 ft., 75c each; 4 to 5 ft., \$1.00 each.

BLACK WALNUT—Well known, same price as Japanese.

Plums

RED JUNE PLUM—This variety is, no doubt the very best plum for all purposes. Our variety of Red June plum is superior to the Red June that is usually sold. Fruit is large, rich red, very juicy, sweet, flesh light yellow, firm, cling to half cling. Small pit. Very showy. Tree is rapid grower and very hardy.

BURBANK—Fruit large, round; skin deep red overlying a yellow ground; flesh yellow, meaty and sweet. Tree bears young and abundantly.



Cluster of Red June Plums

	Each	10	100
3 to 4 ft. whips -----	\$.40	\$3.50	\$25.00
Large, 2-year fine heads -----	.50	4.50	40.00

Scuppernong

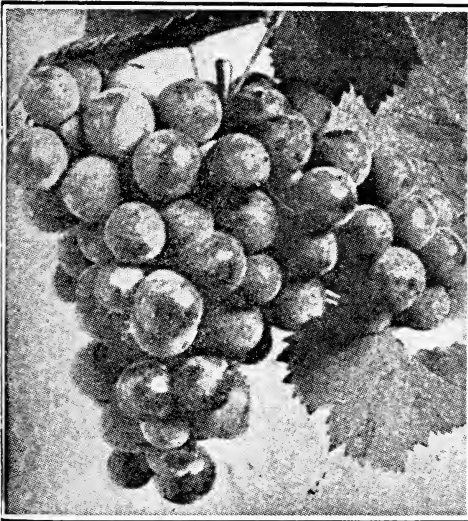
WHITE or **BRONZE**. This is fine, variety especially for home use. The fruit is large, sweet and very juicy. Ripens in August. Price, 2 years, 50c each.

Grapes

NIGARA—This is the very popular and profitable early grape. It is white or cream colored when full ripe, large full clusters; fruit sweet and juicy. The two year vines in our nursery bore as many as 22 large, full bunches. Vines are vigorous, rapid growers.

MOORE'S EARLY resembles the Concord except that it ripens at least two weeks earlier. Very fine in every way.

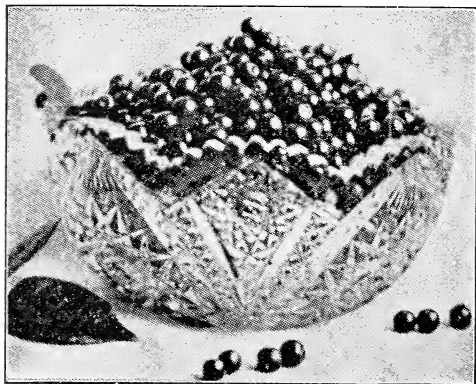
CONCORD is the well known bluish purple or black grape. Used very extensively for market purposes. Bunches large and compact; berries large, round, juicy, sweet, aromatic. Vines vigorous, rapid growers.



A Cluster of Concord Grapes

Grapes do best on well drained soil, and a warm sunny exposure. Set about 10 feet apart. Keep well fertilized and cultivated.

	Each	10	100
Fine No. 1 -----	\$.20	\$1.75	\$15.00
2-year, extra fine bearing vines--	.35	3.00	25.00



RABBIT-EYE BLUEBERRIES

Blueberries

THE BLUEBERRY grows well on various soils, from light sandy to heavy moist, and thrives best in the sections where the old time Huckleberry grows. It does NOT grow on lime soils. The tree grows rapidly and comes into bearing generally the second year after setting out. Tree grows to be about 10 feet high with same spread. Berry is large, blue-black, tender skin, flesh juicy and delicious. There is no limit to the market for this berry which ships remarkably well without refrigeration. For HOME ORCHARDS they may be grouped and used to beautify the grounds.

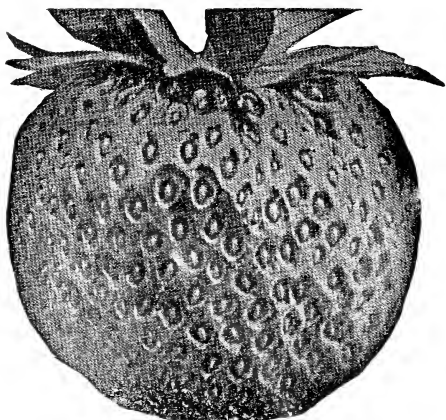
	Each	10
2 to 3 feet, 2 year plants	\$0.50	4.50
Heavy bearing, 3 year plants, well branched		75c each

YOUNGBERRY—This berry is becoming very popular and justly so as it is a prolific bearer of juicy berries, size and shape of a dewberry but have the flavor of raspberry. Makes delicious juices and jellies with that distinct flavor of raspberries which do not succeed in the South. Our plants if set out in the winter and trained on a wire in spring will produce many berries the first season. Price, 12 for \$1.00; \$7.50 per 100 not postpaid.

Figs

CELESTE is the so-called blue fig or sugar fig. It bears heavily; early. Fruit is small, very sweet, juicy, tender. Best fig for home use.

BROWN TURKEY is the best large variety. It is hardy and thrifty. Fruit very large, brownish purple, sweet. Excellent. 3 to 4 ft. each, 50c; 10 for \$4.50.



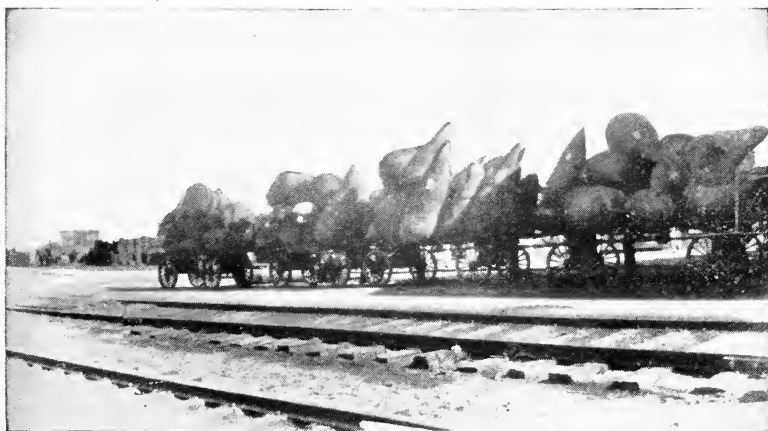
Strawberries

KLONDYKE—This variety is grown most extensively of all strawberries, both for home and market purposes. It is a large, dark red berry, fine shipper, being firm, fine delicious flavor. 100 to 300 plants enough for family garden. 100 postpaid, \$1.00; 300, postpaid, \$2.25; 1,000 not prepaid, \$5.50.

BLAKEMORE STRAWBERRY — A recent introduction and highly recommended by the Government Experiment

Stations as being superior in hardiness and productiveness to any other variety for market purposes. Price, \$1.00 per 100 plants postpaid.

Those who economized on non-essentials and set out fruit and nut trees are reaping a bountiful harvest of choice fruits.



A single express shipment of our trees and plants at station waiting for the train.

TERMS AND CONDITIONS OF SALE

OUR AIM is to be fair, square and honest and it is our sincere desire to ALWAYS give customers full value for their money. Should an error occur it is unintentional and we shall be glad to correct same.

GUARANTEE—We guarantee our trees to be well grown, properly handled, packed and shipped according to instructions. Our liability under the foregoing guarantee is limited in amount to original price received.

CLAIMS—If by any possibility errors should occur, they will be promptly rectified, if claim is made UPON RECEIPT OF TREES.

CALL FOR YOUR TREES PROMPTLY at express office, inspect them and if any are broken or damaged, have agent to write on express receipt stating such and send the express receipt to us. We will then send you another shipment and file a claim with express company for the amount of damage.

TERMS—Our terms are cash with order when shipment is to be made at once. If order is sent in before shipping season, 25 per cent of purchase price may be sent with order, trees will be held for customers until he wishes them shipped, at which time balance of purchase price should be sent.

OUR SHIPPING FACILITIES are exceptionally good, having two railroads, the Southern and the Illinois Central running through Lumberton. We have local and long distance telephone and telegraph service.

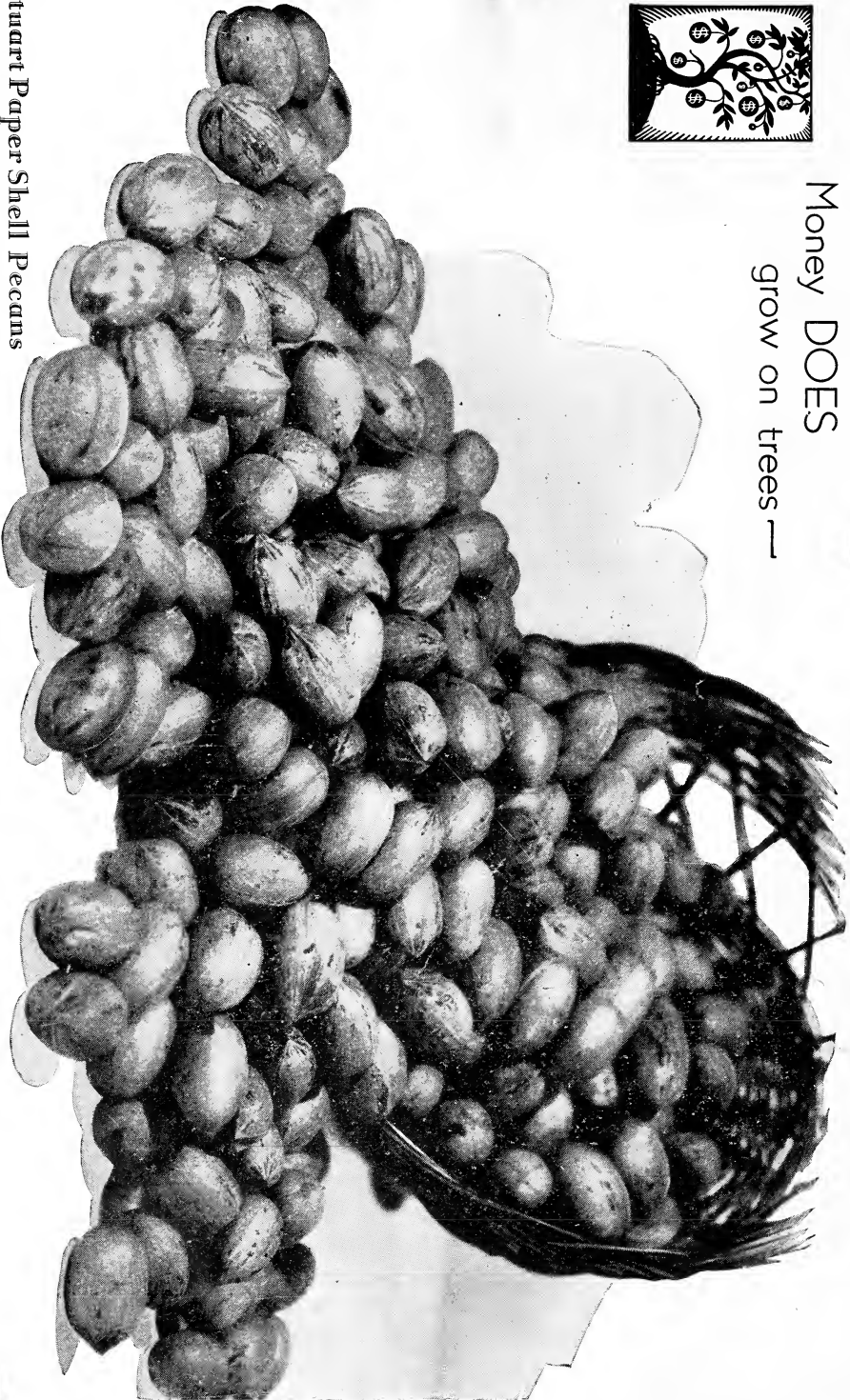
SUBSTITUTIONS—If out of the varieties ordered, we will send the ones we know to be equal or superior unless instructed not to substitute.

NO EXTRA CHARGE FOR PACKING OR DRAYAGE—Our trees are carefully tagged, tied, roots packed in damp material and wrapped, free of charge.

OUR TREES ARE FREE OF DISEASE—A certificate of inspection of the Mississippi State Entomologist guaranteeing our trees to be free of disease accompanies each bundle of trees ALL INSPECTION LAWS OF OTHER STATES ARE COMPLIED WITH.



Money DOES
grow on trees —



Stuart Paper Shell Pecans