

Historic, Archive Document

Do not assume content reflects current scientific knowledge, policies, or practices.

SQUIRES, INDEXED.

1931 CATALOGUE

19TH ANNUAL EDITION



Old Fashioned
**Hardy
Flower
Plants**



ANNUAL
FLOWER
PLANTS
SHRUBS
and
VINES



HARRY L. SQUIRES

HAMPTON BAYS

NEW YORK

SAVE MONEY BY ORDERING EARLY

Ten per cent discount on all orders accompanied by remittance received on or before March 10, 1931; five per cent discount between March 10 and April 1, 1931.

OLD-FASHIONED

Hardy Perennial Flower Plants

FOR SPRING, SUMMER, AND FALL PLANTING

These old-fashioned hardy garden flowers are becoming more popular each year. Twenty-five years ago, very few of them were grown, but today almost everyone who is fortunate enough to have even a small garden devotes at least a part of it to hardy plants. Their popularity is not surprising when we consider the many varied and pleasant changes which take place throughout the entire growing season in a well-arranged hardy border, in which, every week and nearly every day brings forth something fresh and new to interest and delight even the most critical. Beginning in April, the early-flowering varieties open their flowers often before the snow has entirely disappeared; these are followed by others with constantly changing variety, throughout the summer and fall when only severe freezing weather will stop such persistent late-blooming kinds as Japanese Anemones, Hardy *Chrysanthemums*, *Gaillardias*, *Eupatoriums*, *Tritomas*, etc.

Hardy Perennials are much used for planting in borders, for filling in the front of shrubbery, for massing on lawns, for cut-flowers, and for many other purposes. They are hardy, living outdoors during winter, and when once planted they last for many years, increasing in size and beauty each year.

COLLECTIONS OF HARDY PERENNIAL FLOWER PLANTS

As many people are not acquainted with the different sorts, I am offering my customers the following collections, all good, strong plants of blooming size, which when planted will, with little care, keep the garden gay with flowers from early spring until late autumn and will give the buyer greatest satisfaction from year to year. These collections are made up of species and varieties strictly of my selection, and I am unable to submit lists of contents, as the assortment varies at different periods during the spring, summer and fall.

COLLECTION FOR ROCK GARDENS—

20 Perennials, 2 each of 10 distinct species and colors, from early to late, my selection, postpaid, \$4.65; by express, \$4.25.

COLLECTION FOR SHADY POSITIONS—

20 Perennials, 2 each of 10 distinct species and colors, from early to late, my selection, postpaid, \$4.65; by express, \$4.25.

COLLECTION FOR CUT-FLOWERS—

20 Perennials, 2 each of 10 distinct species and colors, from early to late, my selection, postpaid, \$4.65; by express, \$4.25.

BLUE COLLECTION—20 Perennials, 2 each of 10 distinct blue species, from early to late, my selection, postpaid, \$4.65; by express, \$4.25.

PINK COLLECTION—20 Perennials, 2 each of 10 distinct pink species, from early to late, my selection, postpaid, \$4.65; by express, \$4.25.

RED COLLECTION—20 Perennials, 2

each of 10 distinct red species, from early to late, my selection, postpaid, \$4.65; by express, \$4.25.

YELLOW COLLECTION—20 Perennials,

2 each of 10 distinct yellow species, from early to late, my selection, postpaid, \$4.65; by express, \$4.25.

EXPERIMENTAL COLLECTION — 80

Perennials, 2 each of 40 distinct species and colors, from early to late, my selection, postpaid, \$17.35; by express \$16.00.

LONG-BLOOMING COLLECTION — 20

Perennials that bloom for a long time, 2 each of 10 distinct species and colors, from early to late, my selection, postpaid, \$4.65; by express, \$4.25.

7800 Ferndale Ave., Detroit, Mich.,

May 6, 1930

Mr. Harry Squires,
Hampton Bays, N. Y.

Dear Sir:

I wish to express my appreciation for the plants I received yesterday. They were all in splendid condition and were planted at once. This fall, I expect to add to my perennials and will certainly give you my order.

Very sincerely yours,
Mrs. Stanley C. Rau.

Belmont, Mass., Aug. 30, 1930.

Mr. Harry L. Squires,
Hampton Bays,

Dear Sir:

Plans arrived, parcel post, Saturday A. M. Placed them in water and all came up fine. They are healthy-looking and I am sure will give me and my friends much pleasure. Will send rock garden order soon. Thank you.

Very truly,

Mrs. L. C. Bridgham.

OLD-FASHIONED

Hardy Perennial Flower Plants

STRONG, VIGOROUS PLANTS THAT WILL BLOOM THIS YEAR



Aquilegia—Columbine
(Mrs. Scott Elliott Hybrids)

Achillea . Milfoil

Ageratum. A very pretty yellow-flowering variety. 1½ ft.

Millefolium rosea (Rosy Milfoil). Splendid pink-flowering variety. 1½ ft.

Ptarmica, The Pearl. Pure white flowers borne freely all summer on strong, erect stems. Splendid for cutting. 2 ft.

Postpaid, 25c each; \$2.25 per doz. By express, 20c each; \$2.00 per doz.

Aconitum . Monkshood

Fischeri. Large, light blue flowers in fall. Grows well in shady positions. 1½ ft. Postpaid, 40c each; \$3.75 per doz. By express, 35c each; \$3.50 per doz.

Actaea . Baneberry

Rubra (Red Baneberry). A fine, shade-loving plant with long spikes of red berries. Effective as a border plant. 2½ ft. Postpaid, 30c each; \$2.75 per doz. By express, 25c each; \$2.50 per doz.

Agrostemma . Rose Campion

Coronaria (Rose-Pink). Stout, erect-growing plants with silvery leaves and bright rosy crimson flowers produced very freely during June and July. 2½ to 3 ft. Postpaid, 30c each; \$2.75 per doz. By express, 25c each; \$2.50 per doz.

Ajuga . Bugle

Reptans. Very useful plant for the rockery and for carpeting the ground, particularly in shady positions, as under trees and shrubs. Grows 3 to 4 inches high and produces masses of deep blue flowers in May and June. Bronzy foliage. Postpaid, 35c each; \$3.25 per doz. By express, 30c; \$3.00 per doz.

Alyssum . Madwort

Argenteum. Leaves silvery beneath. Flowers yellow, in clustered heads, all summer. 15 in.

Saxatile compactum, Basket of Gold. Broad masses of bright yellow flowers in early spring, entirely covering the plant. Excellent for the rockery and for massing on lawn. 1 ft.

Postpaid, 30c each; \$2.75 per doz. By express, 25c each; \$2.50 per doz.

Anchusa . Alkanet

Italica, Dropmore (Heavenly Blue Flower). Delightful gentian-blue flowers an inch or more across, produced freely in large, branching heads during May, June and July. Good for cutting. 4 ft. Postpaid, 30c each; \$2.75 per doz. By express, 25c each; \$2.50 per doz.

Anemone Japonica

(Japanese Windflower)

Queen Charlotte. One of the most beautiful hardy plants. Blooms continuously from August until frost. Very large, semi-double flowers of La France-pink. Good for cutting and grows well in shade. 2 to 3 ft.

Whirlwind. Similar to Queen Charlotte, but pure white.

Postpaid, 40c each; \$3.75 per doz. By express, 35c; \$3.50 per doz.

Anthemis . Marguerite

Tinctoria. One of the most satisfactory perennials. It is of bushy habit, succeeds in the poorest soil and produces large, golden yellow, daisy-like flowers continuously all summer. A very good cut-flower. 2 ft. Postpaid, 30c each; \$2.75 per doz. By express, 25c each; \$2.50 per doz.

Aquilegia . Columbine

An old-time favorite that thrives in all soils, even though wet and shaded. Among the earliest flowers of spring and absolutely hardy everywhere. They bloom profusely for a long season and are long-lived. Excellent for cutting. 2 to 3 ft.

Canadensis. The native bright red-and-yellow Columbine.

Chrysantha (Golden Columbine). Bright yellow, long-spurred flowers.

Chrysantha alba. Pure white.

Caerulea (Rocky Mountain Columbine). Blue flowers with white corolla.

Long-spurred Pink. Shades of pink.

Long-spurred Mixed Hybrids. One of the finest strains of Columbines. The large, long-spurred flowers are of varied shades of blue, lavender, red, pink, cream, white, etc. Plants in mixed colors only.

Mrs. Scott Elliott Hybrids. A new strain of Long-spurred Columbines, generally considered the finest grown, with larger flowers and spurs, and brighter and more varied colors than any others.

Postpaid, 30c each; \$2.75 per doz. By express, 25c each; \$2.50 per doz.



Armeria

Arabis . Rock Cress

Alpina. A low-growing plant producing white flowers in dense masses from April until midsummer. Good for edging, for borders, and for rockwork. Thrives in dry places. 10 in. Postpaid, 30c each; \$2.75 per doz. By express, 25c each; \$2.50 per doz.

Arisaema . Jack in the Pulpit

Triphyllum. A native plant, bearing curiously formed, black and green, striped flowers in the form of a sheath part of which droops down to protect the long brown spathe within, thus giving the plant its name. Blooms in late May. Grows well in shade and moist ground. Postpaid, 30c each; \$2.75 per doz. By express, 25c each; \$2.50 per doz.

Armeria . Sea Pink or Thrift

Lanceana rosea. A dwarf-growing perennial with attractive deep rose-colored flowers on long stems. Blooms from early spring until late fall. 9 to 12 inches. Postpaid, 35c each; \$3.25 per doz. By express, 30c each; \$3.00 per doz.

Artemisia

Lactiflora. (Hawthorn-scented Mugwort). A desirable new perennial with large branching panicles of creamy white flower heads, produced freely in August and September. Delightfully fragrant and very good for cutting. 4 to 4½ ft. Postpaid, 30c each; \$2.75 per doz. By express, 25c each; \$2.50 per doz.

Asclepias . Butterfly Flower

Tuberosa. One of the most showy of all hardy plants, producing large, compact heads of bright orange-colored flowers, during July and August. 2 ft. Postpaid, 30c each; \$2.75 per doz. By express, 25c each; \$2.50 per doz.

Hardy Aster

(Michaelmas Daisy)

These are among the showiest of our late-flowering hardy plants, giving a wealth of bloom during September and October when most other flowers are past. They grow freely in any soil. Fine for massing and individual specimens. They are very hardy and increase rapidly. Especially valuable for planting among earlier blooming perennials to succeed them.

Hardy Aster—Continued

Novae-angliae. Large bright violet-purple flowers. 4 ft.

Feltham Blue. Splendid free-flowering azure-blue variety. 4 ft.

Novi-belgi, Climax. One of the best and showiest, with large, pyramidal spikes of large, light lavender-blue flowers. Very free-flowering. 5 ft.

Three varieties, named above, postpaid, 30c each; \$2.75 per doz. By express, 25c each; \$2.50 per doz.

Abendrothe. Very effective rosy red flowers. 2½ ft.

St. Egwin. A pleasing rosy pink; very free blooming. 2½ ft. Two varieties named above, postpaid, 35c each; \$3.25 per doz. By express, 30c each; \$3.00 per doz.

Astilbe

Produces many branched, feathered heads of flowers during June and July. Grows well in partial shade. 4 ft.

Grano. Salmon-pink.

Peach Blossom. Bright peach blossom pink. Both varieties, postpaid, 55c each; \$5.25 per doz. By express, 50c each; \$5.00 per doz.

Aubrietia . Rainbow Rock Cress

Hybrida grandiflora. Pretty, dwarf-growing plants, suitable for the rockery or for edging, with masses of silvery green foliage and sheets of various colored flowers in spring and early summer. Mixed colors, including blue, violet, carmine and others. Postpaid, 30c each; \$2.75 per doz. By express, 25c; each \$2.50 per doz.

Baptisia . False Indigo

Australis. A strong-growing plant with dark green leaves and many spikes of showy deep blue flowers in June. 2 ft. Postpaid, 30c each; \$2.75 per doz. By express, 25c each; \$2.50 per doz.



Hardy Aster
(Feltham Blue)

Bellis . English Daisy

Perennis. A favorite perennial, growing about 6 inches high, and producing very pretty double flowers from early spring until late summer. Separate colors pink and white. Postpaid, 25c each; \$2.25 per doz. By express, 20c each; \$2.00 per doz.

Bocconia . Plume Poppy

Cordata. A stately perennial, beautiful in foliage and flower, producing terminal spikes of cream-colored flowers on stems 6 to 8 feet high, during July and August. Postpaid, 30c each; \$2.75 per doz. By express, 25c each; \$2.50 per doz.

Boltonia**(False Chamomile)**

One of the showiest perennial plants. Grows 5 to 7 feet high and during summer and fall is completely covered with large, aster-like flowers.

Asteroides. Pure white.

Latisquama. Pink, tinged with lavender.

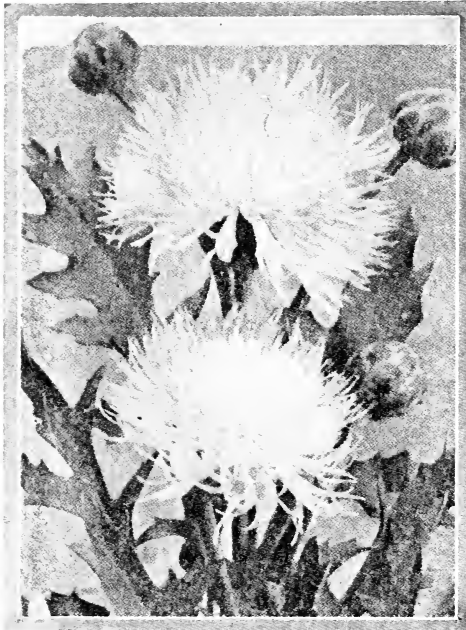
Postpaid, 30c each; \$2.75 per doz. By express, 25c each; \$2.50 per doz.

Callirhoe . Poppy Mallow

Involucrata. An elegant trailing plant, with finely divided foliage and large, saucer-shaped flowers of bright, rosy crimson, with white centers. Blooms all summer and fall. Postpaid, 30c each; \$2.75 per doz. By express, 25c each; \$2.50 per doz.

Caltha . Marsh Marigold

Palustris. An effective perennial with bright yellow, single flowers in early spring. Can be grown in wet places both in sun and shade. Makes a fine pot plant. 1 ft. Postpaid, 30c each; \$2.75 per doz. By express, 25c each; \$2.50 per doz.



Centaurea
(Macrocephala)



Callirhoe

Camassia . Wild Hyacinth

Esculanta. Produces rich pink blooms in April and May. Grows well in shade. Postpaid, 30c each; \$2.75 per doz. By express, 25c each; \$2.50 per doz.

Campanula**(Harebell)**

Carpatia (Carpathian Harebell). Grows in compact tufts, about 2 inches high. The deep blue flowers are produced freely from June until October. Grows well in shade.

Persicifolia (Peach Bells). Produces large, bright blue, bell-shaped flowers on slender graceful stems during June and July. 2 ft.

Pyramidalis. Produces spikes from 4 to 6 feet long, covered with blue, star-shaped flowers during the entire summer. The most conspicuous of all Camoanulas.

Rotundifolia (Blue Bells of Scotland). Bears clear blue flowers during June, July, and August, and grows about 1 foot high. A splendid rock-garden plant. Postpaid, 35c each; \$3.25 per doz. By express, 30c each; \$3.00 per doz.

Canterbury Bells

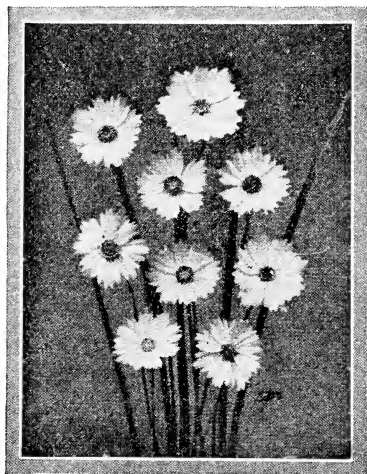
Campanula medium—An old favorite. Large, very showy, bell-shaped flowers, during July and August. 2 to 3 ft. Plants are in separate colors of Blue, Pink and White. Postpaid, 30c each; \$2.75 per doz. By express, 25c each; \$2.50 per doz.

Hardy Carnation

Choice Mixed. Produces an abundance of fragrant flowers, mostly double, from July to late fall. Many deep and brilliant colors. Very good for cut-flowers. 1 ft. Postpaid, 30c each; \$2.75 per doz. By express, 25c each; \$2.50 per doz.

Cassia . American Senna

Mariandica. A bushy plant with beautiful foliage and large panicles of bright yellow, curiously shaped flowers in abundant clusters in July and August. 3 to 4 ft. Postpaid, 30c each; \$2.75 per doz. By express, 25c each; \$2.50 per doz.



Coreopsis

Catananche . Cupid's Dart

Caerulea. Pretty deep blue flowers on long stems, produced freely from July to September. Good for cutting and may be dried for winter bouquets, 2 ft. Postpaid, 30c each; \$2.75 per doz. By express, 25c each; \$2.50 per doz.

Cephalaria . Yellow Scabiosa

Tatarica. Grows 6 feet high, bearing in June and July, delicate sulphur-yellow flowers much like the flowers of Scabiosa. Postpaid, 30c each; \$2.75 per doz. By express, 25c each; \$2.50 per doz.

Centaurea . Hardy Cornflower

Dealbata. Large, bright rose-pink flowers in June and July. 2 ft.

Macrocephala. Large, thistle-like, golden yellow flowers in July and August. Good for cutting. 3½ ft.

Montana. Large, violet-blue flowers from July to September. 2 ft.

Postpaid, 30c each; \$2.75 per doz. By express, 25c each; \$2.50 per doz.

Cerastium . Snow-in-Summer

Tomentosum. A desirable low-growing plant with silvery foliage and white flowers in June. Valuable for edging and for carpeting dry, sunny spots. 10 in. Postpaid, 30c each; \$2.75 per doz. By express, 25c each; \$2.50 per doz.

Cheiranthus**(Siberian Wallflower)**

Allioni. A beautiful plant, covered with brilliant orange flowers on long stems from June until late fall. Very hardy. 1½ ft. Postpaid, 30c each; \$2.75 per doz. By express, 25c each; 2.50 per doz.

Chelone . Shell Flower

Pink. Stately, handsome perennials bearing numerous spikes of large pink flower-heads during summer and fall. 2 ft. Postpaid, 30c each; \$2.75 per doz. By express, 25c each; \$2.50 per doz.

Hardy Chrysanthemum

The most beautiful and popular late autumn flower, blooming from early October until late fall. 3 to 4 ft.

Adironda. Early; aster-flowered; bronze.

Comoleta. Midseason. Large; yellow.

Firelight. Midseason. Large; bright red.

Idolf. Very early. A pleasing salmon-pink.

Little Dot. Midseason. Deep bronze button. Very free bloomer.

Lucifer. Midseason. Deep red.

Mrs. Phillips. Midseason. Large, daisy-like single pink flowers with clear yellow center, 3 to 4 inches across. One of the very best single varieties.

Nellie Blake. Early. A fine deep red.

October Gold. Early. Beautiful deep orange, tinged bronze.

Old Homestead. Midseason. A splendid old-fashioned salmon-pink. One of the best.

Ouray. Midseason. Large; bronze.

Petite Louise. Early. Large; rose-pink.

Tints of Gold. Early. Flowers are large, of rich golden yellow with red near base of petals. Very striking variety.

White Doty. Midseason. Large; white.

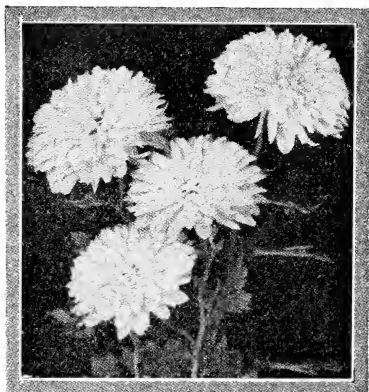
Zelia. Early. Large orange-bronze. Postpaid, 35 each; \$3.25 per doz. By express, 30c each; \$3.00 per doz.

Cimicifuga

Bacemosa. A handsome plant, bearing dense spikes of pure white flowers from July to September. Fine for cutting. Grows best in partial shade. 4 to 6 ft. Postpaid, 30c each; \$2.75 per doz. By express, 25c each; \$2.50 per doz.

Shrubby Clematis

Davidiana. A most desirable variety, with bright green foliage and tubular bell-shaped flowers of deep lavender-blue, during August and September. Deliciously fragrant. Postpaid, 45c each; \$4.25 per doz. By express, 40c each; \$4.00 per doz.

**Hardy Chrysanthemum
(Old Homestead)**

Convallaria . Lily-of-the-Valley

Majalis. An old favorite. Small, bell-shaped, pure white flowers in pretty racemes during early summer; graceful and very fragrant. Grows well in shade. 10 in. Strong clumps, postpaid, 50c each; \$4.75 per doz. By express, 45c each; \$4.50 per doz.

Coreopsis

Lanceolata grandiflora (Golden Wave). The best of all hardy flowers for massing. Blooms constantly from June until frost, with large, rich, golden yellow flowers on long stems. Valuable for cutting. 2 to 3 ft. Postpaid, 25c each; \$2.25 per doz. By express, 20c each; \$2.00 per doz.

Crucianella . Crosswort

Stylosa. One of the finest plants for rock-gardens. Bright purple, ball-shaped flowers in early summer. 6 in. Postpaid, 30c each; \$2.75 per doz. By express, 25c each; \$2.50 per doz.

Cypripedium . Lady's Slipper

Acaule. One of the finest of the Hardy Orchids, with rose-purple flowers. Grows well in shade. Postpaid, 30c each; \$2.75 per doz. By express, 25c each; \$2.50 per doz.

Delphinium . Hardy Larkspur

One of the most popular plants, of easy culture and perfectly hardy.

Belladonna. Pure turquoise-blue; a continuous and free bloomer from July until frost. 3 ft.

Bellamosa. Similar to Belladonna, but dark blue.

Chinense. A very pretty semi-dwarf variety, with intense gentian-blue flowers in open panicles all summer and fall.

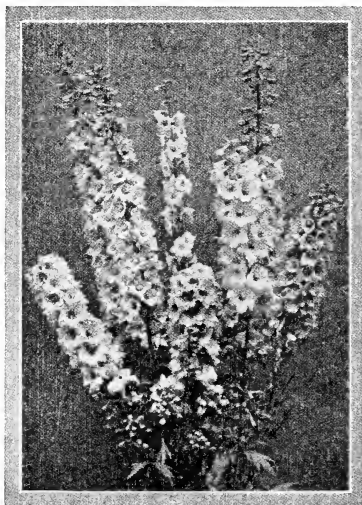
Chinense alba. Similar to *D. chinense*, but pure white.

Gold Medal Hybrids. The largest and finest of the Delphiniums, growing from 3 to 5 feet high and producing large flowers on spikes 2 feet and over long, from June until frost. The colors range from pale blue to the deepest indigo-blue and royal purple, with many intermediate pastel tones of mauve, pink, and lavender blendings. Plants are in mixed colors only.

Postpaid, 30c each; \$2.75 per doz. By express, 25c each; \$2.50 per doz.



Bleeding Heart
(*Dicentra Spectabilis*)



Delphinium

Desmodium . Sweet Pea Shrub

Penduliflorum (*D. formosa*). A very graceful, shrub-like plant completely covered in September and October with beautiful wine-red pea-shaped blooms. Strikingly beautiful. 3 to 5 ft. Postpaid, 45c each; \$4.25 per doz. By express, 40c each; \$4.00 per doz.

Dicentra . Bleeding-Heart

One of the best-known and finest perennials, with heart-shaped, rose-colored flowers in drooping spikes. Perfectly hardy and grows well in either sun or shade.

Eximia (Plumy Bleeding-Heart). Has beautiful finely cut foliage and showy racemes of pretty pink flowers from April until fall. 1½ ft. Postpaid, 45c each; \$4.25 per doz. By express, 40c each; \$4.00 per doz.

Spectabilis. The old-fashioned Bleeding-Heart of Grandmother's garden. Produces in spring and early summer, beautiful heart-shaped, pink flowers in graceful, drooping racemes sometimes a foot long. Fern-like foliage. Especially valuable for planting in the shade. 1½ to 2 ft. Postpaid, 55c each; \$5.25 per doz. By express, 50c each; \$5.00 per doz.

Dictamnus . Gas Plant

Fraxinella. Very showy border perennial, forming a bush 2½ feet in height, having fragrant foliage and spikes of rosy pink flowers during June and July. A very long-lived plant, instances being known where it has outlived father, son, and grandson, in the same spot. Postpaid, 55c each; \$5.25 per doz. By express, 50c each; \$5.00 per doz.



Gaillardia—See page 7

Digitalis . Foxglove

Giant Shirley. This new variety is a magnificent strain of the gloxinia-flowered type, of vigorous habit, attaining a height of from 5 to 7 feet, with spikes of bloom 4 feet in length, closely set with flowers of unusual size ranging in color from purest white to deepest rose, handsomely spotted with crimson, maroon and chocolate. Blooms in June and July. Plants are in mixed colors only. Postpaid, 30c each; \$2.75 per doz. By express, 25c each; \$2.50 per doz.

Grandiflora. A beautiful yellow variety, spotted maroon and chocolate. 2 to 3 ft. Postpaid, 30c each; \$2.75 per doz. By express, 25c each; \$2.50 per doz.

Purpurea gloxinia flora. A large-flowered form of the old-fashioned Foxglove. The bell-shaped flowers are thickly clustered on tall spikes and are produced in great profusion during June and July. Flowers are prettily spotted and very effective. Plants are in separate colors of pink, purple and white. Postpaid, 25c each; \$2.25 per doz. By express, 20c each; \$2.00 per doz.

Dodecatheon . Shooting Star

Meadia (American Cyclamen). A pretty native perennial with rose-colored flowers in May and June. Grows well in shade or full sunlight. 2 ft. Postpaid, 30c each; \$2.75 per doz. By express, 25c each; \$2.50 per doz.

Doronicum . Leopard's Bane

Plantagineum excelsum. Large, bright yellow flowers. One of the most effective spring-flowering perennials, either as a single plant or in the border. Excellent for cutting, as it has long stems and lasts a long time. Postpaid, 50c each; \$4.75 per doz. By express, 45c each; \$4.50 per doz.

Echinops . Globe Thistle

Ritro. Interesting and showy plants with globular heads of deep metallic blue flowers. Attractive a long time when dried. 2 to 3 ft. Postpaid, 30c each; \$2.75 per doz. By express, 25c each; \$2.50 per doz.

Edelweiss . Leontopodium

Alpinum. A well-known alpine plant, familiar to all who have visited the Alps Mountains. The pretty white leaves and small yellow flowers are surrounded by star-like heads of leaves, clothed with a dense white, woolly substance. A splendid plant for the rock-garden. 5 in. Postpaid, 40c each; \$3.75 per doz. By express, 35c each; \$3.50 per doz.

Erigeron

Speciosus. Produces attractive single, mauve-colored, aster-like flowers in profusion from June to August. Good for cutting. 2 ft. Postpaid, 30c each; \$2.75 per doz. By express, 25c each; \$2.50 per doz.

Eryngium . Sea Holly

Planum. Handsome ornamental plants with steel-blue flower-heads produced from July to September. Flowers are useful for vases, also for drying for winter bouquets. 2 to 3 ft. Postpaid, 30c each; \$2.75 per doz. By express, 25c each; \$2.50 per doz.

Eupatorium . Hardy Ageratum

Coelestinum (Mist Flower). One of the prettiest perennials. From August until November it is completely covered with rich lavender-blue flowers similar to ageratum. Good for cutting. 2 ft. Postpaid, 30c each; \$2.75 per doz. By express, 25c each; \$2.50 per doz.

Hardy Fern

Adiantum pedatum (Hardy Maiden-hair Fern). Most attractive of our native Ferns. Black stems with delicate green fronds. 12 in.

Osmunda cinnamomea (Cinnamon Fern). Erect fronds, drooping at tips, with bright cinnamon-colored spores at end of fronds. Very attractive. 2 ft. Postpaid, 30c each; \$2.75 per doz. By express, 25c each; \$2.50 per doz.

Feverfew . Matricaria

Little Gem. A most useful border plant and valuable cut-flower, with large double, white flowers from June to October. 2 ft. Postpaid, 30c each; \$2.75 per doz. By express, 25c each; \$2.50 per doz.



Gentiana

Funkia . Plantain Lily

Variegata. An attractive plant with broad, variegated foliage and blue flowers in summer. Grows well in shade. 15 in. Postpaid, 30c each; \$2.75 per doz. By express, 25c each; \$2.50 per doz.

Gaillardia . Blanket Flower

Grandiflora (G. aristata). One of the best hardy plants. Its large, gorgeous colored flowers are produced freely and continuously from June until frost. The center is dark red-brown, while the petals are marked with rings of brilliant crimson, orange, and vermilion. One of the best for cutting. 2 to 3 ft. Postpaid, 30c each; \$2.75 per doz. By express, 25c each; \$2.50 per doz.

Galega

Officinalis. A bushy plant with attractive foliage and pretty pea-shaped blue flowers. Fine for cutting. 18 in. Postpaid, 30c each; \$2.75 per doz. By express, 25c each; \$2.50 per doz.

Gentiana . Blue Gentian

Andrewsii. Our native species, with beautiful deep blue flowers from July to October. 2 ft. Postpaid, 30c each; \$2.75 per doz. By express, 25c each; \$2.50 per doz.

Hardy Geranium . Crane's Bill

Maculatum. A very desirable plant with attractive foliage and pretty pink flowers in May and June. Postpaid, 30c each; \$2.75 per doz. By express, 25c each; \$2.50 per doz.

Geum

Chiloense, Mrs. Bradshaw. A very showy border plant with large, double flowers of a brilliant scarlet from May to August. 1½ ft.

Chiloense, Lady Stratheden. Large, double flowers of a rich golden yellow. One of the finest perennials. 1½ ft.

Postpaid, 35c each; \$3.25 per doz. By express, 30c each; \$3.00 per doz.

Golden Glow

Golden Glow. An attractive plant, producing masses of double golden yellow flowers resembling cactus dahlias. Blooms from July to September. 5 to 6 ft. Postpaid, 30c each; \$2.75 per doz. By express, 25c each; \$2.50 per doz.

Hardy Grass

Eulalia japonica zebrina (Zebra Grass) A beautiful Grass, the long blades of which are marked with broad yellow bands across the leaf. It makes a very attractive specimen plant for the lawn and is equally good for bedding. Grows 6 to 10 feet high. Postpaid, 40c each; \$3.75 per doz. By express, 35 cts. each; \$3.50 per doz.

Gypsophila . Baby's Breath

Acutifolia. Produces masses of small, rose-colored flowers in feathery panicles during July and August. A beautiful cut-flower. 2 to 3 ft. Postpaid, 30c each; \$2.75 per doz. By express, 25c each; \$2.50 per doz.

**Hemerocallis—Day Lily** (See page 8)**Gypsophila—Continued**

Bristol Fairy. The new double-flowering Gypsophila, and one of the most popular perennials ever introduced. Produces very large panicles of pure white double flowers, almost continuously throughout the summer. 3 ft. Postpaid, 55c each; \$5.25 per doz. By express, 50c each; \$5.00 per doz.

Paniculata. A popular old-fashioned perennial. Forms a compact, symmetrical bush, covered in August and September with loose panicles of minute, pure white flowers, forming a beautiful, gauze-like appearance. Valuable for combining with other flowers. 2 to 3 ft. Postpaid, 30c each; \$2.75 per doz. By express, 25c each; \$2.50 per doz.

Repens (Trailing Baby's Breath). A beautiful trailing plant with masses of small white flowers in July and August. Excellent for the rockery. Postpaid, 30c each; \$2.75 per doz. By express, 25c each; \$2.50 per doz.

Helenium

Very attractive plants, bearing in late summer and fall, great masses of large, daisy-like flowers in pastel shades of red, yellow, and orange. Very useful for cutting and blooms a long time.

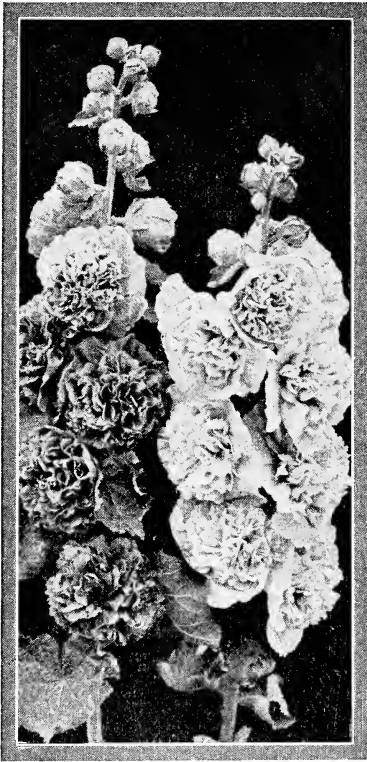
Autumnale rubrum. Deep bronze-red, changing to terra-cotta. 3 to 4 ft.

Riverton Gem. Old-gold, suffused with bright terra-cotta, changing to wall-flower-red. 3 to 4 ft.

Postpaid, 35c each; \$3.25 per doz. By express, 30c each; \$3.00 per doz.

Helianthemum . Sun Rose

Mutabile, Mixed. Very pretty low-growing evergreen plants, forming broad clumps which during June and July are quite hidden by a mass of bloom. Flowers are both single and double, and of many deep brilliant colors, including crimson, pink, yellow, white, and intermediate shades. Plants are in mixed colors only. Postpaid, 35c each; \$3.25 per doz. By express, 30c each; \$3.00 per doz.



Double Hollyhock

Helianthus . Hardy Sunflower

A very effective, free-flowering perennial that succeeds in any soil and blooms from July to October. The large, bright yellow flowers are excellent for cutting, and the plants, when covered with blooms, produce a grand effect. 5 to 6 ft. Postpaid, 30c each; \$2.75 per doz. By express, 25c each; \$2.50 per doz.

Hemerocallis . Yellow Day Lily

Dr. Regel. Handsome, rich orange-yellow flowers in June and July. 1½ to 2 ft.

Florham. Large, golden yellow flowers in June and July. 3 to 3½ ft.

Fuva. (Tawny Day Lily). Large trumpet-shaped flowers; coppery orange, shaded crimson. Blooms in July and August. 4 ft.

Postpaid, 30c each; \$2.75 per doz. By express, 25c each; \$2.50 per doz.

Hepatica . Wood Anemone

Triloba. A pretty native spring flowering plant, with light blue flowers. Prefers shade, but will grow well in full sunlight. Postpaid, 30c each; \$2.75 per doz. By express, 25c each; \$2.50 per doz.

Hesperis . Sweet Rocket

Matronalis. Produces fragrant purple flowers in showy spikes during June and July. 2 to 3 ft. Postpaid, 30c each; \$2.75 per doz. By express, 25c each; \$2.50 per doz.

Heuchera . Coral Bells

Brizoides. One of the most desirable hardy plants and very popular. It is ornamental in foliage and flower. The tiny, soft coral-pink bells are borne on long, slender, wiry stems. Blooms profusely during July and August. Of great value for cutting, 1½ ft. Postpaid, 35c each; \$3.25 per doz. By express, 30c each; \$3.00 per doz.

Hibiscus**(Marsh Mallow; Rose Mallow)**

Giant Mallow Marvels. A stately plant 6 to 8 feet tall, growing equally well in dry or wet ground. The large flowers (8 to 10 inches in diameter) appear early in August and continue until October. The colors are crimson, pink, and white. Plants of either of those colors, 35c each; \$3.25 per doz. By express, 30c each; \$3.00 per doz. Mixed colors, postpaid, 25c each; \$2.25 per doz. By express, 20c each; \$2.00 per doz.

Hollyhock

Double. Very large, double flowers borne profusely during a long season in summer. Much superior to the old-fashioned Hollyhocks. Plants come in seven separate colors: Maroon, pink, red, rose, salmon, white, and yellow. 6 to 8 ft. Postpaid, 25c each; \$2.25 per doz. By express, 20c each; \$2.00 per doz.

Single. The old-fashioned Hollyhocks, much improved in size and purity of color. In mixed colors only. 6 to 8 ft. Postpaid, 25c each; \$2.25 per doz. By express, 20c each; \$2.00 per doz.

Iberis . Hardy Candytuft

Gibraltarica. A beautiful, low-growing plant with dark evergreen foliage, completely covered in April, May, and June with clusters of dainty lavender-pink flowers. Valuable for borders and rock gardens, also for cutting. 10 in.

Sempervirens. An especially fine rock-plant of very dwarf growth (about 6 inches high), with masses of white flowers in May.

Postpaid, 30c each; \$2.75 per doz. By express, 25c each; \$2.50 per doz.

Incarvillea . Hardy Gloxinia

Delavayi. Produces large, rich, gloxinia-like flowers, rose-colored with deep yellow throats, on long stems in June and July. Grows well in either sun or shade. 15 to 18 in. Postpaid, 35c each; \$3.25 per doz. By express, 30c each; \$3.00 per doz.

Westminster, Md., June 8, 1930.

Mr. Harry L. Squires,
Hampton Bays, N. Y.

Dear Sir:

The Zinnias arrived in fine condition and look as if they would surely grow. Thank you very much.

Very truly,

C. L. Mourer.

Iris Germanica . German Iris

One of the our finest plants. Perfectly hardy, it grows and blooms luxuriantly with very little care, even in the poorest soil. Plants that are well established will produce from 50 to 100 spikes of blooms in a season. They bloom in May and June. 2 to 2½ ft.

Caprice. A perfect gem and one of the freest flowering. Immense blooms of solid violet-blue.

Celeste. Pure celestial blue throughout, shading to porcelain; large, open flowers.

Her Majesty. Standards bright lavender-rose; falls crimson over white. Large. Probably the handsomest of the moderately priced "pink" varieties. Especially effective when planted in masses for color effect.

King. Standards lemon-yellow; fall-deep satiny brown, with broad margin of golden yellow. Very large and very brilliant in color.

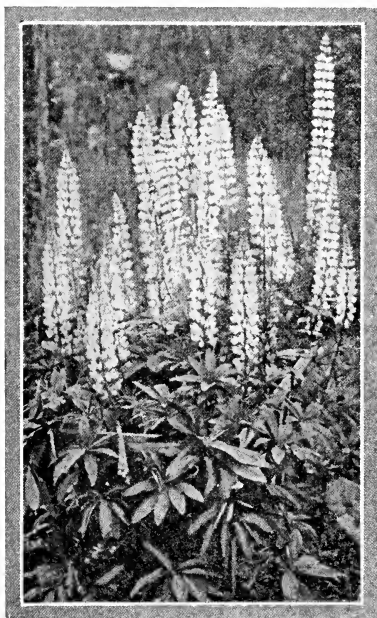
Lohengrin. Foliage and flowers of gigantic size, with petals 2 inches wide. A deep violet-mauve.

Pallida Dalmatica. This is the true type of Pallida Dalmatica which is one of the most attractive and popular varieties. Flowers large, both standards and falls being clear lavender blue, shading to pale silvery blue at the base, and sweetly scented. Grows over 3 feet high.

Postpaid, 20c each; \$2.75 per doz. By express, 25c each; \$2.50 per doz.

Iris Kaempferi . Japanese Iris

Nothing among hardy flowers is more truly grand than the Japanese Iris. The flowers are of immense size, from 6 to 8 inches in diameter, and of the most beautiful colors and combinations of colors. They begin blooming about the middle of June and continue for a month. Valuable for cut-flowers. Plants are of the finest varieties, mixed. Postpaid, 30c each; \$2.75 per doz. By express, 25c each; \$2.50 per doz.



Lupinus—See page 10

German Iris
(Caprice)**Iris Sibirica . Siberian Iris**

Blue. Large, clear blue flowers on stout, stiff stems. Vigorous grower and very free bloomer. One of the best Irises for cutting. 3 ft. Postpaid, 30c each; \$2.75 per doz. By express, 25c each; \$2.50 per doz.

Lathyrus . Everlasting Sweet Pea

Latifolius. A beautiful perennial climbing plant growing about 8 to 10 feet high. Produces clusters of large flowers on long stems all summer and fall. One of the prettiest perennials and one of the best for cut-flowers. Plants are in separate colors of pink, rosy red and white, also in mixed colors. Postpaid, 30c each; \$2.75 per doz. By express, 25c each; \$2.50 per doz.

Lavandula . Lavender

Vera (Sweet Lavender). Delightfully fragrant blue flowers in June and July. When cut and dried, they retain their fragrance for a long time. 1 to 1½ ft. Postpaid, 30c each; \$2.75 per doz. By express, 25c each; \$2.50 per doz.

Liatris**(Blazing Star; Gay Feather)**

Pycnostachya. Showy, attractive native plants, succeeding anywhere, producing large spikes of beautiful, lavender-pink flowers from July to September. 5 to 6 ft. Postpaid, 30c each; \$2.75 per doz. By express, 25c each; \$2.50 per doz.

Rockaway, N. J., June 4, 1930.

Mr. Harry L. Squires,
Hampton Bays, N. Y.

Dear Sir:

Received the plants yesterday in excellent condition and was more than pleased with the variety and size. I expected fair-sized plants, of course, but not all in bud and ready to bloom as were those I received; and the prompt shipment gives me ample time to set them out carefully before going away.

Upon returning from my vacation, hope to send you an order for a few of the special plants listed in your catalogue.

Yours very truly,
Mrs. Floyd M. Housewright.



Tiger Lily.

Lilium . Hardy Lilies

Auratum (Gold-banded Japan Lily). Undoubtedly one of the finest Lilies. Its large, graceful, fragrant flowers are composed of six delicate ivory-white petals, thickly studded with chocolate-crimson spots and striped through the center golden yellow. Blooms from July to September. 3 to 5 ft. Postpaid, 55c each; \$5.25 per doz. By express, 50c each; \$5.00 per doz.

Canadense. Our dainty, beautiful native Lily. The graceful, orange-yellow flowers are produced freely on long stems for several weeks in summer. 4 to 6 ft. Postpaid, 30c each; \$2.75 per doz. By express, 25c each; \$2.50 per doz.

Philadelphicum (Orange-cup Lily). A handsome, yellow, cup-shaped flower, spotted maroon and shaded orange at tips of petals. The flowers are held rigidly erect and last a long time. Grows well in poor sandy soil. Blooms in July. 1 to 2 ft. Postpaid, 30c each; \$2.75 per doz. By express, 25c each; \$2.50 per doz.

Regale (Regal Lily). This is admittedly one of the most beautiful of all Lilies. It grows 3 to 5 feet high, and during July and August bears clusters of very fragrant blooms measuring 4 to 6 inches in length and nearly as broad. A very hardy variety that flourishes under very varied conditions. The trumpet-shaped flowers are ivory-white, shaded pink, tinged with canary-yellow at the base of the petals. A very free bloomer. Postpaid, 50c each; \$4.75 per doz. By express, 45c each; \$4.50 per doz.

Lilium—Continued

Superbum (American Turk's-Cap Lily). A beautiful native variety, with bright reddish orange, spotted blooms in August. Sometimes has as many as 40 flowers in a cluster. 3 to 6 ft. Postpaid, 35c each; \$3.25 per doz. By express, 30c each; \$3.00 per doz.

Tigrinum splendens (Tiger Lily). Produces large flowers of bright, orange-red, spotted with black. It is a free bloomer, and one of the finest Hardy Lilies. Blooms for several weeks in late summer and fall. 4 to 5 ft.

Postpaid, 35c each; \$3.25 per doz. By express, 30c each; \$3.00 per doz.

Lily-of-the-Valley. See *Convallaria*

Linaria

Dalmatica. Produces spikes of golden yellow blossoms, much like snapdragons, from early June to late August. One of the finest perennials and a good cut-flower. 1 to 1½ ft. Postpaid, 30c each; \$2.75 per doz. By express, 25c each; \$2.50 per doz.

Linum . Flax

Perenne. Light, graceful foliage and large blue flowers. Blooms freely all summer. 2 ft. Postpaid, 30c each; \$2.75 per doz. By express, 25c each; \$2.50 per doz.

Lobelia . Indian Paint Brush

Cardinalis (Cardinal Flower). Rich fiery cardinal flowers, borne in dense spikes during August and September. Each plant producing from ten to fifteen spikes. Very showy. 2 to 2½ ft.

Syphilitica (Great Blue Lobelia). Similar in growth to *L. cardinalis*, but the flowers are blue, striped with white. 2 to 2½ ft.

Postpaid, 30c each; \$2.75 per doz. By express, 25c each; \$2.50 per doz.

Lunaria . Honesty

A popular plant which is grown for the round, silvery, paper-like parts of the seed pods. These are dried for winter bouquets. Postpaid, 30c each; \$2.75 per doz. By express, 25c each; \$2.50 per doz.

Lupinus . Hardy Lupine

These are classed among the most beautiful of hardy flowers and are becoming more popular each year. Long spikes of beautiful pea-shaped flowers on 3-foot stems, are produced freely during May and June. Splendid cut-flowers. Very hardy. Will grow in shade. Plants are in separate colors of blue, rose and white. Postpaid, 30c each; \$2.75 per doz. By express, 25c each; \$2.50 per doz.

Lychnis

(Campion; Lamp Flower)

Chalcedonica. A fine old-fashioned plant bearing large heads of vivid scarlet flowers from June to September. 3 ft.

Haageana. Brilliant orange-red flowers nearly 2 inches across, in May & June. 1 ft. Postpaid, 30c each; \$2.75 per doz. By express, 25c each; \$2.50 per doz.

Lythrum . Rose Loosetrife

Roseum superbum. Large spikes of pretty rose-colored flowers produced freely during July and August. Very showy. 3 to 4 ft. Postpaid, 30c each; \$2.75 per doz. By express, 25c each; \$2.50 per doz.

Malva . Musk Mallow

Large, single, sweet-scented, rose-colored flowers. 2 inches across, produced very freely in clusters from June to September. A very showy border plant. 1 to 1½ ft. Postpaid, 30c each; \$2.75 per doz. By express, 25c each; \$2.50 per doz.

Mertensia . Blue Bells

Virginica. Drooping panicles of beautiful light blue flowers in May and June, changing to clear pink. One of the finest spring flowers. It grows well in partial shade, and is the finest companion plant for the early light colored narcissus that we know. Plant them together liberally. 1 to 1½ ft. Postpaid, 30c each; \$2.75 per doz. By express, 25c each; \$2.50 per doz.

Monarda . Bergamot

Cambridge Scarlet. Showy plants with aromatic foliage and producing brilliant crimson-scarlet flowers during July and August. 2 to 3 ft.

Postpaid, 30c each; \$2.75 per doz. By express, 25c each; \$2.50 per doz.

Myosotis . Forget-me-not

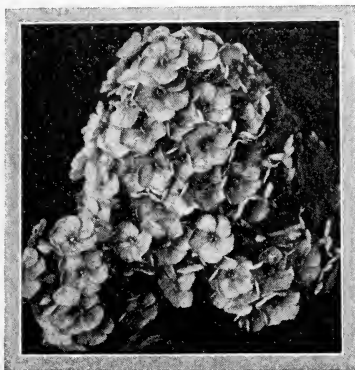
Alpestris. A beautiful pink Forget-me-not.

Palustris semperflorens (Everblooming Forget-me-not). A lovely little hardy plant with small, pale blue flowers from early summer until late fall. 4 to 8 in.

Postpaid, 30c each; \$2.75 per doz. By express, 25c each; \$2.50 per doz.

Nepeta

Mussini. An excellent plant for any position, but especially useful in the rock-garden. Forms dense tufts of very pretty foliage with masses of small light violet-blue flowers during July and August. 1 to 1½ ft. Postpaid, 35c each; \$3.25 per doz. By express, 30c each; \$3.00 per doz.



Hardy Phlox
(E. P. Struthers)—See page 12

Oenothera . Evening Primrose

Missouriensis. Succeeds equally well in sun or shade and is covered with large, golden flowers from June to August. 1 ft. Postpaid, 30c each; \$2.75 per doz. By express, 25c each; \$2.50 per doz.

Pachysandra . Japanese Spurge

Terminalis. This is a trailing plant, 6 to 8 inches high, forming broad mats of bright, glossy green foliage and small spikes of flowers during May and June. A valuable ground-cover that will grow well in either sunlight or dense shade, and the only plant that will thrive under pine trees. Postpaid, 30c each; \$2.75 per doz. By express, 25c each; \$2.50 per doz.

Pardonanthus . Blackberry Lily

Chinensis. Bright orange, lily-like flowers on long stems during July and August, followed in September by seeds that resemble blackberries. 3 to 4 ft. Postpaid, 35c each; \$3.25 per doz. By express, 30c each; \$3.00 per doz.

Pentstemon

Barbatus Torreyi. One of the prettiest and hardiest perennials. Produces long spikes of brilliant scarlet flowers of a very dainty type all summer. Very good for cuttings. 4 to 5 ft. Postpaid, 30c each; \$2.75 per doz. By express, 25c each; \$2.50 per doz.

Double Peonies

The varieties named below are among the best and most popular. All bloom during May and June.

Edulis Superba. The famous Memorial Day Peony. Large, fragrant bright rosy pink flowers. A free bloomer.

Festiva Maxima. The most popular white Peony. A tall, vigorous grower, and free and early bloomer. Color pure white, flecked with crimson at center.

Fragrans. Large, full, very fragrant, deep rose flowers. Free bloomer.

Marguerite Gerard. Very light salmon-pink. Large, compact, rose type. Late.

Rubra Superba. Late. Large, full, double flowers of rich, deep, brilliant crimson. The best keeper of the Peony family. Fragrant.

Postpaid, 65c each; \$6.25 per doz. By express, 60c each; \$6.00 per doz.

Hardy Phlox

The Phlox is one of the very best hardy plants. It succeeds in almost any soil, blooms profusely through a long season, and lives for many years. Grows 2 to 3 feet high and is very effective in any situation. The varieties named below are among the very choicest:

Champs Elysee. Fine rich purple.

Europa. Pure white with crimson-carmine eye. Flowers and trusses very large.

Ferdinand Cortez. Deep crimson, overlaid coppery.

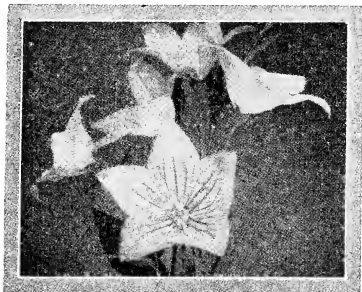
L'Esperance. Lavender-pink with lighter center. Tall. Blooms very freely through a long season.

Miss Lingard. Pure white. One of the most popular varieties. Blooms from May to October.

Mrs. Chas. Dorr. A beautiful pink, slightly tinged lavender.

Rheinlander. Deep salmon-pink, with flowers and trusses of immense size.

(Continued on Page 12.)



Platycodon—See page 13

Hardy Phlox—Continued

Riverton Jewel. A lovely mauve-rose illuminated by a brilliant carmine-red eye.

R. P. Struthers. Bright rosy carmine, with claret-red eye.

Sir Edwin Landseer. Very bright crimson; large trusses. A vigorous grower.

Thor. A beautiful and lively shade of deep salmon-pink, suffused and overlaid with a scarlet glow; has aniline-red eye.

Von Lassburg. Splendid pure white. Very large flowers and trusses; very free bloomer.

B. Comte. Brilliant rich French purple.

Von Hochberg. Brilliant blood red. Large, individual flowers. One of the finest red varieties.

Prices of varieties named above, postpaid, 35c each; \$3.25 per doz. By express, 30c each; \$3.00 per doz.

Deutschland. Unquestionably the brightest red Phlox yet introduced; brilliant Oriental-red with orange suffusion and crimson eye.

Elizabeth Campbell. Bright salmon-pink, with lighter shadings and dark red eye. One of the very finest.

Hindenburg or Commander. A beautiful new variety. Rich crimson-red with darker eye. The most striking of Phloxes. Large florets and trusses.

Jules Sandeau. Large trusses and very free-flowering; pure watermelon-pink; rapid grower. One of the choicest varieties.

Mrs. Milly van Hoboken. Bright pink with a delicate mauve suffusion. Very large florets and trusses. One of the very best pink varieties.

Wanadis. Lavender-blue with crimson eye. Flowers and trusses very large. Free bloomer. One of the most attractive and popular varieties.

Prices of varieties named above, postpaid, 40c each; \$3.75 per doz. By express, 35c each; \$3.50 per doz.

Phlox divaricata canadensis

A beautiful native species, which is worthy of extensive planting, commencing to bloom in early April and continuing through May, with large, fragrant lavender flowers on long stems. 1 ft. Postpaid, 30c each; \$2.75 per doz. By express, 25c each; \$2.50 per doz.

Phlox ovata carolina

(Mountain Phlox)

Bears masses of rosy red flowers from May to July. 12 to 15 in. Postpaid, 35c each; \$3.25 per doz. By express, 30c each; \$3.00 per doz.

Phlox pilosa . Prairie Phlox

Produces great masses of beautiful crimson flowers in May and June. 1 ft. Postpaid, 30c each; \$2.75 per doz. By express, 25c each; \$2.50 per doz.

Phlox subulata

(Moss or Mountain Pink)

An early, spring-flowering type, with pretty, moss-like, evergreen foliage which, from April to June, is hidden under the masses of beautiful bloom. An excellent plant for the rockery, for the border, and for carpeting the ground. Plants are in separate colors of pink, lilac, and white. Postpaid, 30c each; \$2.75 per doz. By express, 25c each; \$2.50 per doz.

Physalis

(Chinese Lantern Plant)

Francheti. An ornamental variety of the Winter Cherry, forming dense bushes about 2 feet high, producing freely its bright orange-scarlet lantern-like fruits which can be cut and dried for floral decorations during winter. Postpaid, 30c each; \$2.75 per doz. By express, 25c each; \$2.50 per doz.

Physostegia . False Dragonhead

Virginiana. One of the most beautiful perennials, forming dense bushes 4 to 6 feet high, bearing many spikes of delicate tubular flowers not unlike a gigantic heather. The bright but soft pink blooms that are borne from early July until September, are good for cutting. Postpaid, 30c each; \$2.75 per doz. By express, 25c each; \$2.50 per doz.

Hardy Pink

An old favorite, bearing sweet, clove-scented, flowers in great profusion all summer. Good for cut flowers and as a rock plant. 1 ft. Postpaid, 30c each; \$2.75 per doz. By express, 25c each; \$2.50 per doz.



Iceland Poppy—See page 13

Platycodon . Japanese Bellflower

Grandiflorum. One of the prettiest perennials. Produces its intense, dark blue, star-like flowers all summer. 1½ ft. Postpaid, 30c each; \$2.75 per doz. By express, 25c each; \$2.50 per doz.

Plumbago

Larpentae. One of the most desirable border and rock plants. It is of dwarf, spreading habit, growing 6 to 8 inches high, and covered with deep blue flowers during the summer and fall months. Postpaid, 35c each; \$3.25 per doz. By express, 30c each; \$3.00 per doz.

Polemonium . Jacob's Ladder

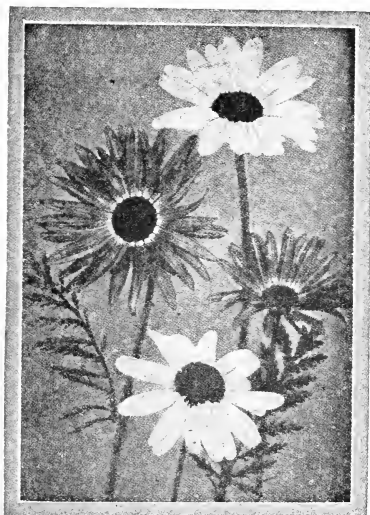
Caeruleum. Produces showy, sky-blue, bell-shaped flowers on erect stems during June and July. Very attractive foliage. Grows best in partial shade, but does well in sun. 1 to 1½ ft. Postpaid, 30c each; \$2.75 per doz. By express, 25c each; \$2.50 per doz.

Polygonatum . Solomon's Seal

Giganteum (P. commutatum). Exceedingly ornamental in foliage and flower. Grows 3 feet high and bears pendant, creamy white flowers in May and June. Grows well in shade. Postpaid, 30c each; \$2.75 per doz. By express, 25c each; \$2.50 per doz.

Iceland Poppy

A plant of neat habit, forming a tuft of bright green, fern-like foliage, from which great numbers of flowers are thrown up on stems from 1 to 1½ feet long. Very pretty cup-shaped flowers from May until late fall. Plants are in separate colors of orange-scarlet, yellow, and white. Postpaid, 30c each; \$2.75 per doz. By express, 25c each; \$2.50 per doz.



Pyrethrum—See page 14



Rudbeckia—See page 14

Oriental Poppy

Crimson-Scarlet. For a gorgeous display of rich and brilliant coloring, nothing can equal the Oriental Poppy. The flowers are from 5 to 7 inches across, of intense crimson-scarlet, and are freely produced on long stems during May and June. Always attractive, wherever placed. 3 to 3½ ft. Postpaid, 30c each; \$2.75 per doz. By express, 25c each; \$2.50 per doz.

Mrs. Perry. Very large flowers similar to the above but of a beautiful shade of salmon-rose. Postpaid, 40c each; \$3.75 per doz. By express, 35c each; \$3.50 per doz.

Perry's White. A fine satiny white with a crimson-maroon blotch at the base of each petal. Very large. Postpaid, 45c each; \$4.25 per doz. By express, 40c each; \$4.00 per doz.

Princess Victoria Louise. Very large blooms of bright salmon-rose. Free blooming and very showy. 2 to 3 ft. Postpaid, 40c each; \$3.75 per doz. By express, 35c each; \$3.50 per doz.

Potentilla . Cinquefoil

Atrosanguinea. Brilliant single or double rosy red flowers produced very freely from June to August. Succeeds in any soil. 1½ ft. Postpaid, 30c each; \$2.75 per doz. By express, 25c each; \$2.50 per doz.

Hardy Primula . Primrose

These are among the most beautiful and interesting of our early spring flowers. They grow well in partial shade.

Veris (English Cowslip). Various shades of lilac, purple, violet, as well as a wide range of buff, orange, salmon, and rich reds. Plants are in mixed colors only. Postpaid, 35c each; \$3.25 per doz. By express, 30c each; \$3.00 per doz.

Vulgaris (English Primrose). An old favorite and one of the earliest spring flowers. Bright canary-yellow; very fragrant.

Postpaid, 40c each; \$3.75 per doz. By express, 35c each; \$3.50 per doz.



Scabiosa
(*Caucasica*)

Pyrethrum . Painted Daisy

Roseum hybridum. A fine old-fashioned perennial extensively grown for cut-flowers. It has attractive fern-like foliage and graceful, daisy-like flowers of many shades of pink and rose on long stems. Blooms profusely from May to July. 1½ to 2 ft. Postpaid, 30c each; \$2.75 per doz. By express, 25c each; \$2.50 per doz.

Ranunculus . Buttercup

Repens. A pretty, double-flowering, bright golden yellow Buttercup, bearing masses of flowers during May and June. 2 ft. Postpaid, 30c each; \$2.75 per doz. By express, 25c each; \$2.50 per doz.

Rudbeckia . Coneflower

Purpurea (*Echinacea purpurea*). Large, drooping petals of a pleasing reddish purple, with a large cone-shaped center of brown. Flowers about 4 inches across. Blooms freely from July to late October. Excellent for bedding, for grouping and for cut-flowers. 2 to 3 ft. Postpaid, 30c each; \$2.75 per doz. By express, 25c each; \$2.50 per doz.

Salvia . Meadow Sage

Azurea (*California Blue Sage*). During August and September it produces pretty sky-blue flowers in the greatest profusion. 3 to 4 ft.

Farinacea. Produces long spikes of very attractive light blue flowers from July to frost. Excellent for combining with other cut-flowers. 2 to 3 ft.

Turkestanica. Very decorative, sweet-scented foliage and showy whorls of white surrounded by pale pink.

Postpaid, 30c each; \$2.75 per doz. By express, 25c each; \$2.50 per doz.

Saponaria

Ocymoides splendens. A very useful plant for rockery or border. Produces, from May to August, masses of pretty, small, bright rosy pink flowers. 8 in. Postpaid, 30c each; \$2.75 per doz. By express, 25c each; \$2.50 per doz.

Scabiosa . Mourning Bride

Caucasica. A soft and charming shade of lavender. Flowers on long stems are produced freely from June until September. A wonderful cut-flower and lasts a long time when placed in water. One of the very choicest perennials. 1½ to 2 ft. Postpaid, 35c each; \$3.25 per doz. By express, 30c each; \$3.00 per doz.

Sedum . Stonecrop

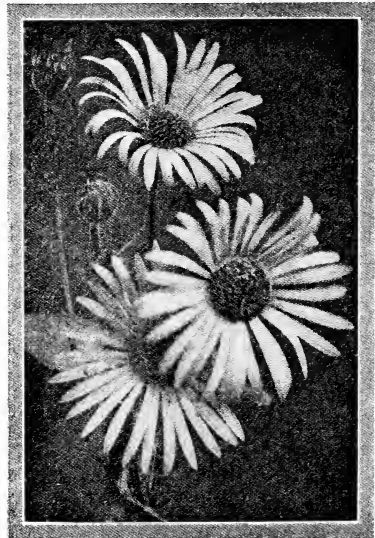
Acre (**Golden Moss**). A long-growing plant with dark green foliage and yellow flowers. Much used for the rockery and for carpet-bedding.

Spectabile. One of the prettiest erect-growing species. Broad light green foliage and immense heads of showy rose-colored flowers. Considered one of the best late fall-blooming plants. 1½ ft.

Postpaid, 30c each; \$2.75 per doz. By express, 25c each; \$2.50 per doz.

Sempervivum . House Leek

Tectorum. An interesting plant producing broad rosettes of leaves with reddish brown tips. The flowers are light red. Good for rockeries, dry banks, and carpeting the ground. 1 foot. Postpaid, 35c each; \$3.25 per doz. By express, 30c each; \$3.00 per doz.



Shasta Daisy—See page 15

Sidalcea

Rosy Gem. Erect-growing, branching plants, 2 to 3 feet high, producing, during June and July, pretty, mallow-like flowers about an inch in diameter and of a beautiful bright rose color. One of the finest perennials. Postpaid, 30c each; \$2.75 per doz. By express, 25c each; \$2.50 per doz.

Silene

Orientalis. A charming plant for the rock garden or border, producing round heads of bright pink flowers in July and August, 1½ ft. Postpaid, 30c each; \$2.75 per doz. By express, 25c each; \$2.50 per doz.

Shasta Daisy

Alaska. Luther Burbank's famous Hybrid Daisy. It is remarkable for its large size, grace, and beauty. The flowers, with numerous long petals of pure white and small bright yellow centers, are produced freely on long stems from July to October. Valuable for cutting, 2 ft. Postpaid, 30c each; \$2.75 per doz. By express, 25c each; \$2.50 per doz.

Spiraea . Meadowsweet

Filipendula (*Filipendula hexapetala*). A fine border plant with pretty fern-like foliage and feathery plumes of white flowers on long stems during July and August. Fine for cutting, 2 ft. Postpaid, 35c each; \$3.25 per doz. By express, 30c each; \$3.00 per doz.

Statice . Sea Lavender

Latifolia. One of the very prettiest hardy plants. Produces large feathery heads of minute lavender-blue flowers from July to September, which are fine for mixing with other cut-flowers and may be dried for winter bouquets, 1 to 1½ ft. Postpaid, 30c each; \$2.75 per doz. By express, 25c each \$2.50 per doz.

Stokesia . Cornflower Aster

Cyanea. A beautiful native plant, bearing freely, from June to September, handsome cornflower-like blossoms 4 to 5 inches across. Flowers are a rich lavender-blue and very good for cutting, 1½ ft. Postpaid, 30c each; \$2.75 per doz. By express, 25c each; \$2.50 per doz.

Sweet William**(*Dianthus barbatus*)**

A well-known, attractive, free-flowering perennial which during June and July is entirely covered with brilliant, fragrant flowers. Excellent for bedding, for borders, and for cutting. Plants are in separate colors of Scarlet, Newport Pink, and White, also Mixed, including these and many other rich colors. 2 to 2½ ft. Postpaid, 30c each; \$2.75 per doz. By express, 25c each; \$2.50 per doz.

Everblooming Sweet William**(*Dianthus latifolius atrococcineus fl.-pl.*)**

A beautiful variety, producing masses of deep crimson, double flowers throughout the entire season. Postpaid, 30c each; \$2.75 per doz. By express, 25c each; \$2.50 per doz.

**Tritoma****Thalictrum . Meadow Rue**

Adiantifolium. A beautiful variety with foliage like the maidenhair fern and miniature white flowers in June. 3 ft. Postpaid, 30c each; \$2.75 per doz. By express, 25c each; \$2.50 per doz.

Dipterocarpum. One of the real gems among hardy plants. A pretty and distinct species, with flowers of a charming shade of violet-mauve which is brightened by a bunch of lemon-yellow stamens and anthers. The dainty, graceful sprays of flowers, elegantly arranged on long stems, are produced during August and September, and are invaluable for cutting. Grows well in shade. 4 ft. Postpaid, 40c each; \$3.75 per doz. By express, 35c each; \$3.50 per doz.

Glaucum. Graceful, columbine-like, blue-gray foliage, and heads of bronzy yellow, fragrant flowers in July. 3 to 4 ft.

Postpaid, 35c each; \$3.25 per doz. By express, 30c each; \$3.00 per doz.

Trillium**(Wood Lily; Wake Robin)**

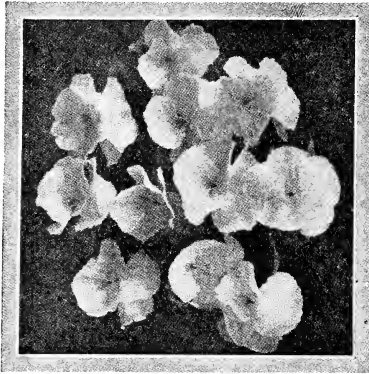
Grandiflorum. Large, pure white flowers in early spring. Grows well in shade or in wet places. 1½ ft. Postpaid, 20c each; \$1.75 per doz. By express, 15c each; \$1.50 per doz.

Tradescantia . Spiderwort

Virginiana. Grows about 2 feet high and produces a succession of pretty blue flowers all summer. A very free bloomer. Postpaid, 30c each; \$2.75 per doz. By express, 25c each; \$2.50 per doz.

Tritoma**(Red-Hot Poker; Flame Flower; Torch Lily)**

Early Hybrids. A splendid and showy bedding plant. Stout stems, from 3 to 4 feet high, are crowned with large spikes or heads of rich, vivid orange-scarlet, producing a grand effect when planted singly or in masses. Blooms from August to October. 3 to 4 ft. Postpaid, 30c each; \$2.75 per doz. By express, 25c each; \$2.50 per doz.



Viola - Jersey Gem

Trollius . Globe Flower

Europaeus. Desirable, free-flowering plants, bearing their giant bright yellow, buttercup-like blossoms on stems 1 to 2 feet high from May until August. Grows well in partial shade. Postpaid, 50c each; \$4.75 per doz. By express, 45c cents; \$4.50 per doz.

Valeriana . Valerian

Coccinea. Showy heads of shell-pink and old-rose flowers from June to October. 3 ft. Postpaid, 30c each; \$2.75 per doz. By express, 25c each; \$2.50 per doz.

Vernonia . Iron Weed

Altissima. Grows about 3 feet high, and produces beautiful violet-blue flowers during August and September. Postpaid, 30c each; \$2.75 per doz. By express, 25c each; \$2.50 per doz.

Veronica . Speedwell

Amethystina. Produces beautiful spikes of rich gentian-blue flowers in June and July. 4 to 6 in. Postpaid, 30c each; \$2.75 per doz. By express, 25c each; \$2.50 per doz.

Longifolia subsessilis. One of the handsomest blue-flowering plants. Perfectly hardy and increases in strength and beauty each year. Spikes completely studded with beautiful blue flowers; fine for cutting. 2 ft. Postpaid, 35c each; \$3.25 per doz. By express, 30c each; \$3.00 per doz.

Spicata. Long spikes of attractive violet-blue flowers produced freely from June to August. 18 inches. Postpaid, 30c each; \$2.75 per doz. By express, 25c each; \$2.50 per doz.

Vinca

(Periwinkle; Trailing Myrtle)

Minor. A trailing evergreen plant much used for carpeting the ground under shrubs or trees or in shady places. Postpaid, 25c each; \$2.25 per doz. By express, 20c each; \$2.00 per doz.

Viola . Tufted Pansy

Cornuta. (Perennial Everblooming Pansy). The most free-flowering perennial, blooming continuously from May until November. While its flowers are not quite as large as Pansies, they have the same rich colors and are produced in great profusion. Plants are in separate colors of blue and yellow; also mixed including these and many other colors. Postpaid, 30c each; \$2.75 per doz. By express, 25c each; \$2.50 per doz.

Jersey Gem. The finest and most valuable Viola. Succeeds in any good garden soil and blooms practically without a break from early May to the end of the season. The flowers are pure violet without the slightest shading and borne on good stems about 6 inches long, making it a good cut-flower as well as a most desirable plant for the border. Postpaid, 35c each; \$3.25 per doz. By express, 30c each; \$3.00 per doz.

Hardy Violet

Pedata (Bird's-Foot Violet). A native variety with finely cut foliage and showy blue flowers.

Pubescens (Yellow Violet). Pretty yellow flowers. Grows well in either sun or shade.

Postpaid, 30c each; \$2.75 per doz. By express, 25c each; \$2.50 per doz.

Yucca . Adam's Needle

Filamentosa. The finest hardy ornamental foliage and flowering plant. Its broad sword-like foliage and tall, branched spikes of large, fragrant, drooping, creamy-white flowers during June and July make it an effective plant for all positions. 5 to 6 ft. Postpaid, 35c each; \$3.25 per doz. By express, 30c each; \$3.00 per doz.



Trollius—Globe Flower

Hardy Plants For Shady Positions

The following hardy plants will grow in shade, partial shade, or full sunlight.

Aconitum	Digitalis	Pachysandra
Actaea	Fern	Phlox divaricata
Ajuga	Funkia	Platycodon
Anemone	Gentian	Polemonium
Aquilegia	Geranium	Polygonatum
Arabis	Hemerocallis	Primula
Arisaema	Hepatica	Sedum
Bellis	Heuchera	Spiraea filipendula
Caltha	Lilies	Thalictrum
Camassia	Lily-of-the-Valley	Tridascantia
Campanula carpatica	Lobelia	Trillium
Campanula rotundifolia	Lupinus	Trollius
Cimicifuga	Mertensia	Vinca
Cypripedium	Monarda	Viola
Dicentra	Myosotis	

Hardy Plants For Rock-Gardens

Alyssum	Hellanthenum	Platycodon
Arabis	Hepatica	Flumbago
Armeria	Heuchera	Polemonium
Aubrietia	Iberis	Poppy, Iceland
Callirhoe	Lavandula	Primula
Campanula carpatica	Lily-of-the-Valley	Ranunculus
Cheiranthus	Linum	Saponaria
Cimicifuga	Lychnis Haageana	Sedum
Dicentra eximia	Mertensia	Sempervivum
Dodecatheon	Myosotis	Silene
Fern	Nepeta	Valeriana
Funkia	Oenothera	Veronica amethystina
Gentian	Phlox divaricata	Vinca
Geranium	Phlox pilosa	Viola
Geum	Phlox subulata	Yucca
Gypsophila repens	Pink, Hardy	

Annual Flower Plants

These plants can be supplied from May until August. Pansies can be supplied from March until December.

Ageratum . Floss Flower

Blue Perfection. Deep amethyst-blue. One of the best bedding plants as it blooms all summer. 1 ft. Postpaid, 75c per doz.; \$4.75 per 100. By express, 60c per doz.; \$4.25 per 100.

Asters

Late-Branching. Very large double flowers of many rich colors. 2 to 3 ft.
Queen of the Market. Similar to Late-Branching, but earlier. 2 ft.

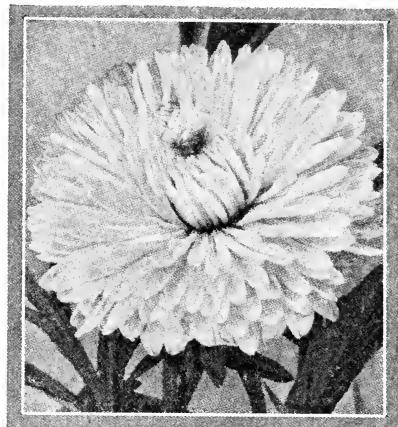
Postpaid, 75c per doz.; \$4.75 per 100. By express, 60c per doz.; \$4.25 per 100.

Blue-Eyed African Daisies

A plant of robust growth, about 2 feet tall, with very pretty, silvery-white, deeply cut foliage and beautiful, daisy-like flowers, 2½ inches across, glistening white with a sky-blue eye surrounded by a narrow yellow zone. The plants can withstand much hot and dry weather and much cold weather. They bloom from early summer until after the ground freezes. Postpaid, 75c per doz.; \$4.75 per 100. By express, 60c per doz.; \$4.25 per 100.

Calendulas

Orange King. Large, double flowers of a rich orange color, from early summer until frost. A good cut-flower. 1 ft. Postpaid, 75c per doz.; \$4.75 per 100. By express, 60c per doz.; \$4.25 per 100.



Aster

Berne, N. Y., July 14, 1930

Mr. Harry L. Squires,
Hampton Bays, N. Y.

Dear Sir:

Received the asparagus roots and strawberry plants, a month ago, in the best condition. Have already had some asparagus and also a few strawberries. Will remember you when we need anything else.

Very truly,
H. Behrens.



African Marigold

Chinese Forget-me-nots

Forms strong plants, 18 to 24 inches high and produces freely, from early summer until late fall, sprays of rich blue forget-me-not-like flowers, delicately sweet-scented, and good for cutting. One of the finest blue flowers. Postpaid, 75c per doz.; \$4.75 per 100. By express, 60c per doz.; \$4.25 per 100.

Dusty Miller

Has silvery foliage. Good for borders and for edging. Postpaid, 30c each; \$2.75 per doz. By express, 25c each; \$2.50 per doz.

Larkspurs

One of the finest annuals, growing about 30 inches high, and producing, all summer, spikes of very attractive colors. Plants are in separate colors of Newport Pink, Dark Blue, and Rosy Red. Postpaid, 75c per doz.; \$4.75 per 100. By express, 60c per doz.; \$4.25 per 100.

Fuchsia

One of the finest pot plants. Grows into a very large bushy plant and can be kept for many years.

Alphand. Large double, lilac mauve corolla and fuchsia red tube. One of the choicest varieties. Postpaid, 30c each; \$2.75 per doz. By express, 25c each; \$2.50 per doz.

Heliotrope

A half-hardy perennial, flowering during the whole season; its delightful perfume makes it a most desirable bouquet flower. It is also a splendid bedding plant.

Lemoine's Giant. The flowers are of great size and beauty, and are blue, violet and other colors. Plants are in mixed colors only. Postpaid, 75c per doz.; \$4.75 per 100. By express, 60c per doz.; \$4.25 per 100.

Marigolds

Double French. Various shades of yellow, orange, brown, mahogany, etc., in very attractive combinations. Blooms all summer and is an especially good bedding plant. 1 ft.

Double African. The blooms are various shades of orange and yellow and are produced freely all summer. Another good bedding plant. 2 to 3 ft.

Postpaid, 75c per doz.; \$4.75 per 100. By express, 60c per doz.; \$4.25 per 100.

Pansies

Giant-Flowering. This class of Pansies leads all others in size, color, and beauty of flower, and are perfectly hardy. The very large blooms frequently measure 3 inches across, and are beautifully marked with many brilliant colors. Plants are in mixed colors only and can be supplied from early spring until late fall. Postpaid, 75c per doz.; \$4.75 per 100. By express, 60c per doz.; \$4.25 per 100.

Parlor Ivy

A very pretty climbing plant, much used for porch boxes and hanging baskets. Postpaid, 30c each; \$2.75 per doz. By express, 25c each; \$2.50 per doz.

Petunias

Balcony Blue. Velvety indigo blue flowers 3 inches across.

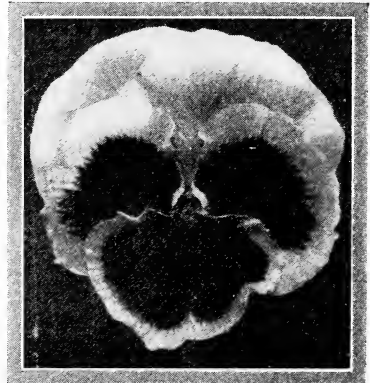
Rosy Morn. Soft rose pink with white throat. A beautiful flower and very popular.

Enchantress Mixture. Includes many beautiful colors and makes a wonderful display.

Postpaid, 75c per doz.; \$4.75 per 100. By express, 60c per doz.; \$4.25 per 100.

Vinca Variegata

The most popular of all trailing house plants, admirably adapted for hanging baskets, vases and porch boxes. The leaves are glossy green, broadly margined a creamy white; flowers blue. Postpaid, 30c each; \$2.75 per doz. By express, 25c each; \$2.50 per doz.



Pansy

Phlox Drummondii

As a bedding plant, this has few equals, and its well-rounded, closely formed flower-heads, with their long stems, make fine cut-flowers. The plant is covered with a mass of brilliant blooms from early summer until fall. Plants are in separate colors of deep rose, rich crimson, primrose and soft lilac; also a choice mixture of these and many other colors. 15 inches. Postpaid, 75c per doz.; \$4.75 per 100. By express, 60c per doz.; \$4.25 per 100.

Queet Anne's Lace Flowers

Grows into an upright, much-branched plant, 2 feet high. Each branch ends in an umbel of sky-blue flowers which spread out in an umbrella-like fashion, crowning each shoot with a beautiful and delicate lace-like head of flowers. Fine for garden display and for cutting, bearing a profusion of flowers from June to September. Lasts a long time when cut. Postpaid, 75c per doz.; \$4.75 per 100. By express, 60c per doz.; \$4.25 per 100.

Salpiglossis

This is one of the finest annuals, and of the easiest culture, growing well in any ordinary soil and in a sunny position. The plants grow from 24 to 30 inches high, and produce freely from midsummer until frost their attractive Gloxinia-like blossoms in a very large and unusual range of colors. They are splendid for cutting, lasting well. Plants are in mixed colors including crimson, primrose, purple and gold, rose and gold and white and gold. Postpaid, 75c per doz.; \$4.75 per 100. By express, 60c per doz.; \$4.25 per 100.

Salvias

Patens. Bears large, broad, tubular-lipped flowers of a most superb rich blue coloring. A splendid bedding plant and can be kept as a house plant. 2 ft.

Splendens. The well-known Scarlet Sage. The richest and most impressive red-flowering bedding plant. It is a bushy plant, 3 to 5 feet high, and, from early July till late fall, bears, in great profusion, long spikes of brilliant fiery scarlet flowers.

Postpaid, 75c per doz.; \$4.75 per 100. By express, 60c per doz.; \$4.25 per 100.

Scabiosas . Pincushion Flowers

Large-Flowering. A very popular flower much used for cutting and for bedding. Grows 24 to 30 inches high and blooms continuously from early July until late fall. The flowers in exquisite shades are borne on very long stems and when cut, keep in perfect condition for nearly a week.

Azure Fairy. Clear lavender-blue.

Crimson. Rich rosy-crimson.

Peach-Blossom. Soft peach-blossom pink.

Mixed. Including the above and many other colors.

Postpaid, 75c per doz.; \$4.75 per 100. By express, 60c per doz.; \$4.25 per 100.

Snapdragons

Giant-Flowered. For gorgeous coloring few flowers can match Snapdragons, and the blooms of this new strain are fully twice the size of the ordinary Snapdragons, the spikes of blooms being from 2 to 3 feet high. As a bedding plant, it blooms continuously and very freely from early summer until frost and, as a cut-flower, few annuals equal it in exquisite beauty and brilliancy of color. The plants are in mixed colors only, including apple-blossom pink; canary yellow, carmine-rose, reddish maroon, scarlet, rose-pink and yellow, mauve-pink, ruby-red, creamy white, salmon, wallflower red, and combinations and blends of these and other colors. Postpaid, 75c per doz.; \$4.75 per 100. By express, 60c per doz.; \$4.25 per 100.

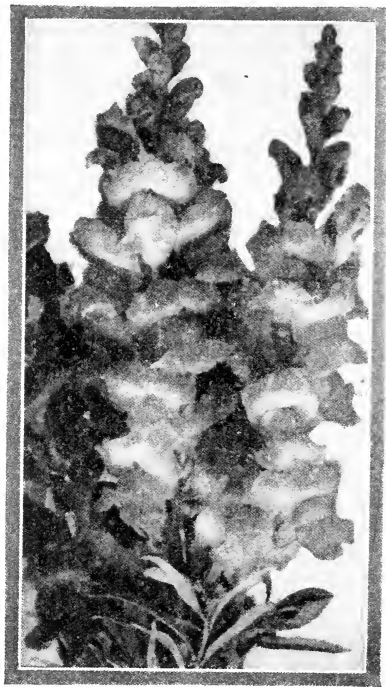
Stocks . Gilliflowers

Large Flowering Ten Weeks. One of the most popular Annuals, either for bedding or pot culture. For brilliancy and diversity of color, fragrance, profusion and duration of bloom, it is unsurpassed. Plants are in mixed colors of blood-red, light blue, bright pink, purple, pure white and canary-yellow. Postpaid, 75c per doz.; \$4.75 per 100. By express, 60c per doz.; \$4.25 per 100.

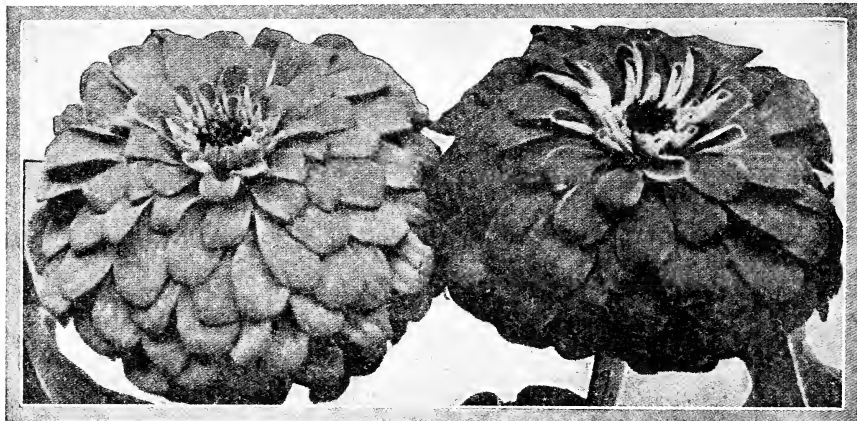
Strawflowers

Straw Flowers are in great demand, not only for the fine effect they give in beds and borders and as cut-flowers, but also because they can be dried for winter bouquets, retaining their brilliant and delicate colors for years. They

Continued on page 20



Snapdragon



Zinnias

Strawflowers—Continued

blooming freely all the time from July until frost. Plants are in mixed colors only, including red, yellow, white, pink, carmine-rose, salmon, violet, burnt-orange and others. 3 ft. Postpaid, 75c per doz.; \$4.75 per 100. By express, 60c per doz.; \$4.25 per 100.

Verbenas

A fine, low-growing, bedding plant, blooming freely from July until late fall. The large trusses of bloom are pink, rose, scarlet, coral pink, white, light and dark blue, and cardinal scarlet. Plants are in mixed colors only. Postpaid, 75c per doz.; \$4.75 per 100. By express, 60c per doz.; \$4.25 per 100.

164 Glenmont Ave., Columbus, O.,
Dec. 13, 1930.

Mr. Harry L. Squires,
Hampton Bays, N. Y.

Dear Sir:

I have received the Barberry plants. They are superior to what I expected for the money—in fact, they are A1, with splendid roots and good tops. They have already recommended you to my neighbors.

Very truly yours,
G. B. Newton.

Zinnias

Giant Double. One of the most brilliant, showy, and satisfactory flowers, and extensively grown, not only for garden decoration, but also for cut-flowers. From early summer until late fall, it bears in great numbers, large, double blooms from 4 to 6 inches across. Grows 4 to 5 feet high. Plants are in separate colors of crimson, rose, salmon, burnt-orange, and canary-yellow; also mixed, including these and other colors. Postpaid, 75c per doz.; \$4.75 per 100. By express, 60c per doz.; \$4.25 per 100.

Cut Strawflowers for Winter Bouquets

These flowers can be supplied from early August until late fall. When dried, they retain their shape and brilliant colors for years.

Cut Straw Flowers, mixed colors, postpaid, \$1.15 per bunch of about 50 flowers. By express, \$1.00 per bunch.

Sprays or branches of Chinese Lanterns (*Physalis*), postpaid, \$1.15 per bunch containing about 50 lanterns. By express, \$1.00 per bunch.

Lawn Grass Seed

One pound of seed is required for a plot 10x20 feet (200 square feet).

Burpee's Fordhook Finest. This seed is unsurpassed for making a smooth, green, velvety lawn with a thick bottom, free from common grasses which are inclined to produce clumps. The various grasses which compose this blend are fine bladed and deep rooting, sure to produce the best results under average conditions of soil and climate met with in America.

Shady Nook. A specially prepared mixture suited for planting under shade trees or in shaded corners which receive but little sunlight and where the general mixtures fail to thrive. It makes a close thick turf.

Sunny South Lawn. A special mixture of grass suited for southern lawns where the general mixtures usually fail to give good results. Thrives in very hot and dry locations.

Postpaid, 65c per pound; \$3.00 per 5 pounds. By express, 60c per pound; \$2.90 per 5 pounds.

10% discount on orders with remittance before March 10, 1931; 5% between March 10 and April 1, 1931.



Darwin Tulips

Bulbs

Begonia, Tuberous-rooted

Double. One of the most gorgeous summer-flowering plants, and particularly valuable for shady places. The flowers which are borne freely from early summer until frost, are of enormous size (from 3 to 5 inches across), exquisite texture, and dazzling colors. They grow best in full or partial shade, either in the garden or in pots and porch-boxes. They are in separate colors, of crimson, pink, salmon, and yellow. 1 to 1½ ft. Postpaid, 45c each; \$4.15 per doz. By express, 40c each; \$4.00 per doz.

Crocus

One of the very earliest spring flowers. Should be planted in the fall. Bulbs are in mixed colors only, including blue, yellow, white, and others. Postpaid, 55c doz.; \$3.90 per 100. By express, 50c per doz.; \$3.75 per 100.

Dahlias

Mixed. An assortment of very choice varieties, not labeled. Many of these are among the finest Dahlias I have ever seen. I am offering them at a low price, and any of my customers who want some extra-choice cut-flowers, and do not care what their names are, will be well pleased with these Dahlias. Postpaid, 30c each; \$3.00 per doz. By express, 25c each; \$2.75 per doz.

Gladiolus

Mixed. This mixture of first-size Gladiolus bulbs includes a large number of very choice varieties and colors. Postpaid, 70c doz.; \$4.25 per 100. By express, 60c doz.; \$4.00 per 100.

Hyalcinth

Mixed. Should be planted in the fall. Bulbs are in mixed colors only, including red, pink, white, blue, yellow, lavender, and others. Postpaid, 25c each; \$2.25 per doz. By express, 20c each; \$2.00 per doz.

Narcissus or Daffodil

Mixed. May be planted in the spring or fall. Various shades of yellow. Postpaid, 25c each; \$2.15 per doz. By express, 20c each; \$2.00 per doz.

Oxalis

Shamrock. A desirable plant for borders, pot-culture, and hanging-baskets. Flowers are bright rose and are produced continuously from early summer until frost. As house plants, they bloom during the winter. Postpaid, 7c each; 50c per doz. By express, 5c each; 40c per doz.

Snowdrops

The first of all spring flowers. Pure white; single. Postpaid, 75c per doz.; \$5.25 per 100. By express, 70c per doz.; \$5.00 per 100.

Tuberose

Double Pearl. A beautiful, pure white, wax-like, very sweet-scented, double flower, growing on tall stems, each stem bearing a dozen or more blossoms. Postpaid, 20c each; \$1.75 per doz. By express, 15c each; \$1.50 per doz.

Tulip

Darwin. Should be planted in the fall. Mixed colors only, including many very choice and beautiful varieties and colors. Postpaid, 80c per doz.; \$1.90 per 100. By express, 70c per doz.; \$4.50 per 100.

10% discount on orders with remittance before March 10, 1931; 5% between March 10 and April 1, 1931.

Roses

POT-GROWN AND FIELD-GROWN BUSHES

I especially recommend pot-grown Roses. They are well-branched two-year-old bushes with extra strong balls of fibrous roots, ready for quick and substantial results when planted out. They are shipped in a growing condition with soil on the roots and can, therefore, be safely planted any time during the season, even during the hot summer months.



Sunburst

Hardy Climbing Roses

The showiest of all flowering vines in June and July. The plants are hardy, the flowers come in deep, rich colors, and the profusion of bloom is incredible.

Climbing American Beauty. Rose-pink. Very free bloomer and grows rapidly.

Crimson Rambler. A rapid grower and produces large clusters of rich crimson flowers until late in the season.

Dorothy Perkins. Soft shell-pink. Flowers profusely in large clusters. Very fragrant and lasting.

Paul's Scarlet Climber. The most popular of all Climbing Roses. Unequaled in brilliancy by any other variety, these are of a vivid scarlet, of large size and are produced in clusters of from 3 to 20 flowers on long, strong stems.

Shower of Gold. Deep golden-yellow and orange flowers borne in splendid trusses forming a mass of beautiful rich bloom. One of the best yellow Climbing Roses.

Postpaid, 85c each; \$8.75 per doz. By express, 75c each; \$8.25 per doz.

Hardy Everblooming Roses

Columbia. A pleasing shade of rose-pink and very fragrant.

Gruss an Teplitz. Rich scarlet, shading to a velvety crimson.

Kaiserin Augusta Victoria. Soft pearly white, slightly tinted lemon in the center; remarkably fragrant.

Hardy Everblooming Roses

(Continued)

Mme. Butterfly. A beautiful blending of bright pink, apricot, and gold.

Mrs. Aaron Ward. Coppery orange in bud, golden orange when partly developed, and pinkish fawn when fully open.

Ophelia. Salmon-pink, shading to rose.

Sunburst. A wonderful giant yellow Rose. The color is superb orange-copper or golden orange, with a deep orange center.

Postpaid, \$1.00 each; \$10.40 per doz. By express, 90c each; \$9.90 per doz.

Hardy Hybrid Perpetual Roses

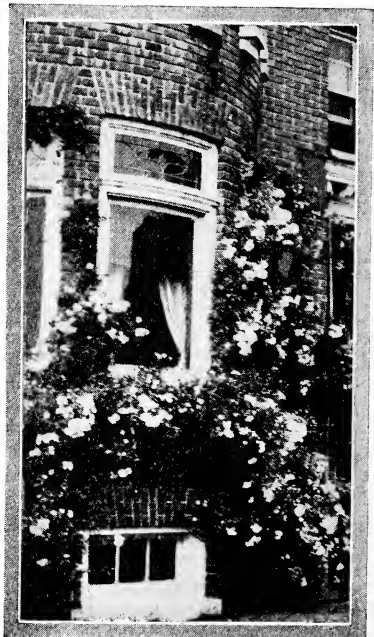
Frau Karl Druscki (Snow Queen). An immense, pure white, perfectly double Rose.

General Jacqueminot. The famous "Jack Rose." Brilliant scarlet-crimson.

Mrs. John Laing. Delicate pink; very fragrant. Blooms all summer.

Paul Neyron. Deep rose-colored blooms of enormous size—probably the largest Rose grown.

(Continued on next page)



Hardy Hybrid Perpetual Roses (Continued)

Ulrich Brunner (Hardy American Beauty). Brilliant cherry-red flowers of immense size.

Postpaid, \$1.00 each; \$10.40 per doz. By express, 90c each; \$9.90 per doz.

Moss Roses

Crimson Globe. Deep crimson; large and full; nicely mossed.

Elizabeth Rowe. Large, deep pink; well mossed.

Mousseline. Pure white; heavily mossed.

Postpaid, \$1.00 each; \$10.40 per doz. By express, 90c each; \$9.90 per doz.

Collections of Rose Bushes

5 Climbing Roses—One each of the five varieties listed, postpaid, \$3.65; by express, \$3.40.

7 Everblooming Roses—One each of the seven varieties listed, postpaid, \$6.20; by express, \$5.90.

5 Hybrid Perpetual Roses—One each of the five varieties listed, postpaid, \$4.40; by express, \$4.15.

Ornamental Shrubs

Barberry

Green-leaved Japanese (*Berberis Thunbergii*). See Hedge Plants, page 25.

Red-leaved Japanese (*B. Thunbergii atropurpurea*). Foliage rich, lustrous, bronzy red. In the fall, the color becomes more brilliant and the leaves are followed by bright scarlet-red berries. One of the very finest shrubs. Plants 12 to 15 inches, postpaid, 85c each; \$8.00 per doz. By express, 75c each; \$7.50 per doz.

Boxwood . *Buxus*

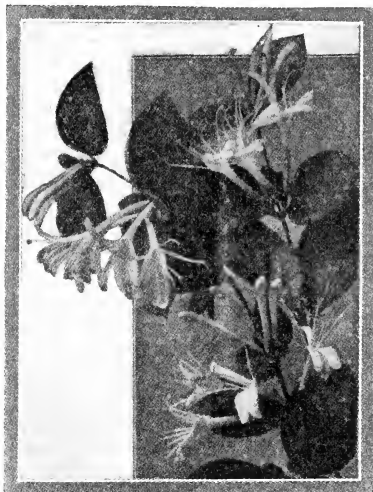
Sempervirens. A popular, valuable, and very hardy evergreen shrub. Much used for formal hedges and on the lawn. Grows 12 to 15 ft. Strong, bushy plants, 6 to 8 in. Postpaid, 75c each; \$6.60 per doz. By express, 60c each; \$6.20 per doz.

Butterfly Bush . *Buddleia*

Produces long, graceful, fragrant violet-mauve flowers freely from June until late fall. Grows 6 to 8 ft. Postpaid, 65c each. By express, 50c each.



Butterfly Bush



Bush Honeysuckle

Deutzia

Scabra crenata fl.-pl. Double pink flowers. June. Grows 6 to 8 ft. Postpaid, 75c each. By express, 60c each.

Dogwood . *Cornus*

White-flowering (*C. florida*). An ornamental tree, growing 15 to 25 feet high, and producing large white flowers in spring and rich crimson foliage in fall. Postpaid, \$1.15 each. By express, \$1.00 each.

Red-flowering (*C. florida rubra*). Produces rich, rosy red flowers in May and June. Grows 15 to 20 ft. Postpaid, \$2.95 each. By express, \$2.75 each.

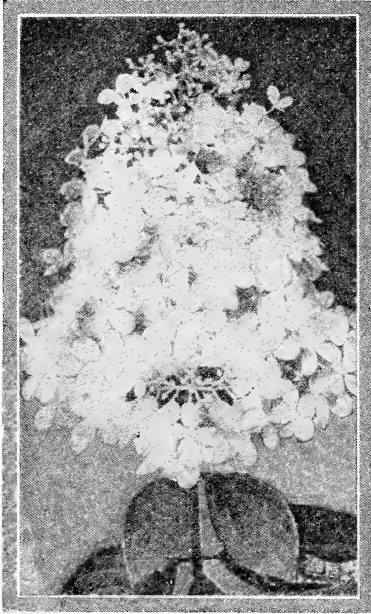
Forsythia

Fortunei (Golden Bell). Covered in early spring, with golden bell-shaped flowers. Grows 8 to 10 ft. Postpaid, 75c each. By express, 60c each.

Honeysuckle . *Lonicera*

Bush (L. tatarica). Fragrant pink flowers in May; waxy, light red berries in late summer. Grows 5 to 8 ft. Postpaid, 75c each. By express, 60c each.

Ornamental Shrubs—Continued



Hydrangea
(*Paniculata grandiflora*)

Hydrangea

Grandiflora alba (Snowball Hydrangea). Very large, snow-white blossoms borne profusely from early June until late July. Grows 4 to 5 ft. Postpaid, 75c each. By express, 60c each.

Paniculata grandiflora. The flowers come in dense pyramidal panicles 9 to 12 inches in length and nearly as broad, are white at first, but gradually change to pink, and remain in good condition for a long time. It blooms from late July until late fall. Grows well in shade; 8 to 9 ft. Postpaid, 75c each. By express, 60c each.

Lilac

Purple. The well-known, old-fashioned Lilac. Large clusters of richly fragrant lilac-colored flowers. Grows 12 to 15 ft.

White. Similar, but pure white. Postpaid, 75c each. By express, 60c each.

Mock Orange

Sweet (*Philadelphus coronarius*). Beautiful pure white flowers of delightful fragrance cover the bush all during June. Grows 5 to 8 ft. Postpaid, 75c each. By express, 60c each.

Quince

Japanese Flowering (*Cydonia Japonica*). Dazzling scarlet flowers in early spring. Grows 4 to 5 ft. Postpaid, 80c each. By express, 65c each.

Rose of Sharon . Althea

A fine old free-flowering shrub, blooming in August and September. Grows 10 to 12 ft. Separate colors of pink, red and white. Postpaid, 75c each. By express, 60c each.

Snowball

Common (*Viburnum opulus sterile*). The popular common white Snowball. Covered with large pendant balls of white flowers in May and June. Postpaid, 85c each. By express, 70c each.

Japanese. One of the choicest hardy shrubs. The perfect balls of pure white flowers are borne in great profusion in May. Postpaid, \$1.05 each. By express, 90c each.

Snowberry

White. Small pink flowers in summer, followed by quantities of large, white, waxy, round berries in autumn and remaining nearly all winter. Grows 5 to 8 ft.

Red. Especially valuable for the beauty of its clusters of red berries which hang on the bush all winter. Grows well in shade. Grows 4 to 5 ft. Postpaid, 75c each. By express, 60c each.

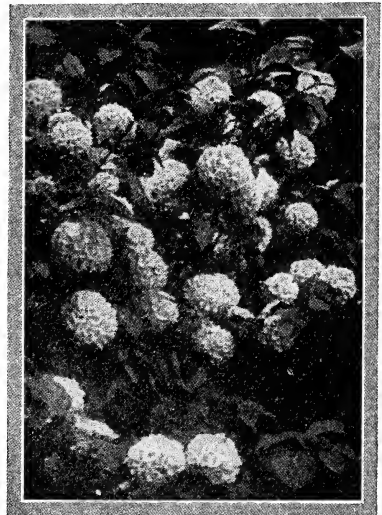
Spiraea

Anthony Waterer. Bright crimson flowers, borne profusely all summer and fall. Grows 2 to 3 ft. Postpaid, 85c each. By express, 70c each.

Billiard. Dense panicles of rosy pink flowers from June to October. Grows 5 to 8 ft. Postpaid, 75c each. By express, 60c each.

Prunifolia (Bridal Wreath). An old favorite; covered with double pure white flowers in May and June. Grows 5 to 8 ft. Postpaid, 90c each. By express, 75c each.

Van Houttei. The grandest of the Spiraeas, with a profusion of graceful white flowers in May and June. Grows 5 to 8 ft. Postpaid, 75c each. By express, 60c each.

**Snowball**

Ornamental Shrubs—Continued

Strawberry, Sweetscented Shrub

(Calycanthus floridus)

An old favorite with double, chocolate-colored flowers of exquisite, aromatic, strawberry-like fragrance, in May. Grows 6 to 8 ft. Postpaid, 95c each. By express, 80c each.

Weigela

Candida. Produces handsome pure white flowers freely during late spring and summer. Grows 5 to 8 ft.

Eva Rathke. The finest Weigela. Flowers of a rich ruby-carmine are produced all summer and fall. Grows 3 to 4 ft.

Rosea. Great masses of deep pink flowers in June. Grows 5 to 8 ft. Postpaid, 85c each. By express, 70c each.

Evergreens

Colorado Spruce (*Picea pungens*)

A magnificent evergreen tree with beautiful bluish green foliage. Its symmetrical shape and conspicuous color make it a striking object in any landscape. Grows 20 to 30 feet high, but can be kept at almost any height by annual pruning. 6 to 8 in. trees postpaid, 75c each. By express, 60c each.

Norway Spruce (*Picea excelsa*)

The time-honored Christmas tree, being extensively used for that purpose. A tall, graceful, picturesque tree reaching a height of 60 feet at maturity and can be kept pruned to any height desired. Pyramidal in shape, with broad, drooping branches at the base; foliage deep green with long, light brown cones. 18 to 24 in., by express, \$1.25 each.

Hedge Plants

Privet

California. The most popular hedge plant. Grows rapidly either in sun or shade. The leaves are a rich green, smooth and shiny.

12 to 18-in. plants, postpaid, 90c per doz.; \$5.25 per 100. By express, 75c per doz.; \$4.50 per 100.

18 to 24-in. plants, postpaid, \$1.25 per doz.; \$7.00 per 100. By express, \$1.00 per doz.; \$6.00 per 100.

Barberry

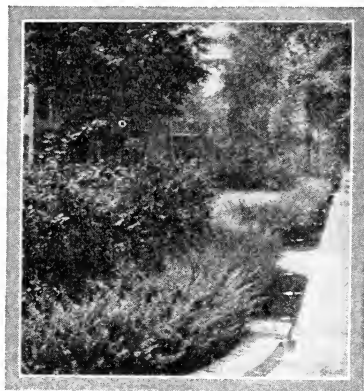
Japanese (*Berberis Thunbergi*). A beautiful hedge plant with drooping branches. The brilliant green foliage turns to a rich crimson in fall. All during the winter the branches carry their bright scarlet berries.

9 to 12-in. plants, postpaid, \$1.25 per doz.; \$6.75 per 100. By express, \$1.00 per doz.; \$6.00 per 100.

12 to 18-in. plants, postpaid, \$2.75 per doz.; \$16.80 per 100. By express, \$2.25 per doz.; \$15.00 per 100.

Barberry—Continued

18 to 24-in. plants, postpaid, \$3.85 per doz.; \$24.00 per 100. By express, \$3.25 per doz.; \$21.00 per 100.

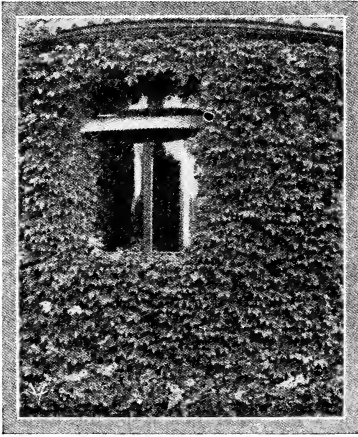


Japanese Barberry

Collection of Ornamental Shrubs

14 Shrubs—1 each of Butterfly Bush, Deutzia, Forsythia, Bush Honeysuckle, Hydrangea paniculata grandiflora, Purple Lilac, Mock Orange, Japanese Flowering Quince, Pink Rose of Sharon, Snowball, White Snowberry, Sireia Prunifolia (Bridal Wreath), Strawberry Shrub, and Weigela rosea. Postpaid, \$8.60; by express, \$8.00.

Hardy Ornamental Vines



Japanese Ivy Bittersweet

American (*Celastrus scandens*). Grows rapidly in sun or shade. Yellow flowers in June, followed in autumn with bright orange-yellow fruit which remains on the plants nearly all winter. Postpaid, 60c each; \$5.30 per doz. By express, 50c each; \$5.00 per doz.

Cinnamon Vine

A very rapid climber with pretty foliage and very fragrant white flowers. Is grown from a tuber and is perfectly hardy. Postpaid, 35c each; \$3.25 per doz. By express, 30c each; \$3.00 per doz.

Clematis

Jackmani. Large flowers of intense violet-purple and 4 to 6 inches across, are produced in great profusion. One of the most beautiful climbing plants. Postpaid, 90c each; \$8.30 per doz. By express, 80c each; \$8.00 per doz.

Paniculata. A beautiful climber; quickly grows to a height of 15 to 20 feet and spreads freely. In August and September it is completely covered with a sheet of fleecy snow-white star-like flowers. Grows well in shade. Postpaid, 55c each; \$4.80 per doz. By express, 45c each; \$4.50 per doz.

Dutchman's Pipe (*Aristolochia Sipho*)

A vigorous and rapid grower with very large heart-shaped deep green leaves. The pipe-shaped brownish colored flowers are always admired. Grows well in either sun or shade. Produces the most dense shade of any climbing vine. Postpaid, 90c each; \$8.30 per doz. By express, 80c each; \$8.00 per doz.

Euonymus

(Evergreen Bittersweet)

Radicans vegeta. A strong-growing vine, particularly desirable because of its dense evergreen foliage and extreme hardiness. Has large, oval leaves and is an evergreen, absolutely hardy wall-cover. Postpaid, 70c each; \$6.30 per doz. By express, 60c each; \$6.00 per doz.

Hop Vines

(*Humulus Lupulus*)

A useful climber. It is a rapid grower and bears a profusion of seedpods suitable for many domestic purposes. Postpaid, 30c each; \$2.75 per doz. By express, 25c each; \$2.50 per doz.

Honeysuckle

Hall's Japanese (*Lonicera Halliana*). A rapid-growing vine, bearing very fragrant white flowers which change to a soft rich yellow. Blooms from May to November. Postpaid, 50c each; \$4.30 per doz. By express, 40c each; \$4.00 per doz.

Ivy

Boston or Japanese (*Ampelopsis Veitchii*). The most popular climbing plant for covering brick, stone, or wood walls. Postpaid, 60c each; \$5.30 per doz. By express, 50c each; \$5.00 per doz.

English (*Hedera helix*). Handsome, evergreen, glossy foliage; useful for covering walls, etc. Grows well in shade. Postpaid, 45c each; \$3.80 per doz. By express, 35c each; \$3.50 per doz.

Kudzu Vine

The most rapid-growing vine in cultivation, often growing 50 feet in a season. Large foliage. Small rosy purple pea-shaped flowers in August. Postpaid, 45c each; \$3.80 per doz. By express, 35c each; \$3.50 per doz.

Lathyrus Latifolius (Everlasting Sweet Pea)

A beautiful climbing plant growing
(Continued on page 27)



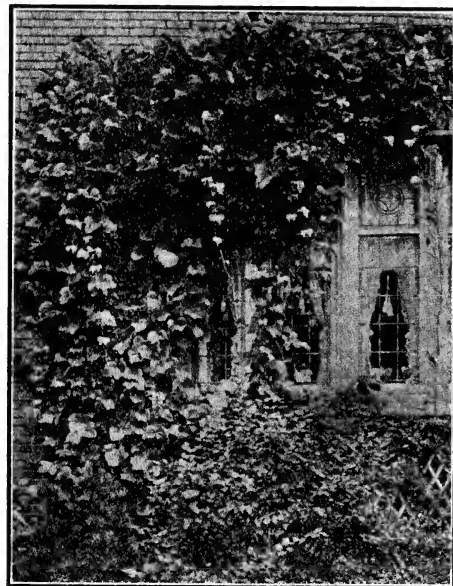
Clematis paniculata

Lathyrus Latifolius—Continued

about 8 to 10 feet high. Produces clusters of large flowers on long stems all summer and fall. A very free bloomer. One of the best cut-flowers. Plants are in separate colors of pink, rosy-red and white—also in mixed colors. Postpaid, 30c each; \$2.75 per doz. By express, 25c each and \$2.50 per doz.

Chinese Matrimony Vine

One of the hardiest of climbing vines, will overcome almost any obstacle to growth and flourish anywhere. Every

**Virginia Creeper
(American Ivy)**

new shoot produces handsome purple flowers and later a large crop of scarlet berries nearly an inch long. Postpaid, 55c each; \$4.80 per doz. By express, 45c each; \$4.50 per doz.

Trumpet Vine

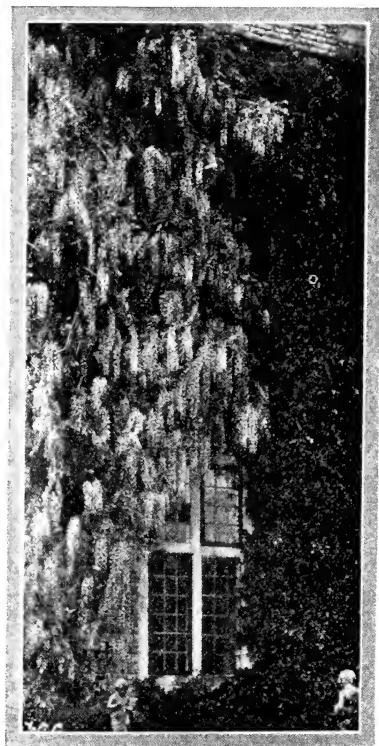
Large, trumpet-shaped flowers of vivid orange-scarlet in clusters. Blooms freely in July and August. Postpaid, 60c each; \$5.30 per doz. By express, 50c each; \$5.00 per doz.

Virginia Creeper

Ampelopsis quinquefolia; American Ivy
One of the best climbers for covering walls, verandas, etc., quickly. Grows well in shade. Postpaid, 50c each; \$4.30 per doz. By express, 40c each; \$4.00 per doz.

Wisteria

Sinensis (Chinese Wisteria). One of the best and prettiest hardy climbers, producing great trusses of soft lavender-blue flowers abundantly in May and June. Postpaid, 75c each; \$6.80 per doz. By express, 65c each; \$6.50 per doz.



Wisteria

Collection of Hardy Ornamental Vines

12 Vines—1 each of American Bittersweet, Cinnamon Vine, Clematis paniculata, Clematis Jackmani, Hall's Japanese Honey-suckle, Japanese Ivy, English Ivy, Kudzu Vine, Matrimony Vine, Trumpet Vine, Virginia Creeper, and Wisteria.

Postpaid, \$5.30; by express, \$5.00.

Berry Plants



Howard No. 17

Strawberries

(June-Bearing Varieties)

The seven varieties listed below are among the very choicest grown, combining in the highest degree all the qualities looked for in high-grade Strawberries. Among them are the earliest and latest varieties, as well as the mid-season sorts, and some of the largest, sweetest, and most productive. All are perfect-flowering and need no other varieties planted near them to produce a crop.

Strawberry plants can be supplied any time during the spring and also during the fall from about September 15 until the ground freezes.

Big Joe. Midseason to late. A large, firm berry of exquisite flavor; very productive.

Chesapeake. Midseason to late. Berries are large, firm, bright crimson, of delicious flavor.

Howard No. 17. Very early and bears for a long time. Produces a heavy crop of large, luscious berries.

Lupton. Very late. Berries are bright red, large, firm, and of the best quality.

Marshall. Midseason. An old favorite in New York and the New England States. One of the largest and best-flavored varieties; very productive.

Premier. Very early. The best and most popular early Strawberry. Wonderfully productive and has a very long fruiting season. Berries are bright red to the center, very large, and of delicious flavor.

Eyckman or New York. Midseason. The largest, most productive, and best-flavored Strawberry grown. It is not only a wonderful table berry but is also a very profitable market berry, selling

for the highest prices. It is of very vigorous growth, succeeding on even very poor soil, and is noted for producing good crops on the same ground for several years in succession.

Strawberry Plants for Spring Planting, postpaid, 45c per doz.; \$1.95 per 100; \$13.25 per 1,000. By express, 35c per doz.; \$1.75 per 100; \$12.00 per 1,000.

Strawberry Plants for Fall Planting, postpaid, 50c per doz.; \$2.45 per 100; \$16.25 per 1,000. By express, 40c per doz.; \$2.25 per 100; \$15.00 per 1,000.

Everbearing Strawberries

Progressive. A very popular and productive variety. Berries are of medium size, glossy, and of a deep crimson color. They are famous for their delightful wild Strawberry flavor. Beginning to ripen early in June, they continue to bear fruit all during the summer and fall. As many as 100 berries and blossoms are often found at a time on a single plant. If planted this spring, they will bear a good crop of berries this summer and fall. If planted in the fall, they will bear the following summer and fall.

Mastodon. The largest, most delicious, and heaviest yielding of all Everbearing sorts. It outyields some of the finest June-bearing sorts during their season and continues to bear throughout summer and fall, berries of amazing size and delicious flavor.

For Spring Planting, postpaid, 70c per doz.; \$3.20 per 100; \$26.25 per 1,000. By express, 60c per doz.; \$3.00 per 100; \$25.00 per 1,000.

For Fall Planting, postpaid, 75c per doz.; \$3.45 per 100; \$28.75 per 1,000. By express, 65c per doz.; \$3.25 per 100; \$27.50 per 1,000.

Collections of Strawberry Plants

COLLECTION A. 100 Strawberry Plants from very early to very late; 25 each of Premier, Ryckman, Big Joe, and Lupton. For spring planting, postpaid, \$1.80. By express, \$1.60. For fall planting, postpaid, \$2.30. By express, \$2.10.

COLLECTION B. 500 Strawberry Plants of the largest, best-flavored and most productive June-bearing varieties, from very early to very late; 100 each of Chesapeake, Howard No. 17, Lupton, Marshall, and Ryckman. For spring planting, postpaid, \$8.75. By express, \$8.00. For fall planting, postpaid, \$11.00. By express, \$10.25.

Pot-Grown Strawberry Plants

For August and fall planting: Big Joe, Chesapeake, Howard No. 17, Lupton, Marshall, Premier, and Ryckman or New York. Postpaid, \$1.45 per doz.; \$8.75 per 100. By express, \$1.25 per doz.; \$7.75 per 100.

Pot-Grown Everbearing Strawberry Plants

Progressive. Postpaid, \$1.70 per doz.; \$10.75 per 100. By express, \$1.50 per doz.; \$9.75 per 100.

Mastodon. Postpaid, \$2.70 per doz.; \$16.00 per 100. By express, \$2.50 per doz.; \$15.00 per 100.

Blackberries

Blowers. Midseason. Very large berries of excellent flavor; produces large crops.

Eldorado. Early. Berries large, sweet, and melting. Bears an enormous crop. Very hardy. The most popular Blackberry.

Postpaid, \$1.15 per doz.; \$5.35 per 100; \$38.25 per 1,000. By express, \$1.00 per doz.; \$5.00 per 100; \$35.00 per 1,000.

Dewberries

Lucretia. The standard variety. Much like Blackberries, but earlier, larger, of better quality, jet-black, and of trailing growth. Very hardy and produces a large crop. Postpaid, 95c per doz.; \$4.55 per 100; \$32.00 per 1,000. By express, 80c per doz.; \$4.25 per 100; \$30.00 per 1,000.

Juneberries

Improved Dwarf. A delicious fruit resembling the large, luscious swamp huckleberry in appearance and quality. The fruit is borne in clusters, and is reddish purple, changing to bluish black. In flavor it is mild, rich subacid. Excellent as a dessert fruit or canned. The bushes are extremely hardy, enduring the cold of the far North and very hot summers without injury. Postpaid, 45c each; \$4.15 per doz.; \$25.35 per 100. By express, 40c each; \$4.00 per 100; \$25.00 per 100.



Eldorado

Loganberries

One of the most delicious fruits grown. The berries are deep reddish maroon in color, as large as the largest blackberries, and of a rich luscious flavor—a mingling of the raspberry and blackberry (the raspberry flavor predominating). Begins to ripen early in July. The plant is a strong grower and very hardy. Postpaid, 50c each; \$4.15 per doz.; \$25.35 per 100. By express, 40c each; \$4.00 per doz.; \$25.00 per 100.

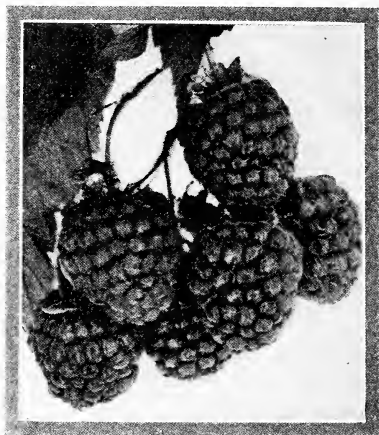
Raspberries

Columbian. Purple. Midseason and bears a long time. Berries purplish crimson, very large, and of delicious flavor. Bears enormous crops. Postpaid, \$1.40 per doz.; \$6.85 per 100; \$52.75 per 1,000. By express, \$1.25 per doz.; \$6.50 per 100; \$50.00 per 1,000.

Cumberland. Black. Midseason. Berries very large, jet-black, firm, and of excellent flavor. Very productive. Postpaid, \$1.15 per doz.; \$5.35 per 100; \$37.75 per 1,000. By express, \$1.00 per doz.; \$5.00 per 100; \$35.00 per 1,000.

Cuthbert. Red. Midseason to late, bearing for a long time. Berries of large size, deep crimson, firm and of high quality, being rich and spicy. Postpaid, \$1.15 per doz.; \$5.35 per 100; \$37.75 per 1,000. By express, \$1.00 per doz.; \$5.00 per 100; \$35.00 per 1,000.

Golden Queen. Yellow. Midseason. Produces a heavy crop of luscious golden yellow berries. Postpaid, \$1.40 per doz.; \$6.85 per 100; \$52.75 per 1,000. By express, \$1.25 per doz.; \$6.50 per 100; \$50.00 per 1,000.



St. Regis

Raspberries—Continued

Honey Sweet. Black. Early. The best blackcap Raspberry. Remarkably rich, sweet, and luscious; very large. Postpaid, \$1.25 per doz.; \$6.10 per 100; \$45.25 per 1,000. By express, \$1.10 per doz.; \$5.75 per 100; \$42.50 per 1,000.

Latham. The most popular raspberry. It is very hardy and wonderfully productive, with large, round, firm berries of a rich, brilliant red in late June and most of July. Postpaid, \$1.40 per doz.; \$6.85 per 100; \$52.75 per 1,000. By express, \$1.25 per doz.; \$6.50 per 100; \$50.00 per 1,000.

St. Regis, Everbearing. Red. Bears richly flavored berries from early July until well along in August. The latter part of August berries begin to ripen on the young canes of the current year's growth, and these young canes continue to bear very large berries until late fall. When planted in the spring, it will produce a crop the following fall. Postpaid, \$1.15 per doz.; \$5.35 per 100; \$37.75 per 1,000. By express, \$1.00 per doz.; \$5.00 per 100; \$35.00 per 1,000.

Wineberries

A unique and delicious fruit from the wilds of Asia. The medium-sized berries are of bright, translucent appearance, the color of sherry wine, and with a brisk, pleasant subacid flavor. Excellent as a dessert fruit, for canning, and for making a delightful wine. Very hardy, of strong growth, and yields enormously for a long season. Postpaid, 30c each; \$2.40 per doz.; \$12.35 per 100. By express, 25c each; \$2.25 per doz.; \$12.00 per 100.

10% discount on orders with remittance before March 10, 1931; 5% between March 10 and April 1, 1931.

Grapes

Caco. A cross between Catawba and Concord which has inherited the best qualities of both parents, developing a luscious fruit which ranks close to the greenhouse-grown product in high quality and melting texture. Very hardy. Berries are large, wine-red with abundant bloom, and carried in large, compact clusters. Ripens in advance of Concord and is a very strong grower. Its rich flavor, coloring and productiveness proclaim the Caco the finest of Grapes. 2-year-old vines, postpaid, 85c each; \$7.75 per doz. By express, 75c each; \$7.50 per doz.

Catawba. Red. Sweet and rich, with pleasant musky flavor.

Concord. The most popular black Grape. Of delicious flavor. Grows well everywhere.

Delaware. Red. Bunch and berry small, of high quality.

Diamond (Moore's). Greenish white, large, juicy, and of good quality. Ripens early.

Moore's Early. Large, black berry of best quality. Very early.

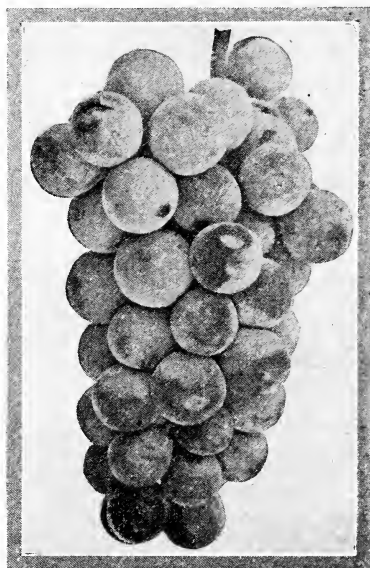
Niagara. Most popular white Grape. Clusters and berries large; sweet and delicious. Ripens in midsummer with Concord.

Worden. Black. Bunch and berry very large; flavor delightfully sweet. Earlier than Concord.

2-year old vines, postpaid, 45c each; \$3.75 per doz. By express, 35c each; \$3.50 per doz.

Collection of Grape Vines

8 Grape Vines—1 each of the 8 varieties listed, postpaid, \$3.00; by express, \$2.85.



Niagara

Currants

President Wilder. One of the very best red Currants. Produces very large bright red, juicy berries of high quality.

White Grape. By far the best white fruited Currant. It is a beautiful translucent white; flavor mild and delicious. The fruit is borne in clusters and the bushes are literally loaded with them.

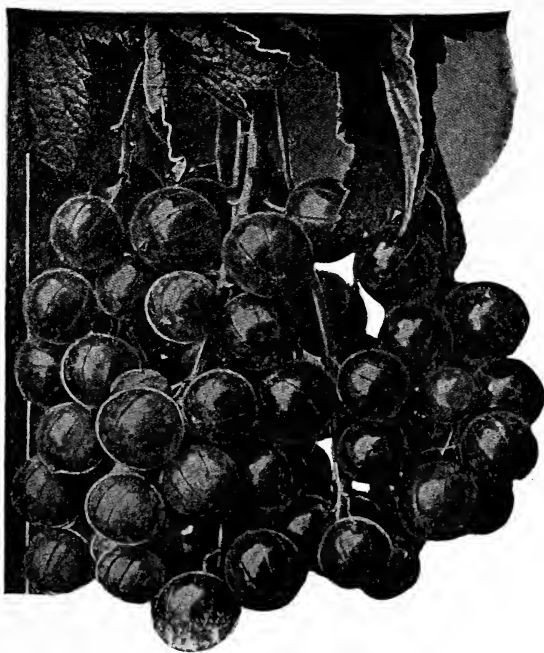
2-year-old plants, postpaid 45c each; \$3.85 per doz. By express, 35c each; \$3.50 per doz.

Gooseberries

Downing. Light green. The most popular market variety. The berries are large; flesh soft, juicy and tender; flavor just barely sour.

Houghton. One of the most popular red Gooseberries. The fruit of medium size, very fine quality and highly flavored. Very productive.

2-year-old plants, postpaid 45c each; \$3.85 per doz. By express, 35c each; \$3.50 per doz.



President Wilder

Vegetable Plants and Roots



Washington

Asparagus Roots

Palmetto. A standard variety for all purposes. The mammoth shoots are always dark green and are produced in great abundance; very early; of delicious flavor.

(Continued in next column)

Asparagus Roots—Continued

Washington. This very popular new variety has large, luscious shoots of a dark green color, tinged with a heavy purple overtone. Very productive and of the very finest quality.

2-year-old roots, postpaid, 55c per doz.; \$2.95 per 100. By express, 45c per doz.; \$2.50 per 100; \$15.00 per 1,000.

3-year-old roots, very large, postpaid, 95c per doz.; \$5.40 per 100. By express, 80c per doz.; \$4.75 per 100.

Cabbage Plants

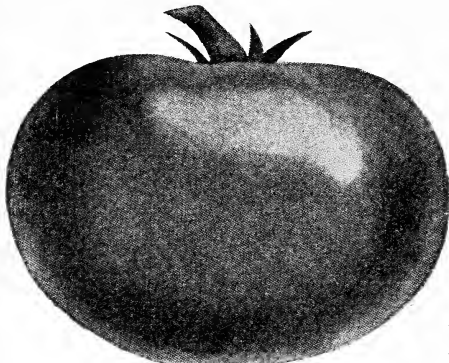
Early Jersey Wakefield and Copenhagen Market. For May and early June planting. Postpaid, 30c per doz.; \$1.50 per 100; \$12.00 per 1,000. By express, 25c per doz.; \$1.25 per 100; \$11.00 per 1,000.

Succession and Danish Ballhead. For planting June 10 and later. Postpaid, 25c per doz.; \$1.00 per 100; \$5.50 per 1,000. By express, 20c per doz.; 75c per 100; \$4.50 per 1,000.

Catnip Plants

Postpaid, 25c each; \$2.25 per doz. By express, 20c each; \$2.00 per doz.

10% discount on orders with remittance before March 10, 1931; 5% between March 10 and April 1, 1931.



Matchless

Cauliflower Plants

Early Snowball. For May and early June planting. Postpaid, 35c per doz.; \$1.85 per 100; \$12.90 per 1,000. By express, 30c per doz.; \$1.60 per 100; \$12.00 per 1,000.

For planting June 10 and later, postpaid, 30c per doz.; \$1.15 per 100; \$6.90 per 1,000. By express, 25c per doz.; 90c per 100; \$6.00 per 1,000.

Celery Plants

Golden Self Blanching and Golden Plume. For planting from about May 10 to July 1, postpaid, 30c per doz.; \$1.50 per 100; \$10.75 per 1,000. By express, \$25c per doz.; \$1.30 per 100; \$10.00 per 1,000.

Golden Self Blanching and Fordhook. For planting July 1 and later, postpaid, 25c per doz.; \$1.10 per 100; \$6.25 per 1,000. By express, 20c per doz.; 90c per 100; \$5.50 per 1,000.

Chives Plants

Much used for soups and seasoning. Postpaid, 25c each; \$2.25 per doz. By express, 20c each; \$2.00 per doz.

Eggplant Plants

Black Beauty. For planting the last of May and during June and July. Postpaid, 45c per doz.; \$2.25 per 100. By express, 40c per doz.; \$2.00 per 100.

Hop Roots

This is the plant that produces the hops used in the manufacture of yeast. Postpaid, 30c each; \$2.75 per doz. By express 25c each; \$2.50 per doz.

Horse-Radish Roots

Maliner Kren. The large white variety. Postpaid, 40c per doz.; \$2.15 per 100; \$13.25 per 1,000. By express, 30c per doz.; \$1.90 per 100; \$12.00 per 1,000.

Lettuce Plants

Big Boston. A delicious head Lettuce. For May and June planting. Postpaid, 30c per doz.; \$1.30 per 100; \$9.75 per 1,000. By express, 25c per doz.; \$1.10 per 100; \$9.00 per 1,000.

Mint Plants

Spearmint and Peppermint. Postpaid, 25c each; \$2.25 per doz. By express, 20c each; \$2.00 per doz.

Pepper Plants

Ruby King. One of the largest and best sweet Peppers. For planting the last of May and during June and July. Postpaid, 45c per doz.; \$2.20 per 100. By express, 40c per doz.; \$2.00 per 100.

Rhubarb Roots

One-year-old roots, the size usually planted, postpaid, 25c each; \$1.85 per doz. By express, 20c each; \$1.60 per doz.; \$6.50 per 100.

Large, selected roots of forcing size, which will produce a crop of large stalks this year, postpaid, 50c each; \$3.90 per doz. By express, 40c each; \$3.50 per doz.

Sage Plants

Used for seasoning. Postpaid, 25c each; \$2.25 per doz. By express, 20c each; \$2.00 per doz.

Sweet Lavender Plants

The Lavender of our grandmothers' gardens. Postpaid, 30c each; \$2.75 per 100. By express, 25c each; \$2.50 per doz.

Sweet Potato Plants

Yellow Jersey. For May, June and July planting. Postpaid, 30c per doz.; \$1.20 per 100; \$6.75 per 1,000. By express, 25c per doz.; \$1.00 per 100; \$6.00 per 1,000.

Tarragon Plants

Used for seasoning soups, salads, stews, pickles, etc. Postpaid, 45c each; \$4.25 per doz. By express, 40c each; \$4.00 per doz.

Thyme Plants

Used for seasoning. Postpaid, 25c each; \$2.25 per doz. By express, 20c each; \$2.00 per doz.

Tomato Plants

Earliana, Ponderosa, and Matchless. For planting in May, June and July. Postpaid, 30c per doz.; \$1.55 per 100; \$12.00 per 1,000. By express, 25c per doz.; \$1.35 per 100; \$11.00 per 1,000.

10% discount on orders with remittance before March 10, 1931; 5% between March 10 and April 1, 1931.

HA General Directions to Customers

The attention of my customers is respectfully called to the following directions, which will, if followed, be an aid to them as well as myself.

Please

GUARANTEE. I warrant my stock true to name, with the explicit understanding that, should any prove untrue, I will return the money paid or replace it with other stock; but I am not liable for damage beyond this. A sure indication of the purity of my stock is the fact that customers of former years continue to deal with me. Certificate of inspection is attached to each shipment.

SAVE MONEY BY ORDERING EARLY. Ten per cent discount will be allowed on all orders accompanied by remittance received on or before March 10, 1931; five per cent discount between March 10 and April 1, 1931.

HOW TO ORDER. Write plainly your name, post office, county and state; also give number of street or post office box, and the nearest express office.

PRICES in this Catalogue cancel all previous quotations. The prices quoted are for the quantities specified of a single variety. But 6 of any variety will be supplied at the dozen rate; 25 at the 100 rate; and 250 at the 1,000 rate. Less than 6 of any variety will be sold at the each rate only; less than 25 at the dozen rate only; and less than 250 at the 100 rate only.

SHIPMENTS BY PARCEL POST AND EXPRESS. All plants can be shipped by parcel post or express. They cannot be safely shipped by freight. On each item I have quoted prices "postpaid" and "by express." At the "postpaid" prices, I ship plants to any post office in the United States, postpaid; at the "by express" prices, I ship plants by express, and the purchaser pays the express charges.

SAFE ARRIVAL OF PLANTS. I guarantee the safe arrival of all plants and roots sent by Express or Parcel Post to all points in the United States. Should anything be injured in transit, I urge my customers to notify me at once on receipt of the goods, and in every case send me a list of what has been damaged so that I can replace them without delay. But when they arrive in good condition, my responsibility ceases, and if from inattention or other causes, they fail and complaint is then made, I cannot replace them.

PACKING. Plants are packed very carefully and special efforts are made to pack lightly so that transportation charges will be as low as possible. Everything is labeled.

SUBSTITUTION. It is my custom, should the supply of any variety become exhausted (which occasionally occurs in all nurseries), to substitute in its stead a similar variety, properly labeled, of course. When it is desired that I shall **not** do this, it must be stated in the order. To simply affix the words "No substitution" is all that is necessary.

TERMS OF PAYMENT. Cash with order or before goods are shipped. I do not ship plants, roots, shrubs and other perishable goods C. O. D. All orders are acknowledged as soon as possible.

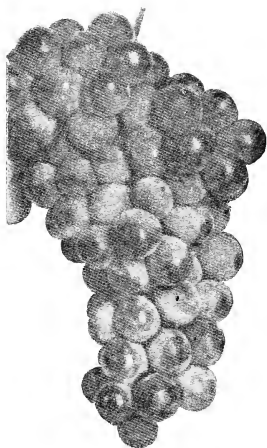
REMITTANCES may be sent by Money Order, Check, or Draft. If you send cash, use registered letter.

WHEN VARIOUS PLANTS CAN BE SHIPPED AND PLANTED. Perennial flower plants can be shipped and planted any time from early spring until the ground freezes in the fall. Annual flower plants are ready in May. They can be shipped and planted any time after that, until midsummer. Pansy plants can be shipped and planted any time from early spring until late fall. Dahlia and other summer-flowering bulbs can be planted from April until July. Tulip, Hyacinth, Crocus, and Narcissus and other spring flowering bulbs can be planted any time during the fall. Berry Plants, Grapevines, Shrubs, Vines, Hedge Plants, Asparagus Roots, etc., can be planted any time during the spring and fall. Roses can be shipped and planted any time during the spring, summer, and fall.



St. Regis Everbearing Raspberry

**STRAWBERRY, BLACKBERRY
and RASPBERRY PLANTS
GRAPE VINES
ASPARAGUS ROOTS**

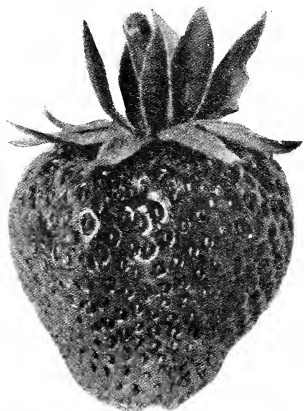


Concord Grape

Harry L. Squires

HAMPTON BAYS

NEW YORK



*Mastodon Everbearing
Strawberry*



Blowers Blackberry