

Historic, Archive Document

Do not assume content reflects current scientific knowledge, policies, or practices.

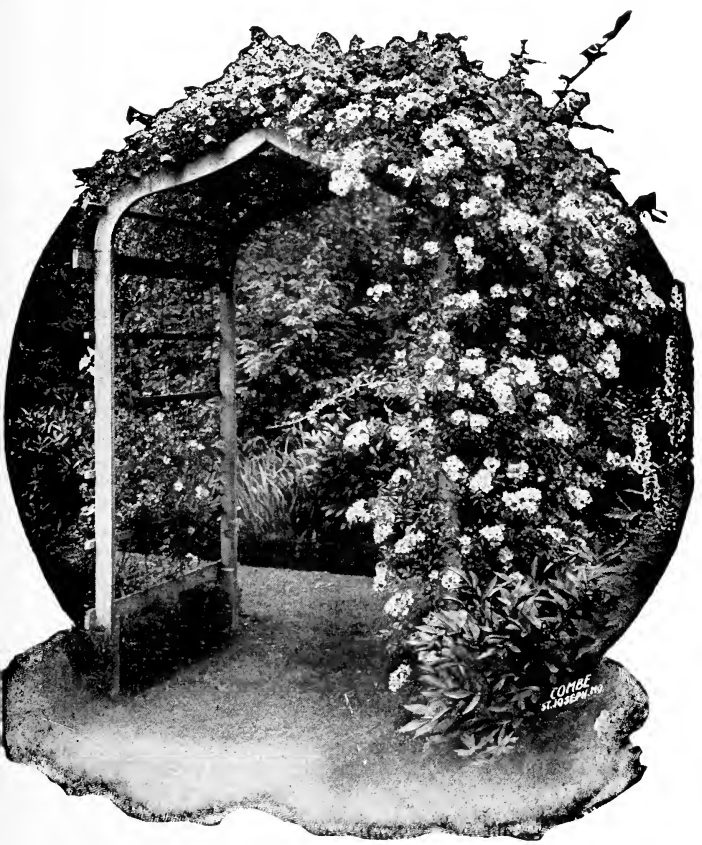
62.47

INDEXED.

Fruits, Trees, Flowers

LIBRARY
SEP 29 1931
U. S. Department of Agriculture.

~ Fall 1931 ~



For an arched entrance, what can be more appropriate than Roses

SARCOXIE NURSERIES
PEONY FIELDS

WILD BROS. NURSERY CO.
Sarcoxie, Missouri

Hardy Flowering Shrubs

Mail sizes, postpaid. Mail sizes, while not as large as the other grades, are sturdy, well rooted young plants and, given time and reasonable care, give good results. If larger sizes are wanted by mail, postage is additional. Shrubs larger than 3 to 4 ft. can seldom be sent by mail.

Five or more of a kind at the 10 rate, less at each rate.

Almond, Double Flowering Pink. Many double pink flowers about an inch across, clustered along the branches before the leaves are developed.

18 to 24 inches\$0.50 each; \$4.50 per 10

Althea; Rose of Sharon. Hollyhock-like flowers in late summer; upright habit, attaining 10-15 ft.; easily grown. Colors: Double white, Double Light Pink, Double Red, Double Violet, Single White.

Mail size, postpaid\$0.15 each; \$1.25 per 10

2 to 3 feet35 each; 3.00 per 10

3 to 4 feet45 each; 4.00 per 10

4 to 5 feet60 each; 5.00 per 10

Arrow-Wood; Viburnum dentatum. Snowy flowers in flat clusters 2-3 in. across in summer; blue berries in fall.

18 to 24 inches\$0.35 each; \$3.00 per 10

Barberry, Japanese or Thunberg. Dwarf, dense, compact, spreading habit; graceful spiny branches; small leaves coloring brilliantly in autumn; scarlet berries; excellent for foundations and hedges.

Mail size, postpaid.....\$0.10 each; \$0.80 per 10; \$6.00 per 100

8 to 12 in., bushy..... .15 each; 1.00 per 10; 8.00 per 100

12 to 15 in., bushy..... .20 each; 1.50 per 10; 12.00 per 100

15 to 18 in., bushy..... .25 each; 2.00 per 10; 15.00 per 100

18 to 24 in., bushy..... .30 each; 2.50 per 10; 18.00 per 100

24 to 30 in., bushy..... .40 each; 3.50 per 10; 30.00 per 100

Barberry, Red-leaved Thunberg. Foliage a rich bronzy red throughout summer if planted in full sun; scarlet berries.

Mail size, postpaid.....\$0.30 each; 3 for \$0.85; \$2.50 per 10

8 to 12 inches35 each; 3 for 1.00; 3.00 per 10

12 to 15 inches50 each; 3 for 1.25; 4.00 per 10

15 to 18 inches60 each; 3 for 1.70; 5.00 per 10

18 to 24 inches75 each; 3 for 2.00; 6.50 per 10

Beautyberry; Callicarpa. Curving branches covered with clusters of small violet-purple berries in fall and early winter.

18 to 24 inches\$0.50 each; \$4.00 per 10

Beautybush; Kolkwitzia amabilis. The branches arch gracefully with clusters of Weigela-like flowers, pink mottled orange.

Mail size, postpaid\$0.35 each; \$3.00 per 10

15 to 18 inches, 2 year50 each; 4.50 per 10

18 to 24 inches, 2 year75 each; 7.00 per 10

Butterfly Bush; Summer Lilac. Covered in summer with fragrant lavender flowers resembling lilacs; grows 4-7 feet high, prune to keep lower and give more flowers. The tops will be cut back as they die to the ground during winter.

Mail size, postpaid\$0.25 each; \$2.00 per 10

Strong plants, tops cut back..... .30 each; 2.50 per 10

Callicarpa, see Beautyberry.

Calycanthus floridus. Odd, double, spicily fragrant chocolate-red flowers in latter spring; sun or shade.

Mail size, postpaid\$0.25 each; \$2.00 per 10

18 to 24 inches50 each; 4.00 per 10

Cornus, see Dogwood.

Cotoneaster acutifolia; Peking Cotoneaster. Upright, attaining 5-6 ft.; slender branches; small whitish-pink flowers followed by black berries; autumn leaves purplish-red.

2 to 3 feet\$0.45 each; \$4.00 per 10

Crab, Flowering, see Shade Trees.

Cranberry Bush. White flowers in flat clusters; scarlet berries in fall and early winter; endures partial shade.

18 to 24 inches\$0.40 each; \$3.50 per 10

2 to 3 feet50 each; 4.50 per 10

Desmodium, Purple. Graceful arching branches covered in late summer with rose-purple, small, pea-shaped flowers.

2 years plants50c each,\$5.00 per 10

Deutzia gracilis. Single white flowers, almost as dainty as Lily-of-the-Valley, in graceful clusters in May; attains 3 ft.

15 to 18 inches\$0.45 each; \$4.00 per 10

Deutzia Lemoine. Beautiful snow-white flowers in conical clusters in May; more upright than gracilis; attains 4 ft.

18 to 24 inches\$0.45 each; \$4.00 per 10

Deutzia Pride of Rochester. Covered in early spring with dainty double tassel-like flowers in clusters 4-6 in. long, white, outer petals tinted rose; attains 6-8 ft.; easy culture.

Mail size, postpaid\$0.15 each; \$1.40 per 10

2 to 3 feet35 each; \$3.00 per 10

3 to 4 feet40 each; 3.50 per 10

4 to 5 feet50 each; 4.50 per 10



Spiraea Callosa alba (white) and *Anthony Waterer* (rosy-crimson,) are excellent dwarf shrubs blooming in summer. (See pages 5 and 6.)

Dogwood, Siberian or Coral. Grown mainly for its intense bright coral-red branches in winter; sun or partial shade.

Mail size, postpaid	-----	\$0.20 each; \$1.80 per 10
18 to 24 inches	-----	.30 each; 2.50 per 10
2 to 3 feet	-----	.40 each; 3.50 per 10

Dogwood, Silver Blotch. A Siberian variety with silvery-blotched foliage.

2 to 3 feet	-----	\$0.60 each; \$5.00 per 10
-------------	-------	----------------------------

Elder, Golden. Small white flowers in flat clusters; golden leaves; full sun gives better foliage color.

2 to 3 feet	-----	\$0.50 each; \$4.00 per 10
3 to 4 feet	-----	.60 each; 5.50 per 10

Forsythia Fortunei. Golden-yellow flowers before the leaves develop; upright to arching branches, attaining 8-10 ft. This and *spectabilis* are perhaps the two best Forsythias.

Mail size, postpaid	-----	\$0.15 each; \$1.40 per 10
18 to 24 inches	-----	.25 each; 2.00 per 10
2 to 3 feet	-----	.30 each; 2.50 per 10
3 to 4 feet	-----	.40 each; 3.00 per 10
4 to 5 feet	-----	.50 each; 4.00 per 10

Forsythia intermedia. Golden-yellow flowers; erect to arching branches; attains 8-10 ft.; blooms freely.

18 to 24 inches	-----	\$0.25 each; \$2.00 per 10
2 to 3 feet	-----	.30 each; 2.50 per 10

Forsythia intermedia spectabilis. Large flowers of a good golden-yellow color; blooms very freely.

Mail size, postpaid	-----	\$0.20 each; \$1.80 per 10
2 to 3 feet	-----	.35 each; 3.00 per 10
3 to 4 feet	-----	.45 each; 4.00 per 10
4 to 5 feet	-----	.55 each; 5.00 per 10

Forsythia suspensa; Weeping Forsythia. Of drooping habit with golden-yellow flowers before the leaves develop.

2 to 3 feet	-----	\$0.30 each; \$2.50 per 10
-------------	-------	----------------------------

Forsythia viridissima. Golden-yellow flowers before the leaves develop; green bark; erect habit.

Mail size, postpaid	-----	\$0.15 each; \$1.40 per 10
18 to 24 inches	-----	.25 each; 2.00 per 10
2 to 3 feet	-----	.30 each; 2.50 per 10
3 to 4 feet	-----	.40 each; 3.00 per 10

Hardy Flowering Shrubs, continued

Honeysuckle, Bush. Covered in early spring with dainty flowers, followed in late summer with red, rarely yellow berries, even more ornamental than the flowers; attains 6-8 ft. **Fragrantissima**, half-evergreen; very early fragrant flowers, white to bluish. **Pink Bush**, pink flowers, red berries.

Mail size, postpaid	-----	\$0.20 each; \$1.80 per 10
18 to 24 inches	-----	.25 each; 2.00 per 10
2 to 3 feet	-----	.35 each; 3.00 per 10
3 to 4 feet	-----	.50 each; 4.00 per 10
4 to 5 feet	-----	.60 each; 5.00 per 10

Hydrangea Hills of Snow. Well named for its profusion of snow-white flowers in large, somewhat globular clusters, beginning in June; suitable for partial shade.

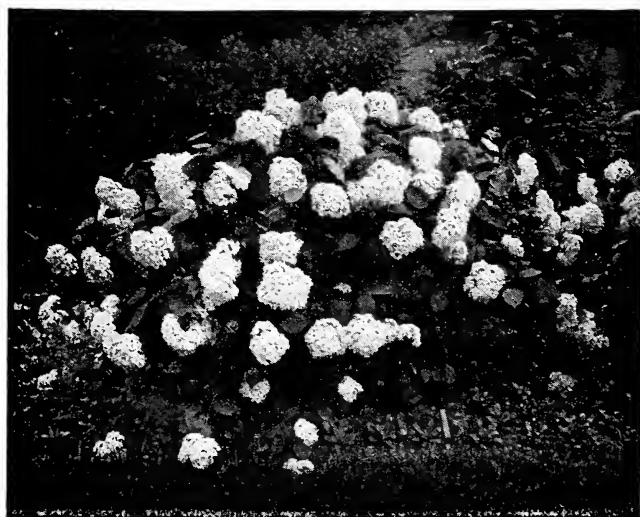
Mail size, postpaid	----	\$0.20 each; 3 for \$0.50; \$1.65 per 10
1 year size	-----	.25 each; 3 for .70; 2.00 per 10
2 year size	-----	.35 each; 3 for 1.00; 3.00 per 10
3 year size	-----	.50 each; 3 for 1.35; 4.00 per 10

Hydrangea paniculata grandiflora. Flowers in great cone-shaped clusters, white assuming rose tints, in profusion in August and September; attains 5-7 ft.; plant in sun.

Mail size, postpaid	----	\$0.20 each; 3 for \$0.50; \$1.65 per 10
12 to 18 inches	-----	.25 each; 3 for .70; 2.00 per 10
18 to 24 inches	-----	.35 each; 3 for 1.00; 3.00 per 10
2 to 3 feet	-----	.45 each; 3 for 1.30; 4.00 per 10
2 to 3 feet, heavy	-----	.50 each; 3 for 1.45; 4.50 per 10

Kerria Japonica, single. Very showy in latter May and June when the neat bush, about 4 ft. high, is covered with single golden-yellow flowers 1 to 2 in. across; sun or partial shade.

2 to 3 feet	-----	\$0.50 each; \$4.50 per 10
-------------	-------	----------------------------



This *Hydrangea* is well named *Hills of Snow*

Lilac, Hybrid. More dwarf than common lilac, more varied in color and blooms younger, sometimes the year after planting.

Lilac, Belle de Nancy. Double; brilliant satiny rose, white center. One of the best of the pink shades.

Lilac, Charles Joly. Double; dark wine-purple.

Lilac, Charles X. Single; purplish-red to lilac-red; while not the largest it is one of the most reliable free bloomers.

Lilac, Ludwig Spaeth. Single; crimson-purple; one of the darkest; large flowers; rather dwarf habit. 12-18 in. and 18-24 in. only.

Lilac, Madame Abel Chatenay. Double; pure white; large, compact trusses; somewhat dwarf habit; excellent.

Lilac, Madame Lemoine. Another fine double white.

Lilac, Marie Legraye. A fine single white; blooms freely.

Lilac, Michel Buchner. Double; pale lilac-blue; good size trusses; rather dwarf and stocky.

Lilac, Persian Purple. Fragrant, pale lilac flowers in trusses 3 to 4 in. long, soon after Common Purple; grows 5 ft. high.

Lilac, President Grevy. Double soft blue; good sized clusters.

Lilac, Single White. An excellent single white.

Lilac, William Robinson. Double; violet-pink; large trusses and good flowers; rather dwarf; excellent.

PRICES OF ABOVE LILACS:

Mail size, postpaid	-----	\$0.25 each; \$2.25 per 10
12 to 18 inches	-----	.35 each; 3.00 per 10
18 to 24 inches	-----	.50 each; 4.50 per 10
2 to 3 feet	-----	.75 each; 7.00 per 10
3 to 4 feet	-----	1.00 each; 9.00 per 10

SPECIAL LILAC COLLECTION

We have many Lilacs not described above. We will furnish 10 Lilacs, 10 varieties our selection, 12 to 18 inches, by express for \$2.75, or mail size, postpaid, for \$2.00.

Mock Orange, White Flowered. The name is almost a description. A profusion of creamy white four-petaled flowers in late spring; grows 8-10 ft. high; sun or partial shade.

Mail size, postpaid	-----	\$0.20 each; \$1.80 per 10
2 to 3 feet	-----	.30 each; 2.50 per 10
3 to 4 feet	-----	.40 each; 3.50 per 10

Mock Orange, Virginal. Large semi-double, fragrant white flowers 1½-2½ in. across; moderately tall.

Mail size, postpaid	-----	\$0.25 each; \$2.40 per 10
18 to 24 inches	-----	.35 each; 3.00 per 10
2 to 3 feet	-----	.45 each; 4.00 per 10
3 to 4 feet	-----	.55 each; 5.00 per 10

Plum, Cistena. Foliage brilliant purplish-red; more shrubby in habit than Newport. Mail size, postpaid, 25c each; 3 to 4 feet, \$1.00 each.

Plum, Double Flowering; Prunus triloba. In very early spring before the leaves appear the branches are covered with double, light pink, rose-like blooms.

3 to 4 feet	-----	\$0.75 each; \$7.00 per 10
-------------	-------	----------------------------

Plum, Newport. Upright habit, becoming 12-15 ft.; foliage deep purplish-red becoming greenish-red in latter summer; fruit red, fair quality. Mail size, postpaid, 25c each; 3 to 4 feet, 75c each.

Privet, Regel. Branches almost horizontal; small white flowers; blue-black berries; a good foundation shrub.

18 to 24 inches	-----	\$0.25 each; \$2.00 per 10
24 to 30 inches, heavy	-----	.35 each; 3.00 per 10

Privet for Hedging, see page 7.

Quince, Japan; Cydonia Japonica. Covered with brilliant scarlet five-petaled flowers 1½ in. across before the leaves are developed.

18 to 24 inches	-----	\$0.35 each; \$3.00 per 10
2 to 3 feet	-----	.50 each; 4.00 per 10

Rhodotypos kerrioides; Jetbead. Four-petaled white flowers 1½ in. across in spring followed by black berries.

18 to 24 inches	-----	\$0.40 each; \$3.50 per 10
2 to 3 feet	-----	.50 each; 4.50 per 10

Rose, F. J. Grootendorst. A Rugosa-Baby Rambler hybrid; excellent as a shrub; bright red flowers in clusters all summer if pruned as they fade. 2 year, 80c each, \$7.50 per 10.

Rose, Hugonis. A fountain of single yellow roses 2-2½ in. across in latter April; useful in shrubbery plantings.

Mail size, postpaid	-----	\$0.30 each; \$2.75 per 10
2-year	-----	.50 each; 4.50 per 10

Rose, Rugosa rubra. Deep green, shining, wrinkled foliage. large, single purplish-red flowers 2½-3 in. across; bright red seed pods. 2 year, 40c each, \$3.50 per 10.

Snowball, Common. Covered in early May with clusters of white snowballs 4 in. across; sun or partial shade.

18 to 24 inches	-----	\$0.40 each; \$3.50 per 10
2 to 3 feet	-----	.50 each; 4.50 per 10

Spirea Anthony Waterer. Crimson flowers in flat clusters in late May and at intervals until fall; grows 3 ft. high.

Mail size, postpaid	-----	\$0.20 each; \$1.80 per 10
12 to 15 inches	-----	.30 each; 2.50 per 10
15 to 18 inches	-----	.40 each; 3.50 per 10
18 to 24 inches	-----	.50 each; 4.50 per 10

Spirea Arguta; Garland Spirea. The earliest; many small clusters of white flowers ¾ in. across before the leaves expand.

12 to 18 inches	-----	\$0.30 each; \$2.50 per 10
18 to 24 inches	-----	.40 each 3.50 per 10

Spirea Billardi alba. Small fuzzy white flowers in finger-like clusters in early summer; grows 3-5 ft. tall.

Mail size, postpaid	-----	\$0.20 each; \$1.80 per 10
3 to 4 feet	-----	.40 each; 3.50 per 10

Spirea Billardi Pink. A pink-flowered form of the above.

2 to 3 feet	-----	\$0.35 each; \$3.00 per 10
-------------	-------	----------------------------

Spirea Bumalda superba. A low spreading bush; flat-topped clusters of pink flowers in May and at intervals during summer.

18 to 24 inches	-----	\$0.30 each; \$2.50 per 10
-----------------	-------	----------------------------

Hardy Flowering Shrubs, continued

Spirea Callosa alba. Similar to Anthony Waterer but white and more dwarf; sun or partial shade; excellent for foundations.

Mail size, postpaid	-----	\$0.20 each; \$1.80 per 10
8 to 12 inches	-----	.25 each; 2.00 per 10
12 to 15 inches	-----	.30 each; 2.50 per 10
15 to 18 inches	-----	.35 each; 3.00 per 10

Spirea Froebeli. Similar to Anthony Waterer but broader leaves; a little taller; autumn foliage green over-laid bronzy-red.

18 to 24 inches	-----	\$0.30 each; \$2.50 per 10
24 to 30 inches	-----	.40 each; 3.50 per 10

Spirea Golden. Leaves golden-yellow in spring becoming bronze-yellow in summer; white flowers in May; attains 5-7 ft.

Mail size, postpaid	-----	\$0.20 each; \$1.80 per 10
2 to 3 feet	-----	.35 each; 3.00 per 10
3 to 4 feet	-----	.45 each; 4.00 per 10
4 to 5 feet	-----	.50 each; 4.50 per 10



Veronica rupestris. See Hardy Flowers

Spirea Korean; Spirea trichocarpa. A new Spirea; flowers larger than Van Houttei and blooms a little later; grows 4-6 ft. tall, forming a dome-shaped shrub; very hardy.

3 to 4 feet	-----	\$0.75 each; \$7.00 per 10
-------------	-------	----------------------------

Spirea Margarita. Bright pink flowers in broad, flat clusters in midsummer; branches spreading; attains 3-5 ft.

18 to 24 inches	-----	\$0.35 each; \$3.00 per 10
-----------------	-------	----------------------------

Spirea Reevesiana Double. Pure white flowers, similar to Van Houttei but double, a little later, habit more upright, though arching gracefully; grows about 4 ft. high.

2½ to 3 feet, bushy	-----	\$0.40 each; \$3.50 per 10
---------------------	-------	----------------------------

Spirea Thunberg. Many small, pure white flowers in clusters before the leaves develop; fine feathery foliage forming a dense bush 3-5 ft. high.

Mail size, postpaid	-----	\$0.20 each; \$1.80 per 10
12 to 18 inches	-----	.25 each; 2.00 per 10
18 to 24 inches	-----	.30 each; 2.50 per 10
24 to 30 inches	-----	.40 each; 3.50 per 10

Spirea Van Houttei. A fountain of white in May with its dense drifts of flowers on graceful arching branches; attains 6-7 ft.

Mail size, postpaid	-----	\$0.15 each; \$1.25 per 10
18 to 24 inches	-----	.20 each; 1.50 per 10
2 to 3 feet	-----	.30 each; 2.50 per 10
3 to 4 feet	-----	.40 each; 3.50 per 10
4 to 5 feet	-----	.50 each; 4.50 per 10

Sumac, Fern-leaved. Large fern-like leaves, in autumn orange and scarlet; flowers greenish followed by crimson fruit in thick clusters, held well into winter.

18 to 24 inches	-----	\$0.35 each; \$3.00 per 10
-----------------	-------	----------------------------

Tamarix. Delicate feathery foliage, resembling asparagus; very small pink flowers; grows 8-15 ft. high.

2 to 3 feet	-----	\$0.35 each; 3.00 per 10
-------------	-------	--------------------------

Weigela. Very showy in latter May or early June with its trumpet-shaped flowers, clustered thickly along the wide spreading branches; attains 6-8 ft. **Amabilis**, light pink; compact grower. **Desboisi**, dark rose; vigorous. **Florabundi**, crimson; more vigorous than Eva Rathke. **Hendersoni**, deep rose; vigorous grower. **Rosea**, rosy pink; compact grower.

Mail size, postpaid	-----	\$0.20 each; \$1.80 per 10
2 to 3 feet	-----	.35 each; 3.00 per 10
3 to 4 feet	-----	.50 each; 4.50 per 10

Weigela Eva Rathke. Brilliant carmine-red; grows about 4 ft. high; will grow in partial shade.
 18 to 24 inches ----- \$0.45 each; \$4.00 per 10
 2 to 3 feet ----- .55 each; 5.00 per 10

Privet for Hedging

Plant 10-12 in. apart. Prune to 4-6 in. to make them branch low and thickly.

50 or more of a variety at the 100 rate, lots of 250 or over 10% discount.

Amoor River North Privet. Growth rapid; upright habit; very hardy.

	Per 10	Per 100
2-year, 18 to 24 inches, well branched	\$1.00	\$8.00
2-year, 2 to 3 feet, well branched	1.20	10.00

California Privet. Of upright habit with glossy dark green leaves, part of which remain on until almost Christmas.

	Per 10	Per 100
2-year, 18 to 24 inches, well branched	\$0.60	\$5.00
2-year, 2 to 3 feet, well branched	.70	6.00

Ibolium Privet. A hybrid of Iboata and California; much harder than California and valuable where that variety sometimes winter injures.

	Per 10	Per 100
2-year, 18 to 24 inches, well branched	\$1.00	\$8.00
2-year, 2 to 3 feet, well branched	1.20	10.00

Regel Privet. More spreading in habit than any of the above; makes an excellent broad hedge.

	Per 10	Per 100
18 to 24 inches	\$2.00	\$15.00
24 to 30 inches	3.00	25.00

Hardy Vines

When planting out the tops back severely, particularly clinging vines such as *Euonymus radicans* and *Boston and English Ivy*, as it is the new growth which clings. Twining vines must have a support they can twine around. If the soil near the foundation is poor, replace with good soil.

Parcel Post. If by parcel post add 5c each, not less than 10c for each package, for Missouri and adjoining states.

5 or more at the 10 rate, less at the each rate.

Bittersweet, Oriental. A high climbing vine; in autumn the orange-yellow seed pods reveal bright red seed; thrives in sun or partial shade. 1 yr. 25c each; 2 year, 50c each.

Boston Ivy; Ampelopsis Veitchi. A graceful vine clinging to wood, brick or stone. 2 year, 50c each, \$4.50 per 10.

Clematis paniculata; Japanese Clematis. Thousands of fragrant pure white four-petaled starry flowers 1-1½ in. across, in Aug. and Sept. 2 year, 40c each, \$3.50 per 10.

English Ivy. Evergreen, wax-like dark green, 3-5 lobed leaves; best in shade and for northern exposures. 25c each.

Euonymus radicans; Wintercreeper. Evergreen, dark green, glossy wax-like leaves 1-1½ in. long; clings to stone or brick by rootlets. 2 year, 25c each, \$2.00 per 10.

Euonymus radicans vegeta. A shrubby form of the above with larger leaves; excellent as a dwarf foundation plant and for rockeries; red berries. 1 year, 25c each, \$2.00 per 10.

Honeysuckle, Hall Japanese. Almost evergreen; deliciously fragrant white flowers becoming yellow, in summer; a twining vine. Strong 2 year, 35c each, \$3.00 per 10.

Honeysuckle, Heckrotti. A constant blooming, compact vine; flowers in clusters, deep rose, yellow inside. 2 year, 50c each.

Honeysuckle, Scarlet Trumpet. Trumpet-shaped flowers 1½ to 2 in. long in clusters, scarlet, buff inside; followed by red berries. 2 year, 30c each, \$2.50 per 10.

Silver Lace Vine. Foamy sprays of white flowers in summer and fall. 2 year, 65c each, \$6.00 per 10.

Wisteria, Purple. Hanging clusters of lavender-purple pea-shaped flowers; rapid growth. 2 year, 35c each, \$3.00 per 10.

Wisteria, White. 2 year, 35c each, \$3.00 per 10.

Wisteria, Japanese; Wisteria multijuga. Light purple pea-shaped flowers in long clusters. 50c each, \$4.50 per 10.

Hardy Evergreens

Our evergreens are grown with plenty of room and are compact, well filled trees of their size and variety. They have been transplanted and root pruned and are well rooted. They are not grown rapidly and soft but are firm and easily transplanted. They are liberally graded. With the exception of the "mail size" they will be dug with a ball of earth wrapped in burlap, termed "balled and burlapped" or B. & B.

MAIL SIZES, POSTPAID

Our mail size are transplanted, sturdy little trees, not balled and burlapped as these sizes do not require it. The value of trees cannot be shown in a catalog. A mail size evergreen may be worth a dime or a dollar. It may be a spindling little tree that requires petting, or a well grown tree that with reasonable care gives good results. We intend to give you your money's worth. Plant these mail sizes firmly, water them as the season requires and they should give you good results. They are not yet old enough and large enough to give the immediate effect of balled and burlapped sizes. Give them time to grow into larger sizes and we think they will please you. B. & B. trees cannot be sent by mail.

Five or more of a kind at the 10 rate, less at each rate.

Arborvitae, American. Upright, conical habit; foliage deep green, tinted bronze in winter; fairly rapid growth.

18 to 24 inches, B. & B.	\$1.50 each; \$14.00 per 10
2 to 3 feet, B. & B.	2.00 each; 18.00 per 10
3 to 4 feet, B. & B.	2.50 each; 22.50 per 10
4 to 5 feet, B. & B.	4.00 each; 35.00 per 10

Arborvitae, American Pyramidal. The shape is not produced by shearing but it is naturally pyramidal; foliage deep rich green; attains a height of 18-20 ft.

Mail size (12 to 15 in.) postpaid	\$0.50 each; \$ 4.00 per 10
18 to 24 inches, B. & B.	1.50 each; 14.00 per 10
2 to 2½ feet, B. & B.	2.00 each; 17.50 per 10
2½ to 3 feet, B. & B.	3.00 each; 25.00 per 10
3 to 3½ feet, B. & B.	3.50 each; 30.00 per 10
3½ to 4 feet, B. & B.	4.00 each; 37.50 per 10
4 to 5 feet, B. & B.	5.50 each; 50.00 per 10

Arborvitae, Bakers. A pyramidal form of the Chinese, maturing at about 8 ft.; foliage light green; fairly rapid growth.

2 to 3 feet, B. & B.	\$2.50 each; \$22.50 per 10
---------------------------	-----------------------------

Arborvitae, Berckmans; Chinese Golden Dwarf. Of superb, somewhat ovate form; dwarf; compact, slow growth, attaining 7 ft.; in spring gold suffused with green, in winter green to bronze green; a gem for both large and small grounds.

Mail size (10 to 12 in.) postpaid	\$0.75 each; \$ 6.50 per 10
12 to 15 inches, B. & B.	2.00 each; 18.00 per 10
15 to 18 inches, B. & B.	2.50 each; 20.00 per 10
18 to 24 inches, B. & B.	3.00 each; 27.50 per 10
24 to 30 inches, B. & B.	4.00 each; 37.50 per 10

Arborvitae, Bonita. Broadly conical with rounded top; slow, compact growth, becoming about 4 ft. high; rich green.

15 to 18 inches, B. & B.	\$2.50 each; \$20.00 per 10
18 to 24 inches, B. & B.	3.00 each; 25.00 per 10
24 to 30 inches, B. & B.	4.00 each; 37.50 per 10

Arborvitae, Chinese Compact. Compact, broad, cone-shaped, similar to Berckman's but green foliage; grows about 5 ft. high.

15 to 18 inches, B. & B.	\$2.00 each; \$17.50 per 10
18 to 24 inches, B. & B.	2.50 each; 22.50 per 10

Arborvitae, Globe. A low, compact, globular form of the American type, becoming 3-3½ ft. high; grows globular without shearing; deep green foliage; very hardy.

Mail size (10 to 12 in.) postpaid	\$0.50 each; \$ 4.00 per 10
10 to 12 inches, B. & B.	1.00 each; 8.50 per 10
12 to 15 inches, B. & B.	1.25 each; 10.00 per 10
15 to 18 inches, B. & B.	1.75 each; 15.00 per 10
18 to 24 inches, B. & B.	2.50 each; 20.00 per 10
24 to 30 inches, B. & B.	3.50 each; 30.00 per 10
30 to 36 inches, B. & B.	4.50 each; 40.00 per 10
36 to 42 inches, B. & B.	6.00 each; 50.00 per 10

Arborvitae, Goldspire. One of the best large growing golden evergreens; erect, conical; fairly rapid growth, becoming about 15-18 ft. high.

Mail size (12 to 15 in.) postpaid	\$0.75 each; \$ 6.50 per 10
18 to 24 inches, B. & B.	2.50 each; 22.50 per 10
2 to 2½ feet, B. & B.	3.50 each; 32.50 per 10

Arborvitae, Tom Thumb. Broadly conical, dwarf and compact; very fine feathery foliage becoming purplish in autumn.

18 to 24 inches, B. & B.	\$2.75 each; \$25.00 per 10
24 to 30 inches, B. & B.	3.25 each; 30.00 per 10



Globe Arborvitae is naturally globular in form

Cedar, Blue or Silver; Juniperus virginiana glauca. Broadly pyramidal habit; new growth silvery becoming bluish-green; growth rather rapid, attaining 15-20 ft.; fine; of rather open habit until they attain 3 to 4 feet.

Mail size (12 to 15 in.) postpaid	\$ 1.00 each; \$ 9 00 per 10
2 to 3 feet, B. & B.	3.50 each; 32 50 per 10
4 to 5 feet, B. & B.	9.00 each; 85.00 per 10
5 to 6 feet, B. & B.	12.00 each; 110.00 per 10

Cedar, Cannart. A broadly pyramidal tree, attaining 15-20 ft., with deep rich green, heavily tufted foliage.

Mail size (12 to 15 in.) postpaid	\$1.00 each; \$ 9.00 per 10
3 to 4 feet, B. & B.	7.00 each; 65.00 per 10
4 to 5 feet, B. & B.	8.50 each; 80.00 per 10

Cedar, Goldtip. The new spring growth is rich creamy-gold, gradually becoming green; attains a height of 10-15 ft.

24 to 30 inches, B. & B.	\$5.00 each; \$48.00 per 10
--------------------------	-----------------------------

Cedar, Red; Juniperus virginiana. The well known native Red Cedar; foliage sharp pointed, usually dark green; berries blue; fairly rapid growth. These trees are trained columnar.

Mail size (12 to 15 in.) postpaid	\$.50 each; \$ 4 00 per 10
2 to 3 feet, B. & B.	2.00 each; 18.00 per 10
3 to 4 feet, B. & B.	3.50 each; 32.50 per 10
4 to 5 feet, B. & B.	4.50 each; 40.00 per 10

Juniper, Irish. Finely cut bluish-green foliage; a dense, slender, columnar tree; fairly rapid growth, attaining 8 ft.

Mail size (8 to 12 in.) postpaid	\$0.50 each; \$ 4.00 per 10
18 to 24 inches, B. & B.	2.00 each; 18.00 per 10
2 to 2½ feet, B. & B.	3.00 each; 25.00 per 10
2½ to 3 feet, B. & B.	3.50 each; 30.00 per 10
3 to 4 feet, B. & B.	4.00 each; 35.00 per 10

Juniper, Pfitzer. Wide spreading horizontal branches forming a broad, irregular, low tree; foliage light olive-gray; fine; thrives in almost every location.

Mail size (12 to 15 in.) postpaid	\$0.75 each; \$ 6.50 per 10
15 to 18 inches, B. & B.	2.25 each; 20.00 per 10
18 to 24 inches, B. & B.	3.00 each; 27.50 per 10
24 to 30 inches, B. & B.	4.00 each; 37.50 per 10

Juniper, Procumbens; Japanese Juniper. Wide spreading, procumbent branches, clinging to the ground, and growing 8-12 in. high, foliage blue-green.

15 to 18 inches, B. & B.	\$2.50 each; \$24.00 per 10
--------------------------	-----------------------------

Juniper, Reeves. Upright, irregularly conical habit; dense, soft, light green foliage shaded silvery, the color well retained in winter.

36 to 42 inches, B. & B.	\$6.00 each; \$55.00 per 10
--------------------------	-----------------------------

Juniper, Savin. Thickly branched, low and spreading; an excellent unusual tree for foundation planting and to border taller evergreens, in a sunny situation.

Mail size (12 to 15 in.) postpaid	\$0.75 each; \$ 6.50 per 10
15 to 18 inches, B. & B.	2.25 each; 20.00 per 10
18 to 24 inches, B. & B.	3.00 each; 27.50 per 10
24 to 30 inches, B. & B.	4.00 each; 35.00 per 10
30 to 36 inches, B. & B.	4.50 each; 40.00 per 10

Mahonia Aquifolium; Oregon Hollygrape. Holly-like foliage, 5-9 leaflets on a stem; excellent in semi-shade.

18 to 24 inches, B. & B.	\$2.50 each; \$22.50 per 10
2 to 3 feet, B. & B.	3.50 each; 30.00 per 10
3 to 3½ feet, B. & B.	4.50 each; 40.00 per 10

Hardy Evergreens, continued

Pine, Mugho. A many-stemmed, low-branched, dense, dwarf tree never growing over 4-5 ft. high; dark green needles; excellent for foundations, rock gardens and in front of taller trees.

Mail size (6 to 8 in.) postpaid-----\$0.50 each; \$ 4.00 per 10
 12 to 15 inches, B. & B. ----- 2.00 each; 18.00 per 10
 15 to 18 inches, B. & B. ----- 3.00 each; 27.50 per 10
 18 to 24 inches, B. & B. ----- 4.00 each; 38.00 per 10

Retinospora plumosa aurea; Golden Plume Cypress. Conical; foliage plume-like, graying-green, new growth tipped golden.

Mail size (12 to 15 in.) postpaid----\$0.75 each; \$ 6.50 per 10
 15 to 18 inches, conical, B. & B. --- 1.50 each; 14.00 per 10
 18 to 24 inches, conical, B. & B. --- 2.00 each; 18.00 per 10
 2 to 3 feet, conical, B. & B. ----- 3.00 each; 27.50 per 10
 3 to 4 feet, conical, B. & B. ----- 3.50 each; 32.50 per 10

Retinospora squarrosa Veitchi. Conical, dense growth with small, soft, feathery, very dense, light silvery blue-green foliage in hollow masses; attains 15-18 ft.

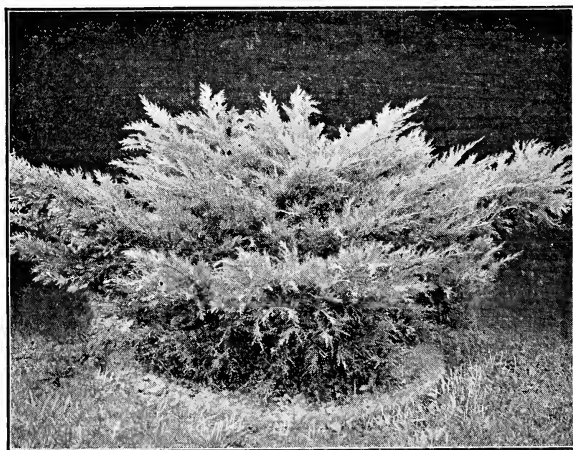
15 to 18 inches, B. & B. ----- \$2.25 each; \$20.00 per 10
 18 to 24 inches, B. & B. ----- 2.75 each; 25.00 per 10
 2 to 3 feet, B. & B. ----- 3.50 each; 32.50 per 10

Spruce, Norway. Dark green, needle-like leaves $\frac{1}{2}$ to $\frac{3}{4}$ in. long.

Mail size (10 to 12 in.) postpaid----\$0.50 each; \$ 4.00 per 10
 18 to 24 inches, B. & B. ----- 2.50 each; 24.00 per 10
 24 to 30 inches, B. & B. ----- 3.50 each; 34.00 per 10

Spruce, White. Compact, upright habit; bluish-green needle-like leaves 1-3 to $\frac{3}{4}$ in. long.

15 to 18 inches, B. & B. ----- \$2.00 each; \$18.00 per 10



Pfitzer Juniper thrives in almost every location

Water Lilies all Summer

To have hardy Water Lilies blooming all summer, beginning in May, you need only a pool, a foot of soil, a foot or more of water and sun.

Chromatella. Flowers 4-6 in. across, bright yellow. \$2.00 each.

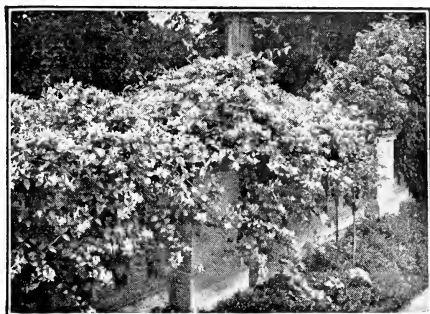
Comanche. Rich apricot shaded dark coppery-orange and streaked red. \$3.00 each.

Pink Opal. Deep rich pink with bright yellow stamens. \$2.00 each.

Pink to Color, not named. \$1.00 each.

White to Color, not named. 75c each.

Water Lily Collection. One each Pink, White and Yellow, \$3.00, postpaid \$3.15.



Hall Japanese Honeysuckle, excellent for walls. Page 7

Shade Trees

Five or more of a kind at the 10 rate, less at the each rate.

Birch, European White. A graceful tree with white bark and slender branches, the ends drooping with age.

3 to 4 feet ----- \$0.75 each; \$7.00 per 10

Catalpa, Umbrella; Catalpa Bungei. A straight, upright stem with a dense, round, umbrella-like head.

5 to 6 feet, 1 year heads ----- \$2.00 each; 2 for \$3.50

Crab, Bechtel. Delightfully fragrant light pink double flowers, resembling small roses.

Mail size, postpaid ----- \$0.25 each; \$2.40 per 10

18 to 24 inches ----- .50 each; 4.50 per 10

Crab, Hopa. Covered in early spring with beautiful rose-colored blossoms followed by small red apples.

3 to 4 feet ----- \$0.50 each; \$4.50 per 10

Elm, American White. The well known native Elm.

6 to 8 feet ----- \$0.75 each; \$7.00 per 10

8 to 10 feet ----- 1.50 each; 14.00 per 10

Elm, Chinese; Ulmus pumila. A rapid grower; slender branches; leaves much smaller than those of the American Elm.

4 to 5 feet ----- \$0.50 each; \$4.50 per 10

6 to 8 feet ----- 1.20 each; 10.00 per 10

8 to 10 feet ----- 2.00 each; 18.00 per 10

Elm, Moline. Erect habit, producing an effect somewhat similar to Lombardy Poplar though not so slender.

'8 to 10 feet ----- \$2.25 each; \$20.00 per 10

Gum, Sweet. Leaves 5-7-lobed, star shaped, bright shiny green, autumn color usually crimson.

4 to 6 feet ----- \$0.75 each; \$7.00 per 10

Maple, Soft or Silver. Useful for quick shade.

4 to 6 feet ----- \$0.40 each; \$3.50 per 10

6 to 8 feet ----- .75 each; 7.00 per 10

Maple, Sugar, Rock or Hard. Deeply rooted, allowing grass to grow about the trunk; beautiful autumn foliage.

8 to 10 feet ----- \$2.50 each; \$20.00 per 10

2½ to 3 in. in diameter ----- 6.00 each; 50.00 per 10

Plum, Flowering, see Shrubs.

Poplar, Bolle's Silver. Similar to Lombardy but the leaves are dark green above, downy white beneath.

6 to 8 feet ----- \$1.00 each; \$9.00 per 10

Poplar, Lombardy. Tall and columnar; rapid growth; useful as an accent tree and to screen objectionable views.

3 to 4 feet ----- \$0.25 each; \$2.25 per 10

4 to 6 feet ----- .35 each; 3.00 per 10

8 to 10 feet ----- 1.00 each; 8.00 per 10

10 to 12 feet ----- 1.50 each; 14.00 per 10

Tulip Tree. Very rapid growth; tulip-like flowers, greenish-yellow blotched orange; autumn foliage yellow.

6 to 8 feet ----- \$1.50 each; \$14.00 per 10

8 to 10 feet ----- 2.00 each; 18.00 per 10

Willow, Babylon Weeping. A large, graceful tree with long, slender, drooping branches; growth rapid.

4 to 6 feet ----- \$0.35 each; \$3.00 per 10

6 to 8 feet ----- .75 each; 7.00 per 10

Willow, Niobe Weeping. Drooping, yellow-barked branches.

4 to 6 feet ----- \$0.45 each; \$4.00 per 10

6 to 8 feet ----- .85 each; 8.00 per 10

Hardy Bush Roses

Early in the season these give a grand display, unsurpassed by any of the everbloomingers, and some bloom intermittently in summer and fall. May be planted to advantage in the fall.

Strong two-year field grown plants 65c each, \$6.00 per 10. Any 5 roses at the 10 rate. Postage additional if by parcel post.

Frau Karl Druschki; White American Beauty. Long pointed buds and magnificent waxy paper-white semi-double flowers, often 4 inches across; very strong and vigorous.

General Jack. Brilliant, velvety crimson-scarlet; large, full, very fragrant flowers; strong, vigorous.

Hugonis. Before other roses hardly realize spring is here Hugonis is a gorgeous bush of soft yellow, single flowers 2 to 2½ in. across; vigorous. 50c each, \$4.50 per 10.

J. B. Clark. Velvety scarlet-crimson; large, globular, fragrant flowers; vigorous; blooms intermittently in the fall.

Paul Neyron. Perhaps the largest of roses; deep, shining rose, clear and bright; full double; blooms freely in the spring and usually again in the fall; vigorous.

Rugosa red. Large, single purplish-red flowers 2½ to 3 in. across; bright red seed pods in fall; one of the most ornamental shrub roses. 40c each, \$3.50 per 10.

Ulrich Brunner. Cherry-red; large, globular, very fragrant flowers; blooms freely; tall; very vigorous.

IT'S EASY TO GROW ROSES

Have you a bit of ground with sun half the day, soil that will grow good garden crops? Then you can have roses in abundance and have them the first summer. Write for booklet.

Everblooming Roses

These are usually planted in the spring as they require winter protection. We will have a good assortment and shall be glad to quote by letter for fall planting.



Climbing American Beauty. See page 13.

Hardy Rambler and Climbing Roses

These give more flowers and a greater display in their season than any other roses. The large-flowered are termed climbers. Those with clusters of small flowers are called ramblers. Hardy and may be planted to advantage in the fall.

Strong two-year field-grown plants 55c each, \$5.00 per 10. Any 5 roses at the 10 rate. Postage additional if by parcel post.

American Pillar. Large clusters of beautiful single flowers 2 to 3 inches across, brilliant pink, almost carmine, white eye; vigorous; blooms freely; midseason; climber.

Christine Wright. Large; semi-double; bright wild-rose pink, often 3 to 4 inches across; early; climber.

Climbing American Beauty. Beautiful buds and large flowers, almost the same color and fragrance as Bush American Beauty; vigorous; good stems; early; climber.

Dorothy Perkins, Pink. Large clusters of small, fragrant, beautiful shell-pink flowers; vigorous; late; rambler.

Dorothy Perkins, White. A sport of Dorothy Perkins and an excellent white rambler; late.

Excelsa; Red Dorothy Perkins. Crimson-maroon, large clusters; blooms freely; late; vigorous; rambler.

Dr. W. Van Fleet. Delicate flesh-pink, center rosy-flesh; flowers borne singly on good stems; medium early to midseason and blooms over a long period; climber.

Goldfinch. Clusters of slender, deep yellow buds, opening creamy-white; early; blooms freely; vigorous; rambler.

Mary Wallace. One of the best; pretty buds and charming flowers often 4 in. across; bright rose-pink, shaded salmon and gold; early; blooms very freely; fragrant; climber.

Paul's Scarlet. Vivid scarlet shaded crimson; good sized semi-double flowers in clusters of 3 to 15; medium early.

Philadelphia. Intense crimson flowers in large clusters; blooms freely; very vigorous; medium early; rambler.

Silver Moon. Creamy buds opening into beautiful semi-double, very large white flowers, often 3 to 4 inches across; midseason; vigorous; blooms very freely.

SUCCESS WITH ROSES

An eight page booklet that tells how to plant and prune. It gives the characteristics of the different classes and describes the varieties carefully. Write for it if you haven't a copy.

Liberty Irises; Fleur de lis

Plant lots of Irises for their grand and royal colors and their beauty of form and texture. Mass them at the borders of the lawn, or among shrubbery. Plant them along walks and drives, and in the herbaceous border.

They are perfectly hardy.

They are easy to grow.

They usually bloom the first season.

They increase rapidly.

They grow in almost any soil.

They furnish a wealth of color in May.

The standards are the upright or standing petals, the falls the lower or drooping petals. The inches or feet in the descriptions is the height of the flower stems.

Prices: 15c each, 3 of a kind for 40c, \$1.50 per doz., except as noted. Six or more of a kind at dozen rates. Postage additional if by parcel post, 2c each, not less than 10c per package, for Missouri and adjoining states.

Albert Victor. Large; standards soft lavender-blue, falls a little deeper; fragrant; vigorous; 3-3½ ft.; fine.

Alcazar. Very large; standards light bluish-violet, falls deep reddish-purple; very fragrant; midseason; blooms freely; 3-3½ ft. 25c each, \$2.50 per doz.

Ambassadeur. Large; standards smoky reddish-lavender, falls dark velvety purple-maroon; late; strong stems; 3-3½ ft.; vigorous. 40c each, \$4.00 per doz.

Azure. Standards lavender-blue, falls rich velvety violet-purple; fragrant; medium late. 25c each.

B. Y. Morrison. Standards light lavender slightly tinted violet, falls velvety purple bordered lavender; fragrant; good size; 30 in. 40c each.

Caprice. Standards reddish-purple, falls slightly deeper; general effect cerise; fragrant; blooms freely; 2 ft.; late.

Liberty Irises, continued

Celeste. Large; sky blue, falls slightly deeper; 30-40 in.; midseason; vigorous; blooms freely.

Cluny. Very large; standards soft bluish-lavender, falls deeper; very fragrant; early; tall. 35c each, 2 for 65c.

Colonel Candelot. Standards bronze overlaid reddish-lavender, falls rich dark velvety crimson; fragrant; 30 in.; a good red-bronze. 25c each, 2 for 45c.

Crimson King. Standards rich claret-purple, falls a little deeper; fragrant; early; 2 ft.; blooms freely.

Cyanea. Deep violet; very early; dwarf; useful in the rockery and perennial border. 20c each, \$2.00 per doz.

Dr. Bernice. Standards reddish or coppery-bronze shaded yellow, falls light ruby-purple; 2 ft.

Dream. Large; soft pink tinged lavender, falls veined darker; fragrant; midseason; vigorous; blooms freely; 3-3½ ft. 35c each, 2 for 65c.

Edouard Michel. Medium large; standards violet-red, falls slightly deeper; fragrant; 2½-3 ft. 50c each.

Fairy. A dainty white, delicately shaded soft blue, early; blooms freely; 2½ ft.

Flavescens. Delicate sulphur-yellow; fragrant; blooms freely; 2½ ft.; good with light blue flowers.

Florida. A yellow dwarf, excellent for the rockery and front of the border. 25c each, \$2.50 per doz.

Honorabilis. Standards golden-yellow, falls crimson-brown; medium size but vigorous and blooms freely from early to late; 1½-2 ft.

Ingeborg. Creamy white; very early; 15-18 in.

Iris King. Standards old gold, falls velvety garnet-brown bordered yellow; good size; 2 ft.; medium late.

James Boyd. Large; standards lavender-blue, falls light violet edged lighter; fragrant; 30 in.

Juniata. Large; lavender-blue, falls slightly deeper, almost violet-blue; fragrant; 3-3½ ft.

Khediye. Beautiful soft lavender; brilliant orange beard; blooms profusely over a long period; 24-30 in.

Kochi. A velvety royal deep reddish-purple or claret-purple, falls slightly deeper, a color greatly admired; good size; fragrant; blooms freely; very early; vigorous.

Lent A. Williamson. Very large; standards lavender-violet, falls drooping, velvety violet-purple; early midseason; 3-3½ ft.; very fine. 25c each, \$2.50 per doz.

Loreley. Standards light yellow, falls dark purple margined yellow; fragrant; early; blooms freely; vigorous; 2-2½ ft.

Madame Chereau. Both standards and falls white, elegantly frilled violet-blue; edges ruffled; midseason; 3 ft.

Madame Chobaut. White suffused yellow, shaded lilac, base netted Prussian-red; an odd color; 3 ft. 30c each.

Madame Pacquette. Standards violet-red, falls slightly deeper; early; 2½ ft.; a good one of the red class.

Monsignor. Bluish-violet, falls deeply veined reddish-purple; fragrant; medium late; blooms freely; 2-2½ ft.

Mother of Pearl. Large; excellent form; light bluish-lavender with an iridescent, pearly effect; fragrant; midseason; vigorous; blooms freely; 3½ ft. 25c each, \$2.50 per doz.

Mrs. H. Darwin. White, falls slightly netted violet at the base; fragrant; blooms freely; 2 ft.

Orientalis Blue. Intense blue, almost purple; small flowers; blooms freely; excellent for naturalized planting, in the rockery and at the borders of pools; 2-2½ ft. 20c each, \$2.00 per doz.

Pallida Dalmatica. Very large; standards clear lavender-blue, falls slightly deeper; broad, heavy foliage; blooms freely; 3½ ft. 20c each, 3 for 55c, \$2.00 per doz.

Perfection. Standards lavender-blue, falls velvety violet-black; vigorous; blooms freely; 2½ ft.

Princess Victoria Louise. Standards sulphur-yellow, falls reddish-purple bordered cream; fragrant; early; blooms freely; 2 ft.

Prosper Laugier. Standards reddish-bronze, sometimes called fiery-bronze, falls velvety ruby-purple; fragrant; good size; midseason; 2½ ft.

Prospero. Very large; standards lavender, suffused yellow towards the base, falls purple, slightly shaded reddish; fragrant; late midseason; fine; 3½ ft. 35c each.

Quaker Lady. Standards smoky light lavender, falls ageratum-blue to lavender-blue; fragrant; blooms freely; 2½ ft. 25c each, \$2.50 per doz.



Liberty Irises furnish a wealth of color

Queen of May. Large; lilac-pink to orchid-pink, falls deeper; fragrant; blooms freely; early midseason; one of the best of the pink class; 2½-3 ft.

Rhein Nixe. Standards white, falls pansy-violet edged white; fragrant; vigorous; blooms freely; midseason to late; 2½ ft.

Roseway. Standards purplish-rose, falls deeper; fragrant; vigorous; blooms freely. 35c each, 3 for \$1.00.

Seminole. Standards violet-red, falls velvety mahogany-red to deep crimson; one of the deepest and brightest red Irises; 2-2½ ft. 25c each, \$2.50 per doz.

Shekinah. Clear soft yellow, base shaded deeper; falls veined olive; fragrant; midseason; blooms freely; one of the best yellows; 2½-3 ft. 25c each, \$2.50 per doz.

Sherwin Wright. Pure golden-yellow, slightly netted brown at base; fragrant; vigorous; blooms freely; 1½-2 ft.

Sweet Lavender. Standards soft lavender-violet, ruffled, falls reddish-violet; blooms freely. 40c each.

Violacea grandiflora. Large; standards lavender-blue, falls slightly deeper, almost violet-blue; late; vigorous; good growth; blooms freely; excellent; 3 ft.

Walhalla. Standards lavender-blue, falls velvety reddish-purple; fragrant; early; 2 ft.

SPECIAL IRIS COLLECTION

Liberty Irises, assorted, our selection, named: Half dozen, 3 varieties, 60c (postpaid, 75c); one dozen, 6 varieties, \$1.00 (postpaid, \$1.15); twenty-five, 8 varieties, \$2.00 (postpaid, \$2.25); one hundred, 8 varieties, \$6.50 (postpaid, \$7.25).

Japanese Irises

Foliage tall, narrow, blade-like; stems slender, graceful, with several buds to the stem; large flat flowers, usually with a gold blotch, blooming later than the Liberty Irises. Plant in full sun in any good mellow loam that does not become excessively dry; very effective along a stream or pool. Water must not stand on the roots. Six-petaled are termed double, three-petaled, single.

Blue. Early, double, 25c each, \$2.50 per doz.

White. Early, double, 25c each, \$2.50 per doz.

Peonies are Easily Grown



The Peony rivals the rose in fragrance, beauty and variety of form

Hardy as the oak, Peonies are so easily grown that little need be said. Often, in neglected gardens, one sees large clumps that have flourished and bloomed for years. Yet they amply repay all attention given them. They thrive in almost any good, well drained soil, are best in full sun but succeed with shade part of the day. Plant 3 feet apart. The early varieties usually begin blooming here about May 5 to 8.

The guards are the wide outer petals. Crown, bomb, semi-rose and rose is the type or form of flower as follows:

Crown. Wide center or crown petals with narrower, shorter petals forming a collar or ring between them and the guards. The crown petals are not always prominent.

Bomb. Center petals of uniform width but narrower than the guards and forming a globe within the guards.

Semi-rose. Flowers that would be classed as rose but for an occasional pollen bearing stamen.

Rose. Perfectly full, all petals wide, no stamens. The center petals may not be as wide as the guards but if quite distinct it would be a bomb.

The name and date in parenthesis is the originator or introducer and date of introduction.

PEONY SIZES AND PRICES

Prices quoted are for good strong divisions of 3 to 5 eyes from blooming plants. We consider them fully equal to one-year plants. They cost less and average larger than the one-year plants usually sent out. If you want something larger order 5 to 8 eyes at fifty per cent advance or 8 to 10 eyes at double the printed price. 3 of a kind at dozen rates.

PEONIES BY PARCEL POST

If wanted by parcel post allow 8c for the first plant and 2c for each additional plant if within 150 miles of Sarcoxie. For the balance of Missouri and adjoining states 10c for the first plant and 3c for each additional plant. For more distant states 15c for the first plant and 8c for each additional plant. Any balance will be refunded.

Augustin d'Hour (Calot, 1867). Deep rich, brilliant solferino-red, slight silvery reflex; large; bomb type; midseason; vigorous, medium tall; fine. \$1.00 each, \$10.00 per doz.

Baroness Schroeder (Kelway, 1889). Large; very delicate flesh, becoming white; beautiful, globular, compact, rose type flowers; delicate tea-rose fragrance; midseason; erect, compact; strong stems; blooms freely. 75c each.

Canari (Guerin, 1861). Large; guards white, barely tinted flesh, center sulphur-white, becoming pure white; fragrant; bomb type; long, strong stems; late midseason; blooms freely. 40c each, \$4.00 per doz.

Claire Dubois (Crousse, 1886). Large; rich, clear satiny-pink, edged silvery; very large, globular, rose type flowers; very broad incurved petals; fragrant; late; growth strong; stems long. 75c each, \$7.50 per doz.

Crown of Gold; Couronne d'Or (Calot, 1873). Snowy-white, reflecting the golden stamens and lighting up the flower; center petals flecked and edged carmine; large; semi-rose type; fragrant; late; upright, vigorous with strong stems. 40c each, \$4.00 per doz.

Duchesse de Nemours (Calot, 1856). Superb ivory white, greenish markings towards center, becoming pure white; especially beautiful in the half open bud; medium to large; crown type; medium early; strong; vigorous; good stems; blooms freely. 35c each, \$3.50 per doz.

Duchesse d'Orleans (Guerin, 1846). Large carmine pink guards, center soft pink and salmon, becoming amber-yellow; medium to large; bomb type; fragrant; midseason; strong, vigorous; very tall; blooms freely. 30c each, \$3.00 per doz.

Duke of Wellington (Calot, 1859). Broad white guards, center very full, sulphur-white becoming pure white; fragrant; bomb type; late; blooms freely; vigorous; long, strong stems; very large. 40c each, \$4.00 per doz.

Edulis superba (Lemon, 1824). Beautiful bright, deep rose-pink; very fragrant; large; of good form; one of the earliest; crown type; strong, vigorous; blooms freely over a long season; excellent both for the lawn and cut flowers; long stems. 35c each, \$3.50 per dozen.

Felix Crousse (Crousse, 1881). Brilliant, rich, even dazzling ruby-red; large, globular, solidly and compactly built; bomb type; fragrant; midseason; growth strong; vigorous; blooms freely; fine. 75c each, \$7.50 per doz.

Festiva maxima (Miellez, 1851). For enormous size combined with wondrous beauty it has stood unsurpassed for 80 years; pure paper white, some center petals flecked purplish-carmine; early; rose type; very fragrant; vigorous; very long, heavy stems. 50c each, \$5.00 per doz.

James Kelway. Fine waxy white, guards barely tinted flesh when opening; very large; semi-rose type; midseason; stems medium long; blooms freely. 75c each.

La Tulipe (Calot, 1872). Blush-white becoming creamy-white, center tipped carmine, carmine tulip-like markings on the outside of the guards; semi-rose type; large; fragrant; midseason; long stems; vigorous. 50c each.

Madame Auguste Dessert (Dessert, 1899). Very large; glossy flesh-pink, some petals edged crimson; semi-rose type; early to midseason; growth strong; blooms freely. 75c each.

Madame Calot (Miellez, 1856). Very delicate pink becoming white; fragrant; large; rose-type; early; strong stems; blooms freely. 35c each, \$3.50 per doz.

Madame de Verneville (Crousse, 1885). An enormous producer of fine, large, compact flowers literally packed with petals; broad white guards, center slightly blush becoming pure white, flecked carmine; delightfully fragrant; bomb type; early; vigorous; medium height; good stems. 40c each, \$4.00 per doz.

Marcella Dessert (Dessert, 1899). Large; white, some petals flecked crimson; tea-rose fragrance; crown type; midseason; growth strong; stems medium long. 75c each.

Marguerite Gerard (Crousse, 1882). Large; light hydrangea-pink becoming almost white; fragrant; semi-rose type; late; blooms freely; growth strong; medium height; stems strong. 50c each.

Modeste Guerin (Guerin, 1854). Large flowers of excellent form; bright deep pink tinged carmine (solferino-red); very fragrant; bomb type; blooms freely; vigorous; medium tall; upright habit; strong stems, \$1.00 each.

Peonies, continued

Mons. Dupont (Calot, 1872). Very large cup-shaped, semi-rose type blooms; ivory-white, some petals edged carmine; fragrant; late midseason; blooms freely; growth strong, upright; tall, strong stems. **50c each.**

Mons. Jules Elie (Crousse, 1888). Immense globular, very full flowers on strong stems; glossy flesh-pink shading to deeper rose at the base; bomb type; very fragrant; early midseason; blooms freely; grand for all purposes. **\$1.00 each.**

Octave Demay (Calot, 1867). Large; delicate hydrangea-pink; fragrant; crown type; early; blooms freely; medium height; strong stems. **75c each.**

Queen Emma. A very large, very full, fragrant, bright, light pink rose type flower; midseason to late; blooms freely; erect habit; compact growth; stems medium long; the flowers keep and ship well. **75c each.**

Therese (Dessert, 1904). Very large; rich clear satiny pink becoming lilac-white in the center, with glossy reflex; compact rose type; very fragrant; plant compact, erect, medium tall; blooming habit medium; fine. **\$3.00 each.**

Venus. Large; hydrangea-pink; fragrant; crown type; midseason; tall. **\$1.00 each.**

Zoe Calot (Miellez, 1855). Very large, very full, globular bloom; soft pink, tinted lilac; fragrant; midseason; growth strong, medium height; very stiff stems; blooms freely. **30c each, \$3.00 per doz.**

PENNANT MIXED PEONIES

If you want something good at a moderate price and are not particular what varieties and colors, just so they are nice, order Pennant Mixed. This is not a cheap lot of undesirable varieties, but a really good mixture of named Peonies, the leading commercial varieties predominating. Do not ask for certain colors of these as they are grown mixed. **25c each, \$2.00 per doz.; 50 or more at 16c each.**

PEONY COLLECTIONS

PEONY COLLECTION A, \$1.00 PREPAID

1 each deep and light pink, white and red, our selection, prepaid **\$1.00.**

PEONY COLLECTION B, \$2.00 PREPAID

1 Festiva maxima. Early; white flecked carmine.....	.50
1 Crown of Gold. Late; white flecked carmine.....	.40
1 Madame Calot. Delicate pink becoming white.....	.35
1 Duchesse de Nemours. Superb ivory-white.....	.35
1 Edulis superba. Early; deep rose-pink.....	.35
1 Duchesse d'Orleans. Pink and salmon becoming amber..	.30
1 Francois Ortegat. Deep purplish-crimson.....	.50

Regular price, not prepaid**\$2.75**

SPECIAL: The 7 prepaid for\$2.00

PEONY COLLECTION C, \$5.00 PREPAID

1 Madame de Verneville. Early; white flecked carmine..	.40
1 Festiva maxima. Early; white flecked carmine.....	.50
1 Crown of Gold. Late; white flecked carmine.....	.40
1 Duchesse de Nemours. Superb ivory-white.....	.35
1 Canari. Large; white; late midseason.....	.40
1 Mons. Jules Elie. Bright silvery lilac-pink.....	1.00
1 Edulis superba. Early; deep rose-pink.....	.35
1 Zoe Calot. Very large; soft pink, tinted lilac.....	.30
1 Queen Emma. Very large; bright light pink.....	.75
1 Francois Ortegat. Deep purplish-crimson.....	.50
1 Felix Crousse. Brilliant, dazzling ruby-red.....	.75
1 Augustin d'Hour. Rich, brilliant solferino-red.....	1.00

Regular price not prepaid**\$6.70**

SPECIAL: The 12 prepaid for\$5.00

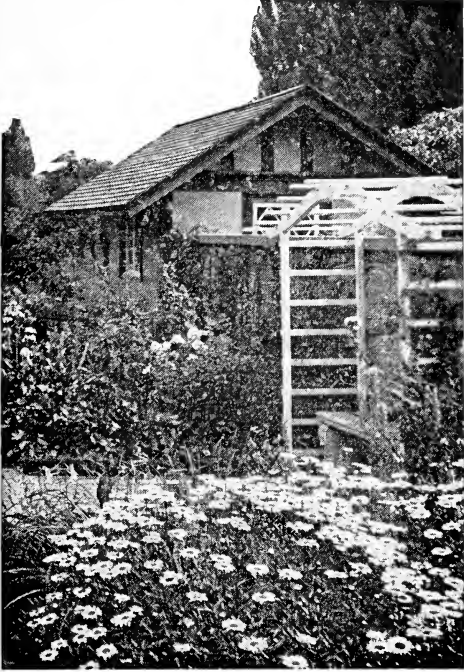
Lily, Regal

A magnificent Chinese lily; white center flushed yellow, outside of petals tinged purplish; delightful fragrance; easily grown. Bulbs 4-6 in. around, 35c each, 3 for \$1.00, \$3.50 per dozen. Postpaid, 40c each, 3 for \$1.10, \$3.75 per dozen.

THE FASCINATION OF ROCK GARDENING

You can have a rock garden, charming and beautiful from the time the early flowers first awaken in the spring until the frosts of autumn put the late flowers to sleep for the winter. Write for booklet, *The Fascination of Rock Gardening*, if you haven't a copy.

Hardy Flowers



Daisies give profusion of flowers. See page 20

Easily grown flowers that live from year to year. Good strong outdoor-grown plants, not the tiny plants offered in cheap collections by parcel post.

Plants by Parcel Post. Plants vary in weight and there are 8 zones. For Missouri and adjoining states allow 10c for the first and 1½c for each additional plant. Any surplus will be refunded.

Six or more of a kind at the dozen rate.

Agrostemma coronaria; Rose Champion. Downy silvery-gray leaves; bright cerise-crimson flowers 1½ in. across in late May 20c each, 3 for 55c, \$2.00 per doz.

Alyssum rostratum. Golden-yellow flowers in dense heads in summer; prostrate habit. 25c each, 3 for 70c, \$2.50 per doz.

Alyssum saxatile compactum; Basket of Gold. Broad masses of bright yellow flowers in early spring; dwarf; easy culture. 20c each, 3 for 55c, \$2.00 per doz.

Armeria maritima; Common Thrift. Small silvery-pink flowers in pretty little balls; early summer to fall. 25c each, 3 for 70c, \$2.50 per doz.

Blanket Flower; Gaillardia grandiflora. Flowers 2 to 3 in. across, maroon bordered yellow; late May till fall; easily grown. 15c each, 3 for 40c, \$1.50 per doz.

Bleeding Heart. Heart shaped rosy-carmine flowers with white inner petals; grows in sun or shade. 50c each.

Candytuft; Iberis sempervirens. A mass of evergreen foliage covered in early spring with dense clusters of small white flowers. 25c each, 3 for 70c, \$2.50 per doz.

Cerastium tomentosum; Snow-in-Summer. A creeping mat of silvery foliage, covered in early summer with small snowwhite flowers. 25c each, 3 for 70c, \$2.50 per doz.

Chrysanthemum. Blooms freely in Oct. and Nov. White, yellow, mauve-pink, red. 20c each, 3 for 55c, \$2.00 per doz.

Columbine; Aquilegia. Many dainty small branches bearing spurred flowers in May. Mixed colors, 1 yr., 15c each, 3 for 40c, \$1.50 per doz.; 2 yr., 20c each, 3 for 55c, \$2.00 per doz.

Columbine, Mrs. Scott Elliotts. Large flowers with very long spurs. Mixed colors, 1 yr., 20c each, 3 for 55c, \$2.00 per doz.

Hardy Flowers, continued

Coreopsis. Pure yellow, daisy-like flowers 2 to 3 in. across on 2 to 3 ft. stems all summer if not allowed to seed. 15c each, 3 for 40c, \$1.50 per doz.

Daisy, Arctic. Flowers 2 to 2½ in. across in Oct. on 12 to 15 in. stems. 15c each, 3 for 40c, \$1.50 per doz.

Daisy, Early Elder. Flowers 2 to 3 in. across on 20-30 in. stems in early May. 15c each, 2 for 25c, \$1.00 per doz.

Daisy, Late Elder. About ten days to two weeks later than Early Elder. 15c each, 2 for 25c, \$1.00 per doz.

Daisy Korean. Clusters of daisies 2 to 2½ in. across, white, sometimes blush, with yellow center on 2 to 3 ft. stems in Oct. 15c each, 2 for 25c, \$1.00 per doz.; clumps 25c each.

Daisy, Painted; Pyrethrum roseum. Daisy-like flowers 1½ to 2½ in. across, white to red on 1 to 2 ft. stems; mixed colors. 20c each, 3 for 55c, \$2.00 per doz.

Daisy, Shasta Alaska. Large, 3 in. or more across, in summer; 15-24 in. stems. 15c each, 2 for 25c, \$1.00 per doz.

Daisy, Supreme. A mass of daisies 3½ to 4 in. across for a month or more, beginning in early June, on stems 2 to 3 ft. tall. 20c each, 3 for 55c, \$2.00 per doz.

Delphinium. Spikes of dainty spurred flowers in May and at intervals during summer if the old flowers are cut off. Plant in full sun, in well drained, preferably sandy, loam; the addition of ground lime helps.

Delphinium Belladonna. Unrivalled for persistent blooming; the delightful blue of the skies; spikes 1½ to 3 ft. tall. 20c each, 3 for 55c, \$2.00 per doz.

Delphinium Belladonna Improved. A little larger, taller and more vigorous than above. 25c each, \$2.50 per doz.

Delphinium Bellamosum. A dark-blue form of Belladonna. 20c each, 3 for 55c, \$2.00 per doz.

Delphinium, English Hybrids. Tall with large flowers, in color ranging from light to deep blue. 50c each.

Delphinium formosum. Brilliant deep blue, white eye; one of the most permanent; spikes 2 to 3 ft. 20c each, 3 for 55c, \$2.00 per doz.

Eupatorium coelestinum; Hardy Ageratum. Covered with small, fuzzy, azure-blue flowers like Ageratums during latter summer. 20c each, 3 for 55c, \$2.00 per doz.

Flax, Perennial. Pearly lavender-blue flowers 1 in. across on 1 to 1½ ft. stems in late spring and summer. 20c each, 3 for 55c, \$2.00 per doz.

Forget-me-not. Dainty little deep blue flowers with yellow eye on stems 6 to 8 in. tall from latter spring until fall. 25c each, 3 for 65c, \$2.50 per doz.

Foxglove. Long tubular flowers drooping on 2 to 4 ft. spikes in May. Mixed white, purple and purplish-rose. 25c each, \$2.50 per doz.

Gayfeather. Spikes of small rosy-purple flowers in late summer on 10-30 in. stems. 20c each, 3 for 55c, \$2.00 per doz.

Helenium pumilum magnificum. Golden flowers, midsummer to fall, on stems 18 in. tall. 25c each, \$2.50 per doz.

Helianthemum mutabile; Sun Rose. A dwarf rockery plant; flowers 1 in. across, pale rose to white, in May and June; plant in sun. 20c each, 3 for 55c, \$2.00 per doz.

Hollyhock. Excellent massed against fences, buildings and at angles of walks. Assorted double, 25c each, \$2.50 per doz.

Irises, see page 13.

Larkspur, see Delphinium.

Lemon Lily, Dwarf. Small, fragrant, golden-yellow flowers in May on 12-15 in. stems. 25c each, \$2.50 per doz.

Mallow Marvels. Six to 10 weeks of flowers like single hollyhocks, 6 to 9 in. across, beginning in early July. Red, 1 yr., 25c each, 3 for 65c, \$2.50 per doz.

Myosotis, see Forget-me-not.

Peonies, see page 16.

Phlox brighten the garden after the spring flowers are gone and before summer flowers arrive in abundance. Field grown plants to bloom the first summer, 20c each, \$2.00 per doz.

Phlox Commander. Brilliant deep crimson-red.

Phlox Eclairer. Rich crimson-carmine, darker eye; large.

Phlox Europa. White, decided crimson eye; large.

Phlox Marechal French. Deep scarlet, blood-red eye; large.

Phlox Miss Lingard. Early; white, faint lilac eye; large.

Phlox Mrs. Jenkins. A good white to follow Miss Lingard.

Phlox Rheinlander. Beautiful salmon pink, deeper eye.

Phlox R. P. Struthers. Clear cherry red, darker eye; fine.

Above Phlox 20c each, \$2.00 per doz.

Phlox subulata; Moss Pink. A mat of somewhat moss-like leaves, covered in early spring with flowers an inch across. Pink and white, 20c each, 3 for 55c, \$2.00 per doz.

Pinks, Scotch or Grass. Single and double very fragrant flowers 1 to 1½ in. across on 15 in. stems; foliage resembling Carnations. 20c each, 3 for 55c, \$2.00 per doz.

Poppy, Iceland. Dwarf, neat habit; flowers single, 1 to 1½ in. across on 1 ft. stems during most of summer. Mixed colors. 20c each, 3 for 55c, \$2.00 per doz.

Pyrethrum, see Daisy, Painted.

Rudbeckia Golden Glow. Double golden chrysanthemum-like flowers on 5 to 6 ft. stems in latter summer. 20c each, 3 for 55c, \$2.00 per doz.



Phlox Miss Lingard at Sarcoxie Nurseries

Saponaria ocymoides. Small lilac-rose flowers cover the plant in late spring; good to follow Phlox subulata. 25c each, 3 for 70c, \$2.50 per doz.

Sedum acre; Gold Moss. A creeping form with very small moss-green leaves; starry yellow flowers ½ in. across. 20c each, 3 for 55c, \$2.00 per doz.

Sedum pulchellum. Pastel-pink flowers in 3-cornered clusters 6-7 in. high in June. 20c each, 3 for 55c, \$2.00 per doz.

Sedum reflexum. Starry yellow flowers in flat-topped clusters 6-7 in. high in early July. 20c each, 3 for 55c, \$2.00 per doz.

Sedum sarmentosum. Slender creeping shoots covered in late May with bright yellow, starry flowers ½ in. across; sun or dense shade. 15c each, 3 for 40c, \$1.50 per doz.

Sedum spectabilis Brilliant. Rosy-red flowers ½ in. across in large flat-topped clusters 18 in. tall. 25c each, \$2.50 per doz.

Sedum stoloniferum. Branches trailing; leaves, triangular, bronzy-red in fall. 20c each, 3 for 55c, \$2.00 per doz.

Sedum Rock Garden Collection. Our assortment. 3 plants, 3 varieties, 50c; 6, 3 varieties, \$1.00; 12, 4 varieties, \$1.80.

Stokesia cyanea; Stoke's Aster. Lavender-blue cornflower-like blooms 3 to 4 in. across on stems 1 to 2 ft. tall in summer. 20c each, 3 for 55c, \$2.00 per doz.

Sweet William. Gorgeous in mid May with their flat-topped clusters of flowers ranging from pure white through shades of pink to deep red and variegated, on 12-18 in. stems. Mixed colors. 15c each, 3 for 40c, \$1.50 per doz.; 2 doz. for \$2.50; 4 doz. for \$4.00.

Sweet William, Newport Pink. Salmon pink. 20c each, 3 for 55c, \$2.00 per doz.

Sweet William, Scarlet Beauty. A charming distinct color. 20c each, 3 for 55c, \$2.00 per doz.

Veronica rupestris. A mat of small, deep green foliage covered in late spring with bright blue flowers on 3 to 4 in. stems. 35c each, 3 for \$1.00, \$3.50 per doz.

Hardy Flowers, continued

Violets, Sweet Russian. Deep, rich violets; very hardy; easily grown. 10c each, 3 for 25c, 12 for 75c, 25 for \$1.50.

Yucca filamentosa; Adam's Needle. Dense clumps of ever-green leaves 1 in. wide and 18 in. high; white flowers in early summer on 4 to 6 ft. stems. 25c each.



This illustrates an outdoor living room with its green carpet for the kiddies' feet, its sweet flowering blooms so refreshing to all and its friendly trees which throw a kindly shade.

IT'S EASY TO GROW ROSES

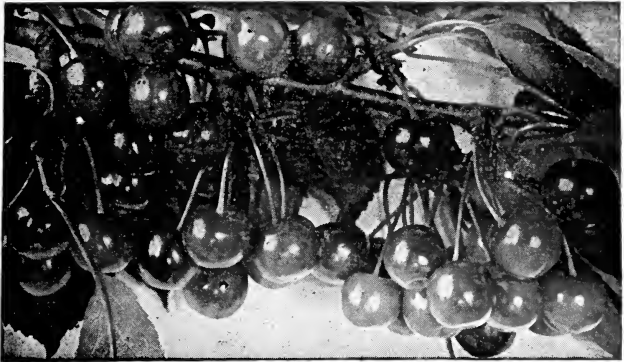
Have you a bit of ground with sun half the day, soil that will grow good garden crops? Then you can have roses in abundance and have them the first summer. Write for booklet.

Complete Landscape Service

We have a competent landscape architect and are prepared to render a complete service, from the drawing of the plans to furnishing and planting the trees and plants. If interested in this service write us for particulars, giving the size of your property.



Sweet William



Cherry Trees

Prices of Cherry Trees	Each	Per 10	Per 100
XXXsize 2 year, 11/16 in. caliper up, about 4 to 5 feet.....	\$0.75	\$7.00	\$65.00
Any 5 or more at the 10 rate; 50 or more at 100 rate.			
Early Richmond; May Cherry. Bright red; May-June.			
English Morello. Dark red, nearly black; latter June-July.			
Montmorency. A week to 10 days later than Early Richmond.			

Peach Trees

Prices of One-Year Peach	Each	Per 10	Per 100
Extra size, 9/16 to 11/16 in. caliper, about 4 to 5 ft.....	\$0.40	\$3.50	\$32.00
Any 5 or more at the 10 rate; any 50 at the 100 rate.			
Belle of Georgia. Very large; white, red cheek; flesh white, firm, juicy, good; freestone; mid August; productive.			
Carman. Large; creamy white, splashed red; flesh white, juicy, rich, sweet; nearly a freestone; productive.			
Elberta. Very large; yellow, crimson cheek; flesh yellow, firm, juicy, good; freestone; mid August; productive.			
Elberta Cling. Excellent for canning and pickling.			
Heath Cling. Very large; creamy white, sometimes faintly blushed; flesh white, rich, very juicy; fine; latter Sept.			
Indian Blood Cling. A red fleshed clingstone, excellent for preserving and canning.			
J. H. Hale. Large; yellow with red cheek; fine grained; a little earlier and more round than Elberta.			
Mayflower. Red all over; semi-cling; good size and quality for a very early peach; about June 10 here; productive.			
Oldmixon Cling. Large; creamy white, red cheek; flesh white, juicy, sweet, rich, fine flavor; latter August.			
Victor. Creamy white with red blush; flesh white; juicy; good; semi-cling; medium size; latter June.			

Pear Trees, Standard

Prices of Pear Trees	Each	Per 10	Per 100
XX size 2 year, 9/16 to 11/16 in. caliper, about 4 to 5 feet.....	\$0.60	\$5.50	\$50.00
Any 5 or more at the 10 rate; 50 or more at 100 rate.			
Bartlett. Large; good quality; latter August.			
Garber. Large; resistent to blight; early September.			
Kieffer. Large; resistent to blight; plant Garber to pollenize it.			

Dwarf Pears

Dwarf Pears occupy little room, and while not so long lived as the Standards, begin bearing younger. **Duchesse.** Large; greenish-yellow, dull red cheek; Sept.-Oct. XX, 5/8 in. caliper up, 75c each, \$7.00 per 10, \$65.00 per 100.

Apple Trees

Prices of Two-Year Apples	Each	Per 10	Per 100
Extra size, 9/16 to 11/16 in. caliper, about 4 to 5 feet-----	\$0.45	\$4.00	\$30.00

Any 5 or more at the 10 rate; any 50 at the 100 rate.

Black Ben Davis. Large; rich red to maroon; winter.

Delicious. Yellow mostly covered red and carmine; winter.

Early Harvest. Bright straw color; very early.

Grimes Golden. Beautiful yellow; fine quality; Oct.-Dec.

Jonathan. Deep red; fine quality; October and later.

Maiden Blush. A large, clear yellow autumn apple.

Stayman Winesap. Striped, often nearly covered with dark red; winter.

Transcendent Crab. Yellow, crimson cheek; Aug.-Sept.

Winesap. Bright deep red, flesh yellow; Dec.-March.

Plum Trees

Prices of Plum Trees	Each	Per 10	Per 100
Extra size, 9/16 to 11/16 in caliper, about 4 to 5 feet -----	\$0.50	\$4.50	\$40.00

Any 5 or more at 10 rate; any 50 at the 100 rate.

Abundance. Japan; large; bright red over yellow; mid July.

America. Large; yellow, red cheek; hardy; July.

Deck Damson. Larger than common Blue Damson; productive.

Grape Vines

Concord. Large, black; juicy, sweet; hardy, productive; mid to late Aug. 2 yr., 1 for 15c, 3 for 40c, 5 at 12c, 25 at 8c each.

Moore Early. Black; large; hardy; productive; 2 weeks before Concord. 2 yr., 1 for 18c, 3 for 50c, 5 at 15c, 25 at 12c each.

Niagara. Greenish-white to pale yellow; sweet; ripens with Concord. 2 yr., 1 for 18c, 2 for 35c, 3 for 50c, 5 at 15c each.

Currants

Should have partial shade or a nothern slope. Red and white, 2 yr., 1 for 25c, 2 for 45c, 3 for 65c, 5 or more at 20c each.

Gooseberries

Houghton. Medium size but bears profusely; resistent to mildew; a northern slope or slight shade is best. 2 yr., 1 for 25c, 2 for 45c, 3 for 60c, 5 or more at 18c.

Raspberries

These are offered for spring shipment only.

Cumberland. Black; large; excellent quality; early to mid-season, 50c per 10, \$1.00 per 25, 50 or more at \$3.50 per 100.

St. Regis. Bright red; good quality; early; productive. 50c per 10, \$1.00 per 25, 50 or more at \$3.50 per 100.

Blackberries

Early Harvest. Medium size but juicy; sweet; hardy; very early. 45c per 10, 85c per 25, 50 or more at \$3.00 per 100, 500 or more at \$27.50 per 1000.

Rhubarb or Pie Plant

Large, tender, delicately flavored stalks; productive. Divisions 15c each, \$1.20 per doz.; 6 or more at the doz. rate.

Asparagus

Mary Washington. Large; productive; resistent to rust; an excellent variety. 2 yr., 40c for 25, \$1.50 per 100.

Complete Landscape Service

We have a competent landscape architect and are prepared to render a complete service, from the drawing of the plans to furnishing and planting the trees and plants. If interested in this service write us for particulars, giving the size of your property.