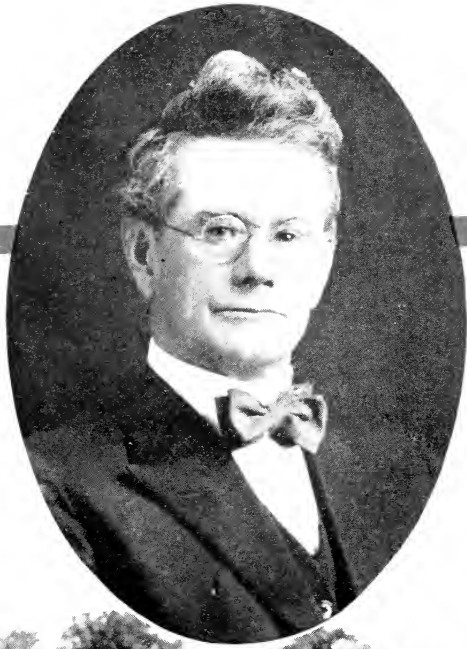


Historic, Archive Document

Do not assume content reflects current scientific knowledge, policies, or practices.





BRAND PEONIES *OWN-ROOT*
LILACS
shrubs, ornamental trees, and fruits

The Martha Bulloch Collection

Seven Beautiful Peonies

-- Each One a Masterpiece --

IF PURCHASED SEPARATELY . . . A TOTAL VALUE OF \$18.50

Collection Price

\$15.00

You Save \$3.50

David Harum A soft Tyrian-rose, absolutely void of stamens. \$2.00

Longfellow The highest rated of all the bright reds. Does not fade in the sun. \$1.50

Kelway's Glorious As good a white as LeCygne, but where LeCygne is compact and symmetrical Kelway's Glorious is loose and lacy. \$5.00

Mme. Jules Dessert A fine, late, midseason, light pink. One of the very best of the light pinks. \$2.00

Souv. de Louis Bigot The best salmon pink as a garden flower. Holds its delicate color well in the sun. \$2.00

Walter Faxon Here is a real salmon pink, distinctly different from any other pink peony. . \$2.00

Martha Bulloch A bright old rose late pink. The largest and best deep late pink. \$4.00

Catalog Value \$18.50

Collection Price

\$15.00

The Three Best Yellow Peonies

Laura Dessert Primevere
Fanny Crosby

IF PURCHASED SEPARATELY . . . A TOTAL VALUE OF \$8.50

Collection Price

\$7.00

You Save \$1.50

Both Laura Dessert and Primevere have a decided uniform yellow cast. Some critics declare Primevere the better flower of the two, while others like the upright growing habit of Laura Dessert.

Fanny Crosby has a distinct lemon yellow center with an outer row of pale pink guard petals.

All of these good yellows should find a place in every large planting. A strong BRAND DIVISION of each variety.

Catalog Value \$8.50

Collection Price

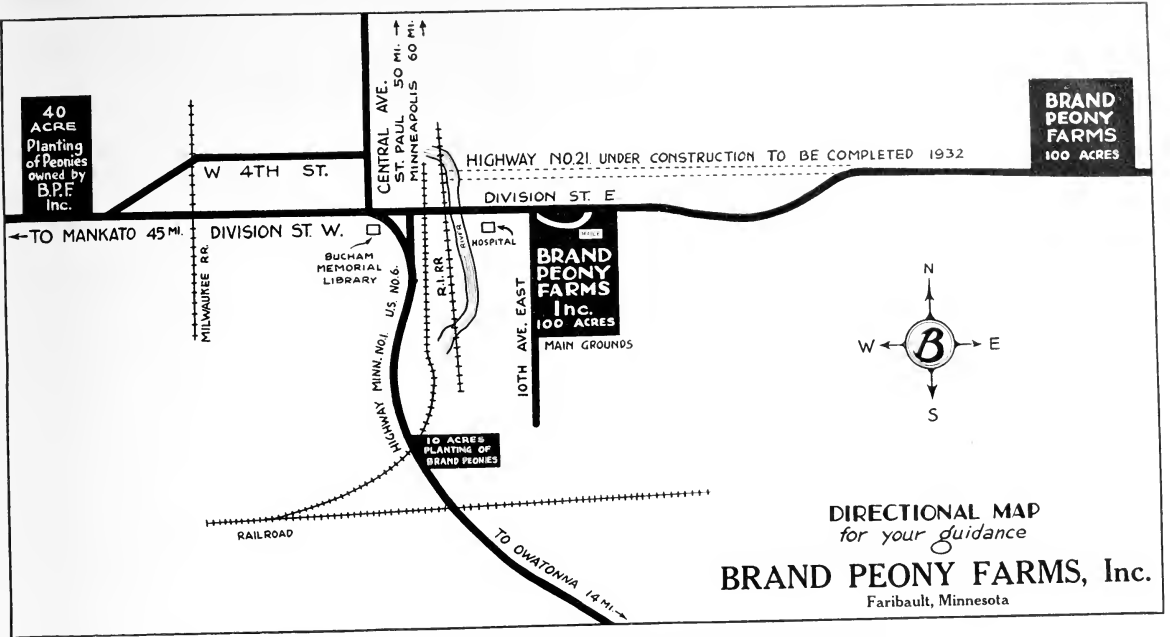
\$7.00

Remember Every Root

— IN EVERY COLLECTION —

IS A BRAND DIVISION

Do Not Take a Cash Discount On Any Collection Price



Paste This Map on Windshield When Motoring to Brand Peony Farms

From Out of Adversity Progress is Born

At 3:15 on the morning of May 7th, last, we were called to the 'phone and informed that our buildings, which lay about a quarter mile from the residence, were afire.

Entirely beyond control, the fire consumed everything but a small part of the walls of the old peony storage room, together with one wall of the old main storage room. Besides practically destroying our buildings, we lost the entire contents. Everything! This included a stock of 40,000 two-year French Lilacs on their own roots, in the very choicest new varieties. This we consider our major loss from the fire, a very serious loss too, as this comprised our stock of these new lilacs accumulated through two years. These would have been planted out into the fields this year, so in this respect it sets us back two years.

In another respect, however, the fire led to advancement and improvement. Due to present conditions governing the reduced costs of labor and materials, we were able to rebuild within our insurance. Although not building as large as before, we have actually increased our capacity and efficiency for the proper handling of all our stock. We now have a new building in place of an old one and a building much better suited to our purposes. With the exception of the roof, everything about the new building is fire-proof. Our natural light is much better, as we learned from previous mistakes how to place our new skylights to have the most light where it is most needed. The walls in our new buildings are better constructed, being designed to give us much better control over temperature and moisture. The west wall is three feet thick with ten air spaces. Having the coldest side of the building protected with such a wall, we believe we can carry all of the stock through our coldest weather without artificial heat, which is very desirable. All the other outside walls have an extra lining of tile over and above what was previously provided in the old build-

ing. Consequently, our new building will be much warmer in winter and cooler in summer.

One large room, 15 feet by 51 feet, in which the furnace is located, is used as a work room in the winter. Here is a warm room in which the men may do the necessary grafting of stock that is done during the winter time, working in comfort on the coldest days of winter.

Above the furnace and work room is the new office, consisting of a large entry way from which doors open into the office proper and into the entrance to the basement and the storage rooms below. The main office consists of a large, well lighted room 15 feet by 30 feet, off from which opens a fire-proof room 10 feet by 15 feet where all files, records and office supplies are kept.

This constitutes the main building, which is used for the handling and storage of peonies and nursery stock. It is constructed entirely of hollow tile, stone, and concrete. No wall has less than six air spaces in it. The roof is of frame construction. It consists of three separate roofs with two air spaces in between, an air space separating each of these roofs from the others.

To the west of this main building is another new building, 24 feet by 70 feet, constructed of hollow tile walls with frame roof. This building is used as a warehouse in which to keep all packing material, lumber, surplus boxes, etc. In this way we have removed from the main building all such materials in which it might be easy for a fire to start. Temporarily this auxiliary building also houses our treating room, being provided with gas plates on which to heat large tanks of water for treating peony roots. Here every peony root we plant is carefully treated. This season we expect to put up a special building, designed purposely for the treating of peony roots.

BRAND PEONY FARMS, Inc.

Box 408 - Faribault, Minn.

A. M. BRAND, President

MYRTLE GENTRY, Sec'y-Treas



Brand's 64 Page Manual International Authority ON Successful Peony Culture

Full of interesting information, covering the history, the cultivation, and the description of all outstanding varieties of peonies.

After you read our book, we believe you will agree with us that there are few questions about the peony left unanswered.

\$1000 Worth of Information

50c a copy—only 25c a copy with each order of \$3.00 to \$5.00.

**FREE WITH EVERY ORDER
AMOUNTING TO MORE THAN \$5.00**

"A Most Useful Manual"

Lexington, Ky.

"The copy of Brand Peony Manual received by me last week and it was so interesting that every page was read before laying it down. To receive and read such a fascinating introduction to the Brand Peony Farms and to have present so much useful information on the Peony, is indeed a pleasure.

"The shipment of peonies arrived this forenoon, and to say I was pleased with the quality of the roots does not express my satisfaction. These are far superior to any that have reached me from other sources."
—J. B.

"The Best Manual I Ever Saw"

Ogden, Utah.

"I wish to express my sincere appreciation for your Peony Manual. It certainly seems to cover everything one might desire to know about peonies. I have not had time so far to thoroughly digest all the information it contains, but what I have read convinces me that it is a book worth having. I am going to take the time to read it from cover to cover, as I find that apparently it covers all the information one may need when growing peonies."
—F. W. S.

"Interesting and Instructive"

North Wales, Pa.

"Thank you for sending me your Peony Manual. It is an interesting, instructive, and handsome publication. Again accept my deepest appreciation and thanks."
—F. Mc. D.

Planting Peonies In the Spring

We are often asked if we agree with an opinion once generally held, that peonies should be planted only in the fall, never in the spring. Emphatically NO! Peonies can be grown just as successfully from spring planting as from fall planting.

The reason peonies formerly were planted only in the fall was because the proper scientific facilities had not been developed for storing the roots through the winter in a dormant state under ideal conditions of temperature and humidity.

Through years of experience, we have proven beyond a doubt that roots which are dug in the fall, carefully divided, properly stored through the winter, and then planted in the spring, will develop in size of plant, beauty of bloom, and quantity of yield—equal in every respect to roots which are planted in the fall.

Comparing peonies planted in the spring with those which were planted the previous autumn, we have found that in the third year bloom, when both classes of plants have attained to maturity, there is no difference whatever. Those which were planted in the spring—several months later—are just as large and they bloom just as profusely as those which were planted the previous fall. This spring we will set out thousands of roots which were dug last fall, just as we have done in former years.

Of course, we would not recommend the spring planting of peony roots carried over in ordinary wholesale storage. Proper storage and air-conditioning facilities are essential. That is why we do not hesitate to assure you that Brand Peony Roots, ordered and received by you this spring, will be in just as good condition as if you had ordered and planted them last fall.



Duchesse de Nemours

**From coast to coast and distant lands,
The Peony Lovers come to BRAND'S.**

Our List Includes Only The Survival of the Fittest

Through long experience with the Peony, we have acquired very definite ideas as to what constitutes a really good variety.

The longer we grow Peonies, the more critical we become. Certain varieties which appealed to us years ago are now supplanted with those which are far superior. We have tried out hundreds of varieties, of both European and American origin; yet from all these original collections, **only a minority** have stood the test of time and the careful scrutiny of our continual inspection.

We frankly discourage the practice of gathering and growing **all** varieties. Our purpose is not to have all, but rather to have the best! We have no patience with the idea of growing and featuring inferior peonies at sensational prices. Since there are now so many beautiful varieties, we believe that inferior peonies should no longer cumber the soil.

This determined stand is strictly in the interest of our customers' pleasure. Even if you could be satisfied at first with an ordinary variety you would tire of it later when you compare it with others. That is why you will find very few peonies in our list with a lower rating than 8.0, although some would say that peonies rated 7.0 and upwards are desirable. Those few exceptions in our list with a lower rating than 8.0 are retained because we are confident these particular peonies will have a much higher rating as soon as they are better known. Mme. de Verneville, Edulis Superba, Chas. McKellip and Archie Brand are such peonies.

Everything else being equal, in comparing two or more attractive varieties, we always favor those which bloom consistently, year after year, rather than those which bloom only at long intervals or very infrequently.

More Floral Beauty---More Enjoyment for Your Money

It is unfortunate that Peonies have to be sold according to a certain price per root; because, unless due discretion is used as to the size, kind and quality of the root, the price alone means nothing.

That is why we have standardized a type and quality of root now generally known to the Peony world as "**A Brand Division.**"

We insist upon making our divisions from hardy plants of two and three years' growth, but we do not approve of **TWO OR THREE YEAR OLD CLUMPS.** Contrary to a common opinion that large clumps are essential for quick blooming, we know from experience that they prove to be disappointing.

We insist that each "**Brand Division**" shall have three to five or more eyes. The roots are first divided, then pruned, and all the little fibrous ends are carefully removed. It is a mistake to suppose that a stock covered with little

fuzzy roots is desirable. These little roots can never be straightened out in planting as they were before they were dug. As the soil is pressed down upon them, they become criss-crossed, which leads to a deplorable root condition. Moreover, these little rootlets have already lost much of their vitality before planting, so they actually retard rather than hasten the growth.

Only a large, clean division, handled by specialized labor according to these standards, can qualify as "**A Brand Division.**" That is why no peonies in our list are priced lower than \$1.00. A root that could be produced and sold for less is not comparable in quality to "**A Brand Division.**" However, when you figure the cost of your peonies, not according to the price per root, but according to the size and beauty of bloom—the quality and quantity of yield—then you will find that no other peonies cost so little as those which are grown from "**Brand Divisions.**"



A Planting of Therese

The
High

4

4 Outstanding Peonies
4 Different Colors
4 Highest Ratings

Each One Supreme In Its Own
Respective Color

IF PURCHASED SEPARATELY . . . A TOTAL VALUE OF \$20.00

Collection Price **\$15.00** You Save \$5.00

The highest rated white, the highest rated pink, the highest rated cream (or ivory white), and the highest rated red . . . four of the world's best peonies . . . ALL FOR \$15.00:

LeCYGNE (Lemoine) 9.9. A fine ivory white without markings. Seldom beaten in the show room by any other white peony. Comes into bloom very early. A regular and abundant bloomer.

THERESE (Dessert) 9.8 A very large midseason variety. A translucent old-rose-pink with a golden yellow glow in the center. A very fine show flower, always found among the winning classes.

SOLANGE (Lemoine) 9.7 A favorite variety of unusual coloring; a creamy white with a suffusion of buff and pale salmon-pink. When well grown the form of the flower is perfect. This variety is invariably in the prize-winning classes.

PHILIPPE RIVOIRE (Riviere) 9.2 The flower of this variety is not large, but its wonderful beauty lies in its perfect form and magnificent coloring. A dark rich crimson. Philippe Rivoire and Richard Carvel are the most fragrant of the red peonies.

Peony List

Addielanthea (Brand) 8.8. White. A peony of the rose type. Creamy white with base of center petals yellow. Guard petals are prominently flecked with crimson; the crown petals slightly so. A fine peony, comparable to Enchantresse and Grace Loomis.

A Brand Division \$5.00.

Adolphe Rousseau (Dessert & Mechin) 8.5. A tall, extremely showy variety. Color a rich velvety maroon red, showing stamens.

A Brand Division \$1.00.

Albert Crousse (Crousse) 8.6. Great as were his other peonies—Crousse regarded three as specially worthy to bear his own name—Albert, Felix and Marie. Albert Crousse is a beautiful soft shell pink. Petals are narrow, very compact, symmetrical—a distinct globular form. Consistently outstanding among midseason varieties.

A Brand Division \$1.00.

Alex D. Vories (Vories) 8.4. Red. Tall, strong, upright stems. Blooms are large, loosely built with broad petals of pleasing American Beauty shade. Protruding above the foliage, the gorgeous blooms are very showy—a wonderful landscape variety.

A Brand Division \$4.00.

Alsace Lorraine (Lemoine) 8.8. White. Of all peonies this is one of the daintiest and refined. Others may be larger or more robust but few of them could be prettier. Flowers of beautiful form. Petals are long, cupped at the end, exquisite in shape. Color, a rich creamy white mellowing to just a suggestion of brownish yellow at the center, the color that makes Solange so fascinating. Medium height plant. Stiff upright stems. Very floriferous. Indeed a beautiful flower.

A Brand Division \$1.00.

A. M. Slocum (Franklin) 9.0. White. A recent introduction by Mr Franklin. Large, loosely built, rose type; showing stamens. Almost pure white with a few central petals edged crimson. A strong upright grower. Blooms profusely.

A Brand Division \$2.00.

Archie Brand (Brand) 7.5. Pink. Large, round, full rose-type blossom of an even shade of sea shell pink. Foliage and stems are light green, very clean in appearance. The buds, as they develop, are very attractive, enormous in size; beautiful as they open. Petals of good length are banked compactly with four distinct corners to the bloom—a very pleasing effect. As the guards fall away they leave a great round ball of bloom in the center. This variety becomes coarse when heavily fertilized. Does best on clay soil.

A Brand Division \$1.00.

Asa Gray (Crousse) 8.1. Pink. Properly grown in suitable soil, this is a beautiful peony. Thrives best in heavy dark loams. Flowers are large, of true rose-type. Guard petals are salmon pink, thickly marked with minute specks of deeper pink. Easy to identify. A prolific bloomer. Fragrant.

A Brand Division \$1.00.

Auguste Dessert (Dessert) 8.7. Red. Among Dessert's latest peonies, this is one of his finest; regarded by the originator as worthy of his own name. He gives this description: "Flower cup-shaped of fine form, with rounded petals, very brilliant, velvety crimson, carmine, with silvery reflex and often streaked white; very large silvery border; visible stamens intermixed with the petals in many flowers. A superb variety, awarded certificate of merit at the Paris show, June 2, 1920."

A Brand Division \$3.00.

Avalanche (Crousse) 8.7. White. A late midseason variety of medium height. The edges of a few petals show light traces of crimson. An excellent variety. **A Brand Division \$1.00.**

Ball O' Cotton (Franklin) 8.8. White. Good whites are in strong demand. This is one of the finest brought out in a long time. Flowers are globular in form, entirely transformed, purest white. Wherever it is shown, Ball O' Cotton is regarded an outstanding white. Awarded first prize in the class of twenty best blooms of white, Northwestern Peony and Iris Show, Faribault, 1927. **A Brand Division \$3.00.**

Baroness Schroeder (Kelway) 9.0. A beautiful late midseason peony. Opens a pale pink, soon fading to white. Noted for its splendid growing habit, fine foliage, strong stems, fragrant and lasting blooms. Very desirable. **A Brand Division \$1.00.**

Brand's Magnificent (Brand) 8.2. A dark red resembling a rose more than a peony. Color, a deep dark red with bluish cast; carries more blue than any other good peony. Distinguished by its beautiful form, prolific bloom, symmetrical petals and magnificent color. At the National Show in Des Moines this variety appeared in the gold medal collections. **A Brand Division \$1.00.**

Candeur (Dessert) 8.4. Pink. Large, globular, rose-type flower, showing stamens. Beautiful delicate pink, slightly tinged lilac-rose, fading to iridescent white; center petals flecked carmine. Very vigorous grower; clean, light green foliage. **A Brand Division \$2.00.**

Charles McKellip (Brand) 7.8. The most perfectly formed of all our deep red peonies. Late midseason. An unusual flower, much underrated. **A Brand Division \$1.00.**

Chestine Gowdy (Brand) 8.4. Pink. A remarkable cone-shaped peony. The broad outer petals are silvery pink—they enclose a zone of fine, irregularly shaped, closely set petals of deep rich cream—all climaxed by a prominent cone of broad pink petals, splashed and tipped with crimson. Always admired, even in a group of the finest peonies. Late, very thrifty; a profuse bloomer with delicate fragrance. An excellent pink cut flower. **A Brand Division \$1.00.**

Claire Dubois (Crousse) 8.7. A very late bright rose pink, best described as violet rose. Has much the silvery appearance of Mons. Jules Elie. Medium tall, good foliage, strong stiff stems. A wonderful cut flower. **A Brand Division \$1.00.**

Commander (A. M. Brand 1928). Red. An extra large, highly built flower; very compact. A cone-shaped, rose type peony. Color, a true self Solferino red. Although late it blooms consistently, which cannot be said of most late varieties. A real acquisition to our quality list of Brand's reds. **A Brand Division \$2.00.**

Couronne D'Or (Calot) 8.1. Very large, late midseason variety. Can be easily identified in any collection. Outer petals pure white. A row of golden stamens is found around a tuft of center petals tipped carmine. **A Brand Division \$1.00.**

David Harum (Brand) 8.4. Red. One of our newest reds. Flowers very large with prominent guard petals surrounding a great ball of closely packed petals, same shade. Over all, an even shade of soft Tyrian-rose. Upright growing plant, very strong stems, blooms held erect. Excels as a landscape red. Appeared in five prize-winning collections, National Show, Des Moines, 1924. **A Brand Division \$2.00.**

Desire (Brand) 8.5. Pink. Very large flower, rather loose, with long broad petals, showing stamens. Color a delicate lilac pink fading lighter toward the edges. Do not hastily judge this flower by a single season—wait till the plant is three years or older. Then see the beautiful pink petaloids bordered with distinct golden edges which fairly illuminate the flower—a thrice wondrous beauty! **A Brand Division \$1.00.**

Duchesse de Nemours (Calot) 8.1. Early. Beautiful, almost pure white, with shadings of green at the base of the petals. Stems erect and strong. Dependable and very floriferous. **A Brand Division \$1.00.**

E. B. Browning (Brand) 9.2. Very large and very late. Creamy blush when the flowers first open, becoming white with a pale yellow glow in the center. One of the world's Twenty-six Highest Rated Peonies. Perfume strong and sweet. Comes into bloom with Florence Nightingale and Marie Lemoine. **A Brand Division \$2.00.**

A Brand Collection

10 Choice Peonies

All Originated by Brand

A REGULAR \$15.00 VALUE

THIS SPRING (As a special collection)

\$10.00

Desire A fragrant soft rose pink, slightly tinted with lilac	\$2.00
E. B. Browning One of the World's 26 Best Peonies. A late white that prolongs the blooming season	2.00
Faribault A deep rose with a silver sheen, named for our city	1.00
Frances Willard A fine midseason white that never fails to give satisfaction. Another of the World's 26 Best Peonies	1.50
Judge Berry The best early light Decoration Day pink. It should be in every planting	2.00
Lora Dexheimer A wonderfully bright dark red of beautiful form. Gaining in popularity each year	1.00
Mary Brand A fine midseason red. Good for exhibition and garden purposes. Best all around red	1.00
Mrs. A. G. Ruggles A late light fragrant pink. Often mistaken for Therese	1.50
Richard Carvel Unquestionably the best early red ever introduced	1.50
Winnifred Domme A brilliant scarlet. A REAL scarlet. The brightest of all reds	1.50
A Total Value Of	<u>\$15.00</u>

BUY THEM NOW AS A SPECIAL COLLECTION

**Do Not Take a Discount
On Any Collections**

\$10.00

**A Bed-Rock Price For
Quality Peonies**

Three Unusual Collections

TO GIVE YOU

A Whole Season of Peony Pleasure

Early Flowering Collection

If you wish four excellent peonies to brighten your garden early in the season, we suggest:

Richard Carvel The best early red on the market. Wonderfully fragrant. Strong, upright grower. Very free bloomer.

Mons. Jules Elie One of the world's 26 best peonies. Fragrant. A wonderful lilac pink.

Mme. De Verneville A splendid early white; parallel in form, type and beauty to Richard Carvel and Mons. Jules Elie.

Edulis Superba A deeper pink than Mons. Jules Elie, known as the Decoration Day pink. Noted for its wonderful fragrance.

All four varieties will be in bloom at the same time, but Richard Carvel will appear first.

Regular Price--\$4.50

Collection Price

\$3.50

Late Flowering Collection

Marie Lemoine A beautiful creamy white. Probably the most fragrant of all peonies. Very late.

Grandiflora Soft shell pink. When you think the peony season is over, you can still cut beautiful large blooms from Grandiflora.

Eugene Bigot This peony must be in your garden if you wish a very late good red. Unlike most reds, it has a delightful fragrance. A desirable cut flower with stiff, straight stems.

Claire Dubois (Crousse) Pink. Among hundreds of varieties, you occasionally find one peony which, for all-around good qualities, excels all others. Such is Claire Dubois. Immense globular form. Long incurved petals—a uniform shade of clear violet rose, tipped silvery white. A late flower otherwise comparable to the early variety, Mons. Jules Elie. Excellent cut flower.

Regular Price--\$4.00

Collection Price

\$3.00

Midseason Flowering Collection

Three from this list rate 9.0 and belong in the world's 26 best.

Sarah Bernhardt A prize-winning peony in every show room. Equally superb as a garden variety. Deep pink, tipped silver. Unusually large; delightfully fragrant.

Georgiana Shaylor Pink. We have always held that this is Mr. Shaylor's greatest flower, and we still do. If he had never produced another variety, this one alone would immortalize his name among peony lovers.

Mary Brand No red peony ever won favor so quickly. Always found among the winning reds in every show room. Comes into bloom with Frances Willard. Color so distinct, it is easily recognized by amateurs, no matter how often they see it in our fields. A red in which there is little trace of purple. One of the most satisfactory reds as a cut flower—it will last a week and hold right up stiff, if cut in the bud.

Baroness Schroeder Classed as a white but opens blush pink, fading to white. Considered one of Kelway's best productions. In the last symposium it continued to rate 9.0 after seventy-nine people had voted.

Regular Price--\$5.00

Collection Price

\$4.00

All 12 of The Above Peonies

A TOTAL CATALOG VALUE OF \$13.50

Buy Them NOW As a Special Collection

**A Bargain Price for
12 Beautiful Peonies**

\$10⁰⁰

**Do Not Take a Discount
on Any Collections**

Edwin C. Shaw (Thurlow) 9.1. Pink. A large cup-shaped flower, borne on strong stems. Outer petals are broad, rounded with carmine tracings; inner petals graduate smaller and shorter to the center. Color, a clear shell pink. Highly impressed as we are with all of Thurlow's seedlings which we have grown and admired, this variety is now our favorite. First we thought President Wilson to be the finest of the lot; yet now, after years of comparison, we have shifted our preference to E. C. Shaw. It is our first choice of Thurlow peonies, all of which excel.
A Brand Division \$5.00.

Elwood Pleas (Pleas) 8.7. Pink. Large to very large. True rose-type. Opens flat. There are many years when Elwood Pleas is one of the most pleasing pinks that we have. Strong, sturdy plant of medium height with rich, healthy foliage extending to the ground for desirable landscape effect. The blooms, fine in form, have a very pleasing shade of pink. Late midseason. Very fragrant.
A Brand Division \$1.00.

Enchantresse (Lemoine) 8.9. White. Another great show variety. Creamy white with crimson tracings. Very large, compact, globular flower. Tall plant, a vigorous grower. In all respects, a charming variety.
A Brand Division \$2.00.

Eugene Bigot (Dessert) 8.3. Red. In color, a deep purple amaranth. The flower is compact with large petals. A free bloomer. A very late variety to greatly extend your blooming season.
A Brand Division \$1.00.

Eugenie Verdier (Calot) 8.6. Pink. An ideal pink variety, coming into bloom early midseason. Semi-rose type. Opens a fresh delicate hydrangea pink with primary petals lighter, and the center of flushed crimson. Fragrant and very desirable.
A Brand Division \$1.00.

Eunice Shaylor (Shaylor) 8.9. Flesh Pink. A midseason semi-double variety; beautiful on matured plants. Outer petals are a light pink. Center petals are a flesh white with a circle of golden stamens around the center tuft. A good show flower.
A Brand Division \$5.00.

Exquisite (Kelway) 8.5. Pink. A large size flat flower of a bright, warm pink; long, narrow, pointed petals. On well established plants, it produces splendid flowers. Very fragrant. Midseason to late.
A Brand Division \$2.00.

Fanny Crosby (Brand) 7.7. An early yellow peony with pink guard petals. Growing in favor more each year as it becomes better known. Strong thrifty plant; very prolific. The side buds come into bloom with the main flower; if left on the plant they make a wonderful showing.
A Brand Division \$2.50.

Faribault (Brand) 8.2. A splendid late variety coming into bloom with Marie Lemoine. A deep rose pink with a silver sheen. Profuse bloomer. Stems long and very strong. A good cut flower.
A Brand Division \$1.00.

Felix Crousse (Crousse) 8.4. A late midseason rose red showing no stamens. A splendid cut flower as well as a show flower.
A Brand Division \$1.00.

Festiva Maxima (Meillez) 9.3. A very large early white. One of the best of the old varieties and probably the best known peony. The flowers are pleasingly fragrant. Petals often tipped crimson.
A Brand Division \$1.00.

Frances Willard (Brand) 9.1. White. Listed among the World's 26 Best Peonies. Perfectly formed, the petals are of varying sizes, forming a very large rounding flower, often having a raised cup-shaped center enclosing golden stamens. Opens an exquisite blush white, occasionally with a carmine touch, changing on the lawn to pure white. Although delicate in appearance, it is an excellent cut flower with good substance—a wonderful combination of strength and daintiness.
A Brand Division \$1.50.

Francois Rousseau (Dessert). An early red variety of medium height. Rose-shaped flower, showing stamens among the petals. Color intensely brilliant.
A Brand Division \$1.00.

Galathee (Lemoine) 8.1. Pink. A large, full, double flower; rose type. Color fleshy white. Fragrance pronounced and pleasant. Tall strong grower; one of the very good late ones.
A Brand Division \$1.50.

Georgiana Shaylor (Shaylor) 8.9. We have always held that this is Mr. Shaylor's greatest flower, and we still do. If he had never produced another variety, this one alone would immortalize his name among peony lovers.
A Brand Division \$2.00.

Gigantea (Calot) 8.2. Pink. A brilliant rose pink of almost uniform color except for the edges of the guards and collar, which are tipped with silvery white. A tall, early, free bloomer that always attracts so much attention. A pleasant spicy fragrance.
A Brand Division \$1.00.

Hazel Kinney (A. M. Brand 1925) 9.0. Delicate Pink. I can still remember this beautiful flower as it appeared on the plant the first time. The form was so superb and the color so pure; it impressed us at once as a flower of great promise, which it since has proved. A great show flower when displayed alongside the very best. True rose type. Color, a delicate, clear hydrangea pink. Medium height plant; clean, light green foliage; late midseason; a prolific bloomer.
A Brand Division \$15.00.

Helen Wolaver (Brand) 7.9. Pink. A very distinctive and beautiful peony. There is none other that resembles it. Looks more like a rose than a peony. Very late and lasts remarkably long as a cut flower. Sweetly rose scented.
A Brand Division \$1.00.

H. F. Reddick (Brand) 7.7. One of our best midseason reds. An excellent flower that always comes good.
A Brand Division \$1.00.

James R. Mann (Thurlow 1920) 8.7. Pink. Large; deep, rosy pink, with one or two crimson streaks in the center of the flower and an occasional marking on back of guard petals. Central petals incurved; a very graceful effect. Midseason.
A Brand Division \$5.00.

Jubilee (Pleas) 8.9. Very large, midseason, ivory-white flowers long, narrow, loosely arranged petals. The stems are weak but one can well afford to support the stems of a flower so beautiful.
A Brand Division \$1.00.

June Day (Franklin) 9.0. Pink. Mr. A. B. Franklin of Minneapolis has produced some very choice peonies, equal in quality to the best. For years we have watched his work, adding the different varieties to our collection as we became acquainted with them. Of these peonies we think June Day one of the very best. A flower of striking beauty; rose type, light flesh with lavender shadings on the edge of the central petals. Pleasing fragrance. Upright grower with dark green foliage midseason.
A Brand Division \$3.00.

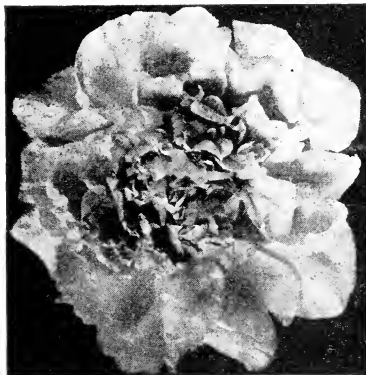
Karl Rosenfield (Rosefield) 8.8. Red. A brilliant and striking variety, coming into bloom early midseason. Flowers very large, semi-rose type, and slightly fragrant. Karl Rosenfield and Richard Carvel are our two best sellers among the reds. Both are very desirable as cut flowers.
A Brand Division \$1.00.

Kelway's Glorious (Kelway) 9.8. White. Although not as symmetrical as LeCygne, we believe this wonderful variety is fully as good and deserves as high a rating. At the St. Paul show in 1926 Kelway's Glorious was shown in perfection, flowers of unsurpassable beauty. Immense blooms with very long petals, so arranged that the entire bloom resembles a great downy ball of the most exquisite, delicate, snow white lace. For a peony of great size, probably no other can exhibit such perfection of beauty.
A Brand Division \$5.00.

Kelway's Queen (Kelway) 8.8. Pink. The stocks of this variety have been badly mixed and many spurious sorts have been sold under the name of Kelway's Queen. Once the genuine variety is seen, there can be no mistake. It is a distinct peony, both in flower and plant. We have the true variety and guarantee our stock of Kelway's Queen to be absolutely genuine. A large, compact, rose type flower of uniform mauve, with center flecked crimson. A tall, strong grower; very profuse bloomer. Late midseason. One of Kelway's finest. Very distinct color; a great show flower.
A Brand Division \$5.00.

Lady Alexandra Duff (Kelway) 9.1. A large, midseason, pale bluish-pink, showing golden stamens in the center. A first-class exhibition flower and one of the most beautiful of all peonies.
A Brand Division \$1.00.

LaFayette (Dessert) 7.8. Pink. Rose type. Midseason. Flowers are large, last well, and the petals are beautifully fringed. Color, a lovely shade of salmon-pink with touches of heliotrope and a delicate tinting of cerise in the reflex—a striking and beautiful effect. One of Dessert's late productions. Very attractive. With so much salmon, the color is different from any other peony.
A Brand Division \$1.00.



Helen Wolaver

La Fee (Lemoine) 9.2. Pink. A scarce variety, seldom seen in any garden. Plants tall with but few stalks to the plant. Long, narrow, sharply pointed foliage. Flowers very large, loosely built, with long narrow petals, sharply notched at the edges. Guards mauve-rose. Collar creamy white. A beautiful mottling of different shades of pink. Strikingly beautiful, both in the field and show room. Healthy stock of this variety being scarce, we started with two small plants years ago; and, being careful, we have developed a small stock of very choice plants, perfectly clean.
A Brand Division \$5.00.

La Perle (Crousse) 8.5. A beautiful pale lavender pink. A midseason variety with good stems and foliage. When we have the stock we always place this variety in our standard collections, as it always gives satisfaction. Medium growing, it should be placed in front of other peonies.
A Brand Division \$1.00.

La Rosiere (Crousse) 8.3. White. A striking variety. Flowers are large, produced in clusters. Straw-yellow at the center, shading to a creamy white border. Pleasing fragrance. The flower is loose, showing yellow stamens, a band of which illuminates the entire bloom with a yellowish cast.
A Brand Division \$1.00.

Laura Dessert (Dessert) 8.8. Yellow. This peony, Primevere, and Fanny Crosby are the three finest yellow peonies grown. The flower is round, of rose type. Guard petals creamy white, enclosing a dome-like center of pure canary yellow. Like Fanny Crosby, the plant is an upright grower and holds its blossoms erect—a good landscape value. Like all yellows, it must be developed inside, away from the sun, to preserve its color.
A Brand Division \$4.00.

Le Cygne (Lemoine) 9.9. White. A flower of true rose type, perfect in form. Creamy white with no tracings of color. Strong, medium height stems; each one produces a perfect bloom. Flowers large and delightfully fragrant. The highest rated peony—it deserves that rating. Early midseason.
A Brand Division \$4.00.

Lillian Gumm (Gumm) 8.8. Pink. A new flower of outstanding qualities, good enough to be repeatedly singled out from hundreds of varieties in the field. Very large, globular in form, rose type, with great

broad petals, and a cupped center. Color, uniform apple blossom pink with more brilliant shadings at the base of petals. We are confident this is a coming flower. **A Brand Division \$4.00.**



Mrs. A. M. Brand

Livingstone (Crousse) 8.1. Pink. A deep pink that comes into bloom just before Grandiflora. Blossoms very large, compact, perfect rose type. Center petals flecked with carmine. Not as fragrant as Grandiflora, but an extra good peony. One of the most satisfactory of the late pink peonies. **A Brand Division \$1.00.**

Longfellow (Brand) 9.0. Red. Undoubtedly most everyone considers Longfellow the best of all the reds for color. At the Des Moines show it appeared in seven of the winning collections. In the class calling for twenty red blooms of one variety, Longfellow was first. At the Minneapolis show, a few days later, this variety again won first in the same class. Equally striking in the field and show room, as it neither fades nor darkens like most reds. **A Brand Division \$1.50.**

Lora Dexheimer (Brand) 8.4. Red. To us, the splendid habit and brilliant color of this plant have exceptional merit. We first selected it from the seed bed in 1904. Each succeeding year it has grown in our esteem. Color, intense flaming crimson. Early midseason. A variety that ranks with Longfellow. From all parts of the country we have reports of the wonderful qualities of Lora Dexheimer. **A Brand Division \$1.00.**

Louisa Brand (Brand) 7.8. Pink. A very late pink. Opens a blush white and gradually fades to pure white. As the blossom opens, it resembles a pink water lily. A tall plant with clean foliage; a good bloomer. **A Brand Division \$1.00.**

Lorch (Goose & Koenemann) 8.7. White. The outer petals are very large, pure snow-white, incurving over a pale lemon and cream center, with pale crimson tracings on edge of center petals. A truly splendid peony. **A Brand Division \$2.50.**

Loveliness (Hollis) 8.8. Pink. Produces very large, flat, hydrangea pink flowers; blooms of wonderful beauty. It is Hollis' best peony. Plants tall with heavy foliage and stems strong enough to hold the immense blooms erect. The flowers, a uniform shade of pink, make wonderful show flowers. **A Brand Division \$1.00.**

Marie Crousse (Crousse) 8.9. If you have a hundred pinks Marie Crousse still has a place in your garden. A delicate shell pink, bordering on salmon. Midseason. A lighter salmon pink than Walter Faxon; a flower just as distinct. **A Brand Division \$1.00.**

Marie Jacquin (Verdier) 8.3. A flower with pure white guards; then a collar of yellow stamens surrounding a row of shorter pure white petals, which in turn enclose a tuft of yellow stamens—a pronounced water-lily effect. One of the daintiest peonies in our whole list. **A Brand Division \$1.00.**

Martha Bulloch (Brand) 9.1. Pink. Very tall, very large, late—one of the greatest of all peonies. We must judge peonies not alone by individual taste but by performance over a long period. The great peonies receive the awards at the large shows. The Northwest Peony Show is staged alternate years in St. Paul and Minneapolis. Outside of the National Show, it is the largest Peony Show in America, taken year after year. Here peonies from all varieties are shown at their best by expert showmen. The class that brings out the best flowers is the class that calls for ten vases, one each of ten varieties, three blooms to a vase. Into this class go the ten best vases of each exhibitor. Martha

Bulloch is almost invariably in the exhibit that wins first. Bright old-rose pink; center of lighter rose and pink. Rose-like fragrance. Tall, straight stems. Immense blooms. The most beautiful peony of its size. **A Brand Division \$4.00.**

Mary Brand (Brand) 8.7. No red peony ever won favor so quickly. Always found among the winning reds in every show room. Comes into bloom with Frances Willard. Color so distinct, it is easily recognized by amateurs, no matter how often they see it in our fields. A rose type peony showing stamens. A red in which there is little trace of purple. Excellent as a cut flower—it will last a week and hold right up stiff, if cut in the bud. **A Brand Division \$1.00.**

Milton Hill (Richardson) 9.0. Pink. Very beautiful—a delicate shade of salmon pink, resembling Walter Faxon. When shown in first class form, it is impossible to beat this variety in its color. It received a rating of 9.0 with sixty-three voting. We are never able to supply the demand for Milton Hill; if you wish to have it included in your order, make your reservations early. **A Brand Division \$2.00.**

Mlle. Leonie Calot (Calot) 8.1. Pink. Typical rose type. Very delicate, rose white, center of deeper shading, slightly tipped carmine. Fine form, medium height, rather spreading habit. Late midseason. A great favorite with many admirers. **A Brand Division \$1.00.**

Mme. de Verneville (Crousse) 7.9. White. We feel this variety is much underrated. Flower large, very full, bomb type. Guard petals sulphur white; center petals rose white with carmine touches. Good substance. Long, strong stems. An ideal cut flower. Pleasing fragrance. **A Brand Division \$1.00.**

Mme. Emile Lemoine (Lemoine) 8.9. A truly great show flower. Tall; free blooming; strong stems and foliage. Rose type, perfect in form. Late midseason. **A Brand Division \$1.00.**

Mme. Jules Dessert (Dessert) 9.4. Pink. One of the finest of all peonies—flowers very large, well formed, with long broad petals. Blooms held rigidly erect on good straight stems of medium height. Creamy white, lighted with buff and salmon shades. A few golden stamens appear to beautify an already beautiful flower. Always among the main prize winners at the great shows. **A Brand Division \$2.00.**

Modeste Guerin (Guerin) 7.8. Pink. A large early dark rose-pink, with slightly violet tint. Has a distinct rose fragrance. Medium tall plant; strong grower; floriferous. **A Brand Division \$1.00.**

Monsieur Dupont (Calot) 8.3. One of the old standard peonies, always desirable. A glistening ivory white with center petals bordered carmine. Golden stamens mingled with the petals throughout the flower. Pleasingly fragrant; wonderfully prolific; a consistent bloomer. Appears just before Couronne d'Or. **A Brand Division \$1.00.**

Mons. Jules Elie (Crousse) 9.3. Pink. One of the largest, most beautiful peonies; in fact, the largest of the globe type varieties. An immense self-colored flesh pink, shading a trifle deeper toward the base of petals. Great, prominent, broad guard petals enclose an immense ball of incurved narrow petals of the same color, all covered with an intense silvery sheen. **A Brand Division \$1.00.**

Mons. Martin Cahuzac (Dessert) 8.8. A shade darker than Midnight or Prince of Darkness. If you wish the darkest red peony grown, order this one. Flowers medium to large; rose type with stamens. Color, a deep maroon red. One of the most earnestly sought peonies. **A Brand Division \$1.50.**

Mrs. A. G. Ruggles (Brand) 8.3. Light pink. Large, late, fragrant. Tall plant with good stems and splendid foliage. Very floriferous. Our field visitors have often taken this variety to be Therese. We consider it one of our good pink peonies. **A Brand Division \$1.50.**

Mrs. A. M. Brand (A. M. Brand 1925) 9.6. Pure White. When this flower was a two-year-old, we were first attracted with its large, uniform, remarkable, white blooms; the clean, thrifty, light green stocks; the luxuriant foliage. Blooms cut in the bud and taken inside develop in exquisite form. Opens a pure, glistening white; pure rose type; a large flat flower with prominent guards and petals of wonderful substance. Gold Medal Award, American Peony Society, St. Paul, 1923. Very late. **A Brand Division \$25.00.**

Mrs. Deane Funk (A. M. Brand). Too new to be rated. Pink. Large and peculiarly beautiful in formation. The broad guards and half of the petals turn outward, gracefully downward, then up. Next is a distinct band of golden stamens as in Phyllis Kelway. Lighting up the entire flower, these stamens enclose a rosebud cup-shaped center of large incurving petals. Color, a Walter Faxon pink. Magnificent in the show room; holds up well as a cut flower; beautiful in the field. Among the five or six best seedlings we have ever produced. **A Brand Division \$25.00.**

Mrs. Edward Harding (Shaylor) 9.3. White. Received the \$100.00 prize at the American Peony Society's show at Cleveland in 1918—the prize offered by Mrs. Harding for a new white peony of superlative merit. **A Brand Division \$6.00.**

Mrs. Frank Beach (A. M. Brand 1925) 9.0. Ivory White. A very large, flat, perfect rose type flower with long, narrow, lacinated petals of the same lacy effect as in Jubilee. Blooms equally large as Jubilee but borne finely erect on rather dwarfish plants with very strong stems. Much as we admire Jubilee, it is handicapped by a weak stem. Mrs. Frank Beach is a glorified Jubilee. Deep cream, it fades but little even when developed in the field. Like Le Cygne, this variety develops a flower true to type even on a yearling. Blooms profusely as a two-year-old. Award of Merit, American Peony Society, London, Ontario, 1922. Late midseason. Sweetly fragrant. **A Brand Division \$25.00.**

Nina Secor (Secor) 9.0. A beautiful midseason variety. Flowers medium to large, borne on tall heavy stems. Pure white with yellow glow in depths. Crimson edge on some of the petals. This is one of our very best white peonies, much on the style of Kelway's Glorious. **A Brand Division \$2.50.**

Nymphaea (ThurLOW) 8.8. White. Large, flat flowers with wide, silky petals of delicate creamy white, notched at tips, edges somewhat rolled. Yellow stamens in center reflect a golden light throughout. Fragrant. Midseason. Remindful of a water lily, only much larger and more beautiful than any water lily we have ever seen. Very refined; a real addition to our growing list of good peonies.

A Brand Division \$2.00.

Octavie Demay (Calot) 8.5. Pink. A very early flesh pink. Collar has ribbon-like white petals; center a deeper pink than guard petals. Rather dwarfish plant, yet an excellent cut flower, as the foliage extends to the ground. In the delicate pinks, this is the best early cut flower

A Brand Division \$1.00.

Officialis Rubra 8.6. Red. Large, round bloom of vivid crimson. The deep bright red peony of olden times. Earliest of all good peonies. Very desirable in this latitude; often in bloom on Memorial Day. The red "piney" of our grandmothers' gardens.

A Brand Division \$1.00.

Opal (Pleas) 8.5. Pink. Guard petals a delicate pink, fading to white; the center is opal pink. Tall, vigorous plant; profuse bloomer. One of the daintiest and most beautiful of all Pleas' peonies.

A Brand Division \$1.00.

Perrette (Dessert) 8.3. White. A beautiful flower borne in clusters. White, slightly tinged flesh and straw-yellow. Pleasing fragrance. A variety that must be seen to be appreciated.

A Brand Division \$2.00.

Philippe Rivoire (Riviere) 9.2. Red. Very fine bright crimson. Beautiful form, splendid in plant growth; most fragrant of the reds. Midseason. A fine show flower. No stamens. Most distinct in color of all the reds; not bright like Mary Brand or Longfellow yet it shows an absence of the purple which is so objectionable. The extremely beautiful form and uniform soft color makes a flower loved by all who see it. The true stock is very scarce; much spurious stock is on the market but ours is absolutely true.

A Brand Division \$10.00.

Philomele (Calot) 7.7. Rose. Medium size. Flat crown type. Guards bright violet rose; anemone center of amber yellow petals, changing to cream. As flower develops, a crown of bright rose appears in the center. Midseason. Strong, free bloomer; very desirable with much deep yellow in make-up. A very striking landscape sort.

A Brand Division \$1.00.

Phoebe Cary (Brand) 8.8. Pink. Much like Martha Bulloch. When first introduced, it met such quick demand that our stock was almost gone before we knew it. What we had for sale last year went very quickly. A true rose type. Petals large, broad, of good substance, slightly cupped. Color, a beautiful rose pink with center slightly deeper in shade. Pleasing fragrance. Late in season with Marie Lemoine. Tall plant; abundant clean, light green foliage.

A Brand Division \$3.00.

Phyllis Kelway (Kelway) 8.8. Pink. Very large, loosely built, the most exquisite beauty. Color, deep lavender flesh with long rays of lighter lavender playing the length of the petals through the deeper centers. A row of broad petals surrounds a loosely built cup-shaped center of long narrow petals, intermingled with conspicuous yellow stamens. Long, stiff stems hold blossoms erect—a gorgeous beauty in the rays of the sunlight—one of the most brilliant and striking peonies in the list.

A Brand Division \$6.00.

Pierre Duchartre (Crousse) 8.2. Pink. Beautifully formed globular flower, often mistaken for La France. Beautifully symmetrical form with great broad rounded petals; true rose type. Color, a pale lilac flesh with glossy reflex, bordered with silver. We have always considered this peony as not being fully appreciated and much underrated. It is in a class with Reine Hortense, Livingstone, La Perle, etc.

A Brand Division \$1.00.

President Coolidge (A. M. Brand 1928). Too new to be rated. Pink. Large, beautiful flowers; a rather uniform lavender pink. Irregular petals in unique irregular formation. The prominent guards stand out from the rest of the flower; very attractive from a distance. The entire flower is climaxed by a striking rosebud effect. Blooms carried well above the foliage on strong stems. A late peony, remarkable both as a show flower and landscape variety.

A Brand Division \$25.00.

President Wilson (ThurLOW) 9.3. Pink. A large flower, on very stout stems of medium length. A very pleasing soft pink changing to shell pink, the guards sometimes showing crimson markings. Examining a private show of wonderful peonies staged by Mr. E. C. Shaw, I was asked to pick out the best vase of flowers without looking at the labels; and my choice was a vase of President Wilson. One of the great peonies.

A Brand Division \$10.00.

Pride of Essex (ThurLOW) 8.9. A delicate light pink, blooming in midseason. Tall plant, vigorous and free blooming. Large, loose, rose type flower—a very fine variety.

A Brand Division \$3.00.

Primevere (Lemoine) 8.6. A fine yellow peony. Guard petals creamy white, enclosing a central ball of sulphur yellow. If cut in the bud, as it begins to open, so the flower may develop away from the sun, it will hold a clear yellow color. Very beautiful.

A Brand Division \$2.00.

Raoul Dessert (Dessert) 9.0. Pink. Large, globular, highly built, with long broad petals. Flowers perfect in form, with pleasing fragrance, are borne on tall stout stems. Color much like Walter Faxon and Souv. de Louis Bigot, only more brilliant with shadings more marked. A much better plant and performer in the field than either of those mentioned.

A Brand Division \$4.00.

Reine Hortense (Calot) 8.7. A tall growing variety, producing perfectly formed flowers on long stiff stems. A uniform hydrangea pink, some petals prominently flecked with crimson. A midseason light rose-pink. Identical with President Taft. Truly a wonderful flower; we are seldom able to supply the demand.

A Brand Division \$1.00.

Richard Carvel (Brand) 8.8. Red. An early crimson peony, parallel to the pink Mons. Jules Elie. Large size, splendid habits; a well established favorite. The demand is growing so rapidly, we advise you to order early. A single plant on the lawn is attractive, delightful and lasting. A valuable cut flower. The best of all early dark reds. Unlike most reds, the odor is pleasant and pronounced, a very rare quality in the reds.

A Brand Division \$1.50.

Rosa Bonheur (Dessert) 9.0. Pink. A very fine midseason flower. Color, light violet rose with guard petals flecked crimson. Erect, medium, strong grower. Flowers are large, flat, of rose type.

A Brand Division \$1.50.

Rosette (Dessert) 8.8. Pink. Pretty flower of fine shape like a Captain Christy rose. Silvery flesh shading to salmon at base of petals and flecked crimson on the edges. A splendid variety of erect habit.

A Brand Division \$1.00.

Ruth Brand (Brand) 7.9. Pink. One of the good early pinks; very large; bomb type. Prominent guard petals enclose a grand ball of compact center petals. Color, a uniform soft lavender pink splashed with a deeper lavender. Stems are tall, fine, and graceful, holding but a single bloom. Early midseason. Ideal to cut. A delicate, pleasing fragrance. We know of no other pink with such delicate blending of color.

A Brand Division \$1.00.

Sarah Bernhardt (Lemoine) 9.0. Pink. Another variety that prevails in the show room. So well known, it seems unnecessary to say that it should be in every garden. Semi-rose type. Late midseason. Color, apple blossom pink with each petal silver tipped. Pleasing fragrance.

A Brand Division \$1.00.

Solange (Lemoine) 9.7. Pink. Color, a deep orange salmon, or Havana-brown at the heart, overlaid with a delicate, tender, rich cream. Rose type. Midseason. A splendid variety.

A Brand Division \$2.50.

Souvenir de Louis Bigot (Dessert) 9.1. Salmon pink. Color, a brilliant rose, slightly tinted carmine at the base, turning to a salmon pink. Resembles Walter Faxon in color but stands up much better in the field.

A Brand Division \$2.00.

Splendida (Kelway) 8.3. Pink. Tall, very strong stems; large, globular blooms of flesh white, slightly tinted lilac. Very fragrant. Due to its strong habit, we recommend it as a landscape variety. Midseason to late.

A Brand Division \$1.00.

Therese (Dessert) 9.8. Pink. Very large; somewhat loosely built; long, narrow, pointed petals. Medium height plant with strong stems. Usually produces large typical flowers, even on one-year plants, if they are allowed to bloom. Prolific with blooms of immense size and ravishing beauty. Beholding Therese for the first time, people stand spell-bound at a new revelation. Truly there is no peony more beautiful—it is comparable to Le Cygne, Solange, and Kelway's Glorious. Color, uniform light violet rose, shading to lilac white at the center. With seventy-one voting, this variety rated 9.8.

A Brand Division \$3.50.

Tourangelle (Dessert) 9.4. Pink. Rose type; late midseason; a vigorous grower, bearing large, highly built flowers with cupped centers. Color, delicate pearly white, suffused with shades of delicate salmon and La France rose. In discussing the very best peonies, we never hesitate to place this one among them.

A Brand Division \$1.50.

Venus (Kelway) 8.3. Pink. Especially good as a cut flower. Both buds and foliage are clean. Flowers of medium size; compact; pale hydrangea pink. Large petals. Tall growing; a very free bloomer.

A Brand Division \$1.00.

Walter Faxon (Richardson) 9.3. The beautiful coloring makes this variety a distinct and outstanding pink peony. Flowers of medium size, attractive in form. Plant of medium height, good stems and fine foliage. Fairly floriferous. Most vivid of all pinks; it has been appropriately called "the only real pink." Wonderful show flower.

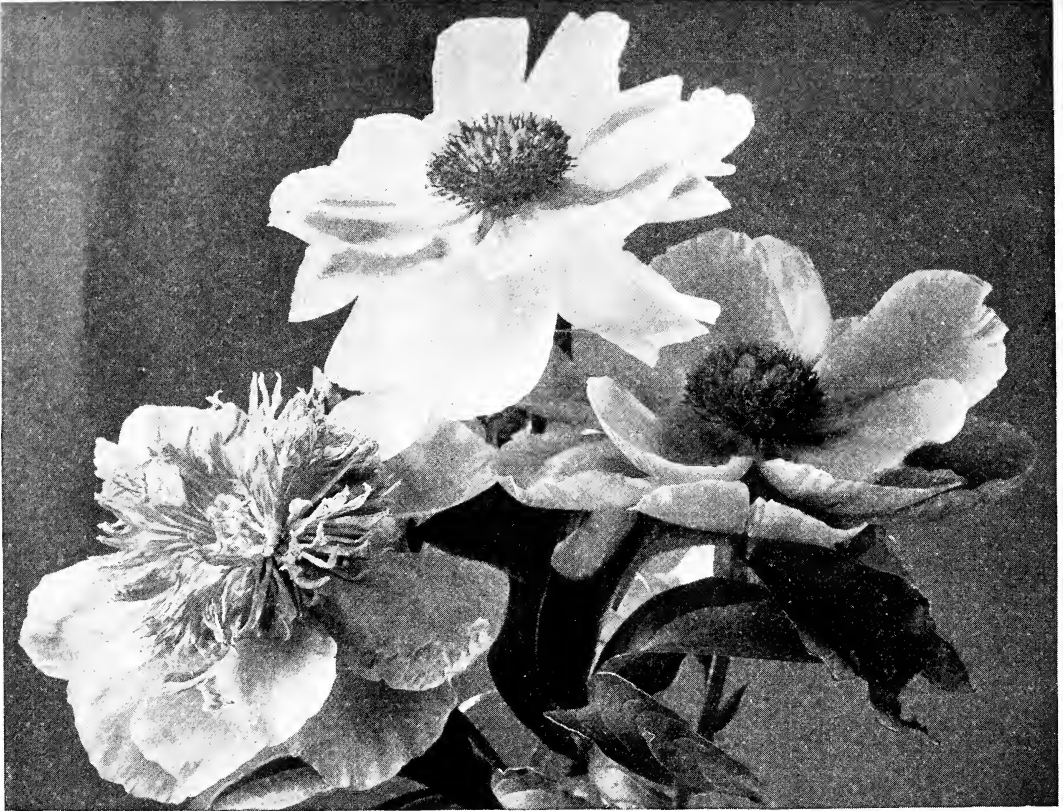
A Brand Division \$2.00.



Sarah Bernhardt

Winnifred Domme (Brand) 8.3. Scarlet Red. No matter how many good reds you have, you will still want Winnifred Domme. Unlike most reds, it has practically no purple; the nearest scarlet of all peonies. The plant is dwarfish but stems are strong and erect, each producing a single bloom. In the next symposium, we believe this variety will be rated 9.0 or better.
A Brand Division \$1.50.

Wm. Penn (Brand) 7.9. Pink. A variety producing such immense blooms that the strong stems need support to keep the blossoms off the ground. When well supported, it is a splendid variety for landscape work. Color, a light rose changing to a more delicate rose at the edges of petals, which are notched. Plant of medium height; strong grower; a lavish bloomer. One of the sweetest perfumed of all peonies.
A Brand Division \$1.00.



Toro No Maki (Jap.)

Albiflora (Single),

Harriet Olney (Single)

Single Peonies

Albiflora (The Bride) (Dessert 1902) 8.4. White. Very large, single white, with long yellow stamens. Fragrant; tall; very early; free blooming in clusters. A third larger bloom than the ordinary Albiflora. Identical with La France.
A Brand Division \$1.00.

Flanders' Fields (A. M. Brand 1928). Red. Eight years ago in one of our seedling beds of many varieties, we noticed a most conspicuous red. Even from twenty rods' distance, this brilliant color stood out from all the others. The next season it was just as noticeable. The second fall we lifted and divided the plant for a three-year test; afterwards we conducted a second three-year test. Every year, in every way, it has proven to be a splendid flower. A single of the most brilliant red. Two rows of petals surround a large prominent center of golden stamens. Petals of great substance stand out flat; rich and velvety in appearance.
A Brand Division \$3.00.

Harriet Olney (Brand 1920). Pink. Flowers large; petals long, broad and shapely. Color, a soft rose combined with attractive prominent yellow center. Medium length stems, perfectly straight, hold the large flower erect. Midseason.
A Brand Division \$2.00.

Krinkled White (A. M. Brand 1928). White. First noticeable in the bud which resembles the bud of a pale pink tulip just ready to burst. The bud is comparatively small and beautiful in effect. As it opens, it expands into a large flower with great, broad, pure white petals, crinkled like crepe paper. A most beautiful effect. Tall straight stems, slender but strong; clean light green. Splendid both as a show flower and field flower. Award of merit, Des Moines National Show.
A Brand Division \$3.00.

La Nuit (Shaylor) 7.7. Very rich dark carmine with an intense velvety sheen. Medium height stems, slender but erect. Medium size flowers; very pretty; they last well in the sun.
A Brand Division \$1.00.

Le Jour (Shaylor) 8.6. White. Very large; in fact the largest single white peony. Purest white with great heavy petals; center, an immense tuft of golden stamens. Strong upright plant holds the great blooms well erect when the side buds have been disbudded. This and Krinkled White are the two best white singles.
A Brand Division \$2.00.

L'Etincelante (Dessert) 8.4. Dark Pink. Very large flowers; decidedly cup-shaped; great broad petals of deep bright pink, heavily margined with silver; a large center of bright yellow stamens. Tall thrifty plant, wonderful as a landscape variety.
A Brand Division \$1.50.

Madeline Gauthier (Dessert) 8.5. Light Pink. Early midseason. Dessert is noted for his Singles. This is a good specimen; a beautiful flesh pink of most perfect form.
A Brand Division \$3.00.

Marguerite Dessert (Dessert 1913) 8.5. Pale Pink. Medium size flower. Petals resemble those of the double, Asa Gray. Central tuft of golden stamens. Very desirable.
A Brand Division \$3.00.

Mellen Knight (Brand 1920). Red. Tall, straight growing; strong enough to hold the flowers well up. Long, narrow petals; evenly rounded on the edges—a beautiful effect both at close examination and from a distance. Color, a bright, rich crimson. Extra good.
A Brand Division \$2.00.

Pride of Langport (Kelway 1909) 8.9. Pink. An immense flower of brilliant, soft peach-pink. Wonderfully beautiful; retains its color in the sun almost a week after it opens; the finest light single.
A Brand Division \$3.00.

Watteau (Goos & Koenemann). Not yet rated. White. Large snow-white guard petals. Center, flesh with a mass of golden stamens. Resembles Albiflora, The Bride, but comes into bloom much later.
A Brand Division \$2.50.

FOUR CHOICE SINGLES
IN
A Bargain Collection

Albiflora—White.....	\$1.00
Harriet Olney—Soft rose pink with prominent yellow center.....	2.00
Marguerite Dessert—Pale pink with golden stamens.....	3.00
Mellen Knight—Bright rich crimson.....	2.00
A TOTAL CATALOG VALUE OF.....	\$8.00

COLLECTION
PRICE

\$6.00

YOU SAVE
\$2.00

Japanese Peonies

Akashigata (Japan). Bright rose. A new Japanese variety not yet rated. After growing it about five years, we consider it very satisfactory. Guard petals a bright rose, surrounding a heavy center of filamental petals of bright pink bordered with gold. **A Brand Division \$2.00.**

Ama-No-Sode (Japan) 9.2. Very large. Midseason. Flower has two rows of long widespread petals of rose-pink, forming a saucer-like cup about an immense center of long yellow staminodes with flattened, crinkled tips, stained with rose. **A Brand Division \$6.00.**

Altar Candles (Pleas) 8.0. Flesh Pink. Very nicely shaped; an evenly formed row of delicately colored flesh pink petals, surrounding a center of completely transformed narrow filamental petals which open cream-white. Very floriferous; one of the most dependable Japanese peonies. **A Brand Division \$1.50.**

Exquisite (Japan 1912) 8.9. White. A large row of pure white guard petals surround a larger center of white filamental petals bordered with yellow. A splendid variety. **A Brand Division \$3.00.**

Fuyajo (Japan) 9.2. We first saw this grand variety at the National Peony Show at Cleveland, being greatly impressed with its beauty. A single row of rich, dark mahogany red petals surround a full center of broad petaloids of the same dark rich color as the outer petals. Very striking. **A Brand Division \$4.00.**

Mikado (Barr) 8.6. Dark Red. We consider this one of the best of the red Japanese peonies. First exhibited in America by the Japanese

Government at the Chicago World's Fair, 1893. A large cup-shaped flower with a single row of wide, dark crimson petals, encircling a filigree cushion of golden petaloids, crimson edged and golden tipped. **A Brand Division \$2.00.**

Ohanagasa (Japan). A splendid Japanese flower with distinct color effect. Guards are rich violet red; staminodes cream white, rose red, and gold. **A Brand Division \$2.00.**

Rashoomon (Japan) 8.7. This flower attracts much attention in our field, not only for its beauty but also the pleasing appearance of the plant. Clear, glossy green foliage; leaves pointed and crinkled; plant very symmetrical; one of the best peonies for landscape planting. Large blossoms; outer row of petals a deep rose red, surrounding a large tuft of crinkled golden filamental petals. **A Brand Division \$3.00.**

Some-Ga-Noka (Japan) 9.0. The highest rated red Jap. Guard petals are a rich dark, velvety red. The center is a ball of golden yellow staminodes, partially transformed and streaked red. This dark red and King of England, which is brighter, make two splendid red Japs for any garden. **A Brand Division \$4.00.**

Taiho (Japan). One of the new varieties imported from Japan. Not sufficiently distributed as yet to receive a rating by members of the American Peony Society. Broad guard petals, clear soft pink; a large central tuft of creamy yellow. One of the fine pink Japs. **A Brand Division \$1.00.**

FOUR BEAUTIFUL JAPS

IN
A Money-Saving Collection

Mikado—One of our best red Japanese peonies.....	\$2.00
Altar Candles—Delicate flesh-pink.....	1.50
Akashigata—Deep carmine-rose.....	2.00
Exquisite—Purest white, center sulphur-yellow.....	3.00
A TOTAL CATALOG VALUE OF.....	\$8.50

— This Collection in Strong 3 to 5 Eye Divisions —

COLLECTION
PRICE

\$6.00

YOU SAVE
\$2.50

Peony Supports

Every peony grower has felt the need of protecting his plants from damage by wind and rain, thus preserving their beauty throughout the entire blooming season. We know of no peony support on the market which is so simple yet so practical and strong as the

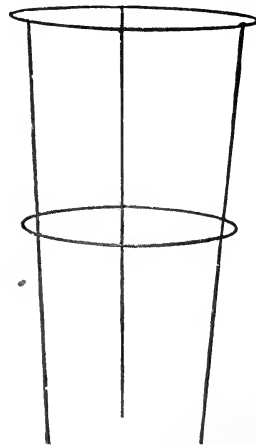
Adams Support

These supports are made of No. 6 galvanized wire that will not rust. They are very substantial; and with ordinary care, they should last many years. If ordered ahead of time, they can be sent by freight, which makes the carrying charges very reasonable.

Special 6-gauge, 24-inch tops, 60 cents each; 12 for \$6.00.

Shipped by freight or express, F.O.B. Faribault, or factory.

Send for prices where larger quantities are wanted.



BRAND'S PEONIES in the garden plot
To make your home a beauty spot.

New Improved French Lilacs

Far More Beautiful Than the Common Lilac

"THE OWN-ROOT LILAC IS THE ONLY LILAC ONE SHOULD PLANT."

REFERENCE: Read *Journal of the Arnold Arboretum*, Volume XII, No. 2, article entitled, "Graft Blight—A disease of the Lilac related to the employment of certain understocks in propagation."

The Common Lilac is one of the hardiest and longest lived of all the flowering shrubs. Old lilac bushes may be seen all about the city of Faribault, planted by the first white settlers when they came here nearly 90 years ago. These old bushes are large and thrifty; there is no apparent reason why they should not live still another ninety years to beautify the yards which they adorn. These are the old fashioned lilacs.

Improved French Lilacs. For many years hybridists have been at work improving the lilac. The most of this work has been done in France, and from there the great bulk of our improved lilacs have come. For this reason, these new lilacs are called Improved French Lilacs.

These new lilacs usually come to us propagated either on the root of the common lilac or on the root of one of the many varieties of privet. Neither of these understocks has proven satisfactory. The common lilac is a rapid grower and throws up many suckers from its roots. As a rule, these suckers grow more rapidly than the graft of the improved lilac and the result is that the choice lilac top is overgrown and choked out. Again, where privet is used as an understock—if the lilac is not planted deep enough so that the union of lilac and privet is at least a foot under ground—the privet root will kill out in the winter, or if it lives, it sends up privet suckers about the lilac top which prove a great nuisance.

Finding several years ago that good lilacs propagated in either of these ways were very disappointing in our cold climate, we set about to bring out the improved lilac on its own root. We find that we can work some varieties onto their own roots very readily, while it is very difficult to grow others in this way. Some of these stubborn sorts seem to unite readily with the root of *Villosa*, a hardy lilac that seldom sends up any sprouts, and we are using this *Villosa* root where we are compelled to do so but not otherwise.

Advantages of the Own-Root Lilac. The lilac you buy from us is on its own root. If this lilac sends up a sucker, the sucker is the same as the bush from which it springs. It grows at the same rate as does the mother bush and when it blooms, the bloom is identical with that of the original plant of which it is a part.

We have never had any success with these new lilacs where they were on common lilac root and not more than 50% success where they were grafted on privet root, yet we have always had perfect success with Own-Root Lilacs, so we believe the Own-Root Lilac is the only lilac to plant and to offer our customers; and we believe an improved lilac on its own root is just as long lived as the common lilac.

Growing an improved lilac on its own root is a slow process. It actually takes us two years longer to produce a lilac of a given grade on its own root than it would take to produce the same grade on privet. Yet we insist on sending out only those lilacs that will prove satisfactory, so our customers can depend upon receiving only genuine OWN-ROOT plants.

We have a wonderful, deep, rich, alluvial soil; the soil in which the lilac revels. This contributes to strong thrifty tops with a large, well-balanced root system. This spring our stock is unusually fine.

How to Plant. Lilacs can be planted either in spring or fall. In the spring it should be done **very early, before the buds start.** To allow the French Lilac its natural spread, the plants should be set not less than eight feet apart. Dig a hole as large as a bushel basket. Fill back rich top soil and tramp down firmly until you can place the plant on this soil so that when roots are spread out naturally the crown will be an inch or two lower than it was in the nursery. Work the soil in carefully among the roots until the hole is half full; then tramp this down unusually hard. Then pour in a full pail of water. After this has settled away, fill the hole with loose mellow soil until it is rounding full; then tramp lightly. Keep plants well hoed.

Fertilizers. A lilac likes a sweet soil and responds wonderfully to applications of lime. Use four quarts of lime to a large bush each year. Any good well-balanced fertilizer can be used with good results.

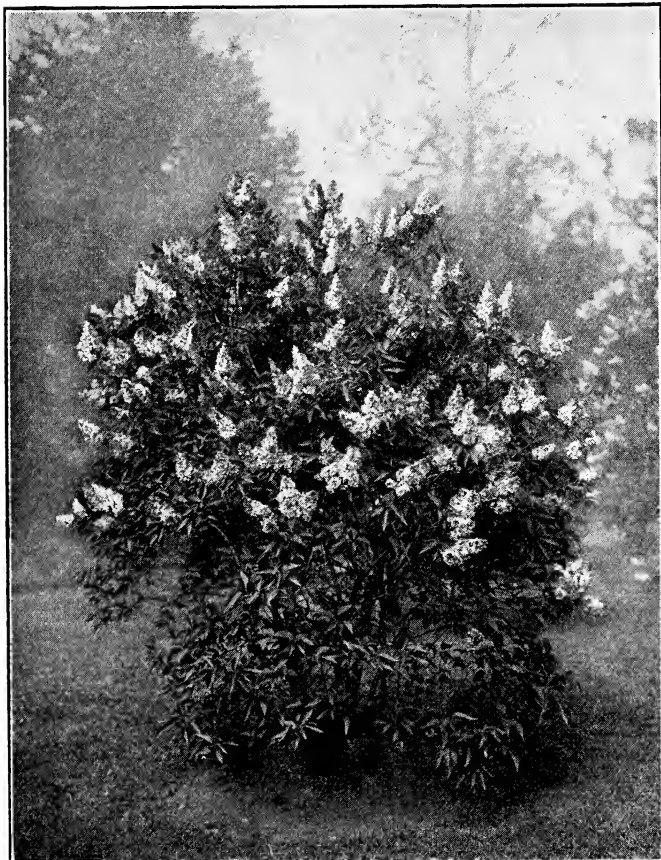
Pests. Oystershell scale and the lilac borer are about the only enemies of the lilac. For oystershell scale, if affected, use a Miscible Mineral Oil Spray as a dormant spray just before the buds open in the spring. This must be done thoroughly while the scale is at its tenderest stage. Spray early in the day so the bushes will be dry by night. The lilac borer is best handled by prevention. If bushes are kept well cultivated and growing, there is but little borer trouble. Where the borer is at work, he may be taken and killed by running a small wire into the hole and twisting it around to accomplish this. One can also shoot carbon bisulphide into the burrow of the borer with a medicine or fountain pen dropper; then plug up the entrance with putty or gum.

Our Lilac Collection

We have over 160 kinds of the best lilacs. Whenever we hear of a new one, we buy it and try it out.

We bloom all of these in our trial gardens. In this way we can choose from the entire range of varieties, compare one with the other, and eventually retain the best.

We find some of the older sorts as good as the best of the new ones. These we retain. We find many superb things among the newer sorts. These we add definitely to our list. But we also find many of both old and new that we can do without. These we drop. It is our constant aim to keep an offering of new lilacs as good as the best.



Maurice de Vilmoran

To some the year begins and ends
When Lilacs bloom—their truest friends.

This spring we are offering an unusually finelst of French Lilacs. With but few exceptions they are all recent introductions. Since we offer no new lilac until we have it on its own root, we may not always offer these same lilacs as soon as those who grow them on privet.

If you were to try to write a description of the most beautiful sunset you ever saw, you would be in the same position that we are in today when we try, in the brief descriptions we give, to convey the beauty of all the lilacs we offer. The best we can do is to give you the color, form, size, and type; leaving you to imagine the rest.

Remember, the following list are mostly new lilacs, all of the very best. They are **own-root lilacs**. New lilacs on their own root are decidedly scarce. If you want any of these for spring, place your order early. We do not have many of any one kind and they will not last long.

Our List of All Choice Standard Sorts

Aline Mocqueris. Double. One of the dark lilacs on the purplish red order. Compact bush of medium height; profuse bloomer, much admired. **Own-Root 3 to 4 Foot, \$1.50; Strong 4 to 5 Foot Specimens, \$2.50.**

Alphonse Lavalle. Blue. Double. Tall, robust growing; makes a very shapely bush. Panicles long, broad, shapely, and compact. Opens an intense blue, but as the florets develop it changes to a beautiful shade of lavender. A wonderful bloomer. Splendid sort. **Own-Root, Strong 3 to 4 Foot, \$1.50.**

Charles Joly. Double. Purple red. One of the very best of the double dark reds. Bush medium both in size and height, limbs growing very upright. Rather large blooms, held erect well above the foliage; very striking. We consider this the best double red in our list. **Own-Root, Strong 2 Foot, \$1.00.**

Charles Sargent. Double. Medium tall growing variety. Very shapely and vigorous plant. Color, a beautiful light lavender. Very double flower with florets; long, narrow, pointed petals. **Own-Root, Strong 2 to 3 Foot, \$1.00.**

Charles Tenth. Red. Single. One of the most dependable of the red singles. Very thrifty. Begins blooming very young and produces great quantities of large, nicely shaped panicles. **Own-Root, Strong 2 to 3 Foot, \$1.00; 3 to 4 Foot \$1.50; 4 to 5 Foot \$2.00.**

Doyen Keteleer. Double. Long, fairly compact, cone-shaped panicle. A very pleasing light purple. **Own-Root, 2 to 3 Foot, \$2.00.**

Japonica. Single. A very fine lilac where a small tree is wanted; for instance, in the rear corner of a lot or as a small lawn tree. Grows into a very clean and trim tree about 20 feet high; heavy, dark green, glossy foliage; great plume-like panicles of creamy white. **Own-Root, Strong 2 to 3 foot, \$1.50; 3 to 4 foot, \$2.00.**

Jacques Calot. Single. Very large panicles of rosy pink flowers with the individual florets very large. **Own-Root, Strong 2 to 3 Foot, \$2.00; 3 to 4 Foot, \$3.00.**

Jean Mace. Double. Bluish mauve. Very pretty lilac with neatly formed panicle. **Own-Root, Strong 2 to 3 Foot, \$2.00.**

Michael Buchner. Double. One of the old lilacs that we like very much. Very striking from a distance. Pale; distinctly double. **Own-Root, Strong 2 to 3 Foot, \$1.00.**

Miss Florent Stepman. Single. Tall upright grower; light clean foliage; long, medium, compact panicle. Pure white with large beautiful florets. **Own-Root, 2 to 3 Foot, \$1.50.**

Marie Le Graye. Single. Pure creamy white. To us this good single French Lilac is a special sensation. Panicles, very large and rather openly built. The individual petals and florets are very large. Blooms profusely, often as a two-year-old. Sells very readily at a good price as a cut flower. **Own-Root, Strong 2 Foot, \$1.00; 3 to 4 Foot, \$1.50.**

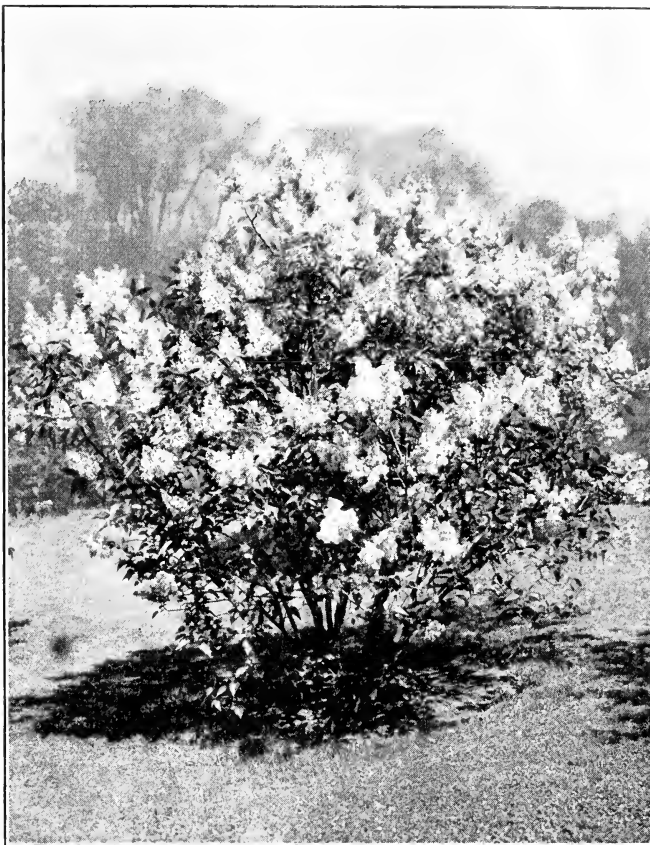
Mme. Casimer Perier. Double. Creamy white. Very thrifty. Produces a profusion of large size panicles; very double creamy-white flowers. Compact bush of medium height; bright, light green foliage. Everyone should plant one of these beautiful lilacs. **Own-Root, Strong 2 Foot, \$1.00; 3 to 4 Foot, \$1.50.**

Maurice de Vilmorán. Double. Tall, upright-growing bush; very stout limbs; long, compact, cone-shaped panicles of a beautiful bluish lilac. Very choice. **Own-Root, Strong 2 to 3 Foot, \$1.00.**

Mme Lemoine. Double. One of the best of the double whites—a pure snow-white without tinge of cream. Foliage dark green. Panicles large, long, erect; large individual florets. **Own-Root, 2 to 3 Foot, \$1.00; 3 to 4 Foot, \$1.50.**

Mont Blanc. Single White. Among the best, if indeed not the very best, of all single whites. A compact plant of shapely growth with clean foliage. Large panicles, rather compact and of beautiful form. Immense florets; clear creamy white. **Own-Root, 18 to 24 Inch, \$1.00; 2 to 3 Foot, \$1.25; 3 to 4 Foot, \$1.50.**

Monument Carnot. One of the greatest of all lilacs. Immense panicles, from nine inches to a foot long. Large, semi-double florets. A clear light blue of a most pleasing shade—finest of all light blue



Wm. Robinson

lilacs. Our stock is limited. **Own-Root, 3 to 4 Foot, \$2.50; 4 to 5 Foot, \$3.50.**

President Carnot. Lavender. Double. One of the most profuse bloomers. Very large panicles, regular in form, rather oblong and compact. Florets very large in the bud. Back of floret deep reddish blue; center bluish violet. Very vigorous and dependable. **Own-Root, 2 to 3 Foot, \$1.00; 3 to 4 Foot, \$1.50.**

President Grevy. Double. Light blue. Immense panicles; very double and symmetrical. A clear, soft, delicate blue—President Grevy is one of the older sorts and still one of the most desirable of all. **Own-Root, 2 to 3 Foot, \$1.00; 3 to 4 Foot, \$1.50.**

President Vigor. Double. Tall, upright-growing bush of great vigor. Long, conical panicles; held erect well above the foliage. A beautiful flower of lilac shades, tinted with blue. **Own-Root, 2 to 3 Foot, \$1.00.**

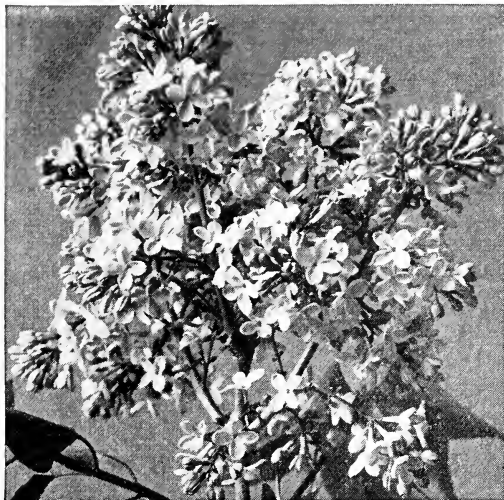
Senator Volland. Pink. Double. Floriferous. Very pretty with a large bloom, somewhat open. In the bud the reverse of the petals shows a distinctly bright touch of pink which continues to show as the florets open, giving a very dainty effect to the bloom. Center of florets, pinkish light lilac. Very dainty. **Own-Root, 2 to 3 Foot, \$1.00; 3 to 4 Foot, \$1.50.**

Souv. de Ludwig Spaeth. Single. Dark reddish purple. One of our oldest varieties among the better lilacs; it remains one of the most striking. Panicles very long, narrow, and perfectly cylindrical. As the plant ages the bloom becomes profuse. Blossoms produced well on the outside of the foliage; very showy. **Own-Root, Strong 2 to 3 Foot, \$1.00.**

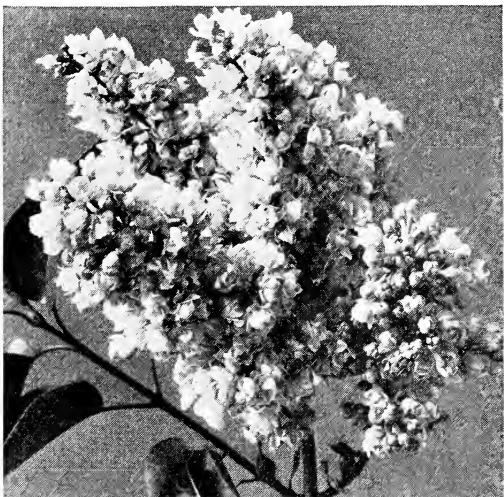
Volcan. Single. One of the most robust and shapely growers of all the best lilacs. As near a true deep red as we have. The darkest of all our reds. Long, large, shapely panicles come up well above the foliage. They look rather open in the bud but as they develop they open into one of the finest, most shapely, and largest of all these lilacs. This variety is in such demand that we have but a few plants for sale. We class it right up with Congo, only it is a different red. **Own-Root, 18 to 24 Inch, \$1.50; 2 to 3 Foot, \$2.00; 3 to 4 Foot, \$3.00; 4 to 5 Foot, \$5.00.**

William Robinson. Double. Invariably well liked; always chosen as one of the best. Very compact panicles, almost round. When florets are about to open, the bloom gives a very striking pinkish red effect which gives place to a lavender as the florets fully open and their reverse side turns back. Very much admired. **Own-Root, 2 to 3 Foot, \$1.00; 3 to 4 Foot, \$1.50.**

List of Extra Select Choice New Lilacs



Congo



Katherine Havemeyer



Oliver de Serries

Berryer (On *Villosa*). Semi-double. A beautiful clear mauve with deeper shadings toward red. One of the very choicest of the early hybrids; distinctly different; also the latest of this new line of lilacs. These plants are now full of blossom buds for spring blooming. On *Villosa Root*, 2 to 3 Foot, \$3.00.

Buffon. Single. One of the very earliest of the early hybrids; also one of the prettiest pinks. Panicles very large. **Own-Root, Strong 2 to 3 Foot, \$3.00.**

Congo. Immense, single, wine-red. This is the best lilac of its color. I have asked many lilac experts for their choice of the twelve most beautiful lilacs and, almost without exception, Congo is one of the first named. We place Congo among the six best of all lilacs. Last fall's orders nearly depleted our stock of this variety. Only a few left. **Own-Root, 2 to 3 Foot, \$4.00; 3 to 4 Foot, \$5.00.**

De Saussure. Double. Medium sized, compact, slender spike. Buds open deep wine-red to a deep bright violet, fading to a light bright violet. Very distinct. **Own-Root, Strong 2 to 3 Foot, \$3.50.**

Edmond About. Double. A bush of large, strong, heavy foliage. Large panicle with large florets. Reverse of petals blue, fading to lavender as bloom opens. Very choice. **Own-Root, Strong 2 to 3 Foot, \$3.50.**

Geheimrat Singlemark. Single. A very dark deep blue. A very striking and distinct color. If you are looking for an unusual lilac, here it is! **Own-Root, Strong 2 to 3 Foot, \$3.00.**

Georges Bellaire. Double. Large compact truss. A very pleasing shade of red. A striking lilac. **Own-Root, Extra Fine 2 to 3 Foot, \$3.00.**

Grace Orthwaite. A real Pink Lilac. Single. Upright spreading bush. Extremely thrifty. Panicles rather open, of medium size. Bloom comes well above the foliage. Such a distinct pink, it is noticeable from a long distance. We regard it the best of all pink lilacs. **Own-Root, 18 to 24 Inch, \$2.00; 2 to 3 Foot, \$2.50; 3 to 4 Foot, \$4.50.**

Henri Martin. Double. Extremely long graceful panicles. Beautiful blue lavender—a splendid new lilac. **Own-Root, Strong 2 to 3 Foot, \$3.00.**

Jules Simon. Double. Immense flower with very large florets. Deep purplish blue to lavender. **Own-Root, Strong 2 to 3 Foot, \$3.00.**

Katherine Havemeyer. Double. A splendid new lilac which we have not had long enough to bloom on old bushes; but on 3 to 4 foot bushes, in the show beds, it gave us some wonderful deep blue panicles. Looks very choice to us. **Own-Root, Strong 2 to 3 Foot, \$3.00.**

Lamartine. Single. Earliest to bloom of all the new early hybrids. Immense open panicles with very large florets. An even shade of pink. **Own-Root, Strong 2 to 3 Foot, \$2.50.**

Leon Gambetta. Double. Panicles of the greatest size. Buds and reverse of petals very pink, which gives the flower a general pink effect. Deep pink buds open into very double little rose-like florets of the daintiest pink and lavender. We still say it's the finest of all lilacs and we want to emphasize this. There are many fine lilacs but we believe this is the most beautiful of all. On *Villosa Root*, 2 to 3 Foot, \$3.00.

How sweet the scent on vernal air;
Ah, Lilacs! What a fragrance rare.

Romantic time, momentous season;
When lilacs bloom—and that's the reason.

L'Oncle Tom. Double. Very dark red. It is hard to say just which is the darkest lilac. Most people say L'Oncle Tom. **Own-Root, Strong 2 to 3 Foot, \$2.50.**

Marechal Lannes. Semi-double. Large panicles with extra large florets. A peculiar shade of blue-violet. A prodigious bloomer even on very small bushes. Many lilac connoisseurs class this new one as among the very best. Distinct. **Own-Root, Strong 2 to 3 Foot, \$5.00.**

Oliver de Serries. Double. Tall bush, good grower. Large to very large open panicles. Large florets with large individual petals. A clear, clean, pleasing lavender. One of the extra choice lilacs. Almost in a class with Leon Gambetta. **Own-Root, Strong 2 to 3 Foot, \$4.00.**

Pascal. Single. Early. Geraldi hybrid. Very large thrifty bush. Medium late. Lacy delicate pink. **Own-Root, Strong 2 to 3 Foot, \$1.50; 3 to 4 Foot, \$2.00.**

President Loubet. Double. Red. One of the very choicest. Medium height plant. Panicles appear rather small just as the florets begin to open but they slowly develop as the florets continue to open until they become immense. A bright red in the bud stage, but showing considerable white on the inner edge of the opened petal. One of the very best. **On Villosa Root, Strong 18 Inch, \$2.00.**

President Poincare. Double. Very thrifty plant; grows into a large, heavy-limbed bush. Panicle large to very large, globular, made up of many lobes. Petals very large, purplish red on outside, turning to lavender blue as they open. An immense and impressive bloom. Very striking. **Own-Root, 12 to 18 Inch (heavy), \$2.00; 2 Foot Select, \$4.00.**

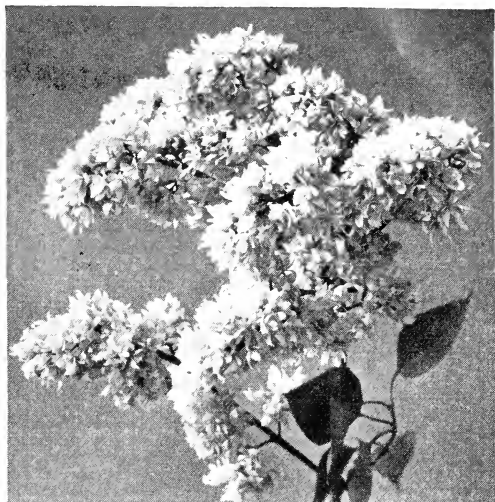
Reaumur. Single. Violet-carmine. Panicles of immense size even on small plants. One 3 to 4 foot plant had one great bloom last season (1931) 16 inches through by 16 inches deep. Very showy. A sensational new lilac. **Own-Root, Strong 18 Inch Plants, \$4.00.**

Thunberg. Double. Very large, long slender spikes, generally two to the panicle. Buds and reverse of florets, a violet mauve with a reddish appearance from a distance. Florets are large; open a light lilac, twisting and turning as they open, so that the color of the bud is intermingled with that of the inside of the petals. This makes, all in all, a very striking lilac which we chose as one of the best of the entire collection. Strong grower. **Own-Root, Strong 2 to 3 Foot, \$4.00.**

Vauban. Double. Another of the early hybrids. The most rapid growing of all our list of lilacs. Large plume-like panicles; delicate pink. **Own-Root, 2 to 3 Foot, \$2.00; 3 to 4 Foot, \$2.50.**

Violetta. Double. One of the very darkest lilacs. Deep bluish violet—a very unusual color. Large open panicle with very large individual florets. New. Very scarce. **Own-Root, Strong 15 to 18 Inch, \$3.00.**

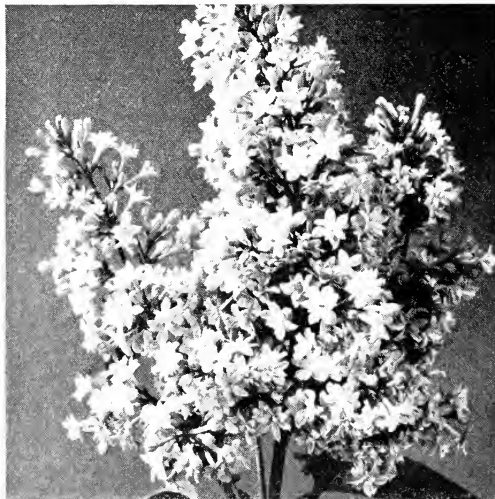
Vestale. Single. One of the best of the single whites. An upright-growing bush with long, narrow, conical panicles which stand upright. **Own-Root, Strong 2 to 3 Foot, \$2.00.**



President Loubet



President Poincare



Thunberg

For Strong, Thrifty Tops
and
Large Magnificent Blooms
BRAND'S LILACS
are grown
on their
OWN ROOTS

Lilacs For Hedges and Screens

COMMON LILAC. As a trimmed hedge there is no shrub that does better in the North than the common lilac. Where a low trimmed hedge is desired, the common Purple is generally used. For tall untrimmed hedge, either common Purple or common White is planted as desired. There is no danger of the hedge, or any part thereof, ever killing out. We have a very large stock in both common Purple and common White, at very low prices:

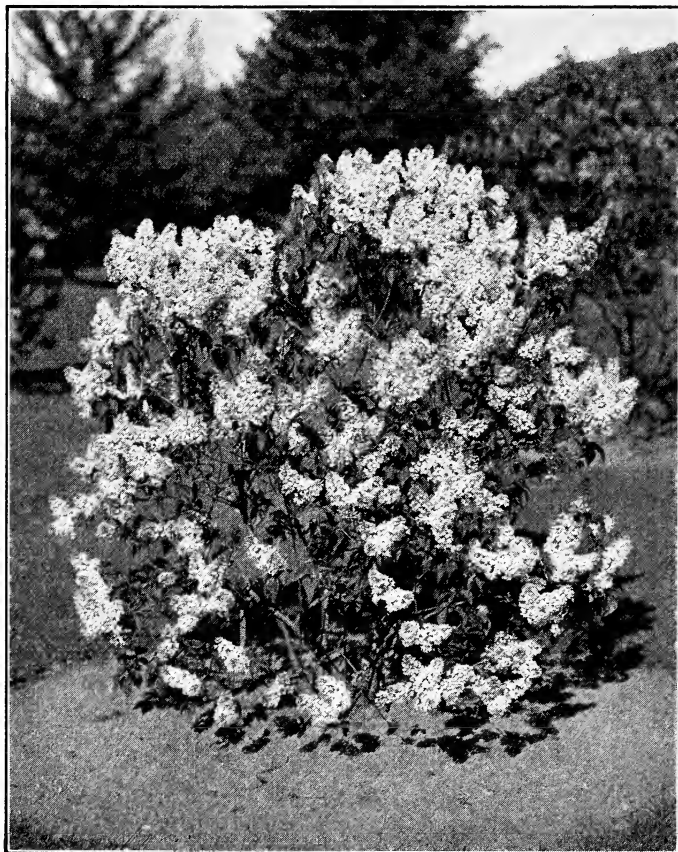
IMPROVED FRENCH LILACS FOR SCREENS. We have several varieties of the Improved Lilacs growing in large sizes in long rows. When in bloom, these are truly wonderful—just one long row of dazzling beauty! For a tall screen hedge to be used as a background or as a border between lots, we know of no shrub so magnificent. For such a screen the plants must be all of one variety, so the screen may have an even, finished appearance. For this purpose we recommend:

Prices of Common Lilac

18 to 24 Inch, 1 to 24 plants at 20c; 25 to 49 at 17c; 50 to 100 at 15c.
2 to 3 Foot, 1 to 24 plants at 25c; 25 to 49 at 20c; 50 to 100 at 17c.
3 to 4 Foot, 1 to 24 plants at 30c; 25 to 40 at 25c; 50 to 100 at 20c.

Prices of Improved French Lilac

Charles Sargent—Lavender, 12 to 18 Inch, Own-Root. Each 50c; 10 for \$4.50; 20 for \$8.00.
Charles Joly—Deep Wine-Red, 10 to 12 Inch, Own-Root. Each 50c; 10 for \$4.50; 20 for \$8.00.
Mme. Casimer Perier—Pure Creamy White, 10 to 18 Inch, Own-Root. Each 40c; 10 for \$3.50; 20 for \$5.00.
Mont Blanc—Large, Pure White Single, 12 to 18 Inch, Own-Root. Each 50c; 10 for \$4.50; 20 for \$8.00.
Rothmogensen—Deep Rose Pink, Persian, 12 to 18 Inch, Own-Root. Each 50c; 10 for \$4.50; 20 for \$8.00.



Congo Lilac Bush

Special Lilac Offers

President Hayes

President Hayes is one of the best of the selected Persian Lilacs. Panicles are very large, in great quantity, and carried well on the outside of the bush. A great variety for large masses and long screens. We grow it on its own root in great quantity and offer it at very attractive prices. Strong 3 to 5 Foot, 50c each; 10 for \$3.50; 50 for \$15.00; 100 for \$25.00.

Villosa

Villosa is another excellent lilac for both large and small plantings. Grows into a very large shrub, about 10 feet high, with great, large, heavy, waxy-like leaves. Comes into bloom when all other lilacs are gone. Panicles large, broad, plume-like, and of a delicate pink color. Own-Root, Strong 3 to 4 Foot, \$1.00; 10 for \$5.00. Choice Select 4 to 5 Foot Specimen Plants, \$2.50; 10 for \$15.00.

Mme. Casimer Perier

Mme. Casimer Perier is the greatest double white lilac for tall hedge purposes. A hedge of this variety grows to a uniform height. In blooming season it is absolutely covered with a mass of pure creamy white throughout its entire length.

Own-Root, 10 to 18 Inch, each 40c; 10 for \$3.50; 20 for \$5.00.
 Own-Root, 2 to 3 Foot, each 75c; 10 for \$5.00; 20 for \$8.00.
 Own-Root, 3 to 4 Foot, each \$1.50; 10 for \$6.00; 20 for \$10.00.

Most Sensational Lilac Offer Ever Made

10 Beautiful Named French Lilacs

Among the new French Lilacs which we have been successful in propagating on their own root, there are ten choice varieties in which we have now multiplied our stocks sufficiently so that we can make an unusual offer. This offer comprises one each of these ten beautiful named French Lilacs in large 2 to 4-foot bushes—all grown on their own roots—all colors—all named and correctly labeled. A TOTAL VALUE OF \$13.50 as priced singly in the following list. All ten for only **\$7.50**

The ten new named French Lilacs in the foregoing offer include:

Alphonse Lavalle. Blue. Double. Tall, robust growing; makes a very shapely bush. Panicles long, broad, shapely, and compact. Opens an intense blue, but as the florets develop it changes to a beautiful shade of lavender. A wonderful bloomer. Splendid sort. **Each \$1.50.**

Charles Tenth. Red. Single. One of the most dependable of the red singles. Very thrifty. Begins blooming very young and produces great quantities of large, nicely shaped panicles. **Each \$1.00.**

Charles Joly. Double. Purple Red. One of the very best of the double dark reds. Bush medium both in size and height, limbs growing very upright. Rather large blooms, held erect well above the foliage; very striking. We consider this the best double red in our list. **Each \$1.00.**

Charles Sargent. Double. Medium tall growing variety. Very shapely and vigorous plant. Color, a beautiful light lavender. Very double flower with florets; long narrow pointed petals. **Each \$1.00.**

Marie Le Graye. Single. Pure creamy white. To us, this good single French Lilac is a special sensation. Panicles, very large and rather openly built. The individual petals and florets are very large. Blooms profusely, often as a two-year-old. Sells very readily at a good price as a cut flower. **Each \$1.00.**

Mme. Casimer Perier. Double. Creamy white. Very thrifty. Produces a profusion of large size panicles; very double creamy-white flowers. Bush medium height, compact, with bright, light green foliage. Everyone should plant one of these beautiful lilacs. **Each \$1.00.**

Monument Carnot. One of the greatest of all lilacs. Panicles of immense size, from nine inches to a foot long. Florets large, semi-double. A clear light blue of a most pleasing shade. Finest of all light blue lilacs. Our stock is limited. **Each \$2.50.**

President Carnot. Lavender. Double. One of the most profuse bloomers. Panicles very large, regular in form, rather oblong and compact. Florets very large in the bud. Back of floret deep reddish blue, center bluish violet. Very vigorous and dependable. **Each \$1.50.**

Senator Volland. Pink. Double. Very floriferous. Very pretty with a large bloom somewhat open. In the bud the reverse of the petals shows a distinctly bright touch of pink which continues to show as the florets open, giving a very dainty effect to the bloom. Center of florets, pinkish light lilac. Very dainty. **Each \$1.00.**

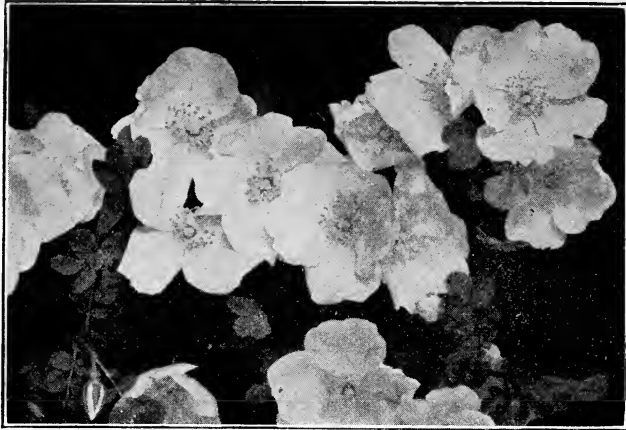
Souv. de Ludwig Spaeth. Single. Dark reddish purple. One of our oldest varieties among the better lilacs; it remains one of the most striking. Panicles very long, narrow and perfectly cylindrical. As the plant ages the bloom becomes profuse. Blossoms produced well on the outside of the foliage; very showy. **Each \$2.00.**

Final Lilac Collection

Naturally, the law of average cannot possibly regulate the demand for all lilacs so evenly as to prevent a surplus of some and a shortage of others. It is nothing unusual to find that the varieties in which we have a surplus include the very finest. To keep our stocks arranged in balanced quantities, we are willing to send these out at a special low price which provides for this Final Collection Offer:

Three Fine French Lilacs, All Different Colors, All Labeled, Our Selection

\$2.50



Hansa

Roses

We send out many thousands of rose bushes every spring and our business in this line is rapidly increasing.

We have our roses grown for us by the best rose growers in America and we feel safe in saying that our rose bushes are as fine as can be bought anywhere in the land. We ask you to bear this in mind in comparing our prices with roses offered cheaper. Our stock is all two-year grown and is of No. 1 grade. We will not offer an inferior grade. Last season many people wrote in complimenting us on the nice roses we had sent them, which did so nicely.

Roses should be planted where they are somewhat sheltered by buildings, hedges, or plantings of shrubbery from the full force of the wind.

The rose likes a rich mellow soil into which some rotted leaf mold, rotted sod, and well rotted cow manure have been worked. Plant the bushes with the top of the roots about two inches below the surface. Trim the branches back to about eight inches. In the fall, mound the dirt up into the branches in pyramidal form about a foot. After the soil freezes hard, scatter a coarse mulch in between the branches and over this mound about two inches thick.

Hugonis Rose

The Golden Wild Rose from China

In the Hugonis Rose we have one of the finest floral introductions of recent times. This rose comes to us from China and is perfectly hardy, growing on our grounds in the most exposed places without any winter protection. The bush throws up many branches to a height of six to eight feet, sending slender sprays in all directions which arch gracefully beneath great loads of bright yellow single flowers of the most exquisite beauty.

Very Strong 2-Year Plants — Each 50c; 10 for \$4.25 Postpaid; 100 for \$30.00 by Express Collect. (Hugonis makes a splendid hedge.)

Persian Yellow. An Austrian Briar Rose producing small semi-double, deep yellow flowers along the branches in late spring. One of the old favorites. **By Mail, 80c Each.**

Hybrid Rugosa Roses

Rugosa and Hybrid Rugosa Roses are very desirable where extremely hardy roses are demanded. Also in great demand because of the luster and beauty of their foliage, working exceedingly well into hedge and mass plantings. Varieties listed are doubles. Except where otherwise noted, all of the following roses are: **Each 40c; 10 of One Variety for \$3.50, Postpaid.**

Agnes. A new Rugosa Hybrid. Absolutely hardy. Yellow flowers of good size; regular Rugosa foliage. Very choice. **Each 75c.**

Belle Poitevine. Splendid pink Rugosa. Every branch a mass of pink bloom.

Hansa. The standard double Red Rugosa. Reddish violet. The most rugged and thrifty of all. Much used for hedges and large mass plantings.

F. J. Grootendorst. Flowers, which are of an intense bright red, come in clusters like those of the Crimson Rambler, but they resemble the hardy red carnation. In continuous bloom all summer; so far, the very best rose for the far north.

Pink Grootendorst. This wonderful new rose resembles **F. J. Grootendorst** in all respects but color. Where that rose is a bright red, this one is intense warm pink. Absolutely hardy and blooms all summer. **Each 60c.**

Sir Thomas Lipton. Double pure white. The best double white Rugosa.

Price of foregoing roses (unless otherwise noted): Each 40c; 10 of 1 Variety for \$3.50, Postpaid.

12 Hybrid Tea Roses

*The American Rose Society's Choice
as the 12 Best of all Hybrid Tea Roses*

To have roses all summer long, one should buy the Hybrid Tea Roses. Buy strong, two-year-old, No. 1, field-grown roses such as we supply; plant them early in the spring and then, with good care, you will have an abundance of bloom from early summer until it freezes in the fall.

We have our roses grown for us by some of the most exacting rose growers in America. From them we secure for our customers only the very best to be had. It is only such rose bushes we supply to our customers—roses grown right and handled right from the very start—bushes guaranteed to reach our customers in the best possible condition.

Our roses are not to be compared with bushes picked up here, there and everywhere, offered at cut prices over the bargain counter. Many customers wrote us last season that while our peony roots were the best they had ever received, **our roses were as good as our peonies.**

Four years ago the American Rose Society took a vote of its membership as to the 12 most beautiful and popular of all the Hybrid Tea Roses. Over 1200 votes were cast. The list of 12 roses which we offer here were selected as the 12 best Hybrid Tea Roses. We offer this list of 12 best roses in strong, 2-year, No. 1, field-grown bushes: Each 55c; One Each of ALL TWELVE, \$6.00, Postpaid.

Columbia. Light pink flowers of beautiful form; very large; darker in color as they age. Borne on a strong, healthy plant with good stems for cutting.

Duchess of Wellington. A beautifully formed flower of medium size—a most fetching saffron-yellow color. Strong plant; nice stems for cutting; very profuse bloomer.

Gruss an Teplitz. A large, strong plant, continuously bearing clusters of beautiful, bright crimson flowers. One of the most free-blooming of all; one of the hardiest.

Kaiserin Augusta Victoria. An exquisitely formed flower of pure white, tinted lemon-yellow in the center. A well tried variety, always liked.

Los Angeles. Tints of flame-pink, gold, and other rich indescribable shades enter into the make-up of this wonderful variety. Very fragrant.

Mme. Butterfly. A flower with peculiar beauty of form that appeals to everyone. A splendid bloomer of good sized flowers on good stems for cutting. Light, bright pink, shaded yellow.

Mme. Edouard Herriot. Wonderful orange-red buds, opening into shrimp-pink flowers of most brilliant shadings. One of the most showy of all roses.

Mrs. Aaron Ward. Low, spreading bush, covered with beautiful little flowers of buff-yellow and fawn. Very free bloomer.

Ophelia. Beautifully formed flowers of a delicate pale pink and gold, changing to white in warm weather. One of the most charming of all roses.

Radiance. A splendid, even shade of clear pink; no trace of any other color. Retains its vivid color for a long time after cutting. One of the greatest bloomers, being constantly in bloom from early summer until freezing weather. One of the best outdoor hardy roses grown.

Red Radiance. If possible, a better rose than its parent, Radiance. Bears big, globular, deep rose-red flowers all summer long, on strong stems.

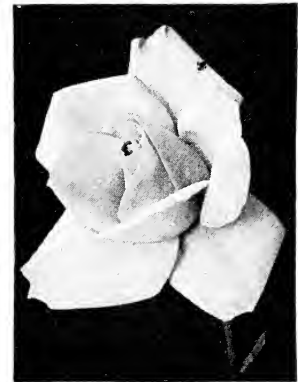
Souv. de Claudius Pernet. A beautiful sulphur-yellow. Wonderful as the bud is about to burst; even more wonderful in the open flower.



Gruss an Teplitz



Los Angeles



Mme. Butterfly



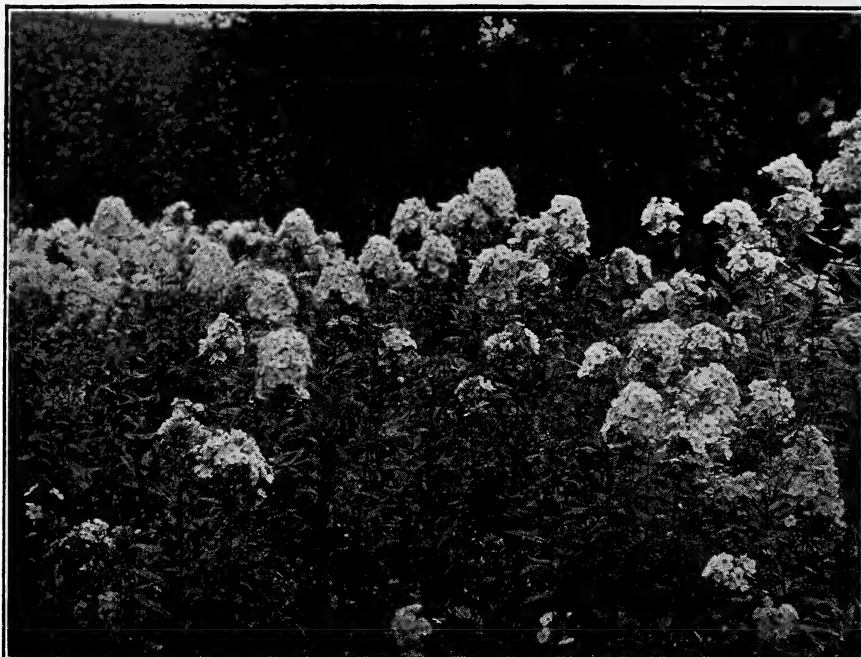
Radiance



Red Radiance



Souv. de Claudius Pernet



Planting of Perennial Phlox Siebold

Hardy Phlox

No other flower fits into the late color scheme in the garden as well as the perennial phlox. Starting to bloom in midseason, they carry loads of the most brilliant color far into the fall or until touched with frost.

For best results the soil should have well rotted manure worked in, and the planting should be in a fairly sunny lo-

cation. Water heavily during dry spells. If lower leaves turn rusty and dry up during the summer, water and spray the plants heavily with cold water and dust with powdered sulphur, such as is used to control black spot on roses. If the first flower spikes are cut off as soon as the flowers fall and the plants are well watered, a second setting of bloom will come on and continue late into the fall.

Our Phlox Collection

There are many new phlox coming out all the time, but few of these are any better than those which have been longer tried. We buy the new ones as they are offered and try them out in our gardens. We save the few really good ones and discard the rest. We offer at all times what we consider the best in phlox.

NOTE—When you order phlox from us you get a real Brand Peony Farms plant. Our phlox plants are of the same quality as our Brand Division peony roots. Our plants are selected No. 1, one-year field-grown plants.

Do not compare the prices for our phlox plants with cheaper prices where orders are filled with plants commonly called Baby Phlox Plants.

PRICES FOR PHLOX, ALL POSTPAID

1 Phlox of any one variety	\$.30
3 Phlox of any one variety85
6 Phlox of any one variety	1.50
12 Phlox of any one variety	2.00

For best artistic effect phlox should be planted in clumps of from 3 to 6, or even 12 if desired, all of one variety.

In Collections A and B, we are offering two equally good combination values. We have tried to arrange the varieties in each of these two collections so that one is just as desirable as the other. Each collection

consists of ten first class sorts; all seasons, all colors. We will send either collection postpaid for \$2.50, or the two to one address for \$4.50.

If you prefer, you may make up your own choice of ten from the entire twenty varieties—one of a kind, as you desire—10 for \$2.80, Postpaid.

The finest work from artist's hand
 Could not portray the fields of BRAND!

Phlox Collection A

Frau von Lassberg. The purest snow white in cultivation; large open truss. Wonderful cut flower.

Firebrand. A brilliant orange scarlet; a very free flowering variety of medium height; one of the most brilliant phlox known.

Ferd. Cortez. Very tall upright grower. Florets large, brilliant scarlet red.

Milly von Hoboken. A pure soft pink self color. Tall, thrifty, and branching. Large, well shaped flower.

Mrs. Jenkins. One of the best whites ever produced. Beautiful large trusses of perfect form with unusually large florets.

Rheinlander. A fine salmon pink with a large claret red eye.

R. P. Struthers. Rosy carmine with claret eye. A splendid variety, as it stands up well in the hot sun.

Thor. Deep salmon pink with aniline red eye. A charming variety.

Widar. Very large individual florets of lavender purple with a large white center. Large panicles; very attractive.

Wm. Ramsey. A very effective deep reddish purple. Everyone who likes a dark phlox likes this variety.



Milly von Hoboken

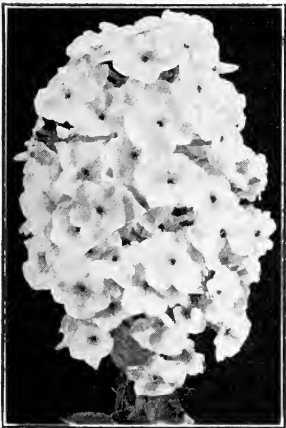


Siebold Phlox

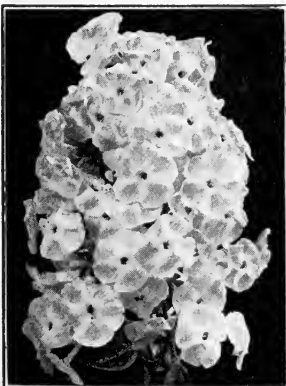
This Entire Collection---One of Each Kind

10 FINE PHLOX

All For \$2.50 Postpaid



Frau von Lassberg



Enchantress

Phlox Collection B

Antinea. A new pure white phlox of great merit. Beautiful form and splendid substance.

B. Compte. A brilliant rich dark satiny red. One of the most striking of all varieties.

Beacon. A fine brilliant bright cherry red. Trusses of most beautiful form.

Champs Elysees. A fine dark magenta that makes an attractive garden variety.

Eclairer. A purplish crimson with white aureole. One of the phlox that seldom kills out.

Independence. A white, with compact panicles; tall; good to use in outer border.

Pantheon. A clear deep carmine-pink with a faint halo. A variety you can depend upon.

Prime Minister. A great large white with a large crimson red eye.

Prof. Virchow. Large, flat flowers; bright carmine overlaid with orange scarlet.

Siebold. Orange scarlet with red eye. Very thrifty; profuse bloomer; immense spikes and many of them.

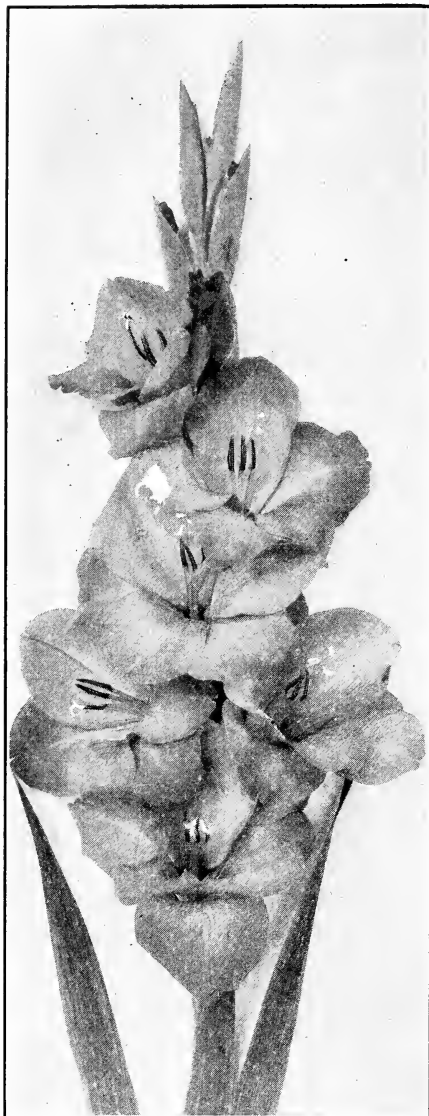
This Entire Collection---One of Each Kind

10 FINE PHLOX

All For \$2.50 Postpaid

Gladiolus

The Finest of all Flowers for Cutting



Dr. F. E. Bennett

The gladiolus is one of the easiest flowers to grow and, at the same time, one of the most beautiful of all flowers. We grow several acres and are keeping in close touch with the new things as they come out, always adding the most desirable of the newer kinds to our offering from year to year. The gladiolus makes a most beautiful cut flower and should be cut just as the first floret is about half open. Placed in water immediately after being cut, the spike will last many days and every bud will open up.

The bulbs should be planted in mellow well-drained soil, free from manure. Plant large size bulbs 4 to 6 inches deep; medium size bulbs 2 inches deep; small bulbs 1 inch deep. Plant from April 15th to June 15th in latitude of southern Minnesota.

Our gladiolus bulbs this spring are in two sizes, large and medium. They are all No. 1 in the grade offered, and all sizes will bloom this year. All bulbs are new bulbs, grown from either small bulbs or bulblets during last season.

Break O' Day. Very early. Massive spikes, several being open at once. A soft LaFrance pink, flushed over a cream ground and shading deeper at edge of petals. The finest extra early gladiolus. Of all our varieties last year, we considered this one of the most beautiful.

Carmen Sylvia (Prestgard). One of the very best of the whites. Pure white with slight violet markings deep in throat. Many open at once.

Crimson Glow (Betcher). Deep scarlet red. A touch of primrose yellow in the throat, overlaid with a deeper red blotch. Very large and thrifty. One of the best dark reds.

Dr. F. E. Bennett (Diener). Peach red, overlaid with flame-scarlet. Throat speckled with ruby and white. One of the most popular of the new glads and the finest scarlet red in our fields the past season.

Giant Nymph. Immense spikes with flowers nicely arranged. Very large, wide open flowers. One of the greatest show flowers. LaFrance pink with creamy yellow throat.

Golden Dream (Groff). A well formed flower. Many open at once on a long, straight spike. A clear deep yellow; by far the best yellow we have ever seen.

Longfellow (Prestgard). One of the greatest pink gladiolus ever sent out. Stems strong and straight. Flowers, a clear LaFrance pink. Wide open, of fine form, perfectly arranged on the spike. Frequently eight are open at once. Wonderful!

Mrs. F. C. Peters (Fisher). A beautiful amaranth pink with a large purplish blotch in the throat. A most popular gladiolus, sometimes described as orchid-colored.

Mrs. Leon Douglas (Diener). Begonia-rose, striped with brilliant scarlet. Immense flowers. The stems are very strong; carry many flowers open at once. One of the greatest show flowers of all gladiolus. At the different shows all over the country, it is always among the winners of the highest awards.

Souvenir (Gravereau). A pure intense yellow Primulinus. The best of all yellow Primulinus. Received First Class Certificate, Haarlam, Holland, 1921. Extra fine.

Above Varieties in No. 1 bulbs—3 of one kind for 20c; 10 of one kind for 50c

SPECIAL OFFER: 1 each of the above ten kinds for 75c

— All Prices Postpaid —

Surprise Mixture

So named because it brings so many pleasant surprises when the bulbs come to bloom.

All blooming size bulbs—1 dozen 35c; 3 dozen \$1.00; 100 for \$2.00.

10 Very Fine New Gladiolus

Affame. A huge, flame-red, slightly flecked. A primulinus-grandilora of great size and wonderful performance. **Each 25c; 10 for \$2.00.**

Betty Nuthall. A beautiful shade of coral pink with a yellow throat. Comes in a double row of huge florets. The most beautiful glad of its color. **Each 25c; 10 for \$2.00.**

Charles Dickens. A bright radiant purple. Considered by many the best in its color. We agree that it is. Indispensable. **Each 15c; 10 for \$1.00.**

Emile Auburn. Rich coppery bronze, often overlaid with slate. Large cherry-red blotch. Eight to twelve blooms open at one time. One of the parents of Picardy. Superb. **3 for 25c; 10 for 70c.**

Jane Addams. Immense; soft phlox-pink or light lavender with white throat. A beautiful flower, much desired. **2 for 30c; 10 for \$1.20.**

Joerg's White. An extra large creamy white; slight markings in the throat. The greatest white in the show room. **Each 15c; 10 for \$1.20.**

Marmora. One of the finest of the smokies. A beautiful silvery lavender with petunia blotches in the throat. A superb flower. **Each 25c; 10 for \$2.00.**

Minuet. A large, very beautiful, clear lavender; in fact, the finest of all light lavender glads, and one of the best of all glads. **2 for 20c; 10 for 80c.**

Pfitzer's Triumph. One of the largest and most beautiful of all gladiolus. Very large flowers on strong tall spikes. Wonderful exhibition variety. **2 for 30c; 10 for \$1.25.**

W. H. Phipps. One of the most popular glads in the whole country. Long spikes, each one often carrying from 15 to 20 blooms all open at once. A beautiful light rose salmon. To us the most beautiful of all. **4 for 25c; 10 for 60c.**

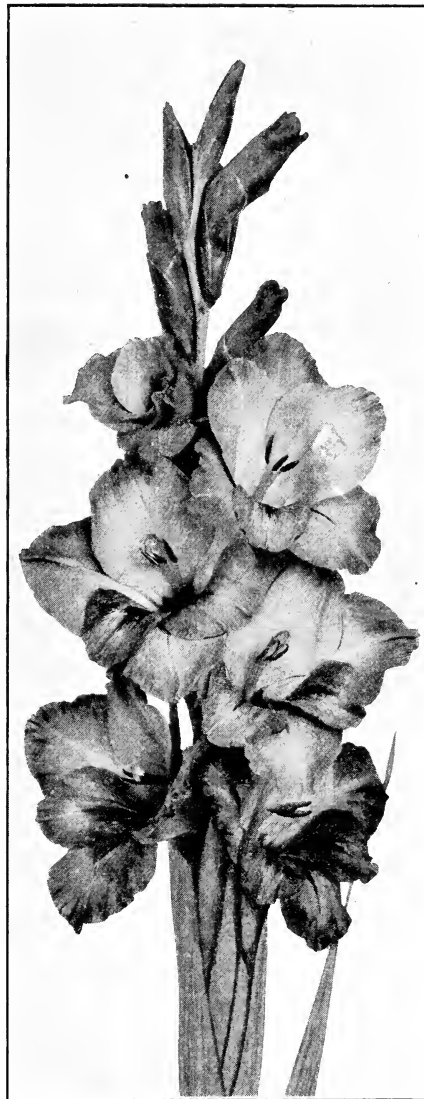
Special Combination Price

One Each of the Above
10 MOST BEAUTIFUL GLADS
All in Large Blooming Size

ALL TEN

\$1.25

POSTPAID



E. J. Shaylor

Rainbow Mixture

This is our great hand-picked mixture. It is made up of all good named varieties. Each mixture is picked up especially for each order and consists of 100 No. 1 bulbs; 100 different, splendid kinds; all colors. The finest low-priced mixture on the market this spring. If purchased separately, it would cost \$15.00.

— The Entire Lot of 100 No. 1 Bulbs —

\$6.00

Postpaid

Lilies



Regal Lily

Sedum Stonecrop

A genus of plants, ranging from a creeping dwarf-like habit to taller varieties like Spectabile. Some of these are evergreen while others are deciduous. The dwarf varieties are used in edgings and rock garden work, where they are very suitable.

Culture: Just ordinary soil, especially dry places in the border, and dry spots in the rock garden. They grow in the poorest, driest places, where scarcely anything else will thrive.

Acre. Green foliage, bright yellow flowers; prostrate and spreads slowly; especially fine for rock garden work or for covering a grave.

Album. A dwarf, spreading variety; with thick, waxy, round leaves and white flowers. Splendid rock garden plant.

Obtusilorum. A variety that grows only three inches high. Golden-yellow flowers with emerald-green foliage.

Sexangulare. A variety quite similar to *Acre*, only the foliage is a much darker green. Yellow flowers.

Spurium Coccineum. A beautiful variety with rosy-crimson flowers. Blooms during July and August. 6 inches high. A fast growing variety, especially desirable for covering sandy banks.

-- Prices All Sedum --

3 of one kind 60c — 12 of one kind \$2.00 — 100 of one kind \$12.00

Bleeding Heart

This is one of the old time flowers from Grandmother's Garden, of which we will never tire. The flowers, which are pink with a white center and heart-shaped, come in long graceful drooping racemes. Foliage is fern-like and dainty. A valuable flower for planting in the shade. Very hardy and lives year after year. Grows one to two feet tall and blooms in May. Each 50c; 12 for \$4.00.

Plant in any light sandy or loamy well-drained soil. Well rotted cow manure should be thoroughly mixed into the soil used for planting; then top dress with the same afterwards. Do not use fresh manure. Plant 5 to 6 inches deep in a pocket of clean sand. Mulch in fall with leaves or straw.

Elegans. One of the hardiest of all lilies. From Japan. Rather dwarf. Thrives in almost any location. The flowers are large, on erect stems; various shades of yellow, orange and red. The different varieties range in height from 1½ to 2 feet. Never kills out. Blooms in June and July. Mixed. Large bulbs, each 30c; 10 for \$2.50.

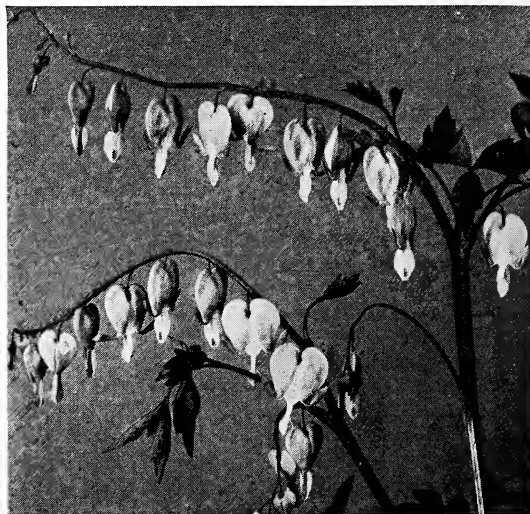
Regale (The Regal Lily). The hardiest of all the really fine lilies. The most sensational lily added to our gardens in many years. Can be grown practically anywhere in the United States in good drained soil. White, streaked with a delightful coral pink on the outside of petals. Throat heavily touched with gold. Perfume exquisite.

5 to 6 Inch Bulbs..... Each 25c; 3 for 60c; 12 for \$2.25, Prepaid
6 to 7 Inch Bulbs..... Each 30c; 3 for 70c; 12 for \$2.75, Prepaid

Tiger Lily (Double). A handsome lily of easy culture. Produces great quantities of large, showy, brilliantly colored flowers in August and September. Develops bold branching heads, each often carrying twenty large, rich, orange-scarlet flowers, spotted crimson brown. This is the double type of the old tiger lily and is much prettier than the single. The hardiest lily grown. Never dies out. Large bulbs 25c; 10 for \$2.00.

Rock Garden Plants

Henchera (Coralbells). Very neat-growing, graceful, flowering perennials, producing quantities of flowers much used for cutting. Very fine for the edging of borders, walks, and flower beds. Works well into rock garden work. We have tried out all of the pink to red shades and find *Rosea*, the one we offer, to be the best. A very strong grower that produces an abundance of tall stems, which carry a profusion of fine reddish pink blooms, lasting over two months. Each 50c; 3 for \$1.20; 12 for \$3.60.



Bleeding Heart



Chinese Elm

Ornamental Trees

American Linden (Basswood). One of our finest lawn trees and, in certain sections, a most beautiful street tree. Grows to be one of our largest trees. Very symmetrical shape; broad at the base and tapers gradually to the top. Immense dark green leaves. Very fine. **Strong 6 to 8 Foot \$1.50.**

Birch (Cut Leaf Weeping). The Cut Leaf Weeping Birch is the finest and most graceful of all the weeping trees. A most beautiful tree with cut leaves; long, slender, pendulous, weeping branches; white bark.

In shipping out Cut Leaf Weeping Birch trees, we take extra care by packing the roots with damp moss. Customers should have the hole all ready to receive the tree before removing the moss; then plant immediately and success is sure. Our stock is extra fine.

With White Bodies: 8 to 10 Foot \$2.50, 2 for \$4.50; 10 to 12 Foot \$3.50, 2 for \$6.00; 10 to 12 Foot Heavy Select \$4.50, 2 for \$7.00; 12 to 14 Foot Extra Fine 2-inch Trees, \$5.00 each.

*See Illustration of
Cut Leaf Weeping Birch
On Following Page*

CHINESE ELM A wonderful new ornamental tree for street and lawn planting; also very desirable as a windbreak tree. A rapidly growing tree; with long, graceful, somewhat drooping branches, and small beautiful leaves. This tree comes to us from China and has taken the entire country by storm. It does equally as well in the dry sections of the arid west as in regions of greater moisture. Grows as rapidly into a large tree as a poplar or a willow, yet it develops into a much finer, prettier tree than either of those.

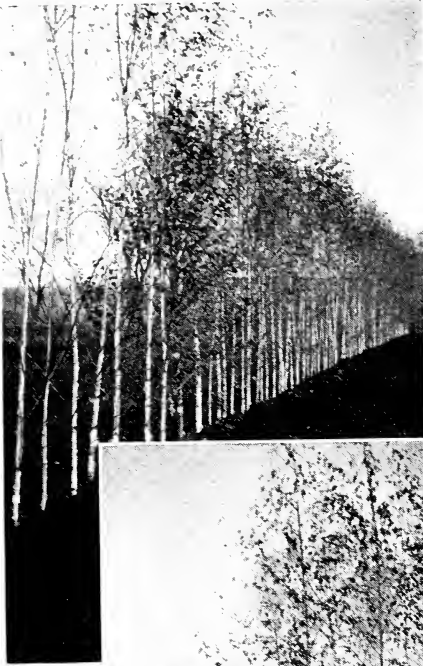
We have a large stock of splendid trees in three different sizes:

4-to-5-ft — Each 50c; 5 for \$2.25; 10 for \$4.00.
5-to-6-ft.—Each \$1.00; 5 for \$4.50; 10 for \$8.00.
6-to-8-ft.—Each \$1.25; 5 for \$5.50; 10 for \$10.00.

CHINESE ELM FOR WINDBREAK. The Chinese Elm, besides being a great street and yard tree, is a splendid tree to plant for windbreaks about farm buildings. It grows as fast as the willows and poplars but makes a much finer looking planting. It will also stand wind, cold and drouth much better than either the poplar or willow.

12 to 18 Inch Seedlings \$3.00 per 100; \$30.00 per 1000
18 to 24 Inch Seedlings \$6.00 per 100; \$45.00 per 1000
2 to 3 Foot Seedlings \$9.00 per 100; \$60.00 per 1000

(At left) *Cut Leaf Weeping Birch*. Taken late in autumn, after much of foliage had fallen—this is a reproduction from photograph of trees to be used in filling this spring's orders.



Cut Leaf Weeping Birch

ELM—MINNEAPOLIS PARK BOARD. The city of Minneapolis, Minnesota, is noted for the beautiful trees which line its streets and driveways. Here one can see some of the finest street plantings in the whole United States. Most of these street trees are Elm. Out of thousands of these beautiful trees, the one selected from which to propagate our own stock is a beautifully growing tree with tall straight body; well balanced, spreading, vase-shaped top; and rich, dark, heavy foliage. Grafting from this Elm, we now have some splendid trees to offer.

5 to 6 Foot 75c, 6 for \$4.20; 6 to 8 Foot 90c, 6 for \$5.00; 8 to 10 Foot by 1¼-inch Caliper \$1.50, 6 for \$7.50.

ELM—MOLINE A new type of elm of fast growing habits. This is a tree of clean growth, thrifty looking, and noted for its large, luxuriant leaves of a rich, dark shade of green.

The Moline Elm is propagated either by budding or grafting, which produces trees all looking alike—a very desirable quality in trees selected for street planting. Therefore, if an Elm is desired for boulevard or street use, one can never go wrong by planting either the Moline Elm or the Minneapolis Park Board Elm. Moline Elm are hardy in Southern Minnesota.

5-to-6-ft —Each 75c; 6 for \$4.20.
6-to-8-ft —Each 90c; 6 for \$5.00.

8-to-10-ft by 1¼-inch caliper at \$1.50; 6 for \$7.50.

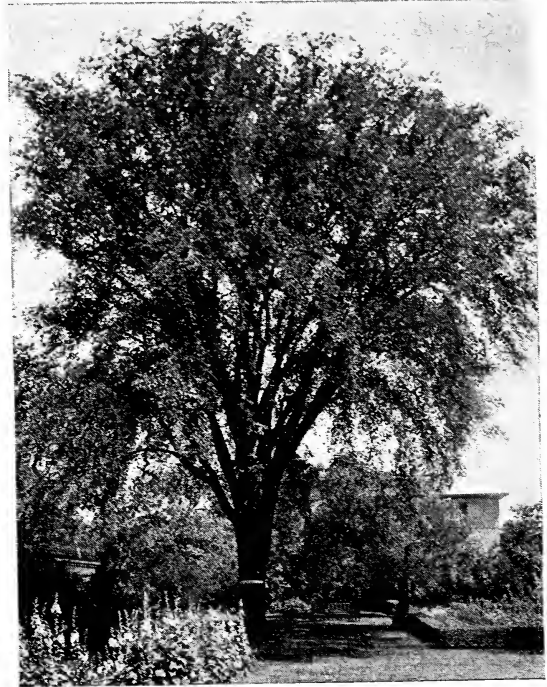
HACKBERRY Few people seem to know this beautiful tree, the Hackberry. It is one of the finest shade, ornamental, and street trees in our entire collection. In habit of growth, it resembles an elm more than any other tree. The straight upright-growing body branches into a gracefully spreading top. Grows to the size of our larger elms. Very hardy. One of the finest trees in this section of the country for boulevard planting, it grows into such a shapely and beautiful tree. The finest of all hardy trees for growing in very sandy soils.

5-to-6-ft —Each 75c; 6 for \$4.20.
6-to-8-ft —Each 90c; 6 for \$5.00.

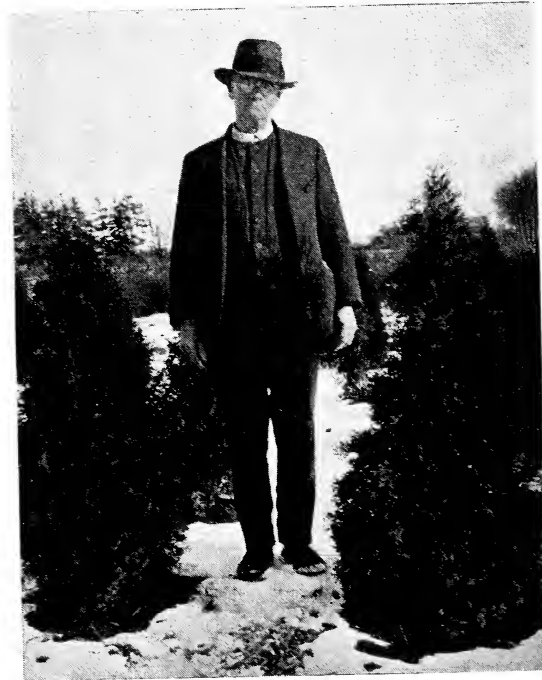
8-to-10-ft by 1¼-inch caliper at \$1.50; 6 for \$7.50.

Maple—Norway. A native of Europe. A large, beautiful tree, with deep green, shining foliage. A most desirable tree for planting along streets, in parks or on the lawn. Makes one of the most beautiful trees we have. Grows into a great, round-headed tree for wonderful shade.

Heavy Specimen Trees, 10 to 12 Foot, 1¼-inch bodies, \$2.00 each, 6 for \$9.00; 1½ to 2-inch bodies, \$2.50 each, 6 for \$12.00; 2-inch bodies, \$5.00 each.



Elm—Minneapolis Park Board



Pyramidal Arbor Vitae

Throughout the year, delightful scene;
Perpetual life, the Evergreen!

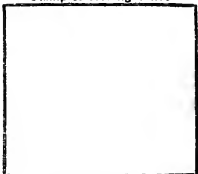
Form No. 6001

POST OFFICE DEPARTMENT
THIRD ASSISTANT POSTMASTER GENERAL
DIVISION OF MONEY ORDERS

No. -----

Stamp of Issuing Office

The Postmaster
will insert



here -----
the office drawn on, when the office named by
the remitter in the body of this application is not a Money Order Office.

Spaces above this line are for the Postmaster's record, to be filled in by him

Application for Domestic Money Order

Spaces below to be filled in by purchaser, or, if necessary,
by another person for him

Amount

----- Dollars ----- Cents

Pay to } **BRAND PEONY FARMS, Inc.**
Order of } -----
(Name of person or firm for whom order is intended)

Whose }
Address } **Box 408**
Is } No. ----- Street

Post } **FARIBAULT,**
Office } -----

State **MINNESOTA**

Sent by -----
(Name of sender)

No. ----- Street
City }
and }
State } -----

PURCHASER MUST SEND ORDER AND COUPON TO PAYEE

Fees for Money Orders Drawn on Domestic Form

Payable in the United States, including Hawaii, Porto Rico, and the United States Virgin Islands, or in Guam and Tutuila (Samoa); also for orders payable in Antigua, Bahamas, Barbados, Bermuda, British Guiana, British Honduras, British Virgin Islands, Canada, Canal Zone, Cuba, Dominica, Grenada, Jamaica, Montserrat, Nevis, Newfoundland, Philippine Islands, St. Kitts, St. Lucia, St. Vincent, and Trinidad and Tobago.

For Orders	From \$0.01 to	\$2.50.....	5 cents.
	From \$2.51 to	\$5.00.....	7 cents.
	From \$5.01 to	\$10.00.....	10 cents.
	From \$10.01 to	\$20.00.....	12 cents.
	From \$20.01 to	\$40.00.....	15 cents.
	From \$40.01 to	\$60.00.....	18 cents.
	From \$60.01 to	\$80.00.....	20 cents.
	From \$80.01 to	\$100.00.....	22 cents.

Memoranda of Issuing Postmaster:

If order is purchased through Rural Carrier, he will fill spaces below:

Carrier's receipt No. _____

_____, Carrier.

NOTE.—The maximum amount for which a single Money Order may be issued is \$100. When a larger sum is to be sent additional Orders must be obtained. Any number of Orders may be drawn on any Money Order office on any one day.

Applications must be preserved at the office of issue for three years from date of issue.

Maple (Schwedlerii). Red leaved maple. In early spring for about a month, while the trees are growing, the leaves are a bright red, from which color they gradually change to a purplish green. In autumn they turn to a beautiful yellow. A most beautiful tree. Absolutely hardy in Minnesota.

6 to 7 Foot Trees, \$2.00 each, 6 for \$10.00; 7 to 8 Foot, \$2.50 each, 6 for \$12.00.

Mountain Ash (European). A fine ornamental tree for the lawn. Almost without pruning it forms a magnificent, fairly dense, well-shaped head, covered from midsummer until midwinter with large clusters of beautiful scarlet berries—a brilliant color for the landscape. Very handsome foliage. One of the choicest trees, it deserves extensive planting.

4 to 5 Foot 50c; 5 to 6 Foot 75c; 6 to 8 Foot \$1.00; 8 to 9 Foot \$1.25. Six for the price of five.

Poplar—Bolleana (Silver Leaved). Very similar in growing habit to the Poplar Lombardy and used in similar planting situations. A very desirable, tall-growing, spire-like tree with beautiful dark maple-like leaves which are lined underneath with silver. Often used to fill out as corner backgrounds and to blot out high blank walls of neighboring buildings. 5 to 6 Foot \$1.00, 6 for \$5.00; 6 to 8 Foot \$1.25, 6 for \$6.00.

Poplar Lombardy. A tall, slender, upright-growing tree, much used in ornamental plantings. Splendid for lining driveways from street into the buildings, as a skyline to the rear of the yard; also for placing here and there in corners against the sides of buildings. 6 to 8 Foot 75c; 10 for \$6.00.

Pyramidal Arbor Vitae. A beautiful and upright-growing form of Arbor Vitae—a superb evergreen, nice to plant in tubs to grow on each side of the porch entrance or to plant one at either side of the walk. See illustration preceding page.

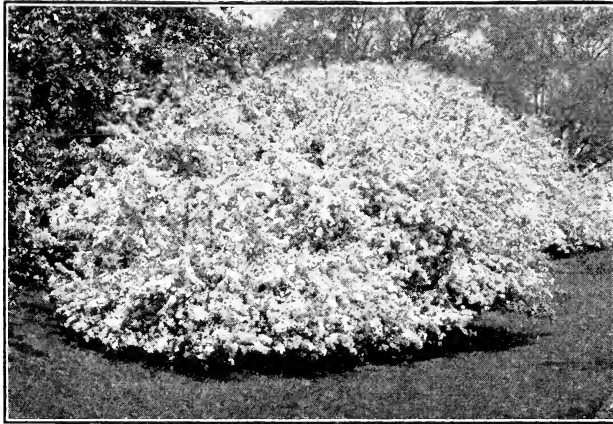
Select 18-to-24-inch—Each \$1.00; 2 for \$1.80; 6 for \$4.50.

Select 2-to-3-ft.—Each \$2.25; 2 for \$4.00; 6 for \$10.50.

Select 3-to-4-ft.—Each \$4.00; 2 for \$7.00.

Weeping Willow, Niobe Golden. The golden weeping willow, the most beautiful in that species. Very appropriate to use in cemetery planting. Splendid as a lawn tree, for planting near pools or along the banks of streams. A graceful weeping tree with deep rich golden bark on trunk and along the long slender weeping branches. Hardest of all the weeping willows. 6 to 8 Foot each 90c; 2 for \$1.75.

All trees balled and burlapped; shipped by freight or express as desired.



Japanese Flowering Crab

Flowering Crabs

Considering the great beauty of the flowering crabapples, it is surprising they are not more commonly grown. The fruit of the flowering crab is, as a rule, of little value for food, but the flowers come in whites, pinks, and reds, in singles and doubles, and in such masses as to make these little trees wonderfully beautiful.

Where yard and garden are large enough, several of these little flowering crabs can be planted together or singly on the lawn or in the shrubbery.

In the more northern sections of our country, we cannot have the beautiful flowering evergreen trees of the south and southwest; but, in

the flowering crabs, we all can have deciduous trees that are just as beautiful. The ground underneath these trees can be used for spring flowering bulbs or for low ground-covering plants, such as forget-me-nots, primroses, violas, etc. Of the flowering crabapple someone in authority at Arnold Arboretum has written, "they are the Queen of the Garden."

They like open, sunny situations and a nice deep soil. The following are purely ornamental, noted for their wonderful profusion of bloom; all selected as the very best of the ornamental crabs.

Aldenhamensis (Reddish Purple). A hybrid of *Atrosanguinea*. Grows to 20 feet. Rich reddish purple.

Arnoldiana. Originated at Arnold Arboretum. Forms a tree twelve to fifteen feet. Covered with beautiful, large, rose-colored flowers gradually turning to white.

Atrosanguinea. Carmine Crab. Matures at from eighteen to twenty feet. Very desirable for the rich deep color of its flowers.

Bechtel's (Double Flowering Crab). Without exception probably the most beautiful of all flowering crabs. A double form of the native wild crab. Grows about ten feet high. Hardy. During the blooming season it's covered with masses of beautiful, double, pinkish-lavender flowers that look like pink roses. The perfume is simply exquisite. 2 to 3 Foot 60c; 4 to 5 Foot \$1.25.

Eleyi (Eley's Crab). A new variety resembling *Floribunda* but much larger flowers. Very striking rich color.

Floribunda (Japanese Flowering Crab). Hardy, vigorous, spreading tree. Profusion of deep pink buds fading to white.

Floribunda Atropurpurea (Japanese). Tree resembles *Floribunda*. Deep rich purple flowers. Thrifty grower.

Hopa (Hansen). One of the most beautiful of the purely ornamental flowering crabs. The wood of this tree is a purple red; inner bark still redder. The new leaves are red; and the flowers, as they appear in great profusion over the entire tree, are red. Coming after the red bloom, the fruit also is red all summer long. Hardy. While the fruit is too small to be of value for eating, its bright red makes the tree a beautiful ornament for the yard. Where an extremely hardy crab is wanted, *Hopa* is absolutely as hardy as the Siberian Crab.

Niedswetzkyana. A beautiful crab found growing wild in the mountains between western China and Turkestan. Purple-red branches, leaves, stems, bark, buds, and fruit. Intense red flowers. Hardy in protected places in the North. Very satisfactory through the South and East.

Red Tip Crab. A very interesting crab that grows into a good sized spreading tree, covered with rich red leaves during the growing season.

Price of All Flowering Crabs

Strong 4 to 6 Foot Trees.....	Each \$1.25
1 Each of the 10 DIFFERENT KINDS, ALL FOR.....	\$10.00



Japanese Flowering Cherry

Flowering Cherries

The Beautiful Flowering Cherries of Japan

A very beautiful line of small sized trees that are becoming tremendously popular all over the country, wherever they can be grown. The greatest collection in this country may be seen in the city of Washington, where the magnificent gift of Japan to this Government is planted. It will well repay any flower lover to make the trip to Washington just to see these wonderful trees in bloom. Not hardy in Minnesota. Will do well in southern Iowa.

Beni-Higan. Buds deep pink, open to a flushed white. The famous **Spring Cherry** of Japan. 4 to 5 foot trees.

Kwanzan. Flowers very full and double, deep pink or rose. They vary much in color according to the weather. Splendid to use one on either side of a gateway entrance. 4 to 5 foot trees.

Mt. Fuji ("Fujizan"). Blossoms are pure white with prominent yellow anthers; beautiful even after the petals fall because of the conspicuous calyx which first shows light red and then real crimson. 3 to 3½ foot trees.

Naden. A world of large double flowers of great substance. A beautiful blush pink, becoming deeper in shade as it matures. Holds its blooms fully two weeks. 4 to 5 foot trees.

Paul Wohlert. A new variety. A dwarf spreading tree, growing not over 10 feet high with an 8 foot spread. Splendid where a small tree is desired. Semi-double, extremely early, deep pink to red. 4 to 5 foot trees.

Sieboldel. A variety greatly sought. Large double white, tinged pink. Grows into a large tree for a flowering cherry. 3 to 3½ foot trees.

Yoshino. A spreading, fast-growing tree, covered early with flowers all over the branches. Buds are red at first, opening into blush-pink single flowers that gradually turn white, with a purple-pink center. This is the cherry that is planted in that great sweep along the tidal basin at Washington D. C., which draws so many visitors to see the cherries in blooming time. Most popular with the Japanese. 4 to 5 foot trees.

After the description of each variety, we have shown the size of trees we carry in each. Except where otherwise noted, all varieties are \$1.75 each; 2 for \$3.25.
1 Each of the SEVEN KINDS, ALL FOR \$10.00

Japan Weeping Cherry

A very popular tree for planting on small lawns. A graceful little weeping tree with long slender weeping branches, covered with light pink bloom. Blooms very early in spring. Grafted on 5 to 6 foot straight stems. Two-year Heads \$3.50 each; 2 for \$6.00.

Persons wishing to make a large planting of trees, shrubs, vines, peonies, fruits, etc., should write us. We carry many items in large quantities and we are always willing to make very attractive reductions on quantity lots in big single shipments.

Red Silver Crab

A New Ornamental Foliage Tree

"A lawn tree, red from top to bottom in bark, trunk and leaf. The silver refers to the delicate silver tinselling on the underside of the leaves. This blending of a beautiful rich maroon red and silver makes a remarkable combination throughout the season. The somewhat cut-leaf character of the leaves adds to the striking beauty of this unique tree."

This new introduction comes to us as another of the marvelous things created by Prof. N. E. Hansen of Brookings, South Dakota. A small tree, very hardy, graceful in its lines, with a wonderfully beautiful foliage; a color so intense that it is little affected by the summer heat. Most flowering crabs are desirable because of the beauty of the mass of bloom which for a short time they have in such profusion, but **Red Silver Crab** is beautiful from early spring until late fall.

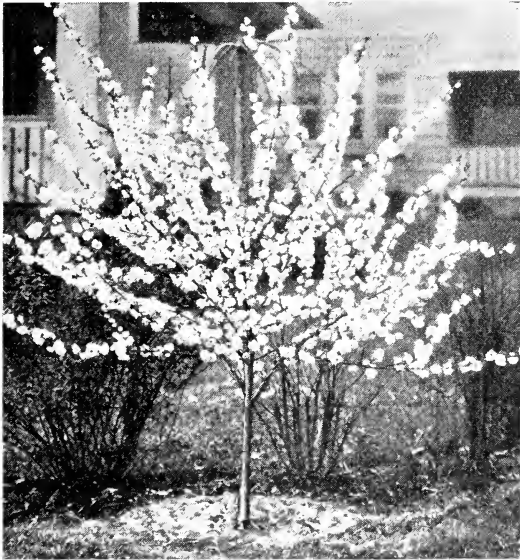
Special

An unusually good growing season enables us to offer a splendid lot of 5 to 6 foot Red Silver Crabs at:

\$2.50 Each
 2 for \$4.50 5 for \$10.00



Red Silver Crab



Prunus Triloba

Flowering Plums

Prunus Triloba (Double Flowering Plum). This is the shrub often sold under the name of "Rose Tree of China." A most beautiful shrub or small tree, as it can be grown in either form. The most beautiful of all the flowering trees that is hardy enough for the Middle Northwest. Grows into a bush or tree from eight to ten feet high. In the early spring, just as the leaves start to come, the branches are literally loaded with small, very double, rose-like flowers an inch in diameter; intense pink on the outside, fading to the most delicate shell pink in the center. Probably the most striking and desirable of any of our very early flowering shrubs in this latitude. We have an unusually fine stock of Prunus Triloba this spring. The best flowering tree for the colder portions of the North. Beautiful when planted in clumps of 6 or more. **2 to 3 Foot 50c; 6 for \$2.50; 3 to 4 Foot 60c; 6 for \$3.00.**

Purple Leaf Plum Newport

A very desirable tree to use in a planting where a purple-leaved tree is wanted. This is the hardy purple-leaved tree sent out by the Minnesota Fruit Breeding Farm. A slow-growing tree of great refinement. The leaves are smooth and richly colored a very bright red, which is held all through the season. Splendid to use as an occasional large bush among other shrubs. Best of all the red-leaved trees for the North. Hardy in Minnesota. **3 to 4 Foot Trees 75c each; 2 for \$1.40; 6 for \$3.00.**

American Rosebud

Another tree that should be more generally planted further north than it is commonly found. At Des Moines, Iowa, it has been found growing perfectly among plantings along the sides of wooded ravines. Will do splendidly in similar locations at least that far north in the Middle West, and much farther north in sections south of the Great Lakes. No tree gives a livelier tone to the early springtime planting than the Rosebud. A small tree with heart-shaped leaves. Covered

with bright pink blossoms in early spring before the leaves appear. Planted largely in clumps. **Nice 4 to 5 Foot Trees, each \$1.25; 6 for \$6.00.**

Red Flowering Peach

A beautiful small tree that seldom grows to be over 20 feet high. During May it looks just like one solid mass of bloom; beautifully formed, double, red flowers. **Splendid 4 to 5 Foot \$1.00; 2 for \$1.80.**

Shrubs

ALMOND, Double Flowering, Pink. A beautiful May-flowering shrub that grows four feet high. Should be planted in a sunny place. Does especially well planted close to the south side of buildings. Just as the leaves begin to come, the branches are covered with small, very double, rose-like flowers, deep pink. Very showy. All our Almonds are on native plum roots, therefore absolutely hardy. One or more of these should be in every yard, as they bloom so early in the spring; about the only shrub then to liven up the drab spring landscape. **2 to 3 Foot 50c; 3 to 4 Foot 75c.**

ALMOND, Double Flowering, White. Pure white in color; otherwise exactly the same as the Pink Double Flowering Almond. Blooms just as early. **2 to 3 Foot 60c.**

BARBERRY, Red Leaved. (Not subject to rust that injures wheat.) Except in the color of leaves, this is similar in all respects to the green-leaved Barberry Thunbergii, of which it is a sport. Starts out in the spring with foliage a bronzy red, which does not fade as the heat of summer advances but becomes more brilliant in coloring. Where exposed to the full sun, in which it revels, it becomes a true red. The foliage stays on far into the fall, taking on different shadings as frosts touch the leaves. Red Leaved Barberry carries its red berries through the winter. One of the most valuable of all our new plants. Nice to dot here and there as individual shrubs to give just a little touch of permanent continuous color. For hedging it is so distinct from any other hedge shrub; and keeps its foliage so very, very late in the fall. Must be planted in full sun. **Nice 12 to 15 Inch, Each 60c; 10 for \$5.50; 25 or more at 50c each.**

BARBERRY THUNBERGII (Japanese Barberry). This barberry is not subject to rust. One of the best all-around shrubs for the Northwest, thriving under all conditions. Slender, graceful branches with fine, bright green foliage, turning to brilliant crimson and orange in the fall. In June the branches are covered with small yellow flowers, followed by scarlet berries that stay on almost all winter. The best low hedge for the Northwest; the greatest of all hedge plants for the colder parts of the country, where a low trimmed or untrimmed hedge is desired.



Flowering Almond

Select Transplanted 18 to 24 Inch..... Each 25c; 10 for \$2.00; 50 or more at 15c each
 Select Transplanted 12 to 18 Inch..... Each 20c; 10 for \$1.50; 50 or more at 12c each
 Select Transplanted 10 to 12 Inch..... Each 15c; 10 for \$1.25; 50 or more at 8c each

Special Barberry Hedge Offer

Barberry Thunbergii is most satisfactory for a low-growing trimmed or untrimmed hedge for the colder parts of the country.

Nice two-year seedling plants in 10 to 12 inch size:

25 Plants..... \$1.00
 100 Plants..... 2.50



Butterfly Bush

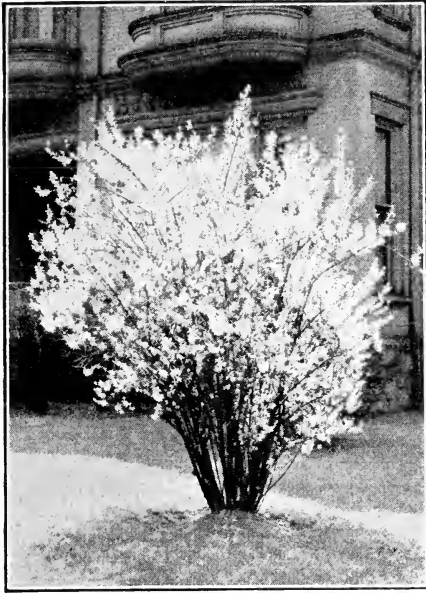
BUTTERFLY BUSH (Buddleia or Summer Lilac). Quite recently introduced, this shrub grew almost immediately into public favor. A semi-herbaceous plant. In some latitudes, where the winters are severe, it dies almost to the ground; then the tops must be cut down in the spring to within four inches from the ground. A new growth begins at once and by summer the bush is in full bloom. We advise covering the roots as winter approaches, using leaves or coarse litter. It will cause the bush to be much prettier the next season. Very hardy, it blossoms the first season from mid-June until frost. The blossoms are borne on long, graceful stems which terminate in tapering panicles of lilac-colored flowers, resembling the bloom of the lilac. The flower head is often 10 inches long and the bloom so profuse that the entire plant is hidden by flowers. **Each 50c; 3 for \$1.25.**

BUCKTHORN (Rhamnus Cathartica). Very hardy. Dark green leaves and black berries. One of the most valuable shrubs for a trimmed hedge in the North.

2 to 3 Foot, each 30c; 10 for \$2.50; 25 or more at 18c each.
18 to 24 Inch (hedging size) 10 for \$1.50; 25 or more at 12c each.

CORNUS ELEGANTISSIMA. The variegated leaved dogwood. One of the prettiest of all shrubs, with purplish red branches and beautiful silver variegated foliage. Among all variegated leaved shrubs, this one excels. For both summer and winter decoration. **2 to 3 Foot, each 75c; 6 for \$4.00.**

CORNUS FLORIDA RUBRA. For our more southern customers. We have some very fine Cornus Florida Rubra, the most beautiful of all the cornus. A wonderful shrub for the warmer sections of the country. Grows into a tall shrubby tree 15 to 20 feet high. In the spring, before the leaves appear, it is covered all over with large, bright pink blooms. **Strong 2 to 3 Foot, each \$2.00; 2 for \$3.50.**



Forsythia

CORNUS LUTEA GOLDENTWIG. The bark of this *Cornus* is a bright, rich, golden yellow, which makes it a most desirable shrub both for specimen and hedge work. In the winter the striking color of the bark livens up the whole planting.

2 to 3 Foot, each 50c; 10 for \$4.00. 18 to 24 Inch (for hedging) 10 for \$3.00; 25 or more at 20c each.

CORNUS SIBERICA (Red Siberian Dogwood). Tall, spreading shrub; extremely hardy; splendid for hedges or groups of shrubbery. Panicles of white flowers in June are followed by clusters of berries. Its chief beauty, however, is in the bark which turns bright crimson as autumn approaches and remains a brilliant red all winter. Much used in hedges for its winter effect.

2 to 3 Foot, each 25c; 10 for \$2.00; 25 or more at 16c each.

COTONEASTER ACUTEFOLIA. One of the hardiest of the *Cotoneasters*. A most desirable shrub for foundation planting about the house or garage. An upright-growing shrub with slender graceful limbs, covered with dark green, beautiful, glossy foliage. One of the very best hedge plants for the North.

Nice 15 to 18 Inch, each 25c; 10 for \$2.00; 25 or more at 18c each.

A garden plot, What inspiration!
A sweet, delightful recreation.



Daphne
(*Garland Flower*)

DAPHNE GNEORUM (Garland Flower). A beautiful, spreading, low-growing evergreen shrub; in great demand as an edging plant in front of evergreens and shrubs. Must have a sunny position and well-drained sandy soil. To keep the evergreen foliage from winter injury, straw must be banked in between the foliage. In early spring and early autumn, the plants are completely covered with delicately perfumed, rose-pink blossoms. Excellent low shrub for Rock Gardens. These plants will come to you balled in earth and wrapped in burlap. Strong 9 to 12 Inch, each \$1.25; 3 for \$3.25.

FORSYTHIA (Intermedia Spectabilis). Acknowledged the finest *Forsythia*; blooms more profusely than the original type; many shades richer in its wonderful deep yellow. Fine Plants, each 50c; 3 for \$1.25.

GOLDEN ELDER (Sambucus Aurea). A very striking shrub, similar to the common American Elder in appearance, except the color of the leaves which are beautiful bright gold from their first appearance in the spring until they drop in the fall. The best of our golden leaved shrubs. The Golden Elder is the best shrub to plant for a golden effect. The color is a soft tone of yellow, of which one never tires. 2 to 3 Foot, each 50c; 6 for \$2.50.

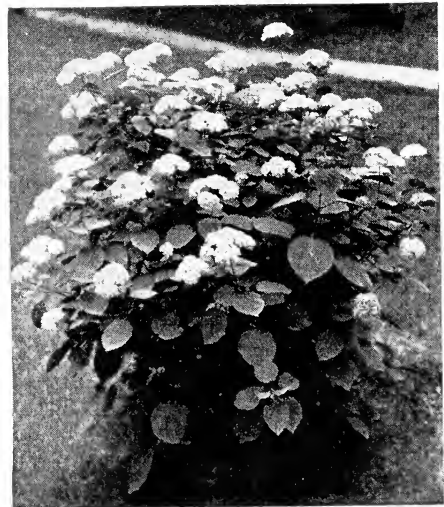
HONEYSUCKLE (Tartarica Rosea). A favorite shrub, absolutely hardy even in dry states like the Dakotas and Montana. Grows from eight to ten feet high; splendid for individual shrub planting where a tall shrub is desired. Used as a screen, it is fine to shut off vegetable garden or unsightly buildings. Covered with myriad blossoms of light pink; very effective in large plantings. 2 to 3 Foot, each 40c; 10 for \$3.50.

HONEYSUCKLE (Tartarica Rubra, the true red). Best of all the upright honeysuckles. Absolutely hardy in North Dakota, Northern Minnesota, etc. Ideal for large plantings on estates as well as on small home grounds. Much used for tall screens. Grows to 10 feet high. Covered all over with sweet scented, deep rose-red flowers. 18 to 24 Inch, each 50c; 6 for \$2.50.

HYDRANGEA ARBORESCENS (Hills of Snow). The early blooming outdoor *Hydrangea*; comes into bloom just after the early spring flowers. Branches well clothed with large, beautiful, deep green leaves; and each branch is terminated with a great, glistening, snow-white bloom of immense size. Does best in partial shade. One of our best shrubs. Strong 18 Inch, each 40c; 10 for \$3.00.

HYDRANGEA PANICULATA GRANDIFLORA. The most beautiful and striking of all flowering shrubs. Bears immense clusters of creamy-white flowers in August, turning to bright pink and rose, then finally to bronze in September. Grows five to six feet high; does well in sunny locations. Valuable for specimen planting and for borders; should be in every garden. Should be cut back in spring before growth starts. The flowers dry like everlasting and can be kept indoors all winter. The plants are hardy as the oak. Splendid for hedges.

Strong 2 to 3 Foot, each 40c; 10 for \$3.00. 18 Inch, each 25c; 10 for \$2.00; 25 or more at 15c each.



Hills of Snow

Bursting buds, approaching pleasure;
Open blossoms, wondrous treasure!



Oak Leaf Hydrangea

HYDRANGEA (Quercifolia). Oak leaved Hydrangea. A new Hydrangea, comparatively little known. Heavy oak-leaved foliage, which takes on a high coloring in the autumn. Very large loose blooms. Hardy as far north as Cleveland, Ohio. Desirable in foundation plantings or as individual specimens. Likes moisture. Grows to six feet. **Strong 18 to 24 Inch, each 60c; 3 for \$1.50.**

KOLKWITZIA 'AMABILIS (Beauty Bush). An exceedingly handsome shrub that has come to us from the wilds of central China. Even when the bush is out of bloom the foliage and habit are attractive. Hardy with us here in Minnesota. Grows 6 to 9 feet high and equally far through. Erect-growing with twiggly branches. In early spring, when the Iris are in bloom, the long arching limbs are covered with

clusters of small, tubular blooms of weigela-type flowers, yet far more beautiful than any weigela; destined to become one of our greatest shrubs. This season again I saw Beauty Bush in full bloom, and the more I see of this shrub the more I am convinced that it is one of the most beautiful things I have ever seen. **Strong 2-year, Field-grown Plants, each \$1.00; 3 for \$2.50.**

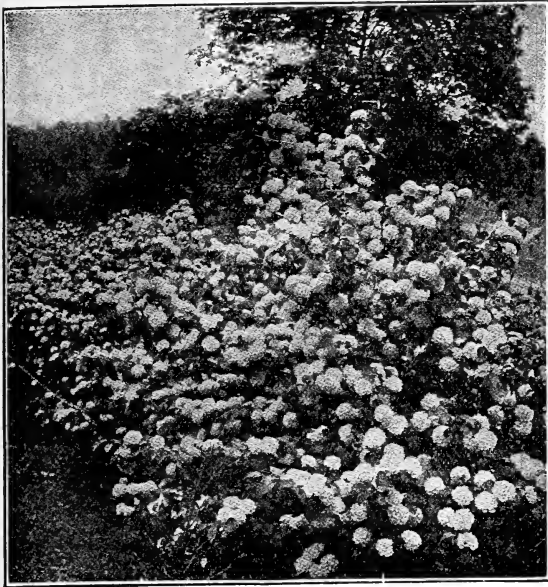
RHUS (Smoke Tree. Purple Fringe). A noticeably spreading shrub or small tree with large, round leaves. Covered in midsummer with a mist-like cloud of very small flowers. These panicles are light lavender, last long, and from a distance they give one the impression of a cloud of smoke hanging over the bush. Very odd. **Strong 2 to 3 Foot, each 65c; 2 for \$1.20.**



Beauty Bush



Smoke Tree



Snowball

SNOWBALL. A good shrub extensively used clear across the northern border of the country. Grows from 8 to 12 feet high. Covered with dark green foliage and, during the blooming season, with great, large, pure white blooms, like a snowball. **Strong 2 to 3 Foot Plants, each 50c.**

SNOWBERRY CHENAULTI (Improved Coralberry). A very beautiful hybrid of the coralberry, originating in the Arnold Arboretum. Small white fruits covered with red dots. A new shrub that will be in great demand. Odd and pretty. **12 to 18 Inch, each 50c; 6 for \$2.50.**

SNOWBERRY RED (Coral Berry). Very pretty shrub to use in plantings in front of Hydrangea, the taller spires, and to plant with barberry. Grows about three feet high; graceful branches covered with minute red seed pods in ropes. Very pretty. **2 to 3 Foot, each 25c; 10 for \$2.00.**

SNOWBERRY WHITE. Also grows three feet high; works in nicely with other shrubs of its height. Covered in the fall and well into the winter with numerous white seed pods which are very noticeable. **2 to 3 Foot, each 25c; 10 for \$2.00.**



Fragrant Viburnum

SUMAC (Fern Leaf, Laciniata). Properly handled, this makes one of the most beautiful shrubs we have. Should be severely cut back each year very early in the spring, which causes strong new shoots to quickly cover the plant. These shoots, covered with frond-like leaves, give the plant a truly tropical fern-like effect. Flowers come during June and July in dense terminal panicles, followed by large red fruit clusters. **2 to 3 Foot, each 40c; 6 for \$2.00.**

VIBURNUM CARLESI (Fragrant Viburnum). A new shrub. The most desirable of all the Viburnums. A semi-dwarf flowering shrub with distinct, pink-tinted, wax-like flowers in clusters, pleasingly fragrant. Blooms in May. This is the new Viburnum, so much sought after—a great acquisition to our list of shrubs. **Choice 15 to 18 Inch Plants, each \$1.25.**

WEIGELIA (Eva Rathke). The hardiest of all the Weigelas. Extremely hardy with us here in Minnesota. We cannot say this for the other Weigelas. A dwarfish shrub, the branches of which are covered with bright red trumpet-like flowers. **2 to 3 Foot, 60c each.**

"Wonderful Plants"

Maywood, Ill.

"I cannot understand how you can send such wonderful roots to everyone. It makes me feel that you're treating me especially nice, yet I know others receive just such wonderful plants too."—Mrs. R. J. McE.

"You Have the Very Best"

Sabbathday Lake, Maine.

"Enclosed please find \$1.00 for which I would like sent to my address two roots of Bleeding Heart. I am getting these from you, as I know from experience that everything you have is the very best quality."—M. F. C.

Much Prefers Own-Root Lilacs

Harrisburg, Pa.

"I take pleasure in enclosing postage covering the Lilac which I recently received from you, and was very much pleased with the sturdiness of this plant. I personally wish to congratulate you upon the stand which you have taken in regard to selling Own-Root lilac stock, as my experience with the grafted varieties has been most unsatisfactory. In my opinion, your position is the only correct one to take, and if the Own-Root plant costs twice as much as a grafted variety, it is cheap at the price and I believe the public will ultimately come to that conclusion."—C. H.

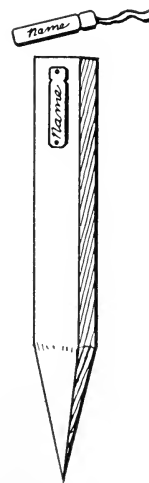
Well Pleased With Our Stock

Atwater, Ohio.

"The bleeding heart received O. K. and set out. I wish to thank you for your prompt service. Next year, if all goes well, I will be in the market for different things. I am certainly well pleased with your stock and your way of doing business. I will remember you to my flower friends."—A. M.

Wants More Bulbs This Season

"I have had some wonderful flowers from the Gladiolus bulbs which I purchased from you last spring. I will be wanting about 200 more next season, so send me your next catalog as soon as it is ready."—N. G. K.



Copper Wired Labels

We have many calls from our customers for a good label to mark their plants, such as Gladiolus, Dahlias, etc. We can furnish the wooden label, which we use ourselves, in 3½-in. by 5⁄8-in. white pine, painted and copper wired, at 35c per 100; \$2.80 per 1000, Postpaid. In our experience, this is the best low-priced label. To mark our big peony fields, we remove the wire and tack the label to a sharpened stake. (See illustration). This stake will last about three years.



Philadelphus Virginal

Improved Philadelphus

Mock Orange or Sweet Syringea

Wonderful improvements have been made in late years in that grand shrub, the Philadelphus; or, as it is better known to us, the Sweet Syringea or Mock Orange.

The Lemoines of France, the same men who produced the most of our new lilacs, have also produced these beautiful new Philadelphus.

The older varieties are single. The new ones come in singles, semi-

doubles and doubles. They are more beautiful than the older sorts, as their blooms are larger, borne in greater profusion, and of more exquisite form. These different Philadelphus may be selected as to their final growth in sizes to suit almost any want. Some are real dwarf, others are of medium height, while still others grow into plants eight or ten feet high. Most of them are very sweet scented. Often a single bush, with its beautiful bloom, will scent the air of an entire city block.

Albatree. A very showy variety; large, dense panicles of double, pure white flowers. A compact, bushy plant of medium height. When fully grown this variety is about five feet high. **Strong 2 to 3 Foot 50c; 3 to 4 Foot 60c.**

Avalanche. Pure white. Grows into a very attractive bush about five feet high. Branches, very slender and graceful—a wonderful shrub when in bloom. The medium sized single florets literally cover the branches, top to bottom, making an absolute snow ball of the plant. The slender branches become so laden with bloom that they bend over in all directions. Very beautiful. **2 to 3 Foot 50c; 3 to 4 Foot 75c.**

Bannier. Upright growing, attaining a height of about 5 feet. Good dark green foliage. Large semi-double blooms, nearly pure white, usually in clusters of 5 or 6. Very sweet; one of the most profuse bloomers. Very desirable. **2 to 3 Foot 60c; 3 to 4 Foot 75c.**

Bouquet Blanc. Develops an upright shapely bush with dark rich foliage. Flowers come in clusters; large, pure white, and quite double. Very sweet scented. One of the hardiest and most dependable bloomers. Extra choice. **2 to 3 Foot 50c; 3 to 4 Foot 60c.**

Favorite. Produces very large flowers, fully three inches across. These flowers are single, pure white, with a bunch of golden stamens in the center. The bush is an upright grower with rich glossy foliage. A marvelous flower. **2 to 3 Foot 50c; 3 to 4 Foot 60c.**

Glacier. We consider this variety one of the very best of the newest sorts. The flowers are wonderfully attractive in appearance; double blooms are produced in large clusters of 6 to 8, of a rich cream color. Grows about five feet high. One of the choice kinds. **2 to 3 Foot 50c; 3 to 4 Foot 60c.**

Mt. Blanc. A tall growing variety, wonderful as a hedge to grow on a line between lots. Flowers large, pure white, semi-double. Produced in great profusion. One of the most prolific of all. **2 to 3 Foot 50c; 3 to 4 Foot 60c.**

Norma. Strong growing; reaches a height of eight feet. To name the most beautiful of these wonderful Philadelphus, if that be possible, we would be inclined to choose Norma. Flowers of great size, single, with a rich waxy-like appearance. **2 to 3 Foot 50c; 3 to 4 Foot 60c.**

Pavillion Blanc. Beautiful flowers of the purest white, sweetly fragrant. Grows into a nice shapely bush about five feet high. Very striking indeed. **2 to 3 Foot 50c; 3 to 4 Foot 60c.**

Virginal. Double. White. Ever-blooming. Everything considered, this is the most sensational of all the Philadelphus. In fact, we regard it the most valuable acquisition to the flower garden of recent years. The bush is a moderately strong grower, with us attaining a height of six to seven feet. Rather open sparse foliage to make the wonderful blooms all the more conspicuous. Flowers pure white, double, often two inches in diameter. Begins to bloom about June 15th with us, and blooms profusely for about three weeks. Then it rests a few weeks and starts to bloom again, continuing with a small amount of bloom until frost. **2 to 3 Foot 50c; 3 to 4 Foot 60c; Extra Select Specimens, 3 to 4 Foot, \$1.00.**

Special Philadelphus Offer

1 Each of the 10 Foregoing Philadelphus, 2 to 3 foot.....	\$4.50
1 Each of the 10 Foregoing Philadelphus, 3 to 4 foot.....	5.50

Spireas

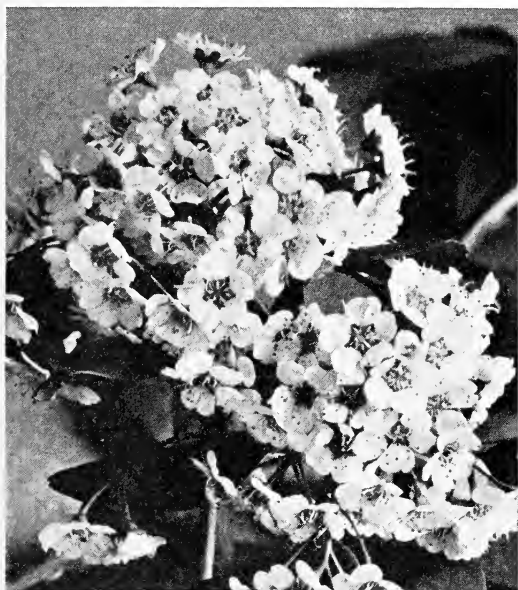
ANTHONY WATERER. One of the finest flowering shrubs of dwarf growth. In constant bloom from June to September. Flowers of bright rose are borne in broad flat clusters, completely covering the bush. The best shrub for low borders and hedges. Keep the blossoms cut as they fade and new ones will keep coming. **12 to 18 Inch, each 40c; 3 for \$1.00; 12 for \$3.00.**

ARGUTA (Garland Spirea). Early in the spring, before the leaves fully appear, the graceful pendant branches are crowded with a perfect mass of tiny white flowers—very showy at a time when very few flowers are in bloom. **2 to 3 Foot, each 40c; 3 for \$1.00; 12 for \$3.00.**

KOREAN BRIDAL WREATH (Spirea Trichocarpa). A handsome new Spirea which comes to us, among many new things, from that strange country Korea—the mother of so many good new plants. It has larger flowers than the common Bridal Wreath, Spirea Van Houttii. The individual florets each have a distinct eye which gives the bloom much more effect. Absolutely hardy here in Minnesota. Starts to bloom heavily on two-year-old plants. The plant grows very fast and soon develops into a beautiful specimen. We are sure that this is the best new Spirea that has come to us in many years. Snow-white blossoms with a yellowish white eye. **Strong 2 to 3 Foot, each \$1.00; 10 for \$9.00.**



Spirea Anthony Waterer



Korean Bridal Wreath

PRUNIFOLIA (Double Bridal Wreath). One of the old fashioned spireas; much too seldom seen in our gardens yet probably the most beautiful of all. Early in the spring, before the foliage appears, the flowers which are borne close to the slender and erect branches are glistening white and look like miniature roses. Very choice. I wish more people would plant this beautiful spirea. It is really about as dainty a thing as we have in shrubs. **3 to 4 Foot, 50c each.**

VAN HOUTTII. One of the finest shrubs ever produced. Its good qualities and beauty cannot be exaggerated. Very graceful, with lovely foliage growing 4 to 6 feet tall; extremely hardy everywhere. In May and June the whole bush is simply covered with small clusters of minute white flowers. For lawns, for cemetery planting, and for hedges, it cannot be equalled. The most popular shrub in all America.

Van Houttii Prices

Strong Hedging Size	25 for \$4.00; 50 for \$7.00; 100 for \$12.00
2 to 3 Foot	Each 25c; 50 for \$10.00; 100 for \$18.00
3 to 4 Foot, Extra Select	Each 30c; 10 for \$2.50
4 to 5 Foot, Extra Select Specimen Plants	Each 50c; 10 for \$4.00

“Your Plants Heavier and Sturdier”

“Last spring I purchased from you 3000 Latham raspberry plants. They came through nicely and we found, by comparison with some No. 1 plants received from another source, that your plants were heavier and sturdier.”—W. E. B.

“Very Fine Stock”

Winnipeg, Can.

“Regarding the shipment of Peonies and Lilacs recently received from you, I feel that I should not let the occasion go by to write and thank you for the very fine stock received. They were all fine selections and I thank you very much for your usual courtesy in filling the orders I have given you in the past.”—C. E. A.

Peony Collection was Wonderful

Pawnee, Ill.

“This is to let you know of the great satisfaction and pleasure I have already received from the collection of peonies sent me. Each root was larger and stronger than I expected. We followed your directions and all came on fine. Almost all have had buds and some are blooming—just six weeks after planting.”—Mrs. E. A. B.

A Word or Two From Kalamazoo

Kalamazoo, Mich.

“I am more than pleased with the two fine peony roots you sent as well as the service you gave me. People who do business on the square and give value for money received cannot help but succeed.”—R. M. H.



Hedge of Barberry Thunbergii

Hedging

	Per 10	Per 25	Per 100
BARBERRY THUNBERGII			
Splendid low hedge. Can be left natural or kept trimmed. Foliage becomes bright red in the autumn. Covered with bright red berries all winter.			
Strong 2-year Seedling 10 to 12 Inch.	\$.25	\$1.00	\$2.50
BUCKTHORN (Rhamnus Catharticus)			
One of the very best hedge plants for the colder parts of the country where a trimmed hedge is desired. Strong 18 to 24 Inch Bushy Stock . . .			
	1.25	2.50	9.00
CARAGANA (Siberian Pea)			
Best hedge plant for the drier parts of the country, where extreme hardiness is also demanded. Strong 12 to 18 Inch.			
	.40	.80	3.00
CORNUS SIBERICA			
Very hardy shrub. Desirable because of its brilliant red bark which is very beautiful in the winter. Strong 12 to 18 Inch.			
	1.00	2.00	8.00
SPIREA VAN HOUTTII			
Makes a very desirable hedge where a medium tall effect is preferred. This hedge should be trimmed but slightly, just enough to keep it in bounds; otherwise it will not bloom. Strong 12 to 18 Inch			
	1.00	1.75	6.00

Vines

AMPELOPSIS ENGELMANNI (Engelmann's Ivy). A type of the Virginia Creeper, but different in growth as well as in foliage. It has much shorter joints, very much smaller and thicker foliage. The only hardy Ampelopsis that will cling to brick, stone, or plaster. A fast grower. **Each 25c; 5 for \$1.10.**

BITTERSWEET (Celastrus Scandens). Perfectly hardy, rapid growth. Handsome glossy foliage. Large clusters of beautiful orange-crimson berries, retained all winter. The berries are in great demand for inside winter decorations. We know of no vine more satisfactory. The Bittersweet does not work well on a trellis but prefers to climb ropes or poles.

People are often disappointed in getting their Bittersweet to bear fruit. This is because the berries are borne only on vines that produce pistillate bloom. We keep our Bittersweet until they bear in the field and then mark them. One must have both the staminate and pistillate vines to get the berries.

Pistillate Vines, strong 3-yr. No. 1—Each \$2.00; 2 for \$3.00.

Staminate Vines, Strong 3-yr. No. 1—Each 50c.

(Only one Staminate Vine is needed in a planting.)

Large Flowering Clematis

Clematis need a rich, deep, well drained soil. The drainage must be perfect and the soil must be prepared at least two feet deep, using lots of coarse sharp sand and well rotted cow manure. Plant with the long roots going straight down, and be sure that the crown of the plant is from four to six inches beneath the surface. Tie the runners loosely to supports and mulch the first year.

HENRYI. Profuse bloomer of beautiful, large, creamy white flowers, lasting all summer. **Best White.**

MME. EDW. ANDRE. Strong vigorous grower; very free bloomer; lovely flowers of a distinct crimson color.



Jackmani

JACKMANI. The most popular of all clematis. Large purple-blue flowers, with rich velvety appearance.

All Clematis—Each 80c; 1 each of the 3 kinds, \$2.25.

Hydrangea Petiolaris

The New Climbing Hydrangea

No vine we know of has quite the same beauty of foliage or lacy abundance of fragrant flowers as this charmingly refined member of the great and useful Hydrangea family.

Its stem is woody and picturesque in winter, clinging tightly to stone and brick-work by innumerable aerial roots, hugging a wall like ivy and requiring no tying or trellis. Its large, glossy foliage is superbly green and seemingly impervious to insect or fungous attacks.

In June a lacy mantle of flowers overspreads the whole plant and exhales a dainty fragrance that pervades the whole garden. Unlike the

other Hydrangeas, there is no hint of coarseness or exotic opulence in the flowers, which come in broad flat clusters of exquisite daintiness.

This is a rare plant which has been the treasured pet of horticultural connoisseurs for many years, and one of the finest specimens in America was the great vine which the late Dr. Sargent of the Arnold Arboretum enjoyed and cared for in Boston.

We are proud to be able to offer it this year for the first time.

Nice 9-to-12-inch plants—Each \$1.50; 2 for \$2.50.

Purple Wisteria

Where the Purple Wisteria can be successfully grown, it is probably the best liked of all the climbing vines. The vines should be planted in a protected spot, where the hard winds of winter do not strike them. If planted in such protected places, they will do well even in Southern Minnesota, provided only grafted vines are planted. Many Wisterias, although they grow vigorously, do not bloom. This is because many Wisterias sold are grown from seed, and most seedling Wisterias do not

bloom well. Our Wisterias are all grafted plants from strong-blooming vines and are sure to bloom. The Purple Wisteria is the prettiest of all and bears, in great profusion, long clusters of pea-shaped blooms. Flowers come in May and June. Occasional trimming back of the side shoots will increase the bloom. **Strong 2-year No. 1 Grafted Plants, each 80c; 2 for \$1.50.**

Two Unusual Shrubs

*The Following Shrubs are not only Ornamental
They Also Bear Fruit*



High Bush Cranberry

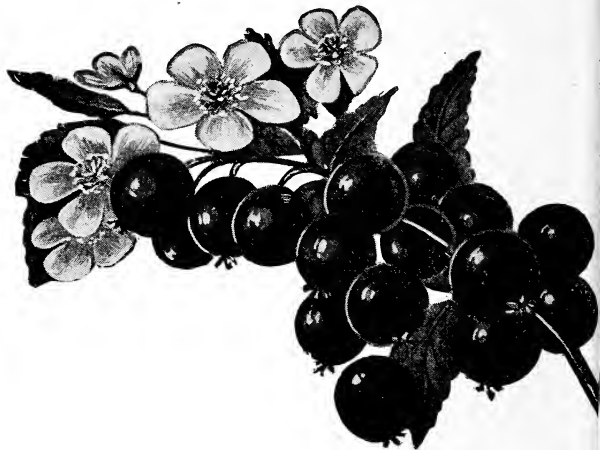
DWARF JUNE BERRY. A very desirable fruit for garden planting. The fruit of the Juneberry very much resembles the blueberry and is used in the same way as that fruit for canning, sauce, and pies. Round black fruit with a heavy blue bloom. Runs from a quarter to a half inch in size. Borne in great clusters all over the bushes, which grow to a height of two feet.

We have grown the Juneberry for many years in our nursery for the fruit, and we find that it is one of our most dependable berries. It bears great crops every year and we enjoy it very much, especially in pie or put up and used in winter for sauce. A sweet fruit, almost totally void of acid; should be made up with lemon to give it a tempting flavor.

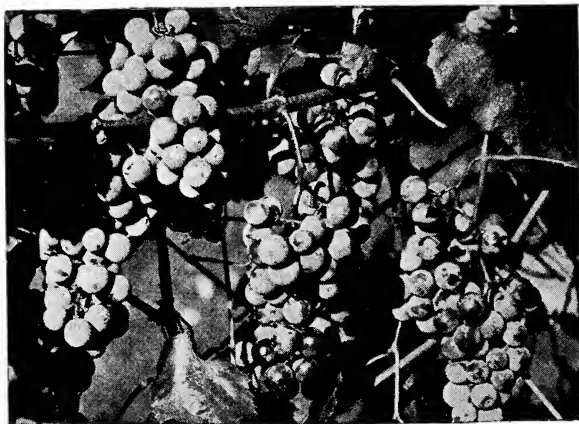
Twelve bushes makes a nice planting; also makes a very nice ornamental shrub. Desirable for its fruit; equally beautiful as a small-growing ornamental for the border. A single plant dotted here and there among other shrubs gives them added life very early in the spring. Twelve plants, as suggested, will make a nice fruit planting but twenty-five is better. **Three Strong Plants, \$1.00; 12 for \$3.00; 25 for \$5.00; 100 for \$18.00.**

HIGH BUSH CRANBERRY. A large-growing shrub which very much resembles the bush of the Snowball. Leaves redder up in the fall and are very beautiful. The white flowers are not of great beauty but they are followed by a profusion of bright red berries, in large clusters, which hang on way into the winter and make a wonderful lawn ornament. These berries are fine for culinary purposes and make a jelly that looks and tastes exactly like that of the marsh cranberry, such as one buys at the grocery.

Nice to plant as individual shrubs, either in clusters or in long rows as a background. Grows to a height of eight to twelve feet. Old bushes will often bear a bushel of fruit in a single year. If planted on the farm, where there is plenty of room, nothing else is nicer than a full row of High Bush Cranberry planted along the north side of the garden, where it will produce loads of fruit and at the same time act as a dense low windbreak for the garden. So planted, bushes should be set six feet apart. **2 to 3 Foot, each 50c; 10 for \$4.50; 25 for \$9.00.**



Juneberries on the Plant



Beta Grapes on the Vine

Strong 2-Year No. 1 Vines — Each 20c; 10 for \$1.75; 50 for \$8.00; 100 for \$15.00

**IF YOU WOULD HAVE REAL GRAPE JELLY
Buy Beta and Alpha
THERE IS NONE BETTER !**

Grapes

Few people realize the value of the two very hardy grapes which we grow and offer. These grapes are a cross between the Concord and the native **Minnesota Wild Grape**. In size the fruit is about two-thirds that of the Concord. The vines are just as hardy as the wild grape and will stand on the trellis with no protection in the winter whatever. This makes these grapes very desirable for city planting. They can be used for covering pergolas or the sides of unsightly buildings; trained along line fences at the back of or between yards; as coverings to arbors, porches, etc., etc. In fact, they can be used in any place where a vine is appropriate. Besides beautifying the location with their rich green foliage, they also give great crops of fruit good to eat from the hand, to make grape juice, wonderful jelly, etc. We have these grapes in two varieties:

BETA. Essentially the grape for the Middle Northwest. Will stand more cold than any other grape and needs no winter protection even in Minnesota. A very heavy bearer of medium-sized grapes on a medium to large compact bunch. A cross between the Minnesota Wild Grape and the Concord. Has the wonderful jelly-making qualities of the wild grape. Grows splendidly to cover arbors.

ALPHA. Everything said of the Beta is likewise true of the Alpha. The Alpha, however, is not quite so compact in the bunch as the Beta but is a trifle larger in berry and is sweeter. The two do better when planted together, half of each kind, to fertilize one another.

The Anoka Apple

A Dwarf Apple for the Family Garden

This is a natural dwarf apple tree. Most of the Dwarf Apples offered in commerce are produced by grafting or budding the standard apple of the variety desired onto certain kinds of roots that act as a check on the growth of the top to dwarf it. This is not desirable. With the Anoka, this is different. It is dwarf in itself and produces a dwarf top when propagated on the regular root used in producing the standard apple tree.

Anoka is a new apple produced by that great plant wizard of South Dakota, Professor Niels Hansen. The tree starts to bear very young, often producing apples on two-year-old trees in the nursery row and is a heavy annual bearer. The fruit has much the appearance of Duchess of Oldenberg but is larger and a little more oblong, and does not show quite so much color. Ripens very early, beginning around August 15th. The flavor is mild and very fine. We like it much better than Yellow Transparent.

Four of these trees were sent to the Fargo, North Dakota, Experimental Station in the spring of 1920 (1-year trees). In the fall of 1922 that Station made the following report: "This spring two of the four trees blossomed; one produced 23 apples, the other 26."

Five years ago we purchased two trees from Professor Hansen. The second year after planting, one of the little trees—then only a three-year-old—produced 14 large apples, the other tree 12. Neither of the trees are over five feet tall and both have borne large crops every year since.

This is just the apple for people getting along in years to plant, as they will bear in two years. They are also just the apple to plant in the back yard or in any little nook or corner where room is scarce.

One customer reports: "The Anoka I received from you last year bore six fine apples the same summer." From another customer, a fruit grower in South Dakota: "Over one bushel of apples from one small tree, about seven feet high, in one year."



Anoka Apple

Anoka is a splendid apple to eat
 —a splendid apple to cook
 —a great big apple from
 —a very little tree
 that can be grown in
 a very little yard.

Anoka Special Offer

Nice 3 to 4 Foot Trees.....	Parcel Post Prepaid.....	2 for \$1.00; 10 for \$4.25
Extra large bearing size, 4 to 5 Foot.....	Express Collect.....	Each 60c; 10 for \$5.00

Dolgo Crab

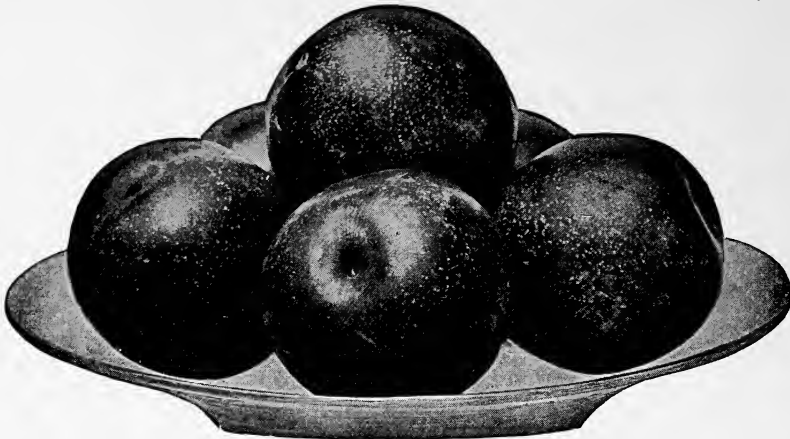
The Greatest Red Crab of the Age

For crab apple pickles, crab apple preserves, and crab apple sauce, the Transcendant Crab was the greatest ever grown. But Transcendant blights so badly that we can no longer grow it. Dolgo has come to take its place. Dolgo is the only really good red crab outside of Transcendant. It is just as hardy, a prolific annual bearer, a brilliant red. Makes wonderful pickles, preserves, sauce and jelly.

While Transcendant is a big tree—too big for the town lot—Dolgo is a small tree, so small that four would grow nicely where but one Transcendant could grow. Dolgo is the crab apple for the small city lot.

Nice Dolgo trees, beautiful 5 to 6 ft. specimens—Each \$1.50; 4 for \$4.00.





Sapa

Plums

The New Plums From Minnesota State Fruit Breeding Farm

The Minnesota State Fruit Breeding Farm has brought out some wonderful new plums—plums that are hardy in Minnesota, yet having the size, appearance and quality of the large fine plums grown on the Pacific Coast. We have tried these plums out thoroughly and are listing what we consider the best.

We have picked out and now offer to our customers only those varieties which we have proven to be safe plums to plant for commercial orcharding. These big plums are mostly as large as the average run of White Leghorn eggs. They are tremendous bearers, good looking and easy to pick. Trees should be planted 17 by 18 feet. This takes 140

trees to the acre. These plums should bear an average of a bushel to the tree when they are set four years (they will bear a great deal more). This makes 140 bushels to the acre. These plums sell right at the orchard at \$3.00 per bushel. This makes a gross income of \$420 per acre.

We believe that every village of a thousand inhabitants can support, in fine shape, one such one-acre orchard, and we believe it is safe for someone interested in fruit to plant such an orchard.

After testing out various plums for the last ten years in our orchard: we have selected the following as the best bearers and choicest plums,

ELLIOTT (Minnesota No. 8). A strong grower; very hardy. Ripened a crop of fruit in 1921 up north of Winnipeg. A very productive variety; bears a big crop every year. Firm, large size, clingstone; small pit; good quality; yellow in color overlaid with red. A splendid late plum to sell in the home or distant market, as it is very firm. We consider Elliott one of the most dependable of all the Minnesota plums. Late.

KAHINTA (Hansen). The largest and one of the best of all the plums sent out by Prof. Hansen. A plum of immense size, rather oblong, red with a blue bloom. Juicy and of the best quality.

LA CRESCENT. A splendid plum of a very distinctive quality. Fruit of medium size; round; light creamy yellow overlaid with delicate pink. Very sweet and of the best quality. Early.

MONITOR. One of the very largest of the lot. An immense bearer of great large plums. Almost round, dark red, with blue bloom. Very meaty, firm, good quality, and a splendid market plum.

RADISSON. The earliest of the Minnesota plums, almost round, red. Of the very best quality for eating. Essentially a home plum.

RED WING (Minnesota No. 12). A regular bearer; hardy as far north as the Twin Cities. Fruit is very large, firm, and of the best quality; color yellow overlaid with bright red; stone small and entirely free; very sweet. An exceedingly fine eating plum. Season, third week in August. A good shipping plum; splendid for cooking. Very easy to peel. A wonderful plum.

SAPA (A Hansen Plum). An extremely early, vigorous bearer. Fruit medium size, glossy black; flesh deep reddish purple, excellent flavor, very tender skin. Fine for eating fresh and makes good preserves and jellies. Sapa plums raised at Brookings, S. D., were one and three-

eighths inches in diameter and weighed five-eighths ounce, from one-year trees set out the preceding year. We had Sapa trees among our two-year-old nursery stock, not more than two feet high, that bore as many as thirty-six great dark purple plums.

TOKA (Hansen). A cross between the native plum and the fragrant apricot plum of China, Prunus Simoni, which is so popular on the west coast. Tree of medium size is just covered with the fruit, which is of the shape of a smooth tomato. Dark brilliant red, meaty, rich, sweet, aromatic. Extra fine.

TONKA. From the very beginning twelve or fifteen years ago, when we first started to test out these new plums, we have always held that this variety is one of the best plums of all. It starts to bear very young, generally as a two-year-old, and brings great crops continuously, every year; large, oval-shaped plums that are an all-over light red, covered with blue bloom. Tonka ripens and can be picked a week before it begins to mellow, which makes it a great shipping plum. Fine deep yellow flesh, sweet, small pit and free stone.

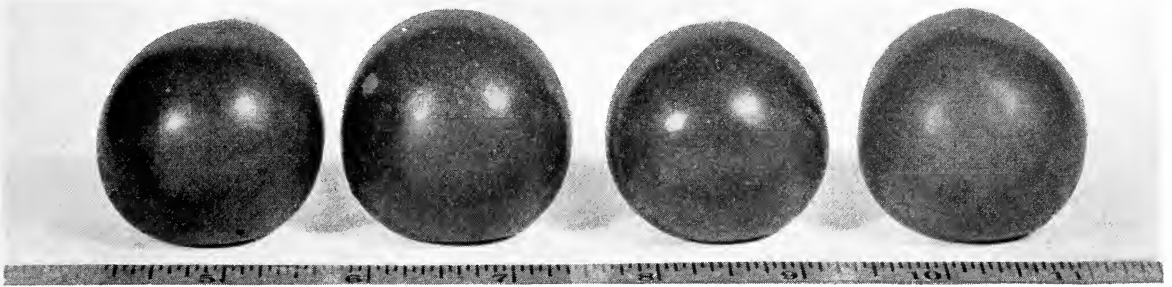
UNDERWOOD (Minnesota No. 91). The earliest of the large new plums. Ripens from about August 1st to 15th and attains a size of one and three-fourths inches. The tree is one of the strongest growers of all these new plums and grows to be very large, furnishing a surface large enough to bear wonderful crops of beautiful fruit. Limbs, well and heavily shouldered, enable it to carry its great loads without injury to the tree. This is the hardiest of all these new plums; and, in favored locations, we do not hesitate to advise its planting far north. Fruit is a very attractive red, firm juicy flesh, very small pit, free stone. Splendid quality. Hangs well to the tree and ripens over a period of two weeks. An annual bearer, having borne eight successive heavy crops.

Prices for Above Plums

Strong 4 to 6 Foot Trees Each 50c; 10 of any one variety \$4.00
1 Each of the TEN VARIETIES for \$4.50

This will make a wonderful home orchard. If plums are wanted in large numbers for commercial orchards, write for price.

A New Minnesota Plum

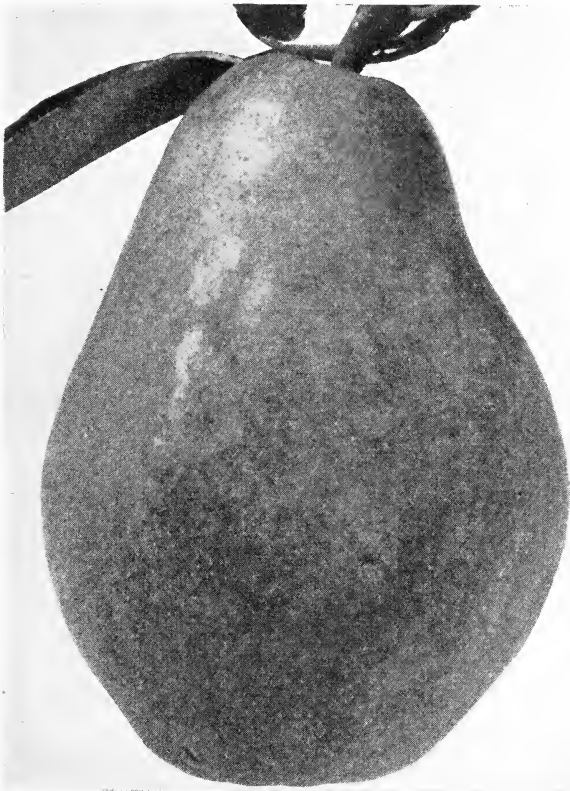


The Fiebing

Charles Haralson, who was formerly in charge of the Minnesota Fruit Breeding Farm during the origination of the Haralson Apple; the Elliott, La Crescent, Monitor, Radisson, Red Wing, Tonka, Underwood and many other good plums, as well as the Latham Raspberry—has now also, more recently, brought out another wonderful plum.

It is a great big conical-shaped red plum of the most wonderful

quality. This plum has been named the **Fiebing** and seems to be just about the best yet. The **Fiebing** is early, ripening with the Underwood, with which it may well be planted so as to fertilize that variety. The **Fiebing** ripens over a long period and is deep red for a full week before it begins to soften, which makes it a splendid plum to market. A few nice 5 to 6 Foot Trees, each \$1.25; 6 for \$6.00.



Patten

Pears

*Five New Pears
All Hardy Enough to Grow in
the Middle Northwest
All Good Enough to
Grow Anywhere*

There has been a long-felt want for some new pears—pears that will grow and bear in Montana, South Dakota, Northern Iowa, Northern Nebraska, Minnesota, Wisconsin, and Northern Michigan. We believe we now have such pears in the five which we list below:

MENDEL. Produced at New Ulm, Minnesota, by Mr. Albert Pfender. The old original tree is now some thirty years old and seemingly as hardy as ever. It stands right out on the prairie in an unfavorable location, yet even under such conditions it produces great crops of splendid fruit. Fruit large and very fine flavored.

MINNESOTA NO. 1. This is the fine new pear from the Fruit Breeding Farm. A splendid large sweet pear that does well as far north as Minneapolis. Fruit large and much like the Flemish Beauty, only hardier. Abundant bearer.

MINNESOTA NO. 3. The newest pear from the Minnesota Station. Said to be something pretty fine in all respects. Very blight-resistant and of splendid quality. 3 to 4 Foot Trees, each 75c.

PATTEN. A large fine flavored pear, brought out by the late Mr. C. G. Patten, the great fruit breeder of Iowa. Tree extremely hardy, a fast grower, and almost blight-proof. Very prolific. Strong 5 to 6 Foot Trees, each \$1.00; 5 for \$4.00.

TATE NO. 2. Another new pear that is extremely hardy and very little subject to blight. Comes to us from Ontario. A pear of splendid quality and good size.

Prices of Pears

(Except where otherwise stated)

4 to 5 Foot Trees Each 75c; 5 for \$3.00; 10 for \$5.50

1 Each of the FIVE DIFFERENT NEW PEARS, all for \$3.50



Oka Cherries

O K A

Prof. Hansen's Latest and Best Cherry

A NEW CREATION
FROM THE PLANT WIZARD
OF SOUTH DAKOTA

All who have had the pleasure of eating this wonderful new plum-cherry hybrid are perfectly agreed that it's the sweetest and finest of all hardy cherries.

In the cherry family, OKA is Professor Hansen's latest and best creation—a sand cherry cross on Champa. It is absolutely hardy and can be grown perfectly anywhere in North Dakota,

South Dakota, Wisconsin, Northern Michigan or Minnesota, where other hardy fruits are grown.

The OKA grows as a dwarf in very little space, yet bears an abundance of fruit—immense round cherries, a full inch in diameter. Outside the cherries are dark black-red; inside a purple juicy meat, wonderfully sweet.

Six or More Trees in a City Back Yard

The OKA cherry begins to bear on two-year-old trees; that is, the second year after being planted out. The trees produce annually great crops of large, sweet, delicious black-red cherries.

Due to their dwarf-like growing habit, the trees may be planted as close as six feet apart. Six or more in a city back yard will not interfere with garden, flowers, or other plantings. The cherries grow in clusters of two all along the stems, and they cover the branches so densely as

to make the entire tree look black. Especially if allowed to grow in bush form, which is their natural growth, the trees will bear heavily all along the limbs from the ground up.

OKA is the best of all hardy cherries, and we have some extra fine trees this spring. Strong 3-to-4-ft. trees—Each 75c; 5 for \$3.50; 10 for \$6.00. Strong 5-to-6-ft. trees—Each \$1.25; 5 for \$5.00.

Everbearing Strawberries

We think that, without exception, the Everbearing Strawberry is the most wonderful fruit ever brought out for a temperate climate. Plant as early in the spring as possible. Keep the plants well cultivated, and the blossoms will soon come. Keep blossoms pinched off until July 10th; after that let the fruit come. Berries will soon begin to ripen and continue to do so right up to killing frost in the fall. Just one continuous crop of berries.

MASTADON. The greatest of all the everbearing strawberries; of great size, a heavy and continuous cropper; splendid quality; very strong grower. It gives more berries than most June-bearing strawberries. They are sweeter; and when they once start, it is berries all the time.

**Mastadon strong plants—25 for 90c; 50 for \$1.35;
100 for \$2.25 Postpaid.**

Pop Corn

DYNAMITE. A fine pop corn that produces ears 6 to 8 inches long. Kernels are very large, smooth, golden yellow. Pops fine into great, large, fluffy balls of rich creamy white. Largest popped kernel of all pop corn. What is nicer when the long evenings of winter come than a big pan of fine pop corn for the children—and for everybody! We have some very fine seed for this season.

**Large package 10c; ½ lb. 20c; 1 lb. 35c—all Postpaid.
By Express or Freight Collect—10 lbs. or more at 15c lb.**



Mastadons

Red Raspberries

"In these days when the one-crop farmer is finding it so hard to make both ends meet and our economists and our would-be-economists are casting about in all directions for some means to help the farmer out, we have often wondered why small fruits and especially red raspberries have not been thought of more than has been the case. Dairying and the diversified farming that necessarily goes with it is the cure-all advocated in the great farming districts of our country. But dairying, like all other branches of farming, if carried too far, will be overdone."

We wrote the foregoing in our catalog years ago and now our prophecy has come true. Dairying, although still by far the most productive branch of farming, is not by any means what it was formerly. It is being overdone and one should stop and think. Over one million head of cows were added to milking herds from January 1, 1929, to January 1, 1931, and present indications are that they were increased by nearly a million more during 1931. On the other hand, but few people think of the growing of small fruits commercially. Now every town of a thousand inhabitants will furnish a market for one good small fruit grower. Two acres of good land planted to our Mosaic-free Latham Red Raspberry will put at least one family in every farming community right onto its feet.

If the Minnesota State Breeding Farm had originated no other fruit of promise, the production of this one superb red raspberry would have repaid the state for all the funds expended at the station. When we first took this berry up, we were not yet greatly impressed with it, as the canes on our soil were not as rank growers as many of our other varieties. However, when our original planting became two years old and the plants came into full bearing, we recognized that we had in the Minnesota No. 4, as it was then called, the most remarkable red raspberry ever sent out to date. The berry is of immense size and the bushes are just loaded to the ground with their great crop of fruit. The plant is not as great a multiplier as some varieties of reds which is a very desirable feature. Still, enough strong hardy plants are produced each year to keep the bed renewed and in good thrifty bearing condition. Berries are dark red in color, very large, and firm. An easy

variety to pick, shows up splendidly in the box; and, because of its immense size, it readily demands the best price when sold. The raspberry growers about Lake Minnetonka, Minnesota's great fruit growing district, are discarding almost all other varieties for Latham, which they claim produces two to one of any other variety.



Our Latham in the Field

Latham, A Bountiful Yields

Reprint from the
Connecticut Agricultural College Review
By W. H. Darrow, Fruit Specialist

Report on a field of 3-year-old plants:

Latham.....	5430 Quarts per Acre
Herbert.....	3648 Quarts per Acre
Cuthbert.....	3600 Quarts per Acre

Bears Big Crop First Year

In the spring of 1923 we had quite a quantity of Latham plants left in our storage after the selling season closed. These we planted out into the field on June 6th; note the date. The tops of these plants were not cut back, as they should have been, after planting. They were well cultivated, threw out side branches, and, to the amazement of

everyone, produced over 1200 pints of great, big, luscious berries which sold at 20c a pint. The plants covered about one-fourth of an acre. The gross return was \$240.00, or at the rate of \$960.00 per acre, from plants which had been set out that same year.



Latham Raspberries



Chief Raspberries

Nets \$1000 per Acre

In the spring of 1928 we had a small part of a field of Latham that we did not sell, so we did not dig it. There were 11 rows in the field, each row 504 feet long. By actual measurement this field covered somewhat less than one-half acre. We picked and sold enough berries from this field to leave us a net profit of \$484.00, which was at the rate of \$1000.00 net profit per acre.

Latham for the Back Yard

Every family having as much as a single city lot should plant Latham Raspberries. There is no other fruit that will give as great returns. Even so few as a dozen plants, well cared for, will provide a small family with several pints of luscious raspberries every day during the fruiting season; 25 plants will supply a large family; while 100 plants will not only give a family all they want for immediate use but also lots of fruit to put up for winter.

Our Plants are Mosaic-free

The disease to which the red raspberry is most subject is Mosaic. Our fields are carefully checked over and inspected three times each summer by our State Raspberry Inspector, and our plants are certified free from this disease. A certificate accompanies each shipment.

Grades and Prices

We have sorted out Latham plants into three different grades, according to the size of the plants. All plants are No. 1 in their grade; all have good tops and good roots. Special care is taken to see that every plant sent out has a good strong root, which is the main essential

	— Postpaid —				By Express or Freight Collect
	6	12	25	100	
Latham Medium.....	\$.55	\$1.00	\$1.25	\$2.75	500 for \$8.75; 1000 for \$16.00
Latham Heavy No. 1.....	.70	1.25	1.50	4.00	500 for 15.00; 1000 for 29.00
Latham Extra Heavy, 2-year Plants..	1.00	1.60	2.00	5.50	

For just a few plants in the garden, the Extra Heavy or the Heavy No. 1 grade is best. For large plantings, we suggest either the Medium or the Heavy No. 1.

Chief

The New Red Raspberry

Chief was originated at the Minnesota Fruit Breeding Farm, selected as the best of 4000 seedlings of the Latham. It has all the good qualities of the Latham, which has become the standard by which all red raspberries now are judged.

Everything we have said about Latham for its productiveness, hardiness, freedom from disease, etc., is equally true of Chief. Chief, however, is an early berry while Latham is late.

During the season just past, we had about an acre of Chief in bearing

and about three acres of Latham. Both varieties gave us a splendid crop, but the Chief were all picked, sold, and gone before the Latham started to ripen. This was a great advantage, as it gave us a continuous crop of red raspberries over a period of about three weeks.

Chief starts to ripen ten days before Latham. It's the earliest of the red raspberries. It commands the best price the market pays.

It is a hardy, bright red, medium size berry—better flavor than Latham—and, by actual test, Chief outbears Latham from 15% to 20%.

Extra Large No. 1 Plants Only 12 for \$1.25; 25 for \$2.15; 50 for \$3.25; 100 for \$6.50—All Postpaid

Black Raspberries

The black raspberry is one of our finest garden fruits. Both in the private garden and commercial plantings, the growing of this berry has been greatly curtailed during recent years, due to the gradual inroad of certain diseases which had made the growing of this berry almost impossible. Now state authorities have taken the situation in hand and

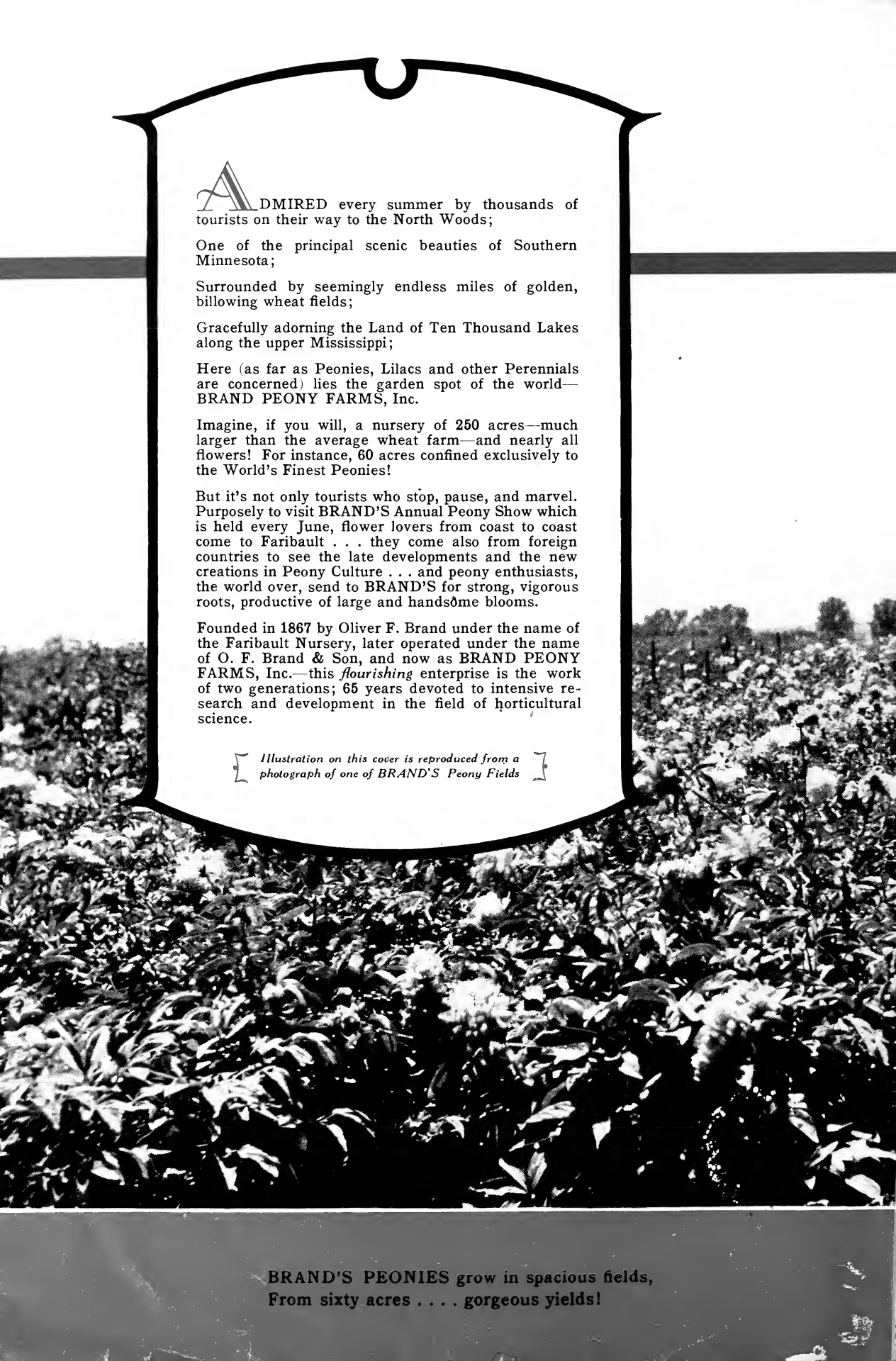
these diseases have become practically eradicated over great sections of the country. We are therefore getting our black raspberry stocks into shape again, so that everyone can now grow this wonderful fruit with but little effort.

CUMBERLAND. A healthy vigorous grower, making large stout canes with many laterals that produce great crops of large sized, intense black fruit of the best quality. Our stock of Cumberland is from plants grown from stock coming directly from State accredited fields and this stock is as clean as can be found.

Strong No. 1 Transplants, 12 for \$1.50; 25 for \$2.25; 100 for \$8.00.

NEW LOGAN. The best flavored, the most disease-resistant, and one of the most profitable black raspberries grown. Fruit not quite as large as Cumberland but very sweet. A new variety especially recommended because of its strength to resist disease.

Strong Tip Plants, 12 for \$1.50; 25 for \$2.25; 100 for \$6.00.



ADMIRED every summer by thousands of tourists on their way to the North Woods;

One of the principal scenic beauties of Southern Minnesota;

Surrounded by seemingly endless miles of golden, billowing wheat fields;

Gracefully adorning the Land of Ten Thousand Lakes along the upper Mississippi;

Here (as far as Peonies, Lilacs and other Perennials are concerned) lies the garden spot of the world—**BRAND PEONY FARMS, Inc.**

Imagine, if you will, a nursery of 250 acres—much larger than the average wheat farm—and nearly all flowers! For instance, 60 acres confined exclusively to the World's Finest Peonies!

But it's not only tourists who stop, pause, and marvel. Purposely to visit **BRAND'S Annual Peony Show** which is held every June, flower lovers from coast to coast come to Faribault . . . they come also from foreign countries to see the late developments and the new creations in Peony Culture . . . and peony enthusiasts, the world over, send to **BRAND'S** for strong, vigorous roots, productive of large and handsome blooms.

Founded in 1867 by Oliver F. Brand under the name of the Faribault Nursery, later operated under the name of O. F. Brand & Son, and now as **BRAND PEONY FARMS, Inc.**—this *flourishing* enterprise is the work of two generations; 65 years devoted to intensive research and development in the field of horticultural science.

Illustration on this cover is reproduced from a photograph of one of BRAND'S Peony Fields

BRAND'S PEONIES grow in spacious fields,
From sixty acres . . . gorgeous yields!