

Historic, Archive Document

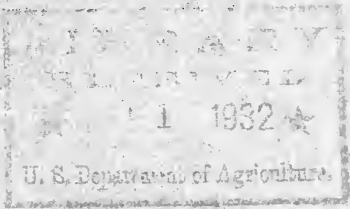
Do not assume content reflects current scientific knowledge, policies, or practices.



6225

THRIFT SEEDS

WHOLESALE
PRICE LIST
1932



Crabbs Reynolds Taylor Co.
SEED GROWERS

Crawfordsville, Indiana
Vegetable Seed Trials

JAN 2 1932

1932 Wholesale Price List

Quality — Service — Price

Herewith we are pleased to quote prices for 1932 subject to market changes, and being unsold upon receipt of orders.

In developing our Garden Seed department in a business established since 1880 the first consideration was to offer nothing but **QUALITY** seeds, and to deal only with growers who were in a position to furnish the best seeds obtainable. To this we added an unprecedented equipment of cleaning and separating machinery that enables dealers buying of us to assure their trade that they are offering the best obtainable.

In these days of careful merchandising, next to quality the ability to make quick shipments and service is the most important thing to seedsmen. Service is something that everyone claims to give, but we hope to have the opportunity to demonstrate ours by the prompt filling of actual orders.

Next we have the price. You know that Quality Seeds are necessarily higher than cheap low germinating seeds. Our prices are as low as is consistent with the **HIGH QUALITY** of seeds we furnish.

TERMS

All bills purchased from this list are net 60 days to houses of approved credit or 1½% discount 10 days. Lawn Grass and Clover Seeds, Miscellaneous Farm Seeds, Onion Sets, Plants and Potatoes, and Bird Seeds, Net Cash, without any discount whatever. All goods shipped F. O. B., Crawfordsville, unless otherwise specified. Bags charged at cost. Cash or satisfactory references should accompany orders from unknown correspondents.

We give no warranty, express or implied as to description, quality, productiveness, or any other matter connected with the goods we send out and we will not be in any way responsible for the crop. If the purchaser does not accept the goods on these terms, they are at once to be returned.

CRABBS REYNOLDS TAYLOR CO.

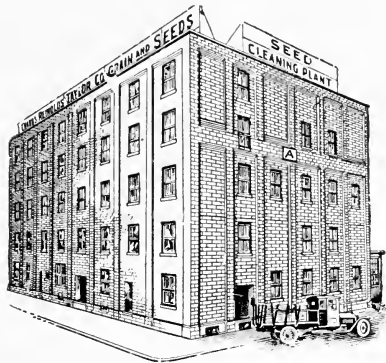
NOTICE—In telegraphing orders, please use **CODE** on third page of cover.



Main Office

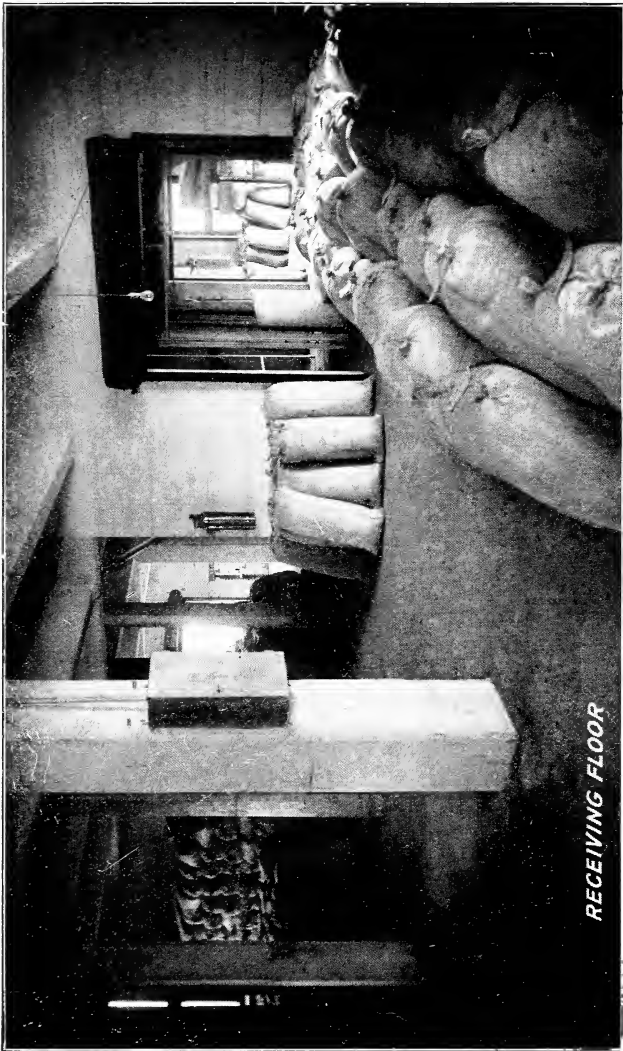
FOREWORD

Our main office and plant are located at Crawfordsville, Indiana, which is served by the Monon, Big Four and Pennsylvania Railroads. These shipping facilities enable us to give you quick delivery and our complete stocks together with an experienced organization and up-to-date equipment make it possible to give you good seeds at reasonable prices. Orders will be shipped the day received.

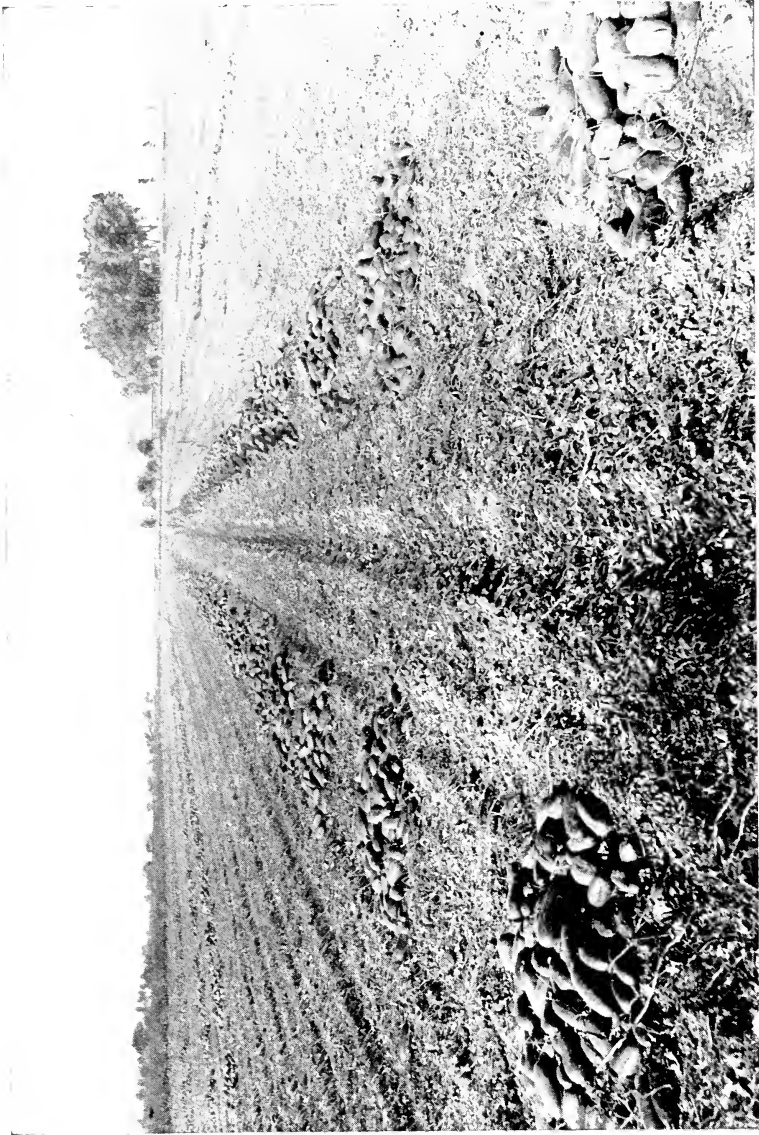


Seed House

CRABBS REYNOLDS TAYLOR CO.
CRAWFORDSVILLE, INDIANA



View of Part of First Floor of Warehouse A



Field of Early Green Cluster Ready for Harvest

January 12, 1932.

Lower Prices for 1932

In line with the general decline of commodity prices, Seeds have followed and are today lower in price than for many years past.

With present prices as given in our 1932 price list, it is a certainty that you will realize more profit by the natural increase of sales volume, due to present economic conditions that prevail throughout the World.

Every family is a potential customer. More Home gardens are being planted and we cordially invite you to become a THRIFT dealer in your vicinity.

Yours truly,
CRABBS REYNOLDS TAYLOR CO.

Thrift Flower Seeds In Packets



Many of our customers call for Flower Seeds in packets, so we are placing a limited number of small cases on consignment, packets retailing at 10c each.

We allow you 50% commission, all carrying charges PREPAID. May we send you a case?



The Handling of Bulk Seed Made Easy by Our Help and Suggestions

To our customers, we supply Glass Jars as pictured at \$3.00 per dozen. We furnish labels for Jars without cost. Also with each contract order, we furnish small seed envelopes, hangers, chart, etc., which really make the handling of bulk seed easy.

If we can be of any assistance, please command us. Our Salesmen are anxious to meet you and we sincerely trust you will ask for one to call when you are ready to place your contract order for 1933 delivery. WE CAN SAVE YOU MONEY.

BEANS

There are no items in your entire vegetable seed list that show so much variation in quality as do beans.

Our prices are as low as is consistent with the **HIGH QUALITY** of seed we supply.

All Beans except Lima and a few pole beans, these are California grown, are Western grown. Grown in sections that are free from anthracnose and other diseases.

QUALITY is paramount and in so far as price is concerned, you can get cheaper beans for two and even three cents per pound less than we are quoting you on **HIGHEST GRADE STOCKS**. Our stocks are rogued and as "BLOOD TELLS," you will notice a great difference.

When you sell **THRIFT** Seed Beans your customers come back for more seed and bring new **CUSTOMERS** with them.

BEANS

DWARF GREEN PODDED VARIETIES

| | Per lb. | Per lb. |
|--|----------|-------------|
| | Bag lots | Per lb. |
| BOUNTIFUL | Bulk \$ | .13½ \$.13 |
| Best of the flat podded stringless varieties. Pods 6½ to 7 inches long. Very early, hardy and productive. | | |
| EARLY REFUGEE | Bearall | .14 .13½ |
| RED VALENTINE | Ballard | .13½ .13 |
| A hardy, early standard sort. Medium green pods. Slightly stringy and of good quality. | | |
| BURPEE'S STRINGLESS GREEN POD | | |
| Ball | .12 | .11½ |
| Absolutely stringless, green pod. Pods 5 inches long, thick, round and creaseback. Tender and brittle. | | |
| GIANT STRINGLESS GREEN POD | | |
| Balsam | .13 | .12½ |
| Resembles Burpee's Stringless, tho larger and longer. Early and of highest quality. | | |
| TENNESSEE GREEN POD | Bandit | .14½ .14 |
| Excellent dwarf snap bean. Prolific foliage dark green. Pods long and flat. Fine quality. | | |
| REFUGEE 1000 TO 1 | Baluster | .13½ .13 |
| A fine main crop variety. Used for late plantings. Pods 5 to 6 inches long. Fine for canning and pickling. | | |

| | | Per lb. | Bag lots Per lb. |
|--|----------------|---------|---------------------|
| BLACK VALENTINE | Baleen | \$.13½ | \$.13 |
| Seed black. An early productive gardeners variety. Plant more vigorous than Red Valentine and pods darker green. Pods about 6 inches long. | | | |
| DWARF HORTICULTURAL | Banal | .14½ | .14 |
| An old standard snap and shell sort. Pods about 5 inches long. Almost stringless. | | | |
| NAVY | Balking | .09½ | .09 |
| The navy bean of commerce. | | | |



Bountiful

| | | | |
|--|----------------|------|------|
| WHITE KIDNEY | Bandore | .13½ | .13 |
| A most excellent white kidney shaped field sort. | | | |
| RED KIDNEY | Bang | .13½ | .13 |
| Almost like the White Kidney except the beans are deep red in color. | | | |
| LARGE WHITE MARROW | Bangle | .14 | .13½ |
| Large, oval shaped white beans grown as a field crop for baking. | | | |

| | Per lb. | Bag lots Per lb. |
|--|---------|---------------------|
| FULL MEASURE Banyan | \$.14 | \$.13½ |
| A good early stringless, high quality bean. Ranks along with Burpee's tho not as productive. Bean resembles Red Valentine. | | |
| LONGFELLOW Bamboo | .13½ | .13 |
| Fine either for home use or market. Grows well and its long slender pods are attractive to buyers. Eating qualities are unsurpassed. Good for late planting. | | |
| EARLY 6 WEEKS Balloon | .13½ | .13 |
| An old standard sort, very early with more or less strings. Medium quality. | | |
| DWARF WAX PODDED VARIETIES | | |
| ROGER'S STRINGLESS REFUGEE WAX | | |
| Balcony | .13 | .12½ |
| A popular canner's variety. Mid-season, very hardy and productive. Pods, 4½ to 5 inches long. Color pale yellow. | | |
| IMP. GOLDEN WAX Bake | .14½ | .14 |
| The most popular of the wax varieties and one of the best. Very early and productive. Pods 4 to 4½ inches long. Seed white, much mottled brown. | | |
| PENCIL POD BLACK WAX Balance | .14 | .13½ |
| The best of the black seeded wax varieties. Early. Pods 6½ to 7 inches. Stringless and of highest quality. | | |
| WARDWELL'S KIDNEY WAX Bale | .15½ | .15 |
| A popular early, gardeners' variety. Pods large, 5½ to 6 in. long. Nearly stringless and of good quality. | | |
| CURRIE'S RUST PROOF WAX Badge | .15 | .14½ |
| Grows free from rust. Large flat pods, nearly stringless and very tender. Matures in about 50 days. Pods 5½ to 6 inches. Seed black. Favorite with market gardeners. | | |
| DAVIS WHITE WAX Baffling | .15½ | .15 |
| Early and very productive. Pods large and flat. 6½ to 7 inches long. Seed white and kidney shaped. A market gardener sort. | | |
| KENTUCKY WONDER WAX POLE | | |
| Barkley | .14½ | .14 |
| Well known favorite of wax pod bean. Pods are about 10 inches long. Very flesh- stringy but brittle. | | |
| SURE CROP WAX Bald | .14½ | .14 |
| Selection from Currie's Rustproof wax, more hardy, little later. Pods flat and average an inch longer. Very desirable. | | |

| | Per lb. | Bag lots Per lb. |
|---|----------------|---------------------|
| GOLDEN CLUSTER WAX | Banquet \$.14 | \$.13½ |
| Dense growth, very productive. Pods 6 to 7 inches long. Tender. Pods are light golden in color. Beans oval and white. | | |



Improved Golden Wax

DWARF LIMA BEANS

| | | | |
|---|---------|-----|------|
| BURPEE'S IMP. BUSH LIMA | Baptist | .16 | .15½ |
| Both beans and pods larger than old type; average one more bean to the pod; beans larger and thicker than in old form. | | | |
| BURPEE'S BUSH LIMA | Banter | .15 | .14½ |
| Perhaps the best Bush Lima bean. Heavy yielder and sure cropper. Pods 4 to 5 inches long containing 3 to 5 beans. Large, flat and white, of excellent quality. Fine for both market and home use. | | | |

| | | Per lb. | Per lb. |
|--|--------|---------|---------|
| FORDHOOK BUSH LIMA | Barb | \$.20 | \$.19½ |
| Produces a large strong plant growing upright keeping the pods off of the ground which prevents rot. Has a very fine flavor. | | | |
| HENDERSON'S BUSH LIMA | Banish | .12 | .11½ |
| A hardy, very early and small type of lima. Much in favor with canners. Pods small and about 3 inches long. | | | |

POLE LIMA BEANS

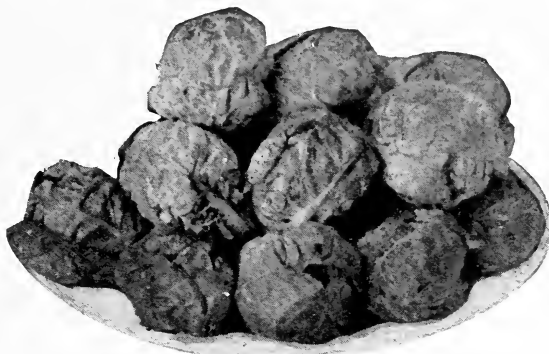
| | | | |
|--|---------|------|------|
| KING OF GARDEN | Barbate | .14½ | .14 |
| Very vigorous and productive, continuing to fruit throughout the season. Pods are large, sometimes as long as 8 inches containing 7 to 8 beans to the pod. Used largely for home and market. | | | |
| LARGE WHITE LIMA | Barber | .14½ | .14 |
| A well known pole variety of tall, vigorous growth. Pods are borne in clusters and are about 5 inches in length, broad and thin. | | | |
| SMALL WHITE OR SIEVA | Bantam | .12½ | .12 |
| Beans small and white on the order of Henderson's Bush Lima. Plant of large growth, very early and productive. | | | |
| FLORIDA SPECKLED BUTTER | Banflor | .14 | .13½ |
| Best variety for bearing early in the season. A dependable, prolific, small seeded lima. Well adapted for the south. | | | |

POLE OR RUNNING BEANS

| | | | |
|---|---------|------|------|
| HORTICULTURAL POLE | Bard | .12 | .11½ |
| An old, well known sort. Mid-season in maturity, hardy and productive. Pods 5 to 6 ins. long. | | | |
| KENTUCKY WONDER | Baneful | .12 | .11½ |
| Pods are green, about 10 inches long and nearly round, fleshy, stringless and one of fine flavor. Early and very productive. | | | |
| LAZY WIFE | Bank | .12 | .11½ |
| An excellent variety for home use. Can be used for cooking green or shelled for winter. Pods are broad, thick and stringless. | | | |
| WHITE KENTUCKY WONDER | Banner | .13½ | .13 |
| Pods 6 to 7 inches long. Same as Burgers green pod. | | | |
| DUTCH CASEKNIFE | Bargain | .13 | .12½ |
| Green snap pods, 7 to 8 inches long. Mid-season of fair quality. Beans very flat and ivory white. | | | |

| | | Per lb. | Bag lots Per lb. |
|---|----------|---------|---------------------|
| RED SPECKLED CUTSHORT | Banjo | \$.12 | \$.11½ |
| A well known, late productive sort. Pods 3½ to 4 inches long. Color light green. | | | |
| MISSOURI WONDER | Bare | .12 | .11½ |
| A well known sort in some states. Very desirable and of fine quality and very productive. | | | |
| WHITE CREASEBACK | Bandy | .13 | .12½ |
| A fine early green podded bean (pole) of rapid growth and very productive. The pods grow in clusters and are from 5 to 6 inches in length, perfectly round and deeply creased. They are very fleshy, stringless and of the highest quality. | | | |
| McCASLAN POLE | Barcas | .12 | .11½ |
| ASPARAGUS YARD LONG | Bearcase | .16 | .15 |
| STRIPED CREASEBACK | Banback | .12½ | .12 |
| A hardy and productive field bean. Pods light green, 6½ to 7 in. long. Slightly stringy, very fleshy, fine grained, and good quality. | | | |

BRUSSEL SPROUTS



Improved Dwarf

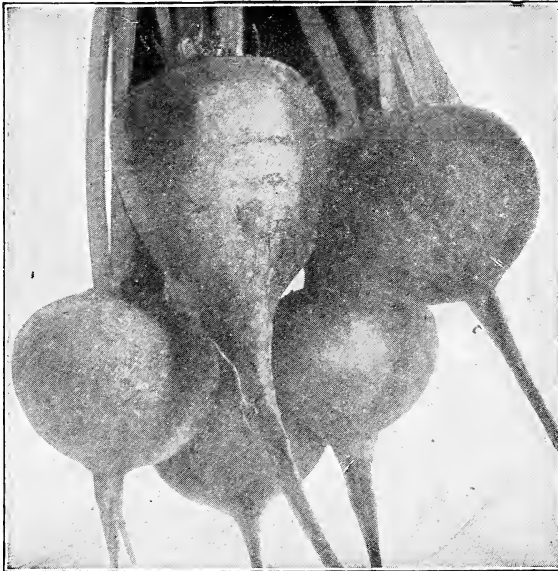
| | | |
|----------------------|------|-------------------|
| IMPROVED DWARF | Base | Per lb. \$.85 |
|----------------------|------|-------------------|

BROCCOLI

| | | |
|-----------------------|----------|--------|
| GREEN SPROUTING | Broccoli | \$2.25 |
|-----------------------|----------|--------|


TABLE VARIETY BEETS

| | | Per lb. | 10 lbs. or more Per lb. |
|--|----------|---------|-------------------------------|
| EXTRA EARLY EGYPTIAN | Barite | \$.40 | \$.35 |
| The earliest beet. Flat root, on ground. Flesh dark purplish red, zoned a lighter shade. | | | |
| CROSBY'S EGYPTIAN | Bark | .40 | .35 |
| Roots a flattened globe shape; skin dark red, flesh a trifle lighter in color and lightly zoned; tops small. | | | |
| EARLY BLOOD TURNIP | Barnacle | .40 | .35 |
| Second early sort, turnip rooted, medium sized. Dark red flesh, solid and sweet. Black red foliage. | | | |



Detroit Dark Red

| | | | |
|--|---------|-----|-----|
| DETROIT DARK RED | Baronet | .40 | .35 |
| Early sort. Root globe shaped, slightly tapering. Smooth skin, mahogany red flesh, crisp and sweet. One of the best sorts to store for winter. | | | |
| IMP. BLOOD TURNIP | Barm | .40 | .35 |
| One of the earliest sorts. Medium sized roots, slightly flattened, one half out of ground. Red flesh, brown green foliage. | | | |

| | | Per. lb. | 10 lbs. or more Per lb. |
|--|----------|----------|-------------------------------|
| CRIMSON GLOBE | Barley | \$.40 | \$.35 |
| Early sort. Root medium sized, spherical, slightly longer than wide. Smooth skin. Red flesh, marbled with crimson stripes. | | | |
| EARLY WONDER | Barge | .45 | .40 |
| A selection from Crosby's Egyptian and is popular with Market Gardeners. Roots very uniform, nearly globe shaped, with small top and tap root; skin dark red, flesh deep red with little zoning. | | | |
| ECLIPSE | Barken | .40 | .35 |
| First early sort. Spherical root, one half in ground. Skin smooth, of red violet color, bright red flesh, somewhat zoned. Brown red foliage. | | | |
|  | | | |
| Mammoth Long Red | | | |
| LONG SMOOTH BLOOD | Barrel | .35 | .30 |
| A standard late variety. Roots about 12 inches long, smooth, rather slender. Flesh deep purplish red. Fine keeper. | | | |
| SWISS CHARD (Lucullus) | Barren | .35 | .30 |
| Curled variety, large savoyed pale green leaves. Tender and thick stalks. | | | |
| EDMUND'S BLOOD TURNIP | Baron | .40 | .35 |
| Medium early sort, turnip rooted, smooth and dark red skin, reddish violet flesh, slightly zoned. Green foliage with red stalks. Good keeping sort. | | | |
| DANISH SLUDSTRAP | Barter | .30 | .25 |
| By actual test far exceeds other varieties in weight and feeding values. | | | |
| CHAMPION YELLOW GLOBE | Becamp | .30 | .25 |
| GOLDEN TANKARD | Bartank | .30 | .25 |
| Yields enormous crops; very rich in sugar. Skin and flesh deep orange-yellow. | | | |
| KLEIN WANZLEBEN (Sugar) | Barklein | .30 | .25 |
| A large growing white variety. Very productive and has a large percentage of sugar. | | | |
| MAMMOTH LONG RED | Barrier | .30 | .25 |
| Long root, suitable for deep and peaty soils. Large top, red skin, white flesh, good keeper and heavy cropper. | | | |

SWEET CORN SEED

The growing of Sweet Corn Seed is one of our specialties. Our stock seeds are not surpassed by any for quality. We inspect the growing crops to insure our customers the very best seed possible.

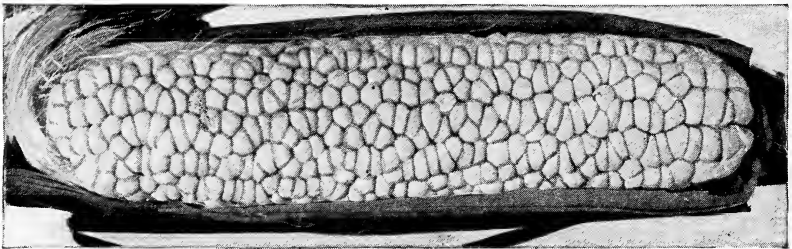
You are cordially invited to inspect our growing crops of Sweet Corn and see the result of pure seed strains. We will admit that you can buy seed from some sources at a cheaper price than we are offering **FIRST CLASS STOCKS**.

Of course you want good seed. Good seed make satisfied customers and these customers come back for more seed.

If you have never sold **THRIFT** seeds, give us a trial order and let us convince you as we have many others.

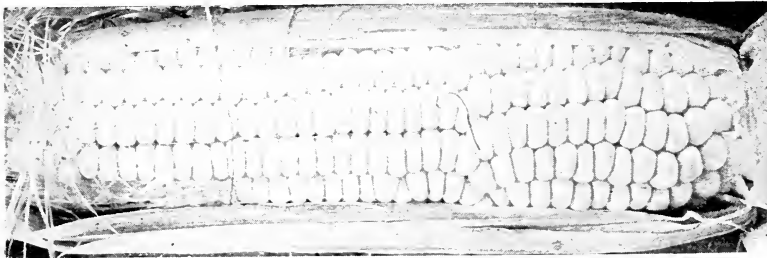
CORN, SWEET OR SUGAR

| | | Per lb. | Per lb. |
|--|----------------|---------|---------|
| ADAM'S EARLY | Cadence | \$.07½ | \$.07 |
| Not a sugar corn, but largely grown by market gardeners for early use. Ears 7 to 8 inches long. Excellent roasting ears. | | | |
| ADAM'S EXTRA EARLY | Cadet | .07½ | .07 |
| Not a sweet corn. Similar to Adam's Early, but two weeks earlier. | | | |



Country Gentleman

| | | | |
|---|---------------|------|------|
| BANTAM EVERGREEN | Cabman | .10 | .09½ |
| A cross between Golden Bantam and Stowell's Evergreen, matures with Howling Mob. As excellent sort of fine quality. | | | |
| BURBANK BANTAM | Cantor | .11 | .10½ |
| COUNTRY GENTLEMAN | Cackle | .10½ | .10 |
| Also known as Shoe Peg. A good late variety. Popular with canners. | | | |
| EARLY EVERGREEN | Cable | .10 | .09½ |
| A few days earlier than Stowell's Evergreen. Very productive and of high quality. | | | |

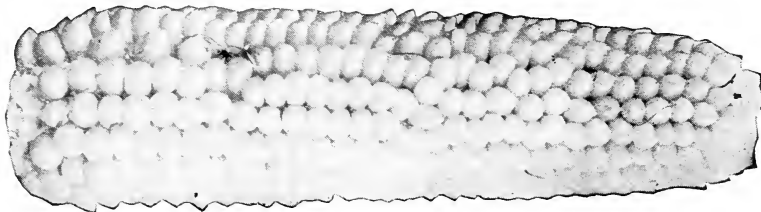


Stowell's Evergreen

| | | Per lb. | Per lb. |
|---|----------|---------|----------|
| | | | Bag lots |
| EARLY MINNESOTA | Cadmus | \$.10½ | \$.10 |
| Very popular, standard early sort. Ears about 8 inches long, kernels very broad, sweet and tender. | | | |
| GOLDEN BANTAM | Calendar | .10½ | .10 |
| Early, golden grained and of highest quality. Ears 6 to 7 inches long. Our stock is superior to much that is offered elsewhere. | | | |
| GOLDEN GIANT | Calico | .10 | .09½ |
| A good second early sort, with yellow grain. Maturing about same time as Kendalls Giant. | | | |
| HOWLING MOB | Caddy | .10 | .09½ |
| One of the best second early sorts. Ears 9 to 10 inches long. Very productive and of excellent quality. | | | |
| NARROW GRAIN EVERGREEN .. | Cabinet | .10 | .09½ |
| STOWELL'S EVERGREEN | Cabala | .09½ | .09 |
| The standard and best known of sweet corn. Our stocks of this variety are unsurpassed by any. | | | |

DOD CORN

| | | Per lb. | Per lb. |
|-------------------------------|---------|---------|----------|
| | | | Bag lots |
| JAPANESE HULLESS | Calb | \$.10 | \$.09 |
| GOLDEN QUEEN | Callant | .09 | .08 |
| WHITE RICE | Callus | .09 | .08 |



Japanese Hulless

CABBAGE

| | Per lb. |
|---|----------------------|
| ALL SEASONS | Cansea \$1.40 |
| Remarkable for its ability to stand hot sun and dry weather and remains in good condition for a long time. Head large, form solid and white | |
| COPENHAGEN MARKET | Camera 1.60 |
| Almost as early as Early Jersey Wakefield. Short stems, heads large, round and solid. | |
| CHARLESTON WAKEFIELD | Calpac 1.35 |
| A little later than Early Jersey Wakefield, but with larger heads. | |
| CHINESE PE TSAI | Candid 1.25 |
| Resembles Cos Lettuce as much as cabbage, though it has a decided cabbage flavor. | |



Copenhagen Market

| | |
|--|---------------------|
| DANISH BALLHEAD | Campus 2.00 |
| A good winter sort, hardy; heads round and solid. | |
| EARLY JERSEY WAKEFIELD | Calm 1.20 |
| One of the most widely known and popular early variety; heads cone shaped and very solid. | |
| EARLY FLAT DUTCH | Calvary 1.20 |
| Earlier and heads smaller than Late Flat Dutch. A good variety. | |
| EARLY DRUMHEAD | Candrum 1.20 |
| EARLY WINNINGSTADT | Calumet 1.20 |
| Medium early, heads solid, fine grained cone shaped and pointed. Very productive and fine quality. | |

| | | Per lb. |
|--|----------|---------|
| GOLDEN ACRE | Calpot | \$2.50 |
| Earliest round headed cabbage. Plant small and compact with few outer leaves. Medium sized, round, solid, and uniform. | | |
| GLORY OF ENKHUIZEN | Canal | 1.30 |
| Medium early. Short stemmed. Heads large, round and very solid, with few outer leaves. | | |
| HOLLANDER WISCONSIN NO. 8 | Conard | 4.40 |
| Medium sized heads, round and solid. A very hardy variety. | | |
| JERSEY QUEEN (Yellow Res) | Canqueen | 4.75 |
| LATE FLAT DUTCH | Camlet | 1.30 |
| A popular variety. Favorite for market and family use. Heads large. | | |
| LATE DRUMHEAD | Camp | 1.40 |
| Heads large, solid and a good keeper. | | |
| MAMMOTH ROCK RED | Canrock | 1.40 |
| MARION MARKET (Yellows Res) | Canmark | 4.50 |
| Round head, short stem. Early to mature. | | |
| SUREHEAD | Cansure | 1.20 |
| Heads are large, round, flattened at the top and remarkably uniform. | | |
| WISCONSIN YELLOW RESISTANT (All Seasons) | Camwilt | 3.60 |

CAULIFLOWER

| | | Per oz. | Per lb. |
|--|--------|---------|---------|
| SNOWBALL (Earliest) | Cannon | \$1.00 | \$12.00 |
| The best and most popular early variety. Heads very early, of medium size, firm, solid and very white; plant compact in growth with few short, upright leaves. | | | |
| EARLY DWARF ERFURT | Canoe | .75 | 9.00 |
| One of the best for general cultivation and produces good sized creamy white heads. Seldom fails to produce a good head. | | | |

COLLARDS

| | | Per lb. |
|---|--------|---------|
| GEORGIA OR SOUTHERN | Candle | \$.40 |
| Plant 2 to 3 feet high, forming a cluster of tender, undulated leaves at the top of rather long stem; used as "greens" in the South and West. | | |

CELERIAC

| | | Per oz. | Per lb. |
|--------------------|--------|---------|---------|
| GIANT PRAGUE | Celgar | \$.15 | \$ 1.80 |

CHICORY

| | | | |
|--------------|--------|--|---------|
| WITLOF | Crelaf | | \$ 1.25 |
|--------------|--------|--|---------|

CRESS

| | | | |
|------------------------------|--------|--|--------|
| CURLED OR PEPPER GRASS | Crepep | | \$.50 |
| TRUE WATER | Crewat | | 2.25 |

CARROTS

| | | Per lb. |
|--|----------|---------|
| CHANTENAY | Candor | .50 |
| This is a half long variety, good medium early sort with half long stump root. Roots about 6 inches long, very thick, smooth and of a deep orange red color. | | |
| DANVER'S HALF LONG | Cane | .50 |
| The best known second early variety. Roots 6 to 8 inches long, tapering to a blunt point; flesh deep orange, tender and good quality. | | |
| LONG ORANGE | Canine | .45 |
| An excellent intermediate variety. Roots 12 ins. long, about 3 ins. broad at the crown, tapering regularly to a point, deep orange color. | | |
| NANTE'S OR CORELESS | Canister | .55 |
| Roots 6 to 8 inches long, with blunt end, smooth and of bright orange color. Flesh red, sweet and mild, almost coreless. | | |
| OXHEART | Canna | .45 |
| Roots about 5 inches long, very stout and thick, ending in an abrupt, small tap root, small top and easily harvested. Color bright orange. | | |
| WHITE BELGIAN | Cabell | .40 |
| WHITE MASTODON | Camast | .40 |

DILL

| | | Per lb. |
|---------------------------|---------|---------|
| LONG ISLAND MAMMOTH | Hackney | \$.40 |

CUCUMBERS

| | | Per lb. |
|---|----------|---------|
| SNOW'S PICKLING | Canyon | \$.55 |
| <p>One of the best formed and productive sort, early, small, square ended and dark green. We have a strain of this unsurpassed by any. 5x2¼ in.</p> | | |
| IMPROVED WHITE SPINE | Capacity | .55 |
| EARLY GREEN CLUSTER | Canter | .55 |
| <p>Very early, fruit short, chunky, small and borne in clusters in the center of the plant. Light green in color. Very prolific. 5x2¼ in.</p> | | |



Chicago Pickling

| | | |
|--|---------|-----|
| EARLY FRAME OR SHORT GREEN | Canton | .55 |
| <p>Vigorous and productive, medium size and medium early. Good for pickling and slicing. Fruit light green. 6½x2¼ in.</p> | | |
| IMPROVED LONG GREEN | Capture | .60 |
| <p>A late, well known sort. 12 to 14 inches long. Color dark green. Flesh white. Our stock of this is excellent. 12x2½ in.</p> | | |
| ARLINGTON WHITE SPINE | Capable | .55 |
| <p>One of the earliest and most productive, true to type and uniform of the White Spine family. Fruit about 7 inches long, rounded at both ends and a bright, deep green color. 7¼x2¼.</p> | | |
| BOSTON PICKLING | Canopy | .55 |
| <p>Sometimes called green Prolific. Fruit short, smooth and bright green, very productive, making a good pickle. A little shorter and thicker than most pickling sorts. 6x2½ inches.</p> | | |

| | | Per lb. |
|--|---------|---------|
| CHICAGO PICKLING | Canteen | \$.55 |
| A good pickling sort, very uniform, productive and good color. We have an excellent strain. 6x2¼ inches. | | |
| DAVIS PERFECT | Caravan | .60 |
| An extra long, dark green type of white spine. Retains its color and good qualities long after being picked. A good shipper. | | |
| WHITE WONDER | Caption | .65 |
| Produces fruit in clusters. Color ivory white from time of forming until maturity. 6x2½ in. | | |
| JAPANESE CLIMBING | Capsize | .65 |
| A climbing sort for fences or trellises, fruit 10 inches long, thick, crisp and fine quality. Color dark green. | | |
| WEST INDIA GHERKIN | Carat | .75 |
| Grown exclusively for pickles. Fruit very small. Color light green. 2x1¼ in. | | |
| EARLY FORTUNE | Caple | .65 |
| Another of the White Spine family. Early and very productive. Disease resistant, fruit 9 inches long. Flesh white, very firm and crisp with very few seeds. Color dark green. 9x2½ in. | | |
| JERSEY PICKLING | Canvas | .55 |
| A very productive variety, fruit long tapering and bottle necked, pickles long and very slender. 6x2 in. | | |
| THORBURN'S EVERBEARING | Caprice | .60 |
| Very productive main crop variety. Quite similar in appearance to Early Frame. 5½x2 in. | | |
| EXTRA LONG EVERGREEN | Caper | .60 |
| An extra long type of white spine. Fruits dark green in color. Mid-season. 10 to 24 inches. | | |
| FORDHOOK FAMOUS | Capote | .55 |
| Largest of the White Spine family. Crisp and solid. Fine for slicing. 14x3½ in. | | |
| KLONDIKE | Capital | .55 |
| A medium early strain of the White Spine. Fruits attractive, full uniform. Color dark green. 7x2¾ in. | | |

CELERY

| | | Per oz. | Per lb. |
|---|---------|---------|---------|
| GOLDEN SELF BLANCHING | Carbide | \$.20 | \$2.50 |
| We have a reliable strain of this very popular variety. Attains a good size, stalks perfectly solid and when blanched is of handsome golden yellow color. | | | |

| | Per oz. | Per lb. |
|--|---------------|---------|
| WHITE PLUME | Carbon \$.15 | \$1.80 |
| An early, good variety. Leaves light, bright green, easily blanched a beautiful silvery white color. | | |
| GIANT PASCAL | Carder .15 | 1.60 |
| One of the best for winter use. Leaves short and dark green color. Stalks short, thick and very broad. Blanches a yellowish white. | | |

EGG PLANT

| | | Per lb. |
|--|--------|---------|
| BLACK BEAUTY | Earthy | \$3.00 |
| Earlier and nearly as large as New York Purple. Fruit dark purple. Holds its color for a long time. | | |
| N. Y. IMPROVED SPINELESS | Earth | 3.00 |
| The favorite variety. Spineless. Plant large and producing four to six large oval fruits of dark purple color. | | |

ENDIVE

| | | |
|---|---------|--------|
| GREEN CURLED | Echo | \$.65 |
| One of the largest sorts, half late. Long green leaves, finely curled; hardy sort for autumn use. | | |
| BROAD LEAF BATAVIAN | Eclipse | .65 |
| One of the best varieties for salad, leaves broad, more or less twisted and waved, bright deep green. | | |
| WHITE CURLED | Eclair | .65 |
| Second early sort, not very productive, but of a good creamy white color. Useful and extensively grown. | | |

KOHLE RABI

| | | |
|---|------|--------|
| WHITE VIENNA | Keel | \$1.40 |
| Early sort, giving a spherical bulb of pale green color. White flesh. Can be used in 2½ months after being planted. | | |
| EARLY PURPLE VIENNA | Keep | 1.40 |
| Handsome early variety, best for garden culture. Small tops, bulbs medium size, of purple color. Flesh white. | | |

KALE

| | | |
|--|------|--------|
| DWARF SIBERIAN | Kame | \$.50 |
| A most vigorous and spreading variety; leaves are large and plain in center but cut and frilled at the edges, color is bluish-green. | | |

| | Per lb. |
|--|--------------|
| DWARF CURLED GREEN | Karma \$.55 |
| Very hardy variety, about 1 to 1½ feet high, spreading growth, finely curled, long leaves. Can be used as a vegetable or for garnishing. | |
| THOUSAND HEAD | Karoo .40 |
| Strong growing variety, very branching and hardy. Broad leaves of light green color. Very productive. Much used for sheep feeding. | |

LETTUCE

| | |
|---|--------------|
| EARLY CURLED SIMPSON | Laban \$.65 |
| Loose-heading variety of good size. Leaves broad, crumpled and frilled at the edge. Good market variety. | |
| GRAND RAPIDS | Labor .65 |
| A loose-leaved forcing lettuce. Leaves closely crumpled, of light green color, crisp and tender. Popular sort. | |
| BLACK SEEDED SIMPSON | Labrum .60 |
| One of the most popular varieties. Will succeed almost anywhere. Loose heading variety. Always reliable. Leaves very broad, much blistered and crumpled. Color light yellowish-green. Quality fine. | |
| CRISP AS ICE | Letcris .80 |
| Broad leaves crumpled very thick and stiff. Outer leaves variegated dark brown and green, brown predominating. Elongated medium size, compact heading excellent quality variety. | |
| BIG BOSTON | Lackey .75 |
| Good sort, suitable for general cultivation. Head large, flattened of medium size. Leaves light green, wavy and tinged with red at the edges. Vigorous and hardy. | |
| PRIZEHEAD | Lacto .65 |
| A crisp and tender loose-leaved non-heading sort and one of the most popular. Frilled at the border of leaves. Good quality. | |
| IMP. HANSON | Lavote .65 |
| One of the most reliable, sure heading sorts. A fine variety for midsummer planting outside, as it withstands the hot season better than most sorts. | |
| N. Y. OR WONDERFUL | Ladle 1.00 |
| A large late sort, cabbage heading variety, with large, crumpled, dark green leaves. Similar to N. Y. cabbage. | |

ICEBERG Per lb.
 Lagan \$.80
 A large late, cabbage heading variety. Heads very firm, hard and well blanched. Color medium green with faint brown tracing on the border. Good quality.



Iceberg

PARIS WHITE COS Ladder .65
 One of the best sorts. Large, loaf shaped head, heart crisp and tender, self folding. Leaves light green. Suitable for frames and spring sowing.

OHIO GRAND RAPIDS Lado .70

CHICKEN LETTUCE Lachic .60

CALIFORNIA CREAM BUTTER Laddy .65

WAYAHEAD Lament .60

An early, medium size, compact sure heading variety. Outer leaves are medium light green. Of superior quality.

ALL SEASON Lame .60

A very large, medium late heading sort, plant rather globular, heart solid deep yellow; leaves broad and peculiarly smooth and thick. Fine quality.

MAY KING Lack .60

A good frame lettuce, quick growing. Medium sized head, leaves pale green, edges tinged brown. Quality fine.

LEEK

AMERICAN FLAG Lanate \$1.10

The favorite gardeners variety. Strong growing, broad leaved and very productive.

MUSKMELON

| | Per lb. |
|--|-----------------------|
| TIP TOP | Manakin \$.60 |
| An excellent melon for home use. Varies from round to oblong, rather large in size and a little late in maturing. Skin pale green. Flesh rich deep salmon, sweet and spicy. | |
| ROCKY FORD | Maltreat .60 |
| Our stocks are grown at Rocky Ford by a farmer of thirty years experience. He grows nothing but melons. This variety is green fleshed and is an excellent shipping melon. | |
| EXTRA EARLY HACKENSACK | Mainly .60 |
| A selection from the old Hackensack, maturing about a week earlier. | |
| OSAGE | Malice .65 |
| A large, main crop melon of superior quality; fruit dark green, covered with a shallow grey netting. Flesh rich orange-salmon, exceedingly thick, small seed cavity. | |
| EMERALD GEM | Main .60 |
| A good early variety. Just ahead of Rocky Ford in maturing. Fruit deep emerald green in color. Flesh very thick, sweet and of rich salmon color. Good for local market, but not a shipper. | |
| HOODOO OR HEARTS OF GOLD | Majestic .65 |
| A good small, midseason variety. Fruit round, densely covered with a fine gray netting. Flesh thick, ripening to the rind, with small seed cavity. A good shipper. | |
| BANANA | Machine .60 |
| Shaped somewhat as named. Grows about 2½ feet long, flesh deep salmon color and of fair quality. | |
| HONEY DEW | Maintain .75 |
| A new melon of the Casaba type. Matures with Osage and is an excellent shipping and keeping sort. | |
| ACME OR BALTIMORE | Mace .60 |
| A fine, medium early, oblong green fleshy variety of good size, skin medium green, closely netted and ribbed. Has a peculiar and distinct "neck" at the stem end. | |
| DEFENDER | Magic .60 |
| Quite identical with Burrell's Gem, medium size, oval shaped, ribbed and well netted. Flesh deep salmon and of fine flavor. | |

| | | |
|--|-----------------|-----------------------|
| POLLOCKS 10-25 | Mallard | Per lb. \$.60 |
| Our stocks of this variety are unsurpassed and being of the Rocky Ford type, except the flesh, which is a light salmon color at the center, shading into a light green midway to the rind. | | |
| CASABA | Maculate | .70 |
| One of the best. Nearly globe shaped, skin golden yellow. White flesh is juicy and sweet. | | |
| PAUL ROSE | Maltose | .60 |
| Known as Petosky. An oblong melon of the Osage type, being smaller. The fruits are deep green, slightly ribbed and fairly netted. | | |



Eden Gem

| | | |
|--|-----------------|------------|
| EDEN GEM | Magnate | .60 |
| A round type of Rocky Ford, covered with fine netting and without ribs; flesh green, tinted yellow at center, fine quality. | | |
| EDWARDS PERFECTO | Magnify | .60 |
| One of the best of Rocky Ford class. Fruit medium in size. Flesh very thin and of a beautiful salmon color, shading into green as it nears the rind. Recommended for its hardness, prolificness and excellent eating and shipping qualities. | | |
| JENNY LIND | Manage | .60 |
| A small, extra early, green fleshed melon, fruit round and flattened at the ends. | | |
| MILWAUKEE MARKET | Milwauk | .60 |
| MONTREAL MARKET | Montreal | .60 |

WATERMELONS

| | Per lb. |
|---|--------------|
| ALABAMA SWEET | Manor \$.40 |
| <p>Fairly early, oblong in form, of large size. Skin medium green, irregularly striped a dark green, flesh bright scarlet, tender and sweet; seed white. Has a tough rind and makes a good shipper.</p> | |
| TOM WATSON | Mart .40 |
| <p>Probably the best shipping melon, and one of the best main crop sorts. Seeds brown. We have fine stocks of this variety, unsurpassed by any seedsmen.</p> | |
| KLECKLEY SWEET | Marker .40 |
| <p>One of the best melons on the market. Rind thin, quality good, but will not ship to distant markets.</p> | |
| HALBERT HONEY | Marbly .40 |
| <p>This melon was originated by Mr. Halbert of Coleman, Texas and is in some respects similar to Kleckley Sweet. A fine quality melon. Seeds white.</p> | |
|  | |
| <p>Rattlesnake</p> | |
| STONE MOUNTAIN | Marston .50 |
| <p>Large and oblong, rind tough and a pale color, white, crisp and mild in flavor. good shipper.</p> | |
| RATTLESNAKE | Marand .40 |
| <p>Large blocky melon. Dark green fairly tough rind. Flesh sweet, scarlet with few seeds; very prolific, not recommended for shipping.</p> | |
| IRISH GREY | Margrave .40 |
| <p>A large, long, main crop variety with a gray-green skin, shell very tough rind and a good shipper. Flesh firm and sweet. Seeds brown.</p> | |
| MONTE CRISTO | Marcris .40 |
| WONDERMELON | Marmon .45 |
| DIXIE BELL | Marbell .50 |
| <p>A large, medium early melon. Oblong in shape, rind dark green, striped with lighter shades; flesh bright red and of fine quality; fair shipper. Seed black.</p> | |

| | Per lb. |
|---|---------------|
| PEERLESS OR ICE CREAM | Marrow \$.40 |
| Early, medium size and one of the best for growing in the North. Seed white. | |
| INDIANA SWEETHEART | Marshy .40 |
| A good shipper with tough rind. Color light green. Flesh bright red and fair quality. Seeds black. | |
| COLE'S EARLY | Mantis .40 |
| One of the earliest and best sorts, medium size, nearly round, rind dark green, striped a lighter shade. Flesh deep pink and fine quality. Seeds black. | |
| PHINNEY'S EARLY | Marphin .40 |
| Very early oblong medium size melon; rind mottled with various shades of green presenting an almost scaly appearance; quality good. Light brown seeds. | |
| HUNGARIAN HONEY | Margin .45 |
| A good early variety, globe shaped, color dark green, mottled and veined with a darker shade. Flesh bright red. Seeds brown and very small. | |
| FLORIDA FAVORITE | Maple .40 |
| Oblong shape and grown to a fair size, rind light green, with the regular stripes of a dark green. Ten days earlier than Kolb's Gem. Fine quality, seeds white. | |
| KOLB'S GEM | Marine .40 |
| A large size and good shipper. Nearly round in form, rind dark green striped with lighter shades, fair quality, black seeded. | |
| MOUNTAIN SWEET | Maroon .40 |
| An old variety, fairly early, medium in size, slightly oblong and very dark green. Seed brown. | |

MUSTARD

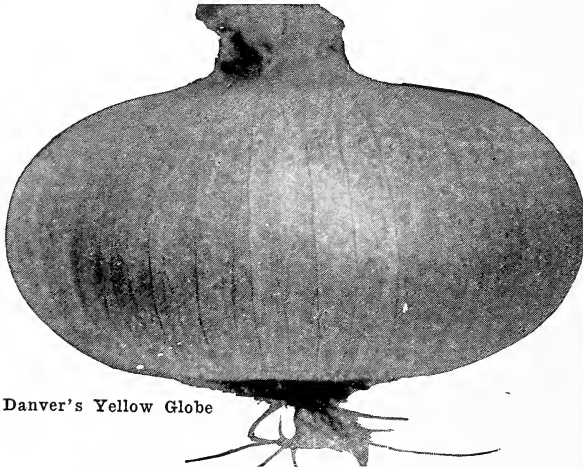
| | |
|---|---------------|
| GIANT SOUTHERN CURLED | Metric \$.30 |
| A good hardy plant spreading growth, leaves large, light green, tinged yellow, much crumpled and at edges. Popular market variety in the South, seed small. | |
| BLACK OR BROWN | Mebro .30 |
| WHITE OR YELLOW | Mandon .30 |
| CHINESE | Manifold .30 |
| Vigorous growing variety with leaves crumpled and curled, used as a vegetable and suitable for garnishing. | |

OKRA

| | | Per lb. |
|---|----------|---------|
| WHITE VELVET | Occident | \$.30 |
| Tall growth, pods long, round, smooth and of a velvety white color. | | |
| PERKINS LONG POD | Observe | .30 |
| One of the best and most productive, green pods 4 to 5 in. | | |

ONIONS

| | | |
|---|--------|--------|
| RED WETHERSFIELD | Object | \$1.10 |
| One of the oldest and best known types of onion. Very productive. | | |
| DANVER'S YELLOW GLOBE | Oblige | 1.10 |
| Early, bulb rather spherical, short top. Outer reddish brown skin. Long keeping sort. | | |
| SOUTHPORT RED GLOBE | Oblige | 1.30 |
| The best variety of the Red Onions. An excellent keeper. | | |



Danver's Yellow Globe

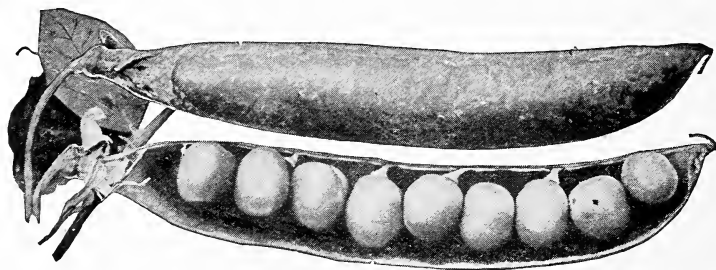
| | | |
|---|----------|------|
| SOUTHPORT YELLOW GLOBE | Observe | 1.30 |
| The most largely grown Yellow onion. Flesh white, crisp and mild in flavor. | | |
| SOUTHPORT WHITE GLOBE | Oblong | 1.50 |
| An exceedingly mild onion with pure white delicate skin. Usually commands highest market price. | | |
| PORTUGAL | Obsolute | 1.50 |
| A large flat onion of mild and pleasant flavor. Used as a pickler and for bunching. | | |

| | | Per lb. |
|--|----------|---------|
| SILVERSKIN | Obstruct | \$1.50 |
| Same as Portugal. | | |
| PRIZETAKER | Obligate | 1.35 |
| A good keeper. Flesh pure white, mild in flavor. | | |
| BROWN GLOBE | Obglow | 1.20 |

PEAS

| | | Per lb. | Bag lots |
|--|----------|---------|----------|
| ALASKA | Facer | \$.10½ | \$.10 |
| Height 2½ feet. Very early. Distinct pale green foliage. Pods straight. Seed of good green color. Favorite for canners. | | | |
| FIRST & BEST | Pander | .10½ | .10 |
| A standard extra early white pea. Height 2½ feet. Pods small, single or in pairs. | | | |
| GRADUS OR PROSPERITY | Pagoda | .12½ | .12 |
| Heights 2½ to 3 feet. A standard early sort, large podded variety. Popular with market gardeners. | | | |
| THOS. LAXTON | Palatine | .12½ | .12 |
| Height 3 feet. Fine first early sort, with very long pods, rich deep green. Excellent flavor, very prolific. | | | |
| NOTT'S EXCELSIOR | Palely | .12½ | .12 |
| An extra early, standard pea. Height 1 foot. Productive and high quality. | | | |
| AMERICAN WONDER | Package | .12½ | .12 |
| Height 1 foot. Good early, standard sort. Pods straight, small square ended, dark green. Good cropper, popular for early use. | | | |
| LAXTONIAN | Pair | .13 | .12½ |
| A large podded, dwarf variety on the order of Gradus, though more dwarf and a little earlier. Height 1½ feet. | | | |
| McLEANS LITTLE GEM | Palpus | .10½ | .10 |
| Similar to Premium Gem, but somewhat taller in growth. | | | |
| PREMIUM GEM | Palmist | .10½ | .10 |
| Height 1½ feet. An improved and more dwarf strain of McLeans Little Gem. Pods light green 3 inches long, containing 6 to 8 green peas of fine quality. Productive. | | | |
| TELEPHONE | Panic | .12½ | .12 |
| Heights 4½ feet. An old standard main crop sort of high quality. Pods long light green, containing eight pale green peas. | | | |

| | Per lb. | Bag lots or more |
|--|---------|---------------------|
| DWARF TELEPHONE Paddock | \$.13 | \$.12½ |
| Height 2½ feet. Pods dark green, 4½ in. long. Peas of fine quality. | | |
| BLUE BANTAM Pan Blue | .13 | .12½ |
| Extremely early, unusually productive dwarf, vigorous vines. Most sweet and delicious. | | |
| PETER PAN Panpan | .13 | .12½ |
| Most desirable. Tender, unsurpassed in sweetness. | | |
| CHAMPION OF ENGLAND Paddle | .12½ | .12 |
| Height 5 feet. Tall, late sort. Pods rather small medium green, often in pairs, straight, blunt ended. Productive. | | |
| BLACK MARROWFAT Palmar | .10½ | .10 |
| WHITE MARROWFAT Pang | .10½ | .10 |
| Height 5 feet. Pods light green, 3½ inches long. | | |
| POTLACH Palm | .12½ | .12 |
| Height about 24 inches. Pods medium green, about 3½ to 4 inches long containing large sized peas. Ready for table about 60 days from date of planting. | | |
| LITTLE MARVEL Palace | .12½ | .12 |
| Height 1½ feet. Early sort. Pods large. Heavy cropper. | | |



Little Marvel

| | | |
|---|------|------|
| DWARF CHAMPION Pantry | .12 | .11½ |
| Height 2½ feet. Pods dark green 4 in. long containing 7 to 8 large medium green peas of fine quality. | | |
| ALDERMAN Packet | .12½ | .12 |
| Height 5 feet. Tall, robust growing sort. Foliage medium green. Pods long broad, dark green, pointed slightly curved with about 9 peas of good quality. | | |

| | Per lb. | Bag lots or more |
|--|----------------|---------------------|
| BLISS EVERBEARING | Padding \$.13 | \$.12½ |
| An old standard, main crop variety. Height 3 feet. Matures following Telephone. Pods in pairs, medium green, 3 in. long, containing 4 to 5 green peas of good quality. | | |



Premium Gem

| | | |
|---|-------------|------|
| DWARF GREY SUGAR | Panther .15 | .14½ |
| Edible pod. Grey seed; height 2 feet. | | |
| IMPROVED STRATAGEM | Panto .12½ | .12 |
| Height 2 feet. Main crop. Pods long large, dark green, containing 8 to 9 medium green peas. Well known sort. | | |
| AMEER | Pacify .12 | .11½ |
| Height about 3 feet. Early large blue pea. Pods broad, dark green, of good size, slightly curved. Popular and productive. | | |
| McLEAN'S ADVANCER | Parable .12 | .11½ |
| A well known, popular sort, much in favor with the canning trade. A little earlier than Horsfords Market Garden. Height 2¼ feet. Pods light green 3 in. long, filled with 6 light green peas. | | |
| MAMMOTH MELTING SUGAR | .19 | .18½ |
| Best known edible podded variety. Delectable and sweet, served like string beans. | | |

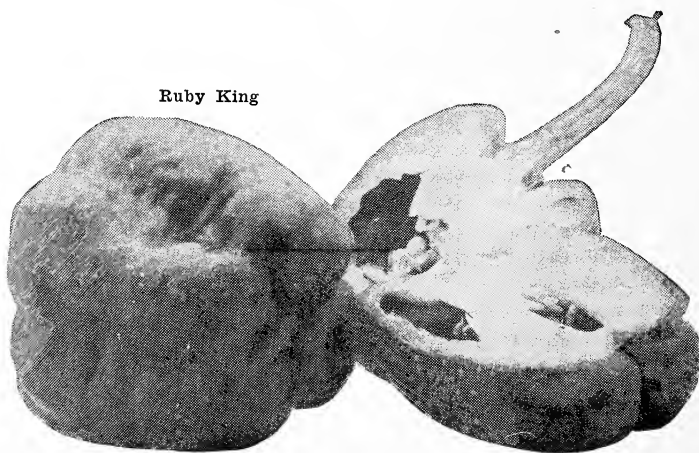
PARSLEY

| | Per lb. |
|--|-----------------|
| PLAIN | Parplain \$.35 |
| Flat leaves deeply cut, but not curled. Dark green in color. | |

| | | Per lb. |
|---|---------|---------|
| MOSS CURLED | Paragon | \$.40 |
| Very compact, densely curled and crumpled. Leaves dark green, giving a moss like appearance. | | |
| DOUBLED CURLED | Paradox | .40 |
| Compact growing. Curled leaves of attractive dark green color. Vigorous. Useful for garnish- ing. | | |
| HAMBURG OR TURNIP ROOTED | Parham | .45 |

PEPPERS

| | | Per lb. |
|---|----------|---------|
| RUBY KING | Parcel | \$2.40 |
| A very popular variety. Plant early, dwarf, of compact growth. Fruits thick, slightly tapering. Very productive and very sweet. | | |
| BELL OR BULL NOSE HOT | Parchot | 2.60 |
| BELL OR BULL NOSE SWEET | Parsweet | 2.40 |
| Early sort of bright red color. Fruits blunt end- ed, almost square, ridged, flesh sweet. | | |



| | | |
|---|--------|------|
| SWEET MOUNTAIN | Pardon | 2.40 |
| Similar to Bull Nose, but more elongated; pendent fruits often grow 6 inches long by four inches in diameter, bright red, mild and sweet. | | |
| LONG RED CAYENNE | Parget | 2.60 |
| Bright scarlet fruits, 3 inches long, slightly curv- ed. Long, slender shape. | | |

| | | Per lb. |
|--|----------|---------|
| PIMENTO OR PERFECTION | Parfet | \$2.25 |
| A very thick fleshy heart-shaped smooth, mild, crimson variety, much used for salads. | | |
| CHINESE GIANT | Parchin | 4.00 |
| One of the largest of the mild red variety. Fruits pendent, thick, blocky, and square ended. | | |
| GOLDEN QUEEN | Parqueen | 4.00 |
| WORLD BEATER | Parbeat | 2.50 |
| TOBASCO | Partobe | 3.80 |

PARSNIPS

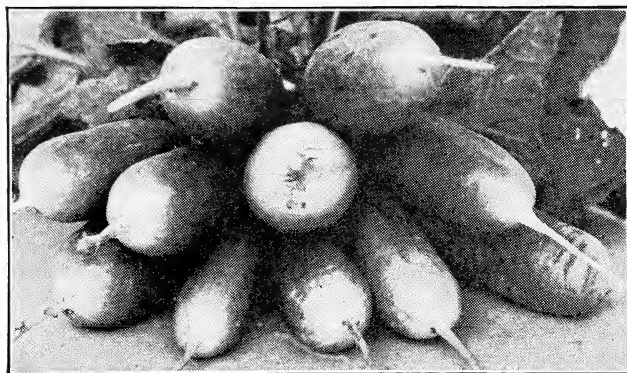
| | | |
|--|---------|--------|
| HOLLOW CROWN | Parapet | \$.40 |
| Root about 12 inches long. Skin white and smooth. Heavy cropper. Requires a deep soil. | | |
| IMP. GUERNSEY | Parasey | .40 |
| A good half long variety. Tender, with sugary flavor. | | |



Hollow Crown

RADISH

| | | |
|--|---------|--------|
| EARLY SCARLET TURNIP | Rack | \$.40 |
| Early, round, deep scarlet, crisp and tender. | | |
| CRIMSON GIANT | Rankle | .45 |
| Large, but not pithy. One of the best for outdoor culture. Top is a little too large for a forcing sort. Intermediate in season. | | |
| SCARLET GLOBE | Rampage | .35 |
| One of the earliest forcing radishes. Roots of medium size, globe shaped, with a very small top. Bright scarlet color. Flesh crisp and tender. | | |
| SCARLET TURNIP WHITE TIP | Racket | .40 |
| Early spherical sort, three quarters rose, one quarter white. Quick grower. Crisp and tender. | | |



Scarlet Turnip White Tip

| | Per lb. |
|--|--------------|
| LONG SCARLET SHORT TOP | Rally \$.40 |
| Root about six inches long and of scarlet color. Top short. Good quality. | |
| ICICLE | Radical .40 |
| The earliest of the long white sorts. Roots pure white. Flesh compact, of fine quality. Popular among Gardeners. | |
| LADYFINGER | Rancher .40 |
| An early long radish for summer use. Root seven inches in length. White slightly tinged green at the top. Flesh firm. | |
| FRENCH BREAKFAST | Rail .40 |
| Good early sort. Root cylindrical. Skin smooth, pink, with small white tip. Good outdoor or under glass. Very popular. | |
| WHITE STRAUSBURG | Rampant .45 |
| Root half long, medium early, pointed 4-5 inches long. Flesh white, pungent. Keeps very well. | |
| LONG BLACK SPANISH | Radio .45 |
| Late sort. Root cylindrical, long blunt ended. Skin black, smooth. Flesh white and crisp. | |
| ROUND BLACK SPANISH | Rafters .45 |
| Second early globe shaped; skin black, smooth, flesh white, crisp and pungent. | |
| CHINA ROSE, WINTER | Ranger .45 |
| One of the best winter sorts. Roots 4-5 inches long, larger at the bottom. Bright red skin, somewhat striped with white, stump-rooted. Flesh white, of delicious flavor. | |
| CALIFORNIA WHITE MAMMOTH | Rage .45 |
| SPARKLER | Ranspark .40 |
| Similar to Scarlet White Tip. | |

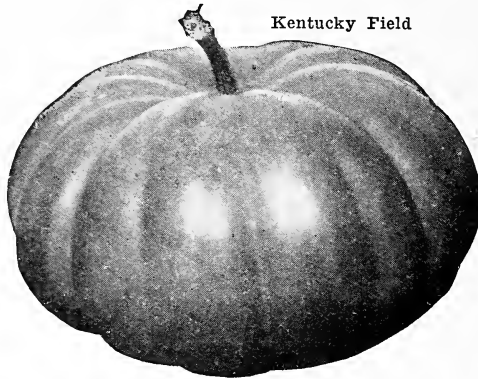
| | Per lb. |
|--|---------|
| LONG BRIGHTEST SCARLETRamble | \$.40 |
| One of the colored as well as the earliest of the long scarlet radishes. A good forcing sort. | |
| EARLY WHITE TURNIPRaddle | .40 |
| First early variety. Grows in about 20 days. Roots slightly flat, short top, small leaves. Skin and flesh white and pungent. | |
| HALF LONG DEEP SCARLETRaisin | .40 |
| Roots are half long, somewhat tapering at the point, and of a deep, rich red color, of quick growth and seldom pithy. | |
| NE PLUS ULTRA OR FIREBALLRacer | .40 |
| The earliest radish for forcing. Medium size. Small leaves, short top, skin bright scarlet, very popular. Delicious flavor. | |
| WHITE OLIVERaccoon | .40 |
| Second early sort, grows in about 30 days. Small top, pure white flesh, crisp and firm. Fine flavor. | |



Icicle

PUMPKIN

| | |
|---|--------|
| LARGE YELLOW PUMPKINPeril | \$.40 |
| CONNECTICUT FIELDParity | .40 |
| Used for planting corn for stock feeding, also for pies. | |
| KENTUCKY FIELDParlance | .25 |
| One of the best canning sorts. Sometimes called Large Cheese. Flesh yellow, very deep and fine quality. | |
| LARGE CHEESEPatch | .25 |
| Same as Kentucky Field. | |
| SMALL SUGAR OR PIEPie | .45 |



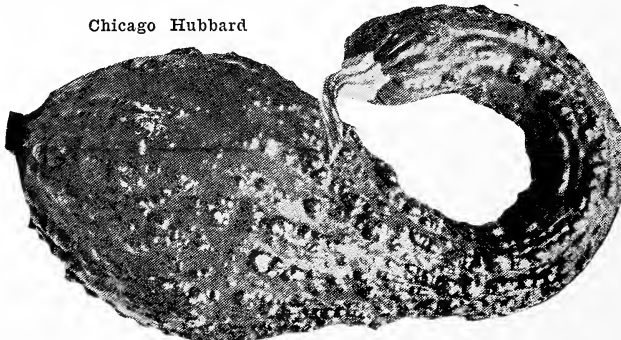
Kentucky Field

| | | |
|---|---------|-----------------|
| JAPANESE PIE | Parody | Bag lots \$.50 |
| Shaped like the Cushaws and grows to a large size. Seed sculptured like chinese letters. | | |
| GREEN STRIPED CUSHAW | Parley | .60 |
| One of the crookneck type with mottled green and white stripes. | | |
| KING OF MAMMOTHS | Parking | .65 |
| Giant among pumpkins. Round flattened fruit, slightly ribbed; salmon-orange skin. Bright yellow,, very thick flesh. | | |
| ZUCCHINI | Parzuck | .60 |

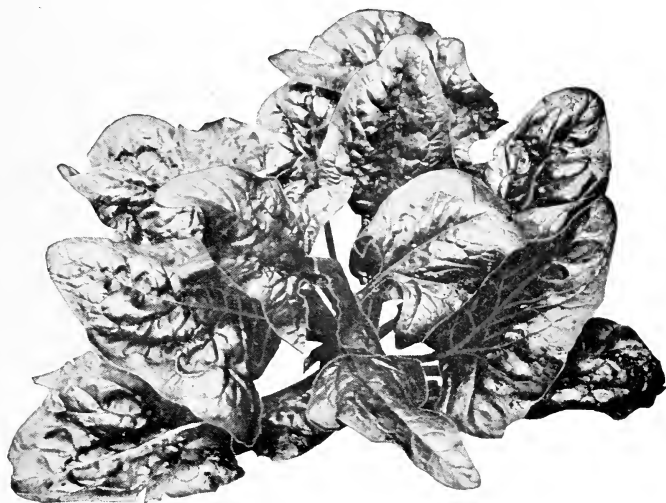
SQUASH

| | | |
|--|--------|--------|
| CHICAGO HUBBARD | Saddle | \$1.00 |
| More heavily warted than the well known Hubbard. Very dark green, almost black in color. | | |
| MAMMOTH WHITE BUSH | Samoth | .60 |
| Early, fruit flattened and scalloped. About 8 inches in diameter. Also known as Patty Pan. | | |

Chicago Hubbard



| | | Per lb. |
|---|------------|---------|
| GOLDEN HUBBARD | Sadness \$ | .75 |
| Not as large as the old Hubbard. Good quality. | | |
| EARLY WHITE BUSH | Sabot | .60 |
| YELLOW CROOKNECK | Sable | .60 |
| The largest and one of the earliest summer varieties. Fruits often 2 to 2½ feet long, very warty and deep orange in color. | | |
| HUBBARD | Savory | 1.00 |
| DELICIOUS | Sadel | .60 |
| Medium size fall and winter sort; top-shaped in form and dark green. Orange flesh very dry delicious. | | |
| BANANA | Salt | .60 |
| Oblong variety with grey green shell, with irregular stripes and dashes of a darker shade. Solid dry flesh rather late in maturing. | | |



Imp. Thick Leaf Spinach

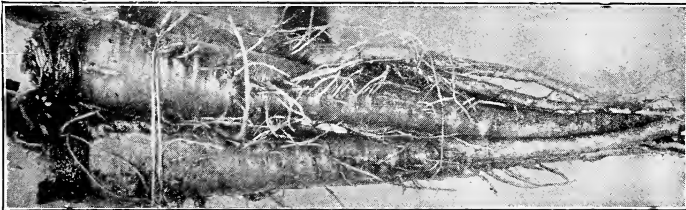
SPINACH

| | | |
|--|-----------|-----|
| NEW ZEALAND | Salmon \$ | .30 |
| Plant different from Spinach, but is used in place of Spinach in dry soils. Leaves thick and numerous. | | |
| BLOOMSDALE SAVOY | Salable | .20 |
| Very early sort, round seeded; one of the best for market, with broad glossy, dark green leaves, crumpled. | | |

| | Per lb. |
|---|--------------|
| LONG STANDING | Salad \$.20 |
| Late, slow growing sort, round seeded. Leaves numerous, crinkled, deep green. Excellent variety for spring use. | |
| VICTORIA | Sallow .20 |
| Late, round seeded variety. Leaves dark green, broad, thick, round. Slow to run to seed, best for market. | |
| IMP. THICK LEAF | Sage .20 |
| A strong, upright growing medium early sort. | |

SALSIFY

| | |
|--|---------------|
| MAMMOTH SANDWICH ISLAND | Salute \$1.40 |
| An improvement of the ordinary type. Root thicker and shorter. Leaves larger than the foregoing. Flowers rose. | |

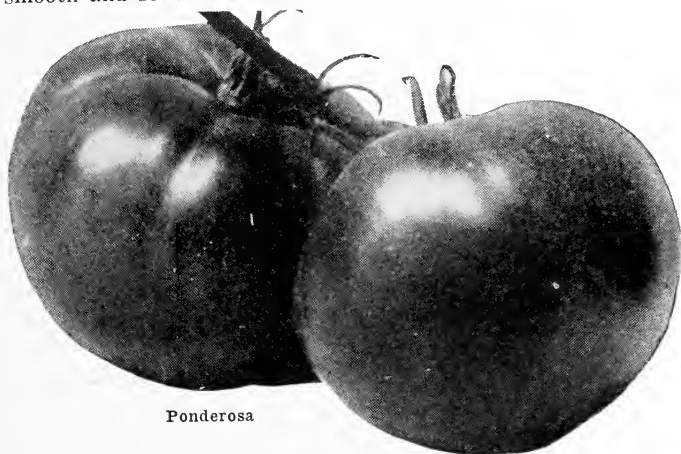


Mammoth Sandwich

TOMATOES

| | |
|--|---------------|
| DWARF STONE | Tablet \$3.00 |
| The best of the dwarf tomatoes, fruit large, smooth, round, very solid and of a deep scarlet color. | |
| MARGLOBE | Tomar 3.00 |
| EARLIANA | Taboo 2.40 |
| The earliest and best of the very early tomatoes, very productive for an early sort; fruit of fair size, round, very smooth and solid. Color bright scarlet. | |
| CHALK'S EARLY JEWEL | Tabes 2.40 |
| A fine early variety, about 10 days later than Earliana; fruit uniformly smooth, round and solid. Color crimson. A good canning sort for the North. | |
| PONDEROSA | Tagal 4.00 |
| A large, purple fruited tomato, and for home use one of the best. Fruit large, few seeds. | |

| | | Per lb. |
|--|--------|---------|
| BONNY BEST | Tabby | \$2.50 |
| About a week earlier than Chalk's Early Jewell. Fruit smaller, very smooth, solid and uniform. Color bright red. | | |
| BEEFSTEAK | Taylor | 4.50 |
| Large, perfectly smooth, glossy, bright red flesh, firm; excellent quality. | | |
| McGEE | Take | 2.60 |
| STONE NEW | Talent | 2.40 |
| A favorite with Canners and Truckers. Always dependable. Deep red in color. Fruits large, smooth and solid. | | |



Ponderosa

| | | |
|--|---------|------|
| GREATER BALTIMORE | Talker | 2.00 |
| A main crop, very productive, red fruited variety of the Matchless Type; quite popular with the Canners. | | |
| CRIMSON CUSHION | Tail | 4.00 |
| A large bright red tomato similar to the Ponderosa. | | |
| FAVORITE | Tofavor | 2.00 |
| Fine quality, fruit smooth, solid and flesh bright. | | |
| RED ROCK | Tally | 2.00 |
| A good selection of the Matchless type, medium early, round, smooth and bright red color. | | |
| JOHN BAER | Tobear | 3.00 |
| Early productive red tomato, similar to Chalk's Jewel. | | |

| | | |
|---|---------|-------------------|
| JUNE PINK | Tangle | Per lb. \$3.00 |
| Similar to Earliana, different only in purple fruit. The best extra early purple or pink fruited variety. | | |
| OXHEART | Toheart | 5.00 |
| Excellent, large heart-shaped. Flesh firm, thick, thick, almost seedless. Purple skin. | | |

TURNIPS

| | | |
|--|--------|--------|
| PURPLE TOP WHITE GLOBE | Tapis | \$.25 |
| Globe form, flesh and skin white, colored purple, or red, above ground. Very fine grained and sweet. | | |
| PURPLE TOP STRAP LEAF | Tappet | .25 |
| Root flat. Skin white, with purple top. Flesh white, of fine quality. | | |
| IMP. PURPLE TOP RUTABAGA | Tabaga | .25 |
| SEVEN TOP | Tavern | .15 |
| Used principally in the South for greens. Produces an abundance of leaves. | | |



Purple Top White Globe

| | | |
|---|--------|-----|
| SOUTHERN PRIZE | Teach | .15 |
| Grown exclusively for the tops, which are used for greens. | | |
| PURPLE TOP MILAN | Toplin | .30 |
| WHITE EGG | Tasty | .25 |
| Early, egg shaped. Skin white and smooth. Flesh pure white, firm and sweet. Quick grower. | | |
| EARLY, WHITE MILAN | Targe | .30 |
| First early. Smooth and white skin. Root flat. Pure white flesh of fine quality, suitable for frames. Highly recommended. | | |

| | | Per lb. |
|---|---------|---------|
| POMERANIAN WHITE GLOBE | Tapom | \$.25 |
| SNOWBALL | Tardy | .25 |
| A reliable early round sort, with white skin and pure white flesh. Root very smooth, with small top. | | |
| WHITE FLAT DUTCH | Tarflat | .20 |
| Early variety. Root round, flat. Flesh white, tender. Leaves divided. Superior quality. | | |
| COWHORN | Tarnish | .25 |
| Late sort, root 12-15 inches long, tapering. Flesh white, sugary. Very productive, suitable for autumn use. | | |
| YELLOW ABERDEEN | Tarpon | .25 |
| A late, medium sized, long keeping variety; roots round, yellow with a purple top, flesh tender and sweet. | | |

THRIFT FLOWER SEED IN BULK

We offer our customers, to increase their profit by selling flower seed in bulk in place of packets. Our flower seed is of the best quality and will not disappoint.

SWEET PEAS

The most popular and widely grown flower of America. Everyone appreciates their delicate form and odor.

| | Per oz. | Per lb |
|---------------------|---------|--------|
| Sweet Peas, Choice | | |
| Mixed | | \$0.45 |
| Sweet Peas, Spencer | | |
| Mixed | | .75 |

NASTURTIUMS

The popular border flower and a universal seller. Hardy and brilliant colorings make this seed move in quantities.

| | | |
|-------------------|---------|--------|
| Dwarf Mixed | Nasdor | \$.50 |
| Tall Mixed | Nastall | .45 |

| | Per oz. | Per lb. |
|-------------------------|---------|---------|
| Aster, Victoria Mixed.. | \$.125 | \$12.50 |
| Aster, Giant Comet | | |
| Mixed | .25 | 3.00 |
| Aster, Queen of the | | |
| Market | .50 | 7.50 |
| Aster, Tall Branching | .50 | 7.50 |
| Alyssum, Sweet | .20 | 2.50 |
| Antirrhinum, (Snap- | | |
| dragon) | .25 | 3.50 |

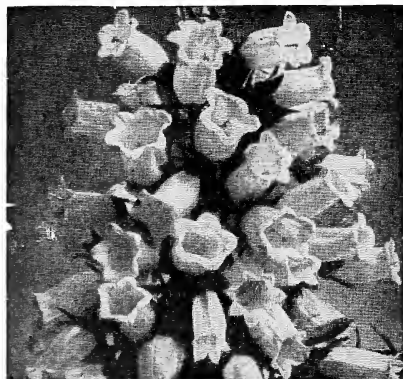


Sweet Pea



Hollyhock

| | Per oz. | Per lb. |
|------------------------------------|---------|---------|
| Ageratum, Fine Mixed | \$.20 | \$2.50 |
| Bachelor's Button, Fine Mixed | .20 | 2.50 |
| Balsam, Double Cam- ellia Mixed | .50 | 5.00 |
| Balloon Vine | .20 | 1.50 |
| Calliopsis, Fine Dwarf Mixed | .20 | 2.50 |
| Canterbury Bells | .25 | 4.00 |
| Candytuft, Fine Mixed | .20 | 2.00 |
| Carnation, Marguerite Mixed | .50 | 6.00 |
| Chrysanthemum, Dou- ble Mixed | .25 | 3.00 |
| Chrysanthemum, Sin- gle Mixed | .20 | 2.00 |



Canterbury Bells

Per oz. Per lb.

| | | |
|------------------------------------|------|-------|
| Cockscomb, Fine | | |
| Mixed | .30 | 4.25 |
| Cosmos, Large Flow- ering Mixed | .20 | 2.75 |
| Cypress Vine | .20 | 2.25 |
| Calendula (Pot Mari- gold) | .20 | 2.00 |
| Castor Beans, Ricinus | .20 | 1.00 |
| Dahlia, Double Mixed | 1.00 | 15.00 |
| Dahlia, Single Mixed | .20 | 3.00 |
| Daisy, Double Mixed | .75 | 10.00 |
| Forget-Me-Not, Mixed | .40 | 5.00 |
| Four O'Clock | .20 | 1.25 |
| Fox Glove, Fine Mixed | .20 | 3.00 |



Aster

| | | |
|---------------------------------------|-------|---------|
| Gaillardia, Mixed | .20 | 3.00 |
| Gypsophila (Baby's Breath) | .20 | 1.75 |
| Heliotrope, Dark Va- rieties Mixed | 1.00 | 12.50 |
| Helichrysum (Straw- flower) | .30 | 4.00 |
| Hollyhock, Double Mixed | .50 | 7.00 |
| Hollyhock Single Mixed | \$.20 | \$ 2.75 |
| Hyacinth Beans | .20 | .75 |
| Ice Plant | .30 | 4.00 |
| Kochia, Mexican Fire Bush | .20 | 1.25 |



Poppies

| | Per oz. | Per lb. |
|-------------------------------------|---------|---------|
| Kudzu Vine, Japanese | .20 | 2.50 |
| Larkspur, Double Mixed | .20 | 3.00 |
| Marigold, African Mixed | .20 | 2.50 |
| Marigold, Prince of Orange | .20 | 2.00 |
| Mignonette, Sweet | .20 | 1.00 |
| Moonflower, Ipomea | .35 | 4.00 |
| Morning Glory, Japanese | .20 | 1.25 |
| Morning Glory, Tall Mixed | .20 | 1.00 |
| Nasturtium, Dwarf Mixed | | .50 |
| Nasturtium, Tall Mixed | | .45 |
| Pansy, Choice Mixed | .35 | 4.50 |
| Pansy, Giant Trimardeau | 1.00 | 12.00 |
| Pansy, King of Blacks | 1.00 | 12.00 |
| Petunia, Fine Mixed | .35 | 4.50 |
| Pinks, Double China Mixed | .20 | 3.00 |
| Phlox, Mixed | .35 | 4.50 |
| Poppy, American Legion | .20 | 1.75 |
| Poppy, Double Carnation | .20 | 2.50 |
| Poppy, Shirley | .20 | 2.50 |
| Portulaca (Rose Moss), Double Mixed | 1.00 | 15.00 |

| | | |
|--|------|-------|
| Portulaca (Rose Moss), Single Mixed | .50 | 6.00 |
| Snapdragon (Antirrhinum) Mixed | .25 | 3.50 |
| Salvia, Splendens | 1.50 | 18.00 |
| Scarlet Runner Beans | .20 | .40 |
| Stocks, Double 10 Weeks | .40 | 5.00 |
| Sunflower, Double Mixed | .20 | 2.50 |
| Sweet William, Double Mixed | .40 | 5.00 |
| Sweet William, Single Mixed | .20 | 3.00 |
| Verbena, Fine Mixed | .40 | 5.00 |
| Vinca, Periwinkle | .20 | 2.00 |
| Zinnia, Dahlia Flowered | .50 | 8.00 |
| Zinnia, Giant Double Mixed | .40 | 6.00 |
| Zinnia, Choice Mixed | .20 | 3.00 |
| Zinnia, Colossal Extra Double Choice Mixed | .50 | 6.00 |
| Zinnia, Striped Double Mixed | .50 | 6.00 |

HERBS

| | | |
|--------------|---------|--------|
| Thyme | Haggard | \$3.50 |
| Sage | Hagen | 3.00 |
| Corn Salad | Hercorn | .60 |
| Anise | Habit | .75 |
| Caraway | Hack | .60 |
| Chervil | Hercher | .40 |
| Sweet Fennel | Haft | .40 |



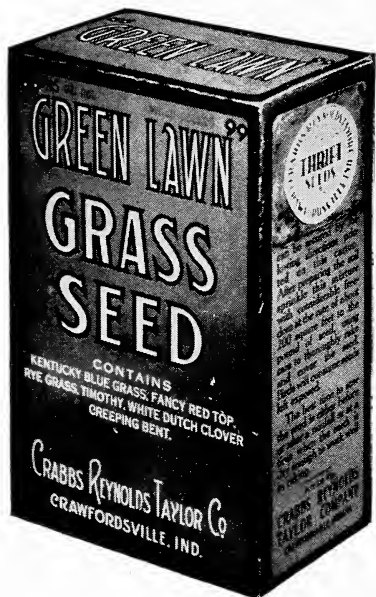
Petunia

LAWN GRASS SEED

GREEN LAWN GRASS SEED

Contains the proper grasses proportionately blended to make a good, quick growing lawn and at the same time insuring a lasting quality.

We claim this mixture cannot be beaten at the prices quoted. A trial order will convince the most critical trade.



PRICE
In Cartons
15½ Oz. Net

18c

Each

Packed 25 and 50
to the case

PRICE
In Bulk
16c

Per Pound

For less than 25
lb. lots, add 2c
per lb. for ad-
ditional cost of
packing.

GENUINE SHADY LAWN MIXTURE

This is a carefully selected and proportioned mixture of grasses that will grow in the shade of trees, in area-ways, between buildings and in other places that get little or no sunshine and where ordinary varieties of grasses will not thrive.

PRICES

In 15 Oz. Cartons
(25 and 50 to case)

30c

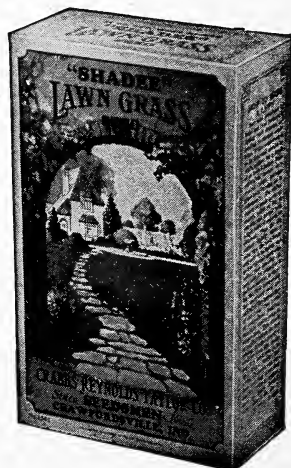
Each

In Bulk

28c

Per Pound

Freight allowed on Lawn Grass orders
totaling 100 lbs. or more.



THRIFT LAWN SEED

A mixture of finest grasses, well balanced and will give a perfect lawn. We have not changed our formula for several years and sales are increasing rapidly each year. THERE MUST BE A REASON.



INDIANA HOME LAWN SEED



PRICE

| | |
|-------------------|------------|
| In 15 Oz. Cartons | |
| Packed 25 and 50 | In Bulk |
| to case | |
| 28c | 26c |
| Each | Per Pound |

In 1 Qt. Cartons
(Packed 25 and 50 to Case)

15c
Each

GREEN LAWN JR. GRASS SEED

| | |
|------------|---------------|
| 5 Oz. Pkg. | |
| Retailer— | Per 100 |
| 10c | \$6.00 |

We have recently installed additional machinery for packing Lawn Seed in Cartons and Bags and can give you prompt shipments.

Freight allowed on orders totaling 100 lbs. or more on Lawn Grass.

We are manufacturers of a complete line of POULTRY and ANIMAL FEEDS sold under the trade names NEW IDEA and MARY ANN.

Our feed manufacturing plant at Lafayette, Indiana, and our line of seventeen country elevators are located in the heart of the grain belt, making it possible to centralize our buying thus giving the poultryman and the farmer the advantage of an unexcelled line of QUALITY FEEDS which will produce BEST RESULTS at LEAST COST.

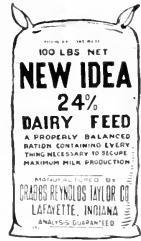
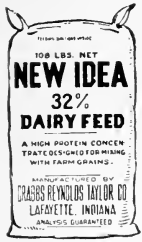
Whether or not you are handling a line of commercial poultry feeds, we know that NEW IDEA and MARY ANN feeds can be made the predominating feeds in your community with the least amount of sales resistance.

All we want is the opportunity to show you that our line of feed will pave your way to a BIGGER and BETTER feed business.

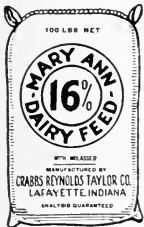
Write for samples and prices today.

CRABBS REYNOLDS TAYLOR COMPANY
Crawfordsville **Lafayette**

OUR LINE



IS



PROFITABLE





FIELD SEED

We are Headquarters for all kinds of field seeds. Thrift Quality Seeds are not excelled by any. Ask for latest quotations.

MEDIUM CLOVER

| | | |
|--------------------------------|--------------|------|
| Thrift | 99.50-99.75% | Pure |
| Laurel | 98.75-99% | Pure |
| Legal | 97.50-98% | Pure |
| Mammoth same quality as Medium | | |

ALSIKE CLOVER

| | | |
|--------------|--------------|-------|
| Thrift | Laurel | Legal |
|--------------|--------------|-------|

SWEET CLOVER

| | | |
|--------------|---|-----------|
| Thrift | } | White and |
| Laurel | | Yellow |
| Legal | | Blossom |

TIMOTHY

| | | |
|--------------|--------------|------|
| Thrift | 99.50-99.75% | Pure |
| Laurel | 98.75-99% | Pure |
| Legal | 98% | Pure |

ALFALFA

| | |
|--------------------------------------|-------|
| Northwestern, Kansas, Colorado Grown | |
| Thrift | |
| Laurel | |

GRIMM ALFALFA

| | |
|------------------------|-------------|
| Idaho Grown | |
| 30-60 and 150 lb. | Sealed Bags |
| Utah Grown | |
| 60-lb. | Sealed Bags |

MISCELLANEOUS—Rape, White Clover, Red Top, Cane Seed, Vetch, Seed Corn, Ky. Blue Grass, Orchard Grass, Sudan Grass, Soy Beans, Millets, Buckwheat, Cotton Bags, Rye Grass, Barley, Seed Wheat, Seed Oats.

NOTICE—We are now packing Thrift Field Seeds in attractive cotton bushel bags at slight extra cost. Ask for prices.

DATED - Fresh Each Year



The Original Legume INOCULATOR

PRICES

Alfalfa, All Clovers

| Size | Dealer | Retail |
|--------------|--------|--------|
| 1/4 bu. | \$.30 | \$.40 |
| 1/2 bu. | .45 | .60 |
| 1 bu. | .70 | 1.00 |
| 5 bu. | 3.35 | 4.75 |

Peas, Vetch, Beans

| Austrian Winter Peas | |
|----------------------|---------------|
| Size | Dealer Retail |
| 1/2 bu. | \$.30 \$.40 |
| 1 bu. | .45 .60 |
| *1 1/2 bu. | .65 .90 |
| 3 1/2 bu. | 1.25 1.80 |
| 5 bu. | 1.75 2.50 |

*Also called "100 lb. size."

When ordering, always specify kind of seed

Soy Beans and Cow Peas

| | | | |
|------------|--------------|-------------|---------------|
| 1 bu. | \$.30 \$.40 | 5 bu. | \$1.05 \$1.50 |
| 2 bu. | .50 .70 | 10 bu. | 1.75 2.50 |

Telegraph Cipher or Cable Code for Weights

The telegraphic word for weights should always precede the cipher word for seeds. Please tell us in first word of telegram, how shipment is to be made "MAIL, EXPRESS or FREIGHT—thus "MAIL DACE CALM DAD CAMP", would read—"Mail at once three pounds Earl Jersey Wakefield Cabbage Four pounds Large late Drumhead Cabbage". "EXPRESS DAINTY LABAN FREIGHT DECOY BALL", would mean, "Express at once ten pounds Early Curled Simpson Lettuce Freight Six hundred pounds Burpee's Stringless Green Pod Beans".

Our customers will find this an inexpensive and quick way to secure seeds, when in a hurry. We cannot however hold ourselves responsible for any errors arising from incomplete messages or incorrect translation.

IMPORTANT. This telegraphic cipher must be used ONLY on orders by telegraph or cable and never in written orders sent by mail.

TELEGRAPHIC CODE WORD FOR WEIGHTS

| | | |
|---------------|------------------|-------------------|
| ¼ Lb.—Dab | 25 Lbs.—Danger | 300 Lbs.—Dearth |
| ½ Lb.—Dabber | 30 Lbs.—Dapper | 325 Lbs.—Debar |
| ¾ Lb.—Dabbing | 35 Lbs.—Daring | 350 Lbs.—Debate |
| 1 Lb.—Dabble | 40 Lbs.—Darken | 375 Lbs.—Debauch |
| 2 Lb.—Dabster | 45 Lbs.—Darkish | 400 Lbs.—Debit |
| 3 Lb.—Dace | 50 Lbs.—Darkness | 425 Lbs.—Debris |
| 4 Lb.—Dad | 55 Lbs.—Darky | 450 Lbs.—Decamp |
| 5 Lb.—Daft | 60 Lbs.—Darn | 475 Lbs.—Decay |
| 6 Lb.—Dagger | 65 Lbs.—Dart | 500 Lbs.—Deceit |
| 7 Lb.—Dago | 70 Lbs.—Dash | 525 Lbs.—Decide |
| 8 Lb.—Daily | 75 Lbs.—Data | 550 Lbs.—Deck |
| 9 Lb.—Dahlia | 80 Lbs.—Datum | 575 Lbs.—Declare |
| 10 Lb.—Dainty | 85 Lbs.—Daub | 600 Lbs.—Decoy |
| 11 Lb.—Dairy | 90 Lbs.—Dawn | 700 Lbs.—Deep |
| 12 Lb.—Daisy | 95 Lbs.—Deacon | 800 Lbs.—Defect |
| 13 Lb.—Dale | 100 Lbs.—Dead | 900 Lbs.—Defile |
| 14 Lb.—Dam | 125 Lbs.—Deadly | 1000 Lbs.—Defy |
| 15 Lb.—Damage | 150 Lbs.—Deaf | 1500 Lbs.—Degrade |
| 16 Lb.—Dame | 175 Lbs.—Deal | 2000 Lbs.—Deity |
| 17 Lb.—Damp | 200 Lbs.—Dealer | 2500 Lbs.—Delay |
| 18 Lb.—Damper | 225 Lbs.—Dealt | 3000 Lbs.—Delete |
| 19 Lb.—Dance | 250 Lbs.—Dean | 4000 Lbs.—Delta |
| 20 Lb.—Dandy | 275 Lbs.—Dearly | 5000 Lbs.—Dement |

