

## **Historic, Archive Document**

Do not assume content reflects current scientific knowledge, policies, or practices.



7257

**DELPHINIUMS  
HARDY PLANTS  
ROSES**

LIBRARY  
RECEIVED  
★ FEB 23 1932 ★  
U. S. Department of Agriculture.

**1932**



*Get Them from*

*Duckham*



**William C. Duckham**  
*Madison, N. J.*

DEPARTMENT OF

PHYSICS

LABORATORY

PHYSICS

PHYSICS



A VIEW OF PART OF DUCKHAMS' GREENHOUSES AND TRIAL GROUNDS  
AT MADISON, N. J.



FOR MANY YEARS my name has been closely associated with Choice Delphiniums. I have given them prominence in all the literature I have distributed. My advertising in leading magazines and newspapers has been mainly devoted to them, but my greatest notoriety in their connection has been created by the awards they have won and honors they have achieved at leading American Flower Shows, where exceptional quality alone can attract and hold the attention of both judges and public. With all the imported and domestic strains now in the country, it is with modest pride that I state I still consider mine in a class of their own. No other strains seem to be "just as good as" or "the same thing"—the great flower connoisseurs can be satisfied only with "Duckham's."

I wish to point out, however, that the Delphinium is simply a leading item that I have developed to a marked degree of perfection and in quantities to meet the ever-increasing yearly demand. All the hardy plants described herein are extra choice strains, carefully chosen for their sterling garden qualities, and are in the same "Perfection Class" as my Delphiniums.

Many new types and colors have been added this year, and prices have been fixed (regardless of the high quality) at an all-round lower rate, to conform with the general business conditions of the present day.

My collection of Roses comprises the choicest introductions of the past year with the best of the old varieties retained. Several exceptionally fine novelties are sure to please—"Olympiad" in the Hybrid Tea Class and "New Dawn" in the climbing varieties; and in the greenhouse forcing types, "Souvenir," "Sunkist" and "Senior."

Assuring all my patrons, both past and new, of my personal attention to all orders and requests, I look forward, with them, to a successful and happy gardening year in 1932.

**WILLIAM C. DUCKHAM**

**MADISON, NEW JERSEY**

January 1, 1932.

# NOVELTIES and SPECIALTIES in Hardy Plants



ENGLISH LONG-SPURRED AQUILEGIAS

## AQUILEGIA

### New English Improved Long-spurred

With their odd shapes and delightful shadings, Aquilegias (Columbines) are among the best of all Hardy Garden Plants. They thrive in almost any location, but prefer a partial shady and moist position. The kinds offered in this strain are perhaps the best and most beautiful in existence, having very long spurs and most charming delicate colors, including **Pink, Blue and Lavender, Red, Cream and White**, that are decidedly new and interesting.

Price, each 50c; 3 for \$1.25; per dozen \$4.50.

## CIMICIFUGA (Bugbane)

**RACEMOSA SIMPLEX.** This little-known plant should not be overlooked by any garden-lover, as it is, without doubt, one of the most beautiful attractions of the perennial border. The dense spikes of feathery white flowers are borne on tall, graceful stems 3 to 4 feet high, making them excellent for cutting and ideal material for vases. The plant grows best in a half-shady location. Each \$1.00.

## NEW GYPSOPHILA

**BRISTOL FAIRY.** Its flowers are almost three times as large as the old *Paniculata*, are pure snow-white under all conditions. Strong field-grown plants \$1.50 each; \$15 per doz.



The following are recommended for your consideration and trial, fully meriting a place in your Flower Borders. They are the very finest types and novel colors in their respective classes, many being my exclusive introductions. The generous sized field clumps which I send out should furnish ample flower production the first year, and fulfill their purpose in such color schemes as have already been planned and are anxiously awaited.

## ASTER

### (New Hardy Michaelmas Daisies)

**DUCKHAM'S "CELESTIAL QUEEN."** A vigorous, well-branched Michaelmas Daisy of medium growth, that simply covers itself with a cloak of thickly massed, lavender-blue flowers. The individual flowers average 1½ to 2 inches in diameter and form very large flower heads. A splendid and most desirable color for the fall garden or for cutting. Each \$1.00; 6 for \$5.00.

**BARR'S PINK.** A lovely light mallow pink with stiff petals and a brilliant golden center, growing from 3 to 4 feet high. Each \$1.00.

**BLUE GEM.** Clear blue, with large yellow center; flowers borne in large trusses. Each \$1.00.

**BRITISH QUEEN.** A soft lavender blue, semi-double, unusually large open flowers with pale yellow center. A vigorous growing well branched plant that comes into bloom early in September. Height about 4 feet. Excellent for cutting and decorations. Each \$1.00.

**NEW HYBRID YELLOW ASTER.** Quite a new departure in color; a clear yellow shade, rather small flowers gracefully arranged in large, long-stemmed trusses. Each \$1.00.

**NEW PINK.** Bright rosy pink, large flowers; plant of free-branching habit. A charming new color in hardy asters. Each \$1.00.

**SKYLAND QUEEN.** (New.) Very large heads of rich blue flowers; very bushy and compact; rather dwarfier than "Celestial Queen." Each \$1.00; 6 for \$5.00.

## GAILLARDIA

**DUCKHAM'S NEW HYBRIDS** (Blanket Flower). The Gaillardias are among the most successful of hardy perennials and give a most striking effect when planted in

Haines Falls, N. Y., 1931.

"My Delphinium has done beautifully, and I was thrilled with the beauty of it."

## NOVELTIES AND SPECIALTIES (Continued)

## GAILLARDIA (Cont'd)

bold groups or in a bed by themselves. They are equally effective, however, in mixed borders. They seem to thrive in the most extreme drought and the greater scarcity of other flowers the more the utility of this hardy perennial is demonstrated. They will bloom perpetually from June to November. Each 50c; 3 for \$1.25; doz. \$4.50.

**"DAZZLER."** Bright golden yellow with rich maroon red center, large flowers. Each 40c, doz. \$3.75.

**PURE YELLOW.** Very fine large flowers. Each 50c; doz. \$4.50.

## LUPINUS

**NEW HYBRIDS.** Whether in the garden or as a decorative cut flower, the lupine has always been a favorite. The English Plant Hybridists (always busy with an eye for new things) have recently introduced a magnificent strain of new colors which includes many shades of delicate tints heretofore unknown in Lupines; colors include bronze, yellow, orange, pink, dark brown and lavender. Offered in mixture only. Each 50c; doz. \$5.00.

## PYRETHRUM

(Painted or Persian Daisy)

**DUCKHAM'S NEW HYBRIDS.** For profusion of flowers in season nothing can surpass the charming variety of the Pyrethrums. They are perfectly hardy, are not injured by storm or sun. The flowers are



NEW HYBRID PYRETHRUMS



HARDY ASTER "CELESTIAL QUEEN"

(see page 2)

bright and showy and are borne on long stiff stems which make them most desirable for vase decoration. The mixed varieties I offer are especially rich in the charming pink shades. 2 to 3 feet. May-September. Each 40c; per doz. \$3.75.

## New Anemone-Flowered

## CLEMATIS

(*C. Montana undulata*)

A gem among climbing plants, a strong vigorous grower, perfectly hardy, disease and insect proof and will succeed and flourish under the most adverse conditions. The Anemone or Windflower-like blooms are white flushed mauve pink, and are from 1½ to 2 inches in diameter and frequently begin to expand as early as the last week in April, just about the time when Wisterias have finished, continuing to bloom well through May, and are produced in great profusion. The best of the early spring-flowering climbers of which there are but few.

## Sizes and Prices:

Strong 1-year-old field-grown plants, 50c each.

Strong 2-year-old field-grown plants, 75c each.

I have constantly limited quantities of Plant Novelties not mentioned in my catalogue. I shall be pleased to correspond with those who may be interested in them.

Onconta, N. Y., Aug. 28, 1931.

"My Delphiniums are the most gorgeous things I ever saw. They were admired by everyone that saw them."

# New Types

of amazing size and infinitely more beautiful colors are presented in

## Duckham's Delphiniums



GOLD MEDAL

A special award from New York Hort. Soc. International Show, and numerous awards elsewhere.

Superb forms and colors that have awakened a new interest in these most charming old fashioned . . . . . flowers

The Delphinium or old-fashioned larkspur for years and years has been a favorite among gems of loveliness for the hardy border.

However beautiful these old flowers were, they are incomparable to the modern types—the choicest of which are still in the hands of a few specialists who devote their whole time to bringing them to a still higher state of perfection.

My Delphiniums are now well known in every State from Maine to California. At every flower show where exhibited they have invariably outclassed every competitive group, and for three years at the great New York Show, where the world's finest Delphiniums have been shown, my exhibits have carried off the highest honors with three special Gold Medals.

Glorious colors from indigo blue to pale mauve, lavender, or soft pink and white, in massive 5 and 6 foot spikes, covered with single, semi-double and double flowers, that cover one-half to two-thirds of the giant stems. Every dozen includes practically the entire color range of this magnificent strain.

No Hardy Flower Border is complete without them. A few of these beautiful spikes are reproduced in natural colors on the next three pages, accompanied by the story of "Duckham's Delphiniums."



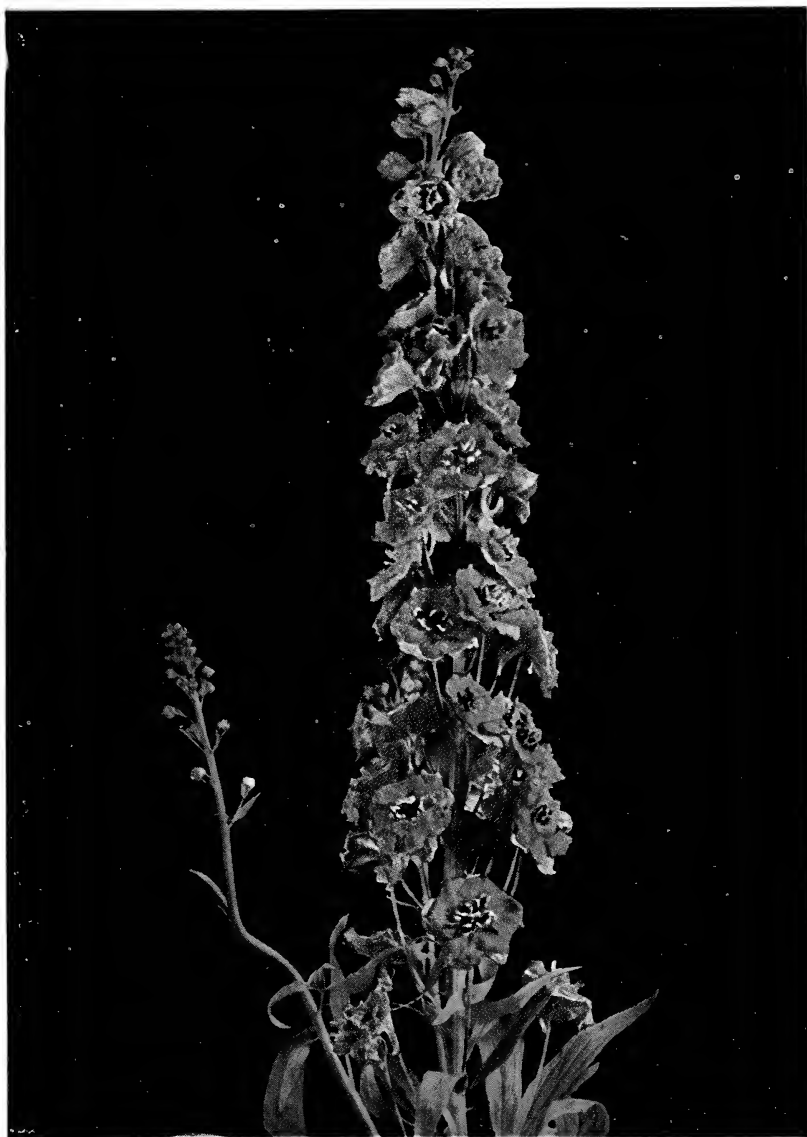
Three huge spikes (of the typical tapering Wrexham strain) on one plant

My Delphiniums adorn the flower borders of some of the finest Estates in America

Commerce, Ga., July 9, 1931.  
"The Delphinium I ordered from you last year was such a beautiful plant that I want more."



# GLORIOUS DELPHINIUMS



*Special Medal from  
Westchester Hort. Soc. 1927*

Since the last issue of this catalogue, I have again gained the highest awards for my Delphiniums at the leading shows in America. Some of the new colors and unique forms are indeed amazing in their beauty. I am in continuous touch with the English sources of the first hybrids I originally imported and distributed in America, and have been fortunate in securing special favors by receiving consignments of their very choicest creations. The addition of these to my already famous strain has made it unique and outstanding in superiority.

(Continued on next page)

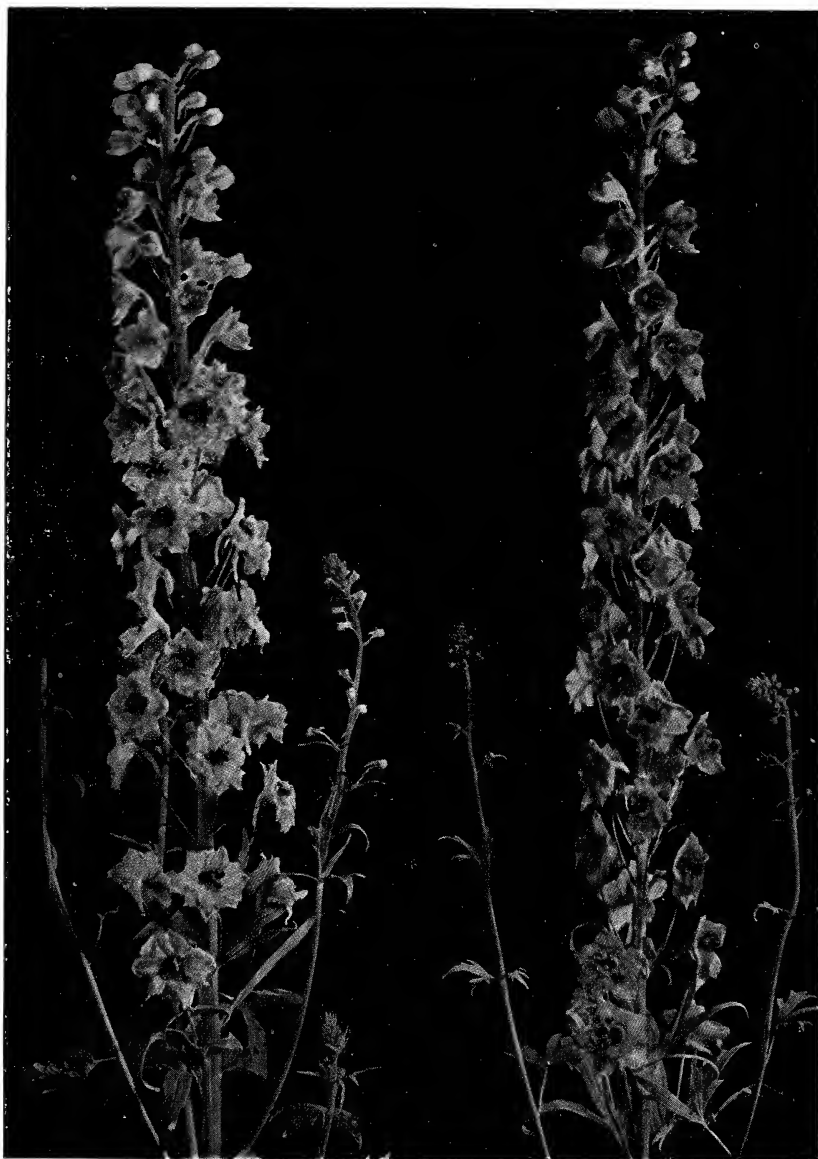
*Hatfield, Pa., July 7, 1931.*

*"I have six Delphiniums growing very nicely, blooming and very beautiful in color and size."*

---

## GLORIOUS DELPHINIUMS

---



Young plants which produced their first flowers this Fall (1931) and which are offered for Spring planting will bring many delightful surprises to those who order now.

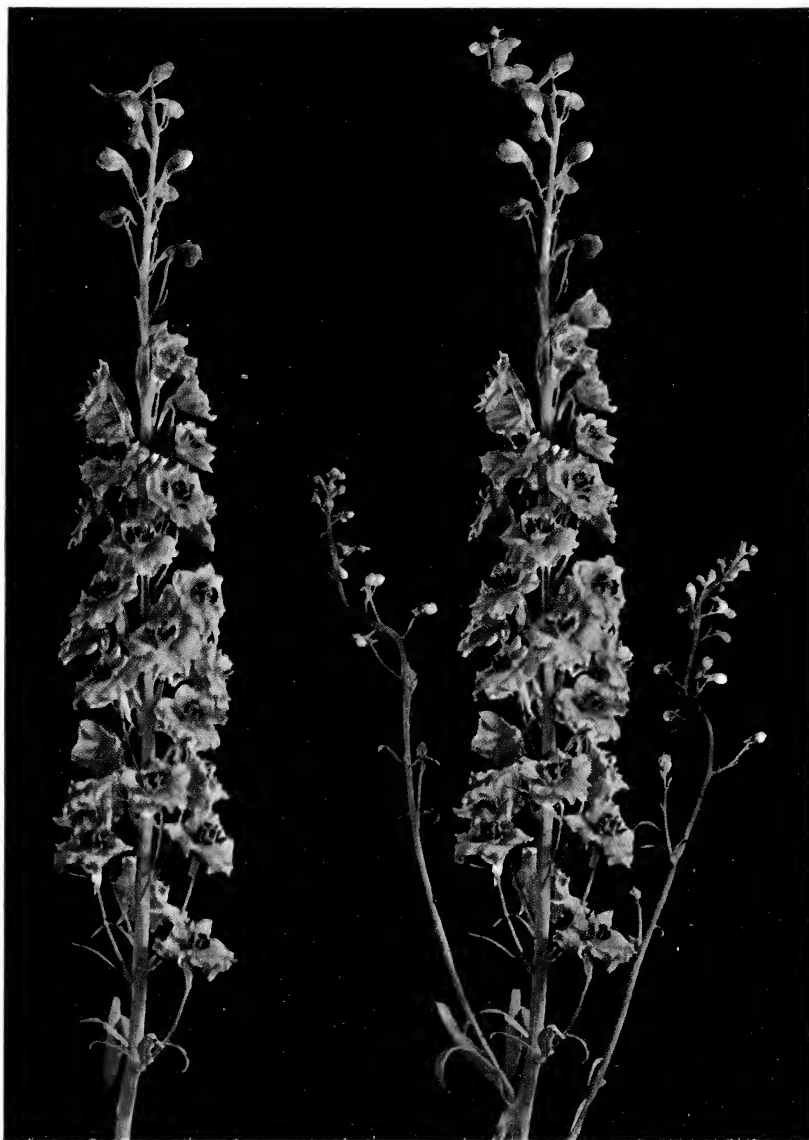
I have many letters from customers in all parts of the country expressing the pleasure and satisfaction they have received from my plants—particularly those who purchased my newest strains of the last few years.

A momentary thought occurred to me of reducing the prices of my Delphiniums this year. Growers of a general line of Hardy Plants, I understand, are doing so. But when I considered, on the other hand, the magnificent and very expensive types I have added, I felt that having so considerably increased the quality, I shall be really giving much greater value for the same price as charged in former years.

---

*Great Neck, Long Island.*  
*"Am sending an order for a few plants I would like to have and I hope these plants will all be as nice as those you sent me last year. My roses were just beautiful."*

## GLORIOUS DELPHINIUMS



In every State in the Union, my Delphiniums now form conspicuous colonies in the gardens of estates famed for their beauty.

The spikes are of huge proportions, standing five and six feet high on "walking cane" stems.

Some of these are broad at the base, tapering to a fine point. Others are columnar, like five or six hyacinth spikes joined end to end. Again, some spikes are compact, with the individual florets touching and overlapping, while others have a more open formation, so graceful in the estimation of connoisseurs.

The flowers are quite double in some spikes, showing distinctly two rows of petals—others are semi-double, while there are quite a number of the single-flowered sorts also, exhibiting special individual charms.



*New York 1929-1930  
Gold Medal*



*One of My Gold Medal Exhibits—New York International Show.*



*Here is a Particularly  
Fine Spike of My  
"Wrexham Type"*

The colors cover the complete range from deepest Indigo Blue and Violet to the faintest Lavenders, Mauves and Peach-cheek hues, almost bordering on true pink. And the flowers are not confined to one or two shades. We find deep blue with white and a brown "bee" (center of flower); violet purple, purple and light blue with black "bee"; lavender, pink, light blue and yellow "bee" and a host of other four-tone effects, all in the one flower.

Such combinations are unusual; it is such combinations that have made my Delphiniums famous—unusually famous,—it is such combinations that have pronounced them "Wonders of the Wily Ways of Wizards" in plant hybridization.

Although these Hybrids comprise many new types and delicate colors, all are extremely hardy, and well-established clumps in the border provide, year after year, wonderful spikes of majestic size and great beauty. They are also very desirable for cutting for indoor decoration, lending a delightful tone to mixed flower gatherings, harmonizing extremely well with yellow and orange colored flowers, particularly the deeper blues, violets and purples.

#### Prices of Duckham's Un-named

#### MIXED DELPHINIUMS

**REGULAR GRADE.** This covers the entire color range from Mauve and Lavender to deep Blue and Violet.

Price, per dozen, \$11.00; per 100, \$85.00.

#### SELECTED TYPES AND COLORS

Where personal selection is made by a customer in my fields during the Summer, I charge according to the merit of each plant selected. For those who cannot visit my grounds, but who desire some of these extra choice types, I have already put aside some of these and offer them as:

#### SUPER-HYBRIDS

Price, Each \$2.50; \$5.00 and \$7.50 and up.

All the above are field grown clumps, thoroughly acclimated, hardy and will bloom profusely this year.

*Bloomfield, N. J., Nov. 3, 1931.*

*"My Delphiniums looked very healthy when they were covered for the winter."*



*One of my Hardy Borders in the center aisle, N. Y. International Spring Flower Show. Delphiniums were the chief feature, but the delighted patrons of the show, marvelled at the excellence of the entire stock, forced into bloom for this great occasion. This exhibit was unanimously awarded a special Gold Medal.*

## *Helpful Hints on growing Delphiniums*

Delphiniums like a well-drained clayey soil, deeply dug, heavily fertilized with rotten manure.

Prepare the soil weeks before planting; leave it in the rough after spading in the manure; this gives it a chance to settle and permits manure to mix thoroughly.

Spade over a second time before planting, and choose a clear dry day for planting. Don't plant in low-lying damp ground.

In choosing a site for your border, select one with a Southern aspect, sheltered from the north by wall, hedge fence or shrubbery.

Unpack the plants immediately on arrival; keep away from cellar or boiler heat. Plant temporarily or cover with mats outside until ready to plant.

Plant at least 3 feet away from other plants in border—preferably in back row. Make hole wide enough to accommodate roots spread out.

Hold the plant so the crown is level with the surface of bed, spread roots, pack earth between and over them. Place a stout 5 foot stake in hole to tie and protect the growing shoots later.

Plant as early in the Spring as possible—when soil is in a workable, pliable form. Plant in the Fall from Sept. 15th to Nov. 15th. Either season is good with proper attention to planting details.

Apply any good artificial fertilizer at periods of a few weeks during Summer. Water regularly and often. Cut away old (first) flower spikes after bloom, for a second crop.

Spray regularly with "Black Leaf 40" (one teaspoonful to one gallon of soap water) to prevent or check attacks of Black Spot and Insects.

### **DUCKHAM'S INIMITABLE MIXED DELPHINIUM SEED**

**Saved Only from Choicest Varieties**  
(Cultural Directions Enclosed  
with Each Order)

**PER PKT., \$2.00**

### **PREVENT DELPHINIUM BLIGHT**

The following mixture is very effective. 1 teaspoonful of Black Leaf 40 to one gallon of soap water (any kind of soap water will do—its action is only a "spreader"). Spray frequently and thoroughly with above.

## GENERAL LIST OF HARDY PLANTS

Varieties marked with a star (\*) are suitable for Rock Gardens; most of them can also be used for bordering walks, driveways, or as edgings to beds and borders of other Herbaceous Plants.

### ACHILLEA (Millfoil)

**PTARMICA "The Pearl."** Indispensable in every border both for their graceful appearance and usefulness for indoor decoration. Flowers are pure white and literally smother the foliage in their great profusion. 2 feet. June-September. **Each 35c; doz. \$3.50.**

**FILIPENDULINA.** This fine plant from the shores of the Caspian Sea grows 2 to 3 feet high, flowers bright yellow, in flat heads, and with lace-like foliage. June to September. Nice to plant among shrubbery, evergreens, or for back border, also a good flower for basket work. **Each 25c; doz. \$2.50.**

**PERRY'S WHITE.** 1 to 2 feet. June to August. A choice variety. Nothing better for cutting. An excellent filler. The whitest of all Achilleas, and an outstanding favorite with florists for Summer flowers. **Each 25c; doz. \$2.50.**

### ACONITUM (Monkshood)

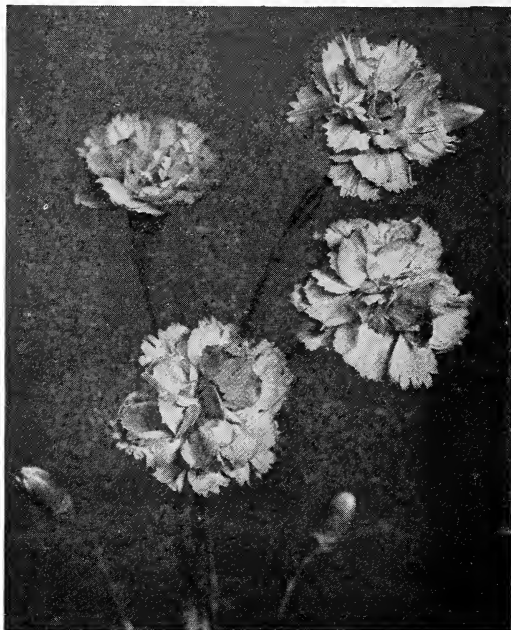
**FISCHERI.** A very attractive, erect, hardy perennial, with odd-shaped blue and white flowers in Autumn. Not unlike the Delphiniums in general effect, but of course not nearly so large. Particularly good in shady borders. **Each 40c; doz. \$4.00.**

**NAPELLUS (Bicolor).** This is one of the tallest and finest of the Aconites, and a fine subject to group among the rear plants in the border. Grows 4 feet high with huge spikes of blue and white flowers. June to August. **Each 40c; doz. \$4.00.**

**NAPELLUS, Sparks' Variety.** A tall variety, with branching spikes of blue flowers. The darkest Aconitum, and has a long flowering period. 5 to 6 feet. July-August. **Each 40c; doz. \$4.00.**

### ALLWOODI

**EVERBLOOMING HARDY PINKS.** This new race of the Dianthus family flowers perpetually during the entire Spring, Summer and Autumn. No plant is hardier or of easier cultivation, and their free-flowering qualities have rendered them exceedingly popular. They range through many shades of light, medium and dark pink and crimson, and all are deliciously fragrant. **Mixed, 35c each; \$3.50 per doz.**



ALLWOODI

### \* ALYSSUM (Madwort)

**SAXATILE COMPACTUM.** Pretty little plants for beds, vases, baskets, edgings, or rockwork, blooming profusely like a sheet of gold. Useful also for Winter flowering in pots. Very sweetly scented. 1 foot. May, June. **Each 25c; doz. \$2.50.**

**SERPILLIFOLIUM.** Very dwarf 4 to 5 inches high, with racemes of pale yellow flowers, and rough hoary leaves. Charming for the rock garden. **Each 25c; doz. \$2.50.**

### ANCHUSA

**ITALICA, Dropmore Variety.** A large spreading bushy plant, requiring plenty of room to develop its great beauty. This variety is a great acquisition and improvement on the old type and of extremely vigorous constitution. Its flowers are of deepest blue, borne in immense sprays. 4 to 5 feet. May-July. **Each 30c; 3 for 65c.**

**MYOSOTIDIFLORA.** New. Produces graceful panicles of bright blue flowers resembling the forget-me-not. April-May. **Each 75c; 3 for \$2.00.**

### ANTHEMIS (Hardy Marguerite)

**TINCTORIA.** Deep golden yellow, daisy-like flowers; ideal for decorative purposes. 1½ to 2 feet. June to September. **Each 35c; doz. \$3.00.**

*"Enclosed find snapshot taken June 14th. These two spikes of light blue and mauve measured twenty-five inches long and about four inches in diameter and were admired by hundreds of tourists, in fact my whole garden of perennials planted from your stock last October was the admiration of all who have seen it."*

Little Switzerland, N. C.



## **ANEMONE HUPEHENSIS** (Early Anemone)

This is a sturdy, dwarf Anemone, growing from 18 to 24 inches high, and resembling the Japanese Anemone in many respects, but it blooms earlier, is not so tall, and is much more richly colored. It is a fine plant for rock-garden use and comes into bloom in early August, continuing until frost. It will succeed in half-shady places. We recommend it especially for rock-gardens, perennial borders, and for cutting.

50 cts. each, \$5 per doz.

**WILLIAM C. DUCKHAM, Madison, New Jersey**





ANTHEMIS (See page 10)

\* **ARABIS (Rock Cress)**

**ALPINA.** An excellent dwarf plant for rock-work, borders or carpeting where massed color effect is desired, covered during its blossoming season with myriads of snow-white flowers. 6 inch; March-June. Each 25c; 3 for 65c; doz. \$2.50.

\* **ARMERIA**

\***LAUCHEANA.** Rosy crimson flowers all Summer. 6 inch. June-August. An excellent plant for rock gardens and borders.

**ARTEMISIA**

**LACTIFLORA.** A tall-growing plant of fine foliage and heads of small white flowers in August and September, which fill the garden with fragrance. A splendid and graceful cut flower. Each 50c; 3 for \$1.35; doz. \$5.00.

**SILVER KING.** Unquestionably one of the best all-around decorative plants. Its bright silver-colored stems and foliage are of great value as a filler for bouquets, sprays, baskets, or all sorts of floral combinations. By cutting and drying the stems it is very valuable in the Winter. A very showy border plant; height 30 inches. Each 35c; doz. \$3.50.

**ASCLEPIAS (Butterfly Weed)**

**TUBEROSA.** Flowers bright orange yellow followed by conspicuous seed vessels. 2-3 feet. July-August. Each 50c; doz. \$5.00.

**ASTERS (Hardy)**

**MICHAELMAS DAISIES.** The many species, widely distinct from each other in habit and form, are with a few exceptions, all native of North America. It is in Europe, however, that our Asters have been most highly appreciated. Many improvements have been made by European growers, and many hybrid forms have been produced by crossing the different species.

**HARDY ASTERS (Cont'd)**

2 to 3 feet. September-October. (New Hardy Asters, see page 2.) Three shades: Pink, Blue or White; each 50c; 3 for \$1.25; doz. \$4.50.

**CLIMAX.** Plants branching, covered in Fall with lovely lavender-blue flowers, 1 to 2 inches in diameter. 4 to 5 feet. August-October.

**WHITE CLIMAX.** (New.) Like Climax, except in color, which is pure white. 4 to 5 feet. August-October.

Either of the above, each 50c; doz. \$5.00.

**ASTILBE (Spirea)**

**ARENDSI HYBRIDS.** Handsome plants and while they are naturally suited for a moist, half shady position, they may be equally successfully grown in any garden border if given rich soil. The new Arendsi Hybrids are strikingly beautiful if planted in masses. They all flower in June-July.

Price of following: 75c each; 3 for \$2.00

**America.** Lilac.

**Amethyst.** Deep violet purple.

**Grandis Rosea Magnifica.** Creamy white, pink center.

**Juno.** Violet-rose.

**Kreimhilde.** Salmon-rose.

**Peach Blossom.** Soft pink. 3 feet.

**Pink Pearl.** The small, delicate pink, pearl-like flowers are borne in dense panicles. 3 feet.

**Rhineland.** Bright crimson, shaded salmon.

**Salland.** Fine red flowers on long stems.

A decorative novelty. \$1.00 each, \$2.25 per 3; \$8.50 per doz.

**Vesta.** Tall grower, lilac-rose flowers.

\* **AUBRIETIA**

One of the daintiest of all creeping plants. Nice for carpeting. Very desirable for rockeries. Blends in beautifully with most of the rock garden plants to produce mass effects over small areas.

**BRIDESMAID.** Pretty variety with soft blush flowers.

**BOUGAINVILLEI.** Dwarf and compact. Blooming in late Spring and Summer with light violet flowers.

**COERULEA.** Delicate blue. Very showy.

**CRIMSON KING.** Extra fine rich crimson.

**DELTOIDES.** Neat compact plants covered with closely set lilac flowers.

**GRAECA.** Violet, large flowers, fine Spring bedders.

**MÖERHEIMI.** Beautiful new variety with lilac pink flowers.

Any of the above, each 25c; doz. \$2.50

**BOLTONIA**

**LATISQUAMA.** Flowers resemble large white daisies or single asters and are borne in great profusion. 4 to 6 feet. July to October. Each 45c; 3 for \$1.00; doz. \$3.50.



**BUDDLEIA (Butterfly Bush)**

**VARIABILIS VEITCHIANA.** In mild climates this is really a hardy shrub, but it may also be classed as herbaceous. Each Spring it throws out vigorous growths that terminate in Fall in tapering spikes of a beautiful lavender-mauve shade. Give it plenty of room. **Strong roots, each 75c; 3 for \$1.50.**

**CAMPANULA****(Harebell and Canterbury Bells)**

A very important class of plants, varying in height from 6 inches to 6 feet, all of extreme beauty and easy cultivation.

\***CARPATICA.** (True Harebell.) 9 inches. July. Dwarf spikes of blue flowers. Excellent for edgings and massing. **35c each; \$3.75 doz.**

**MEDIUM.** (Canterbury Bells.) 2 feet. June, July. Old-fashioned, well-known, yet indispensable in every hardy plant border. Offered in: **Double Rose, Single Blue, Double Blue.** Price, **65c for 3; \$2.50 doz.**

**PERSICIFOLIA.** (Peach-leaved Campanula.) 2 to 3 feet. June and July. Broad, single, purple, bell-shaped flowers arranged along a tall flower-spike. **3 for \$1.00; doz. \$3.00.**

**PERSICIFOLIA ALBA.** White. **Each 35c; doz. \$3.00.**

**PERSICIFOLIA, "Lavender Queen."** Lavender blue. **Each 35c; doz. \$3.50.**



CAMPANULA, CANTERBURY BELL



BOLTONIA

**CAMPANULA (Cont'd)**

**PYRAMIDALIS.** (Chimney Bellflower.) 5 to 6 feet. August, September. Throws up huge stems, covered three-quarters of their length with blue flowers. **Each 40c; 3 for \$1.00.**

**PYRAMIDALIS ALBA.** Pure white flowers. **Each 40c; 3 for \$1.00.**

\***ROTUNDIFOLIA.** (Blue Bells of Scotland or Harebells.) 1 foot. June to August. In the wild it is more slender and taller than in the garden; clear blue flowers. Fine rock plant. **Each 40c; 3 for \$1.00.**

**TELHAM BEAUTY.** One of the best introductions of late years. With its single, rich blue, large, bell-shaped flowers, this variety is a most beautiful and attractive plant. **Each 75c; 3 for \$2.00.**

**CARNATION**

**CHABAUD.** Mixed; fine for cutting. **Each 35c; doz. \$3.75.**

**CARYOPTERIS**

**MASTACANTHUS.** (Blue Spiraea.) A handsome hardy perennial; grows about 3 feet high and produces rich lavender-blue flowers in great profusion from early in September until cut by frost. **Each 50c; doz. \$5.00.**

**CENTAUREA (Cornflower)**

**MONTANA.** (Perennial Cornflower.) Grows 2 feet high, bearing large, violet-blue flowers from July to September. **Each 35c; doz. \$3.50.**

**CHRYSANTHEMUM (Daisy)**

**MAXIMUM, KING EDWARD VII.** Pure white, one of the largest and best. Flowers of fine form. It thrives almost anywhere, and provides continuously, during its season, quantities of blooms for indoor decoration. 2 to 3 feet. June to August. **Each 35c; doz. \$3.50.**

*Bridgeport, Conn.*  
 "I enclose herewith check for plants, which arrived Saturday noon in good condition. They sure look healthy and hope they will make as good a showing as you are able to produce."



DIANTHUS, HARDY GARDEN PINK

### CLEMATIS (Climbing)

**LARGE-FLOWERING.** No other climbing plant equals in attractiveness the beautiful large-flowering Clematis. Their requirements are somewhat different from most other plants, and proper conditions must be given to secure satisfactory results.

**Henryi.** Creamy white; large; 2 yr., 12 for \$4.50.

**Jackmani.** The popular purple variety; 2 yr., 12 for \$4.50.

### SMALL FLOWERING PANICULATA.

This hardy climber is one of the choicest and most satisfactory climbing, flowering plants. Of strong, rapid growth, with small, dense, cheerful green foliage, and pure white, deliciously fragrant flowers. Each 35c; doz. \$3.00.

### COREOPSIS

**GRANDIFLORA.** Large orange-yellow flowers on long, graceful stems. About the best yellow cutflower blooming incessantly. 2 feet. Each 25c; 3 for 65c; doz. \$2.50.

### CYNOGLOSSUM

**CCELESTINUM.** Salvia blue, extra large and good color. Each 40c; doz. \$4.00.

**DELPHINIUM.** See pages 4 to 8; see also Larkspur on page 16.

### DIANTHUS (Hardy Pinks)

\***ALPINUS.** Rich pink; splendid for rockery masses and edging. Each 50c; doz. \$5.00.

\***ARENARIUS.** This pink delights in a sandy soil and sun. Flowers white with carmine-rings, deeply fringed and fragrant. Excellent for dry hot places. Six inches. Each 50c; doz. \$5.00.

### DIANTHUS (Cont'd)

\***BEATRIX.** A new and beautiful hybrid, having double soft pink flowers. Blooms from June until October. Each \$1.00; 3 for \$2.75.

\***CAESIUS.** (Cheddar Pink.) Delicate rose-pink. 6 inches. May to July. Splendid in masses. Each 35c; doz. \$3.50.

\***DELTOIDES.** (Maiden pink.) Dwarf. Beautiful pink flowers, fine for edging. Each 25c; doz. \$2.50.

\***HEDDEWIGII.** (Pink Beauty.) Beautiful double pale pink. Each 30c; doz. \$3.00.

\***LACINIATUS LUCIFER.** Double orange scarlet. Each 50c; doz. \$5.00.

\***LACINIATUS, "Salmon Queen."** Double, rich salmon scarlet (New). Each 50c; doz. \$5.00.

\***MRS. SINKINS.** The genuine, old-fashioned, double white, English border pink. Each 35c; doz. \$3.50.

\***PLUMARIUS HYBRIDS.** The old-fashioned clove scented pinks. Colors from white to deep rose with beautiful fringed petals. Very fragrant. Each 25c; doz. \$2.50.

### DICENTRA

**SPECTABILIS.** (Dielytra, Bleeding Heart.)

A very popular old-fashioned hardy border plant with beautiful foliage and long, drooping sprays of pretty pink, heart-shaped blooms. 1½ feet. May, June. Each 80c; doz. \$8.00.

### DIGITALIS

**FOXGLOVE.** The tall flower spikes of the foxglove are particularly handsome when grown among shrubbery or naturalized in odd places in bold masses. 3 to 4 feet. July-August.

Spotted Varieties, Alba (White), Gloxiniaeflora and The Shirley. Each 35c; doz. \$3.50.

### DORONICUM (Leopard's Bane)

**MAGNIFICUM.** Very attractive with large yellow flowers on stiff stems. Useful for cut flowers. 1½ to 2 feet. May, June. Each 35c; doz. \$3.50.

### ERIGERON (Fleabane)

A very effective genus of Michaelmas Daisy-like plants usually with pink and purple flowers. They flourish in any garden soil, are indispensable for groups and flower borders, and are excellent for cutting. June to August.

**COULTERI.** Spreading masses of pure white flowers; very effective. Each 35c; doz. \$3.50.

### EUPATORIUM (Hardy Ageratum)

**CCELESTINUM.** A pretty, hardy plant, with light purple flowers similar to the ageratum; in flower from August until frost. 12 to 24 inches. Good cut flower. Each 50c; doz. \$5.00.

New York, N. Y.

"Many thanks for the Delphiniums which arrived some time ago. They are coming along fine."

**EUPHORBIA (Milkwort)**

**COROLLATA.** (Flowering Spurge.) Showy and useful native plant growing about 18 inches high, and bearing from June till August umbels of pure white flowers with a small green eye. **Each 40c; doz. \$4.00.**

**\* GEUM (Avens)**

A very desirable class for borders or rock garden. The flower spikes stand boldly over the rather prostrate, deep green foliage. 12 to 18 inches. June-September.

**MRS. BRADSHAW.** Brilliant double orange-scarlet flowers; blooms fully throughout the Summer. **Each 35c; 3 for 85c.**

**LADY STRATHEDEN.** New, fine double yellow of same type as Mrs. Bradshaw. **Each 35c; doz. \$3.50.**

**ORANGE QUEEN.** A brilliant orange-scarlet. **Each 35c; doz. \$3.50.**

**GYPSOPHILA**

**PANICULATA.** (Baby's Breath.) A very valuable perennial because of its light, graceful form and the charm it adds to mixed bouquets of other flowers. The blooms are small, borne in great quantities. 2 to 3 feet. July-August. **Each 35c; doz. \$3.75.**

**HELENIUM (Sneezewort)**

Showy Autumn flowers of great value for garden display in bold masses, and effective when cut. 3 to 4 feet. August-September.

**RIVERTON BEAUTY.** Long stemmed, brownish crimson flowers; a very popular Autumn flower.

**RIVERTON GEM.** A great profusion of bronzy-orange flowers. **Either of the above, each 40c; 3 for \$1.00.**

**\* HELIANTHEMUM**

**MACRANTHUM.** The rock roses offer such a beautiful range of color in the soft pastel shades. Foliage distinctly shrubby; blooms in Spring. 6 inches. **Each 35c; doz. \$3.75.**

**HELIANTHUS**

**DECAPETALUS MULTIFLORUS.** The flowers of this hardy sunflower are deep golden yellow and very attractive. 6 to 8 feet. June to September. **Each 35c; 3 for 85c.**

**SCABERRIMUS, Wolley Dod.** Very distinct; deep yellow. 6 to 8 feet. August-September. **Each 30c; 10 for \$2.00.**

**\* HEUCHERA (Alum Root)**

**PLUIE DE FEU.** (New.) Exceedingly bright fiery red flowers on loose, elegant, graceful spikes. Free flowering. A very showy variety. June-July. **Each 50c; doz. \$5.00.**

**SANGUINEA.** Graceful spikes of dazzling crimson flowers in greatest profusion. 1½ feet. **3 for \$1.50; doz. \$5.50.**

**SANGUINEA ALBA.** Similar to preceding with white flowers.

**SANGUINEA FLAMBEAU.** Very striking crimson flowers. 1½ to 2 feet. June-August. **Each 35c; doz. \$3.50.**

**HOLLYHOCK**

My strain is indeed very wonderful, the flowers being extremely large, double and unique in color. 6 to 8 feet. July-September.

**DUCKHAM'S IMPROVED STRAIN** in following colors: **All Double: Rich Crimson, Bright Rose, White, Scarlet and Salmon Rose.** **Each 35c; doz. \$3.75.**

**\* HYPERICUM REPENS**

**ST. JOHN'S WORT.** Completely prostrate little shrub with coppery stems and fine green foliage. **Each 50c; doz. \$5.00.**

**\* IBERIS (Candytuft)**

**GIBALTARICA.** Very desirable dwarf plant with evergreen foliage, covered by dense heads of flowers early in Spring; height 8 inches. **Each 25c; doz. \$2.50.**

**SEMPERVIRENS.** Very dwarf, covered with a sheet of white; height 6 to 8 inches. **Each 25c; doz. \$2.50.**

**IRIS**

**\*CRISTATA.** So completely dwarf is this little iris, native of our Carolinas, that it resembled some quaint little orchid of delicate lavender. At home in full sun, or semi-shade, as an accent point near a pool. 6 inches. May-June. **Each 35c; doz. \$3.75.**

(Iris continued on next page)



GEUM, MRS. BRADSHAW

*"The Delphinium plants I ordered came today in good shape and are now planted. They were fine plants and I will be glad to send your check covering them on receipt of bill."*

Mount Holly, N. J.,

**IRISES (Cont'd)****GERMAN or FLEUR De LIS**

These like a well drained soil and plenty of sunlight, and when massed on the edge of the border or near the brinks of ponds or streams the effect is remarkable. I offer them in 5 separate shades assorted from the better named varieties.

Light Blue and Lavender, Deep Blue and Violet, Bronze shades, Yellow shades, White and light shades. Price, 3 for 65c; doz. \$2.50; 100 \$15.00.

**JAPANESE IRIS (Kaempferi)**

They enjoy almost unlimited quantities of fertilizer and swampy ground, will encourage sturdy growth and amazing blooms if they are given plenty of water. They bloom right after the German Iris and are at their best in July.

**AMETHYST.** Large single, broad petals of silky texture.

**BETTY F. HOLMES.** Very large white.

**DUCKHAM'S PINK.** Bright rose pink; uncommonly fine flower.

**DUCKHAM'S VIOLET.** Rich violet, deeply veined.

**VIOLET GIANT.** Very large deep violet.

**CLARICE CHILDS.** Single; petunia-violet; yellow center, blue caste; large.

**F. E. CLEVELAND.** Semi-double blue; very large.

**GRACE SPERLING.** Very early single; hortense violet color.

**ORIOLE.** Double claret-red, flamed white and blue. Compact, medium sized.

**PAINTED LADY.** Striped, tall and free-flowing. Flaring "falls" are beautifully veined and washed bright purple over a bluish white ground. Erect, violet "standards," edged white.

Price. Any of above, each \$2.00; doz. \$22.00.

**LARKSPUR (Delphinium)**

(See also pages 4 to 9)

**BELLADONNA.** The most continuous blooming of all. The clear turquoise blue of its flowers is not equalled for delicacy and beauty by any other flowers. Each 35c; doz. \$3.50.

**BELLAMOSUM.** The dark blue form of the popular Belladonna. Each 35c; doz. \$3.50.

**LAVENDER (Lavandula)**

**VERA.** This is the true Sweet Lavender; grows about 18 inches high; delightfully fragrant blue flowers in July and August. Each 25c; doz. \$2.50.

**LIATRIS**

(Blazing Star or Gayfeather)

**SCARIOZA.** (Late.) This is a much finer flower than *Pycnostachya*. It has large, showy purple heads and flowers much later than the others. A very imposing form. September. 4 to 5 feet. Each 40c; 3 for \$1.10; doz. \$4.00.

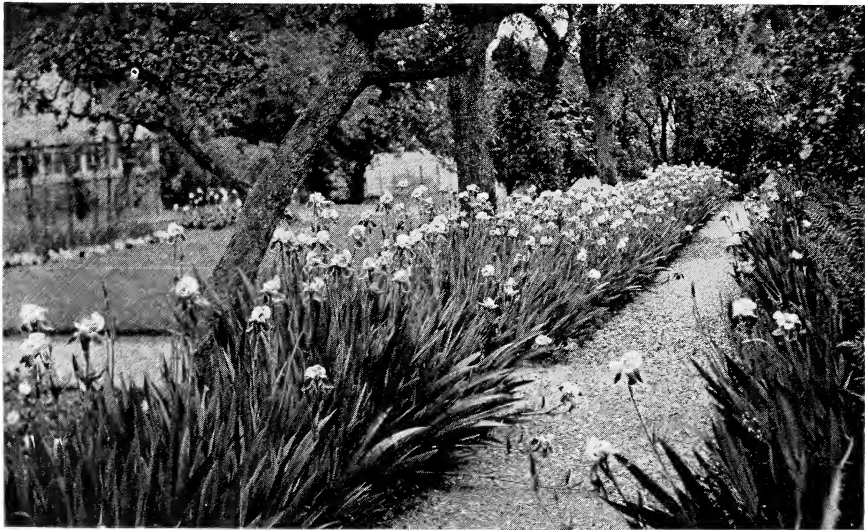
**HARDY LILIES**

**CANDIDUM.** (Madonna or Annunciation Lily.) This is the old-fashioned garden Lily, and one of the most beautiful. Ready in July-August. Fine companion to plant with my Hybrid Delphiniums. Each 70c; 100 \$60.00.

**ELEGANS "LEONARD JOERG."** Rich apricot, spotted black and maroon. A splendid hardy border lily. Each 50c; doz. \$5.00.

**LILY OF THE VALLEY**

**MAJALIS.** This popular and fragrant subject repays for being well treated. Grand for massing near shrubs or along shaded borders. Strong field clumps, each 35c; doz. \$3.50.



*Beautiful Borders of Hardy Irises*

Pawling, N. Y.

*"My order of Delphiniums and Columbines reached me two days ago. The plants are so beautiful and were in such perfect condition in spite of the terrific heat that I felt I must tell you of my appreciation."*

\* **LINARIA**

**ALPINA.** Purple with an orange blotch in the throat, on trailing flax-like stems of blue green. 2 to 4 inches. Continuous blooming. Each 35c; doz. \$3.75.

**LUPINUS POLYPHYLLUS**

(Hardy Lupine) See also page 3

The Lupines are well-known garden plants, very showy and beautiful, with spikes of pea-shaped flowers in various colors. They prefer well-prepared garden soil, and do well in semi-shade. 2½ to 3½ feet. June-August.

Rich Blue, Each 30c; doz. \$3.00.

**LYCHNIS (Campion)**

**ARKWRIGHTII.** Cross between *Lychnis Chalcedonica* and *Haageana*, height 2-3 feet. Effective colors. Each 35c; doz. \$3.50.

**CHALCEDONICA.** Heads of vivid scarlet flowers, blooming a long time. One of the brightest plants in the hardy border. 3 feet. Each 35c; 3 for \$1.00.

**VISCARIA SPLENDENS FL. PL.** Brilliant red. Each 30c; doz. \$3.00.

**MERTENSIA**

**VIRGINICA.** (Virginia Bluebells.) A foot or two high with dark green foliage, and loose panicles of rich blue-purple flowers in early Spring. Very popular as a companion to late flowering tulips. Extra strong plants, each 35c; doz. \$3.50.

**MONARDA**

**SALMONEA.** Large heads of a delicate shade of salmon-pink. Will stand moister positions than other *Monarda* varieties. 3 feet. June-August. Each 35c; 3 for \$1.00.

\* **MYOSOTIS (Forget-me-not)**

**ALPESTRIS, Royal Blue.** The dainty Forget-me-not loves a cool moist soil, and like the pansy, blooms most freely in early Spring, and quickly establishes itself by self-seeding. Royal Blue is a rich deep blue of remarkable free-flowering habit. 6 to 12 inches. May. Each 25c; 3 for 65c; doz. \$2.50.

**Victoria.** Indigo blue. Each 30c; doz. \$3.00.

**NEPETA**

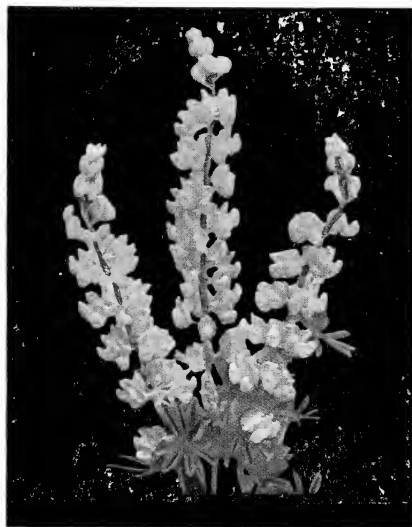
**NERVOSA.** Improved *Nepeta*. Flowers clear light blue. Each 35c; doz. \$3.50.

\* **NIEREMBERGIA**

**RIVULARIS.** Large cream cups snugged against sturdy clumps of green. One of the loveliest of Summer and Fall blooming alpines. 2 to 3 inches. Each 35c; doz. \$3.75.

**OENOTHERA (Evening Primrose)**

**FRASERI.** This is a hardy perennial border plant of value, which grows to about 18



LUPINUS (LUPINE)

inches in height, and gives an abundance of beautiful yellow flowers. Each 35c; doz. \$3.50.

**PANSY (Heartsease)**

My strain of pansies is well known, for I have taken no end of pains to develop it by careful "rogueing" each year. Visitors at my trial grounds proclaim it the best they have seen. 6 inches. April-October.

Light Blue, Purple, Bright Blue, "Fire King," Yellow-Golden Bedding, Dark Blue.

Any of above, 100 \$10.00; doz. \$1.50.

**PAPAVER (Poppy)**

\***ALPINUM.** Height 6 inches. The most exquisite of poppies in a rich range of pastel colors. May to September. Each 35c; doz. \$3.75.

**ORIENTALE.** (Oriental Poppy.) The old oriental poppy is a well-known favorite and has no equal for brilliancy of color. Each 75c; 3 for \$2.00; doz. \$7.50.

**NUDICAULE.** (Iceland Poppy.) A beautiful class of hardy poppies, bearing cup-shaped flowers, ranging in color from pure white to yellow and orange-scarlet, on long stems. 1 foot. May-August. Sunbeam Mixed, each 35c; doz. \$3.50.

**PENTSTEMON**

**BARBATUS, "Coral Gem."** A fine border plant with orange-scarlet flowers. Blooms all Summer. July. Each 35c; doz. \$3.50.

**BARBATUS TORREYI.** Beard Tongue. Tall spikes of brilliant scarlet flowers. A most charming and effective border plant. 4 feet. June-August. Each 35c; doz. \$3.50.

"The Delphiniums that you sent me arrived Saturday. They were in fine shape and I hope next year to have some fine blooms."

Huron, Ohio.

Huron, Ohio.



PHLOX, FIREBRAND.

**PHYSALIS (Chinese Lantern)**

**FRANCHETI.** Bears enormous orange-scarlet fruits enclosed in balloon-shaped bag, valuable for Winter decoration. 2 feet. May-June. Each 35c; doz. \$3.50.

**PHLOX DECUSSATA**

Phlox succeed in almost any soil enriched with manure in Spring, and in hot weather an occasional soaking of water.

**FIREBRAND.** Red.

**THE QUEEN.** Orchid Pink. (New.) Blooms June, early July.

**ENCHANTRESS.** Salmon-red. (New.)

**WALA.** White.

**THOR.** Deep salmon pink.

**MRS. JENKINS.** White, blooms early.

Any of above, each 50c; doz. \$4.50.

**PHYSOSTEGIA**

**VIRGINIANA.** Flowers about an inch long, varying in color from purplish red to pink and white. Each 35c; doz. \$3.50.

**VIRGINICA VIVID.** Dwarf compact heavy bloomer; flowers deep pink. Very good for cutting flowers, lasting well in water. Each 35c; doz. \$3.50.

**PLATYCODON (Balloon Flower)**

**GRANDIFLORA.** Blue, 18 inches. June to October. Large, showy, deep blue flowers. Good for rock garden and border.

**GRANDIFLORA ALBA.** White-flowered form of the above.

Each of above, 25c each; \$2.50 doz.

**PLUMBAGO (Leadwort)**

**LARPENTAE.** One of the most desirable border and rock plants. It is of dwarf, spreading habit, growing 6 to 8 inches high, covered with deep blue flowers during the Summer and Fall. Each 35c; doz. \$3.50.

**PRIMULA (Primrose)**

**\*AURICULA.** Rosettes of simple leaves with heads of large sweet-scented flowers in the richest of colors, golden yellow, warm purples and maroons. Very choice for rock gardens. Each 50c; doz. \$5.00.

**\*POLYANTHUS, Gold-laced.** (Primrose.) Forms a beautiful rosette of large leaves, and bears clusters of ruffled flowers of fine form and rich colors, all laced handsomely with gold. 6 to 8 inches. May-June. Each 25c; doz. \$2.50.

**\*VERIS.** (Cowslip; Pansy-wort.) Plant in rich, well-drained soil, in the border or in the rockery. Flowers vary from a clear yellow to pleasing shades of yellow and maroon. Each 25c; doz. \$2.50.

**RUDBECKIA**

**PURPUREA.** (Cone Flower.) Peculiar reddish purple flowers with a very large brown, cone-shaped center. Thrives in ordinary garden soil. 3 feet. July-October. Each 35c; 3 for 85c; doz. \$3.50.

**SALVIA**

**AZUREA.** This beautiful salvia is worthy of a prominent position in every herbaceous border. Although it is of tender constitution, it will withstand the severe winters prevalent in the Eastern States. Color, a delightful shade of pale blue. 3 feet. July-October. Each 40c; doz. \$3.75.

**PITCHERI.** Large, deep blue flowers. 3 to 4 feet. August-September. Each 40c; doz. \$3.75.

**SCABIOSA (Blue Bonnet)**

**DUCKHAM'S NEW HYBRIDS.** An improvement on the old Scabiosa both in form and color, all lavender and blue, somewhat of the shade of that extremely popular annual *Didiscus coerulea* (Blue lace flower); all those who are familiar with the latter will surely want my new Scabiosa. The assortment also contains a liberal proportion of rich blue and white shades. 3 feet. June-September. Each 75c; 3 for \$2.00; doz. \$6.00.

Tarrytown, N. Y.

"Thank you for the rose bushes received. They look like nice bushes and came just in time to plant before we had a shower."

### \*SEDUM (Stonecrop)

\***ALBUM.** These are, among the dwarf types, outstanding for their interesting foliage effects. *S. album* adds to its delightful carpeting, an abundance of snowy white flowers in midseason. 1 to 2 inches. Each 35c; doz. \$3.75.

**SPECTABILE.** This has thick succulent green leaves surmounted by huge flowering heads of thickly-clustered minute pink flowers. 18 inches. August-October. Each 35c; doz. \$3.75.

### STOKESIA

**CORNFLOWER ASTER.** (Stokes' Aster.) A most charming and beautiful native hardy plant which, for many seasons, has been the most admired flower on my grounds. The plants grow from 18 to 24 inches high, bearing freely from early June until late in October, its handsome lavender-blue centaurea-like blossoms, which measure from 4 to 5 inches across. It is of the easiest culture.

**CYANEA COERULEA.** Beautiful light blue.

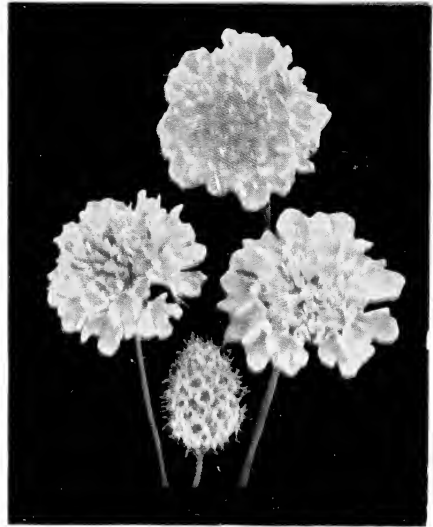
**CYANEA COERULEA ALBA.** White-flowered form of the above. 1 to 1½ feet. Either of above, each 25c; doz. \$2.50.

### SWEET WILLIAM

**DIANTHUS BARBATUS.** An old-fashioned hardy perennial which should not be left out of the list of beautifully colored, sweet-



STOKESIA



SCABIOSA

scented, old-fashioned flowers. **Scarlet Beauty**—brilliant scarlet; **Holborn Glory**—red; **Pink Beauty**—pink.

Price, Any of the above, each 30c;  
3 for 65c; doz. \$2.50.

### THALICTRUM (Meadow Rue)

**ADIANTIFOLIUM.** Leaves resemble Maidenhair fern. Yellow. 1 foot. June-July. Each 30c; doz. \$3.00.

**DIPTEROCARPUM.** Flowers a charming shade of lilac-mauve, which is brightened by a bunch of lemon-yellow stamens and anthers. The plant is of strong growth, about 4 feet high. The dainty flowers are produced in graceful sprays during August and September. Each 60c; doz. \$5.00.

**GLAUCUM.** Similar in habit to the *Aquilegium*; blue-gray leaves rather finely cut, with heads of Chinese yellow, fragrant flowers. 3 to 4 feet. July. Each 40c; doz. \$3.50.

### THERMOPSIS

**CAROLINIANA.** A fine plant, with clover-like foliage and long spikes of bright yellow, pea-shaped, lupine-like flowers. 4 feet. June-July. Each 50c; doz. \$5.00.

### \* THYMUS (Thyme)

**SERP YLLUM COCCINEUS.** (Creeping Thyme.) A carpeter supreme, made for perfumed walks with its dense smooth leaved foliage and its quantities of rich pink flowers. 1 inch. Mid-summer. Each 35c; doz. \$3.50.

\***LANUGINOSUS.** The leaves are densely clothed in a delicate wool, giving the plants a silver sheen. 1 inch. Each 35c; doz. \$3.75.



**TRITOMA (Flame Flower)**

**DUCKHAM'S NEW HYBRIDS.** A wonderful new race in a splendid range of vivid as well as delicate pastel shades. Not the stiff, top-heavy form of the old "Red Hot Poker," but a long-stemmed, graceful, light flower spike that adapts itself to all decorative schemes. Colors are yellow, orange, buff, scarlet and crimson salmon. Blooms from June-August. Offered only in the mixed shades. 3 for \$2.00; doz. \$7.50; 100 \$50.00.

**TROLLIUS (Globe Flower)**

Beautiful, hardy border plants, with handsome, dark green foliage and showy yellow flowers from May to July. They are well adapted for half-shady or sunny positions, are fine for moist places and edges of water-gardens.

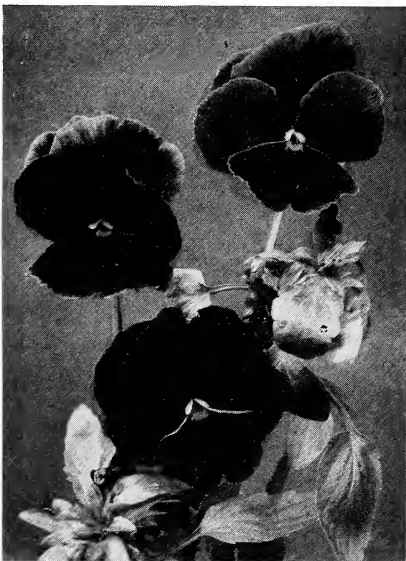
**EARLIEST OF ALL.** (New.) Early, free flowering; light orange-yellow variety. Blooms before other varieties. 1½ feet. April-May. Each 75c; 6 for \$4.00.

**EUROPAEUS, Orange Princess.** (New.) Extra-deep orange flowers in profusion. 2 feet. May-June. Each 75c; 6 for \$4.00.

**VERONICA (Speedwell)**

A family containing some of the most beautiful subjects for the hardy garden and rockery. Given a rich, well drained soil in an open situation in full sun, they will all thrive in an amazing manner.

**INCANA.** Silvery gray foliage and spikes of violet-blue flowers. 1 foot. July-August. Each 35c; doz. \$3.50.



HARDY VIOLA (TUFTED PANSY)

**VERONICA (Cont'd)**

\***REPENS.** To the one who discovers the dwarf Veronicas for the first time, there is a real treat in store. There is no more compact blanket than this little Veronica makes, studding itself with myriads of light blue flowers in early Spring until June-July. And following this it spreads in rich green sensitive amplitude. 1 inch. Each 35c; 3 for \$1.00; doz. \$3.75.

\***SPICATA.** An elegant border plant, growing about 1½ feet high, producing long spikes of bright blue flowers in June and July. Each 35c; doz. \$3.50.

**SUBSESSILIS.** One of the most attractive of all blue flowering plants. Flowers intense deep blue borne on stout, erect stems. 2 to 2½ feet. July. Each 35c; doz. \$3.50.

\***TEUCRIUM, "Royal Blue."** More of a ramper than Repens with heavier spikes of flowers, 6 to 10 inches in height, and masses of fine green leaves. More shrubby in character and quick to fill a space. Spring and Summer blooming. Each 35c; doz. \$3.75.

**\* VIOLA**

Tufted or Bedding Pansies. These splendid little hardy plants are much prized for their quaint little flowers, peculiarly striped, each self-color having a delightful charm of its own. They increase rapidly, and soon form large colonies covered with their dainty blooms.

\*—**CORNUTA, Lavender.**

\*—**CORNUTA, Deep Violet.**

\*—**CORNUTA, Blue Perfection.**

\*—**CORNUTA, Jersey Gem.** A specially selected beautiful violet-blue variety which blooms unceasingly all season. A rare and choice sort. Each 35c; doz. \$3.75.

\*—**CORNUTA, "Apricot Queen."** Here we have a true cornuta type in the beloved Viola, with a most unusual color. Continuous bloomer with a real credit mark for its complete dependability. Each 35c; doz. \$3.75.

Price, any of above Violas, except where noted, each 35c; 6 for \$2.00; doz. \$3.50.

**LECTURES**

If given notice one month in advance, I shall be pleased to give lectures to Garden Clubs, etc., on making and maintaining Hardy Flower Borders.

Monmouth, Ill.

"The Delphiniums were fine and I got a glimpse of what they will be like from small spikes. Some day I want more."





### Duckham's Delphiniums Exclusively

*Used in the borders of this Long Island Estate—noted for its magnificent gardens.*

## DUCKHAM'S READY-MADE PERENNIAL BORDER FOR \$15

Because of their infinite variety and the great variation in the usefulness and season of blooming, many otherwise competent gardeners and flower-lovers are bewildered when they come to select the proper perennials for their garden.

To enable them to obtain the best effects, as well as to relieve very busy people from the task of making selections, I will make up a group of 50 Hardy Perennials of the finest types, in lots of 5 of each kind, enough for an adequate representation of each variety and to make a splendid little garden.

From such a charming little garden as this can be cut splendid flowers for house or table decoration from June until late Autumn, and the best of it is that it will require very little attention aside from occasional cultivation and weeding. The plants will increase in size and strength each year and may eventually be divided and so extend the supply.

These 50 plants, 5 of each kind, all properly labeled, so that the description of them may be located in this catalogue, will be sent for . . . **\$15**

*In planning your purchases, if you will select according to my classifications and descriptions, you will be able to get the suitable perennials for your special requirements. If you are not on my mailing list, please write for a copy of my catalog. I am sure that you will find the information contained therein very helpful.*

*Little Switzerland, N. C.  
"Enclosed find snapshot taken June 14th. These two spikes of light blue and mauve measured twenty-five inches long and about four inches in diameter and were admired by hundreds of tourists, in fact my whole garden of perennials planted from your stock last October was the admiration of all who have seen it."*



Of the many hundreds of varieties that from time to time have been recommended for growing under glass, by growers in various parts of the States, many of them have proved unsatisfactory for several reasons, mainly, the different climatic conditions prevailing in widely separated points.

Some roses that succeed well in one locality will not do so well in others, consequently the number of varieties that force well, **under all conditions**, are comparatively few—and the following are about the best of them.

The plants I offer are strong, well-rooted, grafted or budded on Manetti, the most satisfactory under-stocks for producing abundance of the bloom over a prolonged Winter period.

**BRIARCLIFF.** Splendid, rich rose-pink without any other shadings; fine long pointed bud, opening to a beautifully modeled shell-like flower. Vigorous and prolific. 4-inch pot grown. **Per 100 \$60.00.**

**E. G. HILL.** Considered the finest of the red greenhouse roses. A dazzling combination of brilliant-scarlet and crimson shadings. Splendid, full buds and flowers on long, sturdy stems. Never fails to produce the flowers you expect in a good forcing rose. 4-inch pots. **Per 100 \$90.00.**

**FRANCIS SCOTT KEY.** Extremely double flowers of a brilliant crimson shade; fragrant and prolific grower. 4-inch pot plants. **Per 100 \$60.00.**

**JOHANNA HILL.** This is the gem of the yellow forcing roses. Clear yellow buds and blooms with orange-yellow center—and a color that lasts. More prolific than "Pernet." 4-inch pot plants. **Per 100 \$90.00.**

**MADAM BUTTERFLY.** A well-known favorite and always dependable. Large blooms of rich pink, apricot and gold. 4-inch pot plants. **Per 100 \$60.00.**

**PRESIDENT HERBERT HOOVER.** The New "Wonder Rose" par excellence—a perfect grower, producer and bloomer. Color is a dazzling combination of cerise, flame and orange scarlet, and as fragrant as a freesia. A gold medal winner and fully deserving of it. 4-inch pot plants. **Per 100 \$90.00.**

**PREMIER SUPREME.** The glorified "Premier." Very full buds with high crowned blooms of rich deep rose pink. Healthy and vigorous. 4-inch pot plants. **Per 100 \$60.00.**

**SENIOR.** (New.) Flowers and buds of a rich crimson shade, which holds until fully developed. Splendid foliage, vigorous habit, extra long stems (without pinching).  
**Price, per 100, \$90.00**

**SOUVENIR.** (New.) Here is a glorified and vastly improved "Claudius Pernet." Large, thick-petaled flowers, freely borne on long stems; color is clear bright golden yellow; splendid constitution and free bloomer—the yellow forcing rose you have waited for—now you can with confidence substitute it for all other yellows.  
**Per 100 \$90.00.**

**SUNKIST.** (New.) Long, well-pointed buds, developing into a larger and fuller flower than its parent, "Joanna Hill." Its rich orange-copper shade and vigorous forcing habit make it unique among commercial roses.  
**Per 100 \$90.00.**

**SOUV. de CLAUDIUS PERNET.** Still a popular yellow forcing rose but being replaced quickly by "Souvenir." **Per 100 \$90.00.**

**TALISMAN.** High pointed bloom of glowing golden yellow with interior of copper and orange-rose. A marvelous color and splendid constitution. 4-inch pot plants. **Per 100 \$90.00.**

**TEMPLAR.** Clear rich deep red, brightened with a glow of scarlet. Its rich fragrance and abundance of bloom add to its popularity as a "Winter forcer." 4-inch pot plants. **Per 100 \$60.00.**

*"I received some of your Delphiniums, having placed my order at the Flower Show. They have certainly proven 'a thing of beauty'—and I want more of them."*

Hastings-on-Hudson, N. Y.

# DUCKHAM'S GLORIOUS ROSES



Margaret McGredy



Mrs. Aaron Ward



Etoile de Hollande



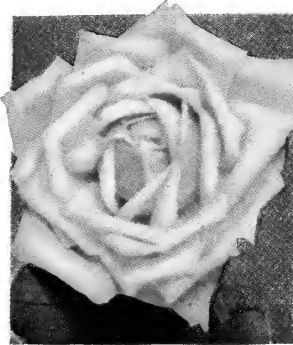
Mrs. E. P. Thom



Talisman



Duchess of Wellington



Dame Edith Helen



Betty Uprichard



Mme. Jules Bouche



E. G. Hill



Butterfly



Briarcliff

From the hundreds of Roses offered each year, we have selected twelve which, in our opinion, satisfy the most exacting demand for beauty of form, brilliance of color, and vigorous growth. Better than many words, the colored pictures above display their beauty.

*Twelve strong, two-year-old, budded  
Roses, pictured above, specially priced*

**\$8.75**

By arranging for wholesale production of these twelve specially selected Roses, we have been able to obtain for our customers the cream of the 1931 crop of field-grown two-year-old, budded plants, with strong heavy canes full of vitality.

**WILLIAM C. DUCKHAM, Madison, New Jersey**



**NEW ROSE, OLYMPIAD**

(MME. RAYMOND GAUJARD)

\$2 each, \$20 per doz.

## SELECTED EVERBLOOMING GARDEN ROSES

### *New and Recent Introductions*

**ABBREVIATIONS:** T., Tea; HT., Hybrid Tea; H.P., Hybrid Perpetual.

"My Field Rose Plants" are American-grown, well ripened, 2-year-old bushes, worked on the Multiflora stock, known for its thorough hardiness and its ravenous feeding propensities, whereby it produces vigorous, well-branched bushes and enormous flowers.

**Novelties:** These are sold at the **each rate**, in any quantity ordered.

**AUTUMN.** Bud medium size, ovoid, burnt-orange; flower medium size, double, cupped, lasting, fragrant, burnt-orange outside; inside buff and gold, streaked with red; borne singly on medium-length stem. Free bloomer. **Each \$2.50.**

**CHARLES P. KILHAM.** A splendid novelty that combined the desirable qualities of "bedding" and "cutting." A rose of the "Herriot" type with large double flowers of blazing orange scarlet and orange with fiery red center. A rose you will be glad to grow. **Each \$1.50.**

**DAZLA.** Long-pointed buds; flowers extra large (nearly 6 inches across), semi-double with waving petals of brilliant brownish orange and a large golden circle around darker stamens at base. Fine for bedding. **Each \$2.00.**

**E. G. HILL.** Considered the finest of the red greenhouse roses. A dazzling combination of brilliant-scarlet and crimson shadings. Splendid, full buds and flowers on long sturdy stems. Never fails to produce the flowers you expect in a good forcing rose. **Each \$1.50.**

**JOANNA HILL.** A glorified Mrs. Aaron Ward. Heavy lemon buds, evolving into a very double bloom with Indian-yellow center surrounded by bold buff petals. Heavy foliage. **Each \$1.50.**



ROSE, AUTUMN

**PRESIDENT HOOVER (L. B. Coddington, 1930).** A glorious rose, wonderfully free in the easy manner in which it grows. A combination of cerise-pink, flame, scarlet and yellow. This combination of colors gives the most dazzling color effect imaginable. The buds are beautifully pointed, the fragrant flowers large, composed of broad, thick, heavy petals. It is exceptionally free flowering. Awarded the Gold Medal at the International Flower Show in New York. **Each \$1.50.**

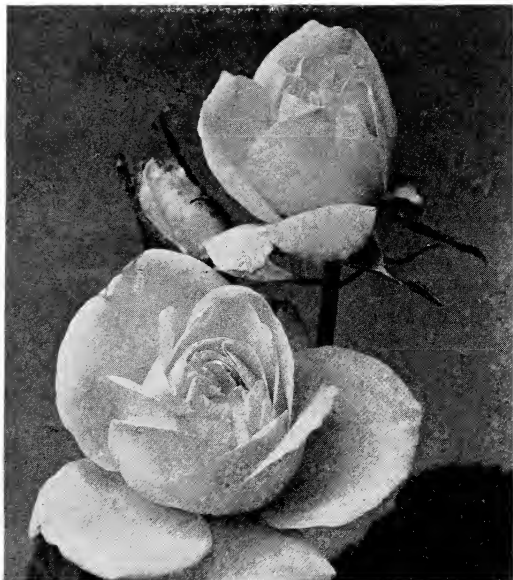
**ROSLYN.** A beautiful, distinct, new yellow Hybrid Tea that has proven especially good for garden planting. Its large, double flowers are borne singly on long, strong stems. The orange-colored bud opens to a full golden yellow bloom deeper in center with orange splashings on back of petals; very free bloomer. Healthy, lustrous foliage. **Each \$2.00.**

**TALISMAN.** The most astounding novelty in roses produced in many a year. Its brilliant yellow and orange-red buds open to a large, fragrant bloom of glowing golden yellow, stained with copper-red and orange-rose on the inside of the petal. It is the most magnificently colored flower of all new roses. **Each \$1.50.**

## GENERAL LIST OF CHOICE

*Everblooming Garden Roses*

Prices: All Roses in the following list, unless otherwise noted, are \$1.00 each; \$10.00 a dozen; \$75.00 per hundred.



DAME EDITH HELEN

- BETTY. HT.** I think this rose has the loveliest buds of any variety I have ever seen. They are long, tapering, with exquisitely curled petals, tinted with soft shades of pinkish buff and copper. The open flower is very large and fluffy, almost creamy white, sprinkled over with a sheen of pale gold.
- BETTY UPRICHARD. HT.** A pretty combination of colors, inner face of petals delicate salmon-pink to carmine, outside glowing carmine with coppery sheen and orange suffusion; well-formed medium sized flowers of good substance and sweet scented.
- BRIARCLIFF. HT.** Splendid, rich rose-pink without any other shadings; fine long pointed bud, opening to a beautifully modeled shell-like flower. Vigorous and prolific.
- BUTTERFLY. HT.** Beautiful buds and flowers, light soft pink tinted yellow at base of petals, very free and highly scented. One of the most dependable garden roses, also a popular greenhouse Winter rose.
- CALVIN COOLIDGE. HT.** Clear buff-yellow flowers, suffused with orange in the center; of medium size, well formed, double, and of some fragrance. A sport of Ophelia, resembling that variety somewhat, except in color. A much better rose.
- DAME EDITH HELEN. HT.** Perfect buds developing into wonderful flowers of immense size, produced singly on well-foliaged strong canes freely throughout the season. The flowers are composed of very substantial broad petals which curl back prettily, forming a glorious long-pointed bud and a full double flower which is beautiful in every stage of development. Color, a brilliant yet soft Rose du Barri pink; strongly sweet-scented.
- DUCHESS OF WELLINGTON. HT.** For a long time I regarded this as the best yellow rose in the world. First place must now be given to Souvenir de Claudius Perret, but the old Duchess still has prettier buds and larger flowers. It grows well, too, after it is once established, and is far too valuable to discard for many years.
- EDEL. HT.** Very large, well-built, stately blooms of pure, ivory-white and lovely globular form; fragrance slight. Plant very vigorous, bearing its bold blooms on erect stems; foliage quite good but not entirely disease-proof. A superb sort which is making itself necessary in all collections of white roses.
- ETOILE DE HOLLANDE. HT.** Brilliant red blooms of magnificent size, perfect in half-open state, showing clean, attractive centers when fully open; petals enormous; very fragrant. Plants branching, particularly free-flowering and healthy. A splendid rose with no serious faults. Color holds remarkably well, becoming lighter instead of "blueing." Toward Fall, the flowers are larger, fuller, and darker red.

New York, N. Y.

"This will acknowledge receipt of my order. Wish to state that they arrived in good condition."

**HARDY EVERBLOOMING ROSES (Continued)**

**ELSIE BECKWITH. HT.** Beautifully pointed buds and rich deep glowing rosy pink blooms carried rigidly upright, with large bold petals of fine substance. Vigorous grower, with foliage of unusual resistance to disease. It produces superb flowers for cutting. The texture of the petals is so firm that the blooms endure both heat and wet in the garden.

**EDITH NELLIE PERKINS.** A striking new variety. Orange-pink buds with salmon and gold underglow, make this a distinctly charming rose. Add to its color its vigorous habit and delicious fragrance and you have an ideal garden rose.

**FRANCIS SCOTT KEY. HT.** A wonderful color, a perfect bloom; a real garden rose. The color is a rich brilliant scarlet; the blooms are large and produced in uninterrupted succession throughout the Summer and Fall. Deliciously perfumed.

**GENERAL JACQUEMINOT. H.P.** Scarlet-crimson buds and clear red flowers of moderate size and excellent shape; deeply fragrant. Plant strong and bushy, 3 to 6 feet high; normal foliage, and sometimes blooms a second time.

**GENERAL MacARTHUR. HT.** Bright crimson buds, developing into moderately large, bright crimson-scarlet flowers; of fine form and delightful fragrance. An upright grower, branched, and produces its flowers freely through Summer and Fall. Its color is more brilliant and lasting in a cool situation and as Summer wanes. Fine for cutting.

**GEORGE C. WAUD.** A most distinct rose because of its wonderful coloring, which is radically different from that of any other variety. The large blooms are glowing orange-vermillion, full globular, perfect in shape, and possess a very sweet odor. Fine in Autumn.

**H. V. MACHIN. HT.** A sturdy, stocky bush, with flowers borne on the top of rigid stems in the manner of the best Hybrid Perpetuals. The blooms are large, well formed, and glowing scarlet-red.

**HENRY FORD. HT.** Medium-sized buds and flowers of very lasting yellow, edged in the early stages with salmon-orange, becoming lemon-yellow as they open. They are slightly fragrant and borne in sprays and clusters of great decorative value. The plant is bushy and rather tall, blooming constantly in great abundance.

**JULIEN POTIN. (The Golden Pernet.) HT.** A brilliant rich golden yellow that grows deeper and richer as the flowers mature. The buds are long pointed and develop into full double flowers of beautiful form, sweetly scented.

**KAISERIN AUGUSTE VICTORIA. HT.** Well-formed, creamy buds which develop slowly to blooms of absolutely perfect form, snowy white with a slight tint of lemon at center; fragrant. Plant moderately vigorous, free-blooming, and hardy. A standard old variety, indispensable among white garden roses.

**KILLARNEY QUEEN.** A sport of Killarney with larger, more double flowers which are absolutely perfect in all stages of development, color a sparkling cerise-pink. Still a popular favorite among the older roses.

**LADY ASHTOWN. HT.** Not just another pink rose, but decidedly a pink rose with a great deal of character. The petals are definitely reflexed and pointed and the center rises in the way of the best exhibition bloom. With its handsome flowers, good growth, and excellent blooming qualities, it stands high in the ranks of dependable roses.



HENRY FORD

*Williamsport, Pa.*

*"I just cut a perfectly wonderful spike of Delphinium from one of the plants I had from you last fall."*



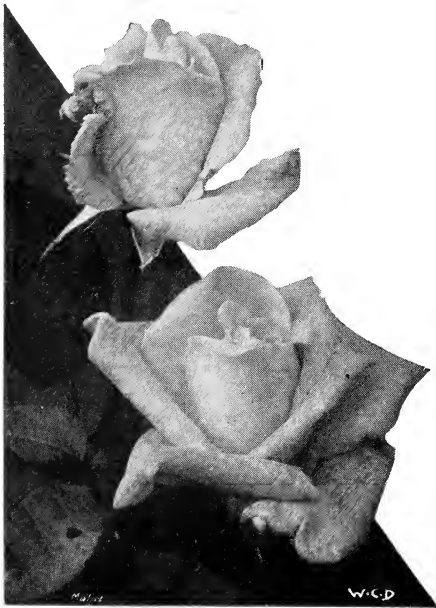
## HARDY EVERBLOOMING ROSES (Continued)

**LADY ALICE STANLEY. HT.** Massive buds and blooms of very large size, fully double and very sweet; outside of petals coral-rose, inside pale flesh-pink. A strong-growing, free-blooming plant. One of the very best and most dependable roses for both bedding and cutting.

**LADY MARGARET STEWART.** A rose of unique color, the flowers in the young stage are a deep sunflower-yellow heavily veined and splashed with orange-scarlet, reverse of the petals deeply suffused with carmine, as the flowers develop these colors intermingle forming a beautiful cadmium orange effect. The bud is long and pointed.

**LOS ANGELES. HT.** Color, form and fragrance are the notable virtues of this rose. It has a flaming golden pink tint unequaled by any other, and an exquisite shape and perfume that are difficult to match.

**MME. CAROLINE TESTOUT. HT.** Clear, glistening, satiny-rose, lighter towards the edges. A strong grower and perant golden suffusion in the high-pointed center, giving a distinct coppery red effect. Strong, bushy and healthy, with good stems and a most unusual color.



RADIANCE

**MME. EDOUARD HERRIOT. HT.** Few flowers of any kind can equal the gorgeous color of this rose. The buds are burning red and copper, and the open flowers brilliant orange-pink, with an immense golden center. Of the roses in this new color, few have ever approached this variety in dependability and beauty of flower.—I think it is one of the very best of its type.

**MME. JULES BOUCHE.** One of the proven best of white roses. Erect, bushy plants with abundance of snow-white flowers, just a suspicion of pink in the center. You will like this rose for its color and dependability.

**MISS LOLITA ARMOUR. HT.** If you can imagine a combination of copper and cream, with only the slightest trace of yellow, the tints of this rose may be realized. The flowers are very double, globular and nod on the tips of long, slender stems.

**MRS. AARON WARD. HT.** Everybody likes this little flower, which nestles on such a vigorous little bush. The buds are golden buff and fawn, opening to very double flowers of palest pink and white, suffused with yellow and cream. The foliage is like holly.

**MRS. A. R. BARRACLOUGH.** A most distinct and valuable rose, of a bright but soft sparkling carmine-pink of even tone that passes to yellow at the base of the petals; this attractive color does not fade as the flower ages, but, if anything, becomes richer and brighter. The bud is long, pointed, and develops into a full double flower of model form and substance; very fragrant.

**MRS. F. R. PIERSON. HT.** A crimson rose, "flooded with sunshine." As a commercial or garden red rose, Mrs. F. R. Pierson has never been equalled. It can be grown to larger size than American Beauty, even at its best. It has an equally large flower, better color, with fine, heavy dark foliage, strong stems, and very fragrant.



## HARDY EVERBLOOMING ROSES (Continued)

**MRS. HENRY BOWLES.** One of the best bedding varieties grown, always in flower and perfect in every stage of development. In color it is of an intense brilliant pink, with lighter salmon pink shadings. A model rose in every way.

**OPHELIA.** A variety which has made such a record for itself that qualifies it to be classed with the very best, a rose that is admired by everyone; its flowers are held erect on long stiff stems, are of perfect form, good size, and of a most pleasing delicate tint of salmon-flesh, shaded with rose.

**PADRE. HT.** Copper-scarlet, with bright yellow at base of petals. Flowers semi-double, with fifteen to twenty petals. Erect, strong bush, with light yellow-green foliage; blooms with exceptional freedom. An extremely effective bedding rose of the general type of Mme. Edouard Herriot, but taller, with better stem, intenser color.

**PREMIER SUPREME. HT.** A richer, more intense color than the old Premier—color is really almost a red. Strong grower and free bloomer.

**RADIANCE. HT.** Of all roses, probably this is the most popular in the country. The flowers are round and cuplike, sometimes with a sort of balloon center, and of bright, shining pink contrasted with a lighter, silvery sheen. The plant is very strong and blooms with the utmost freedom.

**RAPTURE.** Sport of Butterfly with all its good qualities but more double and more highly colored. An attractive flower of an intense and different color; one of the garden roses you will enjoy.

**RED RADIANCE. HT.** A sort very similar to Radiance in all respects except its splendid, light red color. The two belong together in big masses where they will furnish bright color and good flowers for cutting all Summer long.

**REV. F. PAGE-ROBERTS. HT.** A magnificent rose which has created a sensation everywhere. The flowers are gigantic, glowing golden yellow, with a coppery red sheen spread over the outside of the petals, giving them an indescribably rich and sumptuous effect.

**ROSE MARIE. HT.** Fragrant, clear rose-pink flowers of large size, borne freely on plants of notable vigor and health. A better rose than many older pink sorts.



SOUV. DE CLAUDIUS PERNET

**SOUVENIR DE CLAUDIUS PERNET.** A splendid variety, with exquisite golden yellow buds and fine open flowers. The foliage is healthy, and it blooms very freely. A bed of it is a splendid sight.

**SOUVENIR DE H. A. VERSCHUREN.** Perfect buff yellow flowers deepening to orange in center. Sweet scented.

**TEMPLAR.** A strong grower, producing enormous flowers, in very liberal quantities; blooms are very full, of a deep, rich crimson shade; deliciously fragrant.

**WHITE KILLARNEY.** Very long-pointed buds of the typical Killarney form, but snowy white. Open blooms beautifully formed, with a few more petals than the original variety.

**WILHELM KORDES. HT.** Long, pointed buds and double, high-centered flowers of deep golden salmon, overspread with a tint of copper, and veined with red. The red color predominates, making it one of the most brilliant roses of today. Very fragrant and usually free flowering. Vigorous, compact growth.

**WHITE MAMAN COCHET. T.** A delightful little garden Tea Rose, with deep green glossy foliage. Blooms and buds are simply perfect, white, sometimes shaded with pink. One of the hardest Tea Roses for northern gardens. The **Pink Cochet**, of the same character, can also be supplied.

*Montclair, N. J.*

*"I am indeed very glad to let you know that the roses which I purchased from you this spring are doing very well and are all in bud. The plants have grown larger than I have ever seen new plants at this time of year. The Columbine which I purchased last autumn had beautiful blooms this month. I can heartily recommend the quality of your plants."*

# STANDARDS or "TREE ROSES"

The beautiful Standard Roses are made by budding the ordinary dwarf Roses on tall Rose-stems 3 feet or more above the ground developing round, bushy heads which display their flowers at the level of the eyes where they are most effective.

They are exceedingly rare in America and require considerable care to grow them well. They should be planted in carefully prepared ground and be copiously fed with liquid manure throughout the Summer, and most carefully protected in the Winter.

At the time of planting, a strong stake should be set to each plant and the stem tied firmly to it, especially at the top to prevent it from swaying and loosening itself in the ground. It is best to set the stake on the south side of the plant.

Plant them at salient points in the garden, in the centers of wide beds, in a circle about a pool, along walks to give a formal avenue effect, or let them stand sentinel-like at the entrance to the garden.

This season I can offer the following varieties at **\$3.50 each; \$35.00 per doz.**

**BRIARCLIFF.** The most recent and the best sport of Columbia. Fine, handsome flowers of the even shade of silvery rose-pink.

**DUCHESS OF WELLINGTON.** Coppery saffron yellow. Flowers large and delightfully fragrant.

**ELDORADO.** Golden yellow with the peculiar tint of the Marechal Niel Rose.

**MME. BUTTERFLY.** Deep pink shaded orange yellow; wonderful color. Fragrant and a good grower.

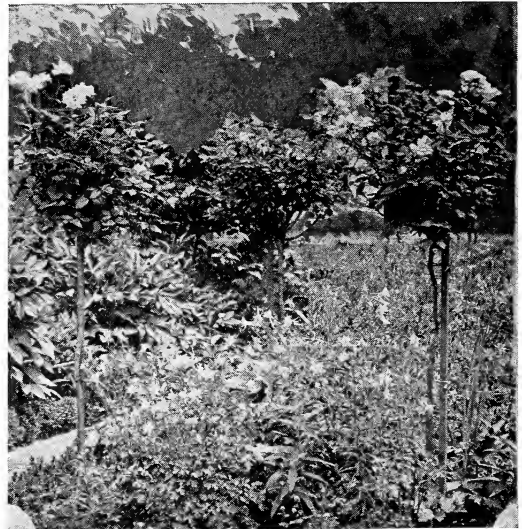
**MRS. AARON WARD.** Deep Indian yellow. Flowers long and shapely; fragrant.

**MRS. HENRY MORSE.** Long, shapely, lovely pink blooms shaded salmon, deeper at base.

**RADIANCE.** Salmon pink suffused coppery red. Very prolific. One of the best Garden Roses.

**RED RADIANCE.** Similar in growth and habit to preceding, only deep red in color.

**SOUVENIR DE CLAUDIUS PERNET.** A definite and lovely Sunflower yellow, deepening in the center.



STANDARD OR "TREE ROSE"

## CHINA or BENGAL ROSES

Those who are already familiar with Polyantha Roses for bedding and massing, will find these Bengal Roses more distinctive and attractive for the same uses. The flowers and buds are more on the type of Hybrid Tea Roses, with slender wiry stems and glossy leaves; they are continually in bloom from mid-Summer until Fall.

### SPECIAL COLLECTIONS

- 3 plants (three distinct colors)..... **\$3.75**
- 6 plants (six distinct colors)..... **6.50**
- 9 plants (nine distinct colors)..... **9.00**

*Flushing, L. I.*  
"The roses I received as per order looked so good and healthy I thought it might be best to order another dozen."



## *All the Gems of the Hardy* **CLIMBING ROSES**

They are so various, these Climbing Roses, both in their unparalleled beauty and their easy adaptability to many situations and uses. Use them for covering or screening objectionable objects. Use them for decorative arches, or to cover Summer-houses or garden seats. Use them on a trellis at the porch or trained about an entry or a window. Let them clamber along a fence or twine about a pergola, or even make a hedge of them by tying in and clipping back the branches.

Anyone with a square yard of ground at his disposal can have one splendid Climbing Rose upon it; and it is doubtful if he could put the ground to any better use.

Best of all, perhaps, is to grow them as pillars, which takes the least space; and anyone who likes Roses will want to crowd as many of them as he can into his garden. To make a pillar, plant a stout, straight post with the Rose and train the plant straight up to the top, or wind it about the support, keeping it cut off at the top, and the stray shoots tied in or cut off. The second season after planting, the pillar will be a mass of flowers from top to bottom and an object of admiration and delight to everybody.

### **THE NEW DAWN**

*(Everblooming Dr. Van Fleet)*

The first Rose ever to receive a patent

A sport from Dr. Van Fleet which is universally acknowledged as the best and most popular American Climbing Rose. This new variety is identical in every way with its parent in size and formation of its flowers, color, etc., but blooms continuously throughout the Summer and Fall months. Really the first worthwhile Everblooming Climber introduced; a variety that every Rose lover will be anxious to possess.

**PRICE EACH \$2.00**

(Climbing Roses continued on next page)

*New York, N. Y., April 25, 1929.*

*"The rose plants were sent as a gift to one of my clients who advise that they arrived in first-class condition and appear to be excellent plants."*

## CHOICE HARDY CLIMBING ROSES (Cont'd)

Price, \$1.00 each; \$10.00 per dozen; \$75.00 per 100.

**AMERICAN PILLAR.** Unlimited in its vigor, this splendid climber will ascend to 20 feet or more, throw out long stems with enormous sprays of hundreds of large, single, brilliant pink flowers, lit in the centers with large white eyes and great clusters of golden stamens. Abroad, American Pillar has taken first place as the favorite Climbing Rose, and in this country its popularity has no end.

**CHAPLIN'S PINK RAMBLER.** This striking novelty is a cross between Paul's Scarlet and American Pillar, of strong growth, perfectly hardy, producing its large flowers, similar in size and form to Paul's Scarlet, profusely in strong trusses of from 8 to 12 flowers each, but in color a rich lively pink. At the Spring Show of the National Rose Society of England it was awarded the Society's Gold Medal.

**DOROTHY PERKINS.** One of the first of the modern Climbing Roses, famous and beautiful old Dorothy is still among the best. Very vigorous in growth, with lovely waxy foliage and great clusters of frilly, shell-pink flowers, tiny but exquisitely shaped, it has a place in the affections of every flower-lover that nothing else can fill. Unequaled for covering arches, trellises, and Summer-houses, and useful wherever a rapid-growing screen or cover is needed.

**DR. HUEY.** Semi-double, rather large flowers of deepest crimson-maroon, shaded black, borne in profuse clusters on a lusty plant, with foliage not entirely immune to mildew. Its unique color is brightened by yellow anthers and it never turns blue. Very distinct and valuable especially when established.

**EMILY GRAY.** This is the long-wanted, golden yellow Climbing Rose, with large, beautifully formed flowers and handsome, shining foliage. It is a wonderful and almost unbelievable sight when in full bloom, and people invariably go into ecsta-

sies over it. Unfortunately, it requires Winter protection in cold climates, but if it is grown as a pillar it can be easily wrapped with burlap or covered with a few boughs to shelter it through coldest seasons.

**EXCELSA.** When Crimson Rambler was so much over-planted that it became a nuisance, Excelsa stepped in to replace it with giant clusters of less harshly colored flowers and a more pliant and more adaptable manner of growth. It is easily the best red Climbing Rose of the cluster-flowered type and is strongly recommended.

**FLAME.** Flowers bright salmon-pink of a very vivid shade, semi-double, and freely produced in large trusses. Plant very vigorous and exceedingly free flowering. Late. Flowering through several weeks. A brilliant and most unusual color in Climbing Roses. Most attractive.

**GARDENIA.** Belonging to a group of climbers with larger flowers than any of the foregoing, and of a soft, dainty yellow color in bud and early opened flower, Gardenia has long held first place among the yellow Climbing Roses. It is very vigorous and its foliage is particularly fine.

**ILE DE FRANCE.** Enormous clusters of semi-double, light crimson-pink flowers, with white centers and clusters of sparkling golden stamens. Strong, vigorous growth and very profuse flowering.

**JACOTTE.** (New.) Large, semi-double flowers of orange-yellow, tinted copper-red, borne in clusters. Strong, profusely blooming plant. The blooms measure 3 inches and over in diameter. Early to midseason. One of the sensational new roses carrying the brilliant orange color into the hardy climbers. **Each \$2.00.**

## CHOICE CLIMBING ROSES

(Continued)

### The New

#### MME. GREGOIRE STAEHELIN

Mme. Gregoire Staechelin has inherited the best qualities of both of its popular parents, Frau Karl Druschki and Chateau de Clos Vougeot. The long-pointed buds are crimson at first as the sepals divide, then the firm outer petals show splashes of carmine as the flower opens, with an iridescent pearl-pink inside and it is richly perfumed. **Each \$2.00.**

**MARY WALLACE.** Queen of the large-flowered, pink clusters, Mary Wallace is regarded as the best of its class. The blooms are very large, cup-like, glowing pink, with a golden undertone, and are borne in clusters at the ends of long stems.

**PAUL'S SCARLET CLIMBER.** Not so vigorous as the other climbers, this striking rose is ideal for growing as a pillar over which it will hang its clusters of large, well-formed shining scarlet flowers in greatest profusion. One of the most spectacular of roses, it is becoming widely known and tremendously popular.

**PRIMROSE.** (New.) In this we have what has long been sought after, a real hardy yellow rambler, a strong vigorous grower and hardy under the same conditions under which Dr. Van Fleet and similar varieties will succeed. In color light primrose-yellow which is maintained until the petals drop. Its flowers are borne in trusses of from 2 to 5, on long stems, about 2½ inches in diameter. The plant is of vigorous climbing habit. **Each \$1.50.**



ROSA HUGONIS

**SILVER MOON.** Tremendous vigor and splendid polished foliage characterize this rose, even without the splendor of its tapering golden white buds and its magnificent, semi-double, saucer-like flowers of purest white, illumined at the center with a giant frill of golden stamens.

**VAN FLEET.** (Dr. Van Fleet.) In spite of the wonderful advances made in the Climbing Roses in recent years, none has yet surpassed this strong-growing old favorite which produces large flowers, similar to the finest Hybrid Teas, in hundreds on its tremendously vigorous canes. The flowers are of the palest possible shade of flesh-pink, with a slightly darker center, and they are likely to acquire deeper color late in the season, as it blooms over a long period and frequently throws a few flowers in late Summer and Fall. Unquestionably it is the most popular Climbing Rose in the country today.

## ROSA HUGONIS

This species, introduced from China, is unlike any other Rose. It is of shrub-like habit of growth and naturally forms symmetrical bushes about 6 feet high, and the same in diameter, and while not suited to plant in the Rose border, it is an invaluable subject when planted in connection with other shrubs or as single specimens in the garden. Its delicate yellow, single flowers are produced on long, arching sprays early in May, every branch of the previous season's growth becomes lined on both sides to the very tip with these attractive flowers, and after it has finished flowering it remains an attractive decorative bush for the balance of the season; perfectly hardy.

**Strong 2-year Plants, Each \$1.00; dozen \$10.00.**

Great Neck, Long Island.

*"Am sending an order for a few plants I would like to have and I hope these plants will all be as nice as those you sent me last year. My roses were just beautiful."*



*Polyantha Roses make brilliant beds and borders*

## POLYANTHA ROSES

The favored uses of these most valuable roses, are massing in beds, or in long rows or borders, where brilliant effect as a whole is desired. They bloom right through the season, simply covering themselves with their large trusses of flowers. **Price: Selected Plants, 75c each; \$8.00 per dozen.**

### —THE NEW "GLORIA MUNDI"—

This new variety is probably the best and most generally satisfactory of all the orange-scarlet Polyantas recently introduced. Its color certainly is emphatic, clear and uniform, and comparatively unfading. The petalage is fully double, with many good sized florets in each cluster. As a bedding rose, it will undoubtedly be accepted as the most brilliant addition to this class in many years, its lasting brilliancy being quite pronounced. **Each, \$1.00.**

**CECILE BRUNNER.** Bright rose with yellowish center. A fine garden rose. Fragrant.

**ECHO.** Delightful shade of delicate pink; flowers borne in large trusses; vigorous and free-flowering.

**ELLEN POULSEN.** A deep rose pink with large flower heads; very striking bedding rose.

**GRUSS AN AACHEN.** Delicate flesh pink overlaid with yellow; a very popular bedder.

**IDEAL.** Very dark crimson-red; free flowering and disease-proof.

**SUPERBA.** This is one of the richest colored Polyantas, a brilliant carmine-red. Flowers abundantly over a long period.

**TRIOMPHE ORLEANAIS.** The bright cerise red, large flowers are borne in strong clusters. This is one of the most popular of all Polyantas.

## PLANTING AND PRUNING ROSES

**Planting** To be successful in growing roses, next to securing a good stock is the preparation of the soil. I would advise having the beds or ground where the roses are to be planted thoroughly prepared well in advance of planting time. The preparation of the soil is a simple operation by digging a foot or eighteen inches deep, thoroughly mixing in at the time of digging, plenty of well rotted manure. The addition of a little ground bone will be found beneficial. After the hole is dug, it is advisable to repeat the operation, for then you are sure that the manure is thoroughly mixed with the soil. Immediately upon receipt of your rose plants unpack them in a cool and shady place, sprinkling them with water. If your beds have previ-

*(Continued on next page)*

ously prepared the sooner the roses are planted in their permanent positions the better. If, however, this has not already been done it is advisable to "heel in" the rose bushes temporarily until they can be placed in their permanent positions. In planting, care should be exercised to make the hole larger than the root-diameter. Fill in with rather fine soil about the roots, using great care to make the soil very firm about them. After planting, thoroughly soak the soil with water to the depth that it has been dug. Should the season be any way dry give thorough soakings at least once a week. After the roses are growing well a mulch consisting of straw-manure or decayed leaves over the ground prevents them from drying out too rapidly and keeps the soil in a much better and humid condition.

**Pruning** Next in importance to the selection of locality, and the careful preparation of the ground is the pruning of roses; in fact I consider pruning exceedingly important, because without it, you can never get vigorous growth and large blooms.

Visit the garden of any successful amateur rose grower during the latter end of February or early March and note the appearance of the bushes. If it should be a new planting of 2-year bushes the pruned stubs will be scarcely discernible peeping over the litter of manure covering the bed. Older bushes will have all the old wood cut away and the previous year's green growths cut back to within 2 or 3 eyes of the hard wood. Such an inspection will teach more than I can put in pages, and a few minutes' talk with the owner or gardener will indelibly impress upon your mind the object and importance of pruning. Most amateurs are afraid to use the knife or shears vigorously, and many of the fairer sex class an expert operator among criminals.

A conception of the principle of pruning may be gathered by comparing the sap in a rose shoot to a slowly moving river; it continues its tranquil course along the lines of least resistance. Cutting this shoot or damming the river creates an accumulation of energy at that point that eventually overflows with extraordinary force, bursting forth into as many shoots or rivulets as are necessary to carry off this surplus sap or water. Hence we get 3 or 4 vigorous growths, each carrying a flower on a long strong stem, from the sap that would otherwise have wasted its energy in nourishing one old worn out shoot. Pruning should be done in February or early March. Cut away all old wood (always particularly noticeable in the Rambler class), shorten all the young growths to from 2 to 3 eyes. Don't be as severe with those of vigorous constitution as those of more stunted growth. By careful observation and a little practice you will soon become an adept at getting the best out of your roses.

## ARRANGING AND PLANTING THE HARDY FLOWER BORDER

Every group or border of Perennial plants should be planted according to some prearranged scheme and with a definite object in view. A rough plan should always be made and the different varieties located in their proper places, keeping in mind the height and color of each. It is desirable to place hardy borders where a background of dwarf trees or shrubs aids in setting off the beauty of the flowering plants.

If such is not available, a vine-covered fence or wall answers very well, though a special planting of dwarf evergreens and flowering shrubs is comparatively inexpensive, easily accomplished and will amply repay for the little extra trouble involved.

**Preparing the Ground.**—The ground should be spaded over to a depth of from eight to ten inches—if virgin soil, turn the sods under where they will rot and form a good fibrous loamy foundation for the border. Spread well-rotted manure over the bed after the first spading, and mix it thoroughly through the top 4 or 5 inches. Slaked lime is a valuable aid to the development of young roots on the growing plants and helps to purify the soil.

*(Continued over the page)*

**Planting.**—A scoop trowel is the most practical tool to use. Lay the plants in their respective positions according to your prearranged plan—keep the taller growing varieties to the rear of the border, selecting varieties of lower stature as you proceed to the front. The distance apart depends upon the height.

Color and height must always be considered and careful thought given to contrasts and harmonious blendings, thus avoiding later lifting and regrouping.

Every perennial border should receive a light covering of dry litter, such as grass clippings, leaves, or strawy manure after the first severe frost has nipped everything down in the late Autumn. A light covering of rotten manure previously laid over and around the plants is also desirable; this can be turned under with a fork in the Spring.

## TABLE OF CONTENTS

	Page		Page
Hardy Perennials (Novelties and Specialties).....	2, 3	Hardy Everblooming Roses .....	23 to 27
“ “ (General List) .....	10 to 21	“ Climbing Roses .....	29, 30, 31
“ “ (Collections) .....	21	Greenhouse Forcing Roses .....	22
Duckham's Delphiniums .....	4 to 8	Polyantha Roses .....	32
Delphiniums—Cultural Directions.....	9	Planting and Pruning Roses .....	32, 33
		Planting a Hardy Plant Border.....	33, 34

## INDEX TO HARDY PERENNIALS

	Page		Page		Page
Achillea .....	10	Dicentra .....	14	Nepeta .....	17
Aconitum .....	10	Digitalis .....	14	Nierembergia .....	17
Allwoodi .....	10	Doronicum .....	14	Oenothera .....	17
Alyssum .....	10	Erigeron .....	14	Pansy .....	17
Anchusa .....	10	Eupatorium .....	14	Papaver (Poppy) .....	17
Anemone .....	11	Euphorbia .....	15	Pentstemon .....	17
Anthemis .....	10	Gaillardia .....	2	Phlox .....	18
Aquilegia .....	2	Geum .....	15	Physalis .....	18
Arabis .....	12	Gypsophila .....	2, 15	Physostegia .....	18
Armeria .....	12	Helenium .....	15	Platycodon .....	18
Artemisia .....	12	Helianthemum .....	15	Plumbago .....	18
Asclepias .....	12	Helianthus .....	15	Primula .....	18
Aster (Hardy) .....	2, 12	Heuchera .....	15	Primrose .....	18
Astilbe .....	12	Hollyhock .....	15	Pyrethrum .....	3
Aubrietia .....	12	Hypericum .....	15	Rudbeckia .....	18
Boltonia .....	12	Iberis .....	15	Salvia .....	18
Buddleia .....	13	Irises .....	15, 16	Scabiosa .....	18
Campanula .....	13	Larkspur .....	16	Sedum .....	19
Carnation .....	13	Lavender .....	16	Stokesia .....	19
Caryopteris .....	13	Liatris .....	16	Sweet William .....	19
Centaurea .....	13	Lilies .....	16	Thalictrum .....	19
Chrysanthemum .....	14	Linaria .....	16	Thymus .....	19
Cimicifuga .....	2	Lupinus .....	17	Tritoma .....	20
Clematis .....	3	Lvchnis .....	17	Trollius .....	20
Coreopsis .....	14	Mertensia .....	17	Veronica .....	20
Delphinium .....	4 to 8	Monarda .....	17	Viola .....	20
Dianthus .....	14	Myosotis .....	17		

## BUSINESS TERMS and SHIPPING INSTRUCTIONS

**To insure early deliveries of Roses and Hardy Plants, and to avoid disappointments, it is necessary to order early.**

**Payments.** Cash or satisfactory references required from all correspondents unknown to me.

**Plants by Parcel Post.** If to be sent by parcel post, add postage as follows: Single plants, 5 cts.; 3 plants, 10 cts.; 6 plants, 15 cts.; 12 plants, 25 cts. I accept no responsibility for delays or conditions that may prove injurious to the contents.

**Plants by Express.** I recommend this mode of transit for more than 18 or 24 plants. All orders are carefully packed by expert hands, but I accept no responsibility for delays over which I have no control that may cause injury to the contents. I can make no adjustments unless complaints are made within five days after receipt of goods. Always state how you wish your order shipped **express or parcel post.**

**Responsibility.** Although exercising the utmost care in packing and routing orders, I cannot be responsible for damage due to the negli-

gence or rough handling of common carriers. If the container appears damaged on arrival, sign for it as **damaged** and make claim on the express company. If considerable delay in transit would indicate fatal damage to contents, refuse delivery.

**I guarantee my stock to be extra strong, but assume no responsibility after shipment has been made. I also wish to emphasize the fact that all roses and plants I send out are vigorous, healthy and true to name.**

**All shipments should be opened and unpacked immediately on arrival; if dry, the plants should be watered and planted as soon as possible.**

**Substitution. In ordering, kindly give a second choice, if possible, as many varieties are sold out as the planting season progresses.**

In the event that I should be sold out of any variety ordered, I will substitute the nearest variety of equally good stock and similar color, unless the order is marked **"No Substitution."**



O R D E R   T O

# WILLIAM C. DUCKHAM

MADISON, NEW JERSEY

Date.....

Your Name .....  
Very Plain

Post Office ..... P. O. Box.....

County ..... State .....

Street No..... Forwarded by.....  
Mail, Express or Freight

Please do not write here

Amount Enclosed: Cash, . . . . \$..... Money Order, \$.....

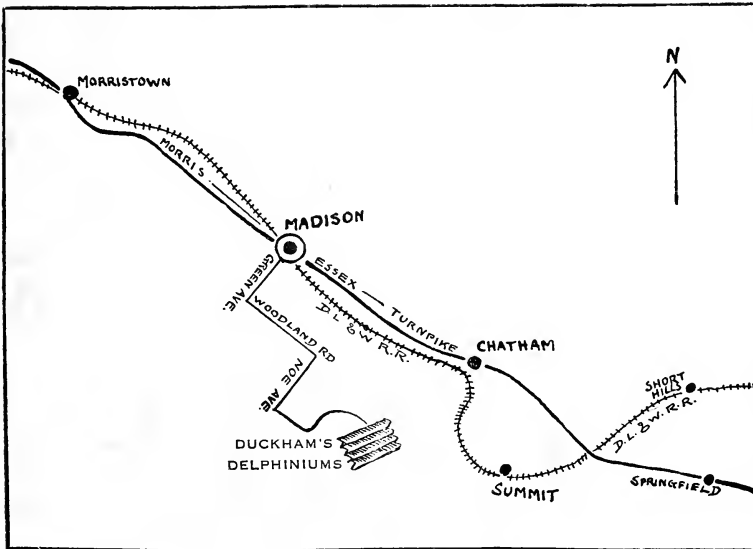
Supt.'s Name ..... \$..... Draft or Check, \$.....  
 State how much money you enclose

QUANTITY	NAME OF ARTICLE	Dollars	Cents

In making your order, please give the price, to avoid delays and errors.

QUANTITY	NAME OF ARTICLE	Dollars	Cents
	<i>Brought forward</i>		
	<i>Total</i>		

In making your order, please give the price, to avoid delays and errors.



The above map shows location of Duckham's Greenhouses and Trial Grounds, situated on Noe Avenue, Madison, N. J. An invitation is extended to all my friends to visit my grounds during the summer months, when Delphiniums and other plants are in bloom.

