

Historic, Archive Document

Do not assume content reflects current scientific knowledge, policies, or practices.

Ferris' NEW LOW PRICES

FALL
1932

The Pick of the Tulips COLLECTION

12 BULBS EACH
OF THESE PICTURED BEAUTIES

THE SIXTY
FINE TULIP BULBS
FOR

\$2.15
POST-PAID

\$2.27

Louis XIV

Rev. Ewbank

Vegetable Seed Trials

DATE OF 1932

LIBRARY
RECEIVED
★ DEC 19 1932 ★
U. S. Department of Agriculture

Inglescombe
Yellow

Feu
Brilliant

princess
Elizabeth

EARL FERRIS
NURSERY
Hampton, Iowa

**100 MIXED
Darwin
Tulips**
for **\$2.39**
POSTPAID

A glorious mixture of Darwin Tulips—rich, distinctive, harmonious colors; select bulbs that have bloomed twice or more—unnamed.

25 for 78¢
50 for \$1.40
100 for \$2.39
PARCEL POST PREPAID

Lowest Prices Ever Offered on Bulbs

We have an exceptionally large quantity of bulbs this fall. We have grown them under very expert yet economical conditions, and have put our price way down to the extreme low limit so that everybody can own a beautiful bed of Tulips—lovely springtime gardens to reach around the world. Take advantage of these wonderful bargain prices—ORDER TODAY.

Brilliant Darwin Tulips

Dazzling beauty—grace—wondrous charm! It's all to be found in our gorgeous Darwin Tulips. They are tall, the superb flowers coming on 2- and 3-ft. stems. They are unusually large, cup-shaped, and of perfect form and texture, while the colors are the very richest and gayest to be found. In beds by themselves, or bordering your shrubbery or perennial groups, they will brighten up your springtime landscape in a marvelous fashion. The Tulip is everybody's flower, for it is so hardy and easy to grow, and so very lovely. Below we are offering only the choicest of the Darwins—fine, large, blooming size bulbs. The Darwins are the most popular of them all.

FRANCOMBE SANDERS.

One of the biggest favorites at our Tulip Show. Intense rose-scarlet, inside vivid cerise with white center marked blue. Very showy.

CLARA BUTT. A lovely shade of clear pink, flushed salmon-rose. You must have this delightful pink Darwin in your garden.

YELLOW. Glossy canary-yellow, large, perfect shaped flowers. You will delight in its glowing color.

BARONNE DE LA TONNAYE. A beautiful large flower of bright rose with bluish rose margin.

WHITE QUEEN. Large flowers of a lovely soft white, slightly tinged bluish. Use generously between the bright colored sorts.

PRIDE OF HAARLEM. Bright rose suffused with purple. Glorious, and a wonderful bedding Tulip.

CENTAIRE. Rich violet-rose with large blue base; enormous flowers. Beautiful in the garden or bouquets.

KING HAROLD. Deep purple-red with white base. Large, finely formed flower, and superb coloring.

PRINCESS ELIZABETH. Exquisite deep pink, deepening to rose-pink as it opens. Very large, beautiful flowers.

REV. H. EWBANK. Beautiful lavender-violet with silvery gleams. A very lovely Tulip.

THE SULTAN. Glossy maroon-black, often called the Black Tulip. A real beauty.

Our new Fall Bargain Prices on the above eleven varieties of Darwin Tulips: 10 for 40c; 25 for 90c; 50 for \$1.55; 100 for \$2.89, postpaid.

Our Rosy Dawn Tulip Collection

- 5 Clara Butt
- 5 Centaire
- 5 Farncombe Sanders
- 5 Princess Elizabeth
- 5 Pride of Haarlem
- 5 Baronne de la Tonnaye

These 30 Handsome
DARWINS Postpaid for Only... **\$1.00**
DOUBLE COLLECTION
The 60 Bulbs, Postpaid for Just \$1.70.

Ferris' Color Charm Collection

- 6 Sultan
- 6 Princess Elizabeth
- 6 Rev. H. Ewbank
- 6 Yellow
- 6 Bartigon
- 6 White Queen

These 36 Gorgeous DARWINS TULIPS—**\$1.25**
Postpaid for Only...
DOUBLE COLLECTION
The 72 Bulbs, Postpaid for Just \$2.22.

Our Glory Tulip Collection

- 5 Clara Butt
- 5 Farncombe Sanders
- 5 King Harold
- 5 Rev. H. Ewbank
- 5 Panorama
- 5 Louis XIV
- 5 Picotee
- 5 Moonlight

These 40 Exquisite TULIPS, Postpaid for Only
\$1.78
DOUBLE COLLECTION
The 80 Bulbs, Postpaid for Just \$2.95.



Top—White Queen.
Center—Faust.
Bottom—Farncombe Sanders.

These Are All Selected Large Size Bulbs

What a gorgeous Tulip Show we had last spring—visited by thousands of folks from far and near. We only wish that all of you could have been here, to have become familiar with all of the different colors and shapes, to have selected the varieties that were particularly appealing to you—then to have paused on the side hill, and feasted your eyes on the full landscape of brilliant color.

These bulbs we are offering will produce for you just as fine and large, if not larger blooms than we had at our Tulip Show. They have all bloomed two or three times. Order now, and have your own Tulip Show next spring.

DARWIN TULIPS—Continued.

BARTIGON. A fiery crimson with white base ringed deep blue. Magnificent and exceedingly popular.

WM. PITT. Very fine deep crimson, with purplish bloom on the outer petals, and white base starred blue. Large flower of distinct color.

Our Fall Bargain Prices on the above two varieties of Darwin Tulips: 10 for 50c; 25 for \$1.00; 50 for \$1.80; 100 for \$3.10, postpaid.

New Extra Choice Darwins

VALENTIN. Exquisite light violet color with electric blue center. An outstanding beauty, either in the garden or in bouquets.

FEU BRILLIANT. Most glorious red Tulip imaginable. Large flower, perfect form, early bloomer. Great attraction at our Tulip Show.

FAUST. A truly magnificent Tulip. Very large, perfectly formed flowers of rich purple, produced on tall, strong stems. Handsome in bouquets, yet equally as brilliant in the garden.

Our new Fall Bargain Prices on the above three extra choice Darwin Tulip bulbs: 10 for 75c; 25 for \$1.50; 50 for \$2.50; 100 for \$4.75, postpaid.

Majestic Breeder Tulips

If you want something unusual and striking in Tulips, you should by all means include some of the rich Breeders in your border. Nowhere else can you get these fine, distinct orange and brown shades, and their huge blooms and tall thick stems make them wonderful for cut flowers, while in the garden they last a very long time. They are late to bloom and often have a sweet fragrance. We cannot say too much of their beauty and strong physique. Our Breeders were greatly admired at our Tulip Show last spring, and we are glad to offer them in the following selected varieties.

BRONZE QUEEN. Large, strong flower, finely formed, beautifully colored purplish fawn, interior buff-yellow with bright lemon base. A great favorite.

DOM PEDRO. A rich coffee-brown shaded with old gold. Very distinctive.

LOUIS XIV. Considered the finest of all the Breeder Tulips on the market. Color a rich dark purple, shaded steel-blue, flushed with bronze. Its enormous size and regal appearance help to make it the great favorite it is, either for the border or as cut flowers.

PANORAMA. This is a magnificent bloom wherever you find it. Deep orange-red shaded mahogany, very striking in a mass planting.

ST. JAMES. A beautiful rosy gold, edged bronze. Large and very fine.

TURENNE. Dark blue flushed bronze, with soft yellow edge. Enormous flower.—a superb Tulip.

YELLOW PERFECTION. Everyone loves a yellow flower, and here is one that is especially beautiful. Large blooms of light bronze-yellow, with golden yellow edge.

Our new Fall Bargain Prices on the above seven varieties of Breeder Tulips: 10 for 55c; 25 for \$1.00; 100 for \$3.75, postpaid.

The Beautiful Cottage Tulips

These are the very popular and delightful May-flowering Tulips that are borne on long, slender but strong stems, and are among the finest for cut flowers. The blooms are long and oval in shape, with petals gracefully reflexed, and colors ranging from warm yellows, orange and salmon, to the more brilliant old rose and scarlet. Every bed or border should contain some of our Cottage Tulips, for their piquant, individual beauty is found in no other flower. Below are the finest varieties of this type.

GESNERIANA SPATHULATA. Rich scarlet with blue base. Magnificent.

PICOTEE (Maiden's Blush). Long graceful blooms of clear white delightfully edged with bright pink. Charming.

HAMMAR HALES. Very long flower; remarkable blending of bronze, old rose, apricot and fawn color. Beautiful, distinguished flower.

MOONLIGHT. A very lovely sulphur yellow, the bloom long and of fine oval shape. Extremely attractive in beds or as cut flowers.

JOHN RUSKIN. Rich apricot-orange, flushed pink and gold. A large flower and a beautiful one.

Our new Fall Bargain Prices on the above five choice varieties of Cottage Tulips: 10 for 55c; 25 for \$1.00; 100 for \$3.75, postpaid.



St. James.



Top—John Ruskin.
Left—Moonlight.
Bottom—Hammar Hales.

Parrot Tulips

A charming and unique Tulip, with bizarre colorings of bright scarlet and yellow, and petals often beautifully fringed. Late bloomers. In bouquets they are especially lovely. Every Tulip border should have a group of these quaint Parrot blooms, which we can furnish in the following special varieties: **CRAMOISI BRILLIANT.** Beautiful carmine-red; very free flowering. **LUTEA MAJOR.** Rich golden yellow. **MARKGRAAF.** Inside rich orange, outside scarlet and yellow feathered. **PERFECTA.** Yellow feathered scarlet.

Our new Fall Bargain Prices on the above four varieties of Parrot Tulips: 10 for 60c; 25 for \$1.10; 100 for \$4.00, postpaid.

Single Early Tulips

Charming flowers that pervade the landscape ere winter has scarce gone. They grow rather low, have bright, beautiful blooms, and are fine for indoor forcing as well as lovely border plants. We can furnish these Single Early Tulips this season in an extra choice mixture only. 10 for 50c; 25 for \$1.00; 50 for \$1.55, postpaid.

Double Early Tulips

Like the Single Early Tulips, these are splendid either for bedding or forcing, and their double blooms of charming colors are wonderfully attractive. We are

offering the Double Early Tulips this fall in an extra select mixture only. 10 for 60c; 25 for \$1.25; 50 for \$2.10, postpaid.

Crocus

This sweet early spring flower bravely springs up year after year, sometimes before the snow is gone.

Their large, funnel-shaped flowers of gay colors are borne on rather short stems. Plant them in borders along your shrubby groups or perennial beds, or they are fine for the rock garden, while planted here and there through the lawn where the sod is inclined to be thin they will give you a most joyous welcome every spring. Set two to four inches deep and two inches apart where they will get good drainage. They can also be planted in pots for indoor culture.

PURPUREA GRANDIFLORA. Extra large choice purple Crocus. 10 for 35c; 25 for 70c; 100 for \$2.10, postpaid.

SIR WALTER SCOTT. White striped lilac. 10 for 35c; 25 for 70c; 100 for \$2.10, postpaid.

KING OF THE WHITES. Large, pure white Crocus. 10 for 35c; 25 for 70c; 100 for \$2.10, postpaid.

MAMMOTH YELLOW. Bright canary yellow. 10 for 35c; 25 for 70c; 100 for \$2.10, postpaid.

MIXED CROCUS. Unnamed—good assortment of colors. 10 for 25c; 25 for 60c; 100 for \$1.89, postpaid.

Heavenly Blue Grape Hyacinths (Muscari)

Beautiful little flowers of early springtime that resemble a miniature inverted bunch of grapes, whence they derive their name. The Heavenly Blue is the choicest of all the Grape Hyacinths, having blooms of a clear, light, irresistible blue. Splendid either in borders by themselves or in the perennial or bulb garden, yet just as delightful in the wild flower garden, or in the lawn under the trees where the sod is thin. You will enjoy them in your rock garden, too. 10 for 35c; 25 for 70c; 100 for \$2.10, postpaid.

Our Magnificent SPRING GARDEN Collection

- | | |
|-------------------------|----------------------------------|
| 50 Mixed Darwin Tulips | 10 Heavenly Blue Grape Hyacinths |
| 15 Mixed Breeder Tulips | 15 Mixed Narcissi, Yellow |
| 15 Mixed Cottage Tulips | 10 Poeticus Narcissus |
| 25 Mixed Crocus | 10 Select Dutch Hyacinths, Mixed |

Here are flowers that will bring the rainbow to your garden, the rich glow of sunset, the rosy morn, and clear June skies—the very loveliest colors that Nature can paint.

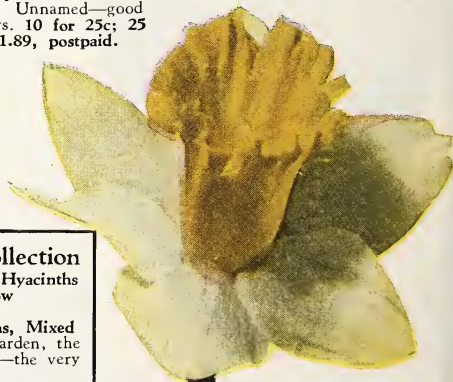
150 CHOICE BULBS—All Extra Fine, Blooming Size, Well Worth \$10.00, Postpaid for Only **\$4.75**



Double Early Tulips.



Parrot Tulip.



Narcissus, Victoria.



Scilla Sibirica.

Scilla Sibirica (Squills)

There is nothing quite so charming on the early spring landscape as a border or clump of these bright blue Scilla. They will edge your perennial or bulb border in a most attractive way, or give life to the early spring rock garden. Plant in ordinary soil, in a sunny location, setting the bulbs about 3 inches deep. You will be delighted with their bright blue, bell-like blooms. Plant at least 12 or 18 in a clump. 5 for 35c; 10 for 50c; 25 for 90c; 100 for \$3.25, postpaid.

Snowdrops (Galanthus)

The first flower of all to open in the spring, and how lovely they are. These pure white flowers find a natural setting under hedges, edging evergreens or shrubbery, and are a real joy to the winter-tired heart. It is best to plant this bulb as soon as you get it, setting it 2 inches deep, and mulching in winter with leaves, straw or coarse litter. 5 for 35c; 10 for 55c; 25 for \$1.00; 100 for \$3.50, postpaid.

Ferris' Extra Choice Narcissi or Daffodils

These glowing trumpeters of individual character and loveliness are perhaps more sought after than any other early spring flower. Most of us who have not had them have been longing for them for years, and now we are offering them at prices so that everyone may have and enjoy them. A trumpet forms the center of the bloom, with base petals (or perianth, as it is called) to give it perfection and balance. Ours are all large sized bulbs. Plant 5 or 6 inches deep, following the directions given for Tulips.



Poeticus Narcissus.

PRINCEPS (Trumpet Daffodil). A splendid large bloom, rich yellow trumpet and sulphur perianth. Blooms early and very profusely. Highly recommended. 10 for 50c; 25 for \$1.00; 100 for \$3.50, postpaid.

MADAME PLEMP (Bicolor). A true beauty, with white perianth and large, deep yellow trumpet. Splendid bloomer. 10 for 75c; 25 for \$1.40; 100 for \$4.50, postpaid.

GOLDEN SPUR. A bright rich yellow throughout; perianth large and spreading, and large trumpet. A beautiful Daffodil, and a good early forcer. 10 for 85c; 25 for \$1.75; 100 for \$6.00, postpaid.

LUCIFER. Perianth creamy white, with long, well rounded petals star-like in effect, with straight orange cup. Early, and a very showy variety. 10 for 75c; 25 for \$1.40; 100 for \$4.75, postpaid.

SULPHUR PHOENIX. A beautiful double variety, very large, or amy white. 10 for 60c; 25 for \$1.25; 100 for \$4.00, postpaid.

VICTORIA. One of the loveliest of all Daffodils. Broad, creamy white perianth, with very large, rich yellow trumpet frilled at mouth. 10 for \$1.10; 25 for \$2.25; 100 for \$7.75, postpaid.

RECURVUS (Poeticus). Charming for the early border. Pure snow-white perianth, with cup margined deep scarlet. Fine for cutting and beautiful in the garden. 10 for 50c; 25 for \$1.00; 100 for \$3.50, postpaid.

EMPEROR. Very large, handsome flower with deep primrose yellow perianth and rich yellow trumpet. Splendid either in the border or for cutting. 10 for \$1.10; 25 for \$2.25; 100 for \$7.75, postpaid.

MIXED DOUBLE NARCISSUS. Unnamed, but a fine assortment of double sorts. 10 for 60c; 25 for \$1.10; 100 for \$3.80, postpaid.

Our Select Dutch Hyacinths

Fragrant—Colorful—and Altogether Charming.

It is difficult to describe the charm of the Dutch Hyacinth, and really, it is so well known and so much admired by all that simply the magic name "Hyacinth" brings a clear picture.

For outdoor planting, bulbs should be set in the fall, from September to November, in rich, well drained garden soil, planting about six inches deep and six inches apart. If in a rather moist location, a little sand placed beneath each bulb will prove beneficial. Mulch with straw or leaves, and do not uncover too early in the spring. If you wish to pot for indoor culture, plant the bulbs in pots and store away in some dark, rather cool place for six weeks, then bring to the light.

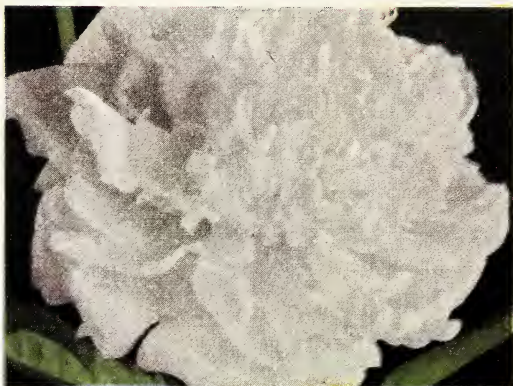
Ours are selected Dutch Hyacinths, choice of Pink, White, Blue, and Yellow. Order early as they go fast. 5 for 50c; 10 for 90c; 25 for \$1.85; 100 for \$6.00, postpaid.



Our Beautiful Dutch Hyacinths.



Sarah Bernhardt.



Baroness Schroeder.



Longfellow.

Ferris Magnificent Peonies

Queen of Spring Flowers

Need we describe the Peony—that springtime flower that was simply made for admiration and joy. We doubt if there will ever be a flower as popular or as genuinely admired.

We are offering extra select Peonies, varieties that we have tested thoroughly and found to be not only of unusual beauty but dependable, hardy sorts that are genuine garden favorites.

PLANTING DIRECTIONS

Peonies can be successfully planted in either spring or fall. Plant in good, rich soil, in an open, sunny situation if possible, with the eyes 2 or 3 inches below the surface of the ground, never deeper. If planted too deep, Peonies are apt to be shy bloomers. See that they get plenty of moisture during growing and blooming season: keep well cultivated and free from weeds.

FRANCOIS ORTEGAT. A handsome Peony.

Bloom is large, semi-rose type, and of deep, rich red, almost purple, the stamens artistically scattered through the petals. 35c each; 3 for 85c; 10 for \$2.55, postpaid.

FESTIVA MAXIMA. Enormous blooms, snow-white shading to cream at base, with carmine tips on center petals. Wonderfully fragrant. 35c each; 3 for 85c; 10 for \$2.55, postpaid.

CAROLINE MATHER. Bright rose-red, with a purplish tint when in full bloom. Striking. 35c each; 3 for 85c; 10 for \$2.55, postpaid.

EDULIS SUPERBA. Large blooms of crown type, and a very lovely shade of bright mauve-pink; fragrant. Strong, free bloomer. 35c each; 3 for 85c; 10 for \$2.50, postpaid.

LAMARTINE. Deep rose-red; stamens form a collar of gold. Distinct and attractive. Late. 35c each; 3 for 85c; 10 for \$2.55, postpaid.

AVALANCHE. A beautiful milk-white Peony, large and compact, with creamy center and occasional carmine flecks. 40c each; 3 for \$1.00; 10 for \$2.75, postpaid.

MEISSONIER. A brilliant colored Peony of medium size, bomb type. The gorgeous purple-red blooms are borne freely on tall stems and are very fragrant. 40c each; 3 for \$1.00; 10 for \$2.75, postpaid.

FELIX CROUSSE. Brilliant ruby-red, large and globular—a typical bomb. Strong grower and free bloomer; fragrant. A dazzling beauty. 50c each; 3 for \$1.25; 10 for \$3.65, postpaid.

DELACHEL. One of the very best reds—large bloom, rose type, and of a beautiful violet-crimson, slightly tipped silver. Strong erect grower, and very free bloomer. 40c each; 3 for \$1.00; 10 for \$2.60, postpaid.

4 Fine Peonies for only \$1.00 POSTPAID.

1 Red 1 White 1 Pink 1 Rose

All large, double-flowering varieties. Quality considered, the greatest Peony Bargain ever offered. Order now—plant this fall—and enjoy their beauty and fragrance in the spring.

4 Popular Named Peonies, \$1.27 POSTPAID.

A Charming Group for the Garden.

1 Festiva Maxima 1 Edulis Superba
1 Karl Rosenfeld 1 Francois Ortegat

A Collection of four beauties that everyone should have. Well worth \$2.50.

Our Extra Choice Favorites

(These are the newer sorts, and without doubt the most exquisite Peonies ever grown).

KARL ROSENFELD. Classed by many as the most brilliant and finest red Peony ever introduced. Blooms are deep rich crimson, very large, globular and compact. Superbly strong and prolific bloomer. 40c each; 3 for \$1.10; 10 for \$3.00, postpaid.

SARAH BERNHARDT. Large, double, full blooms of a melting apple-blossom-pink lightly tipped with silver, and sweetly fragrant. Very prolific bloomer with tall, strong stems. Their immense handsome blooms are among the greatest prizewinners of them all. 60c each; 3 for \$1.65; 10 for \$4.75, postpaid.

OFFICINALIS RUBRA. This is the very early Decoration Day Peony and always in great demand. Wonderful vivid crimson color, with large, globular blooms. 75c each; 3 for \$2.00; 10 for \$5.75, postpaid.

BARONESS SCHROEDER. If you have room for only one white Peony, then by all means plant this wonderful variety. Full, enormous blooms, rose type, which first have a delicate pink tint but become pure white when in full bloom. It has no rival for cut flowers, and is equally fine on the bush. Delicious fragrance. 65c each; 3 for \$1.55; 10 for \$4.25, postpaid.

ALBA SULPHUREA. The "Yellow Peony" it is often called, and in great demand because of its appealing color. Outer petals of creamy white, with deep, sulphur-yellow centers. Large, handsome, and free blooming. 85c each; 3 for \$2.25; 10 for \$6.25, postpaid.

LONGFELLOW. A superb Red Peony, and one that has taken more first prizes at the National Peony Show probably than any other Red. Its rich, cherry color does not fade in the sunlight, and is as glowing and desirable on the landscape as when cut and used in bouquets. Blooms large, very double and full. \$1.25 each; 3 for \$3.00; 10, \$9.00, postpaid.

MONS. JULES ELIE. The largest Peony in existence and one of the highest scoring varieties. Full, double, glossy, mauve-pink blooms shading to deeper rose at the base, with an exquisite silvery sheen. Bomb type, looking very much like an enormous chrysanthemum. 80c each; 3 for \$2.25; 10 for \$6.00, postpaid.

MARY BRAND. The rich, deep, glorious red of the Mary Brand has made it one of the grandest show Peonies of all time. In the garden it is superb—the bush a mass of glossy, crimson blooms, charmingly set off with golden stamens. In bouquets they last an unusually long time. Should be in every collection. 80c each; 3 for \$2.25; 10 for \$6.00, postpaid.

WALTER FAXON. The most exquisitely colored pink Peony imaginable. Bright coral-pink deepening to rose-pink at the base, blooms good size and numerous. The Walter Faxon attracts more admiration at Peony Shows than any other—in fact, it is the most glorious exhibition Peony of all times. \$1.75 each; 3 for \$4.50; 10 for \$10.00, postpaid.



Karl Rosenfield.



Alba Sulphurea.



Edulis Superba.

3 Superb Peonies for \$1.49

POSTPAID.

THE CHOICEST TO BE FOUND.

1 Baroness Schroeder 1 Karl Rosenfield
1 Sarah Bernhardt

It is a shame to pass up this magnificent collection at this extra low price. Here are sublime coloring, delicious fragrance—in fact, it is a perfect group for any garden.

Beautiful As the Lily

Regal Lily - *Lilium Regale*

Regal, superb, hardy, and a wonderful coloring—is it any wonder that the Regal is so popular everywhere. Once you see a Regal Lily in bloom and glimpse its extraordinary beauty, then realize how very hardy it is and how easy it is to grow, you will readily understand its very desirability. Large, stately blooms are borne on strong, sturdy stems, often 4 and 5 feet high, and what magnificent blooms they are—white lightly suffused pink, with beautiful canary-yellow at the center and extending part way up the trumpet. Delicately perfumed. Blooms in June and July. Plant in fall or early spring, in any good, rich, well drained soil, setting it about 5 inches deep, and placing a little sand beneath the bulb. A garden without the Regal Lily is hardly a garden at all. **Fine blooming size bulbs, 15c each; 10 for \$1.00; 25 for \$2.25, postpaid.**



Regal Lily.

Madonna Lily - *Lilium Candidum*

Large, pearl-white flowers, deliciously fragrant, are borne in June and July on tall, erect stems. They are undeniably lovely in the lily garden, or make a wonderful background in the perennial border, where they secure the necessary shade the bulbs like. This Lily likes a good deep soil that is not too dry, and should be left undisturbed for years. We have found, though, that this is one lily that does best if planted shallow, the tops just below the surface, and then given a mulching of well-rotted stable manure. Plant in the fall only. Hardy and will thrive in almost any section. **Fine, blooming size bulbs, 20c each; 6 for \$1.00; 12 for \$1.75, postpaid.**



Tiger Lily - *Lilium Tigrinum*

'Tis the fine old-fashioned sort that needs no description. Handsome, bright orange-red flowers, thickly covered with large, purplish spots, that make a grand show in the garden during August and September. Very hardy, thrifty grower and fine for massing. **Select, blooming size bulbs, 20c each; 3 for 50c; 10 for \$1.50, postpaid.**

Double Tiger Lily - *Lilium Tigrinum Flore Pleno*

Wonderful showy flowers. These choice blooms have the same colors as the single Tiger Lily, but are double clear to the center. Hardy and desirable. **25c each; 3 for 60c; 10 for \$1.75, postpaid.**

Elegans Lily - *Lilium Thunbergianum*

Very hardy, somewhat dwarf Lilies with erect dark orange blossoms borne in great profusion. Showy, and a general favorite everywhere. Most lilies should be planted deeply in rich, well drained soil but do not allow fertilizer to touch the bulb. **30c each; 5 for \$1.25; 10 for \$2.00, postpaid.**

Lemon Lily - *Hemerocallis Flava*

Not a bulb, but generally classed as a perennial. It is one of the old-time favorites and will always be popular. Very hardy, thriving almost anywhere, but does exceedingly well in a moist place or in shade. Abundant grasslike foliage makes a very beautiful background for the wealth of clear yellow blooms in June. Unusually effective in clumps or masses in the garden. **Fine, blooming size plants, 25c each; 5 for \$1.00; 10 for \$1.75, postpaid.**

Gold-Banded Lily of Japan - *Lilium Auratum*

There is no other Lily like this majestic beauty. Its enormous blooms with reflexed petals are borne on 4- to 6-ft. stems, are of pearly white thickly studded with crimson spots, while each petal bears through the center a royal stripe of golden yellow. These grand blooms profusely crown the plant in August and September, and give a marvelous effect. Clumps of them among groups of evergreens or among Irises or Peonies make a glorious showing. Perfectly hardy, requiring only good, well drained soil but should be planted deeply, where it will be sheltered somewhat from strong winds and from the heat of midday. **40c each; 3 for \$1.10; 10 for \$3.50, postpaid.**

Lilium Speciosum Rubrum

One of the grandest of all Lilies, with large, rich crimson blooms showing purple-crimson spots and margined white. Splendid dark green foliage, with as many as 10 or 15 blooms on a spike oftentimes. Plant deeply, in good, well drained soil. **50c each; 3 for \$1.40; 10 for \$4.00, postpaid.**



Madonna Lily.

FREE PREMIUMS

To encourage fall planting, which is being practiced more and more with great success, we are offering the following wonderful Free Premiums, with orders received by November 1st, 1932. These special Free Gifts are given where cash in full accompanies the order, and you must state on your order the gift you want. We absolutely cannot allow these premiums to anyone where the order is not in by November 1st, and where they are not requested on the original order.

- | | | |
|--|--|--|
| <p>With an order amounting to \$5.00 or more:</p> | <p><input type="checkbox"/> 1 White Spruce Specimen. 2 ft.
 <input type="checkbox"/> 30 Mixed Iris (from our famous Rainbow Assortment).</p> | <p>Your choice of either one of the following:</p> |
| <p>With an order amounting to \$10.00 or more:</p> | <p><input type="checkbox"/> 1 Pyramidal Arbor-Vitae Specimen. 3 ft.
 <input type="checkbox"/> 25 Beautiful Perennials (consisting of 5 Mixed Delphiniums, 5 Alaska Daisies, 5 Lychnis, 5 Platycodon, and 5 Dianthus).</p> | <p>Your choice of either one of the following:</p> |
| <p>With an order amounting to \$15.00 or more:</p> | <p><input type="checkbox"/> 1 Trailing Juniper (Sabina) Specimen. 2-3 ft.
 <input type="checkbox"/> 12 Regal Lilies.</p> | <p>Your choice of either one of the following:</p> |
| <p>With an order amounting to \$25.00 or more:</p> | <p><input type="checkbox"/> 1 Silver Cedar Specimen. 3-4 ft.
 <input type="checkbox"/> 1 Juniper Meyeri Specimen, 2 ft.
 <input type="checkbox"/> 50 Handsome Perennials (consisting of 10 Violas, 10 Pyrethrum, 10 Shasta Daisies, 10 Coreopsis, and 10 Delphiniums).</p> | <p>Your choice of any one of the following:</p> |

A Square Guarantee

I guarantee that Ferris stock will reach the purchaser alive and in growing condition, and will replace, free of charge, any that does not, upon receiving your express or freight receipt with written statement from the agent, showing loss or damage. This does not apply to parcel post packages, unless 10c for insurance has been added.

Any tree or plant that dies the first growing season, I will replace at a cost of one-half the regular catalog price, customer to make a written report and have his order for replacement in our hands before October 10th, following fall after purchase.

I guarantee to every Ferris customer, stock that is true to name, and absolutely as represented. Any Ferris stock proven not to be will be replaced free of charge or the purchase price refunded. I cannot be held liable for any damage other than herein named. EARL FERRIS.

Terms of Sale

All nursery stock listed in this catalog is sold under the regular terms which you will find in our large spring catalog, and the guarantee given on this page.

No order for nursery stock accepted for less than \$1.00. On orders up to and including \$5.00 we require cash with order. On orders amounting to more than \$5.00, either all cash with order, or, if customer prefers, one-fourth cash with order, balance C. O. D.

BARGAIN COLLECTIONS CANNOT BE ALTERED, DIVIDED, OR CHANGED IN ANY WAY.

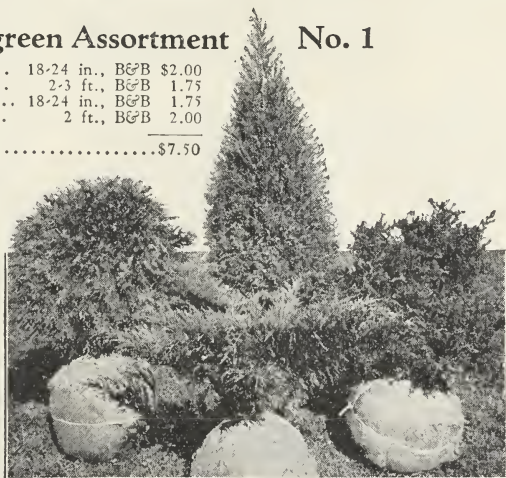
Ferris' Evergreen Assortment No. 1

1 Globosa Arbor-Vitae Specimen	18-24 in., B&B	\$2.00
1 Red Cedar Specimen	2-3 ft., B&B	1.75
1 Trailing Juniper Specimen	18-24 in., B&B	1.75
1 Retinispora Plumosa Specimen	2 ft., B&B	2.00
Total		\$7.50

OUR SPECIAL FALL PRICE

\$5.50

A perfect evergreen group for almost any situation—superb in the rock garden—imposing at the entrance or along the foundation, while out in the garden or outdoor living room such a group will delight the most particular folks.



Ferris' Supreme Evergreens

Our Superb Specimens Give the Home a Gracious, Year-Around Charm.
Our Fine Windbreak Trees Shelter the Farmstead.

Plant a Ferris Evergreen This Fall—a living Christmas Tree for you and your whole community to enjoy—or a group at the entrance and along the foundation that will give your home a distinctive landscape finish. There should be Evergreens around every home, if for no other reason than to relieve the bare wintry landscape and to retain a little of the lovely green coloring of springtime throughout the year. Marvelous effects can be created with the various forms of Ferris' ornamental evergreens, in their often contrasting yet harmonious coloring, and with the aid of other Ferris ornamental trees and shrubs.

Ferris Evergreens, you know, are the finest that can be grown. For 63 years we have been specializing in evergreens. We develop them under our famous system of root-pruning and transplanting, and give them expert care from the time they are started until they are ready to leave the nursery.

For Fall Planting we especially recommend Balled and Burlapped evergreens, although the following varieties in transplanted sizes of 2 feet and under are giving excellent results when not Balled: Junipers, Cedars, Arbor-Vitae, Retinispora, and the hardy Norway Spruce.

Plant This Fall—While Prices are the Lowest in History

(For more complete descriptions of our Evergreens, send for our spring catalog).

American Arbor-Vitae

The popular variety for hedges, with flat, beautifully carved foliage of a deep green, and withstands shearing better than any other evergreen. A splendid landscape evergreen, too.

	Each	10	100
18-24 in., heavy, XXX	\$0.75	\$5.00	\$35.00
2-3 ft., heavy, trimmed Specimens, XXXX	1.25	9.00	
3-4 ft., heavy, trimmed Specimens, XXXX	2.00	18.00	
4-5 ft., heavy, select Specimens, XXXXX	3.00	25.00	

(If desired Balled and Burlapped, add 50c per tree extra).

Siberian Arbor-Vitae

Fine for foundation and landscape groups. Very hardy, dwarfish in nature, with unusually heavy foliage, deeply chiseled, rather conical in form. Deep green color throughout the year.

	Each	10	100
12-18 in., XX	\$0.35	\$3.00	\$25.00

(If desired by parcel post, add 25c extra in lots of ten trees or less, add 75c extra for 50 trees, or \$1.00 extra for 100 trees).

	Each	10	100
18-24 in., Specimens, XXX	\$1.25	\$10.00	
2-3 ft., Specimens, XXX	2.00	18.00	

(If desired Balled and Burlapped, add 50c per tree extra).

Transplanting Directions for Balled and Burlapped Evergreens

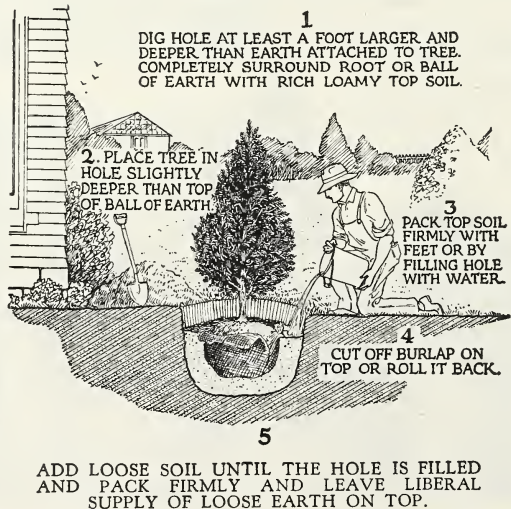
When planting Balled and Burlapped evergreens in the fall, dig a hole about twice the size of the ball, and plant the tree as soon as it reaches you. If the ground is dry at planting time, fill the hole with water two or three times, and let it soak away before putting in the tree. Take care to handle the tree carefully so as not to break the ball, place it in the hole so that the tree will be a few inches deeper than it had been in the nursery, then cut the burlap at the top of the ball and roll it back for three or four inches. Plant ball, burlap and all, using good growing soil to pack around the ball, and be sure to pack this soil firmly.

When the hole is about two-thirds full of soil, pour in a pail of water and allow it to soak away, then continue filling with the good soil, almost to the surface of the ground, always packing it firmly. Leave a layer of loose soil at the top of the ground to prevent baking, and do not mound the soil up around the trunk, but it should dip in slightly towards the trunk so as to catch and retain all moisture.

Keep the ground around the trees free from weeds and grass. If you have dry weather after planting, give the trees a thorough soaking about every other evening until you get a good rain, then mulch heavily with well-rotted straw or sawdust, taking care to put on plenty of it. A judicious trimming at planting time is also beneficial.

For planting and care of small evergreens, or for those handled without balls, see our spring catalog.

How to Properly Plant Balled and Burlapped Evergreens



Pyramidal Arbor-Vitae

A real beauty that has a particular place in every home planting. Has the beautiful lacy foliage of the Arbor-Vitae but naturally assumes a refined, pyramidal shape without trimming. A wonderful landscape evergreen—splendid for entrance planting, for foundation groups, and formal effects in the garden. You will be more than delighted with our choice specimens.

	Each	10
2-3 ft. Specimens, XXXX	\$2.00	\$15.00
3-4 ft., extra heavy, select Specimens, XXXX	3.00	25.00
4-5 ft., extra heavy, select Specimens, XXXXX	4.00	35.00
5-6 ft., extra heavy, select Specimens, XXXXX	6.00	

(If desired Balled and Burlapped, add 50c per tree extra).

Globosa Arbor-Vitae

One of the most charming of all the dwarf evergreens. It, too, has the artistic foliage of the Arbor-Vitae family, and forms a dense, globular shape without trimming. Our Globes are real beauties, and excellent for landscape planting.

	Each	10	100
12-14 in., XX	\$0.50	\$4.50	\$40.00

(If the 12-14 in. light transplants are desired by parcel post, add 5c each, 25c extra for ten, or 80c per hundred).

	Each	10
1 ft., bushy Specimens, XXX ..	\$8.00	\$8.00
12-18 in., Specimens, XXX	1.25	9.00
18-24 in., Specimens, XXX	1.50	10.00
2-3 ft., heavy, select Specimens, XXXX	3.00	25.00

(If desired Balled and Burlapped, add 50c per tree extra).

Erecta Arbor-Vitae

A stately globe, a little more upright in growth than the Globosa. Grows close and compact, with deep green, lacy foliage. Unusually valuable in landscape planting, and a splendid hedge evergreen.

	Each	10	100
12-14 in., light Specimens, XX	\$0.70	\$5.00	\$40.00

(If desired by parcel post, add 35c extra for 10 trees or less, add 75c extra for 50 trees, or \$1.00 extra for 100 trees).

Alba-Spicata Arbor-Vitae

Bushy, symmetrical Arbor-Vitae, beautifully tipped with a light yellow in the early summer. Semi-dwarf. Very charming in the border or landscape groups.

	Each	10
18-24 in., XX	\$0.90	\$7.50
2-3 ft. Specimens, XXX	1.25	9.00

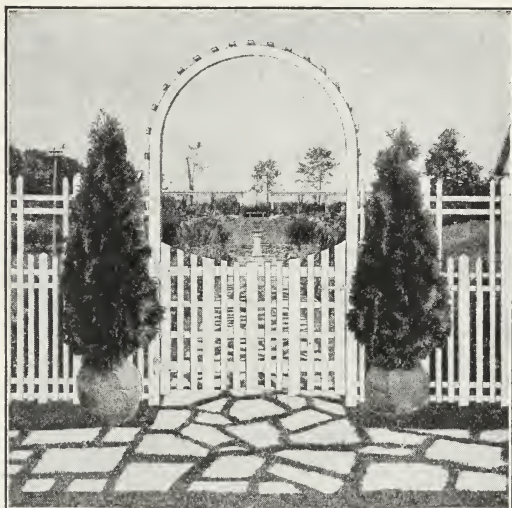
(If desired Balled and Burlapped, add 50c per tree extra).

Lutea Golden Arbor-Vitae

Low, compact growing evergreen, with striking golden yellow foliage. Wonderful for landscape effects.

	Each	10
12-18 in. Specimens, XXX	\$1.00	\$ 9.00
18-24 in. Specimens, XXX	1.40	10.00

(If desired Balled and Burlapped, add 50c per tree extra).



Our Beautiful Pyramidal Arbor-Vitae

There's a world of beauty and joy in a pair of Ferris' selected Pyramidal Arbor-Vitae. What a picture they make at the gateway to your garden or at the home entrance! Because they are easily established in the fall, and because we have such a fine large stock of choice specimens, we are making the following extra low bargain prices, for this fall only.

- 2 1/2-3 ft., selected specimens, XXX, with Roots Mudded, 2 for \$3.75; 5 or more at \$1.60 each.
- 3 1/2-4 ft., selected specimens, XXXX, Balled and Burlapped, 2 for \$6.50; 5 or more at \$2.85 each.
- 4 1/2-5 ft., extra select specimens, XXXXX, Balled and Burlapped, 2 for \$8.50; 5 or more at \$3.85 each.

Red Cedar

(Juniperus Virginiana)

A hardy evergreen; very lovely and desirable in landscape work. Handsome, feathery foliage of deep green, sometimes with silvery tints. Forms a broad pyramid, and can be kept trimmed back to any size or shape desired. Fine in foundation and entrance plantings.

	Each	10
2-3 ft. Specimens, XXX	\$1.25	\$10.00
3-4 ft. Specimens, XXXX	2.00	19.00
4-5 ft. Specimens, XXXXX	3.50	

(If desired Balled and Burlapped, add 50c per tree extra).

Ferris' Silver Cedar

(Juniperus Scopulorum)

A selected tree of the Red Cedar family but growing more narrow and columnar, with foliage of an exceedingly beautiful, lustrous, silvery blue, especially marked in the summer and fall. Very hardy, and a superb evergreen for foundation planting.

	Each	10
2-3 ft. Specimens, XXXX	\$4.00	\$4.00
3-4 ft. Specimens, XXXX	5.00	
4-5 ft. Specimens, XXXX	6.50	

(If desired Balled and Burlapped, add 50c per tree extra).

Blue Juniper

(*Juniperus Virginiana Glauca*)

A distinctive new evergreen, with silver-tipped foliage in the summer as the new growth comes forth. Develops a broad, compact pyramid that is indeed charming. Easily one of the best for landscape planting. Each 10

2-3 ft. Specimens, XXXX\$4.50	\$40.00
3-4 ft. Specimens, XXXX	5.00 45.00

(If desired Balled and Burlapped, add 50c per tree extra).

Chinese Column Juniper

(*Juniperus Chinensis Pyramidalis*)

This superb evergreen as it grows towards maturity develops a beautiful narrow column in the manner of the Lombardy Poplar. Its formal outline, together with its artistic, lacy foliage, and deep green, often silvery color, make it one of the most outstanding evergreens for landscape and entrance groups. Each 10

2-2½ ft. Specimens, XXX\$2.00	\$18.00
2½-3 ft. Specimens, XXX	3.00 25.00
3-4 ft. Specimens, XXX	3.75 35.00

(If desired Balled and Burlapped, add 50c per tree extra).

Juniper Meyerii

A very fascinating new evergreen, charming in the rock garden or close to the pool, while it makes a distinctive addition to a foundation planting. Thick, pointed, lacy foliage of a deep, rich blue color, and very informal as to shape and outline—sometimes more upright and again more trailing. Hardy, rugged, easy to transplant. Each 10

6-10 in., XX\$1.50	\$13.00
--------------	-------------	---------

(If desired by parcel post, add 5c each). Each

16-20 in. Specimens, XXX\$5.00
20-24 in. Specimens, XXXX6.00

(If desired Balled and Burlapped, add 50c per tree extra).

Pfitzer's Juniper

Unusually charming and graceful—you will want this dwarf evergreen in your foundation planting or in the garden groups. Very hardy, and well adapted to almost any climate. Will develop a broad, low-spreading type when left untrimmed or can be staked to form a lovely broad pyramid. Very beautiful and our specimens are extra choice.

	Each	10
8-10 in., X\$0.50	\$3.75

(If the 8-10 in. light transplants are desired by parcel post, add 5c each).

	Each	10
12-18 in. Specimens, XX\$1.50	\$10.00
18-24 in. Specimens, XXX	2.00 17.50
2-3 ft., select Specimens, XXX	3.00
2-3 ft., extra select Specimens (staked upright), XXXX	4.00

(If desired Balled and Burlapped, add 50c per tree extra).

Trailing Juniper

(*Juniperus Sabina*)

Hardy anywhere, with delightful trailing habits that make it essential in landscape groups. Dark green, feathery, graceful foliage. There is no better dwarf evergreen for general planting. Our specimens are beauties that are bound to please.

	Each	10
12-18 in. Specimens, XXX\$1.00	\$9.00
18-24 in. Specimens, XXX	1.25 10.00
2-3 ft. Specimens, XXXX	2.25 20.00
3-4 ft. Specimens, XXXX	4.00

(If desired Balled and Burlapped, add 50c per tree extra).



Ferris' Evergreen Assortment No. 2

A lovely group of Ferris Evergreens, such as this, will make your landscape setting doubly attractive—for remember, it is Evergreens that give a rich finish the year through.

1 Norway Spruce Specimen 2-3 ft.	\$0.95	3-4 ft., B&B	\$1.75
2 Pyramidal Arbor-Vitae Specimens 2½-3 ft.	3.75	3½ ft., B&B	6.50
1 White Pine Specimen 2-3 ft.	.75	3-4 ft., B&B	1.50
1 White Spruce Specimen 2-3 ft.	1.25	3-4 ft., B&B	2.15
1 Globosa Arbor-Vitae Specimen 1 ft.	.90	18-24 in., B&B	2.00
2 Trailing Juniper Specimens 12-18 in.	2.00	18-24 in., B&B	3.50
Totals	\$9.60		\$17.40
Our Special Fall Prices	\$7.75		\$15.00

Juniper Sargentii

A low, creeping evergreen, very fine for terraces, for the rock garden, or to edge taller evergreens in the foundation planting. Beautiful bright green foliage, often tinted blue in the summertime.

Each
2-3 ft. select Specimens, XXXX\$5.00
(If desired Balled and Burlapped, add 50c per tree extra).

Retinispora Plumosa

A handsome small evergreen, with feathery, light green foliage, more beautiful than any fern. Dwarf in habit; a splendid variety for the foundation planting and a great favorite in the rockery.

Each 10
2 ft. Specimens, XXX\$1.50 \$10.00
(If desired Balled and Burlapped, add 50c per tree extra).

American Yew

(Taxus Canadensis)

This hardy, dwarf evergreen, with its deep green, glossy foliage, is excellent for the border or rock garden. Does well in shady places.

Each 10
12-18 in., XXX\$1.75 \$15.00
(If desired Balled and Burlapped, add 50c per tree extra).

NOTE.—X means once transplanted and once root-pruned. XX means twice transplanted and twice root-pruned. XXX means three times transplanted and three times root-pruned. XXXX means four times transplanted and four times root-pruned.

Norway Spruce

Most popular evergreen in existence for windbreaks, yet an equally good ornamental tree. Needles short and stiff, restful deep green. Thick foliage, with numerous interlacing branches clear to the ground. Hardy and well adapted to almost any good growing soil. The variety generally used for Christmas trees.

3 yr. seedlings, 4-9 in. average	\$3.50	1000	\$32.50
(If the seedlings are desired by parcel post, add 10c per 100 for packing and postage).				
	Each	10	100	1000
8-12 in., X	\$0.20	\$1.50	\$8.00 \$75.00
12-18 in., XX25	1.90	11.00 90.00

(If any of the 8-18 in. transplants are desired by parcel post, add 25c extra in lots of ten trees or less, add 50c extra for 50 trees, or 65c extra for 100 trees to cover packing and postage. These are extra nice, thrifty, light transplants.

	Each	10	100	
18-24 in., XX	\$0.28	\$2.25	\$15.00
2-2½ ft., XX50	3.50	22.50
2-3 ft., XXXX, extra heavy wind-break trees60	4.50	30.00
3-4 ft., XXXX, extra heavy wind-break trees75	6.50	50.00
4-5 ft., XXXX, extra heavy wind-break trees	1.00	8.50	70.00
	Each	10		
2-3 ft. Specimens, XXXX	\$0.95		\$ 8.50
3-4 ft. Specimens, XXXX	1.25		10.00
4-5 ft. Specimens, XXXX	2.00		15.00
5-6 ft. Specimens, XXXXX	3.00		28.00
6-7 ft. Specimens, XXXXX	5.00		45.00
8-10 ft. Specimens, XXXXX	8.00		70.00

(If desired Balled and Burlapped, add 50c per tree extra).

Black Hills Spruce

A lovely evergreen; bushy, compact and symmetrical, with very thick, deep green foliage that often has a silvery touch. Needles short and stiff. One of the most beautiful ornamental evergreens—splendid for a living

BLACK HILLS SPRUCE—Continued.

Christmas Tree on the lawn—and a fine windbreak tree for western Iowa, Nebraska, Kansas, and the Dakotas.

	100	1000	
3 yr. seedlings, 4-8 in. average	\$5.00	\$40.00
(If the seedlings are desired by parcel post, add 10c per 100).			
	Each	10	100
8-12 in., X	\$0.35	\$3.00 \$25.00
(If the 8-12 in. transplants are desired by parcel post, add 30c extra in lots of ten trees or less, add 65c extra for 50 trees, or 80c extra for 100 trees, to cover packing and postage).			
	Each	10	
12-18 in. Specimens, XXX	\$1.00	\$ 7.50
18-24 in. Specimens, XXX	1.25	10.00
2-3 ft. Specimens, XXXX	2.50	20.00
3-4 ft. Specimens, XXXX	4.00	

	Each	
4-5 ft. Specimens, XXXXX	\$ 5.00
5-6 ft. Specimens, XXXXX	6.50
6-7 ft. Specimens, XXXXX	10.00
7-8 ft. Specimens, XXXXX	12.00

(If any of the Black Hills Spruce are desired Balled and Burlapped, add 50c per tree extra).

White Spruce

Quite similar to Black Hills Spruce, though a little more open in growth. Another very fine landscape evergreen, and wonderful in windbreaks.

	100	1000	
3 yr. seedlings, 4-8 in. average	\$4.50	\$35.00
(If the seedlings are desired by parcel post, add 10c per 100).			
	Each	10	100
8-12 in., X	\$0.25	\$1.75 \$10.00
(If these 8-12 in. light transplants are desired by parcel post, add 25c extra for 10 trees or less, add 40c extra for 50 trees, or 60c extra for 100 trees).			

	Each	10	100
12-18 in., XXX, heavy, good	...	\$0.40	\$3.00 \$25.00
18-24 in., XXX, heavy, good50	4.00 30.00
2-3 ft., XXXX, extra heavy, bushy	1.00	7.50	60.00
3-4 ft., XXXX, extra heavy, bushy	1.25	8.50	75.00
4-5 ft., XXXX, extra heavy, bushy	1.50	10.00	95.00

	Each	
2-3 ft., selected specimens, XXXX	\$1.25
3-4 ft., selected specimens, XXXX	1.65
4-5 ft., selected specimens, XXXX	2.25
6-8 ft., extra heavy, select specimens, XXXXX	6.00
8-10 ft., extra heavy, select specimens, XXXXX	8.00

(If desired Balled and Burlapped, add 50c per tree extra).

Colorado Spruce

A magnificent evergreen, often with silvery tints in the summer when covered with the new growth. Foliage heavy, the needles short and stiff. Symmetrical and graceful—will make you a delightful living Christmas Tree—and one of the most popular and desirable for landscape planting.

	25	50	100
3 yr. seedlings, 4-8 in. average	\$3.00	\$5.00 \$9.00

NOTE.—These seedlings were grown from seed taken from select Blue Shiners but do not show blue color to any extent when so young. If the seedlings are desired by parcel post, add 5c for 25; 10c for 50; or 15c for 100.

	Each	10	100
8-12 in., XX, bushy, well branched	\$0.40	\$3.50 \$30.00
12-14 in., XX, bushy, well branched50	4.00 35.00

(If any of the 8-14 in. light transplants are desired by parcel post, add 30c extra for ten trees or less, add 50c extra for 50 trees, or 65c extra for 100 trees).

	Each	10	
18-24 in., heavy specimens, XXX	\$1.75	\$15.00
2-3 ft., heavy specimens, XXXX	2.00	19.00
3-4 ft., heavy specimens, XXXX	2.50	24.00

(If any of these specimens are desired Balled and Burlapped, add 50c per tree extra).

Colorado Blue Spruce Shiners

A superb evergreen, being a selected species of the Colorado Spruce, with foliage of a beautiful silvery blue color. It is the new growth each season that brings out its beautiful tones. Unusually symmetrical, with aristocratic lines scarcely found in any other tree.

	Each	10
10-12 in., XX, bushy, well branched (not balled)	\$1.50	\$14.00
12-14 in., XX, bushy, well branched (not balled)	2.00	19.00

(If any of these 10-14 in. transplants are desired by parcel post, add 5c each; or 35c extra for ten trees).

	Each	10
18-24 in., extra heavy, select Specimens, XXX, B&B	\$ 6.00	
2-3 ft., extra heavy, select Specimens, XXXX, B&B	9.00	
3-4 ft., extra heavy, select Specimens, XXXX, B&B	12.00	
4-5 ft., extra heavy, select Specimens, XXXXX, B&B	15.00	
6-8 ft., extra heavy, select Specimens, XXXXX, B&B	40.00	
10-12 ft., extra heavy, select Specimens, XXXXX, B&B	50.00	

NOTE.—Our Colorado Blue Spruce Shiners are all extra fine, and the specimen sizes are the only trees in the nursery that will be Balled and Burlapped without extra charge. This applies to all of the Shiners except the light, twice transplanted trees and any specimens ordered for parcel post shipments. They cannot be shipped by parcel post when balled.

Scotch Pine

A very rapid growing evergreen; fine for quick windbreaks, and used extensively in landscape planting. Slender, dark green needles of medium length. Hardy and easily transplanted.

	10	25	100
3 yr. seedlings, heavy, 10-15 in. average	\$1.00	\$2.00	\$7.50

(If desired by parcel post, add 5c for 10, 10c for 25, or 20c per 100).

	Each	10	100
2-3 ft., XXX	\$0.60	\$5.00	\$45.00
3-4 ft. Specimens, XXXX	\$1.25	10.00	85.00
4-5 ft. Specimens, XXXX	3.00	27.50	200.00
5-6 ft. Specimens, XXXX	4.00	38.00	350.00
6-8 ft. Specimens, XXXXX	5.00	40.00	400.00

(If desired Balled and Burlapped, add 50c per tree extra).

White Pine

A majestic type, fine for windbreaks and ornamental planting. Beautiful light green foliage, long and soft. A Federal Quarantine forbids the entrance of White Pine into the western half of the United States.

	Each	10	100
2-3 ft., heavy, extra good, XXXX	\$0.75	\$7.00	\$40.00
3-4 ft. Specimens, XXXX	1.00	9.00	50.00
4-5 ft. Specimens, XXXX	1.25	10.00	60.00

(If any of the White Pine are desired Balled and Burlapped, add 50c per tree extra).

Jack Pine

The most rapid growing evergreen of them all, and unusually good for the western planter, as it thrives almost anywhere. Makes a good, quick, rough windbreak. Foliage is a light, rather yellowish green, needles moderately long and stiff.

	Each	10	100
18-24 in., XX	\$0.25	\$2.00	\$17.00
2-3 ft., XX30	2.50	20.00

Ponderosa Pine

A massive spreading evergreen, with very long needles of a deep rich green. Very hardy. Invaluable in the landscape setting, and a wonderful windbreak variety.

	100	1000
3 yr. seedlings, 4-10 in. average	\$3.00	\$25.00

(If the seedlings are desired by parcel post, add 10c per 100).

	Each	10	100
18-24 in., XXX	\$0.65	\$5.00	\$35.00
2-3 ft., XXXX, extra heavy80	7.00	45.00
3-4 ft., XXXX, extra heavy	1.00	8.00	60.00
4-5 ft., XXXX, heavy, select Specimens	2.50	20.00	
5-6 ft., XXXX, heavy, select Specimens	3.00	25.00	
6-8 ft., XXXXX, heavy, select Specimens	5.00	45.00	

(If desired Balled and Burlapped, add 50c per tree extra).

Austrian Pine

(Black Pine)

A very popular Pine, and almost identical in appearance with the Ponderosa Pine, though a little more upright in form. Foliage is very long and of a deep rich green. A splendid tree for ornamental planting, yet equally as good for windbreaks.

	Each	10	100
18-24 in., XXX	\$0.50	\$4.00	\$30.00
2-3 ft., XXXX, extra heavy60	5.00	40.00
3-4 ft., XXXX, extra heavy	1.00	8.00	65.00

(If desired Balled and Burlapped, add 50c per tree extra).

Red Pine

(Norway Pine)

This splendid Pine endures almost any hardship, and develops a quick, fine windbreak, as well as a useful tree for ornamental planting. Masses of long, soft, deep green needles contrast delightfully with the reddish bark. One of the best for reforestation.

	Each	10	100
12-18 in., XX	\$0.25	\$2.00	\$16.00
18-24 in., XX30	2.50	22.00

Dwarf Mugho Pine

A charming dwarf Pine with dark, rich green foliage, forming a compact little globe. Hardy, and a wonderful ornamental type for the landscape.

	Each	10
10-12 in., bushy, XX	\$1.25	\$9.00
12-18 in. Specimens, XXX	1.75	15.00
18-24 in., Specimens, XXX	2.00	18.00

(If desired Balled and Burlapped, add 50c per tree extra).

Concolor Fir

Often called the Silver Fir because of its shimmering, silvery color in the summer. Foliage quite long, soft and graceful; one of the most handsome and desirable of all evergreens. Tree is inclined to be a little rough and unshapely in its youth, but soon grows out of this, and develops into one of the finest, if not the most beautiful of all evergreens. Perfectly hardy.

	Each	10	100
4-8 in., X	\$0.25	\$2.00	\$14.00
8-12 in., X30	2.50	18.00

(If any of the 4-12 in. light transplants are desired by parcel post, add 15c for ten trees or less, add 30c extra for 50 trees, or 50c extra for 100 trees).

(See other sizes of Concolor Fir on next page).

CONCOLOR FIR—Continued.

	Each	10
18-24 in., heavy, XXX\$1.00	\$9.00
2-3 ft., heavy, XXXX	18.00
3-4 ft. Specimens, XXXX	3.50

(If desired Balled and Burlapped, add 50c per tree extra).

Douglas Fir

A distinguished tree of outstanding beauty and hardiness. Heavy foliage is of soft green color, and long, graceful branches develop fine form and symmetry. Ideal for both ornamental and windbreak planting, as well as a splendid hedge variety.

3 yr. Seedlings, 4-8 in. average, 100 for \$5.00; 1000 for \$40.00.

(If desired by parcel post, add 10c per 100).

6-10 in., X, 20c each; 10 for \$1.50; 100 for \$10.00.

(If the 6-10 in. light transplants are desired by parcel post, add 15c for ten trees or less, add 30c extra for 50 trees, or 50c extra for 100 trees).

12-18 in., heavy, XXX, 65c each; 10 for \$5.00; 100 for \$35.00. 18-24 in., heavy, XXX, \$1.00 each; 10 for \$9.00; 100 for \$50.00. 2-3 ft. Specimens, XXXX, \$2.00 each; 10 for \$17.50.

(If desired Balled and Burlapped, add 50c per tree extra).

NOTE.—X means once transplanted and once root-pruned. XX means twice transplanted and twice root-pruned. XXX means three times transplanted and three times root-pruned. XXXX means four times transplanted and four times root-pruned.

FERRIS' CUSTOMERS BUY ONCE—TWICE—AND STILL COME AGAIN

Dear Sir: Sorona, Ohio.
I have planted your nursery stock for two years. It is all growing fine and cannot be surpassed by anyone. Please send me your new catalog, as I am going to order again right away.
JESSE T. DOWELL.

Ferris' Evergreen Assortment No. 3

1 Trailing Juniper Spec., 12-18 in.	\$1.00	2-3 ft., B&B	\$2.75
1 Globosa Arbor-Vitae Spec., 1 ft.90	18-24 in., B&B	2.00
1 Red Cedar Spec., 2-3 ft.	1.25	3-4 ft., B&B	2.50
1 Dwarf Mugho Pine Spec., 10-12 in.	1.25	18-24 in., B&B	2.50
1 Pyramidal Arbor-Vitae Spec., 2-3 ft.	2.00	3-4 ft., B&B	3.50
1 Pfitzer's Juniper Spec., 12-18 in.	1.50	2-3 ft., B&B	3.50
Totals			\$16.75
Our Special Fall Prices ..			\$14.50

We call this our Charm Collection, for it contains evergreens of unusual grace and distinction—a group that is splendid at the foundation or equally as attractive in the formal garden setting. They are fine evergreens to plant in the fall.



Plant This Fall
—While Prices are the Lowest in History.

Surround Your Home With Ferris' Choice Shrubs

Delightful Flowers—Artistic Foliage—Charming Finish.

Most of our Hardy Shrubs can be planted successfully in the fall as well as in the spring.

PARCEL POST SHIPMENT OF SHRUBS

The smaller sized shrubs we list can in most cases be shipped by parcel post, and where desired that way and it is requested on the order, we will ship parcel post with the postage C. O. D. This automatically insures your shipment and protects you. The larger, heavier shrubs are in many cases too large and bulky for parcel post shipment.

JAPANESE BARBERRY. The great hedge plant, yet equally as fine for foundation groups. No home planting complete without it. Absolutely free from rust.

	Each	10	25	100
8-12 in. transplants	\$.00	\$0.60	\$1.25	\$3.75
12-18 in. transplants	.15	.90	2.00	6.00
18-24 in. transplants	.25	1.70	3.50	12.00
2-3 ft., extra heavy, twice transplanted	.35	3.00	6.00	20.00

RED-LEAVED BARBERRY. New and exceedingly popular. It has the artistic leaves and spines of the Japanese Barberry except that the foliage is a glowing red throughout the growing season where it is planted in a sunny place. Hardy and absolutely rust-proof.

	Each	10
9-12 in.	\$.035	\$3.20
12-18 in. transplants	.50	4.50

BEAUTY BUSH. Graceful and charming at all seasons, this fine hardy shrub is especially beautiful when entirely covered with its clear pink blooms in May. You will want it.

	Each	10
12-18 in.	\$.055	\$5.00
18-24 in. transplants	.75	7.00

BUTTERFLY BUSH. Long spikes of delightful bluish violet flowers give it the name Summer Lilac; fine fragrance, and attractive to butterflies. Each 5 No. 1 plants

.....	\$0.25	\$1.00
-------	--------	--------

HIGH BUSH CRANBERRY. An artistic member of the Snowbush family, with white, flat blooms, followed by red berries in the fall.

Each	10
2-yr. plants\$0.40 \$3.50

DWARF DEUTZIA. A low-growing, dense little shrub, covered with dainty white flowers in June.

Each	10
2-yr. plants\$0.35 \$3.00

DEUTZIA, Pride of Rochester. Medium in height, covered with artistic, double white blooms in June.

Each	10
2-yr. plants\$0.25 \$2.00

DEUTZIA, Crenata. Charming double pink flowers on bush of medium height.

Each	10
2-yr. plants\$0.25 \$2.00

RED-BRANCHED DOGWOOD. Fine, tall-growing shrub for background and filler. Yellowish white flowers, red stems, and creamy white fruit.

Each	10
2-yr. transplants\$0.25 \$2.00
3-year, heavy40 3.75

YELLOW-BRANCHED DOGWOOD. Very much like the Red-Branch Dogwood except that the branches are an attractive golden yellow; flowers white.

Each	10
3-yr., heavy plants\$0.40 \$3.50

VARIEGATED DOGWOOD. A very lovely, new Dogwood with striking foliage of bright green edged with creamy white. Fine for contrast.

Each	10
2-yr., No. 1\$0.40 \$3.50
3-yr., heavy60 5.00

FORSYTHIA (Golden Bell). Beautiful bell-shaped flowers of golden yellow come out in very early spring—the first shrub of all to bloom.

Each	10
1-yr., No. 1\$0.25 \$2.00
2-yr., transplants35 3.00

GOLDEN ELDER. A glorious, golden leaved shrub, unsurpassed for contrast. Must be planted in a sunny location.

Each	10
1-2 ft., field-grown\$0.25 \$2.00
2-3 ft., field-grown35 3.00
3-4 ft. transplants50 4.00
4-5 ft., heavy transplants60 5.00

PINK TARTARIAN HONEYSUCKLE. A beautiful, tall-growing shrub loaded with delicate pink flowers in June, followed by a wealth of orange-red berries. Splendid for tall hedges and landscape groups.

Each	10
1-yr., 12-18 in. average\$0.20 \$1.40
2-yr. transplants, 18-24 in. average30 2.75

WHITE TARTARIAN HONEYSUCKLE. Like the pink variety except that the blossoms are pure white. Sizes and prices the same as for the pink sort.

JAPAN HONEYSUCKLE (Morrowi). Similar to the Tartarian Honeysuckle, except that the branches are more spreading. Creamy white flowers and crimson berries.

Each	10
2-yr., field-grown\$0.25 \$2.00
3-yr. transplants40 3.50



Ferris' Free Landscape Service

If you are one of the many people desirous of getting a plan made to exactly fit your home grounds and specifications, why not take advantage of our Special Landscape Service? Because of the great demand in the past for this service, we are continuing the department again this season.

ALL YOU NEED TO DO is to write us for our sketch blank. On this blank are full and simple directions so that anyone can make us a rough drawing of their home grounds. Upon returning this drawing and a remittance of \$2.00, we will have our landscape expert make a landscape drawing and planting chart that will give you an accurate and balanced plan to follow in planting your home grounds.

Then, if you purchase the planting material from us this fall and the order amounts to \$15.00 or more, the \$2.00 you have already paid for the plan is applied on the order as a due bill, **THUS GIVING YOU THIS LANDSCAPE SERVICE ABSOLUTELY FREE.** The \$2.00 remittance required when we make the drawing is merely to keep away idle curiosity seekers. The Landscape Department maintains the right to charge a slightly higher rate where lots of over 60x200 feet are planned.

SHRUBS—Continued.

HYDRANGEA ARBORESCENS. Often called "Hills of Snow" or Summer Hydrangea. Immense pure white panicles of bloom in June and July make a glorious picture.

Each	10	25	
2-yr., select plants\$0.35	\$3.00	\$7.00

HYDRANGEA P. G. Magnificent, with its huge, globe-shaped blooms that open up white, later assuming pinkish and lavender tints. The Fall Hydrangea.

Each	10	25
1-yr., field-grown\$0.25	\$2.25
2-yr. transplants35	3.25
3-yr. specimens50	4.75

TREE HYDRANGEA P. G. The same as Hydrangea P. G., but grown on stems in dwarf tree form. Fine for specimen planting. With well-shaped heads.

Each \$1.00

FLOWERING ALMOND. Covered with artistic pink or white flowers in early spring, before other shrubs have budded. Choice of Pink or White.

Each 10
No. 1 plants, 2-yr., extra heavy\$0.75 \$7.00

JAPANESE FLOWERING QUINCE. Clusters of bright, rose-crimson flowers in May make it wonderfully attractive, and give it the name "Fire-bush."

Each 10
3-yr. transplants ...\$0.40 \$3.75

WHITE KERRIA. Beautiful foliage, showy white flowers in May and June, and later its jet black fruits make this a very delightful and useful shrub at all times. Will do well in shade.

Each 10
1-yr., field-grown\$0.25 \$2.00

2-yr. transplants35 3.25

LILAC, Common. An old-fashioned flower of great beauty, delightfully fragrant—a favorite everywhere. Choice of Purple and White.

Each 10
2-3 ft. average\$0.40 \$3.75

3-4 ft., heavy60 5.50

LILAC, Rothomagensis. The Improved Persian Lilac, with arching branches of reddish purple flowers. Fine for hedges and borders.

Each 10
18-24 in., field-grown\$0.35 \$3.25

3 ft. transplants55 4.75

FRENCH or HYBRID LILACS. The new Lilacs with extremely large flowers of delicate and rich colors, and unusually fragrant, with many of the blooms double. Plants start blooming when very young.

Choice of:
Madame Lemoine. Double white.
Chas. X. Reddish purple.

Souvenir de Ludwig Spaeth. Rich magenta-purple.
Michael Buchner. Blue-lilac; double florets.

Chas. Joly. A gorgeous purple—large double blooms.
Belle de Nancy. Double, pinkish tint.

President Grevy. Double light lilac.
Marc Micheli. Double flowers, richly purple.

Each 10
All No. 1, 2-yr. plants\$0.60 \$5.50

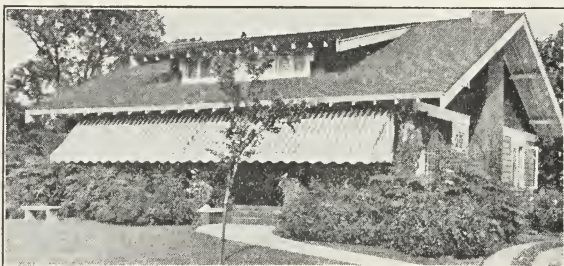
SNOWBALL, Common. Handsome, ball-shaped blooms of pure white in May and June; favorites everywhere.

Each 10
2-yr. transplants\$0.40 \$3.50

WHITE SNOWBERRY. Tiny, rose-colored flowers in June and July, followed by large, clustered, milk-white fruits which remain far into winter. Semi-dwarf.

Each 10
2-yr., field-grown plants\$0.15 \$1.00

RED SNOWBERRY. Similar to the White Snowberry, except that the berries are red, smaller, and are in thick ropes along the stems. Size and price the same as for the White Snowberry.



Fall Landscape Collection No. 4

6 Staghorn Sumac (at corners), 2-3 ft.	\$2.25	2-3 ft.	\$2.25
2 Weigela Rosea (background at steps), 1 yr.50	2 yr.	.70
8 Spirea Van Houttei (background), 1 yr.68	2 yr.	1.80
4 Spirea Anthony Waterer (foreground), 1 yr.80	2 yr.	1.60
4 Hydrangea P. G. (foreground), 1 yr.	1.00	2 yr.	1.63
6 Snowberry (to round out corner), 2 yr.60	2 yr.	.60
5 Spirea Billiardi Rosea (around fireplace), 3 yr.	1.25	3 yr.	1.25

Totals\$7.08 \$9.83
Special Fall Bargain Price\$5.25 \$7.50

Shrubs of unusually artistic foliage—a charming succession of colorful blooms—with ornamental fruits to complete the season and the picture.

(The smaller shrubs can be sent by parcel post, if 35c extra is included).

SPIREA VAN HOUTTEI. Commonly called "Bridal Wreath," and probably the most popular of any shrub in existence. Its graceful, arching branches are loaded with tiny, white blossoms in June.

Each	10	25	100	
1-yr., field-grown\$0.15	\$0.85	\$1.65	\$4.50
2-yr. transplants30	2.25	4.00	14.50
3-yr., heavy clumps40	3.25	6.00	22.00

SPIREA ANTHONY WATERER. The dwarf crimson Spirea, unsurpassed for foreground and for low foundation groups.

Each	10
1-yr., light\$0.20 \$1.90
2-yr. transplants35 3.25

SPIREA CALOSA ALBA. A dwarf white Spirea that makes a charming companion to the Anthony Waterer.

Each	10
1-yr., field-grown\$0.20 \$1.75
2-yr. transplants40 3.50

SPIREA DOUGLASSI. Beautiful, deep rose plumes cover this attractive bush in July and August, at a time when so many other shrubs are through blooming. Very lovely and desirable.

Each	10
2-yr. plants\$0.25 \$2.00

SPIREA THUNBERGI. Somewhat low-growing, with threadlike branches, artistically covered with small, white flowers. Graceful.

Each	10
1-yr., field-grown plants\$0.25 \$2.00
2-yr., No. 135 3.25

STAGHORN SUMAC. Lustrous green foliage followed by brilliant fall colorings makes this a very desirable shrub in the landscape setting.

Each	10
2-3 ft., heavy\$0.40 \$3.75

SYRINGA, Mock Orange. Tall, vigorous bush laden with white waxy flowers resembling orange blossoms in May and June. Delightfully fragrant.

Each	10
2-yr., field-grown\$0.25 \$2.00
3-yr., No. 140 3.50

SHRUBS—Continued.

SYRINGA, Lemoinei. Similar to Mock Orange, though bush is smaller and blossoms semi-double and very fragrant.

Each 10
2-yr., sturdy plants\$0.40 \$3.50

SYRINGA, Virginal. Called the Improved Mock Orange. Extremely large blooms; magnificent.

Each 10
2-yr., No. 1 plants\$0.50 \$4.50

TAMARISK. Foliage delicate and feathery; flowers are tiny, of a light pink, borne in loose sprays.

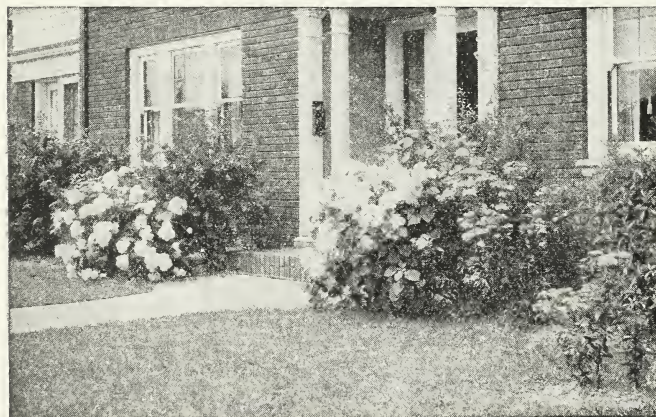
Each 10
1-yr., field-grown\$0.25 \$2.25
2-yr. transplants40 3.50

WEIGELA ROSEA. A bushy, spreading plant, with a great wealth of beautiful rose-colored flowers, bell-shaped, in May and June. Showy.

Each 10
1-yr., field-grown\$0.25 \$2.25
2-yr. transplants35 3.20

WEIGELA EVA RATHKE. Much like the Rosea, but with rich, deep crimson flowers, and a little more dwarf in habit.

Each 10
2-yr. transplants\$0.35 \$3.25



Fall Landscape Collection No. 5

10 Spirea Van Houttei (background), 1 yr.	\$0.85	2 yr.	\$2.25
5 White Kerria (background), 1 yr.	1.00	2 yr.	1.62
5 Weigela Rosea (background), 1 yr.	1.13	2 yr.	1.60
4 Hydrangea Arborescens (foreground at steps), 2 yr. ..	1.20	2 yr.	1.20
4 Dwarf Deutzia (foreground), 2 yr.	1.20	2 yr.	1.20
4 Spirea Anthony Waterer (foreground), 1 yr.80	2 yr.	1.60
2 Hydrangea P. G. (foreground), 1 yr.50	2 yr.	.70

Totals\$6.68 \$10.17
Special Fall Bargain Price\$4.95 \$8.00

An assortment of 34 handsome shrubs that will bring you beautiful blooms throughout the season, and a charming landscape effect.

(If the smaller shrubs are desired by parcel post, add 25c extra.)

Ferris' Dwarf Flowering Trees

JAPANESE FLOWERING CRAB (Malus floribunda).

Lovely rose-colored buds merge into white as they open, followed by yellowish fruits in the fall. Each 4 ft., select\$1.00

SCHEIDECKER'S FLOWERING CRAB. Beautiful red buds open to pink, double blooms. Each 4 ft., select\$1.00

CRIMSON CRAB. Delightful dark red, single flowers in May, with small, bright red fruit in the fall. Each 4 ft., select\$1.00

BECHTEL'S DOUBLE FLOWERING CRAB. One of the very best and most popular dwarf ornamental trees. Its pink, roselike blooms in May and June are very charming, and so fragrant. Each 5 3-4 ft., No. 1\$0.50 \$2.25

CRATAEGUS, Paul's Scarlet Thorn. A picturesque ornamental at all seasons, but especially so when covered with the bright scarlet flowers in the spring. Each 3 ft., heavy\$1.25

PURPLE-LEAVED PLUM. A very beautiful shrub, or small tree, with distinctive foliage of bright pinkish crimson, turning to dark purple—the finest of all for contrast. Covered with delicate white flowers in the spring. Each 2-3 ft. Specimens\$0.45 \$4.20

DOUBLE FLOWERING PLUM. In early spring before the leaves appear, it is entirely enveloped in a fleecy cloud of double, pinkish flowers. Lovely. Each 2-3 ft. Specimens\$0.50 \$4.60

RUSSIAN OLIVE. The beautiful, silvery gray foliage of this small ornamental tree makes a most delightful contrast with the green of surrounding shrubs and trees. Small yellow flowers of fine fragrance in season. Ideal for backgrounds and screen hedges. Each 3 ft. transplants\$0.35 \$3.20

THEY ALL LIKE OUR TULIPS
Almantha, Mo.

Dear Sir:

I have had extra good luck with your plants and bulbs. I don't believe I have ever lost a plant or bulb that I bought from you, and have been very well pleased with the selections, especially my Tulips. They are very beautiful.

CHLOE ESLICK.

Ferris' Hedges—Beautiful Living Fences

Enclose your property with a delightful hedge of our Japanese Barberry or Amoor River Privet. What a charming frame for the landscape picture, as well as giving privacy and protection to the home. These hardy hedge plants, grown by Ferris experts, can be successfully planted in either fall or spring.

For the Low or Trimmed Hedge

JAPANESE BARBERRY (Thunbergi). A beautiful plant with drooping branches, spoon-shaped leaves of brilliant green in summer, followed by rich crimson colors in the fall, and a wealth of scarlet berries that stay on way late in the winter, while the branches are loaded with spines. Absolutely free from all rust and will pass inspection in any state. Set 18 inches apart in the hedge row.

	Each	10	25	100
8-12 in., transplants ..	\$0.10	\$0.60	\$1.25	\$ 3.75
12-18 in., transplants .	.15	.90	2.00	6.00
18-24 in., transplants .	.25	1.70	3.50	12.00
2-3 ft., extra heavy, twice transplanted ..	.35	3.00	6.00	20.00

PRIVET, AMOOR RIVER NORTH. Best and hardiest of all Privets, and splendid for hedges. Fine, light green leaves that are very abundant. Gives best effect when planted deep, about 12 inches apart, giving a severe trimming, and kept sheared annually (both sides and top).

	Each	10	25	100
2-3 ft. bushy transplants	\$0.25	\$1.60	\$3.25	\$11.50

CARAGANA (Siberian Pea Tree). An extremely hardy hedge, fine for northern regions. Will form an effective screen hedge, or can be kept trimmed low and dense. A thick grower, fine foliage, and is loaded with pealike blooms of a lovely yellow color.

	Each	10	25	100
1 yr., light	\$0.10	\$0.75	\$1.50	\$4.50
2 yr., transplants15	1.00	2.00	7.50

For the Screen or Background Hedge

SPIREA VAN HOUTTEI. The beautiful shrub commonly known as Bridal Wreath. Makes a beautiful screen hedge. Set 2 or 2½ ft. apart in the hedge.

Special Hedge Sizes

	50	100
1 yr., plants, 6-12 in. average	\$ 2.50	\$ 4.50
2 yr., transplants, 2 ft. average	7.70	14.50
3 yr., heavy clumps, 3-3½ ft. average	11.75	22.00

TARTARIAN HONEYSUCKLE. For the tall background hedge or screen, we personally think there is nothing finer than this very dependable, likeable shrub. Plant 2 or 3 feet apart in the hedge.

Special Hedge Sizes

	25	50	100
12-18 in., field-grown plants ..	\$3.00	\$5.50	\$10.00
2-2½ ft., transplants	5.00	8.00	15.00

GOLDEN ELDER. The golden beauty of this splendid hardy shrub makes a wonderful background. Set 2 to 3 ft. apart in the hedge, and be sure to plant out in the open where it will get lots of sunshine.

Special Hedge Sizes

	25	50	100
3-4 ft., heavy transplants	\$8.00	\$14.00	\$20.00

Evergreen Hedge

If you wish an Evergreen hedge, we recommend that you plant the American Arbor-Vitae, Siberian Arbor-Vitae, Erecta Arbor-Vitae, Norway Spruce, White Spruce, or Douglas Fir—see Evergreen section of this catalog.

Ferris' Hardy Climbing Vines

Beautiful Coverings for the Trellis—Delightful Climbers to Soften the Harsh Outline of the House—or Charming Vines for the Fence or Screen.

(If Vines are desired by parcel post, add 5c for one, or 15c for ten plants, to cover packing and postage).

AMPELOPSIS VEITCHI (Boston Ivy). Small, dainty leaves, bright green in color, with showy fall colorings. Will climb almost any kind of a wall. 40c each; 10 for \$3.50.

AMPELOPSIS ENGELMANNI (Engelmann's Ivy). Rapid grower, with large heavy leaves, and extremely hardy. Will cling only to rough surfaces, trellises or wire frame. Splendid for shade or dense covering. 25c each; 10 for \$2.00.

CHINESE WISTERIA. Very rapid growing, with long, pendulous clusters of pale blue flowers in May and June. Graceful and lovely. 65c each; 10 for \$4.50.

HONEYSUCKLE, HALLIANA (Hall's Japan). Delightful flowers of pure white change to yellowish cream; very fragrant. Fine climber and also a good ground cover. Not hardy in the North. 30c each; 10 for \$2.60.

HONEYSUCKLE, SCARLET TRUMPET. A splendid climber, vigorous, hardy, with clusters of large, scarlet, trumpet-shaped flowers in the summer. 30c each; 10 for \$2.50.

BITTERSWEET. A woody growing climber with bright, glossy foliage, bearing sprays of bright orange berries in the fall, which are so popular for winter bouquets. Use three or more plants in a clump for good fruiting. 65c each; 3 for \$1.50; 10 for \$4.50.

MATRIMONY VINE. Rapid grower; fine for covering unsightly places and banks. 25c each; 10 for \$2.00.

CLEMATIS, LARGE FLOWERING. Probably the loveliest of all flowering vines. Plant only in the spring. Choice of **Andre** (red), **Henry** (white), and **Jackmani** (purple). 90c each; 10 for \$8.00.

CLEMATIS PANICULATA. Small white flowers in great abundance; very fragrant. Hardy and very desirable. 35c each; 10 for \$3.25.

There Should Be Ferris' Beautiful Roses In Every Dooryard

We do not recommend fall planting of roses, except Rugosas, and any fall shipments of other Roses are entirely at the purchaser's risk. Best success is obtained only from spring planting. Order now and let us hold your order for spring planting, thereby getting first choice and heaviest stock.

If Roses are desired by parcel post, add 5c each for packing and postage.

Rosa Rugosa

(Our Famous Eskimo Beauties)

The Only Roses We Recommend for Fall Planting.

These, the hardiest of all Roses, will grow anywhere. Their shrubby growing plants are fine for hedges, borders, or in foundation groups. Splendid waxy foliage, free from disease, and bearing innumerable blooms of artistic character.

Choice of **Hansa**, double blooms of deep, rich red; **Sir Thos. Lipton**, double, snow-white blossoms; and **Conrad F. Meyer**, double blooms of light clear pink. **Strong**, 2-year, field-grown plants, 35c each; 3 for 90c; 10 or more at 25c each.

F. J. GROOTENDORST. This Rugosa is a continuous bloomer, producing charming clusters of double blooms of carnation-red not only in June but throughout the summer. **Strong**, field-grown, 2-year plants, 40c each; 3 for \$1.00; 10 for \$3.00.

Common Ramblers and Climbers

This classification contains the fine old-fashioned sorts that are always popular: **Crimson Rambler**, brilliant crimson; **White Rambler**, pure white; **Rosby Perkins**, shell-pink; **Excelsa**, scarlet-crimson; **American Pillar**, handsome single flowers of brilliant pink; **Seven Sisters**, bright scarlet; **Lady Gay**, cherry-pink toning to soft pink; and **Wichuraiana**, white. Choice of any of these varieties in 2-year, strong, field-grown plants, 30c each; 5 for \$1.00; 10 for \$1.85.

Select Climbers

PAUL'S SCARLET CLIMBER. The "Reddest Rose That Grows."

HLAWATHA. A deep intense crimson, with a clear white eye, and a mass of golden stamens—it is truly lovely.

DR. W. VAN FLEET. Long, pointed buds of clear fish-pink.

GARDENIA. Charming yellow buds that merge into white as they open.

CLIMBING AMERICAN BEAUTY. Deep pinkish crimson; fine fragrance.

MARY WALLACE. Huge, semi-double blossoms of rose-pink, deepening to salmon at base. Very lovely.

ROSE OF FAIRFIELD. A rich red. Sometimes called the "Everblooming Crimson Rambler."

SILVER MOON. Very large, semi-double flowers of pure glistening white with a heavy fringe of brilliant yellow stamens.

Choice of any of these Select Climbers, in 2-year, strong, field-grown plants, 40c each; 3 for \$1.00; 10 or more at 30c each.

Baby Ramblers

Low, bushy little plants that are covered with artistic clusters of gay blossoms almost throughout the growing season. We can furnish the **Crimson Baby Rambler**, beautiful crimson color; **Baby Orleans**, geranium-red with white center; or **White Baby Rambler**, white. 2-year, field-grown plants, 35c each; 3 for \$1.00; 10 or more at 30c each.

Hybrid Perpetual Roses

FRAU KARL DRUSCHKI. Large, white blooms.

PAUL NEYRON. Immense blooms, deep rose color.

GENERAL JACQUEMINOT. Light scarlet-crimson.

ULRICH BRUNNER. Light red.

MADAME PLANTIER. Creamy white blooms, large and fine.

GENERAL WASHINGTON. Large fine bloom, purplish red in color.

Choice of any of these Hybrid Perpetual Roses, in 2-year, strong, field-grown plants, 40c each; 3 for \$1.00; 10 for \$3.00.

Everblooming Hybrid Tea Roses

CAROLINE TESTOUT. Rich, satiny rose colors; large, rounded flowers.

LADY HILLINGDON. Deep apricot-yellow.

PINK RADIANCE. Light silvery pink, deepening to salmon. Lovely.

RED RADIANCE. Beautiful rich red.

K. A. VICTORIA. One of the finest of all white Roses.

COLUMBIA. Lively pink; very free flowering.

GRUSS AN TEPLITZ. Deep, fiery red.

LUXEMBOURG. Rich bronze-yellow coloring; exquisite.

Choice of any of these Hybrid Tea Roses, in 2-year, strong, field-grown plants, 45c each; 3 for \$1.10; 10 for \$3.25.

Rose Specialties

TALISMAN. Brilliant orange-red, streaked with copper-red. 2-year plants, 90c each; 3 for \$2.55.

PRESIDENT HERBERT HOOVER. Maroon, orange and gold colors, all together in a glorious contrast. 2-year plants, \$1.00 each; 3 for \$2.75.

MRS. CHAS. BELL. The shell-pink Radiance—very lovely. 2-year plants, 65c each; 3 for \$1.75.

BETTY UPRICHARD. Brilliant copper-red buds merge into lovely salmon-pink flowers. Charming. 2-year plants, 80c each; 3 for \$2.00.

EDWARD MAWLEY. The very finest deep red Everblooming Rose. Buds are large, almost black, opening into flowers of dark velvety crimson. 2-year plants, 85c each; 3 for \$2.25.

Gladiolus Bulbs

We do not ship out Gladiolus bulbs in the fall, for that is the time they have to be dug, dried, cleaned and prepared for winter storage. If you wish your bulbs now, we want to say that we have a fine stock of them, and suggest that you send for last spring's catalog, giving descriptions and prices. We will allow you a special 10% discount on your order for Gladiolus bulbs this fall, if the order amounts to \$2.00 or more.

Hardy Shade and Ornamental Trees

Ferris' Selected Trees Give the Superb Finish to Any Home Planting and Provide Bountiful Shade for Hot Summer Days.

Fall planting of Shade Trees is becoming more popular each season. Set them deeply and firmly in good growing soil, trimming back the tops quite severely.

GREEN ASH. Good, rapid growing shade tree. Foliage very verdant. Valuable commercially for its medium hard wood.

	Each	10	100
4-5 ft., transplants	\$0.20	\$1.50	\$10.00
5-6 ft., transplants30	2.50	20.00
7-8 ft., transplants50	4.00	
8-10 ft., heavy transplants75	7.00	

MOUNTAIN ASH. A very artistic tree, covered with large clusters of bright orange-red berries in autumn. We have a beautiful lot of them.

	Each	10
5-6 ft., transplants	\$0.80	\$7.50

BASSWOOD (American Linden). Broad green leaves, fragrant flowers, winged fruit, and a round, compact top are the chief characteristics of this splendid shade tree.

	Each	10
5-6 ft., transplanted	\$1.00	\$9.00

CUT-LEAVED WEEPING BIRCH. White bark, long drooping branches, and finely cut foliage make this one of the most beautiful of all trees. Can be planted in the fall as well as spring, but take care in planting not to expose the roots to the air for a minute. Set deeply and firmly in good soil.

	Each	10
5½-6½ ft.	\$1.60	\$15.50
7-8 ft., heavy	2.50	22.50
8-10 ft., heavy, select	4.00	37.50
10-12 ft., extra heavy, select specimens	5.00	48.00

WHITE BIRCH. A lovely ornamental tree with white bark and light, airy foliage. Can be planted in the fall as well as spring but like the Cut-Leaved Weeping Birch, extra good care should be taken in planting.

	Each	10
6-8 ft.	\$1.00	\$9.00
10-12 ft., heavy	1.25	11.00

CATALPA BUNGEI (Umbrella Tree). Its low-spreading head, 4 to 6 ft. from the ground, flat and rather dome-shaped, with large leaves, unite in making this the finest of all the ornamental trees for formal planting. Our Catalpa Bungei trees are extra select. 6 ft., average height of stems, extra good trees, \$1.50 each; 2 for \$2.50; 10 for \$10.00.

CATALPA SPECIOSA. A popular tree with large dark green leaves, and beautiful white flowers in June and July. Wood is extensively used for fence posts, railroad ties, etc.

	Each	10	100
3-4 ft., transplants	\$0.25	\$2.00	\$10.00
5-6 ft., transplants35	3.00	25.00
6-8 ft., transplants50	4.00	35.00

AMERICAN ELM. This grand, tall, spreading tree needs no description. Adapted almost everywhere, and considered the finest of all shade trees.

	Each	10	100
3-4 ft., transplants	\$0.25	\$2.00	\$10.00
4-5 ft., transplants30	2.25	15.00
5-6 ft., transplants40	2.50	20.00
6-8 ft., transplants50	4.00	25.00
8-10 ft., transplants75	6.50	50.00
10-12 ft., select, heavy	2.00	18.00	100.00
12-14 ft., extra heavy, select ..	3.00	25.00	200.00



American Elm.

CHINESE ELM (Siberian Strain). A very superior new tree, quite similar in appearance to the American Elm, growing tall and majestic, with leaves narrow and elliptical. It is probably the hardiest of the shade trees and an extremely rapid grower. Cannot be recommended too highly.

	Each	10
4-5 ft., transplanted	\$0.70	\$7.25
6-8 ft., transplanted	1.00	9.00
8-10 ft., select	2.00	18.00

HARD MAPLE. The Sugar or Rock Hard Maple is a favorite everywhere. Beautiful foliage, graceful form, and dense shade, with gorgeous fall colors.

	Each	10	100
4-5 ft., transplanted	\$0.90	\$8.00	\$75.00
5-6 ft., transplanted	1.00	9.00	
6-8 ft., transplanted	1.75	16.00	
8-10 ft., heavy transplants	3.00	25.00	

NORWAY MAPLE. The finest and most rapid growing of the Hard Maples. Very shapely and refined in growth. Beautiful fall colorings.

	Each	10
4-5 ft., transplanted, trimmed to straight whip	\$0.50	\$4.00
5-6 ft., transplanted, trimmed to straight whip75	6.50
6-8 ft., twice transplanted, well branched, heavy	1.75	16.00
8-10 ft., select, heavy specimens	2.75	25.00

SCHWEDLER'S MAPLE. The wonderful, showy Maple of the Norway family opening up in the spring with beautiful purplish red leaves, which later burn to bronze and then to a deep green.

	Each	10
4-5 ft., transplanted, trimmed to straight beautiful whip	\$1.35	\$12.50
5-6 ft., transplanted, trimmed to straight beautiful whip	1.60	14.50
6-8 ft., heavy, twice transplanted	2.00	18.00

SOFT MAPLE. A rapid grower, making a fine large tree but inclined to be rough and a little crooked when small. Attractive green leaves with silver facing give it the common name of Silver Maple.

	Each	10	100
5-6 ft., transplanted	\$0.40	\$3.50	\$25.00

RUSSIAN MULBERRY. Good, quick growing tree, used to great extent for quick windbreaks around fruit orchards and for screens. A splendid tree to use in the bird retreat.

	Each	10	100
3-4 ft., transplanted	\$0.25	\$2.00	\$15.00
4-5 ft., transplanted30	2.50	20.00
5-6 ft., transplanted50	4.00	35.00

PIN OAK. The hardiest and best of the Oaks, with deep green, waxed leaves, beautifully carved, turning in the fall to a rich scarlet. Ours are extra choice specimens.

	Each	10	100
4-5 ft., transplanted	\$2.00		
5-6 ft., transplanted	2.50		
6-8 ft., select	3.00		
8-10 ft., heavy, select specimens	4.50		

CAROLINA POPLAR. The most rapid growing shade tree of them all; very hardy, and adapted to almost any soil. Give the top a severe trimming when planting.

	Each	10	100
3-4 ft.	\$0.20	\$1.10	\$6.00
4-5 ft., transplanted20	1.50	8.00
5-6 ft., transplanted25	2.00	10.00
6-8 ft., transplanted35	3.00	20.00

LOMBARDY POPLAR. The tall, slender, columnar growing tree that is used to such good advantage in landscape work.

	Each	10	50	100
5-6 ft.	\$0.60	\$5.50		
6-8 ft.75	7.00		

BOLLEANA POPLAR. Quite similar to the Lombardy Poplar in appearance but is hardier and longer lived. A fine landscape tree.

	Each	10	50	100
6-8 ft.	\$1.50	\$12.50		
8-10 ft.	2.00	17.50		

SYCAMORE (Plane Tree). An excellent tree for street and park planting because of its very rapid growth, lofty, spreading branches, and large, deeply lobed leaves.

	Each	10	50	100
5-6 ft., transplanted	\$1.25			

LAUREL LEAF WILLOW. A fine, ornamental Willow; dwarfish in nature; large, glossy, laurel-like leaves.

	Each	10	25	50	100
4-5 ft.	\$0.25	\$1.50	\$3.25		

WISCONSIN WEEPING WILLOW. Its charming, drooping habit of growth is especially attractive in the background or close to pools.

	Each	10	50	100
4-5 ft.	\$0.90	\$8.00		

WESTERN YELLOW WILLOW. For windbreaks. We consider this Willow by far the best for western planters.

	Each	10	100	500	1000
3-4 ft., transplanted	\$0.25	\$1.00	\$6.00		
4-6 ft., transplanted50	3.00	15.00		

Ferris' Famous Fruit Trees and Plants

Fall planting of fruit trees is quite successful in the southern states, though early spring is always a little safer and better. In the northern and central states, we advise spring planting only, for fruit stock of any kind.

Apples

4 to 6 ft. average height, good, select trees, with 3-year root and 2-year top—a beautiful lot. 40c each; 10 for \$3.50; 25 for \$8.00; 50 for \$14.00; 100 for \$25.00. (The 4 to 6 ft. trees should always be shipped by express. They cannot be shipped by parcel post unless given a severe pruning. Send 10c per tree extra for trimming, packing and postage if you must have these No. 1 Apple trees by parcel post).

SUMMER APPLES. Choice of Duchess of Oldenburg, Yellow Transparent, Early Harvest, Red Astrachan, Red June, and Liveland.

FALL AND EARLY WINTER APPLES. Choice of Wealthy, Wolf River, Fameuse, Maiden Blush, and Chenango.

LATE WINTER APPLES. Choice of Delicious, Grimes Golden, Stayman's Winesap, Salome, Jonathan, Winesap, McIntosh, Baldwin, Ben Davis, Gano, Roman Stem, Rome Beauty, Talman Sweet, Willow Twig, Malinda, Haralson, and Northwestern Greening.

CRAB APPLES. Choice of Hyslop, Transcendent, and Whitney.

Apple Specialties

	Each	10
GOLDEN WINESAP. 4-6 ft., No. 1	\$0.65	\$5.00
BRIGHT RED DELICIOUS. 4-6 ft., No. 180	7.00
YELLOW DELICIOUS. 4-6 ft., No. 180	7.00

Cherries

EARLY RICHMOND and MONTMORENCY. The best and hardiest cherries grown. Montmorency is about ten days later to ripen than the Early Richmond. 3-4 ft. average height, extra good, 40c each; 10 for \$3.60; 100 for \$32.00.

YELLOW GLASS SWEET CHERRY. The hardiest of the sweet cherries; finest flavor. 4-4½ ft. trees, 90c each; 5 for \$4.00; 10 for \$7.50.

Native Plums

GENEVIEVE and TERRY. The two finest native Plums; hardy, large, productive, fine quality. 4-5 ft. average height, 50c each; 10 for \$4.00.

The New Minnesota Hybrid Plums

UNDERWOOD, ELLIOTT, MONITOR, LA CRES-CENT and LORING PRIZE. Choice plums of extreme hardiness, large size, and exceptional quality. 4-5 ft. average height, 50c each; 10 for \$4.00.

Hansen's Hybrid Plums

HANSKA, OPATA, SAPA, WANETA, and KAGA. Wonderful large plums that were introduced out of the North—fruit of extreme hardiness, enabling them to grow almost anywhere, and of remarkably fine flavor. Great favorites. 4-5 ft., No. 1 trees, 40c each; 10 for \$3.25.

Pears

BARTLETT, DUCHESS, KIEFFER, SECKEL, and PATTEN. No. 1 trees, 4-4½ ft. average height, 40c each; 10 for \$3.75.

Peaches

CRAWFORD'S EARLY, CRAWFORD'S LATE, ELBERTA, and J. H. HALE. No. 1 trees, 4-4½ ft. average height, 35c each; 10 for \$2.75.

Ferris Selected Small Fruits

Early spring is the best and safest time to plant all small fruits, especially strawberry plants.

Strawberry Plants

(NOTE: We positively cannot ship Strawberry plants in the summer and fall).

(If Strawberry plants are desired by parcel post, add 10c per 100 extra for packing and postage).

DUNLAP. The old favorite Spring-bearing Strawberry, always dependable, 50 for 65c; 100 for 90c; 500 for \$3.50; 1000 for \$6.00.

HARVEST KING. A wonderful new, Spring-bearing Strawberry—very large, deep red berries of delicious flavor, and an enormous cropper. 25 for 75c; 50 for \$1.10; 100 for \$1.65; 200 or more at \$1.40 per 100.

BLAKEMORE. Another fine new Spring Strawberry—medium size fruit of bright clear red to the center, and of wonderful flavor, 25 for 75c; 50 for \$1.10; 100 for \$1.50; 200 or more at \$1.25 per 100.

MASTODON EVERBEARING. There is no Everbearing Strawberry to equal the great Mastodon. 25 for \$1.00; 50 for \$1.50; 100 for \$2.50; 500 or more at \$2.00 per 100.

Black Raspberries

CUMBERLAND and KANSAS. The two finest Blackcaps. Tips—1-year plants, 12 for 50c; 25 for \$1.00; 100 for \$3.25; 1000 for \$30.00. (If the tips are desired by parcel post, add 10c for 12, 20c for 25, or 40c for 100 to cover cost of packing and postage). Transplants—2-year, 15c each; 12 for \$1.35; 25 for \$2.50; 100 for \$8.00. (If the transplants are desired by parcel post, add 15c to the 12 rate, 30c to the 25 rate, or 80c to the 100 rate).

Red Raspberries

(If Red Raspberries are desired by parcel post, add 10c for 12, 15c for 25, or 20c for 100 plants).

LATHAM. The finest Red Raspberry ever produced. 12 for 85c; 25 for \$1.50; 100 for \$5.00.

KING and ST. REGIS EVERBEARING. The fine old-time sorts. 12 for 50c; 25 for 90c; 100 for \$3.00; 1,000 for \$28.00.

Blackberries

ELDORADO. We consider this the finest of all Blackberries. 12 for 75c; 25 for \$1.20; 100 for \$4.00; 200 or more at \$3.50 per 100. (If desired by parcel post, add 15c for 12, 30c for 25, or 75c for 100 plants).

LUCRETIA DEWBERRY. We handle this only in the spring. 12 for 75c. (Add 10c extra if desired by parcel post).

Currants

(If Currants are desired by parcel post, add 5c each, 10c for 12, or 15c for 25 plants).

CHERRY, FAY'S PROLIFIC, and LONDON MARKET. The three best Red Currants. 15c each; 12 for \$1.50; 25 for \$2.25.

WHITE GRAPE CURRANT. The finest White Currant. 25c each; 12 for \$2.00; 25 for \$3.00.

Gooseberries

(If Gooseberries are desired by parcel post, add 5c each, 10c for 12, or 15c for 25 plants).

HOUGHTON. Medium size; very productive and sweet. 15c each; 10 for \$1.25; 25 for \$2.25.

DOWNING. Large berry of excellent flavor. 30c each; 12 for \$2.75; 25 for \$5.00.

CARRIE. Medium size fruit of high quality. 25c each; 12 for \$2.50; 25 for \$4.75.

Grapes

(If Grapes are desired by parcel post, add 5c each, 15c for 10 plants, or 40c for 50 plants. More than 50 should go by express).

Black Grapes

CONCORD. An old favorite—hardy and fine flavored. 2-yr. plants, 10c each; 6 for 50c; 10 for \$1.00; 50 for \$3.00; 100 for \$5.50; 200 or more at \$4.50 per 100.

MOORE'S EARLY. A supreme Black Grape; large, and of finest quality. 2-yr. plants, 15c each; 10 for \$1.00; 100 for \$9.00; 200 or more at \$8.00 per 100.

WORDEN. A very fine flavored Black Grape; early. 2-yr. plants, 20c each; 10 for \$1.25; 100 for \$9.00.

BETA. Hardest of all Black Grapes, and unsurpassed for jellies and wines. 2-yr. plants, 20c each; 10 for \$1.40; 100 for \$10.00.

White Grapes

NIAGARA. Hardest and best White Grape grown. 2-yr. plants, 20c each; 10 for \$1.25; 100 for \$9.00.

Red Grapes

AGAWAM. Superior Red Grape of finest flavor. 2-yr. plants, 20c each; 10 for \$1.50; 100 for \$12.00.

Garden Roots

Asparagus

Delicious, Fresh Asparagus from Your Own Garden.

Planting Directions. They can be planted successfully either in fall or spring. Dig a narrow trench from 8 to 10 inches deep; fill bottom with thick layer of well-rotted manure, which should then be covered with 2 inches of black surface soil. In this, plant Asparagus, leaving trench open till plants grow out. Fill trench with manure in fall, remove following spring. Keep weeds out. Do not cut first year.

(If Asparagus is desired by parcel post, add 15c for 25, or 30c for 100 for packing and postage).

PALMETTO. Early and a good yielder. Old favorite. 3-yr., No. 1, 25 for 50c; 100 for \$1.75; 1000 for \$10.00.

WASHINGTON RUSTPROOF. Pedigreed strain, wonderfully fine. Shoots are thick and heavy, flavor unsurpassed. 2-yr., No. 1, 25 for 50c; 100 for \$1.75; 1000 for \$14.00.

Rhubarb

LINNAEUS. Commonly called Pie Plant. Early, tender, with mild, sub-acid flavor. 10c each; 5 for 40c; 10 for 75c; 100 for \$5.50. (If desired by parcel post, add 5c each, 10c for 5, 15c for 10, or 35c for 100).

Horseradish

The nippy relish, so tasty in the springtime. 10c each; 10 for 90c. (If desired by parcel post, add 10c to the 10 rate).

Ferris' Superb German Iris

We need not describe the beauty of these lily-like flowers of early spring—they are known and loved by all. Their varied rich and dainty colorings are exquisite, while the plant is extremely hardy, fitting perfectly into any part of the home setting. Great borders of Iris along the driveway or walk, or edging the outdoor living room, give a splendid finish both in and out of bloom. They edge the pool naturally and queenly, and, of course, there must be generous clumps of them in the perennial garden.

Plant about 12 inches apart in good, well drained soil, barely covering the roots with the soil. A little shallow cultivation to keep them free from weeds is all the care they require.

GERTRUDE. Violet-blue; fragrant and lovely.

HONORABILIS. Golden yellow standards, rich mahogany falls.

PURPLE QUEEN. Large, deep purple. Early.

QUEEN OF MAY. Charming shade of rose-lilac, nearly pink. Beautiful.

PERFECTION. Standards light blue, falls dark velvety violet-black with orange beard. Handsome.

MADAME CHEREAU. Flower white with lovely blue frill.

KHEDIVE. Beautiful soft lavender with distinct orange beard; fragrant.

COMTE DE ST. CLAIR. Deep rich violet falls margined white. Standards white. Lovely.

Our Special Fall Prices on above eight Iris: 6c each; 10 for 40c; 25 for 90c; 100 for \$3.25, postpaid.

MRS. H. DARWIN. Pure white, netted at base; free flowering; very fine.

SAMBUCUS BEETHOVEN. Rose-lilac standards, purple falls, orange crest.

EDITH COOK. Deep yellow splashed with purple. Showy.

BRIDESMAID. White shaded soft lilac; slightly frilled. Choice.

FLAVESCENS. Delicate soft yellow; large sweet scented flowers.

MONSIGNOR. Very distinctive and large. Color rich satiny violet and purple-crimson.

CRIMSON KING. Standards and falls a rich claret-purple.

VIOLACEA GRANDIFLORA. Rose-lilac standards, and violet-blue falls. Very fine.

Our Special Fall Prices on above eight Iris: 8c each; 10 for 65c; 25 for \$1.10; 100 for \$3.75, postpaid.

FAIRY. Clear white delicately shaded soft blue; peach blossom scented.

WALHALLA. Soft lavender-blue standards, violet-purple falls. Handsome.

NIBELUNGEN. Standards fawn-yellow with violet-purple falls. Large, handsome flowers.

NUEE D'ORAGE. Standards dove color with deep violet falls. Very large flowers and one of the finest.

PLUMERI. Standards coppery rose; falls velvety claret. Choice.

RHEIN NIXE. Ivory-white standards, falls a lovely mauve edged with white. Charming.

EUGENE SUE. Creamy white, with purple spots and stripes.

Our Special Fall Prices on above seven Iris: 12c each; 10 for 75c; 25 for \$1.40; 100 for \$4.50, postpaid.

Our Favorites

The Very Choicest of the Newer Iris.

MOTHER OF PEARL. A wonderful sort; very large, perfectly shaped flowers of that exquisite "Mother of Pearl" color. 40c each; 5 for \$1.50, postpaid.

LENT A. WILLIAMSON. One of the most gorgeous in the garden. Extremely large, standards lavender-violet blended with yellow towards base; falls rich royal purple, and orange beard. 30c each; 5 for \$1.00, postpaid.

WYOMISSING. Creamy white standards suffused delicate soft rose; deep rose-colored falls, shading to flesh-colored border. Elegant. 25c each; 5 for 75c, postpaid.

AMBASSADEUR. A fascinating smoky velvety purple color; falls velvety purple-maroon; beard and style yellow. A magnificent and regal flower. 25c each; 5 for \$1.25, postpaid.

SHERWIN-WRIGHT. The most golden and rich of the yellow Iris—a glorious yellow color throughout. Not as tall as some, but a wonderfully prolific bloomer. 20c each; 5 for 80c; 10 for \$1.50, postpaid.

SEMINOLE. Extremely choice. Color is a rich dark violet-rose, the falls a little deeper than the standards, and with bright orange beard. Grows tall, is very free-flowering, and a wonderful Iris for mass effect. The most striking of the so-called "Reds." 40c each; 10 for \$3.50, postpaid.

HER MAJESTY. Very beautiful, with standards a lovely soft rose-pink, and bright crimson falls tinged a darker shade. 25c each; 5 for \$1.25, postpaid.

DELICATISSIMA. Standards lobelia-blue clouded rose; falls campanula-violet, shading to lilac. A beautiful variety of exquisite coloring. 35c each; 10 for \$3.00, postpaid.

OPERA. A very distinct variety with fine flowers of good shape and rare coloring. Standards dark purple bronze; falls a unique mixture of violet, overlaid dark crimson, with a rich velvety sheen. 50c each; 10 for \$4.00, postpaid.

DWARF IRIS (Cyanea). Deep velvety blue; flowers large and handsome. These are the very early bloomers, low growing and splendid for edging the pool or perennial border. 20c each; 10 for \$1.75, postpaid.

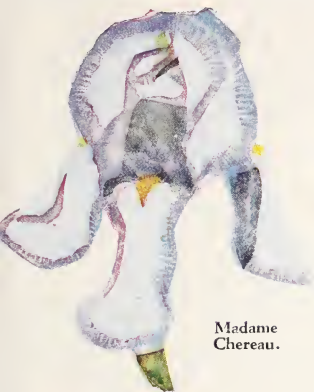
35 Mixed Iris, \$1.00

Postpaid.

Our Special Rainbow Tint Assortment.

Everybody loves the Iris, and it is so easy to grow. Here is a choice assortment of varieties and colors, taken from our giant mixed fields—just what you need to plant along the walk or driveway, or in the perennial garden.

Unnamed: 35 for \$1.00; 50 for \$1.39; 100 for \$2.50, postpaid.



Madame Chereau.



Ambassadeur.



Mother of Pearl.



Seminole.

Harmony Iris Collection

- 10 Purple Queen Iris
- 10 Queen of May Iris
- 10 Madame Chereau Iris
- 10 Gertrude Iris
- 10 Sambucus Beethoven Iris

These 50 CHARMING IRIS—wonderful blending of colors, and an ideal assortment for the border or garden.

POSTPAID \$1.50

Or, a double collection of the above—
100 BEAUTIFUL IRIS,
POSTPAID FOR ONLY \$2.69

Our Royal Iris Collection

- | | |
|----------------|------------------------|
| 5 Gertrude | 5 Madame Chereau |
| 5 Honorabilis | 5 Violaeca Grandiflora |
| 5 Purple Queen | 1 L. A. Williamson |
| 5 Queen of May | 1 Sherwin-Wright |
| 1 Her Majesty | |

These 33 MARVELOUS IRIS—well worth \$3.00—

POSTPAID FOR ONLY \$1.69

It's a glorious assortment that will make your springtime garden a thing of beauty.



Queen of May.



Wyonissing.



Khedive.



Sambucus Beethoven.

Ferris' Selected Perennials Make Beautiful Gardens

We have an extra fine stock of hardy Perennial Plants, and at extremely low prices for this fall.

Perennials, you know, come back year after year without replanting. No fussing with seeds each season. They increase their beauty with each year's growth. A superb finish for the home landscape, and beautiful, colorful blooms for house bouquets.

For edging the shrubby groups or evergreen plantings, or great beds of them in the flower garden, or surrounding the outdoor living room, Ferris' perennials have become so popular in the past few years that we have been unable to grow them fast enough for the demand. **Order early.**

PLANTING SUGGESTIONS FOR PERENNIALS

Perennials can be planted successfully in the fall as well as spring, and if planted in the fall they will bloom the following year. Plant in good, rich soil prepared the same as for any garden crop, and as a rule the crowns level with the ground. Soil should be kept well pulverized and free from weeds and grass, kept well watered. Most perennials like at least some sunshine. A light covering of straw or leaves over the perennial bed in winter is beneficial and especially necessary with newly planted perennials.

Achillea

THE PEARL. Dainty and charming, altogether hardy—it excels as a graceful border plant. Tiny, rose-like flowers of pure white in innumerable clusters nearly all summer; foliage fine and feathery. Delightful in bouquets with other flowers. 15c each; 5 for 40c; 10 for 65c; 25 for \$1.50, postpaid.

ROSEUM. Very similar to The Pearl but with dense heads of light pink. A fine companion plant for The Pearl. 20c each; 5 for 60c; 10 for \$1.00, postpaid.

FILIPENDULA. Very showy, with its dense heads of bright yellow flowers. Fine for the rockery as well as the border. 25c each; 5 for 90c; 10 for \$1.50, postpaid.

Aquilegia - Columbine

Commonly known as Columbine, and one of the daintiest of all flowers. Unusually hardy, vigorous and long-lived, remaining in bloom a long time. Splendid in either the border or rockery, and charming in bouquets. We have two selected strains.

DOUBLE HYBRIDS.

Charming double blooms and a fine range of color. Mixed colors only. 2-yr. plants, 20c each; 5 for 50c; 10 for 80c; 25 for \$1.65, postpaid.

SELECTED LONG-SPURRED HYBRIDS.

Very choice and desirable, colors ranging from white to blue and delicate tones of pink, rose, yellow and lavender, many of them bi-color. Mixed assortment only. 1-yr. plants, 20c each; 5 for 55c; 10 for 90c; 25 for \$1.75, postpaid.

Anthemis

(Golden Marguerite)

You will be delighted with its sunny disposition. Wonderfully free-flowering, golden daisies, with handsome, finely cut foliage. Especially suitable for edging. Blooms throughout the summer. 15c each; 5 for 50c; 10 for 75c; 25 for \$1.50, postpaid.

Arenaria Montana Grandiflora - Sandwort

One of the best for the rock garden. Low growing, and is entirely covered with pure snow-white, star-like flowers in May. Very hardy. 20c each; 5 for 90c; 10 for \$1.65, postpaid.

Aster, Mauve Cushion

A distinct variety, forming a broad circular cushion not over 9 inches high, covered with daisy-like blooms of soft mauve color, in October and November when most other blooms are gone. Charming in the rock garden or bordering the flower garden. 25c each; 5 for \$1.00; 10 for \$1.75, postpaid.

Bleeding Heart - Dicentra

Everyone likes this flower. Its fern-like foliage and deep rosy red, heart-shaped flowers clustered along drooping stems give character to any perennial garden. Very hardy but it prefers a somewhat shady place. 35c each; 3 for 90c; 6 for \$1.65, postpaid.

Coreopsis Grandiflora

Well known and much loved, and one of the most dependable. Rich golden yellow flowers in profusion nearly the entire summer. Invaluable for cutting. We grow only the Grandiflora, the improved strain with extremely large flowers. Hardy, does well in any good soil. 15c each; 5 for 50c; 10 for 75c; 25 for \$1.50, postpaid.



Hybrid Delphinium.



Aquilegia.

Campanula

CANTERBURY BELLS. A biennial, and a great favorite. Covered with large, bell-shaped flowers, pink, white and blue in color. Splendid in the border or in the foreground of shrubby groups. We can furnish in either the Calycaethema (Cup-and-Saucer), or in the Double-flowering variety, choice of white, blue or pink. 20c each; 5 for 75c; 10 for \$1.35; 25 for \$2.75.

CARPATICA (Carpathian Harebell). Flowers of clear blue, in June and through to October, in great abundance. Very charming in the rock garden or low border. 25c each; 5 for \$1.00; 10 for \$1.75, postpaid.

Delphinium

(Perennial Larkspur)

True aristocrats and essential in every garden. Commonly known as Larkspur. Tall, graceful spikes of clear blue flowers give distinction to any planting. Free bloomers almost throughout the summer, and excellent for bouquets. We can furnish either *Belladonna* (light sky-blue), or *Bellamosa* (dark, rich blue). 15c each; 5 for 50c; 10 for 75c; 25 for \$1.50, postpaid.

Our Selected Hybrid Delphiniums

The newest and choicest sorts to be found anywhere—colors ranging from light blue, mauve, pink and lavender, down to the deepest, richest blues and purples—both single and double types. Our visitors the past summer claimed them to be the finest Hybrid Delphiniums they had ever seen. We are making a specialty of these Hybrids from the very best strains in existence. Plants of mixed types and colors only. **Field-grown plants,** 25c each; 5 for 75c; 10 for \$1.25; 25 for \$2.25, postpaid. **2-yr.,** heavy, 40c each; 5 for \$1.50; 10 for \$2.50; 25 for \$4.50, postpaid.

Dianthus - Hardy Pinks

Lovely form, rich coloring, and spicy fragrance. For edging they are extremely lovely, while in rock gardens they are always favorites. Very hardy and thrifty. Our assortment contains a fine mixture of colors in red, pink, and white, and many of them double. 15c each; 5 for 40c; 10 for 60c; 25 for \$1.10; 50 for \$1.90, postpaid.

Digitalis - Foxglove

Stately, picturesque plants without equal for bold effects. Strong stalks of bloom, reaching a

height of 4 and 5 feet. Inclined to be biennial in habit. Likes a rather loose, rich soil and plenty of moisture. Ours is a selected, mixed strain, with colors ranging from pure white to soft pink and deep rose. Mixed assortment only. 20c each; 5 for 90c; 10 for \$1.65; 25 for \$2.75, postpaid.

Funkia, Blue

The very popular Plantain Lily, forming a symmetrical mound of handsome, bright green, waxy foliage, with artistic lily-like flowers of clear blue borne on graceful spikes in July and August. They do best in rich soil, and will thrive well in a partially shaded or a sunny place. 20c each; 5 for 85c, postpaid.

Gaillardia

The Gaillardia is so easy to grow, and such a wonderfully profuse bloomer that you can depend on having their handsome blooms all season. These blooms shade from bright crimson to golden yellow, and what a picture they make in the garden. No border is complete without the Gaillardia. Plant where they can get plenty of sunshine. 15c each; 5 for 50c; 10 for 75c; 25 for \$1.50, postpaid.

Geum

LADY STRATHEDEN. Grows 12 to 18 inches high, producing a great quantity of large, rich, golden yellow blossoms nearly the summer through. Beautiful among rocks or in the border. 25c each; 5 for 90c; 10 for \$1.50, postpaid.

MRS. BRADSHAW. Fiery red blooms, large and double, wonderfully attractive, lasting nearly all summer. A great favorite for the flower garden as well as rockery. 25c each; 5 for 90c; 10 for \$1.50, postpaid.

Golden Glow

(Rudbeckia)

Everyone knows this bold, sunny flower. Very hardy and thrifty, tall growing, producing beautiful, double, golden yellow balls of bloom in profusion. Fine for the background. 20c each; 5 for 75c; 10 for \$1.40, postpaid.

Gypsophila

(Baby's Breath)

A charming plant of delicate, graceful manner. Reaches 2 to 3 feet in height, with a mass of misty white bloom. Fine for cutting and popular for winter bouquets. Perfectly hardy. Excellent for filling bare spaces in the border, between the bright colored varieties. Fine in bouquets with other flowers. 15c each; 5 for 50c; 10 for 75c; 25 for \$1.50, postpaid.



Digitalis—Foxglove.



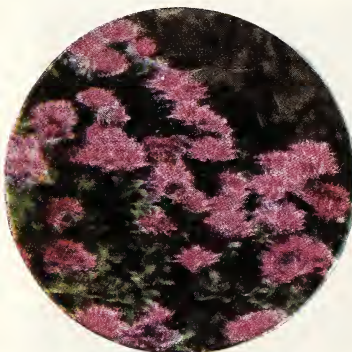
Gaillardia.



Platycodon.



Pyrethrum.



Sedum Spurium Coccineum.



Dianthus.

Heuchera Hybrids

(Coralbells)

Graceful, airy plants that are charming in the border or along the edge of shrubby groups and the rock garden. Artistic leaves close to the ground, with graceful stems about 18 inches high covered with dainty blooms of white, coral and pink. Fine for cutting. Does best in rich, well drained soil. 25c each; 5 for \$1.00; 10 for \$1.85, postpaid.

Hibiscus

(Mallow Marvels)

A beautiful perennial, flowers of rich red, pink and white. One of the finest for the background of perennial borders. Choice of Pink, Red or White. 25c each; 5 for \$1.00; 10 for \$1.75, postpaid.

Hollyhocks

Popular from our grandmother's times, they will always be in great favor. For the showy background and tall border they have no equal. Plant in deep, rich sunny soil, and cover with strawy manure during the winter. Choice of Pink, White, Red, and Yellow. 25c each; 5 for \$1.00; 10 for \$1.75, postpaid.

Iberis Sempervirens

(Candytuft)

Very dwarf. A sheet of white flowers early in the spring. Evergreen foliage. One of the best for rockeries, and a splendid edge for the perennial garden. 25c each; 5 for \$1.00; 10 for \$1.75, postpaid.

Lily-of-the-Valley

The tiny, bell-shaped flowers appear in graceful fashion, and have a delicious fragrance. Fine for shade, as well as an open situation. 20c each; 5 for 60c; 10 for 90c; 25 for \$1.85, postpaid.

Linum Perenne

(Perennial Flax)

A lovely, airy plant, with delicate feathery foliage, and beautiful pale blue flowers all summer long. Fine for the border and rock garden. Likes sunshine and good garden soil. 20c each; 5 for 60c; 10 for 90c; 25 for \$1.75, postpaid.

Lupines

Long spikes of pea-shaped flowers, blue and rose in color. Hardy, vigorous plants. It ranks as one of the most popular of the newer sorts. Does not like drought, so keep the plants well watered. Choice of blue or rose. 15c each; 5 for 50c; 10 for 90c; 25 for \$1.75, postpaid.

Lychnis Chalcedonica

(Maltese Cross)

You will want the flash of red that this will bring to your garden. Very hardy, with dense heads of bright red blooms throughout the summer. Very decorative. 15c each; 5 for 40c; 10 for 65c; 25 for \$1.10, postpaid.

Myosotis

(Forget-Me-Not)

Always charming, as edging or gracing the rock garden. Delicate, tufted foliage; plants laden with tiny flowerets. Bloom in June. This fall we can furnish two strains, as follows:

Mixed. A desirable assortment of white, blue and pink flowers.

15c each; 5 for 40c; 10 for 65c; 25 for \$1.10, postpaid.

Blue. Large, rich blue flowers. 20c each; 5 for 65c; 10 for \$1.10; 25 for \$2.00, postpaid.

Oriental Poppy

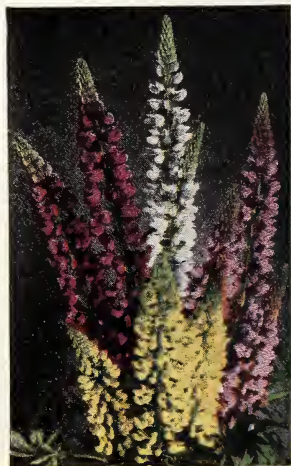
(Papaver Orientale)

Most beautiful and flashy garden flowers. Immense cup-shaped blooms, crimson-scarlet in color, with large, black blotches at base of petals, most gorgeous in the perennial garden. Plant in good, rich soil, and should be mulched with stable litter in late fall. 25c each; 5 for \$1.00; 10 for \$1.85, postpaid.

Phlox Subulata

(Moss or Mountain Pink)

Early spring-flowering, splendid for edging perennial borders, shrubby groups, along paths or drives; one of the best for rockeries. Great masses of bloom, pink and lavender. 20c each; 5 for 60c; 10 for \$1.00; 25 for \$2.00, postpaid.



Lupines.

Physalis

(Chinese Lantern Plant)

Very much in demand because of its wealth of bright orange-scarlet, lantern-like fruits in autumn, which are so fine for winter bouquets. 15c each; 5 for 50c; 10 for 70c; 25 for \$1.50, postpaid.

Platycodon

(Balloon Flower)

Large, handsome, bell-shaped flowers that bloom from July to September. Erect in growth, and very hardy. Splendid for both rock garden and the border. Choice of purplish blue and white. 15c each; 5 for 50c; 10 for 70c; 25 for \$1.50, postpaid.

Pyrethrum

(Painted Daisy)

Fernlike foliage, attractive at all times, while the artistic blooms of white and shades of pink and rose, cover the plant in June. Very hardy and easy to grow, with a liking for sunshine. Valuable for cut flowers. 25c each; 5 for 60c; 10 for \$1.00; 25 for \$2.00, postpaid.

Saponaria - Soapwort

Grand plant for wall or rockery, and a splendid edging plant for the border. Low prostrate plants are loaded with rosy pink or white blooms in May and June. 20c each; 5 for 75c; 10 for \$1.25, postpaid.

Sibbaldia Caucasica

(Pincushion Flower)

A truly handsome border plant, easily grown in ordinary soil that is well drained, where sunshine is prevalent. Blooms from June to September—charming flowers of soft lavender that are beautiful in bouquets. One of the very best cut flower plants for your garden. 20c each; 5 for 75c; 10 for \$1.35; 25 for \$2.75, postpaid.



Viola.

Sedum, Dwarf

The very finest sort of plants for the rock garden, covering graves, etc. Hardy, very easy to establish, with a liking for the sunshine. Dwarf and spreading, with thick, waxy foliage. Choice of any of the following: 15c each; 5 for 50c; 10 for 90c, postpaid.

ALBUM. Thick, waxy, round foliage and lovely white flowers.
SEXANGULARE. Attractive yellow flowers.

SPURIUM COCCINEUM. A beautiful rose-crimson bloom.

STOLONIFERUM. Attractive purplish pink blooms and ever-green leaves.

Sedum, Erect

SPECTABILIS. Broad, light green foliage and immense heads of handsome, showy, rose-colored flowers in late fall. Splendid for the rockery or border. 25c each; 5 for \$1.00; 10 for \$1.75, postpaid.

Sempervivum

(House Leek)

Sometimes called "Hen and Chickens." An unusually attractive plant for the rock garden, with thick, waxy leaves forming very charming rosettes among the rocks or along the border. Pale red flowers. 20c each; 5 for 85c; 10 for \$1.60, postpaid.

Shasta Daisy, Early

Glistening white flowers in great abundance in June. It combines charmingly with other flowers in bouquets. In the garden it is a whole glory in itself, and brings out the rich colors of other flowers. 12c each; 5 for 40c; 10 for 50c; 25 for \$1.00; 50 for \$1.50; 100 for \$2.50, postpaid.

Shasta Daisy, "Alaska"

This is the improved strain of Alaska, with extra large flowers, often 4 or 5 inches across, of pure gleaming white. Very free-flowering, their blooms often lasting through the summer and early fall. 12c each; 5 for 40c; 10 for 65c; 25 for \$1.00; 50 for \$1.50; 100 for \$2.50, postpaid.

Statice

(Great Sea Lavender)

A particularly ornamental plant, splendid for the rockery and in the border. Tiny leaves, leathery in substance, with great heads of purplish blue, minute flowers. In bouquets mix delightfully with other sorts, and when dried last for months. Very desirable for winter bouquets. Hardy, giving best results in a sunny, sandy location. 25c each; 5 for 90c; 10 for \$1.55, postpaid.



Canterbury Bells.



Shasta Daisy.



Lychnis.

Silene Schafta - Catchfly

A lovely rock plant, growing from 4 to 6 inches high, bright pink flowers from July to October. Also makes a charming edge to a sunny border. 25c each; 5 for 90c; 10 for \$1.55, postpaid.

Stokesia - Stokes' Aster

It grows about 2 feet high, producing from June until October, handsome aster-like blooms often 4 or 5 inches across. Extremely hardy, easy to establish, liking a sunny, open place. Choice of blue or white. 20c each; 5 for 60c; 10 for \$1.25; 25 for \$2.50, postpaid.

Viola Cornuta

Fine edging plant, and a favorite in the rockery. Hardy, thrifty plants, bearing great quantities of beautiful pansy-like blossoms throughout the summer and fall. Shear the plants several times during the season so that the flowers do not go to seed—it is the secret of their continuous blooming. We have a fine lot of Viola plants in the mixed and Blue Perfection strain.

MIXED. A delightful assortment of colors and unusual markings. 15c each; 5 for 50c; 10 for 75c; 25 for \$1.50, postpaid.

BLUE PERFECTION. Very lovely light blue flowers. 20c each; 5 for 75c; 10 for \$1.20; 25 for \$2.25, postpaid.



Stokesia.

Veronica Longifolia

Very handsome, blue-flowering plants; one of the very finest perennials. Very hardy. The long spikes of blue come in great abundance from June to September, and are splendid for cutting. 25c each; 5 for \$1.00; 10 for \$1.65, postpaid.

Yucca

Broad, swordlike foliage and tall, branched spikes of large, fragrant, drooping creamy white flowers effective for all positions. The foliage stays green the year around. A most desirable perennial for the border. 15c each; 5 for 50c; 10 for 75c; 25 for \$1.50, postpaid.



Our Superb Flower Border

6 Digitalis (background)	\$1.08
25 Mixed Delphiniums (background)	1.50
10 Hybrid Delphiniums (background)	1.25
3 Peonies (background)	98
(1 each Karl Rosenfeld, Festiva Maxima, and Edulis Superba)		
10 Coreopsis (fillers)75
10 Platycodon (fillers)70
5 Canterbury Bells (fillers)75
6 Lychnis (fillers)48
6 Pyrethrum (fillers)60
10 Long-Spurred Aquilegia (fillers)90
10 Shasta Daisy (fillers)65
50 Fall Bulbs (border)	1.98
(Consisting of 5 each Bartigon, Centenaire, White Queen, Sultan, Rev. H. Ewbank, Pride of Haarlem, St. James, and Gesneriana Spathulata Tulips, and 5 each Mixed Dutch Hyacinths and Princeps Narcissi).		
8 Mixed Myosotis (low edging)52
8 Viola Blue Perfection (low edging)96
8 Phlox Subulata (low edging)80
8 Dianthus (low edging)48
8 Linum Perenne (low edging)72
Total	\$15.10

A wealth of bloom from early spring until late autumn! You simply cannot imagine the beautiful picture that this collection will create around your home—the brilliant colors and picturesque charm—nor the joy that it will give to your whole family. The picture was taken after the Tulip blooms were faded and gone, and shows the delightful midsummer display.

OUR EXTRA SPECIAL BARGAIN PRICE, POSTPAID FOR ONLY \$12.75

Our Choice Perennial Phlox

Brilliant Colors for Your Garden All Summer Long! If You Want the Finest Kind of a Flower Border, Use Ferris' Phlox, and Use Them Generously.

Great trusses of waxy, gorgeously colored flowers that last all summer! Where is there a flower that will equal it for the border? In the foreground of a shrubby planting they supply rich color and finish, while the perennial garden lacks substance and artistic beauty if it does not contain a goodly supply of our Hardy Phlox. We doubt if there is a spot in our nursery that is visited as much or as enthusiastically as our Phlox fields.

PLANTING DIRECTIONS. Plant from 10 to 18 inches apart, in any good soil, where they will get at least some sunshine. They are gross feeders and require considerable moisture, especially until well established, and during the blooming period. Transplant every three or four years for best success. Can be planted successfully either spring or fall.

DR. CHAS. MAYO. Fine large white bloom with red eye.

ECLAIREUR. Bright rose-carmine with hint of purple. Very lasting.

THOR. Deep salmon-pink with scarlet glow. Beautiful.

MISS LINGARD. Immense heads of beautiful, waxy white flowers. Very early.

JULES SANDEAU. Extremely large flower of a beautiful watermelon-pink.

MRS. JENKINS. Pure white; large, very free-flowering. A splendid Phlox.

GEN. VAN HEUTZ. Lovely salmon-red with carmine and white eye.

B. COMTE. A rich satiny purplish red; tall and brilliant.

RIJNSTROOM. Charming rose-pink. Immense flowers in abundance.

Our Special Fall Prices on above nine Phlox: 20c each; 5 for 65c; 10 for \$1.10; 25 for \$2.25, postpaid.

PANTHEON. A lovely cerise-salmon, with white center. Large, branching.

FIANCE. Beautiful waxy white blooms. A fine dwarf grower.

R. P. STRUTHERS. Cherry-red suffused salmon. A great favorite.

BARON VON HEECKEREN. A splendid, new, large salmon-pink.

BEACON. Very tall, strong grower, with brilliant blooms of cherry-red.

F. G. VON LASSBURG. A magnificent pure white. Large blooms.

RHEINLANDER. A tall salmon-pink with claret-red eye. Beautiful.

Our Special Fall Prices on above seven Phlox: 25c each; 5 for 75c; 10 for \$1.25; 25 for \$2.50, postpaid.

FUERBRAND. The most brilliant Phlox known, with its wealth of orange-scarlet trusses throughout the season. 30c each; 5 for \$1.25; 10 for \$2.25, postpaid.



Thor.



Rijnstroom.



R. P. Struthers.



Miss Lingard.



Fuerbrand.



Dr. Chas. Mayo.

Phlox Bargain

A

UNNAMED ASSORTMENT

A fine mixture of varieties and colors taken from our mixed fields: 5 for 50c; 10 for 95c; 25 for \$2.00, postpaid.

Charm Phlox Collection

- 5 Eclairer Phlox
- 5 Dr. Chas. Mayo Phlox
- 5 Thor Phlox
- 5 Rijnstroom Phlox
- 5 Miss Lingard Phlox
- 5 R. P. Struthers Phlox
- 1 Fuerbrand Phlox

These 31 HANDSOME PHLOX—the finest flower collection ever offered.

OUR SPECIAL BARGAIN \$2.88 POSTPAID FOR

EARL FERRIS NURSERY

HAMPTON, IOWA



FERRIS RAINBOW PERENNIAL GARDEN

6 Mixed Hollyhocks (background)	\$1.00
10 Hybrid Delphiniums (background)	1.25
10 Delphinium Belladonna (background)75
10 Delphinium Bellamora (background)75
8 Lupines (foreground fillers)72
6 Gaillardia (foreground fillers)60
8 Aquilegia (foreground fillers)72
6 Stokesia, Blue (foreground fillers)72
6 Pyrethrum (foreground fillers)72
12 Alaska Daisies (edging)75
10 Mixed Viola (edging)78
12 Dianthus (edging)70
6 Cynsophia (edging)60
6 Linum Perenne (edging)60
Total	\$10.58

These 116 Charming Perennials will make a beautiful bed in your outdoor living room, or will give a most delightful finish in the foreground of your shrubbery groups with a lavish display of colorful blooms throughout the season.

NEW! LOW BARGAIN PRICE, POSTPAID \$8.00

HALF COLLECTION
58 Beautiful Perennials, \$4.50
 Postpaid for Only
 (The half collection will nicely fill a space about 4 feet wide and 10 or 12 feet long.)

POSTMASTER:
 Return Postage
 Guaranteed

Sec. 435 1/2 P. L. & R.
 U. S. POSTAGE
PAID
 Hampton, Iowa
 PERMIT NO. 1

D. M. Haenrich

21. S. Dept. of Agr.

Washington

D. C.