

Historic, Archive Document

Do not assume content reflects current scientific knowledge, policies, or practices.

Established 1875

U. S. Dept. of Agriculture

PEDIGREED

Whole-Root
Process

Trees
A Specialty



Grower of
Apple, Peach
and Cherry

Trees in
Quantity



Location, 35 miles Northwest of St. Louis

FRUIT DEPARTMENT CATALOG

Terms, Conditions and General Remarks

READ CAREFULLY BEFORE MAKING UP ORDER

Clause 1—**Easy Terms.** One-fourth cash with orders amounting to more than \$10.00. Orders amounting to \$10.00 or less, cash with order.

Clause 2—**Remit** by postoffice or express money order, registered mail to Golden Eagle, Ill., or by draft. Address all correspondence to Golden Eagle Nursery, Golden Eagle, Ill.

Clause 3—**C. O. D. Orders** must be accompanied by one-fourth the amount in cash.

Clause 4—**Small Orders.** Orders under \$5.00 are too small to handle at a profit. Therefore make your order at least \$5.00. Orders for less than \$1.00 not accepted.

Clause 5—**Free Packing.** Pack free all orders sold at list prices, in the best possible manner, in bales or boxes with moss or excelsior.

See "SAFETY FIRST" PACK—Page 7.

Clause 6—**No Cartage** to freight depots, express offices or wharves.

Clause 7—**Early Orders.** Customers should send in orders as early as possible; do not wait until the last minute and then expect to get immediate delivery. Wishing to serve patrons in the best possible manner is the reason for asking your early orders.

Clause 8—**Directions.** Observe carefully that your **Name, Postoffice, County and State** are plainly written on your order; also state whether to be sent by freight or express, and by what route. If no directions be given, will use best judgment. Use order sheet enclosed.

Clause 9—**Errors.** Any errors that may occur in filling orders must be reported within five days after receipt of goods. Will immediately correct same. Complaints entered after the above stated time will not be entertained.

Clause 10—**Losses.** All stock will be sent out in good condition. Do not guarantee stock to live, nor make up any losses whatever due to climatic effects, or after culture on the part of the purchaser. Immediately upon receipt of stock, open the package and ascertain the condition of same; check up the varieties and compare with your order and report at once any complaints that are to be made, if any. If package has become frosted or dry en route, treat as per instructions given under "Directions for Transplanting and Care of Trees, Shrubs, etc."

Clause 11—**Replacing.** Do not replace stock that may die, at the price quoted. Responsibility ceases upon the delivery of stock in good condition. Complaints, if any, must be made within five days after delivery, when we will at once rectify or allow deductions. Will not permit any deductions from invoices unless the above conditions have been complied with.

Clause 12—**Substitution.** It is customary, should the supply of a variety become exhausted (as will occasionally occur in all establishments), to substitute in its place a similar sort, if there is such. Should it be desired not to do this, please state on your order, "No substitution."

Clause 13—**Selections.** Persons not acquainted with the different varieties can leave the selection open, in which case will select as if planting for personal use, in your locality.

Clause 14—**Transportation.** Every care is taken to secure safe and prompt transportation. The forwarders alone must be held responsible for loss or delay in transit.

Clause 15—**Inspection.** Nurseries are annually inspected by the State Entomologist and have been found free of San Jose Scale and other dangerous insects and diseases. A copy of certificate of inspection will be attached to every package that leaves the establishment.

Clause 16—**Non-Warranty Clause.** If nursery stock proves untrue to the name under which it is sold, a replacement of the stock, as originally ordered, without charge, or a refund of the purchase price shall be a complete satisfaction of our liability. Except for such liability, we give no undertaking or warranty, express or implied, as to description, quality, growth, productiveness, or any other matter on any nursery stock. Assume no liability for delays in delivery, or for non-delivery of nursery stock caused by frost, fire, flood, drought, hail, strikes, embargoes, war or other causes beyond control. Responsibility ceases upon the delivery of stock in good condition. Complaints, if any, must be made within five days after delivery. Railroad, Express Companies and boat lines must be held responsible for losses in case of delay or damage in transit.

RATES—How to Apply

Each Rate. Fruit trees, less than 10 trees go at "each" rate.

10 Rate. 10 or more of a variety go at 10 rate price.

100 rate. Over 30 trees of a kind (as 30 apple or 30 peach, etc.), not less than 10 trees of any one variety go at 100 rate.

1000 Rate. 300 or more of a kind (as 300 apple or 300 peach, etc.) go at 1000 rate price.

Grape Vines, Raspberries, Blackberries, etc., 25 of one variety go at 1000 rate; 300, not less than 25 of a variety, go at 1000 rate.

Grades. 1st class, 2 to 3 ft., parcel post size.

1st class, 3 to 5 ft., express size.

1st class, 5 to 7 ft., freight size.

Parcel post size, 5c extra, if shipped by parcel post.

5 to 7 ft. best size to plant.

Note. Mark very plainly size wanted. Be sure that you have your name and address plainly written. In no case fail to give your shipping address, if different from postoffice address.

GOLDEN EAGLE NURSERY

Golden Eagle, Ill.



GOLDEN EAGLE NURSERY PACKING HOUSE. ALL TREES AND PLANTS ARE HANDLED UNDER COVER—NO EXPOSURE TO SUN, DRYING WINDS OR KILLING FROSTS.

Golden Eagle Whole-Root Process

(See Photograph Below)

Whole-Root Process—First—on the left. Note the root system and the perfect fitting and wrapping (preventing water from entering the splice and setting up decay, forming perfect union, essential to long-lived trees.

Piece Root—Second—from the left. Nine grafts made from one root used in the **WHOLE-ROOT PROCESS**, producing trees of but one-ninth the vitality retained in the Whole-Root Process. Also note the wrapping practiced in making the Piece-Root grafts.

Ill-Made Grafts—Third and fourth—by inexperienced workmen. Note the misfits, small scions used on large roots and rough workmanship, never a union of long duration. Results are weaklings, short-lived and nonproductive.

Perfect Fitting—Last—on the right. Hand-grafted at the proper point by expert workmen, forming perfect union (just visible on close observation). Trees that grow strong will last long under the strain of heavy cropping at an early age. Grafting at the proper joint and perfect fitting unions is as much of an art in the Nursery profession as it is to the blacksmith to use the proper heat to make a perfect and smooth weld. Most of the world knows that the engine power of an automobile is the essential life of the auto—good dependable units that can suck up large quantities of gasoline, convert it into gas vapor and ignite it at the proper time gives the auto an elastic full-of-peg movement. Just so in Trees and Plants. The Golden Eagle Nursery trees are built up on **WHOLE-ROOT PROCESS**, capable of drawing food and moisture from the earth and converting same into growth and quality fruit. Never did the Golden Eagle Nursery propagate the piece-root kind.

WHOLE-ROOT PROCESS, as grown by the Golden Eagle Nursery, are **STRONG** growers, **LONG-LIVED**, and above all, **PRODUCTIVE**.

Pedigree—This has reference to the quality of the fruit—size, color, and bearing habits—therefore, the name, "Pedigreed Whole-Root Process Trees." Golden Eagle Nursery trees now are the sixth "generation" selection from special select parent trees. The location of the Golden Eagle Nursery is ideal (none so good in the world). A million bearing trees in the county affords an opportunity to select the very best strains from time to time. Think of it—1,000,000 trees within 50 miles to observe and select from.





FIELD OF TWO-YEAR PEDIGREED, WHOLE-ROOT PROCESS, GOLDEN DELICIOUS

STANDARD APPLES

PRICES

GOLDEN DELICIOUS

No red tape, no trade-mark or contract to sign. They are yours to do with whatever you wish. Immense bearers at an early age; of best quality, and a long keeper. Larger than Grimes Golden.

1st class	Each	10	100	1000
2 to 3 ft.....	\$0.50	\$4.00	\$35.00	\$300.00
3 to 5 ft.....	.60	5.00	45.00	410.00
5 to 7 ft.....	.70	6.00	55.00	530.00

OTHER LEADING VARIETIES

1st class	Each	10	100	1000
2 to 3 ft.....	\$0.30	\$2.90	\$28.00	\$220.00
3 to 5 ft.....	.35	3.40	33.00	320.00
5 to 7 ft.....	.45	4.40	40.00	380.00

SUMMER OR EARLY VARIETIES

Early Harvest. Medium to large, flat, pale yellow; good. Tree a good grower and bearer. July.

Duchess (Russian). Medium to large; striped, mostly red. Best summer cooking apple; tree hardy, early and a good bearer. July and August.

Red June. Medium size, red; flesh white, tender, juicy, sub-acid; an abundant bearer. July.

Transparent (Russian). Skin clear white, changing to pale yellow when fully ripe; flesh white, tender, sprightly sub-acid; good early bearer. July.

Benonia. Medium size, red and yellow striped; remarkably hardy; fruits every year; has a very peculiar habit of bearing on one-half of the tree each year while the other half rests; fruit very crisp and melting. Should be in every family orchard. July.

Wolf River. Very large, flat, tart, sub-acid; attractive; tree vigorous, spreading, hardy, good bearer. Desirable market variety.

Liveland. Red striped, medium, good quality; beautiful red and yellow; flesh snow-white, tender, fine-grained and juicy; strong grower. Early bearer.

AUTUMN VARIETIES

King David. A beautiful apple, resembles Jonathan in color. Tree strong, vigorous grower, healthy, bears young. September.

Maiden Blush. Large, flat, pale yellow; beautiful blush; mild, sub-acid; valuable for market, cooking and drying. September.

Wealthy. Fruit medium, oblate, skin smooth, whitish-yellow, shaded with deep red in the sun, splashed and spotted in the shade. Flesh white tender, juicy, sub-acid, very good. August to September.

EARLY WINTER VARIETIES

Grimes. Medium to large, roundish, oblate, slightly conical, large specimens oblong. Skin yellowish-white, with a mild sub-acid, agreeable good to best flavor. September to December.

Jonathan. Medium size, unless thinned on tree, when it becomes a fair size; form roundish conical; skin thin and smooth, the ground clear, light yellow, nearly covered with lively red stripes and deepening into brilliant or dark red in the sun; flesh white, rarely a little pinkish; very tender and juicy; mild, sprightly vinous flavor. September to December.

Red Rome Beauty. Large, roundish, oblong apple, handsomely colored and striped with bright red; one of the most beautiful and profitable winter apples; flesh firm and crisp, juicy and of good quality. Splendid storage apple. Tree vigorous, upright, spreading grower, very profitable commercial variety, bears young and annually. October.

Champion. Fruit, good size, roundish, attractive, deep red striped with purplish carmine.

Talman (Sweet). Medium or rather large, roundish, oblate, slightly conical. Color clear white yellow with clear brownish line from stem to apex; flesh white, firm, rich, very sweet.

Recommends Planting Whole-Root Process Trees

Gentlemen: To my sorrow, I must confess, had I entrusted all my tree orders to the Golden Eagle Nursery, I would have profited at least \$5,000.00. I sold the crop of my eight-year-old, two and a half acre Yellow Transparent orchard for \$1,435.00, net. Having had several paying crops before, I do not hesitate to recommend the Golden Eagle Nursery Pedigreed, Whole-Root Process trees. I will plant no other—Pedigreed, Whole-Root Process trees, or none. Will finish planting my farm in the spring. I have but thirty acres left to plant. No other crop pays as much and it is pleasant work. Your prices are very reasonable.

ADOLPH LORSBACH,

Orchardist.



APPLES, WINTER VARIETIES—For prices, see page 3

Arkansas (Mammoth Black Twig). A seedling of Winesap which it resembles in every way except that the tree is a better and much more vigorous grower, more hardy, and the fruit is much larger. Color dark red; flesh firm; flavor mild. A good keeper. One of the best. October to May.

Arkansas Black. Large, very dark red, smooth, roundish flat, lightly dotted white; flesh yellow, sub-acid; long keeper. November to April.

Baldwin. A celebrated winter variety in the east. Large size, bright red; flesh yellow; juicy; very productive where it thrives. September to April.

Black Ben. Of the Ben Davis type, said to be better than Gano. Fruit large, deep red, long keeper, good shipper and sells well on the market. September to February.

Delicious. This variety should be in every orchard. Fruit large, almost covered with beautiful dark red, blending to yellow at the blossom end. Sweet, pleasant flavor, only enough acid to make it pleasing. Flesh crisp, juicy, fine-grained, melting. September to February.

Golden Delicious. Remarkable early bearer of the most delicious apples; tree vigorous grower and hardy; fruit yellow, oblong, larger than Grimes Golden; quality unsurpassed, at all times drawing the attraction of buyers and commanding from 50c to \$1.00 more per bushel than any other apple ever offered. Should be planted in every home and commercial orchard; no mistake about this variety, you can't go wrong, it is the coming apple. Buds and scions are collected from bearing pedigreed trees, positive assurance of genuineness. No red tape, no trade-mark or contract to sign. They are yours to do with whatever you wish.

Ingram. Improved Geneton. Tree upright, strong grower; fruit red, crisp, juicy and white; very late keeper; valuable for home and market.

Giant Geneton. This apple has the advantage over the old Geneton; it does not crack and is much larger and is equally as good as the old kind.

Gano. Tree very healthy, vigorous, hardy, having stood 32 degrees below zero without injury. A rapid grower, large and spreading in orchard. Color bright red without stripes or blotches. Similar but superior to Ben Davis. Large and even in size. Prolific bearer and a good keeper. October to March.

Northwestern (Greening). A Wisconsin seedling of great promise, having taken first prize at their state societies. Tree a good grower and hardy. Fruit yellow, smooth, rich, of good size, resembling Grimes Golden in shape and color. Good quality. November to December.

Stayman. Tree is a vigorous grower, drooping in habit and adapts itself to soils and situations; fruit large size, bright red color and produced in large quantities. A profitable market variety. October to March.

Willow Twig. Large; red yellowish; flesh yellowish; tree drooping habit. Very late keeper.

Winesap. Medium, conical, dark red; very smooth. Acid to sub-acid, juicy and rich, very valuable for both family and market. Tree very hardy and an early and constant bearer. December to April.

Yellow Bellflower. Large to very large; oblong, pale yellow, sometimes blushed; acid to sub-acid, rich and good. Tree a fine spreading grower and hardy. October to January.

York Imperial. Medium to large, oblate; color white, shaded with crimson; flesh firm, crisp, juicy and sub-acid; a good bearer and keeper; one of the best winter apples. November to April.

Golden Eagle Trees Are True To Name

Golden Eagle Nursery

I have planted your trees for many years and have my first lot yet to get that did not come true to name, and the quality and health always satisfactory. I wish to compliment you for fair dealings. Your style of trees are true to name. "Pedigreed, Whole-Root Process" trees are what put Calhoun county (Ill.) on the map as the largest apple-producing district in the world. My best wishes go with you and your success.

LOUIS RINGHAUSEN,
Orchardist.



CRAB APPLE

1st class	Each	10	100	1000
2 to 3 ft.....	\$0.30	\$2.90	\$28.00	\$225.00
3 to 5 ft.....	.35	3.45	33.00	320.00
4 to 7 ft.....	.45	4.40	40.00	380.00

Florence. Originated in Minnesota. Fruit medium in size; color carmine when well colored; flesh yellowish, fine, acid. Excellent for cooking and for jelly. Valuable for early market. Tree hardy and spreading; bears when young and inclined to overbear.

Transcendent. Medium size; flavor pleasant and agreeable; extremely hardy.

Whitney Crab. Large; flesh firm; juicy and of pleasant flavor. Good bearer.

Hyslop. Large size, beautiful dark crimson. Hangs in clusters. September.

"Safety First" Pack is a Perfect Pack

I am well pleased with your trees. They are the finest lot of peach trees I ever saw. Everything in good shape; good roots, too. Your "Safety First" Pack is a perfect pack. Thank you for the courteous and fair treatment. Your system of propagation is without doubt the most up-to-date. The Whole-Root Process is what counts, and the "Pedigreed" select strains have shown up beyond my expectation. How do you do it?

ROY N. BAILEY,
County Clerk and Orchardist.



ROY N. BAILEY

ARBORMEADE FARM

Maple Glen, Pa., Dec. 22nd, 1923.

Hon. Albert A. Schulze,
Golden Eagle, Ill.
Golden Eagle Nursery.

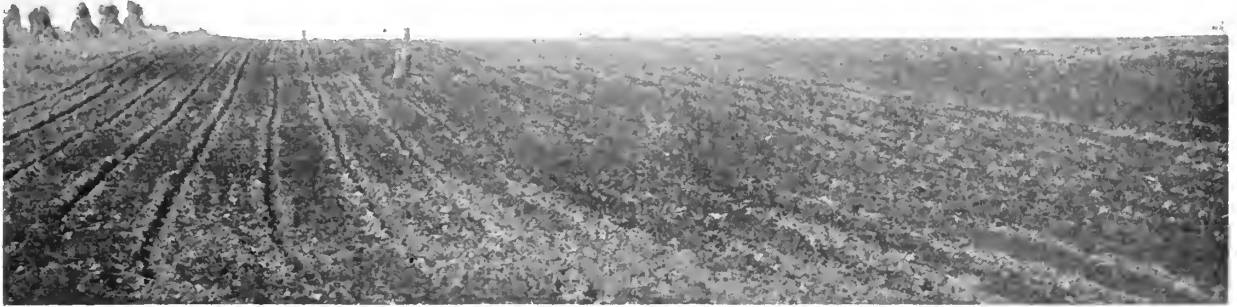
Dear Mr. Schulze:—

A press of urgent duties has prevented me from writing you earlier and expressing my heartiest and sincerest gratitude for the lovely apple trees that arrived at our station at Ambler, Pa., Dec. 7th, from Golden Eagle on the Illinois-Mississippi delta. Surely, I am proud of those perfect Prairie State trees that came East over a thousand miles, across four great states.

Your packing was faultless and the trees "came out of bonds" in the freshest condition.

Believe me, with all good wishes for your happiness and success.

Most cordially yours,
CHARLES S. MANN.



PEACH SEEDING—LARGE FIELDS OF PEACH SEED PLANTED EACH YEAR

PEACHES

PRICES

CHOICE VARIETIES

	Each	10	100	1000
1st class				
2 to 3 ft....	\$0.30	\$2.90	\$20.00	\$150.00
3 to 5 ft....	.35	3.45	25.00	240.00
5 to 7 ft....	.45	4.40	30.00	250.00

Variety marked * highly recommended.

VARIETIES

Wheeler. This variety has again shown its superior qualities in our orchard the past year. Picked our last Wheeler July 12th and picked our first Greensboro same day. Fruit larger than Greensboro, round, flesh white, juicy; tough skin nearly covered with deep red. A good shipper. July 1st to 5th.

Red Bird Cling. The very best of the early varieties; high color, deep red; flesh firm, holds up well when shipped. Sure to give satisfactory results. Very popular with peach growers. July 6th.

Mayflower. Originated in North Carolina; very early; color perfectly red; a valuable market sort. Perfectly hardy in bud and a heavy cropper. July 5th to 10th.

Sneed. Fruit medium size, creamy white, with light blush cheek. Seedling of Chinese Cling. Ripens early July.

Greensboro. The largest and most beautifully colored of the extra early peaches. A freestone; flesh white, juicy and excellent. July 10th to 15th.

Carman. Large, resembles Elberta in shape; color creamy white, with deep blush; skin very tough; flesh tender, fine flavor and quite juicy. One of the hardest in bud. In shipping qualities and freedom from rot it is unsurpassed. Profitable market variety. July 10th to 15th.

Belle. Very large; skin white, with red cheek; flesh white, firm and excellent flavor; the fruit is uniformly large and showy; a very prolific bearer. July 15th to 20th.

Mountain Rose. Large, white, washed with carmine; flesh tinted pink, juicy, vinous, sub-acid and good flavor. July 15th to 20th.

Mamie Ross (Cling). Very large, oblong; color similar to Chinese Cling, but has more of a red cheek. With us one of the best early clingstones. July 20th to 25th.

Rochester. A new yellow freestone variety. The fruit is large, yellow, sweet, juicy and of delicious flavor, keeping and shipping well; skin prettily blushed. Tree strong grower and hardy; prolific bearer. Ripens about July 25th.

Crawford Early. The best early yellow freestone, one of our oldest varieties. Ripens about August 1st.

Champion. Originated at Nokomis, Ill. Flavor delicious, sweet, rich, juicy, surpassing all other early varieties. Skin creamy white with red cheek. Early, productive and large. Perfect freestone. August 10th to 15th.

Early Elberta. Color beautiful yellow, red on the sunny side; flesh juicy and sweet. August 10th to 15th.

Ede. Large to very large; a rich orange yellow; flesh yellow, small stone; melting, rich, highly flavored. Freestone. August 15th to 20th.

Elberta Cling. In appearance as the Elberta, yet it is perfectly a clingstone. Wonderful canner; flesh firm and juicy. 5 days ahead of Elberta.

Elberta. Supposed to be a seedling of Chinese Cling, but is entirely free. Very large, yellow, with red cheek; flesh yellow, firm, juicy and of high quality; exceedingly prolific; sure bearer and hardy. August 15th to 20th.

J. H. Hale. Everybody has heard of this variety; ripens about the same time as Elberta; said to be larger and better flavored; highly colored. We have only a limited number to offer this year. August 15th to 20th.

Stearns. A perfect yellow freestone, brilliant red skin. An excellent shipper. Tree strong, upright grower, extremely hardy. Introducer says it is the best market peach grown. Ripens August 20th to 25th.

Lemon Cling. Large, pale yellow, dark red cheek. Ripens latter part of August.

***Mammoth Heath Cling—Clingstone, Latest of all Peaches, White.** A large, oval, roundish, white peach, often faintly blushed next to the sun. The flesh is firm, very juicy and melting, with a splendid rich juice, like honey. It is an excellent peach for preserves and pickles. It is one of the latest peaches to ripen, hence does not reach the high state of perfection in the northern United States as it does in the central and southern states. Ships well and is an extra good keeper.

The tree is vigorous and hardy, very productive and a regular cropper. Bears third to fourth year.

"There is scarcely a commercial orchard in the regions of the Piedmont and Blue Ridge sections of Virginia and the south Atlantic states which does not contain this variety."—H. P. GOULD, Bureau of Plant Industry, Bulletin No. 135.

Season of Ripening. One hundred days after Mayflower and forty days after Elberta. The latest of all. About same season as Krummel.



PEACH TREES, SIX MONTHS FROM BUD. NOTE THE GROWTH. THERE MUST BE AN UNSURPASSABLE ROOT SYSTEM OR THERE COULD NOT BE SUCH AMAZING GROWTH. THEY ARE PEDIGREED, WHOLE-ROOT PROCESS TREES



SIX-MONTH CHERRY—READY FOR PACKING. NOTE THE ROOT SYSTEM; ALSO THE HEIGHT. THE CAMERA TELLS ALL OF THE STORY, AND NO MORE. THESE CHERRY TREES ARE SIX MONTHS FROM BUD, WHOLE-ROOT PROCESS PEDIGREED TREES. PRODUCE WONDERS IN GROWTH.

CHERRIES

SWEET VARIETIES

1st Class	Each	10	100	1000
2 to 3 ft.....	\$0.40	\$3.50	\$30.00	\$250.00
3 to 5 ft.....	.45	4.00	35.00	300.00
4 to 6 ft.....	.80	7.50	65.00	600.00

Bing. Very large, dark brown—almost black; flesh firm, sweet, rich and delicious. A noted western sort. Late.

Spanish (Sweet). Large, pale yellow, firm, juicy and excellent. One of the best light colored cherries. Tree productive and a fine grower.

Schmidt. Immense size, deep black, flesh dark, tender, very juicy, fine flavor; productive. July.

Tartarian (Black). Very large, black, juicy, rich. End of June.

Wood. Large, light red, juicy, rich, delicious. June.

DUKE AND SOUR VARIETIES

1st Class	Each	10	100	1000
2 to 3 ft.....	\$0.40	\$3.50	\$30.00	\$250.00
3 to 5 ft.....	.45	4.00	35.00	300.00
4 to 6 ft.....	.70	6.50	55.00	500.00

Duke Varieties

May Duke. Medium dark red, melting, rich, juicy, excellent. A reliable early cherry, nearly sweet.

Late Duke. Fruit similar to May Duke, but later and not so sweet.

Sour Varieties

Dyehouse. A very early and sure bearer. Ripens a week before the Early Richmond.

Richmond. Medium size, light red; melting, juicy, sprightly acid flavor. Tree healthy and productive. One of the most popular early cherries.

Montmorency. Large red cherry, ripening ten to fourteen days after Early Richmond. Tree a slow but stiff grower; very profitable bearer; valuable late sour cherry.

Morello. Good size, very dark red when fully ripe, rich, acid, juicy, excellent for canning. Later than Montmorency.

PLUMS

JAPAN OR ORIENTAL VARIETIES

1st Class	Each	10	100
2 to 3 ft.....	\$0.50	\$4.50	\$40.00
3 to 5 ft.....	.60	5.00	45.00
4 to 6 ft.....	.70	5.50	50.00

This class of plums and their hybrids are strong-growing trees with light green foliage and attractive bloom, productive and usually commence bearing the third to fourth year after planting. They bloom very early, should be planted on north or west slopes and in sections not subject to late spring frosts.

Black Beauty. A cross between a Japan Plum and Damson; color almost black. Said to be one of the most productive and profitable varieties. Ripens in August.

Botan. Beautiful lemon-yellow ground, nearly overspread with bright cherry. Large to very large; oblong, tapering to a point like the Wild Goose; flesh orange-yellow, melting, rich and aromatic. August.

Burbank. Large, nearly globular; clear cherry-red, with a thin lilac bloom; flesh a deep yellow, very sweet and agreeable flavor. Hardy; one of the best for both garden and market planting. August.

Gonzales. Probably the finest of all Japan plums; bears young; trees upright in growth; fruit very large, excellent flavor. You should try a few of these; they are fine.

CHICKASAW VARIETIES

1st Class	Each	10	100
2 to 3 ft.....	\$0.60	\$5.00	\$45.00
3 to 5 ft.....	.70	6.00	55.00
4 to 6 ft.....	.80	7.00	65.00

Wild Goose. Well known; large, deep red when ripe. Good quality; one of the best native plums; should be in every orchard. July.

Newman. Fruit medium, oblong; color, bright vermilion. Adheres to the stone. Tree vigorous, foliage smaller than the Wild Goose. In fertility it is truly astonishing; its fruit ripens about August 15th and lasts until September 15th.

EUROPEAN VARIETIES

1st Class	Each	10	100
2 to 3 ft.....	\$0.60	\$5.00	\$40.00
3 to 5 ft.....	.75	7.00	50.00
4 to 6 ft.....	.90	8.00	60.00

Damson (Common Blue). A valuable market sort. It bears enormous crops. Thousands of bushels are annually sold on our markets. It is the best plum for preserving. August and September.

German Prune. Large, dark purple, sweet, good. One of the most popular and desirable for canning. September.

Italian Prune. Good size, purple, juicy, delicious, fine for drying. September.

PEARS

PRICES

1st Class	Each	10	100
2 to 3 ft.	\$0.70	\$6.00	\$50.00
3 to 5 ft.	.80	7.50	70.00
4 to 6 ft.	1.00	9.00	80.00

Varieties marked (*) can be supplied, Standard and Dwarf.

EARLY VARIETIES

Tyson (S). Rather above medium in size, melting and juicy, sweet and fine flavored; one of the finest summer varieties. Tree vigorous and upright in growth.

AUTUMN VARIETIES

***Bartlett (S-D).** One of the most popular pears; large, buttery and melting, with rich flavor. Tree a vigorous and erect grower; bears young and abundantly.

Clairgeau (S). Very large, yellow and red. Flesh yellowish. Keeps solid a long time after gathering. Free grower and abundant bearer.

***Angouleme (D).** The largest of our good pears; succeeds on pear, but attains its highest perfection on quince, and is a beautiful and vigorous tree. Most profitable for market.

Anjou (S-D). A large, fine pear, buttery and melting, with sprightly vinous flavor. Tree a vigorous grower and good bearer. Best on quince.

***Garber (S).** One of the Japan hybrids; the best and handsomest of its class. Earlier than Kieffer, larger and much better quality; free from blight; very hardy. Immensely productive; bears young; excellent for canning or preserving.

Howell (S-D). One of the finest American pears. Large, handsome, sweet and melting; tree very vigorous, hardy and productive.

***Kieffer (S).** This is a seedling raised from the Chinese Sand Pear crossed with the Bartlett. Skin rather rough. Color yellow, with red cheek in the sun. Flesh white, juicy, buttery and rich. Tree a very strong, upright grower. Very profitable for market.

***Seckel (S).** The standard of excellence in pears. Small but of highest flavor. Tree a strong, slow, erect grower; very hardy and bears abundantly.

Sheldon (S). Fruit medium; color greenish-yellow, mostly covered with russet and a little brownish-crimson in the sun. Juicy, rich, aromatic and sweet.

WINTER VARIETIES

Lawrence (S). Size medium to large; obovate; color a golden-yellow; flesh melting, with a rich, aromatic flavor. Tree a moderate grower and an abundant bearer.

GRAPES

1st Class	Each	10	100	1000
Hubbard, Black	.. \$2.00	\$18.00	\$100.00
Campbell Early, Black	.. .25	2.00	20.00	100.00
Concord, Black	.. .35	3.00	30.00	\$250.00
Moore, Black	.. .25	2.00	20.00	100.00
Worden, Black	.. .39	2.50	23.00	200.00
Agawam, Red	.. .30	2.50	23.00	200.00
Brighton, Red	.. .30	2.50	23.00	200.00
Catawba, Red	.. .30	2.50	23.00	200.00
Delaware, Red	.. .30	2.50	23.00	200.00
Diamond, White	.. .30	2.50	23.00	200.00
Niagara, White	.. .30	2.50	23.00	200.00

If wanted by parcel post add 2c per plant to the prices quoted up to 100 lots to cover postage and extra packing. 1,000 lots should be sent by Express or Freight.

WHITE SORTS

Diamond. Grape from Concord seed, fertilized with Iona. In vigor of growth, color and texture of foliage and hardness of vine it partakes of the nature of its parent Concord, while in quality the fruit is equal to many of the best tender sorts, and ripens two weeks earlier than the Concord.

Niagara. Vine remarkably hardy; strong grower; bunches very large and compact, sometimes shouldered; berries large; light greenish-white; semi-transparent; slightly ambered in the sun; skin thin but tough, and does not crack; quality good; very little pulp; melting and sweet to the center.

BLACK OR BLUE SORTS

Campbell Early. A fine healthy and early variety, profuse bearer. Ripens with the Moore's Early but keeps on the vine or in the house for weeks.

Concord. The old stand-by. A large, purplish-black grape; vines remarkably hardy, vigorous and productive. Very popular; best market sort.

Moore. Bunch medium, berry large, round, with heavy bloom; vine exceedingly hardy, entirely exempt from mildew or disease. Its earliness makes it desirable for an early market. Two weeks earlier than Concord.

Worden. A splendid large grape, of the Concord type, but earlier, and in every way as healthy. Quality good to best.

RED OR AMBER SORTS

Agawam (Rogers' No. 15). Berries very large, with thick skin; pulp soft, sweet and sprightly; very vigorous; ripens early.

Brighton. Bunch large, well formed; berries above medium to large, round; excellent flavor and quality; one of the earliest in ripening.

Catawba. Bunches of good size, rather loose; berries large, round; when fully ripe of a dark copper color, with a sweet, rich musky flavor.

Delaware. Bunches small, compact, shouldered; berries rather small, round; skin thin, light red; flesh very juicy, without any hard pulp, with an exceedingly sweet, spicy and delicious flavor.

"SAFETY FIRST" PACK

Trees are virtually planted into the box. Roots are covered with especially prepared packing put up in water-proof paper-lined boxes. The moisture can not escape and frost can not penetrate, insuring "Safety First" delivery of your order.

Box on left partly finished, box on the right complete. Note, there is just enough rise of the packing over the height of the box when pressed down to hold the trees firm in their place, preventing slipping of both the packing and trees, at the same time not overcrowding the roots.



BERRIES AND SMALL FRUITS

BLACKBERRIES

Many kinds of blackberries will succeed, not only on good fruit land, but on the most sandy, porous soil. The pruning should be severe. Cut back the canes in summer when three feet high, causing them to throw sprouts.

When planting 7 by 3 feet it takes 2,078 plants for an acre.

When planting 5 by 3 feet apart it takes 2,904 plants for an acre.

Our Blackberry plants are all grown from root cuttings; they are free from disease.

1st Class	Each	10	100	1000
Blowers	\$0.20	\$1.25	\$7.00	\$60.00
Early Harvest	.20	1.25	7.00	60.00
Eldorado	.20	1.20	6.00	55.00
Mersereau	.20	1.25	7.00	60.00

If wanted by parcel post add 10c to the 10 price, 15c to the 25 price, 50c to the 100 price, to cover postage and extra packing. 1,000 lots should be sent by express.

Blowers. Claimed to be the hardiest, most productive and the finest quality of all the blackberries. Large size, jet black, good shipper. We believe this variety has special merit.

Early Harvest. This is one of the earliest blackberries in cultivation; a compact, dwarf grower; fruit medium size and fine quality; an enormous bearer.

Eldorado. Very vigorous and hardy, enduring the winters of the far northwest without injury, and their yield is enormous. The berries are large, jet black, borne in clusters, and ripen well together; they are very sweet, melting and pleasing to the taste; have no hard core.

Mersereau. Strong grower, upright, stout, stocky canes. Extra size berries, brilliant black and retain color under all conditions. Sweet, rich and melting, without core.

RASPBERRIES

Will do well on any soil that will produce a good corn crop. Land should be thoroughly prepared and well enriched. Keep well cultivated and free from weeds and suckers. As soon as done bearing, cut out old wood to give vigor to young canes. Spring is the best season to plant. Plant in rows six feet apart, three feet apart in rows, 2,420 plants to the acre.

RED SORTS

1st Class	Each	10	100	1000
Cuthbert	\$0.20	\$1.00	\$9.00	\$50.00
King	.20	1.00	9.00	50.00
June	.20	1.00	9.00	50.00
St. Regis	.20	1.20	10.00	60.00
Herbert	.20	1.25	12.00	70.00

PURPLE SORTS

1st Class	Each	10	100	1000
Columbian	\$0.20	\$1.25	\$12.00	\$60.00

BLACK SORTS

1st Class	Each	10	100	1000
Cumberland	\$0.20	\$1.00	\$9.00	\$55.00
Kansas	.20	1.00	8.00	50.00
Plum Farmer	.20	1.00	9.00	60.00

If wanted by parcel post add 10c to the 10 price, 15c to the 25 price, 50c to the 100 price, to cover cost of postage and extra packing. 1,000 lots should be sent by express.

RED SORTS

Cuthbert. A strong, hardy variety; berries very large, rich crimson, very handsome, sweet, rich and luscious; highly flavored.

June. Only kind to fruit in June, from where it derives its name. The fruit is superior to the old timers and earlier; growth vigorous, hardy and adapted to all kinds of soil. Bears heavily and holds its size over a long period; ships well. Larger and rounder than Cuthbert; quality equal to any.

King. Said by many to be the best early red raspberry. Plant a strong grower, hardy and productive. Berry firm; good shipper; large size; color bright scarlet.

St. Regis. Begins to ripen with the earliest, continues to bear on young wood until October. Berries bright crimson, large, rich, raspberry flavor. Flesh firm and meaty, a good shipper. Wonderfully productive, the first or main crop equalling any red variety known.

Herbert. In hardness it easily takes first place, standing lower temperature than any other. Never been known to be affected by anthracnose, or disease of any kind. Fruit bright red, somewhat oblong, larger than Cuthbert. Flavor sweet and juicy; best for table use. Holds size well to end of season. Five or six days earlier than Cuthbert.

PURPLE SORTS

Columbian. Bush a strong grower, attaining a very large size. One of the hardiest and wonderfully prolific. Unexcelled for productiveness, and stands at the head for canning, making jam, etc.

BLACK SORTS

Cumberland. The largest of all black caps. A healthy, vigorous grower, throwing up stout, stocky, well branched canes, that produce immense crops of magnificent berries. Fruit very large, firm; quality about the same as Gregg; keeps and ships well as any of the blacks. The most profitable market variety.

Kansas. A vigorous grower, standing extremes of drought and cold, bearing immense crops. Early, berries jet black, almost free from bloom; firm, of best quality; presents a handsome appearance and brings highest price in market.

Plum Farmer. A few days later than Kansas; matures its crop in a very short period, making it one of the most profitable early market sorts. Berries are thick-meat, firm, and large.

DEWBERRIES

Lucretia. One of the low-growing, trailing blackberries; in size and quality it equals any of the tall-growing sorts. Perfectly hardy, healthy and remarkably productive. The fruit ripens early, often one and one-half inches long by one inch in diameter; soft, sweet and luscious, with no hard core; ripe before late raspberries are gone. Mulch to keep berries from the ground.

1st Class	Each	10	100
Lucretia	\$0.20	\$1.10	\$6.00

If wanted by parcel post add 10c to the 10 price, 15c to the 25 price, 50c to the 100 price.

GOOSEBERRIES

Can not be shipped to states west of Iowa, Missouri and Arkansas, or to Minnesota, account embargo.

This fruit requires the same cultivation as the currant. The surest method to prevent mildew is to plant thickly in the rows and mulch deeply six or more inches with straw, tan bark, coal ashes, etc. To prevent mildew, spray the bushes as soon as the leaves appear in spring, and several times during the summer, with potassium sulphide (liver of sulphur), one ounce to four gallons of water.

Plant in rows five feet apart, and the plants three feet apart in the rows—2,904 plants to the acre. Write for prices on larger quantities than quoted.

1st Class	Each	10	100
Downing	\$0.30	\$2.50	\$22.00
Houghton	.25	2.10	20.00

If wanted by parcel post add 3c per plant to the price quoted to cover postage and extra packing.

Downing. Size medium to large, oval, greenish-white; plants vigorous, upright, very productive; never mildews.

Houghton. A vigorous grower; very productive; not subject to mildew. Flesh tender and very good. Red when ripe.

CURRANTS

Can not be shipped to states west of Iowa, Missouri and Arkansas or to Minnesota, account embargo.

Currants should be planted in very fertile soil, with liberal manuring. The tops should be cut back nearly to the crown, allowing only three or four canes to grow first year. Prune every year to get rid of old wood and keep bushes open. Currant worms can be destroyed by white hellebore, one ounce to three gallons of water, applied with sprinkling can. Be sure to use the remedy as soon or before worms appear. Plant same as Gooseberries.

Write us for prices on larger quantities than quoted.

1st Class	Each	10
Black Champion	\$0.25	\$2.00
Fay	.25	2.00
London	.25	2.00
Perfection	.35	3.00
Wildor	.25	2.00
White Grape	.25	2.00
Cherry	.25	2.00

Black Champion. Very productive; large bunch and berry; excellent quality, strong grower; leading, well tested black sort.

Fay. Best currant yet introduced; berries large, uniform size, long stems, good flavor; very productive and easy to pick.

London. Plant is extremely vigorous, with perfect foliage, which it retains through the season; an enormous cropper; is large in bunch and berry.

Perfection. Color a bright red. Size as large or larger than Fay, clusters averaging longer. The Perfection has a long stem from point of attachment from bush to first berry, making it easy to pick without crushing. A great bearer, and on account of its productiveness the plants should be kept well cultivated and fertilized. Ripens about the same time as Fay.

Wildor. It is large, very productive, sweet and bangs a long time on the bushes in fine condition after fully ripe.

White Grape. Large, yellowish-white; sweet or very mild acid; excellent quality and valuable for table use. Productive.

Cherry. Very popular in market and brings several cents more per quart than any other old variety.

ASPARAGUS

For garden culture dig a trench 18 inches wide and 12 inches deep, trenches 4 feet apart; fill in some well rotted manure in bottom of trench; then cover same with top soil about 2 inches. Plant on top of that, 18 inches apart in row, and only cover plant about 2 inches with good, fine soil, filling the balance by degrees as the plant grows up. Give them a top dressing of manure annually early in spring after loosening the beds on top by forking them over.

Write us for prices on larger quantities.

1st Class	Each	10	100	1000
Columbian	\$0.10	\$0.90	\$5.00	\$23.00
Conover	.10	.90	5.00	23.00
Palmetto	.10	.95	6.00	25.00

If wanted by parcel post, add 15c for 25 plants; 50c for 100 plants; 1,000 lots should be sent by Express or Freight.

Columbian. Produces shoots which are white and remain so as long as fit for use. Throws larger shoots and fully as many of them as the Conover's Colossal.

Conover. A mammoth variety of vigorous growth; an old and well tried sort; very popular.

Palmetto. Of southern origin. It is earlier, a better yielder, more even and regular in its growth, and in quality equal to that old favorite, Conover's Colossal.

RHUBARB OR PIE PLANT

This deserves to be ranked among the best early fruits of the garden. Make the bed very rich and deep. Plant in rows four feet apart and the plants three feet distant. Set the roots so that the crowns are about an inch below the surface.

Linnaeus. Large, early, tender and fine; the very best of all.

1st Class	Each	10	100
Linnaeus	\$0.25	\$2.00	\$12.00

If wanted by parcel post, add 10c per plant to cover postage and extra packing.