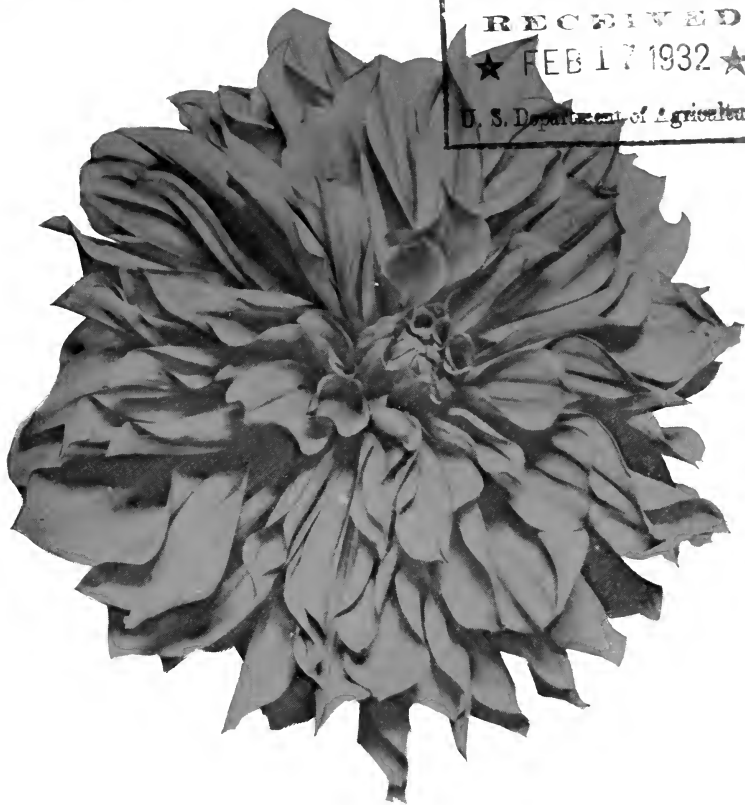


Historic, Archive Document

Do not assume content reflects current scientific knowledge, policies, or practices.

3279

LIBRARY
RECEIVED
★ FEB 17 1932 ★
U. S. Department of Agriculture.



1932

RATED
DAHLIA BOOK
AND
PRICE LIST

GOLDEN RULE DAHLIA FARM
HARLEY T. PECK
LEBANON, OHIO

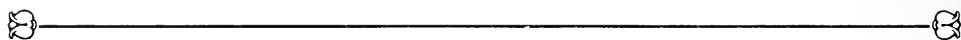
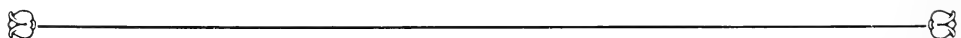


Table of Contents

Table of Ratings, Price List and Variety Index.....	4-5-6-7
Evolution of Golden Rule Dahlias.....	8
Golden Rule Introductions for 1932.....	9
Former Golden Rule Introductions.....	10
Conventional Descriptive List of Dahlias, with prices.....	11-19
Illustration—A corner of Our Main Field—“Buckeye Bride” in right foreground.....	13
Illustration—Looking Up Our Main Field.....	14
Illustration—“Buckeye Bride”—Our Premier Introduction.....	16-17
Informal Decorative Dahlias.....	19-20
Semi-Cactus Dahlias.....	21
Illustration—Vase of “Buckeye Flame”.....	22
Straight and Incurved Cactus Dahlias.....	22-23
Show Dahlias.....	23
Pompon and Miniature Decorative Dahlias.....	23
Bargain Collections.....	24
Cultural Directions.....	25
The Depression, Disbudding.....	26
Insects, Storing of Dahlia Roots.....	27
Illustration—Bush of “Heart of Gold,” Crop Rotation.....	28
Random Notes and Quotations from Our Publications.....	29
Illustration—“Ohio Glory”, Exhibiting Dahlias.....	30
The Dahlia As a Cut Flower.....	31
15% Free Stock With Your Order.....	32



1932 Golden Rule Dahlias

The Largest and Best in Cultivation

PATRONS are cordially invited to visit and inspect not only our flowers, but all operations of our farm at any season. To see our flowers at their best, come before September 15th. Our Dahlias start blooming in July.

Located 3½ miles north of Lebanon on the Lebanon-Dayton Pike, (Ohio No. 48) a direct route between Cincinnati and Dayton. We are 18 miles from Dayton and 33 miles from Cincinnati.

NOTICE

We do not like to list varieties that we have not grown. However we will obtain for our customers any 1932 Introduction which they may order from us and at the originator's price.

To Use the Table of Ratings

IN THE tabulation each large-flowered variety of Dahlia is rated on the scale of 100 points for perfection for six most important qualities. Pompons, Show and Miniature Dahlias are not rated. In the rating for Beauty, the variety is compared only with others of the same type and color. In arriving at the other ratings all large-flowered Dahlias are compared.

For generally good and most reliable results, especially in a hot climate we recommend the purchase only of those varieties which have an average rating of 85 or more. These will be your best investment. For certain specific purposes, some of those rating under 85 may be found excellent, especially in sheltered gardens, and in more favorable climates.

NEW VARIETIES RATED

Many new varieties are rated in this list each year. Some old ones have been eliminated and some new ones have been omitted after they appeared but once or twice; others, standards of excellence, may be found listed herein year after year.

"Do unto others as you would have others do unto you."

GOLDEN RULE DAHLIA FARM

HARLEY T. PECK, *Proprietor*

LEBANON, OHIO

TABLE OF RATINGS—PRICE LIST and VARIETY INDEX

FD—Formal Decorative
 ID—Informal Decorative
 Semi C—Semi Cactus
 Str. C—Straight Cactus
 Inc. C—Incurved Cactus

Varieties with Figure of Merit of 85 or more are printed in black face type.

Page	Size of Flower	Height	Beauty	Substance	Stem and Pose	Portiferousness	Vigor	Resistance to Sucking Insects	Figure of Merit	Price of Plants	Price of Roots
19	5-7	Med.	70	80	86	70	85	80	78	\$3.75	\$ 7.50
11	5-7	Tall	80	80	88	80	90	90	85	\$2.50	\$ 5.00
21	6-8	Tall	86	80	88	80	95	80	81	\$.50
22	4-5	Dwarf	95	90	88	85	80	50	81	\$.75
21	5-6	Dwarf	85	85	90	85	75	25	75	\$ 1.00
19	6-8	Med.	80	70	82	90	86	86	83	\$ 1.75
23	6	Med.	90	85	86	90	86	80	86	\$ 2.00
23	5-7	Dwarf	91	82	88	80	75	25	73	\$ 2.00
19	5-8	Tall	75	72	90	80	90	75	80	\$ 3.00
11	6-10	Dwarf	96	85	88	85	60	80	82	\$1.50	\$ 3.00
19	6-8	Dwarf	80	85	88	70	60	75	77	\$ 7.50
19	6-8	Dwarf	90	92	88	70	60	75	77	\$ 7.50
11	6-8	Tall	80	75	90	70	95	86	82	\$.75
11	5-8	Med.	85	85	90	70	88	86	84	\$.75
11	4-6	Dwarf	80	88	90	95	80	98	86	\$ 1.00
11	5-7	Med.	90	70	85	80	88	85	83	\$ 4.00
10	4-10	Med.	96	85	99	98	86	93	93	\$2.00	\$ 4.00
10	6-12	Med.	88	91	86	86	90	98	90	\$2.00	\$ 4.00
9	5-7	Med.	90	88	90	85	85	90	88	\$2.50	\$ 5.00
9	5-8	Med.	88	88	90	85	85	90	88	\$ 5.00
11	5-8	Med.	88	86	90	85	95	90	89	\$2.50	\$ 5.00
11	5-8	Med.	82	70	70	96	96	88	84	\$ 5.00
11	6-8	Med.	86	80	88	70	70	70	77	\$2.50	\$ 5.00
11	6-8	Tall	78	90	84	60	88	86	81	\$.75
11	5-8	Dwarf	90	88	85	90	76	90	87	\$ 1.00
20	6-10	Med.	96	70	75	80	88	84	82	\$.75
11	6-8	Med.	90	86	88	84	84	82	86	\$1.25	\$ 2.50
11	6-8	Med.	88	84	81	88	82	88	85	\$.75
11	5-6	Med.	80	80	85	65	50	60	70	\$ 1.50
19	7-11	Tall	88	85	92	80	92	86	87	\$ 1.50
11	6-8	Med.	86	88	90	85	84	84	83	\$2.00	\$ 4.00
11	6-10	Med.	88	70	85	85	84	84	83	\$ 1.00
21	5-7	Tall	88	86	90	90	95	70	86	\$.50
19	4-7	Tall	88	80	86	75	96	92	86	\$.75
11	7-10	Med.	92	80	90	85	80	85	85	\$1.75	\$ 3.50

21	DORIS FELLOWES, Semi C, Yellow	5-7	Med.	90	85	85	92	95	92	90	\$1.75	\$ 3.50
11	DR. J. H. CARMEN, FD, Rose	6-11	Med.	88	80	88	85	90	90	87	\$1.00	\$ 2.00
23	DREERS YELLOW, Show, Yellow	3-4	Tall	84	90	82	85	90	80	81		\$.50
11	DWIGHT W. MORROW, FD, Red	7-10	Med.	98	85	75	88	90	88	87	\$3.75	\$ 7.50
19	EDITH BERYL, ID, Gold	4-6	Tall	90	85	68	75	96	86	83		\$.75
21	EDNA FERBER, Semi C, Old Gold	6-8	Med.	90	80	78	88	84	86	85		\$.75
12	EDWARD THOMAS BEDFORD, FD, Purple	7-10	Med.	90	80	80	80	89	80	85	\$1.50	\$ 3.00
12	ELIZA LONDON SHEPPARD, FD, Gold	5-6	Med.	92	88	86	70	80	80	85	\$2.00	\$ 4.00
19	ELEANOR MARTIN, ID, Shaded Purple	8-10	Med.	80	65	88	96	88	88	84		\$.50
12	ELEANOR VANDERVEER, FD, Light Purple	5-10	Med.	86	80	95	88	96	80	88		\$.50
12	ELITE GLORY, FD, Red	6-8	Dwarf	91	86	89	70	70	75	80		\$ 1.00
12	ELIZA CLARK BULL, FD, White	5-7	Med.	92	80	90	80	80	70	82		\$ 1.00
21	ELKRIDGE, FD, White	5-7	Med.	92	60	80	96	96	86	85		\$.75
21	ETHEL WOLFERUM, Semi C, Pink and Gold	5-7	Med.	80	90	80	84	80	82	83		\$.50
12	F. W. BUTLER, FD, Bronze	6-10	Med.	88	88	88	80	70	80	82	\$3.75	
12	FATH GARIBALDI, FD, Pink	5-7	Med.	80	82	86	70	75	70	77		\$ 1.00
12	FORDHOOK MARVEL, FD, Peach	5-8	Tall	80	84	75	70	92	88	82		\$.75
12	FORDHOOK VICTORY, FD, Pink	6-10	Dwarf	90	85	75	90	90	96	88		\$.75
19	FORT MONMOUTH, FD, Dark Red	7-11	Tall	90	70	90	95	94	88	88	\$.75	\$ 1.50
23	FRAU O. BRACHT, Str. C, Yellow	8-8	Med.	96	98	92	88	88	90	90	\$1.75	\$ 3.50
23	FRANK MILLER, FD, Shaded Yellow	8-8	Med.	75	90	70	75	86	86	80		\$ 1.50
12	GALLI CURCI, FD, Gold	6-7	Med.	80	80	85	70	75	70	76	\$1.00	\$ 2.00
21	GEORGE WALTERS, Semi C, Salmon	4-6	Med.	80	80	88	94	88	90	86		\$.50
23	GLADYS BATES, Inc. C, Tan	4-6	Dwarf	84	92	90	98	85	88	90		\$.50
10	GOLDEN ACRE, Semi C, Golden Yellow	4-8	Med.	94	88	86	90	90	80	88		\$.50
12	GOLDEN DREAM, FD, Orange	6-8	Dwarf	82	80	70	80	86	89	81		\$.75
21	GOLDEN LOTUS, Semi C, Golden Yellow	5-7	Med.	85	96	90	80	89	70	85	\$ 1.50	\$ 3.00
23	GOLDEN SONNE, Str. C, Shaded Yellow	5-7	Med.	90	88	96	92	85	80	88	\$1.00	\$ 2.00
20	GOOD NIGHT, ID, Dark Red	6-10	Med.	90	84	90	80	85	85	86	\$2.50	\$ 5.00
20	GOV. MORGAN LARSON, ID, Golden Apricot	6-10	Med.	85	80	88	70	65	65	75		\$ 2.00
12	GRAF ZEPPELIN, FD, White	4-6	Med.	85	92	94	60	60	60	75	\$2.00	\$ 4.00
12	HARRY MAYER, FD, Purple	5-6	Dwarf	86	84	90	85	70	80	82		\$.50
23	HARRY STRUTT, Inc C, Red	4-6	Med.	88	80	85	80	88	50	78		\$.50
12	HATHOR, FD, Rose and Gold	5-7	Tall	86	82	90	80	85	80	80		\$.50
12	HELEN IVINS, FD, Lavender	6-9	Med.	85	75	80	80	75	75	78	\$1.00	\$ 2.00
10	HEART OF GOLD, ID, Pink and Gold	4-7	Med.	85	94	85	90	80	75	85		\$.50
12	IDA PERKINS, FD, White	6-8	Med.	90	88	90	85	75	85	85	\$.50	\$ 1.00
12	J. D. TORBERT, FD, Shaded Apricot	6-8	Med.	85	80	94	60	94	85	83	\$2.00	\$ 4.00
20	JANE COWL, ID, Golden Bronze	7-10	Tall	90	81	86	86	96	96	90		\$.75
21	JEAN HARE, Semi C, Orange	7-10	Med.	89	70	60	90	90	80	80		\$.50
23	JEAN KERR, Show, white	3-5	Med.	80	86	86	95	84	98	88		\$.50
20	JEAN TRIMBEU, FD, purple	6-8	Tall	96	86	90	85	90	85	89	\$2.50	\$ 5.00
12	JERSEY'S BEAUTY, FD, Pink	4-6	Tall	91	88	94	80	88	75	86		\$.50
12	JERSEY'S BEACON, FD, Scarlet	6-7	Dwarf	90	82	90	75	65	75	80		\$.50
12	JERSEY'S JEWEL, FD, Light Pink	6-9	Med.	85	81	90	70	80	75	80		\$.50

12	JERSEYS MAMMOTH, FD, Bronze.	6-9	Tall	80	75	60	90	80	78	\$.75
12	JERSEYS MASTERPIECE, FD, Orange	5-7	Dwarf	82	86	88	84	85	86	\$.50
12	JERSEYS SOVEREIGN, FD, Flame	5-7	Med.	89	82	86	98	87	87	\$.75
21	JERSEYS RADIANT, Semi C, Orange	5-7	Med.	86	86	70	88	84	83	\$.50
15	JOSEPHINE G., FD, Pink	5-7	Med.	92	80	90	75	86	84	\$2.50
15	JULLINAR, FD, Light Purple	6-8	Med.	75	80	85	75	80	81	\$ 7.50
15	JUNIOR, FD, Lavender.	6-10	Med.	85	70	70	90	75	76	\$.50
15	JUDGE MAREAN, FD, Rose and Gold	5-7	Med.	90	60	86	97	82	86	\$.50
15	KATHEEN NORRIS, FD, Light Pink	6-9	Med.	98	88	80	80	82	86	\$1.25
15	KATHERINE COLE, FD, Pink and Cream	6-8	Med.	92	90	88	84	86	87	\$1.25
15	KING MIDAS, FD, Yellow	6-8	Dwarf	94	70	88	92	65	70	\$1.00
20	LA RODA, ID, Light Pink	6-8	Med.	90	85	65	70	70	78	\$ 1.50
15	LA GOLONDRINA, FD, Lavender.	5-8	Med.	90	70	92	98	80	90	\$ 1.00
20	LORD LAMBOURNE, ID, Orange	6-8	Med.	80	85	70	86	80	83	\$1.25
9	MARY BAKER, FD, Yellow, New	8-10	Med.	98	90	92	92	85	85	\$5.00
21	MABEL S., DOUGLASS, FD, Lavender	5-8	Med.	87	85	82	80	85	80	\$ 5.00
20	MAGREGOR, Semi C, Red	5-7	Med.	88	65	76	92	92	84	\$.50
15	MARMION, FD, Golden Yellow	6-10	Tall	92	75	55	90	92	82	\$.75
21	MARIPOSA, Semi C, Lavender	4-7	Dwarf	80	92	88	85	80	84	\$.50
23	MARGARET STARKE, Str. C, Lavender-pink	4-6	Dwarf	90	93	85	80	88	88	\$.50
15	MARGARET MASSON, FD, Silver Pink	4-8	Tall	87	72	80	92	90	85	\$.50
15	MARGARET WOODROW WILSON, FD, Lavender and White	5-9	Med.	86	80	86	88	78	90	\$.50
15	M. H. DE YOUNG, FD, Gold	5-7	Med.	92	97	95	85	80	85	\$.75
20	META SCAMMEL, FD, Pink	5-7	Tall	88	80	75	75	94	86	\$ 1.00
21	MINNIE EASTMAN, Semi C, Red and Yellow	5-8	Med.	90	75	94	92	68	90	\$ 2.00
15	MRS. L. F. HYDE, FD, Rose.	5-8	Tall	84	70	90	83	90	85	\$ 4.00
15	MRS. I. DE VERE WARNER, FD, L. Purple	5-8	Tall	85	85	85	88	94	80	\$.50
15	MRS. ALFRED E. SEAL, FD, Old Rose.	4-6	Dwarf	90	84	25	40	55	62	\$ 2.00
15	MRS. W. E. TREAT, FD, Light Pink	4-6	Med.	80	86	86	90	90	89	\$.75
20	MRS. KENYON, ID, Light Salmon	5-8	Dwarf	96	88	78	90	92	87	\$ 1.00
15	MRS. JOHN BRAY, Peo. Fl., Maroon and White	4-6	Med.	70	70	80	90	92	82	\$.50
15	MONMOUTH CHAMPION, FD, Flame	6-11	Med.	88	88	93	92	85	90	\$1.75
15	MY IRENE, FD, Pink and Gold	5-8	Tall	82	82	80	92	80	86	\$ 1.50
15	MY MARYLAND, FD, Pink	5-7	Med.	80	80	92	60	80	75	\$ 1.00
15	NATHAN HALE, FD, Bronze.	4-6	Tall	70	90	90	60	96	85	\$.50
18	NOPAL, FD, Red	5-7	Dwarf	80	70	92	92	60	75	\$ 1.00
18	NORTHWEST PRIDE, FD, Rose	6-8	Med.	90	80	90	85	92	88	\$1.75
10	OHIO GLORY, Semi C, Bright Purple	5-8	Med.	90	70	70	95	96	94	\$.50
18	OLIVE REED, FD, Bright Yellow	5-8	Med.	92	85	88	90	60	90	\$.75
20	ORINDA, FD, Light Purple	6-12	Tall	86	86	84	90	99	92	\$ 3.50
21	ORIENTAL BEAUTY, Semi C, Pink	4-6	Tall	97	90	94	80	40	25	\$2.00
20	PAPILLON, FD, Salmon	6-8	Med.	87	85	75	98	96	98	\$.50
18	PAUL REVERE, FD, Red	6-9	Med.	94	90	92	86	70	75	\$ 1.50
18	PENN CHARIER, FD, Gold	6-8	Med.	80	85	90	82	84	75	\$ 5.00
18	PRIDE OF BUTLER, Peo. Fl., Red and Gold	5-8	Med.	92	75	88	80	88	80	\$ 1.00

The Evolution of Golden Rule Dahlias

A NEW RACE OF DAHLIAS has been developed at Golden Rule Farm. Each season we add to our list of varieties, which can be relied upon to produce good flowers in abundance. These consist for the most part of those varieties, the foliage of which is more or less unattacked or unharmed by the sucking insects during hot weather. Those varieties which do not possess these reliable qualities are discarded.

This plan started in 1924 when we realized the important fact that there was a great lack of the proper kind of information in Dahlia catalogues. At that time only a limited proportion of purchases of new Dahlia varieties provided a satisfactory succession of blooms during the Dahlia season. The Dahlia, in spite of the fact that it was the most varied, wonderful and useful of all flowers, was then in danger of losing friends, especially in the hotter interior sections of the country. Therefore, in 1925, we published a rating of each variety offered. This was the first rated Dahlia catalogue. Since, we have each year enlarged and improved this feature until now our Table of Ratings will be found to give more useful information than can be discovered elsewhere. See pages 4-5-6-7.

The most important qualities of the modern Dahlia are its degree of resistance to sucking insects and its vigor. We specialize in varieties which possess this resistance and vigor. Our fields every year present a beautiful array of countless large flowers. In addition we specialize in varieties which are best adapted for cut-flower purposes.

We believe that the Dahlia is one of the most satisfactory flowers for all purposes, and should therefore be thus aided in reaching that place in the public's esteem which it eminently deserves. This result is now coming to pass; the Dahlia is being grown more extensively every year in all sections of the country and all over the world. It is becoming the most popular flower. Where other flowers fail, the Dahlia unflinchingly attracts.



ONE OF THE FINEST Amateur Dahlia Gardens we have seen is one in Lebanon, Ohio. For nearly twenty years this garden has had very fine Dahlias. It is so sheltered that very few sucking insects ever bothered the blooms and nearly any variety which was good on the Eastern coast would also do well here.

This season, 1931, conditions in this garden were not so good. Two trees had been cut down letting in more sunlight. Coincidentally leaf hoppers and tarnish bugs appeared in numbers greater than ever before. Many varieties suffered and were not up to their previous standard.

The varieties which rated high in our *Table of Ratings*, however, continued to produce high quality flowers.

Golden Rule Introductions for 1932

CAROLINA ORANGE, Formal Decorative. This perfect stemmed beauty is in color Grenadine to pinkish salmon orange, or a strikingly bright glowing pinkish orange. The bushes are topnotch in vigor and produce many flowers throughout the season. Stems are long and hold flowers above the foliage facing at the correct angle. The flower has good substance and keeps well when cut. The size varies from 5 to 8 inches. This vigorous variety was grown as a seedling by Mrs. Bragg Perry, Hertford, North Carolina, who sent it to us on trial two years ago. Plants \$2.50, Roots \$5.00

The following three new varieties for 1932 are introduced primarily as cut flowers for florists use, but they will also be outstanding as exhibition flowers. All three are very resistant to sucking insects.

BUCKEYE PEACH, Formal Decorative. This forms an almost globular flower, in which are blended wax yellow and peach red, with centre of peach red. Flowers are full to centre the whole season and will average 6 inches by 4 to 5 deep. They keep long when cut. They are held at the best angle on always stiff stems of average length. This variety produces perfect flowers in hot weather and is a free flowering sort. Medium in height. Plants \$2.50, Roots \$5.00

RED OAK, Formal Decorative. A large, extremely long stemmed flower, nopal to Brazil red, a blood orange, shading late in autumn almost to an orange. The bushes are tall, very vigorous, extremely fast growing and prolific of bloom. The stems of this dahlia are outstanding for quality and length. The fine attractive flowers keep remarkably well. They received favorable notice by florists this past season. Plants \$2.50, Roots \$5.00

YELLOW ASTER. In form this outstanding small flowered variety resembles the Crego aster. To the touch it feels like wax, and it will keep longer than any other dahlia when cut. A clear warm picric yellow, each petal cleft many times clear to its base, so that to outward appearances the petals are narrow. They are partly rolled, curled and twisted closely together. Stems are long and stiff and flowers are held facing up. This is a remarkable variety in respect to form and substance and being but 2½-3½ inches with equal depth, really constitutes a new type. We are at a loss how to classify it. It is marvelous as a distinctive cutflower and may be valuable as a seed parent. Plants \$2.50, Roots \$5.00

Introduced by Mad River Gardens, Urbana, Ohio.

MARY BAKER, Formal Decorative, (Wickersham). This happens to be the finest as well as the largest and most beautiful yellow Dahlia bloom we have seen. The color is clear strontian yellow, a shade which is very rare. Stem and pose of flower are perfect. We believe that this is a real improvement in a yellow and should prove to be a prize winner. Plants \$5.00, Roots \$10.00

Former Golden Rule Introductions

BUCKEYE BRIDE (HR). 1930 Formal Decorative. One of the very few truly great Dahlias as its performance all over the country testifies. The color is geranium pink, shading to soft salmon. The flowers are 5 to 10 inches in diameter and when matured nearly as deep. The stems are unusually long, varying from one to two feet to the first pair of leaves. What is most important is that all the flowers are held correctly on the stem. The blooms mature from the bud in less than one half the usual time. This gives it a wonderful advantage over other varieties. The blooms keep well when cut.

During 1931 we had the most successful cutflower year, due to Buckeye Bride. Fully 25% of all dahlias cut were from this variety, which cut ten times as many flowers per plant as any other. Owing to its great beauty and fine stems it sold readily. One block of green plants produced constantly for 17 consecutive weeks. We grew Buckeye Bride in the greenhouse during the winter and spring and again in the late autumn from August planting. It is the best dahlia for greenhouse culture we have tried.

The foliage has a distinct bluish green, or glaucous tint and is heavy, leathery and insect resistant. For combined beauty and general productiveness no other dahlia of any color has equaled it.....Plants \$2.00. Roots \$4.00

BUCKEYE FLAME, (1931) Informal Decorative. A 6 to 12 inch flower borne correctly on straight and strong stems of good length. The color is bright scarlet orange shading to ochraceous orange at margin, and blood red in centre. The florets are long and have great substance; between the long partly curled petals are shorter petaloids bearing silvery white streaks which show only about the centre. Its vigor is great and the foliage is unusually large and heavy. A good root maker which keeps well.

In its color it is outstanding at our farm. It shines and glows. Visitors get out of their cars and walk right straight out to it. The blooms, tho large, were cut in quantity and sold readily in the wholesale market bringing a good price. It keeps better in our exhibitions than any other variety except Frau Bracht. See illustration on Page 22.....Plants \$2.00. Roots \$4.00

BUCKEYE, JR., Miniature Decorative. A brilliant bronzy rose extremely free flowering and vigorous. We use this dahlia for small table bouquets and two bushes will provide for many weeks an abundance of small long keeping flowers. Undisbudded it will cover itself with bloom about 2-3 inches in size and of good depth. It comes full to the center all season long.Roots \$.75

GOLDEN ACRE. Semi Cactus. (1928) A beautiful glistening golden yellow. Strontian yellow faintly tinted ochraceous orange and deeper in centre. Will keep excellently when cut. It is the brightest golden color in our fields. For sheer beauty, Golden Acre is not surpassed by any other yellow. Uniform vigor, excellent keeping roots and flowers, a perfectly stiff stem and a most beautiful, attractive semi cactus formation sets this flower apart. As a commercial flower it has no equal in its color class of golden yellow. Our acres were golden with this lovely Golden Acre.....Roots \$5.00

HEART OF GOLD. Informal Decorative. (1925). This fine old variety is at times semi cactus except for its clear strontian yellow centre which is like a separate flower of Formal Decorative form. The outer petals are flesh ochre to jasper pink. The abundance of easily kept roots, great plant vigor, freedom of bloom, large size and extra good keeping qualities when cut, make Heart of Gold an excellent variety for exhibition, cutting or the home garden.Roots \$5.00

OHIO GLORY. Semi Cactus. (1927). According to soil and light conditions this dahlia varies between Rhodamine purple and Tyrian rose. Chrysanthemum type facing right angles to stem. It presents a deep glowing rose pink or bright purple self color and is always the most shining purple in our fields. Being greatly resistant to leaf hopper, we seldom see an abnormal plant. It has an ideal habit of growth. The flowers consist of numerous waved and curled petals. Early and continuous flowering throughout the season. Ohio Glory is truly outstanding in respect to beauty, number of blooms, resistance to heat and disease and habit of growth. It also is a vigorous root maker and the roots keep well.....Roots \$5.00

RUTH YOST. Formal Decorative. (1928). In spite of the large number of red dahlias very few are reliable producers of flowers in our climate, therefore Ruth Yost is a remarkable exception to this rule, especially since it is so large. Midway in color between spectrum red and carmine, it is characterized by its perfect form, long stiff erect stems, freedom and continuance of bloom throughout the season. It has given uniform satisfaction.Roots \$.75

Conventional Descriptive Lists

Fully double flowers, floral rays generally broad, either pointed or rounded at tips with outer floral rays tending to recurve and central floral rays tending to be cupped; all floral rays in a somewhat regular arrangement. Example; Sagamore, Mrs. I. de Vere Warner.

In the following lists the letters "HR" following the name of a variety denotes that it is on Mr. Hart's Honor Roll.

See Table of Ratings for accurate information about each variety.

ALLADIN. A vigorous new Pacific Coast variety of a pale gold color shading deeper at tips. Excellent stems. Plants \$2.50. Roots \$5.00

AZTEC GLORY. A fine bloom of this variety is the best one can ever hope to see in a clear yellow. Pure lemon yellow, massive, artistic and lasting a long time on the bush. For the experienced grower we recommend this as the finest yellow. Plants \$1.50. Roots \$3.00

BARBARA REDFERN. Large flower, blending of gold and old rose. Excellent stems and the bushes are tall and vigorous and resistant to hot weather conditions. Roots \$7.75

BELLE HAWLEY. A large well formed flower on nice stems. Spectrum to scarlet red finely veined mustard yellow, a very attractive color. The blooms have more than usual substance. Roots \$7.75

BLACK TOP. Deep violet carmine. A well named variety and while not so large as average it is just one of those dahlias that makes the Dahlia business go. It produces well under all sorts of conditions and is almost universally grown and liked in this section by amateur gardeners. Roots \$5.50

BROCKTON BEAUTY. One of the most beautiful and well formed large lavender. Lightly flecked purple in centre. Uniformly vigorous plants. Roots \$1.00

CAVALIER. Large scarlet to spectrum red. Flower has excellent depth and faces up on stem. One of the most profuse of large flowered varieties. Roots \$5.00

CHARLES G. REED (HR). A fine flower of this dahlia is surely a prize winner. It can be grown to immense size and the stems are all that can be desired. The color is reddish purple or Petunia red. Plants \$2.50. Roots \$5.00

CHEMAR'S PURITY. A very large white, quite uniformly high in vigor and the foliage is quite clean and resistant to insects. Roots \$7.75

CHEMAR'S 2406. A rich deep bright red on very long stems. A glowing ruby self color. Keeps well when cut. This red never fails to attract when seen in our fields. Roots \$1.00

CITY OF TRENTON. A very fine flower of bronze with strawberry tints. Stems are long and excellent and plants are quite vigorous. Plants \$1.25. Roots \$2.50

COLOR SERGEANT. A very pure color of rich deep salmon bronze. Flowers are large, appear early in the season and continue till frost. It keeps well when used for cutting. Roots \$7.75

CORA BUTTERWORTH. A large clear silvery primrose yellow. Roots \$1.50

DERRILL W. HART (HR). Capucine yellow to Grenadine red or a deep orange. The large well formed flowers of this variety are held erect on fine stems. Plants \$2.00. Roots \$4.00

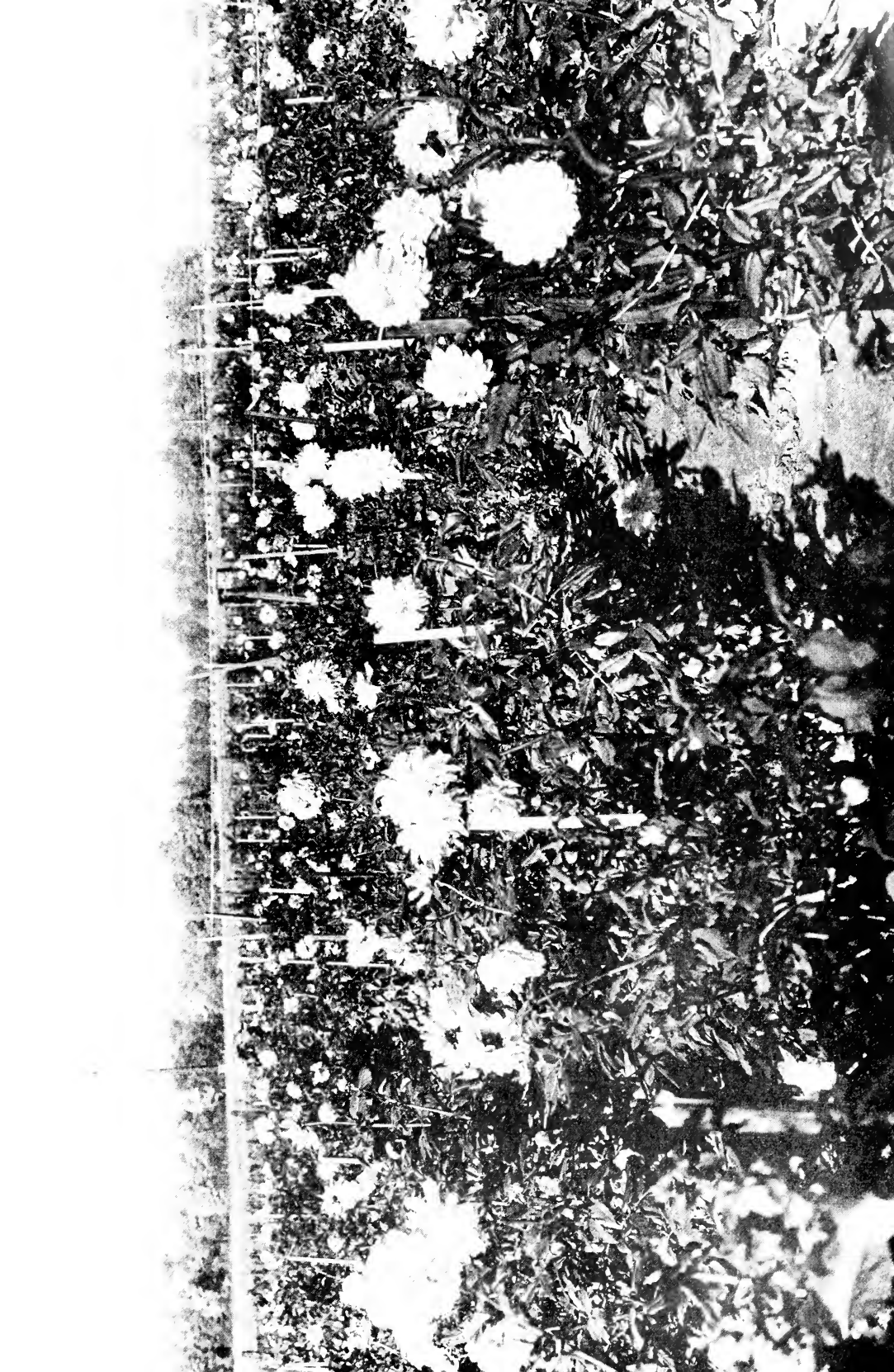
DAD. A true carmine red flower of very large size and extremely free flowering. Vigorous and reliable. Roots \$1.00

DOROTHY STONE. Some of the finest flowers we grew were of this large rose pink. It is a prize winner and a sensation wherever shown. Plants \$1.75. Roots \$3.50

DR. J. H. CARMEN. A deep tyrian rose which we have grown to eleven inches. Stems are long and strong and bushes are unusually vigorous and strong, producing many fine, very large flowers from early to late. Plants \$1.00. Roots \$2.00

DWIGHT W. MORROW (HR). One of the finest red flowers we have seen and one of the largest and deepest. A bright glowing crimson red. The variety has good uniform vigor and produces well. The same color as Paul Revere, but much larger. Plants \$3.75. Roots \$7.50

- EDWARD THOMAS BEDFORD.** This reliable dahlia produces mammoth flowers of bright deep purple on the best of stems. The bushes are strong and uniformly vigorous and productive.....Plants \$1.50. Roots \$3.00
- ELIZA LONDON SHEPPARD (HR).** A clear rich golden orange. This is one of the finest colors we have seen in a dahlia and the flowers are very uniform in size and have excellent substance. It is a strong growing bush and will give satisfaction.....Plants \$2.00. Roots \$4.00
- ELIZA CLARK BULL.** We still believe this is the most beautiful large white. Flowers are 6 to 8 inches, excellently stemmed and produced in great abundance.....Roots \$1.00
- ELITE GLORY (HR).** This is an honor roll Dahlia that has made good in shows everywhere. A large bright red of great substance and always held well on its strong stem. Dwarf bushes with unusually heavy foliage.....Plants \$.50. Roots \$1.00
- ELLINOR VANDERVEER.** A clear bright lavender (pale rosolane purple) of large size with an extra long slender stem that is never defective. Larger than "Warner" and an honor roll variety.....Roots \$.50
- F. W. BUTLER (HR).** A new and huge flower of perfect formation and a startling new color. 1930 Honor Roll. Gold overlaid brownish red. Excellent stems.....Plants \$3.75
- FORDHOOK MARVEL.** The Fordhook Headliner for 1929. Very large peach red and when mature it is almost ball shaped. Flowers are erect on stem. The plants are extremely vigorous, tall and thrive under almost any condition.....Roots \$.75
- FORDHOOK VICTORY (HR).** Regardless of weather or insects this dwarf variety blooms and the flowers are as large as any. 6 to 10 inches. Clean deep tyrian pink self color. There is no clearer color. Since origination this has been one of the most attractive dahlias in our fields.....Roots \$.75
- FAITH GARIBALDI.** A large bright pink on strong straight stems.....Roots \$1.00
- GALLI CURCI.** Large brilliant orange shaded gold. Fine stems. One of the best new dahlias.....Plants \$1.00. Roots \$2.00
- GRAF ZEPPELIN.** A new white of extra good substance on very long perfect stems.....Plants \$2.00. Roots \$4.00
- GOLDEN DREAM.** Golden Orange of large size and the bushes are reliably vigorous and productive.....Roots \$.75
- HARRY MAYER.** This light amparo purple is shaded deeper on the reverse and is one of the largest and most beautiful. Bushes are low and extremely productive.....Roots \$.50
- HELEN IVINS (HR).** A new well formed light purple or orchid lavender. Stems extra long and the bushes produce flowers in abundance.....Plants \$1.00. Roots \$2.00
- IDA PERKINS.** A large finely stemmed white with a creamy centre. The keeping qualities of this white are unusually good.....Plants \$.50. Roots \$1.00
- J. D. TORBERT.** A new variety with color of salmon apricot or peach pink with golden shadings. Plants are strong, large and well branched.....Plants \$2.00. Roots \$4.00
- JERSEY'S BEAUTY (HR).** This famous old cut flower variety will be universally grown for many years yet. All the Florists know and ask for Jersey's Beauty.....Roots \$.50
- JERSEY'S BEACON.** Chinese scarlet, a fine large well formed flower on unusually long straight stems. An Honor Roll dahlia that continues to win prizes year after year.....Roots \$.50
- JERSEY'S JEWELL.** A pale amaranth pink, or shell pink of large size and excellent keeping qualities.....Roots \$.50
- JERSEY'S MASTERPIECE.** One of the most reliable of this family of dahlias. A light strawberry heavily shaded gold. Large flowers erect on long good stems.....Roots \$.50
- JERSEY'S SOVEREIGN.** One can see this dahlia of flame scarlet clear across our farm. It is always attractive to visitors and for years has been one of the most reliable and insect resisting varieties grown.....Roots \$.75





JOSEPHINE G. (HR). This is a very beautiful new dahlia. The stem and flower together are of the highest quality and the variety vigor is high. It is already winning prizes. A soft salmon rose pink with a tiny distinct tip of bright gold..... Plants \$2.50. Roots \$5.00

JULLINAR. Lavender, heavily shaded pink. An immense new variety having perfect long stems. The bushes are vigorous in growth. Plants \$3.75. Roots \$7.50

JUNIOR. A very large lavender and a most strong, vigorous variety. Roots \$50

JUDGE MAREAN. This old variety is a standard for profusion of bloom among large flowered dahlias. Rose red shaded martius yellow..... Roots \$50

KATHLEEN NORRIS (HR). This flower is immense, yet graceful, and its delicate rose-pink color is always strongly and correctly posed on the long straight stem. It wins prizes and is outstanding in every dahlia show. The only exhibition variety that equals it in popularity is Jane Cowl. A clear amaranth pink. We used it for a high class cut flower with great success..... Plants \$1.25. Roots \$2.50

KATHERINE COLE. A large formal Decorative of flesh pink with a cream centre. Stems are extra long and good and the habit of growth is ideal. It is strong growing..... Plants \$1.25. Roots \$2.50

KING MIDAS (HR). A large massive deep bright yellow. Many flowers are produced and stem habit is excellent..... Plants \$1.00. Roots \$2.00

LA GOLONDRINA. A real lavender in the modern massive decorative that is justly so popular. One of the most freely blooming of all dahlias..... Roots \$1.00

MARMION. The largest of the golden yellows and full to the centre until the end. The bushes are big and vigorous and because of its brightness of color the flowers never escape attention. Tho not new it still wins prizes..... Roots \$75

MARGARET MASSON. A model dahlia for plant vigor and freedom of bloom. Silvery pink, or pale rosolane purple. Flowers erect on stem. The terminal bud should be removed to get stem length..... Roots \$50

MARGARET WOODROW WILSON. A huge flower of opalescent pink. This tone is caused by the purple of the reverse shining thru to the face of the petal which is white. Centre is shaded purple. A great producer of good deep flowers..... Roots \$50

M. H. DE YOUNG. At times this dahlia is the best gold cut flower we have, since its fine stems and profusion of bloom added to its resistance to hot weather conditions make it a great producer. A high class flower..... Roots \$75

MRS. L. F. HYDE. A strong growing variety and one that during the August hot days produced many fine large flowers of bright rose pink on long stems. A new variety..... Plants \$2.00. Roots \$4.00

MRS. I. DE VERE WARNER. There is very small chance that this fine old dahlia will do other than please a customer. Light rosolane purple, 6 to 8 inches. Excellent stems. Early and free flowering..... Roots \$50

MRS. W. E. TREAT. Amaranth pink shaded lavender. A beautiful large flower held on a fine stem..... Roots \$75

MY MARYLAND. A graceful and finely stemmed large flower of bright pink tipped ivory. Excellent vigor..... Roots \$1.00

MY IRENE. A fine large flower of Laelia pink with light gold shadings. Fine stems and the vigor of the plants is perfect. This dahlia was a favorite at our farm..... Roots \$1.50

MONMOUTH CHAMPION (HR). Blooms of this variety can readily be grown to a foot in diameter. An orange scarlet self color and extremely beautiful. The stems are long and stiff. The bushes are free branching and produce a lot of flowers..... Plants \$1.75. Roots \$3.50

MRS. ALFRED B. SEAL (HR). This is a large very finely formed, and beautiful flower of old rose..... Roots \$2.00

NATHAN HALE. The foliage of this variety is very resistant to insects. The blooms have excellent substance with perfect stems and an ideal habit of growth. A beautiful golden bronze..... Roots \$50

Buckeye Bride ❁ Our Premier Introduction

Golden Rule
Dahlia Farm

presents
"Buckeye
Bride"

as one of the
great dahlia
varieties of
the present



On Derrill W. Hart's
Roll of Honor

In the *American Home* for December, 1929, and again in 1930, Mr. Hart placed Buckeye Bride on his Honor Roll.

For the third time, in December, 1931, it remains on this now famous Honor Roll.

The behavior of a new dahlia in other gardens than that of the originator is of course the test of its right to exist. We consider the 2nd and 3rd year on Mr. Hart's Roll of Honor the crucial tests of a variety. That Buckeye Bride has passed these successfully proves its greatness as a dahlia.



BUCKEYE
BRIDE

The Dahlia that
Never Takes
a Rest

The fact that Buckeye Bride produces its flowers from the bud in less than one-half the time required by most other dahlias gives it a tremendous advantage. One customer remarks that it is the one Dahlia that never takes a rest. After a light frost, just enough to spoil the flowers, Buckeye Bride in a day or two of warmer weather again produces normal flowers suitable for cutting. Of course this valuable habit necessitates more frequent disbudding. To get the desired two foot stem for ordinary cutting, only one node need be disbudded; and in relation to the large number of perfect flowers obtained the amount of work performed in disbudding is much less than with other varieties, the buds of which open so slowly that the backs may be spoiled before the flower is mature. Buckeye Bride is free from this disadvantage.

"BUCKEYE BRIDE"—Honor Roll Dahlia

NORTHWEST PRIDE. The color description conveys no idea of the unusual color and beauty of this flower. A begonia rose shade, the reverse is light rosolane purple and shows thru lightly on the face of the petals, thus producing this entirely new shade of color. Plants are vigorous and stems are excellent. Flower is large and very deep.....Plants \$1.75. Roots \$3.50

NOPAL. Nopal red with lighter tips. Extremely profuse with fine stems.....Roots \$1.00

OLIVE REED. A bright deep clear lemon yellow. A producer of many fine flowers.....Roots \$7.75

PAUL REVERE. Long known as the most beautiful of large red dahlias, the quality of the flowers of Paul Revere is as yet unequalled.....Plants \$7.75. Roots \$1.50

PENN CHARTER (HR). A large well stemmed gold lightly tinted scarlet.....Plants \$2.50. Roots \$5.00

PRINCESS ALINE. A medium sized dahlia of a clear lavender pink, and a cut-flower that cannot be resisted. It keeps well, and a bunch of these flowers will always sell.....Roots \$5.00

PRIDE OF CONNECTICUT. A medium sized flower of bright deep rose pink. Very free and extremely resistant to leaf hopper. Deserves a place in every garden.....Roots \$5.00

QUEEN OF THE GARDEN BEAUTIFUL. This is one of the largest of pure yellow Dahlias. Perfect stems. An Honor Roll Dahlia of excellent vigor. Stands insects well and blooms in hot weather. Chalcedony yellow. It is a prize winner.....Plants \$5.00. Roots \$7.75

ROBERT SCOTT. A golden buff of great size and perfect form on a long strong stem. Vigorous.....Roots \$5.00

ROSE DARNELL. A good producer of fine large flowers of spinel pink, well adapted for cutting. Stems hold flowers in excellent position.....Roots \$5.00

ROMAN EAGLE. A fine stemmed bronze Dahlia of very high quality.....Roots \$1.00

SAGAMORE. The well known orange-yellow cut-flower variety. Excellent stems and the blooms keep well. Primuline yellow deeping to zinc orange at centre.....Roots \$5.00

SALADINI. One of the most beautiful self colors, an apricot orange, evenly suffused carnelian red. Now in its fourth year, this variety has proved successful everywhere. Extremely vigorous and uniform, very free with its flowers. Fine flowers that keep well for quantity cutting.....Roots \$7.75

SEAL'S CALIFORNIAN. A large flower on the most perfect of stems and one of the most beautiful in our fields. Bright yellow, shading toward outer petals and tips lightly touched bronze pink. The flower has a translucent quality that lends it distinctiveness.....Plants \$7.75. Roots \$1.50

SINDBAD OF THE SEA. A very large well formed flower of deep scarlet. Stems OK.....Plants \$5.00. Roots \$10.00

SUNNYSIDE. A bright scarlet, large and well stemmed. It was originated in Europe and is one of the best we have received from across the water. Flowers are large, deep, keep well and in September literally cover the bushes if left undisbudded.....Roots \$7.75

THOMAS A. EDISON (HR). It takes a good dahlia to live up to this name. A large deep royal purple and a flower of great quality. This dahlia and Violet Wonder were used successfully for high grade cut flowers. Stems are fine. The vigor of the bushes is uniformly good and they produce freely.....Plants \$1.75. Roots \$3.50

THE WORLD (HR). This purple is an improvement over and a successor to Grenadier in our fields. Extra good long stems uphold these large flowers of a deep rose magenta showing a lighter reverse and shaded with white in variable tones.....Plants \$1.00. Roots \$2.00

TREASURE ISLAND (HR). Was indeed a Treasure for us this summer. It was the only dahlia that cut right along with Buckeye Bride day after day for seventeen weeks. Last season was one of our best for cut flower sales and Treasure Island was one of the two best cut flower varieties. A deep gold shaded apricot. Very large and a very free bloomer on fine stems. Every bud develops into a good flower that can be used or admired.....Plants \$1.00. Roots \$2.00

VALENTINO (HR). One of the most prolific of any large dahlia. A light salmon pink with fine stems. The vigor is unexcelled. Plants \$1.75. Roots \$3.50

VIOLET WONDER (HR). A large massive purple flower on very fine stems. These fine blooms sold readily at our florists. A soft violet tone royal purple. Vigorous and free. Plants \$.75. Roots \$1.50

WATCHUNG SUNRISE (HR). This dahlia does well in many gardens. Large yellow, suffused pink. It has a perfect stem and habit of growth. Roots \$1.00

WATCHUNG WONDER (HR). A huge spectrum red suffused and touched gold. These were some of the very finest flowers ever produced on the farm. Vigor and stems OK. A top-notch exhibition variety. Plants \$1.75. Roots \$3.50

WILLIAM H. HOGAN. A very fine stemmed reddish purple tipped white, or with a white band on each petal. Like all bi-colors it will occasionally sport to a solid color. It is a fine long keeping exhibition flower and is a good cut flower. Plants \$.50. Roots \$1.00

WINONA. Large magenta to bishop's purple. One of the best in its color. Excellent in habit and a prodigious bloomer. Roots \$.75

WILL ROGERS. A large clear silvery lavender and this variety bids fair to be one of the finest in its color. Stems are excellent and the strong bushes produce well. Plants \$3.75. Roots \$7.50

WORLD'S BEST WHITE. This is still our best white. It is large, has an ivory centre, is well stemmed and keeps when cut. Roots \$.50

YELLOW BEAUTY paid its way this season with many fine excellently stemmed, clear light yellow flowers. These were used to advantage by the florists. The plant vigor is uniformly high. Plants \$.75. Roots \$1.50



INFORMAL DECORATIVE

Informal Decorative: Petals more irregular than in the Formal type.
Examples: Heart of Gold, Jane Cowl.

See Table of Ratings for accurate information about each variety.

ANNA BARNUM. A deep lavender purple of great size and with excellent stem. Quite vigorous and free from insect troubles. Roots \$.50

ALBERT VESTAL. This is a new color of old rose, shaded corinthian red. The blooms may be grown to ten inches and have very long stems. The plants are unusually uniform and high in vigor and are prolific in bloom. Roots \$2.00

ALI BABA. A new deep red with an orange suffusion and slightly tipped red. Excellent stems. Plants \$3.75. Roots \$7.50

AMUN RA. A large deep copper bronze. Tho an old variety we have not seen the equal of this color in a new variety. It stands high in vigor, freedom of bloom and reliability. Roots \$.50

COQUETTE. A very large striking flower of red and gold. Petals reflex making good depth. These flowers were outstanding in many of our exhibitions. The vigor is unusually good. Plants \$.75. Roots \$1.50

DIENER'S CHRYSANTHEMUM. Since this is really a new type it has been a problem where to class it. This season no petals rolled, so it seems to fit well in this class. The very deep dahlia-purple flowers have long narrow recurving petals making a deep flower facing upon its stiff stem. Foliage, as well as the flower, is quite distinctive. Roots \$.75

EDITH BERYL. Similar to Insulinde in form and the color is lighter. A flower of great beauty and substance. Glistening gold buff shaded jasper pink. Roots \$.75

ELEANOR MARTIN. Large and beautiful. A magenta shaded gold, centre rosolane purple. It is a very free bloomer. Roots \$.50

FORT MONMOUTH (HR). This famous Roll of Honor variety deserves a place in every garden. A giant flower of crimson maroon, on tall strong bushes. Excellent stems. Does not burn in the sun. Plants \$.75. Roots \$1.50

GOOD NIGHT (HR). Immense Blood red shaded maroon, almost black in centre. A strong growing bush that produces many fine flowers. This is one of the remarkable new varieties of the Jane Cowl class.Plants \$2.50. Roots \$5.00

JANE COWL (HR). This is indeed a very wonderful variety. Large blooms have good stems and many are produced in a season. Color is mikado orange with petals shaded heavily on reverse with peach red, and centre of flower shades to Brazil red. Its great vigor and ability to bloom no matter how bad the seasonal conditions, is responsible for its great success in every part of the country. It produces a large clump of roots too. We give it a figure of merit of 90.Roots \$.75, 3 for \$2.00

JEAN TRIMBEE (HR). An unusually clear beautiful royal purple. The flower is in a class by itself for beauty of form. It has a high full centre and the long petals recede to the stem, making the flower as deep as it is big. It is not unusual to see at least five of these fine flowers on one bush at a time.Plants \$2.50. Roots \$5.00

JERSEY'S MAMMOTH. Big tall bushes with mammoth flowers of bronze apricot.Roots \$.75

LA RODA. A massive silvery pink of good substance.Roots \$1.50

LORD LAMBOURNE. A new English variety of sunset colors combining pink and gold. The flower has unusual substance and the petals radiate spirally from the centre is an unusually beautiful arrangement.Plants \$1.25. Roots \$2.50

MABEL S. DOUGLASS (HR). A new flower of clear pastel lavender.Plants \$2.50. Roots \$5.00

META SCAMMEL. A very beautiful flower of clear amaranth pink. The large bushes are all vigorous.Roots \$1.00

MRS. KENYON. This is a variety that covers itself with bloom. A recent Marean Dahlia. It provides a wonderful profusion of fine upstanding flowers of clear light salmon and we use it for cutting.Plants \$.50. Roots \$1.00

ORINDA (HR). This dahlia has the tallest, most vigorous bushes, the longest stems and the largest flowers of any we grow. It was a sensation at our farm this past season. The color is rosolane purple, one shade darker than "Warner".Plants \$1.75. Roots \$3.50

PAPILLON. This has long been a standard for reliable bloom in the middle west. It always produces, no matter what the conditions. Coral red on gold, giving a salmon pink, or two-toned effect. It is a remarkable hot, dry weather dahlia. A figure of merit of 90 tells the story better.Roots \$.50

PRINCE OF PERSIA (HR). A new Californian of great merit. The flowers are probably the most gorgeous of any red we ever grew. A pure scarlet without shading and grows to 12 inches with a suitable depth. Bushes are free of disease and very vigorous.Plants \$5.00. Roots \$10.00

RED WING. An old variety of medium size and perhaps has greater substance than any other dahlia. Hence it has been used for cutting. The color is rich red, glistening and beautiful. A very reliable sort of Dahlia, which of course gives universal satisfaction.Roots \$.50

ROYAL BEAUTY. Very large pomegranite purple, shading to bordeaux at centre making a distinct royal purple tone. Stems are long but are not always straight. The flower keeps extra long when cut. See Table of Ratings.Roots \$1.00

SHAHRAZADE. Another meritorious new Californian. A remarkable shade of bright pink similar to but deeper than the old "Delice". The form and size resemble Jane Cowl, and the bushes are also vigorous.Plants \$5.00. Roots \$10.00

W. D. CARTRIGHT. An English variety of pure gold color. Fine stems and the flowers are wonderful keepers.Roots \$.75

WALDHEIM SUNSHINE. Very large bright yellow with light bronze shading. Extra good form, and vigorous. Recovers remarkably from attacks of leaf hopper. Honor Roll.Plants \$1.00. Roots \$2.00

WESTERN GIANT. A pure gold buff of large size.Roots \$1.50

YANKEE KING. A majestic flower of fine substance. Stems are unusually long and good. Carnelian red, reverse shaded purple. Late in season the color is almost an orange buff.Roots \$.75

SEMI-CACTUS

Semi-cactus, petals rolled up tips only. Examples: Edna Ferber, Ohio Glory.

(See Table of Ratings for accurate information about each variety.)

ALICE WHITTIER. A large clear sulphur yellow. This variety has a high degree of vigor and is resistant to insects. Roots \$5.00

ALICE CECILIA. A new pure white. Its form, stem and pose of flower are top-notch. Roots \$7.75

CHEMAR'S MASTERPIECE. A very large clear light rosolane purple, with reverse shaded magenta. This dahlia is superb in its beauty and reliable in performance. Roots \$7.75

DORIS FELLOWS. A new sulphur yellow flower of extra good habits and vigor. Free blooming and very beautiful. Plants \$1.75. Roots \$3.50

DADDY BUTLER. Though not new this fine variety is in a class by itself for beauty and freedom of bloom. Stem and pose of flowers are surpassed by few Roots \$5.00

EDNA FERBER (HR). A massive and most beautiful flower. In color, coral to old gold. It has succeeded wherever grown and has won many prizes. Plenty of very large flowers may be had from this variety. Roots \$7.75

ETHEL WOLFROTH. This is a very vigorous variety of recent introduction. It flowers generously, stems are excellent and the blooms are large. It is a jasper pink with a canary yellow center. Roots \$5.00

ELKRIDGE. An extremely profuse and reliable large pure white. A good root maker and keeper. Very few varieties of any color produce as many flowers. Roots \$7.75

GEORGE WALTERS. An old dahlia, a standard for prolific blooming and vigorous growth. Large salmon pink. Roots \$5.00

GOLDEN LOTUS. Clear bright old gold or Ochraceous salmon. A flower of remarkable formation, almost a new type. It is a sphere shaped flower erect on long stiff stems and each petal is sharply pointed on extreme end. A flower of fine beauty and extreme substance. Roots \$1.50

JEAN HARE. Probably the largest flower in this type. The huge flowers of golden yellow shaded bronze are very freely produced and all bushes are vigorous. Blooms are crotchety. Roots \$7.75

JERSEY'S RADIANT. The first of the Jersey family to bloom. Profuse and reliable. Bittersweet orange and of extreme beauty. Roots \$5.00

MARIPOSA. This old variety is still good and one of the most beautiful of its type. Pink shading lighter and of unsurpassed form. Roots \$5.00

MACGREGOR. Vigor, resistance to leaf hopper and freedom of bloom. What other good qualities does one need in a Dahlia? Beauty; and this flower is a pure spectrum red of excellent form and large size. Roots \$5.00

MINNIE EASTMAN (HR). Scarlet red tipped yellow and an Honor Roll Dahlia. Very large and with fine stems. For performance in show room and garden this variety is outstanding. A very strong bloomer. Plants \$1.00. Roots \$2.00

ORIENTAL BEAUTY (HR). Clear bright tyrian pink and the flower is always held perfectly on a fine stem. Plants \$2.00

ROYCROFT. This was the only dahlia that bloomed well while the temperature was 100 degrees or more day after day in the 1930 drought. A clear warm buff color. These large golden flowers are produced in great abundance on dwarf bushes that are extremely resistant to heat and leaf hopper. Roots \$5.00

SILVERADO. Very large white tinted and overlaid lavender pink. Free flowering. We used Silverado together with Ohio Glory in baskets. They were very beautiful together. Tall and vigorous with long stems. Roots \$5.00

TALISMAN. A large deep reddish tan with sulphur yellow tips. Blooms well in hot weather. Roots \$5.00

W. H. WAITE. A large clear bright apple blossom pink, or lavender, resembling Mariposa in form and somewhat in color, but a distinct improvement in size, beauty and stem. It keeps wonderfully well when cut. Bushes are tall and vigorous. Plants \$1.75. Roots \$3.50

STRAIGHT CACTUS AND INCURVED CACTUS

Straight Cactus—Petals straight and rolled entire length.

Incurved Cactus—Petals rolled entire length and incurved or bent toward center of flower.

(See Table of Ratings for accurate information about each variety).

ANDREAS HOFER. Straight Cactus. Brilliant salmon pink with a deep golden yellow center. A very beautiful cactus, excellent stems and an unusual keeper when cut.....Roots \$.75



Buckeye Flame

AMERICAN TRIUMPH (HR). Incurved Cactus. Nuneviller's new scarlet red cactus. Fine form and stem and great size. It produces freely flowers of very high quality and perfect stems whenever leaf hoppers are absent. Not a large root maker. Roots \$2.00

FRAU O. BRACHT (HR). This fine sulphur yellow is not only large but perfect in form and stem. It is remarkable for its keeping qualities when cut or on the bush and a steady, strong producer of its high class flowers and good roots too. We believe it will prove to be one of the outstanding varieties of dahlia history. Plants \$1.75. Roots \$3.50

GLADYS BATES. Incurved Cactus. Light tan and a standard for excellence among cactus dahlias. It is fine for cutting and the bushes will stand out covered with flowers. Roots \$50

GOLDEN SONNE. A new European variety of great merit. Yellow with tints of jasper red. It is large, free flowering and with perfect stems, extra long. A coming variety for the cut flower market. Plants \$1.00. Roots \$2.00

HARRY STRUTT. Incurved Cactus. A large clear spectrum red. One of the most reliable red cactus dahlias yet produced and the most satisfactory. Roots \$50

MARGARET STARKE. Straight Cactus. A variety of merit. Spinel pink, a clear self color. The dwarf plants never fail to produce well and the flowers are about 6 inches, have a depth almost equal to their diameter and they keep wonderfully. We are extremely fond of this flower. Roots \$50



SHOW

Old fashioned show type double with quilled petals.

A. D. LIVONI. The purity of bright lavender pink color in this old fashioned dahlia still remains unsurpassed. Roots \$50

DREER'S YELLOW. Clear canary yellow. Roots \$50

JEAN KERR. Pure white. This is a wonderful bloomer and no other white can approach it in performance. It is not large, but profuse and excellent for cutting. Stems are of the best. For resistance to insects we rate Jean Kerr 98. It is all but perfect in this respect. Roots \$50

WALDHEIM GLORY. This seems to be the yellow ball dahlia for which we have been searching. Prolific, vigorous and a beautiful clear bright canary yellow. Roots \$50



POMPON AND MINIATURE DAHLIAS

Pompons—Same as show type but much smaller.
 Miniatures—Very small Decorative blooms.
 Roots of all varieties are \$.50 each.

- AMBER QUEEN, Pom. Amber and scarlet.
- GARDEN LOVE, Min. Old Rose.
- GOOD LUCK, Min. Bright Orange.
- JOHNNIE, Pom. Dark red.
- KLEIN DOMITEA, Pom. Orange.
- LITTLE MAY, Pom. Yellow.
- SNOWCLAD, Pom. White.
- SUNBEAM, Pom. Red.
- RAPALLO, Min. Carmine and gold.
- LITTLE JEWELL, Min. Pink.

SEED—We offer the finest dahlia seed procurable at the following prices:
Mixed large flowered, \$3.00 per 100 seed.
Named parentage, large flowered, \$5.00 per 100 seed.

Bargain Collections

Grab Bag No. 1

Ten roots, ten varieties, not labeled..... \$1.00
 We guarantee these to be standard named varieties, no seedlings.

Golden Rule No. 2

One root of each, labeled..... \$2.25

HEART OF GOLD
 GOLDEN ACRE
 OHIO GLORY

CAVALIER
 SAGAMORE
 MARGARET W. WILSON

Two roots of each labeled..... \$4.00

Three roots of each, labeled..... \$5.50

Exhibition No. 3, all labeled plants

One plant of one variety from each pair, 5 varieties \$4.00

Three plants of one variety from each pair, 5 varieties, 15 plants..... \$10.00

One plant each of all 10 varieties..... \$7.50

Three plants each of all 10 varieties, 30 plants..... \$20.00

Roots will be double the above prices.

Either SEALS CALIFORNIAN
 Either THOMAS A. EDISON
 Either HELEN IVINS
 Either FORT MONMOUTH
 Either MINNIE EASTMAN

or YELLOW BEAUTY
 or EDWARD THOMAS BEDFORD
 or DR. J. H. CARMEN
 or VIOLET WONDER
 or KING MIDAS

Collection No. 4, Roots only

VIOLET WONDER
 FORT MONMOUTH
 SEAL'S CALIFORNIAN

JANE COWL
 FORDHOOK MARVEL
 SPIRIT OF ST. LOUIS

One root of each, 6 roots, 6 varieties..... \$5.00

Two roots of each, 12 roots, 6 varieties..... \$8.36

Collection No. 5

Either ELLINOR VANDEVEER
 Either SAGAMORE
 Either PRIDE OF CONN.
 Either FORDHOOK MARVEL
 Either JERSEY'S JEWELL
 Either HARRY STRUTT
 Either HEART OF GOLD

or MARGARET MASSON
 or GOLDEN ACRE
 or ELEANOR MARTIN
 or JANE COWL
 or JERSEY'S MASTERPIECE
 or OHIO GLORY
 or MARGARET W. WILSON

One root of one variety from each pair, 7 roots, 7 varieties..... \$3.00

Two roots of one variety from each pair, 14 roots, 7 varieties..... \$5.50

One root each of all 14 varieties..... \$5.50

CULTURAL DIRECTIONS

Best Planting Time for Dahlias in Ohio—May 1st to June 15th.

WE ARE convinced that the three most important rules for successfully growing Dahlias in a normal soil are: (1) Have the soil well drained. (2) Do not over-fertilize. The use of nitrates or of too much manure from barnyard or hencoop may give good results one season and result the following season in little or no flowers and loss of roots. The people who not only grow good flowers from Dahlia Roots, but also keep them over winter are those who fertilize moderately. A soil too rich in nitrogen also seems to favor the growth of insect pests that today are the greatest menace to all plant life. (3) Supply humus yearly to your soil. Rye sowed after dahlias are dug and plowed under in April is a good source of humus. Any other decayed vegetable matter will also serve the purpose.

Fertilizing

Fertilize with Peck's Dahlia Fertilizer

For this purpose we have developed, after years of experiments, a fertilizer that is eminently adapted for the fertilizing of Dahlias either mixed with the soil at planting or as a top dressing during the blooming season, and will develop good roots as well as flowers.

Peck's Dahlia Fertilizer will be delivered at \$6.00 per 100 lbs., \$2.00 per 25 lbs., \$.50 for 5 lbs., F. O. B. Lebanon. It may be applied as top dressing when plants are about one foot high and thereafter at 3 or 4 week intervals during the blooming season, up to September 1st. For 100 Dahlias, 25 lbs. per season should be sufficient.

This fertilizer is well-balanced food, especially developed for Dahlias and will produce the best results in a normal soil without the addition of any other plant food except humus. It contains elements which are needed by the Dahlia for the most vigorous and disease-resisting growth.

For a run-down soil we also recommend well rotted manure applied in fall or as a top dressing during summer, followed by our special fertilizer.

Planting

A medium to smallish root makes the best clump. Cut away the tail half of a very large root before planting. Plant the root horizontally when the ground is dry enough, not less than three and one-half feet apart, four inches deep in heavy soil and five to six inches in light soil. A stake should be driven in before planting. Cover the roots, firming well. The plant should appear within a month, if not, investigate and if blind (no sprout) notify the one from whom you purchased the root. Cultivate early and often until the plants show buds, then start fertilizing and disbudding. Much harm is sometimes done by cultivating deeply after plants start blooming. The fibrous root system comes close to the surface of the ground and deep cultivation cuts these roots, thus weakening the growth of the plant. After blooming starts, cultivation should not much more than scratch the surface.

Other points to be observed are: Humus in the soil. Rye sown in late fall and plowed under in the spring is an excellent source of humus. Water only when urgently needed and then soak to a good depth. In case of drought after August 1st mulch with straw, peat moss, or other litter between plants to conserve soil moisture. In a clay soil use winter's coal ashes and mix well before planting.

The Depression

MR. HOOVER has without doubt the hardest job of any president since the war. Mr. Common Peepul will give him little or no credit for the blessings which still remain despite the depression. But he may blame him for the miseries which are undoubtedly present.

If he doesn't continually make some show of trying to do something, starting some organized movement toward alleviating the depression, he will be damned. Yet he knows how very feeble will be the effect of anything he or anyone else can do.

The curing of the depressional disease must come from within the people. Everyone should work constructively at something whether they get much for their work or not. Nobody should get out of the habit of work.

Those who have things to sell should maintain, or better the quality, and within reason should lower the price to stimulate buying. In these times one must admire the tradesman who is willing to work for less money in order to keep busy. "Paying on the nail" for all one buys should become a habit.

Quit beefing about the depression. You know the ones who now complain loudest are the very people who were just as destitute in good times. The worthy ones who are hard hit now are not saying much, but enduring as far as possible in silence.

I know an individual who has always been deeply in debt for the necessities of life; yet he has never been out of a job. He is honest enough to admit that no matter what his income he would probably never change.

When the depression does end nearly every body will be so busy that they will not notice it. One of the first signs will be increase in the demand for real estate.

The sooner we accept the present conditions as normal and do everything in our power to keep busy, and if possible cheerful, and make the best of the depression the sooner it will end. Those who can must "ride the depression."



Disbudding

DISBUDDING or "suckering" is an important operation. Start from the top and work down, don't start disbudding at the base of the plant. When in June, July or August the plants first show flower buds at the top, select a vigorous bud which you wish to bloom, then take off the side buds and shoots on the first two or three joints down from the selected bud. Before this bud will have developed into a flower, other branches will have grown up from beneath and will be ready to disbud. Continue to disbud faithfully and it will repay you with *more* and *better* and *larger* flowers throughout the season. Most of the varieties we offer in this catalogue will naturally produce large flowers without disbudding, but if not disbudded the later flowers may become smaller and with open centers. With faithful disbudding a constant succession of nice large blooms will be had. Cut off the old blooms as soon as the backs become unsightly. This stimulates the plant to produce new buds more rapidly and promptly.

Storing of Dahlia Roots

SOME folks have trouble keeping their roots over winter, and sometimes lose some. Others have no trouble at all. We believe that the greatest loss of roots is caused by their becoming too greatly dried on the day they are dug and during the first few days or weeks after digging. We recommend that they be not dug too soon after an early frost. November 1st is normally soon enough. Watch the weather and if dry postpone digging for a while. If abnormally heavy rains start after frost, dig to avoid possible root rot on poorly drained soil.

Call on us at digging time and see how we do it. It may pay you. A few lose their roots because of poor methods of digging and do not realize it.

It is not necessary to cut the tops off before digging. Dig carefully around the Dahlia plants, finally removing each clump with a good ball of earth. Cut the stem off short and dust it well with powdered sulphur or sulphur containing a little lime. Do not expose the roots for any length of time to a drying wind or sun. Prompt action in following these directions may prevent loss of roots. Store preferably in a cool basement near the floor but not in a wet place. If basement is warm, store roots as far away from heat as possible and protect the clumps by packing in peat moss, dry sand, ashes, leaves, or sawdust and cover the whole container well, placing it as near the floor as possible. A little sulphur mixed with packing material is good to prevent mildew. The container should be large enough to hold the clumps together with four to six inches of packing on each side, underneath and on the top.

If one has a successful method of storing Dahlia roots, we do not recommend changing. Inspection of the roots at weekly intervals during November and December will often enable one to anticipate loss.



Insects Which You May Meet

THE Dahlia has its insect enemies. Fortunately gardens in town are nearly all so sheltered that the Dahlias are not subject to many insect pests. However a few gardens may be adjacent to open fields, weed patches, etc., and these in certain seasons may be troubled with insects. A brief description of the more important follows:

Red Spider—The familiar greenhouse pest. With weekly rains or vigorous spraying, there will be no trouble from red spider. They attack in warm dry weather and the plants have the appearance of being burned by heat. The remedy is a vigorous water spray directly on the leaves.

Tarnish Plant Beetle—A soft shelled beetle about 1-16 inch long, greenish gray brown in color, quick to fly when disturbed. A sucking insect. Attacks the stems of young buds and shoots and is the greatest single cause of blasted Dahlia buds. Remedy: One of the several pyrethrum sprays. (The food of sucking insects cannot be poisoned).

Leaf Hopper—A tiny greenish white sucking insect, 1-32 inch long, quick to fly when disturbed. Attacks all parts of the growing Dahlia and causes wrinkles or mottled foliage. Remedy: Pyrethrum or nicotine sprays.

Black Aster Beetle—A round bodied, black beetle, from $\frac{1}{4}$ to $\frac{1}{2}$ inch long, small head; flies during heat of day from July 15th until September 1st, on sunny days only. A chewing insect that attacks only the flower petals. Best remedy is to remove beetles from flowers into kerosene at the hours of 11:00 A. M., 2 and 4:00 P. M. They are also quickly killed by pyrethrum sprays.

Crop Rotation

THE successful farmer rotates his crops. Many commercial Dahlia Growers do not, but grow Dahlias for many years on the same fields with excellent results. They rely on intelligent and thorough fertilizing, and continue to raise good Dahlias year after year. However, we believe, that the rotation of a legume crop will be found beneficial with Dahlias for at least two seasons out of six or seven. If this is not possible the maintenance of humus or decayed vegetable matter in the soil is next best.



Bush of Heart of Gold

Random Notes and Quotations From Our Former Publications

"The growing of Dahlias is universally popular. A steadily increasing interest is shown each year. More people continually are joining the ranks of Dahlia fans. Florists, the country over, are using more Dahlias each season.

The depression apparently did not hit the Dahlia business. This was because the natural growth of the universal interest in Dahlias was great enough to offset the effect of the depression.

Looking through old catalogues we notice Dahlia varieties that have ceased to appear on their pages. Nature's law of the survival of the fittest is in full operation. It is a healthy sign. Even as in modern industry, changes and improvements are necessary to maintain progress, so in the Dahlia industry improved varieties, better and better each year, must be brought forth."

"New varieties will continue to rise and some will fall. The law of the survival of the fittest must operate. Yet, some of the old varieties persist. How long Mrs. I. de Vere Warner for instance, will live is yet to be known, but it is certainly going strong now. Every so often a Mrs. I de Vere Warner, a Jersey's Beauty, a Jane Cowl, or a Buckeye Bride will rise and will shine for a long period of years in the gardens of the world. These will be the standards by which all new Dahlias will be judged."

"It is only by making comparisons that we progress. We may be thankful that nothing is quite perfect so that we continually strive toward the infinity of perfection."

"Just as one human being may be hardier and more resistant to disease than another, Dahlia varieties differ in their resistance to disease, insects and climatic disadvantages."

"We and other progressive growers in the American Dahlia Society are continually producing more vigorous and more beautiful new varieties each year. While the newer and better varieties remain higher priced due to scarcity, the older varieties of the same type and color are grown. In our Table of Ratings, printed in this book, one may find unerringly the varieties that are the best for beauty, cut-flowers, and the easiest to grow both of the old and new Dahlias. It pleases us best when the customer selects only the higher rated varieties."

"In reviewing our experience with Dahlias and other flowers during the past years, it becomes evident that the Dahlia has given us much less trouble and has shown a higher proportion of healthy vigorous productive plants than any other flower we have grown."

"The greatest value lies in introducing varieties that possess high vigor. This is of the utmost importance."

"Very few Dahlia varieties have contributed as much to the world of flowers than has Jersey's Beauty and it is doubtful if it can be said with truth than any variety has been propagated more from green plants than has Jersey's Beauty. It has become the standard pink for cutting all over the world."

Plants are equally good and more economical for the buyer than roots.

Exhibiting Dahlias

To be prepared for exhibition of dahlia blooms it is well to have more than one plant of each variety. Three is enough.

Plant June 1st in your best soil and prepare for fertilizing about one month before the show. On the morning of the show cut flowers with long stems, select the best and exhibit exactly the number required, arranging them in the best manner.



Ohio Glory

ORDER EARLY

To Prevent Disappointment

SUBSTITUTION—We do not substitute without permission. If ordering roots after April 1st, it is a good plan to make a second choice.

Terms and Delivery

Cash with order. All stock shipped parcel post prepaid May 1st to May 25th unless otherwise specified.

Guarantee

To every customer who is the sole and final judge in the matter, we guarantee satisfaction. Our greatest care and responsibility is to see that the customer gets what he pays for. We cannot be held responsible however for more than the price of the goods when purchased.

The Dahlia As a Cut Flower

THE Dahlia when properly grown and handled after cutting will keep as a cut-flower longer than most flowers.

In July and August cut Dahlias in the morning before the dew has evaporated, the earlier the better. Avoid cutting in the heat of the day. Cut the flowers with two or three joints of the branch as a stem, trim off as many leaves as you can spare.

Place quickly as possible deeply in cool water in a clean vase. If the end of the stem becomes dried it should be freshly cut before placing in water. Visualize what the flower has to do to keep fresh. It has to pump water up the stem to supply the evaporation at the petals. Leave the flowers in water in a cool place free from drafts for at least two hours before using.

