

Historic, Archive Document

Do not assume content reflects current scientific knowledge, policies, or practices.

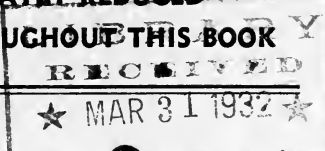


62.55



SEE GREATLY REDUCED

PRICES THROUGHOUT THIS BOOK



GRANITE STATE NURSERIES, INC.

HAMPTON ROAD

EXETER, N. H.

J. A. Tufts, Jr., Pres. and Treas.

Phone 178-M

1932

INDEX

	<i>Page</i>
N	
Asparagus Roots.....O.....	34
Blackberry Plants.....T.....	33
Distances of Planting...I.....	34
Evergreen Trees.....C.....	3, 4, 5
Fertilizer.....E.....	35
Fruit Trees.....	30, 31, 32
Garden Furniture.....T.....	7
Gladioli.....H.....	20, 21, 22
Grape-Vines.....E.....	32
Hardy Perennials.....	23, 24, 25, 26, 27
Irises.....N.....	28, 29
Lemon Lilies.....E.....	22
Mother's Day.....W.....	7
Peonies.....	19, 20
Phlox.....L.....	28
Raspberry Plants.....O.....	32
Rose Bushes.....W.....	15, 16, 17, 18
Rhubarb Roots.....	34
Shade Trees.....P.....	6, 7
Shrubs.....R.....	8, 9, 10, 11, 12, 13
Strawberry Plants.....I.....	33, 34
Vines.....C.....	14
Vigoro.....E.....	35
S	

Miss Hampton

PRICES ARE DOWN

Read this catalog carefully please and notice how prices have been reduced. See how many trees and plants can be purchased for a little money.

See how the prices on EVERGREEN TREES, SHRUBS, FRUIT TREES, etc., have been reduced.

And read what we have to say about buying EVERGREEN TREES by size on this page.

LOCATION OF NURSERIES

One mile from the "Square" at Exeter, on High Street, the Hampton road,—the main highway from Manchester to the beach. Six miles from Hampton and the Lafayette Highway (running from Boston to Portland, via Newburyport and Portsmouth). 32 miles from Manchester, 14 miles from Portsmouth, 10 miles from Amesbury, 18 miles from Haverhill, and 20 miles from Dover.

CASH DISCOUNT

When cash in full accompanies order, a 10% discount may be taken on Spring orders received before March 26, and a 5% discount on orders received before April 9.

25% of the amount should accompany all orders, the balance to be sent at shipping time, otherwise shipment will be C. O. D.

Prices quoted are for stock at the nurseries or delivered to our railroad station. There is no charge for packing.

We are always ready and willing to correct errors on our part, but we are at no time responsible for any amount greater than the original sales price. All claims for damage in transit must be made to the transportation company. Our responsibility ceases on delivery to the carrier.

We book all orders with the understanding that same shall be void should injury befall stock from fire, error in count, or other causes beyond our control.

TIME OF PLANTING

All stock listed in this catalog may be transplanted in the Spring. Peonies, Irises, and Evergreens may also be transplanted in August or later.

Perennials and pot-grown strawberry plants may also be moved in September or later.

Apple Trees, Small Fruits, Grape-Vines, and most varieties of Shade Trees, Shrubs, and Vines may also be transplanted in October or November.

The following

CERTIFICATE OF INSPECTION

Will accompany all shipments made from our Nurseries:—

STATE OF NEW HAMPSHIRE

Department of Agriculture

Division of Nursery Inspection

This certifies that inspection of the nursery of Granite State Nurseries, Inc., at Exeter, N. H., was completed.....

The attached stock was included within the above inspection and is apparently free from dangerous insects or diseases.

(Signed) W. C. O'KANE,

State Nursery Inspector.

SUNDAYS

We do not make a practice of filling orders on Sunday. As an accommodation, however, we are glad to get up orders on Saturday which may, by arrangement, be called for on Sunday. Our hours of business are: Week days, 7 A. M. to 5 P. M. Standard Time (not Daylight Saving). Visitors are always welcome.

We want our customers to know how much we appreciate the opportunity to serve them. We are grateful for the continued patronage of our old friends and we welcome the chance to make new friends. To please our customers, both with the quality of our goods and our service, is our constant endeavor. Should anything which we send you fail to be satisfactory on its arrival, please advise us at once so that we may have the opportunity of making it satisfactory at that time.

Remember: "When you are pleased—we are pleased."



For those of our friends who have followed with interest the snap-shots of the family which have appeared in this book we are pleased to present here a picture of Mrs. Tufts with the children.

Arthur and Eleanor and the baby, Hazel Elizabeth, are seated on the settee with their Mother, while Ralph is in the foreground with the twins, Kenneth and Charles.

EVERGREEN TREES WARNING

In Buying Evergreens

Don't Be Misled by advertisements that give only the age of trees. You are more interested in **size** than age, and trees that are advertised as 3 or 4 years old are probably less than 12 inches tall, possibly not more than 8 or 10 inches tall.

Buy By Size

Transplanting may be done in the spring, or in the late summer or early fall.

Except when otherwise noted, ten trees of one size and one variety for nine times the price of one tree. Five trees for one-half this amount. Twenty-five or more trees will be sold at the hundred rate. Prices include burlapped ball of dirt.

Prices on any sizes or varieties of evergreens not listed in this catalog will be furnished on request.

ARBORVITAE, AMERICAN. A shapely lawn tree, unequalled for hedges, shelters, or screens.

	Each	Per 10	Per 100
18 in.	\$ 1.00	\$ 8.50	\$ 75.00
2 ft.	1.50	12.50	100.00
3 ft.	2.00	17.50	169.00
4 ft.	3.50	30.00	275.00
5 ft.	5.00	47.50	450.00
6 ft.	7.50	65.00	600.00
7 ft.	9.00		
8 ft.	11.00		

ARBORVITAE, GOLDEN, (Vervaeae). A very pretty slow-growing tree which attains a height of about 10 ft. 3 ft. \$3.00.

ARBORVITAE, GIANT. Rich green foliage, with light tips. Very hardy.
12 in. \$1.50; 18 in. \$2.00; 24 in. \$2.50; 30 in. \$3.00; 3 ft. \$3.50.

ARBORVITAE, GLOBE. Small, round, decorative trees.

	Each	Per 10
9 in.	\$1.00	\$ 9.00
12 in.	1.25	10.00
15 in.	1.50	12.50
18 in.	2.00	17.50
24 in.	3.00	25.00

ARBORVITAE HOVEY'S. Globe-shaped. Slow-growing, very pretty.

	Each	Per 10
12 in.	\$1.00	\$ 9.00
15 in.	1.25	10.00
18 in.	1.50	12.50
24 in.	2.00	15.00

EVERGREEN TREES—Cont.

ARBORVITAE, PARSONS. (*T. Oc. compacta*). Very attractive dense little trees which are very useful when a low-growing variety is wanted.

	Each	Per 10
12 in.	\$1.25	\$10.00
15 in. ..	1.50	12.50
18 in.	2.00	17.50

ARBORVITAE, PYRAMIDAL. Slender, formal-shaped trees of pretty dark green.

	Each	Per 10
18 in. ..	\$ 1.50	\$13.50
24 in. ..	2.00	17.50
30 in.	2.50	22.50
36 in.	3.00	27.00
42 in.	3.50	30.00
48 in.	5.00	45.00
5 ft.	8.00	70.00
6 ft.	10.00	90.00

ARBORVITAE, SIBERIAN. A hardy compact variety which grows 10-15 ft. tall and is excellent for hedges and screens.

	Each	Per 10
18 in.	\$2.00	\$17.50
24 in.	2.50	22.50
30 in.	3.00	27.00
36 in.	4.00	35.00

FIR, BALSAM. Forms regular pyramid shape and has sweet scented dark green foliage.

2 ft., \$1.50; 3 ft., \$2.50; 4 ft., \$3.00; 5 ft., \$3.50; 6 ft. \$4.00.

FIR, DOUGLAS. One of the best of all evergreens. Hardy rapid grower.

12 in., \$1.50; 18 in., \$2.00; 24 in., \$2.50; 30 in., \$3.00; 36 in., \$4.00.

FIR, SILVER. Very pretty, bluish tree. Retains its beauty for years.

12 in., \$2.00; 18 in., \$3.00; 24 in., \$4.00; 30 in., \$5.00; 36 in., \$6.00.

HEMLOCK, CANADA. Especially beautiful when laden with snow. Used as a lawn tree or in hedges. Grows in sunlight or shade.

	Each	Per 10	Per 100
12 in.	\$.85	\$ 5.50	\$ 50.00
18 in.	1.50	13.50	125.00
24 in.	2.25	20.00	175.00
30 in.	3.00	27.50	250.00
3 ft.	4.50	40.00	350.00
4 ft.	6.00	50.00	400.00
5 ft.	8.00	60.00	500.00
6 ft.	10.00	80.00	
7 ft.	12.00	100.00	

HEMLOCK, CAROLINA. Has dense, dark foliage on hanging branches.

12 in., \$2.00; 18 in., \$3.00; 24 in., \$4.00.

JUNIPER, COMMON. Low, hardy variety which will grow in almost any soil, and which makes a good ground cover.

12 in., \$1.00; 18 in., \$1.50; 24 in., \$2.00; 30 in., \$2.50.

JUNIPER, PFITZER'S. Horizontally spreading, feathery, gray-green. Dwarfish.

12 in., \$2.00; 18 in., \$2.50; 24 in., \$3.00; 30 in., \$3.50.

JUNIPER, PLUMED SPREADING. (*Depressa plumosa*). An improved plumed form of the common spreading juniper.

12 in., \$1.50; 18 in., \$2.25.

JUNIPER, SAVIN (*Sabina*). Semi-dwarf. Vase-shaped. Dark green foliage.

12 in., \$1.25; 15 in., \$1.50; 18 in., \$2.00; 24 in., \$3.00.

JUNIPER, SPINY GREEK. (*J. excelsa stricta*). Stylish, dwarf-growing trees. Blue-gray. Pointed.

15 in., \$2.50; 18 in., \$3.50.

JUNIPER, SWEDISH. Column-shape with gray-green foliage.

12 in., \$1.00; 15 in., \$1.25; 18 in., \$1.50.

JUNIPER, WAUKEGAN. A spreading, low-growing variety whose soft blue to purple color contrasts prettily with other evergreens. Especially useful in rock-gardens.

12 in., \$1.00; 18 in., \$1.50; 24 in., \$2.00; 30 in., \$2.50.

EVERGREEN TREES—Cont.

LARCH. See ornamental Shade Trees.

PINE, AUSTRIAN. Has long dark needles, and thrives near the seashore.

18 in., \$2.00; 24 in., \$3.00; 30 in., \$4.00; 36 in., \$5.00; 48 in., \$6.00.

PINE, MUGHO. Low, bushy, pretty tree which is very useful in foundation planting, front of evergreens.

12 in., \$1.50; 15 in., \$2.00; 18 in., \$3.00; 24 in., \$4.00.

PINE, NORWAY. A native dark green variety with long needles.

12 in., 75c; 18 in., \$1.00; 24 in., \$1.50; 30 in., \$2.00; 36 in., \$2.50; 48 in., \$3.50.

PINE, SCOTCH. Has long, bluish-green needles and makes good shelter planting.

24 in., \$2.00; 30 in., \$2.50; 36 in., \$3.00; 48 in., \$4.00.

PINE, WHITE. Native variety which is excellent for trimmed hedges, shelter or windbreak.

	Each	Per 10	Per 100
12 in.	\$.50	\$ 4.00	\$ 25.00
18 in.	1.00	7.50	50.00
24 in.	1.50	10.00	75.00
36 in.	2.00	15.00	125.00
48 in.	3.00	25.00	200.00

RED CEDAR (*Juniperus virginiana*). A beautiful slender upright dark green, native tree.

18 in., \$1.50; 24 in., \$2.00; 30 in., \$2.50; 36 in., \$3.00; 48 in., \$4.00.

RETINOSPORA, GOLDEN PLUME. Feathery, fine-cut foliage.

12 in., \$1.00; 36 in., \$4.00; 48 in., \$5.00.

RETINOSPORA, GOLDEN SAWARA. Very hardy, gracefully drooping variety, with good color.

12 in., \$1.00; 24 in., \$3.00; 36 in., \$4.00.

RETINOSPORA, GOLDEN THREAD. Very pretty trees. Somewhat dwarf and spreading.

12 in., \$2.00; 18 in., \$3.00; 24 in., \$4.00.

RETINOSPORA, MOSS. Feathery, blue-green foliage.

18 in., \$2.50; 24 in., \$3.00; 30 in., \$3.50; 36 in., \$4.00.

RETINOSPORA, THREAD. Graceful trees with deep green foliage.

18 in., \$2.50; 24 in., \$3.00; 30 in., \$3.50; 36 in., \$4.00.

SPRUCE, COLORADO BLUE. Popular steel-blue trees.

12 in., \$2.00; 18 in., \$3.00; 24 in., \$4.00; 30 in., \$5.00; 36 in., \$6.00.

SPRUCE, COLORADO GREEN. Very hardy, useful and pretty.

12 in., \$1.50; 18 in., \$2.00; 24 in., \$2.50; 30 in., \$3.00; 36 in., \$4.00.

SPRUCE, KOSTER BLUE. The blueist of the blues.

18 in., \$6.00; 24 in., \$8.00.

SPRUCE, NORWAY. A rapid and tall grower. Useful for hedges and windbreaks.

	Each	Per 10	Per 100
12 in.	\$.75	\$ 7.00	\$ 65.00
18 in.	1.00	8.50	75.00
24 in.	1.25	11.00	100.00
30 in.	1.50	13.50	125.00
3 ft.	2.00	17.50	150.00
4 ft.	3.00	27.50	250.00
5 ft.	4.00	36.00	350.00
6 ft.	5.00	45.00	
7 ft.	6.00	54.00	

SPRUCE, WHITE. Very tall-growing tree which is excellent for specimens, hedges, or windbreaks.

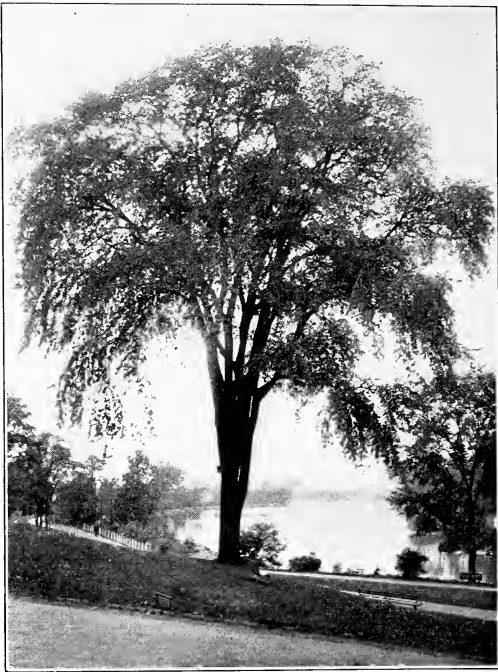
12 in., \$1.00; 18 in., \$1.50; 24 in., \$2.00; 36 in., \$3.00; 48 in., \$4.00; 5 ft., \$5.00; 6 ft., \$6.00.

YEW, UPRIGHT JAPANESE (*Taxus cuspidata capitata*). Very dark, spreading, slow-growing trees.

12 in., \$2.00; 15 in., \$3.00; 18 in., \$4.00.

YEW, SPREADING JAPANESE (*Taxus cuspidata*). Semi-upright in form.

12 in., \$2.25; 15 in., \$3.00; 18 in., \$3.50.



American Elm

ORNAMENTAL SHADE TREES

* Ten trees of one size and one variety for nine times the price of one tree. Five trees for one half of this amount.

Ash, American. Tall, healthy, rapid-growing trees. 6-8 ft., \$1.50; 8-10 ft., \$2.00.

Beech, Purple. Bronze-purple foliage in Spring. 2-3 ft., \$4.00.

Birch, Cut-Leaf Weeping. Beautiful, graceful lawn trees. 5-6 ft., \$2.00; 6-8 ft., \$3.00.

Birch, Paper or Canoe. The beautiful, native white variety. Well-branched, 6-8 ft., \$2.00; 8-10 ft., \$2.50.

Box Elder. Rapid-growing, spreading tree which grows to height of 40-50 ft. 8 ft., \$1.50; 10 ft., \$2.00.

Catalpa, Bungei. Round compact heads. Low-growing formal trees. 2-yr. heads, 5-6 ft., \$2.00.

Catalpa, Speciosa. Rapid grower with white flowers and long seed pods. Grows 40 ft. tall. 6-8 ft., \$1.25; 8-10 ft., \$1.50.

Crab, Betchel's Double-Flowering. Fragrant flowers on long, drooping branches. 3-4 ft., \$1.50; 4-5 ft., \$2.00.

Dogwood, White-Flowering. A beautiful small tree, with white flowers. 2-3 ft., \$1.00; 3-4 ft., \$1.25.

Elm, American. The famous New England street tree. 6-8 ft., \$1.50 each, \$12.50 per ten; 8-10 ft., \$2.00 each, \$18.00 per ten; 10-12 ft., \$3.00 each, \$27.00 per ten.

Elm, Chinese. Rapid grower. Remarkably free from diseases and insect attack. 6-8 ft., \$2.00; 8-10 ft., \$3.00.

Elm, Moline. A new variety; compact, rapid grower, handsome deep green foliage. 6-8 ft., \$2.00; 8-10 ft., \$2.50.

Hawthorn, Paul's Scarlet. Covered with very pretty flowers in May. 4-5 ft., \$2.00.

Horse Chestnut. Known by everybody. White flowers. 6-8 ft., \$2.00.

Larch. Beautiful light green needles, which turn bright yellow in autumn. 6 ft., \$3.00; 8 ft., \$5.00; 10 ft., \$8.00.

Linden, American. Stately rapid-growing trees which grow about as tall as Sugar maples. 6-8 ft., \$2.00; 8-10 ft., \$3.00.

Magnolia (Soulangeana). Popular on account of its beautiful pink and white blossoms in May. 2-3 ft., \$5.00.

Maple, Ash-Leaved. See Box Elder.

Maple, Bloodleaf Japanese. Bushy, dwarf, bright red trees, 18-24 in., \$2.50.

Maple, Cut Leaf Weeping. (Weir's). Long, hanging branches. Rapid grower. 8-10 ft., \$2.00.

Maple, Norway. Rapid-growing street tree. 6-8 ft., \$2.00; 8-10 ft., \$3.00.

Maple, Schwedler. Crimson foliage, changing to bronze. 6-8 ft., \$2.50.

Maple, Silver. Large, spreading, rapid-growing. 8-10 ft., \$1.25.

Maple, Sugar or Rock. The popular street tree. 8-10 ft., \$2.50; 10-12 ft., \$3.00.

Mountain Ash, European. Ornamental, scarlet fruit in fall. 5-6 ft., \$1.25; 6-8 ft., \$2.00; 8-10 ft., \$2.50.

Mulberry, Russian. Planted for the birds especially. 5-6 ft., 75c.

Mulberry, Tea's Weeping. Small trees with drooping branches and dense, deep green foliage. Especially for lawn planting. 5-6 ft. stems, 2-yr. heads, \$3.00.

Poplar, Carolina. Quick grower, with maple-shape top.

	Each	Per 10	Per 25
6-8 ft.	\$.50	\$4.00	\$ 7.50
8-10 ft.75	6.00	12.50
10-12 ft.	1.00	8.00	17.50

Poplar, Lombardy. Tall, slender, rapid grower.

	Each	Per 10	Per 25
6-8 ft.	\$.75	\$ 6.50	\$12.50
8-10 ft.	1.00	8.50	18.75
10-12 ft.	1.25	10.00	20.00
12-14 ft.	1.50	12.50	25.00

Plum, Purple-Leaved. Very pretty small tree. 3-4 ft., 75c; 4-5 ft., \$1.00.

Willow, Golden-Barked. An upright, spreading tree which grows 30-40 ft. tall. 6-8 ft., \$1.50; 8-10 ft., \$2.00; 10-12 ft., \$2.50.

Willow, Laurel-Leaf. Upright and spreading growing tree which attains height of 20-30 ft. Makes quick effects and is good for screens. Bushy 4-6 ft. trees, 50c; 6 ft., \$1.00; 8 ft., \$1.50.

Willow, Thurlow. Spreading tree with long hanging branches and yellow-green bark. Attains height of 30-40 ft. Well-branched. 8 ft., \$1.50.

Willow, Weeping. A good weeping variety which grows 30-40 ft. tall. Well-branched. 6-8 ft., \$1.00; 8-10 ft., \$2.00.

GARDEN FURNITURE

Arbors, benches, garden houses, seats, chairs, trellises, etc. By arrangements with a nearby manufacturer we are able to furnish these things all set up and painted, or in sections, painted and ready to erect.

Further particulars on request.

Attractive Trellises, \$1.25 each. Single trellises, \$1.50, by express; 2 or more, \$1.25 each.

Picture two or three trellises around your home, covered with our Dr. Van Fleet, Climbing American Beauty, or Paul's Scarlet Climbing Rose.

We shall be glad to supply you.

MOTHER'S DAY

Sunday, May 8, 1932

Why not ask us to send a flowering shrub, some gladiola bulbs, a tree, or some hardy flowering plants—such as phlox, larkspur, or the like, to Mother for Mother's Day? We shall be glad to attend to it.

The Fragrant Evergreen Daphne (Page 9) with its succession of bloom throughout the season would be much appreciated.

EVERY DAY IS ARBOR DAY WITH US

Our nurseries are located right here in New England within a comparatively few miles of you, and we can get stock to you in good fresh condition—making it unnecessary for you to send away off to some other part of the country for trees, plants and bulbs.



Norway Maple

HARDY ORNAMENTAL SHRUBS

EVERGREEN AND DECIDUOUS

Prices quoted are for at least 2-3 ft shrubs, unless otherwise specified.

Small orders for shrubs can be sent by Parcel Post. Remit 10c additional for each shrub to cover special packing and postage. 5c each, when not less than 3 are ordered.

10 shrubs of one variety for 9 times the price of one; except as noted; 5 for $\frac{1}{2}$ the price of 10; 50 for $\frac{1}{2}$ the price of 100.

Special quotations on quantities.

Almond, Flowering. Old-fashioned shrub, covered in the spring with small, double, rose-like flowers. White and pink 60c.

Althea, Rose-of-Sharon. Flowers in August and September. Erect and tree-like. Double pink or white. 3-4 ft., 60c.

Aralia. Suitable for dry, sandy spots. Has glossy, deep green leaves. Makes a good hedge. 50c.

Azalea, Downy Pinksterbloom. (A. rosea). Abundance of fragrant, beautiful bright rose blossoms about Memorial Day. 12-18 in., heavy clumps, \$1.50; 10 for \$13.50.

Azalea, Flame. Bears in profusion of brilliant orange-colored blossoms in June. 12-18 in., \$1.50.

Barberry, Box. A dwarf type used extensively for edging. 12-15 in., 40c each; \$3.00 for 10; \$20.00 for 100.

Barberry, Japanese. The best shrub for New England hedges. Absolutely hardy. Pretty at all seasons.

12-18 in., 25c each; \$2.00 for 10; \$12.00 for 100.

18-24 in., 30c each; \$2.50 for 10; \$15.00 for 100.

2-3 ft., 40c each; \$3.00 for 10; \$25.00 for 100.



Dogwood

- Barberry, Purple-Leaf.** A variety of the native barberry with leaves of distinctly different color. Useful in hedges, or to make contrast with other shrubs, 3-4 ft., 50c; 5 or more 40c each.
- Barberry, Red-Leaf.** New form of the Japanese variety, with leaves which are always reddish, 12-15 in., 30c; \$2.50 for 10; \$20.00 for 100.
- Beauty Bush. (Kolkwitzia).** This recent introduction is a veritable cloud of pink, covered as it is each spring with a profusion of tubular flowers. Grows 6-9 ft. tall, 2-3 ft., 75c.
- Bridal Wreath.** See Spirea.
- Buddleia. (Alternifolia).** Hardy Buddleia. Covered from mid-summer to cold weather with compact clusters of bright lilac-purple flowers with reddish-erimson eyes. A truly beautiful shrub and a great addition to any garden, 2-3 ft. plants, \$1.00.
- Burning Bush.** See Euonymous.
- Butterfly Bush, or Summer Lilac.** A free-growing shrub with fragrant, lilac-like flowers all summer, 50c.
- Cinquefoil, Shrubby.** Grows 3 ft. high. Single yellow flowers all summer, 50c.
- Coral Berry.** A graceful small shrub suitable for dry spots. Small pink flowers followed by clusters of coral red berries, 40c; 3 for \$1.00.
- Coral Berry, Improved.** A trim, smallish shrub with bluish-gray foliage, pink flowers and red fruits, 50c.
- Cotoneaster, Rock (C. horizontalis).** Suitable for rock gardens especially. Very dwarf and spreading, 12-15 in., \$1.00; 15-18 in., \$1.50.
- Daphne or Garland Flower.** A low-growing evergreen shrub with clusters of fragrant pink flowers in early spring and again in the summer and fall, 9-12 in., \$1.00; 12-15 in., \$1.25; 15-18 in., \$1.50.
- Deutzia, Pride of Rochester.** Pink and white flowers in early spring, on upright spikes, 50c.
- Deutzia, Dwarf. (Gracilis).** A very useful low-growing shrub with clusters of sweet, white flowers in May and June, 18-24 in., 50c.
- Deutzia, Lemoine's.** A very pretty shrub growing 3-4 feet tall. Covered with white blossoms in June, 24 in., 50c.
- Dogwood, Red-Barked.** Beautiful bright red bark. Is especially ornamental in winter, 2-3 ft., 40c.

- Dogwood, Golden-Barked.** Pretty planted with the red. 50c.
- Elder, Golden.** Large, bright yellow foliage. Showy clusters of white flowers. Good for planting with other shrubs. 50c.
- Euonymous Winged or Burning Bush.** So-called on account of its autumn color. Corky bark. Ornamental scarlet berries. Grows well in shady or dry spots and makes very pretty shrub. 60c.
- Euonymous, Winged, Dwarf (Compacta).** A very desirable very compact low-growing shrub which will grow well in the shade. Very good for low, wide hedges. 18-24 in., 90c; 10 for \$8.00; 25 for \$17.50.
- Euonymous (Radicaus Vegetus) or Evergreen Bittersweet.** A very good ground cover in sunlight or shade. 3 yr., 50c. Extra size, 75c. (Not sold by height).
- Euonymous Colorata.** Similar to preceding. Foliage turns bronze red in the fall. 4 yr. 15 in., 50c.
- Euonymous, variegated.** Green and white leaves. Small plants. 2 yr., No. 1 25c; extra size, 5 yr., 75c.
- Forsythia, Golden Bell.** The shrub with beautiful yellow blossoms which appear in April, before the leaves come out. 50c. Weeping variety, 50c.
- High Bush Cranberry.** Flat heads of white flowers in May-June, followed in July by scarlet berries, 50c.
- Honeysuckle, Morrowi.** White flowers followed by bright red berries. Spreading in form. 50c.
- Honeysuckle, Tartarian.** Upright grower with red flowers followed by bright red fruit. 50c.
- Hugonis Rose.** A beautiful shrub-like rose which is covered with fragrant yellow flowers in May. Has good foliage and is attractive as a lawn specimen. 60c.
- Hydrangea, Everblooming, or Hills-of-Snow.** Begins to produce white heads of flowers in June and continues until fall.
- | | Each | 5-25 | 25-100 |
|----------------|------|----------|----------|
| 18-24 in. | 40c | 35c each | 25c each |
| 2- 3 ft. | 50c | 40c each | 30c each |
| 3- 4 ft. | 60c | 50c each | 40c each |
- Hydrangea, P. G.** One of the showiest and most popular shrubs. Cone-shaped clusters of white flowers which later turn pink. Very ornamental as single plants, in beds, or in rows. Prices same as Everblooming Hydrangea.
- Hydrangea P. G. Tree Form.** Trained to a single stem or stalk, branching out at the height of about 3-4 ft., 75c; 4-5 ft., \$1.00.



Hydrangea P. G.

- Japanese Quince, Fire Bush.** Scarlet flowers in May. 2-3 ft., 50c; 3-4 ft., 75c.
- Kerria, Single.** Bright green branches with yellow flowers. 75c.
- Kerria, White.** Syringa-like flowers in May, followed by pea-size shiny black seeds. 18-24 in., 50c.
- Lilac, Purple.** State flower of New Hampshire. One of the good, old New England shrubs. 2-3 ft., 50c; 5 for \$2.00. 3-4 ft., 75c, 5 for \$3.00.
- Lilac, White.** Similar to above. 2-3 ft., 50c.
- Lilac, Chinese. (Rothamagensis).** Tall grower with open heads of violet-blue flowers in June. 2-3 ft., 50c.
- Lilac, Persian.** More slender and refined than common variety. Fragrant, pale purple flowers in broad clusters. 2-3 ft., 50c.

NAMED VARIETIES OF LILACS

Very handsome shrubs, and a noteworthy addition to our assortment.

Abbreviations—"S," Single; "D," Double.
2-3 ft., 75c; 3-4 ft., \$1.00.

- Belle de Nancy, D.** Rose with white center.
- Charles X, S.** Reddish purple, Vigorous.
- Congo, S.** Deep reddish purple.
- Marie Le Graye, S.** Pure white. Fragrant.
- Michael Buchner, D.** Pale lilac. Very dbl. Dwarf.
- Mme. Cassimer Perier, D.** Creamy white. Late.
- Pres. Grevy, D.** Large blue flowers.
- Ludwig Spaeth, S.** Dark red. Large clusters.



Purple Lilac

- Mountain Laurel.** Broad-leaf evergreen shrub with great clusters of pink and white blossoms in June. 15-18 in. clumps, \$1.65; 18-24 in. clumps, \$2.50; 2-3 ft. clumps, \$3.50 (10 of one size for 9 times the price of one).
- Pacysandra or Japanese Spurge.** A low-growing and spreading broad leaf evergreen. 6-10 in. high, very useful as a ground cover in shady spots in place of grass, or in sunlight. 20c; \$1.00 for 10. Should be planted not less than 4 to the square foot.
- Plum, Purple leaf.** See trees.
- Privet, California.** Upright grower with dark green leaves. Liable to winter kill in exposed places. 2-3 ft., 15c each; 10 for \$1.00; \$7.50 for 100; 50 at the 100 rate.



Spirea Vanhouttei

Privet, Chinese (Ibota). A very hardy type, better adapted to northern New England than the California variety which it resembles. Makes an excellent hedge.

	Each	Per 10	Per 100
18-24 in.	20c	\$1.50	\$10.00
2-3 ft.	25c	2.00	15.00
3-4 ft.	50c	3.00	20.00

Privet, Ibolium. A cross between Ibota and California. Has the hardiness of the former and the appearance of the latter and is by far the best hedge plant.

	Each	Per 10	Per 100
18-24 in.	20c	\$1.00	\$ 6.00
2-3 ft.	25c	1.50	10.00
3-4 ft.	35c	2.00	15.00

Rhododendron, (Catawbiense). Hardest and best all-around variety. Large trusses of rose-pink flowers. Dark, shiny green leaves. 1 ft. clumps, \$2.00; 18 in. clumps, \$3.00; 2 ft. clumps, \$4.00.

Smoke Bush. Much admired for its curious hair-like flowers which cover the whole plants and give the appearance of smoke in late summer. 75c.

Snowball, Japanese. A beautiful strong-growing shrub with clusters of white flowers in June. 75c.

Snowberry. Small pink flowers in summer, followed by waxy marble-like berries in fall, 40c; 3 for \$1.00.

Spirea, Anthony Waterer. The brightest color of all spireas. Pink flowers from June to fall. Low-growing. 18-24 in., 50c.

Spirea, Billardi. Flower spikes of bright pink. Grows 5-6 ft. tall. Good for dry places. 50c.

Spirea, Bridal Wreath (Vanhouttei). Surpasses all other spireas in beauty and grace. Fine foliage and slender arching branches covered with pure white flowers in May. Fine as a single specimen or planted in clumps, and makes a beautiful hedge.

	Each	5-25	25-100
18-24 in.	25c	20c each	15c each
2-3 ft.	40c	35c each	25c each
3-4 ft.	50c	40c each	35c each

Spirea, Froebelli. Flowers bright crimson. Foliage turns red in autumn. Similar to Anthony Waterer but grows taller. 50c.

Spirea, Golden (Ninebark). One of the best golden leaved shrubs. Vigorous grower which attains a height of 8-10 ft. Spreading and drooping branches with 3 in. clusters of white flowers. 2-3 ft., 50c; 4 ft., 75c.

- Spirea, Korean. (S. Trichocarpa).** Forms dome-shaped bush 4-6 ft. tall and is covered in June with large round clusters of snowy flowers. A new shrub which will be very popular. 2-3 ft., 60c.
- Spirea Prunifolia.** The true Bridal Wreath. Round, shining leaves, which assume beautiful autumn color. Many white flowers in May. 50c.
- Spirea, Thunbergi.** Has flowers in long, close clusters in April and May and retains its fine delicate foliage until late fall, changing to a beautiful color. 50c.
- Sumac Stag-horn.** Very ornamental shrubs suitable for massing in corners or the like. Red foliage and fruit. 3-4 ft., 50c; 4-6 ft., 75c.
- Summersweet (Clethra).** Racemes of creamy white flowers with spicy fragrance. July to September. 18-24 in., clumps, 50c.
- Syringa, Golden.** A compact-growing shrub with beautiful yellow foliage in the spring. Makes a pleasant contrast with other shrubs. 18-24 in., 50c.
- Syringa, Avalanche.** Graceful arching shrub with snowy white flowers. 50c.
- Syringa, Large-Flowered.** Vigorous grower. 2-3 ft., 50c; 3 for \$1.25. 3-4 ft., 65c; 3 for \$1.75.
- Syringa, Lemoine's.** Slender, arching branches, covered in May with small, double white flowers. 50c.
- Syringa, Virginalis.** Very large, semi-double fragrant flowers. Beautiful and much admired. 50c.
- Syringa, White or Mock Orange.** Creamy white, orange-scented flowers in May and June. 50c.
- Virburnum, Mayflower. (Carlesi).** A new variety with clusters of early, pink flowers which have May-flower fragrance. 15-18 in., 50c; 18-24 in., \$1.50; 2-3 ft., \$2.50.
- Weigelia, Eva Rathke.** Showy, rich reddish-purple flowers in profusion. 60c.
- Weigelia Rosea.** For several weeks in early summer covered with pink trumpet-like flowers. 50c.



Weigelia Rosea



Hall's Japan Honeysuckle

HARDY ORNAMENTAL VINES

Useful for trellises, screening porches, covering fences, piles of rock, and the like.

**10 vines of one variety for 9 times the price of one.
5 for one-half the price of ten.**

Vine can be sent by Parcel Post. Add 5c each.

Bittersweet or Roxbury Waxwork. Good for covering trellis-work, trees, walls, etc. Orange flowers and showy crimson fruit. 50c; 5 for \$2.00.

Clematis Paniculata or Virgin's Bower. One of the best porch vines; rapid grower, quickly covering trellises with its handsome bright green foliage and profusion of star-shaped, white, sweet-scented blossoms. 50c; 5 for \$2.00.

Clematis Jackmani. The best purple clematis. Rapid climber. Very pretty. July to September. 75c.

Dutchman's Pipe. Rampant grower. Large leaves and curious pipe-shaped flowers. Does well in sun or shade. Give it rich, moist soil for best results. 75c.

Euonymous Radicans Vegetus, or Evergreen Bittersweet. A spreading, shrubby vine, useful on low trellises, rocks, walls, or the like and a very good ground cover, growing well in sunlight or shade. 3 yr., 50c; 4 yr., 75c.

Euonymous Colorata. Similar to preceding. Foliage turns bronze red in the Fall. 4 yr., 12-18 in., 50c.

Euonymous Radicans Variegated. Green and white leaves. 2 yr. No. 1, 25c each. Extra size 5 yr., 75c each.

Honeysuckle, Hall's Japan. A strong grower with white-yellow flowers in August. Suitable for covering trellises, banks and the like. 40c.

Honeysuckle, Scarlet Trumpet. Covered with scarlet trumpet-shaped flowers from June to September. 50c.

Ivy, Boston. A popular vine for public buildings of brick or stone. 2 yr., No. 1, 50c; 5 for \$2.25; 25 for \$10.00.

Ivy, Engelman's, or Clinging Woodbine. Finely divided leaves and strong tendril discs enabling it to cling to any surface, like Boston Ivy. A good wall covering. Should be used extensively. Hardy. 50c.

Lace Vine. (Polygonum Auberti). Truly a beautiful vine, with its clouds of erect sprays of lacy flowers. 75c.

Matrimony Vine. A hardy, rapid grower which is covered with brilliant crimson berries in autumn. 50c.

Trumpet Vine. A good climber with clusters of trumpet-shaped flowers. 50c.

Wisteria, Blue. Rapid growing, woody climber with drooping clusters that should be used extensively. 75c.

Wisteria, White. A rare variety of above; similar except the flowers are pure white. 75c.

Woodbine or Virginia Creeper. Sometimes called American Ivy. Well-known rapid growing climber. Foliage large, deep green, taking on vivid color in the fall. 40c; 5 for \$1.75; 25 for \$7.50.

ROSES

For a number of years, we have been offering mainly Hybrid Perpetual roses, on account of their greater hardiness. Because of their shorter blooming period, however, we have removed some of these from our list and are offering more Hybrid Teas. While the latter are not quite as hardy, we feel that as they bloom over such a longer period each summer they are worth running what little additional risk there is of winter injury. If our customers will take a little more care in protecting the bushes each fall by mounding the soil at least a foot high around each plant and putting on manure, straw, or evergreen boughs as **extra** protection, we feel sure they will get much more satisfaction. The bushes we offer below are strictly No. 1, 2 yr. plants which have been grown in the field, thus insuring vigor and maximum hardiness.

HYBRID TEAS

Price 60c each. Any 5 or more 50c each. Except as noted.

Rose bushes can be sent by Parcel Post. Add 5c per bush.

Gruss an Teplitz. A fragrant, scarlet, free-growing rose, which is in bloom nearly all summer.

Hadley. Velvety-crimson blooms. Very good for cutting.

Harrison Yellow. Old fashioned bright yellow. Shrubby grower. Do not prune, except to remove dead canes.

J. L. Mock. Brilliant pink. Very double.

Kaiserin Auguste Victoria. Most popular white Hybrid Tea. Very double and very fragrant.

Lady Hillingdon. Blooms continuously. Beautiful apricot-yellow. Probably the hardiest Tea rose.

Mme. Butterfly. Bright light pink, shaded with gold. A steady bloomer, particularly in the fall. Quite hardy.

Mme. Caroline Testout. Large, bright rose-pink. Very fragrant and one of the hardiest.

Ophelia. Long-pointed pearl-pink and gold buds. Pearly-white blooms which are produced in profusion.

PRESIDENT HERBERT HOOVER. A striking new variety with a most unusual color combination of maroon, orange, and gold. Long pointed buds, good stems, and continuous bloomer. Every rose-lover will want at least one, if not two or three plants of this variety. \$1.25 each; 3 for \$3.00; \$9.00 for 10.

Radiance, Pink. Produces abundance of brilliant rose-pink blooms of great fragrance and excellent form. Very popular and quite hardy.

Radiance, Red. Same good habits, blooming qualities, healthy foliage, and delightful fragrance as Pink Radiance, but brilliant cerise-red.





President Hoover

Souvenir de Claudius Pernet. Striking sun-flower yellow with large, glossy foliage. Quite hardy.

Talisman. A truly beautiful combination of brilliant orange-red buds and glowing yellow and copper shades in the blooms suffused with copper-red and orange rose shades. Especially good in spring and fall and surprisingly hardy. \$1.00 each; 3 for \$2.75; \$8.00 per 10.

HYBRID PERPETUAL ROSES

The leading variety in each color. 2 yr. No. 1 Field grown plants. Prices same as Hybrid Teas.

Frau Karl Druschki or White American Beauty. The very best white. A great bloomer, fine for cutting and will grow anywhere.

General Jacqueminot. Bright crimson. Known as the Jack Rose. Rich velvety, a truly wonderful variety. Like Frau Karl Druschki, needs careful pruning and thinning.

Mrs. John Laing. Soft pink. One of the very best hardy roses that was ever grown. A great bloomer.

Paul Neyron. Bright pink. A hardy, healthy variety which generally blooms again in the fall. Almost thornless. Produces very large flowers.





Hugonis, Golden Rose of China

HARDY RUGOSA ROSES

A hardy type which has a long blooming season, followed by the ornamental large red fruits. Curiously wrinkled foliage. Very spiny. Will grow almost anywhere.

F. J. Grootendorst. Bright red clusters of flowers, which are produced throughout the season. Ideal for hedges or massed planting. 2 yr. No. 1, 60c each; \$5.00 per 10.

Hansa. Dark purple red. Especially hardy. 2 yr. No. 1, 60c each; \$5.00 per 10.

Sir Thomas Lipton. Produces large, double, white blooms all season. 2 yr. No. 1, 60c each; \$5.00 per 10.

Rosa Rugosa White. Large single blooms. Same price as Red.

Rosa Rugosa Red. Identical with white, except in color. 2 yr. No. 1, 50c each; \$4.50 per 10.

A NEW YELLOW ROSE

Hugonis Rose, Golden Rose of China. The best single flowered rose and one of the best shrubs for general garden use. Fragrant yellow flowers $2\frac{1}{2}$ in. across, forming continuous bands of color on long gracefully arching canes. Blooms very early and is perfectly hardy.

Choice 2 yr. bushes, 60c each; 5 or more, 50c each.

Roses can be sent by Parcel Post. Add 5c per bush.

HARDY CLIMBING OR RAMBLER ROSES

These prices are for 2 yr. No. 1 field-grown plants. Do not confuse them with "seconds" or "thirds" sold at less prices.

2 yr. plants, 50c each, \$4.50 for any 10 (except as noted). Add 5c per bush if to be shipped by Parcel Post.

American Pillar. Great clusters of single pink flowers with a white eye. Vigorous grower.

Climbing American Beauty. An unusually hardy variety, suited for northern exposures in any locality. Beautiful rosy crimson flowers on separate stems, suitable for cutting. Has very good foliage and is a very satisfactory variety. Not a vigorous climber.

Dorothy Perkins. Beautiful, large clusters of clear, shell-pink flowers. Thrifty and rapid grower, suitable, like Excelsa, for growing on trellises, pillars, posts, walls, or the like.

Dr. Van Fleet. By vote of the members of the American Rose Society, acclaimed the Best Climbing Rose. Beautiful big clusters of pink flowers. Vigorous grower. Glossy, healthy, dark green foliage.

Excelsa. The very best double red rambler. A decided improvement on Crimson Rambler, bearing fully as many flowers and retaining its foliage in a much healthier condition. Produces an abundance of large, double flowers. Vigorous grower.

Gardenia. Covered with rich yellow buds which open to creamy white. Vigorous grower with excellent foliage.

Mary Wallace. Vigorous, rapid grower. Long-stemmed pink blossoms, good for cutting.

Paul's Scarlet Climber. The most vivid of all the climbers. This is a new variety and it is fast becoming the most popular on account of its wonderfully brilliant color. Has good, healthy foliage, is a vigorous grower, and produces an abundance of scarlet flower clusters. You will make no mistake if you plant this variety.

PRIMROSE. YELLOW. A new variety acclaimed as the most satisfactory yellow climbing rose for the North. 85c; 3 for \$2.25.

White Dorothy Perkins. The best white climber. Similar in all respects to the Pink Dorothy Perkins except in color. Equally desirable in every way.

Wichuraiana. A trailing variety which is almost evergreen and which makes a good ground-cover. Glossy leaves and clusters of pure white flowers.

POLYANTHA OR BABY ROSES

A charming class of roses, seldom growing over 15-18 inches high, and producing an abundance of clusters of small, perfectly formed flowers all summer long, until cold weather. Very useful and attractive in beds or borders and fine for cutting. Very hardy.

2 yr. No. 1 bushes, 60c each. Any 5 or more, 50c each. Add 5c per bush if to be shipped by Parcel Post.

Ellen Poulsen. Brilliant rose-pink. Very free flowering. Vigorous grower.

Erna Teschendorff. Bright red. Very popular.

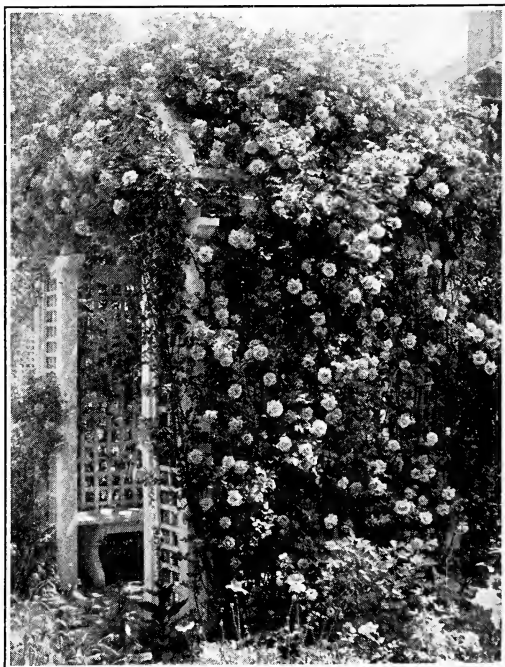
Ideal. High clusters of small dark red flowers. Best dark red.

Katharina Zeimet. Large clusters of small, full, double, white flowers.

La Marne. Bright salmon rose.

Miss Edith Cavell. A profusion of brilliant crimson flowers with white center. Borne in great abundance.

Orleans. Bright geranium red. Bushy plants covered with blossoms all season. Very popular.



Primrose Climber



CHOICE PEONIES

Everybody loves peonies. They are perfectly hardy and require no special care or protection. Use a little lime on the soil before planting, if convenient, to make sure it is sweet. Fertilize with wood ashes and sheep manure in the spring, and with bone meal after flowering, or work 1 pint (1 lb.) of Vigoro around each plant when buds appear. See page 35.

On the basis of ten points as a perfect score, the American Peony Society, rates all our varieties, except one, at over seven points, and most of them over eight points.

September is the best month for transplanting, but plants may also be moved with good results in the spring, if moved early.

Our plants are strong three to five eye divisions.

For Parcel Post add 5c for each root; 4c each when six or more are ordered.

Special Offer No. 1—Three plants, one red, one pink, one white (our selection) for \$1.00, post paid.

Special Offer No. 2—Any 3 50c varieties post paid for \$1.25.

Early April and late summer shipment.

WHITE VARIETIES

Early

Duchess de Neymours. Cup-shaped, sulphur white, 50c.

Mid-Season

Festiva Maxima. Large ivory white, red splash, 50c.

Albatre. Ivory white, and very pretty, 50c.

Madame Crousse. Beautiful, large white flower, 50c.

Mlle. Rousseau. Large, full, finely shaped flowers, 50c.

Late Mid-Season

Duc de Wellington. Vigorous, tall, Pyramidal flowers, 50c.

Avalanche. Ivory white, convex flowers, red fleck, \$1.00.

Baroness Schroeder. One of the best. Large white flowers with baby-pink center. Strong grower. Profuse bloomer. \$1.00.

Late

Couronne d'Or. Large pure white, golden stamens, 50c.

Tourangelle. Fragrant, creamy white with salmon, \$1.00.

RED VARIETIES

Early

Officinalis Rubra. The old-fashioned early red, 75c.

Mons. Baral. Lilac Rose, 50c.

Late Mid-Season

Felix Crousse. Large, deep, ruby red. Best red, 75c.

PINK VARIETIES

Early

Early Pink. The earliest. Good bloomers. 50c; 3 for \$1.00.
Madame Calot. Hydrangea pink. Great bloomer. 50c.

Mid-Season

Madame Geissler. Very large, well-formed, showy. 50c.
Eugenie Verdier. Flesh center, lighter outer petals. 50c.

Late Mid-Season

Madame Emile Galle. Very beautiful, shell pink. 75c.
Madame Boulanger. Rose, shading to silvery flesh. Very large and fine. 75c.

Late

Madame Lebon. Cherry pink. Large, full blooms. 50c.
Mlle. Leonie Calot. Salmon pink, shading to flesh. Great bloomer. 50c.
Albert Crousse. Large, shell pink, vigorous. 50c.

GLADIOLAS

Any good garden soil will raise good "Glads" if you plant good bulbs. Set the bulbs stem-end up, from three to five inches apart and four to six inches deep, covering them gradually as the tops come up through the soil (as in planting asparagus roots). Deep planting prevents the flowers from falling over and makes staking unnecessary. At least fifty days are required from planting to blooming. For a succession of blooms, do not plant all bulbs at one time.

Experiments at Cornell show that best results are secured with gladiolas when the bulbs are procured not very far away—which is another good reason why you may well get your bulbs from us, here in the heart of New England.

In cutting blooms use a sharp knife and leave at least two or three leaves on the plant.

When the leaves turn brown in the fall, lift the bulbs, dry them in the sun, and after removing the old shrivelled bulb, store in a cool dry place where they cannot freeze.

The following varieties are some of the most beautiful. They will delight the eye and gladden the heart of any flower-lover.—**Please Order Early.**

For a ready-mixed assortment, we especially recommend the following:

Exonian Mixture. A good assortment of beautiful varieties. 25c per doz.; 50 bulbs for 75c; \$1.00 per 100.

Good-As-Grow Mixture. A very good selection of varieties. Smaller bulbs than Exonian Mixture, but guaranteed to bloom. 50 bulbs for 50c; 100 bulbs for 75c.

On all bulb orders amounting to \$1.00 we pay the postage.
 (Excepting C. O. D. shipments.)

Otherwise add 5c for each 12 bulbs.

Six bulbs of one variety for one-half the dozen price.
 Small but flowering size, bulbs at ½ the price of full-size bulbs.

	Each	Doz.
Ah! Pale apricot, pink and yellow; beautiful opening-bud like Ophelia rose.....	\$.05	\$.50
Alice Tiplady. (Prim.*) Orange saffron. Much admired05	.35
American Beauty. Very large, brilliant flowers..	.15	1.00
Anna Eberius. Large, deep velvety purple.....	.10	.75
Baron Hulot. The best dark blue.....	.10	1.00
Byron L. Smith. Lavender pink, on white ground. Very beautiful variety10	1.00
Chateau Thierry. Bright scarlet red.....	.10	1.00
Crimson Glow. Finest scarlet crimson.....	.10	.75
Dorothy McKibbin. Apple blossom pink. Ruffled. Very early. 3 for 25c.....	.10	1.00
Dr. Bennett. Large, beautiful, fiery red.....	.15	1.50
Dr. Van Fleet. Rose-pink. Extra early.....	.10	1.00
E. J. Shaylor. Beautiful, deep rose-pink. Early Ruffled. 3 for 25c.....	.10	.75
Elizabeth Tabor. Rosy-pink with crimson blotch. Extremely early.....	.10	1.00
Empress of India. Very dark, velvety-red featherings of American Beauty pink.....	.15	1.50



	Each	Doz.
Evelyn Kirtland. Rosy-pink. Tall grower.....	\$.10	\$.75
Fern Kyle. Large, handsome, showy white.....	.15	1.50
Giant Myrtle. Extra large. Showy. Soft pink...	.15	1.50
Giant Nymph. LaFrance pink. Very tall.....	.15	1.50
Gold. One of the very best yellows.....	.10	1.00
Golden Girl. (Prim.*) Deep Yellow. Very pretty. 3 for 25c.....	.05	.50
Golden Princess. Deep, clear, golden yellow.....	.05	.35
Halley. Showy. Early. Salmon pink. 6 for 25c..	.10	.75
H. C. Goehl. Large, pinkish white, with crimson blotch25	2.50
Henry Ford. Striking, smoky dark purple.....	.15	1.00
Herada. Clear mauve. Truly handsome.....	.10	.75
Le Marechal Foch. Beautiful. Early. Large. Pink. 4 for 25c.....	.05	.35
Lily White. One of the best whites. Early.....	.05	.35
Louise. Bright lavender with wine colored blotches in throat.....	.10	.75
Marie Kunkard. Ruffled pure white.....	.15	1.50
Marshal Foch. (Kunderd's). Ruffled salmon pink. Very showy, large flower.....	.15	1.50
Mary Fennell. Deep lilac. Yellow throat.....	.05	.50
Mary Pickford. Delicate creamy white. Throat softest sulphur yellow. Very beautiful.....	.05	.50
Ming Toy. (Prim.*) Showy, deep buff. Yellow throat. Very choice15	1.50
Mrs. Dr. Norton. Beautiful, tall, white. Edges suffused with pink.....	.10	.75
Mrs. F. C. Peters. Amaranth, pink, with purple blotch. Slightly ruffled. Tall.....	.15	1.50
Mrs. Francis King. Flaming salmon red.....	.10	.75
Mrs. Frank Pendleton. Light pink. Showy red blotch. Slightly ruffled. Tall.....	.10	1.00

	Each	Doz.
Mrs. H. E. Bothin. Geranium pink, scarlet center. Ruffled	\$.15	\$1.00
Mrs. Leon Douglas. Begonia rose, striped scarlet. Extra large and tall.....	.15	1.00
Mrs. Watt. Brilliant wine color.....	.10	.75
Mr. W. H. Phipps. Tall, beautiful flesh pink...	.15	1.50
Nancy Hanks. Peach-red to orange pink.....	.15	1.50
Orange Flame. A wondrous, glowing, vermilion orange. Very large. Blooms magnificently ruffled10	1.00
Orange Queen. Clear copper orange.....	.15	1.50
Peace. Beautiful large white. Tinted pink.....	.10	.75
Pink Wonder. Strong growing, handsome light rosy pink. Very large.....	.15	1.50
Purple Glory. Deepest, velvety maroon with almost black blotches. Ruffled, fine, strong...	.15	1.50
Rev. Ewbank. Exquisite porcelain blue.....	.15	1.50
Richard Diener. Pale geranium pink. Ruffled...	.15	1.50
Rosalia. (Prim.*) Ruffled. Yellow, blushed orange. Magnificent.....	.10	1.00
Rose Ash. Corinthian red, fading to ashes of rose on outer edges. Very distinctive.....	.10	1.00
Scarlet Princeps. Rich glowing scarlet. Large flower and spike.....	.15	1.00
Sweet Lavender. Early flowering. Lavender with maroon blotch10	1.00
Thomas T. Kent. Shell pink, overlaid with strawberry. Crimson streak on petals.....	.10	1.00
Twilight. Ruffled. Beautifully blushed creamy buff. Strong growed and very fine. 2 for 25c.	.10	1.00
White Wonder. Large. Pure white. Vigorous...	.10	1.00
Wilbrink. Dainty pale pink. Early, large, and very pretty05	.35
*“Prim.” Primulinus Hybrids. The Orchid Gladiolas. Smaller and daintier, with graceful, slightly hooded flowers, in exquisite shades.		

LEMON LILIES

Beautiful single yellow variety, 20c per plant, 3 for 50c, \$1.50 per dozen. (By mail, 25c each; \$1.75 per dozen.)

We want you to be one of our satisfied customers. We aim to more than please and we want you to send us your order for nursery stock not only this year, but next year, and in the years to come.



Lemon Lily



Bleeding Heart

HARDY PERENNIALS

It matters not how small your garden, nor whether you own your own home or not, every flower lover should have some perennials. They are a great source of pleasure, requiring very little work, and yielding an abundance of flowers in great variety of form and color. Buy some of these especially choice varieties and you will be relieved of planting seeds or annual plants each year, and at the same time you may have flowers to admire in the garden and flowers to cut for the house.

If you are not familiar with the varieties and care to have us, we shall be pleased to send you an assortment of some of the best kinds.

Those varieties marked * are suitable for rock-garden planting if desired.

Except where otherwise noted, we can supply the following list of plants at 20c each; \$2.00 per doz., comprising not less than six plants of one variety. (By mail, 25c each; \$2.20 per dozen.)

Please bring the total of your order to at least \$1.00.

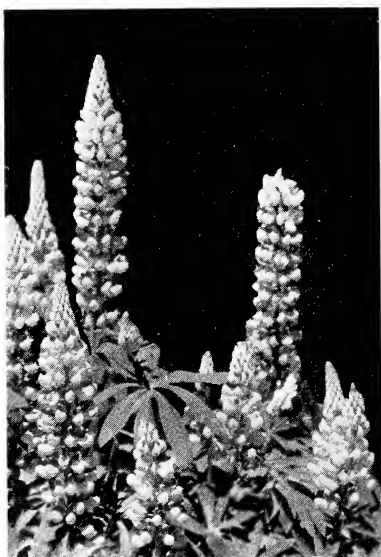
- ***Achillea**. The Pearl. 2 ft. Yields double white flowers all Summer long, suitable for cutting.
- Aconitum**. Autumn Monkshood. Dark blue. September to November. 3-4 ft., 25c; \$2.50 per doz.
- Aconitum**. Sparks' Variety. Very dark blue. July to August. 5-6 ft., 25c; \$2.50 per doz.
- Agrostemma**. (Mullein Pink). 2 ft. Showy white foliage. Many pink-like flowers.
- ***Alyssum**. Basket of Gold. A low, gray-leaved plant, covered with golden flowers in May.
- Anchusa**. 3-5 ft. Gentian-blue flowers in May. 25c.
- Anthemis**. Hardy Marguerite. 2 ft. Excellent for cut-flowers all Summer. Spreads rapidly.
- ***Ajuga** (*genevensis*) Geneva Bugle. 6 in. Creeping rock-garden or border plant. Deep blue-flowers in May and June. 25c; \$2.50 per doz.
- ***Arabis**. Rock Cress. 6 in. Covered with white flowers in April and May.
- ***Armeria** (*Maritima*) Thrift. 6 in. Evergreen tufts of narrow green foliage covered in May and June and again in the fall with pink flowers in dense heads.
- Artemisia**. Silver King. 30 in. Bright silver-colored stems and foliage. Useful in perennial border or among shrubbery. May be dried for Winter bouquets or used fresh. 25c; \$2.50 doz.

- ***Aster Alpine.** 6-10 in. Showy blue flowers in May and June.
- Aster. Blue Gem.** 4-5 ft. Semi-double dark blue flowers in September and October.
- Aster. Pink Perfection.** 3-4 ft. September and October.
- Aster. Ryecroft Pink.** 4-5 ft. Bright rosy-pink. Free-branching. Sept. to Oct.
- Astilbe.** 2-4 ft. Many feathered heads of flowers in June and July. 25c.
- ***Aubretia. Rainbow Rock Cress.** 6 in. Covered with bright flowers in Spring and early Summer.
- Baptisia. (False Indigo).** 2 ft. Dark green, deeply-cut foliage, and spikes of dark blue flowers. June.
- Bee Balm. (Monarda).** 2 ft. Bright scarlet. July-August.
- ***Bleeding Heart. Dwarf.** 12-18 in. Fern-like foliage and drooping, purplish red flowers borne all summer. 25c; \$2.50 per doz.
- Bleeding Heart.** 18-24 in. Popular old-fashioned plant with red, heart-shaped flowers in long racemes. May. 50c; 60c by mail; 5 or more, 40c each; 45c by mail.
- Bocconia (Plume Poppy).** 6-8 ft. Creamy white cones of flowers. July and August. Very rank grower.
- Boltonia.** 4-6 ft. Many pink aster-like flowers in bloom at once. August to October.
- ***Bugle.** See Ajuga.
- ***Buttercup. Double.** 6-8 in. Bright golden, double flowers in May and June.
- ***Calamintha.** 6 in. Aromatic plant with spikes of purple flowers in June.
- Centaurea**—See Corn Flower.
- ***Candytuft, Hardy.** 8-10 in. Evergreen foliage and dense heads of pure white flowers in Spring.
- Canterbury Bells. (Biennial).** Blue, rose, white. 25c. \$2.50 doz.
- ***Columbine.** 2 ft. Beautiful and graceful flowers in early Summer. White, blue and rose.
- Coreopsis.** 2 ft. An abundance of rich yellow flowers throughout the Summer. Very good for cutting.
- Cone Flower, Purple.** 3 ft. Purple-red flowers with cone-shape center. All summer.
- Corn Flower.** 2 ft. Violet-blue flowers from July to September.
- ***Crucianella. Crosswort.** 6-9 in. Prostrate plant with flower-heads of dainty pale rose-pink. June-September.
- Daisy, Persian. (Pyrethrum).** 2 ft. Very pretty red, pink, and white flowers with fern-like foliage.
- Daisy, Shasta.** Large with flowers in Summer and Fall.



Gypsophila

- Doronicum Leopard's Bane.** 1½-2 ft. Attractive large yellow flowers on stiff stems. Good for cutting. May-June.
- ***Flax, Hardy.** 2 ft. May and June. Beautiful blue flowers.
- ***Forget-Me-Not.** Blue flowers from early spring until Autumn.
- Foxglove. (Biennial).** Blue, Rose, White. 25c, \$2.50 doz.
- ***Funkia Plantain Lily.** 18 in. Useful foliage plants in beds, borders, and rock-work, with pale lilac flowers. Green-leaved and Variegated. 25c each; \$2.50 per doz. 30c by Mail.
- Gallardia. Blanket Flower.** 2 ft. Showy crimson and orange flowers with dark red centers. June to frost.
- Geum.** 15-18 in. Showy bright colored flowers. May to July.
- Golden Glow.** 6 ft. Abundance of yellow flowers, July-September. 10c. \$1.00 per dozen.
- Gypsophila. Baby's Breath.** 2 ft. Abundance of small, white flowers. July-August. 25c; \$2.50 doz.
- Gypsophila. Bristol Fairy.** 2-3 ft. Double. Vigorous grower with large flower clusters. If kept cut, will bloom all season. 50c each. \$5.00 per doz.
- Helienium, Autumnale. (Sneezewort).** 5 ft. Bronze flowers in August and September.
- Helianthus. Hardy Sunflower.** 5 ft. Decorative and good for cutting.
- Hens and Chickens**—See Sempervivum.
- ***Heuchera (Coral Bells).** 18 in. Profusion of coral red spikes in July and August. Fine for cutting. 35c; \$3.50 doz.
- Hibiscus. Mallow Marvels.** 5-6 ft. Hollyhock-shape flowers which do well in any soil. July-September.
- Hollyhock.** 5-7 ft. Useful, tall-growing plants. White, pink, rose, yellow. Single and double. 25c; \$2.50 doz.
- Iris. Bearded.** May and June. Blue, white, yellow and purple. See special list, Pages 28 and 29.
- ***Iris. Dwarf.** Grows 6-12 in. high and blossoms early in May. 25c; \$2.50 per doz.
- Iris. Japanese.** See special list on Page 29.
- Iris. Siberian.** Deep blue flowers with grass-like foliage. 25c; \$2.50 per doz.
- ***Ivy, Kenilworth.** Trailing plant suitable for baskets, pots, and rock-work. Blue flowers with yellow throat.
- ***Jacob's Ladder. (Polemonium).** 18 in. Bell-shape blue flowers. May-June.
- Lantern Plant, Chinese.** Dense, bushy plant, bearing bright scarlet "lanterns" suitable for drying for Winter decorations. 25c; \$2.50 doz.
- Larkspur.** Tall spikes of beautiful blue during the Summer. Light and dark. 25c; \$2.50 dozen.
- Lavender.** 18 in. Fragrant. Blue.
- Liatris. Kansas Gayfeather.** 3-5 ft. Long spikes of rich purple flowers in July and August. Very pretty. Good for cutting.
- Lily. Day-White.** 1½-3 ft. Large, golden-green leaves. Fragrant. 50c; 5 for \$2.00; \$4.00 doz.
- Lily-of-the-Valley.** Beautiful, graceful flowers about Memorial Day. Clumps, 40c each; 45c by mail.
- Lily. Lemon.** 3-4 ft. June-July. Beautiful, clear, yellow. Fine for cutting. 20c, 3 for 50c. See Page 22.
- Lupine.** 3 ft. Beautiful spikes. Blue, Pink, White. June.
- Lychuis.** 1 ft. Brilliant red flowers in May and June.
- Lythrum. Loose Strife.** 3 ft. Spikes of rosy flowers. July to September.
- ***Myrtle**—See Vinca.
- ***Nepeta.** 12 in. Blue-gray foliage covered with pale mauve flowers from June to September.
- Peonies.** See special list, Pages 19, 20.
- Penstemon. (Beard Tongue).** 2 ft. Mixed. Showy spikes of flowers throughout the Summer.
- Phlox.** See special list, Page 28.
- ***Phlox. Amoena.** 4-6 in. Bright pink flowers in dense heads. April-May.
- ***Phlox. Moss Pink (Subulata).** 3-6 in. Low-spreading, moss-like plants covered with flowers in April and May. Separate colors, Pink or White.
- ***Phlox Subulata. Vivid.** Bright rose. 25c; \$2.50 per doz.
- Physostegia. False Dragonhead.** 2-3 ft. Strong spikes of delicate pink flowers in June-July.
- ***Pink Cheddar.** 3 in. Rosy pink flowers in May and June.
- ***Pink. Garden.** Both single mixed and double mixed.



Lupines

- ***Pink, Maiden.** Creeping variety with medium sized pink flowers. June-July.
- Platycodon.** 2 ft. Many fine flowers. July and Oct.
- ***Polyanthus.** 9 in. Free-flowering. Showy. Early Spring.
- Poppy, Oriental.** 3 ft. Immense and brilliant red flowers in May and June. Should be planted early in the Spring or in the Fall. 25c; 30c by mail.
- ***Poppy, Iceland.** 12 in. Many brilliant flowers useful for cutting. Blooms throughout the season if not allowed to go to seed.
- Potentilla (Cinquefoil).** 18 in. Profusion of rosy-red flowers. June-August.
- ***Primula. Primrose, English.** 6-9 in. One of the earliest spring flowers. Bright yellow. Fragrant.
- Salvia.** 3-4 ft. Profusion of sky-blue flowers in August-Sept.
- Saxifrage.** 1 ft. Very effective deep green foliage. Rose-pink flowers in early Spring.
- Scabiosa. Blue Bonnet.** 3 ft. Soft lavender blue. Fine for cutting.
- Sea Holly. (Eryngium).** 2 ft. Spiny, cut-leaf foliage and steel-blue flowers in July-August.
- ***Sea Pink. (Armeria or Thrift).** 9 in. Rosy pink flowers all Summer. Good edging plant.
- ***Sedum Acre. Golden Moss.** 2-3 in. Useful edging borders as well as in rockeries. Bright yellow. May-July.
- ***Sedum Ewersi.** 2-3 in. Trailing plant with light green leaves. Pink flowers in Sept.
- ***Sedum Kamtschaticum.** 8 in. Compact-grower with star-shape golden yellow flowers in July-Aug.
- ***Sedum Lydium.** 1-3 in. Evergreen species with bronze foliage. Pink flowers in June.
- ***Sedum Max Stahli.** 2-3 in. Trailing plant with pinkish stem and yellow bloom.
- ***Sedum Sarmentosum.** 6 in. Pale green leaves. White flowers May-July.
- ***Sedum Stoloniferum.** 6 in. A flat trailing variety with pink flowers in July-Aug.
- ***Sedum Stoloniferum Coccineum.** 6 in. Crimson flowers July-Aug.
- ***Sempervivum. Houseleek. (Arachnoides).** Spider-Web. Network of fine threads from leaf to leaf. Red flowers.
- ***Sempervivum. (Globiferum). Hens and Chickens.** Globe-shape plants surrounded by smaller rosette-like plants.
- ***Sempervivum. (Fimbriatum). Fringed Houseleek.** Leaves tipped with a tuft of hairs. Flowers bright red.
- ***Silene Schafta. Autumn Catchfly.** 4-6 in. Splendid border or rock plant. Masses of pink flowers from June to Sept.

- ***Snow-in-Summer. (Cerastium).** 1 ft. Covered with bell-shaped white blossoms in May and June.
- ***Soap-Wort.** Low-growing plant with small, bright rose flowers from May to August.
- ***Spirea Filipendula.** 18 in. Creamy white flowers in May-June.
- Statice.** 1½-2 ft. Large, feathery heads of minute purplish blue flowers. Fine for drying.
- Stokesia, Cornflower Aster.** 18 in. Bears many bright lavender blue blossoms. June-September.
- Sunflower. Orange.** 3 ft. July-August. Beautiful deep golden-yellow flowers suitable for cutting.
- Sweet Rocket. (Hesperis).** 2-3 ft. Spikes of sweet-scented flowers in May and June.
- Sweet William.** Very sweet flower heads with carnation-clove fragrance. June-July. Scarlet. White Pink.
- Sweet William. Everblooming Hybrid.** Sweet William crossed with Annual Pinks. Produces an abundance of intense crimson-scarlet flowers.
- ***Thyme Citriodorus. Creeping Thyme.** 4 in. Lemon-scented foliage.
- ***Thyme Serpyllum. Mother-of-Thyme.** Dense mats of dark green foliage with dark red flowers.
- ***Thyme Serp. Coccineus.** Dark green foliage and bright red flowers.
- ***Trollius. Earliest of all. Globe Flower.** 18 in. Dark green foliage and showy orange-yellow flowers. Free-flowering. April-May. 50c each; \$5.00 doz.
- ***Tunica.** Low-growing tufted plant with light pink flowers all Summer.
- Valeriana. (Garden Heliotrope).** 3-4 ft. Showy, dense clusters of heliotrope-scented flowers in June and July. 25c; \$2.50 doz.
- ***Veronica, Dwarf. (Rupestris).** 4 in. Spreading plant with deep blue flowers in May-June.
- Veronica. Spicata Speedwell.** 2-3 ft. Spikes of beautiful deep blue flowers. July-September. Very pretty.
- Veronica. Longifolia Subsessilis.** 2 ft. Compact flower spikes of deep blue. Distinct foliage. July-August. 25c each; \$2.50 per doz.
- ***Vinca. Myrtle or Periwinkle.** Glossy, evergreen foliage. Extensively used for a ground cover, especially in shady places.
- ***Viola, Jersey Gem.** Covered with dark blue flowers from May to November. 25c; \$2.00 per doz.
- ***Viola, Royal Gem.** A new variety and an improvement over the color of the popular Jersey Gem. 65c. 3 plants for \$1.75; \$6.00 per doz.
- Yucca. Adam's Needle.** 5 ft. Spikes of fragrant, creamy white flowers. June-July. Evergreen, sword-like foliage. 25c; 30c by mail.

PRUNING SERVICES

We are Registered Arborists with the Forestry and Agricultural Department of the State of New Hampshire and are prepared to prune orchard and shade trees within convenient distance of Exeter.

Much damage can be done to trees and shrubs by injudicious pruning. We suggest that you give this careful consideration and employ trained men.

DELIVERY AND PLANTING SERVICE

Wherever desired, we are glad to attend to the planting of such shrubs, trees, plants, etc., as we may furnish any of our customers within convenient trucking distance of Exeter. Our trucks make several trips to Portsmouth, Manchester, Concord, Dover, Rochester, Newburyport, Haverhill, Amesbury, York Harbor, and many other nearby points in Maine, New Hampshire and Massachusetts each season. Estimates gladly furnished to any point on request.

PHLOX

20c each; \$2.00 per dozen. By mail, 25c each; \$2.20 per dozen, **except as noted.**

B. Comte. 30 in. Mid-season to late. Light aster purple to deep purple. Intense lustre. Amaranth purple eye.

Beacon. Brilliant cherry red.

Bridesmaid. White with large crimson eye.

Eclairer. 30 in. Early. Rhodamine purple with deep scarlet eye. Slightly fragrant.

Enchantress. Bright salmon pink. Dark red eyes.

Evangeline, Pink. Offered in place of Elizabeth Campbell on account of improved color and form. Larger individual florets of very good substance.

Evelyn. Rich salmon-rose. 25c each; \$2.50 per doz.; 30c by mail. \$2.70 per doz.

Fireglow. Brilliant Orange-scarlet with darker center. 25c each, \$2.50 per doz. 30c by mail. \$2.70 per doz.

Fraulein von Lassbury. 2-2½ ft. August. Pure snow-white.

G. A. Strolein. One of the best scarlets. Mid-season. Medium height. 25c each; \$2.50 per doz. 30c by mail.

La Vague. 2 ft. Mid-season to late. Shades from phlox pink to mallow purple. Very vigorous. Heavy, broad, green foliage.

Le Soleil. Soft rose with darker center. Medium height. Abundant bloomer.

Lothair. Bright crimson.

Miss Lingard. 30 in. Early white with faint red eye. Blooms very early and again later. Glossy leaves.

Mrs. Jenkins. 30 in. Early. One of the best whites.

Mrs. Scholten. Medium height. Mid-season. Deep blood-red or crimson. 25c each; \$2.50 per doz. 30c by mail.

Prof. Went. Medium to tall, velvety carmine red.

Rhineland. 30 in. Mid-season. Begonia rose, Rhodamine purple eye. Slightly fragrant.

R. P. Struthers. 2 ft. Mid-season. Rose color with crimson eye. Slightly fragrant. 25c; \$2.50 doz.; 30c by mail; \$2.70 per doz.

Rynstroom. Large, beautiful, brilliant rose. Tall. Mid-season to late.

Thor. 30 in. Mid-season to late. Deep salmon pink, overlaid with scarlet. Purple eye. Strong fragrance.

Wm. Robinson. Large salmon flowers. Recommended as one of the best by the Horticultural Experimental Farm of Canada, with Eclairer, Elizabeth Campbell, Miss Lingard, and Thor on our list.

Dwarf Phlox. See under hardy perennials.

BEARDED IRISES

Commonly, though erroneously, called German Iris. These May-flowering, vigorous-growing plants thrive in well-drained, sunny spots. See them in bloom and you will know at once why they are increasing in popularity each year. In planting, barely cover the roots, and mulch the first Fall to prevent heaving.

Iris may be transplanted in the Spring, in the Summer or in the Fall—in short almost any time when the ground is not frozen.

Our stock of Iris is large, and a visit to our nurseries at blossoming time will well repay any who like to see them in bloom. We shall be pleased to have you call.

SPECIAL OFFERS BEARDED IRISES

20c varieties, 3 of one variety \$.50; 6 for \$.90; \$1.50 for 12

35c varieties, 3 of one variety \$1.00; 6 for \$1.75; \$3.00 for 12

50c varieties, 3 of one variety \$1.25; 6 for \$2.25; \$4.00 for 12

By mail, add 5c per plant, or 3c each when 5 or more are ordered, or 25c per dozen.

(S. signifies "standards" or upright petals; F., "falls" or drooping petals.)

Albert Victor. S., soft blue; F., beautiful lavender. Large and fine. 20c.

Ambassadeur. S., lavender. F., deep red-violet with orange beard. The aristocrat of the irises. Large and showy. 35c.

Anna Farr. S., white, bordered pale blue. F., white. Good height and form. 35c.

Aurea. Beautiful chrome yellow. Late. 20c.

Flavescens. Sulphur yellow, brown veins on falls. 20c.

Florentina. White, blue tint, large, fragrant. Early. 20c.

- Her Majesty.** S., old rose; F., white, striped with rosy-lilac. Large. 20c.
- Kochi.** S. and F. Rich claret-purple. Early and handsome. 20c.
- La Neige.** Pure white. Good grower and very pretty. 20c.
- Lent A. Williamson.** S., violet. F., very large, velvety-purple. Brilliant orange beard. 35c.
- Lohengrin.** S. and F. Cattlya-rose. Large, strong grower and great bloomer. 20c.
- Loreley.** S., light yellow; F., ultramarine with cream. 20c.
- Madame Chereau.** White with blue edge. 20c.
- Massasoit.** S. and F., distinct shade of metallic Venetian blue. 35c.
- Mithras.** S., light yellow. F., brilliant wine-red with narrow border of deep yellow. Very showy. 20c.
- Monsignor.** S., rich, satiny violet. F., velvety purple-crimson with lighter margin. Large flowers. 20c.
- Mother-of-Pearl.** S. and F., bluish lavender. A wonderful new variety which suggests its name. A great bloomer. Tall and vigorous. 35c.
- Mrs. Alan Gray.** Free blooming, delicate rose mauve. 20c.
- Mrs. H. Darwin.** White with purple veins. 20c.
- Opera.** A great blooming, reddish purple. Very bright. 35c.
- Pallida Dalmatica.** Tall, lavender blue. 20c.
- Perfection.** S., light blue. F., dark velvety black with orange beard. 20c.
- Princess Victoria Louise.** S., sulphur yellow. F., rich plum, bordered cream. 20c.
- Prosper Laugier.** S., light bronze-red. F., velvety ruby-purple. Beard white with yellow tip. Handsome. 20c.
- Prospero.** Pale lavender standards; rich, deep violet-purple falls. 35c.
- Queen Alexander.** S., fawn. F., lilac. Yellow beard. 35c.
- Queen-of-May.** S. and F., lovely, soft, rosy-violet, nearly pink. 20c.
- Rhein Nixe.** S., white. F., violet blue with white edge. Tall. Large. 20c.
- Rose Unique.** Bright old rose, almost pink. Very beautiful. 35c.
- Seminole.** S., dark violet rose. F., rich, velvety crimson. Orange beard. 35c.
- Sherwin Wright.** Golden yellow. Free-flowering, vigorous grower. 20c.
- Souvenir de Madame Gaudichau.** Very rich velvety purple. One of the very best. Tall and of wonderful character. 50c.
- Sunset.** S. and F., lavender bordered yellow. Yellow beard. A superior variety. 35c.
- White Knight.** Almost pure white. 35c.
- White Queen.** Snow white, a profuse and long-bloomer. 35c.

JAPANESE IRIS

As garden-lovers are getting to know the Japanese Iris they are becoming very popular. This is deservedly so, for they are truly beautiful. While they like plenty of moisture in May and June, before blooming, they must have good Winter-drainage.

In addition to the varieties listed here, we have other beautiful kinds which we offer at 50c each.

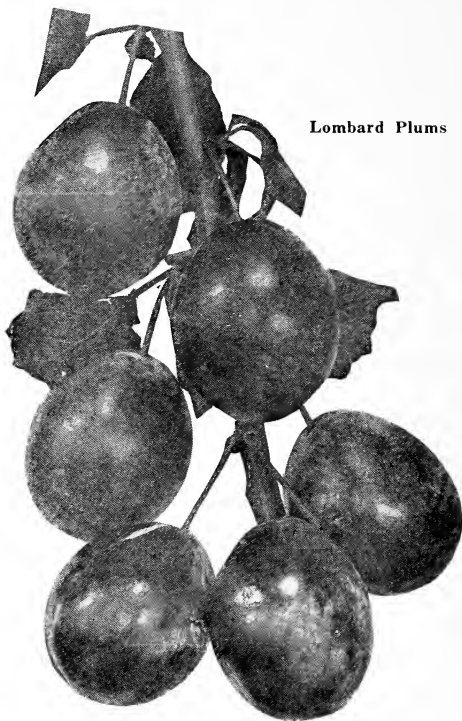
Orders filled in the Spring, Summer and early Fall.

35c each; \$3.50 per doz., except as noted.

By mail, add 5c each.

Description of Varieties

- No. 2 Falls lavender. Stands wine color. 3 petals. Large and fine.
- No. 105 Six petals, bright crimson maroon.
- No. 112 Dark plum purple with yellow center bar and white halo radiating white lines. Center petaloids white. 3 petals.
- No. 129 Falls, yellow blotch at center, shading into blue. Stands light lavender. Very pretty.
- No. 130 Beautiful vinous purple veined white, orange blotch. Stands white, tipped purple. 3 petals.
- No. 134 Royal purple, shaded crimson. 6 petals.
- No. 143 Deep wine color. Three petals. 25c each; \$2.00 per doz.
- Gold Bound.** Large pure white; yellow center. Six petals. 50c.
- White with Porcelain Blue lines;** 6 petal. 75c.
- Mottled.** 6 petal. 75c.



Lombard Plums

FRUIT TREES BY MAIL

With the exception of peach trees, only Dwarf Fruit Trees can be sent by mail.

PLUM TREES

2 Yr. Trees, 5-6 ft., 75c each; 3 or more, 60c each.
 Any 10 for \$5.00; any 5 or more at 10 rate.
 Varieties arranged in order of earliness.
 For best results plant more than one variety.

JAPANESE TYPE

G—Red June. Medium size, cherry red.
G—Abundance. Cherry red, sweet, rich. Eating or canning.
G—Burbank. Cherry red. Enormously productive.
October Purple. Large, good grower, good quality.

EUROPEAN TYPE

Bradshaw. Large, reddish yellow, dessert variety. Early.
Lombard. Purple, medium size, good quality.
Shropshire Damson. Deep blue, canning variety. Late.

PEAR TREES

2 Yr. Trees, 5-7 ft., 75c each; any 3 or 4, 60c each
 \$5.00 for any 10; any 5 or more, at 10 rate.

For best results plant more than one variety.

G—Clapp's Favorite. Best early pear. August.
L—Bartlett. Very popular. September.
L—Beurre Bosc. A Fall variety. Very profitable for market.
 Melting. Pleasant.
Seckel. Fall. Rich and highly flavored. Small.
Worden Seckel. Medium size. Juicy, buttery.
Duchess (d'Angouleme.) Large, greenish yellow. October.
L—Sheldon. Large, round, russet. Rich and spicy. Nov.
L—Beurre d'Anjou. Large, high quality. December.
Lawrence. Large, tender, yellow. December.

DWARF PEAR TREES

Fine 2 Yr. Trees, 3-5 ft., 75c each; 3 or more 60c each;
 any 10 for \$5.00; any 5 or more at 10 rate.

Clapp's Favorite—Bartlett—Duchess—Sheldon

For shipment by Parcel Post, add 10c per tree.
 See above list for description of varieties.

See Page 34 for meaning of L & G

PEACH TREES

As with all our fruit trees, the varieties of peaches offered here have been carefully selected as the best for New England. They are all Free-stone and arranged in the order of their ripening.

4-6 ft. Trees, 40c each; \$3.00 for 10; \$25.00 per 100.
5 of one variety at 10 rate.

For shipment by Parcel Post, add 5c per tree.

L—**Greensboro**. Yellow-white overlaid with red. Hardy in wood and bud.

Champion. White with red cheek. Large. Delicious.

L—**Rochester**. A new variety highly praised by some authorities. Earliest yellow. Large and pretty.

Carmen. Creamy white with red blush. Great for home use or market.

Early Crawford. Very popular. Yellow. Good quality.

L—**Belle of Georgia**. White overlaid with red. Productive.

L—**J. H. Hale**. Very large. Deep yellow.

L—**Elberta**. Large golden yellow. Juicy, rich. Good quality. The most popular peach in New England. **Special quotations in quantities.**

We sell **Peach Baskets**. When you are ready to buy, write us for prices.

CHERRY TREES

Sour

2 Yr. Trees, 5-7 ft., 75c each; any 3 or 4, 60c each.
\$5.00 for any 10; any 5 or more, at 10 rate.

L—**Early Richmond**. Bright red. Slightly acid. Hardy.

G—**Montmorency**. Dark red. Large. Slightly acid. Very hardy.

L—**English Morello**. Blackish red. Slightly acid. Very hardy and productive.

Sweet

Same prices as Sour Cherries.

L—**Black Tartarian**. Sweet, large and luscious.

L—**Governor Wood**. Sweet. Yellow and red. Large. Juicy.

L—**Windsor**. Liver color. Fine quality. Hardy.

APPLE TREES

NEW ENGLAND GROWN. THEY EQUAL THE BEST AND EXCEL THE REST.

CERTIFIED TRUE-TO-NAME by competent inspectors from the Massachusetts State Experiment Station.

2-3 yr. Trees, 5-7 ft., 50c each; \$4.00 for 10; \$30.00 per 100.

(Don't buy "runts" in trees. You wouldn't buy "runty" pigs, calves, or chickens. They never catch up.)

**BUY GOOD STOCK AND BUY
NEW ENGLAND GROWN STOCK**

SUMMER APPLES

L—**Duchess of Oldenburg**

Early McIntosh

Porter

L—**Red Astrachan**

Sweet Bough

L—**Williams Favorite**

L—**Yellow Transparent**

FALL OR AUTUMN APPLES

L—**Gravenstein**

Hubbardston

G—**McIntosh Red**

Pound Sweet

L—**Red Gravenstein**

L—**Snow (Fameuse)**

G—**Wealthy**

WINTER APPLES

L—**Baldwin**

G—**Cortland**

L—**Delicious**

L—**Northern Spy**

L—**Red Northern Spy**

L—**Rhode Island Greening**

L—**Roxbury Russett**

Staymen's Sweet ✓

L—**Tolman Sweet**

Wagener

Winter Banana

CRAB APPLES

Prices same as other apple trees.

L—**Transcendent**

L—**Hyslop**

DWARF APPLE TREES

3-4 ft., 75c each; 3 or more, 60c each; 10 for \$5.00.

For shipment by Parcel Post, add 10c per tree.

Baldwin, Cortland, Delicious, Duchess, Grimes, Golden, McIntosh Red, Northern Spy, Red Astrachan, Wealthy.

See Page 34 for meaning of L & G

QUINCE TREES

4-5 ft., 75c each; 3 or more, 60c each; 10 for \$5.00.
Champion **Orange**

GRAPE-VINES

2 Yr. Vines, 25c each; \$2.00 for 10, except as noted.
5 of one variety at the 10 rate.

On orders for 5 or more grape vines, we pay the postage except on C. O. D. shipments. For less than 5 vines, add 5c per vine for postage.

BLUE GRAPES

Moore's Early. One of the very best for New England.
Worden. Similar to Concord but larger, earlier, better.
Concord. Still a desirable variety and a great favorite.
Campbell's Early. Large and handsome.

RED GRAPES

Brighton. Bunch and berry, large. Quality fine.
Delaware. Small, fine flavor, popular.

WHITE GRAPES

Niagara. Bunch and berry, large. Fine flavor.
Green Mountain. Very hardy, desirable variety. 50c each.

RASPBERRIES

CHIEF

\$1.00 per doz., \$1.50 for 25c; \$5.00 for 100; \$35.00 per 1000.
5c per dozen additional if by mail.

A new variety originated by the Minnesota Fruit Breeding Farm, originators of Latham. This variety has been under test a number of years, and it has considerably out-yielded Latham the last two years. It is a trifle smaller than Latham, but a slightly better berry and somewhat firmer. Ripens nearly a week earlier and is a good variety to prolong the season. Chief is said to be the hardiest of the desirable new varieties.

FOLLOWING VARIETIES

75c per doz.; \$1.25 for 25; \$3.50 for 100; \$30.00 per 1000.
5c per dozen additional if by mail.

G—Latham. A hardy productive variety of good quality which has become the leader of them all within a few years.

L—St. Regis. In a class by itself. Bright red, fine quality. Very early. With good cultivation, produces fruit from June to October. Very profitable.

L—Cuthbert. The great commercial red raspberry. Good quality. Good cropper. Vigorous grower.

L—Herbert. Next to Latham in hardiness. Large red, good quality.

COLUMBIAN

\$1.50 per doz.; \$2.50 for 25; \$8.00 for 100.
5c per dozen additional if by mail.

Columbian. Purple. A very good cropper and one of the best for preserving. This variety does not spread and so can be kept under control very easily. We have found that tip-



Raspberry, Latham

See Page 34 for meaning of L & G

plants are not satisfactory so are offering **one-year transplants**. Raspberries are easy to raise, and they sell readily. In planting raspberries set the plants 3 ft. apart in the row, and rows 5 ft. apart. Use chemical fertilizer, with possibly wood ashes, and keep well cultivated.

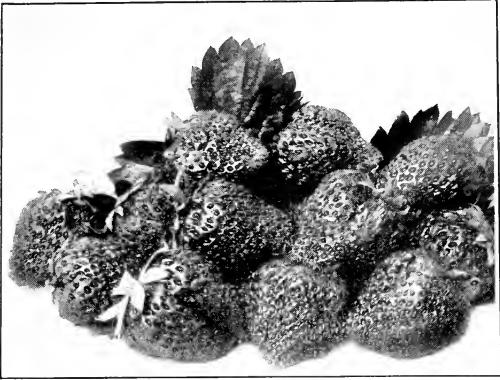
BLACKBERRIES

75c per doz. ; \$1.25 for 25 ; \$4.00 for 100 ; \$35.00 per 1000.
5c per dozen additional if by mail.

L—Snyder. Very hardy, productive variety. The best.

Eldorado. Excellent quality, productive. Fairly hardy.

Set plants same as raspberries, except that it is desirable to make the rows a little further apart.



Howard 17

STRAWBERRIES

Every garden and farm should raise a good supply for use fresh and for canning. They make a very wonderful sauce or preserve. Incidentally, they are a profitable crop to raise for market. In planting, choose well-prepared ground, free from witch grass, and set the plants with the crown or bud just at the surface of the ground. Set the plants 1 ft. apart, with the rows at least 3 ft. apart.

Our plants are what we call "**Good-as-Grow**" Brand. Order early and set as early as possible. Please specify if we may substitute, if sold out of any variety ordered.

STANDARD VARIETIES

All perfect flowering, except Sample.

50c for 25 plants ; 75c for 50 ; \$1.15 for 100 ; \$4.00 for 500 ; \$8.00 for 1000.

We pay postage on lots of 500 or less except on C. O. D. shipments.

Wilson. Early. An old variety of good flavor and quality. Very popular with some of our local growers.

Howard 17. For a good all-around variety for home or market, this has no superior. Among its many good qualities are the following : Earliness, good size, color, shape, shipping qualities, drought-resistance, productiveness, disease resistance, supply of pollen and length of fruiting season.

First Quality. Mid-season. Very attractive berry, long and pointed. Sells very rapidly and is all that its name implies.

Brandywine. Late. A vigorous grower yielding high quality, large berries. An old favorite.

Pearl. Very late. Yields large, dark red, firm berries.

Prices quoted here are for Spring of 1932, for April and May shipment.

For Fall Planting, we offer

Pot-Grown Howard 17

At \$1.50 per 25 by Parcel Post. \$5.00 per 100 by Express collect. Ready in August.

See Page 34 for meaning of L & G.

STRAWBERRY PLANTS

EVERBEARING VARIETIES

These are very desirable for the home garden or for the man or woman who has a good local market like a summer hotel. Their novelty has worn off, they have proved themselves worthy, and have come to stay.

65c for 25 plants ; \$1.00 for 50 ; \$2.00 for 100 ;
\$8.00 for 500 ; \$15 for 1000.

We Pay the Postage on lots of 500 or less except on C. O. D. shipments.

Progressive. Better quality than Mastodon. Dark Glossy red. Earliest spring berry and a good fruiter all season long. Cultivate and fertilize it well and it will pay for itself many times over.

Superb. Large, dark red. A good variety to grow in hills. Mulch well, and keep cultivated, and it will produce an abundance of big berries in the Spring and a good succession of them until freezing weather.

Mastodon. A new variety which produces a large quantity, both Spring and Fall, of big red berries. Best commercial Everbearer.

RHUBARB ROOTS, "PIE PLANT"

15c each ; \$1.00 for 10. By mail, 20c each ; \$1.25 for 10.

Linnaeus. The standard large, early variety for home or market.

Rhubarb is a good spring tonic. It is easy to raise, and any surplus may be canned for winter use as sauce or for pies.

ASPARAGUS ROOTS

Every gardener and farmer should raise his own asparagus, even if all he has is a few plants in a row alongside the vegetable garden, out of the way of the plow, but where the wheel-harrow can be run over them in early spring. Asparagus should be set only on well-prepared ground which is free from witch grass. We recommend spring planting for asparagus. Upon request we will gladly mail more complete instructions on starting an Asparagus Bed.

The best variety of all is Mary Washington. Consequently we are raising only this variety. Why not plant the best and why not let us fill your order with fresh-dug roots at reasonable prices?

1 Yr. Roots : 50c for 25 ; 75c for 50 ; \$1.50 for 100 ; \$6.00 for 500 ; \$10.00 for 1000.

By mail : 55c for 25 roots ; 85c for 50 ; \$1.60 for 100 ; \$6.50 for 500.

2 Yr. Roots : 75c for 25 ; \$1.00 for 50 ; \$2.00 for 100 ; \$7.00 for 500 ; \$12.00 for 1000.

By mail : 80c for 25 ; \$1.10 for 50 ; \$2.10 for 100 ; \$7.50 for 500.

Meaning of L and G Varieties for Maine

With the idea of helping those persons who are considering planting fruit trees or small fruits in Maine, we asked the Head of the Department of Horticulture at the University to indicate those varieties which he considered suitable for Maine planting. These we have marked as follows :

G—meaning suitable for General Use.

L—meaning suitable for Limited Use.

DISTANCES OF PLANTING

Apples, 30-40 feet.
Peaches, 16-20 feet.
Pears, 20-25 feet.
Plums, 16-20 feet.
Quinces, 10-12 feet.
Grape-Vines, 8-12 feet.
Asparagus, 1½ x 3 feet.
Rhubarb, 1½ feet.

Sweet Cherries, 20-25 feet.
Sour Cherries, 15-20 feet.
Blackberries, 4x17 to 6x8 ft.
Red Raspberries, 3x5 feet.
Black Raspberries, 3x6 feet.
Strawberries, garden, 1-3 ft.
field, 1-4 ft.
Dwarf Trees, 20 feet.

VIGORO

A SWIFT & COMPANY PRODUCT, ESPECIALLY PREPARED FOR LAWNS, GARDENS, FLOWERS, SHRUBBERY, TREES. CLEAN, ODORLESS EASY TO APPLY

Vigoro is recognized as one of the best complete, all-around fertilizers on the market. It will give good results on everything you grow. We can supply it as follows:

5 lb. cans	\$.50	50 lb. bags	\$3.00
25 lb. bags	1.75	100 lb. bags	5.00



For the convenience of our patrons, we are prepared to apply fertilizers on lawns, etc., with the use of a machine. Or we will rent a machine to those who prefer to use one themselves, or have their own man use it.

TWO-IN-ONE Peat-Poultry Manure

TWO-IN-ONE PEAT-POULTRY MANURE

Moisture-retaining, humus-forming PEAT MOSS blended with the finest natural fertilizer, poultry manure. Free from weeds. An ideal top-dressing for lawns, golf-courses, and around shrubbery, small fruits, etc. Use 5 lbs. to 100 sq. ft. or 2 lbs. to 50 ft. of row in the garden.

Descriptive folder on request.
5 lb. bag, 60c 25 lb. bag, \$1.75
100 lb. bag, \$4.00

(Special prices in larger quantities)

Moisture-retaining,
humus-forming
Peat Moss blended
with the finest
natural fertilizer,
poultry manure.



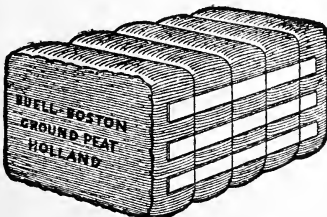
C. E. BUELL, INC.

MISCELLANEOUS FERTILIZERS

	Per lb.	50 lbs.	100 lb. bag
Ground Bone	5c	\$1.50	\$2.00
General Potato and Vegetable Fertilizer, 4-8-8	5c	1.50	2.50
Lawn Fertilizer, 4-12-4.....	5c	1.50	2.50
Sulphate of Ammonia for fruit trees especially	5c	1.50	2.25
Pulverized Sheep Manure.....	5c	1.50	2.25

(Special prices on the above in larger quantities)

FINE-GROUND PEAT MOSS



Valuable as a mulch for Roses, Evergreens, Rhododendrons, and newly-set plants of all kinds. Absorbs 7 to 8 times its own weight in water and improves the moisture-holding capacity of the soil greatly.

Handy Carton, 1½ bu., \$1.25; Standard Bales, \$3.50; 3 for \$10.00.

(Special prices on the above in larger quantities)

GRANITE STATE NURSERIES, Inc.

HAMPTON
ROAD

EXETER
N. H.

Trees and Plants for the Orchard and Garden

"GOOD-AS-GROW BRAND"

POSTMASTER:

If not delivered in Does not receive
5 days please return mail here.
to us, indicating why Deceased.
returned in square, or Unclaimed.
forward.

RETURN AND FORWARDING POSTAGE
GUARANTEED BY

GRANITE STATE NURSERIES, Inc.

POSTMASTER: If forwarded to a new address notify sender
on Form 3547. Postage for notice guaranteed.

New Low Prices for:

Hort. Crops & Diseases.

T. S. D. A.

Washington, D. C.

Bureau of Plant Industry.

Patronize &
Selling

NEW ENGLAND

Industry
Grown Stock