

Historic, Archive Document

Do not assume content reflects current scientific knowledge, policies, or practices.



**GLEN
BROTHERS
NURSERY
ROCHESTER, N.Y.**

"We furnish the home-outdoors"

1932

Why the Trees and Plants from Glenwood Nursery are of Special Importance to You

1. **THEY ARE DEPENDABLE.** Every possible care is taken to have the stock that leaves this Nursery true to name and description.
2. **THEY ARE HEALTHY.** We take extraordinary precautions to keep all our trees and plants entirely free from disease.
3. **THEY ARE HARDY.** We are located in the cold North; the stock we grow becomes acclimated to severe winter temperatures of sometimes 10 to 15 degrees below zero. It will withstand the same temperatures for you.
4. **THEY ARE VIGOROUS.** Ample space has been given each tree or plant in the Nursery; where it has been necessary, we have pruned; we have fertilized; we have sprayed—to make our stock vigorous and sturdy.
5. **THEY ARE PRODUCTIVE.** Whether planted for nuts, fruit, flowers, or ornamental foliage, the trees and plants we send out are prepared to do the best possible. And, frequently, they surpass what we considered the limit of possibility for them.

Important Information

The ILLUSTRATIONS in this catalogue are faithful representations in actual, natural colors

The Order Blank which accompanies this Catalogue is for the convenience of customers. It will greatly facilitate filling orders.

Always Give Full Address—name, post office, county, and state. It is very important that this information be plainly written.

Shipping Instructions. Give your nearest express office and railway station, or stage route, and the name of the transportation company. State how you wish us to ship—by freight or express; also designate the route; otherwise we use our own discretion in forwarding.

Prices in this catalogue are f. o. b. Rochester, N. Y. There are no charges for packing or boxing.

No Orders for Less Than \$1 Accepted. Because it costs just as much to pack and prepare small orders as it does large ones, we cannot afford to fill orders amounting to less than \$1. Ordering all your needed stock at one time saves transportation charges, because the heavier the box or bale, the less it costs per pound for freight or express.

Terms Cash on or before delivery to transportation companies. **Accounts.** When requested, we will open accounts with persons or firms of approved credit, or with those who offer satisfactory references. **Express C. O. D. Orders** will be filled, provided one-half of the amount is sent with the order.

Our Responsibility. We refer you to any bank or bankers in Rochester, N. Y. Also Dun's and Bradstreet's Commercial Agencies.

Guaranty. It is obviously to our advantage to have all stock that leaves our Nursery true to name and to grow to the entire satisfaction of the purchaser. Every effort is put forth to have these conditions a part of every sale. But conditions of soil, climate, care, are sometimes such that it is difficult for any tree or plant to grow; and, because there are so many things that influence the life of a tree or plant after it leaves our Nursery, we do not give any warranty as to description, quality, productiveness or for failure of plants to grow. If it is proved that stock is not true to name, by error on our part, we will replace such plants immediately; and it is agreed between the purchaser and ourselves that we shall not be held responsible for an amount greater than the purchase price of the stock.

Errors. If mistakes are made in filling orders, we will gladly rectify them if notified within ten days after receipt of stock.

Care of Stock When Received. Soak the roots of the trees and plants with water, and either place them in a cellar and keep damp or bury them in a trench until the holes are ready for their transplanting. If dry and shriveled, the best plan is to bury them for a few days, root and branch, in damp earth; if frozen when received, bury in earth until the frost is out.

Stock Specially Selected by customers at the Nurseries will be charged according to value of the trees chosen, irrespective of catalog list price.

Our Collection Offers

We call to our customers' special attention the money-saving, time-saving, satisfaction-giving importance of our collection offers scattered throughout these pages. They deserve special consideration.

GLENWOOD
NURSERY

GLEN BROTHERS, Inc.
Rochester, New York

Established 1866
Incorporated 1907

NURSERY AT FAIRPORT, NEW YORK—MAIN LINE NEW YORK CENTRAL RAILROAD

These Four Jewels for \$2.80



SOUVENIR DE GEORGES PERNET. Try and match it for form and color.

We Call Them
"Jewels"

But
They Are Really
Four Choice
Everblooming
Roses

Big strong 2 year plants — field grown — should bloom first summer, continuously from June until frost.

No, we didn't make any mistake, the price is only \$2.80 for the four plants—one plant each of the following:

Souvenir De Georges Pernet—Brick red buds opening to orange pink blossoms of immense size. Very double and deliciously fragrant. It is hardy and blooms all the time.

Betty Uprichard—Exquisite beyond description. Copper red buds, brilliant orange carmine on outer surface of petals. Spicy fragrance, healthy, hardy and a persistent bloomer.

Etoile De Hollande—It is the outstanding red ever-blooming rose. Its brilliant red blooms of magnificent size are produced freely from June until hard frost.

Rev. F. Page Roberts—Indian Yellow, buds of great length opening to golden yellow, washed with deep carmine. Very large, fragrant and a supremely gorgeous rose.

Every rose we sell is guaranteed to be a hardy New York State grown plant. We do not handle any Texas or California plants, which are usually sold at low prices.

NOTE—For a complete list of our roses, see pages 30 and 31.



SEND ALL ORDERS
TO



BETTY UPRICHARD. One of the most popular roses in the world.



ETOILE DE HOLLANDE. Known everywhere as the leading red rose of the world.



REV. F. PAGE ROBERTS. Beautiful all summer but really superb in Autumn.

Glen Brothers, Inc.

Nurserymen and Rose Growers Since 1866

1762-1772 Main St.

Glenwood Nursery

ROCHESTER, N. Y.

"WE FURNISH THE HOME OUTDOORS"

Three Choice Evergreens for \$8.00



AMERICAN ARBORVITAE



JUNIPERUS PFITZERIANA

Descriptions

American Arborvitae — Size 3-4 ft. Slender pyramid with broad base. Foliage bright green above, yellowish beneath. May be used about the foundation in formal gardens, for hedges or they may be planted in tubs for porch decoration.

Juniperus Pfitzeriana. Size 1½-2 ft. A graceful spreading evergreen with silvery green color. Distinct and charming. Suitable for planting anywhere. Planted with larger evergreens it should be used in the foreground.

Mugho Pine—Spreading in growth, usually broader than high. One of the most valuable dwarf evergreens. Very useful for foundation work, also wonderful for rock garden planting.

One of each of these three for only \$8.00, all transplanted. All Glenwood grown, all balled and burlapped.



MUGHO PINE

•
**Three Choice
Evergreens
Balled and Burlapped
Specimen Plants**

For Immediate Effect

THESE THREE FOR

\$8.00

THE LOWEST PRICE
IN YEARS

•



Mme. Jules Bouche



Souvenir De Georges Pernet



Betty Uprichard



Mrs. Henry Morse

**Speaking About Roses
Try and Beat This One
Ten Plants of \$7.00
Everbloomers for**

**START
A ROSE GARDEN
THIS YEAR**

**Here Are the Ten Described and
Illustrated in Color**



Lady Margaret Stewart



Rev. F. Page Roberts

MME. JULES BOUCHE—Pure snowy white.
SOUVENIR DE GEORGES PERNET—Brick red.
BETTY UPRICHARD—Copper red buds. Flowers above average size.
MRS. HENRY MORSE—Pink and yellow.
LADY MARGARET STEWART—Golden yellow streaked with orange and red.
REV. F. PAGE ROBERTS—Copper red buds opening to golden yellow.
LOS ANGELES—Flame pink, shaded gold.
GOLDEN EMBLEM—Sun-flower yellow.
TALISMAN—Old rose pink, copper and old gold.
ETOILE DE HOLLANDE—Brilliant red.

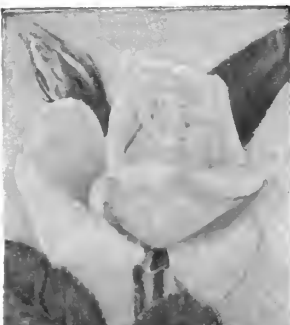
ORDER EARLY

You don't need to keep the plants if they are not the largest and finest two year old plants you have ever seen.

NOTE: For complete list of Roses see pages 30 and 31.



Los Angeles



Golden Emblem



Talisman



Etoile De Hollande



Weigelia Rosea

Three Marvelous Shrubs For \$1.75

BIG SIZE—3 to 4 feet

PLANT THEM FOR IMMEDIATE EFFECT

These three large size 3 to 4 feet shrubs for the low price of \$1.75 is the greatest bargain we have offered in shrubs in 20 years.

Descriptions

WEIGELIA ROSEA—The beautiful pink flowers are produced in so great profusion as almost entirely to hide the foliage. Blooms in June and continues to bloom at intervals throughout the summer.

FORSYTHIA INTERMEDIA—This is the earliest blooming Forsythia. Its bright golden flowers often appear before the snow is gone. Its glittering mass of yellow very early in the spring before the leaves appear creates a gorgeous effect.

SNOWBALL (Viburnum Dentatum)—Upright bushy shrub. Foliage changes to purple and red. Flowers creamy white in May. Berries blue black. One of the best shrubs we grow.

Do not miss this opportunity to obtain three of our choice Shrubs in blooming size for this low price.



Forsythia Intermedia



Snowball (Arrow-wood)

An Unusual Collection of Native Azaleas

Six Beautiful, Hardy Varieties—All Different **\$10.00**

For outdoor planting. All colors of the rainbow.

Deep pink, Shell pink, White, Orange and Canary.

A Wonderful Collection for Lovers of these Exquisite Shrubs

The plants we offer are blooming plants, shipped to you with ball of earth burlapped to roots and will transplant easily. Many of the plants are shipped with bloom buds and will bloom this season.

Varieties

ARBORESCENS Sweet Azalea

—Very attractive white or faintly-rose-tinted, fragrant flowers, whose beauty is enhanced by the long, bright red filaments of the stamens. The flowers are borne after the foliage appears and it is one of the most beautiful of all the hardy Azaleas. In sheltered places it often reaches 6 to 8 feet in height. May.

CALENDULACEA (Flame Azalea)

—Probably the most gorgeous of the Native Azaleas. From early May until well into the month of June, the plants are literally covered with orange-yellow or flame-red blooms which in size are often 2 inches across. The well known Ghent Azaleas rarely equal in brilliancy this native species. Foliage remains good until late Fall and breaks in the spring just before the blooms appear.

CANESCENS (Piedmont Azalea)

—Rosy pink or whitish trumpet-shaped flowers of great beauty. Borne in May before or with the unfolding leaves, fill the air with sweet fragrance. Plant in masses against a dark background to show the flowers to the best advantage.

NUDIFLORA (Pinxter Bloom)

—An extremely beautiful Azalea. Rosy pink or whitish blooms, after or before the foliage develops of strong, sweet fragrance, and borne in great profusion at about the same time as Azalea Canescens. Fall, foliage assumes attractive shades of orange and bronze. Fine for dry open places.

VISCOSA (Swamp Azalea)

—The last of the Azaleas to flower, nearly all the other shrubs having passed out of bloom when it bears its heavy load of pure white, fragrant flowers clothed with sticky hairs.

VASEYI (Pink Shell Azalea)

—One of the earliest flowering Azaleas, blooming in April, and its glorious pink flowers open before the foliage appears. It is the most beautiful of all the Azaleas and in delicacy and purity of color is unsurpassed by the flowers of any other plant.

Note: For a complete list of Azaleas see pages 19-23.



Azaleas make a beautiful showing when planted in clusters or groups

Who Wants Rhododendrons?

At positively the lowest prices we have ever sold these delightful shrubs, 1 plant each of Maximum, Catawbiense and Carolinianum. All plants 2-3 ft. tall, well branched, all balled and burlapped.

The Rhododendron wherever known is universally acknowledged to be the most showy, magnificent hardy evergreen shrub that grows. It should be planted in well prepared soil of leaf mould or leaf mould, muck and peat mixed and in partial shade.

Everybody will at this
Special Introductory Offer

ONE PLANT EACH
THESE THREE FOR \$8.50



One of our Stock Plants
Maximum—2-3 ft. size

DESCRIPTIONS

CAROLINIANUM

This is one of our finest introductions and fills a long-felt want for an absolutely hardy dwarf Rhododendron with clear pink flowers free from any hint of magenta. Stands exposure unusually well and is invaluable as a single specimen or for massing.

MAXIMUM

A well-known native of our mountain regions, with great clusters of white or rose-pink flowers in June and July, just after the hybrid varieties have ceased blooming.

CATAWBIENSE

Is a very free bloomer, with foliage of a dark, rich, lasting green, which never rusts. The trusses of flowers are a bright red-purple.

Rhododendrons may be planted during April, May and Early June or September, October and November.

NOTE: For a complete list of Rhododendrons in carload lots and less quantity, see page 19.



One of our Stock Plants
Catawbiense—2-3 ft. size



Rhododendrons, massed planting, Highland Park, Rochester, N. Y.

A Big Bundle of Twelve Big Shrubs for \$4.00

Attract the Humming Birds and Honey Bees



What a whale of a difference a dozen shrubs make

Red flowers . . . pink flowers . . . yellow flowers . . . white flowers. Red Berries . . . White Berries
Don't put it off. Doll up the yard this year at a very small cost.

All shrubs offered in this assortment are two years old, 2 to 3 feet in height, well rooted, well branched and will bloom the first season planted.

One each of the following—

PINK FLOWERING BUSH HONEYSUCKLE—Fragrant white or pink flowers in May and June. Red or orange fruit.

WHITE FLOWERING BUSH HONEYSUCKLE—A white variety of the above. Bright red berries.

SPIRAEA VAN HOUTTEI—Numerous clusters of white flowers. See page 44 for illustration in color.

SPIRAEA BUMALDA—Deep pink flowers in flat cymes; foliage sometimes variegated with yellow.

SPIRAEA GOLDEN—Golden yellow foliage and double white flowers in June. Effective in shrubbery, for planting along banks or as screens.

DEUTZIA ROSEA—A dwarf Deutzia similar to Deutzia Gracillis except that the flowers are pink. Excellent for edging shrub borders.

FORSYTHIA INTERMEDIA—Tall shrub with slender branches; flowers golden yellow, borne in great profusion, very floriferous.

SWEET SCENTED SYRINGA—Flowers fragrant, pure white or cream. An old favorite.

HYDRANGEA PANICULATA GRANDIFLORA—The hardiest and most popular Hydrangea. In July and August massive plumes of white flowers later changing to pink, bend the branches with their weight. See page 44 for illustration in color.

SNOWBERRY—Pinkish flowers, white berries.

CORAL BERRY—Plump red fruits clustered along the branches.

CORNUS LUTEA—A striking yellow branched form of stolonifera, very satisfactory for contrasting.

NOTE: For complete list of Flowering and foliage shrubs, see pages 23, 24, 25, 26.



**A Real Surprise Awaits the Customers Who Purchase this
Surprise Box of**

Six Splendid Evergreens for \$15.00

THE SURPRISE OF THE SEASON

Just as Pictured Above

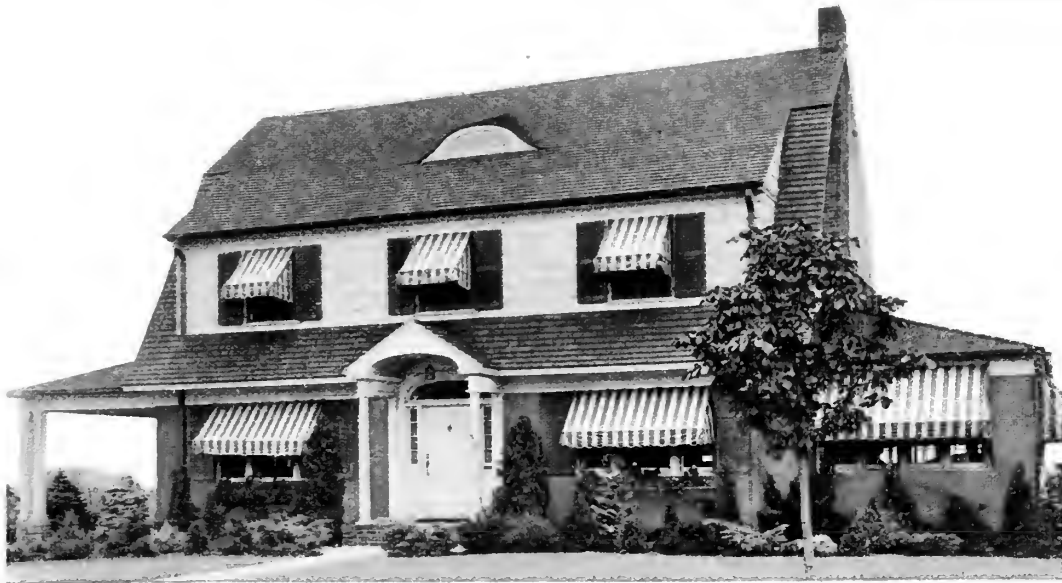
*Play Santa Claus to Your Home Grounds
This Year and Make Them A Present of
These Six Big Evergreens*

Every Evergreen has been transplanted, is symmetrical, is a specimen, is shipped balled and burlapped. Every Evergreen is guaranteed to be a Glenwood grown Evergreen.

A \$19.50 Value for \$15.00

| | | | |
|----------------------|--------------|----------------------------|--------------|
| 1 NORWAY SPRUCE..... | size 2-3 ft. | 1 AMERICAN ARBORVITAE..... | size 2-3 ft. |
| 1 IRISH JUNIPER..... | size 2-3 ft. | 1 SCOTCH PINE..... | size 2-3 ft. |
| 1 RED PINE..... | size 3-4 ft. | 1 GLOBE ARBORVITAE..... | size 18 in. |

NOTE: For a complete list of hardy Evergreens, see pages 17 and 18.



The
Big
Ten
for
\$35

Two Collections of Evergreens with Real Class

These assortments of Evergreens planted about the foundation will make it *your house of dreams.*

All Balled and Burlapped, All Specimen Evergreens

TEN CHOICE EVERGREENS Including 2 Colorado Blue Spruce

For **\$35.00** as Follows:

| | |
|------------------------------|-----------|
| 2 PYRAMIDAL ARBORVITAE | 2-3 ft. |
| 1 MUGHO PINE | 15x15 in. |
| 1 GLOBE ARBORVITAE | 18 in. |
| 1 AMERICAN ARBORVITAE | 2-3 ft. |
| 2 CANADIAN HEMLOCK | 2-3 ft. |
| 1 AMERICAN ARBORVITAE | 3-4 ft. |
| 2 COLORADO BLUE SPRUCE | 18-24 in. |

STAR COLLECTION

of Six Evergreens as Pictured

For **\$13.50** as Follows:

| | |
|-------------------------------|---------|
| 1 NORWAY SPRUCE | 2-3 ft. |
| 2 GLOBE ARBORVITAE | 18 in. |
| 1 AMERICAN ARBORVITAE | 3-4 ft. |
| 1 PYRAMIDAL ARBORVITAE | 2-3 ft. |
| 1 RETINOSPORA THUNBERGI | 2-3 ft. |

The
Big
Six
for
\$13.50



NOTE: For a complete list of hardy Evergreens see pages 17 and 18.

Six Top-Notch Varieties of Peonies

of Magic Color and Huge Size **\$3.50**

June—The Month of Peonies

They rival Roses in beauty, form and exquisite coloring and excel them in size. Noblest and most beautiful of all flowers. These lovely flowers are all indispensable in every garden. They not only combine stateliness of growth with gorgeous coloring but many of the huge blossoms possess the exquisite fragrance of a tea rose.

AND WE OFFER YOU THESE SIX OF OUR CHOICEST VARIETIES FOR ONLY \$3.50.

For cut-flowers these Varieties are excellent.

CANARI—Yellowish, globular, bomb type of medium size, fragrant late.

EDULIS SUPERBA—Bright mauve pink, large, rather flat, crown type; free flowering, fragrant, medium early.

MME. CALOT—Pale, Hydrangea-pink, center shaded darker. Large rose type free flowering, fragrant; early. Very good.

MARECHAL MACMAHON—Rich dark red; large; bomb type a fine flower of rare beauty.

FESTIVA MAXIMA—Pure White flecked with carmine; very large rose type; fine flowering fragrant; medium early.

L'ECLATANTE—Brilliant red, very large bomb type, strong growing; mid-season.

Each root is large and we guarantee from three to five eyes to each root. One each of the above varieties and they are immense.

NOTE: For a complete list of Peonies see page 27.



As a cut Flower Peonies have no Equal

Three New Highland Park Lilacs

Showy—Hardy and Easy to Grow— **\$3.50**

Highland Park contains the largest collection of Hybrid Lilacs in the United States. One of the chief attractions in Rochester is the Highland Park Lilac collection. Nearly 200,000 people visited Highland Park last Spring when these Lilacs were in bloom. We offer this selection of 3 fine varieties composed of one each of the three described and illustrated to a limited number of customers and when our present stock is exhausted we shall have no more of these varieties to offer until next Fall. Order now before present stock is exhausted.

White, Crimson, Blue

ALL THREE FOR \$3.50

Age, 3 years, size 3 to 4 ft. Strong stock

These plants should bloom this season

One Each of the Following

PRESIDENT ROOSEVELT—Bud deep purple-red, bright purplish red when open. Branching habit, open and vigorous.

GENERAL PERSHING—Buds deep lilac, opening to bluish lavender flowers with a tinge of very delicate azure-lilac. Branching habit, medium dense.

MME. ABEL CHATENEY—Sweetly scented pure white flowers of immense size.

For a complete list of Lilacs see page 26



Mme. Abel
Chateney

Pres. Roosevelt

Gen. Pershing

Our Climbing Roses

Soon Beautify Unsightly Spots

3 Aristocrats for **\$1.75**

People are going wild over Climbing Roses. Under the auspices of Women's Clubs and Garden Clubs, they are being extensively planted along the Cape May Highway in New Jersey—the Lincoln Highway in Pennsylvania and other thoroughfares.

For the Porch, Pergola—Arbors—Trellis, etc.

Plant Our Climbing Roses

One each of these 3 for **\$1.75**

TAUSENSCHON—Well merits the name "Thousand Beauties" for the large clusters of flowers vary in color from pink to white. Magnificent foliage. No thorns.

DR. VAN FLEET—Buds long, pointed deep pink, deliciously fragrant.

PAUL'S SCARLET CLIMBER—A large flowered, low climber of brilliant dazzling red. Does particularly well as a pillar rose, trained to a post.

For complete list of Climbing Roses see page 31.



Paul's Scarlet Climber



Red-Leaved
Barberry

Very Effective Planted Among other Shrubs

New Red-Leaved Japanese Barberry

If it is color you want among your shrubs, this is the Barberry to plant.

It is only once in a lifetime that a really worth-while, outstanding novelty in hardy shrubs is introduced, and in this new Barberry we have such a plant.

It is similar in all respects to the green-leaved Japanese Barberry which is so popular for mixing in the shrubbery border, as single specimens or for planting in clumps on the lawn, as well as for foundation plantings and for hedges, but the foliage of this new variety is of a rich, lustrous, bronze red similar to the richest red-leaved Japanese Maples. However, unlike these and other colored shrubs in which the coloring fades or disappears entirely as the season advances, this new Barberry becomes more brilliant and gorgeous throughout the summer, and in the Fall its foliage changes to vivid orange, scarlet, and red shades, more brilliant and more effective than in the ordinary Japanese Barberry. In this coloring it is unequalled by any other shrub and is followed by the same brilliant scarlet berries common to the type which remain on the plant the entire winter.

All that is required to develop its brilliant coloring at all seasons is that it be planted in full exposure to the sun. **Strong 2 yr. plants. Size 12 to 15 inches—75c each, \$6.50 per 10, \$50.00 per 100.**

For complete list of Barberry see page 23.



Chinese Elm

Thriving everywhere from bleak Saskatchewan to torrid Arizona. It is one of the first trees to leave out in the Spring and the last to shed its leaves in the Fall.

THE CHINESE ELM IS AN EXCEEDINGLY RAPID GROWER.

Mr. O. R. Matthews, Supt. of the United States Department of Agriculture at Ardmore, S. D. says "The Chinese Elm has been one of our hardiest and fastest growing trees. Very few species of trees are hardy in this section which makes its success more remarkable."

Mr. Leonard Barron, Horticultural Editor of Country Life Press says in part "The Siberian Elm is certainly a phenomena of rapid growth. It seems that this tree is worth more than passing notice. Its phenomenal rapid growth, its handsome appearance and its adaptability to well drained soils and city conditions are merits enough."

On the Morse estate at Philadelphia was a 5 ft. whip when planted in the spring of 1912. In July 1928 it was 62 inches in circumference, 40 ft. spread and 40 ft. high.

At the State College Park at Maryland are six Siberian Elm trees planted in the spring of 1922, then averaging 2½ inches in diameter. In July 1928, they averaged 36 inches in circumference, 32 ft. spread and 30 ft. high.

BEAUTY, STURDY and QUICK GROWING

Our country is speeding up to a fast pace, where once the Automobile satisfied because it was faster than the horse, we now demand the airplane. Radio and Air Mail speed up communications. People want results NOW. They want shade for themselves—not for future generations only. CHINESE ELM SOLVES THE PROBLEM.

For Quick Growing Shade

Plant the New Chinese or Siberian Elm

(Ulmus Pumila) Hardy North China Strain. (Don't Plant Any Other.)

"Greased lightning" would be a better name for this remarkable tree. It's the fastest growing shade tree we know of. We illustrate a 4 year old tree that was but 5 ft. in height when planted. In 4 years this tree has grown to a height of 20 ft. with a spread of 12 ft. THINK OF IT, A REAL SHADE TREE IN 4 SHORT YEARS.

We are going to call your attention to this matter of there being two strains of Chinese Elm in this country. The first trees came from the Government through the Chico station from the state of Oregon. These trees were gathered in Northwestern China and Manchuria. After they had made a name for themselves, people wanted a source of supply from seed, and the easiest available one was the Nanking University. A great bulk of seedlings in this country is from seed gathered near Nanking. This strain does not do the same as our hardy North China strain, and we know of one nurseryman who destroyed a field of over 100,000 plants. It cost this nursery concern several thousand dollars to learn the difference between the hardy North China strain and the Nanking strain.

OUR TREES ARE GUARANTEED TO BE THE NORTH CHINA STRAIN—THE ONLY STRAIN WORTH PLANTING. You may pay more for them, but they are worth it.

GOOD FOR WINDBREAKS OR SCREENS

Its habit of growth makes it an ideal tree for street planting in the city—for roadside planting in the country, or for shade around the home in either city or country. The tree is healthy and beautiful and will give an abundance of shade in a very short time. It fully justifies the claims of the United States Department of Agriculture wherein they state—"It is very hardy and has proved valuable under a greater variety of climatic soil conditions than any tree yet introduced."

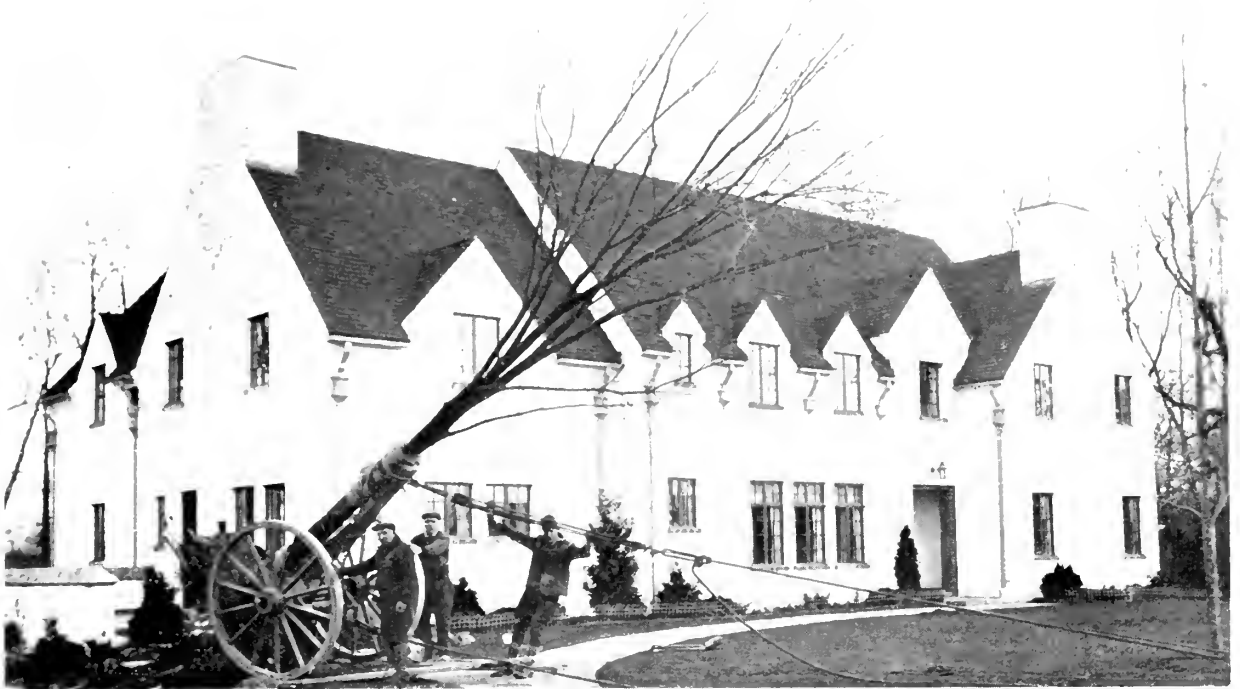
HOME OWNERS, REAL ESTATE MEN, CITY PARK BOARDS AND OTHERS equally interested in securing quick shade with a minimum of time and expense will find in this tree the essential characteristics they desire.

PRICES FOR OUR NORTH CHINA STRAIN CHINESE ELM

| Size | Each | 10 | 100 |
|-----------|--------|---------|----------|
| 4-5 ft. | \$1.00 | \$ 8.75 | \$ 75.00 |
| 5-6 ft. | 1.50 | 13.75 | 125.00 |
| 6-7 ft. | 2.00 | 17.50 | 150.00 |
| 8-10 ft. | 2.50 | 22.50 | 200.00 |
| 10-12 ft. | 3.75 | 35.00 | 325.00 |
| 12-14 ft. | 5.00 | 47.50 | 450.00 |

The Nanking strain trees may be cheaper but in our opinion are not worth planting.

When you purchase from us you are sure of receiving NORTH CHINA STRAIN, the only strain of Chinese Elm worth planting.



New residence of Adolph Stuber, Esq., Ambassador Drive, Rochester, N. Y. Grading and Seeding—Plans and Planting—Plants and Trees—Wall and Step Construction—photo shows our tree moving crew planting a 12 inch Elm selected at Glenwood Nursery. Entire job by Glen Brothers, Inc., Landscape Dept.

LANDSCAPE DEPARTMENT

Let Us Solve Your Landscape Problems

OUR Landscape Department is one of the most efficiently operated by any Nursery in America. Our Landscape Architects are competent, thoroughly experienced and will do your job well. *"We furnish the home-outdoors"* and go anywhere for business.

Our Complete Landscape Service

CREATING pictures with Evergreens, Flowering Shrubs and plants is the only adequate description which can be given the highly developed and experienced service of our Landscape Architects. In the creation of such effects, we not only aim to develop that peculiar charm which will best express a natural beauty and make it harmonious with the house, the grounds and the surroundings, but especially to create those beautiful landscape pictures which will fascinate throughout the entire year.

While builders of new homes are conscious of the need to engage Architects in the development of beautiful designs, it is unfortunate to observe the very large number of instances where the possibilities of an exterior setting of an otherwise carefully designed and attractive house have been entirely ignored, or the grounds have been planted in a "hit or miss" manner. To individuals possessing good taste, the sight of a charming English cottage set in a wealth of crimson Cannas edged with equally crimson scarlet Sage must not only be ludicrous but painful as well.

To make possible the preparation of a Landscape design which would catch the proper spirit of the architectural style of the house and translate it, together with its surroundings into a charming landscape composition was the

very definite purpose given to the selection and organization of the personnel behind the Glen Landscape Service.

How well we accomplished our purpose is illustrated by the accompanying pictures of just a few of the attractive homes that we have landscaped, having supplied the plans, plants and planting. We offer no stereotype plans—each problem must express your own desires and your own individuality. Landscape plans are prepared complete in every detail from surveys which include the grading plans for lawns and terraces, drainage, location and groupings of buildings—designs for entrance gates, drives, masonry, construction, architectural details for Pergolas, Garden Gates, Tea Houses and garden furnishings. Special types of Gardens such as Rock Gardens, Rose Gardens, formal Italian gardens as well as woodland and bridle paths, Water-falls, Garden Pools and Swimming Pools can be made to fit into some appropriate landscape scheme—whatever you desire, we can help you to its fulfillment.

It is known that some persons become discouraged at the prospect of having complete landscape plans prepared for the entire property when it is intended to develop only a small portion of the grounds at a time, but the point is to have the complete plan prepared, then you can carry out as



Residence of A. B. Shultz, Esq. Amherst Estates, Buffalo, N. Y. Photo taken Winter 1931. See photo below for planting results in three months.

much or as little planting as you wish each season, yet feel fully assured and enjoy the satisfaction that whatever planting you do will be done properly and as a part of an entire scheme. Only in following such a plan can you save yourself the constant disappointments in effect and in outlay, as well as the necessity of continually transplanting trees and shrubs, which is bound to result where no definite plan serves as a guide.

Since we are primarily Nurserymen interested in the sale of trees and plants and not in the sale of Landscape designs, we are in a position to offer the services of our landscape

architects at a very low cost to our clients in the connection with the planting of our plant material, for example, we prepare comprehensive plans for as low as 10% of the estimated cost of the material necessary for the proper execution of said plan and this small fee is credited when the order for the planting material is received, hence in case we supply the planting material, there is absolutely no charge for the plan.

If only a part of the planting is desired, 10% of the cost of that part is credited when ordered, or in other words, 10% is credited each time material is ordered for such part of the planting as the client wishes to do.



Residence of A. B. Shultz, Esq. Amherst Estates, Buffalo, N. Y., three months after planting. Photo taken August, 1931. Plans, Plants, Planting by Glen Brothers, Inc., Landscape Department.



Garden and Pool designed, plants and garden furniture supplied, planting supervised by Landscape Dept., Glen Bros. Inc., Rochester, N. Y. for Dr. M. T. Knappenberger, Warren, Ohio.

If you are planning to build or are considering the renovating of your present house or some property which you have just acquired, we will gladly make it a part of our service to collaborate with your Architect in securing the proper location of your house with relation to the sun, to interesting Vistas as well as locate the drives and walks. Large estates or small—country or city homes—no problem too big or too small for our painstaking service.

In this, our 1932 catalogue, you will find described "Glenwood grown" Evergreens, Ornamental Trees, Rhodo-

dendrons, Flowering Shrubs, Perennials, Roses, Vines etc. which are the finest that anyone could possibly grow or procure anywhere.

After years of close personal contact with our customers, we come more and more to feel that this is our opportunity to help. The money you would otherwise have given to a Landscape Architect may be devoted to purchasing the finest Ornamentals without any part of it being diverted for architect's fees.

Let us get in touch with you today. Some member of the



An evergreen planting for William S. Addison, Esq. 399 Westminster Road, Rochester, N. Y. Plans, Plants, Planting by Glen Brothers, Inc., Landscape Department.



Residence and Grounds of Mr. Henry Kimmel, Allen Creek Rd., Rochester, N. Y. Plans, Plants, Planting by Glen Bros. Inc. Landscape Dept., Rochester, N. Y.

firm personally will come and talk with you. We have found this to be the only way to most effectively co-operate with our customers. Write us and we will arrange an ap-

pointment to suit your convenience. Once the outline of the work is agreed on, we will do the rest.

What the Glen Landscape Service does to help you.

First . . . CONSULTATION

At your home or office by appointment.

Second . . . DESIGN

City and Suburban Home Grounds, Private Estates, Factory and School grounds, Gardens etc.

Third . . . PLANTING

Shrub, Evergreen and Tree plantings, Rock Gardens,

Rose Gardens, Perennial gardens.

Fourth . . . CONSTRUCTION

Pools, Entrance Gates, Drives, Pergolas, Arbors, Tennis Courts, Artificial lakes, Walls and Steps.

Fifth . . . MAINTENANCE

Supervision or full care during growing season or entire year at moderate cost.

Landscape work is carried on throughout the year, the season depending entirely upon the type of work entrusted to us and the geographical location of the client's premises. For example as this catalog is going to press late in December we are just completing one job in the extreme south and starting another.



A group of homes Landscaped in "Meadowbrook" Rochester's newest sub-division owned by Kodak Employees Realty Co., Rochester, N.Y. Plans, Plants, Planting for 19 houses for the company.



Home of Mr. A. J. Mathews, Potsdam, N. Y. Plans, Plants, Planting, Glen Bros. Inc. Landscape Dept., Rochester, N. Y.

Price List of Nursery Stock Evergreens

A PLANTING that depends entirely upon deciduous trees for ornamental effects is sure to have a bleak appearance during the winter months. The leaves are gone, and bare limbs and trunks do not, for some reason, impart the same impression of life as do trees carrying their green covering throughout the year. That is one very important reason for planting evergreens.

Abies — (Fir)

| | |
|--|--------|
| Abies Balsamea. (<i>Balsam or Balm of Gilead Fir</i>). A rapid-growing tree 50 to 80 feet high, with dark green, spicy foliage; very hardy. | Each |
| 2-3 feet..... | \$4.00 |
| 3-4 feet..... | 5.00 |
| A. concolor. (<i>White Fir</i>). Of graceful form; handsome foliage, glinting blue and silver. | Each |
| 2-3 feet..... | \$5.00 |
| 3-4 feet..... | 8.00 |
| A. Nordmanniana. (<i>Nordmann's Silver Fir</i>). Dense Evergreen of symmetrical form; vigorous; foliage dark, lustrous, with a silvery sheen. | Each |
| 1 ½-2 feet..... | \$3.50 |
| 2 -3 feet..... | 4.50 |
| 3 -4 feet..... | 6.00 |

Chamaecyparis (*Retinospora and Cypress*)

| | |
|--|--------|
| Chamaecyparis obtusa nana. (<i>Dwarf Retinospora</i>). Bushy, very dense, short, dark green foliage. | Each |
| 1-1 ½ feet..... | \$3.50 |
| C. pisifera. (<i>Sawara or Pea-fruited Cypress</i>). Bright green, feathery foliage with somewhat pendulous branches. Altogether lovely. | Each |
| 2 ½-3 feet..... | \$3.50 |
| 3 -4 feet..... | 5.00 |
| C. pisifera aurea. (<i>Golden Pea-fruited Cypress</i>). A distinct form of the above. The new growth is rich golden yellow. | Each |
| 2 ½-3 feet..... | \$3.00 |
| 3 -4 feet..... | 5.00 |
| C. pisifera filifera. (<i>C. filifera</i>). Thread-branched Cypress. The branches are thread-like and droop gracefully; foliage bright green. | Each |
| 2-2 ½ feet..... | \$3.50 |
| 3-4 feet..... | 6.50 |

| | |
|---|--------|
| C. pisifera plumosa. (<i>C. plumosa</i>). Plume-like Cypress. The favorite for hedges or extensive plantations, with dense, yet fleecy, light green foliage. | Each |
| 2 ½-3 feet..... | \$3.00 |
| 3 ½-4 feet..... | 5.00 |
| C. Pisifera squarrosa. (<i>C. Squarrosa</i>). Silvery blue, feathery foliage. May be kept at any height by pruning. | Each |
| 2-3 feet..... | \$3.00 |
| 3-4 feet..... | 5.00 |
| C. Plumosa Aurea. (<i>Golden Retinospora</i>). Golden yellow foliage, soft and plume-like. Very attractive in spring and summer. A pleasant color contrast when planted with other evergreens. | Each |
| 2-3 feet..... | \$2.50 |
| 3-4 feet..... | 4.00 |
| C. Thunbergii. (<i>Rare</i>). Has a soft, steel colored foliage unlike any other evergreen withstanding shearing well and as specimens planted on a lawn are very effective. | Each |
| 2-3 feet..... | \$6.00 |
| 3-4 feet..... | 8.50 |

JUNIPERUS (*Juniper and Cedar*)

| | |
|--|---------|
| Evergreens of much beauty, ranging from low, prostrate or trailing shrubs to tall trees. | |
| Juniperus communis aurea. (<i>Golden Common Juniper</i>). Low-growing and spreading, particularly useful for edging. The tips of the branchlets are a bright golden yellow. | Each |
| 1-1 ½ feet..... | \$2.50 |
| 2-3 feet..... | 4.00 |
| J. communis hibernica. (<i>Irish Juniper</i>). A slender, columnar form. Branches upright, densely covered with the dark green foliage. | Each |
| 1 ½-2 feet..... | \$1.75 |
| 2 -3 feet..... | 2.50 |
| 3 -4 feet..... | 3.00 |
| | 10 |
| | \$15.00 |
| | 22.50 |
| | 27.00 |

J. communis suecica. (Swedish Juniper). Upright form, similar to the preceding, but more open branches. Foliage glaucous green, lighter, and more bluish than that of the Irish Juniper.

| | | |
|--------------|------|--------|
| 1 1/2-2 feet | Each | \$1.75 |
| 2 -3 feet | Each | 2.50 |

J. Prostrata. (Creeping Juniper). Low prostrate habit; bluish-green foliage.

| | | |
|-----------------|------|--------|
| 2-3 foot spread | Each | \$3.50 |
| 3-4 foot spread | Each | 5.00 |

J. Sabina. (Savin Juniper). Low, bushy, spreading, with very dense, dark green foliage that emits a strong odor when bruised.

| | | |
|---------------|------|--------|
| 1 -1 1/2 feet | Each | \$1.75 |
| 1 1/2-2 feet | Each | 2.50 |
| 2 -3 feet | Each | 4.50 |

J. Sabina tamariscifolia. Trailing; valuable on light soils and for rock-gardens. Foliage bright green, bronzy in winter

| | | |
|-------------------|------|--------|
| 10-12 inch spread | Each | \$2.50 |
| 12-15 inch spread | Each | 3.00 |
| 15-18 inch spread | Each | 4.00 |
| 18-24 inch spread | Each | 5.50 |

J. virginiana. (Red Cedar). Tall native tree of great beauty, hardness and handsome appearance.

| | | |
|----------|------|--------|
| 2-3 feet | Each | \$3.00 |
| 3-4 feet | Each | 4.00 |
| 4-5 feet | Each | 6.00 |

J. virginiana glauca. (Blue Cedar). Allied to the preceding, but has beautiful, silvery blue foliage. Perfectly hardy and transplants easily.

| | | |
|----------|------|--------|
| 3-4 feet | Each | \$6.00 |
| 4-5 feet | Each | 8.00 |

J. pfitzeriana. Spreading, graceful habit, with silvery green color. Distinct and charming.

| | | |
|--------------|------|--------|
| 1 1/2-2 feet | Each | \$3.00 |
| 2 -3 feet | Each | 5.00 |

PICEA (Spruce)

Some of the most ornamental and useful of the conifers. Many are rapid, symmetrical growers.

Picea canadensis. (Black Hills Spruce). A very hardy western variety of the well-known white Spruce. Heavy dark foliage and compact form.

| | | |
|--------------|------|--------|
| 1 1/2-2 feet | Each | \$2.00 |
| 2 -3 feet | Each | 3.00 |

P. excelsa. (Norway Spruce). A tall, picturesque tree, popular as an ornamental and for shelters and windbreaks; hardy; rapid grower. Foliage shining dark green. Stands pruning well.

| | | | |
|----------|------|--------|---------|
| 2-3 feet | Each | \$2.00 | \$18.00 |
| 3-4 feet | Each | 3.00 | 27.00 |
| 4-5 feet | Each | 4.50 | 40.00 |
| 5-6 feet | Each | 6.00 | 55.00 |
| 6-7 feet | Each | 8.00 | 75.00 |

P. glauca. (Colorado Blue Spruce). A very hardy tree from the Rocky Mountains. Its regular, pyramidal shape and beautiful silvery blue foliage are exceptionally ornamental.

| | | |
|--------------|------|--------|
| 1 1/2-2 feet | Each | \$4.00 |
| 2 1/2-3 feet | Each | 6.00 |
| 3 -4 feet | Each | 9.00 |

P. Douglasi. Douglas Spruce. A pyramidal tree that grows to tremendous proportions. Horizontal branches and pendulous branchlets; foliage bluish green.

| | | |
|--------------|------|--------|
| 2 1/2-3 feet | Each | \$3.50 |
| 3 -4 feet | Each | 4.50 |
| 4 -5 feet | Each | 6.50 |

PINUS (Pine)

Strong, rapid growers, that will thrive better on poor soils than on extremely rich ones, although they are grateful for medium conditions.

Pinus nigra austriaca. (Austrian Pine). Robust grower; rigid; very dark green. Wonderfully adaptable to conditions and does especially well at the seashore.

| | | |
|----------|------|--------|
| 2-3 feet | Each | \$3.50 |
| 3-4 feet | Each | 5.50 |

P. Mughus. (Dwarf Mountain Pine). Spreading in growth, usually broader than high. One of the most valuable dwarf evergreens.

| | | |
|--------------|------|--------|
| 15 x 15 inch | Each | \$2.50 |
| 24 x 24 inch | Each | 4.50 |

P. Resinosa. (Red Pine). One of the hardest and most vigorous growing pines. Its spreading branches covered with long, green needles make it an outstanding variety of pine. Splendid for sea-shore planting or near lakes.

| | | |
|----------|------|----------------|
| 2-3 feet | Each | 10 |
| 3-4 feet | Each | \$2.00 \$18.00 |
| | Each | 3.50 33.00 |

P. sylvestris. (Scotch Pine). A tall-growing, broadly pyramidal tree with strong, erect shoots and bluish green needles. Quite hardy, and makes good growth, even in very poor soil.

| | | |
|----------|------|----------------|
| 2-3 feet | Each | 10 |
| 3-4 feet | Each | \$2.00 \$18.00 |
| | Each | 3.00 27.00 |

TAXUS (Yew)

Evergreen, slow-growing trees with dark green foliage densely clothing the branches. In autumn, the bright scarlet berries that generously dot the green background make a great showing.

Taxus canadensis. (Canadian Yew). A prostrate shrub with wide-spreading, slender branches, densely clothed with the yellowish-green leaves that in winter usually assume a reddish tint.

| | | |
|----------------------|------|--------|
| 1 1/2-2 foot spread | Each | \$5.00 |
| 2 -2 1/2 foot spread | Each | 7.00 |

T. cuspidata capitata. (Clustered Japanese Yew). A free-growing open tree of the highest merit and of great hardness. Warm green needles. A rare acquisition.

| | | |
|---------------|------|--------|
| 1 1/2-2 feet | Each | \$5.00 |
| 2 -2 1/2 feet | Each | 7.50 |

TSUGA

Tsuga canadensis. (Canadian Hemlock). Beautiful free, drooping trees, but may be used as a tall hedge; dark green, the rich coloring being retained all winter.

| | | |
|----------|------|--------|
| 2-3 feet | Each | \$3.50 |
| 3-4 feet | Each | 6.00 |

THUJA (Arborvitae)

There are widely varying forms adaptable to many locations—spire-like forms, pyramidal forms, globular forms. The color likewise varies—light green, bright green, dark green, bluish green, golden green, golden yellow, bronze, so that there is an Arborvitae to supply the color-note and form needed in any landscape.

Thuja occidentalis. (American Arborvitae). Will develop into a tree 60 feet tall, of compact, pyramidal form; leaves bright green above, yellowish beneath. Young trees make excellent specimens in tubs, for decorations of porches, etc.; also much used in formal gardens and as hedges.

| | | |
|----------|------|----------------|
| 2-3 feet | Each | 10 |
| 3-4 feet | Each | \$2.00 \$18.00 |
| 4-5 feet | Each | 3.00 25.00 |
| 5-6 feet | Each | 4.00 35.00 |
| | Each | 6.00 55.00 |

T. occidentalis compacta. (Parson's Compact Arborvitae). A low-growing, dense, globular form of the above, with grayish green foliage.

| | | |
|--------------|------|--------|
| 1 1/2-2 feet | Each | \$2.50 |
|--------------|------|--------|

T. occidentalis globosa. (Globe Arborvitae). Symmetrically globular in form and of low, dense growth; beautiful light green. In great demand for formal effects.

| | | |
|--------------|------|--------|
| 1 1/2-2 feet | Each | \$2.50 |
|--------------|------|--------|

T. occidentalis Hoveyi. (Hovey's Golden Arborvitae). A compact-growing variety of distinct conical shape; light golden green.

| | | |
|----------|------|--------|
| 2-3 feet | Each | \$3.00 |
| 3-4 feet | Each | 5.00 |

T. occidentalis lutea. (George Peabody's Golden Arborvitae). Dwarf, dense-growing, pyramidal form with golden yellow foliage.

| | | |
|----------|------|--------|
| 2-3 feet | Each | \$2.50 |
| 3-4 feet | Each | 3.50 |
| 4-5 feet | Each | 4.50 |

T. occidentalis pyramidalis. (Pyramidal Arborvitae). Of much value in formal gardens because of its narrow outline. Branches densely clothed with dark green leaves.

| | | |
|----------|------|----------------|
| 2-3 feet | Each | 10 |
| 3-4 feet | Each | \$2.50 \$22.50 |
| 4-5 feet | Each | 4.00 35.00 |
| 5-6 feet | Each | 6.00 55.00 |
| | Each | 8.00 75.00 |

T. occidentalis. (Tom Thumb). Fine low-growing form of slow, symmetrical growth. Hardy.

| | | |
|------------|------|--------|
| 18-24 inch | Each | \$2.00 |
| 2 -3 feet | Each | 3.75 |

T. occidentalis Wareana. (Siberian Arborvitae). Broad-pyramidal in shape, of slow, dense growth, with stout branches and bluish green foliage.

| | | |
|----------|------|--------|
| 2-3 feet | Each | \$3.50 |
|----------|------|--------|

T. orientalis. (Biota orientalis). (Chinese Arborvitae). Upright, parallel sprays of brilliant green. Compact formal growth.

| | | |
|----------|------|--------|
| 2-3 feet | Each | \$2.00 |
| 3-4 feet | Each | 2.50 |
| 4-5 feet | Each | 3.50 |

Broad-Leaved Evergreen Shrubs

THE winter aspect of home grounds may be greatly enhanced by a planting here and there of some of the luxuriant shrubs listed in this department. Properly grouped in beds and borders or as foundation plantings, their rich, lustrous green foliage adds color and charm to the whole planting-scheme. The flowers and berries that appear in their respective seasons make these shrubs stand out strongly as year-round ornamentals. A cool, moist soil, with a porous substratum, and a northern exposure, is preferred location with most members of the group. We ship all these Evergreen Shrubs with a ball of earth, wrapped in burlap. They will bloom the first season.

ABELIA (*Bush Arbutus*)

A. Grandiflora. One of the most beautiful shrubs in cultivation. Graceful, arching stems bear semi-evergreen dark, glossy leaves. Flowers pinkish-white about an inch long, borne from July until checked by frost.

| | | | |
|-------------------|---------------------|-------------|-----------|
| | Bushy Plants | Each | 10 |
| 2- 3 feet..... | | \$1.00 | \$ 9.00 |
| 18-24 inches..... | | .75 | 6.50 |

AZALEAS

A. amoena. (*Japanese Evergreen Azalea*). A bushy, dwarf evergreen with small green leaves that deepen to a lustrous coppery hue in winter. Its neat appearance is attractive at all seasons, but in April or May the whole plant is clothed with a mass of brilliant claret-colored flowers, that hold their beauty three or four weeks. Such beautiful little plants are ornaments anywhere, and are especially desirable for edging drives and walks, for dwarf hedges, groups or for bordering Rhododendron and Kalmia beds. The habit of this Azalea is so dense and compact that it makes splendid flowering hedges, for which purpose we highly recommend it.

| | | |
|---------------------------|-------------|-----------|
| | Each | 10 |
| 12-15 inches, balled..... | \$2.50 | \$22.50 |
| 10-12 inches, balled..... | 2.00 | 18.50 |

Azalea Kaempferi. (*Rhododendron Kaempferi*; *R. indicum*). Richness of coloring and profuseness of bloom are two of the qualities that make this shrub such a pleasing subject in the summer-time. The dark green leaves, attractive the year round, make a fitting background for the rich masses of bloom and also make it an ornamental specimen during the winter months. Very hardy, withstanding the cold weather at the Arnold Arboretum without winter-killing. If planted in a partially shaded position, the brilliant flowers remain longer in good condition than if planted in full sunlight. Splendid bushy plants.

| | | |
|-------------------------|-------------|-----------|
| | Each | 10 |
| 12-15 inch, balled..... | \$3.00 | \$27.50 |
| 10-12 inch, balled..... | 2.50 | 22.50 |

A. Hindodigiri. A hardy, vigorous-growing variety with bright carmine flowers in such profusion as almost to hide the dense, round, dark green foliage. The flowers remain open for a long time. In winter, the leaves take on a reddish tinge.

| | | |
|-------------------------|-------------|-----------|
| | Each | 10 |
| 12-15 inch, balled..... | \$3.50 | \$32.50 |
| 10-12 inch, balled..... | 3.00 | 27.50 |

BUXUS (*Borwood*)

Buxus sempervirens suffruticosa. (*Dwarf Box*). A low-growing, compact edging plant with small, oval leaves; much used in formal plantings.

| | | |
|---------------------------|------------|-------------|
| | 100 | 1000 |
| 4-6 inch transplants..... | \$30.00 | \$250.00 |

COTONEASTER

Cotoneaster microphylla. A low, spreading shrub, with minute, glossy, persistent leaves. Native of the Himalayas. Flowers pure white, in late spring; fruit bright red, persistent until midwinter. This is a very attractive and ornamental shrub the year round.

| | | |
|-------------------------------------|-------------|-----------|
| | Each | 10 |
| Field Grown Plants, Extra Fine..... | \$2.00 | \$17.50 |

KALMIA

Kalmia latifolia. (*Mountain Laurel*). Bushy shrubs, with bright, evergreen leaves and a profusion of charming pink and white flowers. We can supply strong, bushy, well-shaped plants in almost any size and quantity. Write us for prices on carload lots (300 to 600 plants, according to size). We lift all plants with a ball of earth so that there will be no shock in transplanting.

| | | | |
|-------------------------------|-------------|-----------|------------|
| | Each | 10 | 100 |
| 2-3 feet, well furnished..... | \$2.00 | \$17.50 | \$150.00 |

PACHYSANDRA

Pachysandra terminalis. (*Japanese Spurge*). A low evergreen plant, with glossy dark green foliage. Adapted for covering the ground, where it is difficult to establish grass.

| | | | |
|-------------------------|-----------|------------|-------------|
| | 10 | 100 | 1000 |
| Field-grown Plants..... | \$2.50 | \$20.00 | \$150.00 |

Rhododendrons

FOR years Glenwood Nursery have supplied the private estates of many prominent American people with NATIVE RHODODENDRONS. This year our stock is larger and better than ever. The greatest of all broad-leaved evergreens, there is absolutely nothing that can give the same pleasure and satisfaction when planted in masses. For covering banks, for grouping and massing in shady situations, as an undergrowth in wooded places or for planting beside drives and paths, nothing is more pleasing. The heavy, glossy, green leaves make a magnificent setting for the large showy flowers. These strong, hardy plants bloom profusely in June and July. The flowers are of large size, borne in dense trusses; colors, white and pink. Nothing in horticulture can give the same result as the Native Rhododendrons.

Rhododendron carolinianum. This is one of our finest introductions and fills a long-felt want for an absolutely hardy dwarf Rhododendron, with clear pink flowers free from any hint of magenta. Stands exposure unusually well and is invaluable as a single specimen or for massing.

| | | | |
|--------------------------------|-------------|-----------|------------|
| | Each | 10 | 100 |
| 2-3 feet, balled specimen..... | \$4.00 | \$35.00 | \$300.00 |

R. catawbiense. The hardiest Rhododendron. We recommend it as the finest for general use, withstanding exposure and extremes of temperature where other Rhododendrons fail. It is a very free bloomer, with foliage of a dark, rich, lasting green, which never rusts. The trusses of flowers are a bright red-purple.

| | | | |
|--------------------------------|-------------|-----------|------------|
| | Each | 10 | 100 |
| 2-3 feet, balled specimen..... | \$4.00 | \$35.00 | \$300.00 |
| 3-4 feet, balled specimen..... | 7.50 | 70.00 | 650.00 |

R. maximum. (*Great Laurel*). A well-known native of our mountain regions, with great clusters of white or rose-pink flowers in June and July, just after the hybrid varieties have ceased blooming.

| | | | |
|--------------------------------|-------------|-----------|------------|
| | Each | 10 | 100 |
| 2-3 feet, balled specimen..... | \$3.00 | \$25.00 | \$225.00 |
| 3-4 feet, balled specimen..... | 4.00 | 35.00 | 325.00 |
| 4-5 feet, balled specimen..... | 6.00 | 50.00 | 400.00 |

How About Ordering a Carload?

400 PLANTS for \$780.00

An average of less than \$2.00 per plant.
This is the lowest price in our history.

CAR WOULD CONSIST OF

| | | |
|------|---------------------------------|---------|
| Qty. | | Size |
| 100 | Rhododendrons Maximum..... | 2-3 ft. |
| 50 | Rhododendrons Maximum..... | 3-4 ft. |
| 50 | Rhododendrons Maximum..... | 4-5 ft. |
| 75 | Rhododendrons Catawbiense..... | 2-3 ft. |
| 25 | Rhododendrons Catawbiense..... | 3-4 ft. |
| 50 | Rhododendrons Carolinianum..... | 2-3 ft. |
| 50 | Rhododendrons Carolinianum..... | 3-4 ft. |

Total 400 Plants

Deciduous Trees as Ornaments

THE American forests have given us some of the most majestic specimens of tree life to be found anywhere on the globe—trees that are giants in height and spread. Here, too, are to be found symmetrically formed trees, irregular trees, compact trees, open-head trees, dwarf trees, some with beautiful flowers, others with richly colored foliage—in fact, Nature seems to have lavished upon the American continent a complete arboretum so far as varying forms are concerned.

We have gathered together at Glenwood Nursery such trees as have particular ornamental value, and are growing them and their varieties under conditions that promote vigor of growth and assure continued sturdiness when transplanted to a customer's grounds. Some are especially adapted to lawn planting; others for streets and avenues; others for parks and large estates. There are few places that will not be improved in appearance by the addition of some Deciduous Trees, and a wisely planned and planted home grounds or estate takes on financial value away in excess of the amount expended in adding the trees. Plant more trees around you; they will give shade, beauty, food for birds and bees, provide nesting-places for birds, and bring generous financial recompense.

ACER (Maple)

Highly valued for street and park planting. Handsome foliage rich in autumnal color.

Acer dasycarpum. (Silver-leaved Maple). Height, 60 feet. Rapid-growing, wide-spreading; bark smooth and gray; leaves bright green on upper surface, silvery white beneath, clear yellow in autumn. Succeeds almost anywhere.

6- 8 feet..... Each \$1.50
8-10 feet..... 2.00

A. dasycarpum Wieri. (*A. Wieri laciniatum*). Wier's Cut-leaved Silver Maple. A variety of the above, with gracefully drooping branches and finely divided foliage. Will make a large tree if undisturbed, although it may be pruned and adapted to small lawns.

6- 8 feet..... Each \$2.50
8-10 feet..... 3.00

A. Negundo. (Ash-leaved Maple). Height 70 feet. Rapid-growing, spreading; bark smooth, grayish brown; branchlets green; seeds borne in drooping racemes. Attractive form in winter.

8-10 feet..... Each \$2.00
10-12 feet..... 3.00

A. platanoides. (Norway Maple). Height, 100 feet. Handsome spreading head; leaves large, pale yellow in autumn.

6- 8 feet..... Each 10
8-10 feet..... \$2.75 \$25.00
10-12 feet..... 4.00 37.50
5.00

A. platanoides Schwedleri. (*A. Schwedleri*). Purple-leaved Norway Maple. Strikingly beautiful; leaves at first bright red, changing to dark green, in autumn golden yellow.

6- 8 feet..... Each \$4.00
8-10 feet..... 5.00

A. rubrum. (Red, Scarlet, or Swamp Maple). Height 50 to 100 feet. Branches spreading; red blossoms in spring before the foliage; in autumn the leaves are brilliant red and scarlet.

6-8 feet..... Each \$2.25
8-10 feet..... 3.00

A. saccharum. (Sugar or Rock Maple). Height, 120 feet. Symmetrical, dense head; leaves bright green above, lighter beneath, in autumn yellow and scarlet. Maple syrup is made from its sap. Much favored for planting along avenues.

6- 8 feet..... Each \$2.00
8-10 feet..... 3.00

AESCULUS (Horse Chestnut)

Ae. Hippocastanum. (White-flowering Horse chestnut). Height 60 to 80 feet. Vigorous, rapid-growing tree, giving dense shade; showy white flowers; dark green leaves.

6-8 feet..... Each \$3.00

Ae. Hippocastum Baumanni. (*Ae. alba fl.-pl.*). Double white-flowering Horse Chestnut. A fine double-flowering sort that does not bear fruit; especially desirable as there is no litter of shells and nuts.

4-5 feet..... Each \$3.00

BETULA (Birch)

Betula alba. (European White Birch). Height 60 feet. Rapid growing tree; handsome silvery white bark, sometimes ridged at base of trunk, exposing dark inner bark.

5-6 feet..... Each \$1.50
6-8 feet..... 2.00

B. alba pendula laciniata. (Cut-leaved Weeping Birch). A rapid-growing, graceful tree that is hardy everywhere. Bark silvery white; delicately cut dark green foliage.

6-8 feet..... Each \$4.00
8-10 feet..... 5.00

Birch (Continued)

B. papyrifera. (*Paper or Canoe Birch*). Height, 60 to 80 feet. Irregularly rounded head; bark of chalky white, the outer bark peeling in thin, paper-like layers.

6- 8 feet..... Each \$2.50
8-10 feet..... 3.00

CATALPA

Catalpa Bungei. (*Umbrella Catalpa*). Rapid-growing ornamental tree, grafted on stems 6 to 8 feet high, forms an umbrella-shaped top without pruning; leaves large, glossy, deep green, heart-shaped.

5-6 foot stems, 2 year heads..... Each \$2.00

C. speciosa. (*Hardy Western Catalpa*). Height, to 100 feet. Broad, heart-shaped foliage; white flowers in large panicles.

8-10 feet..... Each 10
10-12 feet..... \$1.00 \$ 9.00
1.50 14.00

CORNUS (Dogwood)

Cornus florida. (*White Dogwood*). Height, 15 to 20 feet. Foliage turns to deep red in autumn; flowers and scarlet berries very showy.

2-3 feet..... Each \$1.50
3-4 feet..... 2.00
4-5 feet..... 3.00

C. florida rubra. (*Red or Pink-flowering Dogwood*). Flowers deep pink, an unusual attraction where the white is familiar. Blooms young.

2-3 feet..... Each \$3.00
3-4 feet..... 4.50
4-5 feet..... 6.50

FAGUS (Beech)

Tall-growing, hardy trees of symmetrical appearance, free from insects and fungi.

Fagus Americana. (*American Beech*). A beautiful shade and ornamental tree, highly valued for park and landscape planting because of its beautiful foliage and bark. Its nuts are sweet and good.

4-5 feet..... Each \$4.00
F. *sylvatica.* (*European Beech*). Height, 60 to 70 feet. Leaves small and shiny, in autumn reddish brown.

5-6 feet..... Each \$5.00

FRAXINUS (Ash)

Fraxinus Americana. (*White Ash*). Fairly rapid grower. Assumes pleasing golden tones in Autumn. Makes a splendid street tree with clean straight trunk.

6- 8 feet..... Each \$1.00
8-10 feet..... 1.50

GLEDITSIA (Locust)

Gleditsia triacanthos. (*Honey Locust*). Height, usually 40 to 50 feet. Vigorous, rapid-growing; feathery, fern-like foliage. As a hedge its thorny branches form an impassable barrier.

1 1/2-2 feet (for hedge)..... \$5.00 1000
Each \$40.00
6- 8 feet..... Each 10
8-10 feet..... \$2.00 \$17.50
3.00 27.50

LARIX (Larch)

Larix europaea. (*L. decidua*). (*European Larch*). Height 60 to 100 feet. Rapid-growing pyramidal trees, with feathery, pine-like light green foliage which turns yellow in autumn.

3-4 feet, balled..... Each \$3.00

LIQUIDAMBAR (Sweet Gum)

Liquidambar styraciflua. (*Sweet Gum*). Height, 60 to 140 feet. A stately tree with star-shaped, dark green leaves, turning intense crimson-scarlet in autumn. The swinging seed-balls are ornamental in winter. Desirable for street or park planting.

4-5 feet..... Each \$4.00

LIRIODENDRON (Tulip Tree)

Liriodendron Tulipifera. (*Tulip Tree*). Height, to 150 feet. Large, peculiarly shaped, glossy leaves; flowers large, tulip-shaped, of mingled green, yellow, cream and orange. Magnificent for street, park, or lawn planting. **Each**
 6- 8 feet..... **\$2.50**
 8-10 feet..... **3.50**

MAGNOLIA

The great cup-shaped, white flowers appear in profusion, in some species before the leaves of other trees. In front of evergreens, the contrasting background adds to the striking effect.

Magnolia acuminata. (*Cucumber Tree*). Height, 60 to 90 feet. Rapid-growing, pyramidal tree, with large, deep green leaves, yellow in autumn; large, creamy white flowers in midsummer, succeeded by cucumber-shaped fruits, at first green, later deep scarlet. **Each**
 4-5 feet..... **\$3.00**
M. glauca. (*Sweet Bay*) A slender, beautiful tree or large shrub, thriving in any good soil or situation. Leaves oblong, glossy green, creamy white, fragrant, cup-shaped flowers in spring. Fruit dark red with scarlet seeds. **Each**
 2-3 feet, balled..... **\$4.00**
 3-4 feet, balled..... **5.00**
M. tripetala. (*Umbrella Tree*). Height, 40 feet. Whorled large, glossy leaves; both hardy and vigorous. The giant white blossoms 4 to 8 inches across, open in June. **Each**
 4-5 feet..... **\$3.00**

MALUS (Crab)

Malus ioensis plena. (*Bechtel's Double-flowering Crab*). A low, bushy tree that is sturdy, hardy, and blooms young. The flowers are double, delicate pink, and delightfully fragrant. **Each**
 2-3 feet..... **\$1.00**
 3-4 feet..... **1.50**
M. Parkmani (P. floribunda Parkmani). (*Parkman's Double-flowering Crab*). Resplendent in early spring with long-stemmed, semi-double, rose-colored blooms that last a long time as cut-flowers. **Each**
 2-3 feet..... **\$1.50**
 3-4 feet..... **2.00**

MORUS (Mulberry)

Morus alba tatarica. (*Russian Mulberry*). Bushy tree, with white to violet-colored fruit, greatly relished by birds. **Each**
 6- 8 feet..... **\$1.75**
 8-10 feet..... **2.25**
M. alba tatarica pendula. (*Teas' Weeping Mulberry*). An unusually fine weeping tree. Foliage is glossy and handsomely lobed; fruit reddish purple. **Each**
 4 foot stems, 2 year heads..... **\$3.00**
M. Downingi. (*Downing's Everbearing Mulberry*). A beautiful lawn or street tree, bearing large, black, subacid fruits that are delightfully refreshing. **Each**
 6-8 feet..... **\$2.00**

PLATANUS (Plane)

Platanus orientalis. (*Oriental Plane*). Height, to 80 feet. Foliage dense, bright green, usually five-lobed, entirely free from attacks of insects and fungous diseases, and not affected by coal-smoke. **Each**
 6- 8 feet..... **\$1.75**
 8-10 feet..... **2.50**

POPULUS (Poplar)

Easy-growing trees with a happy tendency to grow rapidly. Where quick effects rather than permanency are desired—plant Poplars.

P. deltoides carolinensis. (*Carolina Poplar*). Foliage glossy, silvery beneath, heart-shaped, always in motion. Useful for screening unsightly buildings. **Each**
 8-10 feet..... **\$1.50** **\$10.00**
 10-12 feet..... **1.75** **12.50**
 12-14 feet..... **2.00** **18.00**
P. nigra italica. (*Lombardy Poplar*). Tall, spire-like outline prominent among other trees. Makes rapid growth. Ours are low branched, Italian style. **Each**
 8-10 feet..... **\$1.00** **\$ 9.00** **\$ 80.00**
 10-12 feet..... **1.50** **12.50** **100.00**
 12-14 feet..... **2.00** **18.00** **150.00**

PRUNUS

PRUNUS (Flowering Plum, Cherry, Peach and Almond)

The species described below are charming, on account of their habit of growth and profuse bloom that almost hides the limbs from view. They should be a part of every planting scheme.

Prunus avium plena. (*Double-flowering Cherry*). A medium sized tree; clusters of double, pink flowers in May in such profusion that the branches are completely hidden. **Each**
 10
 3-4 feet..... **\$3.50** **\$30.00**

P. cerasifera Pissardi. (*P. cerasifera atropurpurea*). (*Pissard's Purple-leaved Plum*). Compact, ornamental tree with dark crimson foliage, changing to purple as it matures. **Each**
 10
 3-4 feet..... **\$2.00** **\$17.50**
 4-5 feet..... **3.00** **27.50**
 5-6 foot specimen..... **5.00**

P. communis flore-pleno. (*P. japonica; Amygdalus communis flore-pleno.* (*Double-flowering Almond*). Low-growing, bushy; double white and rose-colored flowers in early summer in great profusion. **Each**
 3-4 feet..... **\$1.50**

P. triloba plena. (*Double-flowering Plum*). Small tree, with graceful, slender branches literally covered with double rosy flowers in early summer. **Each**
 3-4 feet..... **\$1.50**

Blood Leaf Peach. Brilliant red bark. Dark red foliage. **Each**
 4-5 feet..... **\$1.50**

P. Persica plena. (*Double-flowering Peach*). A vision of loveliness not equaled by anything else that blooms at the same time. The profusion of its bloom is amazing. **Each**
 10
 3-4 feet..... **\$1.50** **\$12.50**
 4-5 feet..... **2.00**

P. subhirtella pendula. (*P. pendula.* (*Japanese Weeping Rose-flowered Cherry*). Small tree, with drooping, crooked branches, resplendent in early spring with its profusion of dainty pink flowers. **Each**
 2-year Grafted Heads..... **\$4.00**

QUERCUS (Oak)

Stately trees of noble and majestic habit, long-lived wide-spreading, and frequently giants in height. Splendid for shade and much used along avenues.

Quercus alba. (*White Oak*). Height, to 100 feet. Forms a broad, open head. **Each**
 5-6 feet..... **\$3.00**

Q. bicolor. (*Swamp White Oak*). Resembles White Oak but is less spreading in growth. Bark shaggy, like the shagbark hickory, twigs coarse and tough. **Each**
 5-6 feet..... **\$3.00**

Q. coccinea. (*Scarlet Oak*). Height, to 80 feet. Splendid, round-topped, rapid-growing tree, with sharp-pointed leaves, brilliant scarlet in autumn. **Each**
 5-6 feet..... **\$3.50**
 6-8 feet..... **4.50**

Q. macrocarpa. (*Mossy Cup or Bur Oak*). Height, usually 60 to 80 feet. Leaves handsomely lobed; acorns large, half embraced by the fringed, mossy cup. **Each**
 5-6 feet..... **\$3.00**
 6-8 feet..... **4.00**

Q. palustris. (*Pin Oak*). Height, 60 to 120 feet. Rapid-growing, pyramidal tree; foliage lobed, bright green, changing to red and yellow. **Each**
 4-6 feet..... **\$3.00**
 6-8 feet..... **4.00**

Q. rubra. (*Red Oak*). Height about 80 feet. Rapid-growing, majestic tree, forming a broad, round head; foliage dark red in autumn. **Each**
 6-8 feet..... **\$3.50**

SALIX (Willow)

Makes a cool shade for hot days, and enlivens the winter landscape with the colorful bark peculiar to certain of the species.

Salix babylonica. (*Weeping Willow*). Height 30 to 40 feet. Familiar in cemeteries and along water. **Each**
 6- 8 feet..... **\$1.50**
 8-10 feet..... **2.00**

S. Caprea. (*Goat or Pussy Willow*). The silky flowers in early spring are curious and beautiful. **Each**
 6- 8 feet..... **\$1.50**
 8-10 feet..... **2.00**

S. pentandra. (*Laurel-leaved Willow*). Small tree with large shining leaves. **Each**
 6-8 feet..... **\$1.00**

S. vitellina aurea. (*Golden Willow*). Light green leaves and golden yellow branches. **Each**
 6- 8 feet..... **\$1.25**
 8-10 feet..... **1.75**

SORBUS (Mountain Ash)

Sorbus Aucuparis. (*Rowan Tree or European Mountain Ash*). Medium-sized tree that flowers in broad corymbs, followed by clusters of bright red berries. **Each**
 6- 8 feet..... **\$1.75**
 8-10 feet..... **2.25**

SORBUS—Continued

- S. Aucuparia pendula (Pyrus Pendula).** (*Wrapping Mountain Ash*). Graceful slender branches, bright red berries. Plant near the house. **Each \$4.00**
- S. quercifolia (Pyrus quercifolia).** (*Oak-leaved Mountain Ash*). Height about 40 feet. Foliage like oak leaves. Very hardy recommended for lawns or in dooryards. **Each \$2.00**
- 6-8 feet** **\$2.00**
- 8-10 feet** **3.00**

TILIA (Linden)

- Tilia americana.** (*American Linden, or Basswood*). Bark dark gray. The yellowish white blossoms are fragrant and in favor with bees. **Each \$3.50**
- 8-10 feet** **\$3.50**
- T. vulgaris.** (*Common or European Linden*). Smaller than the American variety, but sturdy, providing dense shade and the fragrance of the flowers and their honey-producing properties are the same. **Each \$4.00**
- 8-10 feet** **\$4.00**

ULMUS (Elm)

- Ulmus americana.** (*American or White Elm*). Height, 60 to 120 feet. Forms majestic, vase-like specimens beautiful both in summer and winter. **Each 10**
- 8-10 feet** **\$2.25 \$20.00**
- 10-12 feet** **3.50 30.00**
- 12-14 feet** **4.50 42.00**

ULMUS PUMILA (Chinese Elm)

We offer the hardy North China Strain only. For detailed description, see page 12.

- | | Each | 10 | 100 |
|-------------------------|---------------|----------------|-----------------|
| 4-5 feet | \$1.00 | \$ 8.75 | \$ 75.00 |
| 5-6 feet | 1.50 | 13.75 | 125.00 |
| 6-7 feet | 2.00 | 17.50 | 150.00 |
| 8-10 feet | 2.50 | 22.50 | 200.00 |
| 10-12 feet | 3.75 | 35.00 | 325.00 |
| 12-14 feet | 5.00 | 47.50 | 425.00 |

Red Leaf Peach



Small trees with beet-red foliage and blood-red bark make a charming contrast planted on the lawn or in the shrub border.

Dazzling Beet Red Foliage All Summer . . . As Red as a Beet. Beautiful Pink Flowers in Spring . . . A Rare Ornamental

Of this remarkable variety "PEACHES OF NEW YORK" by Professor U. P. Hedrick, Vice Director and Horticulturist of the New York State Agricultural Experiment Station says "Blood Leaf Peach is a handsome ornamental, its beet-red leaves in early spring and its pink blossoms borne in great profusion entitles it to esteem for both foliage and flowers. It is worth growing as well as for its fruits." Plant it on the lawn, in your shrub border or in the garden.

Legend

Several stories are told of the origin of this peach. One is that on the battlefield of Fort Donelson, Kentucky, a southern general fatally wounded, sucked the juice of the peach and threw the stone into the little pool of blood which flowed from his side. From this pit in its bloody seed-bed sprang the tree with its blood-red leaves.

Prices: Strong Trees 4-5 feet, \$1.50 Each; \$12.50 per 10

How Late Can I Plant Nursery Stock in the Spring?

This is the question that comes up every spring during the month of May, after the first few warm days have come and made the buds swell. Dormant nursery stock may be planted with safety throughout the United States and Canada even late in the spring. We keep our stock dormant

by special methods until late in May. Last year our stock was dormant and we shipped until about the 10th of June. Our advice, however, is to place your order as early as possible. The earlier you plant, the longer the growing season.

Delightful Flowering Shrubs for the Home Grounds

A LONG the roadway, along the pathway, along the house foundation, as borders, for massing—one might mention a large number of special places where Deciduous Shrubs will supply a well-defined need in a planting scheme. Wherever the place may be, however, a wide selection from the list which follows will make possible flowering shrubs around the home or scattered over the estate from early spring to later summer; and the ornamental season is prolonged by the subsequent white or brightly colored berries and the handsome vari-colored leaves that form the characteristic autumnal garb of certain of the genera.

Our Shrubs are well established, two and three years old and of size to give immediate effect.

AMELANCHIER

Amelanchier Canadensis. (*Juneberry*). An attractive and very free flowering shrub with numerous flowers in early spring in small racemes. Fruits purplish, ornamental and edible. Effective if planted in masses with other shrubs.

| | | | |
|---------------|--------|--------|---------|
| | Each | 10 | 100 |
| 2-3 feet..... | \$.75 | \$6.50 | \$55.00 |

ARALIA

Aralia spinosa. (*Hercules' Club*). A large shrub with stout, prickly stems; huge panicles of creamy white flowers in August, followed by dark purple berries.

| | | | |
|---------------|--------|--------|---------|
| | Each | 10 | 100 |
| 2-3 feet..... | \$.50 | \$4.00 | \$30.00 |
| 3-4 feet..... | .60 | 4.50 | 37.50 |

ARONIA

Aronia Arbutifolia. (*Red Chokeberry*). Very ornamental shrub; bright autumn tints; pure white flowers and bright red berries.

| | | | |
|---------------|--------|--------|---------|
| | Each | 10 | 100 |
| 2-3 feet..... | \$.80 | \$7.00 | \$60.00 |

AZALEA

Arborescens. (*Sweet Azalea*). Very attractive white, or faintly rose-tinted, fragrant flowers whose beauty is enhanced by the long, bright red filaments of the stamens. The flowers are borne after the foliage appears, and it is one of the most beautiful of all the hardy Azaleas. In sheltered places it often reaches 15 to 18 feet in height. May.

| | | | |
|-----------------|--------|---------|----------|
| | Each | 10 | 100 |
| 12-18 inch..... | \$2.00 | \$17.50 | \$150.00 |

Canescens. (*Piedmont Azalea*). Rosy pink or whitish trumpet-shaped flowers of great beauty, borne in May before or with the unfolding leaves, fill the air with sweet fragrance. Plant in masses against a dark background to show the flowers to the best advantage.

| | | | |
|-----------------|--------|---------|----------|
| | Each | 10 | 100 |
| 12-18 inch..... | \$2.00 | \$17.50 | \$150.00 |

Nudiflora. (*Pinxter Bloom*). An extremely beautiful Azalea. Rosy pink or whitish blooms; after or before the foliage develops, of strong, sweet fragrance, and borne in great profusion at about the same time as *A. canescens*. Fall foliage assumes attractive shades of orange and bronze. Fine for dry open places.

| | | | |
|-----------------|--------|---------|----------|
| | Each | 10 | 100 |
| 12-18 inch..... | \$2.00 | \$17.50 | \$150.00 |

Viscosa. (*Swamp Azalea*). The last of the Azaleas to flower, nearly all the other shrubs having passed out of bloom when it bears its heavy load of pure white, fragrant flowers, clothed with sticky hairs.

| | | | |
|-----------------|--------|---------|----------|
| | Each | 10 | 100 |
| 12-18 inch..... | \$2.00 | \$17.50 | \$150.00 |

Vaseyi. (*Pink Shell Azalea*). One of the earliest flowering Azaleas, blooming in April, and its glorious pink flowers open before the foliage appears. It is the most beautiful of all the Azaleas, and in delicacy and purity of color is unsurpassed by the flowers of any other plant.

| | | | |
|-----------------|--------|---------|----------|
| | Each | 10 | 100 |
| 12-18 inch..... | \$2.00 | \$17.50 | \$150.00 |

Lutea (*A. calendulacea*). (*Great Flame Azalea*). The gayest and most brilliant-flowering shrub yet known. Splendid clumps, with a mass of buds ranging from light sulphur-yellow to deep red. No more striking landscape effect can be produced than a hillside of *A. lutea* in full bloom.

| | | | |
|-----------------|--------|---------|----------|
| | Each | 10 | 100 |
| 12-18 inch..... | \$2.00 | \$17.50 | \$150.00 |
| 18-24 inch..... | 2.50 | 22.50 | 200.00 |
| 2-3 feet..... | 3.00 | 27.50 | 250.00 |

BENZOIN

Benzoin Aestivale. (*Spice Bush*). An attractive shrub valued for its handsome flowers, which come before the leaves in early spring. The aromatic foliage turns bright yellow, in autumn. Fruit scarlet and conspicuous.

| | | | |
|---------------|--------|--------|---------|
| | Each | 10 | 100 |
| 2-3 feet..... | \$.75 | \$6.00 | \$50.00 |

BERBERRIS

Berberis Thunbergii. (*Thunberg's Japanese Barberry*). Hardy dense, low-growing shrub, with spreading, deeply grooved, thorny branches and small, bright green leaves turning brilliant orange and yellow in autumn. The large,

red berries remain on the bushes throughout the winter giving a cheery bit of color to the place where it grows. Fine for low, ornamental hedges. Bushy plants, with abundant roots.

| | | | |
|-----------------|--------|---------|----------|
| | 10 | 100 | 1000 |
| 12-18 inch..... | \$1.50 | \$15.00 | \$150.00 |
| 18-24 inch..... | 2.50 | 24.00 | 240.00 |
| 2-3 feet..... | 3.00 | 28.00 | 280.00 |

Berberis Thunbergii Atropurpurea. (*Red Leaved Japanese Barberry*). Similar in all respects to the green leaved Japanese Barberry which is so popular for mixing in a shrubby border, as single specimens, or for planting in clumps on the lawn, as well as for foundation plantings and for hedge, but the foliage of this new variety is of a rich, lustrous, bronzy red, similar to the richest red leaved Japanese Maple.

| | | | |
|------------------|--------|--------|---------|
| | Each | 10 | 100 |
| 2 year fine..... | \$.75 | \$6.00 | \$50.00 |

BUDDLEIA

Buddleia Davidi magnifica. (*Butterfly Bush*). Fragrant, rose-purple flowers, with orange eye, in dense, drooping panicles, about the middle of August.

| | | | |
|----------------------------------|--------|--------|---------|
| | Each | 10 | 100 |
| Extra fine plants, 2-3 feet..... | \$.50 | \$4.50 | \$40.00 |

CALYCANTHUS

Calycanthus floridus. (*Sweet Shrub*). The old-fashioned "shrub." Flowers are double, of a rare chocolate color; of spicy fragrance. Blooms in June and at intervals after that.

| | | | |
|--------------------------------|--------|--------|---------|
| | Each | 10 | 100 |
| Strong plants, 18-24 inch..... | \$.50 | \$4.50 | \$40.00 |
| 2-3 feet..... | .60 | 5.00 | 50.00 |

CERCIS

Cercis canadensis. (*Julia Tree, or Red-Bud*). Large, rapid growing shrub; showy, pink flowers in early spring before the leaves.

| | | | |
|---------------|--------|---------|-----|
| | Each | 10 | 100 |
| 4-5 feet..... | \$1.50 | \$14.00 | |

CEANOTHUS

Ceanothus americanus. (*New Jersey Tea*). A low, spreading, free-flowering shrub particularly fine for rockeries. Delicate foam-like flowers on slender stems. Very hardy.

| | | | |
|---------------|--------|---------|-----|
| | Each | 10 | 100 |
| 2-3 feet..... | \$.90 | \$ 8.00 | |

CEPHALANTHUS

Cephalanthus Occidentalis. (*Button-Bush*). A pretty shrub with good foliage and attractive flowers in dense, globular heads.

| | | | |
|---------------|--------|--------|-----|
| | Each | 10 | 100 |
| 2-3 feet..... | \$.75 | \$6.00 | |

CHIONANTHUS

Chionanthus virginica. (*Fringe Tree*). Tall-growing shrub; flowers snow-white, in drooping panicles 4 to 6 inches long, appear in May or June; dark, blue berries.

| | | | |
|---------------|--------|---------|-----|
| | Each | 10 | 100 |
| 2-3 feet..... | \$1.00 | \$ 9.00 | |
| 3-4 feet..... | 1.50 | 12.50 | |

CLETHRA

Clethra alnifolia. (*Sweet Pepper Bush*). Fragrant white flowers in lavish profusion from July to September. Excellent for shady spots.

| | | | |
|---------------|--------|--------|-----|
| | Each | 10 | 100 |
| 2-3 feet..... | \$.75 | \$6.50 | |

CORNUS

Hardy ornamental shrubs with handsome foliage, attractive flowers, conspicuous berries, and brightly colored bark.

| | | | |
|---------------------------------------|--------|--------|---------|
| All following varieties cornus | Each | 10 | 100 |
| 2-3 feet..... | \$.60 | \$5.00 | \$45.00 |
| 3-4 feet..... | .75 | 6.50 | 55.00 |

Cornus Amomum. (*Silky Dogwood*). Reddish purple twigs, flowers creamy white, in early summer; fruit blue. Grows 6 to 10 feet tall.

C. Lutea. A striking yellow branch form of stolonifera, very satisfactory for contrasting.

C. paniculata. (*Panicled Cornel*). Much-branched shrub; flowers white, in loose clusters; white fruits on red stems supply a rich color combination.

CORNUS—Continued

- C. sanguinea.** (*Crimson-barked Dogwood*). Height, 8 to 10 feet. Purple or dark blood-red branches, and greenish white flowers. Berries black in flat-topped clusters.
- C. Siberica.** Grows 6 to 10 feet high with clusters of fine white flowers succeeded by fall crop of ornamental berries. Stem and branches blood red.
- C. stolonifera.** (*Red-Osier Dogwood*). Bushy; blood-red branches and dark green foliage, lighter beneath; fruit white.

CRATAEGUS (*Hawthorn*)

- Crataegus coccinea.** (*Scarlet Thorn*). Single white flowers in spring and scarlet fruit in autumn. Each 10
- 3-4 feet \$1.25 \$11.00
- C. Crus-galli.** (*Cocksbur Thorn*). Sharp spines; bright red fruit, very showy and distinct. Each 10
- 3-4 feet \$1.25 \$11.00
- C. Oxyantha Pauli** (**C. Oxyantha coccinea fl.-pl.**) (*Pauli's Double Scarlet Thorn*). Quick-growing, showy shrubs, with glowing crimson flowers in May. Each 10
- 3-4 feet \$2.00 \$17.50

CYDONIA

- Cydonia japonica.** (*Japanese or Flowering Quince*). Low shrub with formidable thorns and dazzling scarlet flowers. Each 10 100
- 2-3 feet \$.75 \$6.50 \$55.00
- 3-4 feet 1.00 9.00 80.00

DEUTZIA

Ornamental shrubs grown because of their profusion of showy white or blush flowers. Very effective for borders of shrubberies.

- All varieties, except as noted Each 10 100
- 2-3 feet \$.60 \$5.00 \$45.00
- 3-4 feet75 6.50 55.00
- Deutzia gracilis.** (*Dwarf Deutzia*). Slender shrub; flowers pure white, in long, graceful racemes. Each 10 100
- 18-24 inch \$.60 \$5.00 \$45.00
- D. Lemoini.** (*Lemoini's Deutzia*). Small shrub; large flowers. Very effective.
- D. Rosea.** A dwarf deutzia similar to *Deutzia Gracilis* except that the flowers are pink. Excellent for edging shrub borders.
- D. Seabra Candidissima.** (*Snowflaky Deutzia*). Graceful habit, double white flowers in June. Grows vigorously and is one of the best *Deutzias* we offer.
- D. seabra plena** (**D. crenata plena**). (*Double Pink Deutzia*). Tall-growing; resplendent in early summer with double white flowers suffused with rose.
- D. seabra.** (*Pride of Rochester*). Vigorous; delights the eye with large, double, white flowers tinged with pink in the bud.

ELAEAGNUS

- Elaeagnus angustifolia.** (*Oleaster, or Russian Olive*). A large shrub with silvery branches and leaves; flowers and berries yellow, with silvery scales. Each 10 100
- 2-3 feet \$.50 \$4.00 \$30.00
- 3-4 feet60 5.00 45.00
- E. longipes.** (*The "Gumi" of Japan*). Large shrub; flowers yellowish white, fragrant; fruit bright scarlet, used in jams and jellies. Each 10
- 1 1/2-2 feet \$.90 \$8.50
- 2-3 feet 1.25 10.00

EUONYMUS

- Euonymus Alatus.** (*Winged Euonymus*). Spreading in growth with peculiar corky bark along the branches. Leaves small, oval. Berries scarlet, ornamental. The foliage turns a most beautiful crimson in autumn. Each 10
- 2-3 feet \$1.25 \$10.00
- E. americanus.** (*Strawberry Bush*). Tall shrub with odd yellowish or reddish green flowers; fruits pink, warty; scarlet seed-coats. Each 10 100
- 2-3 feet \$.75 \$6.50 \$55.00
- 3-4 feet 1.00 8.00 80.00
- E. europaeus.** (*Spindle Tree*). Larger than the American variety and more showy. Yellowish flowers in early spring, fruits rose-pink. Each 10
- 2-3 feet \$.75 \$ 6.50
- 3-4 feet 1.00 9.00
- E. radicans variegatus.** Low, trailing shrub, usually grown as a vine, will climb 20 feet; the leaves are variegated with silvery white; fruits pink. Each 10 100
- Two year \$.75 \$6.50 \$55.00

FORSYTHIA

- All varieties 2-3 feet Each 10 100
- 3-4 feet \$.60 \$5.00 \$45.00
-75 6.50 55.00
- Forsythia suspensa.** (*Drooping Golden Bell*). Graceful, drooping branches covered with the golden yellow flowers before the leaves appear. Each 10

F. intermedia. (*Hybrid Golden Bell*). Tall shrub with slender branches; flowers golden yellow, borne in great profusion. Grows 8 to 10 feet high; very floriferous.

F. suspensa Fortunei. (*Fortune's Golden Bell*). Golden yellow flower borne in great profusion along the branches before the leaves appear. One of the best.

F. viridissima. (*Green-barked Golden Bell*). Erect, green-barked branches and flowers a bit darker than other varieties; petals twisted.

HALESIA

- Halesia Tetraptera.** (*Silverbell*). Open in growth and best if planted among or back of other shrubs. Flowers resemble snow-drops and completely cover the shrub. Each 10
- 2-3 feet \$1.00 \$ 9.00

HAMAMELIS

- Hamamelis virginiana.** (*Witch-Hazel*). Large, hardy shrubs with peculiar yellow flowers in September and October, remaining for a long time. Each 10
- 2-3 feet \$.75 \$ 6.50
- 3-4 feet90 8.00

HIBISCUS SYRIACUS

(*Althea, or Rose of Sharon*)

Almost tree-like; flowers in August and September.

Prices on following varieties:

- 2-3 feet Each 10 100
- 3-4 feet \$.60 \$5.00 \$45.00
-75 6.50 55.00

Albo-plenus. Double; white, crimson center.

Ardens. Double; bluish purple; distinct.

Carneo-plenus. Double flesh-color.

Comte des Flandres. Double; dark red.

Jeanne de Arc. Double; pure white.

La Reine. Double; deep rose.

Variegatus. Lavender; leaves variegated.

We offer TREE-FORM plants of the above varieties at following prices: Each 10

3-4 feet \$1.00 \$ 9.00

HYPERICUM

- Hypericum Moserianum.** (*Gold Flower*). Low, erect shrub; golden-yellow flowers in July and August. Each 10 100
- 1 1/2-2 feet \$.75 \$6.50 \$55.00

HYDRANGEA

Showy white and pink flowers. Effective as specimen plants or in masses.

Hydrangea arborescens grandiflora. (*Hills of Snow*). A showy *Hydrangea*, with snow-white clusters of flowers. The heads are 5 to 7 inches across. Each 10 100

- 2-3 feet \$.60 \$5.00 \$45.00
- 3-4 feet75 6.50 55.00

H. paniculata grandiflora. The hardiest and most popular *Hydrangea*. In July and August massive plumes of white flowers, later changing to pink, bend the branches with their weight. Each 10 100

- 2-3 feet \$.50 \$4.00 \$24.00
- 3-4 feet60 5.00 36.00

H. paniculata grandiflora. (*Tree-Form*). We have trained a limited number into tree-form, which are ideal for tubs or lawn planting. Each 10

- 3-4 feet \$1.50 \$12.50
- 4-5 feet 2.00 17.50

KERRIA

- Kerria japonica fl.-pl.** (*Globe-Flower*). Attractive shrub; double flowers bright yellow, large and showy; vigorous but not entirely hardy in the far North. Each 10
- 1 1/2-2 feet \$.75 \$ 6.00

KOLKWITZIA

K. Amabilis (*Beauty Bush*). A graceful ornamental shrub closely related to the *Abelias* and *Weigelas*. Blush pink flowers like *Weigela* blooms almost completely cover the bush, highly recommended by the late Dr. E. H. Wilson of Arnold Arboretum.

- Each Per 10
- 12-18 inch plants at \$1.50 \$12.50
- 18-24 inch plants at 2.00 17.50

LABURNUM

- Laburnum vulgare** (*Cytisus Laburnum*). (*Golden Chain*). Height, to 20 feet. A picturesque shrub; long racemes of golden yellow flowers in June. Each 10
- 4-6 feet \$2.50 \$22.50

LIGUSTRUM (*The Deciduous Privet*)

Extensively used for hedges and screens; hardy and vigorous, stands clipping.

Ligustrum Amurense. (*Northern Amoor River Privet*). Grows very much like the California Privet, but is much hardier; erect in habit; fine for hedges.

| | | | | |
|------------|--------|---------|----------|------|
| | Each | 10 | 100 | 1000 |
| 18-24 inch | \$1.50 | \$10.00 | \$ 90.00 | |
| 2-3 feet | 2.50 | 18.00 | 175.00 | |

L. Ibota. (*Japanese Privet*). A large shrub, with graceful branches; flowers white, in panicles, followed by bluish black berries.

| | | | | |
|------------|-------|--------|---------|----------|
| | Each | 10 | 100 | 1000 |
| 18-24 inch | \$.35 | \$2.00 | \$18.00 | \$150.00 |

L. Ibota Regelianum (L. Regelianum). (*Regel's Privet*). Low-growing panicles of white flowers in June and July; foliage bright red in autumn.

| | | | |
|------------|-------|--------|---------|
| | Each | 10 | 100 |
| 18-24 inch | \$.40 | \$3.50 | \$30.00 |

Ligustrum Nanum Compactum. (*Lodense Privet*). This is a new dwarf, distinct form of Privet of extremely compact low-growing habit. The foliage is rich, dark green and of extreme hardness. It is particularly useful for low hedges and borders, as it stands shearing very well and can be kept low and compact very easily.

| | | | |
|------------|--------|---------|----------|
| | 10 | 100 | 1000 |
| 12-15 inch | \$3.50 | \$30.00 | \$200.00 |

L. ovalifolium. (*California Privet*). Ideal hedge plant. Dark green, glossy foliage retained until late winter; flowers white, in panicles; very hardy.

| | | |
|--------------------------------|--------|---------|
| | 100 | 1000 |
| 12-18 inch | \$6.00 | \$50.00 |
| 18-24 inch | 9.00 | 70.00 |
| 2-3 feet, transplanted | 12.00 | 90.00 |
| 3-4 feet, transplanted, 3 year | 25.00 | 200.00 |

50 at 100 rate; 500 at 1000 rate

LONICERA (*Honeysuckle*)

Handsome, ornamental shrubs, popular because of their early fragrant flowers.

| | | | |
|--------------------------------|-------|--------|---------|
| All varieties Lonicera: | Each | 10 | 100 |
| 2-3 feet | \$.60 | \$5.00 | \$45.00 |
| 3-4 feet | .75 | \$6.50 | 55.00 |

Lonicera fragrantissima. (*Early Fragrant Honeysuckle*). Large, half-evergreen shrub; flowers creamy white or light yellow, fragrant in spring. Very desirable.

L. Morrowi. Height, 6 feet. Spreading; flowers white, changing to yellow; red fruit.

L. Ruprechtiana. (*Manchurian Honeysuckle*). Large; white flowers in May and June, changing to yellow; fruit red or yellow.

L. Standishi. Medium size; spreading; flowers white, very fragrant, in March and April; fruit scarlet.

L. tatarica. (*Tartarian Honeysuckle*). Height, 8 to 10 feet. Fragrant white or pink flowers in May and June; red or orange fruit.

L. tatarica alba. (*White Tartarian Honeysuckle*). A white variety of the above. Bright red berries.

PHILADELPHUS (*Syringa; Mock Orange*)

Popular, ornamental shrubs, attractive and fragrant. Nearly all varieties blossom in June.

| | | | |
|------------------------------------|-------|--------|---------|
| All varieties Philadelphia: | Each | 10 | 100 |
| 2-3 feet | \$.50 | \$4.00 | \$33.00 |
| 3-4 feet | .60 | 5.00 | 39.00 |

Philadelphus coronarius. (*Common Mock Orange*). Height, 8 to 10 feet. Flowers fragrant, pure white or cream. An old favorite.

P. coronarius foliis aureis. (*Golden Mock Orange*). Pleasing golden yellow foliage.

P. Primulaeflorus. (*Double-flowered Mock Orange*). A medium size shrub producing fragrant double white flowers—a very fine variety of double mock orange.

P. Falconeri. (*Falconer's Mock Orange*). A medium-sized shrub with graceful branches; flowers pure white, fragrant.

P. grandiflorus. (*Large-flowered Mock Orange*). Height, 10 feet. Large, pure white, fragrant flowers.

P. Lewisii. Upright late-blooming. Flowers profuse, pure white, and rather fragrant.

RHAMNUS

Rhamnus Cathartica. (*Common Buckthorn*). A good hedge plant with dull green foliage; wood black and thorny, with clusters of shiny black berries in autumn and early winter.

| | | |
|----------|-------|--------|
| | Each | 10 |
| 2-3 feet | \$.40 | \$3.00 |
| 3-4 feet | .50 | 4.00 |

RHODOTYPOS

Rhodotypos kerrioides. (*White Kerria*). Graceful shrub, 3 to 6 feet high. Pure white flowers in May and June; shiny black berries in autumn.

| | | | |
|----------|-------|--------|---------|
| | Each | 10 | 100 |
| 2-3 feet | \$.60 | \$5.00 | \$45.00 |
| 3-4 feet | .75 | 6.50 | 55.00 |

RHUS

Rhus Aromatica. (*Fragrant Sumac*). Spreading in growth. Leaves trifoliate, aromatic. Flowers small, in clusters, and come before the leaves appear. Excellent for covering dry, sandy banks or for massing with other shrubs.

| | | | |
|----------|-------|--------|---------|
| | Each | 10 | 100 |
| 2-3 feet | \$.75 | \$6.50 | \$55.00 |
| 3-4 feet | 1.00 | 9.00 | 80.00 |

R. Cotinus. (*Purple Fringe or Smoke Tree*). A medium-sized shrub with fringe-like flowers. In full bloom it has the appearance of a cloud of smoke.

| | | | |
|----------|--------|---------|----------|
| | Each | 10 | 100 |
| 2-3 feet | \$1.00 | \$ 9.00 | \$ 90.00 |
| 3-4 feet | 1.25 | 10.00 | 100.00 |

R. Glabra. (*Smooth Sumac*). Handsome foliage, scarlet in autumn, greenish flowers in July; crimson, hairy seeds

| | | | |
|----------|-------|--------|---------|
| | Each | 10 | 100 |
| 2-3 feet | \$.50 | \$4.00 | \$35.00 |
| 3-4 feet | .60 | 5.00 | 45.00 |

R. typhina. (*Staghorn Sumac*). Large shrub; flowers greenish, in dense panicles in June and July. Grows in the driest soils, and is particularly desirable because of its brilliant autumn color.

| | | | |
|----------|-------|--------|---------|
| | Each | 10 | 100 |
| 2-3 feet | \$.50 | \$4.00 | \$35.00 |
| 3-4 feet | .60 | 5.00 | 45.00 |

ROBINIA

Robinia hispida. (*Rose Acacia*). Height 3 feet. Flowers rose-pink of pale purple, in nodding racemes. Fine top-grafted plants.

| | | |
|----------|--------|---------|
| | Each | 10 |
| Two year | \$1.00 | \$ 9.00 |

SAMBUCUS

Sambucus canadensis. (*American or Sweet Elder*). Handsome, familiar shrub; flowers white, in cymes 3 to 10 inches across; fruit purplish.

| | | | |
|----------|-------|--------|---------|
| | Each | 10 | 100 |
| 2-3 feet | \$.50 | \$4.00 | \$30.00 |
| 3-4 feet | .60 | 5.00 | 36.00 |

S. nigra aurea. (*Golden-leaved Elder*). Handsome golden yellow foliage; flowers and fruit similar to *S. Canadensis*.

| | | | |
|----------|-------|--------|---------|
| | Each | 10 | 100 |
| 2-3 feet | \$.60 | \$5.00 | \$45.00 |
| 3-4 feet | .75 | 6.00 | 55.00 |

SPIREA

All varieties Spirea, except as noted:

| | | | |
|----------|-------|--------|---------|
| | Each | 10 | 100 |
| 2-3 feet | \$.50 | \$4.00 | \$30.00 |
| 3-4 feet | .60 | 5.00 | 45.00 |

Spirea arguta. Vigorous, hardy shrub; pure white flowers, borne in great profusion in early spring.

S. aurea. Golden yellow foliage and double white flowers in June. Effective in shrubbery, for planting along banks or as screens.

S. Opulifolia. A large shrub producing an abundance of delightful fragrant white flowers in flat clusters during June.

| | | | |
|----------|--------|--------|---------|
| | Each | 10 | 100 |
| 4-5 feet | \$1.00 | \$9.00 | \$80.00 |

S. Douglasii. (*Spirea Douglasii*). An upright shrub, 5 to 6 feet tall with reddish brown branches. Leaves narrow, oblong; green above, white woolly underneath. Flowers deep pink. Very showy.

S. Billardi. Rather tall; flowers bright pink, in July and August. Very showy.

S. Bumalda. Height, 2 feet. Deep pink flowers in flat cymes, foliage sometimes variegated with yellow.

| | | | |
|------------|-------|--------|---------|
| | Each | 10 | 100 |
| 18-24 inch | \$.60 | \$5.00 | \$45.00 |

S. Bumalda, Anthony Waterer. (*S. Anthony Waterer*). Variety of the above, with bright crimson flowers.

| | | | |
|------------|-------|--------|---------|
| | Each | 10 | 100 |
| 18-24 inch | \$.50 | \$4.00 | \$30.00 |

S. prunifolia plena. (*S. prunifolia*). (*Bridal Wreath*). In early spring literally covered by small, double, white flowers; autumn leaves orange and scarlet.

S. Thunbergii. Pure white flowers in April and May, like a mantle of snow.

S. Vanhouttei. Height, 6 feet. Numerous clusters of white flowers.

| | | | |
|----------|-------|--------|---------|
| | Each | 10 | 100 |
| 2-3 feet | \$.50 | \$4.00 | \$30.00 |
| 3-4 feet | .75 | 5.00 | 33.00 |

SYMPHORICARPOS

Symphoricarpos racemosus. (*Snowberry*). Height, 3 to 5 feet. Pinkish flowers, white berries.

| | | | |
|----------|-------|--------|---------|
| | Each | 10 | 100 |
| 2-3 feet | \$.60 | \$5.00 | \$45.00 |
| 3-4 feet | .75 | 6.50 | 55.00 |

S. vulgaris. (*Coral Berry or Indian Currant*). Plump red fruits clustered along the branches.

| | | | |
|----------|-------|--------|---------|
| | Each | 10 | 100 |
| 2-3 feet | \$.60 | \$5.00 | \$45.00 |
| 3-4 feet | .75 | 6.50 | 55.00 |

STEPHANANDRA

Stephanandra flexuosa. Spirea-like shrub; leaves brilliant reddish purple in autumn; flowers profuse snowy white

| | | | |
|----------|-------|--------|---------|
| | Each | 10 | 100 |
| 2-3 feet | \$.60 | \$5.00 | \$45.00 |
| 3-4 feet | .75 | 6.00 | 54.00 |

The Lilacs (*Syringa*)

SYRINGA. (*Lilac*). Without a doubt among the most popular of the early spring bloomers. Their bright green foliage and large, fragrant panicles of flowers contribute brightness and perfume to the shrubbery of which they are a part. We offer any of the following kinds in either tree or bush form at the prices given. *Syringa vulgaris* and *S. vulgaris alba* are grown on their own roots; the others are grafted upon English privet to prevent suckering.

POPULAR HYBRID LILACS

| All following varieties: | Each | 10 | 100 |
|--------------------------|--------|--------|---------|
| 18-24 inch..... | \$.75 | \$7.25 | \$70.00 |
| 2-3 feet..... | 1.25 | 10.00 | 90.00 |
| 3-4 feet..... | 1.75 | 15.00 | 125.00 |

Alphonse Lavallee. Double. Very large panicles of beautiful blue flowers, shading lilac.

Belle de Nancy. Double. Great panicles of pink flowers with white center.

Charles X. Single. Strong, rapid grower; rather loose trusses of reddish purple flowers.

Congo. Single. Flowers a beautiful deep wine-red.

Docteur Masters. Double. Fine clear lilac.

Frau Bertha Dammann. Single. Large panicles of pure white flowers. Very fine variety.

Lamarck. Double. Long clusters of rosy lilac flowers.

Leon Simon. Double large flowers of a purplish crimson shade.

Marie Legraye. Single. Dwarf sort, with creamy white flowers of immense size.

Mme. Abel Chateney. Double. Sweetly scented pure white flowers in large panicles.

Mme. Lemoine. Double. A pure white variety that has won many prizes. Good forcer.

Philemon. Single. Red-flowered variety that is very pleasing.

President Grevy. Double. Beautiful lilac-blue flowers in huge panicles.

Souvenir de Ludwig Spaeth. Single. Long panicles of dark purplish red flowers. Splendid sort.

NEW AND RARE HYBRID LILACS

| All following varieties except as noted: | Each | 10 | 100 |
|--|--------|---------|----------|
| 18-24 inch..... | \$1.25 | \$11.00 | \$100.00 |
| 2-3 feet..... | 1.50 | 12.50 | |
| 3-4 feet..... | 2.00 | 17.50 | |

Adelaide Dunbar. Semi-double. Deep maroon in bud, flowers violet-red when fully opened. Open branching habit.

Gen. Kitchener. Semi-double. Buds reddish lilac, flowers when fully opened bluish lilac, tinged violet. Branching habit, compact.

Gen. Pershing. Semi-double. Buds deep lilac, opening to bluish lavender flowers with a tinge of very delicate azure-lilac. Branching habit, medium dense.

Gen. Sherman. Single. Deep lavender bud, flowers creamy lavender-lilac when fully open, with a faint tinge of porcelain-blue at center. Compact, branching habit.

Hiram H. Edgerton. Single. Reddish lilac in bud, flower bluish lilac to violet-lavender when open. Branching habit, compact.

President Harding. Single. Buds deep crimson, flowers reddish lilac when fully open; clusters 7 to 8 inches long. Branching habit, low and compact.

President Roosevelt. Single. Bud deep purple-red, bright purplish red when open. Branching habit, open and vigorous.

Princess Alexandra. Single. White flowers. One of the best.

Princess Marie. Single. Light creamy lilac flowers.

Vivian-Morel. Double. Clear lilac flowers, having white center with violaceous reverse.

William C. Barry. Single. Buds reddish lilac, flowers silvery lavender or pearly lavender when fully opened. Branching habit, open and vigorous; tall.

| All following varieties: | Each | 10 | 100 |
|--------------------------|--------|--------|---------|
| 2-3 feet..... | \$1.00 | \$9.00 | \$80.00 |
| 3-4 feet..... | 1.25 | 10.00 | 90.00 |
| Tree 3-4 feet..... | 2.00 | 17.50 | |

Josikaea. (*Hungarian Lilac*). One of the late-blooming kinds that is valuable for prolonging the Lilac season into June. Broad, dark green leaves and lilac-purple flowers in large panicles.

Villosa. Stout, warty branches and bright green, oblong, sharp-pointed leaves; large panicles of pinkish lilac flowers in May and June.

Vulgaris. (*Common Purple Lilac*). Hardy and vigorous, blooming profusely even under adverse conditions; flowers light purple, fragrant, and borne in good-sized clusters in May.

Vulgaris alba. (*Common White Lilac*). The well-known old-fashioned pure white variety, with fragrant flowers and luxuriant foliage.

TAMARIX

Africana. Very graceful shrub with feathery foliage and long, slender racemes of pink flowers in early summer. Very striking at the edge of an evergreen border.

| | Each | 10 | 100 |
|---------------|--------|--------|---------|
| 2-3 feet..... | \$.50 | \$4.50 | \$35.00 |
| 3-4 feet..... | .60 | 5.00 | 45.00 |

VIBURNUM (*Snowball*)

Large shrubs of good habit. Fine for planting along shrubbery or roads; some species are showy alone on the lawn.

All varieties **Viburnum**, except as noted:

| | Each | 10 | 100 |
|---------------|--------|--------|---------|
| 2-3 feet..... | \$.75 | \$6.50 | \$55.00 |
| 3-4 feet..... | 1.00 | 9.00 | 80.00 |

Viburnum cassinoides (*Withe-Rod*). Medium size; rich green foliage; creamy white flowers in June; pink berries turning blue.

V. dentatum. (*Arrow-Wood*). Upright, bushy shrub; foliage changes to purple and red; flowers creamy white in May; berries blue-black.

V. Lantana. (*Wayfaring Tree*). Large shrub, particularly adapted to dry situations and limestone soil. Flowers white, in May and June; berries bright red, turning black.

V. Lentago. (*Sheepberry*). Large hardy shrub; white flowers, fruit oval, blue-black.

V. Opulus. (*High-Bush Cranberry*). Medium size; particularly brilliant in autumn; white flowers; red fruits.

V. Opulus sterile. (*Snowball*). The old-fashioned favorite. Globular clusters of white flowers the latter part of May.

V. tomentosum. (*Single-flowered Japanese Snowball*). Rather tall; flowers white, in flat clusters; berries red to bluish black.

V. tomentosum plicatum (**V. plicatum**). (*Japanese Snowball*). Handsome pure white globular heads of flowers.

| | Each | 10 | 100 |
|---------------|--------|--------|---------|
| 2-3 feet..... | \$1.00 | \$9.00 | \$80.00 |

WEIGELA (Diervilla)

Hardy, vigorous shrubs with dainty flowers, of variable color.

All varieties **Weigela**: except as noted:

| | Each | 10 | 100 |
|---------------|--------|--------|---------|
| 2-3 feet..... | \$.60 | \$5.00 | \$45.00 |
| 3-4 feet..... | .75 | 6.50 | 55.00 |

W. candida. Vigorous, but refined appearance. Pure white flowers in June and at intervals during the summer.

W. hybrida. (*Eva Rathke*). The most beautiful Weigela. Gorgeous crimson flowers throughout the season.

| | Each | 10 | 100 |
|-----------------|--------|--------|---------|
| 18-24 inch..... | \$.75 | \$6.50 | \$55.00 |

W. rosea. Height, 6 feet. Rose-colored flowers in May.



Weigela Rosea and Viburnum Plicatum

(See this page for description)

Hardy Perennial Plants

GIVE great satisfaction when used for borders—along the front of shrubberies—along driveways and walks, or planted in masses on lawns, because being perennial they do not require replanting each season. Once planted they give but little trouble. When the foliage dies or is killed by frost their usefulness is not ended, for they will appear each spring with greater strength and beauty. They are the old-fashioned garden plants of our grandmothers, always beautiful, always entitled to our most affectionate regard, making our homes more attractive. They hold a strong place in the hearts of all plant lovers and should be planted generously. They combine diversity of foliage and great variety in form and color, while many varieties are excellent for cutting.

ACHILLEA

Ptarmica. (The Pearl). Double; white flowers in clusters. July. 1½ to 2 feet.

Price: 30c each; \$1.25 per 5; \$20 per 100

ACONITUM

Fisherii. Glossy, deep green foliage. Hooded, deep blue flowers in fall. Good cut flower.

Price: 30c each; \$1.25 per 5; \$20 per 100

ANCHUSA

Italica, Dropmore. Blue. July to October. 3 feet.

Price: 30c each; \$1.25 per 5; \$20 per 100

ANEMONE JAPONICA

Graceful, airy flowers of delicate form on clean stems in autumn. Easily grown, and one of the most attractive perennials.

Alba. White. 2 feet.

Queen Charlotte. Soft Pink. 2 feet.

Whirlwind. Double; white. 2 feet.

Price all varieties: 30c each; \$1.25 per 5; \$20 per 100

AQUILEGIA (Columbine)

Canadensis. Scarlet and yellow. April to June. 2 feet.

Chrysantha. Golden yellow. May to August. 3 feet.

Chrysantha alba. Pure white. 2 to 3 feet.

Price all varieties: 30c each; \$1.25 per 5; \$20 per 100

ASTILBE HYBRIDS (Spiraea)

Queen Alexandra. Soft, delicate pink, feathery plumes.

Gladstone. Similar to the above but pure white.

Price all varieties:

30c each; \$1.25 per 5; \$20 per 100

CAMPANULA

Carpatica. (Harebell). Flower large, light blue and white, compact in growth not exceeding 8 inches in height. Fine for border, edging or excellent for rockery.

Medium. (Canterbury Bells). Large, cup-shaped flowers, blue, rose or white and mixed.

Persicifolia. (Peach Bells). Handsome spikes of flowers in July and August. Blue or White. 2 feet.

Price all varieties: 30c each; \$1.25 per 5; \$20 per 100

HARDY CHRYSANTHEMUMS

Aberdeen. Rich bronze; button type.

Apple Blossom. Large; pale pink.

Autumn Glow. Rosy crimson, warm and bright.

Eva. Delicate pink.

Glory of Seven Oaks. Dwarf; golden yellow; very free-flowering and very early.

Indian. Red shaded bronze.

L'Argentenillais. Chestnut brown.

Lucifer. Dark purplish red.

Marie Antoinette. Attractive rose color.

Normandie. A very good pink variety.

Old Homestead. Dark red.

White Flora. Large pure white.

Price all varieties: 30c each; \$1.25 per 5; \$20 per 100

COREOPSIS

Grandiflora. Yellow. June to September. 3 feet.

Price: 30c each; \$1.25 per 5; \$20 per 100

CONVALLARIA

Lily of the Valley. Well known.

Price: 30c each; \$1.25 per 5; \$20 per 100

DELPHINIUM (Larkspur)

Chinense. Gentian-blue. 2½ feet.

Chinense album. White. 4 feet.

Formosum. Dark blue. 4 to 5 feet.

Belladonna. Light blue. 4 feet.

Price all varieties: 30c each; \$1.25 per 5; \$20 per 100

DIANTHUS

Barbatus. (Sweet William). Crimson, white and Newport pink, and mixed colors. 1½ feet.

Plumarus. Scotch Pink. June. 9 inches.

Price all varieties: 30c each; \$1.25 per 5; \$20 per 100

DICENTRA

Spectabilis (Bleeding Heart). Long, drooping racemes of graceful, rose-pink, heart-shaped flowers.

Price: 50c each; \$4.00 per 10

DIGITALIS (Foxglove)

Gloxiniaeflora. White and pink. June, July. 3 feet.

Gloxiniaeflora alba. White. June, July. 3 feet.

Purpurea. Purple and white. June, July. 3 feet.

Price all varieties: 30c each; \$1.25 per 5; \$20 per 100

PHLOX

NEW DWARF LARGE-FLOWERED

Antonin Mercie. Clear lilac with white eye. Extra-large flowers in massive clusters.

Athis. Deep, clear salmon. Very fine.

B. Comte. Rich satiny amaranth.

Beacon. Brilliant cherry-red

Champs Elysees. Fine, rich crimson.

Crepuscle. White with delicate mauve suffusion and rosy purple eye.

Eclairer. Bright carmine with light halo. Large flowers and heavy compact heads.

Europa. A new variety, white with large crimson carmine eye. Very large flower and truss.

Jules Sandeau. Large; fine; very free-flowering; pure pink flowers in noble panicles.

Mrs. Jenkins. White; immense panicles; free bloomer, large individual flowers.

Mrs. Scholten. New. Dark salmon-pink flowers in enormous pyramidal spikes.

Pantheon. Clear, deep, carmine-pink with faint halo.

Peach Blossom. Soft pink.

Prof. Virchow. Bright carmine, overlaid with orange-scarlet. One of the showiest Phloxes.

Rosenberg. Bright reddish violet with blood-red eye. A most striking variety.

Rheinlander. A beautiful salmon-pink, with flowers and trusses of immense size.

R. P. Struthers. Bright rosy carmine, claret-red eye.

Rijnstroom. Lively rose-pink, much like Paul Neyron rose. Immense trusses of flowers.

Thor. A beautiful lively shade of deep, salmon-pink, suffused and overlaid with a scarlet glow, aniline-red eye.

Tapis Blanc. Very large white florets. Panicles are very large and plants very dwarf.

W. C. Egan. Beautiful soft rose. Florets extremely large. Medium.

Widar. Attractive violet-blue with a pure white eye.

Price all varieties: 30c each; \$1.25 per 5; \$20 per 100

Peonies

Among the most hardy, showy, and easily grown of all garden flowers; the plants are practically immune from the attacks of insects or diseases; the flowers are the largest of all double-flowering perennials, and each succeeding year adds to the vigor of the plant and to the abundance and perfection of the blooms. The varieties that we name below we have selected with great care as being excellent specimens of the types and colors they represent.

Agida. Violet-rose; early blooming, free-flowering, semi-double type of medium size.

Berlioz. Rosy magenta; large, compact, rose type; strong grower; free bloomer.

Canari. Yellowish; globular bomb type of medium size; fragrant; late.

Charlemagne. Lilac with blush center; large, rose type; fragrant; late.

PEONIES—Continued

- Delachei.** Rosy magenta; large, rose type; very fine bloomer; late. Extra-fine variety.
- Duc de Wellington.** White with sulphur center; large, bomb type; very free bloomer; very fragrant; late.
- Duchesse de Nemours.** Pure white; medium-sized, crown type; fragrant; two days earlier than Festiva Maxima.
- Edulis Superba.** Bright mauve-pink; large, rather flat, crown type; strong, upright grower, free bloomer; fragrant; early.
- Festiva Maxima.** Pure white; flecked with carmine; very large, rose type; free-flowering; fragrant; medium early.
- L'Eclatante.** Brilliant red; very large bomb type; strong growing; midseason.
- L'Indispensable.** Lilac-white, changing to violet-rose; large, bomb type; free-blooming; medium early.
- Louis Van Houtte.** Dark red; medium-sized, semi-double type; fragrant; late.
- Marechal MacMahon.** Rich, dark red; large, bomb type; a fine flower of rare beauty.
- Mme. Calot.** Pale hydrangea-pink, center shaded darker; large, rose type, free flowering; fragrant; early. Very good.
- Mme. de Verneville.** Pure white, center blushed; very large and full, bomb type; fragrant; early.
- Queen Victoria.** Milk-white guards tinted flesh, the center creamy white with crimson spots; medium-sized bomb type; free blooming; fragrant, midseason.
- Rubens.** Very dark crimson; large, semi-double type; fragrant; early. Extra-fine variety.
- Rubra Triumphans.** Dark crimson; large, semi-double type; free-flowering; fragrant; early; midseason.
- Paonia officinalis.** The old-fashioned "Piney" of Grandmother's day—large, double flowers having a pleasingly rich fragrance. They come into bloom ten days or two weeks earlier than do the herbaceous sorts.
- P. officinalis rubra.** The deep crimson variety that makes such a strikingly handsome showing when in bloom. Very fragrant and among the earliest blooming of the species.
- P. officinalis rosea superba.** The light rose-colored, fragrant, double flowers make this plant very attractive at blooming time.
- President Roosevelt.** Semi-rose type; color deep, rich, brilliant red; mid-season; fine.

Price all varieties of Peonies:

65c each; \$6.00 per 10; \$50.00 per 100

FUNKIA (*Plantain Lily*)

- Subcordata grandiflora.** Pure white. July and September. 2 feet.
- Lancifolia.** Lilac. August. 2 feet.
- Ovata.** Lavender-blue. 1 to 2 feet. June, July.

Price all varieties: 30c each; \$1.25 per 5; \$20 per 100

GAILLARDIA

- Grandiflora.** (*Blanket Flower*). Red and yellow. June to November. 2 feet. One of the easiest grown perennials.

Price 30c each; \$1.25 per 5; \$20 per 100

HEUCHERA

- Sanguinea.** Makes a tuft of heart-shaped glossy green leaves, from which the flowering stems rise a foot or more in height. Flowers small, bright red.

Price 30c each; \$1.25 per 5; \$20 per 100

HIBISCUS

- Moscheutos.** Gigantic flowers of glistening pink. August. 5 feet.
- Moscheutos.** Crimson Eye. Very large flowers of snowy white with a deep red center. August, September. 5 feet.
- Mallow Marvels.** Giant mixed, white, pink, and red. 5 to 6 feet.

Price, all varieties: 30c each; \$1.25 per 5; \$20 per 100

HOLLYHOCKS

- Graceful spire-like plants of the utmost hominess and charm. Double white, red, pink, yellow, salmon, and carmine.

Price 30c each; \$1.25 per 5; \$20 per 100

IBERIS

- Sempervirens.** (*Candytuft*). White. May, June. 8 feet.

Price 35c each; \$1.50 per 5; \$25 per 100

IRIS GERMANICA (*German Iris*)

The tall, sword-like leaves are interesting in themselves until the gorgeous flowers, with their unusual form, their beautiful variegation, and numerous shades of color, make their appearance in May. We have a great number of different varieties, in all colors.

In the following descriptions, S, is for standards, or upper petals; and F, for falls or lower petals.

- Agnes.** S. white, frilled and shaded lilac; F. white, traced lilac.
- Caprice.** S. rosy red; F. rosy red with yellow beard. Very beautiful. 2 feet.

Gertrude. S. and F. beautiful blue. Early.

IRIS GERMANICA—Continued

- Her Majesty.** S. lovely rose pink; F. bright crimson shaded darker. Very handsome.
- Innocenza.** Ivory white. 18 inch.
- Iris King.** S. clear lemon yellow; F. rich maroon, bordered yellow. Large and beautiful.
- Khedivé.** Soft lavender. 33 inch.
- Loreley.** S. light yellow; F. ultramarine blue bordered cream.
- Mary Garden.** S. pale yellow, flushed pale lavender; F. creamy white, dotted and veined maroon. 2 feet.
- Mrs. H. Darwin.** S. pure white; F. slightly reticulated violet at base. One of the best whites. 2 feet.
- Quaker Lady.** S. smoky lavender, shaded yellow; F. aegeratum blue and old gold, yellow beard. 38 inch.
- Sherwin Wright.** Golden Yellow, self. Very free flowering.

Price, all varieties: 35c each; \$1.50 per 5; \$25 per 100

IRIS KAEMPFERI (*Japanese Iris*)

In June and July, the 2 to 3-foot flower-stems are topped with flat, expanded, lightly poised blossoms 6 to 9 inches across, in rich color combinations of white, blue, purple, lavender-pink, lilac-yellow and maroon. And the plants are hardy, requiring no protection in the coldest winters. Spreads rapidly. We have fifty named varieties, several of which we list below.

- Bandai-No-Nami.** Double white.
- Beauty.** Lavender, yellow and white.
- Date-Dugo.** Single, dark rich maroon.
- Fairy.** Dark purple; early.
- Ho-O-Jo.** Double, reddish maroon.
- Kan.** Double violet, pink center.
- Kichi-cohuo.** Single, pure white.
- Osho-Kum.** Double rich blue.
- Paragon.** White; very large and fine.
- Royal Rose.** Rose edged, white.
- Shi-Chu-Ha.** Double, white, with red edges.
- Shikai-Nami.** Double beautiful pale blue.
- Silver Cloud.** White and lavender.
- Uchu.** Very double, light lavender.
- Yedo-Jiman.** Single deep violet, purple center.

Price, all varieties: 50c each; \$4 per 10; \$35 per 100

LIATRIS

- Pycnostachya.** (*Kansas Gay Feather*). Flowers purple, in dense spikes, 4 to 5 feet high. Thick, grass-like foliage. Very choice.

Price 30c each; \$1.25 per 5; \$20 per 100

LOBELIA (*Cardinal Flower*)

- Cardinalis.** Spikes of intense scarlet flowers. Very brilliant. 4 feet high.

Price 30c each; \$1.25 per 5; \$20 per 100

LYCHNIS (*Campion*)

A fine old-fashioned flower, bearing large heads of brilliantly colored flowers, that liven up the border during Summer and early Autumn.

- Alpina.** Dwarf, rose-pink.
- Chalcedonica.** Heads of vivid scarlet flowers, blooming a long time. One of the brightest plants in the hardy border. 3 feet.
- Haageana.** 1 foot. June to August. Very showy; producing orange-red, scarlet or crimson flowers nearly 2 inches across.
- Viscaria flora plena.** A fine double variety; fine for cutting.
- Viscaria Splendens.** Brilliant red.

Price, all varieties: 30c each; \$1.25 per 5; \$20 per 100

LYTHRUM

- Loosestrife.** Produces long spikes of rose-colored flowers from July to September. 4 feet.

Price: 30c each; \$1.25 per 5; \$20 per 100

MONARDA

- Didyma.** (*Cambridge Scarlet*). Heads of brilliant scarlet flowers in July and August. 3 feet.

Price: 30c each; \$1.25 per 5; \$20 per 100

MYOSOTIS

- Palustris.** (*Forget-Me-Not*). A dwarf plant producing small dark blue flowers in profusion.

Price: 30c each; \$1.25 per 5; \$20 per 100

PAPAVER (*Poppy*)

- Nudicaule.** (*Iceland Poppy*). Unquestionably hardy, for it is the glory of the arctic regions, where it flaunts its cup-shaped, white, yellow to orange-scarlet flowers over an immense territory.

Oriental. (*Oriental Poppy*). The showiest of the Poppies, with great silky scarlet and red flowers on long stems, borne well above the foliage.

Price all varieties: 30c each; \$1.25 per 5; \$20 per 100

PHYSOSTEGIA (*False Dragonhead*)

Virginica. Spikes of delicate pink tubular flowers. 3 to 4 feet high.
Price: 30c each; \$1.25 per 5; \$20 per 100

PLATYCODON

Grandiflora. (*Balloon Flower*). Related to the campanulas. Covered with large blue flowers, 3 inches in diameter, in July or August. 2 feet.
Price: 30c each; \$1.25 per 5; \$20 per 100

PRIMULA

Auricula. An old-time favorite that is again becoming popular because of the ease with which it is established and the great variety of cheery colors represented in the flowers.

Veris superba. (*Giant Cowslip*). Noteworthy because of the great trusses of large flowers, the individual blossoms being 1 to 2 inches across; color, bright canary-yellow.
Price all varieties: 30c each; \$1.25 per 5; \$20 per 100

PYRETHRUM (*Feverfew*)

Fine for cut-flowers, the white, pink, and red aster-like flowers making a splendid showing indoors as well as out.
Price: 30c each; \$1.25 per 5; \$20 per 100

SEDUM

Spectabile. (*Stoncrop*). Large heads of pink flowers. A fine border plant and one of the best for foliage or flower effects. 1 1/4 feet. August, September.
Price: 30c each; \$1.25 per 5; \$20 per 100

STOKESIA

Cyanea. (*Cornflower Aster*). Light blue. Centaurea-like blossoms throughout the late summer.
Price: 30c each; \$1.25 per 5; \$20 per 100

TRITOMA (*Red Hot Poker Plant*)

Pfitzeri. (*Flame Flower*). A striking lilaceous plant which is one of the richest flowering bedding subjects of its season, the tall spikes surmounted by brilliant orange-scarlet flower-heads over 1 foot long, rising from a cluster of long lancelike leaves. Extremely free flowering, showy and unusual, but it needs some protection in winter.
Price: 30c each; \$1.25 per 5; \$20 per 100

TROLLIUS

Europeus. (*Globe Flower*). Giant yellow and orange Buttercup-like blossoms nearly all summer. A choice plant, preferring a moist situation.
Price: 30c each; \$1.25 per 5; \$20 per 100

VERONICA

Longifolia Subsessilis. Pretty spikes of blue flowers in late summer. A very choice blue flowering plant. 2 feet.
Veronica Spicata. (*Speedwell*). Long spikes of bright blue flowers. 2 feet. July and August.
Price all varieties: 30c each; \$1.25 per 5; \$20 per 100

ORNAMENTAL GRASSES

Erianthus Ravennae. (*Plume Grass, or Hardy Pampas*) Greatly resembles pampas grass, but blooms more abundantly; attains a height of from 9 to 12 feet; perfectly hardy and valuable for decoration of lawn.
Price, strong plants: 50c each; \$4.00 per 10
Eulalia gracillima univittata. (*Japan Rush*). A handsome ornamental variety with narrow graceful foliage; very valuable; 4 feet.
Price, strong roots: 50c each; \$4.00 per 10

GLADIOLI

GIANT BULBS

Alice Tiplady. Orange salmon. Very choice. Alice Tiplady was awarded the first class Certificate of Merit by North Shore Horticultural Society, Manchester, Mass., summer of 1919. Winner of hundreds of later awards.

Evelyn Kirtland. Conceded to be the most beautiful, brilliant Gladiolus in existence. Beautiful shade of rose-pink, shading to light pink towards the center with brilliant blotches of scarlet on lower petals.

GLADIOLI—Continued

Gold. Golden yellow, throat darker yellow, little stippled; a rival of Golden Measure, which we consider superior.

Halley. The most attractive early blooming sort with large well opened flowers of delicate salmon-pink.

Le Marechal Foch. Beautiful shade of apple blossom-pink flowers. Twice as large as America.

Lily White. An extremely fine novelty. Early. Pure white flower.

Maiden Blush. Exquisite blush-pink.

Louise. The showiest of all Gladiolus. Distinct in form. Clear, pure lavender. A velvet red toward center. Resembles the orchids grown by leading florists. This variety is in a class by itself.

Mrs. Helen Franklin. Pure white. Heavily ruffled. Lavender in the throat.

Mrs. Francis King. A beautiful "Besnard" shade of flame pink. Flowers of giant size on spikes growing 4 feet high. A magnificent variety.

Mrs. Frank Pendleton. The sensational beauty. Winner of awards and prizes everywhere. Petals beautiful rose-pink on a pure white ground, contrasting in a most striking way with the deep, rich, velvety, blood-red blotch on the lower petals. As showy as an orchid.

Odin. Deep salmon-rose.

Peace. Giant white flowers with lilac feathering in throat of two of the petals.

Red Cannia. Real red. One of the finest.

Souvenir. Most superb. Deep yellow. An extra fine Gladiolus.

Capt. Fryatt. Carmine red. This valuable variety must be seen to be appreciated. We suggest that you include at least a nominal number in your order.

Flaming Sword. A variety that is coming to the front very fast. A brilliant red color.

Rose Pearl. A beautiful pink. Sport of Halley. Superior Wilbrinck.

\$1.00 per 10; \$7.50 per 100; \$60.00 per 1000

Rockery Plants

| Variety | Height Inches | Color |
|----------------------------|---------------|--------------------------------|
| Ajuga Reptans | 4 | Blue |
| Arenaria Montana | 3 | White |
| Bellis Perennis Longfellow | 4 | Pink |
| Calamintha Alpina | 6 | Purple |
| Cerastium Tomentosum | 4 | White Silvery white foliage |
| Delphinium Chinese | 12 | White |
| Dianthus Caesius | 6 | Pink |
| Erysimum Pulchellum | 4 | Yellow |
| Linum Perenne | 15 | Blue |
| Lychnis Haageana | 12 | Orange red |
| Oenothera Missouriensis | 10 | Yellow |
| Phlox Sublata Rosea | 6 | Pink |
| Polemonium Coerulea | 15 | Blue |
| Primula Veris | 5 | Mixed |
| Prunella Grandiflora | | Violet |
| Silene Saxifraga | 8 | White |
| Tunica Saxifraga | 4 | White |
| Viola Cornuta | 5 | Various |
| Gypsophila Repens | 6 | White |
| Sempervivum Tectorum | 2 | Yellow |
| Ranunculus Repens | 6 | Yellow |
| Sedum Acre | 4 | Yellow |
| Sedum Album | 4 | White |
| Sedum Spurium | 6 | Red |
| Silene Schafta | 8 | Red |

Price all varieties: 35c each; \$1.50 per 5; \$25 per 100

YUCCA

Yucca filamentosa. (*Adam's Needle*). Handsome evergreen plant with sword-like leaves. In June or July sends up tall stalks bearing creamy white bell-like flowers. Very effective as cornerpieces for shrubby hedges.

| | Each | 10 | 100 |
|---------------|--------|--------|---------|
| Two year..... | \$.35 | \$3.00 | \$25.00 |

ROSES

WOULDN'T you like to have a Rose-garden this year—such a fine one that you could conscientiously make a real hobby out of it? You can do it, and by selecting your Roses from the following lists it is possible to have a garden abloom throughout the season—Roses in beds along the walks, on trellises, or pergolas, or over the garden wall. Put part of your recreation hours into caring for them, ministering to their needs, and combating their enemies. The result in sturdy plant-growth and richness and profuseness of bloom will be seemingly phenomenal. And my! what a feeling of satisfaction will be yours when your friends pause to admire the beauty and inhale the fragrance of the Roses that have resulted from choosing Rose-growing as your hobby.

Hybrid Tea Roses

The following varieties bloom all Summer

Most of these plants are budded or grafted, and while some planters prefer stock grown on their own roots on account of the liability of budded plants to throw up suckers, this will rarely occur if deep planting is practiced, and if a wild shoot should appear it should be removed close to the root. Much can be said in favor of budded plants, being more vigorous, producing finer blooms, come into blooming sooner, and are just as permanent and hardy as those on their own roots.

Prices all Hybrid Tea Roses, except as noted. Each \$.75: 10 For \$7.00: 100 For \$60.00

- American Beauty.** Magnificent, large, globular flowers of a beautiful rosy crimson, on vigorous stems; delightfully fragrant.
- Columbia.** Pink, deepening as it opens. Strong grower and soon makes a great display.
- Courtenay Page.** Beautiful shaped blooms of bright scarlet crimson overlaid with a fine velvety sheen. Intensely fragrant.
- Golden Emblem.** Flower cadmium-yellow as the bloom begins to open, toning to Sun-Flower yellow when full expanded. Large.
- Gorgeous.** Flowers deep orange yellow, glowing coppery yellow and veined richly copper, large full and exquisitely formed.
- Gruss an Teplitz.** The clusters of bright crimson flowers are brilliant all summer, very fragrant, hardy and vigorous.
- Imperial Potentate.** Introduced only five years ago, this beautiful variety has already found a place among the most popular garden sorts. Its splendidly shaped buds develop into large, sweet scented double flowers of crisp, glistening rose-pink with silvery suffusion at the base of the petals. Of strong, vigorous erect habit of growth, and very free flowering. **Price \$1.50 each.**
- Irish Charm.** A new introduction from Ireland with beautiful shaped bluish pink blooms, richly shaded with apricot and gold.
- Irish Fireflame.** A glorious single-flowering variety, bearing its flowers in clusters of five or more; splendid for cutting in sprays in bud form. These buds are wonderfully rich in coloring, a rich deep orange, splashed with crimson, opening to a large single flower of a satiny old-gold, shaded with ochre. **Price \$1.50 each.**
- Joanna Hill.** A 1929 Gold Medal Rose. This wonderful new yellow Rose made its debut as a cut-flower in Pittsburgh, Cleveland, and Chicago last winter, and was pronounced by wholesalers and retailers as well, the best yellow Rose yet introduced. The blooms are clear yellow, deepening at the center, and hold their color under artificial light. Flower Show patrons have been most profuse in expressing their delight with this Rose. **Price \$1.50 each.**
- Jonkheer.** (*J. L. Mock*). Very large, fragrant flower with high-pointed center. Silvery rose on inside and carmine on outside.
- Killarney.** Buds long and pointed; flowers flesh, suffused pink, deliciously perfumed. Lovely and distinct.
- Lady Hillingdon.** Superb cup-like yellow flowers, very delicate and fragrant.
- LaFrance.** Silvery rose, outside of the petals deeper in color. Full, finely formed, and extremely fragrant. Vigorous, hardy.
- Laurent Carle.** Glorious velvety carmine flowers of perfect form and giant size.
- Los Angeles.** Flame-pink, shaded gold. Intensely fragrant, and one of the most beautiful Roses.
- Maman Cochet.** Flowers rose, shaded with carmine and outer petals splashed bright rose; very large and full. Vigorous and floriferous.
- Matchless.** Bud very large, long pointed, deep cerise pink. Flowers immense, full, very double. Intensely fragrant.
- Miss Lolita Armour.** Orange-salmon, very double and fragrant.
- Mme. Butterfly.** Pale pink and gold. One of the most beautiful.
- Mme. Caroline Testout.** Bright satiny rose, bordered carmine-pink, very large, globular. Free flowering and vigorous. Famous as the "Portland" Rose, being used by the thousands for street planting in the Pacific Northwest.
- Mme. Edouard Herriot.** (*The Daily Mail* Rose). HT. Coral red buds, shaded yellow; flowers copper-orange, semi-double, tinted yellow and scarlet; hardy. Winner of the \$50,000 prize offered by the London Daily Mail.
- Mrs. Aaron Ward.** One of the best yellows in the Hybrid Tea class. The long buds open to rather small full flowers of elongated form. Indian-yellow washed with salmon.
- Mrs. Calvin Coolidge.** The beautiful new Rose named after the good wife of our President, is a sport of that wonderful Rose, Ophelia. Its color is a bright yellow, changing to deep orange as the flower develops. **Price \$1.50 each.**
- Mrs. S. K. Rindge.** Red, yellow and orange, becoming pink with age.
- National Emblem.** Velvety, crimson, shading to vermilion; flowers quite full; delightfully sweet-scented.
- Old Gold.** Flowers vivid reddish-orange with rich coppery-red and coppery-apricot shadings. Sweetly scented. Growth vigorous. Continuous flowering. This Rose is regarded as one of the most beautiful decorative and bedding roses.
- Ophelia.** White tinted salmon-flesh, shaded with rose. Growth strong; flowers on long stems, in great profusion all summer. Hardy in almost all localities.
- Premier Supreme.** Pure brilliant rose pink, deliciously fragrant and long lasting. Marvelously free flowering.
- President Hoover.** This marvelously colored new rose was named with the consent of the President. The color is a happy blend of orange and pink, free but very vivid copper red on the buds to glowing orange yellow at base of the petals. Flamed and suffused with vivid rose pink. It is receiving the following awards: Gold Medal by the American Rose Society at the International Flower Show, New York City, 1929, and the Society Silver Medal at the Centennial Exhibition of the Massachusetts Horticultural Society of Boston, 1929. **Price \$1.50 each.**
- Queen of Fragrance.** Flower bright real pink, tipping with silver. Large, double and very elegantly shaped, recalling the painter's rose of the old masters.
- Radiance.** Supreme as the best pink Rose in cultivation. Elegant large flowers are cup-shaped, light silvery flesh to salmon-pink, with opaline. A constant bloomer and delightfully fragrant.
- Red Letter Day.** Flower velvety brilliant, glowing scarlet crimson; opening to medium size, curiously cactus shaped, flower large—will not fade or burn in the sun, as the reflex of the petals is satiny crimson-scarlet colored. Continuous flowering throughout the season.
- Red Radiance.** Exactly like Radiance except bright cerise-red flowers. A very fine variety.
- Rose Marie.** One of the best bedding Roses grown, remarkably free-flowering, producing large, long, ideal buds which develop into full flowers of beautiful form, of a most pleasing clear rose-pink.
- Sensation.** Bud is large, long pointed; the expanded flower very double, averaging 5 inches across; very lasting. The finish suggests rich velvet, in color a scarlet-crimson deepened over all by glossy maroon. The foliage is dark, and the scented bloom profuse. **Price \$1.50 each.**
- Soleil d'Or.** Flowers orange-yellow to ruddy gold, shaded with nasturtium-red.
- Souvenir de Claudius Pernet.** Clear yellow without other shading and does not fade white. The best tested yellow garden Rose.
- Sunburst.** Flowers full, of fine elongated form, yellow, orange in the center.
- Talisman.** This rose is so unique it is almost impossible to describe. The colors are old rose pink, copper and old gold, entirely distinct and unlike any other rose we have ever seen. Awards: Four Gold Medals, American Rose Society at Louisville, 1928; Pres. Coolidge medal at New York, 1928, and also at the Philadelphia and New York shows. **Price \$1.25 each.**
- Willowmere.** Shining pink with yellow glow; perfect flowers; very floriferous.

Hybrid Perpetual Roses

The price of all Hybrid Perpetual Roses, strong 2-year old, field grown plants:

Each... \$.75 Ten... \$7.00 Hundred... \$60.00

Captain Hayward. Scarlet-crimson of perfect form; fragrant. Vigorous, continuous bloomer.

Clio. Large, globular; flesh color, with rosy pink shading; handsome foliage. Very vigorous grower and free bloomer.

Frau Karl Druschki. The buds are handsome, long-pointed opening to very large pure snowy white cupped flowers of great substance. A very vigorous grower and exceptionally hardy; very free and continuous bloomer.

General Jacqueminot. Beautiful buds; flowers crimson-scarlet, large, full, very fragrant. Vigorous.

Heinrich Munch. Delicate pink blooms, resembling those of the Frau Karl Druschki. The flowers are very large and full. A vigorous grower.

Hugh Dickson. Brilliant crimson, shaded scarlet; good size, fine form; fragrant. Vigorous and free flowering.

Juliet. Large; cupped; very double; fragrant. Petals coral-red inside and old-gold outside. Profuse bloomer. Unique.

Magna Charta. Large, full, well-formed flowers of bright pink. Very fragrant. Exceedingly vigorous; fine for forcing under glass.

Margaret Dickson. White, pale flesh center; large, fine form. Very vigorous.

Marshall P. Wilder. Bright cherry-red blooms of good size perfectly double, and very fragrant. Vigorous grower.

Mme. Gabriel Luizet. An extra-early, light satiny pink Rose with delicate fragrance; the broad, thick petals are heavily recurved; of very vigorous growth.

Mrs. John Laing. Fine long buds; very large flowers of an exquisite soft pink, finely formed and very fragrant. Vigorous and free blooming.

Mrs. R. G. Sharman-Crawford. Clear rosy pink, outer petals shaded pale flesh on white ground; large, full, perfectly formed. Free blooming.

Paul Neyron. Enormous deep pink blooms of perfect form and delightful fragrance. Very vigorous; floriferous. One of the largest Roses in cultivation, frequently reaching 6 inches in diameter.

Persian Yellow. A Briar Rose with deep golden yellow flowers of large size and fairly full. Vigorous grower.

Prince Camille de Rohan. One of the best and most useful dark Roses. The flowers are large, full, well-formed, of a deep velvety crimson, shaded with maroon. Very free flowering and vigorous.

Ulrich Brunner. Large cherry-crimson flowers of fine form. Very free flowering and vigorous. A fine all-purpose Rose of standard excellence.

Standard or Tree Roses

Price: \$3.50 each; \$6 per pair; \$28 per 10

Grown in tree form, 4 to 5 feet high. Covered with their lovely double flowers, they are a beautiful sight, and the formal garden is not complete without them. They come in the following varieties:

Gen. Jacqueminot

Gross an Teplitz

Kaiserin Aug. Victoria

Killarney

Lady Hillingdon

Mme. Edouard Herriot

Magna Charta

Maman Cochet

Mrs. Aaron Ward

Ophelia

Paul Neyron

Radiance

Sunburst

Tausendschon

White Maman Cochet

Hardy Climbing Roses

Price all varieties: 65c each; \$6.00 per 10; \$55 per 100

American Pillar. Gorgeous clusters of brilliant pink single flowers. Very vigorous and hardy.

Climbing American Beauty. Hundreds of perfect blooms at one time; large, rich rosy crimson, and very fragrant. Hardy.

Crimson Rambler. One of the most vigorous climbers, often growing 10 to 18 feet the first season, flowers small, double, brilliant crimson, in immense clusters.

Dorothy Perkins. Shell-pink flowers, borne in large clusters; fragrant; very vigorous and free blooming.

Dr. W. Van Fleet. Buds long, pointed, deep pink; deliciously fragrant.

Excelsa. (Red Dorothy Perkins). Very double flowers produced in large clusters; intense crimson-pink, with tips tinged scarlet.

Paul's Scarlet Climber. A large-flowered, low climber of brilliant dazzling red. Does particularly well as a pillar rose, trained to a post.

Tausendschon. Well merits the name "Thousand Beauties," for the large clusters of flowers vary in color from pink to white. Magnificent foliage. No thorns.

Polyantha Roses

Price all varieties: \$1 each; \$9 per 10

Baby Dorothy. Bright pink, in large corymbs; incessant bloom; hardy; rapid grower. 20 inches.

Mme. Norbert Levasseur. (Red Baby Rambler). Bright red flowers, which last a long time, are borne in clusters of twenty or more. Always in bloom. 1½ to 2 feet.

Rugosa Roses

Price all varieties: \$1 each; \$9 per 10

F. J. Grootendorst. A rugosa with small red flowers like a carnation. One of the finest Roses for shrub or hedge planting. It is continually in flower.

Rosa Rugosa alba. Single, white, five-petaled flowers, brilliant red berries; foliage wrinkled, dark lustrous green, stems thickly covered with thorns and bristles.

Rosa rugosa rubra. Same as above, but flowers are deep rosy carmine.

Christmas Rose

(Helleborus Niger)

During mild days of winter, from December to early spring, well-established plants will produce their white, waxy flowers, resembling single roses. \$1.50 each.



Juliet
Old Gold and
Rosy Red

Climbing and Trailing Vines

ORNAMENTAL Vines provide shade for porches, pergolas, arbors; as screens, they contribute privacy; as wall-coverings, they lend a dignified, homelike permanent atmosphere to a place, such as mere coats of paint can never give. The foliage is restful, the flowers gorgeous; some have brilliantly colored berries and autumnal leaf-colorings that are the envy and despair of artists. Plant these vines freely about your home, for in them are possibilities for greatly increasing the charm and value of your property.

AMPELOPSIS (Ivy)

Ampelopsis quinquefolia. (*Virginia Creeper*). Vigorous; clings to walls, making quick, dense shade; leaves gorgeous in autumn; blue berries.

| | | | |
|--|--------|--------|---------|
| | Each | 10 | 100 |
| Strong Plants, field grown | \$.50 | \$4.00 | \$30.00 |
| A. tricuspidata Veitchi (A. Veitchi tricuspidata.) (<i>Japanese or Boston Ivy</i>). Rapid-growing; clings to the smoothest surface; the deep green foliage turns crimson in autumn; blue berries. | Each | 10 | 100 |
| Three year, strong | \$.75 | \$6.50 | \$45.00 |

ARISTOLOCHIA (Dutchman's Pipe)

Aristolochia Siphon. (*Dutchman's Pipe*). Leaves large, affording dense shade; curious yellow-brown flowers.

| | | | |
|-----------------------------------|--------|---------|----------|
| | Each | 10 | 100 |
| Two year, strong | \$1.50 | \$12.50 | \$100.00 |

BIGNONIA (Trumpet Vine)

Bignonia grandiflora. (*Trumpet Vine*). Beautiful vine, with orange-red, trumpet flowers.

| | | | |
|--|--------|--------|---------|
| B. radicans. (<i>Scarlet Trumpet Vine</i>). Deep scarlet flowers in August. | Each | 10 | 100 |
| Three year, strong | \$.50 | \$4.00 | \$30.00 |

EUONYMUS (Evergreen Vines)

Euonymus Kewensis (*Baby Winter Creeper*). For Rockeries this particular variety is a delightful subject. Its small oval foliage is of a very dark green with lighter veins, and the splendid trailing habit of the plant makes it desirable also for carpeting the ground.

Price Strong Field Grown Plants, \$1.00 each, \$9.00 per 10.

Euonymus radicans. (*Creeping Euonymus*). Attractive evergreen climber; rich green foliage; fruits pink.

| | | | |
|---|--------|--------|---------|
| | Each | 10 | 100 |
| Two year plants, heavy | \$.50 | \$4.00 | \$30.00 |

E. radicans vegetus. (*Evergreen Bittersweet*). Climbing Euonymus Vegetus, beautiful 365 days of the year. Particularly adapted to cover garden walls, old stumps or embankments with any exposure, but the fruiting is best when the plants receive the warm sun; the plants are strong, robust climbers and in fall and winter bear a profusion of bright red berries. The vine is covered the whole year with green foliage, and absolutely holds the color even in hottest summer or coldest winter.

| | | | |
|-------------------------------------|--------|--------|---------|
| Good strong plants | Each | 10 | 100 |
| | \$.75 | \$6.50 | \$55.00 |

CELASTRUS

Celastrus scandens. (*American Bitter-sweet*). Orange-yellow capsules that display crimson seeds. Fine on trees or lattice.

| | | | |
|---|--------|--------|---------|
| | Each | 10 | 100 |
| Two year, large plants | \$.50 | \$4.00 | \$30.00 |

CLEMATIS

Showy vines adapted to training over porches, balconies, trellises, walls, fences, and arbors.

SMALL-FLOWERING CLEMATIS

Clematis coccinea. (*Scarlet Clematis*). Graceful vine with attractive foliage and nodding red flowers.

| | | | |
|--|--------|--------|----|
| | Each | 10 | 50 |
| Two year, strong plants | \$.75 | \$6.50 | |

C. paniculata. Rapid grower; free bloomer; fragrant white flowers almost hide the foliage.

| | | | |
|--|--------|--------|----|
| | Each | 10 | 40 |
| Two year, strong plants | \$.50 | \$4.00 | |

LARGE-FLOWERING CLEMATIS HYBRIDS

Duchess of Edinburgh. Double; pure white; fragrant. Requires protection.

| | | | |
|---|--------|---------|-------|
| | Each | 10 | 10.00 |
| Two year, extra strong | \$1.00 | \$10.00 | |

Henryi. Flowers white, large, and very showy.

| | | | |
|---|--------|---------|-------|
| | Each | 10 | 10.00 |
| Two year, extra strong | \$1.00 | \$10.00 | |

Jackmani. Large velvety purple flowers.

| | | | |
|---|--------|---------|-------|
| | Each | 10 | 10.00 |
| Two year, extra strong | \$1.00 | \$10.00 | |

Mme. Baron Veillard. One of the strongest growers of all the large flowering clematis. Its large pink blossoms are produced in profusion. Its color holds as long as the flower lasts. For those desiring a pink clematis, Mme. Baron Veillard is the most dependable variety we have ever offered.

| | | | |
|---|--------|---------|-------|
| | Each | 10 | 10.00 |
| Two year, extra strong | \$1.00 | \$10.00 | |

HEDERA (Ivy)

Hedera helix. (*English Ivy*). Hardy and generally satisfactory on a northern exposure.

| | | | |
|----------------------------------|--------|--------|-------|
| | Each | 10 | 65.00 |
| Two year plants | \$.75 | \$6.50 | |

LONICERA (Honeysuckle Vine)

Lonicera japonica aureo-reticulata. (*Golden Honeysuckle*). Golden variegated leaves. Very handsome.

| | | | |
|--|--------|--------|---------|
| | Each | 10 | 100 |
| Two year, strong plants | \$.50 | \$4.00 | \$30.00 |

L. japonica Halliana. (*Hall's Honeysuckle*). Evergreen climber with deliciously fragrant white flowers that change to yellow.

| | | | |
|--|--------|--------|---------|
| | Each | 10 | 100 |
| Two year, strong plants | \$.50 | \$4.00 | \$30.00 |

L. Periclymenum belgica. (*Monthly Fragrant Honeysuckle*). Yellowish white, and pale purple all summer.

| | | | |
|--|--------|--------|---------|
| | Each | 10 | 100 |
| Two year, strong plants | \$.50 | \$4.00 | \$30.00 |

L. sempervirens. (*Scarlet Trumpet Honeysuckle*). Rich scarlet flowers throughout the summer.

| | | | |
|--|--------|--------|---------|
| | Each | 10 | 100 |
| Two year, strong plants | \$.50 | \$4.00 | \$30.00 |

LYCIUM

Lycium chinense. (*Matrimony Vine*). Hardy, pink or purple flowers and scarlet berries.

| | | | |
|---|--------|--------|---------|
| | Each | 10 | 100 |
| Three year, heavy plants | \$.35 | \$3.00 | \$25.00 |

POLYGONUM

Polygonum Auberti. (*Silver Lace Vine*). One of the most desirable flowering climbers, the plant is of strong, vigorous growth, attaining a height of 25 feet or more, producing through the summer and fall great foamy sprays of white flowers, and a well established plant during its long flowering period is a mass of bloom.

| | | | |
|----------------------------------|--------|--------|-------|
| | Each | 10 | 65.00 |
| Two year plants | \$.75 | \$6.50 | |

PUERARIA

Pueraria Thunbergiana. (*Kudzu Vine*). Grows 50 feet in one season; dense shade; purple, pea-shaped blossoms.

| | | | |
|----------------------------------|--------|--------|-------|
| | Each | 10 | 35.00 |
| Two year plants | \$.40 | \$3.50 | |

VINCA

Vinca Minor. (*Periwinkle, or Myrtle*). Hardy, trailing plant valuable for covering ground in deep shade; shining evergreen foliage and lilac-blue flowers.

| | | | |
|-------------------------------------|--------|--------|---------|
| | Each | 10 | 100 |
| Field grown plants | \$.35 | \$3.00 | \$25.00 |

WISTERIA

Wisteria sinensis. (*Chinese Wisteria*). Great clusters of pale violet flowers. When established, the vine makes an enormous annual growth.

| | | | |
|---|--------|---------|-------|
| | Each | 10 | 10.00 |
| Strong seedling plants | \$1.00 | \$10.00 | |
| Strong grafted plants | 1.50 | 12.50 | |

W. sinensis alba. Magnificent clusters of white flowers.

| | | | |
|--|--------|---------|-------|
| | Each | 10 | 10.00 |
| Two year plants, strong | \$1.00 | \$10.00 | |

W. Tree-Form. We have a number of Tree-Form Wisterias in two colors—white and purple—desirable for lawns.

| | | | |
|---|--------|---------|-------|
| | Each | 10 | 40.00 |
| Either color, 4-5 feet | \$5.00 | \$40.00 | |

FOR COVERING BANKS

Hall's Evergreen Creeping Honeysuckle

Is the best thing we know of. Plant them 3 feet apart in rows 3 feet apart.

Spreads rapidly, developing a beautiful evergreen carpet. Thrives in either full sun or partial shade. Extremely fragrant. Flowers white and yellow.

Price: Extra heavy plants, 3 years old for immediate effect. 50c each; \$4.00 per 10; \$17.50 per 50; \$50.00 per 100.

Apples

GROWING the Apple is a profitable commercial proposition, holding out to planters the possibility of an income from this source about four times as great as could be derived from a similar acreage devoted to ordinary farm crops. Areas planted to Apple trees may be intercropped with grains or small-fruits while the trees are coming to bearing age, so that it is possible to have some income from such a plantation each year. The varieties we offer have been selected for their sterling worth, productiveness, disease-resistance, flavor, time of ripening, and for other special reasons mentioned in the various descriptions.

The home garden that has the necessary space available is not complete without one or more Apple trees. The healthfulness of this fruit is proverbial, and surely it is more pleasurable to buy an Apple tree than it is to pay a doctor's bill.

Prices, Fine Two-Year Trees 5-7 Feet Tall

| | | |
|------|--------|---------|
| Each | 10 | 100 |
| 60c | \$5.50 | \$45.00 |

SUMMER APPLES

Early Harvest. (*Yellow Harvest*). Medium size; bright straw color; fine, rather acid flavor; good bearer. August.

Red Astrachan. Large; deep crimson; juicy, rich, acid, productive. August.

Yellow Transparent. Medium size; pale yellow; pleasantly acid, good. July and August.

AUTUMN APPLES

Fall Pippin. Large; rich yellow when ripe, flesh firm, juicy, aromatic; strong grower and long-lived. September.

Fameuse. (*Snow*). Medium size; bright red deepening to almost purplish black in highly colored specimens; flesh white, juicy, aromatic; heavy yielder. October.

Gravenstein. Large; yellow overlaid with red; flesh firm, juicy, sprightly sub-acid; productive. September to November.

Maiden Blush. Medium size; yellow with red cheek; very juicy, subacid; reliable cropper. September to December.

Oldenburg. Rather large; light red streaks on yellow ground, tender and juicy; very hardy. Handsome appearance and good cooking qualities are two points in favor of this variety. Early autumn.

Twenty-Ounce. (*Cayuga Red Streak*). Very large; yellow splashed with red; quality good, especially for cooking, heavy yielder. Late September to early winter.

WINTER APPLES

Arkansas Beauty. Large handsome; deep red; flesh, tender, yet firm; very productive. December to May.

Baldwin. Large; deep red; crisp and juicy; vigorous grower; heavy bearer. November to March.

Banana. Large and showy; yellow pinkish red blush; flesh tender and exceedingly aromatic, fairly heavy bearer. November to February.

Delicious. A relatively new Apple, ranking high as a variety for commercial or home orchards. Large; brilliant dark-red; flesh fine-grained, crisp, melting, juicy, with a delightful aroma; splendid keeper and shipper; tree bears heavy crops annually; a profitable sort to grow. November to February.

McIntosh. Large; deep red; flesh crisp, tender, juicy, and agreeably aromatic; reliable cropper. Deserves the best we can say. October to December.

Grimes Golden. Medium size; golden yellow; flesh firm, crisp, rich, subacid, aromatic; good bearer. November to February.

Northern Spy. Large; bright red, spread with delicate bloom; flesh tender, rich, delicious; bears well. November to March.

Opalescent. The handsomest Apple ever put on the market. Large to very large; light red shading to very dark crimson, with many yellow dots; skin smooth and susceptible to very high polish; flesh yellowish, tender, juicy and good; productive. One of the best varieties we have. December to March.

Rhode Island Greening. Large, greenish yellow; flesh tender, rich, subacid; bears regularly and profusely. December to April.

Stayman Winesap. Medium size; yellow ground covered with red, flesh fine, crisp and high-flavored; reliable and heavy cropper. November to April.

Tompkins King. Large; red; flesh crisp, aromatic, juicy, subacid; bears abundant annual crops. November to March.

Wagner. Medium to rather large; beautiful bright red; flesh firm, subacid, well-flavored; annually productive. December to May.

Wealthy. Medium to large; deep red, juicy. October to January.

Westfield Seek-No-Further. Medium size, yellow, striped with red. October to late winter.

Wolf River. Large; greenish yellow, flushed with crimson; flesh white, juicy, tender, with a mild subacid flavor; good cropper. September to December.

Dwarf Apples

There are pleasant surprises in store for the planter who sets out dwarf Apple trees. They have the advantage of growing low, fruiting early, may be planted as close as 6 feet apart each way, and bear almost unbelievable loads of the largest and handsomest Apples. They begin bearing in three years and produce good crops thereafter.

| | | | |
|-----------------------------------|--------|--------|---------|
| | Each | 10 | 100 |
| Strong, two-year, branched | \$1.00 | \$9.00 | \$80.00 |
| Baldwin | | | |
| Bismarck | | | |
| Delicious | | | |
| Fameuse | | | |
| Gravenstein | | | |
| King | | | |
| McIntosh | | | |
| Northern Spy | | | |
| Oldenburg | | | |
| Red Astrachan | | | |
| Rhode Island Greening | | | |
| Rome Beauty | | | |
| Wealthy | | | |
| Winesap | | | |
| Yellow Transparent | | | |

CRAB APPLES

| | | |
|---|--------|--------|
| | Each | 10 |
| Two year trees, 4-6 feet | \$1.00 | \$9.00 |
| Transcendent. Yellow, striped with red, crisp and juicy, excellent for culinary use. | | |
| Hyslop. Large, deep crimson fruit, hanging in clusters. | | |
| Whitney. Large; glossy green splashed with carmine; pleasant flavor; hardy and productive. | | |

Pears

EXCELLENT fruit for eating out of hand or for canning purposes. Varieties are now available that make possible Pears in excellent eating condition from August until early spring. Particularly responsive to good cultivation and care, the Pear proves a profitable crop when so favored. It is indispensable in the home-garden. The fruit should be gathered ten days to two weeks before fully ripe and kept in a dark place until matured. When the trees are heavily laden, the fruit should be thinned.

SUMMER PEARS

| | | | |
|---|--------|--------|---------|
| | Each | 10 | 100 |
| Strong, two year tree, 5-7 feet | \$1.00 | \$9.00 | \$85.00 |
| Bartlett. Large; waxen yellow with red blush, buttery, very juicy and high-flavored; bears early and abundantly. | | | |
| Buerre Bosc. This is a Pear which we can give our unqualified praise. A regular bearer; always preferred. Fruit large, pyriform, with flesh white; melting, very buttery. Of a rich, delicious flavor. Best of all Pears. Double worked trees. | | | |
| Clapp's Favorite. Very large; yellowish green to full yellow marbled with dull red in the sun and covered with small russet specks, vinous, melting and rich. | | | |

AUTUMN PEARS

| |
|---|
| Wilder. Medium size, pyriform; pale yellow, with brownish red cheek; flesh fine-grained, tender, subacid, juicy and sweet; tree bears good crops early and annually. |
| Angouleme. Large; greenish yellow, splashed with russet; flesh yellowish white, melting, buttery, juicy; a good bearer. |
| Anjou (Buerre d'Anjou). Large, handsome; greenish yellow, with a dull red cheek on the exposed side; flesh fine-grained, buttery, melting, with a rich, vinous, excellent flavor, tree hardy and very productive. |
| Flemish Beauty. Large, surface slightly rough; greenish yellow and brown; flesh juicy, melting, very rich and sweet; tree hardy, producing good crops annually. |
| Kieffer. Large, very handsome; rich yellow, tinged with red, somewhat russety; flesh white, buttery and juicy—sometimes palatable, though always excellent when canned. Tree vigorous grower and early and tremendous bearer. One of the favorites for canning and preserving. |
| Seckel. Small, but handsome and delicious; yellowish russet with a red cheek; flesh whitish, buttery, very juicy and melting; tree makes somewhat slow but stout and erect growth. Probably the richest and highest-flavored Pear known. |
| Sheldon. Large, roundish; greenish-russet, becoming cinnamon-brown; flesh juicy, melting, sweet, and vinous; tree vigorous, hardy, and fruitful. |

DWARF PEARS

A special list of Pears most suitable as dwarfs. Angouleme is the best of all.

| | | | |
|-----------------------------------|-------|--------|-------------------------|
| | Each | 10 | 100 |
| Two year, extra fine | \$.75 | \$7.00 | \$65.00 |
| Angouleme | | | Kieffer |
| Anjou | | | Seckel |
| | | | Bartlett |
| | | | Clapp's Favorite |

Quinces

THE Quince is highly valued for preserves, marmalades, jellies, and for flavoring purposes, and is worthy of much more extensive planting. Thrives in warm, fertile soil, and the quality of the fruit improves in proportion as its cultural requirements are met.

| | | |
|--------------------------------------|--------|--------|
| | Each | 10 |
| Two year tree, 3-5 feet | \$1.00 | \$9.00 |

Orange. Large; brilliant golden yellow; flesh tender and flavor good; tree productive if well cultivated. Late September.

Rea. Larger than Orange; in other respects much resembling that variety; of excellent quality; tree a strong grower with large, dark foliage.

Plums

BEAUTIFUL dessert fruits of rich and luscious flavor; Equally fine for cooking and for canning. For home use the fruit should be allowed to ripen on the tree, but for shipment to distant markets it must be gathered a few days earlier. All the varieties in the following list are hardy and vigorous in severe climates.

| | | | |
|----------------------------------|-------|--------|---------|
| | Each | 10 | 100 |
| Fine two year trees | \$.75 | \$7.00 | \$65.00 |

EUROPEAN PLUMS

Bradshaw. Very large; dark violet-red; flesh yellowish, juicy, pleasantly subacid; tree vigorous and productive.

German Prune. Large, oval; dark purple; flesh firm, sweet and pleasant; tree moderately vigorous. Popular variety for drying and preserving.

Green Gage. Rather small but highly esteemed; yellowish green with reddish brown dots; flesh melting, juicy and unequaled in flavor.

Lombard. Medium size; violet-red; flesh yellow, juicy, pleasant; tree hardy and very prolific.

Shipper's Pride. Large; dark purple; flesh firm and sweet. An excellent variety for shipping and for canning.

Shropshire Damson. (*Prune Damson*). Medium size; blue; flesh juicy, tender, sweet; reliable grower. Fine for preserving.

Yellow Gage. (*Prince's Yellow Gage*). Large, oval; golden yellow, slightly clouded; flesh deep yellow, rich, sugary, melting.

JAPANESE PLUMS

Burbank. Large, nearly globular; clear cherry-red with a thin lilac bloom; flesh deep yellow, sweet, meaty, and quite firm; tree vigorous.

October Purple. Large, round; purple; good quality; tree strong grower and productive.

Red June. Professor Bailey says, "By all odds the best Japanese Plum." Large; brilliant red; flesh delightfully subacid; ripens early and keeps well; tree reliably productive.

Wickson. Very large; glowing crimson with white bloom, flesh thick, sugary and delicious; tree bears unusually heavy crops. Splendid market variety.

Apricots

RIPE fruit can be had a month or two earlier than the best early peaches, and granted suitable soil and location, the Apricot is practically as hardy.

| | | |
|------------------------------|--------|--------|
| | Each | 10 |
| Extra fine tree | \$1.00 | \$9.00 |

Acme. Large; yellow with red cheek; flesh of good quality; free-stone. August.

Harris. Large; bright yellow with red cheek; flesh juicy, of good quality. July, August.

Moorpark. Large, nearly round; orange with orange-red cheek; flesh very juicy, with rich flavor. August.

Cherries

A MONEY-MAKING crop for the progressive farmer as the trees require but little attention, are thrifty, vigorous, and prolific bearers. There are two principal classes of Cherries: (1) Hearts and Bigarreus and (2) Dukes and Morellos. The former are strong and vigorous growers, making large, open, spreading heads; their fruit is large, heart-shaped, meaty and sweet. The Dukes and Morellos do not attain so large a size, and the fruit is usually sour.

| | | | |
|---|--------|--------|---------|
| | Each | 10 | 100 |
| Selected, two year tree, 5-7 feet .. | \$1.00 | \$9.00 | \$85.00 |

HEARTS AND BIGARREUS (Sweet)

Bing. Very large; dark brown, almost black; flesh firm, rich, and delicious. Considered one of the most profitable sorts.

Dikeman. Large; black; flesh meaty and solid. Ripens two or three weeks after other sorts are gone, giving it value as a commercial variety. Always brings high prices.

Governor Wood. Large, light yellow shaded and mottled with light red; nearly sweet, rich, excellent; tree often overbears, which calls for timely thinning. An excellent variety.

Lambert. Very large; dark purplish red, turning to almost jet-black when fully ripe; flesh firm, solid, rich, and juicy; tree hardy, strong grower, enormous bearer makes a fine appearance and sells well in the markets.

Napoleon. Very large; pale yellow, spotted and shaded with deep red; flesh firm and of fine flavor.

Schmidt. Large; deep crimson-black; tender, juicy, well flavored; bears abundantly.

Seneca (New). Resembles Tartarian in size and color but 2 weeks earlier. Originated at New York State Experimental Station, Geneva, N. Y.

Tartarian. Very large; black; tender. One of the most popular varieties.

DUKES AND MORELLOS (Sour)

Early Richmond. (*Richmond*). Medium size; red; flesh very juicy, acid, moderately rich; tree very productive. A splendid variety for cooking.

Montmorency. Large; bright, clear, shining red; flesh solid, juicy, rich, acid; tree early, annual, prolific and very hardy. Finest acid Cherry grown.

SPECIAL

A Hardy California Plum

Imperial Epineuse Plum

Purple, thin skin, golden flesh, juicy, sweet, tender. A real California plum—100% perfect. Your first taste will be a revelation. "Cyclopedia of Hardy Fruits" by Prof. U. P. Hedrick, Vice-Director and Horticulturist of the N. Y. Agricultural Experiment Station, describes it as follows:

"The fruits of Imperial Epineuse are not surpassed in quality by those of any plum; moreover, they are most pleasing in appearance, being large, beautiful in shape, and made further attractive by a handsome reddish-purple color which is lighter or darker according to the exposure to the sun. The tree-characters are exceptionally good; the crop is so borne on the main limbs as to be protected from the sun; and the tree is particularly large and vigorous, its strong growth being a striking characteristic of the variety. The variety is much grown in California and should be grown in all plum regions. Wherever tried in the East, fruit and tree are liked, and the variety is certain to grow in popularity in eastern orchards for both home and market plantations."

| | | | |
|-------------------------------------|--------|---------|----------|
| | Each | 10 | 100 |
| Price 2 year: 5-7 feet | \$1.50 | \$12.50 | \$100.00 |

Peaches

THE varieties in the following list comprise what we believe to be the best in Peaches. They furnish a succession for about two months, commencing the early part of August. The trees are all shipped with one-year tops and two-year roots. The size will vary according to the season and variety. Plant 16 to 18 feet apart.

| Extra selected trees: | Each | 10 | 100 |
|----------------------------|-------|--------|---------|
| Medium, 3-4 feet..... | \$.50 | \$4.50 | \$40.00 |
| Large, 4-5 feet..... | .75 | 7.00 | 65.00 |
| Extra large, 5-6 feet..... | 1.00 | 9.00 | 75.00 |

Carman. Large; creamy white or pale yellow, with deep blush; skin very tough; flesh tender and pleasantly flavored; tree remarkably hardy. August.

Champion. Creamy white, splashed with carmine, with a blush of darker red; very juicy, sweet and tender; tree vigorous and very productive; has stood 18 degrees below zero and produced a full crop the following summer.

Crosby. Has stood 22 degrees below zero without injury to tree or fruit-buds. Orange-yellow, blushed with dull red, splashed with darker red; flesh deep yellow, juicy, pleasant-flavored. An ideal home sort.

Early Crawford. Large to very large; golden yellow, blushed with dark red; flesh deep yellow, juicy, tender, highly and pleasantly flavored; tree large and vigorous. Early September.

Elberta. The great market Peach. Large, handsome, orange-yellow, nearly overspread with red, much mottled; flesh yellow, firm but tender, mildly subacid.

Fitzgerald. Very large; golden yellow, overspread with dull red blush, mottlings of deeper red; flesh yellow, rather firm, tender, sweet, mildly subacid; tree hardy and bears early. Ripens just after Early Crawford.

J. H. Hale. Very large; rich golden yellow, with carmine blush; flesh firm but of delicious texture, dripping with rich, sweet juice. Very hardy and stands shipping better than any other variety.

Late Crawford. Large; yellow or greenish yellow, blushed with red, splashed with darker red; flesh yellow, firm, juicy, richly flavored; tree large and vigorous.

Marion Hayward. New. Often called the perfect Peach. Strong, vigorous grower, hardy. Resplendent color, yellow flesh; irreproachable quality. Freestone. Ripens August 20 to September 10. Awarded first premium by the Hamilton County Agricultural Society, as being of the finest color and flavor and largest in size of any Peach exhibited.

Niagara. A dependable mid-season variety. Tree large, upright, spreading, hardy. Beautiful fruit, yellow with a handsome overcolor of red. The flesh, too, is attractive and delectable—yellow, thick and firm, with a rich, sweet flavor, making it one of the most palatable Peaches. Free.

Oldmixon Cling. Large; pale yellow with red cheek; juicy, rich, and high-flavored; tree large, vigorous, hardy. One of the best clingstone Peaches. September.

Oldmixon Free. Large; creamy white, blushed and mottled with red; flesh tender, rich and good; tree vigorous and rather productive of freestone fruits. First to middle of September.

Rochester. Very large; orange-yellow, blushed with deep dark-red, mottled; flesh yellow, stained with red near the pit, very juicy, melting, highly flavored; freestone; tree large, vigorous, upright-spreading, productive. Middle of August.

Grapes

| | Each | 10 | 100 |
|--------------------------|-------|--------|---------|
| Strong, two year | \$.35 | \$3.00 | \$27.50 |

WITH its capacity for early bearing, the Grape combines such desirable qualities as hardiness, rapid growth, generous shade, and abundant crops. With the exercise of a little foresight, it may be made to serve a distinct purpose in an ornamental planting scheme—over a trellis, along a wall, or trained to cover a pergola.

BLACK GRAPES

Campbell. (*Campbell's Early*). Bunches thickly set with handsome, large, round berries with a light purple bloom; pulp tender, rich, and sweet; vine healthy, hardy, vigorous and a profuse bearer. Fruit ripens very early and keeps in fine condition for weeks.

Concord. Bunches large and compact; berries large, round, almost black, covered with bloom; pulp juicy and sweet; vine very hardy and equally productive. A great favorite in the markets, although too tender for shipping long distances.

Ives. (*Black*). Bunch extremely large, shouldered, compact, handsome; berry large, tender, juicy, sprightly vinous, rich, sweet without pulp. Vine is vigorous, healthy, hardy.

McPike. Bunches large and compact, like its parent, Worden; berries very large, black; pulp tender and very juicy. Healthy and hardy.

Moore. Bunches large; berries large, round, black, with a heavy blue bloom; pulp of good quality; vine notably resistant to disease and very hardy, withstanding temperatures of 20 degrees below zero without injury. Maturing twenty days before Concord makes it a desirable variety for early selling.

Worden. Bunches large, compact, and handsome; berries larger than Concord and superior to that variety in flavor; vine healthy and hardy. A seedling of Concord, ripening a few days earlier.

RED GRAPES

Brighton. Bunches large compact, shouldered; berries rich wine-red, with purple bloom; pulp tender, almost seedless, juicy, sugary, and rich; vine vigorous grower, prolific and early bearer. A superior variety, ripening about a week earlier than Delaware.

Catawba. Bunches large, loose, shouldered; berries large, of a coppery red color; pulp juicy, sweet, rich, slightly musky, vine productive, but needs warm exposure in the far North. An excellent table and wine Grape.

Catawba-Concord. A cross between the two splendid varieties named, possessing all the merits of the parents and none of their defects. Berry sparkling light red, with abundant bloom; pulp, tender, juicy, sweet, luscious, and aromatic. Strong vines. A splendid variety.

Delaware. Bunches small, compact, shouldered; berries rather small, round, light red; pulp juicy, very sweet, delicious; vine vigorous grower and profuse bearer. A splendid dessert Grape, ripening early.

Jefferson. Bunches large, shouldered; berries bright red, medium to large; pulp tender, sweet, aromatic. Fine keeper and good market Grape.

Lucile. Bunches very large and compact; berries large, rich dark red; pulp sweet and delicious; vine extremely hardy, healthy, and bears tremendous crops. An indispensable variety for the far North, ripening its wood to the tip under a load of fruit of which the Niagara would not ripen one-half. Should be largely planted.

WHITE GRAPES

Diamond. Bunches large, handsome, compact, slightly shouldered; berries large, delicate greenish white with rich yellow tinge when fully ripe; pulp tender, with few seeds, rich, juicy, and sprightly; vine vigorous grower, with dark, healthy foliage entirely free from mildew. Ripens a few days before Concord.

Green Mountain. (*Winchell*). Bunches long compact, shouldered, berries oval, greenish white; pulp tender, juicy, very sweet and rich; vine hardy, vigorous, healthy and very productive. Ripens three weeks earlier than Concord.

Niagara. Bunches very large, uniform, and compact; berries large, pale yellow, with a thin white bloom; pulp melting, sweet, and delightful; vine strong grower and very hardy. An excellent variety for either home or market-garden. Ripens a little before Concord.

Special—New Champagne Grape Two Year Size

A sterling variety of greatest merit. Color a beautiful copper red, berries very large—immense bearer, Champagne never having been known to winterkill, always producing an immense crop of fruit even during seasons when many other varieties fail to fruit. Champagne is a strong grower, 15 to 20 feet or more a season being common. The flesh is tender, extremely juicy and sweet with a rich aromatic flavor. Its keeping qualities are superior. Fine for eating fresh or grape juice. Order now as stock is limited.

\$1 each; \$9 per 10; \$75 per 100

Raspberries

| | | | | |
|---------------------------------------|---------------|---------------|----------------|----------------|
| | 10 | 50 | 100 | 1000 |
| Strong 2-year plants | \$1.50 | \$6.00 | \$10.00 | \$90.00 |

Columbian. Very large, somewhat conical; dark red; rich, juicy, of exceptional quality; seed small, bears large crops. Very valuable for both table and for canning. Fruiting season from July 12 to August 5.

Cuthbert. (*Queen of the Market*). Large, conical; deep rich crimson; firm and of excellent quality; vigorous and produces fine crops.

Cumberland. Largest black Raspberry known; berries glossy, firm, and unsurpassed in quality; perfectly hardy and very productive. A splendid shipper, ripening just before Gregg.

Erskine Park. (*Everbearing Red Raspberry*). Pick berries all through next summer and autumn. The Erskine Park Everbearing Red Raspberry is a seedling from the old Reliable Cuthbert, discovered on the Westinghouse Estate (Erskine Park) at Lee, Mass., by Mr. Edward Norman. This magnificent estate is in the midst of the beautiful Berkshire Hills, with temperatures in winter of 30 or 40 degrees below zero so that the hardiness of this berry is unquestioned. The estate is surrounded by the summer homes

of many wealthy people, and much to the surprise of his neighbors and not without a great deal of personal satisfaction, Mr. Norman furnished large, luscious raspberries throughout the fall for various dinner parties.

Golden Queen. Large; beautiful amber color; firm, delicious; vigorous grower, immensely productive, and hardy enough for extreme northern latitudes.

Honeysweet. A distinctive Black Raspberry. Fruits in July, sweet and delicious. Unlike any other Black Raspberry. It is extremely hardy, bears every year; large size. We regard it as the best Black Raspberry yet introduced. As a dessert berry, in pies, as a canned sauce, as a jam, Honeysweet stands in a class by itself—a Raspberry from tip to root. We offer strong, two-year old fruiting plants.

Herbert. The great commercial Raspberry. Extraordinarily large, oblong; bright red and handsome; very sweet and juicy, with a delicate wild taste all its own; nearly twice as productive as former standard varieties. Its hardiness is unquestioned, growing vigorously and producing heavy crops as far north as Hudson Bay.

Latham. See page 41 for description and price.

Blackberries

| | | | | |
|--|---------------|---------------|----------------|----------------|
| | 10 | 50 | 100 | 1000 |
| Strong, two year plants | \$1.50 | \$6.00 | \$10.00 | \$85.00 |

Blowers. Extremely large, averaging 1 inch in diameter and 1 1/4 to 1 1/2 inches long; exceedingly sweet, with no perceptible core; wonderfully vigorous, many of the canes reaching 14 feet in length; perfectly hardy.

Early Harvest. Berries rather small, very juicy, sweet, and of excellent quality; canes strong and upright in growth, with few thorns; an enormous bearer.

Mersereau. Extra large; brilliant black, retaining that color, sweet, rich and melting, without core; remarkably strong grower; producing stout, stocky canes. Withstands temperatures of 15 to 25 degrees below zero.

Snyder. Medium size; sweet and melting, with no hard, sour core; extremely hardy and enormously productive; very few thorns. A popular variety where earliness and hardiness are important considerations.

Blueberries. See page 47 for description and price.

Strawberries

| | | |
|---|---------------|----------------|
| | 100 | 1000 |
| Extra fine, field grown plants | \$2.50 | \$20.00 |

EXTRA-EARLY STRAWBERRIES

Beacon. The best early variety in existence. Very productive. Large, glossy red, firm and refreshing.

Marshall. Large; handsome; dark crimson; flesh firm, rich; moderately productive.

MID-JUNE STRAWBERRIES

Bouquet. Big plant, berry, and crop. Glossy red, firm, delicious. Ships long distances.

Bliss. Berry of supreme quality, fragrant, high-flavored; glossy red, large; very productive.

Glen Mary. Large sometimes flattened; light red, sweet and rich; very productive.

Jumbo. A mammoth plant and a whale of a berry. It's a good one, too. Try it.

McKinley. Large; handsome; of excellent quality, and very productive.

Sunset. Strong growing plants. Berries deep red. Excellent either fresh or cooked.

Table Queen. A big producer of large, bright red berries, delicious and pleasing. A good canner.

LATE JUNE STRAWBERRIES

Brandywine. Very large, heart-shaped; glossy red to the center; fine flavor.

Ettersburg Late. Best of all very late Strawberries. High quality, and round red berries are produced bountifully.

EVERBEARING STRAWBERRIES

| | | | |
|---|---------------|---------------|----------------|
| | 10 | 100 | 1000 |
| All varieties, everbearers | \$1.00 | \$7.50 | \$50.00 |

The unusual experience of eating fresh berries in autumn may now be enjoyed by all. The varieties below have exceptional merit. Try some this year.

Gold Coin. The best Everbearer. Heavy producer from June until winter comes. Large bright red, golden seeded, fragrant, and richly flavored.

Superb. Very attractive and of finest flavor. Yields as much in autumn as the average spring-bearing varieties do in May. Will bear continuously until checked by hard freezing.

Progressive. Large and moderately firm; of exquisite flavor, far sweeter than standard varieties; strong grower, with healthy-looking foliage, and a prolific bearer. So hardy that uncovered plants usually come through the winter in good condition. Fruit ready for picking a week before the first early varieties of all the old kinds, continuing until frozen in the fall. Needs rich soil to sustain its wonderful activity.

Asparagus

| | | |
|---|---------------|----------------|
| | 100 | 1000 |
| Choice, two year, crowns | \$3.00 | \$25.00 |

Mary Washington Asparagus is the first result of a blister proof campaign for the eradication of asparagus rust and is as far as possible an extremely resistant, vigorous, and high yielding strain of giant asparagus. The plants represented in Pedigree of the last three generations are the best found in a ten-year search among millions of plants tested.

By best, we means the ones that have produced offspring uniform, rust resistant, high yielding, large size, unbranched shoots, with good top buds of rapid growth which indicates tenderness.

Conover's Colossal. Large size, remarkably tender and high flavored, vigorous grower, sending up from fifteen to twenty sprouts each year, from one to two inches in diameter, color deep green and crown very close. Can be cut one year sooner than the other varieties.

Palmetto. An extra early variety, tender and of good flavor, productive.

Rhubarb

(Pie Plant)

| | | | |
|---------------------------------|---------------|---------------|----------------|
| | Each | 10 | 100 |
| Two year roots | \$.35 | \$2.50 | \$20.00 |

Burbank Giant Crimson. Extra large, of fine bloom, and crimson clear through, this new variety of appetizing "pie-plant" should be in every garden and will be when known. Plant a few along beside that you now have growing in your garden and note the difference. BURBANK GIANT CRIMSON is superior in size and quality to any variety we have ever tested. It is an early variety, without being in the least tough or stringy, with a mild sub-acid flavor. Largest and best of all for market or home use.

Early Scarlet. Rather small, early and good.

Myatt's Linnaeus. Those who have never grown this variety, which is of superior quality, will hardly recognize the old "Pie Plant." It is an early, tender variety, without being in the least tough or stringy, with a mild, sub-acid flavor.



This is a very good color reproduction of Royal Ann as it really looks

Royal Ann

The Big Sweet, Long Stemmed Oxheart Cherry

"It's a Humdinger"

The Cherries of Royal Ann are as large and as firm as any of the California varieties. It is the leading firm-fleshed Sweet Cherry, enormous in size, beautiful in appearance, and the high quality of the fruit combined with its unusual production, make it an outstanding variety for the home owner and the Commercial Orchardist.

The accompanying illustration in color shows well the enormous size and magnificent color of the fruit.

Prof. U. P. Hedrick in his Encyclopedia of Hardy Fruits, says of it "The rich, free flavor with abundant juice and firm crackling flesh, makes this a most delicious and refreshing cherry for dessert and with its great size and attractive color, give it preference over all other sweet cherries for canning and other culinary purposes."

SMALL PIT—HENCE IT IS NEARLY ALL MEAT

Royal Ann or Oxheart as it is known in many parts of the country, comes into bearing very early. We urge you to

try it by planting one or more trees this season. We offer some beautiful three year trees. These trees are well branched, well rooted and will grade 5-7 feet in height. Every tree is a specimen tree, and if you are not perfectly satisfied with these trees when you receive them, wrap them up and return them and we will refund the full purchase price and also pay the return transportation charges.

We have but a few thousand of these trees. We offer them while they last as follows:

\$1.00 each—\$9.00 per 10—\$20.00 per 25

EXTRA! EXTRA! EXTRA!

We offer also for those who desire larger and older trees, a limited quantity of *fully four year old* trees of The Royal Ann. These trees will grade 7-9 ft. in height.

PRICE

\$1.50 each—\$12.50 per 10—\$100.00 per 100

NOTE: For complete list of Cherries, see pages 34-43.

Rochester Peach—It's Some Peach

It's a Peach of a Peach

Large yellow and red freestone—ripens in August

Original orchard has produced specimens 12 inches in circumference weighing 12 ounces.

At last a large Yellow Freestone Peach that Ripens real early—When you are Peach Hungry.

Another outstanding characteristic of this wonderful Peach is that it frequently bears the first season planted. Always the second year. Breaks records the third year. Trees planted in Spring of 1927 bore 150 to 200 perfect peaches past Summer.

EVERY YEAR IS A ROCHESTER YEAR—IT'S ALL PEACH

Rochester is a large yellow and red freestone, flesh yellow very highly flavored. To eat fresh out of hand or canned, it cannot be equalled as a table delicacy. Stone very small and will ship as good as an Elberta. The peach comes into ripening when there is no other yellow and red freestone with quality on the market, hence it commands the very highest market price, ripening as it does, the middle of August. The tree is a strong upright grower, hardy as an oak, has stood 16 degrees below zero and produced a good crop while Elberta and Crawford, under the same conditions in the same orchard, produced no blossoms, consequently no fruit.

Price

Extra Large trees 5-6 feet—Well branched tops

\$1.00 each—\$9.00 per 10—\$75.00 per 100

For prices of smaller size, see page 35.

You may pick these Peaches as early as August and the trees frequently bear the first year planted



YOU ARE OUT OF LUCK IF YOU DON'T PLANT A FEW ROCHESTER

Bears first year planted

Our customer Mr. C. N. Thomas, 215 West 40th. St. Savannah, Ga. writes "In February I bought a Rochester Peach tree and on July 20, SAME YEAR I picked one of the finest peaches I ever tasted."

Our customer, Mr. C. A. Harris, 2325 Broadway, Fort Wayne, Ind. sends photograph of a Rochester peach tree which produced twenty-four peaches year following planting.

It's a winner with our customers—It's all Peach

Mrs. E. A. Jones, Treasurer, Playground and Vacation School Association, Emsworth, Pa. writes "I want to say that the last Rochester Peach tree I got from you is so full of peaches that some of the limbs have broken with their weight, although propped up, and in the future I shall be careful to place my orders with you. I haven't a very large place. Wish I had. I would fill it with Rochester peach trees for they are certainly the finest I ever saw."

Our Customer Mr. C. E. Strawbridge, Lima, Ohio picked exactly 403 large Peaches from one tree four years after planting.

"ENCYCLOPEDIA OF HARDY FRUITS," by Prof. Hedrick, describes Rochester Peach as follows: Color, orange-yellow blushed with deep dark red, flesh yellow, stained with red near the pit, very juicy, tender and melting, sweet, highly flavored.

NOTE: For complete list of Peaches, see page 35.

Start it this Year—A Mary Washington Bed

Start with our extra large fully three year old roots

This Is How You Do It

Plant in rows two feet apart, the plants one ft. apart in the rows. Prepare a place of fine loamy soil to which has been added a liberal dressing of rich manure. For each row of plants dig a trench the width and depth of a spade. The plants are then set in the bottom of the trench at the proper distance, care being taken to properly spread the roots. The crown or top of the plant should then be covered with about three inches of soil that has been mixed with a quantity of well rotted stable manure. As

the new shoots burst through the soil, more soil should be added until the entire trench has been filled. In starting a bed in the fall, fill trenches with well rotted stable manure as soon as ground freezes, remove manure in spring. The bed should be manured freely each Fall and Spring. An Asparagus bed will last and produce good results for at least twenty years. NOW IF YOU HAVE DECIDED TO TRY IT, PLANT THE BEST VARIETY AND THAT IS—



Make Your Garden Produce Bundles Like This

WHY MARY WASHINGTON IS THE VARIETY FOR YOU TO PLANT

There is no variety of asparagus as good as the Washington and no strain of the Washington as good as the Mary. Mary Washington is the only asparagus worth planting and in our opinion it will soon be the only asparagus planted.

Plant our extra large 3 year old crowns, and order now under this guarantee. If upon receipt of shipment you find the plants are not the finest and largest 3 year asparagus you have ever seen, wrap them up and return to us and we will refund your money without question, quibble or controversy.

PRICE \$7.00 per 100; \$55.00 per 1000; 500 or more plants at the 1000 rate.

Supply Your Own Table From Your Own Asparagus Bed

NOTE: For other varieties of Asparagus see page 36.

Grapes—Ready to Bear

Plants Fully Four Years Old

Wherever you go, north, east, south and west, whether on hill or in valley, on poor soil or rich, you will find the grape generously giving of its bounty and loyal to its master whether he give care or neglect. If you plant but one fruit, plant the grape. Nothing is better for the money, nothing quite so sure to grow, nothing quite so sure to bear, nothing quite so sure to please every mouth. Plant it wherever you can find a spot six inches square. It has its likes, but it never insists on them. With its roots in any odd nook, you can lead it away in any direction to provide a grateful shade for a restful seat.

BIG JUICY GRAPES FOR DELICIOUS GRAPE JUICE, JAMS, JELLIES OR EATING FRESH

CONCORD—(black) Large and handsome, very hardy, productive and reliable, succeeds well over a great extent of country and is one of the most popular market grapes.

LUCILE—(red) Bunches very large and compact; berries large, rich dark red; pulp sweet and delicious; vine extremely hardy, healthy and bears tremendous crops.

DELAWARE—(red) One of the finest of our native grapes. Ripens early. Bunches small and compact; berries small, light red, with a violet bloom, beautiful, sweet, sugary and vinous with a musky aroma.

CATAWBA — (red) Bunches large and loose; berries large of coppery red color, becoming purplish when well ripened, vinous, rich.

CAMPBELL'S EARLY (black) Clusters large and handsome; berries large, nearly round black with light purple bloom; flesh rather firm; but tender; quality rich, sweet, slightly vinous; a strong and vigorous grower.

BRIGHTON—(red) Flesh rich, sweet and of the best quality, equal if not superior to Delaware; ripens early. Productive and vigorous.

NIAGARA—(white) Bunch medium to large; compact, occasionally shouldered; berry large; roundish, uniform, skin thin, but tough, pale green changing to pale yellow with a thin whitish bloom; flesh slightly pulpy, tender, sweet; ripens with the Concord.

PRICES

for these

**SUPERIOR SUPER-SIZE
SUPER-AGE PLANTS**

50 cents each

\$4.50 per 10

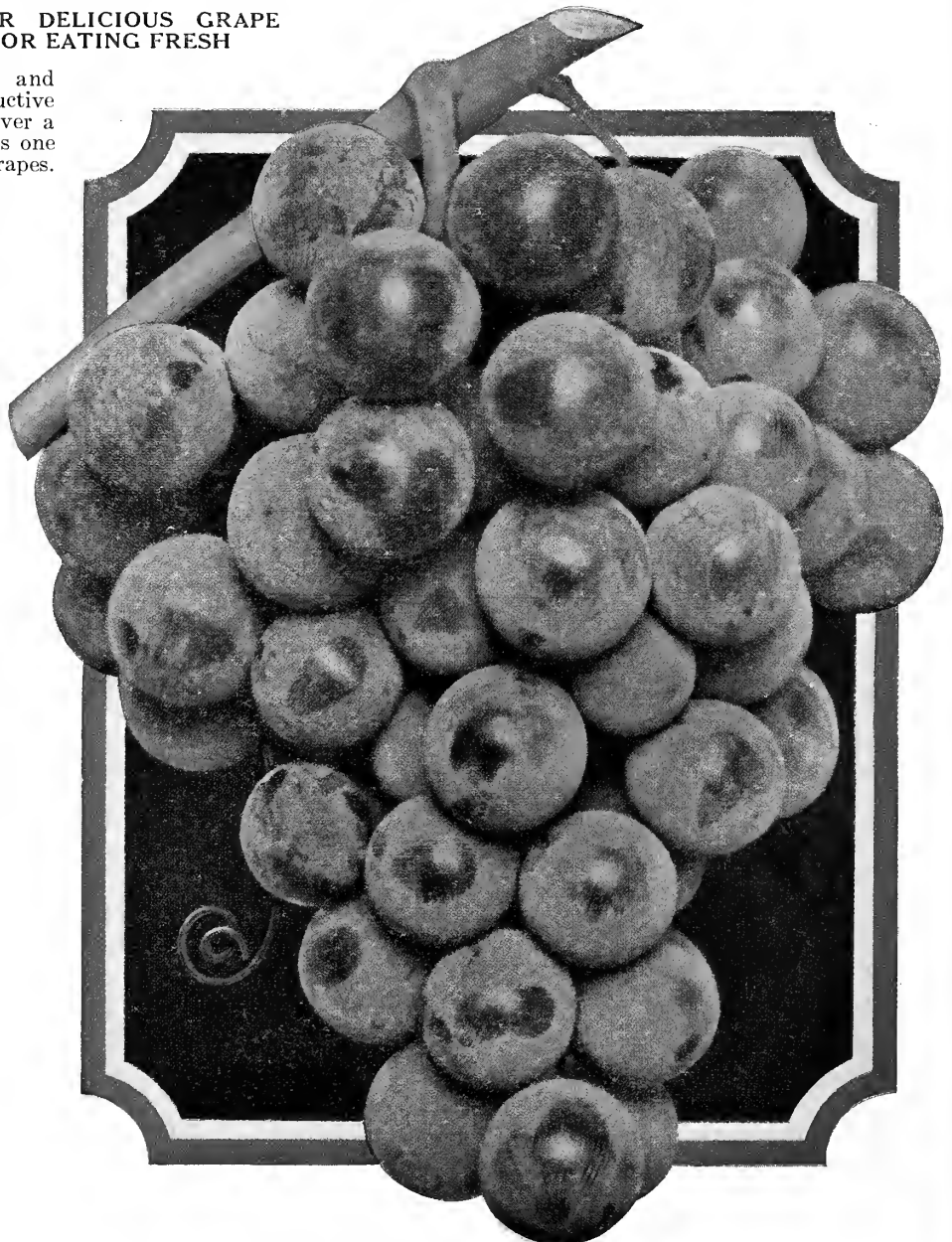
\$40.00 per 100

Every Plant a Big Bearing Plant

Lexington, Ky., February 23, 1927.
GLEN BROS. INC., Rochester, N. Y.
Dear Sirs:—Two or three years ago while living in Kentucky mountains at Coxton, I bought from you a Niagara Grape that BORE THE YEAR IT WAS SET OUT. I am now living at Lexington, Ky. and have a little room in my yard for a few vines. I want one each of a Niagara, Delaware and Champagne grape that will bear this year. Have you them? If so, please let me know the price.

Truly yours, F. A. Atkins,
463 Oldham Ave.

NOTE: For complete list of Grapes, see page 35.



Concord Grape

LATHAM—the Big Red Raspberry

Latham is 100% Raspberry

SENSATIONAL IN YIELD AND PROFIT—THE SENSATIONAL RED RASPBERRY IN THE RASPBERRY FIELD.

5430 Quarts Per ACRE.

\$1629.00 Per Acre.

The superior yielding ability of Latham is fairly represented by the following comparative figures. Reprinted from the Connecticut Agricultural College Review; September 1925. W. H. DARROW, Fruit Specialist.

Report on 3 year old Field; Latham, 5430 qts. per acre. Herbert, 3648 qts. per acre; Cuthbert, 3600 qts. per acre. 5430 qts. per acre at 30c per qt. makes the neat return of \$1629.00 per acre.

Latham is so good that we will pay \$1000. cash for the exclusive selling rights of any new raspberry that is superior to Latham in hardiness, bearing qualities, size and color.

EASY TO GROW: Latham Raspberries can be easily grown in the home fruit garden and they require little care.

Latham doesn't require expert attention. Our Mosaic-free plants are healthy and vigorous and produce abundantly.

They commence to bear soon and continue for many years. Latham will produce the most berries for the least work of any thing you can plant.

A SOURCE OF PLEASURE AND ECONOMY FOR HOME OWNERS

Why pay 20c a pint for Raspberries at the stores when fresher berries can be so easily raised in your garden? Enjoy the pleasure and profit of growing your own.

IT IS A BERRY FOR THE MILLIONS AND THE MILLIONAIRE—THERE ARE MILLIONS IN IT

Strong, healthy, fully 2 year old plants to fruit first season planted: **Price \$2.00 per 12; \$15.00 per 100; \$100.00 per 1000.**

And you take no chances when you buy our Latham. You buy them with this guarantee, that if they are not the largest, finest, best rooted plants you have ever seen at any price, return promptly, and we will refund you your money.

NOTE: For complete list of Raspberries, see page 36.



Sugar and cream and serve



Rhubarb planted in the spring is ready to use in 30 days

RHUBARB

Burbank's Giant Crimson

Introduced by the late Luther Burbank.

It is not unusual for a Single Stalk of this Wonderful "Pie Plant" to weigh a pound.

For many years extensive experiments were carried on by Mr. Burbank for the improvement of the rhubarb. From crossing of the Giant Perpetual with the best European and American varieties, some remarkable giant, early and fine flavored varieties were produced—one of them was BURBANK GIANT CRIMSON.

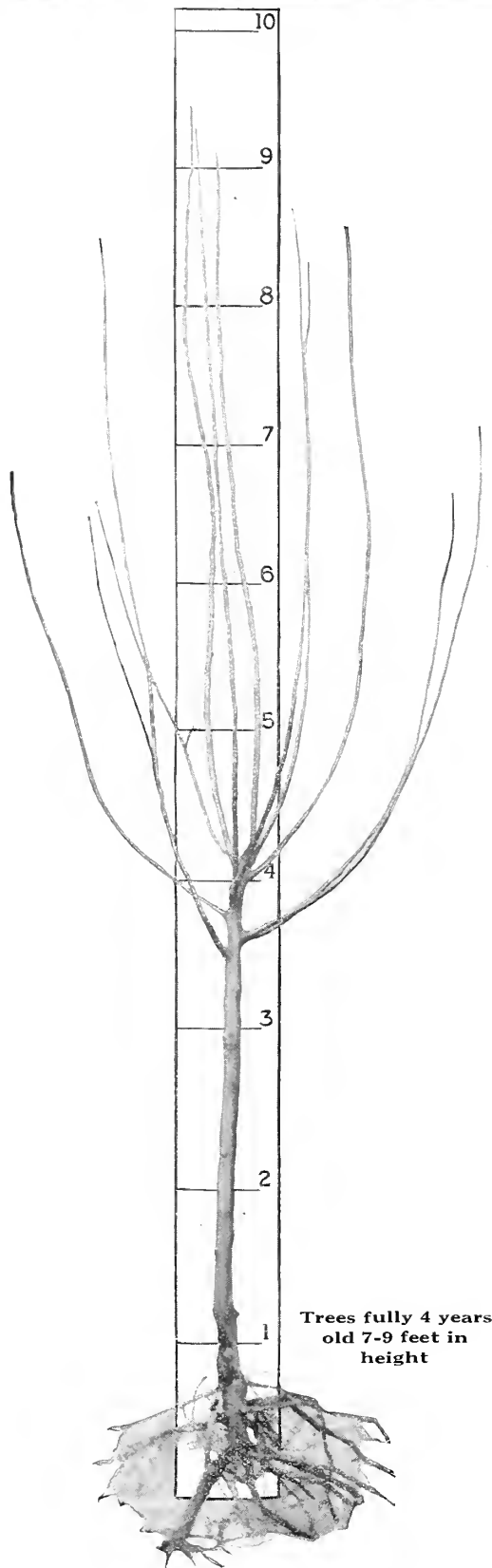
FOR YOUR HEALTH'S SAKE EAT MORE RHUBARB—GROW IT IN YOUR OWN GARDEN

Extra large, of fine bloom, and crimson color, this new variety of appetizing "pie-plant" should be in every garden and will be when known. Plant a few beside that you now have growing in your garden and note the difference. Burbank's Giant Crimson is superior in size and quality to any variety we have ever tested. It is an early variety without being in the least tough or stringy, with a mild sub-acid flavor. Largest and best of all for market or home use. Plant in good garden soil, manure well and have delicious pie and sauce all summer.

PRICE STRONG ROOTS

35c each; \$2.50 per 10; \$20.00 per 100

NOTE: For other varieties of Rhubarb, see page 36.



Plant These Big Many of them Have Fruit in the

TREES FULLY FOUR YEARS OLD—SEVEN TO NINE FEET TALL—BEAUTIFULLY ROOTED—HANDSOMELY BRANCHED.

For those of our customers who desire trees of larger size than are usually sold by Nurserymen and desire quick results, we have grown a few thousand of these handsome specimens. It takes work, time and money to produce them and we have spared neither. Inquiries for these older and larger trees are becoming more numerous each year. These inquiries make it evident that many people prefer older and larger trees for quicker results. Hence, to supply this increasing demand, we are now growing a much larger stock of **BIG BUSTER FRUIT TREES** than formerly.

VARIETIES OF BIG BUSTER SIZE FRUIT TREES Luscious Apples for "Apple Jell"

- RED ASTRACHAN**—Large, deep crimson; juicy. August.
- YELLOW TRANSPARENT**—Medium size, pale yellow, good. July and August.
- FAMEUSE (SNOW)**—Medium size, bright red, flesh white, juicy. October.
- GRAVENSTEIN**—Large, yellow overlaid with red, juicy, productive. September to November.
- TWENTY-OUNCE (Cayuga Red Streak)**. Very large, yellow splashed with red. October.
- BALDWIN**—Large, deep red, crisp and juicy, vigorous grower, heavy bearer. November to March.
- DELICIOUS**—Ranks high as a variety for commercial or home orchards. Large, brilliant dark red; flesh fine-grained, crisp, juicy. November to February.
- MC INTOSH**—Large, deep red, flesh crisp, tender, juicy. October to December.
- NORTHERN SPY**—Large, bright red, spread with delicate bloom, flesh tender, rich, delicious. November to March.



APPLE—Winter Banana

Fruit Trees

Already Produced

Nursery Row

WINTER BANANA—Large and showy; yellow-pinkish red blush; flesh tender and exceedingly aromatic; fairly heavy bearer. November to February.

SWEET CHERRIES FOR "CHERRY PIES"

DIKEMAN—Large black.

GOVERNOR WOOD—Large, light yellow, shaded and mottled with light red.

LAMBERT—Very large, dark purplish red, turning to almost jet-black when full ripe.

NAPOLEON—Very large, pale yellow, spotted and shaded with deep red.

BLACK TARTARIAN—Very large black, tender.

PRICE

\$1.50 each

\$12.50 per 10

\$100.00 per 100



Bartlett Pear, a variety everyone knows and—likes



Plums are one of the most delicious of the fruits

JUICY PLUMS FOR "PLUM CONSERVE"

BRADSHAW—Very large, dark violet-red.

GERMAN PRUNE—Large oval, dark purple.

YELLOW GAGE (Prince's Yellow Gage)—Large oval, golden yellow, slightly clouded, flesh deep yellow, rich, sugary, melting.

LOMBARD—Medium size, violet-red.

BURBANK—Large, nearly globular. Clear cherry red, sweet meaty and quite firm.

OCTOBER PURPLE—Large round; purple.

RED JUNE—Professor Bailey says "By all odds the best Japanese Plum." Large, brilliant red.

SUGARY PEARS FOR "SPICED PEARS"

BARTLETT—Large, waxen yellow with red blush; buttery, very juicy and high flavored.

ANJOU (Beurre d'Anjou)—Large handsome greenish yellow, with a dull red cheek on the exposed side, flesh fine-grained.

CLAPP'S FAVORITE—Very large, yellowish; green to full yellow. Rich.

ANGOULEME—Large, greenish yellow, splashed with russet, a good bearer.

SECKEL—Small, but handsome and delicious; very juicy.

KIEFFER—Large, very handsome, rich yellow, tinged with red, excellent when canned.

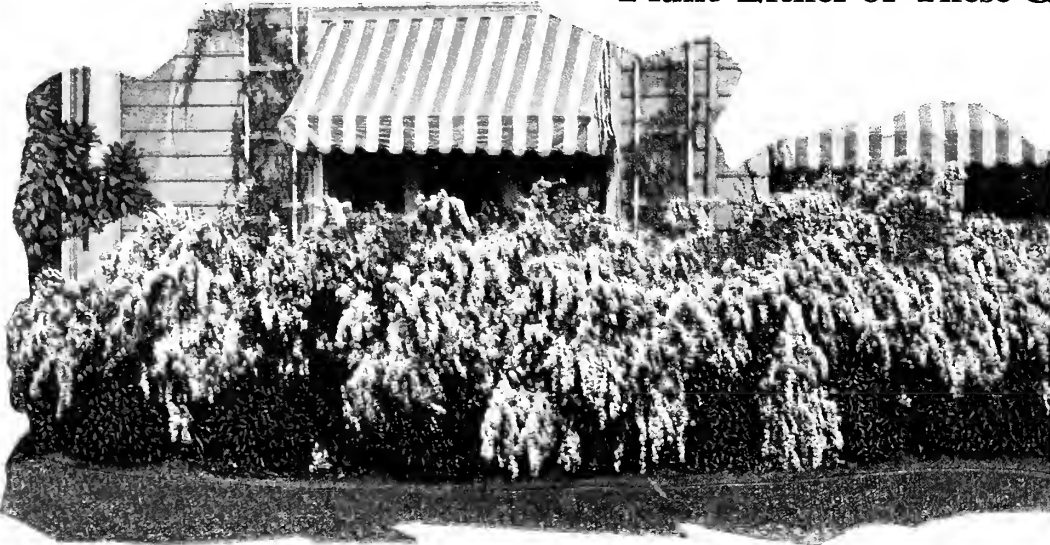
Invitation—Tourists visiting the "Flower City" are cordially invited to visit our Nursery any week day eight to four o'clock. Seeing is believing.

MONEY BACK GUARANTEE

Money Back if not perfectly satisfied, providing trees are returned properly packed the same day as received. You couldn't ask for anything fairer than this.

NOTE: For complete list of Fruit trees see pages 33-34-35.

**If You Want the Most Attractive Hedge in Town
Plant Either of These Great Showy
Shrubs**



**SPIRAEA
VAN HOUTTEI**
(See Top
Illustration)

**HYDRANGEA
PANICULATA
GRANDI-
FLORA**
(See Bottom
Illustration)

Spiraea Van Houttei, showing an effective foundation planting

Prices:

| | | | |
|------------------------|------|---------------|-----------------|
| Size 18-24 inch... 40c | Each | \$5.00 per 10 | \$18.00 per 100 |
| Size 2-3 feet.... 50c | Each | 4.00 per 10 | 24.00 per 100 |
| Size 3-4 feet.... 60c | Each | 5.00 per 10 | 36.00 per 100 |

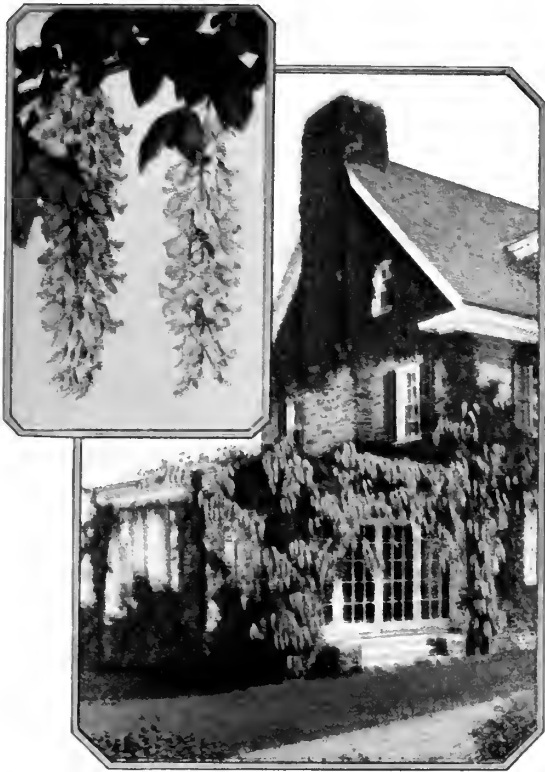
When ordering you may mix them if you wish.

For Hedge, plant 3 feet apart

NOTE: For other varieties of Shrubs, see pages 23, 24, 25, 26



Hydrangea Paniculata Grandiflora, bordering walk



Purple Wisteria



Clematis Paniculata

Three Splendid Vines for \$2.00

Wonderful for beautifying unsightly spots, also for covering pillars, walls, pergolas, summer houses, fences, arbors, trellises, doorways, etc.

RAPID GROWTH—WIDE SPREAD

CHINESE PURPLE WISTERIA—One of the most effective and rapid growing of all Climbing plants. Attains an immense size, growing at the rate of 15 to 30 feet in a season. Has long pendulous clusters of pale blue flowers in May and June and in Autumn.

SILVER LACE VINE—One of the most desirable flowering climbers, the plant is of strong, vigorous growth, attaining a height of 25 feet or more, producing through the summer and fall great foamy sprays of white flowers and a well established plant during its long flowering period is a mass of bloom.

CLEMATIS PANICULATA—A free scented Japanese Climber. This variety is now quite generally planted throughout the country. It is a Vine of very rapid growth, quickly covering Trellis and Arbors with handsome clean, glossy green foliage. Flowers are of medium size. Pure white. Borne in immense sheets and of a most delicious and penetrating fragrance.

STRONG 2 YEAR VINES, ONE OF EACH FOR \$2.00

NOTE: For other varieties of Vines, see page 32.



Silver Lace Vine



A Pair of Catalpa Bungei planted either side of a walk

Beautiful Catalpa Bungei

Probably the most effective tree that grows for planting either side of a walk leading to a house entrance.

Catalpa Bungei is quite frequently referred to as Umbrella Tree or Umbrella Catalpa. We offer sturdy trees with strong two year tops, grafted on stems 5 to 6 feet high. It makes an Umbrella shaped top without pruning. Perfectly hardy—flourishes in almost all soils and climates; leaves large glossy; heart shaped, deep green; lay like shingles on a roof. Always make a symmetrical head. One of the most unique trees, a valuable acquisition, desirable for lawn, park and cemetery planting.

We will ship you a pair of fine matched trees, two year heads on 5 to 6 feet stems.

For \$3.75

Smash! Go Prices on Barberry Thunbergi

The Hedge of Beauty—Density—Protection
The Hedge Everlasting—The best of all Hedges
From Christmas to Christmas—
Every Day of The Year
Barberry is Beautiful

In the early Spring the leaves are a soft shade of green, then as summer comes they turn to deep glossy green. Later on they assume shades of crimson and brown and bronze-green and keep these colors until these old leaves are pushed off the next Spring. To give still more color the long branches carry a multitude of scarlet berries which will give food to the birds in the cold weather.

EXTRA SPECIAL PRICE

It's a shame to do it but the plants offered in this special lot are growing on leased land that must be cleared this year. Every plant is 2 years old, healthy, bushy and exceptionally well rooted. In fact this is one of the prettiest fields of Barberry we have ever seen.

SPECIAL PRICES WHILE THEY LAST, ORDER AT ONCE

18-24 inch size—\$15.00 per 100

Set plants one foot apart.



One of the finest hedge plants grown and may be kept to any height desired

Blueberry Pie—Hm!

**“The Pie of Big Mouthfuls, Crushed Lusciously”
And Right From Blueberries in Your Own Garden**

HARDY AND ORNAMENTAL

Can you imagine anything more satisfactory than having delicious blueberries growing in your own garden? No doubt you have enjoyed these wonderful fruits on the hotel or restaurant menu, served with cream for breakfast or as blueberry pie or dumplings for luncheon or dinner. They are a fruit that satisfies for three meals a day and one dozen plants are quite sufficient to supply the average family with blueberries. They can be used freely for making breakfast muffins or preserves.

Nor should the ornamental value of Blueberries be overlooked. Prof. Bailey says “In the spring the young shoots and leaves are a rich bronzy red, later the clusters of long, white flowers, followed by clusters of dainty pink buds. In winter the red bark creates a charming tracing of red twigs against the snow. Rarely does a plant or shrub combine such exquisite beauty with a fruit, than which there is none more delicious. Is one of the most valuable species both for fruit and as an ornamental shrub. It thrives in the garden and is readily susceptible to improvement by cultivation.

CULTURAL DIRECTIONS

Blueberries require an acid soil to produce the best results. This is prevalent in many sections of the country. Where your soil is not acid, we suggest the following method to get the most from your plants. Choose a well-drained location, easily supplied by water during the dry summer months. Blueberries do best with full sun, although they will grow and produce fruit in partial shade. In order to get the proper acid condition to your soil, mix partly rotted leaves with the soil of your garden. A heavy mulch each Fall of partly rotted leaves will maintain the acidity of the soil. Do not remove this mulch, but let it remain throughout the year. Another easy method to obtain acidity to the soil is to obtain partly

rotted sawdust or wood chips. This makes excellent material and produces an acid condition very beneficial to the plants. Acid fertilizers can be used if the above two methods are not possible. The Department of Agriculture recommends as the best chemical fertilizer Aluminum sulphate, which is an effective and inexpensive method of changing neutral soil to acid, half a pound per plant may be advantageously applied. Never use manure or compost near a blueberry plant. No pruning is necessary except as a branch may become damaged or stop bearing. Water your plants well the first year, soaking the ground two or three feet away from the roots.

Try a Dozen of Our Large Bushy, Nursery Grown Plants This Year
FRUITING SEASON EARLY JULY 'TILL LATE SUMMER

SIZE, 2 to 3 feet.

Balled and Burlapped.

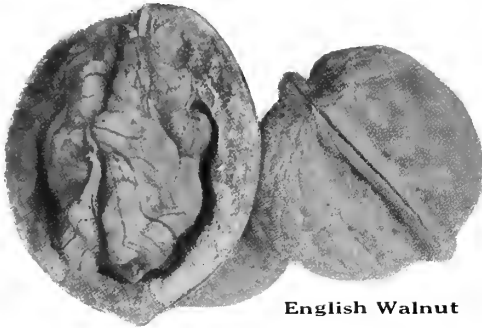


Nursery grown Blueberry plant balled and burlapped ready to pack for safe shipment to any part of U. S.

PRICE
\$1.50
Each
\$15.00
Per Dozen
\$100.00
Per Hundred



Blueberries will flourish in the garden, with proper care



English Walnut

Hardy Nut Trees



Butternut

ENGLISH WALNUT (*Juglans Regia*)

The English or Persian Walnut was brought to America in the early Colonial days but varieties sufficiently hardy to withstand the rigorous climate were not to be had then. In later years new and hardier varieties have developed and in and about Rochester, N. Y. are growing English Walnut trees that withstand 15 degrees below zero without winter-killing. It is reasonable to expect these acclimated trees to thrive wherever peaches succeed. Our trees are grown from nuts produced by hardy bearing trees growing in this vicinity.

| | | | |
|----------|--------|---------|--|
| | Each | 10 | |
| 2-3 feet | \$1.50 | \$12.50 | |
| 3-4 feet | 2.00 | 17.50 | |
| 4-5 feet | 2.50 | 22.50 | |
| 5-6 feet | 3.50 | 30.00 | |

AMERICAN BLACK WALNUT

The Black Walnut is one of America's most useful nut-bearing trees.

| | | | |
|-----------|--------|---------|--|
| | Each | 10 | |
| 5-6 feet | \$1.00 | \$ 9.00 | |
| 6-8 feet | 1.50 | 12.50 | |
| 8-10 feet | 3.00 | 27.50 | |

JAPANESE WALNUT

Nearly as hardy as the Black Walnut and is especially appropriate for farm and dooryard planting.

| | | | |
|----------|--------|---------|--|
| | Each | 10 | |
| 4-5 feet | \$2.00 | \$18.50 | |
| 5-6 feet | 2.50 | 22.50 | |

ALMOND (*Amygdalus Communis*)

Hardy wherever peaches grow; easy of culture. HARD-SHELL. Very showy in bloom; nuts plump and sweet.

| | | | |
|----------|--------|---------|--|
| | Each | 10 | |
| 3-4 feet | \$1.00 | \$ 9.00 | |
| 4-5 feet | 1.50 | 12.50 | |

BUTTERNUT (*Juglans Cinerea*)

One of our finest native nut trees.

| | | | |
|----------|--------|---------|--|
| | Each | 10 | |
| 5 7 feet | \$1.50 | \$12.50 | |
| 6-8 feet | 2.00 | 17.50 | |



Black Walnut



English Filbert

CHESTNUT (*Castanea*)

AMERICAN SWEET. An excellent tree with nuts that are eagerly sought.

| | | |
|--|------|--------|
| 4-5 feet | Each | \$1.50 |
| PARAGON. Nuts of large size, fine appearance and excellent flavor. | Each | \$2.00 |
| 3-4 feet | Each | \$2.50 |

HICKORY

Shagbark. (*Hicoria ovata*.) Esteemed as the choicest of native nuts.

| | | |
|----------|------|--------|
| 2-3 feet | Each | \$1.50 |
| 3-4 feet | Each | 2.50 |

FILBERT (*Corylus*)

Trees grown at our Nurseries are withstanding temperatures of 15 degrees below zero without winter-killing, which should be sufficient warranty of their hardiness throughout the eastern and northeastern sections to call for extensive plantings.

Purple-leaved. One of the best American varieties. Each 18-24 inch \$1.50
2-3 feet 2.50

Hazelnut (American Filbert) Ranks high as an ornamental and bears large quantities of sweet-flavored nuts. Each 2-3 feet \$1.00
3-4 feet 1.50

Kentish Cob (English Filbert) Productive of large, oblong nuts of rich flavor. Layered plants. Each 10
2-3 feet \$1.50 \$12.50
3-4 feet 2.00 17.50
4-5 feet 3.00 27.50

Cosford (Paper Shell) European variety highly prized for thin shelled nuts of richest flavor. Each 10
2-3 feet \$1.50 \$12.50
3-4 feet 2.00 17.50
4-5 feet 3.00 27.50

SEND ALL ORDERS TO

Glen Brothers, Inc.

Glenwood Nursery

Nurserymen and Rose Growers Since 1866

1762-1772 Main St.

ROCHESTER, N. Y.

WE FURNISH THE HOME OUTDOORS"

INDEX

| | | | | | | | |
|---------------------------|------------|----------------------------|------------|--------------------------------------|------------|------------------------------|----------------|
| Abelia..... | 19 | Corylus..... | 48 | Laburnum..... | 24 | Raspberries..... | 36, 41 |
| Abies..... | 17 | Cotoneaster..... | 19 | Lace Vine..... | 32 | Red Bud..... | 23 |
| Acer..... | 20 | Cowslip..... | 29 | Larch..... | 20 | Red-Hot Poker..... | 29 |
| Achillea..... | 27 | Crab, Flowering..... | 21 | Larix..... | 20 | Red Leaf Peach..... | 22 |
| Aconitum..... | 27 | Cranberry, High Bush..... | 26 | Larkspur..... | 27 | Red Osier..... | 24 |
| Adam's Needle..... | 29 | Crataegus..... | 24 | Liatris..... | 28 | Retinospora..... | 17 |
| Aesculus..... | 20 | Cucumber Tree..... | 21 | Ligustrum..... | 25 | Rhamnus..... | 25 |
| Almond, flowering..... | 21 | Cydonia..... | 24 | Lilacs..... | 26 | Rhododendron..... | 19 |
| Almond, Hard Shell..... | 48 | Cypress..... | 17 | Lily of the Valley..... | 27 | Rhodotypos..... | 25 |
| Althea..... | 24 | | | Linden..... | 22 | Rhubarb..... | 36, 41 |
| Amalanchier..... | 23 | Delphinium..... | 27 | Liquidambar..... | 20 | Rhus..... | 25 |
| Ampelopsis..... | 32 | Deutzia..... | 24 | Liriodendron..... | 21 | Robinia..... | 25 |
| Anchusa..... | 27 | Dianthus..... | 27 | Lobelia..... | 28 | Rockery Plants..... | 29 |
| Anemone..... | 27 | Dicentra..... | 27 | Locust..... | 20 | Rose Acacia..... | 25 |
| Apples, crab..... | 33 | Diervilla..... | 26 | Lonicera..... | 25, 32 | Rose of Sharon..... | 24 |
| Apples, dwarf..... | 33 | Digitalis..... | 27 | Lychnis..... | 28 | Roses, climbing..... | 31 |
| Apples, standard..... | 33 | Dogwood..... | 20, 23, 24 | Lycium..... | 32 | Roses, Hybrid Teas..... | 30 |
| Apples, super..... | 42, 43 | Dutchman's Pipe..... | 32 | Lythrum..... | 28 | Roses, Hybrid Perpetual..... | 31 |
| Apricots..... | 34 | | | | | Roses, Polyantha..... | 31 |
| Aquilegia..... | 27 | Eleagnus..... | 24 | Magnolia..... | 21 | Roses, Rugosa..... | 31 |
| Aralia..... | 23 | Elder..... | 25 | Malus..... | 21 | Roses, Standard or Tree..... | 31 |
| Arborvitae..... | 18 | Elm..... | 12, 22 | Maple..... | 20 | Russian Olive..... | 24 |
| Aristolochia..... | 32 | English Walnut..... | 48 | Matrimony Vine..... | 32 | | |
| Aronia..... | 23 | Euonymus..... | 24, 32 | Mock Orange..... | 25 | Salix..... | 21 |
| Arrow Wood..... | 26 | Evergreens..... | 17, 18 | Monarda..... | 28 | Sambucus..... | 25 |
| Ash..... | 20 | Evergreen Shrubs..... | 19 | Morus..... | 21 | Sedum..... | 29 |
| Asparagus..... | 36, 39 | | | Mountain Ash..... | 21, 22 | Sheepberry..... | 26 |
| Astilbe..... | 27 | Fagus..... | 20 | Mountain Laurel..... | 19 | Shrubs..... | 23, 24, 25, 26 |
| Azalea..... | 19, 23 | Feverfew..... | 29 | Mulberry..... | 21 | Silver Bell..... | 24 |
| | | Filbert..... | 48 | Myosotis..... | 28 | Smoke Tree..... | 25 |
| Balloon Flower..... | 29 | Fir..... | 17 | Myrtle..... | 32 | Snowball..... | 26 |
| Barberry..... | 11, 23, 46 | Flame Flower..... | 29 | | | Snowberry..... | 25 |
| Beauty Bush..... | 24 | Forget-me-not..... | 28 | New Jersey Tea..... | 23 | Sorbus..... | 21, 22 |
| Beech..... | 20 | Forsythia..... | 24 | Nut Trees..... | 48 | Spice Bush..... | 23 |
| Benzoin..... | 23 | Foxglove..... | 27 | | | Spindle Tree..... | 24 |
| Berberris..... | 11, 23, 46 | Fraxinus..... | 20 | Oak..... | 21 | Spiraea..... | 25, 27, 44 |
| Betula..... | 20 | Fringe Tree..... | 23, 25 | Oleaster..... | 24 | Spruce..... | 18 |
| Bignonia..... | 32 | Funkia..... | 28 | Ornamental Reeds and Grasses..... | 29 | Spurge..... | 19 |
| Birch..... | 20 | | | | | Stephanandra..... | 25 |
| Bittersweet..... | 32 | Gaillardia..... | 28 | Pachysandra..... | 19 | Stokesia..... | 29 |
| Blackberries..... | 36 | Gladiolus..... | 29 | Pampas Grass..... | 29 | Strawberries..... | 36 |
| Black Walnut..... | 48 | Gleditsia..... | 20 | Papaver..... | 29 | Strawberry bush..... | 24 |
| Blanket Flower..... | 28 | Globe Flower..... | 24, 29 | Peaches..... | 35, 38 | Sumac..... | 25 |
| Bleeding Heart..... | 27 | Golden Bell..... | 24 | Peach, Flowering..... | 21 | Sweet Bay..... | 21 |
| Blueberries..... | 47 | Golden Chain..... | 24 | Peach, Red Leaf..... | 22 | Sweet Gum..... | 20 |
| Boxwood..... | 19 | Grapes..... | 35, 40 | Pears, Dwarf..... | 34 | Sweet Pepper Bush..... | 23 |
| Buck Thorn..... | 25 | Great Laurel..... | 19 | Pears, Standard..... | 33 | Sweet Shrub..... | 23 |
| Buddleia..... | 23 | | | Pears, Super Size..... | 43 | Sweet William..... | 27 |
| Butterfly Bush..... | 23 | Hamamelis..... | 24 | Peonies..... | 27, 28 | Symphoricarpus..... | 25 |
| Butternut..... | 48 | Hawthorn..... | 24 | Perennial Plants..... | 27, 28, 29 | Syringa..... | 25, 26 |
| Button Bush..... | 23 | Hedera..... | 32 | Periwinkle..... | 32 | | |
| Buxus..... | 19 | Halesia..... | 24 | Philadelphus..... | 25 | Tamarix..... | 26 |
| | | Helleborus Niger..... | 31 | Phlox..... | 27 | Taxus..... | 18 |
| Calycanthus..... | 23 | Hemlock..... | 18 | Physostegia..... | 29 | Thorn..... | 24 |
| Campanula..... | 27 | Hercules Club..... | 23 | Picea..... | 28 | Thuja..... | 18 |
| Candytuft..... | 28 | Heuchera..... | 28 | Pine..... | 18 | Tilia..... | 22 |
| Canterbury Bells..... | 27 | Hibiscus..... | 24, 28 | Pinus..... | 18 | Trees, Deciduous..... | 20, 21, 22 |
| Cardinal Flower..... | 28 | Hicoria..... | 48 | Plane..... | 21 | Tritoma..... | 29 |
| Castanea..... | 48 | Hickory..... | 48 | Plantain Lily..... | 28 | Trollius..... | 29 |
| Catalpa..... | 20, 46 | Hollyhocks..... | 28 | Platanus..... | 21 | Trumpet Vine..... | 32 |
| Ceanothus..... | 23 | Honeysuckle, bush..... | 25 | Platycondon..... | 29 | Tsuga..... | 18 |
| Cedar..... | 17, 18 | Honeysuckle, climbing..... | 32 | Plume Grass..... | 29 | Tulip Tree..... | 21 |
| Celastrus..... | 32 | Horse Chestnut..... | 20 | Plums..... | 34 | | |
| Cephalanthus..... | 23 | Hydrangea..... | 24-44 | Plums, Super size..... | 43 | Ulmus..... | 12, 22 |
| Cercis..... | 23 | Hypericum..... | 24 | Plum, Flowering..... | 21 | Umbrella Tree..... | 20, 46 |
| Chamaecyparis..... | 17 | | | Polygonum..... | 32 | | |
| Cherry, flowering..... | 21 | Iberis..... | 28 | Poplar..... | 21 | Veronica..... | 29 |
| Cherries..... | 34, 37 | Indian Currant..... | 25 | Poppy..... | 28 | Viburnum..... | 26 |
| Cherries, super size..... | 37, 43 | Iris..... | 28 | Populus..... | 21 | Vinca..... | 32 |
| Chestnut..... | 48 | Ivy..... | 32 | Privet..... | 29 | Vines..... | 32, 45 |
| Chionanthus..... | 23 | | | Prunus..... | 21 | Virginia Creeper..... | 32 |
| Choke-berry..... | 23 | Japanese Walnut..... | 48 | Pueraria..... | 32 | | |
| Christmas Rose..... | 31 | Judas tree..... | 23 | Pyrethrum..... | 29 | Walnut..... | 48 |
| Chrysanthemum..... | 27 | Juglans..... | 48 | | | Wayfaring tree..... | 26 |
| Clematis..... | 32 | June Berry..... | 23 | Quercus..... | 21 | Weigela..... | 26 |
| Clethra..... | 23 | Juniper..... | 17, 18 | Quince, Flowering..... | 24 | Willow..... | 21 |
| Columbine..... | 27 | Juniperus..... | 17, 18 | Quinces..... | 34 | Wisteria..... | 32 |
| Convallaria..... | 27 | | | | | Witch Hazel..... | 24 |
| Coral Berry..... | 25 | Kalmia..... | 19 | | | Yew..... | 18 |
| Coreopsis..... | 27 | Kerria..... | 24, 25 | | | Yucca..... | 29 |
| Cornus..... | 20, 23, 24 | Kolkwitzia..... | 24 | | | | |
| | | Kudzu Vine..... | 32 | | | | |

**GLEN
BROTHERS
NURSERY
ROCHESTER, N.Y.**