

## **Historic, Archive Document**

Do not assume content reflects current scientific knowledge, policies, or practices.



Q. 35  
1932

CATALOGUE

and

PRICE LIST

of

GLADHAVEN

*Bulbs and Flowers*

(Gladhaven is situated on the cement road to Bristol,  
one mile out of Franklin on direct road to  
White Mountains.)

VISITORS ALWAYS WELCOME.

Address mail to:

GLADHAVEN GARDENS

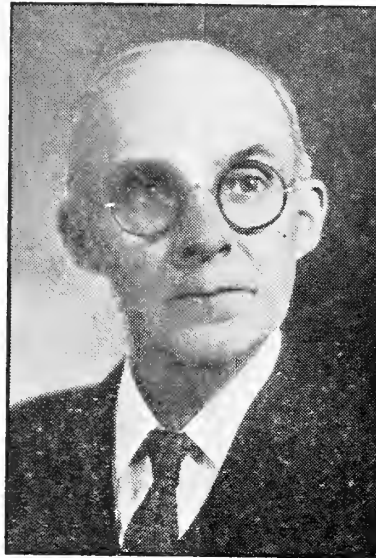
George G. Fowler, Prop.

North Main Street

FRANKLIN, NEW HAMPSHIRE

Established 1920

**IF YOU HAVE NO USE FOR THIS CATALOGUE KINDLY HAND IT TO  
A FLOWER GROWING FRIEND.**



I probably cannot meet you all in person, so I am taking the liberty of introducing myself and hope to see many of my friends and customers at Gladhaven this summer.

---

**HARDY PLANTS,**

**SHRUBS,**

**ANNUAL BEDDING PLANTS,**

**POTTED PLANTS**

**CUT FLOWERS**

**MELONS,**

**TOMATOES,**

**POP CORN**

**VEGETABLES IN SEASON**

**For Sale at Gardens.**

Nineteen thirty-two is here and with it better business. Factories are being started up on full time and some are running 24 hours a day, all over New England. Flowers are one of the emblems of cheerfulness so let's shake off the blues and grow more of them. If you grow more than you care for yourself, sell them or better still, take them to a shut-in or a sick friend. About the best thing we know of for a long lasting cut flower is the *Gladiolus*, lasting over a week if given fresh water every day. Regal Lilies are also good for cutting and have the most delightful fragrance. Dahlias lack fragrance but are good keepers and many of the new varieties are so large each blossom makes a good sized bouquet. Iris are useful for cutting or landscape effects, easy to grow and will stand considerable neglect, but remember good care and cultivation of any plant will pay big dividends.

A lot of our customers are making money growing flowers to sell at wayside-stands, hotels, restaurants, etc. You can do the same, but do not make the mistake of selling high grade stock at low quality prices. Why not try it this year? Prices for bulbs are lowest ever known. Buy bulbs by the 100 and you get them still cheaper. To cut 100 dozen of gladiolus spikes you should plant at least 1,400 bulbs at a cost of around \$30. The glads should sell at from 50c to \$1 a dozen, giving you around \$75 for your flowers and you will have the bulbs for another year with what increase they may make. This does not take into consideration the pleasure you will derive from watching them grow or the flowers you will have for your own use. A small strip of rather level light sandy loam with plenty of water available in a dry time and a bag of sheep manure for fertilizer is about the whole expense.

Wishing our old friends and customers a happier year in 1932, and thanking all for their generous patronage in the past and soliciting a share of your patronage, we are

Cordially yours,

GLADHAVEN GARDENS,

Geo. G. Fowler, Prop.

Gladhaven Gardens,

Franklin, N. H.,

**ORDER EARLY**

Order as early as possible so the bulbs will be received in ample time for early planting.

We will start planting our gardens May 1 or before if weather is suitable. We will not have any bulbs to sell after June 1.

As bulblets germinate rather slowly they should be planted early while soil is still moist. April 1 is none too early.

**PLEASE ORDER EARLY!**

**SMALL ORDERS**

If your order does not total \$1 we suggest a friend "club" with you and make it \$1 or more, or if you wish enclose 10c extra to cover cost of postage, packing, etc. Experience has taught us that orders for lots under \$1 cannot be shipped without loss. We put up any size order at the Gardens.

Gladiolus bulbs, Regal Lily bulbs and Dahlia tubers may be shipped at the same time, but if your order includes Iris or other items to be shipped later, each order must amount to at least \$1.

Regal Lily seed are always sent postpaid. All prices in this catalog are postpaid on orders totalling \$1 or more, unless otherwise noted.

**HOW TO REMIT**

You can send money order or personal check with safety. Do not send loose coins unless letter is registered. If you must send stamps, please send the 1c denomination. We would rather not take stamps for sums over \$1.

**Please write or print your name very plainly and give your correct address. This is important to enable us to give you prompt and satisfactory service.**

Unless otherwise instructed bulbs will be mailed as soon as weather will permit. Large orders of over \$5 may be shipped by express at any time.

**REGARDING RESULTS**

No grower can honestly **GUARANTEE RESULTS**. After the bulbs leave his hands he has no control over their care, culture, etc. We guarantee every bulb sold singly to be true to name, and 95% pure when sold by the 100. Usually there will be enough overcount in a hundred to take care of the 5% that might be "off". We guarantee bulbs to be of size and quality represented. We are glad to correct any mistake we might make. You will find us very fair and liberal in our dealings.

We have tried to make it easy for you to order bulbs. Please use our order blank and keep a copy of your order. Send your order in our addressed envelope on which we pay the postage.

We would appreciate the names of your friends who are interested in growing flowers and who would like our catalog.

**You will receive our catalog next year if you buy from us this year, or will be sent if you ask for it. We are always glad to send it to those who have a use for it, without charge.**

**PRONOUNCE IT TO SUIT YOURSELF** but the American Gladiolus Society at their convention in 1926 adopted this spelling and pronunciation—Glad-i-o-lus for both singular and plural. Most of us fans just call 'em "glads". Most everybody who has ever grown them will agree to this, and if you have never grown "glads" try them this year and you will also be "glad".

**SPECIAL GLADIOLUS COLLECTION FOR \$1**

We offer but one special collection this year as follows:—

5 Red	5 Pink
5 White	5 Salmon
5 Blue	5 Rose
5 Yellow	5 Cream

Each color will be labeled for variety and all bulbs will be of a good blooming size. The 40 bulbs will be sent postpaid for \$1.00.

**MIXED VARIETIES**

We offer what we believe the Best Assortment of gladiolus bulbs sold. These are all named sorts and have become mixed partly through accident and partly small lots that have been discontinued as there were not enough to list. There must be over 50 different kinds in the lot. Cannot promise you one of each kind in a 50 bulb order, but they are **BIG VALUE**. There are early, mid-season and late blooming. Pink, white, red, blue, yellow, orange, salmon and about all the colors imaginable. Planted in May will give flowers from the middle of July till frost.

Per	Large	Medium	Small
10 bulbs	.30	.15	.08
100 bulbs	\$2.50	\$1.25	.60
1000 bulbs	\$15.00	\$7.50	\$3.50

Mixed bulblets 10c a packet, 75c a quart. All prepaid.

Large bulbs 1¼ inches and up; Medium, ¾ to 1¼; small, under ¾.

Your order for bulbs and bulblets must amount to at least \$1 for each shipment. Five bulbs at the 10 price rate, 25 bulbs at the 100 price rate. Bulblets put up in 10e lots. Pints and half pints at the one quart rate. Figures before the prices indicate the number of bulbs given for that price. We cannot guarantee the germination of bulblets or that they will all be absolutely true to name, but we try to have them as near right as possible. If out of size ordered we will unless otherwise instructed, send you the value in a different size. We do not substitute a different variety. Note the new low prices, new varieties and three sizes to select from this year. All prices are for prepaid delivery to your town.

NAME	Large 1 <sup>1</sup> / <sub>4</sub> up	Medium 1 <sup>1</sup> / <sub>2</sub> to 1 <sup>1</sup> / <sub>4</sub>	Small to 1 <sup>1</sup> / <sub>2</sub>	Bblts. by qt.
<b>A. E. Kunderd</b> , salmon pink, darker blotch.....	1 for \$ .12	2 for \$ .15	3 for \$ .10	.....
	10 for 1.00	.60	.25	.....
<b>Adorable</b> , beautiful light creamy pink.....	1 for .10	2 for .10	.....	.....
	10 for .60	.30	.....	.....
<b>Albania</b> , fine white for cutting.....	1 for .08	2 for .08	4 for .10	.....
	10 for .40	.20	.15	\$ 1.00
	100 for 2.50	1.50	1.00	.....
<b>Alice Tiplady</b> , early, orange saffron shade.....	1 for .08	2 for .08	4 for .10	.....
	10 for .40	.20	.15	1.00
	100 for 2.50	1.25	.90	.....
<b>Altair</b> , early salmon rose.....	1 for .08	2 for .08	4 for .10	.....
	10 for .40	.25	.15	1.00
	100 for 2.50	1.50	1.00	.....
<b>Atreus</b> , beautiful early rose pink.....	1 for .08	2 for .08	4 for .10	.....
	10 for .40	.20	.15	1.00
	100 for 2.50	1.50	1.00	.....
<b>A. V. Bunce</b> , bright orange yellow.....	1 for .08	2 for .10	4 for .10	.....
	10 for .50	.40	.25	.....
<b>Aida</b> , early dark blue.....	1 for .....	.15	.....	.....
	10 for .....	1.00	.....	.....
<b>A. W. Hunt</b> , large orange red.....	1 for .08	2 for .08	4 for .10	.....
	10 for .50	.35	.20	.....
<b>Athene</b> , fine early pink.....	2 for .10	3 for .10	4 for .10	.....
	10 for .40	.30	.20	1.00
	100 for 2.50	1.25	.90	.....
<b>Alton</b> , much ruffled orange, pretty.....	1 for .10	2 for .15	2 for .10	.....
	10 for .75	.50	.35	.....
<b>Appleblossom</b> , appleblossom pink (Kunderds).....	1 for .10	2 for .15	2 for .10	.....
	10 for .75	.50	.30	.....
<b>Alhambra</b> , brilliant vermilion scarlet.....	1 for .10	2 for .15	2 for .10	.....
	10 for .75	.50	.30	.....
<b>Annie Laurie</b> , fine shell pink.....	1 for .10	2 for .10	3 for .10	.....
	10 for .50	.30	.20	.....
<b>Baron Hulot</b> , dark velvety blue, yellow lines.....	1 for .08	2 for .08	4 for .10	.....
	10 for .40	.20	.15	1.00
	100 for 3.00	2.25	1.00	.....
<b>Beatrice</b> , finely stippled pink. Rather odd.....	1 for .15	.10	2 for .15	.....
	10 for 1.00	.75	.50	.....
<b>Bengal Tiger</b> , red, darker stripes. Rank grower.....	1 for .08	2 for .08	4 for .10	.....
	10 for .50	.35	.20	.....
	100 for 3.00	1.75	1.00	1.00
<b>Beverley</b> , violet rose, deep red throat. Extra.....	1 for .10	2 for .15	2 for .10	.....
	10 for .90	.60	.30	.....
<b>Betty Joy</b> , soft creamy white flushed pink. Large.....	1 for .10	2 for .15	2 for .10	.....
	10 for .80	.50	.30	.....
<b>Betty Nuthall</b> , extra fine coral orange. One of the best.....	each .25	each .15	each .10	.....
	10 for 1.65	1.00	.60	.....
<b>Big Black</b> , extra large dark red.....	1 for .10	2 for .15	3 for .10	.....
	10 for .75	.50	.30	.....
<b>Beatrice Michelenz</b> , fine tall orange red.....	1 for .10	2 for .10	3 for .10	.....
	10 for .60	.40	.25	.....
<b>Blanche Bollinger</b> , striped old rose.....	1 for .10	2 for .10	3 for .10	.....
	10 for .60	.40	.25	.....
<b>Blushing Beauty</b> , late blush pink. Pretty.....	1 for .10	2 for .15	3 for .10	.....
	10 for .75	.50	.30	.....
<b>Blue Lily</b> , early light violet blue.....	1 for .10	2 for .10	3 for .10	.....
	10 for .50	.35	.20	.....
<b>Blue Orchid</b> , orchid flowered light blue.....	1 for .10	2 for .10	3 for .10	.....
	10 for .50	.35	.20	.....
<b>Bobby</b> , large deep rose, darker blotch.....	1 for .08	2 for .08	4 for .10	.....
	10 for .55	.40	.20	3.00
	100 for 4.00	3.00	1.50	.....

## GLADHAVEN GARDENS

FRANKLIN, N. H.

NAME	Large 1¼ up	Medium ¾ to 1¼	Small to ¾	Bblts. by qt.
Break O'Day, early light pink.....	1 for .08	2 for .08	4 for .10	.....
	10 for .40			1.50
	100 for 2.50			.....
Bertie Snow, large new lavender.....	1 for .20	2 for .15	3 for .10	.....
	10 for 1.25			.....
Buckeye, large rose pink deeper throat.....	1 for .15	each .10	2 for .10	.....
	10 for 1.00			.....
Butter Boy, tall early light yellow.....	1 for .08	2 for .08	4 for .10	.....
	10 for .50			.....
Byron L. Smith, popular light lavender.....	1 for .08	2 for .08	4 for .10	.....
	10 for .50			.....
Capt. Boynton, choice lavender with blotch.....	1 for .08	2 for .08	4 for .10	.....
	10 for .50			.....
California Giant, large light mallow purple.....	1 each .25	each .15	each .10	.....
	10 for 2.00			.....
Cardinal Prince, large cardinal red.....	1 for .08	2 for .08	4 for .10	.....
	10 for .60			2.00
	100 for 4.00			.....
Catherine Coleman, large salmon rose.....	1 for .10	2 for .15	2 for .10	.....
	10 for .75			.....
Carmen Sylvia, good white for cutting.....	1 for .08	2 for .08	4 for .10	.....
	10 for .40			.....
	100 for 2.50			1.00
Chalice Flower, tall ruffled creamy white.....	1 for .15	each .10	2 for .10	.....
	10 for 1.00			.....
Chas. Dickens, tall reddish purple, darker throat.....	1 for .10	2 for .15	2 for .08	.....
	10 for .65			.....
Chas. Fairbanks, good early light red for cutting.....	1 for .10	2 for .10	4 for .10	.....
	10 for .60			1.50
	100 for 3.00			.....
Cherry King, bright cherry red.....	1 for .15	each .10	2 for .10	.....
Cherry Rose, just the right name for it.....	1 for .15	each .10	2 for .10	.....
Chicago White, early white for cutting.....	1 for .08	2 for .08	4 for .10	.....
	10 for .40			1.00
	100 for 2.50			.....
Conspicuous, light blue with butterfly blotch.....	1 for .10	2 for .15	3 for .10	.....
	10 for .70			.....
Copper Bronze, reddish bronze shade, artistic flower.....	1 for .10	2 for .10	4 for .10	.....
	10 for .50			.....
Crimson Glow, large deep crimson flower.....	1 for .08	2 for .08	4 for .10	.....
	10 for .40			1.50
	100 for 3.00			.....
Crinkles, deep heavily ruffled rose pink.....	1 for .08	2 for .10	4 for .10	.....
	10 for .50			.....
Cymbaline, very showy deep red.....	1 for .10	2 for .15	2 for .10	.....
	10 for .80			.....
Diana, large deep red.....	1 for .08	2 for .08	4 for .10	2.00
	10 for .40			.....
	100 for 3.00			1.25
Dorritt, beautiful striped pink.....	1 for .08	2 for .08	4 for .10	.....
	10 for .50			.....
Dorothy McKibbons, early ruffled pink.....	1 for .08	2 for .08	4 for .10	.....
	10 for .40			.....
Dorothy Wheeler, early delicate shell pink.....	1 for .08	2 for .08	4 for .10	.....
	10 for .40			.....
	100 for 2.50			1.00
Dr. Christ Martz, large ruffled light red.....	1 for .10	2 for .10	4 for .10	.....
	10 for .60			2.00
	100 for 4.00			.....
Dr. F. E. Bennett, fiery red, very striking.....	1 for .08	2 for .08	4 for .10	.....
	10 for .50			.....
Dr. Moody, big spike of lavender shade. Early.....	1 for .15		3 for .10	.....
	10 for 1.10			.....
Dr. Nelson Shook, deep rose red, ruffled. Choice.....	1 for .10	2 for .10	4 for .10	.....
	10 for .70			.....
Dr. Van Fleet, early rose pink, shading to creamy throat.....	1 for .10	2 for .10	4 for .10	.....
	10 for .50			2.00
	100 for 3.00			.....



GLADHAVEN GARDENS

FRANKLIN, N. H.

NAME	Large 1 <sup>1</sup> / <sub>2</sub> up	Medium 2 <sup>1</sup> / <sub>2</sub> to 1 <sup>1</sup> / <sub>2</sub>	Small to 2 <sup>1</sup> / <sub>2</sub>	Bblts. by qt.
<b>Dream</b> , salmon red, large flowers well ruffled.....	1 for .10	2 for .15	3 for .10	.....
	10 for .75	.50	.20	.....
<b>Dorothy Wood</b> , early large salmon shaded to red.....	1 for .15	.10	2 for .10	.....
	10 for 1.25	.75	.40	.....
<b>Duchess of York</b> , iris purple shade to deep blue.....	1 for .10	2 for .10	3 for .10	.....
	10 for .75	.40	.25	.....
<b>Elaine</b> , tall white, extra good.....	1 for .10	.08	2 for .10	.....
	10 for .80	.60	.40	.....
<b>Elf</b> , lemon buds opening large white.....	1 for .10	.08	2 for .10	2.00
	10 for .50	.40	.30	.....
	100 for 3.75	2.25	1.25	.....
<b>Elora</b> , early large white, pink lines in throat.....	1 for .08	2 for .10	4 for .10	.....
	10 for .50	.35	.20	1.50
	100 for 3.50	2.00	1.00	.....
<b>Emile Aubrun</b> , slaty red, one of the largest and best.....	1 for .10	2 for .15	3 for .10	.....
	10 for .70	.59	.30	.....
<b>Empress of India</b> , black buds, dark maroon flowers.....	1 for .08	2 for .10	4 for .10	.....
	10 for .40	.30	.20	1.00
	100 for 3.00	2.00	1.00	.....
<b>Estella</b> , big rose shade to brick red. Good.....	1 for .08	2 for .10	4 for .10	.....
	10 for .50	.30	.20	.....
<b>Ernestine</b> , orange, white throat.....	1 for .08	.15	.10	.....
<b>Ethelyn</b> , brilliant orange and light bronze yellow.....	1 for .08	2 for .10	4 for .10	.....
	10 for .50	.35	.20	.....
<b>Europa</b> , one of the largest and clearest whites.....	1 for .10	2 for .15	2 for .10	.....
	10 for .80	.60	.30	.....
<b>Excellence</b> , orange-vermillion, a fine early red.....	1 for .15	each .10	2 for .15	.....
	10 for 1.20	.75	.50	.....
<b>Exquisite</b> , American Beauty rose color. Choice.....	1 for .10	2 for .15	3 for .10	.....
	10 for .60	.45	.25	.....
<b>E. W. Allis</b> , tall scarlet-red, light and dark shade in throat... 1 for .10		2 for .15	3 for .10	.....
	10 for .80	.50	.30	.....
<b>Fairfield</b> , large dark maroon.....	1 for .10	2 for .15	3 for .10	.....
	10 for .70	.50	.30	.....
<b>Fastidious</b> , large light pink.....	1 for .10	2 for .15	3 for .10	.....
	10 for .60	.40	.25	.....
<b>Fay Lanphier</b> , soft rose pink, large flower.....	1 for .08	2 for .10	4 for .10	.....
	10 for .60	.35	.20	.....
<b>Fern Kyle</b> , large ruffled creamy white.....	1 for .08	2 for .10	4 for .10	.....
	10 for .50	.35	.20	1.50
	100 for 3.00	2.00	1.00	.....
<b>Flaming Vale</b> , large dark glowing red.....	1 for .10	2 for .15	3 for .10	.....
	10 for .50	.35	.25	.....
<b>Fire Ribbon</b> , slim spike of velvety red fire.....	1 for .10	2 for .15	3 for .10	.....
	10 for .60	.40	.25	3.00
	100 for 3.00	2.25	1.25	.....
<b>Flaming Sword</b> , early light red.....	1 for .10	2 for .15	3 for .10	.....
	10 for .60	.40	.25	.....
<b>Fontaine</b> , peaches and cream, ruffled.....	1 for .10	2 for .15	3 for .10	.....
	10 for .65	.45	.25	.....
<b>Frost King</b> , long season coral pink.....	1 for .08	2 for .10	4 for .10	.....
	10 for .50	.35	.20	.....
<b>Frosty</b> , large crushed strawberry pink.....	1 each .25	each .15	each .10	.....
<b>Gene Stratton Porter</b> , tall frilled pink.....	1 for .08	2 for .10	4 for .10	.....
	10 for .60	.40	.20	.....
<b>Gertrude Errey</b> , a light pink from Australia.....	1 for .08	2 for .10	4 for .10	.....
	10 for .60	.40	.20	.....
<b>Giant Fawn</b> , large primrose-tan color.....	1 for .15	each .10	2 for .15	.....
	10 for 1.90	.60	.40	.....
<b>Giant Myrtle</b> , soft pink on white.....	1 for .08	2 for .10	4 for .10	.....
	10 for .50	.30	.20	.....
<b>Giant Nymph</b> , tall light pink.....	1 for .08	2 for .10	4 for .10	.....
	10 for .50	.30	.20	.....
<b>Glendale</b> , early lavender purple.....	1 for .08	2 for .10	4 for .10	.....
	10 for .50	.30	.20	.....
<b>Gloriana</b> , pure golden salmon. Buds like a tea rose.....	1 for .08	2 for .10	4 for .10	.....
	10 for .50	.35	.20	2.00
	100 for 3.50	2.00	1.00	.....

## GLADHAVEN GARDENS

FRANKLIN, N. H.

NAME	Large 1 $\frac{1}{4}$ up	Medium $\frac{3}{4}$ to 1 $\frac{1}{4}$	Small to $\frac{3}{4}$	Bblts. by qt.
Gladdie Boy, pinkish orange shading to yellow.....	1 for .08	2 for .10	4 for .10	.....
	10 for .50			.....
Gladis Plath, mallow purple, darker throat.....	1 for .10	2 for .15	3 for .10	.....
	10 for .60			.....
Gloriosa, scarlet with white throat.....	each .20	each .15	each .10	.....
	10 for 1.50			.....
Gold, good early yellow.....	1 for .08	2 for .10	4 for .10	.....
	10 for .50			.....
Golden Buff, tall buff yellow.....	1 for .10	2 for .15	3 for .10	.....
	10 for .70			.....
Golden Dream, late deep yellow.....	1 for .08	2 for .10	3 for .10	.....
	10 for .60			.....
Gold Eagle, very early yellow. Good.....	1 for .08	2 for .10	3 for .10	.....
	10 for .50			.....
Golden Frills, finely ruffled yellow. Red throat.....	1 for .08	2 for .10	3 for .10	.....
	10 for .60			.....
Golden Glory, tall ruffled yellow with blotch.....	1 for .10	2 for .15	3 for .10	.....
	10 for .60			.....
Golden Measure, about the largest and best yellow.....	1 for .08	2 for .10	4 for .10	.....
	10 for .50			2.00
	100 for 3.75			.....
Golden Salmon, ruffled salmon pink and yellow.....	1 for .08	2 for .10	4 for .10	.....
	10 for .50			.....
Golden Swallow, yellow with pointed petals.....	1 for .10	2 for .15	3 for .10	.....
	10 for .60			.....
Gov. Hanley, good early deep red.....	1 for .10	2 for .15	3 for .10	.....
	10 for .60			.....
Halcyon, beautiful light rose pink. Large.....	1 for .10	2 for .15	3 for .10	.....
	10 for .60			.....
Heavenly Blue, pale sky blue. Strong spike.....	1 for .15	.10	2 for .10	.....
	10 for 1.25	.65		.....
Helen Franklin, white violet throat stripe.....	2 for .10	4 for .10	6 for .10	.....
	10 for .40			1.00
	100 for 2.50			.....
Hermes, cherry pink, dark rose throat.....	1 for .10	2 for .15	3 for .10	.....
	10 for .80			.....
Herbstzauber, large bright orange-salmon.....	1 for .10	2 for .15	3 for .10	.....
	10 for .60			.....
Henry Ford, wonderful color, rich dark purple.....	1 for .08	2 for .10	4 for .10	.....
	10 for .50			1.50
	100 for 3.00			.....
Highland Laddie, peculiar rose pink. Good for cutting.....	1 for .10	2 for .15	3 for .10	.....
	10 for .60			2.00
	100 for 4.00			.....
Iwa, large salmon pink, darker blotch. Late.....	1 for .10	2 for .15	3 for .15	.....
	10 for .70			.....
Jack London, large orange with salmon.....	1 for .08	2 for .10	4 for .10	.....
	10 for .50			1.50
	100 for 3.00			.....
Jenny Lind, pink with yellow throat. A beauty.....	1 for .08	2 for .10	4 for .10	.....
	10 for .50			2.50
	100 for 4.00			.....
Jacoba Van Beijeren, tall violet, self color.....	1 for .10	2 for .15	3 for .10	.....
	10 for .70			.....
Joe Coleman, rich ruffled red.....	1 for .10	2 for .15	3 for .10	.....
	10 for .50			1.50
	100 for 3.00			.....
John Dunbar, velvety copper red.....	1 for .10	2 for .15	2 for .10	.....
	19 for .65			.....
John T. McCutcheon, giant red. Strong spike.....	1 for .15	.10	2 for .10	.....
	10 for 1.25	.70		.....
Joy, ruffled pink and creamy throat, good.....	1 for .10	2 for .15	2 for .10	.....
	10 for .80			2.00
	100 for 5.00			.....
John T. Pirie, mahogany brown, lighter blotch.....	1 for .10	2 for .15	3 for .10	.....
	10 for .50			.....
Jean Tenny, silvery pink, good spike.....	1 for .20	.15	.10	.....

NAME	Large 1 $\frac{1}{2}$ up	Medium $\frac{3}{4}$ to 1 $\frac{1}{4}$	Small to $\frac{3}{4}$	Bblts. by qt.
<b>Juniata</b> , pink with white throat. Very pretty.....	1 for .10 10 for .60	2 for .15 .40	3 for .10 .25	.....
<b>Kasson</b> , large rose ruffled lavender.....	1 for .10 10 for .60	2 for .15 .40	3 for .10 .25	.....
<b>Kilima</b> , blush pink and creamy salmon.....	1 for .10 10 for .60	2 for .15 .40	3 for .10 .25	.....
<b>Kirchoff's Violet</b> , deep rich violet.....	1 each .20	each .15	each .10	.....
<b>Kunderd's Yellow Favorite</b> , large light yellow.....	1 for .08 10 for .60 100 for 4.00	2 for .10 .40 2.40	4 for .10 .20 1.25	..... 3.00
<b>Kunderd's Yellow Wonder</b> , clear deep yellow.....	1 for .08 10 for .60 100 for 4.00	2 for .10 .40 2.40	4 for .10 .20 1.25	..... 3.00
<b>Lacinatus</b> , very small rose pink.....	3 for ..... 10 for .....	.10 .20	8 for .10 .10	.....
<b>La Verne</b> , tall creamy yellow flushed pink.....	1 for .10 10 for .60	2 for .15 .40	3 for .10 .25	.....
<b>Le Imaculae</b> , fine early white for cutting.....	2 for .10 10 for .40	4 for .15 .25	4 for .10 .15	.....
<b>Le Marshal Foch</b> , large early light pink.....	2 for .10 10 for .40 100 for 2.50	4 for .15 .25 1.25	4 for .10 .15 .75	..... 1.00
<b>Lilac Glory</b> , rosy lilac shade, ruffled.....	1 for .10 10 for .70	2 for .15 .50	3 for .10 .30	.....
<b>Lilac Wonder</b> , early lilac and lavender.....	1 for .10 10 for .70	2 for .15 .45	3 for .10 .30	.....
<b>Lillian</b> , large ruffled blush white, pink blotch.....	1 for .15 10 for 1.25	.10 .80	2 for .10 .40	.....
<b>Lily White</b> , pure white like a lily.....	2 for .10 10 for .40 100 for 2.50	4 for .15 .30 1.25	.....	..... 1.00
<b>Longfellow</b> , long spike of salmon-pink.....	1 for .08 10 for .50	2 for .10 .35	4 for .10 .15	.....
<b>Los Angeles</b> , many spikes of clear cerise pink.....	1 for .08 10 for .50 100 for 2.50	2 for .10 .30 1.50	4 for .10 .15 .75	..... 1.00
<b>Lorice</b> , scarlet and lemon yellow. Odd.....	1 for .10 10 for .70	2 for .15 .50	3 for .10 .25	.....
<b>Loyalty</b> , best yellow we have seen as yet.....	each .40 10 for 2.75	each .25 2.00	each .15 1.20	.....
<b>Marie Kunderd</b> , early ruffled white.....	1 for .10 10 for .50	2 for .15 .35	3 for .10 .20	.....
<b>Marmora</b> , big slaty red, darker blotch.....	1 each .25 10 for 2.00	each .15 1.20	each .10 .80	.....
<b>Marnia</b> , large orange, tall spikes.....	1 for .10 10 for .60	2 for .15 .40	3 for .10 .25	.....
<b>Marshal Foch</b> , large salmon pink. Late.....	1 for .10 10 for .50	2 for .15 .35	3 for .10 .25	.....
<b>Mary Jane</b> , beautiful silvery pink.....	1 for .15 10 for 1.25	each .10 .80	3 for .15 .40	.....
<b>Marigold</b> , daffodil-like yellow flowers.....	1 for .15 10 for 1.25	each .10 .80	2 for .10 .35	.....
<b>Mary Pickford</b> , early creamy white.....	1 for .08 10 for .50	2 for .10 .35	4 for .10 .20	.....
<b>Magic</b> , odd lavender blue blotch.....	1 for .10 10 for .60	2 for .15 .49	3 for .10 .25	.....
<b>Marietta</b> , large geranium pink, darker throat.....	1 for .10 10 for .60	2 for .15 .40	3 for .10 .25	.....
<b>Martha Washington</b> , a velvety red, dark blotch.....	1 for .10 10 for .60	2 for .15 .40	3 for .10 .25	.....
<b>Masterpiece</b> , ruffled American beauty rose.....	1 for .10 10 for .60	2 for .15 .40	3 for .10 .25	.....
<b>Maiden's Blush</b> , extra early tall light pink.....	1 for .08 10 for .40 100 for 2.50	2 for .10 .25 1.50	.....	..... 1.00
<b>Mimuet</b> , best light lavender. Large spike.....	1 for .15 10 for .90	each .10 .50	2 for .10 .25	.....

## GLADHAVEN GARDENS

FRANKLIN, N. H.

NAME	Large 1 $\frac{1}{4}$ up	Medium $\frac{3}{4}$ to 1 $\frac{1}{4}$	Small to $\frac{3}{4}$	Bblts. by qt.
Miss U. S. A., tall blush white. Pretty.....	1 for .08	2 for .10	4 for .10	.....
	10 for .50	.35	.20	.....
Ming Toy, large buff and orange. Good.....	1 for .08	2 for .10	.....	.....
	10 for .40	.25	.....	.....
Mission Bells, large drooping salmon red flowers.....	each .25	each .15	each .10	.....
Miss Madison, fine large light pink.....	1 for .10	2 for .15	3 for .10	.....
	10 for .60	.35	.20	.....
Mrs. F. C. Hornberger, new pure white, large.....	1 for .15	each .10	2 for .10	.....
	10 for .75	.50	.30	.....
Mrs. F. C. Peters, orchid lavender, rather late.....	1 for .08	2 for .10	4 for .10	1.50
	10 for .60	.40	.20	.....
	100 for 3.75	2.25	1.00	.....
Mrs. Geo. Moulton, large violet red.....	1 for .10	2 for .15	3 for .10	.....
	10 for .60	.40	.20	.....
Mrs. Leon Douglas, begonia rose. Very tall and big.....	1 for .08	2 for .10	4 for .10	.....
	10 for .50	.35	.20	1.50
	100 for 3.50	2.00	1.00	.....
Mrs. Dr. Norton, mingled white and pink.....	1 for .10	2 for .15	3 for .10	.....
	10 for .60	.40	.25	.....
Mrs. L. S. Schweppe, peach blossom pink, darker throat.....	1 for .08	2 for .10	4 for .10	.....
	10 for .50	.35	.20	1.50
	100 for 3.00	2.00	1.00	.....
Mrs. P. W. Sissons, best light ruffled pink.....	1 for .08	2 for .10	4 for .10	.....
	10 for .60	.40	.20	.....
Mrs. Willard Richardson, early clear dark red.....	1 for .10	2 for .15	3 for .10	.....
	10 for .60	.40	.25	.....
Mrs. Van Konynenburg, light violet blue.....	1 for .10	.10	.....	.....
	10 for .70	.....	.....	.....
Mrs. Watts, dark wine red.....	1 for .10	2 for .15	3 for .10	.....
	10 for .50	.35	.20	.....
Nancy Hanks, apricot shading to orange and pink.....	1 for .10	2 for .15	3 for .10	.....
	10 for .60	.40	.25	.....
Nineteen Ten Rose, (1910) early rose pink.....	1 for .08	2 for .10	4 for .10	.....
	10 for .40	.30	.20	1.50
	100 for 3.00	2.00	1.00	.....
Nimrod, tall dark red from Australia.....	1 for .15	each .10	2 for .15	.....
	10 for 1.25	.80	.50	.....
Neoga, dark red. Each spike a complete bouquet.....	1 for .15	each .10	2 for .15	.....
	10 for 1.25	.80	.50	.....
Orange Glory, large ruffled orange, hard to beat.....	1 for .10	2 for .15	3 for .10	.....
	10 for .60	.40	.25	.....
Opalescent, pale lavender, dark throat lines.....	1 for .08	2 for .10	4 for .10	.....
	10 for .45	.35	.20	.....
Pantheon, tall waxy white.....	1 for .10	2 for .15	3 for .10	.....
	10 for .60	.40	.20	.....
Paramount, very pretty peach and cream.....	1 for .10	2 for .15	3 for .10	.....
	10 for .60	.40	.20	.....
Peace, late white, fine for cutting.....	1 for .08	2 for .10	4 for .10	.....
	10 for .50	.30	.20	1.50
	100 for 3.00	2.00	1.00	.....
Peach-Rose, deep rose, with peach tint.....	1 for .10	2 for .15	3 for .10	.....
	10 for .50	.30	.20	.....
Pearl of the Dawn, fine ruffled pink, darker throat.....	1 for .10	2 for .15	3 for .10	.....
	10 for .60	.40	.25	.....
Persia, very deep blackish red.....	1 for .10	2 for .15	3 for .10	.....
	10 for .60	.40	.25	.....
Pink Cloud, large ruffled rose pink.....	1 for .10	2 for .15	3 for .10	.....
	10 for .65	.35	.20	.....
Pink Lily, clear color ruffled pink.....	1 for .10	2 for .15	3 for .10	.....
	10 for .65	.35	.20	.....
Pink Wonder, very large light pink.....	1 for .10	2 for .15	3 for .10	.....
	10 for .50	.30	.15	.....
Pola Negri, ruffled apricot and cream.....	1 for .10	2 for .15	3 for .10	.....
	10 for .60	.40	.25	.....
Primrose Beauty, good canary yellow.....	1 for .08	2 for .10	4 for .10	.....
	10 for .50	.35	.20	.....
Princely, a fine new lily white.....	1 for .08	2 for .10	4 for .10	.....
	10 for .50	.30	.20	.....

GLADHAVEN GARDENS

FRANKLIN, N. H.

NAME	Large 1 <sup>1</sup> / <sub>2</sub> up	Medium 1 <sup>1</sup> / <sub>2</sub> to 1 <sup>1</sup> / <sub>2</sub>	Small to 1 <sup>1</sup> / <sub>2</sub>	Bblts. by qt.
<b>Pride of Wanaka</b> , lavender rose. Good for cutting.....	1 for .08	2 for .10	4 for .10	1.50
	10 for .50		.20	
	100 for 3.00	2.00	1.00	
<b>Purple Glory</b> , a velvety maroon, violet-red.....	1 for .08	2 for .10	4 for .10	2.50
	10 for .50		.20	
	100 for 3.00	2.00	1.00	
<b>Purple Queen</b> , a real purple glad.....	1 for .15	each .10	2 for .15	
	10 for 1.00		.50	
	100 for 10.00		5.00	
<b>Purple Spot</b> , large violet red, purple blotch.....	1 for .10	2 for .15	2 for .10	
	10 for .80		.40	
	100 for 8.00		4.00	
<b>Queen of Night</b> (improved) very dark red.....	1 for .08	2 for .10	4 for .10	
	10 for .50		.20	
	100 for 5.00		2.00	
<b>Queen of Orange</b> , large dark orange red.....	1 for .15	each .10	2 for .15	
	10 for 1.00		.50	
	100 for 10.00		5.00	
<b>Red Cloud</b> , fine red with white bar on lower petals.....	1 for .10	2 for .15	3 for .10	
	10 for .50		.20	
	100 for 5.00		2.00	
<b>Red Copper</b> , eoppery reddish bronze.....	1 for .10	2 for .15	3 for .10	
	10 for .50		.20	
	100 for 5.00		2.00	
<b>Richard Diener</b> , geranium pink. Late but good.....	1 for .10	2 for .15	3 for .10	
	10 for .50		.20	
	100 for 5.00		2.00	
<b>Red Fire</b> , all the name implies.....	1 for .10	2 for .15	3 for .10	
	10 for .50		.20	
	100 for 5.00		2.00	
<b>Rose Ash</b> , smoky rose shade. Ashes of Roses.....	1 for .10	2 for .15	3 for .10	
	10 for .50		.20	1.50
	100 for 5.00	2.00	1.00	
<b>Rosy Glow</b> , large rose pink long spikes for cutting.....	1 for .10	2 for .15	3 for .10	
	10 for .60		.20	
	100 for 6.00		2.00	
<b>Rose Mist</b> , old rose and buff.....	1 for .10	2 for .15	3 for .10	
	10 for .60		.20	
	100 for 6.00		2.00	
<b>Rosalind</b> , pretty ruffled dark velvety rose.....	1 for .10	2 for .15	3 for .10	2.00
	10 for .80		.30	
	100 for 8.00	4.00	2.00	
<b>Rosemary</b> , stippled light lavender rose.....	1 for .10	2 for .15	3 for .10	
	10 for .50		.20	
	100 for 5.00		2.00	
<b>Robert J. Kunderd</b> , tall scarlet red.....	1 for .08	2 for .10	4 for .10	
	10 for .55		.20	
	100 for 5.50		2.20	
<b>Romance</b> , smoky edged with blue. Very odd.....	1 for .08	2 for .10	4 for .10	
	10 for .50		.20	
	100 for 5.00		2.00	
<b>Rozan</b> , delicate pink.....	each .25	each .15	each .10	
	10 for .10	2 for .15	3 for .10	2.00
	100 for .60	.40	.20	
<b>Ruth Huntington</b> , ruffled violet shade of lilac. late.....	1 for 4.00	2.50	1.25	
	10 for .10		.10	
	100 for .80	.60	.30	
<b>Sans Pareil</b> , aprieot pink, with white throat. Good.....	1 for .10	2 for .15	3 for .10	
	10 for .80		.30	
	100 for 8.00		3.00	
<b>Salmon Beauty</b> , salmon, yellow throat.....	1 for .08	2 for .10	4 for .10	
	10 for .40		.15	1.00
	100 for 2.50	1.50	.75	
<b>Scarlano</b> , large bright scarlet.....	1 for .08	2 for .10	4 for .10	
	10 for .50		.20	
	100 for 5.00		2.00	
<b>St. Thomas</b> , deep rose-salmon, darker blotch.....	1 for .10	2 for .15	3 for .10	
	10 for .60		.25	
	100 for 6.00		2.50	
<b>Schwaben</b> , good low priced yellow for cutting.....	1 for .10	3 for .10	4 for .10	
	10 for .40		.15	1.00
	100 for 2.50	1.50	.75	
<b>Scarlet Wonder</b> , big bright red.....	1 for .08	2 for .10	4 for .10	
	10 for .50		.20	
	100 for 5.00		2.00	
<b>Sidney Plummer</b> , soft yellow, pink blotch.....	1 for .08	2 for .10	4 for .10	
	10 for .50		.20	
	100 for 5.00		2.00	
<b>Snowflake</b> , early creamy white, tint of pink.....	1 for .08	2 for .10	4 for .10	1.00
	10 for .40		.20	
	100 for 2.50	1.50	.75	
<b>Souvenir</b> , early clear yellow.....	1 for .08	2 for .10	4 for .10	
	10 for .40		.15	
	100 for 4.00		1.50	
<b>Sovereign</b> , very dark velvety blue.....	1 for .10	2 for .15	3 for .10	
	10 for .60		.25	
	100 for 6.00		2.50	
<b>Splendorra</b> , very dark wine red.....	1 for .10	2 for .15	3 for .10	
	10 for .60		.25	
	100 for 6.00		2.50	
<b>Senorita</b> , brownish mahogany red. Odd.....	each .25	each .15	each .08	
	10 for 2.00	1.20	.60	

## GLADHAVEN GARDENS

FRANKLIN, N. H.

NAME	Large 1½ up	Medium ¾ to 1¼	Small to ¾	Bblts. by qt.
Stalwart, cream and yellow.....	1 for .10 10 for .50	2 for .15 .35	3 for .10 .25	.....
Sulphur Frills, pale clear yellow. Ruffled.....	1 for .08 10 for .50	2 for .10 .30	4 for .10 .15	.....
Sulphur Glow, creamy yellow.....	1 for .08 10 for .50	2 for .10 .30	4 for .10 .15	.....
Sunnymede, brilliant orange. red blotch.....	1 for .10 10 for .70	2 for .15 .50	3 for .10 .25	.....
Sunset, striped white and rose pink. Short spike.....	1 for .08 10 for .50	2 for .10 .35	4 for .10 .20	.....
Sweet Lavender, early pale lavender.....	1 for .08 10 for .50	2 for .10 .30	3 for .10 .15	.....
Sweet Rose, big flowers of finest rose pink.....	1 for .10 10 for .50	2 for .15 .35	3 for .10 .25	.....
Taro, deep rose-cerise.....	1 for .10 10 for .60	2 for .15 .40	3 for .15 .25	.....
Temblor, beautiful tall shell pink.....	1 for .10 10 for .50	2 for .15 .35	3 for .10 .20	.....
Titan, large salmon pink, purple blotch.....	each .30 10 for 2.50	each .20 1.50	each .10 .80	.....
The Orchid, orchid shape and color. Artistic.....	1 for .10 10 for .80	2 for .15 .50	3 for .10 .30	.....
The President, fine early light red. Tall.....	1 for .10 10 for .70	2 for .15 .50	3 for .10 .25	.....
Thistle, ruffled dark salmon pink.....	1 for .10 10 for .80	2 for .15 .60	2 for .10 .40	.....
Troubadour, large clear purple. New and good.....	1 for ..... 10 for ..... .10	.30 2.50 2 for .15	..... ..... 2 for .10	.....
Twilight, blushed creamy buff. Late.....	1 for .10 10 for .65	2 for .15 .35	2 for .10 .20	.....
Tyco Zang, large salmon pink, lighter throat.....	1 for .08 10 for .60	2 for .10 .40	3 for .10 .25	.....
Veilchenblau, fine dark blue.....	1 for .15 10 for 1.10	.10 .65	2 for .10 .35	.....
Veiled Brilliance, pink overlaid with gray.....	1 for .15 10 for 1.25 100 for 8.00	each .10 .75 5.00	2 for .10 .40 3.00	4.00 .....
Virginia (Scarlet Princeps) best red for cutting.....	1 for .08 10 for .50 100 for 3.50	2 for .10 .30 1.75	4 for .10 .15 .75	..... 1.00 .....
Virginia Fisher, dark geranium rose.....	1 for .08 10 for .60	2 for .10 .40	4 for .10 .20	.....
Virginia Hale, beautiful creamy pink.....	1 for .08 10 for .50	2 for .10 .35	4 for .10 .20	.....
Violet Glory, ruffled deep violet.....	1 for .10 10 for .80	2 for .15 .60	2 for .10 .40	.....
Violet Beauty, ruffled cerise violet.....	1 for .10 10 for .80	2 for .15 .60	2 for .10 .40	.....
Violet Prince, deep red-violet.....	1 for .15 10 for 1.00	.10 .60	2 for .10 .35	.....
Vesta Tilley, blotched white.....	1 for .10 10 for .60	2 for .15 .40	2 for .10 .25	.....
White Giant, huge white glad.....	1 for .10	2 for .15	2 for .10	.....
W. H. Pnipp, giant plume of pink. Late.....	1 for .10 10 for .60 100 for 4.00	2 for .15 .40 2.40	2 for .10 .25 1.25	..... 3.00 .....
Wm. Badger, large salmon pink, many open at once.....	1 for .08 10 for .60 100 for 3.50	2 for .10 .40 2.00	4 for .10 .25 1.00	2.50 .....
Wm. Kent, rich ruffled creamy white.....	1 for .15 10 for 1.00	each .10 .80	2 for .15 .50	.....
White Wonder, big white flaked pink.....	1 for .08 10 for .50 100 for 3.00	2 for .10 .35 2.00	4 for .10 .15 1.00	1.00 .....
Wotan, bright pink with blotch.....	each .25 10 for 2.00	each .15 1.00	each .10 .50	.....

## IRIS

Iris are perfectly hardy and may be grown on any good garden soil that is not wet. They prefer good sandy loam in full sunlight.

The roots or more properly rhizomes may be set out at any time when the ground is not frozen. Do not expect bloom the first year, but they increase very rapidly and a few plants set this summer will make a good bed in two years. Read our book "Better Gardening" for full cultural instructions. Five rhizomes of one variety will be sent for the price of four single rhizomes.

<b>Aleazar.</b> 40 in. S. bluish-violet; F. purple crimson. Fragrant	\$ .20
<b>Albert Victor,</b> 40 in. S. soft blue; F. beautiful lavender	.20
<b>Ambassadeur.</b> 48 in. S. smoky velvety purple; F. purple-maroon	.40
<b>Anna Farr.</b> 36 in. S. white, pale blue border; F. white, blue base	.25
<b>Annie Leslie.</b> 27 in. S. white with rose flush; F. rich carmine	.20
<b>Archeveque.</b> 24 in. S. rich purple violet; F. deep velvet violet	.35
<b>Ballerine.</b> 40 in. S. light blue-violet; F. deeper. Fragrant	.40
<b>Bridesmaid.</b> 24 in. S. white shaded silvery lilac; F. creamy white veined with lilac	.20
<b>Brandywine.</b> 30 in. Large flowers S. and F. uniform azure blue	.40
<b>Caprice.</b> 24 in. S. rosy red; F. deeper and richer. Fragrant	.20
<b>Crusader.</b> 42 in. S. light blue; F. deep violet blue. One of the best	.35
<b>Dalmarius.</b> 36 in. S. pale blue suffused with yellow; F. darker with pale brownish suffusion	.20
<b>Delicatissima.</b> 36 in. S. blue clouded rose; F. campanula violet	.35
<b>Dimity.</b> 36 in. S. white peneil mauve; F. faintly veined with lavender	.25
<b>Dream.</b> 30 in. S. and F soft clear pink	.50
<b>Esplendido.</b> 36 in. A large flowered bicolor of red-purple	1.50
<b>Fairy.</b> 30 in. S. and F. white, shaded soft blue. Sweetly scented	.15
<b>Florentina.</b> 25 in. Creamy white, lavender flush. Early	.15
<b>Gracchus.</b> 24 in. S. lemon yellow; F. red-purple	.10
<b>Germanica.</b> 24 in. Large dark purple. Early	.15
<b>Helge.</b> 24 in. S. lemon yellow; F. deeper, orange beard	.10
<b>Her Majesty.</b> 24 in. S. lovely rose pink; F. Bright crimson	.10
<b>Hiawatha.</b> 28 in. S. pale lavender; F. royal purple	.10
<b>Isoline.</b> 36 in. S. silvery lilac, flushed yellow; F. purplish old rose. Large flower	.20
<b>Iris King.</b> S. clear lemon yellow; F. rich maroon bordered yellow	.25
<b>Jacquesiana.</b> 36 in. S. bright copper crimson; F. rich dark maroon	.25
<b>James Boyd.</b> 30 in. S. clear light blue; F. dark violet tipped lighter	.15
<b>Juniata.</b> Tall self color, beautiful clear blue	.25
<b>Lady Jane.</b> 24 in. S. pale old rose; F. white veined old rose	.15
<b>Lord of June.</b> 36 in. One of the best large lavender and blue iris	.40
<b>Loreley.</b> 24 in. S. light yellow; F. ultramarine blue bordered cream	.15
<b>Lent A. Williamson.</b> Very tall. S. campanula blue; F. royal purple	.20
<b>Lohengrin.</b> 36 in. S. mauve; F. Chinese violet. Large free bloomer	.15
<b>Magnifica.</b> 42 in. S. light violet; F. dark reddish violet. Large	.30
<b>Madam Chereau.</b> 30 in. White, edge of petals frilled pale blue	.15
<b>Mandraliscae.</b> 36 in. Early rich lavender-purple. A fine iris	.25
<b>Mrs. H. Darwin.</b> 24 in. S. pure white; F. slight violet tint at base	.15
<b>Morning Splendor.</b> 36 in. S. violet; F. rich dark reddish purple. One of the very finest produced in America	1.00
<b>Monsignor.</b> 28 in. Large rich satiny violet and crimson purple	.20
<b>Navajo.</b> 20 in. S. light bronzy yellow; F. deep maroon, veined	.15
<b>Nibelungen.</b> 28 in. S. fawn yellow; F. violet purple and fawn	.15
<b>Pauline.</b> Pansy violet	.20
<b>Pallida Speciosa.</b> 42 in. S. dark lavender; F. shaded light purple. A fine large iris	.15
<b>Purple Robc.</b> Self color, Royal Purple	.25
<b>Pocahontas.</b> White edged blue	.15
<b>Perfection.</b> 30 in. S. light blue; F. velvety violet. A good one	.15
<b>Prospero.</b> 48 in. Large flowers pale lavender standards and red-violet falls. Strong grower	.40
<b>Prosper Lougier.</b> 36 in. S. light cinnamon drab; F. velvety carmine	.20
<b>Princess Beatrice.</b> 48 in. Delicate lavender of silky texture. Extra	.50
<b>Princess Victoria Louisc.</b> S. sulphur yellow; F. rich plum, bordered cream	.20
<b>Queen Caterina.</b> 30 in. Pale lavender-violet, yellow beard	.30
<b>Queen of May.</b> 32 in. A soft lilac pink. Very pretty	.20
<b>Quaker Lady.</b> 30 in. S. tawny lavender; F. old gold and smoky blue	.20
<b>Rose Unique.</b> Bright violet-rose. Nearest pink. Early	.15
<b>Rhein Nixc.</b> 36 in. S. pure white; F. deep violet blue, white edge	.15
<b>Seminole.</b> 36 in. S. reddish-violet; F. velvety crimson. Very choice	.25
<b>Sindjkha.</b> 48 in. Deep dull lavender shading to dark olive buff	.25
<b>Souvenir de Mme. Gaudichau.</b> 42 in. A rich deep velvety purple Iris of fine shape and quality. Early and very attractive	.40
<b>Susan Bliss.</b> 42 in. Exquisite flowers of uniform deep rose-pink shade. Splendid flower and good substance	.75
<b>Sunset.</b> S. old gold; F. same flushed mauve. Strong grower. Late	.35

Sherbert. 42 in. S. ecru-drab, deepening to purple; F. dahlia purple .....	.25
Walhalla. 20 in. S. lavender; F. wine red. Very showy.....	.10
Wyomissing. 30 in. S. creamy white, suffused delicate rose; F. deep rose base shading to flesh colored border.....	.20
Zua. Falls and standards like creton-crepe. The orchid iris .....	.25

Figures indicate height in inches. S. is for the standards or upright part of flower. F. means the falls or drooping part of flower.

#### SIBERIAN IRIS

Like rather moist soil but will grow anywhere. Fine for cutting.

Siberica Orientalis. Brilliant ultramarine blue flowers growing in clumps 42 in. high .....	.25
Snow Queen. Lovely pure white flower with golden blotch at base. 42 in. ....	.25

The foliage on above is fine to set off bouquets of most flowers.

#### JAPANESE IRIS

Gold Bond. Pure glistening white with golden center, six petals. One of the best. Grows best on moist soil, but does well in any good garden soil.....	.25c each
--	-----------

#### SPECIAL COLLECTION OF 12 NAMED IRIS

For \$1.00 we will send 12 Iris each one properly labeled and selected from above list, and will include one strong rhizome of Lent A. Williamson. This will make a good assortment for a small garden.

#### DAHLIAS

We are listing only a few of the best dahlias that are grown, those we have tried and found to be worth while. We do not sell plants, tubers only. Each tuber will be true to name and have at least one or more eyes showing. They should be planted on their sides with eye up, about 6 inches deep in good garden soil that has been plowed or spaded at least 10 inches deep as the new tubers must have soft soil to grow and expand in, which they cannot do if the soil is hard. Do not have them fertilized too heavily or they will grow rank stalks and make but few flowers. To grow extra large flowers disbud the side shoots. When blooms begin to go by, cut them off so more will come along. Do not plant extra early, June 1st is about right for New England. NOTE—When first planted cover about 3 inches deep and as stalks grow fill up with dirt to soil level.

	per tuber
Adaline Winters, Oriental red. Decorative.....	.25
Alex. Waldie, creamy overlaid salmon pink.....	.25
Bashful Giant, apricot and gold. Large decorative.....	.50
Cigarette, creamy white, edged with flamed orange.....	.40
Coffee Cream, odd shade of creamy brown.....	.50
Harry Sheldon Jr., like an immense pink pond lily.....	.25
Jersey's Beacon, Chinese scarlet, huge flower.....	.50
Jersey's Beauty, one of the best and largest pinks.....	.50
Jersey's Mammoth, rich golden mahogany. Very large.....	.75
Jane Cowl, bronze shading to buff and old gold. Extra fine.....	1.00
Millionaire, lavender pink shading to white center.....	.50
Mrs. I. de Ver Warner, large flowers of orchid pink. A good one. ....	.35
Pride of California, dark rich crimson.....	.25
Red Indian, free flowering brilliant red.....	.10
Snowdrift, pure white. Decorative.....	.50
Uncle Tom, nearly black. Decorative.....	.50

#### POM-POM DAHLIAS

Brownie, free flowering brownish shade.....	.10
Pinkie, very pretty pink.....	.10

#### MADONNA LILIES

Will be ready to ship in September, the proper time for planting. A splendid hardy lily, pure white and very fragrant. Blooms in July. Blooming size bulbs 25c each, \$2.25 doz. Large bulbs, 40c, \$4 doz., postpaid. Lilies are a good investment as they last for years and increase in number and size. Try them.

Liberty, N. Y., April 8, 1931.

Mr. Fowler,

Dear Sir:

Bulbs received this morning in fine shape. I have not unpacked them yet, but thank you for your many additions to my order. We still have snow and cold northeast wind and that is not good for planting.

Again thanking you and with best wishes for your coming season, I am

Very truly yours,

William Sunderland.



## REGAL LILIES

The grandest and most satisfactory of all the hardy lilies, thriving under many trying conditions. Flowers white, trumpet shape, pinkish on the outside. Should have full sunlight and well drained rather light soil. May be grown in pots for Easter by potting in December. Has the most wonderful fragrance like thousands of May-flowers. A dozen plants in full bloom will fill the garden with their odor especially in the evening. We offer but two sizes which experience has taught us are the most satisfactory to the average gardener.

2 inch bulbs to give 2 to 5 blooms in July 1932, 25c each. \$2.25 doz.

3 inch bulbs to give 5 to 10 blooms in July 1932, 50c each. \$5.00 doz.

For those who wish to grow their own bulbs we offer 1931 erop seed at 10c a package of average 100 seed; 40c an ounce, more than 3,000 seed. Above postpaid. Seed at any time. Bulbs not later than May 1 as for good results should be in the ground early in April.

## SOMETHING FOR NOTHING

Here's how you get it. We will give to each customer who asks for it when they send in their order amounting to \$3 or over a copy of **Better Gardening FREE**. Better Gardening is a 64-page illustrated book telling you all about all kinds of garden work. How to grow Flowers, Gladiolus, Iris, Dahlias, Peonies, Shrubs and Trees, Vegetables, etc. What to use for fertilizers, tools, insect control, etc. Twenty-six chapters in all, right up-to-date information actually worth many dollars to any gardener. It may also be had postpaid for 15c, or 10c if taken at our gardens.

## JOIN THE NEW ENGLAND GLADIOLUS SOCIETY

To every new member sending \$1 direct to us besides getting the New 1932 Year Book of 130 pages and the new Color Chart of 108 colors and a year's membership, we will give free of charge one large bulb of Titan. This is a very large glad, of a beautiful salmon pink color on the outer petals and a large light purple blotch in the center. The New England Gladiolus Society puts on a splendid show every year in Boston which is free to all members. Annual dues are \$1 which includes the Year Book which alone is worth the dollar.

We also recommend to you the American Gladiolus Society whose annual dues are \$2 which includes a year's subscription to the magazine The Gladiolus Review of great interest to gladiolus growers. Send your \$2 membership fee direct to the secretary and editor, Roscoe Huff, Goshen, Ind. If you send in to him we would be pleased to have you mention our name.

Two dollars invested for a membership in the Massachusetts Horticultural Society is money well spent. They put on many exhibitions and lectures during the year and have a large library, all of these are free to members.

Horticulture is a semi-monthly magazine that is mailed twice each month to all members. Try it. Address, Secretary, Horticultural Hall, Boston, Mass.

## WHAT OUR FRIENDS HAVE TO SAY

Monmouth, Maine, June 17, 1929.

My dear Mr. Fowler:

The "Santa Claus" package of glads came safely Saturday noon, and I cannot begin to say enough in thanks for your generosity. I feel that I ought to at least pay you the difference in price between the Exhibition Mixture which you sent and the No. 5 mixture which I ordered, to say nothing of the extra value of other varieties which you sent.

It is needless to say you will probably hear from us and our friends in the future.

Thankfully and sincerely yours,

Fred P. Kimball.

Meredith, N. H., December 26, 1931.

Mr. G. G. Fowler:

Dear Sir:

The glad bulbs came through Thursday in fine shape and they are the finest looking lot of bulbs I have ever bought. I can hardly wait until spring to get them started. Many thanks for the service and many thanks for the extra bulbs. Be sure and send me your 1932 catalog.

Herbert Darois.

Keene, N. H., July 2nd, 1931

Mr. Geo. G. Fowler,

Franklin, N. H.

Dear Mr. Fowler:

Received your shipment of Iris last Wednesday and am well pleased with them.

Yours very truly,

Henry G. Neugebauer.

## VALUABLE BOOKS FOR THE GARDENER

**ROCK GARDEN PRIMER**, by Archie Thornton. The Rock Garden has become very popular within the past few years. This little book of 152 pages, 70 illustrations and 4-color plates will give you all the information you will need about what plants to use, how to construct and how to care for a modern Rock Garden. Price postpaid is only \$2.15.

**GLADIOLUS BREEDING**, by J. A. Kemp. This explains the method of originating new varieties of this most wonderful flower. Price in paper, 55c postpaid.

**THE WOMAN'S FLOWER GARDEN, Indoor and Out**, by Jane Leslie Kift. As its name implies, it is a book for women on the care of flowers and plants. 160 pages, numerous illustrations, cloth cover, \$1.35 postpaid.

**FLOWERS OF THE WILD**, by Frank C. Pellett. A different wild flower book from the average, in that it covers most of the common wild flowers suited for growing in the New England States. Full cultural directions for those who wish to grow them in their gardens. 168 pages, 104 halftones, and four 4-color plates. Postpaid \$2.15.

**ALL ABOUT FLOWERING BULBS**, by T. A. Weston. Written especially for the amateur. Gives cultural directions for growing spring, summer and other bulbs both inside and in the garden. 184 pages, many halftone illustrations, and eight full page color plates, bound in Span-o-tone in four colors. Price \$2.15 postpaid.

**THE BOOK OF ANNUALS**, by Alfred C. Hottes. The author explains the many ways of starting the plants for our summer gardens, dealing with over 100 species, their culture and what soils they are adapted for. One of the best books on this subject. 182 pages, 155 illustrations. Price cloth bound, \$1.65 postpaid.

**ROSE GARDEN PRIMER**, by Eber Holmes. The truth about Rose growing at home. Many who love this most beautiful of flowers fail in its culture as they "don't have no luck". Get this book and change your luck by proper care and cultivation which is fully explained in this most valuable of books on growing roses by the average gardener. 224 pages, 70 illustrations, bound in Span-o-tone with colored jacket. Price \$1.90 postpaid.

**BIRDS OF THE WILD**, by Frank C. Pellett. An interesting book to all bird lovers written by one who knows. 128 pages, profusely illustrated with 74 pictures made from photographs taken by the author; bound in cloth with two-color jacket, price \$1.90 postpaid.

**MODERN DAHLIA CULTURE**, by H. H. Waite. Interest in dahlias is increasing every year. With the new and improved varieties now being grown, well it might. This little book will tell you a lot about how to grow them big, fertilize them and store the tubers. 132 pages of clear type, 24 halftone illustrations and 6 in full colors—several taken expressly for this work; complete index and pages for garden notes and records. Handsome cloth binding, price postpaid \$1.65.

**THE BOOK OF PERENNIALS**, by Alfred C. Hottes. A very complete work on growing the ever popular perennials, dealing with over 125 species. This is the new 1932 edition with 80 additional pages with numerous illustrations. Price clothbound, \$1.65 postpaid.

**STANDARDIZED PLANT NAMES**. The first and only systematic, practical, comprehensive and authoritative index to the right names—both common and scientific—of plants known to horticulture. Valuable to all commercial growers and every plant lover. Cloth bound, 584 pages 5½x8 in. 45,000 plant names, \$6.00 postpaid. Pocket edition, India paper, flexible covers, \$7.50. Interleaved edition, cloth, \$7.50 postpaid.

Drop us a postcard for our complete catalog of garden books which is right up-to-date and fully illustrated, listing books covering the entire range of garden activities both amateur and professional. Postpaid no charge.