

## **Historic, Archive Document**

Do not assume content reflects current scientific knowledge, policies, or practices.



6243

LIBRARY  
RECEIVED  
★ MAR 21 1932 ★  
U. S. Department of Agriculture



“HOME  
LANDSCAPES”  
1932

*The Park Nurseries*  
**HOLM & OLSON INC.**  
**SAINT PAUL, MINNESOTA**

# CATALOGUE INDEX

This index shows all items listed in this catalogue. Both the botanical and common names are given.

A		Page		Page		R	
Acer	19	Current, Flowering	7	Jerusalem Cross	25	Raspberries	35
Achillea	22	Current, Moun-		Juglans	17, 19	Regal Lily	25
Aconitum	22	tain	7, 21	Juneberry	8	Rhamnus	7, 21
Adam's Needle	27	Currants, Fruiting	35	Juniper	15	Rhubarb	35
Aesculus	18	<b>D</b>		<b>L</b>		Rhus	12
Alaska Daisy	23	Daisy, Alaska	23	Lantern Plant, Chi-		Ribes	7
Almond, Flowering	6	Daisy, Giant	26	nese (Physalis)	26	Robinia	9
Althaea	25	Daisy, Persian	26	Larkspur	23, 24	Rock Gardens	4, 28
Alyssum	22	Day Lily	25	Lavender, Sea	26	Rosa Rugosa	10, 21
Amelanchier	8	Delphinium	23, 24	Lawn Grass Seed	36	Rose,	
Ampelopsis	20	Dianthus	24	Lilac	9	Red Leaved	10, 34
Anchusa	22	Dictamnus	24	Lilium	25	Roses	32, 33, 34
Anthemis	22	Dicentra	23, 24	Lily	25	Rudbeckia	26
Apples	35	Digitalis	24	Lily-of-the-Valley	25	Russian Olive	10
Aquilegia	22	Dogwood	7	Linden	18	<b>S</b>	
Arabis	22	Dragonhead, False	26	Linum	25	Salix	19
Aralia	6	Dutchman's Pipe	20	Locust, Flowering	9	Salvia	26
Arborvitae	14	<b>E</b>		Lonicera	8, 20	Sambucus	7
Aristolochia	20	Echinops	24	Loosestrife	25	Sedum	26
Armeria	22	Elaeagnus	10	Lupinus	25	Sempervivum	26
Arrowwood	12	Elderberry	7	Lychnis	25	Shasta Daisy	23
Artemisia	22, 23	Elm	18	Lycium	20	Shrubs	6
Ash	17	Engelman's Ivy	20	Lythrum	25	Siberian Pea Tree	10
Asparagus	35	Euonymus	8	<b>M</b>		Snowball	12
Asters	23	Evergreens	14	Mallow	25	Snowberry	10
Astilbe	23	<b>F</b>		Maple	19	Sorbus	18
<b>B</b>		Ferns	24	Marguerite, Hardy	22	Spearmint	25
Baby's Breath	24	Fertilizers	36	Matrimony Vine	20	Speedwell	27
Barberry	6, 21	Filipendula	24	Meadowsweet	25	Spiraea	10, 11, 21
Basswood	18	Fir	15	Mentha	25	Spruce	16
Beard Tongue	26	Flax	25	Milfoil	22	Stalice	26
Betula	17	Forget-me-not	24	Mock Orange	9	Stonecrop	26
Birch	17	Forsythia	8	Monarda	25	Strawberries	35
Bittersweet	20	Foxglove	24	Monkshood	22	Strawberry Bush	8
Blanket Flower	24	Fraxinus	17	Mountain Ash	18	Sumac	12
Bleeding Heart	23, 24	Funkia	24	Myosotis	24	Sweet William	24
Bocconia	23	<b>G</b>		<b>O</b>		Symphoricarpos	7, 10
Boltonia	23	Gaillardia	24	Oenothera	25	Syringa	9
Boston Ivy	20	Gas Plant	24	Olive, Russian	10	<b>T</b>	
Bridal Wreath	11, 21	Globe Flower	27	Oswego Tea	25	Tamarix	12
Buckthorn	7, 21	Globe Thistle	24	<b>P</b>		Taxus	16
Butternut	17	Golden Bell	8	Pachysandra	26	Thorn Apple	12
<b>C</b>		Golden Glow	26	Papaver	26	Thuja	14
Campanula	23	Golden Moss	26	Pea Tree, Siberian	10	Tilia	18
Canterbury Bell	23	Golden Tuft	22	Penstemon	26	Trees	17
Caragana	10	Gooseberries	35	Peonies	31	Trollius	27
Caragana	10	Grapes	20, 35	Perennials, Hardy	22	<b>U</b>	
Catalpa	17	Gypsophila	24	Persian Daisies	26	Ulmus	18
Cedar, Red	15	<b>H</b>		Philadelphus	9	<b>V</b>	
Celastrus	20	Hackberry	18	Phlox	29	Valeriana	27
Celtis	18	Harebell	23	Physalis	26	Veronica	27
Centaurea	23	Hawthorn	12	Physostegia	26	Viburnum	12
Cherries	35	Hedges	21	Picea	16	Vines and Creepers	20
Cherry, Black	17	Helenium	24	Pie Plant	35	Viola	27
Cinquefoil	10	Heliopsis	24	Pine	15, 16	Virginia Creeper	20
Clematis	20, 23	Heliotrope, Garden	27	Pinks	24	<b>W</b>	
Columbine	22	Hemerocallis	25	Plantain Lily	24	Walnut, Black	19
Coneflower, Purple	26	Hen and Chickens	26	Platycodon	26	Wayfaring Tree	12
Coral Bell	25	Hercules Club	6	Plum, Flowering	10	Weigela	12
Coralberry	7	Heuchera	25	Plum, Purple	10, 18	Willow	19
Coreopsis	23	Hibiscus	25	Plums, Fruiting	35	<b>Y</b>	
Cornflower	23	Hollyhocks	25	Poplar	19	Yew	16
Cornus	7	Honeysuckle	8, 20, 21	Poppy	26	Yucca	27
Cotoneaster	7, 21	Horsechestnut	18	Populus	19		
Crab, Flowering	17, 18	Hydrangea	8, 9	Potentilla	10		
Cranberry, High-		<b>I</b>		Pyrethrum	26		
bush	12	Iris	30	Prunus Tomentosa	10		
Crataegus	12	Ivy	20				
Cup-and-Saucer	23						



1932

# "HOME LANDSCAPES"

*Dedicated to Home Owners and Garden  
Lovers of the North Central States*



**A** PRACTICAL BOOK of Landscaping and Planting  
Suggestions and a Complete Catalogue of Hardy Nurs-  
ery Stock Adapted to this Section of the Country.

WITH NEW PRICES and with no sacrifice of the high standard of  
selected, first-quality merchandise and helpful landscape service that has  
distinguished our business since its founding 37 years ago Buy here with  
confidence

## THE PARK NURSERIES

Holm & Olson, Inc.

LANDSCAPE ARCHITECTS

NURSERYMEN

20-22-24 W 5th St., Saint Paul

ST. PAUL PHONE CEDAR 6083

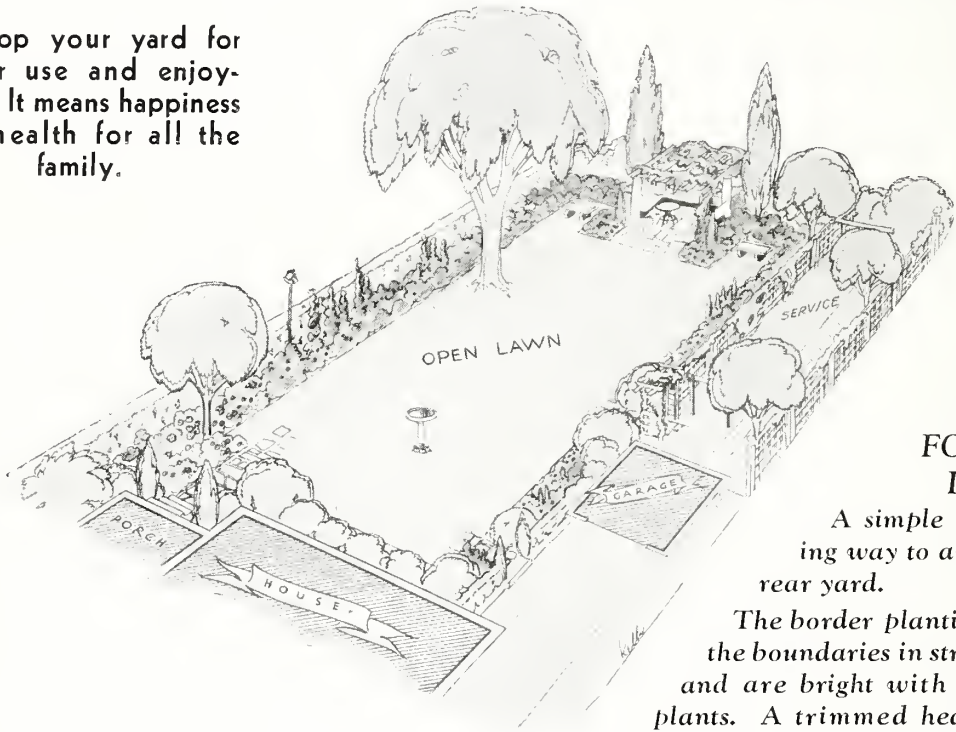
MINNEAPOLIS PHONE DREXEL 7245

Extension Landscape Office and Nursery at Rochester, Minnesota

# "MAKE AN OUTDOOR LIVING ROOM"

Develop your yard for greater use and enjoyment. It means happiness and health for all the family.

WE  
HELP  
YOU  
PLAN  
YOUR  
YARD



## THE FORMAL PLAN

*A simple and pleasing way to arrange the rear yard.*

*The border plantings follow the boundaries in straight lines and are bright with flowering plants. A trimmed hedge is very suitably used along one side.*

## THE BACK-YARD BECOMES THE "OUTDOOR LIVING ROOM"

The back-yard was once a neglected and often unsightly part of the grounds. Today this back-yard is no longer wasted but is improved and beautified so that it adds greatly to the pleasures and enjoyments of the household — it becomes the family's "Outdoor Living Room."

## PLANTINGS BRING PRIVACY

To encourage use and enjoyment the yard should have seclusion from the public and this needed privacy is gained through suitable plantings placed along the boundary lines of the lot. An open, central lawn area, banked in and protected by a colorful border of shrubs, evergreens and flowering plants creates a yard that invites use and gives healthful recreation in the out-of-doors.

## USE OUR PLAN-BY-MAIL SERVICE

Our out-of-town customers can enjoy the advantages of our skilled designer's suggestions through a special "plan-by-mail service."

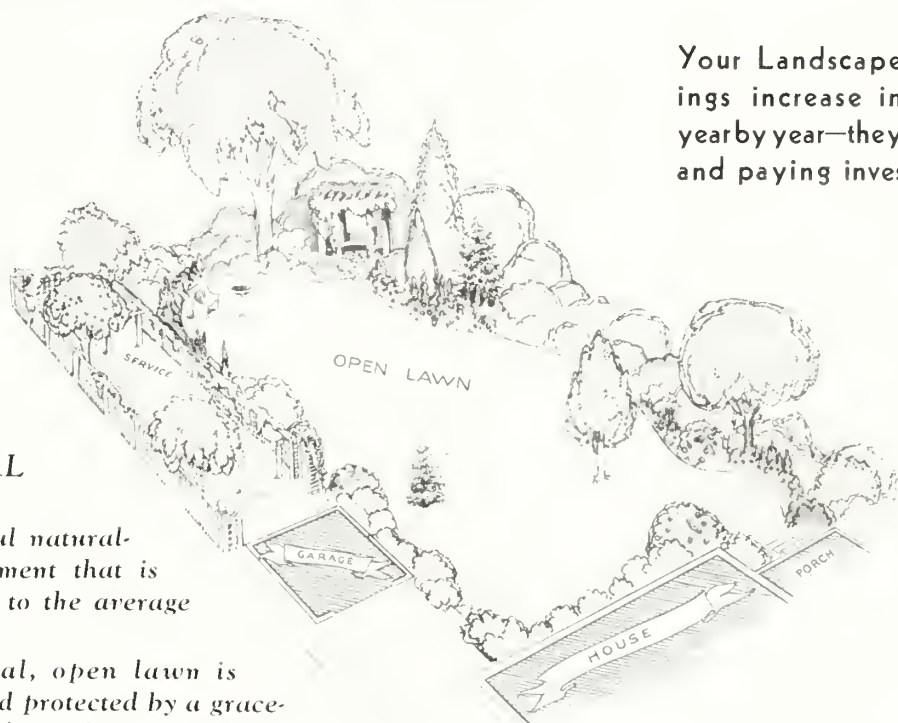
Send us a sketch plan of your property showing the position of the house, the walks, trees and other features with measurements indicated. We will suggest ways of improving and beautifying your grounds so that you will get just the results that you would like.





# ING ROOM OF YOUR YARD"

Your Landscape plantings increase in value year by year—they are safe and paying investments.



## THE INFORMAL PLAN

A delightful naturalistic arrangement that is well adapted to the average home yard.

The central, open lawn is framed in and protected by a graceful border of shrubs and flowering plants.

WE  
HELP  
YOU  
PLAN  
YOUR  
YARD

## YOUR YARD SHOULD HAVE BOTH BEAUTY AND COMFORT

Within the border of taller plants there are ideal spots for those flowers that you particularly love — from the tulips of early spring to the hardy asters that dare October's frosts. You can have the beauty and fragrance of flowers all season through in the well-planned plantings of the modern yard.

Children play safely in this protected yard, free from the dangers of the street, while the adults find ease and comfort in such furnishings as lawn chairs, seats, tables and garden houses. The outdoor living room serves every member of the family.



## WRITE FOR FREE BOOK

"How to Make an Outdoor Living Room" has 31 pages of helpful information written by experts and is fully illustrated. Sent on request.

## MODERNIZE YOUR YARD

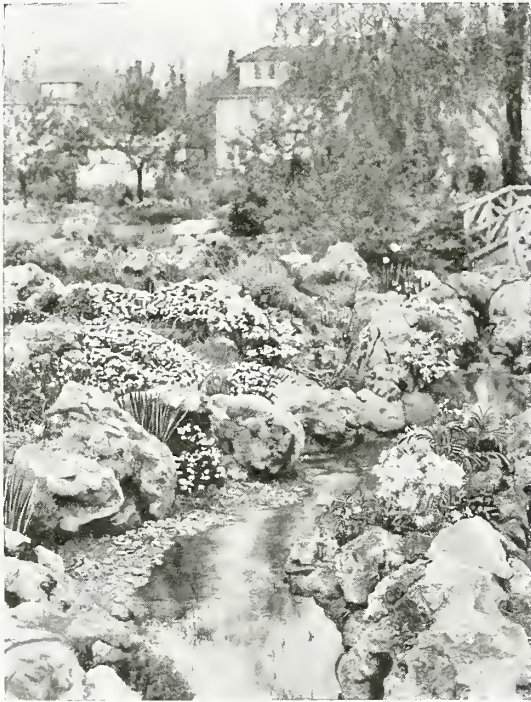
Some of the newer gardening modes and features can readily be added to older plantings.

## YOU WOULD ENJOY:—

*An outdoor living room; a border of hardy flowers; a group of colorful evergreens; some choice new plant varieties; a garden of roses; a rock garden and pool.*

Consult us—we will help you modernize your yard.

# BUILD AND PLANT A ROCK GARDEN



**A rock garden will add a new interest and enjoyment to your yard**

While a rock garden will fit in particularly well with a slope or terrace yet it can be successfully built on a level piece of ground. Select as a site a sunny spot toward a corner of the yard where the rockery can be given a "setting" of its own. A suitable background is very important and for this a group of evergreens or shrubs will prove very desirable.

## Simple Construction is Best

Keep in mind that the purpose of a rockery is to provide a place in which to grow alpine and rock-loving plants and not to display a mass of stone. A low arrangement of horizontally-placed stones with plenty of soil pockets between for the plants is the best. The effect will be better with too few stones rather than with too many.

## HARDY PERENNIAL PLANTS FOR THE ROCK GARDEN

(These are all described and priced in this catalogue. **See page 28 for a special collection of Rock Garden plants**)

Adam's Needle (Yucca)  
Armeria (Sea Pink)  
Bleeding Heart, dwarf plummy variety  
Blue Flax (Linum)  
Coral Bells (Heuchera)  
Clove Pink (Dianthus)  
Ferns (Hardy varieties)

Forget-me-not (Myosotis)  
Golden Tuft (Alyssum)  
Grasses, ornamental varieties  
Harebell (Campanula)  
Hen-and-Chickens (Sempervivum)  
Iceland Poppy  
Iris (Pumila dwarf)

Japanese Spurge (Pachysandra)  
Phlox (dwarf Subulata)  
Plantain Lily (Funkia)  
Rock Cress (Arabis)  
Sea Lavender (Statice)  
Sedum, in variety  
Speedwell (Veronica)  
Viola (Jersey Gem)

## ROCK GARDEN BOOKLET FREE

Send for our new booklet that gives practical instructions on "Building and Planting a Rock Garden." Make use of our complete Landscape Service if you wish to have our skilled workmen build your rockery for you. We can supply all necessary materials and specially selected rocks. Estimates given.

## H. & O. TREE, LAWN AND GARDEN CARE

**A dependable and responsible gardening service**

We offer:—

1. Intelligent care of your shrub and perennial plantings with attention to cultivation, trimming, spraying and other necessary maintenance;
2. Expert care of your lawn from its construction and seeding to fertilizing, top dressing and proper upkeep;
3. Care of your valuable shade and fruit trees comprising trimming, feeding, spraying and repair work;
4. Care of your flower garden from the spring planting season through to the fall covering;
5. Our men are experienced gardeners who work under a competent foreman and have full equipment.

Liability Insurance is supplied by us.

**ESTIMATES GIVEN — SEASON CONTRACTS MADE.**



**Phone: Minneapolis, Drexel 7245  
Saint Paul, Cedar 6083**



# OUR SERVICE MAKES LANDSCAPING EASY

We help you get the most beauty and attractiveness from your grounds with:

## 1—PRACTICAL PLANS AND CAREFUL COST ESTIMATES

You know exactly what the cost will be before you start. The landscape plans prepared by our competent designers assure you of the most successful results at a minimum expense of time and money.

## 2—EXPERT PLANTING ASSISTANCE

The service of our experienced gardeners is available for any type of lawn or garden development. You can rely upon their skill to successfully carry out your planting plans.

## 3—CHOICE SPECIMEN PLANTS

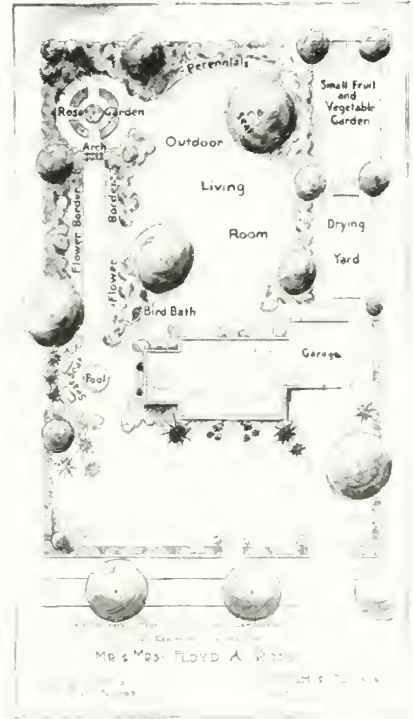
The carefully-grown plants from our local Park Nurseries will please you with their healthy growth and beauty. The varieties are hardy sorts and are grown particularly to produce results for you quickly.

## 4—MAINTENANCE AND CARE OF LAWN AND GARDEN

Our special crew of gardeners can help you keep your trees, shrubs, flowers and lawn in healthy growing conditions and in best appearance throughout the season. Estimates are cheerfully given. Inspection costs are made promptly to any Twin City address and a special service by correspondence is offered to our out-of-town customers.

### USE OUR HELPFUL, COMPLETE LANDSCAPE SERVICE

The appearance and beauty of your home grounds is a matter of great pride and pleasure to you. Entrust this improvement work to our dependable and reliable gardening service and be assured of satisfaction.



A landscape plan will show you just what and where to plant



Home of Mr. Leopold Pistner, Saint Paul



The property before planting

These photographs show the pleasing landscape beauty that developed just 2 years after planting. You can do likewise.

**CONSULT WITH OUR EXPERTS**



The color and beauty of suitable landscape plantings add to the charm of this handsome residence. Home of Mr. Edward Bjorkland, Saint Paul

## FLOWERING SHRUBS

### Hardy Varieties for Northern Gardens

MUCH of the beauty in the landscape planting of any home is supplied by shrubs. Their uses are many and their cost is nominal. It is the softening grace of such shrubs as Spiraea (in variety), Snowberry, Hydrangea, Barberry and others of like nature used about the angles and corners of the house, which makes the transformation from bareness to beauty. The taller shrubs, such as Lilacs, Honeysuckles, Mockorange, etc., find their proper place in the border along the boundary or in plantings which serve to screen out unattractive views. In fact there is a place where most every type of shrub can be effectively used and by choosing carefully it is possible to have practically continuous bloom in the shrub border. A few of the colored twig sorts will liven up the planting in winter.

The figures following the shrub name show the approximate height to which the plant will grow.

#### FLOWERING ALMOND

**ALMOND, Pink Flowering** (*Amygdalus communis rosea*). 4 to 5 ft. Rose-like, pink flowers in early spring. Should be planted deeply to prevent sprouting of the plum root on which, for hardiness, this variety must be grown.

Each

2 to 3 ft. . . . . \$0.90  
3 to 4 ft. . . . . 1.25

**Almond, White Flowering** (*Amygdalus communis alba*). 4 to 5 ft. White flowering variety of the above.

2 to 3 ft. . . . . \$1.00



The Flowering Almond is very colorful in early spring

**ARALIA chinensis. HERCULES CLUB.** 8 to 10 ft. Tropical appearing bush with long, compound leaves. Needs protected situation. Branches are thorny. General appearance is upright and club-like. Each 3 to 4 ft. . . . . \$1.25

#### BARBERRY

**BARBERRY, Japanese or Thunberg's** (*Berberis thunbergii*). 2½ ft. The best and most popular hardy, dwarf shrub. Red berries and brilliant foliage in the fall. Grows most anywhere—in partial shade, sunny, moist or dry places. This variety of Barberry does not carry wheat rust. 12 to 18 in. . . . . \$0.30  
18 to 24 in. . . . . .40  
24 to 30 in. . . . . .60

**BRIDAL WREATH.** See *Spiraea Vanhouttei*.

NEW PRICES—DEPENDABLE SERVICE—NO CHANGE IN HIGH QUALITY



FLOWERING SHRUBS—Continued

**RED-LEAVED BARBERRY**

A splendid addition to our hardy shrubs. Similar to the popular Japanese Barberry but has rich bronze-red leaves that hold their color all summer. The fruit is a scarlet berry. Plant these in with other shrubs for a bright contrast and give a sunny position.

15 to 18 in. ....	\$0.75
18 to 24 in. ....	1.00

**BUCKTHORN, Common** (*Rhamnus cathartica*). 8 to 10 ft. Very hardy. Lustrous leaves and black berries. Desirable in groups or for hedges. (See page 21 for hedge.)

2 to 3 ft. ....	Each	\$0.40
3 to 4 ft. ....		50

**CARAGANA.** See *Siberian Pea Tree*.

**CORALBERRY**

**CORALBERRY** (*Symphoricarpos vulgaris*). 3 to 4 ft. Stands sun or shade and poor soil. Red to purple berries in late summer. A native shrub that is hardy and easy to grow where other plants fail.

2 to 3 ft. ....	Each	\$0.40
3 to 4 ft. ....		.60

**COTONEASTER**

**COTONEASTER acutifolia.** **QUINCE BERRY.** 6 ft. Dense growing with ornamental, dark, glossy green leaves. Stands shade. Very desirable for foundation plantings where a neat, dignified effect is wanted.

18 to 24 in. ....	\$0.30
2 to 3 ft. ....	.40
3 to 4 ft. ....	.60
4 to 5 ft. ....	.75

**CURRANTS—ORNAMENTAL**

**CURRENT, Mountain** (*Ribes alpinum*). 4 ft. Dwarf shrub. Dense growth. Stands shade. One of the best low to medium height shrubs for planting under most all conditions.

12 to 18 in. ....	\$0.40
18 to 24 in. ....	.60

**Current, Yellow Flowering** (*Ribes aureum*). 6 ft. Large, yellow, fragrant flowers early in spring. Black, edible berries. Stands shade.

2 to 3 ft. ....	Each	\$0.50
3 to 4 ft. ....		.75

**DOGWOOD**

**DOGWOOD, Goldentwig** (*Cornus siberica aurea*). 6 ft. Valued for its bright yellow branches in fall and winter. White flowers.

2 to 3 ft. ....	\$0.45
3 to 4 ft. ....	.65

**Dogwood, Red-Twigged** (*Cornus siberica alba*). 6 to 8 ft. White flowers in June. The red stems are highly attractive during the winter. Old wood should be kept out and new growth encouraged to get best color.

2 to 3 ft. ....	\$0.45
3 to 4 ft. ....	.65

**Dogwood, Silver** (*Cornus elegantissima*). 6 ft. Highly decorative because of its white-striped green leaves and red bark. An outstanding shrub in any planting.

18 to 24 in. ....	\$0.75
2 to 3 ft. ....	.90
3 to 4 ft. ....	1.25



The unusual leaves of the Silver Dogwood

**ELDERBERRY**

**ELDER, Black-Fruited** (*Sambucus canadensis*). 6 ft. Heavy, broad, clusters of fragrant, white flowers in July. Edible, black fruit. A very rapidly growing hardy shrub. Stands partial shade.

2 to 3 ft. ....	Each	\$0.45
3 to 4 ft. ....		.65

**Elder, Cut-Leaved** (*Sambucus nigra laciniata*). 5 to 6 ft. Divided, fern-like leaves. Stands shade. The delicate foliage makes a pleasing contrast when planted with other shrubs.

2 to 3 ft. ....	\$0.45
3 to 4 ft. ....	.65

**Elder, Golden** (*Sambucus aurea*). 7 ft. The golden leaves hold their color well all season through; white flowers.

2 to 3 ft. ....	\$0.45
3 to 4 ft. ....	.65

**Elder, Red-Berried** (*Sambucus racemosa*). 8 ft. Bright red berries in July. Stands shade.

2 to 3 ft. ....	\$0.60
3 to 4 ft. ....	.85



The modern yard is a place for rest and entertainment



**FLOWERING SHRUBS—Continued**

**ELAEAGNUS.** See **Russian Olive.**

**EUONYMUS americanus.** **STRAWBERRY BUSH.** Erect growing to 8 ft. Slender, green branches. Ornamental pink fruits in the fall. An unusual and desirable tall shrub. **Each**  
 2 to 3 ft. .... \$0.75  
 3 to 4 ft. .... 1.00

**FORSYTHIA, suspensa.** **GOLDEN BELL.** 5 ft. Pendulous in habit. Lustrous, dark foliage. Golden bell-shaped flowers in early spring. Needs protection.  
 2 to 3 ft. .... \$0.60

**HIGH BUSH CRANBERRY.** See **Viburnum.**

**HONEYSUCKLE**

**HONEYSUCKLE, Morrow's** (*Lonicera morrowi*). 6 ft. Hardy shrub with wide-spreading branches. Yellowish white flowers. Brilliant red berries in July. One of the best all around shrubs for the home yard. Thrives in sun or shade, wet or dry places.  
 2 to 3 ft. .... \$0.45  
 3 to 4 ft. .... .65

**Honeysuckle, Pink** (*Lonicera tatarica rosea*). 8 ft. Quantities of pink to red flowers in spring. The fruit is a red berry that colors the bush in July and August. A long lived and very popular shrub that is always ornamental. Easy to grow.  
 2 to 3 ft. .... \$0.45  
 3 to 4 ft. .... .65

**Honeysuckle, White** (*Lonicera tatarica alba*). 8 ft. Desirable white-flowering, bush honeysuckle. **Each**  
 2 to 3 ft. .... \$0.45  
 3 to 4 ft. .... .65

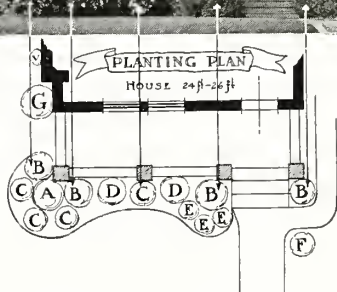
**JUNEBERRY** (*Amelanchier alnifolia*). 8 ft. An early flowering native shrub. White flowers in May. Black berries that the birds seek for food.  
 2 to 3 ft. .... \$0.50  
 3 to 4 ft. .... .75



The bush Honeysuckle gives an abundance of bright flowers

**HYDRANGEA**

**HYDRANGEA, Large-Flowered** (*H. paniculata grandiflora*). 4 ft. Conical, flower heads of white which later change to pink in August and September. Always wanted in home yard plantings because of the large flowers when other shrubs are out of bloom. **Each**  
 18 to 24 in. .... \$0.40  
 2 to 3 ft. .... .55  
 3 to 4 ft. .... .80



Reverse this plan if your entrance is on the left hand side of your house

**BEAUTIFY YOUR HOUSE FRONT**

Use This Special Foundation Planting

Plant this spring for your enjoyment this summer

Full instructions for planting and care will be given. Anyone can do the planting.

Designed for either a right or left hand side front entrance

Key	No. of Plants	Variety of Shrub	Size
A	1	Persian Lilac	3 to 4 ft.
B	4	Bridal Wreath	3 to 4 ft.
C	4	Hydrangea Snowhill	2 to 3 ft.
D	2	Snowberry	2 to 3 ft.
E	3	Spiraea Anthony Waterer	18 to 24 inches
F	1	Rugosa Rose	2 yr.
G	1	Pink Honeysuckle	3 to 4 ft.
V	1	Engelmann's Ivy	2 yr. size

Total 16 Flowering Shrubs and 1 Vine. All plants are first quality, bushy and substantial.

OUR SPECIAL PRICE ..... **\$925**

**FLOWERING SHRUBS—Continued**

**Hydrangea, Snowhill** (*H. arborescens grandiflora*). 3 to 4 ft. Heavy, snowball like flowers of white from late June to frost. Makes a pleasing compact bush with large leaves. Should have plenty of water. Stands partial shade. **Each**  
 18 to 24 in. . . . . \$0.40  
 2 to 3 ft. . . . . .55  
 3 to 4 ft. . . . . .80

**Hydrangea, Tree.** A tree form of the large-flowered fall Hydrangea.  
 3 to 4 ft. . . . . \$1.50

**FRENCH LILACS**

**LILAC, French Hybrid Varieties.** 6 to 8 ft. Improved sorts that have heavier flowers than the common purple and white, and in a wider range of colors. The French lilacs are particularly desirable for garden planting where their beautiful trusses contrast splendidly with spring flowers planted beneath. All the varieties listed below are hardy, free flowering sorts, which will prove highly satisfactory.  
 2 to 3 ft. . . . . \$1.00  
 3 to 4 ft. . . . . 1.25  
 4 to 5 ft. . . . . 1.50

**Alphonse Lavalle.** Blue, shaded violet.

**Belle de Nancy.** Satiny pink.

**Charles X.** Reddish purple; large clusters.

**Chas. Joly.** Deep reddish purple. Very popular.

**Ludwig Spaeth.** Dark purplish-red.

**Marie Legraye.** One of the finest white Lilacs.

**Michel Buchner.** Clear lilac flowers. Double.

**Madame Lemoine.** Pure white.

**President Grevy.** A beautiful light blue.

**Lilac, Hungarian** (*Syringa josikaea*). 8 to 10 ft. Light, violet colored flowers in June, after the common lilacs have finished blooming.  
 2 to 3 ft. . . . . \$1.00  
 3 to 4 ft. . . . . 1.25

**Lilac, Japanese Tree** (*Syringa japonica*). 15 ft. Small tree in habit of growth. Flowers come in loose clusters of creamy white, in June.  
 2 to 3 ft. . . . . \$1.00  
 3 to 4 ft. . . . . 1.25

**Lilac, Late Flowering** (*Syringa villosa*). 10 ft. Bushy, upright growth. Rich dark foliage with pinkish lilac flowers in June. A desirable, hardy shrub, ornamental both in and out of flower.  
 2 to 3 ft. . . . . \$0.45  
 3 to 4 ft. . . . . .65

**Lilac, Persian** (*Syringa persica*). 7 ft. Slender growth; smaller leaves than the Common Lilac. Pale purple flowers in May.  
 2 to 3 ft. . . . . \$0.55  
 3 to 4 ft. . . . . .75

**Lilac, Purple** (*Syringa vulgaris*). 9 to 12 ft. The well-known, old-fashioned Lilac. Fragrant flowers in May.  
 2 to 3 ft. . . . . \$0.45  
 3 to 4 ft. . . . . .65



The Large-Flowered or Hydrangea P. G. They make a colorful winter bouquet

**Lilac Rothomagensis** (Rouen Lilac). 7 ft. Late blooming, reddish purple flowers. Delicately formed leaves. **Each**  
 2 to 3 ft. . . . . \$0.60 3 to 4 ft. . . . . \$0.75

**Lilac, White** (*Syringa vulgaris alba*). 9 to 12 ft. The old-fashioned white flowering lilac.  
 2 to 3 ft. . . . . \$0.60 3 to 4 ft. . . . . \$0.90

**LOCUST, Pink Flowering** (*Robinia hispida*). 5 ft. Showy rose-colored flowers in June in pea-like clusters.  
 2 to 3 ft. . . . . \$0.75 3 to 4 ft. . . . . \$1.00

**MOCKORANGE—(Syringa)**

**PHILADELPHUS aureus.** GOLDEN MOCKORANGE. 3 ft. A dwarf compact shrub with bright, golden yellow foliage. Very useful to add bright color.  
 12 to 18 in. \$0.75 18 to 24 in. \$1.00

**Philadelphus coronarius.** SWEET MOCKORANGE. 7 ft. Flowers are pure white and very fragrant in May and June. Quite a large and hardy old-fashioned shrub.  
 2 to 3 ft. \$0.45 3 to 4 ft. . . \$0.65

**Philadelphus lemoinei.** LEMOINE'S MOCKORANGE. 5 ft. A splendid medium-height hardy shrub that is particularly useful in house foundation plantings. Erect, fine-leaved and slender-stemmed with a mass of fragrant white flowers.  
 18 to 24 in. . . . . \$0.35  
 2 to 3 ft. . . \$0.40 3 to 4 ft. . . .60

**A NEW DOUBLE-FLOWERING MOCKORANGE**

**Philadelphus virginal.** 4 to 5 ft. A choice, fragrant variety, with large creamy-white double flowers. Has a prolonged blooming season. A new and improved variety that is admired by everyone.

**Each**  
 2 to 3 ft. . . . . \$0.75  
 3 to 4 ft. . . . . 1.00



The Snowhill Hydrangea



FLOWERING SHRUBS—Continued

FLOWERING PLUMS AND CHERRIES

**PLUM, Double Flowering.** PRUNUS TRILOBA. 5 ft. Large double pink, rose-like flowers in early spring. Brilliant and remarkable in bloom. Hardier than the flowering almond. **Each**  
 2 to 3 ft. .... \$0.75  
 3 to 4 ft. .... 1.00  
 4 to 5 ft. .... 1.50

**Plum, Purpleleaf.** NEWPORT. 10 ft. Dark purple leaves. Holds purple color all summer and makes a bright contrast with other foliage.  
 2 to 3 ft. .... \$0.65  
 3 to 4 ft. .... .90  
 4 to 5 ft. .... 1.25

**PRUNUS TOMENTOSA.** NANKING CHERRY. 6 ft. A new flowering and fruiting shrub from China. Very hardy. The white or tinted flowers of early spring are followed by red, globular fruits that are excellent for preserving.  
 2 to 3 ft. .... \$0.75

**POTENTILLA fruticosa.** CINQUEFOIL. 2 ft. A useful low shrub; yellow flowers all summer. Leaves are five parted.  
 12 to 18 in. .... \$0.50



The Lilacs bring both fragrance and beauty to the garden

BUSH ROSES (also see page 34)

**ROSE, RED LEAVED** (Rosa rubrifolia). A hardy rose with red leaves all summer. Makes a beautiful contrast in the shrub groups. The blossoms are of a bright pink color and are borne in profusion. **Each**  
 2 yr. plants. .... \$0.65

**ROSE RUGOSA** (Rosa Rugosa). A very hardy bush rose that needs no winter covering. Dark green crinkled foliage and bright pink flowers make it exceedingly ornamental. Bright scarlet fruits appear during late summer and fall. (See hybrid varieties, page 34).  
 2 yr. plants. .... \$0.50  
 3 yr. plants. .... .75

**RUSSIAN OLIVE** (Elaeagnus angustifolia). 12 ft. Silvery, willow-like leaves. Fragrant yellow flowers followed by yellow fruits. Used in plantings for its silvery foliage and good size. Very hardy.  
 2 to 3 ft. .... \$0.50  
 3 to 4 ft. .... .65



Clusters of red flowers all season on the hardy Grootendorst Rugosa Rose. (See page 34)

SIBERIAN PEA-TREE

(Caragana arborescens). 8 ft. Bright green, pea-like leaves. Clusters of yellow flowers in May followed by long slender seed pods. Very hardy and will stand dry locations and poor soils.  
 2 to 3 ft. .... \$0.45  
 3 to 4 ft. .... .65



The Mockorange (Philadelphus) is a delightful, fragrant-flowering shrub. (Page 9)

SNOWBERRY

**SNOWBERRY, White** (Symphoricarpos racemosus). 4 ft. Medium height shrub. Stands shade. Large, waxy berries in September that persist well into the winter. A graceful and pleasing bush all season long. **Each**  
 2 to 3 ft. .... \$0.45  
 3 to 4 ft. .... .65

SPIRAEAS

**SPIRAEA, Anthony Waterer.** CRIMSON SPIRAEA. 2 ft. A very free flowering dwarf shrub of compact form. Crimson flowers all summer. Always blooms the first season. Makes a fine color combination planted with Hydrangea Snowhill.  
 12 to 18 in. .... \$0.40  
 18 to 24 in. .... .60

NEW PRICES—DEPENDABLE SERVICE—NO CHANGE IN HIGH QUALITY





Your yard can be made just as inviting and attractive as this one belonging to Mr. Gustaf Lindquist, Saint Paul

**FLOWERING SHRUBS—Continued**

- Spiraea arguta.** GARLAND SPIRAEA. 4 ft. Many small, white flowers in May. Soft foliage effect with light green leaves. A very attractive shrub. **Each**  
 2 to 3 ft. . . . . \$0.50  
 3 to 4 ft. . . . . .75
- Spiraea billardi.** PINK SUMMER SPIRAEA. 5 ft. Pink flowers in terminal spikes during July and August. Blooms when other shrubs are out of flower. **Each**  
 2 to 3 ft. . . . . \$0.45  
 3 to 4 ft. . . . . .65
- Spiraea japonica (Callosa alba).** 3 ft. White flowers in clusters all summer. A dwarf shrub of compact symmetrical form. Refined foliage. A good foreground and border plant. **Each**  
 12 to 18 in. . . . . \$0.45  
 18 to 24 in. . . . . .60

- Spiraea opulifolia.** NINEBARK. 8 ft. Tall, vigorous shrub with heavy foliage and many small clusters of white flowers. Well suited for planting as a screen or background. **Each**  
 2 to 3 ft. . . . . \$0.45  
 3 to 4 ft. . . . . .65

- Spiraea opulifolia aurea.** GOLDEN SPIRAEA. 6 ft. An ornamental, golden leaved shrub. Has peculiar shredded bark. The profuse clusters of white flowers are followed by seeds which are brilliant orange-red in summer. Useful for screens and as a filler in masses and borders and admired for its bright yellow color. **Each**  
 2 to 3 ft. . . . . \$0.45  
 3 to 4 ft. . . . . .65
- Spiraea sorbifolia.** PLUME SPIRAEA. 5 ft. Foliage resembling a Mountain Ash. Long spikes of white flowers in July. Begins growth very early. Stands either full sun or partial shade. **Each**  
 2 to 3 ft. . . . . \$0.45  
 3 to 4 ft. . . . . .65

- Spiraea thunbergi.** SNOW GARLAND. 3 ft. Graceful, slender branches of light, feathery foliage. Abundant white flowers in May. One of the earliest shrubs to bloom in the spring. **Each**  
 18 to 24 in. . . . . \$0.45  
 2 to 3 ft. . . . . .65

- Spiraea trichocarpa.** KOREAN SPIRAEA. 5 ft. A new, hardy introduction and a valuable addition to our dependable shrubs. The flowers are of the Bridal Wreath type but are larger, come later and are in dome-shaped clusters. **Each**  
 2 to 3 ft. . . . . \$1.00

- Spiraea Vanhouttei.** BRIDAL WREATH. 5 to 6 ft. The most admired of all shrubs. A round, graceful bush with arching branches. White flowers in masses in late May. The most popular and most planted of all shrubs. Will grow in almost any location. Very hardy. **Each**  
 18 to 24 in. . . . . \$0.30  
 2 to 3 ft. . . . . .40  
 3 to 4 ft. . . . . .60



Spiraea Anthony Waterer with crimson flowers all summer

**EXCELLENT MEDIUM HEIGHT SHRUB**

**Spiraea callosa rosea.** 3 1/2 ft. Rose-colored flowers in flat topped clusters during July and August. Well suited to house foundation plantings. **Each**  
 18 to 24 in. . . . . \$0.50  
 24 to 30 in. . . . . .75

**FLOWERING SHRUBS—Continued**

**SUMAC**

**SUMAC, Tall Fern-Leaved** (*Rhus typhina laciniata*). 8 to 10 ft. Delicate, deeply cut leaves that show crimson in the fall. A rapid growing tall shrub. Splendid to add variety to heavier shrub masses.

	<b>Each</b>
2 to 3 ft.....	\$.60
3 to 4 ft.....	.80

**TAMARIX**

**TAMARIX Pentandra. SUMMER TAMARIX.** 8 ft. Feathery, bluish gray foliage; with pink flowers in long, loose terminal clusters. June and July. The delicate foliage is often used in flower bouquets. The appearance is so unlike other shrubs as to always attract attention. Does best in a protected spot.

2 to 3 ft.....	\$.75
3 to 4 ft.....	1.00

**THORN APPLE, Red Haw** (*Crataegus*). 10 to 12 ft. A hardy Hawthorn. White flowers. Ornamental red fruits, well liked by the birds.

2 to 3 ft.....	\$.75
3 to 4 ft.....	1.00
4 to 5 ft.....	1.25



The High-bush Cranberry. Clusters of bright red berries



*Spiraea Snow-Garland* (Thunbergi). Blooms before its leaves appear. Page 11

**VIBURNUM**

**VIBURNUM, Arrowwood** (*V. dentatum*). 8 ft. Glossy green leaves; white flowers in June. Crimson berries, turning to blue. Stands partial shade. A big, full bush with bright, clean leaves.

	<b>Each</b>
2 to 3 ft.....	\$.50
3 to 4 ft.....	.75

**Viburnum, Highbush Cranberry** (*V. opulus*). 8 ft. White flowers in spring followed by brilliant red edible berries. Very hardy. A large growing shrub always ornamental but especially so during the fall because of its bright berry clusters and autumn foliage coloration.

2 to 3 ft.....	\$.60
3 to 4 ft.....	.75

**Viburnum, Snowball** (*V. opulus sterile*). 8 ft. The hardy, old-fashioned Snowball bush. Globular white flowers.

2 to 3 ft.....	\$.60
3 to 4 ft.....	.75

**Viburnum, Wayfaring-tree** (*V. lantana*). 10 ft. Large, white flower clusters in May. Red berries later turning black. Splendid heavy-textured, dark green foliage.

2 to 3 ft.....	\$.60
3 to 4 ft.....	.75

**WEIGELA**

**WEIGELA, Eva Rathke.** 4 ft. Large, crimson, trumpet-shaped flowers in July. Free blooming. Needs protection.

	<b>Each</b>
18 to 24 in.....	\$.60
2 to 3 ft.....	.80

**Weigela rosea.** 5 ft. Pink, bell-shaped flowers in profusion. Good foliage. Our hardiest Weigela but thrives best in a protected spot.

18 to 24 in.....	\$.45
2 to 3 ft.....	.65



Pink Weigela blossoms

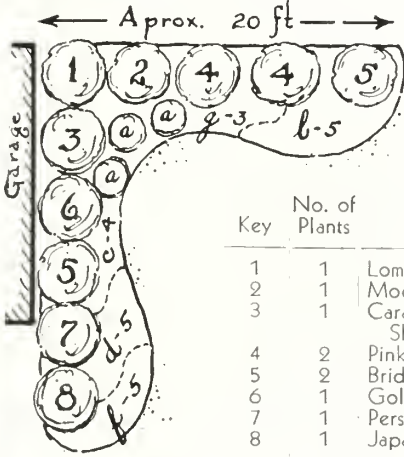
**SHRUBS TO GROW IN SHADE**

- |                          |                           |
|--------------------------|---------------------------|
| Honeysuckle, in variety  | Dogwood, in variety       |
| Hydrangea, Snowhill      | Currant, Yellow flowering |
| Elder, in variety        | Currant, Alpine           |
| Philadelphus, in variety | Coralberry                |
| Viburnum, in variety     | Snowberry                 |
|                          | Barberry                  |



## H. & O. SPECIAL GROUP PLANTINGS

A selection of the more desirable shrubs and plants arranged to bring the greatest attractiveness and beauty to your grounds.



### THE BACK-YARD BORDER GROUP

A very useful planting for the side and back of the yard.



Full directions will be given so that you can easily do the planting.

Key	No. of Plants	Variety	Size
1	1	Lombardy Poplar . . . . .	6 to 8 ft.
2	1	Mock Orange (Syringa)	3 to 4 ft.
3	1	Caragana—Yellow Pea Shrub . . . . .	3 to 4 ft.
4	2	Pink Honeysuckle . . . . .	3 to 4 ft.
5	2	Bridal Wreath . . . . .	3 to 4 ft.
6	1	Golden Spiraea . . . . .	3 to 4 ft.
7	1	Persian Lilac . . . . .	3 to 4 ft.
8	1	Japanese Rose . . . . .	2 yr.
a	3	Peonies—Asst. colors . . . . .	field plants
g	3	Larkspur (Delphinium) . . . . .	"
l	5	Phlox—Asst. colors . . . . .	"
c	4	Coreopsis . . . . .	"
d	5	Shasta Daisy . . . . .	"
f	5	Iris, in variety . . . . .	"

This plan can be varied to meet personal needs.

### This Special Border Group

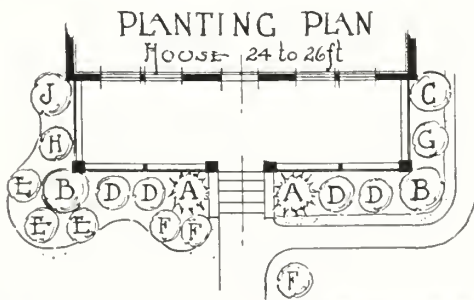
is a careful and pleasing arrangement of some of the hardier and most popular flowering shrubs and perennials.

THIS SPECIAL BACK-YARD BORDER GROUP CONTAINS 10 HARDY SHRUBS and 25 FLOWERING PERENNIALS—all the stock is first quality material—all sturdy, well-developed plants in good substantial sizes.

A \$15.55 VALUE AT THE SPECIAL GROUP PRICE of **\$1350**

## THE FRONT YARD HOUSE-FOUNDATION PLANTING

This special group of carefully selected Evergreens and Shrubs gives you an opportunity to permanently beautify your home at a small cost. Only the most desirable varieties are used and their arrangement is such as to create the most attractiveness and beauty. Full instructions will be given so that anyone can successfully do the planting.



Key	No. of Plants	Variety	Size
<b>EVERGREENS</b>			
A	2	American Arborvitae . . . . .	3 ft. B & B
<b>HARDY SHRUBS</b>			
B	2	Bridal Wreath . . . . .	3 to 4 ft.
C	1	Pink Honeysuckle . . . . .	3 to 4 ft.
D	4	Snowberry . . . . .	2 to 3 ft.
E	3	Anthony Waterer—Spiraea (crimson) . . . . .	18 to 24 in.
F	3	Japanese Barberry . . . . .	18 to 24 in.
G	1	Lemoines Syringa—Philadelphus	2 to 3 ft.
H	1	Rugosa Rose . . . . .	2 yr.
J	1	Persian Lilac . . . . .	3 to 4 ft.

A Total Value of \$14.50  
Total—2 Choice Evergreens and 16 Shrubs.

All plants are well-developed specimens that will produce immediate results.

SPECIAL GROUP PRICE..... **\$1245**





A planting of spire-like pyramidal Arborvitae and a Red Cedar harmonize pleasingly with the architecture of this residence. Mr. E. R. Handy, owner

## HARDY EVERGREENS

### For All Year Around Beauty

THE splendid form and color of the evergreens will add distinction and charm to your plantings. Their beauty can be enjoyed every day in the year since they retain their form and green foliage through all the seasons. Our stock of specimen evergreens is not excelled by any collection in the Northwest.

#### ARBORVITAE—Thuja

**ARBORVITAE, American** (*Thuja occidentalis*). 20 ft. A native tree with fan-shaped leaves. Foliage is soft and flexible, usually bushy at bottom and tapering toward the top. Used very generally in planting singly or with other evergreen. Stands trimming well in any size.

		Each
18 to 24 ins.....		\$ 1.75
2 to 3 ft... \$ 2.75	3 to 4 ft... 4.50	
4 to 5 ft... 6.00	5 to 6 ft... 10.00	
6 to 7 ft... 14.00	7 to 8 ft... 20.00	

Larger specimen trees priced on request.

**Arborvitae, Globe** (*Thuja occidentalis globosa*). 4 ft. A dwarf, bushy evergreen that grows naturally into a rounded, ball-like form. Keeps its rounded shape without trimming. Fine for low borders, foundation groups, tubs and urns.

12 to 18 in. spread.....	\$3.25
18 to 24 in. spread.....	4.50
24 to 30 in. spread.....	5.25
30 to 36 in. spread.....	7.50



American Arborvitae

**Arborvitae, Pyramidal** (*Thuja occidentalis pyramidalis*). 18 ft. An attractive, solid pyramid of green that retains its shape without shearing. Seldom measures over 36 inches in diameter at the base even when mature.

	Each
18 to 24 ins.....	\$ 3.25
2 to 2½ ft.....	3.50
2½ to 3 ft.....	4.50
3 to 3½ ft.....	6.00
3½ to 4 ft.....	7.50
4 to 5 ft.....	10.00
5 to 6 ft.....	14.00
6 to 7 ft.....	20.00

Larger specimen trees priced on request.

**Arborvitae, Siberian** (*Thuja wareana siberica*). 8 ft. A compact, dense, bushy evergreen, conical in outline; foliage rich dark green. The hardiest of the Arborvitae.

18 to 24 ins.....	\$3.50
2 to 2½ ft.....	5.00
2½ to 3 ft.....	6.50
3 to 3½ ft.....	8.00

**CEDAR.** See Juniper.

NEW PRICES—DEPENDABLE SERVICE—NO CHANGE IN HIGH QUALITY

**FIR**

**FIR, Douglas** (*Pseudotsuga douglasi*). 40 ft. Quick growing tree of open, broad, sharp pointed pyramidal shape. Large bluish-green needles. A splendid ornamental evergreen where a large tree is wanted. **Each**  
 4 to 5 ft. . . . . \$ 10.00    5 to 6 ft. . . . . \$14.00  
 6 to 7 ft. . . . . 18.00

**JUNIPER—CEDARS**

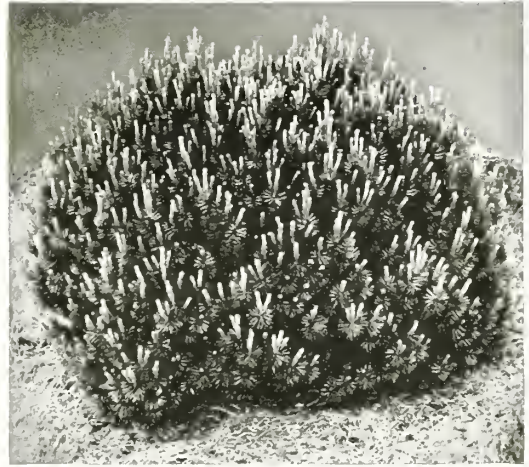
**JUNIPER, Pfitzer's** (*Juniperus pfitzeriana*). 8 ft. Branches horizontally spreading and slightly drooping. A graceful, bushy form suited to foreground plantings.  
 12 to 18 ins. . . . . \$ 2.75    2 to 3 ft. . . . . \$ 7.00  
 18 to 24 ins. . . . . 4.75    3 to 4 ft. . . . . 11.00  
 4 to 5 ft. . . . . 20.00

**Juniper, Redcedar** (*Juniperus virginiana*). 30 ft. Pyramidal shape with rich green foliage. Probably the most useful of all ornamental evergreens because of its beauty, adaptability and hardiness. Stands trimming.  
 2 to 3 ft. . . . . \$ 3.50    5 to 6 ft. . . . . \$12.00  
 3 to 4 ft. . . . . 6.00    6 to 7 ft. . . . . 15.00  
 4 to 5 ft. . . . . 8.00    7 to 8 ft. . . . . 22.00  
 8 to 9 ft. . . . . 30.00  
 Larger specimen trees priced on request.

**Juniper, Savin's** (*Juniperus sabina*). 5 ft. Thickly branched, low spreading tree. Can be trimmed. Excellent for use as a low bush to foreground plantings.  
 12 to 18 in. spread . . \$3.00    24 to 30 in. spread . . \$6.00  
 18 to 24 in. spread . . 4.50    30 to 36 in. spread . . 7.50  
 Larger specimen trees priced on request.

**Juniper, Silver** (*Juniperus virginiana glauca*). 15 ft. Rich, silvery-gray foliage all seasons. Valued for its contrasting color when planted with other evergreens.  
 4 to 5 ft. . . . . \$ 12.50    5 to 6 ft. . . . . \$ 16.00  
 6 to 7 ft. . . . . 18.00

**Juniper, Prostrate** (*Juniperus canadensis depressa*). A dwarf many-stemmed evergreen shrub that grows closely to the ground. Suited to foreground plantings or for rock gardens.  
 12 to 18 in. spread . . . . . \$2.75  
 18 to 24 in. spread . . \$3.75    24 to 30 in. spread . . 5.50



Dwarf Mugho Pine

**PINE—PINUS**

**Each**

**PINE, Austrian** (*Pinus nigra*). 60 ft. Long, dark-green needles; vigorous growing. Very decorative, large-growing evergreen.  
 2 to 3 ft. . . . . \$ 4.00    4 to 5 ft. . . . . \$ 8.00  
 3 to 4 ft. . . . . 5.50    5 to 6 ft. . . . . 12.00

**Pine, Dwarf Mugho** (*Pinus montana mughus*). 4 ft. Desirable dwarf evergreen; bushy and globe shaped. Foliage deep green. Very hardy. Our best dwarf evergreen.  
 12 to 18 in. spread . . \$ 2.75    24 to 30 in. spread . \$ 6.00  
 18 to 24 in. spread . . 4.00    30 to 36 in. spread . 9.00  
 Larger specimens priced on request.

**Pine, Mountain** (*Pinus montana*). A compact conical-shaped pine with the short leaves thickly crowded along the ascending branches. Desirable as a lawn specimen or grouped with other evergreens.  
 3 to 4 ft. . . . . \$ 7.50    4 to 5 ft. . . . . \$10.00





**PFITZER'S JUNIPER**  
 A graceful, medium-height evergreen

— SPECIALS —

**BEAUTIFY YOUR HOUSE WITH EVERGREENS**

Here are 2 Special inexpensive collections of choice first quality trees. Full planting directions given.

 <p><b>HOUSE CORNER</b></p> <p>1 American Arborvitae                  2 Globe Arborvitae                  3 CHOICE EVERGREENS                  Trees about 8 years old.                  1 Amer. Arborvitae 2 to 3 ft.                  2 Globe Arborvitae 12 to 18 ins. <b>SPECIAL GROUP PRICE . . . \$8.25</b></p>	 <p><b>HOUSE ENTRANCE</b></p> <p>2 Pyramidal Arborvitae                  2 Savin Juniper                  4 CHOICE EVERGREENS                  Trees 7 to 8 years old.                  2 Pyram. Arborvitae 2½ ft.                  2 Savin Juniper 12 to 18 ins. wide. <b>SPECIAL GROUP PRICE . . . \$11.45</b></p>
-----------------------------------------------------------------------------------------------------------------------------------------------------------------------------------------------------------------------------------------------------------------------------------------------------------------------------------------------------------------------------------------------------------------------------	------------------------------------------------------------------------------------------------------------------------------------------------------------------------------------------------------------------------------------------------------------------------------------------------------------------------------------------------------------------------------------------------------------------------------



**EVERGREENS—Continued**

**PINE, Scotch** (*Pinus sylvestris*). 60 ft. A very hardy and rapidly growing pine suited to background and windbreaks. **Each**  
 2 to 3 ft. . . . . \$3.50    3 to 4 ft. . . . \$ 5.00

**SPRUCE—PICEA**

**SPRUCE, Blue Colorado** (*Picea pungens glauca*). 35 ft. A hardy American Spruce with rich silvery-blue foliage. A tree of special value as a lawn specimen because of good color and symmetrical growth.  
 18 to 24 ins. . . . \$ 7.50    3½ to 4 ft. . . \$18.00  
 2 to 2½ ft. . . . 10.00    4 to 5 ft. . . . 20.00  
 2½ to 3 ft. . . . 12.50    5 to 6 ft. . . . 22.50  
 3 to 3½ ft. . . . 15.00    6 to 7 ft. . . . 25.00  
 7 to 8 ft. . . . . 30.00  
 Larger specimen trees priced on request.

**Spruce, Black Hills** (*Picea canadensis albertiana*). 30 ft. A valuable ornamental tree of close, dense growth. Stands dry soils and severe climatic conditions. Foliage varies from green to bluish color.  
 18 to 24 ins. . . . \$ 2.75    3 to 4 ft. . . . \$ 7.00  
 2 to 2½ ft. . . . 3.75    4 to 5 ft. . . . 10.00  
 2½ to 3 ft. . . . 4.75    5 to 6 ft. . . . 14.00  
 6 to 7 ft. . . . . 17.50  
 Larger specimen trees priced on request.

**Spruce, Colorado** (*Picea pungens*). 35 ft. Very attractive in appearance with even, symmetrical growth and bluish-green foliage. Very hardy. Thrives almost anywhere, and is always a good lawn specimen.  
 2 to 3 ft. . . . . \$ 6.00    4 to 5 ft. . . . . \$12.00  
 3 to 4 ft. . . . . 8.50    5 to 6 ft. . . . . 17.00  
 6 to 7 ft. . . . . 22.00  
 Larger specimen trees priced on request.

**Spruce, Douglas. See Fir, Douglas.**

**Spruce, Norway** (*Picea excelsa*). 40 ft. A rapidly growing evergreen of graceful outline. Pyramidal growth. Dark green foliage. The older branches are wide-spread and drooping in outline.  
 2 to 3 ft. . . . . \$ 3.50    4 to 5 ft. . . . . \$ 6.50  
 3 to 4 ft. . . . . 4.75    5 to 6 ft. . . . . 10.00



Blue and Norway Spruces, Arborvitae and Pfitzer's Juniper make up this evergreen lawn group. Grounds of Mr. E. G. Riedel

**Spruce, White** (*Picea canadensis*). 50 ft. A hardy, native tree of compact, upright growth. Leaves have silvery green appearance. **Each**  
 18 to 24 ins. . . . . \$ 2.50    4 to 5 ft. . . . . \$ 9.00  
 2 to 3 ft. . . . . 4.50    5 to 6 ft. . . . . 12.50  
 3 to 4 ft. . . . . 5.50    6 to 7 ft. . . . . 17.00  
 7 to 8 ft. . . . . 21.00  
 Specimen trees, large sizes, priced on request.

**YEW, Canada** (*Taxus canadensis*). 3 ft. A shrub-like evergreen with spreading slender branches. Dark green leaves.  
 18 to 24 ins . . . . . \$7.00

**Yew, Japanese** (*Taxus cuspidata*). 4 ft. A small growing evergreen for foreground planting. Longer leaves than the Canadian Yew.  
 15 to 18 ins. . . . . \$ 6.00    18 to 24 ins. . . . . \$ 8.00  
 24 to 30 ins. . . . . 10.00

— SPECIALS —

**USE EVERGREENS FOR ALL-YEAR-AROUND BEAUTY ON YOUR LAWN**

Here are 3 suggestions for pleasing groups of Evergreens. The trees are all first quality—the special prices are very low—Full planting instructions will be given.

<p style="text-align: center;"><b>THE GATE ENTRANCE</b></p>  <p>2 Pfitzer Juniper 2 Red Cedar</p> <p style="text-align: center;"><b>4 CHOICE EVERGREENS</b></p> <p>Trees about 8 years old.</p> <p>2 Pfitzer's Juniper, 12 to 18 in. wide, 2 Red Cedars, 2 to 3 ft. size. <b>SPECIAL GROUP PRICE \$10.95</b></p>	<p style="text-align: center;"><b>GARDEN GROUP # 1</b></p>  <p>2 American Arborvitae 2 Savin Juniper</p> <p style="text-align: center;"><b>4 CHOICE EVERGREENS</b></p> <p>Trees about 8 years old.</p> <p>2 Amer. Arborvitae, 2 to 3 ft. 2 Savin Juniper, 12 to 18 in. wide. <b>SPECIAL GROUP PRICE \$10.25</b></p>	<p style="text-align: center;"><b>GARDEN GROUP # 2</b></p>  <p>1 Colorado Spruce 2 Mugho Pine</p> <p style="text-align: center;"><b>3 CHOICE EVERGREENS</b></p> <p>Trees 9 to 10 years old.</p> <p>1 Colorado Spruce, 2 to 3 ft. 2 Mugho Pine, 12 to 18 in. wide. <b>SPECIAL GROUP PRICE \$10.20</b></p>
--------------------------------------------------------------------------------------------------------------------------------------------------------------------------------------------------------------------------------------------------------------------------------------------------------------------------------------------------------------------------------------------------------	----------------------------------------------------------------------------------------------------------------------------------------------------------------------------------------------------------------------------------------------------------------------------------------------------------------------------------------------------------------------------------------------------------------	------------------------------------------------------------------------------------------------------------------------------------------------------------------------------------------------------------------------------------------------------------------------------------------------------------------------------------------------------------------------------------------------------





Shade trees bring protection and beauty to the pleasant grounds about the home of Mr. Louis R. Kirchner

## SHADE AND ORNAMENTAL TREES

Bring Comfort and Beauty to the Home Grounds

**Y**OUR home will offer the greatest comfort and charm when shade trees contribute their delightful shade and beauty. Our northern grown trees with their well developed root systems will help you get the best results quickly. **Large Trees.** You need not wait for results if you plant one or more of our large, mature shade trees. Write or phone for prices and full information.

### 1932 IS GEORGE WASHINGTON BI-CENTENNIAL—PLANT A TREE AS A MEMORIAL

This year our nation observes the 200th anniversary of the birth of George Washington. The planting of trees as memorials by civic organizations on public grounds and by individuals in their home yards is a fitting way to permanently honor the memory of Washington. Plant at least one tree in 1932 dedicated to the "Father of Our Country" and urge others to do so also.

We will help you select suitable varieties, suggest the location and give careful planting directions.

#### ASH

**ASH, American White** (*Fraxinus americana*). 70 ft. A native shade and forest tree. Straight, clean growth. Few insect troubles. A splendid shade tree for the lawn or boulevard.

	<b>Each</b>
6 to 8 ft. ....	\$1.00
8 to 10 ft. ....	1.50
10 to 12 ft. (1½-2 in.)....	3.00
2 to 2½ in. diameter.....	4.50

#### BIRCH

**BIRCH, Cutleaf Weeping.** 35 ft. White bark; graceful branches; much used as a specimen tree on lawns.

6 to 8 ft. ....	\$ 3.50
8 to 10 ft. ....	4.50
10 to 12 ft. ....	6.00
10 to 12 ft., 1½ to 2 in. diam.	7.50
10 to 12 ft., 2 to 2½ in. diam.	10.00

Larger sizes priced on request.

**Birch, European White** (*Betula alba*). 50 ft. White bark; erect growth.

6 to 8 ft. ....	\$2.00
8 to 10 ft. ....	3.00



BECHTEL'S DOUBLE FLOWERING CRAB  
Beautiful Rose-like Flowers in Springtime

**BUTTERNUT** (*Juglans cinerea*). 70 ft. A hardy, nut producing tree. **Each**  
6 to 8 ft. .... \$2.00

**CATALPA, Western** (*Catalpa speciosa*). 50 ft. The hardiest of the Catalpas. White flowers.  
6 to 8 ft. .... \$1.25  
8 to 10 ft. .... 2.00

**CHERRY, Black** (*Prunus serotina*). 50 ft. A native tree. White, fragrant flowers. Glossy leaves. Hardy. The fruit attracts birds.  
6 to 8 ft. .... \$2.00  
8 to 10 ft. .... 2.50

#### FLOWERING CRAB

**CRAB, Bechtel's Double Flowering.** 15 ft. Desirable lawn specimen. Covered in spring with rose-like, pink flowers. A splendid symmetrical, small lawn tree.  
3 to 4 ft. .... \$1.00  
4 to 5 ft. .... 1.50

**SHADE TREES—Continued**

**DOLGA CRAB.** A splendid lawn tree of symmetrical shape. The long, conical fruits are an intense bright red and cover the tree. **Each**  
 3 to 4 ft. . . . . \$1.00    4 to 5 ft. . . . . \$1.50

**NEW FLOWERING CRAB**

**Hopa.** 20 ft. A good ornamental tree with abundant rose-colored flowers that cover the branches in May. Strikingly ornamental red fruits that hang on until late fall.  
 3 to 4 ft. . . . . \$1.00    4 to 5 ft. . . . . \$1.50

**AMERICAN ELM**

**ELM, American** (*Ulmus americana*). 60 ft. Unquestionably the most popular tree in America for shade, street and lawn planting. It is tough grained and fast growing which places it at the head of the "permanent" class of ornamental trees. Very hardy.  
 6 to 8 ft. . . . . \$1.50  
 8 to 10 ft. . . . . 2.00  
 10 to 12 ft., 1½ to 2 in. diameter. . . . . 3.50  
 2 to 2½ in. diameter. . . . . 4.50  
 2½ to 3 in. diameter. . . . . 6.50  
 Larger trees priced on request.

**Elm, Chinese** (*Ulmus parvifolia*). A new and beautiful lawn tree from Asia. Small, refined leaves. Quick growing. Very hardy.  
 6 to 8 ft. . . . . \$1.75  
 8 to 10 ft. . . . . 2.50  
 10 to 12 ft. . . . . 3.50  
 2 to 2½ in. diameter. . . . . 7.50  
 2½ to 3 in. diameter . . . . . 10.00

**HACKBERRY**

**HACKBERRY** (*Celtis occidentalis*). 50 ft. The foliage somewhat resembles the Elm. Wide spreading tops giving good shade. Very hardy.  
 6 to 8 ft. . . . . \$1.75  
 8 to 10 ft. . . . . 2.50  
 10 to 12 ft. . . . . 3.25



Cutleaf Weeping Birch. See page 17

**HORSECHESTNUT (Buckeye).** (*Aesculus hippocastanum*). 40 ft. Five-fingered leaves. White flowers in spikes. **Each**  
 5 to 6 ft. . . . . \$2.25  
 6 to 8 ft. . . . . 3.50  
 1½ to 2 in. diam. . . . . 5.00  
 2 to 2½ in. diam. . . . . 7.50

**LINDEN—BASSWOOD**

**LINDEN, American** (Basswood). (*Tilia americana*). 70 ft. Broad, heart-shaped leaves; fragrant white flowers. Quite hardy, native, fine for lawn planting.  
 6 to 8 ft. . . . . \$ 2.00  
 8 to 10 ft. . . . . 2.50  
 10 to 12 ft., 1½ to 2 in. diam. . . . . 3.50  
 2 to 2½ in. diam. . . . . 6.50  
 2½ to 3 in. diam. . . . . 9.00  
 3½ to 4 in. diam. . . . . 12.00  
 Larger trees priced on request.

**MOUNTAIN ASH**

**MOUNTAIN ASH** (*Sorbus aucuparia*). 30 ft. White flowers in May followed by bright, orange-red berries, which hang on for months. Very ornamental. Used as a specimen on the lawn or as an accent in the border.  
 6 to 8 ft. . . . . \$1.50  
 8 to 10 ft. . . . . 2.25  
 10 to 12 ft. . . . . 3.50  
 2 to 2½ in. diam. . . . . 5.50  
 2½ to 3 in. diam. . . . . 7.00

**PLUM, Purpleleaf.** 10 ft. Dark purple leaves all summer. Attractive lawn specimen, or to give color to shrub groups.

3 to 4 ft. . . . . \$1.00  
 4 to 5 ft. . . . . 1.25



The Basswood or American Linden

New prices—dependable service—no change in quality  
 Minneapolis Phone Drexel 7245  
 St. Paul Phone Cedar 6083



**MAPLES**

**MAPLE, Norway** (*Acer platanoides*). 50 ft. Handsome tree; rounded head; broad, dark green leaves. The leaves stay green late in the fall turning yellow at last. A splendid lawn tree.

6 to 8 ft. . . . .	\$ 2.75	8 to 10 ft. . . . .	\$3.50
10 to 12 ft., 1 1/4 to 1 1/2 in. diam. . . . .			5.00
2 to 2 1/2 in. diam. . . . .			8.50
2 1/2 to 3 in. diam. . . . .	\$12.00	3 1/2 to 4 in. diam. . . . .	15.00

Larger trees priced on request.

**Maple, Purple Leaf** (*Acer platanoides* Schwedler.) Leaves are bright reddish-purple in spring toning to a deep purplish-green later. Highly prized for lawn planting.

6 to 8 ft. (slightly branched) . . . . .	\$ 3.75
8 to 10 ft. . . . .	6.00
8 to 10 ft., 1 to 1 1/4 in. diameter . . . . .	7.50
1 1/2 to 2 in. diameter . . . . .	10.00
10 to 12 ft., 2 to 2 1/2 in. diameter . . . . .	15.00

Larger trees priced on request.

**Maple, Silver** (*Acer dasycarpum*). 60 ft. Foliage light green, silvery beneath. Rapid growing. Succeeds anywhere.

6 to 8 ft. . . . .	\$1.00	8 to 10 ft. . . . .	\$1.50
10 to 12 ft., 1 1/2 to 2 in. diameter . . . . .			2.50
10 to 12 ft., 2 to 2 1/2 in. diameter . . . . .			4.00

Larger trees priced on request.

**Maple, Sugar** (*Acer saccharum*). 70 ft. A symmetrical tree of great beauty. Hardy native. Deeply lobed, dark green leaves. Brilliant fall colors. Fine for streets, lawns and parks.

6 to 8 ft. . . . .	\$2.50	8 to 10 ft. . . . .	\$3.00
10 to 12 ft., 1 1/4 to 1 1/2 in. diameter . . . . .			4.75
10 to 12 ft., 2 to 2 1/2 in. diameter . . . . .			7.00

**Maple, Tatarian** (*Acer tataricum* Ginnala). 15 ft. A splendid lawn ornamental. Beautiful red fall color.

2 to 3 ft. . . . .	\$0.75	3 to 4 ft. . . . .	\$1.00
--------------------	--------	--------------------	--------

**POPLARS**

**POPLAR, Bolleana** (*Populus bolleana*). 40 ft. Upright, columnar growth. Glossy, green leaves with downy white undersides. Makes a strong vertical accent, striking in appearance.

6 to 8 ft. . . . .	\$1.50	8 to 10 ft. . . . .	\$2.00
10 to 12 ft. . . . .			3.25
12 to 14 ft., 2 to 2 1/2 in. diameter . . . . .			4.50
12 to 14 ft., 2 1/2 to 3 in. diameter . . . . .			6.00

**Poplar, Carolina Norway Variety** (*Populus eugenei*). 60 ft. Quick growth. Dense foliage. Grows anywhere.

6 to 8 ft. . . . .	\$1.00	8 to 10 ft. . . . .	\$1.25
10 to 12 ft. . . . .			2.00

**Poplar, Lombardy** (*Populus fastigiata*). 40 ft. Erect and pyramidal in form. Planted for landscape effect, as an accent or for screening purposes. Grows quickly.

6 to 8 ft. . . . .	\$1.00	8 to 10 ft. . . . .	\$1.50
10 to 12 ft. . . . .			2.25
10 to 12 ft., 2 in. diam. . . . .			3.50

Larger trees priced on request.



The Mountain Ash with its white flowers and red berries is a popular lawn tree

**WALNUT, Black** (*Juglans nigra*). A native nut bearing tree.

6 to 8 ft. . . . .	\$2.00
8 to 10 ft. . . . .	3.00

**WILLOWS**

**WILLOW, Golden** (*Salix vitellina aurea*). 35 ft. Rapidly growing with branches of rich golden yellow. Very hardy.

6 to 8 ft. . . . .	\$1.00
8 to 10 ft. . . . .	1.50

**Willow, Laurelleaf** (*Salix pentandra*). 30 ft. Glossy green leaves. Grows rapidly.

6 to 8 ft. . . . .	\$1.25
8 to 10 ft. . . . .	1.75

**Willow, Niobe Weeping**. 30 ft. Golden bark; pendulous branches.

6 to 8 ft. . . . .	\$1.50
8 to 10 ft. . . . .	2.25

**Willow, Wisconsin Weeping**. 30 ft. The hardiest of the weeping willows. Very desirable for a quick growing, ornamental lawn specimen.

6 to 8 ft. . . . .	\$1.50	8 to 10 ft. . . . .	\$2.25
--------------------	--------	---------------------	--------



Use the Bolleana and Lombardy Poplars for this sky-line effect

**PLANT A BIRTHDAY TREE**

A tree planted to commemorate a birthday becomes an enduring remembrance.

The "Birthday Tree" will not only be of particular interest to the individual honored but its enduring and increasing beauty will make it a prized family possession.

We will be glad to suggest a suitable variety and help you with the planting of a birthday tree for some one in your family. Both shade trees and evergreens are suited for a permanent birthday remembrance.

**PROTECT YOUR TREES**

Your old shade trees are priceless—give them proper attention in trimming, feeding and controlling disease and insect troubles and they will be preserved for years to come.

Our tree expert will call at any Twin City address, make an inspection and give you an estimate for any work your trees may need.

OUT-OF-TOWN customers are invited to correspond with us about the care and maintenance of their shade trees.

## CLIMBING VINES For Shade and Beauty

CLIMBING vines fill an important place in the planting of every home. Without them there frequently is ugliness and bareness. They will quickly drape themselves over suitable support or sprawl pleasingly over a wall or slope.

**BITTERSWEET** (*Celastrus scandens*). A hardy, native climber with glossy leaves. Red berries. Useful for trailing effects or banks, or for trellises, arbors, pergolas, fences, etc.

Each  
2 yrs. . . . . \$0.50  
3 yrs. . . . . .75

**BOSTON IVY** (*Ampelopsis veitchi*). Small glossy leaves that cling closely to walls but is not altogether hardy in Minnesota.

2 yrs. . . . . \$0.75



Plant Engelman's Ivy to cover walls

### H. & O. POTTED CLEMATIS

Special quality stock

Our Clematis are strong, 2 year old vines. They are alive and growing in 6-inch pots when you get them—all ready to continue growth when planted in your yard.



The large, purple flowers of the Jackmani Clematis

**HONEYSUCKLE, Hall's Japan** (*Lonicera halliana*). Fragrant, buff-colored flowers from midsummer to frost. Plant in a protected place.

Each  
2 yrs., strong . . . . . \$0.60

**Honeysuckle, Scarlet Trumpet** (*Lonicera sempervirens*). An interesting twiner with smooth, grayish leaves which surround the stem of the vine. Flowers clear scarlet, with yellow throat.

2 yrs., strong . . . . . \$0.50

**MATRIMONY-VINE** (*Lycium chinense*). Excellent as a trailer for banks and slopes and often used on house lattices. Bright, star-shaped purple flowers followed by brilliant red berries.

2 yrs. . . . . \$0.50 3 yrs. . . . . \$0.75

**VIRGINIA CREEPER** (*Ampelopsis quinquefolia*). A well-known native vine of the twining type, for fence, posts, arbors, pergolas and the like.

2 yrs. . . . . \$0.50 3 yrs. . . . . \$0.75

**CLEMATIS Coccinea** (Scarlet Clematis). Vase-shaped flowers of bright scarlet.  
2 yrs.; strong, potted plants . . . . . \$1.25

**Clematis Henryi**. Large creamy-white flowers.  
2 yrs.; strong, potted growing plants . . . . . 1.50

**Clematis Jackmani**. Broad flowers of violet purple. The most popular and the hardiest of the large-flowering Clematis.  
2 yrs.; strong, potted growing plants . . . . . \$1.50

**Clematis, Mme. Edouard Andre**. Large crimson flowers with long blooming season. 2 yrs.; strong, potted growing plants . . . . . \$1.50

**Clematis Paniculata** (Sweet Autumn Clematis). Rapid growth. Of graceful twining habit, with light green foliage; and in late summer is a mass of fragrant starry white flowers.  
2 yrs.; strong, potted growing plants . . . . . \$1.00

**DUTCHMAN'S PIPE** (*Aristolochia siphon*). An excellent vine for porches as the large heart-shaped leaves create a cooling shade. The purple flowers have an interesting pipe-like form.  
2 yrs., strong . . . . . \$1.00 3 yrs., strong . . . . . \$1.25

**ENGELMAN'S IVY** (*Ampelopsis engelmanni*). This is the only Ivy that is perfectly hardy in Minnesota, and that will cling to brick, stone or plaster. It has innumerable uses.  
2 yrs. . . . . \$0.50 3 yrs. . . . . \$0.75

**GRAPE, Beta**. Desirable for fruit or foliage. Useful on pergolas, arbors, fences, etc. Hardy, rapid growth and has large attractive leaves which quickly cover its support.  
2 yrs., strong . . . . . \$0.40 3 yrs., strong . . . . . \$0.75



The Beta Grape makes a shelter over this garden seat

NEW PRICES—DEPENDABLE SERVICE—NO CHANGE IN HIGH QUALITY





A hedge of Buckthorn will create a solid wall of green about your yard

## HARDY HEDGES

### For Ornament and Protection

A HEDGE planting will bring privacy and seclusion to your grounds. It makes an ornamental wall-of-green along the lot boundaries to protect your property, takes up very little room, yet has none of the objectionable features of a fence. Year by year a hedge grows into greater beauty and usefulness.

Our hedge plants are grown with full-branched, bushy development to give immediate results.

**BARBERRY, Thunberg's** (*Berberis thunbergii*). Very satisfactory for a low hedge of close growth. Can be trimmed or allowed to grow naturally. Bears attractive red berries in the fall and the foliage takes on a brilliant autumn color. Space the Barberrry plants 12 inches apart for a close, compact hedge.

	Per 10	Per 100
12 to 18 inch size.....	\$2.50	\$20.00
18 to 24 inch size.....	3.50	25.00

**BUCKTHORN** (*Rhamnus cathartica*). An ornamental plant of great hardiness that makes a dense hedge. Can be kept trimmed to any desired height or outline. The Buckthorn is a very satisfactory and dependable hedge and a plant that is absolutely hardy. By trimming it can be made so thick as to be impenetrable. Space the plants 1 foot apart in the row.

2 to 3 ft. size.....	\$3.00	\$20.00
3 to 4 ft. size.....	3.50	25.00

**COTONEASTER acutifolia** (*Quinceberry*). A dense growing shrub with dark green, glossy, oval leaves. A splendid hedge plant for the Northwest. Perfectly hardy. While not as twiggy or close growing as the Buckthorn the Cotoneaster is more slender and graceful. It excels all other hardy hedges in beauty of foliage. Plant 12 inches apart in single row.

2 to 3 ft. size.....	\$3.50	\$25.00
3 to 4 ft. size.....	5.00	35.00

**CURRENT, Alpine** (*Ribes Alpinum*). A dense, low-growing plant with attractive green leaves. Makes a desirable low hedge. Stands trimming and shearing to any extent. Will grow well even in partial shade. Space 12 ins. apart.

12 to 18 inch size.....	\$3.75	\$35.00
18 to 24 inch size.....	5.50	50.00

**HONEYSUCKLE** (*Lonicera tatarica*). In addition to great hardiness the Honeysuckles have attractive flowers and berries. Suitable where a tall hedge is wanted and need not be kept trimmed unless this is desired. Grows rapidly and stands some shade. Space plants 18 inches apart.

	Per 10	Per 100
2 to 3 ft. size.....	\$4.00	\$35.00
3 to 4 ft. size.....	6.00	40.00

**ROSA RUGOSA** (*Japanese Rose*). Desirable for an open untrimmed division hedge. Foliage and bright flowers are highly ornamental, while the large red fruits make a brilliant fall display. Space 18 inches apart.

Strong 2 yr. plants.....	\$4.50	\$40.00
--------------------------	--------	---------

**SPIRAEA Vanhouttei** (*Bridal Wreath*). The most satisfactory of hardy shrubs for use as a flowering hedge. Plant only where close trimming is not required, for heavy pruning destroys the natural grace and beauty of the plant. Allow 18 inches to 2 feet spacing between the plants.

2 to 3 ft. size.....	\$3.50	\$30.00
3 to 4 ft. size.....	5.00	35.00

#### HOW TO TRIM YOUR HEDGE

To keep your hedge neat in appearance and close in growth it should be trimmed every spring before new growth begins. Trim the hedge in late March, remove dead wood and cut it back to the size and outline desired. Lighter trimmings can be given at any time during the summer.



#### YOU WILL ENJOY A VISIT TO "THE PARK NURSERIES"

You are invited to visit our nursery and display grounds at 1200 St. Clair St.—just beyond the corner of Lexington and St. Clair.

Make personal selections from our stock of specimen plants.

Your plants will be carefully packed so that you can take them home with you in your car if you wish.



You can have flowers to enjoy  
all summer from a border of  
hardy perennials

## FLOWERING PERENNIALS

THE Perennials persist over winter and renew their growth with increased vigor in the spring. Their first cost is **small**, so that one can enjoy a good assortment at a modest outlay.

**Soil and Planting.** Perennials are best arranged in beds or borders with varieties selected so that there will be some in bloom at all times. The time of blooming is given in the descriptions. The soil should be well worked up and fertilized if necessary. Surface cultivation of the ground between the plants should be practiced. A location free of tree roots and dense shade is desirable.

★**ROCK GARDEN PLANTS.** Varieties marked with a star (★) are adapted to planting in rockeries

### QUANTITY RATE PRICES

Five or more plants of a single variety will be supplied at 5c less per plant. Example: Plants priced at 30c each are \$2.50 for ten or \$1.25 for five.

**ACHILLEA millefolium roseum.** ROSY MILFOIL. 2 ft. Pink flowers in compact heads. Feathery foliage. June to September. 30cts.; 2 yr., 50 cts.

**Achillea, Perry's White.** 1½ ft. Pure white flowers like a small pompon chrysanthemum. Blooms June to September. Fine cut flowers. 30 cts.; 2 yr., 50 cts.

**ACONITUM fischeri.** LATE MONKSHOOD. 3 ft. Strong spikes of dark blue, helmet-shaped flowers. September and October. 40 cts.; 2 yr., 60 cts.

**Aconitum autumnale.** MONKSHOOD. 4 ft. Loose spikes of blue flowers from September until frost. 40 cts.; 2 yr., 60 cts.

**ALASKA DAISY.** 30 cts.; 2 yr., 50 cts.

★**ALYSSUM saxatile compactum.** GOLDEN TUFT. 12 in. Masses of yellow flowers in early spring. For rockery or border. 30 cts.; 2 yr., 50 cts.

**ANCHUSA italica, Dropmore.** ALKANET. 4 to 5 ft. Turquoise blue flowers in June and July. Large heavy leaves. 40 cts.; 2 yr., 60 cts.



Aconitum gives a note of blue to the garden

**ANTHEMIS tinctoria kelwayi.** HARDY MARGUERITE. 1½ ft. Daisy like flowers of golden yellow. June to October. Finely cut foliage. 30 cts.; 2 yr., 50 cts.

★**AQUILEGIA canadensis.** NATIVE CANADA COLUMBINE. 2 ft. Flowers red and yellow. Medium short spurs. June to August. 30 cts.; 2 yr., 50 cts.

**Aquilegia chrysantha.** GOLDEN COLUMBINE. 2 ft. Yellow flowers with long spurs. June to August. 30 cts.; 2 yr., 50 cts.

**Aquilegia helenae.** BLUE COLUMBINE. 1½ ft. June to August. 30 cts.; 2 yr., 50 cts.

**Aquilegia Hybrids.** Long-spurred flowers in a variety of beautiful colors. 30 cts.; 2 yr., 50 cts.

★**ARABIS alpina.** ROCKCRESS. An early blooming dwarf border plant completely covered with white flowers in April and May. 30 cts.; 2 yr., 50 cts.

★**ARMERIA Formosa.** SEA PINK. 9 in. Dwarf border or rockery plant. Pink flowers on wiry stems. All season bloom. 30 cts.; 2 yr., 50 cts.

**ARTEMISIA lactiflora.** MOUNTAIN FRINGE. 4 ft. Large branching plumes of sweetly scented creamy white flowers. August to September. 30 cts.; 2 yr., 50 cts.

NEW PRICES—DEPENDABLE SERVICE—NO CHANGE IN HIGH QUALITY



## FLOWERING PERENNIALS—Continued

- Artemisia, Silver King.** 3 ft. A hardy perennial with silver-gray foliage. Brilliant for garden display and delightful in a winter bouquet. Price, 30 cts.; 2 yr., 50 cts.
- ASTER novae-angliae.** NEW ENGLAND ASTER (Michaelmas Daisy). 4 to 5 ft. Hardy purple Aster. September and October. 30 cts.; 2 yr., 50 cts.
- Aster, Lil Fardell.** 4 to 5 ft. Showy flowers are rich, mauve pink. September and October. 30 cts.; 2 yr., 50 cts.
- Aster, White Climax.** Pure White Aster. 4 to 5 ft. September and October. 30 cts.; 2 yr., 50 cts.
- ASTILBE, Hybrids.** 3½ ft. Showy garden plant of easy culture. Airy plumes of pink flowers. June and July. 50 cts.; 2 yr., 75 cts.
- Astilbe japonica.** (Spirea Japonica.) 2½ ft. Heavy spikes of white feathery flowers in June and July. Showy in the garden. Good for cutting. 50 cts.; 2 yr., 75 cts.

## B

- BABYSBREATH.** See *Gypsophila*, page 24.
- BLEEDING HEART** (*Dicentra spectabilis*). 18 in. Rose-crimson heart shaped flowers in drooping racemes. The old garden favorite. April and May. Grows well in partial shade. 50 cts.; 2 yr., \$1.00.
- BOCCONIA cordata.** PLUME POPPY. 6 ft. Tall growing perennial fine for background. Creamy white plummy flowers in August. 35 cts.; 2 yr., 50 cts.
- BOLTONIA asteroides.** FALSE STARWORT. 4 to 5 ft. Pure white. Aster-like flowers in profusion. Excellent cut flowers. August and September. 30 cts.; 2 yr., 50 cts.
- Boltonia latisquama.** Bears quantities of daisy like pinkish lavender flowers. 30 cts.; 2 yr., 50 cts.

## C

- \***CAMPANULA carpatica.** CARPATHIAN HAREBELL. 8 to 10 inches. Dwarf habit and compact growth. Bell shaped, light blue flowers in July and August. 30 cts.; 2 yr., 50 cts.
- Campanula calycanthema.** CUP-AND-SAUCE BELL-FLOWER. 3 ft. A biennial. Blooms July and August. Colors mixed in blue, rose and white. 30 cts.; 2 yr., 50 cts.
- Campanula glomerata.** CLUSTERED BELLFLOWER. 18 in. Dense tuft of dark green foliage with globular dark blue flowers topping each stem. June and July. 30 cts.; 2 yr., 50 cts.
- Campanula medium.** CANTERBURY BELLS. 3 ft. A biennial. Large bell flowers of rose, blue and white. July. 30 cts.; 2 yr., 50 cts.
- CENTAUREA montana.** PERENNIAL CORNFLOWER. 1½ ft. Violet blue, resembling annual cornflowers. July to September. 30 cts.; 2 yr., 50 cts.
- CLEMATIS davidiana.** 3 to 4 ft. A bush form Clematis with pale blue flowers in small clusters. Fragrant. August and September. 50 cts.; 2 yr., 75 cts.
- Clematis recta.** A shrubby Clematis. 3 ft. Flowers are white in showy clusters on long stems. June and July. 50 cts.; 2 yr., 75 cts.
- COLUMBINE.** See *Aquilegia*, page 22.
- COREOPSIS lanceolata grandiflora.** TICKSEED. 2 ft. Golden yellow flowers on long graceful stems from June until frost. Fine for cutting. Narrow light green leaves. 30 cts.; 2 yr., 50 cts.

## D

- DAY LILY.** See *Hemerocallis*.
- DAISY, Alaska.** 12 to 15 in. An improved Daisy that blooms in middle to late summer. White flowers with yellow center. 30 cts.; 2 yr., 50 cts.
- Daisy, Hartje & Elder.** (New.) A pure white Decoration Day Daisy. Large flowers and strong stems make it fine for cutting. 30 cts.; 2 yr., 50 cts.
- Daisy, Shasta.** 18 inches. The popular June flowering white daisy. June. 30 cts.; 2 yr., 50 cts.
- DELPHINIUM chinense.** SLENDER LARKSPUR. 3 ft. Heads of bright blue flowers in open sprays from June until frost. Finely cut, fern-like foliage. 30 cts.; 2 yr., 50 cts.
- Delphinium chinense alba.** White flowering form of the Slender Larkspur. 30 cts.; 2 yr., 50 cts.
- Delphinium Belladonna.** 3 to 4 ft. Clear, turquoise blue flowers with long blooming habit in many graceful spikes. 30 cts.; 2 yr., 50 cts.
- Delphinium Bellamosa.** 3 to 4 ft. A dark blue Larkspur of free-blooming habit. Many graceful sprays fine for cutting. 30 cts.; 2 yr., 50 cts.



Aquilegia or Columbine  
(See page 22)



Hardy Aster



Alaska Daisy

## FLOWERING PERENNIALS—Continued

## LARGE FLOWERING LARKSPUR

**Delphinium Hybrids.** Large spikes of beautiful flowers of varied shades of blue. Some double and some are single in form. Our stock is a careful selection of the choicest of the English strains. 35 cts.; 2 yr., 50 cts.

**DIANTHUS barbatus.** SWEET WILLIAM. 18 ins. Flowers in variations of red, white and rose colors. May to July. 30 cts.; 2 yr., 50 cts.

\***Dianthus plumarius.** CLOVE PINK. 9 ins. The fragrant white to scarlet flowers bloom in early summer. Grass-like leaves. 30 cts.; 2 yr., 50 cts.

**DICTAMNUS fraxinella.** GAS PLANT. 2½ ft. Bushy growth. Terminal clusters of white and rose pink flowers in June and July. 50 cts.; 2 yr., 75 cts.

\***DICENTRA eximia.** PLUMY BLEEDINGHEART. 9 to 12 in. Rosy pink heart-shaped flower in bloom from May through August. Delicate, finely cut foliage. 35 cts.; 2 yr., 50 cts.

**Dicentra spectabilis.** BLEEDINGHEART. 2½ ft. The favorite old-fashioned flower. April and May. 50 cts.; 2 yr., \$1.00.

**DIGITALIS.** GIANT SHIRLEY FOXGLOVE. 4 ft. Long flower heads of bell shaped blossoms. Colors, rose, shell pink and blue. July. 30 cts.; extra strong, 50 cts.

## E

**ECHINOPS ritro.** GLOBE THISTLE. 3 ft. Ball shaped metallic blue flowers; thistle-like foliage. July to September. 30 cts.; 2 yr., 50 cts.

## F

\***FERNS, Hardy.** Strong growing native varieties suitable for yard planting. 35 cts.; 2 yr., 50 cts.

\***FILIPENDULA ulmaria** (Spiraea). DROPWORT. Tufted, fern-leaved plant. Masses of white flowers on 15 in. stems in June and July. 30 cts.; 2 yr., 50 cts.

**Filipendula palmata** (Spiraea). CRIMSON MEADOWSWEET. Deep pink to carmine flowers in loose clusters. Purplish, leafy stems to 3 ft. June and July. 30 cts.; 2 yr., 50 cts.

\***FORGET-ME-NOT** (*Myosotis scorpioides*). 10 ins. Dainty blue flowers from May to September. Fine dwarf border plant. 30 cts.; 2 yr., 50 cts.

**FUNKIA (Hosta) caerulea.** BLUE PLANTAIN LILY. 15 ins. Drooping flowers of blue in July and August. Excellent border plant. Dark green glossy foliage. Stands shade. 25 cts.; 2 yr., 40 cts.

**FUNKIA subcordata** (White Plantainlily). 18 ins. Fragrant, white, lily-like flowers in August and September. Bright glossy foliage. 50 cts.; 2 yr., 75 cts.

**Funkia Undulata Variegata.** 15 inches. Broad, waxy foliage, beautifully variegated with white. Very attractive border plant. Blue flowers in July. Stands shade. 30 cts.; 2 yr., 50 cts.

## G

**GAILLARDIA grandiflora.** BLANKET FLOWER. 2 ft. Rich red and crimson petals with broad border of yellow. A brilliant garden flower unsurpassed for cutting. June to October. 30 cts.; 2 yr., 50 cts.

**GOLDEN GLOW.** See *Rudbeckia laciniata*. 30 cts.; 2 yr., 50 cts.

**GYPSOPHILA paniculata.** BABYSBREATH. 2 to 3 ft. Cut flower. Tiny white blossoms cover the plant through July and August. 30 cts.; 2 yr., 50 cts.

## DOUBLE BABYSBREATH

**Gypsophila.** BRISTOL FAIRY. A new and improved variety. Full, double flowers of snow white borne in large sprays. Blooms from June until frost. Grafted plants sure to have double flowers, \$0.75 each.

## H

**HELENIUM autumnale superbum.** YELLOW STAR. 4 to 5 ft. Golden yellow flowers in August and September. 35 cts.; 2 yr., 50 cts.

**Helenium Riverton Gem.** 3 ft. Old gold shaded with terra cotta and red. For cutting or garden show. August to frost. 35 cts.; 2 yr., 50 cts.

**HELIOPSIS pitcheriana.** ORANGE SUNFLOWER. 3 ft. Single, thick textured flowers of deep golden yellow. June to September. 35 cts.; 2 yr., 50 cts.

**Heliopsis scabra zinniaeflora.** 24 ins. Grows into a compact head of double zinnia-like flowers of golden yellow. July and August. 35 cts.; 2 yr., 50 cts.



Coreopsis blooms all summer. (Page 23)



Hardy Larkspur (Delphinium Hybrids)



Variegated Plantain Lily (Funkia)

NEW PRICES—DEPENDABLE SERVICE—NO CHANGE IN HIGH QUALITY



## FLOWERING PERENNIALS—Continued

**HEMEROCALLIS flava.** LEMON DAYLILY. 2½ ft. Sweetly scented lemon yellow flowers in June and July. 35 cts.; 2 yr., 50 cts.

**Hermerocallis fulva.** TAWNY DAYLILY. 3 ft. Very hardy, vigorous perennial with orange colored lilies. July. 30 cts.; 2 yr., 40 cts.

\***HEUCHERA Pleu-de-Feu.** ALUMROOT. 18 ins. Crimson flowers are borne in graceful sprays from middle to late summer. About the size of Lily-of-the-Valley bells. Evergreen leaves. 50 cts.; 2 yr., 75 cts.

\***Heuchera sanguinea.** CORALBELLS. 18 ins. Bright coral crimson bells are held pendant from slender flower stems. July to September. Evergreen, geranium-like leaves. 40 cts.; 2 yr., 60 cts.

**HIBISCUS, Crimson-Eye.** ROSEMALLOW. 4 ft. Large pure white flowers with deep crimson center. August and September. 35 cts.; 2 yr., 50 cts.

**Hibiscus Mallow Marvels.** 4 to 5 ft. Giant flowering varieties in crimson, pink and white. 35 cts.; 2 yr., 50 cts.

**HOLLYHOCK, Althaea.** ALLEGHENY MAMMOTH. 5 to 7 ft. Single flowers of delicately fringed petals. Mixed colors. July and August. 30 cts.; extra strong, 40 cts.

**Hollyhock.** DOUBLE FLOWERING. 5 to 7 ft. Yellow, white, pink and red colors. July and August. 30 cts.; extra strong, 40 cts.

**IRIS.** Fleur-de-Lis. See list page 30.

**LARKSPUR.** See *Delphinium*.

**LILIUM auratum.** GOLDBANDED LILY. 3 ft. Fragrant white flowers spotted crimson with central yellow band. Red anthers. July and August. Started and potted plants, 75 cts.

**Lilium elegans.** ORANGE LILY. 18 ins. Very hardy variety producing orange-red flowers in great numbers. July. 35 cts.; 2 yr., 50 cts.

## THE REGALE LILY

**Lilium regale.** 3½ ft. The acknowledged peer of all lilies for Northern gardens. Recently introduced from N. W. China, and proving hardy in Minnesota. The flowers are white with pink tinge on the outer side, with canary yellow shadings within the cup. Deliciously fragrant. July. Large dormant bulbs, 40 cts. each; started, potted plants, 60 cts. each.

**Lilium speciosum album.** JAPANESE LILY. 3 ft. White flowers with recurved petals. August and September. Started, potted plants, 75 cts.

**Lilium speciosum rubrum.** 3 ft. A fragrant lily, under-color white, shaded and spotted with crimson. August and September. Started, potted plants, 75 cts.

\***Lilium Tenuifolium.** CORAL LILY. 12 to 18 ins. A graceful little plant well suited to rockeries or border positions. Many bright scarlet lilies are borne in June. 35 cts.; extra strong, 50 cts.

**Lilium tigrinum, fl. pl.** DOUBLE TIGER LILY. 3 to 4 ft. A double flowering form of this well-known, hardy Lily. Orange-red spotted with black. Late July and August. Bulbs, 35 cts.; extra size, 50 cts.

**LILY-OF-THE-VALLEY.** 8 to 10 ins. Pure white, dainty bell-shaped flowers in May and June. Fragrant. Field clumps, 25 cts.; extra heavy, 40 cts.

\***LINUM perenne.** BLUE FLAX. 18 ins. Graceful foliage with delicate flowers of pearly blue. May to August. 35 cts.; 2 yr., 50 cts.

**LUPINUS Polyphyllus.** 3 to 4 ft. Azure blue, pea-shaped flowers in long spikes. Late May and June. 35 cts.; 2 yr., 50 cts.

**LYCHNIS chalconica.** JERUSALEM CROSS. 2½ ft. Flowers of vermilion scarlet in immense heads. June to mid-July. 30 cts.; 2 yr., 50 cts.

**LYTHRUM roseum.** ROSE LOOSESTRIFE. 3 to 4 ft. Tall spikes of rose-colored flowers July to September. 30 cts.; 2 yr., 50 cts.

## M

**MEADOW SWEET.** (*Filipendula palmata*). 3 ft. Pink to crimson flowers in feathery heads. June and July. 30 cts.; 2 yr., 50 cts.

**MENTHA spicata.** SPEARMINT. 18 ins. Hardy garden mint. 30 cts.; 2 yr., 40 cts.

**MONARDA didyma.** OSWEGO TEA. 3 ft. Compact heads of bright red flowers. Aromatic foliage. June to September. 25 cts.; 2 yr., 50 cts.

\***MYOSOTIS.** See *Forget-Me-Not*.

## O

\***OENOTHERA FRASERI.** EVENING PRIMROSE. 12 ins. Large golden yellow poppy like flowers from June to August. 35 cts.; 2 yr., 50 cts.



Gaillardia Rich red and yellow in color



Hemerocallis (Daylily) Will Grow in shade



The Regal—queen of the hardy garden lilies

\*Rock Garden Plants. Varieties marked with \* are suitable to plant in rockeries.

## FLOWERING PERENNIALS—Continued

—P—

- PACHYSANDRA terminalis.** 6 to 9 ins. A valuable dwarf Evergreen perennial for ground cover planting. 30 cts.; 2 yr., 50 cts.
- PENTSTEMON barbatus torreyi.** BEARD TONGUE. 3½ ft. Tall spikes of brilliant scarlet flowers. Very showy. July. 35 cts.; 2 yr., 50 cts.
- PEONIES.** See list, page 31.
- PERSIAN DAISY.** See *Pyrethrum Hybridum*.
- PHLOX.** See list, page 29.
- PHYSALIS francheti.** CHINESE LANTERN PLANT. 2 ft. Brilliant orange colored seed pods or "lanterns" in September. 30 cts.; 2 yr., 50 cts.
- PHYSOSTEGIA virginica.** FALSE DRAGONHEAD. 2 to 3 ft. Strong spikes of delicate pink flowers. July and August. 30 cts.; 2 yr., 50 cts.
- PLATYCODON grandiflorum.** BALLOON FLOWER. 18 ins. Star-shaped blue flowers at the tip of each branch. Compact, bushy growth. June to September. 35 cts.; 2 yr., 50 cts.
- Platycodon grandiflorum album.** 18 ins. A white flowered variety of the above. 35 cts.; 2 yr., 50 cts.
- POPPY, Oriental (Papaver orientale).** 2½ ft. Massive cup shaped flowers of deep scarlet. May and June. 35 cts.; 2 yr., 50 cts.
- Poppy, Oriental. New Named Varieties—**40 cts. each.  
**BEAUTY OF LIVERMORE.** Crimson with dark shadings.  
**MRS. J. HARKNESS.** Bright salmon pink.  
**MRS. PERRY.** Orange apricot.  
**OLYMPIA.** Brilliant flame-scarlet shaded with golden salmon. 50 cts. each.
- \*Poppy, Iceland (Papaver nudicaule).** 12 ins. Cup shaped flowers of clear colors, white, yellow and orange scarlet. Blooms all summer. June to September. 30 cts.; 2 yr., 50 cts.
- PYRETHRUM Hybridum.** PERSIAN DAISY. 2½ ft. Daisy shaped flowers in white to shades of pink, rose and red. Splendid for cutting. May and June. 30 cts.; 2 yr., 50 cts.
- PYRETHRUM Uliginosum.** GIANT DAISY. 4 to 5 ft. Large white flowers in August and September. Splendid for cutting. 30 cts.; 2 yr., 50 cts.

—R—

- REGALE LILY.** The best garden Lily. See *Lilium Regale*. Large bulbs. 40 cts.; started plants, 60 cts.
- RUDBECKIA laciniata.** GOLDEN GLOW. 5 to 6 ft. The popular, double yellow blossoms of August and September. 30 cts.; 2 yr., 50 cts.
- Rudbeckia purpurea.** PURPLE CONE FLOWER. 3 to 4 ft. Rose-purple flowers with tall, brown center. August to October. 35 cts.; 2 yr., 50 cts.

—S—

- SALVIA pitcheri.** MEADOW SAGE. 3 to 4 ft. Every stem tipped with spikes of pretty sky blue flowers. August and September. 35 cts.; 2 yr., 50 cts.

## \*SEDUM—Stonecrop

The best of the hardy plants for rock gardens and edgings. Grows easily.

- Acre.** GOLDEN MOSS. Bright yellow flowers cover the dwarf plant in June and July. 30 cts.; 2 yr., 50 cts.
- Album.** 2 to 3 inches. A spreading plant with thick, waxy, round leaves. White flowers in May. 30 cts.; 2 yr., 50 cts.
- Glaucum.** Miniature clumps of moss-like, bluish-green leaves. White flowers. 30 cts.; 2 yr., 50 cts.
- Lydium.** 3 inches. Prostrate tufts of bronzy-green leaves. Pink flowers. 30 cts.; 2 yr., 50 cts.
- Sarmentosum.** Low and spreading. Excellent for filling seams between rocks. Yellow flowers in June. 30 cts.; 2 yr., 50 cts.
- Stoloniferum.** Flat, succulent leaves on stems that cling to the ground. Pink flower in August. 30 cts.; 2 yr., 50 cts.
- Sedum spectabile.** BRILLIANT STONECROP. 18 ins. Pink to rosy red flowers in heavy flat clusters. August and September. 30 cts.; 2 yr., 50 cts.
- \*SEMPERVIVUM, "Hardy Hen and Chickens."** Produces small rosettes of thick and rubbery leaves. A splendid rock garden plant. 30 cts.; 2 yr., 50 cts.

**SHASTA DAISY.** See *Daisy*.

**SPIRAEA.** See *Astilbe* and *Filipendula*.

- STATICE latifolia.** SEA LAVENDER. 2 ft. Delicate, small blue flowers cover the branching tops in August and September. 30 cts.; 2 yr., 50 cts.



Herdy Orange Lily (elegans). Page 25



Platycodon or Balloon Flower



Rudbeckia Purpurea—Purple Cone Flower

NEW PRICES—DEPENDABLE SERVICE—NO CHANGE IN HIGH QUALITY



### A CHART OF THE HARDY PERENNIALS

This chart makes it easy to plan your flower plantings. The height of growth, general color and the season of bloom of the more popular perennials is shown.

SEASON					VARIETY NAME	HEIGHT (IN FEET 1. 2. 3. 4. 5.)	COLOR					
MAY	JUNE	JULY	AUGUST	SEPT. OCT.			WHITE	PINK	YELLOW	ORANGE	RED	BLUE
					ACHILLEA - BALL OF SNOW							
					ACONITUM - MONKSHOOD							
					ANCHUSA - ALKANET							
					ANTHEMIS - HARDY MARGUERITE							
					AQUILEGIA - IN VARS - COLUMBINE							
					ASCLEPIAS - BUTTERFLY WELD							
					ASTER - NEW ENGLAND							
					ASTILBE - HYBRID VARIETIES							
					BOCCONIA - PLUME POPPY							
					BOLTONIA ASTEROIDES							
					CAMPANULA - HARE BELL							
					CHRYSANTHEMUM - ALASKA DAISY							
					COREOPSIS - TICKSLED							
					DELPHINIUM - IN VARS - LARKSPUR							
					DIELYTRA - BLEEDING HEART							
					DIANTHUS - SWEET WILLIAM							
					DIANTHUS - SCOTCH PINK							
					FUNKIA - WHITE PLANTAIN LILY							
					FUNKIA - BLUE PLANTAIN LILY							
					GALLARDIA - BLANKET FLOWER							
					GYPSOPHILA - BABY'S BREATH							
					HELIOPSIS - ORANGE SUNFLOWER							
					HEUCHERA - CORAL BELLS							
					HEMEROCALLIS - LEMON DAY LILY							
					HOLLYHOCKS - IN VARS.							
					IRIS - GERMANICA - IN VARS							
					LILIUM - TIGER LILY							
					LILY OF THE VALLEY							
					LYCHNIS - JERUSALEM CROSS							
					LYTHRUM - LOOSESTRIFE							
					MONARDA - OSWIGO TEA							
					MYOSOTIS - FORGET-ME-NOT							
					PEONIES - IN VAR.							
					PAPAVER - ORIENTAL POPPY							
					PHLOX - IN VARS.							
					PLATYCODON - BELLFLOWER							
					PYRETHRUM - PERSIAN DAISY							
					PYRETHRUM - OX-EYE DAISY							
					RUBBECKIA - GOLDEN GLOW							
					SEDUM - STONE CROP							
					STATICE - SEA-LAVENDER							
					TROLLIUS - GLOBE FLOWER							
					YUCCA - ADAM'S NEEDLE							

#### FLOWERING PERENNIALS—Continued

**TROLLIUS, Europaeus.** GLOBE FLOWER. 2 ft. A glorified Buttercup. Handsome dark green foliage with yellow cup-like flowers in May and June. 40 cts.; 2 yr., 60 cts.

**Trollius ledebouri.** 2 1/2 ft. Strong growing hardy perennial with handsome foliage and large orange flowers. 50 cts.; 2 yr., 75 cts.

**VALERIANA officinalis.** HARDY GARDEN HELIOTROPE. 3 ft. Sweetly fragrant, gray-pink flowers in June and July. Deeply cut foliage. 35 cts.; 2 yr., 50 cts.

**\*VERONICA flexuosa.** A useful rock garden plant with creeping stems that make a solid carpet of green. Delicate blue flowers in May. 35 cts.; 2 yr., 50 cts.

**VERONICA longifolia.** JAPANESE SPEEDWELL. 2 ft. Long spikes of attractive blue-violet flowers. August and September. 30 cts.; 2 yr., 50 cts.

**\*Veronica rupestris.** Grows 3 in. high with thickly matted, deep green foliage. Excellent for rock garden plantings. Well covered with bright blue flowers in early June. 35 cts.; 2 yr., 50 cts.

**Veronica spicata.** SPEEDWELL. 1 1/2 ft. Spikes of blue flowers in June. 30 cts.; 2 yr., 50 cts.

**\*VIOLA.** JERSEY GEM. 8 ins. Rich green foliage with blue flowers like small Pansies. May to September. Splendid border plant. 30 cts.; 2 yr., 50 cts.

**YUCCA filamentosa.** ADAM'S NEEDLE. 4 ft. Stiff, sword-shaped leaves with tall spikes of white, drooping flowers in July. 50 cts. each; 2 yr., 75 cts.

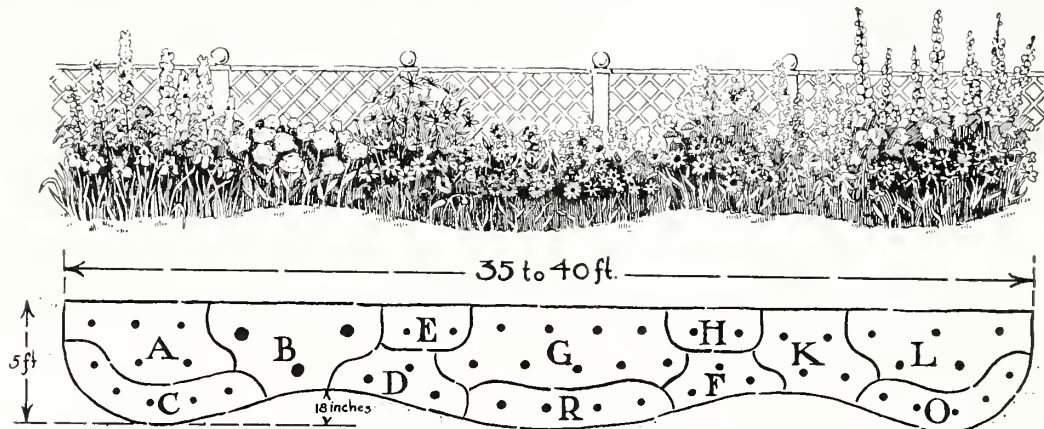
★Rock Garden Plants. Varieties marked with ★ are suitable to plant in rockeries.

## POPULAR PERENNIAL COLLECTIONS

THE adaptability of these selected groups to any home yard and the moderate prices at which they are sold make these collections exceedingly popular. Full planting instructions will be sent with your order.

### H. AND O'S COMPLETE BACK YARD PERENNIAL BORDER

Plant this border of hardy perennials along the property line and enjoy flowers from May to October. Enough plants here for a bed 35 to 40 feet long of the old garden favorites. Use the plan to arrange the plants.



Key	No.	Variety	Color
A	5	Hybrid Larkspur . . . . .	Blue Shades
B	3	Peonies—Asst. . . . .	Pink, white, red
C	5	Iris—Assorted colors . . . . .	Many colors
D	3	Coreopsis . . . . .	Golden yellow
E	2	Tall Fall Daisy (Pyrethrum) . . . . .	White Daisy
H	2	Yellow Star (Helenium) . . . . .	Bright yellow
G	9	Hardy Phlox—Assorted . . . . .	Pink, white, red
R	4	Shasta Daisy . . . . .	Yellow and white
F	3	Gaillardia (Blanket Flower) . . . . .	Red with yellow
K	4	Belladonna Larkspur . . . . .	Sky blue
L	5	Hollyhocks—Double Asst. . . . .	Many colors
O	5	Persian Daisy . . . . .	Pink, white, red
	50		

**This Colorful Garden—50 Hardy Perennials**  
 All strong, field-grown stock—selected for a long season of bloom and harmonious colorings—Value, \$16.70.  
**SPECIAL COMBINATION PRICE**  
 with full planting instructions . . . . . **\$14.25**  
 (F. O. B. St. Paul—No packing charge.)

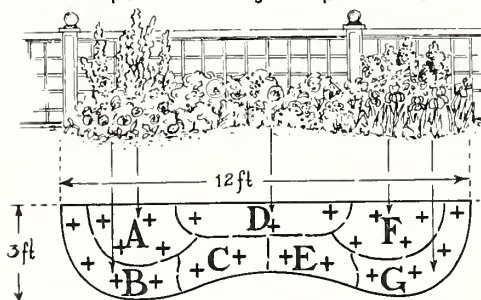
### ROCK GARDEN COLLECTIONS GROUP NO. 1

15 CHOICE PERENNIALS particularly suited for rock garden planting. 3 each of 5 different varieties and all labeled. Our selection. Value \$4.50.  
**SPECIAL PRICE . . . . . \$3.75**

### GROUP NO. 2

25 SELECTED PERENNIAL PLANTS. An unusual assortment of the best hardy rockery plants. 8 distinct varieties and all labeled. Our selection. Value \$7.50.  
**SPECIAL PRICE . . . . . \$6.00**

### A SPECIAL 12 ft. PERENNIAL BED An Inexpensive Planting of Popular Varieties



Key	No.	Variety	Color
A	4	Larkspur . . . . .	Shades of blue
B	4	Gaillardia . . . . .	Yellow marked with red
C	2	Achillea . . . . .	White
D	3	Peonies . . . . .	Pink, white, red
E	2	Coreopsis . . . . .	Yellow
F	4	Phlox, Pink . . . . .	Pink shades
G	4	Alaska Daisy . . . . .	White and yellow

23 Flowering Perennials, All choice, popular kinds.  
 Value \$8.25. Special Group Price . . . . . **\$6.95**

**ROCK GARDEN BOOKLET**  
 of helpful information  
 Sent Free with all orders for these collections.





# BRIGHT PHLOX

For Brilliant Flowers in Mid-Summer

**P**HLOXES are very hardy floriferous perennials that give bold, brilliant color effects from July to frost. They can be had in pure white, pink, lavender and crimson and in varying combinations of these colors.

**Where to Plant**—They are exceedingly attractive when planted in masses of a single kind in a bed or border. Their midsummer bloom makes them a most valuable addition to beds where such spring blooming plants as Iris, Peonies, Poppies, etc., are located. Fertilize your Phlox plants generously and give them an abundance of water through the hot summer days.

**Quantity Rate**—5 or more of a single variety will be supplied at 5 cts. less per plant, viz., plants priced at 30 cts. each are 5 for \$1.25.



Hardy Phlox make a colorful border.

## RED PHLOX

- B. Comte.** Bright purplish-crimson with satiny sheen. Medium height. One of last to flower. 30 cts.; 2 yr., 50 cts.
- Beacon.** A bright cherry red. Large flower heads carried on tall stems. 35 cts.; 2 yr., 50 cts.
- Coquelicot.** A bright orange-scarlet of outstanding color. 30 cts.; 2 yr., 50 cts.
- Dr. Konigshofer.** Brilliant orange-scarlet, with dark blood red eye. Medium height, midseason. 35 cts.; 2 yr., 50 cts.
- Fireglow.** A brilliant orange-scarlet, sometimes almost vermilion. Flowers freely and is outstanding in its bright color. 35 cts.; 2 yr., 50 cts.
- Gen. Van Heutz.** Brilliant salmon red, with light center changing later to deep red eye. 30 cts.; 2 yr., 50 cts.
- Mme. Bezanson.** Rich crimson, medium height. 35 cts.; 2 yr., 60 cts.
- R. P. Struthers.** Rosy carmine with claret red eye. Very bright; tall. 30 cts.; 2 yr., 50 cts.

## WHITE PHLOX

- Frau Anton Buchner.** Undoubtedly the finest white Phlox which has as yet been raised. Large flowers of perfect form. 35 cts.; 2 yr., 50 cts.
- F. G. Von Lassburg.** Purest white; individual flowers very large. Tall, midseason. 30 cts.; 2 yr., 50 cts.
- Miss Lingard.** The most popular white. Immense heads of white flowers in late June and again in September. 30 cts.; 2 yr., 50 cts.
- Mrs. Jenkins.** Immense trusses of pure white flowers. Early. 30 cts.; 2 yr., 50 cts.
- Mia Ruys.** The finest of the dwarf white Phlox. Snow white flowers of large size. Height, 8 to 9 inches. 35 cts.; 2 yr., 50 cts.

### SPECIAL HOME YARD PHLOX COLLECTION

10 field-grown roots, 2 each of 5 standard varieties, selected for variation in colors.

**Special Combination Price (10 plants)..... \$2.75**

## PINK PHLOX

- Elizabeth Campbell.** Very large heads, with flowers of quite a new color—light salmon changing to pink in the center. 40 cts.; 2 yr., 60 cts.
- Mme. Paul Dutrie.** Opens a soft lilac-rose which shades to a delicate pink. 30 cts.; 2 yr., 50 cts.
- Pantheon.** Deep salmon rose; light center. Very large flower. Tall. 30 cts.; 2 yr., 50 cts.
- Rheinlander.** A most beautiful salmon pink with deeper center. Immense size. 30 cts.; 2 yr., 50 cts.
- Rijnstroom.** A lovely rose pink, much like Paul Neyron rose. Very large flower heads. 30 cts.; 2 yr., 50 cts.
- Thor.** A rich salmon pink with crimson eye. 35 cts.; 2 yr., 50 cts.
- W. C. Egan.** Soft shade of lilac with dark pink eye. General effect is a soft rose color. 30 cts.; 2 yr., 50 cts.

## A NEW EARLY PINK

- Miss Verboom.** Blooms in June with Miss Lingard. Long heads of rose pink with bright glossy green foliage that is free from rust. 40 cts.

## WHITE WITH PINK EYE

- Bridesmaid.** Tall, with flowers of pure white, with large crimson carmine eye. 30 cts.; 2 yr., 50 cts.

## LAVENDER AND PURPLE PHLOX

- Eugene Danzanviller.** Soft lavender shading lighter to center. 35 cts.; 2 yr., 50 cts.
- Champs Elysees.** Large trusses of dark crimson-purple, medium height. 30 cts.; 2 yr., 50 cts.
- Mrs. Chas. Dorr.** A beautiful shade of lavender. Very large conical heads. 30 cts.; 2 yr., 50 cts.

## DWARF PHLOX FOR BORDERS

- Phlox Subulata.** An early spring-flowering type which during the flowering season is a mass of bloom. An excellent plant for the rockery and border, and invaluable for carpeting the ground or covering graves.

**Pink or White.** 25 cts.; 2 yr., 40 cts.

- Divaricata.** Large, fragrant, lavender flowers on stems 9 inches high in April and May. An excellent hardy Phlox. 30 cts.; 2 yr., 50 cts.

# COLORFUL IRIS



Hardy Iris. Colorful in the garden—excellent for cutting

IRIS is brilliant in the garden and splendid for cut flowers.  
**How to Plant**—Place the roots just deep enough to be covered with soil and avoid any fresh manures as a fertilizer. Iris prefers a sunny location.

### QUANTITY RATE

5 or more of a single variety will be supplied at 5 cents less per plant, viz.: plants priced at 35 cents each are \$1.50 for 5.

NOTE: In the description "S" or "Standards" refers to the three upright petals. The letter "F" or "Falls" refers to the three drooping or lower petals.

	Each
<b>Ann Page</b> (Lavender). Lovely pale lavender blue. Large quite fragrant flowers on stout stems.....	\$0.75
<b>Ambassadeur</b> (Smoky Bronze). S., red-violet; F., velvety purple maroon. Outstanding variety, rich in color and beauty.....	.35
<b>Asia</b> (Lavender and Gold). Unusually large flower with silvery lavender standards and violet falls.....	.75
<b>Aurea</b> (Yellow). Excellent garden variety of yellow color.....	.25
<b>Caprice</b> (Red Tones). S., reddish purple; F., deeper claret. Grape fragrance.....	.25
<b>Dream</b> (Pink). Lovely rose pink with orange beard. A tall-growing, graceful variety.....	.35
<b>Fairy</b> (Blue White). Soft white with blue glow in depth of flowers. A favorite white.....	.30
<b>Gold Imperial</b> (New) (Yellow). Particularly clear colored yellow with brilliant orange beard.....	.75
<b>Iris King</b> (Yellow and Red). S., buff yellow; F., maroon with gold border.....	.25
<b>Juniata</b> (Mauve Violet). Tall, clear blue violet.....	.30
<b>Kochii</b> (Claret Purple). Medium height good purple.....	.25

### RED and PINK IRIS

These will add new color to your older Iris plantings. 6 sturdy roots of 6 different pink and red tinted Iris.

**Special Collection Price** ..... \$1.60  
 (Postage Prepaid)

	Each
<b>Lent. A. Williamson</b> (Lavender and Purple). An outstanding Iris with large flowers. S., soft violet; F., royal purple.....	.30
<b>Lohengrin</b> . Effect, a silvery pink mauve.....	.25
<b>Lord of June</b> . An immense flower of clear lavender blue. Very popular.	.40
<b>Loreley</b> (Yellow and Violet). S., light yellow; F., purple, bordered yellow.....	.25
<b>Majestic</b> (Purple). S., light lavender with bronze at base; F., velvety raisin purple. An enormous flower.....	1.00
<b>Medrano</b> . Reddish maroon in effect.....	.40
<b>Monsignor</b> (Deep Blue Effect). S., bluish violet; F., purple with white veinings.....	.25
<b>Morning Splendor</b> (Red Purple). S., petunia violet; F., raisin purple. Yellow beard. Judged to be the finest American Iris. Luxuriant in growth.....	.75
<b>Mother of Pearl</b> . A light, soft lavender with pearly sheen. Very aptly named.....	.30
<b>Pallida Dalmatica</b> . Clear lavender-blue flowers on tall strong stems.....	.25
<b>Parc de Neuilly</b> (Violet Effect). S., arched and ruffled; F., drooping. A reliable purple.....	.25
<b>Perfection</b> (Blue Purple Effect). S., light blue; F., rich dark velvety violet.....	.25
<b>Prairie Gold</b> (New). A deep rich yellow. Large flowers and sturdy growth. The finest dark yellow.....	1.00
<b>Princess Beatrice</b> (Silvery Lavender). S., cupped light lavender; F., flaring. Bright, clear color.....	.35
<b>Prospero</b> . S., deep lavender; F., rich violet-purple. Large flowers.....	.40
<b>Quaker Lady</b> (Smoky-lavender). S., aegeratum violet; F., violet overlaid olive buff. An unusual pastel shade.....	.25
<b>Rhein Nixie</b> (Purple and White). S., white; F., pansy violet edged white.....	.25
<b>Salonique</b> . Creamy white standards with rich, red-purple falls. Large flower. Rapid grower.....	.40
<b>Seminole</b> (Wine Red Effect). S., frilled petals of reddish tone; F., a deeper raisin purple. Brilliant in color.....	.35
<b>Sherwin Wright</b> . Intense yellow effect.....	.25
<b>Souvenir de Mme. Gaudichau</b> (Rich Purple). A large and richly-colored dark, velvety purple flower.....	.50
<b>Taj Mahal</b> . A white Iris of pure color and tall growth.....	.75
<b>Tenebrae</b> (Rich Purple Effect). S., violet purple tinged deeper; F., velvety blackish purple.....	.75
<b>White Knight</b> . S., white of domed shape; F., rounded white petals.....	.35

### DWARF IRIS (Pumila)

Well Suited to Rock Gardens

These early-flowering, dwarf Iris are particularly suited for rock gardens and for edging beds and borders.

<b>Yellow, Blue or Purple</b> .....	.25
-------------------------------------	-----

### SIBERIAN IRIS

Very attractive for garden display and particularly for cutting. Flowers on graceful stems; foliage narrow and grass-like.

<b>Siberian Blue</b> . A good violet blue.....	.25
<b>Snow Queen</b> . A delicate ivory white.....	.25

### JAPANESE IRIS

A large flowering Iris that blooms in July. Not as hardy as the Germanica type. We offer choice plants in WHITE, LIGHT BLUE, VIOLET BLUE, REDDISH CRIMSON.

Strong roots, 40 cents each.

### HOME YARD IRIS COLLECTION

A special collection that will make a colorful Iris planting. 12 Choice Roots—2 each of 6 different kinds. Value \$3.00.

**Special Group Price** ..... \$2.10



# EXQUISITE PEONIES

## "The Flower of the Great Northwest"

The Peony has the largest and most gorgeous flowers of all perennials. Here, under our northern conditions, it grows so easily and blooms so profusely that everyone can enjoy these beautiful plants in his home yard.

**PLANTING**—The roots should be set with the "eyes" 2 to 3 inches below the surface and the soil tightly packed about them. Allow a spacing of about 3 feet between the plants.

The soil should be of good substance and the location free of tree roots and dense shade. Bone meal is preferred as a fertilizer.

**QUALITY**—The "roots" are substantial plants with 3 to 5 strong eyes.

### WHITE PEONIES

	Each
<b>Avalanche.</b> A large globular cone-shaped flower of ivory-white. Very fragrant. Mid-season.....	\$1.00
<b>Couronne d'Or.</b> Snow-white with circle of golden stamens. Large blooms. Late. Excellent cut-flower.....	.75
<b>Festiva Maxima.</b> Early and very large. Center flaked crimson. Splendid in every way. Very popular.....	.75
<b>Mme. Jules Dessert.</b> Creamy white lighted with buff and salmon shades. Golden stamens add further beauty.....	2.00
<b>Mons. Dupont.</b> A large-flowering, tall-growing white with crimson blotch on center petals.....	.75
<b>Primevere.</b> Best yellow-tinted Peony. Creamy petals inclose a center of sulphur-yellow.....	1.50

### PINK PEONIES

	Each
<b>Claire Dubois.</b> A uniform shade of clear violet rose, tipped silvery white. Large flower. Late.....	\$1.00
<b>Edulis Superba.</b> A large rose type flower of deep pink. Blooms early.....	.75
<b>Lady Alexandra Duff.</b> Soft delicate pink. Sweetly fragrant. Large flower with broad petals.....	2.00
<b>Livingstone.</b> Large full flowers of soft rose-pink with silvery tipped petals. Blooms late.....	1.00
<b>Martha Bulloch.</b> Shell-pink shading to deep rose-pink in center. Enormous flowers. Fragrant. Mid-season.....	5.00
<b>Mons. Jules Elie.</b> Lilac-rose with silver sheen. Very large; fragrant. Looks like a giant pink Chrysanthemum.....	1.00
<b>Reine Hortense.</b> Delicate pink with center flecked crimson. Perfect flowers on tall, stiff stems. Mid-season.....	1.50
<b>Sarah Bernhardt.</b> Bright apple blossom pink with petals silver-tipped. Agreeable fragrance. Very popular.....	1.00
<b>Solange.</b> Creamy-white with deep orange-salmon tints. Large, full, compact unusual and exquisite flower.....	3.00
<b>Souv. De Louis Bigot.</b> An extra fine and large flower of rich salmon-pink. A striking color.....	3.00
<b>Therese.</b> Unexcelled light pink. Large, exquisitely lovely flowers of true rose type. Delightful fragrance.....	2.50
<b>Walter Faxon.</b> A brilliant salmon-pink. Mid-season. A vivid and outstanding color.....	3.00



Peony plants give plenty o' flowers for cutting.


### RED PEONIES

	Each
<b>Charles McKellip.</b> A deep, bright red of semi-rose form. Mid-season. Broad silky petals.....	\$1.00
<b>Felix Crousse.</b> Bright rose-red. Large globular flower. Fragrant. A profuse bloomer.....	.75
<b>Grover Cleveland.</b> Dark crimson. Large flowers of rose type. Vigorous grower. Late.....	1.25
<b>Karl Rosefield.</b> Rich, glowing crimson. Immense, solid flower. Superb variety with abundance of blooms.....	.75
<b>Longfellow.</b> Crimson with cherry tones. One of the best bright reds. Color never fades.....	2.00
<b>Mary Brand.</b> Deep red. Mid-season. Large flowers in profusion. A Minnesota origination.....	1.50
<b>Mons. Martin Cahuzac.</b> Darkest maroon-red peony. A large, full and unusual flower.....	2.25
<b>Officinalis Rubra.</b> The earliest red. An old favorite. Always blooms.....	1.00
<b>Tenuifolia Fl. Pl.</b> Very early double crimson flowers. With finely-cut, fern-like foliage. Most unusual plant..	2.50

### JAP AND SINGLE PEONIES

Popular taste is rapidly awakening to the beauty and charm of these striking flowers. Within the outer row of large guard petals there are smaller petals or brilliant yellow stamens. The flowers are splendid for garden display or for cutting.

<b>Albiflora (The Bride).</b> Large flower with silky white petals and long yellow stamens. Fragrant.....	\$1.00
<b>Exquisite (Jap).</b> A beautiful white from Japan with yellow center.....	3.00
<b>L'Etincelante.</b> Large petals of clear carmine with silvery margins. Decidedly cup-shaped.....	2.00
<b>Marie Jacquin.</b> Delicate flesh-white, commonly called "the water lily".....	1.00
<b>Mikado (Jap).</b> Dark crimson. Like a giant red poppy. Gold center. Blooms freely.....	1.50
<b>Pride of Langport.</b> Soft peach-pink with golden stamens. Exquisite. The finest light single.....	3.00
<b>Tenuifolia.</b> An early single flowering red with cut-leaf foliage.....	1.50



**A SPECIAL COLLECTION**

**Choice Double Flowering Peonies**

Six good roots, all different. Each assortment will have early and late blooming varieties. 2 white, 2 pink and 2 red colors. Value. . . . \$4.50

**SPECIAL COMBINATION PRICE**

**(6 Roots) . . . \$3.25**

# NOW YOU CAN HAVE BEAUTIFUL ROSES

## "The Queen of Flowers"

YOU can grow very beautiful roses here in these northern states, although this was once thought to be impractical. If you have not had roses to enjoy and to cut right in your own yard, a real pleasure awaits you.

In the following lists will be found many choice varieties of both the old favorites and the newer sorts. Actual tests have shown all these to have real merit.

### HERE IS THE REASON WHY H. & O. POTTED ROSES ARE BETTER

These sturdy, well-developed plants have had two years' growth in the open field. They were carefully planted in six-inch pots early this spring and started into growth so as to reach you in a healthy growing condition. There are no chances for you to take with these growing plants for they are ready to set right out into your garden and will produce results.

You are sure to succeed with these potted roses.



Have Roses in your yard

## HYBRID PERPETUAL ROSES

### Make June "THE MONTH OF ROSES"

These are the hardiest of the large-flowering Garden Roses. They grow into sturdy bushes with their heaviest blooming season during June and July.

PRICE—STRONG 2-YR. PLANTS—STARTED and GROWING IN POTS—\$1.00 each

#### RED H. P. ROSES

- Anna de Diesbach.** A very double brilliant crimson. A fine rose for the north.
- Capt. Hayward.** A fragrant, crimson-carmine flower of large perfect form. Blooms almost constantly.
- General Jacqueminot.** A brilliant crimson. The standard of perfection in color and fragrance.
- Prince Camille de Rohan.** A dark velvety crimson, the darkest of all the roses. Sweetly fragrant.
- Ulrich Brunner.** A brilliant cherry-crimson flower of cupped form. Very fragrant.

#### PINK H. P. ROSES

- George Arends.** A large, delicately-scented, rose-pink. A most beautiful pure pink rose.
- Magna Charta.** A brilliant pink shaded with carmine. Noted for its fragrance and hardiness.
- Paul Neyron.** A fully double, large flower of beautiful, deep rose. A constant bloomer.

#### WHITE H. P. ROSES

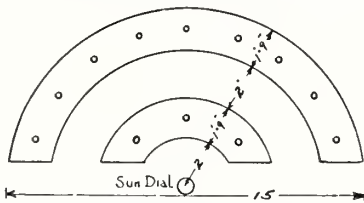
- Frau Karl Druschki.** A large silvery white that is considered the best white of any of the roses.

#### A YELLOW-TINTED H. P. ROSE

**Mme. Albert Barbier.** A most unusual and new color in a June-flowering H. P. Rose. The full flowers are of a fawn-yellow with white and pink shadings. The growth is vigorous and the foliage a rich green. Price (potted plants)..... \$1.25

### A COMPLETE HOME-YARD ROSE GARDEN

Plant this Special "Home-yard Collection" and enjoy roses all summer. This group contains a careful selection of the more popular varieties in an assortment of pink, red, white and yellow colors. Our selection.



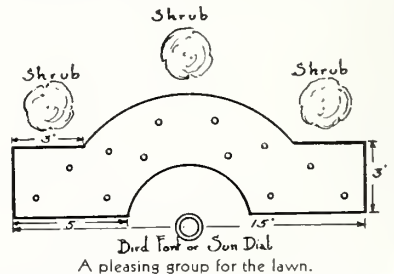
A semi-circular rose bed.

**SPECIAL—"HOME-YARD ROSE GARDEN"—12 choice Roses. In assorted colors. Potted, growing stock. Special Price \$10.80**

#### 12 H. & O. POTTED ROSES

All growing and living plants ready to set right into the garden.

Use these plans and have a beautiful rose garden this summer.



NEW PRICES—DEPENDABLE SERVICE—NO CHANGE IN HIGH QUALITY



# "HYBRID TEAS"

## The Monthly Everblooming Roses

A class of roses originated by crossing the tender Tea Rose with the Hybrid-Perpetuals. They are not as hardy nor as heavy-growing as the Hybrid-Perpetuals, but have a longer blooming season. Their rich coloring, fragrance and extended blooming season make them very popular.

**PRICES—Strong 2-year old plants started and growing in pots, \$1.00 each (except as noted). They are sure to bloom.**



### PINK AND ROSE SHADES

- Columbia.** A lively bright pink. Sweetly scented. Exceptionally free blooming.
- Dame Edith Helen.** A large rose of brilliant but soft pink color. Price, \$1.25 each.
- Los Angeles.** Luminous flame pink, touched with coral, shaded with gold at the base of the petals. Splendid grower and very fragrant. Price, \$1.25 each.
- Ophelia.** Salmon-flesh color, tinted with rose. One of the best.
- Radiance.** Brilliant pink. Strong grower. Profusion and continuity of bloom. Very fragrant.
- Rose Marie.** A clean rose pink. Large flowers borne freely.
- Willowmere.** Rich salmon pink, shaded yellow. Persistent in bloom.

### SCARLET, CARMINE AND CRIMSON SHADES

- Betty Uprichard.** A new and choice variety. Brilliant orange-carmine with salmon reflex. Spicy fragrance. . . . \$1.25 Each
- E. G. Hill.** Full, double flowers of dazzling scarlet which shades to a deeper red as the blossoms develop. . \$1.25 Each
- Etoile de Hollande.** (New.) Large flowers of a brilliant crimson. Very fragrant. Called the "best red rose grown today." Price. . . . \$1.50 Each
- Gross an Teplitz.** Double blooms of brilliant crimson. The best of all for garden decoration.
- Margaret McGredy.** (New.) Long lasting flowers of rich Oriental red shading to carmine. Spicy fragrance. . \$1.25 Each
- Red Radiance.** Large, globular flowers of deep red. Erect sturdy stems; blooms freely until frost.

### WHITE HYBRID TEA ROSES

- Kaiserin Augusta Victoria.** Creamy white; sweetly fragrant; very full and large flowers. Strong growth.
- Killarney, White.** A continuous blooming white variety. Very attractive in both bud and flower.



### POLYANTHA (BABY RAMBLER) ROSES

Heavy clusters of roses that bloom continuously through the summer. The bushes are compact in growth and moderate in size and so particularly suited to borders and home yard plantings.

**PRICES—Strong 2-year growing potted plants \$1.00 each. They are sure to bloom.**

- Red Baby Rambler.** (Miss Edith Cavell.) Large, open clusters of crimson scarlet.
- Pink Baby Rambler.** (Ellen Poulsen.) Clusters of a deep brilliant pink. Quite fragrant. Flowers abundantly.

### YELLOW, SALMON AND COPPER SHADES

- Golden Emblem.** A rich deep golden yellow. . . . \$1.25 Each
- Mme. Edouard Herriot.** Coral red, shaded yellow and scarlet. A brilliant color. Considered the best of its class.
- Miss Lolita Armour.** Deep coral red with gold and copper suffusion.
- Mrs. Aaron Ward.** Distinct Indian yellow, shading light toward edges. Always in bloom. Healthy holly-like foliage.
- President Herbert Hoover.** A gorgeous new rose. The flower holds a blending of many rich colors changing from a deep reddish apricot in the bud to shadings of gold, orange, terracotta and copper. Spicy fragrance. Price. . . . \$1.50 Each
- Soleil d'Or.** Gold and orange yellow of unrivalled color.
- Souvenir de Claudius Pernet.** A pure sunflower yellow. Strong growth and splendid foliage. Price. . . . \$1.25 Each
- Talisman.** (New.) A remarkable shading of gold, apricot, yellow and deep pink. Very free flowering on a strong vigorous bush. Price. . . . \$1.50 Each
- Wm. Kordes.** (New.) A warm salmon with red veinings and a copper suffusion. Very fragrant. Price. . . . \$1.25 Each

### Special Collection of Everblooming Roses

4 Choice Hybrid-Tea Rose plants that will give many fragrant flowers throughout the summer. They are wonderful for cutting.



### 4 Monthly Roses

All different, in shades of pink, white, red and yellow. Our selection. 4 Potted, growing plants. **\$3.85**

**SPECIAL PRICE** . . . . .

## CLIMBING ROSES

### For House Wall and Garden Trellis

Plant Climbing Roses near the porch or on the house walls to have their fragrance and color close at hand. Use them in the garden also to decorate lattices, arbors or pergolas and as festoons over walls.

**PRICES—Strong 2-year plants growing in pots, \$1.00 each**  
(except as noted)

**Climbing American Beauty.** Double, beautifully shaped flowers of rich carmine.

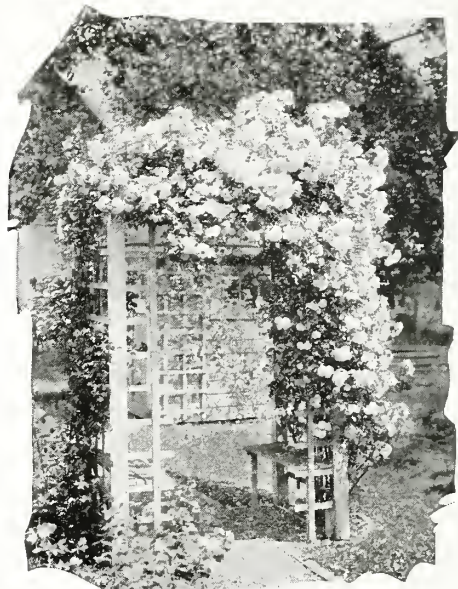
**Dorothy Perkins.** Drooping sprays of clear shell pink. Dainty foliage.

**Dr. W. Van Fleet.** Large flowers of light pink, shading deeper at center. Very fragrant. Splendid to cut.

**Excelsa.** Double crimson flowers in clusters. The improved Crimson Rambler.

**Mary Wallace.** (New.) Perfect double flowers of vivid pink shaded salmon at the base. Splendid foliage and moderately fragrant.

**Paul's Scarlet Climber.** Full double flowers of bright scarlet. Very free blooming.



Dorothy Perkins Climbing Rose.

## HARDY RUGOSA ROSES

### Dependable and hardy all through the North

Their extreme hardiness, vigorous growth and dark ornamental foliage makes the Rugosas highly valued for northern plantings. They do not need winter protection.

Plant the Rugosas in the shrub borders, in foundation groups or wherever hardy shrubs are wanted. Their color and fragrance will delight you.



The double, fragrant Hansa rugosa.

**PRICES (except where noted) \$1.00 each—**  
**strong 2-year dormant bushes**

**Belle Poitvine.** Clusters of large, double, magenta pink flowers that are produced continuously on vigorous plants. Price 75 cts.

**Blanc de Coubert.** Fragrant, double white, Crinkled foliage. A tall grower that blooms throughout summer and fall.

**F. J. Grootendorst.** A combination of the Baby Rambler with the hardy Rugosa Rose. Large clusters of double, bright red flowers that are produced from spring until frost.

**Hansa.** A large, double deep red rose. Dependable and always blooms. Very hardy. Fragrance is very pleasing. Price 75 cents.

**Rugosa rubra.** The original type from Japan. Handsome crinkled foliage on strong plants. Absolutely hardy. Flowers are large five-petaled, fragrant with golden center. Color runs from dark pink to carmine. Ornamental red fruit in the fall. Price, 2-yr., 50 cents each; 3-yr. plants, 75 cents.

**Sarah Van Fleet.** (New.) Soft rose pink and fragrant flowers on a vigorous and sturdy bush. Continuous in flowering.

## HARDY BUSH ROSES

A hardy class of roses used as flowering shrubs in borders, on banks and in naturalistic plantings.

**Blanda.** Soft pink flowers followed by red fruit. Thornless canes 3 to 4 ft. high. 60 cts. each.

**Rubrifolia.** Intensely pink flowers. Reddish purple leaves all summer. Its bright foliage makes a colorful contrast to other shrubs and plants. 65 cts. each.

**Harrison's Yellow.** Clear golden yellow semi-double flowers. Perfect foliage. \$1.00 each.

**Crested Moss.** A much loved, old-fashioned Rose with delicate mossy covering on the buds. Pink flowers. Very fragrant. \$1.00 each.

**Sweet Briar. Rubiginosa.** The well-known Sweet Briar with aromatic foliage and sweetly fragrant pink flowers. \$1.00 each.

### SUGGESTIONS FOR ROSE CULTURE

**TIME TO PLANT—**Spring planting is the safest in our section. Our potted plants can be planted as soon as danger of heavy frost is past, about May 15, and from then on throughout the entire summer. Dormant stock should be planted in early spring.

**LOCATION—**Roses require a good warm location where they will get plenty of sunlight; near large trees they suffer from shade and from the roots and never do well. They will grow in any rich soil.

NEW PRICES—DEPENDABLE SERVICE—NO CHANGE IN HIGH QUALITY



## DELICIOUS FRUITS

For the Home Garden

Fruits Are Easy to Grow. Know the Delight  
of Eating Fruit Fresh from Your  
Own Garden



### HARDY APPLES

Price—Strong Trees, 5 to 6 feet, \$0.75 each.

- Duchess.** Yellow with red stripes.  
**Haralson.** Deep red winter apple.  
**Northwestern Greening.** Large fruit of pale green.  
**Wealthy.** Big red fruits in abundance.  
**Yellow Transparent.** An early table fruit.

### HARDY CRAB APPLES

Price—Strong Trees, 5 to 6 feet, \$0.75 each.

- Early Strawberry.** An early, red-striped fruit.  
**Whitney.** An early, large, red fruit.  
**Dolga.** Good flavored, highly ornamental bright red fruits.  
 Makes excellent jelly. \$1.50.

### HARDY PLUMS

The best from the Minnesota State Fruit-breeding farm.

Price—Strong Trees, 5 feet and up, \$0.75 each.

- LaCrescent.** Our best quality yellow plum.  
**Monitor.** Large, dark red clingstone. Late.  
**Tonka.** Semi-freestone; red fruit. Midseason.  
**Underwood.** Early ripening freestone. Red.

### CHERRY-PLUMS

Price—Strong Trees, 4 to 5 feet, \$0.75 each.

- Nicollet.** Very close to a true sour cherry.  
**Zumbra.** Large dark red fruit with small pit.

### CHERRIES

Price—Strong Trees, 4 to 5 feet, \$1.00 each.

- Wragg.** Heavy bearer of dark red, meaty fruit.

### RHUBARB OR PIE PLANT

Price—Strong Roots, 25 cts. each; \$2.00 per dozen

### ASPARAGUS

**Washington Rust Proof.** An excellent green asparagus.

Price—Strong Roots, 50 cts. dozen; \$3.50 per 100.

### GRAPES

Price—Strong Plants, 40 cts.; \$4.00 per dozen.

- Beta.** Very hardy black grape, sprightly flavor.  
**Brighton.** Fine flavored red grape ripening early.  
**Concord.** The large, popular, black grape.  
**Pocklington.** An early, sweet white grape.

### RASPBERRIES

Price—\$1.00 for ten; \$8.50 per 100.

- Latham.** Large red berries in abundance.  
**Older.** A juicy and sweet black raspberry.  
**St. Regis.** A continuous-fruiting red raspberry.  
**Chief.** The new Minnesota introduction. Early and heavy crops of firm, large, red berries. Very hardy. 10 for \$1.50; \$12.00 per 100.

### CURRANTS

Price—Strong 2-year Plants, 30 cts.; \$2.50 per 10.

- Cherry.** Large bright red, rather acid berries.  
**Perfection.** Heavy clusters of very large, red fruit.  
**White Grape.** A white, sweet currant of good size.

### GOOSEBERRIES

Price—Strong 2-year Plants, 30 cts.; \$2.50 per 10.

- Downing.** A large, oval, pale green berry.  
**Carrie.** Bright red fruit of good size.

### STRAWBERRIES

June-Bearing Variety.

- Senator Dunlap.** Large crops of big, deep red berries.  
 Price—Strong Plants, 40 cts. dozen; \$2.50 per 100.  
 Everbearing Variety  
**Progressive.** Fruits from late June until frost.  
 Price—Strong Plants, 50 cts. dozen; \$3.50 per 100.  
**Mastodon (New)** Largest berries of any variety.  
 Price—Strong Plants, 60 cts. dozen; \$4.50 per 100



Gooseberries

Grapes

Currants

Raspberries

Strawberries

MINNEAPOLIS PHONE DREXEL 7245—SAINT PAUL PHONE CEDAR 6083

## "H. & O."—HIGH-TEST GRASS SEED

Good lawns are the logical result of sowing **GOOD GRASS SEED** on fertile, prepared soil and bestowing a reasonable amount of after-care.

**DEPENDABLE SEED.** There is no timothy seed or any cheap annual grass in our seed mixtures, yet our high quality seed costs only a few cents more per pound than unreliable, untested mixtures. Use the best seed obtainable and get the best results from your work and planting.

Sow one pound to every 200 square feet of area. Sow evenly, rake lightly and water thoroughly.

### HOW TO MAKE A LAWN

Our booklet—"The Principles of Lawn Making," will be mailed without charge to our customers who request it.

(Postage. Add 6 cts. per pound to prices listed on all grass seed wanted by Parcel Post.)

### VELVET-SOD SEED

A very high grade mixture of those hardy grasses that will combine to make a beautiful and lasting lawn. Especially prepared to withstand our Northern climatic conditions. Its weight, over 20 pounds per bushel, clearly indicates its purity and freeness from chaff and adulteration. We use this mixture on all our landscape contracts and recommend it highly.

Lb., 50 cts.; 5 lbs., \$2.25; 10 lbs., \$4.00; 20 lbs., \$7.60

### SHADY-SIDE SEED

By using this seed it is possible to get a growth of lawn under trees and in shady places where the ordinary grasses will not grow. Has always proven satisfactory for such positions.

Lb., 60 cts.; 5 lbs., \$2.75; 10 lbs., \$5.00, 20 lbs., \$9.00

### TERRACE SEED

A special mixture of spreading, deep rooting grasses that will thrive and hold the soil on terraces and slopes. It is very resistant to drought and poor soils and gives results where the ordinary grasses fail.

Lb., 55 cts.; 5 lbs., \$2.50; 10 lbs., \$4.50; 20 lbs., \$8.60

### WHITE CLOVER

The best Clover for lawn uses because of its small leaves and dense, close growth. It is often sown on new lawns for its protection to the tender grasses the first year. Admired by many for its fragrant dainty flowers.

½ lb., 40 cts.; 1 lb., 75 cts.; 5 lbs., \$3.50; 10 lbs., \$6.50

### RED TOP GRASS

A fine-leaved grass that is becoming popular when mixed with Blue Grass as a lawn seed. Develops very quickly.

Lb., 40 cts.; 5 lbs., \$1.75; 10 lbs., \$3.30; 20 lbs., \$6.00

### KENTUCKY BLUE GRASS

A beautiful grass that should be the main constituent of every good lawn here in the North. Sometimes used alone, but becomes better established if sown in mixtures. Our seed is choice grade carefully re-cleaned of the high average weight of 21 lbs. per bushel.

Lb., 45 cts.; 5 lbs., \$2.00; 10 lbs., \$3.70; 20 lbs., \$7.00

### SELECTED PEAT MOSS

#### A Humus to Improve Soils.

Makes heavy soils lighter and adds water-holding capacity to sandy soils.

A wonderful top-dressing for lawns and a splendid mulch to work around trees, evergreens, roses and shrubs.

**PRICE—per bag (about 3 bu.), 75 cts.**

**3 bags, \$2.00**

(1 bag covers 50 sq. ft. to depth of 1 inch)



Sow "Velvet Sod"—the best grass seed.

## FERTILIZERS

### For Lawn and Garden

Keep your lawn fresh and green by giving it plant food each season. Healthy lawns have very few weeds.

**THOROUGHLY WATER THE LAWN IMMEDIATELY AFTER SPREADING THE FERTILIZER.**

**BONE MEAL.** A finely ground meal of animal bone with a high content of valuable phosphoric acid plant food. A popular, safe and excellent fertilizer for roses, peonies and all flowering plants.

10 lbs., 75 cts.; 25 lbs., \$1.25; 50 lbs., \$2.00; 100 lbs., \$3.25

**SHEEP MANURE (Pulverized).** A quick acting plant food for use about the lawn, or garden. For lawns use 40 pounds per 1000 sq. ft. and wet down.

10 lbs., 75 cts.; 25 lbs., \$1.25; 50 lbs., \$1.75; 100 lbs., \$2.75

**SULPHATE OF AMMONIA.** A quick-acting plant growth stimulant containing about 25% ammonia. Use sparingly about garden plants to stimulate rapid development. For lawns apply in a solution at rate of 5 lbs. per 1000 sq. ft. Water down thoroughly.

10 lbs., \$1.00; 25 lbs., \$1.75; 50 lbs., \$3.00; 100 lbs., \$5.00

**VIGORO.** A prepared plant food for lawns, vegetables and flower gardens. Use 40 lbs. to 1000 sq. ft. and water down. 25 lbs., \$1.75; 50 lbs., \$3.00; 100 lbs., \$5.00



**Loma**  
beautifies lawns and gardens

**ALL PURPOSE FERTILIZER.**

**THE PERFECT PLANT FOOD**  
Beautifies Lawns and Gardens

**Loma** is a concentrated plant food. It gives all vegetation a maximum of balanced nourishment that creates a luxuriant growth. **Loma** is clean to handle, has no odor and is entirely free of weed seeds.

**For the Lawn.** Apply 40 lbs. to each 1000 sq. ft. of area. Scatter evenly and wet down.

**For the Garden.** Apply along the rows or around plants according to directions on package.

**Prices of LOMA**

10 lbs., 85 cts.

25 lbs., \$1.75

50 lbs., \$3.00

100 lbs., \$5.00

NEW PRICES—DEPENDABLE SERVICE—NO CHANGE IN HIGH QUALITY



# HOW TO ORDER

## Read Our Liberal Terms and Policies

**When to Order.** Make up your order and send it in as soon as this catalogue reaches you. Early orders enable us to reserve for you the plants wanted and to give you the first selections. *Your order will be shipped just when the weather is most favorable* and at just the right time for planting.

**How to Order.** Send in your orders by whatever means you prefer and we assure you of prompt, careful attention. For your convenience a special addressed order blank is placed in this catalogue, ready for your use. This can be mailed without an envelope and postage is prepaid by us.

**Give Shipping Instructions.** Tell us how you want shipments made, whether by Freight, Parcel Post (suitable only for small packages) or Express, and indicate any special routing. We recommend Express as most advantageous and desirable excepting on heavy, bulky shipments. When not instructed we will use our best judgment.

**No Packing Charge.** Catalogue prices are all based on stock F.O.B. St. Paul and no charge is made for packing. Deliveries are made free of charge to any St. Paul or Minneapolis address.

**Terms.** Cash with order is expected and money should be sent by check, post office order or bank draft. If credit is to be arranged please advise us in ample time and furnish the usual business references. All accounts are due by the 10th of the month following date of purchase.

**Our Guarantee.** You are assured that you will receive only the best grade and quality of healthy, live plants and that the packing will be most carefully done. Should any plant prove untrue to variety ordered we will replace it without charge or refund the purchase price but in no case are we to be liable for more than the original amount paid. Please report any error or complaints immediately for prompt adjustment.

**Free Planting Instructions** are sent with the acknowledgment of every order. Consult us freely for any further information you may need. We want the opportunity to help you and no expense will be spared to make every order we send you give entire satisfaction.

## Your Correspondence Is Always Welcome

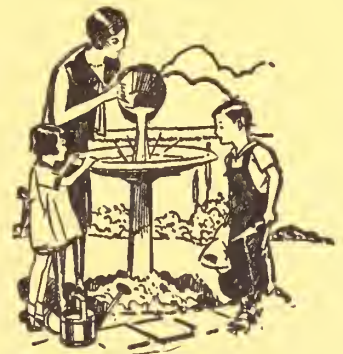
---

### BUY WITH CONFIDENCE

### ORDERS PLACED WITH US MEAN SATISFACTION TO YOU

#### BECAUSE—

- 1—You will have good results with our hardy acclimated plants grown here in the north—
- 2—The well-shaped development of our stock will delight you—
- 3—You buy direct and save agents' fees—
- 4—Our successful experience for thirty-seven years as nurserymen and landscape designers insures dependable and reliable service—
- 5—We help you with full planting directions and cultural care.



# THE PARK NURSERIES

HOLM & OLSON, Inc.

SAINT PAUL      MINNEAPOLIS  
ROCHESTER, MINN.

## H. & O. TREE, LAWN AND GARDEN CARE

A DEPENDABLE and RESPONSIBLE GARDENING SERVICE

Entrust the care of your valuable trees, lawn and landscape plantings to our skilled and experienced gardeners.

WE SPECIALIZE IN

TREE TRIMMING  
HEDGE TRIMMING  
LAWN MAKING  
ROCK GARDENS  
GENERAL SUMMER CARE OF LAWN AND GARDEN

TREE REPAIR WORK  
SHRUB PRUNING  
LAWN FERTILIZING  
GARDEN CONSTRUCTION

ESTIMATES GIVEN

Phone. Mpls. Drexel 7245

--

Saint Paul Cedar 6083

