

Historic, Archive Document

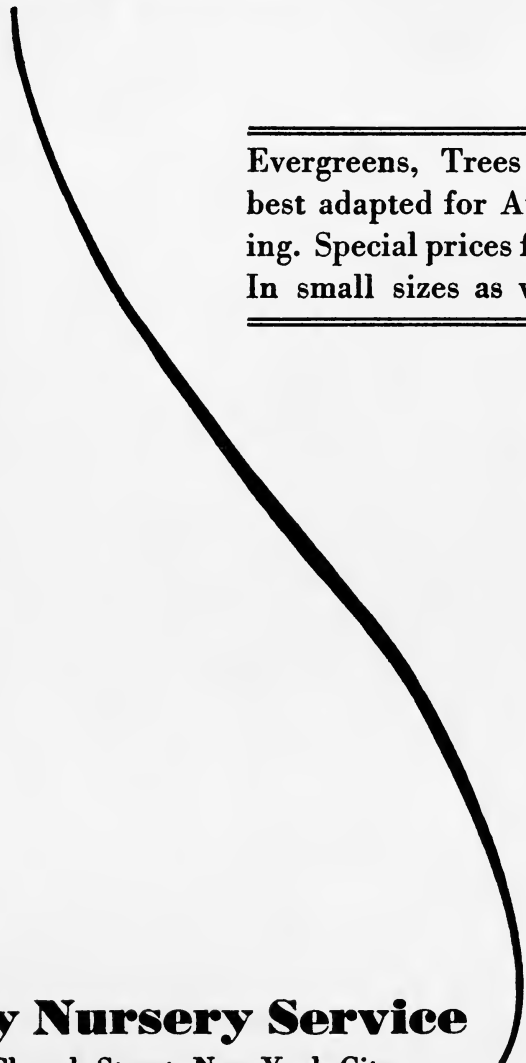
Do not assume content reflects current scientific knowledge, policies, or practices.

62.61

Autumn Specials

FROM OUR COMPLETE LISTS

LIBRARY
RECEIVED
★ SEP 21 1932 ★
U. S. Department of Agriculture.



Evergreens, Trees and Shrubs
best adapted for Autumn plant-
ing. Special prices for Fall 1932.
In small sizes as well as large.

Kelsey Nursery Service

Fifty Church Street, New York City

The Autumn Season for Evergreens extends during the whole of September and early October. Deciduous stock is shipped from mid-October until frost. Balled and Burlapped stock may safely be shipped at any time.

Kelsey Nursery Service

1. We furnish high quality stock. Kelsey Nursery stock is grown where it grows best; always of course, with regard to shipping convenience. Of more than seventy nurseries with over twenty thousand acres of stock we select the nearest nursery growing the material of the quality and grade you may want.
2. We furnish our stock at the lowest prices made possible by mass production. Prices of nursery stock vary greatly. One nursery grows stock on land worth, say, \$4,000 or \$5,000 per acre. The stock is no better than that grown at a nearby nursery where land is worth perhaps \$400 per acre. Nature has no partiality in this respect. We are, therefore, enabled to sell excellent stock at very low prices.
3. We are an entirely responsible source of supply. Established Fifty Years ago, in 1878, we still have among our customers many who have been patrons for forty years or more. In all our dealings we are always willing to make things right on any errors or just causes for complaint.
4. Our Guarantee—Stock to be in good condition when furnished. We will, however, replace any and all losses at half price.
5. Scarce and rare varieties: Why look through a dozen nursery catalogues for them? Send us your list and we will quote promptly. This Short Guide is necessarily confined to standard varieties, but with our facilities we can furnish almost any variety or size grown in the United States.
6. The policy of this Company is to make and keep good will by careful and prompt service.

PRICES—net, packing at cost. Five will be supplied at the 10 rate, 25 at the 100, and 250 at the 1000 rate.

Claims for errors or shortage to be made within ten days.

F. W. KELSEY NURSERY COMPANY

FIFTY CHURCH STREET

NEW YORK CITY

Telephones: Cortlandt 2660 and 2661

Trees for Street Planting

(Write us your needs and let us quote you)

LINDEN (Tilia)

T. vulgaris (European Linden)

| | | |
|----------------------|----------|-----------|
| | (100) | (1000) |
| 6 to 8 feet..... | \$150.00 | \$1300.00 |
| 8 to 10 feet..... | 200.00 | |
| 1½ to 1¾ inches..... | 270.00 | |

MAPLE (Acer)

A. Platanoides (Norway Maple)

Fine trees. Ready for street planting in the larger sizes.

| | | |
|----------------------|----------|-----------|
| | (100) | (1000) |
| 6 to 8 feet..... | \$120.00 | |
| 8 to 10 feet..... | 140.00 | \$1200.00 |
| 1¼ to 1½ inches..... | 170.00 | 1500.00 |
| 1½ to 1¾ inches..... | 220.00 | 1900.00 |
| 1¾ to 2 inches..... | 270.00 | 2400.00 |
| 2 to 2½ inches..... | 320.00 | 2900.00 |
| 2½ to 3 inches..... | 400.00 | |

A. Saccharum (Sugar or Rock Maple)

| | |
|----------------------|----------|
| 6 to 8 feet..... | \$100.00 |
| 8 to 10 feet..... | 190.00 |
| 1¼ to 1½ inches..... | 250.00 |
| 1½ to 1¾ inches..... | 310.00 |
| 1¾ to 2 inches..... | 375.00 |
| 2 to 2½ inches..... | 550.00 |

ELM (Ulmus)

U. Americana (American Elm)

| | | |
|-----------------------------|----------|-----------|
| | (100) | (1000) |
| 1 to 1¼ inches caliper..... | \$ 55.00 | |
| 1¼ to 1½ inches..... | 80.00 | \$ 700.00 |
| 1½ to 1¾ inches..... | 120.00 | 1000.00 |
| 1¾ to 2 inches..... | 150.00 | 1300.00 |
| 2 to 2½ inches..... | 200.00 | 1700.00 |
| 2½ to 3 inches..... | 300.00 | 2700.00 |

U. glabra (Scotch or Wych Elm)

| | |
|------------------------------|----------|
| 8 to 10 feet, 1 to 1¼ inches | \$140.00 |
| 1¼ to 1½ inches..... | 190.00 |
| 1½ to 1¾ inches..... | 250.00 |

U. Campestris (English Elm)

One of the best trees for street planting in America. Does well in City conditions. Highly recommended by the late Dr. Wilson.

| | |
|-------------------|----------|
| 6 to 8 feet..... | \$100.00 |
| 8 to 10 feet..... | 180.00 |

OAK (Quercus)

Q. palustris (Pin Oak)

| | |
|-------------------------------|----------|
| | (100) |
| 6 to 8 feet..... | \$250.00 |
| 8 to 10 feet, 1 to 1¼ in..... | 320.00 |

Q. rubra (Red Oak)

| | |
|----------------------|--------|
| 6 to 8 feet..... | 165.00 |
| 8 to 10 feet..... | 225.00 |
| 1¼ to 1½ inches..... | 275.00 |
| 1½ to 1¾ inches..... | 320.00 |
| 1¾ to 2 inches..... | 415.00 |

MAPLE WHIPS FOR LINING OUT

The following prices include delivery to any freight station in U. S. A.

| | |
|--------------------------|----------|
| Norway Maple | (1000) |
| 5 to 6 feet..... | \$290.00 |
| 6 to 7 feet..... | 380.00 |
| 7 to 8 feet..... | 420.00 |
| 8 to 9 feet..... | 550.00 |
| Schwedler's Maple | |
| 5 to 6 feet..... | 695.00 |
| 6 to 7 feet..... | 895.00 |
| 7 to 8 feet..... | 1100.00 |

SPRING DELIVERY

ORIENTAL PLANE—BEST OF ALL

This charming species is one of the few trees really adapted to succeed under city conditions. Poor air—even smoke and gases—and difficult soils seem to affect the Plane Tree very little. This fact is important by itself, but in addition the Plane is a beautiful specimen, with a neat dense head and charming shape even while young. The two-toned bark and handsome dark green leaves are known and prized wherever streets are planted with trees. We have a block of 2000 of these trees running from 1¼ to 2 inches in caliper, twice transplanted, well branched and straight. These we are offering at almost give-away prices for the quality:

| | | | |
|----------------------|------------------|---------------------|------------------|
| 1¼ to 1½ inches..... | \$125.00 per 100 | 1¾ to 2 inches..... | \$175.00 per 100 |
| 1½ to 1¾ inches..... | 145.00 per 100 | 2 to 2½ inches..... | 225.00 per 100 |

(And special prices quoted on lots of 200 or more)

Trees of Unusual Charm

ON this page are a few of the trees which make a planting truly distinctive. To be at their best, they should be planted in masses—an effect that, once seen, can never be forgotten. As single lawn specimens, however, they are a joy to behold and no place is complete without a few of these gorgeous heralds of spring.



Flowering Dogwood

THE BIRCHES (Betula)

To many people the Birch is typical of New England woods. In clumps here and there on shady lawns, or in groves with ferns underfoot, it has a dryad attraction hard to resist. Single specimens are also effective.

European White Birch (B. alba)

40 to 50 feet. Beautiful tree with spray-like branches. The white bark is effective among evergreens.

| | (Each) | (10) | (100) |
|------------------|--------|---------|----------|
| 4 to 5 feet..... | \$1.00 | \$ 9.00 | \$ 75.00 |
| 5 to 6 feet..... | 1.50 | 12.50 | 90.00 |
| 6 to 8 feet..... | 2.00 | 17.50 | 100.00 |

Paper or Canoe Birch (B. papyrifera)

50 feet. Open in growth with silver-white bark. Should be planted in groups or massed.

| | (Each) | (10) | (100) |
|------------------|--------|---------|----------|
| 4 to 6 feet..... | \$1.50 | \$12.00 | \$100.00 |
| 6 to 8 feet..... | 1.75 | 15.00 | 125.00 |

Cutleaf Weeping Birch (B. pendula laciniata)

40 feet. Ideal for specimen planting.

| | (Each) | (10) | (100) |
|------------------|--------|---------|----------|
| 4 to 5 feet..... | | | \$ 50.00 |
| 5 to 6 feet..... | \$2.00 | \$15.00 | 85.00 |
| 6 to 8 feet..... | 2.50 | 22.50 | 125.00 |

FLOWERING DOGWOOD

(Cornus)

Spring would lose much of its beauty were it not for this species. The large showy flowers in massed effect make a sight never to be forgotten.

Note that we can furnish small sizes as well as large. This is true of all other varieties on these pages. Small sizes of these beautiful flowering trees can be used to obtain a massed effect at low cost, but which in a few years will make as effective a planting as the larger sizes for more immediate effect.

White Flowering Dogwood (C. Florida)

20 feet. Covered with white blooms in May. Crimson leaves and berries in Autumn.

| | (Each) | (10) | (100) |
|------------------|--------|---------|----------|
| 2 to 3 feet..... | \$.70 | \$ 4.50 | \$ 40.00 |
| 3 to 4 feet..... | 1.00 | 7.00 | 60.00 |
| 4 to 5 feet..... | 1.20 | 9.50 | 80.00 |
| 5 to 6 feet..... | 1.50 | 12.00 | |

Red Flowering Dogwood

Same as above with Pink Blooms.

| | (Each) | (10) | (100) |
|----------------------|--------|---------|----------|
| 18 to 24 inches..... | \$1.50 | \$12.00 | \$ 95.00 |
| 2 to 3 feet..... | 2.00 | 17.00 | 125.00 |
| 3 to 4 feet..... | 3.00 | 25.00 | 200.00 |

B&B. add \$.10 per plant.

THE BEECH (Fagus)

Its smooth gray bark and delicate foliage are reminiscent of the Holly and Magnolia. Planted in groves and clumps it becomes a magnificent part of any estate. Single specimens on lawns are equally effective. The European types listed here are denser than the American variety.

European Beech (F. Sylvatica)

50 to 60 feet. A beautiful tree with fan-like branching, close and dense to the ground.

| | (Each) | (10) | (100) |
|----------------------|--------|---------|----------|
| 18 to 24 inches..... | \$1.00 | \$ 9.00 | \$ 80.00 |
| 2 to 3 feet..... | 1.25 | 11.00 | 100.00 |

Purple Beech (F. Syl. Purpurea)

Same as above, with rich red purple or copper leaves.

| | | | |
|----------------------|--------|---------|-------|
| 18 to 24 inches..... | \$2.75 | \$23.00 | |
| 2 to 3 feet..... | 4.00 | | |

Exquisite Trees From the Orient

JAPANESE BLOOD-LEAF MAPLE

Here is a small tree which presents in Spring what is perhaps the brightest, fullest color in Nature.

We offer only true grafted types. They will retain their color practically all Summer, having been especially selected for propagating for that very reason. Makes a superb lawn specimen, or may be used for mixed planting in the shrub border, where its brilliant coloring makes a striking effect.

| | (Each) | (10) |
|----------------------|--------|---------|
| 15 to 18 inches..... | \$2.00 | \$17.50 |
| 18 to 24 inches..... | 2.50 | 22.50 |
| 2 to 2½ feet..... | 4.00 | 35.00 |

JAPANESE FLOWERING CHERRIES

These are among the very first things to bloom in the Spring and extremely choice and scarce. We have several other varieties available in limited quantities. A small tree, entirely hardy. And notice these prices.

Named Varieties—as listed below.

| | (Each) | (10) | (100) |
|------------------|--------|---------|----------|
| 3 to 4 feet..... | \$2.00 | \$18.00 | \$170.00 |

Other sizes on request.

25 of one variety at the 100 rate.

Fugenzo (J. H. Veitch)—Double pink. Late.
Naden (Sieboldi) (also called Kofugen)—Double pink.

Kwanzan (Sekizan)—Double old rose.

Shirofugen—Double white, pink shading.

Yoshino Cherry—Single pink. Fast growth.



A Weeping Cherry Two Years After Planting a Kelsey Six-Foot Specimen

JAPANESE WEEPING CHERRY

Among the unusual trees comes this exotic, with delicate pendant branches clothed in pink at the first warm weather of Spring. It is hardy and grows easily, but like most pendant types prefers a position sheltered from heavy winds.

We offer strong heads on 6 foot stems ready to bear their first blooms this Spring.

\$3.50 each, \$30.00 for ten.

BEAUTIFUL FLOWERING CRABS (Malus)

These superb trees are effective for lawn specimens, but even more important when used plentifully in woodland and mass plantings, in the same way as Dogwood and Hawthorn.

There is a wide range of size and shape and color of bloom and the following list includes only a few of those we are in a position to furnish. The quantity prices are real bargains.

| | 3-4 feet | | 4-5 feet | | 5-6 feet | |
|---|----------|---------|----------|---------|----------|---------|
| | (Per 10) | (100) | (10) | (100) | (10) | (100) |
| ARNOLDIANA: Semi-double, pink, early..... | *\$4.50 | \$36.00 | \$6.50 | \$46.00 | \$7.50 | \$61.00 |
| ATROSANGUINEA: Brilliant-carmine | *4.50 | 36.00 | 6.50 | 46.00 | 7.50 | 61.00 |
| BECHTEL'S: Very fragrant, double, delicate pink.. | 6.00 | 48.00 | 7.00 | 55.00 | 10.00 | 90.00 |
| ELEYI: Purple to red foliage and blooms..... | *4.50 | 40.00 | 6.50 | 46.00 | 7.50 | 61.00 |
| FLORIBUNDA: Profuse, deep pink..... | *4.50 | 36.00 | 6.50 | 46.00 | 7.50 | 61.00 |
| FLORIBUNDA: Purple foliage and flowers..... | *4.50 | 36.00 | 6.50 | 46.00 | 7.50 | 61.00 |
| HOPA: Large purple flowers, very showy fruit..... | 5.00 | 45.00 | 7.00 | 55.00 | 8.00 | 70.00 |
| NIEDZWETSKYANA: Deep pink, purplish fruit.... | 5.00 | 45.00 | 7.00 | 55.00 | 8.00 | 70.00 |
| SARGENTI: White flowers, spreading habit..... | 7.00 | 55.00 | | | | |
| SCHIEDECKERI: Double deep rose..... | *4.50 | 36.00 | 6.50 | 46.00 | 7.50 | 61.00 |
| SIEBOLDI (Toringo): Blush-pink to white, makes fine hedge | *4.50 | 36.00 | 6.50 | 46.00 | 7.50 | 61.00 |
| SPECTABILIS: Double, deep coral-red..... | 5.00 | 45.00 | 7.00 | 55.00 | 8.00 | 70.00 |

*Varieties marked with asterisk may be purchased singly at 10 rate, plus 50c extra.

Here Are Hurry Trees

THE CHINESE (OR SIBERIAN) ELM — ULMUS PUMILA

WHERE screen or shade is wanted in a hurry—and yet permanent screen and pleasing shade—page the new Chinese Elm. Phenomenal tales of its speedy growth and hardiness are told and most of them strangely enough seem to be true. It has few troubles. The only one seems to be a distaste for heavy or poorly drained soils. It grows slowly on such land, and does best on sandy or dry situations. Each tree, upon planting, should be trimmed back. These trees offered below are grown for one season or more in New England and were raised from hardy North China Seed.

There is a distinct advantage in having trees of this species hardened off in the Eastern climate. They will take hold much more briskly and give less trouble. The tree is shapely and seems to be immune to nearly all the common diseases of trees. With the recent invasion of Dutch Elm disease this immunity is a distinct factor. The wood is firm and hard and quite tough. In Siberia where the *Ulmus pumila* is native, it is used for trimming and shearing for hedges and formal effects, for it is a bushy compact grower.

| | (Each) | (10) | (100) |
|----------------------|--------|---------|----------|
| 6 to 8 feet..... | \$1.75 | \$15.00 | \$ 95.00 |
| 8 to 10 feet..... | 3.00 | 27.50 | 150.00 |
| 10 to 12 feet..... | 3.75 | 36.00 | 250.00 |
| 1½ to 1¾ inches..... | 4.50 | 42.50 | 400.00 |
| 1¾ to 2 inches..... | 5.50 | 52.50 | 500.00 |
| 2½ to 3 inches..... | 7.50 | 70.00 | |

SILVER MAPLE (*Acer dasycarpum*)

A fine native. Very fast growing and with beautiful green leaves, silver on the under surface.

| | (Each) | (10) | (100) |
|--------------------|--------|---------|---------|
| 8 to 10 feet..... | \$1.50 | \$14.00 | \$50.00 |
| 10 to 12 feet..... | 2.25 | 20.00 | 65.00 |

(Note extremely low quantity rates)

MOUNTAIN ASH (*Sorbus*)

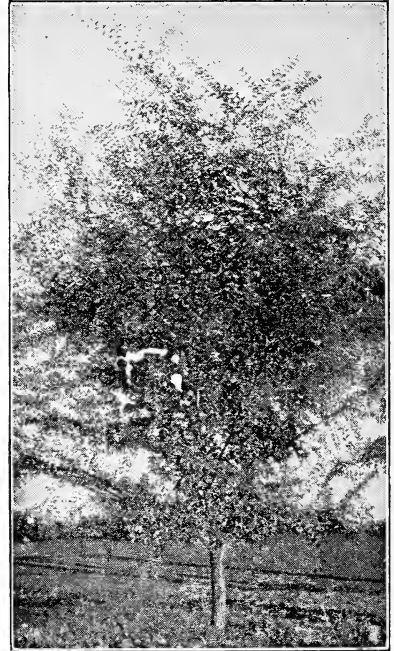
American Mountain Ash (*S. americana*)
Brilliant clusters of bright red berries in the Fall.

| | (Each) | (10) |
|------------------|--------|---------|
| 4 to 5 feet..... | \$1.00 | \$ 8.00 |
| 5 to 6 feet..... | 1.50 | |

European (*S. aucuparia*)

A very attractive small lawn tree, with graceful, compound leaves which turn orange red in the Fall. Clusters of scarlet berries are borne in great abundance from July until Winter.

| | (Each) | (10) | (100) |
|--------------------|--------|---------|----------|
| 5 to 6 feet..... | \$1.00 | \$ 9.00 | \$ 50.00 |
| 6 to 8 feet..... | 1.50 | 12.00 | 60.00 |
| 8 to 10 feet..... | 2.00 | 17.50 | 150.00 |
| 10 to 12 feet..... | 3.00 | 25.00 | |



Four Years After Planting a Tree Six to Eight Feet High

POPLARS AND WILLOWS

We have many varieties to offer, but the recent State quarantines make it desirable that you write for our very low prices, depending on what State you are in. Please advise how many and what kinds you are interested in. These trees are extremely rapid in growth and very useful for many purposes.

The best known varieties are the Lombardy Poplar and the Weeping Willows. We have a large supply of all kinds.

HAWTHORN (*Crataegus*)

The Hawthorns are small, shrubby trees with beautiful glossy green foliage. Showy and fragrant blooms are produced in the Spring and in the Fall they are very attractive with their brilliant foliage and ornamental fruit.

Paul's Scarlet Hawthorn (*C. oxycantha splendens*)

Very double deep crimson flowers with a scarlet glow. A small tree of fine habit. Photograph at the right.

| | (Each) | (10) | (100) |
|------------------|--------|---------|----------|
| 3 to 4 feet..... | \$1.50 | \$12.50 | |
| 4 to 5 feet..... | 1.75 | 15.00 | \$ 90.00 |
| 5 to 6 feet..... | 2.00 | 17.50 | 120.00 |

News About Nut Trees

At last we are able to offer our customers an opportunity to buy and enjoy the remarkable new hybrid nut trees. Hybridizers and experimenters have been working on this problem for years. The varieties we offer here have been thoroughly tested for some years. They are now growing as far north as Canada.

BLACK WALNUTS (*Juglans nigra*)

This Black Walnut is naturally one of our most stately and beautiful native trees and produces one of the finest nuts in the world. It is hardy in Canada and in Florida, growing well in any fertile well drained soil. The flavor is unique and is not lost in cooking (this can be said of no other nut). The new grafted varieties bear their first nuts sometimes in the second year after planting.

Stabler has the thinnest shell. The meat falls out easily in two halves and is of a rich mellow flavor. The tree makes a fine spreading specimen with unusually ornamental form and foliage.

Thomas is a really rapid-growing tree, hardy and easy to grow. The meat is attractive and tasty, but does not crack as easily as the Stabler.

ENGLISH WALNUTS (*Juglans regia*)

If these be grafted on Black Walnut roots, the wood ripens much sooner than otherwise. Hence, such trees can stand much colder weather and are now doing well in extensive plantings in New England and even Michigan.

Wiltz-Mayette is perhaps the best variety for all purposes. The shell can be cracked in the fingers. The meat is plump, white and not in the least bitter. It is a reliable bearer. The English Walnut requires a lime soil. The first crop may be expected in three or four years.

HYBRID HICKORIES

McAllister is a unique tree. Most of the hybrids resemble the pecan in flavor as well as in shape. The McAllister is nearly as thin shelled as any pecan, but its flavor is that of the delicious wild shell-bark hickory. The nut is over two inches in length and is larger than any southern pecan. The kernel is plump and full, the largest in the *Hicoria* genus. It makes a wide spreading specimen with foliage resembling the pecan—a beautiful tree.

Burlington (also called Marquardt) resembles the pecan as to the nut. The tree is very easily grown, a rapid grower and extremely hardy. Does well in Minnesota.

PRICES OF GRAFTED NUT TREES

| Black Walnut | (Each) | (10) |
|------------------------|---------|---------|
| Thomas and Stabler | | |
| 4 to 6 feet | \$ 2.75 | \$22.50 |
| 6 to 8 feet | 4.00 | 35.00 |
| 8 to 10 feet | 10.00 | |
| English Walnut | | |
| Wiltz-Mayette | | |
| 4 to 6 feet | 3.00 | 25.00 |
| Hybrid Hickories | | |
| McAllister | | |
| 4 to 6 feet | 5.00 | 45.00 |
| 6 to 8 feet | 10.00 | |
| Burlington (Marquardt) | | |
| 4 to 6 feet | 3.50 | 30.00 |
| 6 to 8 feet | 6.00 | 50.00 |
| Northern Pecans | | |
| Busseron and Butterick | | |
| 6 to 8 feet | 5.00 | |
| 8 to 10 feet | 10.00 | |
| 10 to 12 feet | 15.00 | |

BLIGHT RESISTANT CHESTNUTS

The Chinese Chestnut (*Castanea molissima*) is larger than the American and of fine flavor and sweet. The tree is not large—seldom growing above 40 feet. It is absolutely hardy in Northern United States . . . a beautiful tree producing sweet nuts at an early age.

Chinese Chestnut

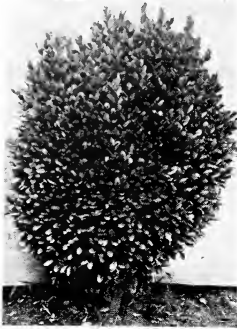
| Mollissima | (Each) | (10) |
|---------------------------|-----------------|---------|
| 3 to 4 feet | \$1.50 | \$12.50 |
| 4 to 6 feet | 2.50 | 20.00 |
| 6 to 8 feet | 4.00 | |
| (18 to 24 inches [light]) | \$15.00 per 100 | |

HARDY NORTHERN PECANS (*Carya ovaliformis*)

Some varieties are hardy in Canada and will bear in Southern New England and the lower Lake region. The quality of the nuts in these varieties is in every way the equal of commercial Pecans. They will bear in three to five years.

Busseron and Butterick are the oldest and best varieties. The differences in growth and quality of the nut are slight. It is very advisable to plant one of each kind so that they will cross fertilize.

Broadleaf Evergreen Shrubs



OLD ENGLISH BOX

Splendid specimens now 18 inches high and 15 inches across — perfect — for \$12.50 each, including delivery (E. of Mississippi). A truly wonderful chance, nursery grown, Balled and Burlapped.

SMALLER PLANTS FOR EDGING

Buxus Suffruticosa. Excellent border for garden paths, etc. Very slow growing.

| | (10) | (100) |
|-------------------------------|---------|----------|
| 4 to 6 inches, bushy.. .. . | \$ 2.00 | \$ 12.00 |
| 6 to 8 inches, bushy.. \$.50 | 3.00 | 20.00 |
| 8 to 10 inches, bushy .90 | 7.50 | 52.50 |
| 10 to 12 inches, bushy 1.75 | 15.00 | 120.00 |

No less than 50 at the 100 rate.

AMERICAN HOLLY

| | (Each) | (10) | (100) |
|---|--------|---------|----------|
| 8 to 15 feet. Yellow flowers in June and scarlet berries in Winter. | | | |
| 18 to 24 inches..... | \$2.00 | \$16.00 | \$120.00 |
| 2 to 3 feet..... | 3.00 | 25.00 | 200.00 |
| 3 to 4 feet..... | 4.00 | 30.00 | 285.00 |
| 4 to 5 feet..... | 5.00 | 35.00 | 325.00 |

LIVING GREEN CARPETS

Grass is not a perfect lawn plant. For many places it is entirely unsuitable. Here we offer three substitutes. They are all evergreen. *Pachysandra* and English Ivy thrive in shade — the Myrtle in full sun.

Pachysandra (terminalis)—a dense mat six inches high. Plant four to each square foot. Requires absolutely no attention.

| | (100) | (1000) |
|------------------------|--------|---------|
| Rooted plants..... | \$5.00 | \$40.00 |
| 2 year old plants..... | 9.00 | 85.00 |

Hedera Helix (English Ivy)

Evergreen, very hardy, excellent for shady and exposed positions where it thrives best. 25 to 50 feet.

| | (10) | (100) |
|----------------------------------|--------|---------|
| Strong plants from 3 inch pots.. | \$1.50 | \$10.00 |

Vinca Minor (Myrtle)

Trailing evergreen plant good in partial shade. Blue flowers in May.

| | (100) | (1000) |
|--|--------|---------|
| Strong clumps (65.00 per thousand) | \$8.00 | \$65.00 |

DAINTY EVERGREEN DAPHNE

THOROUGHLY hardy in our area; entirely evergreen; fragrant; grows to a height of about 12 or 15 inches and spreads to twice that in width; dense-growing and compact; thrives in any good soil, but much prefers a sunny location. Rose-pink flowers.

Most *Daphne cneorum* offered in this country does not bloom intermittently in the Summer. We offer a special type. A dozen of them in a group will have at least some flowers every week of the Summer between May and frost.

PRICES

| | Each | (10) | (100) |
|---------------------------------|---------|----------|-------|
| 6 to 9 inches spread.. .. . | \$ 5.00 | \$ 45.00 | |
| 9 to 12 inches spread.. .. . | 7.50 | 65.00 | |
| 12 to 15 inches spread.. \$1.25 | 11.00 | 100.00 | |
| 15 to 18 inches spread.. 1.75 | 16.50 | 150.00 | |
| 18 to 24 inches spread.. 2.25 | 21.50 | 200.00 | |

DAPHNE AS A BORDER PLANT

For low borders marking the edges of perennial or rose plantings, what possible finer plant could be suggested? Plant them a foot apart in full sunlight and you have bloom all Summer long and a firm evergreen outline during the cold months. Also ideal for edging walks, or paths.



RHODODENDRONS

The following native types have all been nursery grown, are bushy and well transplanted. Furnished B. & B. from Massachusetts. Collected plants quoted at very low prices at the bottom of this page.

Rhododendron Carolina

8 to 10 feet. Fine native with light to deep pink bloom in June. The finest native.

| | (Each) | (10) | (100) |
|-------------------------|--------|---------|----------|
| 12 to 15 inches..... | \$2.00 | \$17.50 | \$150.00 |
| 15 to 18 inches..... | 2.50 | 22.50 | 200.00 |
| 18 to 24 inches..... | 3.00 | 27.50 | 250.00 |
| 2 to 2½ feet, specimens | 4.50 | 40.00 | |

Rhododendron Catawbiense

6 to 8 feet. More compact than the above—rosy purple bloom in June.

| | (Each) | (10) | (100) |
|----------------------|--------|---------|----------|
| 12 to 15 inches..... | \$2.25 | \$21.00 | \$200.00 |
| 15 to 18 inches..... | 3.00 | 27.50 | 250.00 |
| 18 to 24 inches..... | 3.50 | 32.50 | 300.00 |
| 2 to 2½ feet..... | 4.00 | 37.50 | 360.00 |
| 2½ to 3 feet..... | 5.00 | 47.50 | |
| 3 to 3½ feet..... | 6.00 | 55.00 | |

Rhododendron Maximum

8 to 10 feet. Rose bloom in June and July.

| | (Each) | (10) | (100) |
|----------------------|--------|---------|----------|
| 15 to 18 inches..... | \$2.00 | \$17.50 | \$150.00 |
| 18 to 24 inches..... | 2.50 | 22.50 | 200.00 |
| 2 to 3 feet..... | 3.50 | 32.50 | |
| 3 to 4 feet..... | 5.00 | 47.50 | |

MOUNTAIN LAUREL (Kalmia)

5 to 8 feet. Shapely bush covered with white to pink bloom in June—attractive buds in May.

| | (Each) | (10) | (100) |
|----------------------|--------|---------|----------|
| 12 to 15 inches..... | \$1.25 | \$10.00 | \$ 90.00 |
| 15 to 18 inches..... | 1.50 | 14.00 | 125.00 |
| 18 to 24 inches..... | 2.00 | 17.50 | 160.00 |
| 2 to 3 feet..... | 3.00 | 27.50 | |

HARDY HYBRID RHODODENDRONS

The Hybrids are noted for the beauty, richness and large size of their flowers, and their variety of color. For these reasons they add greatly to the attractiveness of any Rhododendron planting.

The plants priced below are well shaped and *with flower buds*, they are now in the open field and absolutely hardy. They will be dug with a fine ball of fibrous roots for safe transplanting.

- *America—deep red.
- *Amphion—clear pink; white eye.
- Catawbiense album—white.
- Dr. H. C. Dresselhuyts—finest red.
- *Kettledrum—fine deep red.
- Mrs. C. S. Sargent—deep rose to red.
- *Ignatus Sargent—red.
- Everestianum—rosy lilac, compact.
- *Lee's Dark Purple—purple.
- Pres. Lincoln—lilac pink, brown eye.
- *Dr. H. V. Rutgers—red.
- *Grandiflorum—red.
- *Purpureum elegans—purple.
- Roseum elegans—clear rose.

| | (Each) | (10) | (100) |
|----------------------------|--------|---------|----------|
| 2 year grafts 12 inches | | | |
| B.&B. | \$2.00 | \$18.00 | \$175.00 |
| 12 to 18 inches B.&B... .. | 5.00 | 45.00 | 400.00 |
| 18 to 24 inches B.&B... .. | 7.50 | 70.00 | 625.00 |
| 2 to 3 feet B.&B..... | 12.00 | 110.00 | 925.00 |

(2 year grafts have only occasional flower buds.)
(Varieties marked (*) in two year grafts only.)

Bargain Carlots of Native Rhododendron

For years we have specialized in fine collected clumps of Rhododendron Maximum and Mountain Laurel. The plants are dug with a good ball and packed carefully, strong plants with several branches. Freight extra from nearby Pennsylvania. All Rhododendron, all Laurel, or mixed, as you may wish.

2 to 3 feet plants 200 for \$125.00 double car for \$250.00
3 to 4 feet plants 150 for 125.00 double car for 250.00

Fall Is the Time for Roses

Two Sensational New Everblooming Climbers

In all garden history the year 1931-2 will be remembered as the year of the first two hardy climbing roses of everblooming type. Nothing in nature can compare to them for sustained ornamental effect. Both are patented plants. All authorities agree that Autumn is the best time for planting roses.

THE NEW DAWN (Everblooming Van Fleet)

Almost identical in appearance with the famous Dr. Van Fleet—gorgeous shell pink blooms of large size—but with the added miracle of *Flowers all summer long!* The foliage is exceptionally good—free from disease and mildew. Introduced in 1931 and a success at once.

(Plant Patent No. 1)

BLAZE

(Everblooming Paul's Scarlet)

A marvelous new hardy climbing Rose which inherits the blazing scarlet of one parent (Paul's Scarlet) and the everblooming habit of its other parent (Gruss an Teplitz). Very vigorous and will grow to considerable height, producing flowers on both the old and new growth. Introduced this Fall for the first time.

(Plant Patent No. 10)

PRICES OF BOTH NEW HARDY EVERBLOOMING CLIMBERS

\$4.50 for two, postpaid East of the Mississippi.

\$10.50 for five, postpaid East of the Mississippi.

(You may order either variety or both.)

SELECTED HYBRID TEA ROSES

Briarcliff. Silvery rose pink; double.
Columbia. Bright pink, sweetly scented flowers of exquisite shape and strong, stiff petals, deepening in color as they expand. Free flowering.
Dorothy Page Roberts. Apricot pink; large petals.
Duchess of Wellington. A delightfully fragrant rose. Intense saffron-yellow.
Etoile de France. Deep crimson with cerise-red center.
Golden Ophelia. A yellow form of Ophelia.
Gruss an Teplitz. Rich scarlet shading to crimson. Vigorous; free bloomer.
Hoosier Beauty. Velvety crimson.
Kaiserine Augusta Victoria. Cream, slightly shaded lemon. Very fragrant.
Killarney. Flesh, shaded white, suffused pale pink. A lovely variety.
Killarney Brilliant. Brilliant pink, almost crimson. Very fragrant.
Killarney White.
Konigin Carola. Color a beautiful satiny rose; reverse of petals silvery rose.
Lady Alice Stanley. Beautiful coral-rose. A magnificent variety, nearly reaching perfection.
Lady Ashtown. Pale rose, shading to yellow at base of petals. Fine buds.

Lady Hillingdon. Deep apricot yellow; violet foliage; vigorous.
Lady Ursula. Flesh pink; large; tea scented; very free bloomer.
Laurent Carle. Brilliant velvety-carmine. A robust and free blooming rose.
Los Angeles. Coral pink.
Mme. Edouard Herriot. Coral or brick-red. Greatly admired.
Mme. Caroline Testout. Beautiful silvery-rose. Excellent in every way.
Mrs. A. R. Baraclough. Long buds, light glowing pink, tinted salmon.
Mrs. Aaron Ward. Color Indian yellow, shading to lemon-cream at the edges of the petals.
Ophelia. Salmon-flesh, shading to rose. Grand.
Premier. Rich, dark pink flowers of full form, fine size, and pleasing fragrance, borne singly on stiff, almost thornless stems.
Radiance. Soft carmine-pink. Double; sweet-scented; free.
Red Radiance. A crimson sport of radiance.
Souvenir de Claudius Pernet. The best and one of the few really yellow, with a pointed bud and glossy foliage.
Souvenir de Georges Pernet. Large brick-red buds, opening to pink.
Sunburst. Rich yellow, shaded copper and orange.

PRICE OF ABOVE HYBRID TEA ROSES

75c each, \$7.50 per doz.

\$60.00 per 100.

Other varieties quoted on request.

KELSEY'S 1932 DOZEN

Any ten of the above listed Hybrid Tea Roses—your selection. In addition we add FREE the following two outstanding Roses:

Talisman—Apricot shaded to yellow at base. Vivid coloring and vigorous blooming.

Pres. Hoover—Maroon, orange and gold. A novelty of contrasting color.

\$7.50

Postpaid

Pines and Spruces

(All evergreens B.&B. unless otherwise stated)

THE BLUE SPRUCES

The Colorado Spruce (*Picea Pungens*) produces both green and blue trees from its seed. The best of the blue trees are selected and sold as Colorado Blue Spruce. We offer the following carefully selected specimens. All are of a definite blue color, although not as uniform in tone as Koster's Blue Spruce.

| | (Each) | (10) | (100) |
|----------------------|--------|---------|----------|
| 12 to 18 inches..... | \$2.00 | \$18.00 | \$150.00 |
| 18 to 24 inches..... | 3.00 | 30.00 | 270.00 |
| 2 to 2½ feet..... | 5.00 | 45.00 | 400.00 |
| 3 to 3½ feet..... | 6.00 | | |
| 3½ to 4 feet..... | 7.50 | | |
| 4 to 4½ feet..... | 9.00 | | |

Koster's Blue Spruce is a grafted form of the above. It is a better and more enduring color. Pictured above.

| | (Each) | (10) | (100) |
|----------------------|--------|---------|-------|
| 15 to 18 inches..... | \$5.00 | \$47.00 | |
| 18 to 24 inches..... | 7.00 | 65.00 | |
| 2 to 2½ feet..... | 8.00 | 75.00 | |
| 2½ to 3 feet..... | 10.00 | 90.00 | |
| 3 to 3½ feet..... | 12.50 | | |

NORWAY SPRUCE

(*Picea excelsa* or *P. Abies*)

At maturity a tall dark green pyramid with pendulous almost weeping branches. The root system is shallow and for that reason Norway Spruce can be planted in thin soils, over hardpan or bed rock. Its great popularity attests its fundamental virtues. Color photograph below.

| | (Each) | (10) | (100) |
|----------------------|--------|---------|----------|
| 18 to 24 inches..... | \$.75 | \$ 6.50 | \$ 60.00 |
| 2 to 3 feet..... | 1.00 | 9.00 | 85.00 |
| 3 to 4 feet..... | 2.00 | 18.00 | 100.00 |

THE AUSTRIAN PINE

This variety of the Black Pine is perhaps the best of the European pines. Properly named *Pinus nigra* var. *italica*, it is called in commerce *Pinus Austriaca*. It is hardy, fast growing and succeeds in a wide variety of soil—even along beaches subject to the salt spray of the sea. It is much used as a wind break in estates near the ocean.

| | (Each) | (10) | (100) |
|------------------|--------|---------|----------|
| 2 to 3 feet..... | \$3.00 | \$25.00 | \$100.00 |
| 3 to 4 feet..... | 4.00 | 30.00 | 200.00 |
| 4 to 5 feet..... | 6.00 | 55.00 | 450.00 |

THE RED (NORWAY) PINE

The *Pinus Resinosa* is probably the one most popular evergreen for all purposes. It is a native to the Eastern parts of the country and absolutely hardy. It grows into a tall, spreading, imposing tree, and is very long lived. The bark is red. This variety is notable because of its freedom from most insect pests.

| | (Each) | (10) | (100) |
|----------------------|--------|---------|----------|
| 18 to 24 inches..... | | | \$ 60.00 |
| 2 to 3 feet..... | \$1.50 | \$13.50 | 100.00 |
| 3 to 4 feet..... | 3.00 | 27.50 | 150.00 |
| 4 to 5 feet..... | 5.00 | 47.50 | 250.00 |
| 5 to 6 feet..... | 7.50 | 70.00 | |

Introducing

THE RIGA (SCOTCH) PINE

(*Pinus Sylvestris* var. *Rigensis*)

This has long been known among foresters as a type altogether superior to ordinary Scots Pine.

Where the type grows straggly and with a crooked leader, the Riga variety puts up a straight clean trunk. The color of branches is striking—noticeably reddish. The needles do not turn so yellow in Spring as those of the type. The Riga Pine also has a much longer life and makes a much greater height, up to 80 and 100 feet or more.

The Riga variety may be planted wherever ordinary Scotch Pine will thrive. It will succeed as well and look better.

| | (Each) | (10) | (100) |
|------------------|--------|---------|----------|
| 2 to 3 feet..... | \$2.00 | \$15.00 | \$100.00 |
| 3 to 4 feet..... | 4.00 | 30.00 | 200.00 |
| 4 to 5 feet..... | 5.00 | 40.00 | 250.00 |

THE MUGHO PINE

Mugho Pine (*Pinus Montana*, var.

Mughus)

6 to 8 feet. A dense low-spreading evergreen, being a variation from the Mountain Pine of Europe. One of the finest dwarfs.

| | (Each) | (10) | (100) |
|----------------------|--------|---------|----------|
| 10 to 12 inches..... | | \$ 7.50 | \$ 60.00 |
| 12 to 15 inches..... | \$1.00 | 9.00 | 75.00 |
| 15 to 18 inches..... | 1.50 | 14.00 | 100.00 |
| 18 to 24 inches..... | 2.00 | 17.50 | 150.00 |

Rare and Unusual Evergreens

We are able to offer at exceptionally low prices this season the following scarce and rare varieties. Both are hardy in sheltered positions as far north as Eastern Massachusetts. Many other similar varieties gladly quoted on request.

Cedar of Lebanon (*Cedrus Libani*)

Large tree, with wide-spreading, horizontal branches. Round headed. Its beauty is historic, and the variety is of peculiar interest for its religious associations. The soft, pleasing foliage is unique. Gray-green in color.

| | (10) | (100) |
|-------------------|---------|----------|
| 2½ to 3 feet..... | \$30.00 | \$225.00 |
| 3 to 4 feet..... | 40.00 | 300.00 |
| 4 to 5 feet..... | 60.00 | |

Cryptomeria Lobbi Compacta

15 to 20 feet. Picturesque, narrow and compact column. Rich bronze in Winter. This is unlike any other hardy evergreen in appearance. The Lobbi variety is much harder than the ordinary *Cryptomeria*.

| | (10) | (100) |
|----------------------|---------|----------|
| 15 to 18 inches..... | \$16.00 | \$140.00 |
| 18 to 24 inches..... | 18.00 | 160.00 |
| 2½ to 3 feet..... | 35.00 | 320.00 |
| 3 to 3½ feet..... | 45.00 | 360.00 |

GRAY'S BLUE COLUMN JUNIPER

(New) introduced here for the first time to horticulture.

Juniperus communis GRAYII.

(Patent applied for 1932)

A quick grower, a foot or so a year when young; reaching a height of eight feet or more. The original tree is now seven feet high and only fifteen inches through. Hardier than Irish Juniper. Long, striking needles of silver blue.

Originator: W. R. Gray, of Virginia.

PRICES POSTPAID

| | |
|------------------------------|-------------|
| 12 to 18 inches B.&B. | \$3.75 each |
| 18 to 24 inches B.&B. | \$5.50 each |
| (Postpaid E. of Mississippi) | |

QUANTITY PRICES

| | (10) | (100) |
|---------------------------|---------|----------|
| 12 to 18 inches B.&B..... | \$32.00 | \$300.00 |
| 18 to 24 inches B.&B..... | 50.00 | 450.00 |

(Not prepaid—shipping extra)



PYRAMIDAL ARBORVITAE

This is perhaps the one best type of American Arborvitae or White Cedar. Very hardy. Ideal for formal narrow hedges, for which purpose we offer a special size: 12 to 15 inches X. \$18.00 per 100. (\$150.00 per 1000.) Larger sizes:

| | | | |
|----------------------|--------|---------|----------|
| 18 to 24 inches..... | \$1.00 | \$ 8.50 | \$ 75.00 |
| 2 to 3 feet..... | 1.75 | 15.00 | 80.00 |
| 3 to 4 feet..... | 2.50 | 22.50 | 100.00 |
| 4 to 5 feet..... | 3.75 | 36.00 | 250.00 |

THE DWARF JUNIPERS

Pfitzer's Juniper (*J. Pfitzer*)

4 to 5 feet. This is a gorgeous dwarf. It makes a compact bush as broad as it is high and with soft green spreading foliage that is like a silver cloud in Spring and early Summer. Thrives under difficult city conditions.

| | (Each) | (10) | (100) |
|-------------------|--------|---------|----------|
| 1½ to 2 feet..... | \$2.50 | \$20.00 | \$150.00 |
| 2 to 2½ feet..... | 3.00 | 25.00 | 225.00 |
| 2½ to 3 feet..... | 3.50 | 32.50 | |
| 3 to 4 feet..... | 6.00 | 55.00 | |

Ground Juniper (*J. Communis depressa*)

3 to 4 feet. Gray green foliage and spreading to 10 feet or more. Useful to cover banks or rocks.

| | (Each) | (10) | (100) |
|----------------------|--------|---------|----------|
| 18 to 24 inches..... | \$2.00 | \$15.00 | \$ 90.00 |
| 2 to 3 feet..... | 3.50 | 30.00 | |

Common Golden Juniper (*J. Canadensis Aurea*)

3 to 4 feet. Dwarf, spreading, fine golden color.

| | (Each) | (10) | (100) |
|-----------------------|--------|---------|-------|
| 18 to 24 inches | \$2.00 | \$17.50 | |
| 2 to 3 feet | 2.50 | 22.50 | |

Creeping Juniper (*J. Sabina Tamariscifolia*)

18 to 24 inches high—4 to 8 foot spread.

| | (Each) | (10) | (100) |
|-----------------------------|--------|---------|----------|
| Blueish-green foliage | \$2.00 | \$18.00 | \$175.00 |
| 12 to 15 inches | 2.50 | 24.00 | 225.00 |
| 15 to 18 inches spread .. | 2.50 | 24.00 | 225.00 |
| 18 to 24 inches | 3.50 | 32.50 | |

Evergreens Grow in Shade

And thrive without sunlight, in fact, if you select the two aristocrats of the conifer family here presented—Hemlocks and Yews. Both stand shearing or, left alone, make naturally graceful specimens.

HEMLOCK (Tsuga)

This is a glorious tree. It thrives in a range of soils and will succeed both in sun and shade. Do not, however, plant in windy, exposed situations. The foliage is black green and form graceful. It is hardy and easily grown. One of the very finest of our native conifers.

American Hemlock (T. Canadensis)

60 to 70 feet. A superb tree that thrives in shade and with drooping spreading foliage. Makes a beautiful hedge and can be easily pruned.

| | (Each) | (10) | (100) |
|--------------------|--------|---------|----------|
| 1½ to 2 feet | \$1.50 | \$14.00 | \$100.00 |
| 2 to 3 feet | 2.50 | 20.00 | 150.00 |
| 3 to 4 feet | 4.00 | 37.50 | 250.00 |
| 4 to 5 feet | 6.00 | 45.00 | 350.00 |
| 5 to 5½ feet | 8.00 | 57.50 | |

(Smaller sizes also available)

VERMEULEN'S YEW (New)

A vigorous upright pyramid with foliage like the "brevifolia"—dark and heavy. Here introduced for the first time to horticulture. The



type plant is 5 feet high and 2½ feet at the base, well proportioned. The distinct form of branching may be seen from the small specimen pictured. It is 12 to 15 inches high, and offered in this size only at \$5.00 each, postpaid east of Mississippi. In quantity of five or more, not prepaid, offered at \$4.00 each. Long Island grown. Will be called *Taxus cuspidata intermedia* var. *pyramidalis*.

JAPANESE YEW TREE FORM

Here is the best Yew for hedges—raised from seed. Picture shows a 15 to 18 inch tree ready to ship.

| | (10) | (100) |
|-----------------|--------|---------|
| 12 to 15" | \$8.00 | \$70.00 |
| 15 to 18" | 10.00 | 90.00 |
| 2 to 2½' | 25.00 | 200.00 |



JAPANESE YEW

Japanese Yew (*Taxus cuspidata*)

The most common form. A spreading bush, about twice as wide as high. Very hardy. Responds eagerly to shearing as for a hedge, although the upright form is better for this purpose.

| | (Each) | (10) | (100) |
|----------------------|--------|---------|----------|
| 12 to 15 inches..... | \$1.75 | \$15.00 | \$ 80.00 |
| 18 to 24 inches..... | 3.50 | 30.00 | 150.00 |
| 2 to 2½ feet..... | 5.00 | 45.00 | 425.00 |
| 2½ to 3 feet..... | 7.50 | 70.00 | 650.00 |

Dwarf Japanese Yew (*Taxus brevifolia* or *nana*)

Extremely slow growing and with denser, shorter needles than ordinary Japanese Yew. The one finest rock garden specimen—picturesque form.

| | (Each) | (10) | (100) |
|----------------------|--------|---------|----------|
| 12 to 15 inches..... | \$3.25 | \$30.00 | \$250.00 |
| 15 to 18 inches..... | 4.00 | 38.00 | 300.00 |
| 18 to 24 inches..... | 7.50 | | |

Upright American Yew (*T. Canad. stricta*)

Here is a worthwhile dwarf. Dense ascending branches give this hardiest of all Yews a new shape and new uses. Introduced Spring 1931.

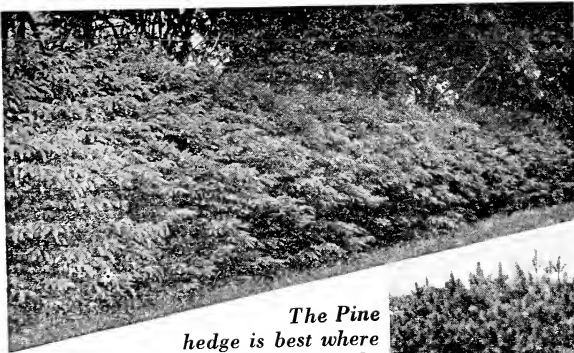
| | (Each) | (10) |
|----------------------|--------|---------|
| 9 to 12 inches..... | \$1.25 | \$11.00 |
| 12 to 15 inches..... | 2.50 | 22.50 |
| 15 to 18 inches..... | 3.00 | 27.50 |

Special Bargains in Evergreens

NOTHING in nature gives the warm protection of evergreen hedges. We offer on these pages some suggested hedges and, in addition, a practical way to realize your wishes at the minimum of cost. On the next page are large sizes for quick results. On this page are the largest sizes which can safely be shipped without an expensive ball of earth. The "X" indicates one transplanting. Shipped packed in wet moss by express at a slight extra cost above the prices quoted.

| | | | | | |
|--------------------------|---------|----------|------------------------------|-------|--------|
| FIRS (Abies) | | | White (N. Y. only) | (100) | (1000) |
| Concolor | | | 12 to 18 inches XX..... | 7.00 | 50.00 |
| | | | 18 to 24 inches XX..... | 8.00 | 60.00 |
| | | (100) | | | |
| 10 to 15 inches XX..... | \$20.00 | \$150.00 | HEMLOCK (Tsuga) | | |
| 15 to 18 inches XX..... | 30.00 | 220.00 | American | | |
| Douglas | | | 10 to 18 inches X..... | 16.00 | 100.00 |
| 14 to 22 inches X..... | 7.00 | 50.00 | 8 to 18 inches XX..... | 30.00 | 200.00 |
| 12 to 15 inches XX..... | 24.00 | 200.00 | 12 to 15 inches XX..... | 32.00 | 300.00 |
| 15 to 18 inches XX..... | 28.00 | 240.00 | 15 to 18 inches XXX..... | 40.00 | 360.00 |
| 18 to 24 inches XX..... | 32.00 | 260.00 | Carolina | | |
| Niko | | | 12 to 18 inches XX..... | 30.00 | 200.00 |
| 12 to 15 inches XXX..... | 20.00 | 180.00 | ARBORVITAE (Thuja) | | |
| SPRUCE (Picea) | | | American | | |
| Norway and White Spruce | | | 18 to 24 inches X..... | 7.50 | 60.00 |
| 9 to 12 inches XX..... | 6.25 | 50.00 | 12 to 18 inches XX..... | 10.00 | 80.00 |
| 12 to 18 inches XX..... | 7.50 | 60.00 | Pyramidal | | |
| 18 to 24 inches XX..... | 8.75 | 70.00 | 12 to 15 inches X..... | 18.00 | 150.00 |
| Colorado (Blue to Green) | | | 18 to 24 inches XX..... | 25.00 | 200.00 |
| 10 to 12 inches XX..... | 24.00 | 200.00 | CYPRESS (Retinospora) | | |
| 12 to 15 inches XX..... | 30.00 | 250.00 | Pisifera | | |
| Engleman | | | 12 to 15 inches X..... | 12.00 | 100.00 |
| 12 to 18 inches XX..... | 25.00 | 200.00 | Pisifera Aurea | | |
| PINES (Pinus) | | | 18 to 24 inches XX..... | 17.00 | 150.00 |
| Austrian | | | Plumosa | | |
| 9 to 12 inches XX..... | 7.50 | 60.00 | 18 to 24 inches XX..... | 17.00 | 150.00 |
| 12 to 18 inches XX..... | 10.00 | 80.00 | Plumosa Aurea | | |
| Red (Resinosa) | | | 18 to 24 inches XX..... | 17.00 | 150.00 |
| 12 to 18 inches XX..... | 5.00 | 35.00 | LARCH (Larix) | | |
| 18 to 24 inches XX..... | 8.00 | 70.00 | European | | |
| 24 to 36 inches XXX..... | 28.00 | 175.00 | 24 to 36 inches XXX..... | 20.00 | 150.00 |
| Riga Scots | | | Japanese | | |
| 12 to 18 inches XX..... | 7.50 | 60.00 | 18 to 24 inches XX..... | 18.00 | 160.00 |
| 18 to 24 inches XX..... | 10.00 | 80.00 | 24 to 30 inches XX..... | 25.00 | 200.00 |

A Spruce Hedge is a hardy thing and will stand rough conditions and yet give protection and good appearance. Photo at the left.



The Pine hedge is best where very windy locations are to be screened off. It can be sheared and kept to a medium height. The Photograph at the right shows one twelve feet high.



Plants for Hedges and Screens



ARBOR VITAE HEDGE

This fine evergreen makes a thick even hedge of five to twenty feet, but only requires three to four feet of width. It will succeed in soil which has a large amount of lime. It can also be sheared easily. Very hardy and will stand severe exposure to winds.

Big Hedges Cheap

| | |
|--------------------------------------|----------|
| AMERICAN ARBORVITAE | (100) |
| 5 to 6 feet..... | \$150.00 |
| PYRAMIDAL ARBORVITAE | |
| 3 to 4 feet..... | 100.00 |
| 4 to 5 feet..... | 250.00 |
| 5 to 6 feet..... | 350.00 |
| AUSTRIAN PINE | |
| 2 to 3 feet..... | 100.00 |
| 3 to 4 feet..... | 200.00 |
| 4 to 5 feet..... | 450.00 |
| RED PINE (Resinosa) | |
| 2 to 3 feet..... | 100.00 |
| 3 to 4 feet..... | 150.00 |
| 4 to 5 feet..... | 250.00 |
| 5 to 6 feet..... | 400.00 |
| RIGA SCOTS PINE | |
| 2 to 3 feet..... | 100.00 |
| 3 to 4 feet..... | 200.00 |
| 4 to 5 feet..... | 250.00 |
| WHITE PINE (N. Y. State only) | |
| 4 to 5 feet..... | 180.00 |
| 5 to 6 feet..... | 200.00 |
| 6 to 8 feet..... | 300.00 |
| 8 to 10 feet..... | 400.00 |
| HEMLOCK | |
| 2 to 3 feet..... | 150.00 |
| 3 to 4 feet..... | 250.00 |
| 4 to 5 feet..... | 350.00 |
| EUROPEAN LARCH | |
| 4 to 6 feet..... | 60.00 |
| 6 to 8 feet..... | 90.00 |
| JAPANESE LARCH | |
| 5 to 6 feet..... | 120.00 |
| 6 to 7 feet..... | 150.00 |
| CONCOLOR FIR | |
| 18 to 24 inches | 150.00 |
| 2 to 3 feet..... | 200.00 |
| DOUGLAS FIR (Pseudotsuga) | |
| 2 to 3 feet..... | 100.00 |
| 3 to 4 feet..... | 140.00 |
| 4 to 5 feet..... | 200.00 |
| 5 to 6 feet..... | 270.00 |
| 6 to 8 feet..... | 500.00 |
| NORWAY SPRUCE | |
| 2 to 3 feet..... | 85.00 |
| 3 to 4 feet..... | 100.00 |
| 4 to 5 feet..... | 200.00 |
| WHITE SPRUCE | |
| 2 to 3 feet..... | 100.00 |
| 3 to 4 feet..... | 200.00 |
| 4 to 5 feet..... | 300.00 |

A HEDGE OF HEMLOCK

No one who has seen a Hemlock hedge in its soft, dense beauty can ever forget it. Small plants around a foot or more in height should be planted eighteen inches apart. Larger stock, say three feet high, can be planted two and a half feet apart. As the hedge grows, it should be kept trimmed widest at the bottom. A six-foot hedge should be three to four feet wide; a ten-foot hedge about six feet wide.



A HEDGE OF JAPANESE YEW

Above is a small section of Yew hedge that shows this species' unique adaption to the purpose. On the opposite page we offer the ideal plant for this purpose—Japanese Yew from seed. The late Dr. Wilson of the Arnold Arboretum recommended this type as the very best Yew hedge for North America.

| | |
|------------------------------------|--------|
| SAWARA CYPRESS | (100) |
| (Green or Golden tipped varieties) | |
| 2 to 3 feet..... | 120.00 |
| 3 to 4 feet..... | 190.00 |
| 4 to 5 feet..... | 260.00 |
| 5 to 6 feet..... | 300.00 |
| 6 to 7 feet..... | 450.00 |
| PLUMED CYPRESS | |
| (Green or Golden tipped varieties) | |
| 2 to 3 feet..... | 120.00 |
| 3 to 4 feet..... | 190.00 |
| 4 to 5 feet..... | 260.00 |
| Golden variety only | |
| 5 to 6 feet..... | 300.00 |
| 6 to 7 feet..... | 450.00 |
| RED CEDAR | |
| 3 to 4 feet..... | 150.00 |
| 4 to 5 feet..... | 225.00 |
| BLUE CEDAR | |
| (Juniperus Virginiana Glauca) | |
| 2 to 3 feet..... | 150.00 |
| 3 to 4 feet..... | 250.00 |
| 5 to 6 feet..... | 550.00 |

All above will be shipped with roots balled and burlapped. 25 of one size and variety at the 100 rate. Write us for delivery costs.

New or Noteworthy Shrubs

MAY-FLOWERING VIBURNUM

V. carlesii

Resembling its namesake, the Mayflower, in fragrance and blossom this shrub is a favorite wherever it is planted. The flowers appear with the leaves in early May. It is a rather low-growing shrub, of dwarf habit and is especially desirable in the garden or shrub border. We have this variety in large quantities and offer strong, well developed plants.

| | (Each) | (10) | (100) |
|----------------------|--------|---------|----------|
| 15 to 18 inches..... | \$.90 | \$ 8.50 | \$ 75.00 |
| 18 to 24 inches..... | 1.35 | 12.50 | 115.00 |
| 24 to 30 inches..... | 2.00 | 17.50 | 150.00 |
| 2½ to 3 feet..... | 2.25 | 20.00 | 175.00 |

ALTHEA (Rose-of-Sharon)

This old favorite is of never-failing beauty and usefulness, for it blooms in late July and August when few other flowers are available. We offer the colors: Double Pink, Double Red and Double White. Order by color.

| | (Each) | (10) |
|------------------|--------|---------|
| 3 to 4 feet..... | \$.75 | \$ 4.00 |

NEW KOREAN SPIRAEA

Spiraea trichocarpa

One of the best of the new Spiraeas. It resembles the *Spiraea Vanhouttei*, but flowering a few weeks later it comes at a time when its show of beauty is much more useful. A thoroughly desirable variety.

| | (Each) | (10) | (100) |
|------------------|--------|---------|----------|
| 2 to 3 feet..... | \$.75 | \$ 4.50 | \$ 36.00 |
| 3 to 4 feet..... | 1.25 | 5.50 | 40.00 |

BEAUTYBRUSH

Kolkwitzia amabilis

One of the finest of the newer shrubs, producing long sprays of graceful foliage. The flowers are a delicate pink, similar in shape to those of the *Weigelia*, but much smaller. Although a rapid grower, it does not flower profusely until it becomes thoroughly established.

| | (Each) | (10) | (100) |
|------------------|--------|---------|----------|
| 2 to 3 feet..... | \$.75 | \$ 5.00 | \$ 40.00 |
| 3 to 4 feet..... | .90 | 7.50 | 60.00 |

PHILADELPHUS VIRGINAL

Here is a big step in advance. For sheer white glowing beauty nothing can equal this shrub in June. Its flowers are large and double and the color is not dead, but so alive and glowing the petals seem almost as though lighted from within. The tips of the new shoots bear all Summer long. It is a wonderful variety.

| | (Each) | (10) | (100) |
|-----------------------|--------|---------|----------|
| 18 to 24 inches | .50 | \$ 2.50 | \$ 15.00 |
| 2 to 3 feet..... | .60 | 3.00 | |
| 3 to 4 feet..... | .75 | 5.00 | 25.00 |

FLOWERING ALMOND

(*Prunus glandulosus rosea*)

One of the charming early-flowering shrubs producing rose-colored flowers in great profusion. There is a white-flowered variety, which we offer at the same prices.

| | (Each) | (10) | (100) |
|-------------------|--------|---------|----------|
| 1½ to 2 feet..... | \$.60 | \$ 5.00 | \$ 40.00 |
| 2 to 3 feet..... | .75 | 6.50 | 50.00 |
| 3 to 4 feet..... | 1.00 | 8.50 | 75.00 |

WONDERFUL BARGAINS IN SHRUBS

| Name | Description | Size | (Per 100) |
|------------------------------|--|--------------|-----------|
| Althea (Rose of Sharon): | Mixed, double red, white, purple..... | 2-3 feet | \$ 8.00 |
| Cornus sanguinea: | Blood-red bark | 18-24 inches | 10.00 |
| Deutzia, Pride of Rochester: | Vigorous grower, pink-white blooms..... | 2-3 feet | 8.00 |
| Forsythia Intermedia: | Bright yellow flowers in April..... | 2-3 feet | 16.00 |
| Lonicera Fragrantissima: | Bush honeysuckle, very fragrant..... | 2-3 feet | 10.00 |
| Lonicera Morrowi: | White flowers, spreading habit..... | 2-3 feet | 10.00 |
| Lonicera Tartarica: | Pink flowers, abundant red berries | 2-3 feet | 10.00 |
| Philadelphus coronarius: | Mock Orange, fragrant white flowers..... | 2-3 feet | 10.00 |
| Spiraea Van Houttei: | Graceful habit, white flowers..... | 2-3 feet | 8.00 |
| Weigelia Rosea: | Arching branches, pink flowers..... | 2-3 feet | 9.00 |

Some of the Best Flowering Shrubs

NEW FORSYTHIA SPECTABILIS

A mass of frozen sunshine so early in the year that you hadn't realized Spring was arrived! This splendid new variety has more flowers and larger than older types of Forsythia. A fine shrub.

| | (Each) | (10) | (100) |
|------------------|--------|--------|---------|
| 3 to 4 feet..... | \$.50 | \$4.50 | \$25.00 |

WHITE FRINGE

Chionanthus virginica

A tall growing shrub with lacy, snow-white flowers which droop in panicles 4 to 6 inches long, and appear in May.

| | (Each) | (10) | (100) |
|-------------------|--------|---------|---------|
| 1½ to 2 feet..... | \$1.00 | \$ 9.00 | \$50.00 |
| 2 to 3 feet..... | 1.25 | 11.00 | 65.00 |

PURPLE FRINGE

Rhus cotinus

This shrub, which is sometimes called Smoke Bush, is of medium size and produces fringe-like flowers, which when in full bloom has the appearance of a cloud of smoke.

| | (Each) | (10) | (100) |
|------------------|--------|--------|-------|
| 2 to 3 feet..... | \$.75 | \$6.00 | |
| 3 to 4 feet..... | 1.00 | 8.00 | |

FEBRUARY DAPHNE

Daphne Mezereum

A small hardy shrub blooming long before the leaves appear. The stems are closely set with deep red, fragrant flowers. Enjoys partial shade.

| | (Each) | (10) | (100) |
|----------------------|--------|---------|----------|
| 12 to 18 inches..... | \$1.00 | \$ 9.00 | \$ 80.00 |
| 18 to 24 inches..... | 1.50 | 12.50 | 110.00 |

HYBRID LILACS

These beautiful Lilacs are adapted to large or small lawns. They require very little care and attention and can be depended upon each year for a profusion of colorful, fragrant panicles of bloom. The varieties we offer are hybrid sorts, possessing all the charm of the old-fashioned Lilacs and present a range of colors from white to richest purple.

DOUBLE FLOWERED

| | |
|--------------------------|--------------------|
| *Alphonse Lavallee, | Light Blue |
| Belle de Nancy, | Satin-Pink |
| Dr. Maillot, | Pinkish-Lilac |
| Doyen Keteleer, | Light Pink |
| Marliensis pallida, | Reddish-Purple |
| *Michel Buchner, | Clear Lilac-Purple |
| Mme. Casimir Perier, | White |
| *Mme. Lemoine, | White |
| Obelisk, | White |
| *President Grevy, Large, | Blue |
| Renoncule, | Light Lilac |
| Ville de Troyes, | Dark Purple |

| | (Each) | (10) |
|-------------------------------|--------|--------|
| 1½ to 2 feet..... | \$.50 | \$4.50 |
| 2 to 3 feet..... | .65 | 6.00 |
| 3 to 4 feet..... | .85 | 7.50 |
| *3 to 4 feet, \$45.00 per 100 | | |

WINTERBERRY

Ilex verticillata

A very ornamental shrub with light green foliage and upright branches. Its bright scarlet berries are very decorative and remain on the branches until Midwinter.

| | (Each) | (10) | (100) |
|------------------|--------|---------|---------|
| 2 to 3 feet..... | \$.75 | \$ 7.00 | \$35.00 |
| 3 to 4 feet..... | 1.00 | 10.00 | 50.00 |

The Barberries (*Berberis*)

Brilliant red berries on black branches in Winter, the Barberries present striking effects and are useful in evergreen groups. Many species of Barberry are under quarantine restriction, but the Japanese Barberries, offered here, are absolutely free from insect pests and diseases. They are effective as hedges, when they should be planted about one foot apart, but informal groups and specimens are entirely charming, as well. They will thrive under the pruning shears, but left alone tend to make shapely low bushes by themselves.

THE JAPANESE BARBERRY

Japanese Barberry (*B. Thunbergi*)

The popular and well-known hedge barberry. Said to be the most valuable single shrub in cultivation.

| | (10) | (100) | (1000) |
|----------------------|--------|---------|----------|
| 18 to 24 inches..... | \$1.50 | \$ 9.00 | \$ 75.00 |
| 2 to 3 feet..... | 4.00 | 25.00 | 190.00 |

(For Evergreen Barberries see "Young Aristocrats" on page 16.)

NEW REDLEAVED BARBERRY

Redleaf Barberry (*B. Thunbergi atropurpurea*)

Leaves are purplish red all Summer, a unique note in the foliage scheme. New.

| | (10) | (100) |
|----------------------|--------|---------|
| 12 to 16 inches..... | \$2.75 | \$20.00 |
| 18 to 24 inches..... | 4.50 | 30.00 |
| 2 to 3 feet..... | 6.50 | 40.00 |

Young Aristocrats



Jap. Bloodleaf
Maple 12-18"

Viburnum
(Evergreen) 12"

Purple Beech
15-18"

Red Dogwood
12-18"

UNUSUAL and rare varieties . . . true to name because they are mostly grafted . . . easy to grow because they have already passed a season out-of-doors. Some Winter protection is desirable, but no other special treatment. Balled and Burlapped for still easier handling. (Please remember that Dutch burlap is used and can be planted without removing from the plant.) This is an amazing opportunity to plant rare and delightful evergreens, trees and shrubs at little cost. (Weight 1 to 3 pounds each.) Five assorted specimens sold at the 10 rate.

AZALEA

| | | |
|----------------------------|---------|---------|
| A. Calendulaceae (Flame) | (10) | (100) |
| 12-15 inches..... | \$ 8.50 | \$75.00 |
| A. Vaseyi (Pink-shell) | | |
| 12-15 inches..... | 8.50 | 75.00 |
| A. Kaempferi (Torch) | | |
| 12-15 inches..... | 8.50 | 75.00 |
| A. Indica alba (Evergreen) | | |
| 8-10 inches..... | 5.00 | 40.00 |
| A. Amoena (Evergreen) | | |
| 12-15 inches..... | 11.00 | 95.00 |
| A. Hinodigiri (Evergreen) | | |
| 12-15 inches..... | 11.00 | 95.00 |

ACER (Maple)

There are many types of Bloodleaf Japanese Maple grown. Of these sub-varieties we selected the variety Osheri beni which is the one offered below.

| | | |
|---|---------|---------|
| A. palmatum atropurpureum (Redleaved Japanese Maple) | | |
| 12 to 18 inches 2 yr. grafts..... | \$10.00 | \$90.00 |
| A. purpureum dissectum (Cutleaved Red Japanese Maple) | | |
| 10 to 15 inches 1 yr. grafts..... | 9.00 | 80.00 |

CORNUS (Dogwood)

| | | |
|-----------------------------------|---------|---------|
| C. florida rubra (Red flowered) | | |
| 18 to 24 inches 2 yr. grafts..... | \$10.00 | \$90.00 |
| 12 to 18 inches 1 yr. grafts..... | 8.00 | 70.00 |

FAGUS (Beech)

| | | |
|--------------------------------------|---------|---------|
| F. Sylvatica riversii (Purple Beech) | | |
| 15 to 18 inches 2 yr. grafts..... | \$10.00 | \$90.00 |

| | | |
|-------------------------------------|-------|-------|
| F. Sylvania pendula (Weeping) | | |
| 15 to 18 inches 2 yr. grafts..... | 10.00 | 90.00 |
| F. Sylvania heterophylla (Fernleaf) | | |
| 12 to 15 inches 1 yr. grafts..... | 8.00 | 70.00 |

MAGNOLIA

| | | |
|-----------------------------------|---------|-------|
| M. lennei | | |
| 10 to 12 inches 1 yr. grafts..... | \$10.00 | |
| M. soulangeana | | |
| 12 to 18 inches 2 yr. grafts..... | 12.00 | |
| M. stellata | | |
| 12 to 18 inches 2 yr. grafts..... | 12.00 | |

THE RARE FRANKLINA TREE

Charming Summer blooms of white. Exceedingly rare and choice.
12-15 inches delivered.....\$3.00 each

PICEA (Spruce)

Moorheim is a new variety, perhaps a little better in color than Koster's, although this is a matter of opinion.

| | | |
|---------------------------------|---------|---------|
| P. Kosteri (Koster Blue Spruce) | | |
| (10) | (100) | |
| 1 yr. grafts, 8 inches..... | \$10.00 | \$90.00 |
| P. Moerheim (Blue) | | |
| 1 yr. grafts, 8 inches..... | 10.00 | 90.00 |

CRYPTOMERIA

| | | |
|---------------------------------|---------|---------|
| C. Lobbi (Hardy variety) | | |
| 2 yr. grafts, 12-15 inches..... | \$10.00 | \$90.00 |

TSGUA (Hemlock)

| | | |
|------------------------------------|---------|---------|
| T. Can. Sargenti (Sargent Weeping) | | |
| 1 yr. grafts, 12-15 inches..... | \$10.00 | \$90.00 |

(Continued on page 18)

Rare Trees and Shrubs

in Small Sizes

EVERGREEN BARBERRIES

(Hardy) (10) (100)

- B. Julianae** (Shiny green leaves)
8 to 10 inches, 3½ in. pots..... \$6.00 \$50.00
- B. Verruculosa** (flowering)
6 to 8 inches, 3½ in. pots..... 6.00 50.00
- B. triacanthophora** (hardest)
8 to 10 inches, 3½ in. pots..... 6.00 50.00

BUXUS (Boxwood)

- B. Koriensis** (Hardest, dwarf)
6 to 8 inches, bushy..... \$5.00 \$40.00

COTONEASTER

- C. Horizontalis** (Photo)
12 to 18 inches, 4 in. pots..... \$8.00 \$70.00
- C. Salicifolia flocosa** (Evergreen)
8 inches, bushy, 3 in. pots..... 6.00 50.00

ILEX (Holly)

- I. aquifolium** (English holly)
10 to 12 inches (thin).....\$ 4.00
- I. pyramidalis** (Improved English)
10 to 12 inches, 1 yr. grafts..... 13.50
- I. opaca** (from berried plants)
8 inches, 1 yr. grafts..... 12.00

LEIOPHYLLUM (Sand Myrtle)

- L. buxifolium** (Evergreen)
10 to 12 in., collected clumps.... \$6.00 \$50.00

LEUCOTHOE

- L. catesbaei** (Lily-of-the-Valley Evergreen)
12 to 18 in., 3 branches up..... \$7.00 \$60.00

OSMANTHUS

- O. aquifolium** (Hardy evergreen)
12 to 15 inches, potted.....\$11.00 \$95.00

PIERIS (Andromeda)

- P. floribunda** (Evergreen)
12 to 15 inches, bushy..... \$8.50 \$75.00
- P. japonica** (Japanese Andromeda)
12 to 15 inches, bushy..... 8.50 75.00

VIBURNUM

- V. rhytidophyllum** (Evergreen)
12 inches, 1 yr. grafts..... \$8.00 \$70.00

RHODODENDRON

- Seedlings from Hybrid Varieties (range from purple to pink)
12 to 15 in., 3 branches up.....\$11.00 \$95.00

R. Named Hybrids:

- 8 inches, 1 yr. grafts..... 12.00
- Caractacus (crimson)
E. S. Rend (red) (Photo)
Chas. Dickens (red)
Dresselhuys (red)
H. W. Sargent (deep red)
Mrs. C. S. Sargent (rose)
Ignatius Sargent (rose)
Roseum elegans (rose)
Parsons' grandiflorum (dark purple)
Album elegans (white)
Album novum (white)

[17]



Cotoneaster Horizontalis 12-18"



H. H. Rhododendron E. S. Rand



Seedling H. H. Rhododendron 12-15"

YOUNG ARISTOCRATS (*Continued from page 16*)

CUPRESSUS (Cypress)

C. Triumph of Boskoop (Blue) (10) (100)
2 yr. grafts, 12-15 inches..... \$8.50 \$75.00

CEDRUS (Cedar)

C. Atlantica glauca (Blue Atlas Cedar)
1 yr. grafts, 12-15 inches.....\$11.00 \$95.00

JUNIPERUS (Junipers)

J. Sargentii
2 yr. grafts, 8 inches.....\$ 7.00 \$60.00

J. Pfitzer (Silver fountain)
2 yr. grafts, 12-15 inches..... 8.50 75.00

J. Koster (Silver dwarf)
2 yr. grafts, 10-12 inches..... 7.00 60.00

J. Meyeri (Purple tips)
2 yr. grafts, 12-15 inches..... 10.00 90.00

PINUS (Pine)

P. Cembra (Swiss stone dwarf) (10) (100)
(New York and New England only)
2 yr. grafts, 12-15 inches.....\$11.00 \$95.00

P. tanyosho (Table Pine)
1 yr. grafts, 8-10 inches..... 8.00 70.00

TAXUS (Yew)

T. Hicksii (fastigiata)
2 yr. grafts, 12-15 inches.....\$ 8.50 \$ 75.00

T. Cuspidata (Japan upright)
12-15 inches 8.00 70.00
15-18 inches 10.00 90.00
2-2½ ft. 25.00 200.00

Lining-out Stock

These are not specimens, but will grow into specimens in a few years. They are listed and priced on pages 16 to 24.

SEEDLINGS ("S")

Many varieties of evergreens are raised from seed until they are two or three years old. These very small plants must be handled with extra care. They should be planted about four inches apart in beds. The beds can be four feet wide and as long as is necessary—up to 100 or 150 feet. Here they are left two years and should be shaded by a lath screen, rested on posts driven into the ground. They are hand cultivated frequently if satisfactory growth is to be obtained. In the Autumn, mulch with dead leaves three inches deep to prevent frost-heaving. At the end of two years, they should be taken from the beds and treated as transplants.

TRANSPLANTS ("X")

Evergreens that have been moved from one position to another, or that have had their roots pruned, tend to throw out extra roots near the stem, forming a close compact ball of fibrous roots that can be easily dug up when the tree is ready for its permanent location. This thick root system increases the chances for success enormously.

Transplants under six inches are so small that they can best be handled in the same way as seedlings, except in reforestation plantings. But over six inches in height the transplant is sufficiently sturdy to be planted out in the open field in rows four feet apart, and a foot or more apart in the rows.

ROOTED CUTTINGS ("R.C.")

Many evergreens do not come true to type from seed. These are propagated by cuttings of branches rooted in sand. It is a difficult process, requiring months in a green-house under exact barometric conditions. In the case of the Yews, often two years is required. For this reason, cuttings are much more expensive than seedlings. They require the same care (for the first year) as seedlings, but once they have passed a Winter in the beds they can be treated as transplants, except for a few special varieties.

GRAFTS

Some trees which do not come true from seed will not even take root readily. These varieties are grafted on established roots of related species and when the graft is healed are perfectly hardy and can be treated as transplants. But during the first year, while the graft is healing, they must be carefully tended. Once a Winter is safely passed out-of-doors, the danger is over. For this reason it is best to buy grafted varieties one year old. Such grafts we list under the name of "Young Aristocrats."

FORESTRY

Transplants and even seedling of the hardier types **Spruce, Pine, Fir, etc.**—can be set out immediately in their permanent positions where a large acreage is to be forested or where a screen or mass effect is desired.

Evergreen Seedlings and Transplants

These are shipped packed in damp moss by express, 50 at the 100 rate, except stock priced \$25.00 per 1000 or less.

"S" Indicates seedlings not transplanted.
"X" Indicates each transplanting.

ABIES (Fir)

Balsamea (Balsam Fir)

Its characteristic clean odor and stately appearance make this a desirable variety even without its well known value as timber. Ideal evergreen for wet land. Popular variety for Christmas trees.

| | (100) | (1000) |
|---------------------------|---------|---------|
| 3 yr. S. 3 to 6 in..... | \$ 1.50 | \$ 6.00 |
| 4 to 6 in. X. 4 yr..... | 2.00 | 12.00 |
| 6 to 9 in. XX. 6 yr..... | 3.00 | 18.00 |
| 9 to 12 in. X. 5 yr..... | 3.00 | 16.00 |
| 12 to 18 in. X. 5 yr..... | 4.50 | 32.00 |

brachyphilla (Nikko Fir)

| | | |
|-----------------------|-------|--------|
| 6 to 8 in. S..... | 4.00 | 30.00 |
| 12 to 15 in. XXX..... | 20.00 | 180.00 |

concolor (White Fir)

| | | |
|-----------------------------|-------|--------|
| 3 to 6 in. S. 3 yr..... | 1.50 | 10.00 |
| 4 to 6 in. X..... | 6.00 | 50.00 |
| 6 to 9 in. X..... | 8.75 | 70.00 |
| 10 to 15 in. XX. Bushy..... | 20.00 | 150.00 |
| 15 to 18 in. XX. Bushy..... | 30.00 | 220.00 |

fraseri (Fraser Fir)

| | | |
|-------------------|------|-------|
| 3 to 6 in. S..... | 6.00 | 40.00 |
|-------------------|------|-------|

THE DOUGLAS FIR

(Pseudotsuga taxifolia)

One of the most beautiful conifers, yet easy to grow and valuable also for timber and as a Christmas tree.

| | | |
|-----------------------------|-------|--------|
| 3 to 6 in. S. 3 yr..... | 1.50 | 6.00 |
| 3 to 5 in. X. 4 yr..... | 2.00 | 15.00 |
| 4 to 8 in. X. 4 yr..... | 2.50 | 19.00 |
| 7 to 15 in. X. 5 yr..... | 5.50 | 36.00 |
| 14 to 22 in. X. 5 yr..... | 7.00 | 50.00 |
| 12 to 15 in. XX. Bushy..... | 24.00 | 200.00 |
| 15 to 18 in. XX. Bushy..... | 28.00 | 240.00 |
| 18 to 24 in. XX. Bushy..... | 32.00 | 260.00 |

Nordmanni (Nordmann's Fir)

| | | |
|-------------------|-------|--------|
| 4 to 6 in. X..... | 12.00 | 100.00 |
|-------------------|-------|--------|

Mariesi (Maries Fir)

Prices on request.

veitchi (Veitch's Fir)

| | | |
|---------------------|-------|--------|
| 6 to 8 in. S..... | 4.00 | 30.00 |
| 12 to 15 in. X..... | 13.00 | 110.00 |

CEDRUS (Trus Cedar)

atlantica (Atlas Cedar)

Prices on request.

deodora (Deodar)

Prices on request.

libani (Cedar of Lebanon)

Prices on request.

CRYPTOMERIA (Japanese Cedar)

japonica

| | | |
|-------------------------|-------|-------|
| 4 to 6 in. 2 yr. S..... | 4.00 | 30.00 |
| 4 to 6 in. X..... | 10.00 | 70.00 |

CUPRESSUS (True Cypress, Northern Growth)

lawsoniana (Lawson's Cypress)

| | | |
|---------------------|-------|--------|
| 4 to 6 in. S..... | 4.00 | 30.00 |
| 9 to 12 in. X..... | 10.00 | 80.00 |
| 12 to 15 in. X..... | 16.00 | 130.00 |

JUNIPERUS (Junipers)

Communis depressa (Common Prostrate Juniper)

| | | |
|--------------------|------|-------|
| 6 to 10 in. S..... | 3.50 | 25.00 |
| 6 to 8 in. X..... | 6.00 | 45.00 |
| 8 to 10 in. X..... | 9.00 | 70.00 |

Communis depressa plumosa

| | | |
|-------------------|-------|--------|
| 6 to 8 in. X..... | 12.00 | 112.00 |
|-------------------|-------|--------|

Communis depressa aurea

(Douglas Golden)

| | | |
|-------------------|-------|--------|
| 6 to 8 in. X..... | 12.00 | 112.00 |
|-------------------|-------|--------|

Communis hibernica (Irish Juniper)

| | | |
|--------------------|-------|--------|
| 6 to 8 in. X..... | 12.00 | 112.00 |
| 8 to 10 in. X..... | 16.00 | 120.00 |

Horizontalis douglasi

(Waukegan Juniper)

| | | |
|-------------------|-------|--------|
| 6 to 8 in. X..... | 16.00 | 145.00 |
|-------------------|-------|--------|

Excelsa stricta (Spiny Greek Juniper)

| | | |
|-------------------|-------|--------|
| 4 to 6 in. X..... | 14.00 | 120.00 |
|-------------------|-------|--------|

Chinensis Pfitzeriana (Pfitzer's Juniper)

Probably the finest of the ornamental Junipers. Feathery greenish-blue foliage.

| | | |
|--------------------|-------|--------|
| 4 to 6 in. X..... | 13.00 | 120.00 |
| 6 to 8 in. X..... | 18.00 | 160.00 |
| 8 to 10 in. X..... | 24.00 | 175.00 |

Sabina (Savin Juniper)

| | | |
|-------------------|-------|--------|
| 6 to 9 in. X..... | 18.00 | 160.00 |
|-------------------|-------|--------|

Virginiana (Red Cedar) Northern

| | | |
|-----------------|------|-------|
| 9 to 12 in..... | 6.00 | 45.00 |
|-----------------|------|-------|

LARIX (Larch)

European Larch (Europa)

| | | |
|-----------------------|-------|--------|
| 6 to 9 in. X..... | 2.50 | 20.00 |
| 18 to 30 in. X..... | 16.00 | 100.00 |
| 24 to 36 in. XXX..... | 20.00 | 150.00 |

American (Hackmatack)

Prices on request.

Japanese Larch (Leptolepis)

| | | |
|--------------------|------|-------|
| 6 to 10 in. S..... | 3.00 | 24.00 |
|--------------------|------|-------|

Siberian Larch (Siberica)

| | | |
|---------------------|------|-------|
| 12 to 18 in. X..... | 5.00 | 40.00 |
|---------------------|------|-------|

PICEA (Spruce)

alba (White Spruce)

Most suitable for paper pulp and succeeds wherever Norway Spruce succeeds. It is a trifle quicker in growth. Popular variety for Christmas trees.

| | | |
|----------------------|------|-------|
| 3 yr. S. 3-5 in..... | 1.00 | 5.25 |
| 4 to 8 in. X..... | 1.50 | 11.00 |
| 9 to 12 in. X..... | 3.00 | 18.00 |
| 12 to 18 in. X..... | 4.00 | 25.00 |
| 12 to 18 in. XX..... | 7.50 | 60.00 |

canadensis (Black Hills Spruce)

| | | |
|--------------|------|-------|
| 2 yr. S..... | 4.00 | 20.00 |
|--------------|------|-------|

englemanni (Englemann's Blue)

One of the finest of the Spruces, foliage very dense and ranges from a bluish green to steel blue in color.

| | | |
|-------------------------|-------|--------|
| 3 yr. S. 2 to 4 in..... | 1.00 | 8.00 |
| 4 to 6 in. X..... | 3.00 | 24.00 |
| 6 to 9 in. X..... | 9.00 | 75.00 |
| 9 to 12 in. X..... | 16.00 | 120.00 |
| 12 to 18 in. XX..... | 25.00 | 200.00 |

polita (Tigertail Spruce)

| | | |
|-------------------|------|-------|
| 6 to 8 in. X..... | 4.50 | 36.00 |
| 6 to 8 in. X..... | 3.00 | 70.00 |

pungens (Colorado Blue Spruce)

This variety varies in color from light blue to light green. Unless stated "Selected Blue" our stock runs from 30 to 50% blue. In small sizes, it is usually cheaper to buy selected trees. Even seed from the Koster blue Spruce does not make all blue seedlings.

| | | |
|-----------------------------|-------|--------|
| 3 yr. S. 2 to 5 in..... | 1.50 | 10.00 |
| 3 to 5 in. X..... | 2.50 | 20.00 |
| 6 to 9 in. X..... | 6.75 | 55.00 |
| 9 to 12 in. XX..... | 22.50 | 180.00 |
| 12 to 18 in. XX. Bushy..... | 30.00 | 250.00 |

Borealis (Polar Spruce)

| | | |
|-------------------|------|-------|
| 5 to 9 in. X..... | 7.00 | 50.00 |
|-------------------|------|-------|

Omorika Spruce

| | | |
|-------------------|-------|--------|
| 4 to 6 in. S..... | 15.00 | 100.00 |
|-------------------|-------|--------|

Oriental Spruce

| | | |
|-------------------|-------|--------|
| 5 to 9 in. X..... | 15.00 | 120.00 |
|-------------------|-------|--------|

EVERGREENS (Continued)

NORWAY SPRUCE (*Picea excelsa*)

This variety will thrive in dense shade and succeeds in heavy damp soil. Having a flat root system, it is suitable for shallow, rocky soils. The hardiest spruce. Popular for Christmas trees.

| | (100) | (1000) |
|-------------------------|---------|---------|
| 3 yr. S. 3 to 5 in. | \$ 1.00 | \$ 5.25 |
| 3 to 6 in. X. | 1.50 | 11.00 |
| 6 to 9 in. X. | 2.00 | 15.00 |
| 12 to 18 in. X. | 3.00 | 24.00 |
| 12 to 18 in. XX. Bushy. | 7.50 | 60.00 |
| 18 to 24 in. XX. Bushy. | 8.75 | 70.00 |

| Sitka Spruce | | |
|----------------|------|-------|
| 6 to 9 in. X. | 2.50 | 20.00 |
| 9 to 12 in. X. | 3.50 | 25.00 |

| rubra (Red Spruce) | | |
|--------------------|------|-------|
| 3 yr. S. | 100. | 6.00 |
| 3 to 6 in. X. | 1.50 | 12.00 |
| 6 to 9 in. X. | 2.50 | 15.00 |
| 9 to 12 in. X. | 3.50 | 24.00 |

PINUS (Pine)

| banksiana (Jack Pine) | | |
|-----------------------|------|-------|
| 6 to 10 in. S. | 2.00 | 8.00 |
| 9 to 12 in. X. | 2.00 | 15.00 |

densiflora (Jap. Red Pine)
Lighter foliage and more spreading than the Austrian pine, but also thrives in seashore planting. Understock for grafting Jap. Table Pine.

| | | |
|----------------|------|-------|
| 8 to 10 in. S. | 2.00 | 16.00 |
| 6 to 9 in. X. | 3.00 | 20.00 |

| mughus (Mugho Pine) | | |
|---------------------|-------|--------|
| 3 yr. S. 4 to 6 in. | 2.00 | 11.00 |
| 6 to 9 in. X. | 7.50 | 60.00 |
| 9 to 12 in. X. | 10.00 | 80.00 |
| 12 to 18 in. X. | 12.50 | 100.00 |
| 12 to 18 in. XX. | 22.50 | 200.00 |

NIGRA—THE AUSTRIAN PINE

This variety of the Black Pine is perhaps the best of the hardy, fast growing kinds and succeeds in a wide variety of soil—even along beaches subject to the salt spray of the sea. It is much used as a windbreak in estates near the ocean, but is equally adapted for forestry planting.

| | (100) | (1000) |
|-------------------------|---------|----------|
| 3 yr. 6 to 9 in. S. | \$ 1.50 | \$ 10.00 |
| 6 to 10 in. X. | 4.00 | 30.00 |
| 12 to 18 in. X. | 7.50 | 60.00 |
| 18 to 24 in. X. | 8.75 | 70.00 |
| 12 to 18 in. XX. Heavy. | 10.00 | 80.00 |

| ponderosa (Western Yellow Pine) | | |
|---------------------------------|-------|-------|
| 6 to 8 in. X. | 10.00 | 80.00 |

RESINOSA—THE RED (NORWAY) PINE

This is probably the one most popular evergreen for all purposes. It is a native to the Eastern parts of the country and absolutely hardy.

This variety is notable because of its freedom from most insect pests.

| | | |
|--------------------------|---------|---------|
| 3 yr. S. 6 to 9 in. | \$ 1.50 | \$ 6.00 |
| 3 to 5 in. X. | 2.00 | 11.00 |
| 6 to 9 in. X. | 3.00 | 15.00 |
| 9 to 12 in. X. | 4.00 | 20.00 |
| 12 to 18 in. XX. | 5.00 | 35.00 |
| 18 to 24 in. XX. | 8.00 | 70.00 |
| 24 to 36 in. XXX. Bushy. | 28.00 | 175.00 |

| rigida (Pitch Pine) | | |
|---------------------|------|-------|
| 4 to 6 in. S. | 2.50 | 12.00 |
| 6 to 12 in. X. | 3.00 | 20.00 |

| strobus (White Pine) | | |
|--------------------------|------|-------|
| New York State only. | | |
| 12 to 18 in. XX. | 6.50 | 50.00 |
| New England States only. | | |
| 12 to 18 in. X. | 5.00 | 25.00 |
| Penna. only. | | |
| 3 to 6 in. S. | 2.00 | 14.00 |

| | (100) | (1000) |
|--|-------|--------|
| sylvestris (Scotch Pine) | | |
| The variety par excellence for poor soils—even dry sand wastes can be successfully covered with Scotch Pine. | | |
| 8 to 18 in. X. | 5.00 | 30.00 |

RIGA SCOTCH PINE (*Pinus sylvestris* var. *Rigensis*)

This has long been known among foresters as a type altogether superior to ordinary Scots Pine.

Where the type grows straggly and with a crooked leader, the Riga variety puts up a straight, clean trunk.

| | | |
|---------------------|---------|---------|
| 3 yr. 4 to 6 in. S. | \$ 1.00 | \$ 5.25 |
| 12 to 18 in. XX. | 7.50 | 60.00 |
| 18 to 24 in. XX. | 10.00 | 80.00 |

| thunbergi (Jap. Black Pine) | | |
|-----------------------------|------|-------|
| 8 to 10 in. S. | 2.00 | 16.00 |
| 12 to 16 in. S. | 6.00 | 50.00 |

PSEUDOTSUGA (See Abies)

RETINOSPORA (Japanese Cypress)

| filifera | | |
|-------------------|-------|--------|
| 4 to 6 in. X. | 10.00 | 80.00 |
| 6 to 8 in. X. | 12.00 | 112.00 |
| filifera aurea | | |
| 4 to 6 in. X. | 10.00 | 80.00 |
| 6 to 8 in. X. | 12.00 | 112.00 |
| pisifera | | |
| 8 to 10 in. X. | 10.00 | 50.00 |
| 12 to 15 in. X. | 12.00 | 100.00 |
| pisifera aurea | | |
| 9 to 12 in. X. | 10.00 | 80.00 |
| 12 to 15 in. X. | 12.00 | 100.00 |
| plumosa | | |
| 8 to 10 in. X. | 10.00 | 80.00 |
| 12 to 15 in. X. | 12.00 | 100.00 |
| plumosa aurea | | |
| 8 to 10 in. X. | 10.00 | 80.00 |
| 12 to 15 in. X. | 12.00 | 100.00 |
| squarrosa veitchi | | |
| 4 to 6 in. X. | 10.00 | 80.00 |
| 6 to 8 in. X. | 12.00 | 112.00 |
| 8 to 12 in. X. | 16.00 | 145.00 |
| obtusata | | |
| 6 to 8 in. X. | 7.00 | 50.00 |

SCIADOPITYS verticillata (Umbrella Pine)

| | (100) | (1000) |
|--|---------|----------|
| 2 yr. S. | \$ 6.00 | \$ 50.00 |
| 2 to 3 in. X. | 10.00 | 80.00 |
| 6 to 8 in. XX. | 24.00 | 220.00 |
| 8 to 10 in. XX. | 35.00 | 295.00 |
| Rare and unusual Jap. evergreen. Very dense and bushy. | | |



Sciadopitys
8 to 10 in. XX



Taxus cuspidata upright
6 to 8 in. from pots

These are the actual trees we offer

EVERGREENS (Continued)

| | | |
|----------------------------------|---------|----------|
| TAXUS (Yew) | (100) | (1000) |
| Canadensis (Canadian Yew) | | |
| Rooted cuttings..... | \$10.00 | \$ 80.00 |
| 7 to 9 in. X..... | 20.00 | 150.00 |

| TAXUS CUSPIDATA | | |
|---|---------|----------|
| (Upright type of Japanese Yew. Finest evergreen for hedges. Does well in shade or sun.) | | |
| 6 to 8 in. strong plants grown from seed and now well established in 2½ in. pots..... | | |
| | \$20.00 | \$190.00 |
| 4 to 6 in. 2 yr. S..... | 8.00 | 70.00 |

| TAXUS CUSPIDATA | | |
|----------------------------------|---------|----------|
| (Spreading Jap. Yew) | | |
| 6 to 8 in. X..... | \$10.00 | \$ 90.00 |
| 6 to 8 in. from 2½ in. pots..... | 18.00 | 160.00 |

| TAXUS CUSP. BREVIFOLIA | | |
|----------------------------------|---------|----------|
| (nana) (Dwarf Jap. Yew) | | |
| 6 to 8 in. X..... | \$26.00 | \$250.00 |
| 6 to 8 in. from 2½ in. pots..... | 20.00 | 180.00 |

| | | |
|--|---------|----------|
| cuspidata aurea (Golden) | | |
| 6 to 18 in. XX..... | \$30.00 | \$200.00 |
| media Hicksi | | |
| 6 to 8 in. from 2½ in. pots..... | 30.00 | 250.00 |
| baccata (English Yew) | | |
| 4 to 6 in. X..... | 10.00 | 80.00 |
| 8 to 10 in. X..... | 16.00 | 145.00 |
| baccata rependens (Weeping variety) | | |
| 4 to 6 in. X..... | 13.00 | 120.00 |
| 8 to 10 in. XX..... | 24.00 | 224.00 |
| baccata aurea | | |
| 4 to 6 in. X..... | 13.00 | 120.00 |
| 8 to 10 in. XX..... | 24.00 | 224.00 |
| Washington | | |
| 4 to 6 in. X..... | 24.00 | |
| 6 to 8 in. X..... | 28.00 | |

| | | |
|-----------------------------------|-------|--------|
| THUJA (Arborvitae) | (100) | (1000) |
| occidentalis (White Cedar) | | |
| 3 yr. 4 to 8 in. S..... | 1.50 | 5.25 |
| 4 yr. 3 to 6 in. X..... | 2.00 | 11.00 |
| 5 yr. 4 to 8 in. X..... | 2.50 | 15.00 |
| 5 yr. 6 to 9 in. X..... | 3.00 | 20.00 |
| 5 yr. 9 to 12 in. X..... | 4.00 | 30.00 |
| 6 yr. 12 to 18 in. X..... | 5.00 | 40.00 |
| 6 yr. 18 to 24 in. X..... | 8.00 | 60.00 |
| 7 yr. 12 to 18 in. Heavy XX.... | 10.00 | 80.00 |

| pyramidalis | | |
|-----------------------|---------|----------|
| 4 to 6 in. X..... | \$ 9.00 | \$ 75.00 |
| 8 to 10 in. X..... | 14.00 | 120.00 |
| 12 to 15 in. X..... | 18.00 | 150.00 |
| BEST ARBORVITAE HEDGE | | |

| | | |
|---|-------|--------|
| Occ. globosa (Globe Arborvitae) | | |
| (Woodwardi) | | |
| 4 to 6 in. X..... | 10.00 | 80.00 |
| 6 to 8 in. X..... | 12.00 | 112.00 |
| Occ. lutea (Geo. Peabody Arborvitae) | | |
| Fine golden variety. | | |
| 4 to 6 in. X..... | 12.00 | 112.00 |
| 6 to 8 in. X..... | 16.00 | 145.00 |
| Occ. douglasii aurea (Douglas Golden) | | |
| 9 to 12 in. X..... | 14.00 | 120.00 |
| 12 to 15 in. X..... | 18.00 | 150.00 |
| Occ. ellwangeriana (Tom Thumb) | | |
| 4 to 6 in. X..... | 10.00 | 80.00 |
| 6 to 8 in. X..... | 12.00 | 112.00 |
| Biota orientalis (Oriental Arborvitae) | | |
| 8 to 12 in. X..... | 7.50 | 45.00 |

| HEMLOCK (Tsuga canadensis) | | |
|--|---------|----------|
| A splendid native tree, excellent as a specimen or for a hedge. Will thrive in shade, but will not stand windy exposure. | | |
| Lining-out Sizes | | |
| 4 to 6 in. S..... | \$ 4.00 | \$ 20.00 |
| 8 to 10 in. X..... | 10.00 | 80.00 |
| 10 to 18 in. X..... | 16.00 | 95.00 |
| 12 to 15 in. XX. Bushy..... | 32.00 | 300.00 |

| | | |
|---------------------------------------|-------|--------|
| T. Carolina (Carolina Hemlock) | | |
| 6 to 12 in. XX..... | 20.00 | 150.00 |
| 12 to 18 in. XX..... | 30.00 | 200.00 |

DECIDUOUS TREE SEEDLINGS

| | | |
|---------------------------------------|-------|--------|
| ACER dasycarpum (Silver Maple) | (100) | (1000) |
| 2 to 3 ft. S..... | 2.50 | 20.00 |
| 3 to 4 ft. X. Branched..... | 10.00 | 80.00 |
| Smaller grades on request. | | |

| *ACER platanoides (Norway Maple) | | |
|--|---------|----------|
| Perhaps the best all-around shade tree for streets. The prices quoted include cost of packing and transportation anywhere in U. S. A. except on seedlings. | | |
| 12 to 18 in. S..... | \$ 6.00 | \$ 45.00 |
| 5 to 6 ft. whips..... | 40.00 | 290.00 |
| 6 to 7 ft. whips..... | 50.00 | 380.00 |
| 7 to 8 ft. whips..... | 60.00 | 420.00 |
| 8 to 9 ft. whips..... | 70.00 | 550.00 |
| Schwedler's Purple Maple | | |
| 5 to 6 ft. whips..... | 85.00 | 695.00 |
| 6 to 7 ft. whips..... | 110.00 | 895.00 |
| 7 to 8 ft. whips..... | 135.00 | 1100.00 |
| SPRING DELIVERY | | |

| | | |
|--------------------------------|---------|----------|
| ACER rubrum (Red Maple) | | |
| 12 to 18 in..... | \$ 4.00 | \$ 25.00 |
| 18 to 24 in..... | 5.00 | 35.00 |

| | | |
|-------------------------------------|------|-------|
| ACER saccharum (Sugar Maple) | | |
| 12 to 18 in..... | 3.00 | 20.00 |
| 18 to 24 in..... | 4.00 | 25.00 |
| 2 to 3 ft..... | 6.00 | 40.00 |

| | | |
|-----------------------------|-------|--------|
| WEIR'S CUTLEAF MAPLE | | |
| 3 to 4 ft. Whips..... | 32.00 | 250.00 |
| 4 to 5 ft. Whips..... | 36.00 | 300.00 |

| | | |
|---|-------|--------|
| AILANTHIUS glandulosa | (100) | (1000) |
| (Tree-of-Heaven) | | |
| 18 to 24 in..... | 3.00 | 25.00 |
| 2 to 3 ft..... | 4.00 | 30.00 |
| AESCULUS (Flowering Horsechestnut) | | |
| hippocastanum | | |
| 18 to 24 in..... | 15.00 | 125.00 |

| AESCULUS neglecta georgiana | | |
|---|---------|----------|
| (Dwarf Red-Flowering Buckeye) | | |
| Very rare shrub with red to yellow flowers. | | |
| 6 to 12 in..... | \$ 5.00 | \$ 40.00 |
| 12 to 18 in..... | 8.00 | 70.00 |

| | | |
|---|------|-------|
| AESCULUS octandra (Yellow Buckeye) | | |
| 12 to 18 in..... | 3.00 | 20.00 |
| BETULA alba (White Birch) | | |
| 12 to 18 in..... | 7.50 | 50.00 |
| BETULA populifolia (Gray Birch) | | |
| 12 to 18 in..... | 3.00 | 18.00 |
| 2 to 3 ft..... | 4.00 | 30.00 |
| BETULA papyrifera (Paper Birch) | | |
| 8 to 12 in..... | 4.00 | 30.00 |
| 12 to 18 in..... | 6.00 | 40.00 |
| BETULA lenta (Sweet Birch) | | |
| 12 to 18 in..... | 2.00 | 15.00 |
| BETULA lutea (Yellow Birch) | | |
| 8 to 12 in..... | 4.00 | 30.00 |
| 12 to 18 in..... | 6.00 | 40.00 |
| BETULA nigra (River Birch) | | |
| 12 to 18 in..... | 2.00 | 15.00 |
| 18 to 24 in..... | 3.00 | 20.00 |

DECIDUOUS TREES (Continued)

| | |
|---|--|
| <p>CATALPA speciosa (Western Catalpa) (100) (1000) 18 to 24 in..... 2.00 15.00 Other grades on request.</p> <p>CARPINUS Americana (Hornbeam) 6 to 12 in..... 2.50 15.00 12 to 18 in..... 3.00 20.00 18 to 24 in..... 4.00 30.00</p> <p>CASTANEA dentata (American Chestnut) Prices on request.</p> <p>CHINESE CHESTNUT (Blight resistant) 18 to 24 in. X..... 12.00 100.00 2 to 3 ft. X..... 20.00 170.00</p> <p>CELTIS (Hackberry) 12 to 18 in..... 5.00 40.00</p> <p>CERCIS canadensis (Red Bud) 6 to 12 in..... 2.00 14.00 12 to 18 in..... 3.00 20.00 18 to 24 in..... 4.00 25.00 2 to 3 ft..... 5.00 35.00</p> <p>*CORNUS FLORIDA (Flowering Dogwood) 12 to 18 in..... 5.00 40.00 18 to 24 in..... 7.00 50.00</p> <p>FAGUS ferruginea (American Beech) 6 to 12 in..... 2.50 12.00 12 to 18 in..... 3.00 18.00 18 to 24 in..... 4.00 25.00</p> <p>FAGUS sylvatica (European Beech) 6 to 10 in..... 5.50 30.00 10 to 12 in..... 7.50 50.00 12 to 18 in..... 12.00 100.00</p> <p>FRAXINUS (American White Ash) 3 to 4 ft. X..... 6.00 45.00 12 to 18 in. S..... 2.00 10.00</p> <p>GINGKO BILOBA (Maidenhair) 4 to 6 in..... 5.50 45.00 9 to 12 in..... 6.50 55.00</p> <p>GLEDITSCHIA (Honey Locust) 12 to 18 in..... 2.20 12.00 18 to 24 in..... 3.00 18.00</p> <p>HALESIA tetrapteria 12 to 18 in..... 10.00 80.00</p> <p>HICORIA alba (Shellbark Hickory) 6 to 12 in..... 7.00 60.00</p> <p>HICORIA ovata (Shagbark Hickory) 6 to 12 in..... 7.00 60.00</p> <p>JUGLANS nigra (Black Walnut) 12 to 18 in..... 4.50 30.00</p> <p>JUGLANS cinera (Butternut) 12 to 18 in..... 5.00 37.50 2 to 3 ft..... 6.00 50.00</p> <p>KOELREUTERIA paniculata (Golden Rain or Varnish Tree) 12 to 18 in..... 9.00 80.00</p> <p>LABURNUM vulgare 18 to 24 in..... 12.00 100.00</p> <p>LIQUIDAMBER styraciflua (Sweet Gum) 12 to 18 in..... 4.00 30.00 18 to 24 in..... 6.00 40.00</p> <p>LIRIODENDRON tulipifera (Tulip Tree) 6 to 12 in..... 2.00 10.00 12 to 18 in..... 2.50 15.00 18 to 24 in..... 3.00 20.00 2 to 3 ft..... 3.50 25.00</p> <p>MAGNOLIA acuminata (Cucumber Tree) 6 to 9 in..... 10.00 80.00</p> | <p>MORUS alba (Russian Mulberry) (100) (1000) Attractive to birds. Among others, the Grouse, Quail, Lark, Thrush, Tanager, etc. 12 to 18 in..... 2.00 10.00 2 to 3 ft..... 3.00 16.00 3 to 4 ft..... 4.50 20.00 Other sizes on request.</p> <p>NYSSA sylvatica (Tupelo or Sour Gum) 12 to 18 in..... 6.00 45.00</p> <p>OXYDENDRON arboreum (Sorrell or Sourwood Tree) 12 to 18 in..... 4.00 25.00 18 to 24 in..... 5.00 35.00</p> <p>OSAGE orange 12 to 18 in..... 1.50 7.50</p> <p>PLATANUS occidentalis (Sycamore) 18 to 24 in..... 3.00 20.00 2 to 3 ft..... 4.00 25.00</p> <p>*PLATANUS orientalis Prices on request.</p> <p>POPULUS (Poplar) Lombardy and Simon's Poplars 18 to 24 in. Whips..... 2.00 14.00 3 to 4 ft. Whips..... 4.00 25.00 Carolina and Norway Poplars 2 to 3 ft. Whips..... 5.00 30.00 Larger and smaller Poplars on request.</p> <p>QUERCUS alba (White Oak) 6 to 12 in..... 5.00 36.00 12 to 18 in..... 6.50 60.00</p> <p>QUERCUS coccinea (Scarlet Oak) 6 to 9 in..... 4.50 40.00</p> <p>*QUERCUS palustris (Pin Oak) 6 to 9 in. S..... 4.00 35.00 9 to 12 in. X..... 6.50 55.00 12 to 18 in. X..... 8.50 65.00 18 to 24 in. X..... 9.00 75.00</p> <p>*QUERCUS rubra (Red Oak) 6 to 12 in..... 6.00 50.00 10 to 18 in..... 8.00 70.00</p> <p>QUERCUS macrocarpa (Burr Oak) Prices on request.</p> <p>QUERCUS Robur (English Oak) Prices on request.</p> <p>ROBINIA (Black Locust) 12 to 18 in..... 2.00 12.50 2 to 3 ft..... 3.00 20.00 Other sizes on request.</p> <p>SALIX babylonica (Weeping Willow) 2 to 3 ft..... 6.00 40.00 3 to 4 ft..... 8.00 45.00</p> <p>SASSAFRAS 18 to 24 in..... 4.50 30.00</p> <p>SORBUS aucuparia (European Mt. Ash) 12 to 18 in..... 8.00 40.00 18 to 24 in..... 9.00 50.00</p> <p>TILIA americans (American Linden) 9 to 12 in..... 6.00 40.00 12 to 18 in. X..... 7.00 50.00</p> <p>ULMUS americana (American Elm) 12 to 18 in..... 2.00 10.00 18 to 24 in..... 3.00 15.00 3 to 4 ft..... 4.00 30.00 Other sizes on request.</p> <p>ULMUS pumila (Chinese or Siberian Elm) 12 to 18 in..... 5.00 32.00 18 to 24 in..... 6.00 50.00 2 to 3 ft..... 8.00 60.00 3 to 4 ft. whips..... 12.00 90.00 4 to 5 ft. whips..... 16.00 120.00 5 to 6 ft. X. branched..... 50.00 400.00 6 to 8 ft. X. branched..... 65.00 500.00</p> |
|---|--|

EVERGREEN SHRUBS

| | | | | | |
|--|-------|--------|--|-------|--------|
| AZALEA | (100) | (1000) | COTONEASTER | (100) | (1000) |
| Amoena | | | Horizontalis | | |
| 2 1/4 in. pots..... | 18.00 | 130.00 | 6 to 8 in. X..... | 9.00 | 75.00 |
| 6 to 8 in. X..... | 25.00 | 225.00 | From 3 in. pots. bushy..... | 24.00 | |
| (New) Amoena coccinea (Fiery Red) | | | Henryi | | |
| 2 1/4 in. pots..... | 20.00 | 150.00 | 6 to 8 in. X..... | 14.00 | 120.00 |
| 4 to 6 in. X..... | 35.00 | | 8 to 12 in. X..... | 16.00 | 140.00 |
| Benigiri | | | DAPHNE | | |
| 2 in. pots..... | 16.00 | 120.00 | D. cneorum (Garland Flower) | | |
| Calendulacea | | | Well rooted layers | 20.00 | 150.00 |
| 12 to 18 in. S..... | 16.00 | 140.00 | GALAX | | |
| Hinamayo | | | G. Aphylla | | |
| R. C. Trans..... | 14.00 | 120.00 | Strong clumps | 10.00 | 80.00 |
| Hinodigiri | | | ILEX (Holly) | | |
| 2 1/4 in. pots..... | 18.00 | 160.00 | opaca (Amer. Holly) Nursery Grown | | |
| 6 to 8 in. X..... | 30.00 | 250.00 | To succeed with Holly, all | | |
| J. van Tol. | | | foliage must be removed be- | | |
| 6 to 8 in. X..... | 18.00 | 150.00 | fore planting. | | |
| Kaempferi | | | 6 to 8 in. S 2 yr..... | 12.00 | 100.00 |
| 3 to 4 in. S..... | 15.00 | 135.00 | 8 to 10 in. from 3 in. pots..... | 24.00 | |
| 6 to 8 in. X..... | 30.00 | 250.00 | 8 to 12 in. XX..... | 32.00 | |
| (New) Kaempferi Hybride (Evergreen) | | | crenata (Jap. Holly) | | |
| Alice—Large Brilliant orange-red | | | 6 to 8 in. S..... | 4.00 | 30.00 |
| Betty—Brilliant crimson-pink | | | 8 to 10 in. X..... | 14.00 | 100.00 |
| Fedora—Deep salmon rose | | | 12 to 15 in. X..... | 16.00 | 140.00 |
| Kathleen—Deep rose-pink | | | glabra (Inkberry) | | |
| Willy—Pure clear soft-pink | | | 10 to 15 in. S..... | 7.00 | 55.00 |
| 2 1/4 in. pots..... | 30.00 | 280.00 | 4 to 6 in. X..... | 10.00 | 90.00 |
| SPRING DELIVERY | | | KALMIA | | |
| Kurume—named varieties | | | latifolia (Laurel) | | |
| Flame, Pink Pearl, Coral Bells. | | | 9 to 12 in. S..... | 8.00 | 55.00 |
| 2 in. pots..... | 24.00 | 200.00 | LEUCOTHOE | | |
| (New) Kurume—Sweet Briar | | | cataesbaei | | |
| 2 1/4 in. pots..... | 30.00 | 280.00 | 6 to 12 in. S..... | 10.00 | 80.00 |
| Ledifolia alba and rosea | | | MAHONIA | | |
| 2 in. pots..... | 14.00 | 120.00 | aquifolium (Oregon Holly) | | |
| 6 to 9 in. X..... | 30.00 | | 6 to 8 in. S..... | 5.00 | 40.00 |
| Macranthus | | | 8 to 12 in. X..... | 10.00 | 80.00 |
| 6 to 8 in. X..... | 30.00 | 250.00 | MAGNOLIA glauca | | |
| Mollis | | | 12 to 15 in. S. Nursery Grown.. | 20.00 | 160.00 |
| 3 to 5 in. X..... | 12.00 | 100.00 | Other sizes on request. | | |
| 6 to 8 in. X..... | 18.00 | 150.00 | PACHYSANDRA Terminalis | | |
| Nudiflora | | | 2 1/4 in. pots..... | 9.00 | 75.00 |
| 12 to 18 in. S..... | 10.00 | 80.00 | PYRACANTHA Lelandi (Leland's | | |
| Pontica—yellow | | | Evergreen Fire Thorn) | | |
| 3 to 5 in. X..... | 24.00 | 200.00 | 2 in. pots | 20.00 | 180.00 |
| Poukhanensis | | | 4 in. pots 8 to 10 in..... | 50.00 | |
| 4 to 6 in. X..... | 24.00 | 200.00 | *RHODODENDRON | | |
| Schlippenbachii | | | maximum | | |
| 6 to 8 in. X..... | 16.00 | 150.00 | 9 to 12 in. S..... | 8.00 | 55.00 |
| Viscosa | | | 9 to 12 in. with ball..... | 20.00 | |
| 12 to 18 in. S..... | 14.00 | 120.00 | catawbiense and R. Carolina | | |
| Yayegiri | | | 3 to 6 in. S..... | 9.00 | 60.00 |
| R. C. Trans..... | 14.00 | 120.00 | 6 to 12 in. S..... | 12.50 | 100.00 |
| Yodogawa | | | hybrids | | |
| 4 to 6 in. S..... | 16.00 | 150.00 | See "Young Aristocrats." | | |
| ABELIA grandiflora | | | VINCA minor (Myrtle) | | |
| 6-12 in. X..... | 10.00 | 80.00 | Strong clumps | 6.00 | 50.00 |
| 12-15 in. X..... | 16.00 | 145.00 | YUCCA filamentosa | | |
| BUXUS (Boxwood) | | | 8 to 12 in. X..... | 8.00 | 60.00 |
| B. suffruticosa (Box edging) | | | | | |
| 3 to 4 in. X..... | 8.00 | 75.00 | | | |
| 4 to 6 in. X..... | 10.00 | 88.00 | | | |
| 6 to 8 in. X Bushy..... | 20.00 | 160.00 | | | |
| B. sempervirens (True Bush Box) | | | | | |
| 4 to 6 in. X..... | 8.00 | 65.00 | | | |
| 6 to 8 in. X..... | 10.00 | 90.00 | | | |
| 9 to 12 in. X..... | 15.00 | 120.00 | | | |

DECIDUOUS SHRUBS

| | | | | | |
|---|--------|--------|-----------------------------------|-------|--------|
| ALTHEA (Rose of Sharon) | (100)' | (1000) | BARBERRY | (100) | (1000) |
| Double flowering named varieties, Red, White, Purple. | | | B. Thunbergii | | |
| Blooms in August. | | | 6 to 9 in..... | 2.50 | 12.00 |
| 12 to 18 in..... | 3.50 | 25.00 | 9 to 12 in..... | 3.00 | 18.00 |
| 18 to 24 in..... | 5.00 | 35.00 | 12 to 15 in..... | 4.00 | 24.00 |
| AMORPHA fruticosa (Indigobush) | | | Red Leaf Japanese (new) | | |
| 10 to 15 in. X..... | 4.00 | 30.00 | 10 to 18 in. 1 yr. cuttings | 10.00 | 70.00 |
| ARONIA | | | 9 to 12 in. X..... | 12.00 | 100.00 |
| melanocarpa (Black Chokeberry) | | | B. Thunbergii minor | | |
| 12 to 18 in..... | 7.00 | 60.00 | (Box Barberry) | | |
| | | | 4 to 6 in. X..... | 8.00 | 60.00 |
| | | | 6 to 8 in. X..... | 10.00 | 70.00 |

DECIDUOUS SHRUBS (Continued)

| | |
|--|---|
| <p>BENZOIN aestivale (Spice-bush) (100) (1000) 15 to 20 in. X..... 8.00 50.00</p> <p>BUDDLEIA magnifica (Butterfly Bush) 12 to 18 in..... 6.00 50.00</p> <p>B. alternifolia (new hardy variety) 2 to 3 feet X..... 20.00 180.00</p> <p>CHIONANTHUS virginica (White Fringe) 3 to 6 in. X..... 10.00 50.00</p> <p>CORNUS (Dogwood) C. alba (Sibirica) Blood-Red branches 12 to 18 in..... 5.50 25.00</p> <p>C. stolonifera. Red Osier Dogwood 12 to 18 in..... 3.00 19.00</p> <p>CORYLUS americana (Hazlenut) 12 to 18 in. X..... 9.00 60.00 12 to 24 in. S..... 3.50 25.00</p> <p>CYDONIA japonica (Jap. Quince) 12 to 18 in..... 5.00 30.00 18 to 24 in..... 7.00 50.00</p> <p>*CRATAEGUS (Hawthorne) C. coccinea 12 to 18 in..... 6.50 50.00</p> <p>C. oxycantha (English Hawthorne) 10 to 15 in..... 6.00 40.00</p> <p>DEUTZIA Candidissima, crenata, fortunei Pride of Rochester 12 to 18 in..... 4.00 25.00 18 to 24 in..... 4.50 30.00</p> <p>D. Lemoine and Gracilis 8 to 12 in..... 9.00 50.00</p> <p>EUONYMUS americanus 12 to 18 in..... 2.50 20.00</p> <p>FORSYTHIA Fortunei, intermedia, suspensa, viridissima 12 to 18 in..... 9.00 70.00</p> <p>Spectabilis (New Variety) 12 to 18 in..... 9.00 50.00</p> <p>HYDRANGEA Paniculata grandiflora 10 to 12 in..... 6.40 50.00</p> <p>aborescens grandiflora 12 to 15 in..... 8.00 60.00</p> <p>aborescens 12 to 18 in..... 4.00 30.00</p> <p>ILEX verticillata (Black Alder) 8 to 12 in. X..... 8.00 70.00</p> <p>*KOLKOWITZIA amabilis (Beauty Bush) 2 to 3 ft. X..... 40.00</p> <p>6 to 12 in. S..... 8.00 60.00</p> <p>LONICERA (Honeysuckle) Bella alba, fragrantissima, morrowii, tartarica alba and rubra 12 to 18 in..... 4.00 25.00 18 to 24 in..... 6.00 35.00</p> <p>PHILADELPHUS Coronarius, Mt. Blanc, Nivalis, Lemoine 12 to 18 in..... 4.50 30.00</p> <p>Virginal, New and scarce variety 12 to 15 in..... 10.00 60.00</p> <p>RHUS (Sumac) R. copalina (Shining Sumac) R. glabra (Smooth Sumac) 12 to 18 in..... 3.00 20.00 18 to 24 in..... 4.00 30.00</p> <p>R. typhina (Staghorn Sumac) 18 to 24 in..... 5.00 25.00 12 to 18 in..... 3.00 18.00</p> | <p>ROSES (100) (1000)</p> <p>Blanda, Meadow Rose 10 to 15 in..... 6.00 40.00</p> <p>Carolina (Humilis) 6 to 12 in..... 6.00 40.00</p> <p>Lucida, Virginia Rose 12 to 15 in..... 6.00 35.00</p> <p>Lucida alba 12 to 15 in..... 10.00 80.00</p> <p>Multiiflora, Japanese Rose 10 to 18 in..... 4.00 25.00</p> <p>Hugonis 8 to 12 in..... 7.00 60.00</p> <p>Rugosa rubra 8 to 15 in..... 6.00 40.00</p> <p>Setigira, Prairie Rose 12 to 15 in..... 6.00 40.00</p> <p>Wichuriana, Memorial Rose 12 to 18 in..... 5.00 25.00</p> <p>Climbing Roses: Dorothy Perkins, White Perkins, Crimson Rambler, Dr. Van Fleet, Clb. Amer. Beauty, Tausendschoen, Silver Moon, Paul Scarlet. 2 1/4 in. pots..... 15.00 125.00</p> <p>We will be glad to quote on Climbing Tea, Hybrid Tea, Hybrid Perpetuals, Polyantha, etc., in any variety that you may wish.</p> <p>SPIREA Anthony Waterer 8 to 15 in..... 6.00 50.00</p> <p>prunifolium 12 to 18 in..... 10.00 80.00</p> <p>Thunbergii 15 to 18 in. X..... 10.00 80.00</p> <p>Trichocarpa (New) 12 to 18 in..... 10.00 90.00</p> <p>Van Houtte 12 to 18 in..... 3.00 20.00 18 to 24 in..... 3.50 25.00</p> <p>STEPHANANDRA (Lace Bush) S. flexuosa 12 to 18 in. X..... 9.00 70.00 6 to 12 in. X..... 6.50 40.00</p> <p>SYMPHORICARPUS Racemosus (Snowberry) 12 to 18 in..... 6.00 30.00</p> <p>Vulgaris (Coralberry) 12 to 18 in..... 3.50 25.00</p> <p>SYRINGA (Lilac) vulgaris. Common purple lilac 12 to 18 in..... 6.00 30.00</p> <p>vulgaris alba 12 to 18 in..... 7.00 30.00</p> <p>Persian Lilac (purple) 12 to 18 in..... 12.00 60.00</p> <p>TAMARIX africana 12 to 18 in..... 5.00 25.00</p> <p>VIBURNUM Americanum. Amer. High Bush Cranberry 6 to 8 in..... 8.00 60.00 12 to 18 in..... 10.00 90.00</p> <p>Carlessii See listed under Grafts.</p> <p>Dentatum (Arrow Wood) 12 to 18 in..... 6.00 50.00</p> <p>Cassinoides (Withe-rod) 8 to 15 in..... 12.00 80.00</p> <p>Lantana (Wayfaring Tree) 12 to 18 in..... 9.00 70.00</p> <p>Opulus sterilis (Common Snowball) 8 to 12 in..... 10.00 60.00</p> <p>Tomentosum (Jap. Snowball) 15 to 20 in..... 10.00 90.00</p> <p>WEICELLA Rosea 12 to 18 in..... 6.00 30.00</p> <p>Eva Rathke (best red variety) 6 to 12 in. X..... 9.00 70.00 15 to 20 in. X..... 12.00 95.00</p> |
|--|---|

Berries That Attract Birds

BY planting their natural food you can have your favorite birds with you all season. The table on this page gives varieties of trees and shrubs which by U. S. Government field observation are known to attract the more desirable birds. The total number of birds seen eating the fruit is given in the second column, except in a few cases where complete information is not yet available. Not only for attracting birds, but to keep them away from cultivated fields by providing natural food near at hand. For instance, a few Mulberry trees and Shadbush will prove a more attractive fare to birds than Cherry trees loaded with cultivated fruit in June. Write us for any detailed information you desire upon the subject. No obligation.

| Shrub or Tree | No. Birds Attracted | Fruiting Season | Small Sizes for Quantity Planting (Per 100) | | Larger, Branched Near-Bearing Sizes (Per 10) | |
|-------------------------------------|---------------------|-----------------|---|---------|--|---------|
| | | | | | | |
| Amelanchier (Juneberry) | 40 | May to Sept. | 6-18" | \$10.00 | 2-3 ft. | \$ 8.50 |
| Aronia (Chokeberry) | 13 | All year | 12-24" | 6.00 | 3-4 ft. | 7.50 |
| Benzoïn (Spicebush) | 17 | Sept. to April | 15-20" | 8.50 | 3-4 ft. | 7.50 |
| Berberis (Japan Barberry) | ... | Oct. to April | 12-15" | 4.50 | See page 15 | |
| Celtais (Hackberry) | 40 | All year | 12-18" | 4.50 | 5-6 ft. | 8.00 |
| Crataegus (Cockspur Thorn) | 33 | Aug. to Mar. | 8-12" | 10.00 | 2-3 ft. | 9.00 |
| Crataegus Tomentosum | 33 | Oct. to April | 10-15" | 10.00 | | |
| Celastrus (Bittersweet) | | Aug. to May | 9-12" | 6.00 | 2-year | 4.25 |
| Cornus (Silky Dogwood) | 86 | July to Oct | 12-18" | 8.25 | 3-4 ft. | 5.25 |
| Cornus (Flowering Dogwood) | 86 | Aug. to Feb. 15 | 18-24" | 8.25 | See page 2 | |
| Dirca (Leatherwood) | | May to June | 12-24" | 15.00 | 2-2½ ft. | 15.00 |
| Diaspyros (Persimmon) | | Aug. to Mar. | 18-24" | 4.00 | 3-4 ft. | 12.50 |
| Euonymus (European) | | Sept. to Mar. | 8-12" | 10.00 | 3-4 ft. | 6.50 |
| Black Huckleberry | 35 | July to Sept. | Clumps | 10.00 | | |
| Ilex (Inkberry) | 45 | 11 Months | 4-6" | 10.00 | 15-18 in. | 7.00 |
| Ilex (American Holly) | 45 | Sept. to May | 6-10" | 12.00 | See page 6 | |
| Ilex (Black Alder) | 45 | All year | 6-12" | 8.25 | 2-3 ft. | 7.50 |
| Juniper (Red Cedar) | 39 | June to April | 9-12" | 6.25 | See page 13 | |
| Lonicera (Honeysuckle) | 15 | All year | 18-24" | 5.25 | 3-4 ft. | 5.50 |
| Myrica (Bayberry) | 73 | May to Aug. | 4-8" | 20.00 | 2-3 ft. | 9.50 |
| Morus (Russian Mulberry) | 52 | All year | 18-24" | 2.50 | | |
| Mitchella (Partridgeberry) | 10 | 11 Months | Clumps | 8.00 | | |
| Nyssa (Sour Gum) | 36 | Sept. to June | 6-18" | 6.50 | 3-4 ft. | 18.00 |
| Prunus (Wild Black Cherry) | 74 | July to Nov. | 12-24" | 4.50 | 3-5 ft. | 5.00 |
| Prunus (Bird Cherry) | 74 | June to Sept. | 12-24" | 6.50 | 2½-4 ft. | 5.00 |
| Rhus (Smooth Sumac) | 93 | All year | 12-18" | 3.50 | 3-4 ft. | 5.50 |
| Rhus (Shining Sumac) | 93 | All year | 12-18" | 3.50 | 18-24 in. | 5.50 |
| Wild Rose (Rosa Carolina) | 25 | All year | 8-12" | 6.00 | 2-3 ft. | 7.00 |
| Wild Rose (Rosa humilis) | 25 | All year | 12-15" | 6.00 | 2-3 ft. | 6.00 |
| Sassafrass | 18 | July to Oct. | 12-18" | 4.00 | | |
| Sorbus (European Mt. Ash) | 14 | Aug. to Mar. | 12-18" | 8.25 | 5-6 ft. | 9.00 |
| Sambucus (Common Elder) | 106 | Aug. to Nov. | 12-18" | 3.50 | 2-3 ft. | 4.00 |
| Sambucus Racemosa | 106 | July to Oct. | | | 2-3 ft. | 4.50 |
| Symphoricarpos (Coral-berry) | 25 | 11 Months | 12-18" | 2.50 | 3-4 ft. | 5.00 |
| Highbush Blueberry | 67 | June to Sept. | 6-12" | 12.50 | 18-24 in. | 8.50 |
| Viburnum (Arrowwood) | 28 | Oct. to July | 12-18" | 5.50 | 3-4 ft. | 5.50 |
| Viburnum (Black Haw) | 28 | Aug. to Mar. 15 | 12-18" | 15.00 | 2-3 ft. | 9.50 |
| Viburnum (American Cranberry) | 28 | 11 Months | 12-18" | 9.50 | 3-4 ft. | 6.50 |

We will quote special prices in quantity.

Kelsey Nursery Service

50 Church Street
New York City

Miss Warner

U.S. Dept of Agriculture

Forest and Game Warden

Bureau of Plant Industry

Washington D.C.

Sec. 435 1/2 P.L. & R.
U. S. POSTAGE
Paid
New York, N. Y.
Permit No. 11450