

## **Historic, Archive Document**

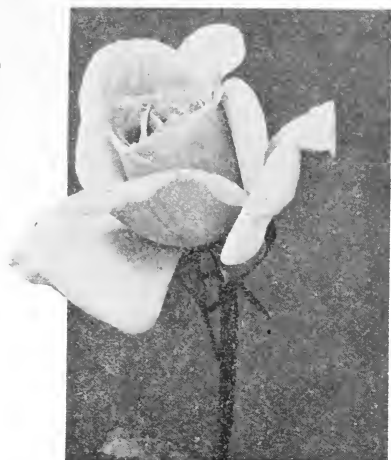
Do not assume content reflects current scientific knowledge, policies, or practices.



62.09

AUGUST 20  
1932

FIRST  
LIST



*Mrs. Aaron Ward*

# FIELD ROSE BUSHES

LIBRARY  
RECEIVED  
★ SEP 21 1932 ★  
U. S. Department of Agriculture.



Howard Rose Company  
Hemet, California



Cl Talisman, HT, (1930) gold.-red and copper	80c	50c	30c
Cl Willowmere, Per, shrimp-pink to yel.	.....		
Cl Winnie Davis, HT, pink	.....		
<b>Crimson Rambler, P, bright crimson</b>	12c	8c	5c
<b>Dorothy Perkins, HW, rose-pink</b>	15c	10c	6c
<b>Dorothy Perkins White, HW, creamy-white</b>	12c	8c	5c
<b>Dr. W. Van Fleet, HW, cameo-pink</b>	15c	10c	6c
Emily Gray, HT, salmon-yellow	.....		
<b>Excelsa, W, crimson</b>	12c	8c	5c
<b>Flower of Fairfield, P, crimson</b>	12c	8c	5c
Gold of Ophir, HW, orange-yellow	.....		
Jacotte, HW, yellow to copper-red	.....		
Marechal Neil, N, golden-yellow	.....		
Mary Wallace, HW, rose-pink	.....		
Mme. Gregoire Staechelin, HT, pink	.....		
<b>Pauls Scarlet Climber, W, crimson-scarlet</b>	15c	10c	6c
Primrose, HW, (1929), yellow	.....		
Roserie, M, deep pink	.....		
Shower of Gold, HW, golden-yellow	.....		
Silver Moon, W, creamy-white	.....		
Tausendschoen, P, white to pink	.....		
Thelma, HW, coral-pink	.....		

## Polyanthas or "Baby" Roses

	No. 1	No. 1½	No. 2
	Each	Each	Each
Catherine Zeimet, P, white	.....		
Cecil Brunner, P, bright pink	.....		
Chatillion, P, bright pink	.....		
Echo, P, rose-flesh	.....		
Edith Cavell, P, deep crimson	.....		
Ellen Poulsen, P, dark pink	.....		
<b>Erna Teschendorf, P, deep crimson</b>	15c	10c	6c
Eugene Lamesch, P, orange-yellow	.....		
Frau Dr. Erreth, P, yellow	.....		
<b>George Elger, P, golden-yellow</b>	15c	10c	6c
Glori Mundi, P, orange-scarlet	.....		
Golden Salmon, P, golden-salmon	.....		
Gruss an Aachen, DP, salmon-flesh	.....		
Ideal, P, dark scarlet	.....		
Lady Reading, P, red	.....		
<b>Mme. N. Levavasseur, P, crimson-red</b>	15c	10c	6c
<b>Perle d'Or, salmon-orange</b>	15c	10c	6c
<b>Triomphe Orleanais, P, cherry-red</b>	15c	10c	6c

## Rugosa and Their Hybrids

	No. 1	No. 1½	No. 2
	Each	Each	Each
Agnes, HR, pale amber .....			
Amelia Gravereaux, HR, carmine .....			
<b>F. J. Grootendorst, PR, bright red</b> .....	<b>15c</b>	<b>10c</b>	<b>6c</b>
F. J. Grootendorst Pink, PR, clear pink .....			
Hansa, HR, red to violet .....			
Sarah van Fleet, HR, rose-pink .....			
Turks Rugosa Samling, HR, cop.-yel. to pink			

## Hybrid Perpetual and Other Hardy Varieties

American Beauty, HP, crimson-carmine .....
Baroness de Rothschild, HP, rose-pink .....
Black Prince, HP, dark crimson .....
Captain Christy, HP, silver-pink .....
Frau Karl Druschki, HP, white .....
Gen. Jacqueminot, HP, scarlet-crimson .....
Gen. Washington, HP, carmine .....
George Dickson, HP, dark crimson .....
Harrisons Yellow, AB, bright yellow .....
Hermosa, C, light pink .....
Hugonis, lemon-yellow .....
J. B. Clark, HP, deep scarlet .....
Juliet, AB, pink to gold .....
Magna Charta, HP, bright rose .....
Marshall P. Wilder, HP, scarlet-crimson .....
Mme. Albert Barbier, HP, salmon to yellow .....
Mrs. John Laing, HP, soft pink .....
Prince C de Rohan, HP, velvety-crimson .....
Ragged Robin, C, crimson .....
Ulrich Brunner, HP, geranium-red .....

### SHIPPING PERIOD

#### *Winter and Spring*

"THE HARVEST" starts at Christmas time (Winter) and all orders are filled in their rotation.

"LARGE ASSORTMENTS" can seldom be completed in the first shipment.

# Hybrid Teas, Teas, and Pernetiana

No. No. No.  
1 1½ 2  
Each Each Each

Abol, HT, ivory-white .....			
Amelia de Bethune, per, coral-red .....			
America, Hills, HT, rose-pink .....			
Angele Pernet, HT, orange-yellow .....	35c	25c	15c
Antoine Rivoire, HT, rose-flesh .....			
Betty, HT, coppery-rose .....			
Betty Sutor, HT, (1929), veined rosy pink.....			
Betty Uprichard, HT, salmon-pink .....			
Briarcliff, HT, rose-pink .....	30c	20c	12c
Caledonia, HT, (1928), white .....			
Cecile Brunner, (see Polyanthas above)			
Charles P Kilham, HT, orange-red .....	30c	20c	12c
Clovelly, HT, pink .....			
<b>Columbia, HT, rose-pink</b> .....	<b>15c</b>	<b>10c</b>	<b>6c</b>
Commonwealth, HT, deep pink .....			
Constance, Per, golden-yellow .....			
Crimson Queen, HT, crimson .....			
Crusader, HT, crimson-red .....			
Cuba, HT, cardinal red to yellow .....	30c	20c	12c
<b>Dame Edith Helen, HT, clear-pink</b> .....	<b>15c</b>	<b>10c</b>	<b>6c</b>
Duchess of Atholl, HT, (1928), orange .....	30c	20c	12c
Duchess of Wellington, HT, yellow .....			
Edith Nellie Perkins, HT, (1928), sal.-pink.....	30c	20c	12c
Edward Mawley, HT, dark crimson .....			
E. G. Hill, HT, (1929), scarlet-red .....			
Eldorado, Per, golden-yellow .....			
Empire Queen, HT, cerise .....			
Ethel Somerset, HT, shrimp-pink .....			
<b>Etoile de France, HT, velvety crimson</b> .....	<b>15c</b>	<b>10c</b>	<b>6c</b>
Etoile de Hollande, HT, bright red .....			
Evening Star, Per, golden-yellow to apricot.....			
Feu Joseph Looymans, Per, Indian-yellow.....			
Fontanelle, HT, lemon-yellow to gold .....			
Francis Scott Key, HT, deep red .....			
Frank W. Dunlop, HT, rose-pink .....			
Fred J. Harrison, HT, cardinal-red .....			
<b>General McArthur, HT, scarlet</b> .....	<b>15c</b>	<b>10c</b>	<b>6c</b>
General S. A. Janssen, HT, deep rose .....			
Gladys Benskin, (1929), sal.-yel. to orange .....	30c	20c	12c
Golden Dawn, HT, (1929), sunflower-yellow.....	30c	20c	12c
Golden Emblem, HT, yellow .....			
Golden Pernet, Per, golden-yellow .....			
Gorgeous, HT, orange-yellow veined copper.....			

Gruss an Coburg, HT, orange to yellow .....	30c	20c	12c
Gruss an Teplitz, HT, velvety-scarlet .....	15c	10c	6c
Hadley, HT, rich crimson .....	15c	10c	6c
Heinrich Eggers, HT, (1928), orange-copper.....			
Hilda, HT, (1928), carmine-pink .....			
Hollywood, HT, (1930), rose-red .....	30c	20c	12c
Hoosier Beauty, HT, dark crimson .....	15c	10c	6c
Hortulanus Budde, HT, deep crimson .....			
Imperial Potentate, HT, deep rose-pink .....			
Impress, HT, (1929), cardinal red to orange	30c	20c	12c
Irish Charm, HT, apricot .....	30c	20c	12c
Irish Elegance, HT, orange-apricot .....			
Irish Fireflame, HT, deep rose to gold .....			
Isobel, HT, rose-pink to apricot .....			
James Gibson, HT, (1928), crimson-scarlet .....			
Jarvisbrook, HT, (1928), carmine to orange.....	30c	20c	12c
J. C. Thornton, HT, crimson-scarlet .....			
Jean C. N. Forestier, Per, carmine-lake .....			
Joan Cant, HT, (1929), salmon-pink .....			
Joanna Hill, HT, (1928), light yellow .....	30c	20c	12c
Jon J L Mock, HT, carmine-pink .....	15c	10c	6c
J. Otto Thilow, HT, rose-pink .....			
Jules Gaujard, HT, (1928), orange-red .....	30c	20c	12c
Jules Tarbart, Per, salmon-pink to coral.....			
Kaiserine A Victoria, HT, creamy white.....	15c	10c	6c
Killarney, HT, bright pink .....	15c	10c	6c
Killarney Dbl. White, HT, white .....			
K of K, HT, velvety scarlet .....			
Lady Barnby, HT, (1930), glowing pink .....	30c	20c	12c
Lady Hillingdon, HT, apricot-yellow .....			
Lady Leslie, HT, (1929), scarlet-carmine .....	30c	20c	12c
Lady Margaret Stewart, HT, orange-yellow.....	30c	20c	12c
La France, HT, silver-pink .....			
Laurent Carle, HT, velvety-carmine .....			
Leader, HT, cerise-red .....			
Lord Charlemont, HT, deep crimson .....			
Lord Rossmore, HT, (1930), creamy white .....			
Los Angeles, HT, pink to coral .....	15c	10c	6c
Louise C. Breslau, HT, chrome-yellow to coral	30c	20c	12c
Lucie Marie, HT, (1930), yellow veined red.....	30c	20c	12c
Lulu, HT, orange to salmon-pink .....			
Luxembourg (Marie Adelaide), HT, cop.-yel.			
McGredy's Scarlet, HT, brilliant scarlet .....			
Marcia Stanhope, HT, white .....			
Margaret McGredy, HT, orange-scarlet .....			
Marion Cran, HT, yellow veined cerise .....			



Mary Count, Illchester, HT, deep rose-pink.....			
Maud Cumming, HT, coral-pink to orange.....			
May Wettern, HT, (1928), rosy pink .....			
Miss Lolita Armour, HT, creamy cop. to rose			
Miss Rowena Thom, HT, rose shaded gold.....	30c	20c	12c
Mme. Able Chatenay, HT, pink to carmine .....			
Mme. Alexandre Dreux, Per, golden yellow.....			
<b>Mme. Butterfly, HT, salmon .....</b>	<b>15c</b>	<b>10c</b>	<b>6c</b>
Mme. Caroline Testout, HT, rose-pink .....			
Mme. Edouard Herriot, HT, coral-red .....			
Mme. Henri Lustre, Per, dark red .....			
Mme. Henri Queille, HT, (1928), pink to gold....			
Mme. Jules Bouche, HT, salmon-white .....			
Mme. Leon Pain, HT, silver-pink .....			
Mme. Nicolas Aussel, HT, (1931), copper .....	50c	30c	20c
Mme. Paul Ollivary, HT, copper-salmon .....			
<b>Mrs. Aaron Ward, HT, Indian-yellow .....</b>	<b>15c</b>	<b>10c</b>	<b>6c</b>
Mrs. A. R. Barraclough, Per, carmine.....			
Mrs. A. R. Waddell, HT, bronze-pink to apricot			
Mrs. Calvin Coolidge, HT, golden yellow .....			
Mrs. Charles Bell, HT, shell-pink .....			
Mrs. E. P. Thom, HT, canary yellow .....			
Mrs. Henry Morse, HT, salmon to vermillion.....			
Mrs. H. R. Darlington, HT, creamy white.....			
Mrs. John Bell, HT, (1928), cochineal-carmine			
Mrs. Lovell Swisher, HT, salmon-pink .....			
Mrs. Sam McGredy, HT, (1929), scarlet-copper	35c	25c	15c
Mrs. Wm. C. Egan, HT, pink .....			
Old Gold, HT, orange shaded copper .....			
Olympiad, HT, (1931), crimson yellow .....	50c	30c	20c
<b>Ophelia, HT, salmon-pink .....</b>	<b>15c</b>	<b>10c</b>	<b>6c</b>
<b>Ophelia Golden, HT, golden-yellow .....</b>	<b>15c</b>	<b>10c</b>	<b>6c</b>
Ophelia White, HT, white .....			
Padre, HT, copper-scarlet .....			
Portadown, HT, (1928), deep crimson .....	30c	20c	12c
Premier, HT, dark rosy pink .....			
President Cherioux, Per, coral to yellow .....			
Pres. Herbert Hoover, HT, (1930) med. orange	35c	25c	15c
Radiance, HT, pink .....			
Radiance Red, HT, crimson .....			
Rev. F. Page Roberts, HT, yellow veined red	30c	20c	12c
Rhea Reid, HT, velvety red .....			
Richard E. West, HT, cadmium yellow .....			
Rose Down, HT, soft shell pink .....			
Rose Hill, HT, rose-pink .....			
Roselandia, HT, deep golden yellow .....			

Rose Marie, HT, rose-pink .....			
Roslyn, HT, (1929), deep orange to yellow.....	30c	20c	12c
Rudolph Valentino, HT, (1929) coral-pink.....	30c	20c	12c
Sensation, HT, scarlet-crimson .....			
Sir David Davis, HT, deep crimson .....	30c	20c	12c
<b>Souv. d Claudius Pernet, Per, pure yellow .....</b>	<b>15c</b>	<b>10c</b>	<b>6c</b>
Souv. d Georges Pernet, Per, red sh. yellow.....			
Souv. d H. A. Verschuren, HT, cadmium yellow			
Souv. d Mme. Boulet, HT, dark yellow .....			
<b>Sunburst, HT, yellow .....</b>	<b>15c</b>	<b>10c</b>	<b>6c</b>
Sunstar, HT, orange to yellow .....			
Swansdown, HT, (1928), creamy white .....			
Talisman, HT, (1929), golden red and copper			
Templar, HT, bright red .....			
Ville de Paris, HT, yellow tinted orange .....	35c	25c	15c
Westfield Star, HT, creamy white .....			
W. E. Chaplin, HT, (1929) deep crimson .....	30c	20c	12c
Wilhelm Kordes, HT, golden yellow .....			
William E. Nickerson, HT, (1928), or.-cerise			
William F. Dreer, HT, pink to yellow .....			
William R. Smith, HT, cream to pink .....			
Willowmere, Per, shrimp-pink to yellow .....			
Winnie Davis, HT, pink .....			

## St. Louis, Salt Lake—Annually

FREIGHT PAID—Car lots are shipped to the above "breaking" points.

At either place we can hold in cold storage for a period if desired.

Grade No. 1—Teas, Hybrid Teas and Polyanthas, 18 inches and up. Climbers and Hybrid Perpetuals, 24 inches and up. Three or more branches.

Grade No. 1½ or Medium—Teas, Hybrid Teas, and Polyanthas, 14 inches and up. Climbers and Hybrid Perpetuals, 18 inches and up. Two or more branches.

Grade No. 2—Teas and Hybrid Teas, 8 inches and up. Climbers and Hybrid Perpetuals, 10 inches and up. Two or more branches. NOTE—They are not culls, but sturdy, well proportioned plants at the price.

Large Assortments can seldom be completed in the first shipment.

*Order in multiples of TEN. Ten or more at these prices.*

# TERMS AND SHIPPING INFORMATION

**Terms**—60 days net, f. o. b. Hemet, California, to established Nurserymen, Seedsmen and Dealers, known to us, or to those who have necessary rating. THIRTY DAYS less 1%. TEN DAYS less 2%. For advance cash or cash with order before shipment, less 3%.

**To the Trade Only**—Prices shown are for first-class stock of the grade named.

The use of printed stationery as protection is desirable. If it is not used, the purchaser should state clearly his position. We print only wholesale trade lists, and do not desire or solicit retail orders.

**Substitution**—We do not substitute unless instructed to do so, and then label true name. Customers will save time by naming a second choice, to be supplied only when first choice is sold out.

**Pro-Rata**—As it is almost impossible to count roses in the field when partly grown, there is a feature of uncertainty about all orders booked before digging. Consequently we reserve the right to fill such pro rata.

**Genuineness**—We exercise great care to keep all varieties true to name and will replace, on proper proof, all stock that may prove otherwise; but it is mutually agreed that we shall not be liable for any amount greater than the original price of the stock. All quotations made subject to stock being unsold when order is received, or loss by any and all unavoidable causes. Freight shipments travel at risk of purchaser.

**Packing**—Bales and boxes will be charged at near actual cost price. We make no charge for packing or delivery to railroad station.

Boxes 18x30 in.—3 ft. 10 in. @ .....	\$1.50
Boxes 24x34 in.—7 ft. 10 in @ .....	\$2.00
Boxes 24x36 in.—7 ft. 10 in. @ .....	\$2.50

We recommend express and will help pay the charges. Write us.

## EXPRESS RATES FROM HEMET, Per 100 lbs. to

Atlanta .....	\$10.25	Jacksonville .....	\$10.80
Boston .....	12.65	Kansas City .....	7.80
Chicago .....	9.45	Memphis .....	8.85
Cincinnati .....	10.15	New Orleans .....	9.00
Dallas .....	6.75	New York .....	12.15
Denver .....	6.30	Philadelphia .....	12.00
Des Moines .....	8.40	Salt Lake .....	4.40
Galveston .....	8.00	St. Louis .....	9.05
Houston .....	7.80	St. Paul .....	9.45
		Washington .....	11.65

Our roses weigh about 350 pounds per 1000 No. 1 grade plants; 225 pounds per 1000 No. 1½ grade; and 125 pounds per 1000 No. 2 grade. Shipments weighing less than 100 pounds take a higher rate.

HOWARD ROSE COMPANY  
HEMET, CALIFORNIA

*Return Postage Guaranteed*

Section 435½ P.L.&R.  
U. S. POSTAGE

PAID 1C

Permit No. 5

Hemet, California

Horticulture Bureau of Plant Ind  
Department of Agriculture  
Washington, D C