

Historic, Archive Document

Do not assume content reflects current scientific knowledge, policies, or practices.

72.67

21532

Worthwhile
FLOWERING SHRUBS

Special List of Rare
and Unusual Plants
at Attractive Prices

A. M. LEONARD & SON

Established 1885

PIQUA, OHIO



HARDY SHRUBS USED TO FRAME THE GARDEN PICTURE



Philadelphus, Norma. See page 7

FOR THE past thirty years we have actively pioneered in the testing of new plants, so that our entrance into the national field with new and rare plants has not been a matter of hasty decision. We have spent much time and money in furthering this work, in the meantime conducting a wholesale and retail nursery business.

At no time in our experience have we seen a greater need of worth-while plants than at the present. The gardening public wants to plant choice and new items, for only in this way can the interest in gardening be maintained. As nurserymen, we anxiously look forward to the arrival of new plants, and when we have tested them fully we are equally anxious to have others enjoy them; so it is in the spirit of true garden- and plant-lovers that we present our first Catalogue of new and rare plants.

Our prices are moderate—exceptionally moderate when one considers the high quality of goods we sell and of the service we render. You save not only the middleman's profit by buying direct from us, but you secure freshly dug plants.

A great deal of the charm of one's plantings can be attributed to new or unusual plants not seen in a neighbor's garden.

Easy-to-grow Plants. The fact that these plants are new and rare does not necessarily mean they are difficult to grow; in fact, we have purposely omitted the difficult species and varieties.

Plant This Spring

Plants and gardening should not be construed as a luxury to be given up in these times of "tight money." The wise man and woman goes to the garden for true physical and mental relaxation—health must be conserved. Buy Leonard's plants and see what a joy you will get out of living.

The plants which appear in this Catalogue have been carefully observed over a period of years, during which we have worked up the present stock of plants; their hardiness to our northern winters is assured; their attractiveness was one of the first things we observed; adaptability to special conditions has made some of them especially valuable. Prior to 1918 we were dependent on Europe to supply us with novelties which would add interest to our existing list of plants; developing of these takes time.

We expect to add more novelties to each successive Catalogue; in this edition, we are including some shrubs (not new or rare) which are bargains at the prices named. Bear in mind that the usual catalogue shrub is only 2 to 3 feet high.

With few exceptions, plants of **planting size** invariably transplant with equal ease. (Note. Our plants are freshly dug and packed so as to reach you in first-class condition. Easily followed planting directions go with each shipment.) These shrubs save you one, two, or three years.

Order at Once

We cannot over-emphasize the necessity of ordering early. Season permitting, we prefer to ship before May 1. We pack so that freezing weather en route will not injure material. You can plant hardy plants any time the temperature is above freezing and the ground is not frozen hard.



A handsome Tree Spirea, showing the graceful foliage and the filmy masses of flowers which resemble very much those of the herbaceous Astilbe

Tree Spirea · *Sorbaria arborea*

One of the very best shrubs introduced, through the explorations of the late E. H. Wilson, from the China-Thibetan borderland. It has the habit of a small tree, with very gracefully poised, compound foliage. Growth is rapid, and it quickly makes an excellent screen or "filler" in a shrub border, and is unrivaled in beauty of habit as a specimen. Plant in rich, moist loam for the best results. Excellent for the wild garden. The tiny, pure white flowers are borne in immense, compact sprays closely resembling those of the popular herbaceous astilbes, or "Spireas" as they are called by some florists. It blooms steadily from the middle of July to the middle of September, and some of the panicles are 2 feet long. This is a handsome and very adaptable shrub and can be used in many locations in partial shade as well as in sun. It blooms the first year after planting.

3 to 4-ft. plants, 50 cts. each; \$5 per doz.

SPECIAL: 2 doz. plants for \$9.40

Shad-bush · *Amelanchier canadensis*

The graceful, airy flowers of the Shad-bush are particularly welcome at the beginning of spring when we are eagerly looking for bloom. Young leaves and stems are covered with silky, silvery down, making them as frostily decorative as the racemes of white flowers. The tree is slender and graceful, of half-shrubby habit.

5 to 6-ft. plants, 80 cts. each; \$8.50 per doz.

Tree-Shaped or Standard Wisteria



The gracefully suspended flowers
of the Japanese Wisteria



These preëminent plants have been out of commerce (except at considerably higher prices) for ten or more years. Our Wisterias are propagated from blooming plants only, insuring that they will bloom and be true to color. Stakes must be placed to keep the trunk upright. Wisterias should have plenty of water at time of flowering.

All these Wisterias are grafted about 4 feet above ground; diameter of upright stem, 1 foot above ground, averages $\frac{5}{8}$ to $\frac{3}{4}$ inch; heads (with foliage) not less than 2 feet across.

Pink Japanese Wisteria (*Wisteria multijuga rosea*). Bears beautiful pink flowers in long clusters.

Double Violet Japanese Wisteria (*Wisteria multijuga violacea plena*).

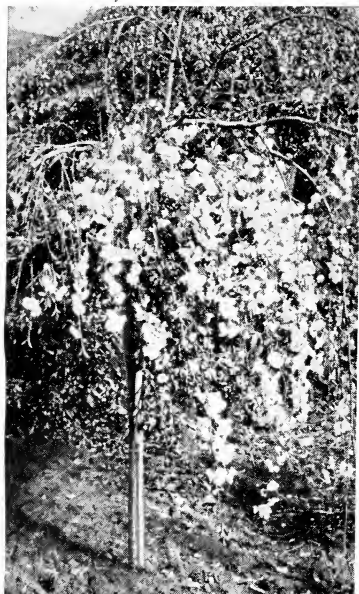
White Japanese Wisteria (*Wisteria multijuga alba*).

Silky Wisteria (*Wisteria venusta*). Glistening white flowers.

Mrs. McCullough. Compact clusters of medium size; rich mauve-purple.

The first two varieties are our pick of the lot, and we have, accordingly, propagated more of them than the other three varieties.

Plants, \$8.75 each; 3 or more at \$7.75 each; 6 or more at \$7.30 each



One of the prettiest ornamental trees imaginable is the Weeping Peach

Japanese Weeping Double-flowering Peach

A most unusual accent plant with wonderful possibilities. It can be used on the informal lawn, in the formal as well as the informal garden, and in the rock-garden.

On large lawns, campuses, or parks, these trees should be used in groups of threes or fives. On account of their rapid growth and early bloom, their appeal is equal to or greater than that of the Weeping Japanese Flowering Cherry.

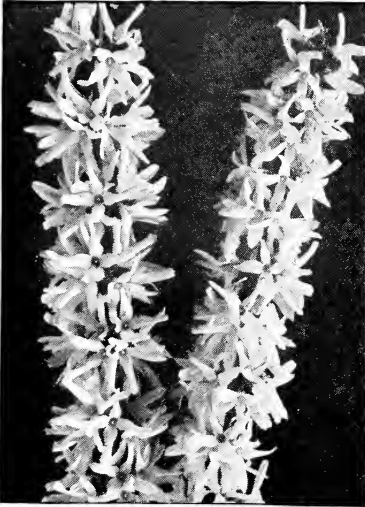
The tree follows the same general style as the fruiting peach in mature size and appearance of foliage, but the gracefully weeping habit is a decidedly attractive quality.

Its flowers are large, very double, so thickly set along the branches that the willowy boughs bend gracefully beneath their weight. They come into full flower in late March or early April, in favorable climates, and are so hardy that they are rarely injured except by the most severe frosts.

	Each	Per Doz.
Double Red. 4 to 6-ft. over-all height (4-ft. stems)	\$3 50	\$35 00
Double White. 6 to 7-ft. over-all height (5-ft. stems)	4 25	45 00
Double Versicolor (Red and White). 6 to 7-ft. over-all height (5-ft. stems)	4 25	45 00

Brilliant Upright Golden-Bell

Forsythia intermedia
Spectabilis



Spectabilis packs its flowers densely along the branches



Spectabilis is much more free-flowering than other Forsythias

Spectabilis is the most brilliant Forsythia or Golden-Bell that is grown. It bears about three times as many flowers as *Forsythia intermedia*, every twig being thickly studded with its exquisite, 4-petaled little bells of deepest golden yellow. An excellent, continuous color effect may be had by planting Cornelian Cherry for early yellow flowers and this Forsythia to follow. It is useful in foundation planting when small, but is better as an accent shrub in lawn or garden. The plants grow very rapidly into large shrubs producing long, wand-like branches 10 feet or more in length, which swing outward and downward to make a big, mounded shrub all of 10 feet high and that much or more in diameter.

2 to 3-ft. plants, 40 cts. each; \$4 per doz. 3 to 4-ft. plants, 50 cts. each; \$5 per doz.
4 to 5-ft. plants, extra heavy, 75 cts. each; \$7.50 per doz.

Upright Golden-Bell · *Forsythia intermedia*

The best Forsythia that we had until *Spectabilis* was brought out, and not to be lightly regarded even now. The color is a shade lighter yellow, and the flowers are not quite so closely packed along the branches, but it is a most showy and graceful shrub and a superb adornment to any property.

Don't "turn up your nose" at Golden-Bells because you ordered them some years ago and got the viny Forsythia that blooms sparsely, whereas you wanted an upright shrub that would be literally covered with blossoms. *Forsythia intermedia* will not disappoint you.

A real bargain for these large plants, 4 to 5-ft., extra-heavy plants, 50 cts. each; \$5 per doz.

Mock Oranges

Philadelphus

We offer three of the fine French hybrids of Lemoine, all distinguished by differences in habit, character of blooming sprays, and in fragrance. The outstanding virtues of all Mock Oranges are their sweet scent and the reckless abundance of their blooming. Our plants are grown in beds under a sprinkler system, and while they are not so bushy they are really splendid values. Each plant has five or more branches, at least three of which exceed 12 inches in height.

Virginal

Generally regarded as Lemoine's finest Mock Orange, Virginal is a tall, narrow grower, 10 feet or more high, of rigid habit. It produces a profusion of large, semi-double, white, fragrant flowers in rich, luxurious clusters in June, so abundantly that the branches bend under their weight. Occasionally through the summer and autumn, charming accidental clusters of flowers will appear on the bush. It is the only Mock Orange which will do this.

12 to 18-in. plants, 30 cts. each; \$3 per doz.



Virginal is the queen of the Mock Oranges; large, semi-double flowers

Albatre (French Hybrid Mock Orange).

A splendid shrub for foundation plantings as it grows only about 4 feet high, making a symmetrical, mounded bush with slender branches which bend to the ground under the weight of its myriads of deliciously scented white flowers.

12 to 18-in. plants, 30 cts. each; \$3 per doz.

Norma.

An erect bush of rigid habit, growing more than 10 feet tall. Its long, straight branches are studded with small clusters of extra-large, single white flowers of extreme purity of color and refinement of shape.

Received Award of Merit from the Royal Horticultural Society.

12 to 18-in. plants, 30 cts. each; \$3 per doz.



Sweet-scented Mock Orange. See page 8

MOCK ORANGES (*Philadelphus*), continued

Sweet-scented Mock Orange (*Philadelphus coronarius*).

Sometimes called the "Old-fashioned Syringa." This long-lived, fragrant shrub must not be omitted from any garden or planting of any extent. Use it in a corner of the house where a "bulky" shrub is needed; use it for a tall screen; it will thrive even in partial shade.

Strong, 4 to 5-ft. plants, 50 cts. each, \$5 per doz.

SPECIAL: 2 doz. plants, \$8.95

Golden Mock Orange (*Philadelphus coronarius aureus*).

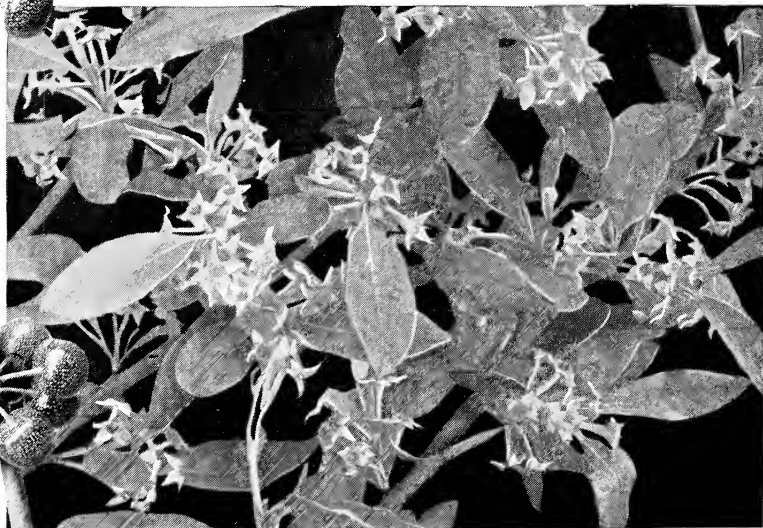
Also called Golden Syringa. This yellow-leaved plant is excellent in foundation plantings, in the garden, or in the shrub border. It grows 5 to 6 feet high and makes a fine mass of yellow foliage.

12 to 18-in. plants, 40 cts. each, \$4.50 per doz.

Autumn Oleaster · *Elaeagnus umbellata*

One or more of these shrubs should be included in every planting for the benefit of the birds, which relish the salmon-scarlet berries very much during the winter. It is a beautiful shrub with grayish green leaves which sometimes look as if they had been coated with silver or aluminum dust, and have a rough, metallic "feel." This is a shrub that can be planted and forgotten, as it "fixes" nitrogen from the air by means of nodules on its roots and is therefore able to flourish by means of its own labor without troublesome fertilizing of the soil. It enjoys full sunlight and will grow 8 to 10 feet high. As it does not spread much, it can easily be inserted in the background of other shrubs. Grows well in sandy as well as clay soil, and resists drought.

3 to 4-ft. plants, 75 cts. each, \$7.50 per doz.



The salmon-pink berries of the Oleaster are incrustated with silver. The foliage and flowers are both attractive

Japanese Barberry Hedges from Cuttings

NOW you can have a Barberry Hedge from cuttings with plants that are all even and uniform



Flowers of the Japanese Barberry



Berries of the Japanese Barberry

Finest of all hedge-plants adapted to the American climate, the Japanese Barberry is a graceful, thorny shrub about 4 feet high when fully developed, but can be kept much lower by proper pruning. For best results the plants should be uniform in all respects.

Not more than 1 per cent of all the Japanese Barberry sold in this country is grown from cuttings. It is so easy to sow the seed of Barberry and get a high percentage of germination that no one bothers with such an expensive method. The reason we grow Barberry from cuttings is that no plant grown from seed varies so much as the Japanese Barberry. A few years ago we imported a limited number of Japanese Barberry plants from France. They were propagated from cuttings, and we have continued the practice in this country. The autumnal color of the leaves is beautiful dark red, and enhanced by brilliant red berries.

	Each	Doz.	100
15 to 18-in. plants	\$0 30	\$3 00	\$23 00
18 to 24-in. plants	35	3 50	27 00
24 to 36-in. plants	50	5 00	38 00

Golden Chain · *Laburnum vossi*

To you who want the thrill of thrills this shrub beckons. It blooms just as the lilacs are finishing. Plant it in a protected (or partially protected) situation in good soil in full sunlight. In time the long yellow racemes of flowers will cover this small tree or shrub in such profusion as fairly to hide the foliage. Even the sophisticated nurseryman will "walk a mile" to see one in bloom.

An exceptionally beautiful specimen is located on the estate of Mrs. Sarah B. Cochran in the Allegheny Mountains, near Uniontown, Pa.

This variety is harder than the commoner *Laburnum vulgare* and the flowers are larger. Because they are scarce and high-priced, very few plants of this variety have been used in this country. We are pleased to announce that we have propagated enough to be able to price them reasonably.

2 to 3-ft. plants, \$1.85 each, \$20 per doz.

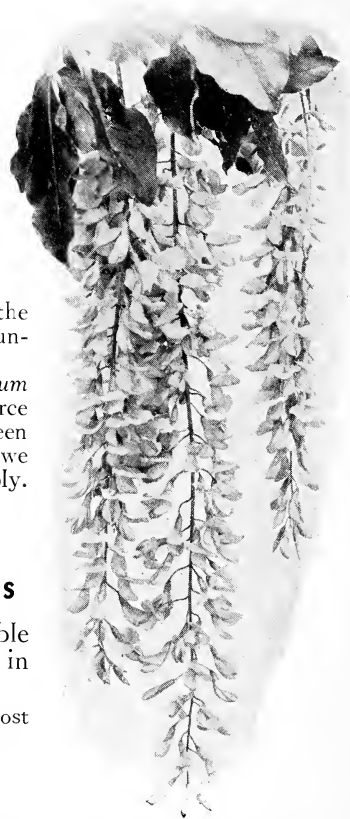
Cornelian Cherry · *Cornus Mas*

There are so many good points to this valuable shrub or small tree that we will enumerate them in "menu" fashion.

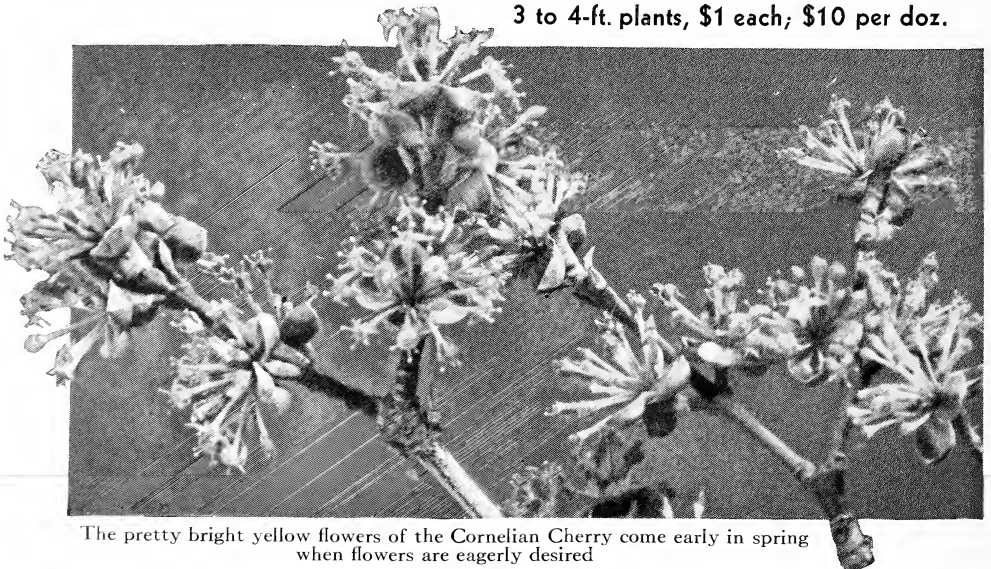
1. Yellow flowers in March or early April (almost before snow has left) before the leaves.
2. Blossoms not injured by frost.
3. Grows in shade as well as sun.
4. Thrives in city atmosphere.
5. Has been out of the market for over ten years—a plant that will never become common. Attains, in time, a height of 10 to 20 feet.

It is useful as a screening shrub, makes a handsome accent plant on the lawn, and in the mass makes a fine background for a garden.

3 to 4-ft. plants, \$1 each, \$10 per doz.



The Golden Chain looks like a yellow Wisteria



The pretty bright yellow flowers of the Cornelian Cherry come early in spring when flowers are eagerly desired

Double-flowering Purple-leaved Plum · *Prunus cerasifera blireana*

An outstanding novelty recently introduced from Europe. The salmon-pink, semi-double flowers are borne in little rosettes along the slender branches. Produces flowers in the greatest profusion, very early, so that the tree becomes a cloud of pink, intermingled with the young coppery foliage. Flowers are splendid for cutting. Plant this shrub in shrub border or as accent plant in garden background. Grows 10 to 15 feet high.

ONE OF THE MOST BEAUTIFUL OF SPRING-FLOWERING SHRUBS

3 to 4-ft. plants, \$1.25 each; \$12.50 per doz. 4 to 6-ft. plants, \$1.50 each; \$15 per doz.

Improved Purple-leaved Plum · *Prunus cerasifera pissardi*

While not as showy a plant as *Prunus cerasifera blireana*, it is much better than the old *Prunus pissardi*, the well-known Purple-leaved Plum. Use it liberally to give that contrast in color of foliage so necessary for an interesting planting. Plant in sunny situation for the best color-tone. It will grow 10 to 15 feet high.

Transplanted	Each	Per doz.
4-yr., 3 to 4 ft.	\$0 53	\$6 00
4-yr., 4 to 5 ft.	80	8 40
4-yr., 5 to 6 ft.	1 13	12 00



The foamy flowers and porcelain berries of the Coral Dogwood

Coral Dogwood · *Cornus alba sibirica*

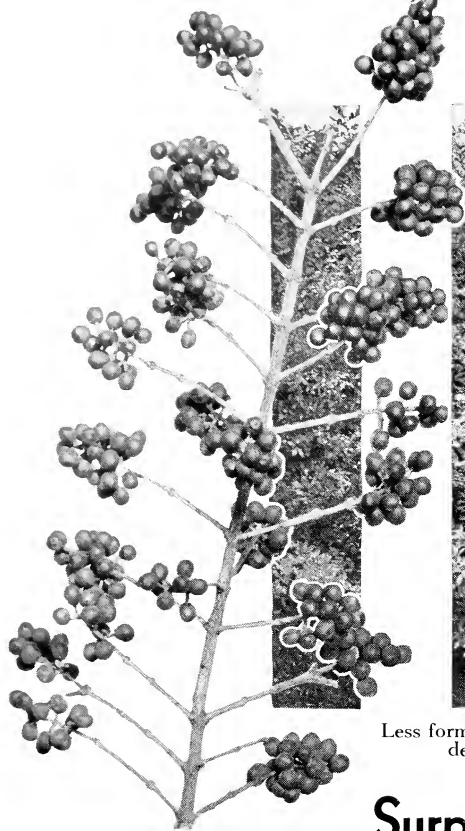
Has the most brilliantly colored bark of any shrub, and no more showy winter landscape can be "made" than by planting a group of this shrub next to the Golden-twig Dogwood offered below.

3 to 4-ft. plants, 50 cts. each; \$5 per doz.; \$34.50 per 100

Golden-twig Dogwood · *Cornus stolonifera lutea*

The distinct yellow bark of this shrub makes a sunny picture in the fall and winter, and when used next to the Red-branched Dogwood the effect is stunning.

3 to 4-ft. plants, 50 cts. each; \$5 per doz.; \$34.50 per 100



Less formal than other types, Regel Privet is hardy and very decorative. Note the glossy blue-black berries

Surplus Privet

Here is an excellent opportunity to secure Privet cheap for making that long-delayed hedge-planting. There is no easier or cheaper plant than Privet for dense hedges which can be maintained with minimum effort and care. One or two shearings per year will keep them in order, but if an intricate design or an especially smooth, box-like effect is desired, Privet hedges must be clipped often.

Their culture is the easiest in the world. Plow a furrow or dig a trench along the line, and set in the plants, a foot apart for a close hedge or a little more for a loose, informal shelter. We offer two of the best Privets for hedge purposes.

Regel Privet · *Ligustrum regelianum*

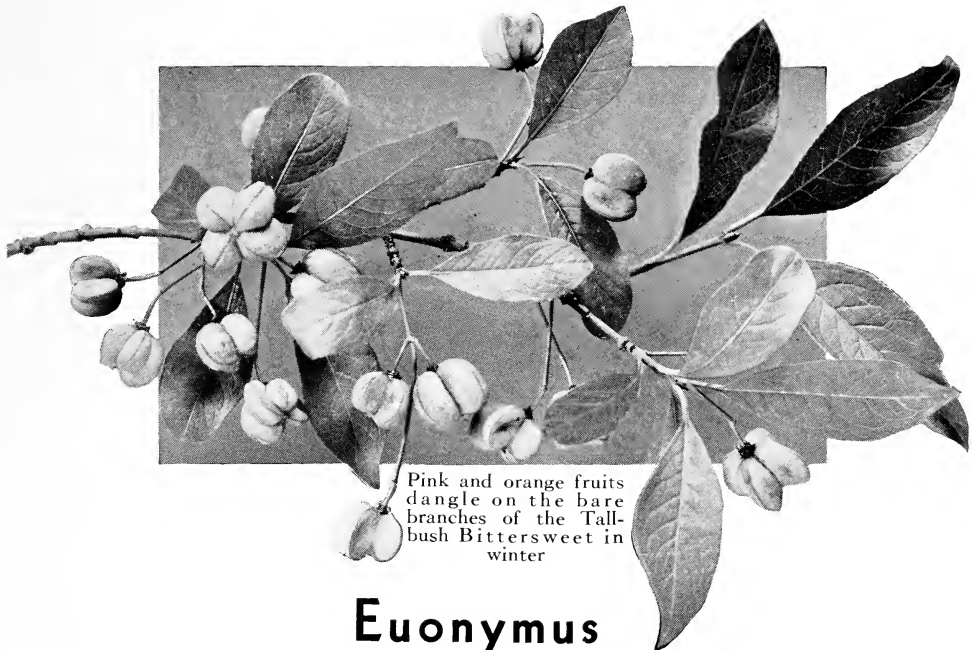
Used as a shrub in foundation plantings, it makes one of our most decorative plants. Its blue-black berries remain on the branches throughout fall and winter. All our plants are grown from cuttings, which makes them much more uniform and valuable than seedlings. The hardiest Privet grown.

3 to 4-ft. plants, 50 cts. each; \$3.50 per doz.; \$24.50 per 100

California Privet · *Ligustrum ovalifolium*

Planted more than any other Privet for hedges. It grows easily and quickly and is a handsome plant with glossy, almost evergreen foliage that can be depended on to thrive under the most difficult conditions. Our 2-year plants were cut back last year so as to make them bushier.

As long as they last, 12 to 15-in. plants, \$5 per 100



Pink and orange fruits dangle on the bare branches of the Tall-bush Bittersweet in winter

Euonymus

Yeddo Euonymus · *Euonymus yedoensis*

A new shrub of fine character, with foliage of particular brilliance in autumn. As the season advances the fruits burst open, displaying scarlet berries against pink husks. Plant several of these charming shrubs in the garden and in the shrub border or one or two in the foundation planting.

2 to 3-ft. plants, \$1 each; \$10 per doz.

Tall-bush Bittersweet · *Euonymus europaeus*

The berries are borne in such great profusion and are so similar to the berries of the Bittersweet vine that we have applied the name "Tall-bush Bittersweet" to this valuable shrub. It is a tall, narrow bush, 8 to 12 feet high, that thrives in shade or sun and has handsome deep green foliage.

	Each	Per Doz.
1 to 2-ft. plants	\$0 45	\$4 50
3 to 4-ft. plants	70	7 50
4 to 5-ft. plants	90	10 00

Spreading Euonymus · *Euonymus patens*

A dwarf, almost evergreen shrub which can be clipped into a very low hedge or used as a low "filler" plant in evergreen groups. The greenish flowers are borne in great, drooping clusters, and are followed by pink and scarlet fruits. Our plants are packed in damp sphagnum moss, insuring the plants reaching you in the best possible shape.

12 to 18-in. plants, 50 cts. each; \$5 per doz.

Cork-barked Euonymus · *Euonymus alatus*

No shrub collection is complete without one or more of these plants. The twigs are adorned by broad, flat "wings" of corky bark, most unusual and decorative. Like *Euonymus europaeus* and *E. yedoensis*, it has brilliant berries in the fall and makes an excellent specimen bush.

12 to 18-in. bushy plants, 40 cts. each; \$4 per doz.



The charming flowers of the Japanese Quince

Japanese Quince

Cydonia japonica

Navel Flowering Quince, *Umblicata*

This is an upright variety with new leaves of a reddish cast, making the bush very attractive when not in bloom. The beautiful rose-pink flowers are borne in greatest profusion, lasting a long time. Its fruits are very large and attractive.

	Each	Per Doz.
Strong, 2 to 3-ft. plants	\$0 85	\$9 00
Strong, 3 to 4-ft. plants	1 15	11 00

Maule's Japan Quince (*Cydonia maulei*).

A dwarf, spreading bush which bears orange-colored flowers in greatest profusion from the ground up.

5-yr. plants, 2 ft. high, 2 ft. broad, \$1 each; \$10 per doz.

Leonard's Velvety Japan Quince. *New*.

This is the first time that this deep velvety red variety has been offered and our supply is very limited. It will never appear in the open market because of the slowness of propagation. The blossoms remain on the plant about twice as long as the other *Cydonias* and retain their beauty of color until the very last.

Plants with 2-ft. spread, \$2.25 each

Apple-Blossom-Pink Japan Quince (*Cydonia japonica*).

One of the loveliest varieties of this popular hardy shrub. While the scarlet or red flowers of the Japanese Quince or *Cydonia* are seen in all older landscape plantings, Apple-Blossom-Pink brings a new color that will prove very popular and fit into color-schemes that would not admit the old red *Japanica*. Scarce.

Strong, 3-ft. plants, \$1.95 each

Common Japan Quince · *Cydonia japonica*

The popular fiery red variety. Plant it as an untrimmed hedge; no dogs or boys will go through it once it is established.

Bushy plants, 18 to 24 in., 45 cts. each; \$4.50 per doz.

Thunberg Spirea · *Spiraea thunbergi*

This medium-sized to dwarf shrub, with its fine, delicate twigs and foliage, makes a veritable snowbank of white in May when it blooms. Use it as an untrimmed hedge—it always looks neat. It also makes a good foundation shrub.

2 to 3-ft. plants, 50 cts. each; \$5 per doz.

SPECIAL: 2 doz. plants for \$8.80

Douglas Spirea · *Spiraea douglasi*

A splendid Spirea for naturalizing. It grows 4 to 5 feet tall and bears high, feathery spikes of rose-colored flowers in midsummer. Use freely in shrubbery borders and informal gardens where it lends an air of naturalistic grace unlike other Spireas. Priced so that they will go quickly.

Heavy, 4 to 5-ft. plants, 40 cts. each; \$4 per doz.

SPECIAL: 2 doz. plants for \$7.20

Rosemary Willow · *Salix rosmarinifolia*

An attractive, slow-growing Willow with grayish foliage. Plant a group of these for a bird-retreat, for the birds delight in the dense, twiggy growth, especially on a windy day. This Willow is a native of Europe and it is not necessary to plant it near water.

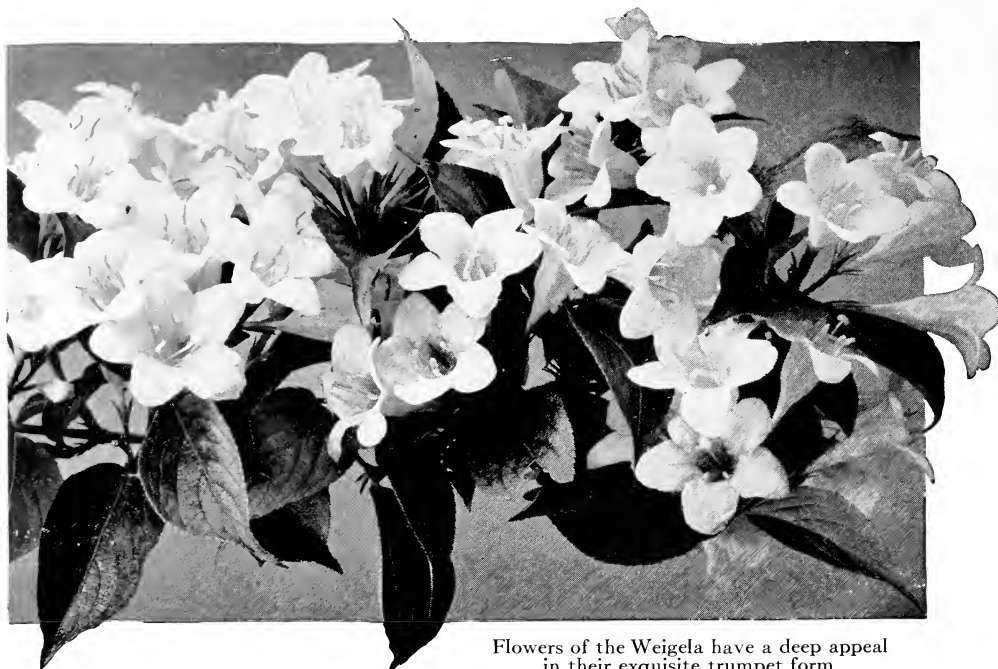
	Each	Per Doz.
2 to 3-ft. plants	\$0 40	\$4 00
3 to 4-ft. plants	50	5 00



Fuzzy spires of *Spiraea douglasi*



The snowy flowers of *Spiraea Thunbergi* clothe the bare branches in early spring



Flowers of the Weigela have a deep appeal in their exquisite trumpet form

Improved Variegated Weigela

Weigela argenteo-marginata variegata

Weigelas are amiable, easily grown shrubs which have been taken more or less for granted for many years. Only a few old, tried and true varieties have been grown for so long that many people have lost interest in them.

But this new variegated variety possesses many improvements over the well-known *Weigela variegata*.

1. Faster grower.
2. Makes a taller plant, growing to 6 feet high.
3. Blooms more freely; has scattered blooms all summer; flowers pink and white.
4. Hardier.
5. Green portions of the long, narrow leaves are richly colored.
6. Not affected by drought like most Weigelas.
7. Splendid for slope-plantings. No shrub collection is complete without this excellent ornamental plant. Can be used as a medium to large shrub in foundation plantings to introduce variety in foliage color.

	Each	Per doz.
2 to 3-ft. plants	\$0 60	\$5 00
3 to 4-ft. plants	85	8 50

Most of our plants are dug and packed ready to go in the space of three hours—they're fresh!

Bush Honeysuckles

Late-blooming Bush Honeysuckle · *Lonicera maacki podocarpa*

This *Lonicera* is a fast-growing shrub with dark grayish green foliage and dainty yellowish flowers along its slender, widely arching branches. In autumn the dark red fruit is borne abundantly and is a great attraction to numerous birds. This is a rather rare and unusual plant from central and western China, which makes itself perfectly at home in our climate and is a happy denizen in shrub borders or in bold clumps anywhere. Under good conditions it will grow 8 to 15 feet high. Our plants are grown exclusively from selected, heavy fruiting plants in order to insure the finest bloom and abundance of glittering red berries.

2 to 3-ft. plants, 50 cts. each; \$5 per doz.
3 to 4-ft. plants, 75 cts. each; \$7.50 per doz.

Pink Bush Honeysuckle · *Lonicera bella rosea*

For a tall, decorative screen-shrub, no plant excels this graceful, pink-flowering Honeysuckle. It is one of the few plants which can be planted for hedge purposes and be left untrimmed without growing all over the place. The brilliant berries are borne in greatest profusion in July.

Strong, 4 to 5-ft. plants, 50 cts. each; \$5 per doz.
SPECIAL: 2 doz. plants for \$8.95

Park Weeping Flowering Cherry

Prunus aequinoctialis pendula rosea

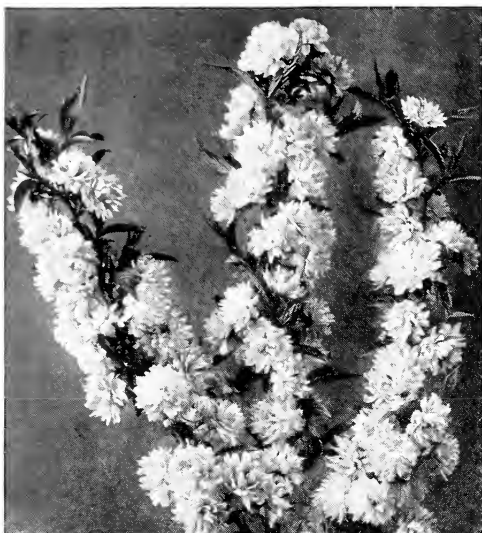
A variety of strongly drooping habit, very vigorous in growth and type of foliage, with deep pink flowers. This is the best single Weeping Japanese Cherry we are offering, as it represents such a splendid value and because it is far better than the single light pink Japanese Weeping Cherries.

Extra-strong stems and heads, 4-ft. stems only, \$4.45 each

Colleges, Universities and Experiment Stations will find this booklet lists many valuable plants which should be added to their collections.



The dainty flowers of the Late-blooming Bush Honeysuckle are followed by showy berries



The Double-flowering Almond is not new but will be a jolly little stranger in most gardens

Pink Double-flowering Almond

ON OWN ROOTS

You have, no doubt, set out *budded* plants of Flowering Almond and had the stock outgrow the top, thus killing the plant. With *own-root* Flowering Almond you have a plant that is long lived, that will never "go wild." You need never worry about suckers. Small, double, pink flowers in April. Plant in a sunny position in the garden or shrub border; also makes a medium-height specimen shrub.

1-yr. plants, 12 to 18 in., 4 or 5 canes, 35 cts. each; \$3.50 per doz.

5-yr. plants, 2½ to 3 ft., very bushy, \$1.25 each; \$12.50 per doz.

Double Pink Weeping Japanese Flowering Cherry

This is one of the most striking and unusual plants that we offer

This is an important novelty which we had expected to disseminate next year, but we just could not refrain from "letting you in" on a good thing now.

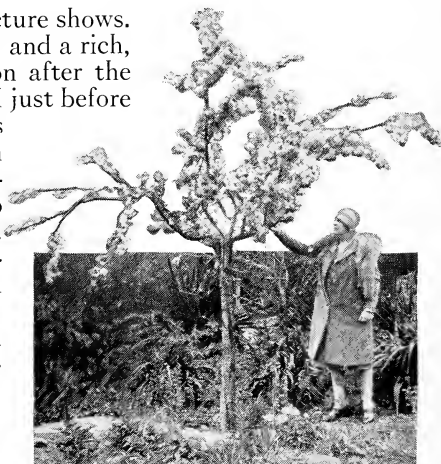
As you know, the Japanese Weeping Cherries which have been offered up to date have been the single, *light* pink varieties. This Double Pink Weeping Japanese Flowering Cherry is the rarest and most gorgeously beautiful of all. It is scarce even in the Orient; Ernest H. Wilson said in "Cherries in Japan" that he was unable to find any there. Almost unknown in this country, it is certain to be widely planted as the stock becomes more plentiful. So far, the demand has greatly exceeded the supply.

It blooms in reckless profusion, as the picture shows. The flowers are of medium size, very double, and a rich, deep pink. They appear in midseason, soon after the single-flowered weepers have blossomed, and just before the very glossy leaves develop. Branches are normally much more arching than shown, as the top had been tied up to permit working under the tree and the photo had to be taken as soon as it was untied. They do not droop as much as the Single-flowered Weeping Cherry. The tree shown here is four years old, on a 5-foot stem. Our trees are top-grafted similarly on straight stems from 5 to 7 feet tall, with excellent heads.

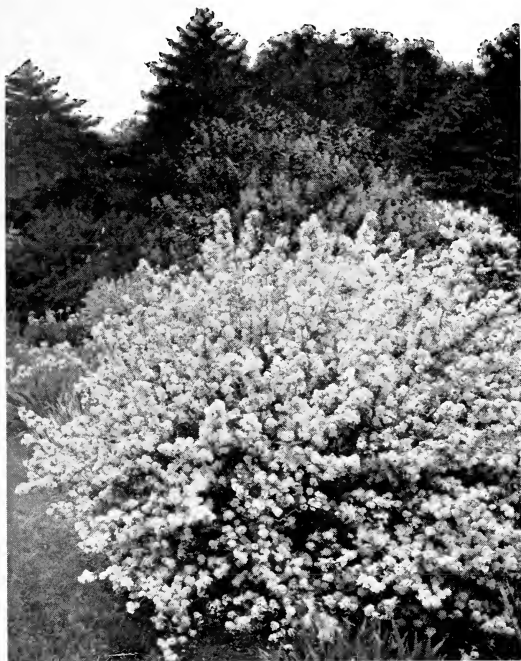
Top-grafted, 8-ft. stems, \$8.85 each

Top-grafted, 7-ft. stems, \$8.35 each

Top-grafted, 6-ft. stems, \$7.85 each



Japanese Weeping Cherries have a picturesque habit



The graceful habit of Deutzia is well shown here

Slender Deutzia *Deutzia gracilis*

This dwarf Deutzia is excellent for the front row in foundation plantings or for a low hedge that can be left unpruned. The tiny creamy flowers are borne in the greatest profusion and are individually most charming, each resembling, in a dainty way, some miniature, snowy white narcissus.

Bushy 12 to 18-in. plants, 40 cts. each; \$4 per doz.

Tall Deutzia *Deutzia crenata fl.-pl.*

An erect shrub of attractive habit, 6 to 8 feet high, which covers itself with a profusion of exquisite little fringed flowers in June. The general effect of the mass of flowers is snowy white, but occasionally there is a pinkish tone from the rose-colored tints on the backs of the petals. Deutzias grow with great vigor in almost dense shade, but bloom better and keep a more symmetrical habit in a sunny place.

Strong 5 to 6-ft. plants, 65 cts. each; \$5 per doz.



The handsome large flower-cluster of *Deutzia crenata fl.-pl.*



The berries glitter through the winter like scarlet through glass

American Cranberry Bush

Viburnum americanum

This shrub is noted for its translucent orange-red fruit through the fall and winter. It makes a bush 8 feet high and should be used for tall natural-growing hedges or as background shrubs in the garden. Our plants are propagated from well-berried plants.

**Bushy, 12 to 18-in. plants,
40 cts. each; \$4 per doz.**

Shrubby St. John's-wort

Hypericum prolificum

A very delicately branched shrub which is so thickly set with bright yellow flowers in August that the plant seems to shine in the radiance of its inflorescence. The outstanding characteristic of the flower is the great mass of thread-like, golden yellow stamens which fill the center of the bloom.

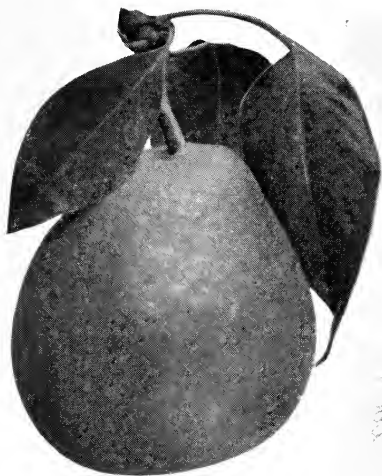
**12 to 18-in. plants, 40 cts. each;
\$4 per doz.**

**18 to 24-in. plants, 50 cts. each;
\$5 per doz.**



The Gold-flower of popular love, St. John's-wort, is a very decorative shrub

It Is the Uncommon Plants That Add Distinction!



The New Pear

James H. Duff

The parent tree of this Pear is on the property of James H. Duff, Esq., Carnegie, Pa. Bud-wood was secured from this tree three years ago and now we are prepared to furnish a very limited number of these trees. Mr. Duff, a prominent attorney of Pittsburgh, is a great student of plant-material. His observations of this tree are set down herewith:



1. Tree is 75 years old.
2. Good foliage throughout the season.
3. Approximately 50 feet high.
4. It is a "sugar Pear"; fairly large.
5. Blight-resistant.

6. When in blossom this Pear is equal to the white Japanese cherry in beauty.
7. Produces good quantity of fruit; medium late.

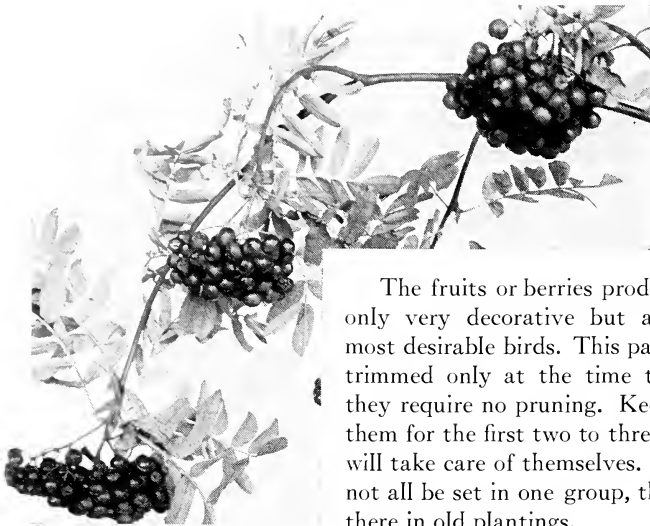
2-yr. trees, 11-16 in. diam., about 5 to 7 ft., \$4.50 each (\$3.95 each in quantities over 3).

2-yr. trees, 9-16 in. diam., about 4 to 5 ft., \$3.75 each (\$3.30 each in quantities over 3).

Very limited quantity available.

Bird-Lover's Page

Attract the birds to your city or suburban garden by planting the plants listed below.



Mountain-Ash Berries

The fruits or berries produced by these plants are not only very decorative but are relished by many of our most desirable birds. This particular selection needs to be trimmed only at the time they are set out; after that they require no pruning. Keep the ground stirred around them for the first two to three years, and after that they will take care of themselves. These shrubs and trees need not all be set in one group, they can be inserted here and there in old plantings.

"Bird Attractors" No. 1

	Page	
1 European Mountain-Ash (<i>Sorbus aucuparia</i>). 8 to 10 ft.	Below	\$1 85
1 Tall-bush Bittersweet (<i>Euonymus europæus</i>). 4 to 5 ft.	13	90
1 Cornelian Cherry (<i>Cornus mas</i>). 3 to 4 ft.	10	1 00.
3 Pink Bush Honeysuckle (<i>Lonicera bella rosea</i>). 4 to 5 ft.	17	1 50
3 Autumn Oleaster (<i>Elæagnus umbellata</i>). 3 to 4 ft.	8	<u>2 25</u>
A \$7.50 value for \$6.90		\$7 50

"Bird Attractors" No. 2

For larger plantings we recommend the following:

	Page	
3 European Mountain-Ash (<i>Sorbus aucuparia</i>). 8 to 10 ft.	Below	\$4 50
3 Tall-bush Bittersweet (<i>Euonymus europæus</i>). 4 to 5 ft.	13	2 70
2 Cornelian Cherry (<i>Cornus mas</i>). 3 to 4 ft.	10	2 00
2 Downy Shadbush (<i>Amelanchier canadensis</i>). 5 to 6 ft.	3	1 60
6 White Tatarian Bush Honeysuckle (<i>Lonicera tatarica alba</i>). 5 to 6 ft.	Below	3 00
6 Pink Bush Honeysuckle (<i>Lonicera bella rosea</i>). 4 to 5 ft. Strong	17	2 50
6 Autumn Oleaster (<i>Elæagnus umbellata</i>). 3 to 4 ft.	8	3 75
6 Rosemary Willow (<i>Salix rosmarinifolia</i>). 3 to 4 ft.	15	<u>2 50</u>
A \$22.55 value for \$20.40		\$22 55

Descriptions of all of the above plants are found in the pages of this booklet.

White Tatarian Bush Honeysuckle (*Lonicera tatarica alba*).

Covered in spring with myriads of white flowers and in summer and autumn with brilliant colored fruit. For best results plant in rich soil.

60 cts. each; \$6 per doz.

European Mountain-Ash (*Sorbus aucuparia*).

One of our best ornamental trees. The brilliant fruit creates a spectacular show from July to November. It is a very rapid grower. Produces quantities of berries; some years they are so heavy that they almost break down the branches. Fruit is edible and eaten by many birds.

8 to 10 ft., \$1.85 each; 3 or more, \$1.50 each

TERMS

Prices. These prices are F.O.B. Piqua, Ohio.

How we ship plants. We prefer to ship all plants by Express or Freight (if late in season, shipment must go by Express).

If you wish plants to come by Parcel Post add a little more to your remittance than you think is necessary to pay for Parcel Post charges and we will remit the difference as soon as we make shipment. Be sure to give Express or Freight station if different from your mail address.

Planting season. In ordinary seasons we begin to dig March 15 and prefer to have our shipping season completed by May 1st.

Most people do not realize that they can set out plants **any time** the temperature is above freezing (32° Fahr.) and there is not too heavy a crust of frozen ground.

The best plan is to place your order early (at once), and we will ship at proper time (or carry out your shipping instructions).

Price explanation. The articles herein listed will be furnished in accordance with the following schedule:

1 to 5 plants of one kind and size will be priced at the each rate.

6 to 24 plants of one kind and size will be priced at the dozen rate.

25 or more plants of one kind and size will be furnished at the 100 rate, when 100 rates are given.

Warranty Clause. We give no warranty, expressed or implied, as to quality, description, productiveness, of any nursery stock that we sell. The only guarantee that we make is that our stock is alive at time of shipment and true to name. No complaints will be considered that are not made within ten days after receipt of order. Any stock ordered from this list, found untrue to name, will be cheerfully replaced at the first favorable opportunity for planting, after it has been found not as ordered.

Reliability. Our business has been built up by the help of our many satisfied customers. Our reputation for fair dealing is your assurance of satisfaction.

Shipping Facilities. We have excellent shipping facilities, being on the main line of the Pennsylvania Railroad (Columbus, Ohio to St. Louis and Chicago), and on the Baltimore and Ohio Railroad (Cincinnati to Toledo and Detroit).

Terms of payment. Strictly cash with order. As a well-rated firm (see Dunn or Bradstreet), we prefer not to make C.O.D. shipments.

Packing. We pride ourselves on the special care we exercise in packing shipments. No charge is made for packing.

Reference. If you think a bank reference is necessary, use Piqua National Bank and Trust Co., Piqua, Ohio.

"Evergreen-Rhodotrim" Service

PRUNING OF EVERGREENS AND RHODODENDRONS

For those who have made Evergreen plantings two or more years ago and have had no pruning done because they were afraid the local landscape man could not do it properly, or on estates where the regular duties of the gardening staff preclude the carrying on of this work in April and May, we are prepared to furnish trained men.

Your location and amount of work to be done will govern our rate. Please write us about special service.

Evergreens in formal gardens and foundation plantings soon outgrow their limits and must be kept in scale by pruning.

Rhododendrons. Pruning of rhododendrons must be done occasionally whether they are in foundation plantings or out in the open.

Fertilizing of Evergreens, Rhododendrons, Azaleas, and other special material is done by our experts under this "Evergreen-Rhodotrim" Service.

Shrubs for Cut-Flowers

Prunus blireana
Forsythia
Philadelphus

Sorbaria
Spiræa
Weigela

Cydonia
Deutzia
Cornus mas

A. M. LEONARD & SON, PIQUA, OHIO

