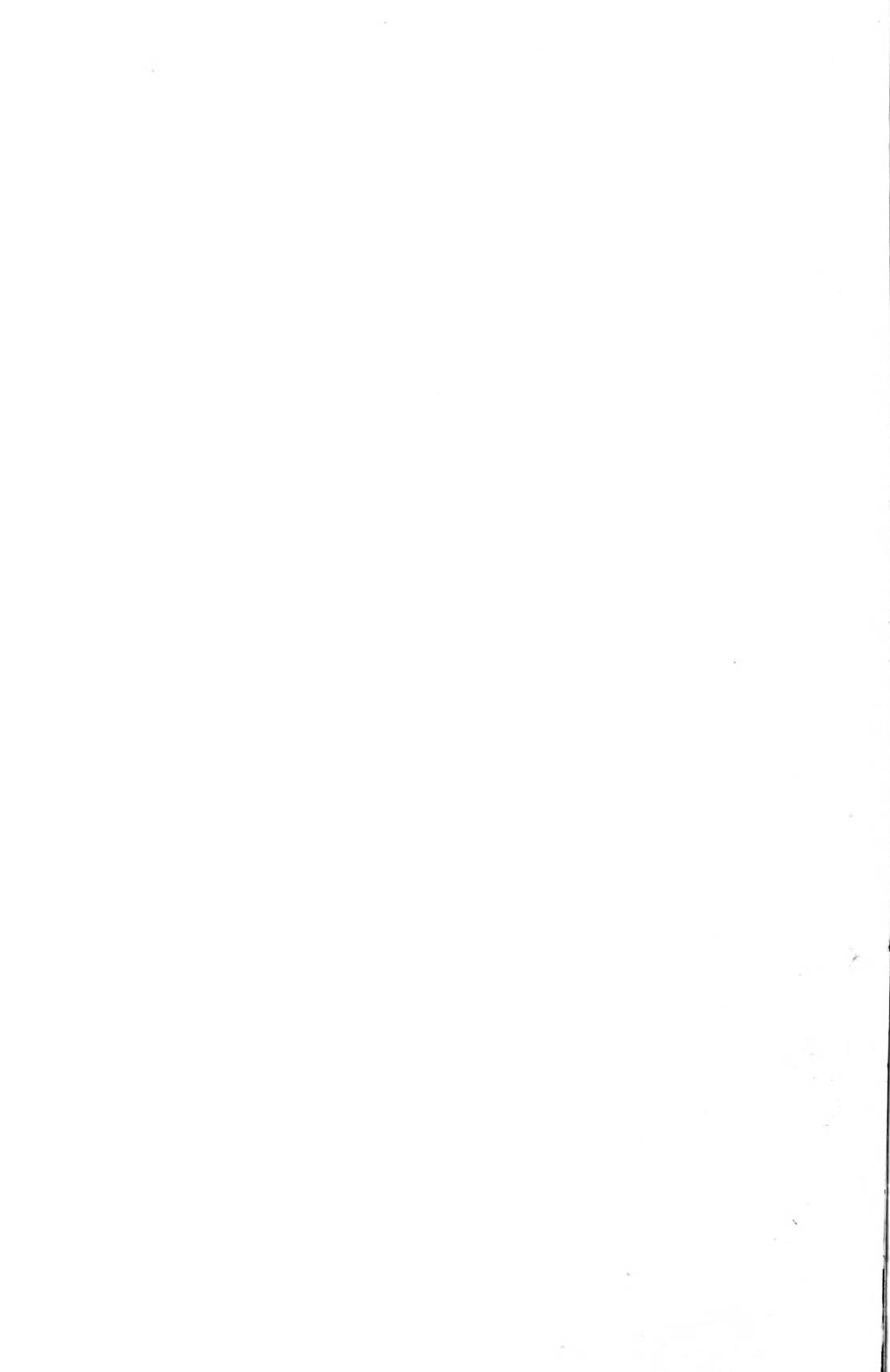


Historic, Archive Document

Do not assume content reflects current scientific knowledge, policies, or practices.



62.67

LIBRARY
RECEIVED
★ OCT 19 1932 ★
U. S. Department of Agriculture

Worthwhile

FLOWERING SHRUBS

• FALL • 1932 •

Special List of Rare
and Unusual Plants
at Attractive Prices

A. M. LEONARD & SON

Established 1885

PIQUA, OHIO



JAPANESE TREE LILAC (*Syringa Japonica*) See Page 13

WORTHWHILE PLANTS FOR FALL 1932

This Fall Booklet lists many items that are best planted in the Fall, including some scarce items that are too good to hold until our Spring 1933 Booklet of Worthwhile Plants.

Leonard's Greenback Specials. These Specials are attune to the present time, full 1932 measure, and POSTPAID if order amounts to \$2.00 or more.

Terms of Payment. Strictly cash with order. Send Dollar Bills if you wish. Remember that you are dealing with an old-established, well-rated firm.

Planting Season. September 20th to November 20th, or we can ship earlier or later to meet your special requirements. Our Southern customers can ask for shipment almost any time during the Winter, as we often have mild "spells" that permit us to dig and ship safely.

PLANT THIS FALL

The Arnold Arboretum in its Bulletin of Popular Information states, "It is very common and widespread idea that most planting should be deferred until Spring, that Autumn is a rather unsafe time to plant or transplant trees or shrubs and many other plants, and that Spring is much to be preferred. On the whole it is doubtful whether there is any more loss of plants in careful planting in Autumn than there is in the average Spring work of the same kind. Much Spring work is carried on so late that the plants to be set out have become weakened by premature sprouting which is checked or dies, necessitating a new development of buds when weather has already become unfavorably hot." PLANT NOW!



Royal Vine of Korea

(*Tripterygium regelii*)



New and
Worthwhile

for its foliage,
for its flowers,
and for its
decorative fruits.

Royal Vine of Korea (*Tripterygium regelii*)

The late E. H. Wilson in his "America's Greatest Garden" states—"(we) may well close with mention of the new and rare *Tripterygium regelii*. This is a beautiful vine with long, red-brown, prominently spotted stems, broad, bright green, wrinkled leaves and large **terminal clusters of small white flowers** which are followed by white bladder-like fruits which, changing in color to pinkish and brown, are long retained. It is perfectly distinct in appearance of shoot, foliage, flower and fruit from any other vine and **when properly known will become a favorite in American Gardens.**"

This rare plant (native of Korea) is by all means our finest introduction in many years, and which for the past ten years has been the sensation at such famous arboretums as Arnold and Highland Park (Rochester). By pinching back the tips it may be used as a specimen shrub, or with the assistance of a few wires it will grow 8 or 10 feet tall; its twining stems readily cling to its supports. Flowers appear early in July, 8 to 18 inches in length. In Boston this plant has never suffered winter injury nor from attacks of fungus or insect pests.

We are fortunate in being able to offer two sizes of the **Royal Vine of Korea** this season at these very reasonable prices; viz:

12 to 18 in.—\$1.45 Each; 3 for \$3.75 Postpaid.

18 to 24 in.—\$1.85 Each; 3 for \$5.00 Postpaid.

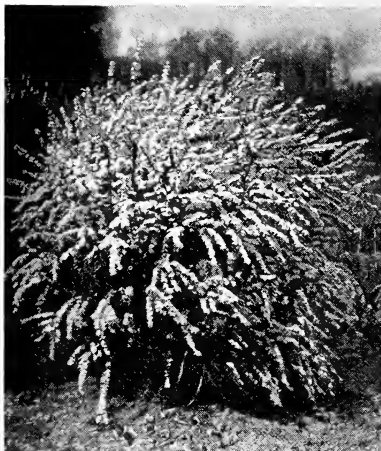
FRENCH MOCKORANGE, ALBATRE (*Philadelphus Lemoinei albatre*).

See illustration opposite page. A splendid shrub for foundation plantings as it grows only about 4 feet high making a symmetrical, mounded bush with branches which bend to the ground under the weight of its myriads of deliciously scented white flowers. These flowers are double (sometimes semi-double); a single flower measuring $1\frac{1}{2}$ inches in diameter.

3 ft. Plants—3 for \$1.00 Postpaid.

Garland Spirea

Garland Spirea (*Spirea arguta*). This is one of the most beautiful of all Spring flowering shrubs. It is a neat growing shrub with graceful arching shoots, clad for most of their length with flattened clusters of pure white blossoms in April; one of the first of the Spirea to bloom. It grows about 5 feet high. A group of these Spireas above a ground-work of For-get-me-nots makes a strikingly beautiful picture. It flowers unflinchingly year after year when other Spireas fall victims to late frosts or unseasonable springs. Stephen F. Hamblin, one of the best authorities on Plant Materials, states;—"The Garland Spirea gives the most delicate of all foliage texture of narrow-leaved shrubs, except Tamarix."



Garland Spirea

The "Sampler" consists of those shrubs, which if better known would be planted much more extensively. In order to convince you that our judgment is correct we are giving you an "overflowing" value.

Greenback "Sampler" No. 1

- 1—**French Hybrid Mockorange** (*Philadelphus lemoinei erectus*).
A medium to dwarf shrub to be planted in the sun; single flowers, slender twig, most fragrant of all Mockoranges; scarce; 3 ft. Plant\$.75
 - 1—**Five-leaved Angelica** (*Acanthopanax pentaphyllum*)
A medium to tall growing shrub for sun or shade; beautiful shiny leaves; excellent for banks or slopes, or very dry location; 2 to 3 ft. Plant..... .60
 - 1—**Garland Spirea** (*Spirea arguta*) A medium growing shrub for sun; (See illustration above) 24 to 30 in. Plant..... .45
- \$1.80**

A \$1.80 Value for One Dollar, Postpaid.

To those who will order two of these Specials and pay the express charge we will send 5 foot Spireas and 4 foot Angelicas; the size of the Mockorange remaining the same.

Greenback "Sampler" No. 2

- 1—**American Cranberry Bush** (*Viburnum americanum*). (See page 20 of Spring Booklet) 18 to 24 in. Plant..\$.60
 - 1—**Five-leaved Angelica** (See above)
2 to 3 ft. Plant..... .60
 - 1—**Garland Spirea** (See above) 24 to 30 in. Plant..... .45
 - 1—**European Privet** (*Ligustrum vulgare*)
(See page 5) 2 to 3 ft. Plant..... .30
- \$1.95**

A \$1.95 Value for One Dollar, Postpaid.

To those who will order two of these Specials and pay the express charge we will send 5 foot Spireas and 4 foot Angelicas; the sizes of the other two plants remaining the same.



Showing the effectiveness of the *Ibota Privet* when clipped; the high sloping growth gives a nice emphasis to this entrance.



Hardy quick-growing, good-looking Ibotia Privet used as an enclosure for this garden.

Hedges are a necessity in our towns and cities.

Mr. T. A. Weston, a Horticultural authority says, "I firmly believe in the old adage that 'a man's home is his castle' and I strongly object to having my garden over-run by other people's straying dogs, or children making short cuts through it. I prevent such occurrences by fencing it in. Why not? Such an act is not unfriendly to neighbors; rather otherwise, for it will save discord that surely will arise. And, apart from stray dogs, there are too many grown up people who appear to imagine that flowers are anyone's property. I know it only too well."

IBOTA PRIVET (*Ligustrum ibota*).

It does not pay one to plant the tender California Privet any longer, while the hardy Ibotia Privet can be obtained at such a low price. By cutting our plants to the ground last year we have created **extra bushy** plants that can be set in a single row one to a foot and give you as thick a hedge as California Privet set 3 plants to a foot.

24—30 in. Plants, \$2.00 per doz.; \$12.00 per 100.

Delivered to your freight Station providing not exceeding 4th zone. Or if you will pay the freight we will furnish 2½—3 ft. Plants (50 at 100 rate). For those who may desire smaller plants we have some well rooted slender plants 12—18 in. which are ready to be moved from the cutting beds to the field. Price—\$3.50 per 100.

EUROPEAN PRIVET (*Ligustrum vulgare*).

This is not only one of the most valuable of all Privets, but is the one shrub that thrives in **shady, dry locations**—even likes tree roots. Use European Privet in the city in your foundation plantings (see page 14) where it is impossible to grow the Arborvitae, or as a background shrub.

The glossy blue green foliage usually holds on until January first in this latitude. And like other Privets it is easily clipped to any size or shape, or if left untrimmed produces large white flowers followed by shining jet black berries in terminal clusters. Strong, well grown plants—from cuttings, not seedlings.

2 to 3 ft. Plants, \$2.80 per doz.; \$19.00 per 100.

3 to 4 ft. Plants, \$3.80 per doz.; \$28.50 per 100.

Delivered to your freight station if not exceeding 4th zone.

COLORED FOLIAGE SHRUBS

The introduction of "color" among your green foliaged plants produces a striking effect that can be attained in no other manner.

Where bushes have overgrown their location it is often better to replant with young plants of colored foliage. This addition of color will do much to "pep up" your old planting.

"COLORED FOLIAGE" SPECIAL OFFER

2— Improved Purple-leaved Plum (<i>Prunus cerasifera pissardi nigra</i>). See page 11 of Spring Booklet, and illustration below. 5 to 6 ft. Plants.....	\$2.26
<small>Please bear in mind that this is less than the present wholesale price for this size and with the still further benefit below.</small>	
2— Improved Variegated Weigela (<i>Weigela argenteo-marginata variegata</i>). See description below. 3 to 4 ft. Plants.....	1.70
2— Golden Syringa or Golden Mockorange (<i>Philadelphus coronarius aureus</i>). See page 8 of Spring Booklet. 24 to 30 in. Plants.....	.80
	\$4.76

A \$4.76 Value for \$3.50, F. O. B. Piqua.*

* These plants are too large to send Parcel Post; the Weigela and Purple-leaved Plum are extra large and will give immediate effect without waiting. Our price of \$3.50 includes good packing and delivery to Express or Freight Station in Piqua.

OUR IMPROVED VARIEGATED WEIGELA

The illustration on page 16 of our Spring Booklet does not begin to show the pronounced variegated features of this new Weigela.

This Weigela has a reddish stem. The yellowish white border on the margin of the deep green leaf makes it one of the most strikingly beautiful of all shrubs. The two-toned pink blossoms completely cover the plant in late May, and then scattering blooms are produced all Summer, being similar to *Philadelphus Virginal* in this respect.

This plant is without an equal in its class. It is a "sport", and although we have indicated a botanical name, we assure you that this plant has not been disseminated before this time. Buy now on our recommendation and you will want more next season. Arboretums will need this plant to complete their Weigela collections.



Improved Purple-leaved Plum; the size plants we offer will be dug directly from this block.

PLANT NOW. In these days you wish to spend your money where it will do the most good both for yourself and for others. The dollars spent for our plants give you an investment that pays big dividends in health, happiness, and beauty; and also helps us maintain our loyal co-workers in the necessities of life.



Springscent is charmingly different in habit

SPRINGSCENT (Fothergilla)

Fothergillas are not as well known as they deserve to be. They are related to the Witch-hazels and resemble them closely in foliage; the flowers, however, are very different in appearance. Altho devoid of petals, their charm lies in the numerous clustered stamens, tipped with yellow anthers which appear at the ends of the naked branchlets. The whole inflorescence is fragrant and very conspicuous, resembling a bottle-brush and quite different from that of any other hardy northern shrub. In autumn the leaves assume shades of orange, crimson and yellow. The Fothergillas thrive best in a mixture of peat and sandy loam.

Fothergilla major—This species has pink stamens and is superior on account of its dense pyramidal habit; larger leaves and showier fruits.

12 to 18 in. Plants—\$1.75 each; 3 for \$4.00, Postpaid.

Fothergilla monticola—This species has white stamens and is looser, more spreading and less tall, though equally vigorous. (See illustration.)

8 to 12 in. Plants—\$1.25 each; 3 for \$3.00, Postpaid.

Postpaid Prices—These prices are always so indicated: where limit is 4th Zone this includes most or all of New York, Pennsylvania, New Jersey, Delaware, Md., the Carolinas, Georgia, Alabama, Mississippi, Arkansas, Missouri, Iowa and Wisconsin; the following cities are **just inside**—Springfield (Mass.) Hartford, Hot Springs, Topeka, Omaha, Minneapolis, and Duluth.

F. O. B. Piqua Prices—If **part** of your order is for large plants sold F. O. B. Piqua, or if you live beyond the 4th Zone (where this is the limit) you have the **option** of (1) larger size plants where prices are postpaid, or (2) taking out the postage benefit in additional plants—and your entire order will then be shipped by Express or Freight Collect.

PEONIES---Our Most Beautiful Hardy Perennial

Our Peony collection contains some of the very best European and American varieties. One of the sons of Mr. A. M. Leonard having been a director with Bertrand H. Farr, was instrumental in advising on the selection and culture; direct importation having been made from L. Van Leeuwen & Son, Inc., Sassenheim, Holland, who handle more European Peony Introductions than any other grower. Special list on request.

The following **Double Peonies** have been thoroughly tried out. You will like them, 3 to 5 eye divisions.

EDULIS SUPERBA—Dark pink; very fragrant; very free bloomer; early,—often in bloom for Decoration Day.

FESTIVA MAXIMA—Pure white with prominent crimson markings; a large flower of good substance. No Peony can take the place of Festiva Maxima; pleasing fragrance.

FRAGRANS—Solferino-red with slight silvery reflex; very late; extensively grown for cut flowers.

HUMEI—Cherry-pink; distinct cinnamon odor; very late; excellent for cutting.

MIAMI CHIEF—Velvety maroon, with silvery reflex; rather loose large flowers; a dependable and prolific bloomer; lasts over a long season.

Leonard Greenback Special—Any Four of the above Postpaid for a One Dollar Bill.

SARAH BERNHARDT (Illustrated.)

A National Prize Winner for the best dark pink. Gorgeous apple-blossom-pink petals tipped with silver; sweet scented. Blooms mid-season until late.

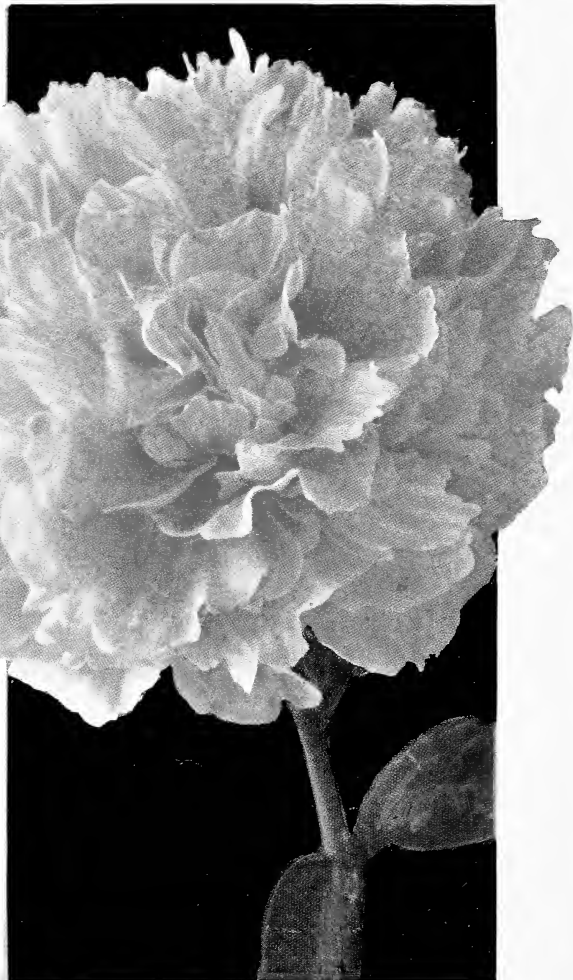
No collection is complete without several plants of this **perfect Peony**. (Lemoine 1906—rating 9.0).

Leonard Greenback Special—One strong, healthy 3 to 5 eye division of Sarah Bernhardt for a One Dollar Bill.

4 Plants for Three One Dollar Bills, Postpaid.

Planting Instructions

Set plant so that tip of bud is two inches (measure it) below the surface of the soil; and so that it will get daily at least six hours of sun. Give each Peony a handful of bone meal every Spring and **never divide them**. **Peonies that have not bloomed** for three consecutive years should be dug up and discarded; we send out only divisions from **blooming plants**. No plant brings as much enjoyment for as little outlay as the Peony. Plant Peonies any time after September 20th until the ground freezes.





JAPANESE PEONIES

Due to their scarcity and consequently high price, this class of Peonies are seldom seen in our American gardens. They should, and will be used more frequently as soon as their rare beauty is known, and the reasonable price at which they can now be obtained.

MIKADO (Illustrated above). Dark carmine petals of large size; carmine petaloids are gold tipped; and outstanding rich color; plant robust with deep green foliage. One of the very best and most beautiful of all the Japanese Peonies. When you note the price below, bear in mind that you are getting a \$3.00 to \$5.00 Peony for One Dollar.

Leonard Greenback Special—One 3 to 5 eye division of Mikado **postpaid** for One Dollar Bill. 4 plants for Three One Dollar Bills.

We are also offering two lighter colored "Japs" as follows:

SUNBEAM—Orchid-pink petals, cream petaloids.

ORIENT—Blush petals, white petaloids.

Leonard Greenback Special—Two (3 to 5 eye divisions) plants, One Sunbeam, One Orient, send **postpaid** to your address for a One Dollar Bill. Since we pay the postage you are buying Japanese Peonies for the unheard of price of less than 50 cents each.

ROCK GARDEN PLANTS

The beauty and success of your Rock Garden or Dry Wall lies in your active interest in adding new colors and types of foliage. To meet this demand for something strikingly new, we offer the following:

Crested Iris (*Iris Cristata*).

A much sought for Species admirably suited for Rock Gardens as it grows only 6 inches high. The fringed and crested flowers are a light lavender-violet with a "signal patch" of contrasting yellow; adds a distinctive color note to rock work in damp, sunny locations. Thrives from Georgia to Montreal and from the Atlantic to the Pacific. Use plenty of leaf mold in the soil. Fragrant.

4 Plants for a Dollar, Postpaid.

Leonard's Greenback Rock Garden Special.

2 of the above Crested Iris and any 3 of the following Rock Plants (total 5 plants) will be sent postpaid for a One Dollar Bill.

Rock Speedwell (*Veronica rupestris*).

Blue flowers in May and June; creeping or prostrate; 3 inches high; will thrive in shade.

Rock Aster (*Aster alpinus*).

Single blue flowers in June; 9 inches high.

Chamaedrys Germander (*Teucrium chamaedrys*).

Especially good for late summer bloom; bright rosy; glossy deep green foliage 12 inches high.

Soapwort (*Saponaria ocymoides*).

Myriads of rose pink blossoms in May; grows 6 inches high; trailing.



PIQ-ROC

For Rock Garden Enthusiasts

PIQ-ROC (pronounced Pick Rock) is a crunchy lime-rock mixture that is absolutely necessary in Rock Gardens. It is true that a few Rock Plants are acid-loving, but 90% are lime loving. Sufficient amount of "top-stone" is included in the crusher so that the color of PIQ-ROC is a subdued brown.

We use this material extensively in our own Rock Gardens, and know that our customers will take advantage of securing the same material at such a low price. As Piqua is a large limestone center it is only logical that we can make such an offer.

"Gumming" in **stone fruits** is usually caused by a deficiency of lime in the soil (sometimes by too deep planting) and easily corrected by use of PIQ-ROC. Lilacs, Nanking Cherries, and Sweet Williams also like PIQ-ROC.

No-Profit Special on "PIQ-ROC" holds good for Fall 1932 only. Not only do you purchase our Worthwhile Plants at great savings, but you improve your garden with the use of this Pulverized Limestone and Limestone Chips.

Price of PIQ-ROC—65 cents per 100 lb. Bag; 2 Bags for \$1.00

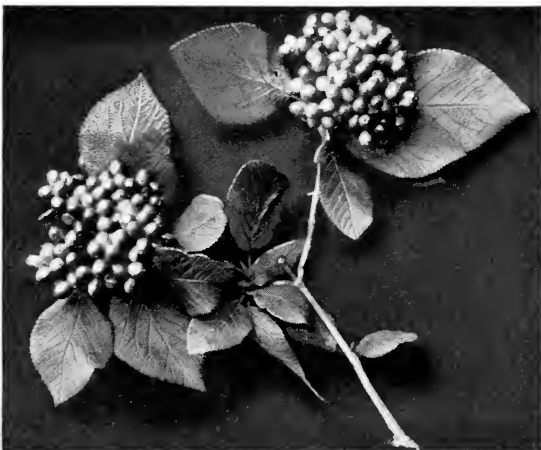
F. O. B. Piqua (you pay freight charge to your station.)

To be eligible to purchase one or more bags of PIQ-ROC at this unheard of price, you must order 2 or more Leonard Greenback Specials.

Wayfaring Tree

(*Viburnum lantana*)

See Page 12



Wayfaring Tree (*Viburnum lantana*). William Falconer, greatest Plantsman of his day, considered this one of our best shrubs; stands dry hot weather well; its soft heavy foliage is a dark grayish green; the clusters of white flowers in early May are followed by red fruit turning black as it ripens; birds strip the black (indicating they are ripe) berries until all are gone (about Sept. 1st.). Note the symmetrical growth; leaves right to the ground.

BIRD LOVER'S PAGE

This page of our Spring Booklet was so popular that we are offering two new "Bird Attractors." Plant these **Three Purpose** shrubs as excellent "background" or screen shrubs; they also attract birds because of their **berries or fruit**, and which are **very decorative**.

"Bird Attractors" No. 3

- 2—**Wayfaring Tree** (*Viburnum lantana*).
See illustration, page 11. 3 to 4 ft. Plants.....\$1.50
- 2—**Red-leaved Rose** (*Rosa rubrifolia*).
Slender purplish branches covered with a bluish bloom; foliage is a grayish red; flowers are tiny and very vivid pink. A striking colored shrub. Red fruit remains long into winter.
2 to 3 ft. Plants 1.50
- 2—**Coral Dogwood** (*Cornus alba*).
See page 11 of Spring Booklet. 3 to 4 ft. Plants..... 1.00
\$4.00

A \$4.00 value for \$3.00, Postpaid, not exceeding 4th zone.

(Or if you pay the express we will include one Pink or White Bush Honeysuckle.)

"Bird Attractors" No. 4

- 2—**Tall-bush Bittersweet** (*Euonymus europaeus*).
See illustration, page 13 of Spring Booklet. 5 to 6 ft. Plants...\$2.60
- 2—**Wayfaring Tree** (*Viburnum lantana*).
See illustration, page 11. 2 to 3 ft. Plants..... 1.20
- 2—**White Tatarian Bush Honeysuckle** (*Lonicera tatarica alba*).
4½ to 5½ ft. Plants..... 1.20
- 2—**Autumn Oleaster** (*Elaeagnus umbellata*).
See illustration, page 8 of Spring Booklet. 3 to 4 ft. Plants... 1.50
\$4.00



A \$6.50 value for \$4.50, f. o. b. Piqua.

NOTE—These plants are too large to send Parcel Post; shipment made by express or freight (transportation charges paid by customer).

ELEY FLOWERING CRAB. (*Malus purpurea eleyi*). The newest of the Flowering Crabs. It is a Hybrid having been raised by Mr. Charles Eley at his English home (Bergholt, Suffolk). Leaves are bright red early in the season, duller later. Clusters of bright reddish flowers followed by very conspicuous fruit of a rich reddish color. It has larger and better flowers than the well known *malus floribunda* which it will supersede. Crabs are excellent for exposed situations.

4 ft. Tree—One for \$1.45;
3 for \$4.00 Postpaid

LILACS

Lilacs will always be one of our best loved flowers;—no garden is complete without them. For best results Lilacs should be planted in the Fall; in fact they "come out" so early in the Spring that we plant Lilacs in the Spring only where exceptional conditions make it necessary.

French Hybrid Lilacs

(on own roots) See illustration.

Double Violet-blue (Alphonsa La-vallee.)

Double reddish purple; the darkest of all the Doubles (Charles Joly.)

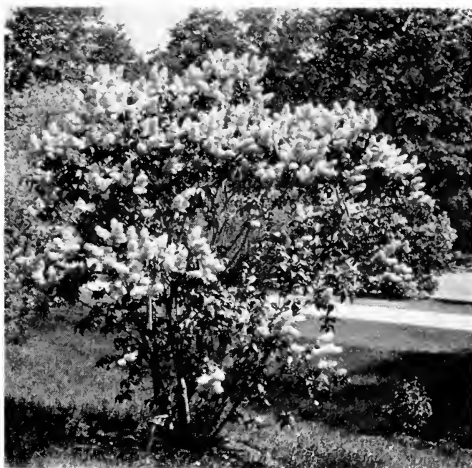
Double White; **the best** (Mme. Lemoine.)

These three **Double** French Lilacs give you a nice range of color; the double lilacs last longer in bloom, and blossom when only 2 feet high.

One each of above 3 varieties, 18 to 24 in. high—\$2.00 Postpaid.

Old Fashioned Purple and White Lilacs. To many these still have a big appeal.
1—Purple, 3 to 4 ft.; 1—White, 2 to 3 ft.

These Two strong plants for \$1.00, F. O. B. Piqua.

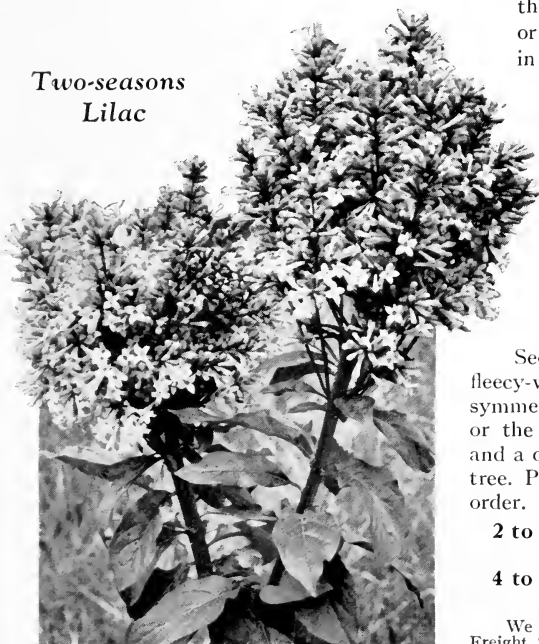


French Hybrid Lilac

Two-seasons Lilac (*Syringa meyeri*) On own roots.

Syringa meyeri is a slender stemmed shrub of compact habit and one of the first of the lilacs to bloom. The flowers are more or less reddish lilac-colored and are borne in upright lateral and terminal clusters, forming large panicles. A peculiarity of this Lilac is that **in early autumn** it bears a more or less abundant **second crop of blossoms**.

Two-seasons Lilac



2 to 3 ft. Plants—\$1.75 Each
3 for \$4.50 Postpaid.

Japanese Tree Lilac (*Syringa japonica*)

See illustration on Front Cover. The showy fleecy-white flowers are produced in large erect symmetrical clusters, about the end of June or the first of July. The large leaves are thick and a dark green. Grows into a handsome small tree. Possesses ornamental qualities of highest order.

2 to 3 ft. Plants—\$1.40 each; 3 for \$3.65
(Delivered to 4th zone)
4 to 5 ft. Plants—\$2.25 each; 3 for \$5.25
(Delivered to 4th zone)

We reserve the right to ship this larger size to your Freight Station; these are extra heavy plants.

GARDENS OF FRAGRANCE OFFER

What is more alluring in a garden than Fragrance? Everyone is alert to it, and for those who enjoy the sweet scent of the Garden we have made up this selection. The following plants are given in order of their bloom, spanning the late winter, spring and summer months.

- 1—**Vernal Witch-hazel** (*Hamamelis vernalis*).
 Winter flowering; on mild days in January you can see the first flowers, yellow petals, reddish towards the base. Rare. The flowers blossom over a period of three months, emitting a delightful spicy odor of almonds. 2 to 3 ft. Plant.....\$1.45
 - 1—**Springscent** (*Fothergilla monticola*).
 See description page 7. 8 to 12 in. Plant..... 1.25
 - 1—**Sweetshrub** (*Calycanthus floridus*).
 The purplish brown flowers of this shrub, so well known to most of us for its enduring fragrance. Will thrive in partial shade. 2 to 3 ft. Plant..... .50
 - 1—**French Hybrid Mockorange** (*Philadelphus lemonei erectus*).
 The single fragrant white flowers of this shrub are typical of the old fashioned "Syringa" that grew to be an immense bush. Also listed on page 4. 3 ft. Plant..... .75
 - 1—**Sweetspire** (*Itea virginica*).
 This old fashioned summer-flowering shrub is not as well known in gardens as it deserves to be. Grows about 4 feet high. Has fragrant, white, star-like flowers. 18 to 24 in. Plant.65
 - 1—**Summersweet** (*Clethra alnifolia*).
 The white spikes of blooms delight the nature lover with its great profusion of Spicy fragrance; starts to bloom in July and is finished by September. Grows about 4 to 5 feet high. Likes damp semi-shade. 18 to 24 in. Plant......65
- \$5.25

A \$5.25 value for \$3.85, Postpaid to all points not exceeding 4th zone.



European Privet used effectively in this foundation planting (north exposure). The Privet are the large shrubs at the extreme ends, and on either side of the entrance. See Page 5



*Photograph taken August 8, 1932, showing one of our evergreen blocks.
The depression does not alter our policy of keeping a clean nursery.*

Our Nurseries contain a Complete Line of Hardy Shrubs and Evergreens, so that you may add other items to your order with full assurance that we can furnish these at the prevailing price.

Recommendations From Our Spring Booklet*

Fall is an excellent time to plant the items listed and described on Pages 3, 6, 7, 8, 9, 10 (Cornelian Cherry), 11, (Coral and golden-twig Dogwood), 12 (Regel Privet, 13, 14, 15 (Thunberg and Douglas Spirea), 16, 17 (Late-blooming and Pink Bush Honeysuckle), 19, 20 (Cranberry Bush), 22 (Bird Attractors No. 1). To those who live in the South, all items can be set out in the Fall; we are situated directly north of Cincinnati, the gateway to the South.

* If you have mislaid or lost this Booklet, we shall be pleased to mail you another copy.

Additional Greenback Specials

Tall Bearded Iris—10 Plants (10 different varieties) for \$1.00 Postpaid.
Our Iris field is healthy, free from borer and rot. Plant this Fall and have blooms next Spring.

Snow Trillium (*Trillium grandiflorum*).

The most beautiful wild flower we have—you can never have too many.

8 Plants (XX largest size) for \$1.00 Postpaid.

Double-flowering Oriental Poppy, Olympia.

A much talked of novelty, which blossoms before the well known Oriental Poppy. When fully developed, flowers are 4 inches in diameter; at first opening the flowers are full double but show a bunch of stamens as they mature. Its crepe finished petals are brilliant rich flame-scarlet overlaid with glistening golden salmon.

5 Plants for \$1.00, Postpaid.

Flowering Plum (*Prunus triloba*).

Double light pink flowers in May.

Two—2 ft. Plants for \$1.00, Postpaid.

French Mockorange (*Philadelphus Norma*).

See description, page 7 of Spring Booklet.

Two—3 ft. Plants for \$1.00, Postpaid.

Order one each of the above **Greenback Specials** (5 of one kind if you wish), sending us \$5.00, and we will include 2—Improved Purple-leaved Plums, 4 ft. high—see Page 6. We will pay the Parcel Post or Express Charges not exceeding fourth zone.



10% Discount

for ordering and remitting before Jan. 1st, 1933 for Tree Wisteria and Dbl. Fl. Purple Leaved Plum.

You Benefit as follows—

- 1st—The “pick of the crop”
- 2nd—Larger selection
- 3rd—10% price reduction
- 4th—Shipment as soon as planting season opens (or held for your instructions).

Standard or Tree Wisteria

Varieties (in order of popularity)

Pink Japanese (*W. multijuga rosea*)

Double Violet Japanese (*W. multijuga violacea plena*)

Wisteria multijuga Longissima—New for 1933

Produces astonishingly long clusters of light purple flowers. On an established “Standard” these flowers will run 3 to 4 feet in length.

White Japanese (*W. mult. alba*)

Silky (*W. venusta*) Glistening white flowers.

Mrs. McCullough—Rich mauve purple.

Price—\$8.75 each; 3 or more at \$7.75 each; 6 or more at \$7.30 each

F. O. B. Piqua, Ohio

(You deduct 10% from these prices).

Double-Flowering Purple-Leaved Plum

(*Prunus cerasifera blireiana fl.-pl.*)

For those who are looking for a really good spring-flowering shrub or tree. The flowers are large and very double, being almost a peach-pink and look exceedingly attractive with the tender young foliage which is beautifully tinted; and they are especially valuable for cutting.

Set this plant in shrub border or as an accent plant in garden background. Grows 10 to 15 feet high.

3 to 4 ft. Plants—\$1.25 each;
\$12.50 per dozen.

4 to 6 ft. Plants—\$1.50 each;
\$15.00 per doz.

F. O. B. Piqua, Ohio.

(You deduct 10% from these prices).

