

Historic, Archive Document

Do not assume content reflects current scientific knowledge, policies, or practices.

62.61

BOARD OF ADVISORS

PAUL H. DAVEY
VICE PRESIDENT
THE DAVEY TREE EXPERT CO.
LESTER C. LOVETT
PAST PRESIDENT
EASTERN NURSERYMAN'S ASSOCIATION
DR. ROBERT T. MORRIS
NEW YORK SURGEON, AUTHOR,
DEAN OF THE NORTHERN NUT
GROWERS' ASSOCIATION

F. W. LUENING
THE MILWAUKEE JOURNAL
PERCIVAL S. RIDSDALE
MANAGING EDITOR
NATURE MAGAZINE

EVERETT G. GRIGGS, 2ND
ST. PAUL AND TACOMA LUMBER CO.
TACOMA, WASH.

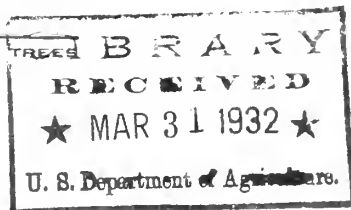
ELLEN EDDY SHAW
BROOKLYN BOTANIC GARDEN
ERNEST THOMPSON SETON
FORMER CHIEF SCOUT
BOY SCOUTS OF AMERICA
AND CHIEF OF THE WOODCRAFT LEAGUE OF AMERICA



NATIONAL HEADQUARTERS FOR GUARANTEED LIVING TREES

468 Fourth Avenue
NEW YORK, N. Y.

1932



Dear Friend:

See what is chosen by the LIVING TREE GUILD for you this year: TREES - PERENNIALS - SHRUBS - HEDGES - VINES.

You can comb the whole country - the finest sources for plants and trees - and we believe you will not find any better qualities or lower prices with a full guarantee.

We are genuinely interested in the results that you get from your efforts. We want to make sure that your investment is good. Every shipment from the LIVING TREE GUILD brings clear, simple instructions.

Above all, we want to bring you a message of good cheer. There is something very comforting in making friends with trees and plants. We are reminded of those beautiful words of Robert Browning, when he said:

"God's in His Heaven - All's right with the world."

Sincerely yours,

THE LIVING TREE GUILD

Be sure to see the offer of the rare Cherry Tree, dedicated to George Washington for the Bicentennial Celebration. Read about the gift of this tree to our friends. See inside page.

HARDY PERENNIALS★

IMPERIAL JAPANESE IRIS—Looks like the best of the orchids. No better Japanese Iris anywhere.

CAILLARDIA (Blanket Flower)—Flowers with red centers, with rings of crimson, maroon, orange or vermilion. Also topped with orange or lemon.

KOREAN CHRYSANTHEMUM—Two years ago we sold this exceptional variety for \$1.00 per plant. Brilliant claret pink colored flowers until late Fall. Very hardy. Don't miss having these in your garden.

HARDY PHLOX—The great panicles of bloom make the Hardy Phlox one of the most showy of all objects on the lawn during the summer months.

DOUBLE HOLLYHOCKS—Extra fine flower stalks, often grow to over five feet in height. A glory for the back fence line.

HARDY CHRYSANTHEMUMS—When other flowers are entering on their winter's rest, these Hardy Chrysanthemums are in their prime.

COLUMBINES—Can be used in full sunlight or partial shade. Gracful airy flowers.

LARKSPUR—Flower stalks produce blooms of various shades of blue, the stalks sometimes over five feet in height.

BABY'S BREATH—One of the most popular old-fashioned perennials.

HARDY SWEET SCENTED LUPINES—Various colors of flowers—blue mauve and pink, reaching majestically upward from long stems.

ORIENTAL POPPY—Flowers from five to seven inches across on tall stems. A gorgeous variety.

SHASTA DAISY—One of the finest of Luther Burbank's productions. Pure white flowers, frequently 2½ or 3 inches in diameter.

CLOVE SCENTED PINKS—Delightfully sweet scented flowers (like carnations). Early summer flowering in great abundance, more sparingly in mid and late summer. Shades of pink predominate in great range of colors.

CANTERBURY BELLS—Profusion of bell-shaped blue and pink flowers through July and August.

COREOPSIS—The best of the hardy yellow flowers for mass effect. Blooms constantly from June to frost.

HIBISCUS (or Marshmallow)—Enormous blossoms, sometimes 8 to 10 inches in diameter, white and pink; produced from early August to frost.

PAINTED DAISIES (or Pyrethrum)—These might be called "Aristocrats" of the flower garden because of their refined beauty. Most attractive foliage helps accentuate their refinement.

LOOSE STRIFE (Lysimachia)—Long dense spikes of pure white flowers. During the last half of the summer.

DROPMORE (Achusa)—Will grow to four or five feet, with delightful gentian blue flowers an inch or more across. During the first half of the summer.

ORANGE SUN FLOWER (Helopsis Pitecherianus)—Grows from two to three feet, producing deep golden yellow flowers freely through the summer.

PRICES OF HARDY PERENNIALS

BOX A	20 plants	\$ 3.55
	(1 of each of the above)	
BOX B	40 plants	\$ 6.95
	(2 of each of the above)	
BOX C	80 plants	\$12.95
	(4 of each of the above)	

If you want special selections—more of one variety and less of another—indicate your choice on order form. But be sure total number of plants amounts to 20 or 40, or 80 plants.

(Less than 20 plants, per plant 30 cents.)

(Hardy Perennials, since they are flowers, do not come under the one year guarantee on all Guild Trees.)

DECORATIVE VINES★

Take Your Pick, Choose Any Combination

CHINESE WISTARIA (Wistaria Sinensis)—Here is the famous Wistaria that has been the glory of artists. This vine will produce lavender-blue flowers, frequently a foot or more in length, in great abundance.

TRUMPET HONEYSUCKLE (Lonicera Semper-virens)—The symbol of good, old-fashioned home life in America. An abundance of scarlet flowers from July to September.

KUDZU VINE (Pueraria Thunbergiana)—This is the quickest growing vine. Choose it for producing shade without much delay. Large tropical foliage makes it excellent as a screen.

BOSTON IVY (Ampelopsis Veitchi)—The most popular of deciduous vines. Clings readily to stone or brick. Foliage turns to beautiful colors in the autumn.

MEMORIAL ROSE (Rose Wichuraiana)—This is a perfect trailer, because it hugs the ground closely. Should be used for ground cover or carpeting steep banks. Grows 10 to 15 feet in a season. Flowers are single, pure white, with golden yellow stamens, and very fragrant.

JAPANESE EVERGREEN HONEYSUCKLE (Lonicera Halleana)—Valuable for its glossy, ever-green foliage. Delightfully perfumed flowers from May until November.

PRICE OF VINES

Per Ten	\$4.95
Less than Ten, Single Plants, each60

GEORGE WASHINGTON Bi-Centennial Cherry Tree!

All over the country this year they are celebrating the 200th Anniversary of the birth of George Washington. The heart of every patriot is stirred.

To commemorate this historical event, the Living Tree Guild dedicates to George Washington one of the most beautiful cultivated Cherry Trees in America. This tree is none other than the Governor Wood. We have been guided in this choice by one of the country's leading horticulturists, who was engaged to find the finest variety Cherry Tree for all-round domestic use.

This tree now dedicated to George Washington is one of the rarest and best. Every friend of



Beautiful flowers!

the Living Tree Guild who owns this tree will delight in it.

This is a *sweet* cherry. The fruit is a beautiful red and amber. It is luscious. The tree virtually produces a shower of large cherries, fairly bursting with juice. A wholesome and healthy food. Full of invigorating vitamins, while the tree itself gives a hospitable shade, especially for the small yard.

Do not confuse this cultivated cherry tree with the wild cherry. The latter is a breeding place for tent caterpillars and in many ways unsatisfactory. This sweet cherry is lovely and wholesome in every way.



Luscious fruit!

Given Away!

**READ
BELOW!**

This Bicentennial Cherry Tree, dedicated to George Washington, will be sent without cost to friends of the Living Tree Guild this year. It will be included with our compliments in every shipment of \$5.00 or more of those trees; perennials, shrubs, vines and hedges which are marked in this folder with a star. Look for the stars! Remember that you will receive the George Washington Bi-centennial Cherry Tree without added cost.

LOOK FOR THE STARS!

Money In Walnuts

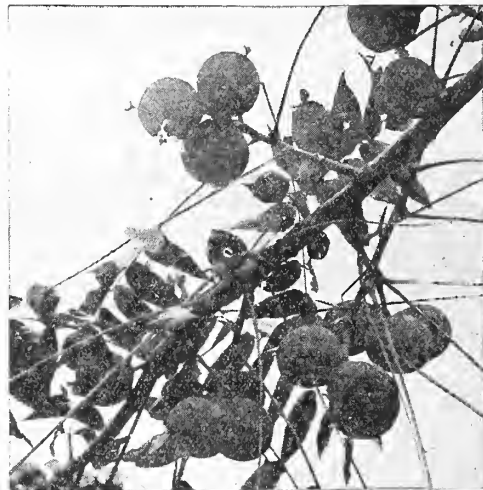
NEW WAY TO HAVE CROPS OF BIGGER NUTS MUCH QUICKER



Black Walnut tree raised from Pedigree. In its fifth year from planting this tree is bearing 300 large nuts. These may be used in biscuits, salads, turkey dressing, ice cream, candy, and as a picnic specialty.

Here's something entirely new in horticulture. It has extraordinary value for unproductive land, and lots and country estates. Hitherto it has taken more than a score of years to get a crop of black walnuts. With Guild Pedigrees (grafted) you can have crops of black walnuts as quickly as apples. And the market value of a crop from each tree is from three to five times more valuable than apples. And there are no pests as with fruit trees; and the walnut tree is not affected by blight, as is the chestnut.

The demand for black walnuts outruns any visible supply. Guild Pedigrees offer an unique opportunity—the kind that comes in agriculture perhaps once in a generation.



The picture shows nuts growing on a tree in its fifth year from planting. Sometimes big nuts appear in the second or third year! Each Guild Black Walnut Pedigree is numbered and registered in the home office. A metal tag with the tree's serial number accompanies each Pedigree.

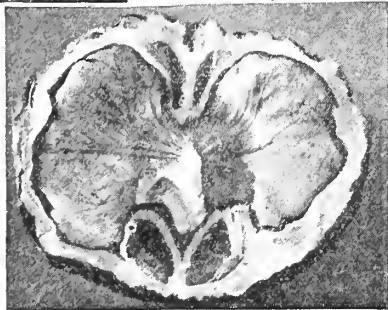


ORDINARY BLACK WALNUT LEFT

Hard nut to crack on account of its extremely thick shell. Undersized kernels, almost impossible to extract whole. This is the kind of nut that is raised after many years from seedlings and wild trees. All the delicious flavor is retained in the Pedigreed nuts.

PEDIGREED BLACK WALNUT RIGHT

Note how thin the shell is compared to the picture above. Very easy to crack. The large kernel of delicious meat literally tumbles out whole. The black walnut is the only nut that does not lose its flavor in cooking.



PRICES

- Black Walnut Pedigrees, 4-5 foot, grafted, registered Pedigrees\$3.90 each
Hazel Hybrids and Filberts†, 3-5 foot, grafted 2.25 each
Nut Tree Fertilizer 1.00 per 5 lbs.

†These trees are shipped together for cross-pollination in the approximate ratio of 2 Hazel Hybrids to 1 Filbert. Order total number of these trees desired and leave the combination to us.

PLANTING NOTES

Fertilizer: Figure on one pound per tree, minimum order 5 lbs.

Spacing: Your main crop of Black Walnuts should be spaced 40-50 feet. You can put the Hazels and Filberts between the Black Walnuts. If you use only the Hazels and Filberts, figure 20-25 foot spacing. The Black Walnuts will make by far the most valuable planting. We recommend Hazels and Filberts only for a delicious intermediate crop.

Instructions for planting accompany shipment.

*America's Fastest
Growing Shade Tree*

The Siberian Elm★

(*Ulmus Pumila—
Hardy Northern Strain*)



This picture was taken at College Park, Maryland, and shows a fine specimen. When this tree was planted it had a girth of 2½ inches. Now it measures over 36-inch girth and over 32-foot spread after 5 years growth.

This beautiful tree develops the full shapeliness of the maple, but grows almost twice as fast as the maple or the American Elm.

After the first year, four to six feet a year is the customary growing schedule of this wonderful shade tree. The SIBERIAN ELM is hardy. It will grow in almost any kind of soil. It will stand great variations of climate. Here's a rule: When not sure which variety of shade tree to plant, plant SIBERIAN ELMS.

This is the fourth year that the Living Tree Guild has sponsored the SIBERIAN ELM. During this time it has become one of the most popular trees in the country. Today, our friends who planted these

SIBERIAN ELMS four years ago now point with pride to them—higher than the roof of the house!

U. S. Department of Agriculture Says:

"It is hardy and has proved valuable under a greater variety of climate and soil conditions than any tree yet introduced."

PRICES ON SIBERIAN ELMS

	2-3 ft.	5 ft.	6-8 ft.	10-12 ft.
One	\$1.00	\$1.80	\$2.70	\$5.25
Three	\$2.65	\$5.00	\$7.95	\$15.00
Ten	\$7.90	\$15.00	\$24.00	\$47.50

SHADE TREES★

Which are Old Friends

NORWAY MAPLE—One of the most popular of all shade trees, and one that can be depended upon to give good results under almost all soil conditions. A symmetrical grower with a beautiful spread. Resists drought and smoke. 5 to 6 feet high when delivered.

WEeping WILLOW—This celebrated, graceful tree is a very quick grower. Also it is easy to grow—its roots taking hold readily. Its natural location is beside a pond or river. Its capacity for drinking up water and converting it into wood tissue is so great that this tree is often useful in landscaping to help dry up a boggy depression. Height when delivered, 5 to 6 feet.

LOMBARDY POPLAR—Of pyramidal growth. Exceedingly graceful and one of the most rapid growing of all deciduous trees. Famous in French landscapes. Height 5 to 6 feet when delivered.

ORIENTAL PLANE TREE—One of the few shade trees that will resist soot-filled atmosphere of the city. Unique for its white bark. In the early fall this is one of the first trees to turn its foliage with brilliant effect. 5 to 6 feet high when delivered.

AMERICAN ELM—One of the most famous trees in America. Characterizes the New England village by its tall arching branches. A comparatively slow growing shade tree, but incomparable for its symmetry—like a giant vase, and with permanent value. 5 to 6 feet high when delivered.

EUROPEAN MOUNTAIN ASH—Best used as individual trees on lawns. Very hardy. Distinctive for the color of its fruit against the background of green foliage. A favorite of landscape architects for that reason. 5 to 6 feet when delivered.

PIN OAK—Here is another favorite tree, useful in congested, suburban districts. A very compact and beautiful tree. Adds to the value of the property. Real estate men are always looking for pin oaks and point to them with pride. 4 to 6 feet high when delivered.

*You can select all of one kind,
or any desired combination.*

Any six of the above trees \$7.50
For less than six, per tree 1.40

The Best HEDGES★ Easy to Grow

JAPANESE ROSE (Rosa Rugosa)—A hardy variety with an abundance of large green leaves. Flowers all summer with large single rose colored blooms. Also recommended for seashore locations. 9 to 12 inches. Per dozen, \$1.25; Per hundred, \$9.50.

JAPANESE BARBERRY—One dozen Barberry plants will make ten feet of hedge. Height, 9 to 12 inches when delivered—will grow quickly. Thorny protection against animals. Per dozen, \$1.25; Per hundred, \$9.50.

CALIFORNIA PRIVET—Decidedly popular but will sometimes suffer from winter injury when planted in latitudes north of New York City. Should be planted 6 inches apart

in a row. Two dozen Privet plants will make twelve feet of hedge, 12 to 18 inches when delivered; multiple stems. Per dozen, 75 cents; Per hundred, \$6.95.

ALTHEA (Rose of Sharon)—Plant 15 inches apart in a row. Makes a glorious flowering hedge. 12 to 18 inches when delivered, will grow rapidly. Per dozen, \$1.75; Per hundred, \$12.95.

GENUINE BOXWOOD (Buxus Suffruticosa)—Propagated from hedges over a hundred years old. An extremely slow grower, but lasts a life time with beautiful, compact, fragrant foliage. 6 to 9 inches when delivered. Each, \$1.00. Per dozen, \$7.95; Per hundred, \$58.00.

CHOICE VARIETY OF TREES★

Seldom Seen and of Rare Beauty

JAPANESE WEEPING PINK FLOWERED CHERRY—A brilliant importation from the Orient. This is the tree selected by the landscape architects of the beautiful Lincoln Memorial at Washington, D. C., and now helps to make that spot one of the most charming shrines of America. Long slender branches appear like a waterfall of pink flowers.

(With five-foot stems and one-year heads when delivered)

Each	\$ 6.00
Three	17.50
Per dozen	65.00

PRUNUS NEWPORT—An exceptionally fine, improved strain of Purple-leaved Plum. Retains its rich purple foliage throughout summer and fall. Foliage is perhaps even more attractive than that of the rare River's Purple Beech.

(Size when delivered, 3-4 ft.)

Each	\$ 2.00
Three	5.75
Per dozen	18.00

ELI FLOWERING CRABAPPLE—While this tree was under investigation, a member of the Guild Board of Advisors received the following report: "A very beautiful crab, large red flowers, the tree is loaded with cherry-colored fruit at this time of year, and as beautiful as any tree can be."

(Size when delivered, 3-4 ft.)

Each	\$ 2.00
Three	5.75
Per dozen	18.00

DOUBLE RED FLOWERING PEACH—A tree which blooms very early in the Spring, affording a most welcome sight after a long winter. Very gorgeous blossoms about one inch in diameter appearing in large clusters. Double red flowers like big roses. Semi-dwarf in growth.

(Size when delivered, 3-4 ft.)

Each	\$ 2.00
Three	5.75
Per dozen	18.00

PINK FLOWERING DOGWOOD (Flor. Rubra)—A beautiful variety of Flowering Dogwood. Heretofore rather scarce in quantity and even now not too plentiful. Bears bright rosy pink flowers. Recommended for a beautiful lawn tree.

(Size when delivered, 2-3 ft.)

Each	\$ 3.95
Three	10.75
Per dozen	36.00

SPECIAL!

JAPANESE BLOOD LEAF MAPLE (Grafted specimens)
—Dwarf in habit. Beautiful blood red leaves from early spring to late fall. The genuine blood leaf maple so decorative for a specimen lawn tree. 2 to 2½ feet high when delivered. A rare and brilliant tree.

Each.....\$7.50 Three.....\$21.00 Dozen.....\$79.20

SELECTED EVERGREENS

for garden backgrounds and
foundation planting

AMERICAN ARBOR VITAE—2 to 3 ft. when delivered. Will make a tall dense pyramid of deep green, lacy foliage. Endures shearing well and is excellent as a screen or hedge plant.

GLOBE ARBOR VITAE—1½ ft. when delivered. A lovely, compact natural globe which will not exceed four feet in height.

CANADIAN HEMLOCK—2 to 3 ft. when delivered. Especially hardy for northern climates. Recommended for locations in partial shade. Feathery fresh green foliage—that makes a graceful individual tree, or can be trained for a fine hedge.

DOUGLAS FIR—2 to 3 ft. when delivered. One of the most valuable of the lofty trees. Dark green foliage, reminiscent of the deep forest. Excellent for a large lawn tree.

BOXWOOD (Buxus Sempervirens)—1 to 1½ ft. high. Exquisite. Beautifully modelled, compact—with rolling sides across which play lights and shadows. Extremely hardy. These Box are 100% perfect. 12 to 18 inches when delivered. Upstanding, aristocratic and symmetrical.

PFITZER'S JUNIPER—18 to 24 inch spread when delivered. Will make a gorgeous decoration like an explosion of green. Very hardy. While it will grow to 6 or 8 feet it can easily be trimmed and kept within any limits.

GOLDEN RETINOSPORA—The tips of its foliage are a bright golden hue. 2 to 3 ft. when delivered. The Retinosporas are among the most colorful and exquisite of the evergreens. Vigorous—but should not be planted in extremely severe climates.

GREEN RETINOSPORA—A decorative evergreen for foundation planting. 2 to 3 ft. when delivered—will grow vigorously and is easily trimmed.

BLUE RETINOSPORA—Distinct and arresting with dense silver-blue foliage, of a feathery, billowy appearance. 2 to 2½ ft. when delivered.

You can select all of one kind,
or any desired combination.

Four of the above trees.....\$10.00

For less than four, per tree..... 2.95

RHODODENDRONS!★ Special Hybrid Strain

An unusually fine strain of hybrid rhododendrons for our friends. Rhododendrons are gaining in popularity because they are green the year round and produce large multi-colored flowers during June and July.

These hybrid rhododendrons are descended from selected stock. If pedigrees were recorded the ancestors of these beautiful plants would be on the blue list.

These rhododendrons should be planted in acid soil, free of lime. Need plenty of water and protection from winter sun. Leaf mould mulching is especially good. Colors of flowers cannot be determined in advance. The pedigree of this family, however, assures you of a magnificent assortment of colors. 10-16 inches when delivered.

Each plant.....\$ 2.00

Ten plants..... 18.00

72.61

1932

ORDER FORM

Mail to

THE LIVING TREE GUILD

National Headquarters for Guaranteed Living Trees

468 Fourth Avenue (at 31st Street), New York, N. Y.

On the dotted line beside the variety write the number of plants or trees of that variety that you wish. Shipments will be made at the proper time for planting.

HARDY PERENNIALS★

- Imperial Japanese Iris
- Gaillardia
- Korean Chrysanthemum
- Hardy Phlox
- Double Hollyhocks
- Hardy Chrysanthemums
- Columbines
- Larkspur
- Baby's Breath
- Hardy Sweet Scented Lupines

Check One:

- Box A.....\$3.55
20 plants—1 of each
- Box B.....\$6.95
40 plants—2 of each
- Box C.....\$12.95
80 plants—4 of each
Less than 20 plants,
per plant, 30c

- Oriental Poppy
- Shasta Daisy
- Clove Scented Pinks
- Canterbury Bells
- Coreopsis
- Hibiscus
- Painted Daisies
- Loose Strife
- Dropmore
- Orange Sun Flower

CHOICE VARIETIES★

- Japanese Weeping Pink Flowered Cherry (one tree \$6.00; three \$17.50; dozen \$65.00)
- Prunus Newport (one tree \$2.00; three \$5.75; dozen \$18.00)
- Eli Flowering Crabapple (one tree \$2.00; three \$5.75; dozen \$18.00)
- Double Red Flowering Peach (one tree \$2.00; three \$5.75; dozen \$18.00)
- Pink Flowering Dogwood (one tree \$3.95; three \$10.75; dozen \$36.00)

SPECIAL!

- Japanese Blood Leaf Maple (one tree \$7.50; three \$21.00; dozen \$79.20)

SELECTED EVERGREENS

- American Arbor Vitae
- Globe Arbor Vitae
- Canadian Hemlock
- Douglas Fir
- Boxwood

Any combination

Four trees

\$10.00

Less than four,
per tree, \$2.95

- Pfitzer's Juniper
- Golden Retinospora
- Green Retinospora
- Blue Retinospora

RHODODENDRONS★

- One Plant.....\$2.00
- Ten Plants.....\$18.00

NUT TREES

- Black Walnut Pedigrees, 4-5 foot, grafted, (\$3.90 each)
- Hazel Hybrids and Filberts‡, 3-5 foot, grafted, (\$2.25 each)
- lbs. Nut Tree Fertilizer (\$1.00 per 5 lbs.)

‡ These trees shipped together for cross-pollination in the approximate ratio of 2 Hazel Hybrids to 1 Filbert. Order total number of these trees desired and leave the combination to us.

SIBERIAN ELMS★

- Siberian Elm, 2-3 ft. high (one tree \$1.00; three trees \$2.65; ten trees \$7.90)
- Siberian Elm, 5- ft. high (one tree \$1.30; three trees \$5.00; ten trees \$15.00)
- Siberian Elm, 6-8 ft. high (one tree \$2.70; three trees \$7.95; ten trees \$24.00)
- Siberian Elm, 10-12 ft. high (one tree \$5.25; three trees \$15.00; ten trees \$47.50)

SHADE TREES★

- Norway Maple
- Weeping Willow
- Lombardy Poplar
- Oriental Plane Tree

Any combination

Six trees,

\$7.50

Less than six,
per tree, \$1.40

- American Elm
- Pin Oak
- European Mountain Ash.

(OVER)

LIBRARY
RECEIVED
MAR 5 1932
U. S. Department of Agriculture

HEDGES★

..... Japanese Rose.....per dozen	\$1.25per hundred	\$9.50
..... Japanese Barberry....per dozen	\$1.25per hundred	\$9.50
..... California Privet.....per dozen	\$.75per hundred	\$6.95
..... Altheaper dozen	\$1.75per hundred	\$12.95
..... Genuine Boxwood	Each \$1.00	per dozen \$7.95per hundred	\$58.00

HARDY SHRUBS★

..... Butterfly Shrub	} <i>Any combination</i> \$2.95 for six. <i>Less than six plants, per plant, 65c</i> Bush Honeysuckle
..... Hardy Hydrangea	 Bridal Wreath
..... Purple Lilac	 Golden Bell
..... Red Weigela	 Japanese Snowball
..... Red Twig Dogwood	 Hydrangea
..... Mock Orange	 Rosa Multiflora

HYBRID LILACS★

..... Marie LeGraye	} <i>Any combination</i> <i>Three plants, \$4.00</i> <i>Six plants, \$7.50</i> <i>Ten plants, \$12.00</i> <i>Less than three, per plant, \$1.50</i> Marc Nicholi
..... Rubra de Marley	 Vauban
..... Charles X	 Belle De Nancy
..... Michel Buchner	 Claude Bernard
..... Mme. Cassimer Perrier	 Waldeck Rousseau

BUMPER EVERGREENS

..... Engelmann Blue Spruce	} <i>Any combination</i> <i>Ten trees, \$3.95 (delivered)</i> <i>Twenty-five trees, \$9.50 (delivered)</i> <i>100 trees, \$35.00 (delivered)</i> Mugho Pine
..... Scotch Pine	 Austrian Pine
..... White Spruce	 American Arbor Vitae
..... Norway Spruce	 Red Pine


GENUINE BLUE SPRUCE

(Picea Pungens Glauca or Colorado Blue Spruce)

..... Ten for **\$3.95**; Twenty-five for **\$9.50**; One hundred for **\$35.00**
(The prices for Colorado Blue Spruce include Delivery)

DECORATIVE VINES★

..... Chinese Wistaria	} <i>Any combination</i> <i>Ten for \$4.95</i> <i>Less than ten, single plants, 60c. each</i> Boston Ivy
..... Trumpet Honeysuckle	 Memorial Rose
..... Kudzu Vine	 Japanese Evergreen Honeysuckle

 George Washington Bi-Centennial Cherry Tree given away as a dedication. One of these trees will be included with our compliments with every shipment of \$5.00 or more of those trees, perennials, shrubs, vines and hedges which are marked in this folder with a star. **LOOK FOR THE STARS.**

PLEASE CHECK ONE

- Fully Prepaid Shipment.** If you prefer a fully prepaid shipment, send with this order exact amount on price list and add 10 per cent to cover delivery. Additional 10 per cent is not required on orders for Bumper Evergreens and Colorado Blue Spruce.
- Express Collect.** Send with this order exact amount on price list, and transportation charges will be collected upon delivery.
- C. O. D.** If you do not remit with this order shipment will be made C.O.D.

Mail to Living Tree Guild 468 Fourth Avenue, New York City

(PLEASE PRINT DISTINCTLY)

E32S

Name.....

Street.....

City..... State.....

NOTE: Give express office address if different from post office address.

(OVER)

HARDY SHRUBS★

for filling bare corners with masses of flowers

BUTTERFLY SHRUB (Buddleia Magnifica)

—This beautiful shrub begins to flower early in August, and continues in profuse bloom until frost. The long panicles of flowers resemble lilacs in color and shape. In rugged climate this lovely bush should be protected by a mulch in winter. It takes its name from the fact that butterflies are almost always hovering about this shrub. 1½ to 2 feet when delivered. Will grow to 6 feet or more.

HARDY HYDRANGEA (Hydrangea Paniculata Grandiflora)—Showy blooms, pure white, turning pink. 1½ to 2 feet when delivered.

‡**PURPLE LILAC (tall)**—The shrub our grandmothers gloried in. 18 to 24 inches when delivered.

RED WEIGELA (Weigela Eva Ruthke)—Deep garnet—red flowers in great abundance throughout the summer and fall. 18 to 24 inches when delivered.

‡**RED TWIG DOGWOOD (Cornus Siberica)**—Especially desirable for winter effect, the brilliant red bark showing up in splendid contrast with drab surroundings. 18 to 24 inches when delivered.

MOCK ORANGE (Philadelphus)—The old-fashioned Syringa of our grandmother's garden. Attains great height with age. 18 to 24 inches when delivered.

Prices of Hardy Shrubs

*Choose your own
combination*

**Any 6
Plants
\$2.95**

Less than 6 plants

65c per plant

‡ *These Shrubs are best for adverse city conditions. Every city home can have a touch of nature—even though there is congestion and dusty atmosphere.*

BUSH HONEYSUCKLE—If you want birds around your home grounds plant this wonderful shrub. Its early winter red fruit is a magnet to the songsters. 18 to 24 inches when delivered.

BRIDAL WREATH (Spirea Van Houttei)—Absolutely hardy and the joy of every novice in gardening. Thousands of pure white blossoms completely cover every bush. 18 to 24 inches when delivered.

‡**GOLDEN BELL (Forsythia)**—The first herald of spring flowers. Branches gloriously burdened with yellow flowers before the foliage comes out. These branches can readily be cut and the golden sunshine that they radiate brought into the house. Moreover, Golden Bell is extremely hardy and flourishes under almost any condition. 18 to 24 inches when delivered. It will grow into a ten-foot shrub. Cuttings of Golden Bell will bloom indoors in mid-winter.

JAPANESE SNOWBALL (Virburnum Plicatum)—Dense clusters of pure white flowers in great profusion. Late spring and early summer. 18 to 24 inches.

HYDRANGEA (Aborescens Grandiflora)—This erect shrub, from four to eight feet high is popularly called, "Hills of Snow," because of its pure white flowers, from late June to late August. 18 to 24 inches.

ROSA MULTIFLORA—Quantities of bright red berries during the fall follow huge clusters of white flowers in the early summer. A double effect! 18 to 24 inches.

HYBRID LILACS!★

for a Remarkable Adventure

These varieties will fascinate the person who wants to grow something unusual. With these Hybrid Lilacs you can have in bloom, a few weeks after planting, clusters of gorgeous varied colored flowers. Will surely bloom the first year, and note the colors.

MARIE LeGRAYE—Pure white flowers, medium size. Very beautiful.

RUBRA de MARLEY—Lilac colored flowers, touched with blue. Single, with large, full clusters.

CHARLES X—Large purple flowers. A vigorous grower.

MICHEL BUCHNER—Large, double clear lilac, shaded pink on inner petals.

MME. CASSIMER PERRIER—Very large, creamy white, double flowers.

MARC NICHOLI—A double, bluish-pink lilac.

VAUBAN—Delicate mauve pink. Extra double blossoms. A very appealing, softly insinuating flower.

BELLE De NANCY—Vigorous, freely blooming. Color, bright pink with white centers. One of the earliest and best.

CLAUDE BERNARD—A bright gray lilac, marked with bluish lavender. Quick growing.

WALDECK ROUSSEAU—Soft, pinkish amethyst, slightly darker in the center. Long branching clusters of medium-sized flowers.

All the above plants 2-3 ft. in height when delivered. They are wonderfully hardy and very fast growers.

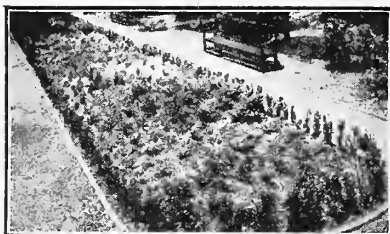
Each	\$ 1.50
Three	4.00
Six	7.50
Ten	12.00

Choose any assortment you wish.

BUMPER TREES

Here's a Way to Revel in Evergreen Trees

BUMPER EVERGREENS for the garden are a rare experience! Pick out different kinds of Evergreens and watch them develop. An Evergreen garden is one of the best investments you can make. In size, maturity and transplanting, BUMPER TREES are the equal of specimen trees which sell at a much higher price. The difference is in the method of cultivation, which saves labor costs. These trees are exceptionally sturdy, the foliage is glistening, moist and green. They will bring you a great amount of joy and profit. BUMPER TREES that will be sent to you are THE HARDEST STOCK IN AMERICA. They are just right for increasing in value. They are sent



Garden of little evergreens at entrance to Country Life Press, on Long Island.

at the exact time when their greatest growth and value is about to take place. They are bursting with life! Here is an experience in trees that you can have at slight cost, with every assurance of success. Ten trees may be planted in a few square feet of space.

THERE ARE NINE VARIETIES

Make your own choice but be sure the total comes to 10 trees, 25 trees, or 100 trees—any combination.

Engelmann Blue Spruce (5 yrs).....	9-12 in.
Scotch Pine (5 yrs).....	18-24 in.
White Spruce (6 yrs).....	10-16 in.
Norway Spruce (6 yrs).....	12-18 in.
Mugho Pine (6 yrs).....	6-10 in.
Austrian Pine (5 yrs).....	10-16 in.
American Arbor Vitae (5 yrs).....	6-10 in.
Red Pine (6 yrs).....	12-18 in.

PRICES

10 trees.....	\$3.95 delivered
25 trees.....	9.50 delivered
100 trees.....	35.00 delivered

TEN Genuine **\$3⁹⁵**
Blue Spruce **FOR!**
ALL!

A real treat while this supply lasts

While they last, we will have for planting this year genuine Colorado Blue Spruce, (*Picea Pungens Glauca*) 9-12 inches in height, twice transplanted specimens. Many requests have come to us for Colorado Blue Spruce. Because of their scarcity and the former high cost of production, we have wanted for several years to make such an offer on Blue Spruce. It has taken five years to bring these Blue Spruces to the point where we can offer them to you. Now they are ready for our special friends to enjoy.

The Blue Spruce is a marvelous investment. The bluest varieties are like a silvery cloud on the lawn. It is especially beautiful when young, and will retain its beauty for years and years.

Every tree lover wants Blue Spruces about his home. Here is your chance to obtain ten beautiful specimens at about half the usual cost. If you can use more than ten we will send you 25 for \$9.50, or 100 for \$35.00. These prices include delivery!