

Historic, Archive Document

Do not assume content reflects current scientific knowledge, policies, or practices.

60,000 of the World's
finest **ROSES** Now
Within Reach of All

1931/32
Growers of Fine
Roses for 49 Years



TALISMAN



RADIANCE



LOS ANGELES

**LOW
PRICED**

at

45c each
\$5.00 doz.

Vegetable Seed Trials

LOCKE NURSERY & FLORAL CO.
New Braunfels, Texas

HARDY FLOWERING SHRUBS for GROUP and BORDER PLANTINGS---Low Prices



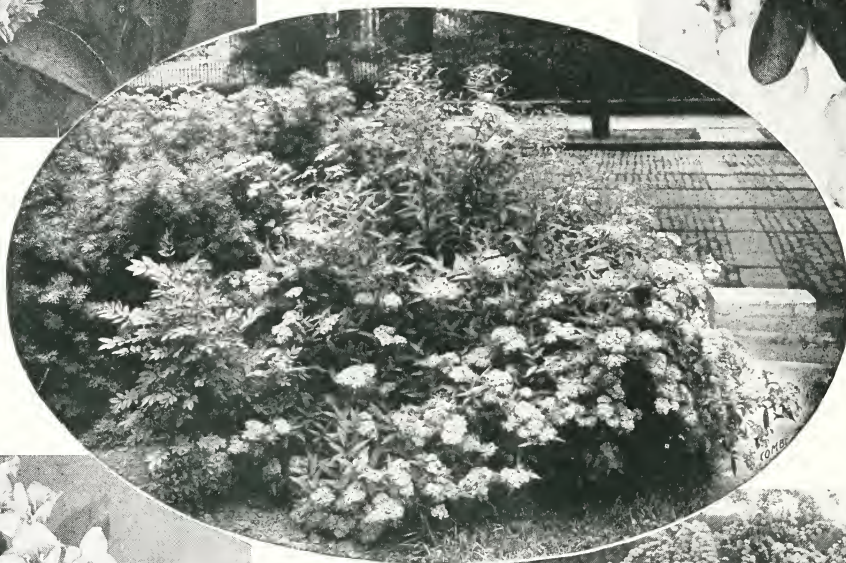
DEUTZIA

DEUTZIA, pictured at the left is a magnificent flowering shrub, growing from 4 to 6 feet in height. The flowers are very full, are pure white, tinted blush. Each.....\$0.50



SNOWBERRY

SNOWBERRY, pictured at right, grows from 3 to 4 feet tall, blooms in late summer and in fall its berries become snow white, and hang on long after frost. Very ornamental. Each\$0.50



SPIREA ANTHONY WATERER



WEIGELA



SPIREA VAN HOUTTE

SPIREA ANTHONY WATERER, center, a low growing shrub that blooms profusely, rich rosy red flowers in clusters, free bloomer. Each \$0.35 and \$0.50.

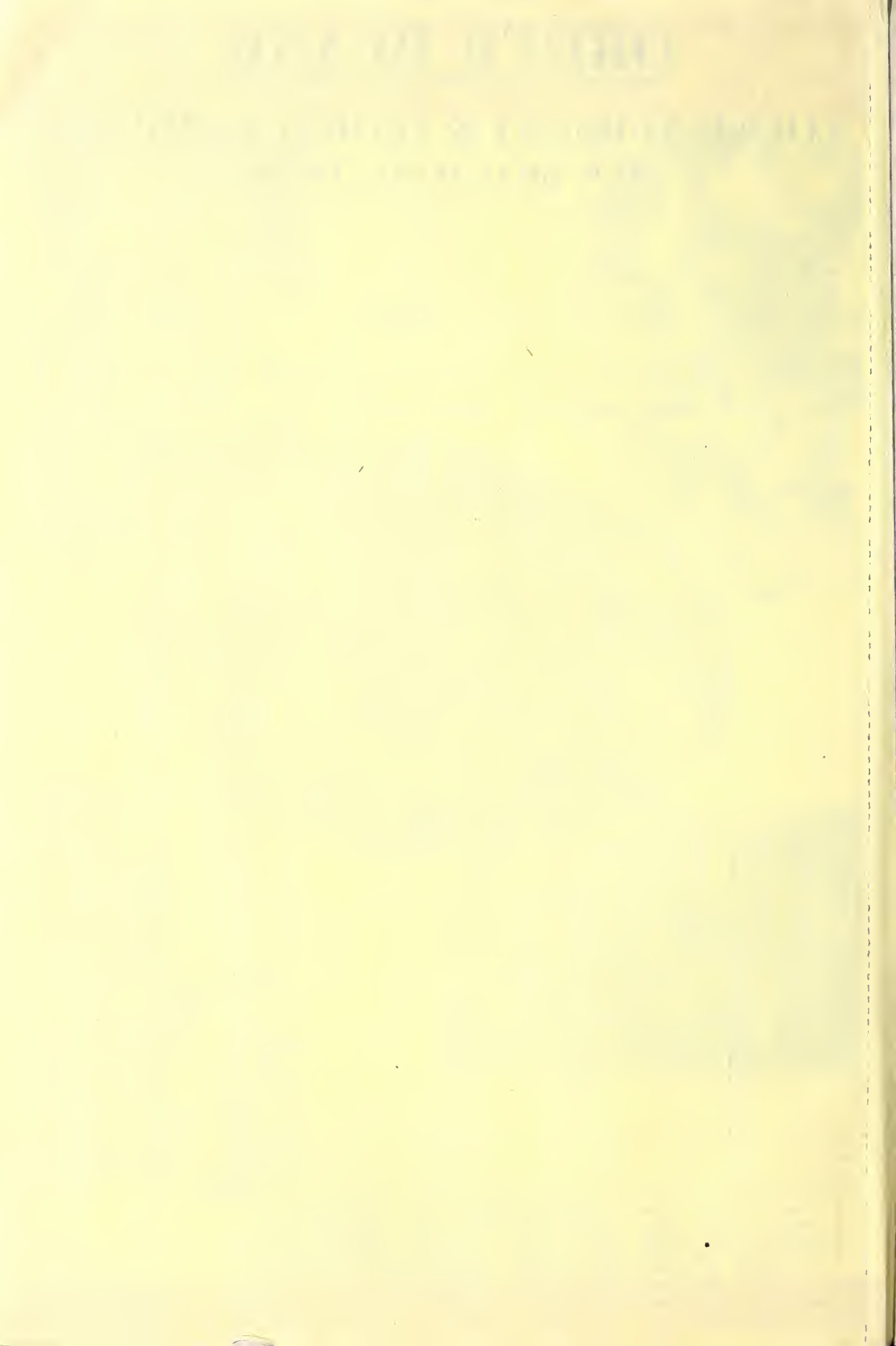
SPIREA VAN HOUTTE, right, the best known of all flowering shrubs, commonly called bridal wreath. The picture tells the story. Each \$0.35 and \$0.50.

WEIGELA, left, either Rosea or Eva Rathke, early spring bloomers, growing from 4 to 6 feet tall and literally covered with gorgeous rose colored blooms which stay on for a considerable period. Makes a magnificent showing against any landscape planting. Each \$0.35 and \$0.50.

Make Your Back Yard Into An **OUTDOOR LIVING ROOM**

THE HISTORY OF THE

ROYAL SOCIETY OF LONDON
AND THE SOCIETY OF MEDICAL PHYSICIANS





OTTO LOCKE, Sr.
The Founder

We
want
you to
come
and
see us



HERMAN C. LOCKE
The Present Owner

We want you to know us better

Otto Locke, Sr., the founder of Comal Springs Nursery, had all his life a love for trees and fruits, began budding his first fruit trees in 1882 and sold a few trees to friends and neighbors in 1883 and 1884. In 1886 his total sales were \$26.00. In 1887 he placed a small advertisement in a San Antonio paper for the sum of \$4.00, and this brought him a sale of \$400.00, and customers all over southwest Texas and as far as Saltillo, Mexico.

His first catalog was printed in 1890, of four pages, 5 by 8 inches. From then the Comal Springs Nursery began to grow rapidly, counting thousands of customers in 1926.

Some of the results of his horticultural work are the introduction of the Bonita Arbor Vitae, Summer Beauty Pear, Dixie Peach, and Honey Nectarine.

His business principle from the very beginning was "to treat each and all his customers as he would like to be treated as a customer," and under this golden rule the nursery business continued to grow from year to year for over 40 years, and is now the second oldest in the state of Texas.

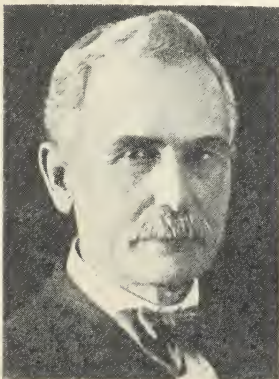
In the meantime, and since the Senior Locke was attaining the ripe age of life and desired to retire from greater activity, young Herman C. Locke saw an opportunity for carrying on the nursery business on a larger scale, and started for himself the present establishment under the name of "The Locke Nursery & Floral Company," on a new 100 acre tract of his



MRS. H. C. LOCKE
Manager
Floral Department

own in the near vicinity of the old nursery. Under his management since 1926, and due to his long years of experience and very extended acquaintance, this business has grown rapidly to one of immense proportions and ranks among the foremost in Texas.

Into the new business he brought with him the same principles that his father had adopted and upheld; and with a desire to continue in business on the basis of satisfactory dealings with all customers, patrons are assured fair and honest treatment in all their dealings with this concern. As in all business of large proportions, mistakes have occurred and may occur again, but in such event it will always be a pleasure to rectify any just and reasonable claim of a customer who may not be entirely satisfied, if promptly reported.

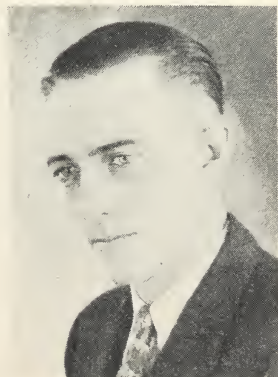


DR. S. W. STANFIELD
San Marcos, Texas

Foremost Horticulturist in Texas. Consultant and Adviser for our Nursery.



HENRY O. MAIER
In Charge of
Landscape Department



ROBERT E. PRICE
Secretary

....To Our Customers....

Please do us the honor to accept this catalog as a cordial invitation to come in and spend a few moments. We do not want you to buy unless you find something that you need, and you are sure that our stock is superior and well fitted to successfully fill your needs. By looking over the catalog it may suggest many items that will make your home and home grounds more beautiful and your orchard more fruitful by planting the best that is to be had, both in selection of varieties as well as quality of stock.

We have propagated and planted more fruit trees this year than ever before. These have made excellent growth and are of our usual well known standard. Never have we had as large a stock and variety of roses—with many new additions to our already comprehensive list. Our stocks of evergreens, ornamentals and flowering shrubs are the largest and finest.

Varieties that have originated on our grounds, the result of our own work in horticulture all these years, are well known to most of our many customers. Of course, the varieties originated here are the best for this section. Our customers' success with these varieties is the strongest possible recommendation for them.

We depend upon the high quality of our goods to hold our customers and bring us new ones. So we feel assured we can please you. Our prices are reasonable—very low, in fact, quality considered—so low we have to sell for cash.

Shipping Instructions

Customers will please state whether they wish their order sent by Parcel Post, Express or Freight. The size limit of Post Parcels is 84 inches in combined girth and length. For this reason no tree over 4 feet high can be sent by Parcel Post and must be sent by Express. Express is the most satisfactory for shipping trees from 10 pounds to 300 pounds, and not more costly than freight, and much quicker. We pay no transportation charges.

We ship our orders just as soon as possible after receiving them, and do most of the work ourselves and take great pride in packing in the best possible manner in order that our customers get their trees and plants in good condition.

Although we deviated somewhat from our former strict rule last winter, we want to emphasize that we employ no agents or salesmen, and have no connections with any other nursery. We deal direct with our customers and are directly responsible to them and to no one else. Many nurserymen and dealers buy from us to re-sell and such buyers re-sell the stock in their own account and responsibility.

Transportation at Purchaser's Risk and Expense

All transportation charges are to be paid by purchaser, and our responsibility ceases upon delivery to forwarding companies. Claims for losses or damage must be made upon the latter. We will, however, start a tracer for delayed shipments, if notified, and use every means at our command to secure prompt delivery, or recovery in case of damage or loss.

Our Location

Our large establishment is located half a mile west of the City of New Braunfels, next to the famous Landa Park and the Comal Power Plant, and is easily accessible. We have the best of transportation facilities, being on two of the largest and most direct trunk lines, M.-K.-T. and I. & G.-N. railways.

We solicit correspondence in English, German or Spanish.

An Unsere Kunden der Deutschen Sprache:

Alle Kunden die Deutsch schreiben, koennen Ihre Anfragen und Auftraege in deutscher Sprache einsenden. Wir werden alle Auftraege prompt und gewissenhaft ausfuehren und garantieren Zufriedenheit.

A Nuestros Apreciables Clientes Mexicanos:

Tenemos el gusto de presentarles este nuevo catálogo, esperando que les sea útil en seleccionar sus plantas.

Al hacer sus pedidos, hágnanos el favor de escribir su nombre y dirección con toda claridad, para evitar errores.

Pueden escribirnos en castellano, y les aseguramos que sus pedidos serán despachados con todo esmero y puntualidad.

Siempre estamos dispuestos a ayudarles en la selección de árboles, plantas, etc.

LOCKE NURSERY & FLORAL CO.

NEW BRAUNFELS, TEXAS

Our Policies, Service and Business Information

1. The **ORDER BLANK** accompanying this catalog is for the convenience of customers, and its use will facilitate the filling of orders. Any other matter should be written on a separate sheet of paper.

2. **ALWAYS GIVE FULL ADDRESS** every time you write. This is important. Please write your name and address very plainly, so that nothing will have to be deciphered or guessed.

3. **TERMS.** Our terms are Cash with Order. The prices are Net Cash. All prices have been so figured and discounts deducted. If we extended any credit or opened accounts, it would be necessary to have higher or increased prices.

4. **REMITTANCES** should be made payable to Locke Nursery and Floral Company and the best way to send them is by Bank Draft, Express Money Order, Postoffice Money Order. Money, if sent by registered mail, is all right. Checks will be accepted from responsible parties.

5. **RESERVATIONS** of stock will be made when one-half of the price accompanies the order. This is to accommodate those who are not ready to plant early in the season but wish to secure the stock before same is sold.

6. **SHIPPING INSTRUCTIONS.** Customers will please state whether they wish their orders to be sent by Parcel Post, Express or Freight. Transportation at purchaser's risk and expense.

OUR SUGGESTIONS

6a. **PARCEL POST.** The size limit for Parcel Post is 84 inches in combined girth and length. For this reason no tree over four feet high can be sent, unless cut back, even if it weighs only a pound or two.

6b. **PARCEL POST CHARGES HAVE TO BE PREPAID,** and for this reason money will have to be sent to cover cost of postal charges.

7. **EXPRESS.** For all shipments up to 300 pounds the Express is the most satisfactory, and not any more costly than freight. Even in heavy shipments Express may cost more but the quicker service pays.

7a. **FREIGHT.** For very large and heavy shipments, and where quick delivery is not an element. All our shipments are so packed that they will carry several weeks by freight without injury to stock.

7b. **EXPRESS AND FREIGHT SHIPMENTS** can be sent "Charges Collect," and such charges are no more than if "Prepaid." For this reason no money has to be sent to cover Express or Freight charges.

8. **ERRORS AND COMPLAINTS.** We want every order to be satisfactorily filled, and the deal is not complete until satisfaction is given. So, if there is any error or dissatisfaction we will appreciate it very much if you will let us know as soon after receipt of stock as possible or not later than five days to admit of adjustment. We immediately and cheerfully correct any errors of our own.

9. **IT IS TO OUR INTEREST** to send out the very best stock possible, true to label, healthy and packed to arrive in good condition, and this we will do. But as we cannot prevent drouths, freezes, ravishes of insects, rabbits, diseases, planting in unsuitable soils, or locations, careless or improper planting, indifferent or ignorant cultivation, **WE DO NOT GUARANTEE STOCK TO LIVE** that arrived in good condition, after passing into other hands, or replace any stock sold at the prices quoted.

10. OUR GUARANTEE:

We guarantee to send:

- (a) Healthy stock.
- (b) Free from insects, diseases, etc.
- (c) Delivered in Good Condition.

Then our responsibility ceases. If we fail in these, we will:

- (a) Replace with other stock of same value, or
- (b) Refund the purchase price of stock in question. But it is mutually understood that we will not be liable for any greater amount or damages. If stock is not accepted on these terms, we should be notified at once, not over five days after receipt, and we will refund the money remitted and advise disposition of stock in question.

11. **SUBSTITUTION.** We desire to follow our customers' wishes in this respect and have found that when our supply of stock ordered is exhausted, our customers ordinarily want us to substitute to the best of our judgment. We, therefore, substitute when necessary, unless instructed to the contrary. Please note in specified blank on our Order Sheet if you do not wish us to substitute in your order and we will gladly refund for shortages, if any. Selection of varieties suitable to your locality is of first importance to us and our services to you can often be of more value, if you leave the selection to us.

12. **NO AGENTS.** We do not employ any agents or salesmen, and have no connection with any other nursery. We deal direct with all our customers and are directly responsible to them and no one else. Many nursery men and dealers buy stock of us to re-sell. Such buyers re-sell the stock in their own account and responsibility.

13. **SERVICE.** We are so equipped that we can get out, pack and ship most orders the first or second day after receipt of order. In some cases on account of character of stock, it may take longer. We leave most of our stock in the ground and dig fresh as wanted, so this takes longer to assemble an order than if the stock was all ready "cellared." There is a period of about two weeks late in the spring, that we are rushed with orders from those who wait until the last minute. Under such conditions we will do our best to get them out as quickly as possible but in order to be fair we will wait upon each order in its turn. It is better to order several days in advance of time stock is wanted; then we will not disappoint you with a tardy delivery.

14. **SHIPPING SEASON** opens November 1st and closes March 15th. Will accommodate late orders after March 15th, if selections are still in stock and not too far advanced in new growth. Best months in which to plant are November, December, January and February.

DISTANCES FOR PLANTING

Depending on character of soil, etc.

Peach, Plum, Apple, Apricot, 20 to 25 feet apart each way.

Pear, 20 to 30 feet apart each way.

Pecans, 40 to 60 feet each way.

Figs, 12 to 18 feet apart each way.

Haupt, McDonald and Dallas Berries, 3½ by 5 feet. In rich land 4 by 6 feet.

Other Blackberry and Dewberry, 3 by 4 feet.

Strawberry, 1 by 2½ feet.

Grapes 12 by 18 feet.

NUMBER OF TREES OR PLANTS TO THE ACRE

1 x 1 foot,	43,560	16 x16 feet,	170
1 x 2½ feet,	17,424	18 x18 feet,	130
2 x 2 feet,	10,890	20 x20 feet,	108
1½ x 3 feet,	9,680	20 x25 feet,	87
3 x 4 feet,	3,630	25 x25 feet,	69
3½ x 5 feet,	2,430	30 x30 feet,	48
4 x 4 feet,	2,722	30 x60 feet,	24
5 x 6 feet,	1,815	25 x30 feet,	58
10 x10 feet,	435	40 x40 feet,	27
12 x12 feet,	302	40 x50 feet,	22
12 x18 feet,	201	50 x50 feet,	17
14 x14 feet,	223	60 x60 feet,	12

To determine number of trees to a acre for any given distance apart, multiply distance apart, and divide 43,560 by this product.

For example:

18 by 20 feet=360. 43,560÷360=121.

There are 121 trees per acre, planted 18 by 20 feet.

PLANTING INSTRUCTIONS

Some cultural hints are given under each heading throughout the catalog. Briefly this is what you should do:

On Arrival of Trees, put in a protected place, keeping moist if held for a day only, else bury roots in ground at once.

Pruning Is Necessary. General rule is to cut off one-half to two-thirds the length of the lateral branches. This balances loss of root system necessary in digging the tree. Remove all label wires.

Plant Carefully. Dig ample holes to take roots without crowding. Plant not more than an inch or two deeper than they formerly stood. Work fine soil into the roots, be sure there are no air pockets and tamp earth solid to insure contact with every root. Water, if possible, before applying the top three inches.

Mulching or Cultivation is necessary if good growth is expected. Both conserve the moisture, which is very essential.

Watering. Sprinkling and spraying are of little value during times of drought. Remember the roots of most plants are buried 8 to 10 inches in the soil and it takes a good soaking to reach them. Let the hose run slowly for an hour or so, or several hours.

PLANTING INFORMATION

Many do not realize the importance of giving trees a little care upon arrival. For this reason we are giving this space in our catalog for your benefit. Failure to get satisfactory results can be largely avoided by observing the few simple but important instructions here given.

CARE UPON ARRIVAL

On arrival of the trees from the Nursery, if unable to plant immediately, and if the trees are dug without a ball of earth intact (Balled), they should be taken from the bale or box at once, counted and the individual tree examined. Should there be a shortage it should **BE REPORTED AT ONCE**. Bare-rooted stock should be immediately heeled in a well-drained, moist piece of sandy ground in order that the soil may thoroughly pulverize between the roots, keeping them from air-drying. The soil should be thoroughly packed around the roots. Water freely and frequently until the trees are planted.

STOCK ARRIVING IN FREEZING WEATHER

If frozen when received, do not open the bales or boxes, but place them in a cellar or some cool, dark room that is free from frost, and let them remain until all frost is drawn out. If no cellar or frost proof room, bury the box or bales in sawdust or dirt until thawed. The point is to get the frost entirely out without sudden exposure of stock to heat, light or air. Even if frozen solid, the stock will not be injured if handled in this manner.

Time of Planting. In this climate vegetation, although inactive in winter for the formation of leaves and new wood, is never so as to new roots. A tree transplanted in the early winter will, by the ensuing spring, have grown sufficient new roots to give it a firm hold in the ground, and will grow off rapidly when active vegetation commences. Plant as early after the first killing frost as practicable, although hardy stock can be safely transplanted any time during the winter when the ground is not too wet or frozen. Planting can be continued until the middle of March, or until just before the buds begin to swell.

Preparation of the Soil. The most desirable soil for fruit trees is a rich loam, naturally dry or made so by drainage. Peaches and plums must be planted on high, well-drained soil. Before planting, prepare the land by thoroughly plowing and subsoiling, first using a two-horse plow, followed by a subsoil plow. Lay off the rows at required distances, and dig holes at least two feet wide and two feet deep; fill the holes by breaking in the sides, commencing at the bottom and going upward. Use surface soil in filling up, and with this mix one or two shovel-fuls of thoroughly decomposed barnyard manure, or use one or two pounds of good bone meal. All fertilizers must be thoroughly incorporated with the soil. Avoid the contact of the roots with heating manures.

PREPARATION OF TREES AND HOW TO PLANT

Before planting, remove the broken roots; cut back one-year peach, apple, pear, cherry and plum trees to a naked stem $1\frac{1}{2}$ to $2\frac{1}{2}$ feet high, leaving no side branches. Two-year old trees should have

their branches cut back to half their length or less; the lower limbs less than those above, cutting in shorter as you go upward, leaving the leader the longest. The trees should be set about 2 inches deeper than they stood in the nursery.

Cultivation. You cannot expect to get good results from your trees unless you keep them well cultivated. The soil must be frequently stirred during the summer. The area immediately around the trees must be kept free from grass and weeds, and this portion of the orchard should receive especial attention. All suckers or branches which start below the head of the tree should be removed.

FERTILIZING

Do not use unrotted stable manure or compost fertilizer when trees are planted. A few pounds of bone meal or a few shovels full of well rotted stable manure can be used at the bottom of the hole with good results at the time trees are planted. When filling the hole use soil which came from the bottom of the hole at the surface. Best results with unrotted manure are attained by using it as a mulch, after the trees are planted. Commercial fertilizer should be used when trees start to bud out. It is applied by digging a trench around the tree or plant, a few inches past the end of the newly PLANTED ROOTS. Then fill trench to cover fertilizer. For the first two years cultivate the orchard during summer in some crop suited to the location, such as cotton, vegetables, melons, peas, peanuts, velvet or soy beans, giving the preference to leguminous crops. Never plant corn or small grain in your orchard.

It is always advisable to sow in the fall a cover crop, such as clover, vetch or rye, using a suitable fertilizer. Turn under this cover crop in the early spring. When soils are deficient in lime and potash, supply this deficiency with an application of lime, bone meal, hardwood ashes or high grade commercial fertilizer, as the soil requires. Satisfactory results can be expected only when the orchard is supplied with the proper plant food and receives careful cultivation.

SELECTION OF TREES

For this climate experience has taught us that one and two year old trees of thrifty growth (except peaches, only one-year trees of which should be planted), are the most desirable. Purchasers should bear in mind that such trees can be removed from the nursery with all their roots, whereas a four or five-year old tree cannot be taken up without cutting away a large portion of them. Success in transplanting is increased according as attention is paid in selecting well-rooted trees, instead of heavily-branched ones. Give as many sound roots and as little head to a tree as possible.

PROTECTING THE TREES

If trees are planted near walks or drives or where cattle are likely to rub them, place posts about the trees until they get thoroughly established.

FUTURE CARE

While plants may live and thrive satisfactorily without proper attention, it is imperative for best results that planting care be followed by continued attention. Insects and diseases must frequently be combatted. Further information concerning care of plants is found in the Farmer's Series of Bulletins issued by the United States Department of Agriculture and the Extension Service Departments of our State Agricultural Colleges. We suggest that all interested planters write for lists of these bulletins.

STATE AGRICULTURAL COLLEGES

from which the latest spraying and similar information may be obtained through correspondence:

Arkansas—Fayetteville.
Colorado—Fort Collins.
Illinois—Urbana.
Indiana—Lafayette.
Iowa—Ames.
Kansas State College—Manhattan.
Kansas University—Lawrence.
Kentucky—Lexington.
Michigan—East Lansing.
Missouri—Columbia.
Nebraska—Lincoln.
New Mexico—Agricultural College.
Oklahoma—Stillwater.
South Dakota—Brookings.
Texas—College Station.



The Orchard Where Varieties are Tested for Many Years.

49 Years of Growing Experience are back of every plant we sell you

OUR STOCK OF FRUIT TREES

We grow only the best sorts—varieties that we have been improving for many, many years, and you can buy with full confidence, that you will get good sturdy stock in any fruit trees you select.

Apples

PRICES: Strong 4 to 6 feet, 2 years old, grafted on whole roots, 50 cents each, \$5.00 per dozen, \$40.00 per 100

There are a few varieties of apples that grow, and only certain localities where these succeed. The latter are in the mountainous regions of Texas and Mexico. The best results are obtained on heavy clay soil. Light or sandy soil must be manured before apples can successfully be grown on same. The apple we grow in our state has a very fine aromatic flavor, more so than that grown in the North, and people who think their soil may be adapted to its culture should plant a few trees. Trees grown in the North should, however, never be planted; they will never prove a success. The following is a collection of those we have found worthy of planting:

Delicious—Large, dark red, flesh is fine grained; crisp, juicy; very attractive and a great market apple; the tree is very hardy and a thrifty grower.

Jonathan—A great favorite; medium size; red and yellow; tender white flesh; juicy and rich; very productive.

Mammoth Black Twig—Large; bright yellow; shaded red; of good quality.

Red Astrahan—Large; very handsome; juicy; very hardy; a good bearer.

Early Harvest—Large; pale yellow; tender; with a fine flavor; a good grower and a heavy bearer; about the first to ripen.

San Jacinto—It is like an enormously large Red June, of same shape and color. Ripens just after Red June. Of best quality and fine keeper for an early ripening variety.

Red June—Tree slow grower but bears young. Small to medium size; bright red skin; flesh tart and quality good. Fine table and market; best shipper of extra early varieties.

Becker—A summer apple, red; especially well adapted to the Coast Country.

Helm—An all around good sort, ripening in July. Red in color.

Arkansas Black—Vigorous, abundant, dark red, medium; excellent market; seedling of Winesap.

Kinnaird's—Strong, spreading tree, prolific; red, large; a superb Southern Winter apple; the best of all Winesap seedlings. Flesh pale yellow, crisp, fine grained; of fine quality; tree longest lived of all varieties tested with us; originated in Tennessee.

Crab Apples

Price, two-year-old trees, 50 cents each, \$5 per dozen

This pretty apple is especially adapted for preserves and is always sure to bring a good crop.

Transcendent—(Siberian.) An attractive yellow color, splashed and striped with red; bears very young, annual crops thereafter. We value it highly for preserves. Buds and blossoms exquisitely beautiful. Ripens in July.

Hyslop—Medium in size, very bright red skin. Delicious for jelly and preserves.

Whitney—Large, striped, not so juicy as Hyslop but better for eating.

Pears

Prices: 2 to 3 feet high, 35 cents each, \$4.00 per dozen; 4 to 5 feet high, 50 cents each, \$5.00 per dozen; 6 to 7 feet high, 75 cents each, \$8.00 per dozen.

The pear is the most profitable fruit we know of. After a tree has once begun to bear, it will bear regularly every year. The tree is very long-lived if it has a favorable locality where it can send its roots deep into the ground for a supply of moisture; for this reason pear trees should only be planted where the sub-soil is rich and deep.

The soil most adapted to pear culture is rich loam, which contains a good supply of humus. Sandy soil with clay sub-soil is also good if well manured. Pear trees should however, never be planted on soil where roots of cotton and potatoes rot, as such soil has the same effect upon pear trees. The following are the best varieties:

In order of ripening.

Locke's Pride—Seedling of Le Conte, very prolific; introduced by us in 1910; discovered and named by Frank Johnson of San Marcos, Texas.

Summer Beauty—First raised in 1873, and introduced in 1893 by us. This pear is the finest and the surest bearer of all varieties that ever have been tested so far south. The trees have not failed to produce heavy crops every year since 1880. It is a vigorous, symmetrical grower and late bloomer so that spring frost will not injure it. The fruit is very large and handsome, of yellow color with a bright red

cheek, flavor sweet sugary, rich, aromatic and pleasant, excellent quality, always grows in clusters of from three to five. One of the rarest and most productive pears in cultivation. Ripening the end of July.

Le Conte—Of remarkable vigor and beauty of growth. The fruit is bell-shaped, of a rich, creamy yellow when ripe, very smooth and fine looking, and a good shipper.

Bartlett—Standard and dwarf. Everyone is acquainted with this large yellow pear. Fruit very rich and highly aromatic—the reason why this pear can always be sold while others may be refused. Tree grows dense and of even and conical shape.

Kieffer Hybrid—Called by many the "Queen of Pears." Fruit large to very large, skin yellow with a brilliant vermilion cheek, flesh brittle, very juicy, with a marked musky aroma. Tree very vigorous and very prolific. Considered the best all-around pear.

Garber Hybrid—Oriental strain, like the Smith's fruit resembles the Kieffer in size, shape and color; ripe three weeks before.

Chinese Sand—Called the "Pineapple Pear." Valuable for the South as a canning pear. Flesh is coarse, about the quality of Kieffer. Tree a good grower, not subject to blight; good bearer. Ripens August.

Apricots

One-year trees, 4 to 6 feet, 50 cents each, \$5.50 per dozen. Strong 3-year old specimen trees, each 75 cents; \$8.00 per dozen.

The apricot is one of those fruits that do fairly well on limestone soil; a rich, heavy soil, however is preferred. As the apricot blooms early it should not be planted extensively in localities visited by late frosts. The fruit is much beloved for its rich and aromatic flavor, and the apricot should be represented by a few trees, at least, in every garden. The culture is about the same as that of the peach.

Royal—Fruit large, oval; color of skin dull yellow, tinted with red on the sunny side; flesh pale orange color, firm, juicy, rich and vinous, freestone. Ripens end of June.

Moorpark—Large, excellent; an old favorite and one of the best bearers. This is the best of all apricots.

Cluster—Grows well and bears young, late bloomer. A good tree to plant; does not require cultivating.

Quinces

50 cents each, \$5.50 per dozen.

The Quince likes a rich, deep, moist and at the same time loose soil, and requires careful cultivation. The fruit is only used in a cooked state and it is a great favorite with the housewife owing to its rich aroma, which makes it fit for all kinds of preserves and jellies.

Orange—Large, roundish, bright golden yellow; cooks tender and is of excellent flavor. Valuable for preserves and flavoring; very productive; one of the most popular and extensively cultivated of old varieties. Ripens in October.

Champion—Fruit very large, fair and handsome. Tree very productive, bears when young; flesh cooks as tender as the apple; flavor very delicate, imparting an exquisite taste and odor to any fruit with which it is cooked.



PEACH ORCHARDS EARN MONEY

Prices: 2 to 3 feet, 25 cents each, \$2.75 per dozen; 3 to 4 feet, 35 cents each, \$4.00 per dozen; 5 to 6 feet, 50 cents each, \$5.50 per dozen. Strong 3-year specimen trees, each 75 cents, \$8.00 per dozen.

The peach is probably more extensively cultivated in our country than any other fruit, and it well deserves its popularity among the people, as there is nothing that excels a luscious, red-ripe peach. There has, however, been much complaint of late that the finer varieties do not bear enough in Texas. People attribute this to the drought, yet the failure in most cases is due to the ignorance of the people. The traveling tree agents from other states introduce new varieties every year that are in most cases not at all adapted to our climate. Therefore, never buy a tree unless you know that it was grown by a reliable nurseryman in your own state. West Texas is a dry country, but nevertheless good peaches can be raised, and plenty of them, provided proper varieties are planted.

The peach succeeds in almost any soil, but it prefers sandy soil with red clay sub-soil to any other. The following varieties are all thoroughly tested by us and we consider them the best collection that can be made for our climate. They are selected from 400 different varieties, and as each variety has a ripening period of from ten to fifteen days, peaches may be had at all times from the middle of May until November. We have arranged them in order of ripening, for the convenience of the buyer.

I. Ripening Here from May 20 to June 10.

Mayflower—A new variety of extreme early ripening; a late bloomer, and being almost entirely covered with red, it is a good market variety. Tree a strong thrifty grower, very prolific; size large, nearly round.

Early Wheeler—Prolific; white, blush cheeks flesh white, extra firm, of better quality than Alexander, with true clingstone flavor. The best shipper among early varieties.

Dwarf Japan Blood—Tree of dwarf habit, surest bearer of all the early peaches; fruit is large, pointed; red cheek and end, and sometimes blood-red flesh.

Alexander—Good quality, high color; flesh greenish white. Best bearing May peach.

Greensboro—Earlier and larger than Alexander; fine flavor and attractive appearance.

Arp Beauty—A rival to Elberta; character, size, color and quality the same, and ripens two to three weeks earlier. The value of this as a market and family peach will be easily seen, and no other statement will be necessary to place it at the head of good peaches.

Triumph—"The earliest yellow peach in the world." A perfect yellow freestone; of excellent quality. Ripens after Alexander. A good keeper, very prolific. Two-year-old trees bore half a bushel each.

Honey—The sweetest of all peaches we have, and about the best bearer. Late frosts have never killed the young fruit here. Color is attractive and it always sells easily. Honey is about the best peach for general planting we have in the South and the Gulf Coast.

Bokara—The hardiest peach known. It is of fine quality and a good bearer. Does remarkably well here.

II. Ripening June 20 to July 15.

Mamie Ross—A seedling of Chinese Cling Fruit very large, nearly covered with a delicate carmine, flesh white, juicy and of good quality; a regular and prolific bearer.

Pallas—Large, flesh white, melting with a rich, vinous aroma; profuse annual bearer; as sweet as Honey peach.

Carman—A large, white free-stone with red cheeks, that originated in Limestone County. Fine flavor; ripens July 5.

Early Bell—Very large; skin white, with red cheeks; flesh white, firm and excellent flavor; tree a rapid grower and very prolific; a seedling of Chinese Cling.



One Year Peach Trees Ready for Our Trade

Dixie—A seedling from Elberta; large; two weeks earlier and a better shipper. Fine flavor; beautiful color, yellow with pink cheeks. Tree is a fine grower and the best bearer in San Marcos, Texas, where it originated. A gentleman working in the Wood National Bank bought a peach many years ago, and it being of such fine flavor and large size, he planted the seed just back of the bank building, where it grew vigorously, and after bearing, everyone seeing it was astonished at the size and good color of the fruit, as well as the productiveness of the tree. Mr. F. M. Johnson sent us the first buds and named it the "Dixie" peach. We find it to be superior to Elberta in flavor. It is the finest peach that ever originated in Southwest Texas. Peach is yellow like Elberta.

Leona—Best yellow free stone peach, ripens week earlier than Elberta, large, good grower.

J. H. Hale—Huge; beautiful golden yellow; freestone; solid; delicious; round as a ball; a great shipper; a splendid keeper; brings top prices and big prices; vigorous, sturdy trees. No orchard complete without this peach.

Belle of Georgia—Very large, white freestone of excellent flavor. Trees grow and bear well; fruit a very good shipper.

Elberta—The peach that everyone knows. A large yellow free-stone, red to the pit. The peach for the market.

Southern Early—This is the largest of all early peaches. Good quality; very prolific; sweet and juicy. Ripens in June.

Augbert—Yellow, resembling Elberta; ripening later; more prolific and fruit is of highest quality. Sometimes called late Elberta.

Old Mixon Cling—The juiciest and best flavored white cling-stone peach; of very large size and best bearing qualities.

Hero—A splendid variety for canning purposes. The tree grows to a very large size and produces beautifully colored, white fleshed juicy clingstone peaches in great abundance; sure to bear every year; flowers very resistant against frost.

Chinese Cling—Spreading habit; healthy; not very prolific; the largest peach in cultivation; flesh white with little red at seed; tender, very juicy. III. Ripening August and September.

Indian Cling or Blood Cling—Red inside, ripens in August, bears regular, trees very hardy; a good peach.

Mathews Beauty—Large, light colored yellow, of best buttery flavor. Skin yellow ground with red cheek, making it a very handsome appearing peach. Freestone.

IV. September and Later.

Salway—Brought from England many years ago. A yellow freestone of best quality, and

fine for canning. Skin rich yellow covered with red.

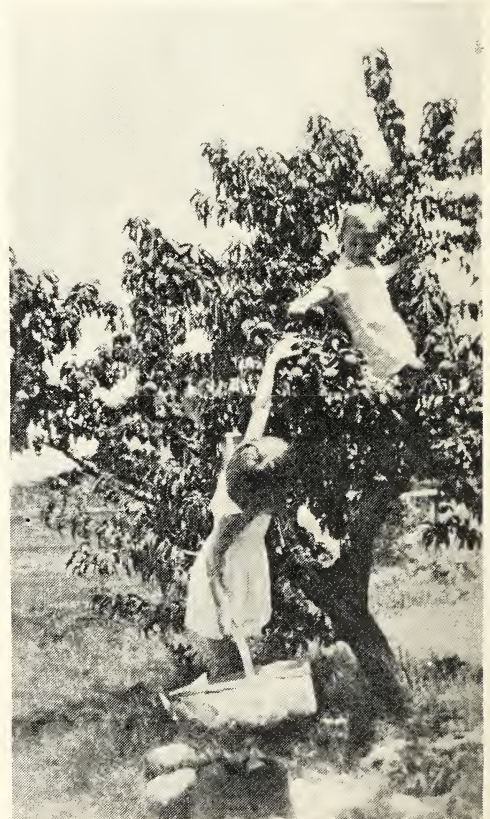
Henrietta—A most attractive yellow clingstone. Skin rich yellow with red cheek. Quality of the best. Fine for eating and for sweet pickles.

Indian Cling—Has mottled brown reddish skin, flesh white with red streaks. Juicy, and fine for sweet pickles.

SPECIAL PEACH

John S. Shaw—The best June peach we ever saw. Wonderful bearer, ripens second week in June; is a fine free stone with ruby cheeks. Size of Carman, but better color. Originated by John S. Shaw, Somerset, Texas.

Price, 2-year trees, 50 cents each.



22 Years Old

This Dixie Peach Tree was bought from us and planted by Mr. H. H. Pfluger, Pflugerville, Texas, 1911. It never failed to bear and this year it was loaded with fruit.



Fine Specimen of Burbank Plum.

PLUMS—STRONG AND HARDY

Prices: 2 to 3 feet, 30 cents each, \$3.25 per dozen; 3 to 4 feet, 40 cents each, \$4.50 per dozen; 5 to 6 feet, 50 cents each, \$5.50 per dozen. Strong 3-year specimen trees, each 75 cents; \$8.00 per dozen

There is no fruit tree that bears such an abundance of fruit at so early an age as does the plum. Many varieties bear the first year after planting, and for this single reason should be most extensively planted. A plum tree requires very little care, but for the fact that it produces its fruit in such great abundance the tree does not live very long, and new trees ought to be planted every year to always have an abundance of this useful fruit. The American or Chickasaw varieties are mostly used for preserves and jellies, while Japanese varieties are for the table.

Rich loam with gravel sub-soil is the best soil for plum culture, while sandy soil is almost as good if manured.

The following is the best collection for the South and cannot be excelled by any:

In Order of Ripening

Bruce—June 5. Large red, productive. A hybrid. One of the best plums. Originated with Mr. A. L. Bruce of Donley County.

McCartney—Originated in Texas; larger than Wild Goose; 14 days earlier; egg-shaped, golden yellow color; enormous bearer. This is the best yellow plum.

Shiro—A combination of Robinson, Myrobolan and Wickson. Rank grower, enormously productive; fruit will keep a month, and is so transparent the pit can be seen through the flesh; apple-shaped; the earliest of all Japanese plums.

Gonzales—A cross between the American and Japanese plum. The fruit is larger than a Botan, it is sweet and juicy and will keep for a week after ripening. The tree is a good

grower and is very prolific. It ripens the middle of June.

Happiness—A new hybrid. The fruit is very large, color glowing red, and in quality it is rarely equaled. It is really the most productive of all plums. Tree is a good grower. Pit very small. Three-year-old trees averaged \$5.00 per tree, as this variety was not damaged by the late frost.

Nona—Large, oblong, red cheeks; heavy bearer; meat yellow and very sweet; ripens in July; tree a healthy grower and long lived. One of the best plums for market.

Mikado—Shape round like an apple, yellow meat, very firm; fine shipping and the best plum for the market gardeners. One of our oldest customers said he planted this plum from our nursery thirty years ago and the first trees are still bearing.

Eikel—Ripens end of June. Tree spreading, sets full of fruit every year. Meat yellow, very juicy, red cheeks. Cross between Wickson and Gonzales.

America—Tree very healthy; fruit medium to large, bright golden yellow, firm; stone medium to large.

Sweet Botan—Japanese; one of the finest and oldest varieties which is too popular to need a long description.

Wickson—Japanese; tree grows in vase form, sturdy and upright. The fruit is evenly distributed all over the tree. It changes to white when about half grown, and remains so until a few days before ripening, when it changes to a glowing carmine. Small stone; the flesh is of a fine texture, firm, sugary and delicious and will keep two weeks after ripening. A fine rare plum.

Santa Rosa—Quality of fruit is unequalled;

as a shipping plum it is the peer of them all. Plums are a deep purplish crimson, each fruit averaging 6 inches in circumference each way; the flesh near the skin is purple shaded with rosy scarlet and pale amber towards the stone, which is very small; the eating quality is unequalled; rich, fragrant, delicious. Ripens a week before Climax and two weeks earlier than the Burbank. Tree is strong, vigorous, upright grower.

Burbank—Japanese; named after the introducer of this and most of the other good plums. The best bearing variety we have. When fully ripe the fruit is deliciously sweet.

Satsuma—A large and well flavored plum with blood red flesh, skin bluish red, pit is very small; trees grow large and old, and is a very good bearer.

Excelsior—Fruit medium, sweet, juicy, melting, color reddish purple; a good plum and very productive.

Cherries

Price: 4 to 5 feet, 50 cents each.

Compass Cherry—In size larger than the largest cherry; rather a small plum. It will succeed where the true cherry will not. The tree is vigorous and bears well; fruit is red; fine for jellies and preserves; ripens in June.

Early Richmond Cherry—Large, red; good bearer.

Prunes

Large California Prunes. Trees 4 to 5 feet, 75 cents each.

Mulberries

5 to 6 feet, 40 cents each, \$4.50 per dozen.

6 to 8 feet, 50 cents each, \$5.50 per dozen.

As a shade tree for the chicken yard the mulberry is about the best to be had. Chickens eat the fruit as soon as it drops from the tree. The finer varieties are also eaten by children. The tree grows very quickly and is easily transplanted.

Hick's Everbearing—Profuse; ripens three months; fine grower for shade and the best of all trees for the fowl yard.

Russian—Unquestionably the best shade tree. The tree is very hardy and long-lived, and grows rapidly to a beautiful round shape.

The fruit is small and does not drop from the tree when ripe; some trees do not produce fruit at all. It is very much sought for street planting, for the shining leaves stand the dust well.

English—A very quick growing mulberry, with very large and well shaped leaves. The fruit is large and black of color; stem is very straight, and can be topped at any desirable height.

Travis—(Everbearing). Luxuriant, symmetrical and compact. Best of all mulberries for fruit. It is very large and sweet, and bears in greatest profusion. The original tree stands in Travis Co.

Japan Persimmons

(*Diospyros Kaki*)

Price of Japanese Persimmons on native Persimmon Roots, 2-year old trees, 50 cents each, \$5.50 per dozen, 3-year 75 cents each, \$8.00 per dozen.

A fruit from the Orient that has come to stay. The growing of this fruit in the South, both for the market and home consumption, is no longer an experiment. It has proven itself adapted to the whole cotton belt, and is becoming quite popular on the northern fruit market.

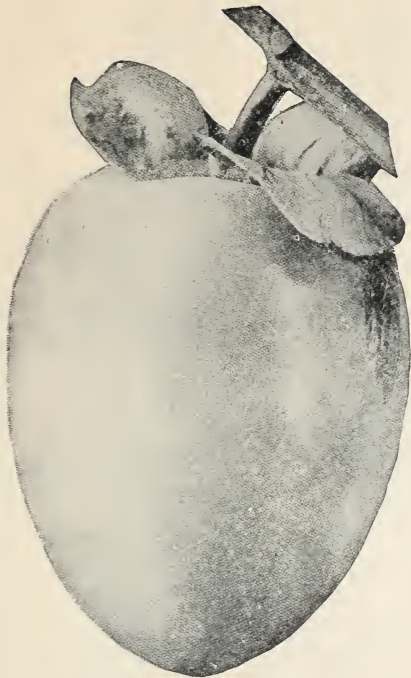
Trees of the native persimmon will grow on any soil in the South, but are not long-lived in wet, low places; high, well-drained, sandy soil suits them best, and they will do better on very poor land than any other kind of fruit tree. They are especially suited for planting in old peach orchards, as the old trees become worthless, or to replant the land after a peach orchard has been destroyed.

Fruit should be shipped just before it begins to soften, and directions how to eat it should be printed on wrappers to be used with each fruit, and dealers instructed to display only ripe fruit.

Hachiya—Very large, oblong, conical, with a sharp point; very showy; diameter $3\frac{1}{2}$ inches longitudinally and 3 inches transversely; color of skin reddish yellow, with occasional dark spots or blotches and rings at apex; flesh dark yellow; some seed; astringed until fully ripe, then very good. Tree vigorous and very shapely.



Part of Fields of 200,000 Young Budded Plum Trees.



Japan Persimmon

Hyakume—A large persimmon, varying from roundish oblong to roundish oblate, but always somewhat flattened at both ends, generally slightly depressed at the point opposite the stem; nearly always marked with rings and veins at the apex; skin light buffish yellow; flesh dark brown, sweet crisp and meaty; not astringent; good while still hard; a good keeper; one of the best market sorts. Trees of good growth and sure bearer.

Triumph—Originated near Sanford in Orange County, Florida, from seed from Japan. Its quality is the best, size medium, tomato-shaped; color of skin dark red, handsome and showy, flesh with but few seeds. It is very productive, the fruit of a single tree having been sold for \$17.00. Ripe in October and holds on the tree until January.

Tane-Nashi—Very large, roundish, conical, pointed; very smooth and symmetrical; color of skin light yellow, changing to bright red at full maturity; flesh yellow, generally seedless, astringent until fully ripe, then one of the best.

Yemon—Large flat, tomato-shaped, somewhat four-sided; diameter $2\frac{1}{2}$ inches longitudinally and 3 inches transversely; very smooth and regular in outline; skin bright orange yellow, flesh yellow, generally seedless, quality very fine. Tree rather an open grower with distinct foliage of light shade.

Nectarine

Honey—In a lot of trees grown from Nectarine seed, one we call Honey is superior on every point. It has the sweetness and bearing quality of its grand parent, the Honey Peach. It does not rot. Ripe July. 4-5 ft., 50c each; \$5.00 per dozen.

Old Glory—Ripens first week of July. Medium size, red all over. Free stone, good, sweet, productive Nectarine.

Pomegranates

The Pomegranate seems to have been created especially for our dry climate. It succeeds in any soil and bears regularly an abundance of the most refreshing fruit.

Little trouble is required for its culture. It is always free from all diseases, and grows in any deserted corner of the garden where no other fruit succeeds. The fruit is very sweet and refreshing, and ripens during August and September.

Old Favorite—Is the best of all the fruiting pomegranates. We call it Old Favorite because it has been grown here at New Braunfels for at least fifty years, and it has been proven to be far superior to all the other fruiting kinds which were introduced later. The fruit is the very largest, refreshing and sweet. The tree or shrub is extremely hardy and has glossy green leaves. Flowers are large and crimson color. 50 cents each.

Pomegranate—Red, flowering double; much used for parks. Blooms all summer, is very hardy. 2 years, 50c each; \$5.50 per dozen.

Dwarf Evergreen Pomegranate. (*P. granatum nana*)—An evergreen form of pomegranate with small fresh green foliage, and covered in spring and summer with bright scarlet flowers and in fall and winter, crimson fruits. Price, 12 to 18 inches, 75 cents each.

Grape Fruit

The increase in cultivation, production and use of the Grape Fruit is without parallel in American horticulture. We have the best seedless variety. 1-year trees \$1.00 each.

Duncan Variety—One of the best Texas varieties, fruit very juicy; good grower.

Marsh Seedless—This is the best and most satisfactory variety as it has a mild, sweet flavor most people prefer.

Walters—A pale yellow oblate grape fruit of marked acidity and sweetness.

Oranges

Strong Trees, \$1.00 each; \$11.00 per dozen.

Satsuma—Best hardy variety.

Ruby Orange—A valuable variety, the fruit being unsurpassed in quality of its kind; skin thin, very tough, pulp melting, rich, juicy, and of exquisite flavor. The tree is a good grower, dense foliage, thornless, and a regular, prolific bearer.

Parson Brown—Round form, medium to large, yellow orange; a popular variety.

Washington Navel or **Bahia**—Round, somewhat tapering, large; of excellent quality.

Nonpareil—Round oblate, of medium to large size, deep yellow; quality fine.

Lemons

Price: 75 cents each, \$8.00 per dozen.

The "New Wonder" Lemon is a true ever-bearing variety. On a tree six feet high, not less than 90 lemons were growing at a single time. Fruit has been taken from this tree weighing 4 pounds. It is not uncommon to make twelve lemon pies from one lemon. Will fruit freely the second year.

Ponderosa Lemon—This tree is noted for its wonderful foliage and the large size of its fruit.

Kumquats

Meiwa and **Nagami Varieties**—Medium size, each, 75c; large size, each, \$1.00.

GRAPES AND BERRY PLANTS

Grapes—Standard List

In succession. Finest quality. This list contains the best and most successful. 20 cents each, \$2.00 per dozen, \$18.00 per 100, except where noted.

The grapes thrive in almost any soil and are successfully grown all over the South. With but little skill and labor they bring abundant crops every year. The following are the best southern varieties.

Ladano—Hybrid of Salado and Headlight; vine vigorous, healthy; foliage similar to that of Headlight; cluster medium, compact; berry translucent, round; skin thin, tough; pulp tender, melting, rich, pure and sweet; seeds few; fine for hot climate and limy soils.

Volney—Clusters very large; berries large and slightly oval; a week later than Ellen Scott; violet color.

Muench—Vine, very vigorous and free from all diseases; clusters large to very large; purplish black; sells readily in the market; fine for table.

Lomante—Vine vigorous, prolific; no rot nor mildew; leaf medium, dark purple or black color of grapes; excellent quality.

Ellen Scott—Vine beautiful, healthy, prolific; clusters large to very large, conical; berry large, translucent, violet covered with a delicate bloom; skin thin and tough; pulp tender, very juicy and pure; high quality.

Edna—Finest white grape in Texas. A tested variety gave largest crops regularly of any white grape ever introduced. No vineyard complete without this wonderful white grape. Very hardy one year strong plants, 25 cents each, \$2.50 per dozen.

Brilliant Grape—Growth strong; vines endure winters anywhere. Clusters large, cylindrical, or somewhat conical; berries large, light to dark red, translucent, with a thin bloom; very handsome when well ripened; skin thin, rather tender but seldom cracks; pulp meaty yet very tender, melting and delicious.

R. W. Munson—Growth strong; clusters medium to large, cylindrical, often shouldered;

berries black, never crack; pulp tender, juicy, very fine quality; good wine grape.

Mustang Grape—1 year from seeds, 15 cents each, \$1.50 per dozen, \$12.00 per 100.

Jacques—(Black Spanish, Le Noir, Blue French); berry small; large clusters; black; red wine.

Herbemont—(McKee, Bottsi, Brown French.) Small; large clusters; purple; finest quality; table, wine; best old grape in Southwest Texas.

Thompson Seedless Grapes—2-year; strong. 25c each, \$2.50 per dozen.



Dewberries and Blackberries

Austin's Thornless Dewberry—We gave this variety a thorough test and find it to be thornless, a good bearer and easy to pick; large berries of uniform size. It is all that the introducer claims it to be and we recommend it to our customers. 50c per dozen.

Corey Thornless Blackberry—2-year. 20c each, \$2.00 per dozen.

Mayes' Dewberry—New; very large, highly flavored. It roots deep, is very prolific and never fails. Price, 35 cents per dozen, \$2.50 per 100.

McDonald Berry—It is hard to decide whether

this is a dewberry or blackberry. It bears in clusters like a blackberry, but tips like a dewberry. It grows on any soil and is the most productive of all berries. Berries are large, juicy, and of the best quality. Price 35 cents per dozen, \$2.50 per 100.

Dallas—(Blackberry.) Very vigorous, drooping, thorny, productive; large, fine. Price, 35 cents per dozen, \$2.50 per 100.

Haupt Berry—In type this is between the dewberry and blackberry. Very prolific grower and bears in profusion throughout the season. Originated on the Haupt Farm near Kyle, Texas, and has become very popular. Price, 5c each; 50c per dozen.



Strawberries

Prices 15 cents per dozen, \$1.00 per 100, \$8.00 per 1000.

To grow Strawberries with success irrigation is required in Western Texas, but where water may be had plentifully it is very valuable, being about the first fruit in spring.

Klondyke—The plant is exceedingly vigorous, seems to be absolutely rust proof, and as near drought proof as a variety can be. Every berry is firm and brilliantly colored. This makes it the greatest and safest money-maker. On good or well manured soil it is simply wonderful.

Lady Thompson—A great favorite with all growers. Mid-season; fine large berries.

Texas—The money making strawberry of the South. Besides being an immense producer of fine flavor and beautiful color, it is a thrifty grower and a splendid drought resister. During the hot summer months we often lose our strawberry plants; the Texas strawberry, however, is perfectly hardy and stands the heat well.

Figs

Price: 1 year light, 35 cents each, \$3.50 per dozen. Strong trees, 50c each, \$5.00 per dozen.

We might also say there is no tree which so abundantly repays its owner for the little trouble it requires as the fig. From June to October ripe fruit may be had almost daily from the same tree, providing there is enough moisture to constantly keep the tree growing during this time. The best place for a fig tree is near a well or a spring or any other place where there is always a plentiful supply of water. During extreme cold weather figs sometimes freeze to the ground, but they sprout from the roots again in the spring.

Green Ischia—Green; medium size; of excellent quality.

Magnolia—Large; rich fruit, yellowish brown. Hardy here. Small one-year trees bear fruit first summer.

Brown Turkey—Medium, brown, very sweet and excellent; very prolific and hardy. The most reliable fig for open field culture.

Celestial—Small pale violet; very sweet; prolific, hardy.

Brunswick—Large, dark purple fig, the largest of our figs. Very productive.

Lemon—Medium to large, yellowish green, sweet and fine quality.

Standard Pecan Trees

2 ft. at 75c, 3 ft. at \$1.00, 4 ft. at \$1.50, 5 ft. at \$1.75, 6 ft. at \$2.00, 7 ft. at \$2.25, 8 ft. at \$2.50, 10 ft. at \$3.00.

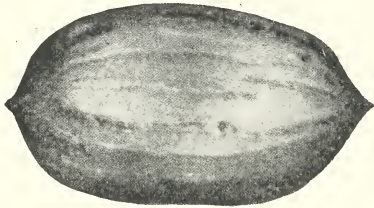
Dozen rates, price of 12 trees less 10%. One dozen \$1.00 trees would be \$10.80, etc.

This is by far the choicest table nut that is grown in America. Each year the demand is increasing; the supply can never equal the demand for good nuts. They are a healthful, nutritious article of food. Plant a tree if you have only a small place, and a thousand trees if you have the land for them. You can count on a good income for your children and your grandchildren. The pecan tree grows on any deep soil, clay with gravelly sub-soil preferred. If you have a river bank that washes badly and you want to make this ground valuable, we can enlighten you, by advising to plant it in a pecan orchard; after the trees are 4 to 5 feet high plant the ground in Bermuda grass for sod, and you have more than doubled the value of your land. If it's a shade tree you want to plant this winter, stop and think it over; why not plant a pecan tree?

Burkett—Callahan County. Large, almost round, shell thin. Flavor excellent. One of the best. Bears young and every year, fine.

Delmas—Nut large, shell moderately thin; quality very good, flavor excellent. Tree quite vigorous. Quite successful in Central to North Texas.

Halbert—Coleman County. Almost round, medium size. Flavor highest. Perhaps the youngest bearer known. Prolific. An all-around pecan. Very thin shell.



Success Pecan

Success Pecan—Originated in Southern Mississippi. Large size, shell thin, kernel very plump, quality good, flavor good; highly prolific; one of the very best and most promising sorts.

Money Maker—Tree of healthy and vigorous growth; bears at early age and is prolific. Nut of medium size and fair quality. Adapted to the entire pecan belt.

Moore—A vigorous grower of handsome appearance. It begins to yield at an early age and is the first to mature nuts. It is an unusually heavy yielder and is a regular bearer of medium sized pecans, oblong and good cracking quality. Adapted to a wide range in the pecan belt.

Pabst—A vigorous and healthy grower with large, handsome foliage. Nuts large, filled well and are of good quality. A standard and highly recommended variety.

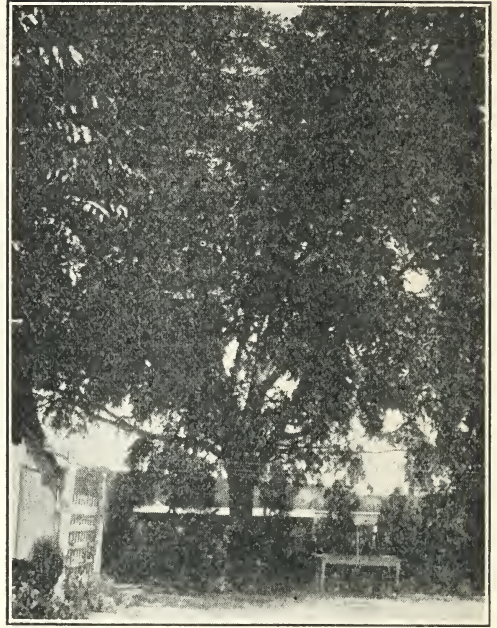
Lone Star—Seedling of the Daisy pecan. Larger and thicker, slightly harder shell; a wonderful bearer, fills well, a fine grower, large leaves, same as its parent, the Daisy.

"Daisy"—Takes the first place of all commercial nuts; is not only the largest paper shell in existence, but it is well filled, of a fine, sweet flavor; a regular bearer and it has not failed to bear a good crop since it first began in 1894.

Admiration—One of the most prolific bearers we have planted. Nut large. Rapid grower, fine dark green foliage. Found on Guadalupe River in Comal County.

Schley—Size medium to large, oblong, somewhat flattened; light reddish brown with a few markings of purplish brown; shell thin, separating easily from the kernel, kernel full, plump, bright yellowish brown in color, flavor rich nutty, in quality one of the best. Tree a good grower and an excellent variety.

Stuart—One of the oldest of the named varieties, but somewhat short; ovoid in shape, shell thin, partitions somewhat corky, kernel plump, quality very good.



Daisy Pecan Tree Twenty Years Old.
Yielded 208 Pounds of Pecans in a Single Crop.

Mahan Pecan—In order to supply our patrons who have inquired about this new pecan, we have made arrangements by which we can supply a limited number of trees. We have decided to list it tho it has not been tried in all sections, but upon the merits shown by its fruiting in Mississippi, Alabama and Florida. The original tree stands in Mississippi, Mr. Mahan of the Monticello Nurseries paying \$5,000.00 for it in order that he could have the cions for his extensive propagation. The tree is a vigorous grower, unusually large foliage, early and prolific bearer and regular producer of giant size nuts of thin shell, fine quality and attractive, 33 to the pound. The trees we offer are grown by the Monticello Nurseries, and will be labeled "MAHAN" with an aluminum label and copyright, at the price of \$5.00 each, same price as asked by the parent nursery.

Almond

Medina and Sultana—Can furnish nice stock, 3 to 4 ft., 35 cents; 4 to 5 ft., 50 cents each.

Walnuts

Juglans Cordiformis—Nuts medium size, thin shell; if cracked longitudinally kernel can be removed entire. Meat is of good quality; tree is a vigorous grower and forms a fine head. Perfectly hardy. We consider it the best of all walnuts. Two years, 2 to 3 feet, \$1.00 each, \$10.00 per dozen.

Juglans Sieboldiana—A native of the mountains of Japan. Extremely hardy and vigorous grower. Three-year-old trees have produced nuts. Wonderfully productive. Meat sweet and of best quality. \$1.00 each; trees 2 to 3 feet, \$10.00 per dozen.

6 Novelty Roses \$4.00

The following new roses are the attraction of every rose garden; thousands have been sold by us last season. To the Gold Medal roses for 1931, we are adding the newest productions, the Hollywood and Premier Supreme.

President Herbert Hoover

75c Each

A rose of many colors—red and rose, yellow and gold—the tints and hues varying in intensity with the season and the age of the flower. Its long buds are superbly formed and the stem ideal for cutting. The bush is strong and blooms the entire season with unusual liberty.

Joanna Hill

75c Each

A superb descendant of the always popular Mme. Butterfly. The large, beautifully formed flowers are rich creamy yellow, with dark apricot centers, richer and more highly colored than others of similar shades. The stems are strong and the flowers are continuously produced by sturdy, healthy bushes. This is one variety from which the finest blooms can be cut at all times, although if great quantity of flowers is wanted several bushes will be necessary.

Talisman

75c Each

The most gorgeously colored rose ever known! Its lovely deep gold and scarlet buds open to large, full flowers of supreme beauty and fragrance. The flowers are lighter in hot weather, but always resume their marvelous color when the nights are cool. It has proved a splendid garden rose with fine foliage and strong, erect stems so that it is ideal for cutting.

E. G. Hill

75c Each

A whopping big new red rose of dazzling shade, with a rich luscious true rose fragrance which recalls the scent of the old time roses. The bush is sturdy and produces a steady crop of long-stemmed flowers and foliage of fine health and color. We find it one of the best red garden roses, always in bloom, and the flowers always of excellent quality. Everyone who has grown it is delighted with it.

Premier Supreme

(Zieger & Sons)

75c Each

By far the best of all the Premier sports. The flowers are magnificent, both in color and form. The color is deep rose with a fine full rounded bud. It is a free, clean grower and is rapidly taking the place of Premier and Matchless.

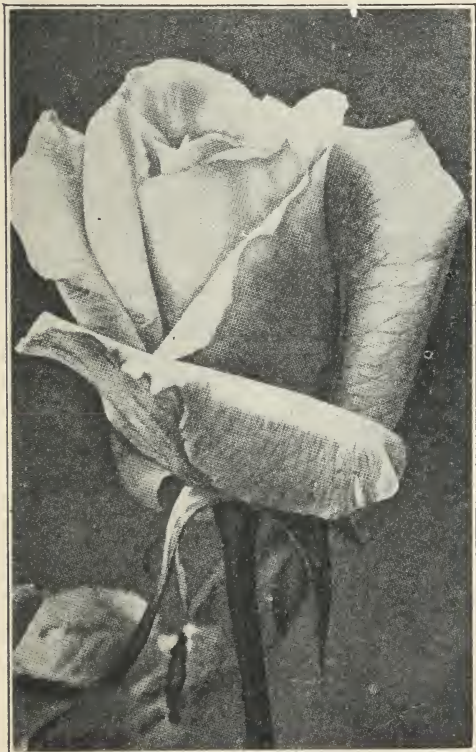
Hollywood

(Scittine and Di Francesco)

A sport of Premier Supreme and highly recommended by growers who gave it a trial last season. Produces a large flower, and is a free bloomer with good keeping qualities.

Dark rosy cerise, deepening to pure red in cool weather. Can be sold as a red at Christmas. The flowers are fully as large or larger than the parent, produced on long stems. The early flowers in the fall bring some "bull heads," but in spite of this the variety can be made to pay.

\$1.00 each



Premier Supreme

The FINEST
COLLECTION of
ROSES
In the Southwest
 at these
LOW PRICES



*Thousands and Thousands of the Finest
 Roses await your selection*

Strong field grown, 1 year old, 35 cents each; \$4.00 per dozen;
 2 year old, extra strong, 45 cents each; \$5.00 per dozen;
 3 year old, extra strong, 75 cents each; \$8.00 per dozen.

Of all the flowers which man has taken into care, the rose has reached the highest degree of popularity. It is the queen of flowers, the flowers of poets, and will always be the dearest of flowers to the lover of the beautiful.

Of the many thousands of varieties which have for centuries been introduced by the hybridizers, those of each succeeding century show a marked improvement over those of the foregoing. Of the roses which were considered the best only a century ago, very few are grown today.

Many hundreds of different varieties have been tried on our grounds, and of all only such are described in the following list, which in our judgment, are the very best for outdoor planting.

Fortunately, we live in a climate where even the tenderest roses stand the winter without cover, and any of the roses in this catalogue may be planted outdoors.

Plant your roses in an open place. Never try to grow roses in the shade of trees. The plants you receive from us are grown by the latest methods of cultivation which we practice together with a means of accumulating power and strength in the young plants, and which is just the opposite from forcing roses in greenhouses for bloom. Do not set out your roses the way you get them, but trim off at least one-half of the wood. Slow growing sorts should be trimmed more severely than the quick growing varieties.

Crimson and Red

American Beauty—Hardy rose of largest size, having the everblooming qualities of the Tea Rose, with the delicious odor of the Damask

or Moss Rose. In color it is brilliant red, shading to a rich carmine crimson. The flowers are borne on long, stiff stems, hence a splendid rose for cutting.

Anna de Diesbach (Gloire de Paris)—Brilliant carmine flowers, very full double and delightfully sweet. A vigorous grower and fine bloomer. One of the hardiest of the well-known, desirable roses.

Baby Rambler (Mme. Levasseur)—This rose is so well known as hardly to need a word of description. It is a dwarf form of Crimson Rambler, which produces flowers absolutely continuously. Invaluable either for pots or for outside bedding.

Balduin—A new hybrid Tea rose. About the best crimson outdoor bedding rose we now have. It is very strong growing and healthy, and produces very large and double roses of a glowing carmine color, which are as sweet as a June rose.

Black Prince—Velvety crimson with shadings of purplish-black. Upright, strong, profusion of flowers.

Charles K. Douglas—Flaming scarlet, flushed velvety crimson, sweetly scented. Vigorous, upright grower.

Hoosier Beauty—HT. (Howard Rose Co., 1918.) Deep crimson with darker shadings, strong and vigorous. We believe this is one of the very best Hybrid Tea Roses ever produced.

Crusader (A Wonderful Crimson)—A big strong-growing variety, robust and rugged in every characteristic.

David O. Dodd—A new crimson Rose with great possibilities as a bedder. A magnificent rich crimson, flushed scarlet, with well shaped buds, carried erect and opening into a large



beautifully shaped flower. Very free flowering; growth bushy and upright.

We consider this fine Rose to be one of the best of its color, a great advance on all other crimson bedding varieties and certainly it is destined to become a great popular favorite. A splendid Rose with no apparent faults.

Dean Hole—Carmine, salmon shaded. This is a very attractive type in the list of red roses.

Edward Mawley—Rich blackish red buds opening to a bloom of brightest crimson. Intensely fragrant, and free-flowering.

Etoile de France (Hybrid Tea)—The gold medal rose of France, and claimed by the raiser, J. Pernet Ducher, to be the finest rose he has ever sent out. A very strong, vigorous grower, with handsome green-bronze foliage and exceedingly free flowering. The flowers are very large and borne on long, stiff stems. Color, a clear red crimson velvet. Very fragrant and keeps well. Without any exaggeration, we may assert that Etoile de France will be appreciated by all lovers of the queen of flowers.

Etoile de Holland—Flower bright, dark red, of medium size, fairly full; deliciously perfumed. Growth vigorous, upright. A rose of great future.

F. J. Grootendorst ("The Baby Rambler Rugosa Rose.")—Rugosa foliage and habit, compact bush, moderate growth; bloom in clusters of over-sized, fairly double red flowers resembling the Crimson Baby Rambler, produced from early summer till fall.

Francis Scott Key—"The rose of every garden of every American Home." Dazzling crimson globular rose of gigantic size. The rose is deliciously perfumed, strong, vigorous, free branching with large and handsome foliage.

General Jacqueminot—Bright shining crimson; very fragrant; good bloomer.

General Washington—Bright shining crimson. Very fragrant; free bloomer. Upright grower.

General McArthur—A grand, new, everblooming crimson scarlet rose. In all the rose family we know of nothing that can compare with this in dazzling color, fragrance of flower and

profusion of bloom. Is as fragrant as a rose can be, has good sized flowers, blooms continuously the whole season through, and gives fine stems for cutting. It makes a strong, stately plant that may be depended upon for strong flower shoots.

Geo. Dickson—Velvety crimson. A sort listed by many extensive rose growers.

Gruss an Aachen—Unusually large, compactly double, fragrant flowers in full clusters; a unique and very pretty combination of pink, red and orange.

Gruss an Teplitz—We unhesitatingly say that for bedding no rose we offer will compare with Gruss an Teplitz. It is a perfect sheet of rich crimson all summer. When we say that we know of no rose that has such bright colors in it as this variety, we are stating facts. The richest velvety crimson overlaid with the brightest penetrating scarlet.

Hadley—In the Hadley we have a rose that possesses a rich and lasting crimson color, coupled with vigor of growth, robust constitution, and free blooming habit.

Hansa—A showy hybrid with abundant large, double, reddish-violet flowers; rampant growth.

Helen Gould—An incessant grower and bloomer. Long, beautiful buds and full, double flowers of warm, rosy-crimson.

His Majesty (Red Frau Karl Druschki)—Dark crimson, shaded vermilion toward edges and overlaid with a rich velvety shading; opens well to a large and splendid form, high center; fragrant, upright, vigorous.

Hugh Dickson—A bright, showy crimson scarlet. Another Dickson rose found among the popular listed sorts.

K. of K.—Kitchener of Khartum—Flower of absolutely pure intense scarlet color, its huge petals velvet sheened, solid scarlet, throughout, semi-single, blooms produced in great profusion throughout the season, deliciously perfumed.

Le Ponceau—Garnet or mahogany red, the darkest of the Polyanthas; vigorous growth, flowering in corymbs.

Lord Charlemont—Bud very long-pointed; flower large, full, high centered, perfectly shaped; clear crimson, deepening to carmine-crimson; strong fragrance.

Louis Philippe—A vigorous, branching plant always covered with small dark red blooms. Exceedingly free-flowering and sweet.

Mad. Jules Groletz (Red Kaiserin Augusta)—This magnificent Rose is exceedingly free blooming, with very large, finely formed flowers. The color is a distinct and charming shade of cherry-red.

Madame Eugene Marlitt—One of the greatest garden roses, wonderfully strong growing, making a sturdy bush about four feet high, heavy leathery foliage like June rose; large, full double crimson flowers of extraordinary beauty and exquisite fragrance.

Marshall P. Wilder—Cherry carmine; free bloomer, very fine.

Mary, Countess of Ilchester—Large, fragrant, crimson flowers. The bush is a vigorous grower and free bloomer.

Marie de la Salle—Deep, brilliant cerise; reverse of petals shaded carmine; long shapely buds with large petals opening to full bloom of splendid form. A free growing and continuous flowering bedder.

Milady—A very pleasing type of flower, in a rich shade of crimson-scarlet.

Mrs. Chas. Russell—Large globular, well formed flowers; very double; of a rosy carmine, with rosy scarlet center. It is of strong branching habit with splendid foliage and very free flowering; one of the very popular cut flower varieties and equally good for the garden.

Meteor—A very velvety red everbloomer of the deepest glowing crimson, as fine as a hybrid. Flower very double and petals slightly recurving. A beautiful open rose.

Mme. Masson—Massive, double and full flowers of intense red with crimson hue; highly perfumed. Very attractive on account of being a constant and free bloomer.

Mrs. Bryce Allen—Strong Moss-rose perfume. Color carmine-rose. Flowers globular in form, very erect stems, deep green foliage.

Orleans—A Baby Rose, with charming and dainty clusters of deep cerise flowers with a pure white center. Always in bloom; looks like a large bouquet.

Prince de Arenberg—To those who prefer a rose with full color we can recommend none more highly than this gorgeous crimson scarlet rose. It is hardy in practically all localities and as an outdoor garden rose it has no superior.

Red Columbia—This excellent type of vigorous growing rose, with long, clean stems and free blooming is highly recommendable; very fine in the bud and beautiful in open flower, fragrant.

Red Radiance—Same rank grower as Radiance, bright red color flowers, double, borne on long stiff stems; one of the finest for cut flowers.

Rhea Reid—One of the Very Best Red Bedding Roses. Rhea Reid is as fragrant as a Rose can be; has good sized flowers and blooms continuously.

Richmond—Pure, rich scarlet; very free and continuous flowering. A splendid forcer.

Royal Red—A very distinct red Rose of enormous size and magnificent growth. In the bud and half open stage the coloring is magnificent, scarlet red with almost black shading.

Sensation—As large and more brilliant than Premier. Well supplied with a heavy, luxuriant foliage. The flowers are fine any season of the year. The color is an entrancing shade of red. The bud long pointed and strong, with ample foliage.

Souv. de Geo. Pernet—Oriental red, shaded yellow.

Templar—A comparatively new Rose, of bright velvety crimson. The flowers are quite free with petals of wonderful depth and substance; with its fine branching habit and ideal growth it makes a fine bush Rose.

Ulrich Brunner—Bright cherry-red flowers of large size and full, globular form. A strong and healthy grower. Often called "Hardy American Beauty."

Pink

Antoine Rivoire—A grand fancy bedding rose, very large, very full, perfect in form. Color flesh tints with orange center and carmine edge.

Baby Echo—Soft pink in color; a desirable sort not very generally known to the public.

Baroness Rothchild—Large, full rose of deep watermelon pink; upright type, hybrid perpetual.

Bridesmaid—The pink sport of Catherine Mermet. It is a stronger grower than its parent; has handsome foliage and the flowers are a much livelier pink. The most popular pink rose ever introduced.

Cecile Brunner—This is the popular Baby Pink or "Sweetheart" rose. Color blush, shaded light salmon-pink; distinct and desirable. Makes a handsome miniature rose; fragrant.

Catherine Mermet—A fine pink rose; a good grower and bloomer; one of the best pink roses for outdoor culture.

Champion of the World—A perpetual bloomer, summer and winter. The flowers, which are produced in the greatest profusion, are perfectly double and of perfect shape. They are of a deep rosy pink and delightfully fragrant.

City of Little Rock—A surprisingly beautiful novelty. It is distinct, and beautiful in color, a bright rose pink or rose-shaded with hydrangea-pink. The buds which open perfectly are long and of ideal form. The growth is vigorous and the flowers are produced profusely. Its pronounced fragrance will attract all Rose lovers.

Columbia—Too well known to need description; glowing pink, deepening as it opens; a marvel of freedom in growth and bloom, with long stems, nearly thornless, quite fragrant, lovely in the bud state, and handsome in the full open flower which turns to deep rose.

Commonwealth—This rose has large, long, pointed buds, and large open double flowers, borne singly on medium strong stems. The color is an even deep pink, what would be called a solid color, that is, without much shading. Ample foliage with few thorns. A vigorous upright grower and delightfully fragrant.





Templar

Frank W. Dunlop—Large double rose, like Premier in shape and color; fine cut flower variety. Large foliage, few thorns.

Geo. Arends (Pink Druschki)—A magnificent new Rose of much the same flower and plant character as the famous white Druschki; color a satiny, tender rose.

Helen Good—A genuine Cochet, being a sport in color. It is a delicate pink.

Hermosa—Popular for many years; cup-shaped, finely formed and full flowers of soft, deep pink; ever-blooming, beautiful and hardy.

Jonkherr J. L. Mock—Although introduced only a few years ago, this beautiful rose quickly found its place among our best bedding varieties. The flowers, which are produced in the greatest freedom on long, stiff stems, are of large size and perfect in form, of a deep imperial pink, the outside of the petals silvery rose white; highly perfumed.

Killarney—No rose has attracted so much attention as Killarney. The color is brilliant sparkling pink. The flowers are extra large and full, with broad, thick petals and delightful tea fragrance.

Killarney Brilliant—Similar to Killarney, but a stronger grower and the flowers are more double. A rich glowing shade of rosy carmine.

Briarcliff

This splendid sport of Columbia can still be called the most universally grown light pink rose. Its long pointed bud and freedom of bloom are outstanding characteristics.

La France—Perhaps no rose is more widely known or more highly valued for a garden rose than La France. It is a hybrid Tea of very beautiful form and color; an early and constant bloomer, producing a wonderful profusion of buds and flowers all through the growing season. It is exceedingly sweet and handsome, and altogether one of the loveliest and most desirable roses one can plant. The color is a delicate shade of peach blossom, changing to amber rose, elegantly tinged with crimson.

Los Angeles—We would not consider any

collection of roses complete without Los Angeles, one of the finest roses ever introduced. The growth is very vigorous and produces a continuous succession of long-stemmed flowers of a luminous flame pink, toned with coral and shaded with translucent gold at the base of the petals. Buds are long and pointed and expand into a flower of form and ever-increasing wealth of color is maintained from the incipient bud until the last petal drops.

Mad. Abel Chatenay—Rosy carmine, tinted salmon, flowers early and late. One of the old favorite sorts.

Mme. Lambard—Buds of deep rose, passing to salmon-pink after opening, very fragrant; free bloomer.

Madame Paul Euler—The color is a lovely shade of deep rose pink, petals waved or undulated on the edges, giving it an elegance of form, seen in no other Rose.

Madame Segond Weber—Rosy salmon or flesh pink.

Magna Charta—An old favorite. A large, deep pink bloom. Plant branches freely and blooms are produced on long, straight stems.

Malmaison—This is certainly one of the choicest, and as a rose for general cultivation is unsurpassed. The color is a beautiful rich, creamy flesh, with a rose center; flowers very large, perfectly double and deliciously fragrant. A strictly first class rose in every respect.

Maman Cochet—A magnificent pink rose of the Mermet type. The grandest of outdoor bedders in pink, making an enormous growth in one season. Color very bright, rose with shading of yellow in center.

Mme. Caroline Testout—A magnificent hybrid Tea, of the very loveliest shade of pink.

Mrs. John Laing—Very free-flowering, commencing to bloom early in the season and continues to bloom profusely until late autumn. A soft delicate pink with a satiny sheen; very fragrant, fully double.

Mrs. George Shawyer—A free blooming, vigorous growing favorite. The color is a bright pink; long pointed buds; long and very stiff stems.

My Maryland—Color, glowing intense pink, which lightens up beautifully as the flower expands.

Paul Neyron—Deep pink, very large and extra fine rose, and very free bloomer. A rose without thorns.

Pilgrim—Beautiful shade of bright rose pink. Bud opens perfectly, is long and of ideal form.

Premier—A magnificent rose of large size, very deep rose color. The broad roll of the outer petals creating most interesting lights and shadows. It is practically thornless. 75 cents each.

Radiance—A grand free-growing, big habited rose, with long stems and globular blooms of intense rose pink color; very fragrant. A fine summer variety and the finest of all the outdoor pink bedding roses. Always in heavy demand.

Rose Hill—Pure rose-pink, which does not lighten on the reverse. Foliage ample and heavy, practically thornless.

Rose Marie—This is a grand Rose of the very highest merit. Color deep pink, similar to My Maryland.

Silver Columbia—An exquisite lighter silvery pink than its parent but deepens as it opens; a vigorous grower, long stemmed and nearly thornless. A very fine sort.

Souvenir de Georges Pernet—Terra-cotta pink. One of the Pernet type of roses; beautiful and very desirable.

Souv. de la Malmaison—Large, very full, flesh-colored flowers. A very free bloomer. An old favorite.

Souv. De President Carnot—Rosy flesh, shaded white; large, fine form; semi-double.

Willowmere—A robust garden Rose of bushy habit, with beautiful buds, very large flowers and lustrous green foliage. Color rich shrimp pink, shaded yellow at center and toning to cream pink towards base of petals.

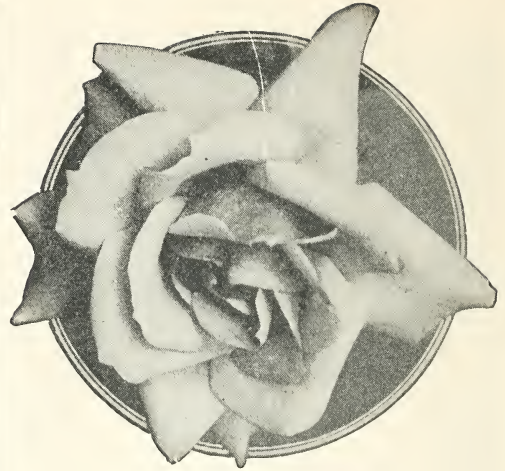
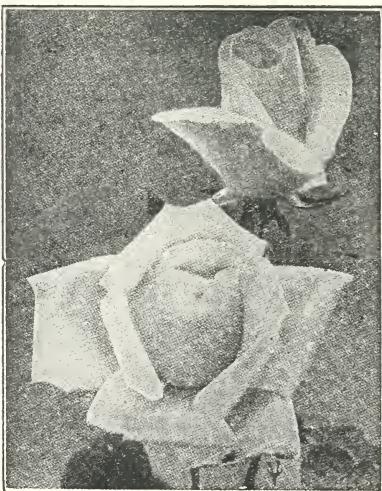
Wm. R. Smith—As a summer bedder this variety ranks above all others; produces immense quantities of fine flowers of creamy white with pink shading; strongest growing of all the summer bedders, making a fine branching bush in one year's time. Has fine, firm, glossy foliage; long flowering stems.

Yellow

Aaron Ward—A color that catches the eye at once, copperage, golden orange in the full flower; fine pointed buds; very popular.

Alexander Hill Gray—The respect of all rose lovers warrants the issuing of a champion rose, and a tea at that, to pay due homage to one of the world's greatest tea rose growers. It is wonderfully floriferous, every shoot being crowned with a flower bud, which develops into a bloom of very large size, great substance and perfect formation, with high pointed center from which the petals gracefully reflex. The best and largest pure yellow tea rose yet introduced. Its color is a solid deep throughout, Marechal-Neil like lemon-yellow; strongly tea scented.

Amelia Gude—A unique and charming yellow rose; color of Sunburst, with deeper shadings on the reverse; a true fancy yellow. The blooms have an individual beauty not always found in the big buds of the modern varieties. It is ideal for table decorations, corsage bouquets, baskets. It keeps well.



Lady Ashtown

Baby Doll or Tip Top—Brilliant golden yellow tipped with clear, bright cerise, lovely miniature "Sweetheart" buds and blooms of perfect form and finish, borne in erect panicles of single, deep, glossy green foliage, narrow, long and sharply pointed; in the Brunner class for corsage and dainty floral work.

Duchess of Wellington—A very popular yellow garden rose. Intense saffron-yellow, stained with deep crimson changing to a deep coppery saffron yellow, as the flowers are fairly full, with large petals, great substance, delightfully fragrant and very free flowering.

Dudley Cross—Light yellow rose, good bloomer. Best grower of the light yellow roses; long pointed buds.

Emily Gray—A vigorous grower, producing normal clusters of rather large flowers, true, full yellow, strong in the bud, a shade or two lighter when full-bloom.

Etoile de Lyon—Many new varieties of yellow roses have been introduced since this was a novelty, but none combine more good qualities than this good old sulphur-yellow rose. Buds are of beautiful shape and flower is very full.

Francisca Krueger—A strikingly distinct and handsome rose. One of the very best for open culture. The flowers are deeply shaded copper-yellow in color and are of large size. Always in bloom.

Eldorado—Per. (Howard & Smith, 1922.) Unnamed seedling × Mme. Edouard Herriot. Golden yellow, with the peculiar tint of Marechal Niel, base of the petals slightly tinted red. Large flowers of distinct formation. Free flowering and very fragrant.

Geo. Elger—A superb Polyantha Rose with just sufficient of Tea Rose blood to make it different from any in its class. It produces great quantities of lovely little buds of golden yellow, opening into miniature symmetrical Roses. Each bush is so loaded with blooms that they resemble a huge bouquet, blooming all summer.

Golden Emblem—Flower similar in color to Constance, same crimson stripe on outer petals, high pointed center, tea perfume.

Golden Ophelia—Similar in habit of growth and freedom to Ophelia but with a pretty golden yellow suffusion.



Helene Gambrier

Helene Gambrier—This lovely yellow hybrid Tea everblooming rose will fill a long-felt want from the fact that everybody has been looking and longing for a good yellow rose that combines vigorous hardiness with rich color and free blooming qualities. This Helene Gambrier does. Flowers are of a delightful shade of deep, rich yellow.

Hugonis—A remarkable and very valuable briar rose brought in from China. Grows and spreads quickly to as much as 6 feet at maturity. Blooms extravagantly in May full length of last year's shoots. Flowers single, ranging from deep gold to canary, with conspicuous stamen tufts.

Lady Hillington—A very popular yellow forcing variety, already planted in considerable quantity in this country. It is of very quick, free growth, with pretty narrow foliage, and is one of the freest in the tea section in the continuous production of flowers. The buds are slender and graceful, a deep shade of yellow which does not easily fade. Everybody can grow this pretty yellow rose and have it in quantity.

Luxembourg—Grand golden yellow rose, H. P. strong grower, heavy foliage; a good rose.

Mabel Drew—The color is a deep cream in the younger state, to intense canary-yellow in the center as the flower develops.

Mad. Melaine Soupert—The form is distinct and elegant, and the fragrance delicious. Color, golden yellow suffused with faint shades of pink.

Miss Lolita Armour—The flowers are of large size, fully double, deliciously fragrant, with petals of great substance, the basic color being deep coral with a golden and coppery red suffusion, the base of petals a rich golden yellow with copper-red sheen.

Mme. Alexandre Dreux—Yellow bud, opening to a high centered flower with sharply reflexed petals of deep yellow splashed with orange. Plant is moderately vigorous, wiry, fairly free flowering.

Mme. Edouard Herriot—The Daily Mail Rose. In color its buds are coral-red, shaded with yellow at the base; the open flowers of medium size, semi-double, are of a superb coral red, shaded with yellow and bright rosy scarlet passing to shrimp-red.

Mme. Cecile Brunner—Synonyms: Mignon and Sweetheart. The tiny pink Polyantha rose.

Mme. Butterfly—Sport of Ophelia. All the color tones of Ophelia are intensified, making it a harmony of bright pink, apricot and gold. It averages more petals to the bloom. The tight buds are a lovely shade of Indian red, yellow at base. They are unique for corsage and for low table decorations.

Mrs. Mackellar—The glorious blooms make this an imposing rose. A deep citron or delicate pure canary color.

Mrs. Arthur Waddell—A strong, rampant grower; buds long and pointed; rose scarlet, opening coppery salmon; large and semi-double.

Old Gold—Reddish orange and yellow. A bush rose of attractive type and color.

Ophelia—The queen of fancy roses; orange salmon; noted for its splendid stems. It is the most fragrant of forcing varieties, with the full June-rose fragrance.

Rev. F. Page Roberts—A fine rose of a vigorous habit, with good shaped blooms, which are carried erect on long stiff stems, and are very sweetly scented. The color is an orange-yellow, becoming lighter at the edges of the petals. It is an excellent exhibition and garden rose. Price, \$1.00 each.

Soleil d'Or—Orange-gold and pink mingle in the sole double blooms. Plant vigorous, blooming freely in June and sparingly thereafter. An intensely interesting rose, the first of the Pernet yellow strain.

Souvenir de Pierre Notting—This is a beautiful rose, seedling of Marechal Niel and Maman Cochet. The bloom is very large, has a beautiful long bud. The colors are very bright, distinct and clear—orange yellow, bordered in carmine rose.

Souv. Claudius Pernet—One of the most interesting roses ever introduced to the trade. It holds a proud place in the cut-flower market. A "Golden King of Roses" for all who have learned to grow it well; foliage like Holly; continues in bloom, wonderful in build, color and size. See back cover. Price, 75 cents each.

Sunburst—This big yellow rose is in a class by itself. It has proven a valuable summer variety and has made many friends.

White

Bessie Brown—One of the finest of the roses of late introduction. It is of the Hybrid Tea class. Blooms are enormous size; of heavy substance and perfect shape. The color is snow-white, faintly flushed and tinged with pink. A fine, strong, free growing, producing long stems.

Catherine Zeimet (White Baby Rambler)—Grows to a height of 15 to 20 inches, and produces double pure white flowers in wonderful abundance. It has a fragrance similar to hyacinths. Always in bloom.

Clothilde Soupert—The best, biggest and freest blooming of all Polyanthas. Flowers borne in clusters; free, double and deliciously scented. Color white, center flushed silvery rose. Blooms all the time.

Edel—An enormous bold, stately, well built flower of great depth, quality and finish. Color white with the faintest ivory shading towards the base, passing to a pure white.

Frau Karl Druschki (White American Beauty)—Form of flower identical with American Beauty. Color clear white, beautiful in bud and half open.

Kaiserin Augusta Victoria—This is one of the grandest of all roses. It is a strong, vigorous grower, producing buds and flowers of enormous size. Color pure ivory white. We have no hesitancy in saying that this rose is unequalled by any other in its color. A grand garden rose on account of its vigorous growth and hardiness.

Lady Ashton—Tender rose; color creamy white with pink reflect.

M. S. Crawford—This is one of the finest white roses, very double on medium stems, a fine bush of semi-tall type and a vigorous grower.

Madame Plantier—Flowers are pure white, very large and double; continuous bloomer. One of the best hardy Roses.

Marie Lambert (Snowflake)—Pure white flowers; a fine grower and bloomer.

Sir Thomas Lipton—The best pure white Rugosa Rose. Strong and vigorous; grows four feet high. Flowers perfectly double, pure snow-white. Fragrant.

Sombreuil—Very strong, vigorous grower, flowers large, full; color white, shaded delicate salmon.

The Bride—The flowers are very large and double on stiff stems of fine texture and substance. During extremely hot weather it becomes pinkish white; at other times a beautiful pure white.

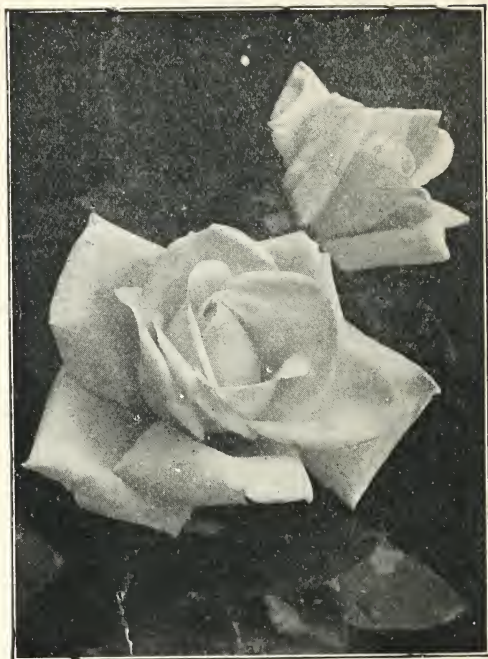
White Cochet—The charming new white tea rose. Another new American rose. Its habit is exceedingly strong and upright, like its parent, Maman Cochet. The flowers are of enormous size, round and delicately tea-scented. It is without doubt the largest white rose, both in bud and flower.

White Killarney—With many growers used in preference to the original White Killarney, as it has many more petals and makes a finer flower for warm weather use.

White Malmaison—The best everblooming white rose. Pure white; best rose for designs and floral offerings. Growth and habit same as the Pink Malmaison.

White Ophelia—Erect habit, faultless form, stiff long stems; handsome bright foliage; pure white; a perfect rose.

Marie Guillot—One of the best white roses of its class; flowers of an unusual style, entirely double to the center; very sweet-scented.



Kaiserin Augusta Victoria

Climbers

American Pillar—Large single flowers of rich rosy-pink, approaching brilliant carmine with golden yellow stamens. A profusion of blooms almost covering the foliage.

Banksia, White—The flowers of this very desirable rose are pure white, violet-scented, very small, double and borne in umbels of twelve to fifteen blossoms. Spring bloomer.

Bridesmaid—Long, full buds and flowers of clear, shining pink, varying to darker pink, and creamy yellow during the blooming period. Grows vigorously and has handsome foliage.

Cecile Brunner—Rosy-pink on a rich creamy, white ground; a beauty. This is the strongest growing Rose offered in this catalog, barring none.

Christine Wright—This sister to Climbing American Beauty is an equally strong grower, and produces a great burst of large, double wild-rose-pink flowers, borne individually and in clusters, and of the most attractive quality.

Climbing American Beauty—A seedling of American Beauty crossed with Wichuriana. Same size, color and fragrance as American Beauty. A vigorous climber. Good foliage and profuse bloomer.

Climbing Helen Gould—Probably no red rose has held its place in the heart of rose lovers for so long a period as has the beautiful Helen Gould. We have now the pleasure in introducing this famous rose in a climbing form. Everyone is familiar with this warm-watermelon red color of its charming flowers. This is a grand climber.

Climbing Etoile de France—Brilliant red, crimson velvet. Centering to vivid cerise. Identical with Etoile de France, except in its vigorous climbing habit.



Climbing Hoosier Beauty, H. T.—Deep crimson with darker shadings, just like the bush variety, and is strong and vigorous. We believe this is one of the very best Hybrid Tea climbers ever produced.

Climbing Columbia—A hardy everblooming pink climbing rose. Color, clear imperial pink with paler edges, beautifully dark veined.

Climbing Kaiserin Augusta Victoria—Flowers same as the Kaiserin, which is too generally known to require description here. Stout canes, very quickly covers verandas, etc. Always in bloom.

Climbing Killarney—A vigorous climber otherwise possessing all of the splendid qualities of the parent Killarney.

Climbing Meteor—Colors are of a dark velvety crimson, the equal of any rose in cultivation, and possibly more glowing than its illustrious parent.

Climbing Sunburst—Same as the well known bush, strong, vigorous and quite hardy. Beautiful large yellow with bright center, throughout summer and a fine keeper; we recommend it to our customers every time.

Climbing Wooten—One of the best of the red climbers. Blooms large and full. Crimson shaded with almost violet crimson. Strong grower, good foliage and profuse constant bloomer.

Climbing Maman Cochet—Same as Maman Cochet, a strong pink climber and good bloomer, flowers are double and keep well.

Crimson Rambler—The most popular out-of-door climber of today; rich clusters of bloom form a mass of vivid crimson beauty until late in the season. Perfectly hardy in the most trying climates, being a native of Japan.

Dorothy Perkins—Beautiful, hardy pink, blooming in clusters. An extra good climber for the South.

Doctor Van Fleet—One of the newer type of climbers which combines absolute hardness with flowers large, as in the tea and Noisette class. This variety shows a mass of beautiful shapely flowers; delicate; flesh white. An admirable cutting variety with stems 12 to 18 inches long.

Dr. Huey—Bud medium size; semi-double; borne in clusters of 3 or 4 on good stems; lasting. Color, dark crimson-maroon, of great brilliancy; stamens and anthers light yellow. Blooms continuously for three weeks.

Emily Gray—In this we have a real yellow climbing Rose as hardy as Dr. Van Fleet. The buds are long and pointed, of splendid shape; in color a beautiful light orange-yellow, changing to pale orange as they expand; they are borne on stiff stems of sufficient length for cutting; these stems are of a crimson-red color which together with the unusually dark green, glossy, holly-like foliage, adds a charm to the flowers and makes the plant, even when out of bloom, a most ornamental subject.

Flower of Fairchild—A counterpart of crimson Rambler in every respect, except that it shows ever blooming tendencies.

Gainesborough—A climbing form of Viscountess Folkstone. Its delicate coloring is difficult to describe, being elegantly tinged fawn, almost white and lustrous as satin. When in full bloom it resembles a large, fine fluffy Peony, but without a suggestion of stiffness.

Heart of Gold—Flowers single, medium size, dark crimson shading to white in center, in large panicles carrying as many as seventy-five blooms. Vigorous, hardy climber; profuse spring bloomer; dark green glossy foliage, mildew resistant.

Irish Fireflame—HT. (A very large, single flower of deep maddery orange, opening from spiral buds, passing to rich satiny old-gold veined with crimson.

Jonkheer J. L. Mock—Gigantic flowers on great, erect, stiff stems. Has extraordinarily large, heavy foliage and quickly makes a great, strong bush. The flowers are enormous in size, magnificently formed, deep and double, exquisitely fragrant; color bright rich pink, faced with carmine.

La Marque—A rampant climber; large clusters of full, very double and sweet pure white flowers. A beautiful rose for which there is always a great demand.

Lady Ashtown—Buds long and pointed, borne single on long stems. Color is a soft, solid carmine pink of a most pleasing shade.

Los Angeles—One of the finest roses ever introduced; strong grower, producing a continuous succession of long-stemmed flowers of flame pink; beautifully formed bud with a wealth of color.

Marechal Neil—Beautiful, deep yellow; very large, full globular form, sweet, free bloomer; the finest climbing rose.

Mary Wallace—Pillar Rose type. Makes a fine, strong, self-supporting rose, with large, glossy foliage, resistant to all diseases. Blooms with great freedom in spring, and bears a considerable number of fine buds in summer and fall. Flowers well formed, semi-double, bright clear rose-pink, with salmon base to the petals.

Mme. Caroline Testout—A rampant climber; beautiful glowing pink. You can't beat it.

Tree Roses

Mme. Abel Chatenay—This is one of the old roses; the color is rosy carmine, tinted with salmon. It flowers from early until late in the season.

Mrs. Aaron Ward—Coppery orange in the open bud, golden orange when partly developed, pinkish fawn of lovely shade when fully open, when it looks like a full fluffy rosette.

Mrs. George Sawyer—A bright pink, free blooming, vigorous climber with long pointed buds borne on long, stiff stems.

Ophelia, Climbing—Salmon-flesh, shaded with rose. Buds of unusual attractiveness, opening full and double. Habit excellent, growth strong, produces flowers on long stems, well up above the foliage and in great profusion all summer. Hardy in almost all localities.

Paul's Scarlet Climber—Winner of gold medal as best new climbing rose at National Rose Society's Exhibition. Flowers are scarlet, shaded crimson; large, semi-double. Corresponds with Cl. Am. Beauty, Dr. Van Fleet, etc., as to size, shape and habit. Blooms very long, holding in flower after many June bloomers have dropped their petals; a wonderful rose for trellis or pergola use.

Premier—Rich dark pink flowers of full size, fine form, and pleasing fragrance, borne singly on stiff, thornless stems arising from a vigorous and robust plant.

Reine Marie Henriette—A congenial companion to the Marechal Neil; a sturdy climber and everbloomer, thriving especially well in the South. Elegant in bud, with large, full, finely formed flowers of rich brilliant crimson.

Rosarie—While it has the same habit of growth and general characteristics as Thousand Beauties, the color is superior—a deeper and more even shade of cerise-pink or carmine.

Shower of Gold—The color is a deep golden-yellow, with orange shadings in the center. This fills the "long felt want" for a "Yellow Rambler."

Silver Moon—Flowers clear silver white in color, petals of great substance and beautifully cupped. The center is filled with bright yellow stamens, a very attractive feature. It is floriferous, the plants literally covering themselves with great Clematis-like flowers. They are borne on strong stems, and are delicately fragrant.

Tausendschoen—Soft pink, blooming in clusters. The branches look like large pink ostrich plumes; a splendid forcing variety under the same treatment given the Crimson Rambler. Very valuable.

Veilchenblau—The blue rose. Color steel-blue or amethyst, sometimes reddish lilac; a seedling of Crimson Rambler, with double florets in fine clusters. It is probably the most beautiful grower, with handsomest foliage of any climbing rose in existence; the leaves are exceedingly long and slender, with high gloss.

Yellow Banksia—Yellow, small flowers; very fragrant. Both Banksia roses are very hardy.



We have a particularly fine lot of Standard Tree Roses this season and recommend the following best blooming varieties:

TREE ROSES SINGLE COLOR \$3.00 Each

Souv. de Claudius	Sensation
Pernet	Sunburst
Golden Emblem	Padre
Mabel Morse	Radiance
Red Radiance	Angelo Pernet
Etoile de Holland	

TREE ROSES TWO-COLOR \$4.00 Each

This year---our 49th

Our values are Better than Ever!



**Thousands
of Shrubs
in our
Growing
Fields**

**Acres and Acres
of the Finest
Evergreens**



Hardy Evergreens and Shrubs

If you are not familiar with the superb quality of Evergreens and Shrubs grown by Locke, this is the opportune time to investigate, because you can do it at a lower cost now—than for many years past. Send us at least a small order for early delivery—and you'll then have time to order more if you need them—after you know what wonderful values we are giving this year.

LOWEST PRICES IN HISTORY---*Compare Them!*

Our large volume of sales enables us to pass on to our customers **LARGE SAVINGS and assures the purchaser of the best and finest nursery stock obtainable in the entire South.**



A Harmonious Planting Adds Charming Beauty to the Home.

HARDY EVERGREENS AND SHRUBS

Abelia Grandiflora—One of our most beautiful, popular and satisfactory broad leaved evergreens. The graceful drooping stems and branches are covered with dark glossy leaves which in winter assume a metallic sheen. From the middle of May till frost this plant produces and immense quantity of tubular shaped white flowers, about an inch long which are borne in clusters. We strongly recommend this plant for single specimens, groups or for hedges. Price, 1-year, 25 cents; strong, 50 cents; 2-year plants from open field, 75 cents each; 3-year, \$1.00 each. Balled, fine specimens, \$1.50 each.

Amoor River Privets (South)—Of similar form and habit to the California type, not so shiney, but hardier, leaves small, round, very dense. 2 to 3 feet, 25 cents each; \$2.50 per dozen; \$15.00 per 100. Balled, 50 cents, 75 cents, \$1.00 each; sheared, 2 to 3 feet, \$1.50.

California Privet—Splendid for specimens, screens, hedges. 2 to 3 feet, 10 cents. For hedging, \$7.50 per 100. Two years, extra heavy, \$10.00 per 100.

Crinkelyleaf Privet (L. lucidum crinkelyleaf)—The medium sized, dark green leaves are extremely glossy, and recurved or crinkely. An upright grower, well filled at base. 2 to 3 feet, \$2.75; 3 to 4 feet, \$3.75 each.

Golden Japanese Privet (L. Japonicum aureum)—A vigorous growing variety with large leaves, beautifully margined with yellow. Withstands the sun. In winter the large bunches of purple berries, combined with the yellow foliage, make a very striking effect. 2 to 3 feet, \$1.00; 3 to 4 feet, \$1.50.

Regel Privet (Weeping)—This beautiful privet is similar to Amoor River but is of a weeping habit. Excellent in landscaping. 25 cents each; \$2.50 per dozen. Balled, 50 cents each.

Lodense Privet (Nanum Compactum)—Dwarf dense grower; compact. A new introduction. 15 to 18 inch, 2-year, 25 cents; \$2.50 per dozen.

Buxus Arborea (or English tree box)—Succeeds almost everywhere. It is of rather slow growth, compared with other evergreens. Remarkable for its longevity, and finally gets to be 10 or 12 feet high. The Buxus makes the finest evergreen hedge. Small, for hedges, 25 cents each; \$2.50 per dozen. Strong, two-year-old bushes, 50 cents each, \$5.00 per dozen. Balled specimens, \$1.00, \$1.50, \$2.50 each.

Cape Jasmine—Flowers large, white, fragrant; foliage rich, glossy. Price, 50 cents each; and \$2.00 each.

Primrose Jasmine—An excellent yellow flowering shrub or vine, blooming profusely in the early spring and summer. Balled, 2 ft., \$1.50; \$5.00 per dozen. Fine large balled, \$1.00, \$1.50 3 ft., \$2.00.

Yellow Jasmine—Flowers bright yellow in clusters; strong grower; very fine for low massing. 2 year, 18 to 24 inch, 50 cents each; balled, 75 cents and \$1.00 each.

Cherry Laurel—A well known native evergreen. Compact glistening green foliage of medium size. Very attractive as foundation planting. It also is effective for formal planting when sheared in standard, pyramidal or other shape. Balled, 12 to 18 inch, \$1.00; larger, \$2.00 to \$3.50 and \$5.00.

Cotoneaster (Panosa)—White flowers, followed by many scarlet berries in winter; leaves ashy color on under sides, giving plant a grayish color effect; very graceful habit; medium size; very attractive. In pots, 50 cents each; balled, 12 to 16 inch, \$1.00; 18 to 24 inch, \$1.50 each; 2 to 3 feet, \$2.50 each.

Cotoneaster (Horizontalis)—Densely spreading, horizontal branches. Shiny oval leaves; persisting scarlet fruits. 12 to 15 inches, balled, \$1.00 each; 18 to 24 inches, \$1.50.

Elaeagnus (Russian Olive)

Elaeagnus—The Elaeagnus group contain a number of fine Evergreen Shrubs. The varieties which we offer are very desirable types

and should be planted more extensively. The growth is very striking with contrasting color in the foliage; generally the inner part of the leaf is a shining silvery, while the tops of the leaves are of a dark green. The stems are mostly fawn colored. In different varieties the stem and leaves vary in size and form and the colors change throughout the growing periods. Older plants produce edible fruit. We recommend the following two varieties:

Simon's Elaeagnus (Grafted) (*E. pungens simoni*)—Its small leaves are dark green and dotted with silver scales on the upper surface; silvery underneath. Younger foliage and stems are brownish. Price: 12 to 18 inches, \$3.50; 18 to 24 inches, \$4.00 each.

Dwarf Thorny Elaeagnus (*E. pungens nana*)—(Grafted). Spreading growth, medium height, usually spiny. Leaves Live Oak shape, glabrous above and silvery white underneath, dotted with brown scales. Price: 12 to 18 inches, \$3.00; 18 to 24 inches, \$4.00 each.

Euonymus Japonica—One of the fastest growing evergreen shrubs, suitable for either hedge or single specimen; can be greatly improved by cutting back to induce bushy form. No evergreen has such a bright dark green color in winter as this. For quick results this excels. Fine 2-year plants, strong, 50 cents each; large, 75 cents each. Balled, 25 cents each additional.

Euonymus (Globe Shaped)—Grows very compact, globe shape, small leaves; upright habit, both green and silver variegated; handsome for formal effect. Balled, 12 to 18 inch, \$1.25 each; 18 to 24 inch, \$1.50 each.

Euonymus, Variegated—This pretty sort is the same as Japonica but has foliage striped with yellow. In cans, 75 cents; large, \$1.00. Balled specimens, \$1.50 each.

Euonymus, Golden—The leaves of this variety are margined with wide gold bands. Very attractive. In cans, 75 cents; large, \$1.00. Balled specimens, \$1.50 each.

Feijoa—Silvery green leaves, spreading habit; flowers waxy petals, white beneath, purpling crimson on upper side; fruit delicious, mingling flavor of pineapple, raspberry and banana; imparts a very pleasing fragrance in a room; very hardy. Balled, 1 year, 12 to 18 inch, \$1.00 each; 2 year, 18 to 24 inch, \$1.50 each; 3 year, 2 to 3 feet, \$2.00 each.

Hypericum (Gold Flower)—Low spreading habit; hardy. In pots, 1 year, 75 cents; 2 year, 2 feet, \$1.25 each; balled, extra large, \$1.50.

Lavender (English)—Very small shrub with gray downy foliage; very aromatic; blue flowers; hardy. 12 to 18 inch, \$1.00 each; 18 to 24 inch, \$1.50 each.

Lavender (Cotton) Santolina—A sweet smelling, dwarf, evergreen perennial, with delicate, silver-white foliage, useful as rock or border plants; also largely used in carpet bedding. 12 to 18 inch, \$1.00; 18 to 24 inch, \$1.50.

Loquat (Japanese Evergreen Plum)—Trees of medium height, with long, glossy leaves, which are evergreen; flowers white in spikes, and produced in winter. Fruit of the size of a wild goose plum, round or oblong, bright yellow, and produced in clusters; sub-acid and refreshing; maturity from end of February to April. 2-year field plants, 75 cents; 3 year, \$1.00; larger sizes, \$1.50 to \$3.50.

Ligustrum Japonicum (Bush)—A handsome evergreen shrub with thick, dark, glossy green leaves. Small, creamy white blooms in early Spring followed by bluish black berries. Will stand trimming well. 12 to 18 inch, 10 cents; \$8.00 per 100; 18 to 24 inch, 20 cents; \$18.00 per 100; large, 50 cents and \$1.00 each. Balled, 25 cents each extra.

Ligustrum (Variegated)—This beautiful new sort is most attractive with its foliage of silvery white and green and shading to pink. Balled specimens, 2 to 3 feet, \$2.00 each.

Ligustrum Lucidum—(Waxy Leaf Privet)—Extra dense compact growth with very dark waxy green thick leaves. Very hardy and thrives in most any kind of soil with no particular attention for care. A most satisfactory evergreen for general planting. 2-year, 75 cents. Balled, fine, \$1.00 to \$5.00 each.

Magnolia Grandiflora—Its large, shining green foliage, accompanied in summer with large, fragrant, milky-white flowers, places it pre-eminently above all ornamental trees. This, as well as all other evergreens, should be handled and planted very carefully, as they are extremely sensitive to injury from drying. Their roots should never be allowed to get dry when out of the ground. In planting, the soil should be pressed firmly about the roots. Two feet, \$1.00 each; 3 to 4 feet, \$1.75 each. Balled, 25 cents additional.

Myrtle, Roman or Sweet (*Myrtus Communis*)—A well known green leaved sweet scented shrub, white blossoms and purple stripes. Balled, \$2.00 each.

Myrtle, Rosemary (*Myrtus michophylla*)—A fine leaved plant of characteristic aroma and white orange blossom-like flowers. Stands shearing, \$2.00 each.

Nandina Domestica—Japanese Nandina. Upright growing evergreen shrub with reed-like stems springing from roots. Leaves glossy green when young tinged with red. In winter beautiful bronze tones are assumed. Flowers white on long panicles followed by masses of small bright red berries that are held all winter. Good in group planting or as specimens. Price, ½ ft., pot grown, 50 cents each; 1 ft., \$1.00; 2 ft., \$2.00.

Photinia—Handsome strong growing shrub; leaves large, deeply serrated, glossy green with reddish hue when small; upright habit; very striking; hardy. Balled, 2 feet, \$1.50; 3 feet, \$2.00; large, \$3.00.

Pittosporum Tobira—One of the finest evergreen shrubs. Well adapted for trimming. Grows round and compact. Pot grown, 75 cents and \$1.00 each; field grown, balled, \$1.50 to \$2.50 each.

Pittosporum, Silver or Whitespot—A wide spreading, dense round headed type, with light green foliage tipped with white, clustered at the end of branches. Balled, \$2.00 to \$3.00 each.

Podocarpus (Taxus Cuspidata)—Japanese Yew—Of recent introduction. Grows equally well in sun or shade, and is not particular as to soils. A small bushy tree with long slender leaves, dark green in color; of easy culture and a rapid grower. Price: 2½ to 3 feet, \$6.50; 3 to 4 feet, \$7.50.



Plantings Greatly Increase the Value of Your Property

Avail yourself of our Expert Landscape Service without charge. We are offering this service gratis to our customers who plan the beautifica-

tion of their homes in the modern manner. A few dollars invested in plants and trees increases the value of your home immensely.



It's NOT a Home until it's PLANTED.

Pyracantha Yunnanensis—Spreading upright growth producing masses of red colored berries in great profusion, throughout the winter months. Leaves are a light green. Balled, \$1.00 and \$1.50 each.

Pyracantha Lalandi (Firethorn)—Thorny evergreen with clusters of orange yellow berries at fall and winter. Very attractive, more especially among green foliage. Balled, \$1.00 and \$1.50 each.

Senisa, Silver Leaf (*Leucophyllum Texanum*)—Evergreen, ashen colored foliage. Pale lilac flowers throughout summer. Excellent for contrast effects. Price, balled, \$1.00, \$1.50, \$2.00 and \$2.50 each.

Viburnum Laurustinus (*Viburnum tinus*)—Well known winter flowering shrub, bearing clusters of small flesh colored flowers in great profusion. Unexcelled for planting or specimens. In pots, 50 cents each; large, balled, \$1.25 each.

Viburnum Sandankwa (*V. suspensum*)—A bushy, spreading shrub; leaves large, shiny, dark green. White flowers in clusters, tinged with pink. Balled, \$1.50 each.

Yaupon Holly (*I. vomitoria*)—A shrub with medium sized oval oblong leaves, producing a mass of scarlet berries in the winter. Unaffected by heat or drouth. Balled, \$1.50 each.

ARBOR VITAE, CEDARS, CYPRESS, JUNIPERS AND PINES

Arbor Vitae

Beverly Golden (*Biota*) (*T. or. beverleyensis*)—Tall, columnar slender effect; the tallest and stately of the Chinese Arborvitae; foliage which covers the trunk well, is flattened; bright green overcast with golden yellow. This variety is unequalled for a vertical line among shrubbery or in formal plantings, especially when the trees gets older. Price: B. and B., 3 to 4 feet, \$3.50; 4 to 5 feet, \$4.25.

Blue-Green Arbor-Vitae (*Texas Blue*)—This is a handsome *Biota* with bluish green foliage that does not change color in winter. It is a strong grower and soon makes fine, large, beautiful specimens which retain their good appearance, even when old. Price, 15 to 18 inch, \$1.00; 18 to 24 inch, \$1.50; 3 to 4 feet, \$2.00 each.

Blue Green, Tall (*Texas Blue*)—A strong and rapid grower; tall and slender with blue fan-shaped foliage. Fine for group and specimen planting. Prices, 2 to 3 feet, \$1.50; 3 to 4 feet, \$2.00; 4 to 5 feet, \$3.00 each.

Bonita—A new Arbor Vitae of the greatest merit, a chance seeding originated in our nursery. It is a perfect round growth, dwarf and as round as a ball; has the beautiful green color of the Arbor Vitae, but the leaves are much thinner. This is the best adapted Arbor Vitae to plant in the cemetery, as it has the round, compact form, and never gets over three feet high. Price: 12 inches, \$1.00; 18 inches, \$1.50; 2 feet, \$2.00 each.

Chinese Arbor Vitae—Dark green, vigorous, hardy, desirable. 2 to 3 feet, each, 75 cents; 3 to 4 feet, each, \$1.00; 4 to 5 feet, each, \$1.50.

Daily Dwarf (*Biota*) (*Mayhew Golden*) (*T. or. Daily nana*)—Upright habit of growth, with tips of the branches a golden color in spring. Price: 18 to 24 inches, \$2.50; 2 to 2½ feet, \$3.00; 2½ to 3 feet, \$3.50.

Compacta Arbor Vitae—A seedling, compact growing Arbor Vitae, of a lively dark green color, and of globular shape, 12 to 18 inches, each, 75 cents; 2 to 3 feet, each, \$1.00; 3 to 4 feet, each \$1.50; 5 to 6 feet, each \$2.00.

Pyramidal Arbor-Vitae—This beautiful tree is one of the very best ornamental trees we have. It requires no shearing or trimming, developing naturally into a perfect pyramidal form and the foliage is of a bright green at all

seasons. 15 to 18 inches, each, \$1.00; 18 to 24 inches, each, \$1.50; 24 to 30 inches, each, \$2.00; 3 to 4 feet, each, \$2.50.

Golden Arbor Vitae—This is the handsomest and most compact of the Arbor Vitae. Green with a beautiful golden tint. True grafted trees. 15 to 18 inches, each, \$1.00; 2 feet, each, \$1.50; 3 feet, each, \$2.00; 4 feet, each, \$2.50.

Golden Pyramidalis Arbor Vitae—Like the Golden, but grows tall and slender. A very ornamental sort. 15 to 18 inches, \$1.00; 18 to 24 inches, \$1.50; 24 to 30 inches, \$2.00; 3 to 4 feet, \$2.50 each.

Hudgins (*Biota*)—A very compact, bluish-green, feathery foliage, branches close to ground. Foliage open enough to allow sunlight and air to penetrate, so it is green to the center, thus making one of the choicest compact blue-green, arbor-vitae. Price: 18 to 24 inches, \$2.25; 2 to 2½ feet, \$2.50; 2½ to 3 feet, \$3.00.



Compacta Arbor Vitae

True Berkmans (Biota Aurea Nana)—A new Golden Arbor Vitae of a dwarf and compact habit; a perfect gem for small gardens or cemetery lots; will not grow higher than 6 to 8 feet. 15 to 18 inches, \$1.00; 18 to 24 inches, \$1.50; 24 to 30 inches, \$2.00; 3 to 4 feet, \$2.50 each.

Rosedale Arbor Vitae—Very compact growth, with sugar loaf form of the Golden Arbor Vitae, but with fine cedar-like foliage of a bluish cast. Makes a beautiful ornament, perfectly hardy and vigorous growth. One foot, \$1.00 each; 2 feet, \$1.50 each; 3 feet, \$2.00 each.

Standard Arbor Vitae—Beautiful tree with fine round heads. They are fine for tubs, roof gardens, hotel lobbies, etc. Price: 5 feet stem to crown, \$2.50; 6 feet stem to crown, \$3.00.

Tall Hybred Arbor Vitae—A type very distinctive for its rather loose but gracefully waving, beautiful, light green foliage. A hybrid between arbor vitae and cupressus. Sizes from 1 to 4 feet. Price scale, 75 cents per foot.

Cypress

Cypress, Spreading Italian (Horizontal Cypress)—Lovely spreading type, rich in appearance with horizontal spreading foliage. Forms a cone shaped tree of great beauty and one of the best for individual specimen. Height from 1 to 5 feet. Price scale, 75 cents per foot.

Bhutan Cypress (C. torulosa majestica)—A tall vigorous pyramidal tree, forming a dense broad pyramid with slender drooping branchlets and foliage of a yellowish-green. Price: 2 to 3 feet, each, \$4.50.

Cypress (Arizona)—Attractive for its silvery blue color. Beautiful blue or glaucous pyramidal tree, horizontal branching, dense foliage, making perfectly shaped specimen. Price, balled, \$1.00 to \$3.00 each.

Cypress, Royal Italian (C. sempervirens fastigiata)—A tall, slender evergreen tree of erect habit and dark green foliage. Unexcelled for group plantings. Used almost exclusively in landscaping for accent purposes. A rapid grower. In height from 2 to 10 feet. Price scale, 75 cents per foot.

Junipers

Chinensis, Mascula—A new, beautiful horizontal blue green foliage type. Finest Junipers for center groups. Price, 2 feet, each, \$4.00; 3 feet, each \$5.00.

Silvestris—Another new juniper, with fine horizontal branching, light green, and very ornamental. Prices, 2 feet, each \$4.50; 3 feet, each, \$5.50; 4 feet, each, \$6.50.

Pfitzer Juniper—Handsome of the Juniper varieties; wide-spread horizontal branches and immense flat, irregular head of plush green foliage. The most satisfactory of the low spreading of prostrate type that we recommend for the South. Unusually beautiful in its distinctive, grayish color and irregular, flat spreading growth. Balled, \$1.50 to \$3.00 each.

Prostrate Canada Juniper—Formerly known as "Canadensis." Of unusual form, having no main stem, it branches in all directions with long, heavily foliated branches of graceful curves. Silvery blue color. Price: 15 to 18 inch spread, \$2.00; 2 to 3 feet, \$3.00.

Savin Juniper (Juniper Sabina)—A semi-spreading shrub of great beauty. Evergreen, bluish or gray-green. Balled, \$1.00 and \$1.50 each.

Spiny Greek Juniper—A very ornamental tree decidedly conical in form, well branched and densely clothed with grayish-green, glaucous foliage. A distinct species of great beauty. Excellent for conifer groups, for specimens or for tubs and urns. Price, balled, 9 to 12 inches, each, \$1.50; 15 to 18 inches, each, \$2.00; 18 to 24 inches, each \$2.50.

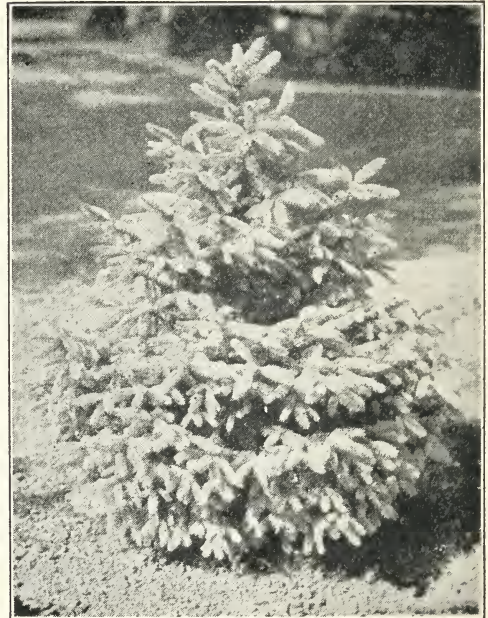
Cedar

Deodor Cedar (Cedrus Deodora)—A stately evergreen with a broad base, tapering to a point at the top. Foliage is a light silvery green and is beautiful as a specimen or in groups. Price: 2 feet, each, \$3.00; 3 feet, each, \$4.00; 4 feet, each, \$5.00.

Mountain Cedar—Nice round trees, suited for specimen planting. Balled, 2 to 3 feet, 75 cents; 3 to 4 feet, \$1.00; 4 to 6 feet, \$1.25 each.

Pines

Pinus Pinæ—A beautiful compact, symmetrical tree when young. Old trees develop a broad umbrella shaped head. Price, each: 12 to 18 inches, \$3.50; 18 to 24 inches, \$4.50.



Blue Spruce

Colorado Blue Spruce

Without doubt the most beautiful evergreen found in the United States. The plants we offer are selected for their symmetrical shape and steel blue foliage.

Price, 3 ft. plants, mossed and burlapped, each, \$5.00.

DECIDUOUS FLOWERING SHRUBS

Altheas

Grafted on hardy stock

One of the best hardy flowering shrubs.

Price of strong plants, 1 year, 35 cents each, \$4.00 per dozen; 2 year, 50 cents each, \$5.50 per dozen.

Beule de Feu—A good double red variety; opens well.

Duchess De Brand—White, red inside; very double.

Lady Stanley—Large double pink.

Tota Alba—Single, pure pearly white; dwarf habit; earliest of all Altheas to bloom and blooms freely.

Don't overlook this sort because it is single. It is very desirable.

Aster—*Grandiflora Texanum*. Improved native aster, profuse mass of bluish flowers; blooms in the fall; grows 4 ft. tall. Clumps. Price, 35 cents each; extra heavy, 50 cents each.

Barberry, Japanese, Thunbergia—Very desirable for single shrub and for hedge planting. Light green leaves which turn red in fall, and red berries in winter. Each, 25 cents.

Barberry, New Red Leafed—This novel variety is very attractive for specimens and in groups. Bright lustrous bronze-red foliage, with brilliant scarlet berries through winter. Price, 50 cents each.

Buddleia Lindleyana (Summer Lilac)—One of the most desirable summer flowering shrubs. Beginning to bloom in July, it continues until cut by severe frost. The flowers are of a pleasing shade of violet mauve, and are borne in dense cylindrical spikes. It succeeds everywhere, and flowers freely the first season planted. Price, 50 cents each.

Callicarpa Americana—French Mulberry. A fine shrub, ornamental with its green foliage and brightly colored berry-like fruit in circular clusters at the leaf joints, appearing late in the fall. Each, 50 cents.

Crepe Myrtles—The Crepe Myrtle has reached such a high degree of popularity that there is hardly a flower garden without a few of these lovely flowering shrubs. They are lately being used for hedges, which produce the most striking effect, and such a hedge is admired by all who see it. The first flowers appear early in May, and from then until frost the plant is continually a mass of flowers.

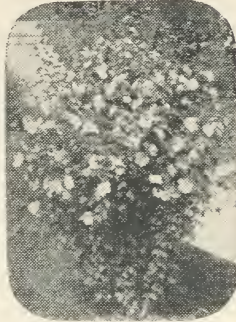
Price, strong plants, 1 year, 35 cents each; \$4.00 per dozen; 2 year, 50 cents each, \$5.50 per dozen.

Pink—The earliest of all Crepe Myrtles to bloom. Tree is of rather a dwarfish habit, but produces more flowers in one season than any of the others.

Crimson—Grows to a good sized tree, and is almost always in bloom. The flowers are of a very rich crimson color.

Purple—The largest of all; produces very pretty purple flowers in great clusters.

White—Is a very profuse bloomer, but slower grower.



Coral Berry—A hardy shrub, that is very useful for borders, hedges and general landscape work; has red berries in the autumn, the bush being covered with brilliant red berries. Price, 2 years, 25 cents each; per dozen, \$2.50.

Gydonia Japonica (Japan Quince)—Very early in spring this fine old shrub is completely covered with dazzling scarlet flowers; followed by small, quince-shaped fruits which are quite fragrant. Growth bushy with protecting thorns. Each, 60 cents.

Deutzias—**Pride of Rochester**. Grows strong and upright, 4 to 6 feet high; flowers very double and full. Pure white tinted with blush. Price, 50 cents each; \$5.50 per dozen.

Elder, American (Sambucus Canadensis)—Immense flat topped cymes of white flowers in early summer; followed in August and September by luscious black fruits. Each, 35 cents.

Elder, Golden (Sambucus)—The golden leaved variety is especially charming. Its foliage contrasts well, and the sweet scented fairy-like racemes of creamy white flowers, followed with the black fruit keeps up the interest and brings the feathered tribes to be your visitors. If you wish an abundant fruit crop find a damp place for them. Price, 35 cents each.

Eupatorium—Shrub 2 to 3 feet, with wonderful fragrant white flowers in fall. It is covered with butterflies on fair days. Each, 75 cents.

Flowering Almond—Double pink; a shower of color in early spring; very hardy. Price, 75 cents each.

Flowering Crab (Bechtel's)—The blooms are in a mass of delicate pink, of delicious fragrance. Very much admired; select specimens; 2 to 3 feet. Each, 75 cents.

Flowering Peach—A most beautiful small tree; at blossoming time in May every twig bright with beautiful flowers; showy and attractive at a great distance. Price, 75 cents each.

Flowering Willow (Chilopsis Linearis)—They bloom constantly from May till late fall; grow on any soil and are long-lived. The lace-like flowers are about an inch and a half long and are borne in clusters. Color, purple or white. Price, 2 year, 50 cents each.



Crepe Myrtle

Forsythia Viridissima (Golden Bell)—Bears small yellow flowers, very early, before leaves appear. Each, 50 cents.

Hydrangea (*H. Hortensis*)—A popular garden plant or shrub furnished with large foliage and immense heads of light pink flowers, having a tinge of blue when grown in soils containing iron. Each, 75 cents.

Lonicera Morrowi (Bush Honeysuckle)—Handsome Japanese variety with white flowers during May, but especially valuable for its bright red fruit during the summer and autumn months. Price, 35 cents each; 2 year, heavy, 50 cents each.

Lonicera (Red Bush Honey Suckle)—This upright honeysuckle has pretty fragrant pink flowers, fine for florists; grows in round bush. 2 to 3 feet, 35 cents each; 4 to 5 feet, 50 cents each.

Mallow Marvels—Improved, hardy hibiscus. Large flowers. White, pink, crimson and scarlet. 2 years, 50 cents.

Oleanders (*Nerium*)—Well known shrub, bearing long, narrow leaves, and clusters of beautiful blossoms. Splendid for foundation planting, lawn specimen, or shrub to alternate with street or park planting. Red, pink or white. Each, 50 cents; balled, large, \$1.00 each.

Philadelphus Grandiflora—(*Syringa* or Mock Orange)—The *Philadelphus* is of vigorous habit, very hardy, with large handsome foliage and beautiful white flowers produced in the greatest profusion in the blooming season. It merits a prominent place in all collections of shrubbery, 2-year-old plants, 35 cents and 50 cents each.

Pussy Willows—A delight to all who see them. These large silvery flowers open up in late winter. Plant them as a screen or hedge in the background, or plant as a tall shrub in your lawn. Their growth is compact and graceful. Price, 50 cents each.

Prunus pissardi (Purpleleaf Plum)—The most valuable of all purple leaved trees. It retains its deep color throughout the warmest weather and its leaves last until mid-winter. 3 to 4 feet, \$1.00.

Rosemary—Evergreen with greyish green foliage highly perfumed, used for medicinal purposes. 2 years, 50 cents each; large, balled specimens, \$1.00 each.

Salvia Greggii—New, hardy, everblooming, red-flowering shrub. A native of West Texas. The color is a lovely shade of red. It is a hard wooded shrub, and adds another good shrub to the already good assortment of the



Salvia Greggii

Southwest. Grows 3 to 4 feet high, and is very full and neat in appearance. Field grown plants, 35 cents and 50 cents each; large balled specimens, \$1.00 each.

Spirea Van Houttei—A splendid new garden shrub, and one of the most beautiful of all. Immense bloomer with snow white flowers. Strong, 35 cents and 50 cents each.

Anthony Waterer—A fine hardy perpetual blooming shrub, particularly desirable for the door yard and lawn, or wherever fine hardy flowering shrubs are wanted. Rich, rosy red flowers in large round clusters; very free bloomer. Fine plants, 35 cents and 50 cents each.

Spirea Thunbergii (Snow Garland)—A very graceful low growing shrub, excellent for foundation and border plantings. Attains a height of 3 feet and produces a profusion of miniature white flowers very early in the spring, often while the snow is still on the ground. Extra fine, 35 cents and 50 cents each.

SYRINGA—LILACS

Price, 35 cents each, \$3.50 per dozen.

Purple Lilac—A well known favorite.

Syringa Rothomagensis—Red Persian Lilac; very profuse bloomer.

White or Red Lilac—Double, grafted. 50 cents each.

Lavender or Chaste Tree (*Vitex Agnus Castus*)—A very large, showy shrub with compound leaves composed of five to seven leaflets, dark green above and downy grey beneath. The flowers are borne profusely during the late summer, in long, dense, terminal racemes. Color Lilac and White, 3 feet, at 50 cents each.

Weigellia—Wonderful, important group of shrubs for specimens and desirable for groups and masses. In spring Weigellias are aglow with a wealth of flowers. *Eva Rathke* and *Rosea*. 2 years. 50 cents.

Shade and Ornamental Trees

Plant shade and ornamental trees around your house and you will be repaid for your trouble in many different ways.

Ailanthus (Tree of Heaven) — Tall, rapid growing stately tree, planted for quick shade effect. From 3 to 5 feet, each, 35 cents; 6 to 8 feet, each, 50 cents.

American Ash—A tree which is particularly well adapted to this latitude; makes quick growth and forms nice tops; leaves are a lively green color. 6 to 8 foot trees, each, 50 cents; per dozen, \$5.50.

American Elm—Long-limbed, fast growing, is always admired; grows well on any ordinary soil. Price, 6 feet, branched, each, 50 cents; per dozen, \$5.50; 8 to 10 feet, each, \$1.00.

Arizona Ash—Most desirable for planting because it is adapted to the arid region and requires little moisture. 5 to 6 feet, each, \$1.00.

Catalpa—Large green heart-shaped leaved tree of rapid growth, white flowers tinged and dotted with purple and yellow. 4 to 6 feet, each, 50 cents; 7 to 10 feet, each, 75 cents.



Chinese Elm

Chinese Elm—Quickest growing Elm tree. Makes a quick shade; does not break. The finest shade tree for street planting. Trees 5 to 6 feet, each, \$1.00; 7 to 8 feet, each, \$1.50.

Japan Varnish Tree, *Streulia Platanaefolia*—A beautiful, hardy shady tree, and at the same time of very fancy appearance, stands as much droughts as a hackberry. 4 to 6 feet, each 50 cents; 6 to 8 feet, each, 75 cents; 8 to 10 feet, each, \$1.00; extra heavy, \$1.50.

Judas Tree or Red Bud—Long-lived; very hard wood; large round leaves, making a dense shade. The first tree to bloom in spring; has very pretty red flowers which last a few weeks. Price, 4 to 6 feet, each, 75 cents; 8 to 10 feet, each, \$1.00.

Ligustrum Japonicum makes a splendid evergreen shade tree; leaves dark green, pointed. 2 to 2½ inches long; produces large bunches of creamy white flowers, followed in autumn by purple berries. Price of tree, well trimmed. 3 to 4 feet, each, 75 cents; 5 to 6 feet, each, \$1.00; per dozen, \$10; 6 to 8 feet, extra heavy, each, \$1.50; per dozen, \$15.

Silver Maple—A hardy, rapid-growing, beautiful tree of large size. Valuable for producing a quick shade. Each, \$1.00

Ornamental Grasses, Yucca and Palms

No garden is complete without a few of these beautiful grasses. They are so easily transplanted and grow with so little care that everybody can afford to have them. The beautiful plumes they produce keep for years if cut at the right time and properly dried.

Grasses

Bamboo—This cane-like ornamental with intricate green foliage and dense growth is excellent for individual groups and for back-

Locust, *Rubinia Pseudoacacia* (Black Locust)—Familiar tree of quick growth, thriving in almost any soil and location. 5 to 6 feet, each, 75 cents.

Locust, *Gleditzia Triacanthos* (Honey Locust)—Of quick growth, very hardy, it can be clipped into shape, and bears numerous strong thorns. 5 to 6 feet, each, 75 cents.

Populus Alba—Silver leaved poplar. Quick growing shade tree; very hardy, 5 to 6 feet, each, 50 cents; 6 to 8 feet, each, 75 cents.

Carolina Poplar—A rapid growing native shade tree; is very largely planted as a street and avenue tree, and is very popular. 5 to 6 feet, each, 50 cents; 6 to 8 feet, each, 75 cents.

Lombardy Poplar—Upright and rapid growing, leaves bright pale green. Fine for formal effects, pyramidal form. 4 to 5 feet, each, 50 cents; 6 to 7 feet, each, 75 cents; 8 to 10 feet, each, \$1.00.

Retama Tree—One of the best shade trees and recommended highly; has beautiful fern-like foliage with yellow flowers. Is very hardy. Each, \$1.00.

Sycamore—A lofty wide-spreading tree, hand shaped leaves; valuable for its handsome foliage and free growth. 5 to 6 feet, each, 75 cents; 6 to 8 feet, each, \$1.00.

Umbrella China—A native of Harris County, finest and quickest growing of all shade trees. 4 to 5 feet, each, 50 cents; per dozen, \$5.50.

Weeping Mulberry—Forms a perfect shaped head, with long, slender, willowy branches, drooping to the ground in light, airy gracefulness. It has beautiful foliage, is hardy, safe and easy to transplant. Price, 6 to 7 feet, each, \$2.50.

Weeping Willow—A grand old tree for the cemetery and for the lawn. Should be planted in deep, rich soil where it is constantly moist. 4 to 6 feet, each, 75 cents.

Tamarix

4 to 5 feet, 40 cents each, \$4.00 per dozen.

The Salt Cedars are attractive for their feathery, pale green foliage and profusion of pink blooms.

Tarifloracans—Large, dark green foliage, upright growth; can be grown into a tree.

Canaris Jap. Plumosa—Finest of them all. Upright, curly light green, feathery leaves.

Estivalis—A constant bloomer. Pink blooms, greyish foliage; very attractive.

Indica—Upright; dark green, thick foliage; a late bloomer; light pink flowers in clusters.

Oddeseana—Neat, grayish foliage; flowers rose colored; very profuse bloomer; blooms from June to August.

Tamarix Africana—Fine feathery foliage, like that of the Juniper; valuable in sand or soil where most shrubs will not do well; upright growth; small pink flowers on long stems.

ground plantings. Clumps, each, 50 cents.

Eulalia Japonica Variiegata—A variegated hardy grass from Japan. In appearance it somewhat resembles the Ribbon Grass while in a young state. It forms compact clumps. Its flower stocks are very graceful and numerous. Each, 25 cents.

***Eulalia Japonica Zebrina* (Zebra Grass)**—Bright green blades with yellow bars across them; grows to a height of 5 to 6 feet; pro-

duces fine-lace-like plumes which last for years if cut when fresh; perfectly hardy. Each, 25 and 50 cents.

Eulalia Univittata—Plumes silvery white, produced upon very long stems; blooms early; a graceful new variety, 4 to 5 feet. Each, 25 and 50 cents.

Georgia Cane—An attractive tall growing cane, fine for background planting and in landscaping. Each, 25 and 50 cents.

Gynerium Argenteum (Pampas Grass)—Enormous bunches of long, handsome, dark green blades, producing long stalks of silver-white plumes, grow light. Each, 50 cents.

Pennisetum Grass—A dwarf grass, averaging about 18 inches in height, with beautiful white plumes of medium size, and fine for beds. Each, 25 and 50 cents.



Yucca, \$1.00 Each

Agave, Americana (Century Plant)—This is well known, thick, grayish green leaves; flower spikes reaching a height of 15 feet or more. Small plants, each, 50 cents; larger, each, \$1.00.

Agave, Variegated—Similar to the green leafed Century plant, but leaves green with

pale yellow margin; ornamental. Each, 50 cents; larger, each, \$1.00.

Dasyliirion—Older plants have a hundred or more leaves symmetrically arranged of a brilliant intense green every day in the year. Fine for large urns, rockeries and lawns. Plants, with leaves, 2 feet, each, \$1.50.

Red Yucca (*Hesperaloe Parviflora*)—One of the rare plants in existence. Native of a limited area of West Texas and Mexico. Dark green, pliant leaves. Flower stalks 5 to 6 feet, covered with scapes of brilliant coral red flowers from April till late summer. For beauty and hardiness we can hardly name an equal. Blooming size plants, each, \$1.50.

Spanish Bayonet (*Yucca Treculeana*)—The trunk reaches a height of 10 feet. Dark green leaves topped in spring with a great truss of cream white flowers. Plants 2 to 3 feet high, \$2.00, balled.

Stiles Yucca—A dwarf variety, very sharp pointed heavy green leaves with light green stripes along center, ornamental. Price, each, 75 cents.

Yucca Filamentosa—Evergreen. This plant is an object of beauty the year around. The leaves are 2 feet long, bristling out of all angles, with sharp points; flower stalks stout. Four feet high, with 100 to 200 bell-shaped creamy white blossoms hanging from branching arms. Perfectly hardy and lives to a great age. Two years old, each, 25 cents; per dozen \$2.50.

Hardy Out-Door Palms

Canary Date Palm (*Phoenix canariensis*)—A stately and rapid growing ornamental date palm thriving under all sorts of conditions. Its dense immense crown of beautiful curving leaves, makes this variety an ideal palm for street, avenue, park. 2 to 3 feet, each, \$2.50.

Fruiting Date Palm (*Phoenix dactylifera*)—An attractive date palm with long arching gray green leaves. One of the best of the dates. 2 feet, each, \$3.50.

Sabal Palmetto—The famed cabbage Palmetto. This forms a tall tree with a large head of fan leaves. This tree can be grown all over the South, and is very hardy here. 1 to 1½ feet, each, \$1.00; 2 to 3 feet, each, \$2.00; 4 to 5 feet, each, \$4.00.

Washingtonia (*Prischildia Filifera*)—The hardiest of the Washingtonia type, quick grower, more erect. Large plants, weight 50 to 100 pounds. 2 feet, each, \$1.00; 3 feet, each, \$2.00; 4 feet, each, \$3.00.

Pindo (*Cocos australis*)—Very graceful, with upright recurving leaves. Foliage impressive gray-green; fruit edible; erect columnar. Price, \$1.00 and \$1.50 each.

Desert Cacti In Nice Assortment

The sorts here named make a nice selection of good variety. Price, each, 50c, 75c, \$1.00 and \$1.50 each, according to size. Collection of six nice plants for \$3.00.

Coryphantha sulcata.

Coryphantha neo-mexicana.

Neobesseya similis.

Neomammillaria applanata (devil's pine cushion).

Echinocereus blanckii (finger cactus).

Echinocereus triglochidiatus.

Echinocereus reichenbachii (Lace Cactus).

Echinocereus enneacanthus (Strawberry Cactus).

Echinocereus englemanii (Arizona).

Homatocephala texensis (Goat Horn).

Hamatocactus setispinus (Fish Hook).

Lophophora Williamsii (Peyote).

Carnegie Gigantea (Arizona) (Giant Cereus).

Ferrocactus wislizeni (Arizona) (Candy Cactus).

Opuntia macrorrhiza.

Opuntia lindheimeri.

Opuntia imbricata (Walking Stick).

Opuntia lingeriformis (Cow's tongue).

Opuntia leptocantis.

Climbing, Clinging, Creeping Plants and Vines

These long-lived plants are the most popular and best for the South to cover arbors, galleries, old trees, etc., in a very short time.

Antigonum Leptopus (Queen's Wreath)—A splendid plant from Central Mexico, producing rose-colored flowers in racemes 2 feet long. The profusion of bloom is such as to give the resemblance of roses at a distance, hence its name, "Rosa de Montana," or Mountain Rose. Will live out in the winter anywhere in the South. The vines are killed by frost, but it quickly shoots up in the spring and develops its flowers from May until frost. This is one of the most lovely vines. Bulbs, each, 25 cents; smaller bulbs, each, 15 cents.

Bignonia Grandiflora—Giant flowering grafted trumpet vines. Also called French Trumpet Vine. Flowers of enormous size. 2 year, strong plants, each, \$1.00.

Bignonia Radicans (Trumpet Vine)—A native hardy, strong climbing vine with good leaves and scarlet, trumpet-shaped flowers in summer. Two year olds, each, 35 cents.

Clematis Drummondii—Many varieties of Clematis grow wild in Texas. Among them this is the best. When in bloom the plant is covered with white flowers, which come in such profusion that it attracts attention along fences, being as white as cotton. Flowers are not fragrant. A rapid climber. Strong plants, each, 25 cents.

Clematis Paniculata—One of the most beautiful of our hardy climbing vines. The flowers are pure white, and are borne in great panicles or clusters of bloom, which fairly cover the plant so that a mass or sheet of fleecy white. The fragrance is delicious, resembling the English Hawthorne blossoms, and so subtle and penetrating that a large plant in bloom fills the air with exquisite fragrance. Each, 25 cents.

Euonymus Radicans—Dense-growing, evergreen vines, climbing by aerial roots, often reaching 15 to 20 feet high. They bear pretty fruits and make good growth. Small, rich, green leaves; a splendid wall-covering. Each, 25 cents.

Ficus Repens (Climbing Fig)—To cover foundation of building or wall this is about best vine obtainable in the South. Small leaved evergreen, very rapid grower. Each, 50 and 75 cents.

*

Honeysuckle, Climbing

Prices, each, 35 cents; per dozen, \$3.75.

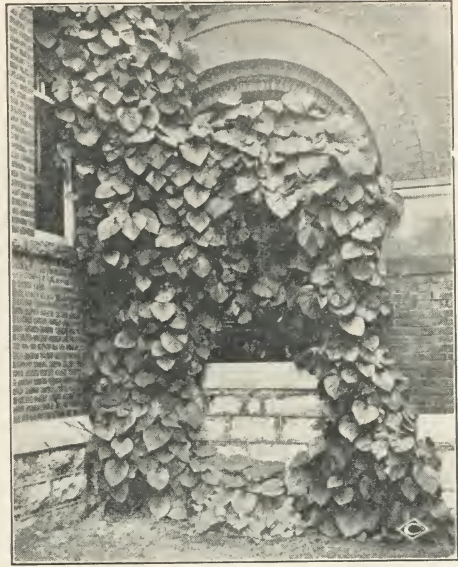
Coccinea—Flowers red, good bloomer; stands Texas sun well.

Halleana—One of the finest Honeysuckles grown. Blooms from May till November; is always evergreen and one of the most fragrant; flowers white, changing to yellow.

*

Ivy, American—The true Virginia Creeper. A well known, hardy, rapid high climbing vine, clinging to walls, trellises and trunks of trees, foliage changing from green to bright colors in fall. Each, 25 cents.

Ivy, Boston (*Ampelopsis Veitchii*)—This plant resembles very much our ivy, but grows very rapidly, covering a large wall in one season. The foliage is small and neat and blood-red in color in fall. Each, 35 cents.



Kudzu

Ivy, Hardy English—The hardy evergreen vine that remains so all the year, making it one of the most valuable of all hardy vines. It is used in covering walls and has become popular for covering graves, especially in the shade where grass will not succeed. Price, each, 25 cents, pot grown.

Kudzu—The famous Chinese Kudzu grows more in three months than most vines do in five years. Adaptable to porches, arbors, fences, rockeries, old trees, etc. If you wish a vine that will grow anywhere in the bed or poorest soil, then plant the Chinese Kudzu. The large, bold, green leaves afford a dense shade. The clusters are deliciously fragrant. Each, 25 cents; per dozen, \$2.50.

Matrimony Vine—A very dense and vigorous climber that overcomes all obstacles. Somewhat shrubby in nature, but will climb fences, trellises, rocks, or hang over an embankment. Small white flowers. Each, 40 cents.

Moon Flower, Giant White—A popular rapid climber. Satiny white flowers, borne abundantly throughout a long season, opening at sundown, emitting a rich, jessamine odor at night, and closing about noon next day. Each, 35 cents.

Passion Flower (*Passiflora*)—A fast-growing vine with deeply cut, sea-green leaves and fragrant blue flowers. Plants, each, 25 cents; per dozen, \$2.50.

Vinca, Evergreen (Trailing)—Dark green, 15 cents each; per dozen, \$1.50.

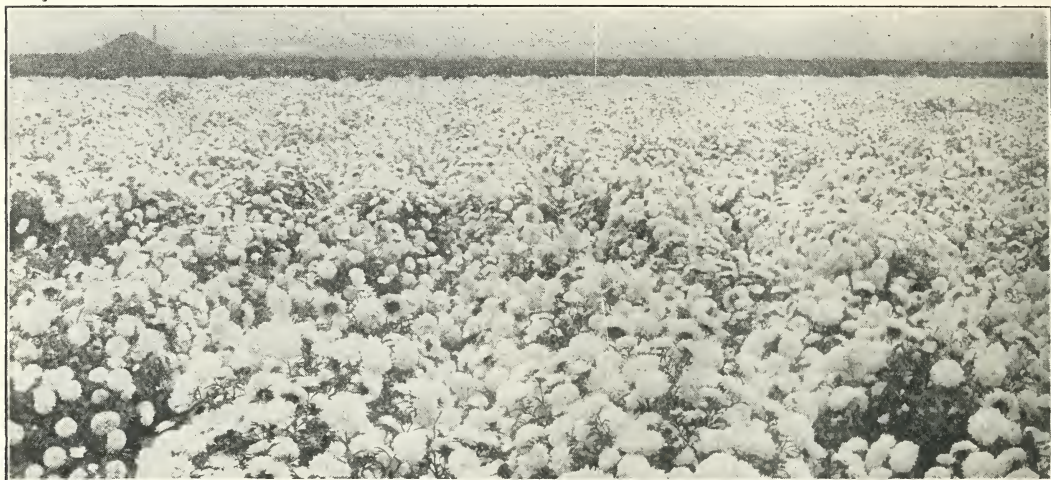
Vinca Harrisemii (Trailing)—Two shades of green and gold. Strong plants, each, 15 cents; per dozen, \$1.50.

Wistaria Senensis (Purple Wistaria)—A quick-growing climber, producing long racemes of purple flowers. Each, 35 cents.

Wistaria Senensis (White Wistaria)—A long, drooping cluster of pure white color, very elegant, strong two-year plants. Each, 35 cents.

Greenhouse and Plant Department

On account of the constantly increasing demand for flowering and ornamental plants, and in order that we may give our large number of customers better service and greater satisfaction, we have added very considerably to our list of varieties that are best suited to their location and conditions.



Flowering and Ornamental Plants

Acalpha

Price: Each, 25 and 50 cents.

One of the popular colored types of pot and bedding plants, with various attractive leaf-formations.

Sanderi (Chenille Plant)—Foliage deep glossy green; flowers fuzzy, bright red, rope-like pendants, long, drooping from the axil of each leaf. They make showy specimen pot plants and cheerful summer bedders.

Tri-Color (Fire Dragon)—A most wonderful plant, in the rich color of the leaves, which are mottled and blotched with crimson and scarlet background. Foliage extra large and maintains its markings.

Ageratum, Blue Star—Useful in summer bedding schemes, as well as for baskets and vases. Indispensable for these purposes on account of the lack of blue shades among bedding plants. Of great value as an edging or massed. Price, each, 10 cents; per dozen, \$1.00.

*

Alternanthera (Border Plant)

Bright, dainty little foliage plants extensively used for dwarf edging and for carpet bedding. Price: Each, 5 cents; per dozen, 50 cents; larger, each, 10 cents; per dozen, \$1.00.

Aurea—Fine leaved; bright yellow, touched with green.

Brilliantissima—Rather broad leaves, bushy growth; mottled bronze and cream, but mostly bright red.

*

Artillery Plant (Pilea Arborea)—A pretty little plant of drooping, graceful habit and fern-like foliage, literally covered with small, pretty flowers, giving the plant a pleasing effect; fine for basket or pot plants. Price, each, 15 cents.

Asters, Fine Branching—These beautiful flowering plants have become extremely popular, and their profusion and array of gorgeous,

double and many colored flowers make them most desirable. The range of colors is exceptionally large and attractive, from the deepest crimson, scarlet, rose, pink, dark and light blue, lavender, purple, sulphur yellow, white and other shades. Plants ready in March, each, 10 cents; per dozen, \$1.00.

Asparagus

Brilliant green foliage indoor trailing plants used for bracketed pots, window boxes and hanging baskets.

Plumosus Nanus—Lace-like texture of its foliage outclasses for grace and daintiness; the long emerald sprays making a rich setting for cut flowers of all descriptions. Price: 25 and 50 cents.

Sprengeri—Mostly used for hanging baskets where its long dense trails make a gleaming mass of green. Price, each, 25 and 50 cents.

Garden Variety—Its fine dark green foliage is used largely in floral designs. Price, each, 25 cents.

*

Azaleas—One of the most attractive flowering plants, very profuse bloomer, fine color. Price, 12 inch plant, \$1.00; 15 inch, \$1.50.

*

Bachelor's Button—Cornflower, or Blue Bottle. One of the most popular and desirable of old-fashioned garden annuals. Bachelor's Button and Baby's Breath make a most beautiful bouquet. The plants reseed. Per dozen, 10 cents; per hundred, \$1.00.

Balsams, Double—An old favorite garden flower producing gorgeous masses of beautiful brilliant colored double flowers in profusion. Balsams like the hot sun, rich soil and plenty of water. Each, 10 cents; per dozen, \$1.00.

Banana Orinoco (Musa)—The hardiest and commonest sort. Plants of large size with dark

green leaves, very robust and easily grown. Strong suckers, each, \$1.00.

Begonias

These are fine, make lovely house plants and can be grown in shady places; foliage and flowers very ornamental. Price: Each, 25 cents; large, 50 cents.

Alba Picta Rosea—Seedling of the *Alba Picta* crossed with *Rubra*. Foliage rich green, spotted with white; flowers on long, pendant stems. Color, delicate rose; very free flowering.

Argentea Guttata—Purple bronze leaves, oblong in shape, with silvery markings, and in every way most beautiful. Produces white flowers in bunches on ends of growth stems.

Coraline Lucerne—Wonderful new Begonia, bearing immense flower clusters of bright coral red, changing to delicate pink. Every lady who has seen it in bloom has bought one.

Marguerite—Leaves a bronzy green, somewhat resembling *Metallica*, but giving a more bushy form. Light rose colored flowers.

Metallica—A shrubby free blooming variety, with triangular leaves; under side of leaf and stem hairy; the surface a lustrous metallic or bronze color, veined darker; flowers white.

Rubra—This Begonia is still a great favorite. The flowers are a rich coral red, hanging in large pendant clusters; these, combined with the rich green foliage, makes it one of the best plants for house culture.

Thurstoni—Under side of leaves is rich, purplish red, veinings prominent, upper side bronzy green, shaded with crimson and olive, peculiar glossy metallic luster over all. Flowers rosy white in large clusters.

Beefsteak Begonia—Very ornamental; leaves silver top, red underneath; very pretty flowers.

New Beefsteak Ruffle-leaved—This is a most beautiful begonia, the leaves margined with a heavy fringe which makes it decidedly attractive. Each, 50 cents.

Begonia Gracilis Luminosa (White, Red and Pink)—Best pot and bedding plants on the market. (Always in bloom.) Have proven themselves to be very fine bedding plants as well as pot plants.

Bougainvillea

Bright festoons, wonderfully effective along the walls in conservatories and sun rooms; or when trained on compact wire trellis forms, in tubs or large crocks.

Braziliensis—One of the showiest plants in cultivation. Bears a mass of brilliant reddish-purple flowers, against a background of bright green leaves. A wonderful vine. Price: \$1.00 each.

Crimson Lake—This is one of the most notable vining plant introductions of years. Its numerous clustered, crinkly, paper-like bells in their emerald setting, are in incomparably brilliant, crimson-like color. Each, \$1.00.

*

Calendula—Hardy annuals. A wonderful profusion of flowers. Valuable for bed and borders. Blooms until late fall. A new but well-proven strain; flowers unusually large and double, of uniformly, rich, dark orange color; with extra long, firm cutting stems. Per dozen, 25 cents.

Candytuft (Iberis)—Wonderfully effective for white massing, but long a favorite cut flower as well. Most blooms are sweetly fragrant. Hardy annual, about one foot. Price, dozen, 10 cents.

Carnations—The Carnation excels all other flowers, the rose alone excepted. If planted in the open ground it will bloom all summer, and if taken out and brought indoors at the approach of cold weather, it will bloom in winter.

Mixed Color (Seedlings)—Grown from the very best Italian seed. Per dozen, 50 cents.

Large Named Varieties—Each, 10 cents; per dozen, \$1.00.

*

Chrysanthemums—These are so well known that they need not be described. They are beautiful with their gorgeous masses of many colored blossoms in late summer and fall. Our selection includes leading large flowered types, in select yellow, white, pink and red colors. Price, each, 10 cents; per dozen, \$1.00.

Cockscomb—Very showy crimson annuals. Extra large, velvety flower-heads or combs. Very easy culture. Cut when partially open and hang in a dark closet to dry for winter decorations. Dwarf, large-flowering type. Per dozen, 15 cents.

Coleus—The Coleus is aptly called the gardener's paint box. We have a superb assortment of the most brilliant colors; fine for pots and bedding; used as bedding plants in parks and lawns everywhere. Fine, healthy plants, each, 10 cents; per dozen, \$1.00.

Coleus (Trailing Queen)—Elegant fringed leaves blending from pink to crimson, finely scalloped edges. The plant is half trailing or running and is well adapted for window boxes, baskets or vases. Price each, 5 cents; per dozen, 50 cents.

Daisy

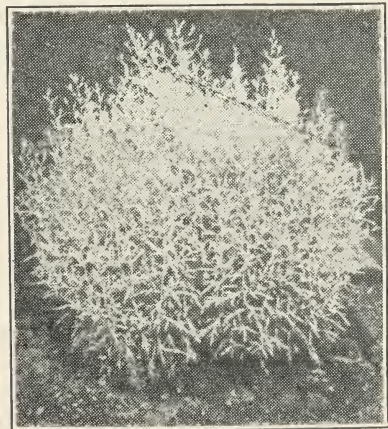
Extremely hardy perennials that give a profusion of flowers with comparatively little care. White with yellow centers on long erect stems. Price: 5c each; dozen, 50 cents.

Early Elder—Very similar to *Shasta*, but much earlier and very productive and hardy.

Shasta—Burbank's great production. Largest flowers and constant bloomers of all daisies. Wonderfully hardy, especially in summer.

*

Devil's Ivy—Wonder vine. Most excellent as an ornamental pot plant in the home, yielding to over or under watering and adverse conditions. For fern dishes, hanging baskets and wall pockets. Each, 25 and 50 cents.



Dusty Miller

Dusty Miller (Silver King)—A strikingly effective white-leaved contrast plant. A beautiful

"mist" for setting off bouquets and floral combinations. The opening leaf buds gleam like tiny beads, the entire color effect bright frosted silver. The plants are matured and very showy early in Summer, 3 feet high. Long sprays may be cut to mix with Winter bouquets. Each, 50 cents.

Dianthus (Hardy Garden Pink)—These very desirable sweet-scented, low-growing, early-blooming and free-flowering are unequalled for the borders of beds, drives and the old-fashioned garden and should be planted in any good garden soil in an open situation. Per dozen, 15 cents.

Dracena—Considered among the best of decorative foliage plants, and are largely used for conservatory and house adornment.

Indivisa—Numerous slender, grass-like green leaves, the favorite center plant for box, vase and basket planting. Each, 50 cents.

Euphorbia, Heterophylla (Mexican Fire-plant)—An annual resembling the Poinsettia in habit and color. Smooth glossy-green leaves which in mid-summer turn to a beautiful orange-scarlet. Each, 10 cents.

Ferns

A foliage plant that presents many varied charms, practical for all general house, table, floral or window decorations. Most varieties love the sun, and thrive to best advantage if located near the sunniest window, occasionally turned, and given a watering.

Boston Fern—One of the best decorative plants of recent introduction. The fronds are large and do not stand up stiff, but droop gracefully. Excellent for making large specimen plants, also for hanging baskets. Each, 25, 35 and 50 cents.

Maiden Hair—The well-known Maiden Hair Fern, indispensable in the making up of floral pieces and winter bouquets; as showy and useful for pot specimens after attaining sufficient size. Each, 25 cents.

Native River Fern—Very attractive in fern beds and rockeries or planted in shady locations. Clumps, 25 cents.

Ostrich Plume Fern—The fronds are of entirely different nature. Each frond is subdivided, thus producing a very beautiful effect. Its decorative ability is excellent. Each, 25, 35 and 50 cents.

Sword Fern—This fern is without doubt the most popular fern for the living room, being very showy and easy to grow. They are grown in pots on pedestals or in hanging baskets or window boxes. Each, 25, 35 and 50 cents.

*
Feverfew (Double White)—A bushy plant, bearing a profusion of double white daisy-like flowers of great popularity for summer bouquets. Hardy annual. Each, 10 cents; per dozen, \$1.00.

Ficus Elastica (India Rubber Tree)—This is the common rubber tree grown so much as a decorative house plant. The leaves grow to 12 inches in length, are very dark glossy green, leathery in texture. A decorative plant, very easy to grow. Each, 75 cents and \$1.00.

Impatiens Sultana Hybrids—Seldom out of bloom, when at their best spangled with flat, single flowers, ranging from intense carmine-rose to white; against a rounded background of glossy green leaves. In separate colors, Red, Pink, White or Mixed. Each, 15 and 25 cents.

Geraniums

Always popular as pot and bedding plants. Other varieties in stock besides the fine named ones here listed.

Special Bedding Collection—Our selection of both double and single varieties. Per dozen, \$1.00; larger, per dozen, \$2.50.

Beaute Poitevine—Light Pink. Beautiful shade of shrimp pink. This variety is a universal favorite and deserves its reputation.

Buchner—Large flowering type and one that has proved to be a fine bedder. Flowers pure white; not a trace of coloring at the center. Very free flowering, always a perfect mass of white. Plant dwarf and bushy.

S. A. Nutt—Crimson Red. This is the finest of dark crimson Geranium; has now taken the lead as a bedding geranium. Each, 10 cents; larger, 25 cents.

Ivy-Leaved—Nothing more desirable for baskets, vases or for any trailing or climbing plant utility. Price, each, 25 cents.

*

Golden Glow—This plant attains a height of 3 to 4 feet and blooms from July till fall. Easy to grow. Strong bunches, each, 25 cents; per dozen, \$2.50.

Hollyhocks—Old-time favorites that should have a place in every hardy border. We offer the finest collection of magnificent flowers. Best varieties, white, red, pink, yellow or mixed; strong plants. Each, 10 cents; per dozen, \$1.00.

Hibiscus

A splendid hardy shrubby plant that adds beauty to the home either as potted specimen or in the open. Strong plants, each, 50 and 75 cents.

Hibiscus Cocinea—A new star-shaped single red flower, and is a wonderful bloomer. This new variety has attracted great attention for outdoor culture. Priced at 75c each.

Sub Violacea—Flowers enormous, semi-double; clear carmine, tinted with violet, large flowers. An unusually free bloomer.

Peachblow—The flowers are double and from four to five inches in diameter; of a charming, rich, clear pink color.

Brilliantissima—The largest flowered of the single varieties. Brilliant scarlet, flushed with orange, base of petal stained deep crimson.

*

Jasmine, Confederate—An elegant hard wood-climber, or can be trained to bush form. Bears large branches of pure white flowers, with most delicious perfume. Price, each, 75 cents.

Jasmine, Grand Duke—Full double-flowered type of the Arabian Jasmine, exquisitely scented and beautiful form. Practically everblooming. Dark green, heavy foliage. Each, \$1.00.

Kochia (Summer Cypress or Burning Bush)—Character for temporary summer hedges. A feathery dense egg-shaped bush ranging from 2 to 4 feet according to soil. Foliage is so fine and close-set, the bush resembles a formally clipped evergreen, although soft enough to ripple. Pale, tender green throughout summer, the color turns towards fall to vivid red. Per dozen, 15 cents.

Lantanas

Try a few Lantanas this year for bedding. They stand sun and drouth remarkably well, and are never out of bloom. Grown in pots or tubs they make splendid specimen plants for porch or lawn, and can be grown with little care in the open. Price: Each, 35 cents; \$4.00 per dozen.

Cook—Dwarf; opens orange and yellow; changes to bright rose; a free bloomer; foliage and florets small; very pretty.

Alba Perfecta—Pure white. A gem among white bedders.

Sunset—Plant vigorous but compact in growth; flower at first opening is deep orange red, changing to deep vivid crimson, very fine and brightest Lantana we have.

Pink Beauty—Covered with flowers of silvery rose with center of soft yellow; a beautiful contrast.

Weeping Lantana—A fine plant for winter flowering in pots or small summer hanging baskets. Flowers delicate rose lilac in compact umbels, borne freely all over the plant from drooping flower laden sprays. Each, 35 cents.



Larkspur

Larkspur (Delphiniums) — Most beautiful hardy plants in cultivation, they have such an immense variety of beauty and increase year after year. The culture is exceedingly simple. The soil may be rich but any soil, even hot and sandy, if well watered and manured, will give excellent results. A succession of flowers may be expected from Spring to early Autumn, especially if the spikes which have done flowering early, be cut down; fresh growth will then give blossoms.

Annual Larkspur—Plants from imported seed of stock flowered varieties in white, pink, lilac, blue, Venetian blue and mixed. Fine; per dozen, 20 cents.

Perennial Larkspur—Indispensable to the herbaceous garden. Their long, showy spikes of flowers persist from June till frost and furnish an unlimited outflower supply. Leading colors. Each, 25 cents.

Liatrus Spectalis (Purple Snake Root)—A hardy, robust and erect growing perennial, with purple spikes of composite blossoms. Derives its name from the peculiar formation of the roots. Strong plants. Each, 25 cents.

Mignonette (Reseda)—No garden is complete without this fragrant plant of unassuming mien. One of the principal uses is for cutting purposes and combining in bouquets with other more pretentious blossoms without its delicate odor. Plants, per dozen, 50 cents.

Military Plant—Very similar to the Artillery plant except size of foliage; robust grower, and ornamental. Price, each, 15 cents.

Mint, English—The old time green mint in the garden, hardy and needs no attention after it is once established. Plants, each, 15 cents.

Pandanus Veitchi—Graceful curved foliage, light green striped with broad bands of pure white. An attractive decorative plant that stands ordinary house culture well and is always fresh and bright in appearance. Price, each, \$1.00.

Pansies—One of the most satisfactory plants. We have the choicest large flowering sort in an assortment of colors unsurpassed. There is no flower more admired than the Pansy. Our assortment of colors embraces Striped, Spotted, Bordered, Fringed, Ruffled and Scaloped, in Rainbow colors, with rich velvety texture. Prices: 12 for 20 cents; 50 for 75 cents; 100 for \$1.25.

Palms

These varieties offered can best stand the hard usage to which house plants are normally subjected. Prices of Palms: Each, 75 cents and \$1.00.

Sago (Cycas Revolata)—Extremely ornamental with its dark, glossy green profusely imbricated leaves.

Kentia Balmoreaha — Gracefully arching stems of steely strength despite their slenderness, each crowned with a fan-like canopy of richest green.

Latania Borbonica (Latania commersoni)—Rather slow growing species with a stout trunk and many leaves. Highly ornamental.

Phoenix Roebelenii—A very graceful dainty Palm as light and feathery as a Cocos, but as hardy as a Kentia.

Parrot's Feather

An aquatic hanging plant, is a novelty and we have it to perfection. Long, trailing stems, clothed with whorls of most exquisite foliage as finely cut as the cypress vine and much more delicate. Planted in a water-tight hanging basket, so water may be kept on the surface, it will trail finely. Price, each, 15 cents; per dozen, \$1.50.

*

Peppers, Ornamental—These dwarf and branching plants with their showy glossy fruits in varying colors of green, white, orange and bright red are fine for pots and in mixture plantings. Each, 35 cents.

Petunias—Furnish an unlimited amount of bloom throughout the summer, fragrant, dainty and delightful. Will profit wonderfully from extra soil enrichment, frequent cultivation and plenty of water; they are worth extra attention. In separate colors, white, pink, red, purple and variegated, mixed, each, 10 cents; per dozen, \$1.00.

Phlox

Both the annual as well as the hardy perennial types offer a wonderful profusion of varicolored flower masses.

Drummond Grandiflora—For a splendid mass of color and constant display, this type is not excelled by any other annual. Blooms early, continuing until severe freezing. Plants, per dozen, 15 cents.

Hardy Perennial—This class is of special importance in every flower garden. Succeeds in almost any soil and blooms through a long season. A range of colors is certain to please. Red, pink, white and violet. Each, 25 cents; per dozen, \$2.50.

*

Plumbagos—Always satisfactory, either for pot culture or for the garden. They are constant bloomers, and their delicate and graceful flowers are very useful for cutting. Sky blue or white, each, 35 cents; per dozen, \$4.00.

Plumosa (Feathered Cockscomb)—This "Ostrich Feather" type grows from 2 to 5 feet high, very showy with their large, dense, and continuing upright plumes. Very effective in garden or potted, as fresh cut flowers and dried. Plants, each, 10 cents; per dozen, \$1.00.

Poinsettia Pulcherrima—The plant which produces the large clusters of red leaves or flowers which are seen in all the flower stores at Christmas. Fine plants. Price, each, 35, 50 and 75 cents.

Poinciana, Gilliesi (Bird of Paradise)—Blossoms rich golden yellow, about 2¼ inches in diameter, produced in large trusses, the most striking feature being the long, incurving stamens and pistils of a beautiful bright crimson color. Each, 50 cents.

Primrose (Primula)—One of the finest plants for winter and spring blooming in the house or conservatory; they do well in a cool room, in a north window where most other plants fail. Greenhouse perennials. Mixed colors. Each, 50 cents.

Salvia

We are listing three Salvias that are very satisfactory for this climate; sure to please.

Azurea Grandiflora (Blue Sage)—A western sort with stout growth, large grey-green leaves; blooming throughout the summer and fall with large sky-blue flower panicles. Each, 25 cents.

Greggii—A shrubby plant that is a splendid drought resister and blooms continuously until late frost with a very beautiful shade of red flowers. Each, 25 cents.

Splendens—The well known annual with bright, scarlet flower spikes, very showy for bed and border planting. Very attractive. Each 10 cents; per dozen, \$1.00.

Scabiosa (Mourning Bride)—Also called Pin Cushion Flower. Handsome summer border plant producing splendid flowers in greatest profusion until severe frosts. Flowers compact, round, long stems, making ideal cutflowers which keep in water a week. Colors both strong and dainty. Per dozen, 25 cents.

Snake Plant (Sansevieria Zeylancia)—A beautiful plant, especially adapted to house culture during cooler months, and for porches during summer. Leaves are beautiful striped crosswise with white variegation on a green ground. Withstands dust and drying out without damage, and can be placed in any part of a room and do well. A beautifully decorative plant for vases and baskets. Prices, each, 50 cents and \$1.00.

Snapdragon (Antirrhinum)—Most popular bedding plants; the richness and diversity of colors, great freedom and protracted blooming giving them great value for garden color masses for cutting. Dark glossy leaves, pea-shaped flowers with uniquely marked throats, set in upright racemes. Plants, each, 5 cents; per dozen 50 cents.

Stocks (Levkojen)—Ten weeks; large flowering. The plants have good habit, fine dull or glossy leaves. The flowers appear on long, stiff stalks like small rosettes, exceedingly fragrant and soft and distinct shades. Per dozen, 25 cents.

Sweet William (Dianthus Barbatus)—Double. A well known, attractive, free-flowering hardy perennial, producing in early Summer a splendid effect in beds and borders. All colors. Per dozen, 25 cents.

Texas Bluebonnet (Lupinus Texensis)—This is the Texas State flower. Grow on poor as well as rich soil, and are covered with beautiful dark blue flowers with white centers that turn red. This gives the colors of red, white and blue, indeed appropriate in a State flower. Bloom in spring and there is nothing prettier than a mass of these plants in flower. They will reseed themselves from year to year. Per dozen, 25 cents; per 100, \$1.50.

Tritoma (Red Hot Poker)—A most beautiful introduction, with tall spikes of attractive and brilliant spikes of rich orange scarlet blossoms; early, free and continuous bloomer and a great bedding plant, strong roots, each, 35 cents.

Umbrella Plant (Cyprus alternifolius)—A plant of the easiest culture, and a large specimen is as handsome as a palm for decoration. Also makes an extra fine pot plant, or can be used in baskets or vases with charming effect. Each, 25 cents.

Verbena (Mammoth Flowered) — Compact, showy flowering plants of considerable value for outlining beds, or as entire beds of solid or mixed colors. Beautiful, highly colored umbels borne very freely throughout the summer, assorted colors, purple, scarlet, pink and white. Each, 10 cents; per dozen, \$1.00.

Vinca (Variegated)—An elegant, low growing trailing vine; bright, glossy green leaves, widely bordered with creamy white; extra nice for pots, vases, baskets, window boxes and rockeries; good everywhere; always wanted. Each 25 cents; per dozen, \$2.50.

Vinca Rosea (Madagascar Periwinkle)—Ornamental free-blooming plants. Bloom first summer. Can be taken up in fall like Chrysanthemums, potted and kept in bloom through winter. Colors, rose, pure white, white with rose eye and mixed. Plants ready in April, per dozen, 15 cents; per hundred, \$1.00.

Violets

These popular plants are always in demand; we list two of the best kinds.

Governor Herrick—This violet is far ahead of any violet known. It is wonderfully free-growing, with stems from 10 to 12 inches long; large, green leaves of thick texture. The grand single flowers of a true violet color that does not fade, are of round symmetrical form, and of the richest and most delicate fragrance. Price, 10 cents each, \$1.00 per dozen.

Prince of Wales—Broad pansy-like flowers, beautiful violet purple, with lighter center. Vigorous growing with clean, healthy foliage and stiff long stems. One of the most beautiful and free flowing. Price, each, 5 cents; per dozen, 50 cents.

Wallflower—Should be better known. Their adaptability for pot culture and out-door bedding and the peculiar sweet fragrance of their flowers should win favor. The oriental coloring of the flowers in their rich reds and yellows is very effective. They are easily grown and last long as cut flowers. Each, 25 cents.

Wandering Jew—This fine trailing plant is very popular for baskets and window boxes. In three colors—Green, Red, Striped and White Variegated. Prices, each, 10 cents; 3 for 25 cents.

Zinnias (Colossal Flowered)—A magnificent annual, known by all lovers of flowers, and without any question the most satisfactory plant for bedding. The flowers are produced in great masses during the entire season and from the time the first flower opens till frost destroys them, they are never out of bloom. In select colors, white, golden yellow, sulphur yellow, canary yellow, rose pink, flesh, crimson, scarlet, purple or mixed. Fine plants, per dozen 25 cents.

Flowering Bulbs and Roots

Our selections of beautiful flowering bulbs and roots are the largest and finest we have ever offered. Many of the newest kinds have been added and we are sure that our customers will find fine variety for their plantings from our lists.



Yellow Humbert Canna

Cannas

Dry, divided roots, the best to transplant, 15 cents each; \$1.50 per dozen, except where noted.

This is one of the most thankful flowers. It produces its flowers from spring until frost kills the tops of the plant, and in such different and exquisite colors that nobody can help admiring them. The plant needs plenty of watering, and can only be had where there is a plentiful supply of same.

Alemania—The giant of all Cannas. Produces the largest flowers. The outer petals are scarlet, with a very broad, golden yellow border; inside of bloom is scarlet and dark red.

Austria—The gorgeous new orchid-flowered Canna; a hybrid with "Canna Flaccida" as one parent. Flowers of immense size, 5 to 6 inches across. Color golden yellow.

Brightness—An intense fiery cinnabar red, that compels attention, an ideal grower, producing a great abundance of flowers on upright stems, well above the foliage, a fine bedder.

City of Portland—A wonderful bright rosy pink, much deeper in color than Hungaria, a free flowering, vigorous growth.

David Harum—Foliage bronze, height 3 feet. growth sturdy, habit moderately clean, flowers similar to King Humbert, but color is reddish yellow orange.

Eureka—The best white canna for all purposes, large substantial flowers, very freely produced on strong vigorous plants.

Feuermeer—Dark red, medium height, good bloomer.

Fire Bird (Oiseau de Feu)—A medium height, green foliage canna, with very bright scarlet flowers.

Florence Vaughan—Of dwarf habit, green foliage; very pale yellow, crimson spotted flowers of large size. Exquisite.

Giant Banana Leaf—Differs in type of foliage which resembles that of the banana; fine, tall grower, excellent for landscape plantings. Small, scarlet flowers.

Humbert—Very interesting and unique. Part yellow and part red blooms and both green and bronze foliage is often found in the same plant.

King Humbert—Foliage bronze, height 3 feet. The finest bronze-leaved Canna. A gorgeous thing. An orange scarlet flower streaked with crimson and gold. True orchid type.

La France (New)—Fine rosy pink, color like that of the rose of the same name; very free bloomer.

Mrs. Alfred Conard—One of the very best cannas in commerce today. Large, exquisitely shaded salmon pink flowers in great abundance, upright stalks.

Orange Bedder—Superior to all preceding varieties of this color, bright orange with just enough scarlet suffusion to intensify the dazzling mass of color.

Red Plume—Medium height stocky grower, bearing beautiful, delicate crimson flowers on long stems excellent for cut flowers.

Rosea Gigantica—Large flowers, beautiful rose pink color.

Saladin (American Beauty Red)—A beautiful large red flowered canna of wonderful shade, with bronze foliage.

The President—Immense florets of bright red color insured its immediate popularity.

Wintzer's Colossal—The largest flowered canna to date; the color is a striking vivid scarlet that retains its brilliancy.

Yellow Plume—Same type as Red Plume but flowers lemon yellow on long stems; fine for cut flowers.

Caladiums

Caladium Esculentum (Elephant's Ear)—One of the most effective plants in cultivation for the flower border or for planting out upon the lawn. It will grow in any good garden soil, and is of the earliest culture, but to obtain the best results it should be planted in rich compost and plentifully supplied with water. Price, medium bulbs, 25 cents each; \$2.50 per dozen. Large, 50 cents each.

Fancy-Leaved Caladium—These come in all the colors of the rainbow, making fine plants for separate pots, window boxes or vases. As Fancy-Leaved Caladiums are very tender to cold, we advise you not to plant before March, but do suggest that you send your order early so as not to be disappointed. 35 cents each; \$4.00 per dozen.

Dahlias

The Most Outstanding New Varieties That We Highly Recommend

Another beautiful perennial of great magnificence, raising its brilliantly colored flowers on lofty stems. The following are a selection of the finest varieties in the various classes.

Bashful Giant—This is one of the largest Dahlias ever produced. It is also of great merit for its beautiful color, being an apricot with golden shadings. Flowers are produced on stout stems. Each, 50 cents.

Dr. Tevis—Beautiful shade of salmon-rose, suffused with old gold. Each, 40 cents.

Eventide—A magnificent flesh color shading to white, giving the appearance of white when in flower. Each, 35 cents.

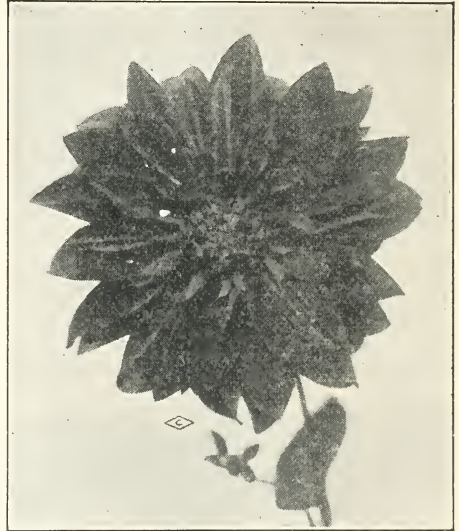
Frank Walker—One of the earliest to bloom. Produces its flowers continuously and abundantly. In color a very beautiful shade of lavender-pink. Each, 35 cents.

George Walters—A wonderful Cactus Dahlia, of gigantic size. Its flowers are perfectly formed, and produced on exceptionally long stems, well above the foliage. Color a beautiful shade of salmon-pink, artistically blending to old gold. Each, 50 cents.

Gloriana—Pure old gold intensified by a reddish glow in the center. Extreme size in flower and stem. Each, 40 cents.

Glory of New Haven—One of the finest Dahlias grown and the best on the orchid shades. An exquisite shade of pinkish mauve or silvery lilac. Its flowers are of very large size, produced with remarkable freedom on long stiff stems. Each, 75 cents.

Jane Selby—Exceptionally large flowers of a delicate mauve-pink. Great substance and good formation on strong stems well above the foliage. Each, 40 cents.



Dahlia

Judge Marean—A gigantic flower of perfect type. There is a riot of color, continually changing as the flower develops. A glowing salmon-pink, with a touch of watermelon-red exquisitely blending to iridescent orange, yellow and pure gold. It is a most profuse bloomer, with flowers on long stems, high above the foliage, seemingly well aware of their magnificence. Each, 75 cents.

Kalif—The largest scarlet Hybrid Cactus Dahlia. A truly majestic flower, of perfect form, well built and good substance. The plants are strong growers, producing their large flowers well above the foliage on strong stems. Each, 50 cents.

La Paloma—Orange chrome, yellow center, flaked white. A very fine large flowering variety. Each, 40 cents.

Maude Adams—The color is pure white, very effectively overlaid with clear delicate pink. This wonderful variety is unsurpassed in quality in every respect, in reality, a model of perfection.

Mrs. Ethel F. T. Smith—The flowers are creamy white shading to a lemon tint at the center. Immense flowers produced freely on long, stiff stems. Each, 40 cents.

Mrs. I. De Ver Warner—A blossom of soft orchid coloring. A refined, lovely, sweet color, deep mauve-pink of perfect form. Extremely strong grower, very abundant bloomer. It is without exception a leader among existing varieties. Each, 75 cents.

Mrs. Carl Salbach—A strong, vigorous grow-

er. This variety has been accorded many honors throughout the country. Color a lively shade of solferino-pink with white suffusion which intensifies its color. Each, 50 cents.

Pride of California—The finest of the dark, rich crimson Decorative Dahlias for all purposes. It produces its gigantic flowers on long, stiff stems, making it an ideal garden and cut flower variety. Each 40 cents.

Rosa Nell—A most beautiful Dahlia. Flowers are perfectly double until frost. Excellent shape, free bloomer, and long stems make it one of the finest Dahlias grown. Its color is rare among Dahlias, a deep bright rose. Each, 75 cents.

Souv. de Gustav Doazon—Decorative, color a pleasing shade of orange-red. It is a vigorous grower, foliage heavy and dark green. Each, 35 cents.

William H. Slocombe—The largest and best pale yellow decorative Dahlia. Recommended as the best for exhibition and garden purposes. A clear primrose or sulphur yellow. Each, 40 cents.

Gladiolus

Gladiolus blooms only once, but, although its beauty lasts only a short time, it is beloved by everybody who knows it. The flowers are borne on spikes 2 to 3 feet long and blooms in success for 8 to 12 days, the lower flowers blooming first. To have a continuance in bloom the bulbs ought to be planted at intervals of every two weeks from March 1 until the end of May. Our bulbs are large, well matured and taken only from the best varieties. Bulbs, extra large, of the finest varieties that money can buy. Mixed: No. 2, 35 cents per dozen; \$2.50 per 100. Large, No. 1, 50 cents per dozen; \$3.50 per 100.

Try a hundred of our extra large and extra fine bulbs, and have the grandest flowers you ever saw in colors.

We can furnish the following named varieties large bulbs, true to name. 5 cents each; 50 cents per dozen.



Gladiolus

Alice Tiplady—A beautiful gladiolus with rich orange flower and lighter shadings.

America—A fine pink variety, much used by florists, opens well.

Anna Eberius—This gladiolus has flowers of reddish purple with cardinal shade.

Velvet King—The best Scarlet Gladiolus.

Chicago White—The pure White Gladiolus, rare.

E. J. Shaylor—This handsome gladiolus is a ruffled rose pink.

Francis King—Beautiful vermilion-scarlet, very useful for cutting.

Halley—A fine variety with lovely salmon pink flowers.

Maiden's Blush—Very handsome, blush pink with lighter throat.

Pendleton—One of the finest varieties, beautiful rose-pink on a pure white ground and red blotch on lower petals.

Rose 1910—Early rose pink; very desirable cut flower.

Scarlano—Fine ruffled bright red, a very distinct and beautiful variety.

Hyacinths

These early Spring flowers not only make a brilliant show in the garden, but most of them may be grown for Winter flowers in the house, making it possible to enjoy their fragrant spikes of color for many months. Plant in Fall. For indoor blooming, pot up in Fall and keep in cool, dark place until roots are well grown before bringing to light and heat. Assorted colors. 15 cents each; \$1.50 per dozen.

Water Hyacinths (Pondeteria)—Very interesting and beautiful, floats on the surface of the water and produces fine spikes of rosy lilac orchid-like flowers. Each, 15 cents; per dozen, \$1.50.

Iris

German Iris (Flag)—Color ivory white and blue; very hardy. 15 cents each; \$1.50 per dozen; \$10.00 per 100.

Lilies

Amaryllis Johnsonii—Brilliant red flower, 5 inches in diameter, with a distinct white stripe in the center of each petal; very fragrant. 35 cents each. Large bulbs, 50 cents each.

Crinum Lily—Sometimes called the Southern Lily. The sword-shaped leaves form a rosette from which very large fragrant flowers appear in immense clusters. Fine for planting along fences and center of beds. Soft delicate pink with a light red stripe down through each petal. 25 cents each; \$2.50 per dozen.

Easter Lily—Sometimes called Creole Lily. This lily is the best for outdoor planting in the South. The flowers are of purest white. No flower garden is complete without this Queen of the Lily family. 20c each; 12 for \$2.25.

Godfrey Calla—A decided improvement over the old-fashioned Calla. A good grower with large flowers of purest white. More floriferous than the old variety and not such a tall grower. Prefers a rich, mucky soil. Potted plants in growth only, as we find the dry tubers very difficult to keep. 35 cents each; 10 for \$3.00.

Hippeastrum Puniceum (Novelty)—Most graceful, free-blooming Amaryllis for pot culture. Its color is of a rare brilliant orange red

with greenish-ivory throat. The lily type shaped flower is of good size and of striking appearance, making a noble effect, hence the fine cut-flower value with lasting quality. Culture is easy; can also be forced during November till March. Price: 35 cents each; 3 for \$1.00.

Regale Lily—A new variety from China. It is absolutely hardy and is excellent for forcing. It has been predicted that this will become the Easter Lily of the future; being so hardy may be grown at home. The flowers are white slightly suffused with pink, with a beautiful shade of canary yellow at the center. It is delightfully perfumed, reminding one of the Jasmine, lacking the heavy oppressive odor of most lilies. Flowering Bulbs, 50c; Large size, 75c.

White Spider Lily—This grand Lily forms large imposing clumps that are a mass of clustered heads of pure white fragrant flowers. 20c each; 6 for \$1.00.

Yellow Day Lily (Hermerocallis Formosissima)—One of the hardiest of all lilies; single. Once planted you have it always. Rich gold color, striped inside. Price 10 cents each; \$1.00 per dozen.

Water Lilies

Pink Opal—A new variety which has been cultivated for two or three seasons, yet has proved its value. The color is a deep pink. The buds are almost round, opening into a flower with comparatively short petals, but because of its substance it has a distinct value for cutting. Each, \$1.50.

Rose Arey—A wonderful variety of the Odorata type; very free flowering, and strong growing. The flowers are very large (last year we had flowers 8 inches across), and are sweetly scented. The color is clear cerise-pink and does not lighten toward the center of the flower. Awarded a Silver Medal by the New York Horticultural Society. Each, \$2.00.

Rose Magnolia—The blooms are borne well out of the water, which makes them desirable for cutting. They are usually 4 to 5 inches across and of a delightful shade of pink. Strong, vigorous grower. Each, \$1.25.

Hopatcong—Well known in southeastern United States, where it grows naturally in ponds. Flowers are pure white, quite large in size, generally 5 to 7 inches across. Produces blooms very freely. Each, 75 cents.

Marliacea Alba—A vigorous variety, flowers large, of sparkling whiteness; stamens light yellow, sepals flushed pink; fragrant and produced freely and continuously through the season. Desirable and handsome. Each, \$1.25.

Marliacea Chromatella—Medium sized flowers, usually 4 to 6 inches across. Color of the bloom is bright yellow, with stamens somewhat deeper in color. The leaves are green, mottled with brown. Each, \$1.00.

Odorata—The American Water-Lily of the northeastern United States. Flowers white. Splendidly adapted to quantity planting in natural pools. Each, 75 cents.

Narcissus

Dainty white flowers appearing very early in Spring and giving a long season of bloom. They are among the most useful of the bulbs and do well in bed or border; are particularly fine for naturalizing and increase in size and beauty from year to year. Assorted varieties. 75 cents per dozen; \$5.00 per 100.

Crocus—These hardy bulbs bloom for several

years in succession, appearing early in the spring. Mixed colors, white, yellow, blue and striped. 5 cents each; 50 cents per dozen.

Yellow Daffodils—Golden yellow and beautiful. Hardy and thrive in almost any position, indoors or out. 15 cents each; \$1.50 per dozen.



Peonies

Peony—We have bulbs of the very best varieties, double, in different colors. No. 1 bulbs, 50 cents each; \$5.00 per dozen.



Tuberoses

Mexican Tuberoses—Unlike any other variety it has stiff, tall stems; flowers pure white, single, delightfully fragrant, blooms continuously. Is valuable either for pots or open garden. Large bulbs, 5 cents each; 35 cents per dozen; per 100, \$1.75.

Darwin Tulips

These beautiful Tulips are among the most beautiful of Spring-flowering bulbs and are classed as the aristocrats of the Tulip family. Beautiful clear colors and heavy velvety petals characterize their showy bloom, and no Spring garden is complete without a bed of them. Plant in Fall only. Assorted Bulbs. Many beautiful colors. 75 cents per dozen; \$5.00 per 100.



Vinca Rosea—Always in Bloom; Even in the Hot Summer Time

OUR FLOWER AND GARDEN SEEDS

In selecting the strains of seeds for our catalog we have striven to list those varieties that are best suited to the South, and which will give best results in the hands of our customers. These have been tried in our own plantings for many years and we can recommend them to all who desire reliable seeds.

Flower Seeds

Ageratum—One of the best summer blooming plants; light blue, purple center. Per pkt., 10 cents.

Alyssum, Sweet—Excellent for borders and cut flowers; fragrant, white. Per pkt., 10 cents.

Amaranthus (Joseph's Coat)—Grown for its bright colored foliage. Per pkt., 10 cents.

Antigonon (Queen's Wreath)—A climber with beautiful rose colored flowers in racemes. Blooms all summer and after frost dies down to come up again next year from its tubers. Per pkt., 10 cents; per ounce, 15 cents; per pound, \$2.00.

Antirrhinum (Snapdragon)—*Najus grandiflora*. Per pkt., 10 cents.

Aster Seeds—We have grown for the last two years beautiful, double, large branching Asters and having received so many inquiries for good seed, we are glad to offer this year seed of the best mixed varieties at 15 cents and 25 cents per pkt.

Bachelor Button (Corn Flower)—Double blue, double and single mixed. Per pkt., 10 cents.

Balsams—Double, mixed colors. Per pkt., 10 cents.

Balsams—Improved rose, extra double. Per pkt., 10 cents. (Home grown).

Calendula—Fine for beds or mixed borders, with bright yellow double flowers all summer. Also fine for pots, and blooms during winter and spring. Per pkt., 10 cents.

California Poppy (Eschscholtzia Californica)—Very showy yellow blossoms. Per pkt., 10 cents.

Candytuft—Showy branching plants bearing a profusion of beautiful clusters of flowers in pure white and variety of colors. Per pkt., 10 cents.

Canna Seed—Upright growing, wide-leaved plants with terminal spikes of bloom in a great variety of colors. Per pkt., 10 cents.

Canterbury Bells—A hardy biennial, herbaceous plant growing about three feet in height; mixed colors. Per pkt., 10 cents.

Cardinal Climber—A wonderful brilliant annual climber, with deep green foliage and bright red flowers in clusters. Per pkt., 10 cents.

Carnation—Favorites for their sweet fragrance. In mixed colors. Per pkt., 10 cents.

Castor Bean—Large leaved, easily grown, and used for a variety of purposes in planting. Mixed, per pkt., 10 cents.

Cockscomb (Dwarf)—A low growing variety with immense combs of rich crimson. Per pkt., 10 cents.

Cockscomb (Feathered or Wool-Flower)—This sort bears a distinct and very beautiful heads of feathery flower heads. Per pkt., 10 cents.

Columbine—Hardy perennial. Embrace a variety of colors. Per pkt., 10 cents.

Coreopsis Lanceolata—Large single yellow flowers, graceful and fine for cutting. Per pkt., 10 cents.

Corn Flower (Centuarea Imperialis)—Purple, good summer bloomers. Per pkt., 10 cents.

Cosmos Klondyke—A gorgeous orange yellow flower with very handsome foliage; more coarsely lacinated than others. Per pkt., 10 cents.

Cosmos (Giant Flowered)—Easily grown and beautiful with its variety of color of blossoms. Mixed colors, per pkt., 10 cents.

Cypress Vine—A most beautiful climber with delicate dark green, feathery foliage and an abundance of bright, star-shaped scarlet and white blossoms. Per pkt., 10 cents.

Dahlia—Hardy perennial and easily grown. In great variety of colors. Re-appear from their tubers the following year. Per pkt., 15 cents.

Daisy, Double—Charming for edging and borders, in a number of colors and variegated. Per pkt., 10 cents.

Delphinium—Double, in white, pink and mixed. No other spring flower will give so much joy as a bed of double Larkspur. Fine for city parks. Per pkt., 10 cents.

Dianthus Caryophyllus Barbatus (Sweet William)—Per pkt., 10 cents.

Dianthus Chinensis (Chinese Pinks)—Very best, mixed. Per pkt., 10 cents.

Forget-Me-Not—These little blue flowering plants are always popular. Per pkt., 10 cents.

Four-o'Clocks—One of the old stand-by garden plants, in red, white and yellow colors mixed. Per pkt., 10 cents.

Gillardia—Very showy with its flowers of highly bright colorings. Per pkt., 10 cents.

Globe Amaranth—Very hardy straw like flower, easy to grow, fine for cut flowers in the hot summer months. Per pkt., 10 cents.

Gourds (Ornamental)—These are of a variety of forms, shapes and colorings. Odd. Per pkt., 10 cents.

Gypsophilla (Elegans Grandiflora Alba)—Large flowering pure white. Per pkt., 10 cents.

Hollyhock—Flowers single and semi-double, great variety of colorings. Annual. Per pkt., 10 cents.

Hyacinth Bean—A handsome vine with its magnificent racemes of beautiful blossoms. Per pkt., 15 cents.

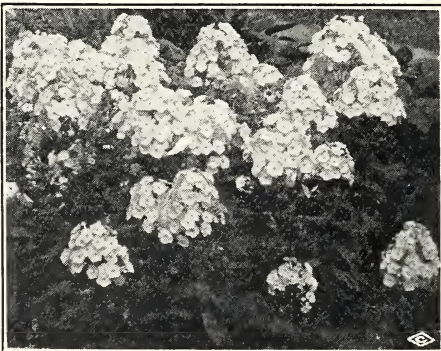
Heavenly Blue (Morning Glory)—Seed, per pkt., 10 cents.

Joseph's Coat—Attractive for its highly bright colored foliage. Per pkt., 10 cents.

Kochia (Burning Bush)—This is also known as "Summer Cypress" and is much planted for its round form and slender foliage, which turns reddish in the fall. Per pkt., 10 cents.

Lantana—Flowers are borne in verberna shaped heads of shades of pink, purple, orange and white. Foliage dark green. Per pkt., 10 cents.

Lobelia—Dwarf plants, excellent for borders of beds. Compact growth, bearing a profusion of delicate flowers in summer and fall. Per pkt., 10 cents.



Phlox



Poppy

Larkspur—Annual mixture of a large variety of colors for general garden planting. Per pkt., 10 cents.

Larkspur—Double Stock Flowered. These varieties of special selection are extremely double and the graceful spikes of bloom are much valued for vases and cut flowers. Double stock flowered, Mixed, Pkt., 10c; Dark Blue, Pkt., 10c; Pink, Pkt., 10c; White, Pkt., 10c; Scarlet Rose, Pkt., 10c.

Marigold—French, dwarf. Form dense bushes and bloom through the entire summer. Per pkt., 10 cents.

Mignonette—Sweet and Mached. Very fragrant, large flowering. Per pkt., 10 cents.

Moon Flower—A rapidly growing vine with pure white flowers. Annual. Per pkt., 10 cents.

Morning Glory—Mixed colors. Always popular where vines are used. Per pkt., 10 cents.

Morning Glory (Heavenly Blue)—This is the most beautiful of the morning glories, with its large blue flowers in profusion. Per pkt., 10 cents.

Nasturtium—Tender annual; brilliant blossoms cover the plant almost from top to bottom. Per pkt., 10 cents.

Oxalis—Attractive with richly colored flowers; fine for rock and rustic baskets. Semi-hardy perennial. Per pkt., 10 cents.

Pansy—The best mixture of giant-flowering kinds, all colors. Per pkt., 10 cents. Large pkt., 20 cents.

Petunia—Great variety of colors; fine for beds, baskets and window boxes, blooming all summer. Per pkt., 10 cents.

Phlox Drummondii—One of the most popular low growing annuals; with great variety of colors in soft-petaled flowers. Per pkt., 10 cents.

Pinks (Dianthus)—A brilliant show of flowers all summer from July till after frost. Per pkt., 10 cents.

Poppy (Large Double Red)—This old member of the flower gardens is always attractive on account of its color and size of flower. Per pkt., 10 cents.

Poppy (Shirley)—A sort that appears with a great variety of delicate colors, especially in the lighter shades. Per pkt., 10 cents.

Poppy (Single Red)—One of the old stand-by flower garden plants that is attractive with its shower of crimson bloom. Per pkt., 10 cents.

Portulaca (Grandiflora)—Also called "Moss Rose." Very pretty in beds of many hued and brilliant colored flowers. Per pkt., 10 cents.

Salvia Splendens—A most handsome summer and fall plant for garden decoration with its bright red spikes of blossoms. Per pkt., 10 cents.

Scabiosa (Mourning Bride)—Sweet Scabious. Very desirable for summer cut flowers. Useful in making up. Very hardy and can stand our long hot summer well. Per pkt., all colors, mixed, 10 cents.

Snapdragon (Antirrhinum)—Most desirable for its variety of color and succession of bloom. Very fine sorts. Crimson, pkt., 10c; Fiery Red, pkt., 10c; Pink, pkt., 10c; Yellow, pkt., 10c; Mixed, pkt., 10c.

Stocks (Ten Weeks)—Another of the old garden varieties that are still popular in the newer double flowering. Per pkt., 10 cents.

Sunflower (Helianthus)—Double Chrysanthemum flowered. Rich golden yellow flowers, perfectly double, resembling a Chrysanthemum. Per pkt., seed, 10 cents.

Sweet Peas—Grandiflora and Spencer Sweet Peas of the very best varieties. Per pkt., 15 cents; per pound, \$5.00.

Sweet Williams—Beautiful improved varieties. Rich in coloring and markings, trusses of flowers remaining in bloom a long time. Per pkt., 10c.

Texas Blue Bonnet (The State Flower)—A beautiful low growing plant with its upright spikes of deep blue flowers that has become very popular for planting. Seeds, per pkt., 10 cents; per pound, \$2.00.



Sweet Peas

Verbena—Mammoth, mixed colors. Always beautiful in masses with a profusion of bloom throughout the season. Per pkt., 10 cents.

Vinca Rosea (Periwinkle)—Showy and decorative in their profuse bloom of shades of color. Can furnish fine mixed, pure white, white with pink center, and pink. Per pkt., 10 cents.

Zinnias, Dwarf—Fine, mixed varieties. Per pkt., 10 cents.

Zinnias—Large colossal flowers. No other flower will stand the summer heat as well as the large Zinnias. They should be planted every month during summer to have flowers until frost. Our Mammoth Colossal Zinnias were admired by all visitors. We have them in a fine mixture of all the best colors. 10 cents per package.

In named varieties, separate colors as follows:

White, Golden Yellow, Sulphur Yellow, Flesh Color, Crimson, Scarlet and Purple. 15 cents per package.

Zinnias, Dahlia Flowered—The plants of this new race are very sturdy and produce many flowers with stout stems. In formation the broad petals are closely imbricated, sometimes almost seeming to be piled one upon the other. The flowers often measure 6 to 8 inches in diameter. Mixed, of the six best named varieties. 25c per pkt.

Lilliput Double 12-inch Zinnias—The plants form handsome little bushes and fairly bristle with tiny, short-stemmed, very double flowers hardly exceeding a daisy flower in size. They are very pretty plants; bloom all summer until late in the fall. Canary-yellow, scarlet, salmon and white. Mixed, pkt., 10 cents.



Sweet William

VEGETABLE SEEDS

The seeds listed here are of kinds that we have tried out in our own plantings for many years, and should prove equally satisfactory in the hands of our customers.



Bush Lima Bean

Beans, Bush

Kidney Wax—Extra early maturing; beans produced in large quantity. Per pkt., 10 cents; large 20 cents.

Stringless Green Pod—Early, vigorous and produces an abundance of brittle stringless beans. Per pkt., 10 cents; large, 20 cents.

Bush Lima—Earlier than the pole lima. Very productive of large crops of beans. Per pkt., 10 cents; large 20 cents.

Beans, Pole

Kentucky Wonder—This variety is well known; vigorous and bears an abundance of long, nearly round beans. Per pkt., 10 cents; large 20 cents.

Lima or Butter—An old favorite in the vegetable gardens, yielding a supply of flat beans through the season. Per pkt., 10 cents.

Beets, Red

Crosby's Egyptian—Globe shaped and very early; of fine quality and very popular. Per pkt., 10 cents.

Early Blood—Dark red and an old standard among the early varieties. Per pkt., 10 cents.

Cabbage

Early Jersey Wakefield—This pointed head cabbage is the earliest maturing, and compact, solid heads. Hardy and withstands unfavorable conditions. Per pkt., 10 cents.

Early Flat Dutch—This sort is too well known to need any description. One of the old reliable varieties. Per pkt., 10 cents.

Chard Swiss

Sea Kale or Spinach Beet—Plant this for greens for your poultry by cutting the leaves. May also be used for table greens and as a salad. Per pkt., 10 cents.

Carrots

Danvers Half Long—The most productive variety, adapted to all classes of soil. Sweet and tender, deep orange. Per pkt., 10 cents.

Chantenay—A medium early heavy cropper; one of the best, very crisp, fine table quality. Per pkt., 10 cents.

Cauliflower

Early Snowball—Dwarf, compact, especially adapted to this section and grown by most market gardeners. Per pkt., 10 cents.

Corn, Sweet

Country Gentleman—Finest quality, making two to three ears to the stalk. No garden should be without this sweet corn. Per pkt., 10 cents.

Golden Bantam—This is the sweetest and richest flavored corn, hardy and early maturing and very productive. Per pkt., 10 cents.

Cucumbers

Early White Spine—One of the best sorts, vigorous grower and fruiting early. Flesh tender and of excellent flavor. Much used in planting for home garden and market. Per pkt., 10 cents.

Cucumber, Locke's New Ideal—The best cucumber ever grown in Texas. Improved by us and acclimated to our conditions. Very vigorous and healthy, and grows throughout the summer. We raised the finest green cucumbers in the middle of July and August. Flesh white and crisp, of excellent flavor. Early, and



Cauliflower

immensely productive. Color is dark green with pale green stripes. Without doubt the best cucumber for the market gardener. Splendid for fall planting. Package, 10 cents; 1 ounce, 20 cents; $\frac{1}{4}$ pound, 75 cents.

Early Short Green—Extensively used for pickling. Vines very vigorous and productive; fruits small, flesh crisp and tender. Per pkt., 10 cents.

Kohlrabi

Early Vienna—Grown for the bulb shaped stalks and used like turnips when young and tender, in summer and fall. Per pkt., 10 cents.

Lettuce

Big Boston—Crisp, tender quality, large and vigorous, solid heads and stands long before shooting to seed. Fine for open ground in spring and fall, and does well in cold weather. Per pkt., 10 cents.

Prizehead—Extra early, loose head, tender and curly. Easily grown and excellent for the home garden. Per pkt., 10 cents.

Melon Seeds

Alabama Sweet—The best watermelon for sandy soil. All our melon seed is taken from selected melons. Per ounce, 10 cents; per pound, \$1.00.

Tom Watson—Best watermelon introduced to date. Perfect in shape; no strings; delicious in taste; splendid shipper. Per pkt., 10 cents; per pound, \$1.00.

Rocky Ford Cantaloupe—The best cantaloupe for the Southwest. Too well known to need any further description, home grown seed. Per ounce, 10 cents; per pound, \$1.00.



Rocky Ford Cantaloupe

Mustard

Southern Giant Curled—Leaves large, crimped, vigorous; fine for salad and cooked like spinach. Per pkt., 10 cents.

Okra or Gumbo

White Velvet—A fine variety, extra early maturing, very productive; yielding a continuous supply of tender pods throughout the season. Per pkt., 10 cents.

Dwarf Green Prolific—This low growing variety is very early and extremely prolific; pods short, deep green and tender. Per pkt., 10 cents.

Onion Seed

Crystal White Wax—Large, flat, mature extremely early. Largely grown by shippers and truckers of Southwest Texas. Per pkt., 10 cents; ounce, 40 cents; $\frac{1}{4}$ pound, \$1.25.

White Bermuda—This is the most profitable to grow and widely known; light yellow in color; large size and mild flavor. Per pkt., 10 cents; ounce, 40 cents; $\frac{1}{4}$ pound, \$1.25.

Garden Peas

Alaska—Dwarf vines, suited for extra early planting; peas smooth, very popular; earliest of all. Per pkt., 10 cents; large, 20 cents

American Wonder—Dwarf size variety wrinkled pea, exceedingly sweet and tender; very early, ripening in about 50 days from germination. Per pkt., 10 cents; large 20 cents.



Peppers

Large Bell or Bull Nose—Fruit roundish, blocky, mild, thick and firm; green when young and rich blood-red when ripe. Per pkt., 10 cents.

Red Chili—A very hot pepper, pods about 2 inches long. Per pkt., 10 cents.

Pumpkins

Large Yellow—Extensively planted sort, varying in size and shape from round to flattened; deep yellow, fine grained and highly flavored flesh. Per pkt., 10 cents.

Green Striped Cushaw—Usually crooknecked, striped green and white; flesh solid, fine grained and sweet. A favorite of the cushaw type. Per pkt., 10 cents.

Radishes

Early Scarlet Globe—Round or slightly oval, deep scarlet with white flesh and tender; popular. Per pkt., 10 cents.

Early Scarlet Turnip White Tipped—A great favorite and attractive in color; fine quality. Per pkt., 10 cents.

Early Long Scarlet, Short Top—A most excellent sort with roots carmine-red, smooth and uniform; tender until matured. Per pkt., 10 cents.



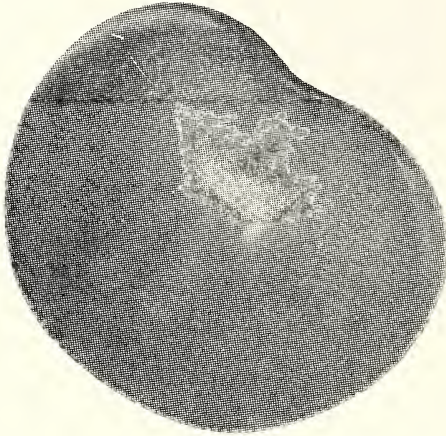
Spinach

Bloomsdale Savoy—Large, round and thick, deep green leaves; one of the earliest varieties and most generally used in South for shipping. Per pkt., 10 cents.

Squash

Early White Bush Scallop—Rather dwarf bush, earliest to mature, very productive; white flat scalloped squash, creamy white. Per pkt., 10 cents.

Yellow Summer Crook Neck—Very early productive summer squash of excellent flavor. Very desirable sort. Per pkt., 10 cents.



Tomato Seed

Comal—At last Mr. Otto Locke, Sr., has originated a perfect tomato, large, round, smooth; pink, prolific, good foliage and hardy. It possesses all the good qualities of a fine tomato. It takes years of work to produce new varieties of fruit, and we are proud that Mr. Otto Locke, Sr., at his age has given another fine tomato to the world. Fresh seed direct from the originator, 25 cents per pkt.

Mr. Otto Locke, Sr., personally guarantees everyone entire satisfaction who plants this new improved variety. It does not crack, is easy to pick, perfectly round and smooth and has no equal. Mr. Locke would like a letter personally addressed to him after planting this new variety and tell him just what they think about the new tomato and give results. Comal is a beautiful clear stream, so is our new tomato—the very best.

Locke's New Triumph Pink Tomato—This tomato is an improved McGee tomato, having been selected and grown from the best pink tomato which was selected from a lot of Prof. N. C. McGee's variety which bears his name. As Prof. McGee's tomatoes were of different shades of pink and red, we have so improved this tomato that the plants grown from our seed will all produce pink tomatoes of large size. The tomato is round and smooth, and immensely productive, of large size. This variety is unexcelled for black land. Packages, 15 cents each; per ounce, \$1.00; per pound, \$15.00.

Locke's Giant—Large, early tomato. Immensely productive, nearly all meat. Vigorous

grower, solid fruit—weigh one and one-half pounds each. Clusters of four tomatoes is not unusual. Package seed 15c; per oz., \$1.00; per lb., \$15.00.

Tomato, President Harding—This new tomato originated on our grounds; outyields and outsells any tomato on the market. It produces at every joint, large clusters of large, smooth, firm, beautifully shaped fruits, uniform in color shape and size. At times the vines are so full that they can hardly hold all the fruit that they produce. They ripen evenly and color up well; keep vigorous and green until frost. The skin of this tomato is tough and meat tender. Is a good shipper and a good cropper. Another point of this new tomato is that it is blight resistant. We can furnish on application, testimonials of some of our customers who planted a few plants last spring to test this new tomato at Lockhart, San Marcos, San Antonio, Palestine, etc., and all say it is the best tomato they ever planted. Price: Per package seed, 25 cents; oz., \$2.00; per pound, \$25.00.

Turnips

Early Purple Top, Strap Leaved—A sort that is standard for this part of the country. Leaves few, turnip flat, white flesh, fine grained and tender. Per pkt., 10 cents; large, 20 cents.

Purple Top White Globe—This excellent table variety is globe shaped and large. Flesh white, fine grained and tender; keeps well. Per pkt., 10 cents; large, 20 cents.

Ruta Baga or Swede—Improved purple top yellow sort, hardy and productive; extensively grown for winter use. Yellow flesh, solid and crisp. Per pkt., 10 cents; large, 20 cents.



Turnip

FIELD SEEDS

The following sorts have been giving the best of results in our own as well as our customer's fields, and we can recommend them highly.

Grasses

Bermuda—This is the leading lawn seed in the South; also fine for grazing. Per pound, 70 cents; 10 pounds, \$6.50.

Sudan—A wonderful hay and forage crop; stands dry weather and not subject to blight under heavy rains. Per pound, 15 cents; 10 pounds, \$1.20.

Seed Oats

Red Rust Resistant—This is select stock seed oats grown in this section and therefore adapted to our conditions. Per bushel, \$1.00; 10 bushels, \$9.00.

Sorghum Seed

Red Top Cane—Most universally planted in the Southwest; makes an excellent fodder crop. Per pound, 15 cents, 2 pounds, 25 cents, postpaid.

Sunflower

Mammoth—Highly valued by farmers and poultry raisers for its great yield of seed on immense heads; one of the best egg producers, and easily grown. Per pound, 50 cents.

Seed Potatoes

Irish Cobbler—Most popular early variety, handsome creamy white; vigorous grower, ripens uniformly and a good keeper. Per pound, 10 cents; 10 pounds, 85 cents, postpaid. Not prepaid quantities, write for prices.



FLORAL DEPARTMENT

MEMBERS OF THE F. T. D.

Through our affiliation with the F. T. D. we can telegraph your order of flowers for delivery anywhere in the United States

**We specialize in Funeral Wreaths
Sprays and other designs
appropriate for any
occasion**

“We Grow Our Own Flowers”



Seed Corn

Surecropper—White, early, quick maturing, sure enough drought resisting and a crib filler even in hard years. Is not only a magnificent corn for early spring planting, but a better corn for summer planting was never known. Per pk., 75c; ½ bu., \$1.50; bushel, \$2.75.

Yellow Dent—Ferguson's famous variety. It is surely the best yielding big grained yellow corn that the southwest has ever known. Per pk., 75c; ½ bu., \$1.50; bushel, \$2.75.

Pop Corn—A good variety, prolific and excellent for parching. Per pkt., 10 cents; pound, 25 cents.

KILL MOST INSECTS WITHOUT ARSENIC

A ready-to-use dust, which gives a fine cloud of protection against most chewing insects, controls most insects for which arsenic dusts are commonly used, plus many more such as CUCUMBER BEETLES, MEXICAN BEAN BEETLE, BLISTER BEETLE, many other beetles, worms, leaf-eating caterpillars on vegetables, fruits, flowers. Safe to use as it contains no arsenic and any possible residue is completely removed by plain water.

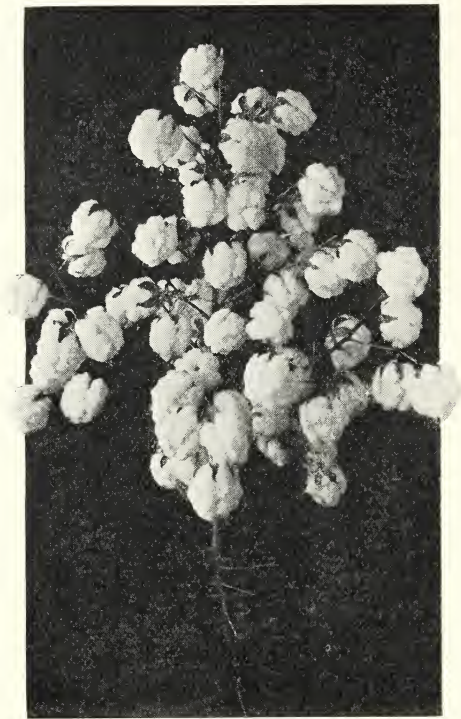
Kalite and Kaloil are available.

		Prices	
		Kalite	Kaloil
1 lb.	\$ 0.35	1½ oz. \$ 0.35
5 lb.50	6 oz. 1.00
25 lb.	5.00	32 oz. 3.85
100 lb.	15.00	1 gal. 13.00

USE KALOIL for sucking insects, such as aphid (plant lice) mites, leaf hoppers, squash bug, etc. A ready-to-use pyrethrum spray, easily mixed with water without using soap, heat or special mixing. Kills most insects, non-poisonous, economical for field spray as well as for all vegetables, fruits, flowers.

BAGLEY BETTER COTTON

State Certified



A Typical Stalk of Bagley Better Cotton,
Mebane Strain.

We have decided, after careful investigation, to offer our customers a limited amount of pure, pedigreed Bagley Better Cotton Seed, bred and grown by W. W. Bagley & Sons, Martindale, Texas. These seeds are State Certified, the fields being inspected by the State Plant Board of Texas, and are ginned on an exclusive battery of gins.

This firm is using the line-breeding method, and has accomplished wonderful results, namely: Heavy yield, large five-lock bolls, hard, wiry, uniform, 1 to 1 $\frac{1}{16}$ " staple, early maturity, lint turnout of 40 to 42%. Due to the drooping tendency of the bolls, this cotton is storm-proof, and decidedly easy to pick.

Varietal purity over 99%. The breeder's guarantee of satisfaction goes with every bag.

For larger lots, prices on request. Freight prepaid on all orders in Texas.



PRICE


3 to 50 Bushels

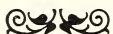
\$1.50

Per Bushel



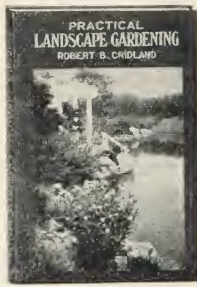
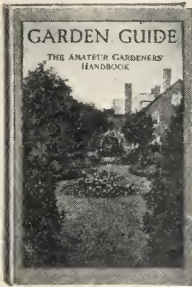
LARGE BREEDING BLOCKS SMALL CERTIFIED ACREAGE

Insures the purchaser
of the Highest Quality
of seed obtainable. 



BOOKS HELPFUL TO FLORISTS

On account of the constantly growing demand for information we are listing a number of books that will be helpful to growers. If any other books are desired we will be glad to get them for our customers if they will let us know the title or the subject.



With orders for books we will give gratis a small 30 page booklet entitled, "Instruction Book for Transplanting and Managing Fruit and Ornamental Trees, Shrubs, Vines, and Flowers." Add 10 cents for postage; we will return the difference, if less.

My Lady's House Plants, By F. E. Palmer—An instructive book for women on the successful culture of plants in the home. Price, \$1.00.

Garden Guide—The Amateur's Handbook of Gardening. Every step from spading up the garden, to the preservation of the crops in winter; with plans for laying out vegetable, flower and fruit gardens. 360 pages, over 275 illustrations. Price, \$1.10.

Little Book of Annuals, by Alfred Carl Hottes—A reliable guide for the increasing throng of amateurs who grow flowers. Price, \$1.25.

Little Book of Perennials, by Alfred Carl Hottes—Companion to above. Devoted to the general principles of growing, using, selecting and propagating perennials, with a list best suited for different locations and purposes, and tabular cultural index. Liberally illustrated, Price, \$1.25.

Plant Culture, by George W. Oliver—A working handbook of everyday practice for the florist and gardener. 444 pages. Price, \$3.50.

The Rose, by H. B. Ellwanger—Revised Edition. A treatise on the cultivation, history and characteristics of the various groups of roses, with names and descriptions of varieties, directions for planting, pruning, propagation and treating diseases and insect pests, and alphabetical list of 1086 varieties. Cloth, 310 pages. Price, \$2.25.

Book of Fern Culture, By Alfred Hemsley—Brief instructions regarding the requirements of the most popular ferns, with aim of assisting those who have had little experience. Illustrated, 112 pages. Price, \$1.90.

Cactus Culture, by William Watson—Especially written for the use of amateurs in growing various varieties of cacti. Profusely illustrated. Price, \$1.00.

Principles and Practices of Pruning, by M. G. Kains—To meet the needs of amateur and horticultural students; profusely illustrated to show the right and wrong practices. 400 pages. Price, \$4.00.

Practical Landscape Gardening, by Robt. B. Cridland—For the man of average means; treats in a simple, logical way all the elements for beautifying properties. 91 photographs, 67 sketches, 33 plans, 19 with planting keys. Price, \$2.50.

SPECIAL OFFER! WINDOW BOX COLLECTION

We have assisted many of our customers in the selection of plants for their window boxes, porch boxes and hanging baskets, and our suggestions have been readily accepted. In order that others may take advantage of these suggestions we are offering the following collections of plants that we know will please:

Collection No. 1—Sixteen plants, all different, our selection from the following list: *Salvia*, *Wandering Jew*, *Ostrich Fern*, *Boston Fern*, *Vinca*, *Ivy Geranium*, *Coleus*, *Petunia*, *Begonia*, *Verbena*, *Geranium*, *Canna*, *Asparagus*, *Sprengeri*, *Fancy Leafed Caladium*. Price \$1.50.

Collection No. 2—Twelve plants, our selection from the above list. Price \$1.00.

Collection No. 3—Eight plants, our selection from the above list. Price 75 cents.

Collection No. 4—Five plants, our selection from the above list. Price 50 cents.

INSECTICIDES AND FERTILIZERS

Volck—An Ortho spray for garden and nursery pests. One of the most powerful insecticides for red spider, mites, white flies, scales, mealy bugs, caterpillars, aphids and thrips. Easy to use and effective. Price: Pint, 75 cents; quart, \$1.25; gallon, \$3.00. Postage extra.

Vitamite—The Bacteria. The best known plant food. Small cartons, 75 cents, large cartons, \$1.25.

A Scientifically Prepared Special Nitrogenous Bacterial Culture for Promoting all Plant Growth.

VITAMITE is a special bacteria—differing from all others. It not only benefits legumes but has the same effect on **ALL PLANT LIFE**.

VITAMITE restores fertility to worn out soil—cuts fertilizer bill—gives larger and healthier crops—makes them grow. Per pkg., 75 cents.



INSECTICIDES AND FUNGICIDES

Slug Shot—Used from Ocean to Ocean for 35 Years—Sold by Seed Dealers of America—Saves Currants, Potatoes, Cabbage, Melons, Flowers, Trees and Shrubs from Insects. Put up in popular packages at popular prices. Write for pamphlet on Bugs and Blights, etc. 5 lb. pkt., 75c; 1 lb., pkt., 25c, postpaid, 30c.

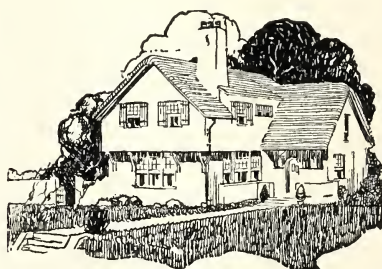
ALL PLANT LIFE MUST BE FED

Plants, like human beings, must receive the right nourishment. Vigoro is specially prepared to supply lawns, gardens, flowers, shrubbery and trees with all of the plant food elements needed for rapid, sturdy and luxuriant growth. It can be sown by hand like grass seed. Start right this year by using hardy, disease-free seeds and Vigoro. Your success in gardening will be assured.



THE BEAUTIFUL CALDWELL COUNTY COURTHOUSE, LOCKHART, TEXAS. All plants from the Locke Nursery and Floral Co. The grounds are in charge of Major Lee Beaty, eighty-five years of age. A confederate veteran, and is the oldest nurseryman in Texas.

Write for Free Pamphlet. Price: 10 pounds, 75c; 25 pounds, \$1.75; 50 pounds, \$3.00; 100 pounds, \$5.00, F. O. B., New Braunfels, Texas.



Better Lawns and Flowers

"I have tried other plant foods in making new lawns and rehabilitating old lawns," writes Mr. Floyd R. Murray, of Hammond, Indiana.

"No other plant food has given the results shown by Vigoro.

"Grass was up within nine days after planting!"

You can have equal success with Vigoro for lawns, flowers, gardens, shrubbery and trees.

Clean, odorless, easy to apply, it is not to be compared with any other plant food you have ever known. Its cost is remarkably low!

VIGORO

Specially prepared plant food

A Swift & Company product

TABLE OF CONTENTS

	Page		Page		Page
A		D		I	
Abelia Grandiflora.....	26	Crepe Myrtle.....	31	Impatiens Sultana.....	38
Acalapha.....	36	Crinkleyleaf Privet.....	26	Indivisa.....	38
Agave, Americana.....	34	Cydonia Japonica.....	31	Insecticides.....	54
Agave, variegated.....	34	Cypress, Arizona.....	30	Iris, German.....	43
Ageratum, Blue Star.....	36	Cypress, Bhutan.....	30	Ivy, American.....	35
Ailanthus (Tree of Heaven).....	32	Cypress, Italian.....	30	Ivy, Boston.....	35
Althernanthera.....	36	Cypress, Italian Spreading.....	30	Ivy, Devil's.....	37
Almonds.....	14	E		Ivy, Hardy English.....	35
Almond, Flowering.....	31	Dahlias.....	42	Italian Cypress.....	30
Altheas.....	31	Daisies.....	37	Italian Cypress, Spreading.....	30
American Elder.....	31	Daily, Dwarf (Biota) Arbor Vitae.....	29	J	
American Elm.....	32	Dasylium.....	34	Japanese Yew.....	27
American Ivy.....	35	Date Palms.....	34	Japan Ligustrum.....	27
Amoor River Privet.....	36	Delphinium (Larkspur).....	39	Japan Ligustrum (Tree).....	33
Antigonoum Leptopus.....	35	Deodor Cedar.....	30	Japan Quince.....	31
Apples.....	5	Deutzias.....	37	Japan Varnish Tree.....	33
Apricots.....	6	Devil's Ivy.....	31	Jasmin, Cape.....	33
Arbor Vitae.....	29	Dewberries.....	12	Jasmin, Confederate.....	38
Arizona Cypress.....	30	Dianthus (Pinks).....	38	Jasmin, Grand Duke.....	38
Artillery Plant.....	36	Dranthius.....	38	Jasmin, Primrose.....	38
Ash, American.....	32	Dusty Miller.....	37	Jasmin, Yellow.....	26
Ash, Arizona.....	32	F		Jasmin, Yellow.....	26
Asparagus.....	36	Elder, American.....	31	Judas Tree.....	33
Asters.....	31	Elder, Golden.....	31	Junipers.....	30
Asters, Branching.....	36	Elaegnus (Russian Olive).....	26	K	
Azraelas.....	36	Elephant Ear.....	42	Kochia.....	38
B		Elm, American.....	32	Kudzu Vines.....	35
Bachelor Buttons.....	36	Elm, Chinese.....	33	Kumquats.....	11
Balsams, Double.....	36	English Ivy.....	35	L	
Banana Orinoco.....	36	English Lavender.....	27	Lantanas.....	39
Barberry, Japanese.....	31	Euonymous, Globe Shape.....	27	Larkspur.....	39
Barberry, Red Leaf.....	31	Euonymous, Golden.....	27	Lavender, Cotton.....	27
Begonia.....	37	Euonymous, Japonicum.....	27	Lavender, English.....	27
Berkman Arbor Vitae.....	30	Euonymous, Radicans.....	35	Lavender, Tree.....	32
Berry Plants.....	12	Euonymous, Variegated.....	27	Lemons.....	11
Beverly Golden (Biota) Arbor Vitae.....	29	Eupatorium.....	31	Leucophyllum (Senisa).....	29
Bhutan Cypress.....	30	Euphorbia.....	38	Levkojen (Stocks).....	40
Bignonia Grandiflora.....	35	G		Liatrus Spectalis.....	39
Bignonia Radicans.....	35	Feathered Cockscomb (Plumosa).....	40	Ligustrum, Japonicum (Bush).....	27
Bird of Paradise.....	40	Ferns.....	38	Ligustrum, Japonicum (Tree).....	33
Blackberries.....	12	Fertilizer.....	27	Ligustrum, Lucidum.....	27
Blue Bonnets.....	40	Feverfew.....	38	Ligustrum, Variegated.....	27
Blue Green Arbor Vitae.....	29	Feijoa.....	27	Lilacs.....	32
Bonita Arbor Vitae.....	29	Ficus Elastica.....	38	Lilies.....	43
Books.....	53	Ficus Repens.....	35	Locust, Black.....	33
Boston Ivy.....	35	Field Seeds.....	51	Locust, Honey.....	33
Bougainvilleas.....	37	Figs.....	13	Lodense Privet.....	26
Buddleia Lindleyana.....	31	Fire Dragon (Tricolor).....	36	Lombardy Poplar.....	33
Bulbs.....	41, 42, 43, 44	Fire Plant (Mexican).....	38	Lonicera.....	32
Bush Honeysuckle.....	32	Firethorn.....	29	Lonicera, Morrowi.....	32
Buxus Arhorea.....	26	Flower Seeds.....	45, 46, 47	Loquat.....	27
C		Flowering Almond.....	31	M	
Cacti.....	34	Flowering Crab.....	31	Magnolia Grandiflora.....	27
Caladium Esculentum.....	42	Flowering Peach.....	31	Mallow Marvels.....	32
Caladium, Fancy Leaf.....	42	Flowering Willow.....	31	Maple (Silver).....	33
Calendula.....	37	Forsythia, Virridissima.....	32	Matrimony Vine.....	35
California Privet.....	26	Fruiting Date Palm.....	34	Mayhew Golden Arbor Vitae.....	29
Callicarpa Americana.....	31	H		Mignonette (Reseda).....	39
Canary Date Palms.....	34	Georgia Cane.....	34	Military Plant.....	39
Candytuft.....	37	Geraniums.....	38	Mint, English.....	39
Cane, Georgia.....	34	Gladiolas.....	43	Mock Orange.....	32
Cannas.....	41, 42	Golden Arbor Vitae.....	29	Moon Flower.....	35
Cape Jasmin.....	26	Golden Bell.....	32	Mountain Cedars.....	30
Carnation.....	37	Golden Elder.....	31	Mulberries.....	10
Carolina Poplar.....	33	Golden Euonymous.....	27	Mulberry, French.....	31
Catalpa.....	32	Golden Glow.....	38	Mulberry, Weeping.....	33
Cedrus Deodora.....	30	Golden Japanese Privet.....	26	Myrtle, Roman.....	27
Century Plant.....	34	Golden Pyramidal A. V.....	29	Myrtle, Rosemary.....	27
Chaste Tree.....	32	Goldflower (Hypericum).....	27	N	
Cherries.....	10	Grape Fruit.....	11	Nandina Domestica.....	27
Cherry Laurel.....	26	Grapes.....	12	Narcissus.....	44
Chinensis, Juniper.....	30	Grasses.....	33	Nectarines.....	11
Chinese Arbor Vitae.....	29	I		O	
Chinese Elm.....	33	Hibiscus.....	38	Oleander (Nerium).....	32
Chinese Umbrella.....	33	Hippeastrum Punicum.....	43	Oranges.....	11
Chrysanthemums.....	37	Hollyhocks.....	38	P	
Clematis Drummondii.....	33	Honeysuckle, Bush.....	32	Q	
Clematis Paniculata.....	33	Honeysuckle, Climbing.....	35	R	
Climbing Fig.....	35	Hyacinths.....	43	S	
Cockscomb.....	37	Hydrangea.....	32	T	
Coleus.....	37	Hypericum.....	27	U	
Compacta Arbor Vitae.....	29	Hudgins (Biota) Arbor Vitae.....	29	V	
Coral Berry.....	31	W		X	
Cotoneaster, Horizontalis.....	27	Y		Z	
Cotoneaster, Panosa.....	27	AA		ZZ	
Cotton, Lavender.....	27	BB		AAA	
Cotton Seed (Bagley).....	52	CC		BBB	
Crab Apples.....	6	DD		CCC	
Crab, Flowering.....	31	EE		DDD	

TABLE OF CONTENTS—Continued

P	Page	R	Page	Page
Palms, Outdoor.....	34	Red Bud (Judas Tree).....	33	Tritoma
Palms, Pots.....	39	Regel Privet.....	26	Trumpet Vine.....
Pampas Grass.....	34	Reseda (Mignonette).....	39	Tube Roses.....
Pandanus Veitchii.....	39	Roman Myrtle.....	27	Tulips, Darwin.....
Pansies	39	Rosedale Arbor Vitae.....	30	U
Parrot's Feather.....	39	Rosemary	32	Umbrella China.....
Passion Flower.....	35	Rosemary Myrtle.....	27	Umbrella Plant.....
Peaches	7, 8	Roses, Climbing.....	22, 23, 24	V
Peach, Flowering.....	31	Roses, Pink.....	18, 19, 20	Variegated Agave.....
Pears	6	Roses, Red.....	16, 17, 18	Variegated Euonymous.....
Pecans	13, 14	Roses, Tree.....	24	Variegated Ligustrum.....
Peonies	44	Roses, White.....	21, 22	Varnish Tree.....
Pepper, Ornamental.....	39	Roses, Yellow.....	20, 21	Vegetable Seeds.....
Persimmons	10, 11	Royal Italian Cypress.....	30	Verbenas
Petunias	40	Rubber Tree.....	38	Viburnum Laurustinus.....
Pfizer, Juniper.....	30	Russian Olive, Elaeagnus.....	26, 27	Viburnum Sandankwa.....
Philadelphus Grandiflora.....	32	S		Vinca, Evergreen.....
Phlox	40	Sabal Palmetto Palms.....	34	Vinca, Harrisemi.....
Photinias	27	Salt Cedar (Tamarix).....	33	Vinca, Rosea.....
Pinks (Dianthus).....	38	Salvia Greggii.....	32	Vinca, Variegated.....
Pittosporum (Silver).....	27	Salvias	40	Violets
Pittosporum, Tobira.....	27	Santolina (Lavender).....	27	W
Plumbago	40	Savin Juniper.....	30	Wallflower
Plumosa	40	Scabiosa	40	Walnuts
Plums	9, 10	Seeds	45-52	Wandering Jew.....
Podocarpus (Japanese Yew).....	27	Senisa (Ash Plant).....	29	Washington Palm.....
Poinciana, Gilliesi.....	40	Silver Maple.....	33	Water Hyacinths.....
Poinsettia, Pulcherrima.....	40	Silvestris, Juniper.....	30	Wax Leaf Ligustrum.....
Pomegranates	11	Snake Plant.....	40	Weeping Mulberry.....
Pomegranates, Dwarf Evergreen.....	11	Snake Root (Purple).....	39	Weeping Willow.....
Poplar, Carolina.....	33	Snapdragon.....	40	Weigelia
Poplar, Lombardy.....	33	Spanish Bayonet Yucca.....	34	Willow, Flowering.....
Poplar, Silver Leaf.....	33	Spiny Greek Juniper.....	30	Window Box Collection.....
Primrose	40	Spirea, Anthony Waterer.....	32	Wistaria, Purple.....
Primrose, Jasmin.....	26	Spirea, Thunbergii.....	32	Wistaria, White.....
Privet, Amoor River.....	26	Spirea, Van Houtteii.....	32	Y
Privet, California.....	26	Spreading Italian Cypress.....	30	Yaupon, Holly.....
Privet, Crinklyleaf.....	26	Standard Arbor Vitae.....	30	Yellow Jasmin.....
Privet, Golden Japanese.....	26	Strawberries	13	Yucca, Red.....
Privet, Lodense.....	26	Summer Lilac.....	31	Yucca, Filamentosa.....
Privet, Regal.....	26	Sycamore	33	Yucca, Stiles.....
Prostrate Canada Juniper.....	30	Syringa, Philad. Grandiflora.....	32	Yucca, Treculeana.....
Prunes	30	Syringa, Rothomagensis.....	32	Z
Prunus Pissardi.....	32	Sweet Myrtle.....	27	Zebra Grass.....
Pussy Willows.....	32	Sweet William.....	40	Zinnias
Pyracantha Lalandi.....	29	T		
Pyracantha Yunnanensis.....	29	Tall Hybrid Arbor Vitae.....	30	
Pyramidal Arbor Vitae.....	29	Tamarix	33	
Q		Texas Blue Bonnet.....	40	
Queens Wreath.....	35	Tree of Heaven.....	32	
Quince	6	Tree Roses.....	24	
		Tri-Color (Fire Dragon).....	36	

CUT FLOWERS

During the summer months we can furnish—

Roses at \$2.50 per hundred
Tube Roses, \$2.50 per hundred

During June and July—

Asters at \$3.00 per hundred, \$25.00 per thousand

Finest cut flowers, best assortment

Prices F. O. B. New Braunfels

Write us for wholesale prices; we specialize in Tube Roses, Caladium Esculentum, Amaryllis Johnsonii and Canna Bulbs, Roses, Crepe Myrtle, Peach and Plum Trees. The largest shippers of Texas Blue Bonnet Seed in the world.

Locke Nursery & Floral Company
New Braunfels, Texas

ORDER BLANK

LOCKE NURSERY & FLORAL COMPANY NEW BRAUNFELS, TEXAS

NAME

POST OFFICE

COUNTY

STATE

STREET OR P. O. BOX No.

R. F. D.

Name of town to which you wish freight or express shipment

Date

Ship by ~~FREIGHT~~—~~EXPRESS~~—~~MAIL~~—Cross out two

COMBE PRINTING CO., ST. JOSEPH, MO

QUANTITY

NAME OF ARTICLE WANTED

AMOUNT

TOTAL

THE LOCKE NURSERY & FLORAL CO. GIVES NO WARRANTY, EXPRESS OR IMPLIED, AS TO DESCRIPTION, PURITY, PRODUCTIVENESS OR ANY OTHER MATTER OF ANY NURSERY STOCK THEY SEND OUT AND THEY WILL NOT BE IN ANY WAY RESPONSIBLE FOR CROP. IF PURCHASER DOES NOT ACCEPT GOODS ON THESE TERMS, THEY ARE AT ONCE TO BE RETURNED.

FRUITS

EARN A BIGGER PROFIT THAN
ANYTHING YOU CAN RAISE

APPLES

Delicious, Jonathan, Mammoth Black Twig, Red Astrakan, Early Harvest, San Jacinto, Red June, Becker, Helena, Arkansas and Kinnaid's—strong, 4 to 6 ft. trees, grafted on whole roots and 2 years old.

\$4.00 per dozen



GRAPES

A fine list of twelve best varieties, time tested for culture in this territory; see page 12 for descriptions.

\$2.00 per dozen



PEARS

After a pear tree once begins to bear it will bear continually year after year—in fact, it is the most profitable fruit we know of for this climate. Several good varieties listed.

\$5.00 per dozen

PEACHES

We list about 30 varieties of this popular fruit on page 8. Look them over and get a few new ones this year.

\$2.75 per dozen





BEAUTIFUL
FLOWERING
BULBS

—o—o—o—
CANNAS

Enjoy these exquisite
colored flowers from
Spring until frost

15c or \$1.50
Ea. Doz.



HYACINTHS

Make Lovely Borders and
Fragrant Winter House
Plants \$1.50 dozen



GLADIOLUS

Enjoy the delicate beauty
of these most beloved
flowers \$3.50 per 100