

## **Historic, Archive Document**

Do not assume content reflects current scientific knowledge, policies, or practices.



# Gladioli-McKibbin

"Buy McKibbin Glad Bulbs and Be Glad"

## JOHN H. McKIBBIN

ORIGINATOR AND GROWER OF

### Choice Gladioli

Bulbs and Cut Flowers in Season

1309 Division Street Long Distance Phone L-1168  
GOSHEN, INDIANA

---

**LOOK! LOOK! Who Said Depression?**  
**THIS is just the buyer's HARVEST!**

Here is a chance to get a start of some of the new things **FREE!**  
I will include in all retail orders extra bulbs of my own selection,  
from my new and recent introductions, amounting to at least 25 %  
of the value of your order.

To those who did not receive my 1930 descriptive and illustrated  
catalog, giving a more complete description of all varieties, I will be  
pleased to mail one on request.



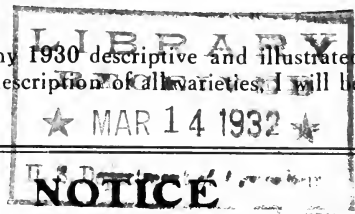
### What SIZE Do You Want to Buy?

We are offering only large size bulbs at retail this year, but are offering the majority of our varieties at wholesale in all different sizes; those varieties offered retail only, no small bulbs or bulblets will be sold.

We will sell 25 bulbs, one variety, and size, at wholesale prices.

If you want to buy Gladioli bulbs to get the most and best blooms which 95% of the people do who buy in the small quantity, the large bulbs are the ones to buy. It stands to reason that a full sized matured bulb will produce a taller spike and larger bloom with many more florets to the spike and also more spikes. Many varieties produce from two to four spikes per bulb. The medium size will produce a good spike and large bloom, but not so many spikes, and a few more bulblets which most people throw away.

Most of the small size will bloom, but the spike will not be so tall nor so many florets to the spike and will not bloom as early as the larger bulbs, but you can grow them to full size No. 1 bulbs the first year. So take your choice and we will do our best to please you.



### Please Read Before Ordering

Where offered by the dozen, six may be ordered at half the dozen price. Less than six at single rate, or as otherwise stated in our price list.

### SUBSTITUTION

If any varieties are out of stock when your order is received, I will substitute a similar or more expensive variety. If this is not satisfactory, please advise when ordering.

Safe arrival of bulbs is guaranteed to any point within the U. S. A. and Canada.

### TERMS

Remittances must accompany all orders.

Send bank draft, express or postal money order.

**ALL RETAIL ORDERS SHIPPED  
PREPAID**

# McKibbin's New and Recent Introductions (RETAIL PRICES)

- BETTY McKIBBIN**—A deep rose pink, slightly lighter towards the throat on the upper petals; while the lower petals are marked with a pure rose colored plume. Slightly ruffled, many open at a time. Each 25c; doz. \$2.50.
- CORAL LUSTER**—A Primulinus Grand type. A deep strawberry pink blending to salmon pink with a feather of soft rose red on the lower petals. Its shape is such as gives it the appearance of a half open rose bud. Each 20c; doz. \$2.00.
- CAPTAIN KIDD**—It is both ruffled and laciniated, has large wide open flowers nicely placed on strong yet graceful stems. Color, deep beautiful red. A very good seed producer and a rapid propagator. Each 50c; doz. \$5.00.
- DAINTY QUEEN**—The beautiful shell-pink color, the tall graceful spike, the beautiful laciniated blooms, measuring four to five inches, gracefully combined to make it one of the most beautiful gladioli among the new creations. Each 20c; doz. \$2.00.
- DR. SUMNER A. EDMANDS**—A well ruffled deep blush pink shading to golden salmon rose on edges of petals. Lower petals slightly darker pink. Edges softly flaked carmine. Unusually heavy texture. Each 30c; doz. \$3.00.
- I. O. WOOD** A beautiful plain petaled variety of Tyrian rose color, blended to a satiny pink in the throat of the upper petals. Throat of lower petals of slightly deeper rose. The entire bloom overlaid with a violet sheen. The large blooms are wide open with a trace of recurve. Each 20c; doz. \$2.00.
- LONE EAGLE**—A living, glowing orange vermillion with soft carmine stripes on lower petals. Upper petals shaded to a delicate pink in the throat. Well ruffled and overlain with a satiny silver sheen. An outstanding variety in every way and under any condition. This variety won the Grand Prize at the Elkhart County Fair, Goshen, Indiana, September, 1930, offered by the A. G. S. for the most perfect spike in the entire exhibit, all varieties competing. Each \$2.00.
- LOCARNO**—A most refined lavender with deep throat markings on lower petals. Tall spike, large wide open flowers, many open at a time. Each 20c; doz. \$2.00.
- MARY LOU**—A soft rose pink with a stripe of Tyrian rose on lower petals. Slightly ruffled, well formed and placed florets on a strong, straight spike. Five or more open at a time. Each 15c; doz. \$1.50.
- MRS. D. A. ZARTMAN**—(A 1931 introduction.) Large plant, tall, straight spikes. Color, Hermosa pink, specked and striped with pure rose. Lower petals blotched with a brilliant Amaranth purple. Slightly ruffled, six and more florets open at a time. A rapid propagator. Each 50c; doz. \$5.00.
- MONA KLAVERN**—(1932). A strong grower, tall spike, wide open bloom. A most beautiful shade of pink and cream, exquisitely laciniated and is one of the finest varieties for decorative purposes yet produced. Each \$3.00.
- RIPPLES**—A deep rose pink blending to a shrimp pink on the upper petals. Lower petals tinting to a soft creamy white, with delicate carmine pencilings in the throat. All midribs are white lined. It is slightly ruffled and at times laciniated. From four to seven beautifully shaped, well placed florets open at once on a straight graceful spike. A rapid propagator. Each 35c; Doz. \$3.50.
- ROSE DOREE**—Color, a shiny soft rose doree with the upper petals blending to a little lighter throat and lower petals marked with a lovely carmine stripe on the midrib. A well open, plain petaled variety, petals slightly recurved. A vigorous plant and increases very rapidly. Each 15c; doz. \$1.50.
- RED ALATUS**—A pure spectrum red, with a slightly darker stripe on the midrib of the lower petals. The spike is strong, slender and willowly. This is one of the red glads that does not sunburn and is a very good cut flower variety. Each 10c; doz. \$1.00.
- SON OF INDIA**—(1932). It is a strong grower, large wide open blooms, from five to eight open at a time with extra fine placement. Color—A satiny mulberry red and purple with a blue sheen overcast, a very fine novelty. Each \$2.00.
- W. G. HATFIELD**—(A 1930 introduction.) Tall, stately plant with massive flowers. From five to eight wide open, beautifully ruffled blooms open at once. Color, begonia rose, blending to geranium pink. The midrib of lower petals Amaranth purple. A very magnificent and grand variety. Exceedingly striking and showy. Each \$3.00.

## Our Standard Varieties (RETAIL PRICES)

- ALBANIA**—One of the best pure white. . . . . Each 5c; doz. 50c.
- ALTAIR**—Finest salmon saffron, primulinus . . . . . Each 5c; doz. 50c.
- ARDEN**—Deep watermelon red . . . . . Each 5c; doz. 50c.
- ALLEN BUNCE**—Bright orange yellow, primulinus . . . . . Each 10c; doz. 60c.
- ANNA LAURIE**—Nicely ruffled, delicate pink . . . . . Each 10c; doz. 60c.
- BUMBLE BEE**—Large flower of purest salmon rose pink . . . . . Each 5c; doz. 50c.
- BUCKEYE**—Massive bloom of fine rose pink color . . . . . Each 10c; doz. 80c.
- BATTLE CREEK**—Deep violet, almost self colored . . . . . Each 5c; doz. 50c.
- BYRON L. SMITH**—Refined lavender pink . . . . . Each 10c; doz. 60c.
- BLACK PANSY**—Dark pansy red . . . . . Each 10c; doz. 80c.
- CRIMSON GLOW**—Immense flower of rich crimson . . . . . Each 5c; doz. 50c.
- CHARLES F. FAIRBANKS**—A beautiful red; many open at a time . . . . . Each 10c; doz. 60c.
- DR. VAN FLEET**—Delicate rose pink; throat of softest canary yellow . . . . . Each 5c; doz. 50c.
- DR. J. H. NEELEY**—Finest blushed white; delicate cream throat . . . . . Each 10c; doz. 80c.
- DR. NELSON SHOOK**—Giant plant and flower; color, deep Tyrian rose; ruffled . . . . . Each 20c; doz. \$2.00
- DR. ELKINS**—Large white flowers, with purple blotches on lower petals . . . . . Each 10c; doz. 80c.
- DR. F. E. BENNETT**—Deep peach red, overlaid with flame scarlet . . . . . Each 10c; doz. 80c.
- DOROTHY McKIBBIN**—Pure apple blossom tint; ruffled . . . . . Each 5c; doz. 50c.
- DEFIANCE**—Delicate blush white; large plant and flower; many open . . . . . Each 10c; doz. 80c.

## OUR STANDARD VARIETIES (Retail Prices)—Continued.

ELORA—Large creamy white, with rich cream spot in throat; early	Each 10c; doz. 80c.
E. J. SHAYLOR—A beautiful pure deep rose pink, nicely ruffled	Each 5c; doz. 50c.
EVELYN KIRTLAND—Rose pink; scarlet blotches on lower petals	Each 5c; doz. 50c.
FIRE RIBBON—Firey red, with many blooms open at a time	Each 10c; doz. 80c.
FAVORITE—Orange salmon; many finely ruffled flowers open at a time	Each 10c; doz. 80c.
FLAMING VALE—Very tall; large deep cardinal red flowers	Each 10c; doz. 80c.
GLORANA—Golden salmon	Each 10c; doz. \$1.00
GLENDAL—Tall, graceful; purple; many open	Each 10c; doz. 80c.
GIANT NYMPH—Large pink	Each 10c; doz. 80c.
GOSHEN—Deep silver rose pink; large rose red blotches; many open	Each 10c; doz. 80c.
GOLDEN SWALLOW—Color, golden yellow; many flowers open at a time	Each 10c; doz. 80c.
GLADDIE BOY—Pink, blending to yellow throat	Each 10c; doz. \$1.00
GLADSOME—A pure soft creamy yellow, primulinus, grandiflora	Each 10c; doz. 60c.
GOLDEN FRILLS—Deep daffodil-yellow, pink lines on lower petals; ruffled	Each 10c; doz. 80c.
HELGA—Fine salmon rose; tall graceful spike	Each 5c; doz. 50c.
HIGHLAND LADDIE—Large massive beautiful pink; very choice	Each 10c; doz. 80c.
HENRY FORD—Dark Rhodamine purple	Each 5c; doz. 50c.
JOE COLEMAN—Rich, red, ruffled; large and vigorous	Each 5c; doz. 50c.
KUNDERDI GLORY—Large, ruffled; creamy apricot pink	Each 10c; doz. 60c.
K'S YELLOW—Large, ruffled; rich sulphur yellow	Each 10c; doz. 60c.
LUSTRE—Tall, large flowered; orange vermillion	Each 10c; doz. 80c.
LACINATUS—Beautiful rose pink color; exquisitely lacinated	Each 5c; doz. 50c.
MARY JANE—A beautiful silver pink, with a light lavender sheen; many large flowers open at a time	Each 25c; doz. \$2.00
MARSHALL FOCH—Color of finest salmon pink, almost self colored	Each 5c; doz. 50c.
MACK'S CARDINAL—Cardinal red; tall spike; many blossoms open at a time	Each 5c; doz. 50c.
MAGIC—Tall; finest lavender blue, large rich purple throat blotches	Each 10c; doz. 80c.
MISS SPOKANE—Large; beautiful salmon pink; many open	Each 5c; doz. 50c.
MRS. DR. NORTON—Tall plant; blooms of finest cream and pink	Each 5c; doz. 50c.
MRS. FRANK PENDLETON—Bright rose pink on white background	Each 5c; doz. 60c.
MRS. GEO. MOULTON—A grand cerise, deeper throat; almost a solid color	Each 10c; doz. 60c.
MRS. LEON DOUGLAS—Ground color begonia rose, striped brilliant scarlet	Each 10c; doz. 80c.
MRS. H. E. BOTHIN—Tall plant; extra well ruffled bloom of light pink color	Each 10c; doz. 80c.
NEGERFURST—Tall; very dark red; large, wide open blooms	Each 20c; doz. \$2.00
OPALESCE—Pale rose lavender, pure self color	Each 10c; doz. 80c.
PATRICIA CARTER—(Primulinus-grandiflora.) Flowers are of most beautiful tone of softest light shrimp pink color; many open; a prize winner	Each 25c; doz. \$2.00
PEACH ROSE—A deep peach-rose color; tall spike; many open	Each 10c; doz. 80c.
PRIMUNELLA—A grand ruffled butterfly, orchid like flower; orange saffron color	Each 10c; doz. 80c.
PURPLE GLORY—Giant plant and flower; color, deepest velvety maroon red	Each 10c; doz. 80c.
PURPLE SPOT—Large; violet red, with conspicuous dark blotches	Each 10c; doz. 80c.
RACINE—Very dark red, flaked deeper, almost black	Each 10c; doz. 80c.
RED COPPER—Deep copper, heavily flaked blue; lower petals copper red	Each 5c; doz. 50c.
ROSE ASH—Corinthian red, shading into ashes of roses on the outer edges	Each 10c; doz. 70c.
ROSE GLORY—Purest rose pink color; a large, beautiful ruffled variety	Each 10c; doz. 70c.
ROSY GLOW—Giant plant, massive flower of fine rose pink on white ground	Each 10c; doz. \$1.00
ROMANCE—Large; orange, salmon rose red, yellow throat, wine blue, bordered petals	Ea. 5c; doz. 50c.
ROBERT M. LAFOLLETTE—Large; royal purple red; many open	Each 15c; doz. \$1.50
RUTH HUNTINGTON—Violet lilac; beautifully ruffled; many open	Each 10c; doz. \$1.00
SENTINEL—Large; pure rose pink with white penciled iris-like throat	Each 5c; doz. 50c.
SNOW BOY—Tall and stately; pure white; many flowers open	Each 5c; doz. 50c.
SOVEREIGN—Deep violet blue; five and six open at a time	Each 10c; doz. 80c.
SPLENDORA—Splendid; very dark wine black	Each 10c; doz. \$1.00
SULPHUR FRILLS—Tall; ruffled; finest pure soft sulphur shade	Each 10c; doz. 80c.
SOUVENIR—(Prim.) Good deep yellow; very early	Each 5c; doz. 50c.
SWEET ROSE—Very massive flowers of purest rose pink, with large beautiful red throat	Each 10c; doz. 80c.
TYRIAN BEAUTY—Large flower; near American Beauty rose color	Each 10c; doz. \$1.00
VIOLET BEAUTY—Deep violet	Each 10c; doz. \$1.00
W. H. PHIPPS—LaFrance pink overlaid with light rose salmon; flowers enormous; many open at a time	Each 10c; doz. \$1.00
WHITE GLORY—Pure white, with iris-blue throat; extra size and nicely ruffled	Each 10c; doz. \$1.00
YOEELL'S FAVORITE—Beautifully ruffled; rosy lavender pink	Each 10c; doz. \$1.00

**IDEAL MIXTURE**—Our Ideal Mixture is made up of thousands of varieties, mostly named kinds, in both the plain petaled and ruffled varieties..... Per doz. 40c; 3 doz. \$1.10

**SUPREME MIXTURE**—Supreme Mixture is made up of 3500 all new originations. The best mixtures ever offered for the money. You will get many glad thrills from a collection of this mixture..... Per doz. 50c; 3 doz. \$1.25

# General 1932 List—WHOLESALE Prices

## ON LARGE LOTS

### Gladiolus Bulbs and Bulblets

#### READ CAREFULLY BEFORE ORDERING

Orders at the 100 rate will be shipped prepaid in the United States.  
Orders at the 1,000 rate will be shipped F. O. B. Goshen, Ind.

25 bulbs of one variety and size at 100 rate. 250 bulbs of one variety and size at 1,000 rate.  
For the 1,000 rate multiply the 100 rate by 7.

In ordering bulblets, 500 sold at 1,000 rate. Larger quantities a matter of correspondence.

Prices subject to stock unsold on receipt of order.

5% discount allowed on all orders received with full remittance. Orders for \$10.00 or more held on deposit of 25% for spring shipment (up to April 1st), balance C. O. D.

No packing charge.

Stock guaranteed best quality, true to name. Will replace any bulbs not running true to name.

**No Wholesale order accepted for less than \$2.00.**

<u>PRICE PER ONE HUNDRED</u>	<b>No. 1</b> 1½ inch and up	<b>No. 2</b> 1¼ to 1½ in.	<b>No. 3</b> 1 to 1¼ in.	<b>No. 4</b> ¾ to 1 in.	<b>No. 5</b> ½ to ¾ in.	<b>No. 6</b> under ½ in.	<b>Bulblets per 1,000</b>
Albania .....	\$ 2.50	\$ 2.00	\$ 1.50	\$ 1.00	\$ 0.75	\$ 0.50	\$ 0.50
Altair .....	2.50	2.00	1.50	1.00	.75	.50	.50
Arden .....	2.50	2.00	1.50	1.00	.75	.50	.50
Bumble Bee .....	3.00	2.50	2.00	1.50	1.00	.75	.75
Crimson Glow .....	2.50	2.00	1.50	1.50	.75	.50	.50
Coral Luster .....	8.00	7.00	6.00	5.00	3.50	2.50	2.50
Captain Kidd .....	30.00	28.00	25.00	22.00	18.00	15.00	15.00
Charles F. Fairbanks .....	3.00	2.50	2.00	1.50	1.00	.75	.75
Dr. Sumner A. Edmands .....	18.00	17.00	16.00	14.00	10.00	8.00	8.00
Dorothy McKibbin .....	2.50	2.00	1.50	1.00	.75	.50	.50
Defiance .....	3.00	2.50	2.00	1.50	1.00	.75	.75
Dainty Queen .....	8.00	7.00	6.00	5.00	3.50	2.00	2.00
E. J. Shaylor .....	2.00	1.50	1.00	.75	.50	.35	.35
Helga .....	2.50	2.00	1.50	1.00	.75	.50	.50
Henry Ford .....	2.50	2.00	1.50	1.00	.75	.50	.50
Highland Laddie .....	4.00	3.50	2.50	2.00	1.50	1.00	1.00
I. O. Wood .....	8.00	7.00	6.00	5.00	4.00	3.00	3.00
Joe Coleman .....	2.50	2.00	1.50	1.00	.75	.50	.50
Mack's Cardinal .....	2.00	1.50	1.00	.75	.50	.35	.35
Magic .....	3.00	2.50	2.00	1.50	1.00	.75	.75
Miss Spokane .....	2.50	2.00	1.50	1.00	.75	.50	.50
Mrs. D. A. Zartman .....	30.00	28.00	25.00	22.00	18.00	15.00	15.00
Mary Lou .....	6.00	5.00	4.00	3.00	2.00	1.00	1.00
Racine .....	3.50	3.00	2.50	2.00	1.50	1.00	1.00
Rose Glory .....	3.00	2.50	2.00	1.50	1.00	.75	.75
Romance .....	3.00	2.50	2.00	1.50	1.00	.75	.75
Ripples .....	15.00	13.50	12.00	10.00	8.00	6.00	6.00
Rose Doree .....	6.00	5.00	4.00	3.00	2.00	1.00	1.00

#### PRICE PER 10—5 at the 10 Rate.

#### Per 100

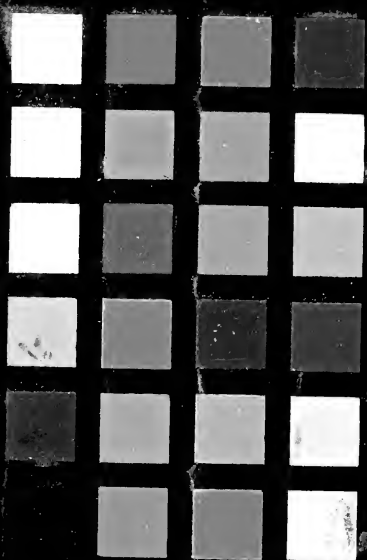
Mona Klavern .....	18.00	17.00	16.00	15.00	13.00	10.00	10.00
Lone Eagle .....	12.00	11.00	9.00	8.00	6.00	5.00	5.00
Son of India .....	12.00	11.00	9.00	8.00	6.00	5.00	5.00
W. G. Hatfield .....	18.00	17.00	16.00	15.00	13.00	10.00	10.00

## JOHN H. McKIBBIN

1309 Division Street

GOSHEN, IND.

Long Dist. Phone L-1168



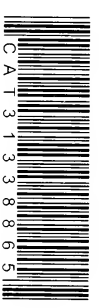
CAT31338865

Gladioli--McKibbin : retail and wholesale descriptive price list / John H.  
McKibbin.

1932

23

Batch: NC\_1932\_Ma-Md



CAT31338865