

Historic, Archive Document

Do not assume content reflects current scientific knowledge, policies, or practices.



MALONEY

NURSERY BOOK OF 1932

MALONEY BROS. NURSERY CO., INC. DANVILLE, N.Y.

The Friendly Evergreens

Evergreens

We wish we were competent to picture the beauty and utility of the aristocratic evergreen. They have an individual attractiveness which they retain throughout the entire year. Their green foliage of every possible shade is particularly pleasing during the winter months, when everything else is bleak and dreary. The many different types and forms which we offer makes it possible to secure varieties appropriate for any planting.

All evergreens will be lifted with ball of earth and roots wrapped in burlap. Leave ball of earth and burlap on when planting. Wet ground after planting until like mud, then one pail of water each week for first summer. Do not trim tops of evergreens.

Arbor Vitae, American—A beautiful tree much used for hedges, screens, foundation planting and singly on lawn. Can be trimmed and kept in any form or height.

2 to 2½ ft. \$1.29 each; 10 for \$10.48
 2½ to 3 ft. 1.39 each; 10 for 12.48
 3 to 4 ft. 1.49 each; 10 for 13.48

Arbor Vitae, Globosa—Forms a dense, low globe; handsome shade of green.

18 to 24 in. \$1.75

Arbor Vitae (George Peabody), Golden—Dwarf, dense-growing variety; much used for color contrast.

18 to 24 in. \$1.75

Arbor Vitae, Orientale—A comparatively low, broadly pyramidal tree. Its color is a refreshing yellowish green, dulling to bronzy green in winter.

2½ to 3 ft. \$3.25
 3 to 3½ ft. 4.25

Arbor Vitae, Pyramidal—A valuable upright evergreen of dense, compact habit. Foliage light green.

2 to 2½ ft. \$2.50
 2½ to 3 ft. 3.50



Colorado Blue Spruce

Colorado Blue Spruce is a remarkably choice Evergreen. Its beautiful shade of blue makes it the most outstanding of all Evergreens.

Arbor Vitae, Tom Thumb—Small and compact. Very desirable for planting in evergreen groups.

12 to 18 in. \$1.75

Fir, Douglas—Popular for its hardiness and great beauty; dark green.

2 to 2½ ft. \$2.75
 2½ to 3 ft. 3.50
 3 to 4 ft. 4.50

Hemlock, Canadian—Beautiful and dependable wherever used. Its refined foliage is lacy, close-set and darkly lustrous; droops gracefully. A moderate grower adapted to severe pruning; used at corner; or as foundation screens.

2 to 2½ ft. \$3.00
 2½ to 3 ft. 4.00

Juniper, Chinese—It is quite columnar, wider at base than Irish Juniper and tapering to a decided point. Winter color is especially good.

18 to 24 in. \$3.75



American Arbor Vitae

Pfitzer's Juniper

Tom Thumb Arbor Vitae

Norway Spruce

Globe Arbor Vitae

Pyramidal Arbor Vitae

- Juniper, Greek (J. Excelsa)**—Compactly columnar, making tall handsome specimens of continuing fresh green color.
18 to 24 in.....\$4.00
- Juniper, Horizontalis**—Handsome, serviceable, especially good in Rock Garden. A fresh gray green turning to bronze in fall.
12 to 15 in.....\$3.00
- Juniper, Irish**—Decided column form which immediately attracts attention. Foliage is a glaucous green used for formal work, especially in contrast with other plants. It is very slender in habit of growth and needs no shearing.
18 to 24 in.....\$1.75
2 to 2½ ft..... 2.50
2½ to 3 ft..... 3.50
- Juniper, Pfitzers**—Of the spreading type this is perhaps the most popular. Foliage a grayish green, slightly drooping and branches are horizontally spreading. It thrives where others fail.
18 to 24 in.....\$3.25
- Juniper, Savin**—Handsome moss green foliage; adapted to use as a filler in Evergreen groups, or as a dwarf ground cover.
18 to 24 in.....\$3.25



Irish Juniper

Juniper, Virginiana (Red Cedar)—A well-known American type, with fine, dense foliage, varying in habit and color, the majority being formal and bluntly conical. Makes a fine tree for planting back of low growing varieties.
2½ to 3 ft.....\$3.25

Juniperus, Virginiana Glauca (Blue Cedar)—Its beautiful glaucous blue foliage makes it one of the choicest Junipers.
2 to 2½ ft.....\$4.25

Pine, Mugho—The only genuine Dwarf Pine. Leaves short, stiff and formal. Does not grow tall, but spreads out, generally assuming a globular form; very dense. Popular in the foreground of foundation plantings.
12 to 15 in.....\$2.50

Pine, Scotch—A very rapid grower. The branches strong. Foliage is a bluish green.
2 to 2½ ft.....\$2.00

Retinospora, Filifera—The leading shoot grows upright but the thread-like branches are nearly horizontal, with long, drooping tasseled ends. Bright green, against red-brown bark.
2 to 2½ ft.....\$3.50
2½ to 3 ft..... 4.50

Retinospora Pisifera—Foliage feathery light green, glaucous beneath.
2 to 2½ ft.....\$2.50
2½ to 3 ft..... 3.50

Retinospora Plumosa (Plumed Cypress)—This is one of the best pyramidal varieties. Foliage a grayish green, very finely cut and has a feathery appearance.
2 to 2½ ft.....\$2.75
2½ to 3 ft..... 3.50

Retinospora, Squarrosa Veitchii—Dense, rounded, bubbling growth; silvery blue foliage arranged in soft spirals.
2 to 2½ ft.....\$2.75
2½ to 3 ft..... 3.50

Spruce, Black Hills—Makes a very close and compact growth. The foliage shades from green to a bluish tint.
18 to 24 in.....\$1.75
2 to 2½ ft..... 2.50
2½ to 3 ft..... 3.00

Spruce, Colorado Blue—This is hardy, healthy and very beautiful. Its foliage is a steel blue.
18 to 24 in.....\$6.50
2 to 2½ ft..... 8.50

Spruce, Colorado Green—The origin of the famous Blue Spruce. A vigorous grower and hardy, making fine specimens in a broad based, sharply defined pyramidal form; foliage rigidly angular with sharp needles very densely set. Light green color.
18 to 24 in.....\$2.00
2 to 2½ ft..... 2.50
2½ to 3 ft..... 3.00



Norway Spruce

EVERGREENS are used extensively for foundation and lawn planting. Easy to grow when following Maloney instructions. Note planting directions as illustrated—follow carefully.

Plant about 2½ feet from foundation and in double rows 3½ feet apart; the tall growing in the background, with medium and dwarfs in the foreground.

Pruning should consist principally of the shearing or clipping of the terminal growth in the spring just when the new growth appears. This keeps your trees compact and once they get to the height you want them they can be kept this way like a hedge. Don't prune too late in the summer.

EVERGREENS—Continued—Page 4

EVERGREENS Dignified—Long Lived Economical

How to Plant Evergreens

- (1) Dig hole a foot larger and deeper than ball of earth. Provide good, loamy top soil to fill around ball.





Rhododendron

EVERGREENS — Continued

Spruce, Norway — Most common Spruce seen; largely used for Christmas trees; a large pyramidal tree suitable for screens or windbreaks or group planting.

18 to 24 in. \$1.25; 10 for \$10.00
 2 to 2½ ft. 1.75; 10 for 15.00
 2½ to 3 ft. 2.00; 10 for 17.50
 3 to 4 ft. 2.75; 10 for 25.00

Spruce, White (Picea Alba) — One of the very best conifers. Compact, upright, long-lived, retaining its branches to the ground; aromatic, drought-resisting; varies in color from light green to glaucous blue.

18 to 24 in. \$1.75
 2 to 2½ ft. 2.00
 2½ to 3 ft. 3.00

Taxus Cuspidata (Japanese Yew) — One of the hardiest of Yews. Bushy, upright, spreading nature, with rich green foliage. A beautiful, medium sized specimen, especially suited for foundation planting.

15 to 18 in. \$3.50



Azalea

MALONEY PRICES LOWEST MALONEY QUALITY HIGHEST

Analyze, Compare and Then
 Come Back to Us

Rhododendrons

Balled and Burlapped

Carolinianum (Carolina) — Beautiful pink flowers appear in June, in great profusion. Will stand exposed locations, perfectly hardy, thriving in either sun or shade.

18 to 24 in. clumps. \$2.98

Catawbiense — Flowers a bright rose-purple, borne in large clusters at the ends of the branches. Perfectly hardy.

18 to 24 in. clumps. \$2.98

Maximum (Great Laurel) — Great clusters of white or rose-pink flowers in June and July; just after the hybrid varieties have ceased blooming; hardy.

18 to 24 in. clumps. \$2.98

Azaleas

Balled and Burlapped

Amoena (Hardy Evergreen) — Low bushy shrub, small green leaves, changing in winter to a bronze or coppery brown. In spring covered with a wealth of claret-purple flowers which continue to open for a period of 2 or 3 weeks.

12 to 15 in. \$2.68

Lutea Calendulacea (Flame colored)

—Ranging from flame color through shades of red and yellow, remaining in bloom for several weeks. Grows 6 to 8 feet high.

15 to 24 in. \$2.38

Boxwood

Tree Bush Form — Slow-growing, suitable for window-boxes, or as specimens.

18 to 21 in. \$3.75



Boxwood

MALONEY BROS. NURSERY CO., INC.



Maloney's Hedges and Vines

Hedges

Hedges give a finish that nothing else can give and serve as a fence as well.

Plant Privet 1 foot apart in double rows, and rows 1 foot apart alternated.

Barberry Thunbergi—A pretty plant of dwarf habit from Japan. Very graceful and its foliage turns to a beautiful red in the fall. 2 year, strong plants, well branched. Plant 18 inches apart.

18 to 24 in.20c each; 10 for \$1.75; 100 for \$18.50
2 to 3 ft.25c each; 10 for 2.00; 100 for 16.00

Privet, Amoor River—Hardy. Of similar form to the California type, not so lustrous, but safest for cold climates. 2 year, strong plants, well branched.

18 to 24 in.10 for \$1.25; 100 for \$8.00; 1000 for \$75.00
2 to 3 ft.10 for 1.50; 100 for 9.50; 1000 for 85.00

Privet, California—Of all ornamental hedge plants this is the most highly prized. The leaves are a rich green and will remain on the plants up to Christmas, and if they are a little sheltered they will keep green almost all winter.

18 to 24 in.10 for \$.75; 100 for \$5.00; 1000 for \$40.00
2 to 3 ft.10 for 1.00; 100 for 6.00; 1000 for \$50.00

Privet, Regel's—A strong, very hardy type with dark and shiny leaves. The numerous branches are stiff, twiggy and horizontally spreading, gracefully drooping at the ends. Makes a naturally wide, dense bush adaptable to foundation plantings.

18 to 24 in.10 for \$2.00; 100 for \$17.50

Norway Spruce—For description see page 4.
18 to 24 in.10 for \$10.00
2 to 2½ ft.10 for \$15.00; 100 for \$100.00

Vines

Give Shade and Ornamentation
Strong Two Year Vines

If by parcel post 3c each extra

The types which cling to wood, stone, brick or stucco are designated by a star (*), the rest twine or need support.

Bittersweet (Celastrus)—Handsome, glossy foliage and large clusters of beautiful, orange-crimson fruits retained all winter. Its graceful sprays of berries make charming winter house decorations.49 cents each

Clematis, Henryi—Free bloomer, producing large, white flowers constantly during the summer and early autumn.79 cents each

Clematis, Jackmanni—Flowers large, rich, velvety violet-purple, produced in masses forming a cloud of bloom.79 cents each

Clematis, Mme. Andre—Distinct crimson red.79 cents each

Clematis, Paniculata—Rapid grower, covering trellises and arbors with handsome, clean glossy foliage. The flowers are of medium size, fragrant, pure white, borne in immense sheets in September, when very few other vines are in bloom.59 cents each

Dutchman's Pipe—Brownish flowers, resembling a miniature pipe; splendid for archways or verandas. Large heart-shaped leaves. Thrives in sun or shade.79 cents each

Euonymus Acutus—Sharp, pointed, narrow leaves 1 to 2 in. long and is perfectly prostrate upon the soil or else climbing.79 cents each

***Euonymus Radicans, Vegetus** — (Evergreen Bittersweet)—Hardy, of quite shrubby character, its rounded leaves close-covering, glossy evergreen throughout most of winter; showily spangled with orange-red berries.79 cents each

***Ivy, American or Virginia Creeper** — Deeply cut leaves which turn to a beautiful crimson in fall; fine for covering trees, rocky slopes, walls, etc.49 cents each.

***Ivy, Boston (Ampelopsis Veitchi)**—Fine for covering walls, as it clings firmly to the smoothest surface, covering it closely with overlapping foliage, giving the appearance of being shingled with green leaves.49 cents each.

Ivy, English — Foliage dark glossy green. Evergreen. Clings to stone walls.49 cents each.

Honeysuckle, Hall's Japan—An almost evergreen honeysuckle of great value, hardy and of strong growth. The flowers are fragrant, of a pure white, changing to yellow.49 cents each

Honeysuckle, Scarlet Trumpet—Trumpet shaped flowers of bright scarlet.49 cents each

Matrimony Vine—Ornamental shrubby climber. Small, purplish flowers in summer, followed by scarlet berries until late in winter.59 cents each

Silver Lace Vine—A new introduction. Will climb gracefully up a trellis, over a tree trunk, a wall, a porch, an arch. It will rapidly grow 20 feet or more, with green foliage lightly bronzed at the tips. A well-grown specimen is a cloud of lacy, misty white, shot with tints of cream and pale rose of most exquisite effect.69 cents each

Wisteria, Chinese Purple—A most beautiful climber of rapid growth, producing long, pendulous clusters of flowers.59 cents each

Wisteria, White—Same characteristics as Wisteria Purple.59 cents each



Silver Lace Vine



California Privet Hedge



Aerial View of Our Office, Greenhouses, Packing House and Perennial Fields.

MALONEY QUALITY

Nationally endorsed for 48 Years

LOWEST PRICES SINCE 1916

MALONEYS STAND FOR

More

Aids to Planters

Larger

Offers

New

Economy

Yearly

Satisfaction



A Message to Our Friends

WE are strong believers in our goods. We are told constantly by others that we are pleasing them, and this after years of effort in trying to please, always sounds good to us. For 48 years we have tried to cater to the likes of our customers; tried to get new ideas, and employ skilled labor, so that now our stock is superior to the average. We believe we have an Organization of which we can justly be proud. We pass all our years of experience along to you in our successful growing of shrubs, vines, roses, ornamentals, fruit trees and evergreens.

This year we have all discussed depression to death. Let's bury the dead! Let's look ahead! People have hedged in buying during the last two years, and when times change back again, we will all be kicking ourselves that we did not buy at low prices.

The depression came over night; it may change back as quickly. The values in this catalog haven't been equalled in 16 years. Remember that value lies not in price alone nor in quality alone, and when you find exactly the same quality at a lower price—that's Maloney value.

A. E. MALONEY, *President.*

MALONEY BROS. NURSERY CO., INC.



An Invigorating, Restful Outdoor Living Room

When and How to Order

TERMS: Cash with order is required. On orders over \$10.00 we will ship C.O.D. providing twenty-five per cent of the total amount is sent with order. If the order goes by express you pay the balance to your Express Agent upon delivery of stock; if by freight, you pay the balance at your bank where you will find bill of lading, which you will present to your freight agent, who will deliver shipment to you. On C.O.D. freight shipments, kindly advise name of your bank. All goods sold F.O.B. Dansville.

HOW TO REMIT: By personal check, express money order, post office money order, bank draft or cash in a registered letter.

SIZE OF ORDERS: Orders less than \$1.00: Send an additional 10c on all orders less than \$1.00 to cover packing cost.

USE ORDER BLANK: Use order blank to simplify ordering.

ORDER EARLY: Order during January, February or March if possible. We ship as received; first come, first served. We must treat all our customers alike and cannot ship orders received in April ahead of those received earlier.

RATES: Less than ten at each rate; ten to fifty at ten rate; fifty or more at hundred rate.

SATISFACTION GUARANTEED: We guarantee all stock sold by us to be strong, vigorous and healthy and to arrive in good condition. If for any reason you are not absolutely satisfied with your stock notify us at once and we will gladly replace the items or refund purchase price.

MALONEY'S TREES ARE TRUE-TO-NAME—No human caution could be more exacting than ours. If any trees prove untrue to name, upon proper proof we will replace or refund the purchase price.

INSPECTION: Our nurseries are inspected yearly by a duly authorized state inspector and a copy of our certificate received from the Department of Agriculture and Markets, Albany, N. Y. accompanies each shipment.

SHIPPING SEASON: In the spring our shipping season usually opens about the 21st of March and continues through May and forepart of June, weather permitting.

PLANTING INSTRUCTIONS: Helpful planting and after care instructions are listed in this catalog. Follow carefully and preserve this book for future reference. Simple and explicit planting instructions will be sent with each order.

15% of Your Order Added Free

Write your order. Then, if it totals \$5.00 or more, add additional stock to the value of 15% of your order. These will be included free. This applies only to cash orders, and they must be mailed on or before March 25th.

Or 10% Cash Discount

Or, instead, you may deduct 10% (on orders of \$5.00 or more, on or before March 25th—5% Discount after March 25th) Cash Discount. Most people take the 15% offer above.

Outdoor Living Room

Right now, in thousands of homes throughout the country, plans are being made to convert old-fashioned "back-yards" into modern Outdoor Living Rooms.

DANSVILLE, N. Y.

For the Outdoor Living Room, with its blessings of fresh air, sunshine and a beautiful garden, holds such irresistible appeal that it has everywhere become the fashion.

No other such moderate investment can bring so much happiness to all the family as a lovely Outdoor Living Room. There the children can romp in safety and take on a healthy tan. There the men-folk can rest and relax at the end of the business day. What's more, an Outdoor Living Room really costs you nothing, for it adds far more value to your property than it costs. And, unlike a room within the house, it increases in value and beauty each year.

How to Make An Outdoor Living Room

A few trees, shrubs and evergreens to give privacy, shade and shut out undesirable views—a soft, rich carpet of velvety grass—and some hardy flowers to give color and fragrance—that's all you need for the modern outdoor living room which is everywhere replacing unsightly rear yards.

Hints for Successful Planting

Avoid straight lines. When planting along the foundation line of your home, you can usually let a semi-circle or some other curved line of plants extend beyond the others, to break the stiff straight effect.

Leave some open spaces in your lawn. Velvety stretches of green grass look better when bordered by flowers.

When planting, dig the holes deep and wide enough so that the roots can spread out to their natural position. Set them into the earth about one inch deeper than they were in the nursery.

Having set the plant in the hole, fill the hole about three-quarters full; pack the earth solidly around it. Then apply a good commercial fertilizer according to directions given by the manufacturer; then fill the hole with earth, packing the earth down firmly. Finally, give the new plant a generous watering.

Prune Before Planting

SHRUBS—Trim off $\frac{1}{4}$ of the top and $\frac{1}{4}$ of the ends of the roots.

ROSES—Trim tops to three eyes on each stem and trim off $\frac{1}{4}$ of root ends.

PRIVET—Trim tops to within 8 inches of ground and prune off $\frac{1}{4}$ of the root ends. This will give you a much more dense and thrifty hedge.

ORNAMENTAL AND SHADE TREES—Trim off $\frac{1}{4}$ of the top and $\frac{1}{4}$ of root.

Care After Planting

It is well to work the ground frequently, keeping it loose and porous during June, July and August. This permits air to circulate through the broken up ground and the result to the plant is very beneficial. Give your plants plenty of water during dry periods.

While these directions apply principally to the first year after planting, they encourage growth if followed in subsequent years.

For pruning and planting instructions of Fruit Trees see page 24 and for Evergreens see page 3.

Rock Gardening a Popular Vogue

PLANTING DAYS
◆ HAPPY DAYS ◆

How to Build a Rock Garden

ROCK gardening has become the new vogue. It offers so many possibilities for individual treatment that it is really no wonder that every one is eager to have the distinction of a rockery in their own garden. On even the smallest lot there is space to build a bit of interesting rock work, for the compactness of a rock garden is one of its greatest charms.

The best rocks to use are these between the round or boulder type.

Soil—good productive soil, such as is used for the rose garden.

Lay the lower rocks first, placing them so there is more plant surface than rock in the finished effect. Plants do not get food out of rocks but from the soil and these soil pockets are essential.

As each rock is laid, ram the soil back, around and beneath it; use no cement. Four factors in the success of rock work are: (1) Place each stone so it is anchored firmly. Stones above help to hold those below. (2) Slope horizontal crevices downward into bank. (3) Rocks uptilted lets rain run down into crevice; tilt back 10 to 45 degrees or more. (4) In walls, set each higher rock back of the lower giving the face of the wall a back slope; thus giving plants water, air, light and room.

Low-growing shrubs and evergreens are particularly effective in the rock garden. Taller growers are frequently used as borders or in the background, to create the necessary atmosphere of informality which the rockery demands.

Choice Rock Garden Plants

*Price: 3 for 59c; 10 for \$1.78
 (except as noted)*

*Plants Can be Sent by Parcel Post, Postpaid
 for 2c Each Extra*

Achillea, Tomentosa—July to Sept. Bright yellow flowers.

Alyssum Saxatile Compactum (Goldentuft)—Broad masses of bright yellow flowers in early spring. 1 foot.

Anchusa (Alkanet) — *Myosotidiflora* — Clusters of charming blue flowers resembling forget-me-nots; for shady places.

Arabis Alpina (Alpine Rock Cress)—Produces a mat of white flowers early in the season, and providing a soft, grayish green carpet the rest of the season. 9 inches.

Armeria Lauchiana (Sea Pink)—Will succeed in any soil, forming evergreen tufts of bright green foliage, from which innumerable flowers appear in dense heads, on stiff, wiry stems, from 9 to 12 inches high. Bright rosy red. May-June.

Aubrietia Bouganvillei (False Rock Cress)—Small showy light violet flowers, silvery foliage. 4 inches.

Daphne Cneorum—A delightfully fragrant flowering evergreen shrub, keeping its leaves during the winter. Fragrant pink flowers almost completely cover the plant early in April and again during the fall. This makes an ideal plant for rockeries. 9 to 12 inches.
 6 to 8 inch plants. \$1.25 each; 3 for \$3.60

Dianthus, Deltoides (Maiden Pink)—Profusion of small, crimson flowers during June and July.

Gypsophila (Baby's Breath) *Repens* — A beautiful trailing plant with clouds of white and pink flowers. July and Aug.

Hardy Asters—*Alpinus, Goliath*—Large, showy, bluish purple flowers in May and June.

Helianthemum (Rock or Sun Rose)—Low-growing evergreen plants, forming broad clumps, which are hidden by a mass of bloom; mixed colors. July to Sept.

Heuchera, Sanguinea (Coralbells)—June to September. Flowers bright crimson; very free-flowering.

Iberis Sempervirens (Evergreen Candytuft)—Spreading habit and distinctive narrow evergreen foliage. Flowers pure white, completely covering the plant. 1 foot. May.

Myosotis Alpestris (Mountain Forget-me-not) — Clusters of azure blue flowers and dark, glossy green leaves. 8 inches.

Papaver Nudicaule Alpinum (Iceland Poppy)—Bright green fern-like foliage, from which springs throughout the entire season, a profusion of slender, leafless stems 1 foot high, each graced with charming cup-shaped flowers in orange, yellow, white mixed, and often fringed.

Phlox Subulata—A very dwarf, creeping Phlox covered with small flowers in the early spring and a bright green mat of foliage all year. Rose and White.

Platycodon (Balloon Flower)—*Grandiflora*—June to October. Large, showy, deep blue flowers.

Polyanthus, Veris Hybrids (Bunch Primrose)—Various shades of lilac, purple and violet, as well as a wide range of buff, orange, salmon and rich reds. Early Spring.

Primula Auricula Alpina (Hardy Primrose)—The growth is very attractive, forming rosettes of thick leaves, sometimes farinose or mealy. The flower stalks rise to a height of six or eight inches, bearing blooms of various colors.

Primula Cashmeriana (Hardy Primrose) — Large, globular heads of a pleasing purplish blue shade; prefers a moist, shaded or sunny location.

Viola, Jersey Gem (New)—Pure rich violet, slightly perfumed.
Veronica Rupestris Nana (Speedwell)—Prostrate and creeping, forming a dark green carpet of shiny foliage which is covered with deep Gentian blue flowers in late April.



Follow the Fashion—Build a Rock Garden

LANDSCAPING SERVICE



After Planting



Before Planting

OWING to the many requests, asking what varieties of trees, shrubs, roses, etc., to plant for best effects and where to plant them, we maintain a Landscape Service Department for the convenience of our customers. This service applies just as well to the small yard as to the great estate of many acres.

Experienced Architects

In this department we are employing landscape architects, who are familiar with the habits of varieties, who know the positions required for the different kinds, and who have an extensive knowledge of trees and plants. We are forced to make a small charge for their service, but because they usually recommend fewer plants than you yourself would select, they reduce your total expenditure while giving you handsomer grounds. Again, on large grounds, by having a plan you can divide the expenditure by planting part of the grounds each year, building to a beautiful finished work of art. When it is merely a question of advice on your planting problems no charge is made as this is a service we are anxious to render to insure your satisfaction.

Cost of Plan

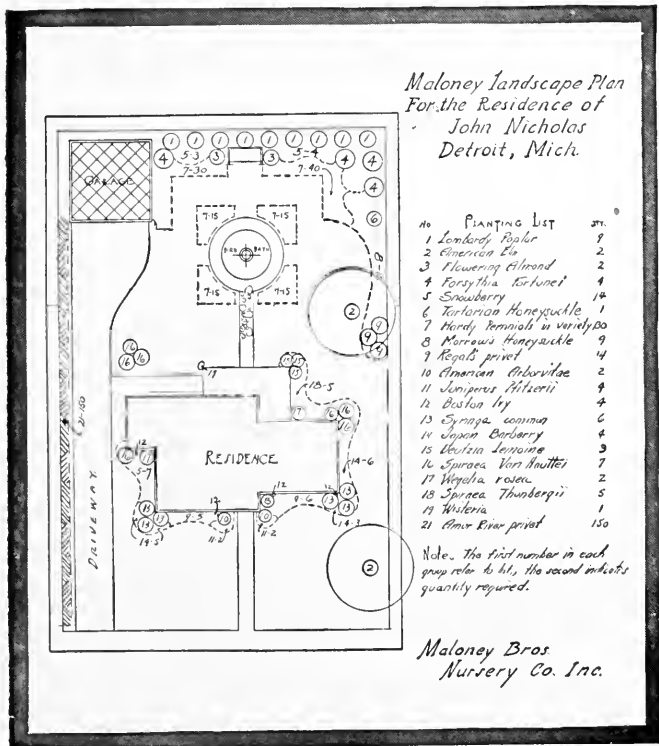
No actual charge for Landscape plans. Kindly send the information requested and our Landscape Department will draw you a complete plan showing what varieties to use and where to plant them. For this plan we will make a charge of \$4.00. Then if your order amounts to \$35.00 or more you may deduct the \$4.00 cost of plan when remitting. Cost of plan not deductible for order under \$35.00.

Necessary Information

The accuracy of our plan depends upon the information you give us, so be complete and exact.

Dimensions of Property, Dimensions of Buildings (show ground floor plan on sketch and give complete dimensions)—Distance of Buildings from Property Lines (locate in respect to Front, Back and Side Lines) Cost of House, Style of Architecture—locate all entrances, locate walk and drives and give width; locate porch and basement windows; (indicate Coal and Laundry Windows); show number of steps; locate existing trees and shrubs of any description; indicate any terraces or sloping ground; give directions of the compass; indicate objectionable features to be screened; indicate views to be retained; send any available photographs. Do you want a vegetable and fruit garden; do you want a Hardy Flower Garden? You don't have to make an architect's drawing to exact scale. Just a rough sketch will do, but be sure it contains all the information requested above. We will supply a complete scale drawing, as indicated in the lower left hand corner of this page. We strongly recommend that you use this service.

Write or phone us. Consultation and personal supervision by our landscape architects can be arranged for large estates, parks, schools, cemeteries, sub-divisions and public buildings anywhere.



DIVIDEND SHRUBS

Decorative Shrubs

Price of All Two Year, No. 1 Hardy Shrubs,
2½ to 3½ Feet
34c each; 10 for \$2.98
(except as noted)

You Are Not Spending Money— You Are Investing It

Why do we call them dividend shrubs? Because an inexpensive little tree will grow into a valuable big tree in years to come. When your children are growing, and going to school, your shrubs and trees are attaining maturity.

Your children provide most of your joys in life. Shrubbery provides a platinum setting for that joy, and gives you many happy hours. Working around the home, keeping up the lawn and shrubs, has become almost an American tradition.

Shrubs for Foundation Plantings, and How to Plant Them as to Size:

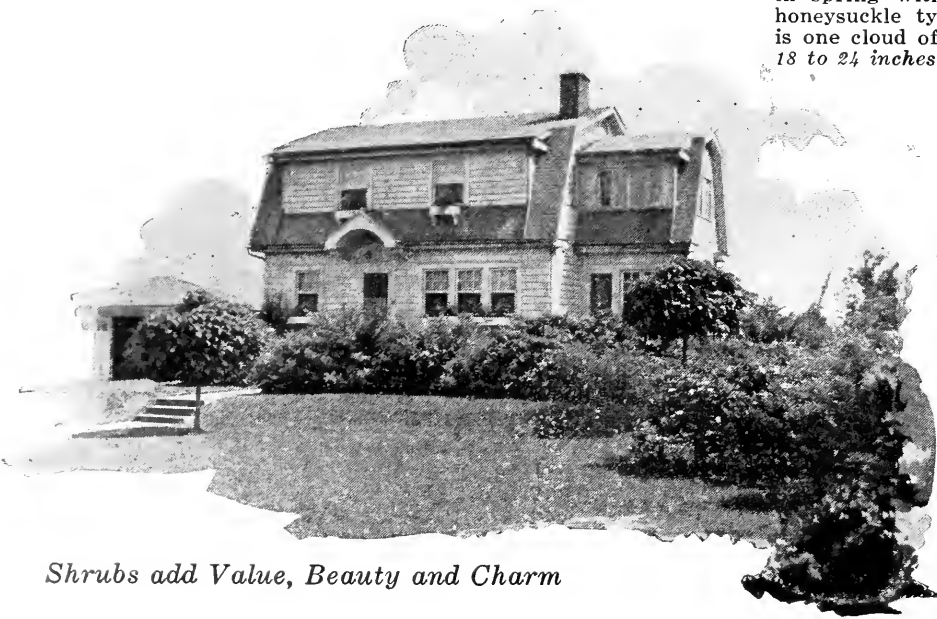
Dwarf Growing—Barberry, Deutzia Gracilis, Deutzia Lemoinei, Kerria Japonica, Spiraea Anthony Waterer, Spiraea Thunbergi, Stephanandra.



Spiraea Van Houttei

Our list of shrubs includes the most desirable, deciduous, blooming and berry-bearing varieties.

For your convenience and to enable you to get the best effect from your planting, we have indicated the kind of plants best suited for various locations. They naturally cover a wide range as to size, from very low growing plants to those that are tall enough for screens. In color of blossom, character of growth, adaptability to soil, you will find something suited to every location. They will put the finishing touches to your home grounds. Maloney shrubs are freshly dug and will not disappoint you.



Shrubs add Value, Beauty and Charm

Medium to Tall Growing Varieties—Almond, Althea, Aralia, Beauty Bush, Butterfly Bush, Calycanthus, Coralberry; Deutzias: Crenata, Pride of Rochester; Golden Elder, Hydrangea A. G., Hydrangea P. G., Mock Orange, Japan Quince, Pearl Bush; Spiraeas: Billiardi, Callosa Rosea, Douglasi, Korean, Prunifolia, Van Houttei; Syringas: Common, Golden, Sweet Pepper Bush, Tamarix; Weigelas: Candida, Eva Rathke, Floribunda, Rosea, Variegated, Witch Hazel.

Tall Growing Varieties for Corners and Borders—Dogwood, Forsythia, High Bush Cranberry, Honeysuckle, Lilacs, Snowball, Winged Burning Bush.

For Berries in Winter

Barberry Thunbergi, Red Leaf Barberry, Coralberry, High Bush Cranberry, Snowberry.

For Shady Locations

Barberry, Coralberry, Deutzias, Dogwoods, Forsythia, Honeysuckle, Hydrangea A.G.A., Mock Orange, Snowball, Snowberry, Spiraea Van Houttei, Witch Hazel.

Almond, Flowering (Amygdalus)—Covered in May with rose-colored blossoms resembling small roses. 4 feet.

Althea (Hibiscus Syriacus)—Blooms freely in August and September. Vigorous grower. Also called Rose of Sharon. Double purple, red, pink and white. 6-8 ft.

Aralia Pentaphylla—Long, slender, gracefully arching branches. Greenish white flowers in long umbels. Valuable for its intense green foliage. 6-8 ft.

2 to 3 ft. 50 cents each

Barberry, New Red-Leaf (Berberis Thunbergi Atropurpurea)—Similar to Barberry Thunbergi but the foliage of this new variety is of a rich, lustrous, bronzy red. It becomes more brilliant and gorgeous throughout the summer and in the fall its foliage changes to vivid orange, scarlet and red shades. Scarlet berries remain on the plant the entire winter. All that is required to develop its brilliant coloring at all seasons is that it be planted in full exposure to the sun. 3 feet.

18 to 24 in. 65 cents each; 5 for \$3.00

Barberry Thunbergi (Berberis Thunbergi)—Dwarf habit, very graceful and its foliage turns to a beautiful red in the fall. Red berries remaining during winter. 3 feet. 25 cents each; 10 for \$1.75.

Beautyberry (Callicarpa Purpurea)—A pretty shrub from 1 to 4 feet high. It blooms profusely during August clusters of pink flowers, these followed by berry bunches colored a light violet.

1½ to 2 ft. 50 cents each

Beauty Bush (Kolkwitzia Amabilis)—An exceedingly handsome ornamental shrub which has come to us from the wilderness of China and Central Asia. The foliage and habit are attractive even when the bush is out of flower, and it is perfectly hardy. It grows 4 to 6 feet high when matured, erect and twiggy, producing long, arching branches covered in spring with clusters of small, tubular flowers of the honeysuckle type, borne in such profusion that the bush is one cloud of delicate pink. 5 to 6 feet.

18 to 24 inches 85 cents each

Beauty Builder Shrub Collection No. 1

Two Year 2½-3½ feet Shrubs
which will bloom all summer

- 2 Spiraea Van Houttei
- 2 Deutzia Crenata
- 2 Forsythia Fortunei
- 2 Golden Elder
- 2 Honeysuckle Pink

**Special Bargain
Price \$2.89**

SHRUBS

A Mark of Refinement

General Grant Once Said:

"Every flower about a house certifies to the refinement of somebody."

We all have that inborn desire to get ahead of the other fellow, whether it be financially, or socially.

This desire makes us more valuable both to ourselves and to our community. Our first move in progressing socially is to attain that certain mark of refinement. This holds true not alone of ourselves, but of our home and the field around it. Field is rather a crude word for a lawn but that's exactly what it is before it is planted.

By planting Maloney shrubs around your home you give it that refined touch that is in keeping with yourself and family.

The garden is the true signet of the cultured homemaker. Flowers and the things associated with flowers always mirror refinement. They bring an element of it into our lives that we can gain nowhere else.



Purple Lilac

Butterfly Bush (Buddleia)
—Attracts butterflies in large numbers. Produces long, beautiful lilac-colored flowers from early summer till frost. 3-4 feet.

Calycanthus—Foliage rich, glossy green; flowers chocolate color, having a peculiarly agreeable odor. August. 5 feet.

Coralberry, Symphoricarpos Vulgaris (Indian Currant)—Vigorous, quick growing shrub; fruit red. Rose colored flowers in June and July. 4-5 feet.

Deutzia Crenata (Double Flowering)—In May is fairly covered with very showy double white flowers, edge slightly tinged with rose. 5-6 feet.

Deutzia, Gracilis—Pure white flowers in June. 2 feet.

Deutzia, Lemoinei—Flowers large, pure white, produced freely. May. 3 feet.

Deutzia, Pride of Rochester—Blooms in May. Double. White. 5-6 feet.

Dogwood (Red)—Very conspicuous in winter when branches turn to blood red. 6-10 feet.

Dogwood, Yellow (Cornus Lutea)—A striking yellow branched form. Satisfactory for contrast. 6-10 feet.

Forsythia Fortunei (Golden Bells)—Deep yellow flowers in great profusion in April. 6-8 feet.

Forsythia Intermedia—Earliest blooming; long, drooping canes of yellow flowers. April. 6-8 feet.

Forsythia Viridissima—Six inch olive-green leaves, on heavy upright canes, the flowers greenish yellow with somewhat twisted petals. Early April. 6-8 feet.

Golden-Leaved Elder—Best of all colored shrubs, the foliage being as yellow as gold. 10 to 12 feet.

High Bush Cranberry—Upright and spreading flat heads of white flowers 3 to 4 inches across in May and June, followed by scarlet fruits which remain until the following spring. 8 to 10 feet.

Honeysuckle, Morrowi—A spreading variety growing 4-6 feet, with creamy white flowers in early spring, followed by pretty red berries.

Honeysuckle, Pink (Grandiflora Rosea)—Bright pink flowers. Covered in summer and autumn with orange berries. May. 8-10 feet.



Forsythia Fortunei



Red Leaf Barberry

Everybody's Favorite Shrub Collection No. 2

Two year 2½-3½ feet Shrubs
which will bloom all summer.

- 2 Spiraea Anthony Waterer
- 2 Flowering Almond
- 2 Hydrangea A. G.
- 2 Honeysuckle Morrowi
- 2 Forsythia Intermedia

Special Bargain
Price \$2.89

SHRUBS Beautiful with Flowers

(for SPRING, SUMMER, FALL)



Beauty Bush

Honeysuckle, Red (*Tatarica rubra*)—Light red flowers. Covered in summer and autumn with scarlet berries. May. 8-10 feet.

Honeysuckle, White (*Tatarica Alba*)—Flowers bluish white. Bush hardy and dense. 8 to 10 feet.

Hydrangea, Arborescens Grandiflora Alba (Hills of Snow)—The blooms are of the very largest size, of pure snow-white color in July and August. 3-4 feet.

Hydrangea P. G. (Tree Form)—When in full bloom are very attractive. 3-4 feet. *89 cents each*

Hydrangea Paniculata Grandiflora—Hardy; thrives in all soil; grows rapidly, blossoms profusely. Flowers are pure white, changing to pink, borne in large pyramidal trusses a foot long and six to eight inches in diameter. Blooms early in August, and continues for several weeks. 4-5 feet.

Kerria Japonica—A medium dwarf shrub, beautiful globe-shaped double flowers of bright orange. July. 3-4 feet. *50 cents each*

Lilac, Purple (*Syringa Vulgaris*)—An old favorite; purple flowers. May 6-8 feet.

Lilac, White (*Syringa Vulgaris alba*)—Well-known favorite. May. 6-8 feet.

Lilac, Persian Purple—Medium growing with slender branches and narrow leaves. *70 cents each*

LILACS, FRENCH HYBRIDS

Carefully selected from the world's renowned Highland Park Collection, Rochester, N. Y. Every planting should include a few of these outstanding French lilacs. The large flower clusters are decidedly more fragrant and unexcelled.

Unusual Price—

Double Flowering *80 cents*

Single Flowering *70 cents*

Charles X—Single, light lilac.

Charles Joly—Double, dark red.

Marie Legraye—Single, pure white.

Paul Hariot—Double, rouge violet. Buds purple.

Edith Cavill—Double, pearly white; buds cream.

Macrostachva—Single, light rose.

Leon Gambetta—Very double, pinkish lilac.



*Weigela
Eva Rathke*

PHILADELPHUS—MOCK ORANGE or SYRINGA

Aureus (Golden Syringa)—Yellow foliage, white flowers. Very sweet scented. 3-5 feet.

Coronarius (Garland Syringa)—Flowers pure white; highly scented. Double. 6-8 feet.

Grandiflorus—Very large flowers in June. Tall.

Virginal—Very large, double white flowers in clusters of five to seven; blooms in June. 5-7 feet.

Pearl Bush—Buds like pearls strung on slender threads and open up to fragrant clusters of pure white, starry flowers. Grows 6 to 10 feet high.

Quince, Japan (*Cydonia Japonica*)—Dark green foliage, and showy, deep scarlet flowers. May. Grows 5-6 feet.

Snowball, Common—Bears balls of pure white flowers in June. Grows 8-10 feet.

Snowball, Japan—A mass of white in June. Grows 6-7 feet.

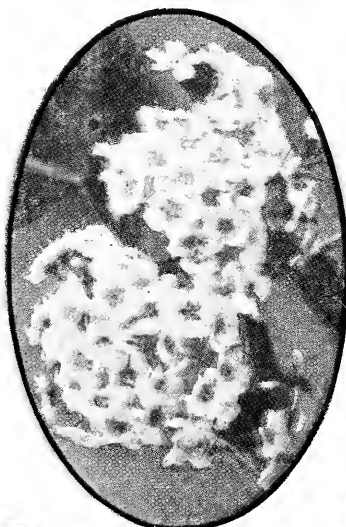
Snowberry—Very ornamental. Small, pink flowers followed by large, waxy white berries, which remain during winter. June and July. Grows 4-5 feet.

Ideal Shrub Collection No. 3

Two year 2½-3½ feet Shrubs
Giving a riot of color the
first summer.

- 2 Hydrangea P. G.
- 2 Weigela Rosea
- 2 Japan Quince
- 2 Spiraea Billardi
- 2 Deutzia, Pride of Rochester
- 2 Common Snowball

**Special Bargain
Price \$3.48**



*Korean
Spiraea*

LOWEST
PRICES
IN
16 YEARS
GOOD
TIME TO
PLANT



Spiraea Anthony Waterer



Philadelphus Grandiflorus

or Bright with **BERRIES**

(for **WINTER EFFECTS**)

Spiraea Anthony Waterer—A dwarf variety of great beauty. Its broad flat heads of red flowers continue in profusion all summer. Grows 3 feet.

Spiraea Billardi—During July every branch and twig is tipped with a spike of beautiful blood-red flowers 4 to 6 inches in length. 4-5 feet.

Spiraea Callosa Rosea—Has large panicles rose-colored flowers. Blooms nearly all summer. Grows 4-6 feet.

Spiraea Douglasi—Has spikes of deep rose-colored flowers in July and August. Grows 4-6 feet.

Spiraea Korean (Spiraea Trichocarpa)—This splendid new shrub is enthusiastically acclaimed the finest spiraea yet discovered, covered with large rounded clusters of snowy white flowers marked with darker eyes. Blooms about two weeks later than the popular Spiraea Van Houttei. It retains its beautiful glossy green foliage late into the autumn. 4-6 ft. Strong 2-year old, field-grown plants. 98 cents each; 3 for \$2.79.

Spiraea Opulifolia—The heavy white flower umbels in June make the branches droop; old flower heads turn to dark red, making a striking variety of colors at different stages of maturity. 8-10 feet.

Spiraea Opulifolia Aurea (Golden Spirea)—Of similar habit to above, with young foliage of bright yellow changing to golden bronze in the fall. 45 cents each

Spiraea Prunifolia (Bridal Wreath)—Plum foliage, in autumn turns to brilliant red. Blooms early, small white flowers. 4-5 feet.

Spiraea Thunbergi—Feathery foliage, which is a peculiar but pleasing shade of yellowish green, changes in autumn to bright red and orange. Grows 3-5 feet.

Spiraea Van Houttei—Everybody's favorite. White blossoms in May and June. Grows 5-7 feet. 30 cents each; 10 for \$2.50

Stephanandra Flexuosa—Branches angular, zigzagged, deep lobed foliage, colors to purplish red; and paniced racemes of white flowers in June. Grows 3-4 feet.

Sweet Pepper Bush (Clethra Alnifolia)—Very hardy; blooms every season without fail; cold never harms it; flowers white, spikes three to six inches long. Grows 4-5 feet. 45 cents each

Tamarix, Africana—The pink flowers, filmy foliage and gracefulness make them one of the most desirable shrubs for background or interplanting. Grows in poor, dry soil. Blooms early. 4-5 feet.

Weigela, Candida (Diervilla Candida)—The flowers are of the purest white, blooming in June, and all summer. 5-7 feet.

Weigela, Eva Rathke (Diervilla Eva Rathke)—Showy, bright red flowers borne freely during the summer. 5-7 feet.

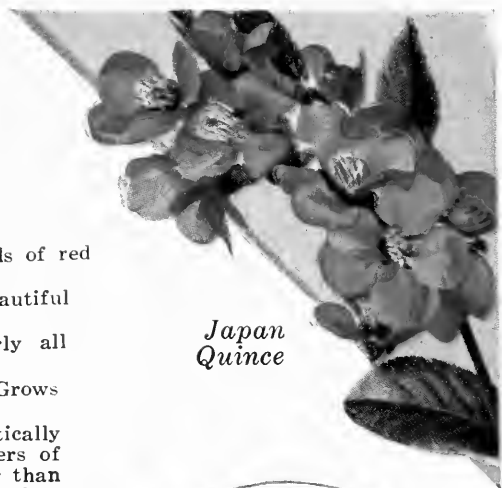
Weigela, Floribunda (Diervilla Floribunda)—Flowers dark crimson, with white stamens somewhat like Fuchsia flowers. Blooms in the spring and in the fall. 5-7 feet.

Weigela, Rosea (Diervilla Rosea)—One of the most charming shrubs in cultivation; the flowers are large and of deep rosy color, and are borne in great profusion. July. 5-7 feet.

Weigela, Variegated Leaved—One of the best dwarf shrubs. Silvery variegated leaves, flowers nearly white. 4-5 feet.

Winged Burning Bush (Euonymus alatus)—Spreading in growth, with peculiar corky bark. Has ornamental scarlet berries. Foliage turns a beautiful crimson in autumn. 8-10 feet. 50 cents each

Witch Hazel (Hamamelis Virginiana, Yellow)—October. Grows well in shade. Unusual because of period of blooming. Grows 4-5 feet.



Japan Quince



Weigela Rosea

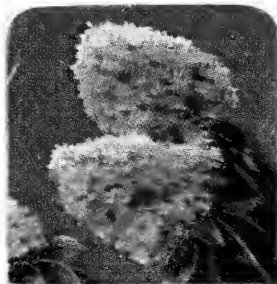
Collection of Winter Berried Shrubs No. 4

Which will give beautiful effect of high colored berries late fall and all winter.

Two year Shrubs 2½-3½ feet

- 2 High Bush Cranberry
- 2 Coralberry
- 3 Barberry Thunbergi
- 3 Snowberry

Special Bargain Price \$2.89



Hydrangea P. G.



Snowberry



Flowering Almond

OPPOR-
TUNITY
DISCOUNTS

SEE
PAGE 7

Climbing Roses

are delightful ornaments; they add beauty and charm to your home and garden.

*Price: Two Year, No. 1 Bushes
39c each; 5 for \$1.85*

American Pillar—The single flowers range from 2 to 3 inches in width in mammoth clusters. Brilliant carmine-rose, with distinct cream variegation and yellow stamens at center.

Aviateur Bleriot—Buds orange, pink and apricot; flowers double, medium size, pale yellow to white.

Climbing American Beauty—Rich carmine pink, the large, finely shaped flowers being borne singly or in threes. Rambler type.

Crimson Rambler—Vigorous, hardy and extremely prolific. It blooms in clusters of a beautiful crimson color and lasts a long time.

Dorothy Perkins—Beautiful shell-pink. Flowers double, large, usually two inches across and borne in loose clusters.

Emily Gray—The most beautiful yellow climber, with large golden buds and blooms which do not fade.

Excelsa—Brilliant scarlet-crimson flowers of great beauty.

Gardenia—The tight, very numerous little yellow buds, are beautiful in early summer, the flowers opening up creamy white jasmine scented.

Hiawatha—Small flowers—deep ruby crimson—uniquely borne in long trails of 40 to 50 blooms.

Paul's Scarlet Climber—Vivid scarlet, good size, semi-double, freely produced in clusters of from 3 to 20 flowers each, the plants being literally covered from top to bottom with bloom.

Rosiere (Pink Tausendschon)—Persistently deep, glowing pink.



*Paul's Scarlet
Climber*



Emily Gray

Seven Sisters—Red to blush pink.

Silver Moon—Beautiful, semi-double, pure white, four inches in diameter, with a cluster of prominent yellow stamens in the center.

Tausendschon (Thousand Beauties)—A beautiful combination of colors, including several shades of pink. Semi-double.

Dr. W. Van Fleet—Large flowers of exquisite pale pink on fine, long stems.

Veilchenblau (Blue Rambler)—Double flowers of light lilac, shading light purple and blue.

White Dorothy—Duplicate of Dorothy Perkins except in color.

Wichuraiana—Clusters of starry white flowers in midsummer and a profusion of red fruits late in the season.

Rugosa and Hugonis

Price: 49c each; 10 for \$4.69

Grootendorst (Rugosa)—For group planting to give color contrast throughout season. Everblooming. Colors red and pink.

Rosa Hugonis—A dense rose bush of medium shrub proportions, well adapted to either specimen or mass planting in the foreground of shrub groups. Their color is bright and noticeable, ranging in shades of yellow from deep gold to canary.

Dwarf Polyantha—Baby Roses Everblooming

Price: 49c each; 10 for \$4.69

Called the "Baby Rambler" on account of their very short, close growth. The flowers are borne in clusters of twenty or more. Bloom from May to November. Colors, crimson, pink and yellow.

MALONEY BROS. NURSERY CO., INC.

Hybrid Perpetual Roses

EVERY ONE HAS BLOOMED IN NURSERY ROW

Price of Strong Bushes, 2 Year, No. 1
49c each; 10 for \$4.69

Hybrid Perpetual Roses are not as free bloomers as the Hybrid Teas, but are completely hardy and of vigorous growth. They bloom tremendously in June and usually sparingly in autumn.

Frau Karl Druschki (Snow Queen)—The finest white Hybrid Perpetual. It is marvelous in its beauty in half opened bud and in the pure white of the full opened bloom.

General Jacqueminot—Brilliant crimson; large and fine. Beautiful in bud.

George Arends—Clear, tender pink; good bud and perfectly formed flowers.

Harison's Yellow—Extremely fragrant, profuse in bloom.

J. B. Clark—Intense, deep scarlet, heavily shaded, blackish crimson.

Madame Gabriel Luizet—Flowers light silvery-pink, shading paler at petal edges. Bears an abundance of bloom.

Magna Charta—Pink and carmine; very large and full; a profuse bloomer. Fragrant.

Margaret Dickson—A free summer and autumn bloomer. Flowers white with pale flesh center; delightful fragrance.

Paul Neyron—The largest of all. Deep rose color. A free bloomer.

Prince Camille de Rohan—Very dark velvety crimson, changing to intense maroon.

Ulrich Brunner—Large flowers of light red; grow on long stems.

CUSTOM GROWN ROSES—HYBRID TEAS

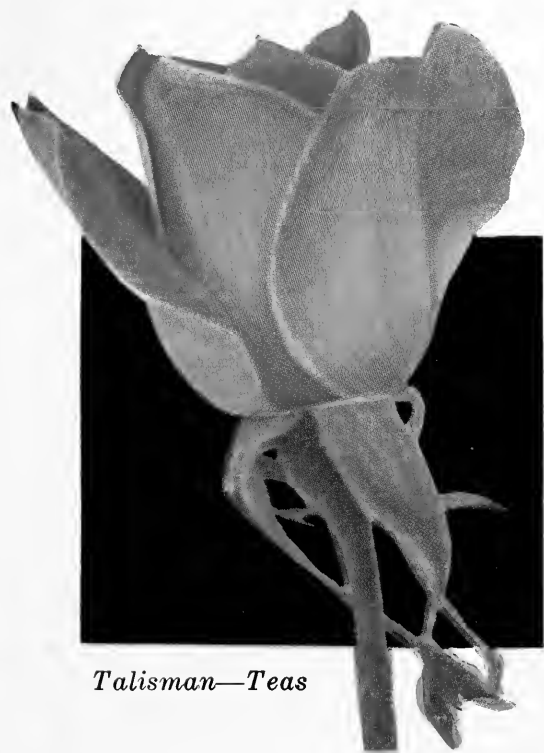
We list the President Hoover and Talisman as Custom Grown because they are so far above the average. We believe that were you to request nature to make you two roses, none could come any closer to your expectations than these two mentioned.

President Herbert Hoover—"President Hoover" is a glorious rose, wonderfully free in the easy manner in which it grows and charming in its color arrangement, which is a splendid combination of cerise, pink, flame, scarlet and yellow, and this combination gives the most dazzling color effect ever seen in any rose. The flower is large and the bud beautifully pointed. The petals are broad and thick, retaining this characteristic days after the flowers are open. It is a splendid keeper. The exquisite fragrance of this rose is one of its strongest points; we have never had a rose to compare with it in fragrance. Awarded the Gold Medal at the International Flower Show in New York, 1929. Strong two year bushes, \$1.19 each.

Talisman—The most vividly colored rose ever introduced. No illustration can do it justice. Beautiful combination shadings of gold, apricot, deep pink and old rose. Unlike most roses, the colors deepen as the rose opens. It created a sensation when first introduced and its popularity is growing by leaps and bounds. Awarded Gold Medals by American Rose Society, also at the International Flower Show at New York, and the President Coolidge Horticultural Gold Medal. Strong two year bushes. 98 cents each.



Prince C. de Rohan



Talisman—Teas



President Herbert Hoover—Teas

Maloney's Hybrid Tea Roses

Latest and Choicest Varieties

"It never rains roses; when we want more roses we must plant more bushes." GEORGE ELLIOT.

The loveliest of all flowers is the rose, and the sweetest of all perfume is its fragrance.

OUR ROSES ARE FINE, HEALTHY, STRONG, VIGOROUS TWO YEAR BUSHES, FIELD GROWN, READY TO BLOOM PROFUSELY THE FIRST SUMMER. ROSES ARE EASY TO GROW.

Price of All Varieties
Strong, 2 Year, No. 1
49c each; 10 for \$4.69
By Parcel Post 5c ea. extra



Columbia Red



Rev. F. Page-Roberts



Willowmere



Lady Hillingdon



Kaiserin Augusta Victoria

Betty Uprichard—Outer petals glowing carmine, the inner, soft salmon pink to carmine. The buds are copper red opening to fairly full flowers with good fragrance.

Columbia Red—This new American variety is indeed a captivating type; lively crimson scarlet with a velvet surface. A unique and pleasing perfume.

Dame Edith Helen—One of the largest and most perfectly shaped pink roses known. Blooms abundantly, with long, strong stems. The most perfumed of all pink roses.

Duchess of Wellington—Intense saffron yellow, outside petals stained crimson, passing to deep coppery saffron yellow as it develops.

E. G. Hill—New—Great massive blooms of deep maroon, velvety on inside and glistening outside; very perfumed.

Etoile de France—Rich velvety crimson with rounded center of vivid cerise. Strong, free-bloomer.

Etoile de Hollande—Brilliant dark, glistening red. Very fragrant. A practically faultless rose.

Francis Scott Key—Red shading to cerise; very large.

General McArthur—An abundance of velvety crimson-scarlet bloom.



J. L. Mock

Gruss an Teplitz—Brilliant crimson flowers of medium size, produced in clusters. Probably the most consistent bloomer of all red roses.

Hoosier Beauty—Large, velvety crimson bloom throughout the season.

J. L. Mock—Magnificently formed, deep pink, double, exquisitely fragrant.

K. A. Victoria—Buds are creamy white, solidly formed, developing into full flowers of the purest white, tinged lemon in the center.

Killarney Pink—Deep brilliant pink. Extra large flowers, double, well formed. Makes a wonderful cut rose in the bud and lasts well.

Killarney White—Free bloomer, beautiful form, pure white.

Lady Hillingdon—Beautiful apricot-yellow with lovely buds and exquisitely formed open blooms produced continuously. Probably the hardiest of all Tea Roses and undoubtedly the best yellow bedding rose.

Los Angeles—Unsurpassed in beauty of coloring—luminous flame-pink, toned with coral, shaded gold at base of petals.



Gruss an Teplitz



Padre



Souvenir de Georges Pernet

Madame Butterfly—A beautiful blend of light salmon apricot with gold tinted base. Flowers of large size, perfect shape; good for cutting.

Mme. Edouard Herriot—Brilliant buds of coral red and orange. Fragrant.

Mme. Jules Bouche—Large flower of pure white, with a tinge of blush in the center. Vigorous grower and profuse bloomer. Fragrant.

Mrs. Aaron Ward—The buds are a rich golden buff, developing into large, well-shaped flowers of Indian yellow, tinged salmon. A free bloomer.

Mrs. A. R. Barraclough—A magnificent new rose of great size. Pure pink, yellow at base of petals; extra fragrant.

Padre—Bright scarlet and copper with orange base. Semi-double flowers with moderate fragrance.

President Herbert Hoover—For illustration, description and price see page 15.



Mrs. Aaron Ward

Radiance Pink—Rose-pink buds developing into large full glossy pink petals. Fragrant.

Red Radiance—A bright rosy red form of Radiance with the same good habit and blooming qualities.

Rev. F. Page-Roberts—Coppery-orange buds, developing into large, full golden yellow flowers, outer petals suffused with red. Produces freely, especially in the fall; fragrant.

Rose Hill—Large petals of great substance, and a deeper tone of pure rose pink.

Sensation—Scarlet-crimson of magnificent shade, with blackish shadings. Extremely large and double.

Souvenir de Claudius Pernet—Long, pointed buds; sun-flower yellow, deeper in the center.

Souv. de Georges Pernet—Glowing carmine pink, ends of petals lighter; flowers full pointed and freely produced.

Sunburst—Giant yellow, suffused orange-copper.

Swansdown—A lovely creamy white.

Talisman—For illustration, description and price see page 15.

Templar—Clear bright red. Very full, globular shaped flowers. Very fragrant.

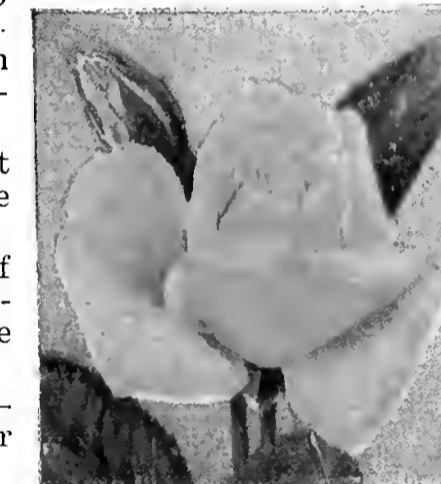
Willowmere—Rich shrimp pink, shaded yellow in the center. Attractive buds.



Etoile de Hollande



Madame Butterfly



Duchess of Wellington



Swansdown

Rose Culture

Plant roses in good rich soil. Do not trim the roots off too severely, but cut the tops off about six to eight inches above the top of the ground. Pack good rich soil thoroughly around the roots.

Maloney's Chosen 14 Special Collection No. 5

One each of Roses illustrated on pages 16-17.

Special Bargain Price \$6.48

Special Offer No. 6

Eight of our finest Roses which are exceptionally good for cutting.

Mme. Ed. Herriot	Sensation
Mme. J. Bouche	Pink Radiance
F. S. Key	Lady Hillingdon
Mme. Butterfly	K. A. Victoria

Special Bargain Price \$3.68

MALONEY'S COVER COLLECTION Our Favorite 5 Offer No. 7

1 Dame Edith Helen
1 Etoile de France
1 General McArthur
1 Killarney White
1 Souv. de C. Pernet

Special Bargain Price \$2.29

An Ideal Rose Garden Suggestion Offer No. 8

Killarney Pink	Los Angeles
Radiance Red	Sunburst
Betty Uprichard	Gruss an Teplitz
Souv. de C. Pernet	K. A. Victoria

Special Bargain Price \$3.68

Choice Perennials

Price of Perennials (except as noted)

3 for 59c; 10 for \$1.78

All our plants are Two-Year Field Grown and will bloom this year.

Can be sent parcel post for 2c each extra.

PERENNIALS are becoming more and more popular as once planted bloom year after year. No home grounds are complete without these continuously blooming plants. We list a wide variety so that you can have a succession of bloom of colors from early Spring until late Fall.



Gaillardia

Achillea, Ptarmica, The Pearl—Pure white, double flowers all Summer. Prized for cutting.

Anchusa (Alkanet) Dropmore—Tall spikes of beautiful blue flowers, blooming all summer. 4 to 5 feet.

Anemone, Prince Henry—Double red flowers; dwarf. Sept.

Anemone, Queen Charlotte—Abundant semi-double flowers broad and perfectly formed; La-France pink, Sept. to Nov. 2-3 feet.

Anemone, Rubra—Beautiful rosy red; stamens bright yellow.

Anemone, Whirlwind—Excellent double white flowers. 2-3 feet.

Anthemis (Golden Marguerite) Tinctoria—Handsome, finely cut foliage, and large, golden yellow flowers produced all summer.

Aquilegia (Columbine)—May to July. Single, long-spurred variety of colors red, blue, white, yellow.

Aquilegia—Long spurred hybrids: Wonderful flowers with very long-spurred flowers. May to July.

Artemisia (Sage Brush) Lactiflora—Heads of small white flowers in Aug. and Sept.

Bleeding Heart—One of the most delightful of early spring flowering plants. Bears numerous rosy red, heart shaped flowers in drooping clusters. Price 39c each; 10 for \$3.48.

Campanula Medium (Canterbury Bells) Calycanthema (Cup and Saucer)—Large, semi-double flowers, each resembling a cup and saucer. White, blue. May-June.

Campanula Medium (Single Canterbury Bells)—Beautiful rich shades in rose, blue and white.

Centaurea (Cornflower)—Makes a fine display in the border; also excellent for cutting. Rose-pink, violet-blue and white. June to Sept. 2 feet.

Chelone Torreyi (Shellflower)—Bears numerous spikes of large scarlet flower heads, Summer and Fall.

CHRYSANTHEMUM

September and October

Brune Poitevine—Of medium height and very early. Flowers are large, of a deep velvety reddish bronze completely covering the plant.

Early Snowdrop—Midseason and of good height, plant rather loosely formed. The best pure white button known.

Excelsior—A very hardy and easily grown Mum. Medium early. About 24 inches high. Produces an abundance of shaggy deep yellow flowers. Good for cutting.

Firelight—Tall, midseason, large flowering. Very showy spikes covered with heads of red flowers tipped with copper.

Indian—Late-flowering. Flowers are shaggy and of peculiarly pleasing coppery red shade.

Chrysanthemum Maximum (Shasta Daisy)—Handsome plant, with large, glistening white blossoms in June and July.

Coreopsis (Tickseed) Grandiflora—Rich golden yellow flowers nearly all summer.

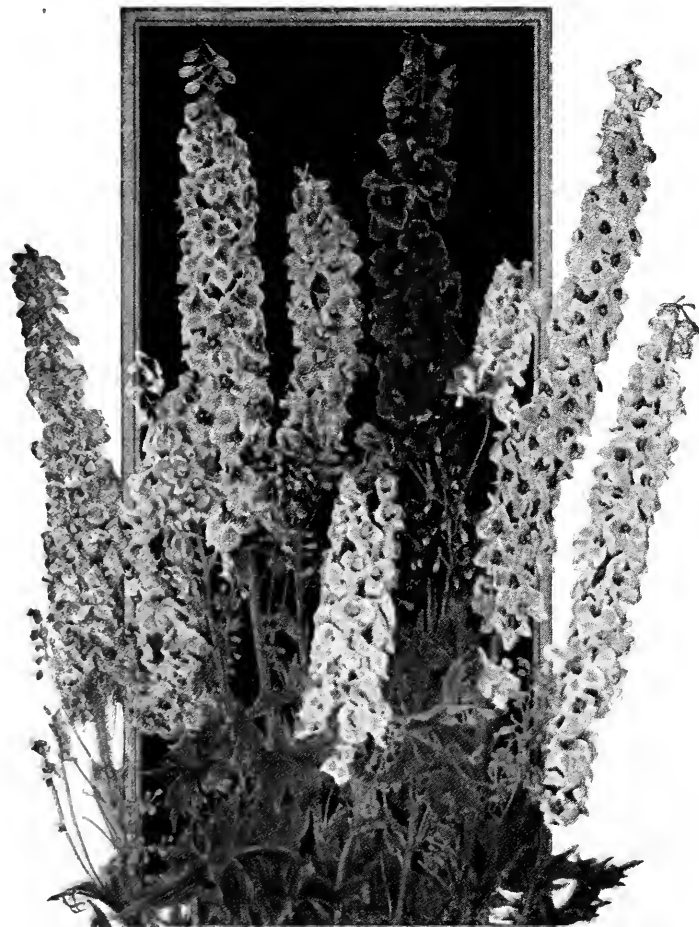
Delphinium (Larkspur) Belladonna—Large spikes of sky blue flowers. June until frost.

Delphinium Formosum—Rich blue flowers tinged with purple and having white eye.

Delphinium, Gold Medal Hybrids—The flowers range in color from light azure to deep blue and from delicate lavender to purple.

Dianthus (Pinks) Barbatus (Sweet William)—Produces great masses of bloom of extremely rich and varied colors. June to July.

Dianthus Plumarius (Grass or Garden Pink)—Pink purplish, and white, fragrant flowers on long spikes.



Delphinium

Digitalis (Foxglove)—Thimble shaped flowers in shades of pink, purple-white. Tall spikes 4 to 6 feet high. June to Sept.

Eryngium (Sea Holly) **Amethystinum**—The true blue Thistle, with amethyst stems and bracts. Excellent for dry bouquets in winter.

Eudalia Japonica Variegated (Ornamental Grass)—Very ornamental, long narrow leaves, striped green, white, and often pink or yellow. The dried plumes make excellent inside winter decorations.

Gaillardia (Blanket Flower)—Large flowers yellow and orange-red. Early summer to Nov.

Geum (Avens) **Mrs. Bradshaw**—Large, double flowers of a fiery red, blooming nearly all summer. 18 inches.

Geum, Lady Stratheden—Rich golden yellow blossoms. All summer.

Gypsophila Paniculata (Baby's Breath)—Mist-like sprays of minute white flowers. Fine for bouquets. Midseason.

HARDY ASTERS

Late Fall

Joan Vaughn—Large, semi-double flowers of deepest blue.

Mrs. Raynor—The nearest red of all asters; good form.

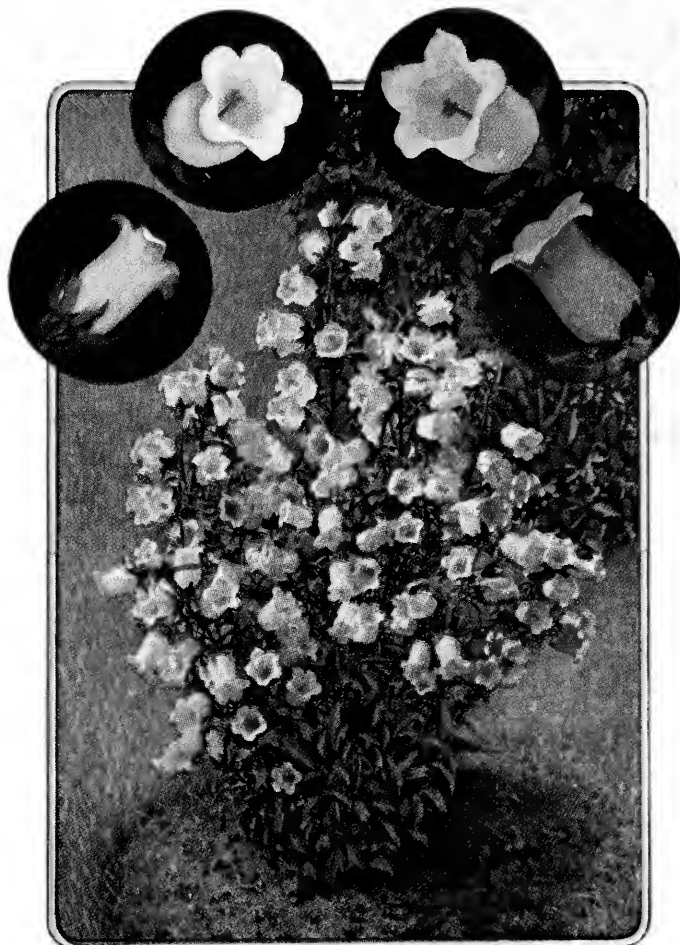
Novaeangliae—Almost red and a profuse bloomer.

Heliopsis (Hardy Zinnia)—Deep golden yellow flowers about two inches in diameter, very thick texture. July and August.

Hibiscus, Mallow Marvels—Upright habit, producing an abundance of flowers of enormous size in the richest shades of red and pink. July to Sept.



Papaver—Orientale



Campanula Medium

Hollyhocks (*Althea Rosea*)—No perennial garden is complete without these. Their graceful spikes are a mass of flowers all summer. Double pink, scarlet, white, yellow; also single mixed.

Lathyrus (Everlasting Sweet Pea)—Clusters of large flowers on long stems produced in abundance. Excellent for covering rocks, stumps, walls; red, white, pink. June to frost.

Lobelia (Indian Paintbrush) **Cardinalis**—Rich, fiery cardinal flowers, producing 10 to 18 spikes. 24 to 30 inches long. Aug. and Sept.

Lychnis Chalcedonica (Maltese Cross)—Heads of vivid scarlet flowers. 3 feet. June to Sept.

Lychnis Viscaria Splendens (German Catchfly)—A splendid variety of tufted habit, with bright rose-pink flowers. June to Sept.

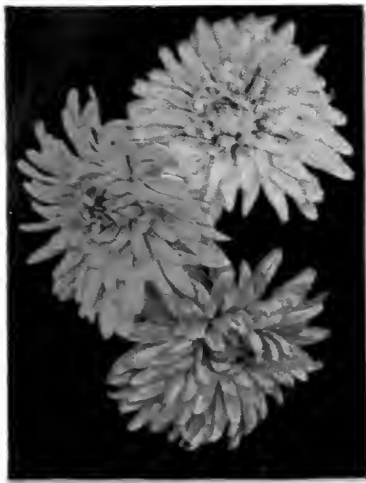
Monarda or Bergamot (Oswego Tea) **Didyma**—Brilliant crimson-scarlet. June to Aug.

Papaver-Orientale (Oriental Poppy)—Tremendous scarlet, cup-shaped blooms of brightest crimson scarlet, with large purplish black blotches at base of petals. May to June.

Pentstemon (Beard Tongue) **Barbatus, Pink Beauty**—Beautiful shell-pink blossoms on spikes 30 inches long. June to July.

Physalis Francheti (Chinese Lantern)—Orange-red, bladder like fruits which cover the bush in late summer and autumn. Branches of fruit may be dried for inside winter decorations.

**CHOICE OF FREE GOODS
OR BIG DISCOUNT OFFERS
See Page 7**

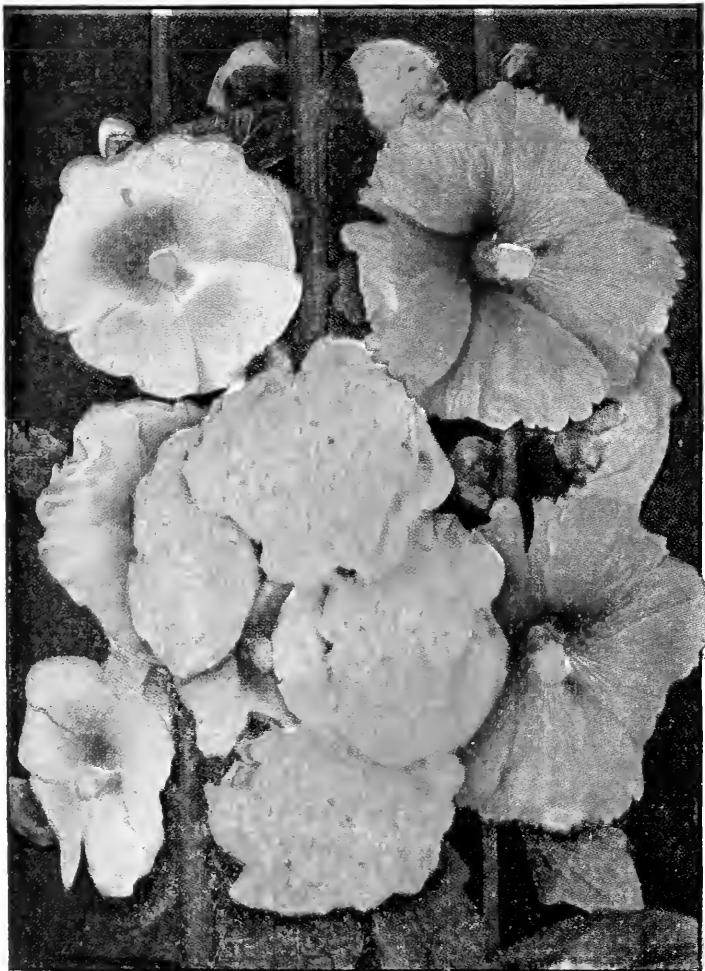


Chrysanthemum

- Coneflower**—Peculiar reddish purple flowers with a very large, brown, cone-shaped center. July to Oct. 3 feet.
- Salvia** (Meadow Sage) **Farinacea**—Beautiful pale blue flowers.
- Stokesia** (Cornflower Aster) **Cyanea**—Grows 18-24 inches high, bearing freely from early June to late October, beautiful light blue blossoms.
- Thalictrum** (Meadow Rue) **Dipterocarpum**—Flowers a charming shade of light mauve, which is brightened by a bunch of lemon yellow stamens and anthers; 4 feet. Aug. and Sept.
- Veronica Spicata**—Long spikes of violet-blue flowers. 18 in. June and July.

CANNAS

- Hungaria**—Green foliage. Petals large and waxy; big, round, full trusses; most attractive pink.
- King Humbert**—Outstanding canna—Foliage rich reddish bronze. Flowers orange scarlet.



Hollyhock

Pyrethrum (Painted Daisy) **Hybrids**—Provides not only a colorful garden show from June throughout the summer, but also a charming cut flower. Red and pink.

Rudbeckia (Coneflower) **Newmanni**—Deep orange-yellow flowers, with a dark purple cone; blooms all Summer.

Rudbeckia Purpurea (Purple

Purple)

—Peculiar reddish purple flowers with a very large, brown, cone-shaped center. July to Oct. 3 feet.

Stokesia (Cornflower Aster) **Cyanea**—Grows 18-24 inches high, bearing freely from early June to late October, beautiful light blue blossoms.

Thalictrum (Meadow Rue) **Dipterocarpum**—Flowers a charming shade of light mauve, which is brightened by a bunch of lemon yellow stamens and anthers; 4 feet. Aug. and Sept.

Veronica Spicata—Long spikes of violet-blue flowers. 18 in. June and July.

Richard Wallace—A pleasing canary yellow. Exceptionally large flowers; best new yellow. 4½ feet.

Shenandoah—Gorgeous, large trusses of pink flowers; foliage rich ruby red.

The President—The greatest red canna. Of immense size; a free bloomer. 5 feet.

Wyoming—Bronze purple foliage, immense spikes of massive orange flowers. 6 feet.

IRIS

Aurea—S. and F. rich chrome yellow. Large flowers of perfect form.

Caprice—S. Rosy red; F. Deeper rosy red.

Iris King—S. Lemon-yellow; F. Rich maroon, bordered yellow. 22 inches.

Juniata—S. and F. Clear blue. Large, fragrant flowers. 44 inches.

Her Majesty—S. Rose pink; F. Bright crimson, shaded darker. 22 inches.

Loreley—S. Light yellow; F. Deep sea-blue, with creamy edging. 32 inches.

Rhein Nixe—S. Pure white; F. Deep violet-blue with white edge. 3 feet.

PHLOX

(July-Aug.)

24c each; 10 for \$2.14

Eclairer—Salmon-scarlet.

Mrs. Jenkins—Pure white.

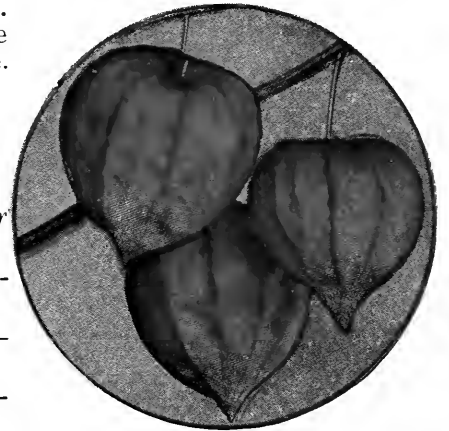
Rhineland—Salmon pink.

Rijnstrom—Clear pink.

R. P. Struthers—Bright rosy red.

Thor—Deep Salmon-pink.

Von Hockburg—Brilliant cherry red.



Chinese Lantern

DAHLIA TUBERS

(Late Fall)

Price, 34c each; 10 for \$2.98

Ambassador—Color, soft yellow buff, shaded salmon pink. Well formed flowers, held erect above the foliage. Bushes branch readily and produce a multitude of flowers.

Insulinde—An artistic dahlia of distinct form, with petals curled and twisted. Flowers mostly facing upward on long, strong stems. Color, a rich saffron yellow shaded russet orange.

Jersey's Beauty—Probably the most popular of any dahlia especially as a cut flower. The ideal pink for exhibition or florist use. Large, deep flowers of perfect form on long stems. Free, early bloomer with exceptional keeping qualities.

Mahogany—A dark red American Cactus on a good erect stem. Large flowers of good form with full centers. Dark velvety red.

Mina Burple—Color rich cardinal red, it is of fine form. The plant is a strong vigorous grower, producing the flower freely on long, stiff stems.

Snowdrift—Large pure white with broad, rather flat waxy petals. Has a good stem by dis-budding. A good bloomer and easy to grow.

MALONEY BROS. NURSERY CO., INC.

GLADIOLUS

(Late Fall)

Price, 10c each; 10 for 73c; 25 for \$1.48

- Alice Tiplady**—Soft, orange saffron shade. Extra fine.
- Anna Eberious**—Velvety violet purple, throat deeper color.
- Byron J. Hulot**—Tall plant, medium size flowers, dark, velvety purple.
- Byron L. Smith**—One of the very best. Most refined lavender pink on white ground.
- Crimson Glow**—Immense open flowers of intense rich crimson.
- Golden Measure**—Large, wide open golden yellow blooms, deeper throat. No markings. Extra fine.
- Los Angeles**—A beautiful shrimp-pink; tinted orange.
- Mary Pickford**—An extraordinary delicate cream-white. Finest soft sulphur-yellow throat. Good-sized blooms.
- 1910 Rose**—Extra large flower, pure rose-pink of a very fine shade. Lower petals marked with narrow white line through center. Very fine.



Sweet William

Perennial Collection No. 9

We have carefully chosen varieties so that you will have succession of bloom from early spring until late fall.

30 Strong Two Year Field Grown Plants

- 3 Her Majesty Iris
- 3 Campanula Medium—Blue
- 3 Chrysanthemum—Brune Poitevine
- 3 Chrysanthemum—Excelsior
- 3 Anemone—Queen Charlotte
- 3 Delphinium—Gold Medal Hybrids
- 3 Shasta Daisy
- 3 Gaillardia
- 3 Geum—Mrs. Bradshaw
- 3 Veronica Spicata

Special Price \$4.98

LILY BULBS

Price, 39c Each; 10 for \$3.39

(except as noted)

Auratum — Large, fragrant flowers of a delicate ivory-white color, thickly studded with chocolate-crimson spots and striped through the center a golden yellow, 3-5 feet. July to Sept. 8-9 inches.

Speciosum Album—White, with a green band traversing the center of each petal. 8-9 in. Aug.

Speciosum Magnificum—Flowers of rich, deep red. 8-9 in. Aug.

Speciosum Rubrum—Petals white, spotted with crimson. 8-9 inches. Aug.

The Regal Lily—Spikes of medium height, bearing several large, fragrant blooms on a stem. White with yellow center, shaded rose on outside of petals. 7-8 in. Early July.



Foxglove

PEONIES

(3-5 eyes)

The Peony is lavish in its bloom and makes a pretentious showing; particularly well suited for planting in the foreground of shrub borders.

Alexandre Dumas (7.1)—Light violet-rose. Early. 45c each.

Edulis Superba (7.6)—Brilliant rose pinkish center. Early. 39c each.

Felix Crousse (8.4)—A rich, brilliant, dazzling ruby red. 49c each.

Festiva Maxima (9.3)—Pure white with crimson markings in the center, fragrant. Early. 33c each.

Louis Van Houtte (6.9)—Large, dark crimson purple. Late. 33c each.

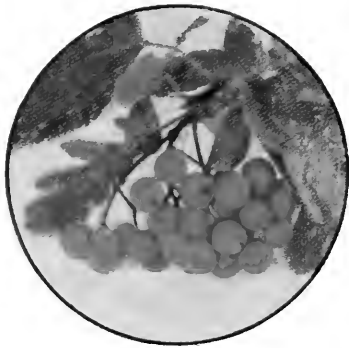
Mme. Ducel (7.9)—A compact, bomb type of mauve-pink and silver. 45c each.

Model of Perfection (8.9)—Very late, very double, pyramidal shaped flower of a light soft violet-rose with shades of flesh pink, marbled and veined with bright rose and silver tipped. 49c each.



Monarda

ORDER EARLY



Mountain Ash



Flowering Crab



Flowering Cherry

ORNAMENTAL TREES

YOUR home grounds are not complete without some shade and ornamental trees. A comparison of a home without shade about it, to one with, is the best argument we can advance.

Ash, White—70'-80'. Fairly rapid grower. Assumes pleasing golden tones in autumn. Good in moist soils.

6 to 8 ft. \$1.98 each

Birch, Cut-Leaved Weeping—Its tall slender, yet vigorous growth, graceful branches, silvery white bark and delicately cut foliage present a combination of attractive characteristics rarely met with in a single tree.

6 to 6 ft. \$1.79 each

6 to 8 ft. 2.19 each

Catalpa Bungei (Umbrella Catalpa)—Makes an umbrella-shaped top without pruning. Flourishes in almost all soils. Leaves large, glossy, heart-shaped.

5 to 6 ft. \$1.29 each; 2 for \$2.48

Catalpa Speciosa—Rapid grower. Large, heart-shaped downy leaves, and compound panicles of white flowers.

6 to 8 ft. \$.89 each; 10 for \$8.48

8 to 10 ft. 1.09 each; 10 for 9.98

Cherry, Japan Weeping Flowering—Beautiful pink flowers bloom in early May before the leaves appear and resemble miniature roses. The mass of bloom completely conceals the branches of this beautiful lawn specimen tree.

5 to 6 ft. stems. \$2.69 each

Cherry, Kanzan Flowering Cherry—One of the famous flowering cherries which attract so much admiration in Washington, D. C. Beautiful, glossy pink flowers in great profusion before the leaves appear. Of delightful fragrance.

4 to 5 ft. \$2.48 each

Crab, Bechtel Flowering—Produces large, double pink and extremely fragrant flowers in June.

2 to 3 ft. 69 cents each

3 to 4 ft. 98 cents each



Schwedler's Maple



Prunus Pissardi

Crab, Purpurea (Purple Crab)—A distinctive variety with attractive dark red flowers and purple foliage.

4 to 5 ft. \$1.19 each
5 to 6 ft. 1.29 each

Crab, Spectabilis—A very showy variety. Double deep coral-red bloom. Grows rather large.

4 to 5 ft. \$1.19 each
5 to 6 ft. 1.29 each

Cornus Florida (White flowering Dogwood)—Flowers white 3 to 3½ inches in diameter, produced in spring before leaves appear; very abundant, showy and durable. Foliage grayish green, glossy and handsome; in the autumn turning to deep red.

3 to 4 ft. \$1.19 each

Elm, American—A natural spreading and drooping tree of our own American meadows and forests. Is entirely hardy and easily transplanted.

8 to 10 ft. \$1.48 each; 10 for \$12.48
10 to 12 ft. 1.98 each; 10 for 17.48

Elm, Chinese—A new introduction from China. This variety is a very rapid grower. Known to have reached a height of 20 feet six years after planting an 8 to 10 ft. tree. Resembles the popular Norway Maple in shape. Good foliage, more dense than other elms. Exceptionally adapted for street and shade planting where quick results are desired. Grows 75 feet high.

5 to 6 ft. \$1.29 each
6 to 8 ft. 1.79 each

Flowering Peach—In May every branch is covered with a mass of beautifully formed, double red and white flowers, producing a charming effect.

3 to 4 ft. 89 cents each

Horse Chestnut, White Flowering—Very handsome; has magnificent spikes of white flowers.

5 to 6 ft. 98 cents each

Judas Tree (Red Bud)—A small growing tree of irregular form, with heart-shaped leaves. It is covered with delicate pink blossoms early in spring before the leaves appear, a charming association among the tender greens and bronzes of young foliage.

4 to 5 ft. \$1.29 each

Magnolia Glauca (Sweet Bay)—When planted in moist soil this makes a handsome tree 30 to 40 feet high but in the drier lawns is much smaller. Its broad leaves are glossy, laurel-like, almost evergreen. In June, its large, waxy white flower-cups are lovely and exquisitely fragrant. 2 to 3 ft. \$3.79 each.



Norway Maple

grows, handsome light green foliage and spreading head.

8 to 10 ft. \$1.19 each
10 to 12 ft. 1.48 each

Maple, Japan (Red-leaved)—Dwarf trees. Their early and mid-summer aspect is vivid blood-red, which dulls to a bronzy purple-red towards fall.

2 ft. \$4.98 each

Maple, Norway—This is one of the hardiest ornamental shade trees and one of the most beautiful. It makes more of a wide spreading tree than the sugar maple.

6 to 8 ft. \$1.69 each; 10 for \$14.98
8 to 10 ft. 2.19 each; 10 for 19.98
10 to 12 ft. 2.98 each; 10 for 24.98

Maple, Silver-leaved or Soft—Foliage bright green above and silvery underneath. An exceedingly rapid grower, makes a large tree.

6 to 8 ft. \$.89 each; 10 for \$7.48
8 to 10 ft. 1.19 each; 10 for 9.98

Maple, Schwedler—Reddish purple foliage in early Spring, changing to deep bronze in Fall.

6 to 8 ft. \$3.29 each

Maple, Sugar or Rock—Is considered slow grower, but long lived.

6 to 8 ft. \$1.98 each

Maple, Wier's Cut-Leaved—Beautiful tree with cut or dissected foliage. Shoots slender and drooping, as graceful as cut-leaved birch.

8 to 10 ft. \$1.48 each; 10 for \$12.48

Mountain Ash, European—A very beautiful tree for ornamental planting. In the early Fall it bears clusters of bright red berries.

6 to 8 ft., \$1.29 each; 8 to 10 ft., \$1.48 each.

Mulberry, Russian—Very hardy, vigorous grower, very productive, fruit black and of medium size. 4 to 6 ft., 79 cents each.

Mulberry, Tea's Weeping—The most graceful and hardy weeping tree. Forms a perfect shaped head, with long, slender willow branches drooping to the ground. 5 ft. 2 year heads, \$2.48 each.



Catalpa Bungei

Mulberry, Russian—Very hardy, vigorous grower, very productive, fruit black and of medium size. 4 to 6 ft., 79 cents each.

Mulberry, Tea's Weeping—The most graceful and hardy weeping tree. Forms a perfect shaped head, with long, slender willow branches drooping to the ground. 5 ft. 2 year heads, \$2.48 each.

Mulberry, Tea's Weeping—The most graceful and hardy weeping tree. Forms a perfect shaped head, with long, slender willow branches drooping to the ground. 5 ft. 2 year heads, \$2.48 each.

Mulberry, Tea's Weeping—The most graceful and hardy weeping tree. Forms a perfect shaped head, with long, slender willow branches drooping to the ground. 5 ft. 2 year heads, \$2.48 each.

Mulberry, Tea's Weeping—The most graceful and hardy weeping tree. Forms a perfect shaped head, with long, slender willow branches drooping to the ground. 5 ft. 2 year heads, \$2.48 each.

Mulberry, Tea's Weeping—The most graceful and hardy weeping tree. Forms a perfect shaped head, with long, slender willow branches drooping to the ground. 5 ft. 2 year heads, \$2.48 each.

Oak, Pin—Fastest growing of all the oaks and easily transplanted. Best shade tree for damp or heavy soil.

4 to 6 ft. \$2.48 each

Oriental Plane—A hardy, rapid growing tree. Beautiful dense foliage.

4 to 6 ft. \$1.29 each

Poplar, Carolina—The most rapid grower among shade trees, frequently growing eight feet during one season and thus making fine shade in two or three years. Will grow in any kind of soil.

6 to 8 ft. 49 cents each; 10 for \$3.98; 50 for \$18.48
8 to 10 ft. 59 cents each; 10 for 4.98; 50 for 22.50

Poplar, Lombardy—Well known for its tall, spire-like form. Where it is desired to make a boundary line, or where there is an entrance to a drive way these trees are very effective. Transplant safely.

6 to 8 ft. 69 cents each; 10 for \$5.48
8 to 10 ft. 89 cents each; 10 for 7.48

Prunus Pissardi (Purple-Leaved)—Leaves are a lustrous crimson, changing to dark purple, and retain this beautiful tint until they drop late in the autumn; no other purple-leaved tree retains its color like this. Flowers small, white, single, covering the tree.

4 to 5 ft. 89 cents each
5 to 6 ft. 98 cents each

Prunus Triloba (Double Flowering Plum)—Flowers double, delicate pink.

4 to 5 ft. 89 cents each

Willow, Babylonica—Well known weeping variety; forms a large round-headed, graceful tree; is quite desirable.

6 to 8 ft. 98 cents each

Willow, Caprea (Pussy Willow)—Quick growing tree, useful for tall background or screen purposes, with fur-like catkins along its branches early in the spring.

4 ft. 98 cents each

Willow, Golden—Especially desirable on account of its golden colored bark with light green leaves. A splendid grower.

5 to 6 ft. 79 cents each; 10 for \$7.48

Nut Trees

Butternut—A fine native tree.

4 to 6 ft. 89 cents each

Filbert, American (Hazelnut)—Succeeds on almost all soils, bearing early and abundantly.

3 ft. 79 cents each; 10 for \$6.98

Pecans—Tree very productive; nuts delicious, thin shelled.

3 to 4 ft. \$1.48 each

Walnut, English—A fine, lofty growing tree, with handsome spreading head; produces large crops of thin-shelled delicious nuts.

3 to 4 ft. \$1.29 each; 10 for \$11.98
4 to 5 ft. 1.48 each; 10 for 13.98

Walnut, Black—Is very productive.

4 to 6 ft. \$.89 cents each; 10 for \$ 8.48
6 to 8 ft. 1.29 cents each; 10 for 12.48

GROW YOUR OWN FRUIT

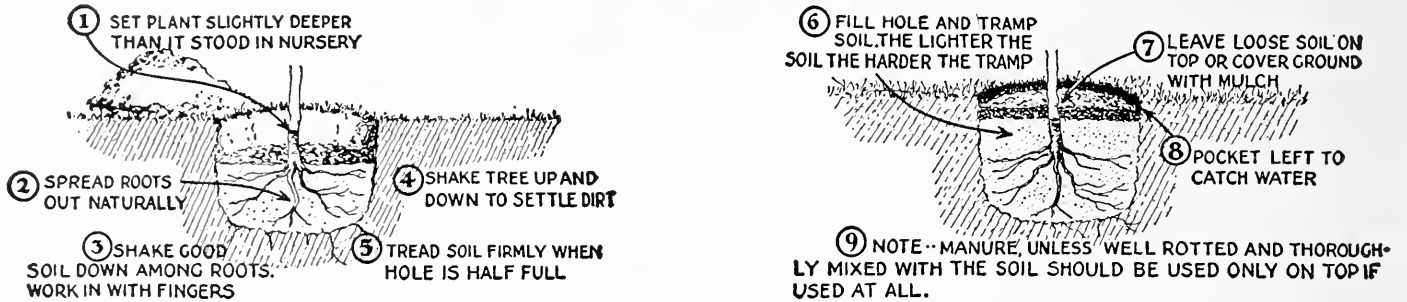
You will never know the highest satisfaction of fruit until you eat it fresh-picked, fully ripe and out of your own yard.

People are discovering that a few fruit trees in



the back yard furnish as much shade and are equally as attractive as the ordinary ornamental tree. We are specialists in growing fruit trees. All are budded from bearing trees of best strains; consequently Maloney varieties bear early and heavily.

How to Plant and How to Prune



IN pruning Fruit Trees, cut the side branches to 6-8 inch stubs and do not leave more than five to a tree. See that these are distributed around the trunk. One year trees are simply headed to whatever height they are wanted. NOTE—Always keep the roots covered. Dig hole large enough to receive plant without bending roots. Break up subsoil when it is very hard.

Maloney's Plums

PRICES OF ALL VARIETIES - UPLAND GROWN

		Height	Diameter	Each	Ten	Hundred
Large	2 yr.	5 to 7 ft.	3/4 and up	\$.49	\$4.48	\$25.00
Medium	2 yr.	4 to 5 ft.	5/8 to 3/4	.39	3.48	20.00
Small	2 yr.	3 to 4 ft.	1/2 to 5/8	.29	2.48	15.00
Large	1 yr.	3 to 5 ft.	9/16 and up	.39	3.48	20.00

RATES—Less than ten at each rate. Ten to fifty at ten rate. Fifty or more at hundred rate. PARCEL POST—First-class small size, 3 ft. trees sent parcel post, postage prepaid, for 27c each; 10 for \$2.44.

EUROPEAN VARIETIES



Bradshaw Plum

- Arch Duke** — Large, black prolific. Early Oct.
- Bradshaw** — Very large, dark violet red, juicy and good. Very productive. Aug.
- Fellenburg Prune** — A fine prune, oval; purple; flesh juicy and delicious. Sept.
- German Prune** — Medium; purple, juicy, rich, fine; high quality. Sept.
- Grand Duke** — Large, dark red, excellent quality, free from rot. Late Sept.
- Imperial Gage** — Large, oval, greenish. Flesh juicy, rich and delicious. Aug.
- Italian Prune** — Good size, purple, juicy, delicious, fine for drying. Sept.

- Lombard** — Handsome reddish plum; flesh yellow, juicy, rich and delicious. Aug.
- Moore's Arctic** — Fruit grown in clusters. Purplish black, juicy, sweet. Sept.

- Reine Claude** — Large, pale yellow, marked red; fine quality; good bearer. Sept.
- Shropshire Damson** — Fruit oval; dark purple; tree enormously productive. Oct.
- Yellow Egg** — Golden yellow, covered with thick bloom. Rather juicy. Sept.
- York State Prune** — Large size, dark blue; delicious. One of the largest. Aug.

JAPANESE VARIETIES

- Abundance** — Tree rapid grower; yields abundantly. Fruit large, amber; juicy, sweet. Aug.
- Burbank** — Fruit large, oval, with reddish purple skin; flesh yellow, juicy and good. Aug.
- Red June** — Medium to large; deep vermilion red; flesh light lemon-yellow, firm. Aug.
- Wickson** — Fruit large, long heart-shaped, color deep maroon red covered with white bloom; flesh firm and meaty, yellow, rich and aromatic. Sept.

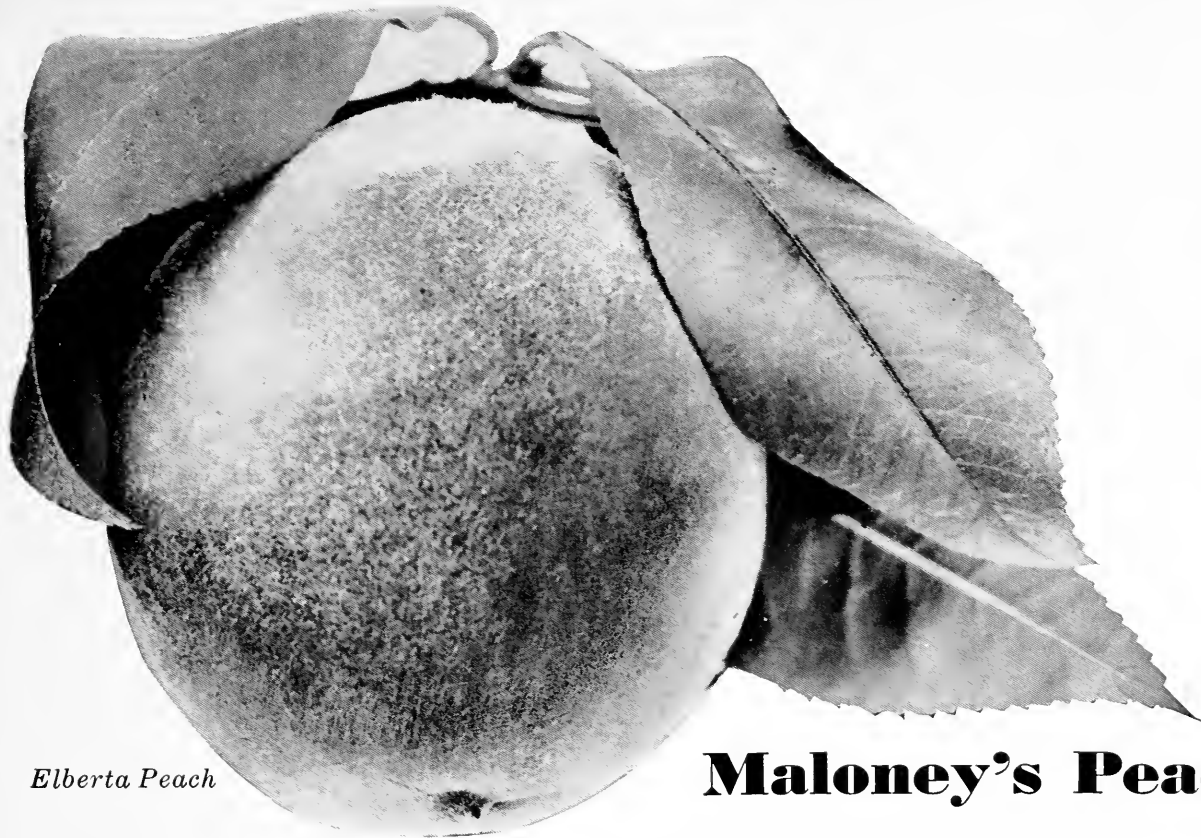
Plum Tree Collection No. 10

Special Selected Varieties for the Garden

- 2 Bradshaw
- 1 German Prune
- 1 Wickson
- 1 Yellow Egg

Five two year 5-7 foot trees.

Special Price \$2.19



Elberta Peach

Maloney's Peaches

PRICES OF ALL VARIETIES OF PEACH TREES

		Height	Diameter	Each	10	100
Large	1 yr.	4 to 5 ft.	$\frac{1}{8}$ and up	\$.44	\$3.48	\$22.50
Medium	1 yr.	3 to 4 ft.	$\frac{1}{8}$ to $\frac{3}{8}$.34	2.98	16.50
Small	1 yr.	2 to 3 ft.	$\frac{3}{8}$ to $\frac{1}{2}$.24	1.98	12.50

RATES—Less than ten at each rate. Ten to fifty at ten rate. Fifty or more at hundred rate.

PARCEL POST—First-class 2 ft. small size trees sent parcel post, postage prepaid, for 23c each; 10 for \$1.90.

Belle of Georgia—Large, white, with red cheek; fine flavor. Free. Aug.

Carman—Large, creamy white or pale yellow, with deep blush; flesh tender. Early Aug. Free.

Chair's Choice—Large, yellow; flesh very firm, great bearer. Oct. Free.

Champion—Large, flavor delicious, skin creamy white, with red cheek. Late Aug. Free.

Crawford's Late—Large, yellow with dull red cheek; flesh yellow. Late Sept. Free.

Crawford's Early—A magnificent large yellow peach, good quality. Tree very productive. Early Sept. Free.

Early Elberta—Ten days earlier than Elberta; rounder and of better quality. Early Sept. Free.

Eclipse—Dark red, yellow-fleshed. Fruit oval, fine grained. July. Free.

Elberta—Large, yellow, with red cheek, juicy and high flavor; flesh yellow. Early Sept. Free.

Fitzgerald—Large, bright yellow suffused with red, flesh deep yellow. Sept. Free.

Greensboro—Greenish-white, shaded with dark red. Late July. Free.

Heath Cling—Fruit very large. Skin creamy white. Clingstone. Middle of Sept.

Hiley—Large, red cheek, white flesh, heavy bearer. July. Free.

J. H. Hale—Large; superior flavor, deep golden yellow, with carmine blush. Late Aug. Free.

Mountain Rose—Large red, white flesh, juicy and excellent. Early Aug. Free.

Rochester—Fruit large, yellow, with a most attractive red blush; juicy and delicious. Free. Aug.

Salway—Large, roundish, ovate, yellow, with a crimson cheek; flesh deep yellow, red at the pit; sweet, juicy. Oct. Free.

Smock Free (Beer's Smock)—Fruit large; oval; skin orange yellow, mottled with red. Last of Sept. Free.

South Haven—Mid-season, large, yellow freestone, heavy bearer. Free.

Yellow St. John—Medium size, orange yellow, with red blush. Middle of Aug. Free.

PRICES OF ALL QUINCE AND APRICOT TREES

		Height	Each	10	100
Large	2 yr.	4 to 5 ft.	\$.58	\$4.98	\$34.90
Medium	2 yr.	3 to 4 ft.	.48	3.98	24.90

PARCEL POST—First-class, 2-3 ft. trees can be sent parcel post, postage prepaid, for 45c each; ten for \$4.00.

Quince

Meech's Prolific—Fruit large, orange yellow. Oct.

Orange—Fruit large, golden yellow, of fine quality. It rarely fails to produce a crop. Oct.

Apricots (Plum Roots)

Royal—Abundant bearer; yellow, with red cheek; large, rich and luscious. July.

Moorpark—One of the largest. Orange-red cheek; firm, juicy; productive. Aug.

Peach Tree Collection No. 11

Special Selected Varieties for the Garden

2 J. H. Hale 1 Rochester
2 Elberta 1 Belle of Georgia

Six one year 4 to 5 foot trees.

Provides fruit from early summer to late fall

Special Price \$2.05

Maloney's Apples

PRICES OF ALL CERTIFIED STANDARD APPLE TREES (For Varieties See *)

		Height	Diameter		Each	10	100
Large	2 yr.	5 to 7 ft.	¾ and Up	XXX	\$.54	\$4.98	\$30.00
Medium	2 yr.	4 to 5 ft.	⅝ to ¾	XX	.44	3.98	25.00
Large	1 yr.	3 to 5 ft.	⅞ and Up	XXX	.44	3.98	25.00

PRICES OF ALL STANDARD APPLE TREES INSPECTED

		Height	Diameter		Each	10	100
Large	2 yr.	5 to 7 ft.	¾ and Up	XXX	\$.49	\$4.59	\$25.00
Medium	2 yr.	4 to 5 ft.	⅝ to ¾	XX	.39	3.59	19.00
Small	2 yr.	3 to 4 ft.	½ to ⅝	X	.29	2.59	14.00
Large	1 yr.	3 to 5 ft.	⅞ and Up	XXX	.39	3.59	22.00

PARCEL POST—First class 3 foot trees sent parcel post prepaid for 27c each; 10 for \$2.49.

RATES—Less than 10 at each rate, 10 to 50 at 10 rate, 50 or more at 100 rate.

Maloney Apples are all certified or inspected by Dr. J. K. Shaw of Amherst, Mass.

All varieties certified can also be had in inspected trees.

SUMMER VARIETIES

Early Harvest—Pale yellow; fine flavor. Late July.

***Early McIntosh**—Size of fruit about that of McIntosh and is similar to and quite the equal in flavor. July.

Golden Sweet—Good medium size, clear yellow, rich, sweet, good, fine flavor. Late Aug.

Red Astrachan—Fruit large, nearly covered with crimson; juicy. July and Aug.

Sweet Bough—Large, pale yellow; sweet and juicy. Aug.

Williams Early Red—Dark red, flesh is crisp, tender, juicy. Aug.

***Yellow Transparent**—Medium size; skin pale yellow; flesh tender, sub-acid. Aug.

AUTUMN VARIETIES

Duchess of Oldenburg—Medium size; red striped; flesh white, juicy. Aug.

Fall Pippin—Large yellow, tender, juicy and rich. Sept.

Maiden's Blush—Large, flat; pale yellow, with red cheek. Sept.

Pound Sweet—Large, round, yellow russet apple, very sweet and rich. Oct.

Red Gravenstein—This red sport is more attractive than Gravenstein. It differs from the old Gravenstein only in the solid, dark, red colored fruits.

WINTER VARIETIES

***Baldwin**—Large strong, vigorous trees, produces an abundance of large apples of a bright red color, with yellowish, crisp, tender, very juicy flesh. Nov. to April.

Ben Davis—Fruit is medium to large. Bright red or red striped, with clear yellow. Jan. to June.

Cortland—It is a beautiful red apple, larger than McIntosh, of better quality and matures a month later. Keeps late in winter and can be handled and shipped like the hardiest of other market varieties. Nov. to Feb.

***Delicious**—Fruit large, nearly covered with brilliant dark red. Flesh fine grained, crisp, of highest quality. A splendid keeper and shipper. Nov. to April.

Fameuse—Medium size; deep crimson; flesh snowy white, melting and delicious. Oct. to Dec.

Gano—Fruit a deep, dark red. Dec. to March.

Golden Russet—Medium size, clear golden russet, with slight flush; juicy, high flavored. Nov. to April.

Grimes Golden—Medium to large size; skin golden yellow, sprinkled with gray dots; flesh crisp, tender, juicy, sprightly. Dec. to April.

Hendrick Sweet—An attractive red winter apple. Nov. to April.

***Jonathan**—Fruit red, highly flavored. Tree productive, and early bearer. Nov. to Jan.

King—Flesh yellow, crisp, tender, juicy and subacid. Skin yellow, mottled with orange red. Oct. to Jan.

***McIntosh Red**—An exceedingly valuable, hardy, attractive apple; good size; nearly covered with red. Flesh white, fine, very tender, juicy and refreshing. Tree hardy, vigorous, a good annual bearer, comes into fruiting early, yielding large crops. Oct. to Jan.

Newton Pippin—Large, yellow, delicious flavor, a long keeper. Nov. to May.

***Northern Spy**—A hardy, large, red apple. Flesh juicy, rich, crisp, tender. Tree healthy, strong grower, rugged. Dec. to March.

North Western Greening—Large, greenish yellow apple; fine grained, juicy. Oct. to April.

Opalescent—Fruit large; pale yellow, mildly subacid. Nov. to Feb.

Rambo—Medium size, red and yellow, mild flavor. Dec.

***Red Spy**—A solid bright red Spy, without stripes or splash- es. It has been recommended to fruit growers by the N. Y. State Fruit Testing Co-operative Association at Geneva as a new variety worthy of trial. Dec. to March.

***R. I. Greening**—Large, flesh yellowish, firm, fine grained, crisp, tender, juicy, slightly subacid, very good. Skin yellow. Keeps until April. Ripens in Dec.

***Rome Beauty**—Large, round, mottled and striped red. Flavor and quality excellent. Dec. to Mar.

Smokehouse—Color yellow or greenish, mottled with rather dark red. Oct. to March.



Delicious Apple

Apple Tree Collection No. 12

1 Red Astrachan 1 Cortland
1 Pound Sweet 2 McIntosh

All strictly first-class two year 5-7 feet high.

Special Price \$2.19

Stayman's Winesap—Medium to large, attractive; green and yellow. Flesh yellow, bears young and annually. Dec. to Apr.

Sweet Delicious—Fruit resembles Delicious in shape. Skin moderately tender. Color, deep yellow, lightly colored with a solid dark red. Flesh, yellow, firm, tender and juicy. Sweet. Season Nov. to Jan.

Tolman Sweet—Light yellow; flesh white, firm, rich, sweet. Nov. to April.

Twenty Ounce—Very large, yellow striped red, fine quality; good keeper. Oct. to Jan.

Wagener—Fruit medium, tender, firm and very juicy. Bright pinkish red. Dec. to May.

Wealthy—Fruit large, roundish, skin smooth, oily, covered with a dark red. Flesh white, tender, juicy. Oct. to Jan.

Winter Banana—Fruit large, perfect form golden yellow, flesh lemon-yellow, fine grained. Nov. to Jan.

York Imperial—Medium size, skin yellow almost covered with red. Nov. to Feb.

Best Hardy Crab Apples

Hyslop—Fruit deep crimson. Oct.

Transcendent—Fruit bright yellow, striped with red. Sept. to Oct.



Maloney's Pears

PRICES OF ALL VARIETIES OF UPLAND GROWN STANDARD PEAR TREES

	Height	Diameter	Each	10	100
Large	2 yr. 5 to 7 ft.	3/4 and up	\$.49	\$4.59	\$25.00
Medium	2 yr. 4 to 5 ft.	5/8 to 3/4	.39	3.59	19.00
Small	2 yr. 3 to 4 ft.	1/2 to 5/8	.29	2.59	14.00
Large	1 yr. 3 to 5 ft.	11/16 and up	.39	3.59	22.00

RATES—Less than ten at each rate. Ten to fifty at ten rate. Fifty or more at hundred rate.

PARCEL POST—First-class, 3 foot Pear Trees sent by parcel post, postage prepaid, for 27c each; 10 for \$2.49.

SOIL—Pears will succeed in a clay soil, although any good heavy soil will do, but avoid planting on sandy loam.

Bartlett—Large, waxen yellow, with red blush; juicy, melting, highly flavored, a most delicious fruit; tree bears early and abundantly. Sept.

Beurre d'Anjou—Yellow when thoroughly ripe. For late fall and very early winter use. Oct. to Nov.

Beurre Bosc—A large and beautiful russet pear; flesh fine grained, juicy and melting, very delicious and highly flavored; bears well. Oct.

Beurre Clairgeau—Light yellow, shaded with crimson; flesh yellowish, melting. Nov. to Jan.

Clapp's Favorite—A superb, large, yellow pear, red cheek. The flesh is fine grained, juicy. Early Aug.

Duchess d'Angouleme—Fruit large, dull greenish yellow, spotted russet, flesh white, rich. Oct. to Nov.

Flemish Beauty—Bears great crops of perfect russet fruit. Sept. and Oct.

Garber—Tree upright; fruit large; skin yellow with crimson cheek. Oct.

Gorham (Late Bartlett)—Originated by New York State Exp. Sta.

Kieffer—Large, rich golden yellow, sometimes tinted red on the sun exposed side; fair quality. One of the most resistant to blight. Nov.

Koonce—Fruit medium size; skin greenish yellow; flesh white, juicy. Aug.

Lawrence—Medium to large, golden yellow. Unsurpassed as an early winter pear. Nov. and Dec.

LeConte—Tree distinctively upright, fruit medium to large. Nov.

Seckel—A beautiful and delicious little pear of the richest and highest flavor. Sept. and Oct.

Sheldon—A large, round russet and red pear of very fine quality. Oct.

Wilder—A very early pear. Medium to large size; pale yellow, with shadings of russet-red. Early Aug.

Winter Nelis—Fine winter variety. Fruit medium size, yellow in color, covered with russet. The flesh is yellow, sweet. Unexcelled for quality when fully ripe. Dec.

Worden Seckel—Quality very high, size much larger than Seckel, shaped like Bartlett. Oct.



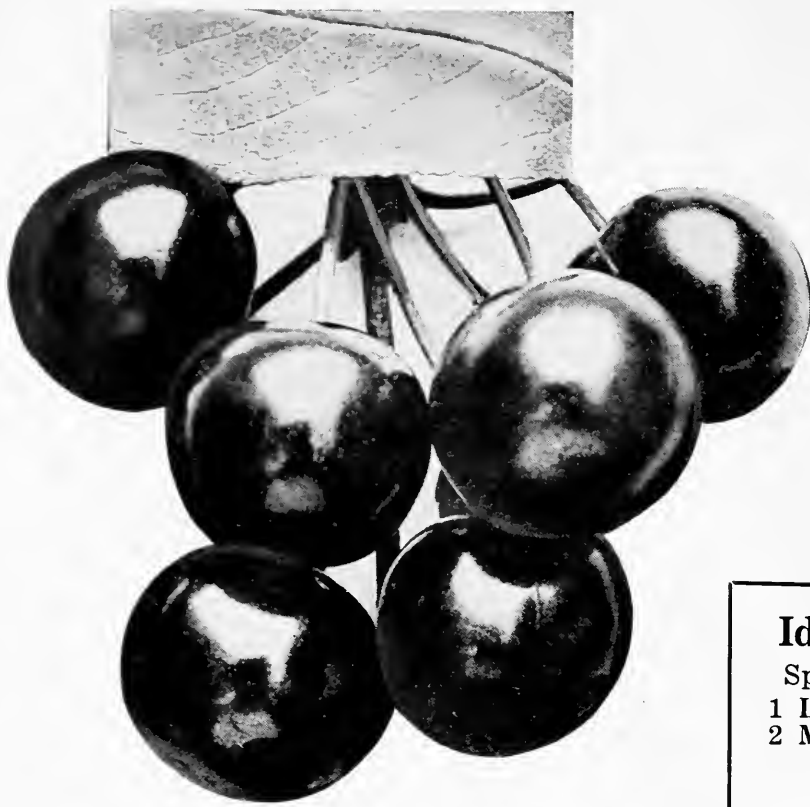
Clapp's Favorite

Pear Tree Collection No. 13

2 Bartlett 1 Clapp's Favorite
1 Seckel 1 Lawrence

Special Selected Varieties for the Garden
Five Two Year 5-7 Foot Trees

Special Price \$2.19



Black Tartarian Cherry

Maloney Radio Service Will Continue

For several years Maloney Bros. have broadcast advice on planting problems. We will continue giving advice this year and will add a new feature in the form of a modern idea, giving you more entertainment.

Thousands have attained helpful suggestions on what to plant, how to plant and how to care for stock to secure the largest yield. These talks will be given over WGY Schenectady and WHAM Rochester, the last week in January, continuing through to the first week in April.

Ideal Cherry Collection No. 14

Special Selected Varieties for the Garden

1 Lambert 1 Napoleon
2 Montmorency 1 Early Richmond

Five Two Year Large Size Trees

Special Price \$2.34

Maloney's Cherries

PRICES, SWEET CHERRY TREES

Budded on the Best Mahaleb Stock

		Height	Diameter	Each	10	100
Large	2 yr.	5 to 7 ft.	¾ and up	\$.54	\$5.09	\$27.50
Medium	2 yr.	4 to 5 ft.	⅝ to ¾	.44	4.09	22.50
Small	2 yr.	3 to 4 ft.	½ to ⅝	.34	3.09	17.50
Large	1 yr.	4 to 5 ft.	⅞ and up	.44	4.09	22.50

PRICES, SOUR CHERRY TREES

Budded on the Best Mahaleb Stock

		Height	Diameter	Each	10	100
Large	2 yr.	5 to 7 ft.	¾ and up	\$.49	\$4.59	\$20.00
Medium	2 yr.	4 to 5 ft.	⅝ to ¾	.39	3.59	15.00
Small	2 yr.	3 to 4 ft.	½ to ⅝	.29	2.59	10.00
Large	1 yr.	3 ft. up	⅞ and up	.39	3.59	20.00

RATES—Less than ten at each rate. Ten to fifty at ten rate. Fifty or more at hundred rate.

PARCEL POST—First-class, 3 ft. trees sent by parcel post, postage prepaid, 27c each; 10 for \$2.49.

Sweet and Sour Cherries on Mazzard roots 10c each higher.

Sweet Cherries

Bing—Flesh solid, flavor of the highest quality. July.

Black Tartarian—Produces immense crops of purplish black fruits. Late June.

Governor Wood—Large, light yellow; juicy, rich. Late June.

Lambert—Large cherries; almost jet black when ripe. Flesh firm, rich. Late July.

Napoleon—Fruit borne generally in twos, very large, light lemon yellow with red cheeks. Flesh very hard. Late June.

Schmidt's Bigarreau—Large size, deep mahogany color. Flesh dark, tender, juicy, rich flavor. July.

Seneca—Ripens the first week of June; fruit large, skin thin, tender; purplish black, indistinctly mottled; flesh tender, spicy flavor.

Windsor—A splendid, large, liver-colored cherry; flesh remarkably firm and good. July.

Yellow Spanish—Large, pale yellow, with red cheek; firm, juicy and excellent. Late June.

Sour Cherries

Dyehouse—The earliest sour cherry of fine quality. Early June.

Early Richmond—Fruit is medium size, round and dark red. Flesh tender. Late June.

English Morello—Easily grown, producing heavy crops. Fruit dark red, quality good. Aug.

Montmorency—The best sour cherry; good sized, fine flavored and bright, clear red. Flesh is of fine quality and sub-acid. Early July.

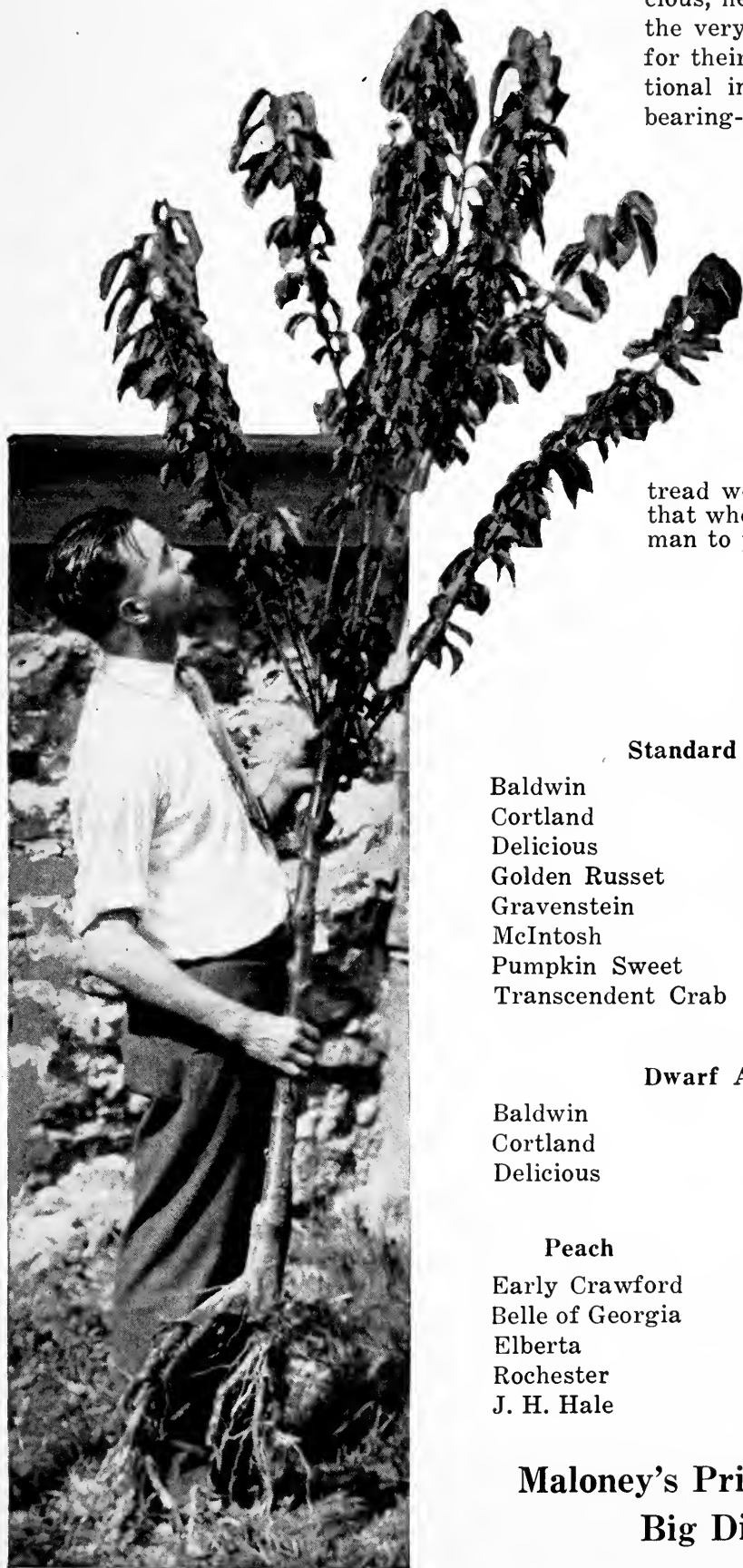
Wragg—Hardy, vigorous and productive; medium, dark purple, fine quality. Aug.

FRESH DUG STOCK DIRECT FROM NURSERY BEST COSTS NO MORE THAN OTHERS

**Fruiting Age Trees
Collection No. 15**

- 1 McIntosh, dwarf apple
- 1 Clapp's Fav. dwarf pear
- 1 Bradshaw Plum
- 1 Lambert Cherry
- 1 Montmorency Cherry

Special Bargain Price \$8.98



FRUITING AGE TREES

OWING to increasing calls from our customers for trees for rear lawn planting, which will fruit in two years, we are offering a tree which will meet this demand. The bearing-age tree: We mean by this, trees which have been once transplanted and scientifically treated. Maloney's have nursed them until they have developed into just the kind of tree to fill your table with delicious, healthful fruit. A great many people make the very serious mistake of selecting small trees for their garden planting, when for a small additional investment they can enjoy the wonderful bearing-age, early fruiting tree.

PLANTING INSTRUCTIONS

Cut off about six inches of the limb growth, prune off bruised ends of roots, if any, make a smooth cut, dig hole deep enough so that the tree will be buried to the same depth as when standing in the nursery row, or up to the collar—soak roots in the water one-half hour, place trees in hole, fill in one-fourth, tread well; another one-fourth, tread well, the third one-fourth, tread well; then finish filling and tread firmly so that when the tree is set it would require a strong man to pull it out.

PRICE OF BEARING AGE TREES

Height 7-8 feet

Each \$1.98; 5 for \$9.18

Standard Apple

- Baldwin
- Cortland
- Delicious
- Golden Russet
- Gravenstein
- McIntosh
- Pumpkin Sweet
- Transcendent Crab

- Red Spy
- Sweet Bough
- Sweet Delicious
- Wealthy
- Wm.'s Favorite
- Winter Banana
- Yellow Trans-
parent

Plum

- Bradshaw
- Burbank
- German Prune
- Reine Claude
- Shrop. Damson
- Lombard
- Grand Duke

Dwarf Apple

- Baldwin
- Cortland
- Delicious

- McIntosh
- Sweet Delicious
- Sweet Bough

Peach

- Early Crawford
- Belle of Georgia
- Elberta
- Rochester
- J. H. Hale

Cherry

- Black Tartarian
- Gov. Wood
- Montmorency
- Napoleon
- Schmidt

Standard Pear

- Bartlett
- Beurre Bosc
- Clapp's Favorite
- Duchess
- Seckel
- Sheldon

Dwarf Pear

- Bartlett
- Clapp's Favorite
- Seckel

**Maloney's Prices Invite Any Comparison
Big Discount—See Page 7**

Blackberries

Price of No. 1 Strong Plants, Best Selected Varieties, 25 for \$1.25; 100 for \$3.75; 500 for \$17.50; 1000 for \$32.50

(By Parcel Post two cents each Extra)

Blowers—Claimed to be the hardiest, most productive, of finest quality and to bring the highest market price.

Eldorado—Berries large, jet black, borne in large clusters and ripen well together; they are very sweet, melting, have no hard core and keep for eight or ten days after picking with quality unimpaired.

Mersereau—An enormous producer of extra size berries, quality sweet, rich and melting, without core. Ripens very early.

Dewberries

Lucretia—It equals any of the tall growing sorts. Perfectly hardy, healthy and remarkably productive, with large, showy flowers. The fruit, which ripens early, is often 1½ inches long by 1 inch in diameter; soft, sweet and luscious. 25 for \$1.00; 100 for \$4.00.

Gooseberries

Price: Two Year Bushes, 25c each; \$2.00 for 10

Downing—Fine quality, vigorous growth and free from mildew.

Josselyn—Marvelously productive. Large size, dark red.

Currants

Price of All Varieties: Extra Size, 2 Year Bushes, 20c each; 10 for \$1.50; 100 for \$12.00

PARCEL POST—Currants can be sent by parcel post, postage prepaid, for 5c per bush extra.

London Market—Plant is exceedingly vigorous, an enormous cropper; fine for home or market. Red.



Black Raspberry
(Plum Farmer)

Red Cross—Cluster long; berry medium to large, bright red; quality good to best. It is exceedingly productive, unusually sweet.

Wilder—Bush upright, vigorous; clusters above medium length; berries large to very large; bright red; excellent, with a mild sub-acid flavor. Ripens early and remains bright and firm until very late.

Choice Strawberries

For garden culture set plants in rows two feet apart, with plants one foot apart in the rows.

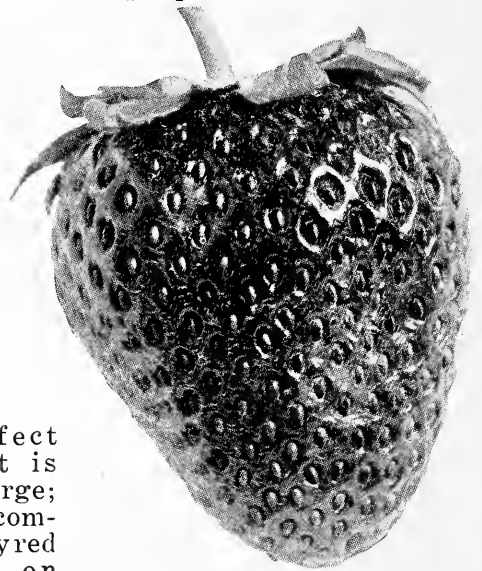
Price, Postpaid, 25 for \$1.00; 100 for \$2.50; 1000 for \$15.00

Big Joe (Perfect)—Late. Fruit firm, large size, good flavor, no green tips, productive.

Howard 17 (Perfect)—Early to late. Noted for its long fruiting season. Fruit large.

New York (Perfect)—Mid-season. Fruit extremely large, well colored. Good mid-season variety.

Premier—Perfect flowered. It is smooth and large; its color the commanding glossy red which sells on sight. Early.



Mastodon Strawberry

FALL OR EVERBEARING STRAWBERRIES
Mastodon—The fruit is of very large size and has a good waxy appearance. Produces an abundance of fruit continuing throughout the summer and fall. 25 for \$1.50; 100 for \$4.00. Postpaid.

Progressive—A wonderful fall-bearing strawberry. The spring-set plants producing a big crop of berries the same season. 25 for \$1.25; 100 for \$3.50. Postpaid.

Rhubarb

Champagne Rhubarb (New)—Excels all in size, flavor and delicate tenderness. Strong 2 year roots. 15c ea.; 10 for \$1.25; 50 for \$5.00.

PARCEL POST—Rhubarb can be sent parcel post, postpaid for 3c per root extra.

Asparagus

Price, 2 year strong plants, 25 for 75c; 100 for \$2.00; 1000 for \$12.50

PARCEL POST—Asparagus can be sent parcel post, postpaid for ½c per plant extra.

Palmetto—A very early variety of excellent quality.

Washington (Pedigreed)—A new rust resistant variety. Stalks are large, dark green, with a heavy purple overtone.

Horse Radish

Hardy roots. Plant in deep rich soil. 10 for 60c; 100 for \$4.50.

Horse Radish can be sent parcel post, postpaid for ½c per root extra.



Washington Pedigreed

Raspberries

Price of No. 1 Strong Best Selected Red and Black Raspberries: 25 for \$1.10; 100 for \$2.75; 500 for \$12.25; 1000 for \$23.50

PARCEL POST—Raspberries can be sent by parcel post, postage prepaid, for two cents per bush extra.

Cuthbert Red—Yields bountifully. Large, bright red berries.

Cumberland Black—Splendid quality. Fruit large. Mid-season.

St. Regis Red (Everbearing)—Ripens with the earliest, continues until October. Bright crimson. Large size.

Plum Farmer (Black)—Very large and productive. Ripens early.

Columbian Purple—Fruit very large, rather soft; rich, sprightly flavor. 25 for \$1.50; 100 for \$3.75; 500 for \$17.50, 1000 for \$30.00.

Latham (Red)—Certified absolutely mosaic-free, perfectly hardy. Its production is superlative, out-yielding even Cuthbert. The berries are large and round, with profitable shipping firmness, 25 for \$1.75; 100 for \$5.00; 500 for \$20.00; 1000 for \$37.50.

Grape Vines

Price, Two Year, No. 1, Strong Vines, Except Where Otherwise Noted: 19c each; 10 for \$1.69; 100 for \$13.98.

PARCEL POST—Grapes can be sent by parcel post, postage postpaid for 5c per vine extra.

Grapes occupy little room and supply an abundance of the most healthful fruit. Plant about 8 feet apart each way.



Caco

DANSVILLE, N. Y.



Cuthbert

Brighton—Dark red when fully ripe. Bunch large, berries large; excellent variety should be in every garden. Sept.

Caco (Red)—This new red grape has a most delicious flavor, and is of the highest quality. It is one of the earliest grapes in ripening. 45c each; 10 for \$4.00.

Concord (Black)—Early. Decidedly the most popular grape in America and deservedly so. Bunch large, shouldered, compact; berries large, covered with a rich bloom; skin tender; flesh juicy, sweet, pulpy, tender. Mid. Sept. 15c each, 10 for \$1.35; 100 for \$9.00.

Delaware (Red)—Bunches small, compact, shouldered; berries rather small, round, skin thin, flesh very juicy, sweet, spicy and delicious. Mid. Sept.

Lucile (Bright Red)—It is very hardy and vigorous. Bunches and berries medium to large. Quality good. Early Sept.

Moore's Early Black—Bunch and berry very large; sweet and juicy. Stands at the head of early black grapes for quality. Late Aug., early Sept.

Niagara (White)—Bunch and berries large, greenish white, changing to yellow when fully ripe; fine flavor. Mid-Sept.

Worden (Black)—Bunch large, sometimes shouldered, compact, berries very large, skin thin. Early Sept.

Grape Collection No. 16

Special Selected Varieties for the Garden

2 Niagara White

4 Concord Blue

2 Brighton

Six Two Year No. 1 Strong Vines

Special Price \$1.09

DWARF FRUIT TREES

BEAR YOUNG AND ABUNDANTLY



Dwarf McIntosh Apple (two years after planting)

DWARF FRUIT TREES require less space, bear larger fruit and several years earlier than standard trees. The low, broad heads are within reach, so that the fruit can be easily picked. Dwarf trees should be planted 15 feet apart. Some varieties will bear the first year, all will the second, and bear a full crop the fourth year.

Prices of Dwarf Fruit Trees

	Age	Height	Each	10	100
Large	2 yr.	4-5 ft.	49c	\$4.59	\$29.48
Medium	2 yr.	3-4 ft.	39c	3.59	24.48

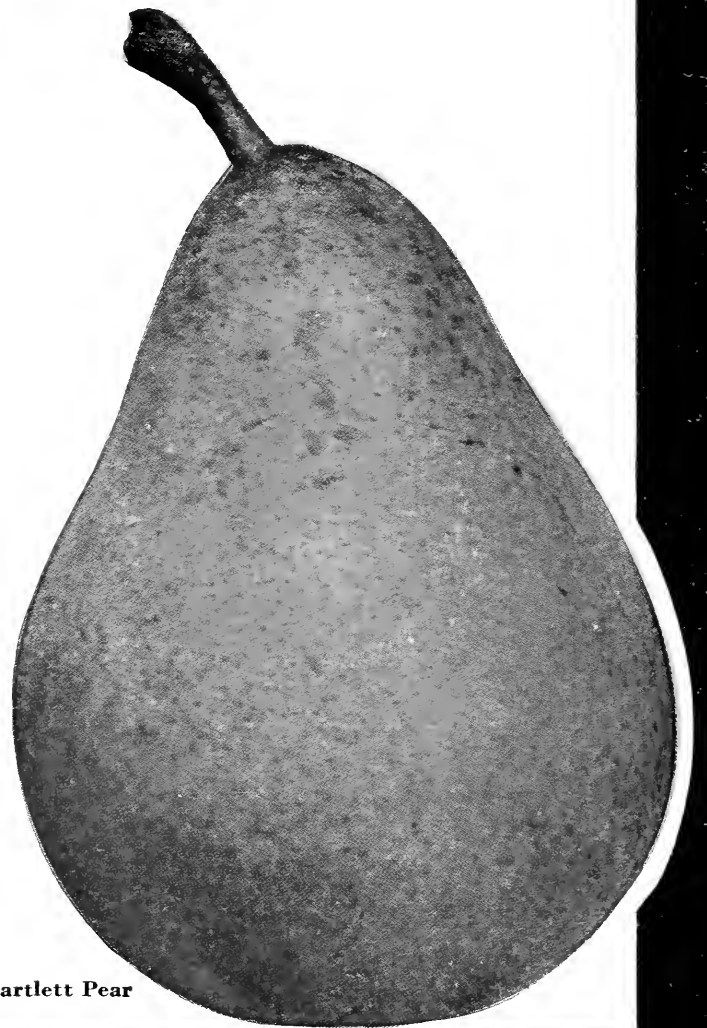
Parcel Post—First-class, 2-3 ft. Dwarf Trees can be sent by parcel post, postage prepaid for 35c each; 10 for \$2.95.

DWARF PEAR

Bartlett	Kieffer
Anjou	Koonce
Clapp's Favorite	Seckel
Duchess	Sheldon
Flemish	Wilder

DWARF APPLE

Baldwin	Pumpkin Sweet
Cortland	Rome Beauty
Delicious	Rambo
Duchess	Red Astrachan
E. McIntosh	R. I. Greening
E. Harvest	Red Spy
Fall Pippin	Sweet Delicious
Fameuse	Stayman's
Gilliflower	Sweet Bough
Gravenstein	Twenty Ounce
Grimes Golden	Wagener
Jonathan	Wealthy
King	W. Banana
M. Blush	Yel. Trans.
McIntosh	Transcendent
Northern Spy	



Bartlett Pear

MALONEY BROS. NURSERY CO., Inc.
DANVILLE, N. Y.