

Historic, Archive Document

Do not assume content reflects current scientific knowledge, policies, or practices.

72.10 1931
1932 PRICES SLASHED

HARDY HERBACEOUS PERENNIALS

COLLECTED BY

MID-WEST PERENNIAL COLLECTORS

STANFORD, ILLINOIS RECEIVED

GEO. A. MARTIN, Proprietor FEB 15 1932

U.S. Department of Agriculture.
WHOLESALE PRICE LIST—FOR DEALERS ONLY

All plants collected by us are guaranteed true to name. Collected, graded and packed by experienced collector, grader and packer.

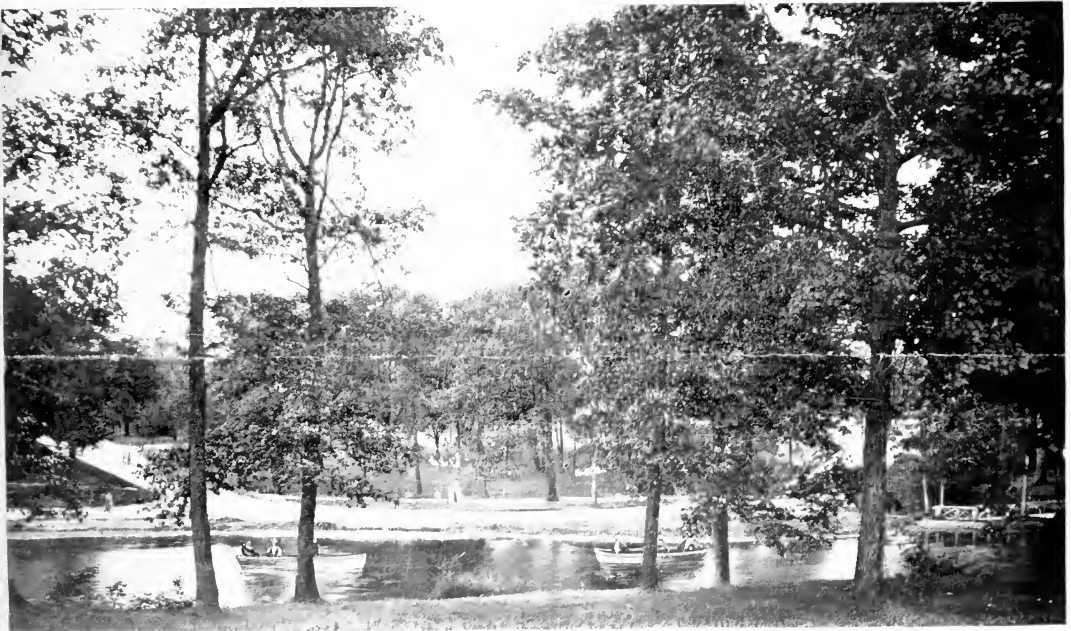
The prices we have made are as low as we think should be to be consistent with safe business.

Please state how we shall send items. Most items go by express. Small lots are sometimes cheaper by parcel post. Very heavy lots are cheaper by freight, but if weather is very hot, freight is not safe. In event no instructions are sent we use our best judgment but assume no risk.

Large orders are sent shipping charges C.O.D. Parcel post packages are sent C.O.D.

We advise delaying shipment on plants until ripened, however, if they may be shipped in the growing or blooming stage, where tops must be crated, a small additional charge must be added. This means that mixed orders are usually sent in several installments as they mature. If this is not satisfactory we can usually store earlier ripened stock until others are ready, if requested.

Sudden and severe hot spells, drouths, freezes or floods make some plants entirely disappear, therefore failures are not always the collectors fault.



TERMS

2% Discount for Cash

All orders sent C. O. D. unless otherwise agreed upon. Responsible parties will be given credit of thirty (30) days from date of shipment.

If only one item is wanted, we do not care to sell less than 250 at these prices. Most items may be had in one thousand lots, many in five thousand lots and some in fifty and one hundred thousand lots.

Let us know your needs, and we will quote you promptly.

CHOICE WILD PLANTS COLLECTED FROM THE WILD

<i>Botanical Name</i>	<i>Common Name</i>	<i>Where It Grows</i>	<i>Color of Flower</i>	<i>Time of Bloom</i>	<i>Per 1000</i>
<i>Aralia racemosa</i> , Spikenard, Ravines, White, July.....					\$35.00
<i>Acorus calamus</i> , Sweet Flag, Bogs, Yellow, June.....					15.00
<i>Achillea Millefolium</i> , Yarrow, Sun Sod, White, June, July.....					12.50
<i>Actaea alba</i> , White, Banberry, Shade, White, May.....					20.00
<i>Actaea rubra</i> , Red Banberry, Shade, White, May and June.....					35.00
<i>Amorpha canescens</i> , Lead Plant, Sun, Violet, July.....					20.00
<i>Anemone Cylindrica</i> , Thimble Weed, Sun or Shade, White, August.....					20.00
<i>Anemone Pennsylvania</i> , White Anemone, Sun, May-July.....					15.00
<i>Anemone thalictroides</i> , Rue Anemone, Woods, White, April-June.....					30.00
<i>Aplectrum hyemale</i> , Putty Root, Shade, Yellow-Purple, June.....					50.00
<i>Aquilegia canadensis</i> , Wild Columbine, Anywhere, Yellow-Red, May-June.....					15.00
2 year plants.....					20.00
XX plants.....					40.00
<i>Arisaema dracontium</i> , Dragon Leaved, Indian Turnip, Shade, Green-Purple, May.....					15.00
<i>Arisaema, triphyllum</i> , Indian Turnip, Shade, Green-Purple, May.....					12.50
<i>Aristolochia hastata</i> , Virginia snakeroot, Shade.....					35.00
<i>Artemisia serrata</i> , Dusty Miller, Sun, Greenish, August-October.....					20.00
<i>Asarum canadense</i> , Wild Ginger, Shade, Violet, April-May.....					10.00
<i>Asclepias rubra</i> , Red Milkweed, Sun, Red, July.....					50.00
<i>Asclepias incarnata</i> , Swamp Milkweed, Open Flats, Pink-Lilac, July-September.....					20.00
<i>Asclepias tubrosa</i> , Butterfly Weed, Sun, Yellow-Red, July-September.....					35.00
<i>Asclepias verticillata</i> , Whorled Milkweed, Sun, White, July-August.....					10.00
<i>Aster novae angliae</i> , New England Aster, Sun, Purple, July-September.....					15.00
<i>Aster sagittifolius</i> , Arrow Lvd. Aster, Sun, Blue, September-October.....					15.00
<i>Aster, Cordifolius</i> , Hart Lvd. Aster, Part Shade, Pale Blue, September-October.....					15.00
Asters, Mixed hardy asters.....					15.00
<i>Baptisia bractea</i> , Bracted False Indigo, Sun, Yellow, May.....					40.00
<i>Baptisia leucantha</i> , Delicate White False Indigo, Sun, July.....					40.00
<i>Callirhoe triangulata</i> , Clustered Poppy Mallow, Dry Land, Purple, Aug.-Sept.....					30.00
<i>Camassia quamash</i> , Wild Hyacinth, Rich Openshade, Pink, April-May.....					35.00
<i>Campanula rotundifolia</i> , Hare Bells, Anywhere, Blue, July-Oct.....					35.00
<i>Caulophyllum thalictroides</i> , Blue Cohosh, Shade, White, May.....					18.00
<i>Chelone glabra</i> , Turtle Head, Damp Place, Pink, August-September.....					30.00
<i>Chrysanthemum leucanthemum</i> , Oxeyed Daisy, Anywhere, Sun, White, Aug.-Oct.....					20.00
<i>Cimicifuga americana</i> , American Bugbane, Hillsides, White, May-June.....					35.00
<i>Claytonia Virginica</i> , Spring Beauty, Open Shade, Purple, April-June.....					15.00
<i>Convallaria Majalis</i> , Lily of the Valley, Part Shade, White, May-June.....					25.00
<i>Delphinium tricolor</i> , Dwarf Larkspur, Sun and Shade, Dark Blue, May-June.....					20.00
<i>Dicentra canadensis</i> , Squirrel Corn, Shade, Pinkish White, April-May.....					10.00
<i>Dicentra Cucullaria</i> , Dutchmans Breeches, Shade, White, April-May.....					15.00
<i>Dodecatheon media</i> , Shooting Star, Sun, Pink, May-June.....					20.00
<i>Echinacea purpurea</i> , Purple Coneflower, Sun or Part Shade, Purple, June-July.....					20.00
<i>Echinacea Angustifolia</i> , Coneflower, Prairie, Sun, Purple, June-July.....					20.00
<i>Equisetum hyemale</i> , Scouring Bush, Sun, Green-Yellow, May-June.....					20.00
<i>Eriogonum bulbosum</i> , Harbinger of Spring, Shade, Pinkish-White, April-May.....					25.00
<i>Eryngium yuccaeifolium</i>, Button Snake Root, Sun, White, July.....					20.00
<i>Eryngium aquaticum</i> , Button Snake Root, Sun-sod, White, July.....					20.00
<i>Erythronium Albidum</i> , Adders Tongue Violet, Shade, White, April-May.....					20.00
<i>Erythronium americanum</i> , Adders Tongue Violet, Shade, Yellow, April-May.....					35.00
<i>Eupatorium coelestinum</i> , Mist-Flower, Sun or Part Shade, Purple, September-October.....					24.00
<i>Eupatorium Ageratioides</i> (<i>urticaefolium</i>), Snake Root, Open Shade, White, Sept.-Nov.....					15.00
<i>Eupatorium perfoliatum</i> , Boneset, Wet, Sun, White, July.....					30.00
<i>Eupatorium purpureum</i> , Joe Pye Weed, Part Shade, Purple, July-September.....					22.50
<i>Euphorbia corollata</i> , Flowering Spurge, Sun, White, July-September.....					25.00
<i>Euphorbia cyparissias</i> , Cyprus Spurge, Sun, Yellow, June.....					25.00
<i>Gentian andrewsii</i> , Closed Gentian, Damp Sun, Blue, August-October.....					30.00
<i>Gentian, Prairie Gentian, opensun</i> , Blue, August-September.....					150.00
<i>Geranium maculatum</i> , Cranes Bill, Anywhere, Pink, May-June.....					15.00
<i>Helianthus mollis</i> , Hairy Sun Flower, Sun, Yellow, July-September.....					20.00
<i>Helianthus giganteus</i> , Tall Sunflower, Sun, Yellow, Sept.-Oct.....					25.00
<i>Hepatica acutiloba</i> (Evergreen), Damp Shade, Pink, April-May—					
1 to 2 plant clumps.....					10.00
3 to 4 plant clumps.....					20.00

<i>Botanical Name</i>	<i>Common Name</i>	<i>Where It Grows</i>	<i>Color of Flower</i>	<i>Time of Bloom</i>	<i>Per 1000</i>
5 to 6 plant clumps.....					30.00
7 to 10 plant clumps.....					45.00
<i>Hydrastis canadensis</i> , Golden Seal, Shade, White, May.....					40.00
<i>Hypericum cistifolium</i> , Round Podded St. Johns Wort, Sun, Yellow, July-August.....					20.00
<i>Hypoxis hirsuta</i> , Star Grass, Yellow, April-May & Sept.-Oct.....					40.00
<i>Iris versicolor</i> , Wild Iris, Sun, Blue, May-June.....					15.00
<i>Isopyrum biternatum</i> , False Rue Anemone, Shade, White, April-May.....					20.00
<i>Jeffersonia diphylla</i> , Twin Leaf, Deep Shade, White, May-June.....					20.00
<i>Krigia virginica</i> , Cyntha, Open Woods, Yellow, June-July.....					30.00
<i>Liatrix scariosa</i> , Button Blazing Star, Sun, Purple, July-September.....					18.00
<i>Liatrix spicata</i> , Blazing Star, Sun, Purple, July-August.....					35.00
<i>Lepachys pinnata</i> , Gray headed Cone Flower, Yellow, Sun, June-Sept.....					25.00
<i>Lithospermum canescens</i> , Puccoon, Open Sun, Yellow, May-June.....					25.00
<i>Lithospermum angustifolium</i> , Narrow Leaved Puccoon, Sun, Bright Yellow, April-July.....					30.00
<i>Li Paris liliifolia</i> , Lily Lvd. Liparis, Shade, Purplish, June.....					35.00
<i>Lobelia siphillica</i> , Great Blue Lobelia, Moist Soil, Sun, Blue, July-October.....					15.00
<i>Mentha piperita</i> , Mint, Moist Soil, Sun, White, May.....					18.00
<i>Mertensia Virginica</i> , Blue Bells, Open Shade, April-June—					
Firsts.....					22.50
Seconds.....					9.00
<i>Mertensia Virginica</i> , Pink, Open Shade, Pink, April-June.....					150.00
<i>Monarda fistulosa</i> , Horse Mint, Sun, Pink, July-September.....					15.00
<i>Oenothera Biennis</i> , Common Evening Primrose, Sun, Yellow, June-Sept.....					25.00
<i>Oxalis violacea</i> , Violet Sheep Sorrel, Sun, Violet, May-June.....					18.00
<i>Pedicularis canadensis</i> , Wood Betony, Sun, Yellow, May.....					25.00
<i>Pentstemon Laevigatus</i> , Smooth Beards Tongue, Sun, White, June-July.....					20.00
<i>Petalostemum candidum</i> , White Prairie Clover, Sun, July-August.....					25.00
<i>Petalostemum villosum</i> , Purple Prairie Clover, Sun, July-August.....					25.00
<i>Phlox bifida</i> , Cleft Phlox, Mixed Colors, Sun or Shade, April-June.....					30.00
<i>Phlox divaricata</i> , Sweet William, Open Shade, Lilac or Blue, May-June					
<i>Phlox glaberrima</i> , Wild Pink Phlox, Sun, June-July					
<i>Phlox pilosa</i> , Prairie Phlox, Red, May-June					
Either of above plants of 3 to 4 stems.....					15.00
Either of above plants of 5 to 6 stems.....					20.00
Either of above plants of 7 to 8 stems.....					30.00
Either of above plants of 8 to 10 stems.....					45.00
<i>Physostegia virginiana</i> , False Dragon Head, Sun, Pink, June-August.....					20.00
<i>Podophyllum peltatum</i> , May Apple, Shade, White, May-June.....					15.00
<i>Polemonium reptans</i> , Greek Valerian, Shade, Blue, May.....					18.00
<i>Polygonatum biflorum</i> , Solomon Seal, Shade, White, May.....					18.00
<i>Polygonatum giganteum</i> , Giant Solomons Seal, Shade, White, May.....					24.00
<i>Ranunculus acris</i> , Common buttercup, Sun or Shade, Yellow, May.....					20.00
<i>Rudbeckia laciniata</i> , Wild Golden Glow, Part Shade, Yellow, July-August.....					18.00
<i>Ruella pedunculata</i> , Stalked Ruella, Sun, Purple, June-August.....					20.00
<i>Sanguinaria canadensis</i> , Blood Root, Shade, White, April-May.....					20.00
<i>Saponaria officinalis</i> , Bouncing Bet, Sun, Pink, June-October.....					15.00
<i>Saururus cernuus</i> , Lizard's tail, Swamps, White, June-Aug.....					40.00
<i>Scutellaria integrifolia</i> , Skull Cap, Sun or Shade, Blue, July-August.....					20.00
<i>Silene stellata</i> , Stary Campion, Shade, White, July.....					22.50
<i>Silene virginica</i> , Fire Pink, Shade, Bright Red, May-June.....					28.00
<i>Silphium laciniatum</i> , Compass plant, Sun, Yellow, July-Aug.....					35.00
<i>Silphium perfoliatum</i> , Indian Cup, Damp soil, Yellow, July-Sept.....					35.00
<i>Sisyrinchium angustifolium</i> , Blue Eyed Grass, Sun, Blue, May-June.....					25.00
<i>Smilacina stellata</i> , Star Flowered Solomons Seal, Shade, White, June-July.....					15.00
<i>Smilacina racemosa</i> , False solomonseal, shade, creamy white, May-June.....					18.00
<i>Solidago canadensis</i> , Canadian Golden Rod, Sun, Yellow, August-October.....					18.00
<i>Solidago</i> , assorted, Golden Rod, Sun, Yellow, August-October.....					18.00
<i>Spiraea Filipendula rubra</i> , Queen of the Prairie, Sun, Pink, June-July.....					35.00
<i>Stylophorum diphyllum</i> , Colandine Poppy, Shade, Yellow, May-September.....					20.00
<i>Talietrum polygamum</i> , Tall Meadow Rue, Sun, White, June-July.....					20.00
<i>Tanacetum vulgare</i> , Tansey, Anywhere, Yellow, June.....					25.00
<i>Tradescantia bracteata</i> , Dwarf Pink Spiderwort, Shade, May-June.....					48.00
<i>Tradescantia Pilosa</i> , Zig Zag Spiderwort, Part Shade, Lilac Blue, June-Sept., singles.					22.50

<i>Botanical Name</i>	<i>Common Name</i>	<i>Where It Grows</i>	<i>Color of Flower</i>	<i>Time of Bloom</i>	<i>Per 1000</i>
<i>Tradescantia virginica</i> , Spiderwort, Part		Shade,	Purple,	May-August,	
Single					10.00
Small clumps					20.00
<i>Tradescantia virginica</i> , Nina Dwarf Spiderwort, Sun or Shade, Blue, May-June,					
Singles					20.00
<i>Trillium Nivale</i> , Dwarf White Trillium, Shade, April					24.00
<i>Trillium recurvatum</i> , Brown Trillium, Shade, May-June					20.00
<i>Uvularia perfoliata</i> , Bellwort, Rich Shade, Yellow, May-June					18.00
<i>Verbena hastata</i> , Blue Verbaue, Sun, Purple, July-September					15.00
<i>Vernonia altissima</i> , Iron Weed, Sun, Violet, August-October					20.00
<i>Veronica virginica</i> , Clovers Root, Sun or Shade, White, July-August					18.00
<i>Viola blanda</i> , White Violet, Part Shade, May-June					18.00
<i>Viola palmata</i> , Palm Leaved Violet, Sun, Blue, May-June					20.00
<i>Viola Papilionacea</i> , Common Blue Violet, Sun, May-June					15.00
<i>Viola pedata</i> , Birds Foot Violet, Sun, Blue, May-June					
Single					20.00
<i>Viola Pedata Bicola</i> , Two Colored Birds Foot Violets, Part Shade					28.00
<i>Viola pubescens</i> , Yellow Violet, Sun or Shade, Yellow, May					18.00
<i>Viola pallens</i> , Sweet White Violet, Sun, May					18.00

FERNS

<i>Adiantum pedatum</i> , Maiden Hair, Damp Shade, Light Sods	15.00
Medium sods	20.00
Heavy sods	30.00
<i>Aspidium acrostichoides</i> , Christmas (Evergreen), Shade	20.00
<i>Aspidium thelypteris</i> , Marsh Fern, Rich Shade	25.00
<i>Asplenium Thelypteroides</i> , Silvery Spleenwort, Damp Shade	24.00
<i>Asplenium angustifolium</i> , Narrow Leaved Spleenwort, Shade	24.00
<i>Asplenium Felix-foemina</i> , Lady Fern, Shade	34.00
<i>Bolychium Virginianum</i> , Virginia Grape Fern, Shade	20.00
<i>Cystopteris fragilis</i> , Fragile Bladder Fern, Moist Shade	14.00
<i>Onoclea sensibilis</i> , Sensitive Fern, Moist Shade	20.00
<i>Pteris Aquilina</i> , Brake, Eagle Fern, Part Shade	35.00
<i>Phegopteris hexagonoptera</i> , Broad Beech Fern, Shade	20.00

VINES

<i>Humulus lupulus</i> , Hop Vine, Sun, Yellow, July	24.00
<i>Ipomoea pandurata</i> , "Man of the Earth," Sun, Purple, July-August	100.00
<i>Menispermum canadense</i> , Wild Sarsaparilla, Sun, White, May	25.00
<i>Mitchella repens</i> , Partridge Berry, Shade, White, April-May	28.00
<i>Nepeta hederacea</i> , Ground Ivy, Shade, Purple, May-June	18.00
<i>Smilax herbacea</i> , Carrion Flower, Part Shade, White, Black Berries	29.00
<i>Vinca Minor</i> , Ground Myrtle, Part Shade, Blue, May-June	20.00

NOTICE

If You buy in large lots, please give Us Your want list to figure on early, if this is done while the collecting of plants can be done with the least possible cost, We can give You better prices on some of the items that We list.

CLAIMS

Claims for any cause must be made on receipt of goods. Shipments travel at cost and risk of purchaser. Prompt and careful service awaiting Your command. We have enlarged Our collecting force and will be able to serve You better than in the past.

Entrust Your orders for plants of the Midwest to Our experience and You will receive plants that will please You and Your Customers.