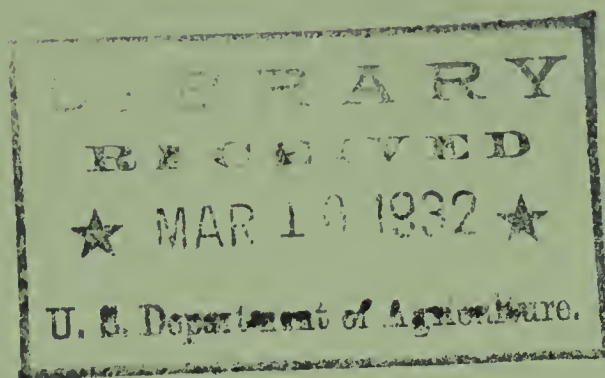


## **Historic, Archive Document**

Do not assume content reflects current scientific knowledge, policies, or practices.



62.73



# Delphiniums

1932

and Other Noteworthy  
Herbaceous and Alpine Plants

**THREE POINT GARDENS**

Nurserymen to a Discriminating Clientele

**EAST STROUDSBURG, PA.**



# DELPHINIUMS

*In Separate Named Types Selected From the Finest English Sources*

ADVANCEMENT—This marks an achievement in delphinium creation. There is often 5-6 ft. of solid bloom. Colors of striking beauty.....	<i>each</i> \$5.00
WATKIN SAMUELS—A group distinguished by enormous tapering spikes, beautiful florets, with striking centers .....	5.00
BLUE QUEEN—Azure blue with blackish brown center. Single 4 ft.....	1.50
CLIVE GREAVES—Rich porcelain blue flowers of good size and form, on a long, tapering, spike of imposing stature. Unique and distinct. 5 ft.	3.00
CONSTANCE—A lovely blue single, white eye .....	1.50
COUNTESS COWLEY—Light blue and mauve, semi-double flowers of won- derfully fine form. Eye is black; magnificent spikes. 5 ft. ....	3.00
EDWARD BROMET—The purplish blue ground is rich and the white eye extremely large. The individual pips are of enormous size and are well set on enormous spikes. 5 ft. AM .....	2.50
GLORY—Mauve, shaded rose. Stout, sturdy plant with white eye. 4 ft. ..	1.50
GREAT STRIDES—Pale blue, shaded pinkish mauve. Prominent white eye	3.00
HAPPY THOUGHT—Medium blue, shaded pansy violet. 5 ft. ....	3.00
MRS. A. J. WATSON—Deep mauve shade with black center, enormous spikes. 7 ft. ....	2.00
MRS. NORMAN HOLDEN—Large semi-double flowers of mauve and blue with large black eye A splendid variety. 5 ft. ....	3.00
MRS. SHIRLEY—Beautiful variety. Lovely lilac mauve. White and sul- phur eye. 5-6 ft. ....	2.00
MRS. TOWNLEY PARKER—Sky blue single, white eye .....	1.50
NORAH PHILLIPS—A gorgeous effect of deep blue and purple florets on a tapering spike of 6 feet .....	3.00
R. A. PILKINGTON—Extra large, well formed, semi-double flowers. Color rich violet, edged dark blue. Eye is brown and spike well formed. 5'.	3.00
THE BISHOP—Bright royal blue, large and conspicuous white center. An outstanding variety. 5 ft. ....	3.00
THE SHAH—A deep rosy lavender self with dark eye. Large semi-double flowers, are circular in form and consist of several rows of petals. Spikes extra long and finely proportioned. 5 ft. AM.....	3.00

*6 plants of a kind at the price of 5*

*12 plants of a kind at the price of 10*

## English Hollyhock Delphiniums in Color Groups

A welcome innovation is the following offer of the Hollyhock Delphiniums released in four separate color groups. These plants are grown from the identical strains which comprise our well-known Named Delphiniums. The plants are all heavy field grown material, and are also shipped balled and burlapped. For exhibition material our Delphinium and Lupin are unsurpassable. Offered in the following color groups:

- LIGHT SHADES {with light center  
                  {with dark center
- MAUVE SHADES {with light center  
                  {with dark center
- DARK SHADES {with light center  
                  {with dark center
- INTERMEDIATE {with light center  
  SHADES        {with dark center
- MIXTURE

Price: \$1.00 each, \$10.00 per dozen,  
\$75.00 per 100.

---

## Choice English Hybrid Lupin in Color Groups

A companion to our Delphinium offer is this list of New English Hybrid Lupin in five distinct color groups, selected from the named varieties which have created so much comment in England.

- GROUP "A"—*Bronze, apricot, yellow, orange.*
- GROUP "B"—*Rose, pink, flesh, buff.*
- GROUP "C"—*Purple and mahogany.*
- GROUP "D"—*Blue and lavender.*
- GROUP "E"—*Cream, white.*

*The Modern Hybrid Mixture*

Price: 50c each, 5.00 per dozen,  
\$35.00 per 100.

THREE POINT GARDENS

A LIST OF THE MOST DESIRABLE  
ALPINE AND HERBACEOUS PLANTS

**G**REAT LOVE and enthusiasm for alpine plants and delphiniums have made us specialize in these subjects. Our knowledge is thorough and comprehensive with years of experimentation and study. Here, in the Pocono Mountains, at an elevation of 1500 feet, we grow the plants where they mature under ideal conditions. In our shaly limestone hill sides they grow as sturdy and ravishingly beautiful as in their native haunts. Gathered from all the world, we have selected a comprehensive list for all needs and conditions, as the most worthy subjects to beautify your gardens. Our natural scree provides free root runs. These wildings are all field grown with amazing results. And a wealth of joy is stored in the wee little gems when they are established in your own garden.

	each dozen	
*ACAENA <i>Buchannani</i> —Dense carpet of pea green. 2 inches .....	.50	5.00
* <i>glauca</i> —Beautiful carpeting plant with rose like foliage of soft grey blue .....	.50	5.00
ACHILLEA <i>The Pearl</i> —Pure white, double dwarf, fine for cutting ..	.35	2.50
ACONITUM <i>autumnale</i> —Monkshood. Handsome species, dark blue flowers in large spikes .....	.35	3.50
<i>Fischeri</i> —Dark blue flowers in dense spikes in autumn .....	.35	3.50
<i>Sparks var.</i> —A tall variety with branching spikes of blue flowers. The darkest <i>aconitum</i> , and has a long flowering period. 5-6 ft. July-August .....	.50	3.50
*AETHIONEMA <i>coridifolium</i> —A many stemmed bushling with short dense heads of pink flowers. 4-6 inches. June-July .....	.60	5.00
* <i>iberidium</i> —Gray glaucous leaves. White flowers are produced in terminal clusters. April-May .....	.60	5.00
* <i>pulchellum</i> —Rosy pink. Very choice. 6 inches .....	.60	5.00
*ALYSSUM <i>argenteum</i> —Clusters of yellow flowers, Gray leaves. 15 inches. All summer .....	.35	3.00
* <i>rostratum</i> —Trailing species with yellow flowers in abundance ..	.35	3.00
* <i>saxatile compactum</i> —Yellow. Fine spring flower .....	.35	2.50
* <i>serpyllifolium</i> —Very dwarf, 4-5" with racemes of pale yellow flowers and rough hoary leaves. Very rare .....	.35	3.00
ANEMONE <i>hupehensis</i> —A beautiful anemone blooming from early August until late Autumn. Flowers of a mauve-rose. Quite hardy. 18 inches high .....	.35	3.00
* <i>pulsatilla</i> —Well drained soil in full sun. Lovely violet cups filled with yellow stamens. April-May .....	.35	2.50
<i>Queen Charlotte</i> —Pink semi-double flowers. Blooms in September and October. 2-3 ft. ....	.35	3.00
* <i>sylvestris</i> —White. Like moist corner of the rock garden. May-June ..	.35	3.00
<i>Whirlwind</i> —Semi-double, white .....	.35	3.00
ANTHEMIS <i>tinctoria Kelwayi</i> —Useful border plant, bright yellow. Good for cutting. The improved type .....	.35	2.50

\* Denotes plants suitable for rock gardens.

T H R E E P O I N T G A R D E N S

*each dozen*

*AQUILEGIA <i>alpina</i> —True variety. Very rare. Powder blue flowers on 1 ft. stems. May-June .....	.35	3.50
* <i>canadensis</i> —The native bright red and yellow columbine .....	.35	2.50
* <i>chrysantha</i> —Waxy yellow .....	.35	2.50
* <i>flabellata nana</i> —Dwarf. White. Nymph-like flowers .....	.35	3.00
<i>H. &amp; S.</i> —The finest of the improved strains in the following separate colors: Scarlet, Blue, Pink and mixture .....	.35	2.50
<i>Mrs. Scott-Elliott Hybrids</i> —A very beautiful strain of extra long spurred flowers .....	.35	2.50
<i>Skinneri</i> —Scarlet tipped green, long spurred .....	.35	2.50
*ARABIS <i>albida</i> —A vigorous rock cress with grey leaves and countless white flowers. Nearly the whole summer. Ordinary soil. Sun...	.35	2.50
* <i>alpina fl. pl.</i> —A double variety of the well loved white rock cress. Early spring .....	.35	2.50
* <i>alpina nana compacta</i> —Dwarfest variety .....	.35	2.50
* <i>Ferdinand-Coburgi</i> —A rare specie from Macedonia. White flowers Compact .....	.50	3.50
* <i>muralis alba</i> —A white form of the compact <i>A. rosea</i> .....	.35	3.00
* <i>rosea</i> —Dwarf. Rose colored blooms .....	.35	2.50
*ARENARIA <i>ballerica</i> —Loves a cool moist situation in the rock garden. Tuft-like habit. Flowers neat and white .....	.35	3.50
* <i>caespitosa</i> —Mossy growth studded with white flowers .....	.35	2.50
* <i>montana</i> —Creeping variety forming mounds of green, covered in early Spring with large white flowers .....	.35	2.50
*ARMERIA <i>lauchearia</i> —Neat tufts of spiny leaves with cluster heads of vivid pink flowers .....	.35	2.50
*ASTER <i>alpinus</i> —Dwarf. Large purple flowers .....	.35	3.00
<i>Blue Gem</i> —Semi-double dark blue flowers. 4-5 feet. Sept. and Oct. .....	.35	2.50
<i>Climax</i> —For the border. Rich lavender purple flowers, large pyramidal spikes 5'. Fall .....	.35	2.50
<i>Erica</i> —A beautiful clear pink .....	.35	2.50
<i>Barr's Pink</i> —Large bright pink flowers in Sept.-Oct. .....	.50	5.00
<i>Mrs. F. W. Raynor</i> —Large crimson flowers .....	.35	2.50
<i>Feltham Beauty</i> —Lovely dark blue flowers. 3 ft. August-October..	.35	2.50
<i>tataricus</i> —Flowers of bluish-violet. November-December .....	.35	3.00
* <i>Himalaicus</i> —Very choice. Dwarf with a profusion of lilac flowers .....	.75	5.00
*AUBRETIA <i>Campbelli</i> —A new improved hybrid of the <i>purpurea</i> ..	.35	2.50
* <i>Eyrii</i> —A rose pink matted rock cress .....	.50	3.50
* <i>bougainvillei</i> —Cerise tufts. Requires light loamy soil .....	.50	3.50
* <i>deltoides</i> —Very dwarf. Pale lavender .....	.35	2.50
* <i>graeca</i> —Lilac blue .....	.50	3.50
* <i>Leichtlini</i> —Bright rose .....	.35	3.50
* <i>Lloyd Edwards</i> —A slightly richer shade of <i>Leichtlini</i> .....	.35	3.50
* <i>purpurea</i> —Rich purplish blue sheets .....	.35	3.00
* <i>mixed</i> —A rich assortment of the entire collection .....	.35	2.50
*AURICULA <i>alpina</i> —6-8 inches with a range of rich pastel colors. One of the primrose family. Choice .....	.50	5.00
* <i>John Forbes</i> —A splendid English mixture .....	.50	5.00
* <i>Storrie's Rich Charming Colors</i> —The finest Scotch strain .....	.50	5.00
* <i>Storrie's mixed</i> —Beautiful colors .....	.50	5.00
* <i>Storrie's aurora and laced</i> —Improved hybrids in rich colors .....	.50	5.00

\* Denotes plants suitable for rock gardens.



T H R E E P O I N T G A R D E N S

*each dozen*

*BELLIS <i>coerulescens</i> —An edging plant, flowers white, tinted lilac. Requires a warm site .....	.35	3.00
*CALAMINTHA <i>alpina</i> —Prostrate. Violet-blue flowers borne in clusters. July-August .....	.50	3.50
CAMPANULA <i>alliarafolia</i> —Showy and choice bell-flower of pyramidal habit. Long-tubed, white flowers from arching stems .....	.50	2.50
* <i>carpathica</i> —A well-known Carpathian harebell. Blooms all summer .....	.35	2.50
* <i>carpathica alba</i> —A pure white of the ever lovely summer-flowering hairbell .....	.35	2.50
* <i>garganica</i> —A gem. Hanging masses of delicate blue flowers .....	.50	5.00
<i>glomerata</i> —Large heads of purple flowers. Good border plant ..	.35	3.50
<i>medium</i> —The ever-beloved <i>Canterbury Bell</i> in a group of separate colors or mixed. Single rose, blue or pink; double, rose, blue or pink .....	.35	2.50
<i>Dean's hybrids</i> —An improved type of <i>medium</i> .....	.35	2.50
<i>macrorrhiza</i> —The harebell of the Riviera, where it fills rock and wall crevices with dainty showers of violet bells from early spring onward .....	.75	7.50
* <i>muralis portenschlagiana</i> —Very Dwarf plant covered with blue flowers in June. Wall and rock garden .....	.50	5.00
* <i>ovatica</i> —A sturdier type of <i>garganica</i> .....	.75	6.50
<i>Palassiana</i> —Fine new variety with blue flowers on stems about 2½ feet high. July-Aug. ....	.35	2.50
<i>persiciolia alba</i> —A good border type with white flowers, on 3 ft. spikes. June-July .....	.35	2.50
* <i>persicifolia Telham Beauty</i> —Immense bell-shaped flowers of delicate China blue. June-July .....	.50	3.50
* <i>pusilla</i> —One of the very choice rock Bellflowers. Blue. June-Aug. ....	.50	5.00
* <i>pyramidalis alba</i> —A beautiful white form .....	.35	2.50
<i>Raddeana</i> —A treasure from the Alps. Glorious violet bells above glossy leaves. Easy in any good soil .....	.50	5.00
* <i>rotundifolia</i> —Delicate blue. 8-10 inches .....	.35	2.50
*CERASTIUM <i>tomentosum</i> —Grey foliage. White flowers .....	.35	2.50
*CHEIRANTHUS <i>allioni</i> —Dazzling orange flowers about 1 ft. Good for the rock garden. June-August .....	.35	2.50
CHRYSANTHEMUM <i>Adirondo</i> —A fine bronze. Oct. 1st .....	.35	2.50
<i>Brune Poitevine</i> —Deep velvety red. Sept. 15 .....	.35	2.50
<i>Carmelite</i> —"Glory of Seven Oaks". Golden yellow. Sept. 15 ....	.35	2.50
<i>Carrie</i> —Clear pale yellow .....	.35	2.50
<i>Edna</i> —Creamy White. Oct. 1 .....	.35	2.50
<i>Harvest Home</i> —Fine golden yellow. Oct. 1 .....	.35	2.50
<i>Idolph</i> —A pleasing salmon pink. Sept. 15 .....	.35	2.50
<i>Mitzi</i> —Late flowering and small. The best hardy yellow button ..	.35	2.50
<i>Mrs. H. Craig</i> —Yellow, overlaid with orange, crimson. Sept. 15 ..	.35	2.50
<i>Mrs. Harrison</i> —Double pink flowers with cream pink center. A pompon .....	.35	2.50
<i>Mrs. Phillips</i> —A beautiful single pink. October 1 .....	.35	2.50
<i>Nellie Blake</i> —Reddish copper. Oct. 1 .....	.35	2.50
<i>Oconto</i> —Pure white. Oct. 1 .....	.35	2.50
<i>October Gold</i> —Rich golden bronze. Oct. 1 .....	.35	2.50
<i>Petit Louis</i> —Rose pink with bronze center. Sept. 15 .....	.35	2.50
<i>Provence</i> —Rose pink tipped rosy pink. Sept. 15 .....	.35	2.50

\* Denotes plants suitable for rock gardens.

THREE POINT GARDENS

	each dozen
<i>Red Button</i> —Compact red cushion .....	.35 2.50
<i>Tints of Gold</i> —Large beautiful bronze shade. Oct. 1 .....	.35 2.50
<i>White Dotty</i> —Pure white pompon .....	.35 2.50
<i>Zelia</i> —A fine orange bronze. October 1 .....	.35 2.50
CHRYSANTHEMUM <i>arcticum</i> —Fall flowering perennial A dark rosette of leaves, with a host of happy white flowers, 2½ in.	.35 2.50
<i>maximum</i> —The reliable Shasta Daisy. Large pure white flowers ..	.35 2.50
CIMICIFUGA <i>racemosa</i> —Handsome, shade loving plant with pure white flowers. 4-6 ft. Splendid for naturalizing .....	.35 2.50
*CORYDALIS <i>cheilantifolia</i> —Handsome fern-like foliage, with spikes of yellow blossoms 12 in. high .....	.75 5.00
*DAPHNE <i>cneorum</i> —One of the choicest of the dwarf shrubs, with delicate pink flowers. Bushy clumps 12-15 in. spread \$2 to \$2.50 each	
DELPHINIUM <i>belladonna Cliveden Beauty</i> —An improved strain of the delicate summer blooming delphinium. Especially lovely for cutting .....	.35 2.50
<i>chinense</i> Blue Butterfly—Intense chinense blue in soft sprays. 18-24 in. ....	.35 2.50
* <i>alba</i> —A white type of the above .....	.35 2.50
DIANTHUS <i>alpestris</i> —Petals lightly fringed. Very choice .....	.50 4.00
* <i>alpinus</i> —Lovely alpine pink that thrives in partial shade. Profuse bright rose blooms. Dwarf .....	.50 5.00
* <i>Alwoodi</i> —Larger flowered than the other hardy pinks, and a con- tinuous bloomer from spring until fall .....	.35 3.50
* <i>arenarius</i> —Sand loving; excellent for hot and dry places. White, finely fringed .....	.35 2.50
<i>barbatus, double mixed</i> —A gorgeous array of color in the old fash- ioned Sweet William .....	.35 2.50
<i>barbatus—Holborn Glory</i> —A lovely new Sweet William .....	.35 2.50
<i>b. Crimson Shades</i> —A new bright addition .....	.35 2.50
<i>b. mixed</i> .....	.35 2.50
<i>b. Pink Beauty</i> .....	.35 2.50
<i>b. single dwarf</i> —Also in a rich range of color .....	.35 2.50
* <i>caesius</i> —Each flower on its own stem. Sweet scented .....	.35 3.00
<i>Chaubd Extra choice</i> —A very fine strain of this carnation .....	.35 2.50
* <i>cruentus</i> —Dense heads of deep red flowers on long stems .....	.35 2.50
* <i>deltoides Brilliant</i> —Brilliant rose maiden pink .....	.35 2.50
* <i>d. Maj. Sterne's var.</i> —Large pink blossoms. Very showy 10-12" ..	.35 3.50
* <i>graniticus</i> —A brilliant summer carpeter, similar to <i>D. deltoides</i> ..	.35 2.50
* <i>Grenadin Scarlet</i> —The Scotch pink which is a glorious scarlet. As close in form to the greenhouse carnation as any in the hardy garden .....	.35 2.50
* <i>Kamtschaticus</i> —A trailing rock plant with deep pink flowers .....	.50 4.00
* <i>neglectus</i> —A real wildling with tiny flowers on 2 inch stems .....	.75 5.00
* <i>plumarius Cylopes</i> —A distinctive form of <i>D. plumarius</i> .....	.35 2.50
* <i>p. hybridus</i> —Many shades of the Single Pheasant's Eye .....	.35 2.50
<i>Gladys Cranfield</i> —Rosy lilac flowers with maroon center .....	.35 3.50
<i>Homer</i> —Deep rose with darker center .....	.35 3.50
<i>Her Majesty</i> —Very large, pure white .....	.35 3.50
<i>White Reserve</i> —Pure white .....	.35 3.50
* <i>superbus</i> —Lilac flowers. Very fragrant. Deeply fringed .....	.50 3.50
* <i>sylvestris</i> —Bluish foliage and salmon pink flowers. 1 ft. ....	.35 3.50

\* Denotes plants suitable for rock gardens.

THREE POINT GARDENS

each dozen

*DICENTRA <i>eximia</i> —A native wildling and a willing one, blooming throughout the season in delicate arching racemes like miniature bleeding heart .....	.35	2.50
<i>spectabilis</i> —This is the more familiar cousin to the dwarf <i>eximia</i> —our well-loved Bleeding Heart .....	.75	6.50
DIGITALIS— <i>gloxinioides rosea</i> —The well loved foxglove .....	.35	2.50
<i>Shirley</i> —A magnificent strain with larger spikes of bloom .....	.35	2.50
<i>Lutz hybrids</i> —A new hybrid. Flowers of a light salmon color. 3' .....	.35	2.50
DORONICUM <i>excelsum</i> —A yellow daisy of the aristocrats, with a wealth of gold blossoms in May and June .....	.35	3.50
*DRABA <i>aizoides</i> —Beautiful rosettes of hairy leaves. Bright yellow flowers. 2 inches. Spring .....	.75	5.00
*EPILOBIUM <i>nummularifolium</i> —A tiny creeper with tiny round copper leaves and tiny white flowers. Happy in semi-shade. A good carpenter for stepping stones .....	.35	3.50
*ERINUS <i>alpinus</i> —Purple flowers in racemes. 6 inches .....	.35	3.50
*ERYSIMUM <i>pulchellum</i> —A tangle of brilliant yellow early in the year .....	.50	5.00
* <i>purpureum</i> —Dwarf half shrubby variety. 3-6 inches. Choice ....	.75	5.00
EUPATORIUM <i>coelestinum</i> —A pretty plant with light purple flowers, blooming from August until frost .....	.35	2.50
*EUMOMYMOUS <i>Radicans vegetas</i> —Evergreen Bittersweet—Produces shiny green leaves that remain lovely throughout the winter. Unequalled for covering walls .....	\$1.00	each
* <i>Kewensis</i> —A variety with small green leaves. Splendid rock plant and ground cover. Most valuable in shady places, and most desirable where a delicate evergreen is needed.....	.75	7.50
GAILLARDIA <i>Dazzler</i> —The improved blanket flower like a rich burst of orange sunshine .....	.35	2.50
*GENTIANA <i>Andrewsi</i> —The beloved closed gentian of our native clime .....	.35	3.50
* <i>cruciata</i> —Heads of brilliant blue blossoms in August. 6-12" high .....	.50	5.00
*GEUM <i>Heldreichii</i> —An improved <i>Geum</i> with brilliant red flowers. For summer gayety this is most desirable .....	.50	5.00
<i>Lady Stratheden</i> —Large flowers of a rich golden color. June-Sept... ..	.35	2.50
<i>Mrs. Bradshaw</i> —Large double scarlet flowers, blooming nearly all summer .....	.35	2.50
* <i>Orange Queen</i> —A penetrating orange of the above .....	.50	5.00
* <i>montanum</i> —Golden yellow blossoms on stems 3-6 inches .....	.75	5.00
*GYPSOPHILLA <i>repens</i> —Trailing plant for rockery or wall garden. Delicate small flowers. July-August.....	.35	2.50
<i>Bristol Fairy</i> —One of the best improvements on <i>G. paniculata fl. pl.</i> Spikes of white flowers produced until frost .....	\$1.00	each
HELENIUM <i>autumnale</i> —A tall mahogany beacon for the late summer hour. Clustered heads of rich flowers, 4 ft. ....	.35	2.50
<i>autumnale Riverton Gem</i> —Rich wall flower, red flowers .....	.35	2.50
<i>gartensonne</i> —Broad heads of deep golden yellow, and a brilliant contrast to the darker mahogany .....	.35	2.50
<i>superbum</i> —Brilliant golden flowers in autumn .....	.35	2.50

\* Denotes plants suitable for rock gardens.

T H R E E P O I N T G A R D E N S

*each dozen*

*HELIANTHEMUM <i>aureum</i> —Golden yellow .....	.35	2.50
<i>Fireball</i> —Brilliant scarlet flowers .....	.35	3.00
* <i>macranthum</i> —Single, white .....	.35	2.50
* <i>Mrs. Earle</i> —Double scarlet flowers .....	.35	3.00
* <i>mutabile</i> —Lovely mixture .....	.35	2.50
* <i>praecox</i> —Soft yellow flowers .....	.35	3.00
* <i>rhodanthe carneum</i> —Large, clear pink flowers .....	.35	3.00
<i>vulgare</i> —A rich mixture of pastel colors .....	.35	2.50
HEMORACALIS <i>fulva</i> —Brown day lily—Coppery orange, shaded crimson .....	.35	2.50
<i>Kwanso</i> —Large double flowered variety, with rich golden bronze flowers .....	.35	2.50
<i>middendorfi</i> —A very striking variety with hugh, rich orange-yellow flowers .....	.35	2.50
<i>Thunbergi</i> —Lemon yellow .....	.35	2.50
HEUCHERA <i>sanguinea</i> —Scarlet panicles of flowers. 18 inches .....	.35	3.00
<i>Rosamonde</i> —Soft pink flowers. 18 inches .....	.35	3.50
HIBISCUS <i>Moschatus hybrids</i> —Colors ranging from white to deep red. 5-6 ft. ....	.35	3.00
HOLLYHOCK <i>Chater hybrids</i> —Singles and doubles in a rich variety of color .....	.35	2.50
<i>Allegheny hybrids</i> —Single, with fringed petals .....	.35	2.50
*HYPERICUM <i>calycinum</i> —A carpet of green with large bright yellow flowers. Vigorous ground cover .....	.75	5.00
* <i>fragile</i> —A trailing sort with 5 inch stems. Covered with cups of clear golden yellow. Indispensible for the rockery .....	.50	5.00
* <i>moserianum</i> —A most desirable plant of shrubby character for rock garden or border. Gold flowers with long delicate stamens. Mid- summer until frost .....	.50	5.00
* <i>olympicum</i> —Grey foliage with very large yellow flowers. A jewel. 6 inches. June-July .....	.50	4.00
* <i>polyphyllum</i> —Rare. Glaucous foliage. Flowers yellow in dense terminal cymes, all summer .....	.50	5.00
* <i>repens</i> —Heath-like, prostrate growth. Bright yellow flowers .....	.50	5.00
* <i>reptans</i> —Prostrate, forming a perfect sheet over the rocks, covered with golden yellow blossoms. A gem .....	.50	5.00
*IBERIS <i>sempervirens</i> —Pure white flowers in June. Glaucous blue foliage. 6 inches .....	.35	2.50
*IRIS <i>chrysophilla</i> —A western Iris of delicate yellow. Best planted in the fall .....	.75	7.50
* <i>cristata</i> —Very dwarf. An orchid blue, spotted orange .....	.35	2.50
* <i>ensata</i> —From China. Pale lilac flowers beautifully veined. 10" ....	1.00	
* <i>Tenax</i> —A lovely thing from the West Coast .....	1.00	
* <i>pumila cyanea</i> —The rich blue dwarf type, of early spring bloom ..	.35	2.50
* <i>p. lutea</i> —A yellow of the above .....	.35	2.50
* <i>p. The Bride</i> —Clear white with a gold stripe in the falls .....	.35	2.50
<i>Orientalis</i> —Purplish blue flowers .....	.35	2.50
<i>Sibirica Snow Queen</i> —Snow White. Lovely .....	.35	2.50
<i>sibirica Perry's Blue</i> —Large clear blue flowers. 40 in. ....	.75	6.50
* <i>tectorum</i> —The roof Iris of Japan. July and August with Dresden blue flowers .....	1.00	7.50

\* Denotes plants suitable for rock gardens.

THREE POINT GARDENS

*each dozen*

IRIS GERMANICA

- Alcazar*—S, light violet; F, deep purple bronze, veined throat. 48"  
*Archeveque*—A very deep purple violet. 24 inches  
*Brooksiana*—A rich claret.  
*Caprice*—Deep pink, richly veined.  
*Dalmatica*—S, clear lavender blue; F, deep lavender; very large  
 A superb variety. One of the finest of its class. 40 in.  
*Dawn*—S and F, sulphur yellow veined bronze at the throat. 26 in.  
*Dr. Bernice*—S, coppery bronze; F, velvety crimson. 27 in.  
*Eldorado*—S, yellowish bronze, shaded lavender; F, bright purple. 22"  
*Florentina*—White, slightly tinged lavender; very early. 27 in.  
*Her Majesty*—S, rosy pink; F, pink, veined crimson. 25 in.  
*Iroquois*—S, smoky lavender, dotted brown; F, black maroon, reticulated white at base.  
*Isoline*—S, lilac pink; F, purplish rose. 36 in.  
*Jean d'Arc*—S, white; F, white bordered pale lilac. 27 in.  
*Juanita*—S and F, deep blue, deeper than Dalmatica.  
*Lohengrin*—One of the most vigorous; petals 2 inches across; S and F  
 deep violet-mauve. 28 in.  
*Loreley*—S, light yellow; F, blue bordered light yellow  
*L. A. Williamson*—Black purple ..... .35 3.50  
*Mme. Chereau*—White, elegantly frilled azure blue; very beautiful  
*Monsignor*—S, violet; F, velvety purple crimson. 22 in.  
*Mrs. Alan Gray*—Delightful lilac shade. 30 in.  
*Navajo*—S, light bronzy yellow, shaded lavender; F, deep maroon,  
 heavily veined white and yellow. 20 in.  
*Othello*—S, deep rich blue; F, dark velvety purple.  
*Princess Victoria Louise*—S, light purple yellow; F, rich violet red.  
*Prosper Laugier*—S, bright coppery crimson; F, rich maroon. A gem  
 edged creamy white. 38 in.  
*Quaker Lady*—S, smoky lavender with yellow shadings; F, a ger-  
 atum-blue and old gold. 38 in.  
*Queen of May*—S and F, rosy lavender. 27 in.  
*Rhein Nixe*—A very strong and robust grower; S, pure white; F,  
 deep violet blue with a white edge. 27 in.  
*Sherwin Wright*—S and F, bright golden yellow. 26 in.  
*Storm Cloud*—Dusky purple and grey.  
*Smoke of War*—S, bronzy grey; F, blue with prominent veins  
*Trautleib*—A clear vibrant blue  
*Violacea Grandiflora*—S, rich blue; F, violet blue. 27 in.  
 (Price of the above Iris .35 each, 2.50 dozen, except where noted)

IRIS KAEMPFERI

- Blue Flag*—Indigo-blue, with light white veins, velvety sheen, bright  
 yellow at the base; six petals  
*Eclipse*—Deep purple, overlaid red; six petals.  
*Gold Bound*—Lovely white, banded with gold ..... .50 5.00  
*Helen von Seibold*—Reddish violet, veined white; three petals.  
*Othello*—Lavendar-blue, veined white; white center; six petals.  
*Paragon*—Rich velvety purple; three petals.  
*Pyramid*—Violet-blue; center of petals veined white. Six petals.  
*Victor*—White, veined violet-blue, purple center; six petals.  
*Venus*—Large, white; three petals.  
 (Price of the above Iris .35 each, 3.50 dozen, except where noted)

\* Denotes plants suitable for rock gardens.

THREE POINT GARDENS

*each dozen*

*LAVENDULA <i>vera</i> —The true Lavendar of the old fashioned garden. Sweet scented. A fine edging plant .....	.35	2.50
*LEONTOPODIUM <i>alpinum</i> —"Edelweiss." Woolly flower heads on stalk 6 in. rise from a loose tuft of narrow grey leaves in June .....	.35	2.50
LIATRIS <i>pycnostachia</i> —Gay Feather—A most unusual flower for August bloom. Tall spikes of blazing derise dust. Attractive to butterflies .....	.35	3.50
*LINARIA <i>alpina</i> —One of the loveliest rock plants, bearing a profusion of rich violet flowers with orange throat, like a miniature snap- dragon. Blooms continuously from frost to frost. 3 in. ....	.35	3.50
* <i>alpina rosea</i> —Like the above, bearing a profusion of pale pink blossoms .....	.35	3.50
* <i>aquitriloba</i> —A minute rock plant for crevices, paths and walks....	.35	3.50
*LINUM <i>austriacum</i> —A variety of <i>L. perenne</i> having more upright habit with blossoms of rich gentian blue .....	.35	3.50
* <i>perenne</i> —Drifts of sapphire blue flowers throughout the summer	.35	2.50
*LITHOSPERMUM <i>petraeum</i> —Heads of blue and purple flowers. For a sunny position in the rock garden .....	.75	7.50
*LUPIN <i>polyphyllus</i> . (See Page 2).		
*LYCHNIS <i>alpina</i> —An attractive little rock plant of tufted growth, bear- ing heads of pink blossoms. May-June .....	.50	3.50
* <i>Hageana</i> —1 ft. June to August. Very showy, producing orange-red, scarlet, or crimson flowers, nearly 2 inches in diameter .....	.35	2.50
* <i>viscaria splendens</i> —Intense crimson. May-June .....	.35	2.50
LYTHRUM <i>roseum superbum</i> —Very showy cerise. Splendid for banks and water edges .....	.35	2.50
*MAZUS <i>rugosus</i> —Loose trailing masses of blue and white flowers speck- led with gold in the throat. Splendid for flagging and carpeting. A little ramper .....	.35	2.50
*MENTHA <i>requieni</i> —A minute carpeting plant from Corsica for a cool damp position or in the crevices of the paved walk, delicately mint scented. 1 inch .....	.35	2.50
MERTENSIA <i>virginica</i> —Long, nodding clusters of pale blue flowers with pink buds blooming early in the spring .....	.35	2.50
MONARDA <i>didyma</i> —A brilliant variety effective for backgrounds....	.35	2.50
*MUHLENBECKIA <i>nana</i> —A very dwarf shrub, barely 1 inch high, with very small round leaves and bright red and brown stems. Tiny yellow flowers. Path and wall .....	.50	5.00
*MYOSOTIS <i>alpestris</i> —Bright blue forget-me-not .....	.35	2.50
* <i>hybridus Ruth Fischer</i> —Compact habit with dark green foliage and large bright blue flowers .....	.50	3.50
* <i>palustris Pink Beauty</i> —A most unusual shade for the for-get-me-not, with sheafs of pink flowers .....	.35	2.50
* <i>palustris semperflorens Water-witch</i> —The best ever-blooming for- get-me-not for naturalizing near water or the shady corner, as well as edging .....	.35	2.50
* <i>rupicola</i> —The gem of all the alpine for-get-me-nots. Forms rosettes of handsome green leaves with heads of large intense blue flowers	.50	5.00
*NEPETA <i>mussini</i> —Lavendar flowers in long graceful spikes over carpets of silvery grey foliage. 1 ft. All summer .....	.35	2.50

\* Denotes plants suitable for rock gardens.

T H R E E   P O I N T   G A R D E N S

*each dozen*

*NIEREMBERGIA <i>rivularis</i> —A trailing alpine plant with cup shaped flowers, white, gold lined .....	.35	3.50
*OENOTHERA <i>missouriensis</i> —10 inches. June to August. A low species with prostrate, branches. Solitary flowers but profuse in number, and large in size .....	.35	2.50
*PAPAVER <i>alpinum</i> —A wee alpine poppy. Small tufts of fern-like leaves with flowers in pastel colors .....	.35	3.50
* <i>album</i> —A delicate white .....	.35	3.50
* <i>coccineus</i> —A lovely coral red .....	.35	3.50
* <i>orange</i> .....	.35	3.50
* <i>a. laciniatum</i> —A rich range of the above in delicately fringed petals .....	.50	3.50
* <i>nudicaule</i> (Iceland Poppy)—Blooms in a rich assortment of colors, from a newly developed strain of great distinction .....	.35	2.50
*n. <i>Coonara pink</i> —An exquisite development of the above .....	.35	3.50
*n. <i>Tangerine</i> —A beautiful orange .....	.35	3.50
<i>Gerald Perry</i> —A uniform shade of apricot pink .....	.50	5.00
<i>Orientele Princess Victoria Louise</i> —A glorious oriental poppy with large rich light orange-salmon flowers .....	.50	5.00
*PHLOX <i>amoena</i> —One of the best carpeters for the rockery, with clustered heads of pink flowers .....	.35	2.50
* <i>divaricata</i> —An exquisite lilac phlox, 12"; for the semi-shade. Profuse bloomer in early spring .....	.35	2.50
<i>decussata Antonin Mercie</i> —A delicate lilac blue variety of the beautiful hardy border-phlox which are so necessary and so effective in the mid season .....	.35	2.50
<i>Baron von Dedem</i> —Glowing crimson .....	.35	2.50
<i>Elizabeth Campbell</i> —Light salmon pink with lighter shadings toward the center .....	.35	3.50
<i>Ethel Pritchard</i> —Mauve lilac .....	.35	2.50
<i>Europa</i> —White changing to a pale blush white toward the center .....	.35	2.50
<i>Gruppenkonigen</i> —Flesh pink, crimson eye .....	.35	2.50
<i>Jules Sandeau</i> —Rather dwarf in habit but producing large heads of brilliant water-melon pink blossoms .....	.35	3.50
<i>Miss Lingard</i> —Heads of white flowers .....	.35	2.50
<i>Mia Ruys</i> —Trusses of pure white flowers .....	.35	2.50
<i>Mrs. Jenkins</i> —Pure white, late flowering. Medium height .....	.35	2.50
<i>Mrs. Milly van Hoboken</i> —An excellent new variety. Very large heads with large florets. A delicate suffusion of purple in the center of a brilliant pink .....	.35	3.50
<i>R. P. Struthers</i> —A lively rose-pink .....	.35	2.50
<i>Rheinlander</i> —A beautiful salmon pink .....	.35	2.50
<i>Rijnstroom</i> —Heavy trusses of brilliant rose-pink .....	.35	2.50
<i>Thor</i> —Dazzling pink flowers .....	.35	2.50
* <i>subulata</i> —Mountain pink. Mats quickly over walls and rocks .....	.35	2.50
*s. <i>alba</i> —A lovely white .....	.35	2.50
*s. <i>G. F. Wilson</i> —Delicate pale lilac .....	.35	3.00
*s. <i>lilacina</i> —Good soft lilac color .....	.35	3.50
*s. <i>vivid</i> —Warm salmon rose .....	.35	3.50
*PHYTEUMA <i>Scheutzeri</i> —Rare alpine, bearing graceful bells of deep blue on swaying stems .....	.75	6.50
*PLATYCODON <i>grandiflora</i> —The balloon flower. Of deep blue .....	.35	2.50
* <i>mariesi alba</i> —White flowered form of mariesi .....	.35	3.50

\* Denotes plants suitable for rock gardens.

THREE POINT GARDENS

	each dozen
*POLEMONIUM <i>Richardsoni</i> —Masses of beautiful sky blue. 18" . . . . .	.35 2.50
* <i>reptans</i> —Greek Valerian. 8-10 inches. April to June Dwarf bushy plant of graceful habit. Showy blue flowers. Rock garden and border . . . . .	.35 3.50
*POTENTILLA <i>Miss Willmott</i> —A charming specie with strawberry red flowers, and beautiful foliage . . . . .	.35 3.50
*PRIMULA <i>auricula alpina</i> —Forms rosettes of thick leaves, sometimes farinose or mealy. Fragrant heads of bloom in rich, warm colors on stems 6-8 in. (See <i>Auricula</i> ) . . . . .	.50 5.00
* <i>Beesiana</i> —a distinct type, with flowers of various shades of purple, with yellow eye. 3 ft. . . . .	.75 5.00
* <i>cashmiriana</i> —Large flowers of deep purple in heads. 2 ft. . . . .	.75 5.00
<i>Florindae</i> —A mighty primrose. Bright yellow fragrant flowers. . . . .	.75 7.50
* <i>japonica</i> —Shades of crimson . . . . .	.75 6.50
* <i>pulverulenta</i> —Rich crimson flowers in whorls. 3 ft. One of the finest varieties . . . . .	.50 5.00
* <i>veris Munstead strain</i> —Flowers of large size in yellows and white . . . . .	.35 2.50
* <i>v. red shades</i> —A selected strain . . . . .	.35 2.50
* <i>Veitchii</i> —Umbels of deep rose flowers. 12 inches . . . . .	.50 5.00
PYRETHRUM <i>roseum, doubles</i> —With beautiful crested types . . . . .	.35 3.50
<i>singles</i> —Clear distinct colors in the range of pink and red . . . . .	.35 2.50
RUDBECKIA <i>Golden Glow</i> —One of the most popular hardy plants. 6 feet high with an abundance of gold balls at the top . . . . .	.35 2.50
RUDBECKIA <i>newmanii</i> —Orange yellow flowers with black center. A luxurious bush form. Fall . . . . .	.35 2.50
<i>purpurea</i> —Rosy purple flowers. 3-4 ft. August-September . . . . .	.35 2.50
*SANTOLINA <i>Chamaecyparissus incana</i> —Beautiful silvery white flow- ers, compact and aromatic. 12 inches. One of the most effective plants in the rock garden or wall . . . . .	.35 3.50
*SAPONARIA <i>ocymoides</i> —Deep pink blossoms in June. Of trailing habit . . . . .	.35 2.50
*SAXIFRAGA <i>aizoides</i> —A lime encrusted variety with white flowers. 8 inches . . . . .	.75 6.50
* <i>aizoon</i> —Silver beaded leaves and plumes of creamy white blossoms. Prevent water from lodging in the crown . . . . .	.75 6.50
* <i>cordifolia</i> —Megasea hybrid . . . . .	.50 3.50
* <i>encrusted</i> —Beautiful plants of the European Alps, with lime encrus- tations on the foliage. Perfect drainage . . . . .	.75 6.50
* <i>decipiens grfl.</i> —Charming hybrids with countless flowers in many shades of white, rose and crimson . . . . .	.50 3.50
* <i>lingulata Leichtlini</i> —Long foliage with erect heads of white flow- ers. 8 inches . . . . .	.50 3.50
*SEDUM <i>acre</i> —A dwarf grower forming a thick carpet of green moss-like foliage hidden by yellow flowers in June . . . . .	.35 2.50
* <i>album</i> —Small succulent leaves which turn reddish brown in fall. White flowers in June-July . . . . .	.35 2.50
* <i>anacamperos</i> —A very quaint plant inhabiting alpine rocks from northern Spain to the Tyrol. The dull purple flowers and grey- green rosettes are effective as they trail over sunny rocks . . . . .	.50 3.50
* <i>anglicum</i> —A coral rosette of grey green. Delicate pink flower . . . . .	.35 2.50

\* Denotes plants suitable for rock gardens.



THREE POINT GARDENS

*each dozen*

* <i>dasyphyllum</i> —Fat glaucous blue leaves set tight on 3 inch stems. Flowers pink. Very profuse bloomer .....	.35	3.50
* <i>Ewersi</i> —Grey foliage. Attractive growth. Rosy lilac blooms .....	.50	3.50
* <i>hispanicum</i> —Tiny growths of pink flowers .....	.35	2.50
* <i>ibericum</i> —Numerous deep rose flowers among dark green foliage..	.35	2.50
* <i>kamtschaticum</i> —Foliage deep green. Numerous yellow flowers in flat heads. 66 in. ....	.35	2.50
* <i>Lydium</i> —Bronze foliage with pink flowers in June .....	.35	2.50
* <i>maximum</i> —Tall robust specie. Foliage purplish; flowers white. 2 ft.	.35	3.00
* <i>Nevii</i> —Tiny rosettes of neat grey leaves not unlike the old-fashioned "hen-and-chickens," but exquisitely neat. Very choice .....	.35	3.00
* <i>obtusatum</i> —Pretty plant with bronze foliage and yellow flowers. 3 inches .....	.35	3.00
* <i>oppositifolium</i> —Pinkish white blooms .....	.35	2.50
* <i>reflexum</i> —Glaucous green leaves. Yellow blooms. 8-10 in. ....	.35	2.50
* <i>Seiboldi</i> —Handsome glaucous foliage and bright pink flowers. In September .....	.35	2.50
* <i>selskianum</i> —Heads of yellow blossoms in July. 18" .....	.35	2.50
* <i>sexangulare</i> —Compact dark green foliage, yellow flowers .....	.35	2.50
* <i>spathulatum</i> —Heads of yellow flowers. 6 in. Decorative metallic foliage .....	.35	2.50
* <i>spectabile</i> —Brilliant flowers in late Fall. 12 inches .....	.35	2.50
* <i>spurium</i> —Prostrate habit with heads of pinkish white flowers .....	.35	2.50
* <i>spurium coccineum</i> —A rose colored type of <i>S. spurium</i> .....	.35	2.50
* <i>stoloniferum</i> —Again a broad leaved type, rooting by stolons .....	.35	2.50
* <i>Yosemitense</i> —A Western variety of unusual charm, with a mosaic pattern of slightly curled leaves, bronzed at te edges .....	.50	3.50
*SEMPERVIVUM <i>alberti</i> —Bright red flowers of medium size .....	.35	2.50
* <i>arachnoideum</i> —Small rosettes covered with cob-web-like down. True variety .....	.35	3.00
* <i>blandum</i> —A unique bronzy rosette .....	.35	3.00
* <i>fauconetti</i> —Minute rosettes of green with red tips .....	.35	3.00
* <i>glaucum</i> —Pale glaucous green leaves .....	.35	3.00
* <i>globiferum</i> —Bright green rosettes producing chicks in the peaks of the leaves .....	.35	3.00
* <i>tectorum</i> —Common house leak. Red flowers .....	.35	2.50
* <i>mixed</i> —A choice collection of the above .....	.35	2.50
*SILENE <i>acaulis</i> —Close cushions of foliage spangled with tiny pink stemless flowers in June. Very choice .....	.75	5.00
* <i>alpestris</i> —A profusion of branching stems carrying exquisite white stars with fringed petals. Best in partial shade .....	.50	5.00
* <i>maritima rosea</i> —Sea Pink. Pretty variety with pink flowers. 3 inches. August-September .....	.35	2.50
* <i>Schafta</i> —Closely allied to the pink family and requires same condition. Tufted growth covered with rosy purple flowers in July and August .....	.35	3.00
SWEET WILLIAM (See <i>Dianthus barbatus</i> ).		
*TEUCRIUM <i>chamedrys</i> —Shrub-like habit. Glossy green foliage with purple flowers in July and August. 1 ft. ....	.50	5.00
*THALICTRUM <i>adiantifolium</i> —Rich loam and moist position. Happy in shade. Miniature white flowers in July. 1 ft. ....	.35	2.50
<i>aquilegiafolium</i> —"Feathered columbine". Handsome foliage .....	.35	2.50

\* Denotes plants suitable for rock gardens.

T H R E E P O I N T G A R D E N S

	each dozen
<i>a. purpureum</i> —Rosy purple flowers. 3 ft. May-June .....	.35 2.50
<i>diptercarpum</i> —A distinct specie with flowers of rosy lilac and yellow stamens and anthers .....	.50 3.50
* <i>minus</i> —Very dwarf, with fern-like foliage .....	.50 3.50
* <i>THYMUS azoricus</i> —Rosy purple flowers. A good alpine trailer. Ordinary soil .....	.35 2.50
* <i>lanuginosus</i> —Clouds of delicate purple flowers among carpets of wooly grey leaves. Lovely trailing habit .....	.35 2.50
* <i>serpyllum</i> —Very desirable wild thyme, creeping habit. Foliage dense dark green. Clouds of delicate purple flowers .....	.35 2.50
* <i>s. alba</i> —Dense green mat with white flowers .....	.35 2.50
* <i>s. coccineus</i> —Brilliant red flowers on the above .....	.35 2.50
* <i>vulgaris</i> —Common Garden Thyme. A well known herb of shrubby character. 12 inches .....	.35 2.50
<i>TRITOMA Pfitzeri</i> —Hardy if given protection, but the most successful methods is to bury the roots in sand in a cool cellar for the winter. The common Red Hot Poker, which is exceedingly effective in late summer. 2½ ft. ....	.50 5.00
* <i>TROLLIUS asiaticus</i> —Bright orange flowers early in the season, and again in early fall. 12-18 inches .....	.50 5.00
* <i>europaeus Orange Globe</i> —Desirable free flowering plants, with giant orange-yellow buttercups. 1-2 ft. May-August .....	.75 7.50
* <i>mixed hybrids</i> —A delightful sequence of shades .....	.50 5.00
* <i>TUNICA saxifraga</i> —Rose pink. Beautiful little prostrate plant .....	.35 2.50
<i>VERBASCUM Miss Willmott</i> —An improved type with large cream-colored flowers. All summer bloomer. 2 ft. ....	.35 2.50
<i>Phoenicum</i> —The most colorful of French mulleins in various shades of white, pink, salmon and violet. These are from a carefully selected English strain. 3 ft. ....	.50 3.50
* <i>VERONICA Allioni</i> —A little coarser type of <i>V. repens</i> , with a complete charm of its own and intense blue flowers .....	.35 3.50
* <i>amethystina</i> —Blue flowers in long racemes. Short spikes. 8-10 inches .....	.35 2.50
* <i>armena</i> —A prostrate Veronica with delicate finely cut foliage and brilliant blue flowers. A real treasure .....	.50 5.00
<i>crassifolia</i> —18 inches of delicate blue flowers on comely spikes, with a real place in the mid-season .....	.35 2.50
* <i>filiformis</i> —A splendid ground cover of approximately 5 inches. Light blue flowers in abundance .....	.50 5.00
* <i>gentianoides</i> —Spikes of large flowers of palest blue, edged deep blue. June-July .....	.35 3.50
* <i>incana</i> —1 ft. July and August. A white, wooly plant with numerous blue flowers. Rockery or border .....	.35 2.50
* <i>longifolia subsessilis</i> —Blue. This is one of the most beau- tiful herbaceous plants, and we cannot too highly recommend it. Continues to bloom until late fall, 2 ft. ....	.35 3.50
* <i>Lyalli</i> —Deeply cut foliage and an occasional charming blue flower suspended upon willow branches. 12 inches .....	.35 3.50
* <i>nummularia</i> —1 ft. high with evergreen foliage and charming blue flowers. Choice .....	.50 5.00
* <i>pectinata</i> —A charming woolly leaved variety which is especially suited for carpeting, owing to its prostrate habit .....	.50 5.00

\* Denotes plants suitable for rock gardens.

T H R E E P O I N T G A R D E N S

	each dozen	
* <i>prostrata</i> —Dwarf close growing specie. Sheets of brilliant blue ...	.50	4.00
* <i>repens</i> —Tiny blue flowers in early spring. A gem .....	.35	3.00
* <i>rupestris</i> —Masses of deep green foliage smothered with bright blue flowers in June. Indispensible for dry walks or edgings. Absolutely prostrate. May-June .....	.35	3.00
* <i>rupestris alba</i> —A white form. ....	.35	2.50
<i>rupestris flexuosa</i> —Solid carpet of green with lovely blue flowers. April-May .....	.35	3.00
* <i>rupestris Heavenly Blue</i> —Dwarf and spreading. Flowers very early. Exquisite shade of blue .....	.35	3.50
* <i>rupestris nana</i> —A very compact form of <i>V. rupestris</i> with intense blue flowers .....	.35	3.50
* <i>rupestris rosea</i> —A rose color of the above .....	.35	3.50
* <i>saxatile</i> —Mounds of evergreen foliage about 5 inches. Slate blue flowers in June .....	.50	5.00
<i>spicata</i> —Spikes of blue flowers .....	.35	2.50
* <i>teucrium Royal Blue</i> —A very desirable trailer .....	.35	3.00
* <i>Traversi</i> —A semi-shrubby variety. Compact bushes with a profusion of mauve flowers in late August .....	.50	5.00
* <i>VIOLA alannah</i> —A truly delightful all summer blooming viola in a real red color. 6 inches .....	.50	5.00
* <i>Black Knight</i> —The sequel to the Giant White in a coal-black ....	.35	3.50
* <i>bosniaca</i> —A perfect gem from Bosnia. Quantities of rose-colored flowers. Resembles <i>gracilis</i> in habit .....	.35	2.50
* <i>Boxles Black</i> —A jewel of perfect propriety, excellent for cut flowers in the delicacy and quaintness of its form .....	.35	2.50
* <i>Bronze Shades</i> —A rich gamut of the bronze tones and a continuous bloomer. Entirely dependable .....	.35	2.50
* <i>Apricot Queen</i> —A most unusual shade of apricot .....	.35	3.50
* <i>G. Wermig</i> —A midget of a blue butterfly, and a real ramper ....	.35	2.50
* <i>Giant White</i> —Immense cream colored flowers, blooming continuously throughout the summer .....	.35	2.50
* <i>Jersey Gem</i> —Rich royal purple blossoms from Spring until frost. Most desirable both in the garden and for cut flowers .....	.35	2.50
* <i>Lady Haslemere</i> —Delicate lavender pink .....	.35	3.50
* <i>lutea</i> —A little mountain pansy from limestone hills. A profusion of dancing golden blooms .....	.35	2.50
<i>c. Perfection alba</i> —Large flowered. White .....	.35	3.00
<i>pedata</i> —Exquisite blue flowers. A gem for the shady corner in the rock garden .....	.35	3.50

\* Denotes plants suitable for rock gardens.

---

T H R E E P O I N T G A R D E N S

---

FRIENDLY ROCK GARDEN COLLECTION OF 24 PLANTS

<i>Armeria laucheana</i> <i>maritima</i>	<i>Phlox subulata</i> Vivid
<i>Aubretia deltoidea</i> <i>purpurea</i>	<i>Primula auricula</i>
<i>Campanula carpathica</i>	<i>Sedum album</i>
<i>rotundifolia</i>	<i>anglicum</i>
<i>Dianthus alpinus</i>	<i>Lydium</i>
<i>neglectus</i>	<i>ibericum</i>
<i>Helianthemum aureum</i>	<i>Thymus serpyllum</i> <i>coccineus</i>
<i>Hypericum polyphyllum</i>	<i>lanuginosus</i>
<i>Iris cristata</i>	<i>Veronica repens</i>
<i>pumila cyanea</i>	<i>Teucrium Royal Blue</i>
<i>Mazus rugosus</i>	<i>Viola Jersey Gem</i>
<i>Papaver alpinum</i>	<i>lutea</i>

ROCK PLANTS FOR DWARF SHRUBBY EFFECTS IN THE ROCK GARDEN

<i>Alyssum serpyllifolium</i>	<i>Lithospermum</i> , all var.
<i>rostratum</i>	<i>Nepeta mussini</i>
<i>Aethionema</i> , all var.	<i>Potentilla tridentata</i>
<i>Dianthus</i> , all var.	<i>Miss Willmott</i>
<i>Helianthemum</i> , all var.	<i>Veronica</i> , all var.
<i>Hypericum</i> , all var.	<i>Lavendula vera</i>
<i>Iberis</i> , all var.	<i>Santolina incana</i>
<i>Iris</i> , all var.	<i>Teucrium chamedrys</i>

ROCK PLANTS FOR THE WALL GARDEN

<i>Aethionema</i> , all var.	<i>Leontopodium</i>
<i>Alyssum</i> , all var.	<i>Linaria alpina</i>
<i>Androsace lanuginosa</i>	<i>aquitriloba</i>
<i>Arabis</i> , all var.	<i>Lithospermum petraeum</i>
<i>Arenaria</i> , all var.	<i>Lychnis alpina</i>
<i>Armeria</i> , all var.	<i>Mazus rugosus</i>
<i>Aster alpinus</i>	<i>Mentha requieni</i>
<i>Aubretia</i> , all var.	<i>Myosotis rupicola</i>
<i>Auricula alpina</i>	<i>Nierembergia rivularis</i>
<i>Campanula</i> , all rock garden var.	<i>Papaver alpinum</i>
<i>Cerastium tomentosum</i>	<i>Phlox</i> , all dwarf var.
<i>Dianthus alpinus</i>	<i>Phyteuma Schéutzeri</i>
<i>arenarius</i>	<i>Primula cashmiriana</i>
<i>caesius</i>	<i>Saponaria ocymoides</i>
<i>deltoides</i> Brilliant	<i>Saxifraga</i> , encrusted var.
<i>neglectus</i>	<i>decipiens</i>
<i>Kamtschaticus</i>	<i>Sedum</i> , all var.
<i>sylvestris</i>	<i>Sempervivum</i> , all var.
<i>Draba aizoides</i>	<i>Silene alpestris</i>
<i>Erinus alpinus</i>	<i>Schafta</i>
<i>Gypsophila repens</i>	<i>Thymus</i> , all var.
<i>Helianthemum</i> , all var.	<i>Tunica</i> , all var.
<i>Hypericum</i> , all var.	<i>Veronica</i> , all dwarf var.
<i>Iris pumila</i>	<i>Viola bosniaca</i>
<i>tectorum</i>	<i>Jersey Gem</i>

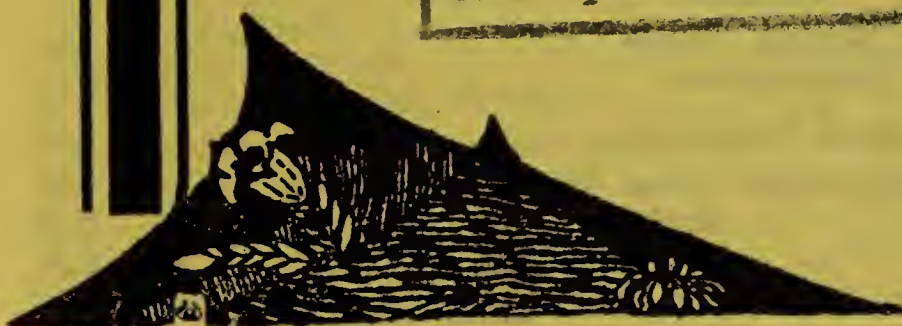
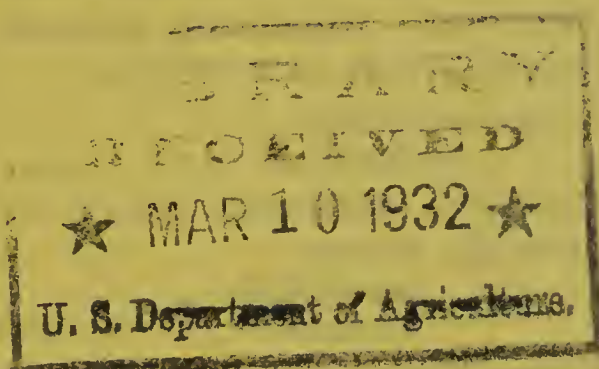
62.73

# Three Point Gardens

1932  
6

Choice Delphiniums  
Herbaceous and  
Alpine Plants

## Supplementary List



Office and Nursery  
East Stroudsburg, Pa.  
Franklin Hill

Display Gardens  
Tannersville, Pa.  
Lackawanna Trail

THREE POINT GARDENS

*Supplementary List of Plants*

	Each	Doz.
Achillea tomentosa .....	.35	\$2.50
Alyssum Moellendorffianum .....	.35	2.50
Ajuga reptans .....	.35	2.50
Anchusa myosotidiflora .....	.35	2.50
Aster Abendroth .....	.35	2.50
"    Perry's White .....	.35	2.50
"    Queen Mary .....	.35	2.50
"    Mauve Cushion .....	.35	2.50
"    St. Egwin .....	.35	2.50
Boltonia latisquama .....	.35	2.50
Chrysanthemum Barbara Cummings .....	.35	2.50
"    Gypsy Girl .....	.35	2.50
"    October Girl .....	.35	2.50
Delphiniums, selected Named Types—See Catalog.		
Delphiniums in 8 Selected Color Groups	\$1.00	10.00
Delphinium Belladonna Triumph (new) ..	.35	2.50
Dianthus Sweet Wivelsfield .....	.35	2.50
Draba lasiocarpa .....	.35	3.50
"    fladnizensis .....	.35	3.50
Gaillardia Rheingold hyb. ....	.35	2.50
Gentiana acaulis .....	.75	each
"    septemfida .....	.75	"
"    Purdomi .....	.75	"
Geum Borissi (new) .....	.35	3.50
"    magnificum .....	.35	3.50
Globularia tricosantha .....	.35	2.50
Helianthemum Clara Middleton .....	.35	2.50
"    Buttercup .....	.35	2.50
"    Sudbury Gem .....	.35	2.50
"    The Bride .....	.35	2.50
Hypericum gracile .....	.50	5.00
Lupin from the Best Named Varieties .....	.50	5.00
Pachystima Canbyi 6-8-10 inches .....	\$1.00	each
Phlox ovata .....	.35	2.50
"    stolonifera .....	.35	2.50
"    subulata Moerhoemi .....	.35	3.50
"    "    Nelsoni .....	.35	3.50
"    "    Apple Blossom .....	.35	3.50
"    "    Fairy .....	.35	2.50
"    "    Perfection .....	.35	2.50
"    divaricata Laphami .....	.35	2.50

EAST STROUDSBURG, PA.

Physostegia virginica vivid .....	.35	2.50
Plumbago larpentae .....	.35	2.50
Primula cortusoides .....	.35	2.50
"    japonica American Beauty .....	.35	3.50
"    nivalis .....	.50	5.00
"    frondosa .....	.50	5.00
Papaver orientale Enfield Beauty .....	.35	2.50
"    "    Beauty of Livermere ...	.35	2.50
"    "    Perry's White .....	.35	2.50
"    "    Joyce .....	.35	2.50
"    "    Olympica .....	.35	2.50
"    pilosum .....	.35	2.50
Potentilla alpestris .....	.35	2.50
"    cinera .....	.35	3.50
"    Tonguei .....	.50	5.00
Sagina subulata .....	.35	2.50
Sedum acre majus .....	.35	2.50
"    "    minus .....	.35	2.50
"    altissimum .....	.35	2.50
"    divergens .....	.35	2.50
"    hispanicum minus .....	.35	2.50
"    Lydium glaucum .....	.35	2.50
"    moranense .....	.35	2.50
"    murale .....	.35	2.50
"    pruniatum fosterianum .....	.35	2.50
"    rupestre .....	.35	2.50
"    tenuifolium .....	.35	2.50
"    oreganum Mt. Hoodi .....	.35	2.50
Sempervivum tectorum atroviolaceum .....	.50	3.50
"    Pittoni .....	.35	3.50
"    Pyrenaicum .....	.35	2.50
"    Rubicundum .....	.50	5.00
Thymus citridorous .....	.35	2.50
Veronica orientalis .....	.50	5.00
Viola Pink Pearl .....	.35	2.50
"    gracilis .....	.35	2.50
"    Jersey Gem White .....	.35	2.50
"    Radio .....	.50	5.00
"    Lavendar Gem .....	.35	3.50
"    W. H. Woodgate .....	.35	3.50

Consult our catalog and select your plants from our extensive collection.

THREE POINT GARDENS

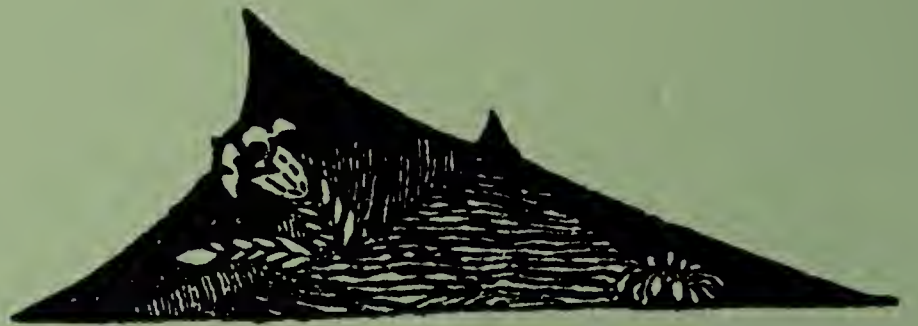
*A Few Outstanding Novelties*

	Each	Doz.
Aethionema persicum .....	.50	5.00
"    purpureum .....	.50	5.00
Aquilegia pyrenacia .....	.35	3.50
Artemisia frigida .....	.35	3.50
Campanula garganica .....	.50	5.00
COTULA SQUALIDA (Leptinella squarrosa)	.50	5.00
Dianthus alpinus .....	.50	5.00
"    alpinus albus .....	.50	5.00
"    arvenensis .....	.35	2.50
"    Beatrix .....	.50	4.00
"    brevicaulis .....	.35	2.50
"    neglectus .....	.75	5.00
"    Prichardi .....	.35	3.50
"    sylvestris .....	.35	3.50
DRABA OLYMPICA .....	.35	3.50
Hydrocotyle moschata .....	.35	3.50
Hypericum gracile .....	.50	.50
Linaria aquitriloba .....	.35	3.50
"    hepaticaefolia .....	.35	3.50
Lithospermum prostratum Heavenly Blue	.75	each
Lotus corniculatus .....	.35	3.50
MECONOPSIS BAILEYI .....	\$1.00 each; \$10.00 doz.	
Papaver orientale Olympia .....	.35	2.50
Potentilla cinera .....	.35	3.50
"    Tonguei .....	.50	5.00
Phlox setacea Moerhoemi .....	.35	2.50
"    subulata "Apple Blossom" .....	.35	2.50
"    "    Fairy .....	.35	2.50
"    "    Perfection .....	.35	2.50
Primula Beesiana .....	.75	5.00
"    cortusoides .....	.35	2.50
"    frondosa .....	.50	5.00
"    japonica American Beauty .....	.35	3.50
"    pulverulenta .....	.50	5.00
Veronica saturoides .....	.50	5.00
"    saxatilis .....	.50	5.00
VIOLA RADIO .....	.50	5.00
"    Lavendar Gem .....	.50	5.00
"    W. H. Woodgate .....	.35	3.50
"    Apricot Queen .....	.35	2.50
"    Pink Pearl .....		

Visit Our New Display Gardens at Tannersville, Pa.,  
(on the Lackawanna Trail) and at the Nursery.







Visit Our New  
**DISPLAY GARDENS**  
**AT TANNERSVILLE**  
On the Lackawanna Trail  
**6½ MILES FROM STROUDSBURG**