

Historic, Archive Document

Do not assume content reflects current scientific knowledge, policies, or practices.



WAUKEGAN NURSERIES

I N C O R P O R A T E D

Established 1884 by

R. DOUGLAS & SONS



Landscape Contractors

Phone Majestic 30

GREEN BAY ROAD

Waukegan, Illinois



Pfitzer's Juniper Foundation Planting

Terms and Conditions of Sale

CONDITIONS: We accept all orders upon condition that they shall be void should any injury befall stock from causes over which we have no control. At the low prices at which our stock is sold we give no warranty except genuineness, expressed or implied, the purchaser assuming all risk and responsibility in the transportation, planting, growth, and life of stock. Our responsibility ceases when goods are turned over to carriers.

PRICES: Do not include any guarantee as to growth except as agreed at the time of purchase.

TERMS: To parties unknown to us we must ask for remittance with order or a sufficient amount to cover at least one-third of the bill, balance to be paid on delivery of stock. Satisfactory references will also expedite shipment of goods.

PAYMENTS: All bills are due and payable the first of the month following purchase, unless otherwise arranged.

PRICES for year 1931. Five plants of same variety will be charged at the 10 rate, while 50 or more of one variety will be charged at special rate. Ask for quotations on quantities.

PACKING: Stock is sold F. O. B. our Nursery. Freight or Express shipments are delivered to station free of charge. Boxing and Baling is charged at cost.

We are prepared to make deliveries by Motor Truck along the North Shore and recommend this method of delivery as stock reaches you promptly and save unnecessary boxing and baling expenses.

CLAIMS for errors or omissions must be reported upon receipt of goods to enable us to investigate and rectify same. Unless this is adhered to we cannot accept responsibility.

AUTOMOBILE ROUTE: Sheridan Road Route No. 42 to Waukegan, turn west on Washington Street, to Green Bay Road, No. 42A North to Nursery, or route 42A from Chicago or 57 from Wisconsin.

Evergreens



Koster Blue Spruce

Abies Concolor (Silver Fir)

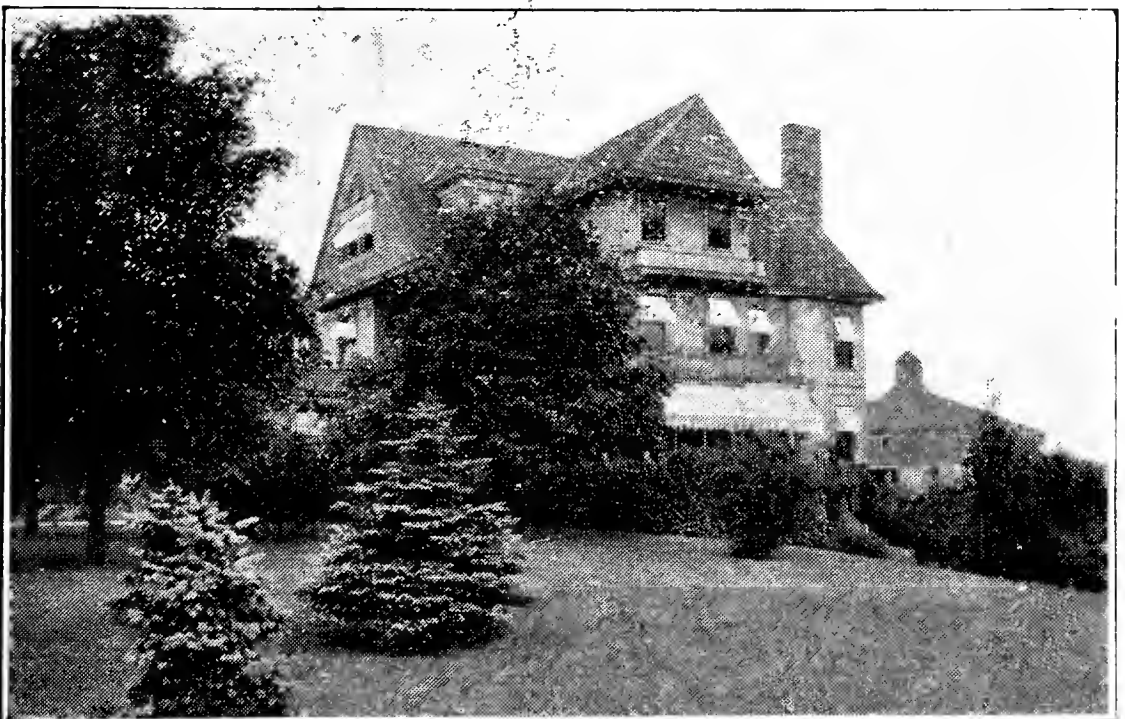
A long flat leaved type of fir and very distinct.

1½-2 feet	each \$3.50
2 -3 feet	“ 4.50

Picea Pungens Glauca (Colorado Blue Spruce)

This is the king of Spruces. Bluish-white foliage.

2-3 feet	each \$10.00
3-4 feet	“ 14.00
4-5 feet	“ 18.00
5-6 feet	“ 20.00



Colorado Green Spruce on Lawn



Blue Spruce and Boxwood

EVERGREENS, Continued

Picea Pungens Viridis (Colorado Green Spruce)

Is also very beautiful in shape and color and very much like the Blue Spruce in habit.

2-3 feet	each \$ 5.00
3-4 feet	“ 7.50
4-5 feet	“ 10.00

Larger trees at special prices.

Picea Canadensis Albertiana (Black Hills Spruce)

Compact pyramidal form. Dark green foliage.

2-3 feet	each \$4.00
3-4 feet	“ 5.50
4-5 feet	“ 6.00
5-6 feet	“ 7.00

Picea Pungens Kosteriana (Koster Blue Spruce)

This is the most showy of the Blue Spruce; is a grafted type producing a rich blue color almost white.

3-4 feet	each \$30.00
4-5 feet	“ 35.00



Black Hills Spruce

Picea Excelsa (Norway Spruce)

A lofty elegant tree of perfect pyramidal habit, exceedingly picturesque and beautiful dark green color.

3 feet	each \$2.25
4 feet	“ 3.50
5 feet	“ 4.50
6 feet	“ 6.50
7 feet	“ 8.00

EVERGREENS, Continued

Abies Douglassi (Douglas Fir)

This type has proven very popular in our section of the country; branches spread horizontal and foliage is of light green above and silvery white below.

2-3 feet	each \$ 3.50
3-4 feet	“ 4.50
4-5 feet	“ 5.50
5-6 feet	“ 7.00
6-7 feet	“ 10.00

Pinus Nigra Austriaca (Austrian Pine)

Very handsome vigorous Pine, dense grower with stout spreading branches of dark green foliage.

2-3 feet	each \$4.00
3-4 feet	“ 6.00
4-5 feet	“ 7.50



Austrian Pine

Pinus Ponderosa (Bull Pine)

Long dark green leaves; ornamental Pine of vigorous growth.

2-3 feet	each \$3.50
3-4 feet	“ 4.50
4-5 feet	“ 6.00
5-6 feet	“ 8.50

Pinus Strobus (White Pine)

One of the most valuable and useful Pines, very picturesque when old.

2-3 feet	each \$3.50
3-4 feet	“ 4.50
4-5 feet	“ 5.00

Pinus Sylvestris (Scotch Pine)

A rapid-growing tree, especially when young. Good for windbreaks.

2-3 feet	each \$ 3.00
3-4 feet	“ 4.25
4-5 feet	“ 5.25
5-6 feet	“ 7.00
6-7 feet	“ 10.00



Mugho Pine

EVERGREENS, Continued

Pinus Montana Mughus (Mugho Pine)

Perhaps the most useful of the Dwarf Pines for foundation planting. Very shrubby and low.

10-12 incheseach \$1.50 15-18 incheseach \$2.50
 12-15 inches " 2.00 18-24 inches " 3.00

Juniperus Depressa (Canadian Juniper)

A spreading type with silvery foliage. Grows in any locality.

18-24 incheseach \$2.25
 24-30 inches " 3.50

Juniper Horizontalis Douglasi (Waukegan Juniper)

Another trailing Juniper of steel blue foliage turning to purple in autumn. 18-24 incheseach \$3.50

Juniperus Pfitzeriana

Has a spreading habit of rich silvery green foliage, very fine in appearance; one of the best for low planting.

18-24 inch spread, each \$2.75
 24-30 inch spread, " 3.75
 30-36 inch spread, " 5.00

Juniperus Sabina Horizontalis

This creeping variety keeps close to the ground. Especially good for rock gardens. Foliage blue.

18-24 incheseach \$2.00

Juniperus Sabina (Cypress Savin Juniper)

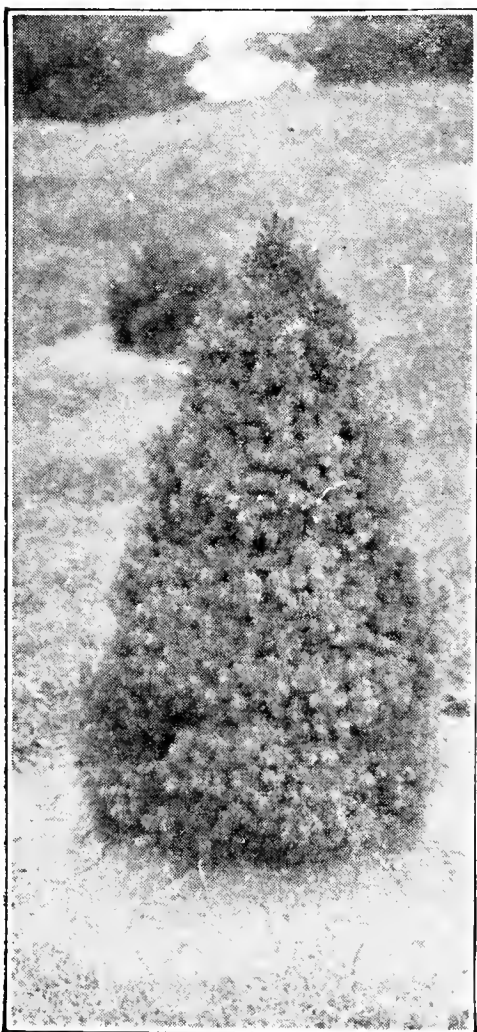
This plant is of a spreading habit; dark green foliage, which color it maintains all year.

15-18 incheseach \$2.00
 18-24 inches " 3.00
 24-30 inches " 4.00

Juniper Sabina Tamariscifolia

Usually of prostrate habit growing from 3 to 6 ft. Bluish green foliage and a very beautiful Evergreen.

18-24 incheseach \$2.50



A Fine Specimen

EVERGREENS, Continued

Juniperus Elegantissima (Golden Tip Cedar)

A grafted variety. Very graceful and quite different from other Cedars.

2-3 feeteach \$6.00

Juniperus Excelsa Stricta (Greek Juniper)

This small blue pyramidal is very attractive. Good for rockeries.

12-15 incheseach \$1.50 15-18 incheseach \$2.50

Juniperus Suecica (Swedish Juniper)

Grows very tall in column form; of rich silvery green color and dense foliage.

3-4 feeteach \$5.00

Juniperus Virginiana (Red Cedar)

This type of plant grows symmetrical in form, foliage is a nice green turning to purple color in fall.

2-3 feeteach \$4.00 4-5 feeteach \$6.50

3-4 feet " 5.00 5-6 feet " 8.00



Balled and Burlapped—Ready to Ship

Juniperus Virginiana Glauca (Blue Cedar)

Bluish foliage, distinct. The best of cedars.

2-3 feeteach \$5.00 4-5 feeteach \$9.00

3-4 feeteach \$7.00

Juniperus Virginiana Cannarti

A grafted variety of distinct foliage and rich green color.

2-3 feeteach \$5.00 4-5 feeteach \$ 9.00

3-4 feet " 7.00 5-6 feet " 12.00

Retinospora Filifera (Japanese Cypress)

Has long, stringy, dropping branches and bright green foliage. Graceful and decorative.

18-24 incheseach \$3.50 2-3 feeteach \$5.00

Retinospora Plumosa (Plume Cypress)

Forms a dense cone of fine texture. Useful for shearing into formal shapes.

15-18 incheseach \$3.25 24-30 incheseach \$4.50

18-24 incheseach 3.75

Retinospora Plumosa Aurea

Same as above but of golden color.

18-24 incheseach \$2.50 24-30 incheseach \$4.75

Taxus Canadensis (Canadian Yew)

Evergreen of spreading habit, bronze color in winter, very desirable for underplanting; prefers shade.

18-24 incheseach \$2.50

Taxus Cuspidata (Japanese Yew)

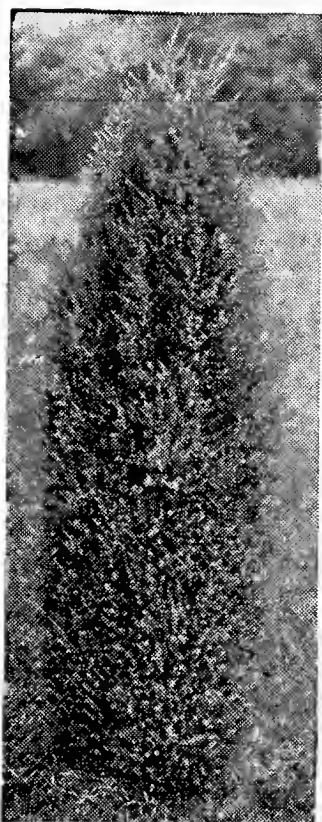
Evergreen of rich deep green foliage of upright growth, very beautiful in any planting as it retains its color in the winter and does well in shady places.

10-12 incheseach \$2.00 15-18 incheseach \$5.50

Taxus Cuspidata Nana (Dwarf Japanese Yew)

Of the same variety as above but grows slower and of spreading habit.

8-10 incheseach \$2.25 10-12 incheseach \$3.25



Juniper

EVERGREENS, Continued

Thuja Ellwangeriana (Tom Thumb Arbor Vitae)

Has heather-like leaves; dense habit; soft, close texture. Rich purple winter coloring.

- 12-18 incheseach \$2.00
- 18-24 inches " 3.00
- 24-30 inches " 4.00

Thuja Globosa (Globe Arbor Vitae)

Useful in formal work. Naturally globe shaped.

- 10-12 inches spread.....each \$1.00
- 12-15 inches spread..... " 1.50
- 15-18 inches spread..... " 2.00
- 18-24 inches spread..... " 2.75

Thuja Occidentalis (American Arbor Vitae)

A pyramid with broad base. Bronzy winter coloring. Good plant for hedge.

- 2-3 ft., ea., \$ 2.50 5-6 ft. ea., \$ 7.00
- 3-4 ft., ea., 4.00 6-7 ft., ea., 10.00
- 4-5 ft., ea., 5.00 7-8 ft., ea., 14.00

Thuja Occ. Spicata Alba (White Tip Arbor Vitae)

Young growths are creamy white, turning to rich green in fall. Very effective.

- 18-24 incheseach \$2.50 2-3 feeteach \$4.00

Thuja Occidentalis Hoveyi (Hovey Arbor Vitae)

Oval in shape, nearly as broad as high. Bright green foliage.

- 12-18 in. spread, each \$3.00 24-30 in. spread, each \$4.00
- 18-24 in. spread, each 3.50

Thuja Occidentalis Douglassi Aurea

A golden arbor vitae. Very hardy. Originated in our nurseries.

- 1½-2 feeteach \$2.50 2-3 feeteach \$3.50

Thuja Occidentalis Wareana (Siberian Arbor Vitae)

Broadly pyramidal, dense type with shiny, blue-green foliage.

- 18-24 incheseach \$2.50 2½-3 feeteach \$4.00
- 2 -2½ feeteach 3.25

Thuja Occidentalis Peabody

This variety is more golden than the Douglassi, but of slow growth.

- 12-15 incheseach \$2.00

Thuja Pyramidalis (Pyramidal Arbor Vitae)

Narrow pyramidal growth, very suitable for formal plantings.

- 2-3 feeteach \$3.50 4 -4½ feeteach \$5.00
- 3-4 feeteach 4.50 4½-5 feeteach 6.00

Thuja Occidentalis Rosenthali (Pyramidal Arbor Vitae)

Slow growing, very compact arbor vitae. More cone shaped than Thuja Pyramidalis.

- 18-24 incheseach \$3.00 2-3 feeteach \$4.00

Thuja Occidentalis Douglassi (Douglas Pyramidal Arbor Vitae)

A very distinct type with curly like leaves. Good for formal gardens. Originated in our nurseries.

- 2-3 feeteach \$4.25 3-4 feeteach \$5.00

Thuja Vervaeneana (Vervaene Arbor Vitae)

Upright form with bronze winter effects.

- 2-3 feeteach \$3.50 4-5 feeteach \$5.50
- 3-4 feeteach 4.50

EVERGREENS, Continued

Tsuga Canadensis (Canada Hemlock)

One of our handsomest ornamental trees for lawn or forest plantings or for hedges. Stand severe clipping, does best in shade.

18-24 incheseach \$3.00
 24-30 inches " 5.00

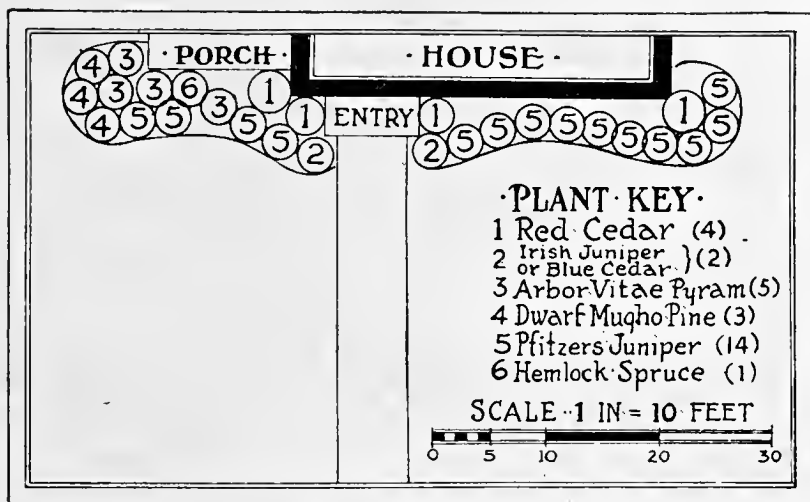
Evergreens for Rock Gardens

Mugho Pines—Waukegan—Pfitzeriana, Savin—Sabina Tamariscifolia—Excelsa Stricta-Prostrate Junipers.

Retinispora Filifera and Plumosa Taxus Canadensis—and Cuspidata and variety of Arbor Vitae in addition to Rock Plants.



A Beautiful Planting of Evergreens—See Below



Landscape Department

We are prepared to furnish sketches and designs of Home Grounds as well as Private Estates, Golf Courses, Country Clubs, Community and Subdivision Developments.

Construct Rock, Wall and Water Gardens, Rustic Garden Houses, Lawns and Perennial Gardens.

Spray and Prune Shrubs, Trees, Orchards and Evergreens.

We shall also be pleased to give advice in Forestry, Maintenance of Wild Flower Gardens and wherever we can assist you in your endeavors to beautify your home surroundings.

WAUKEGAN NURSERIES, INC.

Majestic 30

Shade and Ornamental Trees

Acer Schwedleri (Red Maple)

The most beautiful ornamental tree for the lawn.

8-10 feeteach \$4.00
 10-12 feet " 5.00

Acer Platanoides (Norway Maple)

A popular street tree; retains its green leaves until late autumn.

1½-2 inch calipereach \$4.00
 2 -2½ inch caliper " 6.00

Acer Dasycarpum (Silver or Soft Maple)

Quick growing, graceful shade tree; leaves silvery underneath.

1½-2 inch calipereach \$3.25
 2 -2½ inch caliper " 4.50

Acer Dasycarpum Laciniata (Cutleaf Maple)

A very distinct lawn tree with cut leaves and weeping branches.

1½ inch calipereach \$3.50
 1½-2 inch caliper " 5.00

Acer Saccharum (Sugar Maple)

Ideal for lawn and street planting. One of our stateliest native trees, compact in growth, very fine green leaves changing to autumn tints in fall.

1½ inch caliper.....each \$4.50
 2 -2½ inch caliper..... " 6.50

Acer Negundo (Boxelder)

This tree will grow where other trees fail; especially good for dry barren places.

10-12 feet higheach \$2.00



Weeping Birch



Sugar Maple

Ailanthus Glandulosa (Tree of Heaven)

This is one tree that succeeds under most adverse conditions.

- 6- 8 feet higheach \$1.50
- 8-10 feet high " 2.00

Betula Alba—laciniata (Cutleaf Weeping Birch)

Graceful tree for lawn planting.

- 5- 6 feeteach \$2.50
- 6- 8 feet " 4.00
- 8-10 feet " 5.00
- 2 inch caliper B. & B..... " 7.00

Betula Papyrifera (Canoe Birch)

Picturesque paper bark, very white when older.

- 1½-2 inches calipereach \$3.00

Cercis Canadensis (Redbud)

A small tree branching irregularly from the ground, small pink flowers in early spring; a splendid tree for lawn, spreading in habit with smooth heart shaped leaves.

- 4-5 feet high,each \$1.50
- 5-6 feet higheach \$2.50

Catalpa Bungei (Umbrella Catalpa)

This ornamental tree is becoming very much a favorite, for its beautiful shaped crown makes it quite an attraction. They are also very hardy and flourish in most any soil.

- 5-6 feet, two years.....each \$2.00
- 6-7 feet two years..... " 2.25

Catalpa Speciosa (Western Catalpa)

A fast growing tree large leaves, producing white trumpet shape flowers.

- 6- 8 feeteach \$1.00
- 8-10 feet " 1.50

Crataegus (Paul's Scarlet Thorn)

A popular and superior variety. Flowers of bright carmine red.

- 4-5 feeteach \$2.00
- 5-6 feet " 2.50
- 6-7 feet " 3.00

Fraxinus Americana (American White Ash)

This well known native tree grows very tall with wide round head and dense foliage.

- 1½-2 inch calipereach \$3.25

Malus Floribunda (Japanese Flowering Crab)

One of the handsomest, bright pink flowers buds, white flowers. Small yellowish fruit much liked by birds.

- 3-4 feeteach \$1.25
- 4-5 feet " 1.50
- 5-6 feet " 2.50



Catalpa

SHADE AND ORNAMENTAL TREES, Continued



Flowering Crab

Malus Ioensis Plena (Bechtel Crab)

Large double pink flowers with noticeable fragrance; vigorous grower.

3-4 feet	each \$1.50
4-5 feet	" 2.00
5-6 feet	" 2.50

Malus Niedzwetzkyana (Redvein Crab)

A Russian Turkestan species, remarkable for the red color of flowers, branches, leaves and fruit.

3-4 feet	each \$1.25
----------	-------	-------------

Malus Scheideckeri (Scheidecker Crab)

Small trees of pyramidal habit with small bright rose-colored flowers in great profusion.

4-5 feet	each \$1.75
5-6 feet	" 2.00

Morus Tartarica Alba (Russian Mulberry Tree)

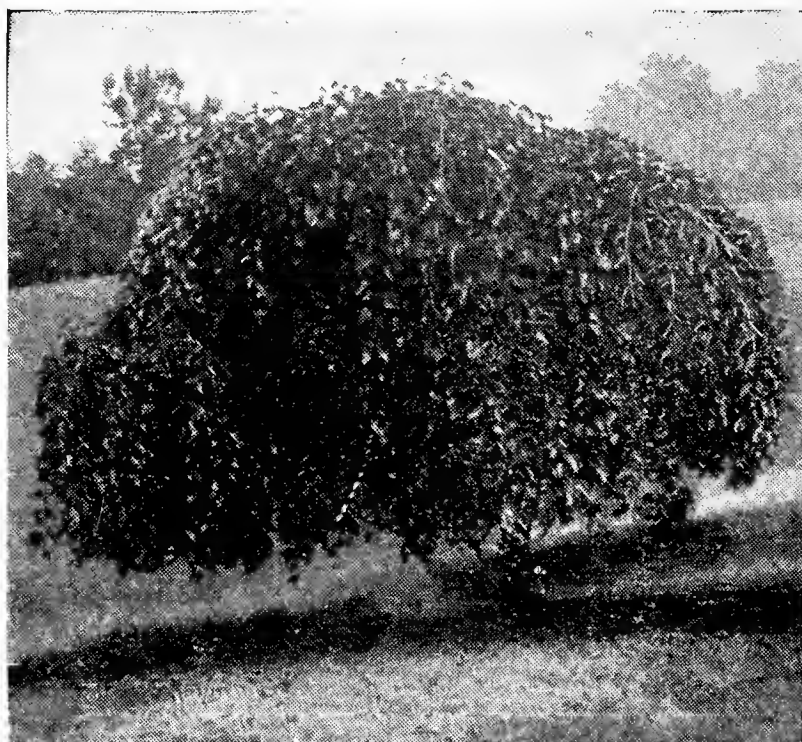
This tree is of quick growth, very profuse foliage and very productive of fruit. As an attraction for birds this tree cannot be surpassed.

6-8 feet	each \$1.00
----------	-------	-------------

Morus Alba Pendula (Tea's Weeping Mulberry)

One of the most popular weeping trees.

5-6 feet, 2 year	each \$3.50
------------------	-------	-------------



Tea's Weeping Mulberry

Populus alba Richardii (Richard Poplar)

A new introduction in this section, leaves are yellow on surface and white underneath, very pretty.

- 5-6 feeteach \$1.00
- 6-7 feet " 1.50

Populus Bolleana (Bolleana Poplar, Silver Pyramid)

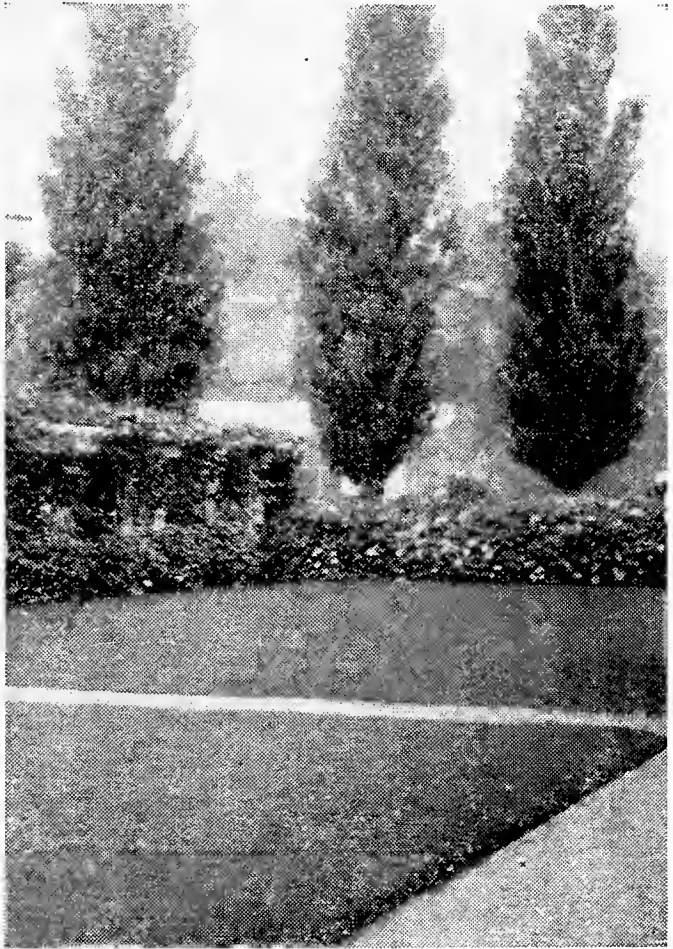
Similar columnar character to Lombardy Poplar.

- 6- 8 ft., each \$2.00
- 8-10 ft., each 2.25
- 10-12 ft., each 3.00

Norway Poplar

A very distinct tree in habit of growing and making a straight, upright, somewhat pyramidal head. The foliage is large, thickly borne, bright and glossy. It grows rapidly in almost every soil.

- 1½-2 inches caliper, each \$1.50



Populus Nigra Italica (Lombardy Poplar)

Tall spire-like character; valued for landscape work and screens.

Lombardy Poplar

- 6 -8 feeteach \$.75
- 8 -10 feet " 1.25
- 1 -1½ inches caliper " 1.50
- 1½-2 inches caliper " 1.75

Prunus Newport

Of the same variety as the Pissardi. A very beautiful ornamental tree.

- 3-4 feeteach \$1.25

Prunus Pissardi (Purple-Leaved Plum)

A very remarkable and beautiful tree with almost black bark and dark purple leaves, remaining so all during the season.

- 3-4 feeteach \$1.50
- 4-5 feet " 2.00
- 5-6 feet " 3.00

Prunus Triloba (Flowering Plum)

Double pink flowers, April and May, very pretty and attractive.

- 2-3 feeteach \$1.00
- 3-4 feet " 1.25
- 4-5 feet " 1.75

Robinia Hispida (Rose Acacia) Tree Form

Rosy pink flowers in profusion, very showy, can also be had in bush form. (See quotations under shrubs.)

- 4-5 feet high.....each \$2.50
- 5-6 feet high..... " 2.75

Salix Fragilis (Golden Weeping Willow)

This is a very graceful Willow and is a pretty sight in summer as well as winter. Perfectly hardy.

- 5- 6 feeteach \$1.25
- 6- 8 feet " 2.00
- 8-10 feet " 3.00

SHADE AND ORNAMENTAL TREES, Continued

Salix Britzensis (Bronze Golden Willow)

Particularly good when used with other varieties.

3-4 feeteach \$0.50
4-5 feet " .60

Salix Discolor (Pussy Willow)

Very desirable for spring effects. Will do well on dry as well as wet places.

4-5 feeteach \$.65
per 10 each .60
5-6 feeteach .80
per 10 each .75
6-7 feeteach 1.00
per 10 each .95

Salix Pentandra (Laurel Leaf Willow)

Shining dark green foliage.

4-5 feeteach \$.65 per 10 each \$.60
5-6 feet " .80 " " " .75
6-7 feet " 1.00 " " " .95

Salix Uralensis (Hedge Willow)

Good for fine texture in foliage effects.

2-3 feeteach \$.40
3-4 feet " .50

Salix Vitellina (Golden Willow)

4-5 feeteach \$.60 per 10 each \$.50
5-6 feet " .80 " " " .75
6-8 feet " 1.00 " " " .90

Sorbus Aucuparia (European Mountain Ash)

Brilliant bright red fruit in large clusters hanging late in the season.

1 -1½ inches caliper.....each \$1.50
1½-2 inches caliper..... " 3.00

Sorbus Aucuparia Pendula (Weeping Mt. Ash)

This crown is grafted on European Mountain Ash stock and makes a very handsome drooping tree.

5-6 feet high.....each \$3.00

Ulmus Pumila (Siberian Elm)

An Elm recently introduced by the U. S. Government from China. Good for arid locations. Tremendously fast grower.

5-6 feeteach \$1.50

Ulmus Molini (Moline Elm)

The most perfect Elm with very large leaves, smooth bark, and very rapid grower.

1½ inches caliper.....each \$4.50
2 -2½ inches caliper..... " 7.50

Ulmus Americana (American Elm)

One of the best known American trees for avenue and general planting.

1 -1½ inch caliper.....each \$2.25
1½-2 inch caliper..... " 3.75
2 -2½ inch caliper..... " 4.50
2½-3 inch caliper..... " 6.00
3 -3½ inch caliper..... " 10.00

Larger trees, quoted on application.

Ulmus Urni (Vase Elm)

Grafted type. Superior to the American Elm.

1½ inch caliper.....each \$4.50



Weeping Willow



Moline Elm



Foundation Planting, Including Barberry

Ornamental Shrubs

Amelanchier Vulgaris (Shadblow)

Snowball flowers in early spring, followed by blue berries. Good for half shade and woods.

2-3 feeteach \$.50

Amygdalus Nana (Flowering Almond)

Flowers double, May; very showy; pink and white varieties.

2-3 feeteach \$.75

3-4 feet " .85

Aralia Pentaphylla

A shrub of slender branches with luxuriant foliage; lasts until late in fall.

2-3 feeteach \$.50

3-4 feet " .65

Amorpha Fruticosa (False Indigo)

Very attractive feathery leaves and indigo flower spikes.

2-3 feeteach \$.50

Althea (Rose of Sharon)

Well known shrub or small tree which blooms when all other shrubs are through. White, red, purple, and pink.

3-4 feeteach \$.60

Aralia Spinosa (Hercules Club)

Useful for tropical effects and shadows; white flowers, July.

2-3 ft.....ea. \$.50

3-4 ft.....ea. .75

4-5 ft.....ea. 1.00

Aronia Arbutifolia (Red Chokeberry)

A very pretty shrub with an abundance of white flowers in April and May and red fruit in fall carrying well into winter.

2-3 ft.....ea. \$.75



Flowering Almond

ORNAMENTAL SHRUBS, Continued



Althea or Rose of Sharon

Berberis Thunbergi (Japanese Barberry)

A splendid low hedge plant, or for massing; brilliant autumn coloring; scarlet berries.

1	-1½ feet	each \$.25	per 10 each \$.20
1½	-2 feet	“ .35	“ “ “ .30
2	-3 feet	“ .45	“ “ “ .40

Box Barberry

8-10 inches	each \$.30	per 10 each \$.25
10-12 inches	“ .40	“ “ “ .35

Berberis Thunbergi Atropurpurea

Has a pleasing purple foliage; NEW.

12-18 inches	each \$.75
2 feet	“ 1.00

Buddleia (Butterfly Bush)

Very effective, has gray foliage and deep lilac flowers; good strong roots.....each \$.50

Berberis Juliana

New. An evergreen barberry with glossy dark green leaves. Should be planted in protected places.

18-24 inches	each \$1.50
--------------	-------	-------------

Calycanthus Floridus (Sweet Shrub)

A fragrant shrub with chocolate colored flowers.

2-3 feet	each \$.60
----------	-------	-------------

Caragana (Siberian Pea Tree)

A low tree-shaped shrub bearing small pea shaped yellow flowers and blooms.

2-3 ft. each \$.40 per 25 each \$.30
 3-4 ft. " .50 " " " .40

Cephalantus (Button Bush)

This is a good grower in moist ground, retaining its blossoms through the summer.

2-3 feeteach \$.50

Clethra Alnifolia

(Sweet Pepper Bush)

Spikes of very fragrant flowers, prefer moist, shady places. Also called Summersweet.

10-12 incheseach \$.50
 18-24 inches " .75

**Cornus Alba Sibirica
 (Siberian Red Dogwood)**

Branches bright coral-red. Large white flowers, blue fruit. Fine for winter effect.

3-4 ft. each \$.45 per 10 each \$.40
 4-5 ft. " .55 " " " .50

Cornus Elegantissima (Variegated Cornelian-Cherry)

Silver and green leaves; red bark, white flowers.

2-3 feeteach \$.70 per 10 each \$.65
 3-4 feet " .80 " " " .75

Cornus Lutea (Yellow Dogwood)

Has distinct yellow bark; fine for winter effects.

2-3 feeteach \$.45 per 10 each \$.40
 3-4 feet " .55 " " " .50

Cornus Paniculata (Gray Dogwood)

2-3 feeteach \$.40 per 10 each \$.35
 3-4 feet " .50 " " " .45

Cornus Stolonifera (Red Dogwood)

Spreading habit, dark red bark, white fruits. Does well in moisture.

2-3 feeteach \$.35
 3-4 feet " .50
 4-5 feet " .60



Buddleia (Butterfly Bush)



Dogwood (Cornus)

ORNAMENTAL SHRUBS, Continued

Cotoneaster Acutifolia (Black Fruited Quinceberry)

Very fine dark green glossy leaves. Red flowers, black fruit, and pretty autumn shades.

2-3 ft.each \$.35
3-4 ft. " .40

Cydonia Japonica (Japan Quince)

Spreading, spiny branches; clusters of scarlet-red flowers.

18-24 in.....each \$.50
2-3 ft..... " .70
3-4 ft..... " 1.00

***Daphne-Cneorum**

A small evergreen shrub with delicately perfumed rose-pink blossoms. Especially adapted for rockeries.

6-8 in.....each \$.85



Philadelphus Virginal

Deutzia Lemoine (Dwarf Shrub)

Spreading shrub, with very showy flowers.

18-24 incheseach \$.45 2-3 feeteach \$.50

Deutzia (Pride of Rochester)

Strong growing shrub; very profuse bloomer; large double white flowers tinged pink.

2-3 feeteach \$.35
3-4 feeteach \$.40 4-5 feet " .50

Eleagnus Angustifolia (Russian Olive)

Silver-gray leaves and branchlets, orange berries; good for massing; flowers pale yellow.

3-4 feeteach \$.50
4-5 feeteach \$.65 5-6 feet " .75

Euonymus Alatus (Cork Bark Shrub)

Attractive corky bark, crimson autumn coloring. Makes fine specimen shrub.

2-3 feeteach \$1.50
3-4 feet " 3.00

Euonymus Obovata

This is a trailing shrub not unlike a vine. Beautiful red and yellow berries.

2-3 feeteach \$.50

Euonymus Americana (Burning Bush)

Pink fruits; prefer moist locations.

3-4 feeteach \$.75
4-5 feet " .90

Exochorda Grandiflora (Pearlbush)

Slender spreading shrub with masses of large pure white flowers during April and May; very attractive.

2-3 ft. each \$.60 per 10 each \$.50
3-4 ft. " .70 " " " .60



Forsythia



Hydrangea Paniculata Grandiflora

Forsythia Fortunei (Golden Bell)

Upright habit with finely arching branches.

3-4 feet	each \$.50	per 10 each \$.40
4-5 feet	“ .60	“ “ “ .50

Forsythia Intermedia (Border Golden Bell)

Bright yellow flowers in April before leaves unfold. Profuse and beautiful.

3-4 feet	each \$.50	per 10 each \$.40
4-5 feet	“ .60	“ “ “ .50

Hamamelis Virginia (Witch Hazel)

Yellow ribbon-like flowers, very bushy habit, fine foliage. Succeeds best in moist, half shady places. Blooms in late autumn.

2-3 feet	each \$.60
----------------	-------------

Hydrangea Arborescens

A form with all flowers sterile and very showy, a striking and useful plant for underplanting and borders.

Medium Clumps	each \$.50
Large Clumps	“ .60

Hydrangea Paniculata Grandiflora

Bears long, loose panicles of white flowers, August.

2-3 feet	each \$.70
----------------	-------------

Paniculata Grandiflora (Tree Form)

Identical with above bush form, but trained in tree shape. Very ornamental and pleasing for either background planting or individual specimens.

3-4 feet	each \$1.50
4-5 feet	“ 2.00



Tree Hydrangea

**Doesn't This
Planting
Appeal
to You?
Let Us Tell
You How
We Can
Beautify
Your Home**



ORNAMENTAL SH

Hypericum Densiflorum

A shrub covered with mass of bright yellow flowers in late summer.

2-3 feeteach \$.50 per 10 each \$.45

Kerria Japonica (Double Flowering)

Flowers of rich yellow borne along the slender and graceful stems of bright green color. One of the first to blossom in the spring.

18-24 incheseach \$.60 per 10 each \$.50
2-3 feet " .70 " " " .60

Ligustrum Amurense (Amoor Privet)

A hardy upright hedge plant can be pruned into any desired shape; bears small white fragrant flowers.

1½-2 feeteach \$.20 per 10 each \$.15
2 -3 feet " .25 " " " .18

Ligustrum Ibota (Japan Privet)

Good dense habit; flowers white and fruits freely. Decorative black berries. Very hardy.

1½-2 feet hedge.....each \$.20 per 10 each \$.15
2 -3 feet hedge..... " .25 " " " .20
4 -5 feet bush..... " .60 " " " .50

Ligustrum Lodense

This makes a very pretty hedge for a formal garden as it retains its foliage of dark green well into December. (Can be kept dwarf.)

12-18 incheseach \$.35 per 10 each \$.30

Ligustrum Regalianum (Regal Privet)

Makes a splendid, low, dense hedge; also good in shrubbery or evergreen plantings. Very desirable.

2-3 feeteach \$.40 per 10 each \$.35

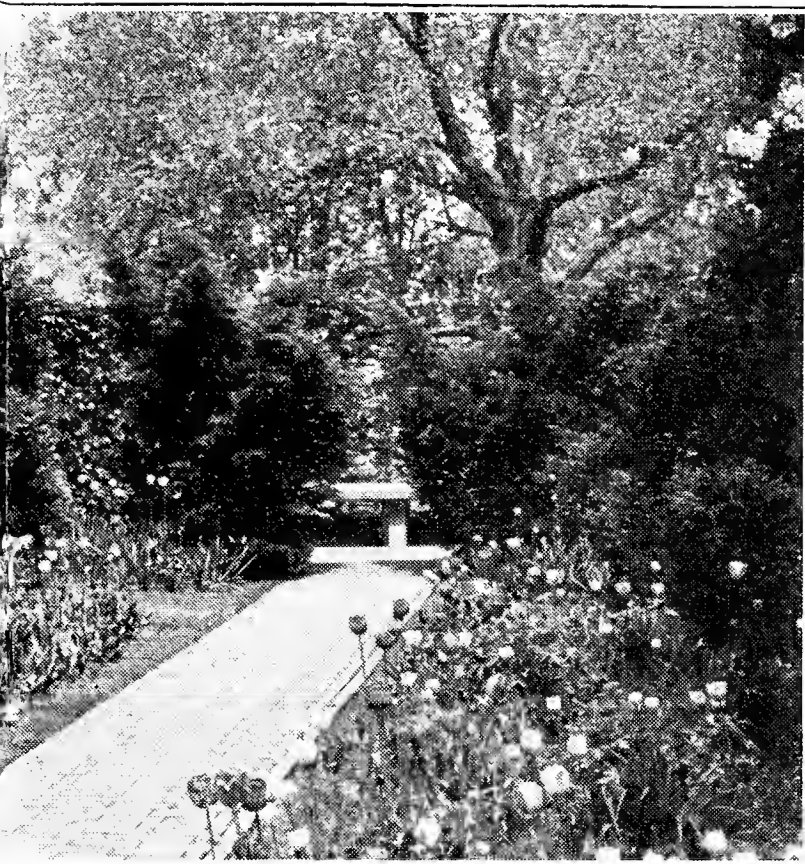
Lonicera Bella Albida (Honeysuckle)

A handsome hybrid of strong growth, flowers white, in great fragrant clusters, followed by attractive ropes of red berries.

2-3 feeteach \$.40 per 10 each \$.30
3-4 feet " .50 " " " .40



Honeys



**We Are
Growers of
Hardy
Nursery
Stock
And Our
Landscape
Department
Is Anxious
to Serve You**

HRUBS, Continued

Lonicera Chrysantha (Creamy Bell Honeysuckle)

Flowers yellowish-white, changing to yellow; handsome bright red fruit in autumn.

2-3 feet	each \$.40	per 10 each \$.30
3-4 feet	“ .50	“ “ “ .40
4-5 feet	“ .60	“ “ “ .50

Lonicera Tartarica Alba (White Honeysuckle)

Similar to Pink Tartarian but with pure white flowers.

2-3 feet	each \$.40	per 10 each \$.30
3-4 feet	“ .50	“ “ “ .40

Lonicera Tartarica Rosea (Pink Honeysuckle)

2-3 feet	each \$.40	per 10 each \$.35
3-4 feet	“ .50	“ “ “ .45

Philadelphus Aurea (Golden Mock Orange)

Dwarf compact form. Yellow leaves, white flower.
18-24 inches

each \$.60	per 10 each \$.50
-------------	--------------------

Photinia Villosa

Beautiful berry bearing shrub. Leaves turn red in autumn.

2-3 feet	each \$.50
3-4 feet	“ .60

Philadelphus Coronarius (Mock Orange)

3-4 feet	each \$.50	per 10 each \$.40
4-5 feet	“ .60	“ “ “ .50
5-6 feet	“ .70	“ “ “ .60

Philadelphus Grandiflora (Large Flowered Mock Orange)

Has no fragrance. Glossy white flowers.

3-4 feet	each \$.50	per 10 each \$.40
4-5 feet	“ .60	“ “ “ .50
5-6 feet	“ .70	“ “ “ .60

Philadelphus Virginal

Beautiful semi-double flowers produced intermittently all summer. Very fragrant.

2-3 feet	each \$.60
3-4 feet	“ .75

Potentilla Fruticosa (Shrubby Cinquefoil)

Showy bright yellow flowers throughout the summer.

1-1½ feet	each \$.45
-----------------	-------------



suckle



Sumac

ORNAMENTAL SHRUBS, Continued

Prunus Pumilla (Sand Cherry)

Fruit purple-black, scarcely edible.

3-4 feet	each \$.45	per 10 each \$.40
4-5 feet	“ .55	“ “ “ .50

Prunus Triloba (Double Flowering Plum) Bush Form

Double pink flowers, April-May. Handsome and useful.

2-3 feet	each \$.75	
3-4 feet	“ .90	

Rhamnus Cathartica (Common Buckthorn)

Dark green leaves, black berries. Valuable background shrub. Excellent for dense hedges.

3-4 feet	each \$.50	per 10 each \$.40
4-5 feet	“ .60	“ “ “ .50
5-6 feet	“ .70	“ “ “ .60

Rhamnus Frangula (Glossy Buckthorn)

Reddish black berries; branches white spotted.

3-4 feet	each \$.50	per 10 each \$.40
4-5 feet	“ .60	“ “ “ .50

Rhodotyus Kerrioides (Jetbead)

Fresh green foliage, pure white flowers, May-June. Shining black bead-like berries all winter.

1-1½ feet	each \$.50	per 10 each \$.45
2-3 feet	“ .55	“ “ “ .50

Rhus Canadensis Aromatic (Fragrant Sumac)

Clusters of small yellow flowers, April-May. Most attractive in June when covered with coral-red fruits. Withstands drought.

1½-2 feet	each \$.50	
2 -3 feet	“ .60	

Rhus Glabra (Smooth Sumac)

Well known for its red and purple leaves in fall.

3-4 feet	each \$.40	
4-5 feet	“ .50	

Rhus Typhina Laciniata (Cutleaf Sumac)

Leaves are finely cut, giving attractive feathery appearance.

2-3 feet	each \$.50	
3-4 feet	“ .60	

Ribes Alpina (Mt. Currant)

A gay flowering shrub in early spring; very easy to cultivate and trim into hedges.

1½-2 feet	each \$.40	per 10 each \$.35
2 -3 feet	“ .50	“ “ “ .40

**Ribes Odoratum Aureum
(Golden Currant)**

Fragrant yellow flowers in May. Useful for under planting.
2-3 feeteach \$.50

**Robinia Hispida (Rose Acacia)
Bush Form**

Rosy pink, attractive flowers. May-June. Soon develops into a mass. Can also be had in tree form. See quotations under trees.

2-3 feeteach \$.65
3-4 feet " .75

**Rosa Multiflora Japonica
(Japanese Rose)**

A vigorous growing, free flowering, fragrant shrub; good for bank and mass planting.

3-4 feeteach \$.50 per 10 each \$.45
4-5 feet " .60 " " " .55



American Beauty

Rosa Rugosa (Red Rugosa Rose)

Handsome shrubs, large pink flowers, June-September. Rich green foliage and large red fruit; useful either in shrubbery border or as hedge.

2-3 feeteach \$.50 per 10 each \$.45

Rosa Setigera (Illinois Rose)

Deep rose flower, June-July. Vigorous grower, good for bank and mass planting.

2-3 feeteach \$.50 per 10 each .45
3-4 feeteach .60 per 10 each .50

Rosa Rugosa Hybrid

F. J. Grootendorst, bright crimson. Hansa, red.

Sir Thomas Lipton, white, double.

2 yearseach \$.65 per 10 each .60

Rosa Hugonis (Golden Rose of China)

A very desirable border rose with attractive single yellow flowers; one of the best of yellow roses.

3-4 feeteach \$.75 per 10 each \$.70



Dorothy Perkins

Roses Climbers in Variety

Climbing American Beauty, red flowers like bush roses of that name.

Dorothy Perkins, shell-pink.

Excelsa (Red Dorothy Perkins).

Paul's Scarlet, vivid scarlet. Seven Sisters, pink.

2 yearseach \$.65 per 10 each \$.60

Roses Hybrid Perpetuals and Hybrid Teas

Alfred Colomb, dark red. Anna de Diesbach, shell pink.

Frau Karl, magnificent snow white.

Paul Neyron, pink shading to rose.

Mrs. J. Laing, shell pink, one of the best free bloomers.

Soliel d'Or, changing from orange yellow to reddish gold.

Ulrich Brunner, brilliant cherry red.

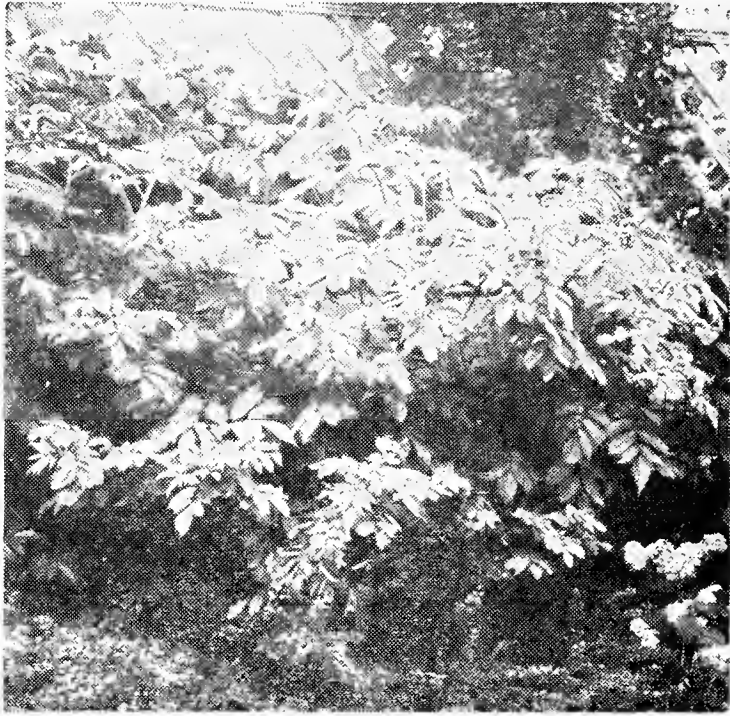
Gruss an Teplitz, vivid fiery red, always in bloom.

Lady Hillingdon, deep yellow, excellent for cutting.

Mme. C. Testout, large bright shiny reddish-rose. Portland, Oregon, street rose.

Radiance, red king of tea roses.

2 years.....each \$.65 Per 10.....each \$.60



Golden Elder

ORNAMENTAL SHRUBS, Continued

Sambucus Acutiloba

This elder has feathery leaves and is very attractive.

3-4 feet	each \$.40
4-5 feet	"	.50

Sambucus Canadensis (Common Elder)

Shrubs to 12 feet. Cymes of white flowers 10 inches across in June or July.

3-4 feet	each \$.50	per 10 each \$.40
4-5 feet	"	.60	" " "	.50

Sambucus Nigra Aurea (Golden Elder)

Variety with golden-yellow leaves. Useful in some locations.

3-4 feet	each \$.55	per 10 each \$.50
4-5 feet	"	.65	" " "	.60

Sambucus Racemosus Pubens (Scarlet Elder)

White flowers in April-May. Bright red fruits, ripens in June. Very attractive.

3-4 feet	each \$.50
4-5 feet	"	.60

Spirea Anthony Waterer

Low shrub, very free-flowering, bright crimson.

12-18 inches	each \$.50	per 10 each \$.40
18-24 inches	"	.60	" " "	.50

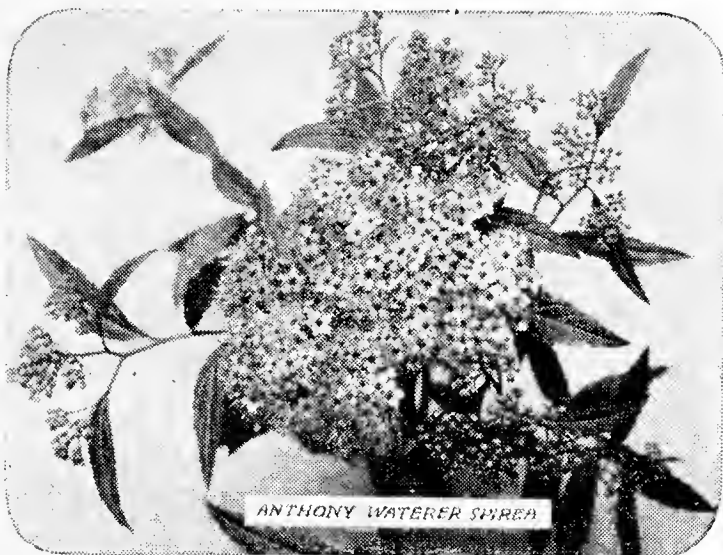


Spirea in Foundation Planting

Spirea Arguta
(Garland
Spirea)

Small light green leaves; very free flowering. May. Similar to but more vigorous than Thunbergi.

2-3 feet, each \$.50
per 10 each .45
3-4 feet, each \$.50
per 10 each .50



Spirea Billardi (Pink Flowers)

Bright pink fluffy flower spikes, July-October. Valuable for dry places.

2-3 feeteach \$.40 per 10 each \$.35
3-4 feet " .50 " " " .40

Spirea Callosa Alba (Japanese Spirea)

White, June-July. Purplish-green foliage when young.

12-18 incheseach \$.40 per 10 each \$.35

Spirea Douglasi (Douglas Spirea)

Beautiful deep rose-colored flowers in spikes, in July and August.

2-3 feeteach \$.40 per 10 each \$.30
3-4 feet " .50 " " " .40

Spirea Froebeli (Froebel Spirea)

Related to Anthony Waterer but a taller plant with bright crimson flowers.

18-24 incheseach \$.45 per 10 each \$.35
2-3 feet " .50 " " " .40

Spirea Latifolia

Same as the Salicifolia but somewhat larger foliage.

2-3 feeteach \$.50 per 10 each \$.40
3-4 feet " .60 " " " .50

Spirea Salicifolia

Light pink flowers, foliage of willow leaf type.

2-3 feeteach \$.50 per 10 each \$.40
3-4 feet " .60 " " " .50

Spirea Van Houttei (Bridal Wreath)

White, May-June. Graceful habit. Extremely free flowering and very adaptable.

2-3 feeteach \$.40 per 10 each \$.30
3-4 feet " .50 " " " .40
4-5 feet " .60 " " " .50

Spirea Op. Nana (Dwarf Ninebark)

The same as the following but dwarf in habit.

2 feeteach \$.50

Spirea Opulifolia (Ninebark Spirea)

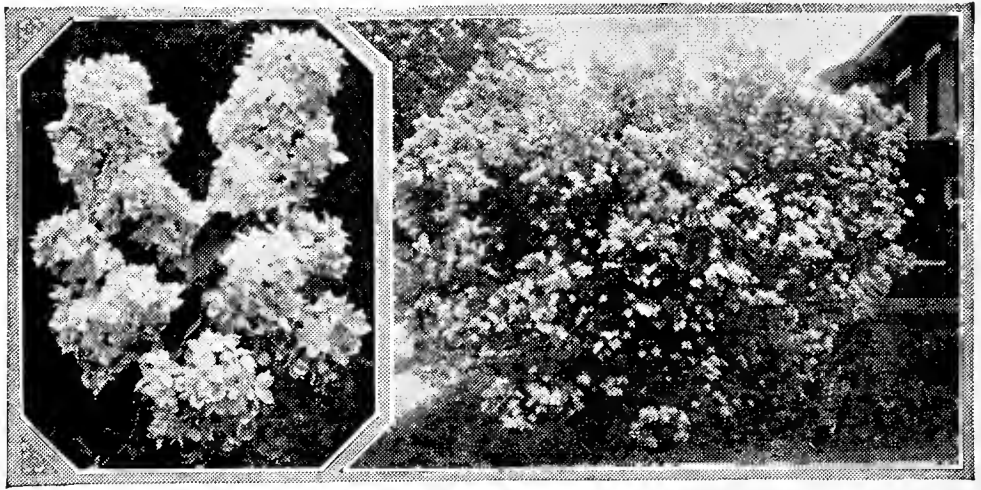
3-4 feet each \$.50
Per 10 " .45
4-5 feet " .60
Per 10 " .50

Spirea Prunifolia
(Bridal Wreath)

White, May. Free - flowering; handsome dark green shining foliage, turning orange in autumn.

2-3 ft., each \$.55
per 10 each .50
3-4 ft. each .65
per 10 each .60





Lilacs

ORNAMENTAL SHRUBS, Continued

Spirea Opulifolia Aurea (Golden Ninebark)

Wide-spreading and recurving branches.

2-3 feet	each \$.45	per 10 each \$.40
3-4 feet	“ .55	“ “ “ .50

Spirea Sorbifolia (Ural False Spirea)

Fluffy heads of white flowers, June-August.

2-3 feet	each \$.50	per 10 each \$.45
----------------	-------------	--------------------

Symphoricarpos Racemosus (Snowberry)

Conspicuous, pink flowers, white berries, attractive foliage. Most adaptable, but best in half shady moist locations.

2-3 feet	each \$.40	per 10 each \$.35
3-4 feet	“ .50	“ “ “ .40

Symphoricarpos Vulgaris (Indian Currant)

Coral red berries, persisting throughout winter. Good for shade and bank planting.

2-3 feet	each \$.40	per 10 each \$.35
3-4 feet	“ .50	“ “ “ .40

Syringa (French Lilac)

These lilacs are the finest plants grown and will prove very satisfactory as to bloom and foliage. They are far superior to the common lilac.

- Chas. Joly, violet color, d.
 - Chas. X, reddish purple, s.
 - Mme. Lemoine, white, d.
 - Marie LeGraye, white, s.
 - Michael Buchner, pale lilac, d.
 - Pres. Grevy, light blue, d.
 - Ludwig Spaeth, purple, s.
- s designates single petal; d designates double petal.

18-24 inches	each \$.75
2-3 feet	“ 1.00

Syringa Persica (Persian Lilac)

Slender arching branches. Flowers lilac in loose broad panicles. Never fails to bloom.

2-3 feet	each \$.50	per 10 each \$.40
3-4 feet	“ .60	“ “ “ .50

Syringa Villosa (Late Lilac)

A pale pinkish lilac of bushy and compact habit, blooms in late May and June.

3-4 feet	each \$.75
----------------	-------------

Syringa Vulgaris Alba (White Lilac)

2-3 feet	each \$.50
3-4 feet	“ .60

Blooms in early May.

Syringa Vulgaris (Purple Lilac)

2-3 feet	each \$.50
3-4 feet	“ .60

Tamarix Hispida Aestivalis (Spanish Tamarix)

Flowers pink in dense racemes, 2-3 inches long in terminal panicles.

2-3 feet	each \$.40
3-4 feet	“ .50

Viburnum Dentatum (Arrowood)

White, May-June. Berries blue-black, autumn coloring purple and red; thrives in wet soil.

2-3 feet	each \$.50
3-4 feet	“ .60

Viburnum Lantana (Wayfaring Tree)

White, May-June. Handsome, dark green wrinkled leaves. Berries red, changing to black.

2-3 feet	each \$.65
3-4 feet	“ .75

Viburnum Molle (Kentucky Viburnum)

Larger, darker green leaves, but otherwise similar to “dentatum.”

2-3 feet	each \$.70
----------------	-------------

Viburnum Opulus (High Bush Cranberry)

2-3 feet	each \$.50
3-4 feet	“ .60

Viburnum Opulus Sterilis (Common Snowball)

This old favorite is still planted in every garden today.

2-3 feet	each \$.50
3-4 feet	“ .60

Weigelia Eva Rathke

Flowers rich reddish-purple.

2-3 feet	each \$.60
3-4 feet	“ .70

Weigelia Rosea (Pink Weigelia)

Showy, pink flowers produced, June. Vigorous grower.

2-3 feet	each \$.50
3-4 feet	“ .60



Vines



Clematis

Ampelopsis Veitchi (Boston Ivy Vine)

This vine is used extensively to cover brick or stone buildings. The foliage is dense, completely carpeting a surface and the autumn tints of green and red are unsurpassed for beauty.

3 years, each \$.60 per 10 each \$.50

Ampelopsis Engelmanni (Engelmann Creeper)

A good self-clinging woodbine; very hardy.

3 years, each \$.50 per 10 each \$.40

Bigonia Radicans (Trumpet Vine)

Showy trumpet shaped flowers, scarlet and orange in July. Roots as it climbs.

3 yearseach \$.50

Celastrus Orbiculatus (Bittersweet Vine)

A native climber with handsome glossy foliage, and large clusters of beautiful orange-crimson fruits retained all winter. Very bright in effect and charming for winter house decoration.

3 yearseach \$.50 per 10 each \$.40

Clematis Jackmanni

Very large purple flower, an extremely popular vine, in use very extensively. It pleases wherever used.

2 year plants.....each \$.90

Clematis Mme. Baron Veillard

Same type of Jackmanni but rose-lilac colored flowers. Also in good demand.

2 year plants.....each \$.80

Clematis Paniculata

Small white flowers. Bloom in late summer and early autumn.

2 year plants.....each \$.50

3 year plants.....“ .60

Euonymus Radicans

A creeping evergreen shrub; useful for round cover and margin planting.

12-18 incheseach \$.50 per 10 each \$.45

Lonicera Halleana (Hall's Honeysuckle)

Pure white flowers changing to yellow.

3 yearseach \$.50 per 10 each \$.45

Lonicera Sempervirens

Scarlet Trumpet, scarlet flowers.

3 yearseach \$.50 per 10 each \$.45

Lycium Chinensis (Matrimony Vine)

Violet flowers in June, followed by bright red fruit; useful for banks or hanging over retaining walls.

2-3 feeteach \$.50 per 10 each \$.45

Wisteria

Deep blue, long clusters; May. Seen to best advantage when planted on old trees or open trellises.

3 years old, grafted.....each \$1.00

Fruits

Blackberries—

Snyder, Eldorado

2 year old...each \$.20
per 10 each .15

**Currants—Red Cross,
Red Dutch, Cherry**

3 year old...each \$.30
per 10 each .25



Latham Raspberries

Gooseberries—Downing, Houghton

2 year old.....each \$.25 per 10 each \$.20

Grapes—Delaware, Niagara, Moore's Early, Concord

2 year old.....each \$.25 per 10 each \$.20

Raspberries (Red)—St. Regis

2 year old.....each \$.15 per 10 each \$.10

Latham Raspberries

2 years (mosaik free).....each \$.20 per 10 each \$.15



Jonathan Apple

Apples

Apples—Duchess of Oldenburg, Wealthy, Baldwin, Delicious, Jonathan, Northern Spy, Yellow Transparent. Red Astrachan.

$\frac{3}{4}$ -1 inch caliper.....each \$1.00

Crab Apple Trees—Whitney, Red Siberian

1 inch caliper.....each \$1.00

Cherries—Early Richmond

11-16 inches cali-
per.....each \$1.00

1-1 $\frac{1}{2}$ inches cali-
per.....each \$1.25

Pears—Standard

Duchess, Flemish
Beauty — Kieffer,
Seckel, Bartlett,
Standard Winter.

1 inch caliper
each \$1.25

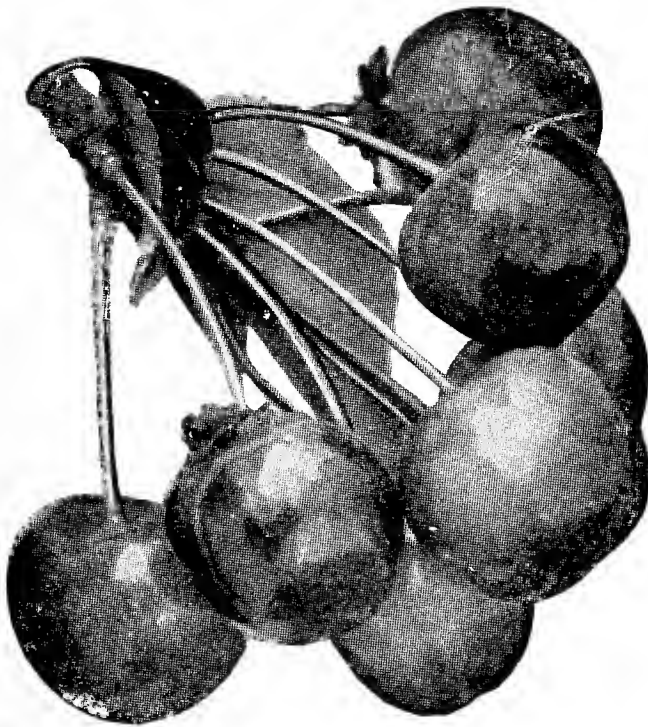
per 10 each \$1.00

1-1 $\frac{1}{2}$ inches caliper
each \$1.75

per 10 each \$1.50

1 $\frac{1}{2}$ -2 inches caliper
each \$2.00

per 10 each \$1.75



Early Richmond Cherries

Dwarf Duchess, Dwarf Bartlett

1 inch caliper.....each \$1.50
per 10 each \$1.25

Plums—Abundance, Burbank, Sur- prise, Lombard, German Prune

1 $\frac{1}{2}$ -2 inches caliper.....each \$2.00
per 10 each \$1.75



Lombard Plums

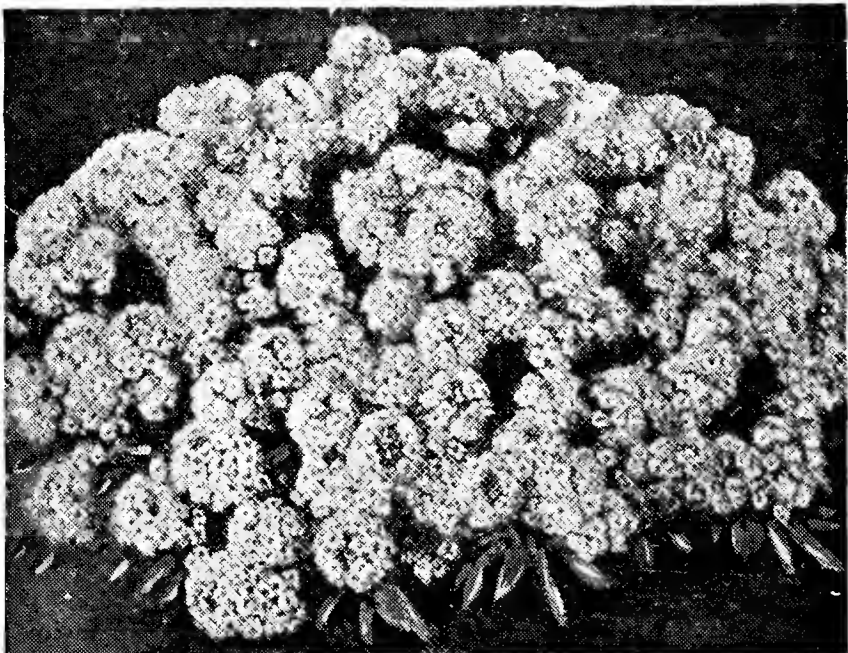
Our Fruit Trees are very fine, now of bearing size, and you will be well pleased with them as they have been developed here in our Nursery and properly pruned to insure an abundance of fruit for years.



Perennial and Hardy Alpine Plants

Our Perennials are grown from the choicest seed and stock plants obtained in this as well as European markets, assuring you of the very finest in plants and blooms and far superior to the stock offered through the various channels of stores where the probability of obtaining what you expect and pay for are more often not realized, since this branch of their business is only seasonal and consequently cannot be given the attention that is necessary, and to which we obligate ourselves the entire year. We take the greatest care of all stock we propagate, and know that any item offered will give satisfaction to the customer, and in many instances far exceed their expectations.

In our assortment we have endeavored to grow such plants as will give you the most attractive as well as best plants for all purposes, and in order to facilitate the selection thereof have marked such plants as are adaptable for



Alyssum

rock plants with the * color of plant and time of bloom, also height of plant when in bloom " for inches and ' for feet. Plants 2 years field grown.

Alyssum

Saxatile compactum. Broad masses of bright yellow flowers in early Spring. An excellent plant for the rockery or front of borders. 1'.
 Each \$.20.....per dozen \$2.00

Agrostemma (Rose Campion)

Coronaria Atrosanguinea. Fine improved variety, blood red, silvery foliage, June-July, 2'.
 Each \$.20.....per dozen \$1.75

Anthemis Tinctoria (Hardy Marguerite)

Beautiful daisy-like flower, clear yellow, very useful for cutting, June-October, 2'.
 Each \$.20.....per dozen \$1.75

***Aquilegia (Columbine)**

Mrs. Scott Elliott's Long Spurred Hybrids, finest of all colors and shades, May-June, 3'.

Each \$.25.....per dozen \$2.00

Coerulea (Rocky Mountain Blue Columbine.)

***Arabis (Rock Cress)**

Alpina, pure white, very useful for rock gardens or edging, April-May, 9".

Each \$.20.....per dozen \$1.75

***Armeria (Thrift)**

A plant of dwarf tufted habit, suitable for borders or rock gardens.

Maritima—pale pink, May-June, 6".

Each \$.20.....per dozen \$2.00

Artemisia (Wormwood)

*Pontica, very valuable for its silver-gray foliage, can be trimmed and used for perennial edging; one of our best; August-September, 12".

Each \$.20.....per dozen \$2.00

Aubrietia (Rock Cress or False Wall Cress).

One of the daintiest and most delicately beautiful of all dwarf, creeping plants for carpeting beds or rockeries, forming brilliant sheets of violet, crimson or rose for many weeks. Massed on rockeries or in borders with white Arabis and yellow Alyssum, it forms a charming contrast. A gem for planting in crevices of rocks or wall, forming a cataract of color.

Each \$.20.....per dozen \$2.00

Ajuga (Bugleweed)

A useful plant for the rockery and for carpeting the ground, particularly in shady positions, as under trees and shrubs; flowers in May and June.

Each \$.20.....per dozen \$2.00

Chelone (Shellflower)

Terminal Spikes of large flower heads, purple red. Very useful for decorations. 3'.

Each \$.20.....per dozen \$2.00



Aquilegia (Columbine)



Shasta Daisies

PERENNIALS AND HARDY ALPINE PLANTS, Continued



Coreopsis

Cypripedium (Lady Slippers)

Hardy orchid; thrives in a moist, light soil in shade or woods.

Each \$.30.....per dozen \$3.00

Coreopsis

Lanceolata grandiflora, large yellow daisy-like flowers. June and July. 2'.

Each \$.20.....per dozen \$1.75

***Campanula Carpatica (Harebell)**

A pretty species growing in compact tufts, the blue flowers extending not more than 8" above foliage. June-October.

Each \$.20.....per dozen \$1.75

Delphinium (Larkspur)

Belladonna, free and continuous bloomer from June until frost; turquoise blue. 4'.

Each \$.20.....per dozen \$2.00

Bellamosa, blooms all summer; dark blue. 4'.

Each \$.20.....per dozen \$2.00

Gold Medal Hybrids of the very finest to be had; blooms all summer; mixed colors. 4'.

Each \$.25.....per dozen \$2.50

English Hybrids, an extra good grade of Gold Medal Hybrids; June-November; mixed colors. 4'.

Each \$.25.....per dozen \$2.50

***Dianthus**

Barbatus, old-fashioned Sweet William in mixed colors. Sweet, fragrant. Each \$.20.....per dozen \$1.75

Caryophyllus, Grenadin; this is the only Carnation we can recommend as hardy; June to August. 2'.

Each \$.20.....per dozen \$2.00

Plumarius—Old fashioned Pinks; fragrant flowers; excellent for edging. Each \$.20.....per dozen \$1.75

***Rockgarden Pink**

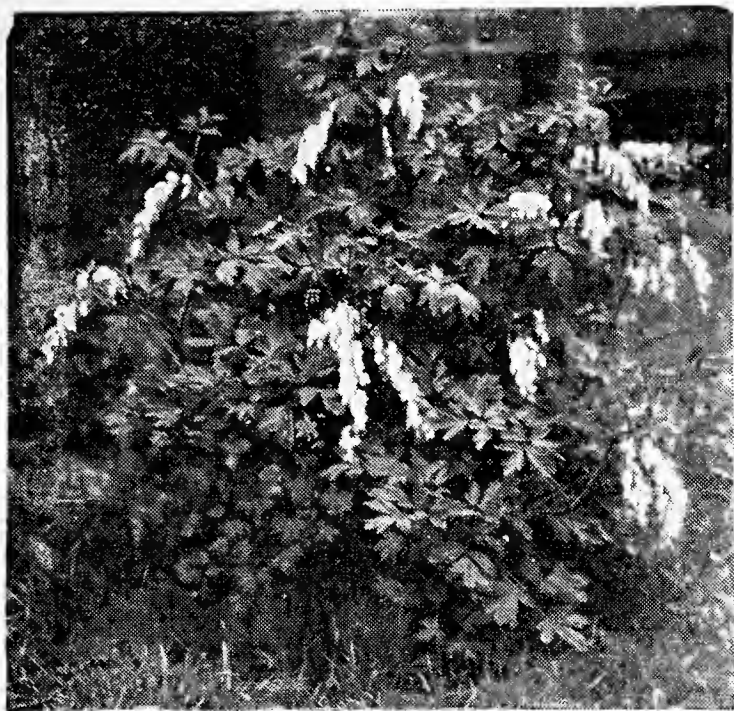
Very hardy Pink; purple red flowers and rich green foliage. Dwarf, 6-8". Each \$.20.....per dozen \$1.75



Delphinium



Dianthus



Dicentra (Bleeding Heart)

Dicentra (Bleeding Heart)

Spectabilis. Old-fashioned; blooms May-June. 18".
Each \$.50.

Digitalis (Fox Glove)

One of the most popular plants of today throwing a flower spike, tall and stately to the height of 4-6 ft.; mixed colors; July-August.

Each \$.25.....per dozen \$2.50

Dodecatheon (Shooting Star)

A pretty native perennial with rose to white colored flowers; thrives in shade. 12-18".

Each \$.20.....per dozen \$1.75

Erinus

Alpinus roseus. Pretty rosettes of foliage and racemes of rosy purple flowers. A first rate rock plant and also invaluable for establishing on old walls or between steps. 4". May-June.

Per dozen \$20.00

Eryngium (Sea Holly)

Planum, blooms July-August; deep blue cones. 3'.

Each \$.20.....per dozen \$2.00

***Funkia (Plaintain Lily)**

Coerulea, narrow green leaves, blue flower; August-September. 18".

Subcordata Grandiflora, pure white lily shaped flowers; August-September. 18".

Each \$.25.....per dozen \$2.50

Echinops Ritro (Globe Thistle)

Showy, thistle-like, globular heads of deep metallic blue color. 2-3'.

Each \$.20.....per dozen \$1.75

Gaillardia (Blanket Flower)

One of the best of our old-fashioned flowers, flowering continuously from June to October. A cut flower that cannot be excelled.

Grandiflora, ranging in color from old gold to rich crimson. 1-2'.
Each \$.20.....per dozen \$1.75

Gypsophila (Baby's Breath)

Paniculata Compacta, flowers pinkish white; July. 2'.
Each \$.20.....per dozen \$2.00



Gaillardia

PERENNIALS AND HARDY ALPINE PLANTS, Continued

Helenium (Sneezeweed)

Riverton Gem, bright yellow, changing to wall-flower red; August-September. 4'.

Each \$.25.....per dozen \$2.50

Hesperis (Sweet Rocket)

Matronalis. 2' to 3'. June and July. Fragrant purple flowers in showy spikes. Desirable for wild garden, shrubbery or mixed border.

Each \$.20.....per dozen \$2.00

Hollyhocks

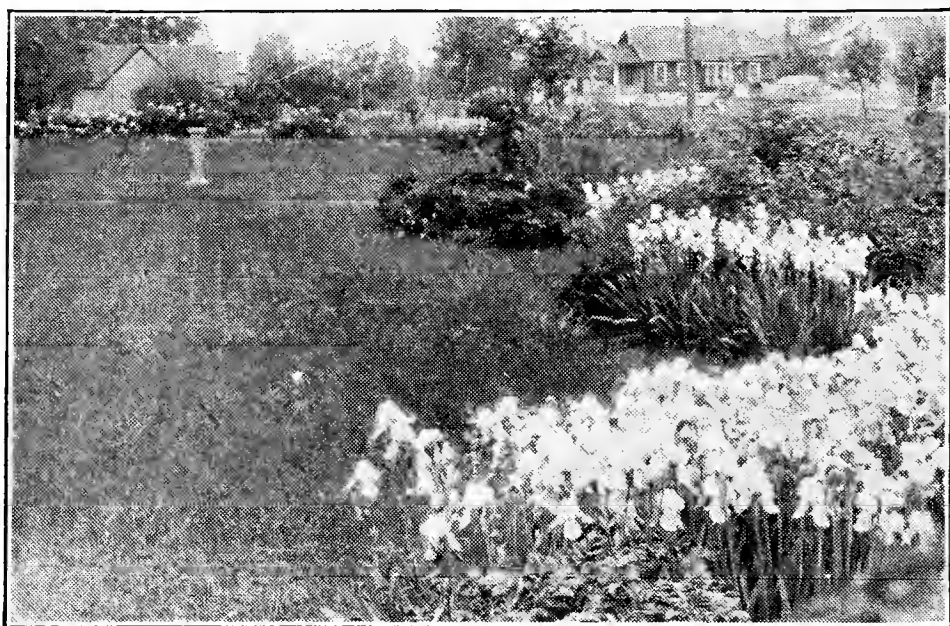
We have this popular plant in single and double flowers; mixed colors; July. 4-5'.

Each \$.20.....per dozen \$2.00

Hibiscus (Mallow)

Giant flowering Mallows in red, white and pink. 3-6'.

Each \$.25.....per dozen \$2.50



Iris in Variety

(s) Standard; (f) Fall.

Althea Deara—Purple.

*Alcazar—(s) violet, (f) purple.

Assyrian—Clear blue, deep yellow beard.

Blue Beard—Dwarf white and pale blue.

Caprice—(s) rosy, (f) rosy red.

Celeste—Azure blue.

Elinore—Pink shadowing white.

*Gold Crest—Bright violet blue.

*Her Majesty—Rosy pink.

Iris King—(s) yellow, (f) maroon.

*Loreley—(s) yellow, (f) marine blue.

*Monsignor—(s) violet, (f) purple.

Mme. Chereau—White with blue border.

Mrs. H. Darwin—(s) clear white, (f) white, violet veins.

Nibelungen—(s) fawn and yellow, (f) violet purple.

Pallida Dalmatica—(s) lavender, (f) deep lavender.

*Prosper Laugier—Bronze and ruby.

Perfection—(s) light blue, (f) dark violet.

Princess Victoria Louise—(s) yellow, (f) crimson.

*Queen of May—Lilac pink, early.

*Seminole—Red tones.

Sherwin Wright—Golden yellow.

*Standard Bearer—Light purple.

Iris Pumila—Very dwarf, purple.

Each \$.25.....per dozen \$2.00

*Each \$.35.....3 for \$1.00

***Iberis (Hardy Candy-tuft)**

Sempervirens, dwarf evergreen foliage covered with sheet of white flowers; May-June. 8".
Each \$.25 per dozen \$2.50

Siberian Iris

Siberian Iris in blue and white colors grow up to 3 feet and are profuse bloomers. These are fine for border plants and for waterside.
Each \$.20, per dozen \$2.00

Liatris (Blazing Star)

A very attractive native perennial throwing up long narrow spikes of rich purple flowers which last a long time. Great attraction for butterflies. 2-3'.

Each \$.20.....per dozen \$1.75

Lupinus (Hardy Lupine)

Produce beautiful spikes of pea shaped flowers. Must be planted in well prepared soil. Keep watered in dry weather. 2-3'.

Each \$.20.....per dozen \$2.00

***Lychnis Viscaria Splendens**

Flowers profusely in June and July; very desirable. 8-10".
Each \$.20.....per dozen \$1.75



Perfection Iris



Regal Lilies

Regal Lilies

These are absolutely hardy, the flowers are white slightly suffused with pink, with a beautiful shade of canary-yellow at the center and extending part way up to the trumpet. It is delightfully perfumed, reminding one of the Jasmine; blooms early in July; flowering size.

Each \$.50.....per dozen \$5.00

**PERENNIALS AND
HARDY ALPINE
PLANTS**

Continued



Oenothera (Evening Primrose)

Each \$.20.....per dozen \$2.00

Mertensia Virginiana (Blue Bell)

Early spring flowering plant, blue bells fading to pink. Very interesting native perennial. 12-18".

Each \$.20.....per dozen \$2.00

Monarda Didyma (Bergamot)

Grows in any soil or position; scarlet flowers, aromatic foliage. 2-3'.

Each \$.20.....per dozen \$1.75

***Myosotis (Forget-Me-Not)**

Alpestris (Alpine Forget-Me-Not), tiny pale blue flowers all summer. 8".

Each \$.15.....per dozen \$1.50

Oenothera (Evening Primrose)

Elegant for a sunny position in the border or on the rockery, blooming all summer.

Each \$.20.....per dozen \$2.00

***Pachysandra
Terminalis**

Evergreen ground cover; does well in shady places, under shrubs and trees.

2 year old plants.

Each \$.30, per doz. \$3.00

**Papaver Orientalis
(Oriental Poppy)**

Brilliant large red flowers; are conspicuous in any position; May-June. 2-3'.

Each \$.25, per doz. \$2.50

Papaver (Poppy)

*Nudicule (Iceland Poppy), a neat dwarf plant from which spring graceful leafless stems with charming cup-shaped flowers in great profusion all summer; fine for cutting; mixed colors. 18".

Each \$.20, per doz. \$2.00



Oriental Poppies

Peony Clumps, Red-White-Pink

3 to 5 eyes.....	each \$.50
5 to 8 eyes.....	“ 1.00
Large clumps	“ 2.00

***Primula Veris (Primrose)**

A very hardy Primrose; blooms early in spring; all colors.

Each \$.20.....	per dozen \$2.00
------------------	------------------

Phlox in Variety

- Baron von Dedem—Rosy red with salmon.
- Beacon—Red with crimson center.
- B. Comte—Satiny purple; gorgeous.
- Bridesmaid—White with carmine eye.
- Milly von Hoboken—Mauve rose with dark eye.
- R. P. Struthers—Salmon red.
- Pantheon—Solid pink.
- Lord Raleigh—Dark lilac.
- Siboldi—Orange scarlet.
- Thor—Deep salmon pink.
- Rheinlander—Salmon pink, claret eyes.
- Rijnstroom—Rose pink.
- Mrs. Scholten—New dark salmon pink.
- Mrs. Jenkins—White, large trusses.
- Miss Lingard—White, everblooming.
- Von Hockberg—Velvet crimson.
- W. G. Egan—French mauve.
- Widar—Reddish violet, white center.

Each \$.20.....	per dozen \$2.00
------------------	------------------

***Phlox Subulata (Moss or Mountain Pinks)**

White-Red-Lavender. A compact mass of elegant prostrate foliage, dainty white flowers in May and June.

Two year field grown clumps....	each \$.20	per dozen \$2.00
---------------------------------	-------------	------------------

Physostegia (False Dragonhead)

Virginica pink flowers and stiff stems. 3-4'.

Each \$.20.....	per dozen \$1.75
------------------	------------------

Physalis (Chinese Lantern Plant)

Francheti, produces bright orange scarlet lantern like fruit excellent for winter bouquets. 2'.

Each \$.20.....	per dozen \$2.00
------------------	------------------

***Platycodon (Balloon Flower)**

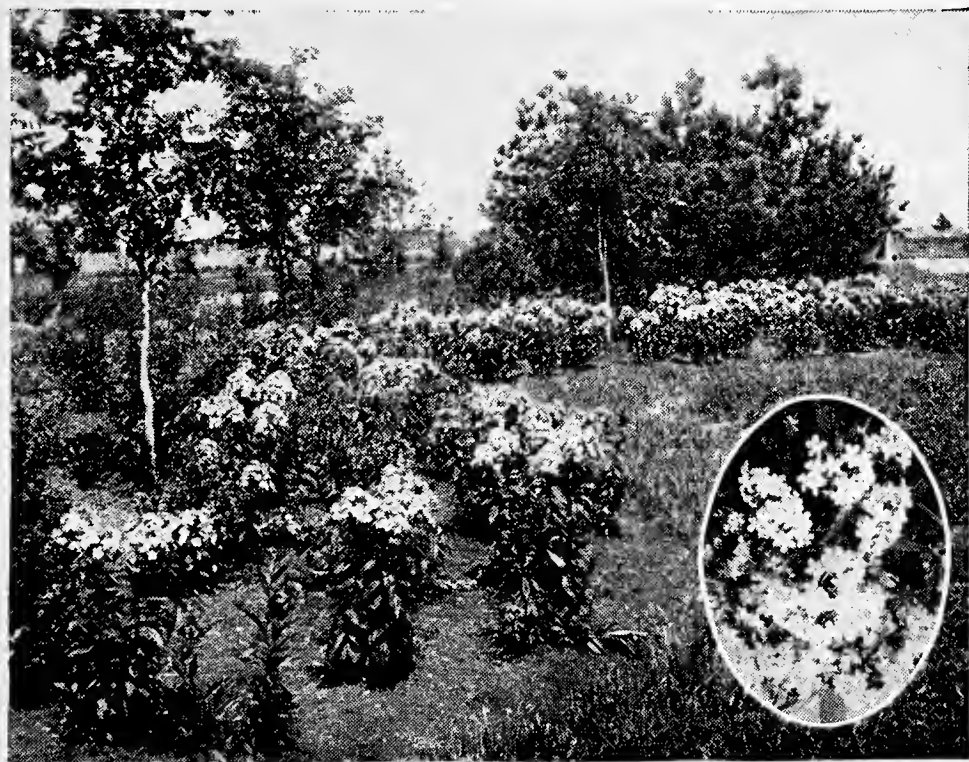
Grandiflorum, blue flowers in bud or balloon shape; June to October. 18".

Each \$.20.....	per dozen \$2.00
------------------	------------------

Polemonium (Valerian)

Coerulea—Erect stems of sky blue flowers; fernlike foliage; June to July. 2'.

Each \$.20.....	per dozen \$2.00
------------------	------------------



Phlox

PERENNIALS AND HARDY ALPINE PLANTS, Continued

Pyrethrum (Painted Daisy)

Mixed colors bloom practically all summer. 2-3'.
 Each \$.20.....per dozen \$2.00
 Kelway, very fine flower, blood red color; June-July. 2'.
 Each \$.30.....per dozen \$3.00

Pyrethrum Uliginosum

Large giant daisy like flowers; blooms in fall in great profusion; should be in every garden.
 Two year field grown clumps...each \$.20 per dozen \$1.75

*Sedum—Acre, Glaucum, and Sieboldi

Dwarf varieties for rockeries.
 Each \$.20.....per dozen \$1.75
 Spectabile, brilliant red; August-September. 18".
 Each \$.20.....per dozen \$2.00

*Statice (Great Sea Lavender)

All these plants have broad leathery leaves, producing candellabra like heads. If cut in full bloom make a very valuable winter bouquet. Latifolia, blue. 18".
 Each \$.25.....per dozen \$2.50

*Sempervivum (Hen and Chickens)

Good for rock gardens. Very satisfactory. Clings to rocks.
 Each \$.25.....per dozen \$2.50

Tradescantia (Spiderwort)

Virginica. Produces a succession of blue flowers all summer. 2 feet..... per dozen \$2.00

*Veronica (Speedwell)

Candida, silver woolly leaves with deep blue flowers; July. 12".
 Each \$.20.....per dozen \$2.00
 *Spicata, blue flowers, green foliage; July. 9".
 Each \$.20.....per dozen \$1.75

*Veronica Repens (Speedwell)

A useful rock or carpeting plant with bright blue flowers. 2 inches tall.
 Each \$.20.....per dozen \$1.75

*Vinca Minor (Periwinkle or Trailing Myrtle)

Valuable for rockeries, ground cover and about trees and shrubs; does well in shady as well as sunny places; dark green foliage, large blue flower.
 Two year field grown.
 Each \$.20.....per dozen \$2.00

*Viola Cornuta (Hardy Pansies)

This is one of the best all around perennials; blooms from June until snow; not the common variety. Small flowers. Mixed colors. 6".
 Each \$.15.....per dozen \$1.25

Yucca Filamentosa

Handsome, creamy white, bell-shaped flowers, branched and densely packed with blooms with sword like foliage. Three year old plants.
 Each \$.50.....per dozen \$5.00

Hardy Ferns

Hardy Ferns for rockery and general planting; two varieties.
 Each \$.25.....per dozen \$2.50



Yucca



GRASS SEED

The very finest quality seed for a beautiful lawn. We use this exclusively in our landscape work. Per lb. 50c.

Granulated Peat Moss

A moisture retaining humus. An important aid in saving soil fertility. Very good for Perennials, Shrubs and Evergreens.

Per bale, \$5.00; per 1/2 bale, \$2.75



Have a prize-winning garden; feed with Lōma.

100-lb. bag \$5.00
50-lb. bag 3.00

25-lb. bag \$1.75
5-lb. pkg. .50

Clean, odorless, easy to apply. Complete directions in every bag.

VIGORO

Specially prepared plant food

Waukegan Nurseries
Waukegan, Illinois

