

Historic, archived document

Do not assume content reflects current scientific knowledge, policies, or practices.

Planter's Guide

SB 445



WIGHT

VARIEGATED CAMELLIA JAPONICA—See Page 6

Wight Nursery & Orchard Co.
J. B. WIGHT, PROP.
CAIRO, GEORGIA

My Aim Is to Sell Fruit Trees That Make Beautiful Orchards and Ornamental Plants That Make Beautiful Grounds

NEVER before have we offered nursery stock at such favorable prices. Never before have we had stock of higher quality. We have always, during our forty-six years as nurserymen, grown the very best nursery stock it was possible to grow. But this year, with conditions disrupted throughout all industries, and an overproduction of nursery stock throughout the South, our prices have been reduced in some cases below the cost of production.

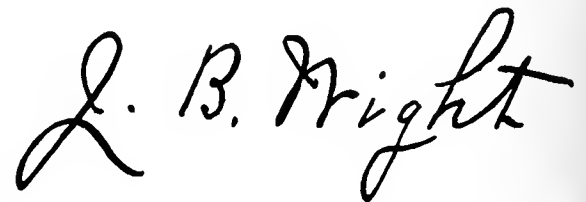
Never was there a more favorable time for purchasing nursery stock, both for improving the home grounds and for the establishment of orchards. These conditions cannot continue long. Production of nursery stock throughout the country has been greatly curtailed. Many of the weaker nurseries are going out of business. The general overproduction of nursery stock should be consumed this year and as soon as conditions generally improve, nursery stock will rise sharply in price. Why not take advantage of these conditions, and make that planting you've been planning?

This catalogue is planned as a Guide to Southern planters—it lists and describes many of the old favorites of the South which rightly belong in the South, and also includes newer introductions which have been thoroughly tested and found suitable for the territory. This season we are listing around 30 new roses, all of which have been tested and found desirable. Our list of azaleas has been increased. Tests of many other new items are being made at the nursery. We hope this catalogue will serve to acquaint you with the wealth of plant material that may be had to add to the wealth, health, and happiness of our Southland.

WIGHT NURSERY & ORCHARD CO.

Oct. 1, 1932.

AN INVITATION TO VISIT US—I'll tell you what you do—plan to visit our nurseries and see for yourself our fine pecan trees, other fruits and ornamental plants—then you'll understand why people buy from us year in and year out.



It Is Easy to Order from Wight's

READ BEFORE ORDERING

WHEN TO PLANT—Planting can be done any time the trees and bushes are dormant and the ground not frozen. In the South the best season for transplanting is usually from November 15th to April 1st.

WHEN TO ORDER—It is best to order early, as this enables us to reserve for you the varieties you want and avoids the possibility of our being sold out. The time of shipment may be left to us, as we keep track of weather conditions throughout the country and ship each order so as to reach our customers at the very best time for planting in that locality. If it is necessary that an order arrive on a certain date, please note it on your order sheet and we will ship to arrive as near to that date as possible.

TERMS OF PAYMENT—Cash with order, or satisfactory reference before shipment; or if preferred, will ship goods with Bill of Lading attached to Sight Draft, through express or bank. On all C. O. D. and Sight Draft Orders we require 25 per cent of the bill before shipment.

PRICES—All prices are net. We offer no premiums, discounts, or gratuities. Five trees or plants of a class will be billed at the 10 rate; 50 trees at the 100 rate; 500 at the 1,000 rate.

POSTPAID SHIPMENTS. All plants which can be wrapped in parcels so as to come within postal requirements as to length and breadth and weight have been quoted postpaid. This will prove an especially attractive feature to our

customers living some distance from Cairo. It eliminates altogether the question of what the plants will cost delivered to your door. Customers wishing the larger size plants may receive them, as before, by express collect. We especially recommend the small size plants to our customers west of the Mississippi. All plants not definitely stated Postpaid are quoted F. O. B. Cairo, Ga.

HOW TO SEND MONEY—An express money order, postal money order, or bank draft is the best form of remittance. You can send your personal check if you desire. It is not safe to send silver or bills except in a registered letter.

OUR GUARANTEE

We guarantee our stock to be well grown, true to name, and properly handled and packed. Our responsibility ceases upon delivery to transportation company. All claims should be promptly made.



Pride of Dorking Azaleas under dogwoods; a beautiful border planting.

AZALEAS AND CAMELLIAS

Azaleas and Camellias have been used for a number of years as hothouse plants in the East, and have been planted out-of-doors in the South for some time, but their real value as outdoor plants is just beginning to be appreciated. Azaleas or Camellias can be used in practically any location where other shrubs are used, giving the desired effect as evergreens, and at blooming time furnish a riot of color unsurpassed by any other group of plants. They should become more and more a part of every home planting. During blooming season, which for Camellias is from November until March, practically no other plants are in bloom. The lovely blossoms of Camellia would be outstanding at any season of the year, but the fact that they bloom during the winter months makes them even more desirable. Azaleas begin blooming in March and continue through April into May. They may be moved when in full bloom—in fact, at any season of the year.

It's a good idea to order Azaleas as soon as possible in the fall and winter, so that they may become well established by spring. There is no danger of their not blooming because of transplanting.

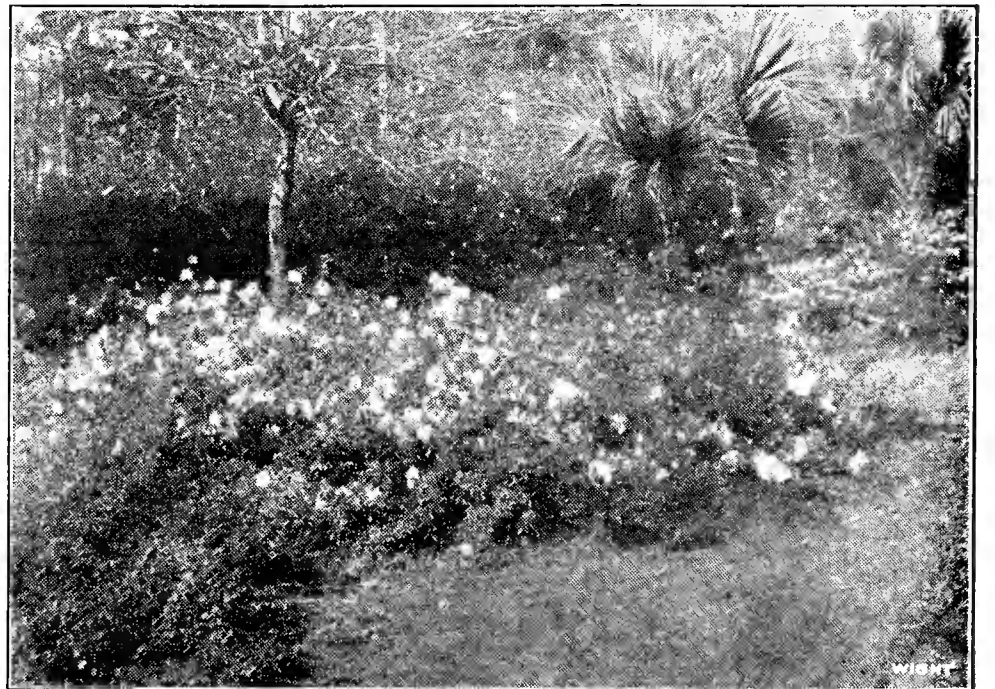
NO Flowering Shrub is so outstanding, so surpassingly beautiful when in bloom as is azalea. Often practically all the leaves are hidden by the flowers in their riot of color—azaleas may be had in purple-pink, salmon pink, orange red, red flame, deep pink, red, white and light pink colors. There are a number of varieties of azaleas of different shadings of the same color, so that they offer a wider range of shades and colors than any flowering plant suited to the South. The blooming season may also be lengthened considerably by the selection of several varieties.

The Indian azaleas have the added advantage of being evergreen, so that even when they are not in flower their attractive foliage is an addition to any landscape. Azaleas can be grown successfully along the seacoast of the middle Atlantic states with a little protection to keep the bloom buds from being injured by cold—and very successfully along the coast from Charleston to South Central Florida and around the Gulf Coastal section to Texas, without any protection whatever.

Azaleas are very easy to transplant and have few cultural requirements. Azalea roots like a cool soil, and should be planted in a partial shade, at least until the plants become large enough to shade their own roots. They may then be planted in full sun to advantage. Azaleas thrive in an acid soil. Where planted in a region in which the soil is alkali, it is advisable to dig out a good large hole and fill it in with leaf mold or woods earth. The peaty muck found in and around old ponds is very desirable. Where this is not obtainable, or where azaleas have already been planted in an alkali soil, a small amount of aluminum sulphate, 1 pound to 30 square feet, will be found beneficial. Fertilize lightly about twice a year with cottonseed meal and tankage. Azaleas like a moist soil but it must be well drained.

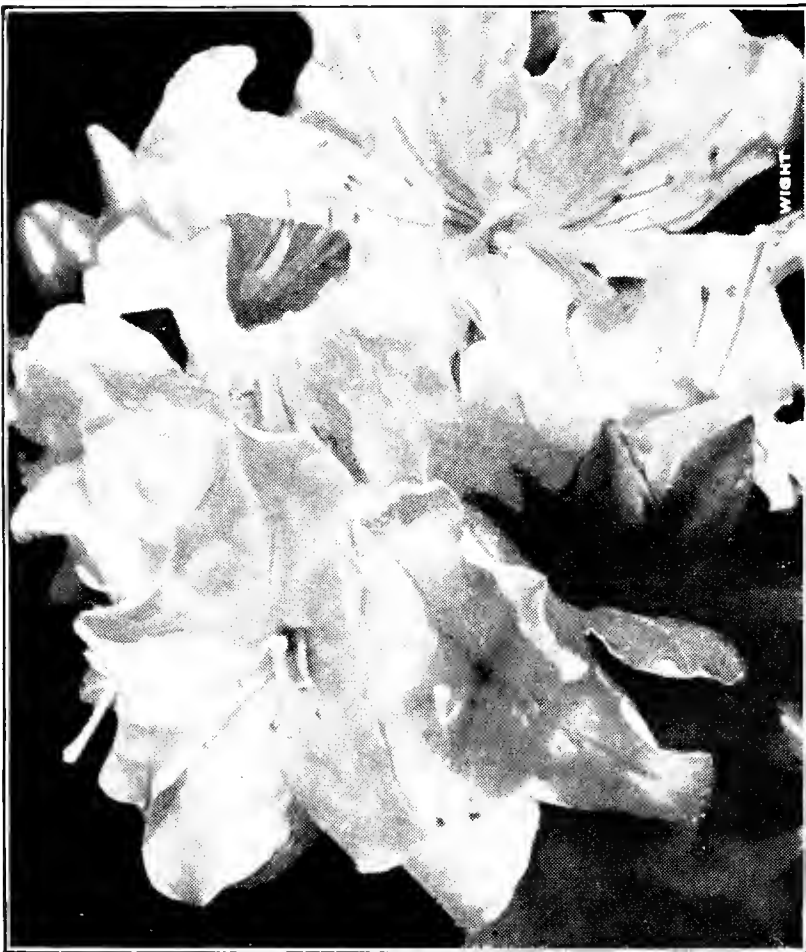
Do not cultivate around azaleas. Their roots are right on the surface of the ground and any cultivation would be likely to cut a number of feed roots. If weeds appear, pull them up.

Azaleas may be used in almost any location where any other dwarf evergreen could be used.



Azaleas bordering the main drive at the estate of Mr. A. B. MacClay, near Tallahassee, Fla.

Have your planting well planned



Hinodigiri Azalea.

It is attractive in the foundation planting in front of the taller plants; in formal or informal beds, using colors which blend well; in hedges—in fact, anywhere where its beauty may be seen and appreciated.

GROUP I

The faster growing varieties of Azalea Indica, generally characterized by large leaves, hairy underneath, and medium to large flowers.

PHOENICIA. Similar in form and habit of growth to Formosa, although with blossoms a little smaller than Formosa. Early. Sizes up to 24 inches only.

FORMOSA. The purple-pink variety so satisfactory in the Southern States. Large single flowers; leaves dark green. Very easy to grow and very vigorous. Sizes to 30 inches.

VITATA FORTUNII. A strong open growing Azalea; flowers very variable, changing from pure white with faint lavender stripes to a pale lavender. Sometimes a plant may produce flowers of only one color, or they may be mixed on the bush. Sizes up to 30 inches only.

WILLIAM BULL. The salmon pink blossoms of this azalea resemble in shape the Sweetheart Roses. The plant grows tall and open. Sizes to 5 feet. 4 to 5 feet, \$5.00; 3 to 4 feet, \$4.00; 2 to 3 feet, \$2.50.



American Beauty Azalea.

A rear lawn provides an extra room to your house



Azaleas dug for shipment. Note the many fibrous roots on the plant at the right. These are sure to live and grow.

PRICES GROUP I

Size	Each	10
24 to 30 inch, B.&B.	\$2.00	\$17.50
18 to 24 inch, B.&B.	1.50	12.50
15 to 18 inch, B.&B.	1.25	10.00
12 to 15 inch, B.&B.	1.00	9.00
10 to 12 inch, B.&B.90	7.50
8 to 10 inch, B.&B.75	6.00
6 to 8 inch, postpaid50	4.50

GROUP II

Medium growers, generally more compact than Group I, and therefore showier when in bloom. Leaves deep green color.

AMERICAN BEAUTY. (See illustration, page 4.) A compact growing azalea, producing large "American Beauty" pink blossoms. A very satisfactory plan. Sizes up to 15 inches.

AMOENA. Hardy and very popular in the North; small hose-in-hose pink flowers, with shadings of purple; leaves small, dark lustrous green. Tall grower. At Cairo blooms in fall or early winter. Sizes to 30 inches.

BRILLIANT. This variety has flowers of medium size of deep rose-pink. Blooms in mid-season. An excellent compact, bushy grower. Sizes to 15 inches.

COCCINEA MAJOR. Large flowers of orange, red color. Early. Sizes up to 12 inches only.

DUC de ROHAN. A free blooming, dense growing type of Azalea. Fine flowers of salmon color. Sizes up to 12 inches.

ELEGANS. A light clear pink with lustrous green leaves; its shadings are very delicate. Early bloomer and very desirable. Sizes to 30 inches only.

FIELDERS WHITE. The most satisfactory white azalea; has large blossoms of pure white. Bush vigorous, compact grower. Excellent for group-

ing with other colors. Sizes up to 18 inches only.

GEORGE FRANC. Unusually large flowers colored bright rose. One of the handsomest of all azaleas. Early. Sizes up to 15 inches only.

GLORY OF SUNNINGHILL. Large scarlet flowers with a shading of orange. Late. Sizes up to 24 inches only.

IVERYANA. White flowers striped with rose. Late. Sizes up to 24 inches only.

MACRANTHA. A lovely pink flowering azalea, valuable for its deep luxuriant green foliage and for the fact that it flowers irregularly throughout the growing season. Sizes to 24 inches.

PRIDE OF DORKING. A rather slow growing variety of azalea which blossoms late in the season; flowers a very deep pink which is especially pleasing. Sizes to 30 inches only.

PRINCE OF WALES. A free flowering early variety of rose-red. Sizes up to 15 inches.

RED FLAME. A very brilliant red which flowers early in April. This is one of the most vigorous varieties, and may be seen at Magnolia Gardens the size of small trees. A most desirable plant. Sizes up to 30 inches.

Besides the above-named varieties we can supply Azalea Indica in the following colors: Deep Pink, and Late Deep Pink. Sizes up to 24 inches; salmon pink to 15 inches.

PRICES GROUP II

Size	Each	10
24 to 30 inch, B.&B.....	\$2.50	\$22.50
18 to 24 inch, B.&B.....	2.00	17.50
15 to 18 inch, B.&B.....	1.50	12.50
12 to 15 inch, B.&B.....	1.25	10.00
10 to 12 inch, B.&B.....	1.00	9.00
8 to 10 inch, B.&B., postpaid.....	.90	7.50
6 to 8 inch, postpaid.....	.60	5.50



Red Flame Azalea.

Wight-grown means grown right

GROUP III

The slowest growing variety of Azalea Indica, also selected varieties of Kurume Azaleas. The varieties constituting this group may be considered dwarfs. This group, although slow growing, is probably the most spectacular of the whole Azalea family when in bloom. Flowers generally are small, but produced in profusion.

FIRE. A Kurume Azalea, compact, with very green leaves; flowers fiery red. Sizes up to 12 inches.

HINODEGIRI. A Kurume Azalea which is quite popular, and deservedly so. Foliage deep rich green; the plant is dwarf and very compact. When in bloom the foliage can hardly be seen for the bright carmine flowers which cover the entire plant. An early bloomer which holds its blossoms for several weeks. A most satisfactory variety which we recommend heartily. Hardy at New York.

SNOW. When in full bloom, the foliage is practically hidden by the mass of white blossoms, making the plant resemble a ball of snow. One of the most showy white azaleas. A Kurume with compact habit of growth. Sizes to 12 inches.



Camellia Japonicas grown in pots. From left to right: 1 yr. plant from 3-inch pot; 2 yr. plant from 4-inch pot; 2 yr. plant from 5-inch pot.

PRICES GROUP III

Size	Each	10
10 to 12 inch	\$1.50	\$12.50
8 to 10 inch, heavy	1.50	12.50
8 to 10 inch	1.00	9.00
6 to 8 inch, postpaid90	7.50

CAMELLIA JAPONICA

CAMELLIA JAPONICA. Long a favorite in old gardens of the South, is becoming more and more appreciated. The foliage is a dense lustrous green. It is hardy in the lower South, and because of the fact that it blooms in the winter when very few other plants are in blossom, it is always in demand. The flowers are delicately moulded of waxy texture, and beautifully tinted, resembling a double full-blown rose.

JAPONICAS, as Camellias have long been known in the South, are easy to grow. They require a well-drained, somewhat shady location. An eastern or northern exposure is desirable. Camellias will thrive in an alkali soil, although they seem to do best in a soil which is slightly acid. Where Camellias are to be planted in full sun, it is wise to shade them for the first season.

We can supply one and two-year plants in red, dark-rose, shell-pink, deep pink, variegated double white, early white and late white. All plants are double flowering.

PRICES

	Each	10
1 yr., 8 to 10 inch, from 2½-inch pots, postpaid....	.40	\$ 3.50
1 yr., 10 to 12 inch, from 3-inch pots, postpaid....	.50	4.50
2 yr., 15 to 18 inch, from 4-inch pots, postpaid....	.75	7.00
3 yr., 24 to 30 inch, from 5-inch pots	1.25	10.00
3 yr., blooming size, from boxes	1.75	15.00
4 yr., 3 to 4 ft., well branched (rose pink only), B.&B.	2.50	22.50



Shell Pink Camellia.

Roses are easy to grow

ROSES

SOMEWHERE in every garden, on every home-grounds, there is a place for roses—the favorite of all. Through the generations these fragrant flowers have delighted young and old—symbolizing for all the romance and beauty of yesterday, today and tomorrow.

The versatility and numerous varieties of roses make it possible for you to grow just the rose you love. The climbing roses may be chosen to arch the trellis over the garden walk or to add beauty and charm to the open veranda, the wall or fence. Bush roses may be grown everywhere and anywhere about the garden and home-grounds, lending an atmosphere of cheer and graceful beauty that only roses can give.

The rose was a June flower in grandmother's day; now after years of experimentation, careful breeding and cultivation, these exquisite flowers brighten the entire summer with their profusion of color, their fragrance and charm. Throughout the growing season, roses may be had in a succession of bloom in shades to fascinate everyone.

THE BEST NEW ROSES

BETTY UPRICHARD. H.T. Outside of petals deep rose, inside shell pink, the darker color filtering through the shell pink petals gives this rose a very intriguing appearance. Attractive when full blown. Bud medium size, long pointed; flowers large, open, fragrant; a good bloomer and grower. This rose has won numerous awards of merit. Highly recommended. 60c each.

BLACK BOY. Cl.H.T. A lovely dark reddish black climbing rose. Buds large, long pointed; flowers very large, semi-double, and lasts extremely well. Vigorous, disease resistant. 60c each.

CHARLES P. KILHAM. H.T. Large flowers of brilliant orange red, suffused scarlet. Vigorous grower. A very outstanding rose, which has been awarded numerous medals. 75c each.

CLIMBING LUXEMBOURG. Cl.H.T. A sport of Luxembourg which originated in our own nursery and is being offered this year for the first time. A very vigorous climbing rose which blooms constantly throughout the season. Bud long-pointed, large, deep pinkish orange; flower light pinkish rouge. 30 to 36 petals. An excellent new climber which we highly recommend. \$1.00 each. Quantity limited.



ETOILE DE HOLLAND. H.T. A very deep velvety crimson rose; beautiful both in bud and full blown. A vigorous grower. Probably the best deep red rose for the South. 50 cents each.

LADY FLORENCE STRONGE. H. T. Bud large, long pointed, reddish prawn to violet-old rose, shading at base to yellow and at edge to pink. Flowers lasting. Medium grower. 50 cents each.

LADY MARGARET STEWART. H.T. Bud large long pointed, orange shaded yellow; flowers large double, deep yellow, flushed orange and red. Vigorous grower. A very desirable rose of the newer type. 60 cents each.

MARCIA STANHOPE. H.T. A seedling from Fran Karl Druschki, but more compact habit of growth; bud large, globular. A good pure white rose, extremely fragrant, with blossoms borne severally on long stems. Foliage dark green, disease resistant.

MARION MANIFOLD. Climber. A very vigorous grower bearing flowers of deep rose, borne in clusters.

PRESIDENT HERBERT HOOVER. H. T. An outstanding rose similar to Talisman. Flowers medium size, semi-double, lasting; medium orange except for the two outside petals which fade to a lighter shade. Growth moderately vigorous. Awarded many medals for excellence. 75 cents each.

REV. F. PAGE ROBERTS. H. T. Bud large, long pointed; flowers large, double, yellow with red shadings; a vigorous grower and bloomer. This is a very fine rose worthy of a place in any rose garden. 60 cents each.

SOUV. de H. A. VERSCHUREN. H. T. Bud very long pointed; flower large, full, fragrant. Color cadmium-yellow, passing to orange yellow. Has won numerous Gold Medals at European flower shows. Highly recommended. 75 cents each.



Abelia is becoming a popular hedge

TALISMAN. Medium size bud, long pointed; flower medium size, double, fragrant, golden yellow and copper. Medium strong grower. A most unusual rose which is in great demand. 75 cents each.

WHITE ENSIGN. H. T. Medium size, pointed buds, flowers medium to large, very double, slightly fragrant, white sometimes running to creamy white at base. Medium grower, excellent bloomer. 50 cents each.

PRICES—ROSES ALL VARIETIES
Unless Otherwise Noted

	Each	10
2 yr. budded, postpaid	\$.45	\$4.00

WHITE ROSES

CL. DEVONIENSIS. Cl. T. In bud slightly tinged with pink, but practically pure white when full blown. Flower very large, full, double. A very vigorous climbing rose, excellent for Southern gardens.

ESTELLE PRADEL. H. T. A very prolific pure white rose, borne in large clusters.

KAISERIN AUGUSTA VICTORIA. T. Another excellent pure white rose which does especially well in the lower South. Free and regular bloomer: large blossoms.

MARCIA STANHOPE. See New Roses.

REVE d' Or. Climber. Lovely soft cream blossoms. Plant moderately vigorous. Has a long blooming season.

SILVER MOON. Hardy Climber. Snow white, producing large nearly single blossoms. Very vigorous to 30 feet or more.

WHITE COCHET. The family traits and beauty of the Cochet family are preserved in this rose: white with edges of petals tipped rose. Among the best white tea roses.

WHITE DOROTHY. H. W. Climber. Creamy white, sport of Dorothy Perkins.

WHITE ENSIGN. See New Roses.

WHITE AMERICAN BEAUTY (Frau Karl Druschki) H. P. The regal "White American Beauty." The distinctive form and expression of its bud, half opened state, and maturity, are a three-fold revelation of exquisite charm and beauty. Large flowers of waxy paper white in June; yielding their final outburst with the first signs of fall.

WHITE KILLARNEY. Sport of the well-known Killarney. Very beautiful in bud; quite satisfactory rose.

YELLOW ROSES

We are listing here the best Yellow Roses for Southern gardens. Although there are a great many varieties of yellow roses, the number which will succeed in the South is quite limited. We therefore are listing only those which we know absolutely will give satisfaction.

ALEXANDER HILL GRAY. T. (Yellow Maman Cochet.) A medium size bud producing large, full, open flowers lemon-yellow. A moderate grower. It blooms continually from April through October.

LADY BANKSIA. Climber. Flowers small to medium, open, full, deep golden yellow. Borne profusely in clusters. One of the most showy climbing roses for the South. Blooms in early spring.

LADY HILLINGDON. T. Apricot-yellow, especially beautiful in the bud; free bloomer, strong grower.

LADY MARGARET STEWART. See Novelties.

LUXEMBOURG. H. T. One of the very best yellows of the new hybrid teas. A deep golden yellow, very attractive both in its pointed bud and as an open flower.

MARECHAL NEIL. Climber. An old favorite which needs no description.

MARIE VAN HOUTTE. T. Bud large, pale, buff yellow, streaked with carmine; flowers large double; lasts well. A vigorous grower and free bloomer.

MRS. DUDLEY CROSS. T. Flower medium size; very pale, with outer petals tinged a soft shell pink. A very vigorous grower. Blooms over long season.

REV. F. PAGE ROBERTS. See Novelties.

SOUV. de H. A. VERSCHUREN. See Novelties.

SUNBURST. H. T. A most excellent yellow rose; blossom deep yellow with shadings of orange; buds long and pointed. One of the most striking roses suitable for Southern gardens.

PINK ROSES

ANTOINETTE REVOIR. H.T. A vigorous grower and bloomer, and one of the most desirable light shell-pink roses.

BETTY U. P. RICHARD. See Novelties.

DOROTHY PERKINS. H. W. Climber. Flowers medium size, full double, fragrant, rose pink; borne in large clusters in early spring.

SHELL PINK RADIANCE. (Mrs. Charles Bell). H.T. Soft-pink with a salmon background. It retains its full globular shape an unusually long period.

FRANK W. DUNLOP. H.T. A prolific pink rose, blooming somewhat on the order of Columbia. Blossoms a rich deep pink, petals when full blown curl back. Profuse bloomer.

MARION MANIFOLD. See Novelties.

MME. CAROLINE TESTOUT. H.T. Bud large, long pointed; flower large, double, moderately fragrant, bright satiny rose, darker center, edges of petals lighter pink. Vigorous grower and bloomer.

PINK RADIANCE. H.T. Extra hardy, vigorous and prolific: one of the best all-around Garden Roses. Its color is a beautiful blending of carmine-rose with shades of opal and copper.

PAUL NEYRON. H.P. One of the best hardy roses ever grown. It blooms intermittently from June to November, on long, smooth.



Lady Hillingdon.

thornless stems, furnishing a vast quantity of uniform flowers 4 to 6 inches across. Color a bright ruddy pink. Particularly good in Autumn.

KILLARNEY QUEEN. H. T. Produces excellent, long, brilliant pink flowers. More vigorous than Killarney.

MAMAN COCHET. Mother of many noted favorites, establishing a type as well known and appreciated as any group in the Tea section. The color is rich, clear pink daintly flushed with silvery rose.

CLIMBING PINK COCHET. A strong climber. Flowers are color and size of bush Maman Cochet.

MADAME BUTTERFLY. H.T. Light shaded pink and yellow. A very richly colored blossom.

Let us landscape your home grounds

COLUMBIA. H.T. Rose-pink, large, double. Shadings of pink become slightly deeper as bud opens.

UNA WALLACE. H. T. Flower double, full, perfectly formed; color a soft even-toned cherry rose. Moderately vigorous grower. 50c each.

WILLOWMERE. H.T. Salmon and shell-pink, with a slight shading of yellow. An excellent flower worthy of being in every garden. This rose is largely taking the place of the over-rated Los Angeles.

PRICES—ROSES, ALL VARIETIES

Size	Each	10
2 year, budded, postpaid.....	\$.66	\$5.50
	.45	4.00

RED ROSES

AMERICAN BEAUTY. H.P. Bud large, globular; flowers very large, double, fragrant, crimson-carmine. Produced on long, strong stems. Vigorous.

BLACK BOY. See novelties.

CLIMBING RED RADIANCE. Cl.H.T. A sport of the bush form. Very vigorous and very good.

ETOILE DE HOLLAND. See novelties.

FRANCES SCOTT KEY. H.T. Crimson; very large and full blooms. exceptionally good in the South.

HADLEY. H.T. Flower very large, double; intensely fragrant; color rich crimson, varying to deep velvety crimson. A good bloomer and vigorous grower.

RED RADIANCE. H.T. The globular, heavy-stemmed "Radiance" duplicated in all respects except color; this sport form being a brilliant crimson.

REINE MARIE HENRIETTE. Climber. ("Red Gloire de Dijon.") Fragrant cherry-red flowers. The plant is vigorous and has a strong climbing habit of growth. Super-abundant bloom early in the season.

ETOILE DE FRANCE. H.T. Blossoms a dark, velvety red, good shape and substance. The best deep red for the lower South.

GRUSS AN TEPLITZ. A shrub rose, very fragrant, with blossom a brilliant velvety crimson. A vigorous grower and bloomer.

LOUIS PHILLIPPE. (Bengal.) Especially adapted for use as a hedge, this lovely rose has small deep crimson blossoms in great profusion in the Spring and Fall.

SENSATION. Buds large, long pointed; flowers of good size, long lasting, scarlet crimson in color, often blooming in clusters. One of the best deep red roses. Especially good in bud. Vigorous grower.

PAUL'S SCARLET CLIMBER. One of the most popular hardy climbers. Large, double, vivid scarlet blossoms produced somewhat in clusters.

PRICES—ROSES, ALL VARIETIES

Size	Each	10
2 year, budded, postpaid.....	\$.66	\$5.50
	.45	4.00

POLYANTHAS

GRUS AN AACHEN. Pol. A very delicate shell pink, bush has somewhat dwarf habit. A good and continuous bloomer.

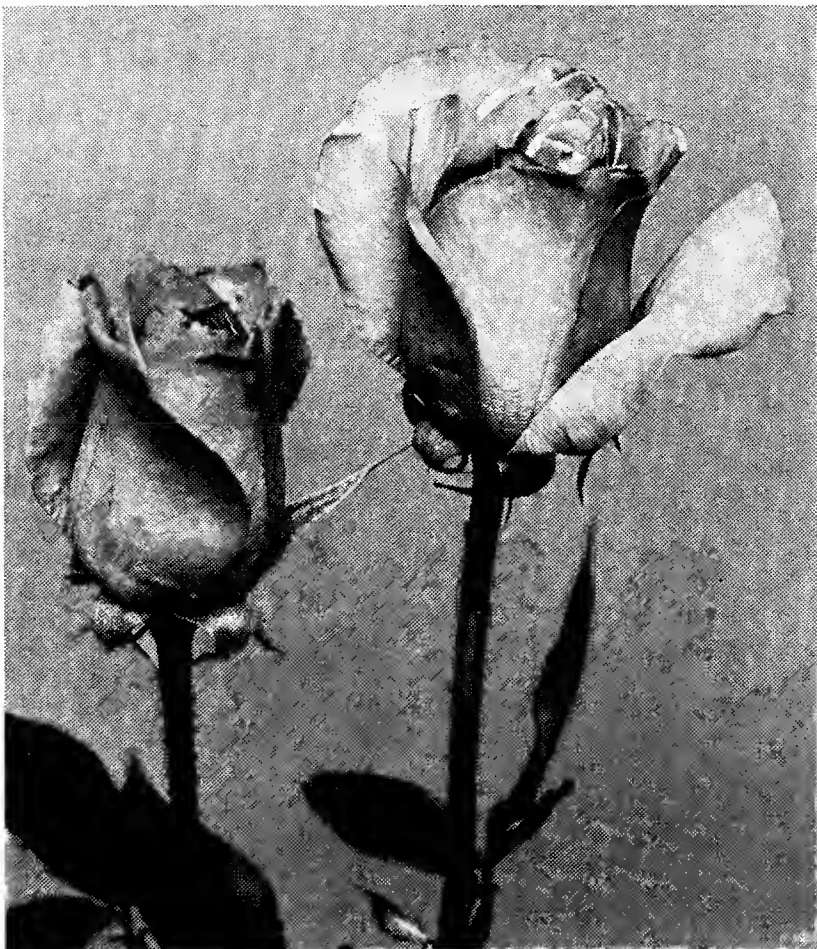
TIP TOP. Pol. A cream rose, buff-yellow at base and edged with pink, with flowers borne in clusters. This little rose is very attractive in bud and when full blown. Blooms freely. 50c each.

EXPLANATION:

The letter following each rose denotes the class or origin to which it belongs: (C.L.) Climbing, (T) Tea, (H.T.) Hybrid Tea, (P) Perpetual, (H.P.) Hybrid Perpetual, (N.) Noisette, (W.) Wichuriana, (H.W.) Hybrid Wichuriana, (Pol.) Polyantha.

Budded, field grown.

Note: All roses are cut back for convenience in packing and shipping.



Luxembourg

. . . . "I believe if a person once has one plant from your place they'll never buy a rose plant any place else. They just do not compare with the ones I've had from other nurseries."—Mrs. T. A. Barrow, Pelham, Ga.

"How to Plant the Home Grounds"

A new booklet, edited by "Chinese" (E. H.) Wilson, famous plant explorer and horticulturist of the Arnold Arboretum, is ready for distribution to our customers desiring it. The booklet pictures and describes the modern trend in beautifying home grounds, and is an excellent guide to modern planters.

You'll enjoy an outdoor living room

BROAD-LEAVED EVERGREENS

THE South is indeed fortunate in the wealth of broad-leaved evergreens which flourish in practically all sections of it. The broad-leaved evergreens are different from the coniferous evergreens in that their leaves are large and glossy. Many of the broad-leaved evergreens have beautiful blooms and berries—a distinct advantage over the conifers. With the use of broad-leaved material one is able to get definite contrasts in color and size of foliage; blossoms over long periods; low growing or tall growing plants as the location demands—in fact, broad-leaved evergreens have all the advantages of conifers without their disadvantages.

There is a distinct tendency on the part of planters in the South to use more Broad-Leaved Evergreens where they formerly used Coniferous Evergreens. Many of the Broad-Leaved Evergreens bloom and are a source of great satisfaction at blooming time. The bloom-

ing season can, by proper selection, be lengthened over a period of several months from spring until midsummer. There are Broad-Leaved Evergreens for every type of planting—tall columnar ones for planting where height is desired, broad symmetrical ones which can be used for places of medium height—in fact, there is some Broad-Leaved Evergreen which will fit any required place. The group as a whole has the added advantage of standing pruning exceptionally well, so that they may be kept under control, and not allowed to become too large.

The Broad-Leaved Evergreens are also excellent for the shrub border, for screening out undesirable views, and for use as specimen plants. There is not a more versatile group. You will find listed below plants of every type and habit to fill any requirements you may have in your planting.

ABELIA

ABELIA GRANDIFLORA. Succeeding over a very wide range of climatic and soil conditions, in sun and in shade, this beautiful evergreen is probably the most satisfactory of the broad-leaved group. An excellent plant for hedge work. Although a very vigorous grower, it will stand any amount of pruning. A hardy evergreen with glossy, dark green foliage. Has profusion of white funnel-shaped flowers, tinted with pink, borne in clusters from May until late autumn. Valuable for foundation planting, grouping on the lawn, etc.

PRICES

Size	Each	10
3 to 4 feet, bare root.....	\$.55	\$5.00
2 to 3 feet, bare root.....	.45	3.50
18 to 24 in. bare root, postpaid	.35	2.50
12 to 18 in. bare root, postpaid	.25	2.25
10 to 12 in. bare root, postpaid	.20	1.50
Specimen Plant, B.&B.....	1.50



Glossy Abelia

BANANA SHRUB

MICHELIA FUSCATA. With deep rich green leaves and blossoms of the odor characteristic of bananas, the Banana Shrub has long been a favorite in the South. Ultimate height about 15 feet. Comparatively slow grower.

Size	Each
12 to 18 inch, field grown plants, postpaid....	\$1.50
5-inch pots, postpaid.....	1.00
4-inch pots, postpaid.....	.75

BOXWOOD

BUXUS SUFFRUTICOSA. Truedwarf box. Leaves small, rounded; deep lustrous green; very slow grower; excellent for edging beds and walks. In the lower South should be planted in two-thirds shade.

Size	Each
12 to 15 inches, postpaid.....	\$1.50
10 to 12 inches, postpaid.....	1.00

CAMPHOR

CINNAMOMUM CAMPHORA. This is an unusually attractive evergreen with bright, evergreen foliage. It is seldom that one finds a tree or shrub which provides such beautiful color changes. The new growth is a wine color

which changes to various other tones until it reaches a dark, glistening green. In fall the older leaves turn a bright red. If allowed to develop naturally will make a broadly rounded cone, branching clear to the ground. Foliage compact. Suitable for windbreaks, hedges or screens. Hardy in the South.

PRICES

Size	Each	10
4 to 5 feet, heavy.....	\$1.25	\$10.00
3 to 4 feet, postpaid.....	1.00	8.00
2 to 3 feet, postpaid.....	.75	6.50

CHERRY LAUREL

LAUROCERASUS CAROLINIANA. Excellent for screen, as it is a fast growing, erect evergreen; also for formal work, since the cherry laurel stands pruning especially well. Leaves large, deep green, bright and shiny. Grows to a height of around 30 feet when mature.

PRICES

Size	Each	10
4 to 5 ft., B.&B.	\$1.75	\$15.00
3 to 4 ft., B.&B.	1.50	12.50
2 to 3 ft., B.&B.	1.00	7.50
18 to 24 in., B.&B.75	6.00
12 to 18 in., B.&B.55	5.00

It's not a home until it's planted

CLEYERA

CLEYERA JAPONICA. An excellent evergreen with thick waxy leaves and creamy white fragrant blossoms. Well covered with red berries in winter. A slow grower with an ultimate height of 10 to 12 feet.

Size	Each
2 to 3 feet, well branched.....	\$1.50
18 to 24 inches.....	1.25

COTONEASTER

COTONEASTER PANNOSA. A handsome evergreen shrub with graceful, slightly drooping branches. Leaves gray green on top, silvery underneath. Ultimate height 6 feet. Great masses of dull red berries, which remain all fall and winter, follow its white blossoms in spring.

Size	Each
4 to 5 feet, B.&B.....	\$1.75
3 to 4 feet, B.&B.....	1.50
2 to 3 feet, B.&B.....	1.00
18 to 24 inches, B.&B.....	.60

ELEAGNUS

ELEAGNUS SIMONI. Of same habit of growth as *Eleagnus Pungens*, but having rather large silvery grey leaves, with few brown scales beneath. By pruning can easily be kept formal. Quite desirable in the lower South.

Size	Each
2 to 3 feet.....	\$1.00
18 to 24 in.....	.75

GARDENIA FLORIDA

GARDENIA! The epitome of immortal flowers. All the romance of the flower world is garnered in the conception of its exquisite snow-white, wax-like petals, its glazed dark-green foliage and its perfume, which literally permeates the air. Gardenias add that all-important finishing touch to your garden, your home, and your costume. Can you afford to be without them?

2-3 ft., \$1.25 each; 1½-2 ft., \$1.00 each.

JASMINE

JASMINUM PRIMULINUM. A graceful drooping evergreen with dark green leaves. Produces large yellow flowers in early Spring. 1-year plants, field grown, postpaid 50c each; 2 year heavy plants 75c each.

LIGUSTRUM

LIGUSTRUM OVALIFOLIUM. (California Privet.) Being of stiff habit of growth, this plant makes a very desirable hedge and is much used for this purpose. Small dark green leaves. Stands shearing well and can be sheared to any desired shape. Ultimate height, if un-sheared, 15 feet. 3 to 4 feet 25c each, \$2.00 per ten. 18 to 24 inch 10c each, 75c per ten.

LIGUSTRUM OVALIFOLIUM VARIEGATA. An excellent strong growing shrub with variegated leaves. Grows to a height of 12 to 15 feet. Will stand severe pruning, however, and can be kept at any desired height.

PRICES

Size	Each
2 to 3 feet.....	\$.75
18 to 24 inch, postpaid.....	.50
15 to 18 inch, postpaid.....	.35
8 to 12 inch, from beds, postpaid.....	.25

LIGUSTRUM IWATA. A comparatively new evergreen privet having glossy green leaves with light center. Of very compact habit, this plant is desirable in any foundation planting, as well as the shrub border, or for screening.

Ultimate height, about 10 feet. Prices same as *Ligustrum Japonicum*. Sizes up to 3 feet.

LIGUSTRUM LUCIDUM. An excellent tall growing evergreen, especially suited for corners and for screening. Can be grown into a small tree. Has large, deep green leaves, white flowers in panicles which are followed by attractive purple berries.

PRICES

Size	Each
6 to 8 feet, bare root.....	\$1.50
5 to 6 feet, bare root.....	1.25
4 to 5 feet, bare root.....	1.00
3 to 4 feet, bare root.....	.75
2 to 3 feet, bare root.....	.35
18 to 24 inch.....	.25

Balled and burlapped, add 50 per cent to the above prices.

LIGUSTRUM JAPONICUM. Among the best Ligustrums. Deep, glossy green leaves, slightly smaller than *L. Lucidum*. This plant is a very compact, symmetrical grower, and does well either in shade or sun. Early in May it has panicles of white flowers, which are followed by large clusters of black berries. The berries remain throughout the winter. An excellent plant for grouping and foundation planting. Stands pruning well. Ultimate height, 15 to 20 feet.

PRICES

Size	Each
3 to 4 feet B.&B.....	\$2.00
2 to 3 feet B.&B.....	1.25
18 to 24 in., B.&B.....	1.00
12 to 18 in., B.&B., postpaid.....	.75

Size	Each
8 to 12 in., from beds, postpaid \$.30	\$2.50

NANDINA

NANDINA DOMESTICA. (Heavenly Bamboo). A most striking plant in fall and winter, when the normally green leaves turn a deep crimson. Mature plants have large clusters of brilliant scarlet berries which hang on well after Christmas. A beautiful upright growing shrub, doing well in either sun or shade. Particularly desirable when planted in front of green foliaged plants.

PRICES

Size	Each
3 to 4 feet, heavy.....	\$2.00
2 to 3 feet, field grown.....	1.50
18 to 24 in., B.&B., field grown.....	1.00
12 to 18 in., B.&B.....	.75
8 to 12 in., B.&B.....	.50

PHOTINIA

PHOTINIA GLABRA. The young leaves are a brilliant scarlet, gradually turning to green. The plant is covered from spring until fall with enough young growth to give the whole plant a decided scarlet color. Flowers quite large.

PRICES

Size	Each
2 to 3 feet, B.&B.....	\$1.50
18 to 24 inches B.&B.....	1.00
12 to 18 inches B.&B.....	.75

Please note **Ligustrum** descriptions carefully. **Ligustrum Lucidum** has formerly been erroneously listed by many firms as **Ligustrum Japonicum**, and **Ligustrum Japonicum** (Wax leaf **Ligustrum**) as **Ligustrum Lucidum**.

For Southern gardens plant Wight-grown evergreens

PHOTINIA SERRULATA. Very desirable for foundation planting or the shrub border. Its large corymbs of white flowers are outstanding in the spring. In the fall much of its foliage takes on varying hues of red. Our particular strain has ruffled, holly-like leaves which are unusually attractive.

PRICES

4 to 5 feet B.&B.....	\$1.50
3 to 4 feet B.&B.....	1.25
2 to 3 feet B.&B.....	1.00
18 to 24 inches.....	.75

PITTOSPORUM

PITTOSPORUM TOBIRA. The medium size, rounded, dark green leaves of this variety of Pittosporum are lovely. Produces small inconspicuous, cream colored flowers, delightfully fragrant. A fast growing shrub which stands shearing well. Much used in foundation planting.

PRICES

Size	Each
24 to 30 inch B.&B.....	\$2.00
18 to 24 inch B.&B.....	1.50
15 to 18 inch B.&B.....	1.00
12 to 15 inch B.&B.....	.75
10 to 12 inch B.&B., postpaid.....	.70
4-inch pots, postpaid.....	.60

VARIEGATED PITTOSPORUM. (Pittosporum Tobira Variegatum). Similar in habit of growth to above variety, but with light green leaves variegated with white. Excellent in the North as a house plant. Planted extensively out of doors in the lower South.

PRICES

Size	Each
4-inch pots, 10 to 12 inch, postpaid.....	\$.75

PYRACANTHA

PYRACANTHA. Commonly called Fire Thorn. The Pyracanthas are outstandingly beautiful in the fall and winter when literally covered with bright colored berries. It may be had in several varieties, depending on the color of fruit and habit desired in the plant.

PYRACANTHA CRENULATA. Leaves narrow, leathery bright green; fruit bright orange-red. Hangs on during the winter and are attractive to birds.

PYRACANTHA FORMOSANA. One of the most thrifty Pyracanthas. Compact, fast growing, with small holly-like leaves and red berries formed in enormous clusters in late summer and hang on during the winter. Ultimate height 15 feet.

PYRACANTHA YUNNANENSIS. Of a lower, more spreading habit than P. Formosana. Leaves larger, being 2 to 3 inches long. Berries bright coral-red, small. One of the most satisfactory Pyracanthas.

PRICES—ALL PYRACANTHAS

Size	Each
5-inch pots, postpaid	\$.75

TEA OLIVE

OSMANTHUS FRAGRANS. A large growing shrub having glossy foliage and producing small white flowers, valuable for their delightful fragrance. Long blooming period. Attains a height of about 20 feet. Should have partial shade when starting.

PRICES

Size	Each
2 to 3 feet, boxed	\$2.00
18 to 24 inches, field grown	1.50
12 to 15 inch plant, 4-inch pot75

TEA PLANT

THEA BOHEA. The leaves of this plant are used for making the tea of commerce. A beautiful low growing winter blooming shrub which produces attractive white flowers. Dark green foliage, dense, and stands shearing well.

PRICES

Size	Each
2 to 3 feet, B.&B.	\$1.25
18 to 24 inch, B.&B.	1.00
15 to 18 inch, bushy, postpaid75

VIBURNUM

VIBURNUM ODORATISSIMUM. (Sweet Viburnum.) An evergreen shrub succeeding all over the lower South. Leaves large and glossy green. Fragrant white flowers appear in the late Spring. Attains a height of 8 to 10 feet. Good in partial shade.

VIBURNUM JAPONICUM. (V. Macrophyllum). Recently introduced from California, this plant is proving very valuable in the lower South. Of about the same hardiness as V. Odoratissimum. Of dwarf growth, leaves thick, heavy dark green. Very compact. Excellent for foundation planting. Maximum height about 6 feet.

VIBURNUM SUSPENSUM. (Sandankwa Viburnum). Of spreading habit, this shrub has large dark green leaves with ruffled edges. Fragrant cream-colored flowers borne in profusion. Stands shearing well and can be kept as low as desired, although its ultimate height is only about 8 to 10 feet.

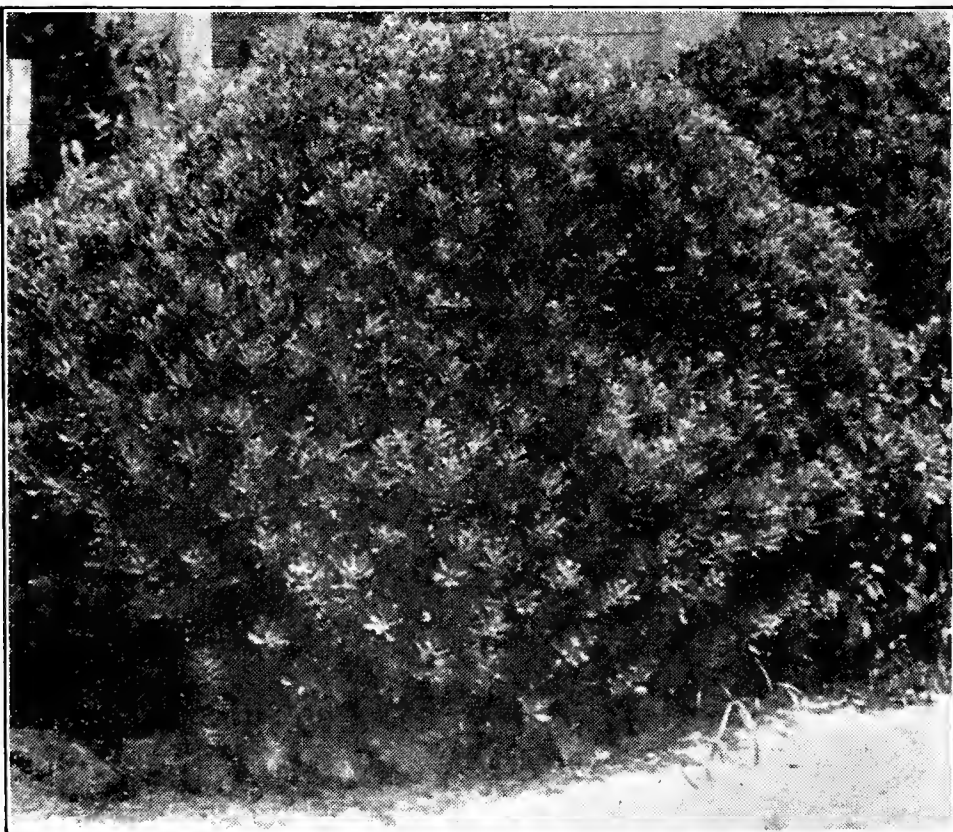
PRICES ABOVE THREE VARIETIES

Size	Each
3 to 4 feet, B.&B.....	\$1.75
2 to 3 feet	1.50
18 to 24 in., B.&B.	1.00
15 to 18 in., B.&B.85
12 to 15 in., B.&B.75
6 to 12 in., from beds, postpaid..	.35

VIBURNUM TINUS. An upright growing, columnar evergreen, much used in locations requiring height without much spread at the base. The foliage is small and of deep green color. Cream colored blossoms are quite attractive. Of comparatively slow growth.

PRICES

Size	Each
12 to 15 inches, postpaid	\$1.00
10 to 12 inches, postpaid75
8 to 10 inches, postpaid60



Pittosporum Tobira.

Plan to plant another tree

CONIFEROUS EVERGREENS

Wherever formality and dignity are required in the garden nothing serves quite so well as to do the Coniferous Evergreens. The tall stately Cedrus Deodara is a source of joy and admiration wherever it is seen. It is especially good as a specimen on the lawn. The Oriental Arborvitae may be used as specimens also, and are excellent as screens. Berckman's Golden Arborvitae is a favorite for planting around entrances, or wherever low Pyramidal Arborvitae are required. Pfitzer Juniper is becoming more popular each year for use in front of upright growing plants. Pfitzer Juniper has a delightful habit of spreading close to the ground. These are but a few of the Conifers which will give you great pleasure in your garden. They are more accurately described below.

ARBORVITAE

AMERICAN ARBORVITAE (Thuja Occidentalis.) An erect form of arborvitae, adapted to a wide range of soils and conditions. Does not burn out in the South like some varieties. Ultimate height 15 to 20 feet.

PRICES	
Size	Each
2 to 3 feet, B.&B.....	\$1.00
18 to 24 inch, B.&B.....	.75

BAKER'S ARBORVITAE. (Thuja Orientalis Bakers). A tall pyramidal arborvitae with bright green foliage. The deep green color is retained both winter and summer.

PRICES	
Size	Each
3 to 4 feet, B.&B.....	\$2.00
2 to 3 feet, B.&B.....	1.50
18 to 24 inch, B.&B.....	1.00
12 to 18 inch, B.&B.....	.75

BERCKMAN'S GOLDEN ARBORVITAE (Thuja Orientalis Aurea Nana). One of the best-known and most desirable dwarf arborvitae. Compact and symmetrical. Leaves are deep green, with golden tinted tips.

PRICES	
Size	Each
18 to 24 inch, B.&B.....	\$1.75
15 to 18 inch, B.&B.....	1.50
10 to 12 inch, B.&B., postpaid.....	1.00
8 to 10 inch, postpaid.....	.75
6 to 8 inch, postpaid.....	.60

BLUE GREEN ARBORVITAE. (Thuja Orientalis Glauca). Closely resembles the Rosedale Arborvitae, but has a slightly deeper blue green color. Very satisfactory in the South.

PRICES	
Size	Each
3 to 4 feet B.&B.....	\$1.50
2 to 3 feet B.&B.....	1.25
18 to 24 inch B.&B.....	1.00
12 to 18 inch B.&B.....	.75

BONITA ARBORVITAE. (Thuja Orientalis Bonita). A compact, dwarf, cone-shaped arborvitae with attractive deep green foliage; a little broader at the base than Berckman's Golden Arborvitae.

PRICES	
Size	Each
12 to 15 inch B.&B.....	\$1.25
8 to 12 inch B.&B.....	1.00

GLOBE ARBORVITAE (Biota Globosa). A dwarf arborvitae which gets its name from the fact that it grows in the shape of a globe, dense, dark green foliage which turns bronze in the winter. Desirable for foundation planting in front of other evergreens, and for pots or tubs.

PRICES	
Size	Each
2 to 3 feet spread, B.&B.....	\$1.25
18 to 24 inch spread, B.&B.....	1.00

ORIENTAL ARBORVITAE (Thuja Orientalis). Seedlings. Tall, loose growing types, growing to make large trees. Broad at the base, pyramidal. Beautiful dark green foliage. Will stand shearing well. Sometimes used for hedges, often for screening and windbreaks.

PYRAMIDAL ARBORVITAE. (Thuja Orientalis Pyramidalis). Selected seedlings true to type. Not so spreading as T. Orientalis. Probably the South's best coniferous evergreen. Blue green foliage; grows tall, stately.

PRICES ABOVE TWO VARIETIES	
Size	Each
6 to 8 feet, B.&B.....	\$2.50
5 to 6 feet, B.&B.....	2.00
4 to 5 feet, B.&B.....	1.50
3 to 4 feet, B.&B.....	1.00
18 to 24 inch, B.&B.....	.75

THUJA ROSEDALE. Leaves a rich blue-green color, which is very pleasing. A fast-growing plant which is quite satisfactory in the smaller sizes. Excellent where an immediate formal effect is desired at a moderate cost.

PRICES	
Size	Each
18 to 24 inches, B.&B.....	\$1.25
12 to 18 inches, B.&B.....	1.00
10 to 12 inches, B.&B.....	.75



Podocarpus Sinensis.

Your grounds are an important part of your home



Cedrus Deodara on Left, Italian Cypress in Center, Oriental Arborvitae on Right

CEDAR

DEODAR CEDAR (*Cedrus Deodara*). A favorite wherever a tall stately specimen plant is wanted. Beautiful upright growing cedar with silvery blue-green foliage. Very graceful. Unsurpassed for a specimen plant.

PRICES

Size	Each
6 to 8 feet, B.&B.	\$4.50
5 to 6 feet, B.&B.	4.00
4 to 5 feet, B.&B.	3.50
3 to 4 feet, B.&B.	2.50
2½ to 3 feet, B.&B.	2.00
2 to 2½ feet, B.&B.	1.50
1½ to 2 feet, B.&B.	1.00

ATLAS CEDAR (*Cedrus Atlantica*). Foliage similar to Deodar Cedar but little shorter and stiffer. Not quite as fast a grower as Deodar. May be used in same way, however.

PRICES

Size	Each
4 to 5 feet, B.&B.	\$2.00
3 to 4 feet, B.&B.	1.75
2 to 3 feet, B.&B.	1.50

ITALIAN CYPRESS

CUPRESSUS SEMPERVIRENS PYRAMIDALIS. Very attractive, columnar growth. Reaches a height of 40 to 50 feet, but never spreads very much at the bottom. Excellent for planting in front of columns, pillars, etc.

PRICES

Size	Each
3 to 4 feet, B.&B.	\$2.00
2 to 3 feet, B.&B.	1.50
18 to 24 inch, B.&B.	1.25

LARGE SPECIMENS

We have many large specimen plants in most varieties which are not listed in this catalogue. They are especially desirable for large landscape projects where an immediate effect is desired. Let us quote you special prices on your planting lists.

JUNIPERS

ENGLISH JUNIPER (*Juniperus Communis*). One of the best junipers; hardy, erect; columnar in some forms. Foliage very attractive.

PRICES

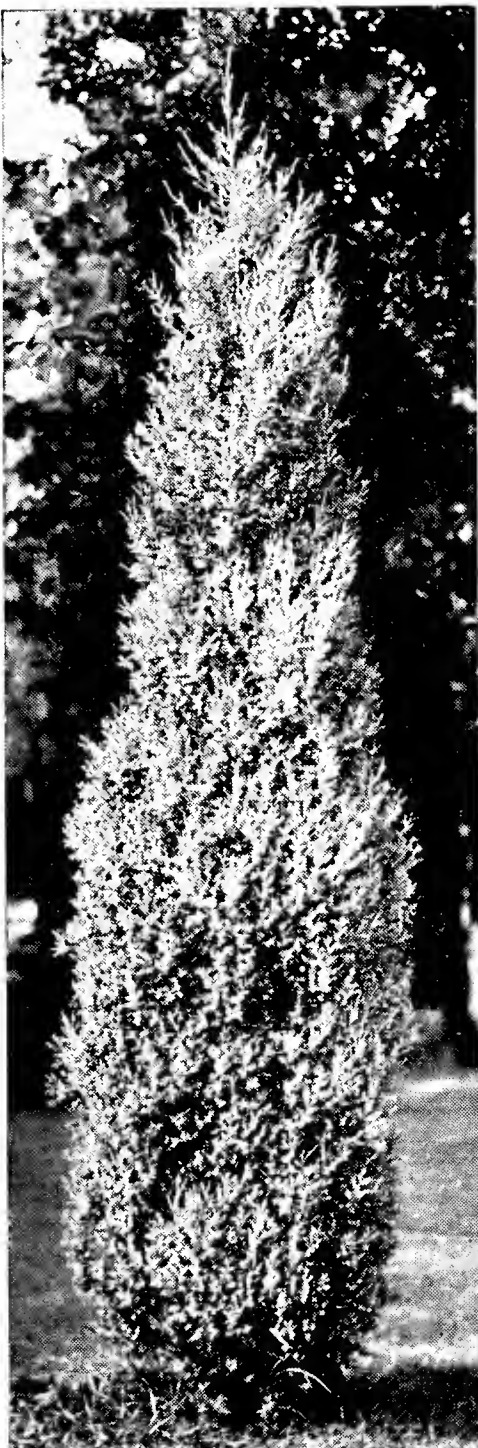
Size	Each
4 to 5 feet, B.&B.	\$2.00
3 to 4 feet, B.&B.	1.50
2 to 3 feet, B.&B.	1.25
18 to 24 inch, B.&B.	1.00
12 to 18 inch75



Deodar Cedar

Blooming shrubs add attractiveness and color

JUNIPERS—Continued



English Juniper

PFITZER JUNIPER (*Juniperus Chinensis Pfitzeriana*). An excellent new Juniper of spreading habit. Very attractive grey-green foliage. Valuable for foundation planting where a low spreading plant is needed, and for planting in front of other conifers.

TRAILING JUNIPER (*Juniperus Chinensis Procumbens*). A low trailing Juniper, somewhat similar to Pfitzer Juniper, but lower growing and with shorter branches. Excellent for a ground cover or for planting in front of the taller growing conifers.

PRICES ABOVE TWO VARIETIES

Size	Each
12 to 18 inches spread	\$1.50
8 to 12 inch spread	1.25

JUNIPERUS VIRGINIANA GLAUCA. An excellent silvery blue-green type of Virginia cedar. Loose habit of growth.

PRICES

Size	Each
2 to 3 feet	\$2.00
18 to 24 inch	1.50
12 to 18 inch, postpaid	1.25

PODOCARPUS

PODOCARPUS SINENSIS. An attractive introduction from Japan. One of the largest of all the conifers. Foliage deep green. Grows to a height of 40 to 50 feet. Our plants are not allowed to send up but one shoot from the ground, and are staked to make attractive specimens. See Illustration page 13.

PRICES

Size	Each
4 to 5 feet, B.&B.	\$2.50
3 to 4 feet, B.&B.	2.00
2½ to 3 feet, B.&B.	1.75
2 to 2½ feet, B.&B.	1.50

RETINISPORA

CHAMAECYPARIS PLUMOSA AUREA (Golden Plumed Retinispora). One of the best and most desirable Chamaecyparis. Vigorous grower, tall and stately. Retains its golden green color. Very desirable.

PRICES

Size	Each
4 to 6 feet, B.&B.	\$2.00
3 to 4 feet, B.&B.	1.50
2 to 3 feet, B.&B.	1.25
18 to 24 inch, B.&B.	1.00
15 to 18 inch, B.&B.75

RETINISPORA SQUARROSA VEITCHII (*Chamaecyparis Pisifera Squarrosa Veitchii*). "Pyramidal but irregular outline together with fine soft foliage of silvery blue-green arranged in billowy masses of clouds gives highly artistic effects to your garden."

PRICES

Size	Each
3 to 4 feet, B.&B.	\$2.50
2 to 3 feet, B.&B.	2.00
12 to 18 inches	1.50
10 to 12 inches, B.&B., postpaid.....	1.25



Retinispora Squarrosa Veitchii

Write for prices on large specimen plants

ORNAMENTAL TREES

CHINESE ELM

(**ULMUS PUMILA**). This fast growing shade tree is being very widely planted all over the country, due to the fact that it adapts itself well to extremes of heat, and cold, drought, and alkali soils. Almost sure to succeed wherever planted.

PRICES

Size	Each
10 to 12 feet	\$1.00
8 to 10 feet90
6 to 8 feet80
4 to 5 feet, postpaid60
3 to 4 feet, postpaid50

LOQUAT (*Eriobotrya Japonica*). A shrub or small tree having large deep green leaves. Hardy out doors south of Charleston, and excellent for a house plant anywhere in the United States. In very mild climates produces delicious yellow edible fruit; grown largely for its handsome foliage.

PRICES

Size	Each
4 to 5 feet	\$1.50
3 to 4 feet	1.25
2 to 3 feet, field grown.....	1.00
15 to 18 inch, from pots, postpaid.....	.75

MAGNOLIA GRANDIFLORA. The native Magnolia so popular in the South. Large deep green, lustrous leaves which are evergreen; large white flowers blooming from April

through August. Ultimate height, 50 to 75 feet. A most desirable tree, either for specimen or group planting.

PRICES

Size	Each
6 to 8 feet specimens, B.&B.	\$4.00
5 to 6 feet	2.50
4 to 5 feet	2.00
3 to 4 feet	1.50

JAPANESE MAGNOLIA (*Magnolia Soulangeana Purpurea*). One of our most magnificent shrubs or small trees. Deciduous; in March, before the leaves appear, it is covered with large cup-shaped purple flowers which last for several weeks. Exquisite as a specimen plant or in the shrub border. Grows to 25 feet.

PRICES

Size	Each
3 to 4 feet	\$3.50
2 to 3 feet, postpaid	2.50
1½ to 2 feet, postpaid	2.00

WEeping WILLOW

SALIX BABYLONICA. The large spreading top and long, drooping branches of Weeping Willow makes it very picturesque. It thrives in wet or dry soils.

PRICES

Size	Each
4 to 5 feet, postpaid	\$.75
3 to 4 feet, postpaid60
2 to 3 feet, postpaid50

RED BUD (*Cercis Canadensis*). Very spectacular in early spring, before the leaves appear, when the tree is covered with a mass of reddish-purple flowers. Fast growing, well shaped tree with large heart-shaped leaves.

PRICES

Size	Each
4 to 5 feet	\$.60
3 to 4 feet50

DOGWOOD (*Cornus Florida*). The surest sign of spring in the South is the blossoming of the lovely dogwood. Striking in the fall with its many-colored Autumn leaves and red berries. Altogether the most desirable flowering tree. Our nursery-grown trees have far better root system than woods-grown trees and will give better results.

PRICES

Size	Each
6 to 7 feet	\$3.00
5 to 6 feet	2.50
4 to 5 feet	1.75
3 to 4 feet	1.25



Japanese Magnolia

Pecans not only add beauty to the home grounds, but will also add increased income. Plant them about your home. See pages 20-22.

Complete your home with vines

ORNAMENTAL FLOWERING SHRUBS

FLOWERING SHRUBS. Color has invaded every part of the home, some parts of which were once dull and drab. But color has always been a prominent factor in the flower garden. With the ever increasing popularity of the outdoor living room, the flowering shrubs have again come into their own. The general scheme is to use the Broad-Leaved Evergreen for the back-ground and for screening out undesirable views, and to depend largely on our excellent flowering shrubs to give the succession of vivid colors which make the shrub border of the outdoor living room always a place of joy and beauty. Pearl Bush, Golden Bell and Thunbergi Spiraea are among the first to open their lovely blossoms to welcome spring. Flowering Peach, the Bush Honeysuckle and Spiraea Van Houttei follow close on their heels. The delightful fragrance of Bush Honeysuckle and the dainty pink and deep red of Flowering Peach, make late spring one of the most delightful times in the garden. As the earlier spring flowering blossoms begin to disappear Deutzia comes along with a profusion of dainty, pinkish white blossoms.

When summer becomes hot and sultry, and most annuals and perennials are gone, the shrub border would become quite drab and uninteresting were it not for Althea and Crape Myrtle. Althea may be had in double white, double purple or the loveliest of shell pink. It seems to rival Crape Myrtle in the length of the blooming season. The popular dwarf red Crape Myrtle is practically indispensable at this season of the year.



Anthony Waterer Spiraea

Don't miss the joys of these flowering plants in your garden. All are inexpensive and at home in practically any soil.

PRICES ALL DECIDUOUS FLOWERING SHRUBS

	Each	10
1 yr. plants	\$.25	\$2.00
2 yr. plants, heavy50	4.50
3 yr. plants, extra heavy65	6.00

Wight-Grown means grown right

ALTHEA (*Hybiscus Syriacus*). A free blooming late summer shrub; upright. Ultimate height 8 to 10 feet. Colors: Double White, Double Purple, Shell Pink.

BUTTERFLY BUSH (*Buddlea*). The long racemes of violet blossoms are especially attractive to butterflies. Blooms from June until frost.

GRAPE MYRTLE (*Lagerstroemia Indica*). This truly Southern shrub is not used as much as its beauty deserves. Excellent in the shrub border or as a specimen. Purple and Pink. Our Red Crape Myrtle is an especially fine dwarf strain, having unusually large racemes of deep red flowers.

DEUTZIA (*Pride of Rochester*). An excellent late spring flowering shrub, bearing a profusion of lovely pinkish-white flowers.

GOLDEN BELL (*Forsythia Fortunei*). Its extremely colorful yellow blossoms are one of the first signs of Spring.

BUSH HONEYSUCKLE

LONICERA FRAGRANTISSIMA. Probably the most desirable bush honeysuckle. Attractive deep green foliage, some of which is retained throughout the winter in the latitude of Cairo. Small, inconspicuous white flowers which are very fragrant.

LONICERA MORROWI (*Morrow Honeysuckle*). Produces in April a mass of white flowers, which are followed by very attractive red berries.

LONICERA TARTARICA (*Tartarian Honeysuckle*). Similar to Morrow Honeysuckle, except that blossoms are pink. Blooms in April, followed by red berries.

MOCK ORANGE

PHILADELPHUS CORONARIUS. Also known as English Dogwood. This fine shrub is deservedly popular. Blossoms saucer shaped, white with yellow center. Ultimate height 8 to 10 feet.

FLOWERING QUINCE

CYDONIA JAPONICA. Its habit of flowering in the lower South from December through March makes the Flowering Quince one of the most desirable of flowering shrubs. The blossoms are a deep clear red, appearing all up and down the stem. Ultimate height 3 to 4 feet. Very hardy.

FLOWERING POMEGRANATE

PUNICA GRANTATUM RUBRA. Valuable summer flowering, tall growing shrub. Perfectly hardy in the South. Very profuse bloomer early in May and throughout the summer. Foliage is bright green and flowers a beautiful red.

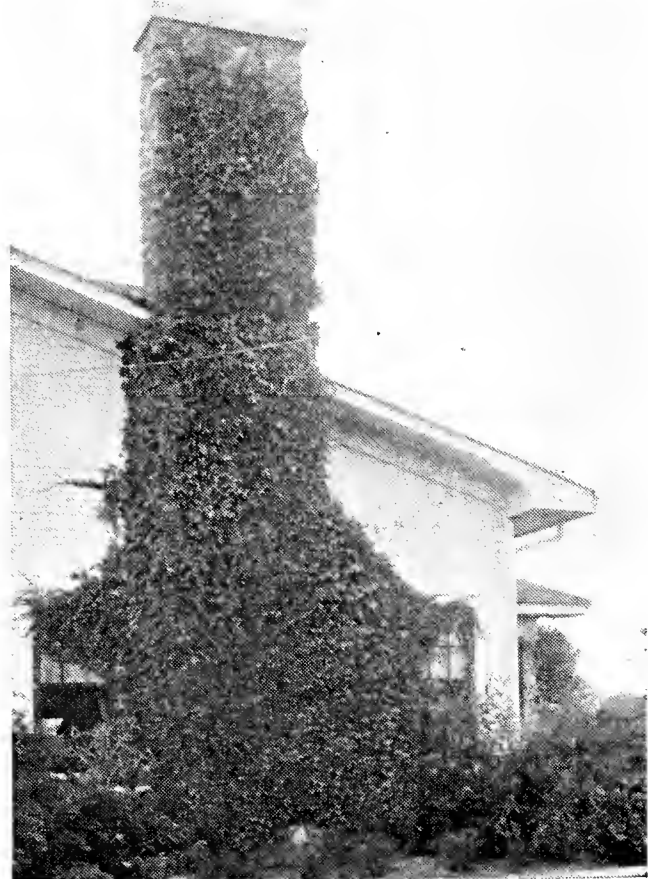
SPIRAEA

SPIRAEA ANTHONY WATERER. A very free flowering shrub growing to a height of about 2 feet. The branches are held upright and the foliage is bright green with variegations of yellow. Bright crimson flowers are borne in dense corymbs throughout the summer and fall. This is a very desirable shrub for the border.

SPIRAEA VAN HOUTTEL. Widely grown favorite with dense foliage. White blooms in early Spring. Leaves persistent to Fall.

SPIRAEA THUNBERGI. A low, bushy plant with very small leaves and star-like flowers in such profusion that in early Spring the plant looks like a mass of snow. In the Fall the leaves color beautifully. Ideal for a low ornamental hedge or border.

CLIMBING VINES



Ivy-covered Chimney

Vines are a very interesting part of the well-planted landscape. They have many uses and lend charm and beauty wherever used.

Perennial vines after they are once established, grow more vigorous each year. Woody vines, such as Wisteria and Fig Vine, grow to be quite old and often cover a large surface. For screening unsightly objects, for softening the lines of entrances and for covering pergolas in the garden, vines are almost indispensable.

CORAL VINE

CORAL VINE (Antignon Leptopus). Often called Mexican Rose. A perennial vine which blooms freely from June until fall. Blossoms a very delicate pink, produced in racemes. A very desirable vine for the South. Fast grower.

Size Each
Two-year, heavy, postpaid.....\$.50

CLIMBING FIG

FICUS PUMILA (Sometimes catalogued Ficus Repens). This lovely evergreen vine clings very closely to any surface on which it climbs. Excellent on chimneys or masonry. Hardy south of the latitude of Montgomery, Ala.

PRICE
Size Each
4-inch pots, postpaid.....\$.50

ENGLISH IVY

HEDERA HELIX. English Ivy, with its dark green leaves, is excellent for covering brick walls, stumps, or any location where it is desirable to have an evergreen vine. Often used as a ground cover.

PRICE
Size Each
4-inch pots, postpaid.....\$.50

KUDZU

KUDZU (Pueraria Thunbergiana). An exceedingly fast growing vine. Suitable where one requires a vine for very quick shade; difficult, however, to keep from spreading. Best known and used most extensively as a hay crop. (See page 28.)

PRICE
Size Each 10 1000
Roots\$.15 \$1.00 \$15.00

CONFEDERATE JASMINE

TRACHELOSPERNUM JASMINOIDES (also known as Rhynchospermum Jasminoides). The fragrance, in early Spring, of the starry white blossoms of Confederate Jasmine is long to be remembered. Evergreen; leaves dark green.

PRICE
Size Each
4-inch pots, postpaid.....\$.75

YELLOW JESSAMINE

CAROLINA YELLOW JESSAMINE (Gelsemium Sempervirens). A hardy, woody twiner whose brilliant, tubular, yellow flowers are one of the first indications of the coming of Spring. Glossy evergreen foliage.

PRICE
Size Each
Open ground plants, postpaid.....\$.50

TRUMPET CREEPER

BIGNONIA RADICANS (Tecoma Smithi). A hardy, vigorous, evergreen vine producing, in early Spring, numerous trumpet-shaped orange-red blossoms fully two inches across.

PRICE
Size Each
2-year plants, postpaid.....\$.50

WISTERIA

WISTERIA SINENSIS (Chinese Wisteria). Those who have visited Summerville, S. C., during Azalea time will never forget the lovely Purple Wisteria there, blooming in the top of pine trees 50 feet tall. Wisteria is one of the South's loveliest and showiest vines.

PRICE
Size Each
2-year plants, postpaid.....\$.75



Chinese Wisteria

"It's not a home until it's planted"

BAMBOO

The graceful branches and dainty foliage of the bamboos deserve a prominent place in every garden of the lower South. The clump sorts do not spread as rapidly as do some, and can be readily kept in bounds. For screens and windbreaks they are not surpassed by any other type of plants.

Bamboos will thrive in practically any type of soil if supplied plenty of plant food, and plenty of moisture, although the location must be well drained. Screen that undesirable view with bamboo.

BAMBUSA ARGENTEA. Grows 25-35 feet high. Its long, slender stems slightly drooping from the weight of the masses of deep green foliage, form one of the most graceful plants in the garden. The clump type so much in demand.

BAMBUSA ARGENTEA STRIATA. This variety is a variation of the above, having green stems striped yellow near the base, and with a white stripe down the green foliage. The variation is most pronounced in young plants.

Large clumps, 20 canes and over.....\$2.00 and up
Strong clumps, 12 to 18 canes 1.25 Each
Small clumps, 6 to 10 canes 1.00 Each

PHYLLOSTACHYS AUREA. A running type of bamboo. Ultimate height is 30 to 40 feet. The leaves are an attractive light-green color. The canes make excellent fishing poles, and are used often here in harvesting pecans. Not recommended as an ornamental plant. Although of running type, it can easily be kept under control by digging up runners as they appear. \$1.00 each.

PHYLLOSTACHYS BAMBUSOIDES. (Timber Bamboo.) Another running type making very large canes. At the United States Experiment Station, near Savannah, it reaches a height of 60 feet. The foliage is large and quite attractive. Easily controlled by digging up runners as they appear. \$1.00 each.

PALMS

COCOS AUSTRALIS (Hardy Cocos). Of the few palms which ever have a chance of surviving the winters of South Georgia and Alabama—even Northern Florida—the hardy Cocos Australis is outstanding as the most satisfactory. A very beautiful hardy palm with greyish-green, curved leaves.

PRICES		Each
Size		
2 to 3 feet, from tubs		\$3.50
1½ to 2 feet, from tubs		2.00

CANNAS

KING HUMBERT. Red.
YELLOW KING HUMBERT. Red and yellow.
PRESIDENT. Red.
MRS. A. F. CONARD. Salmon pink.
APRICOT. Apricot.

Price—15c each, \$1.00 per 10, \$5.00 per 100.
Plant November to March. Blooms all summer.

GRASSES

SNAKE'S BEARD (Ophiopogon Japonicus). A dwarf growing grass that is becoming quite popular in the lower South for edging walks and beds, and for ground cover in shady situations. Maximum height, 8 to 10 inches.

PRICES			
Size	Each	10	100
Small divisions, postpaid...\$.15	\$1.25	\$10.00

OPHIOPOGON JABURAN (Liriope Graminifolia). Similar to O. Japonicus but with broader leaves; produces lavender flowers on long spikes which are very attractive. Used for same purposes as O. Japonicus.

PRICES			
Size	Each	10	100
Small divisions, postpaid...\$.15	\$1.25	\$10.00

LANDSCAPE SERVICE

We are very glad to be able to offer to our clients the services of our men experienced in planning and designing plantings for the small home.

Send us the dimensions of your grounds, the outside measurements of the house, the location of fences, trees and other permanent objects (these can be best shown by a rough sketch of the building and grounds), and we shall be glad to make you a drawing suggesting arrangement of landscape and the proper plants to use in each location. If possible, send a small photograph of the building.

We require a deposit of \$10.00 before starting the sketch, the money to be cred-

ited to your account toward the purchasing of nursery stock for the planting. Should you not make the planting, the money will go to us to defray the expense of the drawing.

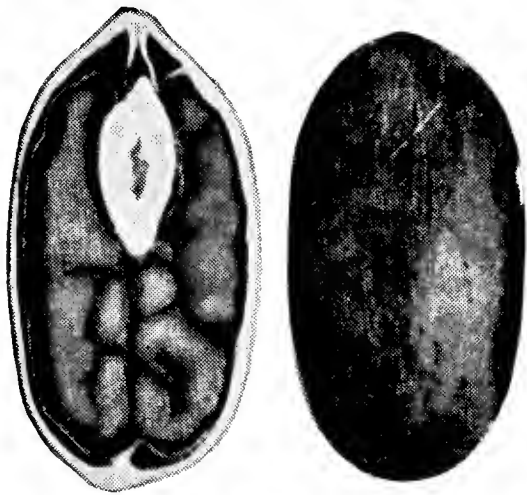
Here is an excellent opportunity to have a real set of landscape plans drawn for your particular lot without the least additional cost to you. Hadn't you rather have your foundation planting, your entrance walks and drives, your rose garden and your outdoor living room planned by experienced landscape men, before you set a single plant, than to plant haphazardly, without any idea how the final result will look? And remember, this service costs you nothing—you simply pay for the plants themselves.

We wish to cooperate with all civic organizations in beautification work. We make special discounts on all purchases for this purpose. We have been called on in the past by Women's Clubs, Garden Clubs, P. T. A.'s, Home Demonstration Agents and Church Organizations, and are heartily in accord with all movements for beautification.

PECANS

A Most Profitable Crop for the South

They Add Value to Your Land



FOR the thoughtful, careful farmer or orchardist, the pecan still stands at the head of the list of profitable tree crops. Many owners of pecan trees have neglected their trees and wondered why they have not gotten good returns, but the careful grower who intelligently cares for his grove and gives them their proper requirements finds his pecan trees one of the most profitable investments he ever made.

The average farmer will still be content with growing cotton and corn, and his land will be worth no more after he has grown them for a hundred years. But the progressive farmer is looking for a crop that will increase the value of his farm land and give him larger returns each year that the farm is worked.

We are in our forty-fifth year as growers of pecan nuts and pecan nursery stock. We have had wide experience in every phase of the industry. The knowledge gained from this experience is available to our customers. There is not sufficient space in this book to include it all here, but much information is available in pamphlet form which we will be glad to send you free on request. Simply check those items in which you are interested on the coupon attached.

A Few Dollars Invested Now May Mean Independence Later

We know of no other thing offering such rich rewards, for which the initial investment is smaller. A comparatively few dollars invested now may bring your independence later.

Do you know that right now, throughout the pecan belt, there are individual trees that are worth from \$500 to \$1,000 each? The value is REAL for it is based on an 8 per cent annual income from these amounts.

Furthermore, when planted about a home they add beauty for the present, and enhance the selling price for the future.

WIGHT NURSERY & ORCHARD CO. Cairo, Georgia

Gentlemen: I am interested in planting { an orchard / my home grounds } to pecan trees. Send me free the following pamphlets on pecan trees:

- () Introducing the Pecan.
- () Pecans are Moneymakers.
- () What They Say.
- () Some Questions Answered in Regard to Pecan Trees.
- () The Management of Pecan Orchards.

NAME

Street or R. F. D.....

City..... State.....

Plant Pecans for profit

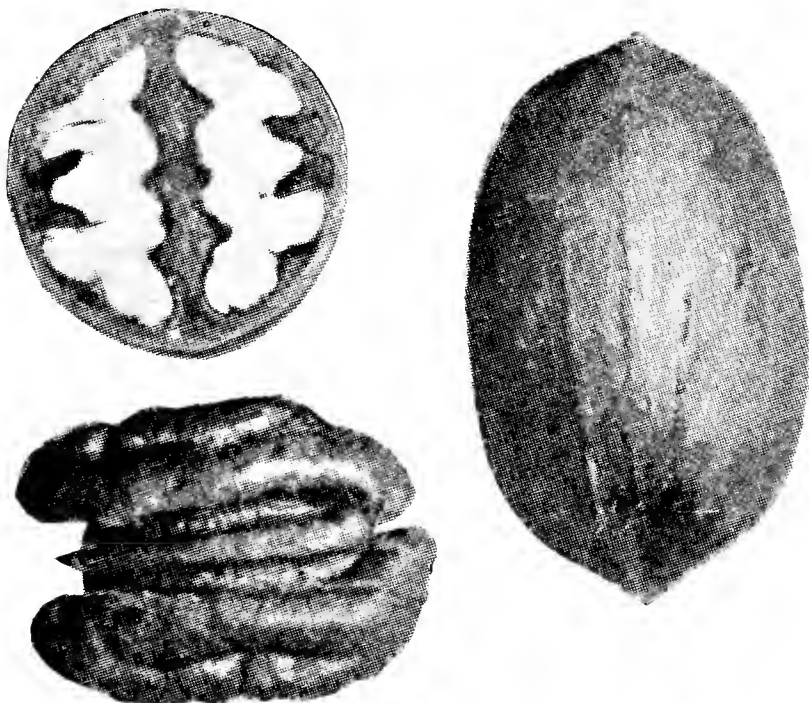
There is little danger of overproduction of pecans during the life of the present generation. The present production of pecans in the United States, if evenly divided between every person in the country, would give only about one-half pound to each person. As it is, barely more than one-half of the people of the United States know what a pecan nut is. It is further to be considered that when our people are provided, that we have the remainder of the world for a market.

After years of trial we have discovered the best stock on which to bud pecan trees in order to grow a vigorous and productive orchard. Our trees are all grown on this stock. Many trees set with inferior (slow growing) trees in the past have been doomed to failure. A runt in the nursery generally proves to be a dwarf in the orchard. We send out no tree that we would not be willing to set out in our own orchards.



Pecan Tree Showing Excellent Root System.

Here Are Our VARIETIES and PRICES



Stuart Pecan

We are testing about forty of the most promising varieties of pecans. The following we consider among the best of these:

FROTSCHER. A large, thin-shelled nut, which has been widely planted. Placed by some at head of list of profitable varieties.

MONEYMAKER. An early and prolific bearer, and a healthy, vigorous grower. It is proving a very profitable commercial variety.

MOORE. Nut of medium size; a vigorous and healthy grower; very early and prolific bearer.

NELSON. This is probably the largest pecan grown. It is a strong, vigorous grower, and an early and abundant bearer. Thick-shelled.

Wight-grown trees give better results

PECANS—Continued

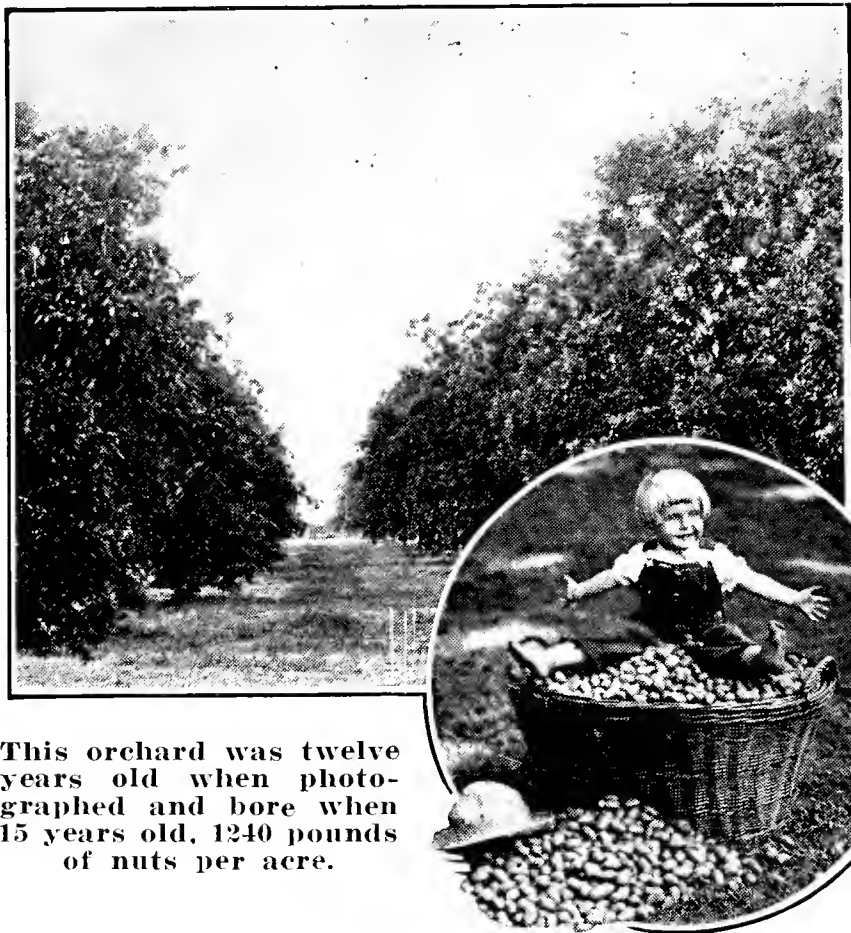
PABST. A safe nut to plant. While not quite as large as some of the above, it is a good bearer and one can hardly make a mistake in setting it.

SCHLEY. This variety is placed by some at the head of the list. It is a large, thin-shelled nut of fine flavor, and is well filled with meat. Liable to scab near the coast.

In quality of meat and thinness of shell it is surpassed by no other variety.

STUART. An old favorite that has been widely tested. This is a variety that can be planted with safety and succeeds over a wider territory than probably any other kind.

SUCCESS. This is a pecan of fine flavor. Originating in Mississippi, it has been widely disseminated during the last few years.



This orchard was twelve years old when photographed and bore when 15 years old, 1240 pounds of nuts per acre.

PRICES PECANS---ORDER TODAY

	Each	10	100	1000
8 to 10 feet.....	\$1.00	\$7.50	\$70.00	\$650.00
7 to 8 feet.....	.75	7.00	65.00	600.00
6 to 7 feet.....	.70	6.50	60.00	500.00
5 to 6 feet.....	.65	6.00	55.00	450.00
4 to 5 feet.....	.60	5.50	50.00	425.00
3 to 4 feet.....	.55	5.00	45.00	400.00
2 to 3 feet.....	.45	4.00	35.00	300.00

5 trees go at 10 rate, 50 at 100 rate, etc.

NOTE: If in doubt as to varieties to set, we shall be glad to help you.



Crotalaria Spectabilis—a remarkable new soil builder.
We will help you plan your fruit trees

CROTALARIA SPECTABILIS

Present prices of farm products do not permit buying large quantities of commercial fertilizers as Southern farmers have been accustomed to do for many years. Crotalaria, a wonderful new nitrogen-gathering plant, makes commercial fertilizers practically unnecessary. Many growers who have experimented with it, have almost or quite doubled their yield of corn and cotton the year following its growth. It may be planted in the drills at the time most annual crops are laid by, and will make a good growth to be turned under before frost kills it. Many orchardists are sowing Crotalaria as a summer cover crop in their orchards to good advantage. It may be sown either in drills or broadcast. The most important requirement in planting is for the ground to have plenty of moisture in it. Note the remarkable ability of Crotalaria to gather nitrogen as shown in the following table:

TABLE SHOWING VALUE OF THE DIFFERENT COVER CROPS
(Prepared by the Florida Agricultural Experiment Station)

Crop	Dry Wt. Yield in tons. (3-yr. Av.)	Percent of Nitrogen	Lbs. of Nitrogen per Acre	Equiv. in Nitrate of Soda per Acre
Crotalaria	2.89	2.446	141.378	885 lbs.
Cow Peas	1.10	2.015	44.330	277 lbs.
Velvet Beans	.85	2.208	37.536	232 lbs.
Beggarweed	.62	1.443	17.890	112 lbs.

Prices of seed are as follows:

- 1 to 10 lbs., 40c per lb., postpaid
- 10 to 50 lbs., 35c per lb., f. o. b. here
- 50 to 100 lbs., 25c per lb., f. o. b. here
- 100 to 1000 lbs., 20c per lb., f. o. b. here

Terms—Cash when shipped, or C. O. D. Add postage when sent by mail.

Three to four pounds of seed when drilled are

sufficient to plant an acre. In the past the demand for seed has been greater than the supply. Crotalaria is sure to play a very important part in future agricultural development. Plant from April to June.

Every farmer should have at least a small planting of this promising legume. It will do much to make him independent of the fertilizer trusts.

JAPANESE PERSIMMONS

For a number of years the Japanese Persimmon has been gaining in popularity. It has been grown in the cotton belt sufficiently long to show that it is well adapted practically all over the belt, at least where the native persimmon thrives. In recent years it has become better known in the Northern and Eastern markets and has commanded very attractive prices wherever it was offered. Leading orchardists in the South are recognizing its possibilities and the chances are that within a few years Japanese Persimmons will be known and marketed in all the leading cities of this country.

Some varieties of Japanese Persimmons, under certain conditions, are self-pollenizing, but it has been found advisable to plant among the other varieties, the staminate variety called Gailey. One tree of this variety to ten trees of the other varieties will insure good pollenization and fruit will grow on to maturity.

We have the prettiest block of one-year persimmon buds we have ever seen offered anywhere. Straight, vigorous trees, many of which will grade 6 to 8 feet in height. Such trees should grow off promptly when transplanted to your orchard.

FUYUGAKI. A recent introduction from Japan. Tree vigorous, upright grower; fruit medium to large, nearly round, but somewhat flattened; skin smooth, tough; color reddish yellow. Flesh meaty and of exceptionally good flavor. Bears young. Non-astringent; can be eaten while still hard; may be peeled and eaten like an apple.

TAMOPAN. A Chinese variety of special merit. Fruit is large, somewhat flattened and with a compressed ring around it as though a string

had been tied around the fruit while growing. Color beautiful golden red; skin quite thick and tough.

TANE NASHI. The best-known and probably the most popular variety. Large to very large, roundish, conical, pointed; skin light yellow, changing to deep red. Quality very fine. The leading market variety.

GAILEY. Recommended for its staminate flowers for pollenizing and not for its fruit. Fruit small, color dull red; flesh dark about the seeds, meaty, juicy. Should be in every planting.

PRICES—ALL VARIETIES

Size	Each	10	100
8 to 10 feet, branched	\$.75	\$7.00	\$65.00
6 to 8 feet, branched	.65	6.00	55.00
5 to 6 feet	.55	5.00	45.00
4 to 5 feet	.45	4.00	35.00
3 to 4 feet, postpaid	.35	3.00	25.00
2 to 3 feet, postpaid	.30	2.50	20.00

SPECIAL OFFER No. 3

Fruits for Home Garden

- 2 Pecans, 3 to 4 feet.
- 3 Peaches, 3 to 4 feet.
- 1 Pineapple Pear, 3 to 4 feet.
- 1 Plum, 4 to 5 feet.

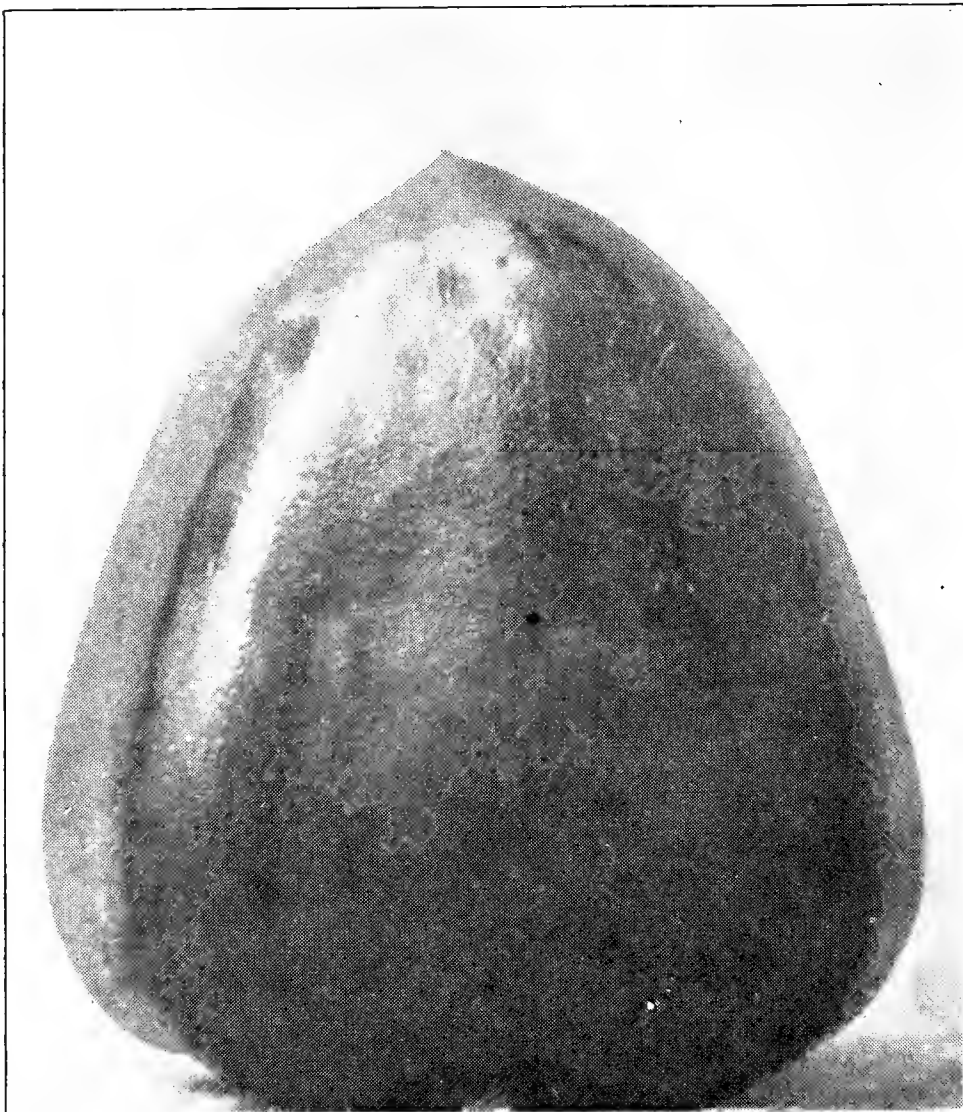
7 Plants.

Regular price	\$3.15
Special offer price	2.00

Use fruit trees in the home garden



Block of One-Year Japanese Persimmons



TANE NASHI PERSIMMON

Our plants are far superior to those handled by department stores and ten-cent stores. They are carefully grown for a clientele that requires the best in nursery stock. No plant is dug until an order is received for it. They are not subjected to the drying out that is bound to occur in heated department stores. Well grown—freshly dug—carefully packed, Wight's trees are always the best.

“Trees came through in good condition, and are up to grade—plus.

We will help you plan your fruit trees

TUNG OIL TREES

are Ornamental and Profitable

ALEURITÈS FORDII. The Chinese tung oil tree was introduced into this country from China by the U. S. Department of Agriculture about 25 years ago. It has shown its adaptability to the soil and climate of southern Georgia, Alabama, Mississippi and Louisiana, and to the northern part of Florida. It is valuable for its oil which is used in paints, varnishes and lacquers, and in a rapidly increasing number of commercial products. There is a great demand for the oil, millions of dollars being paid to China every year for it.

The tree is a rapid and healthy grower. It is easily transplanted and begins to bear the second or third year after transplanting. It comes into profitable bearing in four to five years. It is adapted to any soil that will produce cotton or corn successfully where the temperature does not go below 10 to 15 degrees F. As a shade tree it is attractive, being a rapid and symmetrical grower.

Owing to the very great demand for the oil, the tung oil tree is attracting very wide attention in the territory to which it is adapted. Hundreds of thousands of trees have been set during the last two years. It seems destined to become a most important addition to the list of our profitable crops. Every one who has the land should set at least a few of these trees.

During the last season there have been wonderful developments in the tung oil situation. In Grady County, Georgia, alone, of which Cairo is the county site, 200,000 trees were set during the



The tree shown above set in 1908, has a spread of top of 36 feet, and a circumference three feet above the ground of 63 inches. It has averaged 200 pounds of nuts per year for the last four years.

winter of 1930-31. During last winter this was increased by an almost equal amount of trees. Other sections are also taking a strong hold of the situation. Now is the time to get in on the "ground floor" with this most promising development.

The principal tung oil territory is a strip of land lying mainly along the Atlantic Coast of South Carolina and Georgia, and thence along the



Tung Oil Tree in its Second Summer. Has About 40 Nuts on it.

An orchard is a great asset

Wight Nursery & Orchard Co.

Gulf of Mexico. This favorable strip is about 250 miles wide, extending from a little south of the latitude of Macon, Ga., on the north, to middle Florida on the south. The experience of the present year goes to show that South Georgia and North Florida are especially favorably located for the production of tung oil.

There is no crop that, under present conditions, is more promising for a further diversification for our farm operations. The crop virtually gathers itself, as the nuts will remain without deterioration on the ground until other crops are gathered, when they may be picked up and marketed at leisure.



Tung Oil Nut Orchard 30 months after setting. Trees set 25x25 ft., interplanted with peanuts. Photo July, 1932.

Trees that are well cared for will at eight to ten years of age yield two tons or more of dry nuts per acre. These nuts are readily salable at from \$30.00 to \$50.00 per ton. When the easiness and economy with which this crop may be produced is considered, there is not a more promising crop that can be grown by our landowners. A few trees will enable one to test it out; a larger number will, in a few years, add to the economic independence of the grower.

Our trees are the best and are well grown from select seed of the cluster type. These prices are made exceptionally low so as to enable every one to secure at least a few of these trees.

The following are prices for tung oil trees f. o. b. Cairo:

	10	100	1000
4-6 feet . . .	\$2.00	\$15.00	\$125.00
2-4 feet . . .	1.50	12.50	100.00



**Tung Oil Nursery with Pecan Orchard in Background
Photo made July 24, when trees had 2½ months more to grow.**

No pests attack Tung Oil trees

CITRUS FRUITS

Only a short time ago it was thought that citrus fruits could not be grown outside of the tropical or semi-tropical zones. With the successful introduction of the Satsuma orange to this country, the area in which citrus fruits can be profitably grown has been gradually spreading, so that now many citrus fruits are grown where it was once thought impossible. In our orchards here at Cairo, we have producing orchard trees of Satsuma Orange, Grapefruit, Kumquat, Meyer Lemon, and Citrangequat. Although Cairo is near the northern limit of the zone in which they can be profitably produced, we have a small grove ten years old which has demonstrated fully that Satsumas may be grown commercially here. Northern and Western Florida, Southern Georgia, Southern Alabama, and the section along the Gulf Coast offer great possibilities in the production of this valuable citrus crop.

OWARI SATSUMA. Our Satsuma orange trees are of the Owari variety, the one best suited to conditions in this country. We use as a root stock the hardy orange, CITRUS TRIFOLIATA. Satsumas should come into bearing the third year, and into commercial production the fifth year.

SATSUMA ORANGE (C. nobilis owari). The Satsuma is the hardiest of the oranges and has all the good qualities of the best California and Florida oranges. It begins bearing very young and is the most prolific of all varieties. Aside from the fact that it is easily grown, it has the advantage of being among the most deliciously flavored and attractive of the citrus fruits. The flesh is tender, juicy, fine grained, sweet and delicious with a peculiarly agreeable flavor found in no other orange. This orange is seedless, and this fact, together with the ease with which it is peeled, makes it very pleasant to eat. Every one with available space should grow Satsumas. They ripen early in October through November. Thus they are subject to little competition from other varieties. Aside from their advantages as a commercial fruit, these oranges can be produced most satisfactorily in the backyard, and furnish delicious fruit to the family in the early winter when that class of foods is so desirable and so high priced.

DUNCAN GRAPEFRUIT. This is the hardiest variety being produced extensively at this time. It is not, however, quite so resistant to the cold as the Satsuma orange. The fruit has a very excellent flavor, is medium to large, fine quality and has a very attractive appearance. Ripens early in December. Tree a heavy bearer.

KUMQUAT. This is the smallest of the edible citrus fruits grown in the northern part of the citrus-growing region. The Kumquat is a sweet-skinned orange which is very delicious and makes a very choice fruit for desserts, jellies, jams, preserves, pickles and marmalades. Aside from this, the yellow-gold fruit on the small evergreen tree makes a beautiful sight, and the tree is therefore valuable as an ornament. These trees are very hardy, bear enormous yields and never miss a crop; in fact, they bear the first season after setting. The fruit is readily marketable.

We have a beautiful lot of kumquats in boxes. These plants have a nice crop of fruit set, which will mature about the middle of November. You will get a lot of pleasure out of these trees as house plants. They can then be set in the yard

after they have been used as house plants. \$1.50 each.

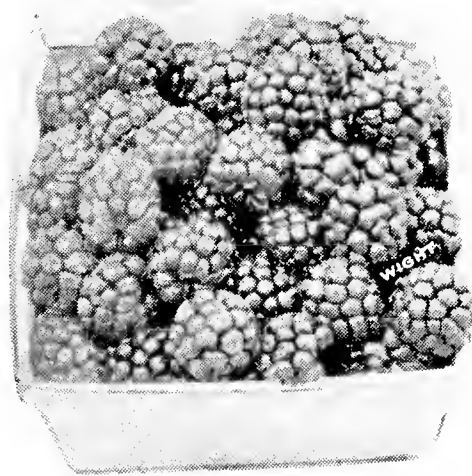
PRICES—ALL CITRUS FRUITS

Size	Each	10	100
2 year, bare root	\$.60	\$5.50	\$50.00
1 year, bare root40	3.50	30.00

BLUEBERRY

BLUEBERRY. A native of the South, the blueberry has, in recent years, been grown commercially in North Florida. The fruit is medium to large, a dark purple color, and begins ripening about June 1st. The ripening season extends through June and July into August. The bush is symmetrical, with a rich green foliage which makes it desirable either in the vegetable garden or the shrub border. Our plants have been observed over a period of several years, and are good producers.

Size	PRICE	Each	10
One-year plants, postpaid.....	\$.20		\$1.75



Youngberries.

YOUNGBERRY

YOUNGBERRY. Far superior to any berry of its type which we have tested. The Youngberry originated in Louisiana 25 years ago, as a cross between the Phenomenal Berry and the Mayes-Austin Dewberry. Just recently it has been widely disseminated and its true value realized. It is said that the Youngberry has revolutionized berry culture in California. The berries are large to very large, with very large grains. The seed are quite soft, so that they may almost be considered seedless. The color is a dark purple, changing as the fruit becomes full ripe to a jet black. The berries keep well and are proving excellent shippers. The vines are vigorous and should be trained on trellises. Plant six to seven feet apart in rows eight to nine feet apart. We recommend this new fruit highly as worthy of a place in every garden. Ripens early, producing berries over a period of several months. Strong rooted tips, postpaid 20c each, \$1.75 per ten.

Home grown fruit tastes better

GRAPES

Commercial vineyards of bunch grapes for supplying the local market have proven quite profitable in many parts of the South. Although the bunch grape is not native of the South, with proper care it gives excellent results. Vines should be planted 8 to 10 feet apart and trained on a three-wire trellis.

CONCORD. Blue-black, vigorous grower and heavy bearer. One of the old favorites.

DELAWARE. Small to medium sized bunches of small pink berries; in quality one of the best.

NIAGARA. Large bunches of good sized white berries; an attractive market variety.

PRICES

Size	Each	10	100
2 year, postpaid.....	\$.25	\$2.00	\$15.00

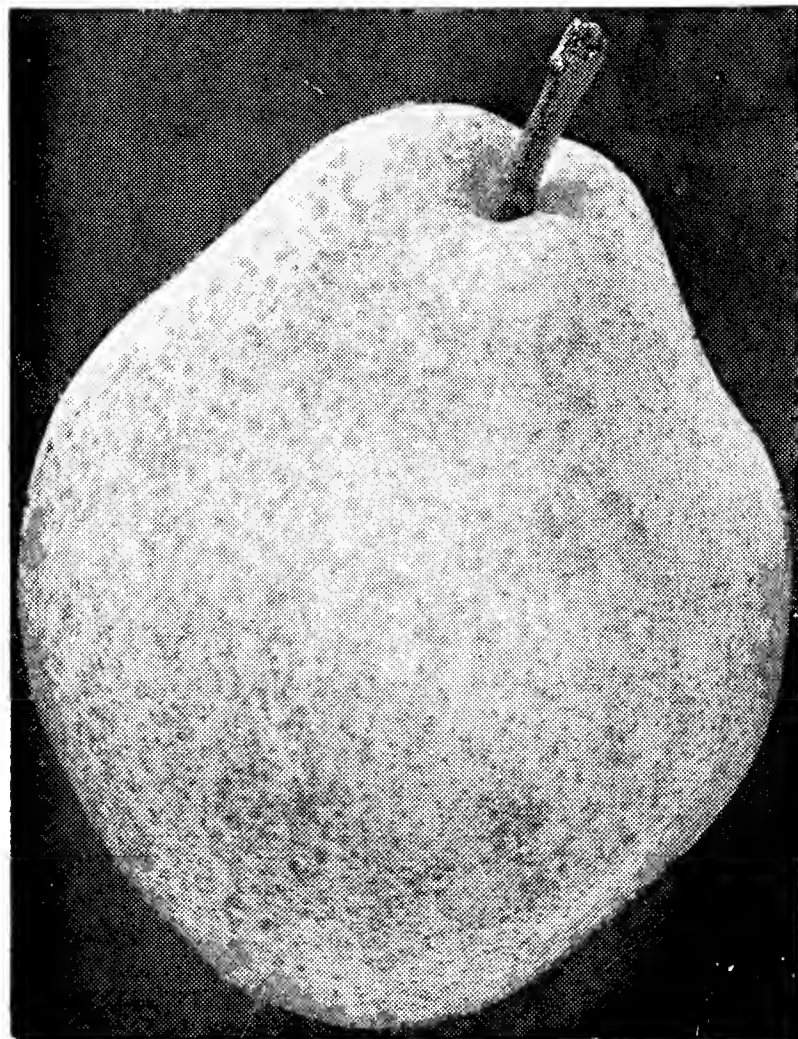
The Muscadine group of Grapes is native to the South and an old favorite. They are well adapted to soil and climate and need no introduction to the South. Muscadine vines are generally trained on overhead trellises, and are spaced 20 to 25 feet apart each way.

SCUPPERNONG (Muscadine). Well known in the South. Large berries, seldom more than eight or ten in a cluster. Brown, thick-skinned, pulpy fleshed. Very vinous, sweet and has a peculiar musky aroma. This grape is a regularly bearing variety and the vine is disease-resisting and free from insect depredations. Fruit has never been known to decay before maturity. Very prolific.

THOMAS. Fruit extra large, borne in clusters like Scuppernong. Color purple, thick skin. Fruit has a peculiar tang which is very delightful. A very desirable arbor grape.

PRICES

Size	Each	10	100
No. 1	\$.35	\$3.00	\$25.00



PEARS

The number of varieties of pears that can be satisfactorily grown in the South has been greatly reduced in recent years due to the high susceptibility of most varieties to blight. No spray has been developed which is effective in controlling blight, so that the only control method now recommended is pruning out diseased limbs. The chief effort in pear culture lately has been the introduction of blight-resistant varieties. A number of these are being tested now. Many of them may prove valuable.

BALDWIN. A new pear, originating in Baldwin County, Alabama, and said to be blight resistant. Good flavor, vigorous grower, ripening in August. A decidedly superior fruit to any other blight resistant varieties tested here. A new introduction which is unusually promising. Supply limited. Price of Baldwin 75c each.

PINEAPPLE. The pineapple pear's blight-resistant qualities make it in great demand as an orchard tree in the South. A very vigorous grower and unusually heavy and regular bearer. The fruit is large and attractive; flesh coarse, juicy. Its quality is very similar to that of the Keiffer. Although not recommended for eating raw, it makes an excellent canning and preserving pear. Ripens during July and August.

KEIFFER. Fruit large to very large. Skin yellow, flesh brittle and juicy. Good quality fruit maturing in September and October. Trees vigorous and prolific.

PRICES

Size	Each	10	100
6 to 8 feet, whips	\$.50	\$4.50	\$40.00
5 to 6 feet, whips45	4.00	35.00
4 to 5 feet, postpaid40	3.50	30.00
3 to 4 feet, postpaid35	3.00	25.00
2 to 3 feet, postpaid30	2.50	20.00

KUDZU FOR HAY

Kudzu is fast becoming the leading hay crop in the lower South. After it once becomes established, it requires no cultivation whatever. The vines will cure and be ready for baling in less than twenty-four hours after cutting. Planted in 15-foot drills, three feet in the drill, it requires between 800 and 900 roots to plant an acre. Such a plan leaves room for two rows of corn or other crop to be planted between the kudzu rows, so that a crop can be made at the same time the kudzu is cultivated. The following year plant only one row of corn. By the third season the kudzu will have become well established and a good crop of hay can be cut.

Price per 1000 roots.....\$15.00

Excellent results from our fruit trees

PLUMS

Recent plum crops demonstrated the fact that plum culture in the South offers wonderful opportunities for profit. The plum bears young and regularly, is about the most productive of the fruits, and very easy to grow. The increasing popularity of this fruit, both in the fresh state and for commercial preserving purposes, enables the grower to market plums readily and at fancy prices in Northern and Southern markets. The demand for plums for refrigerator car shipments is increasing and commercial plum growing offers itself as an enterprise both profit and pleasure producing.

Plum trees should be planted 15 to 25 feet apart each way and can be used, if desired, as a filler in an orchard between permanent trees. It is desirable to plant plums in poultry yards as the nitrogenous fertilizer furnished by the chicken manure seems to be just what the trees need; also the fowls clean up the curculio that attacks the fruit.

BURBANK. Very large, clear rich red, showing yellow dots. Flesh deep yellow, firm and meaty.

RED JUNE. Vigorous grower. Prolific. Medium to large. Deep vermilion red, showy. Flesh light lemon yellow, slightly sub-acid. June.

KELSEY JAPAN. Very large heart shaped, greenish yellow, sometimes spotted red. Vigorous grower, prolific bearer, good quality. July.

		PRICES		
Size		Each	10	100
4 to 5 feet, postpaid	\$.45	\$4.00	\$35.00
3 to 4 feet, postpaid35	3.00	25.00



WINESAP. A recent introduction which is growing rapidly in favor wherever it is known. A very thrifty grower. It is not uncommon for trees in the nursery row to make eight to ten feet of growth the first year after budding. Fruit deep red when half ripe, blending into dark purple as it ripens. Juicy; cling; very large; some specimens reach a diameter of 2½ inches. Sweet-acid when ripe with slight tang, not at all unpleasant in the ripe fruit. One of the best keepers and shippers. July 1st to 15th.

PRICES—WINESAP PLUMS			
Size	Each	10	100
6 to 8 feet, 1 year\$.45	\$4.00	\$35.00
5 to 6 feet, 1 year35	3.00	25.00

METHLEY. A new and most promising plum. Large, firm, red fleshed, good shipper. Pronounced by those who tested it to be the best plum grown. Supply limited. Price of this variety, 60c each.

FIGS

A TRULY Southern fruit of high quality which cannot be grown in the North. This fruit is found almost universally in home plantings in the South. Figs are delicious for eating both fresh and preserved.

Fig trees may be planted as close together as 10 to 12 feet, and require very little cultivation. Cultivation should always be shallow as the roots are close to the surface. Figs seem to do best when their roots can run under buildings. Both varieties we list are very hardy.

BROWN TURKEY. Medium to large; yellowish brown; pulp tender, rich and of the finest quality. Fruit borne on long stems, allowing fruit to hang blossom end down at maturity, preventing souring in rainy weather.

CELESTE. Fruit is of medium size; color pale violet, thin skin and firm flesh. Juicy, rich and sweet. Tree strong grower and reliable bearer. Hardest of all the Figs.

PRICES		
Size	Each	10
3 to 4 feet, postpaid\$.40	\$3.00
2 to 3 feet, postpaid30	2.50



Celeste Figs

Try Wight's Winesap Plum—best yet

FRUITS

for the Home

OUR TREES ARE SURE TO GROW

If planting directions are followed and proper attention and care given, our trees usually grow. Great care is taken to send out only strong, vigorous, well-rooted trees. The varieties we send are true to name. Only strong, vigorous stocks are used for propagating purposes. Start right with trees from Wight!

EARLY ROSE. Because of its excellent keeping and shipping qualities, this is an important and very desirable early peach. Medium size, highly colored. May 20th to June 10.

HILEY. Large, red cheeks, flesh white, red at pit. Freestone. June 20th.

CARMAN. Large, creamy-white, tinged red. Freestone. June 20th.

GEORGIA BELLE. Large, showy, clear, creamy-white, tinted red. Flesh white and firm. Excellent quality. Freestone. July 1st to 15th.

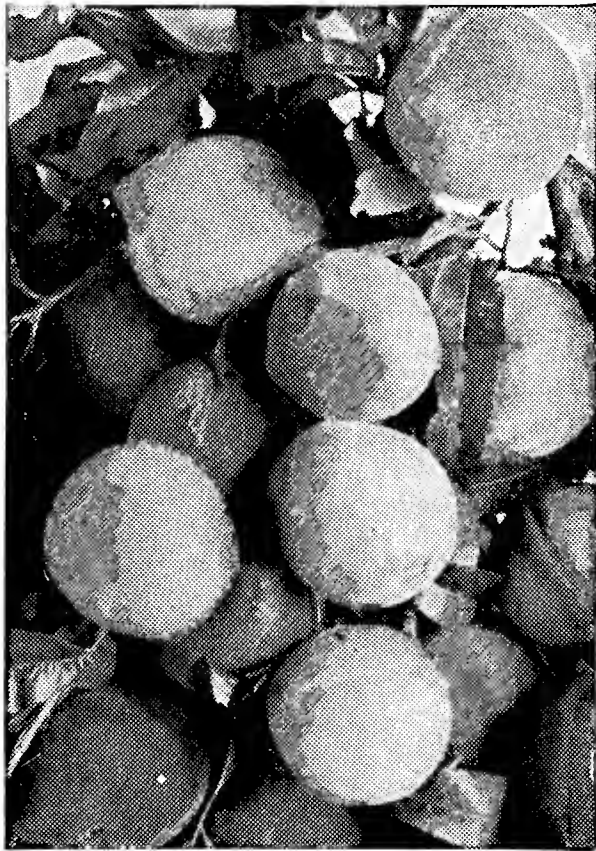
ELBERTA. Probably best known of all peaches. Very large; yellow skin with red cheek. Flesh yellow and juicy. No orchard should be without this variety. Middle of July.

EARLY CRAWFORD. An early yellow-fleshed peach. A very handsome variety with yellow skin, having a dark red blush. Quality unsurpassed, a good Peach for market or home orchard. Tree large and vigorous, bearing in early September.

PRICES

Size	Each	10	100
1 year, 3-4 ft., postpaid.....	\$.35	\$3.00	\$25.00
June buds, 2-3 ft., postpaid	.25	2.00	20.00

Write for special prices in quantity.



Belle of Georgia

PEACHES

Southland's Leading Fruit

THE peach has long been a favorite orchard fruit of the South. It matures quicker than other fruit and comes into commercial bearing comparatively early. Its large range of varieties makes it possible to have fruit ripening over a long period of time in the same vicinity.

Every farmer and home-owner should have at least a few trees. Often a small orchard of four or five acres will prove quite profitable for supplying your home market, even near very small towns. The peach is a popular "filler" crop to be grown in pecan orchards before the pecan trees come into commercial production.

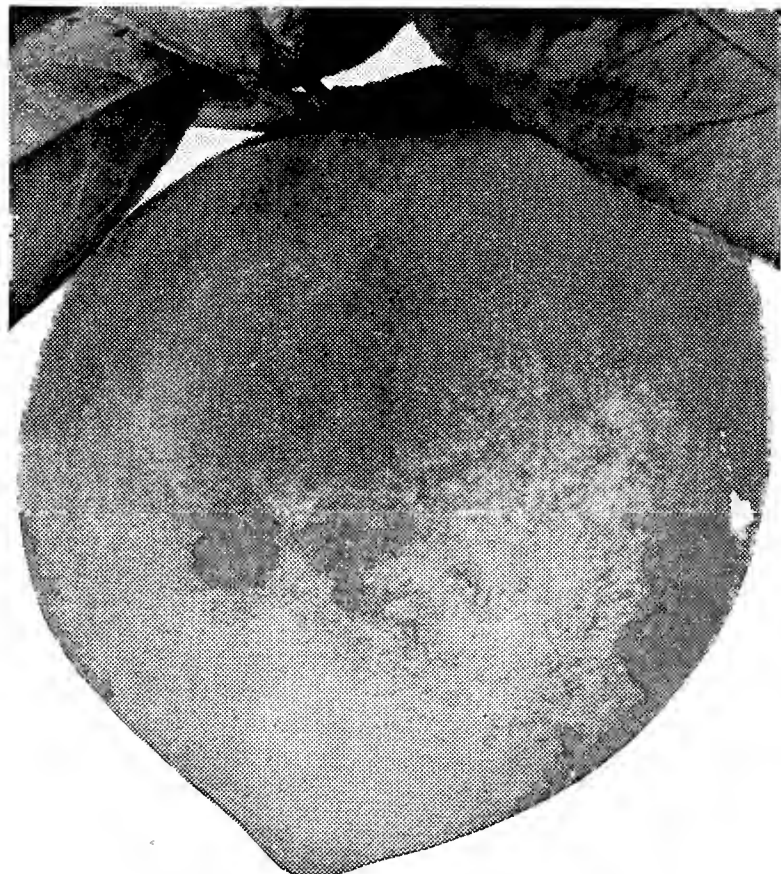
Peaches will grow over a wide territory of the South. Of the many varieties of peach trees, we have selected and are listing those proving most satisfactory over the largest territory in the South. They give a long fruiting period in practically any territory suited to peach culture.

Peaches have one requisite wherever they are grown—they must be planted on well-drained soil. Varieties are listed in order of ripening.

SOME HINTS FOR THE CULTURE OF PEACHES

Plant one-year-old trees about 18 x 18. Prune severely, cutting back 18 to 24 inches to form a balanced, low, and compact head. The following Spring cut away all but three well distributed branches. The annual pruning should consist of cutting off about one-third of the last year's growth. Don't let the branches get too long as their weight will split the tree trunk. Dehorning is done only when there has been a bad winter freeze.

MAYFLOWER. Earliest peach known, although a late bloomer. Medium size, entirely covered with red. Good shipper. May 15th to June 1st.



Elberta Peach

Spray your fruit and have more

From

Street or R. F. D.

City..... State.....

WIGHT NURSERY & ORCHARD CO.

Cairo, Georgia



Wight Nursery & Orchard Co. —ORDER BLANK—Cairo, Georgia

QUANTITY	FULL NAME OF VARIETY	SIZE	PRICE, EA.	TOTAL	
	BROUGHT FORWARD				
	TOTAL				

IMPORTANT—READ CAREFULLY

We wish to send our catalogue to interested parties, and shall appreciate the addresses of some of your friends who would like to set PECAN TREES, FRUIT TREES, ROSES or OTHER ORNAMENTALS.

NAME	ADDRESS

INDEX

A	Page
Abelia	10
Aleurites Fordii	25-26
Althea	17
Antignon	18
Arborvitae	13
Azaleas	3-6
B	
Bamboo	19
Banana Shrub	10
Bignonia	18
Biota	See Thuja
Blueberry	27
Boxwood	10
Broadleaved Evergreens	3-6, 10-12
Buddlea	17
Butterfly Bush	17
C	
Camellia	6
Camphor	10
Cannas	19
Cedar	14
Cedrus	14
Cercis	16
Cherry Laurel	10
Cinnamomum Camphora	10
Citrus	27
Cleyera	11
Cocos	19
Conifers	13-15
Coral Vine	18
Cotoneaster	11
Crape Myrtle	17
Crotalaria	22-23
Cupressus	14
Cydonia	17
Cypress	14
D	
Deutzia	17
Dogwood	16
E	
Eleagnus	11
Elm, Chinese	16

F	Page
Figs	29
Fig, Climbing	18
Flowering Shrubs	17
Forsythia	17
Fruits	23, 24, 27-30
G	
Gardenia	11
Gelsemium	16
Golden Bell	17
Grapes	28
Grapefruit, Duncan	27
Grasses	19
H	
Honeysuckle	17
I	
Ivy, English	18
J	
Japonicas	6
Jasmine	11, 18,
Jessamine, Yellow	18
Junipers	14, 15
K	
Kudzu	18, 28
Kumquat	27
L	
Lagerstroemia	17
Landscape Service	19
Laurocerasus	10
Ligustrum	11
Lonicera	17
Loquat	16
M	
Magnolia	16
Mock Orange	17
N	
Nandina	11
O	
Ophiopogon	19
Orange	27
Osmanthus	12

P	Page
Palms, Hardy	19
Peaches	30
Pears	28
Pecans	20-22
Persimmons, Japan	23, 24
Philadelphus	17
Photinia	11, 12
Pittosporum	12
Plant, When To	2
Plums	29
Podocarpus	15
Pomegranate, Flowering	17
Privet	See Ligustrum
Pueraria	18, 28
Pyracantha	12
Q	
Quince, Flowering	17
R	
Red Bud	16
Retinospora	15
Roses	7-9
S	
Snake's Beard	19
Spiraea	17
T	
Tea Olive	12
Tea Plant	12
Terms	2
Thea Bohea	12
Thuja	13
Trees, Ornamental	16
Trumpet Creeper	18
Tung Oil	25, 26
U	
Ulmus	16
V	
Viburnum	12
Vines	18
W	
Willow, Weeping	16
Wisteria	18
Y	
Youngberry	27



PLANTS FOR SCREENS

- Arborvitae, American (Thuja Occidentalis)
- Arborvitae, Oriental (T. Orientalis)
- Bamboo
- Bush Honeysuckle, all varieties listed
- Camphor
- Cherry Laurel (Laurocerasus Caroliniana)
- Cotoneaster
- Crape Myrtle
- Deutzia, all
- Eleagnus
- Forsythia, all
- Kumquat
- Ligustrum Japonicum
- Ligustrum Lucidum
- Ligustrum Ovalifolium
- Nandina
- Photinia Serrulata
- Pyracantha
- Pyramidalis
- Satsuma

SHRUBS FOR ADVERSE CITY CONDITIONS

- Althea
- Arborvitae, all
- Eleagnus

- Forsythia
- Honeysuckle, Winter (Lonicera Fragrantissima)
- Jasminum Primulinum
- Junipers
- Mock Orange (Philadelphus)
- Spirea Van Houttei
- Viburnum

PLANTS FOR SHADY LOCATIONS

- Abelia Grandiflora
- Azaleas
- Banana Shrub
- Boxwood
- Cape Jasmine
- Cherry Laurel (Laurocerasus Caroliniana)
- Dogwood (Cornus Florida)
- Goldenbells (Forsythia)
- Holly, American
- Honeysuckle, Bush
- Japonica (Camellia Japonica)
- Jasmine (Jasminum Primulinum)
- Ligustrum
- Magnolia Grandiflora
- Pittosporum Tobira
- Ophiopogon
- Red Bud
- Tea Olive

HEDGE PLANTS, FLOWERING HEDGES, INFORMAL OUTLINE

- Abelia Grandiflora
- Althea
- Arborvitae
- Azalea
- Cotoneaster
- Crape Myrtle
- Deutzia
- Flowering Quince
- Honeysuckle, Bush
- Kumquat
- Lonicera Fragrantissima
- Lonicera Morrowi
- Orange, Mock (Philadelphus)
- Photinia
- Pittosporum
- Pyracantha
- Rose, Louis Philippe
- Spirea, Thunbergi
- Spirea, Van Houttei

BROAD-LEAVED HEDGES, FORMAL OUTLINE

- Abelia Grandiflora
- Buxus Suffruticosa
- Ligustrum Ovalifolium Aurea
- Ligustrum Lucidum
- Ligustrum Ovalifolium
- Pittosporum Tobira
- Tea Plant (Thea Bohea)

Plant Now!

*and enjoy Beautiful Grounds
this Summer*

*Visit or Phone
our Nurseries for
Suggestions and
Planting Advice.*



RIGHT NOW is the time to set out trees, shrubs, fruits and flowers, if they are to receive the full benefit of the spring growing season.

ACT NOW and you will enjoy beautiful home grounds this summer.

We Can Help You

Let us help you with your planting plans—help you select exactly the right variety for each location, and tell you how to plant and care for it to insure success. Call or phone.

Wight Nursery & Orchard Co.

Cairo, Ga.

Phone 3-R

