

Historic, Archive Document

Do not assume content reflects current scientific knowledge, policies, or practices.

62.51

GREETINGS
FROM
“TULIPDOM”



Zandbergen Bros

Oyster Bay - Long Island, N.Y.

1932

**Rhynlandt Bulb Nurseries
Valkenburg near Leiden - Holland**

WE GUARANTEE

We guarantee our stock to be true to name. No better bulbs can be bought at any price. If any customer should receive stock which, when it comes to bloom, proves not true to name, it is the result of an accident and in such a case we will send the customer stock of the variety ordered in the grade of stock sent out in the first instance. He may keep the bulbs first received.

Promptly upon receipt of the bulbs the package and each individual bag within it should be opened so as to give the air access to the bulbs. A disregard of this may impair their blooming power.

All bulbs we send out will grow and bloom under any ordinary conditions. But we have no control over conditions surrounding the bulbs and the care they receive after they pass out of our hands. We therefore cannot assume responsibility for customer's failure to succeed with them, either on account of unfavorable weather or soil conditions, improper planting, neglect, moles or mice.

When We Keep "Open House" at "Tulipdom"

Between May first and Memorial Day, you will always find the latch string out at "Tulipdom." Come, and bring your friends. Those who have bought from us in previous years will automatically receive an invitation advising just when is the best time to come. Those who have not visited us previously, will oblige by so advising us and an invitation will be mailed in due time. While you are welcome to visit Tulipdom and make notes on Sundays, no business will be transacted on that day which is set aside as a day of rest for and with the family.

TERMS OF SALE

At prices quoted all bulbs will be delivered f.o.b. New York or Oyster Bay. They will be packed with special care and arrival in perfect condition is guaranteed. If there are any delays in delivery or the shipment does not seem intact, we shall appreciate prompt advice. All prices are based upon present import duties. Should these be raised, an increase equivalent to added duties will be necessary and customers will be so advised.

**25 bulbs of one variety will be charged for
at the 100 rate, 6 at the per dozen rate.**

No order for less than six bulbs of one variety will be entered except where prices are quoted per single bulb or where the price is quoted above \$20 per 100.

We offer the same terms to any number of amateurs who get up a club-order, and we will pack and label the different lots separately, without extra charge. The order will be forwarded to the secretary of the club, who assumes payment for the total amount of the bill.

TERMS OF PAYMENT

Customers of record will be billed at shipping time and the customary courtesies will be extended to all. New customers will oblige by giving satisfactory references. Please do not ask us to open an account for **less than \$10**. Smaller orders should be accompanied by cash. Personal checks always acceptable.

**ADDRESS All Orders and Communications to
ZANDBERGEN BROS., "Tulipdom," OYSTER BAY, N. Y.**

About Bulb Bargains

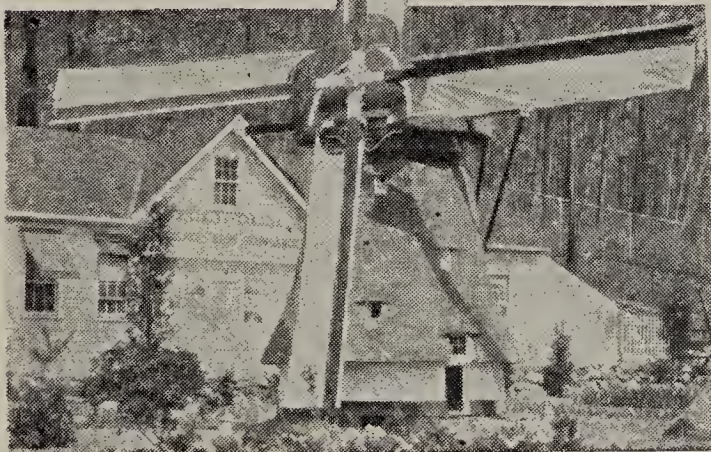
UNUSUAL economic conditions confronting the country have been instrumental in producing an unusual crop of bargain hunters. It may therefore not be amiss to raise a voice of warning against the tendencies to seek bargains when securing materials for the garden.

Above all, don't look for bulb bargains—they do not exist! In this particular merchandise you get just what you pay for—no more. Bulb bargains invariably hold the germs of disappointment. They generally bear inferior flowers or are not always true to name. Bulb satisfaction and bulb bargains never go hand in hand.

Ever since our firm started we have made a bid for the business of the most discriminating among garden fans. The fact that we never offered anything but "Bulbs in a Class All Their Own" has won us the loyal patronage of people who know what they want and are willing to pay the price for quality! It is so easy to sacrifice quality for the sake of gaining volume in business. We prefer to forego large sales in order to maintain quality of the highest standard.

All of which reminds us that high prices are not necessarily an indication of high quality. Neither would higher prices paid elsewhere secure higher quality bulbs than those supplied by us. Let our bulbs prove it. In bulbs especially, the grower's word frequently counts for more than the appearance of the merchandise. Our claim that our bulbs are absolutely the best that money can buy and at moderate prices, is based on a life-time experience in growing and offering bulbs that will redeem all we claim for them.

Telephone
Oyster Bay 573



On this basis we solicit your continued patronage. The best in bulbs at a moderate price to enable us to maintain our quality standard, such is our promise for 1932.

ZANDBERGEN BROS.

Oyster Bay, N. Y.

April 1st, 1932



NARCISSI or DAFFODILS

The term Narcissus and Daffodil is interchangeable, although there exists a tendency to apply the term Narcissi to the small-flowering groups like Poeticus, Leedsii, Barrii and Incomparabilis; while the larger-flowered Trumpet varieties are most frequently referred to as Daffodils.

The name "Narcissi" is derived from the story of the youth Narcissus, in Greek mythology, and in the language of flowers the Narcissus is the symbol of self-love and egotism. This youth lay down to drink from a stream and when he saw his own image reflected in the placid water he fell so madly in love with it that he pined away and died. Even after his death, while passing over the river Styx, he leaned over to get a look at himself in the water beneath. The nymphs implored the dryads to raise a funeral pyre for the purpose of burning his body, but the body was nowhere to be found. In its place rose a pale and melancholy flower which even now likes to see its image in the water, just as Narcissus did in the placid stream. Sophocles tells us that the goddesses on Olympus were crowned with Narcissi which bloomed constantly by being kept moist with the dews which fell from heaven.

We are now able to produce Daffodil bulbs almost as reasonably as they could be imported from Holland before the exclusion act. We are taking rapid strides in the systematizing of our labor and costs. We surely have a soil ideal for the production of bulbs as fine as were ever imported. Our American bulbs bloom earlier than the bulbs we used to ship from our Nurseries in Holland, the flowers are undeniably just as large, and have the advantage of lasting a trifle longer.

When Buying Narcissus Bulbs

We offer **Only** finest quality Double-Nosed Extra Selected bulbs true to name and nothing else! Please consider this factor when comparing prices.

Be sure that you know what you are getting. At least three distinct grades of bulbs are offered, namely: First Grade, Selected Double-Nosed; Second Grade, Double-Nosed or First Size Round; and, Third Grade, Second Size Round. In these three grades are found not only great variation in prices, but naturally, in the resulting flowers, also.



Narcissi, Continued

Culture and Adaptation of Narcissi Outdoors

Soil and its Treatment. Narcissi will thrive in any ordinary garden soil, but prefer a deep, rather moist, sandy loam. When the soil is of a dry and sandy nature, it should be deeply dug, if possible at least a season before planting the bulbs, composted leaves or well-rotted horse manure being added and a vegetable or annual crop grown on the ground. Before the bulbs are planted a sprinkling of lime should be spread on the surface and then raked in. It is also beneficial to add bone meal at the rate of $1\frac{1}{2}$ oz. to the square yard while digging the soil. **Never** use fresh manure of any kind at planting time—it burns the roots! On very poor and dry sandy soils we recommend the addition of about 1 oz. per square yard of sulphate of potash to be sprinkled over the surface of the ground, after planting.

Position and Grouping for Effect. All Narcissi will grow equally well in the open or in partial shade. In the flower-border, to obtain the best effect, they should be planted in large groups of irregular outline, each group or clump to contain one variety only; avoid straight lines, circles, and symmetrical designs. Masses of Narcissi should always appear in the hardy flower border, where they can be planted between the clumps of herbaceous plants, which hide as well as shelter the foliage later in the season.

Naturalizing in Grass, etc. All Narcissi may be planted in grass with perfect success. To produce the best effect, alternate trumpet kinds with small-cupped sorts and let colors vary from the whites through bicolors to the all yellow tones. In planting, make the breaks large and bold, scattering the bulbs over the ground broadcast with the hand and planting them where they fall. In planting under trees, avoid places where the drip from the branches is greatest.

Cutting for Decorations. To obtain the very choicest flowers of the *Barrii* and *Incomparabilis* varieties with colored cups or crowns, they should be cut as soon as the buds begin to open. This will prevent fading. They should then be placed in water and the cooler the atmosphere, the better they will keep. Handled in this fashion the blooms are larger, finer in texture and purer in color than flowers of the same variety that are permitted to open in the natural course of events in the garden.



Narcissi naturalized on Tulipdom's hillside



Daffodils at "Tulipdom"

NARCISSUS CULTURE CONCLUDED

Culture in Pots or Boxes

Time of Potting. Pot as early in Autumn as possible, to obtain the finest results and earliest blooms. The best compost to pot Narcissi in is a mixture of two thirds good fibrous loam and one third old decayed leaf-soil, adding $1\frac{1}{2}$ lbs. of bone meal to every bushel of soil; mix well before using. In all cases the soil used should be fresh and sweet and crumble easily through your fingers.

The pots should be carefully washed or wiped clean before using; never pot in new pots for exhibition purpose. Good drainage should be secured by placing three or more pieces of broken crocks in the bottom of the pots placing round sides uppermost; then cover crocks with a little rough fibre from the loam. When boxes are used, the slit at bottom of box should be covered with crocks, with a good layer of rough fibrous loam placed at bottom of box, or a layer of leaf-soil, to ensure perfect drainage. In potting, the larger bulbs need not be quite covered with soil, the level of which should be half an inch below the rim of the pot, so as to allow watering when in growth. The small bulbs of the miniature species should be covered with half an inch of soil.

After potting, put the pots or boxes outside in the open, on a firm bottom such as a bed of ashes or gravel. Plunge pots into peat-moss, old decayed leaf-soil, or very old ashes, and cover so that tops of pots rest 3 inches below the surface. This will secure a moist condition to the bulbs and encourage root action. So long as pots remain outdoors they require no watering.

The pots or boxes should remain plunged for a period of about ten weeks; after that they may be transferred to a greenhouse or into any room where the night temperature does not exceed 60° . A higher temperature should not be given if you want well-developed blooms. If the pots are taken into a living room they should be kept in a sunny window during the day and at all times should be protected from draughts and too much heat. Later flowering varieties should be brought in later and in succession. After the bulbs are out of the plunging bed, give the plants as much light and air as possible. Once a week give a little weak liquid manure until they come into bloom.



TRUMPET NARCISSI

Trumpet or crown as long as or longer than the perianth segments.

All prices are for double-nosed bulbs.

Note: Adhering to the method in which we now arrange Tulips, we also present the Daffodils in the logical order of their respective merits. Thus the variety which in our opinion is the choicest in its respective class, leads that class, the second best coming second, etc. Lovers of Daffodils will, we hope, welcome this aid in their selection. The number given after each variety name indicates the relative time of flowering both indoors and in the garden.

CLASS A. YELLOW

Varieties with lemon-yellow or sulphur colored trumpet and perianth of same shade or lighter, but not white.

King Alfred. (1) Destined to remain at the head of its class for some time to come. Its rich golden color is outstandingly clear. The trumpet is large, with deeply frilled edge, while the entire flower is of distinctly refined shape. Of great substance, hence of marvelous lasting quality both outdoors and after cutting. One of the earliest for forcing, having long, strong stems. Connoisseurs we know will prefer one dozen well-grown King Alfred to two dozen of any other yellow trumpet. Easily forced and a dependable early variety. **\$2.75 per dozen, \$20 per 100.**



Yellow Trumpet Narcissi, Concluded.

Robert Sydenham. (2). Here is a variety bound to occupy an outstanding position in every collection. The trumpet is a beautiful golden yellow, heavily frilled and glittering as though sprinkled with gold dust. The perianth is a soft, sulphur-yellow of exceptional symmetry. Both length of stem and quality of foliage cause this variety to be of outstanding beauty. **\$5.25 per dozen, \$40 per 100.**

Tresserve. (3). A huge flower with a slightly campanulate canary-yellow perianth and a very bold rich yellow trumpet, with large open mouth deeply flanked at brim. A very robust and free-flowering variety, producing flowers of enormous size; splendid exhibition variety. Fine for forcing and outdoor planting. **\$3.50 per dozen, \$25 per 100.**

Olympia. (3). Handsomely waved or twisted perianth of a pure primrose yellow in artistic contrast with a huge straight trumpet of a slightly deeper shade. Rim of trumpet frilled. Really a huge flower, easily forced and most showy in the garden. **\$3.50 per dozen, \$25 per 100.**

The First. (1). A sulphur-yellow trumpet with perianth of the same color. It blooms as early as Golden Spur, is a very robust grower and bears its beautiful flower on a very tall stem. Though still high in price we predict that ultimately it will completely replace old, yet ever popular Emperor. It blooms much earlier and the flowers are borne on longer stems. **\$5.25 per dozen, \$40 per 100.**

Emperor. (3). Perianth deep primrose, trumpet full yellow, large flower. One of the most popular for the garden and forcing. Splendid grower and one of the best yellow trumpets for naturalizing. **\$1.90 per dozen, \$14 per 100.**

Golden Spur. We finally and somewhat reluctantly have decided to discontinue growing this now very inferior old stand-by. Grow King Alfred!

CLASS B. WHITE OR ALMOST WHITE

Almost white varieties with white or pale primrose trumpet and white perianth.

Mrs. Ernst H. Krelage. (3). Has been described by connoisseurs as "the finest among the best white Daffodils." The flowers are of distinctive shape with elegantly disposed petals. Really one of the finest among white trumpet varieties. Height, 18 inches. **\$4.50 per dozen, \$35 per 100.**

W. P. Milner. (2). Splendid for the rockery. Free-flowering variety with very distinct pale sulphur flowers. Dwarf. **\$2 per dozen, \$15 per 100.**

Thetis. (3). Charming in its elegant form. White perianth combined with prettily frilled creamy white trumpet make this a picture of outstanding loveliness. **\$1.70 per dozen, \$12.00 per 100.**

Madame de Graaff. (3). Perianth pure white; trumpet very pale primrose, passing off pure white. A refined and delicate flower, about to be superseded by Mrs. Ernst H. Krelage described above. **\$2 per dozen, \$15 per 100.**

CLASS C. BICOLOR

Varieties with white or whitish perianth and a yellow or primrose trumpet.

Van Waveren's Giant. (2). Though one of the oldest among giant bicolors, it still leads the rest. Primrose perianth, bright orange-yellow trumpet of great size and substance. Edge of trumpet slightly frilled and artistically recurved. A prize at any price. **\$5.25 per dozen, \$40 per 100.**

Oliver Cromwell. (2). Large yellow trumpet with sulphur-yellow perianth; blooms when forced in the first part of February, most free flowering of all Trumpet varieties. **\$2.75 per dozen, \$20 per 100.**



Glory of Sassenheim. A very fine variety, yet medium priced.

Bicolor Trumpet Narcissi, Concluded.

Glory of Sassenheim. (3). Large showy flowers, broad creamy white perianth and bright canary-yellow trumpet, well-expanded at the mouth. Good forcer and fine for the border. **\$2.15 per dozen, \$16 per 100.**

Spring Glory. (2). Three characteristics cause this variety to be a remarkable acquisition:—It is of refined shape, great size and is delightfully fragrant. It blooms early and lasts well, both outdoors and after cutting. Pure white perianth, deep golden yellow trumpet with an artistically recurved edge. **\$2.45 per dozen, \$18 per 100.**

Martha. (3). Superior to Victoria, earlier, larger flower and taller stem. **\$1.70 per dozen, \$12 per 100.**

Empress. (3). Perianth white, trumpet rich yellow. One of the oldest and best-known Bicolors. **\$1.90 per dozen, \$14 per 100.**

Victoria. (3). Bold erect flower, with creamy white perianth and rich yellow trumpet. Not recommended for outdoor planting, but especially fine for forcing. **\$2.15 per dozen, \$16 per 100.**



Lady Moore—as described below.

BARRII NARCISSI

SHORT-CUPPED DAFFODILS

Cup or crown measuring less than one third the length of the perianth segments.

Sparkler. (4). Its strong, robust constitution causes it to be one of the finest in its class. Large glistening white flowers, 3 inches in diameter, are supported by strong, tall stems. The color combination is exquisite—rich yellow perianth, fiery orange-scarlet crown, shaded gold. Late, and one of the best for forcing and cutting. **\$1 each, \$10 per dozen.**

Lady Moore. (3). A showy variety, easily grown, easily forced, yet very substantial and hence of lasting quality. Perianth delicate creamy white, bright orange edged, citron-yellow cup of wide expansion. Altogether a strikingly beautiful variety. **\$4 per dozen, \$30 per 100.**

Bath Flame. (2). Deep yellow perianth with deeply edged orange-red cup. Extra long petals give the flower a distinct beauty and outstanding character. Because the flowers are apt to fade quickly, this variety should be planted in partially shaded situations. **\$5.25 per dozen, \$40 per 100.**

Brilliancy. (3). We venture to predict that this will in time replace Conspicuous, popular as that old favorite is today. A huge flower for a Barrii, the deep golden yellow perianth measuring 5 inches across when well grown. Yellow cup edged deep scarlet. Easily forced. **\$5.25 per dozen, \$40 per 100.**



Barrii Narcissi, Continued.

Expectation. (3). An exquisite variety equally decorative grown in pots or in the garden. The large spreading, pure white perianth is of great substance. The cup is pure yellow with orange-red margin artistically fluted and frilled. A grand exhibition variety measuring nearly 4 inches across when grown under favorable conditions. **\$3.50 per dozen, \$25 per 100.**

Lady Diana Manners. (3). The tall stems support large flowers of artistic shape and remarkable lasting qualities. Reflexed broad white perianth, flaming orange-scarlet cup. To preserve color cut while young. (See recommendations on page 3). **\$5 each.**

Red Beacon. (3). Ivory white perianth combines with an intense fiery orange cup to make this one of the most showy varieties in its class. Cup has beautifully frilled edge. A striking beauty in the border, an outstanding attraction in vases in the house. Flowers of great substance carried on strong stems. **\$2.75 per dozen, \$20 per 100.**

Red Chief. (3). An admiration commanding flower with pure white perianth and somewhat flattened yellow crown which has a fiery orange margin with handsomely frilled edge. Truly a leader! **\$3.50 per dozen, \$25 per 100.**

Sunrise. (3). White perianth with a broad primrose bar through the center of the petals. Bright orange-yellow cup with fiery scarlet margin, well expanded and elegantly fluted. A gem for the border and great as a cut flower. **\$2. per dozen, \$15 per 100.**

Fire-Brand. (3). Perianth creamy white, shaded lemon at the base, cup intense fiery red. Especially recommended for shady places. **\$1.70 per dozen, \$12 per 100.**

Conspicuous. (3). Soft yellow perianth; short cup conspicuously edged bright orange-scarlet. Very free-flowering and a wonderfully strong grower. One of the best for naturalizing. **\$1.70 per dozen, \$12 per 100.**

INCOMPARABILIS NARCISSI

LARGE CHALICE-CUPPED DAFFODILS

Cup or crown measuring from one-third to nearly equal the length of the perianth segments.

Dorine. (3). Notes made in our trial-grounds last season call this variety "a real aristocrat among the red-cupped novelties." It surely is one of the finest and most refined, with its slightly overlapping creamy yellow perianth that has as its crowning glory a large, dark orange cup. Free flowering, substantial, altogether unique! **\$5.00 each.**

John Evelyn. (3). A truly great novelty destined to become more popular as stocks increase. The creamy white perianth holds a most artistic apricot-orange cup prettily fluted at base and frilled at margin or edge. Flowers of great substance, hence fine for exhibition. Bound to remain an acquisition for years to come. **\$5 each, \$50 per dozen.**

Red Cross. (4). A sensational novelty acclaimed a wonder by all who visited "Tulipdom" at Daffodil time. Broad, overlapping, creamy yellow perianth; large wide cup of orange-red color—so striking that it shines across the spaces like a beacon in a dark night. Great in the garden, greater as a cut flower. **\$7.50 each, \$75 per dozen.**

Orange Glow. (4). One of the largest of the Incomparabilis Narcissi measuring normally 4 inches in diameter. It will grow larger under exceptional conditions. A golden yellow with a deep orange cup beautifully frilled. **Each \$10.**



Incomparabilis Narcissi, Concluded.

Croesus. (3). In our opinion the leader among medium-priced varieties in this class. A beautiful combination of a thick petaled primrose perianth and a handsome deep orange-red cup. Magnificent flower of great substance, whether forced or grown outdoors. **\$10 per dozen, \$75 per 100.**

Helios. (1). A bright new star on the Daffodil firmament—and we are tempted to think of it as the Morning Star because it blooms so early. Creamy yellow, star shaped perianth, within which twinkles a lovely, slightly frilled, pale orange cup, which fades to a lovely, deep yellow after flowers are open for a few days. Valuable for both the border and for forcing, and will ultimately replace Sir Watkin. **\$2 each, \$22 per dozen.**

Lucinius. (3). Here is a flower of perfect shape and very lasting qualities, which combination makes it a great exhibition variety. Clear, deep yellow perianth of star shape, broad, well shaped cup of orange-yellow. You'll be proud to own it! **\$4.50 per dozen, \$35 per 100.**

Bernardino. (3). Looking for a delightful color surprise in your border? Then plant this! A symphony of creamy white perianth, pale yellow, heavily frilled cup and the "frills" in this case bring orange-apricot shades—a combination to delight the heart of color-sensitive flower lovers. **\$2.75 per dozen, \$20 per 100.**

Whitewell. (2). A real good variety in this class. The very substantial flowers are carried on stems 18 inches tall. The flowers are of excellent size and substance. The petals are pure creamy white while the crown is a strong yellow with a distinct orange shade. Equally fine for forcing or for outdoor planting. **\$2.75 per dozen, \$20 per 100.**

Will Scarlet. (4). One of the most striking of all Daffodils, with a broad, wide open, fiery scarlet cup and elegantly frilled, creamy white perianth of a decidedly reflexing character. Will Scarlet's cup will vary in density of color in different soils and situations. It prefers partly shaded spots and looks particularly lovely in clumps. **\$2 per dozen, \$15 per 100.**

Sir Watkin. (1). Whether you want a flower for garden show, naturalizing or to grow in pots indoors, here is the dean of the diplomatic corps of Daffodils. It just pleases everybody, every time. Broad, primrose-yellow perianth, large yellow, orange tinted cup. **\$1.70 per dozen, \$12 per 100.**

Autocrat. (3). Soft yellow cup, widely expanded at the mouth, with broad perianth of primrose-yellow. **\$1.70 per dozen, \$12 per 100.**

Torch. (3). Striking bright orange-scarlet cup, long yellow twisted perianth. Excellent for cutting. **\$1.70 per dozen, \$12 per 100.**

Lucifer. (2). Large handsome white perianth; cup intense glowing orange-red, which stands the sun very well. **\$1.70 per dozen, \$12 per 100.**

Gloria Mundi—Clear yellow perianth with a broad well-expanded orange-scarlet cup. A grand flower. **\$1.70 per dozen, \$12 per 100.**

LEEDSII NARCISSI

Perianth white and cup or crown white, cream or pale citron, sometimes tinged with pale pink or apricot.

Hera. (3). Considered by many to be one of the most beautiful in this class. Perianth snowy white, crown creamy white, handsomely frilled and fluted at the edges. The margin of crown carries a faint apricot tinge. **\$3.50 per dozen, \$25 per 100.**

Arion. (3). A real beauty of great grace and bringing a wonderful color combination. Pure white perianth of perfect shape, measuring 3 inches across. The large, open crown is of ivory-primrose, faintly shaded with apricot, and has beautifully fringed edges. **\$7.50 per dozen, \$60 per 100.**



Will Scarlet—as described on opposite page.

Leedsii Narcissi, Concluded.

Mt. Erebus. (3). A truly beautiful and noble flower and one of the choicest among the Giant Leedsii. The perianth is broad and white. The crown is very large, of a lemon-yellow color shading to white, slightly curved at the edge and beautifully fluted. **\$4 per dozen, \$30 per 100.**

Lord Kitchener. (3). Large pure-white perianth, broad and flat, of great substance; crown very large of a delicate pale primrose, well open at the mouth and elegantly crimped at the brim. **\$2 per dozen, \$15 per 100.**

Laughing Water. (3). Snow-white perianth of beautiful form and large open cup of pale primrose, edged deep primrose and beautifully frilled. A flower of great substance. **\$3.50 per dozen, \$25 per 100.**

Queen of the North. (3). We are tempted to call this the best of the Leedsii. Broad glistening white perianth and a soft primrose-yellow cup with finely crinkled edge make it altogether lovely. Its strong stems make it particularly desirable for naturalizing. Once established it blooms, blooms and blooms some more. **\$1.70 per dozen, \$12 per 100.**

Mrs. Langtry. (3). Broad white perianth and large white cup, edged bright yellow. Fine for naturalizing. **\$1.50 per dozen, \$10 per 100.**

White Lady. (2). An exquisite flower, with a broad white perianth of perfect form; dainty cup, prettily crinkled and of a beautiful pale canary shade, delicately scented. Extra for naturalizing. **\$1.15 per dozen, \$8 per 100.**

NOTE: As in the case of the Tulips, we carry the same scheme of listing through the chapters of Daffodils. In each class, the different varieties are presented in order of the relative merit. Thus the first variety in each class is that which we consider the finest.



POETAZ NARCISSI

A fine race of Narcissi resulting from a cross between Poeticus Ornatus and the finest varieties of Polyanthus or Bunch flowered Narcissi. They are tall and vigorous growers, bearing heads of large well-formed fragrant flowers.

- Yolande.** (3). A really meritorious acquisition. The perianth is silvery white, standing in handsome contrast with the bright yellow cup. Exceptionally large flowers of fine form and blooming freely. **\$2.75 per dozen, \$20 per 100.**
- Admiration.** (3). Sulphur-yellow perianth; sulphur-yellow eye with scarlet-red border. **\$2.75 per dozen, \$20 per 100.**
- Orange Cup.** (3). Bearing clusters of large showy flowers. Perianth primrose-yellow, with a brilliant fiery orange cup shading down to gold, prettily frilled. One of the finest in this section. **\$2.75 per dozen, \$20 per 100.**
- Grandeur.** (3). Exceedingly free-flowering, carrying 4-5 large, substantial flowers on each stem. Perianth silvery white, with a broadly fluted, golden cup. **\$2 per dozen, \$15 per 100.**
- Orange Globe.** (3). Light sulphur-yellow petals, with deep orange eye. Very distinct variety. **\$2 per dozen, \$15 per 100.**
- Elvira.** (4). Bearing on long graceful stems, heads of 3 to 4 large flowers with broad white petals of great substance and a golden yellow cup, edged orange, delicately fragrant. **\$1.70 per dozen, \$12 per 100.**

POETICUS NARCISSI

These "Poets'" Narcissi all have snowy white perianth segments or petals, and a flattened eye or crown, yellow or lemon, edged more or less deeply with scarlet or crimson, and sometimes mostly all scarlet. All are more or less sweetly scented. Having very highly colored crowns they should be cut young.

- Horace.** (4). Broad snow-white perianth; large cup, almost entirely blood-scarlet. Very beautiful; one of the best. Free-flowering and fine for forcing. **\$2 per dozen, \$15 per 100.**
- Cassandra.** (4). A noble and gigantic Poeticus, with broad white perianth; cup deeply rimmed dark red. **\$1.90 per dozen, \$14 per 100.**
- Mayflower.** (5). Those who are fond of old Recurvus will be delighted with this variety, which blooms at the same time but is easily one-third larger. By all means make it a point to plant some Mayflower. **\$2.75 per dozen, \$20 per 100.**
- Homer.** (4). One of the strongest in this class, bearing beautiful large flowers with snow-white perianth. The golden yellow eye is beautifully margined with deep crimson. **\$1.90 per dozen, \$14 per 100.**
- Dante.** (3). Pure white perianth, cup rimmed red. Earliest of all. **\$1.50 per dozen, \$10 per 100.**
- Recurvus.** (5). Narcissi may come and may go, but old "Pheasants Eye" will go on forever. In the days of Rome, 2000 years ago, it was revered for its beauty and the (supposed) medicinal qualities of the roots. Its beauty, charm and fragrance have caused it to become the inspiration for poets and peasants alike. It is the parent of many fine hybrids, yet none compare with it in hardiness, staying qualities and adaptability to many soils and climates. **\$1.25 per dozen, \$9 per 100.**
- Glory of Lisse.** (4). Pure white, orange center. Similar to Ornatus, but much large and earlier. **\$1.70 per dozen, \$12 per 100.**
- Ornatus.** (4) Perianth pure white; cup yellow, margined scarlet. An old variety used chiefly for naturalizing. **\$1.15 per dozen, \$8 per 100.**



DOUBLE NARCISSI

Double Sir Watkin. (1). A double form of Sir Watkin having all the qualities of that well-known variety and is similar in color. One of the finest introductions among the double varieties. **\$6.50 per dozen, \$50 per 100.**

Holland's Glory. (3). A most unusual novelty of great charm and beauty. The segments of the perianth grow in a double row, out of which extends a trumpet reminding one of a Tea Rose. The peculiar pale lemon tints in this flower cause it to be unusually attractive. And, what is best, they are long lasting, surpassing in beauty every other double variety. **\$1 each.**

Cheerfulness. (4). Imagine 2 or 3 Gardenias on elegantly erect stems 17 inches high and you have a fair picture of this remarkable novelty. The creamy white perianth has broad, round, well-shaped petals, while the center consists of creamy white and yellow petals. The flowers are exquisitely scented—and this variety blooms freely! **\$2 per dozen, \$15 per 100.**

Argent. (3). This bears star-shaped, semi-double flowers that are borne erectly on strong stems. The combinations of creamy white petals and yellow center cause it to be most decorative. **\$2 per dozen, \$15 per 100.**

JONQUIL NARCISSI

Very much prized for their delightfully scented flowers, perfectly hardy in gardens or naturalized, also well adapted to indoor culture in pots. The Jonquils are a distinctive type of the Narcissus family.

Giganteus. (2). Unquestionably the outstanding leader in this class. It has no equal when it comes to size, perfume or vigor of foliage. It is an exceedingly fine, fragrant flower for cutting, with clusters of impressive size. A dozen make quite an impressive showing, and for this reason it should ultimately become a great favorite for cut flower purposes. Easily and readily forced. **\$2 per dozen, \$15 per 100.**

Golden Sceptre. A wonder! Excellent for both outdoor and indoor culture. Of deep orange yellow color and unquestionably the largest flowering in this class. **\$2.75 per dozen, \$20 per 100.**

Campernel Odorus Rugulosus. (2). Rich yellow. The single sweet-scented Jonquil. Beautiful star-shaped flowers borne in clusters of four to six on a stem. **\$1.70 per dozen, \$12 per 100.**

Campernel Rugulosus Flora Plena. (2). The double sweet-scented Jonquil. Clusters of rich yellow double flowers, very fragrant, and prized for cutting. **\$1.70 per dozen, \$12 per 100.**

TRIANDUS NARCISSI

Josephine. (4). One of the comparatively few Triandus to grow easily and force readily under all conditions. The pure white flowers are carried 2 and 3 to the stem, are of distinct shape and charming in every way. Height, 12 inches. **\$4.50 per dozen, \$35 per 100.**

POLYANTHUS NARCISSI (BUNCH FLOWERING)

We are offering only two varieties of this type of Narcissi, for growing indoors in pots, as well as in pebbles and water. Suitable for house culture only!

Grand Soleil d'Or. Yellow bright orange cup. **\$2 per dozen, \$15 per 100.**

Paperwhite Grandiflora. The most popular of all Narcissi for indoor growing. **\$1.05 per dozen, \$7.50 per 100.**

MIXED NARCISSI

A really grand Mixture. These mixed Narcissi are all well-selected bulbs; consisting of many varieties. Splendid for naturalizing in woods. **\$1.15 per dozen, \$8 per 100, \$77.50 per 1000.**



TULIPS

We are tempted to pronounce Tulips the most spectacular of all spring flowers for a great variety of reasons. In the first place they bring us a blaze of colors when the heart is just about starved through the drab and dreary winter months.

Their range of colors is perfectly amazing, from clear white to deepest purple and maroon, including many superb vari-colored combinations. By a judicious selection of early, midseason and late varieties, Tulips may be enjoyed for the best part of six weeks outdoors, with an additional two months added when the gardener goes in for "forcing" suitable sorts indoors.

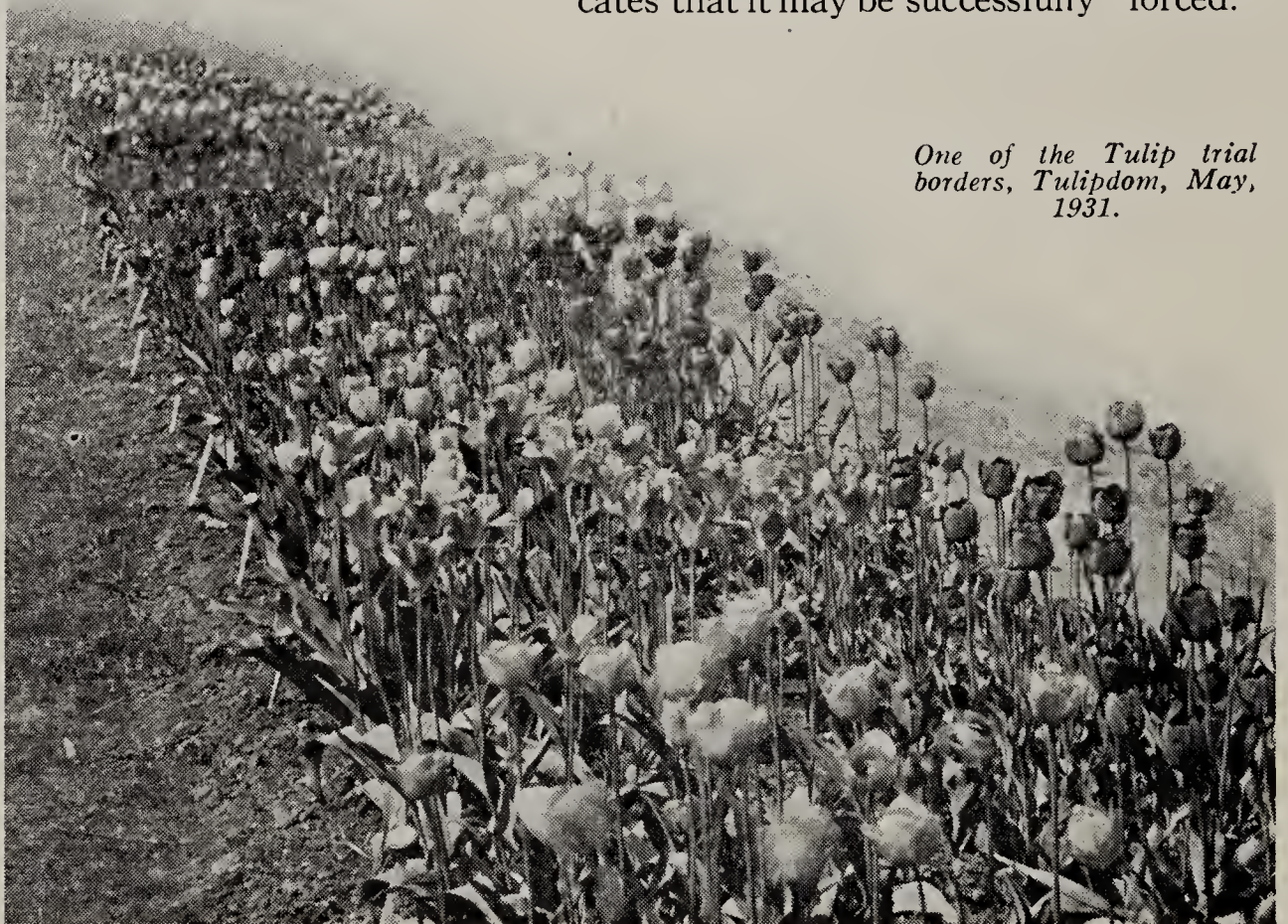
Culture. Tulips should not be grown in soil in which they have been growing for two years previously. They do best in fresh soil or in beds in which the soil has been changed. Growing them in the same soil for more than 2 years will at last lead to failure.

Do not use fresh stable manure at planting time, as it is injurious to the roots. Well-rotted manure will prove beneficial. Bone meal or dried sheep manure also can be used, about two handfuls to the square yard. This must be thrown on top of the soil before planting.

When buying bulbs for your garden, order always a few more than you need, as sometimes the flower-beds are spoiled by dogs, mice, etc. Plant the surplus bulbs in small pots in a corner of your garden so that they can be replanted when something of that kind happens to your flower-beds. Old pots are preferable to new ones, but if such are used they should be soaked in water a few days before they are used for planting bulbs.

Nearly all Tulips should be planted about 5-6 inches deep, and 5-6 inches apart according to the size of the bulb. For pots, six or seven in a 7-inch pot or pan can be used. For best results, do not mulch them until after the soil has become frozen, to keep out mice, etc. Do not mulch them too heavily, half an inch will prove quite enough.

An asterisk (*) preceding the name indicates that it may be successfully "forced."



One of the Tulip trial borders, Tulipdom, May, 1931.



Tulip Culture, Continued.

How Many Bulbs to Order for Beds of a Specific Size

Below we give the number of bulbs needed to plant a circular bed of dimensions as stated. Plant outside rows first. Those planted 6 inches apart should be placed 3 inches from edge of bed; those 12 inches apart should be placed 6 inches from the edge. It is advisable to plant the outer rows more closely than those toward the center.

Diameter of bed	6 in. apart	8 in. apart	12 in. apart	Diameter of bed	6 in. apart	8 in. apart	12 in. apart
3 feet	28	16	7	12 feet	452	255	113
4 feet	48	27	12	13 feet	528	299	132
5 feet	80	44	20	14 feet	612	347	153
6 feet	112	64	28	15 feet	704	398	176
7 feet	152	87	38	16 feet	804	453	201
8 feet	200	113	50	17 feet	904	511	226
9 feet	256	143	64	18 feet	1016	573	254
10 feet	320	177	80	19 feet	1132	638	283
11 feet	380	214	95	20 feet	1256	707	314

To arrive at the number of bulbs required for an oval bed, add the length and breadth and divide by two using the result as the diameter in above table. A bed 6 feet wide by 8 feet long will require the same number of bulbs as a round bed 7 feet in diameter. ($6 + 8 = 14$; divided by 2 gives 7).

The Growing of Bulbs Indoors

The Soil should be good, clean garden soil in which no bulbs, of the kind you wish to raise have been grown before. If the gardener has to prepare it he should use a compost of $\frac{2}{3}$ soil and $\frac{1}{3}$ leaf mould, adding about a pound of bone meal to every bushel of mixture.

The Pots should preferably be of the semi-flat azalea or pan type, these being somewhat shallower than the regulation type of flower pot. But any kind or size of pots may be used if you have them on hand. Broken pieces of flower pots or crocks should be placed in the bottom to insure good drainage.

The Bulbs should be especially selected and be of varieties that lend themselves to "forcing." No expert on earth can force a variety not adapted to producing flowers out of season. Size of the bulb counts, but it is also important that they be firm and in healthy, plump appearance otherwise.

Spacing. After placing some soil on top of drainage material, the bulbs should be set between $\frac{3}{4}$ and 1 inch apart each way, the former distance for the early, the latter for the later Darwin, Cottage and Breeder Tulips. The top of the bulbs may come within $\frac{1}{2}$ inch of the rim of the pot. A 6-inch diameter pot will hold about 6, an 8-inch pot about 8 bulbs of normal size.

After Planting the pans or pots should be watered and then be placed in a cold frame or plunged into the garden, in a spot readily accessible to the gardener. They should be placed so that at least five inches of soil covers the rim of the pot. After frost slightly hardens surface of the soil the spot should be mulched and more covering added, as the temperature goes down, to prevent the pot from freezing.



Indoor Culture of Tulips, Concluded.

Bringing to Daylight. Tulip pots or pans trenched outdoors are ready to be brought in after about ten weeks. Before bringing them to heat or light, however, take the precaution of investigating how much root-growth the bulbs have made. Place your left hand over the pot. Turn it up-side-down with your right, and with the pot between your hands, tap the rim gently against a frame or ledge. If the earth ball shows a nice network of roots, the pot may be brought to light and living room atmosphere. Bring in those marked (1) after variety name first—they are the easiest to "force." Unless roots show, leave pots in a dark corner of a cool cellar or frame. A disregard of this rule is responsible for most of the failures with flowers from bulbs indoors.

Which Flowers Really Are Easily Grown in Your Window Garden

Among the comparatively few flowers that thrive readily and bloom easily for everybody, none surpass those grown from the bulbs we offer, although, in this instance as well, some judgment need be exercised. For instance, all Hyacinths "force" equally well—meaning that they may be brought into flower indoors long before the outside beds show signs of life. But the same cannot be said of Tulips and Narcissi. Some of the late blooming Tulips (Breeder, Cottage and Darwin) require expert skill and experience to be "forced".

To make selection easy for those home gardeners lacking that experience, we have marked with an asterisk (*) those varieties in the different classes, which readily respond to amateur treatment under home conditions. The most important points that need watching in indoor culture are covered in the introductory chapters of the different bulbs. Here is one point that should be watched in particular: Do not bring any pots or pans into heat and light until the bulbs have developed a fairly good root system. When the roots begin to show through the drainage hole at the base, the pots or pans may be taken out of the cold frames and brought indoors.

Here is the order of relative ease with which the various bulbs may be forced: Hyacinths, early Tulips, Trumpet Daffodils, late Tulips; also such smaller flowers as Crocus, Muscari, Scillas, Snowdrops, etc.

One more point: Use clean pots always, and if you use new ones, soak them in water before filling in soil and planting bulbs.



DARWIN TULIPS

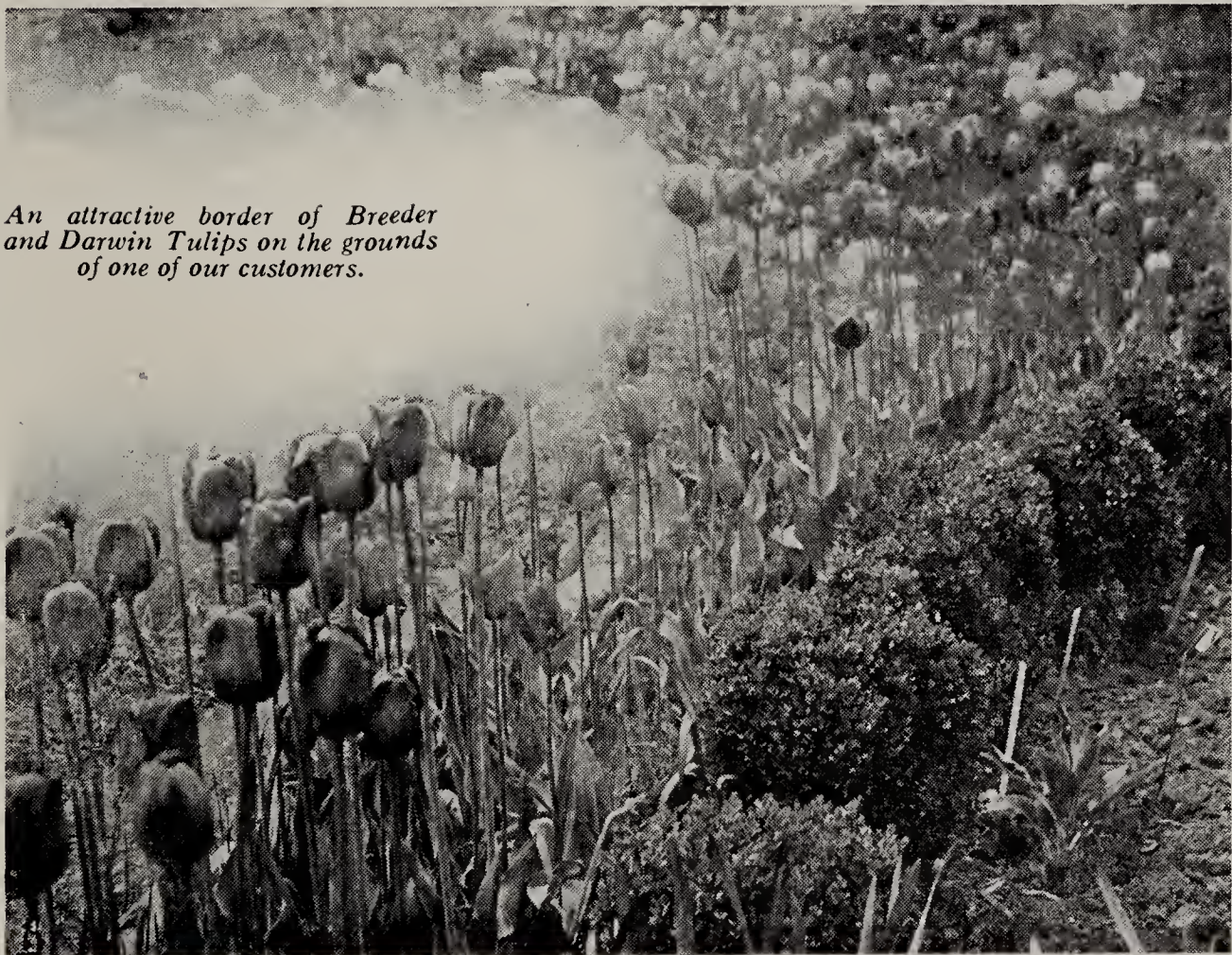
Raised from seeds of the best Bybloemen by an unknown amateur in the north of France, they drew the attention of a prominent bulb-grower of Haarlem, who bought the collection about 35 years ago. Because of the unusual clearness of colors, the thick substance of the petals and their vigorous growth, he immediately realized that he had to do with a superior strain of Late Tulips, and called them after the great naturalist Darwin. This collection is the origin of hundreds of acres in cultivation at present in Holland.

The chief characteristics of the Darwins are the perfect cup-shape of the flowers, fleshy substantial petals, tall stems and bright colors, ranging through all the shades of pink and red to purple. There are certain slaty blues and blue-violets which might almost be called a blue, while the black Tulip is nearly realized in some of the dark maroon varieties. There are comparatively few white or pure yellow varieties. In *Gesneriana Lutea*, among the Cottage Tulips, we have a variety which, in form, surpasses many older Darwins, although the stems are shorter.

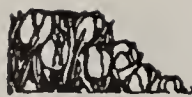
Most Darwins can be forced by middle of February, many of them even earlier, provided that they are potted as soon as received.

For this purpose we recommend deep pots or pans, such as are commonly called Azalea pans. The bulbs must be set farther apart than is the case with the early Tulips, and plenty of room on the benches must be given when vigorous growth begins. They should be grown slowly under a moderate temperature. Too high a temperature should constantly be avoided, or poor flowers result.

Nearly all varieties but especially the mauve-colored ones, lose their true color, becoming much paler when forced.



An attractive border of Breeder and Darwin Tulips on the grounds of one of our customers.



Zandbergen Bros. "Tulipdom"



Darwin Tulip Culture, Concluded.

In the garden, they should be planted not less than 6 inches apart and they should be covered with about 5 inches of soil. Do not plant before middle of October. Do not **mulch** them before the ground is well frozen so as to keep the mice out.

After testing, year after year, several hundred varieties in our trial garden at Oyster Bay, we have listed only such varieties as are the best. We confidently believe that our list will prove to be a reliable guide through the labyrinth of varieties.

RED AND CHERRY-ROSE SHADES

***King George V. (2).** Unquestionably the finest among red or rose-colored Darwins and a gem in every way. Equally superb in the border or when grown indoors. A brilliant cherry-red, shaded orange-scarlet within, blue star at base. The flowers are of great substance, carried on sturdy stems. The reasonable price of this magnificent sort should win it many more admirers. Height 28 inches. **\$1.15 per dozen, \$8 per 100.**

***Eclipse. (2).** Among the finest of all red Darwins, a glowing blood red of deep, rich shade. Particularly impressive alongside of either a yellow or very deeply colored variety like Faust. The huge flowers are supported by strong, tall stems. Second to none for lasting qualities, either in the border or for indoor decoration. A real acquisition. Height 30 inches. **\$2.60 per dozen, \$20 per 100.**



A glimpse in our trial grounds at "Tulipdom."

An asterisk (*) preceding the name indicates that it may be successfully forced. The figure following indicates the relative time of flowering.



Please Note Particularly:

Giving the right varieties "the right of way" over others with less pronounced characteristics constitutes, perhaps, the most noteworthy feature of this catalogue. We have felt for some time that an alphabetical arrangement of varieties is merely a survival of a conventional form of presentation. All varieties we offer in all classes have certain merits or we would not offer them. *But some have greater merits than others, often regardless of price, and these varieties we feature at the head of their respective classes.*



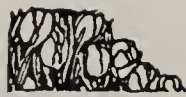
Eclipse—a well-named, stunning variety. See opposite page.

Darwin Tulips, Continued.

RED AND CHERRY-ROSE SHADES, Continued

- ***Louise de la Valliere.** (3). Of a clear tone of cherry-pink without the slightest hint of mauve, this is one of the outstanding beauties in its class. Splendid for the border and equally adapted for forcing. Strong stem, large flower. Height, 25 inches. **\$1 per dozen, \$7 per 100.**
- ***City of Haarlem.** (3). One of the largest scarlet-colored Darwins; intense dark scarlet with darker bloom, large steel-blue base and white halo. The finest red Darwin in existence, but prefers well-sheltered situations since the stem, being brittle, breaks off easily. Prices this year are again considerably lower for this very beautiful Tulip, which we recommend especially for forcing. Height, 31 inches. **\$1.15 per dozen, \$8 per 100.**
- Feu Brilliant.** (3). Clear scarlet, large flower on a tall stem. One of the best scarlets in cultivation which deserves to be better known among those who love brilliant color. Height, 28 inches. **90 cts. per dozen, \$6 per 100.**
- ***Prince of Wales.** (2). Bright cherry-red with a bright blue base. Large flower on a tall stem. Similar in many ways to King George V, but the stem is not quite so strong. Height, 30 inches. **\$1.15 per dozen, \$8 per 100.**

An asterisk (*) preceding the name indicates that it may be successfully forced. The figure following indicates the relative time of flowering.



Darwin Tulips, Continued.

RED AND CHERRY-ROSE SHADES, Continued

- ***President Taft.** (3). Deep ox-blood-red, with dusky bloom, blue base, very large flower on an exceptionally strong stem. An outstanding variety for the garden. Height, 26 inches. **\$1 per dozen, \$7 per 100.**
- Sundew.** (4). A new form of Darwin—medium-sized flower, with a crystal-like fringe at the edges. Should be planted by itself to get the best effect. Color, cardinal-red with a beautiful blue base. Height, 20 inches. **\$1.15 per dozen, \$8 per 100.**
- Scarlet Beauty.** (3). Vermilion-scarlet. Enormous flower on a tall strong stem. One of the finest in this color and of special merit for borders and massing because of its attention-attracting qualities. Height, 26 inches. **90 cts. per dozen, \$6 per 100.**
- ***Professor Rauwenhoff.** (2). Bright cherry-red; inside glowing scarlet, with a brilliant blue center. Large flower of great substance on a very strong stem. Superb among the lower priced varieties for both bedding and forcing. Height, 28 inches. **70 cts. per dozen, \$5 per 100.**
- ***William Pitt.** (2). Very dark crimson, with purplish shade on outer petals, with white base, starred dull blue. It makes very showy beds, and belongs to the best forcing varieties. Height, 24 inches. **80 cts. per dozen, \$5.50 per 100.**
- ***Prince of the Netherlands.** (3). Glowing cerise-scarlet, edged rose, with blue base. Extra large flower of vigorous growth. Very good forcer. Height, 32 inches. **70 cts. per dozen, \$5 per 100.**
- Chant de Cygne.** (2). Deep, rosy red tinged with soft salmon-rose. The flowers are large, yet of graceful shape, and supported by strong upright stems. Height, 30 inches. **\$1.15 per dozen, \$8 per 100.**
- ***Mrs. Farncombe Sanders.** (2). Brilliant rosy red with a clear white base. Very large flower of perfect shape. One of the best among the cheaper varieties for forcing or bedding. Height, 30 inches. **70 cts. per dozen, \$5 per 100.**
- ***Pride of Haarlem.** (1). Brilliant rose-carmine, with blue base. Large flower of stately habit. Superb for outdoor planting and very popular for forcing. Height, 28 inches. **65 cts. per dozen, \$4.50 per 100.**
- King Harold.** (3). Deep ox-blood-red, with purple-black base. Similar in color to Eclipse, but with slightly smaller flower. A strong growing variety. Height, 24 inches. **80 cts. per dozen, \$5.50 per 100.**
- Glow.** (3). Dazzling vermilion-scarlet with white base, marked blue. Medium-sized flower. Unrivalled for massing in borders or shrubs. Height, 24 inches. **70 cts. per dozen, \$5 per 100.**
- ***Bartigon.** (2). Carmine-crimson with pure white base, broadly ringed deep blue. Especially recommended for forcing but hardly suitable for outdoor culture. Height, 28 inches. **70 cts. per dozen, \$5 per 100.**

BULBS "IN A CLASS ALL THEIR OWN"

Please order **before August 10th.** The bulbs will then be packed especially for you by experts, in Holland. No hands will touch them from the time they leave our Nurseries until they reach you—during early October, in time for planting.

Also note that many of the better varieties are now obtainable at quite reasonable prices. Why grow obsolete varieties when newer, better ones superseding them are now available at moderate cost?



Oyster Bay, L.I., New York



The well balanced Tulip border will hold Breeder, Cottage and Darwin besides Lily-flowering types in generous quantities. Never plant less than a dozen of a kind, to secure this effect.



Darwin Tulips, Continued.

VIOLET-ROSE

- ***La Fiancee.** (2). Deep rose, shading to old-rose, delicate pink at edges, blue base. Huge handsome flower on a tall stem. Plant in sheltered position as the flower breaks easily in rainy weather. One of the finest for forcing. Height, 32 inches. **90 cts. per dozen, \$6 per 100.**
- ***Centenaire.** (1). Rich violet-rose, with large blue base. Excellent for either border or forcing. Height, 32 inches, **90 cts. per dozen, \$6 per 100.**
- ***Matchless.** (3). Beautiful violet-rose, with a narrow margin of pale rose. Good-sized flower on a strong, stiff stem. A beautiful Tulip for pots or pans, as it is not tall-growing. Height 20 inches. **90 cts. per dozen, \$6 per 100.**

ROSE, WITH PALER MARGINS

- ***Princess Mary.** (3). A bright carmine-rose with blush-rose margin at edges; white base with a blue halo. Inside of cup is almost a one-toned color, giving the top of the flower a very glowing, rich rose appearance. Extra large, well-formed cup. Height, 32 inches. **\$4.50 per dozen, \$35 per 100.**
- Aviator Hawkes.** (3). This magnificent novelty of recent introduction has worked its way to the front ranks in almost incredible time. A bright, deep rose of an exquisite shade, the large, well shaped flowers are supported by strong graceful stems. Height, 32 inches. **\$1.95 per dozen, \$15 per 100.**
- Baronne de la Tonnaye.** (3). If you need flowers by the armful, this is the variety to grow, as it sometimes bears two or even three flowers per bulb. Bright rose, margined blush rose. Medium-sized flower of great substance, stands the weather well, and is one of the best in lasting quality. Superb for the border. Height, 30 inches. **65 cts. per dozen, \$4.50 per 100.**
- ***Edmee.** (3). Vivid cherry-rose, edged soft old rose. Equally handsome for the border or for forcing. Height, 30 inches. **80 cts. per dozen, \$5.50 per 100.**
- ***Anton Roozen.** (2). Vivid rose-pink, edged pale rose with white base, marked blue. Large cup-shaped flower on a strong stem. Height, 28 inches. **70 cts. per dozen, \$5 per 100.**
- Madame Krelage.** (2). Bright Lilac-rose, margined pale silvery rose. Height 28 inches. **70 cts. per dozen, \$4.75 per 100.**



Princess Mary, one of the greatest in its class. See above.



A sight to delight the heart of every flower lover. Darwins and Breeder Tulips bring a greater variety of shades and colors than any other flower with the possible exception of Dahlias.

Darwin Tulips, Continued.

ROSE, WITHOUT PALER MARGINS

- ***Venus.** (3). This has been compared to the loveliest of pink June Roses. The color is really a charming deep pink, flushed with a slightly lighter shade toward edge of inner petals. The exceptionally large flowers are of exquisite cup shape, held firmly erect by sturdy stems. Height 30 inches. **\$1.60 per dozen, \$12 per 100.**
- ***Mrs. Samuel H. Taft.** (2). (Syn. Queen of Hearts). As fine as anything in the Darwin class, is this beautiful rose sport of the old Farncombe Sanders—equally useful for either forcing or garden. Appleblossom-pink, edged with ivory stripes, veined with peach blossom-pink and white. Inside of cup is a deep pink, almost a rose shade. A really huge flower of perfect shape. Height, 30 inches. **\$2.60 per dozen, \$20 per 100.**
- ***Aphrodite.** (3). Clear silvery rose-pink; inside deeper pink with blue base. Large flower on tall strong stem. Similar to Venus, and while flowers are slightly smaller they are clearer in texture. Height, 30 inches. **\$1.35 per dozen, \$10 per 100.**
- ***Princess Elizabeth.** (2). Clear deep pink, changing with age into rose-pink, with white base. A showy bedder. Perhaps the best pink at a price within the reach of all. Height, 28 inches. **70 cts. per dozen, \$5 per 100.**
- Le Notre.** (1). Beautiful clear pink, with large dull blue base. Similar to Princess Elizabeth, but can be forced earlier. Height 26 inches. **70 cts. per dozen, \$5 per 100.**
- Nauticus.** (2). Dark cherry-pink. Large well-formed flower on a tall, strong stem. At the price this may be considered the best in this color. Height, 28 inches. **80 cts. per dozen, \$5.50 per 100.**



Darwin Tulips, Continued.

PALE ROSE, WITH PALER MARGINS

Kathleen Parlow. (3). A lovely warm shade of true pink, with clearly defined silver margin, shading almost to white at tips of cup. Inside of cup is true pastel pink, with white base. Large, substantial, yet beautifully shaped flowers carried on strong tall stems. Slightly fragrant. Height, 30 inches. **\$3.80 per dozen, \$30 per 100.**

***Salmonea.** (2). Clear rosy pink with clear yellow center. Large flower on a strong stem. Good forcer and fine for cutting. Height, 32 inches. **\$1.35 per dozen, \$10 per 100.**

***Suzon.** (2). Soft buff-rose, shading to blush at margin of petals, with white center, marked blue. Equally useful for forcing and bedding. Height, 28 inches. **70 cts. per dozen, \$5 per 100.**

PALE ROSE, WITHOUT PALER MARGINS

Flamingo. (3). Delicate flesh-tinted rose. Medium-sized, refined flower. Height, 25 inches. **90 cts. per dozen, \$6 per 100.**

Psyche. (2). Silvery rose, edged soft rose, with pale blue base. Large flower on a graceful stem. Plant in a sheltered place for it will not stand harsh winds. Height, 26 inches. **70 cts. per dozen, \$5 per 100.**

SALMON AND ORANGE SHADES

Afterglow. (4). (Syn. Katherine Havemeyer). A well-named Tulip; the marvelous color combination brings us deep rosy orange with salmon high lights at the edge of the petals. Medium-sized flowers of lasting quality, borne on tall stems; special skill and favorable conditions are required to force this variety successfully. Height, 30 inches. **90 cts. per dozen, \$6 per 100.**

Orange Perfection. (3). Bright salmon-red, shading to scarlet when in full bloom, with bright blue base. Large flower on a graceful stem; beautiful for the border. Height 26 inches. **\$2.60 per dozen, \$20 per 100.**

Yolande. (2). Soft rose; inside brilliant rose-salmon with yellowish base. A clear color, similar to Clara Butt, but with slightly larger flower and stronger stem. Very beautiful. Height, 27 inches. **\$1.15 per dozen, \$8 per 100.**

Clara Butt. (3). Popular throughout entire world because of its color—a clear pink, flushed salmon-rose, with blue base and white halo. Medium-sized flower of good form; splendid for outdoor planting. Height, 22 inches. **70 cts. per dozen, \$4.75 per 100.**

"If I had room to have all the Tulips I admire and could afford it I would plant:

King George, Eclipse, Louise de la Valliere, Princess Mary, Aviator Hawkes, Venus, Mrs. Sam H. Taft, Aphrodite, Kathleen Parlow, Afterglow, Faust, Giant, the Bishop, Anton Mauve, Pres. Harding, Goldfinch, Garibaldi, Louis XIV, Indian Chief, De Zwijger, Robinson, Ilias, White Duchess, Vesta, Leda, Dido, Rosabella, Rosebud, Orient, Jupiter, Advance, Scarlet Emperor, Amun Ra, Grenadier, Avis Kennicot, Arethusa, Mrs. Moon, Walter T. Ware, Alaska, Moonlight, Jeanne Dessor, Ambrosia, Marvel, Zomerschoon, Sirene, Fantasy, Mayflower, Roxy, James A. MacDonald."

So writes a Tulip fancier with a life-time experience with this most spectacular of all Spring flowers.



Just About Everything In General

Professor Rauwenhoff, a bright cherry red bedding variety and an outstanding sort among low price Tulips. See also page 20



Giving the right varieties "the right of way" over others with less pronounced characteristics constitutes, perhaps, one of the most noteworthy features of this catalog. We have felt for some time that an alphabetical arrangement of varieties is merely a survival of a conventional form of presentation. All varieties we offer in all classes, have certain merits or we would not offer them. But some have greater merits than others, often regardless of price, and these varieties we feature, at the head of their respective classes.

About stocks on hand in the Fall: We generally have some bulbs on hand here at Oyster Bay at planting time, but both number of varieties and quantity of bulbs will be limited. The fancier whose heart is "set" on specific varieties should order at once, surely not later than August 10th. This will insure getting just the kinds wanted, in a bulb product second to none but—please order before August 1st. The bulbs will then be packed especially for you by experts, in Holland. No hands will touch them from the time they leave our Nurseries until they reach you—during early October, in time for planting.

If you were to ask our opinion

Just which to select from among so many worth-while varieties of Darwin Tulips is not an easy matter for the newcomer to the ranks of Tulip admirers. Those who have no personal preferences and trust to our judgment, will make no mistake choosing from list below.

For pages where varieties are offered, please refer to complete index in back of catalog.

SALMON-ORANGE SHADES

Afterglow

LILAC SHADES

Anton Mauve

Laura

Maya

President Harding

Zev

SLATY LILAC

Duchess of Hohenberg

ROSE WITHOUT PALER MARGINS

Aphrodite

Mrs. Samuel H. Taft

Venus

ROSE WITH PALER MARGINS

Aviator Hawks

Princess Mary

RED SHADES

Eclipse, King George V.

Louise de la Valliere

PURPLE-MAROON SHADES

Faust

Stormking

PURPLE SHADES

The Bishop

Giant

Sir Trevor Lawrence

PALE ROSE WITH PALER MARGINS

Kathleen Parlow



Up to August 15th Only

can we book orders for any variety of Tulips offered in this catalog. Then last orders are cabled to our Holland Nurseries. After that we will book orders only for such varieties as we will have in stock here at Oyster Bay.

The *exacting* Tulip hobbyist will want his or her order filled on the other side for three reasons. It insures expert handling and packing. It avoids *repeated* handling of the bulbs and causes the orders to be filled with

"Bulbs in a Class All Their Own"

Zandbergen Tulips among bulbs may be likened to Tiffany merchandise. You can depend on these gems never to fail under normal soil and weather conditions. For this reason they come to you with the *guarantee* that they will do as this catalog promises.



Silverwing—a sensation among "true-blue" white Darwins.

Darwin Tulips, Continued.

WHITE

Helen Eakin. (2) A truly wonderful pure white Darwin at last! The flowers are cup-shaped, not unlike those of Farncombe Sanders. They are of great substance, hence long lasting. For finest effects plant with one of the medium tall early spring flowers such as Phlox divaricata Laphami or Mertensia virginica. Height 30 inches. **\$10 per dozen, \$75 per 100.**

Silverwing. (1). This magnificent white Darwin—regarded by many as the finest white to date—always creates a sensation in our show grounds. Strong, stiff stems carry magnificent cup-shaped flowers of great substance and huge size. Blooms ten days earlier than other Darwins. Height, 32 inches. **\$2.60 per dozen, \$20 per 100.**

Zwanenburg. (3). Pure white when in full bloom. A good white Darwin, and one of the few available at a reasonably low price. Medium-sized flower; suitable for forcing. Vesta among the Cottage Tulips is a better white variety for the garden. Height, 23 inches. **\$1.15 per dozen, \$8 per 100.**

La Candeur (White Queen.) (2). Opening tinged pale rose, almost pure white when in full bloom; black anthers. Medium-sized flower on a strong stem. Height, 28 inches. **70 cts. per dozen, \$5 per 100.**

YELLOW

Yellow Giant. (3). A pure golden yellow, with large globular flower on a tall strong stem. One of the best of recent introductions. Height, 26 inches. **\$5.25 per dozen, \$40 per 100.**



"The Bishop," truly a dignified personality in the Tulip world. See below.

Darwin Tulips, Continued.

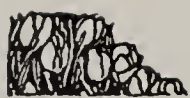
PURPLE SHADES

***The Bishop.** (3). The outstanding variety in its color class! Violet-purple, with small dull blue base and white halo. A truly impressive, enormous flower on a tall strong stem, without any real rival in sight as yet. This must be seen in order to be appreciated! Height, 29 inches. **\$3.20 per dozen, \$25 per 100.**

Storm King. (3). We are glad to be able to offer this again after withdrawing it from sale in order to build up our depleted stock. Of exceptionally rich, dark wine color—a shade that goes particularly well with such favorites as Louis XIV among the Breeders. The flowers are of enormous size and great substance, which is responsible for their great lasting quality. Bound to be welcomed back by many old friends, and to win many new ones. Height 28 inches. **\$2.60 per dozen, \$20 per 100.**

Burgomaster Sandberg. (3). A shade between maroon and violet, with maroon predominating; might be called a plum-violet color, with a blue base and white halo. Beautifully shaped, large flowers on tall strong stems. Height, 28 inches. **\$2.60 per dozen, \$20 per 100.**

***Giant.** (2). Deep reddish purple, shaded dark violet, with white base, starred blue. A real giant on a tall sturdy stem. Height, 29 inches. See illustration on page 29. **\$1.35 per dozen, \$10 per 100.**



Darwin Tulips, Continued.

PURPLE SHADES, Continued

- ***Frans Hals.** (3). Deep reddish purple. Enormous flower on a strong stem. Has to be planted in partial shade, as it does not stand the hot sun. Height, 29 inches. **\$1.15 per dozen, \$8 per 100.**
- ***Sir Trevor Lawrence.** (2). Reddish violet, flushed purple, with white base. Very large cup-shaped flower on a strong stem. One of the tallest Darwins in cultivation. Height 34 inches. **\$1 per dozen, \$7 per 100.**
- ***Jubilee.** (3). A fine color and good variety; bright blue-purple with white base, marked blue. Not as large as the Bishop but of clearer color. Height, 31 inches. **\$1.35 per dozen, \$10 per 100.**
- Mrs. Potter Palmer.** (3). Bright royal purple, with white base. Large flower on a strong stem especially recommended for the border. Height, 26 inches. **90 cts. per dozen, \$6 per 100.**

PURPLE-MAROON SHADES

- ***Faust.** (3). First choice among all dark-colored varieties and if you admire this shade, this is the variety to grow. Dark satiny purple with white base. Enormous flower of fine form. Excels for exhibition purposes among the dark varieties and never fails to win the prizes in its class. Height 30 inches. **90 cts. per dozen, \$6 per 100.**
- ***Mystery.** (3). One of the finest dark Tulips—almost a bright maroon-black. Large flower on a tall, strong stem. Height, 28 inches. **\$2.60 per dozen, \$20 per 100.**
- Zulu.** (2). Rich velvety purple-black egg-shaped flower of good size with pointed petals. Height, 27 inches. **90 cts. per dozen, \$6 per 100.**
- Philippe de Commines.** (2). Velvety maroon-black; large flower on a long stem. Height, 26 inches. **70 cts. per dozen, \$5 per 100.**
- La Tulipe Noire.** (3). Very dark maroon-black. The blackest of all Tulips, with large flower of fine form, on a strong stem. Sometimes bears two flowers to one stem. Height, 26 inches. **90 cts. per dozen, \$6 per 100.**

About Color Schemes

We are frequently asked about how to work out color schemes in Tulips. There is no such thing as a cut and dried proposition because no two individuals have the same taste when it comes to colors. And yet the matter of color harmony is the very foundation of a pleasing garden.

On general principles, violet and rose go well together. Clara Butt is best with a light blue. Lucifer and Panorama among the Breeders go well with lavenders and light blue. On the other hand, the lavender as well as yellow Tulips go best with dark and buff Breeders. We shall be only too glad to help our customers work out color schemes if they will let us know how much money they are prepared to invest, how large a border or bed is available and which colors they prefer.

An asterisk (*) preceding the name indicates that it may be successfully forced. The figure following indicates the relative time of flowering.

Giving the right varieties "the right of way" over others with less pronounced characteristics constitutes perhaps one of the most noteworthy features of this catalog. We have felt for some time that an alphabetical arrangement of varieties is merely a survival of a conventional form of presentation. All varieties we offer in all classes, have certain merits or we would not offer them.



"Giant,"
as offered on
page 27

Darwin Tulips, Continued.

LILAC SHADES

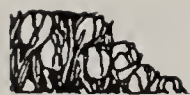
***President Harding.** (3). Blue violet, shading lighter at margin. A magnificent, well-formed flower of good substance, carried on a strong tall stem. One of the finest and largest in this color. Unsurpassed for forcing or the border. Height, 30 inches. **\$1.15 per dozen, \$8 per 100.**

Zev. (3). A silvery lavender, shading to purple tones near the base of the flower, with flushes of pink, gray, and silver to complete a most pleasing, bright coloring. The inside of the cup is white with royal purple stamens. Tall and sturdy. Height, 28 inches. **\$1 each, \$10 per dozen.**

Maya. (3). Pastel lavender with a silver base. The outside of the cup is the same shade as the inside, which is unusual in Tulips. Color is clear and clean. A splendid variety, with very large flowers on straight upright stems. Height, 28 inches. **\$5.25 per dozen, \$40 per 100.**

Anton Mauve. (2). One of the largest among lavender Tulips. Rich violet-purple flowers, shaded with a dull garnet which is slightly paler at the edges. Inside is dark heliotrope, to which a white base with faint blue markings adds greater glory. Enormous, well-shaped flowers of good substance. For most pleasing effects this should be planted with a bright-colored variety. Height, 30 inches. **\$1.05 per dozen, \$7.50 per 100.**

King Mauve (3). Of rather unusual color—a soft mauve or lavender with silvery sheen, which heightens the beauty of darker varieties through sheer contrast. Large, full flowers of refined form. Height 28 inches. **Each \$2.**



Darwin Tulips, Continued.

Laura. (2). A variety of such outstanding loveliness as to cause us to mention first that it should be planted in a proper setting to find full appreciation. Myosotis, yellow Primroses or even some other Tulips of related color, will display this light violet beauty at its best. Each flower is broadly edged white. One of the most interesting of all novelties in this color. Height, 28 inches. **\$2.60 per dozen, \$20 per 100.**

Prince Mauritz. (3). Light purple with silver stripe down center of each petal, leading to white base. Large, impressive and substantial flowers on tall stems. Height, 28 inches. **\$1.95 per dozen, \$15 per 100.**

***Melicette.** (3). Soft lavender, inside deeper, shading to pale lavender at edges. Blue base. Large flower with reflexing petals. The purest lavender Darwin in cultivation. Height, 28 inches. **95 cts. per dozen, \$6.50 per 100.**

Bleu Aimable. (3). Pale lavender, shaded steel-blue, with white base, starred blue. Good-sized flower of a very distinct shape. Height, 26 inches. **80 cts. per dozen, \$5.50 per 100.**

Opal. (2). Heliotrope-lilac, a very distinct and brilliant color. Very scarce. Height, 30 inches. **90 cts. per dozen, \$6 per 100.**

***Valentin.** (1). Soft heliotrope, shaded light violet. Large vigorous flower on a tall graceful stem. Fine for outdoor planting and early forcing. Height, 32 inches. **90 cts. per dozen, \$6 per 100.**

Euterpe. (2). Silvery mauve-lilac, edged paler lilac; white base, with blue halo. Height, 29 inches. **70 cts. per dozen, \$5 per 100.**

***Crepuscule.** (3). Soft rosy lilac, flushed white, with white base. Fine forcer. Height, 26 inches. **70 cts. per dozen, \$5 per 100.**

Reverend Ewbank. (2). Soft lavender-violet, with lighter tint at edges; white base. Medium-sized flower. Height, 25 inches. **70 cts. per dozen, \$5 per 100.**

Dream. (2). Pale heliotrope; inside deep violet with blue base. One of the best among the cheaper varieties for the border. Height, 26 inches. **70 cts. per dozen, \$5 per 100.**

***William Copeland.** (1). Not recommended for outdoors, but of excellent early forcing qualities, when its color becomes a soft lavender. Height, 25 inches. **80 cts. per dozen, \$5.50 per 100.**

Personal Opinions. Were we permitted to have it our way we would no longer grow and offer a good many so-called "old fashioned" favorites, as for instance "Rev. Ewbank" and "Dream" listed above. They are obsolete! Many quite reasonably priced newer varieties are far ahead of them in every respect. We do not offer novelties of questionable merit. Once you see a variety offered in our catalogue you can be sure that it deserves your consideration and trial.



A pleasing border of Darwin and Breeder Tulips as grown from Zandbergen Bulbs.

Darwin Tulips, Concluded.

SLATY LILAC

***Duchess of Hohenberg.** (2). Pale slaty lilac-mauve, with stripe of rosy heliotrope, inside pale lilac with white base. One of the best in this color for forcing. Large flower on tall strong stem. Height, 29 inches. **\$2.60 per dozen, \$20 per 100.**

***Oliphant.** (1). Smoky lavender, flushed blue on outer petals; pure white base. Good early forcer. Huge flower on a graceful stem. Scarce. Height 32 inches. **\$7.50 per dozen, \$60 per 100.**

Remembrance. (2). Pale, slaty lilac of silvery tone, striped dull violet; flushed brown to the small base. Height, 25 inches. **90 cts. per dozen, \$6 per 100.**

La Tristesse. (3). Dull slaty violet; inside dark lilac-blue, with yellow tinged base, slaty at the margin. Medium-sized flower of a distinct color. Height, 26 inches. **70 cts. per dozen, \$5 per 100.**

Ronald Gunn. (2). Large bluish violet, paler at edges, with white center, marked blue. Height, 28 inches. **90 cts. per dozen, \$6 per 100.**

DARWIN TULIPS IN CHOICEST MIXTURE

Selected bulbs, all colors, representing many varieties. **60 cts. per dozen, \$4 per 100, \$37.50 per 1000.**



About Stocks On Hand at Oyster Bay

Every fall we import limited quantities of the most popular varieties of Tulips so as to be able to fill late orders. But we urge all customers desiring specific varieties, to place their orders before August 10th. Of necessity, the number of varieties carried here at Oyster Bay is also quite limited. Few of the rarer and choicer varieties are included in our general "order" from our farms which, as mentioned above, is placed to accommodate those who order late.

When comparing prices, please bear in mind that quality bulbs such as ours, cannot be produced cheaply. The difference in cost begins at harvest time, in the fields. It costs more to gather bulbs in baskets than to put them in burlap bags. It costs more to have them cleaned on a "daily pay" basis, than on a piece work (so much per basket) basis. Packing the bulbs in special paper bags with air holes, in "shock-absorbing" buckwheat hulls, also adds to the cost. But it is all worth-while and the steady increase of satisfied customers testifies to their approval of our methods to gain **Quality Bulbs**.

And what, you will ask, constitutes that evasive factor generally referred to as "Quality"? Planting time marks the beginning of bulb quality. Only sound parent bulbs of known pedigree are set out. Then follow weeks of careful cultivation, which means hand weeding, watchful waiting for the bulbs to bloom. Time arrives for the act of pulling out any that may not be true to name. But where care, going back generations (of bulbs) has been exercised, that act of so-called "rogueing" is seldom necessary.

Then follows harvest time, to which we have already referred in paragraph above headed "When comparing prices." However, "prices" do not mean anything unless they are asked for by a firm of well-known integrity. We look back upon years of doing the right thing in connection with orders, large and small. We have yet to learn of better bulbs (at any price) than those which you get from us, with all of which you get the assurance that they are

"Bulbs in a Class All Their Own"

An asterisk (*) preceding the name indicates that it may be successfully forced. The figure following indicates the relative time of flowering.



Tulip trials at "Tulipdom."

BREEDER TULIPS

Breeders, formerly listed among the Cottage Tulips, form a distinct class by themselves, being "unbroken" forms of the old time "Florist" Tulips.

Discarded by their originators, the old Dutch gardeners, because they had no stripes nor feathers, they were more or less neglected and grown only in some obscure corners, until a taste for the so-called "art colors" awakened, and with the revival for the taste for bronze, brown and buff tones, the attention was drawn to these Tulips, which have now become the most popular late Tulips.

And they deserve their popularity. Not only for their peculiar and odd colors, but also for their great lasting qualities, which make them unusually suited for garden decoration. In size and height they frequently surpass even the finest Darwins.

Out-of-doors or when used for forcing, Breeders require the same cultural treatment as the Darwin Tulips.

About Special Arrangement. Instead of using various marks and different kinds of type to indicate the relative merit of the many varieties, we present them in order of their beauty, usefulness, and general adaptability. Thus, the first few varieties listed in each class, are, in our opinion, the finest.

And if you were to ask us—

All told we offer half a hundred varieties of Breeders. Many Tulip lovers will find it difficult to decide which to order. The varieties named below can be depended upon under all conditions and all are especially recommended.

PURPLE-VIOLET

- Bacchus
- De Zwijger
- Louis Sixteen
- Robinson

LAVENDER SHADES

- Illias
- Salomon

BRONZE AND BUFF

- Cherbourg
- Coridion
- Garibaldi
- Goldfinch
- James A. MacDonald
- Prince Albert

SCARLET, BRONZE AND BROWN

- Indian Chief
- Louis XIV
- Lucifer
- Roi Soleil
- Turenne

PINK TO RED

- Pink Pearl



Breeder Tulips, Continued

SHADES OF BRONZE AND BUFF

- James A. MacDonald.** (3). Long-stemmed variety, particularly good for forcing, when it shows a new color in Breeder Tulips. Orange-flame inside the cup, shading to light orange at petal edges. Outside the orange is blushed with salmon and mauve. Yellow base. Height, 26 inches. **\$6.50 per dozen, \$50 per 100.**
- Goldfinch.** (2). The most beautiful in its color class. A symphony of golden brown with mahogany-brown inside. The effect is heightened by a suffusion of olive tints through center of petals, which are edged light golden brown. An enchanting combination of colors in a flower both handsome and refined, yet substantial, hence long lasting. Height 30 inches. **\$1 per dozen, \$7 per 100.**
- Garibaldi.** (2). Pale lilac-bronze, broadly edged soft primrose-yellow. Long shaped flower on a very tall strong stem. One of the finest in this list, and we guarantee our strain to be as large as it ever was. Height, 31 inches. **\$3.00 per dozen, \$30 per 100.**
- ***Cherbourg.** (3). A beautiful variety, but not tall enough for exhibition purposes. Bright coppery yellow shades, slightly flushed apricot towards the base. Good-sized, egg-shaped flower. Height, 28 inches. **\$5.25 per dozen, \$40 per 100.**
- ***Prince Albert.** (2). Glowing mahogany-brown, shaded dull bronze with a green base. Similar to Goldfinch and one of the best among the medium-priced varieties. Large loosely formed flower. Height, 30 inches. **\$1 per dozen, \$7 per 100.**
- Coridion.** (2). Unusually beautiful clear bronze-yellow color, with a distinct lilac stripe through center. A fine border variety. Height, 24 inches, **\$1.60 per dozen, \$12 per 100.**
- ***Bronze Queen.** (3). (Biscuit, Clio). Color, like a biscuit, soft buff, tinged inside with golden bronze; yellow base. Medium tall, large flower, fine for outdoor planting and for forcing. Height, 28 inches. **75 cts. per dozen, \$5 per 100.**
- ***Abd-El-Kader.** (3). Dull bronze-yellow, bordered light bronze, inside bronze-brown, with olive-green base. Medium-sized flower. Height, 26 inches. **\$1 per dozen, \$7 per 100.**
- ***Plutarchus.** (3). Bronze, shaded dull lilac, inside terra cotta with olive-green base. Fine among evergreens and for the border. Height, 26 inches. **90 cts. per dozen, \$6 per 100.**
- Yellow Perfection.** (2). Light bronze-yellow, edged golden yellow, inside bronzy brown, yellow base starred green. Height, 30 inches. **90 cts. per dozen, \$6 per 100.**
- Apricot.** (3). Ruddy apricot, edged bronzy buff with yellow base and olive halo. A large flower, tending to have an extra number of petals. Height, 26 inches. **90 cts. per dozen, \$6 per 100.**

Kindly order as early as possible, surely not later than August 10th. While we do carry bulbs in stock at Oyster Bay during the fall, as explained on page 32, the greatest satisfaction is in store for those customers taking the advice offered on that page.



**Breeder
Tulips,
Continued**

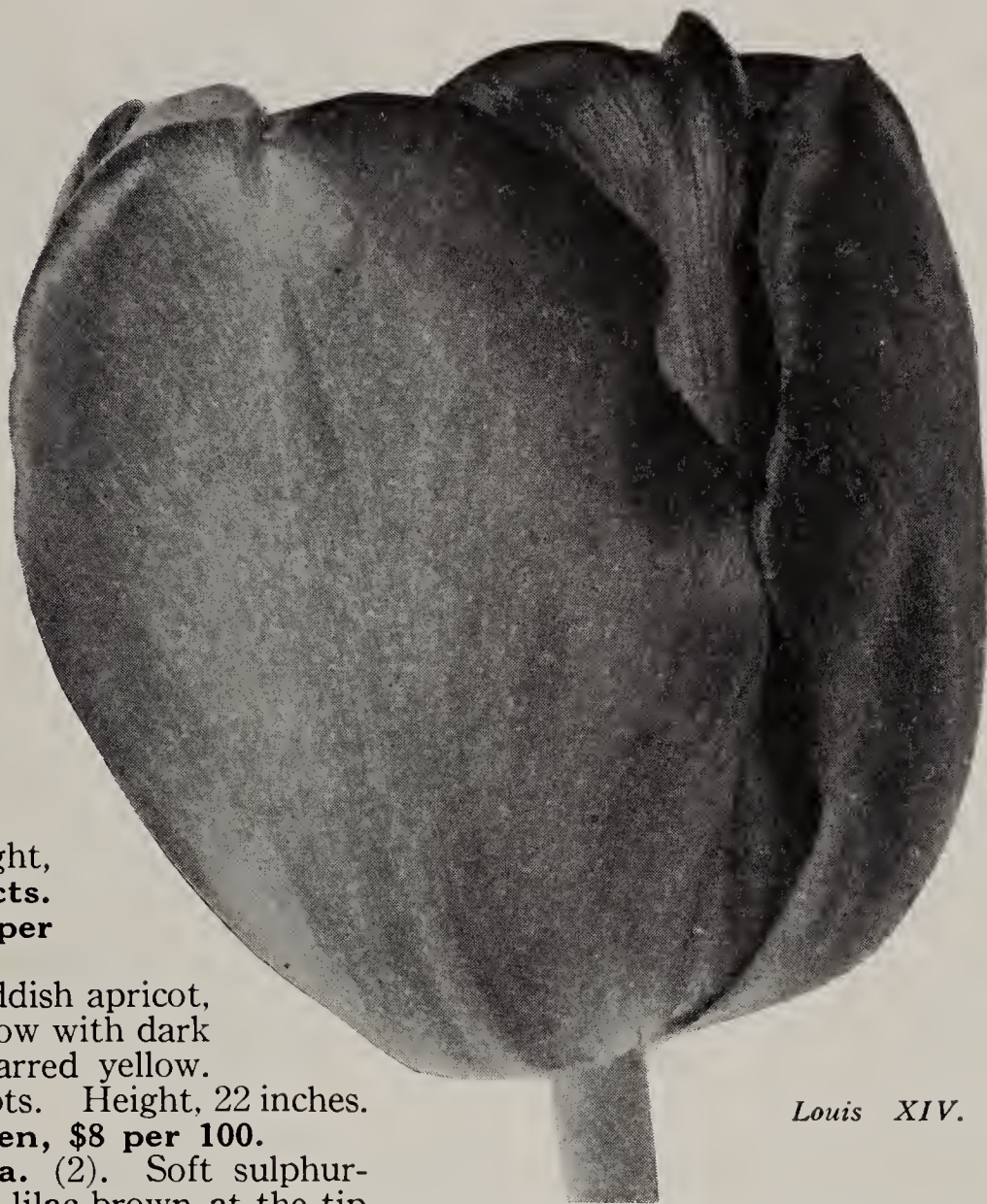
**SHADES OF
BRONZE
AND BUFF,
Continued**

***Jaune d'Oeuf.**

(3). Lively apricot with broad stripe of lilac; inside golden bronze with dark green base. Good-sized flower of distinct shape on a tall strong stem. Height, 26 inches. **70 cts. per dozen, \$5 per 100.**

Vulcain. (3). Reddish apricot, edged buff-yellow with dark green base, starred yellow. Splendid for pots. Height, 22 inches. **\$1.15 per dozen, \$8 per 100.**

***Queen Alexandra.** (2). Soft sulphur-yellow, flushed lilac-brown at the tip of petals. Medium-sized, elegantly shaped. Height, 23 inches. **65 cts. per dozen, \$4.50 per 100.**



Louis XIV.

SCARLET, BRONZE AND BROWN COMBINATIONS

***Louis XIV.** (3). One of the most artistic Tulips in existence. Dark purple, flushed bronze, with broad margin of golden brown. A large globular flower of stately bearing, with green-black base, starred yellow. Exceptionally long lasting and easily one of the outstanding Tulips of all times. Height, 32 inches. **90 cts. per dozen, \$6 per 100.**

***Indian Chief.** (3). One of the largest Tulips in cultivation—a tall variety of most artistic color and make-up. Reddish mahogany, flushed purple; edged warm brown when in full bloom; yellow base. Combines all desirable Tulip qualities in an exceptional degree. See illustration on page 36. Height, 33 inches. **\$3.80 per dozen, \$30 per 100.**

“Bulbs in a Class All Their Own”

Zandbergen Tulips among bulbs may be likened to Tiffany merchandise. You can depend on these gems never to fail under normal soil and weather conditions. For this reason they come to you with the guarantee that they will do as this catalogue promises.



Breeder Tulips, Continued

SCARLET, BRONZE AND BROWN COMBINATIONS

***Lucifer.** (4). A large, bold, gorgeous, late-blooming flower on a tall strong stem. Dark orange, flushed rose, edged scarlet-orange, with yellow base and olive halo. Height, 28 inches. **\$1.15 per dozen, \$8 per 100.**

Feu Ardent. (3). A brilliant deep crimson, shaded mahogany. A flower of great size and substance and a good Tulip for any purpose. Height, 26 inches. **\$1.15 per dozen, \$8 per 100.**

Turenne. (2). Purplish brown with broad margin of soft yellow; yellow base. Very large flower and especially handsome in the border. Strongest competitor of Louis XIV. Height, 30 inches. **90 cts. per dozen, \$6 per 100.**

***Roi Soleil.** (3). Like Louis XIV, this is a large flower of dark purple, flushed bronze. Violet striped and flamed with mahogany. Height, 30 inches. **90 cts. per dozen, \$6 per 100.**

***Dom Pedro.** (3). Coffee-brown, with a very narrow edge of golden brown; inside rich mahogany, olive base. Large fragrant flower. Magnificent when planted with lighter Breeders. Height, 24 inches. **90 cts. per dozen, \$6 per 100.**

***Panorama.** (3). Beautiful deep orange, shaded mahogany. Very large globular flower; being one of the best Tulips for forcing, this is very much in evidence at all spring flower shows. Height, 22 inches. **70 cts. per dozen, \$5 per 100.**



*Indian Chief.
See page 35.*

Bulbs are extremely sensitive merchandise, easily bruised and mishandled. Our men are trained to exercise extra care. As a result the bulbs we offer hold promise of extra-fine results in your garden.

An asterisk (*) preceding the name indicates that it may be successfully forced. The figure following indicates the relative time of flowering.



Oyster Bay, L.I., New York



Breeder Tulips, Continued

SCARLET, BRONZE AND BROWN COMBINATIONS, Concluded

***Prince of Wales.** (2). Maroon-brown, edged coffee-brown, with black base, starred yellow. A very beautiful flower of flat, open form on a tall strong stem. Fine when planted with paler bronze Breeders. Height 31 inches. **\$1.95 per dozen, \$15 per 100.**

***Copernicus.** (3). Dark coppery bronze, flushed old-rose; inside warm brown, with yellow base. Large flower on a strong stem. Very beautiful. Height, 27 inches. **90 cts. per dozen, \$6 per 100.**

***Prince of Orange.** (3). Brilliant orange-scarlet, flushed purple on outer petals. Long well-formed flower of great beauty with greenish yellow base. Fine for beds or borders. Height, 20 inches. **90 cts. per dozen, \$6 per 100.**

James Watt. (3). A small globular flower of most unusual and rather unique color. Black-purple, edged dark brown; inside purple, shaded to brown at edges; beautiful green base, starred white. Height, 24 inches. **\$1.15 per dozen, \$8 per 100.**

Marginata. (4). Lively apricot-orange, edged yellow. Handsome medium-sized flower on a strong stem. Height, 22 inches. **\$1 per dozen, \$7 per 100.**

Chestnut. (3). Not so much noted for its size as it is for the exceptional color combination of brown with faint purplish tints. The inside of the flowers is deep mahogany with a black base that is starred yellow. Height, 24 inches. **70 cts. per dozen, \$5 per 100.**

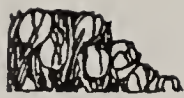
***Old Times.** (3). Dull purple, edged primrose-yellow, green base. Fine for the border. Height, 24 inches. **\$1 per dozen, \$7 per 100.**



A small portion of our annual Tulip Trials at "Tulipdom."

About Stocks on Hand in the Fall:

We generally have some bulbs on hand here at Oyster Bay at planting time, but both number of varieties and quantity of bulbs will be limited. The fancier whose heart is "set" on specific varieties, should order at once, surely not later than August 10th. This will insure getting just the kinds wanted, in a bulb product second to none in the world.



**Breeder Tulips,
Continued**

**SHADES OF PURPLE
TO VIOLET**

- Louis Sixteen.** (3). Enormous violet-blue, large, handsome flower. One of the most beautiful in this color—and it would be a prize at any price, were the stems a few inches taller. Height, 26 inches. **\$3.80 per dozen, \$30 per 100.**
- ***De Zwijger.** (3). (Syn. William the Silent). Large cup-shaped flower of the most striking color, of wonderful substance on a stout stem. Very dark purple, with white base and blue halo. Height, 28 inches. **\$1.95 per dozen, \$15 per 100.**
- ***Bacchus.** (3). Dark plum-violet; inside violet-blue with white star at base. Immense large egg-shaped flower, with frilled edged petals. Lasts very long and stands the weather very well. Height, 30 inches. **\$1 per dozen, \$7 per 100.**
- ***Robinson.** (2). Bright blue-purple, changing into ashy blue-purple when in full bloom. Huge loosely formed flower of graceful habit. Regarded as one of the most beautiful Breeder Tulips among the medium-priced varieties. Height, 32 inches. **\$1.35 per dozen, \$10 per 100.**
- ***Velvet King.** (3). (Dreadnaught). Large, dark glossy maroon-purple flower, with yellowish base, marked blue, and having an extra number of petals. Magnificent for the border, especially in the good company of yellow Mr. Dames, Moonlight or Orange Grenadier. What a gathering of Tulip aristocrats! Height, 26 inches. **90 cts. per dozen, \$6 per 100.**
- Roi de Siam.** (3). Dark claret-purple, edged lighter, with ashy bloom and white base. Large flower on a tall strong stem. Height, 29 inches. **\$1 per dozen, \$7 per 100.**

One special feature of this catalog is that it presents the varieties in the different classes in order of their relative merit. The descriptions are accurate—this catalog has been pronounced the most truthful bulb book published. It points the way to greater gardens, finer exhibition flowers, better success all round, with flowers grown from bulbs.



Oyster Bay, L.I., New York



Breeder Tulips, Continued

SHADES OF PURPLE TO VIOLET, Continued

***Mrs. Beecher Stowe.** (3). One of the most beautiful violet-blue Tulips. White base. Extremely scarce variety. Height, 26 inches. **\$1.95 per dozen, \$15 per 100.**

Socrates (Violet Queen). (3). Deep rosy violet, with a dull blue base. Large flower, often having an extra number of petals. Height, 28 inches. **90 cts. per dozen, \$6 per 100.**

***Sappho.** (3). Dark purple-violet, with white base. Large flower of graceful habit. Height, 26 inches. **\$1.35 per dozen, \$10 per 100.**

Godet Parfait. (3). Dark blue-purple with white base and blue halo. The flower lasts a long time in bloom and is held upright by a very strong stem. Height, 30 inches. **90 cts. per dozen, \$6 per 100.**

LAVENDER SHADES

Ilias. (3). A cross between a Darwin and a Breeder. An almost pure lavender, with white base and purple stamens. Inside of cup is tipped reddish violet. Very large flower on a strong stem. Fine garden variety, and easily the best Breeder in its color class. Height, 26 inches. **\$1 per dozen, \$7 per 100.**

***Salomon.** (3). Silvery lilac with large white base. Long, loosely formed flower carried on a graceful stem. One of the best in this color. Height, 30 inches. **90 cts. per dozen, \$6 per 100.**

Professor Schotel. (3). Bright grayish violet. Extremely handsome, and the best in this color. Large pointed flower on a tall strong stem. Height, 23 inches. **90 cts. per dozen, \$6 per 100.**

Butterfly. (2). Lilac, lighter towards the edges. Good-sized flower on a strong stem. Fine bedder. Height, 28 inches. **70 cts. per dozen, \$5 per 100.**

Vertumnus. (2). Rose-purple tinged with grayish lilac, turning purple with age. Large flower of loose habit on a strong stem. Height, 28 inches. **\$1.35 per dozen, \$10 per 100.**

Up to August 15th Only

can we book orders for any variety of Tulips offered in this catalog. Then last orders are cabled to our Holland Nurseries. After that we will book orders only for such varieties as we will have in stock here at Oyster Bay.

The exacting Tulip hobbyist will want his or her order filled on the other side for three reasons. It insures expert handling and packing. It avoids repeated handling of the bulbs and causes the orders to be filled with, "Bulbs in a class all their own."



Breeder Tulips, Continued

LAVENDER SHADES, Continued

- ***Le Mogol.** (3). Pale lavender-mauve, flushed white, with beautiful white base and blue halo. Medium-sized flower of beautiful color. Height, 26 inches. **\$1 per dozen, \$7 per 100.**
- ***Klopstock.** (3). Silvery lavender, with dark heliotrope stripe; large yellowish base and intense blue halo. Large long shaped flower of beautiful color. Height, 26 inches. **\$1 per dozen, \$7 per 100.**

PINK TO RED

- ***Pink Pearl.** (3). The most beautiful pink Breeder ever introduced. A large flower, lilac-pink with rose bloom, and snow-white base. When forced the color becomes softer. Height, 30 inches. **\$1.60 per dozen, \$12 per 100.**
- ***Heloise.** (1). Purplish red, shaded old-rose; inside Van Dyke brown, edged plum, with yellow base, marked olive-green. Large reflexing flower. Plant in cool, partly shaded situation as it blooms about five days before other Breeder Tulips and is apt to pass its blooming season before the others are at their best. Height, 26 inches. **\$1.35 per dozen, \$10 per 100.**
- Cardinal Manning.** (4). Large, late bloomer. Dull wine-red, flushed rosy bronze, changing into rosy violet, shaded bronze when in full bloom. Height, 28 inches. **70 cts. per dozen, \$5 per 100.**
- Marie Louise.** (3). Old rose, flushed salmon-orange; olive base. Medium-sized flower of refined beauty. Height, 24 inches. **80 cts. per dozen, \$5.50 per 100.**

MIXTURE OF BREEDER TULIPS

Selected bulbs, all colors. Consisting of a great many varieties. **70 cts. per dozen, \$4.75 per 100, \$45 per 1000.**



A charming mingling of Breeders and Darwins—Zandbergen Bulbs used exclusively.



COTTAGE TULIPS

We venture to say that this type is of great antiquity, having probably originated in Persia where some species resembling them in shape are found growing wild to-day—*Tulipa Clusiana* among them. As far back as 1554 the Austrian Ambassador to the court of the Calif brought with him some of their seeds and Tulips became a fascinating hobby with many wealthy Viennese gardeners—for the seeds, as well as bulbs, were expensive.

The term "Cottage" Tulips is of quite recent origin. The fact that they are probably the longest lived and most lasting of all Tulips caused many of them to be planted around the country houses and cottages of England and France.

All colors imaginable can be found among them, and most of them have long stems, some of them gracefully drooping. They form an excellent cut-flower material and are unsurpassed for garden decoration. Flower lovers who happen to be in the neighborhood of Oyster Bay in May and call on us, will see one of the largest collections of May-flowering Tulips in the world.

Visit us, if possible. Wooden shoes and Windmills, Tulips and Hyacinths, we had plenty of most of these right along here at "Tulipdom"—**except the Windmill!** And **that** arrived a year ago! It now is our "Welcome" sign to visitors from everywhere as shown on page 1. It stands as a symbol of Dutch integrity, a promise to maintain our policy of delivering only

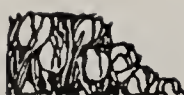


Graceful Cottage Tulips in a well-balanced border.

"BULBS IN A CLASS ALL THEIR OWN"

Consistent winners of highest awards at all leading Spring Flower Shows, Zandbergen Tulips have won a permanent niche in the hearts of exacting garden hobbyists throughout the land.

An asterisk (*) preceding the name indicates that it may be successfully forced. The figure following indicates the relative time of flowering.



Cottage Tulips, Continued

WHITE

- White Duchess.** (3). Large, pure white flowers of the lily-flowering type, with exceptionally strong stems for this class. Absolutely the most artistic yet evolved; the snow-white flowers and creamy white anthers creating an exceedingly artistic effect. Truly an aristocrat of greatest refinement. Height, 28 inches. **\$1 each, \$10 per dozen.**
- Vesta.** (3). As already mentioned, this fits in with the Darwins, for outside, as there is not a satisfactory white Darwin at a reasonable price. One of the truly great pure white May-flowering Tulips. It is equally well adapted for bedding and cutting. The large, well-shaped flowers are carried by strong upright stems. Height, 28 inches. **\$1.35 per dozen, \$10 per 100.**
- Albino.** (2). Radiant pure white. A refined flower of good size, great beauty and lasting qualities. Excellent for forcing. Superior to Carrara, though there is room for both. Height, 26 inches. **\$1.95 per dozen, \$15 per 100.**
- *Carrara.** (3). Another snow-white newcomer, the glistening beauty of which is greatly enhanced by prominent yellow stamens. The flowers are large, with broad, round petals of pronounced substance, hence the flowers last a long time. The best white for forcing. Height, 20 inches. **\$1.35 per dozen, \$10 per 100.**
- *Miss Blanche.** (2). Not a new variety, but one that through sheer merit has won a high place in the hearts of lovers of pure white Tulips. The large, well-formed flowers are carried on strong upright stems. It is a splendid forcer and fine bedder. Height, 20 inches. **90 cts. per dozen, \$6 per 100.**

WHITE, EDGED PINK

- *Pride of Inglescombe.** (3). Opening creamy white, edged carmine-rose; as the flower ages, white, suffusing rose. Of the same type as Picotee, but darker and of brighter color. Height, 23 inches. **90 cts. per dozen, \$6 per 100.**
- Carnation.** (3). Snow-white with carmine-rose edges on a graceful stem. The most lovely flower we know in this color. Height, 12 inches. **90 cts. per dozen, \$6 per 100.**
- Perle Royale.** (3). Opening white, with narrow edge of bright carmine, becoming rosy lilac; edged carmine-rose with age. Large open flower on a tall stem. Height, 27 inches. **90 cts. per dozen, \$6 per 100.**
- Innovation.** (3). Yellowish white, tipped and feathered soft carmine, with a very fine blue base. Large flower of beautiful shape. Height, 20 inches. **\$1 per dozen, \$7 per 100.**
- Picotee.** (3). (Maiden Blush). White, margined deep rose, the color suffusing the whole flower as it ages; recurving petals. Equally popular for the border and for cutting. Height, 24 inches. **70 cts. per dozen, \$5 per 100.**

We specialize in so-called Dutch Bulbs, meaning Tulips, Hyacinths, Crocus, Daffodils and many other bulbs that should be planted in the Fall for Spring bloom. But the fact that they are not planted until Fall is no reason why your order for bulbs should not be placed at once. Doing so will help you to the finest bulbs the season affords. While the crops in Holland are plentiful, there never is an over supply of the kind of top quality bulbs that have earned ours the title "Bulbs in a Class All Their Own."



Cottage Tulips, Continued

PINK AND ROSE SHADES

- Wampum.** (4). About as large a sort as comes in the Cottage type, and a flower of regal appearance in the garden where it gives the effect of a bright glowing rose, slightly tinted with fawn. The base of the cup is primrose with a blue halo, and the inside coloring is at least two shades deeper than the outside, which produces a very rich bright effect. Amber stripes inside at center. This very large Tulip blooms late and is long lasting. Height, 27 inches. **\$6.50 per dozen, \$50 per 100.**
- *Dido.** (3). One of the outstanding Tulips in all classes. The deep, rich pink flowers are of glorious shape and color. Each petal is brightened by salmon-yellow shades, suffused with soft orange. And they are fragrant! Truly a marvel. Height, 30 inches. **\$1.35 per dozen, \$10 per 100.**
- Ambrosia.** (3). Truly an artist's delight. Luminous shades of terra cotta, amber and rose blend in a flower of great size and substance. Either as a cut flower or in the garden it will reign supreme as one of the loveliest among flowers. Height, 28 inches. **\$1.15 per dozen, \$8 per 100.**
- *Rosabella.** (3). A gem of beauty for garden or house decoration. The predominant color is a bright rose, almost watermelon-pink shading to a pastel pink at edge of petals and ivory-white at the base. It reminds one of a magnolia blossom but is of even greater beauty and more graceful. Strong grower with pointed petals. Height, 26 inches. **\$1.35 per dozen, \$10 per 100.**
- Betsy Ross.** (3). Of most unusual color. The outside of the cup is a fawn and dark wine, while the inside resembles a pretty piece of wine colored velvet. Long, sturdy stems. A very fine Tulip, worthy of a place in every garden which shelters the unusual. Height, 28 inches. **\$3.20 per dozen, \$25 per 100.**
- Marjorie Bowen.** As scarce as it is beautiful. The large though gracefully shaped flowers are supported by strong, tall stems. The color is extraordinary—a combination of buff and salmon, passing into deep rose shades with salmon sheen. Height 26 inches. **\$6.50 per dozen, \$50 per 100.**
- *Leda.** (3). A hybrid, representing the best of blood from choice Darwin and Cottage Tulips. One of the most luminous rose colored Tulips in existence, each petal being bordered with a lighter rose, a combination as rare as it is beautiful. The flowers are of exceptional size and substance. Height, 24 inches. **\$1.95 per dozen, \$15 per 100.**
- Rose-bud.** (3). Vivid rose. Very large flower on a tall graceful stem. When in bud, it exactly suggests a rosebud; hence the name. Height, 28 inches. **\$1.60 per dozen, \$12 per 100.**
- Orient.** (4). Light rosy carmine, with a narrow edge of amber at margin, inside salmon with bright rosy carmine reflection. A huge flower of remarkable color, on a very strong stem. Late. One of the largest Tulips in existence. Especially recommended. Height, 28 inches. **\$1.60 per dozen, \$12 per 100.**

By all means order early, as soon as you have studied this Spring's flower shows. By August 15th the last "import-to-order" orders are dispatched to our Nursery in Holland. There, hand-picked bulbs are packed by experts so as to reach you in perfect condition at planting time. No hand touches the bulbs between the time they are packed in Holland and the time that you open the package to entrust the bulbs to Mother Earth.

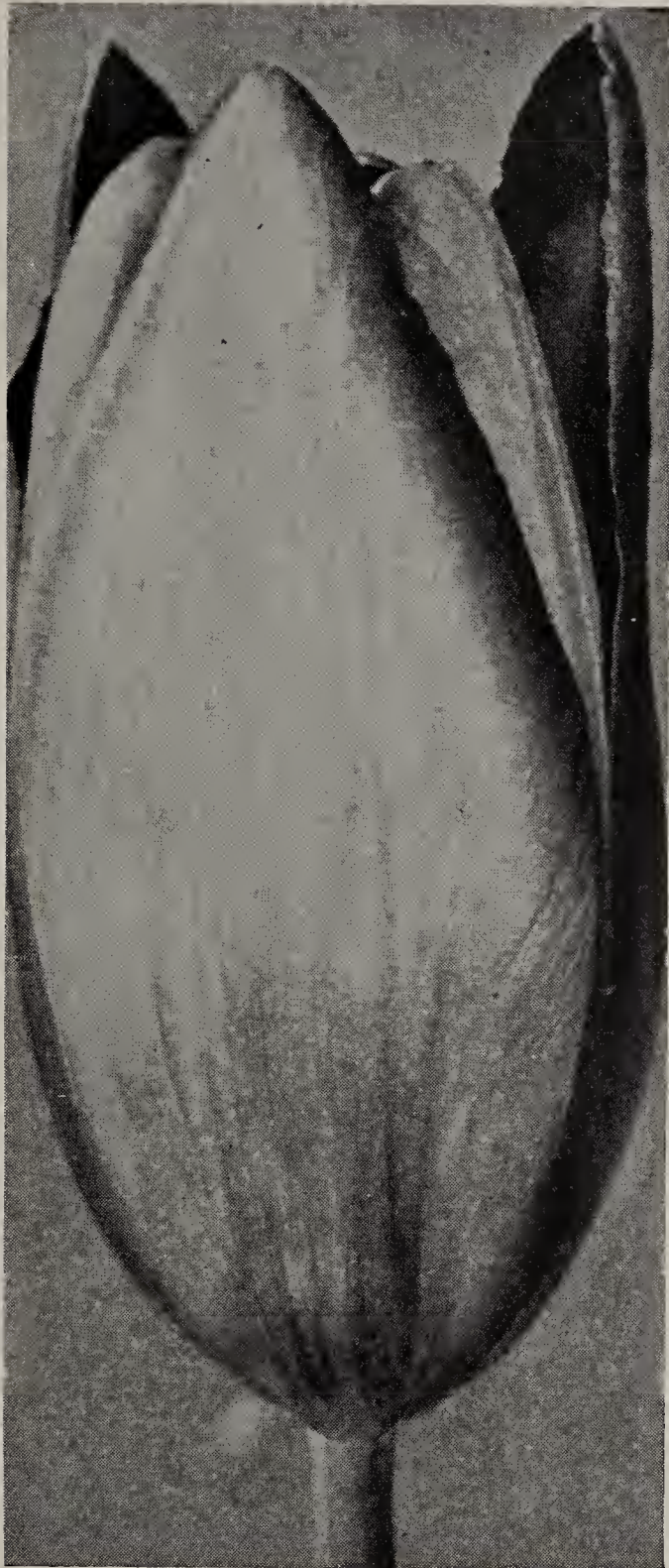


An attractive display of finer varieties of Breeder, Cottage and Darwin Tulips.

Cottage Tulips, Continued

PINK AND ROSE SHADES, Continued

- Nectar.** (3). An immense Tulip, and of a peculiar color. It is carmine-red, of beautiful shape, lasts a long time, and has all qualities of superlative character. Height, 22 inches. **\$1.35 per dozen, \$10 per 100.**
- Annie Laurie.** (4). Luscious, rich pink shading to white base and to cap the climax, bright yellow stamens. Open the cup and behold colorful beauty such as is found in comparatively few other Tulips. Medium tall grower. Height, 22 inches. **\$3.20 per dozen, \$25 per 100.**
- Vanity.** (3). Very pointed petals of clean cut beauty and delicate grace. As pretty a blossom as the Tulip world holds. Color is bright rose-pink and the layman's idea of a real pink color. Inside of cup is flushed with salmon. Height, 24 inches. **\$10 per dozen, \$75 per 100.**
- *Sir Harry.** (4). Pale lavender-pink with yellow base and blue halo. Large pointed flower. Fine when planted with creamy yellow varieties. Height, 22 inches. **70 cts. per dozen, \$5 per 100.**
- Mrs. Kerrell.** (4). Rose, edged soft salmon, white base with a blue ring, beautifully pointed flower. One of the most distinct colors and a most excellent keeper. Height, 18 inches. **\$1.15 per dozen, \$8 per 100.**
- Inglescombe Pink.** (2). (Salmon Queen). Soft rosy pink, flushed salmon, changing into rose when in full bloom. Large globular flower. Height, 25 inches. **70 cts. per dozen, \$5 per 100.**
- *The Fawn.** (3). Pale rosy fawn, changing into blush-rose with age. Large egg-shaped flower. Height, 24 inches. **70 cts. per dozen, \$5 per 100.**
- *Idyl.** (3). Vivid rose, inside soft salmon-rose. A charming flower. Height, 26 inches. **70 cts. per dozen, \$5 per 100.**
- Alcmene.** (3). Soft cherry-red, outside of petals having a glossy sheen. Height, 25 inches. **90 cts. per dozen, \$6 per 100.**



Avis Kennicott. See p. 47

Cottage Tulips, Continued

**SCARLET AND CRIMSON
SHADES**

Mayflower. (3). A hybrid of Gesneriana Spathulata and the Botanical Tulip Greigii. The largest of all Tulips, and extraordinary in so far as it reminds one of an Oriental Poppy. Color a fiery scarlet with blue base. Because it is such a wonderful Tulip, it will be exceedingly scarce for some time to come. Height, 28 inches. **\$2 each, \$20 per dozen.**

Advance. (1). Another prize seedling of Gesneriana spathulata and a real "Advance" in this class. A huge flower of fiery red. It is bright but pleasing, because the bluish sheen of the center tones down the brilliancy. Strong stem, vigorous, upright habit. Height, 28 inches. **\$2 each, \$20 per dozen.**

Scarlet Glory. (2). Beautiful in its brilliancy—as bright a scarlet as any lover of color may desire. Very large flowers, strong stems. Height, 24 inches. **\$3.20 per dozen, \$25 per 100.**

***Scarlet Emperor.** (3). Bright scarlet with a clear yellow base. The flowers are of enormous size, held upright by a strong stem. Height, 23 inches. **\$1.35 per dozen, \$10 per 100.**

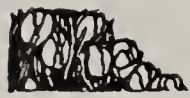
***Gesneriana Spathulata.** (3). Rich crimson-scarlet with brilliant blue base. Its large flower of dazzling brilliancy makes it look like a poppy. One of the most

popular red Cottage Tulips. Height, 26 inches. **80 cts. per dozen, \$5.50 per 100.**

***Jupiter.** (3). Vivid crimson-rose. A superior variety, with excellent forcing qualities. Height, 25 inches. **\$1 per dozen, \$7 per 100.**

***Glare of the Garden.** (3). Bright crimson-red, with black center, edged yellow. Long, large handsome flower. One of the best in this list. Height, 21 inches. **90 cts. per dozen, \$6 per 100.**

An asterisk (*) preceding the name indicates that it may be successfully forced. The figure following indicates the relative time of flowering.



Cottage Tulips, Continued

ORANGE SHADES

***Grenadier.** (2). A most beautiful bright orange color with rich yellow base. Very large, well-shaped flower on a sturdy stem. A fine companion to Velvet King, and one of the best for late forcing. Height, 21 inches. 90 cts. per dozen, \$6 per 100.

***Argo.** (3). Opening golden yellow, mottled red. Suffused orange when in full bloom. Large distinct flower on a tall strong stem. Equally fine for indoor or outdoor culture. Height, 28 inches. \$1 per dozen, \$7 per 100.

Amun Ra. (3). (Sun God).

An unbelievably beautiful combination of colors. Almost like a luscious peach, but in addition it has apricot and chamois shades not usually associated with the peach. The edge of each flower, about half way down, is tinted first with salmon-pink, then apricot, gradually shading to chamois and the almost olive-green base. Inside of cup shows decided orange tints. The flower is medium sized. Height, 24 inches.

\$3.20 per dozen, \$25 per 100.

***Orange King.** (4). Glistening deep orange, shaded rose; inside deep orange-scarlet, with yellow base. Sweet-scented. Large globular flower, very attractive for the border. Height, 20 inches. 65 cts. per dozen, \$4.50 per 100.

La Merveille. (4). Orange-scarlet, flushed rose, with yellow center. Long flower of beautiful shape. Deliciously scented. Extra forcer and bedder. Height, 20 inches. 70 cts. per dozen, \$5 per 100.

Our Bulbs Prove Their Qualities. Zandbergen Tulips won for our customers the Holland Gold Shield for a garden, the Gold Medal for a Tulip border and many other First Prizes and Blue Ribbons.



Amun Ra—truly a tribute to man's skill.



Cottage Tulips, Continued

YELLOW SHADES

Avis Kennicott. (3). One of the finest, if not the brightest, yellow Cottage Tulips. Massed in gardens it creates truly magnificent effects. As illustrated on page 45, its flowers are of decidedly elongated shape and grow to immense size, well developed specimen flowers being about five inches long. Color a rich chrome-yellow with black base and anthers. Height, 26 inches. \$1.15 per dozen, \$8 per 100.



A comprehensive trial of Cottage Tulips, Tulipdom.

***Mrs. Moon.** (4). Well formed vase-shaped flowers of rich golden yellow with slightly recurving petals. Very large flower of great beauty and substance, carried on a tall strong stem. One of the most beautiful of all late Tulips. Fine for forcing and for outdoor planting. Height, 25 inches. 90 cts. per dozen, \$6 per 100.

Walter T. Ware. (4). The richest deep golden yellow in cultivation. Broad globular flower, reflexing at the tip. Not as large as some others, but of unusual substance and remarkable keeping qualities. Height, 22 inches. 90 cts. per dozen, \$6 per 100.

Gesneriana Lutea. (3). Deep yellow. Tall and handsome flower on a strong stem. Fine for growing among shrubbery. Height, 26 inches. 70 cts. per dozen, \$5 per 100.

Mr. Dames. (3). Large, robust flower of immense size, clear yellow, on a strong stem. Height, 22 inches. 90 cts. per dozen, \$6 per 100.

***Inglescombe Yellow.** (4). Glossy canary-yellow. Large globular flower of perfect form on a strong stem. It is one of the best Cottages to use as a yellow Darwin. Height, 23 inches. 70 cts. per dozen, \$4.75 per 100.

Elegans Lutea Maxima. (4). Soft canary-yellow, slightly flushed orange-red when fully open. Large pointed reflexing petals. Fine for the border. Height, 16 inches. \$1 per dozen, \$7 per 100.

***Bouton d'Or.** (2). Deep golden yellow, with black anthers. Small cup-shaped flower. Height, 20 inches. 70 cts. per dozen, \$5 per 100.



Cottage Tulips, Continued

PRIMROSE

- ***Alaska.** (3). Very elegant and graceful with slightly reflexed petals frequently 5 inches long. One of the most intriguing of all canary-yellow varieties, because of its beautiful shape. Height, 25 inches. **\$2.60 per dozen, \$20 per 100.**
- ***Moonlight.** (2). Soft luminous canary-yellow. Very large oval-shaped flower, with outer petals reflexing at the tip. One of the finest in this color. Good forcer. Height, 24 inches. **90 cts. per dozen, \$6 per 100.**
- Golden Rider.** (3). Shaped oval, like a true Cottage, but almost like a Darwin in width of cup. Color is half way between canary-yellow and ivory and almost a one toned flower, as the color extends all the way to the base of the flower. Slightly fragrant. Height, 24 inches. **\$3.20 per dozen, \$25 per 100.**
- Arethusa.** (3). One of the most impressive in this class. Big cupped yet extremely graceful flowers of a bright, very pale primrose tone, shading almost to ivory in the center and base of the flower, each petal of which is edged bright lemon-yellow. Truly a bold, upright flower of queenly beauty. Height, 24 inches. **\$1.95 per dozen, \$15 per 100.**
- Lemon Queen.** (3). A splendid variety of elegant form and one of the best in this color class. Supported by strong stems, makes a splendid showing in masses. Color pure soft yellow. Height, 26 inches. **\$1 per dozen, \$7 per 100.**
- ***Gesneriana Lutea Pallida.** (3). Pale yellow. Large, beautiful flower. Sweet scented. Height, 24 inches. **90 cts. per dozen, \$6 per 100.**
- ***Retroflexa Superba.** (2). Similar to Retroflexa, but a much larger flower. Height, 17 inches. **70 cts. per dozen, \$5 per 100.**
- Solfatare.** (2). Pale sulphur-yellow. Large flower of graceful habit. Fine for the border. Height, 20 inches. **70 cts. per dozen, \$4.75 per 100.**
- ***Solferino.** (3). Pale creamy yellow, edged soft canary-yellow; long egg-shaped flower, in color even paler than Moonlight. Very beautiful when planted in partial shade. Height, 25 inches. **\$1.35 per dozen, \$10 per 100.**

YELLOW, EDGED RED

- Jeanne Desor.** (4). A strikingly beautiful hybrid. The daintily elongated shape proclaims its Cottage Tulip parentage. The strong, tall stem and bold flower show the Darwin blood. The color is a unique combination of deep orange-yellow each petal being edged with a broad scarlet border. Enlivens the border as much late in the season as Keizerskroon does earlier. Height 28 inches. **\$6.50 per dozen, \$50 per 100.**
- Illuminator.** (3). A flower of deep yellow, flushed with scarlet. Height, 24 inches. **\$1.05 per dozen, \$7.50 per 100.**
- Columbus.** (4). (Gala Beauty). A flower of rich golden yellow, feathered and splashed with glowing scarlet. Pointed petals. Sweet scented. Height, 18 inches. **\$1.35 per dozen, \$10 per 100.**
- Golden Crown.** (3). Opening pale yellow, edged crimson-red. Golden orange, suffused orange-red when the flower ages. Fine for cutting and for late forcing. Height, 18 inches. **70 cts. per dozen, \$4.75 per 100.**

Those having "indoor culture" ambitions will do well to follow the asterisk (*) when ordering. Varieties so marked lend themselves readily to "forcing."



Cottage Tulips, Continued

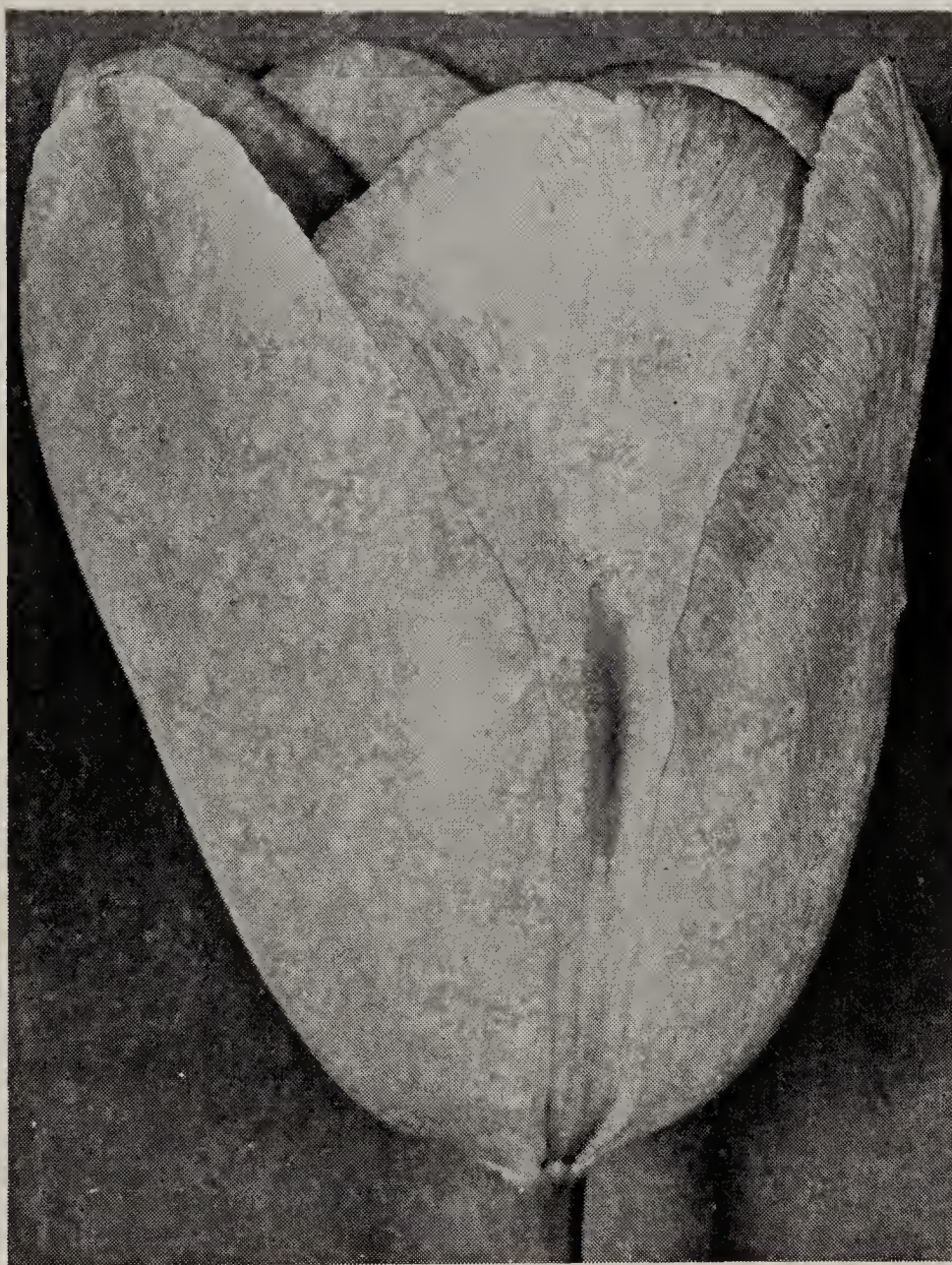
AMBER, ROSE AND LILAC COMBINATIONS

Roxy. (3). A magnificently glorified John Ruskin. It has all the vivid orange shades of the favorite Breeder, Prince of Orange, but softened and enhanced by blushes of gold and fawn on the outside of the long cups with the inside of the cups a bright orange. At the outside tip of each petal is a blush of water-melon-pink. One of the finest colors in all the Tulip world. Height, 26 inches. \$1 per dozen, \$7 per 100.

***John Ruskin.** (3). Glittering salmon-rose, edged soft lemon-yellow with yellow base. Large flower of fine shape, carried on a graceful stem. One of the finest and loveliest Tulips. Height, 18 inches. 70 cts. per dozen, \$5 per 100.

Marvel. (2). A very distinct, sweet scented variety. Inside old gold; outside salmon-rose, edged yellow, very beautiful. Height, 20 inches. \$1.15 per dozen, \$8 per 100.

Fairy Queen. (3). Soft rose-lilac, with a broad amber - yellow margin. The medium sized flowers, of charming art coloring, are carried on long graceful stems. Height, 25 inches. 70 cts. per dozen, \$4.75 per 100.



Please Bear in Mind that we always have bulbs on hand here at Oyster Bay at planting time, but both number of varieties and quantity of bulbs are limited. The fancier whose heart is "set" on specific varieties, should order at once, surely not later than August 10th. This will **in-sure** getting just the kinds wanted, in a bulb product second to none in the world!

Roxy—a color symphony without equal—see above



Cottage Tulips, Continued

VARIOUS COLORS

- ***Zomerschoon.** (4). Elegantly formed flower, handsomely open when fully developed. The color is a delicate salmon-pink streaked with orange and flame-colored stripes on an old ivory ground, warmed by a golden glow emanating from the heart of the flower. Displays its beauty best in full sunshine. One of the oldest Tulips in cultivation and still rare. Height, 18 inches. **\$10 per dozen, 75 per 100.**
- ***Striped Beauty.** (3). Rose, flaked deep crimson and white. Large showy flower on a graceful stem. Height, 18 inches. **\$1.60 per dozen, \$12 per 100.**
- Hammer Hales.** (3). Golden brown, flushed old rose, inside bright apricot, edged bronze-yellow with a yellow base. Beautiful flower. Height, 24 inches. **90 cts. per dozen, \$6 per 100.**
- ***Quaintness.** (4). Golden brown, flushed dull old rose on center of petals; inside shaded mahogany, with yellow base. Long large flower of pointed shape. Height, 20 inches. **90 cts. per dozen, \$6 per 100.**
- Chameleon.** (3). Pale heliotrope, flaked maroon; canary-yellow base. One of the most striking Tulips in existence. Not recommended for forcing. Height, 18 inches. **\$1.35 per dozen, \$10 per 100.**
- Twilight.** (2). Violet-mauve, edged brown; striped and flamed dark violet, white base with striking white midrib. Medium-sized flower. Very scarce. Height, 23 inches. **\$1.35 per dozen, \$10 per 100.**
- Dainty Maid.** (3). White, feathered and veined purple, tinged magenta. Height, 18 inches. **\$1.35 per dozen, \$10 per 100.**

Personal Preferences

It is not easy, even on the basis of impartial descriptions, to come to a definite conclusion which varieties will please the gardener most in the long run. Here is our choice among Cottage Tulips, regardless of price:

SCARLET & CRIMSON

SHADES

Advance
Mayflower
Nectar
Scarlet Emperor

ORANGE SHADES

Amun Ra
Argo
Grenadier

VARIOUS COLORS

Zomerschoon

PRIMROSE

Alaska
Arethusa
Moonlight

YELLOW EDGED RED

Jeanne Desor
White
Vesta
White Duchess

AMBER ROSE &

LILAC

Roxy

PINK AND ROSE

SHADES

Ambrosia
Annie Laurie
Betsy Ross
Dido
Rosabella
Wampum
Vanity

YELLOW SHADES

Avis Kennicott
Mrs. Moon
Walter T. Ware

COTTAGE TULIPS IN MIXTURE

Selected bulbs, all colors, consisting of a great many varieties. **60 cts. per dozen, \$4 per 100, \$37.50 per 1000.**



LILY FLOWERING TULIPS

An exceedingly beautiful new class, the result of crossing the pointed petalled Cottage Retroflexa with a pink Darwin. At a distance they really resemble Lilies, hence the name.

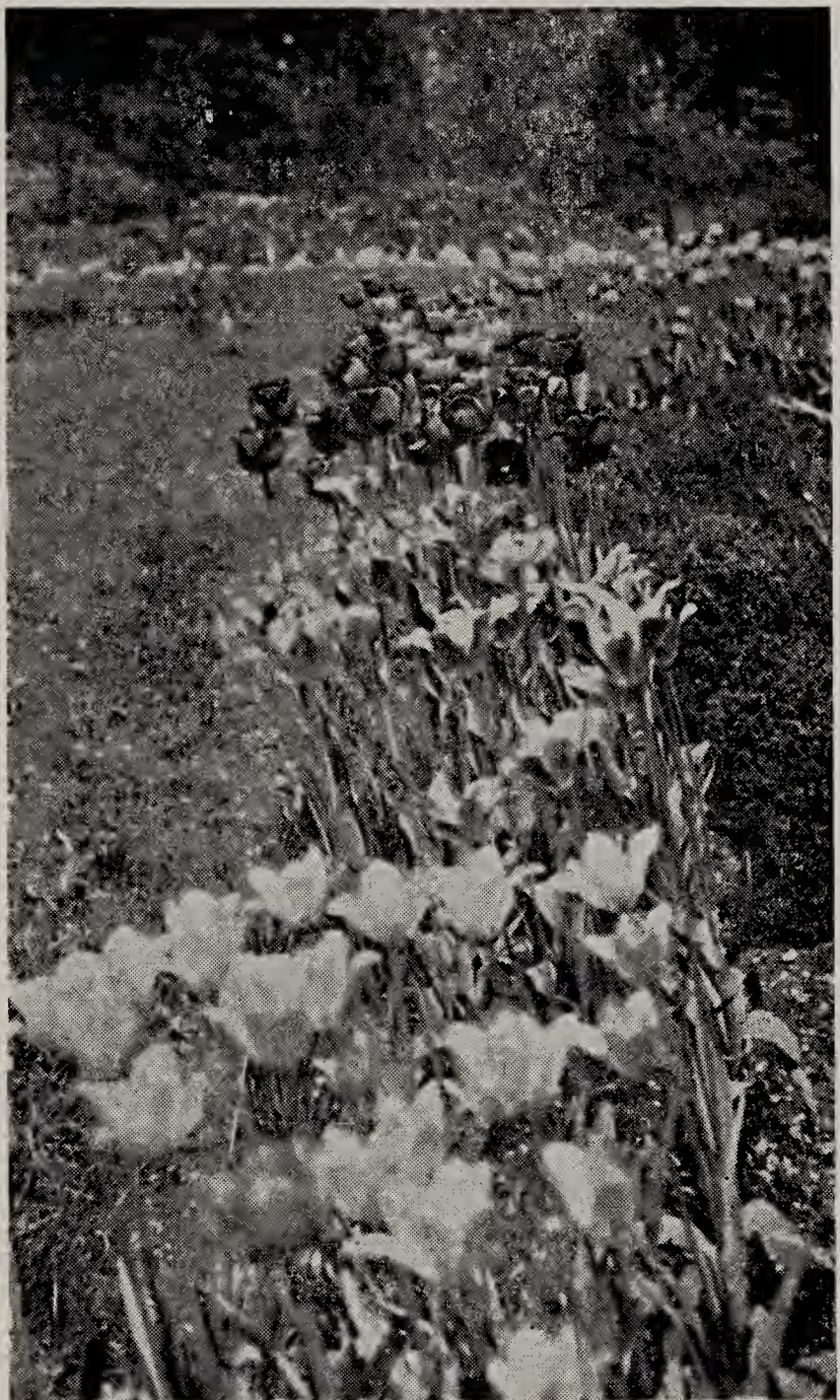
***Sirene.** (3). Rich cerise-pink, with pale pink at the margin of the segments and a white base. A handsome and distinct Tulip and one of the first that has been christened "Lily Flowering." **90 cts. per dozen, \$6 per 100.**

Sally. (3). Intense rouge-red with white base and white stripe through the center of each petal. It is a remarkably effective combination with well defined colors of brilliant appearance in the garden. The cups are on good stems and it is one of the most refined, graceful flowers in the entire Tulip realm. Height, 24 inches. **\$6.50 per dozen, \$50 per 100.**

***Adonis.** (3). Vivid rosy red. Long-shaped flower with reflexed petals. **70 cts. per dozen, \$5 per 100.**

Artemis. (3). Elegantly reflexed petals. Bright carmine-rose with pure white base. **70 cts. per dozen, \$5 per 100.**

When comparing prices, please bear in mind that quality bulbs such as ours, cannot be produced cheaply. The difference in cost begins at harvest time, in the fields. It costs more to gather bulbs in baskets than to put them in burlap bags. It costs more to have them cleaned on a "daily pay" basis, than on a piece work (so much per basket) basis. Packing the bulbs in special paper bags with air holes, in "shock-absorbing" buckwheat hulls, also adds to the cost. But it is all worth-while and the steady increase [of satisfied customers testifies to their approval of our methods.



A fine border of May-flowering Tulips. Lily-flowering varieties in the foreground



PARROT TULIPS

When still in bud the flower looks somewhat like the head of a parrot; hence the name. They can be forced slowly by the middle or end of February, but for that purpose only strong bulbs must be used. They are shy bloomers.

Gadelan. (3). Not since the introduction of Fantasy has a Parrot Tulip created such a sensation as Gadelan. We like to compare it to that rare orchid known as Cattleya. Measuring 6 to 7 inches across when fully developed, it presents a blending of blues and violets with emerald-

green blotches and white edges. Inside of flowers holds bright violet-purple with white center and contrasting black anthers. Grown alongside of Fantasy it presents a sight never to be forgotten. Unlike other Parrot Tulips the huge flowers are supported by sturdy stems, holding them erect and well above the foliage. Height, 20 inches. **\$3 each, \$30 per dozen.**



***Fantasy.** (3). The best of all pink Parrot Tulips.

A sport from the well-known Darwin Tulip Clara Butt, with a strong erect stem and flowers simultaneously with Clara Butt. The petals are heavily lacinated. Its size is simply enormous, but the stem carries the bloom erect. Inside, the cup is of velvety rose color, showing well through the open flower. Apple-green markings on outside makes this one of the most unique among Tulips. Height, 20 inches. **\$3.20 per dozen, \$25 per 100.**

***Gemma.** White, edged rose. Very early. **\$1.35 per dozen, \$10 per 100.**

Markgraaf Van Baden. Brownish red, feathered orange and purple. **70 cts. per dozen, \$5 per 100.**

Perfecta (Gloriosa). Golden yellow, blotched deep scarlet. **70 cts. per dozen, \$5 per 100.**

Lutea Major. Golden yellow with a few crimson and green stripes. **70 cts. per dozen, \$5 per 100.**

Admiral de Constantinople. Red, shaded orange. **70 cts. per dozen, \$5 per 100.**

Café Brun. Deep yellow, striped and feathered reddish brown. **70 cts. per dozen, \$5 per 100.**

Café Purple. Coffee-color and yellow. **70 cts. per dozen, \$5 per 100.**

Rubra Major. Blood-red. **70 cts. per dozen, \$5 per 100.**

Splendid Mixture. **70 cts. per dozen, \$4.75 per 100.**



REMBRANDT TULIPS

▣ The Rembrandt Tulips comprise a strain of variegated or "Broken" Darwin Tulips, but the flowers are not so large as those of the Darwin Tulips.

Varieties, in different colors. \$1 per dozen, \$7 per 100.

Splendid Mixture. 70 cts. per dozen, \$5 per 100.

BIZARRE AND BYBLOEMEN TULIPS

OLD DUTCH TULIPS

An old race that has been grown in Holland and in France since the beginning of the seventeenth century and which caused the famous Tulip craze in 1635.

They are all queerly striped and feathered on long stems. Bizarres have dark stripes on a yellow ground. Bybloemen have rose stripes on a white ground (Rose Bybloemen) or violet stripes on the same ground (Violet Bybloemen) and are brighter in color than the Bizarres.

They show off to best advantage by themselves or with the Rembrandt Tulips.

BIZARRES

Fancy. Golden brown and old gold. Enormous flower. The giant of the Bizarre Tulips. Good forcer. \$1.15 per dozen, \$8 per 100.

Named Varieties. 90 cts. per dozen, \$6 per 100.

Splendid Mixture. 70 cts. per dozen, \$4.75 per 100.

ROSE BYBLOEMEN

Named Varieties. \$1.15 per dozen, \$8 per 100.

Splendid Mixture. 90 cts. per dozen, \$6 per 100.

VIOLET BYBLOEMEN

Named Varieties. \$1.15 per dozen, \$8 per 100.

Splendid Mixture. 90 cts. per dozen, \$6 per 100.

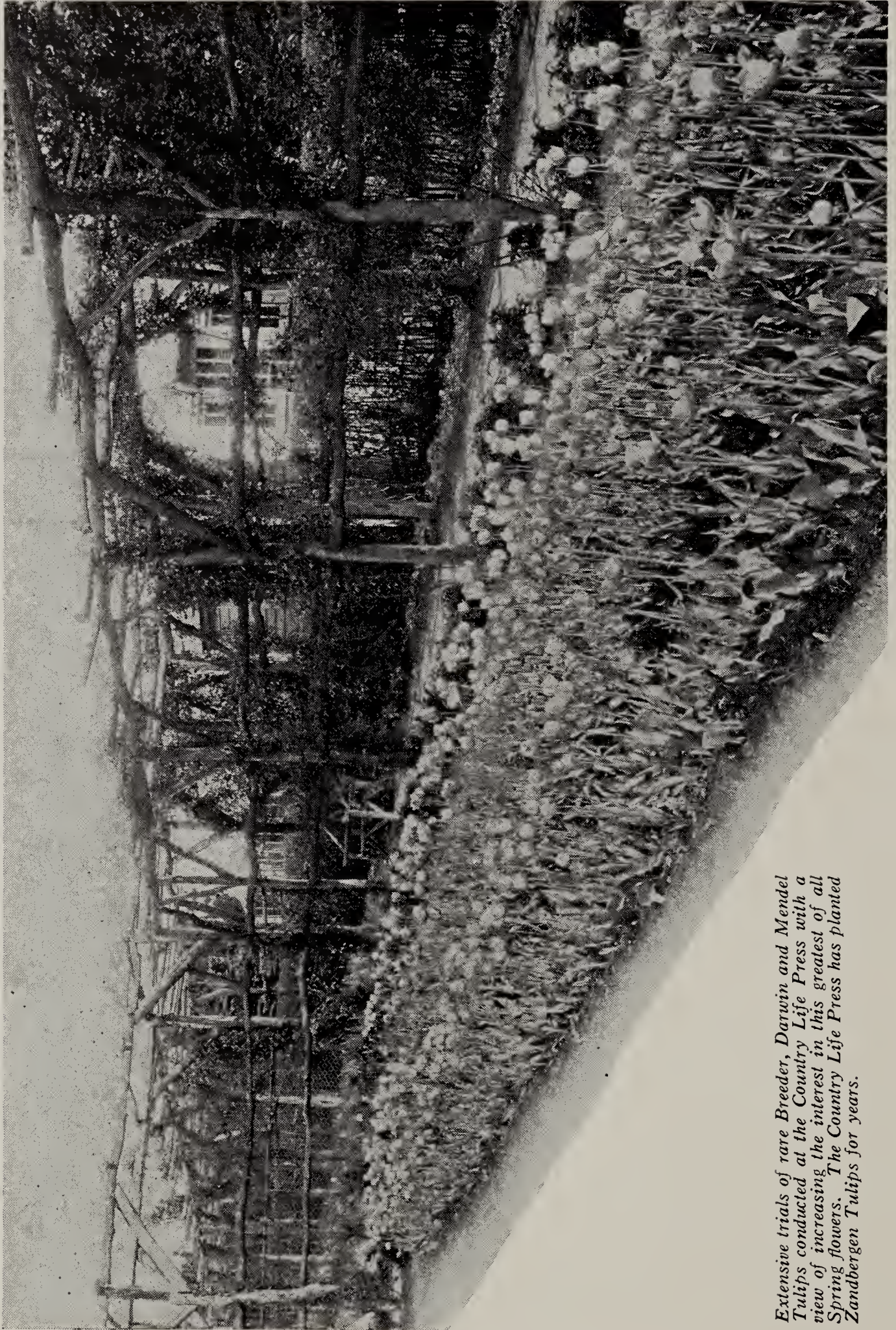


Rembrandt Tulips are extremely showy

We are Tulip Specialists. In our own nurseries in Holland, we grow acres of the choicest, both old, reliable standards as well as rare novelties. Whether your fancy calls for early, mid-season or late varieties, in most any shade of the rainbow, we have them—and at prices within the reach of all. Moreover, you can always depend on us to supply you with the choicest as grown at our own nurseries in Holland.



Zandbergen Bros. "Tulipdom"



Extensive trials of rare Breeder, Darwin and Mendel Tulips conducted at the Country Life Press with a view of increasing the interest in this greatest of all Spring flowers. The Country Life Press has planted Zandbergen Tulips for years.



TRIUMPH TULIPS

We have been reproached for not featuring these Tulips more strongly and telling more about their outstanding characteristics and merit. Triumph Tulips are a new race, hybrids of Early Single and Late Darwin Tulips.

From the Early Single parents they inherit earliness and from the Darwins stateliness. Result:—Here we have something entirely novel and worth while. Tulips that bridge the gap between the early and late kinds. They bloom a week later than the early varieties, have strong, taller stems and some of the most beautiful colors are found in this class. All force readily.

Algiba. Purplish mauve, edged paler mauve. **\$1.35 per dozen, \$10 per 100.**

Buffalo. Dull purple, inside bright purple. A large pointed flower of beautiful shape. **\$1.15 per dozen, \$8 per 100.**

Denbola. Dark amaranth-red with a broad edge of creamy white and a bluish white base. A good-sized flower of open form. **\$3.20 each, \$25 per dozen.**

Lord Carnavon. Each of the magnificently pointed petals is beautifully marked with a stripe or band of clear, bright pink. A flower of exquisite vase-shape, equally attractive indoors or outside. **\$1 per dozen, \$7 per 100.**

Pollux. Rich purple-violet. A beautifully shaped flower carried on a strong stem. **\$1 per dozen, \$7 per 100.**

Pres. Von Hindenburg. Garnet-red, flushed purple with a yellow edge. A very large flower. **\$1 each, \$10 per dozen.**

Prof. Kuenen. Dull purplish red, veined white at the edges; violet-blue base. **\$1 per dozen, \$7 per 100.**

Snowdrift. A large snow-white flower, loosely formed and carried on a strong stem. **\$1.15 per dozen, \$8 per 100.**

Syrius. Garnet-red, flushed purple at the edge of petals. Very large flower on a strong stem. Extra. Height, 28 inches. **\$1.15 per dozen, \$8 per 100.**

Tarazed. Carmine-purple, edged snow-white, with a white base. A round shaped flower of medium size. **\$1 per dozen, \$7 per 100.**

Telescopium. Reddish violet. An elegantly shaped Tulip of large size carried on a very strong stem. Height, 24 inches. **\$1 per dozen, \$7 per 100.**

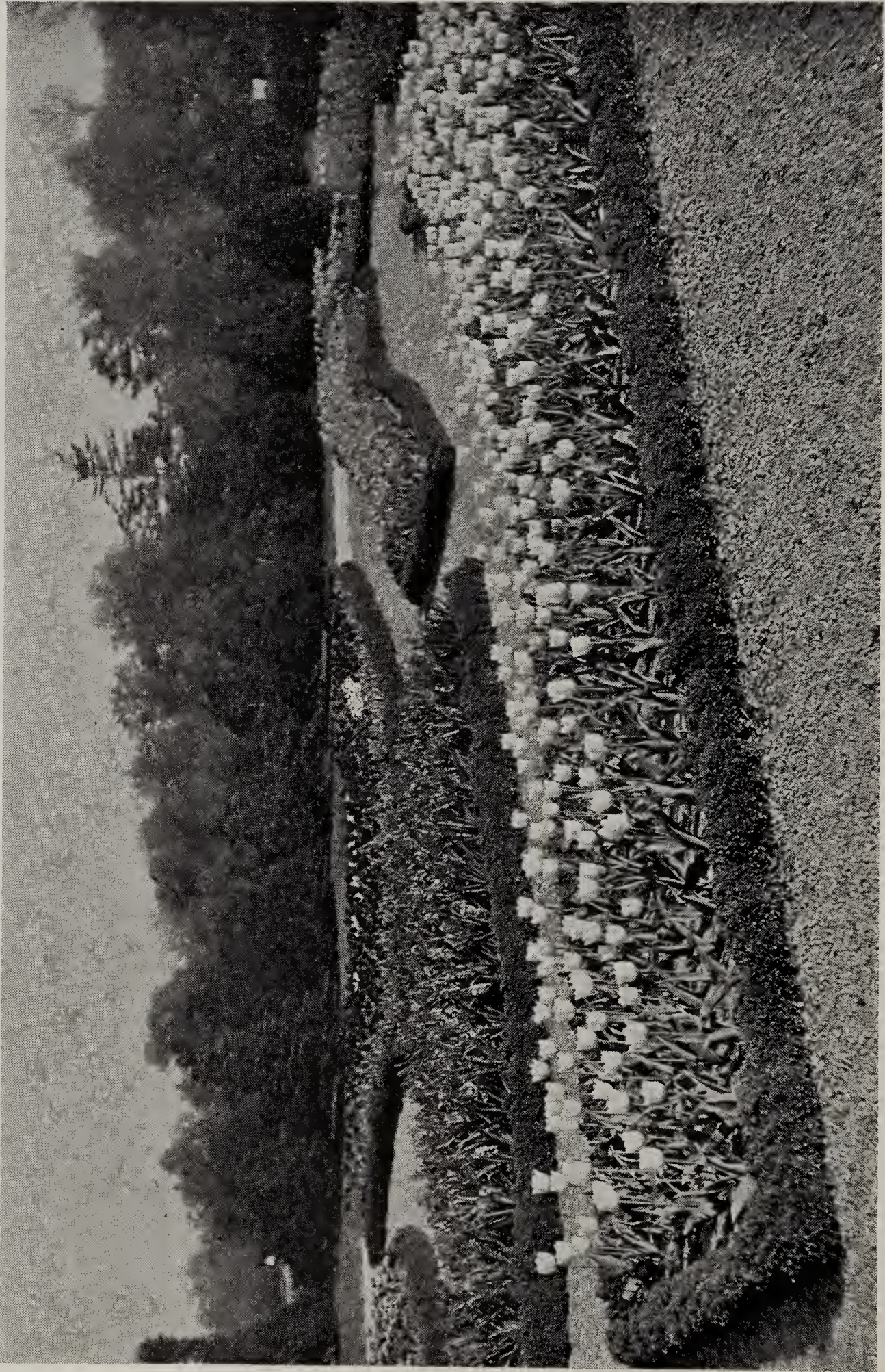
Tucana. Bright orange on a strong stem, large flower. **\$1.15 per dozen, \$8 per 100.**

Ursa Minor. Golden yellow, long elegantly shaped flower on a strong stem. **\$6.50 per dozen, \$50 per 100.**

U. S. A. Carmine-red, edged golden; inside coppery red overlaid with gold. **\$1 per dozen, \$7 per 100.**



Zandbergen Bros. "Tulipdom"



Single Early and Double Early Tulips, together with Hyacinths form charmingly colorful formal beds. You'll forget the "formal" when you admire the colors of the Tulips and the fragrance of the Hyacinths.



SINGLE EARLY TULIPS

Just as the Daffodils pass out of the garden picture, these early Tulips enter, to help prolong Spring joys. This group holds, perhaps, some of the gayest colored of all Tulips—note Keizerskroon as illustrated on page 61, of which more are planted every year than of any other variety. De Wet, too, as illustrated on page 54, is a glorious variety of absolutely unique color—so striking that it has no equal in any other class.

Most early Tulips grow readily in pots or pans indoors. As usual we have marked those most suitable for forcing, with an asterisk (*). All furnish excellent material for beds, being particularly effective in masses of several colors.

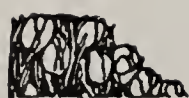
WHITE

- ***White Beauty.** (4). The finest in this class, but also the latest to bloom. Try a bed of them, using yellow Pansies as a ground cover. The flowers are of great size and substance and do well in window boxes. This is a sport of that fine variety "Pink Beauty" and a worthy companion to it in the border. Height 12 inches. **\$1 per dozen, \$7 per 100.**
- ***White Hawk.** (2). A superb bedding variety and one of the finest for growing in pots or pans—forcing. The flowers are pure white, of great substance and unusual grace and beauty, due to the crinkled edges of the petals. Well grown flowers are of globular shape and unusual size for an early Tulip. Grow with Phlox subulata lilacine as ground cover. Height 13 inches. **90 cts. per dozen, \$6 per 100.**
- ***Princess Helen.** (2). Very clear pure white, large flower on a strong stem. Fine for bedding. Height, 13 inches. **90 cts. per dozen, \$6 per 100.**
- ***Lady Boreel.** (2). Snow-white, large pointed flower of perfect shape. Excellent for forcing in pots or pans, but not for cutting. Height, 11 inches. **90 cts. per dozen, \$6 per 100.**
- White Swan.** (4). Pure white, large egg-shaped flower on a graceful stem. Fine for cutting late in the early tulip season. Height, 15 inches. **70 cts. per dozen, \$5 per 100.**

WHITE, FLUSHED PINK

- ***Fortuna.** (2). A delightful newcomer bringing us particularly harmonious color blending. A large, oval-shaped flower of satin rose suffused with fawn. Turns to soft rose with advancing age. Sturdy stems. Height 14 inches. **\$3.20 per dozen, \$25 per 100.**
- ***Cullinan.** (2). A beautiful sport of Flamingo of which it inherits many desirable characteristics. It is of creamy white color, each petal being edged delicate rose. Equally useful in bedding or for forcing. Height 13 inches. **90 cts. per dozen, \$6 per 100.**
- ***Princess Juliana.** (2). Immense flower of delicate pink, lasting a very long time. Height, 13 inches. **90 cts. per dozen, \$6 per 100.**
- ***La Reine Maxima.** (2). White, slightly shaded rose. Large fine flower. Height, 13 inches. **70 cts. per dozen, \$5 per 100.**
- ***President Cleveland.** (2). Creamy white with a border of beautiful light pink. Immense flower. Fine for pots but not recommended for bedding. Height, 13 inches. **90 cts. per dozen, \$6 per 100.**

Put Color in Your Garden. Mankind's fancy has always been captivated by colors. Whether in paintings, rugs or flowers, it is color that catches the eye. And among flowers, few bring us as gorgeous colors in as wide a range as do the Tulips.



Single Early Tulips, Continued

DEEP ROSE AND WHITE

***Pink Beauty.** (4). When it first opens it is white with a narrow pink edge. As it develops, the whole flower turns to a lively cherry-rose, with white base and a yellow star. Among the handsomest of the dark pinks and equally useful for bedding and forcing. Large flowers of great substance, causing it to be one of the longest lasting among early Tulips. Height, 12 inches. **\$1.25 per dozen, \$9 per 100.**

***Diadem.** (1). When first opening it is a distinct old rose or pearl-pink. Changes to salmon-pink as it matures, but is equally attractive at both stages of development. Fine for early forcing. Height 14 inches. **\$3.20 per dozen, \$25 per 100.**

***Ibis.** (2). This "sport" of Flamingo surpasses that old favorite in many ways. The flowers are a brilliant carmine-rose with white stripe through center, larger than those of the parent variety and very substantial. Extra fine for forcing and a luminous bedder outdoors. Height 14 inches. **90 cts. per dozen, \$6 per 100.**

***Flamingo.** (2). A large, graceful flower of a pleasing shade of carmine-rose. Each crinkled petal has a white stripe running through the center. Forces well and is fine for bedding, especially if planted with a ground cover like Alyssum Little Gem. Height, 13 inches. **70 cts. per dozen, \$5 per 100.**

***Rose Luisante.** (4). Deservedly popular because of its many fine characteristics. Of brilliant deep rose color, each petal flushed white at edge. Goblet shaped flowers, carried on straight, sturdy stems. Equally showy in the garden or in pots or pans. When grown indoors, it should be forced slowly. Height, 14 inches. **70 cts. per dozen, \$5 per 100.**

Le Matelas. (1). Glistening rosy pink, flushed creamy white, large flower of beautiful shape. Height, 12 inches. **\$1 per dozen, \$7 per 100.**



White Beauty—see p. 57.

CARMINE-ROSE

***Cramoisi-Royal.** (2). Bright carmine-rose. Large flower on a tall strong stem, undoubtedly the most beautiful in this color. Unsurpassed for forcing, of unusual substance and especially recommended. The bulbs should not be covered as deeply for forcing as others of this class, otherwise the stems show a tendency to be weak. Height, 15 inches. **\$1 per dozen, \$7 per 100.**

***Proserpine.** (1). Though one of the oldest varieties, it retains its hold on the Tulip loving public because of its utter dependability. A silky, carmine-rose, of large size, handsome globe shape and pleasing fragrance, it is a fine indoor as well as a splendid bedding variety. Inside of flower has white base with slaty blue marks. Height, 14 inches. **\$1 per dozen, \$7 per 100.**



Single Early Tulips, Continued

SHADES OF SCARLET

We advise to force all scarlet varieties slowly at the start, otherwise they are apt to be green-tipped.

- ***Vermillon Brilliant.** (2). Brilliant vermilion, with yellow base. Among the most brilliant of red Tulips. Is a very good early forcer and a splendid bedder besides. Height, 13 inches. **80 cts. per dozen, \$5.50 per 100.**
- ***Brilliant Star.** (1). Vermilion-scarlet with a bluish black star at base, when forced very early, often a yellow base. Without doubt one of the best among the earliest red forcing Tulips. Height, 12 inches. **70 cts. per dozen, \$5 per 100.**
- ***Couleur Cardinal.** (4). Brilliant crimson-scarlet. An unusually substantial flower, with a tall strong stem. Fine bedder and late forcer. Height, 13 inches. **70 cts. per dozen, \$5 per 100.**
- Sir Thomas Lipton.** (2). Bright crimson. Large cup-shaped flower. Great bedding variety. Height, 14 inches. **\$1 per dozen, \$7 per 100.**
- ***Duc Van Thol Scarlet.** (1). The earliest to bloom and especially useful for rock gardens, dwarf. Height, 8 inches. **70 cts. per dozen, \$5 per 100.**

ORANGE SHADES

- ***De Wet.** (3). Named after the famous Boer leader, this Tulip may be likened to him because as yet the rest of the tribe have not caught up with it, and it will probably not be superseded for some time to come. It is one of the outstanding varieties for bedding. A golden yellow, flushed and stippled deep orange softened by a golden sheen. One of the outstanding early varieties for forcing. The flowers are large and delicately scented. Height, 16 inches. **\$1.35 per dozen, \$10 per 100.**
- ***Hobbema (Le Reve).** (4). Old rose, flushed buff. An extremely handsome globe-shaped flower of unusual substance and very attractive color. Extra for late forcing and bedding. This is really a marvelous variety, blooming late and "bridging the gap" between the early and May-flowering sorts. Height, 13 inches. **\$1 per dozen, \$7 per 100.**
- ***Prince of Austria.** (3). Large sweet-scented flower on a tall strong stem, blooming over a long period. Color—a rich orange-scarlet, shading to deep brick-red as it gets old. One of the easiest to force and a fine bedding variety as well. Height, 16 inches. **70 cts. per dozen, \$5 per 100.**
- ***Cardinal Rampolla.** (3). Clear yellow, bordered orange-red. Medium-sized flower. Height, 11 inches. **\$1 per dozen, \$7 per 100.**
- ***Fred Moore.** (2). A deservedly popular variety for both indoor culture and outdoor bedding. Color a soft, rosy terra-cotta with edge of petals shaded orange-yellow, base of cup marked olive-green. Flowers of medium size but sweet scented. One of the finest for window culture. Height, 15 inches. **70 cts. per dozen, \$5 per 100.**
- Golden Lion.** (2). Clear light yellow with irregular edge of terra-cotta. Large flower on a strong stem. Height, 13 inches. **90 cts. per dozen, \$6 per 100.**
- Max Havelaar.** (2). Blood-orange, flushed salmon-rose. Large well-formed flower. Height, 13 inches. **90 cts. per dozen, \$6 per 100.**

Varieties marked with an asterisk (*) are especially adapted for indoor culture, about which more is said on pages 15-16. It is most essential to successful forcing that bulbs planted should be of superlative quality. You can always depend on us to supply you with the choicest as grown at our own nurseries in Holland.

Single Early Tulips, Continued

YELLOW

- ***Rising Sun.** (2). Deep golden yellow. It is a real giant on a tall and strong stem which excels all yellow Tulips for bedding or forcing. Height, 16 inches. **\$1 per dozen, \$7 per 100.**
- ***Gold-Finch.** (2). Deep yellow; sweet-scented; a sport of Yellow Prince, without the brownish red streaks, retaining the color until the petals drop. One of the best for bedding and forcing. Height, 13 inches. **90 cts. per dozen, \$6 per 100.**
- ***Mon Tresor.** (1). Intense golden yellow of large size. One of the earliest and easiest forcers. Height, 12 inches. **90 cts. per dozen, \$6 per 100.**
- ***Yellow Prince,** (2). Clear yellow; sweet-scented. The most popular of the yellow Tulips for forcing, but not recommended for bedding. Height, 13 inches. **80 cts. per dozen, \$5.50 per 100.**
- ***Calypso.** (2). Light sulphur-yellow. Fine when planted beside purple-violet varieties. Height, 12 inches. **70 cts. per dozen, \$5 per 100.**
- ***King of the Yellows.** (1). Deep golden yellow. Very early forcer and fine for cutting. Not recommended for bedding. Height, 12 inches. **90 cts. per dozen, \$6 per 100.**

PURPLE SHADES

- ***Van der Neer.** (2). Brilliant, violet-purple, a shade different from that found in any other Tulip. It seems particularly well adapted to northern sections, because it enjoys tremendous popularity in the Scandinavian countries in Europe. The flowers are large, of elegant form and supported by strong stems. Height, 12 inches. **90 cts. per dozen, \$6 per 100.**
- Wouwerman.** (2). Rich purple-violet; large flower. Very handsome with a white variety. Height, 12 inches. **90 cts. per dozen, \$6 per 100.**
- ***Cerise Gris-de-lin.** (4). Dark carmine-violet, shaded fawn and margined creamy white. An exquisite variety, equally suitable for beds, and late forcing. Height, 13 inches. **90 cts. per dozen, \$6 per 100.**
- ***L'Esperance.** (2). Garnet-purple, broadly bordered with very pale rose; early forcer. Height, 13 inches. **80 cts. per dozen, \$5.50 per 100.**
- President Lincoln.** (3). Clear magenta-purple. Large loosely formed flower. Height, 14 inches. **90 cts. per dozen, \$6 per 100.**

Why Order Early? We generally have some bulbs on hand here at Oyster Bay at planting time, but both number of varieties and quantity of bulbs will be limited. The fancier whose heart is "set" on specific varieties, should order at once, surely not later than August 10th. This will **insure** getting just the kinds wanted, in a bulb product second to none in the world!

We are Tulip Specialists. In our own nurseries in Holland we grow acres of the choicest, both old reliable standards as well as rare novelties. Whether your fancy calls for early, midseason or late varieties, in most any shade of the rainbow, we have them—and at prices within the reach of all.



Keizerskroon—one of the showiest.

Single Early Tulips, Continued

RED AND YELLOW

***Keizerskroon.** (2). One of the oldest Tulips in cultivation and still one of the most popular. As a bedding variety it stands alone, with its bright, crimson-scarlet flowers, each of which is edged with a deep, rich yellow border. Of tremendous size for an early variety and withal, of long lasting qualities, either outdoors or grown in pots. Height, 16 inches. See illustration above.

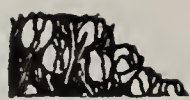
\$1.15 per dozen, \$8 per 100.

Duchesse de Parme. (2). Orange-red with an irregular edge of deep yellow. A showy bedding Tulip. Height, 15 inches. **90 cts. per dozen, \$6 per 100.**

MIXTURE

Single Early Tulips, selected Bulbs, all Colors. 65 cts. per dozen, \$4.50 per 100, \$42.50 per 1000.

We Love Them All, But—There is a vast difference in varieties, even in one and the same class and color. Therefore, we present the varieties in all classes in order of their merit, regardless of cost. Those who desire the best should select from among the first few offered in each class. An asterisk (*) stands for extra forcing qualities.



A fine, mixed border of Double Early Tulips

DOUBLE EARLY TULIPS

Although not so elegant in form as the single varieties, they are an exceedingly useful and beautiful class of Tulips, producing a brilliant and striking effect, when planted in beds, as illustrated on page 63. The flowers are more substantial and last over a long period. Nearly all of them are admirably adapted for forcing and make a fine display when grown in pots or pans; but they should be forced slowly.

For cultural directions see Single Early Tulips.

WHITE

***Schoonoord.** (2). A beautiful white sport of Murillo, large and very full flower. Splendid forcer and magnificent bedder as shown on opposite page. Height, 12 inches. **90 cts. per dozen, \$6 per 100.**

***Boule de Neige.** (2). Pure white. An elegant peony-like flower on a strong stem. Height, 12 inches. **90 cts. per dozen, \$6 per 100.**

An asterisk (*) preceding the name indicates that it may be successfully forced. The figure following indicates the relative time of flowering.



Double Early Tulips, Continued

ROSE

Triumphator. (2). A lovely rose-pink shade overlaid with white. One of the finest for beds and borders since the very double flowers are supported by strong stems. Height, 14 inches. **\$1 per dozen, \$7 per 100.**

***Peach Blossom.** A sport of that old favorite Murillo which it will, no doubt, replace in due time, especially for forcing. A bright rose-pink deepening to carmine-rose as it grows older. Well shaped, large flowers of splendid lasting qualities. **90 cts. per dozen, \$6 per 100.**

***Murillo.** (2). Delicate rose-pink, flushed white. Perhaps the most popular double pink Tulip in existence. Height, 12 inches. **70 cts. per dozen, \$5 per 100.**

SCARLET

***Vuurbaak.** (2). Fiery scarlet, tinged orange when open. Large flower on a strong stem. Height, 12 inches. **\$1 per dozen, \$7 per 100.**

***L'Aurore.** (2). Crimson-red, shaded deep salmon, beautiful well-shaped flower of good substance. Height, 12 inches. **\$1 per dozen, \$7 per 100.**

***Le Matador.** (3). Rich glowing scarlet flushed purple. Height, 12 inches. **90 cts. per dozen, \$6 per 100.**

RED AND YELLOW

***Tournesol Red.** (2). Rich scarlet, edged yellow. Height, 12 inches. **\$1 per dozen, \$7 per 100.**

***Titian.** (1). Bright scarlet, edged yellow. Height, 12 inches. **\$1 per dozen, \$7 per 100.**



A fine bed of Schoonoord, as described on opposite page.



Double Early Tulips, Continued

YELLOW AND ORANGE

- Marechal Niel.** (2). A truly magnificent variety of superb form and color. A pleasing canary-yellow with soft orange tints—a combination as rare as it is beautiful. Height, 11 inches. **\$3.20 per dozen, \$25 per 100.**
- ***Couronne d'Or.** (1). Golden yellow, flushed orange-red. One of the very best for growing in pots. A magnificent flower as shown in illustration on opposite page. Height, 13 inches. **90 cts. per dozen, \$6 per 100.**
- ***Tea-Rose** (Saffrano). (2). Soft pale yellow, tinged light rose. The color is exactly that of the old tea rose, hence the name. Height, 12 inches. **70 cts. per dozen, \$5 per 100.**
- ***El Toreador.** (2). Bright orange-scarlet, with a broad border of buff-yellow. One of the most beautiful double Tulips. It is a grand Tulip for pots or pans. Height, 13 inches. **\$1.15 per dozen, \$8 per 100.**

Zandbergen Prize Winners. Gold Medals and Cups and Blue Ribbons galore have been captured by our customers at the leading flower shows, including the Gold Shield at International Flower Show. Our bulbs have been doing this consistently for years, this being the principal reason why our customers come back consistently year after year. Such bulbs are never abundant. To be sure of yours you should

Order at Once, Surely Not Later Than August 10th.



Double Early Tulips Tournesol-Red as described on page 63 shown in foreground



A magnificent, peony-like flower, truly a "crown of gold," the English term for Couronne d'Or.

Double Early Tulips, Concluded

YELLOW

- ***Golden Giant.** (3). Clear yellow. Enormously large and beautiful flower. Superb for exhibition purposes. **\$1.95 per dozen, \$15 per 100.**
- ***Mr. Van der Hoef.** (2). Pure yellow; a sport of Murillo, and has all the good qualities of that variety. Height, 12 inches. **90 cts. per dozen. \$6 per 100.**
- ***Golden King.** (1). Soft canary-yellow, shaded deeper yellow, with black anthers. Height, 13 inches. **\$1 per dozen, \$7 per 100.**

VIOLET

- ***Electra.** (2). A beautiful violet sport of the well-known Murillo, of very fine color. Height, 12 inches. **\$1.15 per dozen, \$8 per 100.**
- ***Lac van Haarlem.** (2). Brilliant rosy violet; a quite unique color. Height, 12 inches. **\$1 per dozen, \$7 per 100.**

MIXTURE

Double Early Tulips, in all colors. 65 cts. per dozen, \$4.50 per 100.

An asterisk (*) preceding the name indicates that it may be successfully forced. The figure following indicates the relative time of flowering.



DOUBLE LATE TULIPS

These bloom at the same time as the Darwins. They are a most vigorous race of Tulips on tall, strong stems.

Pensee Rose. Violet-pink, extra fine for outdoor planting. Height, 18 inches. **\$1.95 per dozen, \$15 per 100.**

Blue Flag (Bleu Celeste). Soft violet-purple. A magnificent flower of great beauty and size. Height, 16 inches. **\$1.35 per dozen, \$10 per 100.**

Mariage de ma Fille. Crimson; white and cerise feathered. The true variety is very scarce. Height, 15 inches. **\$1.35 per dozen, \$10 per 100.**

VARIOUS WILD TULIPS (TULIPA)

The wild or botanical species of Tulips are of particular usefulness for rockeries. They bring bright colors very early in the season and most have graceful recurving petals. Most of them are natives of Asia Minor and other parts of Asia.

Greigi. One of the most beautiful of the wild Tulips. Enormously large flower of vivid orange-scarlet hue, with distinctly showing black center. Differs from all other Tulips in having fleshy leaves which are flushed purple and spotted chocolate-brown. Height, 9 inches. **\$2.85 per dozen, \$22 per 100.**

Kaufmanniana. The earliest of all Tulips to come in flower, very beautiful. Large, creamy flower, brilliantly marked with carmine. If left undisturbed, will last for years. Height, 12 inches. **\$1.15 per dozen, \$8 per 100.**

***Clusiana.** Sometimes called Candystick or Little Lady Tulip. A charming little flower; glistening white, with a carmine flame on each petal. Grows about eight inches high, flowers as large as a Crocus. Should be planted in light soils, and sheltered corners. **90 cts. per dozen, \$6 per 100.**

Praestans. Brilliant orange-red often bearing two or more flowers on a stem. Late April. Height, 11 inches. **\$3.80 per dozen, \$30 per 100.**



There are literally hundreds of the various Tulips offered above growing in this Rock Garden which is at The Country Life Press, Garden City, N. Y.



*Hyacinths are among
the most fragrant flow-
ers that grow.*

EXHIBITION HYACINTHS

CULTURE IN POTS

The pots for all Bulbs should be well drained, the soil made moderately firm, and a little sharp sand dusted under the base of each bulb before placing it in position; then add more soil until the crown or top of the bulb just appears above the surface.

After thus potting the bulbs, the pans may be plunged into a coldframe or in a sheltered spot in the garden. They should be covered with several inches of soil and, before severe frost sets in, they should be covered heavily with leaves or straw. If this is done during October, the bulbs will have developed a fine root system by the end of December, when they should be brought indoors.

Keep the pans in a dark cool spot until the buds extend sufficiently above the bulb. In an average living room temperature, this will require from 10 days to 2 weeks. After the flowers are plainly visible they should be kept in a slightly cooler temperature to promote sturdy growth of the plants. The flowers should not be exposed to strong sunlight at any time, or else they are apt to fade. The most popular way to have Hyacinths is to plant 3 bulbs in a 7-inch pan. For indoor culture plant exhibition size bulbs of named varieties only.



Exhibition Hyacinths, Continued

In Beds or Borders

Hyacinths should be planted 4 inches deep from the crown of the bulb to the surface of the soil or less, according to size, and about 6 inches apart or more, according to the number of bulbs available for a given space.

The soil should be made moderately firm. If the situation is somewhat damp, a little sand placed beneath the base of each bulb will prevent decay. After planting, the beds must be mulched over with litter, as a protection against severe weather.

All varieties listed are suitable for forcing

All Hyacinths offered are equally good for indoor culture or outside planting. However, for outdoor beds or borders we recommend the first-size bulbs since they produce flowers less top-heavy than those from Exhibition bulbs, hence stand up better in wet seasons and poor weather.

We Love Them All, But—There is a vast difference in varieties, even in one and the same class and color. Therefore, we present the varieties in all classes in order of their merit, regardless of cost. Those who desire the best should select from among the first few offered in each class. An asterick (*) stands for extra forcing qualities.





Exhibition Hyacinths, Continued

UNIFORM PRICES for all Hyacinths offered on this page,
\$2.50 per dozen, \$18 per 100.

ROSE SHADES

Queen of the Pinks. Very lively pink, large spike. A sport of King of the Blues, but should not be forced early. Regarded as the best pink in existence.

Lady Derby. Clear rose-pink. One of the leading pot Hyacinths, owing to its perfect spike on a strong stem and its splendid forcing qualities.

La Victoire. Bright carmine-rose; when forced fine dark pink. This Hyacinth is the very best in this color, and unsurpassed for both purposes.

Garibaldi. Deep crimson-red. One of the most popular for early forcing.

Marconi. Bright deep rose, flushed white. Large compact spike. Recommended for collection.

Gigantea. Blush-pink. Largely used in miniature size for cutting, very small bulbs even producing large flowers.

Gertrude. Dark pink. Most popular for pots and bedding. See left.

WHITE

Arentine Arendse. Snow-white. Especially recommended for early forcing.

La Grandesse. Snow-white. Should not be forced after the middle of March, because the stem grows too tall after that time. Largely used in miniature size.

L'Innocence. Pure white with large bells of great substance. One of the best for both purposes. Illustrated on page 67.

Queen of the Whites. Pure white sport of King of the Blues. Large well-shaped truss.

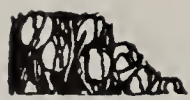
BLUE SHADES

Schotel. Soft light blue, long perfect truss. Easy forcer and splendid bedder. Fine for exhibition purposes.

King of the Blues. Rich dark blue. One of the largest flowers existing. Excellent for late forcing and bedding.



Gertrude—a dark pink beauty.



There are few Hyacinths finer for early forcing than Bismarck.

Exhibition Hyacinths, Continued.

BLUE SHADES, Continued

Myosotis. Gigantic flower of forget-me-not-blue.

Perle Brillant. Light blue, tinged lavender. One of the best of the late blue varieties.

Bismarck. One of the finest light blue Hyacinths. Enormous truss. One of the earliest. See illustration above.

Grand Maitre. Deep lavender-blue, shaded dark blue. The most popular blue.

Menelik. Deep black-blue. Large well-formed spike.

Admiral Courbet. Bright sky-blue. Early forcer. Shade a little when coming into bloom, to get the bright sky-blue color.

**UNIFORM PRICES for all Hyacinths offered on this page,
\$2.50 per dozen, \$18 per 100**



Hyacinths are among the most gorgeous flowers for bedding.

Exhibition Hyacinths, Continued.

VIOLET AND MAUVE

Lord Balfour. Lilac-rose, tinged dark violet, enormous truss, very early, the best in this color.

Sir William Mansfield. Purplish violet, large spike.

Queen of the Violets. Purplish violet. A sport of King of the Blues.

UNIFORM PRICES for above varieties of Hyacinths
\$2.50 per dozen, \$18 per 100

YELLOW

(All yellow varieties produce small bulbs.)

City of Haarlem. Clear Naples yellow, the grandest flower among the yellows. The truss is large and well-formed. **\$2.75 per dozen, \$20 per 100.**

Prince Hendrik. Clear Naples yellow. Large well-formed truss. **\$2.75 per dozen, \$20 per 100.**

Yellow Hammer. Golden yellow. Has the shape of a hammer; hence the name. Splendid early forcer. **\$2.75 per dozen, \$20 per 100.**

First Size Hyacinths

First size bulbs of above yellow varieties at the uniform prices of **\$2.15 per dozen, \$16 per 100.**

All other varieties of Single Hyacinths at the uniform prices of **\$1.85 per dozen, \$13.50 per 100.**



Hyacinths, Concluded

Second Size Hyacinths

These are much superior to the bedding Hyacinths offered below, and produce larger spikes.

Second size Hyacinths will be furnished in any variety of the preceding list at the uniform price of **\$1.65 per dozen, \$11.50 per 100.**

Second size yellow Hyacinths, **\$1.90 per dozen, \$14 per 100.**

Bedding Hyacinths

These bulbs, somewhat smaller in circumference than the second size, offered above can be furnished at the uniform price of **\$1.25 per dozen, \$9 per 100.**

Yellow varieties at \$1.70 per dozen, \$12 per 100.

Miniature Hyacinths

The fifth size, commonly known as Miniature Hyacinths, are unusually handsome for growing in pots. They are a little later than the Romans, but the flowers are much stronger and the bells are much larger.

Miniature Hyacinths will be furnished in any variety of the preceding list at **\$1.05 per dozen, \$7.50 per 100.**

Miniature Yellow Varieties **\$1.50 per dozen, \$10 per 100.**

PREPARED DUTCH HYACINTHS

EARLY FLOWERING

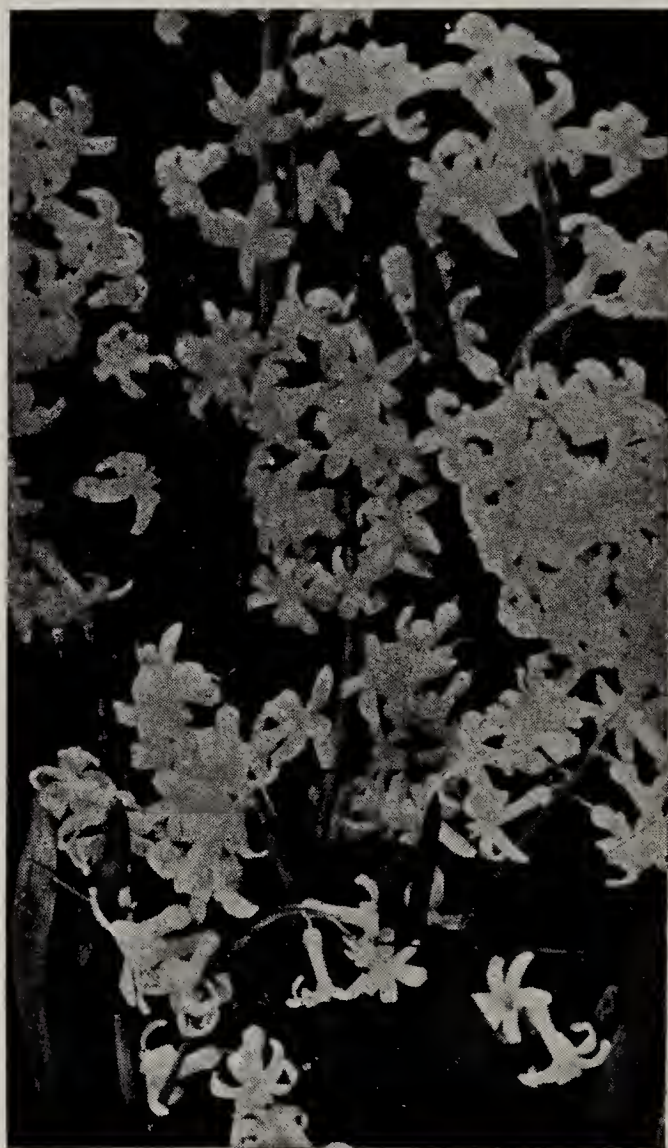
Prepared Hyacinths are not only fitted for early flowering, but are also excellent for use later in the season. The bulbs are smaller in circumference and bring somewhat larger flowers than unprepared Hyacinths.

They can be furnished in any size of the leading varieties and colors "our choice" at 20 per cent higher than the prices quoted for unprepared Hyacinths.

French Roman Hyacinths

Exceedingly popular and invaluable for winter flowering in the house, and also extensively used for Christmas forcing for cut flowers. Not suitable for outdoor planting as these bulbs are not hardy, except in the South and on the Pacific coast. See illustration alongside.

White Romans. Extra selected bulbs. **\$2.50 per dozen, \$18 per 100.**



Our extra-selected bulbs of French Roman Hyacinths bloom readily for everybody.



CROCUSES (SPRING FLOWERING)

The happy gnomes of the home grounds, rollicking, flirting, teasing, awakening many of the human emotions created by teasing. What is more conducive to joyous Spring expectations than to see these happy harbingers of the advance of Spring peep out at you through the sod, beneath the Evergreens and in odd nooks, here and there, including the Rockery?

Crocuses are easily forced in a temperature of about 50 degrees, especially the top-sized quality bulbs which we offer. Please bear in mind that many so-called "first quality" Crocus bulbs do not belong in the top size. Extra quality is never in abundance.

We guarantee all Crocus bulbs offered to be strictly top size unless mentioned otherwise after the variety description.

BLUE, PURPLE AND LILAC SHADES

Paulus Potter. Violet-purple. 60 cts. per dozen, \$4 per 100.

Purpurea Grandiflora. Purple, the largest of all Crocuses. 60 cts. per dozen, \$4 per 100.

The Bishop. Dark blue. 90 cts. per dozen, \$6 per 100.

Maximilian. Clear lilac-blue. 60 cts. per dozen, \$4 per 100.

Blue Peter. Lilac-blue, extra large. 60 cts. per dozen, \$4 per 100.

Enchantress. Clear lilac-blue, strong flower. 70 cts. per dozen, \$5 per 100.

Antigone. Blue, light bordered. 60 cts. per dozen, \$4 per 100.

Navy Blue. 60 cts. per dozen, \$4 per 100.

Remembrance. Sky-blue, free flowering. 90 cts. per dozen, \$6 per 100.

King of the Blues. Dark blue. 60 cts. per dozen, \$4 per 100.

STRIPED

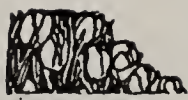
Striped Beauty. Dark striped. 70 cts. per dozen, \$5 per 100.

Charlotte Patti. Lilac striped. 60 cts. per dozen, \$4 per 100.

King of the Striped. Blue striped. 60 cts. per dozen, \$4 per 100.

La Majestueuse. Lilac striped. 60 cts. per dozen, \$4 per 100.

Lothair. White, with blue stripes. 60 cts. per dozen, \$4 per 100.



Spring Flowering Crocuses, Continued

WHITE

Snowstorm. Pure white, very free flowering. The most beautiful white in existence. \$1.15 per dozen, \$8 per 100.

Queen of the Whites. 60 cts. per dozen, \$4 per 100.

La Grandesse. 60 cts. per dozen, \$4 per 100.

Montblanc. 60 cts. per dozen, \$4 per 100.

YELLOW

Large Yellow. Top size. 60 cts. per dozen, \$4 per 100.

Large Yellow. First size. 55 cts. per dozen, \$3.50 per 100.

MIXTURES. First Size. Especially recommended for naturalizing.

We make a specialty of sending out a mixture that cannot be beaten in the size of bulbs and number of varieties. We therefore cannot sell our mixture as cheaply as other firms sometimes do, but we guarantee ours to be far superior.

Mixture of Blue Kinds. 60 cts. per dozen, \$4 per 100, \$38 per 1000.

Mixture of Striped Sorts. 60 cts. per dozen, \$4 per 100, \$38 per 1000.

Mixture of White Varieties. 60 cts. per dozen, \$4 per 100, \$38 per 1000.

Mixture of All Varieties, yellow included. 60 cts. per dozen, \$4 per 100, \$38 per 1000.

SPECIES OF CROCUS

Cloth of Gold (Susianus). Inside yellow with gold outside. 60 cts. per dozen, \$4 per 100.

Cloth of Silver (Versicolor). Inside white with lilac outside. 55 cts. per dozen, \$3.50 per 100.

CROCUS, AUTUMN-FLOWERING

The following species, while smaller flowering than the regular Crocuses, are extremely hardy, vigorous, and naturalize readily in the lawn, border or rock garden. Some of the color combinations found among them are exquisite. Frequently, contrasting stamens add to their loveliness.

Asturicus, Dark violet, \$2.60 per dozen, \$20 per 100.

Longiflorus, Charming soft lilac flowers, with orange stigmata delicately scented. \$3.80 per dozen, \$30 per 100.

Medius, Dark lilac. \$2.85 per dozen, \$22 per 100.

Ochroleucus, Flowers creamy white, with bright orange base. A charming variety. \$1.35 per dozen, \$10 per 100.

Salzmanni, Lilac with dark feathering; delights in moisture. \$1.25 per dozen, \$9 per 100.

Sativus, Large flowers, purplish lilac, feathered violet and with showy orange stigmata. 70 cts. per dozen, \$5 per 100.

Speciosus, bright violet-blue, prettily veined; anthers orange-red, throat yellow. Large, handsome and showy and one of the most beautiful Autumn Crocuses for planting in grass, and borders. 70 cts. per dozen, \$5 per 100.

Speciosus Aitchisonii, Long handsome flowers, with sharp tapering petals. Lavender, dark shaded and with pretty silver flush. Very late. \$1.15 per dozen, \$8 per 100.

Speciosus Globosus, Dark blue, late flowering, \$1.15 per dozen, \$8 per 100.

Speciosus Pollux, Silver-gray, very large. \$1.35 per dozen, \$10 per 100.

Zonatus, Rosy lilac flowers, with yellow centre and orange zone. Very beautiful. 70 cts. per dozen, \$5 per 100.



DUTCH IRIS

Their exquisite shades, ease of culture, and great dependability cause these to become increasingly popular from year to year. They are thoroughly at home in sandy soil, although they will do well in any soil that is not too heavy.

In color they range from the purest white to golden yellow and bronze, from heliotrope to light blue and to the darkest blues. To properly describe the many hues taxes one's imagination. Because of dainty form and having strong, wiry stems, they lend themselves particularly for artistic and decorative arrangements. Whether grown in the garden or displayed as a cut flower, they are always attractive. In the garden they should be massed, grouping the different colors by themselves.

They readily force in moderate temperature. Outdoors they should not be planted in the same place for several years in succession, new ground each year producing by far the best flowers. When planted indoors, new soil that has not been used for Iris ought to be used exclusively.

A. Bloemaard. A fine early variety borne on tall stems. The individual flower is very large, standards being dark purplish, with falls of a lighter blue shade. **\$1.70 per dozen, \$12 per 100.**

David Bless. One of the earliest varieties, and readily forced as early as March. Most unusual flower, bound to attract attention. Standards of a pale pearly blue, with blue or heliotrope falls. **\$1.70 per dozen, \$12 per 100.**

Hart Nibrig. A lovely variety blooming early and yet bearing flowers of excellent size. The falls are brilliant clear blue, while the standards are of a somewhat deeper shade. **\$1.50 per dozen, \$10 per 100.**

J. W. De Wilde. Resembles Yellow Queen in many ways, but is superior because of greater size. Falls golden yellow, standards of a lighter shade. **\$1.50 per dozen, \$10 per 100.**

Imperator. Of truly impressive size and purity of color. An intense, clear blue, a shade not found in any other variety. Truly a leader among Dutch Iris, and one exceptionally suitable for late March forcing. **\$1.50 per dozen, \$10 per 100.**

The First. We cannot speak too highly of this variety which, besides being the earliest blooming of all, is an exceptionally strong grower, of a shade somewhere between lavender and light blue. It is a dependable grower both outdoors and under forcing conditions. If you are fond of Dutch Iris, by all means have this in your collection. **\$2.75 per dozen, \$20 per 100.**

Dutch Iris, Concluded.

Wedgewood. This particular hybrid is one of the best of all for forcing. It blooms readily and very early. The large flowers are borne on strong tall stems. Standards are blue, while the falls are of a paler shade, each having a yellow blotch. **\$2 per dozen, \$15 per 100.**

White Excelsior. Also a splendid forcing variety which may be had in bloom as early as the end of February. It is an exceedingly strong grower bearing pure white flowers of elegant shade and enormous size. **\$1.50 per dozen, \$10 per 100.**

Yellow Queen. Recognized by connoisseurs as one of the most striking of all yellow varieties. The wiry stems carry large flowers of great substance. Standards are a pale yellow, while the somewhat smaller and rounded falls are of a golden yellow. Lasts a long time after cutting. **\$1.25 per dozen, \$9 per 100.**

DIELYTRA

Spectabilis. Better known as Bleeding Heart. This delightful old favorite is assuming a new degree of popularity. Because of its forcing qualities, it makes a splendid potted plant for the window, blooming in either greenhouse or conservatory, but it is also an excellent plant for the hardy border, and especially valuable for shady situations. It bears long racemes of heart-shaped pink flowers and blooms as persistently as any hardy perennial flower we know. In addition it has extremely graceful foliage. Whether you intend to plant it indoors or use it in your hardy border, here is one plant that we can conscientiously recommend. Not very particular as to soil. Strong clumps. **\$6.50 per dozen, \$50 per 100.**



Bleeding Heart—a graceful border plant.



MISCELLANEOUS BULBS

CHIONODOXA (Glory of the Snow)

The most beautiful of dwarf blue spring flowers, resembling those of *Scilla Siberica*, but larger, slightly taller and more handsome. They are very hardy, thriving in any ordinary garden soil, and in almost any situation.

The bulbs continue to flower from year to year. It is most excellent for borders or rockeries. For the best effect, bulbs should be planted close together.

Gigantea. Resembling *Luciliae*, but with much larger blooms of soft gray-blue, 80 cts. per dozen, \$5.50 per 100.

Sardensis. True gentian-blue, with white center. 60 cts. per dozen, \$4 per 100.

Luciliae Alba. Beautiful white form of the above. \$1.05 per dozen, \$7.50 per 100.

ERANTHIS (Winter Aconite)

Hyemalis. Along with Snowdrops and Scillas, *Eranthis* is one of the harbingers of Spring. Moreover, it is particularly suitable for growing under trees and in shaded situations where relatively few flowers thrive. Golden yellow, buttercup-like blossoms are deeply set within emerald-green whorls of leaves which remain long after the flowers are gone. 55 cts. per dozen, \$3.50 per 100.

Note: No order for less than one dozen of either *Chionodoxa* or *Eranthis* of any variety is acceptable at low rates quoted.

FRITILLARIA IMPERIALIS (Crown Imperial)

Hardy border plants of stately growth, producing clusters of pendent bell-shaped flowers, surmounted by a tuft of green leaves. They should be planted in Autumn as early as possible. They do well in any rich garden soil. Never give them fresh manure. They are very effective and, if left undisturbed, will flower abundantly for years. Plant in October, about 6 inches deep and 8 inches apart.

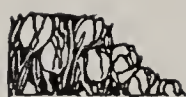
Aurora. Orange. \$6.50 per dozen, \$50 per 100.

Crown Upon Crown. Orange-red. \$6.50 per dozen, \$50 per 100.

Double Red. \$1 each, \$10 per dozen.

Double Yellow. Light yellow. \$1 each, \$10 per dozen.

Gold Striped. Red; foliage variegated. \$7.50 per dozen, \$60 per 100.



Miscellaneous Bulbs, Continued.

Fritillaria Imperialis, Continued.

Silver Striped. Red, silver-striped leaves. \$1 each, \$10 per dozen.
Single Red. This is the old common variety. \$5.25 per dozen, \$40 per 100.
Single Yellow. Light yellow. \$7.50 per dozen, \$60 per 100.
In Choice Named Varieties. \$6.50 per dozen, \$50 per 100.
In Mixture. \$5.25 per dozen, \$40 per 100.

FRITILLARIA MELEAGRIS

Fritillaria Meleagris. A cousin to "Crown Imperial," bearing variously colored bell-shaped flowers on gracefully pendent, dwarf stems. Very early flowering and particularly attractive in groups in the border or in the rockery. Plant about 6 inches deep. They last for years.

Alba. White. \$1 per dozen, \$7 per 100.
In Varieties. \$1 per dozen, \$7 per 100.
In Mixture. 90 cts. per dozen, \$6 per 100.

IXIAS

Charming bulbs for winter blooming, of easy culture, with long, slender, graceful spikes of bloom and producing very brilliant flowers. The colors include many shades of yellow, pink, scarlet and crimson. The center of the flower is always distinct in color from the outer parts, the effect of which is very striking. Six to eight bulbs can be planted in a six-inch bulb pan. Cover them one inch.

Recommended for indoor planting only as they are not hardy enough to withstand severe weather.

No order for less than one dozen is acceptable.

We have available about a dozen choice named varieties, but find the demand for these so limited that space devoted to them is not profitable. For general use we offer:

Choice Named Varieties. \$1 per dozen, \$7 per 100.

LEUCOJUM

Vernum. We like to compare this to the Snowdrops, but the flowers are much larger, borne on taller, stronger stems and are of more upright habit. Under congenial conditions it grows about eight inches high and bears large white flowers, the petals of which are tipped with green, late during April. Because of the height of the stem, it makes an excellent flower for cutting. Once established, they take care of themselves and for that reason deserve a place in every hardy border. Also easily grown in pots in the house. \$1.35 per dozen, \$10 per 100.

Bulb Planting Don'ts. It is just as important to know what not to do as it is to know how to do it. For instance, do not plant bulbs while the soil is too wet. If after digging you pick up a handful of soil and it crumbles easily through your fingers, well and good. If the soil forms a ball when being squeezed, it is too wet. Soil dug when too wet bakes and becomes hard, forming anything but a congenial bed for bulbs. Most planters set bulbs too deep. Read the cultural directions under the various chapter headings. Where planting 4 inches deep is suggested, bear in mind that that means 4 inches of soil measuring from the bottom of the trench. Too shallow planting is just as dangerous as planting too deep.



HARDY LILIES

Many of the late flowering Lily bulbs are not ready before the middle of November. Where the ground is liable to freeze, we advise the preparation of the Lily beds or borders early in autumn, covering them with four to six inches of leaves or other litter to prevent the ground freezing until the bulbs arrive.

It is impossible to give one general set of rules for the cultivation of all Lilies.

See that they have a well-drained position, and without exception they prefer a half shady, moist position, protected against the hot sun.

Such places can usually be found around the shrub borders or in the hardy plant border.

The ground must be thoroughly spaded to a depth of 18 inches before planting Lilies and must be enriched by adding equal portions of leafmould, peat and rotten manure.

Plant the bulbs 6-8 inches deep, varieties like Speciosum require at least 8 inches, putting some sand under and around the bulbs to insure proper drainage.

Cover the beds with six or eight inches of leaves or other litter which must be removed in late Spring.

LILIUM AURATUM

The Gold-banded Lily of Japan. One of the finest and most popular of the hardy garden Lilies. Flowers white, with a wide band of gold running through the center of each petal, and thickly studded with crimson spots. Bulbs 11 to 13 inches in circumference. **65 cts. each, \$6.50 per dozen, \$50 per 100.**

LILIUM CANDIDUM (Madonna Lily)

One of the oldest, loveliest and best-known Lilies. Can be planted only in the Fall. Our bulbs of this splendid Lily are grown in northern France, and are of the thick petaled type. Mammoth bulbs, **45 cts. each, \$4.40 per dozen, \$35 per 100.**



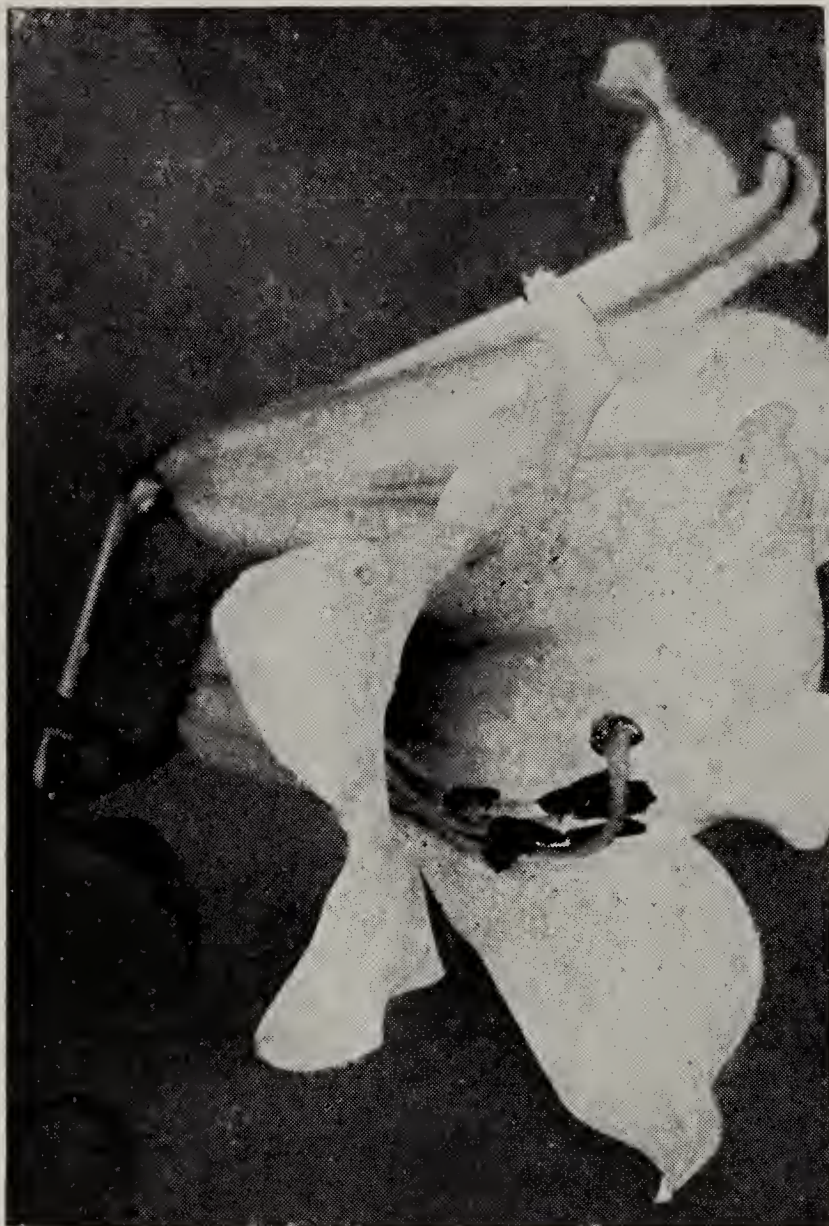
Lilium auratum—a gorgeous visitor from Japan.



Hardy Lilies, Concluded.

LILIUM HENRYI

A charming species of the Speciosum type having orange flowers with brown spots. It is not very particular as to soil and should be planted six to eight inches deep. Season of blooming, July and August, Strong bulbs, 75 cts. each, \$7.50 per dozen, \$60 per 100.



Lilium regale—a true Queen.

LILIUM TESTACEUM

One of the very finest Lilies for the hardy, or shrubby border. When well established it rears its lovely dull apricot flowers six to seven feet above the ground. In habit of growth and the arrangement of its foliage around the stem it resembles *L. candidum* or the Madonna Lily in connection with which it creates lovely pictures. The drooping flowers have reflexed petals, and, being horizontally poised, cause the entire plant to be most graceful. It prefers the same soils and situations as the Madonna Lily and should be treated like it. It forms strong baseroots and is available for fall planting only. Season of flowering June-July.

Mammoth bulbs \$1.50 each, \$15 per dozen.

LILIUM REGALE

A most beautiful pure white bloom, with bright, golden throat, outside white,

tinted pink. Very wiry stem, growing from eighteen inches to three feet tall, with many blooms to each stem. Perfectly hardy and will thrive and do well in any well-drained soil. Extra selected bulbs. 65 cts. each, \$6.50 per dozen, \$50 per 100. Seeds, price per package, \$1.

LILIUM SPECIOSUM MAGNIFICUM

Rich ruby-carmine, margined white, massive flowers, measuring fully 8 inches across the petals and carried on a strong stout stem with dark green leaves. Bulbs 11-13 in. in circ. 65 cts. each, \$6.50 per dozen, \$50 per 100.

LILIUM TIGRINUM

Showy spotted red-orange flowers throughout August and into September. Prefers a sunny situation. Bulbs should not be set deeper than three to four inches. 25 cts. each, \$2.15 per dozen, \$16 per 100.



Miscellaneous Bulbs, Continued.

MUSCARI (GRAPE HYACINTH)

Very beautiful flowers for planting in masses, either in shady places or where exposed to the full sun. When planted out in the herbaceous border, where they can be left undisturbed, they do exceedingly well. Plant in bold groups about 3 inches deep and 1½ inches apart. They are also fine for pot culture. They bloom outdoors during May.

No order for less than **one dozen** of each variety can be entered.

Amethystinum Album. Pure white, large truss. **\$1.35 per dozen, \$10 per 100.**

Botryoides (Blue Grape Hyacinth). One of the most charming of the Grape Hyacinths. Equally attractive massed in the border or naturalized in the grass. Also a charming companion flower to Daffodils, the golden beauty of which is greatly enhanced by these fair blue-eyed beauties. May also be grown in pots and last for years out in the garden. **55 cts. per dozen, \$3.50 per 100.**

Botryoides Album (White Grape Hyacinth). White. **60 cts. per dozen, \$4 per 100.**

Botryoides Carneum. Light rose. **\$1.05 per dozen, \$7.50 per 100.**

Commutatum Coeruleum. Dark blue, almost black. **55 cts. per dozen, \$3.50 per 100.**

Heavenly Blue. Bright sky-blue. This variety is the best and largest of the Grape Hyacinths. The bells are large and form a most impressive truss. See illustration below. **55 cts. per dozen, \$3.50 per 100.**

Plumosum (Feather Hyacinth). Violet-blue. The spike has a perfect pyramidal shape and a real violet-blue color. The petals of the flowers are so narrow, that they look like feathers; hence the name "Feather Hyacinth." **\$1 per dozen, \$7 per 100.**

Racemosum Carneum. Light rose. **\$1.05 per dozen, \$7.50 per 100.**



Muscari Heavenly Blue, the finest of the Botryoides family.



Miscellaneous Bulbs, Continued.



Scilla campanulata or "Wood Hyacinths."

CAMPANULATA (Wood Hyacinths)

Very effective in the border, with its tall, graceful, bell-shaped flowers on stems 15 inches high. Does well in shaded situations and under Pine trees, where few flowers thrive.

Alba Major. Pure white. 65 cts. per dozen, \$4.50 per 100.

Alba Maxima. Large pure white. 55 cts. per dozen, \$3.50 per 100.

Blue Queen. Large bright blue. One of the best. 55 cts. per dozen, \$3.50 per 100.

Excelsior. Very large bright blue. Late. 55 cts. per dozen, \$3.50 per 100.

Rose Queen. Soft lilac-rose. Very free-flowering. \$1.15 per dozen, \$8 per 100.

Sky Blue. Large bright blue. Late. 55 cts. per dozen, \$3.50 per 100.

SCILLAS

All the varieties of the *Scilla Campanulata* and *Nutans* family are splendid for naturalizing, because they will flower in shady places, where almost any other flower will die. As they are not expensive, they are among the most useful articles for naturalizing. Both have bells like small Hyacinths, and long and graceful spikes.

The flowers of the *Campanulata* family are superior to those of the *Nutans* family, being of a larger size and brighter colors. Our list contains all the good varieties. Plant bulbs from 2 to 3 inches deep (deeper in light soils) and about 2 inches apart.

No order for less than **one dozen** of any variety can be entered.



Scilla siberica or "Squills."



Miscellaneous Bulbs, Continued.

SCILLA NUTANS

The flowers are of the same bell shape as those of *S. Campanulata*, but are not as tall, and the arching stems cause the flowers to be more pendulous. In connection with Daffodils it produces most charming effects, especially when it becomes naturalized, which it does readily.

Alba Major. White. 60 cts. per dozen, \$4 per 100.

Arnold Prinsen. Dark purplish rose. 90 cts. per dozen, \$6 per 100.

Blush Queen. Delicate lilac-rose. 70 cts. per dozen, \$5 per 100.

Coerulea. The true English Blue Bell. Violet-blue. 55 cts. per dozen, \$3.50 per 100.

Delicata. Beautiful light lavender. One of the latest introductions. 95 cts. per dozen, \$6.50 per 100.

Rosea. Delicate rose. 90 cts. per dozen, \$6 per 100.

Rubra. Dark lilac-rose. Latest of all. 95 cts. per dozen, \$6.50 per 100.

SCILLA SIBERICA

The Siberian "Squill" bears small, drooping, bell-like flowers on short stems, 3 to 4 inches high. Most attractive for rockery or massing in borders. Should be planted about 3 inches deep. One of the most popular sky-blues. 60 cts. per dozen, \$4 per 100.

Siberica Alba. White. 55 cts. per dozen, \$3.50 per 100.

SNOWDROPS

These elegant little flowers, among the first to open in the Spring, should be found in every garden, not only because they are the earliest, but also the loveliest. They will thrive in almost any situation or soil, and should be planted as soon as possible in early Fall. No order for less than **one dozen** of any variety can be entered.

Nivalis. Single snowdrop. 55 cts. per dozen, \$3.75 per 100.

Nivalis Flore Pleno. Double snowdrop. 70 cts. per dozen, \$5 per 100.

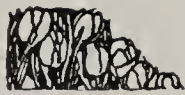
Early Orders Are Appreciated

The ever increasing interest in early orders (import orders sent to Holland before August 15th) proves to our satisfaction that bulbs thus obtained give greater satisfaction to our customers.

It proves the correctness of our contention that bulbs handled but once, by experts in Holland, are bound to give the best results.



The dainty Snowdrops that "usher out" grim winter.



Miscellaneous Bulbs, Continued.

TRITOMA

Equally distinctive as a cut flower or in the garden, the old-fashioned Red Hot Poker, or Flame Flower, is enjoying renewed popularity. The plants are very showy, while the sturdy upright flowers, borne on thick stems, never fail to attract attention. Blooming season, late July and August, just about the time that color is relatively scarce in the garden.

Pfitzeri—though an old variety, it is still one of the best. Profuse bloomer. Flowers flame red. \$3.50 per dozen, \$28 per 100.

Pfitzeri Hybrids. Color, white, various shades of yellow and coral-pinks. \$2.85 per dozen, \$22 per 100.

Rufa. Tall orange-yellow flowers. \$2.85 per dozen, \$22 per 100.

MERTENSIA VIRGINICA (VIRGINIA BLUE BELLS)

An early Spring-flowering plant. Indispensable for the garden and for color effect among naturalized Narcissi. The plants grow from one to two feet in height, with drooping panicles of handsome porcelain-blue flowers, turning pink with age. One of the most interesting of the American Native Spring flowers. Extra heavy clumps. \$2.30 per dozen, \$17.50 per 100.



Mertensia virginica or Virginia Blue Bells.

BULBS FOR YOUR ROCK GARDEN

Rock gardens are here to stay! Originally the fad of a few, they are now the hobby for all garden enthusiasts looking for new experiences—and excitements, may we add. For in all the realm of gardening nothing holds or may hold the element of hidden surprises in a greater degree than the Rockery.

There is one group of materials, however, that, except in rare cases, is as yet not looked upon as representing possible citizens of the rockery. Those are the early Spring flowers from bulbs. And yet what more ideal conditions can one imagine than the cozy nooks created by the rocks and plants, sheltering, for instance, Snowdrops, Grape Hyacinths, Blue Bells, etc., etc.

Here are favorites that quickly make themselves at home in the rock garden and do a great deal toward making it more fascinating than ever:

Chionodoxa—Glory of the Snow
Scillas of various classes
Muscari or Grape Hyacinths
Crocus
Daffodils and Tulip—Species

Eranthis or Winter Aconite
Fritillarias
Leucojum vernum or Spring Snowflake
Galanthus or Snowdrops



A Few Specialties for Experts and Connoisseurs.

CYCLAMEN PERSICUM GIGANTEUM— ZANDBERGEN PRIZE STRAIN

In our travels on the other side we are always on the lookout for finer strains than those offered ordinarily. A couple of years ago we ran across a truly mammoth type of new hybrid Cyclamen and we at once felt that here indeed was a giant among giants. We are now delighted to be able to offer choicest, hand-pollinized seeds from extra selected plants in the following colors:



White	Lilac	Variegated Rose
Frilled Red	Rose	Mixture of
Frilled Rose	Salmon	above shades

We guarantee this seed to germinate 90% or better. Price per packet of 100 seeds \$5.



THE ZANDBERGEN SILVER DOLLAR STRAIN OF GLORIOUS DELPHINIUMS

varies in color from light blue to deep ultramarine-blue and pinkish to lavender shades. Some are single, others semi-double and double, while many of them have centers or "bees" of contrasting colors. The habit of growth is most vigorous. Well developed plants rear flower spikes two to three feet long, on stems 4 to 5 feet tall. The individual florets closely encircle the spikes and are of extraordinary size—generally two inches and larger in diameter.

We only have a very limited amount for sale and until we obtain a better title shall offer it as The Silver Dollar Strain because individual flowers on spikes frequently measure as large as a silver dollar across and we have had them measure more than 2½ inches in diameter.

Price per package, postpaid, \$2.

Should you fail to secure a reasonable number of thrifty seedlings we will replace the seeds another season Free of Charge!

One-year-old plants, from the above mentioned seed, 75 cts each, \$7.50 per dozen, \$50 per 100.

A typical spike of our "private" strain of Delphiniums.



GENERAL INDEX

	PAGE		PAGE
Bulb Planting Don'ts	78	Narcissi Mixture	13
Chionodoxa	77	" Poetaz	12
Crocuses	73-74	" Poeticus	12
Crocus, Autumn-Flowering	74	" Polyanthus	13
" Species	74	" Triandus	13
Cyclamen, Prize Strain	85	" Trumpets	5-7
Delphinium	85	Rock Garden, Bulbs for the	84
Dielytra	76	Scilla Campanulata	82
Eranthis	77	Scilla Nutans	83
Fritillaria Imperialis	77-78	Scilla Siberica	83
Fritillaria Meleagris	78	Snowdrops	83
Hyacinths	67-72	Stock on hand at Oyster Bay	32
Hyacinths, Culture	67-68	Tritoma	84
Iris, Dutch	75-76	Tulips, Bizarre and Bybloemen	53
Ixia	78	" Breeder	33-40
Leucojum	78	" Cottage	41-50
Lilies	79-80	" Culture Directions	14-16
Mertensia Virginica	84	" Darwin	17-31
Mole Kill	3rd Cover	" Double Early	62-65
Muscari	81	" Double Late	66
Narcissi Barrii	8-9	" Lily Flowering	51
" Culture	2-4	" Parrot	52
" Double	13	" Rembrandt	53
" Incomparabilis	9-10	" Single Early	57-61
" Jonquils	13	" Species	66
" Leedsii	10-11	" Triumph	55

DETAILED INDEX

On this and following pages we list the different varieties of the principal classes of HYACINTHS, NARCISSI and TULIPS, together with page numbers where varieties may be found.

HYACINTHS

	PAGE		PAGE		PAGE
Admiral Courbet	70	La Victoire	69	Schotel	70
Arentine Arendse	69	L'Innocence	69	Sir William Mans-	
Bismarck	70	Lord Balfour	71	field	71
City of Haarlem	71	Marconi	69	Yellow Hammer	71
Garibaldi	69	Menelik	70	BEDDING	72
Gertrude	69	Myosotis	70	FIRST SIZE	71
Gigantea	69	Perle Brillant	70	MINIATURE	72
Grand-Maitre	70	Prince Hendrik	71	PREPARED	72
King of the Blues	70	Queen of the Pinks	69	SECOND SIZE	72
Lady Derby	69	Queen of the Violets	71	FRENCH ROMAN	
La Grandesse	69	Queen of the Whites	69	HYACINTHS	72

NARCISSI

Admiration	12	Camp. Od. Rug	13	Dorine	9
Argent	13	" Rug. Fl. Pl.	13	Double Sir Watkin	13
Arion	10	Cassandra	12	Elvira	12
Autocrat	10	Cheerfulness	13	Emperor	6
Bath Flame	8	Conspicuous	9	Empress	7
Bernardino	10	Croesus	10	Expectation	9
Brilliancy	8	Dante	12	Fire-Brand	9



Oyster Bay, L.I., New York



Narcissi, Concluded.

	PAGE		PAGE		PAGE
Giganteus	13	Lucifer	10	Recurvus	12
Glory of Lisse	12	Lucinius	10	Red Beacon	9
Glory of Sassenheim	7	Madame De Graaff	6	Red Chief	9
Gloria Mundi	10	Martha	7	Red Cross	9
Golden Sceptre	13	Mayflower	12	Robert Sydenham	6
Golden Spur	6	Mixed Narcissi	13	Sir Watkin	10
Grandeur	12	Mt. Erebus	11	Sparkler	8
Grand Soleil d'Or	13	Mrs. Ernest Krelage	6	Spring Glory	7
Helios	10	Mrs. Langtry	11	Sunrise	9
Hera	10	Oliver Cromwell	6	The First	6
Holland's Glory	13	Olympia	6	Thetis	6
Homer	12	Orange Cup	12	Torch	10
Horace	12	Orange Globe	12	Tresserve	6
John Evelyn	9	Orange Glow	9	Van Waveren's	
Josephine	13	Ornatus	12	Giant	6
King Alfred	5	Paperwhite Grand-		Victoria	7
Lady Diana Man-		iflora	13	White Lady	11
ners	9	Pheasant Eye (See		Whitewell	10
Lady Moore	8	Recurvus)	12	Will Scarlet	10
Laughing Water	11	Queen of the North	11	W. P. Milner	6
Lord Kitchener	11			Yolande	12

MAY FLOWERING TULIPS

This includes the types: BREEDER, COTTAGE, DARWIN, AND LILY FLOWERING TULIPS

(The letters following the names indicate class to which variety belongs: Thus: "B" stands for Breeder; "C" for Cottage; "D" for Darwin, etc.)

Abd-el-Kader B	34	Burgomaster Sand-		Euterpe D	30
Adonis LF	51	berg D	27	Fairy Queen C	49
Advance C	45	Butterfly B	39	Faust D	28
Afterglow D	24	Cardinal Manning B	40	Feu Ardent B	36
Alaska C	48	Carnation C	42	Feu Brillant D	19
Albino C	42	Carrara C	42	Flamingo D	24
Alcmene C	44	Centenaire D	22	Frans Hals D	28
Ambrosia C	43	Chameleon C	50	Garibaldi B	34
Amun Ra C	46	Chant de Cygne D	20	Gesneriana Lutea C	47
Annie Laurie C	44	Cherbourg B	34	Gesneriana Lutea	
Anton Mauve D	29	Chestnut B	37	Pallida C	48
Anton Roozen D	22	City of Haarlem D	19	Gesneriana Spathu-	
Aphrodite D	23	Clara Butt D	24	lata C	45
Apricot B	34	Columbus C	48	Giant D	27
Arethusa C	48	Copernicus B	37	Glare of the Garden	
Argo C	46	Coridion B	34	C	45
Artemis LF	51	Crépuscule D	30	Glow D	20
Aviator Hawkes D	22	Dainty Maid C	50	Godet Parfait B	39
Avis Kennicott C	47	De Zwijger B	38	Golden Crown C	48
Bacchus B	38	Dido C	43	Golden Rider C	48
Baronne de la		Dom Pedro B	36	Goldfinch B	34
Tonnaye D	22	Dream D	30	Grenadier C	46
Bartigon D	20	Duchess of Hohen-		Hammer Hales C	50
Betsy Ross C	43	berg D	31	Helen Eakin D	26
Bleu Aimable D	30	Eclipse D	18	Heloise B	40
Bouton d'Or C	47	Edmee D	22	Idyl C	44
Bronze Queen B	34	Elegans Lutea		Ilias B	39
		Maxima C	47	Illuminator C	48



May Flowering Tulips, Concluded.

	PAGE		PAGE		PAGE
Indian Chief B.	35	Mrs. Farncombe		Reverend Ewbank	
Inglescombe Pink C	44	Sanders D	20	D	30
Inglescombe Yellow		Mrs. Kerrell C	44	Robinson B	38
C	47	Mrs. Moon C	47	Roi de Siam B	38
Innovation C	42	Mrs. Potter Palmer		Roi Soleil B	36
James A. Mac-		D.	28	Ronald Gunn D	31
Donald B	34	Mrs. Samuel H.		Rosabella C	43
James Watt B	37	Taft D	23	Rose Bud C	43
Jaune d'Oeuf B	35	Mystery D	28	Roxy C	49
Jeanne Desor C	48	Nauticas D	23	Sally LF	51
John Ruskin C.	49	Nectar C	44	Salmonea D	24
Jubilee D	28	Old Times B	37	Salomon B	39
Jupiter C	45	Oliphant D	31	Sappho B	39
Kathleen Parlow D	24	Opal D	30	Scarlet Beauty D	20
King George V. D	18	Orange King C	46	Scarlet Emperor C	45
King Harold D	20	Orange Perfection		Scarlet Glory C	45
King Mauve D	29	D	24	Silverwing D	26
Klopstock B	40	Orient C	43	Sirene LF	51
La Candeur D	26	Panorama B	36	Sir Harry C	44
La Fiancée D	22	Perle Royale C	42	Sir Trevor Law-	
La Merveille C	46	Philippe de Com-		rence D	28
La Tristesse D	31	mines D	28	Socrates B	39
La Tulipe Noire D	28	Picotée C	42	Solfatare C	48
Laura D	30	Pink Pearl B	40	Solferino C	48
Leda C	43	Plutarchus B	34	Storm King D	27
Lemon Queen C	48	President Harding		Striped Beauty C	50
Le Mogol B	40	D	29	Sundew D	20
Le Nôtre D	23	President Taft D	20	Suzon D	24
Louise de la Vallière		Pride of Haarlem D	20	The Bishop D	27
D	19	Pride of Ingle-		The Fawn C	44
Louis XIV B	35	scombe C	42	Turenne B	36
Louis Sixteen B	38	Prince Albert B	34	Twilight C	50
Lucifer B	36	Prince Mauritz D	30	Valentin D	30
Madam Krelage D	22	Prince of Orange B	37	Vanity C	44
Marginata B	37	Prince of the Neth-		Velvet King B	38
Marie Louise B	40	erlands D	20	Venus D	23
Marjorie Bowen C	43	Prince of Wales B	37	Vertumnus B	39
Marvel C	49	Prince of Wales D	19	Vesta C	42
Matchless D	22	Princess Elisabeth		Vulcain B	35
Maya D	29	D	23	Walter T. Ware C	47
Mayflower C	45	Princess Mary D	22	Wampum C	43
Melicette D	30	Professor Rauwen-		White Duchess C	42
Miss Blanche C	42	hoff D	20	William Copeland D	30
Mixture B	40	Professor Schotel B	39	William Pitt D	20
Mixture C	50	Psyche D	24	Yellow Giant D	26
Mixture D	31	Quaintness C	50	Yellow Perfection B	34
Moonlight C	48	Queen Alexandra B	35	Yolande D	24
Mr. Dames C	47	Remembrance D	31	Zev. D	29
Mrs. Beecher Stowe		Retroflexa Superba		Zomerschoon C	50
B	39	C	48	Zulu D	28
				Zwanenburg D	26

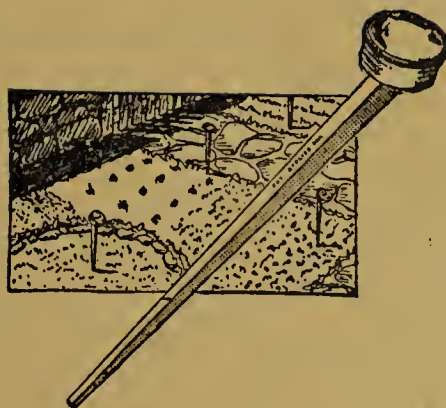
The Practical Magno Garden Marker

*Easy to read at a distance, rustproof,
waterproof, sturdy, practical, durable*

This new garden marker derives its name from the fact that its glass top enlarges the lettering on the name card more than twice its actual size. This makes it "easy to read" at a distance. No more stooping when the Magno Marker is used in your flower or vegetable garden.

The Magno Garden Marker was designed by a real garden enthusiast and it is considered by authorities as the best marker on the market. There is no other like it. It is 12½" long, rustproof, sturdy and durable. The head is in green enamel.

Price: **\$3.25 per dozen, \$25 per 100.**



Is Your Bulb Garden The Moles' Happy Hunting Ground?

Every year scores of our customers write to us wondering what they can do to rid their grounds of moles. It is a case of getting rid of them or being deprived of one of the greatest pleasures on earth—that of having a fine Tulip garden.

The same problem has bothered us in our Nurseries in Holland, and was not solved satisfactorily until a preparation was compounded that did the work. We call it "Mole-kill" for short. It is a powder which is very effective, so effective in fact that if it does not do its work your money will be refunded.

"Mole-kill" is not dangerous to animals (dogs or cats) which may happen to eat a poisoned mole. Keep the product in a safe spot and out of the reach of children. The handling and manipulation are free from danger. "Mole-kill" has caused thousands of congratulatory letters to be received by its inventor, both from experiment stations and from private gardeners. One bottle is sufficient for destroying at least a hundred moles, and is fit for use for six months after opening the bottle.

Directions for Using Mole-kill

Choose by preference where the runs branch off. Carefully uncover the run and free it of earth. Take a worm of average length, shorten it at both ends by about a quarter of an inch, wipe away the first drop of blood, touch each end of the worm with the powder, a small quantity of which has been carefully poured on some paper so as not to dirty the contents of the bottle, slip the worm thus prepared into the run and close the hole with earth. When your garden has thus been baited, tamp all runs down with the foot or rake. If on the following day, there are fresh molehills, the bait must be applied a second time; moles rarely travel alone. Keep at it planting the bait until molehills cease to appear. **Price, postpaid, \$3.**

**“Bulbs in a Class
All Their Own”**

are sold only
under this



and they are
obtainable only from

Zandbergen Bros.

Oyster Bay, Long Island, N. Y.

Rhynlandt Bulb Nurseries

Valkenburg, near Leiden, Holland