

Historic, Archive Document

Do not assume content reflects current scientific knowledge, policies, or practices.

~~SB 425-17~~ SB 445

SB 445

~~SB 425-17~~



RARE

IRIS

SPECIES
AND VARIETIES

THE
AMARYLLIS
FAMILY

LILIES
IN NAME
ONLY

SUMMER
AND
FALL
1933

SPRING
1934

IRIS WILLIAM MOHR

GORDON AINSLEY

CAMPBELL, CALIFORNIA
U. S. A.



Iris Susiana



Iris—Charon



Iris—Holland Type



Iris Pavonia
(Moræa Glaucopis)

TALL BEARDED IRIS

Those who are familiar only with the old-fashioned "flags" sometimes called Bearded Iris or Iris Germanica, have a real treat in store for them in the newer hybrids and improved forms. Many of these are enormous, with flowers eight or ten inches across, rivaling the finest orchids in beauty of tints, which range through blue, purple, lavender, pink, maroon, yellow, buff, white, and every conceivable combination of these colors. Most of them are very fragrant, and all are fine as cut flowers. Do well in any soil, with full sun. Need no summer watering, preferring a season of drought between blooming periods. When blooming, and while leaf growth is in progress, water is needed.

Shipping season for the Tall Bearded Iris, Intermediate Hybrids, and Dwarf Bearded Type is from June to October. August 1 to October 1 for the Bulbous Types and September 1 to November 1 for the beardless species.

RECENT INTRODUCTIONS

ALTA CALIFORNIA (Mohr-Mitchell). Large, beautiful golden yellow flowers faintly touched with bronze on the falls. Each, \$15.00.
ANDREW JACKSON (Kirkland). Large flower of red violet color. Vigorous and hardy. Ea., \$1.00.
ANNA MARIE CAYEUX (Cayeux). Beautiful flower of red violet color. Vigorous, hardy. Each, \$1.25.
BLACK WINGS (Kirkland, 1931). Fragrant flowers of almost black owing to the black veining on Fluorite Violet. Hardy and strong grower. Blooms in midseason, does not fade in sun. Each, \$10.00.
BLUE BANNER (Kirkland). Beautiful light blue, markings of purple violet on falls. Each, \$1.00.
BLUE VELVET (Loomis). Rich clear deep velvety blue self of unusual beauty. Each, \$4.00.
BRONZE BEACON (Salbach, 1932). Velvety Indian lake falls, brown style branches tipped by the glowing bronze standards giving the beacon-like appearance. Extremely late. Each, \$5.00.
BRUNO (Bliss). One of the famous Dominion strain. Bronzed purple, rich falls. Fragrant. Each, 50c.
CANDLELIGHT (Andrews). Pinkish lavender flowers, illuminated by rich golden glow. Each, 50c.
CARDINAL (Bliss). Standards of lavender, overlaid rose; falls of velvety prune purple. Each, 50c.
CLAUDE AUREAU (Cayeux). Great size blooms with standards of golden yellow, russet brown falls with margin of bronzy gold. Each, \$7.50.
COPPERSMITH (Shull). Large coppery red. Each, 50c.
DAUNTLESS (Connell). One of the finest bright red Iris yet introduced. Each, \$4.00.
DAY DREAM (Sturtevant). Blend of pinkish tone with falls darker than the standards. Each, \$2.00.
DESERT GOLD (Kirkland). Straw yellow deepening toward the center with a chrome yellow beard. Luminous, pleasing and fragrant. Each, \$5.00.
DOLLY MADISON (Williamson). Large flowers of mauve and lilac with a yellow glow at the throat and a bright orange beard. Ea., 50c.
EL CAPITAN (Mohr). One of the largest flowered Iris. Violet in color. Each, \$1.00.
ELEGANTE (Mohr-Mitchell). Silvery lavender, flushed yellow at the edges with falls, darker lavender reticulated gold at haft. Each, \$1.50.
EUPHONY (Sass). Standards of mustard yellow, flushed brown, falls, same color, flushed blue. Each, \$1.00.

FRIEDA MOHR (Mohr). Pale lilac standards and falls of lilac rose. Tall, hardy. Each, 50c.
GRACE STURTEVANT (Bliss). Rich velvet brown with a brilliant golden beard. 3 ft. Each, \$2.00.
HELIOS (Cayeux). Pure lemon yellow with delicate purplish-rose reticulations and golden yellow beard. Vigorous grower. Each, \$5.00.
INDIAN CHIEF (Ayres). Fine red Iris. Fine form, strong and vigorous. Early. Each, \$2.00.
KING MIDAS (Mead). Standards of golden buff, with falls of velvety iridescent garnet brown. Heavy beard of deepest golden orange. Each, \$4.00.
KING TUT (Sass). Bright red gold. Yellowish brown standards, Hessian brown falls, golden haft and beard. Each, 75c.
LABOR (Cayeux). Large copper colored flowers. Very unusual color. Large. Each, 50c.
LE CORREGE (Vilmorin). Standards, smoky bronze; falls, reddish plum with yellow beard. Fragrant. Each, 50c.
LOS ANGELES (Mohr-Mitchell). Large white flowers. Standards, edged blue; falls, brown. Each, \$1.25.
LOUIS BEL (Denis). Dark Pansy violet. Ea., 60c.
MAGENTA (Cayeux). Large, red violet self of satiny texture. Each, \$2.00.
MARY BARNETT (Clumbler). Fragrant clear pale blue-lavender with orange beard. Each, 50c.
MELCHOIR (Wallace). Red bronzy claret self with orange beard and purple markings. Each, \$2.00.
MELDORIC (Ayres). Blue black in effect, colossal in size with broad falls and standards of darkest hue. Each, \$7.50.
MIDGARD (Sass). Yellow deeply flushed with rose pink. Large flowers on 3 ft. stalks. Each, 50c.
MIRASOL (Mohr-Mitchell). Chrome yellow remaining long in flower. Each, \$1.50.
MME. CECILE BOUSCANT (Millet). Light orchid pink self of wonderful form and substance. Each, 50c.
MME. DURRAND (Denis). Very large flower of buff color, flushed mauve. Each, 50c.
MME. SEROUGE (Cayeux). Light violet standards, with rich purple red falls. Each, \$6.00.
MODOC (Essig). Cotting purple standards and falls of dark velvety blackish purple. Each, \$5.00.
MONTEREY (Mohr-Mitchell). Fine red violet bicolor. Tall, of good size and form. Each, \$1.00.
MOONBEAM (Murrell). Pure sulphur yellow self with no markings. Robust, fragrant. Ea., \$1.00.
MRS. VALERIE WEST (Bliss). Standards, bronze shot with lavender; falls broad and of deep velvety maroon purple. Each, \$2.00.
NATIVIDAD (Mohr-Mitchell, 1932). Creamy white with soft yellow base and beard. Each, \$5.00.
NUMA ROUMESTAN (Cayeux). Rich coppery red with orange beard. Fragrant. Each, \$1.75.
OPHELIA (Cayeux). Beautiful combination of orange, cream, mauve and bronze tints lit up by deep orange beard. Each, 75c.
PACIFIC (Essig). Light bluish violet with flaring falls, slender, straight stems. Each, \$1.00.
PADRE (Mohr-Mitchell). Falls of rose purple flushed bright blue; standards, rose bronze. Each, \$1.50.
PEERLESS (Dykes). Reddish violet with bronze reticulations on falls. Gold beard. Each, \$1.00.
PLUIE D'OR (Cayeux). Tall, pure rich yellow with striking yellow beard. Each, \$1.75.
PONGEE (Bretschneider). Buff colored self similar to pongee silk in color. Each, \$1.00.
PURISSIMA (Mohr-Mitchell). Splendid white, large. 3½ to 4 ft. tall. Each, \$1.00.

QUERIDA (Mohr-Mitchell). Pinkish lavender with beards and hafts flushed yellow. Each, \$1.00.
RAMESES (Sass). Gold, pink and apricot blend. Vigorous and hardy. Each, \$5.00.
RAYO DE SOL (Mohr-Mitchell). Large lemon chrome with flaring falls and a few white lines at the haft. Each, \$2.50.
RED WING (Sass). Big bronzy red. Large and tall. Each, \$1.50.
ROB ROY (Kirkland). Bicolor. Standards are Argyle purple, with flaring falls of Bordeaux richly suffused gold. Each, \$7.50.
RONDA (Mohr-Mitchell). Rich red, falls slightly darker than the standards. Each, \$4.00.
ROSE MITCHELL (Essig). Rose colored self. Each, \$1.50.
ROUSULTRA (Essig). Rose colored Iris that makes good garden clump. Each, 75c.
RUBEO (Mohr-Mitchell). Standards are deep glistening rose, the broad falls are deep maroon with no white veining. Each, \$7.50.
SACRAMENTO (Mohr-Mitchell). White ground, standards edged red purple, falls reticulated with the same color. Orange beard. Each, \$2.50.
SAN DIEGO (Mohr-Mitchell). Immense blooms of velvety blue purple. 46 inches. Each, \$2.00.
SAN FRANCISCO (Mohr-Mitchell). Large flowers of white, edged with lavender blue. Ea., \$2.00.
SAN LUIS REY (Mohr-Mitchell). Large violet red of beautifully rounded form. Golden beard and yellow center. Each, \$1.25.
SAN RAFAEL (Mohr-Mitchell). Dark red purple. Large with an overtone of black adding to the richness of the color. Each, \$2.00.
SANTA CLARA (Mohr-Mitchell). Tall, violet blue self, with ruffled flaring falls. Each, \$1.25.
SANTA FE (Mohr-Mitchell). Almost white, pale blue being evident when first opened. Ea., 75c.
SENSATION (Cayeux). Clear blue flowers on tall stems. Fine form and substance. Each, \$1.50.
SHASTA (Mohr-Mitchell). White, distinctive in style. Tall, free flowering. Each, 75c.
SIKH (Baker). A rich bronzy purple blend. Each, \$1.00.
SIR MICHAEL (Yeld). Standards opalescent lavender blue, falls deep rich purple strongly suffused red brown. Orange beard. Each, \$2.00.
SUMMER CLOUD (Kirkland). The falls are sky blue; standards, light blue, changing to gray-blue white like a cloud. Each, \$5.00.
SUNBEAM (Murrell). Deep canary yellow self, unmarked. Form, round and smooth. Each, 60c.
SUNDEW (Essig). Pinard yellow, overlaid with empire yellow, maroon purple lining at base of the falls. Very distinctive. Each, 75c.
TALISMAN (Murrell). Rich iridescent golden yellow faintly flushed violet pink. Electric blue flush down the center of the falls. Beard, golden yellow, haft golden bronze. Each, \$7.50.
TIOGA (Salbach). Fragrant, velvety blue violet. Broad falls, smooth texture. Each, \$3.50.
UNCLE REMUS (Essig). Mulberry purple self with cadmium yellow beard. Each, 75c.
VERT-GALANT (Cayeux). Coppery red shading to garnet, yellow throat reticulated brown. Each, \$5.00.
WAMBLISKA (J. Sass). Large, pure white with a bluish sheen at center. Pale yellow beard with few yellow stripes on haft. Crinkled. Each, \$5.00.
WILLIAM MOHR (Mohr). Large lilac flower with violet veins. Beautiful and unusual. Impressive as a cut flower. Hardy. Each, 75c.
W. R. DYKES (Dykes). Falls crinkled adding richness to the yellow flowers. Some seasons purple flakes appear on the falls. Beard, brilliant orange. Each, \$7.50.



Iris Zwanenburg



Iris Turkoman



Iris Wm. Mohr



Iris Crimson King

TALL BEARDED IRIS—STANDARD VARIETIES

ALAMEDA. Both standards and falls heavily suffused blue violet on white. Each, .50.
ALCAZAR. Standards, mauve, falls, dark bronzy red purple. Yellow beard. Each, .20.
ALLURE. Canary yellow, standards flushed and overlaid violet pink. Falls same. Each, .50.
AMADOR. Soft pink bicolor. Each, .20.
AMBASSADEUR. Standards, bronzy violet with falls of dark maroon. Orange beard. Each, .35.
ANN PAGE. Pale lavender blue self. Each, .25.
APHRODITE. Bright violet pink self. Fragrant, free blooming. Each, .35.
ARCHEVEQUE. Deep purple, violet standards, velvety raisin purple falls. Each, .20.
ARGENTINA. Tall white Caterina seedling, gold haft. Fine seed parent. Each, .20.
ARGYNNIS. Standards, clear bright yellow, with falls chestnut red, yellow edge. Each, .35.
ASIA. Pale silvery lavender standards, rosy lavender falls. Golden yellow beard. Each, .35.
AURIFERO. Pale lavender, deeper falls. Brilliant gold beard. Each, .35.
AUTOCRAT. Light lavender, darker violet falls fading to a conspicuously veined haft. Each, .20.
AVALON. Satiny pinkish lavender. Each, .20.
A YELLOW. Early yellow. Each, .20.
AZULADO. Enormous pearly blue. Each, .35.
BALBOA. Tall bright red violet bi-color; fine distinct flowers. Each, .20.
BALLERINE. Light blue violet standards, deeper colored falls, fragrant. Each, .25.
BELISAIRE. Golden bronze standards, fall of purplish old rose, yellow hafts. Each, .20.
BONITA. Clear buttercup yellow, shading to cream. Orange beard. Each, .35.
BRAVURA. Deep rosy lilac. Each, .35.
BUTO. Large; standards, royal purple, falls velvety blackish violet. Each, .50.
CLARIDAD. Lavender blue. Each, .25.
CLEMENT DESORMES. Deep red pink. Orange beard. Each, .25.
COLUSA. Petunia violet. Each, .25.
CONCHOBAR. Light purple standards, falls, deep reddish velvety purple. Each, .20.
CONQUISTADOR. Light violet. Each, .25.
CRIMSON GLOW. Crimson rose. Each, .25.
CRUSADER. Clear blue violet. Each, .20.
DEJAZET. Beautiful bronze rose. Each, .20.

DON QUIXOTE. Lavender blended yellow, buff style arms, orange beard. Each, .35.
DREAM. Crinkled orchid pink self. Each, .25.
DUKE OF BEDFORD. Deep violet purple. Orange beard. Vigorous. Each, .35.
DULCINEA. Lavender standards, falls, violet blue, lavender margins. Each, .20.
EP MICHEL. Ruffled, red purple. Each, .20.
E. YELLOW. Buttercup yellow. Each, .20.
ESPLENDIDO. Red purple bi-color. Each, .25.
EVADNE. Rose red self, orange beard. Each, .25.
FIREFLY. Luminous yellow with falls lined brown and mauve. Each, .35.
FORTUNA. Clear amber yellow standards, lighter falls, lined brown. Each, .50.
FRO. Mustard yellow, oxblood red falls. Each, .25.
GAVIOTA. Creamy white, both standards and falls edged yellow. Each, .25.
GEORGIA. Soft Cattleya rose. Each, .25.
GERMAIN PERTHUIS. Violet purple. Each, .50.
GLOWING EMBERS. Brownish lavender standards, falls, pansy purple. Each, .35.
GOLDEN PROMISE. Yellow, flushed lavender. Each, .35.
GOLDEN IMPERIAL. Chrome yellow. Each, .35.
HARRIET PRESBY. Light rosy violet. Each, .25.
HIDALGO. Lavender self. Each, .35.
IRIS KING. Golden yellow standards, velvety garnet falls. Each, .25.
ISOLENE. Silvery rose and mauve. Each, .20.
JACQUELINE GUILLOT. Fragrant lavender blue. Lustrous. Each, .25.
J. B. DUMAS. Violet rose, rich creamy yellow haft. Yellow beard. Each, .25.
J. J. DEAN. Light violet standards, velvety blue purple falls. Large and tall. Each, .25.
JUMBO. Violet falls, velvety red violet standards, orange beard, free blooming. Each, .35.
KASHMIR WHITE. Pure white. Each, .25.
LEONATO. Standards, pale lavender to silvery heliotrope, with slightly darker falls. Each, .25.
LEVERRIER. Light rose red. Fragrant. Each, .25.
LORD LAMBOURNE. Bronze bi-color. Each, .35.
MAGNIFICA. Huge, violet blue, darker violet falls. Each, .25.
MAJESTIC. Light lavender, velvety raisin purple falls. Each, .35.
MARY GIBSON. Bronzy rose blend. Each, .35.

MICHELINE CHARRIARE. Pure white, golden reticulations. Each, .50.
MME. CHERI. Red violet tinted with pink, yellow undertone. Each, .25.
MME. CHOBOUT. Yellow ground flushed red. Each, .20.
MOA. Pure violet, deeper falls. Each, .50.
MOONLIGHT. Creamy amber, gold reticulations. Each, .50.
MORNING SPLENDOR. Rich red violet. Each, .35.
MRS. MARTIN CRAN. Light rose. Each, .35.
OCHRACEA. Gold suffused blue violet. Each, .25.
ORUGA. Pale lavender. Each, .50.
PHYLLIS BLISS. Rose lavender self. Each, .25.
PIONEER. Red purple, bluish sheen. Each, .50.
PRAIRIE GOLD. Golden yellow self. Each, .50.
PRIMROSE. Primrose yellow. Each, .35.
PRINCESS BEATRICE. Lustrous lavender. Each, .25.
REALM. Tall periwinkle blue. Each, .50.
RIALGAR. Rich yellow. Long blooming. Each, .35.
RITA. Clear blue purple self. Each, .20.
ROMOLA. Pale lilac; falls red violet. Each, .50.
ROSADO. Clear soft pink. Each, .25.
ROSE MADDER. Bright rose madder bi-color. Each, .20.
ROSEWAY. Bright rose pink, orange beard. Each, .25.
SAN GABRIEL. Lavender pink, fragrant. Each, .50.
SEMINOLE. Velvety light red purple. Each, .25.
SENORITA. Pale lavender overlaid luminous yellow. Each, .35.
SHEKINAH. Pale lemon yellow. Each, .20.
SINDJKHA. Deep lavender combined with buff. Each, .20.
SOLEDAD. Pale yellow, deeper falls. Each, .20.
SOLFERINO. Lilac red self. Each, .50.
SOUV. DE MME. GAUDICHAU. Royal purple. Each, .25.
TROSTRINGER. Beautiful pink. Each, .35.
VALENCIA. Orange buff self. Each, .25.
VALERY MAYET. Coppery rose standards, bronze red falls. Each, .25.
VESPER GOLD. Creamy buff, flushed amber. Each, .50.
YELLOW MOON. Yellow self of Pallida habit. Each, .25.

IRIS PUMILA (DWARF BEARDED IRIS)

A miniature race of Iris similar in form to the tall bearded type. These lovely little gems are early bloomers, appearing soon after the Unigularis or winter-blooming Iris have gone. Especially good for the rockery. Every Iris lover should have a few at least.

ALPIN. S. lobelia blue; F. reddish purple. Each, .30.
ATROPURPUREA. Deep red purple. Each, .20.
ATROVIOLEACEA. Rich velvety red purple. Each, .20.
AUREA MACULATA. Yellow, orange beard. Each, .25.
BALKANA. Reddish purple. Each, .30.

BOQUET. White and heliotrope. Each, .30.
BRAUTJUNFER. Lilac white standards, purple falls, yellow tipped. Each, .20.
BRIDE. Early white, fragrant. Each, .20.
BRIDESMAID. Creamy white, bronze marked. Each, .30.
BUTTERFLY. Cream and olive. Scented. Each, .20.
CANARY BIRD. Straw yellow, orange beard. Each, .30.
CITREA. Lemon yellow. Extra early. Each, .20.
DITON-PURPLE. Clear violet purple. Each, .25.
EXCELSA. Lemon yellow, orange beard. Each, .40.
GLEE. Light yellow self. Each, 1.00.

GLORIA. Cream, greenish veins on falls. Each, .25.
HARLEQUIN. Pale straw. Each, .25.
JOSEPHINE. White, touched with yellow. Each, .35.
MAROCAIN. Blackish violet. Each, .50.
NIobe. Rich purple, free flowering. Each, .25.
ORANGE QUEEN. Deep yellow self. Each, .30.
PRAIRIE GEM. Yellow. Each, .30.
ROYAL PURPLE. Rich purple. Each, .30.
SNOWCUP. White, greenish tinge on falls. Each, .25.
STEWART. Fine deep yellow. Each, .50.

COLLECTION: 1 each of six varieties all separately labeled for \$1.00.

INTERMEDIATE HYBRID IRIS

These hybrids are a cross between the tall bearded Iris (Germanica) and the dwarf Iris Pumila. As a result they are of medium height (12 to 24 inches) and flower after the early dwarfs and before the tall bearded, thus filling the gap between these two types. They are free flowering, vigorous growers and very hardy.

BLUE BOY. S. bright clear blue; F. dark blue. Each, .20.

DOROTHEA. S. pearl gray; F. light blue. Each, .25.
GERDA. S. creamy yellow; F. deeper with golden veins. Very beautiful. Each, .25.
HALFDAN. Fragrant creamy white flower with golden veined throat, yellow beard. Each, .20.
HELGE. Citron yellow, pearl colored center. Each, .25.
INGEBORG. Large pure white with golden veined throat. Each, .20.

QUEEN FLAVIA. Primrose yellow. Each, .15.
WALHALLA. Fine large flower with light blue standards and rich violet purple falls. Each, .20.
ZUA. Fragrant soft gray flowers with curiously crinkled petals. Each, .25.

COLLECTION: 1 each of the ten fine hybrid Iris listed above, all separately labeled, \$1.75.



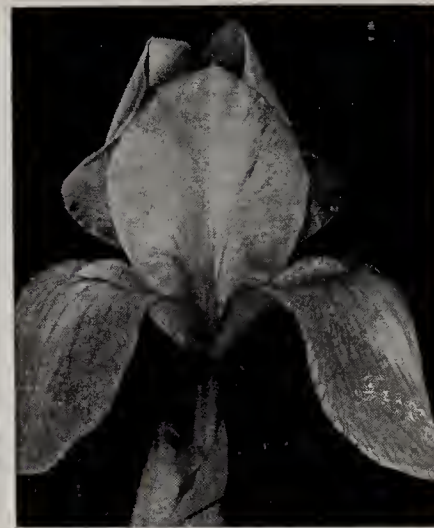
Iris Stolonifera



Iris Susiana—In Field



Iris Fulva



Iris Hoogiana

PALESTINE HYBRID IRIS

This group contains the most curious, yet beautiful of all Iris. Their flowers are strikingly veined on white, soft violet-purple or brown ground. To grow this type of Iris successfully where winters are severe or summers subjected to occasional rains, it is necessary to dig the roots each season after the leaves have died down (about the end of June) wash, and dry off for a day or two and then store in a box of very dry sand until time to replant. Tobacco dust added to the sand is used as a protection against aphids. The planting should be done a few weeks before the ground freezes, three or four inches deep and then covered with a mulch of straw or dried leaves to prevent heaving. A light frost will not injure the roots, but will kill the new growth. Therefore, the roots should be kept bone dry after planting, inasmuch as growth starts very readily upon the addition of moisture, if the temperature is mild.

ONCOCYLUS TYPE

SUSIANA (Mourning Iris) Enormous flowers of grayish white veined black maroon. Each, 1.00.

REGELIA TYPES

FLECTA. Lavender, light purple falls. Each, 1.00.

FRIGA. S. violet, lined purple; F. rich purple lined white. Each, 1.50.

HOOGIANA. Soft uniform blue. Each, .50.

KOROLKOWI. Silvery gray, veined blackish purple. Native of Turkestan. Each, 1.50.

KOROLKOWI CONCOLOR. Pinkish lilac. Each, 1.50.

STOLONIFERA. Bronze and steel-blue. Each 1.50.

VAGA. Purple, blue and bronze. Each, 1.00.

REGELIA-CYCLUS TYPE

ASPASIA. Reddish lavender, veined darker. Each, 1.00.

BEATRIX. Pale violet, dark veined, falls soft pearly gray with dark violet veins. Each, 1.50.

CHARON. Bronze, veined gold and brown. Each, 1.00.

HECATE. Uniform smoky rose, falls of rich mahogany veining over a cream ground. Each 1.00.

HERA. Beautiful flower shot with ruby, bronze and blue. Each, 1.00.

IRENE. Lavender, silvery-gray falls. Each, 1.00.

ORESTES. Dark bronze with purple hue. Each 1.50.

OSIRIS. Cream, veined lilac purple. Each, 1.50.

PSYCHE. White, veined violet, brown blotch in throat. Each, 1.00.

SATURNUS. Lilac violet, gray falls. Each, 1.50.
TURKOMAN. Warm reddish brown shot with violet. Ruby purple falls, royal blue beard. Each, 1.00.

POGO-CYCLUS HYBRIDS

CARMELO. Blue violet shade. Each, .25.

CHEROKEE MAID. Blackish maroon. Each, .50.

CONGRESS. Deep reddish bicolor. Each, 1.00.

DORAK. Light violet, darker falls. Each, 1.00.

GIRAN. Wine color, handsome veining. Each 1.00.

HAMADAN. Rich violet, white throat, veined purple; black beard. Each, 1.00.

IB-PALL. Deep red violet, veined purple. Each, .50.

LADY LILFORD. Deep violet purple. Each, .35.

NAZARINE. Beautiful purplish violet. Each, .50.

NEFERT. Soft blue, unmarked. Each, .50.

PANDORA. Light pinkish blue. Each, 1.50.

PARACINA. Dwarf. Very deep purple. Each, 1.00.

PARVAR. Black violet, velvety sheen. Each, 1.50.

SHIRAZ. Bright violet shade, darker falls. Each, 1.50.

WILLIAM MOHR. Manganese violet. Each, 1.00.

ZWANENBURG. Cream and purple shades. Each, .25.

COLLECTION: 1 each of 6 varieties, our selection, \$1.75.

BEARDLESS IRIS

LOUISIANA SPECIES

This group of Iris was recently discovered by Dr. Small and Mr. E. J. Alexander. Most of these species grow in swamps and require the same culture as Japanese Iris; a great deal of water at blooming time. Any good garden soil, with peat moss or leaf mold worked in, will suit them. Unlike the bearded Iris, they stand a much heavier fertilization, giving in return a wealth of flowers.

CAROLINA. Fragrant lavender blue. Each, 1.00.

CHRYSOPHOENICIA. Blue purple flowers, golden signal patch. Large. Each, 1.50.

CITRICRISTATA. Blue lavender, lemon crest surrounded by lemon area. Each, 2.00.

ELEPHANTINA. Pure ivory white. Each, 2.00.

FOURCHIANA. Beautiful wine red. Each, 1.50.

GIGANTECOERULEA. China blue. Beautiful. Each, 1.00.

GIGANTICOERULEA ALBA. Pure white. Each, 3.00.

LANCIPETALA. Pale silvery lavender. Yellow crest. Very tall, large and beautiful. Each, 3.50.

MORICOLOR. Mulberry purple, golden crest. Each, 7.50.

RHODOCHRYSEA. Deep brilliant old rose lilac, gold crest. Each, 5.00.

THOMASI. Red purple, golden crest. Each, 2.50.

VINICOLOR. Deep wine red. Fine. Each, 2.00.

VIOLIPURPUREA. Violet purple. Fragrant. Each, 2.50.

VIRIDIVINEA. Red purple, green crest. Each 2.50.

PACIFIC COAST SPECIES

The west has many beautiful Iris, all rather dwarf and suitable for the "wild flower garden." Though rather difficult to transplant, are well worth the effort required to establish them.

BRACTEATA. Dwarf, golden yellow. Each, .25.

CHRYSOPHYLLA. Light yellow flowers. Each .30.

DOUGLASIANA. Flowers blue and cream. Mixed only. Each, .25; dozen, 2.50.

GORMANI. Dwarf, soft yellow flowers. Each, .75.

HARTWEGI. Yellow, very dwarf. Each, .25.

LONGIPETALA. Light blue, similar in growth to Japanese Iris. Prefers moist situation. Each, .35.

MACROSIPHON. Blue purple flowers with white stripe. Fragrant. Each, .50.

PURDYI. Beautiful cream colored flowers, lined purple. Low growing. Each, .40.

TENAX. Tiny, reddish purple flowers. Each, .25.

TENUIS. White flowers, with purple and gold markings. Wide leaved woodland Iris. Each, .50.

COLLECTION: Ten of these lovely woodland Iris, all different and labeled separately, but our selection, \$2.00. Five, all different, our selection, \$1.00.

OTHER AMERICAN SPECIES AND HYBRIDS

These native Iris are all beautiful and can be used artistically either in rock gardens or as marginal plants along the edges of pools and streams. These species are not as tall as the Louisiana species, but are daintier and will stand a lower temperature. All these bloom after the Bearded Iris, except Missouriensis, which blooms early.

ARKANSAS. Pinkish orange self. Hybrid. Each, 2.50.

CACIQUE. Hybrid. Purple, golden signal patch. Each, 1.00.

CHOCTAW. Hybrid. Mauve purple self. Each 2.50.

DOROTHEA K. WILLIAMSON. Hybrid. Velvety purple. Each, .75.

FOLIOSA. Blue color. Each, .75.

FULVALA. Similar to Fulva, but more coppery.

Cross between Fulva and Lamanea. Each, .25.

FULVA. (pink) Very unusual pink. Each, .75.

FULVAUREA. Ashen pink, yellow crest. Each 2.50.

HEXAGONA. Tall blue. Each, .50.

MISSOURIENSIS (Blue Bird) Violet blue. Each .50.

MISSOURIENSIS (Snow Bird) Pure beautiful white without any veining. Delicate flowers Each, 1.00.

PRISMATICA. Pale blue standards, white falls with blue edging and yellow throat. Each, .25.

PURPUREA. Raisin purple hybrid. Each, .50.

SAVANNARUM. Tall blue; petals thicker and more pointed than Hexagona. Each, .75.

SHREVEI. Lovely shade of lavender blue. Each .35.

TULSA. Hybrid. Rich velvety purple self. Each .50.

VERSICOLOR KERMESINA. Brilliant claret red. Each, .50.

VERSICOLOR ROSEA. Light rose mauve. Each, .50.

VIRGINICA. Light blue lavender, different from Versicolor in foliage, growth, season. Each, .25.

COLLECTION: 1 each of six varieties, our selection, \$1.75.

BEARDLESS SPECIES For Rock Gardens

ENSATA. Handsome soft lavender dwarf from Asia. Flowering over a long period. Each, 1.00.

GRAMINEA. Fragrant, red purple flowers, very scarce. Each, 1.00.

MINUTA. Tiny yellow flowers from Japan. Extremely rare. Each, 3.50.

TRICUSPIS. Makes a compact clump, with masses of flowers that resemble a blue Siberian Iris. Each, 1.00.

VERNA. Pretty little lavender Iris. Native to the southeastern states. Requires an acid soil and does well in partial shade. Each, .20.

MISC. BEARDLESS SPECIES

CHRYSOGRAPHES. Southwestern China. Deep violet veined with gold. Each, .50.

CHRYSOFOR. Attractive combination of blue shades with yellow. Each, .50.

DELAVAYI. Native to China. Variations of blue and purple. Each, .50.

DICHOTOMA. (The Vesper Iris) North China. Flower coloring varies from white to purple. Each, .50.

FOETIDISSIMA. Central and Southern Europe. (Seed Pod Iris).. Seed pods burst open during the winter and display rows of orange red seeds. Each, .20.

FONTANESI. Soft yellow and lavender blossoms. Each, 1.00.

FORRESTI. Alpine from China. Lovely clear yellow blossoms. Each, 1.00.

HYACINTHIANA. From Kansu, China. Attractive flowers of soft blue and sulphur yellow with brown veins. Each, .50.

WILSONI. From Western China. Fine pale yellow flowers veined brown at throat. Each, 1.00.



Iris Spuria



Iris Siberica



Iris Bucharica



Iris Fimbriata

KAEMPFERI (Japanese Iris)

As these magnificent Iris become better known they gain in popularity and a field of them in bloom or a few specimens artistically arranged in the water garden is a truly lovely sight. These Iris are the last to bloom. Coming into flower the first part of June and continuing for two or three weeks, they fill in a period when flowers of this attractive type are particularly welcome. They have proved hardy in most localities, but should be covered with straw in the northern and eastern states to prevent danger from freezing and thawing. While more artistic when grown in pools, they will flourish in any good garden soil, provided they are planted in a sunny location with an abundance of water, especially at the blooming season.

ALAGOZ. (Single) Purple and violet. Each, 1.50.
BETTY F. HOLMES. (Double) Pure white. Each, 1.00.

BOKHARA. (Single) Purple and blue. Each, .50.
CHUTSAL. (Single) Violet and purple, white veins. Each, .60.

CLARICE CHILDS. (Single) Petunia violet, yellow center. Large. Each, .60.

ELEANOR PARRY. (Double) Claret red, flamed white and blue. Each, .60.

GOLD BOUND (Double) White, gold banded center. Each, .35.

ISPAHAN. (Double) Phlox purple, white veins. Each, .60.

KHA KHAN. (Single) White suffused blue. Each, .50.

LA FAVORITE. (Single) White veined blue, purple center. Each, .50.

MONGOL KAHN. (Sgle.) Deep rosy red. Each, .60.

PYRAMID. (Double) Violet purple, veined white. Each, .25.

RED RIDING HOOD. (Single) Amaranth, veined white. Each, .40.

REPSIME. (Dbl.) Blue veined white. Each, .35.

ROSE ANNA. (Double) Ivory white, ruby veins. Yellow blotch, stigmas dark plum. Each, .40.

SADARABAD. (Sgl.) White, spread with pink. Each, .60.

TARTAR PRINCE. (Single) Rosy crimson. Each, .60.

TEMPLE FLOWER. (Single) White, blended violet. Each, .60.

T. S. WARE. (Double) Violet, veined white, yellow marked white center. Each, .50.

VIOLET GIANT. (Semi-Double) Rich violet shading to rose. Each, 1.50.

COLLECTION: 1 each of 6 varieties, our selection, \$1.75.

IRIS SIBERICA

These flowers are not so large as the Japanese or Ball Bearded Iris, but their ease of culture and

adaptability to all sorts of soils and locations is amazing. They bloom in great profusion and give a magnificent garden effect, also good as cut flowers.

BLUE FLAME. Lightest blue Siberian. Each 1.50.

BLUE STAR. Large, deep rich violet. Each, .50.

BUTTERFLY. Soft uniform blue. Each, .20.

EMPEROR. Tall, dark Siberica. Each, .15.

KINGFISHER BLUE. One of the newer Siberians.

Larger, brighter than Perry's Blue. Each, .50.

PAPILLION. Soft blue on tall stalks. Each, .50.

PERRY'S BLUE. Bright sky-blue. Each, .25.

RED EMPEROR. Wine red, veined blue. Each, .75.

RED RAIDER. Rose-red lined deeper. Each, .75.

SNOW QUEEN. White, yellow throat. Each, .15.

SUNNYBROOK. Soft Alice blue. Each, .20.

TRUEBLUE. Pure blue, tinged yellow. Each, .50.

COLLECTION: 1 each of 6 varieties, our selection, \$2.00.

IRIS SPURIA

A group of tall, stately Iris which resemble the Dutch type, but are much larger. They can be had in many beautiful shades, ranging from almost white, and cream to deep rich yellow and from pale lavender to blue purple. They grow from 4 to 6 feet tall and are desirable to plant along streams or around pools or ponds. They are exquisite cut flowers as the buds keep opening for a long period. Most of those in the following list are hybrids, the parents being native to Asia.

Branin Hybrids

ALICE EASTWOOD. Beautiful rich yellow. Each, 5.00.

GOLDEN GATE. Tall, golden yellow flowers. Each, 3.00.

MARY NULTY. Very tall pure white. Each, 3.00.

NELLIE STUART. Beautiful tall blue. Each, 3.00.

Standard Varieties

AUREA. Tall, deep yellow. Very fine. Each, .25.

A. J. BALFOUR. Fine blue hybrid of Monspur. Each, .50.

DOROTHY FOSTER. Violet standards with falls striped lighter. Medium height. Each, .50.

JUNO. Lovely blue-purple flower of the Monspur type. Quite hardy. Each, .25.

LORD WOLSELEY. Large, handsome flower similar to Juno, but not quite as tall. Each, .35.

MONNIER. Rich golden yellow. Prefers moist situation, but quite hardy. Each, .25.

MONSPUR. Tall, blue purple. Each, .25.

MRS. A. W. TAIT. Handsome, porcelain blue. Each, .25.

NOTHA. Fine, pale lavender. Each, .25.

OCHROLEUCA. White and gold. Very tall. Each, .25.

OCHROLEUCA SULPHUREA. More yellow than above. Each, .20.

SPURIA. Lavender blue. Each, .15.

COLLECTION of ten of these stately Iris, full range of colors including deep cream, white and yellow, golden yellow, pale lavender to blue-purple. All different and labeled separately, our selection, \$2.75. Five, all different, our selection, \$1.50.

IRIS UNGUICULARIS

Winter Blooming

The plants start blooming in the fall and bloom throughout the winter. They grow wild in Algeria, Greece, and Asia Minor. The foliage is grass-like and the flowers are borne on stem-like parts, really elongated perianth tubes, 8 to 16 inches long. The flower is one of great refinement and is delightful when cut and combined with Maiden Hair fern. Requires pot culture or cold frame protection in the east. Plant preferably from June to December.

STYLOSA. Lilac blue with grassy evergreen foliage. Each, .25.

MARGINATA. A form of bluer hue and somewhat broader foliage than above. Each, .25.

ALBA. A white form. Each, .25.

QUEEN ELIZABETH. A dwarf form, violet and white. Very floriferous. Each, 1.00.

SPECIOSA. A violet form, narrower foliage and smaller flower, shorter perianth tube. Each, .75.

CRESTED IRIS

CRISTATA. Tiny wild species from North Carolina. Clear lavender with gold tinge. Each, .15.

CRISTATA ALBA. Lovely white form of above. Very scarce. Each, .50.

FIMBRIATA. Native to Japan. The flower stems, which usually appear in February, are much branched and the individual flowers are so numerous that the display continues for some weeks. Each, .25.

GRACILIPES. Dainty little Japanese crested Iris. Pale lavender flowers touched with orange. Each, 1.00.

GRACILIPES ALBA. Handsome, white form of above. Each, 10.00.

LACUSTRIS. A tinier Cristata in deeper blue. Each, 1.00.

MILESI. Reddish purple flowers with darker mottlings. Each, .75.

TECTORUM. The well known Roof Iris. Flat blue-purple flowers, fringed white crest. Each, .35.

TECTORUM ALBA. Exquisite white form of the preceding. Each, .75.

WATTI. Very rare and unique Iris from the Himalayas. Similar in growth to a dwarf bamboo. White flowers, lightly tinged. Each, 1.00.

BULBOUS IRIS *Holland Type*

One of the most satisfactory groups to grow, being particularly hardy in most states, but should be well covered during the winter, with straw or leaves, in the east.

The orchid-like flowers are of great beauty, having many different shades and blendings of color, and if cut in the bud will keep for a long time in water. For best effect, they should be planted in clumps of 25 or more bulbs, or are very satisfactory placed in a long row in the hardy border. Plant in early fall, six inches apart. They bloom soon after the Daffodil season.

A.BLOEMAARD. Beautiful purplish blue. Very early. Dozen, .60.

ABRAHAM STORCK. Magnificent steel blue with darker falls. Extra large. Dozen, 3.00.

ADRIAN BACKER. Early rosy lavender, extra large. Dozen, .60.

ANTON MAUVE. Lovely uniform shades of soft blue. Dozen, .60.

ARIE SCHEFFER. Uniform dark blue. Dozen 1.00.

DAVID HARING. Tall white, golden center. Dozen, .50.

E. B. GARNIER. Tall dark blue. Dozen, .75.

GERRIT van Hess. (New) Broad deep blue standards. Large blue falls, with pale yellow stripe. Dozen, 2.00.

FLORIS VERSTER. Uniform dark blue. Doz. 1.25.

FRANS DECKER. Pure white. Dozen, 2.50.

GOLDEN BRONZE. S. dark violet edged bronze; F. golden bronze. Beautiful. Dozen, 1.25.

GOLDEN GLORY. Golden yellow, deeper falls. Dozen, .75.

HUCHTENBURG. Orange yellow, blue standards. Dozen, .60.

JACOB de WIT. Dark blue. Dozen, .75.

JAN WEENIX. Soft lavender blue. Dozen, 1.50.

J. W. de WILDE. Golden yellow, bronze sheen. Dozen, .75.

LEONARDO de VINCI. White, yellow falls. Dozen, .60.

POGGENBEECK. Uniform dark blue. Dozen, .60.

S. de VLEIGER. (New) Soft sky blue with narrow orange stripe. Dozen, 1.25.

S. ROMBOUT. Very dark blue. Dozen, .50.

S. van RUYSDAEL. (New) Standards violet purple, falls bluish violet. Dozen, 1.75.

THERESA SCHWARTZ. Light lilac and white. Dozen, .75.

TH. WYCK. Blue, narrow orange stripe. Doz. .60.

WM. VERSCHUR. (New) Standards violet, tinged bronze, falls deep bronze. Dozen, 1.50.

WHITE EXCELSIOR. Pure white, with yellow blotch. Dozen, .50.

W. ZUIDERVELD. Standards and falls light bluish violet. Excellent novelty. Dozen, 1.00.

YELLOW QUEEN. Magnificent. pure yellow. Dozen, .60.

NOTE: Six bulbs will be supplied at the dozen rate, or at five times the single rate.



Hippeastrum Advenum



Hippeastrum—Hybrid



Zephyranthes



Lycoris aurea

BULBOUS IRIS—Continued

MIXED HOLLAND IRIS. Doz., .50; 100, 2.75.
COLLECTION: 100 bulbs in five named varieties, in shades of light and dark blue, blue and yellow, white and yellow, white and lilac and pure yellow. 100 large bulbs for \$3.25; 50 for \$1.75; 25 for \$1.00.

Filifolia and Tingitana Hybrids FOR FORCING

IMPERATOR. (Filifolia) Large dark blue, very free-flowering. Dozen, .75.
THE FIRST. (Tingitana) Standards and falls beautiful marine blue. First to bloom. Doz., 1.00.
WEDGEWOOD. (Tingitana) Standards a lovely shade of blue, with paler falls. Dozen, 1.00.

ENGLISH TYPE

Similar to the Holland, but later. These Iris are hardy, but need a cool, moist soil. They need not be lifted more than every three years to separate.
IRANS HALS. Porcelain blue on white. Doz., 1.00.
GRAND LILAS. White and lavender. Doz., .75.
JOHN DUCKER. White, flushed rosy purple. Dozen, 1.00.
MONT BLANC. Pure white. Dozen, 1.00.
PRINCE OF WALES. Rich deep blue. Doz., 1.00.
PRINCESS DAGMAR. Creamy white, reddish mauve spots. Dozen, 1.00.

ROSA BONHEUR. White, splashed dark carmine. Dozen, .75.
PERLE DES JARDINS. Pearl, flamed light blue. Dozen, 1.00.
MIXED VARIETIES. Dozen, .75; 100, 5.25.

SPANISH TYPE

These are similar to the Holland Iris, blooming later and contain shades of bronze which the Holland Iris do not have.
BELLE CHINOISE. Early yellow. Dozen, .50.
BLANCHE FLEUR. Fine white. Dozen, .50.
BRITISH QUEEN. Large pure white. Dozen, .50.
CAJANUS. Late yellow. Dozen, .65.
FIORA. Large white and lavender. Dozen, .50.
KING OF BLUES. Tall dark blue. Dozen, .50.
KING OF WHITES. Large pure white. Doz., .50.
LA NUIT. Violet blue, extra fine. Dozen, .65.
LA RECONNAISSANCE. Beautiful bronze shade. Dozen, .65.
LOUISE. Porcelain blue. Dozen, .50.
PRINCE HENRY. Golden bronze. Very fine. Dozen, .65.
QUEEN EMMA. Extremely large golden yellow. Beautiful flower. Dozen, .75.
THUNDERBOLT. Dark bronze, blue sheen. Extra large and stately. Dozen, .75.

MIXED SPANISH IRIS. Dozen, .50; 100, 2.75.
COLLECTION of 100 bulbs, named varieties, our selection, for \$3.25; 50 bulbs for \$1.75; 25 for \$1.00.

BULBOUS IRIS—Rare Species

BUCHARICA (Juno Type) Native of Bokhara. Soft yellow with deeper yellow on the lip of the falls. Each, .50.
JUNCEA. Native of North Africa. Fragrant yellow flowers similar to the Holland type in form. Each, .50; dozen, 5.00.
ORCHIOIDES. (Juno Type) Similar to Bucharica, but more dwarf and deeper yellow. Each, 3.50.
PAVONIA (Moraea Glaucopis) Peacock Iris. Tiny flowers somewhat resembling the tip of a peacock feather. Each, .25; dozen, 2.50.
PERSICA. (Juno Type) Dwarf species from Asia Minor. White, tinged sea green, purple blotch on falls. Each, .50; dozen, 5.00.
RETICULATA. Dwarf, blue flowers, somewhat like Spanish Iris. Each, .25; dozen, 2.50.
SINDPERS. (Juno Type) Exquisite, early. Soft turquoise blue. Each, 3.50.
SISYRINCHIUM (Moraea Sisyrrinchium). Light blue, dainty flowers that last half a day, like Tigridia. Each, .25; dozen, 2.50.
TUBEROSA (Hermodactylus Tuberosa). Fragrant apple green, with lip of rich velvety blackish purple. Unique. Each, .50.

BULBS THAT BLOOM IN THE FALL

COLCHICUM

These unusual bulbs bloom without soil, water or care. Place in a dish, bowl, or on the table or window sill in a little light and watch its beauty unfold. As the blossoms fade and drop, cut them off and others will follow in quick succession. When the blooming has ceased the bulbs may be potted or planted and will develop a beautiful broad, green foliage. Remove from bed about July first, dry the bulbs for a few weeks, and treat as at first. Very unique and beautiful, having refreshing fragrance.

Newer Varieties and Novelties

AUTUMN QUEEN. Deep rose purple. Each, .75.
AUTUMNALE ALBA PLENO. Beautiful double white, rare. Each, 1.50.
CONQUEST. Dark violet. Each, .50.
LILAC WONDER. Violet mauve. Each, .75.
MR. KERBERT. Pale violet. Each, .75.
PRESIDENT COOLIDGE. Light lavender. Ea. .60.
SPECIOSUM ALBA. Pure white. Each, 1.50.
THE GIANT. Very large lilac. Each, 1.50.
VIOLET QUEEN. Lilac tinted violet. Each, 1.00.

Standard Varieties

AGRIPINUM. Sherry rose, checkered. Each, .50.
AUTUMNALE. Light purple. Each, .25.
AUTUMNALE ALBA. Pure white. Each, .40.
AUTUMNALE ROSEA PLENO. Double late pink. Each, .40.
BORNMULLERIE. Rosy lilac. Each, .50.
SPECIOSUM. Deep rose purple. Each, .40.

AUTUMN FLOW'RING CROCUS

These dainty flowers light up the garden in Autumn long after most other flowers have finished for the year. They are ideal for rock gardens, producing a solid mass of flowers within a few weeks after planting. Plant the corms early in colonies and clusters, but avoid deep plantings
ASTURICUS. Deep purple. Each, .20; doz., 2.00.

IYEMALIS. Lovely pure white. (Winter flowering). Each, .10; dozen, 1.00.
IMPERATI. Lilac, outside silvery gray with brown stripes. (Winter flowering). Each, .15; doz., 1.50.
IRIDIFLORUS. Purple violet. Each, .15; doz. 1.50.
KOROLKOWI. From Turkestan and Bokhara. Yellow, brown bronze flush on outside of the petals. Each, .15; dozen, 1.50.
LONGIFLORUS. Bluish lilac. Each, .15; doz. 1.50.
OCHROLEUCUS. White, yellow base. Each, .15; dozen, 1.50.
PULCHELLUS. Lavender blue, white anthers. Each, .20; dozen, 2.00.
SALZMANNI. Lilac. Each, .10; dozen, 1.00.
SATIVUS. (The Saffron Crocus) Purplish lilac feathered with violet. Each, .05; dozen, .50.
SPECIOSUS AITCHISONI. Bright blue. Very large flower. Each, .20; dozen, 2.00.
ZONATUS. Rose lilac, yellow center and orange zone. Each, .10; dozen, 1.00.

AUTUMN FLOWERING "AMARYLLIDS"

HIPPEASTRUM ADVENUM (Ox Blood Lily). Resembles Sprekelia in its habits. Flowers, funnel-shaped, three or four in an umbel on a stem about ten inches tall. Color, deep, blood-red, with green throat. Very distinct and interesting, and is much hardier than the other Hippeastrum, thriving in the open in California. Each, .50; dozen, 5.00.
NERINE SARNIENSIS (Guernsey Lily). Dense heads of bright crimson flowers with silvery luster. Protruding stamens and pistils give a "spidery" effect. Each, .25; dozen, 2.50.
MAMMOTH bulbs for forcing. Each, .50; doz. 5.00.
NERINE CURVIFOLIA. var Fothergilli major. A magnificent plant for the house or conservatory. Intense, shining scarlet. By artificial light the crystalline cells of the petals sparkle like jewels. Each, 1.50.
STERNBERGIA. Yellow Crocus-like flowers. Suitable for rock gardens or borders. Each, .15; dozen, 1.50.

ZEPHYRANTHEA ROSEA. (Crocus Type) Rose pink, should not be confused with "Carinata," which is sometimes sold by that name. Each, .25; dozen, 2.50.

COLLECTION C-49: 2 Colchicum Autumnale, 6 mixed Autumn Crocus, 3 Hippeastrum Advenum, 3 Nerine Sarniensis, 3 Sternbergia, 3 Zephyranthea Rosea. A complete collection of Autumn flowering bulbs (Catalog value, 5.00) for \$3.50; one-third collection, 1.25.

LYCORIS (Magic Lily)

Unique bulbs of the Amaryllis family and native to Japan and China. The strap-like leaves appear early in the spring and die in June. The bulbs usually bloom in the late summer or early autumn, appearing suddenly and in a few days attains a height of two feet or more, which doubtless accounts for the name. A large clump of these flowers in full bloom is a magnificent sight. The bulb receives a severe shock when transplanted, therefore does not often bloom until the second season after planting. For the best blossoms it is necessary that the leaves grow for as long as possible and die back naturally. While the variety "Squamigera" is reported hardy, even in the eastern states, it is advisable to plant all in a protected location and cover with a good mulch during the winter months.

AUREA. (Golden Spider Lily) Bright yellow flowers usually in August. They are shaped like Nerines, but larger. Very rare. Each, \$2.50.
PURPUREA. Beautiful clusters of six to eight wine colored flowers, changing to purple when fully expanded, giving a startling and beautiful effect. Supply limited. Each, \$2.00.
SQUAMIGERA. (Amaryllis Halli) Umbels of large lily-like flowers of delicate pink shade, in late summer. Grows from two to two and one half feet tall. Each, \$1.00.

COMPLETE LIST OF "AMARYLLIDS" ON
FOLLOWING PAGE



Sternbergia lutea



Chlidanthus fragrans



Sprekelia formosissima



Crinum—C. E. Houdyshel

THE AMARYLLIS FAMILY

The Amaryllis family, botanically known as "Amaryllidaceae" contains an interesting group of bulbs which should become better known. Many have funnel shaped blossoms and are sometimes erroneously called "Lilies." (See "Lilies in Name Only.") Pot culture is recommended for such tender subjects as Clivia, Eucharis and Hippeastrums, except in the extreme south. Other bulbs in this group can be grown outside, if planted in a protected location and given a heavy mulch of straw, dried leaves, or other light material. In very cold climates the deciduous varieties may be lifted and stored in a dry cellar during the winter.

AMAR-CRINUM. Hybrid between Amaryllis Belladonna and Crinum Moorei. Beautiful pink trumpet-shaped flowers, freely produced. Each, \$4.50.
AMARYLLIS Belladonna Major. Pink, trumpet-shaped flowers, fragrant. Each, 35c; doz., \$3.50.
CHLIDANTHUS fragrans. Very fragrant, rich yellow flowers, resembling a miniature Amaryllis. Each, 15c; dozen, \$1.50.
CLIVIA Miniata. Amaryllis-like plants with large umbels of bright scarlet flowers with yellow throat. Fine house plant. Each, \$1.00.
COOPERIA Drummondii. Native of Texas, where it studs the plains with fragrant white flowers. Each, 15c; dozen, \$1.50.
CRINUM. The diversity of form and coloring is very great, the flowers ranging from white through all shades of pink to deep rose. Many have a darker stripe through each segment; others are self colored. Some are funnel-shaped, some bell-shaped, and others have long, narrow segments placed at right angles to the perianth tube. Should be grown either in tubs for the conservatory or planted outside in a protected location.
Amabile. Fragrant pink flowers. Each, \$1.25.
Americanum. Lily-like white flowers. Each, 75c.
Asiaticum. Forms white rosette of dark green leaves. Fragrant white flowers. Large, Ea., 50c.
Campanulatum. Spikes of rose-red bell-shaped flowers. Strap-shaped leaves. Each, \$1.00.
C. E. Houdyshel. Hybrid. Nearest to a red flower. Often blooms several times yearly. Ea., \$1.50.
Capense Rosea. Pink, hardy. Each, 50c.
Capense Alba. White, hardy. Each, 50c.

Empress of India. Produces drooping, rose-colored flowers, striped flesh pink. Each, \$1.50.
Erubescens. Flowers, reddish outside, white inside. Each, 50c.
Fimbriatum. Pure white flowers with pink stripes through center of petals. Each, 50c.
Giganteum. Large, white flowers with vanilla-like fragrance. Handsome foliage. Each, \$1.25.
J. C. Harvey. Hybrid. Fragrant rose pink flowers. Often blooms several times yearly. Ea., \$1.25.
Kirki. White flowers with reddish-purple stripe in the center of each petal. Each, 75c.
Kunthianum. Dull white flowers, tinged rose-red. Native of New Granada. Each, 50c.
Moorei. Clear pink flowers. From Africa. Ea., 50c.
Mrs. Bosanquet. Hybrid. Cup shaped blossoms of deep, glowing rose. Each, \$2.50.
Powellii Rosea. Pink flowers. Each, 50c.
Powellii Album. Same with white flowers. Ea., 50c.
Pedunculatum. White, tinged green. Each, \$2.00.
Scabrum. White flowers, rose keels. Each, \$1.00.
Virginicum. White and rosy-pink flower. Ea., 75c.
Collection—6 Choice Crinums, all different, our selection, \$2.50.
CYRTANTHUS. Amaryllis-like bulbous plants from the Cape, with pendulous funnel-shaped flowers.
Apricot. Apricot pink. Each, \$1.00.
Mackeni. White. Each, \$1.00.
Parviflorus. Scarlet. Each, \$1.00.
EUCHARIS. Grandiflora. Recommended exclusively for indoors, and requires to be well established for good production of flowers. Very fragrant white Narcissus-like flowers. Each, \$1.00 dozen, \$10.00.
HIPPEASTRUM (Amaryllis). Diener's Ever-blooming Mammoth Hybrids. Flowers a foot across are not uncommon and range in colors from white, faintly marked red or pink, through many shades and combinations of pink, vermilion and orange. Large bulbs; Each, 50c; dozen, \$5.00.
Advenum. See list of Autumn Flowering Amaryllids.
Equestre. Orange scarlet. Each, 35c; dozen, \$3.50.
Equestre var. Flore Pleno. Same as above, but double flowers. Excellent as cut flowers. Each, 50c; dozen, \$5.00.

Vittata Hybrids. Mixed colors only. Large bulbs. Each, 50c; dozen, \$5.00.
HYMENOCALLIS Calathina. Fragrant white blossoms. Grand summer flowering bulbs. Each, 25c; dozen, \$2.50.
Galvestonensis. Umbels of white, fragrant flowers, with stamens joined at the base to form a cup, giving a Narcissus-like appearance. Each, 25c; dozen, \$2.50.
Sulphur Queen. Lovely hybrid form of Calathina. Pale yellow flowers. Very rare. Each, \$5.00.
HYPOXIS Hirsuta. Star-shaped flowers, yellow. Produced in umbels. Each, 15c; dozen, \$1.50.
ISMENE. (See Hymenocallis.)
NERINE. (See Autumn Flowering Amaryllids.)
PANCRATIUM Maritimum. Pure white Ismene-like flowers. Fragrant. Each, 20c; dozen, \$2.00.
SPREKELIA Formosissima. Brilliant flowers of dark crimson, with narrow reflexing and spreading petals. Each, 25c; dozen, \$2.50.
STERNBERGIA. (See Autumn Flowering Amaryllids.)
VALLOTA Purpurea. Red flowers. Native of South Africa. Each, 75c; dozen, \$7.50.
ZEPHYRANTHES. Dwarf bulbous flowers suitable for the rock garden. They come in two distinct types. Goblet shaped, called Summer Crocus and funnel-shaped, called Fairy Lily or sometimes Rain Lily as they often bloom soon after a rain.
Ajax (Crocus Type). Golden yellow. Each, 25c; dozen, \$2.50.
Atamasco (Lily Type). White. Ea., 20c; doz., \$2.00.
Candida (Crocus Type). White. Ea., 5c; doz., 50c.
Carinata (Lily Type). Rosy-pink. Ea. 10c; doz. \$1.00.
Longifolia (Crocus Type). Yellow-bronze. Each, 30c; dozen, \$3.00.
Rosea (Crocus Type). Rose pink. Ea., 25c; doz. \$2.50.
Texana (Crocus Type). Golden yellow inside, copper bronze outside. Each, 20c; dozen, \$2.00.
Treatiae (Lily Type). Pure white, turning pink with age. Each, 10c; dozen, \$1.00.
Zephyranthes Collection. One each, labeled separately—\$1.00.
Collection of Amaryllids. One each—Amaryllis Belladonna, Chlidanthus, Cooperia, Hymenocallis (Ismene Calathina), Pancratium, Sprekelia and Vallota—All labeled, for \$1.75.

LILIES IN NAME ONLY

Lily, in the narrowest sense, is restricted to the genus Liliium, but through popular adoption other bulbs are sometimes known by this same name. Many of these belong to the Amaryllis group. The following list should prove helpful to identify some of the old favorites that are not known by their botanical name.

AMAZON or BETHLEHEM LILY (Eucharis). See "Amaryllis Family." Each, \$1.00.
ANGEL LILY (Crinum Powellii). See "Amaryllis Family." Each, 50c.
ATAMASCO LILY (Zephyranthes Atamasco). See "Amaryllis Family." Each, 20c; doz., \$2.00.
BARBADOS LILY or KNIGHT'S STAR LILY (Hippeastrum Equestre). See "Amaryllis Family." Each, 35c.
BELLADONNA LILY (Amaryllis Belladonna). See "Amaryllis Family." Ea., 35c; doz., \$3.50.
BENGAL (Crinum Moorei). See "Amaryllids." Each, 50c.
BLUE LILY OF THE NILE (Agapanthus Umbellatus). Large umbels of blue flowers. Ea., 50c.

CALLA LILY (Zantedeschia aethiopica). See color illustration. Each, 20c; dozen, \$2.00.
DAY LILY (Hemerocallis Fulva). Orange. Ea., 20c.
DAY LILY (Hemerocallis Flava). Lemon. See color illustration. Each, 20c.
Collection—6 Hemerocallis, all different, labeled—\$2.00.
FAIRY LILY (Zephyranthes Carinata). See color illustration. Each, 10c; dozen, \$1.00.
GINGER LILY (Hedychium Coronarium). Waxy white flowers. Rich fragrance. The bruised roots have an odor of ginger. Ea., 50c; doz., \$5.00.
GUERNSEY LILY (Nerine Sarniensis). See color illustration. Each, 25c; dozen, \$2.50.
IFAFA LILY (Cyrtanthus). See "Amaryllis Family." Each, \$1.00.
IVORY LILY (Hymenocallis Calathina). See "Amaryllis Family." Each, 25c; dozen, \$2.50.
JACOBAN LILY (Sprekelia Formosissima). See "Amaryllis Family." Ea., 25c; doz., \$2.50.
JOHNSON'S LILY (Hippeastrum Johnsoni). See color illustration. Each, 25c; dozen, \$2.50.

KAFFIR LILY (Schizostylis coccinea). Scarlet flowers; lily-like in shape. Ea., 50c; doz., \$5.00.
PERUVIAN LILY (Alstroemeria). Many spikes of funnel-shaped, orange flowers. Ea. 25c; doz. \$2.50.
POLIANTHES LILY (Tuberose). Fragrant, pure white. Single. (See color illustration). Each, 10c. Double. Each, 15c; dozen, \$1.50.
PRAIRIE LILY (Cooperia). See "Amaryllis Family." Each, 15c; dozen, \$1.50.
SCARBOROUGH LILY (Vallota). See "Amaryllis Family." Each, 75c; dozen, \$7.50.
SPIDER LILY (Pancratium). See "Amaryllis Family." Each, 20c; dozen, \$2.00.
ST. BERNARD LILY (Anthericum). Pure white flower, long grassy leaves. Ea., 40c; doz., \$4.00.
STAR LILY (Hypoxis Hirsuta). See "Amaryllis Family." Each, 15c; dozen, \$1.50.
TORCH LILY (Kniphofia or Tritoma). Scarlet flowers during winter months. Ea., 20c; doz., \$2.00.
TRANSVAL LILY (Billbergia Nutans). Spikes of rose flowers, edged green. Each, 50c.
VITTATA LILY (Hippeastrum Hybrids). See color illustration. Each, 50c; dozen, \$5.00.

TERMS. Remittance should accompany order in the form of bank draft, postal or express money order, or personal check.



COLLECTION OF CHOICE "LILIES"*

We will send you the following assortment of bulbs illustrated on this page, prepaid for **\$1.95**

- 1 Vittata Lily (Hippeastrum Hybrid)
- 1 Johnson's Lily (Hippeastrum Johnsoni)
- 2 Calla Lilies (Zantedeschia Aethiopica)
- 2 Day Lilies, Lemon (Hemerocallis Flava)
- 2 Guernsey Lilies (Nerine Sarniensis)
- 3 Polianthes Lilies (Tuberosa) Single
- 6 Fairy Lilies (Zephyranthes Carinata)

- 1. Vittata Lilies (Hippeastrum Hybrids)
Mixed colors only.
Each, 50c; dozen, \$5.00.
- 2. Johnson's Lily (Hippeastrum Johnsoni)
Each, 25c; dozen, \$2.50.
- 3. Calla Lily (Zantedeschia Aethiopica)
Each, 25c; dozen, \$5.00.
- 4. Day Lily (Lemon) (Hemerocallis Flava)
Each, 20c; dozen, \$2.00.

- 5. Guernsey Lily (Nerine Sarniensis)
Each, 25c; dozen, \$2.50.
- 6. Polianthes Lily (Tuberosa) Single
Each, 10c; dozen, \$1.00.
- 7. Fairy Lily (Zephyranthes Carinata)
Each, 10c; dozen, \$1.00.

*Note: All the above bulbs and many others, commonly called "Lilies" are described elsewhere in this folder, under the heading "Lilies in Name Only."



Gordon Ainsley & Campbell, California, U. S. A.
Importer and Grower of Rare Bulbs