

Historic, Archive Document

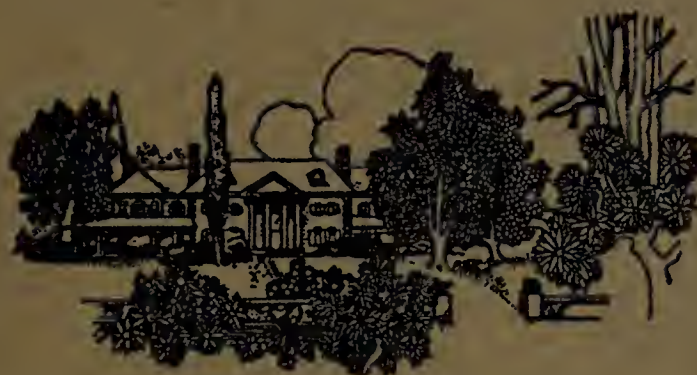
Do not assume content reflects current scientific knowledge, policies, or practices.

ARVISTA GARDENS

Owned and Operated by

Roy V. Ashley

172 Grand Blvd.
BATTLE CREEK, MICH.



IRISES OF PERSONALITY
PEONIES
ORIENTAL POPPIES

1933

SPECIAL OFFER EXTRAORDINARY

Irises

25 fine varieties, all different, all named, all labeled, including some that sold but a few years ago at prices ranging from \$10.00 to \$25.00 each. Postpaid, only\$1.00

Poppies

7 dazzling Orientals, all different and labeled, to your address postpaid, only 2-year, sturdy roots\$1.50

Peonies

7 superb varieties, our selection, strong 3 to 5 eye divisions, a guaranteed \$5.00 value, all labeled. Prepaid to your door, only\$2.50

A CATALOGUE

OF MANY

New, Rare, and Fine

IRISES

PEONIES

ORIENTAL POPPIES

And Some of the Older Standard Sorts; Including Some
Information About These Plants Which, Though
Not Entirely New, May Prove of Special
Interest to Garden Lovers

No goldsmith with his tools and forge
Who made a chalice for a king,
No painter grinding secretly
The color that he hoped would bring
Life to his canvas, ever caught
More beauty in the thing he wrought.

—Louise Driscoll.

MEMBER

American Iris Society
American Peony Society.
Michigan Peony and Iris
Society

ROY V. ASHLEY

Owner of Arvista Gardens
172 Grand Blvd.
Battle Creek, Mich.

VISITORS

Visitors are always welcome at Arvista Gardens. The height of the flowering season usually extends from the middle of May to the Middle of June or even later. The dwarf Irises bloom earlier, about the end of April or the first of May.

To reach our garden from US-12, follow M-78 1.4 miles south of US-12, turn left on East Columbia Ave., one block (east), then left (north) on Grand Boulevard to 172—the first place from the corner on the left or west side of the street.

TERMS

Prices quoted are net cash with order with the exception that 5% may be deducted on orders for named varieties at catalogue prices amounting to \$10 or more and 10% on orders of \$25 or more. All special offers are net as quoted.

Special prices will be quoted on lots of one dozen or more of one variety. We are always glad to quote special prices on lists of wanted varieties.

Terms cash with orders. Remittances may be by check, money order, bank draft or registered mail. Orders amounting to less than \$2 are not solicited.

Orders for all plant material herein offered will be filled in rotation as received. Early orders are highly advisable as stocks of some varieties are very limited.

We reserve the right to return orders, or refund money paid for plants which for any reason beyond our control we are unable to supply.

SHIPMENTS

Shipment of Irises will be made soon as possible after the blooming season, beginning about July 1st and continuing through the balance of the season. Shipment of Peonies begins about September 15, and shipment of Poppy roots from the middle of August on.

GUARANTY

No warranty, either express or implied, is given as to growth or productivity of any plant, root, bulb or seed which we offer for sale. We do guarantee to exercise the greatest of care in filling orders, and are always glad to rectify any errors made in the names of varieties shipped to the extent of replacing any variety that proves untrue to name. We ship only live, healthy, field grown stock which we guarantee to arrive in good condition. Every order has our close personal attention. It is our earnest desire and effort to please every customer.

All offerings in this list at prices quoted will be shipped prepaid anywhere in the United States by parcel post or express at our option.

We do not substitute unless requested to do so.

“Sunbeams imprisoned that fall to earth and grow;
The lovely ling’ring blush of sunset afterglow.
The whiteness of the snows, a gleam of garish gold,
A wave of royal purple, a dash of yellow bold.”

—Grace Hine Dalzell.

“If you yield to the magic spell of the Iris, it will lead you across the border into a wonderland of delight, for an Iris garden is a floral world in itself.”

Thou art the Iris, fair among the fairest,
Who, armed with golden rod
And winged with the celestial azure, bearest
The message of some god.
O Flower-de-Luce, bloom on, and let the river
Linger to kiss thy feet!
O Flower of song, bloom on, and make forever
The world more fair and sweet.

—Longfellow.

ORIENTAL POPPIES

At a meeting on June 4, 1933, of a national committee on the scoring of Oriental Poppies, held at Pauding, Ohio, of which R. V. Ashley is a member, Dr. J. H. Neeley, the dean of American Poppy enthusiasts, stated to the members of the committee and other visitors that our own introduction, MANDARIN, should displace all other Poppies in its color class—a real compliment to our first Poppy introduction, and one that is truly appreciated.

The Most Striking Note of the June Garden

“Eclipsing with its gorgeousness the lily and the rose,
The Oriental Poppy in my quiet garden grows.
A brazen beauty of the East from some zenana strayed,
In scarlet silk and sable fringe most stunningly arrayed.”

“’Tis only poppies in the dreamy close
You tend, with buds soft as your kiss that lies
In ever happy dreams, upon mine eyes.”

CULTURE

The chief requirement of this most striking plant is that it should be moved only after the beginning of the dormant season about the first to the middle of August, and from then until the ground freezes in the fall. It is important in transplanting that the plant be set deep enough to place the crowns two to three inches below the surface. It is well also, to set the plants at an angle of 45 degrees or more so that water will not be trapped by the hollow crowns of large plants. After planting, the ground should not be allowed to dry out before the roots become established. After the ground freezes, a light covering of straw or coarse litter should be placed over the ground to prevent the plants from being heaved out by alternate freezing and thawing which, in our experience, is the most common cause of winter killing. Plants also may be killed by planting where water will stand over the crowns in winter, or by cutting off the crowns after growth starts in the spring. The plants like full sun, but do well in partial shade, especially certain of the darker colored varieties. It is well also when transplanting to make a fresh diagonal cut with a sharp knife at the base of the root, so that a freshly cut surface may be exposed to the soil. Plant about two feet apart.

We do not recommend spring planting, but it may prove successful if done by April 15, if special care is given.

Many new hybrid varieties have been introduced in recent years, extending the color range and showing improved habit and form.

SHIPMENTS

Shipments of Poppy plants begin about the middle of August and may continue until the ground freezes.

SIZE OF PLANTS

Prices are for LARGE, FIELD GROWN PLANTS, AT LEAST TWO YEARS FROM PROPAGATION. Some nurseries claim that pot-grown plants give entirely satisfactory results. Other extensive nurseries agree with us that they are much inferior, and that large, field-grown plants not only are much more likely to live and grow well, but also that in the great majority of cases they bloom earlier and more generously.

The wonderful blooms may be kept for several days as cut flowers if the freshly cut stems are immediately singed at the cut surface, or if the stems are plunged at once into boiling water for a moment or two, and then placed in cold water.

Many new hybrid varieties have been introduced in recent years, extending the color range and showing improved habit and form.

We believe that the vogue of the Oriental Poppy is just beginning; that when its ease of culture, its wide color range and striking charm are better appreciated, the demand will far exceed any commercial supply that now exists. We believe that this list of some 120 named varieties of Oriental Poppies is the largest list offered by any grower in this country.

Plant Oriental Poppies in your garden and enjoy a thrill that perhaps you have never before experienced.

"For dazzling barbaric splendor, the great Oriental Poppies are absolutely unrivaled. Standing out in bold relief against a background of green, they command instant attention, and a mass of them in bloom is a sight never to be forgotten."—B. H. Farr.

The prevailing color is a vivid orange-scarlet, with black blotches at the base of the petals, the heart of the enormous, cup-shaped flowers showing a mass of bluish black stamens in the center. The stamens of Poppies are said to be the most beautiful stamens of all flowers. The gigantic flowers sometimes reach a diameter of nine to ten inches or even more.

Says Dr. J. H. Neeley: "Varying from red to orange, salmon to pink, mulberry to white, this barbaric flower offers a wide range of colors, is free from disease, fairly hardy and easy to transplant."

"It has been well said that the blood of all the poppies runs red; that all are harmonious, all appealing, but among the family as a whole, there is none so regal as the Oriental Poppy."

ALPINUM—Dwarf growing, mixed colors. \$2.50
AMUN RA—A new red-orange of outstanding quality \$2.50
APRICOT QUEEN—True apricot with large dark purple center. Large silky petals 50c
AUSTRALIA—A new, massive ox-blood red, said to be better than Wurtembergia \$2.50
BARR'S WHITE—A splendid new white with dark blotch and satiny sheen . . \$1.50
BEAUTY OF LIVERMERE—Deep ox-blood, velvety red \$1.00
BRACTEATUM—Fiery scarlet, one of the largest, 30 inches 35c
BRIGHTNESS—A large, bright orange scarlet, to 28 inches 35c
BRILLIANT (Perry)—Brilliant, fiery red. \$1.00
CAVALIER (Neeley 1931)—Glowing cerise of similar color and form to Wurtembergia, but with considerably larger flowers that are longer lived. Good habit. Few plants at this price \$5.00
CERISE BEAUTY—Large flowers, beautiful shade of cerise pink, glittering black blotches 50c
CERISE DWARF—A very dwarf, cerise-red Poppy on strong stems. Large flowers. \$1.00
COLONEL BOWLES—Very fine large flower of deep scarlet with large, dense black spots and heavy texture \$2.50
DAINTY LADY—Wonderfully dainty shade of shell pink. New and scarce \$2.50
DELICATA—Old rose pink, silky texture. Likes half shade \$1.00
DUKE OF TECK—Beautiful light crimson, strong stems, a free bloomer \$1.00
E. A. BOWLES—Charming shade of apricot changing to shell pink. Prettily crimped, medium size 75c

ECHO (Neeley, 1931)—A new delightful silvery pink, the base of the petals showing a very light maroon blotch. A frosted sheen gives the whole flower a most distinct and pleasing appearance, net \$10.00
EDNA PERRY (Perry 1902)—Lovely bright pink. Good color and form \$1.00
EMPRESS OF INDIA—A wonderful, deep red flower, rare, and of great beauty \$2.50
ENCHANTRESS (Neeley 1931)—A seedling of Masterpiece with all of its good qualities and none of its faults. In color a little deeper and does not fade as quickly as the parent. The nearest approach to a lavender Poppy. Bound to be extremely popular. Stock limited. Net \$18.00
ENFIELD BEAUTY (Perry)—Bright, rich salmon, maroon base, late 50c
ETHEL SWETE—New. A brilliant cherry pink with black blotch. A charming variety with large, open flowers that are both distinct and lovely. Rare. A. M., R. H. S. \$2.50
EXCELSIOR—Attractive orange scarlet flowers. One of the best of the color, 30 inches 50c
FIRE BALL—A new, fiery red. Early double, like Olympia 35c
FIRE KING—Glowing red, to 24 inches \$1.00
FLANDERS—Maroon shaded crimson. Very fine \$1.00
FLUSH OF DAWN—New. As its name indicates, its coloring suggests the rosy flush of dawn. Charming and scarce \$5.00
GERALD PERRY (Perry 1915)—Large flowers of uniform apricot pink, blotched crimson \$1.00
GIANT—A mammoth flowered, well formed orange scarlet. New 75c
GOLIATH—Soldiers-scarlet flowers of enormous size on rigid stems 35c
GOLDSCHMIDT—Scarlet with black spots. Dwarf 50c

GRAND DUKE—Similar to Grossfurst but a better grower\$2.00

GRAND MOGUL—Very attractive deep red flowers to 8 inches across, 36 inches tall35c

GROSSFURST—Deep crimson. One of the best of this color. Coal black spots. 18 inches\$1.50

HARMONY—Satiny, rosy puce. Very distinct. Slow to establish\$1.50

HENRI CAYEUX—Orchid shading to wine color. Uncommon and beautiful. Fine for a half shady place\$1.00

HERCULE—Immense, flame-colored, four-petaled flowers\$1.00

JEANNIE MAWSON—Very large, beautiful soft salmon. One of the best of the "pinks"50c

JOYCE—Radiance Rose cerise. A first choice for gardens50c

KING GEORGE (Perry (1916))—Large, fringed flowers resembling a Parrot Tulip, brilliant scarlet. One of Perry's finest. Best fringed\$2.00

LACHS KONIGEN—Salmon Rose, or by Ridgeway, Peach Red with pink cast. Distinct\$1.00

LADY MOORE (Perry 1914)—Beautiful soft rose. New\$1.50

LEON LAURENT—An excellent, clear wine red. New\$1.50

LIGHTNESS—Strong grower. A most pleasing soft rose, or rose doree of Ridgeway, with ruffled petals and a white base. 26 inches 75c

LITTLE JEWEL—An attractive blush salmon shade\$1.00

LITTLE PRINCE—A half-dwarf, very attractive Poppy with scarlet flowers \$1.00

LORD LAMBOURNE (Perry 1920)—Perry considers this one of his finest introductions. Flowers are exceedingly large, of a rich orange-scarlet with conspicuous black blotches. Petals deeply fringed like a Parrot Tulip\$1.00

LORELEY—24 inch. A red with finely pleated petals\$1.50

LULA A. NEELEY—Prolific, wonderfully free bloomer, flowers of a deep, dark red. Mr. Bonnewitz pronounced this the best Poppy in the world\$2.00

LUMINOSA—A new, orange pink poppy of the largest size\$2.00

MAGNIFICUS—A new, large, deep scarlet\$1.00

MAHONY AMELIORE—A beautiful shade of rich mahogany purple, a richer coloring than Mahonoy. Lovely and scarce \$1.50

MAHONoy (Mahogany)—Large flowers of a deep, red mahogany-maroon. Distinctive75c

MANDARIN—Real Chinese red. Immense flowers to 9 inches across, 30 inches tall. Very prolific, cup-shaped bloom, with absolutely no spots in the center in established plants. Excellent substance. Our own product, introduced only after considerable urging by several Poppy authorities. Dr. Neeley recently remarked to a group of Poppy connoisseurs that all other named Poppies in its color class should be discarded, leaving Mandarin only to occupy its particular field. A mature plant in bloom is a marvelous sight \$2.00

MAROON BEAUTY—New. An immense dark red—distinct\$2.00

MARVEL—A very large, glowing, flame orange pink\$2.00

MASTERPIECE—A lilac pink flower of good size and different. Until the coming of Enchantress, the closest approach to a lavender Poppy. Should have some shade, as it fades in bright sunlight\$1.00

MAY QUEEN—A double poppy similar to Olympia, if not the same35c

MAY SADLER (Perry)—Salmon-pink with black markings. Large and robust. One of the finest "pinks"50c

MENELIK—Definite orange, black spots 75c

MR. G. W. STOBART—Most outstanding Poppy with cerise colored flowers or, by Ridgeway, Rose Red. A large flower on a tall, stiff stem.

MR. STOBART—A brilliant cerise pink, a beautiful sort, and rare. (We have poppies under the names Mr. Stobart, Mr. G. W. Stobart, and Mrs. Stobart, all of which we surmise may be identical, but we can not be sure until all bloom together at Arvista Gardens which we hope they will do this season)\$2.50

MRS. BAKER—A new, rich poppy of distinct wine red without sheen. Different from any other\$1.00

MRS. FISHER—Another new and scarce poppy. Extra large, deep crimson flowers on 4 ft. stems\$1.00

MRS. HEENK—An excellent rose color that is hard to find. Scarce\$1.50

MRS. J. HAWKINS—Best pink, of a very agreeable shade. Good grower, free bloomer. Flowering period ten days longer than any other.\$1.00

MRS. PERRY (Perry 1906)—A lovely shade of salmon pink, prolific, stout stems to 36 inches35c

MRS. STOBART—New introduction from England. Rose cerise. Really a wonderfully soft old rose. One of the very finest.\$2.50

NANCY (Perry)—Perry calls it one of the finest of its color, a rich, glowing rose red, tall, and a free bloomer\$1.50

NEELEY'S LAVENDER (Syn. "Old Rose")
—Rosy Lavender distinct shade.

NEELEY'S PINK—A medium sized flower of a pleasing pink shade perhaps the freest bloomer of the entire list. New 75c

NEGRILLON—Vivid carmine. New and very distinct. Part shade\$1.00

OLYMPIA—Flame scarlet overlaid golden salmon, flowers 4 inches across, double profuse. The earliest Oriental to bloom. Should be planted away from other Poppies, as it spreads by root runners or stolons25c

ORANGE BEAUTY—Large flowers of a beautiful orange shaded scarlet, purple blotches75c

ORANGE KING—A new orange colored poppy of great merit\$1.00

ORANGE QUEEN—Rich orange red ...50c

ORIENTALE—The type. Orange-scarlet, large flowers on a strong growing plant25c

ORIFLAMME—Orange-scarlet-red flowers immense size, profuse, to 18 inches ..50c

PEARL PINK—Now introduced for the first time. A very new and distinct, delicate shade of light pearly pink, vigorous and prolific. Makes a wonderful garden group with blue Irises. Looks like one large tulip within a still larger one\$2.50

PERFECTION—Large, deep flowers, lovely shade of pink, large black spots\$1.00

PERRY'S BLUSH (Perry)—Stout stems, bearing lovely large open flowers of a pretty shade of bluish-white. Very rare\$4.00

PERRY'S WHITE (Perry 1912)—Perry says "One of the finest novelties introduced, a plant of exceptional merit, a facsimile of the well-known Mrs. Perry in habit and size of flower." Color, a pure satiny white with a bold crimson base. A. M., R. H. S.\$1.00

PINK BEAUTY—Large clear pink with black base. 32 inches50c

PINK RADIANCE—A new gorgeous pink hybrid, tall and of unusual beauty. Good form\$1.50

POWHATTAN—38 inches. Deep, flaring, cup-shaped flowers of spectrum red of Ridgeway, 7 inches across. A free blooming plant with bright red flowers of wonderfully attractive form. Very early. Not for sale.

PRIMIERS—Great flame colored flowers to 10 inches across. To 24 inches\$1.50

PRINCE OF ORANGE—A fine, new distinct orange color\$1.00

PRINCE OF WALES—New, bright salmon pink of unusual size and form. Distinct\$1.50

PRINCESS ENA (Perry 1907)—Named by permission of the former Queen of Spain who described the pleasing shade of orange-salmon as one of the loveliest she had ever seen. Flowers of medium size, resembling a Tulip50c

PRINCESS VIKTORIA LUISE—Soft salmon rose shading to blush rose50c

PROSERPINE—Chinese red. Decidedly black center. Very fine. To 36 inches\$1.00

PSYCHE—Light old rose, good grower, shy bloomer50c

PURITY (Neeley 1931)—Pure, soft pink without spot or blemish. A flower of unusual charm. A new hybrid brought out by Dr. Neeley, and one of the new varieties that will make Poppy history. It is believed that this variety will prove superior to all the older "pinks" when available at a popular price, because in every respect, size of flower, clarity of color and stiffness of stem, and carriage, it excels any similar variety that we know today\$12.00

PYGMAEA—Curious and interesting dwarf form, orange shaded scarlet, similar to Orange Beauty, but smaller50c

QUEEN ALEXANDRA (Perry 1906)—Light pink with gray blotches. One of the strongest50c

QUEEN LOUISE—A melting strawberry pink flower of good finish, with prominent black and red base spots. To 40 inches\$2.00

RED LACQUER—Now first introduced. A new deep, dark red of strong appeal. Very fine, to 10 inches across\$2.50

REGGIE PERRY (Perry)—Tufted, slender, Tulip-shaped flowers of salmon-rose, flushed crimson base\$1.50

REMBRANDT—Very large orange-scarlet flowers\$1.00

ROSE QUEEN—Nice old rose color. Good sized flower\$1.00

ROYAL SCARLET—Orange scarlet, very small black blotch. Compact 15 inches 35c

RUBY PERRY (Perry)—New, slender, rigid stems with numerous Tulip-shaped flowers a delicate shade of salmon-apricot\$1.00

SALMON KING—Inexpressible improvement over Salmon Queen. Great value. To 24 inches\$1.00

SALMON QUEEN—Between salmon and scarlet. Strong and pretty plant50c

SASS PINK—A recent lovely creation from Mr. Sass. Exceptionally large flowers of flesh pink with purplish black blotches, crepy texture and exquisitely delicate. Light grey-mauve anthers\$1.00

SILVERBLICK—Salmon with blue blotches.50c

- TRILBY**—Dark, lustrous, rich red, plaited petals. With Lula A. Neeley and Wurembergia, the world's three best Poppies. Very large flowers on tall, stiff stems. One of the latest\$2.50
- TURNER PINK**—Now offered for the first time in any catalogue. A new and distinct sort with petals of a deep coral pink, the lower half of the petals of a much deeper shade, giving an effect of a bi-color\$2.50
- WATTEAU**—Flesh coral, small numerous flowers, as many as 25 on one year plants. No blotch in petal. Very fine and scarce\$2.50
- WELCOME**—Deep scarlet, shaggy, with dusty black center, very large\$1.50
- WUNDERKIND**—Very large flowers of a dark, satiny, carmine-rose. A universal favorite when known\$1.50
- WURTEMBERGIA**—Very large, tall growing red, with medium blotch. One of the three best Poppies\$1.00
- SILVER KING**—A wonderful, dainty, profuse blooming White Poppy. Most attractive\$1.50
- SPOTLESS**—Beautiful pink, free flowering, no base spots75c
- STURTEVANT PINK HYBRID**—An unusual shade of deep pink. New and beautiful\$1.00
- SUNNY JIM**—Semi-double scarlet. Much improved Goldschmidt. 24 inches50c
- SURPASSETOUT**—A very popular new red of excellent quality\$1.00
- THORA PERRY (Perry 1919)**—“An extremely dainty variety of recent introduction; the smallest flowered form of this group. Neat tufts of dark green foilage, with a profusion of slender stems bearing very small snow-white flowers. Invaluable for cutting.” One of Perry's best\$2.00
- THIBETICA**—A striking Alpine Poppy with great quantities of bright orange flowers. Gorgeous throughout the season ...\$1.50
- TOREADOR**—Mammoth size, large black, dark crimson blotch\$5.00

IRISES

Iris—the most decorative form in all the flower world.

—Hannah Rion

This list of 650 named Irises is presented in full confidence that it represents in a very unusual degree the finest varieties of recent introduction. This selection, or any part of it, would grace the garden of the keenest connoisseur. The selection has been aided by several of our friends among the leading Iris authorities of this country who have visited personally the gardens of most of the distinguished American introducers, and also have made repeated pilgrimages to the most famous originators and introducers of France and England.

The members of the Garden Club of America recently voted the Iris our most popular garden flower, and authorities everywhere praise it as the finest single hardy perennial. This is a well deserved distinction, because, with its dainty refinement, with the delicate poise of the Orchid, it presents a wider range of coloring, will withstand more neglect and abuse and will thrive under more widely varied and less favorable conditions than any other garden flower. But it is at its best when planted in rich well drained soil and in a position open to full sunshine.

PRICES

Never before have prices of the finest Irises been so low. Many prices are only one-fourth to one-half of those of last year.

Don't make the mistake of thinking that you must buy the new, enthusiastically described Irises in order to be sure of having good varieties. This is a Golden Age of Irises, and one can obtain simply marvelous sorts at extremely low prices. Numerous really fine Irises are completely ignored because they do not travel the highways of display advertising and official observation.

Any 10 cent Iris will be sold 3 for 25c; 90c per dozen.

Any 20 cent Iris will be sold 3 for 40c; \$1.55 per dozen.

Any 25 cent Iris will be sold 3 for 50c; \$1.75 per dozen.

Any 35 cent Iris will be sold 3 for 85 cents; \$2.25 per dozen.

Any 50 cent Iris will be sold 3 for \$1.25; \$4.00 per dozen.

Any 60 cent Iris will be sold 3 for \$1.50; \$5.00 per dozen.

Any 75 cent Iris will be sold 3 for \$1.85; \$6.00 per dozen.

Any \$1.00 Iris here listed will be sold 3 for \$2.50.

Special quotations on larger quantities.

Your choice of any twelve 25 cent Irises listed for \$2.25; any 20, \$3.50.

O, let no lovely thing be lost!

The rose is yours to have and hold . . .

Beauty shall lead you at the end

Gently as a familiar friend.

—Louise Driscoll.

Join the American Iris Society. Send \$3.00 for a year's membership to Science Press Printing Company, Lime & Green Streets, Lancaster, Pa. Four fine bulletins every year, worth more than the dues.

"Not one of Flora's brilliant race

A form more perfect can display;

Art could not feign more simple grace

Nor nature take a line away."

—Montgomery

BEARDED IRISES VARIETIES OF SUPERIOR MERIT

We are greatly pleased to be able to present this season four separate Irises to which the Dykes Medal has been awarded. This Medal, an international honor, is the highest award that can be made to an Iris. The four include two American varieties, SAN FRANCISCO and RAMESES, and two French introductions, PLUIE D'OR, and DEPUTE NOMBLOT, the latter having been adjudged also the "finest Iris in the world." Rameses was pronounced the finest American Iris of 1932.

We are proud also to be able to announce that our own introduction, LARGO, has been adjudged by at least one authority, to be one of the three finest of the new introductions. We hope that all of the varieties mentioned will open their flowers for the benefit of our visitors this season.

In the description of varieties, the initial S. always refers to the standards, or upright petals, and F. to falls, or the three outside petals which may be horizontal, flaring, drooping or straight hanging.

- A. J. MUEHLIG**—30 inch. Midseason. An origination by the late Mr. Burchfield, of an original shade of grey, difficult to describe50c
- ALLIES**—S. deep violet-rose shaded copper; F. deep rich velvety red-purple, with some of the brown tones of Grace Sturtevant. A fall-bloomer. A large flower with deep-red effect 50c
- ALLURE**—A very fine Iris with an entirely new break in color. A rich canary yellow overlaid and flushed with pink, deeper in the falls. The flower is large, splendidly formed and poised, with ruffle-edged standards and lustrous coloring. Tall, vigorous with stout stems, well branched\$1.50
- AMBER**—A striking, fine, pure, deep yellow self color with a prominent reddish gold beard. Taller and larger than SHEKINAH and richer in color than GOLD IMPERIAL15c
- AMERIND**—36 inch. S. golden bronze; F. bright purple with a wide margin of bronze. Well poised and branched, prolific. A most unusual blend35c
- APACHE**—S. coppery purple; F. dark crimson brown. A flower of medium size of uncommon color on strong stalks. Very striking and effective25c
- APHRODITE**—Stands at the head of the list of violet-pinks. For purity of tone and bright color, in a class by itself. A pure bright violet-pink self with flowers of good size and perfect form. Strong and vigorous15c
- ARCTURUS**—S. lemon-yellow, shaded ageratum violet; F. violet-purple with margin of golden-yellow. A large flower, of unusual merit25c
- ARIADNE**—S. very broad, pure silvery light blue, waved edges; F. deeper blue suffused reddish violet. A deeper, richer colored ASIA40c
- ASPHODEL**—S. a beautiful light lavender-violet; F. similar—almost a self. A fragrant, large, free-flowering Iris of good habits, fine form, and a rich satiny texture that commands attention\$1.00
- AUBURN**—S. rose-purple, flushed hazel and ochre-red; F. warm crimson. Attractive and beautiful flowers to medium size and fine form25c
- AURELLE**—S. light purplish-blue; F. rich glowing crimson-purple. In shape and habit quite similar to Souv. de Mme. Gaudichau of which it is a seedling, but with more luminous falls. Rich color40c
- AUTUMN KING**—A medium sized, early lavender-violet, almost a self. Very free flowering. Frequently blooms in the fall25c
- BALDWIN**—A Sass introduction. A large outstanding Iris on tall, well branched stalks. A manganese violet self. Striking color, fine form and habits, good substance, long blooming period. A wonderful bright blue effect in mass50c
- BARCAROLLE**—S. violet-mauve; F. deep mauve with soft white undertone. A gigantic flower, a charming specimen. Late and fragrant25c
- BEAU SABREUR**—32 inch. A flower of remarkable refinement, finish and subtle beauty. S. yellow flushed purple; F. ox-blood red with lighter margin. Pronounced the finest of the yellow bi-colors. Highly recommended\$1.00
- BELLE PORTER**—An old-rose-red blend. Distinctive and striking25c
- BERTRAND**—Gigantic flowers of perfect form and finest texture. S. bright lavender-violet; F. deep, rich violet25c
- BLUE VELVET (Loomis 1929)**—A very new Iris of superlative beauty. A self color, clear, rich, beautiful, very dark blue, the richest, deepest, darkest blue velvet. The very finest dark colored Iris yet offered\$3.50
- BRALLIAR'S GIANT**—Early, large flowers of QUEEN OF MAY type and coloring, with frilled standards, to 45 inches tall. Not widely distributed *T.B.-E.*\$3.00
- BRALLIAR'S BRANCHING**—Another Bralliar hybrid that is distinctive for its extra fine branching habit, with many large blue-purple bicolored flowers open at a time. 36 inches ... *R.J.D. T.B.*\$2.50
- BRALLIAR'S GIANT BICOLOR**—A third of the Bralliar seedlings. 40 inches. Mid-season. S. yellow, flushed light amparo purple; F. red-violet, darker in the center, velvety, very large flowers on good stalks. Scarce .. *T.B.-M.-Y.G.D.*\$1.00
- BRAVURA (Mohr)**—40 inches. A vigorous plant with large flowers of excellent substance of a deep rosy lilac35c
- BRUNO**—S. fawn, tinted rose, shading to yellow at the base. F. deep, rich, velvety red purple. Of exceptional size and great substance. Very distinct. Perfectly formed with texture of fine plush. Makes a most wonderful garden clump. Still scarce35c
- BUECHLEY'S GIANT**—A real giant of a blue purple bicolor. New\$25.00
- BUTO**—A rich, velvety, deep royal purple flower of perfect form, gigantic size and satiny texture. Nearly as dark in color as LOUIS BEL50c

CAMELIARD—A gigantic flower of variegata type. Flowers over seven inches long, of amber yellow overlaid wine purple on the blade of the flaring falls. An Iris of strong personal character, as indispensable as BRUNO and CARDINAL. One of Miss Sturtevant's finest achievements\$1.50

CAMILLA DUBUAR (Lapham 1929)—Phlox pink to pale phlox pink. "This Iris gives a much truer impression of real pink than any I know and is really very delicate and beautiful." Vigorous and distinctive 75c

CANDLELIGHT—Large flowers of pale pinkish lavender, strongly illuminated by a rich golden glow. Very lovely. Tall and vigorous35c

CANOPUS—This is a velvety-purple blend of large size, fine form and good texture. It is a desirable, large-flowered Iris of the famous "DOMINION" race25c

CAPTAIN COURAGEOUS—A beautiful blended self of deep rose and buff, with a firm rounded shape and heavy substance. Medium as to season, 44 inches tall, it is a lusty grower with foliage in good condition throughout the season. The glowing color makes a gorgeous and arresting garden picture.\$1.50

CARDINAL—One of the richest of the Dominion race. S. distinct shade of lavender overlaid rich rose, erect, arching. F. rich velvety prune purple, broad, rounded, decidedly glossy of texture. Just a few years ago sold for \$50.00 each50c

CASSANDRA—A beautiful Iris, as large as MAGNIFICA and ALCAZAR with a combination of the colors found in both, and better substance. Very rich25c

CASSANDRE—Midseason to 48 inches.. S. smoky rose violet. F. velvety, deep, rich purple-garnet, with lighter border. The falls resemble heavy velour in dark rich Persian colors wonderfully blended. Very vigorous, strong, erect, well branched stems. Highly recommended\$2.50

CHASSEUR—One of the finest yellow Irises originated in France. Color a deep yellow becoming lighter with age. Distinct and outstanding25c

CHATELET—S. pink ageratum violet; F. aconite violet, delicate rosy sheen. An exquisite flower of great size and beauty25c

CHURCHMOUSE—36 inches. Hays-brown. A new and distinctive coloring. Nothing else like it50c

CINNABAR—A rich, dark red of even tone, in the bicolor class. Holds up exceptionally well through wind and rain. An Iris of great carrying power50c

CITRONELLA—A very brilliant, free flowering yellow with F. beautifully veined and mottled Vandyke red. Intense orange beard. Fragrant. 36 inches25c

CLARA NOYES—36 inches. A fine Iris of an intriguing new color. A rich medley of yellow, orange and apricot. Large flowers on perfectly branched stems. An entrancing, warm blend\$4.00

CLASSIC—One of the "finds" of 1930. A gorgeous thing of the Asia type, of Dominion form and texture. The huge standards appear to be fashioned out of gold leaf, shading to reddish-lavender in the upper portion." Mr. Grinter, the originator, says that the beard and center of the flower glow so vividly when one looks into it that it almost seems to be alive. Still scarce\$4.00

CONCHOBAR—One of the best of the DOMINION seedlings. Coloring a rich purple with slightly more red than CARDINAL. In the same high class25c

CONQUISTADOR—S. lavender; F. slightly darker. Very sweetly scented. Large attractive flower. Tall and vigorous, to 56 inches25c

COOLEY'S SURPRISE—A beautiful, large tall medium blue suffused heliotrope. An intense burnt-orange beard\$2.00

COPPERSMITH—S. Crimson purple; F. Indian lake shading to dahlia carmine producing a rich coppery-red effect in the sun. Fragrant. Large flowers. 42 inches35c

CORONATION—A deep, rich golden yellow self. Large flowers on tall, well branched stems. Perhaps the finest yellow ..\$1.25

CRIMSON GLOW—Self-colored flowers of crimson-rose color. Fine and handsome.25c

DAY DREAM—42 inches. A charming garden Iris by Miss Sturtevant, a soft pink bi-color blend of great beauty \$2.00

DELIGHT—Purest white with a barely perceptible soft-blue edge, lavender styles, and a rich golden beard. Lovely25c

DEPUTE NOMBLOT—The very FINEST IRIS in the world. Really magnificent, of such great beauty of coloring, form and carriage that it is very difficult to do it justice. Large, well proportioned flowers on very tall and widely branched stems. S. coppery red flushed golden bronze. F. wide and spreading a very rich shade of deep claret crimson. Rich finish ..\$12.50

DISTINCTION—A handsome, refined uniform soft rose. Vigorous and profuse 35c

DOLLY MADISON—Mauvette shading out to yellow at base; F. lilac shading to gold at base; bright orange beard. Flowers of perfect form, gigantic size and heavy substance. One of the finest of Irises ..50c

- DOMINION**—S. Dauphins blue; F. deep rich indigo purple. This and **LENT A. WILIAMSON** probably have produced more of the world's finest Irises than any other two varieties in existence**50c**
- DOXA** (H. Sass, 1929)—A gigantic creamy white flushed soft yellow and green. No other Iris like it. Early**\$1.00**
- DREADNAUGHT** (Bralliar)—Described as a larger, taller, better-colored, redder Cardinal without Dominion blood ..**\$5.00**
- DUKE OF BEDFORD**—A very fine Iris of the Dominion race with typically large, well formed flowers of great substance. A rich deep violet-purple, very velvety and brilliant. Reliable**35c**
- ECLAIREUR**—One of the largest and tallest white bicolors**25c**
- E. C. SHAW**—26 inches. S. light claret. F. claret veined and shaded black. Sweetly scented**25c**
- ELAINE**—40 inches. Late. Coloring similar to Asia. A fragrant, light blend. Large flowers. Form and texture of the finest**25c**
- ELIZABETH EGELBERG**—A sensational new Iris with as many as nine flowers on a stem at one time. S. tall, domed, a beautiful blend of pink and mauve; F. flaring, a lustrous mauve shading to pink. Flowers six to seven inches broad ..**\$1.00**
- ENA BRALLIAR**—One of Mr. Bralliar's best named introductions of which as yet we have no description**\$1.00**
- EMBER**—An outstanding rich violet-red self with amber styles, haft and orange beard. Magnificent**25c**
- EREBIAN**—An Iris of exquisite finish, refinement and quality of texture seldom found in even the best of Irises. Flowers large, perfect in form, with a rich, dark Bordeaux-red color effect. The brilliant, heavy gold beard intensifies the velvety, glowing texture of the falls. A near approach to the perfect Iris. Scarce **\$10.00**
- EUPHEMIA**—A recent Lapham seedling. S. cotinga-purple. F. prune purple to blackish purple. Stands up without wilting in the hottest sun. Similar to **ARCHEVEQUE** but much superior in every way**\$1.00**
- EUPHONY** (H. P. Sass, 1929)—36 inches. S. beautifully ruffled, of richest copper or old gold color with a tinge of heliotrope at the tips. F. veined old-gold and tinged violet over a cream background. The finest of its type**50c**
- EVADNE**—S. deep rosy-violet, tinted buff; F. deeper, very rich velvety rose-violet; burnt orange beard; sweetly scented. A beautiful rose-red, almost a self. Flowers large of good form, on tall, well branched stalks, and of good substance.**25c**
- FARANDOLE**—S. light rosy lilac; F. purplish rose. 36 inches. Enormous flowers borne on strong, robust stems. The color is absolutely unique; nothing else like it in any other Iris. An exquisite combination of French gray ground in the standards and a border of the same in the falls. A masterpiece**\$1.50**
- FRA ANGELICO**—S. light bronze gold; F. same color overlaid metallic light lavender blue. A dainty and charming flower of great beauty and delicacy of coloring**35c**
- FOLKWANG**—S. rose pink; F. claret red with a lighter edge. Beautiful blending of colors**15c**
- FORSETE**—A deep violet-blue self. Very large, fine flowers. Very free flowering**25c**
- FRAGONARD**—A most unique and beautiful shade. S. exquisite light rose; F. of a deeper tone. A truly luscious coloring**\$1.00**
- FRIEDA MOHR**—A gigantic deep pink toned Iris of perfect form, good texture, and brilliant coloring. S. pale lilac; F. deep lilac rose. One of the very finest of recent introductions.**60c**
- GABRIEL**—Midseason. 48 inches. S. broad, well rounded and finely arched, bright, clear steel blue; F. very broad and flat hanging, light violet blue, suffused deeper at the haft. The enormous flowers are of perfect form and erect carriage**50c**
- GARGANTUA**—To 48 inches. One of the largest and finest of Irises, with a self-coloring of soft lobelia blue**75c**
- GEO. J. TRIBOLET**—A magnificent deep red purple Iris with flowers of perfect form, freely borne on splendid stems. 40 inches. Fragrant. A most satisfactory Iris**25c**
- GEORGE YELD**—S. bright apricot buff, shaded rose; F. brilliant rose-crimson edged apricot buff. Very large flowers of wonderful form, freely produced on tall, branching stems**35c**
- GERMAINE PERTHUIS**—A fragrant, late blooming Iris, and one of the finest in cultivation. An intense, velvety violet purple self**50c**
- GIANT KING**—32 inches. A Sass Iris introduced by Mr. Wayman. A flower of the Iris King type but of gigantic size. S. Fawn, softly suffused rose; F. wine red; haft white prominently reticulated. Orange beard. A flower of perfect form and good substance**\$1.00**
- GLAMOUR**—A splendid Iris of **DOMINION** parentage. S. mauve, tinted heliotrope; F. red purple. 36 inches**25c**

- GOBELIN RED**—30 inches. A real red. S. pure mineral red and F. pure spectrum red of Ridgway. Almost an ox-blood self\$1.50
- GOLDEN GLORY**—A sturdy tall yellow with indistinct reticulations at the throat. S. pinard yellow deepening to chrome at base; F. baryta yellow, deepening to pinard yellow at the base. 36 inches ...50c
- GOLD IMPERIAL**—A bright, clear yellow self; beard conspicuous orange. Probably the finest yellow for the money available25c
- GOLD STANDARD**—40 inches. Lovely medium gold effect, free blooming and robust. Tall, with a beard that glows and bubbles over with a glistening, effervescent effect. Very fine\$2.50
- GRACE STURTEVANT**—An Iris of exceeding richness of color and texture. A dark red brown and carmine combination Falls of deep velvet that look black in certain lights. Brilliant beard. Flowers are large, of extra heavy substance, on strong stems. A very fine Iris\$2.50
- GRAND MONARCH**—Late, to 40 inches, and very fragrant. A really grand Iris with very tall, large flowers. A self in coloring, velvety bronze red of the deepest velvet and the greatest substance. Coloring of a richness unsurpassed. Highly recommended\$2.00
- HENRI RIVIERE**—42 inches. Very late. A plant of great vigor bearing very large flowers on many branched, rigid stems. S. pure lemon yellow; F. lilac mauve with lemon reflex, blending to a canary yellow throat and with a canary yellow edge. Millet thinks it his best recent introduction. An exquisite coloring \$2.00
- HENRY F. MICHEL**—A very large flower of a lovely orchid color with falls four inches wide. A great favorite of the late James Boyd. Scarce and not often offered\$1.00
- HONEYDROP**—Midseason, to 36 inches. The finest Iris originated by Mr. Morrison. S. lemon suffused pale brown; F. deep red brown over lemon yellow. An exquisite blend of henna, brown, honey and old rose\$3.50
- HUSSARD**—Late, to 30 inches. An unusual deep toned blue self. An excellent and attractive flower in a class with WEDGEWOOD25c
- HYPERION**—Late, 38 inches. S. glossy lavender-blue; F. bright violet. A gigantic flower "almost as big as a dinner plate." Should be in every fine collection ..25c
- HYPNOS**—36 inches. A medium blend, resembling Steepway but a larger flower of brighter and smoother coloring\$1.00
- INDIAN CHIEF**—Midseason, 40 inches. One of the finest red Irises in existence. S. beautiful violet red; F. deep rich glowing velvety red. A wonderfully fine color in a strong and vigorous plant. A distinctly outstanding Iris\$2.00
- INEZ BRYAN**—A red-blue toned self introduced by Mr. Lapham and comes highly recommended25c
- ISHTAR (Sturt. 1925)**—42 inches. A lovely soft blend of subdued lavender and buff50c
- JACQUARD**—34 inches. S. Cupped, dark vinous mauve, bronzy base; F. straight hanging, velvety dark violet purple. Deep orange beard. A brilliant note in the garden. A flower of great carrying quality.\$2.75
- J. B. DUMAS**—Midseason, 42 inches. S. very light rose with a touch of violet; F. a slightly deeper shade. A large and magnificent flower of unusual color ..25c
- JUBILEE**—Midseason, 34 inches. S. buff, tinted soft pink; F. satiny buff, veined and spotted heavily with dark copper at the haft. Fragrant. A very large vigorous free flowering plicata25c
- KING KARL**—Late, 32 inches. A very large flower of colonial buff, delicately sanded and reticulated lavender-rose. Larger and taller than JUBILEE, which it resembles35c
- KING TUT**—Late, 32 inches. S. cacao brown; F. Hessian brown; golden-yellow beard. General effect is a rich, bright red Very popular75c
- LABOR**—Midseason, 36 inches. An absolutely new color in Irises. A dark violet heliotrope with falls a shade deeper than the standards which are suffused with a soft coppery glow. General effect is of burnished red copper40c
- L'AIGLON**—Midseason, 38 inches. S. livid purple to cinnamon drab; F. Schoenfeldt's purple. A rich, bronzy-red bicolor. Belongs with the ten finest Irises35c
- LADY BYNG**—Late, 36 inches. A clear pale lavender self, lightly suffused and reticulated rose. A pink effect. Excellent form and substance and very attractive25c
- LADY LILFORD**—A Pogo-Cyclus hybrid with S. purple violet; F. black purple with a black beard. Very striking and attractive. One of the darkest colored flowers in the garden50c

- LARGO**—Our own introduction. Midseason, 42 inches. The flower is large and symmetrical, the size of Le Grande Ferre, one of its parents. The flower is refined in form, well poised and of delicious charm, a self in a pastel, old-gold effect. S. transparent mustard yellow shading to wax yellow at the base which is lined and dotted with brown, highly iridescent; F. citron yellow shading to strontian yellow towards base, lightly overlaid mauve, the lower half lined with brown; a center of white with brown lines and a bright orange beard illuminating the whole flower. A very striking, delicate pastel coloring. Mr. Howard Weed, after blooming Largo in his garden this season, says it is one of the three best new introductions of this season \$15.00
- LE CORREGE**—Midseason, 38 inches. S. light bronze, suffused violet-gold at base; F. rich velvety wine red. Brilliant orange beard. A brilliant dark, velvety red; a greatly improved Ambassadeur 60c
- LEONATO**—One of the tallest, largest and finest lavender Irises 40c
- LODESTAR**—Late, 36 inches. S. a wonderful, clear lemon-chrome; F. velvety clar-et brown with lemon-chrome border. The most brilliant "variegata to date 75c
- LORD LAMBOURNE**—Early, 42 inches. S. rose-buff suffused pale bronze; F. rich madder-crimson. Bright yellow beard; sweetly scented. A large flower. A wonderful color effect 25c
- LOS ANGELES**—46 inches. Great white flowers, truly fine in shape and texture. S. faintly edged blue; F. beautifully marked with red brown at the base. The blue style arms add a note of clear color to the center. One of the most beautiful of all Irises \$1.50
- LOUIS BEL**—Midseason, 32 inches. S. very dark velvety pansy violet; F. deep violet, almost black, a matchless color 35c
- MAGENTA**—Late, 42 inches. A deep clear toned amethyst violet self, of the finest form and substance, tall, vigorous and very free flowering. An absolutely unique coloring and a great drawing card wherever shown \$2.00
- MAGNIFICENT**—Early midseason, 38 inches. S. bright violet-rose; F. Rood's violet approaching crimson. Conspicuous orange beard; fragrant. Large and bright colored 25c
- MAJESTIC**—Midseason, 42 inches. One of the best DOMINION seedlings. The enormous flowers are of fine form, great substance and lasting quality. A pale bluish-mauve; F. purple, edged blue-violet; yellow beard. Vigorous and free flowering 25c
- MARY BARNETT**—Midseason, 36 inches. A light lavender self resembling PRINCESS BEATRICE in color, only a trifle lighter, with a more prominent and brighter golden beard and a charming golden halo. A very fine flower 35c
- MARY WILLIAMSON**—Midseason, 34 inches. S. white; F. flaring, purple with wide silvery white border. A flower of medium size, charmingly ruffled, of great refinement and beauty 25c
- MASSENA**—Midseason, 40 inches. A very large, well balanced pink lilac self.. 75c
- MAY SADLER**—Midseason, 42 inches. S. violet-rose; F. madder-crimson, dark bronze beard. Beautiful and distinct. "An exquisite piece of dark crimson velvet" 40c
- MELDORIC**—Said to be the masterpiece to date of Dr. W. McL. Ayers. A real sensation in Irises that combines the richness of DOMINION with the size and majesty of MESOPOTAMICA without the tenderness of the latter. Blue-black in effect, colossal in size, with broad flaring falls, and standards of huge size and darkest hue. A truly magnificent Iris. \$7.50
- MENETRIER**—Midseason, 38 inches. S. pale yellow, shaded terra cotta; F. rich bronzy-yellow overlaid maroon at center and edged same. Large flower of good substance 25c
- MICHELLINE CHARRAIRE**—Late, 48 inches. S. and F. pure white with a faint touch of amber and light bronze at the throat; yellow beard. Tall, vigorous and free flowering over a long season. Very fragrant flower of good form and substance 35c
- MILLERESS**—A very pretty pale, blue-toned white, produced by the late Sam Burchfield. Very attractive 25c
- MIDGARD**—Midseason, 36 inches. One of the most attractive of the newer Irises. A lovely blend of soft pink and yellow, general effect pink. Large flowers of excellent substance 40c
- MME. CECILE BOUSCANT**—Late, 40 inches. A pleasing shade of violet-rose; orange beard tipped medium-blue to match the style-tips. An unusual and very beautiful coloring 50c
- MME. DURRAND**—Late, 48 inches, S. tawny buff, flushed amber; F. rich creamy yellow shaded buff. A very highly rated Iris, in a class by itself. An unusual and warmly beautiful coloring. Stunning, at 40c

- MME. HENRI CAYEUX**—Midseason, 42 inches. S. smoky red-violet; F. velvety dark crimson with lighter edges. A very large, vigorous and free flowering variety of the coloring of LOUIS BEL 40c
- MOA**—Midseason, 42 inches. S. pure violet; F. deep, velvety violet purple. The tallest of the DOMINION race. Enormous and grand 50c
- MOONLIGHT**—Early, 36 inches. A gigantic, silvery-white flower, very fragrant, as large as the giant flowers in other colors. A garden Iris and a breeder's Iris. Real personality 25c
- MORNING GLORY**—40 inches. Midseason. A new RED-toned Iris with large flowers of great brilliancy enhanced by the glittering golden beard. "A superb Iris and will be for many years to come.".. \$5.00
- MRS. EDWARD HARDING**—Midseason, 42 inches. A very beautiful dark Pallida that becomes more attractive with long acquaintance. Large, well shaped flowers of fine substance that stand up remarkably well under wind and rain. S. violet purple; F. velvety dark purple, overlaid black with a bronze yellow beard. Exceptionally fine 75c
- MRS. ILTIS**—Introduced by the late Mr. Fryer in 1925. We purchased our stock direct from him. The variety has not been widely distributed and deserves to be better known. It received an award of merit by the Royal Horticultural Society of England after trial. The flower is very large, of uniform wisteria blue, of fine form, and a prodigious bloomer. 35c
- MRS. MARION CRAN**—Midseason, 38 inches. An unusual shade of brilliant light rose; yellow beard, white tipped, sweetly scented. Medium size flowers of wondrous form and beauty 25c
- MRS. ROBERT EMMETT**—Midseason, 38 inches. A milk white flower with a conspicuous yellow beard. Large flowers of wonderful form and substance, vigorous and free. A wonderful Iris. One of the finest whites 50c
- MRS. VALERIE WEST** — 42 inches. Mr. Bliss's masterpiece, the very finest of the DOMINION race. S. bronzy violet; F. rich, velvety maroon crimson. Large flowers finely held on strong branching stems. Beautiful for any purpose.. \$2.00
- MY MARYLAND**—52 inches. S. petunia violet flushed rose; F. velvety, deep, brilliant crimson overlaid garnet-brown. Sweetly scented. Tall and vigorous. \$7.50
- NEBRASKA**—34 inches. A fine, large flower of rich, deep yellow with ruffled standards. The flaring falls are veined raisin-purple50c
- NEHAWKA**—The darkest blue purple plicata. A wonder. New25c
- NEWTONIA**—42 inches. An old-rose and amber blend with a frosted finish. Fine form and substance. A golden beard illuminates the entire flower\$1.00
- NUSKU**—A lovely old rose blended with gold on tall, well branched stems ...\$1.50
- OBERON**—Late, 48 inches. A rich dark lavender, a very large flower on tall branched stalks. Try it. Very desirable 25c
- ODAROLOC**—40 inches. An extremely free flowering Iris, practically a self of rosy-mauve to lobelia-violet. Very highly rated25c
- ODENVOGEL**—36 inches. A new "variegata" with deep yellow standards and plum colored falls, the latter with a wide border of primrose. A fine large flower of perfect form25c
- OLIVE MURRELL**—Late, 46 inches. S. deep lavender-rose shaded bronze; F. rich lavender blue, shot rose and bronze; beard and style-arms rich buttercup yellow. Very fragrant. Vigorous and free flowering. Charming cut flower50c
- OPHELIA**—Midseason, 32 inches. S. tan suffused rose-ash and lilac-purple; F. similar, showing purple-lilac; deep orange beard. An exquisite flower of most unusual coloring. Deliciously attractive 75c
- OREAD**—Midseason, 36 inches. A brilliant red violet bicolor with only slightly darker falls. Large, vigorous and free flowering, fine form and substance, and extra good carrying quality. This Iris has a remarkably fresh crimson tone and lovely form50c
- OREGON BEAUTY**—A flower of gigantic proportions and heavy substance. S. aconite violet and F. velvety purple and flaring. A very fine flower\$2.50
- OREGON GIANT**—Another Iris with gigantic flowers. S. reddish-purple; F. velvety blackish-purple and flaring. One of the darkest colored Irises. Rich\$2.50
- ORION**—Midseason, 38 inches. S. smoky violet; F. velvety, dark violet, prominent yellow beard. A larger and brighter AM-BASSADEUR. A majestic Iris50c
- ORTRUD**—Early, 26 inches. A deep, rich, warm reddish blending of color. Large flowered. A wonderful, subtly colored blend50c
- PAVANNE**—A new, deeply bronzed, rich purple red with very wide segments; rosy-bronzed standards and falls with a deep blackish tone. A super Iris75c

- PEAU ROUGE**—Late, 30 inches. S. soft old-rose, flushed bronze; F. flaring, a deep rich velvety-red, slightly bronzed. A stunning coppery-red garden effect ..25c
- PEERLESS**—Late, 42 inches. S. light reddish violet; F. deep, rich, velvety glowing red with bronze reticulations. Rich gold beard so brilliant that it lights up the whole flower. Magnificent50c
- PERSIA**—Midseason, 48 inches. A new Iris by Dr. Ayers, with an absolutely unique color. S. smoky blue; F. rich blue purple shading to much lighter at the edge and gold markings at the haft. The coloring is that of a rich Persian rug. A magnificent Iris, universally admired\$5.00
- PETRUCHIO**—Midseason, 36 inches. S. lobelia violet; F. dahlia-carmine. A golden throat with a rich golden beard. A fine piece of coloring of great intensity and richness. A veritable color gem ...\$2.00
- PHRYNE**—Early, 42 inches. Enormous flowers, almost as large as PEERLESS and NENE. S. Lavender with rose shadings; F. red-lilac shaded silver gray at the edge Distinct, beautiful, and inspiring50c
- PINK SATIN**—42 inches. Midseason. The first clear, pure pink Iris. Large finely shaped, well poised flowers with a rich satiny sheen\$5.00
- PLUIE D'OR**—Midseason. 41 inches. The name means Golden Rain. This is a pure, golden yellow self. It is very floriferous and bears very large flowers of great substance. The first Iris of French introduction to be awarded the Dykes Medal. M. Cayeux considers it the world's finest yellow\$2.00
- PRAIRIE GOLD**—Late, 38 inches. S. rich dark yellow; F. light yellow; orange beard. A large orange colored flower of good form and substance on well-branched stalks25c
- PURISSIMA**—The highest rated white Iris. It is a pure white of gigantic size, fine form and heavy substance. Tall, to 42 inches. A really wonderful white Iris \$1.50
- RAJPUT**—Late, 36 inches. Large flowers, perfectly formed, of heavy texture. A self color, bright violet shading to heliotrope and very luminous. Beautiful both as a single flower and in mass effect, with a carrying quality equal to any other Iris. 25c
- RAMESES**—Late, 36 inches. One of the finest new soft blends with S. light russet and F. tourmaline pink. Vigorous and well branched. Next to PINK SATIN, the finest introduction of the Sass Brothers. Dykes Medal\$4.50
- REALM**—Late, 42 inches. An intense, pure, beautiful light blue self. Flowers of the largest size, finely formed and of very heavy substance. Exceptionally vigorous and floriferous50c
- REDWING**—36 inches. Of similar coloring to Allies but fully twice as large, in general a bronzy-red. A gigantic flower and a wonderful addition to any Iris collection\$1.00
- REMBRANDT**—An intermediate, light blue self25c
- RENE CAYEUX**—Very late, 42 inches. The largest flowered white bicolor, and one of the finest and richest.35c
- REVERIE**—Late, 45 inches. One of the really fine Irises, of exquisite coloring, perfect form and good substance. S. buff with a deep pink flush; F. deep red .35c
- RHEINGAUPERLE**—Midseason, 36 inches. A most lovely variety, a very distinct, large, flaring orchid pink with the fragrance of orange blossoms.35c
- ROBERT W. WALLACE**—Late, 42 inches. S. rich violet; F. very deep rich purple, almost black-purple; conspicuous orange beard. Approaches GERMAINE PERTHUIS and PEERLESS in quality25c
- ROMOLA**—Late, 42 inches. S. pale lilac, tinged pale ivory yellow at base; F. flat hanging, velvety, red-violet; conspicuous yellow beard. Graceful in form, heavy in substance and long lasting. Most delicately colored and vigorous. Distinct and rare50c
- ROTA**—Midseason, 32 inches. S. bright silky carmine; F. a darker shade. A splendid flower25c
- ROYAL BEAUTY (McKee 1932)**—48 Inches. Midseason. One of the finest new Irises. S. Clear, intense, medium blue; F. deeper, a brilliant, deep, velvety blue. Velvety texture. Stalks tall, widely branched, carrying many open flowers at once. Very highly recommended\$12.50
- SAN DIEGO**—46 inches. An immense, deep velvety blue-purple flower of Gaudichau coloring. Received an Honorable Mention by the A. I. S. in 1931\$1.50
- SAN FRANCISCO**—Midseason, 43 inches. Tall stems, low and widely branched like a candelabra, large white flowers with both S. & F. edged lavender blue. Far beyond any of the older Plicatas in size, shape and substance. Highly recommended\$1.00
- SAN GABRIEL**—Midseason, 38 inches. Very nearly a self color of lustrous lavender flushed rosy mauve; white beard. Very large, tall and well branched; imposing.25c

- SAN LUIS REY**—Late, 40 inches. S. red purple; F. rich purple violet; deep orange beard. Flower large, of fine form and substance; a distinct improvement over OPERA50c
- SANTA BARBARA**—Early, 42 inches. A very light lavender blue, almost a self; horizontal falls. Probably the finest flower of its color, pure, lavender blue. In color, size and carriage of the falls it is distinct and practically perfect25c
- SASS NO. 33**—A new deep purple self with very large flowers. Fine25c
- SELENE**—40 inches. Midseason. A tall, very large, pure white of thick substance and fine form. Exquisitely luminous. Hardy\$5.00
- SENECA**—Late, 28 inches. The second of our two originations, the other being LARGO. A large flower, 6½x5½ inches; S. white, lined, dotted and heavily overlaid, except in the center with deep, livid purple passing to dark vinaceous purple at the base with yellow shadings; F. drooping, wedge shaped; white with light to heavy sanding at center merging towards the edge into heavy lines of violet carmine with a general effect of Dahlia purple because of the broken pigment. Considerable white in the center and a conspicuous midline of violet carmine running the length of the fall. The white ground is overlaid yellowish at the base. Beard white, tipped violet carmine. The falls are very velvety and of excellent substance. A most distinctly colored large Plicata\$5.00
- SIR MICHAEL**—Midseason, 48 inches. S. clear lavender blue; F. rich deep purple, suffused red-brown, deeper at the haft; brilliant red-gold beard. The finest origination by Mr. Yeld, considerably surpassing even ASIA. According to Dr. Ayres, the originator of PERSIA and INDIAN CHIEF, SIR MICHAEL stands head and shoulders above all other English Irises.\$1.75
- SKITCHWAUG**—Midseason, 36 inches. An Iris with a coloring on the order of ISOLINE, but richer, more brilliant and more velvety, lighted by a heavy gold beard 50c
- SNOW WHITE**—Early, 39 inches. A large pure white of excellent substance that withstands wind, rain, and sun. Bids fair to become one of our most popular white Irises40c
- SOLEDAD**—25 inches. The best intermediate yellow in the garden and the first to bloom. A very fragrant flower of irresistible charm, style and attractiveness. 25c
- SOLFERINO**—Early, 48 inches. Of APHRODITE parentage but a much superior flower. It has the same shape, substance and stem growth as the parent but the coloring is much richer. A magnificent Pallida of a beautiful lilac red. As many as fifteen buds to one bloom stalk ...40c
- SONATA**—Midseason, 38 inches. S. deep olive buff, deepening to sulphur yellow at base; F. lilac at center shading to deep olive buff; rosy flush, rich yellow beard50c
- SOPHIE**—Almost a self color of manganese violet slightly suffused with bronze. Beautifully shaped flowers of splendid substance, good height and size. A rampant grower and one of the freest blooming of all Irises. Another of Mr. Lapham's originations. Distinct\$1.00
- SOUV. DE LOETITIA MICHAUD**—Midseason, 48 inches. A very large flower, of fine texture, well proportioned, vigorous, and widely branched. A delicate blue lavender, paling towards the edges. A real Iris queen35c
- SRINAGAR**—18 inches. An early intermediate. S. pure aniline blue; F. narrow, deep purple with blackish overlay. An Iris of refinement. Very scarce, seldom offered50c
- SUMMER CLOUD**—32 inches. S. light blue shading to gray-blue-white, like a summer cloud; F. sky blue. Flowers of a most pleasing color\$5.00
- SWAZI**—Midseason, 38 inches. S. soft bluish-violet; F. rich velvety pansy violet. Very large flowers of magnificent coloring and brilliancy. Bluer, taller and better branched than DOMINION75c
- TAFFY**—20 inches. A jaunty mass of orange blossoms, brilliant beards, low branched\$2.50
- TENEBRAE**—An early, dark colored Dominion seedling of dependable growth, a Rembrandt coloring, fine large flower. S. violet purple; F. velvety blackish purple. Fragrant 25c
- THAIS**—Midseason, 42 inches. A vigorous silvery-pink self, with falls very slightly darker. Flowers ideal in form, large on stately, strong stems, very free blooming. Most satisfactory and the best pink at the price75c
- TITAN**—Midseason, 38 inches. S. light violet blue; F. horizontal, violet purple, darker in center. Vigorous and free flowering, well branched, very large, of charming form and carriage, great substance and good habits. What more can one ask?25c

TROPIC SEAS—Early, 46 inches. S. Daphin's violet; F. velvety mulberry purple; golden yellow beard, fragrant. Large flowers of good form, giving a rich deep blue effect. Commanding25c

TROSTRINGER—Midseason, 34 inches. A light rose-purple self. A vigorous, free flowering **CAROLINE E. STRINGER** on taller, branching stalks.25c

TRUE DELIGHT—Midseason, 42 inches. A pure white Plicata with deep rose-pink markings. A most artistic flower of great charm and beauty. Free blooming, refined and a real delight25c

VALKYRIE—33 inches. Large flower on a tall, stout stem. S. olive-lake; F. dark maroon purple, almost black, velvety texture. No other Iris like it and it should be in every planting50c

VESPER GOLD—Midseason, 38 inches. S. baryta yellow shading to pale empire at margins, deeper at base; suffused violet throughout; F. flaring, baryta yellow, lighter at edges; bright orange beard. A self color of beautiful shape and great substance25c

WACONDA—Midseason, 38 inches. A new large flowered fuschia-red self. S. deep fuschia red; F. rich velvety violet carmine. A very attractive flower\$1.50

WATTEAU—30 inches. S. bright violet; F. deep purple; white styles and yellow beard. A handsome flower 25c

WHITE AND GOLD—37 inches. A large flower of a pure, glistening satiny white

without markings, flaring falls and a brilliant golden beard75c

WILLIAM MOHR—Midseason, 32 inches. A Pogo-Cyclus hybrid, and one of the most remarkable ever raised. The late Mr. Mohr considered it his finest achievement. Flowers of a pale lilac ground color beautifully veined Manganese violet. A flower of great substance and perfect form .75c

YOLANDE—Midseason, 38 inches. S. blue with a bright sheen; F. pansy-blue, striped white and white haft; beard pale blue Very large, vigorous, and free flowering.25c

YVES LASSAILLY—Early, 48 inches. A giant plant with enormous flowers. A beautiful combination of white and light blue. The standards are white. The falls are very wide, white with a suffusion of soft sky blue in the center. In a class with **PLUIE D'OR** but of an entirely different color. Strongly recommended\$2.50

ZAHAROON—Midseason, 42 inches. Described as one of the most beautiful Irises in commerce today. The color is a charming and beautiful blend of amber, buff, yellow, fawn and pale violet, with a strong suffusion of rose. Silver Gilt Medal as the best seedling at the English Iris Show in 1927\$12.50

ZULU—Very late, 36 inches. A **DOMINION** seedling with S. a clear rich steely aniline blue; F. a fine, dark velvety blue. Vigorous and free flowering, this Iris is one of the finest of the **DOMINIONS**50c

Mother pointed out the flowers—
 I saw no planted things,
 But white and purple butterflies
 Tied down with silken strings.
 —Mary McNeil Fenellosa

Have you seen tall larkspur
 With rosy hollyhocks?
 Or purple wings, half folded,
 Of Irises in flocks?
 —Louise Driscoll.

Then in the valley, where the brook went by,
 Silvering the edges that it rippled from—
 An isolated slip of fallen sky
 Epitomizing heaven in its sum
 An Iris bloomed—blue, as if flower-disguised,
 The gaze of Spring had there materialized.
 —Cawein: A Wild Iris.

IRIS BARGAINS

The two lists following, containing about 300 fine named Irises, offered at the bargain prices of 10c each or 3 for 25c in one list and 20c each or 3 for 50c in the other, afford an unheard-of opportunity to plant a fine Iris garden or border at little cost. Varieties in bold type represent outstanding bargains.

10c Each, 3 Roots of a Kind for 25c

AFTERGLOW	ISIS	NOTHUNG
ALCAZAR	ISOLINE	ORABELLE
AMAS	JACQUESIANA	OSSIAN
AMBIGU	JAPANESQUE	OTHELLO
ANNE LESLIE	JUNIATA	PAULINA
ANTONIA ANTONETTE	JUNONIA	PAXATAWNY
ARCHEVEQUE	KHEDIVE	PERFECTION
ARGUS	KING GEORGE V	PETIT VITRY
ARMENIAN	KOCHII	PINK MME. CHERREAU
ASSYRIAN	KURDISTAN	POCAHONTAS
AUREA	LANCELOT	POWHATTAN
AURORA	LENT A. WILLIAMSON	PRINCESS OSRA
BELLADONNA	LEWIS TROWBRIDGE	PRINZESS VIKTORIA
BLACK PRINCE	LOHENGRIN	LUISE
BLUE BOY	LORELEY	PROSPER LAUGIER
BLUE LAGOON	LULWORTH	QUAKER LADY
BLUET	MADISON COOPER	QUEEN ALEXANDRA
BRANDYWINE	MADY CARRIERE	QUEEN CATERINA
BRONZE LADY	MAGNATE	QUEEN OF MAY
CAMELOT	MAJOR	RAFFET
C. A. PFEIFFER	MA MIE	RACHEL FOX
CAPRICE	MARY GARDEN	RED CLOUD
CAVALIER	MARY ORTH	RED RIDINGHOOD
CECIL MINTURN	MASSOSOIT	REV. WURTELLE
CENGIALTI	MAUVINE	RHEIN NIXE
CLARENCE WEDGE	MAY QUEEN	RHEINTRAUB
CLEMATIS	MERLIN	RODNEY
CLIO	MISTRESS FORD	ROSE UNIQUE
CLUNY	MITHRAS	ROSEWAY
COL CANDELOT	MME. BOULLET	RUBY PERRY
CORDELIA	MME. BAZES	RUBY QUEEN
CORRIDA	MME. BOYER	RUGAJO
DALMATICA	MME. CHEREAU	SANTA ROSA
DAWN	MME. CHOBOUT	SARABANDE
DEUCALION	MME. LOUESSE	SARPEDON
DIADEM	MME. DE SEVIGNE	SEAGULL
DONNA NOOK	MME. PACQUITTE	SEA NYMPH
DORMAN	MON SIGNOR	SHEKINAH
DOROTHEA	MOTHER OF PEARL	SHERWIN WRIGHT
DRAKE	MRS. ALAN GRAY	SILVER MIST
DREAM	MRS. J. C. BIRD	STORM CLOUD
DUSKY MAID	MRS. COWLEY	TAMAR
EDOUARD MICHEL	MRS. CUTHBERTSON	TAMERLAN
FAIRY	MRS. C. DARWIN	TOM TIT
FLORENTINE ALBA	MRS. HAW	TRAUTLIEB
FRYER'S GLORY	MRS. H. DARWIN	TREGASTEL
GEO. W. PEAKE	MRS. EARDSLEY	TWILIGHT
GEORGIA	MRS. H. F. BOWLES	VICTORINE
GERTRUDE	MRS. KINGSCOTE	VIOLA
GLORY OF HILLEGOM	MRS. NEUBRONNER	VOLUMNIA
GREVIN	MRS. TINLEY	VIRGILIA
HER MAJESTY	MRS. WEDGE	WESTERN DREAM
IGOUF	MOUNT PENN	WM. MARSHALL
ILSAN	NAUSHON	WINDHAM
INGRESS	NIBELUNGEN	WYOMISSING
IRIS KING	NINE WELLS	

20 CENT IRIS LIST

3 of a kind for 50c

- AMBASSADEUR 94**—S. reddish-violet; F. dark velvety purple-maroon. A regal Iris. Very late.
- A. M. BRAND**—S. Golden bronze; F. Maroon very fragrant.
- ANNA FARR 81**—Standards and falls white with pale blue pencilings. A large flower, fragrant and beautiful. Late.
- ANN PAGE 86**—A lovely pale blue, penciled brown. Sweet.
- ANTARES**—S. lemon yellow shaded lighter and dotted ageratum blue; F. white dotted ageratum violet with creamy yellow reverse. Good substance and unusual color.
- ARAGON 73**—A red mahogany-brown Iris in a class with Flammerschwert.
- ARGOS**—S. large, Dauphins blue; F. long, velvety petunia violet, with lighter margins. A very large flower on strong stalks.
- ARLETTE**—S. deep cream with a velvety sheen; F. very delicate cream with golden yellow markings at base and bright orange beard. Flower of good shape and size with superior substance.
- ARGYNNIS**—S. Deep yellow; F. dark violet-carmine. Tall and vigorous. Late.
- ARIEL**—A lovely soft, clear, bright harebell blue self. Fragrant.
- ARNOLD**—S. Dark reddish violet; F. rich, deep velvety very dark pansy violet. Beautiful and rich.
- ASIA**—Iris enthusiasts the world over have raved about this Iris which has been considered generally as one of the best in cultivation because of its color, height and splendid substance. S. broad and massive, pale silvery lavender deepening to a golden-yellow base; F. pale reddish purple.
- AZULADO**—Very large, lustrous pearl-gray blue. Very beautiful.
- AZURE 82**—A rich, red-purple, bicolor, approaching DOMINION in color tone and quality. 3 ft.
- AZURE GLOW 74**—S. dull violet-blue; F. madder-violet. Late. Tall, vigorous, free-flowering.
- BALBOA 83**—A fine, vigorous, large-flowered Iris in deep mauve and violet-red shades. Medium to late.
- BALDER**—S. yellow-olive; F. maroon. Good form A. G. & K. variety.
- BALDUR**—A red-blue-purple blend of good color effect.
- BALERUC 76**—A very good medium height white Iris. Late.
- BALLERINE 90**—S. Clear light blue; F. deeper blue. Very large, sweet scented flowers on fine, tall stems. One of the very best of lavender blue bicolors.
- BARTON HERRINGTON**—A yellow pink bicolor. Fragrant.
- BEAU IDEAL**—A splendid large plicata of heavy substance. White bordered rich violet.
- BENRIMO 75**—Beautiful, extra large blue flower of good form on tall stalks. Makes a wonderful blue effect.
- BENBOW 78**—A deep violet-blue pallida. Large flowers. Fine in mass.
- B. Y. MORRISON 88**—S. pale lavender-violet; F. velvety-purple bordered lavender.
- CAMELOT 80**—S. and F. creamy white edge pale violet. Tall and free-flowering.
- CHALICE 84**—A real yellow self. Beard and style arms lemon.
- CRIMSON KING**—28 Inches. A deep purple intermediate, very early, large flowers. An old favorite.
- CRUSADER 87**—S. clear, light blue violet; F. a deeper shade of blue-violet. Large early and beautiful.
- DALILA 80**—S. creamy-yellow; F. plum-red. Charming.
- DALMARIUS**—A pale-blue and faint-yellow blend. Dainty.
- DEJAH**—An attractive silvery-blue to bright-blue pallida. An excellent flower.
- DELICATISSIMA 80**—S. Lobelia blue suffused rose; F. soft bright violet shaded lilac. Large flower, good substance, charming rosy-mauve effect.
- DEMURE**—A pink to red toned blend.
- DIMITY 83**—S. White penciled mauve; F. finely veined lavender.
- DULCINEA**—S. Lavender; F. violet-blue, lavender border with a pearly luster.
- EDEN PHILPOTTS**—Large flowers of dark lavender-blue. Bold white and yellow beard. Early. Attractive flower.
- E. H. JENKINS 82**—S. Pale steel-blue-purple; F. deeper. Excellent substance. Fragrant. Large and vigorous. One of the best blue-toned Irises.
- E. L. CRANDALL**—S. and F. white with edges penciled light blue. Very fragrant and attractive.
- FAITH 80**—A clear, distinct violet with falls only slightly deeper than the standards; almost a self.
- FEDORA 75**—S. old gold; F. rich deep red-violet, edged old gold. A large, free flowering, red toned variegata of real merit.

- FIRMAMENT**—Two shades of light lavender-blue. A fine, large, very early flower.
- FLAMMENSCHWERT 80**—S. bright golden yellow; F. broad, crimson-maroon, edged yellow. Sturdy, free, good substance, brilliant in mass.
- FLUTTER-BY**—34 inch. Late. S. Clear yellow; F. light yellow. A beautiful, soft yellow flower of fine form and substance.
- FRO 75**—S. deep rich gold; F. velvety bronzy-crimson, margined crimson and edged yellow. Sweet. Very showy.
- GANDHI**—A very dark blue-toned bicolor in a class with **MORNING SPLENDOR** and **GERMAINE PERTHUIS**. Not widely known.
- GAVIOTA**—A delicately colored creamy-white Iris with both S and F. edged yellow. Quite unusual.
- GLOWING EMBERS**—S. rich warm tan; F. velvety dark glowing red. A rich flower, of great size and substance. One of Miss Sturtevant's very best.
- GOLD CREST**—A very bright violet-blue Iris with a conspicuous golden-yellow beard. The first great success of the late W. R. Dykes.
- GOLDEN PROMISE**—S. deep yellow; F. soft yellow flushed soft lavender, reticulated bronze. Remarkable for its vigor, substance and free flowering.
- GREATER MAY QUEEN**—A pinkish-red self, larger, taller and brighter than the **MAY QUEEN**.
- HALO 83**—Blue-violet bicolor. A large flower, sweetly scented.
- HARMONY 82**—A deep, rich violet-purple self with beard of the same shade, producing a wonderful even-colored dark effect in mass.
- HARPALION 77**—S. lavender overlaid bronze; F. clear lavender-blue. Very large, well-formed flowers on tall stalks, very free.
- HARRIET PRESBY 83**—Two tones of pe-tunia violet producing a pink effect. Similar to **APHRODITE** but without markings of any kind. Good form.
- HELENE KOEHLER 72**—S. lilac-pink; F. amparo-purple, orange beard. Very free flowering, medium sized flower of good form.
- HIPPOLYTA 85**—S. light lavender-blue; F. slightly lighter shade. Mass effect of clear mauve. Excellent form and carriage and wonderfully smooth.
- HOMER C**—An intense velvety red-violet, taller and better than **OPERA**. Large size, excellent form and carriage.
- IDEAL**—Midseason, 38 inches. S. pure blue; F. deeper shade of rich, royal blue, almost a self; orange beard. A distinct and beautiful clear blue, a large flower of heavy substance.
- IMPERATOR**—Late, 40 inches. S. clear violet tinted buff; F. beautiful reddish violet with red brown throat and orange beard. Free flowering and of great beauty.
- JACQUELINE GUILLOT**—Late, 38 inches. A handsome, large, soft-blue self of unusually smooth and satiny texture.
- JEAN CHEVREAU**—S. primrose-yellow to olive-buff; F. cream stippled and edged red. Odd and beautiful.
- J. J. DEAN**—S. light violet; F. velvety royal-purple. Very handsome.
- KALEIDOSCOPE**—Yellow, stippled, striped and spotted maroon. Very odd.
- KALOS 80**—S. and F. white, veined pale rose. A dainty flower of light rosy effect, good form and substance.
- KATHRYN FRYER 76**—S. very large clear straw-yellow; F. velvety maroon-red with creamy-white reticulations; sweetly scented. Vigorous, tall.
- KNYSNÁ 78**—S. clear, deep-yellow; F. velvety red-brown. Bright and showy.
- LADY FOSTER 85**—S. light lavender-violet; F. darker, veined gold. Fragrant.
- LADY LILLIAN**—S. lavender suffused violet; F. slightly deeper. Almost a self color; fragrant. A vigorous, free flowering Iris with a real rose pink effect. Charming. Too little known.
- LA NEIGE 83**—Splendid creamy white flower of good form and substance. Late. 24 inches.
- LE GRANDE FERRE**—Late, 42 inches. S. grayish fawn tinted heliotrope; F. vinous-rose washed with buff. A very large flower of an unusual and attractive coloring.
- LEOTA**—Opens creamy white, becoming pure white with a faint bluish tinge. Very early, very vigorous and free flowering. Excellent for white mass effect.
- LORD OF JUNE 91**—S. very broad, light blue; F. lavender-violet marked with old gold. One of the giants. Very handsome.
- LURLINE**—A rose-lilac Iris somewhat darker than **DREAM**. A medium sized flower that is very prolific.
- LYCAENA**—S. pure white; F. deep, rich purple. Very showy. 32 inches.
- MAGNIFICA 91**—S. Broad, pale violet; F. purple, creamy haft. Fragrant.
- MANON**—A plicata of the **ANN FARR** type. S. white margined with lilac-blue pencilings; F. cream-white with still narrower margin of the same lilac-blue. The lighter falls give the flower a distinction lacking in other plicatas. A rare gem.

- MARION CRAN**—Quite similar to MRS. MARION CRAN, a slightly deeper coloring and slightly smaller flower.
- MARJORIE TINLEY**—A blue toned lavender by Perry, refined and beautiful.
- MARSH MARIGOLD 87**—S. golden yellow; F. purple-brown with yellow border. Bright and striking.
- MARY GIBSON**—Midseason, 42 inches. S. delicate light buff, overlaid old rose, old rose suffused bronze and yellow. Bright orange beard. Distinct and beautiful.
- MAY ROSE**—A pink toned self, heavily veined lavender.
- MEDRANO 85**—S. purple; F. rich maroon-purple, tinted buff. A late, dark toned large flower.
- MIDWEST**—A fine ruffled Iris of large size. S. flushed purple; F. white with heavy purple-lined border.
- MILDRED PRESBY**—Late, 32-inches. S. ivory white flushed rose-lavender; F. rich, dark velvety pansy-violet, with a faint edge of lavender-white.
- MIRANDA**—An early, strong growing, uniform bluish-violet. Lovely.
- MLLE. SCHWARTZ 87**—Uniform soft light lavender-blue. Beautiful and distinct.
- MME. CHERI 83**—S. purple with yellow undertone; F. violet, washed pink. An excellent pinkish blended bicolor.
- MME. GAUDICHAU, SOUV. DE**—A very large, very dark, deep purple bicolor. 3 feet. A wonderful, strikingly beautiful flower.
- MME. VERNOUX 84**—S. soft light blue washed rose; F. intense bright violet-purple, veined red bronze on white. Large, tall, vigorous.
- MOLIERE 85** — S. mauve; F. violet with brown veining. Shadowy pinkish cast.
- MORNING SPLENDOR**—Late, 42 inches. One of the very best Irises originated in America. S. rich red violet; F. an even richer shade of red violet. Of a quality and size with DOMINION seedlings.
- MRS. A. M. BRAND**—White, feathered light blue. Attractive.
- MRS. FRYER**—A blue-purple bicolor with dark standards.
- MRS. HETTY MATSON 80**—S. purple-bronze showing buff; F. broad rich crimson-purple. Yellow beard. Superior in color to CANOPUS and LENT A. WILLIAMSON. A very large, distinct bicolor.
- MYSTIC**—Late, 36 inches. A pure white flower of good substance. Many flowers of good substance. Very striking.
- NEPTUNE 79** — S. bright pale blue; F. spreading, purple-blue; fragrant. Large and tall, good form and substance, free and reliable.
- NIMBUS**—Midseason, 44 inches. S. light lobelia-violet with darker edge; F. cotinga purple; sweetly scented. A tall, vigorous velvety bicolor of a distinct steel gray effect.
- OCHRACEA 79**—S. old gold; F. lavender-blue. A wonderfully rich effect the blue of the falls underlaid with coppery yellow. A distinct and attractive gold and blue combination.
- OPERA 87**—S. livid purple; F. velvety purple. An intensely rich violet-red bicolor.
- OPHIR GOLD 82**—A golden yellow self without veining or marks of any kind. Large, vigorous and free flowering, 10 days later than SHERWIN WRIGHT.
- OUR KING 72**—S. mauve and coppery-pink; F. deep Bishop's violet, Fragrant. Larger and better formed than QUEEN OF MAY.
- PALEMON 84**—S. apricot; F. apricot suffused lavender. Larger and darker than AFTERGLOW.
- PARC DE NEUILLY 81**—A very large, rich, deep violet-blue self, slightly ruffled. Late. One of the finest late varieties.
- PARISIANA 79**—S. white dotted purple; F. white, widely frilled edges penciled purple-lilac. Vigorous, large, free-flowering.
- PERLADONNA 82**—One of the most effective blues with grace, poise and beauty, and unusually fine texture. Tall, free-flowering. 40 inches.
- PHYLLIS BLISS 89**—A beautiful, pale rosy-lavender self, large flowered, vigorous and free. 33 inches.
- PINK PEARL**—Delicate clear tints of mellow pink to apricot. Dainty color.
- PIONEER**—One of the most marvelous Irises in cultivation. The very best of the red purple varieties. S. bright red purple; F. a deep glowing red purple set off by a bright orange beard. Early, 36 inches.
- P. L. BATTEY**—One of the older, good reds.
- POLARIS**—Midseason, 38 inches. A bright violet self. A large flower of good form, substance and delightful color
- PRINCESS BEATRICE 95**—A light-lavender self with a beautiful, satiny texture. One of the finest of all.
- PROF. SEELIGER 77**—A deep Bordeaux wine red self; rich orange beard. 30 inches.
- PROSPERITY 77**—A lilac hyacinth-violet flower of large size and flaring falls.
- PROSPERO 82**—S. deep lavender, flushed yellow at base; F. violet with lighter shadings. A fine flower of large size, heavy substance and good form. Late. 48 inches.

- QUEEN FLAVIA**—24 inches. An intermediate. A very fine large yellow flower with a rich golden beard. Perfect shape, very free flowering and rugged.
- RIALGAR 82**—30 inches. Prof. Mitchell, of California, says this Iris is "at the head of the list of all Variegatas," and if he could have but one Variegata it would be RIALGAR. S. yellow-chrome; F. veined and flushed hellebore-red. A real bargain.
- ROSALBA 84**—S. rich wine-red; F. deeper. Good form, very fine color and free flowering. A splendid red landscape variety.
- ROSALIND**—A medium pink to red toned self.
- ROSE MADDER**—Midseason, 36 inches. S. light rose-madder; F. velvety dark rose-madder; orange beard, sweetly scented, vigorous, brilliant rose-crimson.
- ROTORUA 78**—A pale lavender-blue self. A good light blue landscape variety.
- SAFRANO 79**—S. clear straw yellow; F. flaring, same shade with lighter suffusion. A vigorous, tall-growing Iris of high standard.
- SALONIQUE 78**—S. white flushed cream; F. purplish-violet. Vigorous and free flowering. Late.
- SEMINOLE 83**—A rich red-purple with velvety falls. One of the brightest and reddest of all Irises.
- SILVER RIBBON**—A deep, rosy pink with a distinct pale band down the middle of the fall.
- SIMONE VAISSIERE**—S. light chicory blue; F. violet veined gold and maroon at the haft. A beautiful bicolor of unusually clear coloring.
- SINDJKA 84**—S. deep lavender shaded an olive-buff; F. lavender-purple. A very effective color blend.
- SOLANA 78**—S. clear lemon-yellow; F. rich Bordeaux. Larger and brighter than KNYSNA. A richly colored, free flowering variegata.
- STEEPWAY 82**—A tall, smooth purple tinted flower, slightly flushed peacock-blue, tipped yellow. Attractive and distinct.
- SUSAN BLISS 86**—A delightful shade of deep rose-pink with pale orange beard. An Iris of good form and rare beauty.
- SUZANNE AUTISSIER**—S. blue-gray heliotroupe; F. deep red-lilac. Hardier than Magnifica which it resembles.
- SWEET LAVENDER 87**—S. pale lavender-blue; F. broad, widely flaring, deeper rose-lavender, darker at center. Rich, rosy-mauve effect with the scent of lavender. Free, wonderful form and beauty.
- SWEET SIXTEEN**—One of the Lapham introductions of which I have no color description yet.
- SYPHAX 75**—S. mauve; F. raisin-purple, bright orange beard. 30 inches.
- TAFFETA**—S. light heliotroupe-gray flushed olive-buff; F. dull lavender. A "smoky" blue.
- TAJ MAHAL**—Midseason, 36 inches. One of the fine whites. Flowers of fine form and good substance. Very vigorous
- THELMA PERRY**—A pink to red toned bicolor.
- TINTALLION 76**—S. white; F. flaring, white, shaded deep purple at tips. A flower of fine form and great beauty. Vigorous.
- TRISTRAM 75**—S. clearest white; F. deep rich purple. Distinct. More striking than RHEIN NIXE.
- TROADES**—S. old rose, overlaid bronze; F. bright red-violet, edged old rose-bronze. Large flower of good form and habits.
- TROJANA 81**—S. light lavender-violet; F. amethyst-violet veined darker. 3 feet.
- TROOST 84**—S. rosy purple; F. lighter, veined violet. 3 feet. A brilliant bright pink.
- TRUE CHARM**—Late, 38 inches. S. white; F. white, frilled and slightly veined blue lavender. Vigorous. A very dainty, indispensable Plicata.
- UNDINE**—A dark blue-toned self.
- VALENCIA**—Midseason, 36 inches. A beautiful, bright orange-buff self color, very vigorous and free flowering. Flowers of excellent form and substance. Distinct, unusual, and highly recommended.
- VALERY MAYET DEUIL DE 85**—S. rose-purple flushed orange; F. velvety dahlia purple. Rich and distinctive red color tone.
- VINGOLF**—S. cream; F. deep, rich, velvety violet-blue. 30 inches. Fascinating.
- VIRGINIA MOORE 81**.—A tall, bright chrome-yellow, veined darker on falls.
- WEDGEWOOD**—Late, 42 inches. The richest "Wedgewood-china blue" self, white beard. The most glorious, rich blue in Irises. A super Iris, distinct and indispensable.
- WHITE KNIGHT 83**—One of the older pure whites; chaste and beautiful.
- WHITE QUEEN 81**—Absolutely pure white even to beard and style arms. One of the best and freest flowering early whites, good form and wonderful substance, long blooming period. 30 inches.
- WILD ROSE 81**—S. pale amaranth-pink, with white beard. Exact shade of the prairie rose. 33 inches.

W. J. FRYER 84—S. olive-yellow; F. blackish, red-purple, with yellow border. 33 inches.

YELLOW HAMMER 88—A large bright amber yellow of good form and substance, long flowering period, very sweetly scented. An Iris of great merit. 24 inches. Early.

YELLOW MOON—Late, 36 inches. A very soft, uniform, pale yellow self. Exceedingly free flowering, a good grower, desirable in every respect. Lovely.

YEOMAN—Late, 40 inches. Of the DOMINION family with soft-violet standards and satiny, mulberry falls that are especially fine. Clear and bright

YVONNE PELLETIER 81—S. pale lavender-blue; F. slightly deeper shade. Medium size, most profuse. Most effective for a blue mass. 36 inches.

ZILIA—A uniform shade of dark lavender-blue, overlaid rose. Large and attractive, free flowering.

ZUA 74—S. and F. and extremely light shade of lavender, olive green markings on edge. Charmingly ruffled. Scented. Very large.

ZWANENBURG 85 — S. cream blotched greenish buff; F. chamois to olive. Early. Large flower, odd and distinct. Attractive coloring.

DWARF BEARDED IRISES

These are among the earliest Irises to bloom in the garden. Blooming in April and early May, they afford an early glimpse of the later, tall bearded Iris season. The dwarfs are adaptable to a wide range of growing conditions and are especially suited to borders and rock gardens. The rhizomes of this division usually are quite small, and after planting, they should not be allowed to dry out before the plants become established.

AZUREA—Bright sky blue. A real gem. 4 to 6 inches 25c

BUTTERFLY—A yellow toned dwarf, curiously feathered. 6 inches 20c

CHAMAEIRIS ALBA—6 inches. A wild dwarf species from southern France and northern Italy. White with evergreen foliage 25c

CHAMAEIRIS AUREA—6 inches. The yellow form of the foregoing 35c

CYANEA—6 inches. Very fragrant, rich crimson with a beautifully veined white throat. One of the largest of the dwarfs and one of the best purples 25c

DIXMUDE—6 inches. A reliable blue and red violet bicolor; vigorous and free flowering. S. aniline blue; F. rich crimson purple. White throat veined purple, 20c

EBURNEA—6 inches. A lovely soft yellow 35c

FLORIDA—6 inches. A fine, new yellow dwarf. Scarce 50c

GOLDEN—6 inches. A pleasing shade of deep yellow 50c

GRAMINEA—6 inches. A rich red-violet of fine form, the falls shading to blackish-purple. Very profuse 35c

HARBOR LIGHTS—8 inches. Originated by the late Mr. Sam Burchfield, who claimed it as the best soft yellow dwarf Iris. A charming lemon-yellow 50c

JAUNE—4 inches. A light primrose-yellow 35c

JEAN SIRET—12 inches. A recent importation from France. It is said to be an ever-blooming Iris, and apparently is the

nearest approach to it that we have yet seen. It starts with the earliest of the Dwarfs blooms over a long period then intermitently during the summer and in the fall is the most free flowering of all the fall bloomers. S. creamy white overlaid picric yellow; F. slightly deeper with greenish-yellow lines and with a very few bright purple splashes; beard golden yellow. A very iridescent dwarf of good form and very attractive. Fragrant.. 75c

LA FRANCE—8 inches. One of the best of the white Dwarfs 50c

LEOPOLD—4 inches. Blue-purple with white beard 25c

LIBRA—10 inches. Another good white Dwarf with a coloring similar to that of WHITE QUEEN 50c

LUTEA—6 inches. A pale yellow 50c

NEGUS—10 inches. One of the best of the Dwarfs very free flowering giving a very rich effect in clump. Reddish-purple to intense dark velvety purple with a rich golden beard 20c

NUDICAULIS—8 inches. A free blooming, reddish-blue, bicolored Dwarf 15c

ORANGE QUEEN—6 inches. In our opinion the finest yellow Dwarf, being a large flower of excellent form, of a uniform shade of clear, deep yellow 25c

PHOEBUS—4 inches. Yellow with chestnut venations 25c

PUMILA BLANC—6 inches. A white Dwarf species 25c

PUMILA ROYAL PURPLE—6 inches. The purple flowered species 20c

PUMILA HYBRIDA VARA NANA—4 inches. Evergreen grass-like foliage with early, rich showy purple flowers. Splendid for evergreen borders, for massing, or for the rock garden 25c

REICHENBACHII—4 inches. A Dwarf species from the Balkans. A clear, light yellow self 25c

ROSE MIST—6 inches. Mr. H. P. Sass, who originated this variety, describes it as "a pumila hybrid, with rose-purple flush not heretofore found in pumila hybrids" at 75c

ROYAL PURPLE—A clear, deep purple self with white reticulations at haft and a white-tipped beard. One of the largest and best of the purple dwarfs for rock garden or border 35c

SCHNEECUPPE (Snow Cap)—6 inches. One of the best of the white Dwarfs, the falls having a greenish flush and slight reticulations at the throat 20c

SOUV. DE LIEUT. DE CHAVAGNAC—6 inches. A new, French, violet-purple dwarf **EVERBLOOMING** variety with a delightful lemon fragrance. See **JEAN SIRET** for further description 75c

STATELLAE—10 inches. A collected variety. One of the best. The flower is a white self overlaid with a creamy tone, of good form and well poised. There is a soft yellow flush at the center of the flower and a brilliant orange board.. 35c

TOM TIT—18 inches. This variety belongs in the Tall Bearded division, but is so low growing as to be suitable for planting with the dwarf Irises. It is a delightful dark blue-toned Iris and makes a most effective color mass. Late 15c

VILLEREAL—8 inches. A medium-blue-toned bicolor. Attractive 25c

VIOLET ROUGATRE FIEUME—No description yet 50c

BEARDLESS IRISES

Including Siberian, Acorus, Spuria and various Genera and Species.

BLUE KING—42 inches. From Japan. A deep blue-purple that has been a great favorite, and is excellent for landscape and for cut flowers. 3 for 50c, each 15c

BUTTERFLY—38 inches. Very lovely with standards and styles of a soft uniform sky-blue, and falls flushed soft-blue over a white throat with purple veins ... 20c

CACIQUE—3 to 5 feet. A rich purple. Fulva hybrid with a brilliant gold arrow on the fall. Very effective \$1.00

CAESAR'S BROTHER (F. Cleveland Morgan)—A new introduction this season. A great improvement over the same introducer's **CAESAR**, by far the richest colored Siberian Iris yet brought out. Flowers of largest size and the finest form and texture, of brilliant red-purple \$3.00

DOROTHEA K. WILLIAMSON—33 inches. A rich, velvety royal-purple flower and one of the finest of the section. It is a Fulva-Foliosa hybrid by Mr. Williamson and produces a distinctive form of flower. Does well in a moist, well-drained location, in partial shade, or in ordinary garden soil 20c

ENSATA—The earliest blooming dwarf beardless Iris. It has very handsome little soft lavender-blue flowers, on stems 12 inches tall, opening soon after the Dwarf Beardless Irises. The dainty flowers nestle down among the slender leaved foliage. Does equally well in a moist or a dry location 35c

EMPEROR—48 inches. A noble form of *Orientalis* collected by the late E. H. Wilson in Japan, one of the finest of the

type. Large flowers of good form and texture, of a uniform deep violet-blue, 15c

FLORRIE RIDLER—42 inches. A large flower of an exquisite deep, rich blue. Two flowers open side by side on the same stem, giving a charming double effect—a feature shown by no other Siberian Iris. Very attractive 35c

FOLIOSA—18 inches. An American species of the Hexagona group, with brilliant blue flowers nestling among the luxuriant foliage. Does well in partial shade or a moist location. Ideal beside a pool.. 35c

FULVA—18 inches. An American species from the Southern States that is quite hardy in the North. One of the most interesting of all Iris species, of a most unique deep burnished copper color. Likes semi-shade and a moist location, but will do well on high ground ... 25c

GEORGE WALLACE—46 inches. A very fine tall azure-blue Siberian, the first of this group to bloom. Very popular.. 25c

GRANDIS—45 inches. A variety with rich violet standards and styles and white falls beautifully veined the color of the standards 50c

HYACINTHIANA—12 inches. The second earliest of the beardless sorts to bloom, **ENSATA** only being a day or two earlier. The standards and style arms have a ground color of white heavily flushed and lined pale violet. The falls have a center of deep cream paling to white at the edges with a faint flush and faint lines of light violet. This was a great favorite

- with the late Mr. Sam Burchfield, and is a wonderfully dainty Iris. Especially fine as a cut flower, but charming in the clump. 3 for 50c. Each 20c
- LADY NORTHCLIFFE**—38 inches. A fine flower of deep bright violet with a white throat beautifully veined violet, and a broad white line on the reverse of the falls. One of the most beautiful of the Sibiricas 25c
- LORD WOLESLEY**—40 inches. Large flowers, of a handsome blue-purple. One of the most rugged and hardy, and one of the most beautiful of the Spuria group. 35c
- MONNIERI**—48 inches. Also a Spuria. A handsome, rich golden-yellow flower somewhat similar to AUREA. Late flowering. Likes a moist situation 60c
- MRS. A. W. TAIT** — 30 inches. Spuria group. A very fine, soft porcelain-blue Spuria hybrid; handsome and free flowering 25c
- ORIENTALIS GIGANTEA**—38 inches. A large flower of pure white with large yellow blotches at the base of the falls. Stately and fine 25c
- ORIENTALIS SUPERBA**—38 inches. A similar flower to the above, but a medium blue with a pinkish tinge 25c
- PAPILLON**—50 inches. One of the tallest of the Sibiricas. The color is the same lovely soft blue of PERRY'S BLUE but the flowers are larger and of a somewhat different form 50c
- PEGGY PERRY**—A flower with an airiness and grace that are most appealing. Slightly ruffled petals forming a large and most attractive flower of a uniform rich violet-blue with a prominent white center with veins of the blue 35c
- PSEUDACORUS GIGANTEA**—A giant flowered form of Pseudacorus, a very valuable English species. The color is a rich yellow, and the plant will take care of itself under a great diversity of conditions. Does especially well in a moist location 15c
- PERRY'S PYGMY**—18 inches. This is a Unique Siberian Iris, being of dwarf growth with small flowers on short stems. The flowers are an intensely brilliant dark blue. Fine for a pool border, or for a moist spot among the rocks 35c
- ROBERT W. WALLACE**—A Siberian hybrid that came to us under this name but without description, so we must await its bloom before describing it. Very fine 35c
- SNOW QUEEN**—24 inches. This is a collected variety with a very handsome snow white flower and rich yellow markings at the throat. The flower is firm and waxy 15c
- SPURIA AUREA**—38 inches. A fine, rich uniform golden-yellow flower, prolific and free flowering. Splendid for landscape use 25c
- SPURIA NOTHA**—An Iris of the Spuria group with standards of rich violet and falls of blue, spotted yellow 35c
- THELMA**—A Sibirica hybrid the fine flowers of which are a handsome light blue in tone with the falls slightly darker than the standards 50c
- TRUE BLUE**—A medium sized blue Sibirica that makes a wonderful effect in the garden clump 20c

JAPANESE IRISES

The Japanese Irises are perhaps the most showy of all, and are most valuable in the garden because they blossom after the others have finished flowering. The broad, flat flowers, some of them 10 inches across, in their beautiful clear colors and pastel shades, add distinctive character to any garden planting. Their principal requirement is an abundance of water about the roots during a month before and a month after blooming. With this precaution, they will do well in any location and give wonderful returns on the investment of time and effort. They like full sun.

- ELEANOR PARRY**—An unusual double carlet-red flushed white and blue 40c
- GOLD BOUND**—The most popular double white Jap. Flowers white as snow with a firm and waxy texture 35c
- KOMACHI**—A double, deep violet-purple variety of great beauty 35c
- KOMBARIN**—A double, fine, large, pure white that is early and outstanding .. 35c
- MAHOGANY** — A large, double flower of rich mahogany-red. Very late. One of the handsomest of Japanese Irises .. 35c
- PRESIDENT HARDING**—A double, large, thick petaled flower of fine light blue, shaded darker; the last to bloom, and one of the best 35c
- PURPLE AND GOLD**—A very popular, double Japanese of brilliant purple and gold coloring 35c

IRISES FOR LANDSCAPING

Mixed Irises without labels and many fine unnamed seedlings are available for extensive plantings and where a large show of flowers from a moderate investment is desired. While they last—

100 Rhizomes for \$2.00 by express, charges collect. Not less than 50 at the 100 rate.

SPECIAL OFFERS

For a limited time, and if the selection of varieties is left entirely to us we offer double catalogue value for labeled varieties. This means \$10 value for \$5; \$50 value for \$25, etc. No such order received for less than \$2.00 net. You may indicate your preference as to colors and whether Irises of low, medium or higher prices are desired.

“Mysterious as the opal with its ever-changing fire, its marvelous, fragile structure more wonderful than the orchid, its beauty seems wholly ethereal, making you dream of faraway things—like the smoky clouds at dusk, or the rainbow glistening in the sun.”—B. H. Farr.

Most of the beardless Irises are right at home on the border of a pool, or in a grassy meadow with a brook running through it, though they will do well in the ordinary garden if given good care immediately after planting and until they become established.

Bonemeal, Stonemeal, Tankage and very little applications of Vigoro are the best fertilizers for Irises. Never use fresh, barnyard manure.

Remember that rhizomes of bearded Irises like a good baking in the sun. Naturally they “sit” on the ground as a duck “sits” on the water.

Iris root rot, when it appears, should be entirely cut out and burned. The cut surfaces of the rhizomes should be bathed in a purple solution of Potassium permanganate and allowed to bake in the sun a few days before replanting, or treated with Cupro-Jabonite which seems to be a sure cure.

In poorly drained and heavy soils, while not perhaps necessary, it is well to mulch Irises lightly in the late fall after the ground freezes to prevent heaving out from alternate freezing and thawing.

PEONIES

At the Michigan State Peony Show held at Jackson, Mich., June 10 and 11, 1933 our first copetitive Peony exhibition, we are proud to record that our Peonies were awarded two first prizes and two second prizes on only five entries. **OUR PEONIES ARE PRIZE WINNERS.**

“No garden can really be too small to hold a Peony. Had I but four square feet of ground at my disposal I would plant a Peony in the center and proceed to worship.”

—Mrs. Edward Harding.

Fine Peonies because of their all-round dependability, their sturdiness, their exquisite beauty and delightful fragrance have a peculiar fascination for flower lovers. The Peony is so hardy that it thrives in the coldest climate, without winter protection. Wherever the ground freezes at some time during the winter the peony can be successfully grown. It is the ideal flower of the North where most perennials can hardly survive. Nearly all of the varieties in this list are real aristocrats of the Peony world.

Peony roots are best planted at any time in the fall, beginning about the middle of September. All orders for Peony roots will be shipped during this period. Prices are for standard divisions with three to five or more eyes.

A discount of 15% from list prices will be allowed when selection of varieties is left to us.

DOUBLE FLOWERED PEONIES

8.6 ALBERT CROUSSE—Rose pink with creamy tone, tall, late, fragrant, profuse50c

7.2 ALICE DE JULVECOURT—Pink, charming, fragrant, midseason50c

9.0 A. M. SLOCUM—Late, large flower, pale pink tones of great beauty\$5.00

ANOMALA—Bright crimson species, 4 in., distinctive foliage\$1.50

8.7 AUGUSTE DESSERT—Large, midseason, intensely pink, silver tipped. Cup shaped. Rated too low. A real comer\$3.00

8.7—AVALANCHE—Waxy blush-white with faint pink center, rated as a splendid late white of perfect form50c

8.0 ASSMANNSHAUSEN—Late, light pink fading to white, strong stems. Laterals flower freely after main bloom\$4.00

- 9.0 BARONESS SCHRODER**—Finest white Peony for cut flowers of long keeping quality. Opens pale pink fading to white. Fragrant, tall, strong stems50c
- 8.0 BOULE DE NEIGE**—Large, early mid-season, white with yellow flush and crimson flecks. Pungent fragrance, tall, strong stems, free blooming75c
- 8.2 BRAND'S MAGNIFICENT**—Large, late midseason. Deep dark red. Strong stems, good foliage, very prolific\$3.00
- 7.5 BUNCH OF PERFUME**—A very fragrant Peony of deep rose color75c
- 7.8 CARNEA ELEGANS**—Clear flesh-pink center and guard petals with smaller petals of bright, clear yellow. Vigorous 75c
- 8.5 CHARLES NEIDEL**—Large, mid-season; shaggy, rose-pink, waxy flower, bright yellow stamens. Strong growth\$2.00
- 8.6 CHERRY HILL**—Very early, medium size. Glistening maroon with bright yellow stamens. Strong, free blooming \$1.00
- 8.1 COURONNE D'OR**—Large, late. Full, rounded white flowers with center of yellow stamens; odor of water lilies. Floriferous; strong stems, good foliage ..50c
- 8.5 CORONATION**—Midseason. Pale rose pink with much darker center; delicate lilac fragrance; medium height, floriferous, good stems and foliage. Of distinct form and beautiful\$2.50
- 7.4 COQUETTE**—Medium size, globular flower, late. Flesh-pink50c
- 7.2 DE CANDOLLE**—Late midseason. Very large, cup-shaped bloom. Currant red shaded amaranth. Novel. None like it60c
- 8.1 DUCHESSE DE NEMOURS**—Early, Superb, cup-shaped, sulphur-white, changing to pure snow-white. Fragrant. None so exquisitely chaste and beautiful in the half-opened flower 50c
- 8.5 DESIRE**—Large, midseason. Soft rose-pink, slightly tinted lilac. Rich rose fragrance. Scarce\$3.00
- 7.6 EDULIS SUPERBA**—Very early. Bright old rose to lighter pink. Very fragrant. Exceedingly floriferous. "Decoration Day, pink"40c
- EILEEN KELWAY**—A fine white flower on stiff stem. Scarce\$2.50
- 9.2 ELIZABETH BARRETT BROWNING**—Very large, very late, creamy blush opening to white with a pale yellow glow. Very fragrant; tall, spreading, floriferous. A beautiful flower\$1.50
- 8.7 ELWOOD PLEAS**—Bloom of largest size, flat and full, light shell-pink with delicate lavender tone. Does not fade. Midseason. Fragrant, long keeping flowers\$1.00
- 8.9 ENCHANTRESS**—Very large, globular, rose-type flower of great beauty; pure creamy white faintly flecked and splashed crimson. Very large, very late, tall, floriferous, strong\$1.50
- 8.3 EUGENE VERDIER**—A very beautiful, cup-shaped, crown type flower, flesh-pink with yellow, salmon and lilac-white shadings. Large, late, dwarf plant, exceptionally strong stems, very erect75c
- 8.6 EUGENIE VERDIER**—Midseason. Very large, flat flower of rose-pink. Slightly fragrant. Tall, floriferous, strong stems and good foliage. Very showy50c
- 8.2 Evangeline**—Large, late. Dark but bright rose-pink, rose fragrance, strong stems. Glorious flowers, very fragrant\$2.50
- 8.3 EVENING GLOW**—Large, early. Light shell-pink, paling to white and pale old-rose. Tall, erect stems\$1.50
- 8.5 EXQUISITE (Kelway)**—Midseason. Very large flowers. Most beautiful cherry-rose with prominent golden anthers. Very fragrant. One of the most beautiful of all\$1.50
- 8.4 FELIX CROUSSE**—Late midseason. Full, rich, even shade of red. Most popular red Peony for cut flowers50c
- FIDELINA**—One of the older pink Peonies50c
- 9.3 FESTIVA MAXIMA**—Very large, early, white with few crimson flakes. Fragrant, tall, strong stems40c
- 8.9 FLOWERET OF EDEN**—Large; early midseason. The flower has that soft, elusive pink-and-white coloring that is so appealing. Changes from a baby pink on opening to clear white. Unusually strong stems\$5.00
- 7.5 FLORAL TREASURE (Syn. Delicatisima)**—Flowers fragrant, and on strong plants, very large and perfectly formed. Delicate salmon-pink. Tall, strong grower. Midseason40c
- FRAGRANS**—A little appreciated Peony with small rose-pink flowers, not over three inches in diameter that under artificial light becomes almost true American Beauty shade. They appear more like roses than peonies. Slender, wiry stems. The oldest recorded Chinensis Peony. The most outstanding cold storage and cut flower variety 50c
- FONTENELLE**—Early red, very desirable for early blooming and its long, strong stems. Medium size, good form, clear crimson50c
- 8.6 FRANCES SHAYLOR**—Very large, mid-season. Dwarf, free flowering, good stems and foliage. White with pink flush and yellow tinted collar. Very distinct . \$1.00

- FULGIDA**—Late midseason. Tall, very erect, medium sized bloom of a uniform rose-magenta with silver tips50c
- 8.1 **GALATHEE**—A full, rose-type flower of perfect form. Very late. Flesh-white with deep pink center. Very fragrant. Tall, free blooming, good habit\$1.50
- 8.9 **GEORGIANA SHAYLOR**—Late midseason. Very large. Light rose-pink splashed crimson. A most refined pink Peony of sweet fragrance, medium height, free\$1.50
- 6.5 **GENERAL HOOKER**—Midseason, large flower, free bloomer. Uniform dark Tyrian-rose50c
- 8.2 **GROVER CLEVELAND**—Late midseason. Large bright crimson, mildly fragrant. Medium height, stiff stems, free. One of the finest late reds75c
- 8.8 **GRANDIFLORA**—Very late, very large, refined texture. A soft shell-pink shading to rosy-white. A fitting climax to a glorious Peony blooming season35c
- 7.7 **H. F. REDDICK**—Midseason. Large flowers of brilliant, dark crimson with showy bright yellow stamens. Free .75c
- 8.7 **JAMES KELWAY**—Early midseason. Very large. Fine form. Dainty flesh-pink changing to flesh-white. Tall and vigorous75c
- 9.2 **JEANNOT**—Late. Large. One of the finest of late introductions. Delicate flesh-pink tinted lavender and salmon-pink. Free blooming, upright, strong stems \$2.00
- 8.9 **JUBILEE**—Midseason. A wonderful white Peony of largest size, often 8 to 9 inches in diameter. A full, flat, refined bloom of most delicate texture and long lasting quality. One of the finest of all for cut flowers and show bloom\$1.00
- JUPITER (Calot)**—A lovely deep rose, free blooming. Fine for cut flowers50c
- 8.8 **KARL ROSENFELD**—Midseason, large flower, very bright crimson. One of the best all-around red Peonies. Ideal for landscape and for cut flowers75c
- 9.8 **KELWAY'S GLORIOUS** — Midseason. White with creamy suffusion, sometimes with faint crimson edges in center. Rated next to Le Cygne as the second best of all white Peonies. Strong stems, reliable and free bloomer\$3.00
- 8.8 **KELWAY'S QUEEN**—Midseason. A large flower of bright rose-pink with flesh tones; strong rose fragrance. Medium height, floriferous, strong stems. True variety is very scarce\$5.00
- 8.1 **LADY ALEXANDRA DUFF**—Midseason. "The long lost Peony." One of the most popular of all. Flowers of a beautiful French white tinted a very delicate, fresh blush or pale pink, very large, nicely formed and fragrant; in clusters with saucer-shaped side flowers. Strong stems, very free\$1.00
- 9.2 **LA FEE**—Early midseason. Very large, delightfully airy and charming. Called "The Fairy." Light old-rose-pink with collar of creamy pink. One of the very finest\$2.50
- 7.5 **LA TULIPE**—Early midseason. Large. Clear, light flesh-pink, with creamy center often streaked crimson. Popular 40c
- LAURA DESSERT** 8.8—Early midseason, medium size. One of the best yellow Peonies. Vigorous, erect, strong stems. Very fragrant\$2.00
- 9.9 **LE CYGNE**—Early. Very large. Fragrant. White tinted ivory, fading to pure white. The very embodiment of grace and beauty\$3.00
- 8.8 **LILLIAN GUMM**—Late midseason. Very large. Apple-blossom pink, lighter at tips shading to fiery carmine, at base. An outstanding sort with very fine fragrance\$1.50
- 8.1 **LIVINGSTONE**—Late. Large. Old-rose-pink on lighter base, lightly marked crimson. Strong, sweet fragrance, sturdy. Good form60c
- LORD KITCHENER**—Single dazzling cherry red, very large. One of the first Chinesis Peonies to bloom\$1.50
- 9.0 **LONGFELLOW** — Midseason. Large. Bright crimson with golden stamens. Most brilliant and purest red. Strong stems\$1.50
- 8.4 **LORA DEXHEIMER**—Midseason. Large. Intense crimson shaded darker at base. One of the brightest of dark red Peonies. Very fine form and style\$1.00
- 8.8 **LOVELINESS**—Very late. Large. Pale flesh-pink. Fragrant, free-blooming on strong stems. Excellent quality and habits\$1.00
- 8.7 **LUETTA PFEIFFER**—Early, very large, hydarangea-pink shading to nearly white. Creamy suffusion from numerous stamens\$3.50
- 9.0 **MABEL L. FRANKLIN**—Midseason. Very large. Brilliant rose-pink. Delightful lemon fragrance. Strong and free . \$3.00
- 8.4 **MARGUERITE GERARD**—Midseason. Very large. Flesh to rose-pink with yellow stamens. Free flowering and good foliage50c
- 8.5 **MARIE LEMOINE**—Late. Very large. Pure white with traces of crimson and yellow. Richly fragrant. One of the handsomest Peonies50c
- 7.8 **MARQUIS C. LAGERGREN**—Midseason. Large, bright, velvety crimson, brilliant and showy. Silvery border. Strong stems. Profuse \$1.00

- 9.1 **MARTHA BULLOCH**—Late. Very large. Silvery shell-pink shading to deep rose-pink. Combines quality, texture and immense size\$2.50
- 8.7 **MARY BRAND**—Midseason. Large. Brilliant, vivid crimson with silvery sheen. Fragrant\$1.00
- 7.4 **MASTERPIECE**—Early midseason. Large dark Tyrian-rose showing numerous stamens. Slightly fragrant. Fine plant, tall, good stems75c
- 8.5 **MAUD L. RICHARDSON**—Very late. Large to very large. Light rose-pink with flesh-pink undertone. Fragrance strong and pleasing\$1.00
- 8.2 **MIDSUMMER NIGHT'S DREAM**—Late midseason. Large. Ivory-white guards and center with primrose-yellow collar. Attractive cut flower\$1.00
- 9.0 **MILTON HILL**—Late. Large. Luminous light shell-pink with opalescent tints of salmon-pink. Fragrant. Delicate and refined. One of the very finest\$1.00
- 8.1 **MLLE LEONIE CALOT**—Late midseason. Small to medium size. Light flesh-pink darkening in center, ruffled and crinkled. Fresh, sweet fragrance. Very floriferous. Excellent cut flower50c
- 8.6 **MME. AUGUSTE DESSERT**—Midseason. Large cupped blooms of old-rose pink with a hollow center filled with golden yellow stamens and rose-pink carpels. Fragrance of elderberries. Free blooming, strong stems, medium height ..\$1.00
- 8.1 **MME. CALOT**—Early. Large. Light old-rose-pink with creamy tints and darker center. Very fragrant, tall, strong stems. A Peony of generally high quality. Very floriferous30c
- 7.9 **MME. DUCEL**—Midseason. Medium size. Pale old-rose with lustrous silvery sheen. Dwarf; floriferous; stiff stems50c
- 7.5 **MME. DE GALHAU**—Late. Medium size. Rose-white to pale lilac-rose. Very fragrant. Well developed flowers very beautiful75c
- 7.9 **MME DE VERNEVILLE**—Early. Medium size. A sweetly fragrant early white blush. One of the most perfectly formed of white Peonies. Reliable75c
- 8.5 **MME EMILE GALLE**—Late. Large flat flower of translucent light rose-pink with shading of shell-pink about the daintiest colorings of the flower kingdom. Free and reliable50c
- 7.7 **MME. FOREL**—Late midseason. Very large. Even, clear pinkish-lavender throughout. The fragrant blooms make fine cut flowers75c
- 8.2 **MME GAUDICHAU**—Late midseason. Medium size. Very dark crimson with brilliant blackish sheen. Foliage distinct dark red that greatly enhances the value of this variety\$2.00
- 9.4 **MME. JULES DESSERT**—Late midseason. Very large, flat, saucer-shaped flowers of flesh-pink shading to straw-white golden stamens. Difficult to do justice to the perfect flowers of this Peony \$1.50
- 7.8 **MODESTE GUERIN**—Early. Large. Dark rose pink with violet tints and rose fragrance. Strong growth, floriferous, good stems. The best early, deep pink ...75c
- 8.3 **MONS. DUPONT**—Late midseason. Large. Cream-white with a yellow glow from buried stamens; center crimson splashed. Tall, stiff stems, free blooming. A thoroughly good Peony75c
- 9.2 **MONE JULES ELIE**—Early. Very large. The opaque, light rose-pink of pink Chrysanthemums. Fragrant, tall, free-flowering. One of the most popular cut flower Peonies75c
- 8.8 **MONE. MARTIN CAHUZAC**—Early midseason. Large. Massive, full flowers, outstanding because of its dark, maroon-crimson with black reflex and yellow stamens. Most popular very dark red \$1.50
- 9.3 **MRS. EDWARD HARDING**—Midseason. Large. A fine quality flower of clearest white illuminated by many golden stamens. Ideal habit, strong, vigorous, upright. Very handsome\$2.50
- 9.0 **NINA SECOR**—Midseason. Medium to large. Pure white with yellow glow in the depths. A reliable flower of fine form \$2.50
- 8.8 **NYMPHAEA**—Midseason. Large. Creamy white, flushed pale rose-pink on opening. Many stamens afford a golden yellow light throughout. Fragrant, a free bloomer, stiff stems\$1.00
- 8.5 **OPAL**—Midseason. Large. Pale rose-pink changing to opalescent French-white. "Great beauty of form and delicacy of color and texture." Free and reliable bloomer\$1.00
- OTHELLO**—Medium sized flower, very double, deep purple-crimson. One of the darkest colored of all Peonies. Very rare\$1.50
- 8.2 **PALLAS**—Early midseason. Very large, exquisite bloom of delicate flesh-pink shading to a white center. Very long petals. Extra free bloomer. Strong stems\$2.50
- 8.4 **PASTEUR**—Late midseason. Large. Very soft pink, nearly white, shading to tea-rose at the base of the petals. Very fine\$1.00
- 9.2 **PHILIPPE RIVOIRE**—Early. Beautiful. well-formed, cup-shaped flower, very dark crimson with blackish sheen. The best dark red Peony in the world. Rich rose fragrance. The only sweet-scented red Peony. Strong stems\$4.00

- 9.0 PHYLLIS KELWAY**—Midseason. Very large. A strikingly beautiful flower with a fine style all its own. Rose-pink paling to white in the center. Strong, upright, stiff stems\$3.00
- 7.7 PRESIDENT ROOSEVELT**—Midseason. Medium size. Distinct, brilliant dark red, different from any other. Stiff stems. Excellent, all-round red\$1.00
- PRESIDENT TAFT**—(See REINE HORTENSE.)
- 9.3 PRESIDENT WILSON** — Late. Very large, bright rose-pink, deeper in center and paling with age. Rich spicy fragrance, medium height, floriferous, strong stems\$7.00
- 8.6 PRIMEVERE**—Midseason. Medium size. Flat flower with creamy-white cupped guards, rarely splashed red; center opens deep canary yellow changing to sulphur-yellow. One of the best “yellows” \$1.50
- 8.3 RACHEL (Lemoine)**—Late midseason. Large. Soft apple-blossom pink with flesh tints at base. High grade, free flowering, erect\$2.00
- 8.7 REINE HORTENSE**—Midseason. Very large. Lovely rose-pink in a halo of white. Deliciously fragrant. A dependable sort, one of the world’s finest. Tall, free flowering, stiff stems\$1.00
- 8.8 RICHARD CARVEL**—Early. Large. An unfading, bright crimson. The first red to bloom. Tall, strong, upright, free. Ideal habit and earliness make it desirable for cutting\$1.50
- 8.8 ROSETTE**—Early midseason. Large. loose, semi-rose type flowers, distinct and attractive. Light shell-pink, clear and fresh\$1.25
- 9.0 SARAH BERNHARDT**—Late. Very large. Dark rose-pink edged lighter, a refined flower, beautiful in color, strong and vigorous, free blooming and reliable. Holds its own with the rarest and finest of them all75c
- 9.7 SOLANGE**—Late. In a class by itself with a coloring beautiful and distinct. Deep creamy-white with a suffusion of buff and pale salmon-pink. A flower to inspire the deepest enthusiasm. One of the five finest Peonies\$1.50
- 7.6 SOLFATAIRE**—Midseason. Medium size. The flower opens with milk-white guards and center of pale sulphur-yellow changing to sulphur-white. One of the good yellows. Vigorous, upright50c
- 9.1 SOUVENIR DE LOUIS BIGOT**—Midseason. Large. Vivid rose-pink, brightening to shell-pink in the center. One of the most distinct and beautiful of all pink Peonies, and one of the cleanest and brightest colored grown. A real treasure, nothing short of gorgeous\$1.50
- 8.2 SUZETTE**—Midseason. Large. Clear rose-pink, with deeper old-rose center, showing golden stamens. Free, good habit, stiff stems\$1.50
- 8.5 TENUIFOLIA FLORE PLENO**—Early, very double, dazzling red. The earliest red to bloom. Foliage beautifully cut and lacinated\$2.50
- 9.8 THERESE**—Midseason. Very large, Pale translucent, old-rose, illuminated by a golden yellow glow. Splendid in form, texture and color. With LeCygne and Solange the three greatest Peonies . \$1.50
- 9.4 TOURANGELLE**—Late. Large. A pale, apple-blossom pink; one of the most beautiful of all Peonies and none with greater refinement and delicacy. Pleasing fragrance. Floriferous\$1.50
- 7.4 UMBELLATA ROSEA**—Very early. Medium size. Pale hydrangea-pink minutely flecked violet-rose, vigorous, floriferous, stiff stems. An old variety listed among the first 50 Peonies50c
- 9.3 WALTER FAXON**—Midseason. Medium size. Among all the pink Peonies in the show room this one stands out as the one real pink. It is vivid shell-pink of a luminous intensity. Mild fragrance.\$1.50
- WARWICK**—An old crimson Peony of unknown origin50c
- 7.8 WELCOME GUEST**—Midseason. Large. Uniform glossy silvery-pink changing to rose-white. Fragrant, erect, tall, strong and free blooming\$1.00
- 8.8 W. F. CHRISTMAN**—Midseason. Large. Delicate flesh-pink changing to flesh-white. Strong, upright, free and reliable\$2.50
- 8.4 WILLIAM F. TURNER**—Early midseason. Large. Very dark crimson with blackish velvety sheen mingled with yellow stamens. A valuable sort for the garden because of its excellent habit . \$3.00
- 8.8 WILTON LOCKWOOD**—Midseason. Very large. Light rose-pink with red splashed and edged center, illuminated by yellow stamens. Tall, strong and free. Growth to 5 ft.\$3.50
- ZEST**—Midseason. A pink Peony of medium height and strong, graceful stems which at times “even exceeds Kelway’s Exquisite in beauty”\$1.00
- 7.0 MULTIFLORA (Syn. NELLIE PLEAS)**—One of the old “pinks” 50c

SINGLE PEONIES

- 8.6 **LE JOUR**—Early midseason. Finest single white. Golden yellow stamens. Strong erect. Wonderfully large flowers ..\$1.50
- 8.4 **L'ETINCELANTE** — Midseason. Very large cupped flowers, very bright pink margined silver. Bright golden stamens. Tall, stiff stems, free bloomer. Exquisite, pure color\$1.50
- 8.2 **MAFEKING**—Midseason. Very large, smooth, dark ruby-red. One of the very finest single reds. Mint fragrance. Tall and free\$2.00
- MINNEHAHA**—An introduction of Mrs. Pleas that is not widely distributed. A distinct and pleasing single flower, borne in great profusion, uniform, bright cherry-red with center of clear gold stamens. A gorgeous color effect.\$2.00
- 8.6 **NELLIE**—Midseason. Medium to large. A very fine flower of uniform and shell-pink. Center of yellow stamens. Blooms in clusters on strong, stiff stems ...\$1.50
- 8.9 **PRIDE OF LANGPORT**—Midseason. Very large and fine flowers of soft, pleasing pink with center of long yellow stamens. Has the highest rating for a single pink peony. Flowers in clusters on strong stems with a delightful habit of growth\$2.50
- 8.5 **ROSY DAWN**—Early. Large white flowers opening pale pink. A profusion of blooms on strong branching stems .\$1.00
- 8.4 **THE BRIDE (Syn. LA FIANCEE)**—Early. Large, saucer-shaped blooms with very broad, silky, transparent petals of purest white and a crown of golden yellow at the center. Superb75c
- 8.0 **THE MOOR**—Early. Medium size flowers with petals of dark purple-garnet. Center of pleasing yellow stamens. Prolific, showy\$1.50
- 7.9 **TOREADOR**—A good single Red Peony\$2.00
- 8.5 **WILD ROSE**—Midseason, elegant flower of richest satiny pink\$3.00

JAPANESE PEONIES

Not so well known, but the distinctive form, surpassing beauty and delightful charm peculiar to themselves, these glories of the garden deserve far more attention than they have yet received. To see them is to love them.

- 8.5 **ALMA**—Midseason. Medium size. Soft-pink\$1.00
- 9.2 **AMA-NO-SODE No. 1**—Midseason. Very large. Rose-pink saucer of petals with immense center of long yellow staminodes. One of the six best Japanese Peonies \$4.00
- AMA-NO-SODE No. 3**—Another excellent pink Japanese peony but not quite the quality of the No. 1\$2.00
- 8.1 **CATHEDRAL (Syn. Hana-no-sato)**—Midseason. Large. Vivid dark rose-pink guard petals with a great center of staminodes of light lilac-rose. Perhaps the most striking of Japanese Peonies\$2.00
- 8.5 **FLAMBOYANT**—Midseason, large. Violet-crimson petals with center a full ball of chamois-yellow edged gold staminodes, faced red\$2.00
- 9.2 **FUYAJO (Jap.)**—Midseason, medium size. Mahogany tipped light bronze. One of the richest shades, deserving a place in every garden\$2.50
- 8.3 **INNOCENCE**—Late midseason. Lilac-rose with canary yellow center\$1.50
- 9.3 **ISANI GIDUI**—Midseason. Very large. The very best White Japanese Peony. Excellent white guard petals with a large, rounded mass of yellow staminodes of the finest quality\$5.00
- 8.6 **KING OF ENGLAND (Jap.)**—Midseason, very large, glossy garnet red, between crimson and maroon. Tall, floriferous, slender, wiry stems. A handsome, vividly colored flower\$3.00
- 8.6 **MIKADO**—Midseason. Medium size. Waved, cupped petals of dark, dull crimson. If you have but one Jap. Peony, let it be Mikado. First imported for the Chicago World's Fair in 1893. Most popular\$1.50
- 8.3 **SNOW WHEEL**—Midseason. Large. Broad, waxy outer petals with small, deep yellow center, the filamented petals resembling beautiful aigrette feathers. A pure immaculate white\$3.00
- 9.0 **SOME GANOKO**—Midseason. Large. Probably the best red of all Japanese type Peonies. Guards a rich shade of velvety clear dark crimson, center of crinkled buff staminodes tinted rose-red. Fragrant \$2.50
- SUNRISE (Syn Hinode Sakai)**—Very late, handsome lilac-pink \$1.50
- 9.4 **TAMATE-BOKU**—Midseason. Very large. Enormous cupped petals of dark old-rose-pink. Center of staminodes of yellow-shading to light pink. "The finest of all the Japs." A glorious pink, exquisitely fragrant\$15.00

THE DRAGON—An uncommon brilliant, rich, dark crimson\$2.00

8.9 TOKIO—Midseason. Broad clear carmine-pink petals and a golden-yellow heart. A very large pink Jap. type . \$2.00

8.0 TORPILLEUR—Midseason. Very distinct, large, rose-red or light crimson with large cluster of staminodes of the same color tipped pink and yellow. Probably the very best genuine red Japanese type Peony\$3.00

EARLY MAY FLOWERING PEONIES

OFFICINALIS RUBRA PLENA—The old-fashioned red "Piney." Sometimes known as the "Decoration Day Red." A brilliant amaranth-red not found in any other 75c

TENUIFOLIA FLORE PLENA—Flowers small to medium, full double, a brilliant dark crimson. The first to bloom. A dwarf "cut-leaved" plant with distinctive finely lacinated foliage\$2.50

PEONY SPECIES

SMOUTH—A variety of ANOMALA with 4-inch, bright crimson flowers\$2.00

ANOMALA—A well-marked type native to Europe, with distinctive cut foliage \$1.50

The heavy-headed peony
Drops silken petals, rosy sweet,
Upon a silken carpet for my feet.
—Louise Driscoll.

I love the clean green after rain
When yet there is no rust or stain
On any leaf, but all things are
As if we lived on some new star
—Louise Driscoll.

Join the American Peony Society by sending \$3.00 for a year's dues to Secretary, Mr. W. F. Christman, Northbrook, Ill., and receive their valuable bulletins.

PERFECT PLANT MARKER

READ AT A GLANCE



A permanent, indestructible, metal plant marker that may be easily "knocked down" or "set up" as desired, is easily read, dependable in place, and tall enough to make reading the labels a pleasure instead of a task.

Label your Irises, Peonies, Gladioli, Poppies, Phlox, Chrysanthemums, Roses or what have you with the Perfect Plant Marker so that any visitor may read their names instantly without grasping the label, without stooping, without digging into a mass of foliage and without first having to wipe off a layer of sand or dirt.

The Perfect Plant Marker consists of a heavy galvanized wire standard 36 inches in length (may be longer if desired), and the label proper, an oval galvanized steel or zinc plate at least 2"x4½", held rigid at an angle of 45 degrees.

The marker may be easily mounted without tools and as easily demounted when required. There are no projecting corners, or ends of metal or wire to catch clothing or fingers.

Nothing appears above but the lettering on the surface.

It has been pronounced the SIMPLEST, NEATEST, and CHEAPEST label of its type on the market.

Marking easily placed with chemical ink, brush, or metal marking pencil.

Size 2"x4½", Standard 36", galv., only \$1.25 per 12; \$7.50 per 100.

Chemical Ink for marking, 50c per bottle.

