

Historic, Archive Document

Do not assume content reflects current scientific knowledge, policies, or practices.

6245

Barnes Seed & Feed Company

Successors to Hightower Seed Company

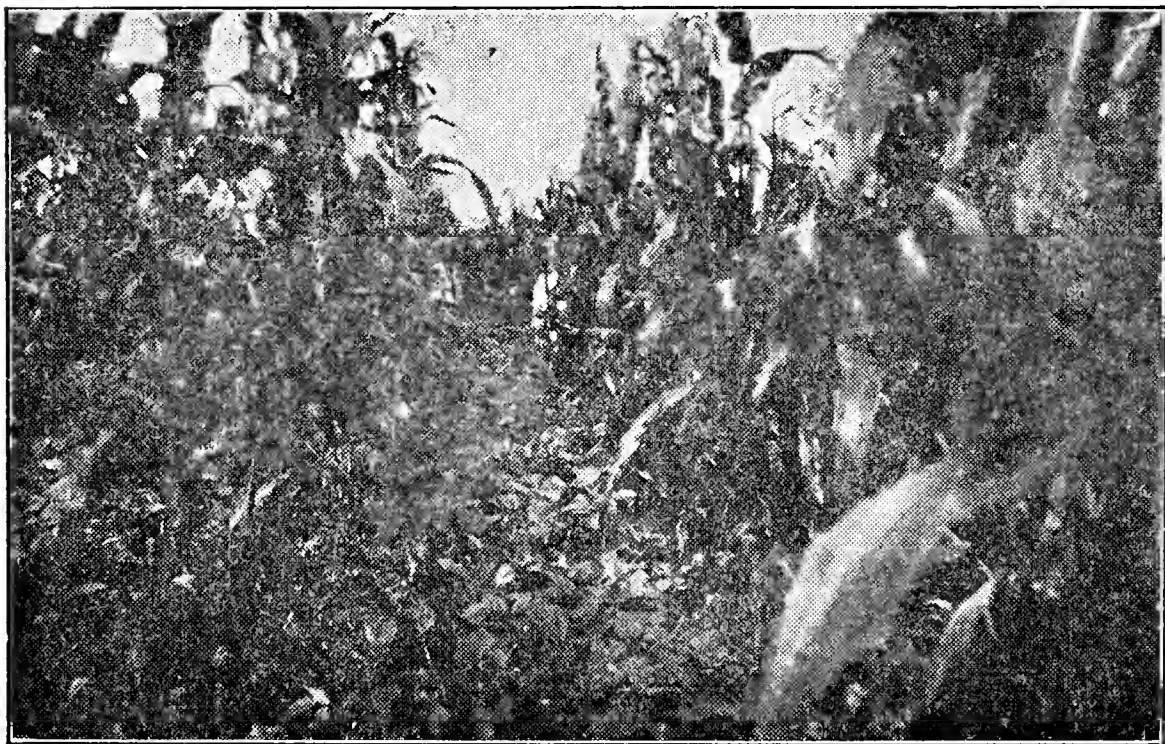
Hattiesburg, Mississippi

VEGETABLE
SEED TRIALS
HORTICULTURE

U. S. Department of Agriculture

1933 Catalogue—Spring & Summer

JAN 28 1933



A FIELD OF OUR HASTING'S PROLIFIC CORN
AND COW PEAS

Spring and Summer Price List for 1933

This our SECOND ANNUAL Catalogue comes to you with our greetings and best wishes for you during the year 1933 and the earnest hope that it may be of REAL SERVICE to you. real

Our Firm is new in name, but OLD IN SEED EXPERIENCE, having had a number of years experience in BUYING, SELLING, TESTING and GROWING SEED. We are QUALIFIED and THOROUGHLY EQUIPPED to serve the South with HIGHEST QUALITY SEEDS.

Our seed are grown ONLY by RELIABLE growers, from CAREFULLY SELECTED stock, TESTED by us in our store and at our EXPERIMENT FARM, thus assuring you of getting at all times, seeds of FINEST QUALITY and SURE GERMINATION.

Visit us or write us your "seed needs". All orders, inquiries, and requests will receive our PROMPT AND COURTEOUS ATTENTION.

OUR TERMS are CASH with order. Remittances may be made by CASHABLE Check, Post Office or Express Money Order, or small amounts in stamps.

C. O. D. ORDERS must be accompanied by at least one-fourth the amount of the order, in CASH. NO PLANTS WILL BE SHIPPED C. O. D.

PARCEL POST ORDERS, where sufficient amount is not remitted to cover postage, will be sent C. O. D. FOR THE NECESSARY POSTAGE in order to save delay.

MARKET PRICES CHANGE. Therefore, PRICES IN THIS CATALOGUE ARE SUBJECT TO CHANGE WITHOUT NOTICE.



NON-WARRANTY. While we exercise every possible care in our selection and handling of seeds, BARNES SEED & FEED COMPANY gives no warranty, express or implied, as to description, quality, productiveness or any other matter of any seeds, bulbs or plants they send out, and will not in any way be responsible for the crop. If the purchaser does not accept the goods on these terms, they are to be returned at once. NO RESPONSIBLE SEEDMEN GIVE ANY WARRANTY, as it is impossible for us to regulate weather or soil conditions, the proper planting of seeds and many other things beyond our control. So, while we have the utmost confidence in our seeds, we cannot be responsible after they leave our hands.

FRESH, TESTED SEED ONLY**BUSH BEANS****GREEN PODDED VARIETIES**

CULTURE. Plant one pint to 75 feet of row, and $\frac{3}{4}$ to $1\frac{1}{4}$ Bu. per acre, in the spring, early summer and fall. Drop in hills or rows 18 inches apart and cover not more than two inches.

IMPROVED EARLY RED VALENTINE. One of the earliest beans. With pods of medium length, round, crisp and tender, the most popular as a truck crop or for home use. 46 days from planting to picking. Pkg. 10c; $\frac{1}{2}$ Lb. 20c; 1 Lb. 30c; 2 Lbs. 55c, postpaid. Not prepaid, 15 Lbs. (Peck) \$2.00; Bushel \$6.75; 100 Lbs. 11c per Lb.

BURPEE'S STRINGLESS GREEN POD. Surpasses all others in tenderness, quality and in being absolutely stringless. The pods are long and straight and very beautiful. Four days earlier than Red Valentine and the best bean of all for home garden. Pkg. 10c; $\frac{1}{2}$ Lb. 20c; 1 Lb. 30c; 2 Lbs. 55c, postpaid. Not prepaid, 15 Lbs. (Peck) \$2.00; Bushel \$6.75; 100 Lbs. 11c per Lb.

OTHER GOOD VARIETIES

GIANT STRINGLESS. A very hardy vine with long fine beans of exceptional quality.

BLACK VALENTINE. An improvement over the Red Valentine with pods one-third longer.

REFUGEE. OR 1000 TO 1. Very hardy vines, bearing long, round, tender pods.

RED KIDNEY. The old fashioned dry or shelled bean.

WHITE NAVY. Selected seed, grown largely for Winter use.

Prices on above varieties: Pkt. 10c; $\frac{1}{2}$ lb. 20c; 1 lb. 30c; 2 lbs. 55c, postpaid. Not prepaid, 15 lbs. (Peck) \$2.00; Bushel \$7.00; 100 lbs. 12c per lb.

WAX PODDED VARIETIES:

IMPROVED GOLDEN WAX. Semi-round, golden colored stringless pods, ready to pick in forty seven days. Excellent quality and an improvement over the Golden Wax.

GERMAN PROLIFIC BLACK WAX. The standard Black Wax Bean.

DAVIS WHITE WAX. Pods of fine quality, long, straight, waxy yellow.

Prices on above varieties: Pkt. 10c; $\frac{1}{2}$ lb. 20c; 1 lb. 30c; 2 lbs. 55c, postpaid. Not prepaid, 15 lbs. (Peck) \$2.00; Bu. \$7.00; 100 lbs. 12c per lb.

Barnes' Big Four BEAN OFFER

This splendid collection, 90c worth for 50c:

$\frac{1}{2}$ Pint Early Red Valentine 20c; $\frac{1}{2}$ Pt. Improved Golden Wax 20c; $\frac{1}{2}$ Pt. Kentucky Wonder Pole 25c; $\frac{1}{2}$ Pt. Carolina Pole Lima or Butter Bean 25c; All for 50c. postpaid.

POLE BEANS

CULTURE. Plant one quart to 150 hills, 10 to 13 quarts per acre from spring to fall.

BARNES' EARLY MARKET. Out-yields all others and is the earliest of all green-podded pole beans. Matures fully two weeks earlier than the Kentucky Wonder and first picking is just a few days behind bush beans planted at same time. Don't fail to plant some of this variety. Pkt. 10c; $\frac{1}{2}$ Lb. 25c; 1 Lb. 40c; 2 Lbs. 75c; 5 Lbs. \$1.60, postpaid. Not prepaid, 15 Lbs. (Peck) \$2.50; 60 Lb. Bu. \$9.50; 100 Lbs. \$15.00.

KENTUCKY WONDER, OLD HOMESTEAD OR TEXAS WONDER. The old reliable and standard pole bean.

WHITE CREASEBACK. Extremely early and of splendid quality.

LAZY WIFE. Large clusters of pods five to seven inches long and entirely stringless.

CORN HILL or CUT SHORT. The best kind to plant in corn.

KENTUCKY WONDER WAX. Very early and adapted to our section.

MCCASLAN POLE. Immensely prolific, pods of large size.

STRIPED CREASEBACK, SCOTIA. or CORNFIELD. The real old style pole bean.

Prices on above varieties: Pkt. 10c; $\frac{1}{2}$ lb. 20c 1 lb. 35c; 2 lbs. 55c, postpaid. Not prepaid, 15 lbs. (Peck) \$2.00; Bu. \$7.50; 100 lbs. \$12.00.

BROCCOLI

WHITE CAPE. Similar to cauliflower and cultivated the same. Pkt. 10c; 1 oz. 75c, postpaid.

POPCORN

WHITE RICE, GOLDEN QUEEN and JAPANESE HULLESS. Pkt. 10c; 1 lb. 25c; 2 lbs. 40c 5 lbs. 90c, postpaid. Not prepaid, 10 lbs. 11c per pound. Write for quantity prices.

CARROTS

CULTURE. Plant 2 ozs. of seed to 100 feet of row or 3 to 5 lbs. per acre in drills 15 to 24 inches apart, in Spring and Fall.

EARLY CHANTENAY, IMPROVED LONG ORANGE, DANVER'S HALF LONG. Pkt. 5c; 1 oz. 15c; $\frac{1}{4}$ lb. 35c; 1 lb. \$1.00, postpaid. Write for quantity prices.



RED VALENTINE BEANS

LIMA OR BUTTER BEANS

CULTURE. Plant one pint to a quart to one hundred feet of row and about fifteen quarts per acre in the Spring, early Summer or Fall.

HENDERSON'S BUSH. The most popular variety, most prolific and of the very highest quality. Splendid for truck crop or home garden. Seeds are small white. $\frac{1}{2}$ lb. 20c; 1 lb. 30c; 2 lbs. 50c, postpaid. Not prepaid, Pk. \$1.85; Bu. \$7.00; 100 lbs. \$11.00.

JACKSON WONDER LIMA. A perfect bush butter bean, most prolific and stands most dry weather.

BURPEE'S BUSH LIMA. Pods and beans are very large.

CAROLINA OR SIEVA POLE. Immensely popular pole butter bean, very early and extremely productive.

FLORIDA SPECKLED POLE. The seeds are speckled, a variety that is very prolific.

EARLY JERSEY LIMA. A very large bean, bearing early and abundantly.

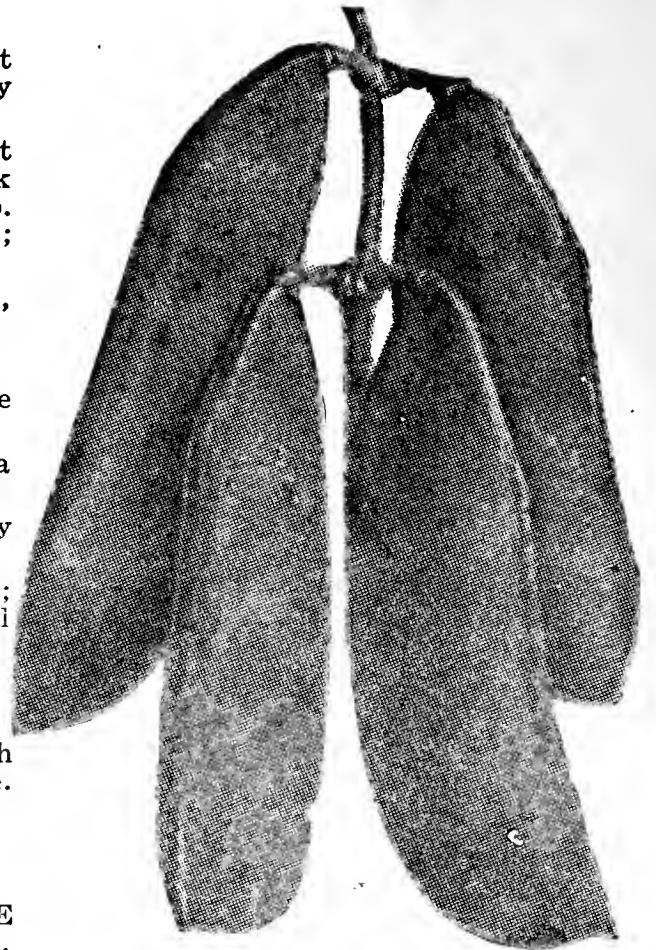
Prices on above varieties: Pkt. 10c; $\frac{1}{2}$ lb. 20c; 1 lb. 30c; 2 lbs. 55c, postpaid. Not prepaid, 15 lbs. (Peck) \$2.00; Bushel \$7.50; 100 lbs. \$12.00.

CAULIFLOWER

EARLY SNOW BALL. The best of all for the South, both for early and late planting. Culture is same as for cabbage. Pkt. 10c and 25c. postpaid.

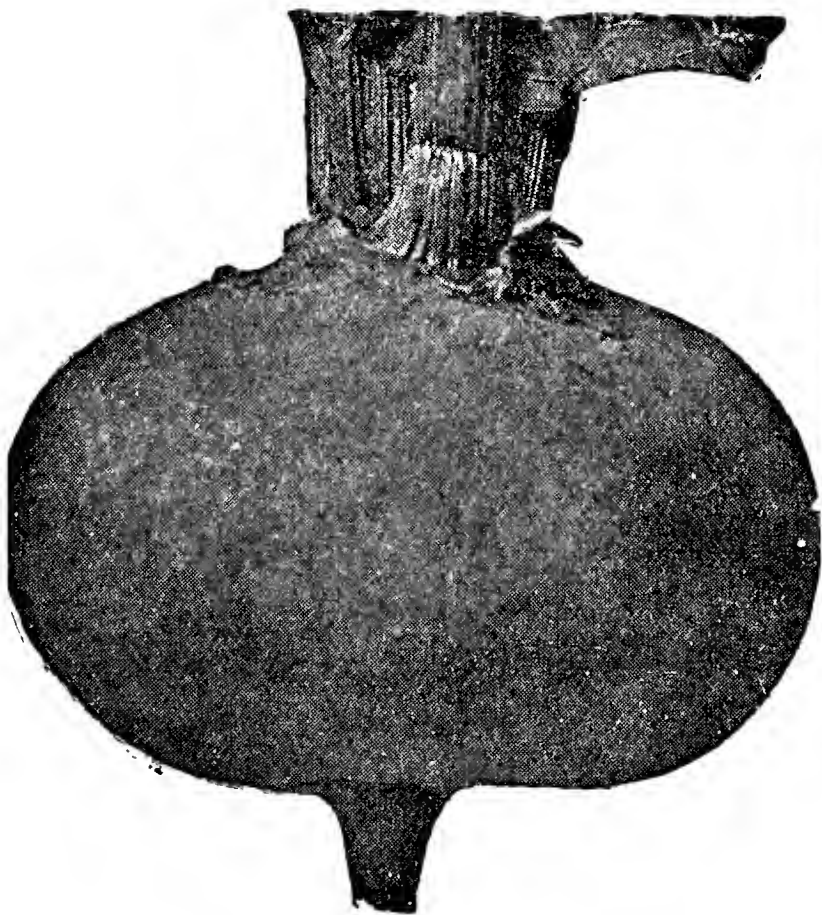
COLLARDS

GEORGIA BLUE STEM. The old time favorite, also **WHITE HEADING OR CABBAGE COLLARD.** Pkt. 5c; 1 oz. 10c; $\frac{1}{4}$ lb. 20c; 1 lb. 60c, postpaid.



HENDERSON'S BUSH LIMA BEANS

BEETS



BARNES' EARLY IMPROVED
BLOOD TURNIP BEET

CULTURE. Plant one ounce to one hundred feet drill in Spring, early Summer or Fall. Manure and pulverize ground well. sow in drills one-half inch deep and eighteen inches apart. Soaking seed before planting will greatly assist in germination.

BARNES' IMPROVED BLOOD TURNIP. An extra select, dark red, uniform size and first quality. One of the very best for main crop. Pkt. 5c; 1 oz. 15c; $\frac{1}{4}$ lb. 25c; 1 lb. 85c; 5 lbs. \$3.75. postpaid.

CROSBY'S EGYPTIAN. Globe shape and bright color. Pkt. 5c; 1 oz. 10c; $\frac{1}{4}$ lb. 25c; 1 lb. 85c; 5 lbs. \$3.75, postpaid. Write us for quantity prices.

Other good varieties of beets: **LONG SMOOTH BLOOD**, splendid for late use, growing deep and resisting drought.

EXTRA EARLY ECLIPSE. Exceedingly early, glossy red, round, uniform shape.

SWISS CHARD. Grown for leaves only. Cook like spinach or turnip greens.

Prices on above varieties: Pkt. 5c; 1 oz. 10c; $\frac{1}{4}$ lb. 20c; 1 lb. 75c; 5 lbs. \$3.35, postpaid.

MANGEL OR STOCK BEET. Largest and most productive of all Mangels. If you have stock, do not fail to plant some of this large beet. Pkt. 5c; 1 oz. 10c $\frac{1}{4}$ lb. 20c; 1 lb. 60c; 2 lbs. \$1.10; 5 lbs. \$2.40, postpaid.

CABBAGE

CULTURE. One ounce seed will produce about 2000 plants. About one-half pound will produce plants for one acre. Sow early in hot beds and from March on in the open. Manure soil well. Work deep and frequently. Set plants 18 to 24 inches apart in $2\frac{1}{2}$ to 3 foot rows.

BARNES' EARLY JERSEY WAKEFIELD. The most popular seed we sell. Medium size pointed head.

CHARLESTON WAKEFIELD. Half again as large as Jersey Wakefield. Head not so pointed and very solid.

EARLY DRUMHEAD, EARLY DWARF FLAT DUTCH, LARGE LATE DRUMHEAD, ALL SEASONS, SUREHEAD. PREMIUM LATE FLAT DUTCH.

Prices on above varieties: Pkt. 5c and 10c 1 oz. 20c; $\frac{1}{4}$ lb. 50c; 1 lb. \$1.75; 5 lbs. \$7.00. postpaid.

CHINESE CABBAGE. (Pe-Tsai) Easily and cheaply raised in great abundance anywhere. Is very similar to lettuce, but cooks like cabbage. Pkt. 10c; 1 oz. 20c; $\frac{1}{4}$ lb. 70c; 1 lb. \$2.50. postpaid.

VEGETABLE PLANTS

FINE HARDY PLANTS, raised from only the best seed. It takes longer to fill orders for plants than for seed. Please make allowance for delay due to weather conditions beyond our control. **NO PLANTS SHIPPED C. O. D.** Cash should accompany each order.

CABBAGE PLANTS, Frost Proof. Varieties: Early Jersey and Charleston Wakefield. Flat Dutch. 100 35c 300 85c; 500 \$1.25; 1,000 \$2.00; 2,000 \$3.75, postpaid. Not prepaid. \$1.50 per 1,000.

GENUINE BERMUDA ONION plants, grown from pure Bermuda seed, now ready to set out for large Summer onions. Prices same as cabbage plants.

CERTIFIED PORTO RICO SWEET POTATO plants, grown under regulations of the Mississippi Plant Board, thoroughly inspected, and shipped under Mississippi Plant Board inspection tags. Our potato slips are the very best. Our prices will be in line. We think plants will be ready for shipment April 1st to 15th.



BARNES' HARDY CABBAGE PLANTS

SWEET or SUGAR CORN

CULTURE. Plant about a pint to 100 hills or 6 quarts per acre after the ground is warm in Spring until August. Drop 5 or 6 grains in hills 2½ to 3 feet apart each way. Give frequent shallow cultivation.

Varieties: **COUNTRY GENTLEMAN, GOLDEN BANTAM, STOWELL'S EVERGREEN.** Pkt. 10c; 1 lb. 30c; 2 lbs. 50c; postpaid. Not prepaid, 10 lbs. 12c per pound.

TRUCKER'S FAVORITE. An early, extremely fine roasting ear corn, producing 2 to 3 thick, well grained ears 12 to 14 inches long, to the stalk. Do not fail to plant some of this wonderful corn.

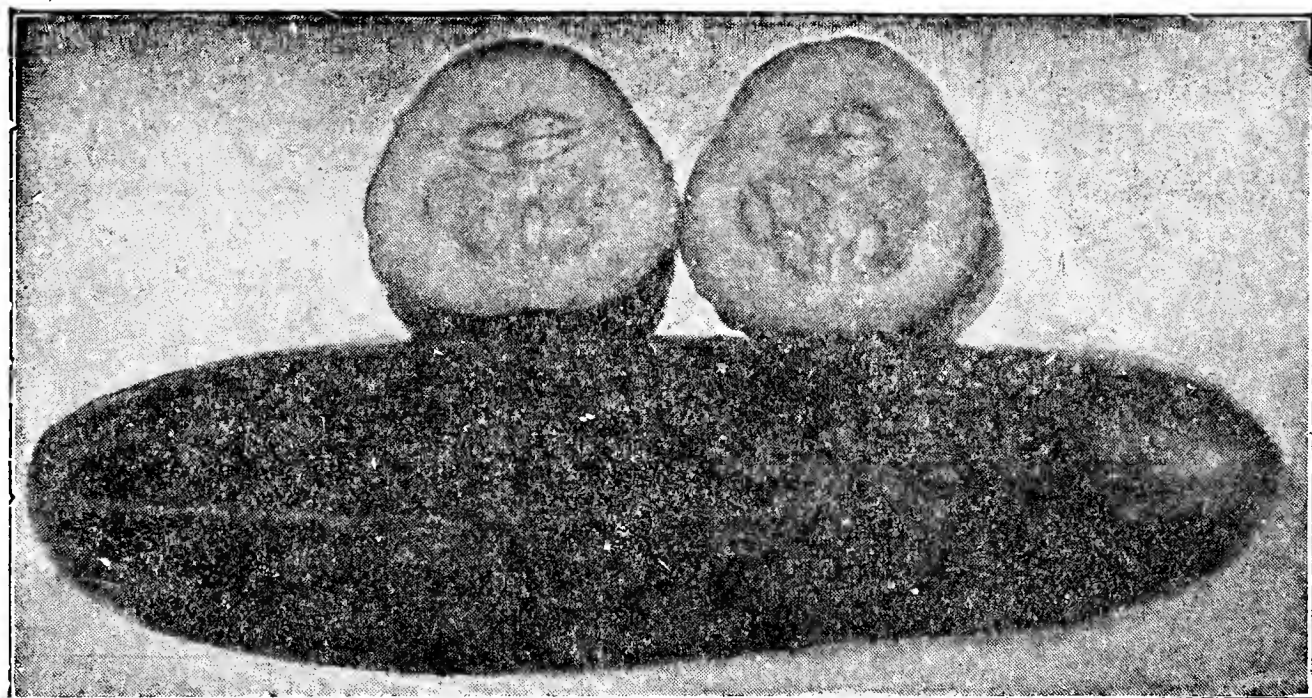
Other good varieties: **ADAM'S EARLY AND ADAM'S EXTRA EARLY.**

Prices on above varieties: Pkt. 10c; 1 lb. 20c; 2 lbs. 35c; postpaid. Not prepaid. Peck 80c. Write us for quantity prices.

Cucumbers

CULTURE. Plant 1 Oz. to 60 hills, 2 lbs. per acre, in Spring and early Summer. Make hills 4 Ft. each way, use well rotted manure if obtainable, and plant seeds ½ to 1 inch deep. Pick all cucumbers as soon as large enough for use, to keep plants bearing.

BARNES' CHOICE LONG GREEN. A dark, glossy green, 10 to 12 inches long, beautiful and unsurpassed for quality. Pkt. 5c; 1 oz. 15c; ¼ lb. 35c; 1 lb. \$1.15. postpaid.



BARNES' CHOICE LONG GREEN CUCUMBERS

Other good varieties: **EARLY WHITE SPINE, EARLIEST OF ALL, EARLY CLUSTER, DAVIS PERFECT, CHICAGO PICKLING, JAPANESE CLIMBING, SMALL GHERKIN.** Pkt. 5c and 10c; 1 oz. 15c ¼ lb. 35c; 1 lb. \$1.15, postpaid.

EGG PLANT

NEW YORK IMPROVED PURPLE AND BLACK BEAUTY. Pkt. 10c; 1 oz. 30c; ¼ lb. \$1.10; 1 lb. \$3.75, postpaid.

ENDIVE

CULTURE. Drill in early Spring. Thin out and transplant. When nearly grown, tie up and shade for blanching. Fine and wholesome for salad. Pkt. 5c; 1 oz. 10c; ¼ lb. 30c; 1 lb. 90c, postpaid.

KALE OR GERMAN GREENS

CULTURE. Plant 1 Oz. of seed to 200 ft. of drill. Pkt. 5c; 1 oz. 10c; ¼ lb. 25c; 1 lb. 75c, postpaid.

KOHL RABI

EARLY WHITE VIENNA. A vegetable half way between cabbage and turnip with flavor of both. Sow 1 Oz. of seed to 100 Ft. of row Spring or Fall or very early in hot beds. Pkt. 10c; 1 oz. 20c; ¼ lb. 50c; 1 lb. \$1.75. postpaid.

LETTUCE

CULTURE. Sow 1 Oz. seed to 10 Ft. Sq. or 120 Ft. row, 3 Lbs. per acre in Spring, early Summer, Fall and early Winter

BARNES' SELECT BIG BOSTON. We strongly recommend this as the very best head lettuce. Very compact heads. Pkt. 5c; 1 oz. 10c; ¼ lb. 30c; 1 lb. \$1.15, postpaid.

ICEBERG. A most valuable. all season lettuce. Makes solid head and bleaches white. crisp and tender. Pkt. 5c; 1 oz. 15c; ¼ lb. 35c; 1 lb. \$1.50, postpaid.

NEW YORK OR WONDERFUL. Makes the most immense head of any lettuce. It is rich, crisp and very tender. Pkt. 10c; 1 oz. 20c; ¼ lb. 75c; 1 lb. \$2.50. postpaid.

BLACK SEEDED SIMPSON. Pkt. 5c; 1 oz. 15c; ¼ lb. 45c; 1 lb. \$1.75, postpaid.

MUSKMELONS or CANTALOUPE

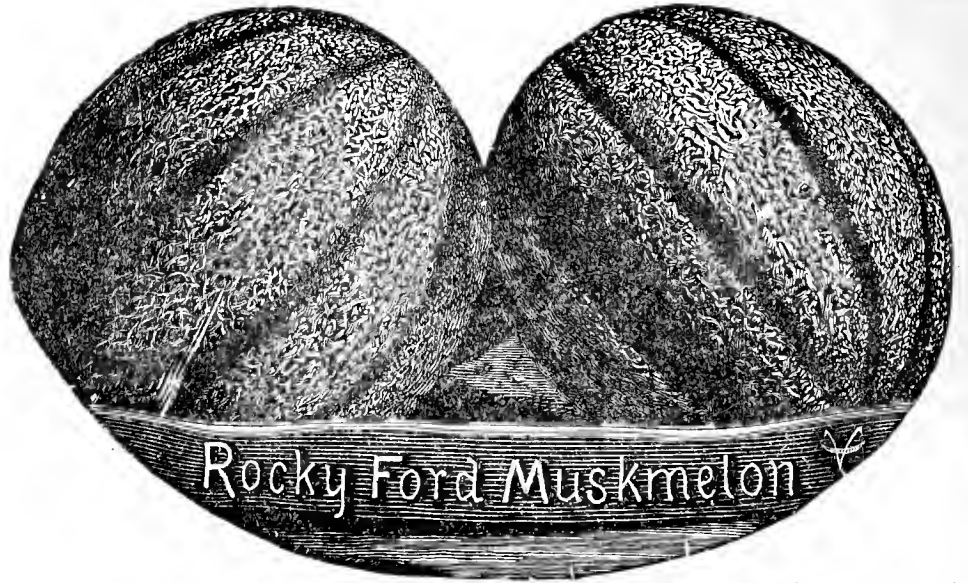
CULTURE. Plant 1 Oz. seed to 50 hills, 2 lbs. per acre, 10 to 12 seed to hill, thinning out to 4 plants. Make hills 4 to 6 Ft. apart each way. Fertilize with well rotted manure and give frequent, shallow cultivation.

ROCKY FORD. For every use, the most popular cantaloupe. Vigorous and productive vines. Netted rind, uniform size, delicious, sweet, highly flavored, green flesh. Pkt. 5c; 1 oz. 10c; ¼ lb. 30c; 1 lb. 90c; 5 lbs. \$4.25, postpaid.

EMERALD GEM. Oval shaped, salmon fleshed melon.

EDEN GEM. A perfect netted, oval shaped, uniform melon, heavy yielder and fine shipper.

Other good varieties; **OSAGE OR MILLER**



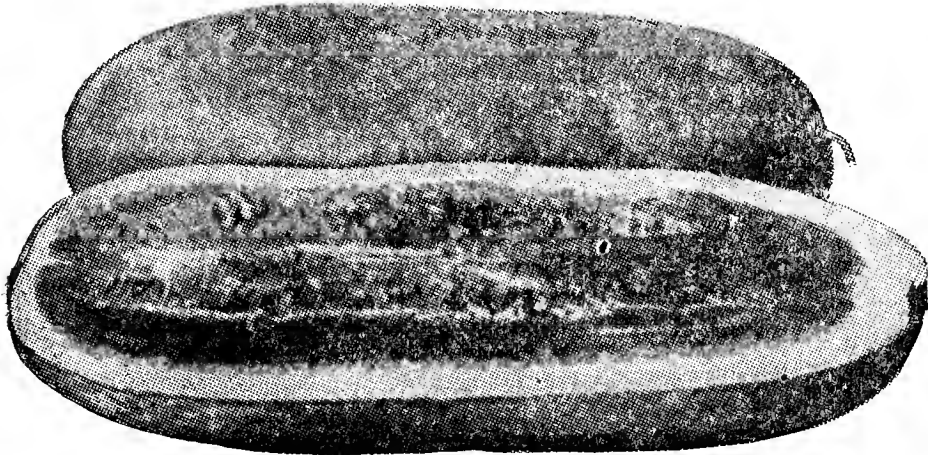
CREAM, LONG YELLOW OR BANANA, HONEY DEW.

Prices on above varieties: Pkt. 5c; 1 oz. 15c; ¼ lb. 30c; 1 lb. \$1.00, postpaid.

WATERMELON SEED

Our watermelon seeds are selected from the largest melons only, which are grown in the South and raised exclusively for seed. You cannot regret planting our melon seed.

CULTURE. Plant 1 oz. seed to 30 hills, 3 pounds to acre in hills worked with well rotted manure, 8 to 10 ft. each way. Cultivate lightly and often.



NEW WONDERMELON

NEW WONDERMELON. Certainly a real WONDER WATERMELON. Very large, long shaped, dark green color, containing a big luscious red heart, with few white seed, thin but tough rind and very sweet. Pkt. 5c; 1 oz. 15c; ¼ lb. 25c; 1 lb. 90c. postpaid.

SCHOCHLER. Grows extra large and fine for shipping purposes. Pkt. 10c; 1 oz. 15c; ¼ lb. 35c; 1 lb. \$1.15, postpaid.

STONE MOUNTAIN. A very large, almost round in shape, but of much better quality than the average round melon. Pkt. 10c; 1 oz. 15c; ¼ lb. 30c; 1 lb. 90c. postpaid.

Other good varieties: **HALBERT'S HONEY, IRISH GREY, FAMOUS EXCEL, FLORIDA FAVORITE, ALABAMA SWEET, EARLY TRIUMPH, KLECKLEY SWEET, TOM WATSON, GEORGIA RATTLESNAKE.**

Prices on above varieties: Pkt. 5c; 1 oz. 10c; ¼ lb. 25c; 1 lb. 80c; 5 lbs. \$3.75; 10 lbs. \$6.75, postpaid.

Barnes' Superlative Melon Collection

No. 1. CANTALOUPE-WATERMELON OFFER. 60c Worth for 40c. 1 oz. Tom Watson; 1 oz. Kleckley's Sweet; 1 oz. Halbert's Honey; 1 oz. Rocky Ford Cantaloupe; 5c Pkt. Long Yellow Cantaloupe; 10c Pkt. Emerald Gem Cantaloupe. This splendid collection for 40c. postpaid.

No. 2. YOUR PERSONAL SELECTION. 70c Worth for 50c. 7 oz. Watermelon seed, any varieties that you select from our choice seed. Select 7 varieties. 1 ounce to Pkt., just as you like. All postpaid for only 50c.

No. 3. ONE-ACRE—ONE DOLLAR SELECTION. \$1.75 Worth for \$1.00. Plant an acre of assorted melons, and be certain of fine melons for a long while. Any five varieties—your own choice—20 ounces. Select ¼ lb. each. for \$1.00 POSTPAID. Take advantage of this VERY VALUABLE OFFER by ordering today. and getting ready for that fine acre patch.

MUSTARD

CULTURE. Sow here at practically any time, in drills or broadcast, 1 ounce to 100 feet of drill, 4 to 6 pounds per acre, broadcast.

SOUTHERN GIANT CURLED. Otherwise known as "Ostrich Plume". A Southern favorite of fine quality, dark green leaves with beautifully ruffled edge. Pkt. 5c; 1 oz. 10c; ¼ lb. 20c; 1 lb. 60c, postpaid.

CHINESE BROADLEAF. The finest mustard, the leaves growing in 6 weeks to twice the size of any other and continuing until frost. Pkt. 5c; 1 oz. 10c; ¼ lb. 20c; 1 lb. 60c, postpaid.

FLORIDA BROADLEAF. Large, broad, pale green leaves. Pkt. 5c; 1 oz. 10c; ¼ lb. 20c; 1 lb. 65c, postpaid.

OKRA or GUMBO

CULTURE. Sow from Spring until August 1 ounce of seed to about 50 feet or row, or 8 lbs. per acre. When three inches high, thin to one foot apart in row, letting rows be about 2½ ft. wide.

BARNES' WHITE VELVET. The choice of all okras for your garden. Bears large round, smooth, white pods, from the ground up, and is very prolific until frost. Pkt. 5c; 1 oz. 10c; ¼ lb. 20c; 1 lb. 60c. postpaid.

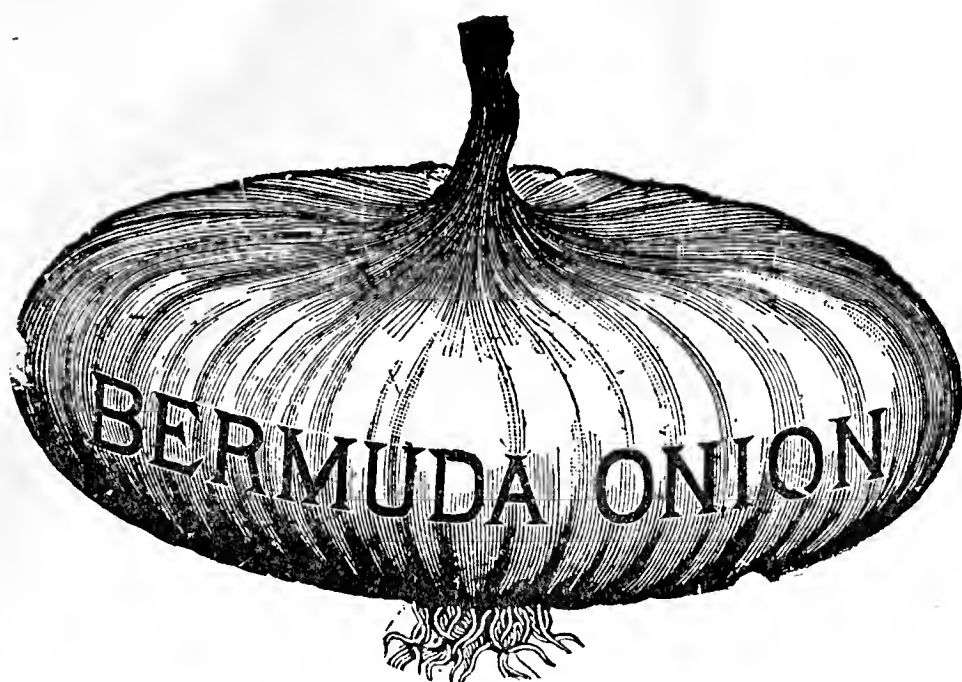
LONG GREEN. Grows on tall stalk, pods being long, green-ribbed. The regular old time good kind.

DWARF GREEN. Grows on small bush, but begins bearing low to ground. This, too, is a good green okra.

Prices on above varieties: Pkt. 5c; 1 oz. 10c; ¼ lb. 20c; 1 lb. 60c, postpaid.



OKRA



YELLOW GLOBE SETS. (Ready now). 1 lb. 25c; 4 lbs. 75c; 8 lbs. \$1.25, postpaid. Not prepaid, Peck. 75c; Bushel \$2.35.

RED GLOBE SETS. (Ready for shipment now). Lb. 25c; 4 lbs. 75c; 8 lbs. \$1.25, postpaid. Not prepaid, Peck 75c; Bushel \$2.35.

Bermuda sets are obtainable only in the Fall. **WE ARE SPECIALISTS IN BERMUDA SETS.** Give us your order next August to December.

WHITE SILVERSKIN. (Ready now). 1 lb. 25c; 4 lbs. 80c; 8 lbs. \$1.35, postpaid. Not prepaid, Peck 85c; Bushel \$2.50.

ONION SEED

GENUINE WHITE, or YELLOW BERMUDA. The mildest and sweetest flavored of all onions, and of a light straw color, though called white. Grows to immense size and is easily raised anywhere in the South. Pkt. 10c; 1 oz. 20c; ¼ lb. 50c; 1 lb. \$1.90, postpaid.

Crystal White Wax Bermuda.
SOLD OUT.

Other good varieties: **AUSTRALIAN BROWN, PRIZETAKER, LARGE RED WEATHERSFIELD, SILVERSKIN or WHITE PORTUGAL.** Pkt. 10c; 1 oz. 20c; ¼ lb. 60c; 1 lb. \$1.90, postpaid.

ONION SETS

We make a specialty of handling **FINE ONION SETS** and can recommend the stock that we offer as being the **VERY HIGHEST** grade.

ENGLISH PEAS

CULTURE. Plant about 1 quart of seed to 100 feet of row. 1 to 2 bushels per acre, Winter, Spring and Fall. Plant early from January to March 15th. Drill 2 to 3 feet apart in single or double rows, covering about 2 inches and drawing earth up to plants when few inches high, repeating this.

EARLY ALASKA. Earliest of all, uniform and very popular. Vines 2½ feet tall, pods medium size, well filled. Pkt. 10c; 1 lb. 30c; 2 lbs. 55c postpaid. Not prepaid, 15 lbs. (Peck) \$2.25; 60 lbs. or over, 14½c per lb.

Other good varieties of dwarf early peas: **EXTRA EARLY, LITTLE GEM.** Pkt. 10c; 1 lb. 35c; 2 lbs. 60c; Not prepaid, 15 lbs. (Peck) \$2.40; 60 lbs. or over, 15c per lb.

Taller Growing Varieties

THOMAS LAXTON. An improvement on Gradus and Prosperity varieties. Hardy and earlier and a great bearer, maturing in fifty-seven days. Excellent for shipping and home garden. Pkt. 10c ½ lb. 20c; 1 lb. 35c; 2 lbs. 60c, postpaid. Not prepaid, 14 lbs. (Peck) 16c per lb.; 56 lbs. or over, 16c per lb.

SALAD PEA, MAMMOTH MELTING SUGAR. Very delicious, eating pod and all. Heavy bearer, 4 to 5 feet tall. Pkt. 10c; ½ lb. 25c; 1 lb. 40c; 2 lbs. 70c, postpaid. Write us for quantity prices.

Other good varieties: **BLISS' EVERBEARING, IMPROVED TELEPHONE, GRADUS or PROSPERITY, WORLD'S RECORD, LARGE WHITE MARROWFAT.** All of these are heavy yielders. Do not fail to plant some English Peas this season. Pkt. 10c; ½ lb. 20c; 1 lb. 35c; 2 lbs. 60c, postpaid. Not prepaid, 14 lb. (Peck), \$2.40; 56 lbs. and over 16c per lb. f. o. b.

PARSLEY

CULTURE. As seed do not germinate for three or four weeks, soaking twelve hours will hasten. Plant in Spring and Fall, 1 ounce to 150 feet of drill, or sow in beds. When plants are strong, thin out to six inches.

CHAMPION MOSS CURLLED. Beautifully crimped, curled leaves. The favorite for garnishing. Pkt. 5c; 1 oz. 10c; ¼ lb. 20c; 1 lb. 70c, postpaid.

PLAIN LEAVED. The hardiest variety. Pkt. 5c; 1 oz. 10c; ¼ lb. 20c; 1 lb. 70c, postpaid.

PARSNIP

HOLLOW CROWN. The best variety, the roots being long, uniform and slender. Sow in Spring and Fall, 1 ounce seed to 250 feet of drill. Pkt. 5c; 1 oz. 10c; ¼ lb. 30c 1 lb. \$1.00, postpaid.



BLISS' EVERBEARING PEAS

PEPPER

CULTURE. Use an ounce of seed for about 1,000 plants. Plant early in hot beds or after ground is warm, in the open. Transplant when three inches tall in rows three feet apart.

BARNES' WONDER. If you want a large, heavy, smooth, green pepper, growing to the enormous size of 5 inches in length and 4 inches in diameter, this pepper will meet your requirements. Pkt. 10c; 1/2 oz. 25c; 1 oz. 40c; 1/4 lb. \$1.40; lb. \$4.50, postpaid.

BELL or BULL NOSE. Old reliable, very large, inverted bell shape, sweet pepper. Pkt. 5c and 10c; 1 oz. 25c; 1/4 lb. 75c; 1 lb. \$2.50. postpaid.

RUBY KING and ROYAL KING. Both of these are very fine peppers, for both home garden and the market. Pkt. 5c and 10c; 1 oz. 30c; 1/4 lb. 90c; 1 lb. \$3.00, postpaid.

CHINESE GIANT. Popular because of immense size. Pkt. 5c and 10c; 1 oz. 40c, postpaid.

PIMIENTO. Mildest and sweetest of them all. Mostly used for canning. Pkt. 5c and 10c; 1 oz. 30c; 1/4 lb. 90c; 1 lb. \$3.00. postpaid.

LONG RED CAYENNE. Pods are long, slim, red when ripe and hot. Pkt. 5c and 10c; 1 oz. 35c

RED CHILI. Small and scarlet red when ripe. Used for pepper sauce. Pkt. 5c, 10c and 25c, postpaid.

PUMPKIN

CULTURE. Plant 10 to 12 seed to the hill. After danger from bugs is passed thin out to three plants. Make hills 3 to 10 feet apart each way. Plant after weather is warm, using 3 to 4 pounds of seed per acre. Plant either in open or in corn.

KENTUCKY FIELD or LARGE CHEESE. A most popular variety, immense size and quality. Pkt. 5c; 1 oz. 10c; 1/4 lb. 20c; 1 lb. 60c, postpaid.

SMALL SUGAR. A small pumpkin of the very finest quality. If you like pumpkin pies, get this variety. Pkt. 5c 1 oz. 10c; 1/4 lb. 30c; 1 lb. 90c, postpaid.

RADISH

CULTURE. Radishes are very easy to grow, being ready very quickly, especially in rich, loose, moist soil. A quick money crop.

BARNES' LONG RED. An improved short top

variety, rich red in color, about six inches long. Grows very quickly and has tender, crisp flesh. This is the most popular sort. Pkt. 5c; 1 oz. 10c; 1/4 lb. 20c; 1 lb. 60c. postpaid. Write us for quantity prices.

CINCINATTI MARKET. Also called **GLASS RADISH.** Very much like the long red, is very popular on Northern market. Prices same as long red.

SCARLET GLOBE. A handsome turnip shape radish, with beautiful red color, maturing very early. Fine for market garden. Pkt. 5c; 1 oz. 10c; 1/4 lb. 20c; 1 lb. 60c, postpaid.

Other good varieties: **WHITE ICICLE, FRENCH BREAKFAST, LONG BLACK SPANISH, ROUND BLACK SPANISH.** Pkt. 5c and 10c; 1/4 lb. 20c; 1 lb. 60c, postpaid.

SAGE

Most popular herb for flavoring. Pkt. 5c, 10c and 25c, postpaid.

SPINACH

LONG STANDING BLOOMSDALE, of Savoy type with crumpled, rounded, large, thick lustrous green colored leaves. Sow thinly, in rich soil, 1 ounce to 150 feet of drill, Spring or Fall. Pkt. 5c; 1 oz. 10c; 1/4 lb. 20c; 1 lb. 50c, postpaid.

NEW ZEALAND. Fine for Summer planting. When cut it grows out again. Pkt. 5c 1 oz. 15c; 1/4 lb. 25c; 1 lb. 70c. postpaid.

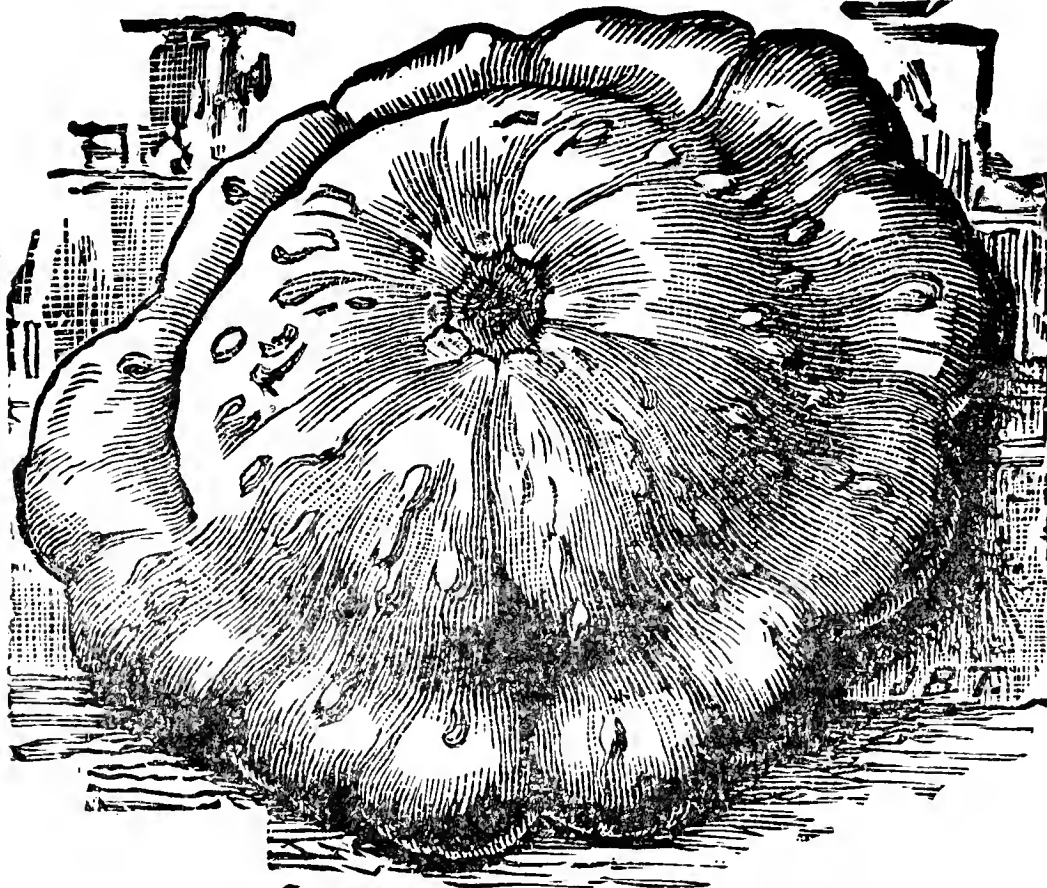
SQUASH

CULTURE. Plant 1 ounce of seed for about 25 hills; hills 3 to 6 feet apart, 8 to 10 seed to the hill, later thinning plants out to 3. Plant in warm, well pulverized soil, mixing in with well rotted manure.

MAMMOTH WHITE BUSH. A great improvement over the old white bush. Fruit is large scalloped, waxy white, uniform, growing abundantly on bush. Fine for market. Pkt. 5c; 1 oz. 15c; 1/4 lb. 30c; 1 lb. \$1.00, postpaid.

SUMMMER CROOKNECK. Grows on a vine, very early and prolific, light yellow with a crookneck. Pkt. 5c; 1 oz. 15c; 1/4 lb. 30c; 1 lb. \$1.00, postpaid.

Other good varieties: **MAMMOTH YELLOW BUSH, WARTY HUBBARD.** Pkt. 5c; 1 oz. 15c; 1/4 lb. 45c; 1 lb. \$1.25, postpaid.



BARNES' MAMMOTH WHITE BUSH SQUASH

BARNES' BIG 35c TURNIP SEED COLLECTION

This collection gives you a full supply of early, medium and late turnips of the very best varieties. We send postpaid for 35c. Seven Large 10c Packets, one each of Purple Top Strap Leaf, Cow Horn, Early White Flat Dutch, Barnes' Purple Top Globe, White Egg, Barnes' Amber Globe and Pomeranian White Globe. Order this collection today.

70 CENTS WORTH FOR
35 CENTS.

TURNIPS

CULTURE. Plant one ounce of seed to 100 feet of drill, 2 pounds per acre in drills, broadcast 3 to 4 pounds per acre. Plant all during the Spring, late Summer and Fall.

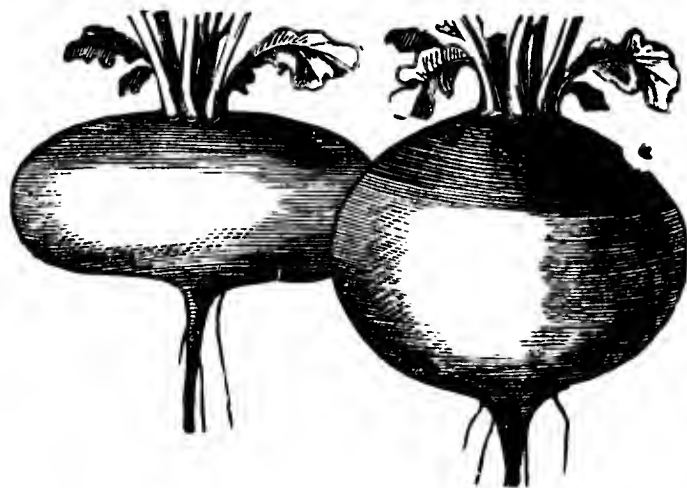
BARNES' PURPLE TOP WHITE GLOBE. SPECIAL. This is the best all round turnip to plant at any season of the year. Handsome globe shape with white bottom and purple or red top. Early maturing and best for both the home and market. Our special prices: Pkt. 5c; $\frac{1}{4}$ lb. 15c; 1 lb. 50c 5 lbs. \$2.00, postpaid. Write us for quantity prices.

SHOGON or JAPANESE. A new foliage turnip from Japan; resists heat and sun, dry weather and lice. Pkt. 10c; 1 oz. 15c; $\frac{1}{4}$ lb. 20c; 1 lb. 50c, postpaid.

POMERANIAN WHITE GLOBE. Extremely large, smooth, white and very sweet. Pkt. 5c; 1 oz. 10c; $\frac{1}{4}$ lb. 20c; 1 lb. 60c, postpaid.

PURPLE TOP MILAN. The quickest turnip that grows; makes fourteen days earlier than others. Medium size, smooth flat shape with purple top. Pkt. 5c; 1 oz. 10c $\frac{1}{4}$ lb. 25c; 1 lb. 90c, postpaid.

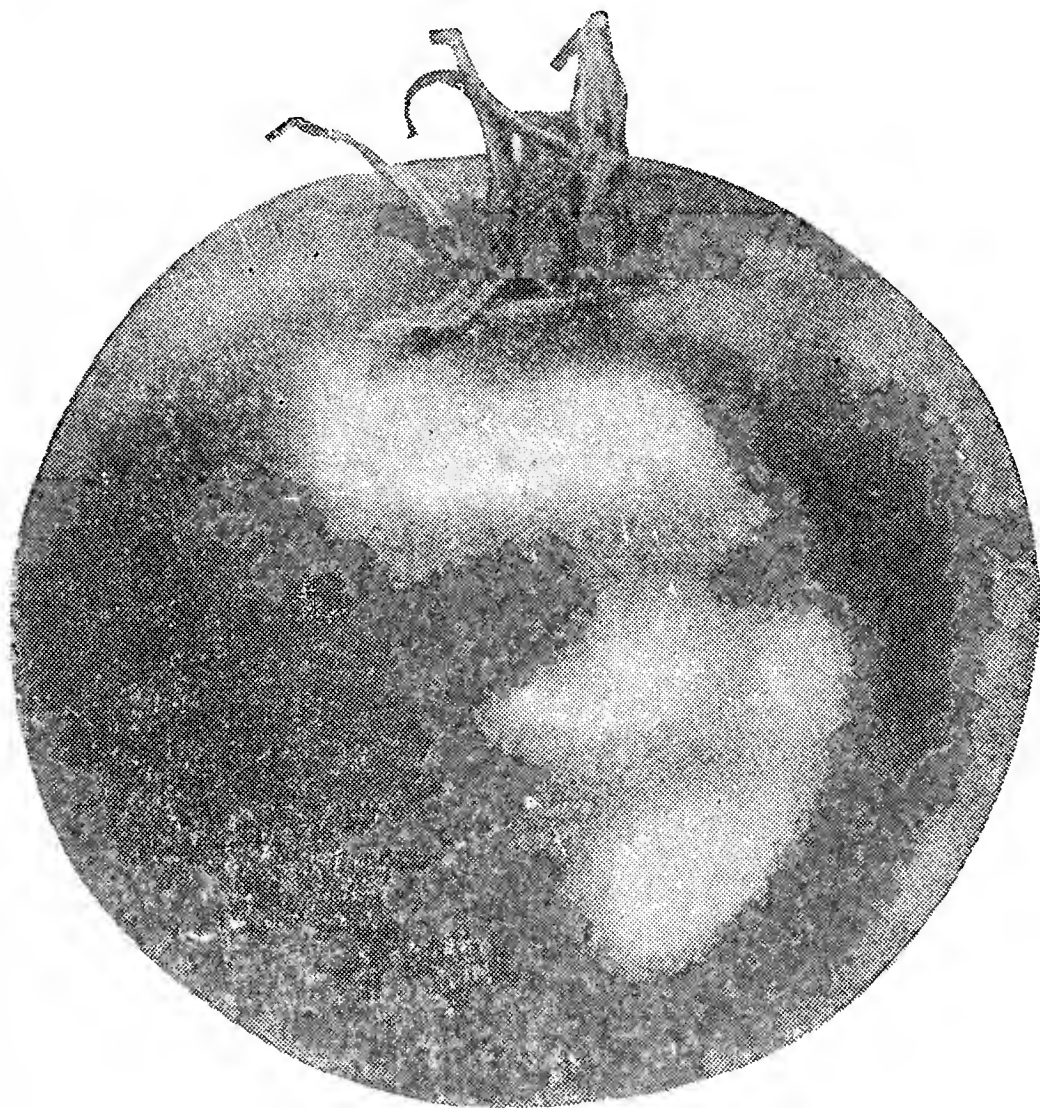
Other good varieties: **PURPLE TOP STRAP LEAF, EARLY WHITE FLAT DUTCH, WHITE EGG, COW HORN, LARGE AMBER GLOBE, SWEET GERMAN or HANOVER, SEVEN TOP or WINTER GREENS.** All these are good varieties.



PURPLE TOP STRAP LEAF AND PURPLE TOP WHITE GLOBE

You will be well pleased with either variety. Pkt. 5c; 1 oz. 10c; $\frac{1}{4}$ lb. 20c; 1 lb. 50c, postpaid.

IMPROVED AMERICAN RUTABAGA. Yellow flesh, purple top. small leaves and short neck. Grows to immense size, and is a great producer. This variety has been improved for years and will satisfy the most exacting planter. Pkt. 5c and 10c; $\frac{1}{4}$ lb. 15c; 1 lb. 50c, postpaid.



BARNES' BREAK O'DAY TOMATO

EXTRA EARLY JUNE PINK. The earliest tomato you can plant. Very smooth, solid, handsome and prolific. Pkt. 5c; 1 oz. 35c; $\frac{1}{4}$ lb. \$1.15; 1 lb. \$4.00, postpaid.

PONDEROSA. Ponderous size, often weighing 2 pounds, a rich crimson color, maturing late. Pkt. 5c; 1 oz. 40c; $\frac{1}{4}$ lb. \$1.50 1 lb. \$5.50, postpaid.

LIVINGSTON'S GLOBE. Globe shape, purplish, glossy red, large, smooth fruit. Pkt. 5c; 1 oz. 30c; $\frac{1}{4}$ lb. \$1.00; 1 lb. \$3.50, postpaid.

TOMATO

Our tomato seed are saved from crops grown exclusively for seed. Rely on fine crops and fine, large tomatoes from the seed we offer.

CULTURE. Plant 1 ounce of seed for about 1200 plants from January and February in hot beds, and later in open ground. Transplant to cold frames when about three inches tall, or to open ground when danger of frost is past. Set three feet apart in deeply broken ground, well worked with manure or fertilizer. For late crop, plant in May or June.

BARNES' BREAK O'DAY. A very fine tomato of large size, globe shape, and very early. Ripens 10 to 12 days earlier than the Marglobe. Greatly resistant to wilt and rust; a good shipper and also fine for home use. Do not fail to plant some of this wonderful tomato. Pkt. 10c $\frac{1}{2}$ oz. 25c; 1 oz. 40c; $\frac{1}{4}$ lb. \$1.30; 1 lb. \$4.50, postpaid.

GULF STATES MARKET. The most popular variety with truck growers. Smooth, free from cracks, firm skin, solid flesh, a fine shipper. Pkt. 10c; $\frac{1}{2}$ oz. 20c; 1 oz. 35c; $\frac{1}{4}$ lb. \$1.25; 1 lb. \$4.00, postpaid.

Other good varieties: **ACME, NEW STONE, LIVINGSTON'S BEAUTY, RED ROCK, REDFIELD BEAUTY.** Pkt. 5c; 1 oz. 25c; $\frac{1}{4}$ lb. 85c; 1 lb. \$3.00, postpaid.

MARGLOBE. This variety has gained great popularity, especially for shipping. It is firm, meaty, with small core, early maturing and wilt resistant. Pkt. 5c and 10c; 1 oz. 35c; $\frac{1}{4}$ lb. \$1.25; 1 lb. \$4.00, postpaid.

BARNES' FIELD SEEDS

Market prices are constantly changing and we will gladly furnish special quotations by return mail. Write us for prices or any information. We are always ready to serve you.

SOY or SOJA BEANS

MAMMOTH YELLOW. Grows 4 to 5 feet high and makes the largest, finest beans, maturing in 100 to 150 days. A fine feed and soil builder. 1 lb. 20c; 2 lbs. 35c; 5 lbs. 60c, postpaid. Peck, about 75c f. o. b. Write us for bushel and quantity prices.

BILOXI. A genuine marvel of the bean family. Grows 5 to 7 feet tall and broad in proportion. Will yield 20 tons of grand forage per acre, and as high as 43 bushels threshed beans. 1 pound 20c; 2 lbs. 35c; 5 lbs. 65c, postpaid. Not prepaid, Peck. about 75c. Write us for quantity prices.

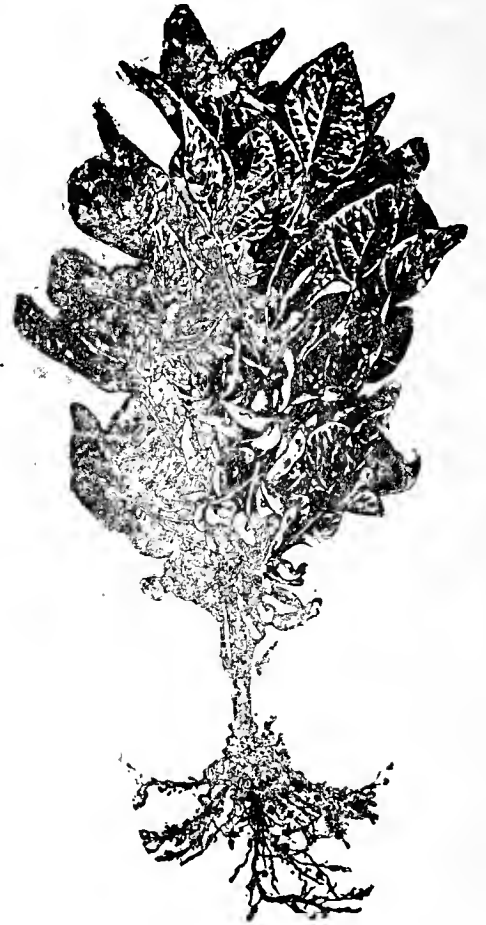
OTOOTAN. The Oootan is a REAL WONDER and one of the greatest discoveries for agriculture in a generation. Grows 4 to 5 feet tall, making an excellent quality of hay, also fine for soil builder. 1 lb. 25c; 2 lbs. 40c, postpaid. Write us for special prices, when you are in the market.

LAREDO. Quite similar to the Oootan, but 10 days to 2 weeks earlier. Like the Oootan, it is also a very fine bean for hay and soil builder. It does not shatter or waste in the field. By all means, plant plenty of soy beans this season. 1 lb. 20c; 2 lbs. 35c; 5 lbs. 80c, postpaid. Write us for quantity prices, when you are in the market.

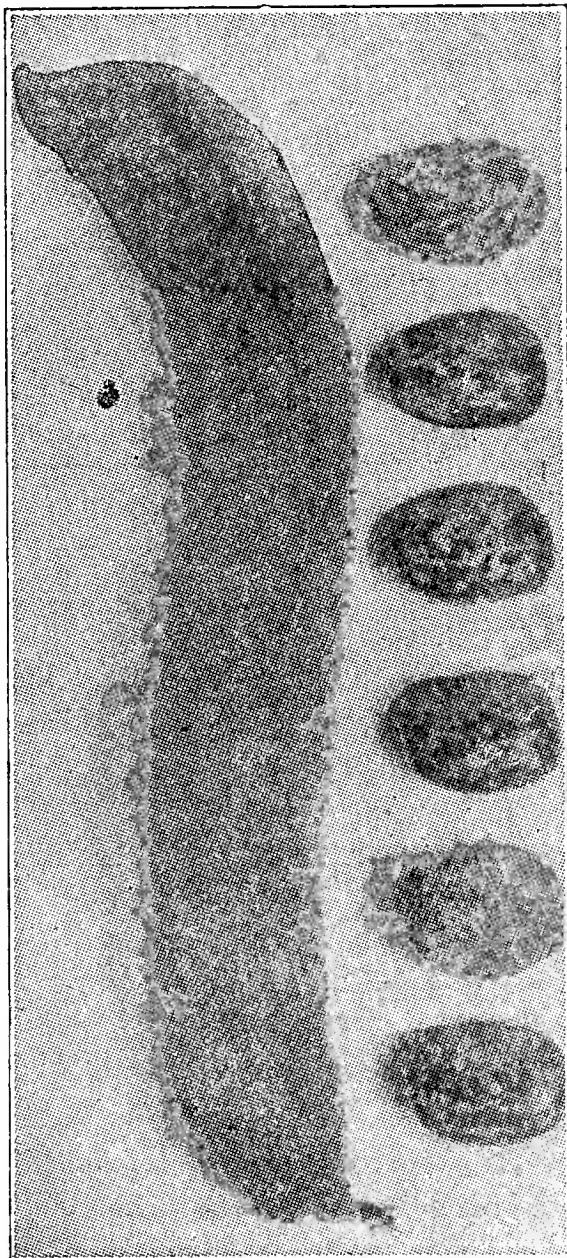
VELVET BEANS

A great and valuable crop was discovered when farmers began to grow VELVET BEANS. THEY ARE OUR GREATEST SOIL ENRICHER, BEST STOCK FATTENER, FINEST CRUSHED FEED, AND FOREMOST WEALTH MAKER.

EARLY SPECKLED or NINETY DAY. This variety has superseded the old style Velvet Beans on account of absolute certainty of maturity before frost. It is also a heavy yielder. Plant about 1 gallon per acre. 1 pound 20c; 2 lbs. 35c, postpaid. Write us for quantity prices when in the market.



Mammoth Yellow Soy Bean



OSCEOLA BEAN

OSCEOLA. One of the greatest velvet beans of them all. They do not sting when picking. 1 lb. 20c; 2 lbs. 35c, postpaid. Write for quantity prices.

OLD STYLE or ONE HUNDRED AND 20 DAY BEAN. Supply very limited. Write us for prices.

MUNG BEANS. A fine land building, leguminous plant, growing 3 to 5 feet tall, fine for hay and the beans makes excellent chicken feed. 1 lb. 35c; 5 lbs.—enough for one acre, \$1.25, postpaid. Write for quantity prices.

CHUFAS or EARTH ALMONDS

CHUFAS. A species of ground nuts. A crop every farmer ought to plant for fattening and growing hogs. 1 lb. 25c; 2 lbs. 40c; 5 lbs. 85c, postpaid. Not prepaid, Pk. about \$1.00; Bushel, about \$3.40.

CLOVER

JAPAN CLOVER, or LESPEDEZA (Bushel—25 lbs.). One of the most valuable grazing crops. Grows well on rich or poor land. It is a dependable crop, yielding as high as 4 tons or more per acre. An ideal hay crop for the South. Plant one bushel per acre. Fine for sowing in oats. By all means plant some Lespedeza this season. 1 lb. 30c; 2 lbs. 50c; 5 lbs. \$1.00, postpaid. Bushel—about \$2.25. Write us when you are in the market, for quantity prices.

The **CYCLONE SEED SOWER.** The ideal machine for sowing Lespedeza seed. Price \$2.50, postpaid.

WHITE CLOVER. A small, spreading perennial, hardy under all conditions. Fine for pasture or lawns. Sow 10 to 15 lbs. per acre. Pkg. 25c; 1 lb. 65c, postpaid.

SOUTHERN BUR CLOVER. 10 pounds to bushel in bur. A great Winter pasture and soil improver. Reseeds itself. An extremely fine and valuable crop for the South. Combined with Bermuda or Carpet Grass, it will make an ideal, all-year pasture. Write us for prices, when in the market.

FIELD CORN

CORN is our **MAIN CROP** and we are extremely interested in helping the country to the **GREATER PRODUCTION**. You can increase the yield by planting **ONLY THE MOST RELIABLE SELECTED SEED**. Profit by our **SEED EXPERIENCE** for thoroughly **RELIABLE SEED CORN**.

EARLY WHITE DENT. The favorite white variety of the South for early crop, one of the very first large eared corns to mature. 1 lb. 20c; 2 lbs. 35c, postpaid. Not prepaid, Peck 70c; Bushel \$2.00.

IMPROVED YELLOW DENT. The most popular and reliable yellow corn. Two or three large, fine ears to the stalk. Extremely early. 1 lb. 20c 2 lbs. 35c, postpaid. Not prepaid, Peck 70c; Bushel \$2.00.

IOWA SILVER MINE. One of the best yielders we know. Ears 9 to 12 inches long, pure white, deep grains, resist drought and matures in 100 days. 1 lb. 20c; 2 lbs. 35c, postpaid. Not prepaid, Pk. 70c; Bu. \$2.00.

IOWA GOLD MINE. Like the Silver Mine, except in its golden yellow color. 1 lb. 20c; 2 lbs. 35c, postpaid. Not prepaid, Pk. 70c; Bu. \$2.00.

HICKORY KING. Largest grained, smallest cob corn that grows. 1 lb. 25c 2 lbs. 40c, postpaid. Not prepaid. Peck 75c; Bushel \$2.50.

BARNES' HASTINGS PROLIFIC. This variety, we exercise the greatest possible care in selecting, and sell it most. Our stock is grown specially for seed by an expert grower, and we heartily recommend it to the most careful planters. 1 lb. 25c; 2 lbs. 40c, postpaid. Not prepaid, Peck 75c; Bushel \$2.60.

IMPROVED MOSBY'S PROLIFIC. Another good prolific. Pure white, small cob, large ears, deep, full grains, neither hard nor too soft. 1 lb. 25c 2 lbs. 40c. postpaid. Not prepaid, Pk. 80c; Bu. \$2.75.

TENNESSEE or GEORGIA RED COB. Makes fine, white, uniform ears, averaging 10 inches in length. Solid, very deep grains on red cob. Medium early and makes a fine yield. 1 lb. 25c; 2 lbs. 40c, postpaid. Not prepaid, Peck 75c; Bushel \$2.50.

Other good varieties: **NEAL'S PAYMASTER, SURECROPPER, MEXICAN JUNE, JARVIS PROLIFIC**: 1 lb. 25c; 2 lbs. 40c, postpaid. Not prepaid, Peck 75c; Bushel, about \$2.50.

CHICKEN CORNS

WHITE SEEDED CHICKEN CORN. Fine, inexpensive feed for poultry, extra large, loose heads like sorghum, heavy with small, round grains. Plant thinly in 3 to 4 feet rows in Spring and early Summer. Pkt. 10c; 1 lb. 25c; 3 lbs. 65c, postpaid.

WHITE SEEDED KAFFIR CORN, FETERITA, SAGRAIN, MILO-MAIZE, are all fine for chicken feed. Pkt. 10c; 1 lb. 20c; 5 lbs. 60c, postpaid.

GROHOMA

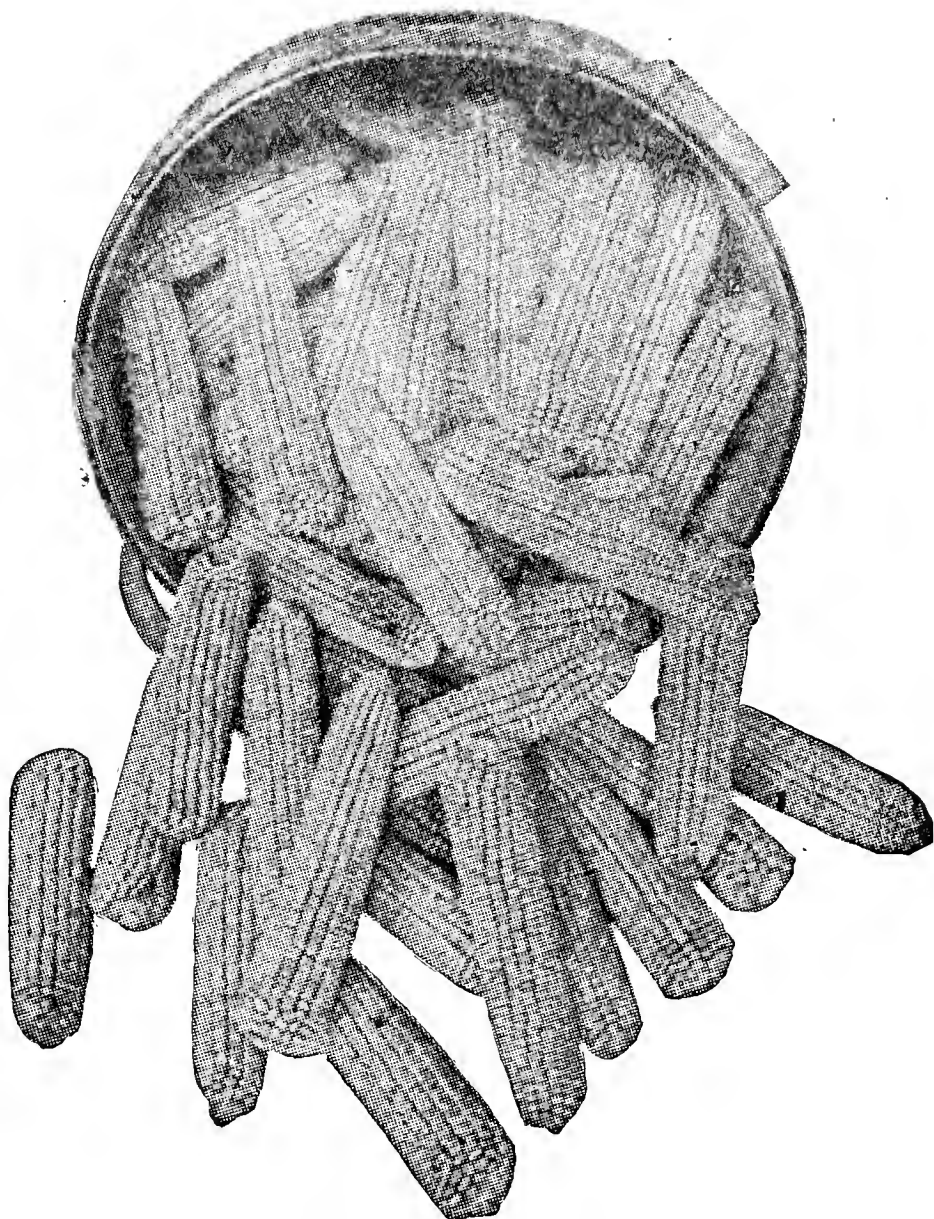
Wonderful claims have been made on this new grain. Grows 4½ to 5 feet high. It has been known to yield 100 bushels per acre. Plant 1 to 2 pounds per acre. Pkt. 10c; 1 lb. 40c; 2 lbs. 75c, postpaid.

COTTON

Our stock of **COTTON SEED** is selected with painstaking care and knowledge of our country's needs, and consists of varieties that are standard, early, and **BEST ADAPTED TO SOUTH**.

HALF AND HALF. Early maturing and a very large yielder, turning out 40 to 45 per cent at the gin. Not prepaid, Bushel (30 lbs.) \$1.50; 100 lbs. \$4.50.

WANNAMAKER'S CLEVELAND BIG BOLL. One of the earliest and best big boll cottons, a standard and popular variety. Medium stalk, long heavy lint.



BUSHEL BASKET OF BARNES' SEED CORN

A splendid kind to plant. Not prepaid, Bushel (30 lbs.) \$1.50; 100 lbs. \$4.50.

DELTA PINE LAND NO. 4-8. This is a fine cotton for this section, very prolific and wilt-resistant, recommended by Experiment Stations. Prices \$1.50 per bushel; \$3.50 per 100 lbs. f. o. b.

GRASSES

CARPET GRASS. (Bushel 19 lbs.) Spreads along the ground like a carpet, taking root at every joint. Grows on any kind of land and thrives under tramping and grazing. One acre will keep a cow for the best five months of the year. Sow 7 to 10 lbs. of seed per acre in Spring. Pkt. 15c; 1 lb. 30c; 2 lbs. 50c; 5 lbs. \$1.00, postpaid. Write us for quantity prices.

BERMUDA GRASS. (Bushel 30 Lbs.) Grows on all soils and is very valuable as a grass and hay pasture. Also, makes beautiful lawns for the South. No grass gives so great returns with little care as Bermuda. Sow 6 lbs. per acre in Spring and Summer. Pkt. 15c; 1 lb. 40c; 2 lbs. 75c; postpaid. Write us for quantity prices.

JOHNSON GRASS. (Bushel 20 Lbs.) Most cuttings, and yields an enormous amount of hay. Fine for hog pasture. Sow 1 bushel per acre in Spring and Fall. 1 lb. 30c; 2 lbs. 50c; postpaid. Not prepaid, 10 lbs.—about 17c per pound; 100 lbs.—about 15c per pound.

SUDAN. (Bushel 40 Lbs.) A wonderful grass from Africa, growing from 5 to 10 feet tall and producing the greatest amount of forage and hay and gives 2 to 4 cuttings per season. Does not reseed and needs to be planted each year. Drill 5 to 8 pounds per acre in 18 to 24 inch rows or broadcast 15 to 25 lbs. per acre in Spring or early Summer. 1 lb. 25c; 2 lbs. 40c; 5 lbs. 90c, postpaid. Write us for quantity prices.

ENGLISH RYE GRASS. (Bushel 20 Lbs.) The best Winter grass for this section, growing most rapidly of all and succeeding on any soil. Makes good grazing in cold Wintery days. 1 lb. 20c; 2 lbs. 35c; 5 lbs. 65c, postpaid.

MILLET

TENNESSEE GERMAN. (Bushel 50 Lbs.) Produces very heavily in good, nutritious hay, and requires rather rich soil. Should be cut while in bloom. Drill 5 to 10 lbs. per acre, or broadcast 30 to 40 lbs. in Spring and Summer. 1 lb. 20c, postpaid. Not prepaid, 10 lb. lots about 7c per lb. Write us for quantity prices.

PEARL or CATTAIL. Grows 10 to 12 feet tall, stools enormously and is most valuable, continuous cutting for green feed until frost. Do not fail to plant some of this fine millet. Pkt. 10c; 1 lb. 30c; 5 lbs. \$1.10, postpaid. Not prepaid, 10 lb. lots, 15c per lb.; 100 lbs. about 12c per pound.

OATS

BAYLIS OATS. The best of any variety for the South. We recommend it above all. Acclimated and grown on Mr. Baylis' farm for the past thirty years. Is the most rust resistant of any and always makes a crop, where other oats fail. Bushel 75c; 5 Bushel bag, \$3.25 f. o. b. Sold out.

BURT or MAY OATS. Quick maturing and especially recommended for Spring planting. Bushel 70c. Write us for quantity prices.

PEANUTS

One of the best money-making crops in the South. A food for both man and beast. Plant plenty peanuts.

VALENCIA. A very fine, large variety, containing 3 or 4 red skin nuts of fine flavor. 1 lb. 20c; 2 lbs. 35c; 5 lbs. 85c, postpaid. Not prepaid, 25 lbs. \$2.00; 100 lbs.—about \$7.50.

TENNESSEE RED. Splendid long pods containing 3 to 5 red nuts. The top bunches and all nuts pull up with the vine. An early, splendid yielder and very popular. Same price as Valencia.

IMPROVED SPANISH. Contains 3 to 4 white nuts, larger and better than regular Spanish. 1 lb. 25c; 2 lbs. 40c; 5 lbs. 85c, postpaid. Not prepaid, 100 lbs.—about \$8.00.

SMALL SPANISH. The best variety for South. An early and heavy bearer, making two crops per year. Fine for hogs, also makes splendid hay. 1 lb. 20c; 2 lbs. 35c; 5 lbs. 75c, postpaid. Not prepaid, 100 lbs. \$7.50.

FIELD AND CROWDER PEAS

A staple crop that under no circumstances should be neglected. The pea is a nitrogen gatherer, forage crop, stock food, and splendid table dish; a Southern agricultural necessity.

BARNES' SIX-WEEK PEA. The earliest and most prolific of all cow peas. Seed are light clay color and very large. Fine for stock and table use. 1 lb. 25c; 2 lbs. 40c, postpaid. Not prepaid, Peck 75c; Bushel \$2.50.

RED RIPPER PEAS. A very fine, late maturing, especially fine for planting in corn, an excellent keeper in the field under all kinds of weather conditions. By all means plant some of this splendid variety. 1 lb. 25c; 2 lbs. 40c postpaid. Not prepaid, Peck 85c; Bushel \$2.75.

BRABHAM. A very fine variety, being a cross between the Whippoorwill and the Iron, said to be the most prolific now in cultivation. Very fine for planting in orchards. 1 lb. 25c; 2 lbs. 40c, postpaid. Not prepaid, Peck 85c; Bushel \$2.75.

Other good varieties: **WHIPPOORWILLS**, or **CLAYS.** Both varieties are fine for hay and heavy yielders. 1 lb. 20c; 2 lbs. 35c, postpaid. Not prepaid, Peck 75c; Bushel \$2.25. Write us for special quantity prices.

WHITE SUGAR CROWDERS. One of the finest that grows especially for table use. Exceedingly prolific, peas closely crowded in long pods. Pkt. 10c; 1 lb. 30c; 2 lbs. 50c, postpaid. Write us for quantity prices.

BROWN SUGAR CROWDER. Similar to the White Crowder, growing quickly and greatly crowding the pod. An extra nice table variety. Makes two crops. Prices same as White Crowder.

WHITE LADY. Small round and pure white. A great table delicacy. Vigorous growing and prolific. Pkt. 10c 1 lb. 30c; 2 lbs. 50c, postpaid.

Other good varieties of table peas: **LARGE CALIFORNIA BLACK EYE, GREY SPECKLED CROWDER, BLACK SUGAR CROWDER.** Each of the three above varieties are fine table peas. 1 lb. 25c; 2 lbs. 45c; 5 lbs. 90c, postpaid. Write for quantity prices.

SEED POTATOES

We direct special attention to BARNES' CERTIFIED SEED POTATOES. The stock is selected with great care, and backed up by our highest recommendations. OUR SEED are CERTIFIED NORTHERN GROWN, the BEST for this section.

RED BLISS TRIUMPH. Specially adapted to Southern soil, by far the most popular variety grown here. Extra early, round shape, pink skin, white flesh and very handsome. Gallon 50c; Peck 90c, postpaid. Write us for quantity prices. By all means plant CERTIFIED STOCK.

DWARF ESSEX RAPE

Makes the most excellent grazing for hogs, stock and poultry, and many use it for table. Makes fine pasture in 6 to 8 weeks. Drill like turnips, 5 to 6 lbs. per acre or broadcast 10 to 12 pounds, any time from August to May. Pkt. 10c; 1 lb. 25c; 2 lbs. 40c; 5 lbs. 90c, postpaid. Write us for special quantity prices.

UPLAND RICE

(Bushel, 44 Pounds)

Grown on uplands as well as flooded low lands. 30 to 50 bushels per acre. Splendid for table use and very high feeding value for stock and fowl. Drill 1 peck per acre or broadcast about 1½ bushels. Cultivate like peas. Cut and store like oats. Pkt. 10c; 1 lb. 20c; 2 lbs. 35c 5 lbs. 80c, postpaid. Not prepaid, Peck, 90c; Bushel \$2.85.

SORGHUM

EARLY AMBER. (Bu. 50 Lbs.) The most popular variety, the earliest, makes the finest hay, green or cured, good for silage and molasses. Drill 10 to 12 pounds per acre or broadcast one-half to one bushel from April until last of July. Fine broadcasted with peas. 1 lb. 20c; 5 lbs. 75c, postpaid. 10 lbs. or over, not prepaid, about 8c. Write us for quantity prices.

TEXAS SEEDED RIBBON CANE. Much superior for syrup, growing 12 to 15 feet tall and yielding 250 to 400 gallons per acre. Drill thinly in 3½ foot rows, 6 to 8 pound per acre April to July or broadcast for forage. Pkt. 10c; 1 lb. 25c; 2 lbs. 40c; 5 lbs. 75c, postpaid. Write us for quantity prices.

Other good varieties: **EARLY ORANGE, RED TOP.** Both of the above varieties are good syrup canes, also fine for cutting for hogs and other stock. Same price as EARLY AMBER.

Mammoth Russian Sunflower

Makes enormous head and ordinarily yields 40 to 60 bushels seed per acre. The best egg producing food known and most splendid for stock, especially horses. Pkt. 10c; 1 lb. 20c 2 lbs. 35c; 5 lbs. 75c, postpaid. Not prepaid, 10 lbs. or over, 10c per pound. Write us for quantity prices.

SAND, HAIRY or WINTER VETCH

A great soil building, Winter-cover and grazing crop. One of the finest Winter crops for the South. SOLD OUT.

AUSTRIAN WINTER PEAS

Like Hairy Vetch, this is a fine Winter-cover and grazing crop for the South. SOLD OUT.



FLOWER SEEDS



BARNES' FLOWER SEED are **FINEST, HIGH QUALITY, TESTED** seed. We specialize in **VAUGHAN'S Flower Seed**. Our flower seed department is not so extensive as some, but we are carrying **ONLY** the best of each variety. All seed are in bulk, assuring you of fresher seed at all times.

AGERATUM. Mixed Colors. Plant February to April.

ALYSSUM, Sweet or Little Gem. Fine for borders. January to May.

AMARANTHUS. Caudatus (Love Lies Bleeding); Tricolor (Joseph's Coat). Plant in hot beds or in open after danger of frost.

AQUILEGIA (Columbine). Grows 2½ ft. Plant in hot beds, transplant.

ASTERS. American Beauty. White, Red, Pink, Blue and Mixed. December to March.

BALSAM (Lady Slipper, or Touch-Me-Not). Plant after danger of frost.

BATCHELOR BUTTON, or Ragged Robin, or Cornflower. January to April.

CALENDULA or Pot Marigold. Dbl. Orange and Striped. After danger of frost.

CALLIOPSIS. Plant December to March.

CANDYTUFT. Mixed. Sow in open after danger of frost.

CANNA. Mixed. Start in seed beds. Transplant in open.

CANTERBURY BELLS (Campanula) Large Blue, Medium Mixed and Cup and Saucer, all mixed. Sow in seed beds. Transplant in open.

CARNATION. Marguerite, Mixed. October to April.

CASTOR OIL BEAN (Ricinus). Plant after ground gets warm.

CHRYSANTHEMUM. Tall Mixed. Sow in open January to April.

COCKSCOMB. Tall Mixed. Sow in seed beds and transplant in open.

COLEUS. Fine Mixed. December to March in indoor boxes. Transplant.

COREOPSIS. Sow in indoor boxes. Transplant 10 to 12 inches apart.

COSMOS. Single, Pink, White, Red, Mixed. Klondyke. Double, Pink, Red and Mixed. December to April.

DAHLIA. Finest Mixed. December to March.

DAISY. English and Shasta. Sow in indoor boxes. Transplant when warmer.

ESCHOLTZIA, (California Poppy). December to April. Do not transplant well.

EUPHORBIA. (Snow on the Mountain).

FORGET-ME-NOT. Alpestris, Blue. Sow in indoor boxes. Transplant 10 in. apart.

FOUR-O'CLOCK. Tall Mixed. January to April.

FOX GLOVE (Digitalis) Fine Mixed. October to April.

GAILLARDIA (Blanket Flower). Sow in seed beds. Transplant 1 foot apart.

HELICHRYSUM. (Strawflower). After danger of frost, plant seed where they are to bloom.

HELIOTROPE. Vaughan's Special Mixed. October to April.

HOLLYHOCK. Dbl., Mixed. Sow in hot beds and transplant when 3 or 4 leaves show.

HYACINTH BEAN, Bush, White. Beautiful spikes to combine with other cut flowers. Very fragrant. Plant when danger of frost is over.

KOCHIA or Mexican Fire Bush. January to March in seed beds.

LARKSPUR. VAUGHAN'S Double Hyacinth Flowered. Pink, Blue and Mixed. Plant November to April. Does not transsplant well.

LOBELIA (Bedding Queen). Fine for borders. Sow early in indoor boxes. Merely press seed in soil.

LUPINS. Fine Mixed. Sow in permanent beds about January or February.

MARIGOLD.....African, Dbl. Tall Mixed. Dec. to April in open.

MIGNONETTE. Sweet Scented. Sow in permanent beds Dec. to May.

NASTURTIUM. Tall and Dwarf Mixed. Sow in open when ground is warm.

Pkt. 10c; 1 oz. 15c; ¼ lb. 45c; 1 lb. \$1.25, postpaid.

PANSY. VAUGHAN'S Giant Trimardeau. Sow early in sandy seed beds and transplant in open 6 to 8 inches apart.

PERIWINKLE. (Vinca). January to May in permanent beds.

PETUNIA. Beautiful Balcony Mixed. ROSE of HEAVEN. Beautiful, showy, small flowers of roid rose color. Very bright and attractive. Mixed Petunias.

PHLOX Drummondi, Grandiflora. Vaughan's Special Mixture. Nov. to April.

PHLOX Drummondi, Grandiflora, Pale Yellow.

PINKS. Dianthus Heddeiwigii. Choice double mixed. Dec. to March.

POPPY. Dbl. Carnation and Dbl. Shirley. Sow in open from Dec. to March.

POPPY. Orientale. May be transplanted.

PORTULACA. Dbl. Large-Flowering. Very showy Moss or Sun Plant. Jan. through May.

SALVIA Splendins, or SCARLET SAGE. May be started in indoor or planted in open when ground is warm.

SCABIOSA. Mourning Bride (Pin cushion flower). Excellent for cut-flowers. Sow early in indoor boxes or in open when ground is warm.

SNAPDRAGON, Maximum, New Giant Flowered. Mixed.

SNAPDRAGON, Majus Grandiflorum. Rose Queen. Sow in indoor boxes and transplant when about 3 inches high.

STOCKS. Bismarck. Vaughan's Special Mixture. Sow early in indoor boxes. Transplant when about 3 inches high.

SWEET PEAS. Vaughan's Spencer's Mixed. Large flowering with curled petals. October to March. Pkt. 10c; 1 oz. 20c; 2 oz. 35c; ¼ lb. 60c; ½ lb. \$1.00; 1 lb. \$1.75, postpaid.

SUNFLOWER. Mammoth Russian. Japanese Dbl. Chrysanthemum and Miniature.

SWEET WILLIAM. Dianthus Barbatus. Mammoth Flowering. Vaughan's Special Mixture. Oct. to April.

TRITOMA. (Red Hot Poker). Flame-like spikes makes splendid cut flowelrs. Effective for borders. Jan. to March.

VERBENA. Vaughan's Best Mixed. Vaughan's Defiance, brilliant scarlet. Plant seed in indoor boxes and transplant to open.

ZINNIA. Vaughan's California Giants, Lemon Queen; Rose Queen; Enchantress, a beautiful pink; Grenadier, a dark red; Mixed. Pkts. 10c, 25c and 50c; 1 oz. 75c, postpaid.

ZINNIA. Dahlia Flowered. Canary Bird; Crimson Monarch, the best red; Dream, deep lavender shading to purple; Old Rose; Exquisite, light pink shading to rose; Gold Medal Mixture. Pkts. 25c, 50c, 75c; 1 oz. \$1.75, postpaid.

ZINNIA. Lilliput. Canary Yellow, Flesh, Orange, Purple, Scarlet Gem, Rose, Mixed. Pkts. 10c, 25c, 50c; 1 oz. 75c, postpaid.

Prices on all the above varieties except Nasturtiums, Sweet Peas and Zinnias. Pkts. 10c, 15c, 25c, 50c, postpaid.

SPRAYS AND INSECTICIDES

A GOOD SPRAY PUMP MORE THAN PAYS FOR ITSELF THE FIRST SEASON. IT'S JUST AS IMPORTANT TO SAVE YOUR CROPS, AS IT IS TO MAKE THEM.

BLUE RIBBON D Four-gallon galvanized Tank. This is an excellent, efficient, durable, screw-locking, compressed air sprayer. Tank capacity, 3 $\frac{3}{4}$ gallons. Price, \$4.95 f. o. b.

BLUE RIBBON JR. Two-gallon galvanized Tank. This, like the above sprayer is made of good material and will give you excellent service at a lower cost. Price, \$3.75 f. o. b.

COMPRESSED HAND SPRAYERS. The most satisfactory quart size hand sprayer on the market. It operates easily and sprays continuously. No. 26-A, Qt. size, \$1.15, postpaid.

BUCKET AUTO SPRAYER. Solid brass pump, spraying continuously on up and down strokes; very high pressure and indestructible. Price complete, pre-paid. \$3.75.

MYER'S BARREL SPRAYER No. R305B. The best barrel sprayer on the market. Cylinder, valves, valve seat, and discharges all BRASS. Hemp packed plunger. All working parts submerged in liquid and no priming necessary. Complete with 15 feet of $\frac{1}{2}$ inch hose. Price, \$15.00 f. o. b.

MYER'S KNAPSACK SPRAY PUMP. Used by many truckers. 5 gallon Tank; brass pump, plunger and agitator; 5 feet of hose, pipe extension and Vermorel nozzle. The best sprayer we know of for spraying vegetables. Price, \$11.00 f. o. b.

INSECTICIDES

PROTECT YOUR CROPS FROM INSECTS, WORMS, SCALE, ETC. PREVENTION IS BETTER THAN CURE.

BOWKER'S PYROX

KNAPSACK Combined insecticide and fungicide. A creamy paste easily mixed with water, sticking like paint to plants and not washing off, even in rain. Kills all insects, bugs, and worms on potatoes, beans, melons, tomatoes and other vegetables. 1 lb. jar 50c; 5 lbs. \$1.75; 10 lbs. \$3.40, postpaid. Write for prices on larger quantities.

BUG DEATH

BUG DEATH is a powder applied in dry form or mixed with water and sprayed or sprinkled. 1 lb. 25c; 2 lbs. 50c; 5 lbs. 75c, postpaid. Not prepaid. 100 lb. keg, \$10.00.

ARSENATE OF LEAD

One of the very best and safest insecticides; the standard for all vegetables; absolutely kills every insect or worm and does not burn, or injure the most tender growth. Mix with air slacked lime, or water, 2 pounds to 25 gallons. Apply with spray or sprinkled. $\frac{1}{2}$ lb. 25c; 1 lb. 30c; 5 lbs. \$1.40, postpaid. Write for quantity prices.

ARSENATE OF CALCIUM

A ready mixed powder and can be applied in dust form on vegetables, or cotton for destroying weevils. $\frac{1}{2}$ lb. 15c; 1 lb. 20c; 10 lbs. \$1.50, postpaid. 100 lbs. about \$10.00 f. o. b.

HAMMOND'S SLUG SHOT. Excellent for blight on roses, also worms and lice on cabbage. 1 lb. 35c; 5 lbs. \$1.00, postpaid.

TOBACCO DUST. Kills Aphis and Flea Beetles. 1 lb. 20c; 5 lbs. 75c, postpaid. Not prepaid, 10 lbs. \$1.00.

FISH OR WHALE OIL SOAP. Prevents and cures scale, aphis, lice and many insects on trees, bushes and plants. 1 lb. 35c; 2 lbs. 60c, postpaid.

BARBER'S OIL EMULSION. The famous red engine oil emulsion for the control of SAN JOSE and other scale insects. Use 1 part BARBER'S EMULSION to 30 parts water. 1 Qt. 50c; Gal. \$1.00; 5 Gals. \$4.50. Write us for quantity prices.



Blackleaf "40"

BLACKLEAF "40". Highly concentrated Nicotine Sulphate solution, for the destruction of Aphis, thrips and other sucking insects on vegetables, roses and shrubbery. 1 oz. Bottle makes 6 gallons of spray. 1 oz. 40c; 5 oz. Bottle, \$1.25, postpaid.

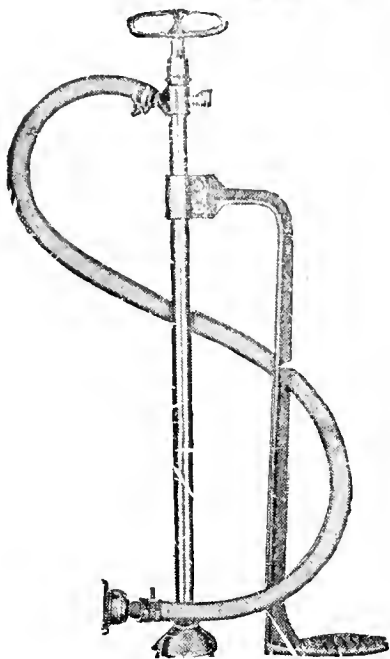
EVERGREEN. (Non-poisonous). This is recommended for both sucking and eating insects. 1 oz. 35c; 6 oz. \$1.00; 16 oz. \$2.00, postpaid. Not prepaid, 1 Qt. \$3.50. Write for prices on larger quantities.

EVERGREEN

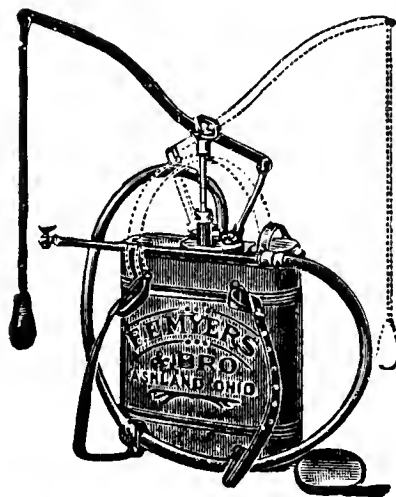
NON-POISONOUS INSECTICIDE

BORDEAUX MIXTURE. Controls black rot, mildew, blight, rust, and other fungus diseases. 1 lb. 50c, postpaid.

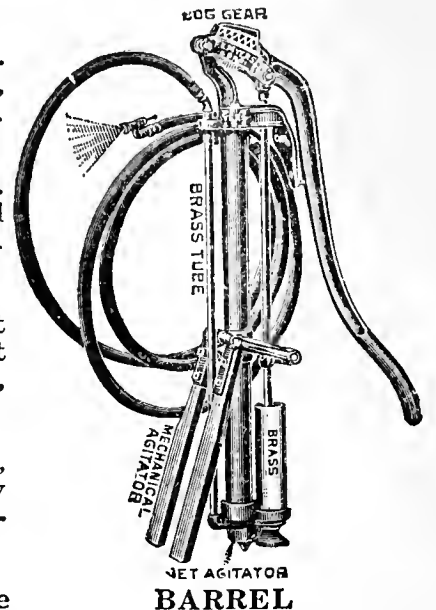
BISULPHATE OF CARBON (High Life). Fine for destroying weevils in corn, etc. Place grain to be treated in air-tight place and put the liquid in an open vessel on top, so that the poison gas will penetrate down through it. 1 lb. Bottle 60c; 3 lb Bottle \$1.00, not prepaid.



BUCKET



KNAPSACK



BARREL



Other Insecticides

SULFOCIDE. A sure preparation for the second spraying and the best spray for summer. Prevents wormy fruits, does not burn and is easy to use. For spraying, use 1 gallon SULFOCIDE to 200 gallons water. Cannot be mailed. Not prepaid, 1 Pint 40c; 1 Qt. 70c; 1 Gallon \$2.00. Write for prices in larger quantities.

SCOOT. The great ant chaser. Quickly destroys all ants. Poisonous syrup which ants greedily eat, but never come back to again. They all disappear when SCOOT is put out. 4 oz. Bottle. 35c, postpaid.

Pratts

Stock and Poultry Remedies

There Is a Pratt Remedy for Nearly Every Curable Poultry and Stock Disease.

PRATT'S COW TONIC. The greatest remedy in the world for cows and calves and the best tonic to keep them in good condition. 2 lb. Can 65c, postpaid.

PRATT'S POULTRY REGULATOR. The best of all poultry tonics. A health maker and egg producer. 4 lb pkg. 65c, postpaid.

PRATT'S ANIMAL REGULATOR. Cost less than 1c per day per horse or cow. 48 oz. Pkg. 65c, postpaid.

PRATT'S DIP AND DISINFECTANT. For poultry, cattle or dogs and household use. 1 Pt. 50c, postpaid Not prepaid, 1 Gal \$1.50.

PRATT'S FLY CHASER. For ridding animals of horn flies. Costs less than one-half cent per animal per day. One-half Gallon 90c; 1 Gal. \$1.50, not prepaid.

OTHER PRATT'S REMEDIES, POSTPAID

PRATT'S LICE KILLER, Small size, 35c; Large size	60c	PRATT'S GAPE REMEDY	30c
PRATT'S ROUP REMEDY	30c	PRATT'S HEAD LICE OINTMENT	35c
PRATT'S CHICK TABLETS, for drinking water	30c	PRATT'S SORE HEAD or CHICKEN POX REMEDY	65c
		PRATT'S HEALING OINTMENT	35c
		PRATT'S SPECIAL REMEDY, for Chicken Cholera	65c



BLACKMAN'S MEDICATED SALT BRICK. A tonic and conditioner for live stock. Put a brick in the feed trough. 2 3/4 lb. bricks, 35c each, postpaid.

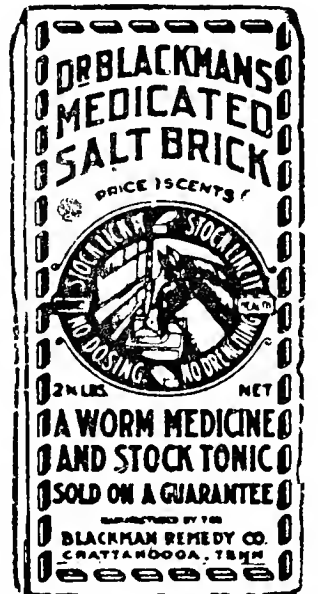
AVICOL. Great remedy for poultry. Used in drinking water. Large Pkg. 52c, postpaid.

DON SUNG. Makes hens lay. Easily given in feed and gets eggs in any weather. Try it. If it doesn't pay you a good profit, your money will be promptly refunded. Pkg. 52c; Large size, three times as much as small, \$1.02, postpaid.

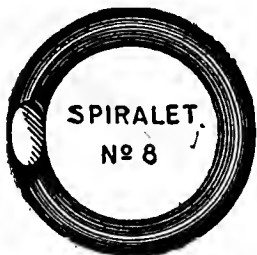
FIGARO LIQUID MEAT SMOKE. Condensed, bottled wood smoke.

The easiest, most economical and best way to cure meat. FIGARO "saves the bacon". 20 oz. bottle (cures 250 lbs.) \$1.00; 1 1/4 Qt. (cures 500 lbs.) \$1.50, postpaid. Not prepaid, 85c and \$1.25.

TALCIMIZED SODIUM FLOURIDE. The U. S. Dept. of Agriculture recommends Sodium Flouride as one of the greatest lice destroyers in existence. 1/2 lb. Pkg. 45c; 1 lb. Pkg. 75c, postpaid.



POULTRY SUPPLIES



MOE'S LINE of Fountains, Feeders, etc., are made of heavy Galvanized material. Non-Rustable and practically everlasting. Write us for your needs in any **POULTRY GOODS**.

COLORED CELLULOID SPIRALETS

Leg Bands, made of celluloid, fast colors,

light in weight, durable, proper temper, weather proof, hold their shape. Colors in Red, White, Black, Blue and Green.

Size 4. For Baby Chicks. Doz. 15c; 25, 25c; 50, 40c; 100, 60c; 500, \$2.40; 1000, \$4.25, postpaid.

Size 6. For growing Chicks. Doz. 15c; 25, 25c; 50, 40c; 100, 60c; 500, \$2.40; 1000, \$4.25, postpaid.

Size 8. For Leghorns and Anconas. Doz. 20c; 25, 35c; 50, 55c; 100, 85c; 500, \$3.75; 1000, \$7.00, postpaid.

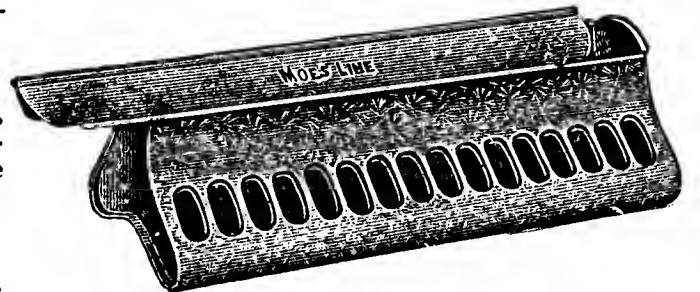
Size 11. For R. I. Reds, Rock, Wyandottes, Orpingtons. Doz. 20c; 25, 35c; 50, 60c; 100, 90c; 500, \$4.00; 1000, \$7.50, postpaid.

Size 12. For Asiatics, Cornish and Ducks. Doz. 20c; 25, 35c; 50, 60c; 100, 90c; 500, \$4.00; 1000, \$7.50, postpaid.

Size 14. For Turkeys and Geese. Doz. 25c; 25, 40c; 50, 65c; 100, \$1.00, postpaid.

ALUMINUM LEG BANDS. Made of aluminum, large raised numbers, adjustable for any size fowl, easily and quickly applied. Doz. bands, numbered 1 to 12, 20c; 25 bands, 1 to 25, 35c; 50 bands, 1 to 50, 55c; 100 bands, 1 to 100, 90c; 500 bands, 1 to 500, \$3.75; 999 bands, 1 to 999, \$6.50, postpaid.

REGAL EGG SHIPPING BOXES. The safest and most durable egg carrier on the market. Made of very strong corrugated fibre board. This box can be used in Parcel Post or Express shipments time after time. No. 14, 15 Egg capacity, each 30c; 6, \$1.60; Doz. \$2.90, postpaid. No. 15, 30 Egg capacity, each 60c; 6, \$2.90; Doz. \$5.40, postpaid.



LARGE CAPACITY FEEDERS. No. 140. A wonderful feeder, holding 10 qts. and accommodating 32 chicks at one time. Impossible for fowls to roost on cover or sides and foul the feed. Great time and labor saver. Sliding top, easy to fill and clean. Length is 21 inches, width is 8 1/2 inches, height 7 inches. Each, \$1.50, postpaid.

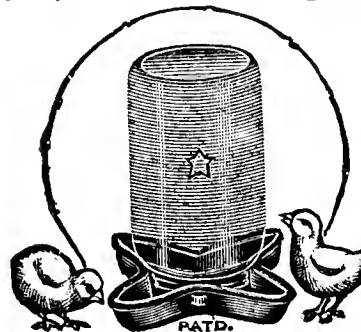
Smaller Sizes. No. 58, Length 12 inches, 18 holes, 50c, postpaid. No. 59, Length 18 ins., 26 holes, 65c, postpaid. No. 60, 24 ins., 36 holes, each 80c, postpaid.

ROUND BABY CHICK FEEDERS. A great feed saver. Also used for water. Top taken off for cleaning or filling. No. 11. Diameter 6 inches, 8 holes, each 20c; 3 for 50c; or 6 for 90c; \$1.75 per dozen, postpaid. No. 12. Diameter 8 1/4 inches, 12 holes, each 30c; 3 for 75c; postpaid.

STAR FOUNTAINS AND FEEDERS. No. 32. Suitable for feed as well as water; fits any Mason jar; made of a single piece of metal in shape of a star. Jar not included. Each 15c; 2 for 25c; 6 for 65c, postpaid.

Moe's Brooder Heater. Height 7 inches, diameter 11 inches. Each, \$2.50, postpaid.

We carry in stock many other styles of feeders and water founts. When in the market for poultry supplies, remember we can supply you whatever equipment needed.



The ZINNIA — Today's Favorite Flower



The ZINNIA was always passingly pretty, but the DAHLIA FLOWERED ZINNIA is exquisitely beautiful. The development of this wonderfully attractive flower was the biggest sensation in the flower world in recent years.

BARNES' Zinnia seed all come directly from the seed farms of the most careful and reliable flower seed growers in the world.

These seed are offered in the most beautiful and pleasing separate shades, and also in the mixed colors. See descriptions and prices inside.

Return to
**BARNES SEED &
HATTIESBURG,**

Return Postage Guaranteed

ROUTE

From Barnes Seed & Co.
Address Hattiesburg, Miss.

U. S. DEPARTMENT OF AGRICULTURE,
Shaw-Walker
WASHINGTON, D. C.

BUREAU OF PLANT INDUSTRY
Horticultural Crops and Diseases

8-3591

THE NEW DAHLIA FLOWERED ZINNIA