

## **Historic, Archive Document**

Do not assume content reflects current scientific knowledge, policies, or practices.



Highest Grade Stock — Order  
Early and Save Money

Fall

Every Possible Saving  
Is Passed on to You

# PLANTING GUIDE



## To Our Friends and Customers

In the past it has been our practice to issue a large illustrated descriptive catalog which costs considerable money. In keeping with the trend of the times, it was our desire to reduce prices of the trees and plants which we have grown and now offer for sale. We have, therefore, decided not to issue the large expensive catalog this season, but rather to pass the saving along to our customers by reduction in the price of all the trees and plants offered in this bargain circular.

Fall planting of shrubs, trees and flowers has an advantage over spring planting in that all during the

long winter months the root systems are forming, and no damage may be done from drouth or heat, which all too often follow spring planting before the transplanted shrubs have sufficient opportunity to take ample root in their new location. You may expect better plants next summer, better growth and less loss by anticipating your spring needs, sending in your order now and getting the plants in the ground this fall. Orders received prior to fall shipping time will be filled just as soon as it is safe to move the plants.

**OUR GUARANTEE:** All goods are guaranteed to reach you in good condition; mistakes, if made, will be promptly rectified. Accept shipment, examine and count on receipt and notify us at once should there be any errors, and the carrier as well, if any damaged stock. This guarantee not good unless above requirements are complied with. We do not guarantee continued growth. Remember, a tree, shrub or plant is a living organism, as much as a cow, horse or man. It breathes, drinks and feeds, and is liable to attacks of disease and insects. At prices we sell, it is impossible for us to guarantee growth or to be responsible for stock after delivery to our customers in good condition.

**TERMS:** Cash with order, except to persons who satisfy us as to their responsibility. Remittances may be made by bank draft, postal or express money order. Never send loose currency in envelope.

**DISCOUNTS:** 10% Discount from list prices if cash order is received any time between now and October 15.

6% Discount from list prices if cash is received with order in November.

3% Discount allowed on all cash orders after dates mentioned. Orders shipped C. O. D. if one-fourth cash accompanies order. No discount on C. O. D. orders.

**Buy Wisely—Take Advantage of These Special Discounts for Cash and Promptness in Ordering**

**PACKING:** All plants are carefully packed to prevent drying or freezing, while in transit. All packing charges are included in catalog list price.

**HOW TO SHIP:** We prefer shipping by express, **CUSTOMER TO PAY THE CHARGES.** If you prefer sending by parcel post, add 15% to your order to cover this. **ALL PLANTS ARE SOLD F. O. B. McMinnville, Tennessee. CUSTOMERS ARE TO PAY ALL TRANSPORTATION CHARGES.** **IN ORDERING** Please give plainly the name, post office and state. Always tell us how you want goods to come, and name your express or freight station. Make out orders on separate sheet from your letter, plainly stating the grade you want.

# BOYD NURSERY COMPANY

McMINNVILLE, TENNESSEE

# Plant Bulbs This Fall for **SPRING FLOWERS**

## TULIPS

The Darwin Tulips and Hyacinths herein offered will be Holland-grown bulbs. Our shipment from Holland will probably arrive the latter part of September or early October, at which time we will fill the orders that have been placed with us up to time of arrival of bulbs, promptly on receipt of the shipment from Holland. The bulbs offered are to be only No. 1 quality bulbs.

### DARWIN TULIPS

**Baronne De La Tonnaye.** Bright pink, margined bluish rose.  
**Bartigon.** Fiery crimson with light base; large flower, very beautiful.  
**Clara Butt.** Beautiful salmon-pink; one of the most popular pink sorts.  
**White Queen.** Lovely soft white, slightly tinged pink.  
**Farncombe Sanders.** Brilliant red with light base; very large flower.  
**La Tulipe Noire.** Dark red Tulip.  
**Price of Haarlem.** Deep rose-red with blue base.  
**William Copeland.** Rose-lilac; pleasing color and one of the best.  
**Rev. H. Ewbank.** Deep lavender with lighter tint at the edge.  
**Scarlet Beauty.** Intense rich glowing scarlet without any marking.  
**Centenaire.** Dark violet-rose, with blue center; large flower.  
**Princess Elizabeth.** Rich soft rose, shaded lighter at the edge.  
**Inglescombe Yellow.** Clear canary-yellow; very effective.  
**Prices on above varieties 10c per dozen; \$3.00 per hundred.**

### HYACINTHS

They should be planted in the fall months, November or December. Plant from 3 to 5 inches apart and cover one and one-half times their depth. Should be covered with good, rich garden soil. Before severe weather cover Hyacinth bed with straw, leaves or manure. This covering should be removed in early spring, after all danger of heavy frost.  
**Gertrude.** A bright rosy pink, on large upright spikes.  
**La Victoire.** Brilliant crimson-scarlet.  
**L'Innocense.** Pure white; single.  
**King of the Blues.** Rich dark blue; single flower.  
**Yellow Hammer.** Best pure yellow single.  
**President Roosevelt.** Bright pink; large and double.  
**La Grandesse.** Extra fine, pure white; very double.  
**Bloksberg.** Bright porcelain blue; double.  
**Goethe.** Light yellow. One of the best double.  
**Prices on above varieties 10c each; \$1.00 per dozen.**

### LILIES

None of the fall-planting bulbs afford quite so much pleasure as the Lilies. Rich and varied in color, stately and handsome in habit, they stand out prominently from all other hardy plants. They require but little attention and really should not be disturbed for several years.  
**Day Lily.** Flowers large, rich golden yellow, marked with Indian yellow. 40c per dozen; \$3.00 per hundred.  
**Lemon Lily.** Fragrant, clear yellow. Very freely produced in early summer. 10c each; 75c per dozen.



Giant Darwin Tulips



Lilies

**Tawny Day Lily.** Flowers tawny orange with wavy margined petals. 40c per dozen; \$3.00 per hundred.  
**Regal Lily.** One of the most beautiful Lilies. Flowers are white, slightly suffused with pink, with a beautiful glow of canary-yellow at center. Its perfume is exquisite. 15c each; \$1.50 per dozen.  
**Tiger Lily.** Deep orange-red flowers, spotted with black, purplish spots; borne in many clusters. 10c each; 90c per dozen.  
**Spider Lily.** An entirely distinct species of mid-summer flowering Lily. They should be in every garden. The large snow-white flowers are very suggestive of the name. 75c per dozen; \$5.00 per hundred.  
**Speciosum Lily.** A vigorous variety. Rich carmine on white ground with crimson spots. 20c each; \$2.00 per dozen.

### ORNAMENTAL GRASSES

Very effective and artistic results may be obtained by the use of these graceful and attractive plants. We offer two very pretty varieties, in divisions.  
**Eulalia Gracillima Univittata (Japan Rush).** Very graceful habit with long, narrow bright, green foliage, with silvery midrib.  
**Eulalia Dwarf Variegata.** Very ornamental, long, narrow leaves striped green, white and often pink or yellow.  
**Prices on above varieties 35c per dozen; \$2.50 per hundred.**

### SHASTA DAISIES

Mammoth white flowers, sometimes 3 inches across, with yellow center and borne in profusion in July. Their position in the garden is a shimmering drift of snowy white. 35c per dozen; \$2.50 per hundred.

### PHLOX

Presents brilliant masses of color in landscape or hardy border. Blooms from July on, with wide range of color. Can be planted in fall or early spring. Soil should be well prepared and very rich. Plant 12 to 15 inches apart, water thoroughly. Clumps should be divided and planted in rich, fresh soil every three years. Divisions 20c each; \$1.50 per dozen.

### YUCCA FILAMENTOSA

Exceedingly good for the rockery. Grows to a height of 6 feet with broad sword-like, evergreen foliage and immense branching spikes of drooping, creamy white flowers. 1-year plants 10c each; 75c per dozen. \$3.50 per hundred. 2-year plants (clumps) 20c each; \$1.50 per dozen; \$6.00 per hundred.

### HARDY FERNS

**Maiden Hair Fern.** A graceful species, with large deciduous leaves, very dark chestnut-brown stipules radially forked at the summit. Grows 10 to 15 inches high. Small roots 40c per dozen; \$3.00 per hundred.  
**Hay-Scented Fern.** Has thin and delicate leaves, from one to three feet long. Stipes clustered; pale green and sweet scented. 50c per dozen; \$3.50 per hundred.  
**Cinnamon Fern.** Stately fern with very large, creeping root stocks. Bright green with pinnatifid divisions, growing 3 to 5 feet tall. 50c per dozen; \$3.00 per hundred.  
**Royal Fern.** Vigorous fern with good stout root stocks. Fronds will measure a foot or more wide, growing 2 to 5 feet tall. 60c per dozen; \$4.00 per hundred.  
**Christmas Fern.** Beautiful Evergreen Fern with densely chaffy stipes. Leaves deep green with numerous pinnae, 1 to 2 feet long. 50c per dozen; \$3.50 per hundred.

## PEONIES

The Peony is one of our best known and best loved flowers. Although very hardy and easily grown, the Peony prefers a good, deep soil, in a rather moist, yet sunny location. Plant the roots so that the eyes are about 2 to 3 inches under the surface. For best results WE WOULD SUGGEST FALL PLANTING.

**Alfred de Musset.** A fine white. 30c each; \$3.00 per dozen.  
**Candidissima.** White guard petals, pale yellow center. 25c each; \$2.50 per dozen.  
**Charlemagne.** Creamy white, with lilac tinted center. 20c each; \$2.00 per dozen.  
**Ducess de Nemours.** Pure white, extra large and fine. 25c each; \$2.50 per dozen.  
**Ducess of Wellington.** Yellowish white; very soft. 20c each; \$2.00 per dozen.  
**Festiva Maxima.** White, with central petals flaked with red. 20c each; \$2.00 per dozen.  
**Queen Victoria.** White; very free-flowering. 20c each; \$2.00 per dozen.  
**Andre Lauries.** Rich, velvety red. 25c each; \$2.50 per dozen.  
**Ducess D'Orleans.** Dark rose, with shades of salmon in center. 20c each; \$2.00 per dozen.  
**Formosa.** Light rose, paler in the center. 35c each; \$3.00 per dozen.  
**Felix Crousse.** Brilliant red; large, good fragrance. 45c each; \$4.00 per dozen.

## GERMAN IRIS

The grand and royal colors of the flowers of these superb hardy plants are not surpassed by those of any garden subject. They are invaluable, due to their hardiness and easy culture, and for the lavish wealth of blossoms that crown their numerous stems. A sunny location in moist, rich soil is best adapted to their requirements. They will greatly increase in size of clumps each season.

**Rhein Nixe.** Purple falls, white standards. 12c each; 85c per dozen.  
**Gertrude.** Bright blue. 10c each; 60c per dozen.  
**Archevêque.** Deep wine-purple. 15c each; \$1.00 per dozen.  
**Mithsen.** Purple falls, buff standards. 12c each; 85c per dozen.  
**Paxatawny.** Lavendar. 10c each; 60c per dozen.  
**Miranda.** Blue-purple. 15c each; \$1.00 per dozen.  
**Queen of May.** Lavendar-pink. 10c each; 60c per dozen.  
**Mars.** Yellow. 10c each, 60c per dozen.  
**Sans Souci.** Lemon-yellow. 10c each; 60c per dozen.  
**Nibelungen.** Purple falls, buff standards. 12c each; 85c per dozen.  
**German Iris, mixed colors, a good mixture, 35c per dozen; \$2.50 per 100.**

## COREOPSIS

A profusion of golden yellow flowers on long, graceful stems from early June until frost. Excellent for cutting. Grows 2 feet high. 35c per dozen; \$3.00 per hundred.

## NOTICE SPECIAL PRICES

Hand this special price list to your friends, but do not do so until you have sent in your own order. Your friends will thank you for it, and we will THANK YOU, TOO.



Iris

# Flowering Shrubs Provide Unusual and Artistic Settings



Barberry

**ALTHEAS (Hibiscus).** A most desirable hardy shrub, that will furnish a wide range of colors from June until frost. Our collection includes the best varieties.

*Double White, Single White, Double Variegated, Double Purple, Double Red*

|                    | Each | Per 10  |
|--------------------|------|---------|
| 12 to 18 inch..... | .15  | \$ 1.00 |
| 18 to 24 inch..... | .20  | 1.25    |
| 2 to 3 feet.....   | .25  | 1.75    |
| 3 to 4 feet.....   | .35  | 2.50    |

**AMYGDALUS ROSEA.** Pink Flowering Almond. A neat shrub. Small, pink, rose-like flowers thickly cover the branches in early spring.

|                    | Each | Per 10  |
|--------------------|------|---------|
| 12 to 18 inch..... | .20  | \$ 1.50 |
| 18 to 24 inch..... | .25  | 2.00    |
| 2 to 3 feet.....   | .35  | 3.00    |

**BERBERIS THUNBERGI (Japanese Barberry).** Hardy shrub, splendid for hedges or massing. Delicate yellow flowers appear in April and May. Foliage is brilliant in fall, followed by scarlet berries.

|                    | Each | Per 10 |
|--------------------|------|--------|
| 9 to 12 inch.....  | .10  | \$ .85 |
| 12 to 18 inch..... | .15  | 1.25   |
| 18 to 24 inch..... | .25  | 2.00   |
| 2 to 3 feet.....   | .40  | 3.50   |

**BERBERIS THUNBERGI ATROPURPUREA (Red Leaf Barberry).** This is a new variety of the Japanese Barberry. Bronzy-red foliage in early spring, turning to brilliant red in the autumn.

|                    | Each | Per 10  |
|--------------------|------|---------|
| 9 to 12 inch.....  | .20  | \$ 1.75 |
| 12 to 15 inch..... | .35  | 3.00    |
| 15 to 18 inch..... | .60  | 5.00    |

**Buddleia Variabilis Magnifica (Butterfly Bush).** A shrub that should be in every garden. Flowers produced on long, graceful stems of beautiful lilac-color. Second year after planting it usually begins to bloom in June and continues throughout the summer.

|                    | Each | Per 10  |
|--------------------|------|---------|
| 18 to 24 inch..... | .20  | \$ 1.75 |
| 2 to 3 feet.....   | .30  | 2.25    |

**CALYCANTHUS (Sweet Shrub).** A hardy shrub with dark green foliage and chocolate-colored flowers in early spring. Will thrive in shade.

|                    | Each | Per 10  |
|--------------------|------|---------|
| 12 to 18 inch..... | .20  | \$ 1.75 |
| 18 to 24 inch..... | .35  | 2.50    |
| 2 to 3 feet.....   | .40  | 3.50    |

**CORALBERRY (Symphoricarpos Vulgaris).** Another berry-bearing shrub that is bright and showy all during the winter. Perfectly hardy.

|                    | Each | Per 10  |
|--------------------|------|---------|
| 12 to 18 inch..... | .15  | \$ 1.00 |
| 18 to 24 inch..... | .20  | 1.50    |
| 2 to 3 feet.....   | .25  | 2.00    |

**CORNUS—Shrub Dogwood.** These shrubs are planted for their bright-colored bark and the profusion of berries. They are very pretty in the winter season when other shrubs are dead.

Amomum. (Red bark).  
Paniculata. (Red Bark with white berries).  
Sanguinea. (Red-twigged, with black berries).  
Siberica. (Coral Dogwood).  
Stolonifera. (Bright red bark with white berries).

|                    | Each | Per 10  |
|--------------------|------|---------|
| 18 to 24 inch..... | .20  | \$ 1.50 |
| 2 to 3 feet.....   | .35  | 3.00    |
| 3 to 4 feet.....   | .50  | 4.00    |

**CRAPe MYRTLE.** A beautiful Southern shrub. Profusion of lace-like blooms in crimson, pink and white colors.

|                    | Each | Per 10  |
|--------------------|------|---------|
| 12 to 18 inch..... | .25  | \$ 2.00 |
| 18 to 24 inch..... | .35  | 3.00    |
| 2 to 3 feet.....   | .45  | 4.00    |

**CYDONIA JAPONICA (Japanese Quince).** The earliest blooming shrub. In early spring the shrub will be literally covered with scarlet flowers followed by small fruit.

|                    | Each | Per 10  |
|--------------------|------|---------|
| 12 to 18 inch..... | .25  | \$ 2.00 |
| 18 to 24 inch..... | .35  | 3.00    |
| 2 to 3 feet.....   | .50  | 4.00    |

**DEUTZIA.** Showy Japanese shrubs of highest ornamental merit and adapted to all soils. Their clean foliage, upright, dense growth and free flowering nature, render them especially valuable.

**Candidissima.** (Upright; pure white double).  
**Crenata.** (Light pink fragrant flowers).  
**Fortunei.** (Upright; pink flowers).  
**Pride of Rochester.** (Upright; white flowers tinged with pink).

|                    | Each | Per 10  |
|--------------------|------|---------|
| 12 to 18 inch..... | .15  | \$ 1.00 |
| 18 to 24 inch..... | .20  | 1.50    |
| 2 to 3 feet.....   | .30  | 2.50    |
| 3 to 4 feet.....   | .35  | 3.00    |

**EXOCHORDA GRANDIFLORA (Pearl Bush).** In early spring pearl-like buds open into fragrant pure white waxy flowers. Light green foliage.

|                    | Each | Per 10  |
|--------------------|------|---------|
| 18 to 24 inch..... | .35  | \$ 3.00 |
| 2 to 3 feet.....   | .45  | 4.00    |
| 3 to 4 feet.....   | .60  | 5.00    |

**FORSYTHIA (Golden Bell).** You have surely noticed these graceful shrubs in the early spring, with the branches covered with small yellow flowers, which are followed by the leaf buds.

**Fortunei.** (Upright).  
**Intermedia.** (Arching).  
**Suspensa.** (Long curving branches).  
**Viridissima.** (Upright).

|                    | Each | Per 10  |
|--------------------|------|---------|
| 18 to 24 inch..... | .20  | \$ 1.75 |
| 2 to 3 feet.....   | .30  | 2.25    |
| 3 to 4 feet.....   | .40  | 3.50    |

**HYDRANGEA ARBORESCENS (Common Wild Hydrangea).** A native plant in our mountains. Large flat heads of white flowers in early summer.

|                    | Each | Per 10  |
|--------------------|------|---------|
| 18 to 24 inch..... | .15  | \$ 1.00 |
| 2 to 3 feet.....   | .20  | 1.50    |
| 3 to 4 feet.....   | .30  | 2.50    |

**HYDRANGEA ARBORESCENS GRANDIFLORA (Hills of Snow).** Succeeds anywhere. Round heads of snowy white flowers from early June to September.

|                    | Each | Per 10  |
|--------------------|------|---------|
| 12 to 18 inch..... | .25  | \$ 2.00 |
| 18 to 24 inch..... | .30  | 2.50    |
| 2 to 3 feet.....   | .40  | 3.50    |

**HYDRANGEA PANICULATA GRANDIFLORA (Pee-Gee Hydrangea).** Very effective Hydrangea. Dark green foliage, producing large panicles of creamy white flowers, which turn rosy as the season advances.

|                    | Each | Per 10  |
|--------------------|------|---------|
| 12 to 18 inch..... | .20  | \$ 1.50 |
| 18 to 24 inch..... | .25  | 2.00    |
| 2 to 3 feet.....   | .35  | 3.00    |

**HYDRANGEA QUERCIFOLIA (Oak-Leaved Hydrangea).** Excellent for foundation planting. Heavy, oak-leaved foliage, highly colored in autumn. Extra large white blossoms.

|                    | Each | Per 10  |
|--------------------|------|---------|
| 18 to 24 inch..... | .30  | \$ 2.50 |
| 2 to 3 feet.....   | .40  | 3.50    |

**HYPERICUM (Shrubby St. John's Wort).** Useful in the border, or where low growth is wanted.

|                    | Each | Per 10  |
|--------------------|------|---------|
| 12 to 18 inch..... | .20  | \$ 1.50 |
| 18 to 24 inch..... | .35  | 3.00    |
| 2 to 3 feet.....   | .50  | 4.50    |



Butterfly Bush

**KERRIA JAPONICA (Yellow Kerria).** Does well in shady location. Single yellow flowers apparent in June.

|                    | Each | Per 10  |
|--------------------|------|---------|
| 18 to 24 inch..... | .35  | \$ 3.00 |
| 2 to 3 feet.....   | .45  | 4.00    |

**LILAC (Syringa).** There is no flowering shrub more easily grown or more generally satisfactory. They are perfectly hardy, and bloom freely during April and May.

**Purple.** The well known old garden favorite. Excellent for screens.

**White.** Same as purple in habits, only with flowers of pure white.

**Rothomagensis.** Strong, vigorous grower. Small, narrow leaf and fragrant flowers of deep reddish lilac.

|                    | Each | Per 10  |
|--------------------|------|---------|
| 18 to 24 inch..... | .25  | \$ 2.00 |
| 2 to 3 feet.....   | .35  | 2.50    |
| 3 to 4 feet.....   | .50  | 4.00    |

**LONICERA (Bush Honeysuckle).** Strong dense growing shrub with deciduous foliage. Small fragrant flowers appear almost with first days of spring, and are followed by showy berries.

**Fragrantissima.** (Pale Pink).  
**Lonicera Pink.**  
**Lonicera White.**

|                    | Each | Per 10  |
|--------------------|------|---------|
| 12 to 18 inch..... | .15  | \$ 1.00 |
| 18 to 24 inch..... | .20  | 1.50    |
| 2 to 3 feet.....   | .30  | 2.00    |
| 3 to 4 feet.....   | .40  | 3.00    |



Forsythia

## Privett—Hedge Plants

If your fences and dividing lines are made of hedge rather than of wood and iron they immediately become a thing of beauty and the upkeep is materially reduced. Once established, they will last a life time. The trimming of the Privett is not a large job and certainly is worth while. To secure best results, pruning should be commenced at time of planting and kept up throughout the season.

We are large growers of hedge plants, and are thereby enabled to make the following very low prices.

**AMUR RIVER NORTH PRIVETT.** Hardy as far North as Canada. Makes a fine, dense hedge. Eventually attains the height of 8 to 10 feet.

**AMUR RIVER SOUTH PRIVETT.** (Southern Evergreen Privett). Most popular hedge plant, often times called Evergreen Hedge, in the South. Rich green foliage, compact growth. Hardy as far North as Kentucky. Makes a good hedge in one year.

**CALIFORNIA PRIVETT.** A very successful privett for the Northern States. Leaves dark, glossy green. ERECT branching habit and quick, substantial development.

**IBOLIUM PRIVETT.** A cross between California and Iboia Privetts, having the attractiveness of the California and at the same time is much hardier. Forms an excellent hedge when trimmed.

### PRICES ABOVE VARIETIES OF PRIVETT:

|                             | 10   | 100    | 1000    |
|-----------------------------|------|--------|---------|
| 12 to 18 inch, two year.... | .40  | \$2.00 | \$18.00 |
| 18 to 24 inch, two year.... | .60  | 3.00   | 22.50   |
| 2 to 3 feet, two year.....  | .75  | 4.00   | 30.00   |
| 3 to 4 feet, two year.....  | 1.00 | 5.00   | 40.00   |

**NOTE.—This Great Reduction "Sale Price" in Quantity Lots.**

# HEDGES Add BEAUTY to Home Landscape

**PHILADELPHUS (Mock Orange).** This old-fashioned shrub with creamy white flowers borne in clusters is found in many plantings. All varieties are strong growers and are suitable for border, screen or specimen planting.

**Coronarins.** One of the first to bloom. Pure white.

**Gordoniaans.** Large, white flowers appearing later than other varieties.

**Grandiflorus.** The leading variety for specimen planting. Flowers large, white.

**Mont Blanc.** A charming variety; dwarf in habit with large, fragrant flower.

**Nivalis.** Large, single white flower.

|                    | Each  | Per 10  |
|--------------------|-------|---------|
| 12 to 18 inch..... | \$.15 | \$ 1.00 |
| 18 to 24 inch..... | .20   | 1.50    |
| 2 to 3 feet.....   | .25   | 2.00    |
| 3 to 4 feet.....   | .35   | 3.00    |

**RHUS (Sumac).** The sumacs are among the most showy of our ornamental shrubs in Autumn. The flowers are bright yellow in large panicles, which in some sorts turn brilliant red in late Summer.

**AROMATICA.** This variety is a short-branched shrub, called the Fragrant Sumac. Red berries mature in June, which are fine for bird seed, and the foliage is a riot of brilliant scarlet.

|                    | Each  | Per 10  |
|--------------------|-------|---------|
| 18 to 24 inch..... | \$.25 | \$ 2.00 |
| 2 to 3 feet.....   | .35   | 2.50    |
| 3 to 4 feet.....   | .50   | 4.00    |

**COPALLINA (Shining Sumac).** Tall growing. Lustrous leaves which change to rich crimson in Fall. Very effective for borders and background.

|                    | Each  | Per 10  |
|--------------------|-------|---------|
| 18 to 24 inch..... | \$.15 | \$ 1.00 |
| 2 to 3 feet.....   | .20   | 1.50    |
| 3 to 4 feet.....   | .25   | 2.50    |

**COTINUS (Purple Fringe).** A medium-sized shrub with fringe-like flowers. In full bloom it has the appearance of a cloud of smoke.

|                    | Each  | Per 10  |
|--------------------|-------|---------|
| 18 to 24 inch..... | \$.20 | \$ 1.50 |
| 2 to 3 feet.....   | .30   | 2.50    |
| 3 to 4 feet.....   | .40   | 3.00    |

**GLABRA (Smooth Sumac).** Handsome foliage, scarlet in Autumn. Greenish flowers in July; Crimson, hairy seeds.

|                  | Each  | Per 10  |
|------------------|-------|---------|
| 2 to 3 feet..... | \$.15 | \$ 1.00 |
| 3 to 4 feet..... | .20   | 1.50    |
| 4 to 5 feet..... | .35   | 2.50    |

**TYPHINA (Straghorn Sumac).** Large shrub. Grows in the driest soils, and is particularly desirable because of its brilliant colors.

|                  | Each  | Per 10 |
|------------------|-------|--------|
| 2 to 3 feet..... | \$.10 | \$.75  |
| 3 to 4 feet..... | .20   | 1.50   |
| 4 to 5 feet..... | .35   | 2.50   |

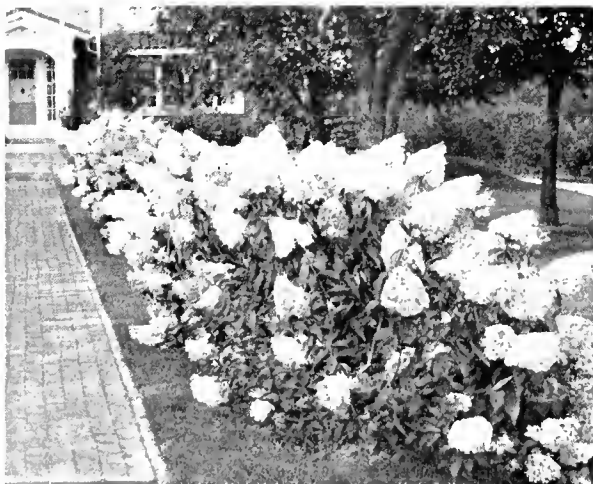
**ROBINA HISPIDA (Moss Locust).** The racemes of rose-pink or pale purple hang in clusters like Wisteria. Rarely grows taller than 2 or 3 feet.

|                    | Each  | Per 10  |
|--------------------|-------|---------|
| 18 to 24 inch..... | \$.25 | \$ 2.00 |
| 2 to 3 feet.....   | .35   | 3.00    |

**SPIREA.** An indispensable class of small to medium size shrubs. Unsurpassed in beauty. Easy of culture and very hardy. Very satisfactory for single or clumping effect and planted more largely than any other flowering shrubs. The bloom period of the different sorts extends from May until September.

**THUNBERGI.** Pure white flowers in April and May, like a mantle of snow.

|                    | Each  | Per 10  |
|--------------------|-------|---------|
| 12 to 18 inch..... | \$.15 | \$ 1.00 |
| 18 to 24 inch..... | .20   | 1.50    |
| 2 to 3 feet.....   | .30   | 2.50    |



Hydrangea P. G.



Weigela

**SPIREA VAN HOUTTEI.** The most commonly planted variety. Beautiful clusters of pure white flowers and a rich green foliage, on branches drooping to the ground. Remarkably hardy.

|                    | Each  | Per 10 |
|--------------------|-------|--------|
| 12 to 18 inch..... | \$.10 | \$.75  |
| 18 to 24 inch..... | .15   | 1.00   |
| 2 to 3 feet.....   | .20   | 1.50   |
| 3 to 4 feet.....   | .30   | 2.50   |

**OPULIFOLIA.** Grows upright. Bears white flowers in June. The old flower heads turn to a dark red and make a striking variety of colors at different stages of maturity.

|                    | Each  | Per 10  |
|--------------------|-------|---------|
| 18 to 24 inch..... | \$.15 | \$ 1.00 |
| 2 to 3 feet.....   | .25   | 2.00    |
| 3 to 4 feet.....   | .35   | 3.00    |

**ANTHONY WATERER.** Valuable for low hedge planting. Produces a red bloom in July or August and continues to bloom for several weeks. May be kept trimmed to any height.

|                    | Each  | Per 10  |
|--------------------|-------|---------|
| 12 to 18 inch..... | \$.20 | \$ 1.50 |
| 18 to 24 inch..... | .25   | 2.00    |
| 2 to 3 feet.....   | .35   | 3.00    |

**DOUGLASI.** Flowers deep rose color. The blossoms are large spikes and very attractive. One of the best Spiraea.

|                    | Each  | Per 10  |
|--------------------|-------|---------|
| 18 to 24 inch..... | \$.15 | \$ 1.00 |
| 2 to 3 feet.....   | .25   | 2.00    |
| 3 to 4 feet.....   | .35   | 3.00    |

**VIBURNUM OPULUS STERILE (Common Snowball).** A fine, old time favorite. Free growing, easy culture. Covered in early spring with balls of snow white flowers.

|                    | Each  | Per 10  |
|--------------------|-------|---------|
| 12 to 18 inch..... | \$.25 | \$ 2.00 |
| 18 to 24 inch..... | .35   | 3.00    |
| 2 to 3 feet.....   | .40   | 3.50    |

**VIBURNUM PLICATUM (Japanese Snowball).** A handsome shrub with showy clusters of creamy white flowers. Very highly recommended.

|                    | Each  | Per 10  |
|--------------------|-------|---------|
| 12 to 18 inch..... | \$.30 | \$ 2.50 |
| 18 to 24 inch..... | .40   | 3.50    |
| 2 to 3 feet.....   | .50   | 4.00    |

**WEIGELA (Diervilla).** The Weigelas are shrubs of erect habit while young, but gradually spread and droop as they acquire age. Flowers are large, trumpet-shaped, of all shades. Blossoms produced in June and July.

**Amabilis.** Rose-colored flowers.

**Desboisi.** Deep pink flowers.

**Hendersonia.** Rose-pink.

**Madam Leimouie.** Flowers blush, changing to deep pink.

**Rosea.** Best known of all pink blooming Weigelas.

|                    | Each  | Per 10  |
|--------------------|-------|---------|
| 12 to 18 inch..... | \$.20 | \$ 1.00 |
| 18 to 24 inch..... | .30   | 1.50    |
| 2 to 3 feet.....   | .40   | 2.00    |
| 3 to 4 feet.....   | .50   | 3.50    |

**Eva Rathke.** Flowers deep carmine red. A very distinct and attractive variety.

**Variegated Leaf.** Leaves bordered with yellowish-white, making the bush very conspicuous.

|                    | Each  | Per 10  |
|--------------------|-------|---------|
| 12 to 18 inch..... | \$.30 | \$ 2.50 |
| 18 to 24 inch..... | .40   | 3.50    |
| 2 to 3 feet.....   | .50   | 4.00    |

## Deciduous Trees As Ornaments

Trees occupy by far the greatest place in our landscape. Everybody knows the value of shade trees, and they may be regarded as a permanent investment. We could not do without them. Select them with care. For permanency choose the hardwood types, although they grow a little slower. The faster growing soft wood varieties also are very desirable, and useful, and should be used more liberally, especially interspersing them among hardwood varieties.

**RED, OR SCARLET MAPLE (Acer Rubrum).** A long-lived, hardy tree of excellent habit. Scarlet flowers in early spring; dense foliage turning to gorgeous colors in autumn.

|                   | Each  | Per 10  |
|-------------------|-------|---------|
| 3 to 4 feet.....  | \$.20 | \$ 1.75 |
| 4 to 6 feet.....  | .40   | 3.50    |
| 6 to 8 feet.....  | .60   | 5.00    |
| 8 to 10 feet..... | .85   | 7.50    |

**SILVER MAPLE (Acer Dasycarpum).** A rapid growing tree of graceful habit. Foliage light green above and silvery beneath. Will grow under most all conditions.

|                   | Each  | Per 10  |
|-------------------|-------|---------|
| 3 to 4 feet.....  | \$.20 | \$ 1.75 |
| 4 to 6 feet.....  | .40   | 3.50    |
| 6 to 8 feet.....  | .60   | 5.00    |
| 8 to 10 feet..... | .85   | 7.50    |

**SUGAR MAPLE (Acer Saccharum).** One of the stately native trees growing to large size. The cool green leaves in spring, turning to shades of orange and scarlet in fall, make it one of the prettiest of shade trees. The delicious Maple Sugar is made from the sap of these trees.

|                   | Each  | Per 10  |
|-------------------|-------|---------|
| 3 to 4 feet.....  | \$.20 | \$ 1.75 |
| 4 to 6 feet.....  | .40   | 3.50    |
| 6 to 8 feet.....  | .60   | 5.00    |
| 8 to 10 feet..... | .85   | 7.50    |

**ANDROMEDA ARBOREUM (Sour Wood).** Another of our native trees that color up so beautifully in the autumn. Abundant masses of small, white flowers appear when the tree is very young.

|                    | Each  | Per 10  |
|--------------------|-------|---------|
| 18 to 24 inch..... | \$.25 | \$ 2.00 |
| 2 to 3 feet.....   | .30   | 2.50    |
| 3 to 4 feet.....   | .40   | 3.00    |

**AMERICAN ASH (Fraxinus Americana).** A tree of graceful habit and shape, very desirable for shade or street planting. Bark of tree is light gray; foliage very attractive, turning to gold and purple in autumn.

|                   | Each  | Per 10  |
|-------------------|-------|---------|
| 4 to 6 feet.....  | \$.40 | \$ 3.50 |
| 6 to 8 feet.....  | .60   | 5.00    |
| 8 to 10 feet..... | .80   | 7.50    |

**RIVER BIRCH (Betula Nigra).** This is the famous Birch with the ragged or torn bark so often seen along the banks of streams. The leaves are dark green, turning to a dull yellow in autumn.

|                   | Each  | Per 10  |
|-------------------|-------|---------|
| 4 to 6 feet.....  | \$.40 | \$ 3.50 |
| 6 to 8 feet.....  | .60   | 5.00    |
| 8 to 10 feet..... | .85   | 8.00    |

**HORNBEAM (Carpinus Caroliniana).** Another low-growing tree with brilliant colors in fall. This tree is used quite a lot for hedging.

|                   | Each  | Per 10  |
|-------------------|-------|---------|
| 4 to 6 feet.....  | \$.40 | \$ 3.50 |
| 6 to 8 feet.....  | .60   | 5.00    |
| 8 to 10 feet..... | .85   | 8.00    |



Anthony Waterer Spirea

# ORNAMENTAL TREES for Beauty and Shade



Lombardy Poplars

**RED BUD (Cercis Canadensis).** One of the best ornamental trees. Grows to medium height, round-headed with heart-shaped, dark green foliage. A profusion of deep pink flowers appear early in April.

|                   | Each  | Per 10  |
|-------------------|-------|---------|
| 3 to 4 feet.....  | \$.20 | \$ 1.50 |
| 4 to 5 feet.....  | .35   | 2.50    |
| 5 to 6 feet.....  | .60   | 5.00    |
| 6 to 8 feet.....  | .85   | 7.50    |
| 8 to 10 feet..... | 1.15  | 9.00    |

**CHIONANTHUS VIRGINICA (White Fringe).** A small native tree, with ash-like leaves and clusters of snow-white flowers, resembling an elegant fringe.

|                    | Each  | Per 10  |
|--------------------|-------|---------|
| 18 to 24 inch..... | \$.35 | \$ 3.00 |
| 2 to 3 feet.....   | .45   | 4.00    |
| 3 to 4 feet.....   | .60   | 5.00    |

**CLADRASTIS LUTEA (Yellow Wood).** A very pretty tree, with drooping branches. Small egg-shaped leaflets and white flowers. Very slow growth.

|                  | Each  | Per 10  |
|------------------|-------|---------|
| 2 to 3 feet..... | \$.25 | \$ 2.00 |
| 3 to 4 feet..... | .35   | 3.00    |
| 4 to 5 feet..... | .50   | 4.00    |

**CORNUS FLORIDA (White Flowering Dogwood).** A tree that is desirable from every point of view. In spring they make a picture of beauty with their snowy flowers; the foliage is handsome during summer, and their red berries one of autumn's chiefest charms.

|                  | Each  | Per 10  |
|------------------|-------|---------|
| 3 to 4 feet..... | \$.30 | \$ 2.50 |
| 4 to 5 feet..... | .50   | 4.00    |
| 5 to 6 feet..... | .75   | 6.00    |

**CORNUS FLORIDA RUBRA (Red Flowering Dogwood).** Similar to the White Flowering Dogwood, except the flowers are a rosy-pink, suffused with bright red. A very beautiful tree.

|                       | Each  | Per 10  |
|-----------------------|-------|---------|
| 2 to 3 feet, B&B..... | \$.85 | \$ 7.50 |
| 3 to 4 feet, B&B..... | 1.50  | 12.50   |
| 4 to 5 feet, B&B..... | 2.50  | 20.00   |

**CHINESE ELM.** A rapid-growing tree. Forms a dense head, with smaller darker leaves than the Autumn Elm. We recommend this tree very highly; easy to transplant and drought resistant.

|                    | Each  | Per 10  |
|--------------------|-------|---------|
| 5 to 6 feet.....   | \$.50 | \$ 4.50 |
| 6 to 8 feet.....   | .90   | 8.50    |
| 8 to 9 feet.....   | 1.25  | 10.00   |
| 9 to 10 feet.....  | 1.75  | 15.00   |
| 10 to 12 feet..... | 2.50  | 22.50   |

**LINDEN (Tilia Americana).** Basswood. Big, handsome trees of rapid growth and among the best ornamentals for either lawn or street planting. They are beautiful in foliage, in flower and when bare.

|                   | Each  | Per 10  |
|-------------------|-------|---------|
| 4 to 6 feet.....  | \$.40 | \$ 3.50 |
| 6 to 8 feet.....  | .75   | 5.00    |
| 8 to 10 feet..... | 1.00  | 8.00    |

**LIQUIDAMBER STYRACIFLUA (Sweet Gum).** They resemble the Maple in foliage, which is star-shaped and a glossy green in spring turning to deep purple in fall.

|                  | Each  | Per 10  |
|------------------|-------|---------|
| 3 to 4 feet..... | \$.40 | \$ 3.50 |
| 4 to 5 feet..... | .75   | 6.00    |
| 5 to 6 feet..... | 1.00  | 9.00    |

**TULIP TREE (Liriodendron Tulipifera).** A tall, handsome hardy tree. Clean foliage of light, bluish green appearance, which is rarely attacked by in-

sects. In June, its tulip-shaped, fragrant flowers of a creamy yellow and orange color are very numerous. A distinguished tree.

|                  | Each  | Per 10  |
|------------------|-------|---------|
| 3 to 4 feet..... | \$.20 | \$ 1.50 |
| 4 to 5 feet..... | .35   | 3.00    |
| 5 to 6 feet..... | .50   | 4.50    |

**PUSSY WILLOW (Salix Caprea).** A small, shrubby tree with numerous upright branches. Highly prized are the catkins for cutting and furnishing early spring beauty to house decorations.

|                  | Each  | Per 10  |
|------------------|-------|---------|
| 2 to 3 feet..... | \$.20 | \$ 1.00 |
| 3 to 4 feet..... | .35   | 2.00    |
| 4 to 6 feet..... | .50   | 3.50    |

**CAROLINA POPLAR (Monilifera Populus).** If you are wanting quick results, rather than permanent shade, plant the Carolina Poplar. They make a quick, dense screen when planted close together.

|                  | Each  | Per 10  |
|------------------|-------|---------|
| 3 to 4 feet..... | \$.25 | \$ 2.00 |
| 4 to 6 feet..... | .40   | 3.50    |
| 6 to 8 feet..... | .75   | 6.50    |

**LOMBARDY POPLAR (Populus Nigra).** A tall, slender tree easily transplanted and of rapid growth. Valuable for planting along driveways.

|                   | Each  | Per 10  |
|-------------------|-------|---------|
| 3 to 4 feet.....  | \$.20 | \$ 1.50 |
| 4 to 6 feet.....  | .40   | 3.50    |
| 6 to 8 feet.....  | .60   | 5.00    |
| 8 to 10 feet..... | .85   | 7.50    |

**NEW CHINESE LOMBARDY POPLAR (Populus Simoni).** Similar to the Lombardy Poplar. Tall grower, with branches closely pressed to the trunk. Foliage dark green.

|                  | Each  | Per 10  |
|------------------|-------|---------|
| 3 to 4 feet..... | \$.20 | \$ 1.50 |
| 4 to 6 feet..... | .40   | 3.50    |
| 6 to 8 feet..... | .60   | 5.00    |

**AMERICAN SYCAMORE (Platanus Occidentalis).** The large green leaves and silvery bark make it a very attractive tree. Used largely for street planting.

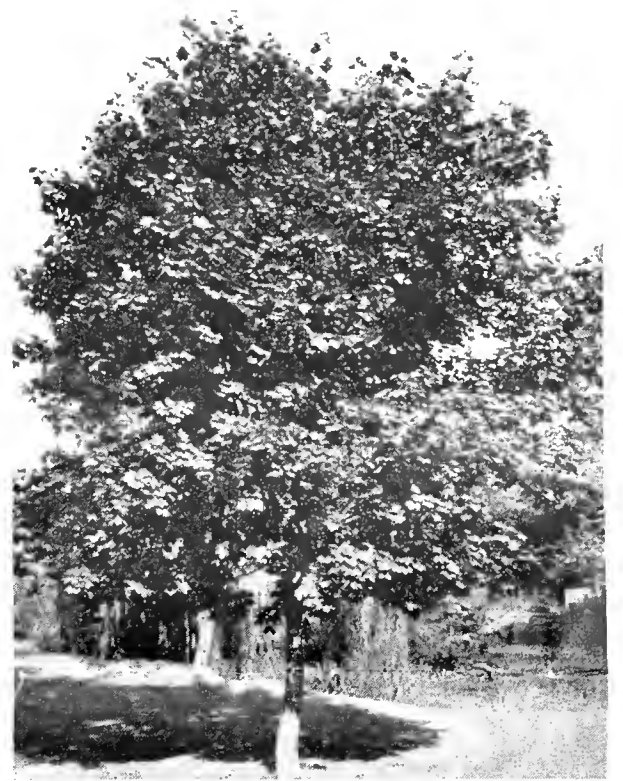
|                  | Each  | Per 10  |
|------------------|-------|---------|
| 3 to 4 feet..... | \$.35 | \$ 3.00 |
| 4 to 6 feet..... | .50   | 4.00    |
| 6 to 8 feet..... | .75   | 6.50    |



Silver Maple

**VIBURNUM PRUNIFOLIUM (Black Haw).** This variety can be used for specimen planting, as it is a small tree. Dark green foliage and snowy white flowers borne in clusters.

|                  | Each  | Per 10  |
|------------------|-------|---------|
| 2 to 3 feet..... | \$.25 | \$ 2.00 |
| 3 to 4 feet..... | .40   | 3.00    |
| 4 to 5 feet..... | .65   | 5.50    |



Red Maple

will begin paying dividends, in large, soft shell nuts. They should be frequently cultivated and amply fertilized.

**Frotseher.** Shell very thin; medium size, rather long and tapering.

**Moneymaker.** Extra good, due to its resistance against diseases that attack a great many Pecans. Heavy producer.

**Schley.** Nuts of the highest quality and very thin shell.

**Stuart.** Extremely hardy, strong grower; nuts of good size, plump, well filled.

**Success.** Resembles the Stuart, only somewhat larger. Nuts of excellent flavor.

|                  | Each  | Per 10  |
|------------------|-------|---------|
| 2 to 3 feet..... | \$.35 | \$ 3.00 |
| 3 to 4 feet..... | .50   | 4.00    |
| 4 to 5 feet..... | .75   | 6.00    |

**HAZLENUTS (Corylus Americana).** Nuts borne in large fringed fruit-husks adding beauty and interest to the heavily laden plant. Kernels sweet and edible. Very prolific.

|                  | Each  | Per 10  |
|------------------|-------|---------|
| 2 to 3 feet..... | \$.20 | \$ 1.50 |
| 3 to 4 feet..... | .30   | 2.50    |

**BLACK WALNUT (Juglans Nigra).** A noble tree with symmetrical crown. Bright yellow-green foliage in autumn. Nuts solitary or in pairs, kernels very sweet and good. Very desirable tree for most any planting.

|                    | Each  | Per 10 |
|--------------------|-------|--------|
| 18 to 24 inch..... | \$.10 | \$ .75 |
| 2 to 3 feet.....   | .15   | 1.00   |
| 3 to 4 feet.....   | .25   | 2.00   |

**JAPAN WALNUT (Juglans Sieboldiana).** Fruit in pendent clusters, heart-shaped and somewhat flattened with smooth shells and sweet edible kernels. A very attractive ornamental.

|                    | Each  | Per 10  |
|--------------------|-------|---------|
| 12 to 18 inch..... | \$.15 | \$ 1.00 |
| 18 to 24 inch..... | .25   | 2.00    |
| 2 to 3 feet.....   | .35   | 3.00    |

**WHITE WALNUTS (Juglans Quera).** This is the Butternut. A large tree with bright yellow green foliage, fading in autumn to tones of yellow and brown. Nuts borne in drooping clusters.

|                  | Each  | Per 10 |
|------------------|-------|--------|
| 2 to 3 feet..... | \$.10 | \$ .75 |
| 3 to 4 feet..... | .15   | 1.00   |
| 4 to 6 feet..... | .25   | 2.00   |

## NUT TREES

The demand for nut trees is growing larger with the coming of each season. No home should be without a few. They pay well in their nutritious kernels, also in valuable timber.

**PECANS (Carya Pecan).** The pecan is fast growing popular. It has been proven that they can be grown successfully in the North and East, as well as the South. The aim for the first few years should be devoted to the growth of the trees, and then they



# CONIFEROUS EVERGREENS Give Abundant Foliage

**AMERICAN ARBOR VITAE** (*Thuja Occidentalis*). Very popular because of its easiness to transplant; grows well under most any condition, and is wonderful for hedge plants. Stands trimming well.

|                    | Each  | Per 10  |
|--------------------|-------|---------|
| 18 to 24 inch..... | \$.75 | \$ 6.50 |
| 24 to 30 inch..... | 1.00  | 9.00    |
| 30 to 36 inch..... | 1.50  | 12.50   |

**GLOBE ARBOR VITAE** (*Globosa Arbor Vitae*). Forms a perfect globe when well grown. Dwarf with light green foliage.

|                    | Each  | Per 10  |
|--------------------|-------|---------|
| 12 to 15 inch..... | \$.75 | \$ 6.50 |
| 15 to 18 inch..... | 1.25  | 10.00   |
| 18 to 24 inch..... | 1.50  | 12.50   |
| 24 to 30 inch..... | 2.25  | 15.00   |

**WAREANA ARBOR VITAE**. Broad-pyramidal in shape, of slow, dense growth, with stout branches and bluish green foliage.

|                    | Each  | Per 10  |
|--------------------|-------|---------|
| 12 to 15 inch..... | \$.75 | \$ 6.50 |
| 15 to 18 inch..... | 1.00  | 9.00    |

**BERCKMAN'S GOLDEN ARBOR VITAE** (*Aurea Nana*). Conical in shape; foliage warm golden. Very slow growing, and used where dwarf plant is required.

|                    | Each  | Per 10  |
|--------------------|-------|---------|
| 12 to 18 inch..... | \$.85 | \$ 7.50 |
| 18 to 24 inch..... | 1.00  | 9.00    |
| 24 to 30 inch..... | 1.50  | 12.50   |
| 30 to 36 inch..... | 2.25  | 18.00   |

**PYRAMIDAL ARBOR VITAE** (*Thuja Pyramidalis*). Strong, erect and pyramid shape. Rich, dark, glossy green foliage. Useful to plant to break height of tall houses or at corners.

|                    | Each  | Per 10  |
|--------------------|-------|---------|
| 18 to 24 inch..... | \$.85 | \$ 7.50 |
| 24 to 30 inch..... | 1.00  | 9.00    |
| 30 to 36 inch..... | 1.50  | 12.50   |
| 36 to 42 inch..... | 2.25  | 18.00   |

**HEMLOCK SPRUCE** (*Tsuga Canadensis*). This is considered one of the best of all evergreens. Grows rapidly and will adapt itself to most any location. Foliage deep green, and if branches are allowed to remain natural are very graceful. Can be sheared to any shape desired.

|                    | Each   | Per 10  |
|--------------------|--------|---------|
| 15 to 18 inch..... | \$1.25 | \$10.00 |
| 18 to 24 inch..... | 2.00   | 15.00   |
| 2 to 3 feet.....   | 2.50   | 20.00   |
| 3 to 4 feet.....   | 3.50   | 30.00   |

**RED PINE** (*Pinus Denseiflora*). A rapid-growing ornamental Pine. Needles bright bluish green. Cones grayish-brown. In age it presents a charming picture.

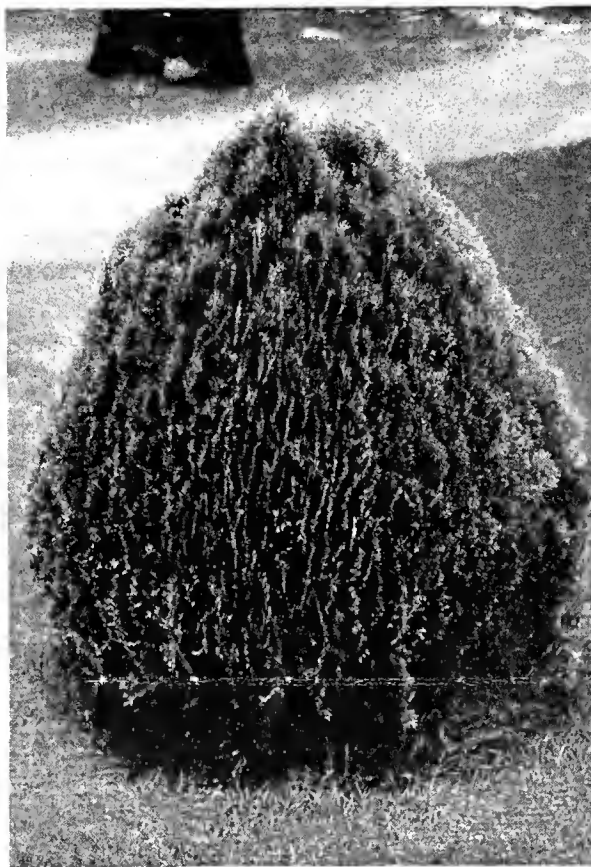
|                    | Each  | Per 10  |
|--------------------|-------|---------|
| 18 to 24 inch..... | \$.50 | \$ 4.00 |
| 2 to 3 feet.....   | .75   | 6.00    |

**MUGHO PINE** (*Pinus Mughus*). Dwarf plant, growing slowly; neat and compact in habit. Foliage dark green.

|                    | Each   | Per 10 |
|--------------------|--------|--------|
| 12 to 15 inch..... | \$1.00 |        |
| 15 to 18 inch..... | 1.50   |        |
| 18 to 24 inch..... | 2.25   |        |

**WHITE SPRUCE** (*Picea Alba*). Compact and upright growing. Especially suited for tall backgrounds. Light green.

|                    | Each  | Per 10  |
|--------------------|-------|---------|
| 12 to 18 inch..... | \$.75 | \$ 6.00 |
| 18 to 24 inch..... | 1.25  | 10.00   |
| 2 to 3 feet.....   | 2.00  | 15.00   |



Berckman's Golden Arborvitae

**NORWAY SPRUCE** (*Picea Excelsa*). A very thrifty, quick-growing tree. Heavy masses of deep green foliage. Used extensively for Xmas trees.

|                    | Each  | Per 10  |
|--------------------|-------|---------|
| 12 to 18 inch..... | \$.75 | \$ 6.00 |
| 18 to 24 inch..... | 1.25  | 10.00   |
| 2 to 3 feet.....   | 2.00  | 15.00   |

**GOLDEN PLUMED CYPRESS** (*Retinospora Plumosa Aurea*). A beautiful golden evergreen. Soft, plumelike foliage forming a beautiful contrast to the green grass.

|                    | Each  | Per 10  |
|--------------------|-------|---------|
| 12 to 15 inch..... | \$.40 | \$ 3.50 |
| 15 to 18 inch..... | .60   | 5.00    |
| 18 to 24 inch..... | .85   | 7.50    |

**GREEN CYPRESS** (*Retinospora Plumosa*). Similar to the Golden Cypress, except the foliage is a beautiful green.

|                    | Each  | Per 10  |
|--------------------|-------|---------|
| 12 to 15 inch..... | \$.40 | \$ 3.50 |
| 15 to 18 inch..... | .60   | 5.00    |
| 18 to 24 inch..... | .85   | 7.50    |
| 2 to 3 feet.....   | 1.25  | 10.00   |
| 3 to 4 feet.....   | 1.75  | 15.00   |
| 4 to 5 feet.....   | 2.25  | 20.00   |
| 5 to 6 feet.....   | 3.25  | 30.00   |

**DOUGLAS FIR** (*Pseudotsuga Douglasi*). A very hardy grower suited for almost any purpose. Needles are soft and green.

|                    | Each   | Per 10  |
|--------------------|--------|---------|
| 12 to 18 inch..... | \$1.00 | \$ 9.00 |
| 18 to 24 inch..... | 1.50   | 12.50   |
| 2 to 3 feet.....   | 2.25   | 20.00   |

**JUNIPER CANADENSIS** (*Spreading Juniper*). Used especially for hedging groups of upright evergreens. Is very attractive.

|                    | Each  | Per 10  |
|--------------------|-------|---------|
| 12 to 15 inch..... | \$.50 | \$ 4.00 |
| 15 to 18 inch..... | .75   | 5.00    |

**PFITZER'S JUNIPER** (*Pfitzeriana*). A very popular Juniper. Grayish green both summer and winter.

|                    | Each   | Per 10  |
|--------------------|--------|---------|
| 12 to 18 inch..... | \$1.25 | \$10.00 |
| 18 to 24 inch..... | 2.00   | 16.00   |
| 24 to 30 inch..... | 3.00   | 22.50   |
| 30 to 36 inch..... | 3.50   | 30.00   |

**IRISH JUNIPER** (*Communis Hibernica*). Very erect and columnar. Silvery green foliage and upright branches.

|                    | Each  | Per 10  |
|--------------------|-------|---------|
| 12 to 18 inch..... | \$.60 | \$ 5.00 |
| 18 to 24 inch..... | .75   | 6.50    |
| 24 to 30 inch..... | 1.00  | 8.50    |
| 30 to 36 inch..... | 1.50  | 12.50   |
| 36 to 42 inch..... | 2.00  | 18.00   |

**RED CEDAR** (*Juniperus Virginiana*). Compact, pyramidal form; deep green foliage, purplish in winter. Very useful in formal work.

|                      | Each  | Per 10  |
|----------------------|-------|---------|
| 18 to 24 inch.....   | \$.40 | \$ 3.50 |
| 24 to 30 inch.....   | .60   | 4.50    |
| 30 to 36 inch.....   | .75   | 6.00    |
| 36 to 42 inch.....   | 1.00  | 8.50    |
| 3 1/2 to 4 feet..... | 1.50  | 12.50   |

## BROAD-LEAVED EVERGREENS

*Give Color Tone  
the Whole Year*

**ABELIA GRANDIFLORA** (*Glossy Abella*). A most attractive evergreen shrub. Foliage dark green and glossy; arching branches have a distinct tinge of red. From May until frost the plant is covered with small pinkish white flowers.

|                    | Each  | Per 10  |
|--------------------|-------|---------|
| 12 to 18 inch..... | \$.25 | \$ 2.00 |
| 18 to 24 inch..... | .35   | 3.00    |
| 2 to 3 feet.....   | .50   | 4.00    |
| 3 to 4 feet.....   | .75   | 6.50    |

**BUXUS SEMPERVIRENS** (*Boxwood*). The medium sized Boxwood, leaves small, round and glossy. A hardy outdoor type, it is slow growing so that with slight shearing it may be utilized as a dwarf boxwood edging for gardens, beds and walks. No other hardy edging is its equal in refinement and lustrous beauty. We have a large stock of the hardiest variety, at these very low prices.

|                    | Each  | Per 10  |
|--------------------|-------|---------|
| 10 to 12 inch..... | \$.50 | \$ 4.00 |
| 12 to 15 inch..... | .85   | 7.50    |
| 15 to 18 inch..... | 1.15  | 10.00   |
| 18 to 24 inch..... | 1.50  | 14.00   |
| 24 to 30 inch..... | 2.50  | 20.00   |

**ILEX OPACA** (*American Holly*). Perfectly hardy. A slow growing tree, having short spreading branches with large, shining, thorny leaves. Bright red berries in winter.

|                    | Each  | Per 10  |
|--------------------|-------|---------|
| 18 to 24 inch..... | \$.75 | \$ 6.00 |
| 2 to 3 feet.....   | 1.50  | 12.00   |
| 3 to 4 feet.....   | 2.50  | 20.00   |

**MOUNTAIN LAUREL** (*Kalmia Latifolia*). A beautiful evergreen shrub. Broad glossy green foliage; rose-colored flowers appear in large and showy clusters in June.

|                            | Each  | Per 10  |
|----------------------------|-------|---------|
| 12 to 18 inch, clumps..... | \$.80 | \$ 6.50 |
| 18 to 24 inch, clumps..... | 1.25  | 10.00   |
| 2 to 3 feet, clumps.....   | 1.50  | 12.50   |

**MAGNOLIA GRANDIFLORA** (*Southern Magnolia*). One of the grandest of all native broadleaved evergreen trees for the South. Very large glossy green foliage; fragrant white blooms in spring. Especially desirable for planting where it has ample room.

|                    | Each  | Per 10 |
|--------------------|-------|--------|
| 18 to 24 inch..... | \$.75 |        |
| 2 to 3 feet.....   | .90   |        |
| 3 to 4 feet.....   | 1.25  |        |
| 4 to 5 feet.....   | 2.00  |        |
| 5 to 6 feet.....   | 2.50  |        |

**NANDINA DOMESTICA**. A beautiful shrub, with numerous reed-like stems springing from the same root. Leaves deep green, when young tinged with red. In winter beautiful coppery tones are assumed. Masses of bright red berries during the winter.

|                    | Each  | Per 10  |
|--------------------|-------|---------|
| 15 to 18 inch..... | \$.50 | \$ 4.00 |
| 18 to 24 inch..... | .85   | 7.50    |
| 2 to 3 feet.....   | 1.25  | 10.00   |

**It is as much our business to help solve your planting problems as to sell you our goods. For information, for advice or counsel, write to Boyd. We will gladly give you the benefit of our many years' experience.**

**WE WANT TO SERVE AS WELL AS SELL.**



Glossy Abella



Pfitzer Juniper





# CONIFEROUS EVERGREENS Give Abundant Foliage

**AMERICAN ARBOR VITAE (Thuja Occidentalis).** Very popular because of its easiness to transplant; grows well under most any condition, and is wonderful for hedge plants. Stands trimming well.

|                    | Each  | Per 10  |
|--------------------|-------|---------|
| 18 to 24 inch..... | \$.75 | \$ 6.50 |
| 24 to 30 inch..... | 1.00  | 9.00    |
| 30 to 36 inch..... | 1.50  | 12.50   |

**GLOBE ARBOR VITAE (Globosa Arbor Vitae).** Forms a perfect globe when well grown. Dwarf with light green foliage.

|                    | Each  | Per 10  |
|--------------------|-------|---------|
| 12 to 15 inch..... | \$.75 | \$ 6.50 |
| 15 to 18 inch..... | 1.25  | 10.00   |
| 18 to 24 inch..... | 1.50  | 12.50   |
| 24 to 30 inch..... | 2.25  | 15.00   |

**WAREANA ARBOR VITAE.** Broad-pyramidal in shape, of slow, dense growth, with stout branches and bluish green foliage.

|                    | Each  | Per 10  |
|--------------------|-------|---------|
| 12 to 15 inch..... | \$.75 | \$ 6.50 |
| 15 to 18 inch..... | 1.00  | 9.00    |

**BERCKMAN'S GOLDEN ARBOR VITAE (Aurea Nana).** Conical in shape; foliage warm golden. Very slow growing, and used where dwarf plant is required.

|                    | Each  | Per 10  |
|--------------------|-------|---------|
| 12 to 18 inch..... | \$.85 | \$ 7.50 |
| 18 to 24 inch..... | 1.00  | 9.00    |
| 24 to 30 inch..... | 1.50  | 12.50   |
| 30 to 36 inch..... | 2.25  | 18.00   |

**PYRAMIDAL ARBOR VITAE (Thuja Pyramidalis).** Strong, erect and pyramid shape. Rich, dark, glossy green foliage. Useful to plant to break height of tall houses or at corners.

|                    | Each  | Per 10  |
|--------------------|-------|---------|
| 18 to 24 inch..... | \$.85 | \$ 7.50 |
| 24 to 30 inch..... | 1.00  | 9.00    |
| 30 to 36 inch..... | 1.50  | 12.50   |
| 36 to 42 inch..... | 2.25  | 18.00   |

**HEMLOCK SPRUCE (Tsuga Canadensis).** This is considered one of the best of all evergreens. Grows rapidly and will adapt itself to most any location. Foliage deep green, and if branches are allowed to remain natural are very graceful. Can be sheared to any shape desired.

|                    | Each   | Per 10  |
|--------------------|--------|---------|
| 15 to 18 inch..... | \$1.25 | \$10.00 |
| 18 to 24 inch..... | 2.00   | 15.00   |
| 2 to 3 feet.....   | 2.50   | 20.00   |
| 3 to 4 feet.....   | 3.50   | 30.00   |

**RED PINE (Pinus Densiflora).** A rapid-growing ornamental Pine. Needles bright bluish green. Cones grayish-brown. In age it presents a charming picture.

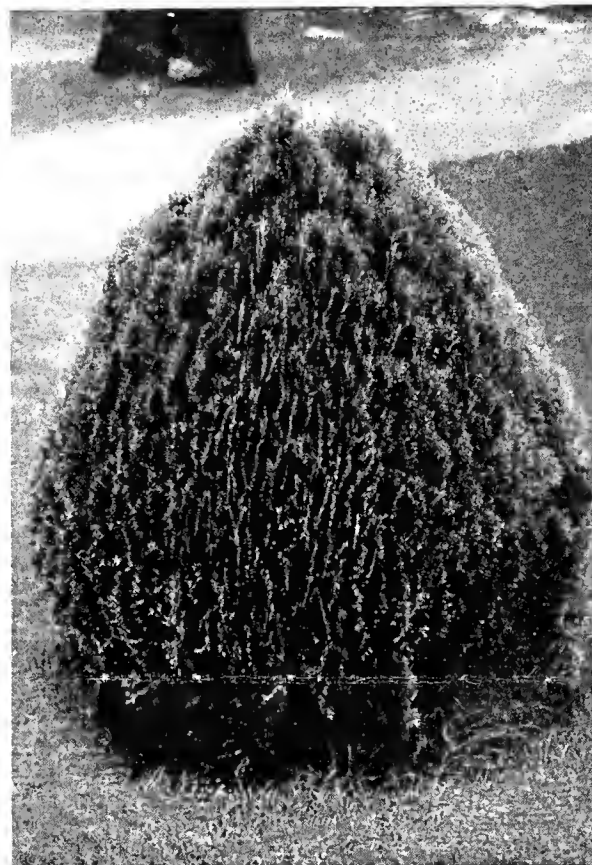
|                    | Each  | Per 10  |
|--------------------|-------|---------|
| 18 to 24 inch..... | \$.50 | \$ 4.00 |
| 2 to 3 feet.....   | .75   | 6.00    |

**MUGHIO PINE (Pinus Mughus).** Dwarf plant, growing slowly; neat and compact in habit. Foliage dark green.

|                    | Each   | Per 10 |
|--------------------|--------|--------|
| 12 to 15 inch..... | \$1.00 |        |
| 15 to 18 inch..... | 1.50   |        |
| 18 to 24 inch..... | 2.25   |        |

**WHITE SPRUCE (Picea Alba).** Compact and upright growing. Especially suited for tall back-grounds. Light green.

|                    | Each  | Per 10  |
|--------------------|-------|---------|
| 12 to 18 inch..... | \$.75 | \$ 6.00 |
| 18 to 24 inch..... | 1.25  | 10.00   |
| 2 to 3 feet.....   | 2.00  | 15.00   |



Berkman's Golden Arborvitae

**NORWAY SPRUCE (Picea Excelsa).** A very thrifty, quick-growing tree. Heavy masses of deep green foliage. Used extensively for Xmas trees.

|                    | Each  | Per 10  |
|--------------------|-------|---------|
| 12 to 18 inch..... | \$.75 | \$ 6.00 |
| 18 to 24 inch..... | 1.25  | 10.00   |
| 2 to 3 feet.....   | 2.00  | 15.00   |

**GOLDEN PLUMED CYPRESS (Retinospora Plumosa Aurea).** A beautiful golden evergreen. Soft, plumelike foliage forming a beautiful contrast to the green grass.

|                    | Each  | Per 10  |
|--------------------|-------|---------|
| 12 to 15 inch..... | \$.40 | \$ 3.50 |
| 15 to 18 inch..... | .60   | 5.00    |
| 18 to 24 inch..... | .85   | 7.50    |

**GREEN CYPRESS (Retinospora Plumosa).** Similar to the Golden Cypress, except the foliage is a beautiful green.

|                    | Each  | Per 10  |
|--------------------|-------|---------|
| 12 to 15 inch..... | \$.40 | \$ 3.50 |
| 15 to 18 inch..... | .60   | 5.00    |
| 18 to 24 inch..... | .85   | 7.50    |
| 2 to 3 feet.....   | 1.25  | 10.00   |
| 3 to 4 feet.....   | 1.75  | 15.00   |
| 4 to 5 feet.....   | 2.25  | 20.00   |
| 5 to 6 feet.....   | 3.25  | 30.00   |

**DOUGLAS FIR (Pseudotsuga Douglasi).** A very hardy grower suited for almost any purpose. Needles are soft and green.

|                    | Each   | Per 10  |
|--------------------|--------|---------|
| 12 to 18 inch..... | \$1.00 | \$ 9.00 |
| 18 to 24 inch..... | 1.50   | 12.50   |
| 2 to 3 feet.....   | 2.25   | 20.00   |

**JUNIPER CANADENSIS (Spreading Juniper).** Used especially for hedging groups of upright evergreens. Is very attractive.

|                    | Each  | Per 10  |
|--------------------|-------|---------|
| 12 to 15 inch..... | \$.50 | \$ 4.00 |
| 15 to 18 inch..... | .75   | 5.00    |

**PFITZER'S JUNIPER (Pfitzeriana).** A very popular Juniper. Grayish green both summer and winter.

|                    | Each   | Per 10  |
|--------------------|--------|---------|
| 12 to 18 inch..... | \$1.25 | \$10.00 |
| 18 to 24 inch..... | 2.00   | 16.00   |
| 24 to 30 inch..... | 3.00   | 22.50   |
| 30 to 36 inch..... | 3.50   | 30.00   |

**IRISH JUNIPER (Communis Hibernica).** Very erect and columnar. Silvery green foliage and upright branches.

|                    | Each  | Per 10  |
|--------------------|-------|---------|
| 12 to 18 inch..... | \$.60 | \$ 5.00 |
| 18 to 24 inch..... | .75   | 6.50    |
| 24 to 30 inch..... | 1.00  | 8.50    |
| 30 to 36 inch..... | 1.50  | 12.50   |
| 36 to 42 inch..... | 2.00  | 18.00   |

**RED CEDAR (Juniperus Virginiana).** Compact, pyramidal form; deep green foliage, purplish in winter. Very useful in formal work.

|                    | Each  | Per 10  |
|--------------------|-------|---------|
| 18 to 24 inch..... | \$.40 | \$ 3.50 |
| 24 to 30 inch..... | .60   | 4.50    |
| 30 to 36 inch..... | .75   | 6.00    |
| 36 to 42 inch..... | 1.00  | 8.50    |
| 3½ to 4 feet.....  | 1.50  | 12.50   |

## BROAD-LEAVED EVERGREENS

Give Color Tone the Whole Year

**ABELIA GRANDIFLORA (Glossy Abella).** A most attractive evergreen shrub. Foliage dark green and glossy; arching branches have a distinct tinge of red. From May until frost the plant is covered with small pinkish white flowers.

|                    | Each  | Per 10  |
|--------------------|-------|---------|
| 12 to 18 inch..... | \$.25 | \$ 2.00 |
| 18 to 24 inch..... | .35   | 3.00    |
| 2 to 3 feet.....   | .50   | 4.00    |
| 3 to 4 feet.....   | .75   | 6.50    |

**BUXUS SEMPERVIRENS (Boxwood).** The medium sized Boxwood, leaves small, round and glossy. A hardy outdoor type, it is slow growing so that with slight shearing it may be utilized as a dwarf box-wood edging for gardens, beds and walks. No other hardy edging is its equal in refinement and lustrous beauty. We have a large stock of the hardest variety, at these very low prices.

|                    | Each  | Per 10  |
|--------------------|-------|---------|
| 10 to 12 inch..... | \$.50 | \$ 4.00 |
| 12 to 15 inch..... | .85   | 7.50    |
| 15 to 18 inch..... | 1.15  | 10.00   |
| 18 to 24 inch..... | 1.50  | 14.00   |
| 24 to 30 inch..... | 2.50  | 20.00   |

**ILEX OPACA (American Holly).** Perfectly hardy. A slow growing tree, having short spreading branches with large, shining, thorny leaves. Bright red berries in winter.

|                    | Each  | Per 10  |
|--------------------|-------|---------|
| 18 to 24 inch..... | \$.75 | \$ 6.00 |
| 2 to 3 feet.....   | 1.50  | 12.00   |
| 3 to 4 feet.....   | 2.50  | 20.00   |

**MOUNTAIN LAUREL (Kalmia Latifolia).** A beautiful evergreen shrub. Broad glossy green foliage; rose-colored flowers appear in large and showy clusters in June.

|                            | Each  | Per 10  |
|----------------------------|-------|---------|
| 12 to 18 inch, clumps..... | \$.80 | \$ 6.50 |
| 18 to 24 inch, clumps..... | 1.25  | 10.00   |
| 2 to 3 feet, clumps.....   | 1.50  | 12.50   |

**MAGNOLIA GRANDIFLORA (Southern Magnolia).** One of the grandest of all native broadleaved evergreen trees for the South. Very large glossy green foliage; fragrant white blooms in spring. Especially desirable for planting where it has ample room.

|                    | Each  | Per 10 |
|--------------------|-------|--------|
| 18 to 24 inch..... | \$.75 |        |
| 2 to 3 feet.....   | .90   |        |
| 3 to 4 feet.....   | 1.25  |        |
| 4 to 5 feet.....   | 2.00  |        |
| 5 to 6 feet.....   | 2.50  |        |

**NANDINA DOMESTICA.** A beautiful shrub, with numerous reed-like stems springing from the same root. Leaves deep green, when young tinged with red. In winter beautiful coppery tones are assumed. Masses of bright red berries during the winter.

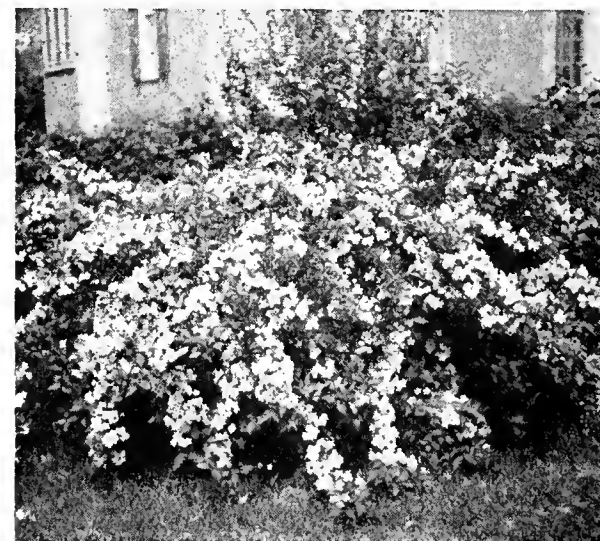
|                    | Each  | Per 10  |
|--------------------|-------|---------|
| 15 to 18 inch..... | \$.50 | \$ 4.00 |
| 18 to 24 inch..... | .85   | 7.50    |
| 2 to 3 feet.....   | 1.25  | 10.00   |

It is as much our business to help solve your planting problems as to sell you our goods. For information, for advice or counsel, write to Boyd. We will gladly give you the benefit of our many years' experience.

WE WANT TO SERVE AS WELL AS SELL.



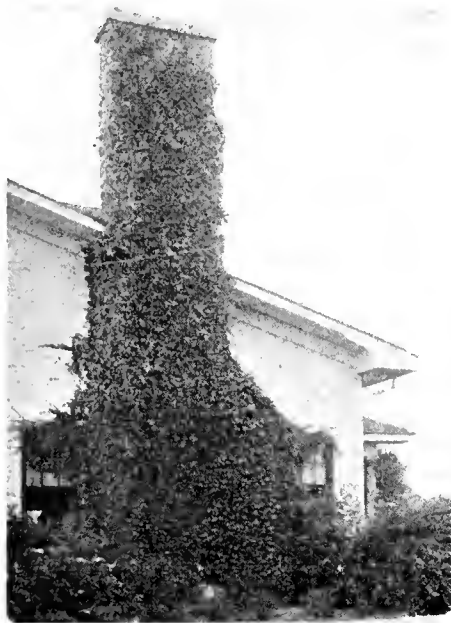
Pfitzer Juniper



Glossy Abella

# FRUIT AND BERRIES of Well Known Varieties

## HARDY CLIMBING ORNAMENTAL VINES



Ivy-Covered Chimney

Climbing vines are necessary to complete your planting of the home grounds. They play their part as well as the shade trees, flowering shrubs, evergreens, etc. They give quick shade and are very cheerful. They can be used, also, for covering unsightly places, and the fragrance from the flowers will be very pleasing.

**BOSTON IVY (Ampelopsis Velutina).** Used extensively for covering walls, as it will cling to the smoothest surface. Foliage turns to brilliant orange and crimson in the fall.

|                            |       |         |
|----------------------------|-------|---------|
|                            | Each  | Per 10  |
| Medium .....               | \$.25 | \$ 2.00 |
| Two year transplanted..... | .35   | 3.00    |

**ENGLISH IVY (Hedera Helix).** This variety favors shady locations. This variety is fine for the South, but hardy only as a ground cover where the winter is too severe.

|                            |       |         |
|----------------------------|-------|---------|
|                            | Each  | Per 10  |
| Medium .....               | \$.25 | \$ 2.00 |
| Two year transplanted..... | .35   | 3.00    |

**CELASTRUS SCANDENS (American Bittersweet).** With handsome, glossy foliage and large clusters of beautiful orange-crimson fruits, which hang on all winter.

|                            |       |         |
|----------------------------|-------|---------|
|                            | Each  | Per 10  |
| One year.....              | \$.25 | \$ 2.00 |
| Two year transplanted..... | .40   | 3.50    |

**CLEMATIS PANICULATA (Japanese Clematis).** This is one of the best and most satisfactory of the Clematis. Small creamy white, star-shaped flowers in wild profusion, which are very fragrant.

|                            |       |        |
|----------------------------|-------|--------|
|                            | Each  | Per 10 |
| Two-year transplanted..... | \$.35 | \$3.00 |

**HALL'S JAPAN HONEYSUCKLE (Lonicera Hal-Hana).** This variety will grow rank under any condition. Dark green foliage, almost evergreen, with an abundance of white flowers, changing to yellow and are very fragrant.

|                                  |        |         |
|----------------------------------|--------|---------|
|                                  | Per 10 | Per 100 |
| Medium .....                     | \$.35  | \$ 2.00 |
| One year No. 1 transplanted..... | .40    | 3.00    |
| Two year No. 1 transplanted..... | .60    | 5.00    |

**SCARLET TRUMPET HONEYSUCKLE (Lonicera Sempervirens).** An exceptionally hardy vine and fine bloomer. Blossoms bright scarlet, trumpet-shaped with rich dark green leaves.

|                              |       |         |
|------------------------------|-------|---------|
|                              | Each  | Per 10  |
| Two year transplanted.....   | \$.20 | \$ 1.50 |
| Three year transplanted..... | .30   | 2.50    |

**KUDZU VINE (Pueraria Thunbergiana.)** This is a useful vine for porch covering, or is used for feed for stock. Grows quickest of all vines. Large leaves, and flowers rosy-purple.

|                              |       |         |
|------------------------------|-------|---------|
|                              | Each  | Per 10  |
| One year seedlings.....      | \$.15 | \$ 1.00 |
| Two year transplanted.....   | .20   | 1.50    |
| Three year transplanted..... | .30   | 2.50    |

### FOREST TREE SEEDLINGS FOR REFORESTATION

We are growing large quantities of forest tree seedlings for reforestation purposes and are making attractive prices on one and two-year seedlings, where they are used for above mentioned purposes. Write for special quotations, giving quantities wanted.

We are listing below a few fruit trees, grape vines and strawberry plants. We are not growers of fruit trees in our nursery, but have had many calls from our customers for them, and since there are large quantities of both peach and apple trees produced in this section, we are in position to supply our customers' wants from reliable, trustworthy growers who know how to grow and properly care for young trees.

## APPLES

We have tried to list only those of the most dependable sorts. These are all standard varieties that have been thoroughly tested for years, and are such that we can recommend for average conditions.

### EARLY SUMMER VARIETIES

- EARLY HARVEST.** Medium to large; bright yellow; tender, juicy, well flavored.
- HORSE.** Large, green, acid. Good for cooking and drying.
- RED JUNE.** Deep red skin; white flesh, tender and very juicy.
- YELLOW TRANSPARENT.** Early bearing. Fruit large and yellow.

### AUTUMN VARIETIES

- GRIMES GOLDEN.** A high quality yellow apple of delicious flavor; hardy, and very productive.
- JONATHAN.** Striped and splashed with dark red; of excellent quality and highly flavored.
- KINNARD'S CHOICE.** Large, dark red; resembling the Arkansas Black. Is good for market or table.
- WEALTHY.** The fruit is a brilliant red, distinctly marked with narrow stripes and splashes of deeper red.

### EARLY WINTER VARIETIES

- ARKANSAS BLACK.** Fruit medium size, dark red, almost black.
- BALDWIN.** Known to almost everyone as a good cooking and eating apple, and one that keeps well. Fine for drying.
- DELICIOUS.** Striped and marked with light and dark red. Fruit large, of uniform size.
- MAIDEN BLUSH.** Especially good for cooking. Pale, waxy yellow, crimson blush.
- ROME BEAUTY.** Large, round, red and juicy. Of a good quality and bears early.
- STAYMAN WINESAP.** A seedling of Winesap. Improved. Dark, rich red. No apple is being more widely planted.
- WINESAP.** Medium, dark red; very smooth. Apples juicy and rich; very valuable for both family and market. Trees hardy, and an early and constant bearer.

Plant Standard Apple trees from 30 to 40 feet each way. At 30 feet apart it takes 48 trees per acre; 40 feet apart it takes 27 trees per acre.

|                                    |        |         |
|------------------------------------|--------|---------|
|                                    | Per 10 | Per 100 |
| 18 to 24 inch, one-year whips..... | \$.75  | \$ 5.00 |
| 2 to 3 feet, one-year whips.....   | 1.00   | 7.50    |
| 3 to 4 feet, one-year whips.....   | 1.35   | 10.00   |

The following prices are for strong, two-year trees:

|                                             |       |        |         |
|---------------------------------------------|-------|--------|---------|
|                                             | Each  | Per 10 | Per 100 |
| 3 to 4 feet, 7-16 in. caliper.....          | \$.25 | \$2.00 | \$15.00 |
| 4 to 5 feet, 9-16 to 11-16 in. caliper..... | .30   | 2.50   | 20.00   |

## PEACHES

Without a doubt, the peach is one of the best paying fruit crops for the South. The southern-grown peaches excel in size, appearance and quality; there are no crop failures. The tree is valuable for ornament as well as useful for fruit. The pink blossoms in spring present a beautiful sight. The trees come into bearing early, and the luscious fruit forms a welcome addition to the summer menu.



Elberta Peach



Belle of Georgia

**BELLE OF GEORGIA (Free).** A medium season peach, large, white, with a decided blush; firm flesh of delicious flavor.

**CARMAN (Free).** Early. Large roundish, pale yellow skin; flesh white and sweet.

**CHAMPION (Free).** Early, ripens last of July. The flesh is delicious, rich and sweet. Skin creamy with red cheeks.

**CRAWFORD'S EARLY (Free).** Large, rather oblong, with yellow skin and yellow flesh.

**EARLY ELBERTA (Free).** Like the Elberta, but ripens a little earlier.

**ELBERTA (Free).** A large, yellow peach shaded with red; yellow flesh.

**HEATH CLING.** A clingstone peach. Very large, creamy white with delicate red blush.

**HILEY (Free).** Early, large, creamy white with red cheek; white flesh and juicy. Ripens about the first of July.

**J. H. HALE (Free).** The beautiful midseason peach. Large, round, yellow and nearly covered with red.

**KRUMMEL (Free).** A freestone peach. Fine flavor; skin yellow with carmine blush.

**MAYFLOWER (Free).** One of the earliest peaches. Red all over.

**RED BIRD CLING.** Creamy white, nearly covered with red.

**ROCHESTER (Free).** Fruit large, light yellow to orange, with red blush. One of the best.

Prices, All Varieties of Peaches:

|                    |       |        |         |
|--------------------|-------|--------|---------|
|                    | Each  | Per 10 | Per 100 |
| 18 to 24 inch..... | \$.10 | \$ .80 | \$ 5.00 |
| 2 to 3 feet.....   | .15   | 1.00   | 7.50    |
| 3 to 4 feet.....   | .25   | 1.50   | 10.00   |
| 4 to 5 feet.....   | .30   | 2.00   | 15.00   |

## CHERRIES

At least a few cherry trees should be planted in every garden. The fruit is delicious for pies and fine for canning and preserving.

### SWEET CHERRIES

**BLACK TARTARIAN.** A favorite sweet cherry. Fruit large and very dark red, almost black when ripe.

**GOVERNOR WOOD.** Fruit large, yellow, immediately after the Black Tartarian.

**NAPOLEON.** An ideal, light-colored, sweet cherry. Fruit large, heart-shaped.

### SOUR CHERRIES

**EARLY RICHMOND.** Very early sour cherry; very popular. Bright red. Hardy and grows to a compact tree.

**MONTMORENCY.** Slightly acid. Bright red; ripens in early July.

|                  |       |        |         |
|------------------|-------|--------|---------|
|                  | Each  | Per 10 | Above   |
| Mentioned:       |       |        | Trees   |
| 2 to 3 feet..... | \$.30 | \$2.25 | \$17.50 |
| 3 to 4 feet..... | .35   | 3.00   | 25.00   |
| 4 to 5 feet..... | .50   | 4.00   | 30.00   |

## PEARS

**BARTLETT.** Golden yellow with red cheek, fine grained, melting, of delicious quality. Bears when very young.

**GARBER.** Fruit large, resembling the Keiffer but ripens two or three weeks earlier.

**KEIFFER.** The Keiffer is not a high quality pear, but is excellent for canning and cooking; bears regularly every year.

Prices, All Varieties of Pears:

|                                 |       |        |         |
|---------------------------------|-------|--------|---------|
|                                 | Each  | Per 10 | Per 100 |
| 3 to 4 feet, 1 year whips ..... | \$.25 | \$2.00 | \$14.00 |
| 4 to 5 feet, 1 year whips ..... | .35   | 3.00   | 17.50   |

# Roses — A Selection of Hardy, Field Grown Varieties

## FRUIT—Continued

### PLUMS

**ABUNDANCE.** Pale amber, turning to red; yellow, sweet flesh.  
**BURBANK.** Large, deep red, with yellow flesh; juicy and sweet.  
**KELSEY'S JAPAN.** Size large, heart-shaped, long pointed. Fruit flavor rich.  
**RED JUNE.** Japanese. Skin garnet red; flesh light yellow, somewhat meaty.  
**SHROPSHIRE DAMSON.** Season late; fruits small in size. An old, well-known variety.

Prices, All Varieties of Plums:

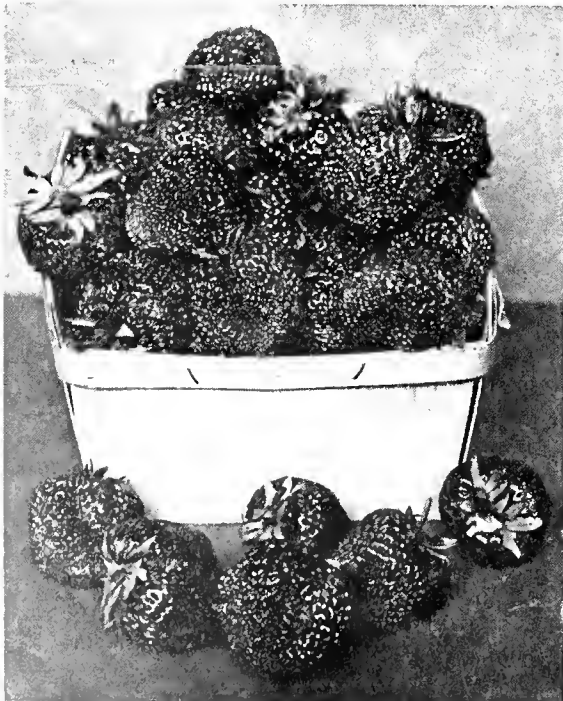
|                                             | Each  | Per 10 | Per 100 |
|---------------------------------------------|-------|--------|---------|
| 2 to 3 feet.....                            | \$.20 | \$1.50 | \$10.00 |
| 3 to 4 feet, 7-16 to 9-16 in. caliper.....  | .30   | 2.50   | 20.00   |
| 4 to 5 feet, 9-16 to 11-16 in. caliper..... | .40   | 3.50   | 30.00   |



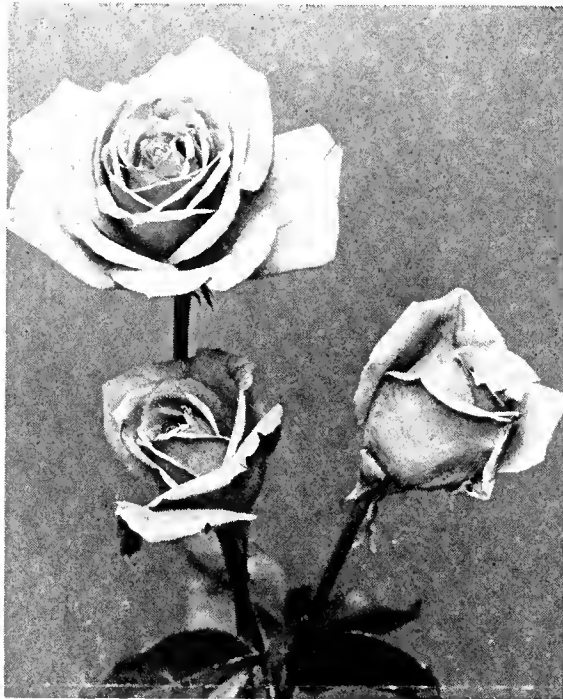
Red June Plums

### STRAWBERRIES

**AROMA.** Steady producer. Big, deep red berries of excellent eating quality.  
**CHAMPION.** A late and heavy bearer of good size berries, dark red and fine flavor.  
**GANDY.** A standard market variety. Fruit firm and of good quality. Excellent for canning.  
**KLONDIKE.** A good berry, rich blood-red in color, having a fine flavor that is neither sweet nor sour.  
**PREMIER.** Extra early. Produces large quantities of good sized attractive berries of excellent quality.  
**PROGRESSIVE EVERBEARING.** The berries are just about the size and color of the Duulap and produced in great profusion.  
 50c per dozen; \$2.00 per 100; \$7.50 per 1000.  
**SENATOR DUNLAP.** Fruit very large, mid-season; colored light and dark scarlet. Quality very good.  
 Prices on Above Varieties, except Progressives: 75c per 100; \$3.00 per 500; \$5.00 per 1000.



Strawberries



Pink Radiance Roses

### GRAPES

The Grape is not only profitable commercially but has many home uses and a few vines planted about the yard to run over the fences or trained up on buildings will add to the attractiveness of the grounds as well as furnishing a supply of luscious fruit. They should be planted where they will have plenty of sunshine which supplies the needed warmth to develop the sugar content of the fruit.

**Red Varieties**—Brighton, Catawba, Delaware, Lutie.  
**Black Varieties**—Moore's Early, Campbell's Early, Concord, Warden.  
**White Varieties**—Niagara, Pocklington, Martha.

Prices, All Varieties of Grapes:

|                     | Each  | Per 10 | Per 100 |
|---------------------|-------|--------|---------|
| Two-year No. 1..... | \$.20 | \$1.50 | \$10.00 |
| Two-year No. 2..... | .15   | 1.00   | 7.50    |
| One-year.....       | .10   | .75    | 5.00    |

## ROSES

The happiness of mankind may be increased by encouraging that love of a garden, that love of the beautiful which is innate in us all, and in the development of the garden no plant is more worthy of a large place than the ROSE. In what wonderful shades and coloring, in what exquisite variety of form and habit, with what delicate perfume it is now possible to have them! For length of blooming period they have few equals, and no superiors among flowering shrubs—the ROSE stands in a class by itself—THE QUEEN OF FLOWERS.

### RED

**Francis Scott Key.** Free bloomer. Double rich crimson-red.  
**General Jacqueminot.** Bright, shining crimson. One of the most desirable of the red roses.  
**Gruss an Teplitz.** A very dependable variety. A profusion of clear, scarlet flowers are borne from July until frost.  
**Radiance Red.** Similar to the Pink Radiance, but has long, bold cerise red flowers on long, heavy stems. An exceptionally good rose.

### WHITE

**Bessie Brown.** Pure white, large, double flowers, flushed with pink near the center.  
**Frau Karl Druschki.** This is the White American beauty. Very perfect in form.  
**Kaiserin Augusta Victoria.** Buds creamy, well formed, with a slight tint of lemon at center.  
**Wm. R. Smith.** Flowers are freely produced, creamy white, with strong tints of pink.  
 Any of the above hardy bush roses, two year old, 40c each; \$4.00 per dozen.

### CLIMBING ROSES

**Dorothy Perkins.** A grand climbing rose. Beautiful, double, shell-pink flowers in great profusions. Foliage fine and smooth.  
**Dr. W. Van Fleet.** Very popular climbing rose. Can be used nicely for cut flowers. Perfectly formed, long-pointed deep pink buds. Foliage dark, glossy green.  
**Gardenia.** The color is a decided yellow; flowers very sweet scented.  
**Marechal Nell.** A very popular, yellow rose. The buds are exquisitely formed and the blooms of large size; color rich golden yellow. 50c each; \$5.00 per dozen.

**Paul's Scarlet.** Makes a brilliant display for several weeks. Vivid bright red, blooms in large clusters. Prices on above Climbers, except where noted. 30c each; \$3.00 per dozen.

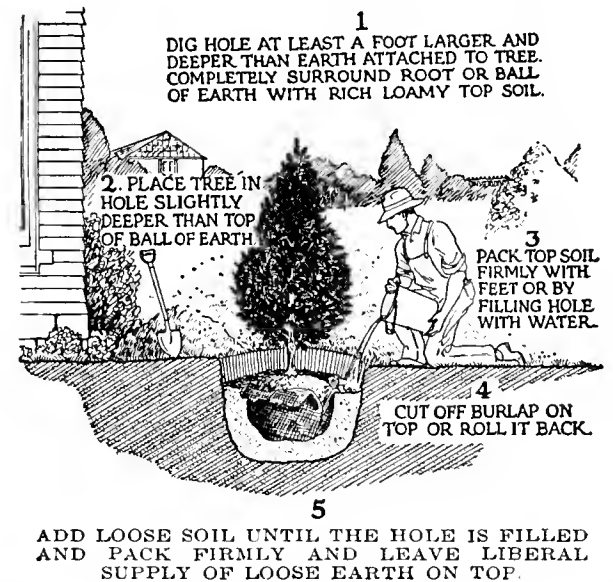
### PINK

**Columbia.** Enormous blooms of clear pink. Extra good for cut flowers, due to long stiff stems.  
**Dame Edith Helen.** Large, beautifully shaped. Double flowers of pure, light pink. A very handsome new variety.  
**Frank W. Dunlop.** Brilliant, deep rose pink. Very double and highly scented.  
**Jonkheer J. L. Mock.** A massive rose. Carmine buds slowly open to deep carmine-pink.  
**Paul Neyron.** Probably the largest of the pink roses. Very beautiful.  
**Radiance Pink.** The finest pink we know. The buds are rounded, and flowers cup shaped. A beautiful shade of soft carmine-pink flowers on long stems.

### YELLOW

**Alexander Hill Gray.** Pale, lemon yellow deepening in the center of perfectly formed fragrant flowers.  
**Lady Hillington.** Clear apricot-yellow. Buds of remarkable quality and elegance.  
**Luxembourg.** A fine, large, double golden-yellow rose of vigorous habit.  
**Sunburst.** A wonderful rose of orange coppery golden yellow. We recommend this rose to our customers.  
 Any of the above varieties 40c each, \$4.00 per dozen.  
**Talisman.** Brilliant red and gold buds, opening to well-shaped blooms of scarlet-orange. Tall, hardy growth, constantly in bloom. 50c each; \$5.00 per dozen.

## How to Properly Plant Evergreens



Lady Hillington