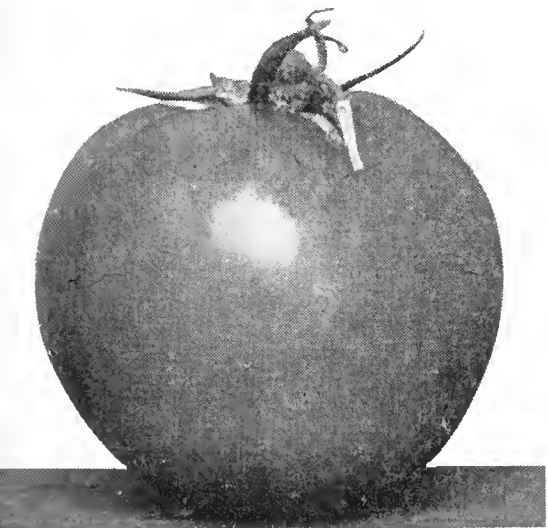


Historic, Archive Document

Do not assume content reflects current scientific knowledge, policies, or practices.

Eclipse Brand Delicious Tomatoes

Tomatoes can be eaten in salad, cooked and now even the juice of this wonderful vegetable is desired by many. We know of no other plant that will give as much satisfaction to the home gardener, if properly cared for. Our seed is all from reliable growers and should please you.



Tomato—Chalk's Jewel

	Pkt.	Oz.	1/4 Lb.
Chalk's Early Jewel	\$0.05	\$0.30	\$0.60
Sparks' Earliana	.05	.20	.50
Marglobe	.05	.30	.85
Matchless	.05	.20	.60
Norton's Wilt Resistant	.05	.35	1.00
Beauty	.05	.20	.65
Stone, New Improved	.05	.20	.50
Acme	.05	.20	.70
John Baer	.05	.25	.80
Dwarf Champion	.05	.25	.80
Ponderosa	.05	.35	1.25
June Pink	.05	.30	1.15
Golden Queen	.05	.30	1.00
Yellow Pear	.05	.35	1.15
Walter Richards Extra			
Early Imp. Globe	.40	1.25	4.00
Break of Day	.05	.35	1.25
Oxheart	.10	.40	1.50

All postpaid.

Write for Special Prices
and Catalog on
HUDSON SPRAYERS

Eclipse Brand Luscious Watermelons

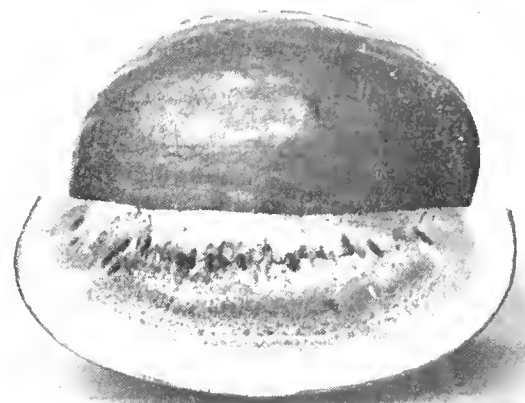
(Southern-Grown—Crisp and Delicious)

Eclipse Brand Watermelon seed will satisfy you. Southern-grown and saved from crops grown exclusively for seed. All seed from selected melons only.

Culture: Plant in hills eight or ten feet apart, dropping ten seeds to the hill; thin out to three plants to the hill, cultivate until the vines cover the ground, and pinch the ends of the early shoots to induce early fruiting.

	Pkt.	Oz.	1/4 Lb.	1 Lb.
Excell	\$0.05	\$0.15	\$0.30	\$0.90
Alabama Sweet	.05	.10	.25	.75
Georgia Rattle-snake	.05	.10	.25	.65
Phinney's Early	.05	.10	.25	.65
Tom Watson, selected	.05	.15	.30	.75
Irish Grey, selected	.05	.15	.30	.75
Golden Honey, selected yellow	.05	.15	.30	.90
Angel Kiss, selected	.05	.15	.30	.85
Halbert's Honey, selected	.05	.15	.30	.90
Kleckley Sweet, selected	.05	.15	.30	.90
Monte Cristo, selected	.05	.15	.30	.90
New Wonder, selected	.05	.20	.30	.75
Stone Mountain	.05	.20	.40	1.00
Ribault	.05	.20	.40	1.00
Thurmond Grey	.05	.20	.35	1.00
Porto Rico—yellow	.05	.20	.35	1.00

All postpaid.



Watermelon—Stone Mountain

We have a complete line of
Poultry Equipment
Write for Catalog.

Inoculate All Legumes with



THE ORIGINAL LEGUME INOCULATOR
Guaranteed Fresh Each Year. Leads in High
Germ Count

For profitable results, Agricultural Colleges advise inoculation for all legume seed, because it pays well in producing larger quantity yields. Fresh, high count NITRAGIN, containing billions of efficient nitrogen-gathering germs, builds up the soil.

All Legume Germs are PERISHABLE. To protect you, NITRAGIN Cans are stamped with expiration date. Insist on NITRAGIN.

When ordering, always specify kind of seed.

NITRAGIN PRICES		Peas, Vetch, Beans, Austrian Winter Peas	
Size	Retail	Size	Retail
1/2 bu.	.40	1/2 bu.	.40
1 bu.	.90	1 bu.	.90
5 bu.	4.00	5 bu.	4.00

Soy Beans and Cow Peas	
Size	Retail
1 bu.	.40
2 bu.	.70

Garden Nitrigin—Garden Size—Peas, Beans, Sweet Peas
Inoculates from 1 ounce to 8 lbs. seed. Price, \$.25.

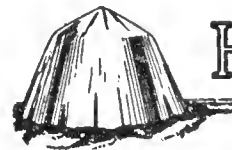
JOHNSTON PRINTING AND ADVERTISING

VIGORO

Complete plant food

Where the soil lacks the natural elements that supply the necessary plant food for the high production, you can use Vigoro—a Swift & Co. product—which supplies the exhausted elements and produces delicious vegetables, beautiful flowers, and quicker maturity and more velvety lawns. Vigoro can be spread with the hands as it has no bad odors and is today the last word in a perfect soil builder and crop grower. Vigoro will pay handsome returns for the investment you put into it. Prices: 10 lbs. 85c; 25 lbs. \$1.50; 50 lbs. \$2.50; 100 lbs. \$4.00, f.o.b. Shawnee, Okla.

Earlier, More Profitable Crops



Germaco
Hotkaps
New Method of
Plant Protection

Germaco HOTKAPS can make many extra dollars for you this season. They are patented wax paper cones—"individual hothouses for each plant" that completely cover them, and fully protect them from frost, wind, rain, ground-crusting and insects. This is your assurance of earlier, bigger crops, and higher early-to-market prices. HOTKAPS are inexpensive and easy to use. One man "sets" over 3,000 per day. Write us about HOTKAPS or order your season's supply now. Prices: 1,000 lots, \$9.50; special trial package of 250 with Garden "Setter", \$3.50; \$2.25; steel Setter, \$2.50 each. Postage or express extra.

FERTILIZER FOR THE FIELD CROPS

agents and carry in stock Swift's Red Steer Brand of fertilizers for corn, potatoes and root crops, as well as for the garden and lawns. We also have Ash, Nitrate of Soda, Lime and Bone Meal. Our customers using fertilizers are getting double the amount of production where they fertilize. You can do it. Write for prices.

AGRICULTURAL PRINTERS, DALLAS, TEXAS

The Sign of
UNQUESTIONABLE
QUALITY

ECLIPSE BRAND
SEEDS



Clarke & Keller
Seed Store
SHAWNEE, OKLAHOMA

VEGETABLE
SEED TRIALS
HORTICULTURE
JAN 23 1933

To Boxholder on Route Number

Sec. 435 1/2, P.L. & R.

U. S. POSTAGE

PAID

SHAWNEE, OKLA.

Permit No. 76

LIBRARY

RECEIVED

★ JAN 30 1933 ★

U. S. Department of Agriculture.

Clarke & Keller Seed Store---An Institution



LHIRTY-ONE years ago the foundation was laid for what is now Oklahoma's oldest exclusive seed house. Year after year our business has grown until our customers are now found in every part of the South and Southwest. With thousands of square feet available for storage in our warehouses we are able to buy our seeds in large quantities from the best growers. This enables us to keep on hand at all times for our customers the finest grades the market affords. In addition, no expense nor effort has been spared in the securing of seed cleaning and grading equipment to insure our customers that they will receive only seeds of highest quality. Because climatic conditions are different in our part of the country our aim has always been to offer only those seeds that should be used in this section. The greatest care is taken in procuring the best seeds possible of the best varieties grown in and adapted to the Southwest.

ECLIPSE BRAND SEEDS. Eclipse is our general Trade Brand for seeds. When you buy Eclipse seeds you buy the last word in quality. For purity, vitality, and germination, no better seeds can be produced. With the most modern cleaning and testing equipment that money can buy, and with our long experience in seed selection, we maintain a standard of perfection that few others can equal. All Eclipse seeds are thoroughly cleaned and carefully graded, then packed in heavy, secure packages for shipment to insure safe arrival in good condition.

THE GRADES WE OFFER. Our seeds are offered in four grades. The Eclipse or No. 1 grade is the best that can be produced and conforms to the United States No. 1 Standard. The Fancy or Second grade is in many ways equal to the best grade, but lacks some small point of being up to No. 1 Standard. Always dependable. The third grade is called Choice Seed. High in purity, but lower in germination than the two top grades. The fourth grade or Prime Seeds are still good quality, thoroughly cleaned and tested, but lower in vitality than the other grades.

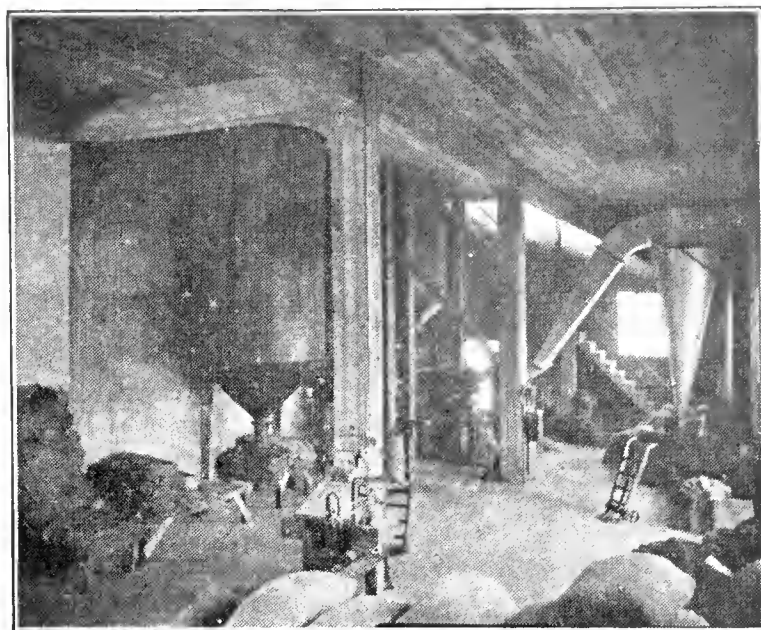
PRICES. Prices, of course, conform with the value of the different seed grades. In all grades our prices are usually lower than those offered by any other reputable seed house specializing in seeds for the Southwest.

GARDEN SEEDS. Our garden seed department offers exceptional inducements to those interested in finest grades of garden seeds for either commercial gardening or resale. Our catalog describes all the best standard varieties and all the new plants which have shown evidence of good adaptability to our climate. We give liberal premiums with all garden seed orders in addition to giving more seed per package than most seed companies.

SEED SAMPLES. We are glad to submit samples of field seed when desired. Then you know what you buy. Any seeds ordered from us and found unsatisfactory or not as represented may be returned immediately. Your money will be refunded, including shipping costs both ways. Our policy is to treat our customers right. You take no chances when dealing with us.

SEED LAWS. Seeds bought from us will be labeled to comply with the laws of your State. We are familiar with the seed laws of each State and will meet the requirements of the State in which you reside.

NON-WARRANTY. Although our seeds are bought only from the most reliable producers, and every precaution humanly possible is taken to give our customers exactly what they want with each order, we absolutely do not give any warranty—either expressed or implied—as to description, quality, productiveness, or any other characteristic of any seeds, bulbs, or plants sold by us,



View of Seed-Cleaning Equipment

nor do we assume any responsibility whatsoever for the crop which may be produced.

QUICK DELIVERY SERVICE. From our location at Shawnee, Oklahoma, with rapid rail and highway connections to all parts of the country, we can make delivery to any part of the Southwest within a few hours after receipt of your order, either by freight, express, truck or parcel post.

ORDER EARLY FOR 1933. We recommend booking your seed orders now. Prices are lower now than they will likely be nearer planting time. Orders placed now at definite prices will protect you against later advances. If, on the other hand, prices should go lower, we will give you the benefit of the lower price. You save either way by placing your orders now.

Our Terms are Cash F. O. B. Shawnee. We solicit your orders with our promise that we will give you honest goods at honest prices.

We Are the Largest Growers of Cabbage and Onion Plants in the Southwest



Bunching Onion Plants on Clarke & Keller Farm

Owning, as we do, one of the finest sections of truck farming land in the heart of the "WINTER GARDEN BELT" of South Texas, we are enabled to grow for our customers the finest plants to be had.

Our seed stocks for the production of these plants are imported from the best growers in the world.

We grow the famous Crystal White Wax and White or Yellow Bermuda, Sweet Spanish or Valencia onions by the millions and during the planting season receive them fresh daily. Also grow a splendid assortment of the Frost-proof Cabbage Plants, embracing the Early Jersey Wakefield, Early Flat Dutch and Copenhagen Market—these being time-tested varieties, giving best results.

Prices on Frost-proof Cabbage and

Bermuda Onion Plants, Postpaid

	Per 100	300	500	1000
Crystal White Wax	\$.30	\$.60	\$.70	\$1.00
White or Yellow Bermuda....	.30	.60	.70	1.00
Sweet Spanish or Valencia....	.30	.60	.70	1.00
Frost-proof Cabbage35	.75	1.00	1.75

Ask us for prices on larger quantities. When ready for Sweet Potato slips, write us for prices on your requirements.

SPECIAL prices on crate lots by express, f. o. b. Shawnee, Oklahoma.

Crystal White Wax—6,000 in crate. Per crate, \$4.00.

Yellow Bermuda—6,000 in crate. Per crate, \$4.00

Sweet Spanish or Valencia—6,000 in crate. Per crate, \$4.00.

Cabbage Plants—5,000 lots, \$1.45 per 1,000. Express collect.



Cabbage Plants



Onion Plants

CLARKE & KELLER'S ECLIPSE BRAND, HIGH GERMINATING, GARDEN SEED



Burpee's Stringless

Pole Beans

Pole Beans enjoy a longer bearing period than bush beans and are therefore more productive. They are more sensitive to cold and wet as well as drought and hot winds than the dwarf sorts. You should by all means include a planting of Pole Beans in your garden.

Speckled Cut Short	Pkt.
Dutch Case Knife	\$0.10
Kentucky Wonder	.10
Scarlet Runner	.15
1 lb. 40c; 2 lb. 75c; 5 lb. \$1.50, postpaid	

Lima Beans

Lima Beans require a slightly longer time to bear than other beans. Do not plant until the ground is warm and dry and all danger of frost has passed.

Large White Lima Pole	Pkt.
King of the Garden Lima Pole	\$0.10
Henderson's Bush Lima	.10
Burpee's Bush Lima	.10
Jackson Lima-Bush Beans	.10
Speckled Lima Pole Beans	.10
1 lb. 40c; 2 lb. 75c; 5 lb. \$1.50, postpaid	

Garden Beets

The best results are obtained on a deep, rich, sandy loam soil. Sow in rows about 18 inches apart and, when the plants are well up, thin to 4 to 6 inches apart in the rows.

Sow outdoors in March and April for early crops and later as desired for late maturity. One ounce will sow 50 feet of drill.	
Pkt. Oz. ¼ Lb. 1 Lb.	
Early Model	\$0.05 \$0.15 \$0.35 \$0.90
Crosby's Egyptian	.05 .15 .35 .90
Detroit Dark Red	.05 .15 .35 .90
Edmond's Blood Turnip	.05 .15 .35 .90
All postpaid.	

Eclipse Brand Collards

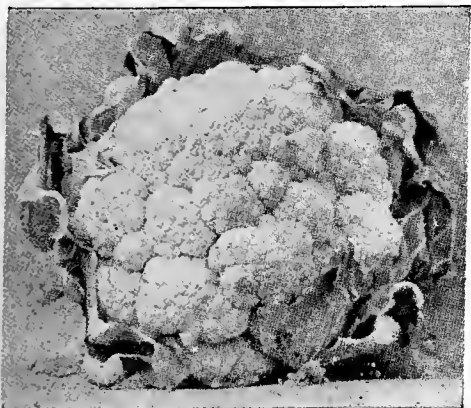
This is a variety of cabbage largely grown in the South. Loose-leaved and will usually live through mild winters.

True Georgian, pkt. 5c; oz. 15c; lb. 65c. All postpaid.

Swiss Chard

Grown for its leaves and stems only. Cook the leaves as you do Spinach and the stems like Asparagus. The plant is almost perpetual if kept trimmed. An ounce will sow 50 feet in drills.

Swiss Chard. Pkt. 10c; oz. 20c; ¼ lb. 40c; lb. \$1.00. All postpaid.



Cauliflower—Early Snowball

Asparagus
(See Root Crops)
Eclipse Brand Beans
Plant from first of April on through until fall, when moisture conditions are favorable. Sow in rows 2½ to 3 feet apart. One quart will sow 200 feet of row.

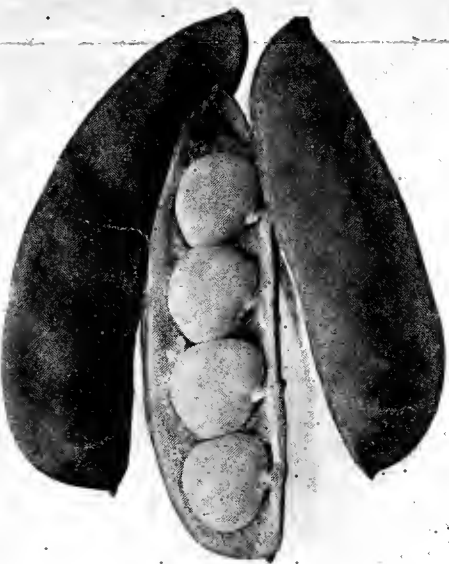
Bush Beans (Green Pod)

Refugee, or 1000-to-1	Pkt.
Early Red Valentine	\$0.10
Long Yellow Six Weeks	.10
Burpee's Stringless Green Pod	.10
Tennessee Green Pod	.10
1 lb. 40c; 2 lb. 75c; 5 lb. \$1.50, postpaid	

Wax, or Yellow Pod

Destined by many on account of the meaty pods that are always brittle. Bush Wax Beans are early and one of the best kinds for home planting as well as market.

Wardwell's Kidney Wax	Pkt.
Improved Golden Wax	\$0.10
Improved Prolific Black Wax	.10
Grennel's Golden Wax	.10
Currie's Rust-Proof Wax	.10
1 lb. 40c; 2 lb. 75c; 5 lb. \$1.50, postpaid	



Henderson's Bush Lima

Celery

One ounce of seed will produce about 3000 plants.

Improved White Plume	Pkt. Oz.
Golden Self-Blanching	\$0.10 \$0.45
Giant Pascal	.10 .75
All postpaid.	

Eclipse Brand Cucumbers

For very early crop, grow in small plant boxes in hotbeds. Plant seed outdoors early in April in hills 4 feet apart for later crops; one ounce to 50 hills.

Burrell's Earliest	Pkt. Oz. ¼ Lb. 1 Lb.
of All	\$0.05 \$0.15 \$0.35 \$1.25
Arlington White Spine	.05 .15 .35 1.00
Boston Pickling	.05 .15 .35 1.25
Early Green Cluster	.05 .15 .35 1.00
Davis Perfect	.05 .15 .35 1.25
Long Green	.05 .15 .35 1.25
West India Gherkin	.05 .15 .50 1.75
All postpaid.	

Cress or Pepper Grass

Curled	Pkt. Oz.
Broad-Leaved	\$0.10 \$0.25
All postpaid.	

Eclipse Brand Cauliflower

If your garden will produce cabbage, it should successfully grow cauliflower. Plant as you would cabbage, but the heads must be protected from sunlight so as to insure a white center.

Henderson's Early Snowball	Pkt.
Extra Early Dwarf Erfurt	\$0.10
All postpaid.	.10

Kale or Borecole

Described as Loose Leaf Cabbage—cooked as greens—very hardy.

Curled Green Scotch	Pkt. Oz.
Tall Green Curled	\$0.05 \$0.20
All postpaid.	.05 .20



Early Flat Dutch

Cabbage

Cabbage is a gross feeder and requires rich, well drained soils for best returns. Plants should be grown and ready for transplanting very early in the spring. An ounce of seed will produce 3,000 plants. Set plants 1½ by 3 feet apart. See prices listed in this circular on plants ready for transplanting.

Early Jersey Wakefield	Pkt. ¼ Lb. 1 Lb.
Copenhagen Market	\$0.05 \$0.40 \$1.35
Early Winningstadt	.05 .40 1.35
Early Flat Dutch	.05 .40 1.35
Express	.05 .40 1.35
Genuine Surehead	.05 .40 1.35
Selected All Seasons	.05 .40 1.35
Early Summer	.05 .40 1.35
Mammoth Drumhead	.05 .40 1.35
Premium Late Flat Dutch	.05 .40 1.35

Pe-Tsai or Chinese Cabbage

A new form of greens imported from the Orient. Heads up like cabbage, but resembles head lettuce. Easy to grow; makes enormous yields. A great greens for poultry also. Price, per pkt. 5c; per oz. 35c; per lb. \$1.50. All postpaid.

Carrots

Carrots are classed as a "health vegetable" and are growing in favor as they can be prepared in so many different ways. They are excellent for salads and soups and are a wonderful dish when prepared alone with a rich cream sauce or combined with English Peas. Sow in rows 16 to 18 inches apart at the rate of one ounce to 100 feet of row or 3 pounds to the acre.

Danver's Half Long	Pkt. Oz. ¼ Lb. 1 Lb.
Long Orange	\$0.05 \$0.20 \$0.50 \$1.35
Oxheart	.05 .20 .40 1.00
White Belgian Stock	.05 .20 .50 1.35
Carrot	.05 .15 .35 .85
All postpaid.	

Pop Corn

Nearly all standard sorts do well in this country and we list the following types and call especial attention to the Mammoth Sweet Pop Corn and Dynamite or South American Yellow.

Mammoth Sweet Popcorn
The Mammoth Sweet Pop Corn is the new wonder corn. It has large white grains and pops out the most in bulk and size of grains, very sweet and tender. Produces large ears, giving maximum yields under average conditions. Special price of 25c per pound, postpaid, two pounds 45c, postpaid. Ask for special prices on large amounts.

South American Giant Yellow Pop Corn

This splendid new popcorn has a very large bright yellow grain which pops out an enormous kernel. It has a rich flavor and is very tender. On account of extreme size of the popped kernels, this popcorn will produce more bulk after popping than any other variety. Grows well over the Southwest and produces good yields. Lb. 25c; 2 lbs. 45c, postpaid. Ask for prices on large amounts.

Eclipse Brand Sweet Corn

Stowell's Evergreen Sweet Corn
For early market, plant the garden varieties latter part of March. Sugar Corns should not be planted until April. One gallon to the acre usual amount required.

Golden Bantam, early	Pkt. ½ Lb. 1 Lb.
Howling Mob, early	\$0.10 \$0.20 \$0.30
Early Evergreen	.10 .20 .30
White Mexican, early	.10 .20 .30
Country Gentleman	.10 .25 .35
Stowell's Evergreen	.10 .20 .30
Adams' Extra	.10 .20 .30
Adams' Extra Early	.10 .20 .30
All 5-lb. lots \$1.10, postpaid.	

Eclipse Brand Eggplant

Sow in hotbeds and transplant when 2 inches high. Requires warm weather for best growth.

Improved New York Purple	Pkt. Oz. ¼ Lb.
Round Purple	\$0.05 \$0.35 \$1.15
All postpaid.	.05 .35 1.15

Endive

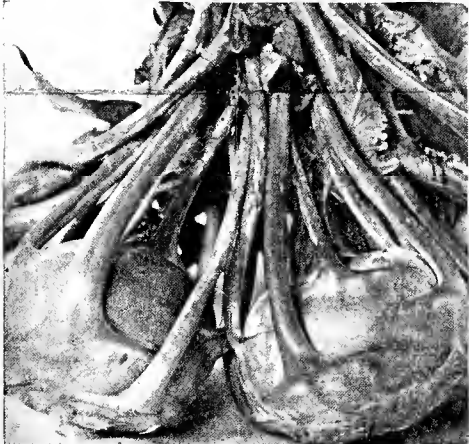
Endive is very rich in mineral salts. It is a salad plant somewhat similar to lettuce and is zesty and makes a beautiful garnish.

Broad-Leaved	Pkt. Oz.
All postpaid.	\$0.05 \$0.25

Kohl-Rabi

This vegetable is a cross between cabbage and turnips and combines the delightful flavor of both. Plant in the same manner as you would turnips.

Early White Vienna	Pkt. Oz.
All postpaid.	\$0.05 \$0.25



Kohl-rabi

Root Crops

Asparagus
CONOVER'S COLOSSAL — One-year-old, \$1.00 per dozen; two-year-old, \$1.50 per dozen.

Rhubarb

"Grow and eat Rhubarb and be healthy and happy," is a household word among the many thousands growing this palatable health-giving plant. Our Rhubarb is grown in Central Oklahoma and is acclimated.

Prices: Heavy, number one roots, 15c each; \$1.50 per dozen. Number two, 10c each; \$1.00 per dozen.

Horseradish Roots

50c per doz.
All postpaid.

Leek

A member of the onion family and used by many as a substitute for green onions in cooking. The lower portion of the plant can be boiled whole or used in soups.

Large Flag Winter	Pkt. Oz.
All postpaid.	\$0.05 \$0.25

Eclipse Brand Lettuce

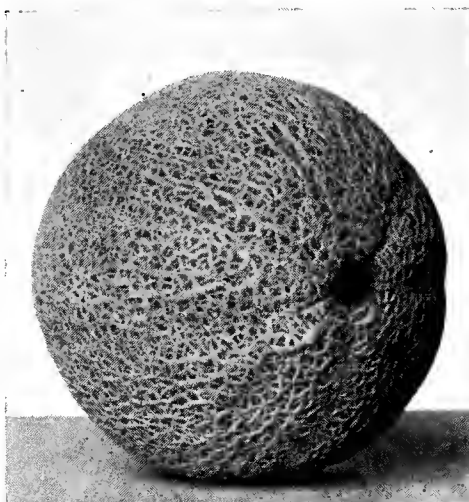
Sow in open ground early in spring soon as ground can be worked nicely. Thin out and transplant heading varieties for best results.

Early Curled Simpson	Pkt. Oz. ¼ Lb. 1 Lb.
Grand Rapids Forcing	\$0.05 \$0.15 \$0.35 \$1.20
Iceberg	.05 .15 .45 1.50
Improved Hanson	.05 .15 .40 1.25
Big Boston	.05 .15 .40 1.25
Black Seeded Simpson	.05 .15 .40 1.35
California Cream Butter	.05 .15 .40 1.25
Denver Market	.05 .15 .45 1.40
Prizehead	.05 .15 .50 1.50
New York Green	.05 .15 .50 1.50
or Wonderful	.05 .15 .50 1.50
All postpaid.	

Mustard

Sow from February to April or September and October. Broadcast or in drills. One ounce to 80 feet of drill.

White, for Salads	Pkt. Oz. ¼ Lb. 1 Lb.
Southern Giant Curled	\$0.05 \$0.10 \$0.25 \$0.65
Smooth Leaf	.05 .10 .25 .65
Ostrich Plume	.05 .10 .25 .65
All postpaid.	



Select Rocky Ford

Muskmelons, Cantaloupes

Plant in hills 5 feet apart, thin to 4 plants; cultivate well. Pinch off ends of vines as they begin to blossom, which will increase the yield. One ounce to 60 hills.

Burrell's Gem	Pkt. Oz. ¼ Lb. 1 Lb.
Thoroughbred	\$0.05 \$0.15 \$0.35 \$1.00
Rocky Ford	.05 .15 .35 1.00
Osage, or Miller's	.05 .15 .35 1.00
Cream	.05 .15 .35 1.00
Extra Early Hack-	.05 .15 .35 1.00
ensack	.05 .15 .35 1.00
Late Large Hackensack	.05 .15 .35 1.10
Emerald Gem	.05 .15 .35 1.00
Honey Dew	.05 .20 .40 1.25
Honeyball	.05 .20 .40 1.25
Pollock's 10-25	.05 .20 .35 1.00
Banana	.05 .20 .40 1.25
All postpaid.	

Okra

This plant is extensively cultivated for its green pods, which are used in soups and stews. Sow about the first of May in drills 3 feet apart and thin out plants to one foot apart.

Long Green	Pkt. Oz. ¼ Lb.
Early Dwarf	\$0.05 \$0.10 \$0.20
White Velvet	.05 .10 .20
1 lb. 50c, all postpaid.	

Eclipse Brand Onion Seed

Sow onion seed during February and early March. Drill three pounds to acre and thin out to stand required.

Silverskin	Oz. ¼ Lb. 1 Lb.
Sweet Spanish or Valencia	\$0.20 \$0.60 \$1.75
Australian Brown	.25 .65 2.00
Large Red Wethersfield	.20 .50 1.50
Southport Red Globe	.20 .45 1.25
Southport Yellow Globe	.20 .45 1.25
Yellow Prizetaker	.20 .50 1.50
Yellow Bermuda, Teneriffe	.25 .60 2.00
Crystal Wax, Teneriffe Grown	.25 .60 2.00
All postpaid.	

Parsley

The most decorative of all when used as a garnish. Excellent for soups, stews and many other dishes.

Moss Curled, Pkt. 5c; oz. 25c.

Parsnips

The seed is slow to germinate. Should be planted early in rows 18 to 24 inches apart, covering about ½ inch. Have a distinctive flavor and are greatly desired by many.

Hollow Crown, Pkt. 10c; oz. 15c; ¼ lb. 30c. All postpaid.



Lettuce—Early Curled Simpson

Eclipse Brand Peas

The English Pea is hardy and endures cold well, either in or above ground. It is best to sow the earliest varieties as soon as possible (February) in warm, light soil, prepared the previous autumn or winter. The main crop may be sown about two weeks later and on somewhat heavier soil. One quart will sow 100 feet of drill.

MICHIGAN GROWN	Pkt. ½ Lb. 1 Lb.
Early Alaska	\$0.10 \$0.20 \$0.35
Extra Early	.10 .20 .35
American Wonder	.10 .20 .35
Nott's Excelsior	.10 .20 .35
Bliss' Everbearing	.10 .20 .35
First and Best	.10 .20 .35
Little Gem	.10 .20 .35
POLE VARIETIES	
Telephone	.10 .20 .35
Champion of England	.10 .20 .35
White Marrowfat	.10 .20 .35
Edible Pod or Melting Sugar	.15 .25 .35
5-lb. lots \$1.50, all postpaid.	



Peas—Early Alaska

Eclipse Brand Pepper Seed

For early plants, sow in hotbeds and transplant to open after all danger of frost is over.

Chinese Giant	Pkt. Oz. ¼ Lb. 1 Lb.
Bell or Bull Nose	\$0.10 \$0.45 \$1.25 \$4.50
Long Red Cayenne	.10 .35 .90 2.75
Red Chili	.10 .40 1.00 3.25
Pimento	.10 .40 1.00 3.25
California Wonder	.10 .45 1.25 4.50
Ruby King	.10 .35 .90 2.75
All postpaid.	

Eclipse Brand Pumpkins

Plant in hills eight feet apart each way, and any time after all danger of frost is over.

King of Mammoth	Pkt. Oz. ¼ Lb. 1 Lb.
Kentucky Field	\$0.05 \$0.15 \$0.35 \$1.10
Large Cheese	.05 .10 .30 .75
Japanese Pie	.05 .15 .35 1.00
Tennessee Sweet Potato	.05 .15 .35 1.00
Cushaw	.05 .15 .35 1.00
All Postpaid.	

Rhubarb

Rhubarb is also known as pie plant. As it requires considerable time to grow from seed, it is our suggestion that you plant the roots should you desire to cut the first season.

Mammoth Victoria	Pkt. Oz. ¼ Lb.
All postpaid.	\$0.10 \$0.20 \$0.50

Salsify or Vegetable Oyster

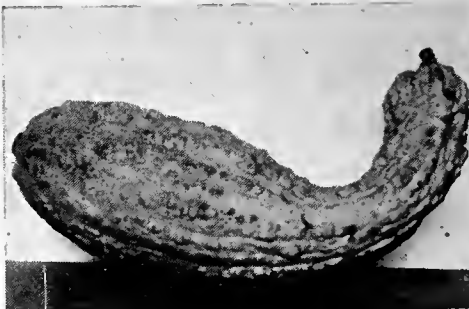
This plant truly has an oyster flavor and can be prepared in many ways. Culture is the same as recommended for Parsnips.

Mammoth Sandwich Island	Pkt. Oz.
All postpaid.	\$0.10 \$0.25

Eclipse Brand Spinach

This crop requires but little culture. Should be sown during March; one ounce to 100 feet of drill.

Curled Leaf Savoy	Pkt. Oz. ¼ Lb. 1 Lb.
Bloomsdale	\$0.05 \$0.10 \$0.15 \$0.35
New Zealand	.05 .10 .15 .35
All postpaid.	.10 .15 .25 .75



Early Summer Crookneck

Eclipse Brand Radishes

Sow them as early in spring as possible. To be tender and crisp, radishes must be grown quickly. Light, rich, deeply worked soil gives best results. One ounce sows 50 feet of drill.

Long Scarlet Short Top	Pkt. Oz. ¼ Lb. 1 Lb.
Long Brightest Scarlet	\$0.05 \$0.10 \$0.25 \$0.80
Long White Vienna or	.05 .10 .25 .80
Lady Finger	.05 .10 .25 .80
White Icicle	.05 .10 .25 .80
Early Scarlet Turnips,	
White Tipped	.05 .10 .25 .80
French Breakfast	.05 .10 .25 .80
Crimson Giant	.10 .15 .25 .90
Vick's Scarlet Globe	.10 .15 .25 .90

WINTER RADISH	Pkt. Oz. ¼ Lb. 1 Lb.
White Mammoth	\$0.05 \$0.10 \$0.25 \$.85
Long Black Spanish	.05 .10 .25 .85
Rose China	.05 .10 .25 .85
All postpaid.	

Squash

Plant 8 or 10 seeds to the hill; the bush varieties 4 to 6 feet apart, the running sorts 8 to 10 feet.

Mammoth White Bush	Pkt. Oz. ¼ Lb. 1 Lb.
Early White Scalloped	\$0.05 \$0.15 \$0.30 \$1.00
Bush	.05 .15 .30 1.00
Early Summer	.05 .15 .30 1.00
Improved Hubbard	.05 .15 .30 1.00
Warty Hubbard	.05 .15 .30 1.00

Turnips

(Imported)

Spring sowing should be put in early so that they will attain good size before hot weather. For the regular crop sow from July to September, when soil and moisture conditions permit. Sow 1½ pounds seed to the acre.

Purple Top Strap Leaf	Pkt. Oz. Lb.
Purple Top White Globe	\$0.05 \$0.10 \$0.40
Yellow or Amber Globe	.05 .10 .40
Cow Horn	.05 .10 .40
White Egg	.05 .10 .40
Rutabaga	.05 .10 .40
Seven Top	.05 .10 .40
Extra Early Milan	.05 .10 .65
All postpaid.	

Herbs

Anise	Pkt.
Caraway	\$0.10
Coriander	.10
Fennel	.10
Lavender	.10
Marjoram	Pkt.
Rosemary	\$0.10
Sage	.10
Thyme	.10
All postpaid.	



ECLIPSE BRAND CLOVER



While there is not much call for many of the clover varieties, we carry in stock White Dutch Clover, which is used mostly for lawns; Red Clover, for the field crop; Bur Clover for pasture, and Alsike Clover, a fine pasture and hay clover. Write for prices and samples if in need of any of these.

Sweet Clover Mellilotus Alba White Blossom

Sweet Clover is also useful for soil improvement as it is very valuable to lime and heavy clay and black soils, not only on account of the heavy stems and foliage, but also because of the thick heavy root system which upon decaying will improve the soil and its drainage. Lands planted in Sweet Clover will increase greatly in value with each year's growth. Planting of this wonderful Clover is certainly a great investment for land owners.

This can be called the upland Alfalfa, as the pasture and hay is in every way its equal. Will grow on the very poorest soil. Is a superior soil builder, adapted to any soil, makes a fine ensilage, and is one of the most popular plants for bees. Sweet Clover honey is the best honey produced, and brings the highest price. Sow 12 to 15 pounds per acre in fall or early spring.

Price, 25c per pound; 2 pounds 45c, postpaid. Ask for prices in large quantity.

100 lbs. \$5.00, f. o. b. Shawnee.

Sweet Clover Yellow Bloom Biennial

In addition to the White Bloom Biennial variety of sweet clover seed, we handle and sell a great deal of the Yellow Bloom Biennial. This clover is fine-stemmed, quite leafy and makes an excellent pasture and at the same time is a soil-building legume, the equal of any of the clovers. This variety does not grow so tall as the White Bloom Biennial. Price, 25c per lb.; 2 lbs. 45c, postpaid; 100-lb. lots, \$5.50, ready for shipment, f. o. b. Shawnee, Okla.

Lespedeza or Japan Clover

Korean Lespedeza this past summer of 1932 stood some very hot and dry weather but produced an unusual amount of pasture for milch cows for a number of our customers. It has proven beyond a doubt that it has a place in Oklahoma's crop rotation plans. We urge that you sow one of your pasture lots to Korean Lespedeza this spring. It is a fine legume soil builder as well as producing a rich pasture for any class of livestock. Sow on well-prepared ground and, after all danger of killing frosts is past, harrow or roll the ground well after seeding. Usually 12 to 15 pounds of seed is sown to the acre. In case you have well cultivated cotton stalk land, you could prepare it with a light disking and harrow the seed into the soil. Lb. 35c, postpaid; 2 lbs. 55c, postpaid; 100-lb. lots at \$9.00, f. o. b. Shawnee, Okla.

Lespedeza Sericea

This wonderful new introduction from the Orient is a perennial, living indefinitely; more and more shoots coming from the original crown year after year. This is the greatest of soil-building legumes, producing both hay and pasture crops; very drouth-resistant and also will stand the most severe winter weather. Oz. 75c; ¼ lb. \$2.00, postpaid; ½ lb. \$3.00; 1 lb. \$5.25, postpaid.

Spring Barley

If every upland farmer in the South grew an acreage of Spring Barley there would be many trainloads of feed that is shipped into from the North for feeding, that would have to look for a market in other sections of the country. Planted in February and March, it makes a quick growth and is matured before the summer heat can injure it. It is almost certain that you will harvest a crop if you prepare a seed bed and sow the seed. Divide your corn acreage on upland with Barley. Ask for samples and prices.

Price: 60c per bu., f. o. b. Shawnee, Okla.

Japanese Buckwheat

A quick growing crop that is grown mostly for bees. It is a splendid poultry feed and with a good growing season will mature a crop in 55 days. Can be planted up to August 1st.

Price: Lb. 30c; 2 lbs. 55c; 5 lbs. \$1.25, postpaid.

Winter or Hairy Vetch

In Eastern and Southeastern Oklahoma, as well as over the entire South, the Winter or Hairy Vetch is being used more and more universally as a winter soiling crop. Due to its wonderful ability to build up soils as well as furnish excellent pasturage, every farm should have some acreage every year of either spring or winter Vetch. We mention winter Vetch this spring so that you may have it in mind for your next fall planting program. Per lb. 35c, postpaid; 10-lb. lots \$1.60, postpaid; 100-lb. lots at \$11.00, f. o. b. Shawnee, Okla.



A Field of Eclipse Brand Alfalfa

ECLIPSE BRAND ALFALFA

Alfalfa is without a doubt the best forage and hay crop for the South and Southwest. This applies to the yield as well as the quality, as it requires only 30 to 40 days of good growing weather between cuttings to produce another crop, and it will certainly stand heavy grazing. In planting, your soil should be clean and well prepared, but firm. Cover the seed about one inch with a harrow. The use of a roller after planting will help firm the soil and insure a better stand. Be sure and inoculate your seed with Nitra-gin before sowing.

We were the first in the Alfalfa producing sections of the State this year, and had the choice of the crops of seed. We bought carefully of seed offered, and our selection was only the seed of the highest purity and vitality that was threshed. After recleaning this seed with our electric machines, we find we can offer the planters a quality of seed that will be equal to and superior to most of the seed sold in the South and Southwest. Our seed will test 99½ per cent or better purity, with absolutely no noxious or other weed seeds. This is our Eclipse Brand, which we sell in car lots to many of the critical seedsmen of the Eastern States. Many seedsmen look to us for their supplies, knowing the superior quality we place on the market. We can furnish Alfalfa seed in all grades, and each grade will be priced at an attractive price. Prices are very much higher than the past season. All seed will be tagged to comply with your State seed law, with which we are familiar. Thousands of bushels are in our warehouses awaiting your orders, and requests for samples and prices. No farm that has even a small acreage that will grow Alfalfa should be without it. Ask for samples and prices.

Soy Beans

Generally speaking, the Soy Beans require the same soil as corn, although Soy Beans will make a very satisfactory growth on poorer soil than will corn if the seed is properly inoculated. Soy Beans are wonderful soil improvers; they belong to the family of legumes, therefore have the power of taking nitrogen from the air and storing that most valuable of all plant foods in the soil.



Soy Beans in Corn

Our prices on alfalfa seed and other forage crop seeds are quoted subject to market changes and stocks being unsold. Due to the great shortage of the alfalfa seed crop, we are sure that there will be much very poor seed offered at prices much below that of good seed, so we would urge that before you make your purchases of such alfalfa seed, that you secure samples and make careful comparisons as to their quality.

Our Eclipse Brand of Alfalfa seed will show 99.50 per cent or better purity and, when you sow it, you are sowing the purest and highest germinating alfalfa seed available in this section. We are quoting special price this spring of \$14.50 per 100 lbs., sacked, ready for shipment, f. o. b. Shawnee, Okla. Samples of this grade or any other grades will be mailed you on request.

For those wanting a good pure seed and a good germination we have our Fancy Grade of Alfalfa seed to offer and while this grade does not have any noxious weed or grass seed in it, yet it does not show as high germination as the Eclipse Brand. This seed will please you and give you a perfect stand under normal moisture conditions if sown at the rate of 20 lbs. to the acre. Offering our Fancy Grade of Alfalfa seed at \$13.50 per 100 lbs., sacked, ready for shipment, f. o. b. Shawnee, Okla.

If you have a hog pasture lot that you want to get into a good alfalfa pasture and without much outlay of cash, we suggest that you buy our Prime Grade of Alfalfa seed. This seed does not have a good color, but does have a fair germination, is well recleaned and will give you satisfaction. Offering this bargain quality seed for \$11.50 per 100 lbs. sacked, ready for shipment, f. o. b. Shawnee, Okla.

We always have on hand some of the lighter weight alfalfa seed that is good, well-cleaned seed and of fair germination that we can offer to those wanting a very low-priced seed at \$7.50 per 100 lbs., sacked, f. o. b. Shawnee, Okla. This seed we designate as our Fair Grade, and every year we have customers reordering from us and telling us that they were well pleased with the results obtained. As we have only a limited amount of this seed on hand, suggest that you place your order early if you want to try some of our Fair Grade Alfalfa Seed this year.

Laredo Soy Beans

A new variety of outstanding worth, particularly for making hay. The Laredo makes many slender branches and the plants are leafy, both of which go to make an ideal Bean for hay. It is particularly adapted to sections where wilt and nematode are prevalent, as it has proven resistant to these troubles.

As a soil builder it ranks favorably with other summer legumes. The seeds of the Laredo Bean are very small. One bushel, 60 pounds, will plant about 10 acres in 2½-foot rows, planting three to four seeds to the foot in drills. The proper time to cut for hay is when the Beans are about half matured.

Price: \$2.00 per bu. f. o. b. Shawnee, Okla.

Virginia Soy Beans

This variety is about 20 days earlier than the Mammoth Yellow variety. The vines have an abundance of growth and it is a heavy yielder of beans. The vines stand about three feet high and are easily cut for hay. We do not hesitate to recommend this bean to our customers. Price: \$1.75 per bushel f. o. b. Shawnee.



A Field of Mung Beans

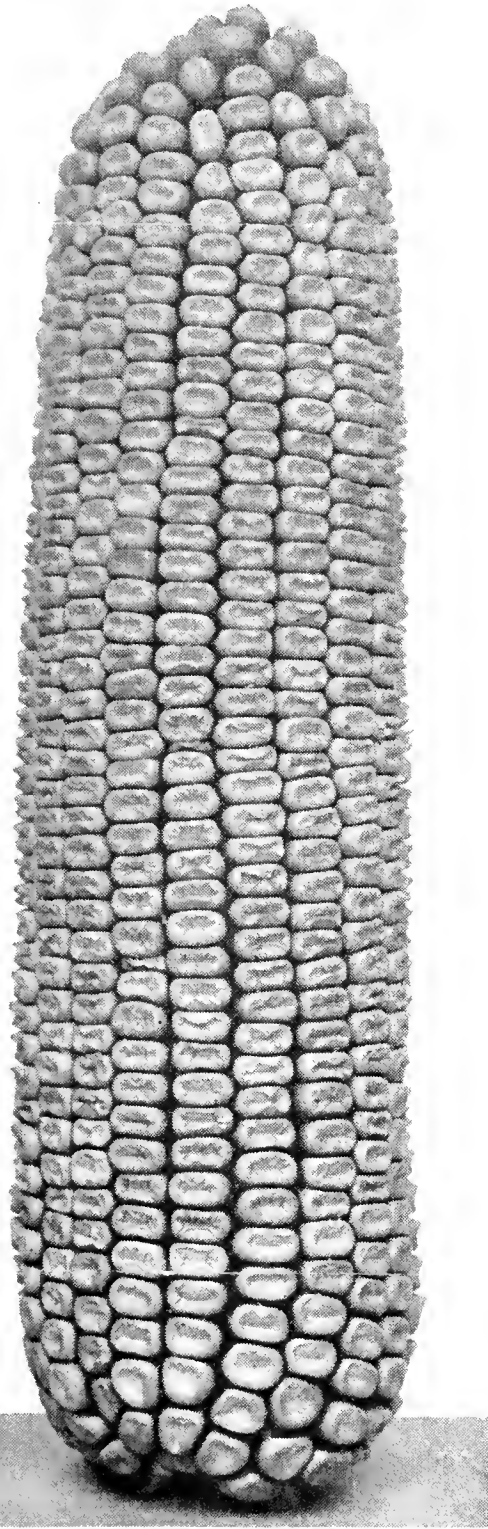
Mung Beans

An exceptionally good hay crop and a wonderful soil improver and very drought resistant. About 5 pounds will plant an acre. Best results are obtained when planted in 2½- to 3-foot rows, 4 to 5 inches in the drill. For hay purposes we advise planting in April. Seed can be harvested as Soy Beans or picked by hand. Prices: Lb. 30c; 2 lbs. 50c, postpaid. Not prepaid, 100 lb. lots \$5.00, f. o. b. Shawnee, Okla.

Certified Seed Corn

By the use of better bred and more carefully selected seed this store has kept pace with the demand for certified seed, the use of which the maximum production is achieved. The highest grade of selected seed, bought from one of the largest seed corn concerns in the U. S., is bought each year; this we furnish the best growers of this section to grow the corn that we offer you. Hand picked, nubbed and tipped, graded and cleaned; you will find our seed corn uniform in size, insuring a good stand of corn that will be far superior to the commercial grades offered by many dealers.

Careful elimination of all inferior ears, our force of efficient workmen select only the best of the field and then re-sort before our critical selection is made. Owners of the finest fireproof warehouse and the best and latest equipment that money will buy, we are prepared to furnish our customers a seed corn that will satisfy. If you buy seed corn from us and it is not satisfactory, return it and we will return your money and pay all carriage charges. Treat your seed corn with Semesan Jr. to insure stands and freedom from diseases.



Corn—Surcropper



A Field of Cow Peas

Oklahoma Grown Seed Corn

Corn, probably second to cotton in importance, should have every consideration from the planter. As we have been doing for some years in the past, we secured the Mason City, Illinois, seed corn for our grower again this year, and being one of Oklahoma's most successful corn growers, he has grown for us one of the largest and best crops that we have ever had. All this corn was matured before most corn was badly injured by the drought. Applying our efforts to the growing of a corn that will be safe by July 1st, and supplying such a large number of customers with these varieties, has enabled the growers to always mature a crop on account of its early maturity.

Early Yellow Dent

Certified by Grower

Matures in 90 days. Has bright golden color. Ears good size. Is heavy and filled to the ends. Will be made before July 1st if planted by April 1st. Made 55 bushels per acre this year on medium soil. The best and surest yellow corn grown on the upland of the South. For the lighter soils this is the safest corn you can plant early—of the standard varieties. It has small cob. One pound 20c; two pounds 35c, postpaid. Not prepaid, one peck 65c; one bushel \$2.00.

Iowa Silvermine

This is one of the old standbys, being a 90-day corn, nearly certain to make and very popular with those wanting a white corn. Is a heavy yielder on the heavy soils and will make on the average upland soils if any climated strain grown in Oklahoma. One pound 20c; 2 lbs. 35c, postpaid. Peck 65c; bushel \$2.00, f. o. b. Shawnee, Okla.

Surecropper

This corn is an early maturing, drought-resisting variety that is growing in popularity every year. It can be planted in summer on stubble ground and will produce a much larger tonnage than June Corn. Ears are large, corn white and run 14 or more rows to the ear. 1 lb. 20c; 2 lbs. 35c, postpaid. Not prepaid, 65c per peck; \$2.00 per bushel.

Improved Squaw Corn

This is a fine drought-resisting corn, producing ears 10 to 12 inches long. Its color is blue, red and white. Fine for roasting ears or for hogging down. Grows 5 to 6 feet, has 1 to 3 ears to the stalk, and matures in 75 days. Lb. 30c; 2 lbs. 45c, postpaid. Not prepaid, \$1.05 peck; \$3.00 bushel.

Hickory King

White corn with smallest cob. Kernel will cover the end of cob. Largely planted for roasting ears, hominy and meal use. Lb. 30c; 2 lbs. 45c, postpaid. Not prepaid, \$1.25 pk.; \$4.00 per bu.

We have in stock Reid's Yellow Dent, Early Yellow Dent, Golden Beauty, Midland Yellow Dent, Indian Chief or 90-Day Red, Early Iowa Silvermine, Mammoth Early White, White Wonder, Boone County White, Surecropper, and Mexican June Corn. Price: 1 lb. 25c; 2 lbs. 40c, postpaid. \$2.00 per bushel.

Write Us For Special Prices on Large Orders.

Cow Peas

A wonderful crop to produce and one of the highest protein feeds grown. They are a great soil builder, being a legume, gathering from the air a nitrogen so essential to the fertility of the soil. You can get the benefit of fertilization without turning the vines under, thereby getting the value of the hay and pea crop, and also building the land. Plant 10 to 12 pounds in rows, or 1/2 to 1 bushel broadcast. We will have in stock Whipperwills, Red Rippers, New Eras, Clays, Yellow Crowders, White Crowders, Black-Eyed Peas and Lady Peas. Price: 1 lb. 25c; 2 lbs. 45c, postpaid.

Whipperwills, bu. \$1.20; New Era, bu. \$1.20; Red Rippers, bu. \$1.20; 10 bu. lots at \$1.10 per bu., f. o. b. Shawnee, Okla.

Austrian Winter Peas

While these Winter Legumes are supposed to be planted during the fall months, they can be planted in the very early spring and make an excellent feed crop or can be turned under in May as a green fertilizer crop. If you do not try them this spring, let us quote you prices in the fall on whatever amount you may require. Per lb. 25c, postpaid; 10-lb. lots \$1.25, postpaid; 100-lb. lots at \$6.50, f. o. b. Shawnee, Okla.



Darso

Grohoma Seed

A cross between Seeded Ribbon and Kaffir. Three weeks earlier than kaffir, and the past year after the long severe drouth was green from top to the ground. Stock consumes the fodder completely. Test made by the chief chemist of the Oklahoma Board of Agriculture gave it an analysis of 12.33 protein, fat 3.80, N. F. E. 70.24, fiber 2.50. Test made on June 11, 1930.

Our seed from selected heads, thoroughly matured and cleaned and tested, is the best seed produced. Two pounds will plant an acre in three-foot rows, though some claim that a pound is sufficient. We quote this seed at 1 lb. 25c; 2 lbs. 45c; 5 lbs. \$1.00. Parcel post prepaid up to 5th zone. Ask for special prices on large amounts.

Darso

The Darso seed which we are offering comes from one of the most careful growers in the State, his fields are hand rogued and the seed stocks used have been developed by years of careful selection. Darso is one of the sweet grain sorghums, the stalks of which are rich in sugar content, thereby making an excellent feed. The stalks are also short jointed with heavy fodder which, with the very heavy grain yields, makes it one of the best all around forage and grain crops to grow for feeding stock. Being a great drouth resister, we have known it to make excellent crops when all surrounding cane crops burned up entirely. Lb. 20c; 2 lbs. 25c; 5 lbs. 65c, postpaid. Special prices on large amounts.



Double Dwarf Milo

Sugar and Stock Beets

High in sugar content makes Beets a fine winter green feed for the poultry, cows and hogs. They make a rich feed, relished by stock and poultry and easy to keep. Plant for best results in 18-inch rows and thin to ten inches in the row. Store in basement or hill out in the open. About one-fourth the daily ration can be fed.

Prices on Sugar and Stock Beets

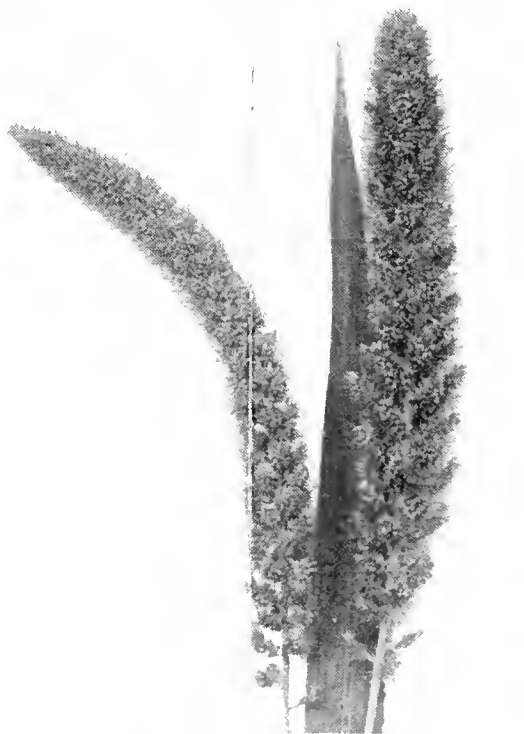
	Oz.	1/4 lb.	1 lb.
Golden Tankard	\$0.10	\$0.20	\$0.55
Giant Feeding	.10	.20	.55
Mammoth Long Red	.10	.20	.55
White Sugar	.10	.20	.55
Lane's Sugar	.10	.20	.55
5-lb. lots	\$2.25. All postpaid.		

Big German Millet

We doubt if you were ever offered as fine a grade of pure German Millet as we offer you at this time. It is so good that we have bought a great deal more seed for our 1933 trade than we have ever bought before. Our entire stock of several hundred thousand pounds is grown from pure Tennessee cultivated seed, and is 100 per cent pure and as bright as can be grown. Millet will mature a crop of hay in 60 days and is an excellent feed for both the dairyman and the poultry people. It is much lower in price than the past season. Dairymen are growing more and more millet every year, as it is a milk producing hay, and mixes well with the clover feeds. Ask for the lowest prices quoted in years. Price: 100 lbs. \$2.50, f. o. b. Shawnee.

White Wonder Millet

A heavy producer of hay and a good seed crop can be grown from this variety. Some prefer it to the Big German Millet. It does well in the arid sections. We have large stocks of selected seed grown especially for seed purposes. Postpaid, lb. 25c; 5 lbs. 50c. Prices in large quantities with samples on application.



Big German Millet

Cane Seed for Forage

Sorghum Cane seed is used more for the hay crop in the South and Southwest than any other seed. Our seed is grown for us by contract, by experienced growers in the best growing sections of Kansas, Oklahoma and West Texas. From long contact with growers, we contract only with those who use the proper methods to produce the highest type of the different varieties. You can depend on getting seed of the best quality if you buy from us. After going through our modern cleaning machinery you will find the seed as near 100 per cent as can be produced. The varieties are Improved Black Amber, Early Orange, Kansas Orange, Sugar Orange, Red Top, Sourless or African Millet. Our sorghum varieties are Japanese, Honey Drip, Texas Seeded Ribbon and Waconia Orange. Price on forage cane seed: Lb. 20c; 2 lbs. 35c; 10 lbs. 75c, postpaid. Ask for samples and prices on larger lots.

Red Top Cane, 100 lbs. \$1.40; Orange Cane, 100 lbs. \$1.35; Black Amber, 100 lbs. \$1.25; Mixed Fodder Cane, 100 lbs. \$1.00, f. o. b. Shawnee, Okla.

Japanese Seeded or Honey Drip Cane

Sorghum making on the farm has been the most profitable money crop that we know of. Thousands of gallons have been sold for good prices. Our seed comes from a local grower, Mr. W. L. Gentry, who is an expert in the growing and making of sorghum. His output has been over 100 gallons per acre, and one large store bought the entire output, as they recognize the superior quality of this variety, and pay a better price than for any other variety.

His cane was thoroughly matured when headed, and the seed is the best we have ever handled. It is thoroughly rogued and inspected. It comes close to 100 per cent purity, and will test 95 per cent or better germination. We most sincerely recommend this seed to our trade.

Price: Lb. 25c; 2 lbs. 45c; 5 lbs. \$1.00, postpaid. Ask for samples and price on large lots.

Waconia Orange

Away up north in Minnesota where the seasons are short, and the crops have to grow fast in order to mature, the great Waconia Syrup Factory has produced a syrup cane seed that is early and a superior variety. It is three weeks earlier than any other sorghum cane. It produces a heavy percentage of juice, and where used has been highly satisfactory. Five pounds will plant one acre.

Price: Lb. 25c; 2 lbs. 45c; 5 lbs. 90c, postpaid.

Peanuts

We find, from observing the crops grown in this section, that peanuts have stood the long extended drouth better than any other crop that produces under the ground. They grow best in light sandy soils, though they grow on any well cultivated soil. They are one of the highest protein and fat producing crops grown, and the hay is a very superior feed, especially for the dairy herd. The Spanish is the most popular variety for feed, though many prefer it for human consumption. The Tennessee Red Peanuts are a fine peanut for the family and are planted more than any other for this purpose. We also have the Virginia Jumbo which grows the largest. All are new crop seed, cleaned and ready for the planter. We offer the Improved Spanish at 20c per lb.; 2 lbs. 35c; 5 lbs. 40c, postpaid. The Tennessee Red, lb. 25c; 2 lbs. 40c; 5 lbs. 85c, postpaid. The Virginia Jumbo, lb. 25c; 2 lbs. 40c; 5 lbs. 85c, postpaid. In small lots postage consideration adds to the delivered price on seed. On the larger quantities the seed in most instances will cost less per pound.

Seed Oats Kanota or Fulghum Oats

These hardy type oats have shown their ability to outyield most any variety of oats grown in the Southwest. They will mature a week to ten days earlier than the Texas Red Oats and, on this account alone, the crop sometimes will be made and out of the way of hot weather. On account of the smut damage that is prevalent in oats in this country we urge that you treat all seed stocks with "Ceresan" at least ten days before sowing. Fancy, re-cleaned and sacked ready for shipment, we are making a special price of 40c per bushel, f. o. b. Shawnee, Okla.

Texas Red Rustproof Oats

This time tried variety of rustproof oats will always give high yields under the average soil and weather conditions. Our stocks are secured from only the best of the crops, so you are assured of securing good quality and pure seed stocks from us. Treat your seed stocks with "CERESAN" and increase your yields by preventing smut. Special price of 35c per bushel, f. o. b. Shawnee, Okla.

Non-Saccharine Sorghums

We are fortunate in being in touch with the best growers of the country, where we secure our supplies of grain sorghums. For the spring of 1933 we will have the highest grade seeds that we have ever offered to the trade. By the most critical selection of the seed for growing the crops, and frequent inspection, careful harvesting, cleaning, and grading, we offer as high purity seed as it is possible to obtain, at the lowest possible prices.

Dwarf White Black Hull Kaffir, Hegari, Darso and Feterita are among these seed, and we are confident that you will profit by using the seed offered.

In small quantities we offer the above seed, Lb. 20c; 2 lbs. 30c; 5 lbs. 65c, postpaid. By freight or express, 25 lbs. at 5c; 50 lbs. at 4c; 100 lbs. \$2.75, charges collect.



Hegari

Sagrain

Another very popular member of the sweet grain sorghum family which makes excellent heads and fine fodder is the Sagrain. Makes excellent growth either in rows or broadcast and grows well over most of the South and Southwest. It will grow to a good height under trying moisture conditions. If you want a sure feed crop, plant Sagrain. Lb. 20c; 2 lbs. 30c; 5 lbs. 65c, postpaid. Special prices on large amounts.

Double Dwarf Milo Maize

This straight necked Milo maize is proving very popular where grain alone is wanted. The stalks are very low, head is erect, making it easy to harvest with a header outfit. Heads are quite large, producing heavy grain yields and making good crops during years of drouth. Lb. 20c; 2 lbs. 30c; 5 lbs. 65c, postpaid. Special prices on large amounts.

Dwarf Milo Maize

If you want only the grain crop, Milo maize produces under the most trying conditions. It is a deep rooting hardy grain and grown in the arid sections more than any other grain crop. The forage is not a good feed. Stock will eat the leaves but not the stalks. Three to four weeks earlier than kaffircorn.

Price: Lb. 20c; 2 lbs. 35c; 5 lbs. 65c, postpaid.

Broom Corn

We offer Standard Evergreen, Oklahoma Dwarf, Japanese Standard. Broom corn will grow on the thin lands, and is an easy crop to grow. The stalk has no feed value. Plant in 3 foot to 3½ foot rows, and space the stalks 10 to 12 inches in the row. Five pounds will plant an acre.

Price: Lb. 30c; 2 lbs. 50c; 5 lbs. 90c, postpaid.

Dwarf Essex Rape Seed

Holland grown Rape produces fine pasture for hogs, sheep and poultry. It can be planted early and will last until late frost. One pound 30c, postpaid. Ask for prices in large quantities.

Sunflower Seed

MAMMOTH RUSSIAN grown for shade and feed. Will produce 30 to 40 bushels to the acre. Is an excellent feed for poultry. Can be planted as late as July 15th and mature a crop.

Price: Pkt. 10c; lb. 35c; 2 lbs. 50c, postpaid.

Other Field Seed Items

We sell pure strains of Wheat, Rye, Winter Barley, Hard and Soft smooth head Wheat, Spring and Winter Rye, and Winter Turf Oats. All carefully selected and re-cleaned at market prices.

Clarke & Keller's Alcala No. 8 Cotton Seed

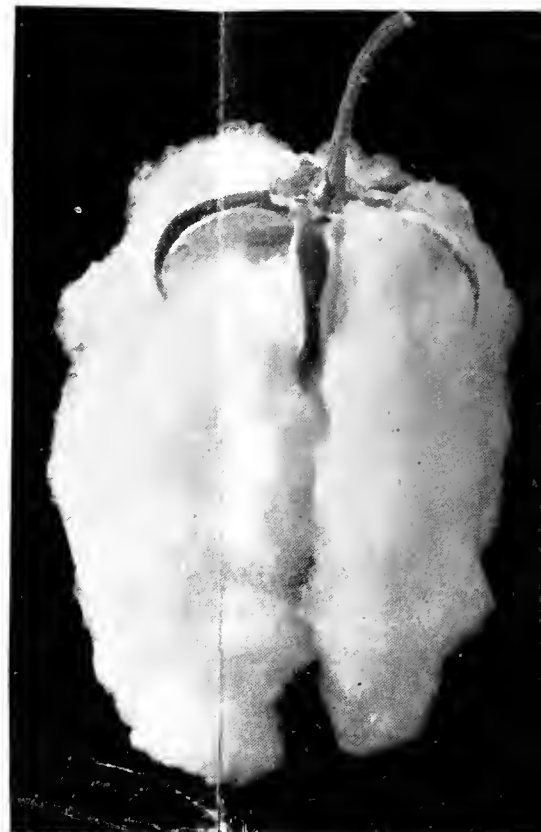
Cotton Seed

We have been selling cotton seed for planting for 30 years. We have handled a great many varieties, but we have never had as many favorable reports from any variety as we have had from Alcala No. 8.

Our county the past season put over one of the few special Alcala No. 8 cotton projects to the extent of above 4,000 acres. All of this cotton was planted from one lot of seed which came originally from the Coachella Valley in California, where the U. S. Government has put over an exclusive planting and breeding of the Alcala No. 8 strain of this wonderful cotton. Our project here is planted, cultivated, and the seed blocks are all under the direct supervision of the U. S. Department of Agriculture cotton breeding experts.

Alcala No. 8 is being grown in the Southwest and in Oklahoma particularly on account of the fine quality of its staple and the uniformity of its lint. None of the staple was under one inch this year and its average range was up to one and one-eighth inches. The bolls are large and the plant has a well established type, growing like a pine tree, the lower limbs spreading wide out and the upper limbs increasingly shorter as they approach the top. While the past season was a hard one, both from the point of weather and boll weevil damage, yet this block of cotton averaged 35 per cent lint yields, and all of the cotton—some 1,100 bales or more—sold for a premium of \$2.00 to \$5.00 per bale over any other cotton raised and sold outside of this block. This cotton was all ginned at one special gin, so you are assured of getting only the best of pure bred cotton seed from us. \$1.00 per bu; 3 bu. bag for \$2.50, f. o. b. Shawnee, Okla.

We have nice stocks of this seed, grown by a member of the Oklahoma Crop Improvement Association and a master farmer in



A Boll of Alcala No. 8

every respect. We quote this seed at \$1.00 per bushel; 3-bushel bags \$2.50, f. o. b. Shawnee, Okla.

We also have in stock Mebane, Oklahoma "44" Strain No 11, and Half-and-Half of high grade seed, which we will be glad to quote on application.

Eclipse Brand Grasses for Better Pastures

We carry in stock the grass seeds that are more commonly used in the South. All new crop re-cleaned seed. English Blue Grass, Kentucky Blue Grass, Rye Grass, Red Top, Timothy, Orchard Grass, Bermuda Grass. The prices are lower than we have ever known them to be.

Prices: English Blue and Kentucky Blue, 35c per lb.; 5 lbs. \$1.40. Italian Rye Grass, Red Top, 30c lb.; 5 lbs. \$1.25. Timothy, lb. 25c; 5 lbs. \$1.00. Bermuda Grass, 45c per lb.; 5 lbs. \$1.75; all postpaid.

Sudan Grass

There is no more dependable grass grown for both pasture and hay. Will grow on the poorest soil, and produce an abundance of feed under the most unfavorable climatic conditions. Its feeding value is acknowledged, and the tonnage secured makes it a valuable crop. Sow 30 to 40 pounds to the acre on heavy soils, and 20 to 25 pounds on light soils. Always glad to mail you samples of seed free from Johnson Grass or weed seeds of any kind. No grass stands like Sudan. We have counted more than two hundred stalks from a single seed. It is fine and juicy when broadcast, but can be planted in rows and cultivated if desired, making a better yield but the hay is not as fine, and will not be eaten as well by stock. We have bought our stock at very low prices, and are prepared to sell it at a very low price. 100 lbs. \$2.50, f. o. b. Shawnee.



Dallis Grass

Orchard Grass

In the orchards, pecan groves, and anywhere that is partly shaded this grass is proving a decided success in this section. We believe that it is the most productive grass for grazing that has been tried here, and where it had been growing for a year or more it went through the long drouth of 1932 in good shape. It stands the lowest temperature, starts early in the spring, and remains green until late frost. You would be pleased with this grass if you tried it. Sow early on prepared ground 14 pounds per acre.

Prices: Lb. 25c; 2 lbs. 45c; 5 lbs. 85c, postpaid. 100 lbs. \$10.00, f. o. b. Shawnee.

Lawn Grass

We have made a study of Lawn Grasses and the seed adapted to the Southland. If you will advise us the character of the soil you wish to make into a lawn, whether shaded or in the open, sandy or heavy soil, we can tell you what is best to plant. Our lawn mixture is made from the highest grade seeds and are free from weed seed. Sow 1 pound on 100 square feet of ground.

Price: Lb. 45c; 2 lbs. 75c; 5 lbs. \$1.50, postpaid.

Dallis Grass

This is certainly a wonderful pasture grass and with its natural spreading habits over the South, it should be in every pasture. It is one of the best winter pasture grasses and remains green on an average of ten months out of the year. It does well on heavy, moist or black soils.

Dallis grass will grow from 2 to 4 feet high and has an exceptionally heavy rooting system, but is easy to eradicate; it is no pest—one plowing will easily kill it out.

This grass recovers very quickly after grazing and will yield more pasture, when once started, than any other grass we know of.

Dallis grass must be planted on a firm seed bed in order to get the seed to germinate to best advantage. Loose soil loses moisture very rapidly in the top mulch of porous soil; since this grass is shallow rooted, the plants will die shortly after germinating, if planted in loose soil. Therefore, be sure and plant in a firm seed bed.

In our section, this grass does best when planted in the early spring. Sow at the rate of 10 pounds per acre.

This grass does exceptionally well when planted with other grasses and clovers.

Price: 45c per lb.; 2 lbs. 75c, postpaid 10-lb. lots \$3.00; 100-lb. lots \$20.00, sacked ready for shipment, f. o. b. Shawnee.

Treat your Oats with Ceresan before sowing.

Eclipse Brand Flower Seed

What is there about the home that is more satisfactory than the flower garden? How easy it is to plant and grow them from the time we sow the seed to the time the plant produces the flower. We watch its development with increasing interest, and when we finally see the fruits of our labor we are indeed thankful that so little time and effort have accomplished such wonderful results. Growing flowers from seed has grown by leaps and bounds in the past years, and the demand for the old-fashioned flower as well as the improved and new varieties is constantly increasing. Health and cheerfulness are the result of flower culture. Our flower seed comes from the most reliable growers in this and foreign countries where the varieties mature to the best possible development. We know where to buy the best, and only the highest quality is offered to our customers. Much of your time is spent about the house. Why not add to its comfort by having a beautiful flower garden? Our special collection of 13 varieties found in this catalog, for 50c postpaid, will produce a wonderful effect.

Flower Seeds put up in 5c and 10c packets. Special prices in ounce lots.



Asters

Asters

American Aster
Giant Comet, Branching Type
Queen of the Market Type

Bachelor Buttons	Marigold
Balsam	Mignonette
Calliopsis	Morning Glory
Candytuft	Nasturtiums
Castor Bean	Pansies
Canterbury Bells	Phlox
Carnation Marguerite	Pinks
Bachelor Button, Corn Flower	Poppies, New Shirley,
Coreopsis	Oriental Poppy
Cosmos	Portulaca or Rose
Cypress Vine	Moss
Everlasting	Petunia
Feverfew	Salvia
Forget-Me-Not	Salpiglossis
Four o'Clock	Smilax
Foxglove	Snapdragon
Gaillardia	Stocks, Ten Weeks
Heliotrope	Sunflower, Double
Hollyhock	Dwarf or Globes of Gold
Job's Tears	Sweet Williams
Kochia or Summer Cypress	Sweet Peas

All above, 5c per packet.



Zinnias—Dahlia-Flowered

Giant Dahlia-Flowered Show Zinnias

If you want the finest to be had in rare colors and extra large blossoms, try one of our 50c packets of Giant Dahlia Flowered Zinnia seed from the most exclusive Zinnia Seed grower in the world. Flowers attain diameter of 6 to 8 inches. Our special mixture contains most gorgeous colors. Special prices on large orders. One packet 25c, postpaid; 1 oz. 50c. All postpaid.

Clark & Keller's Selected Collection of Flower Seed

A Wealth of Bloom All Summer

pkt. Phlox, mixed	5c	1 pkt. Petunias, mixed	10c
pkt. Cosmos, mixed	5c	1 pkt. Larkspur, mixed	10c
pkt. Poppies, mixed	10c	1 pkt. Marigold, mixed	10c
pkt. Pansies, mixed	10c	1 pkt. Balsam, mixed	5c
pkt. Nasturtiums, mixed	10c	1 pkt. Verbenas, mixed	5c
pkt. Four O'Clock, mixed	5c		
pkt. Zinnias, mixed	5c		
pkt. Sweet Peas, mixed	10c		
		Regular Price	\$1.00
		This Collection postpaid	50c

Clarke & Keller's Eclipse Brand Bulbs, Plants and Roots

For the person desiring the best to be had in bulbs, plants and roots, we have had the following stocks grown especially for us. These listings are field-grown under expert supervision and on the finest soil to be found in Central Oklahoma. Your money back if not pleased with any selections you make from this list. Special prices on lots of 100.

Peony Bulbs

Fine, large roots, several eyes to each one.
Red color @ 45c each
White color @ 35c each
Pink color @ 40c each
All postpaid.

Madeira Vine Bulbs

40c per dozen.
All postpaid.

Milk and Wine Lily Bulbs

Extra fancy, large flowers; prolific on stems—pure white with pink throat, at 25c each, postpaid.

Dahlias

We are pleased to announce that after growing and trying out many varieties of Dahlias, that we have selected varieties adapted to Southwestern conditions. We sell only good strong bulbs.

Mixed Dahlias

Our finest florists' mixture of hardy beautiful flowering varieties will give you a profusion of blooms. Price, \$1.50 per dozen, postpaid.

Separate solid colors, finest dahlia bulbs, 15c each; or in original clumps at 50c per clump. Postpaid.

Gladiolus

LARGE SIZE

Famous Rainbow Mixture

"Plant Glads to Be Glad", is the slogan of thousands of admirers of this wonderfully beautiful flower. Our Rainbow mixture of plump, vigorous bulbs will produce many colors of flowers in a few weeks after planting. Price, 40c per dozen; \$2.50 per 100, postpaid.

Tuberose

The demand for Tuberose the most fragrant of flowers, is ever increasing. We specialize on the genuine Mexican Tuberose. Price, nice plump bulbs, 10c each; \$1.00 per dozen, postpaid.



Canna

Cannas

Special on Canna Bulbs

In assorted colors—Pink, Red, Yellow—gorgeous bloomers, at 65c per dozen, \$4.00 per 100, postpaid.

Hungaria

The best Pink Canna. Flowers large with immense petals. Very compact, almost dwarf and of very luxuriant growth. Green leaves. Price: 15c each, 2 for 25c; per dozen, \$1.25, postpaid.

Yellow Humbert

Dark green foliage, flowers a deep rich yellow, softly spotted with bright red. About four feet high. A very beautiful large-flowering canna. Price, each, 10c; per dozen, 90c, postpaid.

The President

Four feet high. In color a rich glowing scarlet with immense rounded flowers. Free bloomer and strong grower. Price, 10c each; per dozen, 90c, postpaid.

Apricot

Four feet. Color is a buff-yellow base, overspread with salmon-pink, making a mass effect of rich apricot. Price, 10c each; per dozen, 90c, postpaid.

Mrs. Alfred F. Conard

Four feet. Flowers salmon-pink, of large size on finely shaped flower heads. Price, 10c each; per dozen, 90c, postpaid.

Wyoming

Five to six feet. Bronze foliage. Flowers a beautiful shade of orange. Price, 10c each; per dozen, 90c, postpaid.



Gladiolus

