

Historic, Archive Document

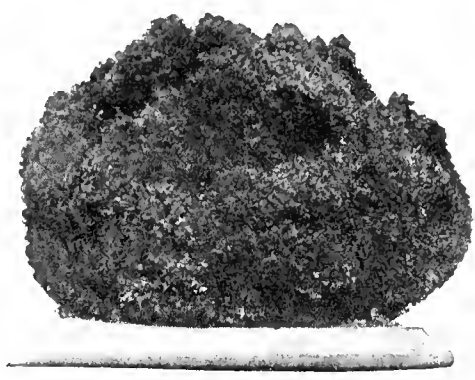
Do not assume content reflects current scientific knowledge, policies, or practices.



62,15

LIBRARY
RECEIVED
★ JAN 7 1922 ★
U. S. Department of Agriculture

The
Aristocrat



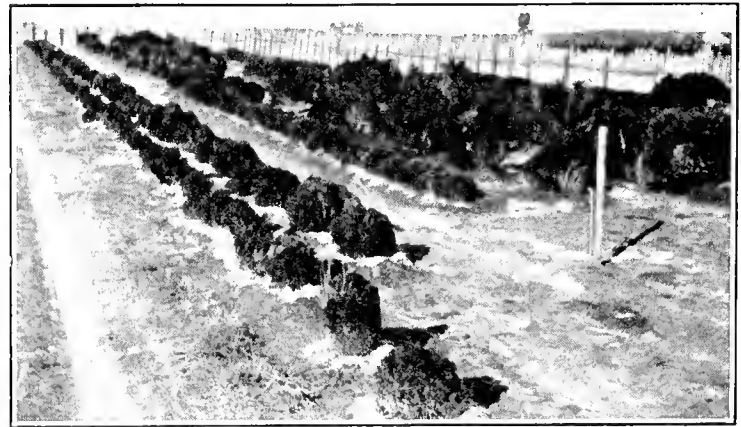
Of
Evergreens



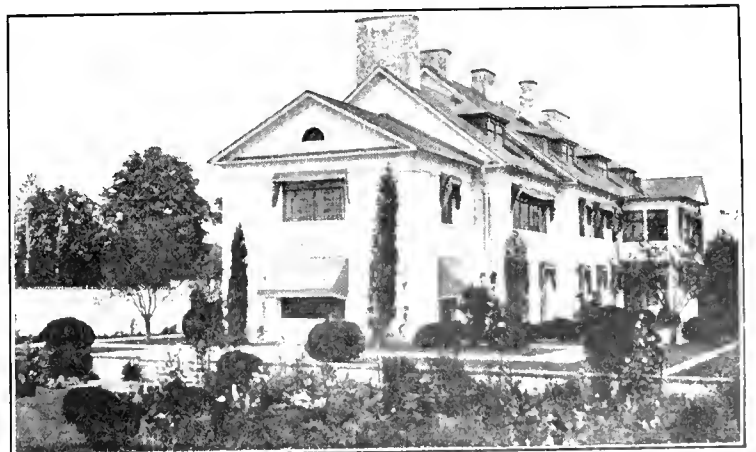
Presenting the largest and finest collection of Box in America. Assembled that you may select the complete planting for your estate in a few hours.



The
Living
Antique



It is something of an accomplishment to meet the exacting standards of those who "just can't find what they want elsewhere" . . . and DO find it here.



Serving the Most Exclusive Clientele Always With Beautiful Boxwood

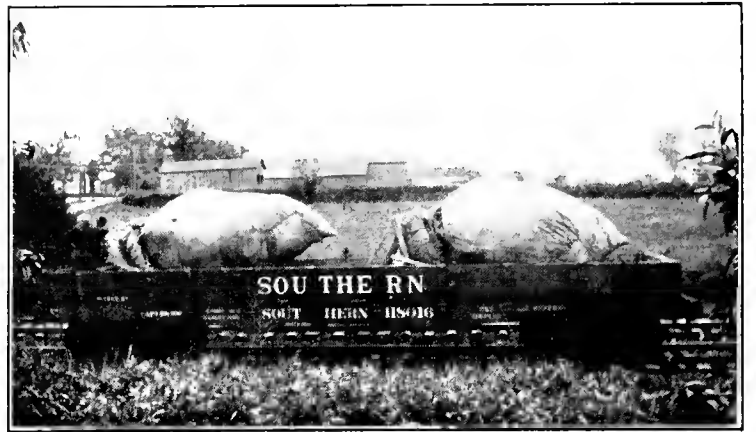
➤ NOW LOOK OVER THE OTHER SIDE



LARGE SUFFRUTICOSA SPECIMEN OF PERFECT FORM BEING MOVED IN NURSERY
IT'S HERE NOW!

TO A NEW HOME OVER 500 MILES!

By our improved methods more than 200 big Box Trees have been moved without either loss or damage.



Old English Boxwood

Buxus Suffruticosa

SPECIMENS

No. Plants	Ft. High	Ft. Spread	No. Plants	Ft. High	Ft. Spread
34	1	1	31	4½	1½ to 8
28	1½	1½	33	5	4 to 8
89	2	1½ to 4	10	5½	6 to 12
88	2½	1½ to 5	22	6	3 to 15
96	3	2½ to 7	3	6½	7 to 12
70	3½	3 to 7	16	7	8 to 12
56	4	3 to 7	3	8	10

HEDGES

Ft. Lin.	High Ft.	Spread Ft.	Lin. Ft.	Ft. High	Ft. Spread
18	1½	1½	40	4	4
316	2	2	47	4½	4½
303	2½	2½	14	5	10
579	3	3	375	6	4½-7
839	3½	3½	7	6	10

Boxwood Trees

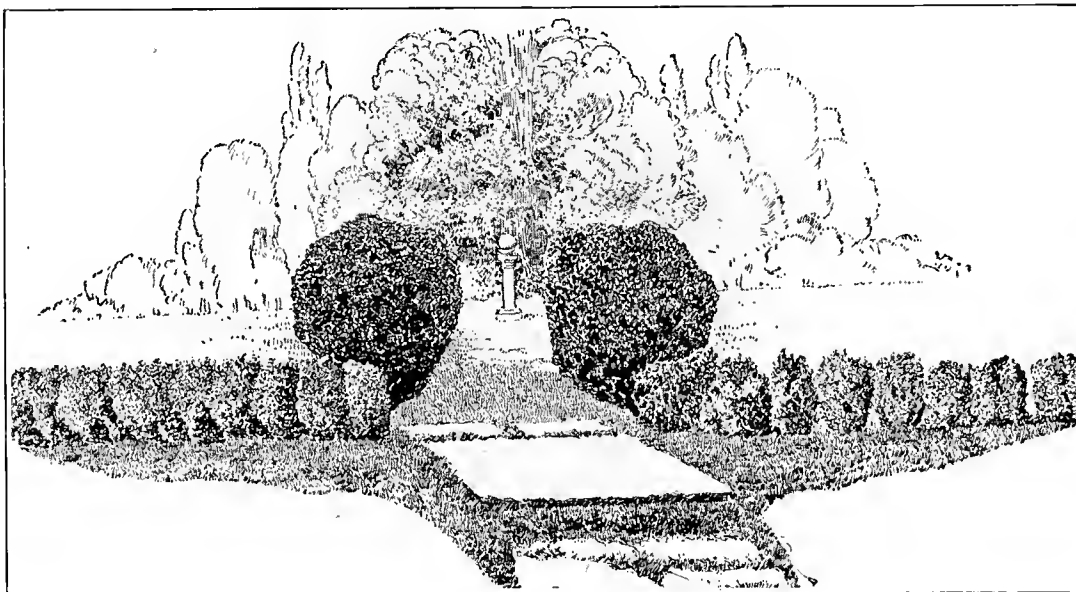
Buxus Sempervirens

SPECIMENS

No. Trees	Ft. High	Ft. Spread	No. Trees	Ft. High	Ft. Spread
9	3½	3½	3	11	7
21	4	4-5	1	11	15
23	4½	4-5	6	11	12
23	5	4-6	6	11	9
8	6	4-5	1	12	12
8	7	5-7	1	12	16
12	8	6-8	1	13	8
6	9	8	7	14	12
10	10	6-8	6	16	14

HEDGES

Lin. Ft.	Ft. High	Ft. Spread
175	3½	3½
65	4	5½
200	4½	4
60	5	5-6
164	6	5



NURSERY grown small plants for small hedges, window boxes and bordering walks. Practically every rose garden in England has an edging of the *Buxus Suffruticosa*. Our sales have increased from 2000 to over 35,000 per year because we send only selected plants of the highest quality.

BUXUS SUFFRUTICOSA

5-6 inch	\$18.00 per 100
6-8 inch	35.00 per 100
8-10 inch	60.00 per 100
10-12 inch	85.00 per 100

Extra heavy plants, four times transplanted. Dense. Uniform. 16-18 inch x 10-12 inch \$600.00 per 100



BUXUS SEMPERVIRENS

9-12 inch	\$ 50.00 per 100
12-15 inch	75.00 per 100
15-18 inch	100.00 per 100

Extra heavy and bushy, four times transplanted, annually sheared.

15-18 inch	\$150.00 per 100
18-21 inch	200.00 per 100
24x18 inch	600.00 per 100

H. Ernest Conwell, Inc.

Boxwood Nurseries

Milton, Delaware

Visit
Us

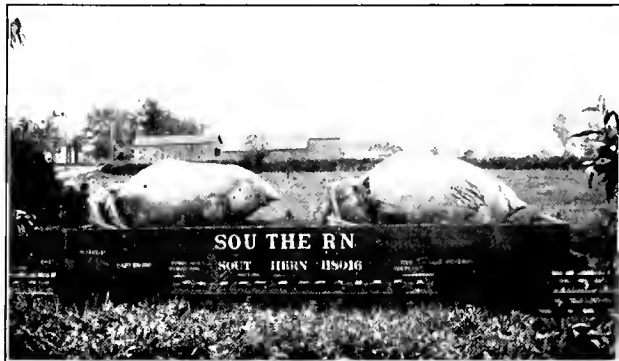
Write
Us



LARGE SUFFRUTICOSA SPECIMEN OF PERFECT FORM BEING MOVED IN NURSERY
IT'S HERE NOW!

TO A NEW HOME OVER 500 MILES!

By our improved methods more than 200 big Box Trees have been moved without either loss or damage.



Old English Boxwood

Buxus Suffruticosa

SPECIMENS

No. Plants	Ft. High	Ft. Spread	No. Plants	Ft. High	Ft. Spread
34	1	1	31	4½	1½ to 8
28	1½	1½	33	5	4 to 8
89	2	1½ to 4	10	5½	6 to 12
88	2½	1½ to 5	22	6	3 to 15
96	3	2½ to 7	3	6½	7 to 12
70	3½	3 to 7	16	7	8 to 12
56	4	3 to 7	3	8	10

HEDGES

Ft. Lin.	High Ft.	Spread Ft.	Lin. Ft.	Ft. High	Ft. Spread
18	1½	1½	40	4	4
316	2	2	47	4½	4½
303	2½	2½	14	5	10
579	3	3	375	6	4½-7
839	3½	3½	7	6	10

Boxwood Trees

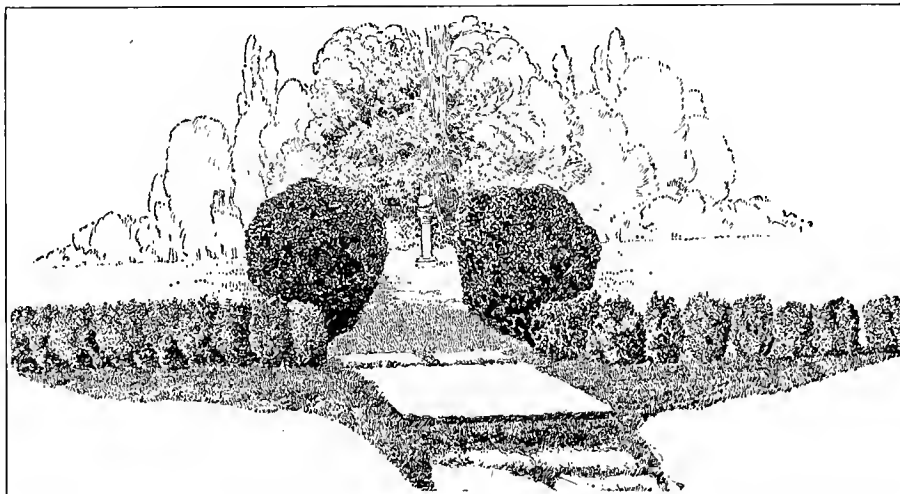
Buxus Sempervirens

SPECIMENS

No. Trees	Ft. High	Ft. Spread	No. Trees	Ft. High	Ft. Spread
9	3½	3½	3	11	7
21	4	4-5	1	11	15
23	4½	4-5	6	11	12
23	5	4-6	6	11	9
8	6	4-5	1	12	12
8	7	5-7	1	12	16
12	8	6-8	1	13	8
6	9	8	7	14	12
10	10	6-8	6	16	14

HEDGES

Lin. Ft.	Ft. High	Ft. Spread
175	3½	3½
65	4	5½
200	4½	4
60	5	5-6
164	6	5



NURSERY grown small plants for small hedges, window boxes and bordering walks. Practically every rose garden in England has an edging of the *Buxus Suffruticosa*. Our sales have increased from 2000 to over 35,000 per year because we send only selected plants of the highest quality.

BUXUS SUFFRUTICOSA

5- 6 inch	\$18.00 per 100
6- 8 inch	35.00 per 100
8-10 inch	60.00 per 100
10-12 inch	85.00 per 100

Extra heavy plants, four times transplanted. Dense. Uniform. 16-18 inch x 10-12 inch \$600.00 per 100



BUXUS SEMPERVIRENS

9-12 inch	\$ 50.00 per 100
12-15 inch	75.00 per 100
15-18 inch	100.00 per 100

Extra heavy and bushy, four times transplanted, annually sheared.

15-18 inch	\$150.00 per 100
18-21 inch	200.00 per 100
24x18 inch	600.00 per 100

H. Ernest Conwell, Inc.

Boxwood Nurseries

Milton, Delaware

Visit
Us

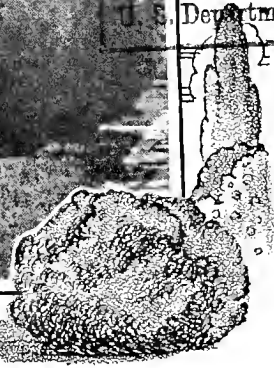
Write
Us

62.15

17337



LIBRARY
RECEIVED
★ JAN 27 1933 ★
U. S. Department of Agriculture.



*From
the heart of
the Boxwood
Country!*

H. Ernest Conwell, Inc.

Boxwood Nurseries

Milton

::

Delaware

62,15

LIBRARY
RECEIVED
★ JAN 27 1933 ★
U. S. Department of Agriculture.

The
Aristocrat



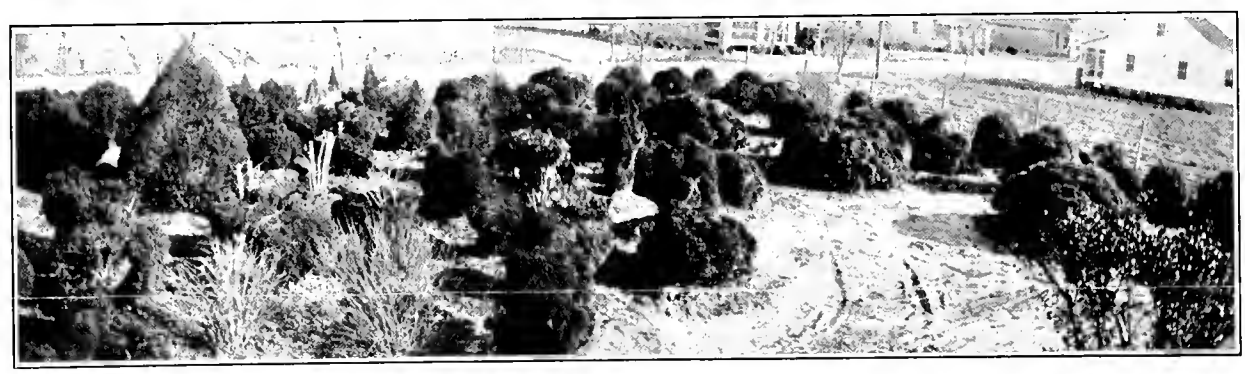
Of
Evergreens



Presenting the largest and finest collection of Box in America. Assembled that you may select the complete planting for your estate in a few hours.



The
Living
Antique

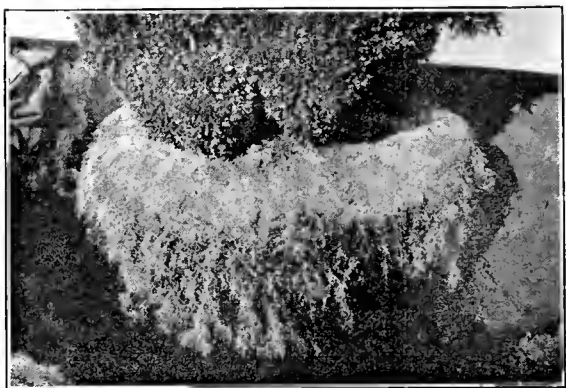


It is something of an accomplishment to meet the exacting standards of those who "just can't find what they want elsewhere" . . . and DO find it here.



Serving the Most Exclusive Clientele Always With Beautiful Boxwood

➤ NOW LOOK OVER THE OTHER SIDE

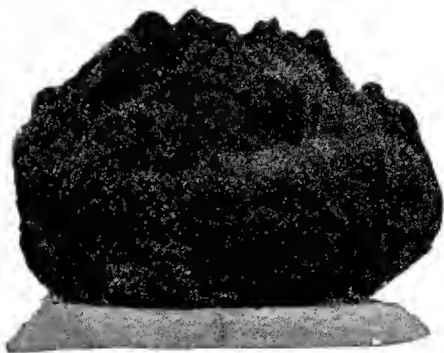


*Every Conwell planting
is guaranteed
to Live and Thrive*

SUCCESS with Boxwood plantings—the absolute satisfaction of the purchaser of this beautiful, old shrub—is almost entirely dependent upon the care and skill used in transplanting.

Small fibrous roots must be carefully preserved in digging—protection from the sun provided—covers must be made specially and laced in place to insure protection from damage in transit—generous balls of earth *must* be taken with every specimen if plants are to thrive in their new locations.

Such has been our success in transplanting that for eight years our replacements have been less than one-tenth of one per cent. Every Conwell planting is guaranteed to live and thrive—and our prices are surprisingly reasonable.



"The Aristocrat of Evergreens"

THE quaint, home-like atmosphere of the Old English cottage—the geometrically perfect proportions of French or Italian court—in any setting, for any effect, Boxwood lends an added charm.

All sizes and shapes—matched pairs—beautiful hedges—all assembled for your selection—ready to add to your own property a bit of century-old grace and enchantment—at a cost which is well within reason.

Inquiry invited

H. Ernest Conwell, Inc.

Boxwood Nurseries

Milton

::

Delaware

