

## **Historic, archived document**

Do not assume content reflects current scientific knowledge, policies, or practices.



62, 73

# SPECIALS

for Spring Planting - 1933

LIBRARY  
RECORDED  
★ MAY 5 1933 ★  
U. S. Department of Agriculture.

Sec. 562 P. L. & R.

U. S. POSTAGE

PAID

EVANS CITY, PA.

PERMIT No. 1

VEGETABLE  
SEED TRIALS  
HORTICULTURE

APR 5 - 1933

*U. S. Department of Agriculture  
D. N. Shoemaker  
Washington, D. C.*

**Elliott Nursery Co.**  
Evans City, Pennsylvania



*Juniperus Communis Depressa.*

very gray-green evergreen, one of the most beautiful in cultivation, is indispensable for planting in industrial communities, since it is one of the very few evergreens that is not injured by smoke, soot or coal gases. 15-18 inches.

**J. communis depressa** (Prostrate Juniper). Makes a dense mat of beautiful, feathery evergreen foliage. Golden tipped in the spring. 15-18 inches.

**J. Sabina** (Savin's Juniper). A trailing vase-like evergreen which sends up sprays of lovely, feathery foliage about 18 inches high. 15-18 inches.

**Pinus montana mughus** (Mugho Pine). A lovely dwarf evergreen. The new growth is very straight and upright and resembles a myriad of little candles attached to the plant. 12-15 inches.

**Thuja occidentalis Boothi** (Booth's Arbor-Vitae). A low, round evergreen growing about 2 feet high. Makes a lovely, bright evergreen cushion. 15-18 inches.

**T. occidentalis globosa** (Globe Arbor-Vitae). A very dwarf, perfectly round evergreen. Very neat and lovely for formal effects. 15-18 inches.

# Fine Balled and Burl

Freshly Dug When

**A**LL of us know that there will be a revival of business this spring. We also know that the producers and distributors of the necessities of life—the basic trades—will reap the first benefits. Those of us who deal in the commodities which make for dignified and gracious living after our basic needs are supplied must wait a few months longer. Our turn will come, and soon, but in the meantime we must watch our step.

For a few months longer prices of nursery stock must be

## Dwarf and Spreading Evergreens

Specially Suitable for Edging and Low Foundation Planting.

**Juniperus chinensis Pfitzeriana** (Pfitzer's Juniper). This lovely, sil-

### Collection A

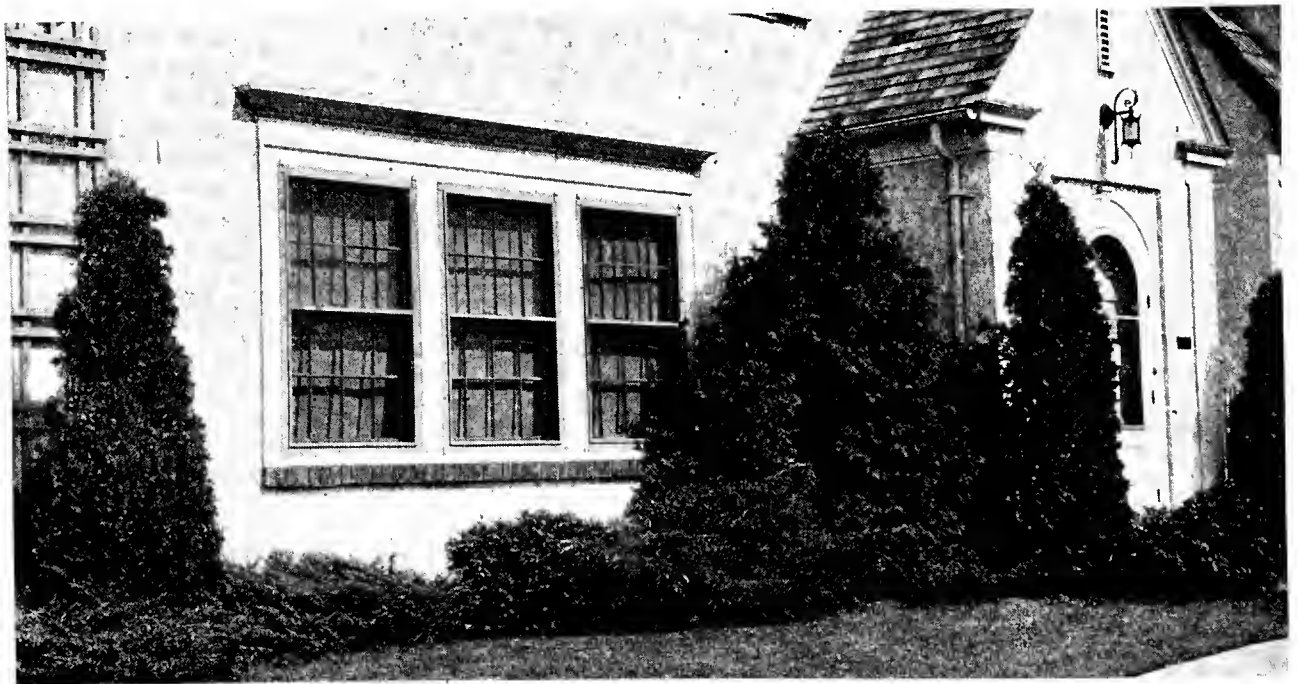
Any or all of the above in any assortment. \$1.10 each; 6 for \$5.95.

### Collection 1-A

Plants one year older, averaging 6 inches larger. Price, \$1.60 each; 6 for \$8.95.

### Collection 2-A

Plants two years older, averaging 12 inches larger. Price, \$2.05 each; 6 for \$11.95.



Foundation Planting of Pyramidal Arbor-Vitae, Pfitzer's and Savin Junipers.

# apped EVERGREENS

## the Order is Filled

kept down. There are two ways of accomplishing this; the first being to cut the quality of our plants, and the second to reduce the amount of the so-called individual service which usually accompanies the filling of each order. While this service is pleasant when we can afford to pay for it, obviously it adds nothing whatever to the value of the plants. The Elliott Nursery Co. will not cut its quality. It can, however, cut out the frills and to such of its customers as will help it to do this, it offers very substantial price reductions.

## Medium Growing Evergreens

For Foundation Planting, Border Planting or for Specimens.

*Juniperus hibernica* (Irish Juniper).

Very slender, narrow, compact trees. The foliage is sage green. 18-24 in.

*J. virginiana* (Red Cedar). Lovely, slender, compact evergreen pyramid with feathery, dark green foliage. 18-24 inches.

*Retinospora plumosa* (Plume Cypress). Conical trees with splendid plume-like branches, bright shining green foliage. 15-18 inches.

*R. plumosa aurea* (Golden Plumed Cypress). Similar to the Plume Cypress excepting that the young growth is a lovely, bright yellow. 15-18 inches.

*Thuja occidentalis* (American Arbor-Vitae). The tall, compact, spiral-like evergreen so widely desired and planted. 24-30 inches.

*T. occidentalis pyramidalis* (Pyramidal Arbor-Vitae). Very slender, very compact, almost columnar in form. 18-24 inches.

### Collection B

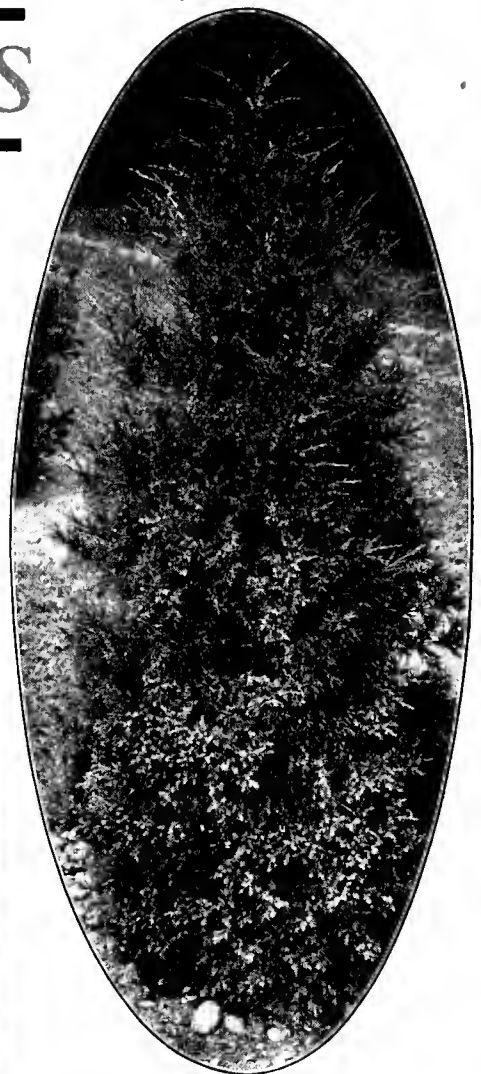
Any or all of the above in any assortment. \$1.10 each; 6 for \$5.95.

### Collection 1-B

Plants one year older, averaging 6 inches larger. \$1.60 each; 6 for \$8.95.

### Collection 2-B

Plants two years older, averaging 12 inches larger. \$2.05 each; 6 for \$11.95.



*Juniperus Virginiana.*

## Tall Growing Evergreens

### Collection C

Any or all of the above in any assortment. \$1.10 each; 6 for \$5.95.

### Collection 1-C

Plants one year older, averaging 6 inches larger. \$1.60 each; 6 for \$8.95.

### Collection 2-C

Plants two years older, averaging 12 inches larger. \$2.05 each; 6 for \$11.95.

These plants weigh from 20 to 50 lbs. each; cannot be sent by mail.

For Screening, Woodland Planting or For Specimens.

*PICEA CANADENSIS* (White Spruce). A very dense evergreen with bright, grayish green foliage which stands drought better than any other Spruce. 18-24 inches.

*P. EXCELSA* (Norway Spruce). A strong, symmetrical Spruce of rapid growth. Very hardy. 18-24 inches.

*PINUS AUSTRIACA* (Austrian Pine). A bold, robust evergreen tree which grows very rapidly. 18-24 inches.

*P. SYLVESTRIS* (Scotch Pine). A rather delicate, graceful Pine with silvery, gray-green foliage. Grows rapidly. 18-24 inches.

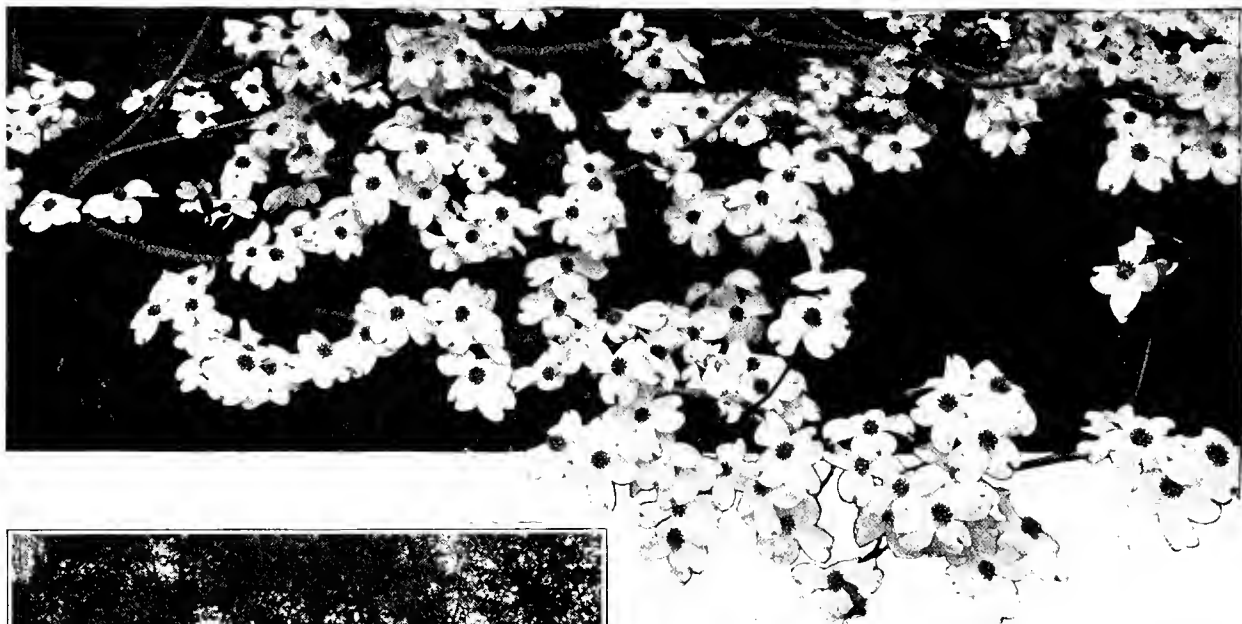
*PSEUDOTSUGA DOUGLASI* (Douglas Fir). A giant evergreen forest tree of great beauty. Grows very rapidly. 18-24 inches.

*TSUGA CANADENSIS* (Canadian Hemlock). Probably the most graceful and beautiful evergreen in cultivation. Give it plenty of room. 18-24 inches.



*Tsuga Canadensis.*

This sale is for cash only—No accounts opened at these prices



## Dogwood

(*Cornus florida*)

**I**f this lovely tree had nothing to offer for our enjoyment besides its great spread of glorious white flowers in the springtime, we still could not do without it. This, however, is not its only virtue. In the fall while its leaves turn flaming red, the Dogwood spreads for our pleasure its great crop of beautiful, scarlet berries.

---

3 to 4 ft. . . . . \$0.90 each; 3 for \$2.55  
 4 to 5 ft. . . . . \$1.20 each; 3 for \$3.20  
 5 to 6 ft. . . . . \$1.45 each; 3 for \$3.95

Trees of this size cannot be sent by mail.

---

## Climbing Roses

**T**HREE Roses in the finest varieties, either white, pink or red, or one of each at your option.

for **75c**

**3 for 75c**

The regular price is \$1.50 for 3-year plants.

If wanted by parcel post, add 12c for each three plants.









Deutzia Lemoinei.

**Barberry, Red Leaved.** The new Barberry, the leaves of which are always bright red throughout the season.

**Calycanthus floridus** (Sweet-Scented Shrub). Fragrant reddish brown flowers. Very aromatic.

**Cornus alba sibirica** (Red-Twigged Dogwood). Creamy white flowers. The limbs are bright, blood-red and make a bright spot in the shrubby planting in the dead of winter.

**C. lutea.** Similar to alba sibirica excepting that the limbs are bright yellow.

**C. stolonifera** (Red Osier; Cornel). Creamy white flowers and white berries. Branches bright reddish purple.

**Clethra alnifolia** (Sweet Pepper Bush). Fragrant, creamy white flowers are borne in erect racemes. July to September.

**Cephalanthus occidentalis** (Button Bush). The creamy white flowers are borne in dense, round heads. The foliage is large and quite glossy. July.

**Cydonia japonica** (Japanese Quince). The shrub is covered with dazzling scarlet blooms before the foliage appears.

**Deutzia crenata fl. pl.** Double pink flowers.

**D. Lemoinei.** A dwarf, free-flowering shrub with pure white flowers.

**D. magnifica.** The best large-flowered Deutzia yet produced.

**D. Wellsi.** Pure white, double flowers. May.

**Diervilla sessilifolia** (Native Weigela). Stands dense shade.

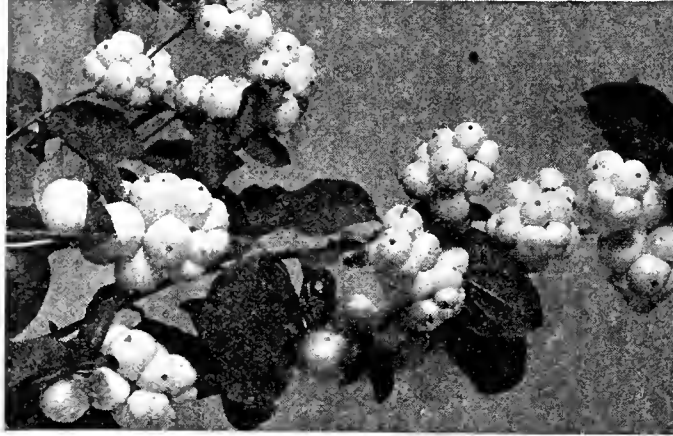
**Elaeagnus umbellata** (Japanese Oleaster). Fragrant yellowish white flowers and berries that are silvery when young but change to scarlet as they ripen. Fruit attracts birds. June.

**Exochorda grandiflora** (Pearl Bush). Dazzling white flowers in numerous terminal racemes. May.

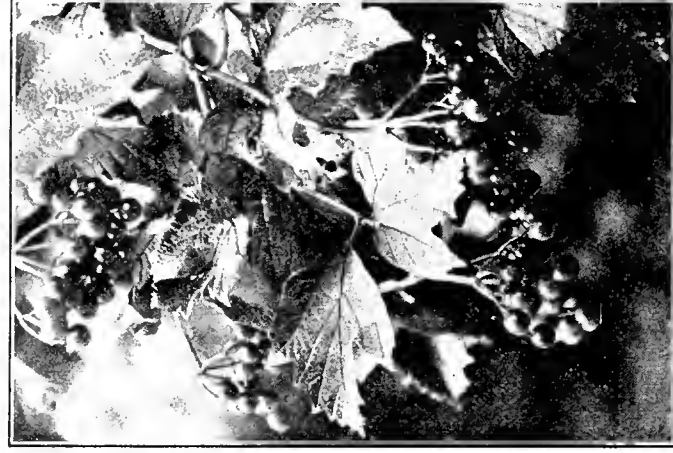
**Euonymus alatus** (Winged Burning Bush). In the fall the leaves turn to gracious tones of red and crimson, making the brightest spot in the landscape.



Forsythia Intermedia.



White Snowberry.



Viburnum Opulus.

# Flowering Shrubs ~ Bargain Offer

As has been stated elsewhere in this circular, an individual filling of individual orders costs money, in many cases as much as 50% of the cost of the plants. This would seem to be a good year to cut out the frills and get down to brass tacks. The flowering shrubs offered in this list will be exactly the same plants whether you pay from 50c to 75c a piece for individual packing or the bargain price for standardized packing and the varieties offered are those most of you buy.

The following shrubs, marked with routine digging labels to enable identification, will be furnished as follows:

We guarantee that these plants have been produced on our Evans City nurseries and will be dug fresh the day they are shipped. They are standard, full sized, properly grown shrubs; too large to be sent under the laws of the United States Post Office by parcel post.

**Any Variety**  
**3 plants - 85c**  
**6 plants \$1.65**  
**12 plants \$2.25**

**Euonymus europaeus** (European Burning Bush). Small tree; fruit red with orange seeds. May.

**Forsythia intermedia** (Hybrid Golden Bell). Produces great quantities of golden yellow flowers on its slender, arching branches before the foliage appears. April.

**Hydrangea arborescens grandiflora** (Hills of Snow). A fine low bush about 3 to 4 feet, with large clusters of white flowers somewhat like the Snowball.

**H. arborescens flore pleno.** The new Double Hills of Snow and the latest thing in Hydrangeas.

**H. paniculata grandiflora** (Peegee Hydrangea). The very popular large-flowered type, with enormous white blooms.

**Kerria japonica** (Corchorus japonicus). Single yellow flowers in May.

**K. japonica argenteo-variegata.** A dwarf shrub with delicate green foliage edged with white. Bears a profusion of bright yellow flowers.

**Lonicera bella albidia.** In the spring it produces quantities of small, white flowers. Later in the season the bush is covered with bright red fruits.

**L. bella rosea.** Exactly like L. bella albidia in all respects save that the flowers are pink.

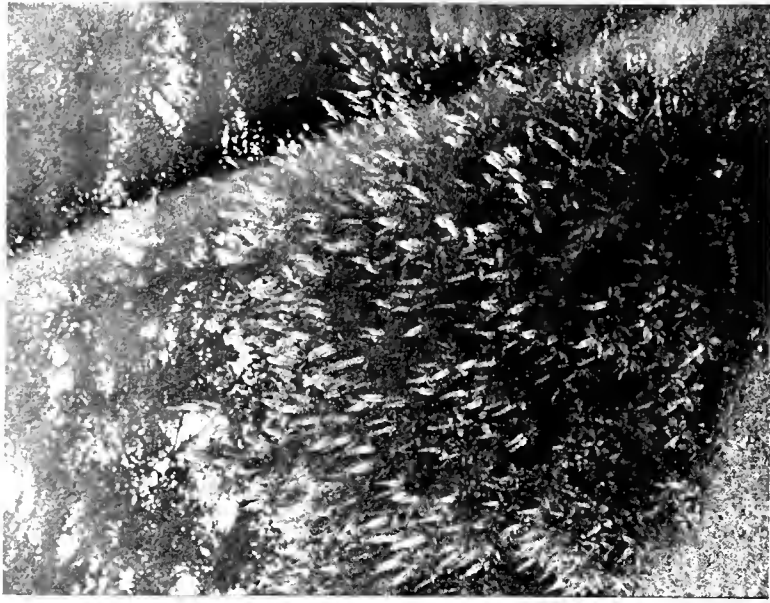
**Lonicera fragrantissima** (Early Fragrant Honeysuckle). Small, deliciously fragrant, white flowers tinged with yellow in the early spring before the leaves appear. April.

**L. Ruprechtiana** (Manchurian Honeysuckle). Pure white flowers, which later change to yellow, appear late in spring. In midsummer red and orange fruits appear.

**Physocarpus opulifolius aurea** (Golden Nine-bark). Leaves are yellow when they first appear in the spring. The whitish flowers appear in numerous clusters along the branches in early summer and are followed by bright, red pods which form a strong contrast to the foliage.

**Philadelphus grandiflorus** (Large-Flowered Mock Orange). The largest of the family, occasionally growing to a height of 5 feet. Scentless pure white blooms, each 2 inches across. June.

**Spirea Anthony Waterer.** A dwarf shrub with dense heads of pinkish red flowers. These appear first about July, and if removed, the plant will continue to produce blooms until frost.



Clethra Alnifolia.

**Spirea callosa Froebeli.** Deep rosy blooms are borne in abundance in the middle of summer.

**S. Reevesiana.** The limbs of this shrub in May are literally covered with clusters of single white flowers.

**S. Thunbergi** (Snow Garland). First of the Spiraeas to bloom in the spring. Blooms pure white.

**S. Van Houttei** (Van Houtte's Bridal Wreath). A most graceful shrub with numerous arching branches, which are almost concealed by compact umbels of pure white flowers in late spring. This is easily the most beautiful of all the Spiraeas, as it possesses beautiful foliage at all times, and the wealth of beauty in May and June is unsurpassed by any shrub in existence. As a flowering hedge or as a specimen it is delightful.

**Symphoricarpos racemosus** (Snowberry). Racemes of white or pinkish flowers appear in summer and are followed by white berries which are produced in great numbers, the limbs often bending under the weight of the immense crop. This is well adapted to shade planting, as it will succeed where no other shrub will keep alive.

**S. vulgare** (Indian Currant). Greenish red flowers in summer; the chief beauty is in the wealth of red or purplish berries which cling to the branches in winter.

**Tamarix africana** (African Tamarix). Slender, tree-like shrub of 10 feet, with drooping spikes of small, pink flowers.

**Viburnum dentatum** (Arrowwood). Creamy white blooms followed by blue-black berries.

**V. opulus** (European Cranberry Bush). White flowers in late spring or early summer. Later scarlet berries appear and cling to the branches all winter.

**V. opulus sterile** (Snowball). Handsome, showy flowers are produced in large globular clusters, which appear like single blooms.

**Weigela amabilis** (Rose Weigela). The flowers are light pink and produced in great abundance.

**W. Eva Rathke.** Large, crimson or carmine-red flowers of dazzling brilliancy.

**W. Hendersoni** (Henderson's Weigela). Clear, light red flowers.

**W. rosea** (Pink Weigela). Rose-colored flowers produced in great profusion.

**This sale is for cash only—No accounts opened at these prices**





# Three Lovely Trees



Pin Oak.

## Norway Maple

(*Acer platanoides*)

The most popular and the most widely planted tree in cultivation. Develops into a tall, round-headed tree, the foliage of which is so very dense that the sunlight seldom penetrates through it.

---

6 to 8 ft. high.

**\$1.60** each;

3 for **\$4.50**

---

## Salix Salamoni

(Salamoni Willow)

This is the fastest growing tree hardy in northern latitudes. Planted in identical conditions it will grow faster even than the Carolina Poplar.

Most fast growing trees are trashy, being short lived and brittle with a tendency to go to pieces even before they have made their full development. Worse than this, many of them seem to delight in playing host to all sorts of despicable insect pests and malignant plant diseases. Few have any beauty.

---

6 to 8 ft. high.

**75c** each;

3 for **\$2.00**

---

The Salamoni Willow is first of all a handsome tree with a life cycle of from fifty to seventy years. In the forty odd years we have known it, it has never developed any bad habits, remaining a graceful and beautiful object until the end.



The Salamoni Willow.

## Pin Oak

(*Quercus palustris*)

Like all the Oaks, the Pin Oak is a tree of great dignity. While it develops a very symmetrical form, it never becomes harsh and awkward, always remaining light and graceful without being frivolous. Its leaves are deeply cut. Given liberal planting it will grow almost as fast as many of the cheap, shoddy, short-lived trees which the uninformed are so often persuaded to plant.

---

6 to 8 ft. high.

**\$1.60** each;

3 for **\$4.50**

---

These trees cannot be sent by mail.

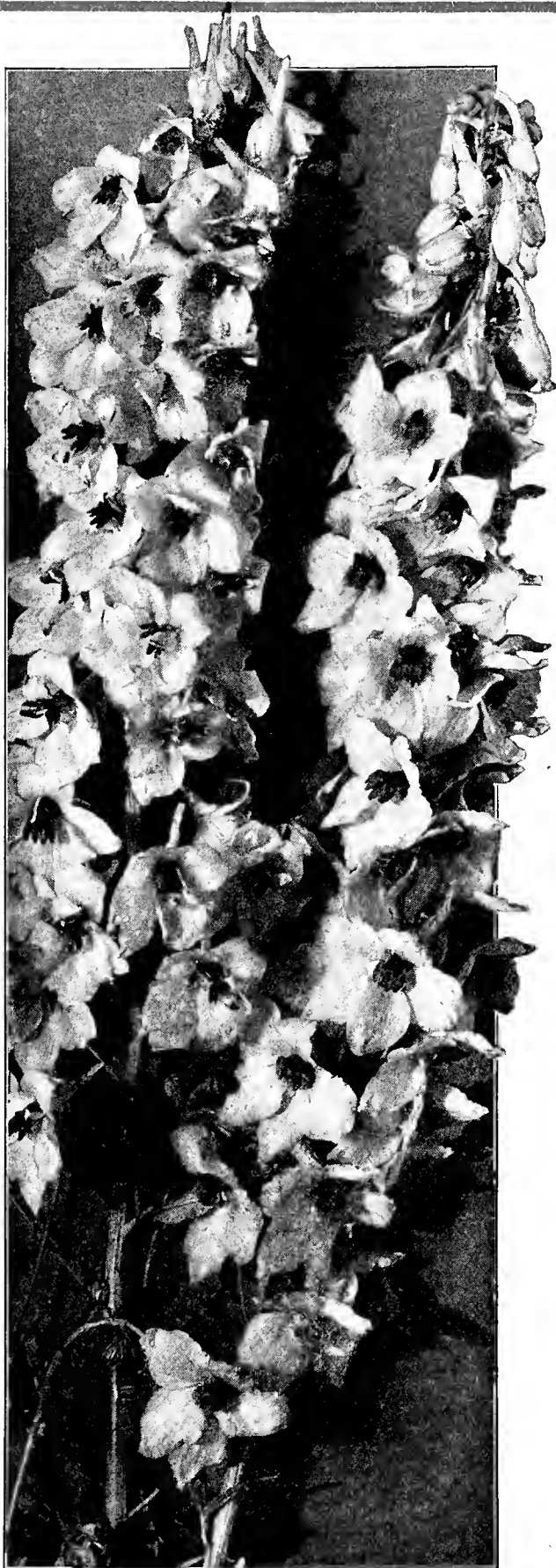
**This sale is for cash only—No accounts opened at these prices**



---

# Tall English Delphiniums

---



**B**LOOMING all summer, coming up year after year, sending aloft successive shafts of incredible color to a height of five, six, eight feet. It is doubtful if any other plant so superb as Delphinium ever graced a garden.

Few people are aware of the perfection to which this ancient flower has been brought by modern culture, how easily it can be planted and grown, and how lasting a delight the gardener secures who plants Delphinium. If everyone knew, tall, hardy Delphiniums would be more in evidence everywhere.

We offer specially selected plants grown from seeds of famous named varieties. Will grow anywhere but do best in rich garden soil. Every imaginable tint and shade of blue, lavender, and purple. We promise you'll find positive joy in their extraordinary bloom.

---

## Elliott's Magnificent Varieties

**Improved English Hybrids.** Range in color from very light blue to very dark blue, overlaid irregularly with tones of pink and lavender, rose, and lilac. Black spots on pistil and anthers at center of flower. Many blossoms show white secondary petals of white spots at base of major petals. A wonderful wealth of color variation in the English Hybrids.

**Fine Mixed English Hybrids.** \$2.50 per doz.; \$7.50 per 50; \$15.00 per 100.

**English Hybrids, Extra Selected Varieties.** 50c each; \$5.00 per doz.

**Belladonna.** Uniform light sky-blue. The most universally admired and desired of the solid color varieties. \$2.50 per doz.; \$7.50 per 50; \$15.00 per 100.

**Bellamosa (The Improved Formosum).** For solid dark blue color, unequalled among Delphiniums—positively the best. \$2.50 per doz.; \$7.50 per 50; \$15.00 per 100.

Delphiniums may be ordered on open account.

If wanted by parcel post, add 15c for each six plants.

---





# HARDY PERENNIAL PLANTS

## Bargain Offer



Anemone japonica.

**Achillea, The Pearl.** Pure white flowers in clusters, produced freely from July to October. 2 feet.

**Anemone japonica, Assorted.** These are among the most beautiful hardy plants in the perennial garden.

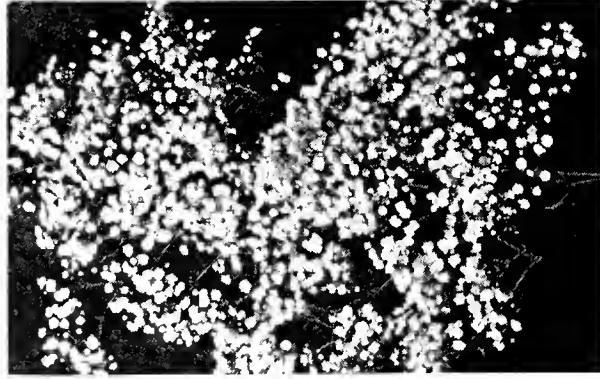
The foliage is always good, but the crowning glory comes when from August even until snow flies they are a mass of white or pink blooms. 4 to 5 feet.

**Astilbe.** Lovely plants about 4 feet high with great plumes of pink or white flowers. Plant these in a moist, shady place.

**Boltonia latisquama.** Lovely border plant. Flowers vary from pink to pinkish lavender and blue. 2 to 4 feet. September to November.

**Coreopsis lanceolata grandiflora.** Gorgeous for massing because of the profuse rich golden yellow blooms. 2 feet. June-July.

**Foxglove.** Though they will grow in the sun, if you have a shady or semi-shady place in your garden, you must plant the glorious Foxgloves.



Gypsophila Paniculata.

**Gaillardia.** We consider the Gaillardia one of the most beautiful hardy plants in cultivation, and believe our strain to be the finest extant. The gay blossoms are obtainable in perpetual profusion from June to November.

**Geum.** Here you may have either the lovely orange-yellow or the dark red, as you prefer. The flowers are double in either case.

**Gypsophila paniculata (Baby's Breath).** One of the daintiest flowers imaginable. The individual blooms are extremely small, but are borne in such large clusters that they look like one immense pure white bloom.

**Hemerocallis, Assorted (Lemon Lilies).** Of course, you want Lemon Lilies.

**Helenium autumnale superbium (Sneeze-weed).** A showy perennial with crimson, yellow or orange petals surrounding a yellow disc.

**Hibiscus (Rose Mallow Marvels).** Splendid plants five or more feet tall. Gracious flowers of crimson, pink or red. You select the color.

**Hollyhocks.** These lovely Hollyhocks furnished in an assortment of colors, either single or double, as you prefer.

**Kniphofia (Red Hot Poker, Torch Lily).** Plants between two and three feet tall, blooming in August and September. The flowers are flaming orange-scarlet. The most strikingly brilliant color it is possible to use.

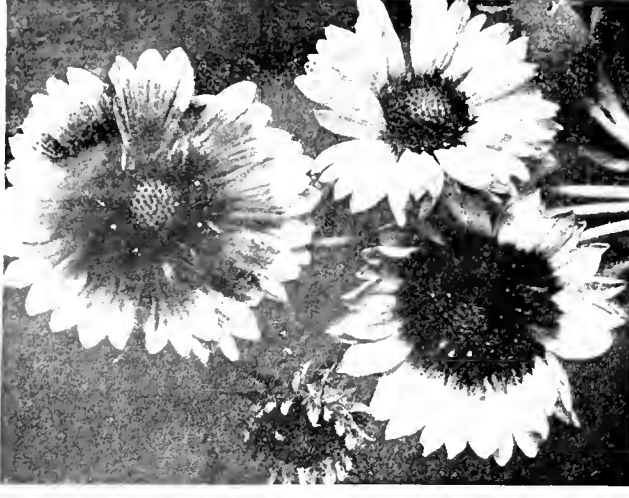
WE grow over three hundred varieties of perennial plants and all of them are purchased in greater or less quantities every season. Filling each order individually requires an individual numbered label, an individual check-up, individual digging of the plants, individual inspections, individual audits, etc., and in times like these the cost of doing this makes our superintendents old long before their time. Something had to be done about it. We knew, of course, that most of you order about the same things and it didn't seem fair to ask you to pay for services which you neither need nor want. So we made a check-up of our sales records to find out what is in most demand so that we could work out a standardized packing and cut costs. Our investigation proved that most of you want the following plants in greater quantities than all the others combined, and on these we are making a special offer.

Routine digging labels to enable you to identify the plants, will be furnished with each package. We guarantee that the plants are our own production and dug fresh the day they are sent to you.

**Any One of the Varieties Listed Below**

3 Plants .50  
6 Plants .90  
12 Plants \$1.75

If wanted by parcel post add 9c for each 3 plants.



Gaillardia.

fectly hardy and absolutely invaluable for cut flowers through the summer and autumn months. The flowers are bright and elegantly borne on long stems.

**Ranunculus acris fl. pl. (Bachelor Buttons).** The flowers are glossy golden yellow. 2 to 3 feet. May to September.

**Sedum spectabile (Showy Stonecrop).** One of the very best perennials. Pinkish flowers. September-October.

**Shasta Daisy.** The famous white Daisy originated by the great Luther Burbank.

**Stokesia laevis (Stokes' Aster).** Lovely blue-violet or pure white flowers, 4 to 5 inches across, from July until frost.

**Sweet William, Assorted.** Probably the most famous of the old-fashioned garden plants.

**Trollius.** Glorious flowers like giant Buttercups in May and June. Yellow, orange and gold.

**Yucca filamentosa (Spanish Bayonet).** An evergreen plant with long, spiny foliage. In June and July, tall spikes of pure white, bell-shaped flowers rise above the foliage.



Coreopsis Lanceolata Grandiflora.

**Liatris pycnostachya (Cattail Gay Feather).**

Very beautiful as well as odd. Blooms in midsummer and throws up long, narrow spikes of rich purple flowers which last a long time. A peculiarity of this plant is its great attraction for butterflies; when in bloom it is always surrounded with them.

**Linum perenne (Flax).** An erect growing perennial. Lovely blue flowers.

**Lychnis viscaria splendens fl. pl. (Ragged Robin).** Double red. Forms a dense tuft of evergreen foliage, and in June it sends up tall spikes of handsome, double, deep red flowers of exquisite fragrance, and remains in perfection six weeks.

**Lychnis coronaria (Dusty Miller).** The colors may be pink, white or crimson, as you prefer.

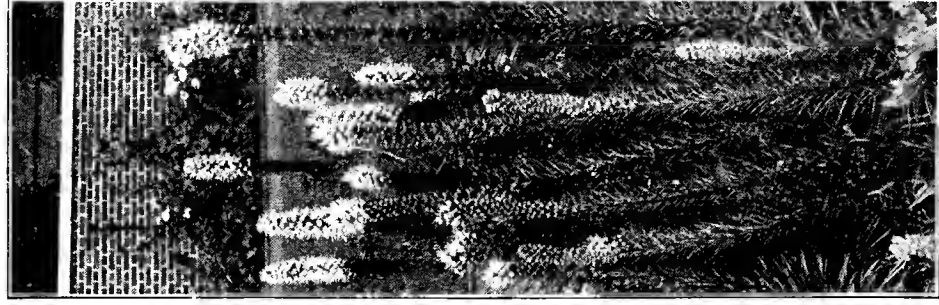
**Monarda, Cambridge Scarlet.** Grows best in moist places. Most effective where it has a background of greenery. 3 feet. July-Sept.

**Pentstemon Torreyi.** The flower spikes which are scarlet or crimson-orange are produced freely in July and August.

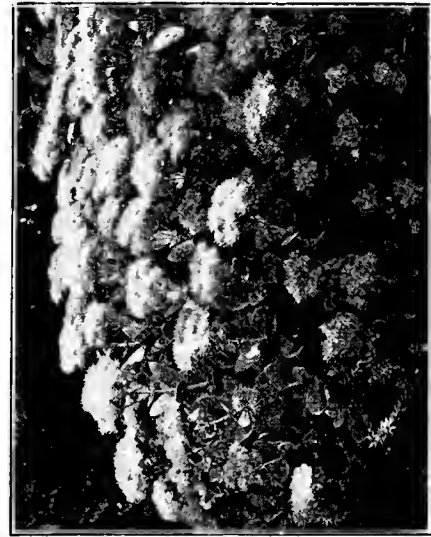
**Polemonium caeruleum (Jacob's Ladder).** The flowers are bell-shaped, blue or white, and about an inch across. 1 to 3 feet. May-June.

**Phytostegia virginiana. (False Dragonhead).** Splendid pink flowers.

**Pyrethrum roseum (Painted Lady).** The Pyrethrum are so simply and easily cultivated that they may be recommended to all who possess a garden. They are per-



Liatris Pycnostachya.



Sedum Spectabile.

**This sale is for cash only—No accounts opened at these prices**

Veronica Amethystina.



# ORIENTAL POPPIES

"I REMEMBER very well the first time I saw an Oriental Poppy. I was a boy then, and it excited me wonderfully, and I thought it the most remarkable flower in the world; and now, after fifty years have gone by and I have seen all the known flowers of the world, I am still of the opinion that it is mighty fine; one of the most striking and effective perennials in cultivation." Our founder, Mr. J. Wilkinson Elliott, said this fifteen years ago and it is still true. One who has not seen the blazing beauty of the Oriental Poppies has not yet seen a garden.

We grow the six finest varieties in cultivation. They are:

**Bracteata.** Enormous, blazing red blooms.

**Grand Mogul.** Bright red. Excellent habit.

**Mrs. Perry.** Bright orange-apricot, shaded pink.

**Princess Ena.** Small, tulip-like flowers of orange-salmon.

**Royal Scarlet.** Profuse bloomer; medium size; rich scarlet.

**Silverblick.** Salmon, with blue blotches.

The regular price is 25c at the nursery.

We will furnish a collection of 6 plants, one each, specially grown in Poppy pots, for \$1.10, less than 18c a plant; a collection of 12 plants, two each, for \$2.05; and a collection of 24 for \$4.00.

Though no names can be furnished at these prices, we guarantee that each collection will be made up of equal quantities of the six varieties. If you must have your plants named, the price is 25c each.

## SPECIAL

For those who prefer Poppies in mixture, we will furnish Oriental Hybrids Mixed.

3 plants for 50c  
6 plants for 90c  
12 plants for \$1.75

If wanted by parcel post, add 21c to each 6 plants.

No guarantee of equal varieties covers this mixture.

*Bargain Offer*



**This sale is for cash only—No accounts opened at these prices**

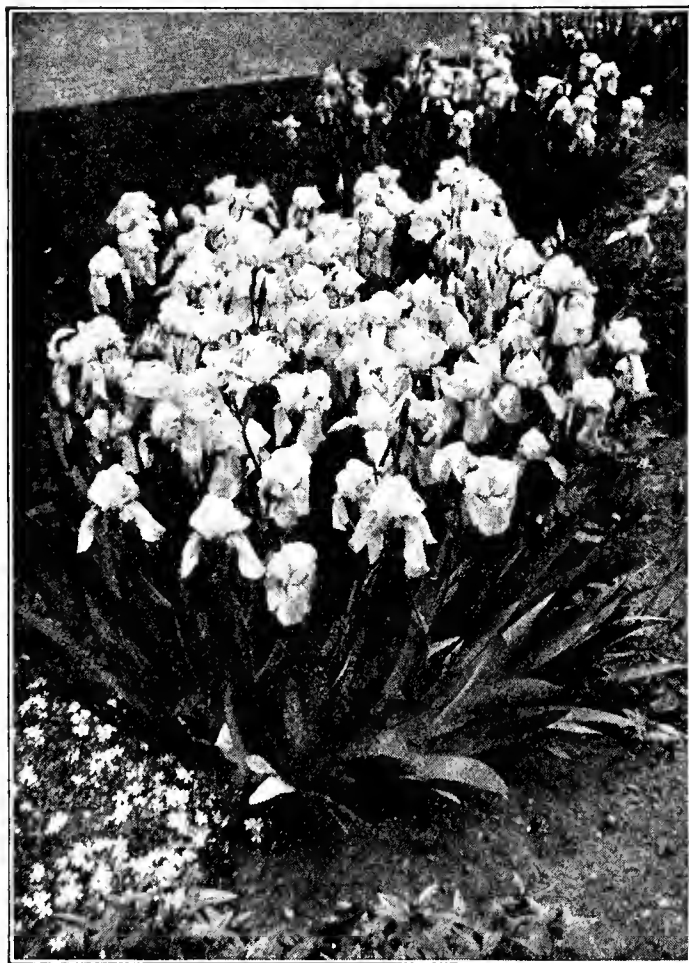


# Bearded IRIS

## BARGAIN OFFER

**A** GARDENER and his assistant leisurely wandering over the nurseries finding individual plants and fastening individual labels thereto—how this eats up money! Two years ago when we all had money it didn't matter much, and a year from now when we all have it again, it will matter not at all. This year, however, if you will help us cut costs, you can buy fine Iris at a price that you will never get again.

This spring we will pack Special Iris Collections, using our regular production. The plants are growing here in Evans City and they will be dug fresh the day they are sent to you. If you must have names you may order them from our catalog, paying from 20c to 40c a plant for them. You can have exactly the same plants, however, by ordering collections as follows:



### Bearded Iris OFFER

6 plants in 6 varieties	70c
12 plants in 12 varieties	\$ 1.35
18 plants in 18 varieties	\$ 1.95
24 plants in 24 varieties	\$ 2.40

If wanted by parcel  
post, add 11c for each  
six plants.

**This sale is for cash only—No accounts opened at these prices**



**Alyssum saxatile compactum.** Gray-green cushions covered with brilliant yellow blossoms.

**Arabis alpina fl. pl.** A trailing plant with gray foliage literally smothered in clusters of double white flowers.

**Bellis perennis.** The lovely English Daisy is covered with beautiful double flowers about the size of a five cent piece. The colors may be white, pink or assorted, as you prefer.

**Campanula rotundifolia.** The famous Bluebells of Scotland.

**Cerastium (Snow-in-Summer).** The foliage of this dwarf plant is silvery white and is covered with small, white flowers in May.

**Cheiranthus Allioni.** Dazzling, flaming orange flowers; the brightest color you can use.

**Dicentra eximia.** A dwarf Bleeding Heart with exquisite fernlike foliage and lovely pink blossoms.

**Festuca glauca.** A dwarf, grasslike plant with blue-gray foliage.

**Gypsophila repens.** A beautiful trailing plant with clouds of small white and pink flowers.

**Helianthemum (Sunrose).** White, yellow, orange, scarlet, pink and crimson. A constant succession of many colored flowers throughout the season.

## Rock Plants

**SPECIAL** effects are desired in a rockery and these plants will produce these effects. Special soil conditions are also present and these plants will thrive under these conditions.

Strictly speaking, however, there is no such thing as a rock plant, a plant which must be planted in a rockery and in no other place. While these plants are specially desirable in a rock garden, they may also be used in the perennial borders or in the flower garden.

**Any  
One Variety**

---

<b>3 plants</b>	<b>- 50c</b>
<b>6 plants</b>	<b>- 90c</b>
<b>12 plants</b>	<b>- \$1.75</b>

---

*If wanted by parcel post  
add 9c for each  
3 plants*

**Heuchera (Coralbells).** A lovely and graceful perennial bearing a multitude of graceful panicles of flowers. The color may be pink or crimson, as you prefer.

**Iberis (Candytuft).** Lovely, dwarf perennial almost completely hidden beneath its numerous panicles of white flowers.

**Myosotis semperflorens.** The Forget-me-not of song and story, and the loveliest blue color imaginable.

**Nepeta Mussini.** A dwarf, compact plant, producing masses of lovely lavender flowers all spring and summer.

**Phlox subulata.** A dwarf, creeping Phlox, the flowers of which make a glowing carpet when in bloom. The colors may be white, pink or blue, as you prefer.

**Plumbago larpentae.** A lovely, dwarf, spreading plant, covered with deep blue flowers.

**Polemonium reptans.** A lovely, dwarf, bushy plant bearing showy blue flowers.

**Primula polyanthus (Munstead Strain).** The newest and loveliest of the Primroses. The colors may be white or yellow, as you prefer.

**Primula polyanthus (Spechley Strain).** A new development in Primroses. The flowers are shades of red, pink, white or yellow.



**This sale is for cash only—No accounts opened at these prices**

# PEONIES ~ Bargain Offer

**F**ILLING the average order, a gardener and his helper will walk a mile or more over the nurseries, stopping here to dig one plant and there to dig another, and all the while guarding the plants carefully to prevent mixing. This costs money, which must be added to the price and you, of course, have to pay it.

This spring we will distribute special unnamed Peony collections, and by cutting out waste and lost motion, price them at the lowest prices ever quoted. We guarantee that the plants used shall be our regular stock, grown by ourselves at Evans City; first class plants in every respect. We further guarantee that the varieties used will be our regular production quoted in our catalog at from 50c to \$1.25 a plant. We further guarantee that each plant in each collection will be different and there will be no duplicates. Finally the plants will be dug fresh the day they are sent to you. We do not deal in cold storage plants.

**Special Peony Collection**

---

**GUARANTEED**

<b>3 plants</b>	<b>\$0.70</b>
<b>6 plants</b>	<b>1.35</b>
<b>12 plants</b>	<b>2.55</b>

If these Peonies are wanted by parcel post, add 21c for each six plants ordered.

The plants will be furnished with routine digging labels which will enable you to identify each variety. At these prices the selection of varieties must be left entirely to us for the reason that it costs money to send a man to the fields to dig a special order.

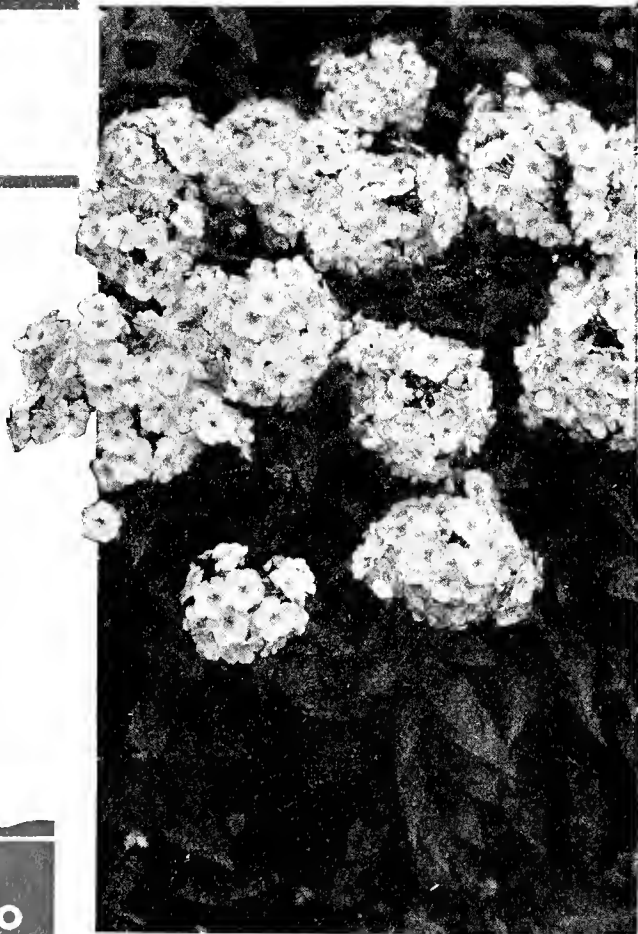


**This sale is for cash only—No accounts opened at these prices**

# Tall Perennial PHLOX

The Finest of the Hardy Border Plants  
Beauty for Cut Flowers

FOR those of you who are willing to cooperate with us in cutting costs and who do not insist on having names, we will pack special Phlox Collections and price them to save you money. We guarantee that the plants used in these collections will be our regular production, grown by ourselves here at Evans City. We also guarantee that the plants will be perfectly fresh, dug the day they are sent to you. We further guarantee that each plant in each collection will be different. Obviously we cannot afford to name the plants at these prices and if you must have names you must order from our catalog, paying the regular price of 25c a plant in addition to transportation.



<b>Special Phlox Collection</b>	
3 plants in 3 varieties	- \$0.50
6 plants in 6 varieties	- .90
12 plants in 12 varieties	- 1.75

If wanted by parcel post, add 10c for each 6 plants.



## Scott Elliott Hybrid COLUMBINES

(Long-Spurred Aquilegias)

IT wouldn't be a garden without some Scott Elliott Columbines and it wouldn't be a sale if we didn't include these.

So  
here they are

Instead of the usual  
25c to 35c each.

If wanted by parcel  
post, add 9c for each  
three plants.

priced at

3 plants for	\$0.50
6 plants for	.90
12 plants for	1.75

**This sale is for cash only—No accounts opened at these prices**

*Bargain  
Offer*

# Hardy Hedge Plants

Any dub nurseryman can propagate California Privet and most of them do because it is easy and cheap. However, it is not so easy and cheap for the customer for the reason that California Privet is not reliably hardy and should not be used in the North. There are other privets which are not only more beautiful than the California Privet but also perfectly hardy and easier to grow, though, of course, it does take skill to propagate them. This year there will be no excuse for planting the cheap, inferior California Privet since we are going to make the price right on the two good ones.

## Regel's Privet

Incomparably the finest of the Privets where one has room for it and perfectly hardy. It is at its best when it can be allowed to grow at least 4½ feet tall and is not sheared too closely. Use it on the larger properties.

---

Regular Price, \$30.00 per 100.  
SPECIAL PRICE **\$12.00** Per 100

---



Regel's Privet.

## Amur River Privet

Absolutely the finest of all the Privets for smaller properties where there is not room for the Regel's Privet. In addition to being absolutely hardy, it is superior in every respect to the California Privet.

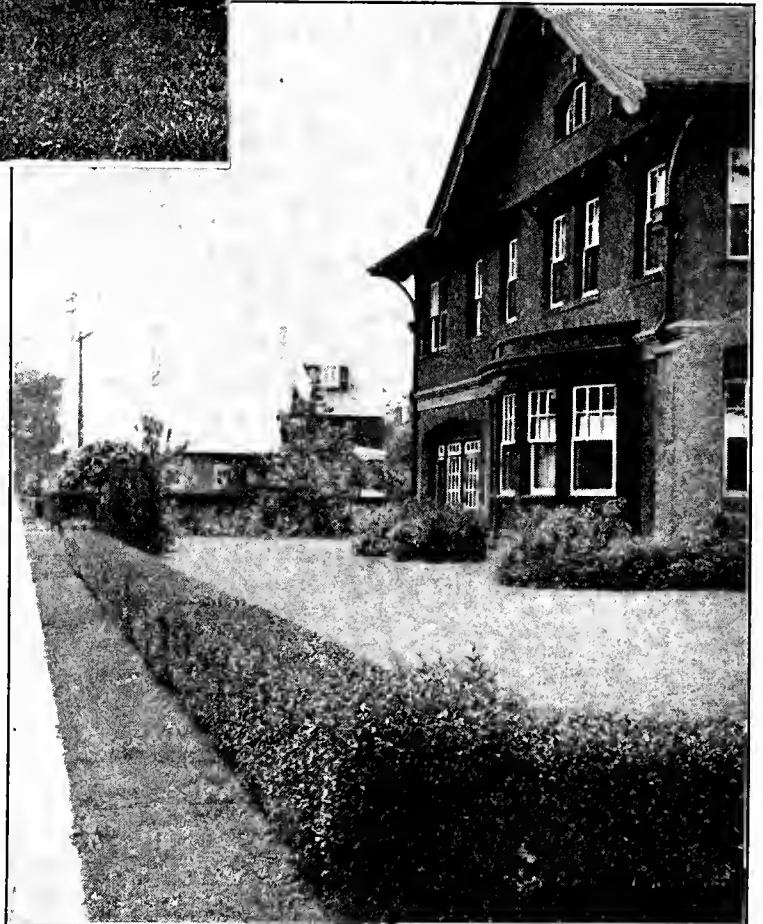
---

Regular Price, \$18.00 per 100.

SPECIAL PRICE **\$9.00** Per 100

---

These are full sized, properly grown plants much too large to be shipped by parcel post.



Amur River Privet.

**This sale is for cash only—No accounts opened at these prices**